



US009259209B2

(12) **United States Patent**
Lee et al.

(10) **Patent No.:** **US 9,259,209 B2**
(45) **Date of Patent:** ***Feb. 16, 2016**

(54) **ULTRASOUND SYSTEM AND SIGNAL PROCESSING UNIT CONFIGURED FOR TIME GAIN AND LATERAL GAIN COMPENSATION**

(71) Applicant: **SAMSUNG MEDISON CO., LTD.**,
Gangwon-Do (KR)

(72) Inventors: **Doo Sik Lee**, Seoul (KR); **Mi Jeoung Ahn**, Seoul (KR)

(73) Assignee: **SAMSUNG MEDISON CO., LTD.**,
Hongchun-gun, Kwangwon-do (KR)

(*) Notice: Subject to any disclaimer, the term of this patent is extended or adjusted under 35 U.S.C. 154(b) by 0 days.

This patent is subject to a terminal disclaimer.

(21) Appl. No.: **13/938,847**

(22) Filed: **Jul. 10, 2013**

(65) **Prior Publication Data**

US 2013/0303911 A1 Nov. 14, 2013

Related U.S. Application Data

(63) Continuation of application No. 13/756,274, filed on Jan. 31, 2013, which is a continuation of application No. 13/184,094, filed on Jul. 15, 2011, now Pat. No. 8,403,855, which is a continuation of application No. 11/857,860, filed on Sep. 19, 2007, now Pat. No. 8,016,759.

(30) **Foreign Application Priority Data**

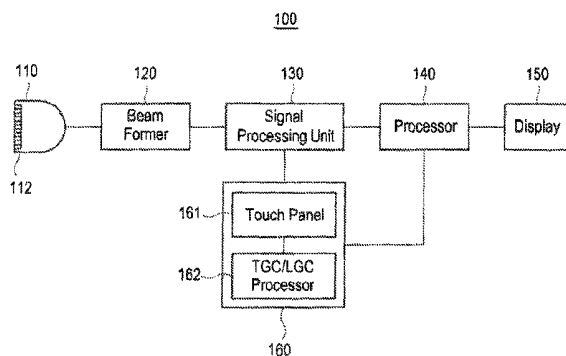
Dec. 7, 2006 (KR) 10-2006-0123752

(51) **Int. Cl.**
A61B 8/08 (2006.01)
A61B 8/00 (2006.01)

(Continued)

(52) **U.S. Cl.**
CPC **A61B 8/5207** (2013.01); **A61B 8/00** (2013.01); **A61B 8/14** (2013.01); **A61B 8/4254** (2013.01);

(Continued)



(58) **Field of Classification Search**

CPC A61B 8/00; A61B 8/14; A61B 8/4254;
A61B 8/4444; A61B 8/461; A61B 8/463;
A61B 8/467; A61B 8/5207; A61B 8/5269;
A61B 8/54; G01S 7/52033; G01S 7/52084

See application file for complete search history.

(56) **References Cited**

U.S. PATENT DOCUMENTS

4,043,181 A 8/1977 Nigam
4,475,400 A 10/1984 Flax

(Continued)

FOREIGN PATENT DOCUMENTS

EP 0 539 697 A1 5/1993
EP 10-248843 9/1998

(Continued)

OTHER PUBLICATIONS

US Office Action issued in U.S. Appl. No. 13/8475,686 mailed Aug. 2, 2013.

(Continued)

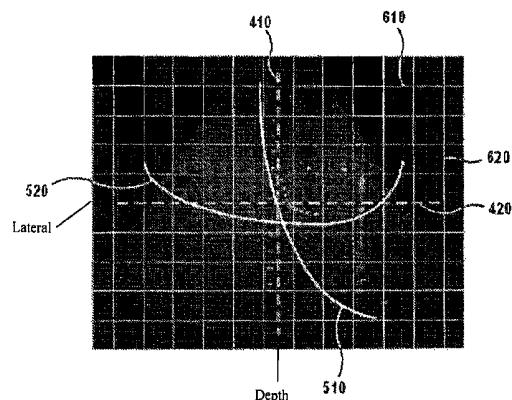
Primary Examiner — Amanda Lauritzen Moher

(74) *Attorney, Agent, or Firm* — McDermott Will & Emery LLP

(57) **ABSTRACT**

The present invention provides an ultrasound system, which comprises: a signal acquiring unit to transmit an ultrasound signal to an object and acquire an echo signal reflected from the object; a signal processing unit to control TGC (Time Gain Compensation) and LGC (Lateral Gain Compensation) of the echo signal; a TGC/LGC setup unit adapted to set TGC and LGC values based on TGC and LGC curves inputted by a user; and an image producing unit adapted to produce an ultrasound image of the object based on the echo signal. The signal processing unit is further adapted to control the TGC and the LGC of the echo signal based on the TGC and LGC values set by the TGC/LGC setup unit.

53 Claims, 8 Drawing Sheets



US 9,259,209 B2

Page 2

- (51) **Int. Cl.**
G01S 7/52 (2006.01)
A61B 8/14 (2006.01)
- (52) **U.S. Cl.**
CPC **A61B 8/4444** (2013.01); **A61B 8/461**
(2013.01); **A61B 8/463** (2013.01); **A61B 8/467**
(2013.01); **A61B 8/5269** (2013.01); **A61B 8/54**
(2013.01); **G01S 7/52033** (2013.01); **G01S**
7/52084 (2013.01)
- 2005/0059892 A1 3/2005 Dubois et al.
2007/0230759 A1* 10/2007 Tamura 382/128
2007/0239019 A1 10/2007 Richard et al.
2009/0043195 A1* 2/2009 Poland A61B 8/00
600/437
- 2009/0069677 A1 3/2009 Chen et al.
2010/0145195 A1 6/2010 Hyun
2011/0054325 A1 3/2011 Shin et al.
2013/0030298 A1 1/2013 Tamura
2013/0064036 A1 3/2013 Lee et al.
2013/0144169 A1 6/2013 Lee et al.
2014/0088428 A1 3/2014 Yang et al.

(56) References Cited

U.S. PATENT DOCUMENTS

4,817,614 A 4/1989 Hassler et al.
5,161,535 A 11/1992 Short et al.
5,245,586 A 9/1993 Hassler
5,315,999 A 5/1994 Kinicki et al.
5,482,045 A 1/1996 Rust et al.
6,102,859 A* 8/2000 Mo 600/443
6,142,942 A 11/2000 Clark
6,468,212 B1* 10/2002 Scott et al. 600/437
6,677,985 B1 1/2004 Kubota et al.
6,933,934 B2 8/2005 Amemiya
7,022,075 B2 4/2006 Grunwald et al.
8,016,759 B2 9/2011 Lee et al.
8,403,855 B2 3/2013 Lee et al.
2002/0008692 A1 1/2002 Omura et al.
2003/0097071 A1 5/2003 Halmann et al.
2003/0187353 A1* 10/2003 Ng et al. 600/437
2003/0236459 A1 12/2003 Loftman et al.
2004/0015079 A1 1/2004 Berger et al.

FOREIGN PATENT DOCUMENTS

EP 1 219 972 A2 7/2002
JP 6-154227 A 6/1994
JP 10-248843 A 9/1998
JP 2000-197637 A 7/2000
JP 2006-296978 A 11/2006
KR 2001-0067091 A 7/2001
KR 10-2004-0069378 8/2004
KR 10-2006-0033845 4/2006

OTHER PUBLICATIONS

U.S. Office Action issued in U.S. Appl. No. 13/586,290 dated Jul. 17, 2015.
U.S. Final Office Action issued in U.S. Appl. No. 13/475,686 dated Mar. 13, 2014.
U.S. Office Action issued in related U.S. Appl. No. 13/475,686 dated Mar. 26, 2015.

* cited by examiner

FIG. 1

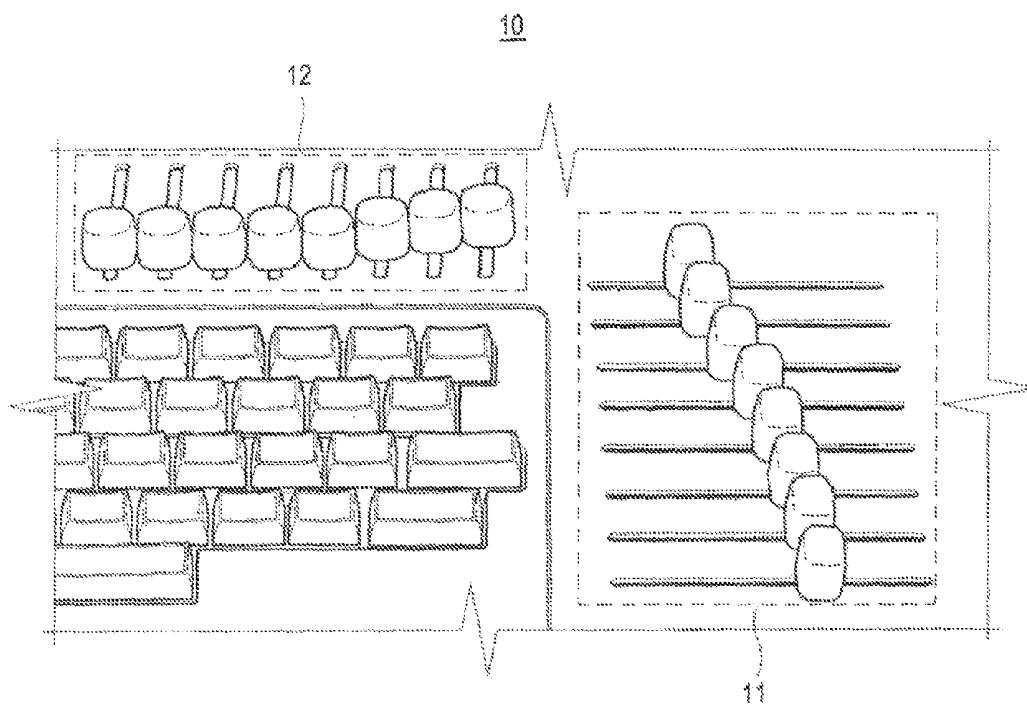


FIG. 2

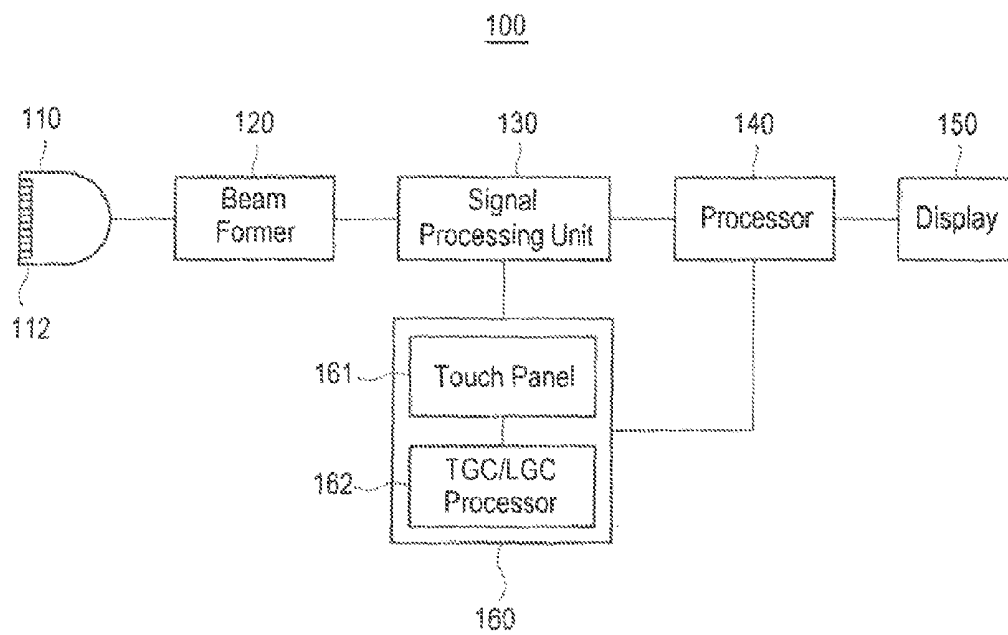


FIG. 3

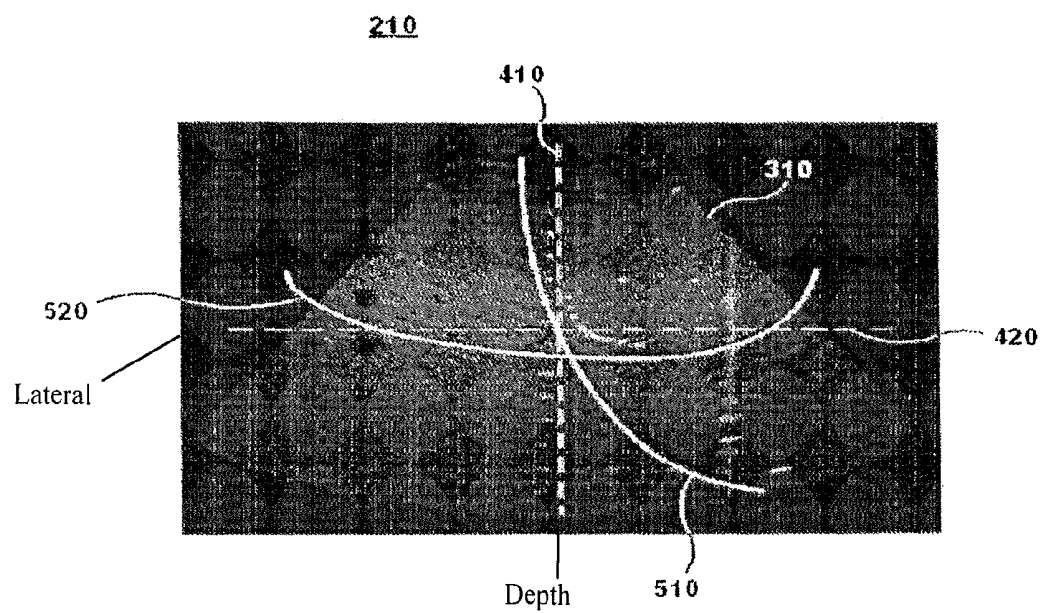


FIG. 4

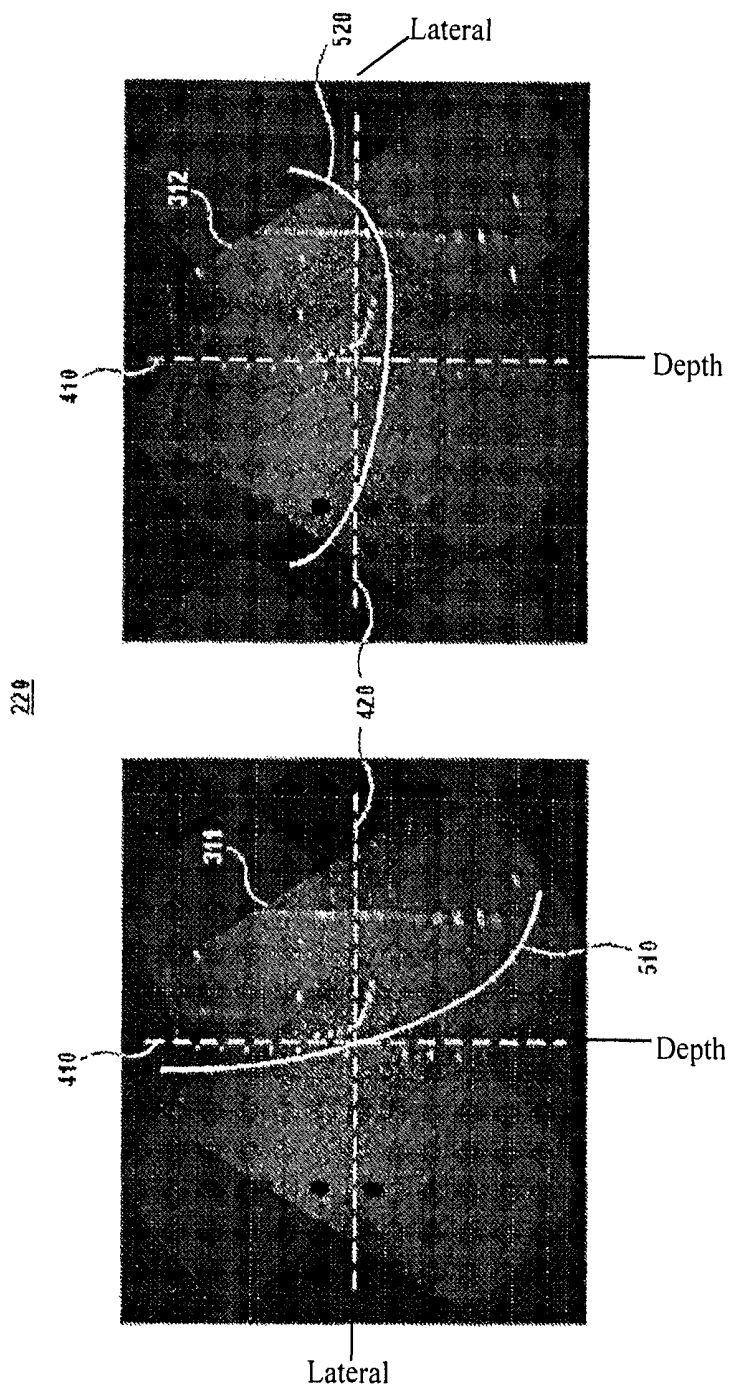


FIG. 5

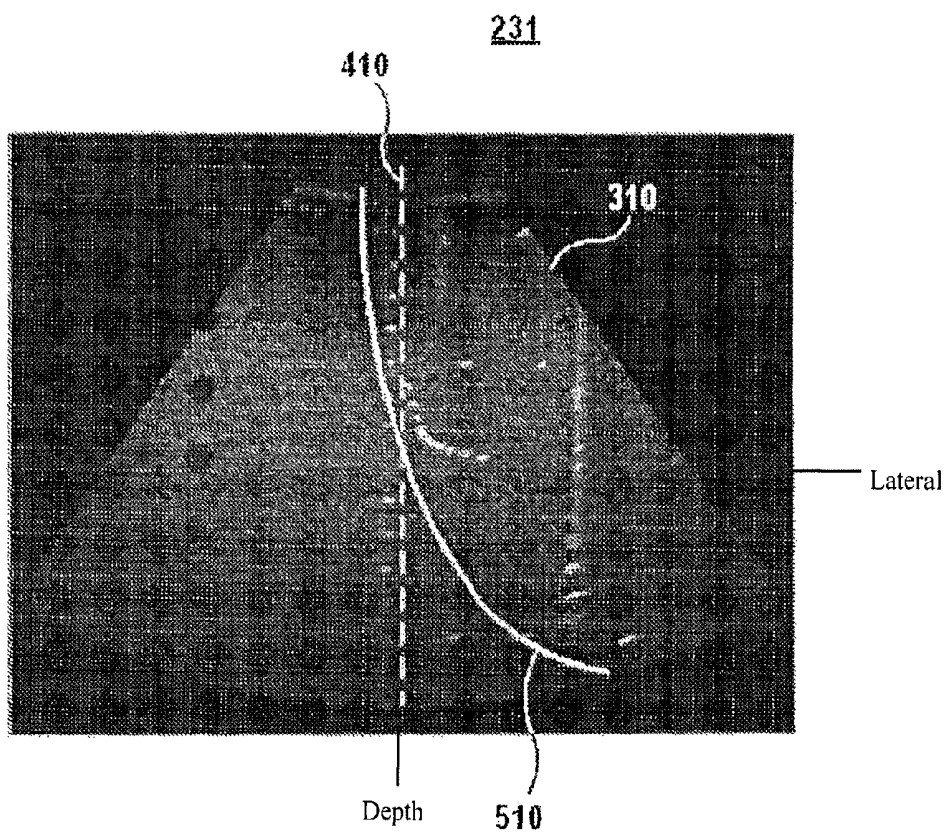


FIG. 6

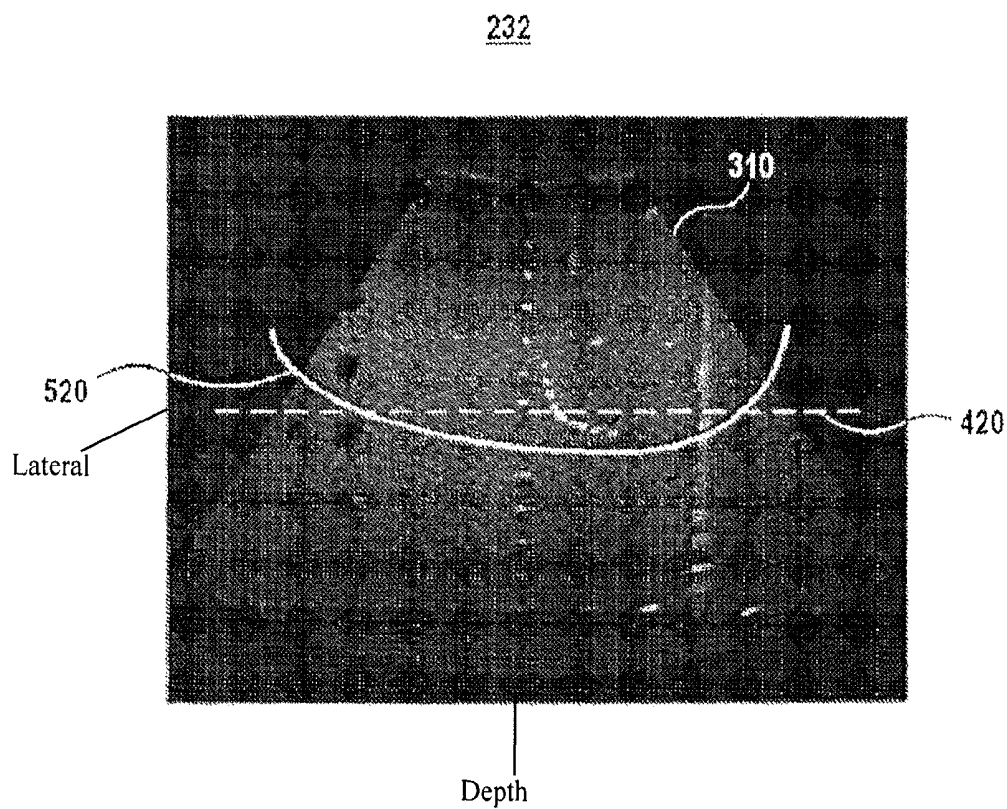


FIG. 7

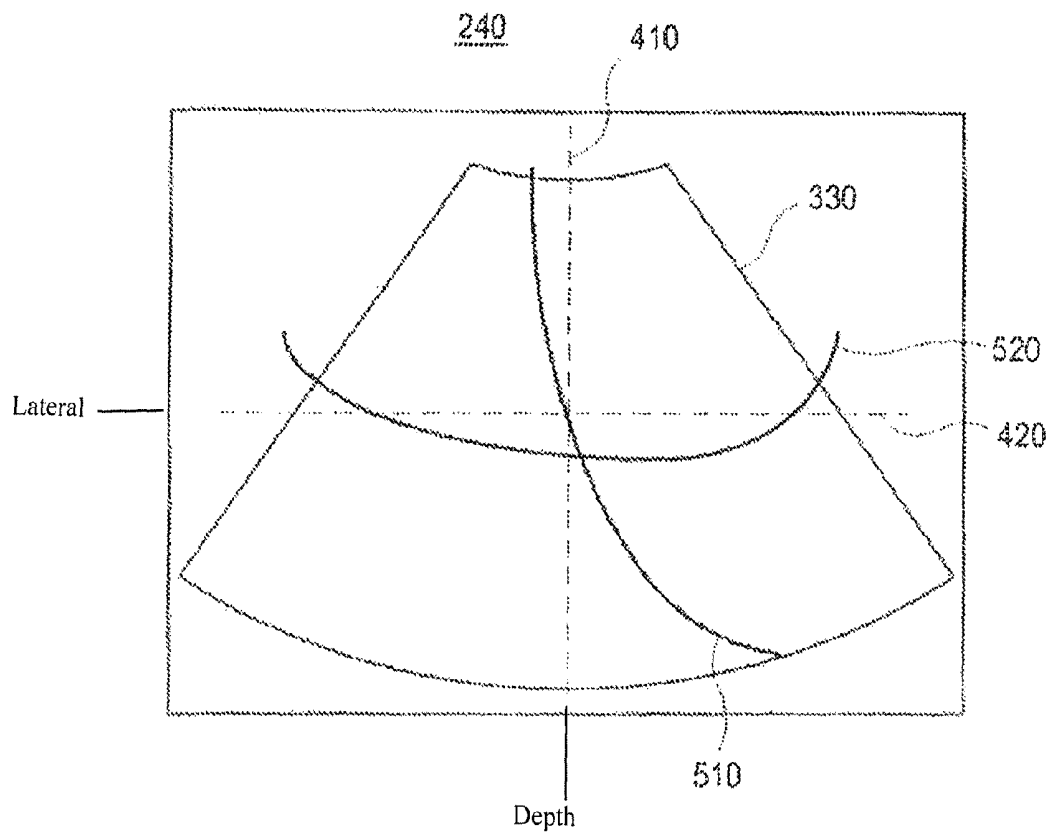
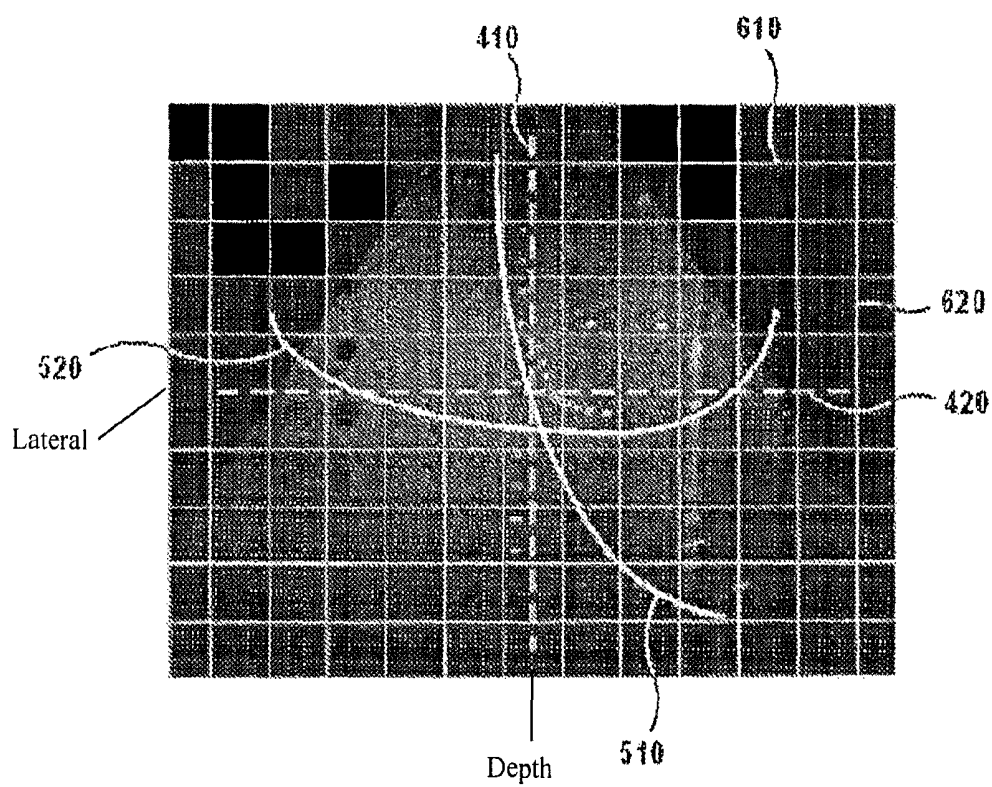


FIG. 8



ULTRASOUND SYSTEM AND SIGNAL PROCESSING UNIT CONFIGURED FOR TIME GAIN AND LATERAL GAIN COMPENSATION

The present application is a continuation of U.S. application Ser. No. 13/756,274, filed on Jan. 31, 2013, which is a Continuation of U.S. application Ser. No. 13/184,094, filed on Jul. 15, 2011, now U.S. Pat. No. 8,403,855, which is a Continuation of U.S. application Ser. No. 11/857,860, filed on Sep. 19, 2007 now U.S. Pat. No. 8,016,759, which claims priority from Korean Patent Application No. 10-2006-0123752 filed on Dec. 7, 2006, the entire subject matter of which are incorporated herein by reference.

BACKGROUND

1. Field

The present invention generally relates to an ultrasound system, and more particularly to an ultrasound system adapted to precisely and easily perform TGC (Time Gain Compensation) and LGC (Lateral Gain Compensation).

2. Background

An ultrasound system has become an important and popular diagnostic tool since it has a wide range of applications. Specifically, due to its non-invasive and non-destructive nature, the ultrasound system has been extensively used in the medical profession. Modern high-performance ultrasound systems and techniques are commonly used to produce two or three-dimensional diagnostic images of internal features of an object.

In order to transmit and receive ultrasound signals, the ultrasound system is generally provided with a probe including a wideband transducer. When the transducer is electrically stimulated, it produces ultrasound signals and transmits them into a human body. The ultrasound signals transmitted into the human body are reflected from borders between human tissues and then returned to the transducer. The returned ultrasound echo signals are converted into electric signals. Thereafter, ultrasound image data for imaging the tissues is produced by amplifying and signal-processing the echo signals.

Typically, the ultrasound system is provided with a control panel including a plurality of input units in order to perform a control function of acquiring the ultrasound image, a menu control function, a measurement and annotation function, etc. The control panel is comprised of a touch panel, an image control unit, a measurement control unit, etc. The touch panel displays menus for optimizing an ultrasound image displayed on a display unit. The menus on the touch panel can be touched and selected by a user. The image control unit controls the ultrasound image, whereas the measurement control unit measures a distance to the object, a circumference of the object, etc. As illustrated in FIG. 1, the image control unit includes a plurality of TGC control keys **11** and a plurality of LGC control keys **12**. The TGC control keys **11** are used to control a gain of each echo signal based on depth of the position from which the echo signal is reflected. Further, since the echo signal is attenuated at the outer right and left sides, the LGC control keys **12** are used to control a gain of the attenuated echo signal.

In the conventional system, the TGC control keys **11** and the LGC control keys **12** are arranged on different areas of the control panel. The problem associated with such an arrangement is that the size of the control panel must be inevitably increased. Further, a user of the system suffers a great inconvenience when operating the TGC control keys **11** and the

LGC control keys **12**. Another problem of the conventional system is that since the TGC control keys **11** and the LGC control keys **12** are comprised of slide-type variable resistors, it is very difficult for an unskilled user to finely control TGC and LGC with the TGC control keys **11** and the LGC control keys **12**.

In order to resolve the above problems, the present invention is directed to providing an ultrasound system adapted to display a setup screen used to input TGC and LGC curves on a touch panel and perform TGC and LGC based on the inputted TGC and LGC curves.

The present invention provides an ultrasound system, which comprises: a signal acquiring unit adapted to transmit an ultrasound signal to an object and acquire an echo signal reflected from the object; a signal processing unit adapted to perform TGC (Time Gain Compensation) and LGC (Lateral Gain Compensation) upon the echo signal at a coarse compensation mode based on predetermined TGC and LGC values; an image producing unit adapted to produce an ultrasound image of the object based on the TGC and LGC compensated echo signal; an input unit adapted to allow a user to provide TGC and LGC curves; and a TGC/LGC setup processor adapted to set TGC and LGC values based on the TGC and LGC curves provided by the user. The signal processing unit is further adapted to perform the TGC and LGC upon the echo signal at a fine compensation mode based on the TGC and LGC values set by the TGC/LGC setup processor.

In addition, the present invention provides an ultrasound system, which comprises: a processor adapted to configure a setup screen for display; and a touch panel adapted to display the setup screen so as to allow a user to input TGC and LGC curves. The processor is further adapted to calculate the TGC and LGC values based on the inputted TGC and the LGC curves.

BRIEF DESCRIPTION OF THE DRAWINGS

Arrangements and embodiments may be described in detail with reference to the following drawings in which like reference numerals refer to like elements and wherein:

FIG. 1 is a schematic diagram illustrating conventional TGC and LGC control keys;

FIG. 2 is a block diagram showing a structure of an ultrasound system according to one embodiment of the present invention;

FIGS. 3 to 7 illustrate a setup screen according to one embodiment of the present; and

FIG. 8 illustrates an exemplary distinction between TGC and LGC curves according to one embodiment of the present invention.

DETAILED DESCRIPTION OF THE PRESENT INVENTION

A detailed description may be provided with reference to the accompanying drawings. One of ordinary skill in the art may realize that the following description is illustrative only and is not in any way limiting. Other embodiments of the present invention may readily suggest themselves to such skilled persons having the benefit of this disclosure.

Certain embodiments of the present invention will be explained below with reference to FIGS. 2 to 8.

As illustrated in FIG. 2, an ultrasound system **100** comprises: a probe **110**; a beam former **120**; a signal processing unit **130**; a processor **140**; a display unit **150**; and a TGC/LGC setup unit **160**. The probe **110** includes a plurality of trans-

ducers **112**. Each of the transducers **112** may be configured to transmit an ultrasound signal to an object and receive the ultrasound signal reflected from the object. The beam former **120** may be configured to focus the transmitted ultrasound signals from the transducers **112** on the object and collect the reflected ultrasound signals from the object to the transducers **112** together with corresponding time delay.

The signal processing unit **130** may be configured to amplify the signals collected by the beam former **120** and control gains of the amplified echo signals. Specifically, the signal processing unit **130** may be configured to perform TGC (Time Gain Compensation) and LGC (Lateral Gain Compensation) upon the echo signals based on predetermined TGC and LGC values at a coarse compensation mode (e.g., in an initial operation stage). The signal processing unit **130** may be further configured to perform TGC and LGC upon the echo signals based on TGC and LGC values calculated in a TGC/LGC setup unit **160** using a curve inputted by a user at a fine compensation mode (e.g., during operations).

The processor **140** may be configured to receive the echo signals from the signal processing unit **130** and produce an ultrasound image signal based on the echo signals. The display unit **150** may be adapted to receive the ultrasound image signal from the processor and display an ultrasound image based on the signal.

The TGC/LGC setup unit **160** may include a touch panel **161** and a TGC/LGC setup processor **162**.

The touch panel **161** may be configured to display a setup screen and detect TGC/LGC curves inputted by the user on the touch panel **161** to produce a detecting signal. The touch panel **161** detects the user's input according to either the pressure sensing method or the electromagnetic induction method. The touch panel **161** may be a touch panel included in a control panel (not shown) of the ultrasound system **100**. Alternatively, it may be separate and apart from the ultrasound system **100**.

In one embodiment of the present invention, the touch panel **161** may be configured to display a setup screen **210** (shown in FIG. 3) including an ultrasound image **310** and first and second reference lines **410**, **420**. The ultrasound image **310** is based on the echo signal, the TGC and LGC of which are controlled based on the predetermined TGC and LGC values. The first and second reference lines **410**, **420** may be used to detect a TGC curve **510** and a LGC curve **520** inputted by the user (i.e., to determine whether a curve inputted by the user is a TGC curve **510** or a LGC curve **520**). After inputting a curve, the user can modify a portion of the curve.

In another embodiment of the present invention, the touch panel **161** may be configured to display a setup screen **220** (shown in FIG. 4) including first and second ultrasound images **311**, **312** and first and second reference lines **410**, **420**. The first and second ultrasound images **311**, **312** are based on the echo signal, the TGC and LGC of which are controlled based on the predetermined TGC and LGC values. The first and second reference lines **410**, **420** may be used to detect whether a curve inputted by the user is a TGC curve **510** or a LGC curve **520**. The first ultrasound image **311** may be identical to the second initial ultrasound image **312**.

In yet another embodiment of the present invention, the touch panel **161** may be configured to display a first setup screen **231** (shown in FIG. 5) including an ultrasound image **310** and a first reference line **410**. The ultrasound image **310** is based on the echo signal, the TGC and LGC of which are controlled based on the predetermined TGC and LGC values. The first reference line **410** may be used to detect a TGC curve **510** inputted by the user. The touch panel may then display a second setup screen **232** (shown in FIG. 6) including the

ultrasound image **310** and a second reference line **420**. The second reference lines **420** may be used to detect a LGC curve **520** inputted by the user. Alternatively, the touch panel **161** may be configured to display the second setup screen **232** before the first setup screen **231**.

In still yet another embodiment of the present invention, the touch panel **161** may be configured to display a setup screen **240** (shown in FIG. 7) including a virtual ultrasound image **330** and first and second reference lines **410**, **420**.

The TGC/LGC setup processor **162** may be configured to detect TGC and LGC curves **510**, **520** inputted by the user on the touch panel **161**. The TGC/LGC setup processor **162** may then calculate new TGC and LGC values in consideration of the detected TGC and LGC curves and transmit the values to the signal processing unit **130**.

In one embodiment of the present invention, as illustrated in FIG. 8, the TGC/LGC setup processor **162** may be configured to establish a first group of lines **610** and a second group of lines **620**. The first group of lines **610** is perpendicular to a first reference line **410** and the lines in said group are equally spaced apart from each other. The second group of lines **620** is perpendicular to a second reference line **420** and the lines in this group are equally spaced apart from each other. If it is determined that a curve inputted by the user (such as the curve **510**) intersects the first group of lines more often than the second group of lines, then the TGC/LGC setup processor **162** recognizes that the curve is a TGC curve. Alternatively, if it is determined that a curve inputted by the user (such as the curve **520**) intersects the second group of lines more often than the first group of lines, then the TGC/LGC setup processor **162** recognizes that the curve is a LGC curve. The TGC/LGC setup processor **162** then calculates the new TGC value corresponding to the TGC curve **510** based on the first reference line **410**. It also calculates the LGC value corresponding to the LGC curve **520** based on the second reference line **420**. The TGC value and the LGC value are transmitted to the signal processing unit **130**.

The present invention allows the user to accurately control the TGC and LGC by using the TGC and LGC curves inputted into the touch panel, thereby improving operational accuracy and time. Further, the present invention reduces the size of the control panel to thereby improve the spatial efficiency.

Although the present invention has been described with reference to a number of preferred embodiments thereof, it should be understood that numerous other modifications and embodiments can be devised by those skilled in the art that will fall within the spirit and scope of the principles of this disclosure. More particularly, numerous variations and modifications are possible in the component parts and/or arrangements of the subject combination arrangement within the scope of the disclosure, the drawings and the appended claims. In addition to variations and modifications in the component parts and/or arrangements, alternative uses will also be apparent to those skilled in the art.

What is claimed is:

1. An ultrasound system, comprising:

a probe configured for transmitting an ultrasound signal to an object and receiving echo signals reflected from the object;

a touch panel configured for receiving a single time gain compensation (TGC) curve touch input for setting TGC values, the single TGC curve touch input intersecting with multiple lines corresponding to different depths on the touch panel; and

a processor configured for adjusting TGC setting based on the intersection of the single TGC curve touch input with the multiple lines.

5

2. The ultrasound system of claim 1, wherein the processor is further configured to determine TGC values for adjusting the TGC setting based on the intersection of the single TGC curve touch input with the multiple lines.

3. The ultrasound system of claim 1, wherein the multiple lines correspond to different positions of the object from which the echo signals are reflected.

4. The ultrasound system of claim 1, wherein the touch panel is further configured to display the ultrasound image of the object.

5. The ultrasound system of claim 1, further comprising: a display to display the ultrasound image of the object, wherein the display is separate from the touch panel.

6. The ultrasound system of claim 1, wherein the processor is further configured to control a gain of echo signals reflected from a corresponding depth based on the intersection of the single TGC curve touch input with the multiple lines.

7. The ultrasound system of claim 1, wherein at least one of the multiple lines are displayed in a form a dotted line.

8. The ultrasound system of claim 1, wherein at least one of the multiple lines are displayed in a form of a solid line.

9. The ultrasound system of claim 1, wherein the processor is further configured for performing an initial TGC on the echo signals at an initial compensation mode based on a predetermined TGC before the adjusting of the TGC setting.

10. The ultrasound system of claim 1, wherein the multiple lines correspond to different depths of an ultrasound image displayed on the touch panel.

11. The ultrasound system of claim 1, wherein the multiple lines correspond to different depths of an ultrasound image displayed on a display.

12. The ultrasound system of claim 1, wherein the touch panel is further configured to display the single TGC curve touch input.

13. The ultrasound system of claim 12, wherein the touch panel is further configured to display the ultrasound image, and to receive the single TGC curve touch input overlying the displayed ultrasound image.

14. The ultrasound system of claim 12, wherein the touch panel is further configured to display a virtual image, and to receive the single TGC curve touch input over the virtual image.

15. A method, performed by an ultrasound system, comprising:

transmitting, by a probe, an ultrasound signal to an object; receiving, by the probe, echo signals reflected from the object;

receiving, by a touch panel, a single time gain compensation (TGC) curve touch input for setting TGC values, the single TGC curve touch input intersecting with multiple lines corresponding to different depths on the touch panel; and

adjusting TGC setting based on the intersection of the single TGC curve touch input with the multiple lines.

16. The method of claim 15, further comprising determining TGC values for adjusting the TGC setting based on the intersection of the single TGC curve touch input with the multiple lines.

17. The method of claim 15, wherein multiple lines correspond to different positions of the object from which the echo signals are reflected.

18. The method of claim 15, further comprising: displaying the ultrasound image of the object on the touch panel.

19. The method of claim 15, further comprising: displaying the ultrasound image of the object on a display, the display being separate from the touch panel.

6

20. The method of claim 15, wherein the adjusting TGC setting comprises controlling a gain of echo signals reflected from a corresponding depth based on the intersection of the single TGC curve touch input with the multiple lines.

21. The method of claim 15, wherein at least one of the multiple lines are displayed in a form of a dotted line.

22. The method of claim 15, wherein at least one of the multiple lines are displayed in a form of a solid line.

23. The method of claim 15, further comprising: performing an initial TGC on the echo signals at an initial compensation mode based on a predetermined TGC before the adjusting of the TGC setting.

24. The method of claim 15, wherein the multiple lines correspond to different depths of an ultrasound image displayed on the touch panel.

25. The method of claim 15, wherein the multiple lines correspond to different depths of an ultrasound image displayed on a display.

26. The method of claim 15, further comprising: displaying the single TGC curve touch input on the touch panel.

27. The method of claim 26, further comprising: displaying the ultrasound image of the object on the touch panel; and

wherein the receiving comprises receiving the single TGC curve touch input forming the TGC curve overlying the displayed ultrasound image.

28. The method of claim 26, further comprising: displaying a virtual image on the touch panel; and wherein the receiving comprises receiving the single TGC curve touch input forming the TGC curve over the virtual image.

29. An ultrasound system, comprising: a probe configured for transmitting an ultrasound signal to an object and receiving echo signals reflected from the object;

a touch panel configured for receiving a single time gain compensation (TGC) touch input for setting TGC values, the single TGC curve touch input intersecting with multiple lines corresponding to different depths on the touch panel;

a processor configured for adjusting TGC setting based on the intersection of the single TGC curve touch input with the multiple lines; and

a display configured for displaying an ultrasound image formed based on the echo signals and the adjusted TGC setting.

30. The ultrasound system of claim 29, wherein the processor is further configured to determine TGC values for adjusting the TGC setting based on the intersection of the single TGC curve touch input with the multiple lines.

31. The ultrasound system of claim 29, wherein the touch panel is further configured to display the single TGC curve touch input.

32. The ultrasound system of claim 29, wherein the touch panel is further configured to display the ultrasound image and receive the single TGC curve touch input over the ultrasound image.

33. The ultrasound system of claim 29, wherein the display is further configured to display the ultrasound image corresponding to the single TGC curve touch input.

34. The ultrasound system of claim 29, wherein the multiple lines correspond to different depths of an ultrasound image displayed on the touch panel.

35. The ultrasound system of claim 29, wherein the multiple lines correspond to different depths of the ultrasound image displayed on the display.

36. An ultrasound system, comprising:

a probe configured for transmitting an ultrasound signal to an object and receiving echo signals reflected from the object;

a processor configured for generating an ultrasound image based on the echo signals; and

a touch panel configured for displaying the ultrasound image and receiving a single time gain compensation (TGC) curve touch input for setting TGC values, the single TGC curve touch input intersecting with multiple lines corresponding to different depths on the ultrasound image,

wherein the processor is further configured for adjusting TGC setting based on the intersection of the single TGC curve touch input with the multiple lines.

37. The ultrasound system of claim 36, wherein at least one of the multiple lines is a dotted line.

38. The ultrasound system of claim 36, wherein at least one of the multiple lines is a solid line.

39. The ultrasound system of claim 36, wherein the ultrasound image is displayed in a first region of the touch panel and the single TGC curve touch input is received in a second region of the touch panel, different from the first region.

40. The ultrasound system of claim 36, wherein the touch input is received over the ultrasound image.

41. The ultrasound system of claim 36, wherein the multiple lines correspond to different depths of the ultrasound image displayed on the touch panel.

42. The ultrasound system of claim 36, wherein the multiple lines correspond to different depths of the ultrasound image displayed on a display.

43. An ultrasound system, comprising:

a probe configured for transmitting an ultrasound signal to an object and receiving echo signals reflected from the object;

a touch panel configured for receiving a single time gain compensation (TGC) curve touch input for setting TGC values, the single TGC curve touch input intersecting with horizontal parallel lines corresponding to different depths on the touch panel; and

a processor configured for adjusting TGC setting based on the intersection of the single TGC curve touch input with the horizontal parallel lines.

44. The ultrasound system of claim 43, wherein the processor is further configured to determine TGC values for adjusting the TGC setting based on the intersection of the single TGC curve touch input with the horizontal parallel lines.

45. The ultrasound system of claim 43, wherein the horizontal parallel lines correspond to different positions of the object from which the echo signals are reflected.

46. The ultrasound system of claim 43, further comprising: a display to display the ultrasound image of the object, wherein the display is separate from the touch panel.

47. The ultrasound system of claim 43, wherein the horizontal parallel lines correspond to different depths and the processor is further configured to control a gain of echo signals reflected from a corresponding depth based on the intersection of the single TGC curve touch input with the horizontal parallel lines.

48. The ultrasound system of claim 43, wherein at least one of the horizontal parallel lines are displayed in a form a dotted line.

49. The ultrasound system of claim 43, wherein at least one of the horizontal parallel lines are displayed in a form of a solid line.

50. The ultrasound system of claim 43, wherein the processor is further configured for performing an initial TGC on the echo signals at an initial compensation mode based on a predetermined TGC before the adjusting of the TGC setting.

51. The ultrasound system of claim 43, wherein the touch panel is further configured to display the single TGC curve touch input.

52. The ultrasound system of claim 51, wherein the touch panel is further configured to display the ultrasound image, and to receive the single TGC curve touch input overlying the displayed ultrasound image.

53. The ultrasound system of claim 51, wherein the touch panel is further configured to display a virtual image, and to receive the single TGC curve touch input over the virtual image.

* * * * *

专利名称(译)	超声系统和信号处理单元配置用于时间增益和横向增益补偿		
公开(公告)号	US9259209	公开(公告)日	2016-02-16
申请号	US13/938847	申请日	2013-07-10
[标]申请(专利权)人(译)	三星麦迪森株式会社		
申请(专利权)人(译)	三星麦迪逊CO.LTD.		
当前申请(专利权)人(译)	三星MEDISON CO. , LTD.		
[标]发明人	LEE DOO SIK AHN MI JEOUNG		
发明人	LEE, DOO SIK AHN, MI JEOUNG		
IPC分类号	A61B8/08 G01S7/52 A61B8/14 A61B8/00		
CPC分类号	A61B8/5207 A61B8/00 A61B8/14 A61B8/4254 A61B8/4444 A61B8/461 A61B8/463 A61B8/467 A61B8/5269 A61B8/54 G01S7/52033 G01S7/52084 A61B6/467 A61B8/46 A61B8/462 A61B8/465 G06F3/01 G06F3/048 G06F3/0484 G06F3/04845 G06F3/04847 G06T7/0012		
代理机构(译)	MCDERMOTT WILL & EMERY LLP		
优先权	1020060123752 2006-12-07 KR 13/184094 2013-03-26 US 11/857860 2011-09-13 US		
其他公开文献	US20130303911A1		
外部链接	Espacenet USPTO		

摘要(译)

本发明提供一种超声系统，包括：信号获取单元，用于将超声信号发送到物体并获取从物体反射的回波信号；信号处理单元，用于控制回波信号的TGC（时间增益补偿）和LGC（横向增益补偿）；TGC / LGC设置单元，适于根据用户输入的TGC和LGC曲线设置TGC和LGC值；图像产生单元，适于基于回波信号产生对象的超声图像。信号处理单元还适于基于由TGC / LGC设置单元设置的TGC和LGC值来控制回声信号的TGC和LGC。

comprises: a signal acquiring unit to transmit an ultrasound signal to an object and acquire an echo signal reflected from the object; a signal processing unit to control TGC (Time