



US008747322B2

(12) **United States Patent**
Kim

(10) **Patent No.:** **US 8,747,322 B2**
(45) **Date of Patent:** **Jun. 10, 2014**

(54) **USER INTERFACE IN AN ULTRASOUND SYSTEM**

(71) Applicant: **Samsung Medison Co., Ltd.**,
Gangwon-do (KR)

(72) Inventor: **Hyoung Jin Kim**, Seoul (KR)

(73) Assignee: **Samsung Medison Co., Ltd.**,
Gangwon-Do (KR)

(*) Notice: Subject to any disclaimer, the term of this patent is extended or adjusted under 35 U.S.C. 154(b) by 0 days.

(21) Appl. No.: **13/898,455**

(22) Filed: **May 20, 2013**

(65) **Prior Publication Data**

US 2013/0253323 A1 Sep. 26, 2013

Related U.S. Application Data

(63) Continuation of application No. 12/413,024, filed on Mar. 27, 2009, now Pat. No. 8,517,946.

(30) **Foreign Application Priority Data**

Mar. 28, 2008 (KR) 10-2008-0028801

(51) **Int. Cl.**
A61B 8/00 (2006.01)

(52) **U.S. Cl.**
USPC **600/443**; 600/437; 345/649; 345/650;
715/700

(58) **Field of Classification Search**

None

See application file for complete search history.

(56) **References Cited**

U.S. PATENT DOCUMENTS

6,063,030	A	5/2000	Vara et al.	
6,516,215	B1	2/2003	Roundhill	
6,891,920	B1 *	5/2005	Minyard et al.	378/37
7,129,963	B2	10/2006	Bohnisch et al.	
2005/0041147	A1	2/2005	Kim et al.	
2006/0116578	A1 *	6/2006	Grunwald et al.	600/440
2007/0159549	A1 *	7/2007	Matsumoto	348/333.11
2007/0176895	A1	8/2007	Miyasaka et al.	
2007/0271528	A1	11/2007	Park et al.	

FOREIGN PATENT DOCUMENTS

JP	2006-347478	A	12/2006
KR	2006-0106054	A	10/2006

OTHER PUBLICATIONS

Office Action issued Dec. 6, 2010 in Korean Application No. 10-2008-0028801.

* cited by examiner

Primary Examiner — Unsu Jung

Assistant Examiner — Michael N Fisher

(74) *Attorney, Agent, or Firm* — McDermott Will & Emery LLP

(57) **ABSTRACT**

Embodiments of a user interface in an ultrasound system are disclosed. In one embodiment, the ultrasound system comprises a display unit for prompting a user to touch a desired one of hierarchically arranged soft buttons for triggering an execution of the function of the ultrasound system associated with the touched button. The display unit includes a display having a display with touch panel mounted. The display unit is configured to display a touch screen menu together with the ultrasound image on the display.

20 Claims, 8 Drawing Sheets

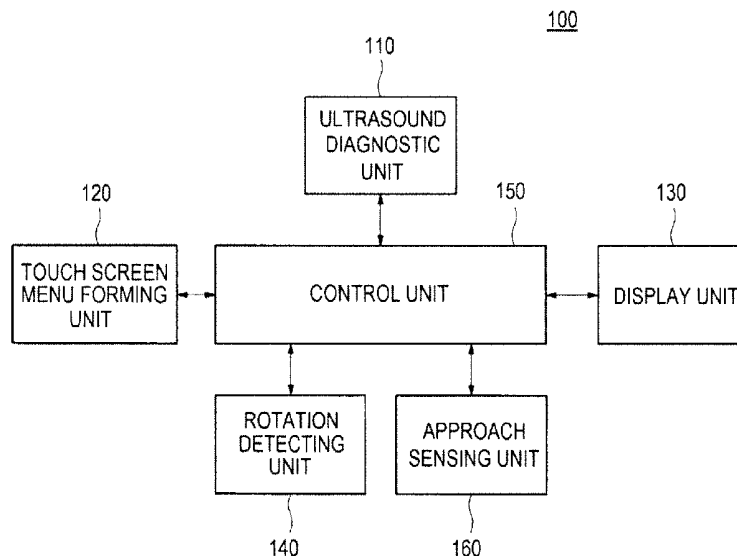


FIG. 1

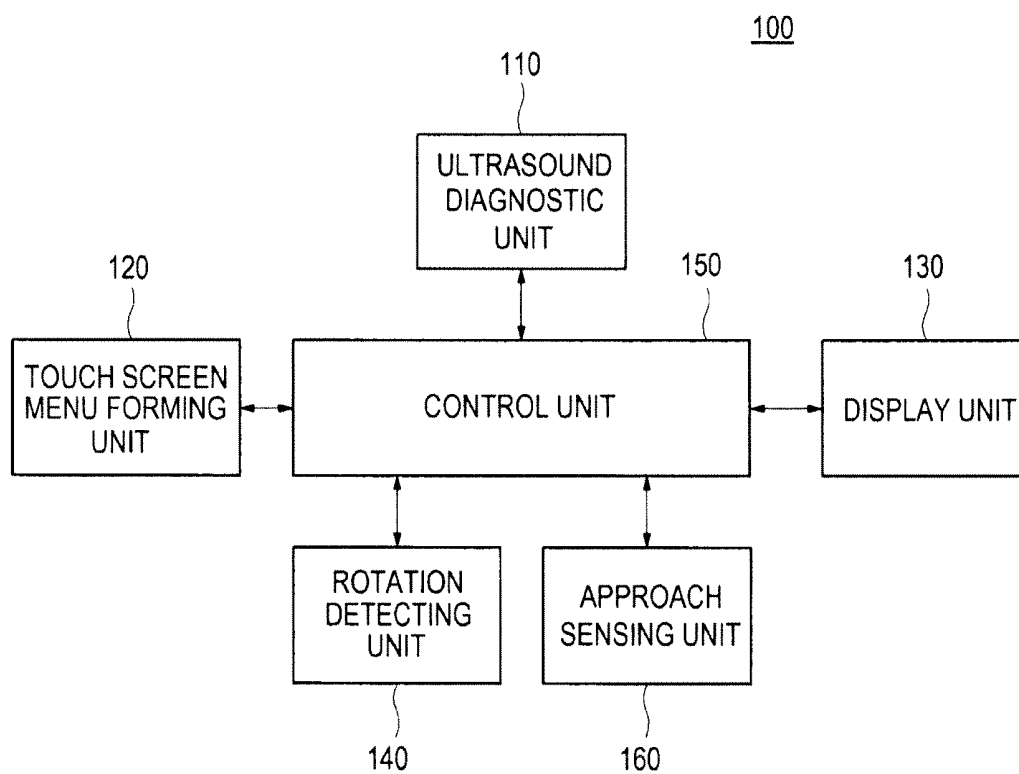


FIG. 2

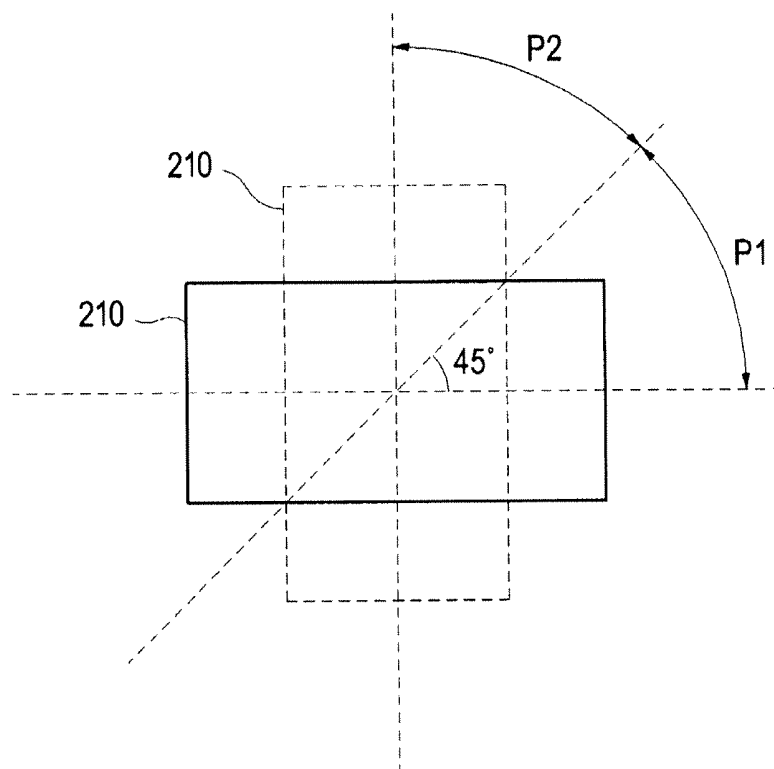


FIG. 3

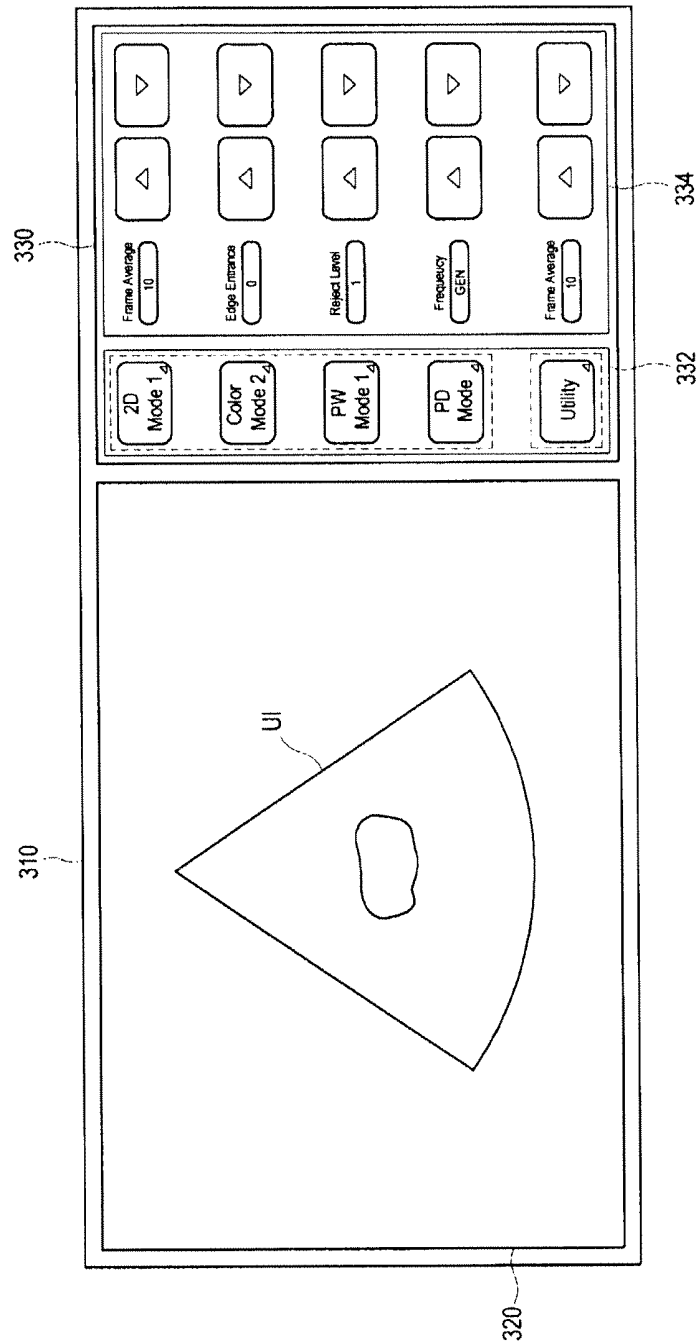


FIG. 4

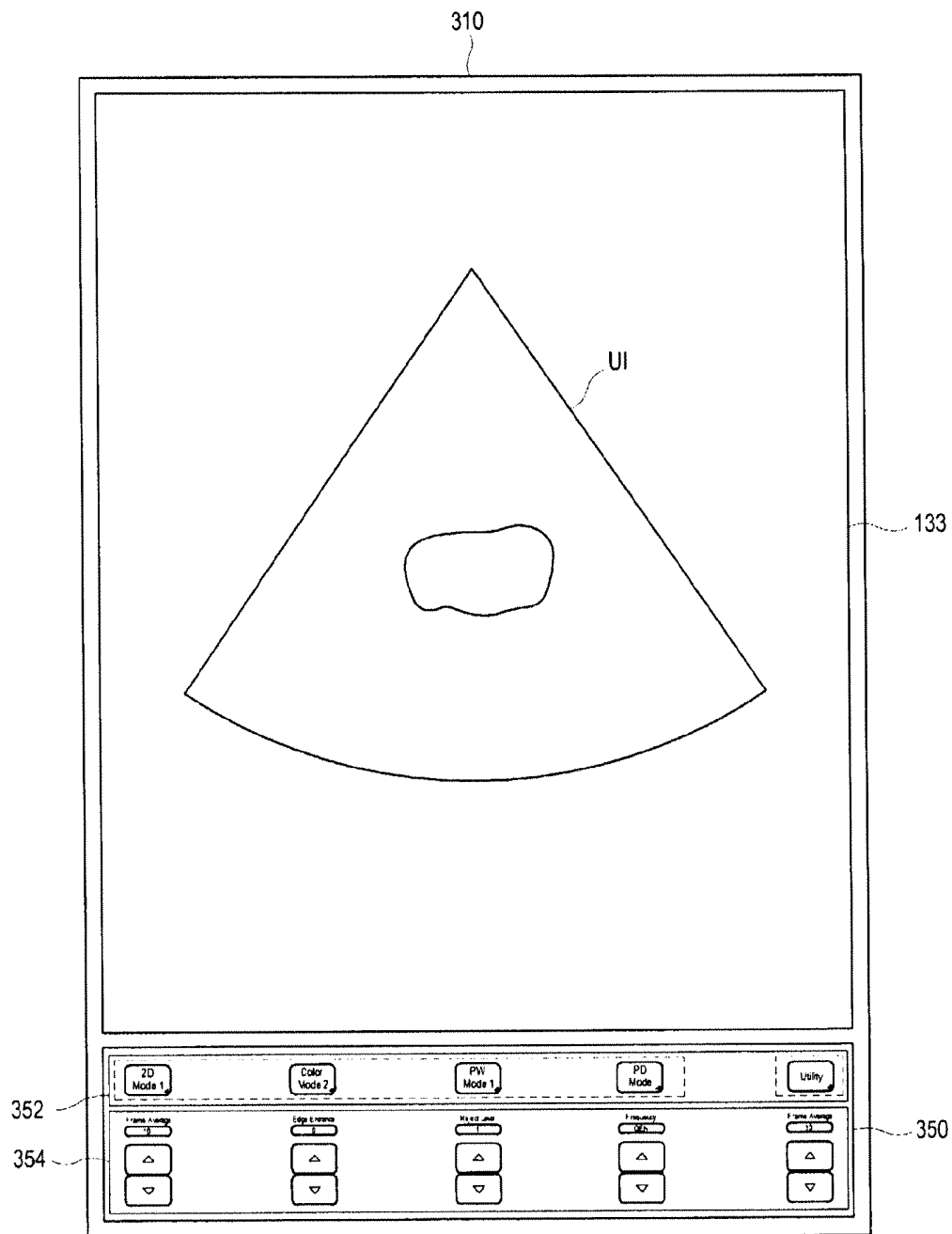


FIG. 5

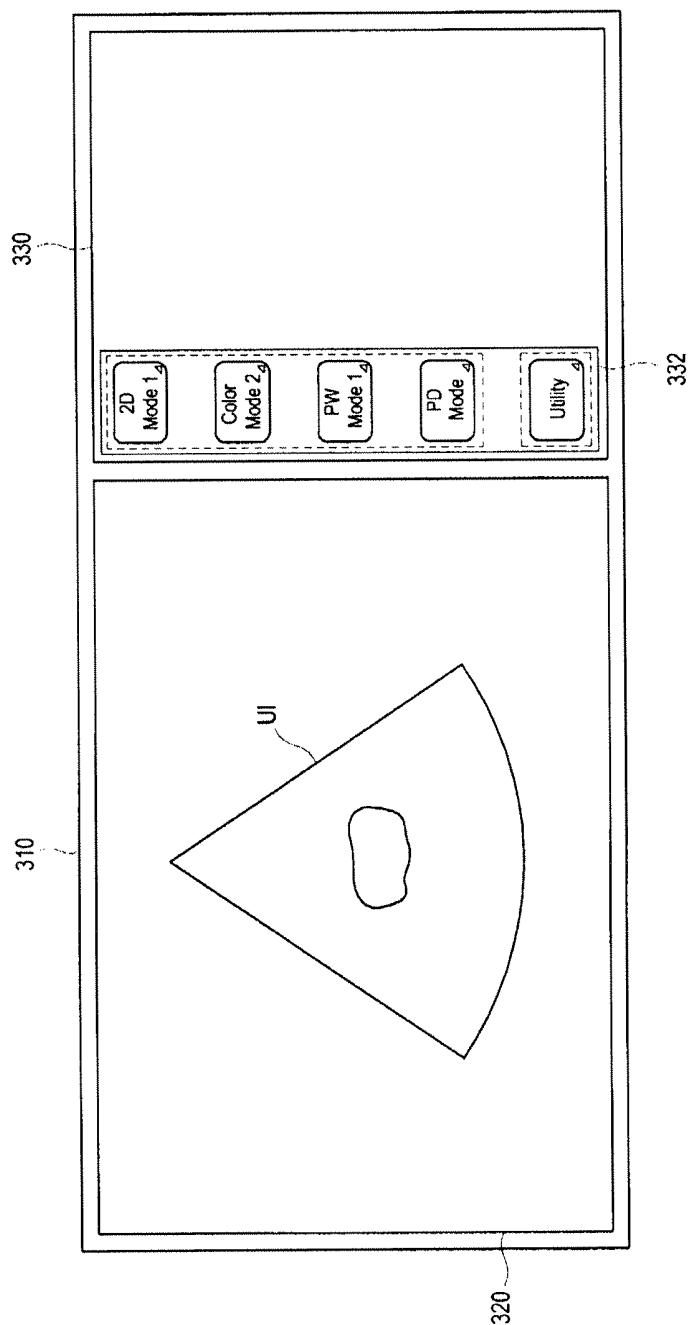


FIG. 6

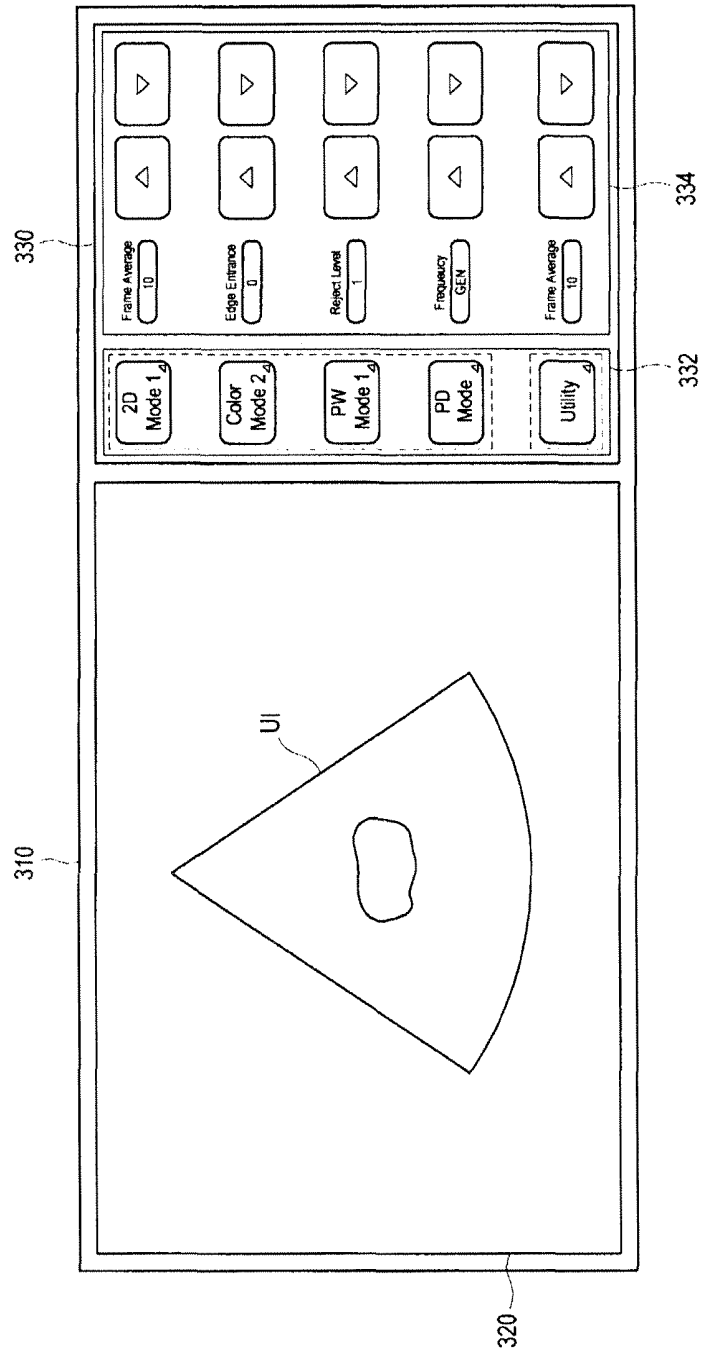


FIG. 7

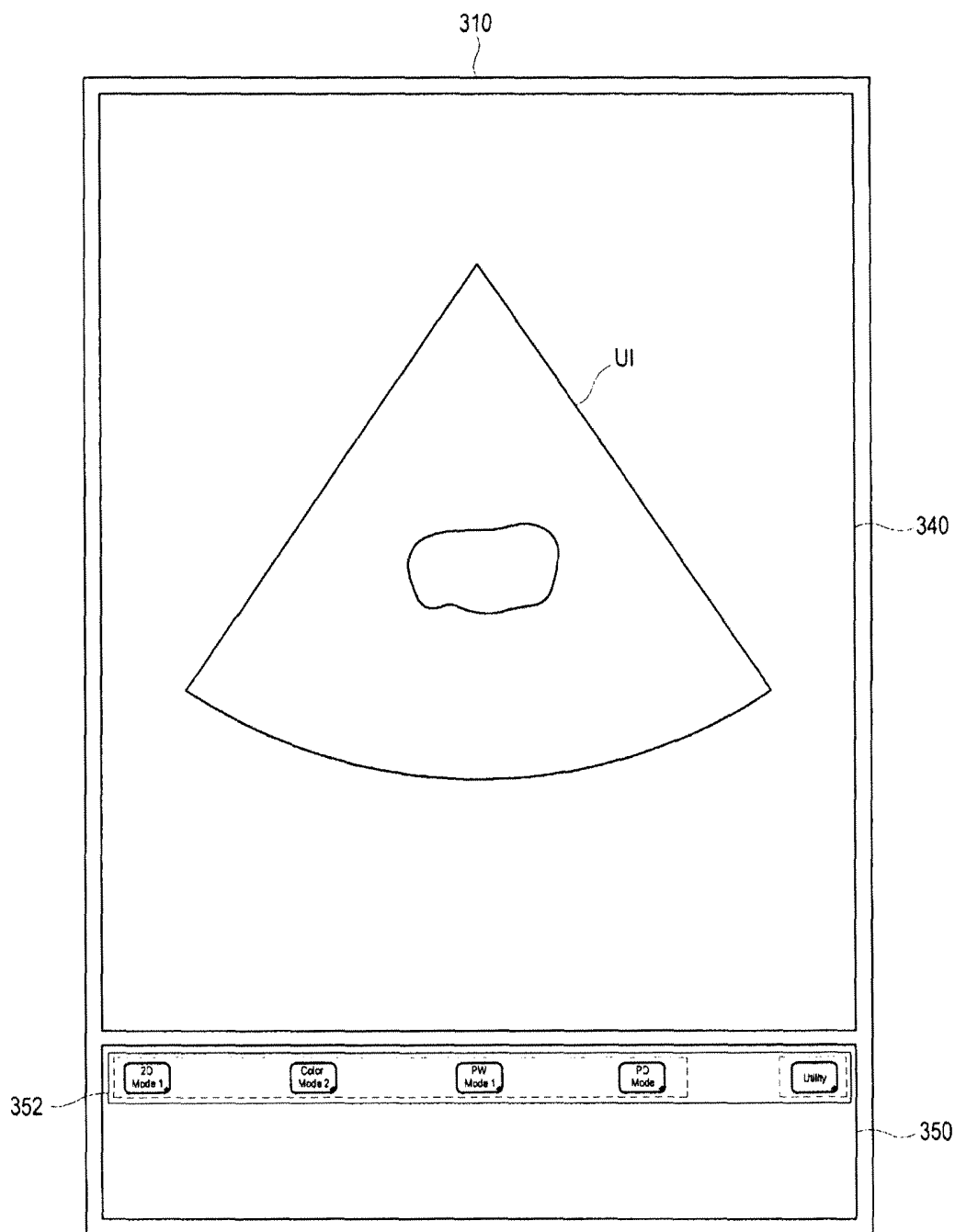
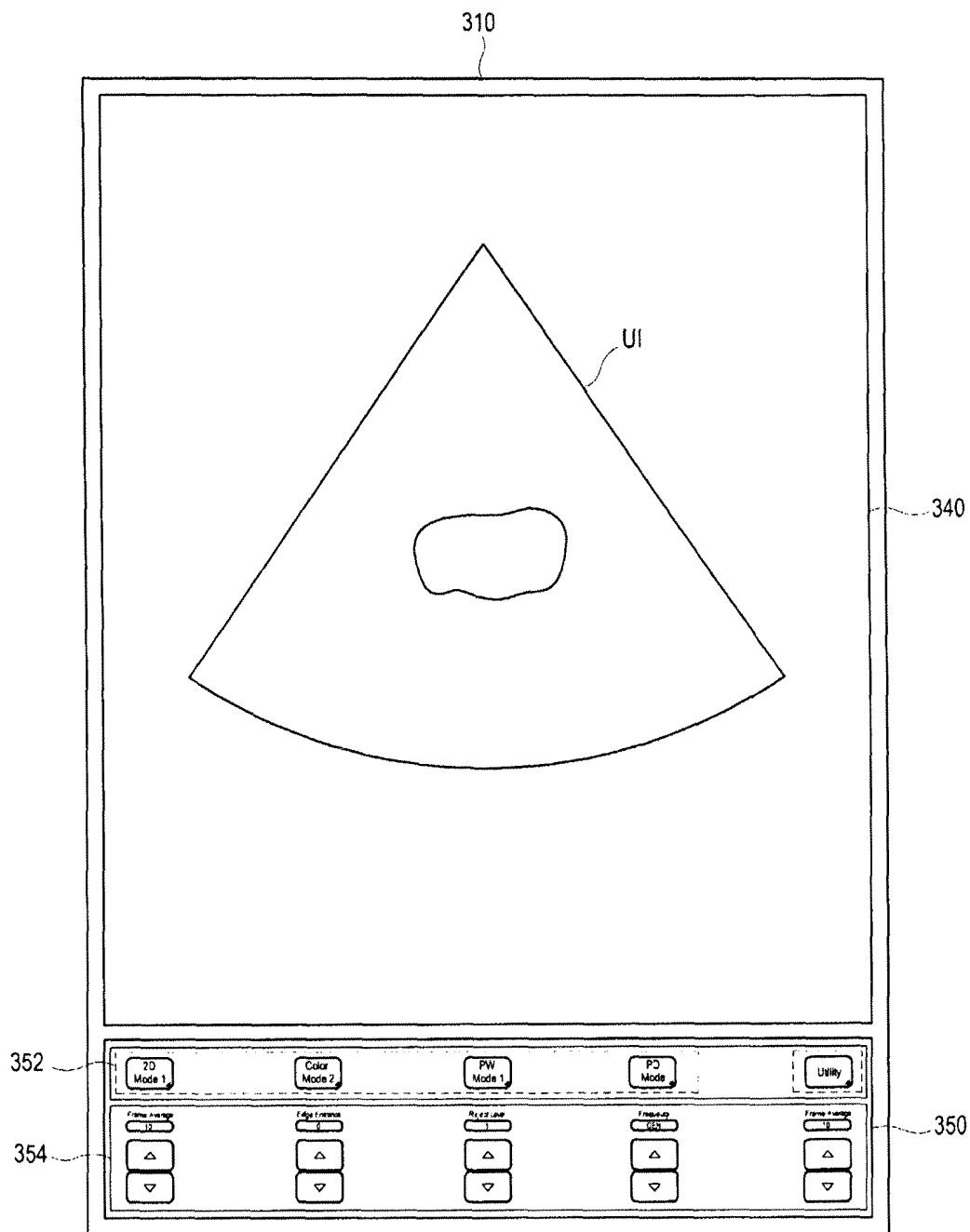


FIG. 8



USER INTERFACE IN AN ULTRASOUND SYSTEM

RELATED APPLICATIONS

This application is the Continuation of U.S. application Ser. No. 12/413,024, filed on Mar. 27, 2009, which in turn claims priority from Korean Patent Application No. 10-2008-0028801, filed on Mar. 28, 2008, the entire subject matter of which is incorporated herein by reference.

The present application claims priority from Korean Patent Application No. 10-2008-0028801 filed on Mar. 28, 2008, the entire subject matter of which is incorporated herein by reference.

TECHNICAL FIELD

The present disclosure generally relates to user interfaces, and more particularly to a user interface adapted to utilize a touch screen in an ultrasound system.

BACKGROUND

Recently, an ultrasound system has been extensively used in the medical field due to its non-invasive and non-destructive nature. Modern high-performance ultrasound imaging systems and techniques are commonly used to produce two dimensional ultrasound images, three-dimensional ultrasound images and color flow images of internal features of patients. Further, such ultrasound systems provide various functions such as image recording, image annotation, zooming, archiving, panning and the like.

As the number of functions performed by the ultrasound system is increased, the size of a user interface such as a control panel, on which a keyboard, a track ball and slide bars are installed, is also inevitably increased. However, it is difficult to expand the area of the user interface due to the limited space of the ultrasound system. To resolve this problem, the ultrasound system may provide a touch screen as the user interface. The touch screen may be mounted on a control panel in the conventional ultrasound system. In order to install the touch screen on the ultrasound system, a touch panel liquid crystal display and an additional graphic card should be additionally provided. Thus, installing the touch screen on the control panel significantly increases the manufacturing costs.

Further, the ultrasound system may use a display, the horizontal size of which is relatively larger than the vertical size (e.g., the aspect ratio is 4:3 or 16:9). However, there is a problem since a display area of the display is not efficiently used due to the characteristics of the ultrasound image.

SUMMARY

Embodiments of a user interface, which utilizes a touch screen in an ultrasound system, are disclosed herein. In one embodiment, by way of non-limiting example, an ultrasound system comprises: an ultrasound diagnostic unit for forming an ultrasound image based on echoes reflected from a target object; a touch screen menu forming unit for forming a touch screen menu having graphics and text, the touch screen menu including hierarchically arranged soft buttons associated with functions of the ultrasound system; and a display unit including a display with a touch panel mounted, the display unit being configured to display the touch screen menu together with the ultrasound image on the display to prompt a user to touch a desired one of the soft buttons for triggering an

execution of the associated function therewith, wherein a display area of the display is horizontally divided into an upper display area and a lower display area, wherein the ultrasound image is displayed on the upper display area and the touch screen menu is displayed on the lower display area.

In another embodiment, an ultrasound system comprises: an ultrasound diagnostic unit for forming an ultrasound image based on echoes reflected from a target object; a touch screen menu forming unit for forming a touch screen menu having graphics and text, the touch screen menu including hierarchically arranged soft buttons associated with functions of the ultrasound system; and a display unit including a display with a touch panel mounted, the display unit being configured to display the touch screen menu together with the ultrasound image on the display to prompt a user to touch a desired one of the soft buttons for triggering an execution of the associated function therewith, the display unit further including a support to rotatably support the display; a rotation detection unit configured to detect rotation of the display to output a rotation detection signal; and a control unit configured to determine a display mode of the ultrasound image and the touch screen menu in response to the rotation detection signal.

In another embodiment, an ultrasound system comprises: an ultrasound diagnostic unit for forming an ultrasound image based on echoes reflected from a target object; a touch screen menu forming unit for forming a touch screen menu having graphics and text, the touch screen menu including hierarchically arranged soft buttons associated with functions of the ultrasound system; a display unit including a display with a touch panel mounted, the display unit being configured to display the touch screen menu together with the ultrasound image on the display to prompt a user to touch a desired one of the soft buttons for triggering an execution of the associated function therewith, the display unit further including a support to rotatably support the display; a rotation detection unit configured to detect rotation of the display to output a rotation detection signal; an approach sensing unit mounted on the display unit, the approach sensing unit being configured to sense an approach of an object to output an approach sensing signal while the object is within a predetermined distance from the display; and a control unit configured to determine a display mode of the ultrasound image and the touch screen menu in response to the rotation detection signal and the approach sensing signal.

The Summary is provided to introduce a selection of concepts in a simplified form that are further described below in the Detailed Description. This Summary is not intended to identify key or essential features of the claimed subject matter, nor is it intended to be used in determining the scope of the claimed subject matter.

BRIEF DESCRIPTION OF THE DRAWINGS

FIG. 1 is a block diagram showing an illustrative embodiment of an ultrasound system.

FIG. 2 is a schematic diagram showing an example of rotation of a display.

FIGS. 3-8 are schematic diagrams showing examples of displaying an ultrasound image and a touch screen menu.

DETAILED DESCRIPTION

A detailed description may be provided with reference to the accompanying drawings. One of ordinary skill in the art may realize that the following description is illustrative only and is not in any way limiting. Other embodiments of the

present invention may readily suggest themselves to such skilled persons having the benefit of this disclosure.

Referring more particularly to FIG. 1, an illustrative embodiment of an ultrasound system **100** is shown. As depicted, the ultrasound system **100** may include an ultrasound diagnostic unit **110** configured to form ultrasound images based on ultrasound echoes reflected from a target object. The ultrasound diagnostic unit **110** may include a probe (not shown) for transmitting and receiving ultrasound signals, a beam former (not shown) for forming a receive beam based on the ultrasound echoes, and an image processing unit (not shown) for processing the receive beam to form the ultrasound image of the target object.

The ultrasound system **100** may further include a touch screen menu forming unit **120** that may be operable to form a touch screen menu having graphics and text. The touch screen menu may include hierarchically arranged soft buttons associated with functions of the ultrasound system. For example, the touch screen menu may be classified into a main menu and a sub menu. The main menu may include image mode buttons for selecting the ultrasound image modes such as a 2-dimensional (2D) mode, a color mode, a Power Doppler mode and a pulsed wave mode, and a utility mode for setup of the ultrasound system **100**. The sub menu may include a plurality of image adjusting buttons and a plurality of setup buttons associated with the respective soft buttons contained in the main menu. The instructions may include requests for display mode selection, patient information display, rotation of an ultrasound image, enlargement and reduction, gain adjustment, measurement, movement of a cursor and the like.

The ultrasound system may further include a display unit **130** that may display an ultrasound image formed in the ultrasound diagnosing unit **110**. Also, the display unit **130** may further display the touch screen menu formed in the touch screen menu forming unit **120**. In one embodiment, the display unit **130** may include a display with a touch panel mounted, such as a touch panel liquid crystal display (LCD). The touch panel may be configured to detect a user touch to thereby output a touch signal corresponding to a touch location of the user on the display. That is, the display is configured to display the touch screen menu together with the ultrasound image on the display panel to prompt a user to touch a desired one of the hierarchically arranged soft buttons for triggering an execution of the associated function therewith. The display unit **130** may further include a support to rotatably support the display in a predetermined direction within a predetermined angle by the user.

The ultrasound system **100** may additionally include a rotation detecting unit **140**. The rotation detecting unit **140** may be configured to detect a rotation of the display in the display unit **130** to thereby output a detection signal ("rotation detection signal"). Referring now to FIG. 2, if the display **210** is rotated to be within a first angle range P1 of about 0 to 45 degrees with respect to a reference angle (e.g., 0 degree), then the rotation detecting unit **140** may output a first rotation detection signal. Also, if the display **210** is rotated to be within a second angle range P2 of about 45 to 90 degrees, then the detecting unit **140** may output a second rotation detection signal. In one embodiment, when the display **210** is rotated to be positioned at an angle of 45 degrees, the detecting unit **140** may output the second rotation detection signal.

The ultrasound system may further include a control unit **150**. The control unit **150** may be configured to control transmission/reception of the ultrasound signals. Further, the control unit **150** may be operable to control formation of the ultrasound image and the touch screen menu. The control unit **150** may also be configured to determine a display mode of

the ultrasound image and the touch screen menu on the display in response to the rotation detection signals.

In one embodiment, if the first rotation detection signal is outputted from the detecting unit **140**, then the control unit **150** may be operable to control the display unit **130** such that a first display area **320** and a second display area **330** are displayed on left and right sides of the screen, respectively, as illustrated in FIG. 3. In such a case, the ultrasound image UI may be displayed on the first display area **320** and the touch screen menu may be displayed on the second display area **330**. As described above, the touch screen menu may include the main menu **332** and the sub menu **334**. In one embodiment, a ratio of the horizontal dimensions of the first display area **320** and the second display area **340** may be set to 3:1. However, the ratio is certainly not limited thereto. The size ratio may be adjusted according to the image mode.

In one embodiment, it has been described that the ultrasound image UI may be displayed on the first display area **320** and the touch screen menu may be displayed on the second display area **340**. However, displaying the ultrasound image UI and the touch screen menu is certainly not limited thereto. In another embodiment, the touch screen menu may be displayed on the first display area **320** and the ultrasound image UI may be displayed on the second display area **330**. In such a case, the ratio of the horizontal dimensions of the first display area **320** and the second display area **330** may be set to 1:3, although it is certainly not limited thereto.

If the second rotation detection signal is outputted from the detecting unit **140**, then the control unit **150** may be operable to control the display **310** such that a third display area **340** and a fourth display area **350** are displayed on upper and lower sides of the screen of the display **310**, respectively, as illustrated in FIG. 4. In such a case, the ultrasound image UI may be displayed on the third display area **340** and the touch screen menu may be displayed on the fourth display area **350**. The touch screen menu may include the main menu **352** and the sub menu **354**. A ratio of the vertical dimensions of the third display area **340** and the fourth display area **350** may be set to 7:1. However, the ratio is certainly not limited thereto.

If the touch signal is inputted from the display unit **130**, then the control unit **150** may be configured to control the ultrasound system **100** such that the function corresponding to the soft button located at the user touch is performed.

The ultrasound system **100** may further include an approach sensing unit **160**. In one embodiment, the approach sensing unit **160** may be installed on a front side of the display unit **130**. However, the location of the approach sensing unit **160** is not limited thereto. The approach sensing unit **160** may be operable to sense whether any object such as a user's hand, a stylus, etc. approaches the approach sensing unit **160** within a predetermined distance. If the object approaches within the predetermined distance, then the approach sensing unit **160** may output an approach sensing signal. Any device capable of sensing the approach of the object may be used as the approach sensing unit **160**.

If the approach sensing signal is not outputted from the approach sensing unit **160**, then the control unit **150** may be operable to control the display **310** such that the main menu is only displayed on the display unit **130**, as illustrated in FIG. 5. In such a case, the display area **330** displaying the touch screen menu may be reduced depending on the size of the main menu **332**. That is, the control unit **150** may control the display unit **130** such that the display area **320** for displaying the ultrasound image UI may be widened and the display area **330** for displaying the touch screen may be reduced. In another embodiment, If the approach sensing signal is not

outputted, then the control unit 150 may be operable to control the display 310 such that the ultrasound image UI is only displayed.

However, if the approach sensing signal is outputted from the approach sensing unit 160, then the control unit 150 may be operable to control the main menu 332 and the sub menu 334 to be displayed at the same time, as illustrated in FIG. 6. In such a case, the size of the display area 330 for displaying the touch screen menu may be adjusted according to the size of the main menu 332 and sub menu 334.

FIGS. 7 and 8 show examples of displaying the ultrasound image and the touch screen menu, while the display of the display unit 130 is rotated to be at an angle of 90 degrees. If the approach sensing signal is outputted from the approach sensing unit 160, then the control unit 150 may be operable to control the display 310 such that the main menu is only displayed on the display unit 130, as illustrated in FIG. 7. In such a case, the display area 350 displaying the touch screen menu may be reduced depending on the size of the main menu 352. That is, the control unit 150 may control the display unit 130 such that the display area 340 for displaying the ultrasound image may be widened and the display area 350 for displaying the touch screen may be reduced. Also, the control unit may be operable to control the display unit 130 such that the ultrasound image is only displayed while the approach sensing signal is not outputted in another embodiment.

However, if the second signal is outputted from the approach sensing unit 160, then the control unit 150 may be operable to control the main menu 352 and the sub menu 354 to be displayed at the same time, as illustrated in FIG. 8. In such a case, the size of the display area 350 for displaying the touch screen menu may be adjusted according to the size of the main menu 352 and sub menu 354.

In one embodiment, since the display unit and the user interface are embodied in a single device, costs may be reduced. Also, the touch screen menu is provided on the display together with the ultrasound image so that the user may easily select a desirable function of the ultrasound system without changing the user's sight. Further, since the touch screen menu is provided on a residual display area while the ultrasound image is displayed, the display area of the display unit 130 may be efficiently utilized.

Although embodiments have been described with reference to a number of illustrative embodiments thereof, it should be understood that numerous other modifications and embodiments can be devised by those skilled in the art that will fall within the spirit and scope of the principles of this disclosure. More particularly, numerous variations and modifications are possible in the component parts and/or arrangements of the subject combination arrangement within the scope of the disclosure, the drawings and the appended claims. In addition to variations and modifications in the component parts and/or arrangements, alternative uses will also be apparent to those skilled in the art.

What is claimed is:

1. An ultrasound system, comprising:

an ultrasound diagnostic unit configured to form an ultrasound image based on echoes reflected from a target object;

a touch screen interface forming unit configured to form a touch screen interface;

a display including a display with a touch panel mounted, the display unit being configured to display at least one of the ultrasound image and the touch screen interface on the display,

an approach sensor configured to sense an approach of an object, and to output an approach sensing signal while the object is within a predetermined distance from the display;

a controller configured to control the display such that the ultrasound image is displayed while the approach sensing signal is not outputted, and the ultrasound image and the touch screen interface are displayed while the approach sensing signal is outputted from the approach sensor.

2. The ultrasound system of claim 1, wherein the controller is further configured to control the display to divide a display area of the display into at least two display areas in a horizontal direction or a vertical direction to display the ultrasound image and the touch screen interface, respectively.

3. The ultrasound system of claim 1, wherein the display is further configured to divide a display area of the display into at least two display areas, and to display the touch screen interface on one of the two display areas based on the display mode in response to the approach sensing signal.

4. The ultrasound system of claim 1, wherein the controller is further configured to control the display such that the ultrasound image is only displayed while the approach sensing signal is not outputted.

5. The ultrasound system of claim 2, wherein the controller is further configured to control the display such that the display area for displaying the ultrasound image is widened and the display area for displaying the touch screen interface is reduced.

6. The ultrasound system of claim 1, wherein the touch screen interface comprises a touch screen menu having graphics and text.

7. The ultrasound system of claim 6, wherein the touch screen menu comprises hierarchically arranged soft buttons associated with functions of the ultrasound system.

8. The ultrasound system of claim 7, wherein the display is further configured to prompt a user to touch a desired one of the soft buttons for triggering an execution of the associated function.

9. The ultrasound system of claim 1, wherein the ultrasound system further comprises a rotation detection sensor configured to detect rotation of the display to output a rotation detection signal.

10. The ultrasound system of claim 9, wherein the controller is further configured to determine a display mode of the ultrasound image and the touch screen interface in response to the rotation detection signal, the controller configured to control the display to display the ultrasound image adjacent to a first side of the touch screen menu in response to a first rotation detection signal, and to display the ultrasound image adjacent to a second side of the touch screen menu in response to a second rotation detection signal, the first side and the second side being different.

11. An ultrasound system, comprising:

an ultrasound diagnostic unit configured to form an ultrasound image based on echoes reflected from a target object;

a touch screen interface forming unit configured to form a touch screen interface;

a display including a display with a touch panel mounted, the display unit being configured to display at least one of the ultrasound image and the touch screen interface on the display,

an approach sensor configured to sense an approach of an object, and to output an approach sensing signal when the object is located within a predetermined distance from the display;

7

a controller configured to control the display such that the ultrasound image is displayed while the approach sensing signal is not outputted, and the ultrasound image and the touch screen interface are displayed when the approach sensing signal is outputted from the approach sensor.

12. The ultrasound system of claim 11, wherein the controller is further configured to control the display to divide a display area of the display into at least two display areas in a horizontal direction or a vertical direction to display the ultrasound image and the touch screen interface, respectively.

13. The ultrasound system of claim 11, wherein the display is further configured to divide a display area of the display into at least two display areas, and to display the touch screen interface on one of the two display areas based on the display mode in response to the approach sensing signal.

14. The ultrasound system of claim 11, wherein the controller is further configured to control the display such that the ultrasound image is only displayed while the approach sensing signal is not outputted.

15. The ultrasound system of claim 12, wherein the controller is further configured to control the display such that the display area for displaying the ultrasound image is widened and the display area for displaying the touch screen interface is reduced.

8

16. The ultrasound system of claim 11, wherein the touch screen interface comprises a touch screen menu having graphics and text.

17. The ultrasound system of claim 16, wherein the touch screen menu comprises hierarchically arranged soft buttons associated with functions of the ultrasound system.

18. The ultrasound system of claim 17, wherein the display is further configured to prompt a user to touch a desired one of the soft buttons for triggering an execution of the associated function.

19. The ultrasound system of claim 11, wherein the ultrasound system further comprises a rotation detection sensor configured to detect rotation of the display to output a rotation detection signal.

20. The ultrasound system of claim 19, wherein the controller is further configured to determine a display mode of the ultrasound image and the touch screen interface in response to the rotation detection signal, the controller configured to control the display to display the ultrasound image adjacent to a first side of the touch screen menu in response to a first rotation detection signal, and to display the ultrasound image adjacent to a second side of the touch screen menu in response to a second rotation detection signal, the first side and the second side being different.

* * * * *

专利名称(译)	超声系统中的用户界面		
公开(公告)号	US8747322	公开(公告)日	2014-06-10
申请号	US13/898455	申请日	2013-05-20
[标]申请(专利权)人(译)	三星麦迪森株式会社		
申请(专利权)人(译)	三星MEDISON CO. , LTD.		
当前申请(专利权)人(译)	三星MEDISON CO. , LTD.		
[标]发明人	KIM HYOUNG JIN		
发明人	KIM, HYOUNG, JIN		
IPC分类号	A61B8/00 G06F3/048		
CPC分类号	A61B8/462 G06F19/3406 A61B8/00 A61B8/465 G16H40/63		
代理机构(译)	MCDERMOTT WILL & EMERY LLP		
审查员(译)	JUNG , UNSU		
优先权	1020080028801 2008-03-28 KR		
其他公开文献	US20130253323A1		
外部链接	Espacenet USPTO		

摘要(译)

公开了超声系统中的用户界面的实施例。在一个实施例中，超声系统包括显示单元，用于提示用户触摸分层排列的软按钮中的所需一个，以触发与触摸的按钮相关联的超声系统的功能的执行。显示单元包括显示器，该显示器具有安装有触摸板的显示器。显示单元被配置为在显示器上与超声图像一起显示触摸屏菜单。

