



US 20190059856A1

(19) **United States**

(12) **Patent Application Publication**  
JIN et al.

(10) **Pub. No.: US 2019/0059856 A1**

(43) **Pub. Date: Feb. 28, 2019**

(54) **ULTRASOUND DIAGNOSIS APPARATUS  
AND METHOD OF OPERATING THE SAME**

**Publication Classification**

(71) Applicant: **SAMSUNG MEDISON CO., LTD.**,  
Hongcheon-gun (KR)

(51) **Int. Cl.**  
*A61B 8/00* (2006.01)

(72) Inventors: **Gil-ju JIN**, Hongcheon-gun (KR);  
**Jae-moon JO**, Hongcheon-gun (KR);  
**Yu-ri KIM**, Hongcheon-gun (KR);  
**Mi-jeoung AHN**, Hongcheon-gun (KR)

(52) **U.S. Cl.**  
CPC ..... *A61B 8/4472* (2013.01); *A61B 8/465*  
(2013.01); *A61B 8/5207* (2013.01); *A61B 8/54*  
(2013.01); *A61B 8/56* (2013.01)

(73) Assignee: **SAMSUNG MEDISON CO., LTD.**,  
Hongcheon-gun (KR)

(57) **ABSTRACT**

(21) Appl. No.: **15/871,261**

Provided is an ultrasound diagnosis apparatus connected with at least one wired ultrasound probe and at least one wireless ultrasound probe. The ultrasound diagnosis apparatus includes: at least one wired ultrasound probe connected via wire to the ultrasound diagnosis apparatus; at least one wireless ultrasound probe connected to the ultrasound diagnosis apparatus by using wireless communication; a wireless communication module configured to receive a pairing reception signal from the at least one wireless ultrasound probe to thereby be connected with the at least one wireless ultrasound probe by using a wireless communication method and to transmit and receive a beamforming control signal and ultrasound image data to and from each of the at least one wireless ultrasound probe; and a controller configured to detect an ultrasound probe being used by a user, and activate the detected ultrasound probe.

(22) Filed: **Jan. 15, 2018**

**Related U.S. Application Data**

(60) Provisional application No. 62/550,124, filed on Aug. 25, 2017.

**Foreign Application Priority Data**

Dec. 27, 2017 (KR) ..... 10-2017-0181452

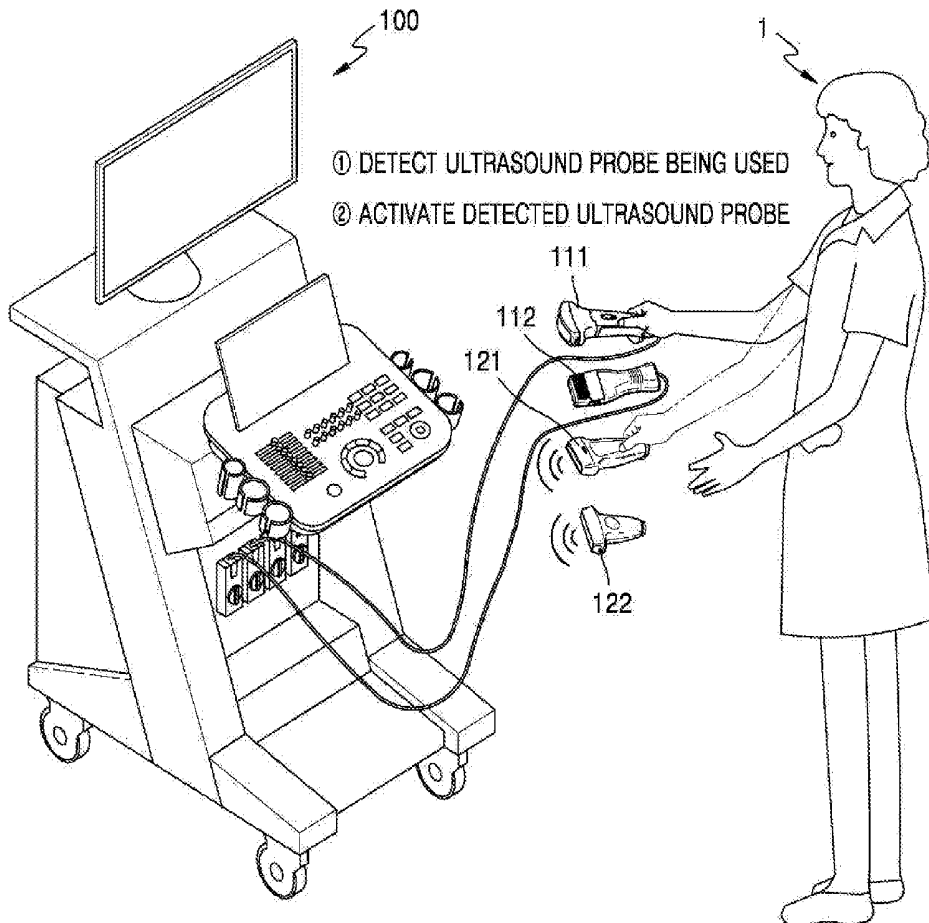


FIG. 1

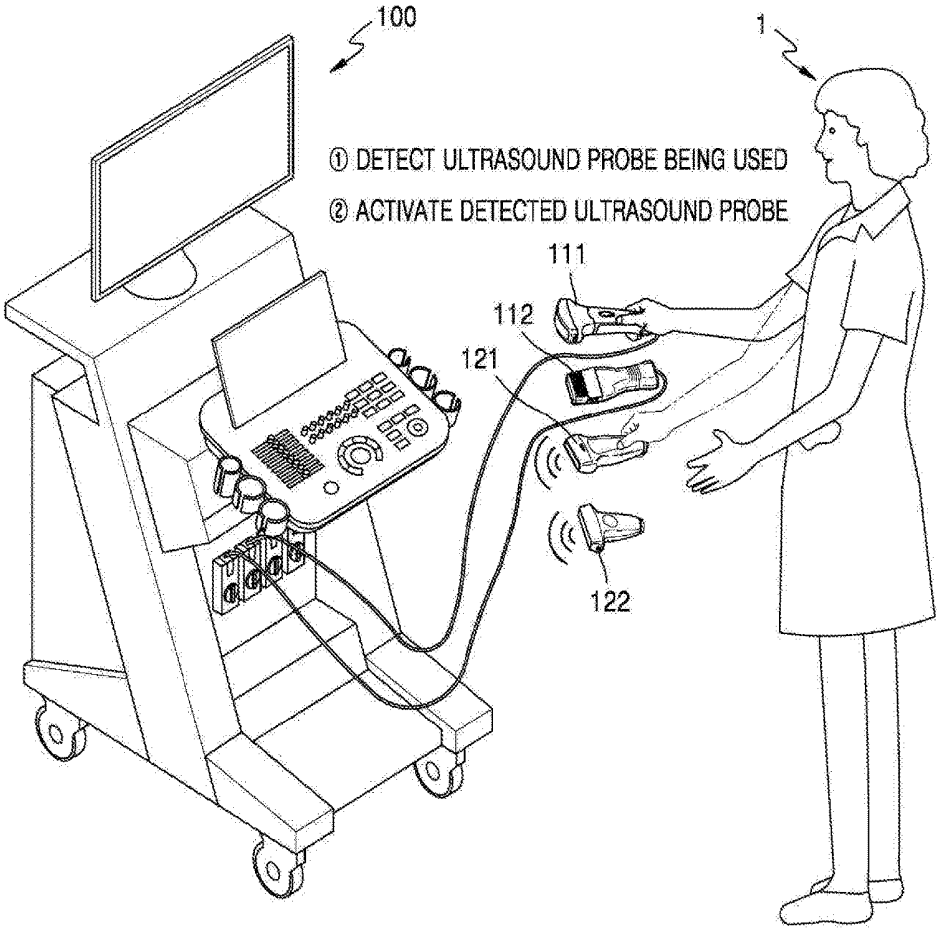


FIG. 2

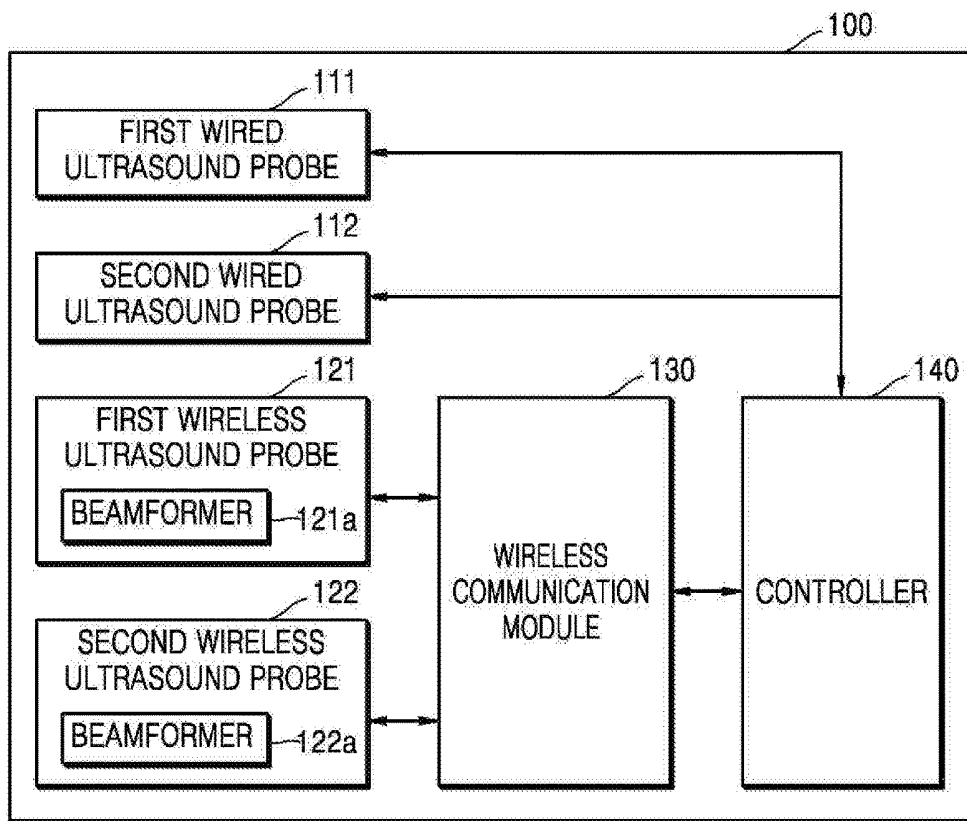


FIG. 3

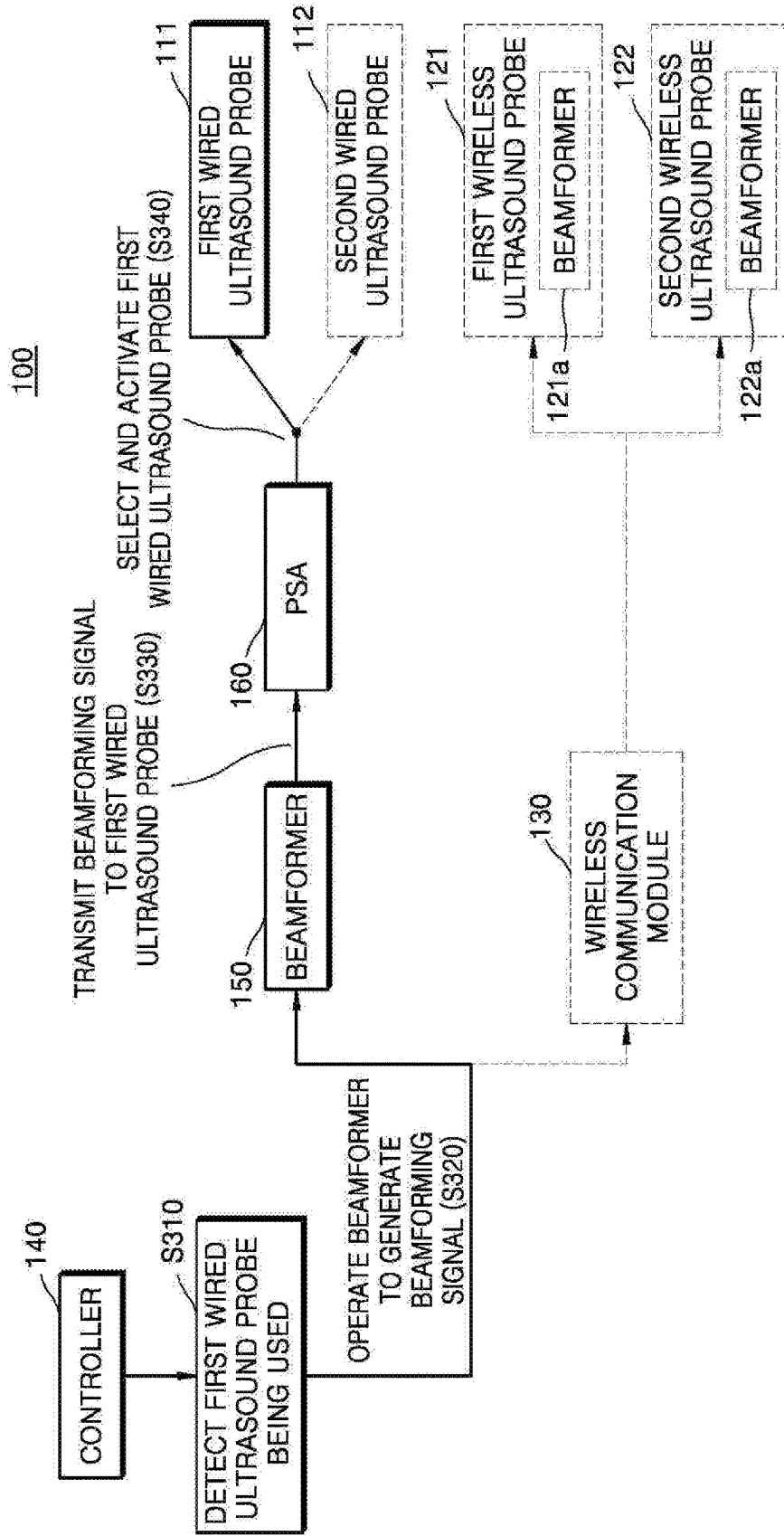


FIG. 4

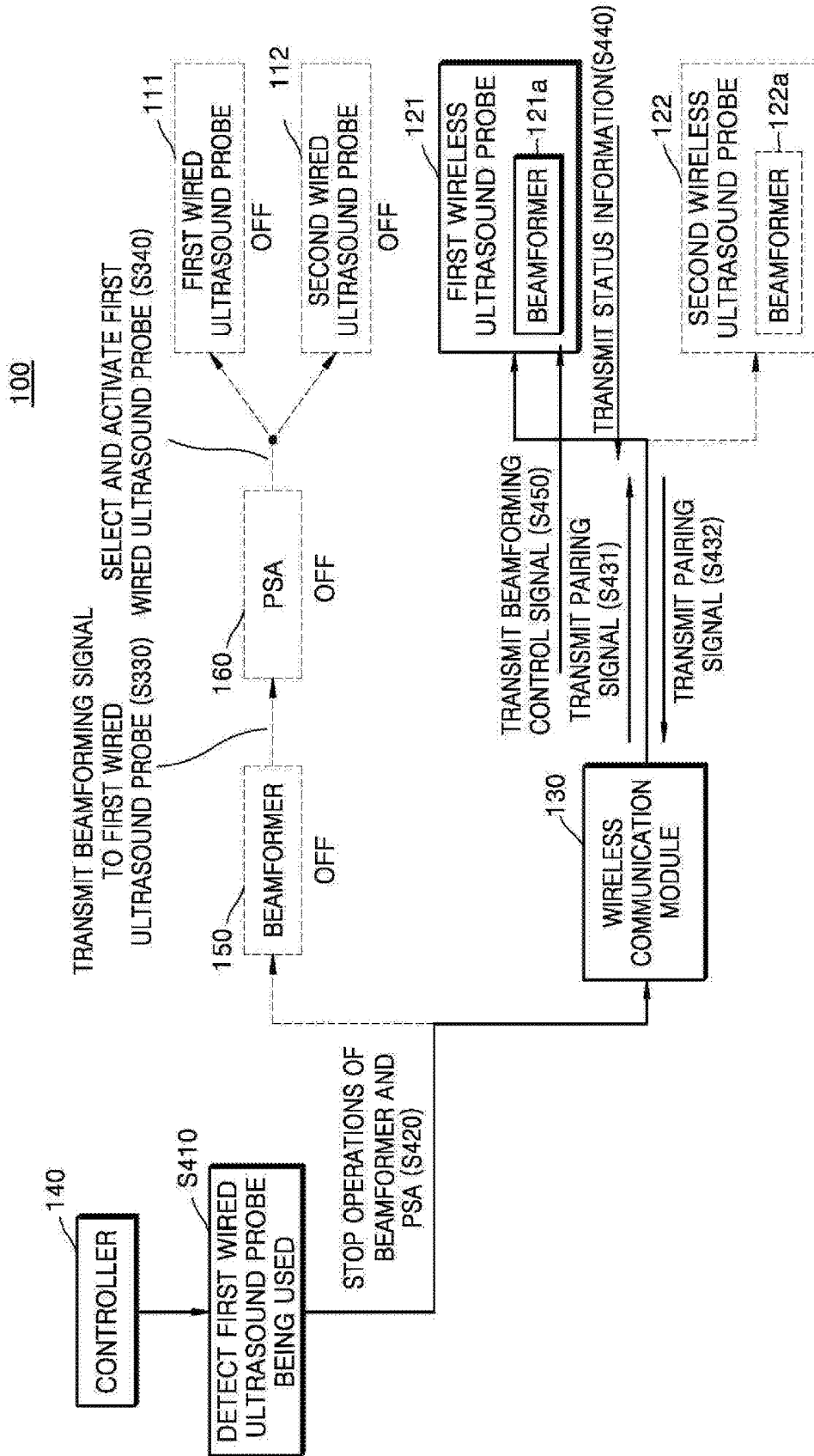


FIG. 5

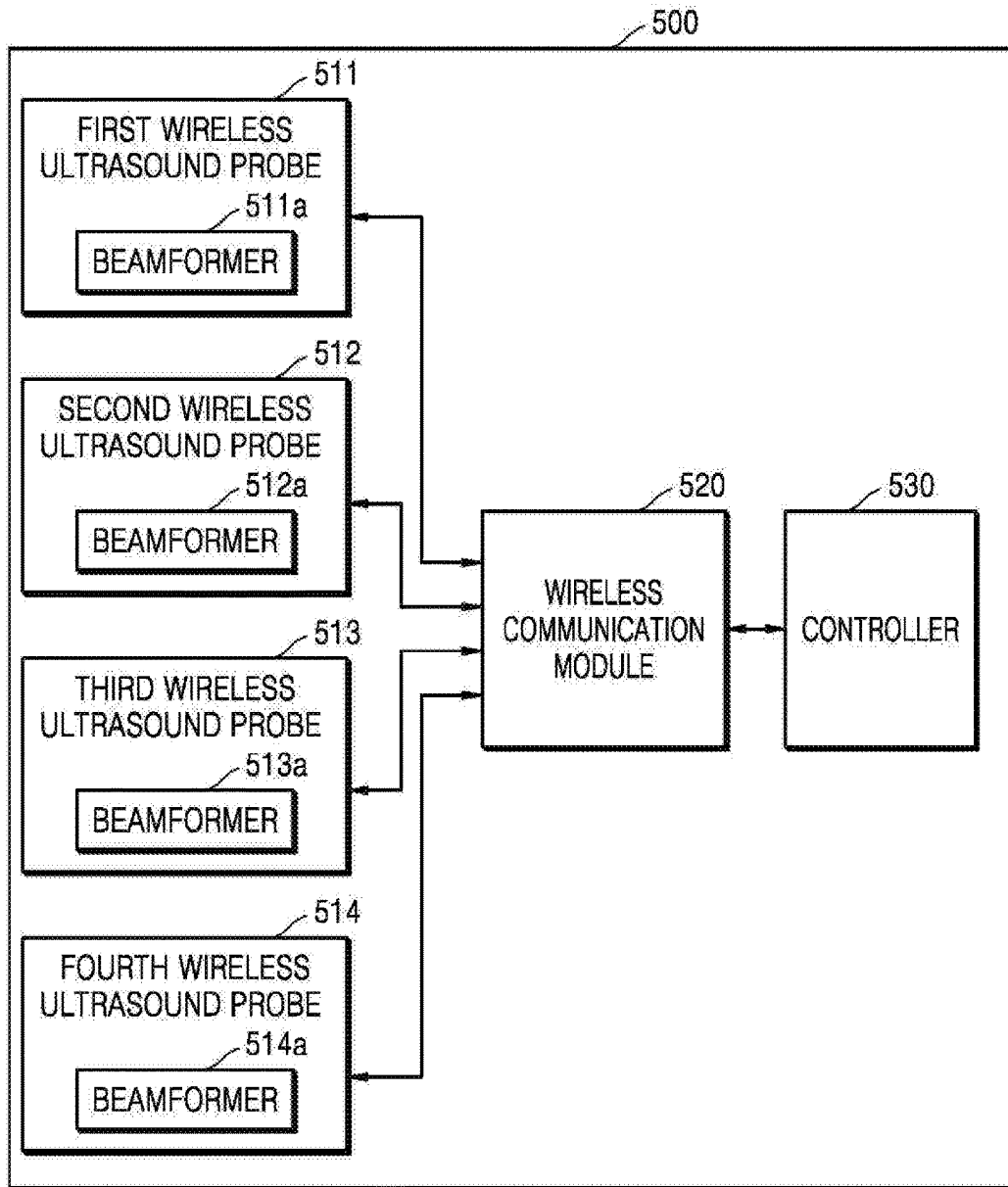


FIG. 6

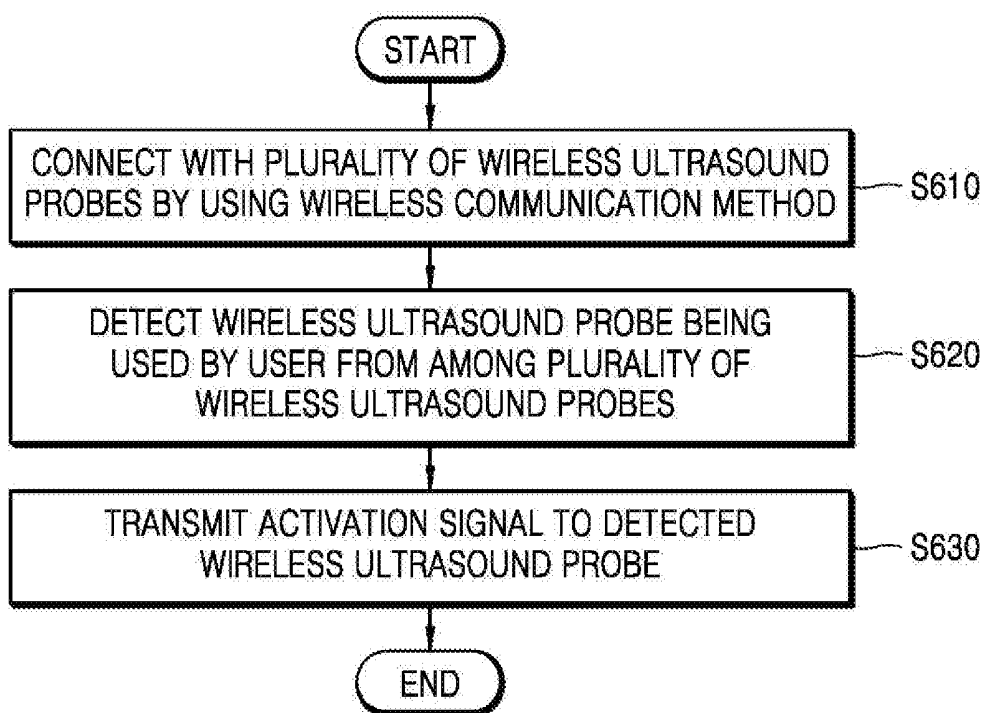


FIG. 7

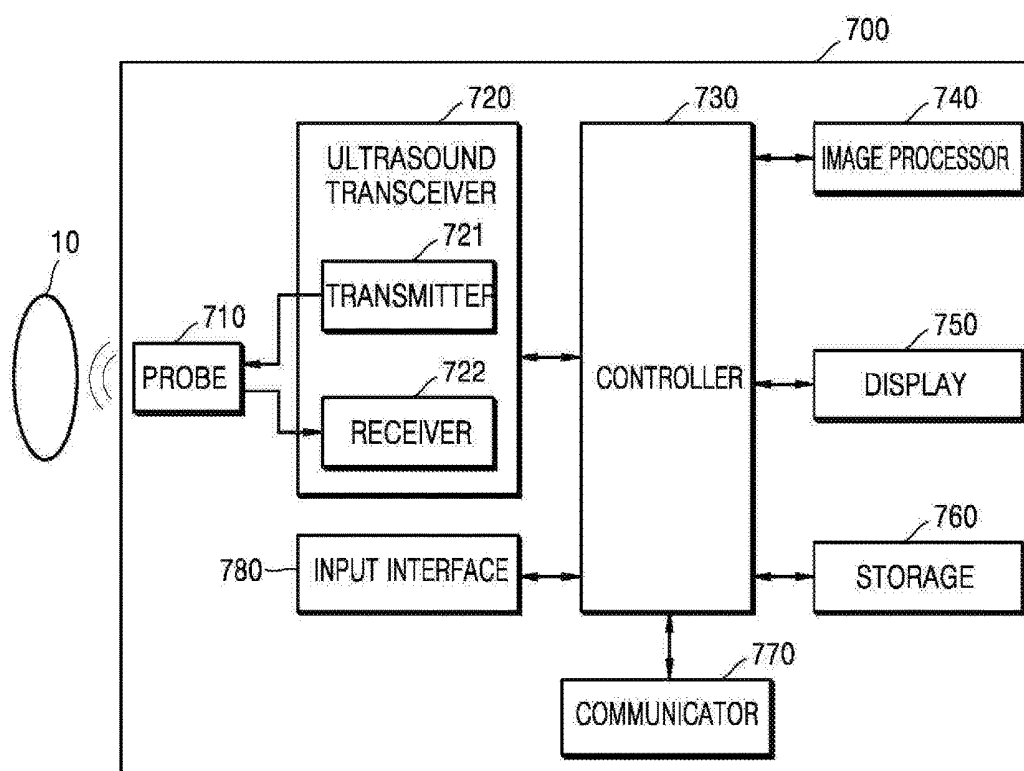


FIG. 8

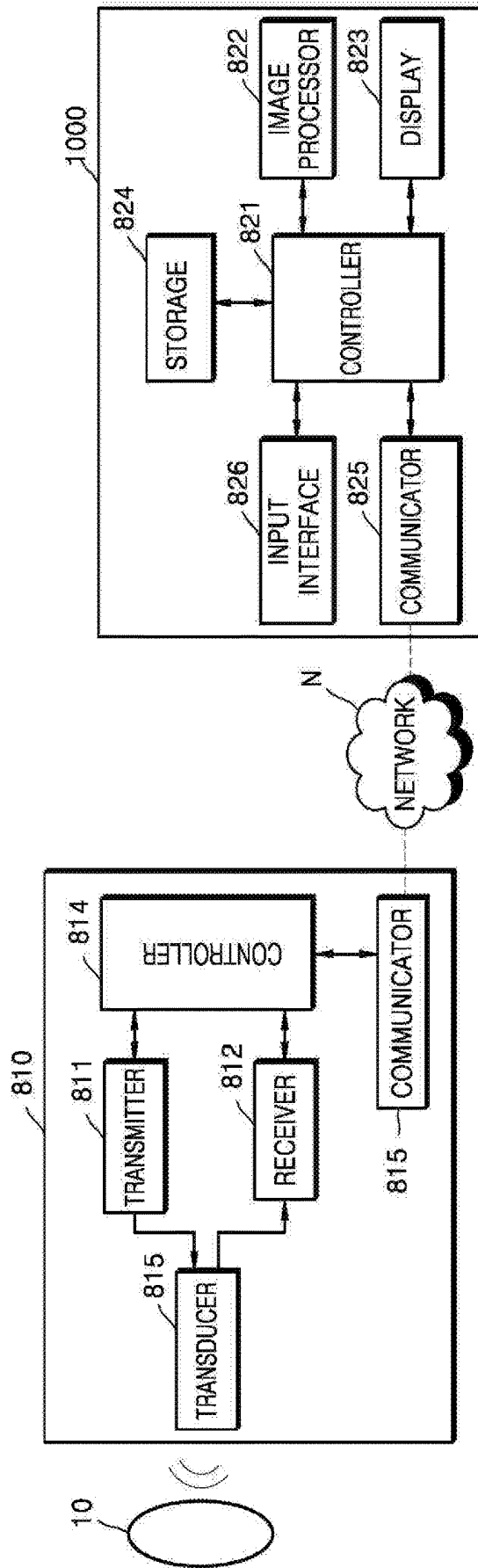


FIG. 9C

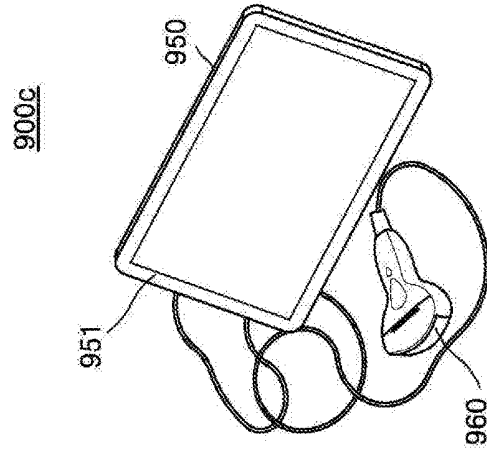


FIG. 9B

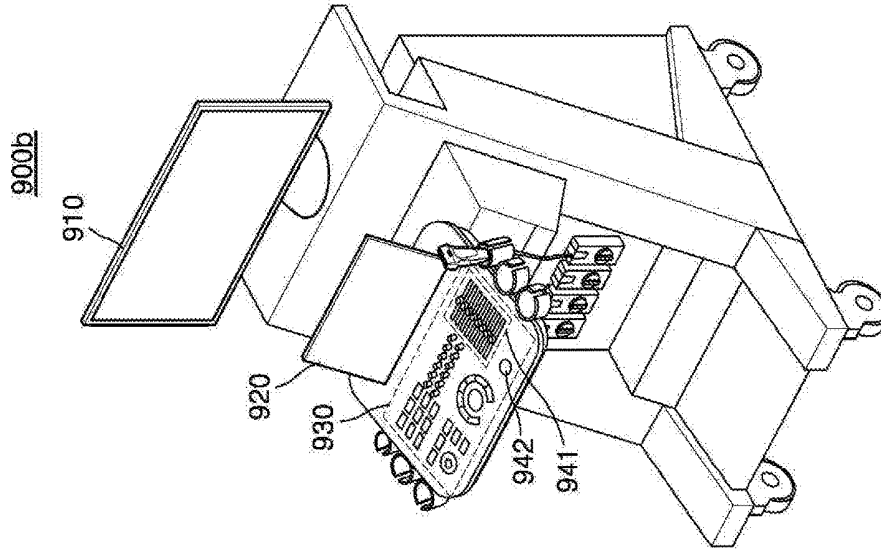
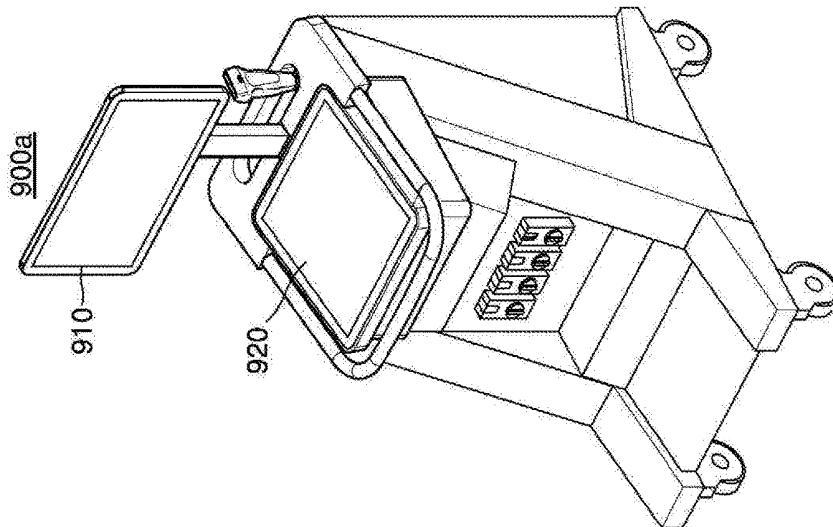


FIG. 9A



## ULTRASOUND DIAGNOSIS APPARATUS AND METHOD OF OPERATING THE SAME

### CROSS-REFERENCE TO RELATED APPLICATIONS

[0001] This application claims the benefit of U.S. Provisional Application No. 62/550,124, filed on Aug. 25, 2017, in the US Patent Office and Korean Patent Application No. 10-2017-0181452, filed on Dec. 27, 2017, in the Korean Intellectual Property Office, the disclosures of which are incorporated herein in their entirety by reference.

### BACKGROUND

#### 1. Field

[0002] The present disclosure relates to ultrasound diagnosis apparatuses and methods of operating the same, and more particularly, to an ultrasound diagnosis apparatus including at least one wired ultrasound probe and a plurality of wireless ultrasound probes and a method of operating the ultrasound diagnosis apparatus.

#### 2. Description of Related Art

[0003] Ultrasound systems transmit ultrasound signals generated by transducers of an ultrasound probe to an internal part of an object and receive information about echo signals reflected therefrom, thereby obtaining an image of the internal part of the object. In particular, ultrasound systems are used for medical purposes including observation of an internal area of an object, detection of foreign substances, diagnosis of damage to the object, and imaging of characteristics.

[0004] Wireless ultrasound probes connected to an ultrasound diagnosis apparatus by using wireless communication are nowadays being developed in order to improve the operability of an ultrasound probe by removing a communication cable for transmitting and receiving ultrasound image data between the ultrasound probe and the ultrasound diagnosis apparatus and eliminating the inconvenience caused by the communication cable. However, at the present time, an ultrasound diagnosis apparatus including a wireless ultrasound probe may contain only one wireless ultrasound probe, and only one wireless ultrasound probe may be connected to the ultrasound diagnosis apparatus at a time. Furthermore, in the case of an ultrasound diagnosis apparatus including both wired and wireless ultrasound probes, when a user stops using the wired ultrasound probe and attempts to use the wireless ultrasound probe, the user suffers the inconvenience of having to manually pair the wireless ultrasound probe to the ultrasound diagnosis apparatus and activate the paired wireless ultrasound probe.

### SUMMARY

[0005] Provided are ultrasound diagnosis apparatuses including at least one wired ultrasound probe and at least one wireless ultrasound probe and configured to detect an ultrasound probe being used by a user, from among the at least one wired ultrasound probe and the at least one wireless ultrasound probe, and activate the detected ultrasound probe. Provided are also ultrasound diagnosis apparatuses for activating a wireless ultrasound probe being used among at least one wireless ultrasound probe paired using a wireless communication method.

[0006] Additional aspects will be set forth in part in the description which follows and, in part, will be apparent from the description, or may be learned by practice of the presented embodiments.

[0007] In accordance with an aspect of the present disclosure, an ultrasound diagnosis apparatus includes: at least one wired ultrasound probe connected via wire to the ultrasound diagnosis apparatus; at least one wireless ultrasound probe connected to the ultrasound diagnosis apparatus by using wireless communication; a wireless communication module configured to receive a pairing reception signal from the at least one wireless ultrasound probe to thereby be connected with the at least one wireless ultrasound probe by using a wireless communication method and to transmit and receive a beamforming control signal and ultrasound image data to and from each of the at least one wireless ultrasound probe; and a controller configured to detect an ultrasound probe being used by a user to examine an object, from among the at least one wired ultrasound probe and the at least one wireless ultrasound probe, and activate the detected ultrasound probe.

[0008] The ultrasound diagnosis apparatus may further include: a beamformer configured to generate a beamforming signal to be applied to each of a plurality of transducers included in each of at least one wired ultrasound probe, based on a position and a focal point of the plurality of transducers; and a probe switching assembly configured to select a wired ultrasound probe from among the at least one wired ultrasound probe and activate the selected wired ultrasound probe.

[0009] The controller may be further configured to detect a first wired ultrasound probe being used from among the at least one wired ultrasound probe, control the probe switching assembly to activate the detected first wired ultrasound probe, and control the beamformer to transmit the beamforming signal to the first wired ultrasound probe.

[0010] The controller may be further configured to stop operations of the beamformer and the probe switching assembly when the ultrasound probe detected as being used is switched from the wired ultrasound probe activated among the at least one wired ultrasound probe to one of the at least one wireless ultrasound probe.

[0011] The controller may be further configured to resume, when the ultrasound probe detected as being used is switched from the wireless ultrasound probe to the first wired ultrasound probe, the operations of the beamformer and the probe switching assembly, control the probe switching assembly to activate the first wired ultrasound probe, and control the beamformer to transmit the beamforming signal to the first wired ultrasound probe.

[0012] The controller may be further configured to control the wireless communication module to transmit, when the ultrasound probe detected as being used is a first wireless ultrasound probe, a beamforming control signal for controlling a beamformer included in the first wireless ultrasound probe to the first wireless ultrasound probe.

[0013] The controller may be further configured to control the wireless communication module to receive, from the at least one wireless ultrasound probe, status information including at least one of identification information, a wireless communication frequency, a connection type, an executable application, a wireless communication method, battery charging information, a remaining battery capacity, a

remaining usability time, and a communication status with respect to each of the at least one wireless ultrasound probe.

**[0014]** The wireless communication module may be connected with the at least one wireless ultrasound probe by using at least one of wireless communication methods comprising a Wireless Local Area Network (WLAN), wireless fidelity (Wi-Fi), Bluetooth, Zigbee, Wi-Fi Direct (WFD), Infrared Data Association (IrDA), Bluetooth Low Energy (BLE), Near Field Communication (NFC), Wireless Broadband Internet (WiBro), World Interoperability for Microwave Access (WiMAX), Shared Wireless Access Protocol (SWAP), Wireless Gigabit Alliance (WiGig), and radio frequency (RF) communication.

**[0015]** The wireless communication module may be simultaneously paired with the at least one wireless ultrasound probe.

**[0016]** The controller may be further configured to check a status of wireless connection between the ultrasound diagnosis apparatus and the at least one wireless ultrasound probe at preset time intervals.

**[0017]** In accordance with another aspect of the present disclosure, an ultrasound diagnosis apparatus includes: a wireless communication module connected with each of a plurality of different wireless ultrasound probes by using a wireless communication method; and a controller configured to detect a wireless ultrasound probe being used by a user, from among the plurality of wireless ultrasound probes, and control the wireless communication module to transmit an activation signal to the detected wireless ultrasound probe.

**[0018]** The controller may be further configured to control the wireless communication module to transmit and receive a pairing signal to and from each of the plurality of wireless ultrasound probes by using a wireless communication method.

**[0019]** The controller may be further configured to control the wireless communication module to receive, from the plurality of wireless ultrasound probes, status information including at least one of identification information, a wireless communication frequency, a connection type, an executable application, a wireless communication method, battery charging information, a remaining battery capacity, a remaining usability time, and a communication status with respect to each of the plurality of wireless ultrasound probes.

**[0020]** The controller may be further configured to control the wireless communication module to transmit, to the wireless ultrasound probe, a beamforming control signal for controlling a beamformer included in the wireless ultrasound probe detected as being used.

**[0021]** The wireless communication module may be simultaneously paired with the plurality of wireless ultrasound probes.

**[0022]** In accordance with another aspect of the present disclosure, a method of operating an ultrasound diagnosis apparatus includes: connecting the ultrasound diagnosis apparatus with the at least one wireless ultrasound probe by using a wireless communication method; detecting an ultrasound probe being used by a user to examine an object, from among the at least one wired ultrasound probe and the at least one wireless ultrasound probe; and activating the detected ultrasound probe.

**[0023]** The activating of the detected ultrasound probe may include: detecting a first wired ultrasound probe being used, from among the at least one wired ultrasound probe;

controlling a probe switching assembly included in the ultrasound diagnosis apparatus to activate the first wired ultrasound probe; and transmitting a beamforming signal to the first wired ultrasound probe.

**[0024]** The method may further include stopping an operation of the probe switching assembly and transmission of the beamforming signal when the ultrasound probe detected as being used is switched from the first wired ultrasound probe to one of the at least one wireless ultrasound probe.

**[0025]** The method may further include: resuming, when the ultrasound probe detected as being used is switched from the wireless ultrasound probe to a second wired ultrasound probe, the operation of the probe switching assembly to activate the second wired ultrasound probe; and transmitting the beamforming signal to the second wired ultrasound probe.

**[0026]** The activating of the detected ultrasound probe may include: detecting a first wireless ultrasound probe being used, from among the at least one wireless ultrasound probe; and transmitting a beamforming control signal for controlling a beamformer included in the first wireless ultrasound probe to the first wireless ultrasound probe.

**[0027]** The method may further include, after the connecting of the at least one wireless ultrasound probe with the ultrasound diagnosis apparatus, receiving, from the at least one wireless ultrasound probe, status information including at least one of identification information, a wireless communication frequency, a connection type, an executable application, a wireless communication method, battery charging information, a remaining battery capacity, a remaining usability time, and a communication status with respect to each of the at least one wireless ultrasound probe.

**[0028]** The connecting of the at least one wireless ultrasound probe with the ultrasound diagnosis apparatus may include connecting with the at least one wireless ultrasound probe by using at least one of wireless communication methods including a Wireless Local Area Network (WLAN), wireless fidelity (Wi-Fi), Bluetooth, Zigbee, Wi-Fi Direct (WFD), Infrared Data Association (IrDA), Bluetooth Low Energy (BLE), Near Field Communication (NFC), Wireless Broadband Internet (WiBro), World Interoperability for Microwave Access (WiMAX), Shared Wireless Access Protocol (SWAP), Wireless Gigabit Alliance (WiGig), and radio frequency (RF) communication.

**[0029]** The connecting of the at least one wireless ultrasound probe with the ultrasound diagnosis apparatus may include simultaneously pairing the ultrasound diagnosis apparatus with the at least one wireless ultrasound probe.

**[0030]** The connecting of the at least one wireless ultrasound probe with the ultrasound diagnosis apparatus may include checking a status of wireless connection between the ultrasound diagnosis apparatus and the at least one wireless ultrasound probe at preset time intervals.

**[0031]** In accordance with another aspect of the present disclosure, a method of operating an ultrasound diagnosis apparatus includes: connecting the ultrasound diagnosis apparatus with each of the plurality of wireless ultrasound probes by using a wireless communication method; detecting a wireless ultrasound probe being used by a user, from among the plurality of wireless ultrasound probes; and transmitting an activation signal to the detected wireless ultrasound probe.

**[0032]** The connecting of the plurality of wireless ultrasound probes with the ultrasound diagnosis apparatus may

further include transmitting and receiving a pairing signal to and from each of the plurality of wireless ultrasound probes by using a wireless communication method.

**[0033]** The method may further include, after the connecting of the plurality of wireless ultrasound probes with the ultrasound diagnosis apparatus, receiving, from the plurality of wireless ultrasound probes, status information including at least one of identification information, a wireless communication frequency, a connection type, an executable application, a wireless communication method, battery charging information, a remaining battery capacity, a remaining usability time, and a communication status with respect to each of the plurality of wireless ultrasound probes.

**[0034]** The transmitting of the activation signal may include transmitting, to the wireless ultrasound probe, a beamforming control signal for controlling a beamformer included in the wireless ultrasound probe detected as being used.

**[0035]** The connecting of the plurality of wireless ultrasound probes with the ultrasound diagnosis apparatus may include simultaneously pairing the ultrasound diagnosis apparatus with the at least one wireless ultrasound probe.

**[0036]** In accordance with another aspect of the present disclosure, a computer-readable recording medium having recorded thereon a computer program including instructions for performing operations of: connecting the ultrasound diagnosis apparatus with the wireless ultrasound probes by using a wireless communication method; detecting an ultrasound probe being used by a user to examine an object, from among the at least one wired ultrasound probe and the wireless ultrasound probes; and activating the detected ultrasound probe.

#### BRIEF DESCRIPTION OF THE DRAWINGS

**[0037]** These and/or other aspects will become apparent and more readily appreciated from the following description of the embodiments, taken in conjunction with the accompanying drawings in which:

**[0038]** FIG. 1 is a conceptual diagram illustrating an example in which an ultrasound diagnosis apparatus detects an ultrasound probe being used by a user, from among wired and wireless ultrasound probes, and activates the detected ultrasound probe, according to an embodiment;

**[0039]** FIG. 2 is a block diagram of a configuration of an ultrasound diagnosis apparatus according to an embodiment;

**[0040]** FIG. 3 is a flowchart of a method of operating an ultrasound diagnosis apparatus, according to an embodiment;

**[0041]** FIG. 4 is a flowchart of a method of operating an ultrasound diagnosis apparatus, according to another embodiment;

**[0042]** FIG. 5 is a block diagram of a configuration of an ultrasound diagnosis apparatus according to another embodiment;

**[0043]** FIG. 6 is a flowchart of a method of operating an ultrasound diagnosis apparatus, according to another embodiment;

**[0044]** FIG. 7 is a block diagram of a configuration of an ultrasound diagnosis apparatus including a wired ultrasound probe, according to an embodiment;

**[0045]** FIG. 8 is a block diagram of a configuration of an ultrasound diagnosis system including a wireless ultrasound probe, according to an embodiment; and

**[0046]** FIGS. 9A through 9C are diagrams illustrating ultrasound diagnosis apparatuses.

#### DETAILED DESCRIPTION

**[0047]** Advantages and features of one or more embodiments of the present disclosure and methods of accomplishing the same may be understood more readily by reference to the following detailed description of the embodiments and the accompanying drawings. In this regard, the present embodiments may have different forms and should not be construed as being limited to the descriptions set forth herein. Rather, these embodiments are provided so that this disclosure will be thorough and complete and will fully convey the concept of the present embodiments to one of ordinary skill in the art, and the present disclosure will only be defined by the appended claims.

**[0048]** Terms used herein will now be briefly described and then one or more embodiments of the present disclosure will be described in detail.

**[0049]** All terms including descriptive or technical terms which are used herein should be construed as having meanings that are obvious to one of ordinary skill in the art. However, the terms may have different meanings according to the intention of one of ordinary skill in the art, precedent cases, or the appearance of new technologies. Also, some terms may be arbitrarily selected by the applicant, and in this case, the meaning of the selected terms will be described in detail in the detailed description of the disclosure. Thus, the terms used herein have to be defined based on the meaning of the terms together with the description throughout the specification.

**[0050]** When a part “includes” or “comprises” an element, unless there is a particular description contrary thereto, the part can further include other elements, not excluding the other elements. Also, the term “unit” in the embodiments of the present disclosure means a software component or hardware component such as a field-programmable gate array (FPGA) or an application-specific integrated circuit (ASIC), and performs a specific function. However, the term “unit” is not limited to software or hardware. The “unit” may be formed so as to be in an addressable storage medium, or may be formed so as to operate one or more processors. Thus, for example, the term “unit” may refer to components such as software components, object-oriented software components, class components, and task components, and may include processes, functions, attributes, procedures, subroutines, segments of program code, drivers, firmware, micro codes, circuits, data, a database, data structures, tables, arrays, or variables. A function provided by the components and “units” may be associated with the smaller number of components and “units”, or may be divided into additional components and “units”.

**[0051]** In the present specification, an “object” may be a human, an animal, or a part of a human or animal. For example, the object may be an organ (e.g., the liver, the heart, the womb, the brain, a breast, or the abdomen), a blood vessel, or a combination thereof. Furthermore, the “object” may be a phantom. The phantom means a material having a density, an effective atomic number, and a volume that are approximately the same as those of an organism. For example, the phantom may be a spherical phantom having properties similar to the human body.

**[0052]** Furthermore, in the present specification, a “user” may be, but is not limited to, a medical expert, such as a

medical doctor, a nurse, a medical laboratory technologist, and a technician who repairs a medical apparatus.

**[0053]** Furthermore, in the present specification, the terms “first”, “second”, “1-1”, etc. are only used to distinguish one component, element, object, image, pixel, or patch from another component, element, object, image, pixel, or patch. Thus, these terms are not limited to representing the order or priority among elements or components. Expressions such as “at least one of,” when preceding a list of elements, modify the entire list of elements and do not modify the individual elements of the list.

**[0054]** Reference will now be made in detail to embodiments, examples of which are illustrated in the accompanying drawings. In this regard, the present embodiments may have different forms and should not be construed as being limited to the descriptions set forth herein. In the following description, well-known functions or constructions are not described in detail so as not to obscure the embodiments with unnecessary detail.

**[0055]** FIG. 1 is a conceptual diagram illustrating an example in which an ultrasound diagnosis apparatus 100 detects an ultrasound probe being used by a user, from among wired ultrasound probes 111 and 112 and wireless ultrasound probes 121 and 122, and activates the detected ultrasound probe, according to an embodiment.

**[0056]** Referring to FIG. 1, the ultrasound diagnosis apparatus 100 may be connected with at least one wired ultrasound probe and at least one wireless ultrasound probe. According to an embodiment, the ultrasound diagnosis apparatus 100 may be connected via wire with first and second wired ultrasound probes 111 and 112. Furthermore, the ultrasound diagnosis apparatus 100 may be connected with a plurality of wireless ultrasound probes including first and second wireless ultrasound probes 121 and 122 by using a wireless communication method. Although FIG. 1 shows that the number of the wired ultrasound probes 111 and 112 and the number of the wireless ultrasound probes 121 and 122 are both two (2), embodiments are not limited thereto.

**[0057]** In an embodiment, the first and second wired ultrasound probes 111 and 112 may be connected to a controller (140 of FIG. 3) of the ultrasound diagnosis apparatus 100 via a probe switching assembly (PSA, 160 of FIG. 3).

**[0058]** According to an embodiment, the ultrasound diagnosis apparatus 100 may be connected with the first and second wireless ultrasound probes 121 and 122 by using a wireless communication method. In this case, “connected” may mean a state in which the ultrasound diagnosis apparatus 100 is paired to use at least one of the first and second wireless ultrasound probes 121 and 122. Even when the ultrasound diagnosis apparatus 100 is connected with the first and second wireless ultrasound probes 121 and 122, it does not mean that the ultrasound diagnosis apparatus 100 may use all of the first and second wireless ultrasound probes 121 and 122 to transmit ultrasound signals to an object. “Pairing” is conceptually different from “activation”, as will be described in more detail below with reference to FIG. 4.

**[0059]** For example, the ultrasound diagnosis apparatus 100 may be connected wirelessly with the first and second wireless ultrasound probes 121 and 122 by receiving pairing reception signals therefrom by using at least one of data communication methods including a Wireless Local Area Network (WLAN), Wireless Fidelity (Wi-Fi), Bluetooth,

Zigbee, Wi-Fi Direct (WFD), Infrared Data Association (IrDA), Bluetooth Low Energy (BLE), Near Field Communication (NFC), Wireless Broadband Internet (WiBro), World Interoperability for Microwave Access (WiMAX), Shared Wireless Access Protocol (SWAP), Wireless Gigabit Alliance (WiGig), and radio frequency (RF) communication.

**[0060]** The first and second wireless ultrasound probes 121 and 122 may each transmit ultrasound signals to the object and receive echo signals reflected from the object to thereby produce reception signals. The first and second wireless ultrasound probes 121 and 122 may each perform image processing on the received echo signals to thereby generate ultrasound image data and then transmit the generated ultrasound image data to the controller (140 of FIGS. 2 through 4) of the ultrasound diagnosis apparatus 100.

**[0061]** The ultrasound diagnosis apparatus 100 may detect an ultrasound probe being used by a user 1 to examine the object among the first and second wired ultrasound probes 111 and 112 and the first and second wireless ultrasound probes 121 and 122. According to an embodiment, the ultrasound diagnosis apparatus 100 may detect a user's operation of stopping using the first wired ultrasound probe 111 and then switching probes to use the first wireless ultrasound probe 121 instead. Furthermore, the ultrasound diagnosis apparatus 100 may detect a user's operation of stopping using the first wireless ultrasound probe 121 and then switching probes to use the first wired ultrasound probe 111.

**[0062]** The ultrasound diagnosis apparatus 100 may detect an ultrasound probe being used by the user to examine the object and activate the detected ultrasound probe. In this case, “activation” may mean operating an ultrasound probe to transmit ultrasound signals to the object and receive ultrasound echo signals reflected from the object.

**[0063]** For example, when the ultrasound probe being used by the user 1 is the first wired ultrasound probe 111, the ultrasound diagnosis apparatus 100 may select the first wired ultrasound probe 111 via the PSA (160 of FIG. 3) and transmit a beamforming signal to the selected first wired ultrasound probe 111. The first wired ultrasound probe 111 may then receive the beamforming signal to transmit ultrasound signals to the object and receive ultrasound signals reflected from the object.

**[0064]** As another example, when the ultrasound probe being used by the user 1 is the first wireless ultrasound probe 121, the ultrasound diagnosis apparatus 100 may activate the first wireless ultrasound probe 121 and wirelessly transmit a beamforming control signal for controlling a beamformer included in the first wireless ultrasound probe 121 to the first wireless ultrasound probe 121. The first wireless ultrasound probe 121 may operate the beamformer based on the received beamforming control signal and transmit ultrasound signals generated by the beamformer to the object.

**[0065]** For example, when the user 1 switches the first wireless ultrasound probe 121 being used to use the first wired ultrasound probe 111 instead, the ultrasound diagnosis apparatus 100 may deactivate the first wireless ultrasound probe 121, select the first wired ultrasound probe 111 via the PSA (160 of FIG. 3), and transmit a beamforming signal to the first wired ultrasound probe 111, as will be described in more detail below with reference to FIG. 3.

**[0066]** As another example, when the user 1 switches the first wired ultrasound probe 111 being used to use the first

wireless ultrasound probe **121**, the ultrasound diagnosis apparatus **100** may deactivate the first wired ultrasound probe **111** and wirelessly transmit a beamforming control signal to the beamformer included in the first wireless ultrasound probe **121**, as will be described in more detail below with reference to FIG. 4.

[0067] Conventionally, ultrasound systems including only wired ultrasound probes or only one wireless ultrasound probe have been used. However, in some cases, a wired ultrasound probe and a wireless ultrasound probe need to be alternately selected for use according to characteristics of an object or a protocol necessary for diagnosing diseases of the object. A conventional ultrasound system including only a wired or wireless ultrasound probe cannot satisfy these needs. Furthermore, even in case of an ultrasound system including both wired and wireless ultrasound probes, when the user quits using the wired ultrasound probe and attempts to use the wireless ultrasound probe, the user suffers the inconvenience of having to manually pair the wireless ultrasound probe and activate the paired wireless ultrasound probe.

[0068] The ultrasound diagnosis apparatus **100** includes both at least one wired ultrasound probe (the first and second wired ultrasound probes **111** and **112**) and at least one wireless ultrasound probe (the first and second wireless ultrasound probes **121** and **122**) and is configured to detect an ultrasound probe being used by the user **1** to examine the object among the first and second wired ultrasound probes **111** and **112** and the first and second wireless ultrasound probes **121** and **122** and activate the detected ultrasound probe directly without a separate pairing process, thereby increasing user convenience. In particular, even when an ultrasound probe being used is switched from a wired ultrasound probe to a wireless ultrasound probe or vice versa, the ultrasound diagnosis apparatus **100** may automatically detect an ultrasound probe being used as a result of switching probes and activate the detected ultrasound probe to transmit ultrasound signals to the object and acquire ultrasound image data from the object.

[0069] FIG. 2 is a block diagram of a configuration of an ultrasound diagnosis apparatus **100** according to an embodiment.

[0070] Referring to FIG. 2, the ultrasound diagnosis apparatus **100** according to the embodiment may include first and second wired ultrasound probes **111** and **112**, first and second wireless ultrasound probes **121** and **122**, a wireless communication module **130**, and a controller **140**. Although FIG. 2 shows that the ultrasound diagnosis apparatus **100** includes the two wired ultrasound probes (the first and second wired ultrasound probes **111** and **112**), this is merely an example. The ultrasound diagnosis apparatus **100** may include at least one wired ultrasound probe. Furthermore, although FIG. 2 shows that the ultrasound diagnosis apparatus **100** includes the two wireless ultrasound probes (the first and second wireless ultrasound probes **121** and **122**), this is merely an example. The ultrasound diagnosis apparatus **100** may include at least one wireless ultrasound probe.

[0071] According to an embodiment, the ultrasound diagnosis apparatus **100** may further include a beamformer (**150** of FIG. 4) and the PCA (**160** of FIG. 4).

[0072] The ultrasound diagnosis apparatus **100** may be implemented not only as a cart type apparatus but also as a portable type apparatus. Examples of portable ultrasound diagnosis apparatuses may include, but are not limited to, a

picture archiving and communication system (PACS) viewer, a hand-carried cardiac ultrasound (HCU) device, a smartphone, a laptop computer, a personal digital assistant (PDA), and a tablet PC.

[0073] The first and second wired ultrasound probes **111** and **112** may each include a plurality of transducers for transmitting a beamforming signal generated by the ultrasound diagnosis apparatus **100** to an object. The plurality of transducers included in each of the first and second wired ultrasound probes **111** and **112** may receive ultrasound echo signals reflected from the object to produce reception signals. The first and second wired ultrasound probes **111** and **112** may each transmit the reflected ultrasound echo signals to the controller **140**. The controller **140** may then perform analog-to-digital conversion on the received ultrasound echo signals to generate ultrasound image data and perform image processing on the ultrasound image data to obtain an ultrasound image of the object.

[0074] The first and second wireless ultrasound probes **121** and **122** may each be different types of probes having different functions, but embodiments are not limited thereto. The first and second wireless ultrasound probes **121** and **122** may each transmit ultrasound signals to the object and receive ultrasound echo signals reflected from the object to produce reception signals.

[0075] The first and second wireless ultrasound probes **121** and **122** may respectively include beamformers **121a** and **122a** for generating ultrasound signals that are transmitted to the object. The beamformers **121a** and **122a** may each receive a beamforming control signal generated by the controller **140** via the wireless communication module **130** and generate ultrasound signals that are transmitted to the object based on the received beamforming control signal.

[0076] The first and second wireless ultrasound probes **121** and **122** may each perform analog-to-digital conversion on received ultrasound echo signals and image processing of the resulting signals to thereby generate ultrasound image data regarding an object. The first and second wireless ultrasound probes **121** and **122** may each transmit generated ultrasound image data to the controller **140** via the wireless communication module **130**.

[0077] The wireless communication module **130** may receive pairing reception signals from the first and second wireless ultrasound probes **121** and **122** and may be connected simultaneously with the first and second wireless ultrasound probes **121** and **122** by using a wireless communication method based on the pairing reception signals. For example, the wireless communication module **130** may simultaneously be paired wirelessly with the wireless ultrasound probes **201** through **204** by using at least one of wireless communication techniques including a WLAN, Wi-Fi, Bluetooth, Zigbee, WFD, IrDA, BLE, NFC, WiBro, WiMAX, SWAP, WiGig, and RF communication method.

[0078] According to an embodiment, the wireless communication module **130** may wirelessly receive pieces of status information regarding the first and second wireless ultrasound probes **121** and **122** based on a control signal from the controller **140**. For example, status information may include at least one of a wireless communication frequency, a wireless communication connection type, an executable application, a wireless communication method, a communication status, battery charging information, a

remaining battery capacity, and a remaining usability time with respect to each of the first and second wireless ultrasound probes **121** and **122**.

[0079] According to an embodiment, the wireless communication module **130** may perform data communications with the first and second wireless ultrasound probes **121** and **122** by using a 60-GHz millimeter wave (mmWave) local area communication method. The wireless communication module **130** may receive raw data by using a 60-GHz mmWave wireless communication method. To acquire the raw data, the first and second wireless ultrasound probes **121** and **122** each transmit ultrasound signals to the object, process received ultrasound echo signals, and perform analog-to-digital conversion on the resulting signals.

[0080] In another embodiment, the first and second wireless ultrasound probes **121** and **122** may each perform analog-to-digital conversion on received ultrasound echo signals and perform image processing on the analog-to-digital converted signals to generate ultrasound image data. In this case, the wireless communication module **130** may receive the ultrasound image data respectively from the first and second wireless ultrasound probes **121** and **122** via Wi-Fi, WLAN, or Bluetooth.

[0081] The controller **140** may control operations of the first wired ultrasound probe **111**, the second wired ultrasound probe **112**, and the wireless communication module **130**. In detail, the controller **140** may activate a wired ultrasound probe being selected and used by a user from among the first and second wired ultrasound probes **111** and **112**. In this case, "activation" may mean operating an ultrasound probe to transmit ultrasound signals to the object and receive ultrasound echo signals reflected from the object.

[0082] Furthermore, the controller **140** may control the wireless communication module **130** to maintain wireless pairing with the first and second wireless ultrasound probes **121** and **122**. Furthermore, the controller **140** may control the wireless communication module **130** to receive pieces of status information from the first and second wireless ultrasound probes **121** and **122**. According to an embodiment, the controller **140** may check a status of pairing with each of the first and second wireless ultrasound probes **121** and **122** at preset time intervals. Furthermore, the controller **140** may control the wireless communication module **130** to transmit at preset time intervals a pairing signal for checking whether there is any additional wireless ultrasound probe, other than the first and second wireless ultrasound probes **121** and **122**, which is to be wirelessly connected. For example, the controller **140** may control the wireless communication module **130** to transmit a pairing signal for searching for connection of an additional wireless ultrasound probe to a region near the ultrasound diagnosis apparatus **100** at 1-minute or 30-second intervals.

[0083] For example, the controller **140** may be formed as a hardware module including at least one of a central processing unit (CPU), a microprocessor, a graphic processing unit, random-access memory (RAM), and read-only memory (ROM). In an embodiment, the controller **140** may be implemented as an application processor (AP). The controller **140** may also be implemented as a hardware component such as a field-programmable gate array (FPGA) or an application-specific integrated circuit (ASIC). However, embodiments are not limited thereto, and the controller **140** may include components such as software components,

object-oriented software components, class components and task components, processes, functions, attributes, procedures, subroutines, segments of program code, drivers, firmware, micro codes, circuits, data, a database, data structures, tables, arrays, and variables.

[0084] According to an embodiment, the ultrasound diagnosis apparatus **100** may further include a display configured to display a user interface (UI) indicating pieces of status information regarding the first and second wireless ultrasound probes **121** and **122** wirelessly paired thereto.

[0085] An operation of the controller **140** activating an ultrasound probe being used by a user, from among the first and second wired ultrasound probes **111** and **112** and the first and second wireless ultrasound probes **121** and **122**, according to an embodiment and an operation of the controller **140** activating, when the ultrasound probe being used is switched from a wired ultrasound probe to a wireless ultrasound probe or vice versa, an ultrasound probe being used as a result of the switching according to an embodiment will now be described in detail with reference to FIGS. **3** and **4**.

[0086] FIGS. **3** and **4** are flowcharts of methods of operating an ultrasound diagnosis apparatus **100**, according to embodiments.

[0087] Referring to FIGS. **3** and **4**, the ultrasound diagnosis apparatus **100** may include first and second wired ultrasound probes **111** and **112**, first and second wireless ultrasound probes **121** and **122**, a wireless communication module **130**, a controller **140**, a beamformer **150**, and a PSA **160**. Since the first and second wired ultrasound probes **111** and **112** and the first and second wireless ultrasound probes **121** and **122**, and the wireless communication module **130** correspond to their counterparts of the ultrasound diagnosis apparatus **100** described with reference to FIG. **2**, descriptions that are already provided above with respect to FIG. **2** will be omitted herein.

[0088] The beamformer **150** may generate a beamforming signal to be applied to a plurality of transducers, which are included in each of the first and second wired ultrasound probes **111** and **112**, based on a position and a focal point of the plurality of transducers. The beamformer **150** may transmit a beamforming signal to a wired ultrasound probe selected in response to a control signal from the controller **140**.

[0089] The PSA **160** may select a wired ultrasound probe detected as being used by a user, from among the first and second wired ultrasound probes **111** and **112**. The wired ultrasound probe connected by the PSA **160** among the first and second wired ultrasound probes **111** and **112** may receive a beamforming signal from the beamformer **150** and transmit ultrasound signals to an object based on the received beamforming signal.

[0090] An operation of the controller **140** detecting the first wired ultrasound probe **111** being used by the user according to an embodiment is now described.

[0091] The controller **140** detects the first wired ultrasound probe **111** being used (operation S310). In an embodiment, the controller **140** may detect the first wired ultrasound probe **111** being used based on a user input signal input via a user input device such as a button, mounted on the first wired ultrasound probe **111**. According to an embodiment, the controller **140** may detect the first wired ultrasound probe **111** being used by using a probe information recognition method based on an RF identification (RFID), etc.

[0092] In another embodiment, the controller 140 may detect an ultrasound probe being used via a sensor built into the ultrasound probe. The sensor may detect a user input of holding one of the first and second wired ultrasound probes 111 and 112 and the first and second wireless ultrasound probes 121 and 122 in his or her hand. The sensor may then transmit ID information of the detected first wired ultrasound probe 111 to the controller 140, and the controller 140 may identify the first wired ultrasound probe 111 being used based on the received ID information.

[0093] The controller 140 generates a beamforming signal by operating the beamformer 150 (operation S320). Since the first and second wireless ultrasound probes 121 and 122 respectively includes beamformers 121a and 122a, when one of the first and second wireless ultrasound probes 121 and 122 is being used, the beamformer 150 may not operate and may be deactivated. The controller 140 may change the deactivated beamformer 150 to an activated state and control the beamformer 150 to generate a beamforming signal.

[0094] The controller 140 controls the beamformer 150 to transmit the generated beamforming signal to the first wired ultrasound probe 111 (operation S330). The controller 140 may control the beamformer 150 to transmit the beamforming signal to the first wired ultrasound probe 111 detected as being used, such that the first wired ultrasound probe 111 may emit ultrasound signals toward the object.

[0095] The controller 140 controls the PSA 160 to select and activate the first wired ultrasound probe 111 (operation S340). The PSA 160 selects the first wired ultrasound probe 111 among the first and second wired ultrasound probes 111 and 112 based on a control signal from the controller 140 to connect a signal transmission line. The first wired ultrasound probe 111 connected by the PSA 160 may be activated to transmit ultrasound signals to the object and receive ultrasound echo signals reflected from the object.

[0096] While performing operations S310, S320, S330, and S340, the controller 140 may control the wireless communication module 130 to maintain wireless pairing respectively with the first and second wireless ultrasound probes 121 and 122. However, the controller 140 does not activate one of the first and second wireless ultrasound probes 121 and 122 to transmit ultrasound signals to the object.

[0097] Operations S310, S320, S330, and S340 are part of a method of activating the first wired ultrasound probe 111, and may be applied when an ultrasound probe being used is switched from one of the first and second wireless ultrasound probes 121 and 122 to the first wired ultrasound probe 111 in the same manner as when the first wired ultrasound probe 111 is initially selected and used.

[0098] FIG. 4 is a flowchart of a method of operating the ultrasound diagnosis apparatus 100, according to another embodiment.

[0099] An operation of the controller 140 detecting the first wireless ultrasound probe 121 being used by the user according to an embodiment will now be described in detail with reference to FIG. 4.

[0100] The controller 140 detects the first wireless ultrasound probe 121 being used (operation S410). In an embodiment, the controller 140 may detect the first wireless ultrasound probe 121 being used based on a user input signal input via a user input device such as a button, mounted on the first wireless ultrasound probe 121. According to an embodiment, the controller 140 may detect the first wireless

ultrasound probe 121 being used by using a probe information recognition method based on an RFID, etc.

[0101] In another embodiment, the controller 140 may detect an ultrasound probe being used via a sensor built into the ultrasound probe. The sensor may detect a user input of holding the first wireless ultrasound probe 121 of the first and second wired ultrasound probes 121 and 122 in his or her hand. The sensor may then transmit ID information of the detected first wireless ultrasound probe 121 to the controller 140, and the controller 140 may identify the first wireless ultrasound probe 121 being used based on the received ID information.

[0102] The controller 140 stops operations of the beamformer 150 and the PSA 160 (operation S420). In an embodiment, the controller 140 may switch the beamformer 150 and the PSA 160 to an OFF state by deactivating them. When the beamformer 150 and the PSA 160 are deactivated, operations of the first and second wired ultrasound probes 111 and 112 may also be deactivated. After operation S420, no signal may be transmitted to the first and second wired ultrasound probes 111 and 112.

[0103] The controller 140 controls the wireless communication module 130 to transmit a pairing signal to the first wireless ultrasound probe 121 detected as an ultrasound probe being used (operation S431). The wireless communication module 130 may transmit a pairing signal to the first wireless ultrasound probe 121 by using a wireless communication method based on a control signal from the controller 140.

[0104] The first wireless ultrasound probe 121 may transmit a pairing signal to the wireless communication module 130 (operation S432).

[0105] In operations S431 and S432, the wireless communication module 130 may exchange a pairing signal with the first wireless ultrasound probe 121 by using at least one of wireless communication methods including a WLAN, Wi-Fi, Bluetooth, Zigbee, WFD, IrDA, BLE, NFC, WiBro, WiMAX, SWAP, WiGig, and RF communication.

[0106] The first wireless ultrasound probe 121 transmits status information to the wireless communication module 130 (operation S440). According to an embodiment, the controller 140 may control the wireless communication module 130 to receive from the first wireless ultrasound probe 121 status information including at least one of ID information, a wireless communication frequency, a connection type, an executable application, a wireless communication method, battery charging information, a remaining battery capacity, a remaining usability time, and a communication status with respect to the first wireless ultrasound probe 121. Although not shown in FIG. 4, the controller 140 may control the wireless communication module 130 to receive status information from the second wireless ultrasound probe 122 as well.

[0107] The controller 140 controls the wireless communication module 130 to transmit a beamforming control signal to the first wireless ultrasound probe 121 (operation S450). A beamforming control signal may be a signal used to control the beamformers 121a and 122b respectively included in the first and second wireless ultrasound probes 121 and 122 to perform beamforming. The controller 140 may generate beamforming control signals for controlling the beamformers 121a and 122a and control the wireless communication module 130 to transmit a beamforming

control signal to the beamformer **121a** included in the first wireless ultrasound probe **121** detected as being used.

[0108] Operations **S410**, **S420**, **S431**, **S432**, **S440**, and **S450** are part of a method of activating the first wireless ultrasound probe **121**, and may be applied when an ultrasound probe being used is switched from one of the first and second wired ultrasound probes **111** and **112** to the first wireless ultrasound probe **121** in the same manner as when the first wireless ultrasound probe **121** is initially selected and used.

[0109] According to the embodiments described with reference to FIGS. **3** and **4**, the ultrasound diagnosis apparatus **100** is configured to detect an ultrasound probe being used by the user to examine the object among the first and second wired ultrasound probes **111** and **112** and the first and second wireless ultrasound probes **121** and **122** and automatically activate the detected ultrasound probe, thereby eliminating the need to perform unnecessary processes such as a separate wireless pairing process and termination of pairing and thus increasing user convenience.

[0110] FIG. **5** is a block diagram of a configuration of an ultrasound diagnosis apparatus **500** according to another embodiment.

[0111] Referring to FIG. **5**, the ultrasound diagnosis apparatus **500** may include first through fourth wireless ultrasound probes **511** through **514**, a wireless communication module **520**, and an a controller **530**. The ultrasound diagnosis apparatus **500** of FIG. **5** does not include a wired ultrasound probe unlike the ultrasound diagnosis apparatus **200** described with reference to FIG. **2**, but includes the same components as their counterparts of the ultrasound diagnosis apparatus **200**. Thus, descriptions that are already provided above with respect to FIG. **2** will be omitted herein.

[0112] Although a total of four (4) wireless ultrasound probes including the first through fourth wireless ultrasound probes **511** through **514** are shown in FIG. **5**, this is merely an example, and the ultrasound diagnosis apparatus **500** may include a plurality of wireless ultrasound probes.

[0113] The first through fourth wireless ultrasound probes **511** through **514** may respectively include beamformers **511a** through **514a**. The beamformers **511a** through **514a** may each generate a beamforming signal to be applied to a plurality of transducers, which are included in each of the first through fourth wireless ultrasound probes **511** through **514**, based on a position and a focal point of the plurality of transducers.

[0114] The first through fourth wireless ultrasound probes **511** through **514** may each perform analog-to-digital conversion on received ultrasound echo signals and perform image processing on the analog-to-digital converted signals to thereby generate ultrasound image data. The first through fourth wireless ultrasound probes **511** through **514** may each transmit the generated ultrasound image data to the controller **530** via the wireless communication module **520**.

[0115] The first through fourth wireless ultrasound probes **511** through **514** may each be connected with the wireless communication module **520** by using a wireless communication method. For example, the first through fourth wireless ultrasound probes **511** through **514** may be wirelessly paired with the wireless communication module **520** by using at least one of wireless communication techniques including a WLAN, Wi-Fi, Bluetooth, Zigbee, WFD, IrDA, BLE, NFC, WiBro, WiMAX, SWAP, WiGig, and RF communication method.

[0116] The wireless communication module **520** may be connected with the first through fourth wireless ultrasound probes **511** through **514** by using a wireless communication method. The wireless communication module **520** may be simultaneously paired wirelessly with the first through fourth wireless ultrasound probes **511** through **514**.

[0117] According to an embodiment, the wireless communication module **520** may wirelessly receive status information regarding each of the first through fourth wireless ultrasound probes **511** through **514** based on a control signal from the controller **530**. For example, the wireless communication module **520** may receive from the first wireless ultrasound probe **511** status information including at least one of ID information, a wireless communication frequency, a connection type, an executable application, a wireless communication method, battery charging information, a remaining battery capacity, a remaining usability time, and a communication status with respect to the first wireless ultrasound probe **511**.

[0118] According to an embodiment, the wireless communication module **520** may perform data communication with each of the first through fourth wireless ultrasound probes **511** through **514** by using a 60-GHz mmWave local area wireless communication method. The wireless communication module **520** may receive raw data by using a 60-GHz mmWave wireless communication method. To acquire the raw data, each of the first through fourth wireless ultrasound probes **511** through **514** transmits ultrasound signals to the object, processes received ultrasound echo signals, and performs analog-to-digital conversion on the resulting signals.

[0119] The controller **530** may detect a wireless ultrasound probe being used by the user among the first through fourth wireless ultrasound probes **511** through **514** wirelessly paired with the wireless communication module **520** and control the wireless communication module **520** to transmit an activation signal to the detected wireless ultrasound probe. According to an embodiment, the controller **530** may detect the first wireless ultrasound probe **511** being used based on a user input signal input via a user input device such as a button, mounted on the first wireless ultrasound probe **511**. According to an embodiment, the controller **530** may detect the first wireless ultrasound probe **511** being used by using a probe information recognition method based on an RFID, etc.

[0120] In another embodiment, the controller **530** may detect an ultrasound probe being used via a sensor built into the ultrasound probe. The sensor may detect a user input of holding in his or her hand the first wireless ultrasound probe **511** among the first through fourth wireless ultrasound probes **511** through **514**. The sensor may then transmit ID information of the detected first wireless ultrasound probe **511** to the controller **530**, and the controller **530** may detect the first wireless ultrasound probe **511** being used based on the received ID information.

[0121] The controller **530** may control the wireless communication module **520** to transmit a beamforming control signal for controlling the beamformer **511a** included in the detected first wireless ultrasound probe **511** to the first wireless ultrasound probe **511**. The first wireless ultrasound probe **511** that has received the beamforming control signal from the controller **530** may generate ultrasound transmitting signals via the beamformer **511a** and transmit the

generated ultrasound transmitting signals to the object via a plurality of transducers included therein.

[0122] The controller 530 may be constructed by a hardware module including at least one of a CPU, a microprocessor, a graphic processing unit, RAM, ROM, and an AP.

[0123] Although not shown in FIG. 5, the ultrasound diagnosis apparatus 100 may further include a display configured to display a UI indicating ID information and status information regarding each of the first through fourth wireless ultrasound probes 511 through 514.

[0124] The ultrasound diagnosis apparatus 500 according to the embodiment may include a plurality of wireless ultrasound probes, i.e., the first through fourth wireless ultrasound probes 511 through 514 and may simultaneously be wirelessly paired therewith. Furthermore, the ultrasound diagnosis apparatus 500 is configured to detect a wireless ultrasound probe being used among the paired first through fourth wireless ultrasound probes 511 through 514 and automatically transmit an activation signal to the detected wireless ultrasound probe, thereby eliminating the need to perform an unnecessary pairing process and therefore increasing user convenience.

[0125] FIG. 6 is a flowchart of a method of operating an ultrasound diagnosis apparatus, according to another embodiment.

[0126] The ultrasound diagnosis apparatus is connected with a plurality of different wireless ultrasound probes by using a wireless communication method (operation S610). According to an embodiment, the plurality of wireless ultrasound probes may each be different types of wireless ultrasound probes having different functions, but are not limited thereto. The wireless ultrasound probes may be the same type of wireless ultrasound probes. In an embodiment, the ultrasound diagnosis apparatus may be connected wirelessly with the wireless ultrasound probes by using at least one of wireless communication methods including WLAN, Wi-Fi, Bluetooth, Zigbee, WFD, IrDA, BLE, NFC, WiBro, WiMAX, SWAP, WiGig, and RF communication. In operation S610, "connected" may mean a state in which the ultrasound diagnosis apparatus is paired to use at least one of the wireless ultrasound probes. In an embodiment, the ultrasound diagnosis apparatus may be paired simultaneously with the wireless ultrasound probes.

[0127] The ultrasound diagnosis apparatus detects a wireless ultrasound probe being used by a user, from among the wireless ultrasound probes (operation S620). The ultrasound diagnosis apparatus may detect a wireless ultrasound probe being used based on a user input signal input via a user input device such as a button, mounted on each of the wireless ultrasound probes. According to an embodiment, the ultrasound diagnosis apparatus may detect the wireless ultrasound probe being used by using a probe information recognition method based on an RFID, etc.

[0128] The ultrasound diagnosis apparatus transmits an activation signal to the detected wireless ultrasound probe (operation S630). In this case, "activation" is conceptually different from the "connection" or "pairing" in operation S610 and means operating the detected wireless ultrasound probe to transmit ultrasound signals to an object and receive ultrasound echo signals reflected from the object to thereby generate ultrasound image data.

[0129] According to an embodiment, each of the wireless ultrasound probes may include a beamformer. The ultrasound diagnosis apparatus may generate a beamforming

control signal for controlling a beamformer included in the wireless ultrasound probe detected in operation S620 and transmit the generated beamforming control signal to the detected wireless ultrasound probe. The wireless ultrasound probe that has received the beamforming control signal may generate ultrasound transmitting signals via the beamformer and transmit the generated ultrasound transmitting signals to the object via a plurality of transducers included therein.

[0130] According to an embodiment, the activated wireless ultrasound probe may perform analog-to-digital conversion and image processing on ultrasound echo signals reflected from the object to generate ultrasound image data and transmit the generated ultrasound image data to the ultrasound diagnosis apparatus. In this case, the wireless ultrasound probe may transmit the ultrasound image data, i.e., ultrasound raw data to the ultrasound diagnosis apparatus by using a 60-GHz mmWave local area wireless communication method.

[0131] FIG. 7 is a block diagram of a configuration of an ultrasound diagnosis apparatus 700 including a wired ultrasound probe 710, according to an embodiment;

[0132] Referring to FIG. 7, the ultrasound diagnosis apparatus 700 may include the wired ultrasound probe 710, an ultrasound transceiver 720, a controller 730, an image processor 740, a display 750, a storage 760, a communicator 770, and an input interface 780.

[0133] The ultrasound diagnosis apparatus 700 may be implemented not only as a cart type apparatus but also as a portable type apparatus. Examples of a portable ultrasound diagnosis apparatus may include, but are not limited to, a smartphone, a laptop computer, a PDA, and a tablet PC.

[0134] The wired ultrasound probe 710 may include a plurality of transducers. The plurality of transducers may transmit ultrasound signals to an object 10 in response to transmitting signals received from a transmitter 721. The plurality of transducers may receive ultrasound signals reflected from the object 10 to generate reception signals. Furthermore, the wired ultrasound probe 710 may be formed integrally with the ultrasound diagnosis apparatus 700, or the wired ultrasound probe 710 and the ultrasound diagnosis apparatus 700 may be formed separately but connected to each other by wire or wirelessly. In addition, the ultrasound diagnosis apparatus 700 may include one or more wired ultrasound probes 710 according to embodiments.

[0135] The controller 730 may control the transmitter 721 to generate transmitting signals to be respectively applied to the plurality of transducers based on a position and a focal point of the plurality of transducers included in the wired ultrasound probe 710.

[0136] The controller 730 may control the ultrasound receiver 722 to generate ultrasound data by performing analog-to-digital conversion on reception signals received from the wired ultrasound probe 710 and summing the analog-to-digital converted reception signals based on a position and a focal point of the plurality of transducers.

[0137] The image processor 740 may generate an ultrasound image by using the ultrasound data generated by the ultrasound receiver 722.

[0138] The display 750 may display the generated ultrasound image and various pieces of information processed by the ultrasound diagnosis apparatus 700. The ultrasound diagnosis apparatus 700 may include one or a plurality of

displays **750** according to its implemented configuration. The display **750** may be combined with a touch panel to form a touch screen.

[0139] The controller **730** may control all the operations of the ultrasound diagnosis apparatus **700** and flow of signals between the internal elements of the ultrasound diagnosis apparatus **700**. The controller **730** may include a memory for storing a program or data to perform functions of the ultrasound diagnosis apparatus **700** and a processor for processing the program or data. For example, the controller **730** may control the operation of the ultrasound diagnosis apparatus **700** by receiving a control signal from the input interface **780** or an external apparatus.

[0140] The ultrasound diagnosis apparatus **700** may include the communicator **770** and may be connected to external apparatuses, for example, servers, medical apparatuses, and portable devices such as smart phones, tablet PCs, wearable devices, etc., via the communicator **770**.

[0141] The communicator **770** may include at least one element that enables communication with the external apparatuses. For example, the communicator **770** may include at least one of a local area communication module, a wired communication module, and a wireless communication module.

[0142] The communicator **770** may receive a control signal and data from an external apparatus and transmit the received control signal to the controller **730** such that the controller **730** may control the ultrasound diagnosis apparatus **700** in response to the received control signal.

[0143] The controller **730** may also transmit a control signal to the external apparatus via the communicator **770** such that the external apparatus may be controlled in response to the control signal from the controller **730**.

[0144] For example, the external apparatus may process data of the external apparatus in response to the control signal from the controller **730** received via the communicator **770**.

[0145] A program for controlling the ultrasound diagnosis apparatus **700** may be installed in the external apparatus. The program may include command languages for performing part of operation of the controller **730** or the entire operation thereof.

[0146] The program may be pre-installed in the external apparatus or may be installed by a user of the external apparatus by downloading the program from a server that provides applications. The server that provides applications may include a recording medium where the program is stored.

[0147] The storage **760** may store various pieces of data or programs for driving and controlling the ultrasound diagnosis apparatus **700**, input and/or output ultrasound data, obtained ultrasound images, etc.

[0148] The input interface **780** may receive a user input for controlling the ultrasound diagnosis apparatus **700**. For example, the user input may include an input for manipulating a button, a keypad, a mouse, a trackball, a jog switch, or a knob, an input for touching a touchpad or a touch screen, a voice input, a motion input, and an input of biometric information such as iris recognition or fingerprint recognition, but embodiments are not limited thereto.

[0149] FIG. **8** is a block diagram of a configuration of an ultrasound system **800** including a wireless ultrasound probe **810**, according to an embodiment.

[0150] Referring to FIG. **8**, an ultrasound diagnosis apparatus **820** may be connected with the wireless ultrasound probe **810** via a network **N**.

[0151] The wireless ultrasound probe **810** may include a transmitter **811**, a receiver **812**, a transducer **813**, a controller **814**, and a communicator **815**. Although FIG. **8** shows that the wireless ultrasound probe **810** includes both the transmitter **811** and the receiver **812**, according to an implemented configuration, the wireless ultrasound probe **810** may include some of the components of the transmitter **811** and the receiver **812** while the ultrasound diagnosis apparatus **820** may also include some of the components thereof.

[0152] The transducer **813** may include a plurality of transducer elements. The plurality of transducer elements may transmit ultrasound signals to an object **10** in response to transmitting signals received from the transmitter **811**. The transducer elements may receive ultrasound signals reflected from the object **10** to generate reception signals.

[0153] The controller **814** controls the transmitter **811** to generate transmitting signals to be respectively applied to the transducer elements based on positions and focal points of the transducer elements.

[0154] The controller **814** controls the receiver **812** to generate ultrasound data by performing analog-to-digital conversion on the reception signals received from the transducer **813** and summing the analog-to-digital converted reception signals based on a position and a focal point of the transducer elements.

[0155] The communicator **815** may wirelessly transmit the generated ultrasound data or ultrasound image to the ultrasound diagnosis apparatus **820** via a wireless network. Alternatively, the communicator **815** may receive a control signal and data from the ultrasound diagnosis apparatus **820**.

[0156] The ultrasound diagnosis apparatus **820** may receive ultrasound data or an ultrasound image from the wireless ultrasound probe **810**. The ultrasound diagnosis apparatus **820** may include a controller **821**, an image processor **822**, a display **823**, and a storage **824**, a communicator **825**, and an input interface **826**.

[0157] The controller **821** may control all operations of the ultrasound diagnosis apparatus **820** and flow of signals between the internal elements of the ultrasound diagnosis apparatus **820**. The controller **821** may include a memory for storing a program or data to perform functions of the ultrasound diagnosis apparatus **820** and a processor for processing the program or data. Furthermore, the controller **821** may control the operation of the ultrasound diagnosis apparatus **820** by receiving a control signal from the input interface **826** or an external apparatus.

[0158] The ultrasound diagnosis apparatus **820** may include the communicator **825** and may be connected to external apparatuses, for example, servers, medical apparatuses, and portable devices such as smart phones, tablet PCs, wearable devices, etc., via the communicator **825**.

[0159] The communicator **825** may include at least one element capable of communicating with the external apparatuses. For example, the communicator **825** may include at least one of a local area communication module, a wired communication module, and a wireless communication module.

[0160] The communicator **825** may receive a control signal and data from an external apparatus and transmit the received control signal to the controller **821** such that the

controller **821** may control the ultrasound diagnosis apparatus **820** in response to the received control signal.

[0161] Alternatively, the controller **821** may transmit a control signal to the external apparatus via the communicator **825** to control the external apparatus in response to the control signal from the controller **821**.

[0162] For example, the external apparatus may process data from the external apparatus in response to the control signal from the controller **821** received via the communicator **825**.

[0163] A program for controlling the ultrasound diagnosis apparatus **820** may be installed in the external apparatus. The program may include command languages for performing part of operation of the controller **821** or the entire operation thereof.

[0164] The program may be pre-installed in the external apparatus or may be installed by a user of the external apparatus by downloading the program from a server that provides applications. The server that provides applications may include a recording medium on which the program is stored.

[0165] The image processor **822** may generate an ultrasound image by using ultrasound data received from the wireless ultrasound probe **810**.

[0166] The display **823** may display an ultrasound image received from the wireless ultrasound probe **810** and an ultrasound image generated by the ultrasound diagnosis apparatus **820**. The ultrasound diagnosis apparatus **820** may include two or more displays **823** according to its implemented configuration. Furthermore, the display **823** may be combined with a touch panel to form a touch screen.

[0167] The storage **824** may store various pieces of data or programs for driving and controlling the ultrasound diagnosis apparatus **820**, input and/or output ultrasound data, ultrasound images, etc.

[0168] The input interface **826** receives a user input for controlling the ultrasound diagnosis apparatus **820**. For example, the user input may include an input for manipulating a button, a keypad, a mouse, a trackball, a jog switch, or a knob, an input for touching a touchpad or a touch screen, a voice input, a motion input, and an input of biometric information such as iris recognition or fingerprint recognition, but embodiments are not limited thereto.

[0169] FIGS. 9A, 9B, and 9C are diagrams illustrating ultrasound diagnosis apparatus according to an exemplary embodiment.

[0170] Referring to FIGS. 9A and 9B, the ultrasound diagnosis apparatuses **900a** and **900b** may include a main display **910** and a sub-display **920**. At least one among the main display **910** and the sub-display **920** may include a touch screen. The main display **910** and the sub-display **920** may display ultrasound images and/or various information processed by the ultrasound diagnosis apparatuses **900a** and **900b**. The main display **910** and the sub-display **920** may provide graphical user interfaces (GUI), thereby receiving user's inputs of data to control the ultrasound diagnosis apparatuses **900a** and **900b**. For example, the main display **910** may display an ultrasound image and the sub-display **920** may display a control panel to control display of the ultrasound image as a GUI. The sub-display **920** may receive an input of data to control the display of an image through the control panel displayed as a GUI. The ultra-

sound diagnosis apparatuses **900a** and **900b** may control the display of the ultrasound image on the main display **910** by using the input control data.

[0171] Referring to FIG. 9B, the ultrasound diagnosis apparatus **900b** may include a control panel **930**. The control panel **930** may include buttons, trackballs, jog switches, or knobs, and may receive data to control the ultrasound diagnosis apparatus **900b** from the user. For example, the control panel **930** may include a time gain compensation (TGC) button **941** and a freeze button **942**. The TGC button **941** is to set a TGC value for each depth of an ultrasound image. Also, when an input of the freeze button **942** is detected during scanning an ultrasound image, the ultrasound diagnosis apparatus **900b** may keep displaying a frame image at that time point.

[0172] The buttons, trackballs, jog switches, and knobs included in the control panel **930** may be provided as a GUI to the main display **910** or the sub-display **920**.

[0173] Referring to FIG. 9C, the ultrasound diagnosis apparatus **900c** may include a portable device. An example of the portable ultrasound diagnosis apparatus **900c** may include, for example, smart phones including probes and applications, laptop computers, personal digital assistants (PDAs), or tablet PCs, but an exemplary embodiment is not limited thereto.

[0174] The ultrasound diagnosis apparatus **900c** may include the probe **960** and a main body **950**. The probe **960** may be connected to one side of the main body **950** by wire or wirelessly. The main body **950** may include a touch screen **951**. The touch screen **951** may display an ultrasound image, various pieces of information processed by the ultrasound diagnosis apparatus **900c**, and a GUI.

[0175] The embodiments of the present disclosure can be written as computer programs and can be implemented in general-use digital computers that execute the programs using a computer-readable recording medium. The above-described embodiments of the present disclosure may be embodied in form of a computer-readable recording medium for storing computer executable command languages and data. The command languages may be stored in form of program codes and, when executed by a processor, may perform a certain operation by generating a certain program module. Also, when executed by a processor, the command languages may perform certain operations of the disclosed embodiments.

[0176] Examples of the computer-readable recording medium include magnetic storage media (e.g., ROM, floppy disks, hard disks, etc.), optical recording media (e.g., CD-ROMs or DVDs), etc.

[0177] While the present disclosure has been particularly shown and described with reference to exemplary embodiments thereof, it will be understood by those of ordinary skill in the art that various changes in form and details may be made therein without departing from the spirit and scope of the present disclosure as defined by the following claims. Accordingly, the above embodiments and all aspects thereof are examples only and are not limiting.

What is claimed is:

1. An ultrasound diagnosis apparatus comprising:
  - at least one wired ultrasound probe connected via wire to the ultrasound diagnosis apparatus;
  - at least one wireless ultrasound probe connected to the ultrasound diagnosis apparatus by using wireless communication;

- a wireless communication module configured to receive a pairing reception signal from the at least one wireless ultrasound probe to thereby be connected with the at least one wireless ultrasound probe by using a wireless communication method and to transmit and receive a beamforming control signal and ultrasound image data to and from each of the at least one wireless ultrasound probe; and
- a controller configured to detect an ultrasound probe being used by a user to examine an object, from among the at least one wired ultrasound probe and the at least one wireless ultrasound probe, and activate the detected ultrasound probe.
2. The ultrasound diagnosis apparatus of claim 1, further comprising:
- a beamformer configured to generate a beamforming signal to be applied to each of a plurality of transducers included in each of at least one wired ultrasound probe, based on a position and a focal point of the plurality of transducers; and
- a probe switching assembly configured to select a wired ultrasound probe from among the at least one wired ultrasound probe and activate the selected wired ultrasound probe.
3. The ultrasound diagnosis apparatus of claim 2, wherein the controller is further configured to detect a first wired ultrasound probe being used from among the at least one wired ultrasound probe, control the probe switching assembly to activate the detected first wired ultrasound probe, and control the beamformer to transmit the beamforming signal to the first wired ultrasound probe.
4. The ultrasound diagnosis apparatus of claim 2, wherein the controller is further configured to stop operations of the beamformer and the probe switching assembly when the ultrasound probe detected as being used is switched from the wired ultrasound probe activated among the at least one wired ultrasound probe to one of the at least one wireless ultrasound probe.
5. The ultrasound diagnosis apparatus of claim 4, wherein the controller is further configured to resume, when the ultrasound probe detected as being used is switched from the wireless ultrasound probe to the first wired ultrasound probe, the operations of the beamformer and the probe switching assembly, control the probe switching assembly to activate the first wired ultrasound probe, and control the beamformer to transmit the beamforming signal to the first wired ultrasound probe.
6. The ultrasound diagnosis apparatus of claim 1, wherein the controller is further configured to control the wireless communication module to transmit, when the ultrasound probe detected as being used is a first wireless ultrasound probe, a beamforming control signal for controlling a beamformer included in the first wireless ultrasound probe to the first wireless ultrasound probe.
7. The ultrasound diagnosis apparatus of claim 1, wherein the controller is further configured to control the wireless communication module to receive, from the at least one wireless ultrasound probe, status information including at least one of identification information, a wireless communication frequency, a connection type, an executable application, a wireless communication method, battery charging information, a remaining battery capacity, a remaining usability time, and a communication status with respect to each of the at least one wireless ultrasound probe.
8. The ultrasound diagnosis apparatus of claim 1, wherein the wireless communication module is connected with the at least one wireless ultrasound probe by using at least one of wireless communication methods comprising a Wireless Local Area Network (WLAN), wireless fidelity (Wi-Fi), Bluetooth, Zigbee, Wi-Fi Direct (WFD), Infrared Data Association (IrDA), Bluetooth Low Energy (BLE), Near Field Communication (NFC), Wireless Broadband Internet (Wi-Bro), World Interoperability for Microwave Access (Wi-MAX), Shared Wireless Access Protocol (SWAP), Wireless Gigabit Alliance (WiGig), and radio frequency (RF) communication.
9. The ultrasound diagnosis apparatus of claim 1, wherein the wireless communication module is simultaneously paired with the at least one wireless ultrasound probe.
10. The ultrasound diagnosis apparatus of claim 1, wherein the controller is further configured to check a status of wireless connection between the ultrasound diagnosis apparatus and the at least one wireless ultrasound probe at preset time intervals.
11. An ultrasound diagnosis apparatus comprising:
- a wireless communication module connected with each of a plurality of different wireless ultrasound probes by using a wireless communication method; and
- a controller configured to detect a wireless ultrasound probe being used by a user, from among the plurality of wireless ultrasound probes, and control the wireless communication module to transmit an activation signal to the detected wireless ultrasound probe.
12. The ultrasound diagnosis apparatus of claim 11, wherein the controller is further configured to control the wireless communication module to transmit and receive a pairing signal to and from each of the plurality of wireless ultrasound probes by using a wireless communication method.
13. The ultrasound diagnosis apparatus of claim 11, wherein the controller is further configured to control the wireless communication module to receive, from the plurality of wireless ultrasound probes, status information including at least one of identification information, a wireless communication frequency, a connection type, an executable application, a wireless communication method, battery charging information, a remaining battery capacity, a remaining usability time, and a communication status with respect to each of the plurality of wireless ultrasound probes.
14. The ultrasound diagnosis apparatus of claim 11, wherein the controller is further configured to control the wireless communication module to transmit, to the wireless ultrasound probe, a beamforming control signal for controlling a beamformer included in the wireless ultrasound probe detected as being used.
15. The ultrasound diagnosis apparatus of claim 11, wherein the wireless communication module is simultaneously paired with the plurality of wireless ultrasound probes.
16. A method of operating an ultrasound diagnosis apparatus comprising at least one wired ultrasound probe and at least one wireless ultrasound probe, the method comprising:
- connecting the ultrasound diagnosis apparatus with the at least one wireless ultrasound probe by using a wireless communication method;
- detecting an ultrasound probe being used by a user to examine an object, from among the at least one wired ultrasound probe and the at least one wireless ultrasound probe; and

activating the detected ultrasound probe.

**17.** The method of claim **16**, wherein the activating of the detected ultrasound probe comprises:

detecting a first wired ultrasound probe being used, from among the at least one wired ultrasound probe;  
controlling a probe switching assembly included in the ultrasound diagnosis apparatus to activate the first wired ultrasound probe; and  
transmitting a beamforming signal to the first wired ultrasound probe.

**18.** The method of claim **17**, further comprising stopping an operation of the probe switching assembly and transmission of the beamforming signal when the ultrasound probe detected as being used is switched from the first wired ultrasound probe to one of the at least one wireless ultrasound probe.

**19.** The method of claim **18**, further comprising:

resuming, when the ultrasound probe detected as being used is switched from the wireless ultrasound probe to a second wired ultrasound probe, the operation of the probe switching assembly to activate the second wired ultrasound probe; and  
transmitting the beamforming signal to the second wired ultrasound probe.

**20.** The method of claim **16**, wherein the activating of the detected ultrasound probe comprises:

detecting a first wireless ultrasound probe being used, from among the at least one wireless ultrasound probe; and  
transmitting a beamforming control signal for controlling a beamformer included in the first wireless ultrasound probe to the first wireless ultrasound probe.

**21.** The method of claim **16**, further comprising, after the connecting of the at least one wireless ultrasound probe with the ultrasound diagnosis apparatus, receiving, from the at least one wireless ultrasound probe, status information including at least one of identification information, a wireless communication frequency, a connection type, an executable application, a wireless communication method, battery charging information, a remaining battery capacity, a remaining usability time, and a communication status with respect to each of the at least one wireless ultrasound probe.

**22.** The method of claim **16**, wherein the connecting of the at least one wireless ultrasound probe with the ultrasound diagnosis apparatus comprises connecting with the at least one wireless ultrasound probe by using at least one of wireless communication methods comprising a Wireless Local Area Network (WLAN), wireless fidelity (Wi-Fi), Bluetooth, Zigbee, Wi-Fi Direct (WFD), Infrared Data Association (IrDA), Bluetooth Low Energy (BLE), Near Field Communication (NFC), Wireless Broadband Internet (Wi-Bro), World Interoperability for Microwave Access (Wi-MAX), Shared Wireless Access Protocol (SWAP), Wireless Gigabit Alliance (WiGig), and radio frequency (RF) communication.

**23.** The method of claim **16**, wherein the connecting of the at least one wireless ultrasound probe with the ultrasound diagnosis apparatus comprises simultaneously pairing the ultrasound diagnosis apparatus with the at least one wireless ultrasound probe.

**24.** The method of claim **16**, wherein the connecting of the at least one wireless ultrasound probe with the ultrasound diagnosis apparatus further comprises checking a status of wireless connection between the ultrasound diagnosis apparatus and the at least one wireless ultrasound probe at preset time intervals.

**25.** A method of operating an ultrasound diagnosis apparatus comprising a plurality of wireless ultrasound probes, the method comprising:

connecting the ultrasound diagnosis apparatus with each of the plurality of wireless ultrasound probes by using a wireless communication method;

detecting a wireless ultrasound probe being used by a user, from among the plurality of wireless ultrasound probes; and

transmitting an activation signal to the detected wireless ultrasound probe.

**26.** The method of claim **25**, wherein the connecting of the plurality of wireless ultrasound probes with the ultrasound diagnosis apparatus comprises transmitting and receiving a pairing signal to and from each of the plurality of wireless ultrasound probes by using a wireless communication method.

**27.** The method of claim **25**, further comprising, after the connecting of the plurality of wireless ultrasound probes with the ultrasound diagnosis apparatus, receiving, from the plurality of wireless ultrasound probes, status information including at least one of identification information, a wireless communication frequency, a connection type, an executable application, a wireless communication method, battery charging information, a remaining battery capacity, a remaining usability time, and a communication status with respect to each of the plurality of wireless ultrasound probes.

**28.** The method of claim **25**, wherein the transmitting of the activation signal comprises transmitting, to the wireless ultrasound probe, a beamforming control signal for controlling a beamformer included in the wireless ultrasound probe detected as being used.

**29.** The method of claim **25**, wherein the connecting of the plurality of wireless ultrasound probes with the ultrasound diagnosis apparatus comprises simultaneously pairing the ultrasound diagnosis apparatus with the at least one wireless ultrasound probe.

**30.** A computer-readable recording medium having recorded thereon a program for executing the method of claim **16** on a computer.

\* \* \* \* \*

专利名称(译)	超声诊断设备及其操作方法		
公开(公告)号	<a href="#">US20190059856A1</a>	公开(公告)日	2019-02-28
申请号	US15/871261	申请日	2018-01-15
[标]申请(专利权)人(译)	三星麦迪森株式会社		
申请(专利权)人(译)	三星MEDISON CO. , LTD.		
当前申请(专利权)人(译)	三星MEDISON CO. , LTD.		
[标]发明人	JIN GIL JU JO JAE MOON KIM YU RI AHN MI JEOUNG		
发明人	JIN, GIL-JU JO, JAE-MOON KIM, YU-RI AHN, MI-JEOUNG		
IPC分类号	A61B8/00		
CPC分类号	A61B8/4472 A61B8/465 A61B8/56 A61B8/54 A61B8/5207 A61B8/4405 A61B8/4427 A61B8/4438 A61B8/4477 A61B8/462		
优先权	1020170181452 2017-12-27 KR 62/550124 2017-08-25 US		
外部链接	<a href="#">Espacenet</a> <a href="#">USPTO</a>		

摘要(译)

提供一种超声诊断设备，其与至少一个有线超声探头和至少一个无线超声探头连接。超声诊断设备包括：至少一个有线超声探头，其通过导线连接到超声诊断设备；至少一个无线超声探头，通过无线通信连接到超声诊断设备；无线通信模块，被配置为从所述至少一个无线超声探头接收配对接收信号，从而通过使用无线通信方法与所述至少一个无线超声探头连接，并且发送和接收波束成形控制信号和超声图像数据来自至少一个无线超声探头中的每一个；控制器，被配置为检测用户正在使用的超声探头，并激活检测到的超声探头。

