



US 20100222676A1

(19) **United States**(12) **Patent Application Publication**
Ogihara et al.(10) **Pub. No.: US 2010/0222676 A1**(43) **Pub. Date: Sep. 2, 2010**(54) **ULTRASONIC THERAPEUTIC APPARATUS****Publication Classification**(76) Inventors: **Makoto Ogihara**, Chiba (JP); **Jun Kubota**, Chiba (JP); **Akira Sasaki**, Chiba (JP); **Hiroshi Furuhashi**, Tokyo (JP)(51) **Int. Cl.**
A61N 7/00 (2006.01)
A61B 8/14 (2006.01)
(52) **U.S. Cl.** **600/439**
(57) **ABSTRACT**

Correspondence Address:

ANTONELLI, TERRY, STOUT & KRAUS, LLP
1300 NORTH SEVENTEENTH STREET, SUITE
1800
ARLINGTON, VA 22209-3873 (US)(21) Appl. No.: **11/993,047**(22) PCT Filed: **Jun. 22, 2006**(86) PCT No.: **PCT/JP2006/312513**

§ 371 (c)(1),

(2), (4) Date: **Dec. 19, 2007**(30) **Foreign Application Priority Data**

Jun. 22, 2005 (JP) 2005-182334

An ultrasonic therapeutic apparatus according to the present invention being provided with: an ultrasonic probe (102) provided with a group of ultrasonic transducers for diagnosis use and a group of ultrasonic transducers for therapeutic use of which at least apart of ultrasonic beam irradiation surfaces are arranged so as to overlap each other, a tomographic image producing means (8) that produces a tomographic image containing a diseased portion of a subject from reflection echoes received by the group of ultrasonic transducers for diagnosis use, a display means (10) that displays the tomographic image containing the diseased portion of the subject produced by the tomographic image producing means (8), a setting means (103) that sets an irradiation path of the therapeutic ultrasonic waves on the tomographic image containing the diseased portion of the subject displayed by the display means (10) and a control means (104) that produces irradiation path information corresponding to the irradiation path of the therapeutic ultrasonic waves set by the setting means (103) and causes to display the produced irradiation path information on the display means (10) while correlating with the tomographic image containing the diseased portion of the subject.

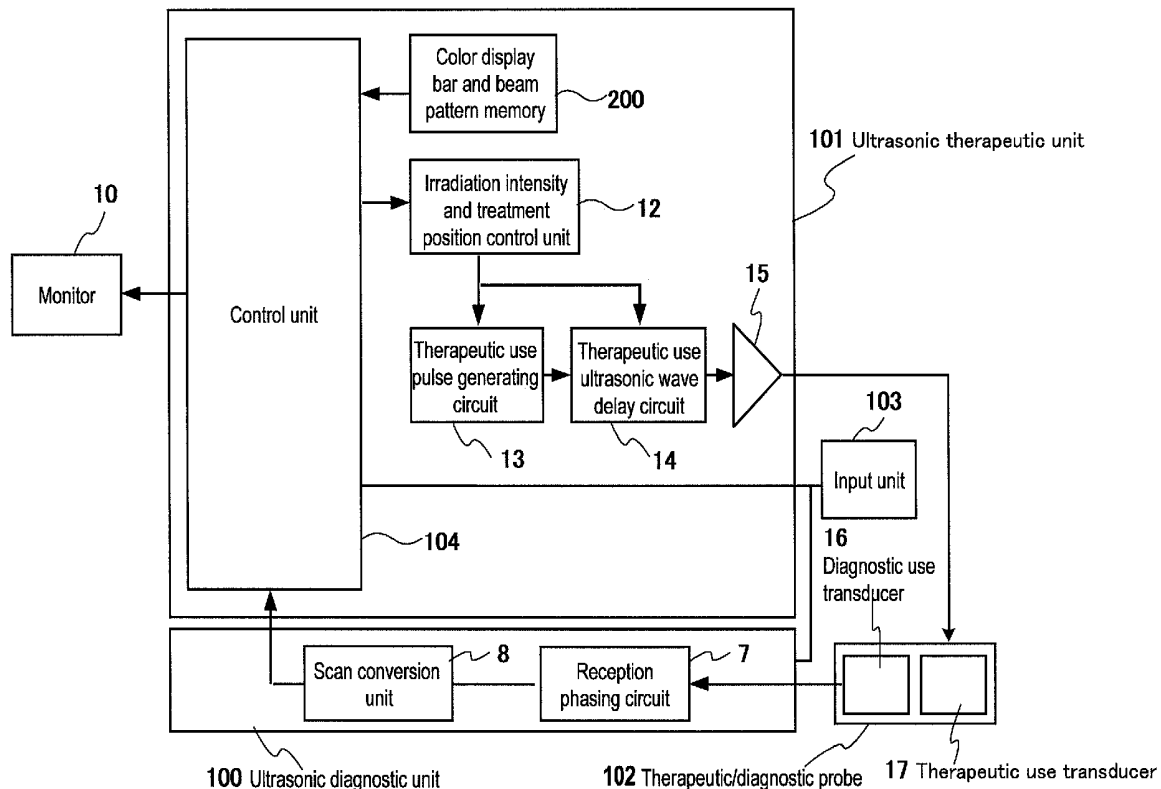


FIG. 1

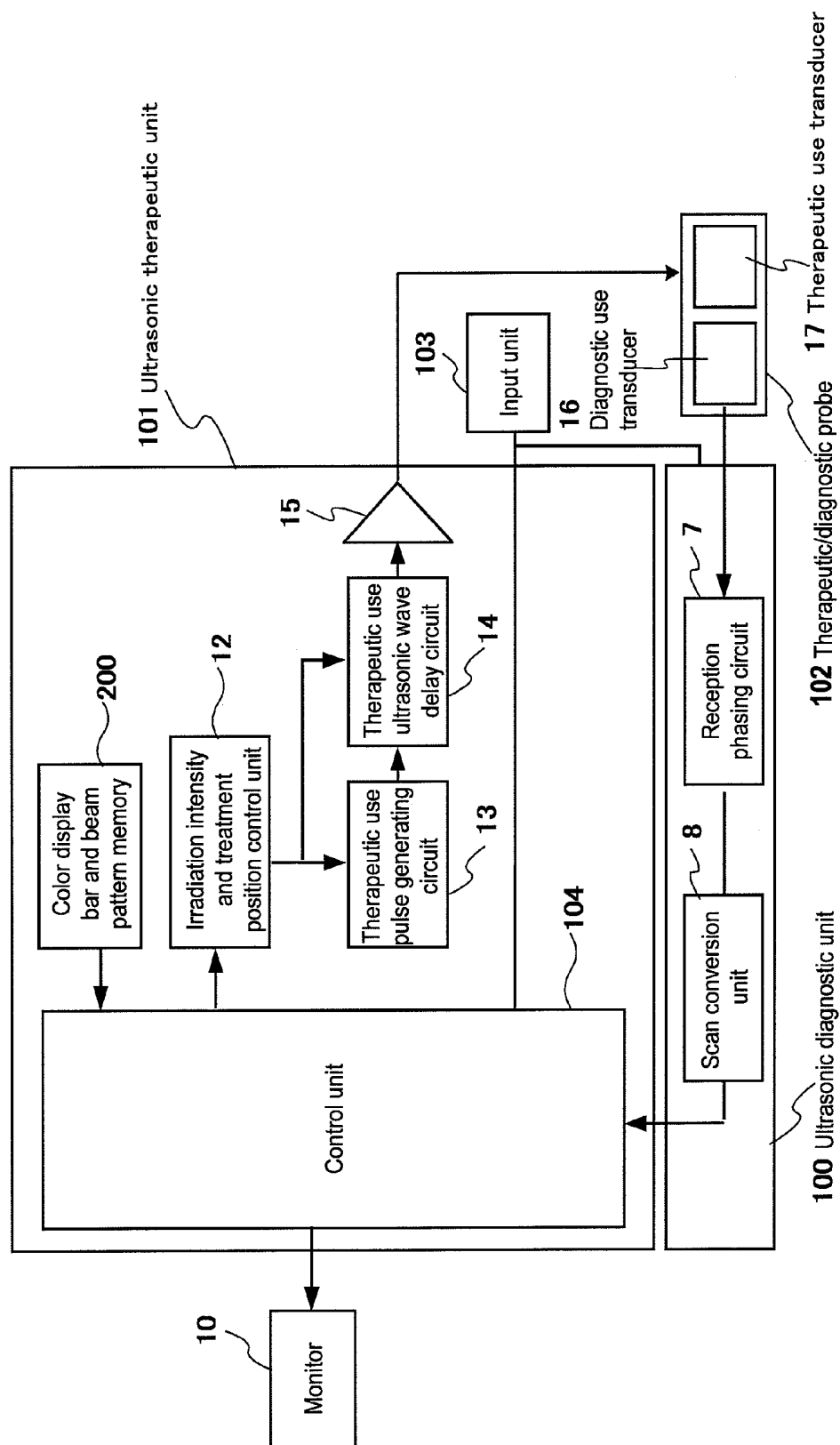


FIG. 2

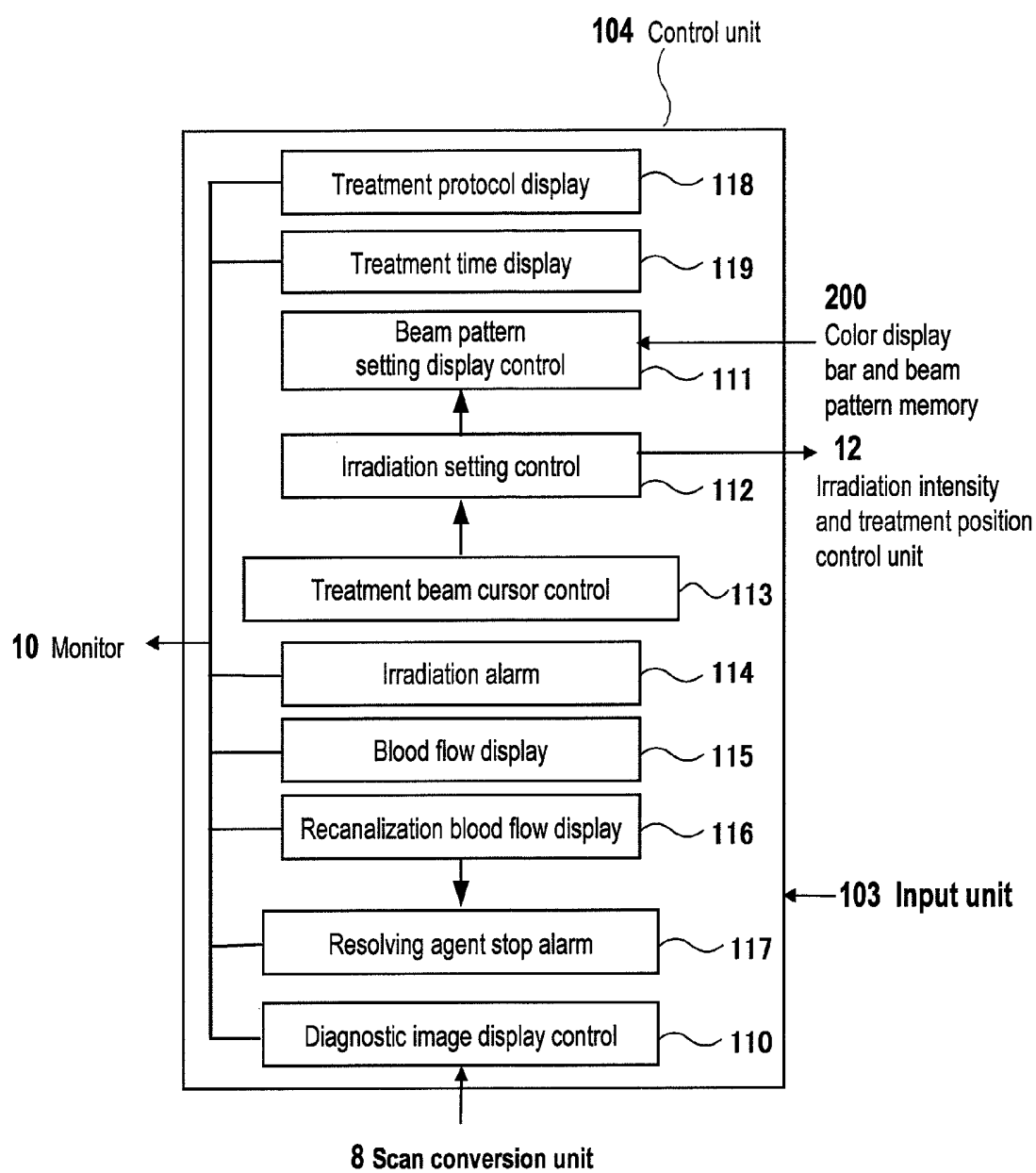


FIG. 3

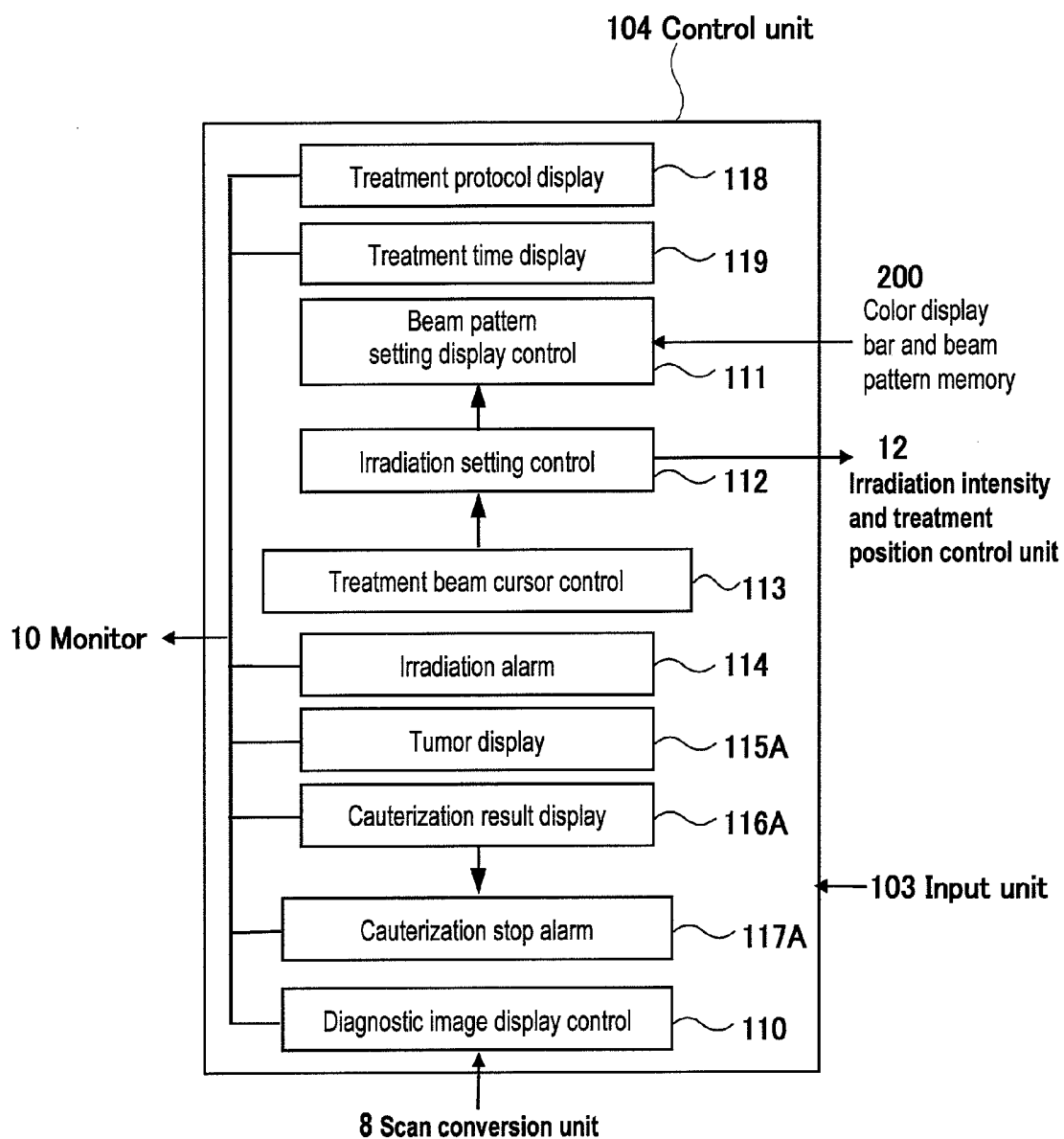


FIG.4

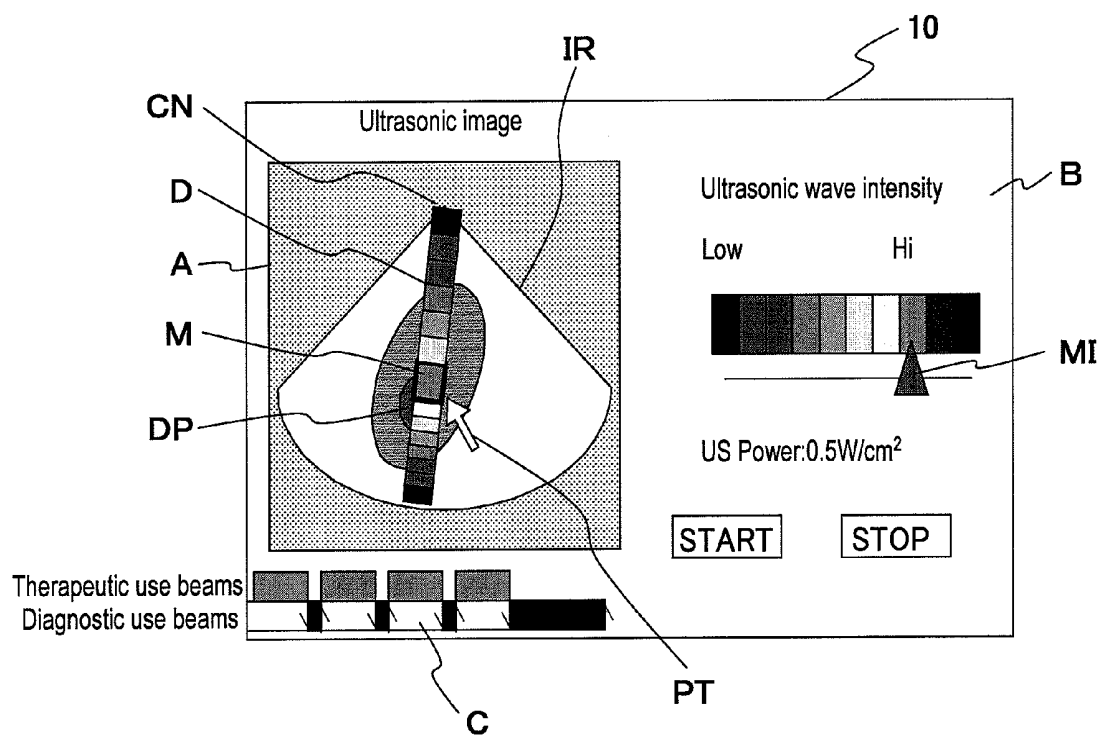


FIG.5

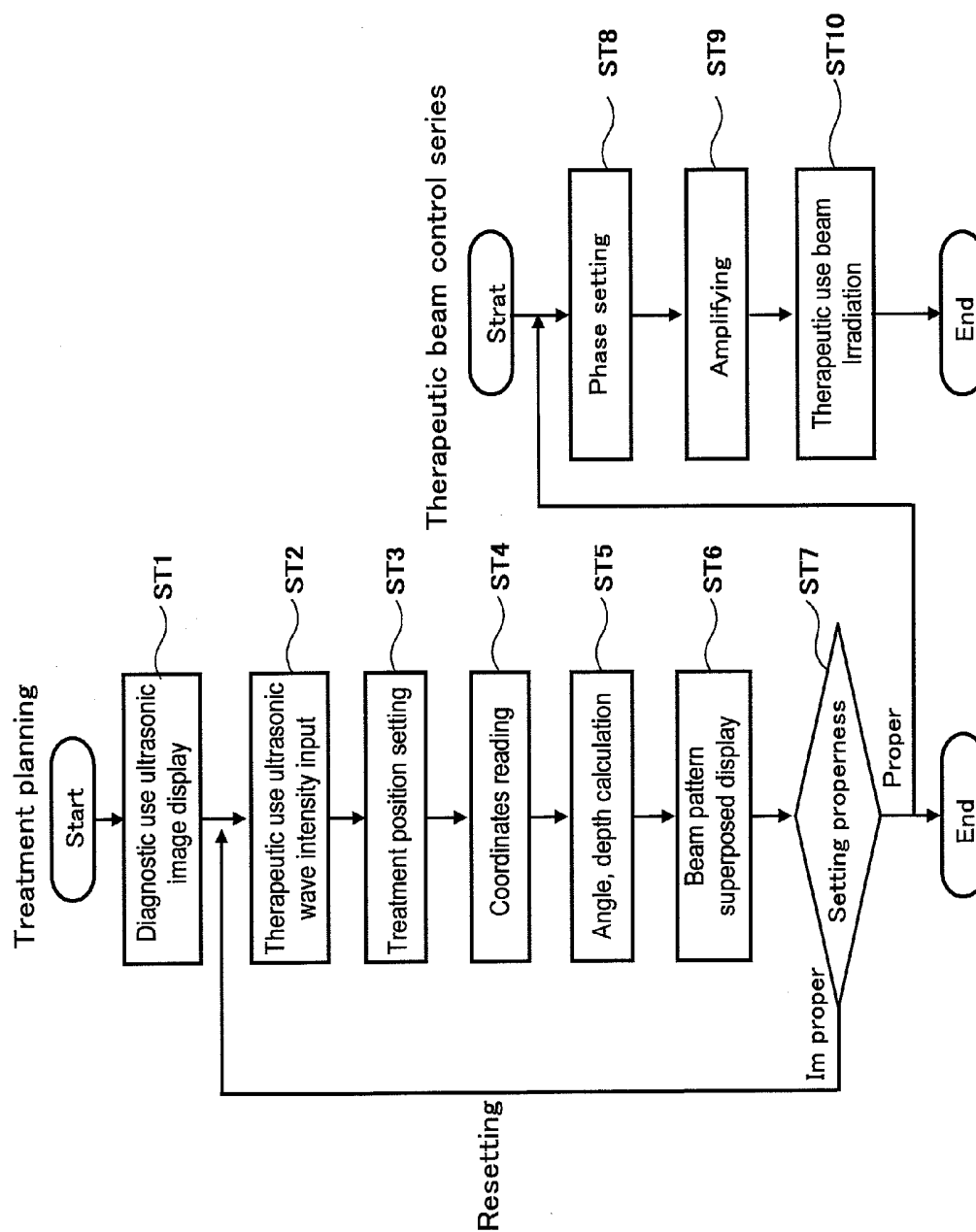
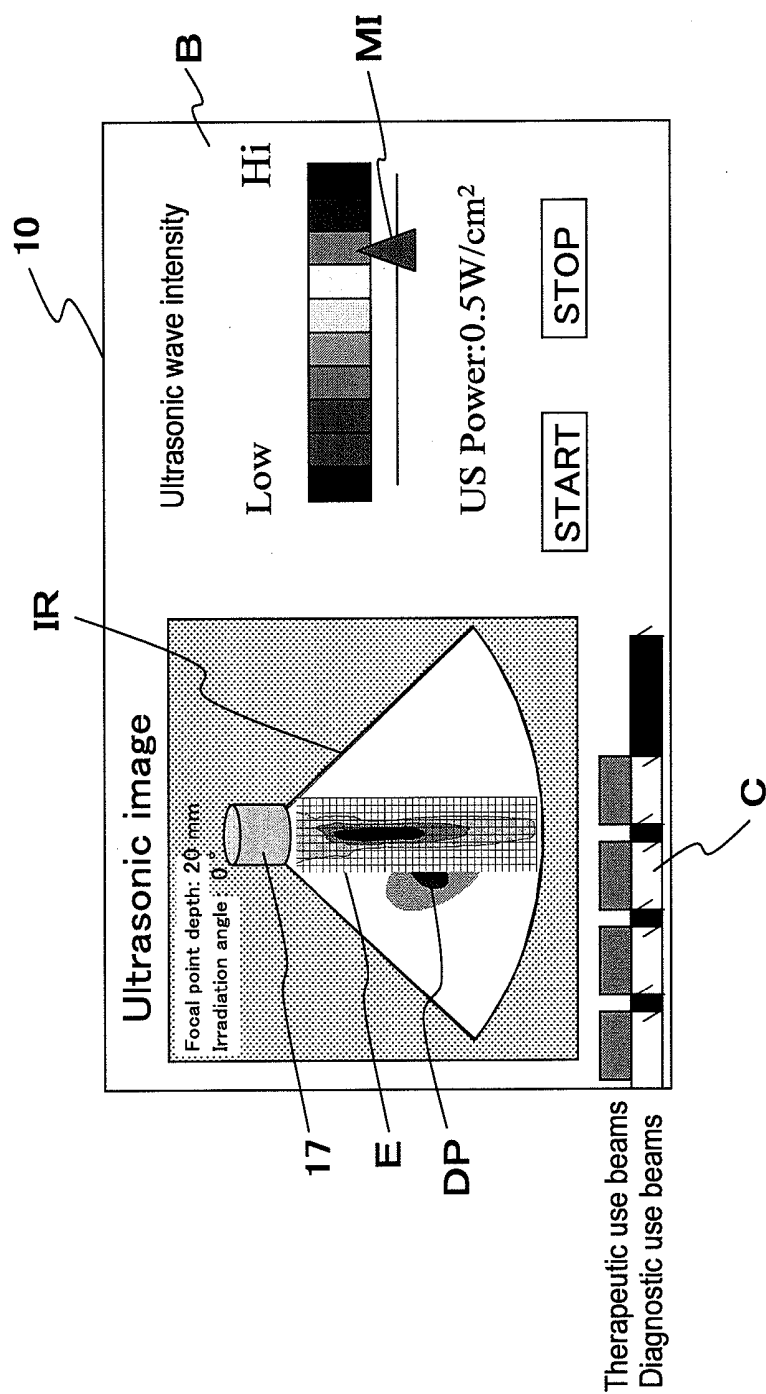
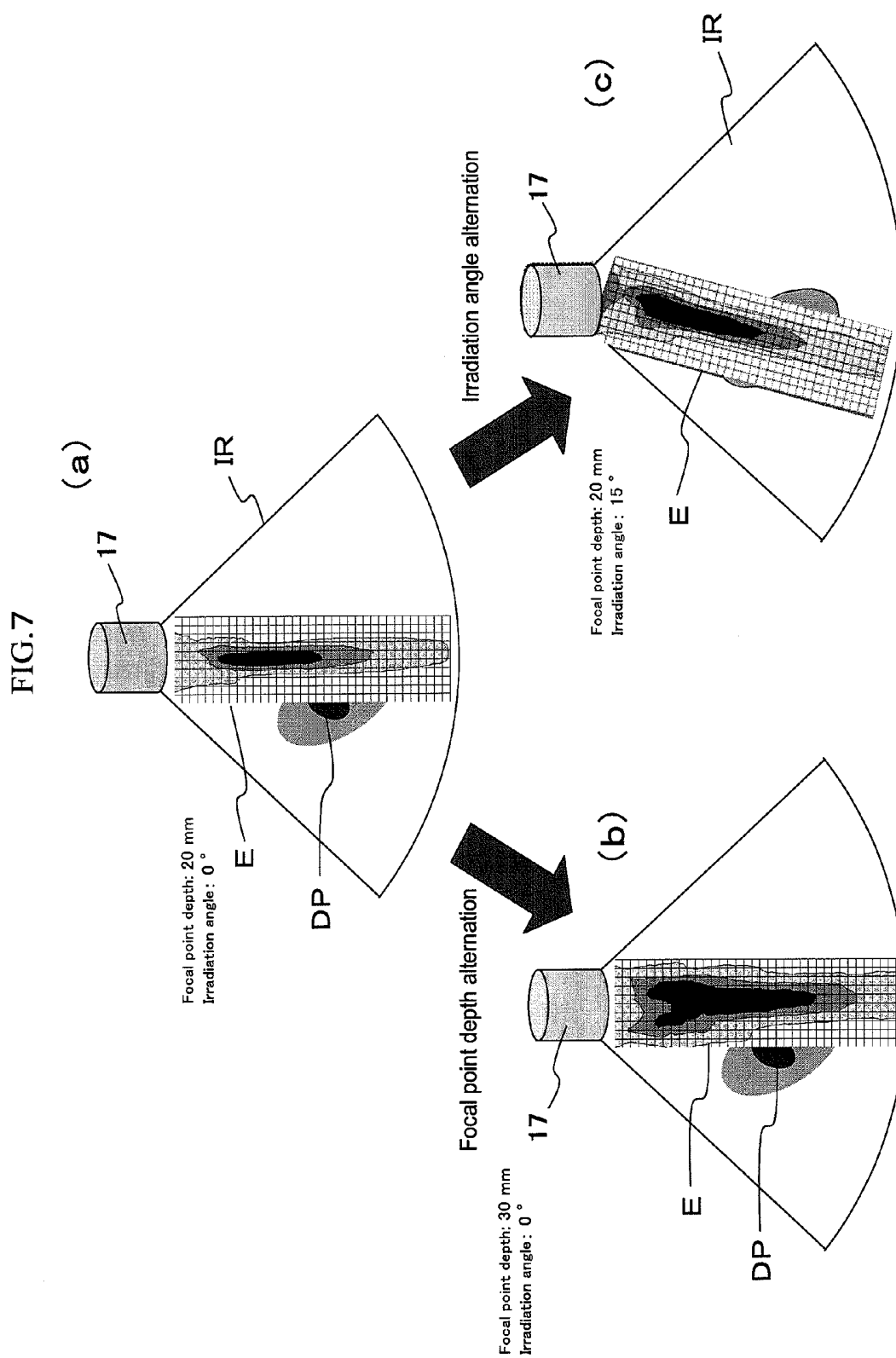


FIG. 6





ULTRASONIC THERAPEUTIC APPARATUS

FIELD OF THE INVENTION

[0001] The present invention relates to an ultrasonic therapeutic apparatus in which while displaying on a monitor an ultrasonic tomographic image containing a diseased portion including an embolized portion in a blood vessel or a tumor of a subject and by irradiating therapeutic ultrasonic waves of a proper intensity to the diseased portion to resolve the thrombus or to cauterize the tumor the diseased portion is treated.

[0002] The present application is an application claiming Paris Convention priority based on Japanese Patent Application No. 2005-182334 under Japanese Patent Law and is an application, which enjoys the benefit of Japanese Patent Application No. 2005-182334 by reference.

CONVENTIONAL ART

[0003] In a conventional ultrasonic therapeutic apparatus, at first diagnostic ultrasonic waves are irradiated toward a region including a diseased portion to be treated from ultrasonic transducers for diagnostic use and an ultrasonic tomographic image for diagnostic use from the reflected echo signals including the diseased portion is displayed on a monitor. An operator observes such as position, size, shape and surrounding living body tissue of the diseased portion to be treated in the ultrasonic tomographic image for diagnostic use including the diseased portion displayed on the monitor. The operator inputs from an input unit such as irradiation path including irradiation angle, focusing depth and irradiation intensity of therapeutic ultrasonic waves to be irradiated and sets the intensity of the therapeutic ultrasonic waves irradiated at a treatment position (irradiation position) and the irradiation position. Thereafter, the ultrasonic transducers for therapeutic use are controlled according to the irradiation position set by the operator so as to irradiate therapeutic ultrasonic waves toward the diseased portion.

[0004] A conventional therapeutic ultrasonic apparatus is disclosed in patent document 1. An operator designates on an ultrasonic tomographic image for diagnostic use displayed on a monitor an irradiation position where therapeutic ultrasonic waves are irradiated by making use of an input unit. The operator further inputs by making use of the input unit input conditions such as an output waveform, output value and output interval of the therapeutic ultrasonic waves. A control unit causes to display on the monitor a target cursor corresponding to the irradiation position of the therapeutic ultrasonic waves in a superposed manner on the ultrasonic image for diagnostic use according to the respective input data. The target cursor represents an irradiation intensity of output beams of the therapeutic ultrasonic waves by means of shape, size or color thereof.

[0005] Patent Document 1: JP-A-10-192289

[0006] However, in the above referred to conventional ultrasonic therapeutic apparatus, since information on the irradiation path such as irradiation intensity distribution along the irradiation path of the therapeutic ultrasonic waves is insufficient, no consideration for observing influences on normal portions in the irradiation path of the therapeutic ultrasonic waves is given.

[0007] An object of the present invention is to provide an ultrasonic therapeutic apparatus that is able to observe influences on normal portions in the irradiation path of the therapeutic ultrasonic waves.

SUMMARY OF THE INVENTION

[0008] An ultrasonic therapeutic apparatus according to the present invention is characterized by comprising an ultrasonic probe (**102**) provided with a group of ultrasonic transducers for diagnosis use and a group of ultrasonic transducers for therapeutic use of which at least a part of ultrasonic beam irradiation surfaces are arranged so as to overlap each other, a tomographic image producing means (**8**) that produces a tomographic image containing a diseased portion of a subject from reflection echoes received by the group of ultrasonic transducers for diagnosis use, a display means (**10**) that displays the tomographic image containing the diseased portion of the subject produced by the tomographic image producing means (**8**), a setting means (**103**) that sets an irradiation path of the therapeutic ultrasonic waves on the tomographic image containing the diseased portion of the subject displayed by the display means (**10**) and a control means (**104**) that produces irradiation path information corresponding to the irradiation path of the therapeutic ultrasonic waves set by the setting means (**103**) and causes to display the produced irradiation path information on the display means (**10**) while correlating with the tomographic image containing the diseased portion of the subject.

[0009] According to the present invention, influences on normal portions in the irradiation path of the therapeutic ultrasonic waves can be observed.

BRIEF DESCRIPTION OF THE DRAWINGS

[0010] FIG. 1 is a schematic block diagram of an ultrasonic therapeutic apparatus representing an embodiment of the present invention.

[0011] FIG. 2 is a functional block diagram of one constitutional example of a control unit **104** in FIG. 1.

[0012] FIG. 3 is a functional block diagram of another constitutional example from FIG. 2.

[0013] FIG. 4 is a view showing a display example on a monitor **10** by the control unit **104** in FIG. 1.

[0014] FIG. 5 is a flowchart showing an operation example of the ultrasonic therapeutic apparatus in FIG. 1.

[0015] FIG. 6 is another display example from FIG. 4.

[0016] FIG. 7 is views showing alternative examples of focusing depth or irradiation angle from FIG. 6.

BEST MODE FOR CARRYING OUT THE INVENTION

[0017] An embodiment of an ultrasonic therapeutic apparatus according to the present invention will be explained with reference to FIG. 1 through FIG. 4.

[0018] The ultrasonic therapeutic apparatus according to the present embodiment includes the following constitutional elements.

[0019] The ultrasonic diagnostic unit **100** transmits ultrasonic waves to a portion containing a diseased portion of a subject, produces a B mode image (tomographic image) containing the diseased portion from the reflected echo signals by a scan conversion unit **8** and displays the produced tomographic image on a monitor **10**. Herein, since the ultrasonic

diagnostic unit **100** is a prior art ultrasonic diagnostic device, the detailed explanation thereof is omitted.

[0020] An ultrasonic therapeutic unit **101** includes the following constitutional elements that are connected to the ultrasonic diagnostic unit **100** so as to permit data transmission therewith. A therapeutic use pulse generating circuit **13** drives therapeutic use transducers **17** and irradiates therapeutic use ultrasonic waves toward a treatment position of a set diseased portion of a subject. A therapeutic use ultrasonic wave delaying circuit **14** properly delays the therapeutic ultrasonic waves and forms a focusing point of the therapeutic ultrasonic waves. An amplifier **15** signal-amplifies the therapeutic ultrasonic waves. An irradiation intensity and therapeutic position control unit **12** controls the therapeutic use pulse generating circuit **13** and the therapeutic use ultrasonic wave delaying circuit **14**. A control unit **104** controls the irradiation intensity and therapeutic position control unit **12** and the monitor **10**.

[0021] The monitor **10** is connected to the ultrasonic therapeutic unit **101** so as to permit data transmission therewith and includes a therapeutic/diagnostic probe **102** that is connected to the ultrasonic diagnostic unit **100** and the ultrasonic therapeutic unit **101** so as to permit transmission and reception of the ultrasonic wave signals therewith and an input unit **103** that is connected to the therapeutic/diagnostic probe **102**, the ultrasonic diagnostic unit **100** and the ultrasonic therapeutic unit **101** so as to permit transmission and reception of control signals thereto.

[0022] The input unit **103** is constituted so as to permit inputting of such as a variety of commands and set values.

[0023] The therapeutic/diagnostic probe **102** is constituted by diagnostic use transducers **16** and therapeutic use transducers **17** and the both are constituted integrally, for example, through lamination so that their beam irradiation planes occupy a same plane. The therapeutic/diagnostic probe **102** is held on a body surface near the diseased portion of the subject with a hand of an operator or by making use of a holding tool.

[0024] The ultrasonic diagnostic unit **100** drives the diagnostic use transducers **16** through a diagnostic use pulse generating circuit, a diagnostic use ultrasonic wave delaying circuit and an amplifier.

[0025] The diagnostic use transducers **16** thus driven irradiate diagnostic use ultrasonic waves toward a region containing the diseased portion of the subject, receive the reflected waves, convert the same into electrical signals and transfer the same to a received wave phasing circuit **7**. Signals subjected to a phasing process herein are inputted through the scan conversion unit **8** to a diagnostic image display control unit **110** included in the control unit **104** of the ultrasonic therapeutic unit **101** and in the diagnostic image display control unit **110** the imaging process is performed and a diagnostic use ultrasonic image A as shown in FIG. 4 is displayed on the monitor **10**.

[0026] The ultrasonic wave therapeutic unit **101** includes the following constitutional elements. The therapeutic use pulse generating circuit **13** drives therapeutic use transducers **17** and causes to irradiate therapeutic use ultrasonic waves toward the treatment position of the set diseased portion of the subject. The irradiation intensity and therapeutic position control unit **12** controls the therapeutic use ultrasonic wave delaying circuit **14**, the amplifier **15**, the therapeutic use pulse generating circuit **13** and the therapeutic use ultrasonic wave delaying circuit **14**. The control unit **104** controls the irradiation intensity and therapeutic position control unit **12** and the monitor **10**. The control unit **104** further includes a beam

pattern setting display control unit **111** and a beam pattern memory **200**. The beam pattern memory **200** stores color display bars of plural kinds to which data of a desired color display bar is accessible from the beam pattern setting display control unit **111**.

[0027] In addition to the diagnostic image display control unit **110** and the beam pattern setting display control unit **111**, and a therapeutic protocol display unit **118** and a therapeutic period display unit **119**, the control unit **104** includes constitutional elements for at least one function for thrombus resolving and for tumor cauterizing. The constitutional elements for the thrombus resolving function include an irradiation setting control unit **112**, a therapeutic beam cursor control unit **113**, an irradiation alarming unit **114**, a blood flow display unit **115** and a resolving agent stop alarming unit **117**. Further, the constitutional elements for the tumor cauterizing function include a tumor display unit **115A**, a recanalized blood flow display unit **116** or a cauterized result display unit **116A** and a cauterizing stop alarming unit **117A**.

[0028] Prior to starting a treatment by directing the therapeutic use transducers **17** in the ultrasonic therapeutic unit **101** toward a treatment position of a diseased portion set in a subject and irradiating therapeutic use ultrasonic waves, a treatment planning according to the present embodiment is performed in the following manner.

[0029] At first, while observing the diagnostic use ultrasonic image A displayed on the left half region on the monitor **10**, the operator moves the therapeutic beam cursor in the input unit **103** to the center portion of a diseased portion DP to be treated and sets the treatment position. For example, by making use of a mouse pointer PT in the input portion **103** the therapeutic beam cursor control unit **113** is controlled. The coordinate of the set treatment position is transferred to the irradiation setting control unit **112** from the therapeutic beam cursor control unit **113**. Thereafter, herein the focusing depth and the irradiation angle of the therapeutic use ultrasonic waves to be irradiated are computed based on the transferred coordinate of the treatment position.

[0030] Further, the operator, while observing the set treatment position on the monitor **10**, inputs an intensity of the therapeutic use ultrasonic waves to be irradiated to the set treatment position by making use of, for example, a key board in the input unit **103**. The inputted intensity of the therapeutic use ultrasonic waves is likely transferred to the irradiation setting control unit **112**.

[0031] The focusing depth and the irradiation angle computed in the irradiation setting control unit **112** and the inputted intensity of the therapeutic use ultrasonic waves are transferred to the beam pattern setting display control unit **111**.

[0032] The beam pattern setting display control unit **111** is connected to the color display bar and beam pattern memory **200** in a manner to be accessible thereto. Further, at the right side on the monitor **10** as shown in FIG. 4 a moving indicator MI is displayed. The intensity of ultrasonic waves at a position where the moving indicator is placed is, for example, 0.5 W/cm² and a reference use ultrasonic wave intensity color display bar B is displayed by color-coding in 10 levels with a unit of 0.05 W/cm². In the beam pattern memory **200**, data for displaying the reference use ultrasonic wave intensity color display bar B and data for position information and strip shaped beam patterns are stored. The position information uses parameters of angle and depth from a position CN of the ultrasonic transducers **17** in an ultrasonic imaging range IR. The ultrasonic intensity distribution corresponds to the entire

region of the color-coded sections of the reference use ultrasonic wave intensity color display bar B. The data are those obtained along the irradiation path of the therapeutic use ultrasonic waves, for example, with regard to $64 \times 16 = 1024$ data points.

[0033] The beam pattern data representing the ultrasonic wave intensity distribution with regard to the respective data points are measured before shipment by making use of, for example, a hydrophone and are stored in the memory 200 after patterning in a form such as a bit map image.

[0034] The color display of the reference use ultrasonic wave intensity color display bar B is color-coded and sectioned from the left end having low ultrasonic wave intensity to the right end having high ultrasonic wave intensity, for example, in such a manner that while determining the left end as blue, the blue tone gradually decreases and red tone gradually increases.

[0035] The beam pattern setting display control unit 111 captures from the color display bar and beam pattern memory 200 a beam pattern of the data point corresponding to the irradiation angle and the focusing depth inputted from the irradiation setting control unit 112. The captured beam pattern represents a sectioned ultrasonic wave distribution. The beam pattern setting display control unit 111 performs coloring according to the irradiation intensity of the inputted treatment position, namely the focused position in correspondence with the color sections of the reference use ultrasonic wave intensity color display bar B. The coloring is performed on the displayed diagnostic use ultrasonic wave image A along the therapeutic use ultrasonic wave irradiation path or along a running direction of a hollow organ of the diseased portion. A strip shaped therapeutic use ultrasonic beam pattern D colored in such a manner is displayed by being superposed on the diagnostic use ultrasonic wave image. In this instance, in order to ease observation of the organ and the diseased portion on the therapeutic use ultrasonic wave irradiation path, the strip shaped therapeutic use ultrasonic beam pattern D can be displayed in a superposed manner on the diagnostic use ultrasonic wave image after being processed in semi-transparent.

[0036] The operator observes the strip shaped therapeutic use ultrasonic beam pattern D displayed while being superposed on the diagnostic use ultrasonic wave image A. The operator confirms the followings through this observation. (1) Whether the ultrasonic wave intensity and its spreading of the section represented by M among the beam pattern D irradiated to the diseased portion DP are proper. (2) Whether there exists such as an organ that is weak to ultrasonic waves on the ultrasonic wave irradiation path. When it is judged there are no problems with regard to these items to be confirmed, the operator pushes a START button through the input unit 103 or on the monitor 10. The ultrasonic therapeutic unit 101 drives the irradiation intensity and therapeutic position control unit 12, the therapeutic use pulse generating circuit 13, the therapeutic use ultrasonic wave delaying circuit 14, the amplifier 15 and the therapeutic use transducers 17 according to the set value including the beam pattern D, and starts irradiation of the therapeutic use ultrasonic waves toward the diseased portion D.

[0037] Further, in order to have the operator correctly grasp the ultrasonic wave intensity of the section M corresponding to the treatment position in the therapeutic use ultrasonic beam pattern D, the region of the corresponding color section

on the reference use ultrasonic wave intensity color display bar B can be displayed in flickering manner.

[0038] When the operator judges the ultrasonic wave intensity distribution including irradiation intensity on the diseased portion DP is improper, the operator resets the ultrasonic wave intensity to be irradiated and the irradiation position through the input unit 103. The resetting of the irradiation position can be performed by a measure in which, for example, the moving indicator MI on the reference use ultrasonic wave intensity color display bar B is moved to shift the position of reference ultrasonic wave intensity on the color display bar. Further, when the moving indicator MI is moved, the band of the ultrasonic wave intensity covered by the color display bar B also varies.

[0039] Further, when there is a portion to which irradiation of ultrasonic waves should be avoided on the ultrasonic wave irradiation path, the position of the therapeutic/diagnostic probe 102 on the body surface is altered and the treatment position and the irradiation intensity are reset.

[0040] The strip shaped therapeutic use ultrasonic beam pattern D displayed in a superposed manner on the diagnostic use ultrasonic wave image A represents colored intensity distribution corresponding to the color sections of the reference use ultrasonic wave intensity color display bar B. Therefore, the operator can visibly and instantly recognize the distribution of the therapeutic use ultrasonic wave intensity to be irradiated, thereby, can easily judge the properness.

[0041] At the same time, in the stage of treatment planning according to the present embodiment before starting the treatment by irradiating the therapeutic use ultrasonic wave, the operator inputs the treatment protocol data in the treatment protocol display unit 118 in the control unit 104 through the input unit 103. A display C on the monitor 10 in FIG. 4 is an example of a displayed treatment protocol and shows timing and sequence of irradiation of the therapeutic use ultrasonic beams during treatment and of the diagnostic use ultrasonic beams (irradiation resting of the therapeutic use ultrasonic beams).

[0042] The treatment period display unit 119 in the control unit 104 displays on the monitor 10 the lapsed time from the start of the treatment in a numerical value or in an arrow in a manner being superposed on the displayed treatment protocol C or in parallel therewith.

[0043] The irradiation alarming unit 114 audibly or optically alarms that thrombus resolution accelerating ultrasonic beams are in a way of being irradiated during the therapeutic use ultrasonic wave irradiation.

[0044] The blood flow display unit 115 monitors blood flow in a blood vessel portion at an embolized peripheral region that is set as a treatment position during the treatment planning stage and displays on the monitor 10 a velocity or flow rate or both of the recanalized blood flow in numerical values.

[0045] The tumor display unit 115A monitors the degree of cauterization of the tumor portion set as a treatment position during the treatment planning stage and displays the same on the monitor 10.

[0046] When the blood flow velocity or flow rate thereof measured at the time of blood flow recanalization due to thrombus resolution exceeds predetermined values, the recanalizing blood flow display unit 116 indicates and displays the fact audibly or optically or in both.

[0047] When the degree of cauterization of the tumor portion exceeds a predetermined level, the cauterization result display unit 116A indicates and displays the fact audibly or optically or in both.

[0048] When the blood flow recanalization reaches a set blood flow condition (Flow velocity or flow rate or both) and thereafter a predetermined time elapses, the resolving agent stop alarming unit 117 alarms audibly or optically or in both for commanding to stop supplying the thrombus resolving agent.

[0049] When the degree of cauterization of the tumor portion reaches a predetermined level, the cauterization stop alarming unit 117A alarms audibly or optically or in both for commanding to stop the cauterization.

[0050] A series of operational flow from the treatment planning to the irradiation of the therapeutic use ultrasonic beams will be summarized and explained with reference to FIG. 5 flowchart which is performed by the embodiment of the ultrasonic therapeutic apparatus according to the present invention as explained hitherto with reference to FIG. 1 through FIG. 4.

[0051] At first, in step ST1, the diagnostic use ultrasonic wave image A, which is obtained through signal processing the reflected waves from the diseased portion of the irradiated diagnostic ultrasonic waves and received by the diagnostic use transducers 16, is displayed on the monitor 10.

[0052] In step ST2, after observing the diagnostic use ultrasonic wave image A displayed on the monitor 10, the operator inputs an initial value of intensity of the therapeutic use ultrasonic waves to be irradiated to the diseased portion DP of the subject through the input unit 103.

[0053] In step ST3, while observing the diagnostic use ultrasonic wave image A displayed on the monitor 10, the operator moves by making use of, for example, the mouse pointer PT in the output unit 103 the therapeutic beam cursor controlled by the therapeutic beam cursor control unit 113 to the center portion of the diseased portion to be treated to set the treatment position. Further, the order of the steps ST2 and ST3 can be altered.

[0054] In step ST4, the therapeutic beam cursor control unit 113 reads the coordinate of the set therapeutic position and inputs the same to the irradiation setting control unit 112.

[0055] In step ST5, the irradiation setting control unit 112 calculates the angle and the depth of the data point, namely, the focal point of the therapeutic use ultrasonic waves to be irradiated based on the inputted coordinate of the treatment position. The irradiation setting control unit 112 further inputs the calculated angle and depth of the focal point into the beam pattern setting display control unit 111 together with the previously inputted data of the therapeutic use ultrasonic wave intensity.

[0056] In step ST6, the beam pattern setting display control unit 111 calls a beam pattern including a distribution pattern of the ultrasonic wave intensity at the data point corresponding to the inputted angle and depth of the focal point from the color display bar and beam pattern memory 200. Further, the beam pattern setting display control unit 111 produces on the displayed color display bar the strip shaped therapeutic use ultrasonic beam pattern D by applying corresponding colors allocated to the respective ultrasonic wave intensity with reference to the ultrasonic wave intensity at the inputted focal point. The respective intensity sections of the strip shaped therapeutic use ultrasonic beam pattern D accompanies the distribution of the called ultrasonic wave intensity. The strip shaped therapeutic use ultrasonic beam pattern D is displayed

on the diagnostic use ultrasonic wave image A displayed on the monitor 10 in a superposed manner along the irradiation path of the therapeutic use ultrasonic waves.

[0057] In step ST7, the beam pattern setting display control unit 111 references the displayed color in the reference use ultrasonic wave intensity color display bar B displayed in parallel on the monitor 10. With reference to the displayed color in the reference use ultrasonic wave intensity color display bar B, the operator sets the strip shaped therapeutic use ultrasonic beam pattern D accompanying the colored ultrasonic wave distribution information displayed in a superposed manner on the diagnosis use ultrasonic wave image A on the monitor 10. Thereby, display information is provided for the operator to judge whether the distribution of the ultrasonic intensity along the irradiation path containing the treatment position and whether the irradiation path thereof are proper.

[0058] When the setting is judged proper in step ST7, the process moves to the therapeutic use beam control system at the right side in FIG. 5 and in step ST8, the therapeutic use ultrasonic wave delay circuit 14 drives the respective therapeutic use transducers 17 based on the angle and the depth of the set focal point such as in the strip shaped therapeutic use ultrasonic beam pattern D. The phases of the drive signals for these therapeutic use transducers 17 are set therewith. In step ST9, the drive signals are amplified. In step ST10, the respective therapeutic use transducers 17 are driven based on the amplified drive signals and the irradiation of the therapeutic use ultrasonic waves toward the diseased portion of the subject is started.

[0059] When the setting is judged improper in step ST7, the process returns to step ST2 wherein the intensity of the therapeutic use ultrasonic waves is reset and in step ST3, the treatment position is reset. Further, the irradiation path of the therapeutic ultrasonic waves is judged improper, the process returns to step ST1 and the position of the therapeutic/diagnostic probe 102 on the body surface is altered and a new diagnostic use ultrasonic wave image A is displayed on the monitor 10, thereafter, step ST2~step ST7 are executed again.

[0060] FIG. 6 shows a display example on the monitor 10 wherein a second type beam pattern E is used for the ultrasonic therapeutic apparatus according to the present invention in place of the first type of the strip shaped beam pattern D as shown in FIG. 4.

[0061] The second type of the beam pattern includes information of ultrasonic wave intensity distribution in lateral direction perpendicular to the direction along the irradiation path of the therapeutic use ultrasonic waves in addition to the information of ultrasonic wave intensity distribution in the direction along the irradiation path.

[0062] Accordingly, when the second type of the beam pattern E is displayed in a superposed manner on the diagnostic ultrasonic wave image displayed on the monitor 10, the distribution of therapeutic use ultrasonic wave intensity in a comparatively broad area around the diseased portion of the subject can be observed. Thereby, the properness of the set irradiation condition can be judged further correctly.

[0063] In the same manner as for the first type of the beam pattern D, the beam pattern data representing the ultrasonic wave intensity distribution with regard to the respective data points in the second type beam pattern E are also measured before shipment by making use of, for example, a hydrophone and are stored in the memory 200 after patterning in a form such as a bit map image.

[0064] FIG. 7(a) shows a display example of the second type beam pattern E corresponding to a treatment position at focusing point depth of 20 mm and irradiation angle of 0° displayed in a superposed manner on the diagnosis use image in the ultrasonic wave imaging range IR on the monitor 10. FIG. 7(b) shows a display example of the second type beam pattern E corresponding to a treatment position at focusing point depth of 30 mm and irradiation angle of 0° displayed in a superposed manner on the diagnosis use image in the ultrasonic wave imaging range IR on the monitor 10. FIG. 7(c) shows a display example of the second type beam pattern E corresponding to a treatment position at focusing point depth of 20 mm and irradiation angle of 15° displayed in a superposed manner on the diagnosis use image in the ultrasonic wave imaging range IR on the monitor 10.

[0065] In the like manner as explained in connection with FIG. 1~FIG. 5, while observing the colored ultrasonic wave intensity distribution including a spread also in lateral direction in the second type beam pattern E displayed in a superposed manner on the respective diagnostic use images, the operator judges the properness of the previous setting.

[0066] According to the present embodiment, prior to the treatment of the diseased portion of the subject by the irradiation of therapeutic use ultrasonic waves, the treatment position and the irradiation intensity of the therapeutic use ultrasonic waves can be set by making use of the diagnostic use ultrasonic wave tomographic image displayed on the monitor. Further, since confirmation and evaluation of the setting properness of the irradiation intensity is easy, the ultrasonic therapy can be performed smoothly.

1. An ultrasonic therapeutic apparatus characterized by comprising:

an ultrasonic probe (102) provided with a group of ultrasonic transducers for diagnosis use and a group of ultrasonic transducers for therapeutic use of which at least a part of ultrasonic beam irradiation surfaces are arranged so as to overlap each other,

a tomographic image producing means (8) that produces a tomographic image containing a diseased portion of a subject from reflection echoes received by the group of ultrasonic transducers for diagnosis use,

a display means (10) that displays the tomographic image containing the diseased portion of the subject produced by the tomographic image producing means (8),

a setting means (103) that sets an irradiation path of the therapeutic ultrasonic waves on the tomographic image containing the diseased portion of the subject displayed by the display means (10) and

a control means (104) that produces irradiation path information corresponding to the irradiation path of the therapeutic ultrasonic waves set by the setting means (103) and causes to display the produced irradiation path information on the display means (10) while correlating with the tomographic image containing the diseased portion of the subject.

2. An ultrasonic therapeutic apparatus according to claim 1 characterized in that the setting means (10) sets an irradiation angle and intensity and a focal point depth of the therapeutic use ultrasonic waves.

3. An ultrasonic therapeutic apparatus according to claim 2 characterized in that the setting means (10) sets the irradiation intensity of the therapeutic use ultrasonic waves with reference to a color bar displayed in parallel.

4. An ultrasonic therapeutic apparatus according to claim 2 characterized in that the setting means (10) displays a moving indicator value of the therapeutic use ultrasonic waves and sets the irradiation intensity of the therapeutic use ultrasonic waves with reference to the displayed moving indicator value.

5. An ultrasonic therapeutic apparatus according to claim 1 characterized in that the control means (104) displays the irradiation path information and the tomographic image in a superposed manner.

6. An ultrasonic therapeutic apparatus according to claim 5 characterized in that the control means (104) displays the irradiation path information in a semi-transparent manner and displays on the tomographic image in a superposed manner.

7. An ultrasonic therapeutic apparatus according to claim 1 characterized in that the irradiation path information is produced along a lumen organ including a blood vessel.

8. An ultrasonic therapeutic apparatus according to claim 1 characterized in that the irradiation path information is produced in a direction spreading from the diseased portion of the subject toward the surrounding portion thereof.

9. An ultrasonic therapeutic apparatus according to claim 1 characterized in that the control means (104) causes the display means (10) to display the diagnostic use ultrasonic wave image, corresponding information of the irradiation path and a color bar color-coded for every intensity of the therapeutic use ultrasonic waves in parallel.

10. An ultrasonic therapeutic apparatus according to claim 1 characterized in that the control means (104) causes the display means (10) to display a treatment protocol including irradiation timing of the therapeutic use ultrasonic beams and of the diagnostic use ultrasonic beams.

11. An ultrasonic therapeutic apparatus according to claim 1 characterized in that the control means (104) displays during thrombus resolving mode a variety of information of blood flow display, recanalization blood flow display and thrombus resolving agent stop alarm according to the progress of the treatment.

12. An ultrasonic therapeutic apparatus according to claim 1 characterized in that the control means (104) displays during tumor cauterization mode a variety of information of tumor display, cauterization result display and cauterization stop alarm according to the progress of the treatment.

13. An ultrasonic therapeutic apparatus according to claim 1 characterized by further comprising means for variably setting the focal point depth of the therapeutic use ultrasonic waves and characterized in that the control means (104) produces an irradiation path of the therapeutic use ultrasonic waves based on the variably set focal point depth of the therapeutic use ultrasonic waves.

14. An ultrasonic therapeutic apparatus according to claim 1 characterized by further comprising means for variably setting the irradiation angle of the therapeutic use ultrasonic waves and characterized in that the control means (104) produces an irradiation path of the therapeutic use ultrasonic waves based on the variably set irradiation angle of the therapeutic use ultrasonic waves.

15. A method of ultrasonic therapy characterized by comprising the steps of:

transmitting diagnostic ultrasonic waves to a diseased portion of a subject and displaying on a display unit a diagnostic use ultrasonic wave image containing the diseased portion of the subject based on the reflected waves,

setting through an input unit parameters including intensity of therapeutic use ultrasonic waves and treatment position based on the displayed diagnostic use ultrasonic wave image,

calculating an angle and a depth of the therapeutic use ultrasonic waves to be irradiated based on the inputted treatment position,

reading from a memory a beam pattern of ultrasonic wave intensity distribution corresponding to the calculated result,

producing an irradiation path of the therapeutic use ultrasonic waves by applying colors allocated for every ultra-

sonic wave intensity to the ultrasonic wave intensity distribution of the beam pattern read out based on the therapeutic use ultrasonic waves inputted from the input unit,

displaying on the display unit the produced irradiation path of the therapeutic use ultrasonic waves and the diagnostic use ultrasonic wave image in a superposed manner and

controlling the ultrasonic therapy by making use of the displayed irradiation path information.

* * * * *

专利名称(译)	超声波治疗仪		
公开(公告)号	US20100222676A1	公开(公告)日	2010-09-02
申请号	US11/993047	申请日	2006-06-22
[标]申请(专利权)人(译)	荻原MAKOTO 久保田JUN 佐佐木AKIRA 古畑HIROSHI		
申请(专利权)人(译)	荻原MAKOTO 久保田JUN 佐佐木AKIRA 古畑HIROSHI		
当前申请(专利权)人(译)	桥本电子实业有限公司.		
[标]发明人	OGIHARA MAKOTO KUBOTA JUN SASAKI AKIRA FURUHATA HIROSHI		
发明人	OGIHARA, MAKOTO KUBOTA, JUN SASAKI, AKIRA FURUHATA, HIROSHI		
IPC分类号	A61N7/00 A61B8/14		
CPC分类号	A61B8/13 A61B8/461 A61B19/56 A61B8/12 A61B2019/5276 A61N7/02 A61N2007/0078 A61B2019/507 A61B8/463 A61B8/465 A61B34/25 A61B2034/107 A61B2090/378		
优先权	2005182334 2005-06-22 JP		
其他公开文献	US8740797		
外部链接	Espacenet USPTO		

摘要(译)

根据本发明的超声治疗设备具有：超声探头（102），其设置有一组用于诊断的超声换能器和一组用于治疗用途的超声换能器，其中至少一部分超声波束照射表面被布置为了相互重叠，断层图像产生装置（8）产生包含受试者的病变部分的断层图像，该断层图像来自用于诊断用途的超声换能器组接收的反射回波，显示装置（10）包含由断层图像产生装置（8）产生的受试者的患病部分的断层图像，设定装置（103），其设定治疗超声波在包含受试者的病变部分的断层图像上的照射路径。显示装置（10）和控制装置（104）产生与其对应的照射路径信息由设定装置（103）设定的治疗超声波的照射路径，使得在显示装置（10）上显示产生的照射路径信息，同时与包含受试者的病变部分的断层图像相关联。

