



US007713210B2

(12) **United States Patent**
Byrd et al.

(10) **Patent No.:** **US 7,713,210 B2**
(45) **Date of Patent:** **May 11, 2010**

(54) **METHOD AND APPARATUS FOR
LOCALIZING AN ULTRASOUND CATHETER**

(75) Inventors: **Charles Bryan Byrd**, Medford, NJ
(US); **Praveen Dala-Krishna**,
Bensalem, PA (US); **David A. Jenkins**,
Flanders, NJ (US)

(73) Assignee: **St. Jude Medical, Atrial Fibrillation
Division, Inc.**, St. Paul, MN (US)

(*) Notice: Subject to any disclaimer, the term of this
patent is extended or adjusted under 35
U.S.C. 154(b) by 614 days.

(21) Appl. No.: **10/994,424**

(22) Filed: **Nov. 23, 2004**

(65) **Prior Publication Data**

US 2006/0122514 A1 Jun. 8, 2006

(51) **Int. Cl.**
A61B 8/02 (2006.01)

(52) **U.S. Cl.** **600/459**; 600/437; 600/443;
600/462; 600/466; 601/2; 601/3; 601/4

(58) **Field of Classification Search** 600/428,
600/463, 437, 439, 443, 459, 462, 466; 601/2-4
See application file for complete search history.

(56) **References Cited**

U.S. PATENT DOCUMENTS

3,917,979 A 11/1975 Volk, Jr.
4,161,121 A 7/1979 Zitelli et al.
4,241,610 A 12/1980 Anderson
4,442,713 A 4/1984 Wilson et al.
4,462,408 A 7/1984 Silverstein et al.
4,519,260 A 5/1985 Fu et al.
4,522,194 A 6/1985 Normann
4,534,221 A 8/1985 Fife et al.
4,576,177 A 3/1986 Webster, Jr.
4,605,009 A 8/1986 Pourcelot et al.
4,841,977 A 6/1989 Griffith et al.
4,890,268 A 12/1989 Smith et al.

4,917,097 A 4/1990 Proudian et al.
4,951,677 A 8/1990 Crowley et al.
5,002,059 A 3/1991 Crowley et al.
5,090,956 A 2/1992 McCoy
5,105,819 A 4/1992 Wollschlager et al.
5,139,020 A 8/1992 Koestner et al.
5,152,294 A 10/1992 Mochizuki et al.
5,156,154 A 10/1992 Valenta, Jr. et al.
5,156,157 A 10/1992 Valenta, Jr. et al.
5,158,087 A 10/1992 Gatzke
5,170,793 A 12/1992 Takano et al.

(Continued)

OTHER PUBLICATIONS

Keith S. Dickerson et al., "Comparison of Conventional and Transverse Doppler Sonograms", J. Ultrasound Med., 1993, pp. 497-506, vol. 12.

(Continued)

Primary Examiner—Brian Casler

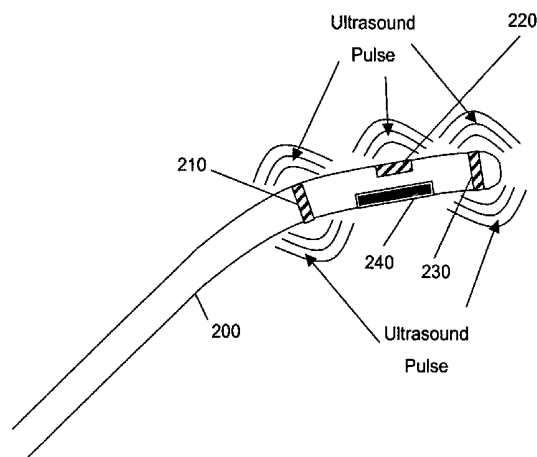
Assistant Examiner—Baisakhi Roy

(74) *Attorney, Agent, or Firm*—The Marbury Law Group, PLLC

(57) **ABSTRACT**

An imaging system is provided with an ultrasound catheter and a controller coupled to the ultrasound catheter. The catheter includes a localizer sensor configured to generate positional information for the ultrasound catheter, and an imaging ultrasound sensor having a restricted field of view. The controller co-registers images from the imaging ultrasound sensor with positional information from the localizer sensor.

36 Claims, 7 Drawing Sheets



US 7,713,210 B2

Page 2

U.S. PATENT DOCUMENTS

5,183,040 A	2/1993	Nappholz et al.	6,039,693 A	3/2000	Seward et al.
5,188,106 A	2/1993	Nappholz et al.	6,085,117 A	7/2000	Griffin, III et al.
5,195,968 A	3/1993	Lundquist et al.	6,120,453 A	9/2000	Sharp
5,199,299 A	4/1993	Hughes et al.	6,144,870 A	11/2000	Griffin, III
5,254,088 A	10/1993	Lundquist et al.	6,149,599 A	11/2000	Schlesinger et al.
5,279,559 A	1/1994	Barr	6,171,248 B1	1/2001	Hossack et al.
5,304,214 A	4/1994	DeFord et al.	6,173,205 B1	1/2001	Griffin, III et al.
5,307,816 A	5/1994	Hashimoto et al.	6,190,353 B1	2/2001	Makower et al.
5,309,914 A	5/1994	Iinuma	6,210,333 B1	4/2001	Gardner et al.
5,325,860 A	7/1994	Seward et al.	6,224,556 B1	5/2001	Schwartz et al.
5,336,182 A	8/1994	Lundquist et al.	6,228,028 B1	5/2001	Klein et al.
5,345,938 A	9/1994	Nishiki et al.	6,228,032 B1	5/2001	Eaton et al.
5,345,940 A	9/1994	Seward et al.	6,261,246 B1	7/2001	Pantages et al.
5,357,550 A	10/1994	Asahina et al.	6,293,943 B1	9/2001	Panescu et al.
5,358,478 A	10/1994	Thompson et al.	6,306,096 B1	10/2001	Seward et al.
5,361,767 A	11/1994	Yukov	6,306,097 B1	10/2001	Park et al.
5,364,351 A	11/1994	Heinzelman et al.	6,310,828 B1	10/2001	Mumm et al.
5,372,138 A	12/1994	Crowley et al.	6,346,074 B1	2/2002	Roth
5,385,148 A	1/1995	Lesh et al.	6,352,509 B1	3/2002	Kawagishi et al.
5,395,327 A	3/1995	Lundquist et al.	6,358,208 B1	3/2002	Lang et al.
5,438,997 A	8/1995	Sieben et al.	6,360,027 B1 *	3/2002	Hossack et al. 382/294
5,456,258 A	10/1995	Kondo et al.	6,368,275 B1	4/2002	Sliwa et al.
5,456,664 A	10/1995	Heinzelman et al.	6,385,489 B1	5/2002	Griffin, III et al.
5,469,852 A	11/1995	Nakamura et al.	6,398,731 B1	6/2002	Mumm et al.
5,470,330 A *	11/1995	Goldenberg et al. 606/7	6,423,002 B1	7/2002	Hossack
5,470,350 A *	11/1995	Buchholtz et al. 601/3	6,440,488 B2	8/2002	Griffin, III et al.
5,471,988 A	12/1995	Fujio et al.	6,443,894 B1	9/2002	Sumanaweera et al.
5,499,630 A	3/1996	Hiki et al.	6,475,148 B1	11/2002	Jackson et al.
5,515,853 A	5/1996	Smith et al.	6,475,149 B1	11/2002	Sumanaweera
5,515,856 A	5/1996	Olstad et al.	6,482,161 B1	11/2002	Sumanaweera et al.
5,531,686 A	7/1996	Lundquist et al.	6,484,727 B1	11/2002	Vaska et al.
5,560,362 A	10/1996	Sliwa, Jr. et al.	6,485,455 B1	11/2002	Thompson et al.
5,568,815 A	10/1996	Raynes et al.	6,490,474 B1	12/2002	Willis et al.
5,588,432 A	12/1996	Crowley	6,491,633 B1	12/2002	Krishnan et al.
5,615,680 A	4/1997	Sano	6,503,202 B1	1/2003	Hossack et al.
5,622,174 A	4/1997	Yamazaki	6,517,488 B1	2/2003	Hossack
5,630,837 A	5/1997	Crowley	6,527,717 B1	3/2003	Jackson et al.
5,662,116 A	9/1997	Kondo et al.	6,532,378 B2	3/2003	Saksena et al.
5,697,965 A	12/1997	Griffin, III	6,544,187 B2	4/2003	Seward
5,699,805 A	12/1997	Seward et al.	6,554,770 B1	4/2003	Sumanaweera et al.
5,701,897 A	12/1997	Sano	6,567,700 B1	5/2003	Turcott et al.
5,704,361 A	1/1998	Seward et al.	6,589,182 B1	7/2003	Loftman et al.
5,706,823 A	1/1998	Woldinger	6,592,520 B1	7/2003	Peszynski et al.
5,713,363 A	2/1998	Seward et al.	RE38,209 E	8/2003	Yamazaki et al.
5,715,817 A	2/1998	Stevens-Wright et al.	6,605,043 B1	8/2003	Dreschel et al.
5,722,403 A	3/1998	McGee et al.	6,607,488 B1	8/2003	Jackson et al.
5,749,364 A	5/1998	Sliwa, Jr. et al.	6,612,992 B1	9/2003	Hossack et al.
5,749,833 A	5/1998	Hakki et al.	6,645,147 B1	11/2003	Jackson et al.
5,788,636 A	8/1998	Curley	6,648,875 B2	11/2003	Simpson et al.
5,795,299 A	8/1998	Eaton et al.	6,650,927 B1 *	11/2003	Keidar 600/424
5,797,848 A	8/1998	Marian et al.	6,654,638 B1	11/2003	Sweeney
5,800,356 A	9/1998	Criton et al.	6,658,279 B2	12/2003	Swanson et al.
5,803,083 A	9/1998	Buck et al.	6,690,958 B1 *	2/2004	Walker et al. 600/323
5,807,324 A	9/1998	Griffin, III	6,690,963 B2 *	2/2004	Ben-Haim et al. 600/424
5,840,030 A	11/1998	Ferek-Petric et al.	6,709,396 B2	3/2004	Flesch et al.
5,842,994 A	12/1998	TenHoff et al.	6,716,166 B2 *	4/2004	Govari 600/437
5,846,204 A	12/1998	Solomon	6,773,402 B2 *	8/2004	Govari et al. 600/459
5,846,205 A	12/1998	Curley et al.	6,788,967 B2 *	9/2004	Ben-Haim et al. 600/424
5,853,368 A	12/1998	Solomon	6,908,434 B1	6/2005	Jenkins et al.
5,888,577 A	3/1999	Griffin, III et al.	6,923,768 B2 *	8/2005	Camus et al. 600/463
5,891,088 A	4/1999	Thompson et al.	7,029,467 B2	4/2006	Currier et al.
5,906,579 A	5/1999	Vander Salm et al.	7,090,639 B2 *	8/2006	Govari 600/437
5,916,168 A	6/1999	Pedersen et al.	7,171,257 B2	1/2007	Thomson
5,921,978 A	7/1999	Thompson et al.	7,211,045 B2	5/2007	Dala-Krishna et al.
5,928,276 A	7/1999	Griffin, III et al.	7,236,821 B2	6/2007	Cates et al.
5,931,863 A	8/1999	Griffin, III et al.	2002/0007198 A1	1/2002	Hauptert et al.
5,935,102 A	8/1999	Bowden et al.	2002/0049383 A1	4/2002	Swanson et al.
5,938,616 A	8/1999	Eaton et al.	2003/0045796 A1	3/2003	Friedman
5,954,654 A	9/1999	Eaton et al.	2003/0060813 A1	3/2003	Loeb et al.
6,013,072 A	1/2000	Winston et al.	2003/0151462 A1	8/2003	Koen et al.
6,033,378 A	3/2000	Lundquist et al.	2003/0158483 A1	8/2003	Jackson et al.
			2004/0097805 A1 *	5/2004	Verard et al. 600/428
			2004/0127798 A1	7/2004	Dala-Krishna et al.

2004/0249282	A1	12/2004	Olstad
2004/0254442	A1	12/2004	Williams et al.
2005/0165313	A1	7/2005	Byron et al.
2005/0203390	A1	9/2005	Trop et al.
2005/0245822	A1	11/2005	Dala-Krishna et al.
2007/0071295	A1	3/2007	Jackson
2007/0083118	A1	4/2007	Dala-Krishna et al.
2007/0135854	A1	6/2007	Kramer et al.
2007/0167809	A1	7/2007	Dala-Krishna et al.

OTHER PUBLICATIONS

David J. Sahn, "Phased Arrays for Multiplane Esophageal Echos in Infants", Summary Statement, Diagnostic Radiology Study Section, Jun. 1990.

David J. Sahn, "Instrumentation and Physical Factors Related to Visualization of Stenotic and Regurgitant Jets by Doppler Color Flow Mapping", JACC, Nov. 1988, pp. 1354-1365, vol. 12, No. 5.

David J. Sahn, "Advances in Ultrasound Imaging for Congenital Heart Disease Diagnosis and Management", Pediatric Cardiology, Nov. 26-Dec. 1, 1989, Proceedings of the III World Congress of Pediatric Cardiology, Bangkok.

David J. Sahn et al., "Important Roles of Transeophageal Color Doppler Flow Mapping Studies (TEE) in Infants with Congenital Heart

Disease", Supplement to Journal of the American College of Cardiology, Feb. 1990, vol. 15, No. 2 (Supplement A).

David J. Sahn, "Applications of Color Flow Mapping in Pediatric Cardiology", Cardiology Clinics, May 1989, pp. 255-264, vol. 7, No. 2.

David J. Sahn et al., "Miniaturized High Frequency Phased Array Devices for High Resolution Neonatal and Intraoperative Imaging", Supplement to Journal of the American College of Cardiology, Feb. 1990, vol. 15, No. 2 (Supplement A).

Piero Tortoli et al., "Velocity Magnitude Estimation with Linear Arrays Using Doppler Bandwidth", Ultrasonics, 2001, pp. 157-161, vol. 39.

Lilliam M. Valdes-Cruz et al., "Transvascular Intracardiac Applications of a Miniaturized Phase-Array Ultrasonic Endoscope", Brief Rapid Communication, Mar. 1991, pp. 1023-1027, vol. 83, No. 3.

Lilliam M. Valdes-Cruz et al., "Experimental Animal Investigations of the Potential for New Approaches to Diagnostic Cardiac Imaging in Infants and Small Premature Infants from Intracardiac and Trasesophageal Approaches Using a 20MHz Real Time Ultrasound Imaging Catheter", Supplement to Journal of the American College of Cardiology, Feb. 1989, vol. 13, No. 2 (Supplement A).

P.N. T. Wells, "Velocity, Absorption and Attenuation in Biological Materials", Biomedical Ultrasonics, 1977, pp. 110-144.

* cited by examiner

Figure 1A

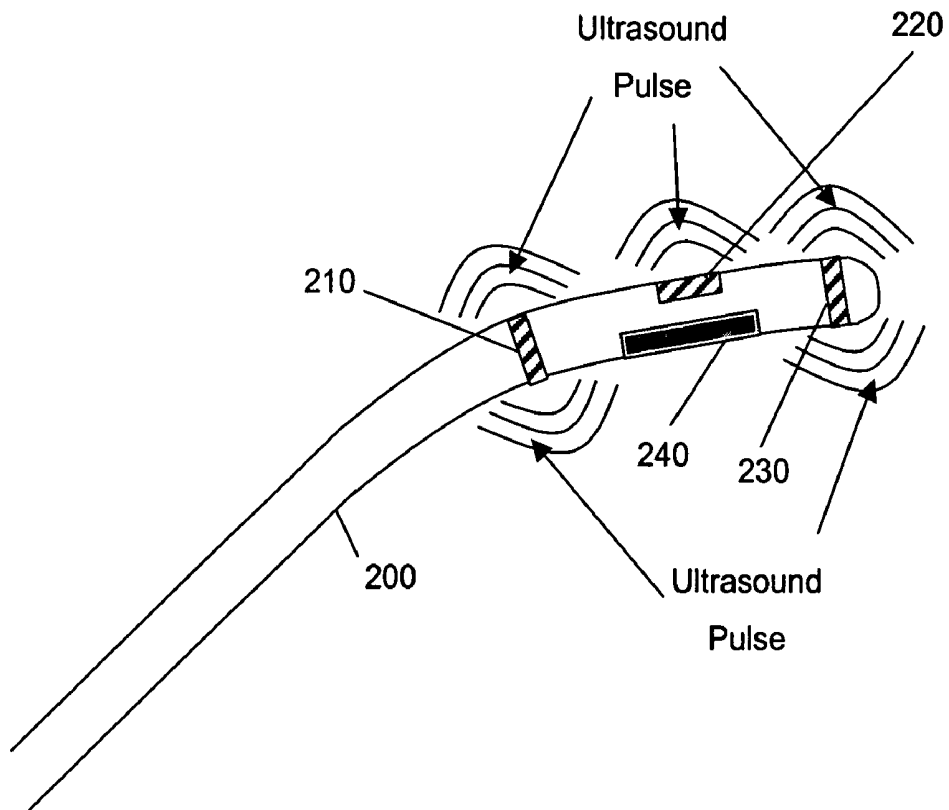


Figure 1B

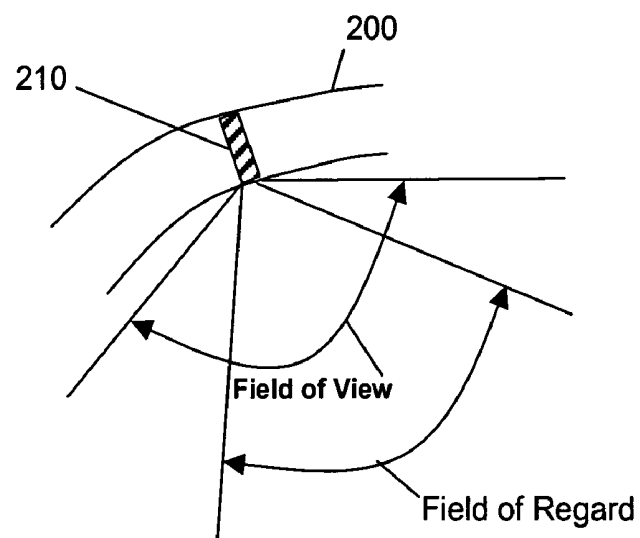


Figure 2

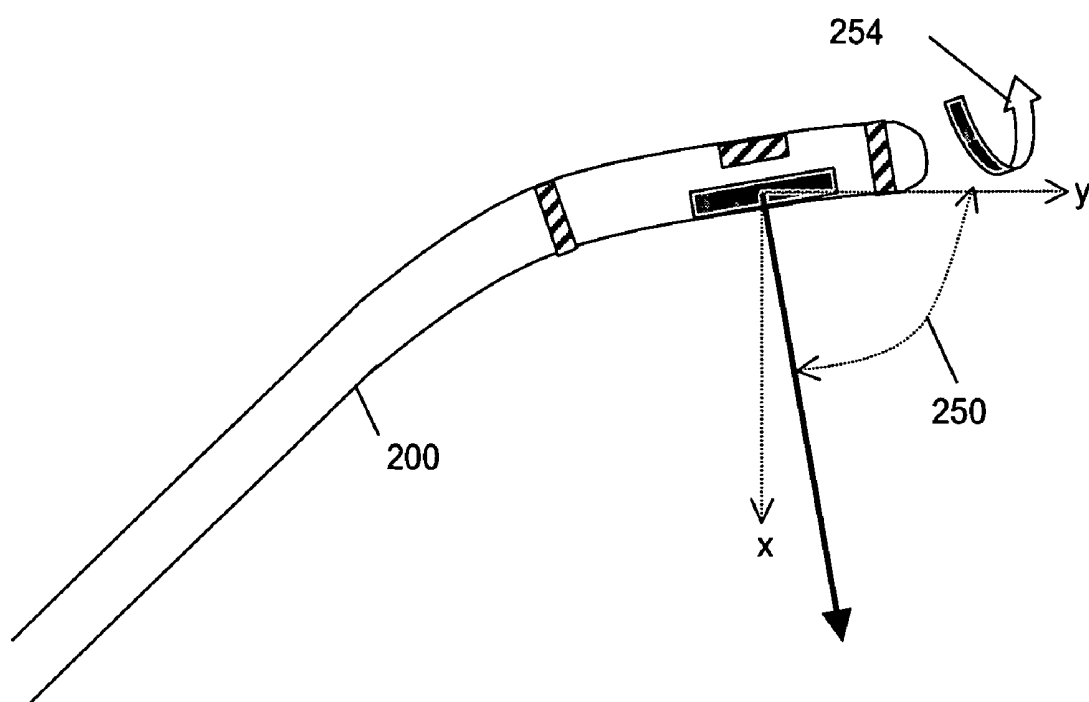


Figure 3

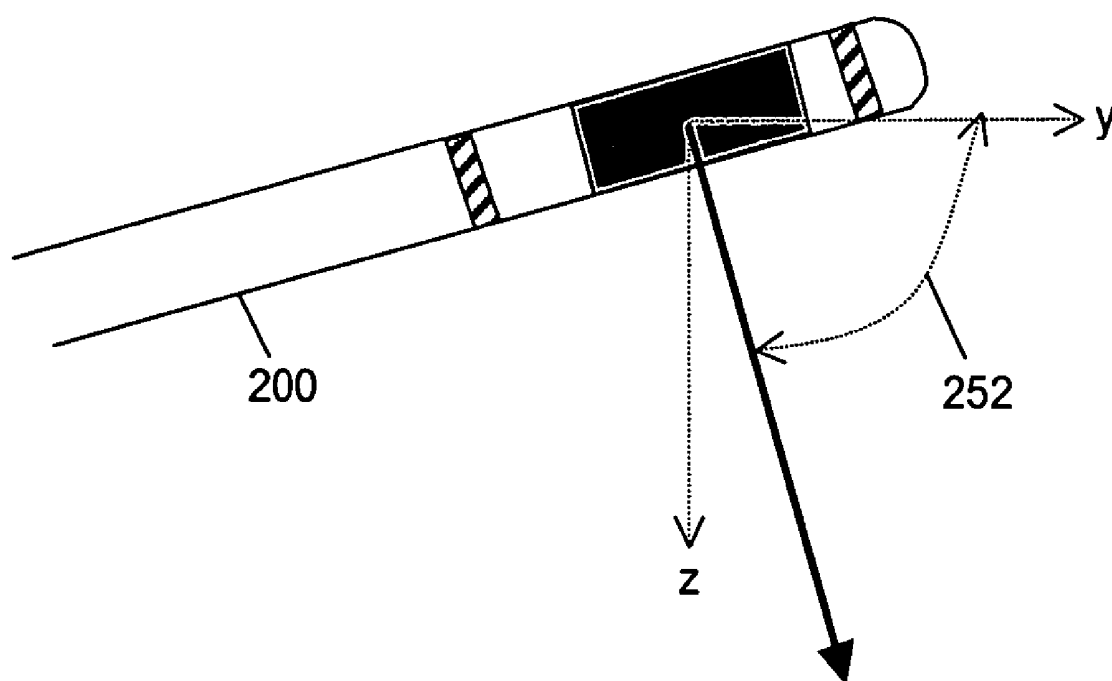


Figure 4

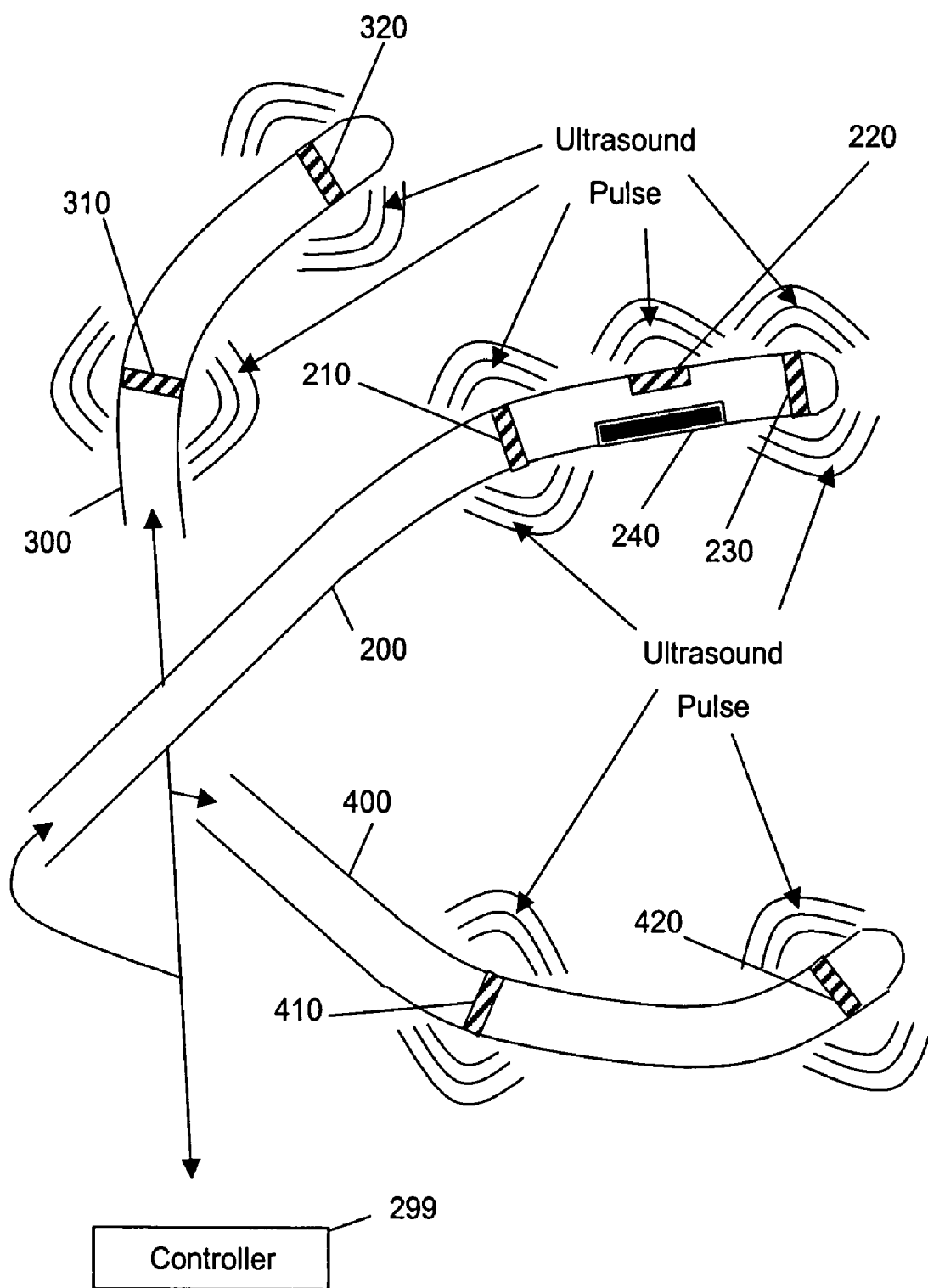


Figure 5

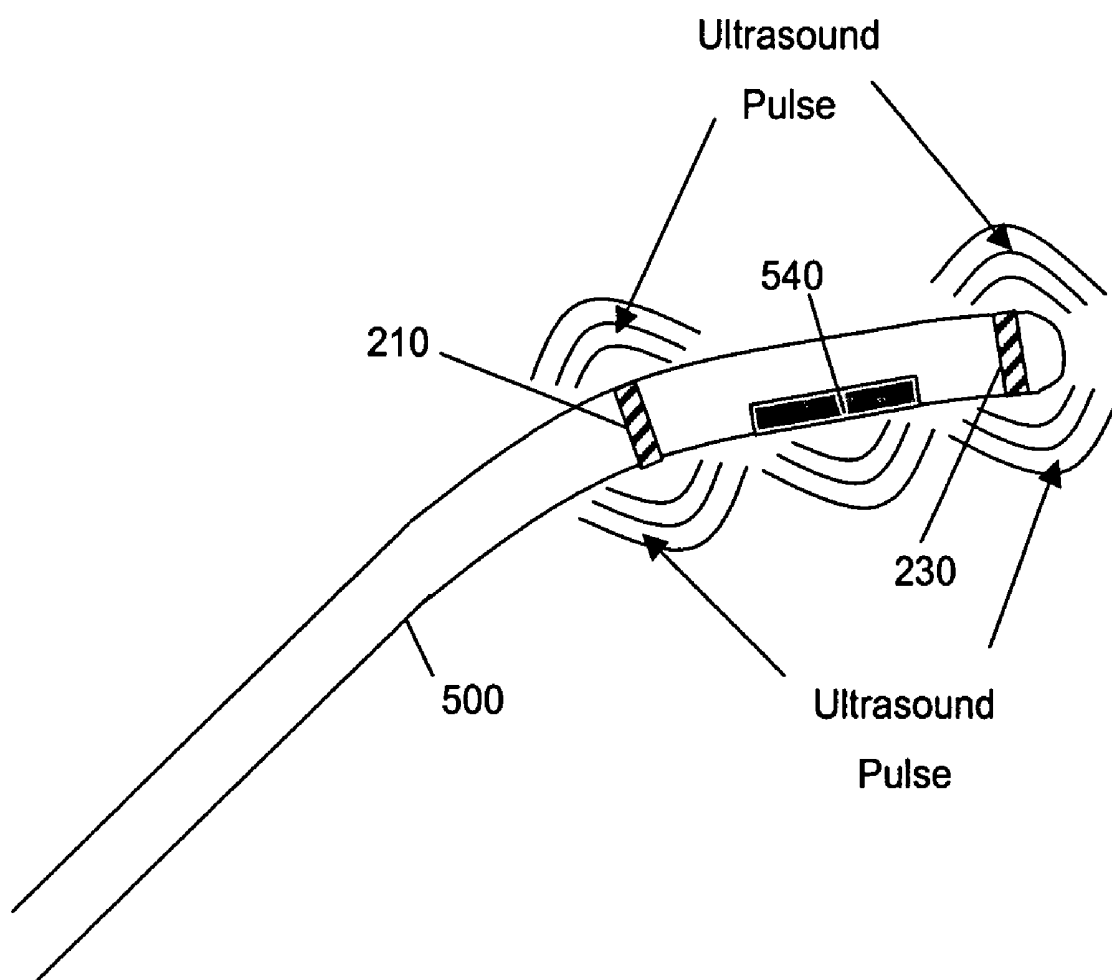


Figure 6

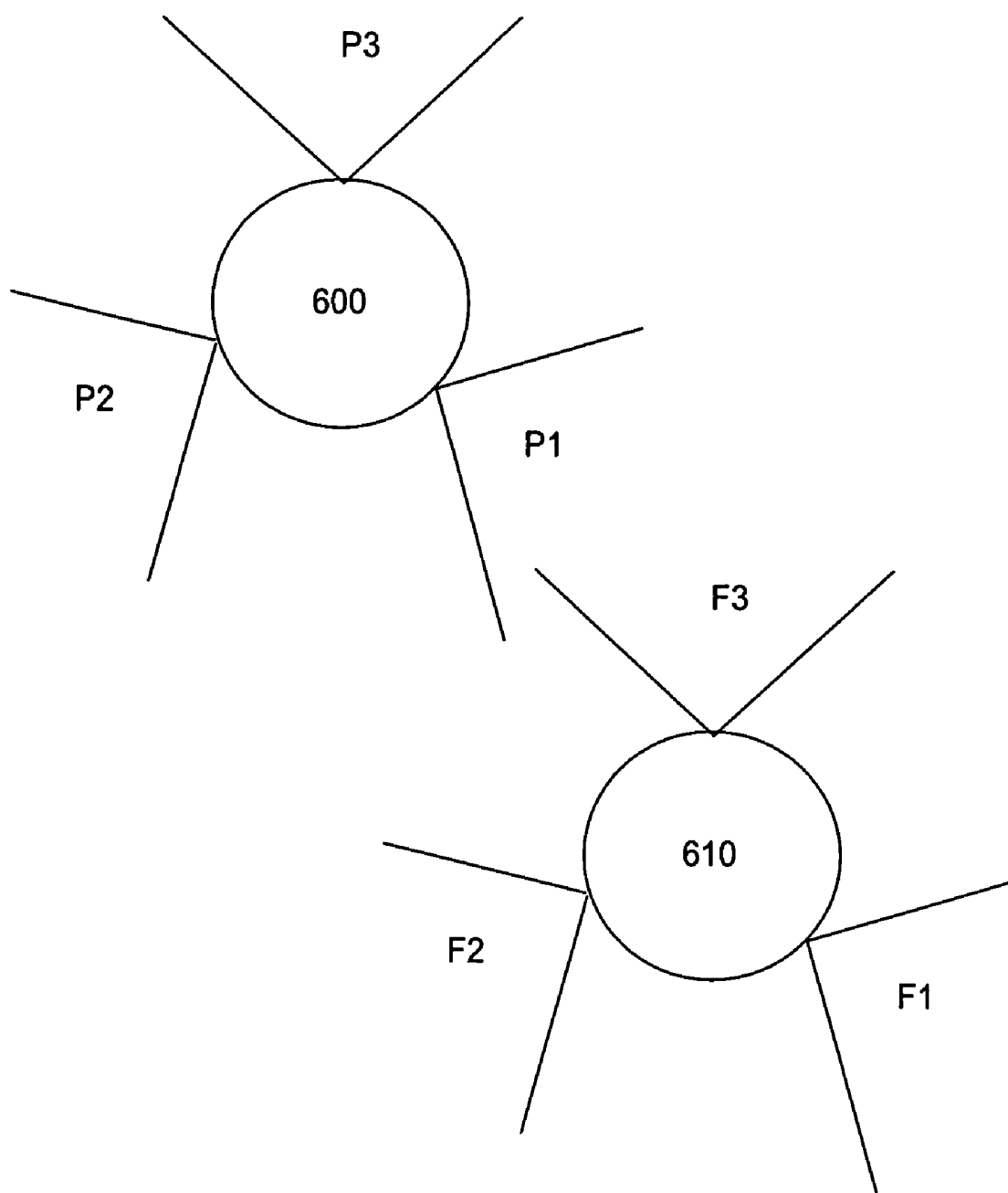
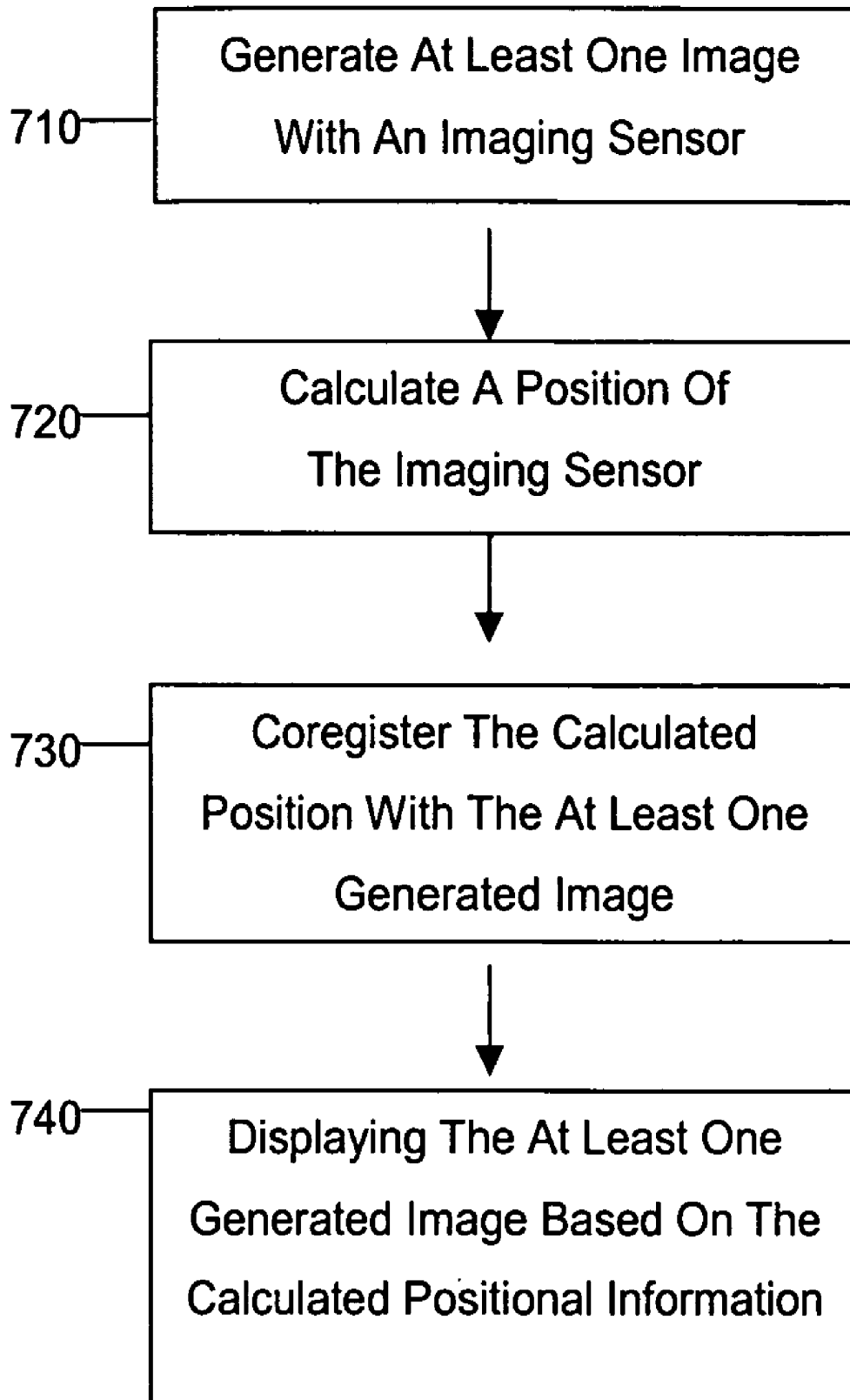


Figure 7



METHOD AND APPARATUS FOR LOCALIZING AN ULTRASOUND CATHETER

BACKGROUND OF THE INVENTION

1. Field of the Invention

The present invention relates generally to medical imaging systems, and more particularly to a method and apparatus for localizing an ultrasound imaging catheter.

2. Description of the Related Art

Medical imaging technology is used to improve the diagnosis and treatment of medical conditions. Presently available medical imaging technology includes a wide variety of ultrasound, X-ray, nuclear, magnetic resonance imaging (MRI) and other imaging systems. A technology of particular benefit to diagnosis and treatment of cardiovascular conditions uses imaging ultrasound detectors mounted a percutaneous catheter.

Techniques exist for localizing catheters deployed within a patient's body. One such technique is described in U.S. Pat. No. 6,192,266 to Dupree ("Dupree" hereafter), which is incorporated by reference herein in its entirety. In particular, Dupree generates an electric field with one of a basket electrode and a roving electrode, the electric field being characterized by the physical dimensions and spacing among the basket electrodes. A navigation application is provided which analyzes the spatial variations in the electrical potentials sensed within the field, and provides a location output which locates the roving electrode within the space defined by the basket, in terms of its position relative to the position of the multiple basket electrodes. Other such systems also exist.

The Dupree system, however, may be problematic in some applications due to its use of an electrode generated electric field to determine the location of the probe. In particular, electric fields generated intra-body can generate electrical currents which flow in the body that may cause muscle stimulation, which may result in heart arrhythmias, etc., when used in or near the heart, such as intra-cardiac sensing or treatment. Thus, a need exists for a non-electric field-based catheter locating system that does not induce significant electric currents in the body. There is also a particular need for catheter locating methods that are compatible with ultrasound imaging catheters, and for methods of utilizing localized position information in combination with image rendering.

Other problems with the prior art not described above can also be overcome using the teachings of the present invention, as would be readily apparent to one of ordinary skill in the art after reading this disclosure.

SUMMARY OF THE INVENTION

According to an embodiment of the present invention, an imaging system is provided with an ultrasound catheter including a tubular body, and a controller coupled to the ultrasound catheter. The ultrasound catheter includes a localizer sensor adapted and configured to generate positional information for the ultrasound catheter, and an imaging ultrasound sensor positionable relative to the tubular body so as to have a first restricted field of view. The controller co-registers images from the imaging ultrasound sensor with positional information from the localizer sensor. Preferably, the first restricted field of view spans less than 360 degrees about the tubular body.

According to another embodiment of the present invention, a method of displaying medical images from a catheter-based imaging ultrasound sensor having a first restricted field of view is provided including generating at least one image with

the imaging ultrasound sensor, calculating a position of the imaging ultrasound sensor, coregistering the calculated position with the at least one generated image, and displaying the at least one generated image based on the calculated positional information, wherein the first restricted field of view spans less than 360 degrees about a body of the catheter.

According to another embodiment of the present invention, an imaging system is provided including means for generating a plurality of two dimensional (2D) images of a structure, means for determining a section of the structure corresponding to each of the plurality of 2D images, and means for displaying a three dimensional (3D) display of at least a portion of the structure from the plurality of 2D images.

BRIEF DESCRIPTION OF THE DRAWINGS

FIG. 1A depicts an ultrasound catheter probe according to an embodiment of the present invention.

FIG. 1B depicts a field of regard and a field of view for one side of one of the ultrasound sensors of FIG. 1A.

FIG. 2 depicts a yaw angle and a roll of the ultrasound catheter probe of FIG. 1A.

FIG. 3 depicts a pitch angle of the ultrasound catheter probe of FIG. 1A.

FIG. 4 depicts a positioning system according to an embodiment of the present invention.

FIG. 5 depicts an ultrasound catheter probe according to another embodiment of the present invention.

FIG. 6 depicts a cross sectional view of catheter probes including a plurality of directional sensors according to another embodiment of the present invention.

FIG. 7 depicts a method of displaying medical images from a catheter-based imaging sensor having a restricted field of view according to another embodiment of the present invention.

DETAILED DESCRIPTION OF THE EXEMPLARY EMBODIMENTS

Reference will now be made in detail to exemplary embodiments of the present invention. Wherever possible, the same reference numbers will be used throughout the drawings to refer to the same or like parts.

The various embodiments of the present invention provide capabilities to determine the location of medical instrumentation and/or treatment devices within a patient's body using ultrasound echolocation and/or three dimensional (3D) triangulation techniques, and to use this localized information in conjunction with medical images. Relative positions of one instrument with respect to other instruments and registration of instrumentation positions with respect to the patient's body may be obtained, which is generally referred to herein as "localizing" the instrumentation. Thus, references to catheters as particular types of medical instrumentation and treatment devices are not intended to be limiting since the claimed systems and methods equally apply to other non-catheter probes/medical devices positional within the body, including remote or robotic surgery, esophageal probes, and medical, veterinarian and forensic applications where an instrumentation or tools require positioning within a body where they cannot be observed directly by the operator.

The various embodiments of the present invention employ sensors on a probe, such as a catheter, that are capable of sensing a signal to determine a range or bearing to an emitter in combination with 1, 2, 3 or more emitters in order to determine a one-dimensional (1D), two-dimensional (2D) or three-dimensional (3D) position, respectively, of the probe

with respect to the emitters. The range or bearing information is referred to herein as positional information because the information permits determining the position of the sensor with respect to an emitter and/or a frame of reference. The sensors that receive signals from emitters are referred to herein as localizer sensors, because the sensors permit locating the sensor with respect to an emitter and/or a frame of reference. Three types of ranging/directional signals described herein include magnetic fields, electrical fields and ultrasound, but other signals are contemplated consistent with the purpose and techniques described herein. The emitters may be placed on or within a body, preferably at dispersed positions around and near an area in which the probe will be operated.

As will be discussed, the emitters are preferably positioned at predetermined, fixed or determinable (i.e., measurable) positions on, in or near the body to provide a relative frame of reference for locating the probe. When the positions of emitters are based upon the patient's body, such as on the chest at measured distances from a part of the anatomy (e.g., the sternum), the emitters provide a relative frame of reference for positioning the probe with respect to the body. Also, emitters may be positioned at predetermined or measured locations with respect to an external or absolute frame of reference, such as an operating table or electrophysiology lab. When the positions of emitters are measured against an external frame of reference, they are said to be "registered" to the external frame of reference and may serve as fiducial references for locating the probe within the external frame of reference.

Magnetic field emitters may be used to localize a probe within a patient's body by using magnetic field sensors positioned on the probe, such as a catheter to measure the magnetic field strength or sense a direction of the magnetic field. In this embodiment, magnetic field emitters are magnets of a known or measurable field strength, such as permanent magnets and electromagnets. Preferably, electromagnets are used so that the emitted magnetic field can be turned on and off sequentially to permit sensors to determine a range or bearing to each electromagnet sequentially.

In an embodiment employing magnetic field strength measurements, a magnetic field strength sensor is positioned at a known or fixed position on a probe, such as a catheter, that is capable of measuring the relative or absolute magnetic field around it. Since the strength of a magnetic field decreases with distance from a magnet, a range or distance to the magnet from the sensor can be calculated using known methods and simple calculations. By measuring the range R_i to three or more magnets, a 3D position of the sensor is easily calculated using well known methods as the intersection of three or more spheres of radius R_i each centered on each magnet.

In an alternative embodiment employing magnetic field direction sensors, a magnetic field direction sensor is positioned at a known or fixed position on a probe, such as a catheter, that is capable of sensing the direction of a local magnetic field. Similar to a compass, this sensor may be configured to sense the direction or bearing to the magnet in 1, 2 or 3 dimensions with respect to the catheter. By measuring the bearing to three or more magnets, a 3D position of the sensor is easily calculated using well known triangulation methods as the intersection of three or more vectors each passing through a magnet.

Electric field emitters may be used to localize a probe within a patient's body by using electric field sensors positioned on the probe, such as a catheter to measure the electric field strength or other electric field properties such as impedance. In such embodiments, an electric field may be applied to

the body by means of an electrode to which a voltage or alternating field (such as radio frequency) is applied of a known or measurable strength. The electric field applied to electrodes can be turned on and off sequentially to permit sensors to determine a range to each electrode sequentially.

In an embodiment employing electric field sensors, a voltage sensor, such as an electrode, is positioned at a known or fixed position on a probe, such as a catheter, that is capable of measuring the relative electric (i.e., voltage) field around it. Since the strength of an electric field decreases with distance from an electrode, a range or distance to the magnet from the sensor can be calculated using known methods and simple calculations. By measuring the range R_i to three or more magnets, a 3D position of the sensor is easily calculated using well known methods as the intersection of three or more spheres of radius R_i each centered on each magnet.

In an alternative embodiment employing electric field sensors, a electric field sensor, such as an electrode, is positioned at a known or fixed position on a probe, such as a catheter, that is capable of receiving an alternating electric field and passing the signal, such as via a coaxial cable, to external equipment configured to measure impedance between the emitter electrode and the sensor electrode on the catheter. Since the impedance between the electrode emitter and sensor electrode on the catheter varies with distance, a range or distance to the emitter electrode can be calculated using known methods and simple calculations. Similar to other embodiments, by measuring the range R_i to three or more electrodes, a 3D position of the sensor is easily calculated using well known methods as the intersection of three or more spheres of radius R_i each centered on each electrode.

Ultrasound emitters may be used to localize a probe within a patient's body by using ultrasound sensors positioned on the probe, such as a catheter to measure receive ultrasound pulses emitted by emitters positioned within or external to the body.

According to such an embodiment of the present invention as shown in FIG. 1A, an ultrasound catheter **200** includes an imaging ultrasound sensor **240**, and a positional array with positional sensors **210**, **220**, **230**. Preferably, positional sensors **210**, **220**, **230** comprise ultrasound sensors as will be described in greater detail below. Other positional sensors are also contemplated, such as the magnetic positional sensors and resistance/impedance positional sensors described above, as would be readily apparent to one of ordinary skill in the art after reading this disclosure.

A first annular ultrasound sensor **230** may be positioned at or near a proximal end of the catheter **200** and second annular ultrasound sensor **210** may be positioned at some distance from the first annular ultrasound sensor **230**. In this embodiment, the first annular ultrasound sensor **230** and the second annular ultrasound sensor **210** are positioned so as to bracket the imaging ultrasound sensor **240** along a length of the catheter **200**.

As referenced above, the term "annular" refers to sensors which have a "field of view" that extends substantially all the way around the long axis of the catheter **200**. Magnetic, electric and ultrasound sensors may each be configured as annular sensors. Annular ultrasound sensors are typically ring shaped transducers that create ultrasound pulses and receive echoes from those pulses around the circumference of the catheter **200**. Due to their configuration, annular ultrasound sensors may create and/or receive minimal or no ultrasound pulses along the length (i.e., long axis) of the catheter **200** (see FIG. 1B, which shows a restricted field of view with no ultrasound pulses being created/received along the length of

the catheter 200). An annular ultrasound sensor may comprise a single sensor, such as a ring-shaped transducer, or an array of sensors.

In addition to annular ultrasound sensors 210, 230, a directional sensor 220 may be circumferentially positioned at a known angle about the catheter axis relative to the imaging ultrasound sensor 240. Preferably, the known angle between the directional sensor 220 and the imaging ultrasound sensor 240 is in the range of about 90 degrees to about 180 degrees. Most preferably, the known angle is about 180 degrees around the catheter circumference from the transmission face of the imaging ultrasound sensor 240. In the exemplary embodiment illustrated in FIG. 1A, the directional sensor 220 is positioned substantially opposite the imaging ultrasound sensor 240 about the catheter 200. Other configurations are also contemplated.

As referenced above, the term “directional” refers to sensors which do not transmit or which do not have a field of view that extends substantially all the way around the long axis of catheter 200. Due to this configuration, directional ultrasound sensors, for example, create and/or receive ultrasound pulses along a restricted field of view (i.e., a field of view less than 360 degrees about the long axis of catheter 200). Such a field of view may be cone-shaped where the angle of the cone of transmitted and/or received ultrasound may narrow to nearly 180 degrees. However, the breadth of the restricted field of view may vary depending on the particular directional sensor 220 utilized, as would be readily apparent to one of ordinary skill in the art after reading this disclosure.

It should be appreciated that while only three ultrasound sensors 210, 220, 230 are shown as forming the positional ultrasound array, additional sensors may also be provided to improve the accuracy and/or reliability of the position determination as would be readily apparent to one of ordinary skill in the art after reading this disclosure. By way of example, a near-omni directional transducer may be mounted on a tip of catheter 200; e.g. a transducer which has a 4π radians (approximate) field of view except along the length of catheter 200 (i.e., the long axis). This near-omni directional transducer may be substituted for or be provided in addition to the annular ultrasound sensors 210, 230.

It should also be appreciated that ultrasound has a limited path length within the body due to sound absorption by tissue and blood, and therefore more than three sensors may be required in some applications to localize medical devices positioned near or beyond the maximum path length of the particular tissue. Further, in addition to the limited path length issue, multipath issues can also be problematic in ultrasound based localizers. Multipath refers to ultrasound pulses generated by a first source arriving at first receiver at different times due to different path lengths. The speed of ultrasound is different in bones, tissues, and fluids (e.g., blood). Thus a single ultrasound pulse passing through different body structures will arrive at a sensor at slightly different times. Also, ultrasound may refract in, reflect off and preferentially conduct through different body structures, permitting an ultrasound pulse to reach a sensor along different paths. The combined effects are multipath errors that may reduce location accuracy achievable with ultrasound localization because determination of the travel time of an ultrasound pulse does not correlate exactly to the distance traveled. However, by providing more than three sensors, the combined distance measurements can be correlated to help reduce multipath induced errors.

Additionally, one or more of ultrasound sensors 210, 220, 230 may be positioned on a rigid portion of catheter 200, and/or one or more of ultrasound sensors 210, 220, 230 may

be positioned on a flexible portion of catheter 200. Preferably, at least imaging ultrasound sensor 240 and directional ultrasound sensor 220 are positioned on a rigid portion of catheter 200. Other configurations are also contemplated. For example, with catheters that may be flexed or bent in one or more angles, additional sensors (e.g., one for each positionable segment) may be used to provide 3D position information on the catheter segments.

As shown in FIGS. 2 and 3, the ultrasound pulses of the first annular ultrasound sensor 230 and the second annular ultrasound sensor 210 are used to determine the 3D position of the catheter 200 with respect to a frame of reference. As discussed above, it should be appreciated that the phrase “frame of reference” refers to any known position and/or coordinate system which can be used to determine the absolute position of catheter 200 within a patient’s body by knowing the relative position between the frame of reference and the catheter 200 and the relative position of the patient’s body and the frame of reference. In this regard, the frame of reference may be established using a second or third catheter (see FIG. 4) having a known position or an image obtained by other technology (e.g., fluoroscopy, x-ray, etc.). The frame of reference may be a fixed frame of reference to which the catheters and the patient are located (e.g., on an exam table or the like), a frame of reference fixed on the patient’s body (e.g., externally generated ultrasound signals provided at registered fiducial points on the patient’s body), a detected and recognizable structure (e.g., the heart wall or valve). The use of a frame of reference is also applicable to embodiments using non-ultrasound positional sensors, such as the magnetic positional sensors, and resistance/impedance positional sensors previously described. It should be appreciated that multiple frames of reference may be used to further improve the accuracy and reliability of the position determination, the selection of which may depend upon the nature of the medical procedure and the required positional precision.

According to the present embodiment, the ultrasound pulses generated by the first annular ultrasound sensor 230 and the second annular ultrasound sensor 210 as well as the echoes in response thereto are measured (in time and/or strength) and are used to determine the planar angle 250 along the X-Y plane (the “yaw” angle) and the Z offset angle 252 (the “pitch” angle) with respect to the frame of reference using positioning algorithms known in the art. For example, knowing the speed of sound in blood and the time when a pulse is emitted, the measured delay of a received pulse can be used to determine position by spherical triangulation. It should be appreciated that increasing the number of annular ultrasound sensors 210, 230 as previously noted would improve accuracy of the pitch and yaw determination, as more relational data is generated for the positioning algorithms.

In addition to determining the 3D position of the catheter 200, it is also desirable to know the direction an instrument, such as an ultrasound imaging transducer, optical imager or microsurgical instrument, is facing. For example, interpretation of intracardiac echocardiography images would be facilitated if the direction that the imaging ultrasound sensor 240 is facing is known with respect to the frame of reference, particularly for an imaging ultrasound sensor 240 with a limited field of view. This determination can be achieved by receiving in some but not all catheter sensors the ultrasound pulse generated by directional ultrasound sensor 220 as well as the echo off other sensors (in time and/or strength) and the pulses from those other catheter sensors within the field of view of directional ultrasound sensor 220, the data from which is collectively used to calculate the direction the directional

ultrasound **220** is pointed. As directional ultrasound sensor **220** is positioned at a known angle from the ultrasound sensor **240** about the catheter **200**, the direction **254** of ultrasound sensor **240** (the “roll” of catheter **200**) relative to the frame of reference can be determined based on the measured direction of directional ultrasound sensor **220**.

The aforementioned configuration thus has the capability of determining the 3D position of the catheter **200** relative to the frame of reference, as well as the direction of imaging ultrasound sensor **240**. This provides a user of the system with a greater amount of information as to the position of a given image generated by catheter **200** than in conventional systems. In particular, various embodiments provide the user with the pitch, yaw, and roll position of catheter **200** having an imaging ultrasound sensor **240** with a restricted field of view. Thus a six dimensional (6D) (x, y, z, pitch, yaw, roll) localizing capability is afforded by embodiments of the present invention.

According to another embodiment of the present invention as shown in FIG. **4**, a catheter positioning system is provided for more accurately determining the position (or relative position) of catheter **200** of FIG. **1A**. In particular, the catheter positioning system includes a first positioning catheter **300** and a second positioning catheter **400** preferably positioned at some angle from catheter **200** as shown. By way of example, if the catheter **200** is used for intra-cardiac ultrasound (and thus positioned somewhere in the right atrium of a patient’s heart), the first positioning catheter **300** and second positioning catheter **400** may be positioned so as to better triangulate the position of the catheter **200** within the heart. Other locations for positioning catheters **300**, **400** are also contemplated. Additionally, an external location source/system, such as an X-ray system and/or external ultrasound transducers/beacons, may be used in conjunction with the aforementioned configuration to better determine or to confirm the position of ultrasound catheter **200**. The position of one or both of catheters **300**, **400** may be established by an external localizing means (e.g., an x-ray), so as to qualify as a frame of reference for determining the position of catheter **200**. This embodiment may be used to reduce x-ray exposure to the patient and attendants by using one or a few x-ray images to localize the positioning catheters **300**, **400**, which then can be used to localize the imaging catheter **200** during an intracardiac echocardiography session without the case of additional fluoroscopy. Alternatively, additional or other frames of references may also be used as previously described.

According to the exemplary embodiment shown in FIG. **4**, the first positioning catheter **300** includes at least two annular localizer sensors **310**, **320** positioned on a tubular body thereof so as to generate respective near-omni directional ultrasound pulses. In a like manner, the second positioning catheter **400** includes at least two annular localizer sensors **410**, **420** positioned on the tubular body thereof so as to generate respective near-omni directional ultrasound pulses. The positional sensors **310**, **320**, **410**, **420** illustrated in FIG. **4** comprise ultrasound sensors, however non-ultrasound sensors may also be used, such as the magnetic positional sensors, and resistance/impedance positional sensors previously described. The annular ultrasound sensors **310**, **320**, **410**, **420** of the positioning catheters **300**, **400** can be similar to the annular ultrasound sensors **210**, **230** of catheter **200** in that they create and/or receive ultrasound pulses from substantially all angles about the circumference of catheters **300**, **400**, respectively. Other configurations are also contemplated, such as positioning catheters each with only one annular ultrasound sensor, positioning catheters each with more

than two annular ultrasound sensors, and configurations with only one positioning catheter or more than two positioning catheters.

Alternatively, instead of annular sensors, two, three, four or more directional ultrasound sensors may be spaced at known angular intervals to provide near-omni directional ultrasound pulses. This alternative embodiment may further feature using different ultrasound frequencies on each such directional sensor or pulsing such sensors at different known times so that received pulses can be processed to identify which of the directional sensors emitted the received pulse. This additional information may be useful in certain applications where multipath errors may be an issue or where high positional precision is required (e.g., when microsurgery is being performed). An exemplary implementation of this technique is shown in greater detail in FIG. **6**, with catheters **600**, **610** generating a plurality of ultrasound pulses from directional sensors having individual field of views **P1**, **P2**, **P3** (for catheter **600**) and **F1**, **F2**, **F3** (for catheter **610**). Other configurations are also contemplated.

It should be appreciated that, while ultrasound positional sensors have been described, other non-ultrasound positional sensors may be used. As previously noted, examples of non-ultrasound positional sensors include magnetic positional sensors and resistance/impedance positional sensors. It should further be appreciated that a combination of the ultrasound and non-ultrasound positional sensors may be used for some applications. Such a combination may be used for positioning catheter **300**, positioning catheter **400**, and/or catheter **200**.

According to another embodiment of the present invention, the positioning catheters **300**, **400** and the ultrasound catheter **200** are electrically coupled to controller **299**, the controller **299** being adapted and configured to receive the echo data and to determine therefrom a three dimensional (3D) position of the ultrasound catheter **200** relative to a frame of reference from electrical signals generated by positioning catheters **300**, **400** and ultrasound catheter **200**. The controller **299** may comprise an appropriately programmed microprocessor, an application specific integrated circuit (ASIC) or other similar control and calculation device, as would be readily apparent to one of ordinary skill in the art after reading this disclosure.

According to an embodiment of the present invention, the positioning catheters **300**, **400** and the ultrasound imaging catheter **200** are coupled to controller **299** via an integrated positioning and imager junction box. The integrated positioning and imager junction box may include isolation circuitry to reduce or eliminate stray currents from controller **299**, which would otherwise be radiated along the length of catheter **200**.

In operation, the annular ultrasound sensors **310**, **320** of first positioning catheter **300**, the annular ultrasound sensors **410**, **420** of second positioning catheter **400**, and the annular ultrasound sensors **210**, **230** of ultrasound catheter **200** record the time of arrive of pulses from all positioning sensors in their field of regard. Additionally, echoes of a given sensor’s own pulses bouncing off another catheter may also be received and used to determine location. For example, an imaging ultrasound sensor may image a catheter within its field of view. As such, the field of view and field of regard of a given sensor may differ, where the “field of regard” refers to the direction(s) from which a given sensor may receive echoes (see FIG. **1B**). Hence, the field of regard may be the same or different from a given sensor’s overall field of view, which is the directions in which the sensor is facing.

Using the known speed of sound through blood, the controller **299** is able to calculate the relative positions of the sensors by spherical triangulation. More specifically, the

ultrasound sensors **310**, **320** detect the ultrasound sensors **210**, **230**, **410**, **420**; the ultrasound sensors **210**, **230** detect the ultrasound sensors **310**, **320**, **410**, **420**; and the ultrasound sensors **410**, **420** detect the ultrasound sensors **310**, **320**, **210**, **230**. By measuring the time delay of each pulse and/or the signal strength of received pulses, the relative positions of the three catheters **200**, **300** and **400** can be determined using known algorithms, and thus used to calculate the pitch and yaw of catheter **200** relative to the frame of reference.

To further determine the roll of catheter **200**, the annular ultrasound sensors **310**, **320** of catheter **300**, the directional ultrasound sensor **220** of catheter **200**, and the annular ultrasound sensors **410**, **420** of catheter **400** detect each other. Thus, the ultrasound sensors **310**, **320** detect the ultrasound sensors **220**, **410**, **420**; the directional ultrasound sensor **220** detects the ultrasound sensors **310**, **320**, **410**, **420**; and the ultrasound sensors **410**, **420** detect the ultrasound sensors **310**, **320**, **220**. By measuring the time delay of each pulse and/or the signal strength of received pulses, the relative positions of directional ultrasound sensor **220** from ultrasound sensors **310**, **320**, **410**, **420** can be determined using known algorithms. In this regard, it should be appreciated that not all of ultrasound sensors **310**, **320**, **410**, **420** may detect the directional ultrasound sensor **220** due to the restricted field of view of directional ultrasound sensor **220**. However, based off of the measured time delay and/or signal strength of the received pulses (including a measurement of no pulse received), the direction of directional ultrasound sensor **220** can be determined. This allows the direction of imaging ultrasound sensor **240** to be determined based on the known angle between imaging ultrasound sensor **240** and directional ultrasound sensor **220**.

The aforementioned location technique can be enhanced by gating each of the ultrasound sensors **310**, **320**, **210**, **220**, **230**, **410**, **420** to operate or emit pulses at different time intervals. Alternatively, each of the ultrasound sensors **310**, **320**, **210**, **220**, **230**, **410**, **420** may operate at different frequencies (preferably also different from imaging ultrasound sensor **240**), such that multiple ones of the ultrasound sensors **310**, **320**, **210**, **220**, **230**, **410**, **420** may generate/detect simultaneously. In this manner, the identity of each positioning sensor can be easily determined by the controller **299** according to the received frequency. Other configurations and methods are also contemplated.

According to an embodiment of the present invention as shown in FIG. 5, an ultrasound imaging catheter **500** is provided, the ultrasound catheter including an imaging ultrasound sensor **540**, and a positional ultrasound array with positional ultrasound sensors **210**, **230**. Similar to the ultrasound catheter **200** of FIG. 1A, first annular ultrasound sensor **230** is positioned at or near a proximal end of the catheter **200** and second annular ultrasound sensor **210** is positioned at some distance from first annular ultrasound sensor **230**. Preferably, the first annular ultrasound sensor **230** and the second annular ultrasound sensor **210** are positioned so as to bracket the imaging ultrasound sensor **540** along a length of the catheter **500**.

While the ultrasound catheter **500** of FIG. 5 is similar to ultrasound catheter **200** of FIG. 1A, the ultrasound catheter **500** utilizes one or more of the transducer elements of the imaging ultrasound sensor **540** in positioning determination rather than or in addition to a directional sensor **220** as with catheter **200**. In this regard, imaging ultrasound sensor **540** may be configured to operate in at least a positioning mode during which the imaging ultrasound sensor **540** generates and/or receives a positioning ultrasound pulse, and an imaging mode during which the imaging ultrasound sensor **540**

generates and/or receives an imaging ultrasound pulse. The ultrasound catheter **500** may be configured to have imaging ultrasound sensor **540** only operate in the positioning mode when the ultrasound catheter **500** is moved or on command by a user thereof, or may be configured to periodically operate in the positioning mode for periodic updates of the position.

The aforementioned technique can be performed by pulsing one or more single elements individually (e.g., one on each end of a linear array), by pulsing a plurality of elements together (e.g., non-phased), or by forming a directional pulse via phasing the pulses of each element (which may or may not include directing the direction pulse at specific positional sensors). Due to the high frequency of ultrasound and the high scan rate of a linear phased array ultrasound transducer, periodic localizing pulses may be transmitted so frequently that the positioning mode appears to be operating simultaneously with the imaging mode without noticeably degrading the quality of images.

The embodiment illustrated in FIG. 5 eliminates the need for a directional ultrasound sensor **220**. Thus, the present embodiment benefits from a reduced cost.

It should be appreciated that the particular frequency of a given ultrasound sensor for any one of the embodiments shown in FIGS. 1-6 may be selected based on the precision and penetration depth required. Thus, for ultrasound sensors positioned outside the body (e.g., sensors used as extra-body fiducials) a lower frequency may be selected, in order to achieve a higher degree of penetration depth. For an ultrasound imaging sensor, such as sensor **240** in FIG. 1A, a higher frequency may be selected, in order to achieve a higher degree of precision. Thus, particularly for ultrasound sensors positioned intra-body, higher frequencies are typically used than for ultrasound sensors positioned outside the body. Other configurations and methods are also contemplated.

According to another embodiment of the present invention, the positioning information from any one of the aforementioned embodiments may be used in control equipment to assist the operator in positioning and operating an ultrasound imaging catheter. Specifically, a rectangle or other shape representing the field of regard of the imaging sensor may be projected onto a 3D (e.g., wire-frame, cartoon or stylized) representation of the patient's heart rendered on a display device to show the operator the portion of the patient's body that is or will be imaged based upon the present position and orientation of the sensor. The image generated by the imaging ultrasound sensor **240**, **540** and positional information may be correlated to heart structures within the 3D wire-frame image (or stylized image) of an idealized heart using known image processing techniques. Once the ultrasound image provided by the ultrasound imaging catheter **200** has been correlated to heart structures, and the 3D wire-frame image (or stylized image) has been correlated to those heart structures, the catheter localizer information and ultrasound image can be applied to the 3D wire-frame image (or stylized image) to graphically depict the image including the location of all (or some) catheters within the heart for easier interpretation by the user. This embodiment provides the operator with more visual information, and thus a more easily understood representation of the position of the ultrasound catheters **200**, **500** and the image generated thereby. Specifically, a 3D wire-frame image may be transparent, allowing the operator to "see" the catheter(s) positions relative to the heart structures. This may be particularly useful in procedures where catheters are used to precisely position electrodes on the heart wall based upon real-time images provided by an intracardiac ultrasound imaging catheter since the positions of all catheters relative to the heart are displayed for the physician.

According to another embodiment of the present invention, the localizer information can be used in conjunction with images obtained from catheter 200. By way of example, one such process is described in copending application entitled "Method and Apparatus for Time Gating of Medical Images", filed currently with the present application and incorporated by reference herein in its entirety. Another such process is shown in the flowchart of FIG. 7, and described in greater detail below.

As shown in FIG. 7, at least one embodiment of the present invention includes methods of displaying medical images from a catheter-based imaging sensor having a restricted field of view, such as a two dimensional (2D) ultrasound imaging sensor. In step 710, the imaging sensor is used to generate at least one image (preferably 2D) of a structure of interest. In step 720, a position of the imaging sensor is calculated, and then coregistered in step 730 with the at least one image generated in step 710. This may include, for example, coregistering a section of the structure of interest (e.g., a heart) with each image generated in step 710.

In step 740, the at least one generated image of step 710 is displayed based on the calculated positional information from step 720. By way of example, step 740 may include displaying a 3D model of the structure of interest, and then highlighting a section of the 3D model of the structure of interest which corresponds to the coregistered section of step 730. Preferably, the 3D model is generally depicted in a first color or colors, and the highlighted section is depicted in a second color different from the first color(s). Other configurations are also contemplated.

The foregoing description of various embodiments of the invention has been presented for purposes of illustration and description. It is not intended to be exhaustive or to limit the invention to the precise form disclosed, and modifications and variations are possible in light of the above teachings or may be acquired from practice of the invention. The embodiments were chosen and described in order to explain the principles of the invention and its practical application to enable one skilled in the art to utilize the invention in various embodiments and with various modifications as are suited to the particular use contemplated.

What is claimed is:

1. An imaging system, comprising:

an ultrasound catheter including a tubular body, comprising:

a localizer sensor adapted and configured to generate positional information for the ultrasound catheter, the localizer sensor comprising:

a first annular ultrasound sensor positioned on the tubular body; and

a second annular ultrasound sensor positioned on the tubular body displaced from the first annular sensor along a length of the tubular body; and

an imaging ultrasound sensor positioned on the tubular body so as to have a first restricted field of view; and a controller coupled to the localizer sensor and the ultrasound catheter,

wherein the first restricted field of view spans less than 360 degrees about the tubular body, and

wherein the controller is configured to determine a position and direction of the ultrasound catheter in six dimensions with respect to a frame of reference defined by a recognizable heart structure imaged by the imaging ultrasound sensor, and to co-register ultrasound images from the imaging ultrasound sensor with the frame of reference.

2. The imaging system of claim 1, wherein the localizer sensor further comprises:

a directional ultrasound sensor positioned on the tubular body so as to sense positional information along a second restricted field of view,

wherein the second field of view spans less than 360 degrees about the tubular body, and wherein the directional ultrasound sensor is circumferentially positioned relative to the imaging ultrasound sensor about the tubular body at a known angle.

3. The imaging system of claim 2, wherein the known angle is within a range of about 90 degrees to about 180 degrees.

4. The imaging system of claim 3, wherein the directional ultrasound sensor is positioned substantially opposite the imaging ultrasound sensor about the tubular body.

5. The imaging system of claim 1, wherein at least one of the first annular ultrasound sensor and the second annular ultrasound sensor comprise a cylindrical array of ultrasound sensors.

6. The imaging system of claim 1, wherein the first and second annular ultrasound sensors are ring shaped transducers.

7. The imaging system of claim 1, wherein the controller is configured to determine position and direction of the ultrasound catheter in six dimensions by determining a distance based upon a measured time delay of a received ultrasound pulse and a known speed of sound in blood and applying spherical triangulation to the determined distance to determine a position.

8. The imaging system of claim 2, wherein at least one of the first annular ultrasound sensor and the second annular ultrasound sensor are positioned within a flexible portion of the tubular body.

9. The imaging system of claim 2, wherein the imaging ultrasound sensor is positioned between the first annular ultrasound sensor and the second annular ultrasound sensor along the length of the tubular body.

10. A method of displaying medical images from a catheter-based imaging ultrasound sensor having a first restricted field of view, the method comprising:

generating at least one image with the imaging ultrasound sensor;

receiving ultrasound signals at a first annular ultrasound sensor positioned on the catheter body and at a second annular ultrasound sensor positioned on the catheter body at a position displaced along a length of the catheter body from the first annular ultrasound sensor;

calculating a six dimensional position and direction of the imaging ultrasound sensor with respect to a frame of reference defined by a recognizable heart structure imaged by the imaging ultrasound sensor based on the ultrasound signals received at the first and second annular ultrasound sensors;

coregistering the calculated position with the at least one generated image within the frame of reference defined by the recognizable heart structure; and

displaying the at least one generated image based on the calculated positional and directional information, wherein the first restricted field of view spans less than 360 degrees about a body of the catheter.

11. The method of claim 10,

wherein coregistering the position of the imaging ultrasound sensor with the at least one generated image comprises coregistering a section of a heart imaged in the at least one generated image, and

wherein displaying the at least one generated image based on the positional and directional information comprises:

13

displaying a three dimensional (3D) model of the heart;
and

highlighting a section of the 3D model of the heart which corresponds to the coregistered section.

12. The method of claim 11, wherein the 3D model of the heart is displayed in a first color, and wherein the highlighted section of the 3D model is displayed in a second color different from the first color.

13. The method of claim 10, wherein the step of calculating a six dimensional position and direction of the imaging ultrasound sensor comprises:

measuring a time delay of a received ultrasound pulse received at one of the first and second annular ultrasound sensors;

determining a distance based upon the measured time delay and a known speed of sound in blood; and

applying spherical triangulation to the determined distance to determine a position of the one of the first and second annular ultrasound sensors.

14. The method of claim 11, further comprising displaying the imaging ultrasound sensor in the 3D model of the heart based on the calculated positional information.

15. The method of claim 11, wherein calculating the six dimensional position and direction of the imaging ultrasound sensor is further based on positional measurements by a directional ultrasound sensor having a second restricted field of view about the body of the catheter, the directional ultrasound sensor being positioned on the body of the catheter at a known angle to the imaging ultrasound sensor.

16. The method of claim 15, further comprising:

sensing a first omni directional position information with the first annular ultrasound sensor; and

sensing a second omni directional position information with the second ultrasound annular sensor.

17. The method of claim 15, wherein the first restricted field of view is substantially the same as the second restricted field of view, and the known angle is substantially zero.

18. The method of claim 17, further comprising sensing a third position information with the imaging ultrasound sensor.

19. An imaging system, comprising:

an ultrasound catheter including a tubular body, comprising:

a localizer sensor adapted and configured to generate positional information for the ultrasound catheter, the localizer sensor comprising:

a first annular ultrasound sensor positioned on the tubular body;

a second annular ultrasound sensor positioned on the tubular body, the second annular sensor being displaced from the first annular sensor along a length of the tubular body; and

an imaging ultrasound sensor positioned relative to the tubular body so as to have a first restricted field of view;

a first positioning catheter comprising at least one ultrasound transducer; and

a controller coupled to the localizer sensor, the first positioning catheter and the ultrasound catheter,

wherein the first restricted field of view spans less than 360 degrees about the tubular body, and

wherein the controller is configured to determine position and direction of the ultrasound catheter in six dimensions with respect to a frame of reference defined by the first positioning catheter.

14

20. The imaging system of claim 19, wherein the localizer sensor further comprises:

a directional ultrasound sensor positioned on the tubular body so as to receive ultrasound signals along a second restricted field of view,

wherein the second field of view spans less than 360 degrees about the tubular body, and

wherein the directional ultrasound sensor is circumferentially positioned relative to the imaging ultrasound sensor about the tubular body at a known angle.

21. The imaging system of claim 19, wherein the controller is configured to determine position and direction of the ultrasound catheter in six dimensions by determining a distance of one of the first and second annular ultrasound sensors to one ultrasound transducer on the first positioning catheter based upon a measured time delay of a received ultrasound pulse and a known speed of sound in blood and applying spherical triangulation to the determined distance to determine a position of the one of the first and second annular ultrasound sensors with respect to the first positioning catheter.

22. The imaging system of claim 19, further comprising a second positioning catheter comprising at least one ultrasound transducer.

23. The imaging system of claim 19, wherein the first positioning catheter comprises at least two annular ultrasound transducers.

24. The imaging system of claim 19, further comprising a second positioning catheter

wherein the first and second positioning catheters each comprise at least two annular ultrasound transducers.

25. The imaging system of claim 24, wherein the annular ultrasound transducers emit pulses at one of different sound frequencies and at different times.

26. The imaging system of claim 19, wherein the first positioning catheter comprises at least three directional ultrasound transducers.

27. The imaging system of claim 19, further comprising a second positioning catheter

wherein the first and second positioning catheters each comprise at least three directional ultrasound transducers.

28. The imaging system of claim 27, wherein the directional ultrasound transducers emit pulses at one of different sound frequencies and at different times.

29. A medical imaging system, comprising:

a catheter including an imaging ultrasound sensor having a first restricted field of view spanning less than 360 degrees about a body of the catheter;

means for generating at least one image, with the imaging ultrasound sensor;

means for receiving ultrasound signals at a first annular ultrasound sensor positioned on the catheter body and a second annular ultrasound sensor positioned on the catheter body displaced along a length of the catheter body from the first annular ultrasound sensor;

means for calculating a six dimensional position and direction of the imaging ultrasound sensor with respect to a frame of reference defined by a recognizable heart structure imaged by the imaging ultrasound sensor based on the ultrasound signals received at the first and second annular ultrasound sensors;

means for coregistering the calculated position with the at least one generated image within the frame of reference defined by the recognizable heart structure; and

means for displaying the at least one generated image based on the calculated positional and directional information.

15

30. The medical imaging system of claim **29**,

wherein means for coregistering the position of the imaging ultrasound sensor with the at least one generated image comprises means for coregistering a section of a heart imaged in the at least one generated image, and

wherein means for displaying the at least one generated image based on the positional and directional information comprises:

means for displaying a three dimensional (3D) model of the heart; and

means for highlighting a section of the 3D model of the heart which corresponds to the coregistered section.

31. The medical imaging system of claim **30**, wherein:

means for displaying a 3D model of the heart comprises means for displaying the 3D model of the heart in a first color; and

means for highlighting a section of the 3D model comprises means for highlighting the section of the 3D model in a second color different from the first color.

32. The medical imaging system of claim **29**, wherein means for calculating a six dimensional position and direction of the imaging ultrasound sensor comprises:

means for measuring a time delay of a received ultrasound pulse received at one of the first and second annular ultrasound sensors;

means for determining a distance based upon the measured time delay and a known speed of sound in blood; and

16

means for applying spherical triangulation to the determined distance to determine a position of the one of the first and second annular ultrasound sensors.

33. The medical imaging system of claim **30**, further comprising means for displaying the imaging ultrasound sensor in the 3D model of the heart based on the calculated positional information.

34. The medical imaging system of claim **30**, wherein means for calculating the six dimensional position and direction of the imaging ultrasound sensor comprises means for calculating the six dimensional position and direction of the imaging ultrasound sensor based on positional measurements by a directional ultrasound sensor having a second restricted field of view about the body of the catheter, the directional ultrasound sensor being positioned on the body of the catheter at a known angle to the imaging ultrasound sensor.

35. The medical imaging system of claim **34**, further comprising:

means for sensing a first omni-directional position information with the first annular ultrasound sensor; and means for sensing a second omni-directional position information with the second ultrasound annular sensor.

36. The medical imaging system of claim **34**, further comprising means for sensing a third position information with the imaging ultrasound sensor,

wherein the first restricted field of view is substantially the same as the second restricted field of view, and the known angle is substantially zero.

* * * * *

UNITED STATES PATENT AND TRADEMARK OFFICE
CERTIFICATE OF CORRECTION

PATENT NO. : 7,713,210 B2
APPLICATION NO. : 10/994424
DATED : May 11, 2010
INVENTOR(S) : Charles Bryan Byrd et al.

Page 1 of 1

It is certified that error appears in the above-identified patent and that said Letters Patent is hereby corrected as shown below:

Column 14, claim 20, line 7, kindly delete "360degrees" and replace with --360 degrees--.

Signed and Sealed this
Twelfth Day of March, 2013

A handwritten signature in cursive script, appearing to read "Teresa Stanek Rea".

Teresa Stanek Rea
Acting Director of the United States Patent and Trademark Office

专利名称(译)	用于定位超声导管的方法和设备		
公开(公告)号	US7713210	公开(公告)日	2010-05-11
申请号	US10/994424	申请日	2004-11-23
[标]申请(专利权)人(译)	EP MEDSYST		
申请(专利权)人(译)	EP MedSystems公司，INC.		
当前申请(专利权)人(译)	ST.犹达医疗用品，房颤DIVISION，INC.		
[标]发明人	BYRD CHARLES BRYAN DALA KRISHNA PRAVEEN JENKINS DAVID A		
发明人	BYRD, CHARLES BRYAN DALA-KRISHNA, PRAVEEN JENKINS, DAVID A.		
IPC分类号	A61B8/02		
CPC分类号	A61B5/06 A61B5/064 A61B8/12 A61B8/5238 A61B8/463 A61B5/063 A61B8/445 A61B8/4263 A61B8/4254 A61B8/54 A61B5/062 A61B8/4488		
其他公开文献	US20060122514A1		
外部链接	Espacenet USPTO		

摘要(译)

成像系统设置有超声导管和耦合到超声导管的控制器。导管包括定位器传感器和成像超声传感器，定位器传感器配置成产生超声导管的位置信息，成像超声传感器具有受限制的视野。控制器将来自成像超声传感器的图像与来自定位器传感器的位置信息共同登记。

