



US007654958B2

(12) **United States Patent**  
**Byrd et al.**

(10) **Patent No.:** **US 7,654,958 B2**  
(45) **Date of Patent:** **Feb. 2, 2010**

- (54) **METHOD AND APPARATUS FOR ULTRASOUND IMAGING WITH AUTOFREQUENCY SELECTION**  
4,917,097 A 4/1990 Proudian et al.  
4,951,677 A 8/1990 Crowley et al.  
5,002,059 A 3/1991 Crowley et al.
- (75) Inventors: **Charles Bryan Byrd**, Medford, NJ (US); **Praveen Dala-Krishna**, Bensalem, PA (US)  
5,090,956 A 2/1992 McCoy  
5,105,819 A 4/1992 Wollschlager et al.  
5,152,294 A 10/1992 Mochizuki et al.  
5,158,087 A 10/1992 Gatzke
- (73) Assignee: **St. Jude Medical, Atrial Fibrillation Division, Inc.**, St. Paul, MN (US)  
5,170,793 A 12/1992 Takano et al.  
5,195,968 A 3/1993 Lundquist et al.  
5,254,088 A 10/1993 Lundquist et al.
- (\* ) Notice: Subject to any disclaimer, the term of this patent is extended or adjusted under 35 U.S.C. 154(b) by 1143 days.

(21) Appl. No.: **10/827,520**

(Continued)

(22) Filed: **Apr. 20, 2004**

**OTHER PUBLICATIONS**

(65) **Prior Publication Data**  
US 2005/0240103 A1 Oct. 27, 2005

Keith S. Dickerson et al., "Comparison of Conventional and Transverse Doppler Sonograms", J. Ultrasound Med., 1993, pp. 497-506, vol. 12.

- (51) **Int. Cl.**  
*A61B 8/00* (2006.01)  
*A61B 8/12* (2006.01)  
*A61B 8/14* (2006.01)
- (52) **U.S. Cl.** ..... **600/443**; 600/437; 600/442; 600/459; 382/148; 382/299; 73/602
- (58) **Field of Classification Search** ..... 600/437, 600/442; 382/148, 299; 73/602  
See application file for complete search history.

(Continued)

*Primary Examiner*—Brian Casler  
*Assistant Examiner*—James Kish  
(74) *Attorney, Agent, or Firm*—The Marbury Law Group, PLLC

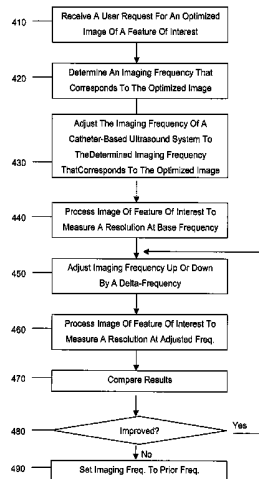
(56) **References Cited**  
U.S. PATENT DOCUMENTS

(57) **ABSTRACT**

- 4,161,121 A 7/1979 Zitelli et al.
- 4,241,610 A 12/1980 Anderson
- 4,442,713 A \* 4/1984 Wilson et al. .... 73/599
- 4,462,408 A 7/1984 Silverstein et al.
- 4,519,260 A 5/1985 Fu et al.
- 4,534,221 A \* 8/1985 Fife et al. .... 73/626
- 4,576,177 A 3/1986 Webster, Jr.
- 4,605,009 A 8/1986 Pourcelot et al.
- 4,841,977 A 6/1989 Griffith et al.
- 4,890,268 A 12/1989 Smith et al.

An ultrasound imaging system is provided with an interface for receiving user input, and a controller coupled to the interface, the controller being adapted and configured to adjust parameters for a catheter-based ultrasound probe in response to received user input. Preferably, the controller is programmed to receive a user request for a desired imaging depth, determine an imaging frequency that corresponds to the desired imaging depth, and adjust the imaging frequency of the system to the determined imaging frequency that corresponds to the desired imaging depth.

**22 Claims, 5 Drawing Sheets**



## U.S. PATENT DOCUMENTS

5,279,559	A	1/1994	Barr	
5,301,674	A *	4/1994	Erikson et al. ....	600/447
5,307,816	A	5/1994	Hashimoto et al.	
5,309,914	A	5/1994	Iinuma	
5,325,860	A	7/1994	Seward et al.	
5,336,182	A	8/1994	Lundquist et al.	
5,345,938	A	9/1994	Nishiki et al.	
5,345,940	A	9/1994	Seward et al.	
5,357,550	A	10/1994	Asahina et al.	
5,358,478	A	10/1994	Thompson et al.	
5,361,767	A *	11/1994	Yukov .....	600/442
5,364,351	A	11/1994	Heinzelman et al.	
5,372,138	A	12/1994	Crowley et al.	
5,385,148	A	1/1995	Lesh et al.	
5,395,327	A	3/1995	Lundquist et al.	
5,438,997	A	8/1995	Sieben et al.	
5,456,258	A	10/1995	Kondo et al.	
5,456,664	A	10/1995	Heinzelman et al.	
5,470,350	A	11/1995	Buchholtz et al.	
5,499,630	A	3/1996	Hiki et al.	
5,515,853	A	5/1996	Smith et al.	
5,515,856	A	5/1996	Olstad et al.	
5,531,686	A	7/1996	Lundquist et al.	
5,560,362	A	10/1996	Sliwa, Jr. et al.	
5,588,432	A	12/1996	Crowley	
5,622,174	A	4/1997	Yamazaki	
5,662,116	A	9/1997	Kondo et al.	
5,697,965	A	12/1997	Griffin, III	
5,699,805	A	12/1997	Seward et al.	
5,701,897	A	12/1997	Sano	
5,704,361	A	1/1998	Seward et al.	
5,713,363	A	2/1998	Seward et al.	
5,715,817	A	2/1998	Stevens-Wright et al.	
5,722,403	A	3/1998	McGee et al.	
5,749,364	A	5/1998	Sliwa, Jr. et al.	
5,788,636	A	8/1998	Curley	
5,795,299	A	8/1998	Eaton et al.	
5,797,848	A	8/1998	Marian et al.	
5,800,356	A	9/1998	Criton et al.	
5,807,324	A	9/1998	Griffin, III	
5,846,205	A	12/1998	Curley et al.	
5,888,577	A	3/1999	Griffin, III et al.	
5,891,088	A	4/1999	Thompson et al.	
5,906,579	A	5/1999	Vander Salm et al.	
5,916,168	A	6/1999	Pedersen et al.	
5,921,978	A	7/1999	Thompson et al.	
5,928,276	A	7/1999	Griffin, III et al.	
5,931,863	A	8/1999	Griffin, III et al.	
5,935,102	A	8/1999	Bowden et al.	
5,938,616	A	8/1999	Eaton et al.	
5,954,654	A	9/1999	Eaton et al.	
6,013,072	A	1/2000	Winston et al.	
6,033,378	A	3/2000	Lundquist et al.	
6,039,693	A	3/2000	Seward et al.	
6,085,117	A	7/2000	Griffin, III et al.	
6,095,976	A *	8/2000	Nachtomy et al. ....	600/443
6,144,870	A	11/2000	Griffin, III	
6,171,248	B1	1/2001	Hossack et al.	
6,173,205	B1	1/2001	Griffin, III et al.	
6,190,353	B1	2/2001	Makower et al.	
6,210,333	B1	4/2001	Gardner et al.	
6,224,556	B1	5/2001	Schwartz et al.	
6,228,028	B1	5/2001	Klein et al.	
6,228,032	B1	5/2001	Eaton et al.	
6,261,246	B1	7/2001	Pantages et al.	
6,293,943	B1	9/2001	Panescu et al.	
6,306,096	B1	10/2001	Seward et al.	
6,306,097	B1	10/2001	Park et al.	
6,310,828	B1	10/2001	Mumm et al.	
6,322,507	B1 *	11/2001	Passi et al. ....	600/437
6,358,208	B1 *	3/2002	Lang et al. ....	600/438
6,360,027	B1	3/2002	Hossack et al.	
6,368,275	B1	4/2002	Sliwa et al.	
6,385,489	B1	5/2002	Griffin, III et al.	
6,398,731	B1	6/2002	Mumm et al.	
6,423,002	B1	7/2002	Hossack	
6,440,488	B2	8/2002	Griffin, III et al.	
6,443,894	B1	9/2002	Sumanaweera et al.	
6,475,148	B1	11/2002	Jackson et al.	
6,475,149	B1	11/2002	Sumanaweera	
6,482,161	B1	11/2002	Sumanaweera et al.	
6,485,455	B1	11/2002	Thompson et al.	
6,491,633	B1	12/2002	Krishnan et al.	
6,503,202	B1	1/2003	Hossack et al.	
6,517,488	B1	2/2003	Hossack	
6,527,717	B1	3/2003	Jackson et al.	
6,532,378	B2	3/2003	Saksena et al.	
6,554,770	B1	4/2003	Sumanaweera et al.	
6,589,182	B1	7/2003	Loftman et al.	
6,605,043	B1	8/2003	Dreschel et al.	
6,607,488	B1	8/2003	Jackson et al.	
6,607,528	B1	8/2003	Quick et al.	
6,612,992	B1	9/2003	Hossack et al.	
6,645,147	B1	11/2003	Jackson et al.	
6,648,875	B2	11/2003	Simpson et al.	
6,709,396	B2	3/2004	Flesch et al.	
6,908,434	B1	6/2005	Jenkins et al.	
6,923,768	B2	8/2005	Camus et al.	
7,396,332	B2 *	7/2008	Taimisto et al. ....	600/467
2001/0020126	A1 *	9/2001	Swanson et al. ....	600/407
2003/0045796	A1	3/2003	Friedman	
2003/0158483	A1	8/2003	Jackson et al.	
2004/0039286	A1 *	2/2004	Kuban et al. ....	600/467
2004/0097805	A1	5/2004	Verard et al.	
2004/0249282	A1	12/2004	Olslad	
2005/0203390	A1	9/2005	Torp et al.	

## OTHER PUBLICATIONS

- David J. Sahn, "Phased Arrays for Multiplane Esophageal Echos in Infants", Summary Statement, Diagnostic Radiology Study Section, Jun. 1990.
- David J. Sahn, "Instrumentation and Physical Factors Related to Visualization of Stenotic and Regurgitant Jets by Doppler Color Flow Mapping", JACC, Nov. 1988, pp. 1354-1365, vol. 12, No. 5.
- David J. Sahn, "Advances in Ultrasound Imaging for Congenital Heart Disease Diagnosis and Management", Pediatric Cardiology, Nov. 26-Dec. 1, 1989, Proceedings of the III World Congress of Pediatric Cardiology, Bangkok.
- David J. Sahn et al., "Important Roles of Transeophageal Color Doppler Flow Mapping Studies (TEE) in Infants with Congenital Heart Disease", Supplement to Journal of the American College of Cardiology, Feb. 1990, vol. 15, No. 2 (Supplement A).
- David J. Sahn, "Applications of Color Flow Mapping in Pediatric Cardiology", Cardiology Clinics, May 1989, pp. 255-264, vol. 7, No. 2.
- David J. Sahn et al., "Miniaturized High Frequency Phased Array Devices for High Resolution Neonatal and Intraoperative Imaging", Supplement to Journal of the American College of Cardiology, Feb. 1990, vol. 15, No. 2 (Supplement A).
- Piero Tortoli et al., "Velocity Magnitude Estimation with Linear Arrays Using Doppler Bandwidth", Ultrasonics, 2001, pp. 157-161, vol. 39.
- Lilliam M. Valdes-Cruz et al., "Transvascular Intracardiac Applications of a Miniaturized Phase-Array Ultrasonic Endoscope", Brief Rapid Communication, Mar. 1991, pp. 1023-1027, vol. 83, No. 3.
- Lilliam M. Valdes-Cruz et al., "Experimental Animal Investigations of the Potential for New Approaches to Diagnostic Cardiac Imaging in Infants and Small Premature Infants from Intracardiac and Trasesophageal Approaches Using a 20MHz Real Time Ultrasound Imaging Catheter", Supplement to Journal of the American College of Cardiology, Feb. 1989, vol. 13, No. 2 (Supplement A).
- P.N.T. Wells, "Velocity, Absorption and Attenuation in Biological Materials", Biomedical Ultrasonics, 1977, pp. 110-144.

- Antonio L. Bartorelli, M.D. et al., "Plaque Characterization of Atherosclerotic Coronary Arteries by Intravascular Ultrasound", *Echocardiography: A Journal of CV Ultrasound & Allied Tech*, 1990, pp. 389-395, vol. 7, No. 4.
- N. Bom et al., "Early and recent intraluminal ultrasound devices", *International Journal of Cardiac Imaging*, 1989, pp. 79-88, vol. 4.
- R.J. Crowley et al., "Optimized ultrasound imaging catheters for use in the vascular system", *International Journal of Cardiac Imaging*, 1989, pp. 145-151, vol. 4.
- R.J. Crowley, et al., "Ultrasound guided therapeutic catheters: recent developments and clinical results", *International Journal of Cardiac Imaging*, 1991, pp. 145-156, vol. 6.
- Richard A. Carleton, M.D., et al., "Measurement of Left Ventricular Diameter In the Dog by Cardiac Catheterization", *Circulation Research*, May 1968, pp. 545-558, vol. XXII.
- Taher Elkadi et al., "Importance of Color Flow Doppler (CFD) Imaging of the Right Ventricular Outflow Tract and Pulmonary Arteries by Transesophageal Echocardiography (TEE) During Surgery for CHD", *Supplement III Circulation*, Oct. 1990, p. III-438, vol. 82, No. 4.
- Philip C. Currie, "Transesophageal Echocardiography New Window to the Heart", *Circulation*, Jul. 1989, pp. 215-217, vol. 88, No. 1.
- Steven Schwartz et al., "In Vivo Intracardiac 2-D Echocardiography: Effects of Transducer Frequency, Imaging Approached and Comparison with Fiberoptic Angioscopy", *JACC*, Feb. 1990, pp. 29A, vol. 15, No. 2.
- J. Souquet et al., "Transesophageal Phased Array for Imaging the Heart", *IEEE Transactions on Biomedical Engineering*, Oct. 1982, pp. 707-712, vol. BME-29, No. 10.
- Craig J. Hartley, "Review of Intracoronary Doppler catheters", *International Journal of Cardiac Imaging*, 1989, pp. 159-168, vol. 4.
- John McB. Hodgson et al., "Percutaneous Intravascular Ultrasound Imaging: Validation of a Real-Time Synthetic Aperture Array Catheter", *American Journal of Cardiac Imaging*, Mar. 1991, pp. 56-71, vol. 5, No. 1.
- J. McB. Hodgson et al., "Clinical percutaneous imaging of coronary anatomy using an over-the-wire ultrasound catheter system", *International Journal of Cardiac Imaging*, 1989, pp. 187-193, vol. 4.
- Brenda S. Kusay et al., "Realtime in Vivo Intracardiac Two-Dimensional Echocardiography and Color Flow Imaging: Approaches, Imaging Planes, and Echo Anatomy", *Abstracts of the 62<sup>nd</sup> Scientific Sessions*, 1989, p. II-581.
- Charles T. Lancee, "A Transesophageal Phased Array Transducer for Ultrasonic Imaging of the Heart", 1987.
- Natesa Pandian et al., "Enhanced Depth of Field in Intracardiac 2-D Echocardiography with a New Prototype, Low Frequency (12 MHz, 9 French) Ultrasound Catheter", *Supplemental III Circulation*, Oct. 1990, p. III-442, vol. 82, No. 4.
- Natesa G. Pandian, M.D. et al., "Intravascular and Intracardiac Ultrasound Imaging: Current Research and Future Directions", *Echocardiography: A Journal of CV Ultrasound & Allied Tech.*, 1990, pp. 377-387, vol. 7, No. 4.
- Natesa G. Pandian, M.D. et al., "Intracardiac, Intravascular, Two-Dimensional, High-Frequency Ultrasound Imaging of Pulmonary Artery and Its Branches in Humans and Animals", *Circulation*, Jun. 1990, pp. 2007-2012, vol. 81, No. 6.
- F. Ricou et al., "Applications of intravascular scanning and transesophageal echocardiography in congenital heart disease: tradeoffs and the merging of technologies", *International Journal of Cardiac Imaging*, 1991, pp. 221-230, vol. 6.
- Samuel B. Ritter, M.D., et al., "Transesophageal real time Doppler flow imaging in congenital heart disease: experience with a new pediatric transducer probe", 1989, Dynamedia, Inc.
- Samuel B. Ritter, M.D., et al., "Pediatric Transesophageal Color Flow Imaging: Smaller Probes for Smaller Hearts", 1989.
- David J. Sahn, M.D., et al., "Important Roles of Transesophageal Color Doppler Flow Mapping Studies (TEE) in Infants With Congenital Heart Disease", *IACC*, Feb. 1990, p. 204A, vol. 15, No. 2.
- David J. Sahn, M.D. et al., "Miniaturized High Frequency Phased Array Devices for High Resolution Neonatal and Intraoperative Imaging", *JACC*, Feb. 1990, p. 10A, vol. 15, No. 2.
- David J. Sahn, M.D., et al., "Phased Arrays for Multiplane Esophageal Echos in Infants", *Grant Application, Department of Health and Human Services Public Health Service*, 1992.
- Steven Schwartz, M.D., et al., "Intracardiac Echocardiographic Guidance and Monitoring During Aortic and Mitral Balloon Valvuloplasty", *JACC*, Feb. 1990, p. 104A, vol. 15, No. 2.
- James B. Seward, M.D. et al., "Biplanar Transesophageal Echocardiography: Anatomic Correlations, Image Orientation, and Clinical Applications", *Mayo Clin Proc.*, 1990, pp. 1198-1213, vol. 65.
- James B. Seward, M.D. et al., "Wide-Field Transesophageal Echocardiographic Tomography: Feasibility Study", *Mayo Clin Proc.* 1990, pp. 31-37, vol. 65.
- Khalid H. Sheikh, M.D., et al., "Interventional Applications of Intravascular Ultrasound Imaging: Initial Experience and Future Perspectives", *Echocardiography: A Journal of CV Ultrasound & Allied Tech.*, pp. 433-441, vol. 7, No. 4.
- Paul G. Yock, M.D., et al., "Two-Dimensional Intravascular Ultrasound: Technical Development and Initial Clinical Experience", *Journal of American Society of Echocardiography*, 1989, pp. 296-304, vol. 2, No. 4.
- Paul G. Yock, M.D. et al., "Real-Time, Two-Dimensional Catheter Ultrasound: A New Technique for High-Resolution Intravascular Imaging", *JACC*, Feb. 1988, p. 130A, vol. 11, No. 2.
- P. Yock et al., "Intravascular Two-Dimensional Catheter Ultrasound: Initial Clinical Studies", *Abstracts of the 61<sup>st</sup> Scientist Sessions*, p. II-21.
- Michael J. Eberle et al., "Validation of a New Real Time Percutaneous Intravascular Ultrasound Imaging Catheter", *Abstracts of the 61<sup>st</sup> Scientist Sessions*, p. II-21.
- Natesa Pandian et al., "Intraluminal Ultrasound Angioscopic Detection of Arterial Dissection and Intimal Flaps: In Vitro and In Vivo Studies", *Abstracts of the 61<sup>st</sup> Scientist Sessions*, p. II-21.
- John A. Mallery et al., "Evaluation of an Intravascular ultrasound Imaging Catheter in Porcine Peripheral and Coronary Arteries In Vivo", *Abstracts of the 61<sup>st</sup> Scientist Sessions*, p. II-21.
- Andrew Wintraub, M.D., "Realtime Intracardiac Two-Dimensional Echocardiography in the Catheterization Laboratory in Humans", *Intravascular Imaging I*, Mar. 19, 1990.

\* cited by examiner

FIG. 1

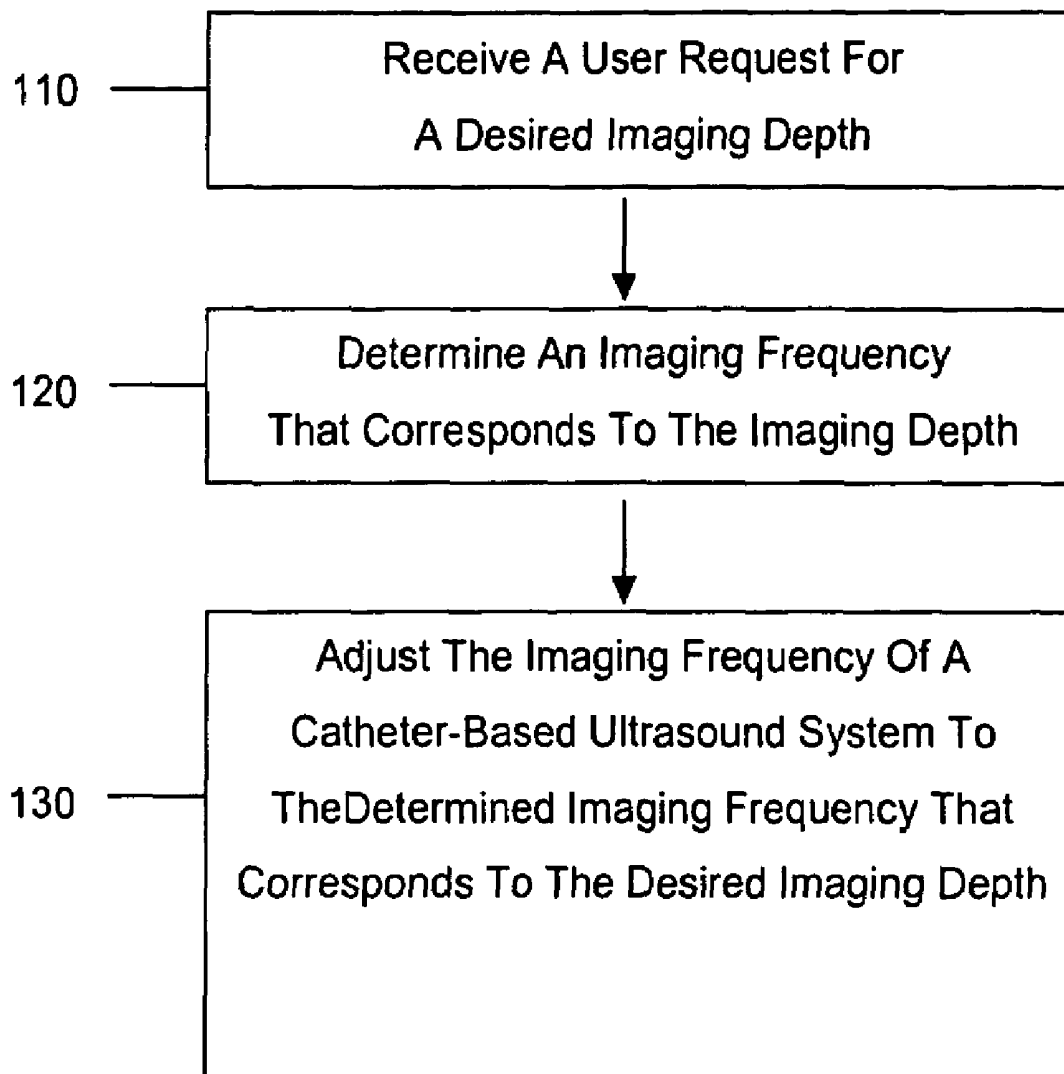


FIG. 2

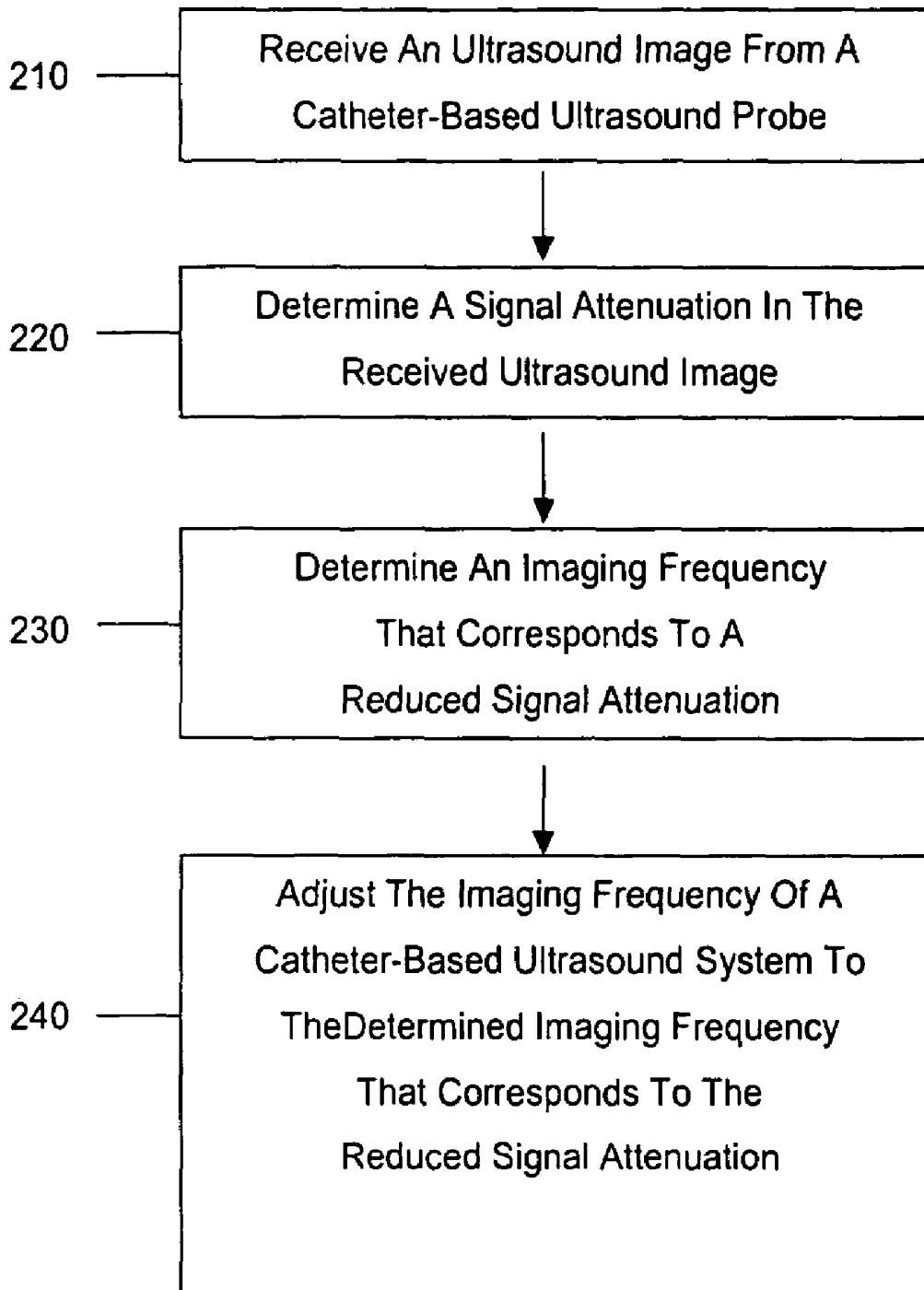


FIG. 3

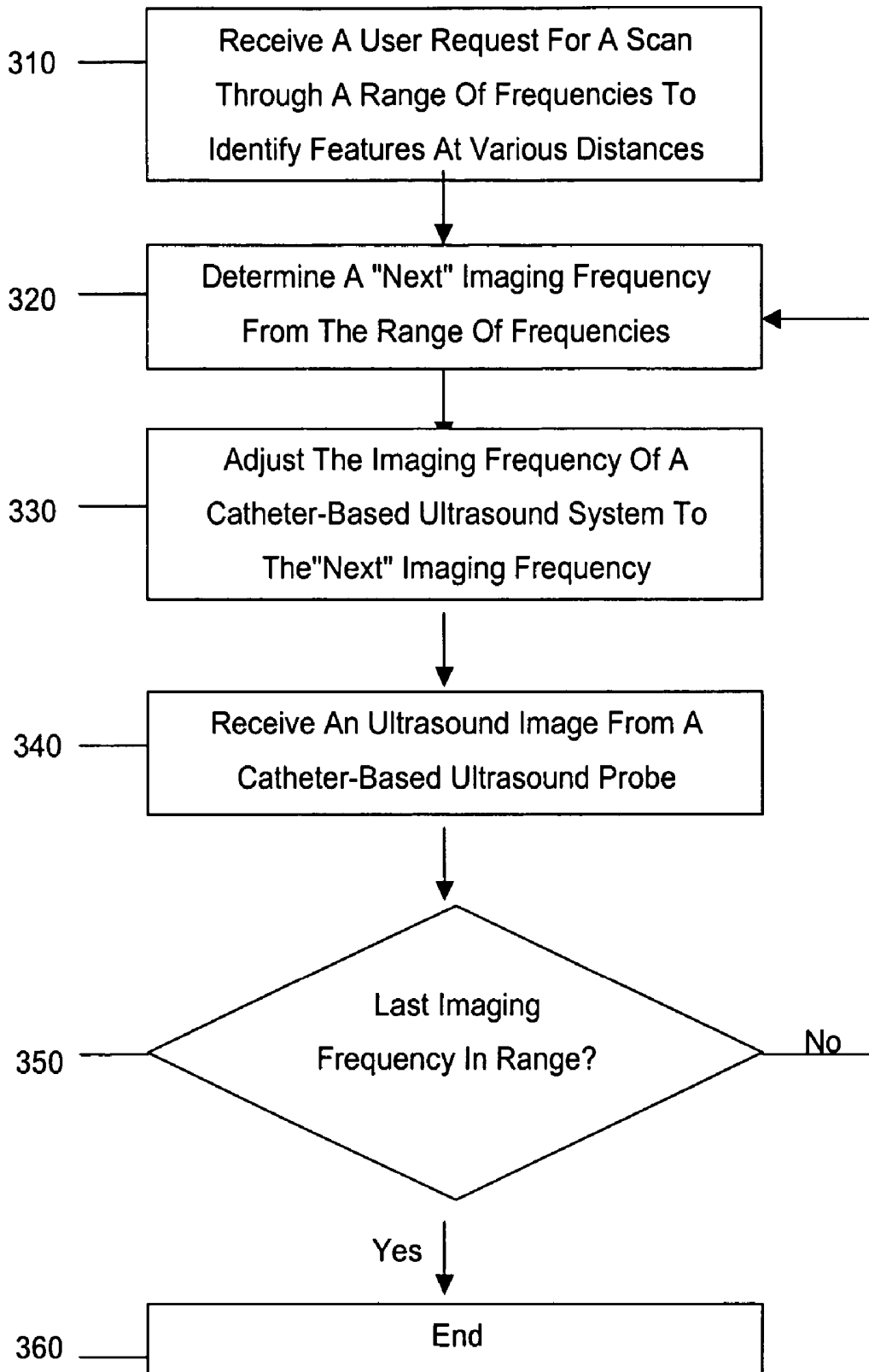


FIG. 4

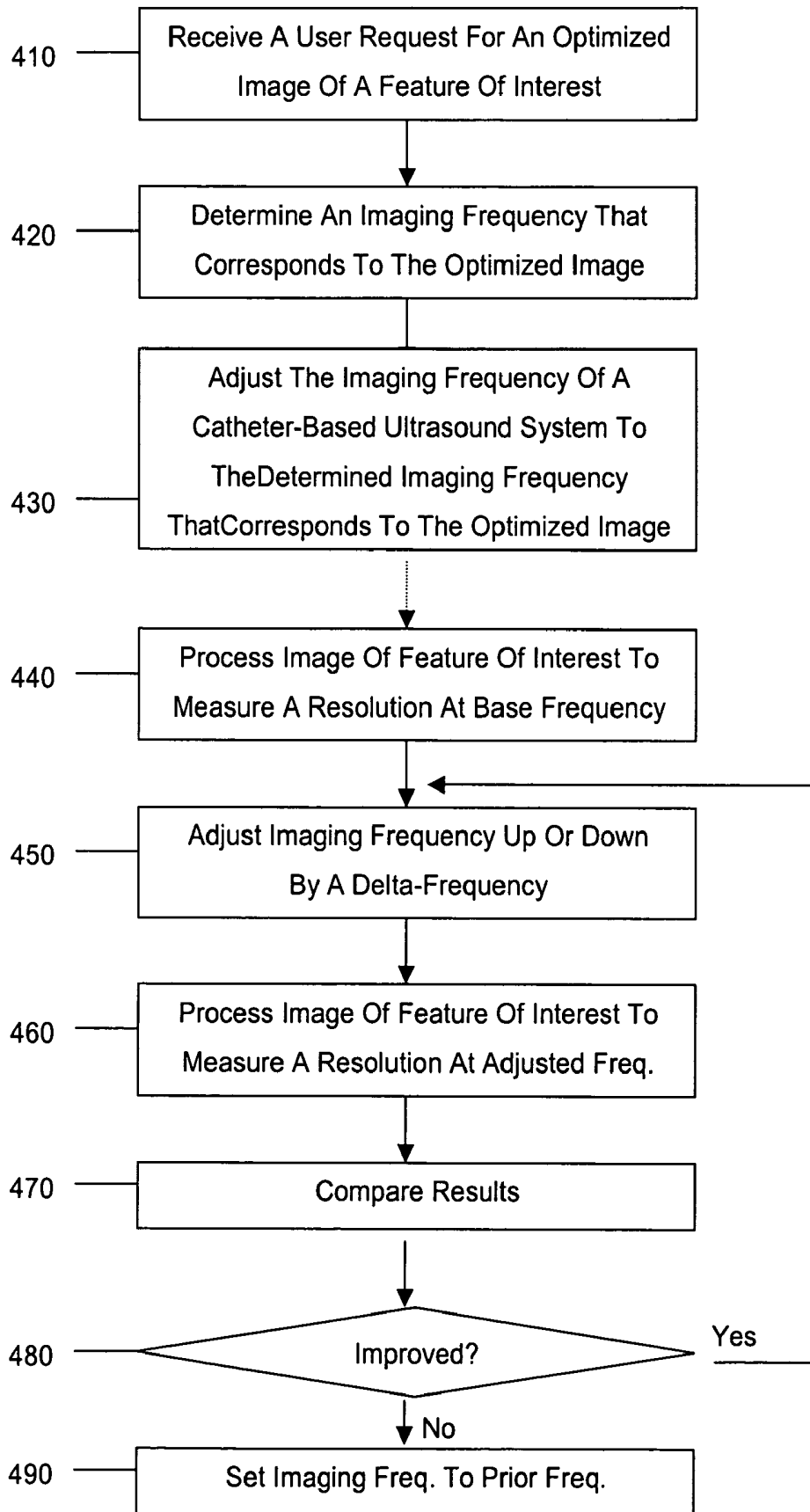
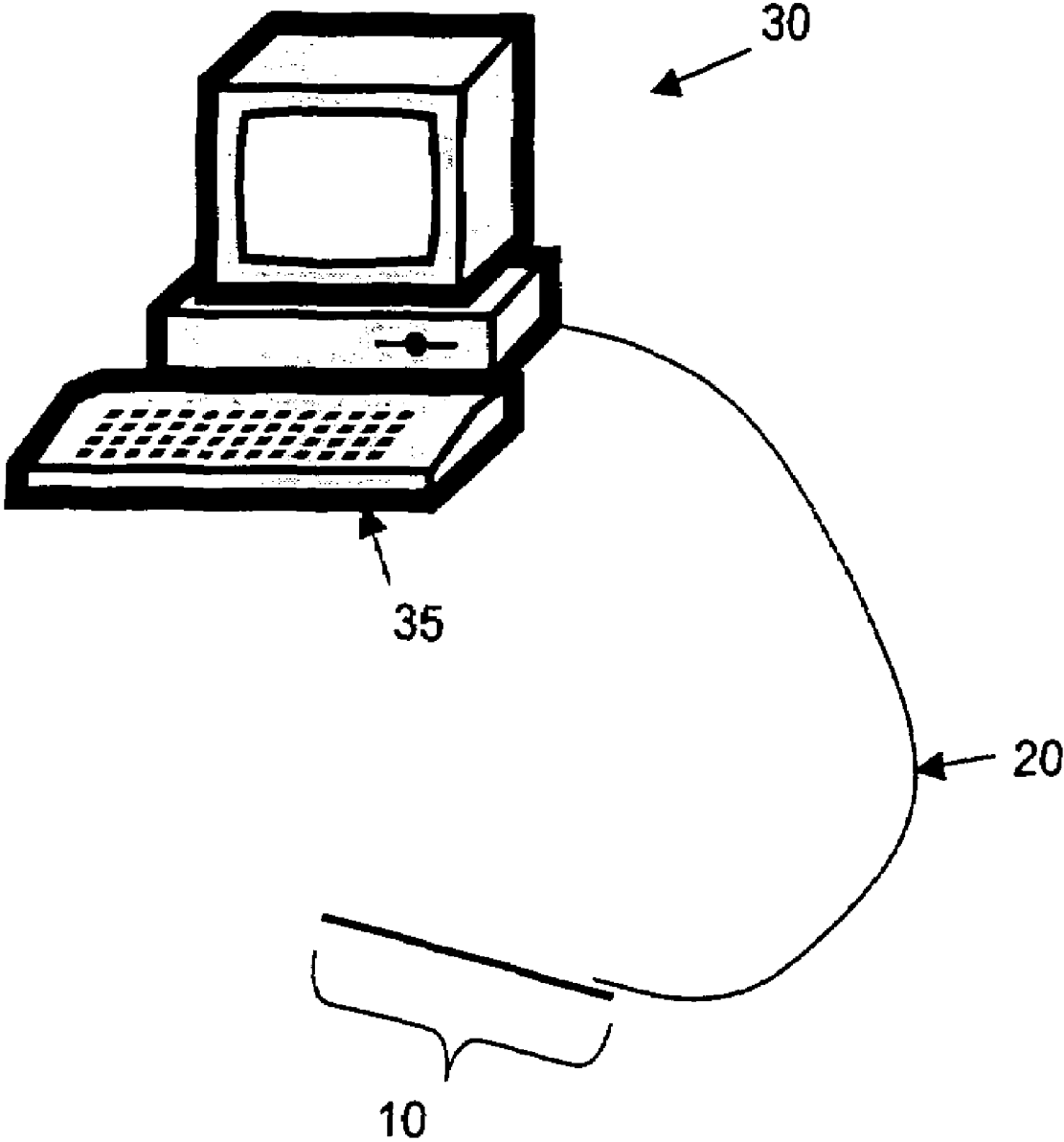


FIG. 5



## METHOD AND APPARATUS FOR ULTRASOUND IMAGING WITH AUTOFREQUENCY SELECTION

### BACKGROUND OF THE INVENTION

#### 1. Field of the Invention

The present invention is directed at medical imaging technology, and more particularly to a method and apparatus for ultrasound imaging with autofrequency selection.

#### 2. Description of the Related Art

Medical imaging technology is used to improve the diagnosis and treatment of medical conditions. Presently available medical imaging technology includes a wide variety of ultrasound, X-ray, nuclear, magnetic resonance imaging (MRI) and other imaging systems.

In these medical imaging technologies, various parameters may be controlled that affect the resultant image. By way of example, with catheter-based ultrasound imaging technology, the imaging beam aperture size, imaging beam frequency, and apodization parameters may be adjusted as described in U.S. Pat. No. 6,629,929 to Jago ("Jago" hereafter) and U.S. Pat. No. 6,354,997 to Holley ("Holley" hereafter), which are incorporated by reference herein in their entirety. Other adjustable parameters for ultrasound and non-ultrasound imaging technologies also exist.

To adjust a parameter in a typical catheter-based ultrasound imaging system, a user inputs a desired parameter change, which is then implemented by the particular imaging system. This requires the user to know how the parameter change will affect the image, and may require the user to iteratively try a number of different parameter changes to achieve a desired result. Thus, this process may be tedious, time consuming, and involve significant user-system interaction.

Other problems with the prior art not described above can also be overcome using the teachings of the present invention, as would be readily apparent to one of ordinary skill in the art after reading this disclosure.

### SUMMARY OF THE INVENTION

An ultrasound imaging system includes an interface for receiving user input and a controller coupled to the interface, the controller being adapted and configured to adjust parameters for a catheter-based ultrasound probe in response to received user input. User input may be in the form of a desired imaging depth or user designation of a feature within an image, such as by means of a touch screen. The controller is programmed to receive a user request for a desired imaging depth, automatically determine an imaging frequency that corresponds to the desired imaging depth, and adjust the imaging frequency of the catheter-based ultrasound probe to the determined imaging frequency that corresponds to the desired imaging depth. The controller may be further programmed so the imaging frequency is selected from a range of incremented frequencies separated by increments of about 0.1 MHz to about 0.5 MHz within a range of about 2 MHz to about 20 MHz. The controller may be further programmed so the imaging frequency is set to scan through a range of frequencies. The controller may be further programmed to receive an ultrasound image from the catheter-based ultrasound probe, determine a signal attenuation in the received ultrasound image at the determined imaging frequency, determine an imaging frequency that corresponds to the determined signal attenuation, and adjust the imaging frequency of the catheter-based ultrasound probe to the determined imaging frequency that corresponds to the determined signal

attenuation. The controller may be further programmed to compare the determined signal attenuation to a predicted signal attenuation, and adjust the imaging frequency to the determined imaging frequency that corresponds to the determined signal attenuation if the determined signal attenuation diverges from the predicted signal attenuation by at least a known value. The controller may be further programmed to process a first image of a feature of interest imaged at the determined imaging frequency, adjust the imaging frequency of the catheter-based ultrasound probe by a delta-frequency, process a second image of the feature of interest imaged at the delta-frequency adjusted imaging frequency, compare a resolution of the first image to a resolution of the second image, and adjust the imaging frequency to the determined imaging frequency if the resolution of the first image is better than the resolution of the second image.

A method of controlling an ultrasound imaging system includes receiving a user request for a desired imaging depth or change in the present imaging depth, automatically determining an imaging frequency that corresponds to the desired imaging depth, and adjusting the imaging frequency of a catheter-based ultrasound probe to the determined imaging frequency that corresponds to the desired imaging depth. The desired imaging depth may be received as a user request for a scan through a range of frequencies to identify features at various depths. The desired imaging depth may be received as a user designation of a feature within an image, and determining the imaging frequency involves determining an imaging frequency that corresponds to the user designated feature. The imaging frequency may be selected from a range of incremented frequencies separated by increments of about 0.1 MHz to about 0.5 MHz within a range of about 2 MHz to about 20 MHz. The imaging frequency selection may be conducted as a scan through the range of frequencies. The method may include receiving an ultrasound image from the catheter-based ultrasound probe, determining a signal attenuation in the received ultrasound image at the determined imaging frequency, determining an imaging frequency that corresponds to the determined signal attenuation, and adjusting the imaging frequency of the catheter-based ultrasound probe to the determined imaging frequency that corresponds to the determined signal attenuation. The method may further include comparing the determined signal attenuation to a predicted signal attenuation, and adjusting the imaging frequency to the determined imaging frequency that corresponds to the determined signal attenuation if the determined signal attenuation diverges from the predicted signal attenuation by at least a known value. The method may further include processing a first image of a feature of interest imaged at the determined imaging frequency, adjusting the imaging frequency of the catheter-based ultrasound probe by a delta-frequency, processing a second image of the feature of interest imaged at the delta-frequency adjusted imaging frequency, comparing a resolution of the first image to a resolution of the second image, and adjusting the imaging frequency to the determined imaging frequency if the resolution of the first image is better than the resolution of the second image.

### BRIEF DESCRIPTION OF THE DRAWINGS

FIG. 1 is a flowchart of a method of controlling an ultrasound imaging system according to an embodiment of the present invention.

FIG. 2 is a flowchart of a method of compensating for signal attenuation in an ultrasound imaging system according to an embodiment of the present invention.

FIG. 3 is a flowchart of a method of auto-scanning a plurality of imaging frequencies in an ultrasound imaging system according to an embodiment of the present invention.

FIG. 4 is a flowchart of a method of optimizing an image in an ultrasound imaging system according to an embodiment of the present invention.

FIG. 5 is a block diagram of an exemplary ultrasound imaging system usable with various embodiments of the present invention.

#### DETAILED DESCRIPTION OF THE EXEMPLARY EMBODIMENTS

Reference will now be made in detail to exemplary embodiments of the present invention. Wherever possible, the same reference numbers will be used throughout the drawings to refer to the same or like parts.

An exemplary ultrasound imaging system usable with various embodiments of the present invention is shown in the block diagram of FIG. 5. The exemplary ultrasound imaging system includes a workstation 30, having an interface 35 (e.g., a keyboard, mouse, touchscreen display, etc.), a controller, and a display. The workstation 30 is coupled to an ultrasound probe 10 via a percutaneous catheter 20. The controller may be a computer, such as a personal computer, an internal microprocessor, or an application specific integrated circuit (ASIC) operating software that causes the controller to perform the control functions described herein. In this regard, the controller is preferably programmable so as to perform various processes and method steps described in greater detail below. Other configurations are also contemplated, and the system may or may not include further components as would be readily apparent to one of ordinary skill in the art after reading this disclosure.

A method of controlling an ultrasound imaging system according to a first embodiment of the present invention is shown in the flowchart of FIG. 1. Specifically, in step 110, the ultrasound imaging system receives a user request for a desired imaging depth. By way of example, a user may: (1) enter a desired imaging depth (e.g., 5 cm) into a keyboard type interface, such as or including keys, buttons, toggle switches, rotary knobs, or various keypads, for example; (2) select an increase or decrease (i.e., a change) in a present imaging depth on a touchscreen display type interface; (3) issue a voice command to increase or decrease the present imaging depth interpreted by a voice recognition type interface; (4) select one of a list of possible imaging depths listed on a display using a mouse type interface; or (5) select any imaged feature or position on a video display showing the real-time image received from the ultrasound imaging system, such as by touching a touch-screen display or using a pixel-detecting pen coupled to the system to indicate the depth (and/or feature) for which optimized imaging is desired. In the embodiment that includes option (5), the imaging distance can be automatically calculated based upon the distance from the imager to the indicated point on the display. Other techniques for receiving a user request are also contemplated.

After the user request has been received in step 110, the ultrasound imaging system then automatically determines an imaging frequency that is calculated or known to correspond to the desired imaging depth in step 120. Step 120 may include processes such as retrieving a corresponding frequency from an electronic lookup table or database based upon the desired depth, or calculating a corresponding frequency using any one of a number of algorithms as would be readily apparent to one of ordinary skill in the art after reading this disclosure. The attenuations of sound in various tissues,

including in blood, as a function of frequency have been measured and therefore are known and can be reduced to a look up table. Alternatively, the measured attenuation of sound in blood may be transformed into a computational algorithm, such as by a curve fit, that the imaging system can perform using the indicated imaging depth as an input. For example, the imaging depth of an ultrasound imager due to attenuation of sound in blood is an approximately linear gradient (classically expressed in dB/cm/MHz), such that the imaging depth at 4.5 MHz is about 11 cm and the imaging depth at 7.0 MHz is about 6 cm. Step 120 may be based on assumed physical properties or may include measuring physical properties of the fluids and/or tissues between the ultrasound sensor and the desired depth using data obtained from the ultrasound sensor or other sensors. In an embodiment, the look up table or algorithm may include attenuation effects of tissues, such as heart muscle or connective tissue in addition to blood.

In step 130, the medical imaging system then adjusts the imaging frequency of the system to the imaging frequency determined in step 120. In this manner, the medical imaging system automatically adjusts the imaging frequency in accordance with manual adjustment of the desired imaging depth. By automatically adjusting the imaging frequency, the medical imaging system can optimize the imaging frequency to match the desired imaging depth without requiring any further user interaction than the request for the desired imaging depth. As such, user interaction is minimized and the most optimized image is generated.

In an embodiment, the imaging system may also automatically adjust the time-gain compensation (up or down) in conjunction with adjusting the imaging frequency. The time-gain compensation also compensates for the attenuation of sound by blood or tissues. Since the time at which an echo signal is received is directly related to the distance the associated sound traveled (i.e., to and from the echoing structure), sound attenuation can be compensated for by amplifying the echo signals by an increasing amount based upon the time after the transmission pulse that the echo signal is received. The time-gain compensation may be adjusted according to an algorithm (such as a linear adjustment). However, applying too high a level of amplification in order to capture distant echo signals may result in greater noise in the image. Also, the appropriate time-gain may vary with imaging frequency. In this embodiment, when the imaging system receives a request for a new imaging depth, the system automatically adjusts the time-gain compensation to provide appropriate signal gain at the approximate time echo signals from that distance will be received at the ultrasound transducers.

According to an embodiment of the present invention, the catheter-based ultrasound probe includes an array of ultrasound transducers for generating ultrasound pulse(s), the array of ultrasound transducers, such that the system has an imaging frequency range of about 2 MHz to about 20 MHz. Preferably, the system is adjustable from about 2 MHz to about 20 MHz in about 0.5 MHz intervals. In this manner, the medical imaging system may adjust the imaging frequency to an imaging frequency selected from the group consisting essentially of 2.0 MHz, 2.5 MHz, 3.0 MHz . . . 19.0 MHz, 19.5 MHz, 20.0 MHz. In an embodiment, the increment of imaging frequency is more or less than about 0.5 MHz intervals. In an embodiment, the increment of imaging frequency is about 0.1 MHz. It should be appreciated, however, that the disclosed frequency range and adjustment increment may change as improvements in ultrasound imaging equipment become available, and/or to implement various embodiments

of the present invention on non-ultrasound based medical imaging technology. Thus, the ranges noted above are not intended to be limiting.

According to another embodiment of the present invention as shown in FIG. 2, the medical imaging system may further be provided with signal attenuation compensation capabilities. Signal attenuation generally refers to a reduction in signal quality, which may be caused by ultrasound pulses passing through different body tissues, structures, and fluids, such as for example calcification layers that absorb or scatter ultrasound energy. The resulting reduction in reflected ultrasound energy may result in degradation of the received echo signal quality. Such reduction in reflected ultrasound echo energy, and thus image signal quality may be compensated for by increasing or decreasing the imaging frequency from the frequency that typically provides an optimized image of a given imaging depth. Thus, the imaging frequency determined in step 120 may be further adjusted upon or after being implemented in step 130 to compensate for signal attenuation.

As shown in FIG. 2, an ultrasound image is received from the catheter-based ultrasound probe in step 210. The medical imaging system then, in step 220, determines a signal attenuation in the received ultrasound image. In step 220, the system may compare the measured received echo energy to the energy that would be expected if the attenuation matched expected values for the imaging depth. If the received energy is less than the expected energy, attenuation over the path length may be greater than the prediction or assumption. Similarly, if the received energy exceeds the expected energy, the actual attenuation may be less than the prediction or assumption. Attenuation may also be calculated using other methods, including an electronic table look up using the received or measured path length as an input, or an algorithm, such as a linear gradient, using the received or measured path length as an independent variable.

Once the signal attenuation has been determined in step 220, the medical imaging system then automatically determines an imaging frequency that corresponds to a reduced signal attenuation in step 230. By way of example, if the measured signal attenuation indicates less signal strength than expected (i.e., attenuation is greater than expected), such as due to the ultrasound pulse passing through a calcification layer, the determined imaging frequency may be an imaging frequency one (or more) increments (e.g., about 0.5 MHz or about 0.1 MHz, according to various embodiments) below (i.e., a lower frequency) that determined in step 120. If measured signal attenuation is less than expected, the imaging frequency may be increased in order to provide finer resolution of features at the selected imaging depth.

The medical imaging system then adjusts the imaging frequency of the system in step 240 to the determined imaging frequency that corresponds to the measured signal attenuation. According to an embodiment of the present invention, the medical imaging system may then verify that the change has improved the signal attenuation condition by re-running steps 220, 230, 240. In this manner, the medical imaging system may automatically re-adjust for signal attenuation with minimal user interaction required. According to an embodiment, the imaging system may also automatically adjust time-gain compensation in response to measured signal attenuation, such as by adjusting the slope of a linear algorithm (e.g., increasing or decreasing gain  $G$  where time-gain compensation for a given point in the image =  $G * t + C$ , where  $t$  corresponds to the time corresponding to the point of interest and  $C$  is a constant).

According to another embodiment of the present invention as shown in FIG. 3, the medical imaging system may be provided with a frequency scanning capability. More specifically, in step 310 the medical imaging system receives a user request for a scan through a range of frequencies to identify features at various distances, features including any number of viewable structures such as tissue masses, anomalies, etc. In step 320 the medical imaging system determines a "next" imaging frequency from the range of available frequencies. By way of example, if the scan is operating at its first cycle, the "next" imaging frequency may be the first available imaging frequency (e.g., 2.0 MHz for the medical imaging system previously discussed or the current imaging frequency +/- the delta frequency). The medical imaging system then adjusts the imaging frequency in step 330 to the frequency determined in step 320. After an ultrasound image from the catheter-based ultrasound probe is received in step 340, the medical imaging system then determines whether the frequency determined in step 320 is the last imaging frequency in the range of available frequencies. If not, the medical imaging system re-runs step 320, else the process ends in step 360. Alternatively, steps 310 through 350 may be performed until stopped by the operator.

According to another embodiment of the present invention, the medical imaging system may be provided with an optimization feature as shown in FIG. 4. In particular, in step 410 the medical imaging system receives a user request for an optimized image of a feature of interest, indicated by the point of focus set by the user, or assumed by default to be at 75% of the imaging depth. As an example, once the scanning process shown in FIG. 3 has completed, a user may desire an optimized image of one of the features discovered during the scan and presented on the ultrasound image display. Alternatively, an "auto-recognize" feature may be provided that automatically recognizes features and initiates the request received in step 410.

Referring to FIG. 4, the medical imaging system in step 420 determines an imaging frequency that corresponds to the optimized image based on the measured depth to the feature. The determination of an imaging frequency may assume physical properties for intervening tissues, including in an embodiment, assuming properties based upon detected intervening structures and fluids and measured parameters (e.g., continuity of imaged tissue, received echo signal strength, etc.). Alternatively, using the scan of FIG. 3 as an example of a starting point, if a feature becomes apparent at about 4.0 MHz during the frequency scan, the medical imaging system may select 4.0 MHz in step 420.

In step 430 the medical imaging system then adjusts the imaging frequency to the frequency determined in step 420. This may be followed by a confirmation step that queries the user whether the image has been sufficiently optimized. If the user responds that further optimization is required, then the process shown in FIG. 4 may repeat (even with a smaller delta frequency).

In another embodiment illustrated in FIG. 4, the medical imaging system may include an image recognition and processing capability that assists in the optimization process. Specifically, following step 430, the image processing capability determines a measure of the image quality of the feature selected for imaging, such as by calculating a measure of resolution by measuring the definition of a boundary. For example, the image processing capability may determine the range over which echoes from a surface are received along a vector, which may be combined with statistical measures of the changes in intensity along the vector in the vicinity of the structure.

After an image quality (e.g., resolution) measure has been obtained for an initial frequency ( $F_0$ ), the medical imaging system adjusts the imaging frequency of the catheter-based ultrasound probe in step 450 to a higher or lower frequency ( $F_1$ ) and obtains another image. In step 450, the frequency may be adjusted up or down as determined by the imaging processing system as necessary to determine if optimum image quality (e.g., resolution) is achieved. By way of example, the subsequent discussion assumes step 450 increases frequency the first time through the process (default), but the process may be implemented by decreasing the frequency the first time through. In applications where moving tissues, such as muscles and structures of the heart, are imaged, the second image may need to be taken (timed or triggered) so as to correspond to a similar configuration as in the first image so that image quality measurements can be compared. In a particular embodiment suitable for use in intracardiac imaging, the first and second images are timed or initiated based upon an input (e.g., an ECG signal) to occur at the same point in the cardiac cycle. By acquiring the second image at or nearly at the same point in the cardiac cycle as the first image, measures of image quality in the two images may be compared because the same structure will appear at approximately the same position (e.g., imaging depth) in both images.

In step 460, the image obtained at the new frequency  $F_1$  is processed to determine a measure of the image quality (e.g., resolution) of the feature selected for imaging. Then, in step 470, the two measures of resolution for images taken at  $F_0$  and  $F_1$  are compared to determine if the image quality (e.g., resolution) is improved or degraded as a result of the change in imaging frequency.

In step 480, the medical imaging system determines whether to further adjust the frequency or whether an optimum frequency was obtained. If there is an improvement in image quality (e.g., resolution) when the imaging frequency is increased from  $F_0$  to  $F_1$ , then the process returns to step 450, sequentially increasing (or decreasing) the frequency to new frequency  $F_i$  and comparing the resulting image quality (e.g., resolution) measurements. Steps 450 through 480 are repeated until the system determines there is no change or a degradation in image quality (e.g., resolution) when frequency is increased from  $F_{i-1}$  to  $F_i$ . When that determination is made, the medical imaging system sets the imaging frequency to the frequency that provided the best measure of image quality (e.g.,  $F_{i-1}$ ) in step 490.

If the first comparison of the measures of image quality (e.g., resolution) in steps 470 determines that the resolution is unchanged or degraded by increasing the frequency from  $F_0$  to  $F_1$ , then in step 480 the medical imaging system determines that the optimum frequency may be lower than the initial frequency ( $F_0$ ). In that case, the process returns to step 450 where the imaging frequency is decreased to  $F_1$ . Then steps 460 through 480 are performed to determine if lowering the imaging frequency improved the image quality (e.g., resolution) of the desired feature. Steps 450 through 480 are repeated until the system determines there is no change or a degradation in image quality when frequency is decreased from  $F_{i-1}$  to  $F_i$ . When that determination is made, the medical imaging system sets the imaging frequency to the frequency that provided the best measure of image quality (e.g.,  $F_{i-1}$ ) in step 490.

As set forth in the aforementioned embodiments, medical imaging systems have been disclosed with autofrequency selection that provide a user with relatively simple and efficient operations of a given medical imaging system. Additional features such as frequency scanning, signal attenuation

compensation, and image optimization may be utilized as desired. Further, a medical imaging system according to the present invention may merge or correlate ultrasound images with other medical information, including concurrent instrumentation data, such as electrocardiogram (ECG) data. For example, in medical procedures in which the imaging system is used to image portions of a patient's heart, intracardiac electrophysiology catheters may also be present in the heart. In such procedures, displaying ECG data (such as a trace moving across the screen) on the same monitor that displays ultrasound images would aid the physician. Such ECG data may be correlated to the ultrasound images so the current ECG trace(s) is displayed along with the current ultrasound image. The ECG data may be further correlated to the image so the display shows only the ECG trace of the ECG catheter that is presently imaged by imaging system.

The foregoing description of various embodiments of the invention has been presented for purposes of illustration and description. It is not intended to be exhaustive or to limit the invention to the precise form disclosed, and modifications and variations are possible in light of the above teachings or may be acquired from practice of the invention. The embodiments were chosen and described in order to explain the principles of the invention and its practical application to enable one skilled in the art to utilize the invention in various embodiments and with various modifications as are suited to the particular use contemplated.

What is claimed is:

1. An ultrasound imaging system, comprising:

an interface for receiving user input;

a controller coupled to the interface, the controller being adapted and configured to adjust parameters for a catheter-based ultrasound probe in response to received user input; and

a catheter-based ultrasound probe coupled to the controller,

wherein the controller is programmed to:

receive a user request for a desired imaging depth;

automatically determine an imaging frequency that corresponds to the desired imaging depth;

adjust the frequency of signals applied to the catheter-based ultrasound probe to the determined imaging frequency that corresponds to the desired imaging depth;

automatically process a first image of a feature of interest imaged at the determined imaging frequency to measure image resolution;

adjust the frequency of signals applied to the catheter-based ultrasound probe by a delta-frequency;

automatically process a second image of the feature of interest imaged at the delta-frequency adjusted imaging frequency to measure image resolution;

automatically compare the measured resolution of the first image to the measured resolution of the second image; and

automatically adjust the frequency of signals applied to the catheter-based ultrasound probe to the adjusted imaging frequency if the measured resolution of the second image is better than the measured resolution of the first image.

2. The ultrasound imaging system of claim 1, wherein the determined imaging frequency is selected from a range of incremented frequencies separated by increments of about 0.5 MHz.

3. The ultrasound imaging system of claim 1, wherein the determined imaging frequency is selected from a range of incremented frequencies separated by increments of about 0.1 MHz.

4. The ultrasound imaging system of claim 1, wherein the determined imaging frequency is within a range of about 2 MHz to about 20 MHz.

5. The ultrasound imaging system of claim 1, wherein receiving a user request for a desired imaging depth comprises receiving a user request for a change in a present imaging depth.

6. The ultrasound imaging system of claim 1, wherein receiving a user request for a desired imaging depth comprises receiving a user request for a scan through a range of frequencies.

7. The ultrasound imaging system of claim 6, wherein determining an imaging frequency for the catheter-based ultrasound probe that corresponds to the desired imaging depth comprises progressively determining a next imaging frequency for the scan through the range of frequencies.

8. The ultrasound imaging system of claim 1, wherein receiving a user request for a desired imaging depth comprises receiving user designation of a feature within an image, wherein automatically determining an imaging frequency that corresponds to the desired imaging depth comprises automatically determining an imaging frequency that corresponds to the user designated feature, and wherein adjusting the frequency of signals applied to the catheter-based ultrasound probe comprises automatically adjusting the frequency of signals applied to the catheter-based ultrasound probe to the determined imaging frequency that corresponds to the user designated feature.

9. The ultrasound imaging system of claim 1, wherein the controller is further programmed to: automatically adjust the frequency of signals applied to the catheter-based ultrasound probe to the determined imaging frequency if the measured resolution of the first image is better than the measured resolution of the second image.

10. An ultrasound imaging system, comprising:  
 an interface for receiving user input;  
 a controller coupled to the interface, the controller being adapted and configured to adjust parameters for a catheter-based ultrasound probe in response to received user input; and  
 a catheter-based ultrasound probe coupled to the controller,  
 wherein the controller is programmed to:  
 receive a user request for a desired imaging depth;  
 automatically determine an imaging frequency that corresponds to the desired imaging depth;  
 adjust the frequency of signals applied to the catheter-based ultrasound probe to the determined imaging frequency that corresponds to the desired imaging depth;  
 receive a signal from an electrocardiogram and correlate the signal with the received ultrasound image;  
 acquire a first image at a point in a cardiac cycle based on signals received from the electrocardiogram;  
 automatically process the first image of a feature of interest imaged at the determined imaging frequency to measure image resolution;  
 adjust the frequency of signals applied to the catheter-based ultrasound probe by a delta-frequency;

acquire a second image at approximately the same point in the cardiac cycle as the first image based on signals received from the electrocardiogram;  
 automatically process the second image of the feature of interest imaged at the delta-frequency adjusted imaging frequency to measure image resolution;  
 compare the measured resolution of the first image to the measured resolution of the second image;  
 automatically adjust the frequency of signals applied to the catheter-based ultrasound probe to the determined imaging frequency if the measured resolution of the first image is better than the measured resolution of the second image; and  
 automatically adjust the frequency of signals applied to the catheter-based ultrasound probe to the adjusted imaging frequency if the measured resolution of the second image is better than the measured resolution of the first image.

11. A method of controlling an ultrasound imaging system including a catheter-based ultrasound probe, comprising:  
 receiving a user request for a desired imaging depth;  
 automatically determining an imaging frequency that corresponds to the desired imaging depth;  
 adjusting the frequency of signals applied to the catheter-based ultrasound probe to the determined imaging frequency that corresponds to the desired imaging depth;  
 automatically processing a first image of a feature of interest imaged at the determined imaging frequency to measure image resolution;  
 adjusting the frequency of signals applied to the catheter-based ultrasound probe by a delta-frequency;  
 automatically processing a second image of a feature of interest imaged at the delta-frequency adjusted imaging frequency to measure image resolution;  
 automatically comparing the measured resolution of the first image to the measured resolution of the second image; and  
 automatically adjusting the frequency of signals applied to the catheter-based ultrasound probe to the adjusted imaging frequency if the measured resolution of the second image is better than the measured resolution of the first image.

12. The method of claim 11, wherein the determined imaging frequency is selected from a range of incremented frequencies separated by increments of about 0.5 MHz.

13. The method of claim 11, wherein the determined imaging frequency is selected from a range of incremented frequencies separated by increments of about 0.1 MHz.

14. The method of claim 11, wherein the determined imaging frequency is within a range of about 2 MHz to about 20 MHz.

15. The method of claim 11, wherein receiving a user request for a desired imaging depth comprises receiving a user request for a change in the present imaging depth.

16. The method of claim 11, wherein receiving a user request for a desired imaging depth comprises receiving a user request for a scan through a range of frequencies to identify features at various depths.

17. The method of claim 16, wherein determining an imaging frequency for the catheter-based ultrasound probe that corresponds to the desired imaging depth comprises progressively determining a next imaging frequency for the scan through the range of frequencies.

18. The method of claim 11, wherein receiving a user request for a desired imaging depth comprises receiving user designation of a feature within an image,

11

wherein determining an imaging frequency that corresponds to the desired imaging depth comprises automatically determining an imaging frequency that corresponds to a distance from a transducer to the user designated feature, and

wherein adjusting the frequency of signals applied to the catheter-based ultrasound probe comprises automatically adjusting the frequency of signals applied to the catheter-based ultrasound probe to the determined imaging frequency that corresponds to the user designated feature.

19. The method of claim 11, further comprising: automatically adjusting the frequency of signals applied to the catheter-based ultrasound probe to the determined imaging frequency if the measured resolution of the first image is better than the measured resolution of the second image.

20. An ultrasound imaging system, comprising:  
 a catheter-based ultrasound probe,  
 means for receiving a user request for a desired imaging depth;  
 means for automatically determining an imaging frequency that corresponds to the desired imaging depth;  
 means for adjusting the frequency of signals applied to the catheter-based ultrasound probe to the determined imaging frequency that corresponds to the desired imaging depth;  
 means for receiving a signal from an electrocardiogram and correlating the signal with ultrasound images received from the catheter-based ultrasound probe;  
 means for acquiring a first image at a point in a cardiac cycle based on signals received from the electrocardiogram;  
 means for automatically measuring image resolution of the first image of a feature of interest imaged at the determined imaging frequency;  
 means for adjusting the frequency of signals applied to the catheter-based ultrasound probe by a delta-frequency;  
 means for acquiring a second image at approximately the same point in the cardiac cycle as the first image based on signals received from the electrocardiogram;  
 means for automatically measuring image resolution of the second image of the feature of interest imaged at the delta-frequency adjusted imaging frequency;  
 means for comparing the measured resolution of the first image to the measured resolution of the second image;  
 and

12

means for automatically adjusting the frequency of signals applied to the catheter-based ultrasound probe to the adjusted imaging frequency if the measured resolution of the second image is better than the measured resolution of the first image.

21. The ultrasound imaging system of claim 20, further comprising:

means for automatically adjusting the frequency of signals applied to the catheter-based ultrasound probe to the determined imaging frequency if the measured resolution of the first image is better than the measured resolution of the second image.

22. A method of controlling an ultrasound imaging system including a catheter-based ultrasound probe, comprising:

receiving a user request for a desired imaging depth;  
 automatically determining an imaging frequency that corresponds to the desired imaging depth;  
 adjusting the frequency of signals applied to the catheter-based ultrasound probe to the determined imaging frequency that corresponds to the desired imaging depth;  
 receiving a signal from an electrocardiogram and correlate the signal with the received ultrasound image;  
 acquiring a first image at a point in a cardiac cycle based on signals received from the electrocardiogram;  
 automatically processing the first image of a feature of interest imaged at the determined imaging frequency to measure image resolution;  
 adjusting the frequency of signals applied to the catheter-based ultrasound probe by a delta-frequency;  
 acquiring a second image at approximately the same point in the cardiac cycle as the first image based on signals received from the electrocardiogram;  
 automatically processing the second image of the feature of interest imaged at the delta-frequency adjusted imaging frequency to measure image resolution;  
 comparing the measured resolution of the first image to the measured resolution of the second image;  
 automatically adjusting the frequency of signals applied to the catheter-based ultrasound probe to the determined imaging frequency if the measured resolution of the first image is better than the measured resolution of the second image; and  
 automatically adjusting the frequency of signals applied to the catheter-based ultrasound probe to the adjusted imaging frequency if the measured resolution of the second image is better than the measured resolution of the first image.

\* \* \* \* \*

UNITED STATES PATENT AND TRADEMARK OFFICE  
**CERTIFICATE OF CORRECTION**

PATENT NO. : 7,654,958 B2  
APPLICATION NO. : 10/827520  
DATED : February 2, 2010  
INVENTOR(S) : Charles Bryan Byrd et al.

Page 1 of 1

It is certified that error appears in the above-identified patent and that said Letters Patent is hereby corrected as shown below:

Column 8, claim 1, line 48, kindly delete “imagine” and replace with --imaging--.

Column 9, claim 7, line 18, kindly delete “too” and replace with --to--.

Column 9, claim 10, line 52, kindly delete “imagine” and replace with --imaging--.

Signed and Sealed this  
Twenty-sixth Day of February, 2013



Teresa Stanek Rea  
*Acting Director of the United States Patent and Trademark Office*

专利名称(译)	用于具有自动频率选择的超声成像的方法和设备		
公开(公告)号	<a href="#">US7654958</a>	公开(公告)日	2010-02-02
申请号	US10/827520	申请日	2004-04-20
[标]申请(专利权)人(译)	EP MEDSYST		
申请(专利权)人(译)	EP MedSystems公司, INC.		
当前申请(专利权)人(译)	ST.犹达医疗用品, 房颤DIVISION, INC.		
[标]发明人	BYRD CHARLES BRYAN DALA KRISHNA PRAVEEN		
发明人	BYRD, CHARLES BRYAN DALA-KRISHNA, PRAVEEN		
IPC分类号	A61B8/00 A61B8/12 A61B8/14		
CPC分类号	A61B8/12 A61B8/467 G01S7/5205 G01S15/8952 A61B8/461		
助理审查员(译)	基士JAMES		
其他公开文献	US20050240103A1		
外部链接	<a href="#">Espacenet</a> <a href="#">USPTO</a>		

摘要(译)

超声成像系统设置有用于接收用户输入的接口, 以及耦合到接口的控制器, 该控制器适于并配置成响应于接收的用户输入调整基于导管的超声探头的参数。优选地, 控制器被编程为接收用户对所需成像深度的请求, 确定对应于所需成像深度的成像频率, 并将系统的成像频率调整到对应于所需成像深度的确定成像频率。

