



(19) **United States**

(12) **Patent Application Publication** (10) **Pub. No.: US 2002/0042573 A1**

**Hashimoto et al.**

(43) **Pub. Date: Apr. 11, 2002**

(54) **ULTRASONIC IMAGING APPARATUS AND METHOD OF INDICATING THE NEXT SCANNING START TIME**

(30) **Foreign Application Priority Data**

Oct. 10, 2000 (JP) ..... 2000-308668

(76) Inventors: **Hiroshi Hashimoto**, Tokyo (JP); **Kow Tanaka**, Tokyo (JP); **Teruo Anzai**, Tokyo (JP); **Ken Kanno**, Tokyo (JP)

**Publication Classification**

(51) **Int. Cl.<sup>7</sup>** ..... **A61B 8/00**

(52) **U.S. Cl.** ..... **600/443**

Correspondence Address:

**MOONRAY KOJIMA**  
**BOX 627**  
**WILLIAMSTOWN, MA 01267 (US)**

(57) **ABSTRACT**

(21) Appl. No.: **09/928,179**

An ultrasonic imaging apparatus indicates the preceding time length which lasts until the next scanning start time on a bar graph or the like, thereby relieving the operator's duty in carrying out intermittent scanning.

(22) Filed: **Aug. 10, 2001**

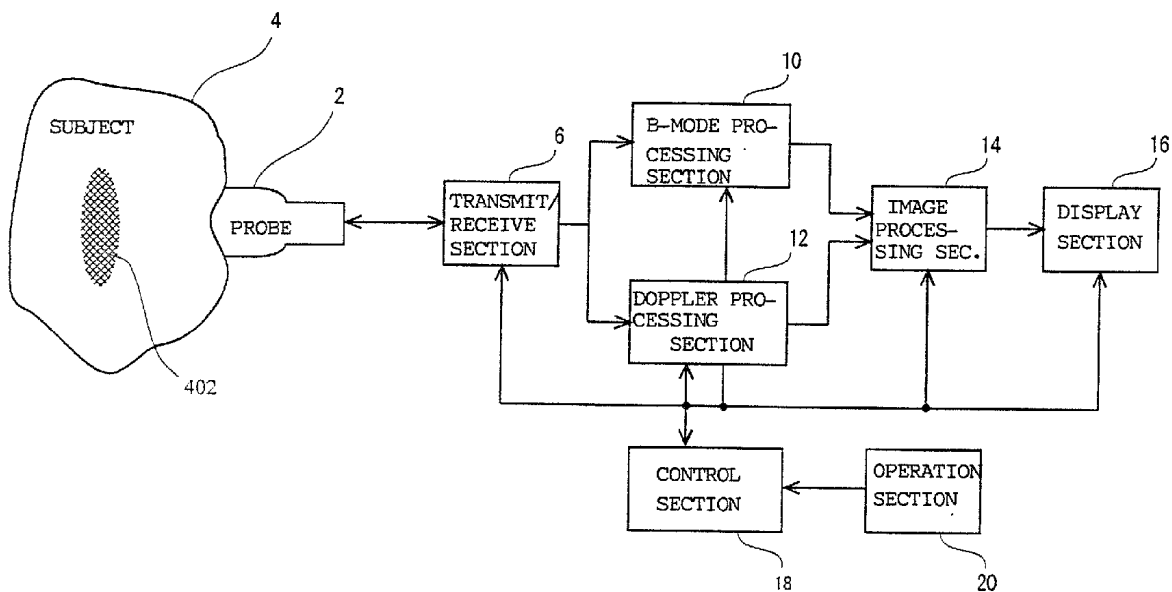


FIG. 1

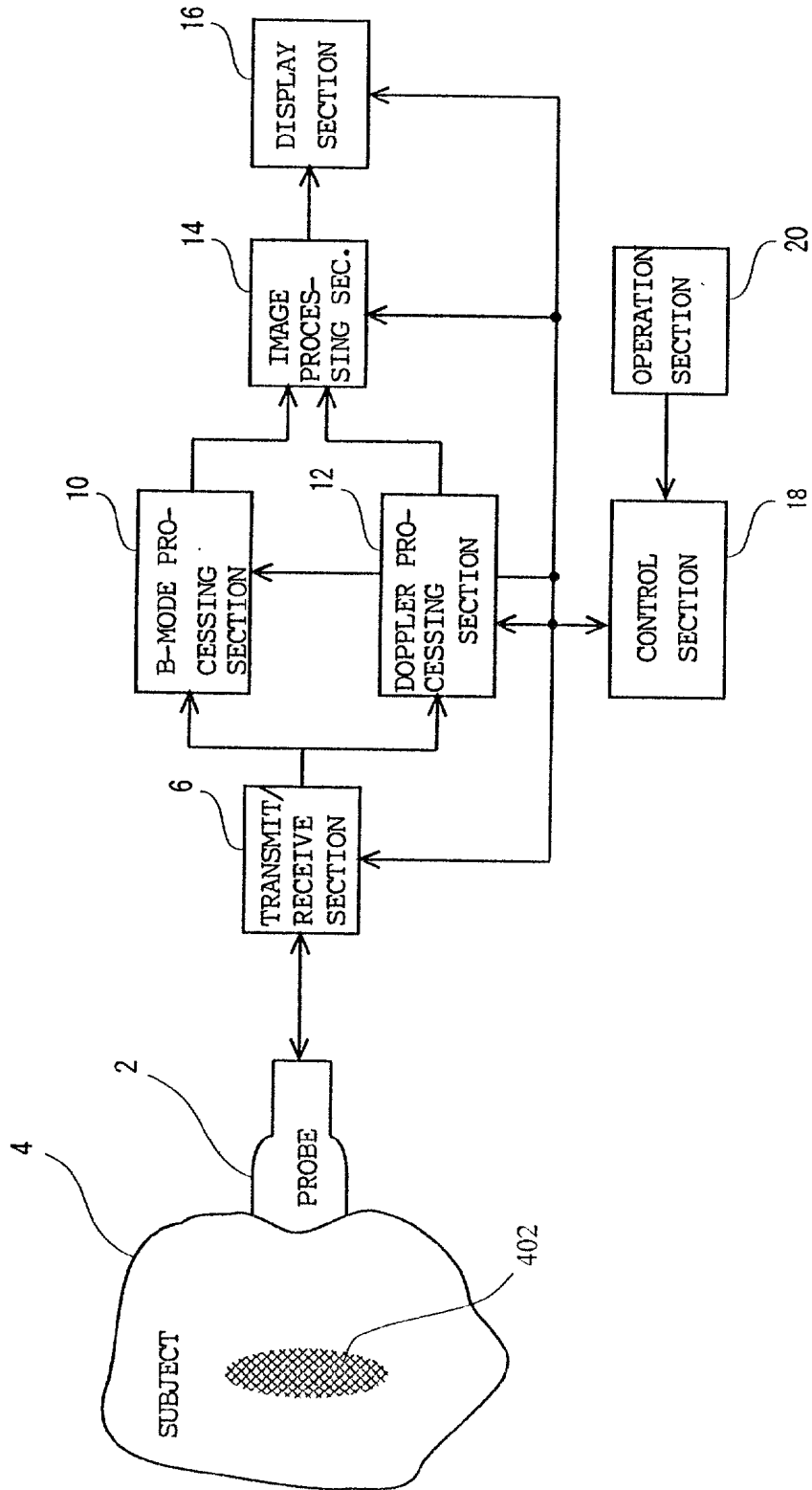


FIG. 2

6

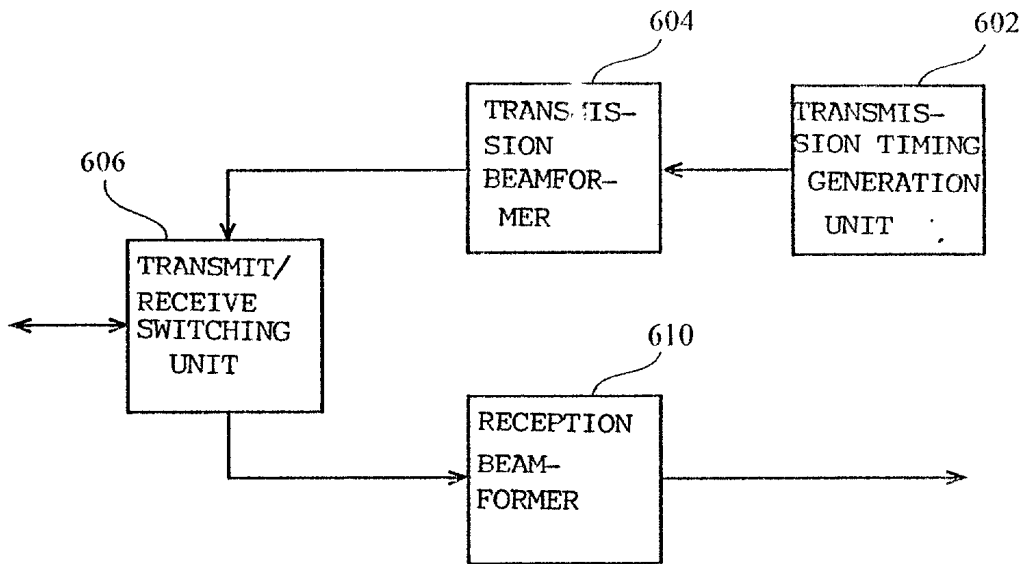


FIG. 6

10

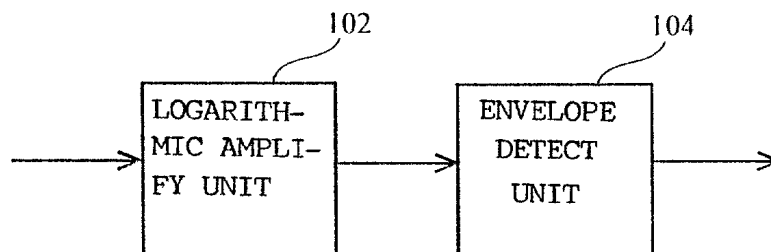


FIG. 3

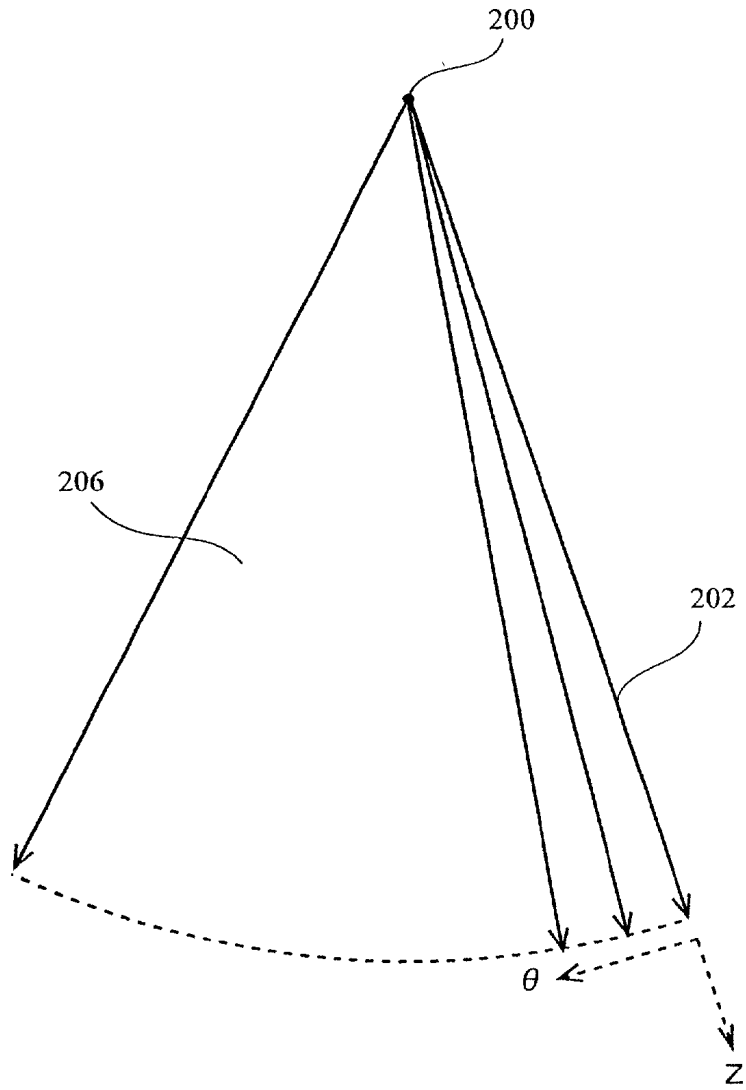


FIG. 4

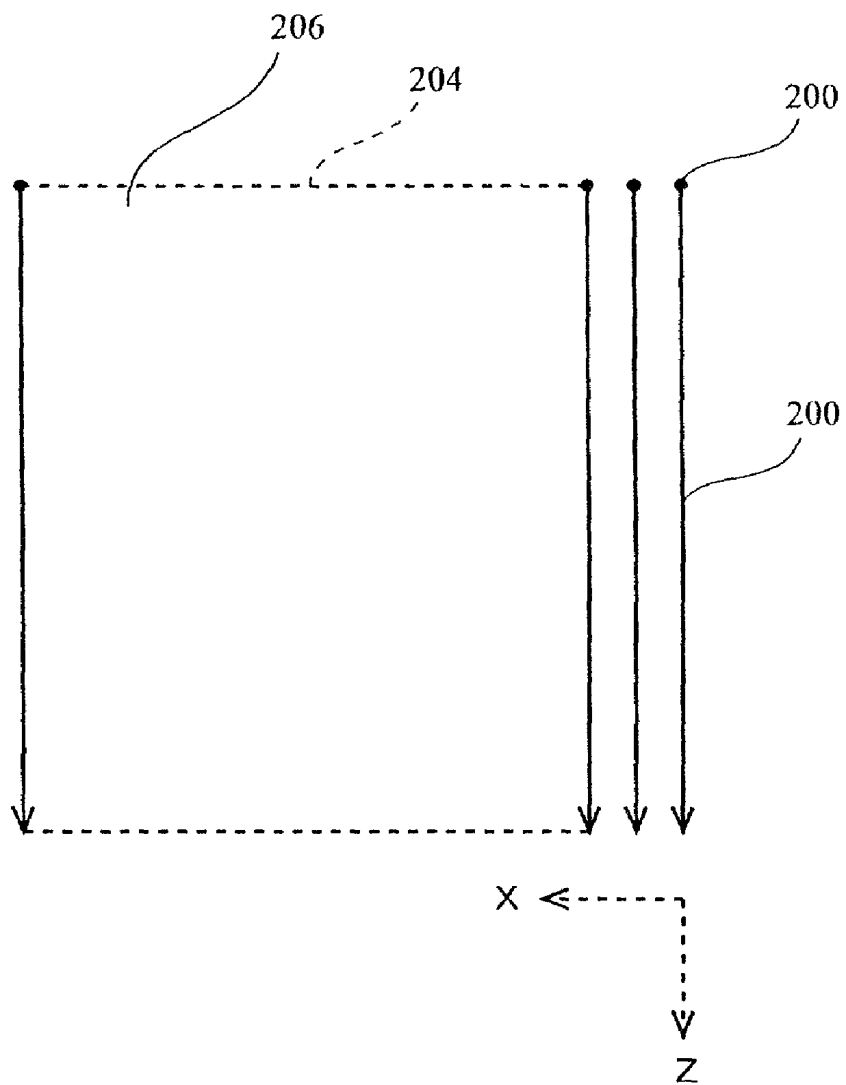


FIG. 5

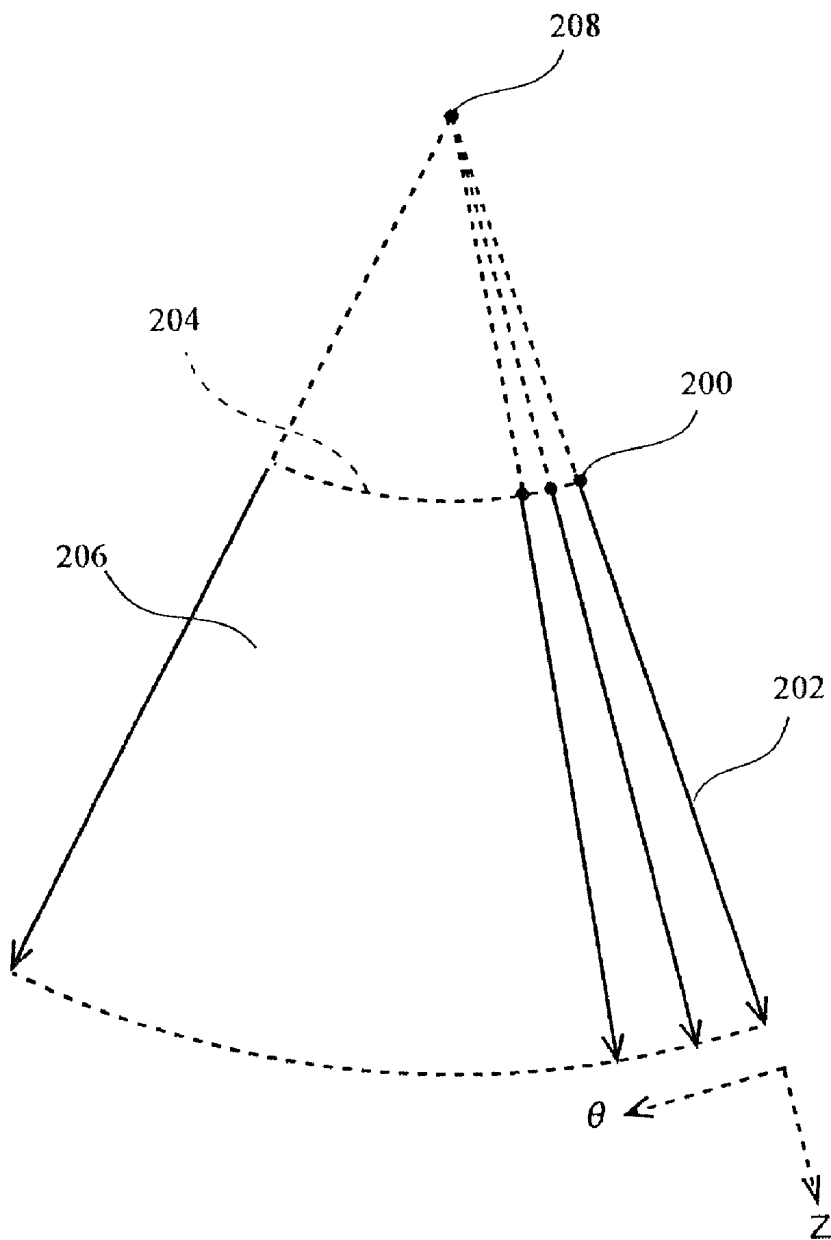


FIG 7

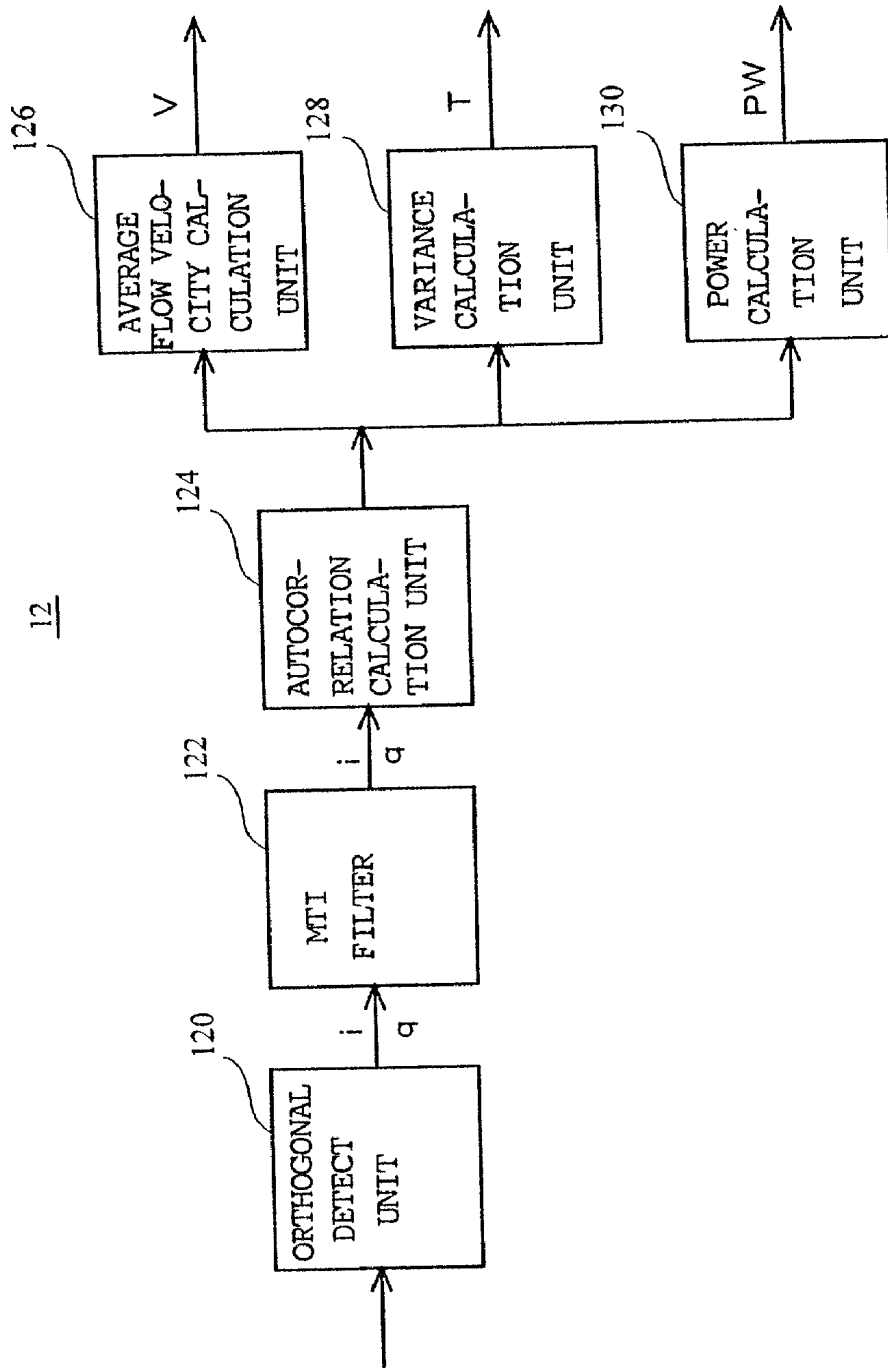


FIG. 8

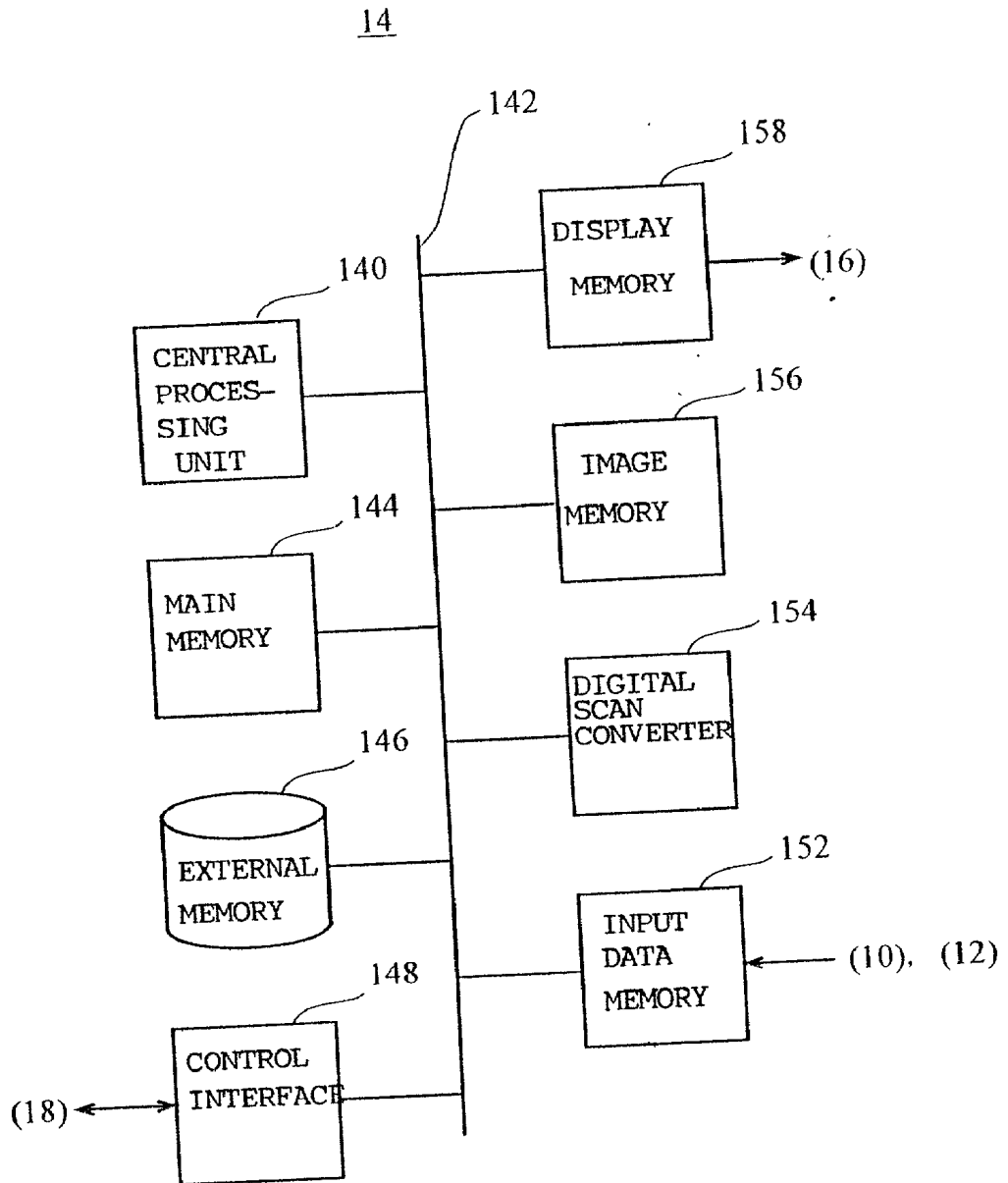


FIG. 9

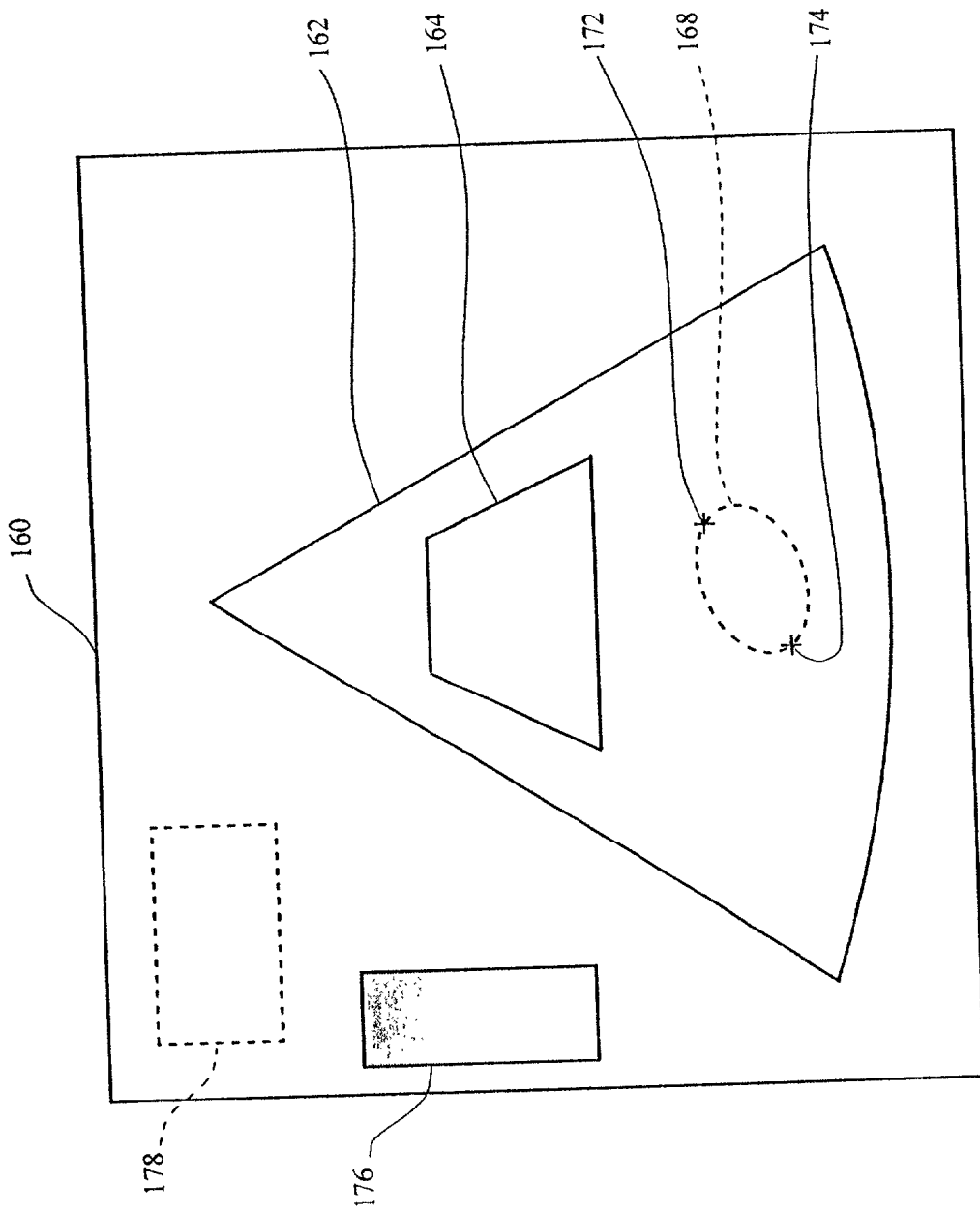


FIG 10

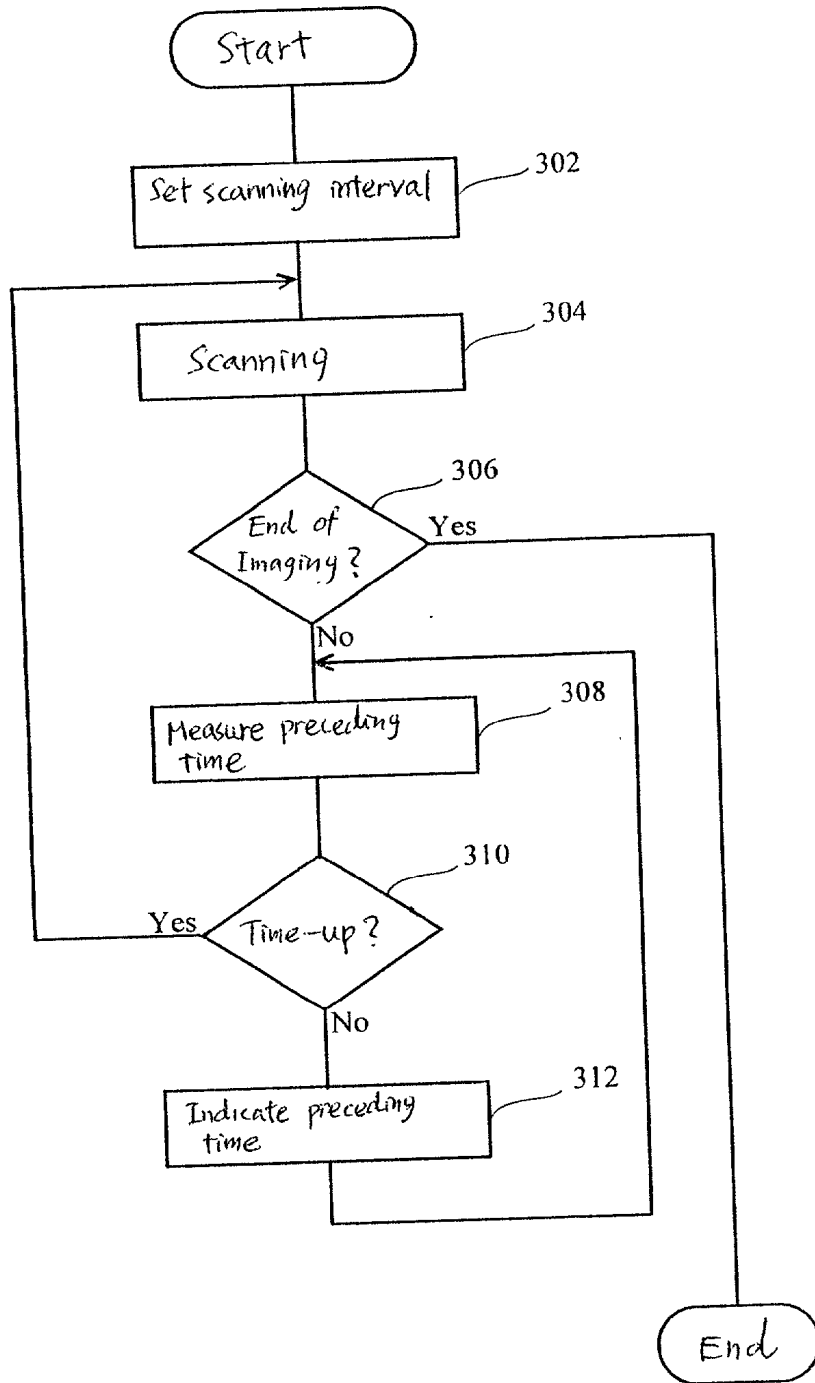


FIG. 11

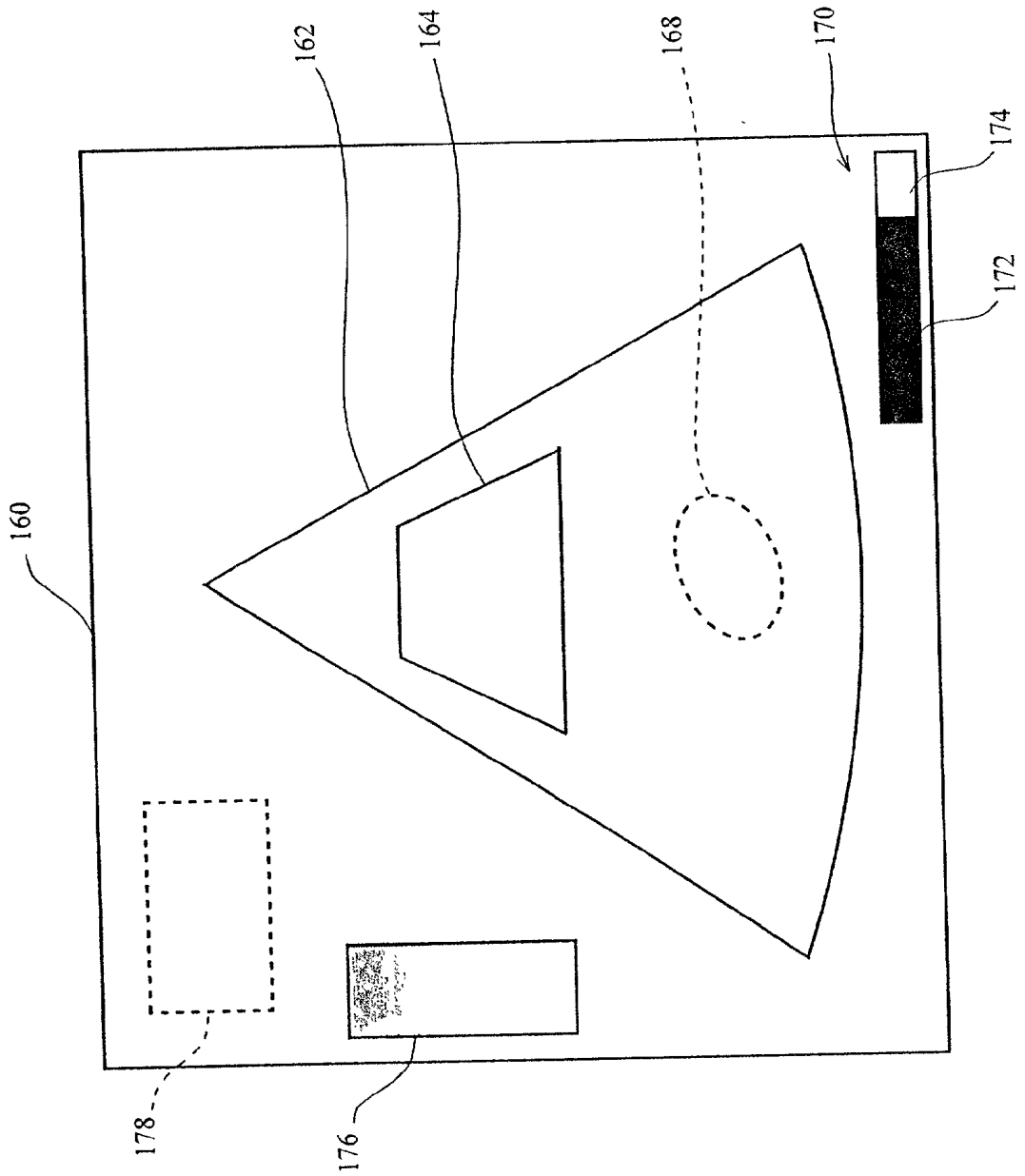


FIG. 12

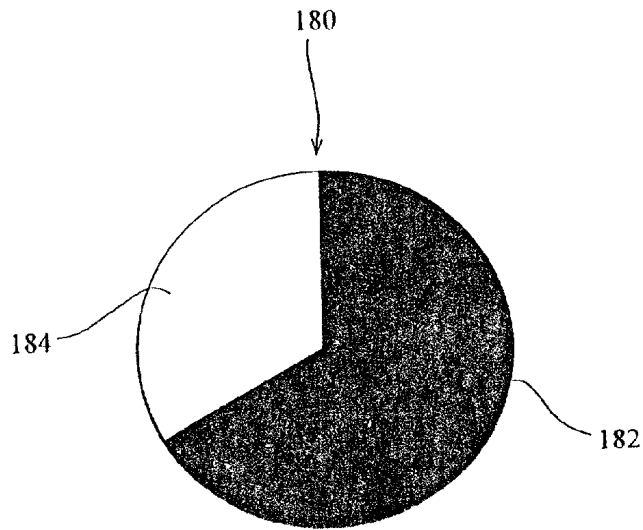


FIG. 13

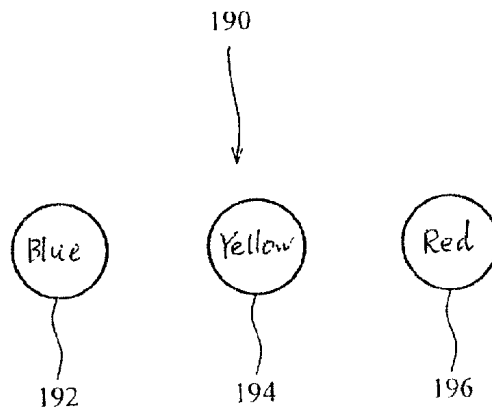
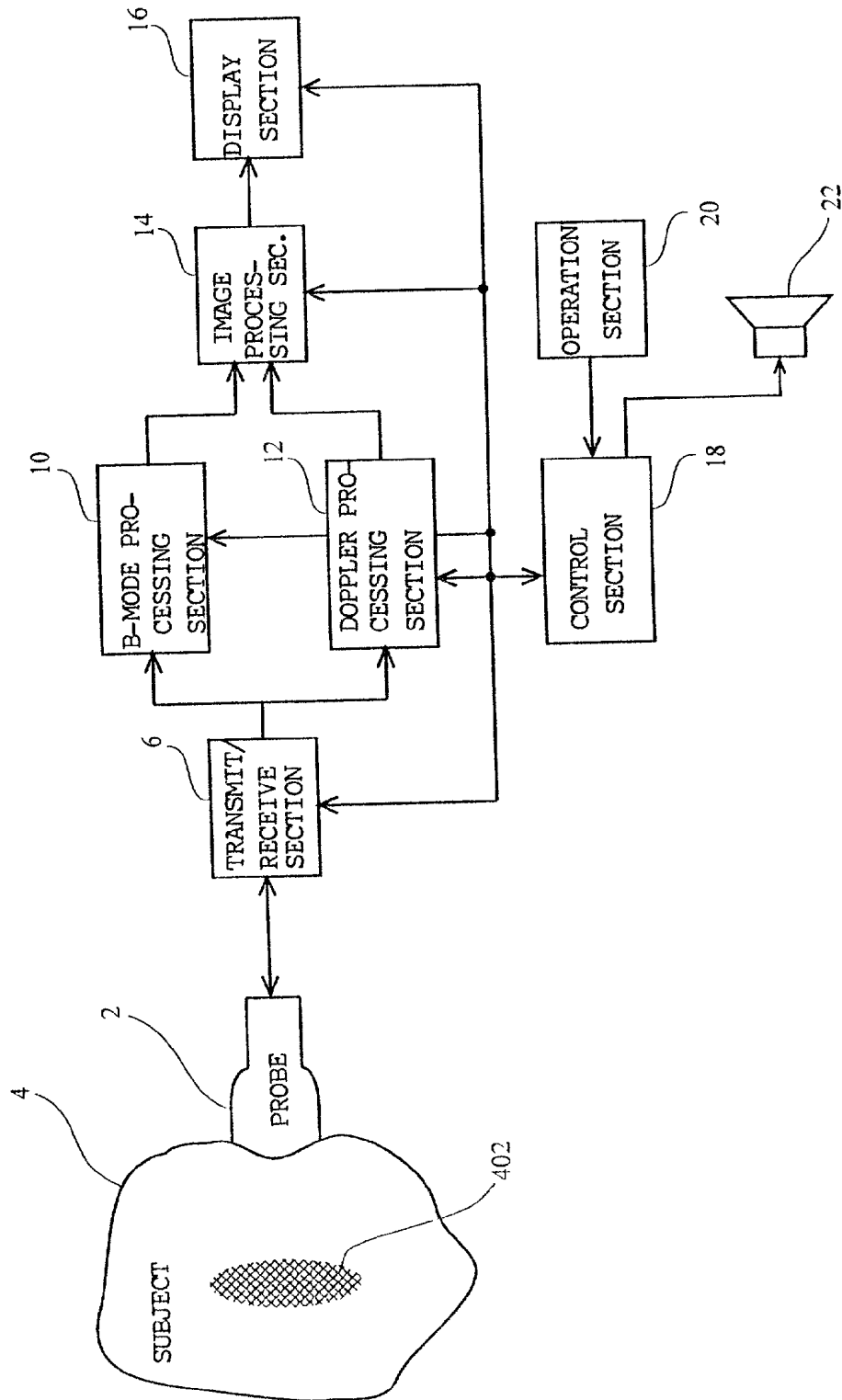


FIG. 14



## ULTRASONIC IMAGING APPARATUS AND METHOD OF INDICATING THE NEXT SCANNING START TIME

### BACKGROUND OF THE INVENTION

[0001] The present invention relates to an ultrasonic imaging apparatus, and particularly to an ultrasonic imaging apparatus which implements repeatedly and intermittently the ultrasonic wave transmit/receive operation of scanning the inside of a subject with an Ultrasonic wave and receiving an echo of the ultrasonic wave, with a predetermined resting period being interposed between operations.

[0002] Ultrasonic imaging utilizes the echo of an ultrasonic wave which is radiated to the inside of a subject to produce a tomographic image of the subject, and displays a resulting B-mode image. It also utilizes the Doppler shift of the ultrasonic echo to produce an image of the dynamic state of a blood flow or the like, and displays a resulting color Doppler image.

[0003] If it is needed to raise the magnitude of echo, the region of interest is filled with contrast agent by utilization of the blood flow. The contrast agent is a mass of fine bubbles having a diameter of several  $\mu\text{m}$ .

[0004] The contrast agent dissolves by being hit by an ultrasonic wave and thereafter does not produce an echo, and therefore next scanning is carried out by being timed so that the imaging portion is filled with contrast agent again.

[0005] On this account, ultrasonic imaging based on the use of contrast agent implements the intermittent scanning having a resting period of several seconds to several tens of seconds in each operation cycle. A tomographic image produced by each scanning is displayed as a frozen image, and it is revised at each scan-imaging.

[0006] In the intermittent scanning operation, the operator of ultrasonic imaging apparatus must keep to put the ultrasonic probe on the imaging portion of the subject preparatory to the next scanning, and it is a hard work for the operator to stay tight even during the resting period of intermittent scanning.

### SUMMARY OF THE INVENTION

[0007] Accordingly, it is an object of the present invention to accomplish an ultrasonic imaging apparatus which relieves the operator's duty in the intermittent scanning operation.

[0008] The present invention for solving the above-mentioned problem resides in an ultrasonic imaging apparatus comprising ultrasonic wave transmission/reception means which implements repeatedly and intermittently ultrasonic wave transmission/reception operations of scanning the inside of a subject with a ultrasonic wave and receiving an echo of the ultrasonic wave, with a predetermined resting period being interposed between operations, imaging means when produces an image based on the received echo, display means which displays the image, and indication means which indicates the length of preceding time which lasts up to the next scanning start time.

[0009] According to this invention, the preceding time length until the next scanning start time is indicated, and the

operator can anticipate the start time of ultrasonic wave transmission/reception accurately and can relax and wait until then.

[0010] By displaying the preceding time length on a graph, the operator can recognize the preceding time length in analog fashion.

[0011] By displaying the preceding time length in terms of hues, the operator can recognize the preceding time length in steps.

[0012] By displaying the preceding time length numerically, the operator can recognize the preceding time length in digital fashion.

[0013] By displaying the preceding time length acoustically, both the operator and the person under test can recognize the preceding time length.

[0014] The present invention seen from another viewpoint for solving the above-mentioned problem resides in an ultrasonic imaging method which is characterized by implementing repeatedly and intermittently ultrasonic wave transmission/reception operations of scanning the inside of a subject with an ultrasonic wave and receiving an echo of the ultrasonic wave, with a predetermined resting period being interposed between operations, producing an image based on the received echo and displaying the image, and indicating the length of preceding time which lasts up to the next scanning start time. The invention of this viewpoint can achieve the same effectiveness as described above.

[0015] Therefore, the present invention can accomplish the ultrasonic imaging apparatus which relieves the operator's duty in carrying out the intermittent scanning.

[0016] Further objects and advantages of the present invention will be apparent from the following description of the preferred embodiments of the invention as illustrated in the accompanying drawings.

### BRIEF DESCRIPTION OF THE DRAWINGS

[0017] **FIG. 1** is a block diagram of the apparatus which is an example of embodiment of this invention.

[0018] **FIG. 2** is a block diagram of the transmit/receive section of the apparatus shown in **FIG. 1**.

[0019] **FIG. 3** is a schematic diagram of sonic beam scanning by the apparatus shown in **FIG. 1**.

[0020] **FIG. 4** is a schematic diagram of sonic beam scanning by the apparatus shown in **FIG. 1**.

[0021] **FIG. 5** is a schematic diagram of sonic beam scanning by the apparatus shown in **FIG. 1**.

[0022] **FIG. 6** is a block diagram of the B-mode processing section of the apparatus shown in **FIG. 1**.

[0023] **FIG. 7** is a block diagram of the Doppler processing section of the apparatus shown in **FIG. 1**.

[0024] **FIG. 8** is a block diagram of the image processing section of the apparatus shown in **FIG. 1**.

[0025] **FIG. 9** is a schematic diagram showing an example of display on the display section of the apparatus shown in **FIG. 1**.

[0026] FIG. 10 is a flowchart of the operation of the apparatus shown in FIG. 1.

[0027] FIG. 11 a schematic diagram showing an example of display on the display section of the apparatus shown in FIG. 1.

[0028] FIG. 12 is a schematic diagram showing an example of the preceding time display image.

[0029] FIG. 13 is a schematic diagram showing an example of the preceding the display image.

[0030] FIG. 14 is a clock diagram of the apparatus which is an example of embodiment of this invention.

#### DETAILED DESCRIPTION OF THE INVENTION

[0031] An embodiment of this invention will be explained in detail with reference to the drawings. FIG. 1 shows by block diagram an ultrasonic imaging apparatus, which is an example of embodiment of this invention. The arrangement of this apparatus shows an example of embodiment the inventive apparatus.

[0032] As shown in FIG. 1, this apparatus includes an ultrasonic probe 2. The ultrasonic probe 2 has an array of a number of ultrasonic transducers (not shown). Each ultrasonic transducer is formed of a piezoelectric material, e.g., PZT (titanium (Ti) acid zirconium (Zr) acid) ceramics. The ultrasonic probe 2 is used by the operator to come in contact with a subject 4. The subject 4 has its region of interest fed in advance with contrast agent 402 by utilization of the blood flow.

[0033] The ultrasonic probe 2 is connected to a transmit/receive section 6. The transmit/receive section 6 supplies a drives signal to the ultrasonic probe 2, which then transmits an ultrasonic wave. The transmit/receive section 6 gets an echo signal which is received by the ultrasonic probe 2.

[0034] FIG. 2 shows by block diagram the transmit/receive section 6. As shown in the figure, the transmit/receive section 6 includes a transmission timing generation unit 602. The transmission a timing generation unit 602 generates a transmission timing signal periodically and puts the signal into a transmission beamformer 604. The transmission timing signal has its period controlled by a control section 18 which will be explained later.

[0035] The transmission beamformer 604, which implements the beamforming for transmission, produces a beamforming signal for making an ultrasonic beam of a prescribed azimuth based on the transmission timing signal. The beamforming signal consists of a number of drive signals having time differences which correspond to the azimuths. Beamforming is controlled by the control section 18 which will be explained later. The transmission beamformer 604 puts the transmission beamforming signal into a transmit/receive switching unit 606.

[0036] The transmit/receive switching unit 606 puts the beamforming signal into the ultrasonic transducer array. In the ultrasonic transducer array, the ultrasonic transducers which constitute transmission apertures generate ultrasonic waves having phase differences which correspond to the time differences of the drive signals. Based on the wave

front composition of these ultrasonic waves, an ultrasonic beam along the line of a certain azimuth is made.

[0037] The transmit/receive switching unit 606 is connected to a reception beamformer 610. The transmit/receive switching unit 606 puts the echo signals, which have been received by reception apertures of the ultrasonic transducer array, into the reception beamformer 610. The reception beamformer 610, which implements the beamforming for reception in correspondence to the transmission sonic beam, makes time differences among received echoes to adjust their phases and subsequently sums the echoes to form an echo reception signal along the sonic beam of a certain azimuth. Beamforming of reception is controlled by the control section 18 which will be explained later.

[0038] Transmission of ultrasonic beam takes place repetitively at a certain time interval in response to the transmission timing signal generated by the transmission timing generation unit 602. In synchronism with the beam transmission, the transmission beamformer 604 and reception beamformer 610 alter the azimuth of sonic beam at a certain step. In consequence, the sonic beam scans the inside of the subject 4 in succession. The transmit/receive section 6 having this arrangement performs the scanning as shown in FIG. 3 for example. Specifically, it scans a two-dimensional sectoral region 206 along the direction of  $\theta$  with a sonic beam 202 extending in the z direction from a radiation point 200, thereby performing so-called sector scanning.

[0039] When the transmission and reception apertures are formed as part of the ultrasonic transducer array, the apertures are moved in succession along the array, thereby implementing the scanning as shown in FIG. 4 for example. Specifically, the sonic beam 202 which extends in the z direction from the radiation point 200 is moved along a locus 204 of straight line to scan a two-dimensional rectangular region 206 in the x direction, thereby performing so-called linear scanning.

[0040] When the ultrasonic transducer array is a so-called convex array in which the ultrasonic transducer array is arranged along an arc which is advanced toward the ultrasonic transmission direction, it is obviously possible based on sonic beam scanning similar to linear scanning to scan a two-dimensional sectoral region 206 along the  $\theta$  direction by moving the radiation point 200 of the sonic beam 202 along an arcuate locus 204 as shown in FIG. 5 for example, thereby performing so-called convex scanning.

[0041] The above-mentioned scanning takes place continuously or intermittently under control of the control section 18. The intermittent scanning has an interval of several seconds to several tens of seconds. The portion of apparatus including the ultrasonic probe 2, transmit/receive section 6 and control section 38 is an example of embodiment of the inventive ultrasonic wave transmission/reception means.

[0042] The transmit/receive section 6 is connected to a B-mode processing section 10 and Doppler processing section 12. The echo reception signal of each sonic beam released by the transmit/receive section 6 is put into the B-mode processing section 10 and Doppler processing section 12.

[0043] The B-mode processing section 10 functions to produce B-mode image data. The B-mode processing sec-

tion 10 includes a logarithmic amplify unit 102 and an envelope detect unit 104 as shown in FIG. 6. The B-mode processing section 10 implements with its envelope detect unit 104 the logarithmic amplification for the echo reception signal and implements with its envelope detect unit 104 the envelope detection for the amplified signal thereby to produce a signal indicative of the strength of echo at each reflection point on the sonic beams, i.e., A-scope signal, and produce B-mode image data by sampling the amplitude of the A-scope signal as a value of luminous intensity.

[0044] The Doppler processing section 12 functions to produce Doppler image data. The Doppler image data includes flow velocity data, variance data and power data as will be explained later.

[0045] The Doppler processing section 2 has an orthogonal detect unit 120, an MTI (Moving Target Identification) filter 121, an autocorrelation calculation unit 124, an average flow velocity calculation unit 26, a variance calculation unit 128 and a power calculation unit 130, as shown

[0046] The Doppler processing section 12 implements with its orthogonal detect unit 120 the orthogonal detection for the echo reception signal, and implements with its MTI filter 122 the MTI process to evaluate the Doppler shift of the echo signal. It further implements with its autocorrelation calculation unit 124 the autocorrelation calculation for the output signal of the MTI filter 122, evaluates with its average flow velocity calculation unit 126 the average flow velocity V from the result of autocorrelation calculation, evaluates with its variance calculation unit 128 the variance T of the flow velocity from the result of autocorrelation calculation, and evaluates with its power calculation unit 130 the power PW of the Doppler signal from the result of autocorrelation calculation. Hereinafter, the average flow velocity will be called simply flow velocity, the variance of flow velocity will be called simply variance, and the power of Doppler signal will be called simply power.

[0047] The Doppler processing section 12 produces data of each sonic beam indicative of the flow velocity V, variance T and power PW of the echo source in motion in the subject 4. The data indicates the flow velocity, variance and power of each pixel on the sonic beam. The flow velocity represents the component in the sonic beam direction, with the directivity of coming toward or going away from the ultrasonic probe 2 being distinguished.

[0048] The B-mode processing section 10 and Doppler processing section 12 are connected to an image processing section 14. The image processing section 14 forms a B-mode image and a Doppler image based on the data provided by the B-mode processing section 10 and Doppler processing section 12, respectively. The arrangement including the B-mode processing section 10, Doppler processing section 12 and image processing section 14 is an example of embodiment of the inventive image forming means.

[0049] The image processing section 14 has a central processing unit (CPU) 140 as shown in FIG. 8. The CPU 140 is connected by a bus 142 to a main memory 144, an external memory 146, a controller interference 148, an input data memory 152, a digital scan converter (DSC) 154, an image memory 156, and a display memory 158.

[0050] The external memory 146 stores a program which is run by the CPU 140. The external memory 146 also stores various data used by the CPU 140 in running the program.

[0051] The CPU 140 loads the program from the external memory 146 into the main memory 144, and runs the program to carry out the imaging process. The program stored in the external memory 146 acts on the CPU 140 to accomplish an information display function. During the program execution, the CPU 140 transacts control signals via the controller interference 148 with a control section 18 which will be explained later.

[0052] The B-mode image data and Doppler image data provided by the B-mode processing section 10 and Doppler processing section 12 for each sonic beam are stored in the input data memory 152. The data in the input data memory 152 is rendered the scan conversion by the DSC 154 and stored in the image memory 156. The data in the image memory 156 is loaded into the display memory 158 and then fed to a display section 16.

[0053] The display memory 158 is further written by the CPU 140 the preceding time indication image which will be explained later. Accordingly, the display section 16 receives the preceding time indication image in addition to the image from the image memory 156.

[0054] The image processing section 14 is connected with the display section 16. The display section 16 is supplied with the image signal from the image processing section 14, so that it displays a picture based on the signal. The display section 16 is a graphic display unit having a cathode-ray tube (CRT) which is capable of displaying a color picture. The display section 16 is an example of embodiment of the inventive display means. It is also an example of embodiment of the inventive indication means.

[0055] The foregoing transmit/receive section 6, B-mode processing section 10, Doppler processing section 12, image processing section 14 and display section 16 are connected with the control section 18. The control section 18 controls these sections by supplying the control signals to them. The control section 18 has inputs of various information signals from the controlled sections. The B-mode operation and Doppler mode operation take place under control of the control section 18.

[0056] The control section 18 is connected with an operation section 20. The operation section 20 is operated by the operator to enter timely commands and information to the control section 18. The operation section 20 is an operation panel which is equipped with, for example, a keyboard, pointing device and other operation devices.

[0057] The imaging operation of this apparatus will be explained. Continuous scanning without the injection of contrast agent will be explained first. The operator brings the ultrasonic probe 2 to come in contact with an intended portion of the subject 4, and operates the operation section 20 to carry out the imaging operation which covers both the B mode and Doppler mode for example. B-mode imaging and Doppler-mode imaging take place on a time slice basis under control of the control section 18. Specifically, for example, scanings for the B mode and Doppler mode take place at such a proportion a one B-mode scanning in every certain number of Doppler-mode scanning.

[0058] In the B mode, the transmit/receive section 6 operates on the ultrasonic probe 2 to scan the inside of the subject 4 and receive the echo of each sonic beam. The B-mode processing section 10 amplifies with its logarithmic

amplify unit **102** the echo reception signal provided by the transmit/receive section **6** and implements the envelope detect on with its envelope detect unit **104** to produce the A-scope signal, thereby producing B-mode image data for each sonic beam based on the signal.

[**0059**] The image processing section **14** stores the B-mode image data of each sonic beam provided by the B-mode processing section **10** into the input data memory **152**. In consequence, a sonic beam data space for the B-mode image data is formed in the input data memory **152**.

[**0060**] In the Doppler mode, the transmit/receive section **6** operates on the ultrasonic probe **2** to scan the inside of the subject **4** and receive the echo of each sonic beam. In this operation, a number of times of ultrasonic wave transmission and reception take place for each sonic beam.

[**0061**] The Doppler processing section **12** implements with its orthogonal detection unit **120** the orthogonal detection for the echo reception signal, implements the MTI process with its MTI filter **122**, and evaluates the autocorrelation with its autocorrelation calculation unit **124**. It further evaluates the flow velocity **V** from the autocorrelation result with its flow velocity calculation unit **126**, evaluates the variance **T** with its variance calculation unit **128**, and evaluates the power **PW** with its power calculation unit **130**. These calculated values become data indicative of the flow velocity, variance and power of the echo source of each sonic beam and each pixel.

[**0062**] The image processing section **14** scores Doppler image and of each pixel and each sonic beam provided by the Doppler processing section **12** into the input data memory **152**. In consequence, a sonic beam data space for each Doppler image data piece is formed in the input data memory **152**.

[**0063**] The CPU **140** implements with its DSC **154** the scan conversion for the B-mode image data and Doppler image data in the input data memory **152**, and writes the resulting data into the image memory **156**.

[**0064**] In this case, the Doppler image data is written as flow velocity distribution image data which is a combination of the flow velocity **V** and variance **T**, power Doppler image data with variance which is the power-Doppler image data using the power **PW** or a combination of the power **PW** and variance **T**, and the variance image data using the variance **T**.

[**0065**] The CPU **140** writes the B-mode image data and each Doppler image data piece into separate areas. The display section **16** displays an image which is based on the B-mode image data and each Doppler image data piece.

[**0066**] The B-mode image becomes a tomographic image of the body tissues on the sonic beam scanning plane. Among the color Doppler images, the flow velocity distribution image becomes an image indicative of a two-dimensional distribution of flow velocity of the echo source. This image has different display colors for different flow directions, has different luminous intensities for different flow velocities, and intensifies certain colors thereby to vary the purity of display colors or different variances.

[**0067**] The power Doppler image becomes an image indicative of a two-dimensional distribution of the power of the Doppler signal. This image reveals the presence or echo

sources in motion. The luminous intensity of the display color of the image corresponds to the power. With the variance being combined to it, certain colors are intensified thereby to vary the purity of display colors for different variances.

[**0068**] The variance image becomes an image indicative of a two-dimensional distribution of variance values. This image also reveals the presence of echo sources in motion. The luminous intensity of the display color corresponds to the value of variance.

[**0069**] In the case of displaying these images on the display section **16**, the images are merged into the B-mode image in the display memory **158** and the composed image is displayed on the display section **16**, and it is possible to observe a color Doppler image which reveals clearly the positional relation with body tissues.

[**0070**] **FIG. 9** shows schematically an example of display of the resulting image. As shown in the figure, the screen **160** displays a B-mode image **162** which is taken based on sector scanning. Displayed above the B-mode image **162** is a color Doppler image **164**, which is depicted here in terms of the border of a display area.

[**0071**] There is a region of interest (ROI) **168** within the B-mode image **162**, with measuring cursors **172** and **174** being displayed at two positions on the profile of ROI. The operator can move the measuring cursors **172** and **174** arbitrarily with the pointing device.

[**0072**] Displayed in the blank area of the screen **160** are a gray scale **176** which indexes one concentration or of the B-mode image **162** and a user comment field **178**.

[**0073**] Next, imaging based on intermittent scanning will be explained. Intermittent scanning is carried out with the injection of contrast agent **402** to the subject **4**.

[**0074**] **FIG. 10** shows by flowchart the intermittent scanning operation. As shown in the figure, step **302** sets the interval of scanning. The scanning interval is set by the operator through the operation section **20**. The scanning interval ranges from several seconds to several tens of seconds for example.

[**0075**] The next step **304** implements the scanning. Specifically, the sonic beam **206** scans the two-dimensional region **206** only once under control of the control section **18**.

[**0076**] The next step **306** judges the end of imaging, and if it is not the end of imaging, step **308** measures the preceding time length under control of the control section **18**. The control section **18** measures the preceding time length by counting down the setup value of scanning interval.

[**0077**] The next step **310** judges the expiration, i.e., count **0**, of the preceding time length, and unless it is time-up, step **312** indicates the preceding time length.

[**0078**] The preceding time length is indicated on the display section **16** under control of the control section **18**. The manner of preceding time indication will be explained later. The operations of steps **308** to **312** are repeated, while the preceding time length is measured and indicated, until it expires.

[0079] In response to the time-up, the operation sequence returns to step 304 to scan the two-dimensional region 206 once and subsequently measure and indicate the preceding time length as described above. These operations are repeated. On completion of imaging, when the operator takes the imaging terminating operation, the operation ends in response to the judgement of step 306.

[0080] FIG. 11 shows schematically an example of display of intermittent scanning. As shown in the figure, the screen 160 displays a B-mode image 162 which is taken based on sector scanning. Displayed above the B-mode image 162 is a color Doppler image 164.

[0081] Within the B-mode image 162, there is a region of interest (ROI) 168, which is filled with contrast agent. Displayed in the left-hand blank area of the screen 160 are a gray scale 176 which indexes the concentration of the B-mode image 162, and a user comment field 18.

[0082] As a result of intermittent scanning, the B-mode image 163 and color Doppler image 164 are revised intermittently. During the scan resting period between intermittent scanings, these images are displayed as still or frozen images. The scan resting period is equal in length to the scanning interval.

[0083] Displayed in the bottom-right blank area of the screen is a bar graph 170, which is an example of the preceding time indication image. The bar graph 170 is a figure of horizontal strip having a constant length irrespective of the value of scanning interval. The bar graph 170 may have its length varied in proportion to the scanning interval.

[0084] The bar graph 170 consists of two sections 172 and 174 of different levels of brightness. The dark section 172 increases in length and the bright section 174 decreases in length with the passage of scan resting period.

[0085] The operator can know the passage of scan resting period in terms of the proportion of the length of the dark section 172 out of the resting period. The operator can know the preceding time which lasts until the start of next scanning in terms of the proportion of the length of the bright section 174 out of the resting period. If the bar graph 170 has a length which is proportional to the scanning interval, the operator can know the time passage and the preceding time length in terms of absolute values.

[0086] The bar graph 170 may consist of two sections of different hues instead of levels of brightness. The bar graph 170 may be displayed vertically in the right-hand blank area of the screen for example.

[0087] In consequence, the operator can recognize the next scanning start time accurately in analog fashion, and can relax and wait in most of the resting period. Accordingly, the operator can be relieve of the mental and physical duty.

[0088] The preceding time indication image may be a sector graph 180 as shown in FIG. 12. The sector graph 180 is designed to consist of two sectors 182 and 184 of different levels of brightness, with the dark sector 172 increasing in area and the bright sector 174 decreasing in area with the passage of scan resting period. The operator can recognize the preceding time length in terms of the area of the bright sector 174 in analog fashion. The levels of brightness may be substituted by hues as in the case of FIG. 11.

[0089] The preceding time indication image may be a set of three color signal display images 190 similar to the traffic signals as shown in FIG. 13. The color signal display images 190 include a blue signal image 192, yellow signal image 194 and red signal image 196.

[0090] While the time passage is less than  $\frac{1}{3}$  of the resting period, the blue signal image 192 is displayed in blue and other images are displayed in white. While the time passage is more than  $\frac{1}{3}$  and less than  $\frac{2}{3}$  of the resting period, the yellow signal image 194 is displayed in yellow and other images are displayed in white. When the time passage is more than  $\frac{2}{3}$  of the resting period, the red signal image is displayed in red and other images are displayed in white. In this manner, the operator can know the preceding time length by display color in steps.

[0091] The preceding time length can obviously be displayed numerically instead of graphic display described above, enabling the operator to recognize the preceding time length in digital fashion.

[0092] Otherwise, one preceding time length may be indicated acoustically by the provision of an acoustic output section 22 which is controlled by the control section 18 as shown in FIG. 14. The acoustic output section 22 is an example of embodiment of the inventive indication means.

[0093] The acoustic indication takes place at every ten seconds until five seconds to the commencement of scanning, and at every second after five seconds to the commencement of scanning. The indication at every second may be based on either a call of a number of second or a rhythmic sound of one-second period.

[0094] The acoustic indication enables the person under test as the subject 4 to anticipate the next scanning start time, and the person can relax and wait during the resting period. Accordingly, the person can also be relieved.

[0095] Many widely different embodiments of the invention maybe configured without departing from the spirit and the scope of the present invention. It should be understood that the present invention is not limited to the specific embodiments described in the specification, except as defined in the appended claims.

1. An ultrasonic imaging apparatus comprising:

an ultrasonic wave transmission/reception device which implements repeatedly and intermittently ultrasonic wave transmission/reception operations of scanning the inside of a subject with an ultrasonic wave and receiving an echo of the ultrasonic wave, with a predetermined resting period being interposed between operations;

an imaging device which produces an image based on the received echo;

a display device which displays the image; and

an indication device which indicates the length of preceding time which lasts up to the next scanning start time.

2. An ultrasonic imaging apparatus of claim 1 wherein, said indication device indicates the preceding time length on a graph.

3. An ultrasonic imaging apparatus of claim 2, wherein said graph is a bar graph.

4. An ultrasonic imaging apparatus of claim 2, wherein said graph is a sector graph.

5. An ultrasonic imaging apparatus of claim 1, wherein said indication device indicates the preceding time length in terms of hues.

6. An ultrasonic imaging apparatus of claim 1, wherein said indication device indicates the preceding time length numerically.

7. An ultrasonic imaging apparatus of claim 1, wherein said indication device indicates the preceding time length acoustically.

8. A method of indicating the next scanning start time, comprising the steps of:

implementing repeatedly and intermittently ultrasonic wave transmission/reception operations of scanning the inside of a subject with an ultrasonic wave and receiving an echo of the ultrasonic wave, with a predetermined resting period being interposed between operations;

producing an image based on the received echo; and

indicating the length of preceding time which lasts up to the next scanning start time.

\* \* \* \* \*

专利名称(译)	超声波成像设备和指示下一扫描开始时间的方法		
公开(公告)号	<a href="#">US20020042573A1</a>	公开(公告)日	2002-04-11
申请号	US09/928179	申请日	2001-08-10
[标]申请(专利权)人(译)	桥本HIROSHI 田中KOW 安西照雄 菅野KEN		
申请(专利权)人(译)	桥本HIROSHI 田中KOW 安西照雄 菅野KEN		
当前申请(专利权)人(译)	桥本HIROSHI 田中KOW 安西照雄 菅野KEN		
[标]发明人	HASHIMOTO HIROSHI TANAKA KOW ANZAI TERUO KANNO KEN		
发明人	HASHIMOTO, HIROSHI TANAKA, KOW ANZAI, TERUO KANNO, KEN		
IPC分类号	A61B8/06 A61B8/00 G01S7/52		
CPC分类号	A61B8/06 A61B8/13 G01S7/52073 A61B8/463 G01S7/52071 A61B8/4281		
优先权	2000308668 2000-10-10 JP		
其他公开文献	US6461300		
外部链接	<a href="#">Espacenet</a> <a href="#">USPTO</a>		

摘要(译)

超声波成像设备在条形图等上指示持续到下一扫描开始时间的前一时间长度，从而减轻了操作者执行间歇扫描的任务。

