



US006647135B2

(12) **United States Patent**
Bonnefous

(10) **Patent No.:** **US 6,647,135 B2**
(45) **Date of Patent:** **Nov. 11, 2003**

(54) **ULTRASONIC IMAGE PROCESSING METHOD AND SYSTEM FOR DISPLAYING A COMPOSITE IMAGE SEQUENCE OF AN ARTERY SEGMENT**

Primary Examiner—Amelia M. Au
Assistant Examiner—Anand Bhatnagar
(74) *Attorney, Agent, or Firm*—John Vodopia

(75) **Inventor:** **Odile Bonnefous**, Nogent-sur-Marne (FR)

(57) **ABSTRACT**

(73) **Assignee:** **Koninklijke Philips Electronics N.V.**, Eindhoven (NL)

The invention concerns an ultrasonic image processing method for displaying a composite sequence of images of an artery segment with indication of blood flow velocity and wall movements in function of the cardiac cycle, comprising steps of:

(*) **Notice:** Subject to any disclaimer, the term of this patent is extended or adjusted under 35 U.S.C. 154(b) by 550 days.

forming, at a first rate, a first sequence (131) of blood flow velocity color-coded images and forming, at a second rate, a second sequence (231) of images with wall movement graphics;

(21) **Appl. No.:** **09/732,195**

and constructing said composite image sequence (361) by determining a first set of temporal markers (n1,n2), related to the cardiac cycle, in the first image sequence as the minimum points of a curve (P(n)) of the number of the colored points per image in function of the image instants, determining a second set of temporal markers (k1,k2), related to the same cardiac cycle, in the second image sequence as the minimum points of a curve (D(k)) of the arterial mean dilation in function of the image instants, and by superposing the first and second image sequences by synchronizing the respective markers of said two sets,

(22) **Filed:** **Dec. 7, 2000**

and displaying the composite image sequence.

(65) **Prior Publication Data**

US 2001/0017937 A1 Aug. 30, 2001

(30) **Foreign Application Priority Data**

Dec. 7, 1999 (EP) 99403058

(51) **Int. Cl.**⁷ **G06K 9/00**

(52) **U.S. Cl.** **382/128; 600/455; 128/916**

(58) **Field of Search** **382/128, 130, 382/131; 600/443, 447, 453, 454, 455, 456; 128/916**

(56) **References Cited**

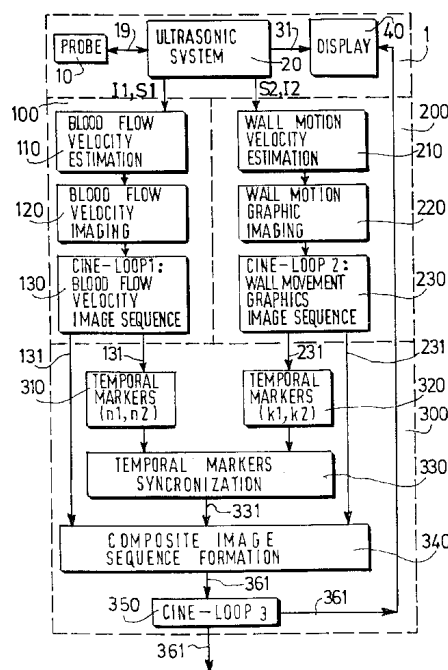
U.S. PATENT DOCUMENTS

5,938,606 A 8/1999 Bonnefous 600/437

FOREIGN PATENT DOCUMENTS

WO WO9925250 5/1999 A61B/8/08

11 Claims, 4 Drawing Sheets



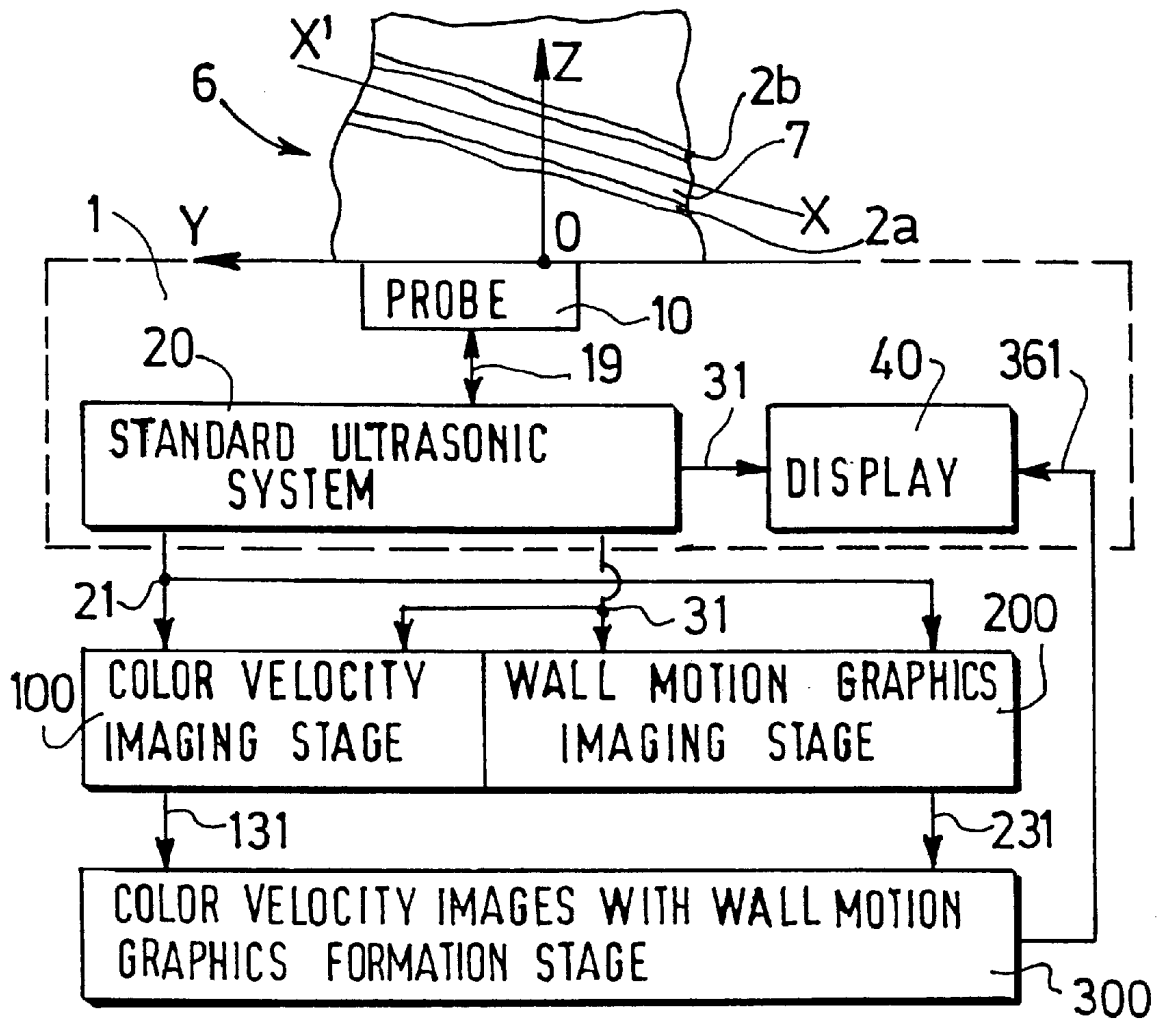


FIG.1

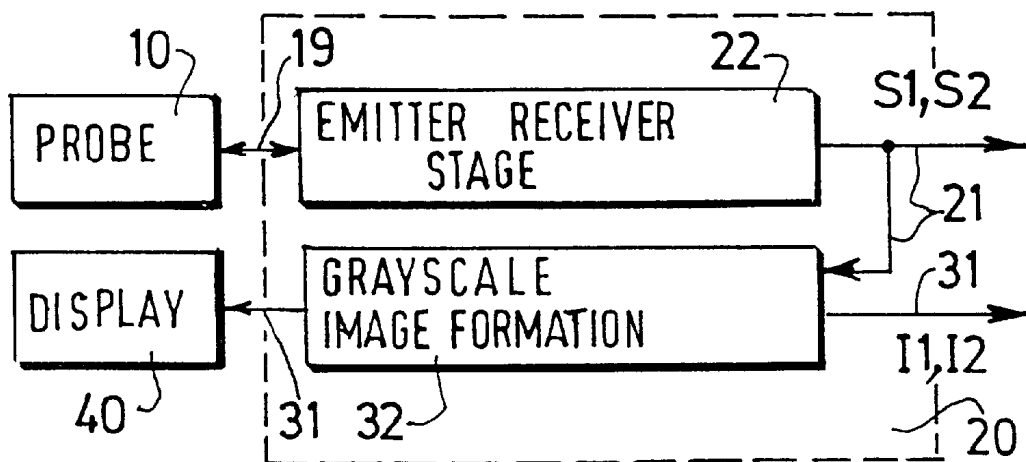


FIG.2

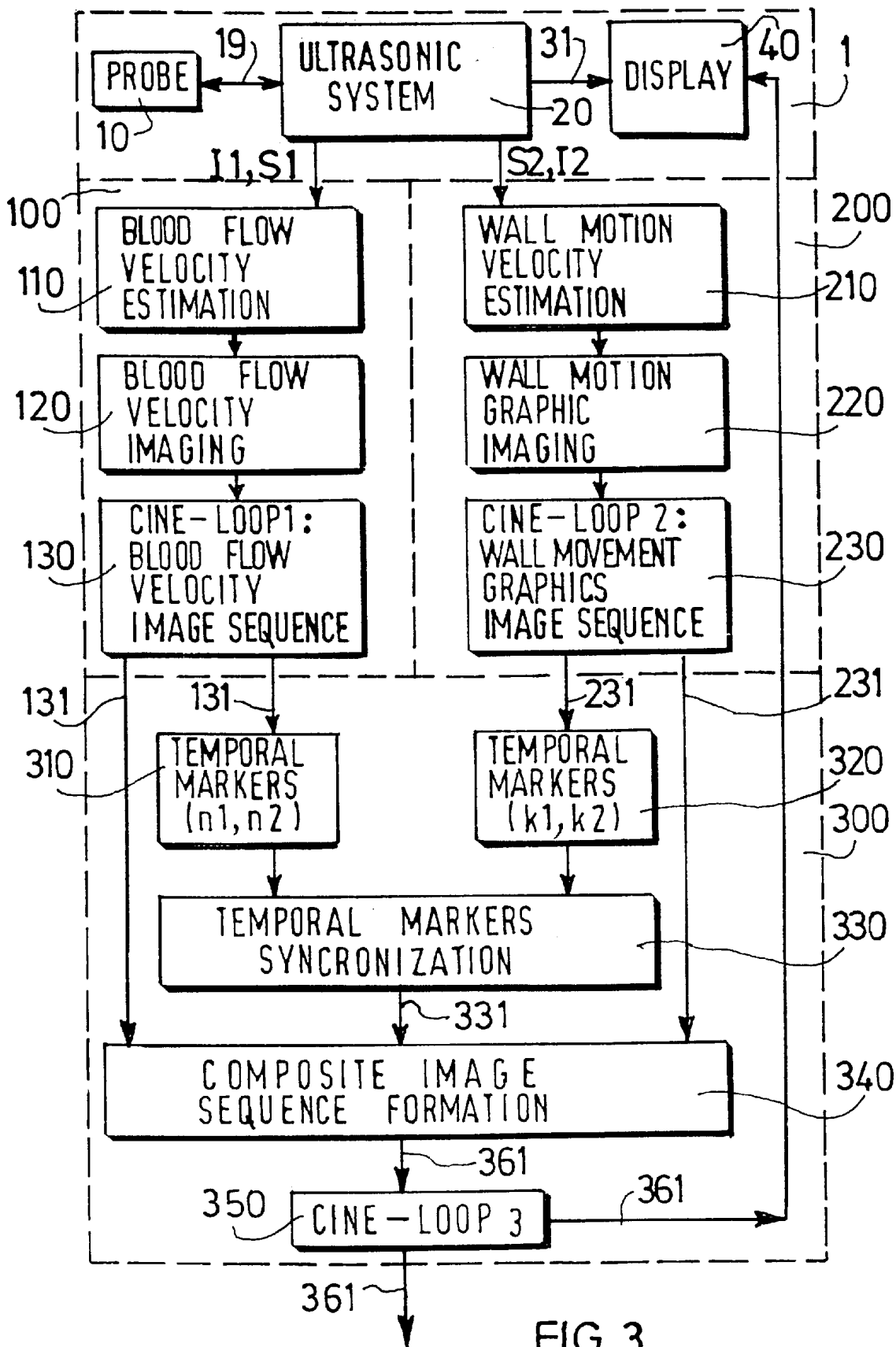


FIG. 3

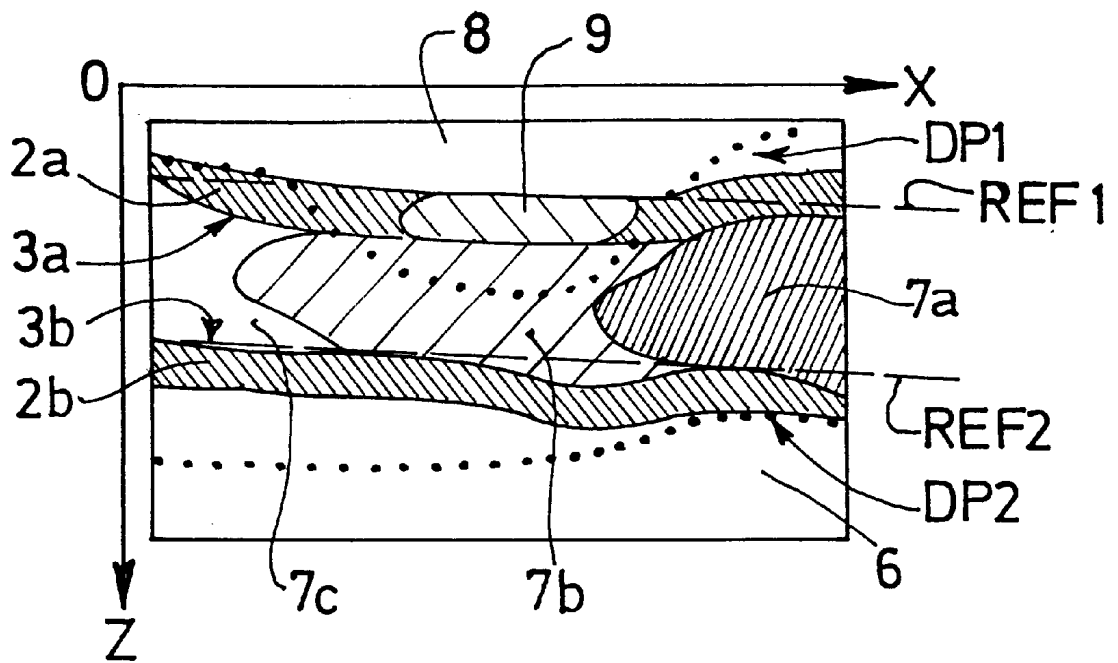


FIG.4

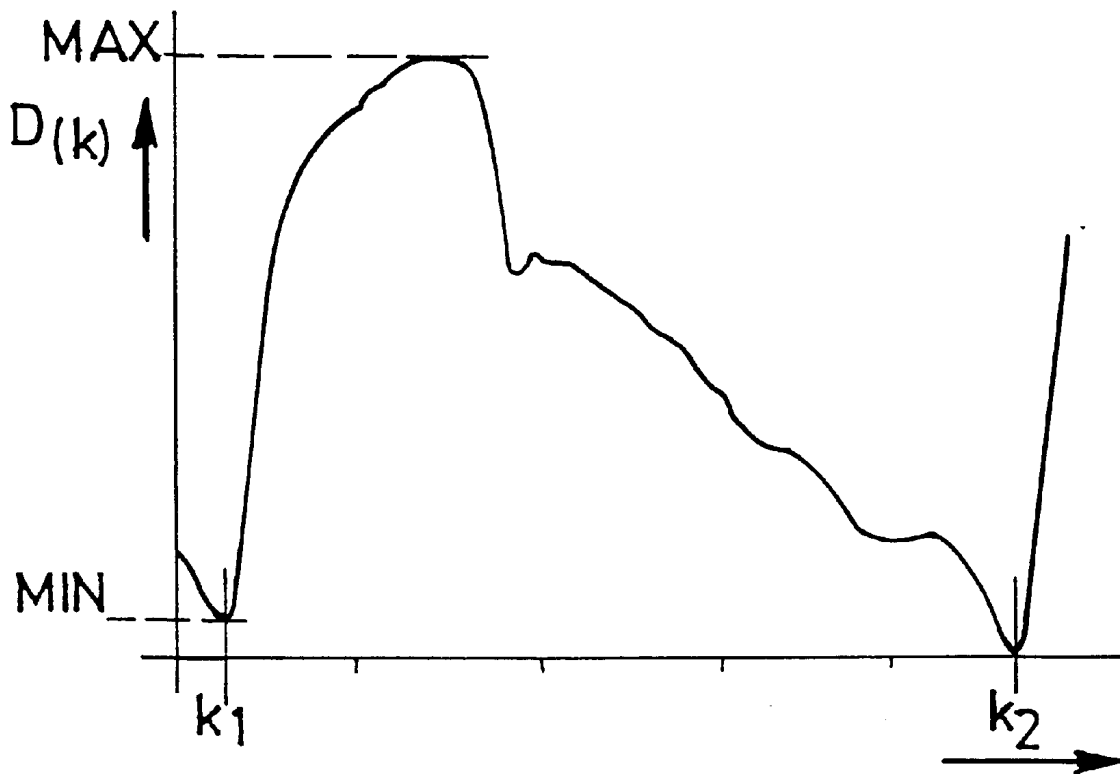


FIG.7

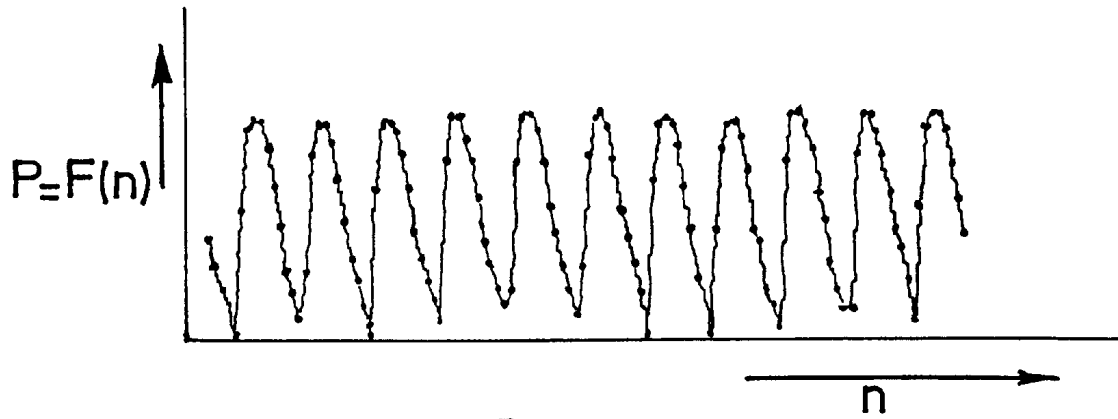


FIG.5

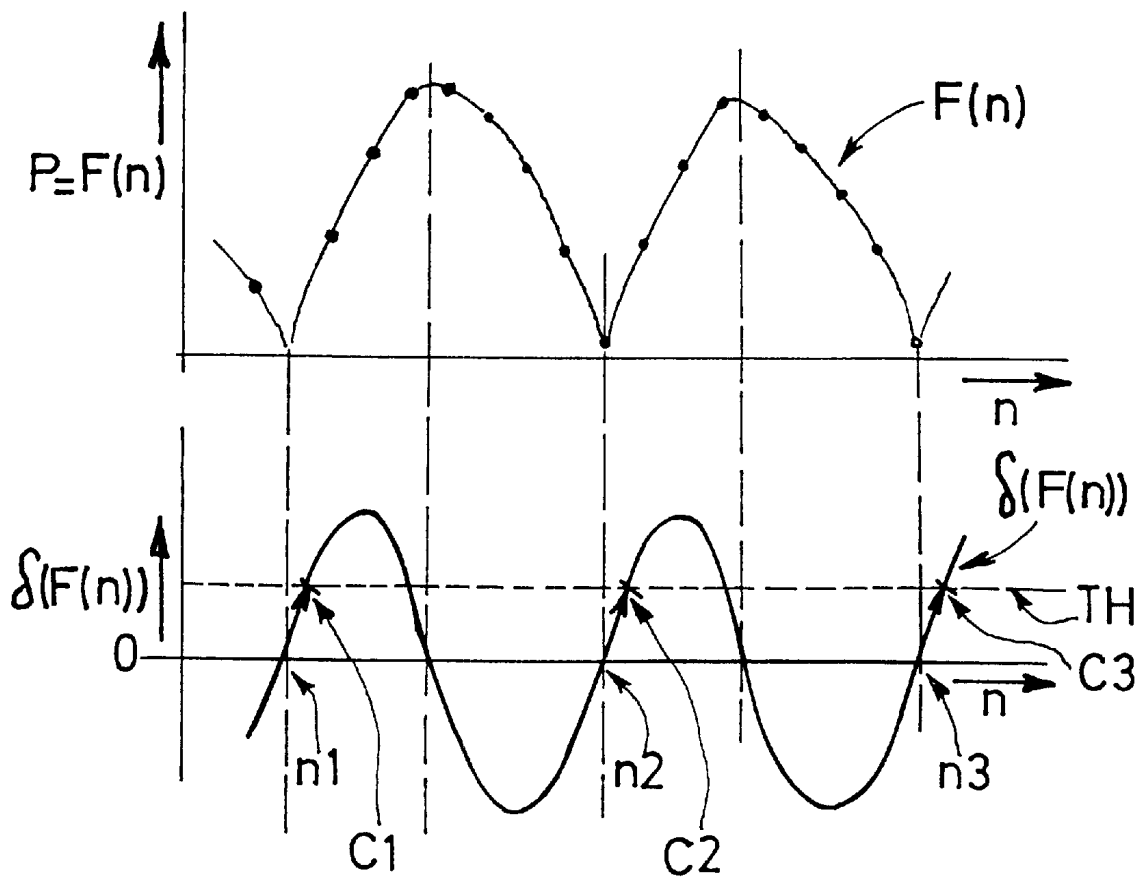


FIG.6

1

ULTRASONIC IMAGE PROCESSING METHOD AND SYSTEM FOR DISPLAYING A COMPOSITE IMAGE SEQUENCE OF AN ARTERY SEGMENT

Ultrasonic image processing method and system for displaying a composite image sequence of an artery segment

FIELD OF THE INVENTION

The invention relates to an ultrasonic image processing method for displaying a composite sequence of images of an artery segment with indication of blood flow velocity and wall movements in function of the cardiac cycle, comprising steps of forming, at a first rate, a first sequence of blood flow velocity color-coded images and forming, at a second rate, a second sequence of images with wall movement graphics. The invention also relates to an ultrasonic diagnostic imaging system for carrying out this method.

The invention is used in the field of medical echographic imaging, for providing cardiovascular diagnostic tools for non-invasive study of anomalies of arteries and notably of stenoses. A diagnostic criterion for a stenosis is an abrupt reduction of an artery diameter. Another criterion is the blood velocity in the stenosed zone. Therefore, the medical field has a need for non-invasive means for studying parameters related to arterial wall motion and to blood flow velocity in order to early diagnostic stenosed arteries.

BACKGROUND OF THE INVENTION

A method for displaying a composite sequence of images of an artery segment with indication of color-coded blood flow velocity and arterial wall movement graphics in function of the cardiac cycle is already known from the PCT patent application No WO 99/25250. This method comprises steps of forming, at a first rate, a first sequence of blood flow velocity color-coded images and of forming, at a second rate, a second sequence of images with wall movement graphics and finally of superposing the first and second sequences by synchronizing markers of the starts of the cardiac cycles, previously measured for first and second sequences separately, using an external ECG device. To this end, the ECG measure means is to be applied to the patient in supplement to the ultrasonic measure means. The start and end points of the first and second sequences are further made to coincide by using calculation steps. Then, the composite image sequence is displayed.

As explained before, it is of importance that indications of the actual movements of the walls be available together with the blood flow velocity in order to diagnose stenoses or other diseases. A technical problem resides in the fact that processing a first set of data appropriate to provide arterial wall radial velocity together with processing a second set of data appropriate to provide either Doppler Imaging or CVI is difficult because said first and second sets of data are actually incompatible due to the respective velocities of arterial walls and blood flow, which are in the ratio of one to about fifty. It is the reason why the document cited as state of the art used a system based on supplementary ECG measurements in order to synchronize the first and second sets of data.

SUMMARY OF THE INVENTION

It is a purpose of the invention to provide an image processing method for synchronizing the two sequences of images that are formed from these two sets of data.

2

This problem is solved by means of a method as claimed in claim 1.

This method offers the advantage that the synchronization is performed using uniquely image processing. This method spares the patient to suffer supplementary ECG measure means and it spares the operator to perform supplementary ECG measures. This method also avoids inaccuracies that appear while making ultrasonic measures and ECG measures coincide. This method also offers the advantage that the arterial wall behavior is made clearly visible together with color-coded indications of the blood flow velocity. So, the physician may easily diagnose stenosis or arterial anomalies.

An ultrasonic diagnostic system having means for carrying out the method is claimed in claim 10, and constitutes a tool for non-invasive diagnostic of arterial wall anomalies.

BRIEF DESCRIPTION OF THE FIGURES

Specific embodiments of the invention will be described in detail hereinafter with reference to the accompanying diagrammatic drawings; therein:

FIG. 1 shows a simplified block diagram of an ultrasonic diagnostic imaging system;

FIG. 2 shows a block diagram of a standard ultrasonic system;

FIG. 3 shows a detailed block diagram of the ultrasonic diagnostic imaging system;

FIG. 4 shows a color-coded blood flow velocity image of an artery with superimposed graphic lines schematically representing wall movements;

FIG. 5 shows a curve of a function $F(n)$ representing the number of colored points in a color-coded velocity image in function of the instant n of said image in a sequence;

FIG. 6 shows the curve $F(n)$ together with the derivative $\delta[F(n)]$ of said curve;

FIG. 7 shows a curve of parietal mean displacements $D(k)$ of an artery as a function of temporal instants k .

DESCRIPTION OF THE PREFERRED EMBODIMENTS

Referring to FIG. 1, an ultrasonic diagnostic imaging system constructed in accordance to the principles of the present invention is shown in a simplified block diagram form. The ultrasonic diagnostic imaging system comprises sub-systems **1**, **100**, **200**, **300** for the construction and display of a sequence of echographic images of an artery, said sequence comprising color-coded blood flow velocity images on which graphic lines representing the arterial wall movements are superimposed. The constructed images of the sequence are 2-D images. A problem solved by the further described method and system is the construction of each sequence image by determining the information appropriate to construct each line of said 2-D image. In the example of embodiment that is described hereafter, the ultrasonic diagnostic imaging system is used as a tool for the examination of an artery located in a medium.

The ultrasonic sub-system **1** comprises a standard ultrasonic system **20** coupled to a probe or scan-head **10** and provided with display means **40**. The operation of the standard ultrasonic system **20** involves setting the probe **10** in contact with a medium **6** observed for transmitting, via periodic excitations, ultrasonic signals to said medium in a given direction **OZ** and for receiving in the same direction **OZ**, the echoes returned by the obstacles encountered in the

medium. The probe **10** may be composed of ultrasonic transducers that are assembled in a linear array having an orientation OY perpendicular to the OZ-axis. A respective transmitting/receiving line corresponds to an acoustic beam generated at a corresponding position.

Referring to FIG. 2, the standard ultrasonic system **20**, which is connected to the probe **10**, includes a transmitter/receiver stage **22** for generating the excitation signals applied to said probe. The probe transducers convert these signals into periodic train of ultrasonic pulse signals supplied with a predetermined recurrent frequency. The returned acoustic signals are received and combined by the transmitter/receiver stage **22** to perform beam formation. Control signals are further supplied by the transmitter/receiver stage **22** to control the probe **10**, the pulse signals and velocity estimation stages **110**, **210** included in sub-systems **100** and **200**.

In the transmission mode of the transmitter/receiver stage **22**, the medium is scanned along the directions OZ of the excitation lines. In the receiving mode, the image of each excitation line is formed, taking into account the propagation time in the medium and the amplitude of the echoes returned by the obstacles encountered along the excitation line considered. In the transmission mode of the transmitter/receiver stage **22**, each excitation line of the probe **10** thus provides acoustic high-frequency signals referenced **21** which enable the formation of a sequence of intensity images referenced **31** by way of a stage of image formation **32**. The intensity image sequence is referred to as ultrasonic grayscale image sequence **31**, which is displayed in the form of a 2-D image whose each column, called line, contains the information of one excitation line. So, the 2-D image contains a predetermined number of lines representing a segment of artery of about 28 mm.

Referring to FIG. 3, the ultrasonic diagnostic imaging system constructed in accordance to the principles of the present invention is shown in a detailed block diagram form. The ultrasonic diagnostic imaging system **1** is provided with:

- a first sub-system or first means **100** for providing a first sequence **131** of color-coded blood flow velocity images of an artery;
- a second sub-system or second means **200** for providing a second image sequence **231** of graphic lines representing the artery wall movements
- and with a third sub-system or third means **300** for synchronizing the images of the first and second sequences and providing a further third composite sequence of images **361** constituted of color-coded blood flow velocity images on which graphic lines representing the wall movements are superimposed.

The first, second and third means, respectively **100**, **200**, **300**, may be programmed computer means, which are able to carry out steps of a method described hereafter with the same results as first, second and third sub-systems respectively. Referring to FIG. 3, the subsystems **100** and **200** have computation means that are of the same kind, however applied on signals that are different. It is also to be noted that the first sub-system acquires a first set of data at a first rate so that this first set of data is appropriate to be processed for providing an image sequence of blood flow velocity (V_1). The first rate is of the order of 30 images per second for example. Besides, the first sub-system acquires a second set of data at a second rate so that this second set of data is appropriate to be processed for providing an image sequence of wall motion velocity (V_2). The second rate is of the order of 200 images per second.

Referring to FIG. 3, the first ultrasonic sub-system **100** is coupled to the standard ultrasonic system **1** in order to permit operation thereof in a color coded velocity imaging mode which enables determination of the blood flow velocities in different parts of the segment of artery. To that end, this first ultrasonic sub-system **100** comprises:

- a blood flow estimation stage **110**,
- a blood flow velocity imaging stage **120**
- and a memory Cine-Loop **1** storing an image sequence **131**.

Still referring to FIG. 1, for the estimation of blood flow velocity, which velocity is longitudinal, meaning parallel to the X'X-axis, the scanning of the medium by the ultrasonic probe is performed in such a manner that the artery is scanned forming an angle with said longitudinal X'X-axis. This permits of evaluating the arterial blood flow velocity based on the evaluation of the longitudinal velocity value component obtained by projection onto the OZ-axis, taking said angle into account. The behavior of the artery must be observed over a full cardiac cycle. Therefore, a sequence of a total number N of images covering a time interval that is at least equal to a cardiac cycle must be formed, the images being produced at each instant n, and N being a number superior to 1. So, time markers that are common to the blood flow velocity image sequence and to the cardiac cycle must be identified and are denoted hereafter starts of successive cardiac cycles n_1 , n_2 , n_3 . . . Thus, the blood flow in the artery may be observed in relation to the various phases of the cardiac cycle.

The blood flow estimation stage **110** performs the processing of the high-frequency signals **21** issued by the emitter/receiver stage **22**. Said high-frequency signals **21** denoted $S_1(X, Z, n)$ are produced by the transmitter/receiver stage **22** at the first rate appropriate to the formation, as a function of the instant n, of said N images of a blood flow velocity image sequence. The corresponding grayscale image sequence **31** issued by the grayscale image formation stage **32** at said first rate is based on intensity signals denoted $I(X, Z, n)$. This blood flow estimation stage **110** performs a blood flow velocity estimation by estimating blood flow parameters that may be estimated in any way known of those skilled in the art. For example, these parameters may be provided by a CVI or by a Doppler embodiment.

A first imaging technique called CVI (from Color-coded Velocity Imaging) measures blood flow velocity directly by using time domain processing. CVI tracks individual clusters of blood cells using ultrasound to measure the distance and the time traveled. CVI is based on the principle of signature recognition. In a time domain correlation process, a first echo is stored in a digital memory. The shape of signal traces the relative position of blood cells, which is called ultrasound signature of the cluster. Some microseconds later, a second echo signal is stored. A computing system analyzes the two signal signatures by time shifting these two signatures until they match perfectly. This time shift is directly related to the distance the blood cells have moved, using the speed of sound in tissue. Blood-cell velocity is obtained by dividing this measured distance by the time between the two corresponding ultrasound pulses. It is to be noted that CIV measures peak velocities. Correction of the cosine angle between the vessel axis and the ultrasound beam is performed and the velocity computations are coded in shades of red and blue.

In the first embodiment based on CVI technique, the blood flow estimation stage **110** first performs a fixed echo suppression operation for suppressing echoes that are considered fixed, notably those caused by reflection of the

ultrasound waves from the arterial walls in which the blood flow being studied occurs. The presence of said fixed echoes must be eliminated because their amplitude is much higher, about 40 dB in the case of arterial walls, than that of the signal useful for determining blood flow velocity, that is to say the signals which are returned by moving clusters of blood cells. Said blood flow estimation stage **110** further estimates said blood flow parameters. On the basis of signal differences between two successive excitation lines which are successively supplied by the fixed echo suppression operation, the blood flow velocity estimation stage **110** supplies correlation function values, and on the basis on these values, said blood flow velocity estimation stage **110** supplies parameters which characterize the different flow velocities encountered along the axis of propagation of the ultrasound wave. These parameters are the axial components of the blood flow local mean velocity $V_1(Z, X, n)$ at a given depth location along the OZ axis of propagation. In the blood flow estimation stage **110**, the correlation function computation is controlled by a sequencer of the transmitter/receiver stage **22** and is preferably performed by 1-bit correlators which offer the advantage that the principal correlation peak obtained is triangle-shaped which is suitable for linear interpolation. The correlation functions or the formation of the mean value thereof are supplied to an interpolator which may be formed by a microprocessor or a table that enables the reconstruction of the principal correlation peak. The abscissa of said correlation peak enables the determination of the local velocity $V_1(Z, X, n)$ at a given depth in the medium that is stored.

In the first embodiment CVI, the image formation stage **120** processes the velocity values $V_1(Z, X, n)$ of the blood flow together with the images of the sequence of grayscale images **31**, or intensity images $I_1(X, Z, n)$, formed at said first rate in the image formation stage **32** of the standard ultrasonic system **20**. The velocities are color-coded in different colors and in several hues of said colors for indicating ranges of velocity and levels of velocity in the range, and maps of the color-coded velocities are superimposed unto respective grayscale images so as to forming a color-coded blood flow velocity image sequence.

A second imaging technique called Doppler is already used in numerous ultrasonic systems to calculate blood flow velocity indirectly by measuring the frequency shift and the phase shift variations from the original transmitted frequency pulse of a Doppler transducer. These shifts are caused by movement of blood cell clusters. Doppler velocity determination is based on mean velocities. Correction of the cosine angle between the vessel axis and the ultrasound beam is performed and the velocity computations are color-coded.

In the second embodiment based on the Doppler technique, the blood flow estimation stage **110** processes Doppler echo signals issued by stage **20** of the ultrasonic sub-system **1**, to obtain Doppler shift characteristics such as frequency corresponding to velocity and Doppler power corresponding to intensity. A Doppler processor processes an ensemble of two or more received echo sequences from a same spatial location of the artery and determines the Doppler phase or frequency shift. The Doppler processor may estimate the Doppler shift by a fast Fourier transform (FFT) or auto-correlation operation. Preferably the Doppler estimator employs two-dimensional auto-correlation which performs auto-correlation in both time and space and produce precise, highly resolved Doppler shift estimates. The Doppler estimator operates using a wall filter that removes low frequency tissue signal components from the echo

signals to process and display only blood flow information. The operation of the wall filter is performed by a pass-band providing a cutoff frequency or velocity for example in the range of 50 Hz to 500 Hz, above which the Doppler frequencies generally correspond to blood flow velocities. For color flow imaging, the wall filter is employed to eliminate signals below this blood flow signal pass-band. The echoes returning from tissue would generally be found in the lower frequency pass-band below the 50–500 Hz cutoff.

In the Doppler embodiment, the blood flow velocity imaging stage **120** processes the segmented blood flow signals, which may include scan conversion to the desired image format, if needed. Said signals are color mapped to a range of color values. The color map of Doppler signals may then be overlaid on the grayscale map provided by stage **32** of the ultrasonic sub-system **1** using a video processor.

For the CVI embodiment as for the Doppler embodiment, the colors indicating the velocities, are superposed on the grayscale images of intensity **31** thus forming a color-coded blood flow velocity sequence of images referred to as **131**. This color-coded blood flow velocity sequence **131** is further stored in a memory **130** labeled Cine-Loop-1.

Referring to FIG. 3 and FIG. 5, the second ultrasonic sub-system **200** is coupled to the standard ultrasonic system **1** in order to permit of operating in a graphic mode which enables determination of the arterial wall velocity perpendicular to the direction of the blood flow at instants during a cardiac cycle, while the pulsating wave propagates within the artery considered as a wave-guide, and which enables construction of graphics reproducing the movements of said arterial walls for comfortable observation of their behavior. The second echographic subsystem **200** is implemented especially for compliance with the range of parietal displacements. The artery segment of the medium **6** studied is scanned two-dimensionally, as quickly as possible, and the temporal correlation operation **230** is performed one image after the other in the sequence of N images. The maximum parietal velocity is of the order of 10 mm/s. Consequently, an image period must be of the order of ≈ 7.5 ms. The number of excitation lines per image may be, for example $x=68$ or $x=112$, with a scanning step (distance between excitation lines) of 0.5 mm or 0.25 mm, which enables visualization of an arterial segment of 28 mm. The delay between the signals corresponding to each excitation line of the image may be adjusted by increasing or decreasing the number of excitation lines and the distance between the excitation lines. A memory may preferably be available at the input of the wall velocity estimation stage **210** for providing the necessary delay between two correlated signals.

This second ultrasonic sub-system **200** includes processing stages that execute steps of forming a sequence of images representing an artery segment and of computing the pattern of graphic lines DP1, DP2 reproducing the movements of the internal parietal boundaries **3a**, **3b** of said artery segment scanned by the probe **10** in the medium **6**, at each scanned point of the parietal boundaries and at given instants n of a cardiac cycle, in conformity with a predetermined spatial amplification scale. These graphic lines fulfil the purpose of enabling the diagnosis of parietal lesions **9**, based on the shape and amplitude of the parietal displacements with respect to the normal.

So, this second sub-system **200** comprises:

- a wall motion estimation stage **210**,
- a wall motion graphic imaging stage **220**
- and a memory denoted Cine-Loop **2** storing an image sequence **231**.

Still referring to FIG. 1, now for the estimation of the velocity of the arterial walls, which velocity is radial, the scanning of the medium by the echographic probe **10** is performed in such a manner that the artery is scanned longitudinally in the direction of its longitudinal X'X axis and that the excitation lines are considered orthogonal to the X'X axis in order to produce longitudinal cross-sectional intensity images of the artery, enabling the visualization of the front wall **2a** and the rear wall **2b**. The images provided by the excitation lines of direction OZ are the columns of each 2-D image that are formed by that method. The wall motion estimation stage **210** performs the processing of high-frequency signals **21** denoted $S_2(x,z,k)$ issued by the emitter/receiver stage **22** at the second rate compatible with the determination of the wall movement velocity. Here, k is the instant or the number of the signal in a set of signals, which are acquired at this second rate. From this set of signals, the ultrasonic sub-system **1** also provides a sequence of intensity images or grayscale image sequence denoted $I_2(x,z,k)$ that is formed in stage **32**. Under the influence of the pulsating wave, the arterial walls **2a**, **2b** are subject to a periodic radial movement whose amplitude and velocity must be determined. Depending on the arterial wall state, the pressure variations induced by the pulsating wave create either a uniform arterial dilation or a distorted parietal movement. The behavior of the artery must be observed over a full cardiac cycle. Therefore, a sequence of a total number N of images covering a time interval which is at least equal to a cardiac cycle must be formed, N being a number superior to 1. Time markers that are common to the image sequence and to the cardiac cycle must be identified. These time markers are denoted start points **n1**, **n2** of the cardiac cycle. So, the behavior of the arterial walls may be observed in relation to the various phases of the cardiac cycle.

In the sub-system **200**, the velocity and the amplitude of the displacement of the walls are first determined in a wall velocity estimation stage **210** that performs a temporal correlation operation. During this temporal correlation operation, the successive ultrasonic echoes, produced by the motion of tissue structures and generated in the transmitter-receiver stage **22** of the standard ultrasonic system **20**, are compared by way of their correlation functions. The displacement of the tissue structures from one ultrasonic emission to the next is estimated while taking into account the displacement of the correlation peak corresponding to the delay introduced by this displacement upon reception. The correlation operation of stage **210** provides velocity measurements in the form of a second sequence of two-dimensional velocity images denoted $V_2(X,Z,k)$. Then, in the wall motion estimation stage **210**, during an operation called post-processing, the parietal movements are localized for determining the locations of the arterial walls in corresponding echo amplitude images $A_2(X,Z,k)$ that are formed by an operation of measuring the amplitudes of echoes, and for transferring the locations of the arterial walls in the arterial wall velocity images. In stage **210**, during said post-processing operation, an adaptable threshold is further calculated and applied to each amplitude image **111** $A_2(X,Z,k)$ in order to produce digital amplitude images in which the transitions corresponding to the internal parietal boundaries are further smoothed by filtering. The post-processing operation of stage **210** subsequently includes an operation of detection of internal parietal boundaries **3a**, **3b**. The image is thus scanned along the excitation lines of direction OZ in order to detect the points situated on these boundaries. The post-processing operation also includes evaluation of parietal displacement values denoted **D1** and **D2** of respectively

upper and lower walls **2a**, **2b**. For each line having a co-ordinate X on the X'X-axis of each image n of the image sequence, the displacements **D1** and **D2** are calculated by determining instantaneous mean velocities of said walls. The resultant wall displacements are processed so as to determine the temporal markers **k1**, **k2** . . . of the cardiac cycle at which said displacements are zero. This permits of determining reference positions **REF1**, **REF2** corresponding to the starts of the cardiac cycles derived from the parietal boundaries extracted from the amplitude images.

Referring to FIG. 3 and to FIG. 5, the stage **220** of wall motion graphic imaging performs the encrustation, or graphic superposition, in each image k in the sequence of K intensity images $I_2(Z,X,k)$ provided by the image formation stage **32** of the sub-system **1** at said second rate, of:

reference lines **REF1**, **REF2** corresponding to the starts of cardiac cycles;

graphic lines **DP1**, **DP2** which represent the displacements **D1** and **D2** of the points of the parietal boundaries at each instant k, so as to simulate the movements of the front and rear arterial walls respectively.

The encrusted images referred to as **231** that are provided by the stage of wall motion graphic imaging **220** are then stored in the memory **230** labeled Cine-loop-2.

Referring to FIG. 3, the first sub-system **100** and the second sub-system **200** are further connected to a third sub-system **300**, which has means for providing the instants of the starts of the cardiac cycles referred to as temporal markers that are accurately identified. Said third sub-system **300** has first means for providing first temporal markers denoted **n1**, **n2**, **n3** . . . in the first sequence of N color-coded blood flow velocity images and has second means for providing second temporal markers denoted **k1**, **k2**, **k3** . . . in the second sequence of K arterial wall motion images. To that end, said third sub-system **300** comprises:

a first stage **310** of detection of the first temporal markers in the first sequence of N color-coded images of blood flow velocity;

a second stage **320** of detection of the second temporal markers in the second sequence of K images incrustated with graphic lines representing the arterial wall motion;

a third stage **330** of synchronization of the first and second temporal markers;

a fourth stage **340** of construction of a composite image sequence formed of a color coded blood flow velocity image sequence with encrusted graphics representing wall motion;

and a memory labeled Cine-Loop **3** to store said composite image sequence denoted **361**.

So, the first stage **310** comprises the determination of temporal markers relating to the sequence of N blood flow velocity images. It is wanted to determine at least a first temporal marker **n1** and a second temporal marker **n2** for this sequence, so a number of blood flow images greater than N is constructed. To determine the first temporal markers, the first stage **310** comprises an operation of construction of a curve, shown in FIG. 5, whose each point is constituted by the number P_n of colored points evaluated in each 2-D color-coded image, at each corresponding instant n, of the constructed blood flow velocity images, so as: $P_n = F(n)$. It is to be noted that the color-coded blood flow velocity image sequence **131**, which is stored in Cine-Loop **1**, is constituted from a first plan of the grayscale images **31** formed at each instant n, upon which a second plan of the color map of blood flow velocity values is superimposed. So, the first stage **310** of cardiac cycle detection operates the counting of

the number P_n of the colored points that are in each of the color maps, at each instant n . This number P_n represents the volume of blood at said instant n in the segment of artery of the color-coded image. For performing the counting, each colored point that pertains to the color map in the upper plan, is given a value equal to 1, while each other point that pertains uniquely to the grayscale lower plan, is given the value zero. Then, each 2-D image is processed by scanning the image points and adding the values found at those image points for constructing one point of the curve $F(n)$ per 2-D image. In the case, for example, when the sequence of 2-D images is formed at a rate of 15 images per second, the curve $F(n)$ may be constructed with about 15 points per cardiac cycle, said cardiac cycle being of about one second.

It has been observed, according to the present invention that the curve $F(n)$ shows minimum points regularly spaced in function of the instants n , which minimum points correspond to the start points of the cardiac cycle. So, according to the present invention, these minimum points of the curve $F(n)$ are determined in order to provide corresponding temporal markers $n1, n2, n3 \dots$ of the blood flow velocity image sequence **131**.

Referring to FIG. 6, a simplified representation of the curve $F(n)$ is shown together with a representation of the curve of the first derivative $\delta(n)$ of the function $F(n)$ given by:

$\delta(n)=F(n)-F(n-1)$. The evaluation of the derivative $\delta(n)$ permits of determining the minimum points $n1, n2, n3, \dots$ of the curve $F(n)$. The curve of the derivative $\delta(n)$ crosses the value zero each time that the function $F(n)$ has a minimum and each time that said function $F(n)$ has a maximum. Only the minimum value positions in function of n are interesting in order to determine the temporal markers. So, a positive threshold TH is designed on the curve of the derivative $\delta(n)$, and based on said threshold, the interesting zero points of the derivative $\delta(n)$ are determined and retained as temporal markers when they start an increasing positive part of the curve $\delta(n)$ that crosses the threshold line TH.

Now, the second stage **320** comprises the determination of temporal markers relating to the sequence of K wall motion images. It is wanted to determine at least a first temporal marker $k1$ and a second temporal marker $k2$ for this sequence, so a number of blood flow images greater than K is constructed. To determine the second temporal markers, the second stage **320** comprises an operation of construction of a curve, shown in FIG. 7, whose each point is constituted by the mean dilation $D(k)$ in each 2-D wall motion image, at each corresponding instant k , of the constructed wall motion image sequence **231** issued from the memory Cine-Loop **2**. The temporal markers are determined by analysis of the temporal variations of said mean arterial dilation along the longitudinal arterial axis $X'X$. This mean dilation $D(k)$ is calculated as the difference between the displacements of the two walls **2a, 2b**, integrated from the co-ordinate $X=0$ to the co-ordinate $X=X_{max}$ in the longitudinal direction of the segment of artery in the 2-D image at the instant k .

Referring to FIG. 7, the curve $D(k)$ shows minimum values at abscissae $k1$ and $k2$, which must be identified as starts of cardiac cycles by means of an automatic method. To this end, the minimum and maximum values MIN and MAX are detected on the curve of FIG. 7 and a function $g(k)$ is calculated on the basis of this detection, so as:

$$\text{If } [D(k)-\text{MIN}]/(\text{MAX}-\text{MIN}) > D_0, \text{ then } g(k)=0 \\ \text{Else, } g(k)=1.$$

Consequently, the function $g(k)$ validates the segments of the curve $D(k)$ which are below a predetermined threshold

denoted D_0 . On each of these segments, the minimum values of $D(k)$ are determined and the corresponding instants $k1, k2$ are stored as the starts of successive cardiac cycles.

The third stage **330** performs the synchronization between the markers $n1, n2$ relating to the blood flow velocity image sequence and the markers $k1, k2$ relating to the wall motion image sequence. Each wall motion image formed at a given instant k , between $k1$ and $k2$, must moreover be synchronized with a corresponding blood flow velocity image formed at a corresponding instant n , between $n1$ and $n2$, such as:

$k1$ corresponds to $n1$, and $k2$ corresponds to $n2$,

k corresponds to n , with $k1 \leq k \leq k2$ and $n1 \leq n \leq n2$. Thus, when defining a proportionality factor denoted α , the correspondence between the values of n and the values of k are given by the relations:

$$k2-k1=\alpha(n2-n1), \text{ and: } k-k1=\alpha(n-n1)$$

from which: $\alpha=(k2-k1)/(n2-n1)$ and $k=\alpha(n-n1)+k1$

$$k=[(k2-k1)/(n2-n1)](n-n1)+k1$$

The fourth stage **340** of composite image sequence formation receives this value of k that is an information referred to as data **331**, which permits of synchronizing the first sequence of images **131** at a first rate stored in the memory Cine-Loop-**1** and of the second sequence of images **231** at a second rate stored in the memory Cine-Loop-**2** and of superposing these images for providing a composite sequence denoted **361** of color-coded blood flow velocity images having encrusted wall movement graphics.

This composite image sequence **361** is subsequently stored in a memory labeled Cine-Loop-**3**. The image sequence **361** which is stored in Cine-Loop **3** may be formed at a third rate with respect to the first and second sequences of Cine-Loop **1** and Cine-Loop **2** but is formed preferably at the lower rate of the two rates of acquisition of data, for example 30 images per second, which is sufficient for display.

During the display of the composite sequence **361** by the display device **40**, the physician can qualitatively and quantitatively evaluate the distortions or non-distortions of the graphic lines simulating the displacements of the arterial walls together with the blood flow velocity which is color-coded. The physician may derive therefrom the presence and the seriousness of stenosis, or elasticity defects, linked to the arterial walls of the subjacent blood flow velocity image. The visualization of the arterial dilation in real time, together with the blood flow velocity enables optimization of the position of the echographic probe **10** so as to obtain a cross-sectional plane which passes through the arterial axis parallel to $X'X$.

The invention has been described in relation to the processing of echographic signals, but can also be applied to the processing of signals of a different nature: electric, electromagnetic, etc.

What is claimed is:

1. An ultrasonic image processing method for displaying a composite sequence of images of an artery segment with indication of blood flow velocity and wall movements in function of the cardiac cycle, comprising steps of:

forming, at a first rate, a first sequence (**131**) of blood flow velocity color-coded images and forming, at a second rate, a second sequence (**231**) of images with wall movement graphics;

constructing said composite image sequence (**361**) by determining a first set of temporal markers ($n1, n2$), related to the cardiac cycle, in the first image sequence

as the minimum points of a curve (P(n)) of the number of the colored points per image in function of the image instants, determining a second set of temporal markers (k1,k2), related to the same cardiac cycle, in the second image sequence as the minimum points of a curve (D(k)) of the arterial mean dilation in function of the image instants, and by superposing the first and second image sequences by synchronizing the respective markers of said two sets,

and displaying the composite image sequence.

2. An ultrasonic image processing method as claimed in claim 1, comprising steps of forming, at said first rate, the first sequence (131) of blood flow velocity color-coded images by forming a sequence (31) of ultrasonic grayscale images and a sequence of blood flow velocity color-coded maps (110) and steps of superposing the color-coded maps onto the grayscale images at each image instant (n).

3. An ultrasonic image processing method as claimed in claim 2, comprising steps of determining the blood flow color-coded map using a CVI blood flow velocity estimation technique (110).

4. An ultrasonic image processing method as claimed in claim 2, comprising steps of determining a blood flow color-coded map using a Doppler blood flow velocity estimation technique (110).

5. An ultrasonic image processing method as claimed in claims comprising, for determining said first set of temporal markers (n1,n2), steps of counting the numbers of the colored points in the color-coded maps in the respective sequence images at every image instants, for forming, with said numbers, the points of the curve (P(n)) of the number of the colored points per image in function of the image instants and for determining the minimum points of said curve (n1,n2) as temporal markers.

6. An ultrasonic image processing method as claimed in claim 1 comprising steps of calculating the first derivative of the curve (P(n)) of the number of the colored points per image in function of the image instants, and for determining the minimum points (n1,n2) of the curve (P(n)) as zero points on increasing parts of the first derivative.

7. An ultrasonic image processing method as claimed in claim 1 comprising steps of forming, at said second rate, the second sequence (231) of images with wall movement graphics by forming a sequence (31) of ultrasonic grayscale

images and a sequence of images of wall motion graphics (210) and steps of superposing the wall motion graphics unto the grayscale images at each image instant (k).

8. An ultrasonic image processing method as claimed in claim 1 comprising, for determining said second set of temporal markers (k1,k2), steps of determining, at each image instant, based on the arterial wall position, the mean dilation (D(k)) of the artery, for forming a curve (D(k)) of the arterial mean dilation in function of the image instants and for determining the minimum points (k1,k2) of said curve as temporal markers (k1,k2).

9. An ultrasonic image processing method as claimed in claim 1 comprising, for synchronizing the first and second image sequences, steps of determining the image instants (k) of the images of the second sequence, which correspond to the image instants (n) of the images of the first sequence.

10. An ultrasonic examination system having an ultrasonic standard system connected to a probe to acquire ultrasonic data and a display system to display a composite sequence of images of an artery segment with indication of blood flow velocity and wall movements in function of the cardiac cycle, said ultrasonic examination system comprising, for carrying out a method as claimed in claim 1 a first sub-system for forming, at a first rate, a first sequence (131) of blood flow velocity color-coded images and a second sub-system for forming, at a second rate, a second sequence (231) of images with wall movement graphics,

and comprising a third sub-system for determining in the first image sequence a first set of temporal markers (n1,n2) as the minimum points of a curve (P(n)) of the number of the colored points per image in function of the image instants, determining in the second image sequence a second set of temporal markers (k1,k2) as the minimum points of a curve (D(k)) of the arterial mean dilation in function of the image instants, and constructing said composite image sequence (361) by superposing the first and second image sequences by synchronizing the respective markers of the first and second sets.

11. A computer program product comprising a set of instructions for carrying out the method as claimed in claim 1.

* * * * *

专利名称(译)	用于显示动脉段的合成图像序列的超声图像处理方法和系统		
公开(公告)号	US6647135	公开(公告)日	2003-11-11
申请号	US09/732195	申请日	2000-12-07
[标]申请(专利权)人(译)	BONNEFOUS 奥迪勒		
申请(专利权)人(译)	BONNEFOUS 奥迪勒		
当前申请(专利权)人(译)	皇家飞利浦电子 N.V.		
[标]发明人	BONNEFOUS ODILE		
发明人	BONNEFOUS, ODILE		
IPC分类号	A61B8/06 G01S15/00 G01S15/89 G01S7/52 A61B8/08 G06K9/00		
CPC分类号	A61B8/06 A61B8/13 G01S7/52074 G01S15/8979 G01S7/52073 Y10S128/916		
优先权	1999403058 1999-12-07 EP		
其他公开文献	US20010017937A1		
外部链接	Espacenet USPTO		

摘要(译)

本发明涉及一种超声图像处理方法，用于显示动脉段的复合图像序列，其具有心动周期的血流速度和壁运动的指示，包括以下步骤：以第一速率形成第一序列（131）血流速度彩色编码图像，并以第二速率形成具有壁运动图形的图像的第二序列（231）；以及通过确定第一组时间标记（n1）构建所述合成图像序列（361），与心动周期有关，在第一图像序列中作为图像瞬间函数中每个图像的着色点数的曲线的最小点（P（n）），确定第二组时间标记（k1，k2），与相同的心动周期相关，在第二图像序列中作为动态平均扩张的曲线的最小点（D（k））与图像瞬间的函数关系，并叠加第一和第二通过同步的第二图像序列本发明还涉及一种执行所述方法的超声波检查成像系统，其中包括所述两组的各个标记，并显示所述合成图像序列。

