



(11) **EP 1 762 178 A1**

(12) **EUROPEAN PATENT APPLICATION**  
published in accordance with Art. 158(3) EPC

(43) Date of publication:  
**14.03.2007 Bulletin 2007/11**

(51) Int Cl.:  
**A61B 8/06 (2006.01)**

(21) Application number: **04822049.5**

(86) International application number:  
**PCT/JP2004/016631**

(22) Date of filing: **10.11.2004**

(87) International publication number:  
**WO 2005/115248 (08.12.2005 Gazette 2005/49)**

(84) Designated Contracting States:  
**DE FR GB IT NL**

(30) Priority: **26.05.2004 JP 2004155662**

(71) Applicant: **HITACHI MEDICAL CORPORATION**  
**Tokyo 101-0047 (JP)**

(72) Inventors:  
• **AZUMA, Takashi**  
**HITACHI, LTD. Central Res. Lab.280**  
**Kokubunji-shi**  
**Tokyo**  
**1858601 (JP)**

• **U MEMURA, S.**  
**HITACHI, LTD. Central Res. Lab., 280**  
**Kokubunji-shi**  
**Tokyo**  
**1858601 (JP)**

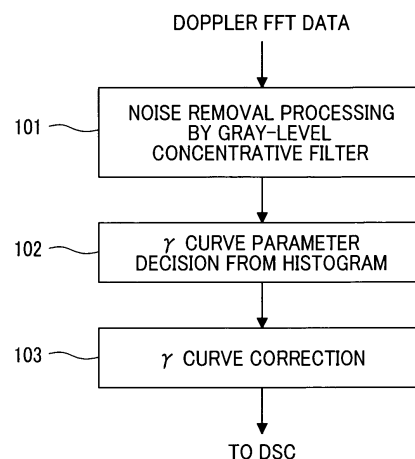
• **KAMADA, Hideyo**  
**HITACHI MEDICAL CORPORATION1-14**  
**Chiyoda-ku**  
**Tokyo**  
**1010047 (JP)**

(74) Representative: **Strehl Schübel-Hopf & Partner**  
**Maximilianstrasse 54**  
**D-80504 München (DE)**

(54) **ULTRASONOGRAPHIC DEVICE**

(57) The present invention provides an ultrasonic diagnostic apparatus realizing improved visibility of a contour shape of signal components in an ultrasonic blood flow spectrum display image. The apparatus includes a gray-level correction unit for correcting intensity of an output result of a Doppler processing unit. The Doppler processing unit calculates a Doppler frequency shift in a reception signal output from a receiver and calculates blood flow velocity of a subject on the basis of the Doppler frequency shift. The gray-level correction unit has: a filtering unit for separating a signal and a noise from each other, which are included in a time-varying waveform of the blood flow velocity of the subject obtained by the Doppler processing unit on the basis of continuity on a space defined by the blood flow velocity and time; and a gray-level corrector for performing a gray level correction using, as a parameter, a boundary value between signal intensity and noise intensity obtained by the filtering unit.

**FIG.2**



**EP 1 762 178 A1**

**Description**

## Technical Field

5 **[0001]** The present invention relates to an ultrasonographic technique and, more particularly, to an ultrasonographic device having the function of detecting blood flow velocity in a living body on the basis of Doppler frequency shift in a reception signal from a subject.

## Background Art

10 **[0002]** An ultrasonic diagnostic apparatus transmits an ultrasonic beam from a ultrasonic probe to a subject, and obtains information necessary for diagnosis on the basis of a reception signal from the subject. For example, a Doppler frequency shift in a reception signal is detected and, on the basis of the Doppler frequency shift, the velocity of blood flow can be obtained.

15 **[0003]** Such an ultrasonic Doppler apparatus has, as shown in FIG. 9, a probe 1 for transmitting/receiving ultrasonic wave, an interface 5 for operating an ultrasonic diagnostic apparatus, a control unit 4 for controlling the whole system, a pulse/CW transmit signal generator 3 for generating a transmission waveform on the basis of the control unit 4, a transmitter 2 for amplifying a signal generated by the pulse/CW transmit signal generator 3, a pre-amplifier 6 for amplifying a reception signal from the probe, a receive beamformer 7 for selectively emphasizing a signal from a desired location,  
20 a Doppler processing unit 8 for detecting a Doppler shift component from the blood flow from a phase output, a digital scan converter (DSC) 10 for displaying an instantaneous frequency component calculated by the processing unit as blood flow waveform data, and a display 11 for displaying an output of the scan converter.

**[0004]** In such an ultrasonic Doppler apparatus, when ultrasonic wave having a frequency  $f_0$  is output from the probe 1, since blood of the subject flows at predetermined speed, an echo signal obtained by the ultrasonic wave from the probe 1 reflected by blood cells has been subjected to a frequency shift by the Doppler effect. The Doppler processing unit 8 detects the Doppler shift component (Doppler signal). Since the blood flow velocity varies, a Doppler signal obtained includes different frequency components. The Doppler processing unit 8 obtains a frequency distribution, that is, blood flow distribution by performing a method such as fast Fourier transform on the Doppler shift component. By sequentially performing the computation, a change with time in the blood flow distribution is displayed. The method provides significant data also from the clinical viewpoint and is widely used. In particular, the data can be used not only as quantitative data of the maximum blood flow velocity in a predetermined position in a subject but also as data in the case of diagnosing a valvular disease of the heart or the like. By displaying a time-varying waveform of a velocity distribution of the blood flow from the portion of the valve of the heart, backflow at the valve can be determined. The shape itself of the time-varying waveform of the blood flow velocity distribution is widely known as data useful for diagnosis.

35 **[0005]** Since a Doppler signal is based on a reflection signal from a blood cell having low ultrasonic scattering power, there has been the task of improving a signal-to-noise ratio. Noise exists also in a velocity range in which signals do not inherently exist in the time-varying waveform of the blood flow velocity distribution, and it largely deteriorates visibility of the time-varying waveform of the blood flow velocity distribution. As a method of solving the problem, for example, a method of setting a threshold between an area including many noise components and an area including many signal components at the time of performing gray scale mapping has been proposed (refer to, for example, Published Japanese Translation of PCT International Publication for Patent Application No. 2002-534185). The gray scale mapping is a method of displaying a change with time of a blood flow velocity distribution by setting time on the axis of abscissa, velocity on the axis of ordinate, and intensity of a signal as brightness.

## 45 Disclosure of Invention

## Problem to be solved by the Invention

50 **[0006]** The gray scale mapping is performed on assumption that two peaks basically appear in the intensity of the signal component showing blood flow velocity and the intensity of the noise component. In reality, however, signals of low intensity are also included in the signal components, so that the components cannot be separated to the signal component and the noise component on the basis of the intensity. Consequently, when an output of a low-intensity signal is suppressed, the intensity of the signal components becomes partially low, the contour shape of a spectrum waveform is deformed, and a so-called black spot in which a signal drops occurs.

55 **[0007]** Therefore, an object of the present invention is to provide an ultrasonic diagnosis apparatus realizing improved visibility of a contour shape of signal components in an ultrasonic blood flow spectrum display image.

## Means for Solving the Problem

**[0008]** To achieve the object, an ultrasonic diagnostic apparatus of the present invention has the following characteristics.

- 5 (1) An ultrasonic diagnostic apparatus of the present invention has: an ultrasonic probe; a transmitter having a transmission signal generating circuit for generating a ultrasonic wave made by continuous wave or pulse wave and selectively transmitting the ultrasonic wave to a subject via the ultrasonic probe; a receiver for phasing a reception signal received from the subject by the ultrasonic probe; a Doppler processing unit for calculating Doppler frequency shift in the reception signal output from the receiver and calculating blood flow velocity of the subject on the basis of the Doppler frequency shift; a display for displaying a waveform of the blood flow velocity; a controller for controlling the transmitter, the receiver, the Doppler processing unit, and the display; and a gray-level correcting unit for correcting gray level of an output result of the Doppler processing unit, wherein the gray-level correcting unit includes: a filtering unit for separating a signal and a noise from each other, which are included in a time-varying waveform of the blood flow velocity of the subject obtained by the Doppler processing unit on the basis of continuity on a space defined by the blood flow velocity and time; and a gray-level corrector for performing a gray level correction using, as a parameter, boundary value between signal intensity and noise intensity obtained by the filtering unit.
- 10 (2) In the ultrasonic diagnostic apparatus of (1), the gray-level correction unit is constructed so as to suppress an intensity signal lower than the boundary value in intensity distribution of the signal and the noise.
- 20 (3) In the ultrasonic diagnostic apparatus of (1), the filtering unit has: means for defining a peripheral pixel range of a pixel in image data on the blood flow velocity; and means for determining a weighting function from the difference between the intensity of each of the pixels and the intensity of each of the peripheral pixels, the weighting function has a maximum point at zero, an integral value of an absolute value of the function in the range from negative infinity to positive infinity is finite, and a value obtained by using sum of product of the weighting function and the intensity of each of the peripheral pixels as intensity of a pixel in image data on the blood flow velocity is used as signal intensity of a result of the filtering process.
- 25 (4) An ultrasonic diagnostic apparatus of the present invention includes: an ultrasonic probe; a transmitter having a transmission signal generating circuit for generating a ultrasonic wave made by continuous wave or pulse wave and selectively transmitting the ultrasonic wave to a subject via the ultrasonic probe; a receiver for phasing a reception signal received from the subject by the ultrasonic probe; a Doppler processing unit for calculating Doppler frequency shift in the reception signal output from the receiver and calculating blood flow velocity of the subject on the basis of the Doppler frequency shift; a display for displaying a waveform of the blood flow velocity; a controller for controlling the transmitter, the receiver, the Doppler processing unit, and the display; and a gray-level correcting unit for correcting gray level of an output result of the Doppler processing unit, wherein the gray-level correcting unit separates a signal and a noise from each other which are included in a time-varying waveform of the blood flow velocity of the subject obtained by the Doppler processing unit on the basis of a statistical property, and performs an intensity correction by suppressing output intensity equal to or lower than a boundary point between signal intensity and noise intensity obtained as a result of the filtering process.
- 30 (5) In the ultrasonic diagnostic apparatus in any of (1) to (4), the separating process includes a process for separating the signal and the noise as peaks on a histogram from each other.
- 35
- 40

## Effects of the Invention

**[0009]** According to the present invention, in an ultrasonic blood flow spectrum display image, by suppressing intensity of noise components while minimizing the influence on display of signal components, visibility of the contour shape of the signal components is improved.

45

## Brief Description of the Drawings

50 **[0010]**

FIG. 1 is a diagram illustrating a configuration example of an ultrasonic diagnostic apparatus according to an embodiment of the present invention.

FIG. 2 is a diagram showing an intensity correcting computing process flow according to the invention.

55 FIG. 3 is a diagram showing a process flow of a gray-level concentrative filter in FIG. 2.

FIGS. 4A and 4B are diagrams illustrating the shapes of the frequency distribution of intensity difference and the weighting function.

FIGS. 5A and 5B are diagrams illustrating histograms before and after a gray-level concentrative filter process in

the invention.

FIG. 6 is a diagram showing an intensity correction curve in the invention.

FIGS. 7A, 7B, and 7C are diagrams showing an original image, a blood flow spectrum image subjected to the intensity correcting process of the invention, and an image obtained by the conventional method, respectively.

FIGS. 8A and 8B are diagrams showing a result of performing contour auto trace on the original image, and a result of performing contour auto trace on the blood flow spectrum image according to the present invention.

FIG. 9 is a diagram illustrating the configuration of a conventional ultrasonic diagnostic apparatus.

FIGS. 10A and 10B are diagrams showing image data which is input to the gray-level concentrative filter.

#### Best Mode for Carrying Out the Invention

**[0011]** An embodiment of the present invention will be described in detail hereinbelow with reference to the drawings.

**[0012]** FIG. 1 shows a configuration example of an ultrasonic diagnostic apparatus as an embodiment of the invention. The apparatus has a probe 1 for transmitting/receiving ultrasonic wave to/from a subject (not shown), a control unit 4 for controlling the whole system, a pulse/CW transmit signal generator 3 for generating a transmission waveform on the basis of the control unit 4, a transmitter 2 for amplifying a signal generated by the pulse/CW transmit signal generator 3, a pre-amplifier 6 for amplifying a reception signal from the probe, a receive beamformer 7 for selectively emphasizing a signal from a desired position, a Doppler processing unit 8 for detecting a Doppler shift component from the blood flow from a phase output, a digital scan converter (DSC) 10 for displaying an instantaneous frequency component calculated by the processing unit as blood flow waveform data, and a display 11 for displaying an output of the scan converter. Particularly, in the present invention, a gray-level correction unit 9 is provided to improve visibility of a blood flow spectrum image which is output to the display 11.

**[0013]** FIG. 2 is a diagram showing a calculation processing flow executed by the gray-level correction unit 9. The intensity correction computing process is constructed by two processes; a process for separating a noise and a signal, and an intensity correcting process for suppressing output intensity equal to or less than a boundary point between the noise and the signal intensity obtained as a result of the separating process. The above-described conventional technique (Patent Document 1) employs only the intensity correcting process. In the present invention, as a pre-process of the intensity correcting process, a process for separating noise and signal from each other is also employed.

**[0014]** The two process flows are performed, in a concrete example, by a noise eliminating process 101 using a gray-level concentrative filter, a parameter determining process 102 of a  $\gamma$  curve (intensity correction curve) from a histogram from which noise has been eliminated, and a  $\gamma$  curve correcting process 103, thereby completing the intensity correction computing process.

**[0015]** FIG. 3 shows concrete calculation process of the noise eliminating process 101 performed by the gray-level concentrative filter. FIGS. 10A and 10B show image data which is input to the gray-level concentrative filter.

**[0016]** In FIGS. 10A and 10B, intensity of a point (focused pixel) 200 at which intensity is calculated in image data is expressed as  $I_0$ , and the size of a focused area 201 (area in which a weighting value is calculated) for calculating an output of the intensity is expressed as  $ixj$ . The larger the size is, the more the gray-level concentrative filter is effective, however, the computation speed decreases only by the amount. 202 denotes peripheral pixels of the focus pixel 200 in the area 201 in which a weighting value is calculated. In place of enlargement of the size  $ixj$  of the focused area 201, it is also effective to increase efficiency of computation by performing a process of reducing the number of sampling points by decimation prior to the process of the gray-level concentration filter and increasing the number of sampling points to the original number by interpolation after the process. The number of re-sampling points of the decimation, "i" and "j", and the shape of a weighting function are determined in a parameter setting step 104 in FIG. 3. The position of a pixel of calculation and the pixels in the range determined by "i" and "j" are set in step 105, and a weighting value is calculated in step 105 on the basis of the weighting function which will be described later. By performing the weighting value calculation on all of the points (step 107), an intensity value is obtained (step 108). After  $I_0$  is shifted in the image and the calculation is executed on all of the points in the image, the gray-level concentrative filter process is finished in step 109.

**[0017]** The weighting function will be described with reference to FIGS. 4A and 4B. FIG. 4A shows the frequency distribution of the intensity difference between pixels in a typical ultrasonic image. In contrast, as a function in which the weighting value monotonously decreases as the difference between  $I_0$  and  $I_{ij}$  increases, as shown in FIG. 4B, a Gaussian function (Equation 1) or a polynomial of even-number order can be used.

$$w_{ij} = \exp\left(-1 \times \left(\frac{I_{ij} - I_0}{\alpha}\right)^2\right)$$

... Equation 1

[0018] In Equation 1,  $\alpha$  denotes half width of a Gaussian value. When the half width, that is,  $\alpha$  is increased, a change in the weighting value decreases relative to a change in intensity. As a result, sensitivity to a change in intensity decreases.

[0019] An intensity computing process shown by Equation 2 using the weighting function  $W_{ij}$  is performed. In the intensity computing process, all of values obtained by multiplying the pixels in the area of calculation with the weighting function are added, and normalization is performed with the total value. As a result, new image intensity ( $I_0$ ) in which noise components are suppressed without blurring an image is obtained. The application of the weighting function according to the intensity difference is equivalent to two-dimensional filter process of low pass type performed along the edge of a contour shape in an image.

[0020] The gray-level concentrative filter is also called a self-centered filter by the inventors of the present invention by paying attention to the characteristic of the filter. Specifically, a large weight is given to a pixel whose property is close to a focused target pixel, so that feedback is obtained only from pixels close to the target pixel and it is similar to a behavior with self-centered will.

$$I_0 = \frac{\sum I_{ij} w_{ij}}{\sum w_{ij}}$$

... Equation 2

[0021] The histograms of a signal before and after the filtering process with the gray-level concentrative filter will be compared with each other by using FIGS. 5A and 5B. FIG. 5A shows the histogram of original data. A distribution of a noise signal having a peak at around 20 in intensity is the largest. There is a signal distribution on the higher intensity side. However, the peak is hidden in the noise signal distribution, and it is difficult to determine the distribution shape.

On the other hand, FIG. 5B shows the histogram after the filtering process using the gray-level concentrative filter. The distribution of signal components having the peak at around intensity 25 can be clearly distinguished from the distribution of noise components. It shows that the filtering process using the gray-level concentrative filter of the present invention is different from the process of simply suppressing a low-intensity component as described in the conventional technique (Patent Document 1). In the case of giving a unique intensity output to an intensity input, signals are not separated while forming peaks. The value at which the signal distribution and the noise distribution are separated from each other in FIG. 5B is set as  $Th$ . For example, the value can be determined as  $Th = (M1+M2)/2$  where  $M1$  denotes the maximum value of the signal distribution and  $M2$  denotes the maximum value of the noise distribution.

[0022] Intensity correction is performed by using the value  $Th$  and a  $\gamma$  curve shown in FIG. 6. FIGS. 7A to 7C are provided for comparison between the case of performing the intensity correcting process using a blood flow spectrum image (7b) subjected to the intensity correcting process according to the present invention and the case of performing the intensity correcting process using the known method (c) described in the conventional technique (Patent Document 1). FIGS. 7A to 7C show results of reverse videos so that comparison can be made easily.

[0023] The noise component is suppressed more in the method (b) according to the present invention and the known method (c) than the original image shown in FIG. 7A. When the signal areas are compared with each other, the signal intensity distribution of the method according to the present invention is continuous and it can be recognized that so-called black patch does not occur. The effect of the present invention can be recognized not only by comparison in visibility of images but also in the case where a contour is auto-traced.

[0024] FIGS. 8A and 8B are also provided to show comparison between results of performing contour auto-trace on the original image and an image subjected to the image process of the present invention, respectively. FIGS. 8A and 8B show results of reverse videos so that comparison can be made easily.

[0025] In the result of performing the contour auto-trace on the original image (FIG. 8A), a deviation occurs between the contour of the signal component distribution and the result of auto trace. In the result of auto-trace after the process of the present invention (FIG. 8B), it is understood that the contour of the signal component distribution and the auto

trace result match each other extremely.

**[0026]** Although histograms are always measured in the above description, depending on the performance of a computation circuit of the device, by providing a mechanism for detecting an environmental change, the histogram measurement can be omitted by using the value  $T_h$  once obtained as long as the environmental change is not detected. The environmental change denotes a change in setting of the device or a change in a signal obtaining part. The environmental change can be detected by monitoring a representative value indicative of a parameter on the device side such as a statistical parameter such as the frequency of transmission/reception, and the number of sampling points of frequency conversion in the Doppler processing unit, or representative values indicative of statistical parameter of a signal such as an average value of Doppler signals, variance, pulse repetition frequency. By simplifying the histogram measurement, a real-time process can be performed in a small circuit-scale.

**[0027]** The parameter  $\alpha$  (the half width of the Gaussian value) may be provided as a key in the interface 5 (FIG. 1). As the parameter  $\alpha$ , a predetermined value may be used. A value with which the signal component peak can be detected on the histogram most excellently may be retrieved and used. Further,  $\alpha$  for obtaining the value  $T_h$  and  $\alpha$  of the gray-level concentration filter use for outputting an image may be the same or different from each other.

#### Industrial Applicability

**[0028]** As described in detail above, according to the present invention, the ultrasonographic device with improved visibility in a contour shape of signal components by suppressing display intensity of a noise component while minimizing the influence on display of the signal component in an ultrasonic blood flow spectrum image can be realized. By clarifying the contour of a spectrum waveform, detection of a lesion can be facilitated.

#### Claims

##### 1. An ultrasonic diagnostic apparatus comprising:

an ultrasonic probe;  
 a transmitter having a transmission signal generating circuit for generating an ultrasonic wave made by continuous wave or pulse wave and selectively transmitting the ultrasonic wave to a subject via the ultrasonic probe;  
 a receiver for phasing a reception signal received from the subject by the ultrasonic probe;  
 a Doppler processing unit for calculating Doppler frequency shift in the reception signal output from the receiver and calculating blood flow velocity of the subject on the basis of the Doppler frequency shift;  
 a display for displaying a waveform of the blood flow velocity;  
 a controller for controlling the transmitter, the receiver, the Doppler processing unit, and the display; and  
 a gray-level correcting unit for correcting gray level of an output result of the Doppler processing unit,

wherein the gray-level correcting unit includes: a filtering unit for separating a signal and a noise from each other, which are included in a time-varying waveform of the blood flow velocity of the subject obtained by the Doppler processing unit on the basis of continuity on a space defined by the blood flow velocity and time; and a gray-level corrector for performing a gray level correction using, as a parameter, a boundary value between signal intensity and noise intensity obtained by the filtering unit.

##### 2. The ultrasonic diagnostic apparatus according to claim 1, wherein the gray-level correction unit is constructed so as to suppress an intensity signal lower than the boundary value in intensity distribution of the signal and the noise.

3. The ultrasonic diagnostic apparatus according to claim 1, wherein the filtering unit has: means for defining a peripheral pixel range of a pixel in image data on the blood flow velocity; and means for determining a weighting function from the difference between the intensity of each of the pixels and the intensity of each of the peripheral pixels, the weighting function has a maximum point at zero, an integral value of an absolute value of the function in the range from negative infinity to positive infinity is finite, and a value obtained by using sum of product of the weighting function and the intensity of each of the peripheral pixels as intensity of a pixel in image data on the blood flow velocity is used as signal intensity of a result of the filtering process.

##### 4. An ultrasonic diagnostic apparatus comprising:

an ultrasonic probe;

**EP 1 762 178 A1**

a transmitter having a transmission signal generating circuit for generating a ultrasonic wave made by continuous wave or pulse wave and selectively transmitting the ultrasonic wave to a subject via the ultrasonic probe;  
a receiver for phasing a reception signal received from the subject by the ultrasonic probe;  
a Doppler processing unit for calculating Doppler frequency shift in the reception signal output from the receiver  
and calculating blood flow velocity of the subject on the basis of the Doppler frequency shift;  
a display for displaying a waveform of the blood flow velocity;  
a controller for controlling the transmitter, the receiver, the Doppler processing unit, and the display; and  
a gray-level correcting unit for correcting gray level of an output result of the Doppler processing unit,

5

10

wherein the gray-level correcting unit separates a signal and a noise from each other which are included in a time-varying waveform of the blood flow velocity of the subject obtained by the Doppler processing unit on the basis of a statistical property, and performs an intensity correction by suppressing output intensity equal to or lower than a boundary point between signal intensity and noise intensity obtained as a result of the filtering process.

15

**5.** The ultrasonic diagnostic apparatus according to claim 1 or 4, wherein the separating process includes a process of separating the signal and the noise as peaks on a histogram from each other.

20

25

30

35

40

45

50

55

FIG.1

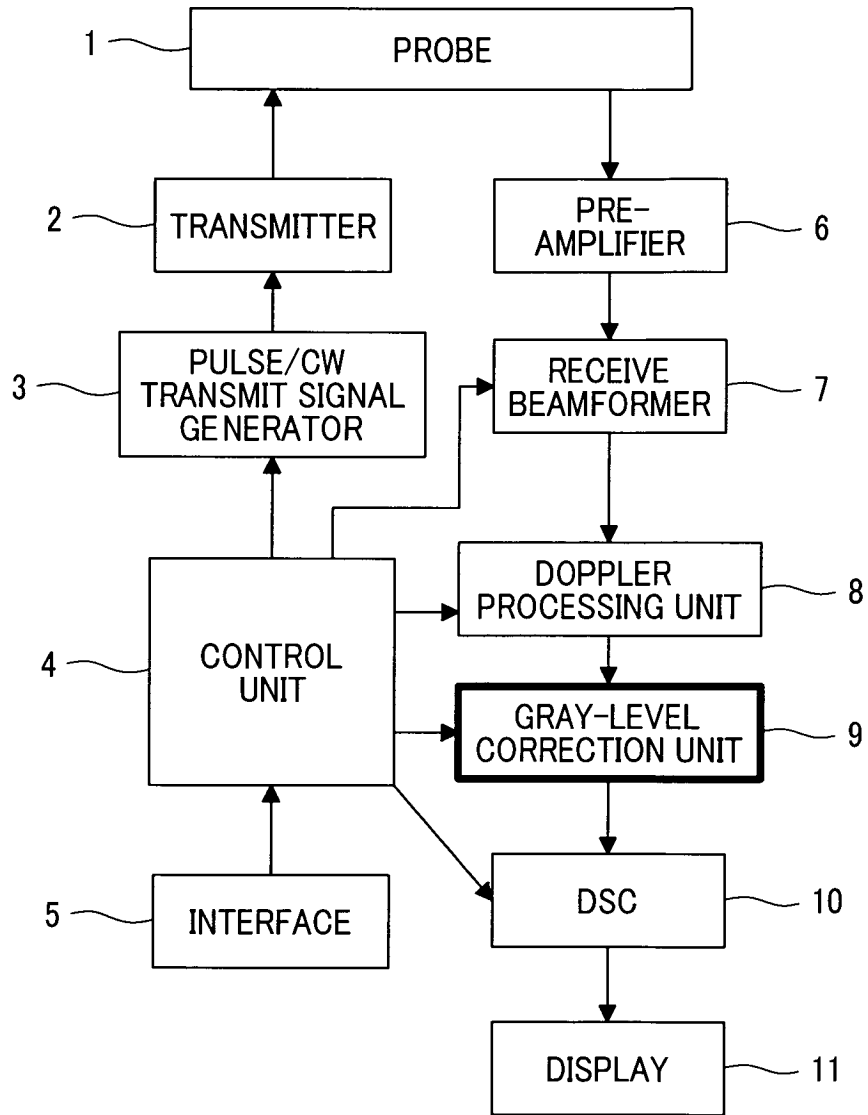
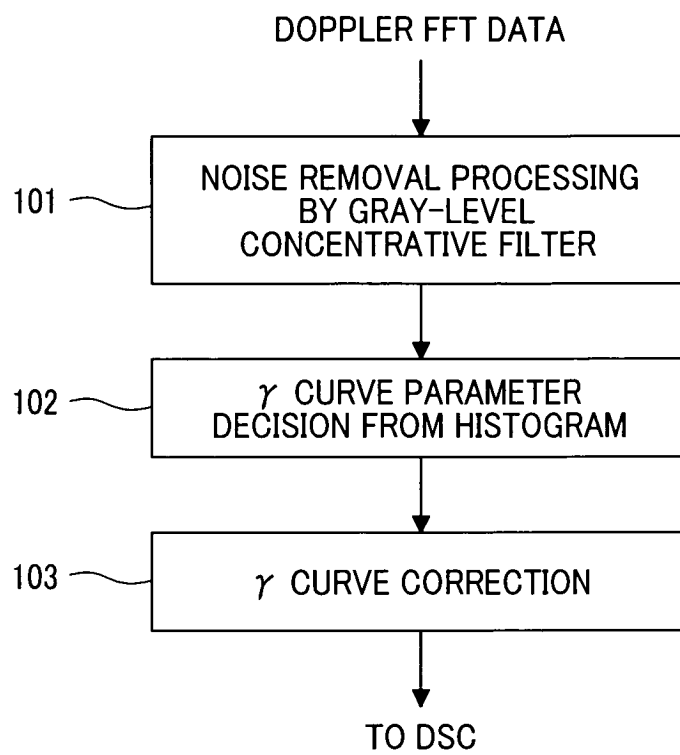
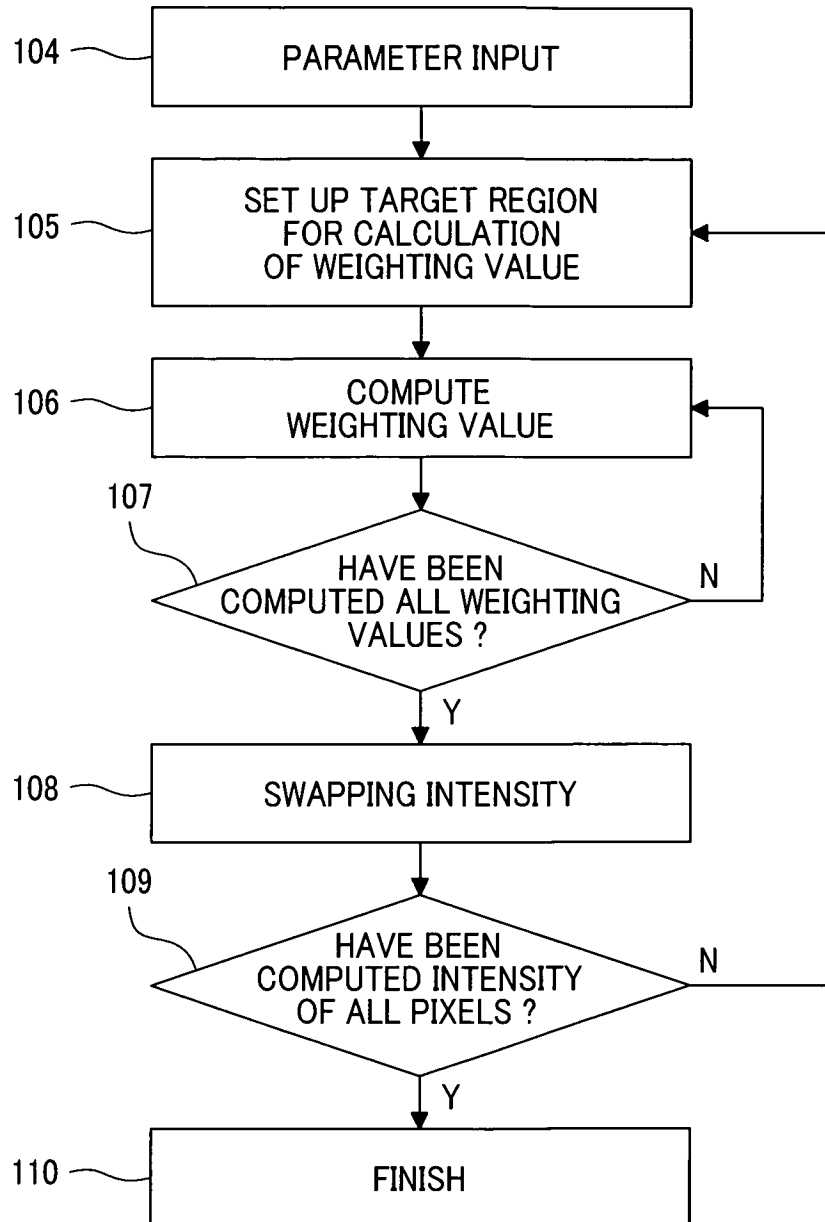


FIG.2

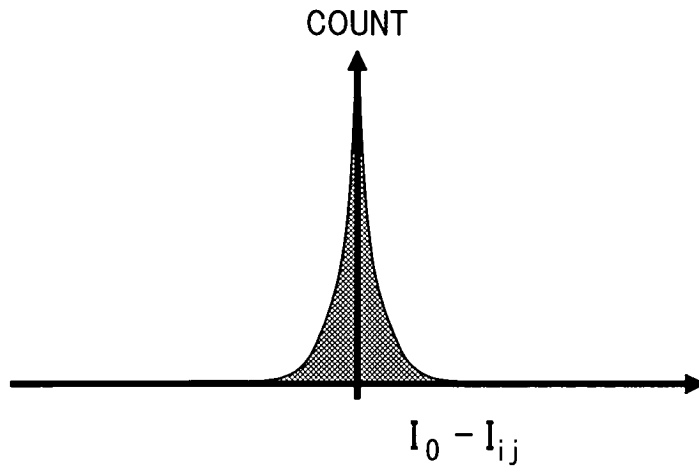


# FIG.3



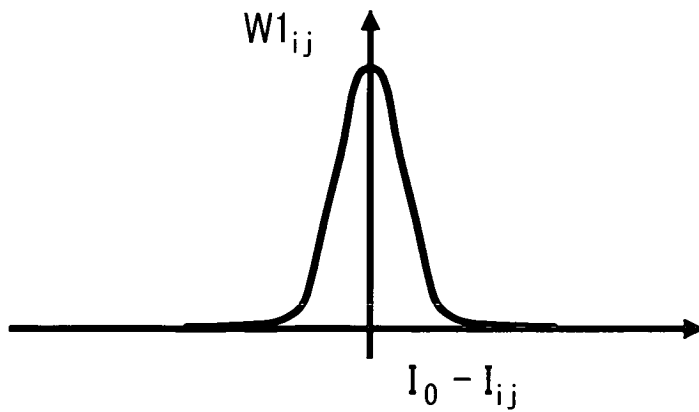
# FIG.4A

HISTOGRAM OF INTENSITY  
DIFFERENCE OF ADJACENT PIXELS

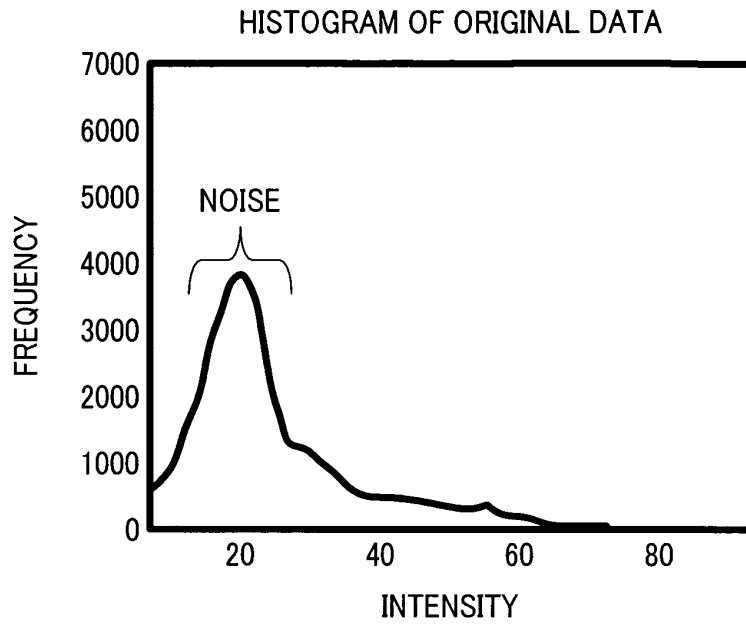


# FIG.4B

WEIGHTING FUNCTION 1



# FIG.5A



# FIG.5B

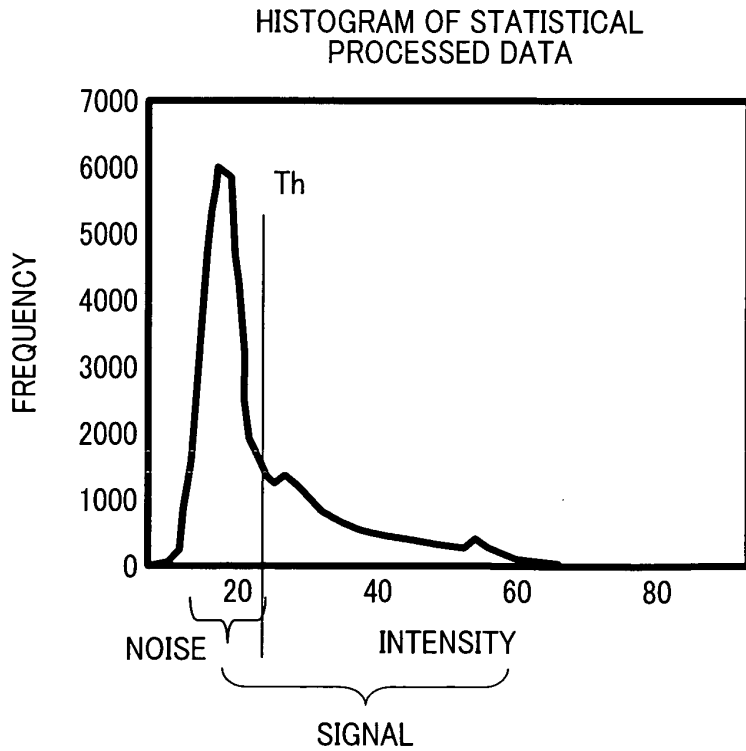
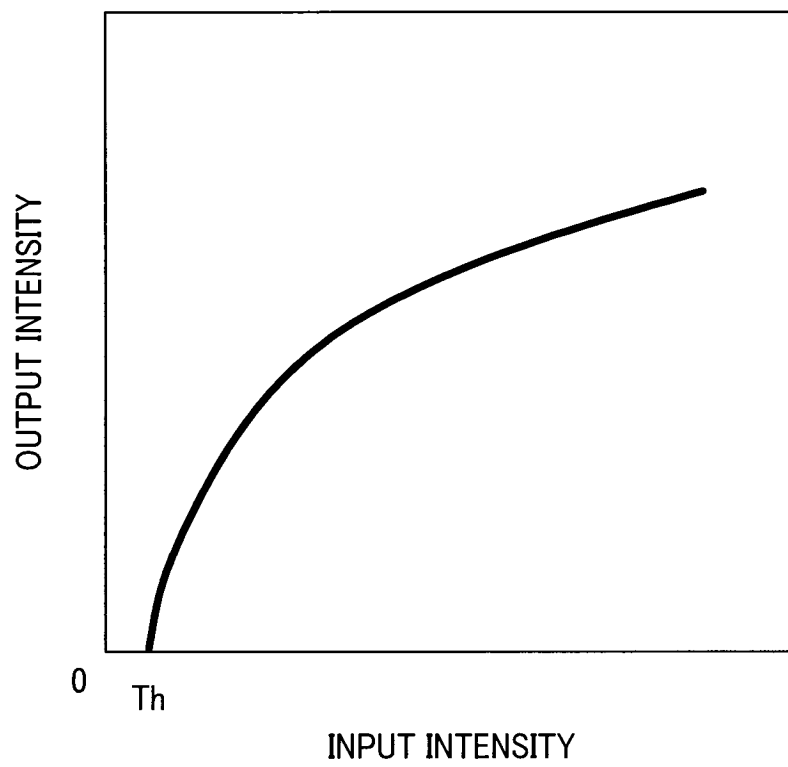
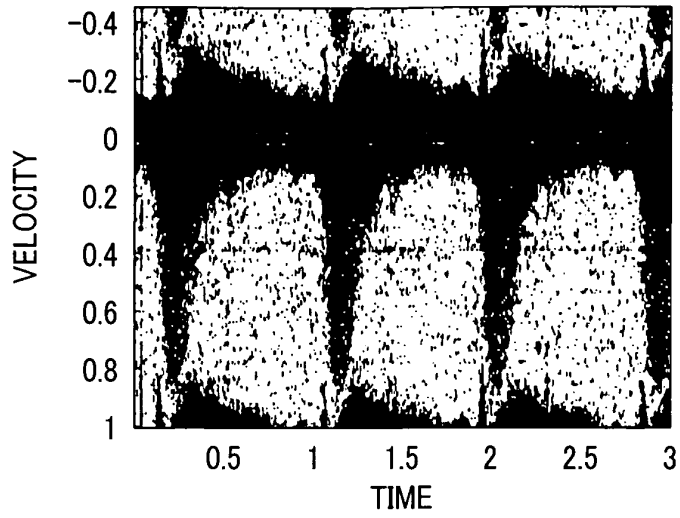


FIG.6



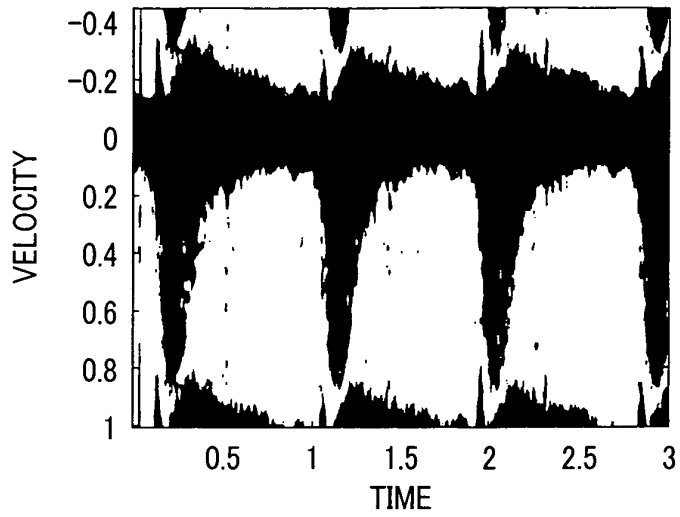
**FIG.7A**

ORIGINAL  
IMAGE



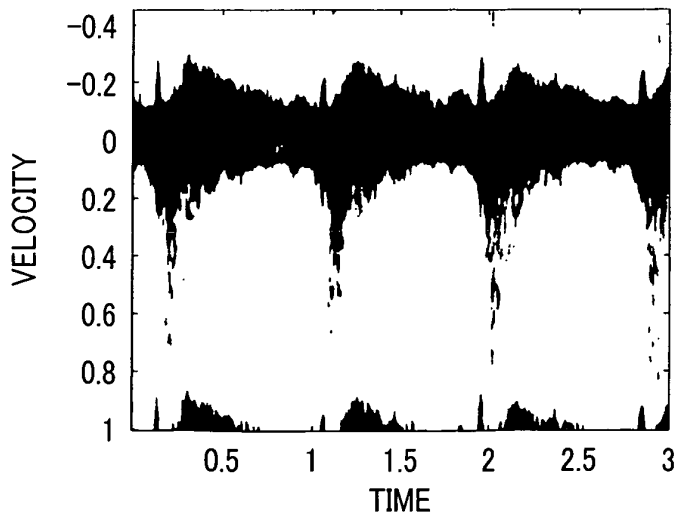
**FIG.7B**

THE PRESENT  
INVENTION

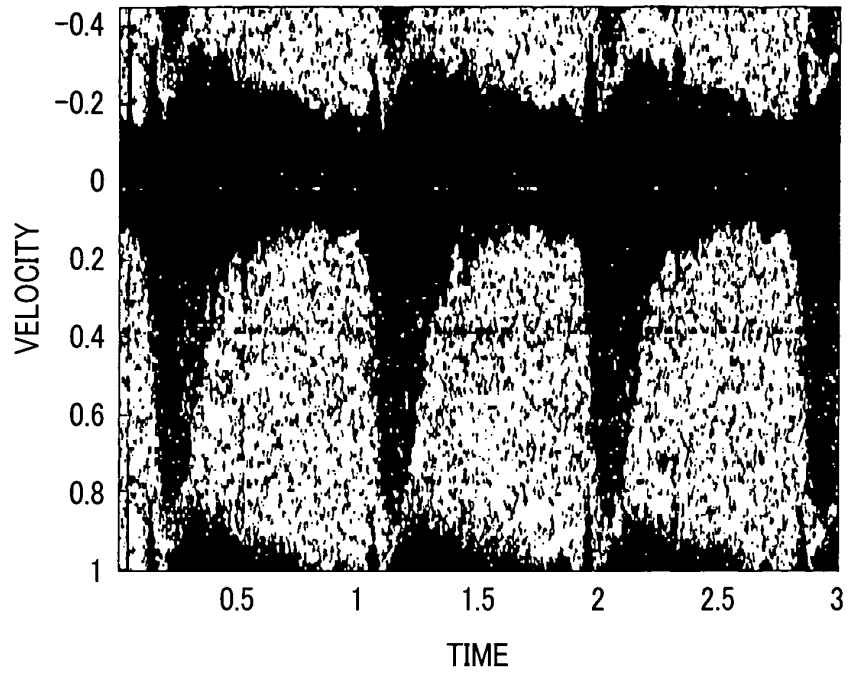


**FIG.7C**

CONVENTIONAL  
METHOD



# FIG.8A



# FIG.8B

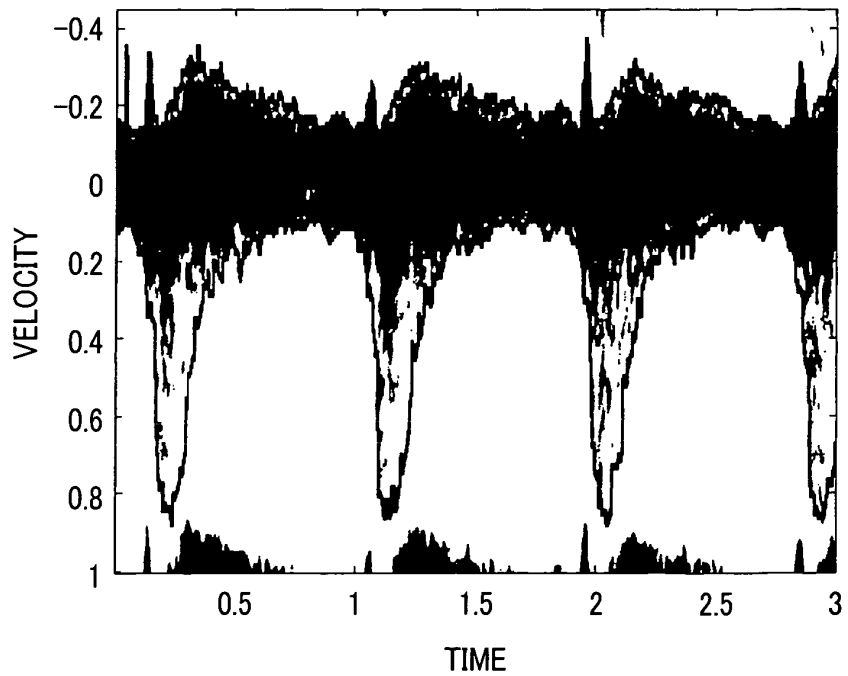
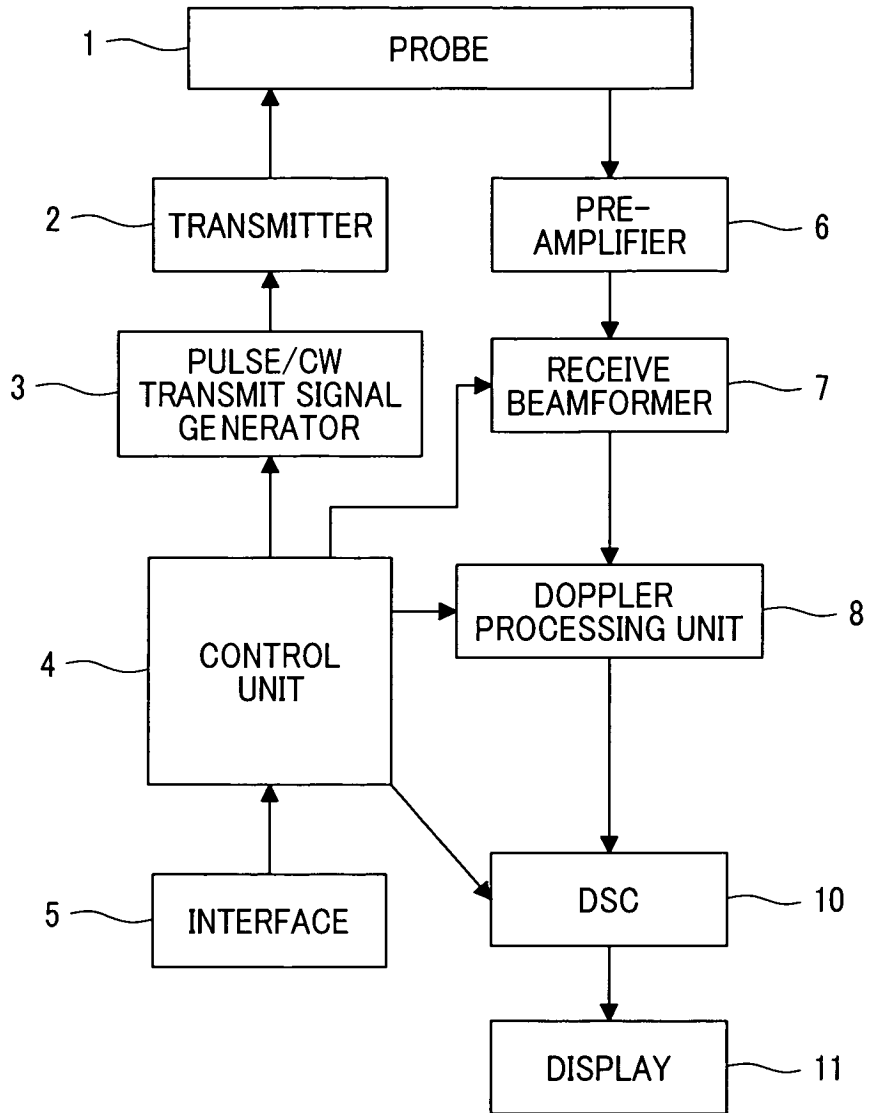
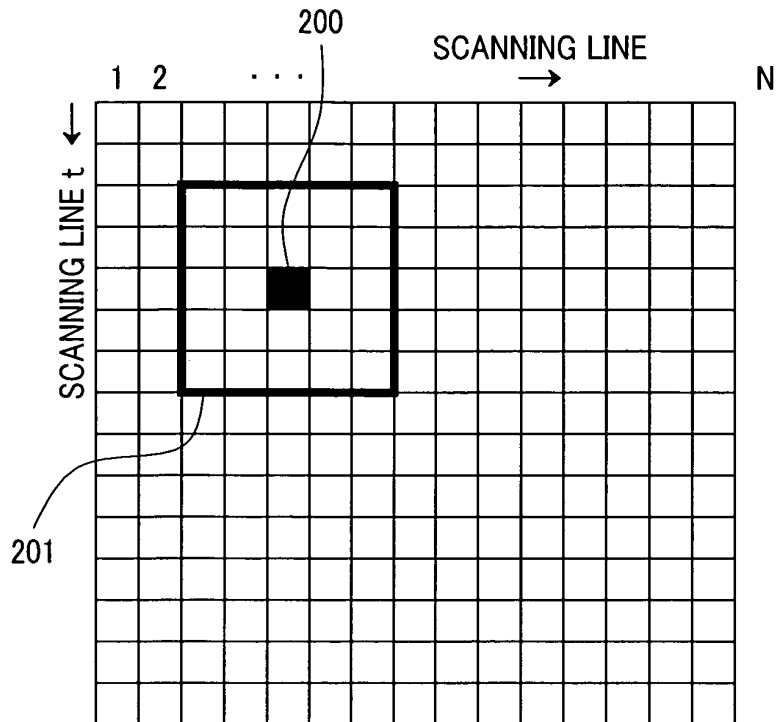


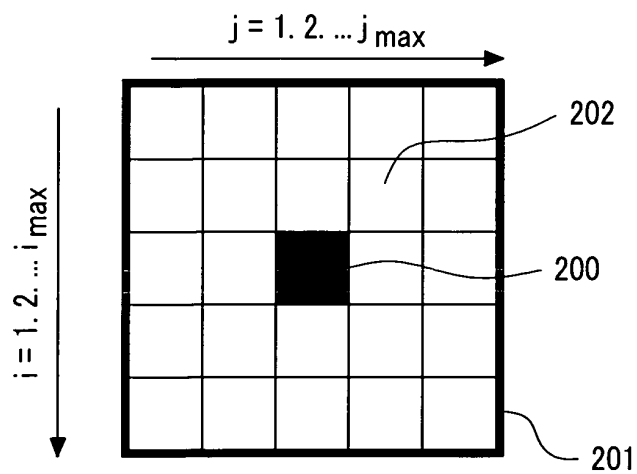
FIG.9



# FIG.10A



# FIG.10B



## INTERNATIONAL SEARCH REPORT

International application No.

PCT/JP2004/016631

A. CLASSIFICATION OF SUBJECT MATTER Int.Cl <sup>7</sup> A61B8/06		
According to International Patent Classification (IPC) or to both national classification and IPC		
B. FIELDS SEARCHED		
Minimum documentation searched (classification system followed by classification symbols) Int.Cl <sup>7</sup> A61B8/00		
Documentation searched other than minimum documentation to the extent that such documents are included in the fields searched Jitsuyo Shinan Koho 1922-1996 Toroku Jitsuyo Shinan Koho 1994-2005 Kokai Jitsuyo Shinan Koho 1971-2005 Jitsuyo Shinan Toroku Koho 1996-2005		
Electronic data base consulted during the international search (name of data base and, where practicable, search terms used)		
C. DOCUMENTS CONSIDERED TO BE RELEVANT		
Category*	Citation of document, with indication, where appropriate, of the relevant passages	Rélevant to claim No.
Y	JP 2002-534185 A (General Electric Co.), 15 October, 2002 (15.10.02), Page 13, line 16 to page 15, line 17 & WO 00/040998 A1	1, 2, 4, 5
Y	JP 4-51941 A (Fujitsu Ltd.), 20 February, 1992 (20.02.92), Page 2, lower left column, lines 4 to 14; Fig. 5 (Family: none)	1, 2, 4, 5
Y	JP 2000-262520 A (Aloka Co., Ltd.), 26 September, 2000 (26.09.00), Column 2, lines 14 to 37 (Family: none)	1, 2, 4, 5
<input checked="" type="checkbox"/> Further documents are listed in the continuation of Box C. <input type="checkbox"/> See patent family annex.		
* Special categories of cited documents: "A" document defining the general state of the art which is not considered to be of particular relevance "E" earlier application or patent but published on or after the international filing date "L" document which may throw doubts on priority claim(s) or which is cited to establish the publication date of another citation or other special reason (as specified) "O" document referring to an oral disclosure, use, exhibition or other means "P" document published prior to the international filing date but later than the priority date claimed		"T" later document published after the international filing date or priority date and not in conflict with the application but cited to understand the principle or theory underlying the invention "X" document of particular relevance; the claimed invention cannot be considered novel or cannot be considered to involve an inventive step when the document is taken alone "Y" document of particular relevance; the claimed invention cannot be considered to involve an inventive step when the document is combined with one or more other such documents, such combination being obvious to a person skilled in the art "&" document member of the same patent family
Date of the actual completion of the international search 31 January, 2005 (31.01.05)		Date of mailing of the international search report 15 February, 2005 (15.02.05)
Name and mailing address of the ISA/ Japanese Patent Office		Authorized officer
Facsimile No.		Telephone No.

Form PCT/ISA/210 (second sheet) (January 2004)

## INTERNATIONAL SEARCH REPORT

International application No.

PCT/JP2004/016631

C (Continuation). DOCUMENTS CONSIDERED TO BE RELEVANT		
Category*	Citation of document, with indication, where appropriate, of the relevant passages	Relevant to claim No.
A	JP 2000-300561 A (General Electric Co.), 31 October, 2000 (31.10.00), Column 11, lines 33 to 42; column 13, lines 1 to 4 & US 6135962 A                      & EP 1006369 A2	1-5
A	JP 11-33024 A (Toshiba Corp.), 09 February, 1999 (09.02.99), Column 8, line 37 to column 9, line 14 & US 6050948 A	1-5

Form PCT/ISA/210 (continuation of second sheet) (January 2004)

**REFERENCES CITED IN THE DESCRIPTION**

*This list of references cited by the applicant is for the reader's convenience only. It does not form part of the European patent document. Even though great care has been taken in compiling the references, errors or omissions cannot be excluded and the EPO disclaims all liability in this regard.*

**Patent documents cited in the description**

- JP 2002534185 W [0005]

专利名称(译)	超声波设备		
公开(公告)号	<a href="#">EP1762178A1</a>	公开(公告)日	2007-03-14
申请号	EP2004822049	申请日	2004-11-10
[标]申请(专利权)人(译)	株式会社日立医药		
申请(专利权)人(译)	日立医疗器械股份有限公司		
当前申请(专利权)人(译)	日立医疗器械股份有限公司		
发明人	AZUMA, TAKASHI HITACHI, LTD. CENTRAL RES. LAB.280 UMEMURA, S. HITACHI, LTD. CENTRAL RES. LAB., 280 KAMADA, HIDEYO HITACHI MEDICAL CORPORATION1-14		
IPC分类号	A61B8/06		
CPC分类号	A61B8/06		
优先权	2004155662 2004-05-26 JP		
其他公开文献	EP1762178A4		
外部链接	<a href="#">Espacenet</a>		

摘要(译)

本发明提供一种超声波诊断装置，其实现了超声波血流频谱显示图像中信号分量的轮廓形状的改善的可视性。该装置包括灰度校正单元，用于校正多普勒处理单元的输出结果的强度。多普勒处理单元计算从接收器输出的接收信号中的多普勒频移，并基于多普勒频移计算对象的血流速度。灰度级校正单元具有：滤波单元，用于将信号和噪声彼此分离，其包括在由多普勒处理单元基于连续性获得的对象的血流速度的时变波形中。在由血流速度和时间定义的空间上；灰度校正器，用于使用由滤波单元获得的信号强度和噪声强度之间的边界值作为参数来执行灰度级校正。

FIG.2

