



(11) **EP 2 016 906 B1**

(12) **EUROPEAN PATENT SPECIFICATION**

(45) Date of publication and mention of the grant of the patent:
12.09.2012 Bulletin 2012/37

(51) Int Cl.:
A61B 8/06^(2006.01) A61B 8/14^(2006.01)

(21) Application number: **08012537.0**

(22) Date of filing: **10.07.2008**

(54) **Ultrasound diagnostic apparatus**

Diagnostisches Ultraschallgerät

Appareil de diagnostic à ultrasons

(84) Designated Contracting States:
DE FR GB IT

(30) Priority: **17.07.2007 JP 2007185566**

(43) Date of publication of application:
21.01.2009 Bulletin 2009/04

(73) Proprietor: **Hitachi Aloka Medical, Ltd.**
Mitaka-shi
Tokyo,
181-8622 (JP)

(72) Inventor: **Murashita, Masaru**
Mitaka-shi
Tokyo, 181-8622 (JP)

(74) Representative: **Heim, Hans-Karl et al**
Weber & Heim
Patentanwälte
Irmgardstrasse 3
81479 München (DE)

(56) References cited:
US-A- 6 126 603 US-A1- 2006 184 029
US-B1- 6 334 847 US-B1- 6 503 202

- **ELIZABETH BULLITT, STEPHEN AYLWARD: "Volume Rendering of Segmented Tubular Objects", LECTURE NOTES IN COMPUTER SCIENCE 2208, 1 January 2001 (2001-01-01), pages 161-168, XP002579462, Lecture Notes in Computer Science**
- **MROZ L ET AL: "Maximum intensity projection at warp speed", COMPUTERS AND GRAPHICS, ELSEVIER, GB LNKD- DOI:10.1016/S0097-8493 (00)00030-3, vol. 24, no. 3, 1 June 2000 (2000-06-01), pages 343-352, XP004201697, ISSN: 0097-8493**

EP 2 016 906 B1

Note: Within nine months of the publication of the mention of the grant of the European patent in the European Patent Bulletin, any person may give notice to the European Patent Office of opposition to that patent, in accordance with the Implementing Regulations. Notice of opposition shall not be deemed to have been filed until the opposition fee has been paid. (Art. 99(1) European Patent Convention).

Description

BACKGROUND

Technical Field

[0001] The present invention relates to an ultrasound diagnostic apparatus, and more particularly to a technology of forming a three-dimensional bloodstream image.

Related Art

[0002] In the medical field, an ultrasound diagnostic apparatus transmits and receives ultrasonic waves to and from a living organism and generates an ultrasound image on the basis of a reception signal obtained by transmission and reception of the ultrasonic waves. Typical ultrasound images may include a two-dimensional tissue image, which is a monochrome image (B-mode image), and a two-dimensional bloodstream image, which is a color image. A two-dimensional bloodstream image is color representation of Doppler components or motion information (e.g., velocity information, power information, and so on) which are contained in a reception signal. A two-dimensional tissue image may be formed by reference to the motion information. In general, a two-dimensional tissue image and a two-dimensional bloodstream image are combined to form a combined image, which is then to be displayed on a display.

[0003] In recent years, three-dimensional ultrasound diagnostic apparatuses which form a three-dimensional tissue image by reference to volume data obtained by transmission and reception of ultrasonic waves with respect to a three-dimensional space within a living organism have been in wide-spread use. Conventionally, a three-dimensional tissue image is formed by using a volume rendering method, for example, and is a stereoscopic representation of a tissue (e.g. an organ) within a living organism. Meanwhile, motion volume data can be obtained by extracting motion information from volume data. Here, motion volume data refers to three-dimensional data formed of the motion information. By applying three-dimensional image processing to the motion volume data, a three-dimensional bloodstream image can be formed.

[0004] JP 2005-157664 A (Reference 1), JP 2005-40622 A (Reference 2), JP 2006-51202 A (Reference 3), and JP 2001-17428 A (Reference 4) disclose conventional ultrasound diagnostic apparatuses which form a three-dimensional ultrasound image.

[0005] In a case where the magnitude of velocity or power is represented by the level of brightness in forming a three-dimensional bloodstream image, provided that a bloodstream located on the front side is a low-velocity stream and a bloodstream on the further back side is a high-velocity stream, the high-velocity bloodstream located on the back side is represented with a high brightness and the low-velocity bloodstream located on the

front side is represented with a low brightness, or only the high-velocity bloodstream on the back side is represented. Consequently, the resulting image loses a sense of depth, which is a characteristic of a three-dimensional image. If a weighting function is applied in the depth direction in order to prevent the above disadvantage, the magnitude of motion information such as velocity cannot be represented in an accurate manner. As such, formation of a three-dimensional bloodstream image suffers from specific problems which are inherent thereto and differ from those regarding formation of a three-dimensional tissue image.

[0006] Elizabeth Bullitt, Stephen Aylward teach in "Volume Rendering of Segmented Tubular Objects" (XP002579462) ways for producing three-dimensional images of blood vessels for example by ultrasound.

[0007] Mroz L et al. disclose in "Maximum intensity projection at warp speed" (XP004201697) a way how maximum intensity production can be carried out in an improved way by a specified algorithm.

[0008] Different ultrasonic diagnostic apparatus are known from US 6,126,603, US 2006/0184029 A1 and US 6,503,202 B1.

SUMMARY

[0009] The present invention advantageously provides an ultrasound diagnostic apparatus which is capable of forming a three-dimensional bloodstream image in which a sense of depth can be achieved.

[0010] The present invention also advantageously provides an ultrasound diagnostic apparatus which is capable of accurately representing the magnitude of bloodstream information.

[0011] The invention is defined in the independent claims 1 and 9. Preferred embodiments are defined in the dependent claims.

[0012] In this structure, when forming a three-dimensional bloodstream image by reference to the bloodstream volume data, for each ray, a voxel value (motion information) is sequentially referred to starting from the search start point to search for the specific maximum value (a representative value). More specifically, on each ray, the first peak value is determined as the specific maximum value, which is then reflected in a pixel value. The three-dimensional bloodstream image is formed of a plurality of pixel values obtained for a plurality of rays. The motion information preferably represents a positive or negative velocity or a power (i.e., information corresponding to an absolute value of the velocity). The motion information may be Doppler information, or may be in the form of a two-dimensional or three-dimensional vector. If the three-dimensional bloodstream image is a velocity image, preferably, the direction of flow is represented with different hues and the magnitude of velocity is represented by the level of brightness. The search start point is a point which is set on a viewpoint (a ray original point) or is set on the further back side away from the viewpoint.

The viewpoint may be set arbitrarily.

[0013] According to the conventional maximum value method, because in a portion where two bloodstreams cross each other, an absolute maximum value on the ray is unconditionally imaged, there are cases in which the bloodstream located on the back side is preferentially represented. This results in a problem that a sense of depth is lost. According to the present invention, on the other hand, because a modified maximum value method is realized that is, basically, because a first peak is always imaged, the bloodstream on the front side is represented in the above-described portion where the bloodstreams cross each other, so that a sense of depth can be retained. Further, because it is not necessary to apply special weighting processing along the depth direction, the motion information can be represented in an accurate manner. However, in addition to the above modified method, a weighting processing may be applied along the depth direction for the purpose of enhancing stereoscopic vision, and so on. Here, the first peak value, which corresponds to a center of the bloodstream located on the front side, may be a value corresponding to a vertex, or a local average value in the vicinity of a vertex.

[0014] Preferably, when a predetermined termination condition is satisfied during the course of executing maximum value search processing sequentially for each voxel starting from the search start point on each ray, a maximum value which is detected at this time is regarded as the first peak value. Preferably, the predetermined termination condition is a condition that, in the course of sequentially executing the maximum value search processing while a voxel value of each voxel is being referred to, the voxel value first increases and then decreases, and further reaches a predetermined value.

[0015] If a plurality of hills are present in a graph (a series of voxel values) along the ray, the vertex of the first hill, for example, corresponds to the first peak value described above. However, whether or not the vertex corresponds to the first peak value can generally be determined when the search has progressed to such a point that a search point has passed over the vertex of the first hill and then descended a negative gradient or when the search has further progressed to such a point that the search point has reached the bottom of a valley. In either case, it is desirable to set the termination condition so as to allow specification of the first peak without fail (that is, so as not to specify the second or later peak) and also to allow execution of a search operation as simply and rapidly as possible. It is desirable to terminate the search operation concerning the target ray at a time point when the first peak is specified.

[0016] On the three-dimensional bloodstream image, in a portion in which an image of a bloodstream located on a front side and an image of a bloodstream located on a further back side cross each other, the image of the bloodstream located on the front side is represented. Preferably, on the three-dimensional bloodstream image, a center portion of a bloodstream is represented

with a higher priority and with a higher brightness as compared with a peripheral portion around the center portion of the bloodstream. As the pixel value is determined by the first peak, the bloodstream on the front side as seen from the viewpoint is displayed. On similar grounds, when distribution of the velocity (or power) is generated in the bloodstream, the maximum velocity (or the maximum power) in the distribution is preferentially represented. Namely, on each ray, a center portion of the bloodstream is represented with a higher priority than the peripheral portion around the center portion of the bloodstream.

[0017] The generation unit includes a computation unit which generates motion volume data from the original volume data, an identification unit which generates identification data for distinguishing between a bloodstream portion and a noise portion by reference to the motion volume data, and an extraction unit which extracts the bloodstream volume data from the motion volume data by reference to the identification data. In a three-dimensional bloodstream image, in which noises are imaged, it is difficult to recognize the running state of a bloodstream. Accordingly, in the present invention, the bloodstream volume data in which noises are effectively removed or reduced are generated, and a three-dimensional bloodstream image is formed by reference to the bloodstream volume data.

[0018] Preferably, the identification unit specifies a plurality of objects included in the motion volume data, and identifies a type of each of the objects which are specified, by reference to the size of the object to thereby generate the identification data. While it is difficult to discriminate between a bloodstream portion and a noise portion by reference to the motion components, with this structure, these portions can be distinguished from each other in accordance with their spatial sizes.

[0019] In accordance with another preferred embodiment of the present invention, there is provided an image-processing program to be executed in a computer, as defined in claim 9. The program according to the present invention is provided via a storage medium or a network and is installed in a computer. The storage medium includes a medium such as a CD-ROM, and so on. Here, the above-described computer is a general personal computer or an ultrasound diagnostic apparatus, for example. The three-dimensional bloodstream image may be formed by reference to the volume data which are obtained in real time or by reference to the volume data which are stored.

BRIEF DESCRIPTION OF THE DRAWINGS

[0020] A preferred embodiment of the present invention will be described in detail by reference to the following figures, wherein:

FIG. 1 is a block diagram showing an ultrasound diagnostic apparatus according to a preferred embodiment of the present invention;

FIG. 2 is a conceptual view for explaining processing for generating bloodstream volume data;

FIG. 3 is a conceptual view for explaining a relationship between the bloodstream volume data and a screen;

FIG. 4 is a chart (graph) showing distribution of voxel values along a ray; and

FIG. 5 is a flowchart showing processing for forming a three-dimensional bloodstream image.

DETAILED DESCRIPTION

[0021] A preferred embodiment of the present invention will be described in detail with reference to the accompanying drawings.

[0022] FIG. 1 is a block diagram showing the overall structure of an ultrasound diagnosis apparatus according to a preferred embodiment of the present invention. The ultrasound diagnosis apparatus according to the present embodiment is for use in the medical field, and includes a function of forming a three-dimensional bloodstream image which is a stereoscopic representation of bloodstream within a living organism.

[0023] In the present embodiment, a 3D (three-dimensional) probe 10 includes a 2D (two-dimensional) array transducer. The 2D array transducer includes a plurality of transducer elements which are arranged two-dimensionally. An ultrasound beam is formed by the 2D array transducer and is electronically scanned. Known electronic scan methods include electronic sector scan, electronic linear scan, and others. In FIG. 1, a symbol "r" indicates the depth direction, which corresponds to the ultrasound beam direction. Symbols "θ" and "φ" represent directions in which an ultrasound beam is scanned. In the illustrated example, a pyramid-shaped echo data acquisition region, which is a three-dimensional space constructed within a living organism, is formed. Here, in place of the 2D array transducer, a 1D array transducer and a mechanism for mechanically scanning the 1D array transducer may be provided.

[0024] A unit 12 functions as a transmitting beam former transmitter and a receiving beam former receiver. The unit 12, at the time of transmission, provides a plurality of transmission signals, in parallel, to the 2D array transducer, thereby forming a transmitting beam. At the time of reception, a reflection wave from within the living organism is received by the 2D array transducer, which outputs a plurality of reception signals, in parallel, to the unit 12. The unit 12 then performs phase adjustment and summation processing with respect to the plurality of reception signals to thereby electronically form a receiving beam. In this case, a reception dynamic focus technology is applied. According to the present embodiment, the reception signal (beam data) having been subjected to beam adjustment and summation is output to a signal-processing unit 14 and a velocity-computing unit 22. Here, an ultrasound beam for forming a three-dimensional tissue image and an ultrasound beam for forming a

three-dimensional bloodstream image may be formed separately.

[0025] The signal-processing unit 14 is a module which executes signal processing for forming a three-dimensional tissue image, and has functions such as detection processing, logarithmic compression processing, and so on. The beam data having been subjected to the signal processing are stored in a 3D memory 16. Here, when storing and reading data with respect to the 3D memory 16, coordinate transformation processing is executed. In the present embodiment, a three-dimensional tissue image-forming unit 18 forms a three-dimensional tissue image from volume data stored in the 3D memory 16, by means of a volume rendering method in which opacity is used. More specifically, a plurality of rays are set with respect to the volume data, and, for each ray, a voxel computation is sequentially repeated along the ray to thereby determine a pixel value. The image data of the three-dimensional tissue image are output to a display processing unit 20. The image data are then provided to a display unit 42, which displays the three-dimensional tissue image.

[0026] Now, processing for forming a three-dimensional bloodstream image will be described in detail. The three-dimensional bloodstream image is displayed separately from or in combination with the three-dimensional tissue image described above.

[0027] The velocity-computing unit 22, in the present embodiment, includes a quadrature detector, a low-velocity motion removal filter, an autocorrelation operator, a velocity operator, and so on. Specifically, the velocity-computing unit 22 has a function of computing the velocity information as one type of motion information contained in a reception signal. More specifically, the velocity-computing unit 22 extracts Doppler components contained in a reception signal, applies an autocorrelation operation with respect to the Doppler components, and further computes the velocity (the average velocity) from the autocorrelation result. The velocity which is obtained in this case has a positive or negative sign. The velocity information is computed for each voxel. Although the velocity is obtained as the motion information in the present embodiment, a power (or an absolute value of the velocity) may be computed. Further, although in the present embodiment the velocity information along the beam direction is obtained, a two-dimensional velocity vector or a three-dimensional velocity vector may be computed.

[0028] The velocity data output from the velocity-computing unit 22 are stored in a 3D memory 24. Then, when writing or reading the data with respect to the 3D memory 24, coordinate transformation is executed. In this case, coordinate transformation from the $r\theta\phi$ coordinate system to the XYZ coordinate system is executed. The 3D memory 24 has a storage space corresponding to the three-dimensional space within the living organism described above. The 3D memory 24 stores velocity volume data (motion volume data) formed as an aggregate of velocity data which are voxel data. Here, each of 3D

memories 28, 32, and 36, which will be described below, preferably has a storage space similar to that of the 3D memory 24 and functions as a buffer memory.

[0029] A binarization processing unit 26 is a module which executes binarization processing with respect to the velocity volume data stored in the 3D memory 24. Specifically, there is executed processing in which a voxel value which is smaller than a predetermined threshold value is replaced with 0 (an invalid value) and a voxel value which is equal to or greater than the predetermined threshold value is replaced with 1 (a valid value). As a result, only the voxel values which are candidates of bloodstreams are specified. The volume data having been subjected to this binarization processing are binary volume data, which are also one type of the motion volume data. The binary volume data are stored in the 3D memory 28.

[0030] A labeling processing unit 30 applies three-dimensional labeling processing to the binary volume data, as will be described with reference to FIG. 2. Specifically, the labeling processing unit 30 extracts a voxel aggregation (i.e. an object) having a voxel value 1. In general, a plurality of bloodstreams and a plurality of noises exist within a three-dimensional space, and a plurality of objects are specified as a result of the labeling processing. Each object is composed of a plurality of voxels which are spatially coupled to each other. In this embodiment, these voxels have a voxel value, which is 1. Although an object composed of one isolation voxel may be extracted, such an object is a noise and need not be extracted. Further, the minimum number of voxels forming an object may be defined. Here, the three-dimensional labeling processing itself is a known technology. The volume data having been subjected to the three-dimensional labeling processing or the data of processing results are stored in the 3D memory 32.

[0031] Here, with the labeling processing, an object number is assigned to each object, and the number of voxels constituting each object is counted to obtain a count value. The object number and the count value constitute object attribute information.

[0032] A mask data generation unit 34 reads out from the 3D memory 32 the volume data and the attribute information obtained as a result of the three-dimensional labeling processing, and executes processing for identifying the type of each object. Namely, the mask data generation unit 34 identifies whether each object is a bloodstream (which is a subject to be imaged) or noise (which is not a subject to be imaged). More specifically, the mask data generation unit 34 compares the number of voxels of each object with a predetermined reference value, and determines an object with the number of voxels which is smaller than the reference value as noise and determines an object with the number of voxels which is equal to or greater than the reference value as a bloodstream. In general, the volume size of noise is smaller than the volume size of a bloodstream within a three-dimensional space. Accordingly, although it is difficult to

discriminate noise and bloodstream by reference to the magnitude of velocity, it is possible to distinguish between a noise portion and a bloodstream portion by reference to a difference in the spatial size. For this identification, the count value which is obtained in the three-dimensional labeling processing described above; that is, a volume size, is referred to.

[0033] The mask data generation unit 34 generates, for each object, identification data (mask data) representing an identification result of whether the object is a bloodstream or noise. The mask data is three-dimensional volume data, which are reference data which can be used for spatially identifying a portion corresponding to noise and a portion corresponding to a bloodstream.

[0034] Here, the mask data which identify an object corresponding to noise can be generated if noise removal is performed in gate processing which will be described below, whereas the mask data which identifies an object corresponding to bloodstream can be generated if extraction of bloodstream is performed in the gate processing. The mask data generated by the mask data generation unit 34 are stored in the 3D memory 36.

[0035] A gate-processing unit 38, with the use of the mask data described above, applies bloodstream extraction processing (and/or a noise removal processing) to the motion volume data which are read from the 3D memory 24, and generates, as a result, volume data which basically represent only bloodstreams; i.e., bloodstream volume data, which are then provided to a three-dimensional bloodstream image-forming unit 40.

[0036] The three-dimensional bloodstream image-forming unit 40, in the present embodiment, generates a three-dimensional bloodstream image by means of the maximum value method. However, a modified maximum value method is applied in the present embodiment, as will be specifically described below with reference to FIGs. 3 to 5. With the modified maximum value detection method according to the present embodiment, in a portion in which a plurality of bloodstreams cross each other, a bloodstream located on the front side as seen from the viewpoint, which is a bloodstream located closer to the viewpoint, is represented or high-velocity components in the bloodstream is represented, so that a clear three-dimensional bloodstream image can be advantageously formed without losing the sense of depth.

[0037] The display processing unit 20 has a color processing function, an image-combining function, and so on. The display processing unit 20 outputs image information which is selected in accordance with a display mode set by a user and provides the image information to the display unit 42. In the present embodiment, the three-dimensional tissue image is displayed as a monochrome image, whereas the three-dimensional bloodstream image is displayed as a color image. The three-dimensional bloodstream image is a velocity image in which a bloodstream approaching the probe is represented with red hue and a bloodstream moving away from the probe is represented with blue hue, and also, different

velocities are represented by brightness of the respective hues. The display processing unit 20 performs such a coloring processing. As described above, because a bloodstream located on the front side seen from the viewpoint is represented in a portion in which a plurality of bloodstreams cross each other, problems such as a loss of the sense of depth and unnatural mixture of red and blue colors in a portion where bloodstreams cross each other can be eliminated or alleviated. Also, as a stream with the highest velocity in the center portion of the bloodstream can be represented preferentially due to the method which will be described below, the state of each bloodstream can be advantageously represented in a clear manner.

[0038] As a matter of course, the method according to the present invention can be similarly applied to a case in which a power image is displayed as a three-dimensional bloodstream image. A power image is formed as an image of a red color, for example, in which the magnitude of power is represented by brightness. In either case, there can be formed a three-dimensional bloodstream image in which noise, especially undesirable clutter generated due to interference of ultrasonic waves or the like, is effectively reduced.

[0039] A control unit 44, which performs operation control of each unit described in FIG. 1, is formed of a CPU and an operation program. An operation panel 46 is connected to the control unit 44. The operation panel 46 includes a keyboard and a trackball and is operated by a user to set the operation conditions and parameters. Here, the function of each of the binarization processing unit 26, the labeling processing unit 30, the mask data generation unit 34, the gate processing unit 38, the three-dimensional image-forming unit 40, the display processing unit 20, and so on, can be essentially implemented as a software function. It is also possible to output the information stored in the 3D memory 24 to an external personal computer and execute the processing described above on the personal computer to thereby form a three-dimensional bloodstream image.

[0040] Each of the 3D memories 24 and 16 can be formed as a cine memory having a ring buffer structure. A three-dimensional bloodstream image may be formed as a moving image based on the time-sequential volume data stored over a fixed time period.

[0041] FIG. 2 conceptually shows processing of generating bloodstream volume data. Reference numeral 50 indicates velocity volume data. In this example, portions 52 and 54 corresponding to bloodstreams and portions 56, 58, 60, and 62 corresponding to noises are present within a three-dimensional space.

[0042] A result of application of the binarization processing, and then the three-dimensional labeling processing, to the velocity volume data 50 is shown by a view indicated by reference numeral 64. With the binarization processing, a value of 1 is assigned to each voxel forming each of the portions 52, 54, 56, 58, 60, and 62 described above, and a value of 0 is assigned to other

voxels. More specifically, in the binarization processing, a predetermined threshold value is set, and a voxel value which is smaller than the threshold value is replaced with 0 and a voxel value which is equal to or greater than the threshold value is replaced with 1, so that a still object and a low-velocity object can be advantageously excluded from the subjects to be processed. As required, various filtering processing operations can be applied to the binarized volume data. Then, with the labeling processing, a plurality of objects 52A, 54A, 56A, 58A, 60A, and 62A which spatially exist are specified. Here, each object is an aggregate of voxels which are spatially contiguous and which have a value 1. An object formed of a single voxel can also be identified. Object numbers #1 to #6 are assigned to the respective objects in a predetermined order. Also, the number of voxels forming each object is counted. Namely, in the three-dimensional labeling processing, at the time of extracting an object, counting of voxels forming the object is executed and the resulting count value is stored as attribute information representing the volume size of the object.

[0043] As described above, in view that a bloodstream object generally has a larger volume size whereas a noise object generally has a smaller volume size, it is possible to discriminate between a bloodstream portion and a noise portion. In the example shown in FIG. 2, four noise portions are identified, and these noise portions form three-dimensional mask data 66. In this case, the portions 56A, 58A, 60A, and 62A designated by object numbers #1, #2, #5, and #6, respectively, are specified.

[0044] Once the three-dimensional mask data are generated as described above, the three-dimensional mask data 66 are caused to operate on the velocity volume data, and more specifically, a logical operation is performed between the three-dimensional mask data and the velocity volume data, to thereby remove the noise portions 56, 58, 60, and 62 contained in the velocity volume data 50, so that bloodstream volume data 68 in which noise is removed can be generated. The bloodstream volume data 68 basically include only the portions 52 and 54 corresponding to the bloodstreams. Accordingly, by executing rendering processing based on the bloodstream volume data, there can be provided a three-dimensional bloodstream image in which noises are effectively reduced, or the bloodstreams are clearly represented.

[0045] Although, in the example shown in FIG. 2, the portions 56A, 58A, 60A, and 62A are identified by the three-dimensional mask data 66 as the subjects to be excluded, various other methods may also be applied for configuring the three-dimensional mask data 66. For example, three-dimensional mask data for extracting the bloodstream portions may be configured. In any case, control data which can be used for achieving removal of noise portions and extraction of bloodstream portions are generated.

[0046] Referring now to FIGs. 3 to 5, processing for forming a three-dimensional bloodstream image will be

described.

[0047] FIG. 3 shows the bloodstream volume data 68. A modified maximum value detection method, which will be described below, is to be applied to the bloodstream volume data 68. First, a plurality of virtual rays (lines of sight) are set with respect to the bloodstream volume data 68. Here, a viewpoint 72 can be set at an arbitrary position. In the example shown in FIG. 3, only one representative ray 70 is shown. The plurality of rays may be parallel to each other or non-parallel. For each ray, an operation which will be described below is executed to determine one pixel value. By mapping, on a screen 74, a plurality of pixel values which are obtained for the plurality of rays, a three-dimensional bloodstream image can be formed.

[0048] Now, with regard to the ray 70, voxel values are sequentially obtained in the order of voxels on the ray 70, starting from the viewpoint 72. Namely, a maximum value search processing is executed. Here, it is desired that the voxel value is an absolute value of the velocity, in order to specify the bloodstream on the front side, regardless of the direction of the stream (i.e. regardless of a negative sign or a positive sign). In the example shown in FIG. 3, the ray 70 penetrates both the portion 52 corresponding to a bloodstream and the portion 54 corresponding to a bloodstream, and is associated with a specific address P_i on the screen 74.

[0049] FIG. 4 shows, in a graph, a sequence of voxel values existing on the ray described above. The left end of the horizontal axis represents the viewpoint or a search start point, and the direction to the right from the viewpoint represents the depth direction. Further, the vertical axis represents the magnitude of a voxel value, which is an absolute value of the velocity in the present embodiment. Specifically, although, in the actual display of an image, each bloodstream is represented with a hue in accordance with the direction of the stream in consideration the positive or negative sign, the sign should not be considered when specifying the peak of the bloodstream located on the front side, and therefore an absolute value of the velocity is referred to. Here, when the voxel value corresponds to a power, the voxel value is directly referred to for performing search of the maximum value.

[0050] The graph shown in FIG. 4 includes two hills 74A and 74B. The first hill 74A corresponds to the bloodstream 52 located on the front side in FIG. 3, and the following hill 74B corresponds to the bloodstream 54 located on the further back side in FIG. 3. Once search of the maximum value is started from the search start point, the voxel values are sequentially referred to along the j direction or the depth direction as indicated by reference numeral 75. Then, as will be described below with reference to FIG. 5, the current voxel value which is being referred to is compared with the current maximum value stored in a buffer. If the current voxel value is greater than the current maximum value, the maximum value stored in the buffer is updated; i.e., the current voxel value is written in the buffer. With sequential repetition of this

processing, after the voxel value of the first peak 76 corresponding to the vertex of the first hill 74A is stored in the buffer, the buffer value remains unupdated, and the reference position descends a slope of the hill 74A.

[0051] In the present embodiment, if the voxel value increases and then decreases to finally reach 0 in the course of search; i.e., if the voxel value reaches a point indicated by reference numeral 78, the maximum value search processing is completed. At this point in time, the maximum value currently stored in the buffer is identified as a specific maximum value, and is then converted into a pixel value. In this shown example, the value of the first peak 76 is identified as the specific maximum value.

[0052] Accordingly, the second hill 74B is not considered as a search subject, because the search is completed before the second hill 74B. Consequently, in the portion in which the two bloodstreams cross each other, only the bloodstream located on the front side is displayed, thereby avoiding a problem that the bloodstream on the further back side is unnecessarily imaged.

[0053] Although in the present embodiment, the search is completed at the time point when the first hill is crossed to find the first valley, the search may be completed at a position 77 located at a predetermined level further down from the peak 76, for example. Alternatively, it is also possible to compute a gradient at each point and terminate the search at a point where the current gradient exceeds a predetermined value.

[0054] The present embodiment can provide an advantage that even if a second hill 80 is higher than the first hill 74A, the first peak 76, which is the vertex of the first hill 74A, can be specified reliably. However, the second or subsequent hill may be referred to for the purpose of preventing misidentification of the peak.

[0055] FIG. 5 shows, in a flowchart, a processing for forming a three-dimensional bloodstream image. First, in step S101, i is set as i , which represents a ray number, and also 1 is set as j , which represents a step number on the ray; i.e., a voxel address. Also, a maximum value buffer is cleared. In step S102, whether or not a currently-referred voxel value d_j is 0 is determined. If d_j is 0, the voxel which is currently being referred to is assumed to be located on the front side with respect to the first bloodstream. Then, in step S103, j is incremented by 1, and in step S104, whether or not j is a maximum value is determined. If j is determined to be a maximum value, processing in step S108 is executed in order to terminate the processing with regard to the ray which is currently noted. On the other hand, if j is not determined to be a maximum value in step S104, the processing proceeds to step S102.

[0056] If in step S102 it is determined that the voxel value d_j is not 0, the processing in step S105 is performed. More specifically, a determination is made as to whether or not the voxel value d_j which is currently being noted is greater than the j -th buffer value corresponding to the currently-noted ray. If the currently-noted voxel value d_j is greater, there is executed update processing in which

the current buffer value is replaced by the currently-noted voxel value dj. If the voxel value dj is equal to or smaller than the current buffer value, such update processing is not performed.

[0057] In step S106, whether or not a termination condition is satisfied is determined with regard to the current ray. As shown in FIG. 4, when the first hill is crossed and then the voxel value 0 is reached, it is determined that the termination condition is satisfied. Alternatively, other termination conditions may be applied. If the termination condition is not satisfied, processing proceeds to step S107, in which j is incremented by 1, and then step S105 and the subsequent steps are repeated. On the other hand, if it is determined that the termination condition is satisfied with regard to the currently-noted ray, then, in step S108, whether or not i, which is a ray number, reaches a maximum value is determined. Then, if it is determined that i does not reach the maximum value, i is incremented by 1 in step S109, and then step S102 and the subsequent steps described above are repeated.

[0058] On the other hand, if in step S108 it is determined that i reaches a maximum value, in step S110, coloring processing is applied to a three-dimensional bloodstream image formed of a plurality of pixel values which have been obtained until then. More specifically, hue and brightness are assigned in accordance with the direction and magnitude of the velocity, so that a three-dimensional bloodstream image, which is a color image, is formed.

[0059] In the three-dimensional bloodstream image, as described above with reference to FIG. 3, in a portion in which the bloodstreams cross each other, the bloodstream located on the front side seen from the viewpoint is displayed. In addition, when displaying each bloodstream, a center portion of the bloodstream with a higher velocity is displayed with a higher priority than a peripheral portion around the center portion of the bloodstream with a lower velocity, so that each bloodstream can be clearly displayed with a sense of depth. Further, with the above processing, high-speed computation can be executed, because the computation concerning the subject ray is completed if the first peak is specified and then the termination condition is satisfied. Although it is possible to apply weighting processing along the depth direction so as to prevent the bloodstream located on the deeper side from being displayed preferentially, such special and additional processing is not necessary according to the structure of the present embodiment. However, such a weighting processing in the depth direction may be performed for the purpose of image adjustment and so on.

[0060] As described above, the ultrasound diagnostic apparatus according to the present embodiment advantageously generates bloodstream volume data in which noises (particularly clutter) present in a three-dimensional space are removed, and further advantageously forms a three-dimensional bloodstream image which is based on such bloodstream volume data and which also can provide a sense of depth and can faithfully represent mo-

tion information. The ultrasound diagnostic apparatus according to the present embodiment has two characteristics features (noise removal based on the object size, and image processing for displaying the bloodstream on the front side). It is possible, for example, to first generate the bloodstream volume data using the method as shown in FIG. 2, and then apply various known volume rendering methods to the bloodstream volume data. It is also possible to generate bloodstream volume data by using a general method and then apply the method described in FIGs. 3 to 5 to display the bloodstream located on the front side.

15 Claims

1. An ultrasound diagnostic apparatus, comprising:

a unit (12) configured to transmit and receive ultrasonic waves with respect to a three-dimensional space within a living organism (10) to thereby obtain original volume data (50);

a generation unit configured to remove noise (56, 58, 60, 62) from the original volume data (50) to thereby generate bloodstream volume data (68); and

an image-forming unit (18, 40) configured to form a three-dimensional bloodstream image by reference to the bloodstream volume data (68), wherein

the image-forming unit (18, 40) is configured to search for a specific maximum value which is a first peak (76) value first found from a search start point on each of a plurality of rays (70) set with respect to the bloodstream volume data (68), the specific maximum value on each ray (70) corresponding to a pixel value concerning each ray (70), and

the three-dimensional bloodstream image is formed by reference to a plurality of pixel values corresponding to the plurality of rays (70)

characterised in that

the generation unit includes:

a computation unit (22) configured to generate motion volume data (64) from the original volume data (50);

wherein the motion volume data (64) comprise velocity information of a plurality of voxels;

an identification unit (74) configured to generate identification data for distinguishing between a bloodstream portion (52, 54) and a noise portion (56, 58, 60, 62) based on the motion volume data (64); and

an extraction unit (38) configured to extract the bloodstream volume data (68) from the motion volume data (64) by reference to the

- identification data (66).
2. The ultrasound diagnostic apparatus according to Claim 1, wherein
when a predetermined termination condition is satisfied during the course of executing a maximum value search processing sequentially for each voxel starting from the search start point (72) on each ray (70), a maximum value (76) which is detected at this time is regarded as the first peak (76) value.
 3. The ultrasound diagnostic apparatus according to Claim 2, wherein
the predetermined termination condition is a condition that, in the course of sequentially executing the maximum value search processing while a voxel value of each voxel is being referred to, the voxel value first increases and then decreases, and further reaches a predetermined value (78).
 4. The ultrasound diagnostic apparatus according to Claim 1, wherein
on the three-dimensional bloodstream image, in a portion in which an image of a bloodstream (52, 54) located on a front side and an image of a bloodstream (52, 54) located on a further back side cross each other, the image of the bloodstream located on the front side is preferentially represented.
 5. The ultrasound diagnostic apparatus according to Claim 1, wherein
on the three-dimensional bloodstream image, a center portion of a bloodstream (52, 54) is represented with a higher priority and with a higher brightness as compared with a peripheral portion around the center portion of the bloodstream (52, 54).
 6. The ultrasound diagnostic apparatus according to Claim 1, wherein
the identification unit (34) specifies a plurality of objects (52A, 54A, 56A, 58A, 60A, 62A) included in the motion volume data (64), and identifies a type of each of the objects (52A, 54A, 56A, 58A, 60A, 62A) which are specified by reference to the size of the object (52A, 54A, 56A, 58A, 60A, 62A) to thereby generate the identification data (66).
 7. The ultrasound diagnostic apparatus according to Claim 6, wherein
the identification unit (34) applies three-dimensional labeling processing to the motion volume data (64) to specify the plurality of objects (52A, 54A, 56A, 58A, 60A, 62A).
 8. The ultrasound diagnostic apparatus according to Claim 1, wherein
the three-dimensional bloodstream image is a color image, an image of a bloodstream flowing in a first

direction is represented in a first color and an image of a bloodstream flowing in a second direction is represented in a second color, and
in a portion on the three-dimensional bloodstream image in which an image of a bloodstream located on the front side and an image of a bloodstream located on the back side cross each other, the image of the bloodstream located on the front side is preferentially represented, so that mixture of the first color and the second color occurring in the portion in which the bloodstreams (52, 54) cross each other is prevented or reduced.

9. An image-processing program to be executed in a computer, for forming a three-dimensional bloodstream image by reference to bloodstream volume data (68), the image-processing program comprising:

a module configured to search for a specific maximum value which is a first peak (76) value first found from a search start point (72) on each of a plurality of rays (70) set with respect to the bloodstream volume data (68);

a module configured to associate the specific maximum value on each ray (70) with a pixel value concerning the ray (70);

a module configured to form a three-dimensional bloodstream image by reference to a plurality of pixel values corresponding to the plurality of rays (70);

a generation module configured to remove noise from the original volume data (50) to thereby generate bloodstream volume data (68);

characterised in that

the generation module includes:

a computation unit configured to generate motion volume data (64) from the original volume data (50);

wherein the motion volume data (64) comprise velocity information of a plurality of voxels;

an identification unit configured to generate identification data for distinguishing between a bloodstream portion (52, 54) and a noise portion (56, 58, 60, 62) based on the motion volume data (64); and

an extraction unit configured to extract the bloodstream volume data (68) from the motion volume data (64) by reference to the identification data (66).

Patentansprüche

1. Diagnostisches Ultraschallgerät mit:

einer Einheit (12), die ausgebildet ist, Ultraschallwellen bezüglich eines dreidimensionalen Raumes innerhalb eines lebenden Organismus (10) zu senden und zu empfangen, um dadurch ursprüngliche Volumendaten (50) zu erhalten; eine Generierungseinheit, die ausgebildet ist, das Rauschen (56, 58, 60, 62) aus den ursprünglichen Volumendaten (50) zu entfernen, um dadurch Blutbahnvolumendaten (68) zu generieren; und

eine Bilderzeugungseinheit (18, 40), die ausgebildet ist, ein dreidimensionales Blutbahnbild unter Bezugnahme auf die Blutbahnvolumendaten (68) zu erzeugen,

wobei

die Bilderzeugungseinheit (18, 40) ausgebildet ist, nach einem spezifischen Maximumwert zu suchen, welcher ein erster Scheitelwert (76) ist, der von einem Such-Startpunkt auf jedem von einer Vielzahl von Strahlen (70) zuerst gefunden wird, die bezüglich der Blutbahnvolumendaten (68) bestimmt werden, wobei der spezifische Maximumwert auf jedem Strahl (70) einem Pixelwert bezüglich jedes Strahles (70) entspricht, und das dreidimensionale Blutbahnbild unter Bezugnahme auf eine Vielzahl von Pixelwerten, die der Vielzahl der Strahlen (70) entspricht, erzeugt wird,

dadurch gekennzeichnet,

dass die Generierungseinheit aufweist:

eine Berechnungseinheit (22), die ausgebildet ist, Bewegungsvolumendaten (64) aus den ursprünglichen Volumendaten (50) zu generieren;

wobei die Bewegungsvolumendaten (64) Geschwindigkeitsinformationen von einer Vielzahl von Voxel enthalten;

eine Identifikationseinheit (74), die ausgebildet ist, anhand der Bewegungsvolumendaten (64) Identifikationsdaten zur Unterscheidung zwischen einem Blutbahnbereich (52, 54) und einem Rauschbereich (56, 58, 60, 62) zu generieren;

und

eine Extraktionseinheit (38), die ausgebildet ist, die Blutbahnvolumendaten (68) aus den Bewegungsvolumendaten (64) unter Bezugnahme auf die Identifikationsdaten (66) zu extrahieren.

2. Diagnostisches Ultraschallgerät nach Anspruch 1, wobei, wenn eine vorgegebene Abbruchsbedingung wäh-

rend dem Verlauf der Ausführung eines Maximumwertsuchprozesses, welcher sequentiell für jeden Voxel von dem Such-Startpunkt (72) auf jedem Strahl (70) beginnt, erfüllt ist, ein Maximumwert (76), welcher zu dieser Zeit detektiert wird, als ein erster Scheitelwert (76) betrachtet wird.

3. Diagnostisches Ultraschallgerät nach Anspruch 2, wobei

die vorgegebene Abbruchsbedingung eine Bedingung ist, dass, in dem Verlauf des sequenziell ausgeführten Maximumwertsuchprozesses während ein Voxelwert für jeden Voxel untersucht wird, sich der Voxelwert zuerst erhöht und dann verringert, und ferner einen vorgegebenen Wert (78) erreicht.

4. Diagnostisches Ultraschallgerät nach Anspruch 1, wobei

auf dem dreidimensionalen Blutbahnbild, in einem Bereich, in welchem sich ein Bild einer Blutbahn (52, 54), die sich auf einer vorderen Seite befindet, und ein Bild einer Blutbahn (52, 54), die sich auf einer hinteren Seite befindet, miteinander überschneiden, das Bild der Blutbahn, die sich auf der vorderen Seite befindet, bevorzugt dargestellt wird.

5. Diagnostisches Ultraschallgerät nach Anspruch 1, wobei

auf dem dreidimensionalen Blutbahnbild, ein Mittenbereich einer Blutbahn (52, 54) mit einer höheren Priorität und mit einer höheren Helligkeit im Vergleich zu einem Randbereich um den Mittenbereich der Blutbahn (52, 54) dargestellt wird.

6. Diagnostisches Ultraschallgerät nach Anspruch 1, wobei

die Identifizierungseinheit (34) eine Vielzahl von Objekten (52A, 54A, 56A, 58A, 60A, 62A), die in den Bewegungsvolumendaten (64) enthalten sind, spezifiziert, und einen Typ von jedem der Objekte (52A, 54A, 56A, 58A, 60A, 62A) identifiziert, welche unter Bezugnahme auf die Größe der Objekte (52A, 54A, 56A, 58A, 60A, 62A) spezifiziert werden um dadurch Identifikationsdaten (66) zu generieren.

7. Ultraschalldiagnosegerät nach Anspruch 6, wobei

die Identifizierungseinheit (34) einen dreidimensionalen Kennzeichnungsprozess auf die Bewegungsvolumendaten (64) anwendet, um die Vielzahl der Objekte (52A, 54A, 56A, 58A, 60A, 62A) zu spezifizieren.

8. Diagnostisches Ultraschallgerät nach Anspruch 1, wobei

das dreidimensionale Blutbahnbild ein Farbbild ist, ein Bild einer Blutbahn, die in einer ersten Richtung fließt, in einer ersten Farbe dargestellt wird und ein

Bild einer Blutbahn, die in einer zweiten Richtung fließt, in einer zweiten Farbe dargestellt wird, und in einem Bereich auf dem dreidimensionalen Blutbahnbild, in welchem sich ein Bild von einer Blutbahn, die sich auf der Vorderseite befindet und ein Bild einer Blutbahn, die sich auf der hinteren Seite befindet, miteinander überschneidet, das Bild der Blutbahn, das sich auf der vorderen Seite befindet bevorzugt dargestellt wird, so dass eine Mischung der ersten Farbe und der zweiten Farbe, welche in dem Bereich auftritt, in welchem sich die Blutbahnen (52, 54) miteinander überschneiden, verhindert oder reduziert wird.

9. Ein in einem Computer ausführbares Bildprozessprogramm, zum Erzeugen eines dreidimensionalen Blutbahnbildes unter Bezugnahme auf Volumendaten (68), wobei das Bildprozessprogramm aufweist:

ein Modul, das ausgebildet ist, nach einem spezifischen Maximumwert zu suchen, welcher einem ersten Scheitelwert (76) entspricht, der von einem Suchstartpunkt (72) auf jedem von einer Vielzahl von Strahlen (70) zuerst gefunden wird, die in Bezug auf die Blutbahnvolumendaten (68) bestimmt werden;

ein Modul, welches ausgebildet ist, den spezifischen Maximumwert auf jedem Strahl einem Pixelwert bezüglich des Strahls (70) zuzuordnen;

ein Modul, welches ausgebildet ist, ein dreidimensionales Blutbahnbild unter Bezugnahme auf eine Vielzahl von Pixelwerten entsprechend der Vielzahl der Strahlen (70) zu erzeugen;

ein Generierungsmodul, welches ausgebildet ist, das Rauschen aus den ursprünglichen Volumendaten (50) zu entfernen, um dadurch Blutbahnvolumendaten (68) zu generieren;

dadurch gekennzeichnet,
dass das Generierungsmodul umfasst:

eine Berechnungseinheit, die ausgebildet ist, Bewegungsvolumendaten (64) aus den ursprünglichen Volumendaten (50) zu generieren;

wobei die Bewegungsvolumendaten (64) Geschwindigkeitsinformationen von einer Vielzahl von Voxel enthalten;

eine Identifikationseinheit, die ausgebildet ist, Identifikationsdaten zum Unterscheiden zwischen einem Blutbahnbereich (52, 54) und einem Rauschbereich (56, 58, 60, 62) anhand der Bewegungsvolumendaten (64) zu generieren; und

eine Extraktionseinheit, die ausgebildet ist, Blutbahnvolumendaten (68) aus den Bewegungsvolumendaten (64) unter Bezugnahme auf die Identifikationsdaten (66) zu ex-

trahieren.

Revendications

1. Appareil de diagnostic à ultrasons, comprenant :

une unité (12) configurée pour émettre et recevoir des ondes ultrasonores en relation avec un espace tridimensionnel situé à l'intérieur d'un organisme vivant (10) pour ainsi obtenir des données (50) de volume originel ;

une unité de génération configurée pour éliminer le bruit (56, 58, 60, 62) des données (50) de volume originel pour ainsi générer des données (68) de volume du système sanguin ; et

une unité (18, 40) formatrice d'images configurée pour former une image tridimensionnelle du système sanguin en faisant référence aux données (68) de volume du système sanguin, dans lequel

l'unité (18, 40) formatrice d'images est configurée pour rechercher une valeur maximale spécifique qui est une valeur de premier pic (76) trouvée initialement à partir d'un point de début de recherche sur chacun d'une pluralité de rayons (70) fixés en fonction des données (68) de volume du système sanguin, la valeur maximale spécifique sur chaque rayon (70) correspondant à une valeur de pixel concernant chaque rayon (70), et

l'image tridimensionnelle du système sanguin est formée par référence à une pluralité de valeurs de pixel correspondant à la pluralité de rayons (70)

caractérisé en ce que

l'unité de génération comprend :

une unité de calcul (22) configurée pour générer des données (64) de volume de mouvement à partir des données (50) de volume originel ;

dans lequel les données (64) de volume de mouvement comprennent des informations de vitesse d'une pluralité de voxels ;

une unité d'identification (74) configurée pour générer des données d'identification pour distinguer une partie système sanguin (52, 54) d'une partie bruit (56, 58, 60, 62) sur la base des données (64) de volume de mouvement ; et

une unité d'extraction (38) configurée pour extraire les données (68) de volume du système sanguin à partir des données (64) de volume de mouvement par référence aux données d'identification (66).

2. Appareil de diagnostic à ultrasons selon la revendication 1.

- cation 1, dans lequel, lorsqu'une condition de fin prédéterminée est satisfaite pendant le cours de l'exécution d'un traitement de recherche de valeur maximale, séquentiellement pour chaque voxel en partant du point (72) de départ de la recherche sur chaque rayon (70), une valeur maximale (76) qui est détectée à cet instant est considérée comme la valeur du premier pic (76).
3. Appareil de diagnostic à ultrasons selon la revendication 2, dans lequel la condition de fin prédéterminée est une condition selon laquelle, au cours de l'exécution séquentielle du traitement de recherche de valeur maximale pendant qu'il est fait référence à une valeur de voxel de chaque voxel, la valeur de voxel augmente d'abord, puis diminue, et atteint ensuite une valeur prédéterminée (78).
4. Appareil de diagnostic à ultrasons selon la revendication 1, dans lequel sur l'image tridimensionnelle d'un système sanguin, dans une portion dans laquelle une image d'un système sanguin (52, 54) situé sur un côté avant et une image d'un système sanguin (52, 54) situé sur un autre côté, arrière, se croisent, l'image du système sanguin sur le côté avant est préférentiellement représentée.
5. Appareil de diagnostic à ultrasons selon la revendication 1, dans lequel sur l'image tridimensionnelle d'un système sanguin, une portion centrale d'un système sanguin (52, 54) est représentée avec une priorité supérieure et avec une brillance supérieure en comparaison d'une portion périphérique située autour de la portion centrale du système sanguin (52, 54).
6. Appareil de diagnostic à ultrasons selon la revendication 1, dans lequel l'unité d'identification (34) définit une pluralité d'objets (52A, 54A, 56A, 58A, 60A, 62A) compris dans les données (64) de volume de mouvement, et identifie un type de chacun des objets (52A, 54A, 56A, 58A, 60A, 62A) qui sont définis par référence à la taille de l'objet (52A, 54A, 56A, 58A, 60A, 62A) pour ainsi générer les données (66) d'identification.
7. Appareil de diagnostic à ultrasons selon la revendication 6, dans lequel l'unité d'identification (34) applique un traitement de labellisation tridimensionnelle aux données (64) de volume de mouvement pour définir la pluralité d'objets (52A, 54A, 56A, 58A, 60A, 62A).
8. Appareil de diagnostic à ultrasons selon la revendication 1, dans lequel l'image tridimensionnelle du système sanguin est une image en couleurs,
- une image d'un système sanguin circulant dans une première direction est représenté dans une première couleur et une image d'un système sanguin circulant dans une deuxième direction est représenté dans une deuxième couleur, et dans une portion de l'image tridimensionnelle du système sanguin dans laquelle une image d'un système sanguin situé sur le côté avant et une image d'un système sanguin situé sur le côté arrière se croisent, l'image du système sanguin située sur le côté avant est représentée préférentiellement, de sorte que le mélange de la première couleur et de la deuxième couleur se produisant dans la portion dans laquelle les systèmes sanguins (52, 54) se croisent est empêché ou réduit.
9. Programme de traitement d'images destiné à être exécuté dans un ordinateur pour former une image tridimensionnelle d'un système sanguin par référence à des données (68) de volume de mouvement, le programme de traitement d'images comprenant :
- un module configuré pour rechercher une valeur maximale spécifique qui est une valeur de premier pic (76) trouvée initialement à partir d'un point (72) de début de recherche sur chacun d'une pluralité de rayons (70) fixés en fonction des données (68) de volume du système sanguin ;
 - un module configuré pour associer la valeur maximale spécifique sur chaque rayon (70) avec une valeur de pixels concernant le rayon (70) ;
 - un module configuré pour former une image tridimensionnelle d'un système sanguin par référence à une pluralité de valeurs de pixels correspondant à la pluralité de rayons (70) ;
 - un module de génération configuré pour éliminer le bruit dans les données (50) de volume originel afin de générer des données (68) de volume de système sanguin ;
- caractérisé en ce que**
le module de génération comprend :
- une unité de calcul configurée pour générer des données (64) de volume de mouvement à partir des données (50) de volume originel ;
 - dans lequel les données (64) de volume de mouvement comprennent des informations de vitesse d'une pluralité de voxels ;
 - une unité d'identification configurée pour générer des données d'identification pour distinguer une partie système sanguin (52, 54) d'une partie bruit (56, 58, 60, 62) sur la base des données (64) de volume de mouvement ; et
 - une unité d'extraction configurée pour ex-

traire les données (68) de volume du système sanguin à partir des données (64) de volume de mouvement par référence aux données d'identification (66).

5

10

15

20

25

30

35

40

45

50

55

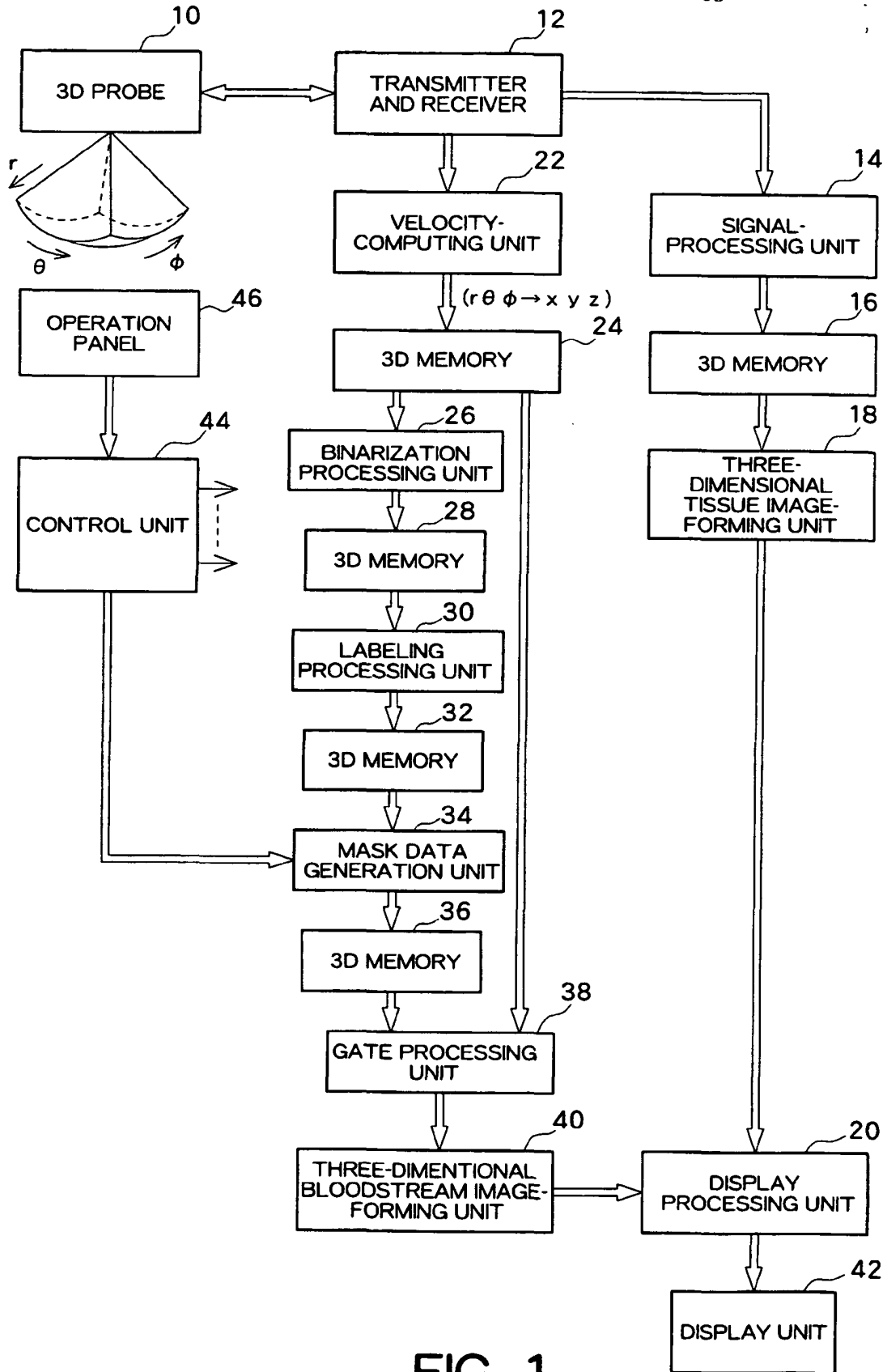


FIG. 1

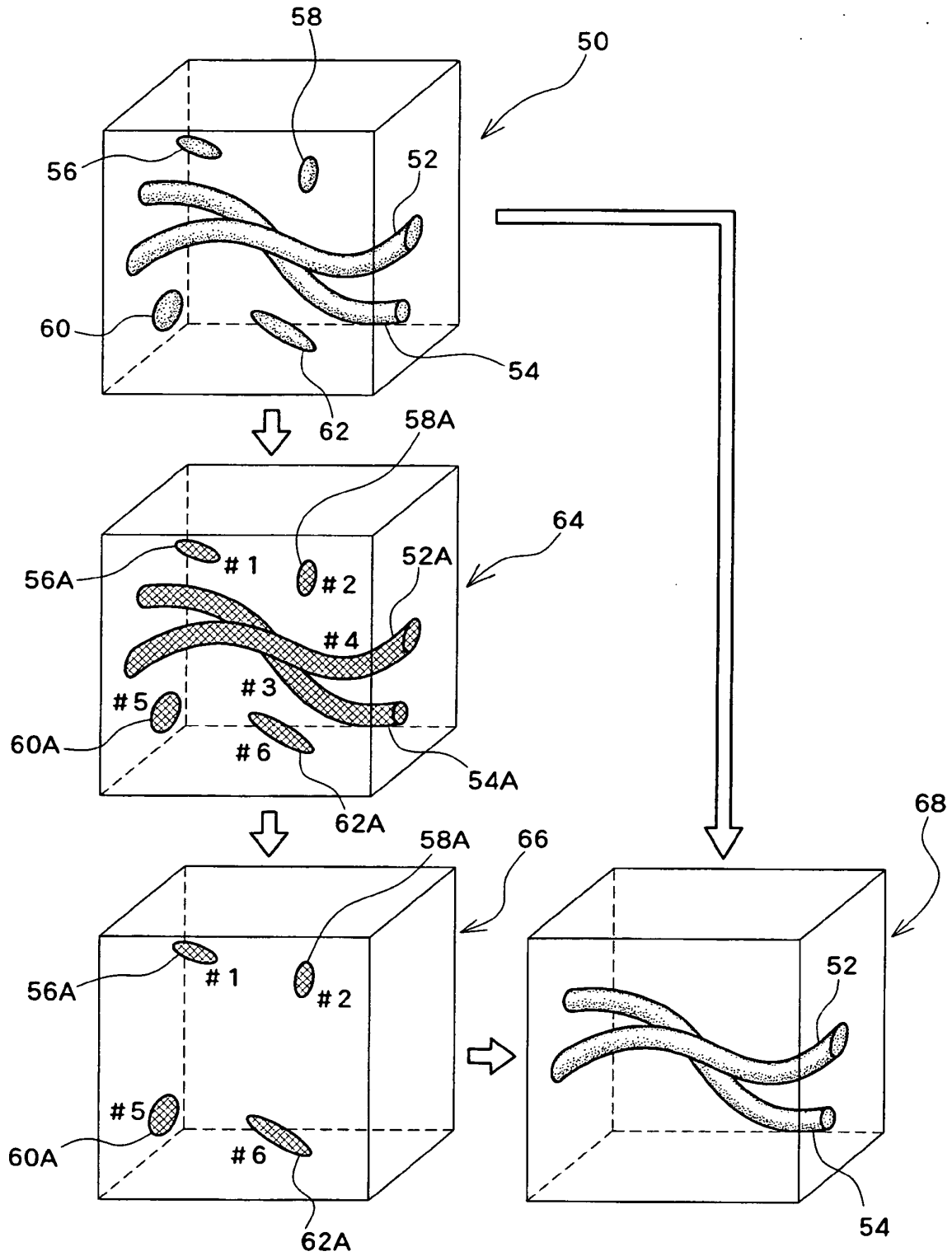


FIG. 2

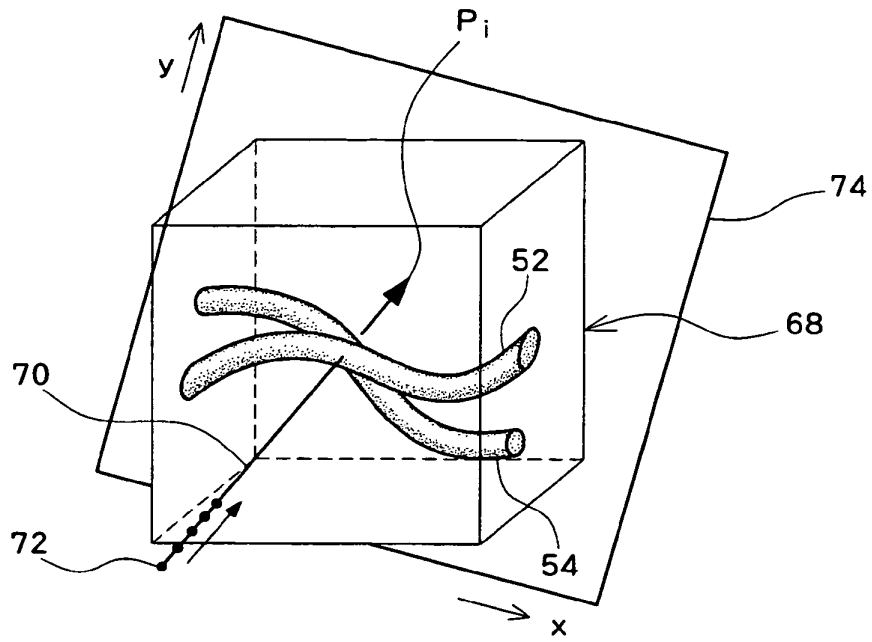


FIG. 3

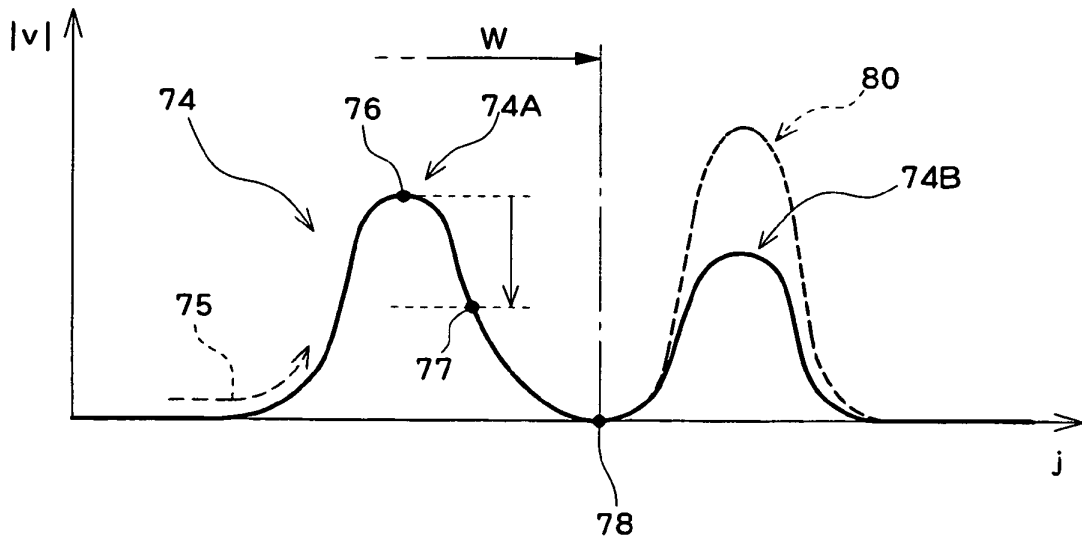


FIG. 4

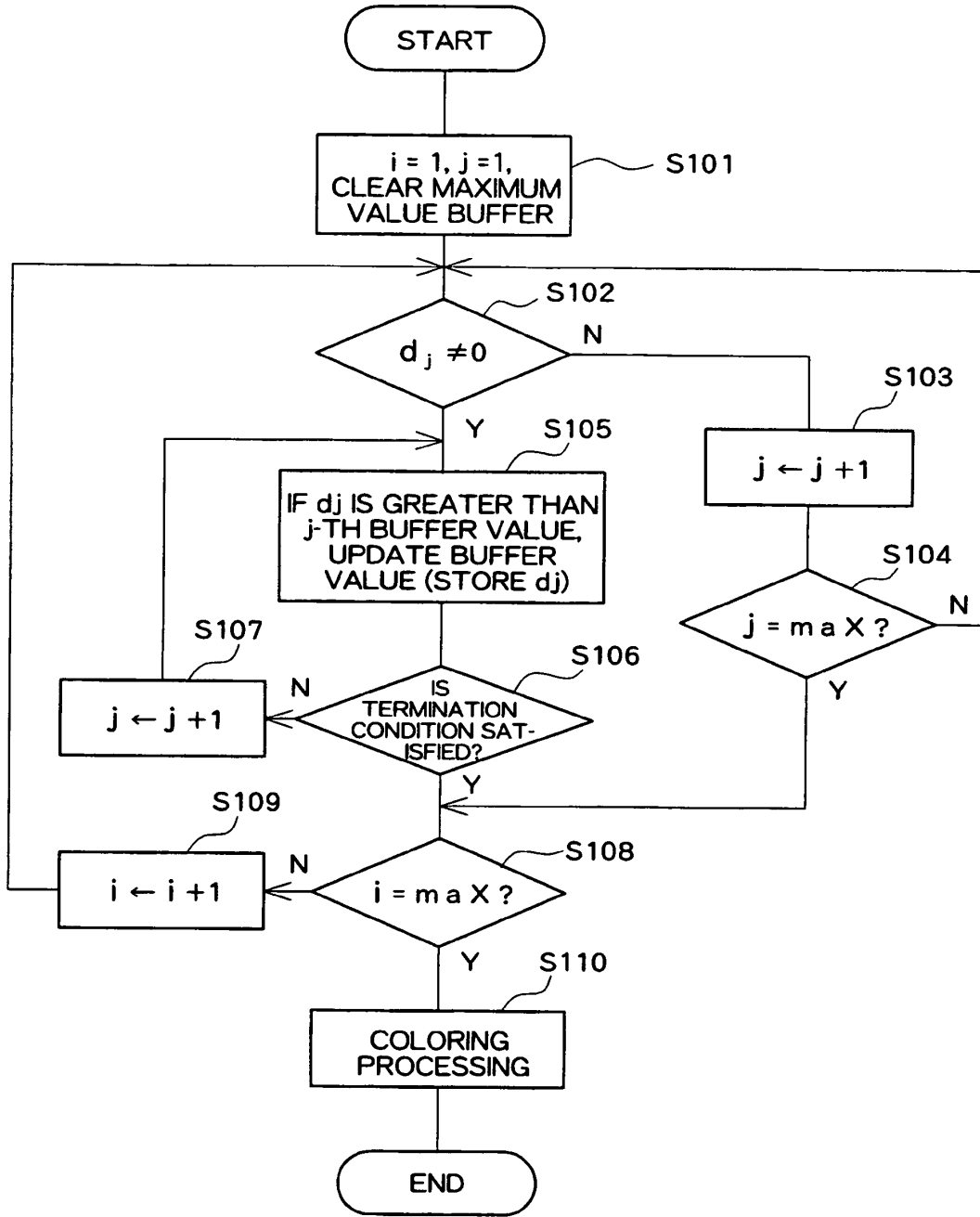


FIG. 5

REFERENCES CITED IN THE DESCRIPTION

This list of references cited by the applicant is for the reader's convenience only. It does not form part of the European patent document. Even though great care has been taken in compiling the references, errors or omissions cannot be excluded and the EPO disclaims all liability in this regard.

Patent documents cited in the description

- JP 2005157664 A [0004]
- JP 2005040622 A [0004]
- JP 2006051202 A [0004]
- JP 2001017428 A [0004]
- US 6126603 A [0008]
- US 20060184029 A1 [0008]
- US 6503202 B1 [0008]

Non-patent literature cited in the description

- **ELIZABETH BULLITT ; STEPHEN AYLWARD.**
Volume Rendering of Segmented Tubular Objects
[0006]
- **MROZ L et al.** *Maximum intensity projection at warp speed* [0007]

专利名称(译)	超声诊断仪		
公开(公告)号	EP2016906B1	公开(公告)日	2012-09-12
申请号	EP2008012537	申请日	2008-07-10
[标]申请(专利权)人(译)	日立阿洛卡医疗株式会社		
申请(专利权)人(译)	ALOKA CO. , LTD.		
当前申请(专利权)人(译)	日立ALOKA MEDICAL. , LTD.		
[标]发明人	MURASHITA MASARU		
发明人	MURASHITA, MASARU		
IPC分类号	A61B8/06 A61B8/14		
CPC分类号	A61B8/14 A61B8/00 A61B8/06 A61B8/13 A61B8/463 A61B8/483		
优先权	2007185566 2007-07-17 JP		
其他公开文献	EP2016906A2 EP2016906A3		
外部链接	Espacenet		

摘要(译)

一种超声波诊断装置，其通过参考从生物体内的三维空间获得的体积数据形成三维血流图像。沿每条射线应用修改的最大值检测方法。从搜索开始点顺序执行最大值的搜索，并且在满足预定终止条件的时间点，将在该时间点检测到的最大值视为特定最大值。然后将特定最大值转换为像素值。特定最大值是第一个峰值，即使在第一个峰值之后存在更高的峰值，也会指定。通过多个像素值形成三维血流图像。在两个血流彼此交叉的三维血流图像的一部分中，优先显示位于前侧的血流。

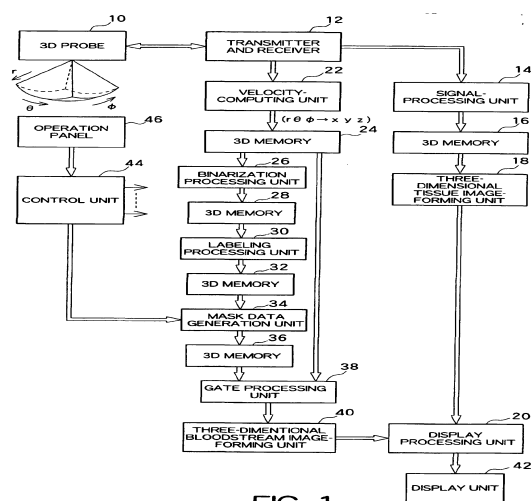


FIG. 1