



(11) **EP 3 165 172 A1**

(12) **EUROPEAN PATENT APPLICATION**
published in accordance with Art. 153(4) EPC

(43) Date of publication:
10.05.2017 Bulletin 2017/19

(51) Int Cl.:
A61B 8/14 (2006.01)

(21) Application number: **15851011.5**

(86) International application number:
PCT/JP2015/075328

(22) Date of filing: **07.09.2015**

(87) International publication number:
WO 2016/059913 (21.04.2016 Gazette 2016/16)

(84) Designated Contracting States:
AL AT BE BG CH CY CZ DE DK EE ES FI FR GB GR HR HU IE IS IT LI LT LU LV MC MK MT NL NO PL PT RO RS SE SI SK SM TR
Designated Extension States:
BA ME
Designated Validation States:
MA

(71) Applicant: **Olympus Corporation**
Tokyo 192-8507 (JP)

(72) Inventor: **NAKATSUJI Tomohiro**
Tokyo 192-8507 (JP)

(74) Representative: **Gunzelmann, Rainer**
Wuesthoff & Wuesthoff
Patentanwälte PartG mbB
Schweigerstraße 2
81541 München (DE)

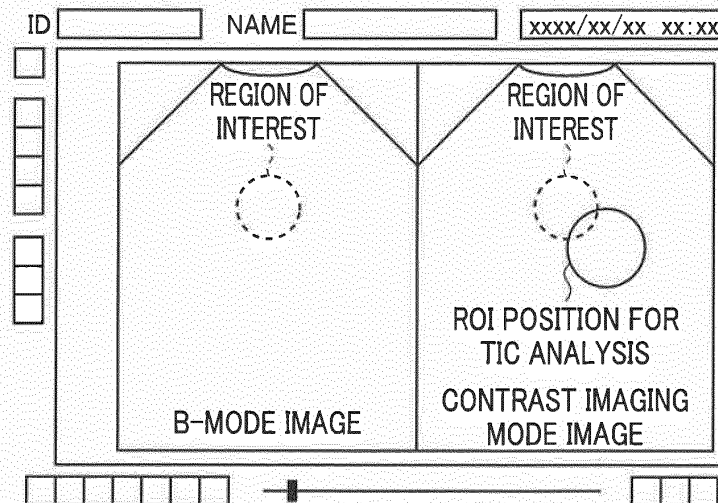
(30) Priority: **16.10.2014 JP 2014211786**

(54) **ULTRASONIC OBSERVATION APPARATUS**

(57) An ultrasound observation apparatus 1 includes: an ultrasound probe 2 configured to change a transmitting-receiving direction of ultrasound in a first direction and a second direction to perform two-dimensional scanning with an ultrasound beam; a transmitting-receiving section 3 configured to control the transmitting-receiving direction of the ultrasound beam; an image processing section 5 configured to generate volume data of a B-mode image from a result of scanning with the ultrasound beam in the first direction and the second direction; an input section 6 configured to set, as a refer-

ence image, an image in which the first region of interest is clearly visualized; a storage section 8 configured to hold the reference image; and a calculation section 4 that corrects a scanning plane to allow an image similar to the reference image that is set by the input section, to be constantly displayed, in which the calculation section 4 automatically corrects a position of the second region of interest for analysis of temporal variation of the luminance, in synchronization with movement of the first region of interest in the scanning plane.

FIG. 6B



EP 3 165 172 A1

Description

Technical Field

[0001] The present invention relates to an ultrasound observation apparatus, and in particular, to an ultrasound observation apparatus that can calculate temporal variation of luminance in a region of interest.

Background Art

[0002] An ultrasound observation apparatus has been widely used in a medical field or other fields. The ultrasound observation apparatus transmits and receives ultrasound to/from a subject to generate an ultrasound image that indicates acoustic characteristics inside the subject, and uses the ultrasound image in inspection and diagnosis of the subject.

[0003] The ultrasound observation apparatus used in the medical field or other fields includes an ultrasound probe that is capable of transmitting and receiving ultrasound to/from the subject, and generates a B-mode image that is a cross-sectional image of the subject. The B-mode image is obtained through scanning of a predetermined scanning plane with an ultrasound beam.

[0004] For example, Japanese Patent No. 4801229 discloses an ultrasound observation apparatus that acquires volume data of a B-mode image, and then calculates correlation in all scanning planes to constantly display an optimum scanning plane (having the highest correlation) in order for continuous favorable observation of a treatment using treatment instruments without deviation from the scanning plane.

[0005] Also, such an ultrasound observation apparatus uses TIC (time intensity curve) analysis as an objective diagnostic approach using an ultrasound contrast agent. In the TIC analysis, a region of interest (ROI) for TIC analysis is set to a region of interest in the scanning plane, and temporal variation of contrast luminance in the ROI is calculated.

[0006] For example, Japanese Patent Application Laid-Open Publication No. 2011-254963 discloses an ultrasound diagnostic apparatus that generates luminance time curves of at least one analysis region with, as a scanned region, a two-dimensional region or a three-dimensional region including a predetermined site of a subject medicated with a contrast agent, then analyzes a retention time period of the contrast agent in the analysis region to display different color phase that is assigned dependently on the retention time period.

[0007] In the existing TIC analysis, however, if the position or the direction of the probe is deviated by hand shake or other factors, the region of interest in the scanning plane is deviated to the outside of the set ROI. Thus, it is disadvantageously difficult to accurately comprehend (evaluate) the temporal variation of the contrast luminance in the region of interest.

[0008] The technology disclosed in Japanese Patent

No. 4801229 can correct the deviation of the scanning plane but not correct the deviation of the region of interest in each scanning plane. In contrast, the technology disclosed in Japanese Patent Application Laid-Open Publication No. 2011-254963 can overcome deviation of the two-dimensional imaging image because an image of a volume of a tissue is picked up instead a single surface when three-dimensional ultrasound imaging is used.

[0009] To perform the TIC analysis, however, it is necessary to store the volume data (movies) acquired for each case. This disadvantageously increases data capacity.

[0010] Therefore, it is an object of the present invention to provide an ultrasound observation apparatus that allows for accurate comprehension of temporal variation of contrast luminance even if the probe is deviated from the region of interest, while suppressing data capacity for the TIC analysis.

Disclosure of Invention

Means for Solving the Problem

[0011] An ultrasound observation apparatus according to an aspect of the present invention sets a second region of interest for analysis of temporal variation of luminance to a first region of interest and calculates temporal variation of luminance in the second region of interest. The ultrasound observation apparatus includes: an ultrasound probe configured to change a transmitting-receiving direction of ultrasound in a first direction and a second direction to perform two-dimensional scanning with an ultrasound beam; a transmitting-receiving section configured to control the transmitting-receiving direction of the ultrasound beam of the ultrasound probe; an image processing section configured to generate volume data of a B-mode image from a result of scanning with the ultrasound beam in the first direction and the second direction; an input section configured to set, as a reference image, an image in which the first region of interest is clearly visualized; a storage section configured to hold the reference image; and a calculation section configured to correct a scanning plane to allow an image similar to the reference image that is set by the input section, to be constantly displayed. The calculation section automatically corrects a position of the second region of interest for analysis of temporal variation of luminance, in synchronization with movement of the first region of interest in the scanning plane.

Brief Description of the Drawings

[0012]

Fig. 1 is a block diagram illustrating an entire configuration of an ultrasound observation apparatus according to a first embodiment;

Fig. 2 is a flowchart for explaining an example flow

of processing in a case where TIC analysis is not performed;

Fig. 3 is a flowchart for explaining an example flow of processing in a case where TIC analysis is performed;

Fig. 4 is a flowchart for explaining an example flow of optimization process of a scanning plane in steps S4 and S15;

Fig. 5 is a block diagram illustrating an entire configuration of an ultrasound observation apparatus according to a second embodiment;

Fig. 6A is a diagram for explaining automatic correction of a position of a ROI for TIC analysis;

Fig. 6B is a diagram for explaining the automatic correction of the position of the ROI for TIC analysis; and

Fig. 6C is a diagram for explaining the automatic correction of the position of the ROI for TIC analysis.

Best Mode for Carrying Out the Invention

[0013] Hereinafter, embodiments of the present invention are described with reference to drawings.

(First Embodiment)

[0014] First, a configuration of an ultrasound observation apparatus according to a first embodiment is described with reference to Fig. 1. Fig. 1 is a block diagram illustrating an entire configuration of an ultrasound observation apparatus according to the first embodiment. An ultrasound observation apparatus 1 illustrated in Fig. 1 is an apparatus used to observe a subject with use of ultrasound.

[0015] The ultrasound observation apparatus 1 includes: an ultrasound probe 2 that outputs an ultrasound pulse to the subject and receives an ultrasound echo reflected by the subject; a transmitting-receiving section 3 that transmits and receives an electric signal to/from the ultrasound probe 2; a calculation section 4 that performs predetermined calculation on an electric echo signal that is converted from the ultrasound echo; an image processing section 5 that generates image data corresponding to the electric echo signal converted from the ultrasound echo; an input section 6 that is configured of interfaces such as a keyboard, a mouse, and a touch panel, and receives input of various kinds of information; a display section 7 that is configured of a display panel formed of a liquid crystal, an organic EL or the like, and displays various kinds of information including the image that is generated by the image processing section 5; a storage section 8 that holds various kinds of information including an image and a movie acquired from the subject; and a control section 9 that controls entire operation of the ultrasound observation apparatus 1.

[0016] The ultrasound probe 2 is configured to perform two-dimensional scanning with an ultrasound beam by changing a transmitting-receiving direction in a first direction and a second direction with use of an ultrasound

transducers that are two-dimensionally arranged. The ultrasound probe 2 converts an electric pulse signal received from the transmitting-receiving section 3, into an ultrasound pulse, and converts an ultrasound echo that is reflected by an outside subject, into an electric echo signal again.

[0017] The transmitting-receiving section 3 is electrically connected with the ultrasound probe 2, and transmits the pulse signal to the ultrasound probe 2 and receives the echo signal from the ultrasound probe 2. More specifically, the transmitting-receiving section 3 generates the pulse signal based on a preset waveform and preset transmission timing, and transmits the generated pulse signal to the ultrasound probe 2. Also, the transmitting-receiving section 3 performs processing such as amplification and filtering on the received echo signal, and then performs A/D conversion, thereby generating a digital signal to provide the digital signal to the control section 9.

[0018] The input section 6 includes a reference image instruction section 10 that sets, as a reference image, an image in which a region of interest is clearly visualized, in order to perform TIC (time intensity curve) analysis. The reference image is previously fabricated by a user according to the size of the region of interest, clarity of a contour of the region of interest, and the like. Note that the setting of the reference image is not limited to the reference image instruction section 10, and for example, a reference image setting button may be provided, or the setting of the reference image may be linked to an unillustrated movie recording button.

[0019] The image processing section 5 includes: a B-mode image data generation section 17 that generates B-mode image data; and a contrast image data generation section 18 that generates contrast image data with use of a signal reflected by a contrast agent flowing into the subject. The B-mode image data displays luminance that is converted from an amplitude of the echo signal.

[0020] The data generated by the B-mode image data generation section 17 is volume data. Note that ultrasound power (an MI value) in acquisition of the volume data may be controlled to minimize destruction of the contrast agent.

[0021] The storage section 8 includes: a movie storage section 15 that holds the contrast image data (a movie); and a reference image storage section 16 that holds the reference image set by the reference image instruction section 10. The contrast image data is acquired with use of a signal from the contrast agent that is administered to and flows into the subject.

[0022] The movie storage section 15 holds a movie of an optional plane of the volume data in which the region of interest is displayed, in order to suppress data capacity. The volume data of the B-mode image generated by the B-mode image data generation section 17 is not stored in the movie storage section 15 and is used only for calculation to correct the position of the scanning plane.

[0023] The calculation section 4 includes: a TIC analysis section 11 that performs TIC analysis; a first position correction section 12 that corrects deviation of the scanning plane with respect to movement of the region of interest for TIC analysis; a second position correction section 13 that performs contour extraction of the region of interest in the scanning plane to automatically correct the position of a ROI for the TIC analysis, in synchronization with the movement of the region of interest in the scanning plane; and a correlation calculation section 14 that calculates a correlation value between the volume data of the B-mode image generated by the B-mode image data generation section 17 and the reference image held by the reference image storage section 16.

[0024] The first position correction section 12 calculates the correlation between the acquired volume data and the reference image, and moves the scanning plane in the second direction of the transmitting-receiving section 3 in order to display, on the display section 7, the scanning plane having the largest correlation value. More specifically, the first position correction section 12 corrects the scanning plane such that an image similar to the reference image set by the input section 6 is constantly displayed. A method of determining the optimum scanning plane is described later.

[0025] To calculate the correlation between the acquired volume data and the reference image, image processing so-called pattern matching is performed on the generated B-mode image with use of the reference image as a template, and calculates similarity between the echo pattern in the B-mode image and the reference image. The image processing may be, for example, pattern matching of the contour of the region of interest, or pattern matching of adjacent organs displayed on the image. The correlation value becomes high as the similarity between the echo pattern in the B-mode image and the reference image is higher. Note that the detailed description of the pattern matching is omitted because the pattern matching is a well-known technology.

[0026] Note that, when the ultrasound power (the MI value) is suppressed in order to minimize destruction of the contrast agent in acquisition of the volume data, the ultrasound is applied to the optimum plane (the scanning plane having the largest correlation) with the ultrasound power that is the same as the ultrasound power in acquisition of the normal B-mode image and the contrast imaging mode image.

[0027] The second position correction section 13 uses, as the template, the region of interest in the scanning plane image determined by the first position correction section 12, and uses the above-described pattern matching processing, thereby automatically correcting the position of the ROI for TIC analysis, in synchronization with the movement of the region of interest.

[0028] Next, operation of the ultrasound observation apparatus 1 having the above-described configuration is described. First, the operation in a case where the TIC analysis is not performed is described. Fig. 2 is a flow-

chart for explaining an example flow of the processing in the case where the TIC analysis is not performed.

[0029] When operation of releasing a frozen state is inputted through the input section 6, the ultrasound echo is transmitted and received by the ultrasound probe 2, and measurement is accordingly started. First, the mode is switched over to the contrast imaging mode (step S1), and recording of a normal movie is started (step S2) when operation of starting the movie recording is inputted through the input section 6.

[0030] The volume data of the B-mode image is generated from the ultrasound echo that is received by the ultrasound probe 2, by the image processing section 5 (step S3). Note that the ultrasound power (the MI value) in acquisition of the volume data may be controlled to minimize destruction of the contrast agent.

[0031] Next, optimization of the scanning plane is performed by the first position correction section 12 (step S4). In the process in step S4, the correlation between the volume data and the reference image is calculated, the scanning plane having the highest correlation is set to the optimum scanning plane, and the image of the set scanning plane is continuously displayed.

[0032] The scanning for contrast imaging mode is performed on the optimum scanning plane (step S5). In other words, in the process in step S5, the ultrasound echo to acquire the B-mode image and the contrast imaging mode image is transmitted only to the optimum scanning plane. Next, the B-mode image and the contrast image are generated from the ultrasound echo by the image processing section 5 (step S6).

[0033] Next, it is determined whether operation of terminating the movie recording has been performed through the input section 6 (step S7). When it is determined that the operation of terminating the movie recording has not been performed (No in step S7), the process returns to step S4, and the similar process is repeated. On the other hand, when it is determined that the operation of terminating the movie recording has been performed (Yes in step S7), the movie recording is terminated, the movie is stored (step S9), and the process is completed.

[0034] Next, the operation in a case where the TIC analysis is performed is described. Fig. 3 is a flowchart for explaining an example flow of the processing in the case where the TIC analysis is performed.

[0035] When the operation of releasing the frozen state is inputted through the input section 6, the ultrasound probe 2 transmits and receives the ultrasound echo, thereby starting the measurement. First, the mode is switched over to the contrast imaging mode (step S11), and the reference image is set (step S12). When the TIC analysis is performed, the image in which the region of interest, temporal variation of the contrast luminance of which is desired to be known, is clearly visualized is previously set by the reference image instruction section 10. Note that the process in step S12 may be performed in conjunction with the movie recording in step S13. The

set reference image is stored in the reference image storage section 16.

[0036] When operation of starting the movie recording is inputted through the input section 6, recording of the movie is started (step S 13). The volume data of the B mode image is generated, by the image processing section 5, from the ultrasound echo that has been received by the ultrasound probe 2 (step S14). Note that the ultrasound power (the MI value) in acquisition of the volume data may be controlled in order to minimize destruction of the contrast agent.

[0037] Optimization of the scanning plane is performed by the first position correction section 12 (step S15). In the process in step S15, the correlation between the volume data and the reference image is calculated, the scanning plane having the highest correlation is set to the optimum scanning plane, and the image of the set scanning plane is continuously displayed.

[0038] The ultrasound echo to acquire the B-mode image and the contrast image is transmitted only to the optimum scanning plane (step S16). The ultrasound echo to be transmitted is applied with the ultrasound power (the MI value) that is the same as the ultrasound power in acquisition of the normal B-mode image and the contrast imaging mode image.

[0039] The B-mode image and the contrast image are generated from the ultrasound echo by the image processing section 5 (step S17). It is determined whether the operation of terminating the movie recording has been performed through the input section 6 (step S18). When it is determined that the operation of terminating the movie recording has not been performed (No in step S18), the process returns to step S 15, and the similar process is repeated. On the other hand, when it is determined that the operation of terminating the movie recording has been performed (Yes in step S18), the movie recording is terminated and the movie is stored (step S 19).

[0040] Next, when the TIC analysis is performed, the recorded movie is read (step S20), and the ROI for TIC analysis is set to the region of interest from the read movie (step S21). When the operation of starting the TIC analysis is inputted through the input section 6, the TIC analysis is started, and the positional deviation of the ROI for TIC analysis is automatically corrected by the second position correction section 13 (step S22).

[0041] In the process in step S22, the contour of the region of interest in the scanning plane is extracted, and the position of the ROI for TIC analysis is automatically corrected in synchronization with the movement of the region of interest. Finally, the temporal variation of the contrast luminance in the ROI for TIC analysis is calculated, and the calculated temporal variation of the contrast luminance is displayed with, for example, a graph (step S23). Thus, the process is completed.

[0042] Here, the optimization process of the scanning plane in steps S4 and S 15 is described with reference to Fig. 4. Fig. 4 is a flowchart for explaining an example

flow of the optimization process of the scanning plane in steps S4 and S 15.

[0043] First, the scanning plane is set to one end ($N = 1$) of the scanning range in a second direction of the ultrasound probe 2 (step S31). Next, the scanning is performed in the first direction (step S32), and the B-mode image is generated by the B-mode image data generation section 17 (step S33). Next, a correlation value between the generated B-mode image and the reference image held by the reference image storage section 16 is calculated by the correlation calculation section 14 (step S34).

[0044] Next, it is determined whether the scanning range has been scanned at all positions ($N = N_{max}$) in the second direction (step S35). When the scanning range has not been scanned at all positions ($N = N_{max}$) in the second direction (No in step S35), the scanning plane is moved toward the other end in the second direction of the ultrasound probe 2 by a predetermined value ($N = N+1$) and set (step S36). Then, the process returns to step S32, and the similar process is repeated to calculate the correlation value between the B-mode image and the reference image.

[0045] These processes are repeated until scanning of the scanning range at all positions ($N = N_{max}$) in the second direction is completed. When it is determined that the scanning range has been scanned at all positions ($N = N_{max}$) in the second direction (Yes in step S35), the scanning plane is moved, by the first position correction section 12, to a position having the highest calculated correlation value (step S37). When the process in step S37 is completed and the optimum scanning plane is determined, the process returns to step S5 in Fig. 2 or step S16 in Fig. 3, and the scanning is performed on the optimum scanning plane.

[0046] Even if the region of interest is deviated, due to pulsation, hand shake, or other factors, from the region of interest desired to be subjected to the TIC analysis, the above-described processes make it possible to automatically correct the region of interest desired to be subjected to the TIC analysis according to the deviation of the region of interest. In addition, the volume data of the B-mode image generated by the B-mode image data generation section 17 is not stored in the movie storage section 15 and is used only for the position correction of the scanning plane. As a result, the ultrasound observation apparatus 1 makes it possible to three-dimensionally correct the deviation of the region of interest due to pulsation, hand shake, or other factors while suppressing the data capacity, which allows for accurate observation of the region of interest and accurate comprehension of the calculation results of TIC analysis.

[0047] Therefore, the ultrasound observation apparatus of the present embodiment allows for accurate comprehension of the temporal variation of the contrast luminance even if the probe is deviated from the region of interest, while suppressing the data capacity for the TIC analysis.

(Second Embodiment)

[0048] Next, a second embodiment is described.

[0049] Fig. 5 is a block diagram illustrating an entire configuration of an ultrasound observation apparatus according to a second embodiment. Note that, in Fig. 5, components similar to components of Fig. 1 are denoted by the same reference numerals and description of the components is omitted.

[0050] As illustrated in Fig. 5, an ultrasound observation apparatus 1a includes an ultrasound probe 2a, a calculation section 4a, and a storage section 8a, in place of the ultrasound probe 2, the calculation section 4, and the storage section 8, respectively, of the ultrasound observation apparatus 1 in Fig. 1.

[0051] The ultrasound probe 2a is configured by adding a signal conversion section 21 and a sensor section 22 to the ultrasound probe 2 in Fig. 1. Also, in the calculation section 4a, a first position correction section 12a and a second position correction section 13a are provided in place of the first position correction section 12 and the second position correction section 13, respectively, of the calculation section 4 in Fig. 1, and the correlation calculation section 14 in Fig. 1 is removed. Further, the storage section 8a is configured by adding a positional information storage section 23 to the storage section 8 in Fig. 1.

[0052] The signal conversion section 21 converts the electric pulse signal that is received from the transmitting-receiving section 3, into the ultrasound pulse, and converts the ultrasound echo that is reflected by the outside subject, into the electric echo signal again.

[0053] The sensor section 22 may be configured of, for example, a gyro sensor or a magnetic sensor, and detects information of the position and the direction of the ultrasound probe 2a. The information of the position and the direction of the ultrasound probe 2a detected by the sensor section 22 is provided to the storage section 8a through the control section 9.

[0054] The positional information storage section 23 of the storage section 8a holds positional information in acquisition of the reference image, and holds the information of the position and the direction of the ultrasound probe 2a detected by the sensor section 22 as needed.

[0055] The first position correction section 12a corrects deviation of the scanning plane with respect to movement of the region of interest for TIC analysis. At this time, the first position correction section 12a moves the scanning plane based on the information of the position and the direction of the ultrasound probe 2a that is held by the positional information storage section 23.

[0056] Also, the second position correction section 13a automatically corrects the position of the ROI for TIC analysis in synchronization with the movement of the region of interest in the scanning plane. At this time, the second position correction section 13a automatically corrects the position of the ROI in the scanning plane, based on the information of the position and the direction of the

ultrasound probe 2a that is held by the positional information storage section 23. The other components are similar to components of the first embodiment.

[0057] Next, the operation of the ultrasound observation apparatus 1a having such a configuration is described. The process when the TIC analysis is not performed and the process when the TIC analysis is performed are substantially similar to those in Fig. 2 to Fig. 4, and only different processes are described.

[0058] In the second embodiment, the optimization process of the scanning plane in step S4 of Fig. 2 and in step S 15 of Fig. 3 is different from that of the first embodiment. In the second embodiment, the position and the direction of the ultrasound probe 2a are acquired by the sensor section 22 provided in the ultrasound probe 2a. Then, the first position correction section 12a detects reference degree and a movement direction of the reference image, from the acquired position and the acquired direction of the ultrasound probe 2, thereby correcting the scanning plane from the volume data, based on the detected information, to continuously display the reference image.

[0059] Also, in the second embodiment, the process of automatically correcting the ROI for TIC analysis in step S22 of Fig. 3 is different from process of the first embodiment. In the second embodiment, the information of the position and the direction that is detected by the sensor section 22 provided in the ultrasound probe 2a is read out from the positional information storage section 23, and the second position correction section 13a automatically corrects the position of the ROI for TIC analysis, based on the read information of the position and the direction. Other processes are similar to processes in Fig. 2 to Fig. 4.

[0060] Here, the automatic correction of the position of the ROI for TIC analysis is described with reference to Fig. 6A to Fig. 6C. Fig. 6A to Fig. 6C are diagrams for explaining the automatic correction of the position of the ROI for TIC analysis.

[0061] First, as illustrated in Fig. 6A, the ROI for TIC analysis is set to a region of interest in the scanning plane. If the position or the direction of the probe is deviated due to hand shake or other factors, the region of interest is deviated to the outside of the ROI for TIC analysis, as illustrated in Fig. 6B.

[0062] In this case, as illustrated in Fig. 6C, the second position correction section 13a automatically corrects the position of the ROI for TIC analysis, based on the information of the position and the direction of the ultrasound probe 2a that is detected by the sensor section 22 and is held by the positional information storage section 23.

[0063] As mentioned above, the ultrasound observation apparatus 1a according to the present embodiment is different in the method of optimizing the scanning plane and the method of automatically correcting the position of the ROI for TIC analysis from the first embodiment. In the ultrasound observation apparatus 1a according to the present embodiment, the sensor section 22 is pro-

vided in the ultrasound probe 2a to acquire the information of the position and the direction of the ultrasound probe 2a, and the scanning plane is optimized and the position of the ROI for TIC analysis is automatically corrected based on the information.

[0064] Other components and operation are similar to the components and the operation of the first embodiment. Therefore, the ultrasound observation apparatus 1a of the present embodiment allows for accurate comprehension of the temporal variation of the contrast luminance even if the probe is deviated from the region of interest, while suppressing the data capacity for the TIC analysis, as with the first embodiment.

(Third Embodiment)

[0065] Next, a third embodiment is described.

[0066] The display section 7 displays the various kinds of information including the image generated by the image processing section 5. The image displayed on the display section 7 is a live image that is being observed. An image that has the highest correlation value with the reference image (the movie for TIC analysis) is stored in the apparatus (for example, stored in the movie storage section 15), and is read out and used in the TIC analysis. Other components are similar to components of the first or second embodiment.

(Fourth Embodiment)

[0067] Next, a fourth embodiment is described.

[0068] The display section 7 displays the various kinds of information including the image generated by the image processing section 5. The image displayed on the display section 7 is an image (a movie for TIC analysis) that has the highest correlation value with the reference image, calculated by the correlation calculation section 14. Note that the display section 7 may display the image that has the highest correlation value with the reference image and the live image being observed at a time. At this time, only the image that has the highest correlation value with the reference image by the correlation calculation section 14 is stored in the apparatus as the movie for TIC analysis. Other components are similar to components of the first or second embodiment.

[0069] Note that in the third embodiment and the fourth embodiment, the volume data of the B-mode image that is generated for the correlation calculation by the B-mode image data generation section 17 may be displayed on the display section 7, together with the image that has the highest correlation value with the reference image and/or the live image being observed, at a time.

[0070] Note that the respective steps in the respective flowcharts in the present specification may be changed in execution order, executed together at a time, or executed in different order in each execution, unless contrary to the nature of the steps.

[0071] The present invention is not limited to the

above-described embodiments, and other various modifications and alternations may occur within the scope of the present invention.

[0072] The present application is based upon and claims the benefit of priority of Japanese Patent Application No. 2014-211786 filed in Japan on October 16, 2014, and the above-described disclosure is incorporated by reference in the specification, claims, and drawings of the present application.

Claims

1. An ultrasound observation apparatus that sets a second region of interest for analysis of temporal variation of luminance to a first region of interest and calculates temporal variation of luminance in the second region of interest, the ultrasound observation apparatus comprising:

an ultrasound probe configured to change a transmitting-receiving direction of ultrasound in a first direction and a second direction to perform two-dimensional scanning with an ultrasound beam;

a transmitting-receiving section configured to control the transmitting-receiving direction of the ultrasound beam of the ultrasound probe;

an image processing section configured to generate volume data of a B-mode image from a result of scanning with the ultrasound beam in the first direction and the second direction;

an input section configured to set, as a reference image, an image in which the first region of interest is clearly visualized;

a storage section configured to hold the reference image; and

a calculation section configured to correct a scanning plane to allow an image similar to the reference image that is set by the input section, to be constantly displayed, wherein the calculation section automatically corrects a position of the second region of interest for analysis of temporal variation of luminance, in synchronization with movement of the first region of interest in the scanning plane.

2. The ultrasound observation apparatus according to claim 1, wherein

the calculation section calculates a correlation value between the volume data and the reference image held by the storage section, and the transmitting-receiving section moves the scanning plane in the second direction to maximize the correlation value.

3. The ultrasound observation apparatus according to claim 1, further comprising a TIC analysis section

configured to calculate temporal variation of contrast
 luminance in the second region of interest that is set
 to the first region of interest, wherein
 the calculation section automatically corrects the po-
 sition of the second region of interest for TIC analy- 5
 sis, in synchronization with the movement of the first
 region of interest.

4. The ultrasound observation apparatus according to
 claim 1, wherein the calculation section performs 10
 contour extraction of the first region of interest to
 automatically correct the position of the second re-
 gion of interest, in synchronization with the move-
 ment of the first region of interest.

5. The ultrasound observation apparatus according to
 claim 1, wherein 15
 the ultrasound probe includes a sensor that detects
 a position and a direction of the ultrasound probe,
 the storage section holds information of the position 20
 and the direction detected by the sensor, and
 the calculation section corrects, based on the infor-
 mation of the position and the direction, the scanning
 plane to allow the reference image held by the stor-
 age section to be constantly displayed. 25

6. The ultrasound observation apparatus according to
 claim 5, wherein the calculation section reads, from 30
 the storage section, the information of the position
 and the direction detected by the sensor, and auto-
 matically corrects the position of the second region
 of interest, based on the read information of the po-
 sition and the direction.

7. The ultrasound observation apparatus according to 35
 claim 5, wherein the sensor is a gyro sensor or a
 magnetic sensor.

40

45

50

55

FIG. 1

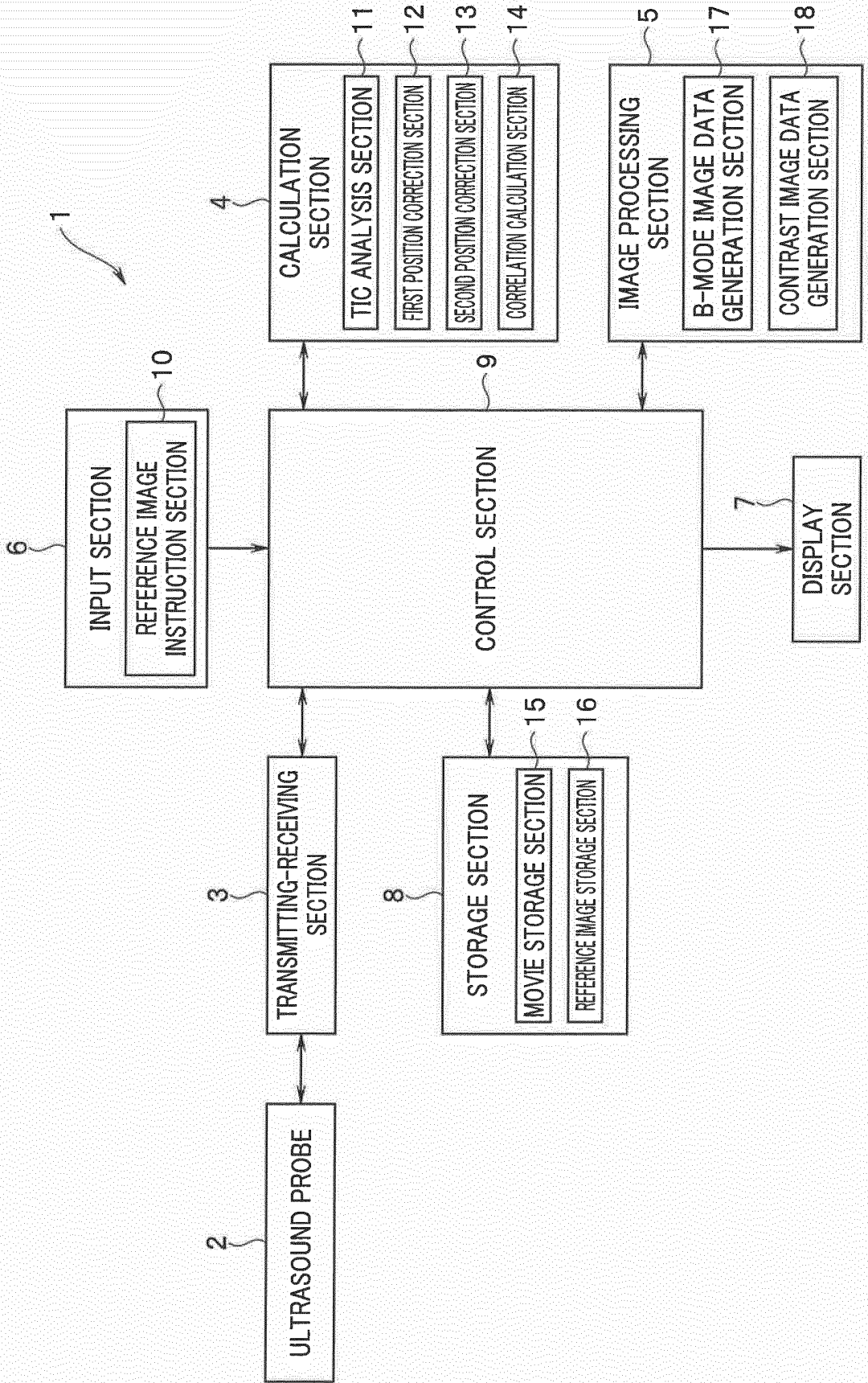


FIG. 2

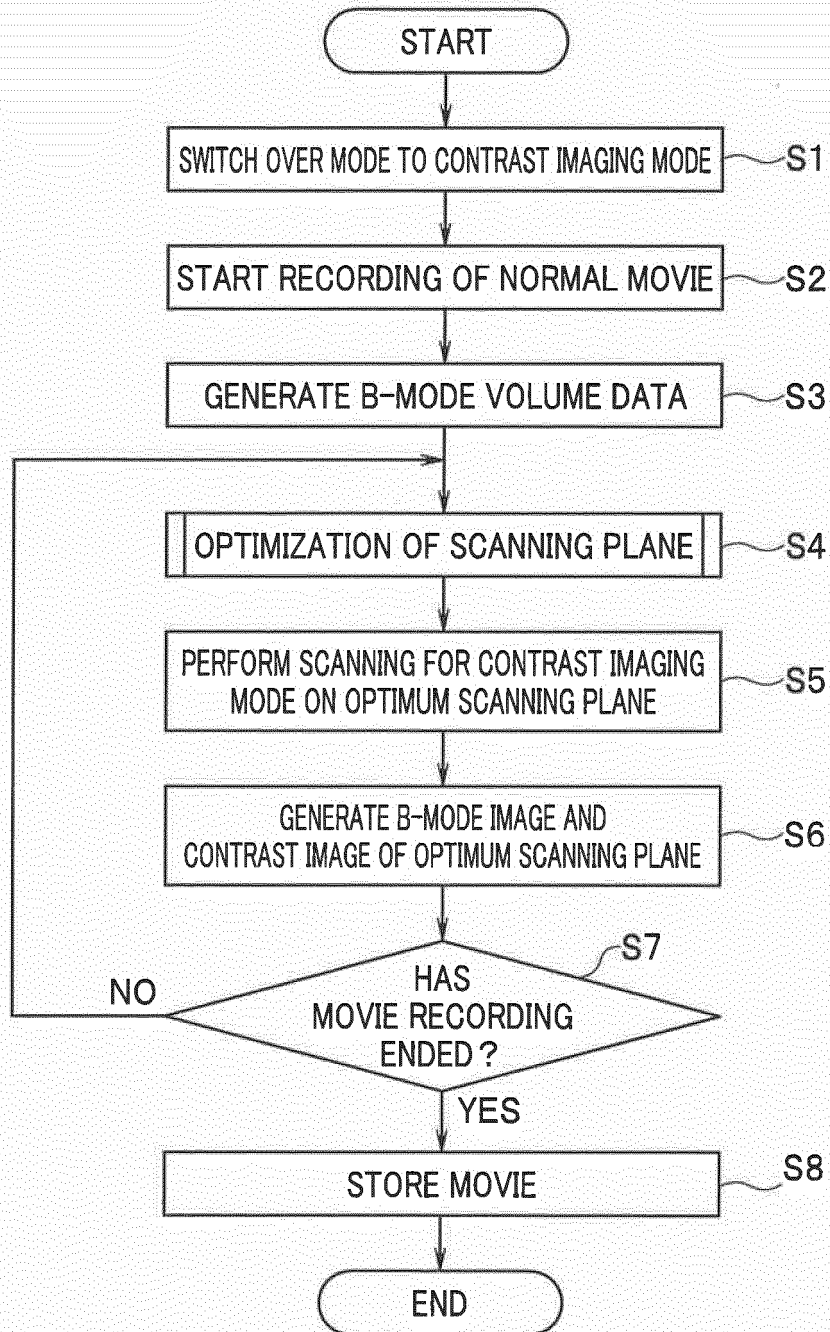


FIG. 3

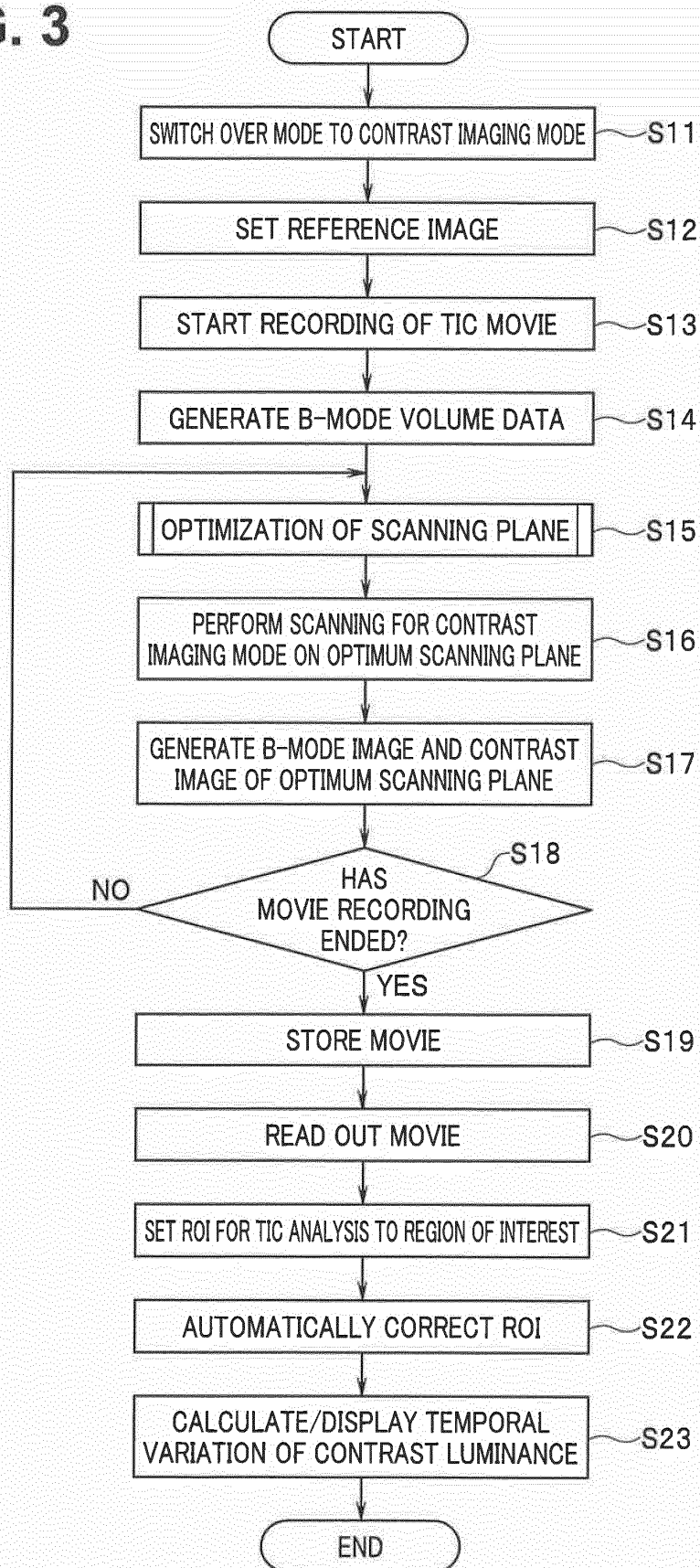


FIG. 4

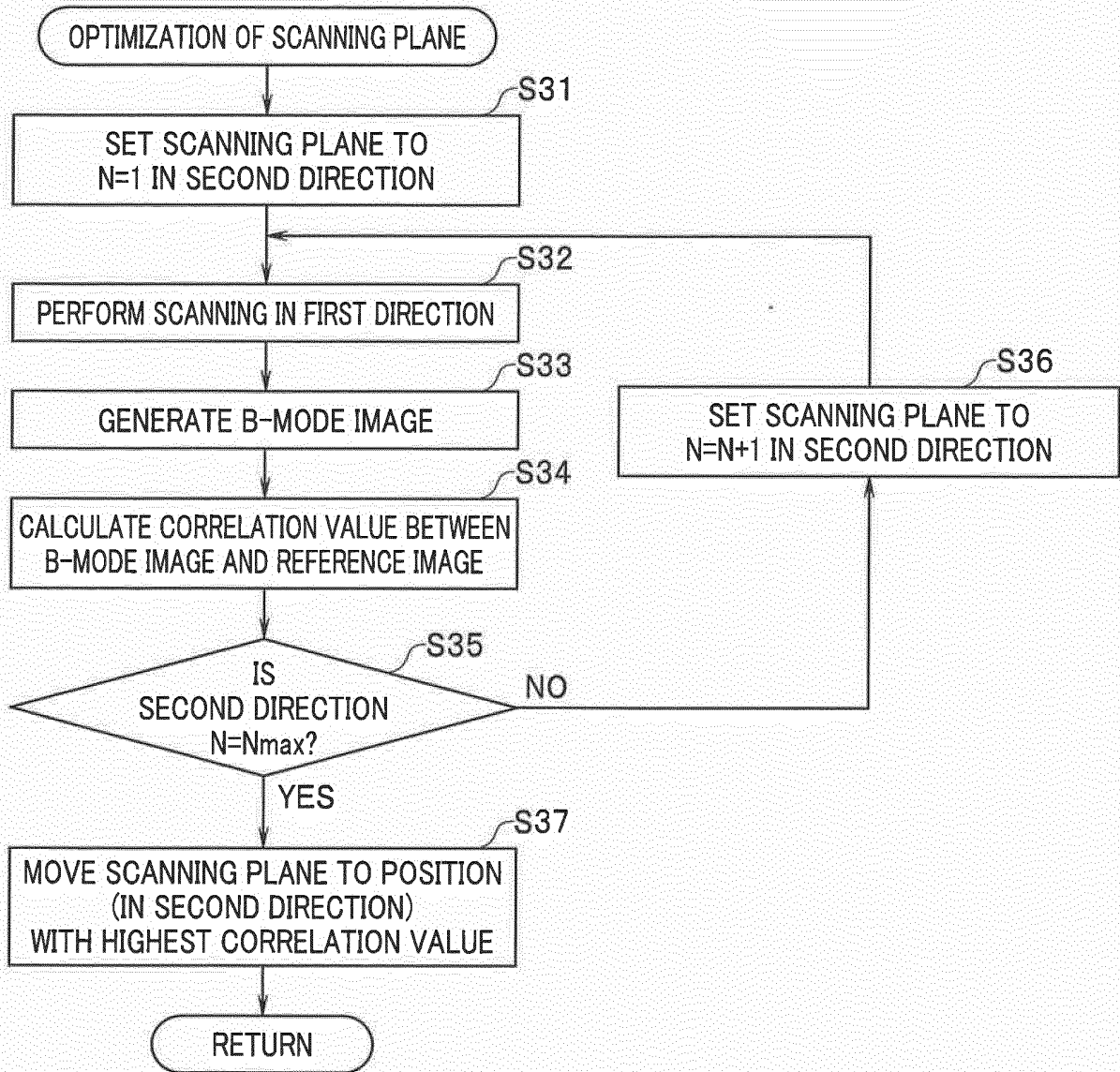


FIG. 5

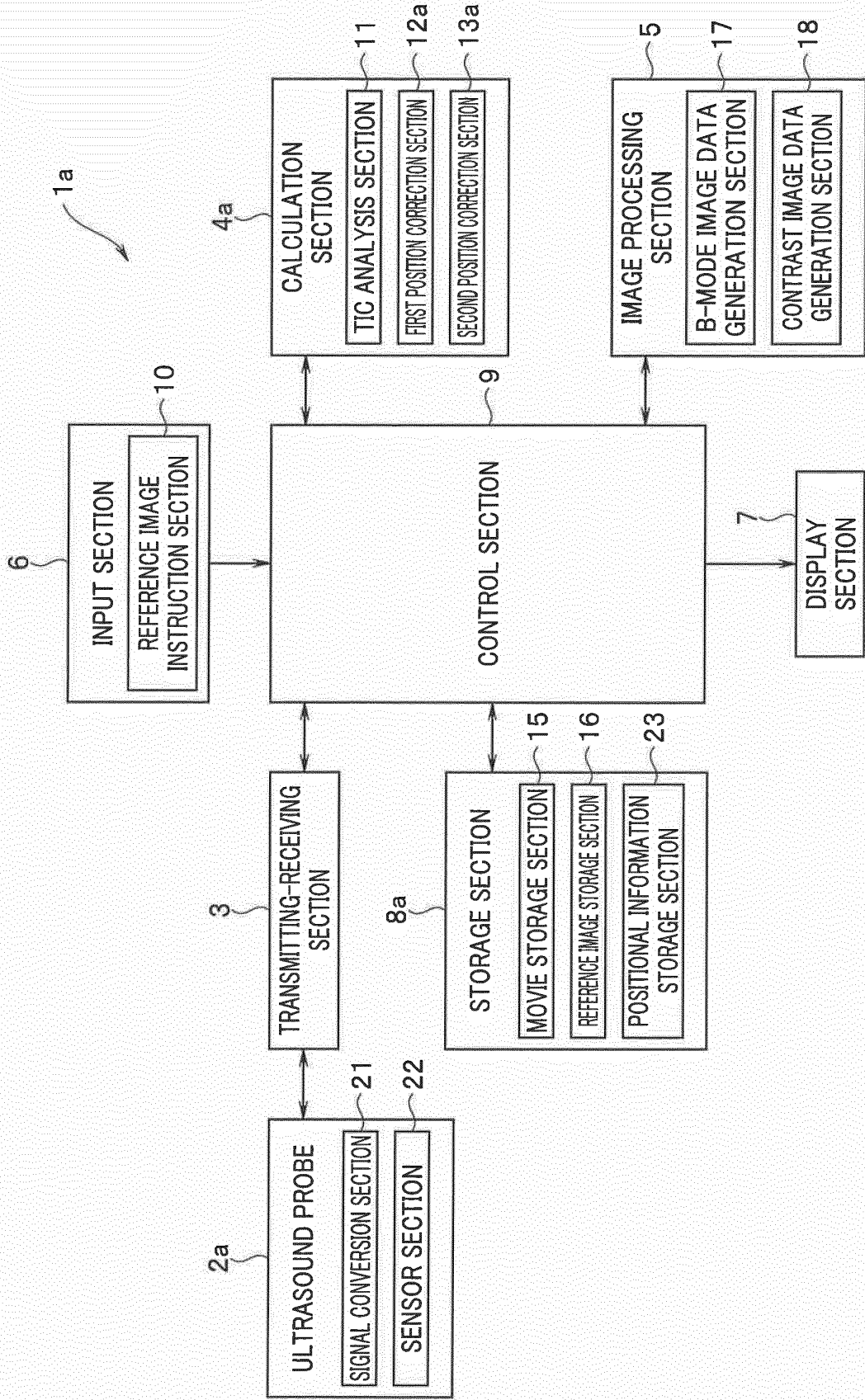


FIG. 6A

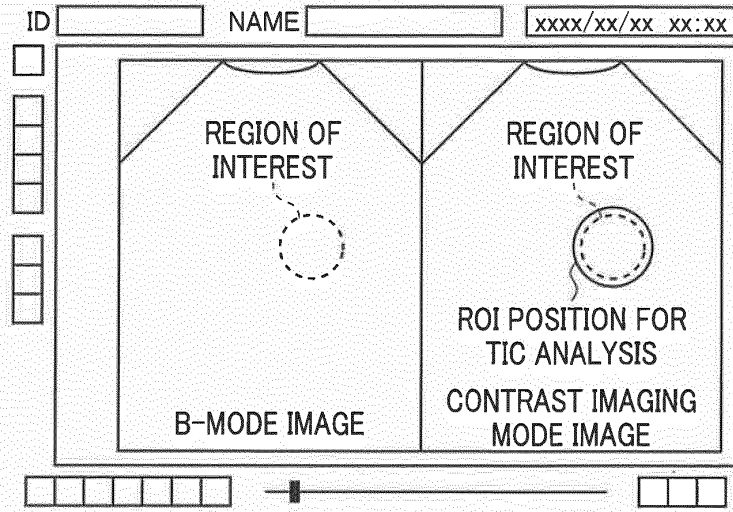


FIG. 6B

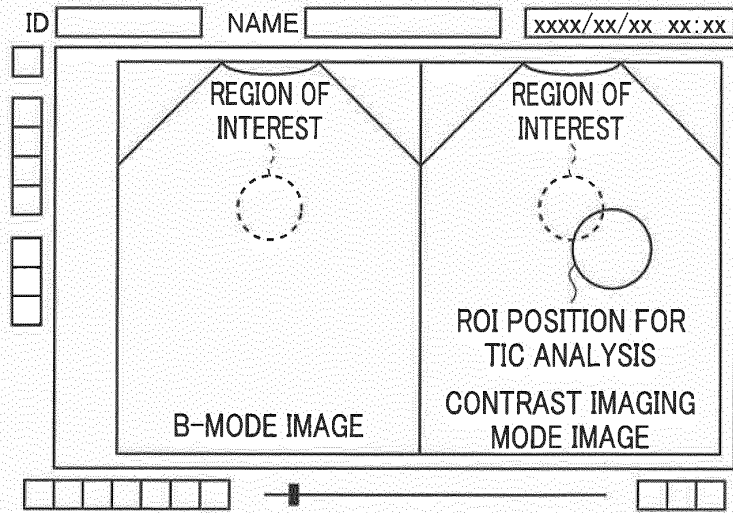
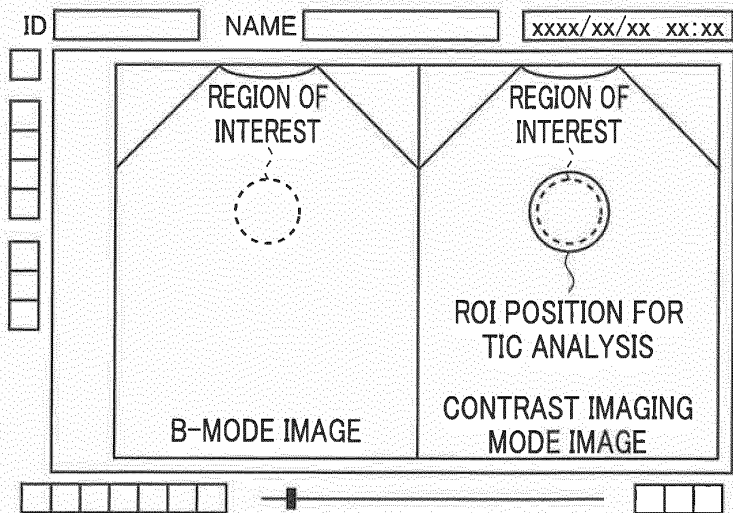


FIG. 6C



INTERNATIONAL SEARCH REPORT

International application No.

PCT/JP2015/075328

5

A. CLASSIFICATION OF SUBJECT MATTER

A61B8/14 (2006.01) i

According to International Patent Classification (IPC) or to both national classification and IPC

10

B. FIELDS SEARCHED

Minimum documentation searched (classification system followed by classification symbols)

A61B8/14

15

Documentation searched other than minimum documentation to the extent that such documents are included in the fields searched

Jitsuyo Shinan Koho 1922-1996 Jitsuyo Shinan Toroku Koho 1996-2015

Kokai Jitsuyo Shinan Koho 1971-2015 Toroku Jitsuyo Shinan Koho 1994-2015

Electronic data base consulted during the international search (name of data base and, where practicable, search terms used)

20

C. DOCUMENTS CONSIDERED TO BE RELEVANT

25

Category*	Citation of document, with indication, where appropriate, of the relevant passages	Relevant to claim No.
Y	JP 2003-61959 A (Toshiba Corp.), 04 March 2003 (04.03.2003), paragraph [0090] & US 2004/0159155 A1 paragraph [0118] & CN 1555246 A	1-7
Y	JP 2013-81764 A (Toshiba Corp.), 09 May 2013 (09.05.2013), paragraph [0046] & US 2013/0096430 A1 paragraph [0059] & CN 103179907 A	1-7

35

40

 Further documents are listed in the continuation of Box C.
 See patent family annex.

45

* Special categories of cited documents:

"A" document defining the general state of the art which is not considered to be of particular relevance

"E" earlier application or patent but published on or after the international filing date

"L" document which may throw doubts on priority claim(s) or which is cited to establish the publication date of another citation or other special reason (as specified)

"O" document referring to an oral disclosure, use, exhibition or other means

"P" document published prior to the international filing date but later than the priority date claimed

"T" later document published after the international filing date or priority date and not in conflict with the application but cited to understand the principle or theory underlying the invention

"X" document of particular relevance; the claimed invention cannot be considered novel or cannot be considered to involve an inventive step when the document is taken alone

"Y" document of particular relevance; the claimed invention cannot be considered to involve an inventive step when the document is combined with one or more other such documents, such combination being obvious to a person skilled in the art

"&" document member of the same patent family

50

Date of the actual completion of the international search
19 November 2015 (19.11.15)Date of mailing of the international search report
01 December 2015 (01.12.15)

55

Name and mailing address of the ISA/
Japan Patent Office
3-4-3, Kasumigaseki, Chiyoda-ku,
Tokyo 100-8915, Japan

Authorized officer

Telephone No.

INTERNATIONAL SEARCH REPORT

International application No.
PCT/JP2015/075328

5
10
15
20
25
30
35
40
45
50
55

C (Continuation). DOCUMENTS CONSIDERED TO BE RELEVANT		
Category*	Citation of document, with indication, where appropriate, of the relevant passages	Relevant to claim No.
A	JP 2007-330764 A (Toshiba Corp.), 27 December 2007 (27.12.2007), paragraphs [0158] to [0163] & US 2008/0262354 A1 paragraphs [0189] to [0194] & CN 101309647 A	1-7
A	JP 2011-194228 A (Siemens Medical Solutions USA, Inc.), 06 October 2011 (06.10.2011), abstract & US 2011/0230765 A1 abstract & DE 102011014301 A & KR 10-2011-0104917 A & CN 102274044 A	1-7

REFERENCES CITED IN THE DESCRIPTION

This list of references cited by the applicant is for the reader's convenience only. It does not form part of the European patent document. Even though great care has been taken in compiling the references, errors or omissions cannot be excluded and the EPO disclaims all liability in this regard.

Patent documents cited in the description

- JP 4801229 B [0004] [0008]
- JP 2014211786 A [0072]
- JP 2011254963 A [0006] [0008]

专利名称(译)	超声波观察仪器		
公开(公告)号	EP3165172A1	公开(公告)日	2017-05-10
申请号	EP2015851011	申请日	2015-09-07
[标]申请(专利权)人(译)	奥林巴斯株式会社		
申请(专利权)人(译)	OLYMPUS CORPORATION		
当前申请(专利权)人(译)	OLYMPUS CORPORATION		
[标]发明人	NAKATSUJI TOMOHIRO		
发明人	NAKATSUJI TOMOHIRO		
IPC分类号	A61B8/14		
CPC分类号	A61B8/14 A61B8/4254 A61B8/463 A61B8/469 A61B8/481 A61B8/483 A61B8/5207 A61B8/5269 A61B8/5276 A61B8/54		
优先权	2014211786 2014-10-16 JP		
其他公开文献	EP3165172B1 EP3165172A4		
外部链接	Espacenet		

摘要(译)

超声波观测装置1包括：超声波探头2，被配置为在第一方向和第二方向上改变超声波的发送 - 接收方向，以利用超声波束执行二维扫描；发送 - 接收部分3，被配置为控制超声波束的发送 - 接收方向；图像处理部分5，被配置为从在第一方向和第二方向上利用超声波束扫描的结果生成B模式图像的体数据；输入部分6，被配置为将第一感兴趣区域清晰可见的图像设置为参考图像；存储部分8，用于保持参考图像；并且计算部分4校正扫描平面以允许与输入部分设置的参考图像类似的图像，其中计算部分4自动校正第二感兴趣区域的位置以进行分析与扫描平面中的第一感兴趣区域的移动同步的亮度的时间变化。

FIG. 6B

