



(11) **EP 3 431 009 A1**

(12) **EUROPEAN PATENT APPLICATION**
published in accordance with Art. 153(4) EPC

(43) Date of publication:
23.01.2019 Bulletin 2019/04

(51) Int Cl.:
A61B 8/14 (2006.01) G06T 1/00 (2006.01)

(21) Application number: **17766006.5**

(86) International application number:
PCT/JP2017/000038

(22) Date of filing: **04.01.2017**

(87) International publication number:
WO 2017/158998 (21.09.2017 Gazette 2017/38)

(84) Designated Contracting States:
AL AT BE BG CH CY CZ DE DK EE ES FI FR GB GR HR HU IE IS IT LI LT LU LV MC MK MT NL NO PL PT RO RS SE SI SK SM TR
Designated Extension States:
BA ME
Designated Validation States:
MA MD

(71) Applicant: **FUJIFILM Corporation**
Minato-ku
Tokyo 106-8620 (JP)

(72) Inventor: **EBATA, Tetsurou**
Ashigara-kami-gun
Kanagawa 258-8538 (JP)

(30) Priority: **14.03.2016 JP 2016049927**

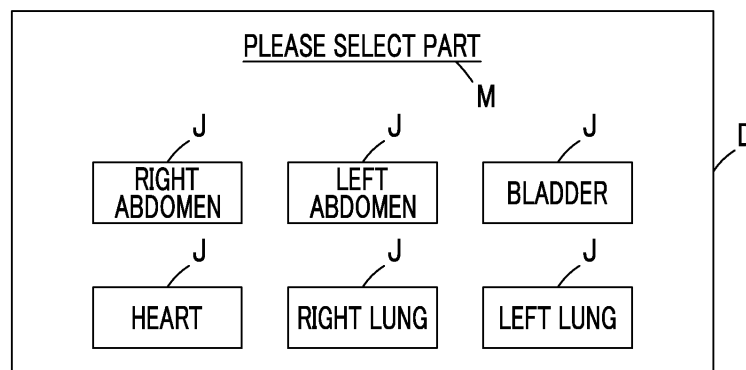
(74) Representative: **Klunker IP**
Patentanwälte PartG mbB
Destouchesstraße 68
80796 München (DE)

(54) **ULTRASONIC DIAGNOSIS DEVICE AND METHOD FOR CONTROLLING ULTRASONIC DIAGNOSIS DEVICE**

(57) An ultrasound diagnostic apparatus includes: an ultrasound probe; an imaging unit that transmits and receives an ultrasound beam to and from a subject using the ultrasound probe and converts a received signal output from the ultrasound probe into an image to generate an ultrasound image of the subject; a display unit; a collation pattern memory that stores a plurality of collation patterns corresponding to a plurality of examination parts of the subject in advance; a confidence degree calculation unit that reads the plurality of collation patterns from the collation pattern memory, collates the ultrasound image generated by the imaging unit with each of the plu-

rality of read collation patterns to perform part recognition, and calculates degrees of confidence for the examination parts corresponding to each of the read collation patterns; and a dialogue display control unit that determines whether to display, on the display unit, a dialogue for making a user check which of the plurality of examination parts, for which the degrees of confidence have been calculated, is an imaging part of the subject on the basis of the degrees of confidence and displays the dialogue on the display unit on the basis of a determination result.

FIG. 6



EP 3 431 009 A1

Description

BACKGROUND OF THE INVENTION

1. Field of the Invention

[0001] The present invention relates to an ultrasound diagnostic apparatus and a method for controlling the ultrasound diagnostic apparatus, and more particularly, to an ultrasound diagnostic apparatus that recognizes an imaging part of a subject on the basis of an ultrasound image.

2. Description of the Related Art

[0002] In the related art, an ultrasound diagnostic apparatus using an ultrasound image has been put to practical use in the medical field. In general, in this type of ultrasound diagnostic apparatus, an ultrasound probe provided with an array transducer scans a subject with an ultrasound beam and receives ultrasound echoes from the subject and the received signal is electrically processed to generate an ultrasound image.

[0003] In recent years, an ultrasound diagnostic apparatus which collates a generated ultrasound image to automatically recognize an imaging part of a subject and assists the diagnosis of the subject on the basis of the recognition result has been researched and developed. For example, JP2002-140689A discloses a medical image processing apparatus which collates a generated ultrasound image with a plurality of collation patterns corresponding to a plurality of examination parts that are stored in advance to recognize an imaging part and provides auxiliary data used for the diagnosis of a subject on the basis of the recognition result.

SUMMARY OF THE INVENTION

[0004] However, the medical image processing apparatus disclosed in JP2002-140689A calculates similarities indicating how the generated ultrasound image and a plurality of collation patterns are similar to each other and confirms that an examination part corresponding to the collation pattern with the highest similarity is the imaging part. Therefore, even in a case in which each of the similarities calculated for each collation pattern is low, the examination part corresponding to any one of the collation patterns is confirmed to be the imaging part of the subject. As a result, there is a concern that the imaging part will be falsely recognized. In addition, in a case in which auxiliary data used for diagnosis is provided on the basis of the false part recognition, there is a concern that diagnosis will be hindered.

[0005] The invention has been made in order to solve the problems of the related art and an object of the invention is to provide an ultrasound diagnostic apparatus and a method for controlling the ultrasound diagnostic apparatus that can prevent an error in part recognition.

[0006] According to the invention, there is provided an ultrasound diagnostic apparatus comprising: an ultrasound probe; an imaging unit that transmits and receives an ultrasound beam to and from a subject using the ultrasound probe and converts a received signal output from the ultrasound probe into an image to generate an ultrasound image of the subject; a display unit; a collation pattern memory that stores a plurality of collation patterns corresponding to a plurality of examination parts of the subject in advance; a confidence degree calculation unit that reads the plurality of collation patterns from the collation pattern memory, collates the ultrasound image generated by the imaging unit with each of the plurality of read collation patterns to perform part recognition, and calculates degrees of confidence for the examination parts corresponding to each of the read collation patterns; and a dialogue display control unit that determines whether to display, on the display unit, a dialogue for making a user check which of the plurality of examination parts, for which the degrees of confidence have been calculated, is an imaging part of the subject on the basis of the degrees of confidence and displays the dialogue on the display unit on the basis of a determination result.

[0007] In a case in which only one of the calculated degrees of confidence is greater than a predetermined threshold value, the dialogue display control unit may not display the dialogue on the display unit. In cases other than the case in which only one of the calculated degrees of confidence is greater than the predetermined threshold value, the dialogue display control unit may display the dialogue on the display unit.

[0008] In a case in which all of the calculated degrees of confidence are not greater than the predetermined threshold value, the dialogue display control unit may display the dialogue on the display unit. Alternatively, in a case in which a plurality of degrees of confidence among the calculated degrees of confidence are greater than the predetermined threshold value, the dialogue display control unit may display the dialogue on the display unit.

[0009] In a case in which the degree of confidence calculated for the collation pattern corresponding to an examination part that has been examined among the calculated degrees of confidence is greater than a predetermined threshold value, the dialogue display control unit may display the dialogue on the display unit.

[0010] The dialogue display control unit may display the dialogue formed according to the calculated degrees of confidence on the display unit.

[0011] The dialogue display control unit may display, on the display unit, the dialogue in which an examination part that corresponds to the collation pattern with a highest degree of confidence among the degrees of confidence calculated for each of the plurality of collation patterns is displayed so as to be larger than other examination parts.

[0012] The dialogue display control unit may display, on the display unit, the dialogue in which the examination

parts corresponding to the plurality of collation patterns are displayed so as to be arranged in descending order of the degrees of confidence calculated for the plurality of collation patterns.

[0013] The dialogue display control unit may display, on the display unit, the dialogue in which the examination parts corresponding to the collation patterns, for which the degrees of confidence have been calculated, and values of the degrees of confidence are displayed.

[0014] The dialogue display control unit may display, on the display unit, the dialogue in which the examination part that has been examined is not displayed and an examination part that has not been examined is displayed.

[0015] The ultrasound diagnostic apparatus may further comprise a part confirmation unit that, in a case in which only one of the calculated degrees of confidence is greater than the predetermined threshold value, confirms that the examination part with the degree of confidence greater than the threshold value is the imaging part of the subject and confirms the imaging part of the subject on the basis of a check result of the user through the dialogue in cases other than the case in which only one of the calculated degrees of confidence is greater than the predetermined threshold value.

[0016] The ultrasound diagnostic apparatus may further comprise an imaging condition setting unit that sets imaging conditions corresponding to the imaging part confirmed by the part confirmation unit. The imaging unit may generate the ultrasound image according to the imaging conditions set by the imaging condition setting unit.

[0017] According to the invention, there is provided a method for controlling an ultrasound diagnostic apparatus. The method comprises: a step of transmitting and receiving an ultrasound beam to and from a subject using an ultrasound probe and converting a received signal output from the ultrasound probe into an image to generate an ultrasound image of the subject; a step of reading a plurality of collation patterns that are stored in advance, collating the ultrasound image with each of the plurality of read collation patterns to perform part recognition, and calculating degrees of confidence for examination parts corresponding to each of the read collation patterns; and a step of determining whether to display, on a display unit, a dialogue for making a user check which of a plurality of examination parts, for which the degrees of confidence have been calculated, is an imaging part of the subject on the basis of the degrees of confidence and displaying the dialogue on the display unit on the basis of a determination result.

[0018] According to the invention, an ultrasound beam is transmitted to and received from a subject, using an ultrasound probe, and a received signal output from the ultrasound probe is converted into an image to generate an ultrasound image of the subject. A plurality of collation patterns that are stored in advance are read and the ultrasound image is collated using each of the plurality of read collation patterns to perform part recognition. The degrees of confidence for examination parts correspond-

ing to each of the read collation patterns are calculated. It is determined whether to display, on a display unit, a dialogue for making a user check which of a plurality of examination parts, for which the degrees of confidence have been calculated, is an imaging part of the subject on the basis of the degrees of confidence. The dialogue is displayed on the display unit on the basis of the determination result. Therefore, it is possible to prevent an error in part recognition.

BRIEF DESCRIPTION OF THE DRAWINGS

[0019]

Fig. 1 is a block diagram illustrating the configuration of an ultrasound diagnostic apparatus according to Embodiment 1 of the invention.

Fig. 2 is a block diagram illustrating the internal configuration of a receiving unit.

Fig. 3 is a block diagram illustrating the internal configuration of a B-mode processing unit.

Fig. 4 is a flowchart illustrating the operation of Embodiment 1.

Fig. 5 is a flowchart illustrating a part recognition process according to Embodiment 1.

Fig. 6 is a diagram illustrating a dialogue displayed by the ultrasound diagnostic apparatus according to Embodiment 1.

Fig. 7 is a diagram illustrating a dialogue displayed by an ultrasound diagnostic apparatus according to Embodiment 2.

Fig. 8 is a diagram illustrating a dialogue displayed by a modification example of Embodiment 2.

Fig. 9 is a diagram illustrating a dialogue displayed by another modification example of Embodiment 2.

Fig. 10 is a diagram illustrating a dialogue displayed by still another modification example of Embodiment 2.

Fig. 11 is a diagram illustrating a dialogue displayed by yet another modification example of Embodiment 2.

Fig. 12 is a diagram illustrating a dialogue displayed by an ultrasound diagnostic apparatus according to Embodiment 3.

Fig. 13 is a diagram illustrating a dialogue displayed by a modification example of Embodiment 3.

Fig. 14 is a diagram illustrating a dialogue displayed by another modification example of Embodiment 3.

Fig. 15 is a diagram illustrating a dialogue displayed by still another modification example of Embodiment 3.

DESCRIPTION OF THE PREFERRED EMBODIMENTS

[0020] Hereinafter, embodiments of the invention will be described with reference to the accompanying drawings.

Embodiment 1

[0021] Fig. 1 illustrates the configuration of an ultrasound diagnostic apparatus according to Embodiment 1 of the invention. The ultrasound diagnostic apparatus includes an ultrasound probe 1 provided with an array transducer 1A. An image generation unit 3 is connected to the ultrasound probe 1 through a transmitting/receiving unit 2 and a display unit 5 is connected to the image generation unit 3 through a display control unit 4.

[0022] The transmitting/receiving unit 2 includes a transmitting unit 6 and a receiving unit 7 that are connected to the array transducer 1A of the ultrasound probe 1 and a transmission/reception control unit 8 that is connected to the transmitting unit 6 and the receiving unit 7. The image generation unit 3 includes a brightness-mode (B-mode) processing unit 9 that is connected to the receiving unit 7 of the transmitting/receiving unit 2 and a digital scan converter (DSC) 10 that is connected to the B-mode processing unit 9. The display control unit 4 is connected to the DSC 10. An imaging condition setting unit 11 is connected to the transmission/reception control unit 8 of the transmitting/receiving unit 2 and the B-mode processing unit 9 and the DSC 10 of the image generation unit 3.

[0023] In addition, a confidence degree calculation unit 12 is connected to the DSC 10. A dialogue display control unit 13 and a part confirmation unit 14 are connected to the confidence degree calculation unit 12. The dialogue display control unit 13 is connected to the part confirmation unit 14.

[0024] An apparatus control unit 15 is connected to the imaging condition setting unit 11, the confidence degree calculation unit 12, the dialogue display control unit 13, and the part confirmation unit 14. In addition, a collation pattern memory 16, an operation unit 17, and a storage unit 18 are connected to the apparatus control unit 15.

[0025] The array transducer 1A of the ultrasound probe 1 includes a plurality of ultrasound transducers that are one-dimensionally or two-dimensionally arranged. Each of the ultrasound transducers transmits ultrasonic waves in response to a driving signal supplied from the transmitting unit 6. In addition, each of the ultrasound transducers receives ultrasound echoes from a subject and generates a received signal. Each ultrasound transducer is, for example, a transducer in which electrodes are formed at both ends of a piezoelectric body made of piezoelectric ceramic typified by lead zirconate titanate (PZT), a polymer piezoelectric element typified by polyvinylidene difluoride (PVDF), or a piezoelectric crystal typified by lead magnesium niobate-lead titanate (PMN-PT).

[0026] In a case in which a pulsed voltage or a continuous-wave voltage is applied to the electrodes of the transducer, the piezoelectric body is expanded and contracted and pulsed or continuous ultrasonic waves are generated from each transducer. The ultrasonic waves are combined to form an ultrasound beam. In addition,

each transducer receives propagated ultrasonic waves, is expanded and contracted, and generates an electric signal. The electric signal is output as a received ultrasound signal.

[0027] The transmitting/receiving unit 2 transmits and receives an ultrasound beam according to the set ultrasound beam scanning conditions and the image generation unit 3 generates a B-mode image signal according to the set ultrasound image generation conditions. Therefore, the transmitting/receiving unit 2 and the image generation unit 3 form an imaging unit. In addition, imaging conditions for the imaging unit are formed by ultrasound beam scanning conditions for the transmitting/receiving unit 2 and ultrasound image generation conditions for the image generation unit 3.

[0028] The transmitting unit 6 of the transmitting/receiving unit 2 includes, for example, a plurality of pulse generators, adjusts the amount of delay of each driving signal such that the ultrasonic waves transmitted from a plurality of ultrasound transducers in the array transducer 1A form an ultrasound beam, on the basis of a transmission delay pattern selected according to a control signal from the transmission/reception control unit 8, and supplies the driving signals to the plurality of ultrasound transducers.

[0029] As illustrated in Fig. 2, the receiving unit 7 has a configuration in which an amplification unit 19 and an analog/digital (A/D) conversion unit 20 are sequentially connected in series. The receiving unit 7 amplifies the received signals transmitted from each ultrasound transducer of the array transducer 1A with the amplification unit 19 and performs A/D conversion for the received signals with the A/D conversion unit 20 to generate digital received data.

[0030] The transmission/reception control unit 8 controls the transmitting unit 6 and the receiving unit 7 on the basis of various control signals transmitted from the apparatus control unit 15 such that the transmission of an ultrasound pulse to a subject and the reception of an ultrasound echo from the subject are repeated at a pulse repetition frequency (PRF) interval.

[0031] The B-mode processing unit 9 of the image generation unit 3 has a configuration in which a beam former 21 and a signal processing unit 22 are sequentially connected in series, as illustrated in Fig. 3. The beam former 21 applies a delay to each received data item output from the receiving unit 7 of the transmitting/receiving unit 2 according to a sound speed or a sound speed distribution set on the basis of a reception delay pattern selected according to a control signal from the imaging condition setting unit 11 and adds the received data to perform a reception focusing process. A sound ray signal in which the focus of an ultrasound echo subjected to phasing addition is narrowed is generated by the reception focusing process.

[0032] The signal processing unit 22 corrects the attenuation of the sound ray signal generated by the beam former 21 depending on a distance according to the depth

of the reflection position of ultrasonic waves and then performs an envelope detection process. In addition, the signal processing unit 22 performs various types of necessary image processing including a gradation process to generate a B-mode image signal which is tomographic image information related to the tissues of the subject.

[0033] The DSC 10 of the image generation unit 3 converts the B-mode image signal generated by the signal processing unit 22 into an image signal based on a general television signal scanning system (raster conversion).

[0034] The display control unit 4 displays a B-mode image on the display unit 5 on the basis of the B-mode image signal generated by the image generation unit 3.

[0035] The display unit 5 includes a display device, such as a liquid crystal display (LCD), and displays the B-mode image under the control of the display control unit 4.

[0036] The operation unit 17 is used by a user to perform an input operation and may include, for example, a keyboard, a mouse, a trackball, and a touch panel.

[0037] A plurality of collation patterns corresponding to a plurality of examination parts of the subject are stored in the collation pattern memory 16 in advance.

[0038] The confidence degree calculation unit 12 reads a plurality of collation patterns from the collation pattern memory 16, compares each of the read collation patterns with the B-mode image signal generated by the image generation unit 3, and calculates the degree of confidence for each of the read collation patterns. Here, the degree of confidence means the degree of similarity between the B-mode image signal and the collation pattern. That is, the degree of confidence is an index indicating the degree of confidence that an imaging part of the subject will be an examination part corresponding to the collation pattern.

[0039] The dialogue display control unit 13 determines whether to display, on the display unit 5, a dialogue for making the user check which of the examination parts corresponding to the collation patterns, for which the degrees of confidence have been calculated, is the imaging part of the subject, on the basis of the degrees of confidence calculated by the confidence degree calculation unit 12. Specifically, in a case in which only one of the calculated degrees of confidence is greater than a predetermined threshold value, the imaging part of the subject can be confirmed to be an examination part corresponding to the collation pattern with the calculated degree of confidence. Therefore, the dialogue is determined not to be displayed on the display unit 5.

[0040] On the other hand, in cases other than the case in which only one of the calculated degrees of confidence is greater than the predetermined threshold value, it is difficult to confirm which of the examination parts is the imaging part of the subject. Therefore, for example, a dialogue formed according to a plurality of calculated degrees of confidence is determined to be displayed on the display unit 5 as illustrated in Fig. 6. Specifically, a case

in which all of the calculated degrees of confidence are not greater than the predetermined threshold value or a case in which the plurality of calculated degrees of confidence are greater than the predetermined threshold value is given as an example.

[0041] In a case in which the degree of confidence calculated for the collation pattern corresponding to the examination part which has been examined is greater than the predetermined threshold value, there is a concern that the same examination part will be repeatedly examined and it is necessary to prompt the user to make a check. Therefore, for example, the dialogue illustrated in Fig. 6 is determined to be displayed on the display unit 5.

[0042] In addition, the dialogue display control unit 13 outputs the determination result to the apparatus control unit 15 and the part confirmation unit 14.

[0043] In a case in which the determination result indicating that the dialogue is displayed on the display unit 5 is output, information for forming the dialogue is output to the apparatus control unit 15 together with the determination result. On the other hand, in a case in which the determination result indicating that the dialogue is not displayed on the display unit 5 is output, information indicating the examination part corresponding to the collation pattern with the calculated degree of confidence greater than the predetermined threshold value is output to the part confirmation unit 14 together with the determination result.

[0044] The apparatus control unit 15 controls the display control unit 4 such that the dialogue is displayed on the display unit 5, on the basis of the determination result indicating that the dialogue is displayed on the display unit 5 from the dialogue display control unit 13.

[0045] In addition, in a case in which the check result of the user based on the dialogue displayed on the display unit 5 is input through the operation unit 17, the apparatus control unit 15 outputs the check result to the part confirmation unit 14.

[0046] Furthermore, the apparatus control unit 15 controls the display control unit 4, the imaging condition setting unit 11, the confidence degree calculation unit 12, and the part confirmation unit 14 on the basis of commands input by the user through the operation unit 17.

[0047] In a case in which the determination result indicating that the dialogue is displayed on the display unit 5 is input, the part confirmation unit 14 confirms the imaging part of the subject on the basis of the check result of the imaging part of the subject by the user from the apparatus control unit 15. On the other hand, in a case in which the determination result indicating that the dialogue is not displayed on the display unit 5 is input, the part confirmation unit 14 confirms that the imaging part of the subject is the examination part indicated by the information which has been input together with the determination result.

[0048] The imaging condition setting unit 11 stores imaging conditions corresponding to a plurality of examination parts in advance and sets the imaging conditions

corresponding to the examination part confirmed by the part confirmation unit 14.

[0049] The storage unit 18 stores, for example, an operation program. For example, a recording medium, such as a hard disk, a flexible disk, a magneto-optical disk (MO), a magnetic tape (MT), a random access memory (RAM), a compact disk read only memory (CD-ROM), a digital versatile disk read only memory (DVD-ROM), a secure digital card (SD card), a compact flash card (CF card), or a universal serial bus memory (USB memory), or a server may be used as the storage unit 18.

[0050] The image generation unit 3, the display control unit 4, the transmission/reception control unit 8 of the transmitting/receiving unit 2, the imaging condition setting unit 11, the confidence degree calculation unit 12, the dialogue display control unit 13, the part confirmation unit 14, and the apparatus control unit 15 are formed by a central processing unit (CPU) and an operation program that causes the CPU to perform various processes. However, these units may be formed by digital circuits. In addition, some or all of the image generation unit 3, the display control unit 4, the transmission/reception control unit 8 of the transmitting/receiving unit 2, the imaging condition setting unit 11, the confidence degree calculation unit 12, the dialogue display control unit 13, the part confirmation unit 14, and the apparatus control unit 15 may be integrated into one CPU.

[0051] Next, the operation of Embodiment 1 will be described with reference to a flowchart illustrated in Fig. 4.

[0052] First, in Step S1, the transmitting/receiving unit 2 performs the transmission and reception of an ultrasound beam and scanning, using the plurality of ultrasound transducers in the array transducer 1A of the ultrasound probe 1. A received signal from each ultrasound transducer that has received ultrasound echoes from the subject is output to the receiving unit 7. The receiving unit 7 performs amplification and A/D conversion for the received signal to generate received data.

[0053] Then, in Step S2, the received data is input to the image generation unit 3. The B-mode processing unit 9 performs a reception focusing process for the received data and the DSC 10 converts received data to generate a B-mode image signal. The B-mode image signal is output from the image generation unit 3 to the display control unit 4. The B-mode image is displayed on the display unit 5.

[0054] The B-mode image signal generated by the image generation unit 3 is also output to the confidence degree calculation unit 12. Then, in Step S3, the confidence degree calculation unit 12 collates the B-mode image signal to perform a part recognition process. Specifically, the process in Steps S11 to S15 in the flowchart illustrated in Fig. 5 is performed.

[0055] In Step S11, first, the confidence degree calculation unit 12 reads a plurality of collation patterns corresponding to a plurality of examination parts from the collation pattern memory 16 and collates the B-mode image signal with each of the read collation patterns to perform

part recognition.

[0056] For example, the confidence degree calculation unit 12 reads a plurality of collation patterns corresponding to the right abdomen, the left abdomen, the bladder, the heart, the right lung, and the left lung from the collation pattern memory 16. The confidence degree calculation unit 12 compares the B-mode image signal with the collation pattern corresponding to the right abdomen and calculates the degree of similarity between the B-mode image signal and the collation pattern corresponding to the right abdomen, that is, the degree of confidence that the imaging part of the subject will be the right abdomen.

[0057] Similarly, the confidence degree calculation unit 12 compares the B-mode image signal with each of the plurality of collation patterns corresponding to the left abdomen, the bladder, the heart, the right lung, and the left lung and calculates the degree of confidence for each of the collation patterns. The calculated degrees of confidence are output to the dialogue display control unit 13.

[0058] A known matching technique can be used to compare the B-mode image signal with the read collation patterns and to calculate the degree of confidence. For example, the degree of confidence can be calculated by a machine learning method, a template matching method, or a general image recognition method.

[0059] The dialogue display control unit 13 stores a predetermined threshold value that has been set for the degree of confidence in advance. In Step S12, the dialogue display control unit 13 determines whether only one of the degrees of confidence calculated by the confidence degree calculation unit 12 is greater than the threshold value. In a case in which the degree of confidence is less than the threshold value, it is difficult to have confidence that the imaging part of the subject is the examination part corresponding to the collation pattern for which the degree of confidence has been calculated.

[0060] In a case in which only one of the calculated degrees of confidence is greater than the threshold value, the dialogue display control unit 13 determines not to display the dialogue on the display unit 5. In cases other than the case in which only one of the calculated degrees of confidence is greater than the threshold value, the dialogue display control unit 13 determines to display the dialogue on the display unit 5.

[0061] For example, as the case in which only one of the calculated degrees of confidence is greater than the threshold value, the following case is considered: a case in which it is determined that, among the degrees of confidence calculated for the collation patterns corresponding to the right abdomen, the left abdomen, the bladder, the heart, the right lung, and the left lung, only the degree of confidence calculated for the collation pattern corresponding to the right abdomen is greater than the predetermined threshold value. In this case, the dialogue display control unit 13 outputs the determination result indicating that the dialogue is not displayed on the display unit 5 to the apparatus control unit 15 and the part con-

firmation unit 14. In addition to the determination result, information indicating that the right abdomen corresponds to the collation pattern with the calculated degree of confidence greater than the predetermined threshold value is output to the part confirmation unit 14. Then, Steps S13 and S14 are omitted and the process proceeds to Step S15.

[0062] In contrast, as a case other than the case in which only one of the calculated degrees of confidence is greater than the threshold value, the following case is considered: a case in which it is determined that all of the degrees of confidence calculated for the collation patterns corresponding to the right abdomen, the left abdomen, the bladder, the heart, the right lung, and the left lung are less than the predetermined threshold value. In this case, the dialogue display control unit 13 determines to display the dialogue on the display unit 5 in order to make the user check which of the right abdomen, the left abdomen, the bladder, the heart, the right lung, and the left lung is the imaging part of the subject.

[0063] In addition, as the case other than the case in which only one of the calculated degrees of confidence is greater than the threshold value, the following case is considered: a case in which it is determined that the degrees of confidence calculated for the collation patterns corresponding to the right abdomen and the heart are greater than the predetermined threshold value. In this case, the dialogue display control unit 13 determines to display the dialogue with the configuration illustrated in Fig. 6 on the display unit 5 in order to make the user check which of the right abdomen, the left abdomen, the bladder, the heart, the right lung, and the left lung is the examination part.

[0064] For example, in a case in which the right abdomen has been examined and the degree of confidence calculated for the collation pattern corresponding to the right abdomen is determined to be greater than the predetermined threshold value, there is a concern that the right abdomen will be repeatedly examined. In this case, the dialogue display control unit 13 determines to display the dialogue with the configuration illustrated in Fig. 6 on the display unit 5 in order to make the user check which of the right abdomen, the left abdomen, the bladder, the heart, the right lung, and the left lung is the examination part.

[0065] Then, the dialogue display control unit 13 outputs the determination result indicating that the dialogue is displayed on the display unit 5 to the apparatus control unit 15 and the part confirmation unit 14. In addition, the dialogue display control unit 13 outputs information for forming the dialogue to the apparatus control unit 15 together with the determination result.

[0066] In Step S 13, the apparatus control unit 15 controls the display control unit 4 on the basis of the information for forming the dialogue from the dialogue display control unit 13 such that a dialogue D illustrated in Fig. 6 is displayed on the display unit 5.

[0067] The dialogue D includes a plurality of icons J

indicating the names of the examination parts corresponding to each of the collation patterns, for which the degrees of confidence have been calculated, and a message M that prompts the user to select the examination part. The dialogue D illustrated in Fig. 6 is used to make the user check which of the right abdomen, the left abdomen, the bladder, the heart, the right lung, and the left lung is the imaging part of the subject.

[0068] In Step S14, the user operates the operation unit 17 to select any one of the plurality of icons J displayed in the dialogue D and checks which of the right abdomen, the left abdomen, the bladder, the heart, the right lung, and the left lung is the imaging part of the subject.

[0069] For example, in a case in which the user selects the icon J indicating the right abdomen, the check result indicating that the imaging part of the subject is the right abdomen is input to the apparatus control unit 15 through the operation unit 17. The check result is output from the apparatus control unit 15 to the part confirmation unit 14.

[0070] Then, in Step S15, the part confirmation unit 14 confirms that the imaging part of the subject is the right abdomen on the basis of the check result indicating that the imaging part of the subject is the right abdomen which has been output from the apparatus control unit 15. As such, even in a case in which all of the degrees of confidence calculated for the collation patterns corresponding to the right abdomen, the left abdomen, the bladder, the heart, the right lung, and the left lung are less than the predetermined threshold value, the dialogue D is displayed on the display unit 5 such that the user checks which of the examination parts is the imaging part of the subject. Therefore, it is possible to prevent an error in part recognition.

[0071] As described above, even in a case in which the degrees of confidence calculated for the collation patterns corresponding to two parts, that is, the right abdomen and the heart are greater than the predetermined threshold value, the dialogue D illustrated in Fig. 6 is displayed on the display unit 5. Then, the user checks which of the right abdomen, the left abdomen, the bladder, the heart, the right lung, and the left lung is the examination part.

[0072] As such, in a case in which a plurality of calculated degrees of confidence are greater than the predetermined threshold value, the dialogue D is displayed on the display unit 5 such that the user checks the imaging part. Therefore, it is possible to prevent an error in part recognition.

[0073] As described above, even in a case in which the right abdomen has been examined and the degree of confidence calculated for the collation pattern corresponding to the right abdomen is determined to be greater than the predetermined threshold value, the dialogue D illustrated in Fig. 6 is displayed on the display unit 5. Then, the user checks which of the right abdomen, the left abdomen, the bladder, the heart, the right lung, and the left lung is the examination part.

[0074] With this configuration, it is possible to prevent the user from repeatedly examining the examination part that has been examined.

[0075] In a case in which the dialogue display control unit 13 outputs the determination result indicating that the dialogue D is not displayed on the display unit 5 to the apparatus control unit 15 and the part confirmation unit 14 in Step S12 as described above, the dialogue display control unit 13 outputs, to the part confirmation unit 14, information indicating that the right abdomen corresponds to the collation pattern with the calculated degree of confidence greater than the predetermined threshold value together with the determination result. Then, Steps S13 and S14 are omitted and the part confirmation unit 14 confirms that the imaging part of the subject is the right abdomen in Step S15. In addition, the dialogue D is not displayed on the display unit 5 and the check of the examination part by the user is omitted, according to the determination result input from the dialogue display control unit 13 to the apparatus control unit 15.

[0076] In a case in which the part confirmation unit 14 outputs, for example, the confirmation result indicating that the imaging part is the right abdomen, the imaging condition setting unit 11 adjusts the imaging conditions in Step S4 of the flowchart illustrated in Fig. 4. The imaging condition setting unit 11 stores a plurality of imaging conditions in advance, selects imaging conditions on the basis of the output confirmation result, and controls the transmitting/receiving unit 2 and the image generation unit 3 such that imaging is performed for the subsequent frames under the selected imaging conditions.

[0077] Then, in Step S5, the transmitting/receiving unit 2 is controlled according to ultrasound beam scanning conditions included in the imaging conditions selected by the imaging condition setting unit 11. Then, in Step S6, the image generation unit 3 is controlled according to ultrasound image generation conditions included in the imaging conditions selected by the imaging condition setting unit 11. In addition, the B-mode image signal is output from the image generation unit 3 to the display control unit 4. In this way, the B-mode image suitable for diagnosing the right abdomen can be displayed on the display unit 5.

[0078] Then, in Step S7, the confidence degree calculation unit 12 determines whether the imaging part of the B-mode image signal has been changed. For example, in a case in which the examination part is changed from the right abdomen to the left abdomen and the imaging part is changed, the confidence degree calculation unit 12 determines that the imaging part has been changed. Specifically, in general, in a case in which the imaging part is changed, the probe is separated from the surface of the body and emits ultrasonic waves to the air. Therefore, it is possible to determine whether the imaging part has been changed by detecting the aerial emission state (a state in which a reflected signal is not obtained).

[0079] Then, Steps S5 to S7 are repeated until the con-

fidence degree calculation unit 12 determines that the imaging part has been changed in Step S7 and the right abdomen which is the imaging part is continuously diagnosed.

[0080] Then, for example, in a case in which it is determined in Step S7 that the imaging part has been changed the right abdomen to the left abdomen, it is determined whether examination has ended in Step S8. Then, in a case in which it is determined that examination is continuously performed, the process returns to Step S1 and a B-mode image signal including the left abdomen is generated through Step S1 and S2. Then, in Step S3, a part recognition process is performed. As such, Steps S1 to S8 are repeated until examination is determined to end in Step S8.

[0081] For the plurality of read collation patterns, the degree of confidence is calculated for each frame. The degrees of confidence corresponding to a predetermined number of frames are calculated. In a case in which all of the degrees of confidence calculated for all of the frames are less than the predetermined threshold value, the dialogue D may be displayed on the display unit 5. As such, since the degrees of confidence corresponding to a plurality of frames are calculated to recognize the imaging part, it is possible to effectively prevent an error in part recognition.

[0082] Even in a case in which the degree of confidence calculated for the collation pattern corresponding to the examination part which has been examined is greater than the predetermined threshold value, the dialogue D may be displayed on the display unit 5. In this case, it is possible to prevent the imaging part of the subject from being falsely recognized as the examination part that has been examined.

Embodiment 2

[0083] In Embodiment 1, the dialogue D illustrated in Fig. 6 is displayed on the display unit 5. However, in Embodiment 2, a dialogue D with a configuration different from that of the dialogue D illustrated in Fig. 6 is displayed on the display unit 5.

[0084] For example, the confidence degree calculation unit 12 reads a plurality of collation patterns corresponding to the right abdomen, the left abdomen, the bladder, the heart, the right lung, and the left lung from the collation pattern memory 16 and calculates the degrees of confidence for each of the collation patterns. It is assumed that the left abdomen has the highest degree of confidence, followed by the right lung, the left lung, the right abdomen, the heart, and the bladder. Then, in a case in which all of the degrees of confidence are less than a predetermined threshold value, a dialogue D illustrated in Fig. 7 is displayed on the display unit 5.

[0085] An icon Jb indicating the left abdomen corresponding to the collation pattern with the highest degree of confidence among the calculated degrees of confidence is displayed so as to be larger than a plurality of

icons J indicating the other examination parts, that is, the lung, the right abdomen, and the heart. Therefore, the user easily checks that the imaging part of the subject is the left abdomen corresponding to the collation pattern with the highest degree of confidence.

[0086] In addition, an icon indicating the bladder corresponding to the collation pattern with the lowest degree of confidence among the calculated degrees of confidence is not displayed in the dialogue D illustrated in Fig. 7. Therefore, it is possible to prevent the user from falsely recognizing that the imaging part of the subject is the bladder corresponding to the collation pattern with the lowest degree of confidence.

[0087] As in a dialogue D illustrated in Fig. 8, a plurality of icons J in which the examination parts corresponding to the collation patterns, for which the degrees of confidence have been calculated, and the values of the calculated degrees of confidence are displayed may be displayed. The user can check that the imaging part of the subject is the left abdomen corresponding to the icon J indicating the maximum value from the values of the calculated degrees of confidence displayed in the plurality of icons J.

[0088] As in a dialogue D illustrated in Fig. 9, a plurality of icons J indicating the examination parts corresponding to the collation patterns may be displayed so as to be arranged in descending order of the calculated degrees of confidence. In the dialogue D illustrated in Fig. 9, a plurality of icons J indicating the examination parts are displayed so as to be arranged in the order of the left abdomen, the right lung, the left lung, the right abdomen, the heart, and the bladder from the position close to the message M. Therefore, the user can recognize the order of the calculated degrees of confidence.

[0089] As in a dialogue D illustrated in Fig. 10, a graph in which the vertical axis indicates the degree of confidence and the horizontal axis indicates a plurality of icons J indicating the examination parts corresponding to the collation patterns, for which the degrees of confidence have been calculated, may be displayed. The graph enables the user to recognize the order of the calculated degrees of confidence.

[0090] In a case in which the plurality of calculated degrees of confidence are greater than the predetermined threshold value, only the icon J that corresponds to the examination part corresponding to the collation pattern with the calculated degree of confidence greater than the threshold value may be displayed in the dialogue D. For example, in a case in which the degrees of confidence calculated for the collation patterns corresponding to the right abdomen and the left abdomen are greater than the predetermined threshold value, only the icons J corresponding to the right abdomen and the left abdomen may be displayed as in a dialogue D illustrated in Fig. 11. In this case, the icons which correspond to the bladder, the heart, the right lung, and the left lung corresponding to the collation patterns with the calculated degrees of confidence less than the predetermined threshold value are

not displayed in the dialogue D. Therefore, it is possible to prevent the user from falsely recognizing that the imaging part of the subject is any one of the bladder, the heart, the right lung, and the left lung.

[0091] In the dialogues D illustrated in Figs. 8 to 11, the icon indicating the left abdomen corresponding to the collation pattern with the highest degree of confidence may be displayed as the icon Jb that is displayed so as to be larger than the other icons J.

[0092] As such, in Embodiment 2, the dialogue D is formed on the basis of the calculated degree of confidence. Therefore, the user easily checks the imaging part of the subject and it is possible to effectively prevent an error in part recognition.

Embodiment 3

[0093] In Embodiment 3, a plurality of predetermined examination parts are continuously examined. Therefore, a plurality of collation patterns corresponding to the plurality of predetermined examination parts are read from the collation pattern memory 16 and the degree of confidence is calculated for each of the read collation patterns.

[0094] For example, in a case in which the right abdomen, the left abdomen, the bladder, the heart, the right lung, and the left lung are examined, the confidence degree calculation unit 12 reads the collation patterns corresponding to the right abdomen, the left abdomen, the bladder, the heart, the right lung, and the left lung from the collation pattern memory 16 and calculates the degree of confidence for each of the read collation patterns.

[0095] In a case in which all of the calculated degrees of confidence are less than the predetermined threshold value, a dialogue D illustrated in Fig. 12 is displayed on the display unit 5. In the dialogue D illustrated in Fig. 12, an icon J indicating the right abdomen as "a part that is being examined" and a plurality of icons J indicating the left abdomen, the bladder, the heart, the right lung and the left lung as "the other candidates" are displayed. The term "the part that is being examined" means an examination part as the current examination target and the term "the other candidates" means the examination parts other than "the part that is being examined".

[0096] As such, in a case in which a plurality of predetermined examination parts are continuously examined and all of the calculated degrees of confidence are less than the predetermined threshold value, the dialogue D illustrated in Fig. 12 enables the user to recognize the examination part as the current examination target and the other examination parts and to check the imaging part. Therefore, it is possible to prevent an error in part recognition.

[0097] An icon indicating the examination part corresponding to the collation pattern with the highest degree of confidence among the calculated degrees of confidence may be displayed so as to be larger than icons indicating the other examination parts. For example, in

a case in which the degree of confidence calculated for the collation pattern corresponding to the left abdomen is the highest among the calculated degrees of confidence, an icon Jb indicating the left abdomen is displayed so as to be larger than a plurality of icons J indicating the right abdomen, the heart, the bladder, the right lung, and the left lung as in a dialogue D illustrated in Fig. 13.

[0098] As such, in a case in which the icon Jb indicating the left abdomen displayed as one of "the other candidates" is displayed so as to be larger than the icon J indicating the right abdomen as the current examination target, it is possible to effectively prevent an error in part recognition even though the user examines the left abdomen which is not the current examination target.

[0099] In a case in which an examination order is predetermined and an extended focused assessment with sonography for trauma (eFAST) examination that continuously examines, for example, the right abdomen, the left abdomen, the bladder, the heart, the right lung, and the left lung in this order is performed, the schema image illustrated in Fig. 6 in JP2015-29619A may be added to a blank B in the dialogue D illustrated in Fig. 12. The addition of the schema image makes it easy for the user to recognize the progress of the eFAST examination.

[0100] As in a dialogue D illustrated in Fig. 14, in a case in which "the part that is being examined" is the right abdomen in the eFAST examination, the left abdomen which is the next examination target may be displayed as "the next candidate".

[0101] As such, the examination part which is the next examination target is displayed as "the next candidate" according to a predetermined order in the eFAST examination. Therefore, the user can easily check the imaging part of the subject.

[0102] As in a dialogue D illustrated in Fig. 15, an examination part as the current examination target and a plurality of examination parts as the next examination targets may be displayed so as to be arranged in the order of examination. For example, in a case in which the examination part as the current examination target is the right abdomen, the icons J and Jb are displayed in the order of the left abdomen as the next examination target and the bladder, the heart, the right lung, and the left lung which are to be examined after the left abdomen. In a case in which the degree of confidence calculated for the collation pattern corresponding to the left abdomen is the highest among the calculated degrees of confidence, the icon Jb indicating the left abdomen is displayed so as to be larger than a plurality of icons J indicating the right abdomen, the bladder, the heart, the right lung, and the left lung.

[0103] As such, the user can recognize the order in which the examination parts are examined and the examination part corresponding to the collation pattern with the highest degree of confidence. Therefore, it is possible to effectively prevent an error in part recognition.

[0104] In addition, since the examination part that has been examined is not displayed as the icon J in the dia-

logue D, it is possible to prevent the user from checking the examination part that has been examined as the imaging part of the subject. In addition, with the progress of examination, the number of icons J indicating the unexamined parts displayed in the dialogue D is reduced. Therefore, the user can recognize the progress of examination.

[0105] In addition, a second threshold value that is less than the predetermined threshold value is set in advance. In a case in which the calculated degree of confidence is less than the second threshold value, the degree of confidence may not be calculated for the other read collation patterns and the dialogue D may be displayed on the display unit 5.

[0106] For example, in the eFAST examination, in a case in which the degree of confidence calculated for the collation pattern corresponding to the right abdomen as the current examination target is less than the second threshold value, the possibility that an examination part different from the right abdomen will be examined is high. In this case, the calculation of the degree of confidence for the collation patterns corresponding to the left abdomen, the bladder, the heart, the right lung, and the left lung as the next examination targets is omitted and the dialogue D is displayed on the display unit 5. Therefore, it is possible to rapidly prompt the user to check the examination part.

Explanation of References

[0107]

- 1: ultrasound probe
- 1A: array transducer
- 2: transmitting/receiving unit
- 3: image generation unit
- 4: display control unit
- 5: display unit
- 6: transmitting unit
- 7: receiving unit
- 8: transmission/reception control unit
- 9: B-mode processing unit
- 10: DSC
- 11: imaging condition setting unit
- 12: confidence degree calculation unit
- 13: dialogue display control unit
- 14: part confirmation unit
- 15: apparatus control unit
- 16: collation pattern memory
- 17: information input unit
- 18: storage unit
- 19: amplification unit
- 20: A/D conversion unit
- 21: beam former
- 22: signal processing unit
- D: dialogue
- J: icon
- Jb: icon larger than other icons

M: message
B: blank

Claims

1. An ultrasound diagnostic apparatus comprising:

an ultrasound probe;
an imaging unit that transmits and receives an ultrasound beam to and from a subject using the ultrasound probe and converts a received signal output from the ultrasound probe into an image to generate an ultrasound image of the subject; a display unit;
a collation pattern memory that stores a plurality of collation patterns corresponding to a plurality of examination parts of the subject in advance; a confidence degree calculation unit that reads the plurality of collation patterns from the collation pattern memory, collates the ultrasound image generated by the imaging unit with each of the plurality of read collation patterns to perform part recognition, and calculates degrees of confidence for the examination parts corresponding to each of the read collation patterns; and a dialogue display control unit that determines whether to display, on the display unit, a dialogue for making a user check which of the plurality of examination parts, for which the degrees of confidence have been calculated, is an imaging part of the subject on the basis of the degrees of confidence and displays the dialogue on the display unit on the basis of a determination result.

2. The ultrasound diagnostic apparatus according to claim 1,

wherein, in a case in which only one of the calculated degrees of confidence is greater than a predetermined threshold value, the dialogue display control unit does not display the dialogue on the display unit, and
in cases other than the case in which only one of the calculated degrees of confidence is greater than the predetermined threshold value, the dialogue display control unit displays the dialogue on the display unit.

3. The ultrasound diagnostic apparatus according to claim 2,

wherein, in a case in which all of the calculated degrees of confidence are not greater than the predetermined threshold value, the dialogue display control unit displays the dialogue on the display unit.

4. The ultrasound diagnostic apparatus according to claim 2,

wherein, in a case in which a plurality of degrees of confidence among the calculated degrees of confidence are greater than the predetermined threshold value, the dialogue display control unit displays the dialogue on the display unit.

5. The ultrasound diagnostic apparatus according to claim 1,

wherein, in a case in which the degree of confidence calculated for the collation pattern corresponding to an examination part that has been examined among the calculated degrees of confidence is greater than a predetermined threshold value, the dialogue display control unit displays the dialogue on the display unit.

6. The ultrasound diagnostic apparatus according to any one of claims 1 to 5,

wherein the dialogue display control unit displays the dialogue formed according to the calculated degrees of confidence on the display unit.

7. The ultrasound diagnostic apparatus according to claim 6,

wherein the dialogue display control unit displays, on the display unit, the dialogue in which an examination part that corresponds to the collation pattern with a highest degree of confidence among the degrees of confidence calculated for each of the plurality of collation patterns is displayed so as to be larger than other examination parts.

8. The ultrasound diagnostic apparatus according to claim 6,

wherein the dialogue display control unit displays, on the display unit, the dialogue in which the examination parts corresponding to the plurality of collation patterns are displayed so as to be arranged in descending order of the degrees of confidence calculated for the plurality of collation patterns.

9. The ultrasound diagnostic apparatus according to claim 6,

wherein the dialogue display control unit displays, on the display unit, the dialogue in which the examination parts corresponding to the collation patterns, for which the degrees of confi-

dence have been calculated, and values of the degrees of confidence are displayed.

ing the dialogue on the display unit on the basis of a determination result.

- 10. The ultrasound diagnostic apparatus according to claim 6, 5

wherein the dialogue display control unit displays, on the display unit, the dialogue in which the examination part that has been examined is not displayed and an examination part that has not been examined is displayed. 10

- 11. The ultrasound diagnostic apparatus according to any one of claims 2 to 10, further comprising: 15

a part confirmation unit that, in a case in which only one of the calculated degrees of confidence is greater than the predetermined threshold value, confirms that the examination part with the degree of confidence greater than the threshold value is the imaging part of the subject and confirms the imaging part of the subject on the basis of a check result of the user through the dialogue in cases other than the case in which only one of the calculated degrees of confidence is greater than the predetermined threshold value. 20
25

- 12. The ultrasound diagnostic apparatus according to claim 11, further comprising: 30

an imaging condition setting unit that sets imaging conditions corresponding to the imaging part confirmed by the part confirmation unit, wherein the imaging unit generates the ultrasound image according to the imaging conditions set by the imaging condition setting unit. 35

- 13. A method for controlling an ultrasound diagnostic apparatus, the method comprising: 40

a step of transmitting and receiving an ultrasound beam to and from a subject using an ultrasound probe and converting a received signal output from the ultrasound probe into an image to generate an ultrasound image of the subject; 45
 a step of reading a plurality of collation patterns that are stored in advance, collating the ultrasound image with each of the plurality of read collation patterns to perform part recognition, and calculating degrees of confidence for examination parts corresponding to each of the read collation patterns; and 50
 a step of determining whether to display, on a display unit, a dialogue for making a user check which of a plurality of examination parts, for which the degrees of confidence have been calculated, is an imaging part of the subject on the basis of the degrees of confidence and display- 55

FIG. 2

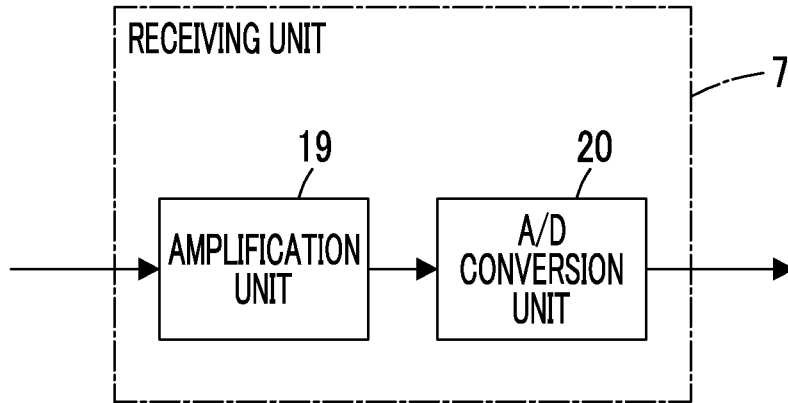


FIG. 3

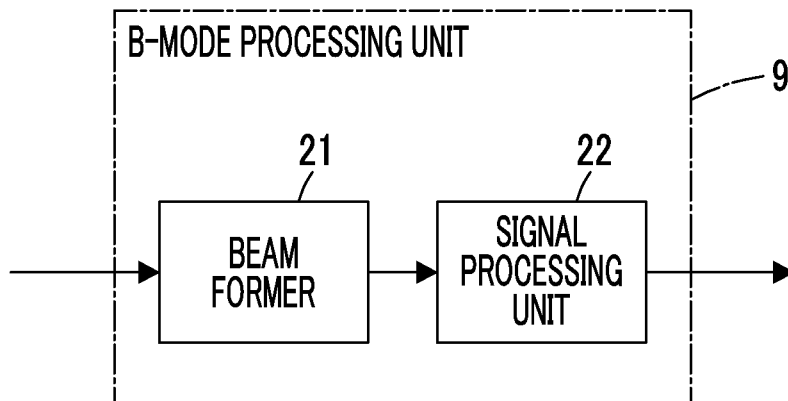


FIG. 4

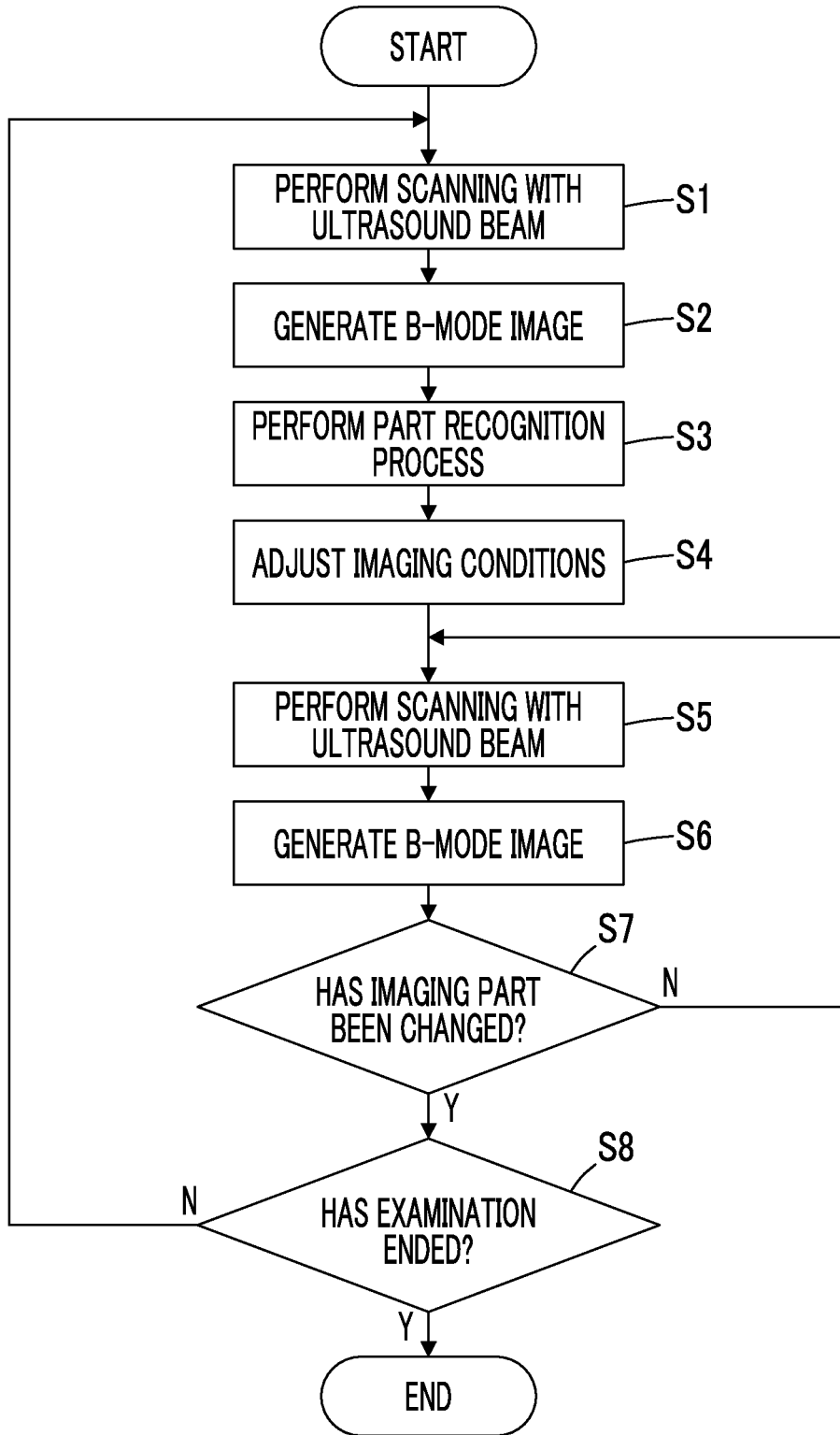


FIG. 5

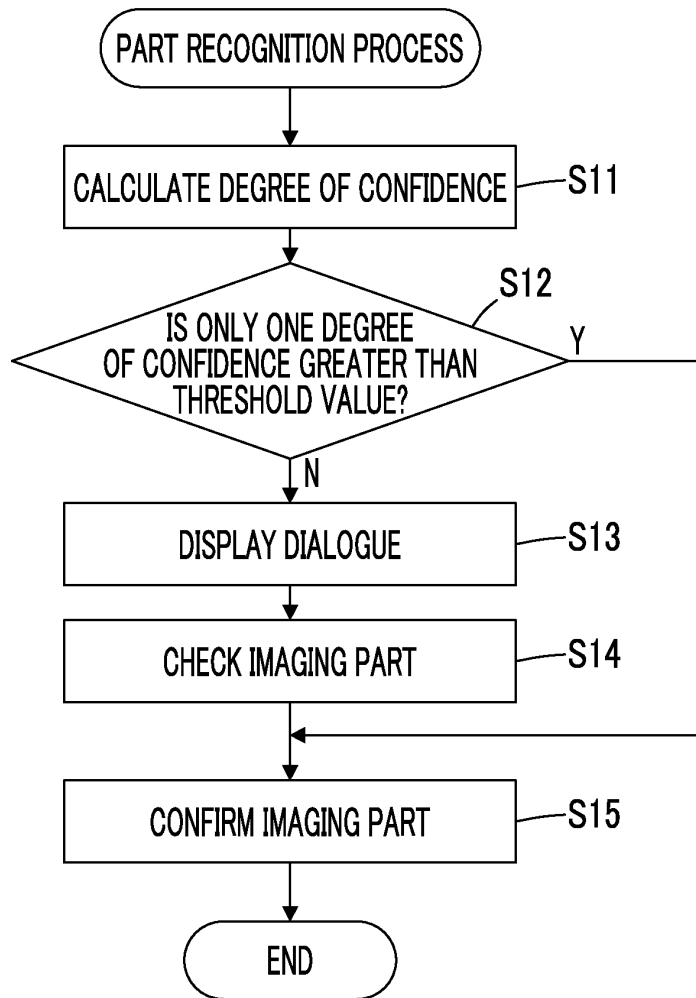


FIG. 6

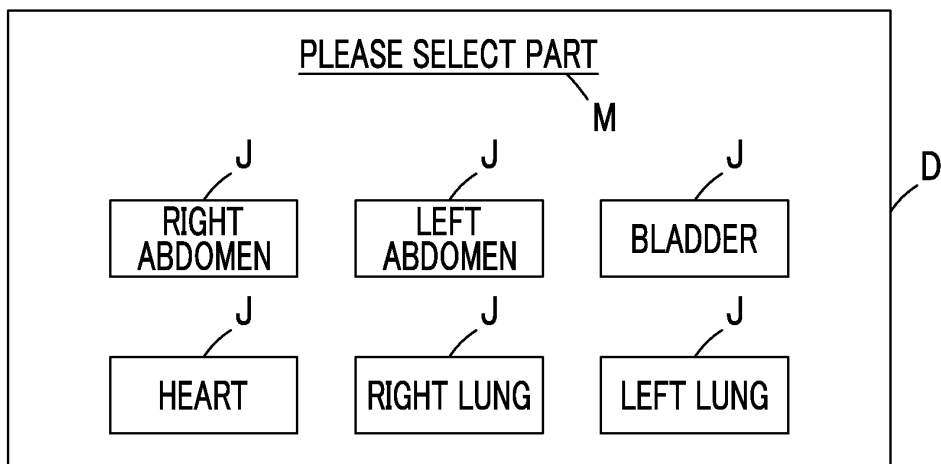


FIG. 7

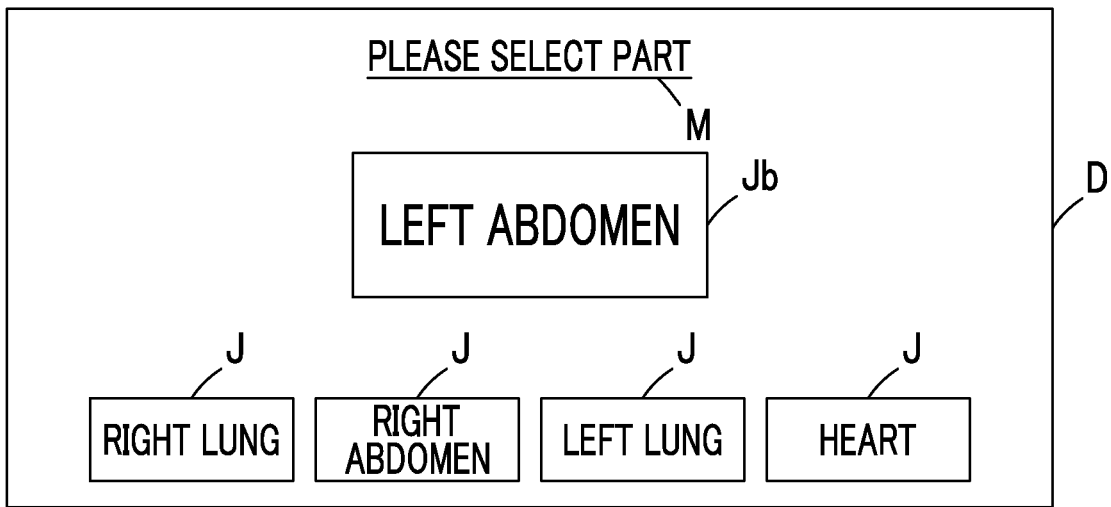


FIG. 8

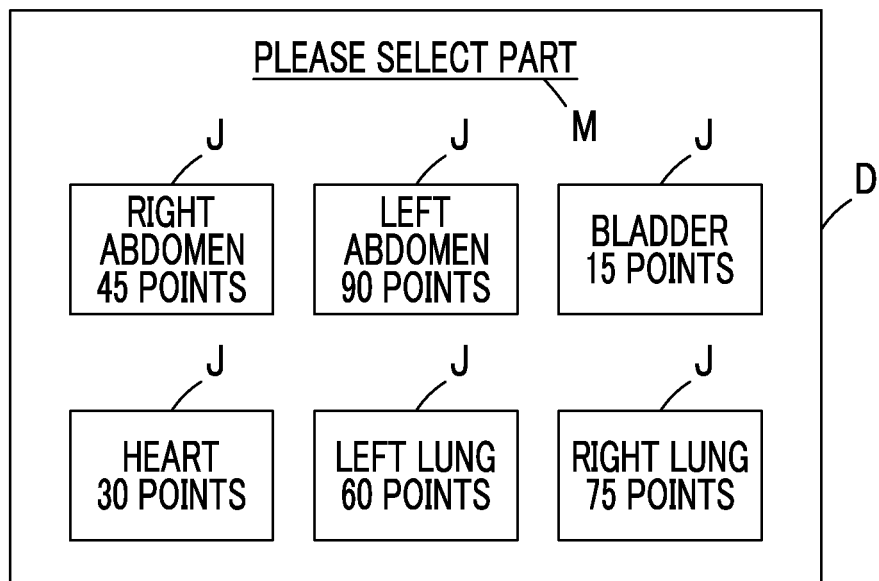


FIG. 9

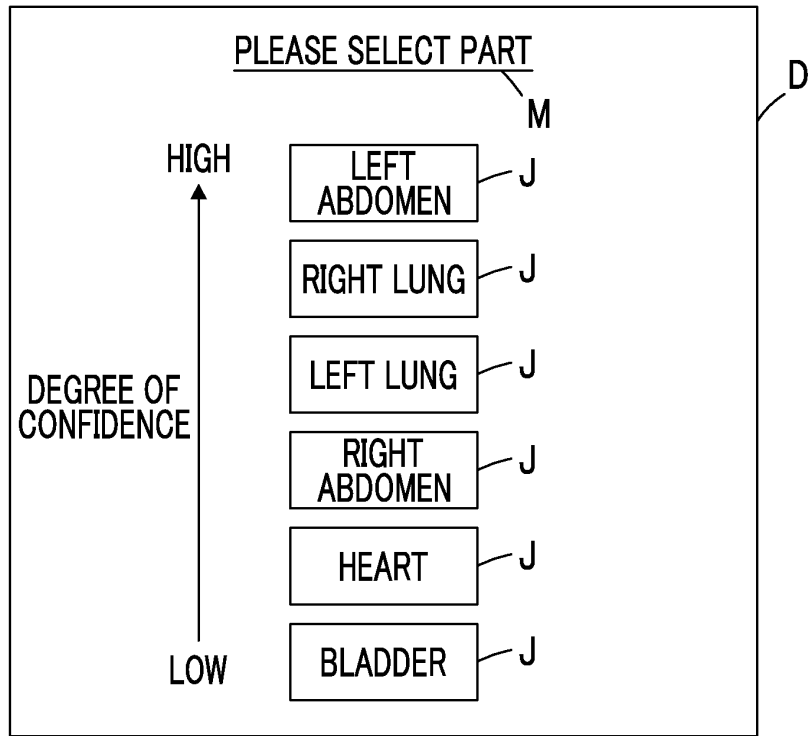


FIG. 10

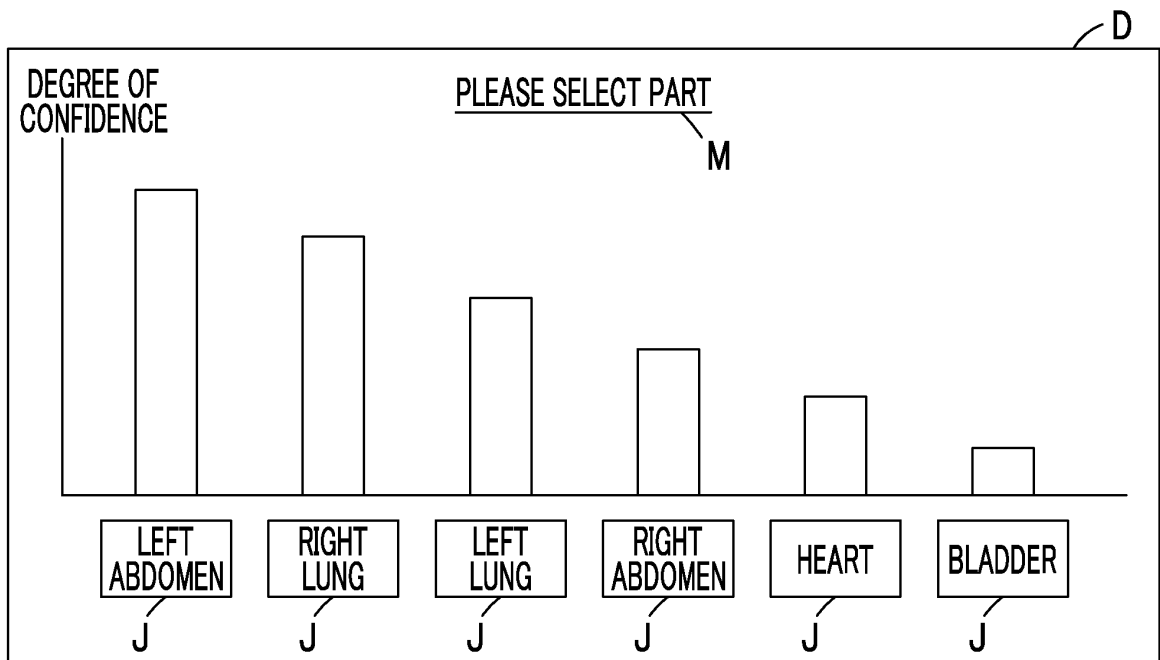


FIG. 11

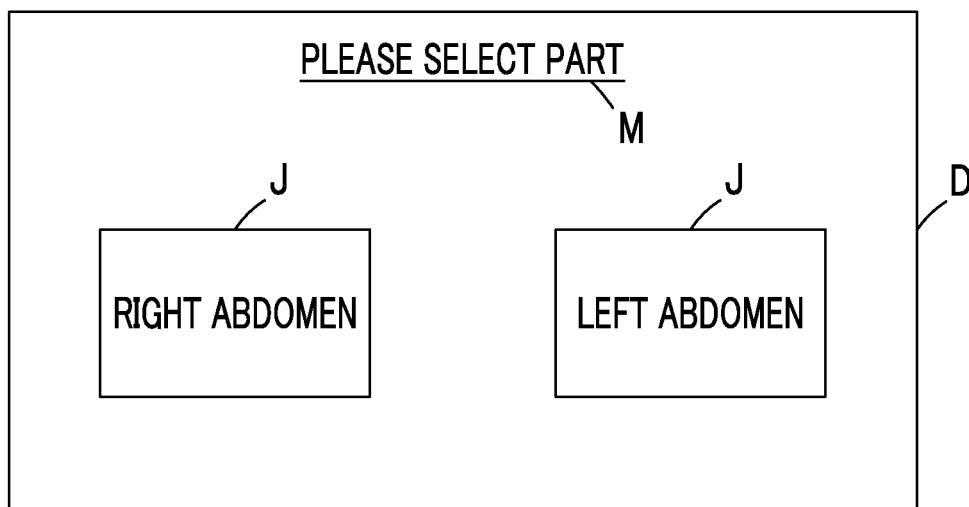


FIG. 12

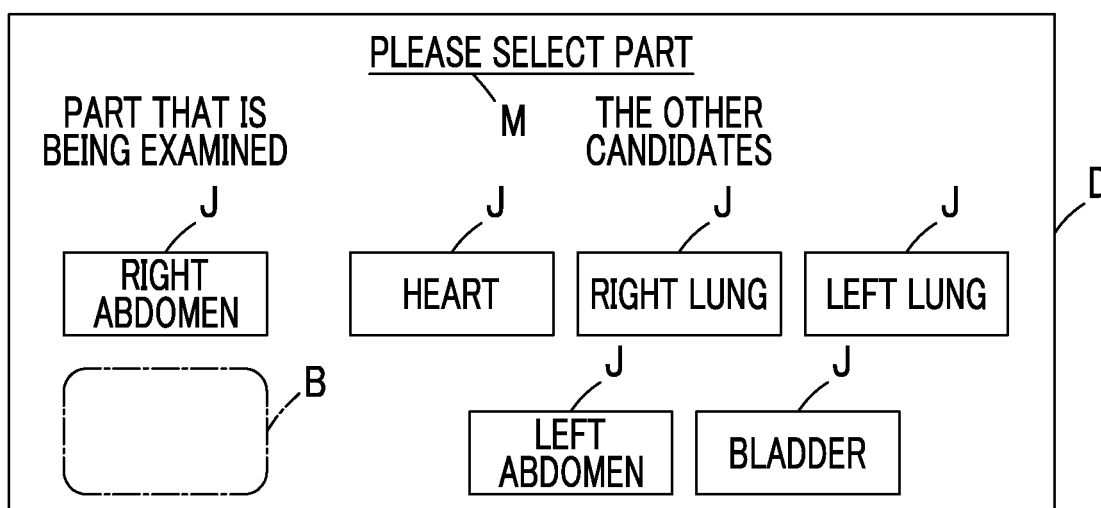


FIG. 13

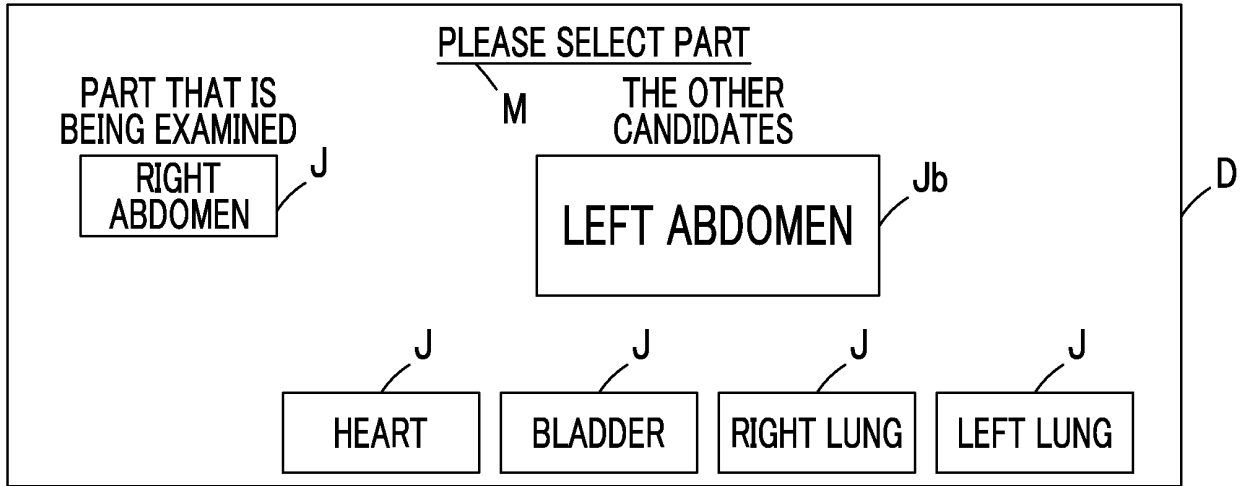


FIG. 14

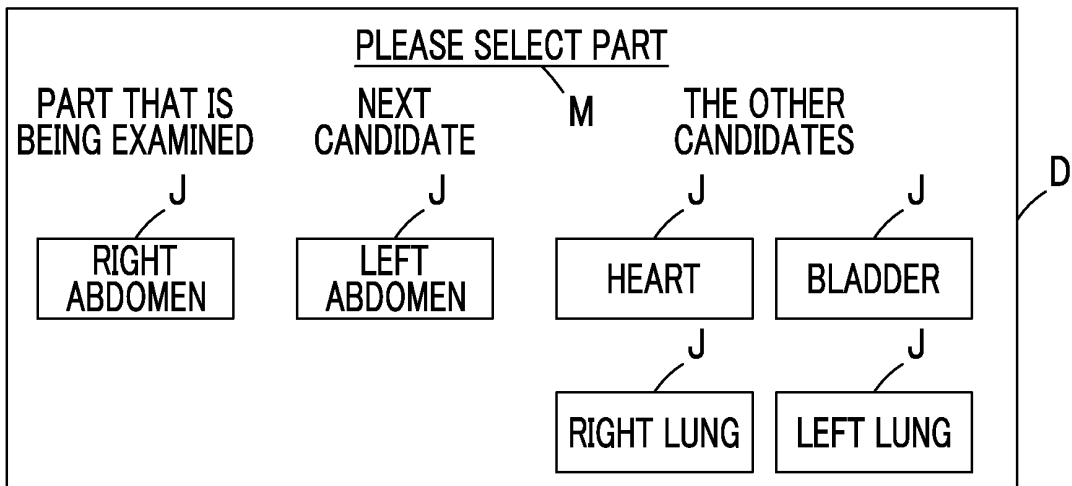
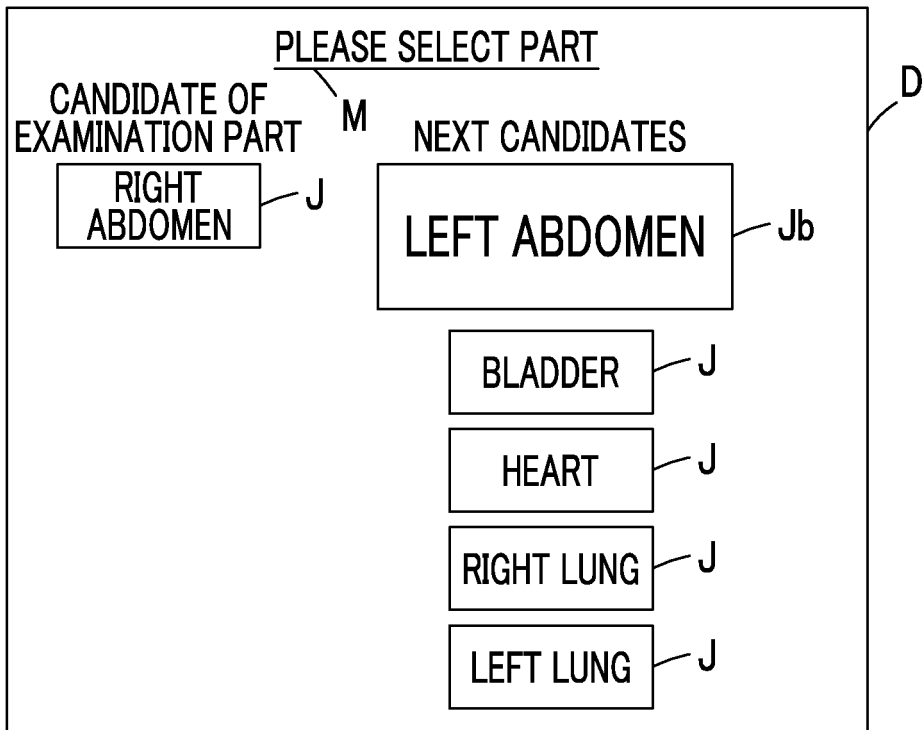


FIG. 15



INTERNATIONAL SEARCH REPORT

International application No.

PCT/JP2017/000038

A. CLASSIFICATION OF SUBJECT MATTER

A61B8/14(2006.01)i, G06T1/00(2006.01)i

According to International Patent Classification (IPC) or to both national classification and IPC

B. FIELDS SEARCHED

Minimum documentation searched (classification system followed by classification symbols)

A61B8/14, G06T1/00

Documentation searched other than minimum documentation to the extent that such documents are included in the fields searched

Jitsuyo Shinan Koho	1922-1996	Jitsuyo Shinan Toroku Koho	1996-2017
Kokai Jitsuyo Shinan Koho	1971-2017	Toroku Jitsuyo Shinan Koho	1994-2017

Electronic data base consulted during the international search (name of data base and, where practicable, search terms used)

C. DOCUMENTS CONSIDERED TO BE RELEVANT

Category*	Citation of document, with indication, where appropriate, of the relevant passages	Relevant to claim No.
A	JP 4-224738 A (Yokogawa Medical System Ltd.), 14 August 1992 (14.08.1992), paragraphs [0009] to [0026] (Family: none)	1-13
A	WO 2014/034948 A1 (Toshiba Corp.), 06 March 2014 (06.03.2014), paragraphs [0064] to [0067]; fig. 5 to 7 & JP 2014-61291 A & US 2015/0178921 A1 paragraphs [0080] to [0083]; fig. 5 to 7 & CN 103781424 A	1-13

 Further documents are listed in the continuation of Box C. See patent family annex.

* Special categories of cited documents:

"A" document defining the general state of the art which is not considered to be of particular relevance

"E" earlier application or patent but published on or after the international filing date

"L" document which may throw doubts on priority claim(s) or which is cited to establish the publication date of another citation or other special reason (as specified)

"O" document referring to an oral disclosure, use, exhibition or other means

"P" document published prior to the international filing date but later than the priority date claimed

"T" later document published after the international filing date or priority date and not in conflict with the application but cited to understand the principle or theory underlying the invention

"X" document of particular relevance; the claimed invention cannot be considered novel or cannot be considered to involve an inventive step when the document is taken alone

"Y" document of particular relevance; the claimed invention cannot be considered to involve an inventive step when the document is combined with one or more other such documents, such combination being obvious to a person skilled in the art

"&" document member of the same patent family

Date of the actual completion of the international search
06 March 2017 (06.03.17)Date of mailing of the international search report
14 March 2017 (14.03.17)Name and mailing address of the ISA/
Japan Patent Office
3-4-3, Kasumigaseki, Chiyoda-ku,
Tokyo 100-8915, Japan

Authorized officer

Telephone No.

REFERENCES CITED IN THE DESCRIPTION

This list of references cited by the applicant is for the reader's convenience only. It does not form part of the European patent document. Even though great care has been taken in compiling the references, errors or omissions cannot be excluded and the EPO disclaims all liability in this regard.

Patent documents cited in the description

- JP 2002140689 A [0003] [0004]
- JP 2015029619 A [0099]

专利名称(译)	超声波诊断装置和超声波诊断装置的控制方法		
公开(公告)号	EP3431009A1	公开(公告)日	2019-01-23
申请号	EP2017766006	申请日	2017-01-04
[标]申请(专利权)人(译)	富士胶片株式会社		
申请(专利权)人(译)	富士胶片株式会社		
当前申请(专利权)人(译)	富士胶片株式会社		
[标]发明人	EBATA TETSUROU		
发明人	EBATA, TETSUROU		
IPC分类号	A61B8/14 G06T1/00		
CPC分类号	A61B8/5223 A61B8/14 A61B8/463 A61B8/465 A61B8/467 A61B8/469 A61B8/54 A61B8/585 G06T1/00 G06T7/337 G06T2207/10132 G06T2207/30048 G06T2207/30061		
优先权	2016049927 2016-03-14 JP		
其他公开文献	EP3431009A4		
外部链接	Espacenet		

摘要(译)

超声波诊断装置包括：超声波探头；成像单元，使用超声探头向对象发送超声波束并从对象接收超声波束，并将从超声波探头输出的接收信号转换为图像，以生成对象的超声波图像；显示单元；整理模式存储器，其预先存储与对象的多个检查部分对应的多个核对模式；置信度计算单元，其从对照图案存储器读取多个对照图案，将由成像单元生成的超声图像与多个读取对照图案中的每一个进行核对以执行部件识别，并计算检查部件的置信度对应于每个读取的核对模式；以及对话显示控制单元，其确定是否在显示单元上显示用于使用户检查已经计算了置信度的多个检查部分中的哪一个的对话是对象的成像部分。置信度的基础，并根据确定结果在显示单元上显示对话。

