



(11) **EP 2 143 382 A1**

(12) **EUROPEAN PATENT APPLICATION**

(43) Date of publication:
13.01.2010 Bulletin 2010/02

(51) Int Cl.:
A61B 8/00 (2006.01)

(21) Application number: **09163974.0**

(22) Date of filing: **29.06.2009**

(84) Designated Contracting States:
**AT BE BG CH CY CZ DE DK EE ES FI FR GB GR
HR HU IE IS IT LI LT LU LV MC MK MT NL NO PL
PT RO SE SI SK TR**

- **Park, Sung In**
135-851, Seoul (KR)
- **Lee, Su Myeong**
135-851, Seoul (KR)

(30) Priority: **10.07.2008 KR 20080066835**

(74) Representative: **Schmid, Wolfgang**
Lorenz & Kollegen
Patentanwälte Partnerschaftsgesellschaft
Alte Ulmer Straße 2
89522 Heidenheim (DE)

(71) Applicant: **MEDISON CO., LTD.**
Kangwon-do 250-870 (KR)

(72) Inventors:

- **Shin, Soo Hwan**
135-851, Seoul (KR)

(54) **Ultrasound System Having Virtual Keyboard and Method of Displaying the Same**

(57) The present invention relates to an ultrasound system capable of displaying a virtual keyboard image on the touch screen and a method of displaying the virtual keyboard image on a part of a display screen of the display unit. The ultrasound system comprises: a control panel configured to receive user instructions for displaying a virtual keyboard image; a display unit configured to

display the virtual keyboard image and to receive a command by touch type; and a processor unit coupled to the control panel and the display unit, the processor unit being configured to display an ultrasound image on the display unit to display the virtual keyboard image on a part of a display screen of the display unit.

EP 2 143 382 A1

Description

[0001] The present application claims priority from Korean Patent Application No. 10-2008-0066835 filed on July 10, 2008, the entire subject matters of which are incorporated herein by reference.

BACKGROUND OF THE INVENTION**[Technical Field]**

[0002] The present invention generally relates to ultrasound systems, and more particularly to an ultrasound system having a virtual keyboard and a method of displaying the virtual keyboard on a part of a display screen of the display unit.

[Background Art]

[0003] A touch screen is widely used as a user interface in various imaging devices. The touch screen is a display that can detect the presence of a user's touch and a touched location in a display area. The imaging device may process previously set instructions in response to the detected presence or location. The touch screen may be manufactured by adding a touch panel on a screen of a general display such as a monitor. The touch panel may be segmented into a plurality of grids and an infrared sensor may be mounted on each of the grids. The infrared sensor may sense a temperature change so that it can be recognized whether a touch is present on the display area. The imaging device may recognize what the user selects based on a touch position on the display area of the touch screen and then generate input signals corresponding to the selection.

[0004] Generally, the ultrasound system has an alpha-numeric keyboard for character and number input. Although the alpha-numeric keyboard is not typically used, the alpha-numeric keyboard occupies a significant region on the control panel. Also, the alpha-numeric keyboard can be drawn out of the control panel. In such a case, the user must change his or her position and it is significantly more difficult to use the alpha-numeric keyboard.

BWFF DESCRIPTION OF THE DRAWINGS**[0005]**

- FIG. 1 is a schematic diagram of an illustrative embodiment of an ultrasound system.
- FIG. 2 is a schematic diagram showing the first virtual keyboard image for inputting text and numerical information.
- FIG. 3 is a schematic diagram showing the second virtual keyboard image for inputting numerical information.
- FIG. 4 is a schematic diagram showing the third virtual keyboard image for inputting an ultrasound im-

age scanning operation information.

DETAILED DESCRIPTION OF THE INVENTION

[0006] FIG. 1 is a schematic diagram of an illustrative embodiment of an ultrasound system. The ultrasound system 100 may include: a control panel 110 configured to receive user instructions for displaying a virtual keyboard image; a display unit 120 configured to display the virtual keyboard image thereon and to receive a command by touch type; and a processor unit (not shown) coupled to the control panel and the display unit, the processor unit being configured to display an ultrasound image on the display unit and to display the virtual keyboard image on a part of a display screen of the display unit 120.

[0007] The control panel 110 may be configured to receive user instructions for displaying a virtual keyboard image on a part of a display screen of the display unit 120. For example, a user may input user instructions such as a virtual keyboard image display instruction by pressing a text button 112 and a virtual keyboard image change instruction by pressing a virtual keyboard image change button 114. The virtual keyboard image is selected from a group of (i) a first image for inputting text and numerical information, (ii) a second image for inputting numerical information only, and (iii) a third image for inputting an ultrasound image scanning operation information. One of the first, second and third images (may be referred from Figs. 2 to 4) may be displayed on the display unit 120 according to the user instructions. The processor unit of the ultrasound system 100 is configured to change from one image of the first, second and third images to another image according to the user instructions. For example, the first image turns to the second image when you press the virtual keyboard image change button 114 as a virtual keyboard change instruction. Further, the second image turns to the third virtual keyboard image when you press the virtual keyboard image change button 114 again.

[0008] The first virtual keyboard image 140 may include input confirmation region 141, reference words list region 142 and button region 143, as illustrated in Fig. 2. The words, which were received from the button region 143, may be displayed at the input confirmation region 141. The button region 143 may include a number of buttons for receiving the user instructions. Words buttons, which are related to the specific characters, may be displayed at the reference words list region 142. The user can recognize characters, which are received from the button region 143, due to displaying the characters on the input confirmation region 141. The buttons located in the button region 143 are shaped as lengthy oval. Also, the vertical length of the buttons is longer than the horizontal length of the buttons. The characters on the buttons are located at the upper region of the buttons. As such, the user can recognize the characters on the buttons while pressing the buttons.

[0009] The virtual keyboard image may be displayed

on a part of a display screen of the display unit 120. The display unit 120 may be configured to display the virtual keyboard image thereon and to receive a command by touch type. The display unit 120 may be made from Liquid Crystal Display touch panel. Thus, the user can touch the display unit 120 to input the text information, numerical information and the ultrasound image scanning operation information.

[0010] The processor unit (not shown) is mounted on a body 130. The processor unit is coupled to the control panel 110 and the display unit 120. The processor unit is configured to display an ultrasound image on the display unit 120. Also, the processor unit is configured to display the virtual keyboard image on a part of a display screen of the display unit 120. For example, the processor unit may control the display unit 120 to display the virtual keyboard image 140 including the input confirmation region 141, the reference words list region 142 and the button region 143, as illustrated in Fig. 2, according to the user instructions. Namely, the processor unit may display the first virtual keyboard image on the display unit 120 when the user presses the text button 112. The pressing of the text button 112 is regarded as a first virtual keyboard display instruction. Also, the processor unit may display the first virtual keyboard image on the display unit 120 when the user moves a cursor to a specific part of the display unit 120. The moving of the cursor to the specific part of the display unit 120 is regarded as a first virtual keyboard display instruction.

[0011] Also, the processor unit may control the display unit 120 to display the second virtual keyboard image 140 including the numeric buttons, as illustrated in Fig. 3, when the user selects the second virtual keyboard image. The processor unit is configured to display the second virtual keyboard image, as illustrated in Fig. 3, on the display unit 120 when the user presses the text button. Also, the processor unit is configured to display the second virtual keyboard image, as illustrated in Fig. 3, on the display unit 120 when the user moves the cursor to the specific part of the display unit 120. The moving of the cursor to the specific part of the display unit 120 is regarded as a second virtual keyboard display instruction. The numeric buttons, which are included in the second virtual keyboard image, are configured to set in an array similar to telephone buttons. Thus, the user can input the numbers faster.

[0012] Also, the processor unit is configured to control the display unit 120 to display the virtual keyboard image for text input, which is related to the scanning operation as illustrated in the Fig. 4, when the user select the third virtual keyboard image. It is necessary to input a text on the ultrasound image for the ultrasound image explanation during the scanning operation. The text, which is used in the ultrasound image scanning operation, may be limited. The third virtual keyboard image may be displayed when the user presses the text button 112 during the scanning operation. The text made up of a character combination is typically used. The character combination

may be displayed on the ultrasound image when the user presses a character combination button. The character combination may be edited by the user. Further, it may not be necessary to input a blank because the blank may be inputted along with the character combination when the user presses the character combination button. The first virtual keyboard image, as illustrated in Fig. 2, is displayed on the display unit 120 when the user presses the virtual keyboard image change button 114 as the virtual keyboard change instruction during displaying of the third virtual keyboard image on the display unit 120. Thus, the user can input the text easily.

[0013] It is important that changing of the virtual keyboard image may not mean changing of the virtual keyboard image in a regular sequence. The first virtual keyboard image may be displayed, as illustrated in Fig. 2, when the user presses the virtual keyboard image change button 114 during displaying of the third virtual keyboard image as illustrated in Fig. 4. Also, the third virtual keyboard image may be displayed when the user presses the virtual keyboard image change button 114 during displaying of the first virtual keyboard image.

[0014] The processor unit is configured to assess the input state and control the display unit 120 to display the adequate virtual keyboard image to the input state. The input state may include inputting text and numerical information, inputting numerical information only and inputting an ultrasound image scanning operation information.

[0015] Any reference in this specification to "one embodiment," "an embodiment," "example embodiment," "illustrative embodiment," etc. means that a particular feature, structure or characteristic described in connection with the embodiment is included in at least one embodiment of the present invention. The appearances of such phrases in various places in the specification are not necessarily all referring to the same embodiment. Further, when a particular feature, structure or characteristic is described in connection with any embodiment, it is submitted that it is within the purview of one skilled in the art to affect such feature, structure or characteristic in connection with other ones of the embodiments.

[0016] Although embodiments have been described with reference to a number of illustrative embodiments thereof, it should be understood that numerous other modifications and embodiments can be devised by those skilled in the art that will fall within the spirit and scope of the principles of this disclosure. More particularly, numerous variations and modifications are possible in the component parts and/or arrangements of the subject combination arrangement within the scope of the disclosure, the drawings and the appended claims. In addition to variations and modifications in the component parts and/or arrangements, alternative uses will also be apparent to those skilled in the art.

Claims

1. An ultrasound system, comprising:
- a control panel configured to receive user instructions for displaying a virtual keyboard image; 5
 - a display unit configured to display the virtual keyboard image and to receive a command by touch type; and 10
 - a processor unit coupled to the control panel and the display unit, the processor unit being configured to display an ultrasound image on the display unit and to display the virtual keyboard image on a part of a display screen of the display unit. 15
2. The ultrasound system of Claim 1, wherein the virtual keyboard image includes a button region for displaying keyboard buttons; and 20
- an input confirmation region for displaying information inputted through the keyboard buttons.
3. The ultrasound system of Claim 1, wherein the virtual keyboard image is selected from a group of (i) a first image for inputting text and numerical information, 25
- (ii) a second image for inputting numerical information only, and (iii) a third image for inputting an ultrasound image scanning operation information. 30
4. The ultrasound system of Claim 3, wherein the first image includes a reference words list region for displaying buttons of words related to characters inputted by a user. 35
5. The ultrasound system of Claim 3, wherein the processor unit is configured to change from one image of the first, second and third images to another image according to the user instructions. 40
6. A method of displaying a virtual keyboard image in an ultrasound system, comprising:
- a) displaying an ultrasound image on a display unit within the ultrasound system; 45
 - b) receiving a command for displaying a virtual keyboard image from a control panel within the ultrasound system; and
 - c) displaying the virtual keyboard image on a part of a display screen of the display unit. 50
7. The method of Claim 6, wherein the virtual keyboard image includes a button region for displaying keyboard buttons; and 55
- an input confirmation region for displaying information inputted through the keyboard buttons.
8. The method of Claim 6, wherein the virtual keyboard image is selected from a group of (i) a first image for inputting text and numerical information, (ii) a second image for inputting numerical information only, and (iii) a third image for inputting an ultrasound image scanning operation information.
9. The method of Claim 8, wherein the step c) includes; changing from one image of the first, second and third images to another image.

FIG. 1

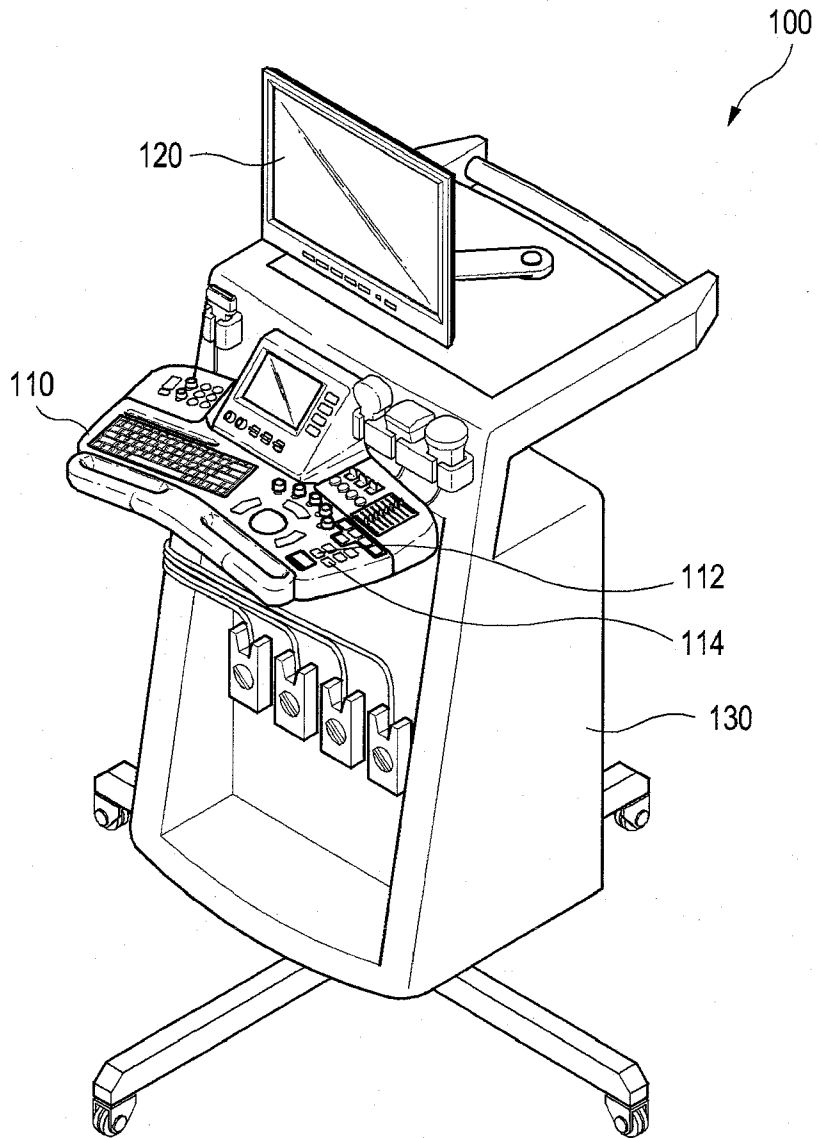


FIG. 2

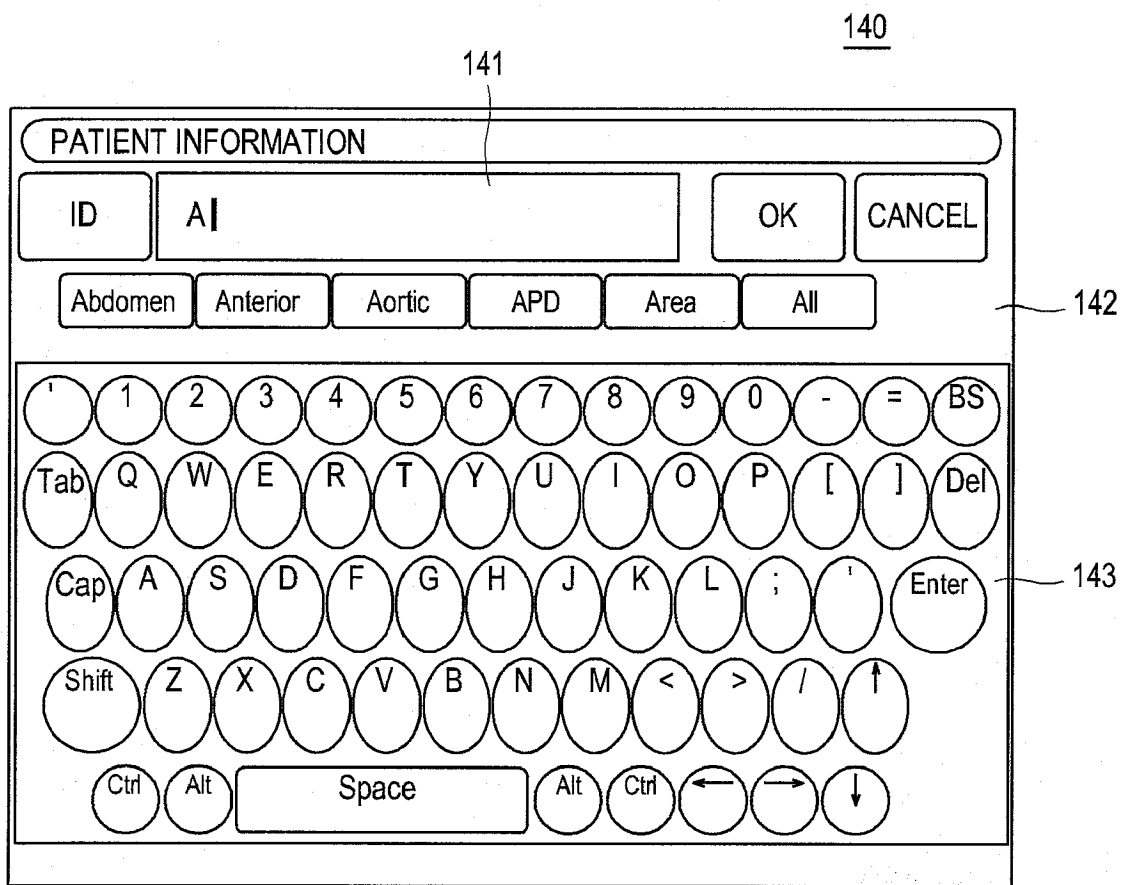


FIG. 3

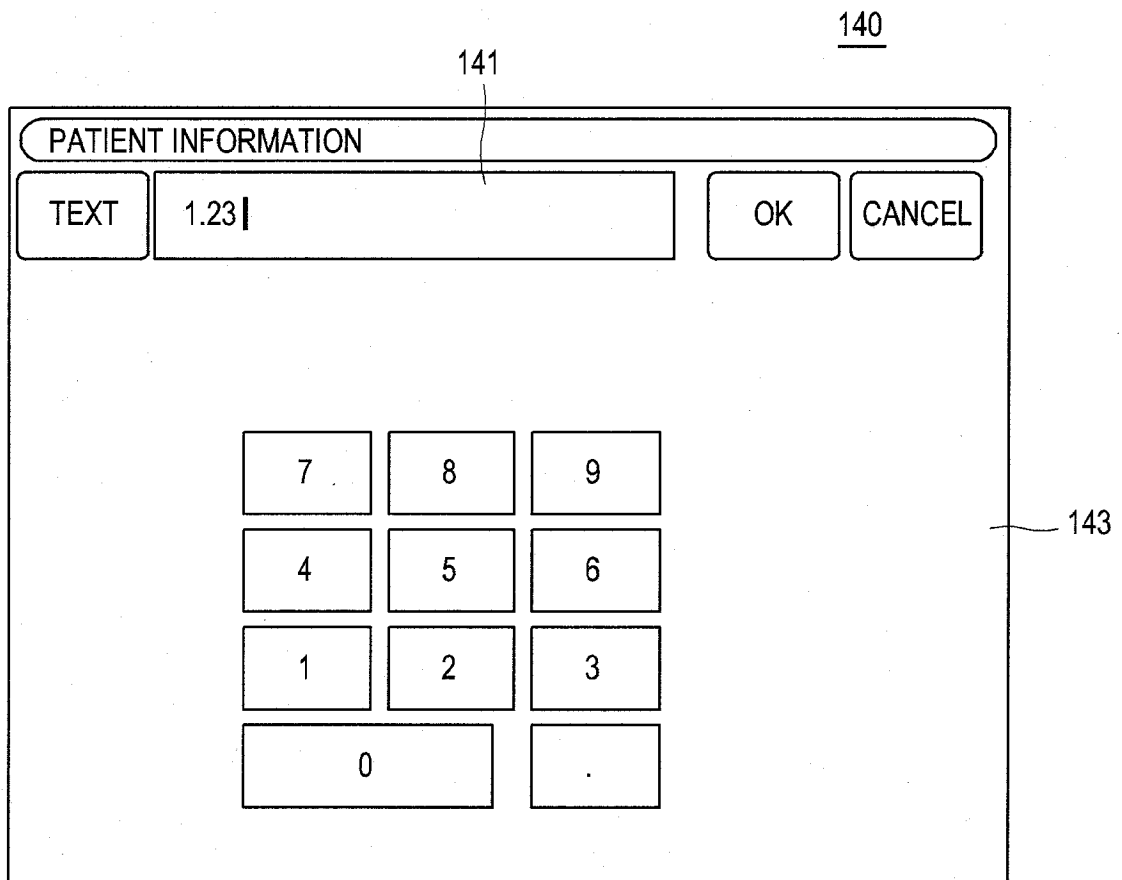
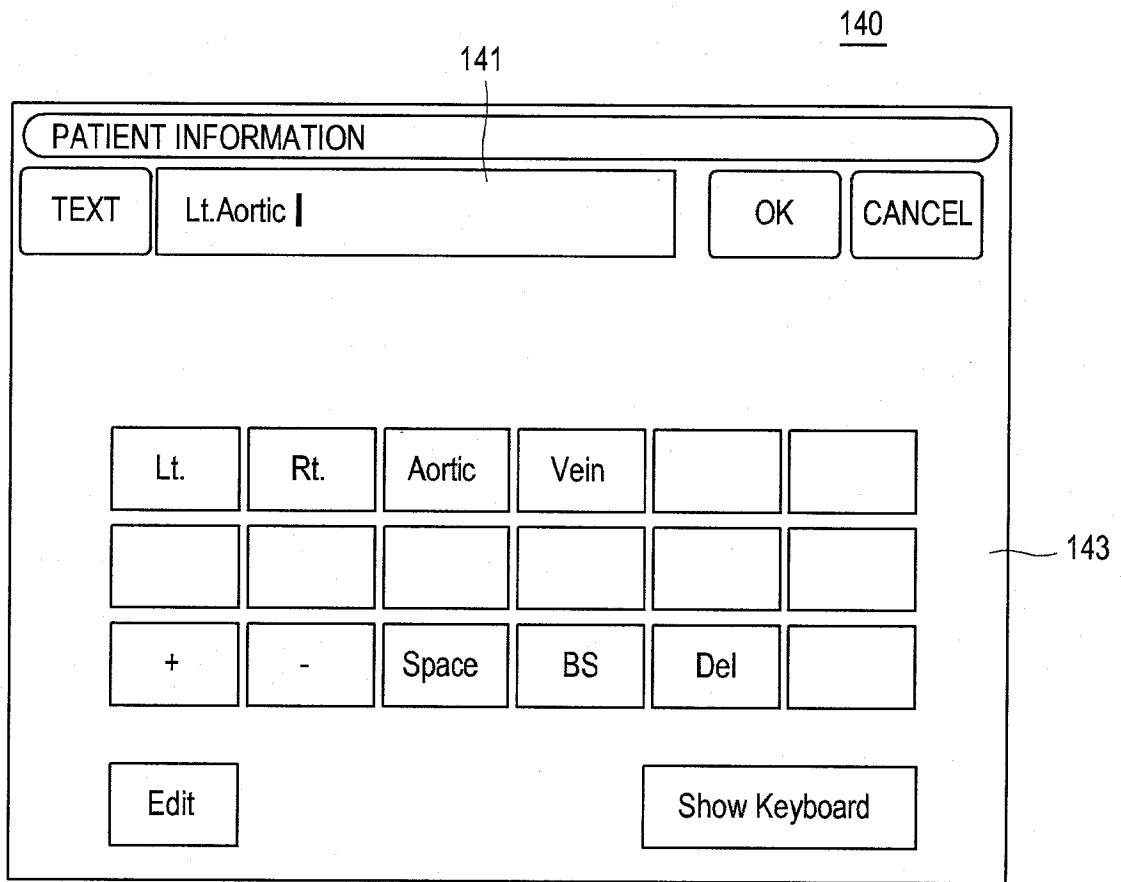


FIG. 4





EUROPEAN SEARCH REPORT

Application Number
EP 09 16 3974

DOCUMENTS CONSIDERED TO BE RELEVANT			
Category	Citation of document with indication, where appropriate, of relevant passages	Relevant to claim	CLASSIFICATION OF THE APPLICATION (IPC)
X	FR 2 861 192 A1 (THALES ULTRASONICS SAS [FR]) 22 April 2005 (2005-04-22) * page 1, line 29 - page 2, line 4 * * page 4, lines 2-30 * * page 5, line 15 - page 6, line 29 * * page 8, line 34 - page 9, line 4 * * page 9, line 26 - page 10, line 17 * * page 11, line 33 - page 12, line 3 * * figures 5, 7 *	1-9	INV. A61B8/00
X	----- US 2002/173721 A1 (GRUNWALD SORIN [US] ET AL) 21 November 2002 (2002-11-21) * paragraph [0072] * * paragraphs [0273] - [0289] * * figures 28,31A,33 *	1-9	
X	----- US 2006/020206 A1 (SERRA LUIS [SG] ET AL) 26 January 2006 (2006-01-26) * paragraphs [0031] - [0037] * * figures 7-13 *	1-9	
A	----- US 6 491 630 B1 (SACCARDO GRACE M [US] ET AL) 10 December 2002 (2002-12-10) * column 3, line 18 - column 4, line 46 * * figures 4-6 *	1-9	TECHNICAL FIELDS SEARCHED (IPC) A61B
The present search report has been drawn up for all claims			
Place of search The Hague		Date of completion of the search 13 August 2009	Examiner Dydenko, Igor
CATEGORY OF CITED DOCUMENTS X : particularly relevant if taken alone Y : particularly relevant if combined with another document of the same category A : technological background O : non-written disclosure P : intermediate document		T : theory or principle underlying the invention E : earlier patent document, but published on, or after the filing date D : document cited in the application L : document cited for other reasons ----- & : member of the same patent family, corresponding document	

1
EPO FORM 1503 03.02 (P04C01)

**ANNEX TO THE EUROPEAN SEARCH REPORT
ON EUROPEAN PATENT APPLICATION NO.**

EP 09 16 3974

This annex lists the patent family members relating to the patent documents cited in the above-mentioned European search report. The members are as contained in the European Patent Office EDP file on
The European Patent Office is in no way liable for these particulars which are merely given for the purpose of information.

13-08-2009

Patent document cited in search report		Publication date	Patent family member(s)	Publication date
FR 2861192	A1	22-04-2005	NONE	

US 2002173721	A1	21-11-2002	DE 10306924 A1	04-09-2003
			JP 2003299652 A	21-10-2003
			US 2006116578 A1	01-06-2006
			US 2004138569 A1	15-07-2004

US 2006020206	A1	26-01-2006	NONE	

US 6491630	B1	10-12-2002	NONE	

REFERENCES CITED IN THE DESCRIPTION

This list of references cited by the applicant is for the reader's convenience only. It does not form part of the European patent document. Even though great care has been taken in compiling the references, errors or omissions cannot be excluded and the EPO disclaims all liability in this regard.

Patent documents cited in the description

- KR 1020080066835 [0001]

专利名称(译)	具有虚拟键盘的超声系统及其显示方法		
公开(公告)号	EP2143382A1	公开(公告)日	2010-01-13
申请号	EP2009163974	申请日	2009-06-29
申请(专利权)人(译)	MEDISON CO. , LTD.		
当前申请(专利权)人(译)	MEDISON CO. , LTD.		
[标]发明人	SHIN SOO HWAN PARK SUNG IN LEE SU MYEONG		
发明人	SHIN, SOO HWAN PARK, SUNG IN LEE, SU MYEONG		
IPC分类号	A61B8/00		
CPC分类号	A61B8/00 A61B8/465 A61B8/467		
代理机构(译)	SCHMID , WOLFGANG		
优先权	1020080066835 2008-07-10 KR		
外部链接	Espacenet		

摘要(译)

本发明涉及能够在触摸屏上显示虚拟键盘图像的超声系统和在显示单元的显示屏的一部分上显示虚拟键盘图像的方法。超声系统包括：控制面板，被配置为接收用于显示虚拟键盘图像的用户指令；显示单元，用于显示虚拟键盘图像并通过触摸类型接收命令；处理器单元耦合到控制面板和显示单元，处理器单元被配置为在显示单元上显示超声图像，以在显示单元的显示屏的一部分上显示虚拟键盘图像。

