



(11) **EP 1 609 423 B1**

(12) **EUROPEAN PATENT SPECIFICATION**

(45) Date of publication and mention of the grant of the patent:  
**31.03.2010 Bulletin 2010/13**

(51) Int Cl.:  
**A61B 8/12 (2006.01)**

(21) Application number: **05013437.8**

(22) Date of filing: **22.06.2005**

(54) **Ultrasonic diagnostic apparatus**

Ultraschalldiagnosegerät

Appareil de diagnostic ultrasonique

(84) Designated Contracting States:  
**AT BE BG CH CY CZ DE DK EE ES FI FR GB GR HU IE IS IT LI LT LU MC NL PL PT RO SE SI SK TR**

(72) Inventor: **Hirota, Kazuhiro**  
**Ashigarakami-gun**  
**Kanagawa 259-0151 (JP)**

(30) Priority: **24.06.2004 JP 2004186344**

(74) Representative: **Casalonga, Axel et al**  
**Casalonga & Partners**  
**Bayerstrasse 71/73**  
**80335 München (DE)**

(43) Date of publication of application:  
**28.12.2005 Bulletin 2005/52**

(73) Proprietor: **TERUMO KABUSHIKI KAISHA**  
**Tokyo (JP)**

(56) References cited:  
**EP-A- 0 154 869 US-A- 5 280 787**  
**US-A1- 2002 028 009 US-A1- 2002 183 619**  
**US-A1- 2003 195 422 US-B1- 6 381 350**

**EP 1 609 423 B1**

Note: Within nine months of the publication of the mention of the grant of the European patent in the European Patent Bulletin, any person may give notice to the European Patent Office of opposition to that patent, in accordance with the Implementing Regulations. Notice of opposition shall not be deemed to have been filed until the opposition fee has been paid. (Art. 99(1) European Patent Convention).

## Description

**[0001]** The present invention relates to an ultrasonic diagnostic apparatus for clearly plotting an image of a blood vessel wall, for example, and a method of processing an ultrasound signal.

**[0002]** Heretofore, intravascular ultrasonic diagnostic apparatus have widely been used for the diagnosis of arteriosclerosis, the preoperative diagnosis for an intravascular treatment such as percutaneous transluminal coronary angioplasty, and the postoperative observation of an intravascular treatment. The intravascular ultrasonic diagnostic apparatus detect a reflected echo of an ultrasonic wave emitted from an ultrasonic transducer disposed in a catheter tube and convert the detected echo into an image. When an image of a blood vessel wall is generated from the ultrasonic echo, it is affected by an ultrasonic echo reflected from blood cells that are flowing through the blood vessel. The ultrasonic echo reflected from blood cells tends to blur the boundary between the blood vessel wall and the blood vessel lumen in the resultant image, adversely affecting the diagnostic accuracy. Though it is generally understood that the diagnostic accuracy is increased at higher frequencies of ultrasound signals, there is a certain limitation on the diagnostic accuracy because the reflected echo from blood cells increases at higher ultrasound signal frequencies, particularly of 40 MHz or higher.

**[0003]** US 2002/0183619 discloses an ultrasound imaging apparatus comprising an ultrasonic probe having an ultrasound array and a beamformer. The beamformer adds the phase adjusted to form an acoustic line in a certain direction. The apparatus demodulates the line signals and forms B-mode image frames. Frame averaging is performed and the SNR ratio is improved.

**[0004]** The present invention provides an ultrasonic diagnostic apparatus which is capable of reducing an ultrasonic echo reflected from blood cells without lowering the resolution of a generated image and of clearly plotting in real-time the boundary between a blood cell wall and a blood vessel lumen, and a method of processing an ultrasound signal.

**[0005]** One aspect of the present invention is, as claimed in claim 1, an ultrasonic diagnostic apparatus comprising at least one ultrasonic transducer configured to send an ultrasound signal to an object and receive a reflected signal from the object, an A/D converter configured to convert the received reflected signal into a digital data, a line data averaging processor configured to store lines of said digital data and average the stored lines of said digital data over a number of lines, a demodulator configured to demodulate the averaged digital data, an image constructor configured to construct an image from the demodulated digital data and a display unit configured to display the constructed image.

**[0006]** The ultrasonic diagnostic apparatus according to the present invention has the A/D converter for converting the received reflected signal into a digital signal, and the data averaging processor for storing lines or frames of digital data represented by the digital signal and adding the stored lines or frames of the digital data to average the reflected signal. Since the A/D converter and the data averaging processor process the signal before the signal is demodulated, the adverse effect of a reflected echo from blood vessels is reduced by the A/D converter and the data averaging processor, making it possible to plot a sharp image of the blood vessel wall of a blood vessel of the examined object. The accuracy with which the examined object can be inspected is increased because the boundary of the blood vessel wall and the blood vessel lumen is more clearly plotted.

**[0007]** The above and other objects, features, and advantages of the present invention will become apparent from the following description when taken in conjunction with the accompanying drawings which illustrate a preferred embodiment of the present invention by way of example.

FIG. 1 is a transverse cross-sectional view showing a catheter inserted in a blood vessel;

FIG. 2 is a perspective view showing the catheter inserted in the blood vessel;

FIG. 3 is a block diagram of an ultrasonic diagnostic apparatus according to the present invention;

FIG. 4 is a block diagram of a fast A/D converter of the ultrasonic diagnostic apparatus shown in FIG. 3;

FIG. 5 is a diagram showing the waveforms of clock signals supplied to the fast A/D converter shown in FIG. 4;

FIG. 6 is a flowchart of a method of processing an ultrasound signal according to the present invention;

FIG. 7 is a view showing a cross-sectional vascular image in a radial scan B mode which is produced when an ultrasonic echo signal is processed by a line data averaging process;

FIG. 8 is a view showing a cross-sectional vascular image in a radial scan B mode which is produced when an ultrasonic echo signal is processed by a line data averaging process and a sharpness filtering process;

FIG. 9 is a view showing a cross-sectional vascular image in a radial scan B mode which is produced when an ultrasonic echo signal is processed by a line data averaging process, a sharpness filtering process, and a frame data averaging process;

FIG. 10 is a view showing a cross-sectional vascular image in a radial scan B mode which is produced by a conventional ultrasonic diagnostic apparatus; and

FIG. 11 is a view showing another cross-sectional vascular image in a radial scan B mode which is produced by a conventional ultrasonic diagnostic apparatus.

**[0008]** An ultrasonic diagnostic apparatus according to the present invention will be described below. The embodiments has been made to improve the problem of an increased ultrasonic echo reflected from blood cells such as red blood cells, resulting in a difficulty in distinguishing between the blood cells and the blood vessel wall, when the frequency of an ultrasonic wave applied to the examined object is increased for the purpose of increasing the quality of a cross-sectional vascular image to be finally generated. The ultrasonic diagnostic apparatus according to the embodiment is capable of processing a signal for clearly plotting the boundary between a blood vessel wall and a blood vessel lumen.

**[0009]** FIGS. 1 and 2 show a catheter inserted into a blood vessel.

**[0010]** For performing the diagnosis of arteriosclerosis, the preoperative diagnosis for an intravascular treatment, and the postoperative observation of an intravascular treatment, a catheter 20 in the form of an elongate tube is inserted into a blood vessel 10, as shown in FIGS. 1 and 2. The catheter 20 has a lumen housing therein an ultrasonic transducer (not shown) for sending an ultrasound signal to the blood vessel 10 as an examined object and receiving a reflected signal of the ultrasound signal from the blood vessel 10. The ultrasonic diagnostic apparatus according to the present invention is capable of detecting an ultrasound signal, having a frequency higher than 40 MHz, reflected from the blood vessel 10 separately in 1024 lines for each frame of an image. As shown in FIG. 2, an image in a radial scan B mode, i.e., a cross-sectional vascular image of the blood vessel 10, can be generated by analyzing reflected signals in the lines 1 through 1024 on one plane 30 and joining the analyzed results of all the lines in an annular pattern.

**[0011]** FIG. 3 shows a block diagram of the ultrasonic diagnostic apparatus according to the present invention.

**[0012]** As shown in FIG. 3, the ultrasonic diagnostic apparatus includes an ultrasonic transducer 25, a signal transmitter/receiver 40, a fast A/D conversion unit 50, a line data averaging processor 60, a demodulating/logarithmic converting processor 70, a sharpness filtering processor 80, a frame data averaging processor 90, an image constructor 100, an image display unit 110, and a control circuit 150.

**[0013]** The ultrasonic transducer 25 is housed in the catheter 20, and can apply an ultrasonic wave having a frequency higher than 40 MHz to the blood vessel 10 while the ultrasonic transducer 25 is being rotated in the blood vessel 10.

**[0014]** The signal transmitter/receiver 40, which functions as an ultrasound signal transmitting/receiving means, sends an ultrasonic output signal to the ultrasonic transducer 25 to send an ultrasound signal from the ultrasonic transducer 25 to the blood vessel 10, and receives an ultrasound signal reflected from the blood vessel 10 and received by the ultrasonic transducer 25, i.e., receives a reflected signal. The ultrasonic transducer 25 may include either a single component for sending and receiving ultrasonic waves or two components for sending and receiving ultrasonic waves, respectively.

**[0015]** The fast A/D conversion unit 50 is capable of converting a received RF signal, i.e., an analog reflected signal, having a high frequency which is received by the signal transmitter/receiver 40, into a digital signal at a high speed. For high-speed A/D conversion, the fast A/D converter 50 is specially designed as shown in FIG. 4. As shown in FIG. 4, the fast A/D conversion unit 50 includes four A/D converters (ADCs) 501 through 504, each capable of sampling an input analog signal at a sampling frequency of 60 MHz, connected parallel to each other, and four FIFO memories 511 through 514 connected in series to the respective A/D converters 501 through 504. The A/D converters 501 through 504 are supplied with respective clock signals CLK1 through CLK4, each having a frequency of 60 MHz, which are successively shifted 1/4 period out of phase. When data are read from the FIFO memories 511 through 514 in synchronism with the clock signals CLK1 through CLK4, the fast A/D conversion unit 50 can convert the analog reflected signal into a digital signal at a high speed, i.e., a sampling frequency of 240 MHz. The sampling frequency employed by the fast A/D conversion unit 50 is not limited to 240 MHz. Rather, the fast A/D conversion unit 50 may convert the analog reflected signal into a digital signal at a sampling frequency of 80 MHz or higher. Furthermore, the fast A/D conversion unit 50 may operate on other fast A/D conversion principles. For example, the received RF signal may be converted into a baseband signal by quadrature detection, and the baseband signal may be converted into a digital signal at a relatively low sampling frequency.

**[0016]** The line data averaging processor 60, which functions as a data averaging processor, stores lines of digital data of the reflected signal which have been converted by the fast A/D conversion unit 50, and adds a plurality of the lines of the digital data to average the reflected signal. The line data averaging processor 60 has a mode changer serving as a selector for selecting a line data averaging mode or not. If the line data averaging mode is selected, then a cross-sectional vascular image in a radial scan B mode which is affected by a reduced reflected echo processed in the line data averaging mode is displayed by the display unit 110. If the line data averaging mode is not selected, a cross-sectional vascular image in a radial scan B mode which is directly affected by a reflected echo not processed in the line data averaging mode is displayed by the display unit 110.

**[0017]** When the lines of the digital data are averaged in the line data averaging mode, an ultrasonic echo reflected from blood cells can be reduced. Specifically, since blood cells are small in size, even when a reflected echo from one blood cell exists over several lines, reflected signals from the blood cell in the respective lines are slightly out of phase. Therefore, when the lines of the digital data from the blood cells are averaged, the average of the reflected echoes from the blood cells is reduced. On the other hand, an ultrasonic echo reflected from the blood vessel remains unchanged in phase between the lines. Therefore, even when the lines of the digital data from the blood vessel are averaged, the

reflected signal from the blood vessel is essentially not reduced. The number of lines to be averaged is 4 or 8, but should not be limited to those values. The reduction of the ultrasonic echo from blood cells by the line data averaging process is more effective by the case when the line data averaging process averages to a signal before demodulated.

5 [0018] The demodulating/logarithmic converting processor 70, which functions as a demodulator and logarithmic converting processor, demodulates an averaged reflected signal produced by the line data averaging processor 60 and converts the demodulated signal into a logarithmic signal. The demodulated signal has a frequency lower than the averaged reflected signal, and the logarithmic signal is suitable for displaying an image.

10 [0019] The sharpness filtering processor 80 performs a sharpness filtering process on the logarithmic signal produced by the demodulating/logarithmic converting processor 70 for clearly plotting an image in a radial scan B mode. The sharpness filtering processor 80 may include an FIR digital filter of the fourth order. The FIR digital filter has coefficients  $h_0 = -0.125$ ,  $h_1 = -0.3125$ ,  $h_2 = -0.5625$ , and  $h_3 = 2$ , for example. However, the sharpness filtering processor 80 is not limited to the FIR digital filter and the above filter coefficients.

15 [0020] The frame data averaging processor 90, which functions as a second data averaging processor, stores frames of the low-frequency signal sharpened by the sharpness filtering processor 80, and adds the frames of the low-frequency signal to average the low-frequency signal. The frame data averaging processor 90 adds the frames of the digital data to average the digital data according to either a simple averaging process or a recursive frame correlating process. The simple averaging process is a process of averaging added frames of low-frequency signals, and the recursive frame correlating process is a process of calculating a weighted average according to the following equation:

$$20 \quad [\text{OUT}(n)] = (1/(1 + \alpha)) \times [\text{IN}] + (\alpha/(1 + \alpha)) [\text{OUT}(n - 1)]$$

25 where  $\text{OUT}(n)$  represents  $n$ th frame data,  $\text{IN}$  represents new input frame data,  $\text{OUT}(n - 1)$  represents  $(n - 1)$  frame data, i.e., preceding frame data, and  $\alpha$  a frame correlating coefficient. The above equation indicates that the new frame data and the present frame data are combined at a ratio of  $1 : \alpha$  into frame data to be displayed. The frame averaging process is effective to smooth noise and speckles that are emphasized by the sharpness filtering process. The frame correlating process should preferably, but not necessarily, be carried out with the frame correlating coefficient  $\alpha$  of 1.0. The simple averaging process also offers the same advantages as the recursive frame correlating process.

30 [0021] The image constructor 100 converts the converted low-frequency reflected signal into a polar-coordinate signal to construct a cross-sectional vascular image in a radial scan B mode based on the polar-coordinate signal. The image constructor 100 outputs an image signal that is suited to the specifications of the display unit 110.

[0022] The display unit 110 displays a cross-sectional vascular image in a radial scan B mode which is constructed by the image constructor 100. The display unit 110 may include an LCD monitor, a CRT, or the like.

35 [0023] The control circuit 150 controls operation timing of the signal transmitter/receiver 40, the fast A/D conversion unit 50, the line data averaging processor 60, the demodulating/logarithmic converting processor 70, the sharpness filtering processor 80, the frame data averaging processor 90, the image constructor 100, and the image display unit 110, as a whole.

40 [0024] Since the ultrasonic diagnostic apparatus according to the present invention reduces adverse effects posed by a reflected echo from blood cells, the ultrasonic diagnostic apparatus can plot a clear image of the blood vessel wall with a clear boundary between the blood vessel wall and the blood vessel lumen, for increased examination accuracy.

[0025] The sharpness filtering processor 80 and the frame data averaging processor 90 are not indispensable for producing somewhat clear images. However, the sharpness filtering processor 80 and the frame data averaging processor 90 are effective to make a finally produced image sharper. The frame data averaging processor 90 used in place of the line data averaging processor 60 is effective to produce somewhat clear images.

45 [0026] A method of processing an ultrasound signal according to the present invention will be described below.

[0027] FIG. 6 illustrates a method of processing an ultrasound signal according to the present invention. The processing sequence shown in FIG. 6 is carried out by the ultrasonic diagnostic apparatus shown in FIG. 1.

50 [0028] The signal transmitter/receiver 40 sends an ultrasonic output signal to the ultrasonic transducer 25. In response to the ultrasonic output signal, the ultrasonic transducer 25 applies an ultrasonic wave having a frequency higher than 40 MHz to the blood vessel 10 in step S1. The applied ultrasound signal is reflected by inner and outer wall surfaces of the blood vessel 10. The reflected signal is received through the ultrasonic transducer 25 by the signal transmitter/receiver 40 in step S2. The reflected signal received by the signal transmitter/receiver 40 is converted into digital data by the fast A/D converter 50 in step S3. The processing in steps S1 through S3 is carried out with respect to each of 1024 lines, i.e., lines 1 through 1204, as shown in FIG. 1. The data obtained from the 1024 lines serve as data of one frame.

55 [0029] The line data averaging processor 60 stores lines of the digital data of the reflected signal, and adds the lines of the digital data to average the reflected signal in step S4. If the line data averaging mode is not selected, then step S4 is omitted. Then, the demodulating/logarithmic converting processor 70 demodulates the averaged reflected signal

and converts the demodulated signal into a logarithmic signal in step S5. The demodulated logarithmic reflected signal is a low-frequency signal.

**[0030]** The image constructor 100 converts the detected reflected signal into a polar-coordinate signal to construct a cross-sectional vascular image in a radial scan B mode based on the polar-coordinate signal while the ultrasonic transducer 25 is being rotated in the blood vessel 10 in step S6. The display unit 110 displays the cross-sectional vascular image in the radial scan B mode which is constructed by the image constructor 100 in step S7.

**[0031]** The user looks at the cross-sectional vascular image displayed by the display unit 110, and performs the diagnosis of arteriosclerosis, the preoperative diagnosis for an intravascular treatment, and the postoperative observation of an intravascular treatment.

**[0032]** FIG. 7 shows a cross-sectional vascular image in a radial scan B mode which is actually displayed by the display unit 110 when an ultrasonic echo signal is processed by the line data averaging process. It can be seen from FIG. 7 that the boundary between the blood vessel wall and blood vessel lumen of a blood vessel which is represented by an annular white region is clearly displayed.

**[0033]** For displaying a cross-sectional vascular image in a radial scan B mode more clearly, the logarithmic signal in step S5 may be processed according to the sharpness filtering process by the sharpness filtering processor 80 in step S5-1 (see FIG. 6). The sharpness filtering process makes blurred regions in the cross-sectional vascular image sharper.

**[0034]** FIG. 8 shows a cross-sectional vascular image in a radial scan B mode which is displayed by the display unit 110 when an ultrasonic echo signal is processed by a line data averaging process and a sharpness filtering process. It can be seen from FIG. 8 that the boundary between the blood vessel wall and blood vessel lumen of a blood vessel which is represented by an annular white region is sharper than the boundary in the cross-sectional vascular image shown in FIG. 7 which is displayed without being processed by the sharpness filtering process.

**[0035]** For removing a reflected echo from blood vessels and displaying a cross-sectional vascular image in a radial scan B mode more clearly, a plurality of frames of a low-frequency signal may be averaged by the frame data averaging processor 90 in step S5-2 after step S5-1 (see FIG. 6).

**[0036]** FIG. 9 shows a cross-sectional vascular image in a radial scan B mode which is produced when an ultrasonic echo signal is processed by a line data averaging process, a sharpness filtering process, and a frame data averaging process. It can be seen from FIG. 9 that the boundary between the blood vessel wall and blood vessel lumen of a blood vessel which is represented by an annular white region is sharper than the boundary in the cross-sectional vascular image shown in FIG. 8 which is displayed after being processed by the sharpness filtering process.

**[0037]** The process of adding the lines of the digital data to average the reflected signal in step S4 may be replaced with the process of adding the frames of the digital data to average the digital data according to the frame data averaging process. The frame data averaging process may be either a simple averaging process or a recursive frame correlating process, as described above.

**[0038]** In FIG. 6, the sharpness filtering process in step S5-1 is followed by the frame data averaging process in step S5-2. However, these processes may be switched around. Furthermore, the process of constructing a cross-sectional vascular image in step S6 may be performed prior to the frame data averaging process in step S5-2. These changes in the processing sequence do not produce significant differences in the generated cross-sectional vascular image.

Comparative Examples:

**[0039]** FIGS. 10 and 11 show cross-sectional vascular images in a radial scan B mode which are produced by a conventional ultrasonic diagnostic apparatus. The cross-sectional vascular image shown in FIG. 10 is produced by performing a line data averaging process on a digital signal that is converted from a demodulated signal (corresponding to the demodulated and logarithmically converted data in the present invention) produced from a blood vessel wall by the conventional ultrasonic diagnostic apparatus. The cross-sectional vascular image shown in FIG. 11 is produced by performing a line data averaging process and a frame data averaging process on a digital signal that is converted from a demodulated signal produced from a blood vessel wall by the conventional ultrasonic diagnostic apparatus. More specifically, the cross-sectional vascular image shown in FIG. 10 is produced by a sequence including an ultrasonic wave applying process, a reflected wave receiving process, a demodulating process, an A/D converting process, and a line data averaging process, and the cross-sectional vascular image shown in FIG. 11 is produced by a sequence including an ultrasonic wave applying process, a reflected wave receiving process, a demodulating process, an A/D converting process, a line data averaging process, and a frame data averaging process.

**[0040]** As described above, FIGS. 8 and 9 show cross-sectional vascular images in a radial scan B mode which are produced by the ultrasonic diagnostic apparatus according to the present invention. The cross-sectional vascular image shown in FIG. 8 is produced by converting a received signal from a blood vessel wall, without demodulation, into digital data, and thereafter processing the digital data according to the line data averaging process, the demodulating/logarithmic converting process, and the sharpness filtering process in the ultrasonic diagnostic apparatus. The cross-sectional vascular image shown in FIG. 9 is produced by converting a received signal from a blood vessel wall, without demod-

ulation, into digital data, and thereafter processing the digital data according to the line data averaging process, the demodulating/logarithmic converting process, the sharpness filtering process, and the frame data averaging process in the ultrasonic diagnostic apparatus.

5 [0041] A comparison between the cross-sectional vascular images produced by the conventional ultrasonic diagnostic apparatus as shown in FIGS. 10 and 11 and the cross-sectional vascular images produced by the ultrasonic diagnostic apparatus according to the present invention as shown in FIGS. 8 and 9, clearly indicates that they have different respective resolution levels and the ultrasonic diagnostic apparatus according to the present invention is more effective in reducing a reflected echo from blood cells, resulting in a highly clear presentation of the boundary between the blood vessel wall and the blood vessel lumen.

10 [0042] The ultrasonic diagnostic apparatus according to the present invention is capable of producing clear images for at least the following reasons:

The first reason is that a reflected signal that is received is converted into a digital signal without demodulation, and the digital signal is processed by the line data averaging process. Since the received reflected signal is a high-frequency signal, the reflected signal is shifted in phase even if the position of blood cells is slightly different between lines. Therefore, 15 the signal level of a reflected echo from blood vessels can be reduced by averaging the line data. However if a reflected signal is demodulated before line data are averaged and the demodulated signal is a low-frequency signal, the reflected signal is essentially not shifted in phase even the position of blood cells is slightly different between lines. Consequently, even if the line data are averaged, the averaged signal is of a level close to the level of the original signal.

20 [0043] The second reason is that after the line data are averaged to produce a signal suffering a reduced blood cell echo, the signal is processed by the logarithmic converting process, the demodulating process, the resampling process, the sharpness filtering process, and the frame data averaging process. The sequence of these processes makes it possible to display the blood vessel wall and the blood vessel lumen clearly separately from each other. If only the sharpness filtering process is performed, then a speckle pattern which is one type of ultrasonic interference fringe inherent in ultrasonic diagnostic images, and also noise are also emphasized, resulting in a less clear image. Such a shortcoming 25 is eliminated by the frame data averaging process which follows the sharpness filtering process. The frame data averaging process is effective to smooth the speckle pattern and noise, producing an image wherein the blood vessel wall and the blood vessel lumen are displayed clearly separately from each other. Stated otherwise, the signal data are smoothed in time domain and sharpened in space domain so that they are processed in balance to plot a clear image. The signal data may first be processed for smoothing in time domain and then processed for sharpening in space domain, or vice versa for plotting a clear image.

30 [0044] An IC, e.g., a DSP or the like, that is capable of performing the above processes ranging from the fast A/D converting process to the image constructing process may be incorporated in the ultrasonic diagnostic apparatus for real-time data processing to allow the operator to observe a real-time image of a blood vessel wall and a blood vessel lumen which are separate from each other.

35 [0045] According to the present invention, since the ultrasonic diagnostic apparatus according to the present invention can produce a sharp image free of the adverse effect of a reflected echo, the ultrasonic diagnostic apparatus can be used to inspect the patient with increased accuracy. The ultrasonic diagnostic apparatus according to the present invention can effectively be used for the diagnosis of arteriosclerosis, the preoperative diagnosis for an intravascular treatment, and the postoperative observation of an intravascular treatment.

40 [0046] Although a certain preferred embodiment of the present invention has been shown and described in detail, it should be understood that various changes and modifications may be made therein without departing from the scope of the appended claims.

45 **Claims**

1. An ultrasonic diagnostic apparatus for clearly plotting in real-time an image of the boundary between a blood cell wall and a blood vessel lumen, the apparatus comprising:

- 50 at least one ultrasonic transducer (25) configured to send an ultrasound signal to an object, and receive a reflected signal from the object and be rotated;  
 an A/D converter (50) configured to convert the received reflected signal into a digital data;  
 a line data averaging processor (60) configured to store lines of said digital data and average the stored lines of said digital data over a number of lines;  
 55 a demodulator (70) configured to demodulate the averaged digital data;  
 an image constructor (100) configured to construct an image from the demodulated digital data; and  
 a display unit (110) configured to display the constructed image.

2. The ultrasonic diagnostic apparatus according to claim 1, further comprising:

a sharpness filter (80) for filtering said demodulated digital data;  
wherein said image constructor constructs a sharpened image based on the filtered digital data.

5

3. The ultrasonic diagnostic apparatus according to claim 2, further comprising:

a frame data averaging processor (90) configured to store frames of the demodulated signal and average said stored frames of said demodulated digital data.

10

4. The ultrasonic diagnostic apparatus according to claim 1, further comprising:

a selector configured to determine whether said digital data is to be averaged by said frame data averaging processor (90) or not.

15

5. The ultrasonic diagnostic apparatus according to claim 3, wherein said frame data averaging processor (90) is configured to add the stored frames and average the added frames according to either a simple averaging process or a recursive frame correlating process.

20

6. The ultrasonic diagnostic apparatus according to claim 1, wherein said A/D converter has a sampling frequency of 80 MHz or higher.

7. The ultrasonic diagnostic apparatus according to claim 1, wherein the reflected signal from the object has a frequency of 40 MHz or higher, and said A/D converter has a sampling frequency of 80 MHz or higher.

25

8. The ultrasonic diagnostic apparatus according to claim 3, wherein said frame data averaging processor (90) is configured to average said filtered digital data by said sharpness filter (80).

9. The ultrasonic diagnostic apparatus according to claim 3, wherein said frame data averaging processor (90) is configured to average a plurality of images constructed by said image constructor (100).

30

## Patentansprüche

1. Ultraschall-Diagnosegerät zum deutlichen Aufzeichnen eines Bildes der Grenze zwischen einer Blutzellwand und einem Blutgefäßlumen in Echtzeit, wobei das Gerät Folgendes umfasst:

35

wenigstens einen Ultraschallwandler (25), der dafür konfiguriert ist, ein Ultraschallsignal zu einem Gegenstand zu senden und ein reflektiertes Signal zu empfangen und gedreht zu werden,  
einen A/D-Umsetzer (50), der dafür konfiguriert ist, das empfangene reflektierte Signal in digitale Daten umzusetzen,  
einen Zeilendaten-Mittelwertbildungsprozessor (60), der dafür konfiguriert ist, die Zeilen der digitalen Daten zu speichern und den Mittelwert der gespeicherten Zeilen der digitalen Daten über eine Zahl von Linien zu bilden,  
einen Demodulator (70), der dafür konfiguriert ist, die gemittelten digitalen Daten zu demodulieren,  
einen Bildkonstrukteur (100), der dafür konfiguriert ist, aus den demodulierten digitalen Daten ein Bild zu konstruieren, und  
eine Anzeigeeinheit (110), die dafür konfiguriert ist, das konstruierte Bild anzuzeigen.

40

45

2. Ultraschall-Diagnosegerät nach Anspruch 1, das ferner Folgendes umfasst:

50

ein Schärfefilter (80) zum Filtern der demodulierten digitalen Daten,  
wobei der Bildkonstrukteur auf der Grundlage der gefilterten digitalen Daten ein geschärftes Bild konstruiert.

3. Ultraschall-Diagnosegerät nach Anspruch 2, das ferner Folgendes umfasst:

55

einen Rahmendaten-Mittelwertbildungsprozessor (90), der dafür konfiguriert ist, Rahmen des demodulierten Signals zu speichern und den Mittelwert der gespeicherten Rahmen der demodulierten digitalen Daten zu bilden.

## EP 1 609 423 B1

4. Ultraschall-Diagnosegerät nach Anspruch 1, das ferner Folgendes umfasst:

einen Selektor, der dafür konfiguriert ist, zu bestimmen, ob durch den Rahmendaten-Mittelwertbildungsprozessor (90) der Mittelwert der digitalen Daten zu bilden ist oder nicht.

- 5
5. Ultraschall-Diagnosegerät nach Anspruch 3, wobei der Rahmendaten-Mittelwertbildungsprozessor (90) dafür konfiguriert ist, die gespeicherten Rahmen zu addieren und den Mittelwert der addierten Rahmen entweder nach einem einfachen Mittelwertbildungsverfahren oder nach einem rekursiven Rahmenkorrelationsverfahren zu bilden.
- 10
6. Ultraschall-Diagnosegerät nach Anspruch 1, wobei der A/D-Umsetzer eine Abtastfrequenz von 80 MHz oder mehr hat.
7. Ultraschall-Diagnosegerät nach Anspruch 1, wobei das reflektierte Signal von dem Gegenstand eine Frequenz von 40 MHz oder mehr hat und der A/D-Umsetzer eine Abtastfrequenz von 80 MHz oder mehr hat.
- 15
8. Ultraschall-Diagnosegerät nach Anspruch 3, wobei der Rahmendaten-Mittelwertbildungsprozessor (90) dafür konfiguriert ist, den Mittelwert der durch das Schärfefilter (80) gefilterten digitalen Daten zu bilden.
- 20
9. Ultraschall-Diagnosegerät nach Anspruch 3, wobei der Rahmendaten-Mittelwertbildungsprozessor (90) dafür konfiguriert ist, den Mittelwert mehrerer durch den Bildkonstrukteur (100) konstruierter Bilder zu bilden.

### Revendications

- 25
1. Appareil de diagnostic par ultrasons pour tracer clairement en temps réel une image de la limite entre la paroi d'une cellule sanguine et la lumière d'un vaisseau sanguin, l'appareil comprenant :
- 30
- au moins un transducteur à ultrasons (25) configuré pour envoyer un signal ultrasonore vers un objet, et recevoir un signal réfléchi par l'objet et être mis en rotation ;  
un convertisseur A-N (50) configuré pour convertir le signal réfléchi reçu en une donnée numérique ;  
un processeur de moyenne de données de lignes (60) configuré pour mémoriser des lignes desdites données numériques et pour calculer la moyenne des lignes mémorisées desdites données numériques sur un nombre de lignes ;  
un démodulateur (70) configuré pour démoduler les données numériques dont on a calculé la moyenne ;  
35 un constructeur d'image (100) configuré pour construire une image à partir des données numériques démodulées ; et  
une unité d'affichage (110) configurée pour afficher l'image construite.
- 40
2. Appareil de diagnostic par ultrasons selon la revendication 1, comprenant en outre :
- un filtre de netteté (80) pour filtrer lesdites données numériques démodulées ;  
dans lequel ledit constructeur d'image construit une image améliorée d'après les données numériques filtrées.
- 45
3. Appareil de diagnostic par ultrasons selon la revendication 2, comprenant en outre un processeur de moyenne de données de trame (90) configuré pour mémoriser des trames du signal démodulé et pour calculer la moyenne desdites trames mémorisées desdites données numériques démodulées.
- 50
4. Appareil de diagnostic par ultrasons selon la revendication 1, comprenant en outre un sélecteur configuré pour déterminer s'il faut ou non calculer la moyenne desdites données numériques au moyen dudit processeur de moyenne de données de trame (90).
- 55
5. Appareil de diagnostic par ultrasons selon la revendication 3, dans lequel ledit processeur de moyenne de données de trame (90) est configuré pour additionner les trames mémorisées et pour calculer la moyenne des trames additionnées, soit selon un processus de calcul de moyenne simple, soit selon un processus de corrélation de trames récursif.
6. Appareil de diagnostic par ultrasons selon la revendication 1, dans lequel ledit convertisseur A-N a une fréquence d'échantillonnage supérieure ou égale à 80 MHz.

## EP 1 609 423 B1

7. Appareil de diagnostic par ultrasons selon la revendication 1, dans lequel le signal réfléchi par l'objet a une fréquence supérieure ou égale à 40 MHz, et ledit convertisseur A-N a une fréquence d'échantillonnage supérieure ou égale à 80 MHz.
- 5 8. Appareil de diagnostic par ultrasons selon la revendication 3, dans lequel ledit processeur de moyenne de données de trame (90) est configuré pour calculer la moyenne desdites données numériques filtrées par ledit filtre de netteté (80).
- 10 9. Appareil de diagnostic par ultrasons selon la revendication 3, dans lequel ledit processeur de moyenne de données de trame (90) est configuré pour calculer la moyenne d'une pluralité d'images construites par ledit constructeur d'image (100).

15

20

25

30

35

40

45

50

55

FIG. 1

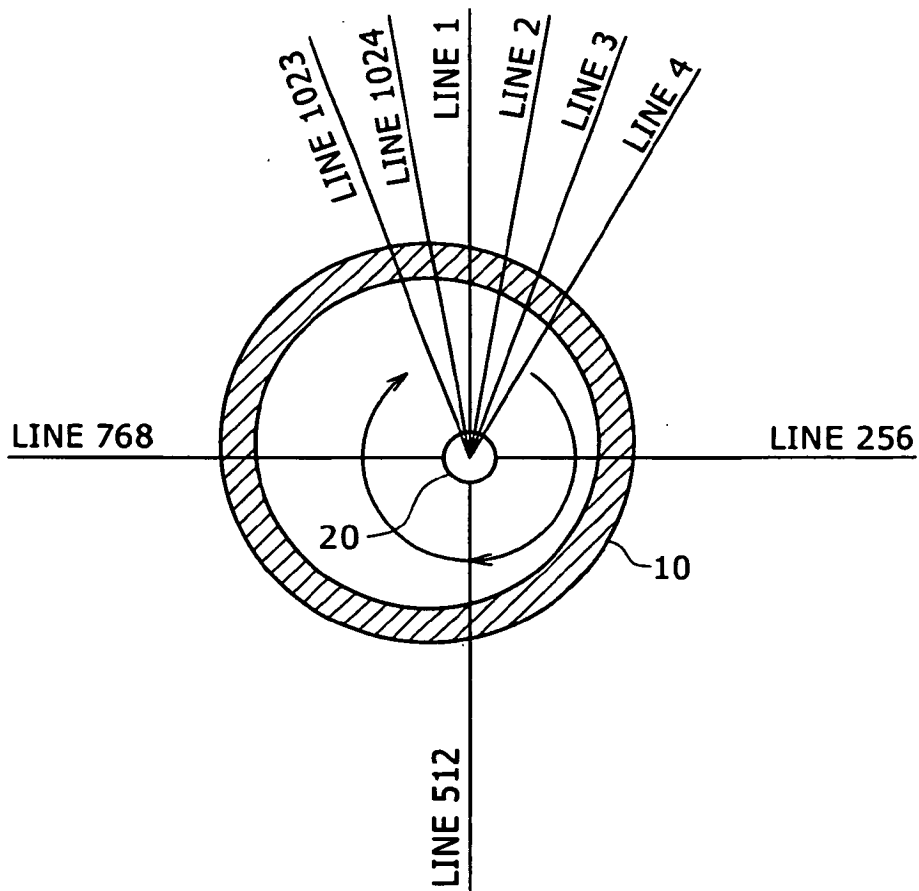


FIG. 2

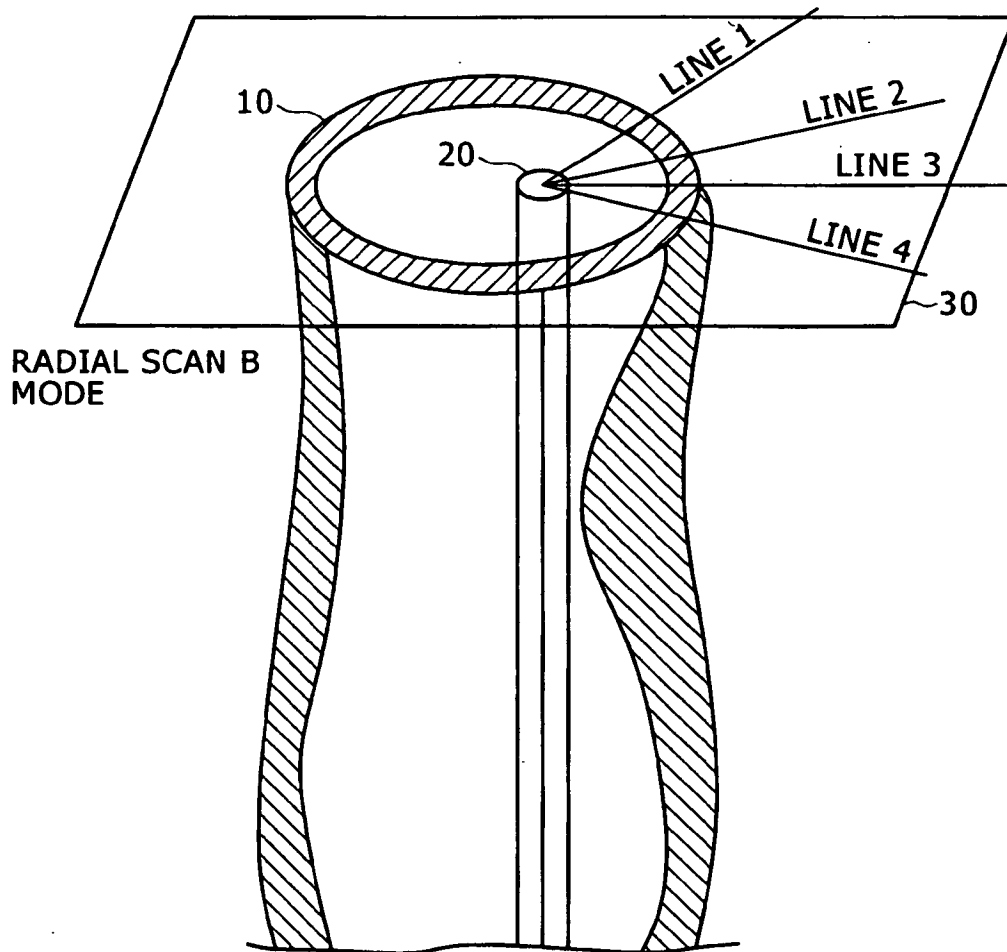


FIG. 3

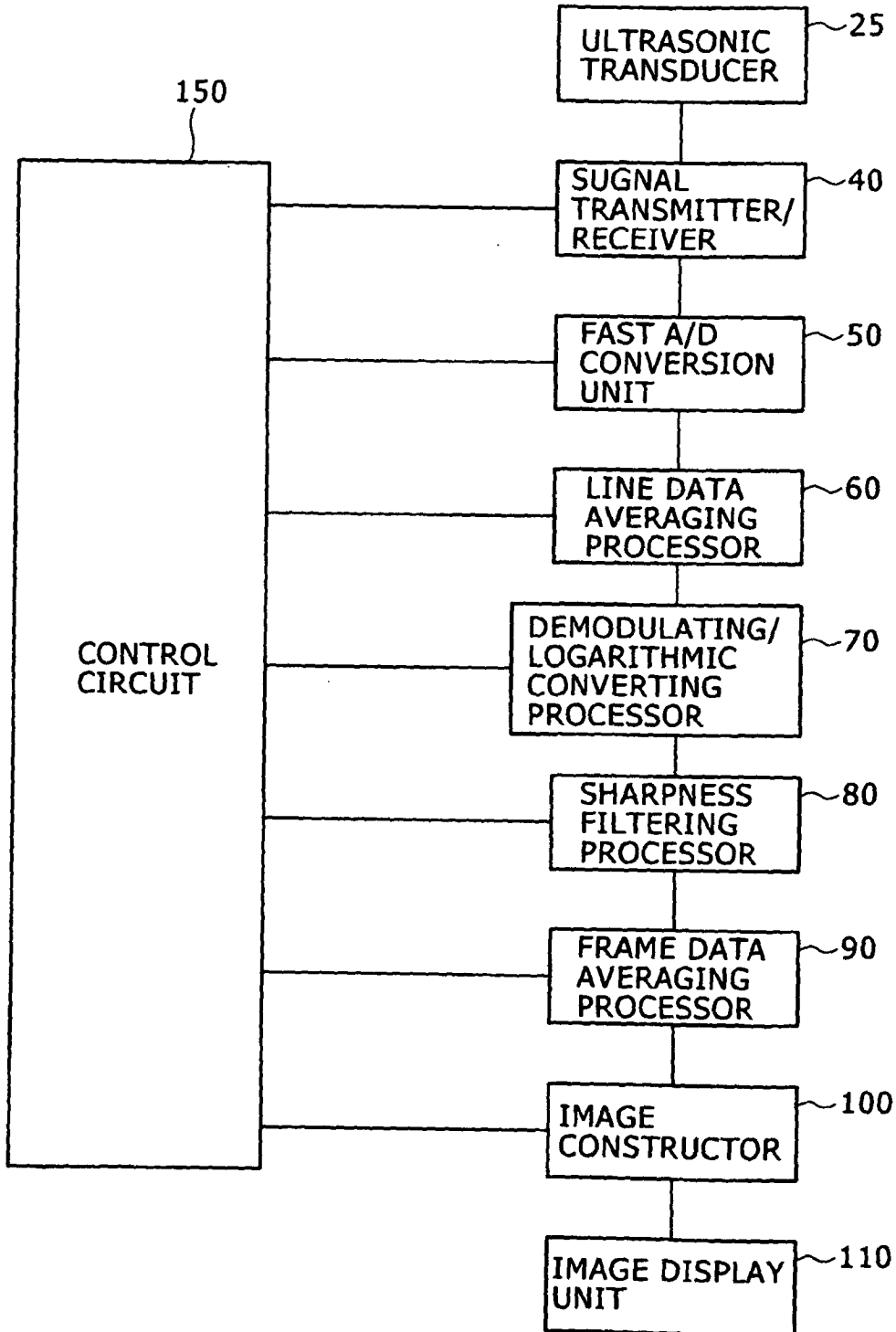


FIG. 4

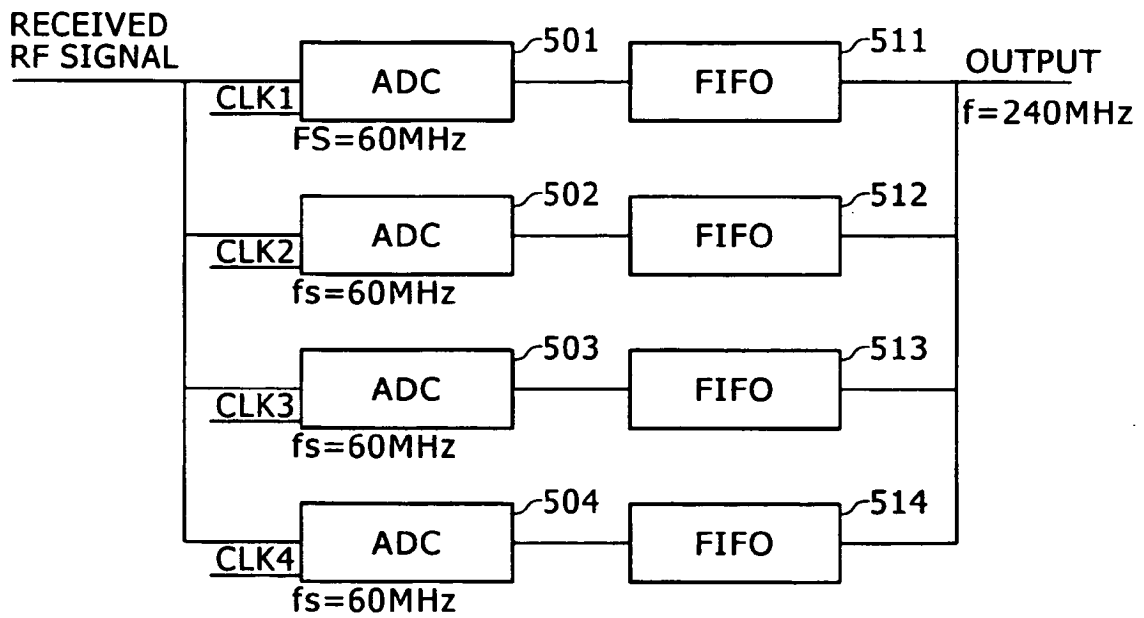


FIG. 5

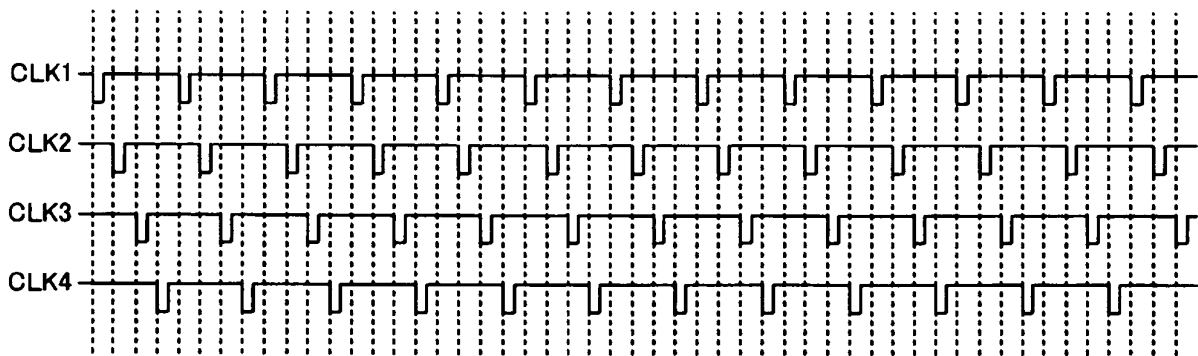


FIG. 6

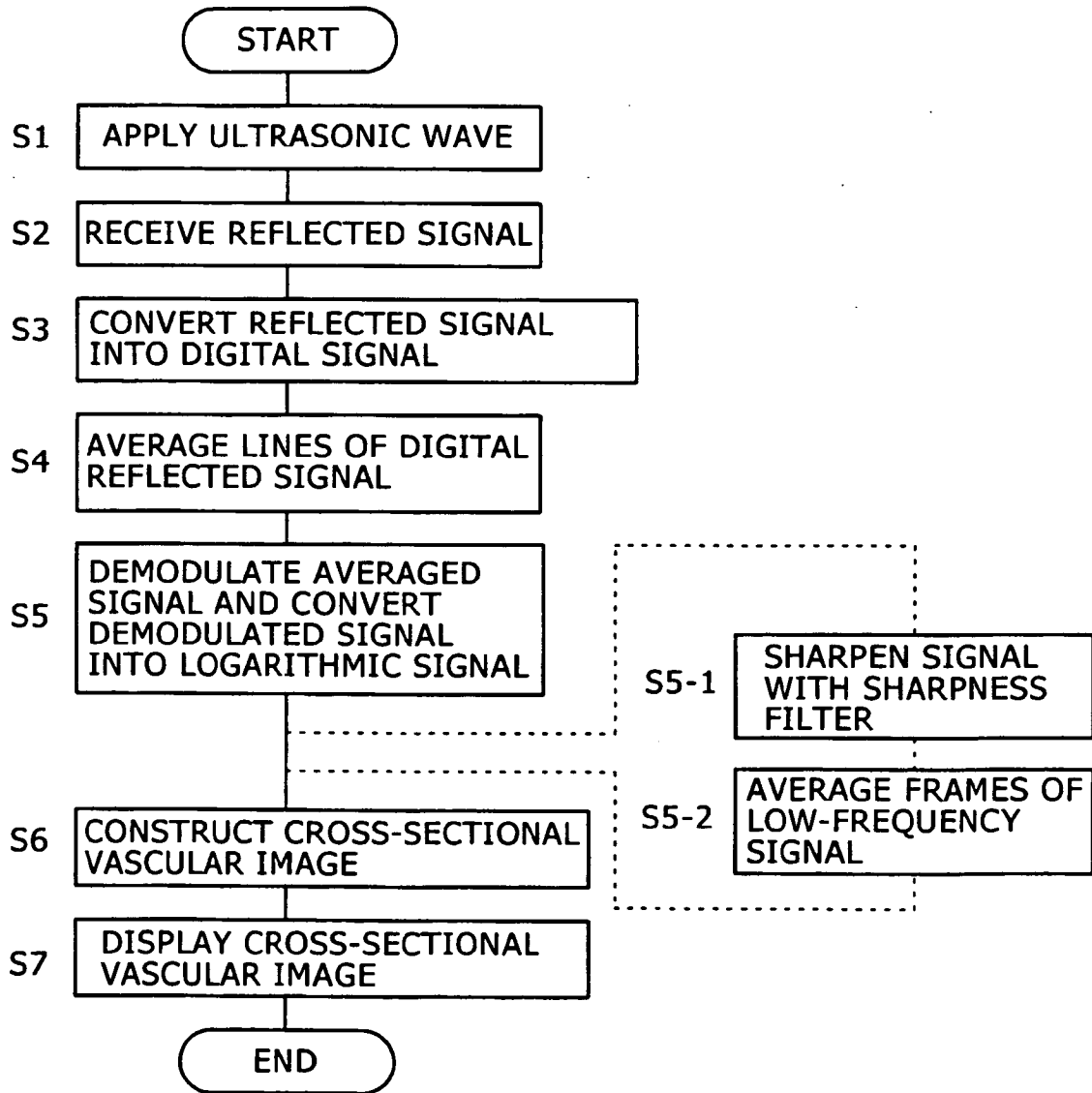
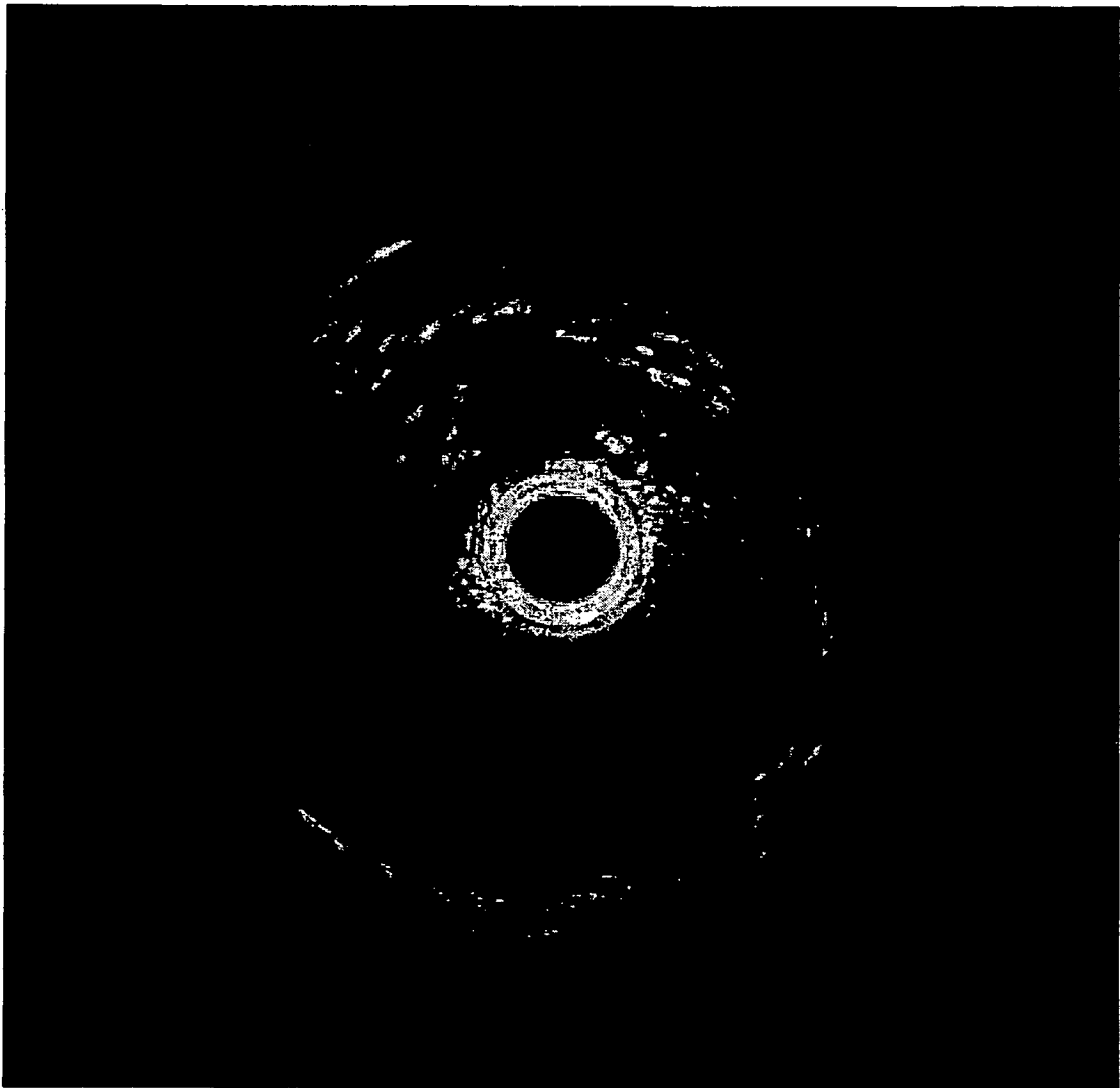
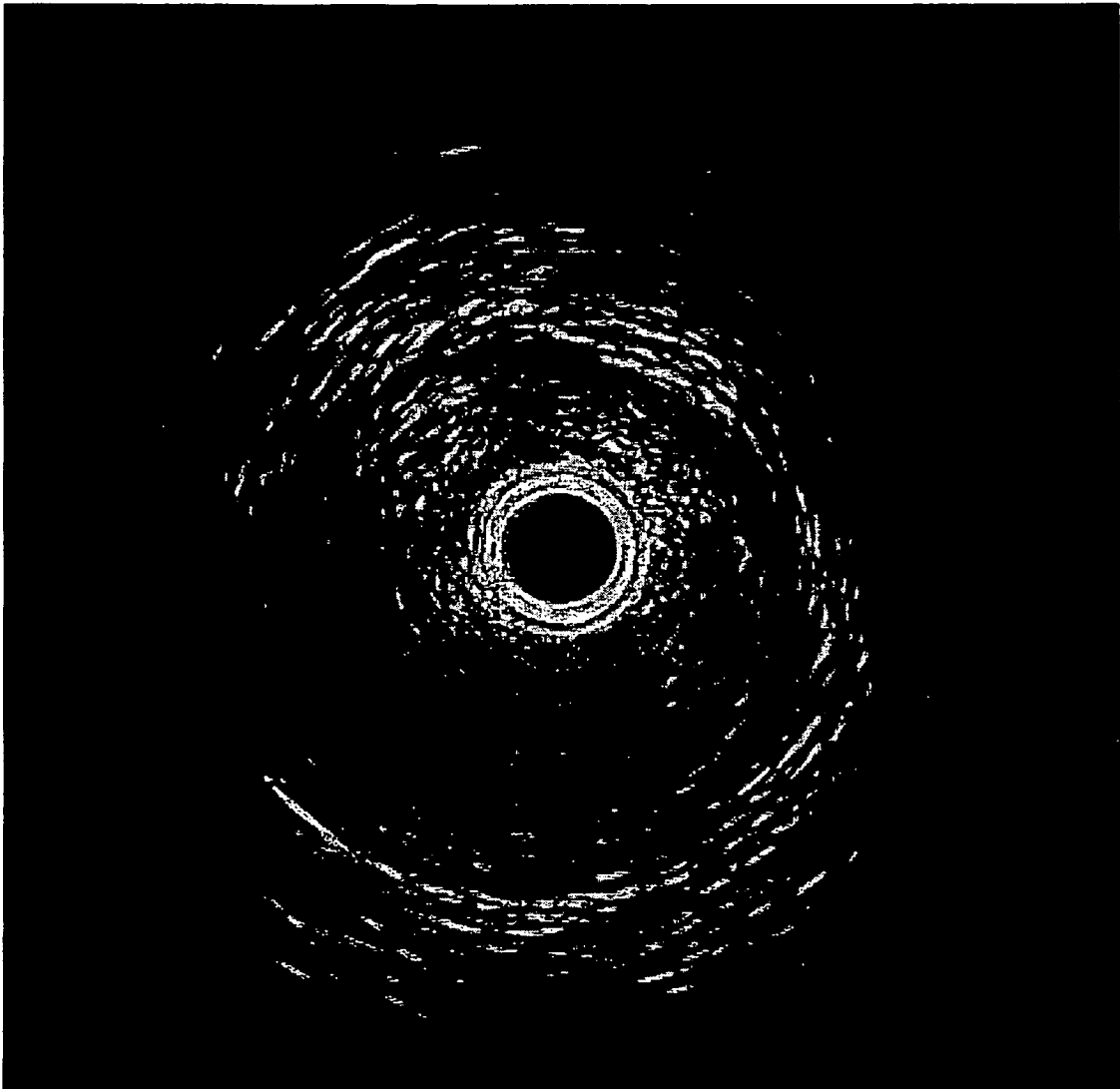


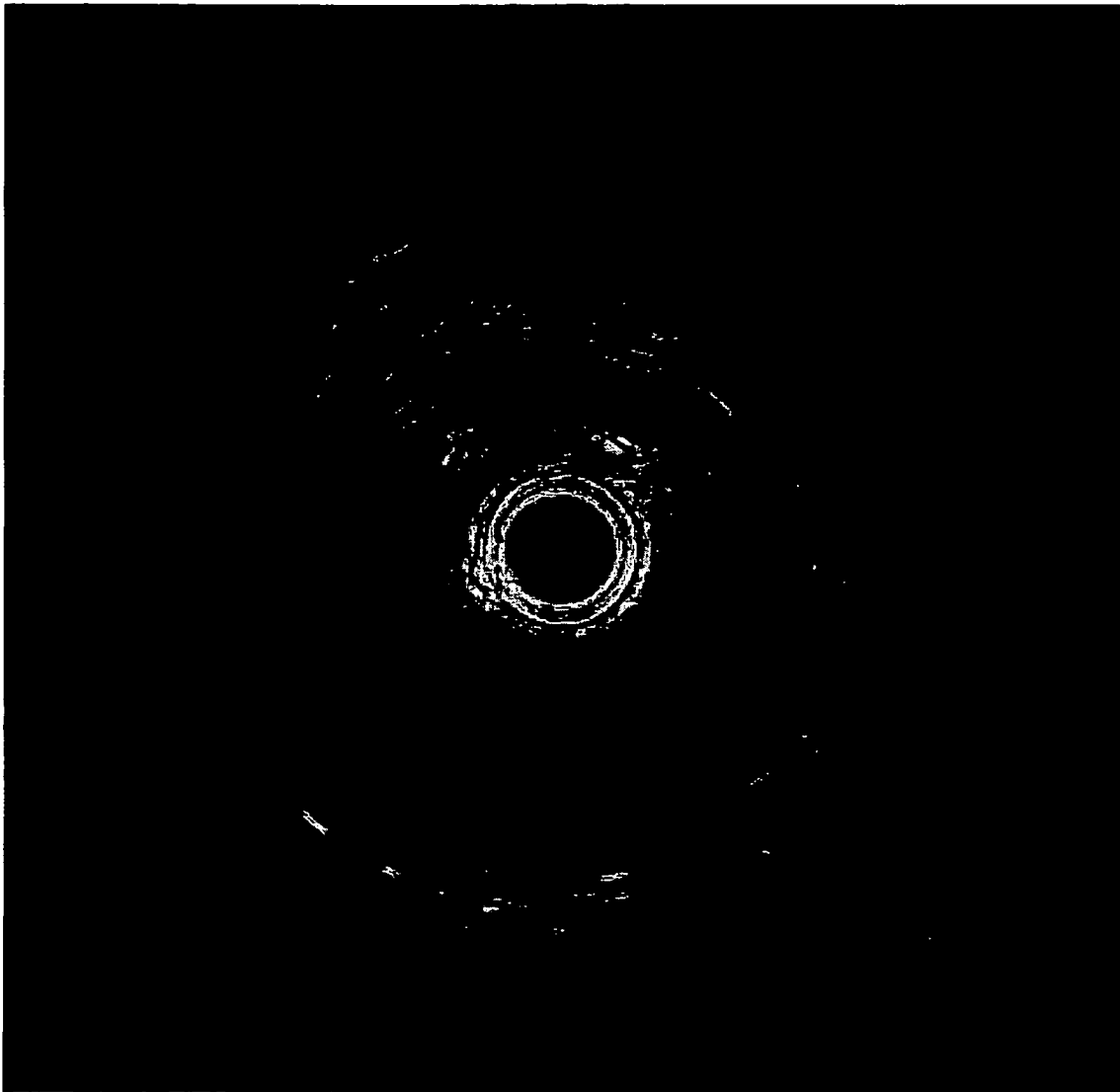
FIG. 7



**FIG. 8**



**FIG. 9**



**FIG. 10**

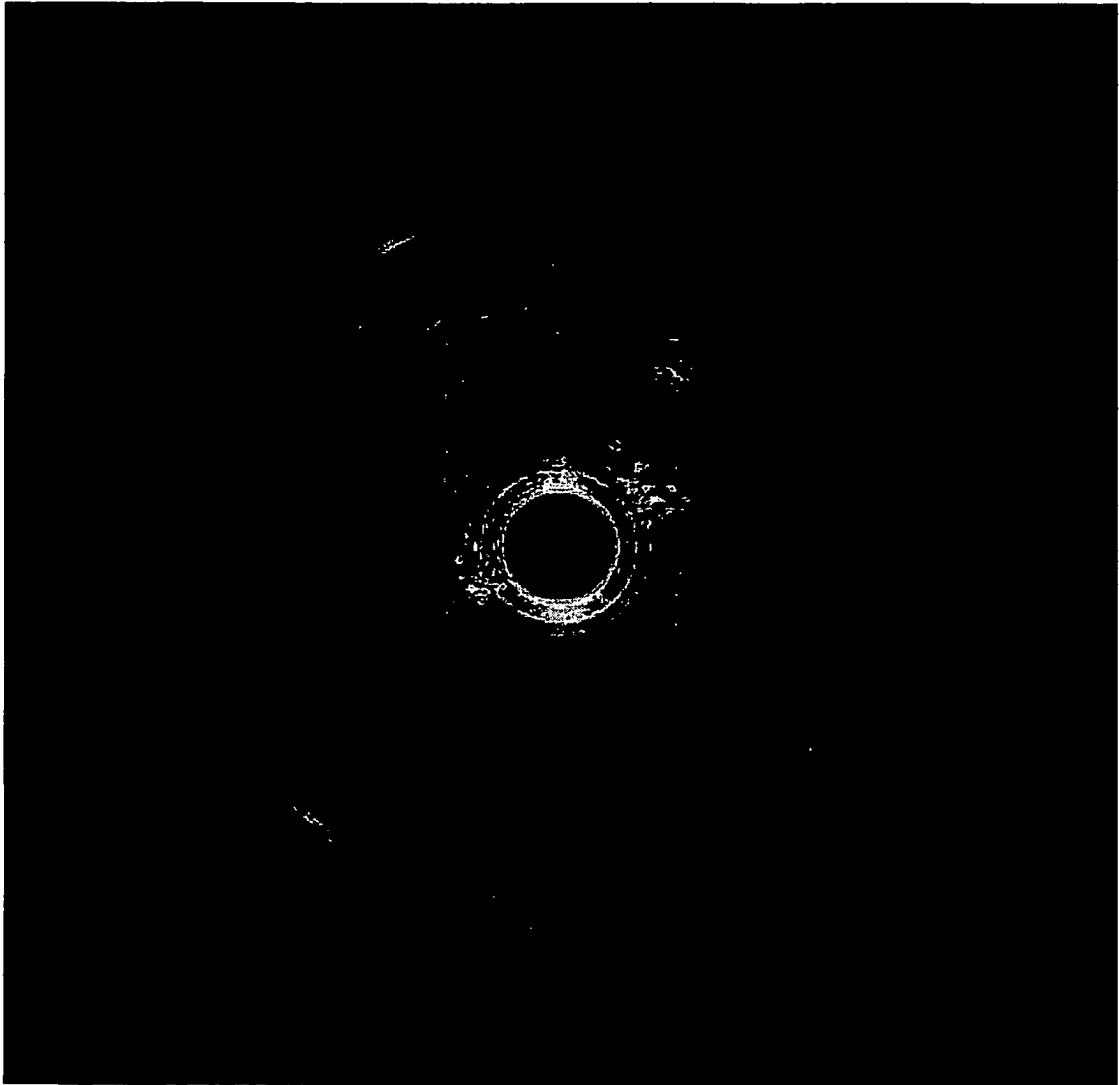


FIG. 11



**REFERENCES CITED IN THE DESCRIPTION**

*This list of references cited by the applicant is for the reader's convenience only. It does not form part of the European patent document. Even though great care has been taken in compiling the references, errors or omissions cannot be excluded and the EPO disclaims all liability in this regard.*

**Patent documents cited in the description**

- US 20020183619 A [0003]

专利名称(译)	超声诊断设备		
公开(公告)号	<a href="#">EP1609423B1</a>	公开(公告)日	2010-03-31
申请号	EP2005013437	申请日	2005-06-22
[标]申请(专利权)人(译)	泰尔茂株式会社		
申请(专利权)人(译)	泰尔茂株式会社		
当前申请(专利权)人(译)	泰尔茂株式会社		
[标]发明人	HIROTA KAZUHIRO		
发明人	HIROTA, KAZUHIRO		
IPC分类号	A61B8/12 A61B8/00 G06T7/00		
CPC分类号	G06T7/0012 A61B8/12 G06T2207/30101		
代理机构(译)	CASALONGA , AXEL		
优先权	2004186344 2004-06-24 JP		
其他公开文献	EP1609423A3 EP1609423A2		
外部链接	<a href="#">Espacenet</a>		

摘要(译)

超声诊断设备包括：超声换能器，容纳在导管中，用于将超声波发送到血管并接收来自血管的反射信号；A / D转换器，用于将接收的反射信号转换成数字信号，数据平均用于存储由数字信号表示的数字数据的行或帧并将所存储的数字数据的行或帧相加以平均反射信号的处理单元，用于解调平均反射信号的解调/对数转换处理器，用于构建数字数据的图像构造器来自解调信号的径向扫描B模式的图像和用于以径向扫描B模式显示构建的图像的显示单元。超声诊断设备绘制具有从血细胞反射的减少的超声回波的横截面血管图像，该图像清楚地显示血管壁和血管腔之间的边界。

