



(12) **EUROPEAN PATENT APPLICATION**

(43) Date of publication:
10.11.2010 Bulletin 2010/45

(51) Int Cl.:
G01S 7/52 (2006.01) **G01S 15/89 (2006.01)**
A61B 8/08 (2006.01)

(21) Application number: **10160682.0**

(22) Date of filing: **22.04.2010**

(84) Designated Contracting States:
AT BE BG CH CY CZ DE DK EE ES FI FR GB GR HR HU IE IS IT LI LT LU LV MC MK MT NL NO PL PT RO SE SI SK SM TR
 Designated Extension States:
AL BA ME RS

(72) Inventors:
 • **Kim, Baek Sop**
Gangwon-do 200-170 (KR)
 • **Lee, Hyeong Do**
Seoul 135-851 (KR)

(30) Priority: **30.04.2009 KR 20090038474**

(74) Representative: **Schmid, Wolfgang**
Lorenz & Kollegen
Patentanwälte Partnerschaftsgesellschaft
Alte Ulmer Strasse 2
89522 Heidenheim (DE)

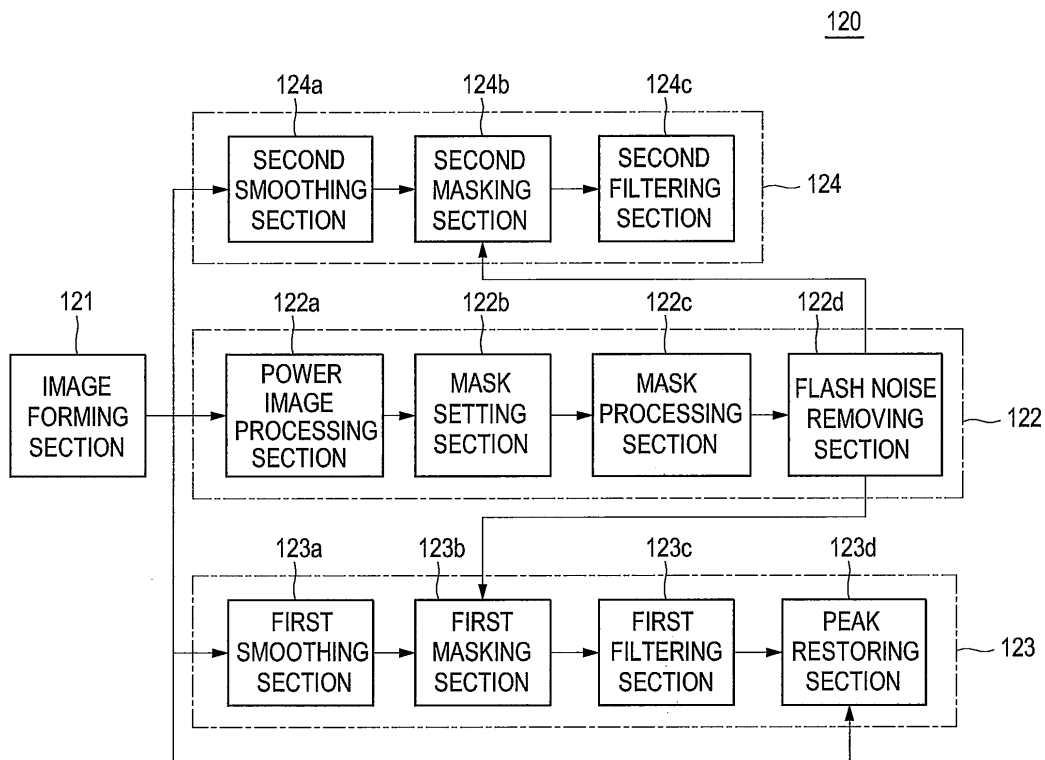
(71) Applicant: **Medison Co., Ltd.**
Kangwon-do 250-875 (KR)

(54) **Color doppler mode image processing in an ultrasound system**

(57) Embodiments for processing a color Doppler mode image in an ultrasound system are disclosed. In one embodiment, the ultrasound system includes: a Doppler signal acquisition unit configured to transmit and receive ultrasound signals to and from a target object to

acquire first Doppler signals; and a processing unit configured to form color Doppler images including power images and velocity images and a mask for detecting a region of interest by using the color flow images, the processing unit being further configured to mask the power images and the velocity image by using the mask.

FIG. 3



Description

CROSS-REFERENCE TO RELATED APPLICATIONS

[0001] The present application claims priority from Korean Patent Application No. 10-10-2009-0038474 filed on April 30, 2009, the entire subject matter of which is incorporated herein by reference.

TECHNICAL FIELD

[0002] The present disclosure relates to ultrasound image processing, and more particularly to color Doppler mode image processing in an ultrasound system.

BACKGROUND

[0003] Recently, an ultrasound system has been extensively used in the medical field due to its non-invasive and non-destructive nature. Modern high-performance ultrasound imaging diagnostic systems and techniques are typically used to produce two- or three-dimensional ultrasound images of internal features of patients. To provide the ultrasound images, the ultrasound system operates in various image modes such as a brightness mode, a Doppler mode and the like to acquire ultrasound images for diagnosis.

[0004] In the Doppler mode, the ultrasound system provides a color Doppler mode image visualizing velocities of moving objects such as blood flow, heart, etc. The color Doppler mode image includes a power image visualizing powers of Doppler signals as 2-dimensional distribution and a velocity image visualizing velocities of the moving objects, which may be computed from the Doppler signals, as 2-dimensional distribution. The color Doppler mode image may visualize the blood flow in real time and a wide range from the blood flow of a high velocity in a large vessel to the blood flow of a low velocity in a small vessel.

[0005] Conventionally, smoothing has been carried out upon the velocity image for enhancement. However, since the blood flow on the velocity image may be extended to the vessel region due to the smoothing, bleeding, which shows blood escape from the real vessel on the velocity image, may be caused. Further, a loss of small vessels may occur. Also, the connectivity loss, i.e., portions of vessel are cut in the velocity image, may be generated. The peaks of the blood flow may be important clinical information in the velocity image. However, the peak loss, i.e., peaks of the blood flow are disappeared in the velocity image, may be also generated due to the smoothing thereupon.

[0006] Further, the effectiveness of pixels in the power image is determined through the fixed thresholding method. However, since the power of blood flow varies according to the heartbeat, the vascular collapse, i.e., the blood vessel region is collapsed in the power image, may occur.

SUMMARY

[0007] Embodiments for processing a color Doppler mode image in an ultrasound system are provided. The ultrasound system comprises: a Doppler signal acquisition unit configured to transmit and receive ultrasound signals to and from a target object to acquire first Doppler signals; and a processing unit configured to form color Doppler images including power images and velocity images and a mask for detecting a region of interest by using the color flow images, the processing unit being further configured to mask the power images and the velocity image by using the mask.

[0008] In another embodiment, a method of processing a color Doppler mode image in an ultrasound system including a Doppler signal acquisition unit and a processing unit, comprises: a) at the Doppler signal acquisition unit, transmitting and receiving ultrasound signals to and from a target object to acquire first Doppler signals; b) at the processing unit, forming color Doppler images including power images and velocity images; c) at the processing unit, forming a mask for detecting a region of interest by using the color Doppler images; and d) at the processing unit, masking the power images and the velocity image by using the mask.

[0009] The Summary is provided to introduce a selection of concepts in a simplified form that are further described below in the Detailed Description. This Summary is not intended to identify key or essential features of the claimed subject matter, nor is it intended to be used in determining the scope of the claimed subject matter.

BRIEF DESCRIPTION OF THE DRAWINGS

[0010]

- FIG. 1 is a block diagram showing an illustrative embodiment of an ultrasound system.
- FIG. 2 is a block diagram showing an illustrative embodiment of a signal acquisition unit in FIG. 1.
- FIG. 3 is a block diagram showing an illustrative embodiment of a processing unit in FIG. 1.
- FIG. 4 is an exemplary diagram showing an example of a graph of mean powers for power images and formation of compound images.
- FIG. 5A is a diagram showing an example of setting a mask.
- FIG. 5B is a diagram showing an example of detecting contours of a mask.
- FIG. 5C is a diagram showing an example of smoothed contours of a mask.
- FIG. 5D is a diagram showing an example resulting from performing filling upon a mask.
- FIG. 6 is a diagram showing an example of a distance transform image.

DETAILED DESCRIPTION

[0011] A detailed description may be provided with reference to the accompanying drawings. One of ordinary skill in the art may realize that the following description is illustrative only and is not in any way limiting. Other embodiments of the present invention may readily suggest themselves to such skilled persons having the benefit of this disclosure.

[0012] Referring to FIG. 1, an illustrative embodiment of an ultrasound system 100 is shown. As depicted therein, the ultrasound system 100 may include a signal acquisition unit 110. The signal acquisition unit 110 may be operable to alternately transmit and receive ultrasound signals to and from a moving target object (e.g., heart, blood flow, etc). The signal acquisition unit 110 may acquire Doppler signals corresponding to a plurality of frames based on the received ultrasound signals. In one embodiment, the frames may include color Doppler mode image frames.

[0013] FIG. 2 is a block diagram showing an illustrative embodiment of the signal acquisition unit 110 in FIG. 1. Referring to FIG. 2, the signal acquisition unit 110 may include a transmit (Tx) signal generating section 111. The Tx signal generating section 111 may be operable to generate a plurality of transmit signals.

[0014] The signal acquisition unit 110 may further include an ultrasound probe 112 containing a plurality of transducer elements for reciprocally converting ultrasound signals and electrical signals. The ultrasound probe 112 may be operable to transmit ultrasound signals into a target object in response to the transmit signals. The ultrasound probe 112 may be further operable to receive echo signals reflected from the target object to thereby output electrical receive signals, which are analog signals. The transmission and reception of the ultrasound signals are alternately carried out to output a plurality of electrical receive signals.

[0015] The signal acquisition unit 110 may further include a beam forming section 113. The beam forming section 113 may be operable to convert the electrical receive signals into digital signals. The beam forming section 113 may be further operable to apply delays to the digital signals in consideration of distances between the elements and focal points, thereby outputting digital receive-focused signals.

[0016] The signal acquisition unit 110 may further include a Doppler signal forming section 114 that may be operable to form Doppler signals based on the digital receive-focused signals. The Doppler signals may contain power information and velocity information. The Doppler forming section 114 may be operable to perform signal processing (e.g., gain adjustment, filtering and the like) necessary for forming the Doppler signals upon the digital receive-focused signals.

[0017] The ultrasound system 100 may further include a processing unit 120 coupled to the signal acquisition unit 110. The processing unit 120 may be operable to

form a color Doppler mode image based on the Doppler signals provided from the signal acquisition unit 110. The processing unit 120 may be further operable to form a mask for detecting a blood vessel region by using the color Doppler mode image and perform masking upon the color Doppler mode image. The color Doppler mode image may include a power image indicative of powers of the Doppler signals as 2-dimensional distribution and a velocity image indicative of velocities of the Doppler signals as 2-dimensional distribution.

[0018] FIG. 3 is a block diagram showing an illustrative embodiment of the processing unit. Referring to FIG. 3, the processing unit 120 may include an image forming section 121, a mask forming section 122, a first image processing section 123 and a second image processing section 124.

[0019] The image forming section 121 may be operable to a power image and a velocity image based on the Doppler signals provided from the signal acquisition unit 121. The mask forming section 122 may be operable to form a mask for detecting a blood vessel region, which is a region of interest, on the power image. In one embodiment, the mask forming section 122 may include a power image processing section 122a, a mask setting section 122b, a mask processing section 122c and a flash noise removing section 122d.

[0020] The power image processing section 122a may be operable to analyze the power images sequentially provided from the image forming section 121 to set a reference power image. In one embodiment, a power image having a mean power greater than a predetermined threshold may be set as the reference power image. The power image processing section 122a may be further operable to compound power images, of which mean powers are less than the predetermined threshold, with the reference power image to thereby form compound images.

FIG. 4 shows an example of mean powers of the power images and examples of setting the reference power image to form the compound images by using the power images. Referring to FIG. 4, if a first power image PI_1 is provided, then the power image processing section 122a may be operable to compute a mean power of the first power image (hereinafter, referred to as "first mean power"). The power image processing section 122a may initially set the first power image PI_1 and the first mean power as the reference power image and the reference mean power.

[0021] If a second power image PI_2 is provided from the image forming section 121, then the power image processing section 122a may be operable to compute the mean power of the second power image PI_2 (hereinafter, referred to as "second mean power"). The power image processing section 112a may check whether the second mean power is greater than the predetermined threshold (e.g., reference mean power 0.8). If the second mean power is greater than the predetermined threshold, then the power image processing section 122a may be

operable to set the second power image PI_2 as a new reference power image.

[0022] If a third power image PI_3 is provided from the image forming section 121, then the power image processing section 122a may be operable to compute the mean power of the third power image PI_3 (hereinafter, referred to as "third mean power"). The power image processing section 122a may check whether the third mean power is greater than the predetermined threshold (e.g., reference mean power 0.8). If the third mean power is greater than the predetermined threshold, then the power image processing section 122a may be operable to set the third power image PI_3 as a new reference power image.

[0023] If a fourth power image PI_4 is provided from the image forming section 121, then the power image processing section 122a may be operable to compute the mean power of the fourth power image PI_4 (hereinafter, referred to as "fourth mean power"). The power image processing section 122a may check whether the fourth mean power is greater than the predetermined threshold (e.g., reference mean power 0.8). If the fourth mean power is less than the predetermined threshold, then the power image processing section 122a may be operable to compound the fourth power image PI_4 and the reference power image, thereby forming a compound image CI_4 . In one embodiment, since the power image having relatively low mean power is compounded with the reference power image, it may be prevented that the blood vessel region is indicated as a small region on the power image due to the low mean power.

[0024] If fifth to eighth power images PI_5 - PI_8 are provided from the image forming section 121, then the power image processing section 122a may be operable to compute mean powers of the fifth to eighth power images PI_5 - PI_8 (hereinafter, referred to as "fifth to eighth mean powers"). The power image processing section 122a may compare the fifth to eighth mean powers with the predetermined threshold (e.g., reference mean power 0.8). If the fifth to eighth mean powers are less than the predetermined threshold, then the power image processing section 122a may be operable to compound the respective fifth to eighth power images PI_5 - PI_8 with the reference power image.

[0025] If a ninth power image PI_9 is provided from the image forming section 121, then the power image processing section 122a may be operable to compute the mean power of the ninth power image PI_9 (hereinafter, referred to as "ninth mean power"). The power image processing section 122a may check whether the ninth mean power is greater than the predetermined threshold (e.g., reference mean power 0.8). If the ninth mean power is greater than the predetermined threshold, then the power image processing section 122a may be operable to set the ninth power image PI_9 as a new reference power image.

[0026] If tenth to twelfth power images PI_{10} - PI_{12} are provided from the image forming section 121, then the

power image processing section 122a may be operable to compute mean powers of the tenth to twelfth power images PI_{10} - PI_{12} (hereinafter, referred to as "tenth to twelfth mean powers"). The power image processing section 122a may compare each of the tenth to twelfth mean powers with the predetermined threshold (e.g., reference mean power 0.8). If the tenth to twelfth mean powers are less than the predetermined threshold, then the power image processing section 122a may be operable to compound each of the tenth to twelfth power images PI_{10} - PI_{12} with the reference power image PI_9 , thereby forming compound images CI_{10} - CI_{12} .

[0027] The mask setting section 122b may be operable to set a region of interest, i.e., a mask for detecting a blood vessel region on each of the reference power images PI_1 - PI_3 and PI_9 and the compound images CI_4 - CI_8 and CI_{10} - CI_{12} , as shown in FIG. 5A. The mask may include one or more sub regions. In one embodiment, the mask may be set by using various well-known methods, such as a thresholding method, an area expanding method, an area segmenting method, a contour extracting method, a graph method, a watershed method, and the like.

[0028] The mask processing section 122c may be operable to detect contours of the mask set in the mask setting section 122b, as illustrated in FIG. 5B. In one embodiment, by way of non-limiting example, the contours may be detected by using contour following, mathematical morphological operation and the like. The mask processing section 122c may be operable to perform smoothing upon the detected contours of the mask, as shown in FIG. 5C. The smoothing may be performed through at least one of Fourier descriptor based algorithm, chain codes, active contour and the like. The mask processing section 122c may be further operable to perform filling upon the smoothed mask, as shown in FIG. 5D.

[0029] The flash noise removing section 122d may be operable to remove flash noises from the mask provided from the mask processing section 122c. The flash noises may occur due to muscles neighboring to the blood vessels, heart muscles and the like whose moving velocities are slower than those of the blood flows while their moving powers are greater than those of the blood flows. The flash noises may be appeared and disappeared in a flash. In one embodiment, the flash noise removing section 122d may be operable to perform region labeling upon the mask of the frame (reference power image or compound image) to assign a specific index to each of the sub regions in the mask. The flash noise removing section 122d may compare the mask of the current frame with the masks of the predetermined number of the previous frames (e.g., 3 frames). If the indices in the mask of the current frame are not identical to those of the respective sub regions of the predetermined number of the previous frames, then the flash noise removing section 122d may determine the different indexed sub region(s) in the mask of the current frame as the flash noises to

thereby remove them. In another embodiment, the flash noise removing section 122d may check whether each of the sub regions in the mask is effective as the blood vessel. The flash noise removing section 122d may remove the sub regions, which do not have the effective values. The effectiveness may be determined by checking whether the maximum value of pixels in each sub region in the mask is greater than a predetermined value. When the maximum value of pixels in the sub region is less than the predetermined value, the corresponding region sub may be determined as the noise. Also, the effectiveness may be determined by checking whether the contours of the sub regions in the mask are flat over a predetermined portion.

[0030] The first image processing section 123 may use the mask provided from the mask forming section 122 to mask the velocity images, which may be sequentially provided from the image forming section 121. Referring to FIG. 3, the first image processing section 123 may include a first smoothing section 123a, a first masking section 123b, a first filtering section 123c and a peak restoring section 123d.

[0031] The first smoothing section 123a may be operable to perform smoothing upon the velocity images. In one embodiment, by way of non-limiting example, the smoothing may be carried out through one of the mean filtering, Gaussian filtering, median filtering, low pass filtering, graph regularization and the like.

[0032] The first masking section 123b may use the mask provided from the mask forming section 122 to mask the smoothed velocity images. The first masking section 123b may be operable to use the mask to set regions corresponding to the blood vessels for each of pixels of the respective velocity images as "1" and regions except for the blood vessel regions as "0."

[0033] The first filtering section 123c may be operable to apply distance weighting to the masked velocity images and then perform border smoothing thereupon. The distance weighting may be performed such that the velocities of the blood flow at blood vessel border portions are indicated slower than those at the center portion of the blood flow.

[0034] The first filtering section 123c may be operable to form distance transform images by using the masked velocity images. The first filtering section 123c may set pixels corresponding to background (i.e., not blood vessel regions) as "0" and the rest of the pixels as minimum distance values from the background, as shown in FIG. 6, to thereby form the distance transform images. Distance weighting corresponding to the pixels of the distance transform image may be expressed as a function of the pixels. In one embodiment, the distance weighting may be defined as $w(i) = \min(i * 0.2 + 0.6, 1)$, wherein i represents a pixel value in the distance transform image. Thus, if a pixel value of the smoothed velocity image is $f(x, y)$, this pixel value may be transformed to $f(x, y) * w(f(x, y))$. The first filtering section 123c may be further operable to detect blood vessel border portion in the dis-

tance weighted velocity image and then perform smoothing upon the detected border portions.

[0035] The peak restoring section 123d may be operable to restore peaks in the velocity images provided from the first filtering section 123c. The maximum velocity (i.e., peak) of the blood flow in the blood vessel may provide clinically important information, so that the peaks should be maintained. However, the peaks may be blurred during the smoothing, which makes the peak values lowered. Thus, the peak restoring section 123d may be operable to compute image differences between the velocity images provided from the image processing section 121 and the smoothed velocity images. The peak restoring section 123d may check peak candidates, which are regions over the image difference of "0," and then detect regions greater than a predetermined threshold as the peak regions among the peak candidates. The peak restoring section 123d may be operable to restore the peaks in the smoothed velocity image by using the detected peak regions.

[0036] The second image processing section 124 may be operable to use the mask provided from the mask forming section 122 to mask the power images sequentially provided from the image forming section 121. In one embodiment, the second image processing section 124 may include a second smoothing section 124a, a second masking section 124b and a second filtering section 124c.

[0037] If the power images are provided from the image forming section 121, the second smoothing section 124a may be operable to perform smoothing upon the power images. In one embodiment, the smoothing may be performed through mean filtering, Gaussian filtering, median filtering, low pass filtering, graph regularization and the like.

[0038] The second masking section 124b may use the mask provided from the mask forming section 122 to mask the smoothed power images. The second masking section 124b may be operable to use the mask to set regions corresponding to the blood vessels for each of pixels of the respective power images as "1" and regions except for the blood vessel regions as "0."

[0039] The second filtering section 124c may be operable to apply distance weighting to the masked power image and then perform border smoothing thereupon. The distance weighting may be performed such that the powers of the blood flow at blood vessel border portions are indicated lower than those at the center portion of the blood flow. The second filtering section 124c may be operable to form distance transform images by using the masked power images. The second filtering section 124c may be further operable to detect blood vessel border portion in the distance weighted power images and then perform smoothing upon the detected border portions.

[0040] Referring back to FIG. 1, the display unit 130 may include at least one of a CRT monitor, a LCD monitor, a plate display and the like. The display unit 130 may display the color Doppler mode images formed in the

processing unit 120, i.e., velocity images and power images. The control unit 140 may operable to control the formation, image processing and display of the power images and the velocity images.

[0041] In another embodiment, instructions for performing the above method of processing the color Doppler mode image may be recorded in a computer readable medium using computer-readable instructions. The computer readable medium may include any types of record media, which can be read by a computer system. The computer readable medium may include read only memory (ROM), random access memory (RAM), CD-ROM, magnetic tape, floppy disk, optical-data recording apparatus and the like. The computer readable medium comprises computer executable instructions that may be configured to perform the following acts: a) transmitting and receiving ultrasound signals to and from a target object to acquire first Doppler signals; b) forming color Doppler images including power images and velocity images; c) forming a mask for detecting a region of interest by using the color Doppler images; and d) masking the power images and the velocity image by using the mask.

[0042] Although embodiments have been described with reference to a number of illustrative embodiments thereof, it should be understood that numerous other modifications and embodiments can be devised by those skilled in the art that will fall within the spirit and scope of the principles of this disclosure. More particularly, numerous variations and modifications are possible in the component parts and/or arrangements of the subject combination arrangement within the scope of the disclosure, the drawings and the appended claims. In addition to variations and modifications in the component parts and/or arrangements, alternative uses will also be apparent to those skilled in the art.

Claims

1. An ultrasound system, comprising:

a Doppler signal acquisition unit configured to transmit and receive ultrasound signals to and from a target object to acquire first Doppler signals; and
 a processing unit configured to form color Doppler images including power images and velocity images and a mask for detecting a region of interest by using the color flow images, the processing unit being further configured to mask the power images and the velocity image by using the mask.

2. The ultrasound system of Claim 1, wherein the processing unit includes:

an image forming section configured to form the power images and the velocity images;

a mask forming section configured to form a mask by using the power image;
 a first image processing section configured to mask the velocity images by using the mask; and
 a second image processing section configured to mask the power images by using the mask.

3. The ultrasound system of Claim 2, wherein the mask forming section includes:

a power image processing section configured to analyze the power images to set a reference power image whose mean power is greater than a predetermined threshold, and to compound the reference power image with power images whose mean power is less than the predetermined threshold to form compound images;
 a mask setting section configured to set the mask for detecting the region of interest by using the reference power image and the compound images; and
 a mask processing section configured to detect contours of the mask, perform smoothing upon the detected contours, and perform filling upon the smoothed mask.

4. The ultrasound system of Claim 3, wherein the predetermined threshold is a value obtained by multiplying the reference mean power by a predetermined value.

5. The ultrasound system of Claim 4, wherein the mask forming section includes a flash noise removing section to remove flash noises in the mask.

6. The ultrasound system of Claim 4, wherein the power image processing section is configured to:

compute a first mean power of a first power image provided from the image forming section to set a reference mean power;
 set the first power image as a reference power image;
 compute an i^{th} mean power of an i^{th} power image provided from the image processing section, wherein i is a positive integer greater than 1;
 compare the i^{th} mean power with a predetermined threshold;
 set, when the i^{th} mean power is greater than the predetermined threshold, the i^{th} mean power as a new reference mean power and set the i^{th} power image as a new reference power image; and
 compound, when the i^{th} mean power is less than the predetermined threshold, the i^{th} power image to the reference power image.

7. The ultrasound system of Claim 2, wherein the first

image processing section includes:

a first smoothing section configured to perform smoothing upon the velocity images;
 a first masking section configured to mask the smoothed velocity images by using the mask;
 a first filtering section configured to perform distance weighting and border smoothing upon the masked velocity images; and
 a peak restoring section configured to obtain difference image between the velocity image provided from the image processing section and the distance-weighted and border-smoothed velocity images, detect peak regions by using the difference images, and restore peaks of the distance-weighted and border-smoothed velocity images by using the detected peak regions.

8. The ultrasound system of Claim 2, wherein the second image processing section includes:

a second smoothing section configured to perform smoothing upon the power images;
 a second masking section configured to mask the smoothed power images; and
 a second filtering section configured to perform distance weighting and border smoothing upon the masked power images.

9. A method of processing a color Doppler mode image in an ultrasound system including a Doppler signal acquisition unit and a processing unit, comprising:

- a) at the Doppler signal acquisition unit, transmitting and receiving ultrasound signals to and from a target object to acquire first Doppler signals;
- b) at the processing unit, forming color Doppler images including power images and velocity images;
- c) at the processing unit, forming a mask for detecting a region of interest by using the color Doppler images; and
- d) at the processing unit, masking the power images and the velocity image by using the mask.

10. The method of Claim 9, wherein the c) includes:

- c1) analyzing the power images to set a reference power image whose mean power is greater than a predetermined threshold, and compounding the reference power image with power images whose mean power is less than the predetermined threshold to form compound images;
- c2) setting the mask for detecting the region of interest by using the reference power image and the compound images; and

- c3) detect contours of the mask to perform smoothing upon the detected contours; and
- c4) performing filling upon the smoothed mask.

5 11. The method of Claim 10, wherein the c) further includes removing flash noises from the mask.

12. The method of Claim 10, wherein the predetermined threshold is a value obtained by multiplying the reference mean power by a predetermined value.

10 13. The method of Claim 10, wherein the c1) includes:

- computing a first mean power of a first power image provided from the image forming section to set a reference mean power;
- setting the first power image as a reference power image;
- computing an i^{th} mean power of an i^{th} power image provided from the image processing section, wherein i is a positive integer greater than 1;
- comparing the i^{th} mean power with a predetermined threshold;
- setting, when the i^{th} mean power is greater than the predetermined threshold, the i^{th} mean power as a new reference mean power and set the i^{th} power image as a new reference power image; and
- compounding, when the i^{th} mean power is less than the predetermined threshold, the i^{th} power image to the reference power image.

14. The method of Claim 9, wherein the d) includes:

- performing smoothing upon the velocity images;
- masking the smoothed velocity images by using the mask;
- performing distance weighting and border smoothing upon the masked velocity images;
- obtaining difference image between the velocity image provided from the image processing section and the distance-weighted and border-smoothed velocity images;
- detecting peak regions by using the difference images; and
- restoring peaks of the distance-weighted and border smoothed velocity images by using the detected peak regions.

15. The method of Claim 9, wherein the d) include:

- performing smoothing upon the power images;
- masking the smoothed power images; and
- performing distance weighting and border smoothing upon the masked power images.

FIG. 1

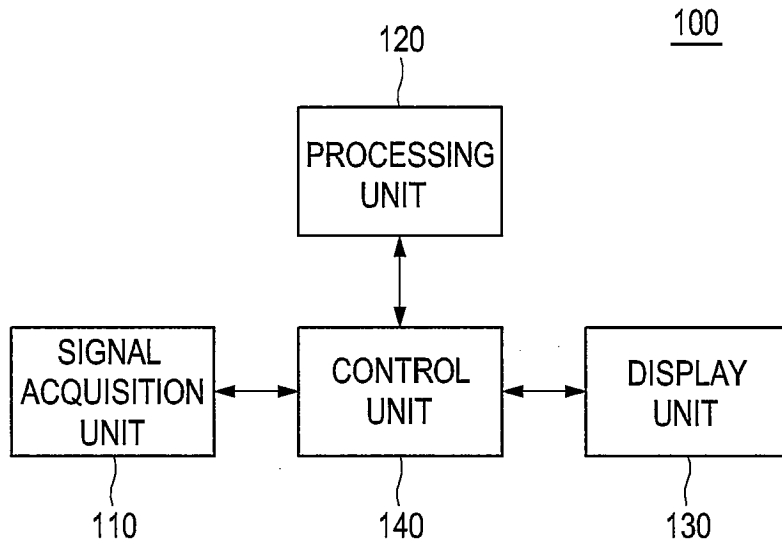


FIG. 2

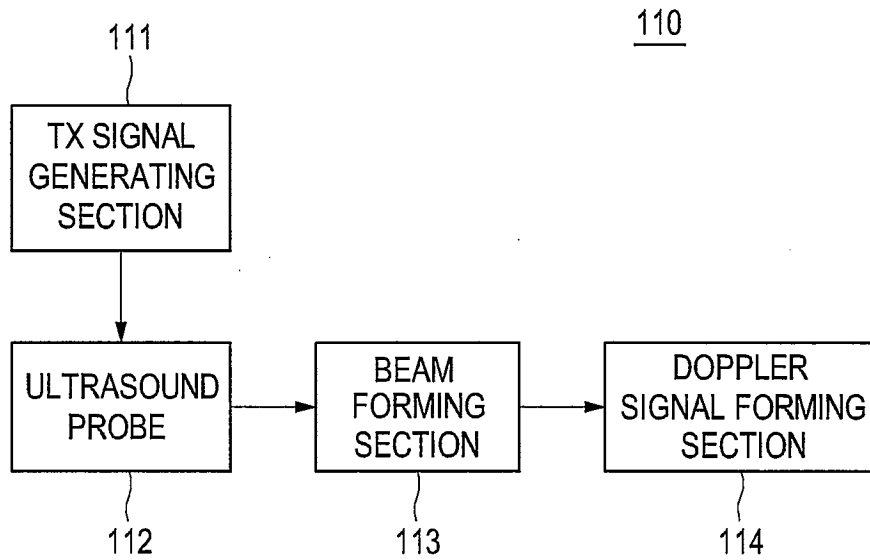


FIG. 3

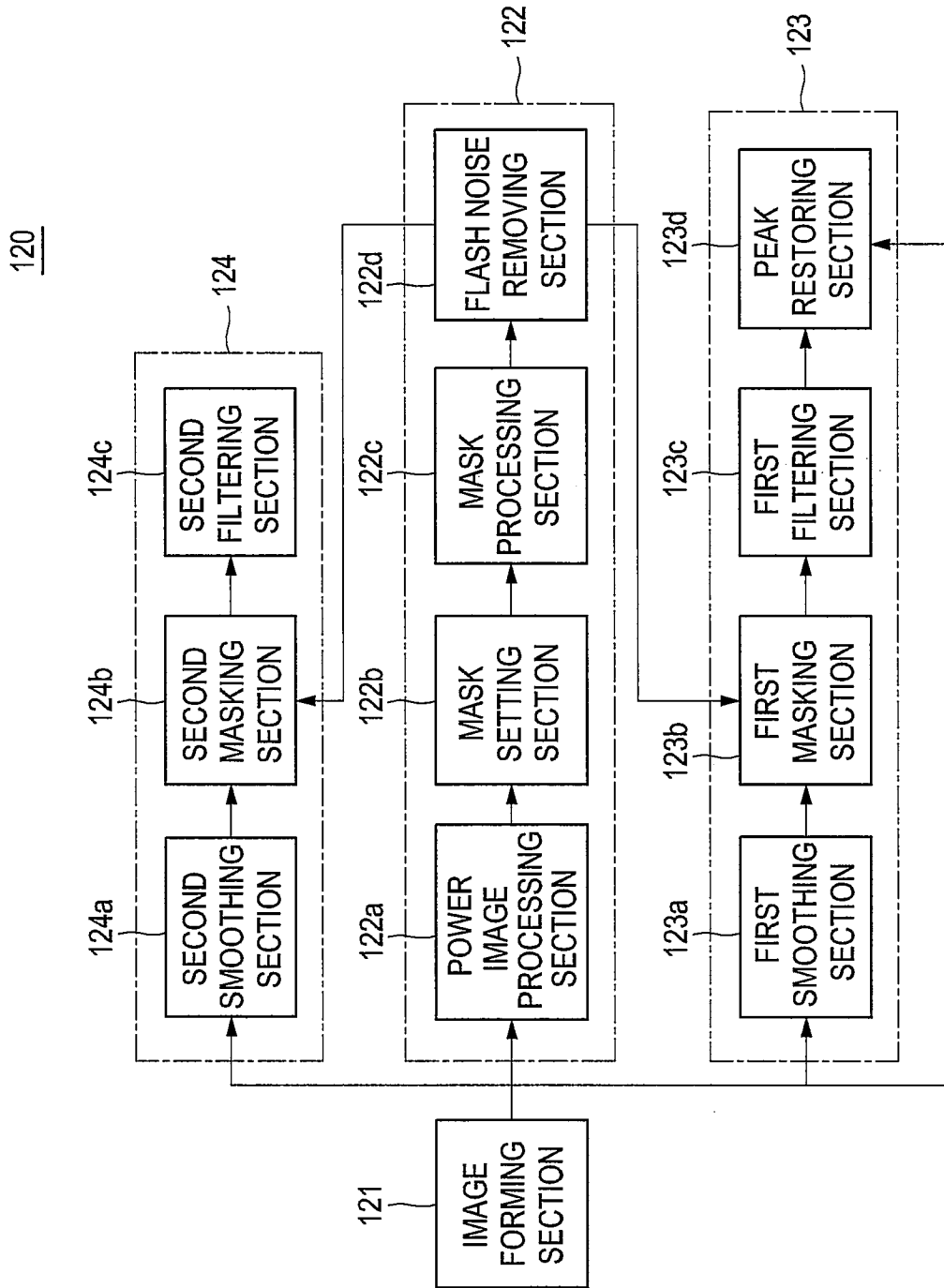


FIG. 4

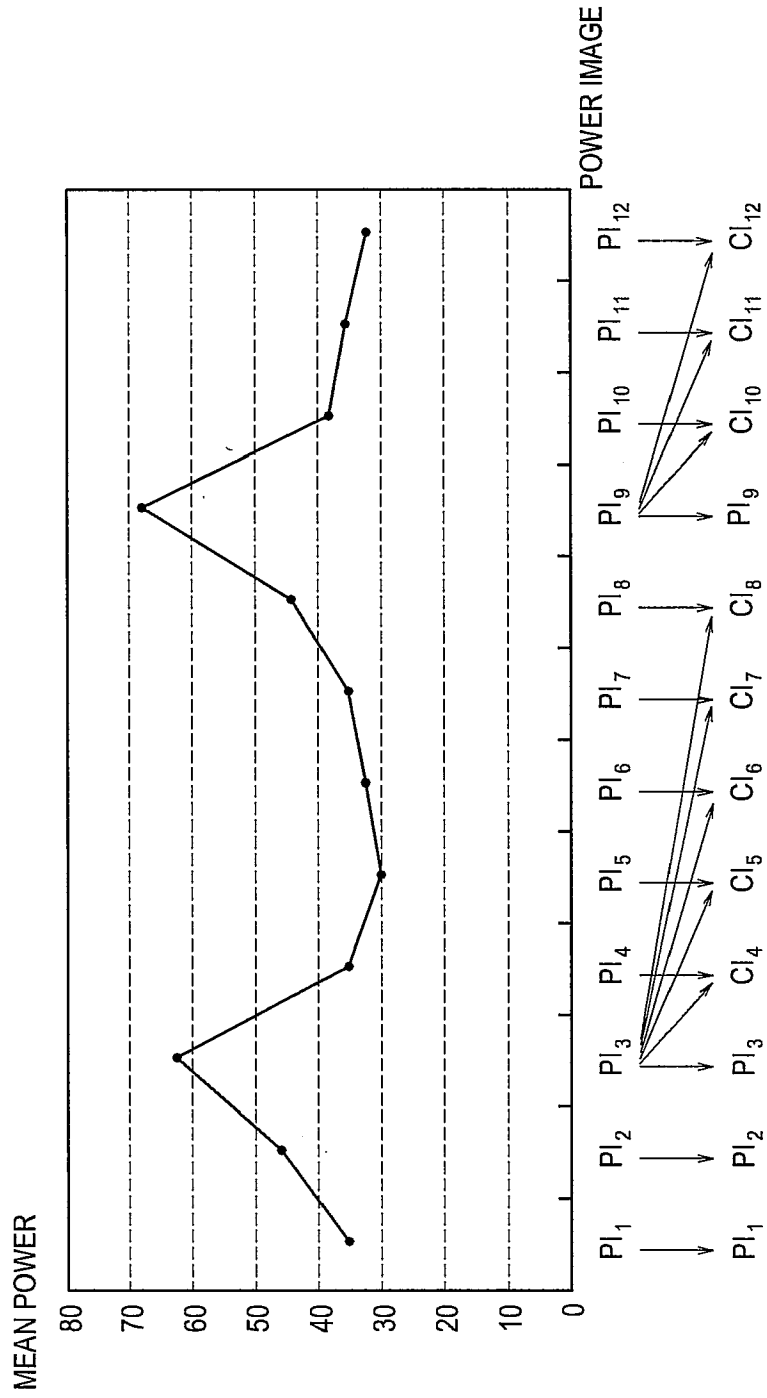


FIG. 5A

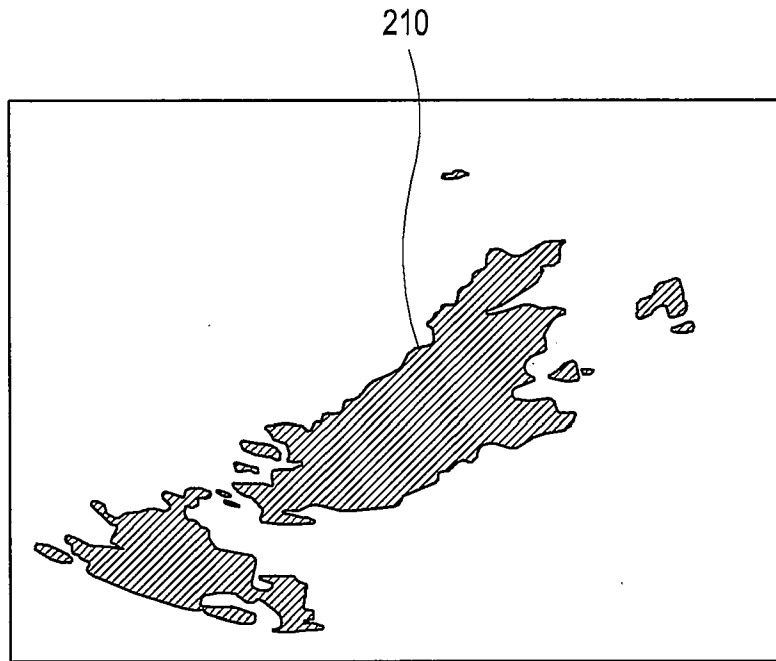


FIG. 5B

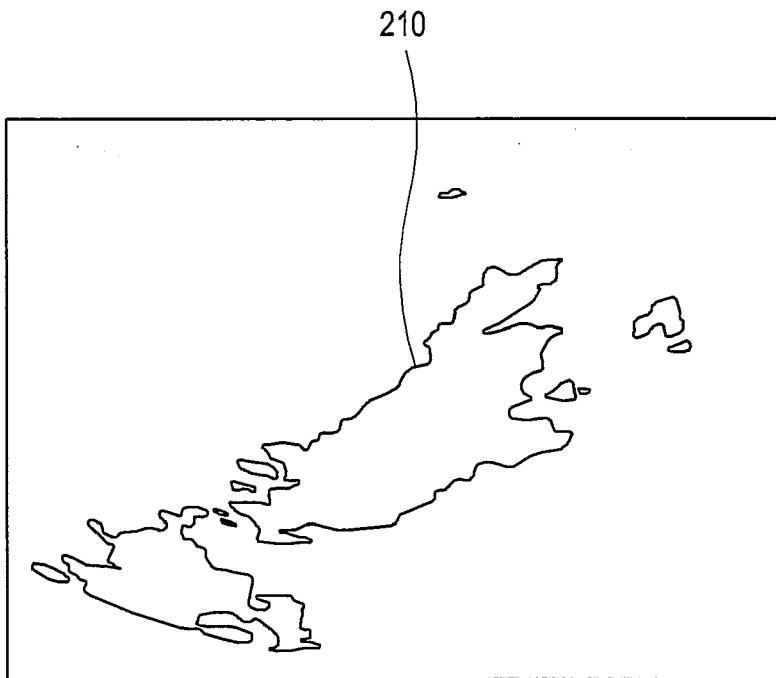


FIG. 5C

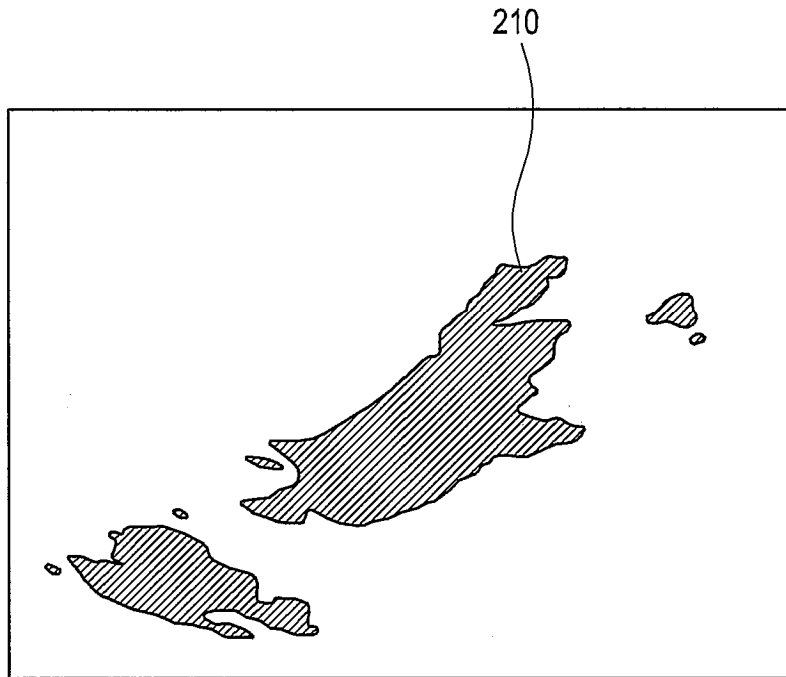


FIG. 5D

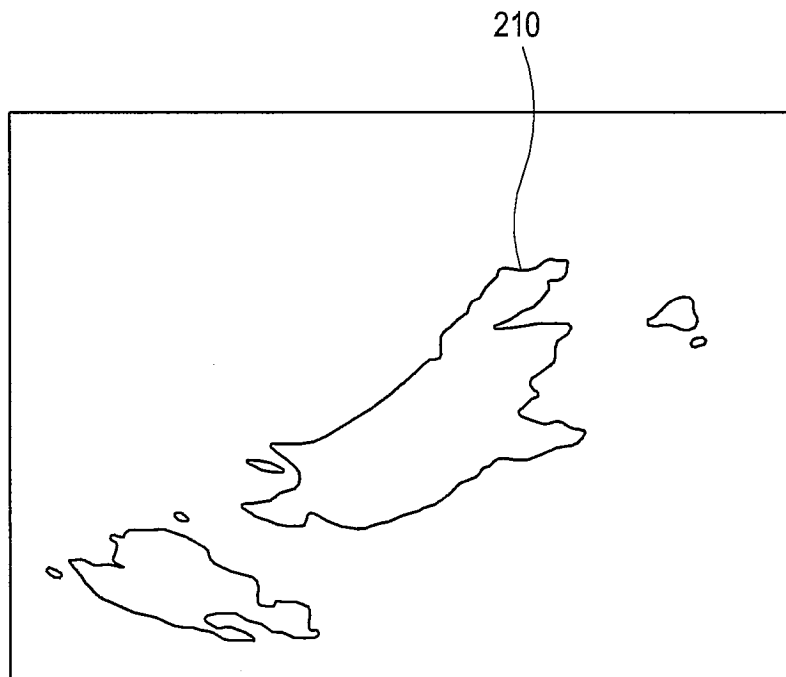


FIG. 6

0	0	0	0	0	0	0	0
0	1	1	1	1	1	1	0
0	1	2	2	2	2	1	0
0	1	2	3	3	2	1	0
0	1	2	2	2	2	1	0
0	1	1	1	1	1	1	0
0	0	0	0	0	0	0	0



EUROPEAN SEARCH REPORT

Application Number
EP 10 16 0682

DOCUMENTS CONSIDERED TO BE RELEVANT			
Category	Citation of document with indication, where appropriate, of relevant passages	Relevant to claim	CLASSIFICATION OF THE APPLICATION (IPC)
X	EP 0 871 043 A2 (ENDOSONICS CORP [US] ENDOSONICS CORP) 14 October 1998 (1998-10-14) * abstract; figures 5,7,8 * * column 1, lines 28-39 * * column 7, lines 3-31 * * column 10, line 10 - column 19, line 47 * -----	1,2,8,9,15	INV. G01S7/52 G01S15/89 A61B8/08
X	US 2003/181814 A1 (JI TING-LAN [US] ET AL) 25 September 2003 (2003-09-25) * abstract; figures 1-4 * * paragraphs [0003] - [0081] * -----	1,2,8,9,15	
X	US 6 217 520 B1 (HE ANMING [US] ET AL) 17 April 2001 (2001-04-17) * figures 1-7 * * column 3, line 6 - column 4, line 60 * -----	1,9	
A	US 2004/138567 A1 (ITO HIROSHI [JP] ET AL) 15 July 2004 (2004-07-15) * the whole document * -----	1-15	TECHNICAL FIELDS SEARCHED (IPC)
A	US 5 860 929 A (RUBIN JONATHAN M [US] ET AL) 19 January 1999 (1999-01-19) * the whole document * -----	1-15	G01S A61B G06T
A	US 2006/116582 A1 (YOSHIDA TETSUYA [JP] ET AL) 1 June 2006 (2006-06-01) * the whole document * -----	1-15	
1 The present search report has been drawn up for all claims			
Place of search Munich		Date of completion of the search 21 July 2010	Examiner Zaneboni, Thomas
CATEGORY OF CITED DOCUMENTS X : particularly relevant if taken alone Y : particularly relevant if combined with another document of the same category A : technological background O : non-written disclosure P : intermediate document		T : theory or principle underlying the invention E : earlier patent document, but published on, or after the filing date D : document cited in the application L : document cited for other reasons & : member of the same patent family, corresponding document	

EPO FORM 1503 03.02 (P04C01)

ANNEX TO THE EUROPEAN SEARCH REPORT
ON EUROPEAN PATENT APPLICATION NO.

EP 10 16 0682

This annex lists the patent family members relating to the patent documents cited in the above-mentioned European search report. The members are as contained in the European Patent Office EDP file on
The European Patent Office is in no way liable for these particulars which are merely given for the purpose of information.

21-07-2010

Patent document cited in search report		Publication date	Patent family member(s)	Publication date
EP 0871043	A2	14-10-1998	CA 2234191 A1	08-10-1998
			DE 69824660 D1	29-07-2004
			DE 69824660 T2	30-06-2005
			JP 3629141 B2	16-03-2005
			JP 10305036 A	17-11-1998
			US 5921931 A	13-07-1999

US 2003181814	A1	25-09-2003	DE 10312018 A1	02-10-2003
			JP 2004033732 A	05-02-2004

US 6217520	B1	17-04-2001	NONE	

US 2004138567	A1	15-07-2004	JP 3683886 B2	17-08-2005
			JP 2004208807 A	29-07-2004

US 5860929	A	19-01-1999	NONE	

US 2006116582	A1	01-06-2006	CN 1827048 A	06-09-2006
			JP 2006141798 A	08-06-2006

REFERENCES CITED IN THE DESCRIPTION

This list of references cited by the applicant is for the reader's convenience only. It does not form part of the European patent document. Even though great care has been taken in compiling the references, errors or omissions cannot be excluded and the EPO disclaims all liability in this regard.

Patent documents cited in the description

- KR 101020090038474 [0001]

专利名称(译)	超声系统中的彩色多普勒模式图像处理		
公开(公告)号	EP2249175A1	公开(公告)日	2010-11-10
申请号	EP2010160682	申请日	2010-04-22
申请(专利权)人(译)	MEDISON CO. , LTD.		
当前申请(专利权)人(译)	三星MEDISON CO. , LTD.		
[标]发明人	KIM BAEK SOP LEE HYEONG DO		
发明人	KIM, BAEK SOP LEE, HYEONG DO		
IPC分类号	G01S7/52 G01S15/89 A61B8/08 A61B8/06		
CPC分类号	G01S15/8979 A61B8/08 A61B8/488 G01S7/5206 G01S7/52077 G06T7/11 G06T7/136 G06T2207/10132		
代理机构(译)	SCHMID , WOLFGANG		
优先权	1020090038474 2009-04-30 KR		
其他公开文献	EP2249175B1		
外部链接	Espacenet		

摘要(译)

公开了用于在超声系统中处理彩色多普勒模式图像的实施例。在一个实施例中，超声系统包括：多普勒信号获取单元，被配置为向目标对象发送超声信号和从目标对象接收超声信号以获取第一多普勒信号；处理单元，用于通过所述彩色流图像形成包括功率图像和速度图像的彩色多普勒图像和用于检测感兴趣区域的掩模，所述处理单元还用于通过使用所述彩色图像和所述速度图像来屏蔽所述功率图像和所述速度图像。面具。

