

(19)



(11)

**EP 2 745 137 B1**

(12)

**EUROPEAN PATENT SPECIFICATION**

(45) Date of publication and mention of the grant of the patent:  
**03.01.2018 Bulletin 2018/01**

(51) Int Cl.:  
**G01S 7/52 (2006.01) G01S 15/58 (2006.01)**  
**G01S 15/89 (2006.01) A61B 8/06 (2006.01)**

(21) Application number: **12783303.6**

(86) International application number:  
**PCT/IB2012/054806**

(22) Date of filing: **14.09.2012**

(87) International publication number:  
**WO 2013/046087 (04.04.2013 Gazette 2013/14)**

**(54) ULTRASOUND SYSTEM WITH AUTOMATED DOPPLER FLOW SETTINGS**

ULTRASCHALLSYSTEM MIT AUTOMATISIERTEN DOPPLERFLOW-EINSTELLUNGEN

SYSTÈME À ULTRASON À RÉGLAGE AUTOMATIQUE DES FLUX DOPPLER

(84) Designated Contracting States:  
**AL AT BE BG CH CY CZ DE DK EE ES FI FR GB GR HR HU IE IS IT LI LT LU LV MC MK MT NL NO PL PT RO RS SE SI SK SM TR**

(72) Inventors:  
• **LOUPAS, Thanasis**  
**NL-5656AE Eindhoven (NL)**  
• **SAAD, Ashraf**  
**NL-5656AE Eindhoven (NL)**

(30) Priority: **30.09.2011 US 201161541353 P**

(74) Representative: **Steffen, Thomas**  
**Philips Intellectual Property & Standards**  
**High Tech Campus 5**  
**5656 AE Eindhoven (NL)**

(43) Date of publication of application:  
**25.06.2014 Bulletin 2014/26**

(73) Proprietor: **Koninklijke Philips N.V.**  
**5656 AE Eindhoven (NL)**

(56) References cited:  
**WO-A1-03/019227 US-A- 6 086 539**

**EP 2 745 137 B1**

Note: Within nine months of the publication of the mention of the grant of the European patent in the European Patent Bulletin, any person may give notice to the European Patent Office of opposition to that patent, in accordance with the Implementing Regulations. Notice of opposition shall not be deemed to have been filed until the opposition fee has been paid. (Art. 99(1) European Patent Convention).

## Description

**[0001]** This invention relates to ultrasonic diagnostic imaging systems and, in particular, to ultrasound systems with automated Doppler flow settings.

**[0002]** Ultrasound imaging systems are operable in B mode for tissue imaging, and Doppler modes for flow analysis and imaging. Typical Doppler modes include the power Doppler mode used for both tissue motion and flow imaging, colorflow Doppler for qualitative flow imaging, and spectral Doppler for flow quantification. Doppler can be performed in one dimension (M mode and spectral Doppler), two dimensional imaging, and three dimensional imaging.

**[0003]** Current diagnostic ultrasound systems offer a number of acquisition controls for the user to manipulate in order to achieve the optimal image quality to help with the patient diagnosis. During vascular exams, users frequently use the colorflow Doppler imaging mode to assess and diagnose blood vessels. Users frequently manipulate the color box position to center it on a vessel of interest and manipulate the Doppler sample volume to locate it on the vessel sites of interest to acquire a spectral Doppler waveform of a particular location in the body. Users also manipulate the Doppler angle correction control to align the flow direction cursor with the vessel orientation. Proposals have been made to automate the placement of the flow angle cursor over the blood flow of a vessel as shown by US Pat. 6,464,637 (Criton et al.), WO 96/17549 (Goujon), US Pat. 6,068,598 (Pan et al.), and US Pat. 6,176,830 (Freiburger). Freiburger also discusses automatic placement of the Doppler sample volume based upon the detected location of maximum velocity in an image, setting the pulse repetition frequency (PRF) based upon the maximum detected frequency shift, and automatically setting the gain based upon the amplitude of colorflow data. US Pat. 6,126,605 (Washburn et al.) automatically adjusts thresholds and data compression for a Doppler image by using histograms and samplings of colorflow data, and US Pat. 6,322,509 (Pan et al.) adjusts the Doppler sample volume position and size based on image data of a blood vessel. WO 03/19227 (Christopher et al.) describes automatic settings of spectral Doppler and colorflow Doppler displays based upon both spectral Doppler and colorflow Doppler information.

**[0004]** US Pat. 6,086,539 A describes a method and apparatus for quantifying and displaying Doppler signals in an ultrasonic Doppler system. A first Doppler signal value for each of at least one spatial location in a region of interest is acquired at a first time, and the Doppler signal values are summed to obtain a first surface integral value. A second Doppler signal value for each of said at least one spatial location in said region of interest is acquired at a second time, and the second Doppler signal values are summed to obtain a second surface integral value. The first surface integral value is summed with the second surface integral value to obtain a time based in-

tegral. The time based integral is displayed.

**[0005]** To obtain consistent velocity measurements for multiple exams of the same patient or to compare measurements of different patients, users try to maintain a fixed Doppler angle, the angle at which the Doppler beams are transmitted in relation to the direction of flow, and there are two approaches to achieving this goal. One approach is to fix the angle correction cursor over the image and heel-toe manipulate the transducer to align the vessel with the angle line. Another approach is to rely on ultrasound systems offering a feature that adjusts the beam steering angle each time the angle correction is changed by the user to achieve a fixed Doppler angle. However the angle correction is still done manually. What is needed is an ultrasound system which automatically adjusts the beam steering angle and the color box in which Doppler interrogation is performed based upon the characteristics of the blood vessels in the image.

**[0006]** In accordance with the principles of the present invention, a diagnostic ultrasound system is described which automates the color box placement, Doppler sample volume placement, angle correction, and beam steering angle using vessel segmentation and flow image analysis. In a preferred embodiment the automation is carried out each time the user indicates a point in a blood vessel for flow analysis, without the need to adjust any user controls. The optimal ultrasound transmit and viewing parameters are determined and set automatically each time the user indicates a new location for diagnosis, eliminating the time consuming and tedious adjustments otherwise necessary for every selection of a new site of interest. Ergonomic-related injuries from repeated control manipulation are reduced, particularly in the scanning of long vessels such as the carotid artery and lower extremity vessels.

**[0007]** In the drawings:

FIGURE 1 illustrates in block diagram form a diagnostic ultrasound system constructed in accordance with the principles of the present invention.

FIGURE 2 is a flowchart illustrating the operation of the color box position and steering angle processor of FIGURE 1.

FIGURES 3a and 3b illustrate the segmentation and analysis of a blood flow image of a blood vessel.

FIGURES 3c and 3d illustrate the automatic repositioning of a color box in accordance with the principles of the present invention.

FIGURES 4 to 7 are a sequence of ultrasound system displays illustrating an implementation of the present invention.

FIGURE 8 is an ultrasound system display illustrating controls for automatic flow tracking in accordance with the principles of the present invention.

FIGURES 9 and 10 are ultrasound system displays showing automatic tracking of a sample volume, color box placement, and angle correction during an ultrasound exam without user intervention.

**[0008]** Referring first to FIGURE 1, an ultrasound system constructed in accordance with the principles of the present invention is shown in block diagram form. An ultrasound probe 10 contains a transducer array 12 of transducer elements which transmit ultrasound waves into the body and receive returning echo signals. The transmitted waves are directed in beams or scanlines to interrogate a region of interest in the body. A one-dimensional array can be used to transmit beams over a single plane for two dimensional imaging, or a two-dimensional array of transducer elements can be used to transmit beams over a volumetric region of the body for three dimensional imaging. The beams can be steered and focused in different directions by the probe to interrogate tissue in specific locations or blood flow in specific directions as explained more fully below. Control and processing of beams on transmit and receive is provided by a beamformer controller 16, which controls a beamformer 14, connected to the elements of the transducer array 12, to transmit properly formed beams and beamform the received signals through delay and summation into coherent echo signals. The beamformer can control the transducer array to scan beams over a desired image plane, for example, and to repetitively scan beams over an area of the image plane in which blood flow is to be assessed at a PRF appropriate for the velocities of blood flow present in that region of the body.

**[0009]** A quadrature bandpass filter 18 processes the echo signal into quadrature I and Q components. The separate components are used by a Doppler angle estimator to estimate the phase or frequency shift of a Doppler signal at points where Doppler interrogation is to be performed. The B mode detector uses the I and Q components to perform B mode detection for tissues images by taking the square root of the sum of the squares of the I and Q components. The detected echo intensities are processed on a spatial basis to form a two or three dimensional image of the tissue in the body, which is processed for display by display processor 36 and displayed on display screen 52.

**[0010]** The Doppler frequencies at locations in the image plane which are produced by the Doppler angle estimator 20 can be mapped directly to velocity values of flow at those locations. This Doppler data is coupled to a colorflow processor 30 which spatially processes the data into a two or three dimensional image format, in which the velocity values are color-coded. This Doppler color map is overlaid over the spatially corresponding B mode image by the display processor 36 to illustrate the locations in the anatomy where flow is taking place and the velocity and direction of that flow by the color coding. Doppler data from a particular point in the image, selected by placement of a sample volume over that location in the image, is coupled to a spectral Doppler processor 32 which produces a spectral display of the variation and distribution of flow velocities at that point with time. The spectral Doppler display is forwarded to the display processor 36 for processing and display of the spectral Dop-

pler display on the display screen 52.

**[0011]** In accordance with the principles of the present invention, colorflow data from the colorflow processor 30 and, preferably, B mode data from the B mode processor 24, is coupled to a color box position and steering angle processor 40. The color box position and steering angle processor controls the automation of settings and features of the colorflow image, including properly positioning the color box, setting the Doppler angle of the Doppler beams, locating the sample volume in the image, and proper positioning of the flow angle cursor. For control of the Doppler angle the color box position and steering angle processor is coupled to the beamformer controller 16 to control the Doppler beam directions. Setup and control of the automation provided by the color box position and steering angle processor is provided by the setting of controls on a user control panel 50. Graphical display of functions controlled by the color box position and steering angle processor, such as the outline of the color box and the flow angle cursor, is provided through a graphics processor 34 which is coupled to the display processor 36 to overlay the graphics over the ultrasound images.

**[0012]** The operation of the color box position and steering angle processor 40 is illustrated by the flowchart of FIGURE 2. The first step 102 in the process is to segment the flow in an ultrasound image spatially. This may be performed by masking out areas of an image where flow does not occur. In a given implementation the Doppler image from the colorflow processor may provide a spatial image of only the flow locations in the image. This step may also include averaging the flow data over some or all of the heart cycle to produce average or median flow values. In step 104 the blood vessels are segmented, separating them from other motional effects such as perfusion or tissue motion. In step 106 a vessel of interest is selected. A vessel of interest will generally be located in the center of the image acquired by the user. A vessel of interest may also be selected by considering the size, flow, and type of blood vessels which have been segmented. In a carotid exam, for instance, the carotid artery will be identified as an artery and as the largest vessel in the image. FIGURE 3a shows an actual ultrasound flow image 120 of the flow in blood vessels which has been segmented and selected for further processing.

**[0013]** In step 108 the center of the flow path of a vessel is identified. Several techniques for plotting the center of the flow path are known, such as locating the center of the laminar flow field by velocity. Another technique is to analytically draw lines across the blood vessel lumen as shown in the aforementioned Goujon patent application. The centers of the lines or their points of intersection define the center of the vessel. FIGURE 3b illustrates the vessel flow of FIGURE 3a in which the center of the flow path has been identified by the white tracing 122. This example shows the branching of a connecting vessel at the bottom of the image. In step 110 the flow-weighted center of mass is calculated. This is done by analyzing

the spatial dimensions of the flow in the target vessel and finding its center. A simple approach is to measure the length and width of the flow of the vessel and take the center of each. More sophisticated approaches of weighting and integration may also be used.

**[0014]** In a system where the sample volume is to be set automatically, the process next sets the sample volume location in step 112 as the point on the flow path 122 which is closest to the calculated center of mass. This positions the sample volume generally in the center of the image of the blood vessel and in the center of the vessel where flow measurements are generally taken. In step 114 the flow angle is set in accordance with a flow vector localized to the sample volume location. One of the techniques described at the outset of this patent may be used to set the flow angle cursor orientation. Another approach is to set the flow angle cursor to be parallel to the center line 122 as the center line is oriented in the vicinity of the sample volume.

**[0015]** Using the center of mass of the flow previously calculated in step 110, the color box is positioned to be centered about the center of mass. If the center of mass is too close to the side of the image, some of the color box area may be truncated as needed. The color box may also be rescaled in height or width if desired for a uniform appearance. FIGURES 3c and 3d illustrate such a repositioning of a color box 70 in an ultrasound image 60. In FIGURE 3c the flow region 76 is the smooth grey region in the blood vessel at the top of the color box 70. The computation of the center of mass of the flow 76 and its repositioning to the center of the color box 70 is shown in FIGURE 3d, in which the color box has been relocated so that the flow 76 is more centered in the color box. In step 118 the color box steering angle and the angle of the Doppler beams is set to achieve a desired Doppler angle. For instance if the flow angle set in step 114 shows that the target vessel flow is from the upper left to the lower right in the image, the steering angle will be set to angle from the upper left to the lower right. This steering direction is more nearly in line with the flow direction than a steering angle directed from the upper right to the lower left of the image, which would be more closely orthogonal to the flow direction and hence less sensitive to Doppler flow. A typical steering angle for superficial vessels is  $\pm 60^\circ$ . The setting of step 118 would then set the steering angle to be  $+60^\circ$  or  $-60^\circ$ , whichever will produce the better Doppler sensitivity. Such a resetting of the color box steering angle is also seen by comparing the color box angle in FIGURE 3c with the reset angle in FIGURE 3d. This setting of the color box steering angle may be set in accordance with the local flow direction at the sample volume location, or in accordance with average or median flow angles along some or all of the displayed length of the blood vessel. With the color box angle thus reset, the new setting of the angle is coupled to the beamformer controller 16 so that the ultrasound beams transmitted to the color box will be transmitted at the newly determined angle.

**[0016]** The sequence of images of FIGURES 4-7 illustrate an example of how the ultrasound system described above can operate. FIGURE 4 shows an ultrasound system display of a typical colorflow/spectral Doppler duplex image with non-optimized Doppler settings. The anatomical ultrasound image 60 is at the top of the screen and the spectral Doppler display 62 is at the bottom of the screen. Doppler interrogation is done inside the color box 70, and a colorflow image is displayed inside this box. Outside the color box 70 the rest of the image is shown in B mode grayscale. The use of a color box delineates the region where Doppler is to be performed, and repeated Doppler transmission for Doppler ensemble acquisition is not performed outside of the color box. Restricting the Doppler transmission to only the color box eliminates the need for repeated line interrogation outside the box and hence limits the total number of transmit-receive cycles needed to produce the image, thereby reducing the time needed to acquire the image which improves the real time frame rate of display. The Doppler beams for the spectral Doppler data are transmitted and received along the beam direction line 68 and the data used for the spectral Doppler display are acquired from echoes returning from the sample volume SV on the beam direction line. The Doppler flow direction cursor 66, used for angle correction, is not aligned with the orientation of the vessel 64 (it should be parallel with the flow direction), and the Doppler steering angle is not optimized for the best color and spectral Doppler sensitivity. In this example the Doppler steering angle is  $0^\circ$ , vertical in the image and normal to the face of the transducer probe.

**[0017]** FIGURE 5 shows the ultrasound system display after several of the automatic adjustments of the present invention have been made by the color box position and steering angle processor 40. After the user has placed the Doppler sample volume SV on the site of interest in the blood vessel 64, the processor 40 segments the blood flow of vessel 64 and easily identifies vessel 64 (step 106) as the target vessel, the largest vessel in the color box 70. The center of the flow path is identified (step 108) and the orientation of the flow direction cursor 66 is set to be parallel to the flow direction (step 114) as FIGURE 5 illustrates. It is also seen that the angle of the color box 70 and beam direction line 68 have been set to achieve a  $60^\circ$  angle with the orientation of vessel 64 (step 118). The new setting will produce better Doppler sensitivity and accuracy due to the more optimal settings.

**[0018]** FIGURE 6 illustrates a scenario in which the user has moved the sample volume SV to a different location over the blood vessel 64. The automated system has responded by calculating the center of mass of the flow in the vessel 64 inside the color box 70 (step 110). The color box 70 has been repositioned so that the box is centered on the calculated center of mass (step 116); the sample volume SV is in the center of the color box 70. The angles of the flow direction cursor 66 and the beam direction line 68 and color box 70 have also been adjusted to achieve the desired  $60^\circ$  Doppler angle be-

tween the beam directions and the flow direction.

[0019] In FIGURE 7 the user has changed the image view by moving the ultrasound probe and has repositioned the sample volume SV to a different vessel above vessel 64. The calculations based upon the the previously selected vessel 64 and its view now no longer apply to the new site of interest. The calculations of the flow-chart of FIGURE 2 must now be initialized using new data from the different vessel in order to apply automated adjustments to the different vessel in the new view.

[0020] FIGURE 8 illustrates an implementation of the present invention in which the user controls for automated flow adjustment are implemented as softkeys on the display screen and are selected and actuated through a mouse or trackball control on the control panel 50. Button 82, the AutoFlow On/Off button, is actuated to turn the flow automation on or off. Clicking this button will toggle the automated system off (if on) or on (if off). The AutoFlow Reset button 84 will reset the automation results if the user is dissatisfied with them. Actuating this button will cancel all previous calculations by the processor 40 and start them anew. The AutoFlow Config button 86 opens a menu (not shown) in which the user can select which of the automated adjustment features the user wants to use. The user may want to have the system automatically relocate the color box and the angles of the color box and beam direction, for example, but wants to place the sample volume cursor SV and set the orientation of the flow direction cursor manually. In this case the processor 40 can use the orientation of the manually set flow direction cursor to calculate and set the color box and beam direction steering angles, or use computed average or mean flow angles. Actuation of the AutoFlow SV Track button 88 causes the system to dynamically track the sample volume as it is repositioned and continually makes automated flow adjustments as described below.

[0021] FIGURE 9 illustrates a scenario where the user has just taken Doppler measurements at location 80 in blood vessel 64 and wants to take a series of measurements at different points along a section of the blood vessel. In prior art systems, adjustments have to be made to the Doppler acquisition settings for each new measurement, requiring the user to continually make manual adjustments with the controls of the ultrasound system. In this illustration the user is finished with the measurements at location 80 and has moved the sample volume SV to the left to another location in the blood vessel. When the user pauses the sample volume motion to stop at the new measurement location to the left, or clicks on the new location, the ultrasound system immediately makes all of the automated setting adjustments which the user has selected with the AutoFlow Config button settings. The result is illustrated by FIGURE 10, where the system has automatically repositioned the color box to be centered around the new sample volume location, has automatically adjusted the Doppler angle of the color box 70 and the spectral beam direction line 68, and has

automatically set the angle of the flow direction cursor 66. The system is immediately ready to acquire spectral Doppler data under optimal conditions at the new sample volume location. The exam can continue in this manner.

Each time the user moves the sample volume cursor to a new location on the vessel and pauses there, or clicks on the new location, the system will automatically reset the Doppler acquisition controls for optimal data acquisition. The user can take measurements along a continuous length of the blood vessel without the need to manually readjust any of the Doppler control settings, speeding the conduct of the exam and improving the comfort and convenience of the sonographer.

## Claims

1. An ultrasonic diagnostic imaging system, which produces spectral Doppler displays of flow for anatomical locations selected from a colorflow Doppler image, comprising:

an ultrasonic transducer array probe (10) which transmits beams and receives echo signals from a region of a subject where flow is present;  
 a beamformer (14) which controls the directions in which beams are transmitted by the probe;  
 a Doppler processor (20) responsive to the echo signals to produce Doppler signals;  
 a Doppler image processor (30, 32), responsive to the Doppler signals to produce colorflow Doppler images; and  
 a display on which Doppler images are displayed; **characterized in that** the system further comprises:

a color box position and steering angle processor (40), responsive to Doppler signals, to automatically determine a beam steering angle at which Doppler beams are to be transmitted, and a position of a color box (70) in which Doppler interrogation is to be performed and colorflow images displayed, based upon the flow direction in a target blood vessel segmented from a colorflow Doppler image produced by the Doppler image processor.

2. The ultrasonic diagnostic imaging system of Claim 1, wherein the color box position and steering angle processor is further operable to automatically determine the position of the color box by determining the beam steering angle of the Doppler beams relative to the flow direction in the target blood vessel.
3. The ultrasonic diagnostic imaging system of Claim 2, wherein the color box position and steering angle processor is further operable to automatically deter-

mine the angle of a Doppler steering angle line (68) to be in line with the determined beam steering angle of the Doppler beams.

4. The ultrasonic diagnostic imaging system of Claim 3, wherein the color box position and steering angle processor is coupled to the beamformer to control the angle of Doppler beam transmission.
5. The ultrasonic diagnostic imaging system of Claim 1, wherein the color box position and steering angle processor is further operable to automatically determine the position of the color box by determining a position relative to the location of a blood vessel in an ultrasound image.
6. The ultrasonic diagnostic imaging system of Claim 1, wherein the color box position and steering angle processor is further operable to automatically determine the position of the color box by determining a position relative to the location of a Doppler sample volume in an ultrasound image.
7. The ultrasonic diagnostic imaging system of Claim 1, wherein the color box position and steering angle processor is further operable to automatically set the orientation of a flow direction cursor based upon the flow direction in the target blood vessel.
8. The ultrasonic diagnostic imaging system of Claim 1, further comprising a graphics processor (34) responsive to the color box position and steering angle processor for graphically delineating the location of the color box on an ultrasound image.
9. The ultrasonic diagnostic imaging system of Claim 8, wherein the graphics processor is further operable to graphically delineate the locations of a Doppler sample volume graphic and a Doppler steering angle line on an ultrasound image.
10. The ultrasonic diagnostic imaging system of Claim 1, further comprising a B mode processor (24) responsive to the echo signals to produce a B mode image, and wherein the colorflow Doppler image is displayed in spatial registration with the B mode image in the color box.
11. The ultrasonic diagnostic imaging system of Claim 10, wherein the Doppler image processor is further operable to produce a spectral Doppler image which is displayed concurrently with the colorflow Doppler image displayed in spatial registration with the B mode image in the color box.
12. The ultrasonic diagnostic imaging system of Claim 1, wherein the color box position and steering angle

processor is further responsive to Doppler signals from a blood vessel for determining a center of mass of a flow of the blood vessel.

13. The ultrasonic diagnostic imaging system of Claim 12, wherein the color box position and steering angle processor is further operable to locate the position of the color box to be centered about the determined center of mass of the flow of the blood vessel.
14. The ultrasonic diagnostic imaging system of Claim 1, wherein the color box position and steering angle processor is further operable to determine the beam steering angle of the Doppler beams in consideration of a local or average or median flow direction in the target blood vessel.
15. The ultrasonic diagnostic imaging system of Claim 1, wherein the color box position and steering angle processor is further operable to determine a center line of the flow in the target blood vessel.

#### Patentansprüche

1. Ultraschallsystem zur diagnostischen Bildgebung, das spektrale Dopplerflussanzeigen für anatomische Orte erzeugen, die aus einem Farbflussdopplerbild ausgewählt wurden, umfassend:

eine Ultraschallwandlerraysonde (10), die Strahlenbündel aussendet und Echosignale von einer Region eines Subjekts empfängt, in der ein Fluss vorhanden ist;

einen Strahlformer (14), der die Richtungen steuert, in denen Strahlenbündel durch die Sonde ausgesendet werden;

einen Doppler-Prozessor (20), der auf die Echosignale reagiert, um Dopplersignale zu erzeugen;

einen Dopplerbildprozessor (30, 32), der auf die Dopplersignale reagiert, um Farbflussdopplerbilder zu erzeugen; und

eine Anzeige, auf der Dopplerbilder angezeigt werden;

**dadurch gekennzeichnet, dass** das System weiterhin Folgendes umfasst:

einen Farbkastenpositions- und Lenkwinkelprozessor (40), der auf die Dopplersignale reagiert, um automatisch einen Strahlenbündel-Lenkwinkel, mit dem Dopplerstrahlenbündel auszusenden sind, und eine Position eines Farbkastens (70) zu bestimmen, in dem die Dopplerabfrage durchzuführen ist und die Farbflussbilder anzuzeigen sind, und zwar basierend auf der Flussrichtung in einem Zielblutgefäß, das aus

- einem durch den Dopplerbildprozessor erzeugten Farbflussdopplerbild segmentiert wurde.
2. Ultraschallsystem zur diagnostischen Bildgebung nach Anspruch 1, wobei der Farbkastenpositions- und Lenkwinkelprozessor weiterhin betriebsfähig ist, um automatisch die Position des Farbkastens zu bestimmen, indem der Strahlenbündel-Lenkwinkel des Dopplerstrahlenbündels in Bezug auf die Flussrichtung im Zielblutgefäß bestimmt wird. 5
  3. Ultraschallsystem zur diagnostischen Bildgebung nach Anspruch 3, wobei der Farbkastenpositions- und Lenkwinkelprozessor weiterhin betriebsfähig ist, um automatisch den Winkel einer Dopplerlenkwinkellinie (68) so zu bestimmen, dass sie in Linie mit dem bestimmten Strahlenbündel-Lenkwinkel der Dopplerstrahlenbündel liegt. 10
  4. Ultraschallsystem zur diagnostischen Bildgebung nach Anspruch 3, wobei der Farbkastenpositions- und Lenkwinkelprozessor mit dem Strahlformer gekoppelt ist, um den Winkel der Dopplerstrahlenbündelaussendung zu steuern. 15
  5. Ultraschallsystem zur diagnostischen Bildgebung nach Anspruch 1, wobei der Farbkastenpositions- und Lenkwinkelprozessor weiterhin betriebsfähig ist, um automatisch die Position des Farbkastens zu bestimmen, indem eine Position in Bezug auf den Ort eines Blutgefäßes in einem Ultraschallbild bestimmt wird. 20
  6. Ultraschallsystem zur diagnostischen Bildgebung nach Anspruch 1, wobei der Farbkastenpositions- und Lenkwinkelprozessor weiterhin betriebsfähig ist, um automatisch die Position des Farbkastens zu bestimmen, indem eine Position in Bezug auf den Ort eines Dopplerprobenvolumens in einem Ultraschallbild bestimmt wird. 25
  7. Ultraschallsystem zur diagnostischen Bildgebung nach Anspruch 1, wobei der Farbkastenpositions- und Lenkwinkelprozessor weiterhin betriebsfähig ist, um automatisch die Orientierung eines Flussrichtungscursors basierend auf der Flussrichtung in dem Zielblutgefäß einzustellen. 30
  8. Ultraschallsystem zur diagnostischen Bildgebung nach Anspruch 1, weiterhin umfassend einen Grafikprozessor (34), der auf den Farbkastenpositions- und Lenkwinkelprozessor reagiert, um den Ort des Farbkastens auf einem Ultraschallbild grafisch zu skizzieren. 35
  9. Ultraschallsystem zur diagnostischen Bildgebung nach Anspruch 8, wobei der Grafikprozessor weiterhin betriebsfähig ist, um die Orte einer Dopplerproben- 40
- benvolumengrafik und einer Dopplerlenkwinkellinie auf einem Ultraschallbild grafisch zu skizzieren.
10. Ultraschallsystem zur diagnostischen Bildgebung nach Anspruch 1, weiterhin umfassend einen B-Mode-Prozessor (24), der auf die Echosignale reagiert, um ein B-Mode-Signal zu erzeugen, und wobei das Farbflussdopplerbild in räumlicher Registrierung mit dem B-Mode-Bild in dem Farbkasten angezeigt wird. 45
  11. Ultraschallsystem zur diagnostischen Bildgebung nach Anspruch 10, wobei der Dopplerbildprozessor weiterhin betriebsfähig ist, um ein spektrales Dopplerbild zu erzeugen, das gleichzeitig mit dem Farbflussdopplerbild angezeigt wird, welches in räumlicher Registrierung mit dem B-Mode-Bild in dem Farbkasten angezeigt wird. 50
  12. Ultraschallsystem zur diagnostischen Bildgebung nach Anspruch 1, wobei der Farbkastenpositions- und Lenkwinkelprozessor weiterhin auf Dopplersignale aus einem Blutgefäß reagiert, um ein Massezentrum eines Blutgefäßflusses zu bestimmen. 55
  13. Ultraschallsystem zur diagnostischen Bildgebung nach Anspruch 12, wobei der Farbkastenpositions- und Lenkwinkelprozessor weiterhin betriebsfähig ist, um die Position des auf das bestimmte Massezentrum des Blutgefäßflusses zu zentrierenden Farbkastens zu lokalisieren.
  14. Ultraschallsystem zur diagnostischen Bildgebung nach Anspruch 1, wobei der Farbkastenpositions- und Lenkwinkelprozessor weiterhin betriebsfähig ist, um den Strahlenbündel-Lenkwinkel der Dopplerstrahlenbündel unter Berücksichtigung einer lokalen oder durchschnittlichen oder medianen Flussrichtung im Zielblutgefäß zu bestimmen.
  15. Ultraschallsystem zur diagnostischen Bildgebung nach Anspruch 1, wobei der Farbkastenpositions- und Lenkwinkelprozessor weiterhin betriebsfähig ist, um eine Mittellinie des Flusses in dem Zielblutgefäß zu bestimmen.

#### Revendications

1. Système d'imagerie diagnostique ultrasonore, qui produit des affichages Doppler spectraux de flux pour emplacements anatomiques sélectionnés à partir d'une image Doppler de flux couleur comprenant :
  - une sonde de réseau de transducteurs ultrasonores (10) qui transmet des faisceaux et reçoit des signaux d'écho d'une région d'un sujet où

un flux est présent ;  
 un formateur de faisceaux (14) qui commande les directions dans lesquelles des faisceaux sont transmis par la sonde ;  
 un processeur Doppler (20) sensible aux signaux d'écho pour produire des signaux Doppler ;  
 un processeur d'image Doppler (30, 32) sensible aux signaux Doppler pour produire des images Doppler de flux couleur et  
 un affichage sur lequel des images Doppler sont affichées ; et  
**caractérisé en ce que** le système comprend en outre :

- un processeur de position de boîte à couleurs et d'angle de direction (40) sensible aux signaux Doppler pour déterminer automatiquement un angle de direction de faisceau selon lequel des faisceaux Doppler doivent être transmis et une position d'une boîte à couleur (70) dans laquelle une interrogation de Doppler doit être effectuée et des images de flux couleur affichées sur la base de la direction d'écoulement dans un vaisseau sanguin cible segmenté à partir d'une image Doppler de flux couleur produite par le processeur d'images Doppler.
2. Système d'imagerie diagnostique ultrasonore selon la revendication 1, dans lequel le processeur de position de boîte à couleurs et d'angle de direction est en outre à même de déterminer automatiquement la position de la boîte à couleurs en déterminant l'angle de direction des faisceaux Doppler par rapport à la direction de flux dans le vaisseau sanguin cible.
  3. Système d'imagerie diagnostique ultrasonore selon la revendication 2, dans lequel le processeur de position de boîte à couleurs et d'angle de direction est en outre à même de déterminer automatiquement l'angle d'une ligne d'angle de direction Doppler (68) pour qu'il soit aligné sur l'angle de direction déterminé des faisceaux Doppler.
  4. Système d'imagerie diagnostique ultrasonore selon la revendication 3, dans lequel le processeur de position de boîte à couleurs et d'angle de direction est couplé au formateur de faisceaux pour commander l'angle de transmission de faisceaux Doppler.
  5. Système d'imagerie diagnostique ultrasonore selon la revendication 1, dans lequel le processeur de position de boîte à couleurs et d'angle de direction est en outre à même de déterminer automatiquement la position de la boîte à couleurs en déterminant une position par rapport à l'emplacement d'un vaisseau sanguin dans une image ultrasonore.
  6. Système d'imagerie diagnostique ultrasonore selon la revendication 1, dans lequel le processeur de position de boîte à couleurs et d'angle de direction est en outre à même de déterminer automatiquement la position de la boîte à couleurs en déterminant une position par rapport à l'emplacement d'un volume d'échantillon Doppler dans une image ultrasonore.
  7. Système d'imagerie diagnostique ultrasonore selon la revendication 1, dans lequel le processeur de position de boîte à couleurs et d'angle de direction est en outre à même de régler automatiquement l'orientation d'un curseur de direction de flux sur la base de la direction du flux dans le vaisseau sanguin cible.
  8. Système d'imagerie diagnostique ultrasonore selon la revendication 1, comprenant en outre un processeur graphique (34) sensible au processeur de position de boîte à couleurs et d'angle de direction pour ébaucher graphiquement l'emplacement de la boîte à couleurs sur une image ultrasonore.
  9. Système d'imagerie diagnostique ultrasonore selon la revendication 8, dans lequel le processeur graphique est en outre à même d'ébaucher graphiquement les emplacements d'un graphique de volume d'échantillon Doppler et d'une ligne d'angle de direction Doppler sur une image ultrasonore.
  10. Système d'imagerie diagnostique ultrasonore selon la revendication 1, comprenant en outre un processeur de mode B (24) sensible aux signaux d'écho pour produire une image de mode B et dans lequel l'image Doppler de flux couleur est affichée en registre spatial avec l'image en mode B dans la boîte à couleurs.
  11. Système d'imagerie diagnostique ultrasonore selon la revendication 10, dans lequel le processeur d'images Doppler est en outre à même de produire une image Doppler spectrale qui est affichée simultanément avec l'image Doppler de flux couleur affichée en registre spatial avec l'image de mode B dans la boîte à couleurs.
  12. Système d'imagerie diagnostique ultrasonore selon la revendication 1, dans lequel le processeur de position de boîte à couleurs et d'angle de direction est en outre sensible aux signaux Doppler issus d'un vaisseau sanguin pour déterminer un centre de masse d'un flux du vaisseau sanguin.
  13. Système d'imagerie diagnostique ultrasonore selon la revendication 12, dans lequel le processeur de position de boîte à couleurs et d'angle de direction est en outre à même de situer la position de la boîte à couleurs à centrer autour du centre de masse déterminé du flux du vaisseau sanguin.

14. Système d'imagerie diagnostique ultrasonore selon la revendication 1, dans lequel le processeur de position de boîte à couleurs et d'angle de direction est en outre à même de déterminer l'angle de direction des faisceaux Doppler en considération d'une direction de flux locale ou moyenne ou médiane dans le vaisseau sanguin cible. 5
15. Système d'imagerie diagnostique ultrasonore selon la revendication 1, dans lequel le processeur de position de boîte à couleurs et d'angle de direction est en outre à même de déterminer une ligne centrale du flux dans le vaisseau sanguin cible. 10

15

20

25

30

35

40

45

50

55

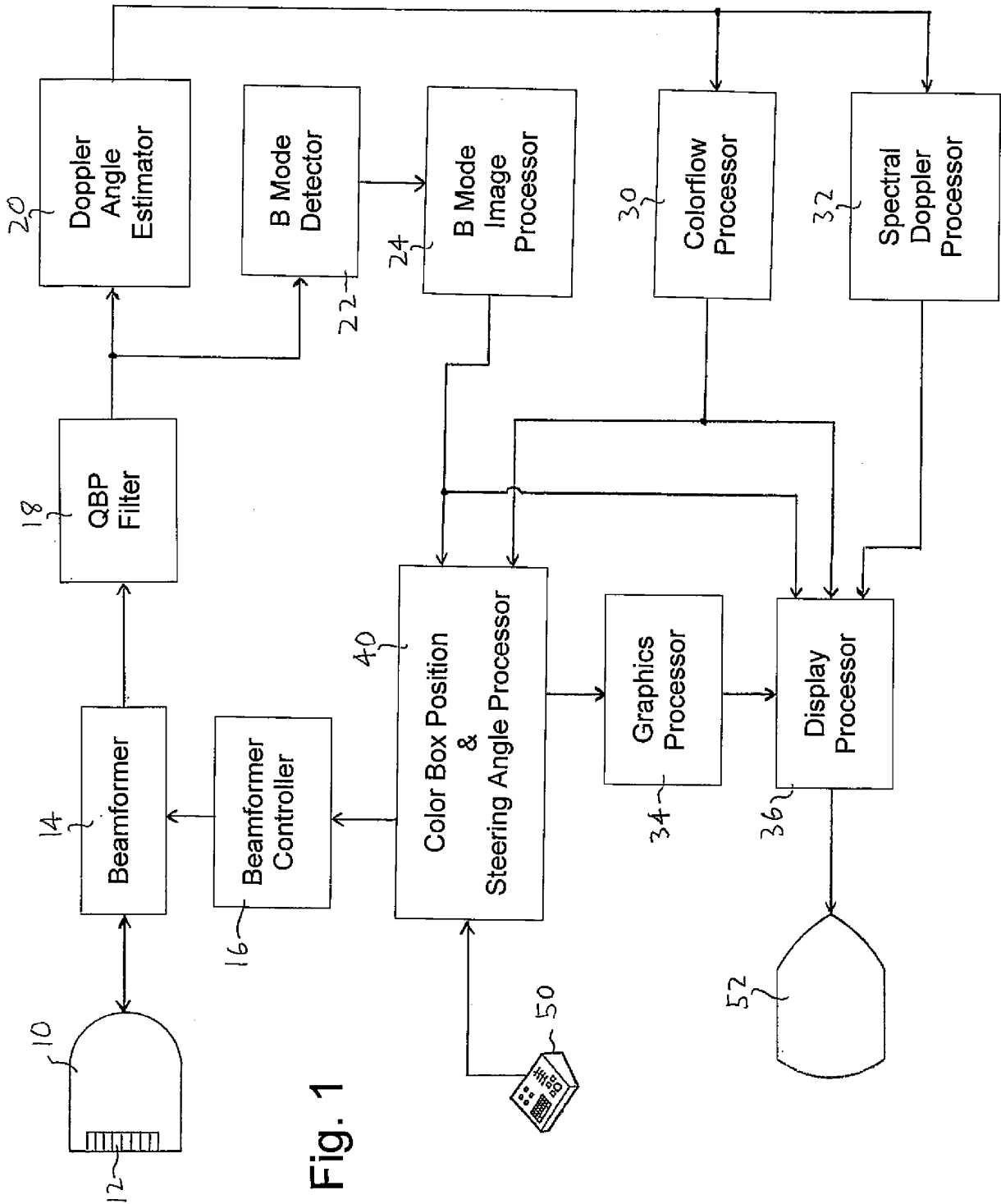


Fig. 1

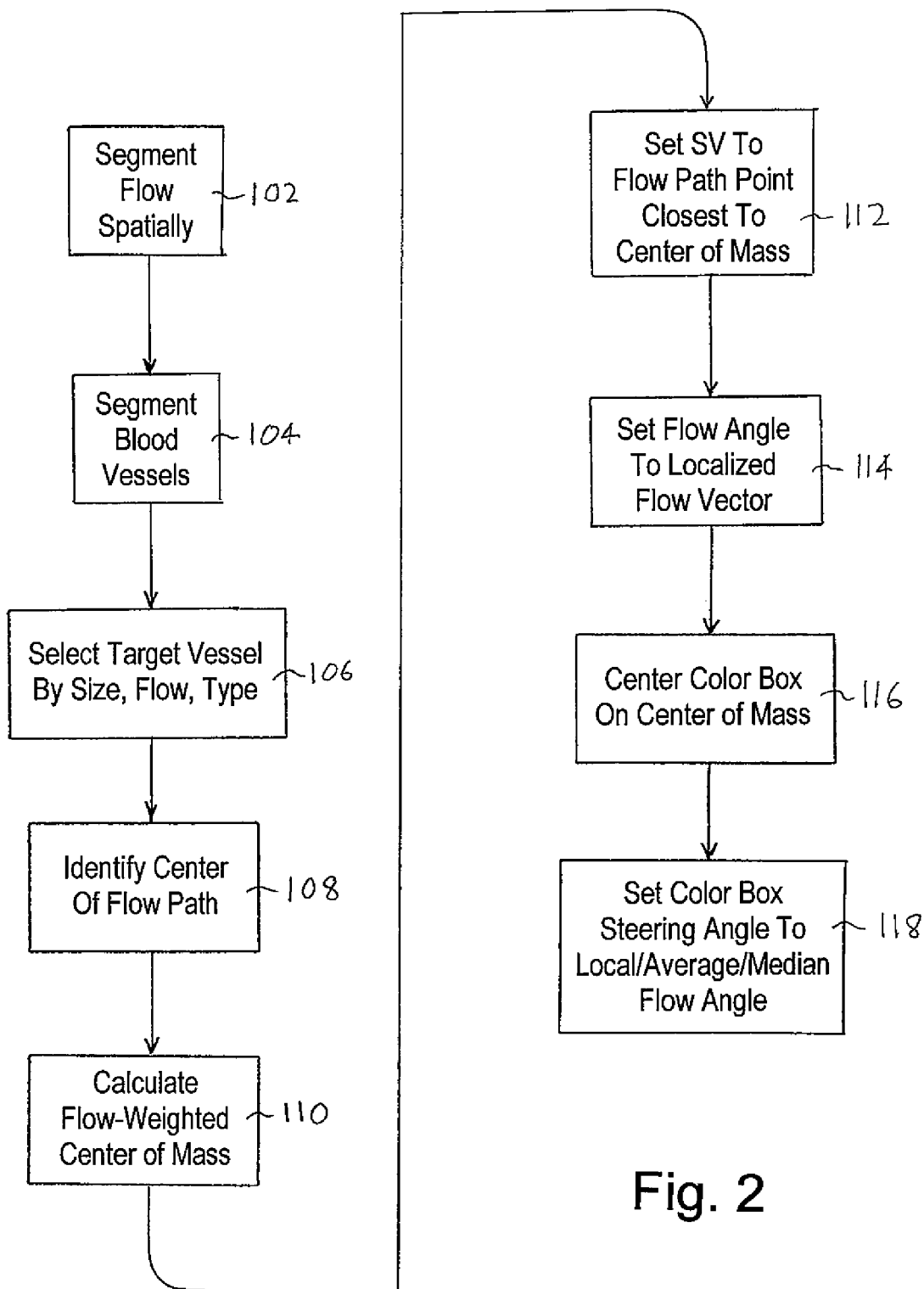


Fig. 2



Fig. 3a



Fig. 3b

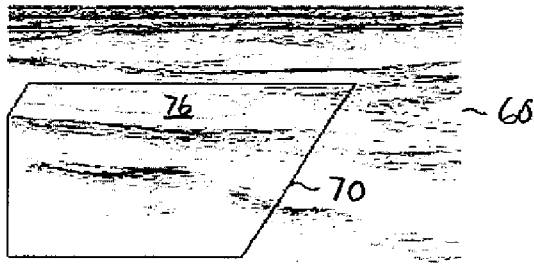


Fig. 3c

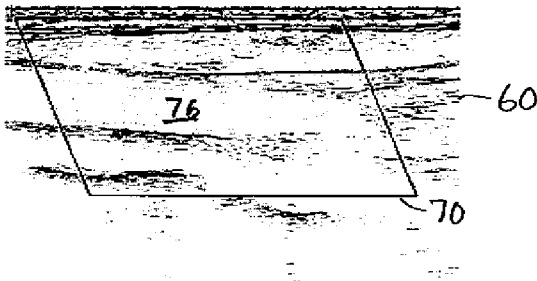


Fig. 3d

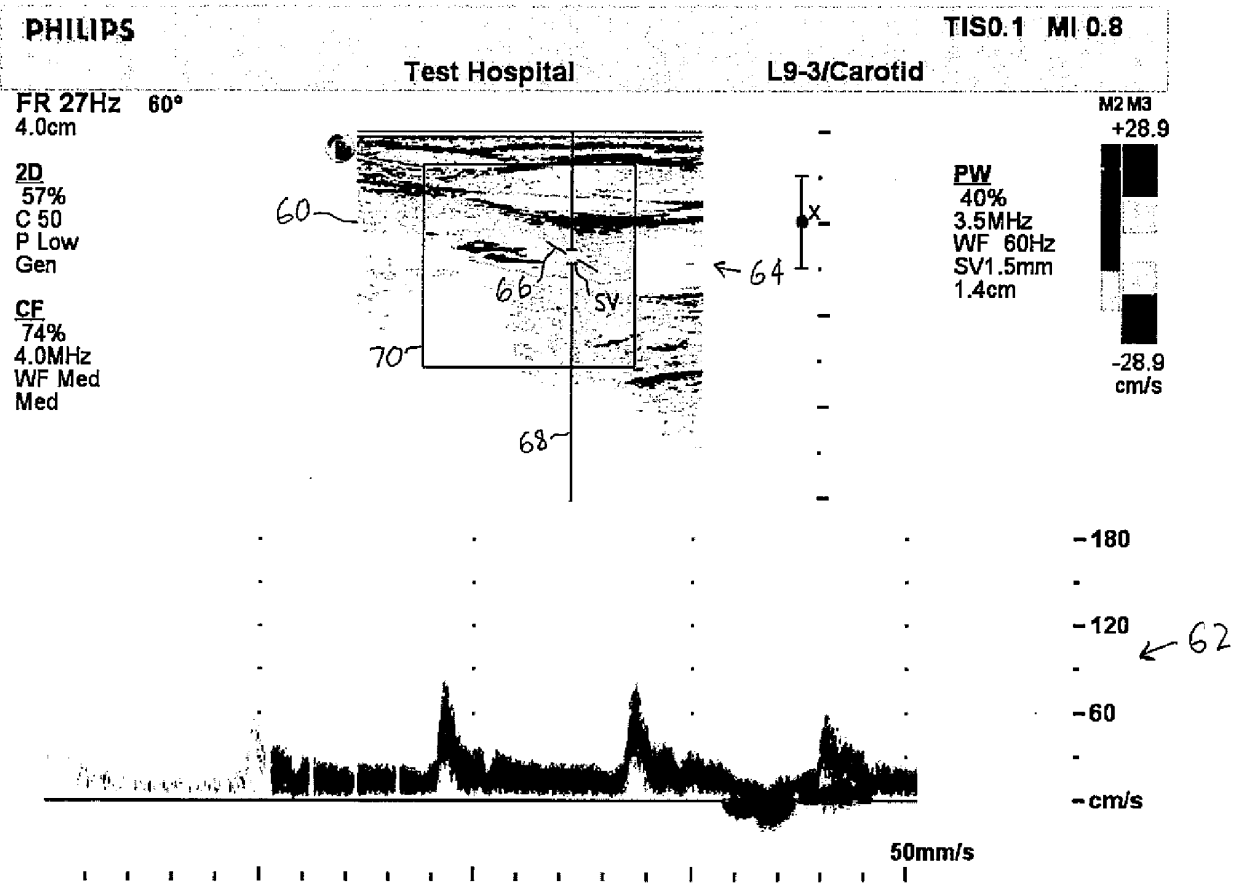


Fig. 4

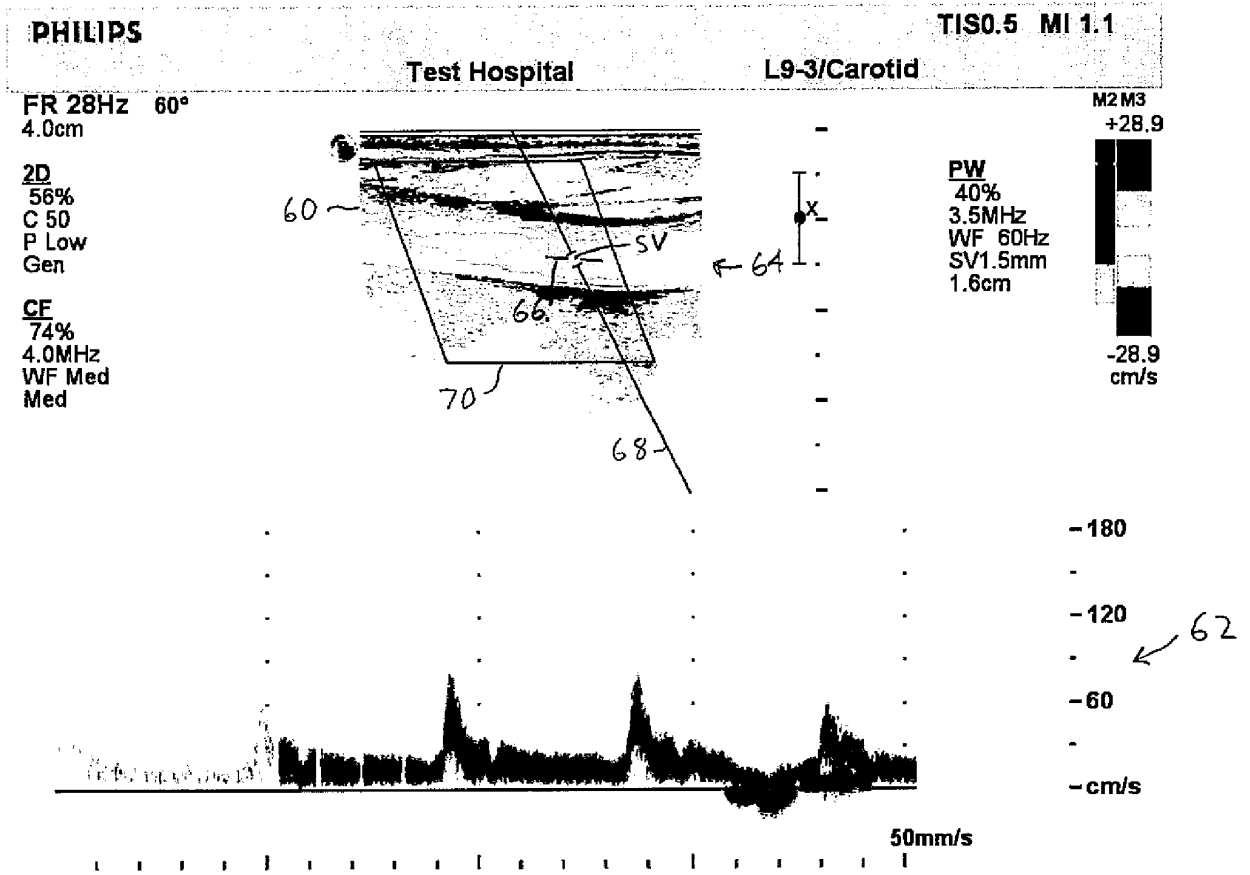


Fig. 5

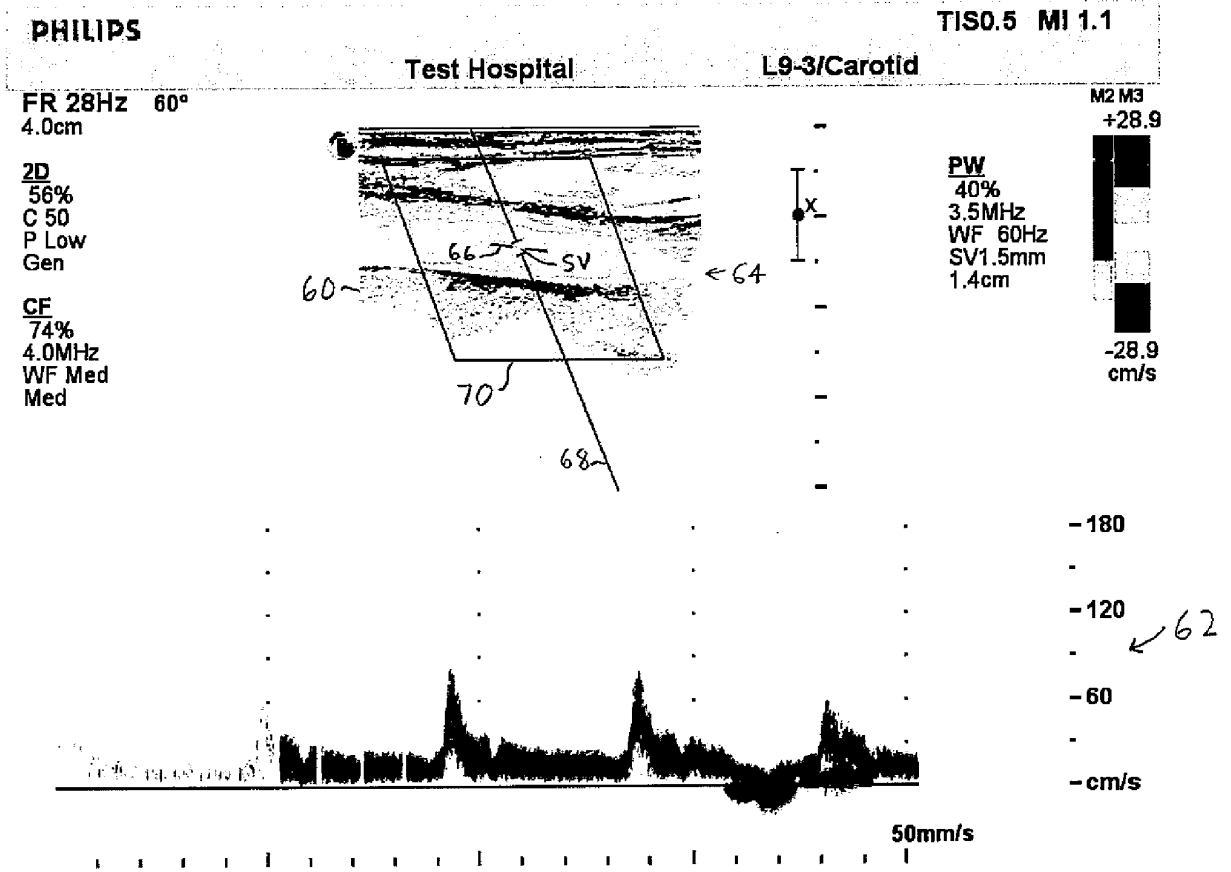


Fig. 6

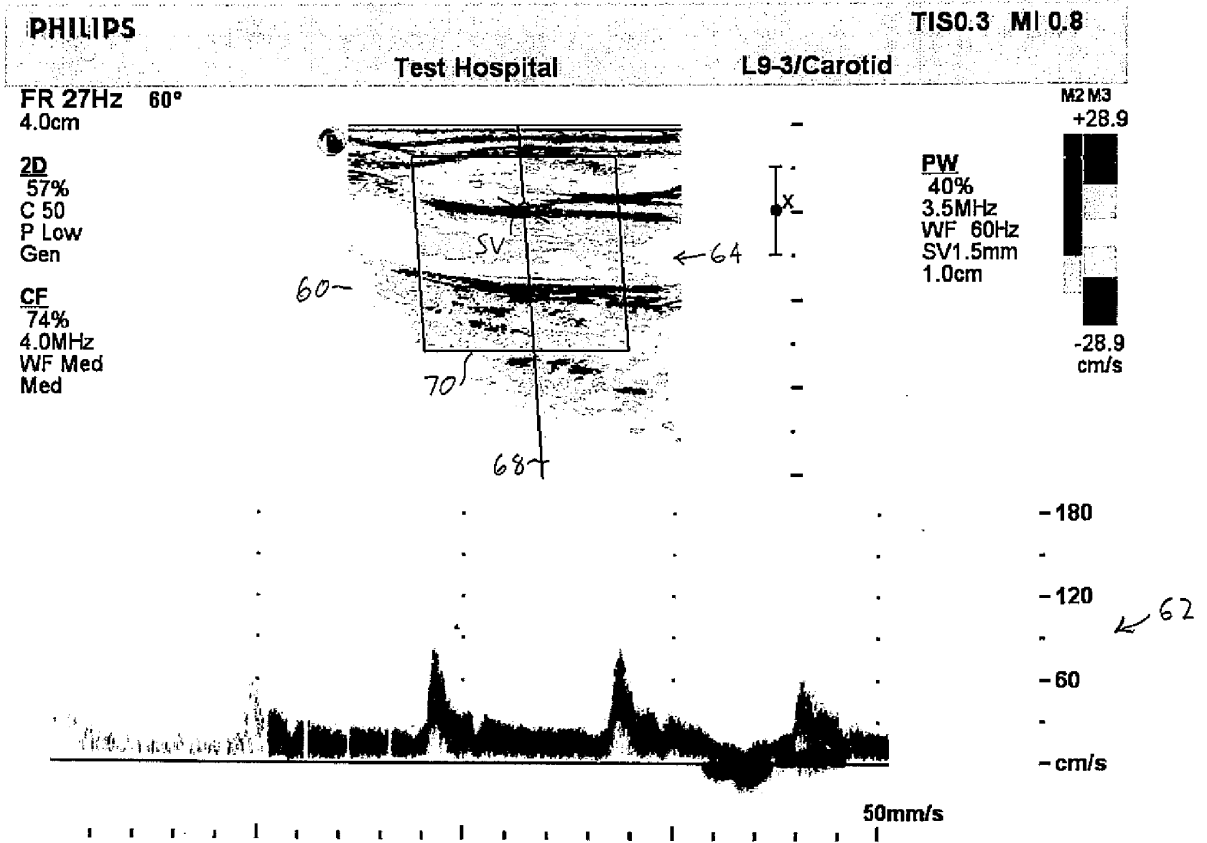


Fig. 7

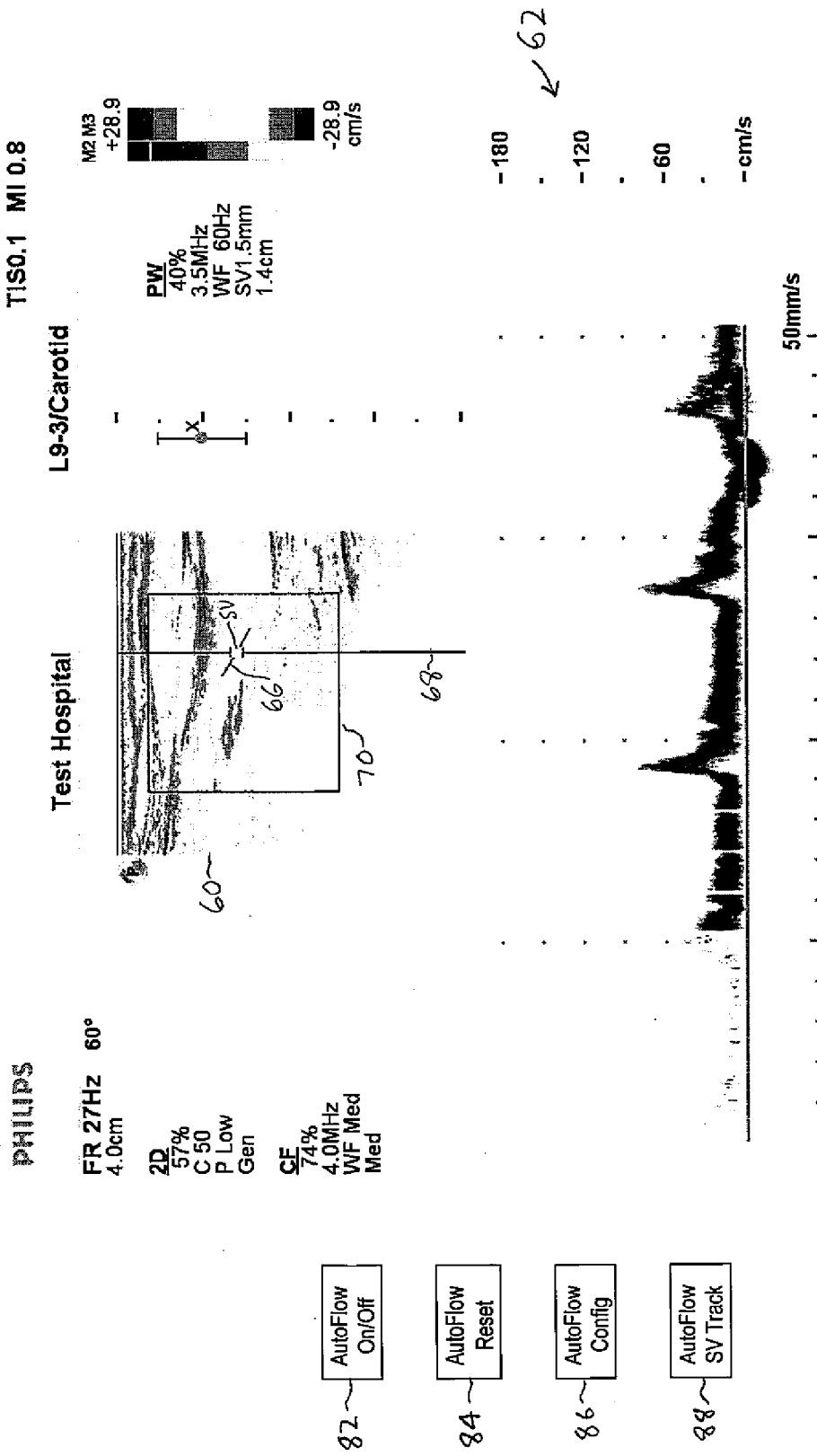


Fig. 8

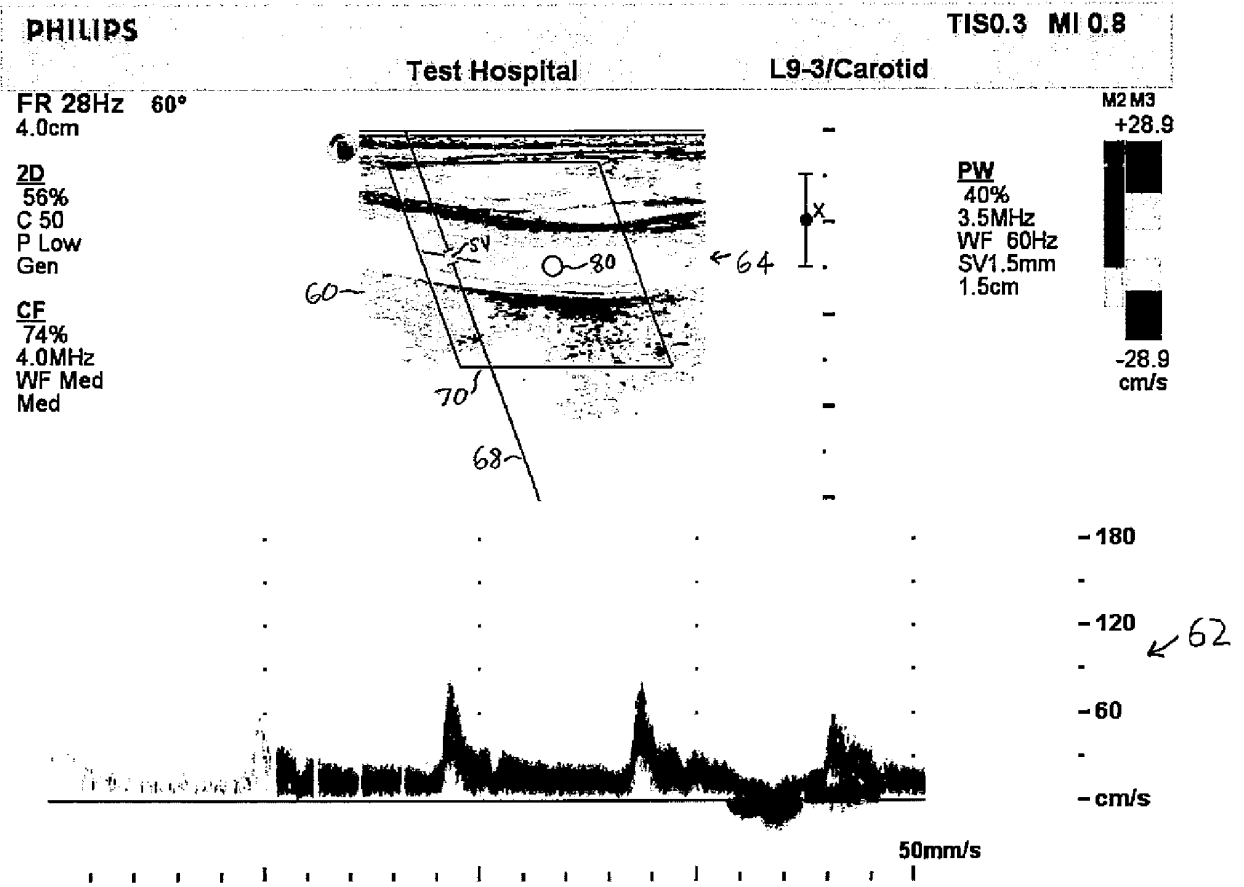


Fig. 9

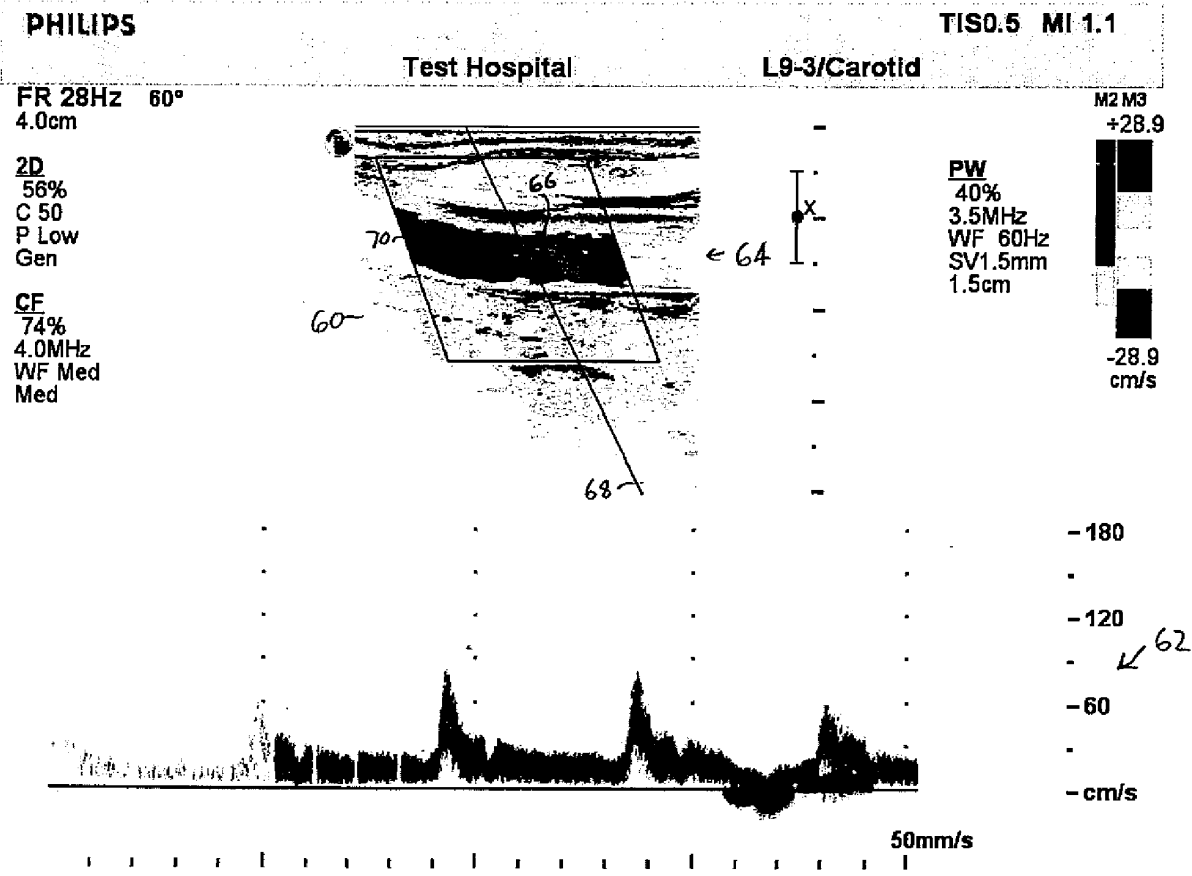


Fig. 10

**REFERENCES CITED IN THE DESCRIPTION**

*This list of references cited by the applicant is for the reader's convenience only. It does not form part of the European patent document. Even though great care has been taken in compiling the references, errors or omissions cannot be excluded and the EPO disclaims all liability in this regard.*

**Patent documents cited in the description**

- US 6464637 B, Criton **[0003]**
- WO 9617549 A, Goujon **[0003]**
- US 6068598 A, Pan **[0003]**
- US 6176830 B, Freiburger **[0003]**
- US 6126605 A, Washburn **[0003]**
- US 6322509 B, Pan **[0003]**
- WO 0319227 A, Christopher **[0003]**
- US 6086539 A **[0004]**

专利名称(译)	具有自动多普勒流量设置的超声系统		
公开(公告)号	<a href="#">EP2745137B1</a>	公开(公告)日	2018-01-03
申请号	EP2012783303	申请日	2012-09-14
[标]申请(专利权)人(译)	皇家飞利浦电子股份有限公司		
申请(专利权)人(译)	皇家飞利浦N.V.		
当前申请(专利权)人(译)	皇家飞利浦N.V.		
[标]发明人	LOUPAS THANASIS SAAD ASHRAF		
发明人	LOUPAS, THANASIS SAAD, ASHRAF		
IPC分类号	G01S7/52 G01S15/58 G01S15/89 A61B8/06		
CPC分类号	A61B8/488 A61B5/489 A61B8/06 G01S7/52071 G01S7/52073 G01S15/8915 G01S15/8984 G01S15/8988		
代理机构(译)	STEFFEN, THOMAS		
优先权	61/541353 2011-09-30 US		
其他公开文献	EP2745137A1		
外部链接	<a href="#">Espacenet</a>		

摘要(译)

超声系统执行双色彩色流和频谱多普勒成像，在彩色血流图像上显示的样本体积位置处执行频谱多普勒询问。彩色图像显示在叠加在共同登记的B模式图像上的彩色框中。颜色盒位置和转向角处理器分析空间多普勒数据并自动设置血管上的颜色盒角度和位置，以获得最佳的多普勒灵敏度和准确度。处理器还可以自动设置与流动方向对齐的流动角度校正光标。在优选实施例中，当用户在沿着血管长度进行多普勒测量的点处暂停时，这些优化调整是自动且连续地进行的。

