

(19) World Intellectual Property Organization
International Bureau



(43) International Publication Date
30 July 2009 (30.07.2009)

PCT

(10) International Publication Number
WO 2009/093212 A1

- (51) **International Patent Classification:**
A61B 8/00 (2006.01) A61B 8/08 (2006.01)
G06T 7/20 (2006.01)
 - (21) **International Application Number:**
PCT/IB2009/050277
 - (22) **International Filing Date:** 23 January 2009 (23.01.2009)
 - (25) **Filing Language:** English
 - (26) **Publication Language:** English
 - (30) **Priority Data:**
61/022,888 23 January 2008 (23.01.2008) US
 - (71) **Applicants and**
 - (72) **Inventors:** AVERKIOU, Michalakis [CY/CY]; P.O. Box 3003, Bothell, Washington 98041-3003 (US). LAMPASKIS, Marios [CY/CY]; PO Box 3003, Bothell, Washington 98041-3003 (US). KYRIAKOPOULOU, Konstantina [GR/GR]; PO Box 3003, Bothell, Washington 98041-3003 (US).
 - (74) **Agent:** DAMEN, Daan; Philips Intellectual Property & Standards, High Tech Campus 44 PO Box 220, NL-5600 AE Eindhoven (NL).
 - (81) **Designated States** (unless otherwise indicated, for every kind of national protection available): AE, AG, AL, AM, AO, AT, AU, AZ, BA, BB, BG, BH, BR, BW, BY, BZ, CA, CH, CN, CO, CR, CU, CZ, DE, DK, DM, DO, DZ, EC, EE, EG, ES, FI, GB, GD, GE, GH, GM, GT, HN, HR, HU, ID, IL, IN, IS, JP, KE, KG, KM, KN, KP, KR, KZ, LA, LC, LK, LR, LS, LT, LU, LY, MA, MD, ME, MG, MK, MN, MW, MX, MY, MZ, NA, NG, NI, NO, NZ, OM, PG, PH, PL, PT, RO, RS, RU, SC, SD, SE, SG, SK, SL, SM, ST, SV, SY, TJ, TM, TN, TR, TT, TZ, UA, UG, US, UZ, VC, VN, ZA, ZM, ZW.
 - (84) **Designated States** (unless otherwise indicated, for every kind of regional protection available): ARIPO (BW, GH, GM, KE, LS, MW, MZ, NA, SD, SL, SZ, TZ, UG, ZM, ZW), Eurasian (AM, AZ, BY, KG, KZ, MD, RU, TJ, TM), European (AT, BE, BG, CH, CY, CZ, DE, DK, EE, ES, FI, FR, GB, GR, HR, HU, IE, IS, IT, LT, LU, LV, MC, MK, MT, NL, NO, PL, PT, RO, SE, SI, SK, TR), OAPI (BF, BJ, CF, CG, CI, CM, GA, GN, GQ, GW, ML, MR, NE, SN, TD, TG).
- Published:**
— with international search report

(54) **Title:** RESPIRATORY-GATED THERAPY ASSESSMENT WITH ULTRASONIC CONTRAST AGENTS

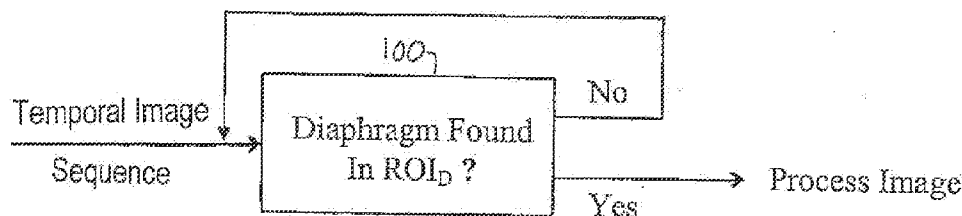


Fig. 4

(57) **Abstract:** An ultrasonic imaging apparatus and method are described for monitoring the progress of therapy for pathology such as lesions, tumors, and metastases by means of contrast agent imaging. A sequence of images are acquired as a bolus of contrast agent infuses the tissue containing the pathology. A contrast wash-in time parameter is calculated for both the tumor and normal tissue, and a ratio is calculated of the two wash-in time parameters (called WITR) which removes the effects of variations in the procedure from one therapy monitoring session to another. A difference curve of the time-intensity curves of the pathology and normal tissue is also produced, which is similarly immune to procedural variations. The motional effects of respiration can be taken into account by detecting the position of a landmark such as the diaphragm in each of the images of the sequence and discarding from processing those which exhibit a change in the position of the landmark relative to the probe.



WO 2009/093212 A1

-1-

**RESPIRATORY-GATED THERAPY ASSESSMENT WITH ULTRASONIC
CONTRAST AGENTS**

5 This application claims the benefit of U.S.
provisional application serial no. 61/022,888 filed
January 23, 2008, which is incorporated herein by
reference.

10 This invention relates to ultrasonic diagnostic
imaging systems and, in particular, to the use of
ultrasonic diagnostic imaging systems to assess the
progress of therapeutic treatment of tumors.

15 International patent publication WO 2006/090309
(Bruce et al.) describes an ultrasonic imaging
technique for detecting lesions in the liver by use
of an ultrasonic contrast agent. A bolus of contrast
agent is introduced into the body and the time of
arrival of the contrast agent in the liver is
detected. When a bolus of contrast agent travels
through the blood vessels of the body and begins to
20 appear at a specific organ or location in the body,
the build-up of contrast in the images is termed the
"wash-in" of the contrast agent. As the infusion of
contrast agent plateaus at the location in the body
and then declines as it is carried away from the
25 location by the flow of blood, the decline is termed
the "wash-out" of the contrast agent. In the
aforementioned patent publication the inventors take
advantage of the fact that the flow of blood to the
liver comes from two sources, the hepatic artery and
30 the portal vein. Since the flow of blood during the
first, arterial phase of blood flow will perfuse HCC
and metastatic liver lesions first, the inventors
identify such lesions by detecting the times of
arrival of contrast agent in the liver during the
35 arterial and the later portal phase of blood flow.

-2-

An area of early wash-in of contrast agent to the liver can be symptomatic of a lesion.

Once a lesion or metastasis has been identified by this and/or other means, a treatment regimen is generally prescribed by a physician. The therapy may involve hyper-/hypothermia, cytotoxic chemotherapy, or anti-angiogenesis agents, for example. The therapy is usually not performed in a single session, but in several sessions over a period of weeks or months. At each therapy session it is generally desirable for a physician to assess the progress of the therapy to determine its effectiveness for the patient. The lesion or metastasis may be imaged diagnostically to see whether it is shrinking, for instance. But often the progress of treatment is slow and only small changes in the lesion or metastasis have occurred since the previous session. In such instances it is desirable to assess the progress of therapy quantitatively by measuring certain characteristics of the tumor. One such measure is the regression of tumor angiogenesis. As a lesion or metastasis shrinks with the necrosis of its cells, the microvasculature which developed to nourish the lesion will provide a smaller supply of blood for the lesion and may itself begin to shrink. One quantitative approach is to assess this regression of angiogenesis, the decline in performance of the lesion's microvasculature. It is desirable that such quantitative measures be repeatable and immune to variations from one imaging procedure to the next, such as variation of the bolus injection, patient cardiac output, and ultrasound machine settings which may differ from one examination day to another. Eliminating the effects of these variations enables the measurements to be

-3-

comparable from one therapy session to another. It is an object of the present invention to provide new and improved techniques for assessing lesion or metastasis angiogenesis during a period of therapy for the tumor.

In accordance with the principles of the present invention, time-intensity curves of the wash-in and wash-out of ultrasonic contrast agents are produced and used to quantify the tumor angiogenesis resulting from therapy. An image of a lesion or metastasis is acquired by an ultrasonic imaging system and the pathology is continuously imaged as contrast agent washes into and out of the tissue or organ being observed. For an accurate measurement of this process it is desirable to steadily acquire ultrasonic signals from the same location of the metastasis as the contrast agent washes in and out, so that the signal information for time-intensity curve computation continually emanates from the same point of the lesion. In accordance with a first aspect of the present invention, the effects of respiratory motion are removed by respiratory gating of the data acquisition for time-intensity curve production. A preferred technique of respiratory gating is one performed by image analysis, in which the presence or absence of an anatomical landmark in the image, such as the diaphragm, is used to decide whether an image is or is not to be used for time-intensity curve processing.

In accordance with a further aspect of the present invention, a time-intensity curve is produced both for ultrasonic data from the tumor and for ultrasonic data from normal tissue. A wash-in time (WIT) parameter is calculated for each time-intensity curve. A wash-in time ratio (WITR) is formed of the

-4-

two parameters, which reduces variations in wash-in time quantification due to factors such as bolus differences, cardiac output, and ultrasound system settings. The WITR thus provides an accurate and comparable indicator of the progress of the therapy.

In accordance with yet another aspect of the present invention, the time-intensity curves of the tumor and normal tissue are subtracted from each other to form a differential time-intensity curve. The shape of the differential time-intensity curve and its variations over time are another indicator of the progress of the therapy.

In the drawings:

FIGURE 1 illustrates in block diagram form an ultrasonic diagnostic imaging system constructed in accordance with the principles of the present invention.

FIGURES 2 and 3 illustrate details of the operation of the QLab processor of FIGURE 1 in accordance with the principles of the present invention.

FIGURE 4 illustrates respiratory gating through image processing in accordance with the principles of the present invention.

FIGURE 5 is an illustration of ROIs for time-intensity curves in accordance with the present invention in an image of the liver acquired during the arterial phase.

FIGURE 6 is an illustration of ROIs for time-intensity curves in accordance with the present invention in an image of the liver acquired during the late portal phase.

FIGURE 7 illustrates time-intensity curves for a metastatic lesion and normal parenchyma.

FIGURE 8 illustrates the identification of the

-5-

diaphragm in an ultrasound image for respiratory gating in accordance with the principles of the present invention.

5 FIGURES 9a-9d illustrate the production and subtraction of time-intensity curves to form a differential time-intensity curve in accordance with the principles of the present invention.

10 FIGURE 10 illustrates the clinical results of assessments of therapeutic progress in accordance with the present invention.

15 Referring first to FIGURE 1, an ultrasound system constructed in accordance with the principles of the present invention is shown in block diagram form. This system operates by scanning a two or three dimensional region of the body being imaged with ultrasonic transmit beams. As each beam is transmitted along its steered path through the body, the beam returns echo signals with linear and nonlinear (fundamental and harmonic frequency) components corresponding to the transmitted frequency components. The transmit signals are modulated by the nonlinear response of contrast agent microbubbles encountered by the beam, thereby generating echo signals with harmonic components.

25 The ultrasound system of FIGURE 1 utilizes a transmitter 16 which transmits waves or pulses of a selected modulation characteristic in a desired beam direction for the return of harmonic echo components from scatterers within the body. The transmitter is responsive to a number of control parameters which determine the characteristics of the transmit beams, including the frequency components of the transmit beam, their relative intensities or amplitudes, and the phase or polarity of the transmit signals. The transmitter is coupled by a transmit/receive switch

30

35

-6-

14 to the elements of an array transducer 12 of an
ultrasound probe 10. The array transducer can be a
one dimensional array for planar (two dimensional)
imaging or a two dimensional array for two
5 dimensional or volumetric (three dimensional)
imaging.

The transducer array 12 receives echoes from the
body containing fundamental (linear) and harmonic
(nonlinear) frequency components which are within the
10 transducer passband. These echo signals are coupled
by the switch 14 to a beamformer 18 which
appropriately delays echo signals from the different
transducer elements then combines them to form a
sequence of linear and harmonic signals along the
15 beam from shallow to deeper depths. Preferably the
beamformer is a digital beamformer operating on
digitized echo signals to produce a sequence of
discrete coherent digital echo signals from a near
field to a far field depth of the image. The
20 beamformer may be a multiline beamformer which
produces two or more sequences of echo signals along
multiple spatially distinct receive scanlines in
response to a single transmit beam, which is
particularly useful for 3D imaging. The beamformed
25 echo signals are coupled to an ensemble memory 22

In the ultrasound system of FIGURE 1, multiple
waves or pulses are transmitted in each beam
direction using different modulation techniques,
resulting in the reception of multiple echoes for
30 each scanned point in the image field. The echoes
corresponding to a common spatial location are
referred to herein as an ensemble of echoes, and are
stored in the ensemble memory 22, from which they can
be retrieved and processed together. The echoes of
35 an ensemble are combined in various ways by the

-7-

nonlinear signal separator 24 to produce the desired nonlinear or harmonic signals. For example, two pulses with different phase or polarity modulation can be transmitted to each point in the image field.

5 When the echoes resulting from the two pulses are received by the ultrasound system and additively combined, the different modulation causes the fundamental frequency components of the echoes to cancel and the harmonic components to reinforce each other. This separates out the harmonic components of the echo signals. Alternatively, when the two echoes are subtracted from each other, the fundamental frequency components are reinforced and the harmonic components cancel. This separates out fundamental

10 frequencies for construction of a standard B mode image. This modulation is referred to as "pulse inversion," and can be done by phase, polarity or amplitude modulation as described in US patents 5,706,819 (Hwang et al.), 5,951,478 (Hwang et al.), and 5,577,505 (Brock Fisher et al.)

15

The separated signals are filtered by a filter 30 to further remove unwanted frequency components, then subjected to B mode or Doppler detection by a detector 32. The detected signals are coupled to a

25 nonlinear signal combiner 34 to reduce image speckle content. The signals are then processed for the formation of two dimensional, three dimensional, spectral, parametric, or other desired image in image processor 36, and the image is then displayed on a

30 display 38. Detected fundamental (linear) signals which do not need speckle reduction processing are coupled directly to the image processor 36 for image formation and display.

In accordance with the principles of the present invention, the ultrasound image data is also coupled

35

-8-

to a QLab image processor 40 for the production of time-intensity curves and contrast agent wash-in and wash-out characteristics. The time-intensity curves and characteristics produced by the QLab processor are coupled back to the image processor where they may be displayed numerically or graphically on the display 38 along with the ultrasound images. A standard QLab processor which is suitable for the production of time-intensity curves is available from Philips Healthcare of Andover, Massachusetts.

A standard QLab processor produces the well-known time-intensity curves, also referred to as perfusion curves or reperfusion curves. See US patent 5,833,613 (Averkiou et al.), international patent publication WO 2005/099579 (Rafter), and international patent publication WO 2005/054898 (Garg et al.) As these publications illustrate, the build-up of contrast agent at points in the tissue (points in the image) is monitored during the arrival of the contrast agent at locations in the body. The amount of contrast agent at a point is indicated by the intensity of echoes returned from contrast agent microbubbles at each point, and is present in a sequence of images acquired by low power (low MI) transmission as the contrast agent washes into the tissue. A time-intensity curve can be formed of this build-up of contrast intensity and its subsequent decline during wash-out of the contrast agent for each point in the tissue which returns the time sequence of echoes frame-by-frame. A qualitative presentation of the time-intensity curves for the entire tissue being viewed can be formed by coloring each pixel in an anatomical image with a color that represents a parameter of the time-intensity curves at each point in the image. The Garg et al.

-9-

application illustrates the formation of a parametric image of the myocardium where the color of each pixel in the image represents the peak level attained by the time-intensity curve at each point in the myocardium, for example. See also US patent 6,692,438 (Skyba et al.)

In an implementation of the present invention, contrast agent perfusion echo data is acquired over a sequence of images as the contrast agent arrives at the location of a metastasis in the body, builds up, and then washes out. The intensity values of the echoes will thus start from a baseline level of no contrast agent present, then rise, plateau, and decline as the contrast agent washes out. A curve-fitting algorithm then fits this data variation to an error function defined as

$$I(t) = A[\text{erf}\{(t-t_0)/T\} + I_0]$$

where $I(t)$ is the linear intensity at time t , A is the maximum intensity over the baseline offset, T is wash-in time parameter which is linearly proportional to wash-in time (e.g., from 5%-95%), I_0 is baseline offset, and t_0 is a time offset. The wash-in time is preferably extracted from the fitted curve instead of the noisy image data. Preferably the contrast agent echo data does not undergo data compression prior to this processing so that the data remains in its acquired linear relationship. Another approach is to fit the whole time-intensity curve (instead of just the wash-in part) to appropriate mathematical models as the lognormal distribution for example defined as

$$I(t) = \frac{A}{\sqrt{2\pi}\sigma(t-t_0)} e^{-\frac{[\ln(t-t_0)-\mu]^2}{2\sigma^2}} + C$$

where μ and σ are the mean and standard deviation of the normal distribution from which the logarithmic transformation was obtained. The curve can be scaled

-10-

horizontally by varying σ and changed in terms of skewness by varying μ . The area under the curve is A , t_0 is the time offset, and C is the baseline intensity offset. The lognormal fitted curve is used to extract the wash-in time.

FIGURE 5 illustrates one pair of images in a sequence of image frames of a metastasis 50 in the surrounding liver tissue. The pair of images are produced from the same echo data, with the left image being a second harmonic image which emphasizes the contrast agent and the right image being a fundamental frequency image of the same anatomy. When the liver is perfused with the contrast agent the perfused metastasis 50 stands out distinctly in the harmonic image and its border can be outlined by a tracing 52. The tracing can be done manually or by automated or semi-automated processing such as border detection, a thresholding process, or a region-growing technique initiated by indication of a seed point on the border of the metastasis. The border tracing 52 thus defines the region of interest (ROI) of the metastasis within its border. It is seen that the metastasis 50 is less distinct in the fundamental B mode image on the right because the harmonic response of the contrast agent is suppressed in this presentation. With the ROI of the metastasis delineated by the border tracing 52, the contrast agent intensity of the metastasis at the time of acquisition of the image can be measured by combining the pixel values within the border 52 by integration, summation, averaging, or other selected combining technique.

The images of FIGURE 5 were acquired during the arterial phase of the blood flow to the liver. FIGURE 6 is a pair of harmonic and fundamental images

-11-

of the same tissue and metastasis 50 acquired in the late portal phase. As previously mentioned, HCC and metastatic liver lesions generally receive most of their blood perfusion during the arterial phase, whereas normal parenchyma in the liver receives most of its blood perfusion during the portal phase, as seen by the greater shading of the liver in the left image of FIGURE 6. For clarity of illustration the ultrasound images in this application are shown as a black-on-white grayscale rendering rather than the conventional white-on-black.

In accordance with the principles of the present invention, a parameter referred to herein as the wash-in time ratio (WITR) is computed as a quantitative measure of the perfusion of the metastasis. The WITR is computed as shown by the block diagram of FIGURE 2. From a temporal sequence of images of a metastasis or lesion during contrast agent wash-in and wash-out as shown by FIGURES 5 and 6, contrast agent intensity values are computed for the ROI_{Met} of the metastasis 50 as indicated by box 72. As explained above, these values can be computed by combining the pixel values of the metastasis ROI for each image of the sequence. In box 74 intensity values are computed for an ROI_{Par} of normal parenchyma of the tissue. This may be done by tracing a region of normal tissue as shown by the tracing 54 in FIGURES 5 and 6, and using the normal tissue perfusion pixel values within this second tracing. These values are therefore perfusion values of normal tissue. In box 76 a time-intensity curve is fitted to the perfusion values of ROI_{Met} , and in box 78 a time-intensity curve is fitted to the perfusion values of ROI_{Par} . The fit is not always necessary but it gives a better estimation of WITR. While WITR can

-12-

be measured directly from the data, noise in the data can interfere with the accuracy of the measurement, hence the preference for curve-fitting. FIGURE 7 is an illustration of two such time-intensity curves, curve $T-I_{Met}$ from the ROI of a metastasis and curve $T-I_{Par}$ for parenchyma. A wash-in time parameter WIT is found for each curve, for example by use of the error function or lognormal distribution described above. This determines a wash-in time parameter for both the metastasis and normal parenchyma, WIT_{Met} and WIT_{Par} , respectively. A wash-in time ratio $WITR$ is then computed from the two wash-in parameters by dividing WIT_{Met} by WIT_{Par} . The effect of normalizing WIT_{Met} by the wash-in time parameter of normal tissue is to reduce or eliminate the effects of variables in the procedure such as bolus size, cardiac output, and ultrasound system settings, which may differ from one therapy session to another. Thus, comparable quantitative measures of the growth or shrinkage of the metastasis as indicated by its angiogenesis can be produced for each therapy session over the period of weeks or months that the patient is being treated.

Another quantified measure of metastasis angiogenesis which reduces or removes the effects of bolus injection rate, cardiac output of the patient, or variation in machine settings is illustrated in FIGURE 3. A time-intensity curve is fitted for each of the ROIs of the metastasis and the parenchyma as shown in boxes 76 and 78. In boxes 82 and 84, the range of each time-intensity curve is normalized. A convenient normalization scale is zero to one. In box 80 a difference curve $\Delta T-I$ Curve is computed as the difference between the two normalized curves $T-I$ Curve_{Met} and $T-I$ Curve_{Par}. This process and its results are illustrated in FIGURES 9a-9d. The dots in FIGURE

-13-

9a illustrate the perfusion intensity values of a metastasis ($T-I_{Met}$) and normal parenchyma ($T-I_{Par}$) acquired over a one hundred second period of contrast agent wash-in and wash-out. The two sets of values are normalized to the same scale of zero to one, where the peak intensity value of each data set is scaled to the one level. These curves illustrate the characteristic early wash-in of contrast agent during the arterial phase for the metastasis and the later perfusion of the liver parenchyma during the portal phase. In FIGURE 9b a curve 92 (for example error function or lognormal distribution) is fitted to the perfusion values of the metastasis and a curve 94 is fitted to the perfusion values of the parenchyma. FIGURE 9c shows the two curves 92 and 94 in darker lines without the acquired intensity data values. FIGURE 9d shows a curve 90 which is the computed difference $\Delta T-I$ Curve of the two curves 92 and 94 of FIGURE 9c. When the tumor therapy is successful and the angiogenesis of the metastasis declines with treatment, the $\Delta T-I$ Curve will show a progressive flattening and will approach a straight line. This is an expected result, for when the lesion has been dissipated its location in the body will respond like normal parenchyma, and the difference of the two (now virtually identical) curves for normal tissue and the lesion location will approach zero. The difference curve could also be expressed as a parameter value such as the maximum slope of the difference curve. When the maximum slope value approaches zero (there is no slope), this is an indication that the difference curve is approaching a straight line.

It is seen from the time scale of the graphs of FIGURES 9a-9d that a typical period of contrast agent wash-in and wash-out can last for 100 seconds. This

-14-

means that a clinician acquiring the image data must maintain the same image of the lesion steadily for 100 seconds so that each intensity value is of the same region of the lesion. If the probe moves during the acquisition, for instance, the lesion can move out of the image plane and the data acquired cannot be used. Even if the probe is held steady against the body of the patient, the lesion can still move relative to the probe field of view due to the respiratory motion of the patient. One way to overcome the effect of respiratory motion is to gate the image acquisition to the respiratory cycle. A respiratory signal can be acquired by known means such as an elastic band with strain or pressure sensors around the chest of the patient. Another technique is to transmit small signals between sensors across the chest of the patient and measure the patient's chest impedance variations. These and other techniques can produce cyclical signals of the respiratory cycle and can be used to gate the acquisition of images to the same phase of the respiratory cycle. In accordance with another aspect of the present invention, respiratory gating is performed by image processing as shown in the block diagram of FIGURE 4. The fundamental frequency images on the right side of FIGURES 5 and 6 show a distinctly shaded region 60 at the bottom of each image (which would be bright regions in a standard white-on-black grayscale ultrasound image). This image landmark 60 is the diaphragm of the patient in these images. In FIGURE 8 the diaphragm in the image has been outlined by a tracing 62. In the illustrated example the tracing 62 is replicated in the same position on each image of the image frame sequence. If the anatomy in the image does not move

-15-

relative to the probe as the image sequence is acquired, the diaphragm landmark 60 will be present in the tracing outline 62 in each image. However, respiratory motion may move the diaphragm 60 in and out of the tracing, particularly with deep breaths. The image processor 100 of FIGURE 4 detects this change by looking for the diaphragm landmark in the same location, ROI_p , which is the tracing 62 in the example of FIGURE 8. When the diaphragm landmark 60 is found in its expected location in the image ("Yes"), the image is forwarded for processing and quantification. However, if respiratory motion causes the diaphragm landmark 60 to move from its expected ROI_p location in an image ("No"), that image is omitted from processing. This process is applied to all of the images in the sequence so that respiratory motional effects on the imaging of the metastasis, as indicated by movement of the diaphragm, are eliminated by discarding those images which are not consistently aligned to a constant location of the diaphragm. There are also other possible ways of conducting respiratory gating. For example, a time-intensity curve can be formed from an ROI that closely follows a part of the diaphragm and the threshold of the values are detected. Any image whose intensity value is below the threshold is then discarded. Other motion compensation-based algorithms can also detect respiratory motion and gate for it.

The quantified measurements of the present invention have been used in a clinical environment to monitor the results of tumor treatment of eight patients over three to five therapy sessions. A measurement of the WITR was computed for each patient for each therapy session. Results for a good

-16-

responder and a bad responder are illustrated in
FIGURE 10. As this graph shows, the WITR approached
unity for the successfully treated patient with each
therapy session. For the patient in the group who
5 ultimately failed to respond to treatment (denoted as
bad responder) the WITR stayed away from unity. It
is seen by this graph that WITR measurement is well
correlated with actual clinical results of therapy
and may be used as a therapy biomarker.

10

-17-

WHAT IS CLAIMED IS:

1. An ultrasonic diagnostic imaging system for assessing the progress of tumor therapy comprising:
5 an ultrasound probe for acquiring a sequence of ultrasound images of a tumor and its adjoining tissue as a contrast agent perfuses the tissue, a plurality of the images further including an anatomical landmark indicative of tissue motion;
10 a contrast perfusion processor which processes perfusion parameters from the ultrasound images; and
an image processor which identifies the anatomical landmark in the images and enables contrast perfusion processing of images which include
15 the desired anatomical landmark.
2. The ultrasonic diagnostic imaging system of Claim 1, wherein the anatomical landmark further comprises the diaphragm.
20
3. The ultrasonic diagnostic imaging system of Claim 2, wherein the location of the diaphragm in the images is indicated by a manual tracing,
wherein the image processor identifies the
25 presence of image data of the diaphragm in the manual tracing.
4. The ultrasonic diagnostic imaging system of Claim 2, wherein the location of the diaphragm in the
30 images is indicated by image processing.
5. The ultrasonic diagnostic imaging system of Claim 1, wherein the image processor further operates to identify variation of the location of the
35 anatomical landmark in images of the sequence.

-18-

6. The ultrasonic diagnostic imaging system of Claim 1, wherein the image processor further operates to omit from processing images in which the anatomical landmark does not appear in a predetermined position.

7. The ultrasonic diagnostic imaging system of Claim 1, wherein the contrast perfusion processor further operates to produce a contrast agent wash-in parameter.

8. The ultrasonic diagnostic imaging system of Claim 7, wherein the contrast perfusion processor further operates to produce a normalized contrast agent wash-in parameter.

9. A method for ultrasonically monitoring the progress of tumor therapy comprising:
acquiring a sequence of ultrasound images of a tumor and its adjoining tissue as a contrast agent perfuses the tissue;
processing the images to identify tissue motion in the images;
perfusion parameter processing images of the sequence which are not adversely affected by tissue motion to determine a perfusion parameter which is a therapy biomarker.

10. The method of Claim 9, further comprising omitting from the sequence images which are adversely affected by tissue motion.

11. The method of Claim 10, further comprising omitting from the sequence images which are adversely

-19-

affected by tissue motion as indicated by the location of an anatomical landmark in the images.

5 12. The method of Claim 11, wherein the anatomical landmark is the diaphragm.

10 13. The method of Claim 9, wherein the perfusion parameter is a contrast agent wash-in parameter.

14. The method of Claim 13, wherein the perfusion parameter is a normalized contrast agent wash-in parameter.

15 15. A method for ultrasonically monitoring the progress of tumor therapy comprising:

acquiring a sequence of ultrasound images of a tumor and its adjoining tissue as a contrast agent perfuses the tissue;

20 selecting ultrasound images of the sequence for processing by respiratory gating;

extracting from the data of the selected images a normalized parameter of the perfusion of the tissue by the contrast agent; and

25 displaying the normalized parameter as a tumor biomarker of the progress of tumor therapy.

30 16. The method of Claim 15, wherein selecting further comprises selecting ultrasound images for processing by means of a respiration sensor.

35 17. The method of Claim 15, wherein respiratory gating further comprises analyzing the data of the acquired images for respiratory effects.

-20-

18. The method of Claim 15, wherein respiratory gating further comprises analyzing the data of the acquired images for respiratory motion.

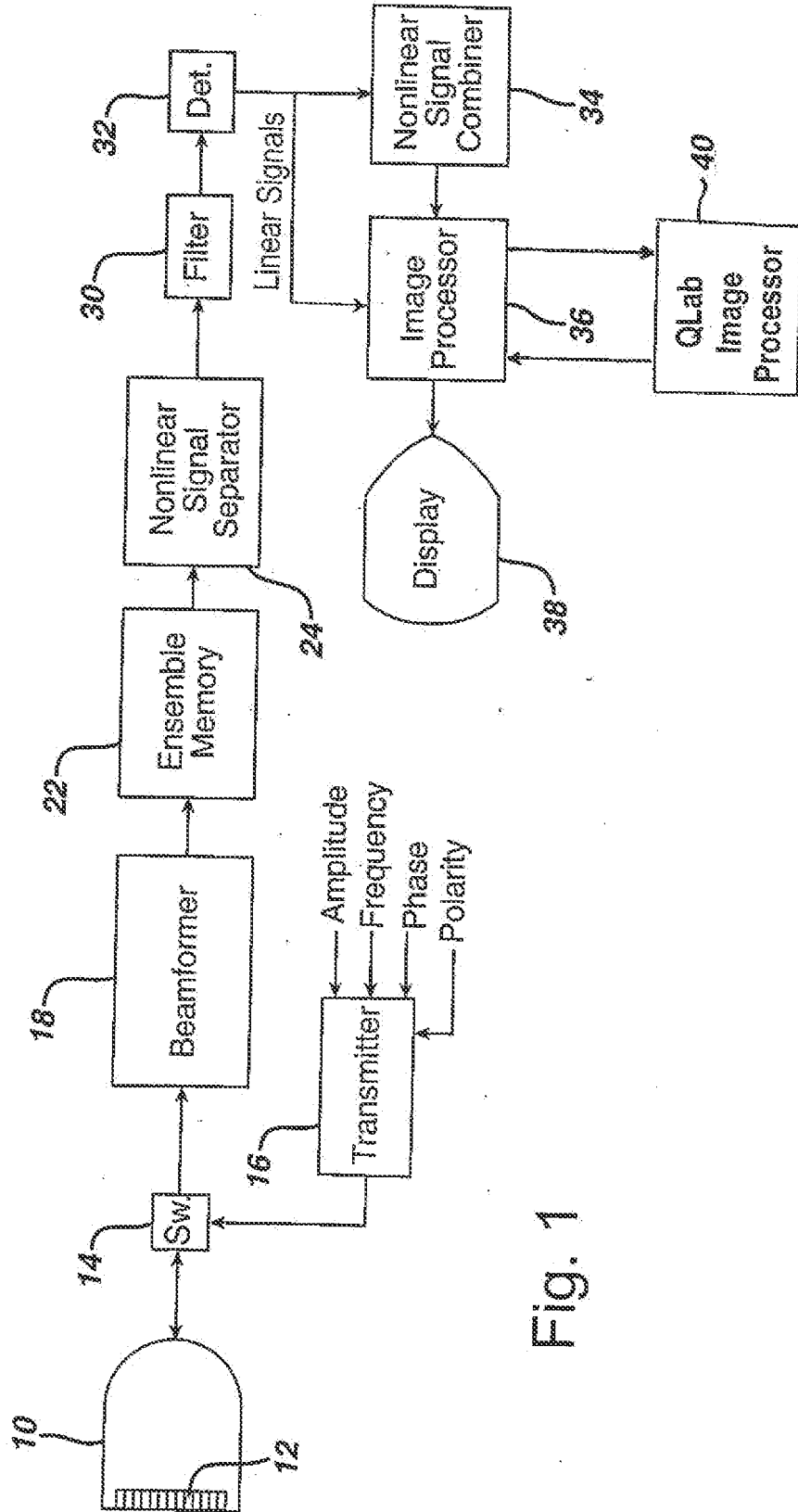


Fig. 1

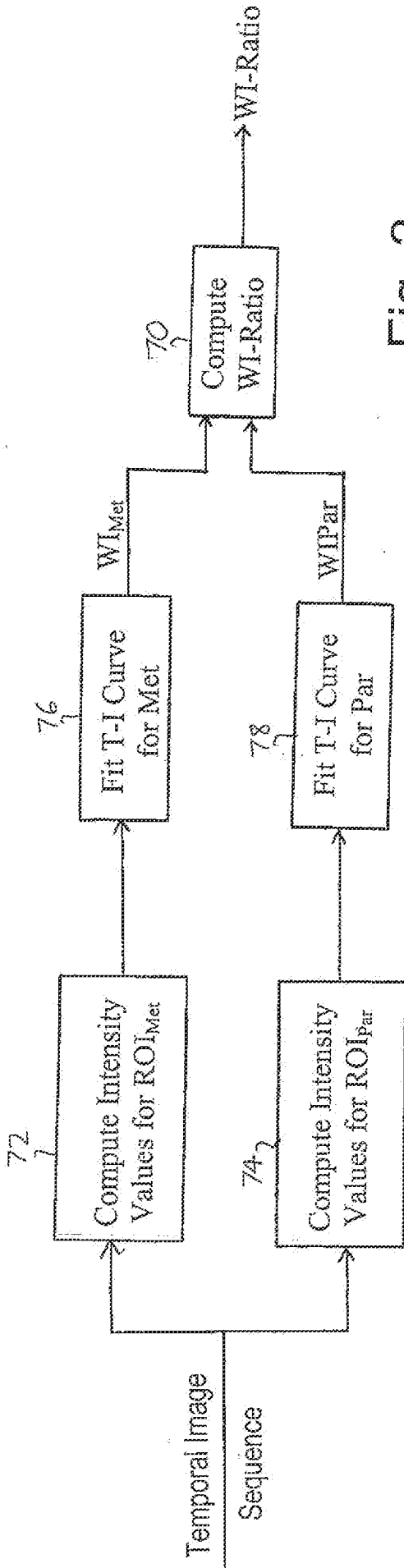


Fig. 2

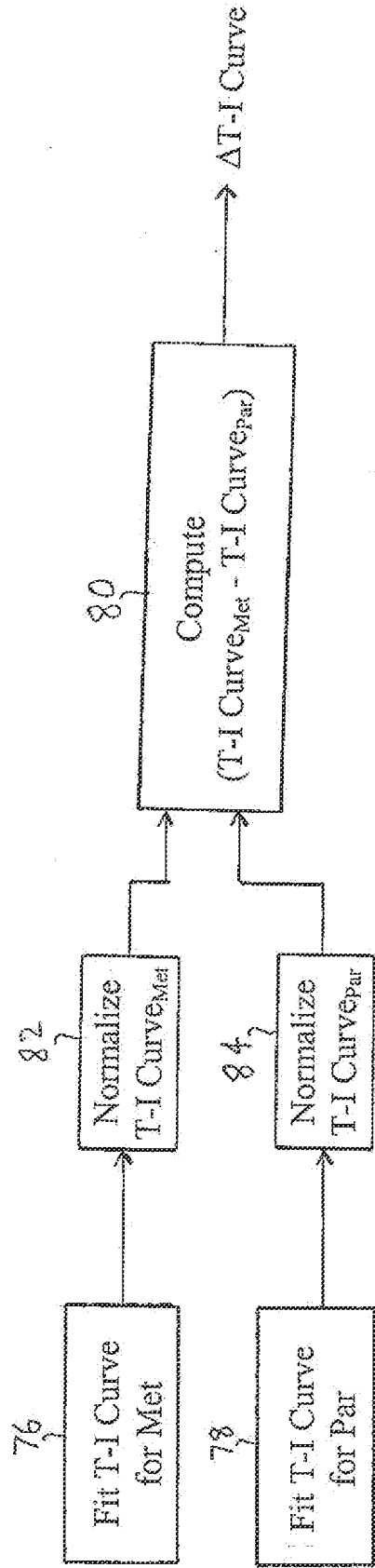


Fig. 3

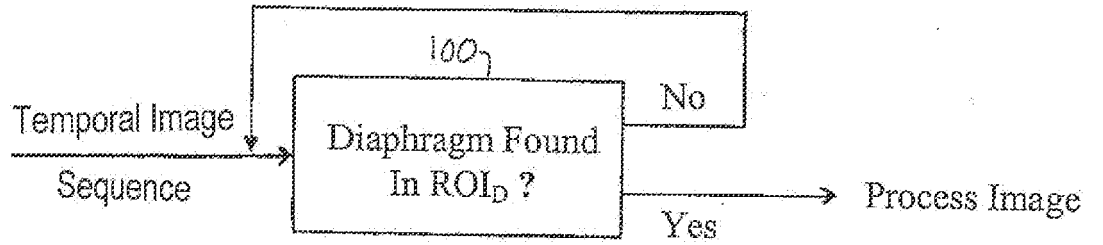


Fig. 4

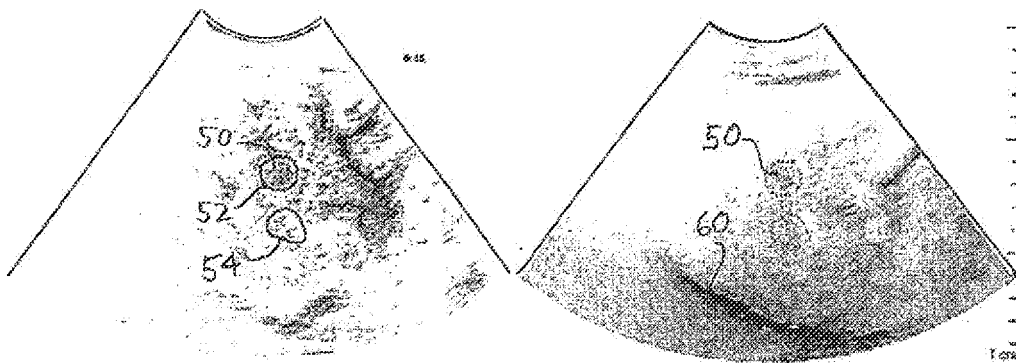


Fig. 5

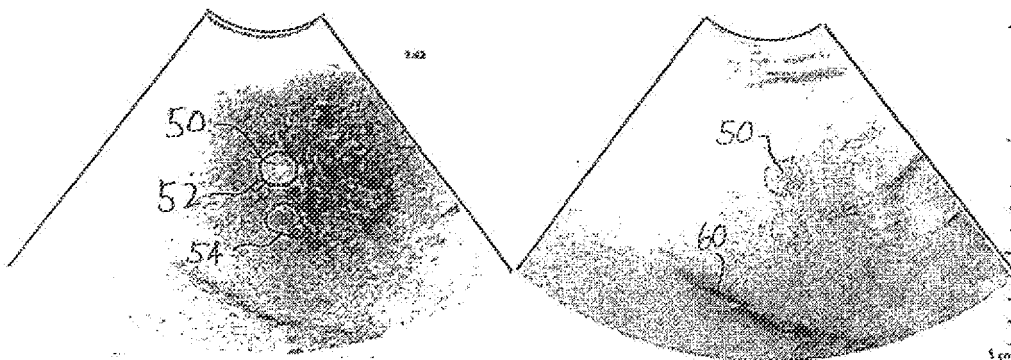


Fig. 6

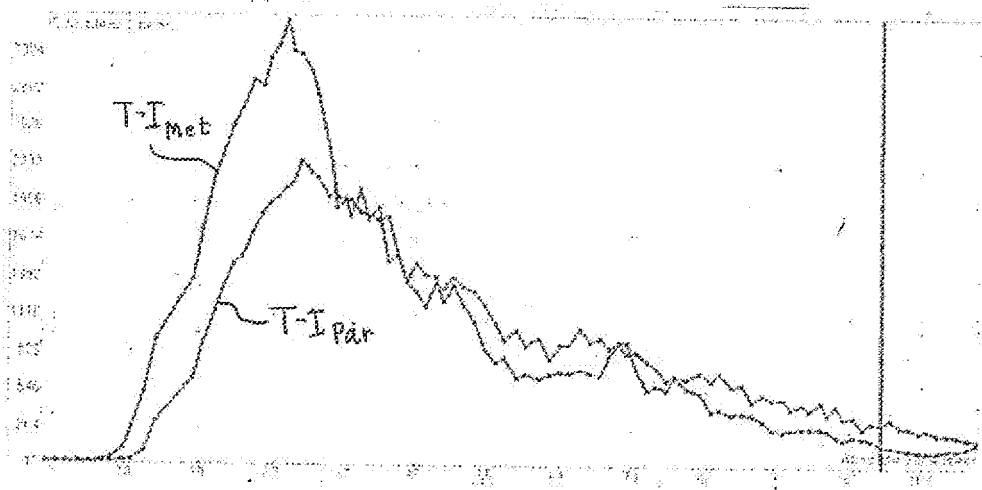


Fig. 7

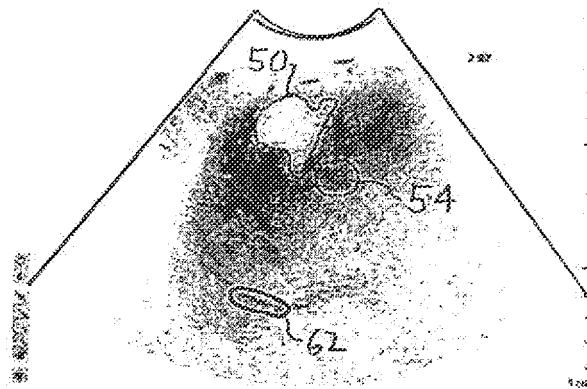


Fig. 8

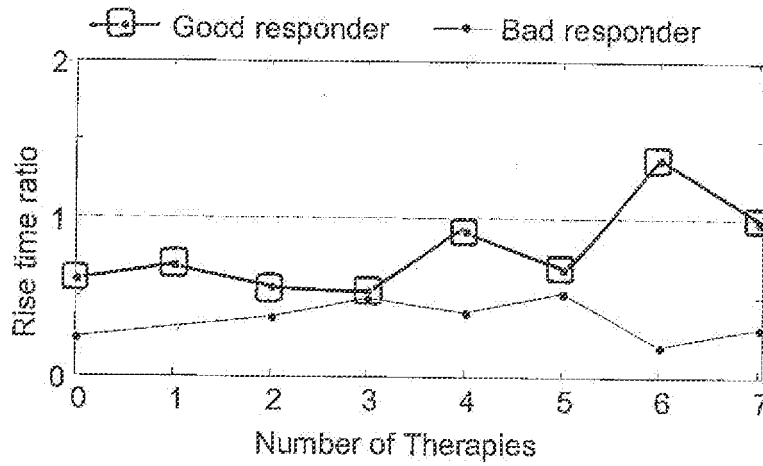


Fig. 10

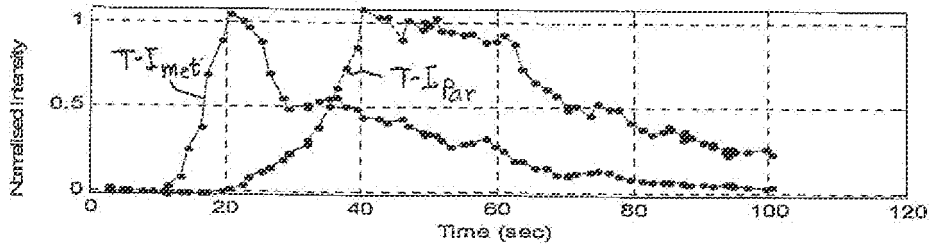


Fig. 9a

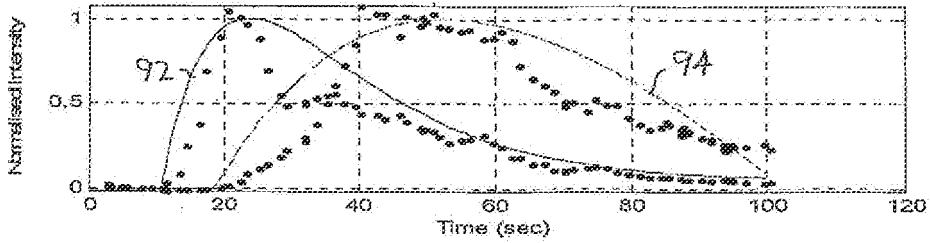


Fig. 9b

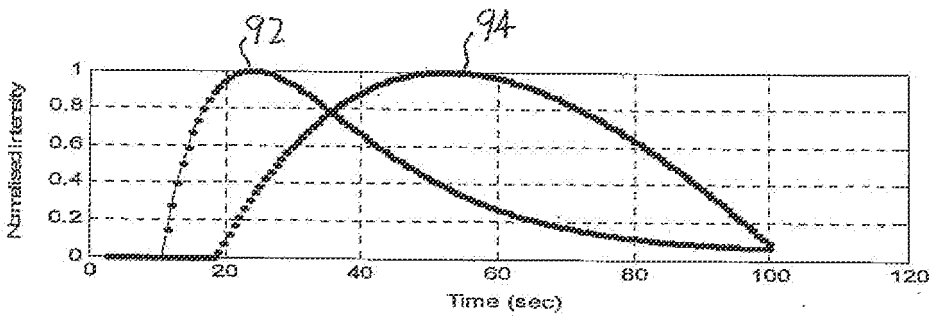


Fig. 9c

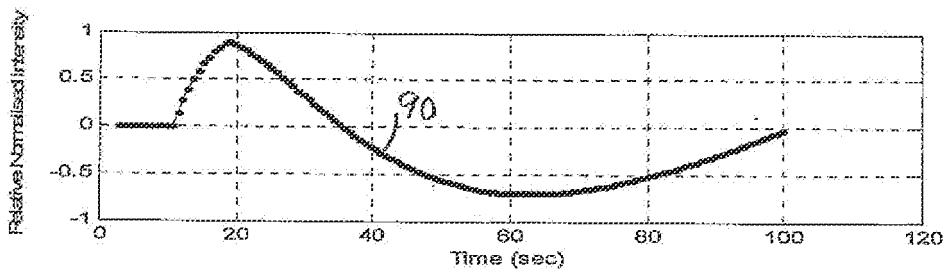


Fig. 9d

INTERNATIONAL SEARCH REPORT

International application No

PCT/IB2009/050277

A. CLASSIFICATION OF SUBJECT MATTER

INV. A61B8/00 G06T7/20
 ADD. A61B8/08

According to International Patent Classification (IPC) or to both national classification and IPC

B. FIELDS SEARCHED

Minimum documentation searched (classification system followed by classification symbols)
 A61B G06T G01S

Documentation searched other than minimum documentation to the extent that such documents are included in the fields searched

Electronic data base consulted during the international search (name of data base and, where practical, search terms used)

EPO-Internal

C. DOCUMENTS CONSIDERED TO BE RELEVANT

Category*	Citation of document, with indication, where appropriate, of the relevant passages	Relevant to claim No.
Y	WO 2006/090309 A (KONINKL PHILIPS ELECTRONICS NV [NL]; BRUCE MATTHEW [US]; POWERS JEFFRY) 31 August 2006 (2006-08-31) cited in the application the whole document	1,5,7,8
Y	EP 1 772 825 A (ESAOTE SPA [IT]) 11 April 2007 (2007-04-11) abstract paragraph [0004] - paragraph [0031] paragraph [0085] - paragraph [0092] column 16, line 53 - column 17, line 25 paragraph [0158] figures 10-14	1,5,7,8
	----- -/--	



Further documents are listed in the continuation of Box C.



See patent family annex.

* Special categories of cited documents :

- *A* document defining the general state of the art which is not considered to be of particular relevance
- *E* earlier document but published on or after the international filing date
- *L* document which may throw doubts on priority claim(s) or which is cited to establish the publication date of another citation or other special reason (as specified)
- *O* document referring to an oral disclosure, use, exhibition or other means
- *P* document published prior to the international filing date but later than the priority date claimed

- *T* later document published after the international filing date or priority date and not in conflict with the application but cited to understand the principle or theory underlying the invention
- *X* document of particular relevance; the claimed invention cannot be considered novel or cannot be considered to involve an inventive step when the document is taken alone
- *Y* document of particular relevance; the claimed invention cannot be considered to involve an inventive step when the document is combined with one or more other such documents, such combination being obvious to a person skilled in the art.
- *Z* document member of the same patent family

Date of the actual completion of the international search

7 April 2009

Date of mailing of the international search report

06/05/2009

Name and mailing address of the ISA/

European Patent Office, P.B. 5818 Patentlaan 2
 NL - 2280 HV Rijswijk
 Tel. (+31-70) 340-2040,
 Fax: (+31-70) 340-3016

Authorized officer

Artikis, T

INTERNATIONAL SEARCH REPORT

International application No

PCT/IB2009/050277

C(Continuation). DOCUMENTS CONSIDERED TO BE RELEVANT		
Category*	Citation of document, with indication, where appropriate, of the relevant passages	Relevant to claim No.
Y	US 2004/120559 A1 (HALL ANNE LINDSAY [US]) 24 June 2004 (2004-06-24) abstract paragraph [0010] - paragraph [0025]; figure 1	1,5,7,8
A	----- RENAULT G ET AL: "A posteriori navigator echo for perfusion imaging of the liver with contrast ultrasound" BIOMEDICAL IMAGING: MACRO TO NANO, 2004. IEEE INTERNATIONAL SYMPOSIUM ON ARLINGTON,VA, USA APRIL 15-18, 2004, PISCATAWAY, NJ, USA,IEEE, 15 April 2004 (2004-04-15), pages 316-319, XP010773861 ISBN: 978-0-7803-8389-0 the whole document	1-8
A	----- XU QIANYI ET AL: "A novel respiratory detection method based on automated analysis of ultrasound diaphragm video" MEDICAL PHYSICS, AIP, MELVILLE, NY, US, vol. 33, no. 4, 16 March 2006 (2006-03-16), pages 916-921, XP012092075 ISSN: 0094-2405 the whole document	1-8
A	----- US 2005/033179 A1 (GARDNER EDWARD A [US] ET AL) 10 February 2005 (2005-02-10) abstract paragraph [0002] - paragraph [0046] figures 1,4	1,5-8
A	----- US 6 659 953 B1 (SUMANAWEERA THILAKA S [US] ET AL) 9 December 2003 (2003-12-09) the whole document	1,5-8

INTERNATIONAL SEARCH REPORT

International application No.
PCT/IB2009/050277

Box No. II Observations where certain claims were found unsearchable (Continuation of item 2 of first sheet)

This international search report has not been established in respect of certain claims under Article 17(2)(a) for the following reasons:

1. Claims Nos.: 9-18
because they relate to subject matter not required to be searched by this Authority, namely:
Rule 39.1(iv) PCT - Method for treatment of the human or animal body by surgery due to the use of an injected contrast agent
2. Claims Nos.:
because they relate to parts of the international application that do not comply with the prescribed requirements to such an extent that no meaningful international search can be carried out, specifically:
3. Claims Nos.:
because they are dependent claims and are not drafted in accordance with the second and third sentences of Rule 6.4(a).

Box No. III Observations where unity of invention is lacking (Continuation of item 3 of first sheet)

This International Searching Authority found multiple inventions in this international application, as follows:

1. As all required additional search fees were timely paid by the applicant, this international search report covers allsearchable claims.
2. As all searchable claims could be searched without effort justifying an additional fees, this Authority did not invite payment of additional fees.
3. As only some of the required additional search fees were timely paid by the applicant, this international search report covers only those claims for which fees were paid, specifically claims Nos.:
4. No required additional search fees were timely paid by the applicant. Consequently, this international search report is restricted to the invention first mentioned in the claims; it is covered by claims Nos.:

Remark on Protest

- The additional search fees were accompanied by the applicant's protest and, where applicable, the payment of a protest fee.
- The additional search fees were accompanied by the applicant's protest but the applicable protest fee was not paid within the time limit specified in the invitation.
- No protest accompanied the payment of additional search fees.

INTERNATIONAL SEARCH REPORT

Information on patent family members

International application No

PCT/IB2009/050277

Patent document cited in search report	A	Publication date	Patent family member(s)	Publication date
WO 2006090309	A	31-08-2006	CN 101128154 A EP 1855596 A2 JP 2008531082 T KR 20070110855 A	20-02-2008 21-11-2007 14-08-2008 20-11-2007
EP 1772825	A	11-04-2007	NONE	
US 2004120559	A1	24-06-2004	CN 1509690 A DE 10357888 A1 JP 2004202229 A	07-07-2004 15-07-2004 22-07-2004
US 2005033179	A1	10-02-2005	US 2008027319 A1 US 2008033294 A1	31-01-2008 07-02-2008
US 6659953	B1	09-12-2003	NONE	

专利名称(译)	使用超声造影剂评估呼吸门控治疗		
公开(公告)号	EP2234544A1	公开(公告)日	2010-10-06
申请号	EP2009704834	申请日	2009-01-23
[标]申请(专利权)人(译)	AVERKIOU MICHALAKIS LAMPASKIS MARIOS KYRIAKOPOULOU KONSTANTINA		
申请(专利权)人(译)	AVERKIOU , MICHALAKIS LAMPASKIS , MARIOS KYRIAKOPOULOU , KONSTANTINA		
当前申请(专利权)人(译)	AVERKIOU , MICHALAKIS LAMPASKIS , MARIOS KYRIAKOPOULOU , KONSTANTINA		
[标]发明人	AVERKIOU MICHALAKIS LAMPASKIS MARIOS KYRIAKOPOULOU KONSTANTINA		
发明人	AVERKIOU, MICHALAKIS LAMPASKIS, MARIOS KYRIAKOPOULOU, KONSTANTINA		
IPC分类号	A61B8/00 G06T7/20 A61B8/08		
CPC分类号	G06T7/0012 A61B8/0833 A61B8/481 A61B8/543 G06T2200/04 G06T2207/10016 G06T2207/10132 G06T2207/20104 G06T2207/30096		
优先权	61/022888 2008-01-23 US		
其他公开文献	EP2234544B1		
外部链接	Espacenet		

摘要(译)

描述了一种超声成像设备和方法，用于通过造影剂成像监测病理学，例如病变，肿瘤和转移的治疗进展。当大剂量造影剂注入含有病理的组织时，获取一系列图像。计算肿瘤组织和正常组织的对比洗入时间参数，并计算两个洗入时间参数（称为WITR）的比率，该参数消除了从一个治疗监测会话到另一个治疗监测会话的过程变化的影响。还产生病理学和正常组织的时间 - 强度曲线的差异曲线，其同样不受程序变化的影响。呼吸的运动效果可以通过在序列的每个图像中检测诸如光阑的界标的位置并且从处理那些表现出界面相对于探针的位置的变化的处理中考虑来考虑。