



(11) **EP 2 570 081 B1**

(12) **EUROPEAN PATENT SPECIFICATION**

(45) Date of publication and mention of the grant of the patent:
09.09.2015 Bulletin 2015/37

(51) Int Cl.:
A61B 8/00 (2006.01)

(21) Application number: **12161828.4**

(22) Date of filing: **28.03.2012**

(54) **Method and apparatus for processing image, ultrasound diagnosis apparatus, and medical imaging system**

Verfahren und Vorrichtung zur Bildverarbeitung, Ultraschalldiagnosevorrichtung und medizinisches Abbildungssystem

Procédé et appareil de traitement d'images, appareil de diagnostic à ultrasons et système d'imagerie médicale

(84) Designated Contracting States:
AL AT BE BG CH CY CZ DE DK EE ES FI FR GB GR HR HU IE IS IT LI LT LU LV MC MK MT NL NO PL PT RO RS SE SI SK SM TR

(30) Priority: **19.09.2011 KR 20110094280**

(43) Date of publication of application:
20.03.2013 Bulletin 2013/12

(73) Proprietor: **SAMSUNG MEDISON CO., LTD.**
Hongcheon-gun, Gangwon-do (KR)

(72) Inventor: **Baek, Ji-hye**
Hongcheon-gun
250-875 Gangwon-do (KR)

(74) Representative: **Schmid, Wolfgang**
Lorenz & Kollegen
Patentanwälte Partnerschaftsgesellschaft mbB
Alte Ulmer Strasse 2
89522 Heidenheim (DE)

(56) References cited:
WO-A1-2011/074207 US-A1- 2011 028 844

- **WINTER S ET AL: "Toward Registration of 3D Ultrasound and CT Images of the Spine in Clinical Praxis: Design and Evaluation of a Data Acquisition Protocol", ULTRASOUND IN MEDICINE AND BIOLOGY, NEW YORK, NY, US, vol. 35, no. 11, 1 November 2009 (2009-11-01), pages 1773-1782, XP026718519, ISSN: 0301-5629, DOI: 10.1016/J.Ultrasmdbio.2009.06.1089 [retrieved on 2009-08-27]**

EP 2 570 081 B1

Note: Within nine months of the publication of the mention of the grant of the European patent in the European Patent Bulletin, any person may give notice to the European Patent Office of opposition to that patent, in accordance with the Implementing Regulations. Notice of opposition shall not be deemed to have been filed until the opposition fee has been paid. (Art. 99(1) European Patent Convention).

Description

BACKGROUND OF THE INVENTION

1. Field of the Invention

[0001] The present invention relates to a method and apparatus for processing an image, an ultrasound diagnosis apparatus, and a medical image system.

2. Description of the Related Art

[0002] A diagnosis image of an object is obtained by an ultrasound diagnosis apparatus, a computed tomography (CT) system, a magnetic resonance imaging (MRI) system, or the like. In this case, in order to obtain a diagnosis image by using an ultrasound diagnosis apparatus, a user needs to scan a region of interest of an object by using a probe installed in the ultrasound diagnosis apparatus.

[0003] Winter S et al: "Toward Registration of 3D Ultrasound and CT Images of the Spine in Clinical Praxis: Design and Evaluation of a Data Acquisition Protocol", Ultrasound in Medicine and Biology, New York, NY, US, vol. 35, no. 11, 1 November 2009 (2009-11-01), pages 1773-1782, XP026718519, ISSN: 0301-5629, DOI: 10.1016/J. Ultrasmedbio.2009.06.1089 discloses an ultrasound data acquisition protocol that leads the user through the data acquisition process and also provides the criteria to adjust the relevant ultrasound parameters.

[0004] The US 2011/028844 A1 discloses embodiments for providing a 2-dimensional (D) computerized-tomography (CT) image corresponding to a 2-D ultrasound image through image registration between 3-D ultrasound and CT images. An imaging system comprises a CT imaging unit, an ultrasound image forming unit, a storing unit, a processor and a display unit. The processor extracts the 2-D CT image from the 3-D ultrasound-CT registered image by performing a rigid-body transform upon the 3-D ultrasound image and calculating similarities between reference images and the 2-D ultrasound images, wherein the reference images are obtained through the rigid-body transform.

[0005] WO2011/074207 A1 discloses an ultrasound image forming unit for acquiring a cross section of a subject, wherein a previously acquired three-dimensional ultrasound data of the same subject is available and out of the three-dimensional ultrasound data a cross section matching the acquired cross section is generated.

SUMMARY OF THE INVENTION

[0006] The present invention provides a method and apparatus for processing an image, an ultrasound diagnosis apparatus, and a medical image system which improve the accuracy of reading an ultrasound image. In addition, the present invention also provides a non-transitory computer readable recording medium having re-

corded thereon a program for executing the method in a computer. The technical objects of the present invention are not limited thereto and include other objects.

[0007] According to an aspect of the present invention, there is provided an image processing apparatus as defined by claim 1.

[0008] According to another aspect of the present invention, there is provided a method of processing an image, as defined by claim 8.

[0009] According to another aspect of the present invention, there is provided a non-transitory computer readable recording medium as defined by claim 10.

BRIEF DESCRIPTION OF THE DRAWINGS

[0010] The above and other features and advantages of the present invention will become more apparent by describing in detail exemplary embodiments thereof with reference to the attached drawings in which:

FIG. 1 is a block diagram of an image processing apparatus according to an embodiment of the present invention;

FIG. 2 shows an example of a standard plane, according to an embodiment of the present invention; FIG. 3 is a diagram for describing a method of generating a standard image in the a standard image generating unit of FIG. 1, according to an embodiment of the present invention;

FIG. 4 is a diagram for describing a method of generating a standard image in the standard image generating unit of FIG. 1 according to another embodiment of the present invention;

FIG. 5 is a block diagram of an image processing apparatus according to another embodiment of the present invention;

FIG. 6 is a diagram of an ultrasound diagnosis apparatus including an image processing apparatus, according to an embodiment of the present invention;

FIG. 7 is a block diagram of a medical image system including an image processing apparatus, according to an embodiment of the present invention;

FIG. 8 is a flowchart of a method of processing an image;

FIG. 9 is a flowchart of displaying an image; and

FIG. 10 is a flowchart of displaying a diagnosis image.

DETAILED DESCRIPTION OF THE INVENTION

[0011] Reference will now be made in detail to embodiments, examples of which are illustrated in the accompanying drawings, wherein like reference numerals refer to like elements throughout. In this regard, the present embodiments may have different forms and should not be construed as being limited to the descriptions set forth herein. Accordingly, the embodiments are merely de-

scribed below, by referring to the figures, to explain aspects of the present description. Expressions such as "at least one of," when preceding a list of elements, modify the entire list of elements and do not modify the individual elements of the list.

[0012] FIG. 1 is a block diagram of an image processing apparatus 100 according to an embodiment of the present invention. Referring to FIG. 1, the image processing apparatus 100 includes an image data acquiring unit 110, a standard image generating unit 120, and a display unit 130.

[0013] Elements related to the present embodiment are illustrated in FIG. 1. However, it will be understood by those of ordinary skill in the art that besides the elements illustrated in FIG. 1 other general elements may be further included.

[0014] The standard image generating unit 120 of FIG. 1 may correspond to a single processor or a plurality of processors. The processor may be embodied with an array of a plurality of logic gates, or may be embodied with a combination of a general microprocessor and a memory where a program to be run in the microprocessor is stored. It will be also understood by those of ordinary skill in the art that it may be embodied with another form of hardware.

[0015] The image processing apparatus 100 processes an image of an object and provides the image to a user. In this case, the user is generally a medical expert such as a doctor, a nurse, or a medical image expert, but is not limited thereto. In addition, the object may be a human body, liver, heart, brain, abdomen, breasts, or the like, but is not limited thereto.

[0016] The image processing apparatus 100 may be installed in an ultrasound diagnosis apparatus (not shown), but is not limited thereto. That is, the image processing apparatus 100 may be installed in a general computer system, a laptop, a personal digital assistant (PDA), or the like.

[0017] The image data acquiring unit 110 acquires ultrasound image data indicating information regarding the object. For example, the image data acquiring unit 110 may acquire the ultrasound image data from an echo signal that is formed by reflecting an ultrasound signal transmitted to the object. Thus, the image data acquiring unit 110 may be, but is not limited to, a probe that acquires the echo signal that is reflected off the object and may acquire image data that is previously stored.

[0018] The standard image generating unit 120 generates an ultrasound standard image from the ultrasound image data that is acquired by the image data acquiring unit 110, based on a reference image with respect to at least one standard plane. For example, the standard image generating unit 120 may include a digital signal processor (DSP) (not shown) and a digital scan converter (DSC) (not shown). The DSP according to the present embodiment forms image data indicating a b-mode (brightness mode), c-mode (color mode), or d-mode (Doppler mode) by using the ultrasound image data ac-

quired by the image data acquiring unit 110. The DSC according to the present embodiment generates an image that is scan-converted in order to display the image data that is formed by the DSP.

[0019] According to the present embodiment, the at least one standard plane corresponds to a standard plane that is used to diagnose the human body. For example, the at least one standard plane may include at least one of a sagittal plane, a coronal plane, and an axial plane, but is not limited thereto. The standard plane will be described below in detail with reference to FIG. 2.

[0020] A reference image according to the present embodiment may include at least one of a sagittal ultrasound image with respect to a sagittal plane, a coronal ultrasound image with respect to a coronal plane, and an axial ultrasound image with respect to an axial plane. The sagittal ultrasound image, the coronal ultrasound image, and the axial ultrasound image may be previously stored in a database (not shown), but are not limited thereto. That is, the sagittal ultrasound image, the coronal ultrasound image, and the axial ultrasound image may be acquired from an external source outside the image processing apparatus 100.

[0021] The standard image generating unit 120 generates an ultrasound standard image with respect to at least one of the sagittal plane, the coronal plane, and the axial plane of the object, based on at least one of the sagittal ultrasound image, the coronal ultrasound image, and the axial ultrasound image.

[0022] The standard image generating unit 120 performs an image registration process on the ultrasound image data based on a reference image to generate an ultrasound standard image. In this case, the image registration process may be performed using an image registration algorithm. The image registration algorithm may include a mean squares metric technique, a normalized correlation metric technique, a mean reciprocal square difference technique, a mutual information metric technique, or the like.

[0023] In more detail, the image registration algorithm may include an image-based registration algorithm, a sensor-based global positioning system (GPS) algorithm, or the like. The image-based registration algorithm may include a method of comparing intensities of images or comparing characteristics such as edges of images.

[0024] A method of generating a standard image by performing the image registration process on the ultrasound image data in the standard image generation unit 120 will be described below in detail with reference to FIGS. 3 and 4.

[0025] The standard image generating unit 120 may perform the image registration process based on the sagittal ultrasound image to generate an ultrasound standard image with respect to the sagittal plane of the object, may perform the image registration process based on the coronal ultrasound image to generate an ultrasound standard image with respect to the coronal plane of the object, or may perform the image registration process

based on the axial ultrasound image to generate an ultrasound standard image with respect to the axial plane of the object.

[0026] According to the present embodiment, since the standard image generating unit 120 generates an ultrasound standard image, a standardized diagnosis image is used, thereby improving the accuracy of diagnosis of the object.

[0027] An ultrasound signal may be transmitted to the object and an ultrasound image may be obtained from an echo signal that is obtained by reflecting the transmitted ultrasound signal. In this case, an apparatus (for example, a probe) for transmitting the ultrasound signal to the object may be manipulated by a user. Thus, an ultrasound image of the object may be an ultrasound image of a region that is determined by a user's manipulation of the probe.

[0028] Thus, since the standard image generating unit 120 generates the ultrasound standard image, different ultrasound images may not be obtained with respect to the same region of interest according to the user's manipulation of the probe, thereby improving the accuracy of diagnosis.

[0029] The standard image generating unit 120 may generate the ultrasound standard image according to whether the ultrasound image data contains a region that is likely to have a disease. In this case, the region that is likely to have a disease may include a lesion, a mass, a tumor, and the like.

[0030] For example, the standard image generating unit 120 may analyze the ultrasound image data, may determine whether the ultrasound image data contains a region that is likely to have a disease, and may generate the ultrasound standard image only when the ultrasound image data contains the region that is likely to have a disease according to the determination result.

[0031] In this case, the standard image generating unit 120 may determine whether the ultrasound image data contains the region that is likely to have a disease by generating an ultrasound image or may determine whether image data on which beamforming is performed contains the region that is likely to have a disease.

[0032] Thus, when there is no region that is likely to have a disease in the object, the ultrasound standard image may be prevented from being generated unnecessarily.

[0033] However, the standard image generating unit 120 is not particularly limited. When a user wants screening using a standard plane, the standard image generating unit 120 may generate a standard image prior to diagnosing the user. That is, the standard image generating unit 120 may generate the ultrasound standard image regardless of whether there is a region that is likely to have a disease in the object and may diagnose the object by using the generated ultrasound standard image.

[0034] Thus, convenience for a user that is accustomed to diagnosis through diagnosis image of diagnosis apparatuses other than the ultrasound diagnosis appa-

ratus may be improved. In this case, the diagnosis apparatuses other than the ultrasound diagnosis apparatus may include a magnetic resonance imaging (MRI) system, a computed tomography (CT) system, a positron emission tomography (PET) system, or the like, but are not limited thereto.

[0035] In addition, the standard image generating unit 120 may automatically perform the above-described functions. That is, when the image data acquiring unit 110 acquires image data of the object, the standard image generating unit 120 may automatically generate the ultrasound standard image or may automatically determine whether there is a region that is likely to have a disease and may generate the ultrasound standard image.

[0036] The display unit 130 may display the ultrasound standard image generated by the standard image generating unit 120. For example, the display unit 130 may be an output device installed in the image processing apparatus 100, such as a monitor, a touch panel, a liquid crystal display (LCD), or the like, and a software module for driving the output device. Thus, the user may view the ultrasound standard image of the object through the display unit 130.

[0037] Since the image processing apparatus 100 generates the ultrasound standard image about the ultrasound image that may vary according to the user's manipulation of the probe, the user may easily and rapidly diagnose the object.

[0038] FIG. 2 shows an example of a standard plane, according to an embodiment of the present invention. In FIG. 2, a case where an object is a human body is shown, for convenience of description. FIG. 2 shows a drawing 21 indicating an object including a sagittal plane 211, a coronal plane 212, and an axial plane 213. In this case, the axial plane 213 may be a transverse plane.

[0039] For example, the sagittal plane 211 indicates a side of the object. The sagittal plane 211 may include a sagittal cross sectional plane. In more detail, the sagittal plane 211 indicates a plane that divides the object between left region and right region.

[0040] For example, the coronal plane 212 indicates the front of the object. In more detail, the coronal plane 212 indicates a plane that vertically divides the brain with reference to the front of the object. In this case, the front of the object may mean a face.

[0041] For example, the axial plane 213 indicates a cross section of the object. In more detail, the axial plane 213 is a plane that horizontally divides the object. In detail, the axial plane 213 indicates a plane that divides the object between upper region and lower region.

[0042] According to the present embodiment, the standard plane may further include other planes in addition to the sagittal plane 211, the coronal plane 212, and the axial plane 213.

[0043] In addition, FIG. 2 shows a single sagittal plane 211, a single coronal plane 212, and a single axial plane 213 only, but the present invention is not limited thereto.

Planes that are in parallel to the sagittal plane 211, the coronal plane 212, and the axial plane 213 may be included in the sagittal plane 211, the coronal plane 212, and the axial plane 213 respectively.

[0044] FIG. 3 is a diagram for describing a method of generating a standard image in the standard image generating unit 120 of FIG. 1, according to an embodiment of the present invention. Hereinafter, the method will be described with reference to FIGS. 1 and 3. For convenience of description, FIG. 3 shows a case where the image data acquiring unit 110 acquires three-dimensional (3D) image data by using a two-dimensional (2D) array probe, but the present invention is not limited thereto.

[0045] Ultrasound image data 31 may be acquired from an echo signal that is reflected from an object. In more detail, the ultrasound image data 31 may be formed by performing receive beamforming on the echo signal that is reflected from the object.

[0046] Thus, the ultrasound image data 31 is formed with respect to an axial direction indicating a propagation direction of an ultrasound signal, a lateral direction indicating a moving direction of a scan line, and an elevation direction indicating a depth direction of an ultrasound image.

[0047] Thus, the standard image generating unit 120 performs an image registration process on the ultrasound image data 31 based on a reference image to generate a standard image. That is, the standard image generating unit 120 generates the standard image from the ultrasound image data 31 based on the reference image by using an image registration algorithm.

[0048] For example, when an image registration algorithm for comparing the intensity of an image is used, the standard image generating unit 120 may compare the intensity of the reference image with the intensity of the ultrasound image data 31 and may generate the standard image having the most similar intensity to the reference image from the ultrasound image data 31.

[0049] For example, when an image registration algorithm for comparing the characteristics of an image is used, the standard image generating unit 120 may compare characteristics such as an edge or the like of the reference image with the characteristics of the ultrasound image data 31 and may generate the standard image having the most similar characteristics to the reference image from the ultrasound image data 31.

[0050] In this case, the standard image generating unit 120 may perform a modification process such as a synthesis process, an interpolation process, a translation process, a rotation process, a scaling process, or the like on the ultrasound image data 31 to generate the standard image.

[0051] Thus, the standard image generating unit 120 may generate the standard image of the object from the ultrasound image data 31 on which beamforming is performed. In this case, the standard image generating unit 120 may generate the standard image of the object without a loss in data.

[0052] The standard image generating unit 120 is not limited thereto and may generate the standard image of the object from a plurality of images that are scan-converted. That is, the standard image generating unit 120 may perform a modification process such as a synthesis process, an interpolation process, a translation process, a rotation process, a scaling process, or the like on the scan-converted plurality of images to generate a single standard image. In this case, the standard image generating unit 120 may generate the standard image at a higher speed than the case where the ultrasound image data 31 on which beamforming is performed is used.

[0053] Thus, the standard image generating unit 120 may generate the standard image by using the ultrasound image data 31 on which beamforming is performed or at least one of a plurality of images that are scan-converted. In this case, a user may select the ultrasound image data 31 on which beamforming is performed or at least one of a plurality of images that are scan-converted to generate the standard image.

[0054] FIG. 4 is a diagram for describing a method of generating a standard image in the standard image generating unit 120 of FIG. 1, according to another embodiment of the present invention. Hereinafter, the method will be described with reference to FIGS. 1 and 4.

[0055] FIG. 4 shows a standard plane 42 of an object 41. In this case, when the image data acquiring unit 110 acquires ultrasound image data with respect to a first plane 431, a second plane 432, and a third plane 433, the standard image generating unit 120 may generate an ultrasound standard image with respect to the standard plane 42 by using the ultrasound image data with respect to the first plane 431, the second plane 432, and the third plane 433.

[0056] FIG. 4 shows a case of a single standard plane 42, but the present invention is not limited thereto. The standard image generating unit 120 may generate standard images with respect to a plurality of standard planes, respectively.

[0057] Thus, when the image processing apparatus 100 is used, a standard image with respect to a standard plane may be acquired regardless of a user's manipulation of a probe, thereby improving the accuracy of reading an ultrasound image of the user.

[0058] FIG. 5 is a block diagram of an image processing apparatus 100 according to another embodiment of the present invention. Referring to FIG. 5, the image processing apparatus 100 includes an image data acquiring unit 110, a database 112, a search unit 114, a standard image generating unit 120, a comparison image acquiring unit 125, and a display unit 130.

[0059] Elements related to the present embodiment are illustrated in FIG. 5. However, it will be understood by those of ordinary skill in the art that besides the elements illustrated in FIG. 5 other general elements may be further included.

[0060] The image processing apparatus 100 of FIG. 5 is an example of the image processing apparatus 100 of

FIG. 1. Thus, the image processing apparatus 100 according to the present embodiment is not limited to including units of FIG. 5. Accordingly, although omitted, details described with reference to the image processing apparatus 100 of FIG. 1 are applied to the image processing apparatus 100 of FIG. 5.

[0061] According to the present embodiment, the image processing apparatus 100 processes an image of an object and provides the processed image to a user.

[0062] The image data acquiring unit 110 acquires ultrasound image data indicating information about the object.

[0063] The database 112 stores a reference image with respect to at least one standard plane, for each respective information about a human body and information about a region of the human body. In this case, the reference information stored in the database 112 may be a general image of an object without disease.

[0064] For example, the information about the human body may contain, but is not limited to, sex, height, age, or the like and the information about the human body region may contain, but is not limited to, a liver, breast, abdomen, brain, or the like. That is, the database 112 stores the reference image with respect to at least one standard plane for each of various information about the human bodies and various information about the human body regions.

[0065] The search unit 114 searches for a reference image corresponding to information about the human body and information about the human body region of the object.

[0066] For example, when the object is the heart of a thirty year-old woman, the search unit 114 searches for a reference image of the heart of the thirty year-old woman in the database 112. In addition, when information about height, weight, and the like of the object is recognized, the search unit 114 searches for the reference image in consideration of the information about the height, weight, and the like of the object.

[0067] In this case, information about the human body and information about the human body region of the object may be input by a user through a user interface unit (not shown). In embodiments not covered by the present invention, the information about the human body region may be recognized from image data acquired by the image data acquiring unit 110.

[0068] The standard image generating unit 120 generates an ultrasound standard image from the ultrasound image data, based on a reference image with respect to at least one standard image. The standard image generating unit 120 generates the ultrasound standard image, based on the reference image that is found by the search unit 114.

[0069] Thus, the standard image generating unit 120 generates a standard image in consideration of the human body information of the object, thereby further improving the accuracy of image registration.

[0070] The comparison image acquiring unit 125 ac-

quires at least one comparison image indicating information about the object by using a diagnosis technique different from a diagnosis technique of acquiring the ultrasound image data.

[0071] Examples of the diagnosis technique different from a diagnosis technique of acquiring ultrasound image data may include a diagnosis technique using a magnetic resonance imaging (MRI) system, a diagnosis technique using a computed tomography (CT) system, and a diagnosis technique using a positron emission tomography (PET) system.

[0072] Thus, comparison image according to the present embodiment may include, but is not limited to, at least one of a MRI image, a CT image, and a PET image of the object.

[0073] The comparison image acquiring unit 125 may acquire the comparison image through a communication interface unit (not shown) from outside the image processing apparatus 100, but the present invention is not limited thereto. That is, the comparison image acquiring unit 125 may acquire the comparison image that is previously measured and is stored in the database 112.

[0074] The display unit 130 displays an ultrasound standard image. According to the present embodiment, the display unit 130 displays the ultrasound standard image together with at least one comparison image acquired by the compare image acquiring unit 125. In this case, each of the at least one comparison image and the ultrasound standard image, which are displayed by the display unit 130, may be images with respect to the same standard plane.

[0075] For example, when the display unit 130 displays a sagittal ultrasound standard image with respect to a sagittal plane of the object, at least one of a sagittal CT image, a sagittal MRI image, and a sagittal PET image with respect to the sagittal plane of the same object may be displayed together with a sagittal ultrasound standard image.

[0076] Thus, according to the present embodiment, the display unit 130 displays the ultrasound standard image together with at least one comparison image acquired by the comparison image acquiring unit 125. Alternatively, the display unit 130 may sequentially display the at least one comparison image and the ultrasound standard image on a single screen, or may display the at least one comparison image and the ultrasound standard image by converting one another in consideration of information input by a user.

[0077] In addition, the display unit 130 may sequentially display ultrasound standard images of the same object with a time interval. Thus, a change in the size of a tumor or the like may be easily traced.

[0078] Accordingly, the image processing apparatus 100 according to the present embodiment is used, thereby improving the accuracy of reading an ultrasound image by radiation oncologists, image medical scientists, or the like who are accustomed to a standard plane such as a sagittal plane, a coronal plane, an axial plane, or

the like.

[0079] FIG. 6 is a diagram of an ultrasound diagnosis apparatus 600 including an image processing apparatus 100, according to an embodiment of the present invention. Referring to FIG. 6, the ultrasound diagnosis apparatus 600 includes a probe 610, a user interface unit 620, and a main system 630. The user interface unit 620 includes an input unit 622 and a display unit 624.

[0080] The ultrasound diagnosis apparatus 600 may be, but is not limited to, an apparatus that transmits an ultrasound signal to an object and generates an ultrasound image by using an echo signal that is reflected from the object. The ultrasound diagnosis apparatus 600 may include the image processing apparatus 100 shown in FIGS. 1 and 5. Accordingly, although omitted, details described with reference to the image processing apparatus 100 of FIGS. 1 and 5 are applied to the ultrasound diagnosis apparatus 600 of FIG. 6.

[0081] The probe 610 transmits the ultrasound signal to the object and receives the echo signal reflected from the object. The probe 610 shown in FIG. 6 may be, but is not limited to, an example of the image data acquiring unit 110 of the image processing apparatus 100 of FIGS. 1 and 5.

[0082] The user interface unit 620 acquires input information from a user and displays output information to the user. According to the present embodiment, the user interface unit 620 may include, but is not limited to, the input unit 622 and the display unit 624. That is, the user interface unit 620 may be embodied as a single unit having both input and output functions. The display unit 624 of FIG. 6 may be, but is not limited to, an example of the display unit 130 of the image processing apparatus 100 of FIGS. 1 and 5.

[0083] For example, the user interface unit 620 may include, but is not limited to, any input/output device included in the ultrasound diagnosis apparatus 600, such as a keyboard, a mouse, a touch panel, a speaker, or the like, and any software for driving the input/output device.

[0084] The main system 630 controls an overall function of the ultrasound diagnosis apparatus 600. That is, the main system 630 controls the probe 610 and the user interface unit 620. According to the present embodiment, the main system 630 may include the database 112, the search unit 114, the standard image generating unit 120, and the comparison image acquiring unit 125 of the image processing apparatus 100 of FIGS. 1 and 5.

[0085] Thus, the ultrasound diagnosis apparatus 600 may generate an ultrasound diagnosis image or an ultrasound standard image of the object. In addition, the ultrasound diagnosis apparatus 600 may display the ultrasound standard image together with at least one comparison image that is acquired by using a diagnosis technique different from a diagnosis technique of acquiring the ultrasound image data, thereby improving the accuracy of reading an image by the user.

[0086] FIG. 7 is a block diagram of a medical image

system 700 including an image processing apparatus 100, according to an embodiment of the present invention. Referring to FIG. 7, the medical image system 700 includes the image processing apparatus 100, a diagnosis unit 710, a storage unit 720, and an output unit 730.

[0087] The image processing apparatus 100 of FIG. 7 corresponds to an example of the image processing apparatus 100 of FIGS. 1 and 5. Accordingly, although omitted here, details described with reference to the image processing apparatus 100 of FIGS. 1 and 5 are applied to the image processing apparatus 100 of FIG. 7.

[0088] The image processing apparatus 100 acquires ultrasound image data indicating information about an object and generates an ultrasound standard image of the ultrasound image data based on a reference image with respect to at least one standard plane. In addition, the image processing apparatus 100 acquires at least one comparison image indicating information about the object by using a diagnosis technique different from a diagnosis technique of acquiring the ultrasound image data. Thus, the image processing apparatus 100 may display the ultrasound standard image of the object together with the comparison image.

[0089] The diagnosis unit 710 performs a diagnosis technique different from a diagnosis technique of acquiring the ultrasound image data. According to the result of the diagnosis technique different from a diagnosis technique of acquiring ultrasound image data, the image processing apparatus 100 may acquire at least one comparison image indicating the information about the object.

[0090] For example, the diagnosis unit 710 may perform a diagnosis technique using a MRI system for acquiring a MRI image, a diagnosis technique using a CT system, a diagnosis technique using a PET system, and the like.

[0091] Thus, the image processing apparatus 100 may acquire at least one of a MRI image, a CT image, and a PET image of the object as the comparison image, through the diagnosis unit 710. In this case, the diagnosis unit 710 may perform diagnosis for acquiring the comparison image with respect to the same standard plane as that of the ultrasound standard image.

[0092] However, the present invention is not limited thereto. The medical image system 700 may acquire at least one of a MRI image, a CT image, and a PET image of the object, which are previously measured in an external device and stored. In this case, the external device may be a MRI system, a CT system, a PET system, or the like.

[0093] The storage unit 720 stores data that is generated during an operation of the medical image system 700. For example, the storage unit 720 may store data output from the image processing apparatus 100, a diagnosis image generated by the image processing apparatus 100, and the like.

[0094] According to the present embodiment, it will be understood by those of ordinary skill in the art that the storage unit 720 may be any storage device such as a

hard disk drive (HDD), a read only memory (ROM), a random access memory (RAM), a flash memory, and a memory card.

[0095] The output unit 730 may transmit and receive data to and from an external device through a wired/wireless network or wired serial communication. In this case, examples of the network may include the Internet, a local area network (LAN), a wireless local area network (WLAN), a wide area network (WAN), a personal area network (PAN), or the like, but are not limited thereto. The network may be any type network that transmits and receives information.

[0096] Thus, the medical image system 700 may output the ultrasound standard image generated by the image processing apparatus 100 to an external device. Examples of the external device may include, but is not limited to, another medical image system which may be located at remote place, a fax machine, a general computer system, a PDA, or the like.

[0097] It will be understood by those of ordinary skill in the art that the storage unit 720 and the output unit 730 further include an image reading function and a searching function so as to be integrated in the form of a picture archiving communication system (PACS).

[0098] FIG. 8 is a flowchart of a method of processing an image, according to an embodiment of the present invention. Referring to FIG. 8, the method of processing the image includes time-series operations performed by the image processing apparatus 100, the ultrasound diagnosis apparatus 600, and the medical image system 700 shown in FIGS. 1, and 5 through 7. Accordingly, details described with reference to the image processing apparatus 100, the ultrasound diagnosis apparatus 600, and the medical image system 700 shown in FIGS. 1, and 5 through 7 are also applicable to the method of processing the image of FIG. 8.

[0099] In operation 801, the image data acquiring unit 110 acquires ultrasound image data indicating information about an object. For example, the image data acquiring unit 110 may acquire image data by using a probe.

[0100] In operation 802, the standard image generating unit 120 generates an ultrasound standard image from the ultrasound image data acquired in operation 801, based on a reference image with respect to at least one standard plane. In this case, the reference image may include at least one of a sagittal ultrasound image with respect to a sagittal plane, a coronal ultrasound image with respect to a coronal plane, and an axial ultrasound image with respect to an axial plane.

[0101] In operation 803, the display unit 130 displays the ultrasound standard image generated in operation 802. The display unit 130 may display the ultrasound standard image generated in operation 802 together with at least one comparison image acquired by using a diagnosis technique different from a diagnosis technique of acquiring the ultrasound image data.

[0102] When the method of processing the image according to the present embodiment is used, an ultrasound

standard image with respect to a standard plane may be displayed, thereby improving the accuracy of reading an ultrasound image. In addition, an ultrasound diagnosis image and at least one comparison image that is acquired by using a diagnosis technique different from a diagnosis technique of acquiring the ultrasound image data may be viewed together, thereby improving the accuracy of diagnosis.

[0103] FIG. 9 is a flowchart of displaying an image, according to an embodiment of the present invention. Referring to FIG. 9, the method of displaying the image may include time-series operations performed by the image processing apparatus 100, the ultrasound diagnosis apparatus 600, and the medical image system 700 shown in FIGS. 1, and 5 through 7. Accordingly, although omitted, details described with reference to the image processing apparatus 100, the ultrasound diagnosis apparatus 600, and the medical image system 700 shown in FIGS. 1, and 5 through 7 are also applicable to the method of displaying the image of FIG. 9.

[0104] In operation 901, the image data acquiring unit 110 acquires ultrasound image data indicating information about an object.

[0105] In operation 902, the standard image generating unit 120 determines whether the ultrasound image data acquired in operation 901 contains a region that is likely to have a disease. According to the determination result, when the ultrasound image data does not contain the region that is likely to have a disease, the method proceeds to operation 903. When the ultrasound image data contains the region that is likely to have a disease, the method proceeds to operation 904.

[0106] In operation 903, the display unit 130 displays an ultrasound image. In this case, the ultrasound image may be generated from the ultrasound image data. However, according to a usage environment, when the ultrasound image data acquired in operation 901 does not contain the region that is likely to have a disease, the ultrasound image may not be displayed and the procedure may be finished. In this case, operation 903 may not be performed.

[0107] In operation 904, the search unit 114 searches the database 112 for a reference image corresponding to information about a human body and information about a region of the human body of the object. In this case, the database 112 stores a reference image with respect to at least one standard plane, for each respective information about the human body and information about the human body region.

[0108] In operation 905, the standard image generating unit 120 generates an ultrasound standard image from the ultrasound image data acquired in operation 901, based on the reference image that is searched for in operation 904.

[0109] In operation 906, the comparison image acquiring unit 125 acquires at least one comparison image indicating information about the object by using a diagnosis technique different from a diagnosis technique of acquiring

ing the ultrasound image data in operation 901.

[0110] In operation 907, the display unit 130 displays the at least one comparison image acquired in operation 906 together with the ultrasound standard image generated in operation 905.

[0111] When the method of displaying the image according to the present embodiment is used, an ultrasound image of an object and at least one comparison image may be viewed simultaneously on a single screen, thereby improving the accuracy of reading an image and improving the correctness and accuracy of diagnosis.

[0112] The procedure shown in FIGS. 8 and 9 may be embodied in the forms of application program. Accordingly, the application may be executed in the form of a viewer in a general computer system, a PDA, a laptop computer, an ultrasound diagnosis apparatus, a medical image system, or the like. Thus, the user may conveniently use functions according to embodiments of the present invention.

[0113] In addition, the image processing apparatus 100, the ultrasound diagnosis apparatus 600, and the medical image system 700 display the ultrasound standard image and the comparison image, but the present invention is not limited thereto. That is, the ultrasound standard image may be uploaded to another diagnosis apparatus (e.g., a MRI system, a CT system, or a PET system).

[0114] For example, when a CT system obtains an ultrasound standard image, the accuracy of diagnosis of soft tissues that are barely viewable from a CT image may be improved. That is, the CT system displays the ultrasound standard image and a user reads the ultrasound standard image, thereby improving the accuracy of diagnosis.

[0115] FIG. 10 is a flowchart of displaying a diagnosis image, according to an embodiment of the present invention. Referring to FIG. 10, the method of displaying the diagnosis image includes time-series operations performed by the image processing apparatus 100, the ultrasound diagnosis apparatus 600, and the medical image system 700 shown in FIGS. 1, and 5 through 7. Accordingly, details described with reference to the image processing apparatus 100, the ultrasound diagnosis apparatus 600, and the medical image system 700 shown in FIGS. 1, and 5 through 7 are also applicable to the method of displaying the diagnosis image of FIG. 10.

[0116] In operation 1001, a diagnosis image viewer that is executed by a processor obtains a plurality of diagnosis images of an object, which are generated by at least two diagnosis apparatuses using different diagnosis techniques. For example, the diagnosis image viewer may receive a plurality of diagnosis images from at least two diagnosis apparatuses.

[0117] In this case, examples of the diagnosis apparatus may include an ultrasound system, a MRI system, a CT system, and a PET system. Examples of the diagnosis image may include an ultrasound image, an ultrasound standard image according to an embodiment of

the present invention, a MRI image, a CT image, and a PET image.

[0118] In operation 1002, the diagnosis image viewer executed by the processor displays at least two diagnosis images together from among the plurality of diagnosis images obtained in operation 1001. In this case, the at least two diagnosis images may be selected by a user. In addition, the at least two diagnosis images may be obtained by using different diagnosis techniques, but are not limited thereto. That is, the at least two diagnosis images may be obtained by using the same diagnosis technique.

[0119] When diagnosis images obtained by using the same diagnosis technique are displayed together on a single screen, the diagnosis images obtained by using the same diagnosis technique may be obtained with respect to the same region of an object with a time interval, or may be obtained with respect to different regions of the object.

[0120] The diagnosis image viewer according to the present embodiment may be embodied in the form of application program by executing a processor included in a general computer system, a PDA, a laptop computer, a medical image system, or the like. Thus, a user may conveniently diagnose the object by using the diagnosis image viewer.

[0121] As described above, an ultrasound standard image may be generated and displayed, different ultrasound images may not be obtained with respect to the same region of interest according to the user's manipulation of a probe, thereby improving the accuracy of diagnosis and the accuracy of reading an image of a user who views the ultrasound image.

[0122] In addition, since the user views both the ultrasound standard image and the comparison image with respect to the same plane together, whether a disease exists may be easily determined by comparing a plurality of images of a region that is anatomically located at the same place.

[0123] The embodiments of the present invention may be written as computer programs and can be implemented in general-use digital computers that execute the programs using a computer readable recording medium. In addition, a structure of data used in the above-described method may be recorded in a computer readable recording medium through various methods. Examples of the computer readable recording medium include magnetic storage media (e.g., ROMs, RAMs, universal serial buses (USBs), floppy disks, hard disks, etc.), optical recording media (e.g., CD-ROMs, or DVDs), and storage media such as PC interfaces (e.g., PCI, PCI-express, Wifi, etc.).

[0124] As described above, an ultrasound standard image may be generated and displayed, different ultrasound images may not be obtained with respect to the same region of interest according to the user's manipulation of a probe, thereby improving the accuracy of diagnosis and the accuracy of reading an image of a user who searches for the ultrasound image.

Claims**1.** An image processing apparatus (100) comprising:

an image data acquiring unit (110) for acquiring
ultrasound image data (31) indicating information
about an object (41);

a database (112) for storing an ultrasound reference
image with respect to at least one of a
sagittal plane, a coronal plane, and an axial
plane, for each respective information about a
human body and information about a human
body region;

a search unit (114) for searching for an ultra-
sound reference image corresponding to infor-
mation about a human body and information
about a human body region of the object (41),
wherein the information about the human body
and the information about the human body re-
gion is input by a user through a user interface
unit;

a standard image generating unit (120) for gen-
erating an ultrasound standard image with re-
spect to at least one of the sagittal plane, the
coronal plane, and the axial plane from the ac-
quired ultrasound image data (31) by performing
an image registration process on the acquired
ultrasound image data based on the searched
ultrasound reference image; and

a display unit (130) for displaying the ultrasound
standard image.

2. The image processing apparatus (100) of claim 1,
further comprising a comparison image acquiring
unit (125) for acquiring at least one comparison im-
age indicating the information about the object (41)
by using a diagnosis technique different from a di-
agnosis technique of acquiring the ultrasound image
data (31),
wherein the display unit (130) displays the acquired
at least one comparison image together with the ul-
trasound standard image.

3. The image processing apparatus (100) of claim 2,
wherein the at least one comparison image compris-
es at least one of a magnetic resonance imaging
(MRI) image, a computed tomography (CT) image,
and a positron emission tomography (PET) image
of the object (41).

4. The image processing apparatus (100) of claim 2,
wherein each of the acquired at least one compari-
son image and the ultrasound standard image, which
are displayed together by the display unit (130), is
an image with respect to the same standard plane
(42).

5. The image processing apparatus (100) of claim 1,

wherein the standard image generating unit (120)
generates the ultrasound standard image according
to whether the acquired ultrasound image data (31)
contains a region that is likely to have a disease.

6. An ultrasound diagnosis apparatus (600) including
the image processing apparatus (100) of any one of
claims 1 through 5, the ultrasound diagnosis appa-
ratus (600) comprising:

a probe (610) for acquiring ultrasound image da-
ta (31) indicating information about the object
(41);

a main system (630) for generating the ultra-
sound standard image from the ultrasound im-
age data (31) based on the ultrasound reference
image with respect to at least one standard
plane (42).

7. A medical image system (700) including the image
processing apparatus (100) of any one of claims 1
through 5, the medical image system (700) compris-
ing:

a diagnosis unit (710) for performing a diagnosis
technique different from a diagnosis technique
of acquiring the ultrasound image data (31),
wherein the image processing apparatus (100)
displays the ultrasound standard image together
with at least one comparison image that is gen-
erated by using the diagnosis technique differ-
ent from a diagnosis technique of acquiring the
ultrasound image data (31).

8. A method of processing an image, the method comprising:

storing an ultrasound reference image with re-
spect to at least one of a sagittal plane, a coronal
plane, and an axial plane, for each respective
information about a human body and informa-
tion about a human body region in a database;
searching the database for an ultrasound refer-
ence image corresponding to information about
a human body and information about a human
body region of the object (41), wherein the in-
formation about the human body and the infor-
mation about the human body region is input by
a user through a user interface unit; acquiring
ultrasound image data (31) indicating informa-
tion about the object (41);

generating an ultrasound standard image with
respect to at least one of the sagittal plane, the
coronal plane, and the axial plane from the ac-
quired ultrasound image data (31) by performing
an image registration process on the acquired
ultrasound image data, based on the searched
ultrasound reference image; and

displaying the generated ultrasound standard image.

9. A method of displaying diagnosis images including the ultrasound standard image generated by the image processing device (100) of any one of claims 1 through 5, the method comprising:

obtaining a plurality of diagnosis images of the object (41), which are generated by at least two diagnosis apparatuses using different diagnosis techniques; and displaying together at least two diagnosis images from among the plurality of acquired diagnosis images.

10. A non-transitory computer readable recording medium having recorded thereon a program for executing the method of any one of claims 8 and 9.

Patentansprüche

1. Bildverarbeitungsvorrichtung (100), welche Folgendes aufweist:

eine Bilddatenerlangungseinheit (110) zum Erlangen von Ultraschallbilddaten (31), die eine Information über ein Objekt (41) anzeigen; eine Datenbank (112) zum Speichern eines Ultraschallreferenzbilds unter Bezugnahme auf wenigstens eine einer Sagittalebene, einer Koronarebene und

einer axialen Ebene für jede entsprechende Information über einen menschlichen Körper und jede entsprechende Information über eine menschliche Körperregion;

eine Sucheinheit (114) zum Suchen eines Ultraschallreferenzbilds, das einer Information über einen menschlichen Körper und einer Information über einen menschlichen Körperbereich des Objekts (41) entspricht, wobei die Information über den menschlichen Körper und die Information über den menschlichen Körperbereich von einem Benutzer über eine Benutzerschnittstelle eingegeben wird;

eine Standardbilderzeugungseinheit (120) zum Erzeugen eines Ultraschallstandardbilds aus den erlangten Ultraschallbilddaten (31) unter Bezugnahme auf wenigstens eine der Sagittalebene, der Koronarebene und der axialen Ebene mittels Durchführen eines Bildregistrierungsprozesses an den erlangten Ultraschallbilddaten basierend auf dem gesuchten Ultraschallreferenzbild; und

eine Anzeigeeinheit (130) zum Anzeigen des Ultraschallstandardbilds.

2. Bildverarbeitungsvorrichtung (100) nach Anspruch 1, welche des Weiteren eine Vergleichsbilderlangungseinheit (125) zum Erlangen wenigstens eines Vergleichsbilds aufweist, welches die Information über das Objekt (41) durch Verwenden einer Diagnosetechnik anzeigt, die unterschiedlich von einer Diagnosetechnik zum Erlangen der Ultraschallbilddaten (130) ist, wobei die Anzeigeeinheit (130) das erlangte wenigstens eine Vergleichsbild zusammen mit dem Ultraschallstandardbild anzeigt.

3. Bildverarbeitungsvorrichtung (100) nach Anspruch 2, wobei das wenigstens eine Vergleichsbild wenigstens eines eines Magnetresonanzabbildungs (MRI)-Bilds, eines Computertomographie (CT)-Bilds und eines Positronemissionstomographie (PET)-Bilds des Objekts (41) aufweist.

4. Bildverarbeitungsvorrichtung (100) nach Anspruch 2, wobei jedes des erlangten wenigstens einen Vergleichsbilds und des Ultraschallstandardbilds, die zusammen durch die Anzeigeeinheit (130) angezeigt werden, ein Bild unter Bezugnahme auf dieselbe Standardebene (42) ist.

5. Bildverarbeitungsvorrichtung (100) nach Anspruch 1, wobei die Standardbilderzeugungseinheit (120) das Ultraschallstandardbild in Abhängigkeit davon erzeugt, ob die erlangten Ultraschallbilddaten (31) eine Region enthalten, die mit einer gewissen Wahrscheinlichkeit eine Krankheit hat.

6. Ultraschalldiagnosevorrichtung (600), welche die Bildverarbeitungsvorrichtung (100) nach einem der Ansprüche 1 bis 5 aufweist, wobei die Ultraschalldiagnosevorrichtung (600) Folgendes aufweist:

eine Sonde (610) zum Erlangen von Ultraschallbilddaten (31), welche Informationen über das Objekt (41) anzeigen;

ein Hauptsystem (630) zum Erzeugen des Ultraschallstandardbilds aus den Ultraschallbilddaten (31) basierend auf dem Ultraschallreferenzbild unter Bezugnahme auf wenigstens eine Standardebene (42).

7. Medizinisches Abbildungssystem (700), welches die Bildverarbeitungsvorrichtung (100) nach einem der Ansprüche 1 bis 5 aufweist, wobei das medizinische Bildsystem (700) Folgendes aufweist:

eine Diagnoseeinheit (710) zum Durchführen einer Diagnosetechnik, die unterschiedlich von einer Diagnosetechnik zum Erlangen der Ultraschallbilddaten (31) ist, wobei die Bildverarbeitungsvorrichtung (100) das Ultraschallstandardbild zusammen mit wenigstens einem Vergleichsbild anzeigt, das un-

ter Verwendung der Diagnosetechnik erzeugt wird, die unterschiedlich von einer Diagnosetechnik zum Erlangen der Ultraschallbilddaten (31) ist.

8. Verfahren zum Verarbeiten eines Bilds, wobei das Verfahren Folgendes aufweist:

Speichern eines Ultraschallreferenzbilds unter Bezugnahme auf wenigstens eine einer Sagittalebene, einer Koronarebene und einer axialen Ebene für jede entsprechende Information über einen menschlichen Körper und jede entsprechende Information über eine menschliche Körperregion in einer Datenbank;

Durchsuchen der Datenbank nach einem Ultraschallreferenzbild, das einer Information über einen menschlichen Körper und einer Information über eine menschliche Körperregion des Objekts (41) entspricht, wobei die Information über den menschlichen Körper und die Information über die menschliche Körperregion von einem Benutzer über eine Benutzerschnittstelle eingegeben wird;

Erlangen von Ultraschallbilddaten (31), welche Informationen über das Objekt (41) anzeigen;

Erzeugen eines Ultraschallstandardbilds aus den erlangten Ultraschallbilddaten (31) unter Bezugnahme auf wenigstens eine der Sagittalebene, der Koronarebene und der axialen Ebene mittels Durchführung eines Bildregistrierungsprozesses an den erlangten Ultraschallbilddaten basierend auf dem gesuchten Ultraschallreferenzbild; und

Anzeigen des erzeugten Ultraschallstandardbilds.

9. Verfahren zum Anzeigen von Diagnosebildern einschließlich des Ultraschallstandardbilds, das durch die Bildverarbeitungsvorrichtung (100) nach einem der Ansprüche 1 bis 5 erzeugt wurde, wobei das Verfahren Folgendes aufweist:

Erlangen einer Vielzahl von Diagnosebildern des Objekts (41), welche mittels wenigstens zwei Diagnosevorrichtungen erzeugt werden, die unterschiedliche Diagnosetechniken verwenden; und gemeinsames Anzeigen von wenigstens zwei Diagnosebildern aus der Vielzahl von erlangten Diagnosebildern.

10. Nichttransitorisches computerlesbares Aufzeichnungsmedium, auf dem ein Programm zur Durchführung des Verfahrens nach einem der Ansprüche 8 und 9 aufgezeichnet ist.

Revendications

1. Appareil de traitement d'images (100) comportant :

5 une unité d'acquisition de données d'images (110) pour acquérir des données d'images ultrasoniques (31) indiquant des informations concernant un objet (41) ;
 10 une base de données (112) pour enregistrer une image de référence ultrasonique par rapport à au moins un plan sagittal, un plan coronal et un plan axial, pour chaque information respectivement relative à un corps humain et des informations relatives à une zone d'un corps humain ;
 15 une unité de recherche (114) pour rechercher une image de référence ultrasonique correspondant à des informations relatives au corps humain et des informations relatives à une zone du corps humain d'un objet (41), dans lequel les informations relatives au corps humain et les informations relatives à une zone du corps humain sont introduites par un utilisateur au moyen d'une unité d'interface utilisateur ;
 20 une unité standard (120) de génération d'image pour générer une image ultrasonique standard par rapport à au moins un desdits plans sagittal, coronal et axial à partir des données d'images ultrasoniques acquises (31) en effectuant un processus d'enregistrement d'image sur les données d'images ultrasoniques basées sur l'image de référence ultrasonique recherchée ;
 25 et
 30 une unité d'affichage (130) pour afficher l'image standard ultrasonique.

2. Appareil de traitement d'images (100) selon la revendication 1, comprenant en outre une unité d'acquisition d'image de comparaison (125) pour acquérir au moins une image de comparaison indiquant les informations relatives à l'objet (41) en utilisant une technique de diagnostic différente d'une technique de diagnostic d'acquisition de données d'images ultrasoniques (31), dans lequel l'unité d'affichage (130) affiche au moins une image de comparaison acquise simultanément avec l'image ultrasonique standard.

3. Appareil de traitement d'images (100) selon la revendication 2, dans lequel au moins une image de comparaison comprend au moins une image de résonance magnétique (IRM), une image de tomographie par ordinateur (CT) et une image à émission de positrons (PET) d'un objet (41).

4. Appareil de traitement d'images (100) selon la revendication 2, dans lequel chacune des au moins une image de comparaison acquise et l'image ultrasonique standard qui sont affichées ensemble par

l'unité d'affichage (130), est une image relative au même plan standard (42).

5. Appareil de traitement d'images (100) selon la revendication 1, dans lequel l'unité de génération d'image standard (120) engendre l'image ultrasonique standard selon que les données (31) de l'image ultrasonique acquise contiennent une zone qui est susceptible de révéler une maladie.
6. Appareil de diagnostic ultrasonique (600) comportant un appareil de traitement d'images (100) selon l'une quelconque des revendications 1 à 5, l'appareil de diagnostic ultrasonique (600) comprenant :
- une sonde (610) pour acquérir des données d'images ultrasoniques (31) indiquant des informations relatives à l'objet (41) ;
 - un système principal (630) pour générer l'image ultrasonique standard à partir des données d'image ultrasonique (31) basées sur l'image de référence ultrasonique relativement à au moins un plan standard (42).
7. Système d'imagerie médicale (700) comportant un appareil de traitement d'images (100) selon l'une quelconque des revendications 1 à 5, le système d'imagerie médicale (700) comportant :
- une unité de diagnostic (710) pour effectuer un diagnostic technique différent d'un diagnostic technique d'acquisition de données d'images ultrasoniques (31), dans lequel l'appareil de traitement d'images (100) affiche l'image ultrasonique standard simultanément avec au moins une image de comparaison qui est générée par l'utilisation du diagnostic technique différent d'un diagnostic technique d'acquisition des données d'images ultrasoniques (31).
8. Procédé de traitement d'image, le procédé consistant à :
- stocker une image ultrasonique de référence en liaison avec au moins un plan sagittal, un plan coronal et un plan axial, pour chaque information respectivement relative à un corps humain et les informations relatives à une zone d'un corps humain dans une base de données ;
 - rechercher dans la base de données une image de référence ultrasonique correspondant à des informations relatives au corps humain et les informations relatives à une zone du corps humain d'un objet (41), dans lequel les informations relatives au corps humain et les informations relatives à une zone du corps humain sont introduites par un utilisateur au moyen d'une unité

d'interface utilisateur ; acquérir les données ultrasoniques (31) relatives aux informations concernant l'objet (41) ;

générer une image ultrasonique standard par rapport à au moins un desdits plans sagittal, coronal et axial à partir des données d'images ultrasoniques acquises (31) en effectuant un processus d'enregistrement d'image sur les données d'images ultrasonique basées sur l'image de référence ultrasonique recherchée ; et afficher l'image standard ultrasonique générée.

9. Procédé d'affichage des images de diagnostics comprenant l'image standard générée par l'appareil de traitement d'images (100) selon l'une des revendications 1 à 5, le procédé consistant à :

obtenir une pluralité d'images de diagnostics de l'objet (41), qui sont générées par au moins deux appareils de diagnostic utilisant différentes techniques de diagnostic ; et afficher simultanément au moins deux images de diagnostics parmi la pluralité d'images de diagnostics acquises.

10. Support d'enregistrement lisible par un ordinateur non transitoire, ayant enregistré un programme pour exécuter le procédé selon l'une quelconque des revendications 8 et 9.

FIG. 1

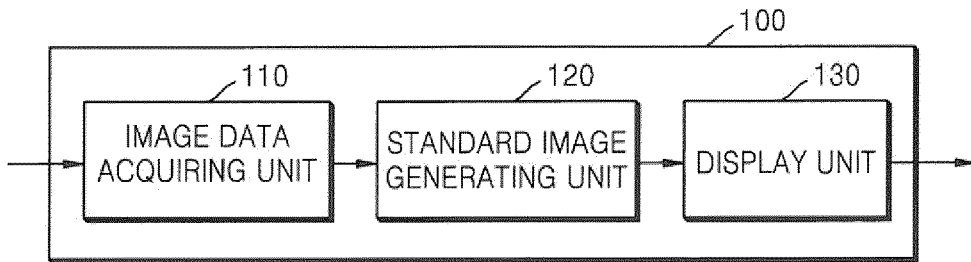


FIG. 2

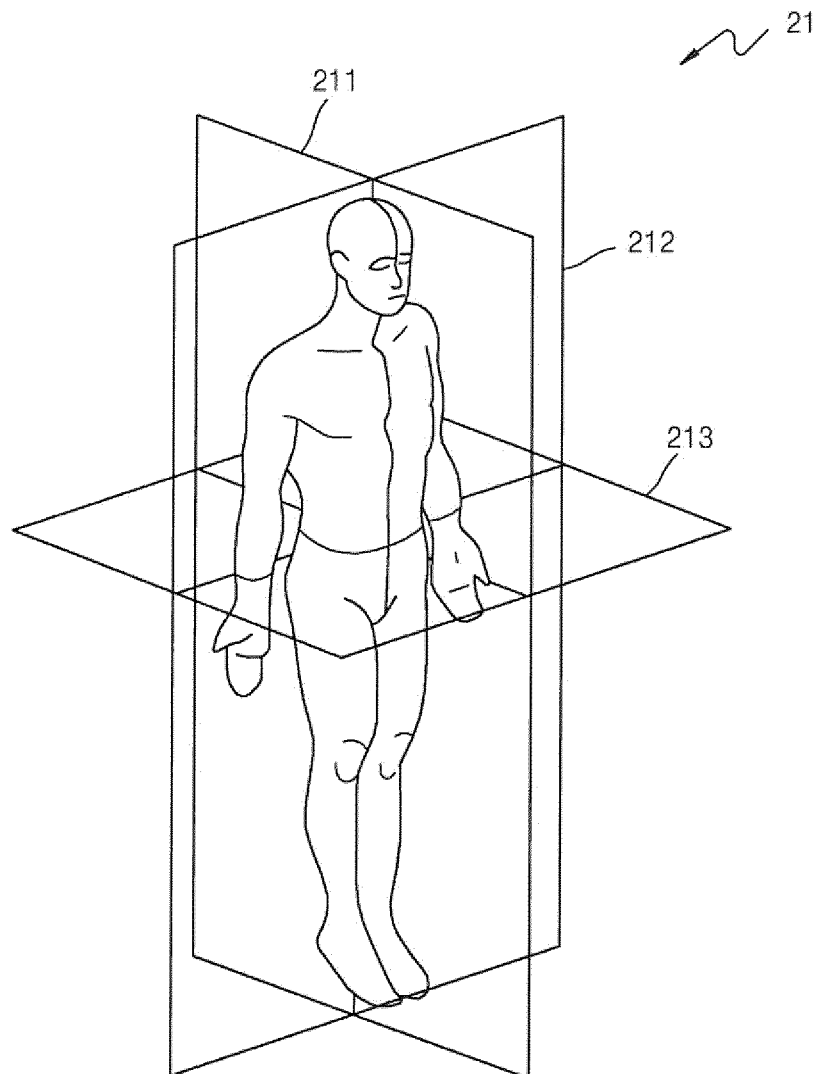


FIG. 3

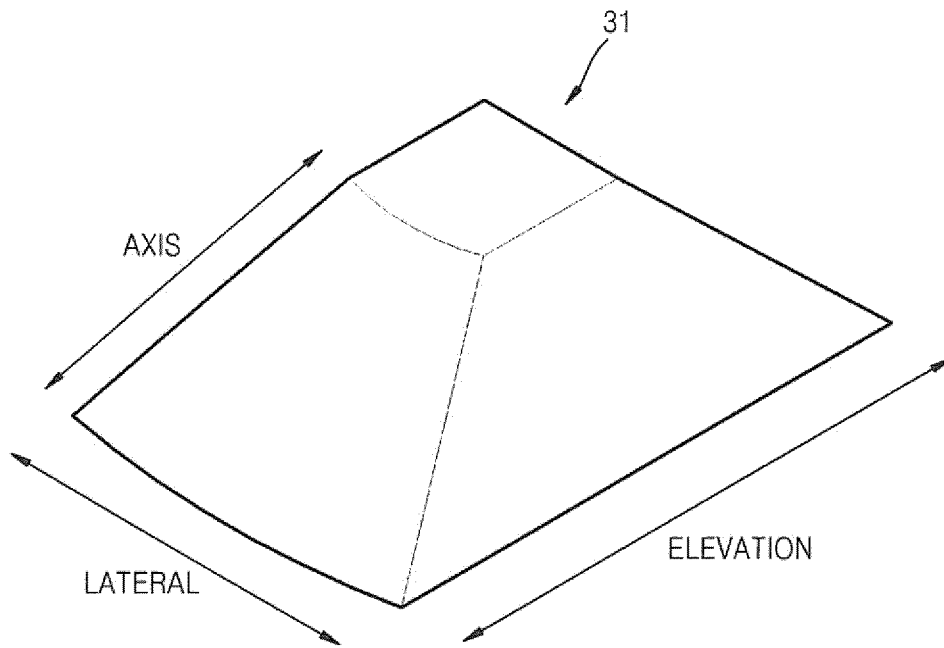


FIG. 4

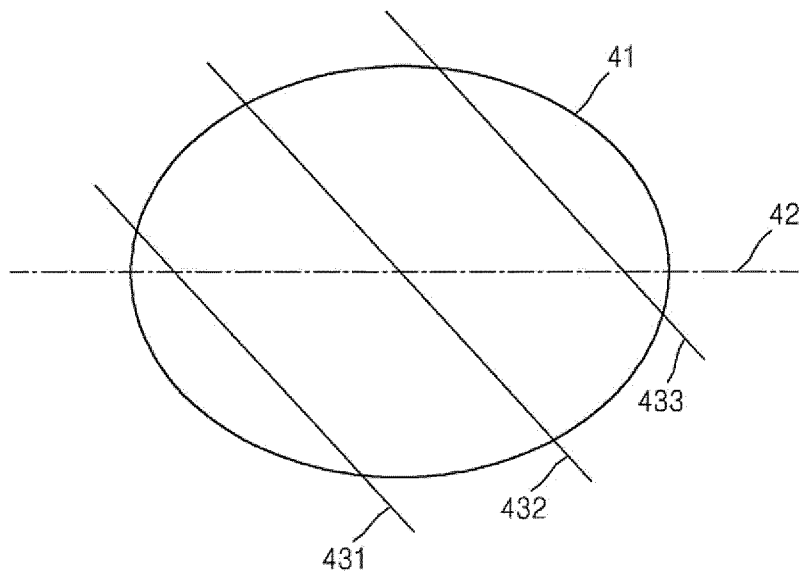


FIG. 5

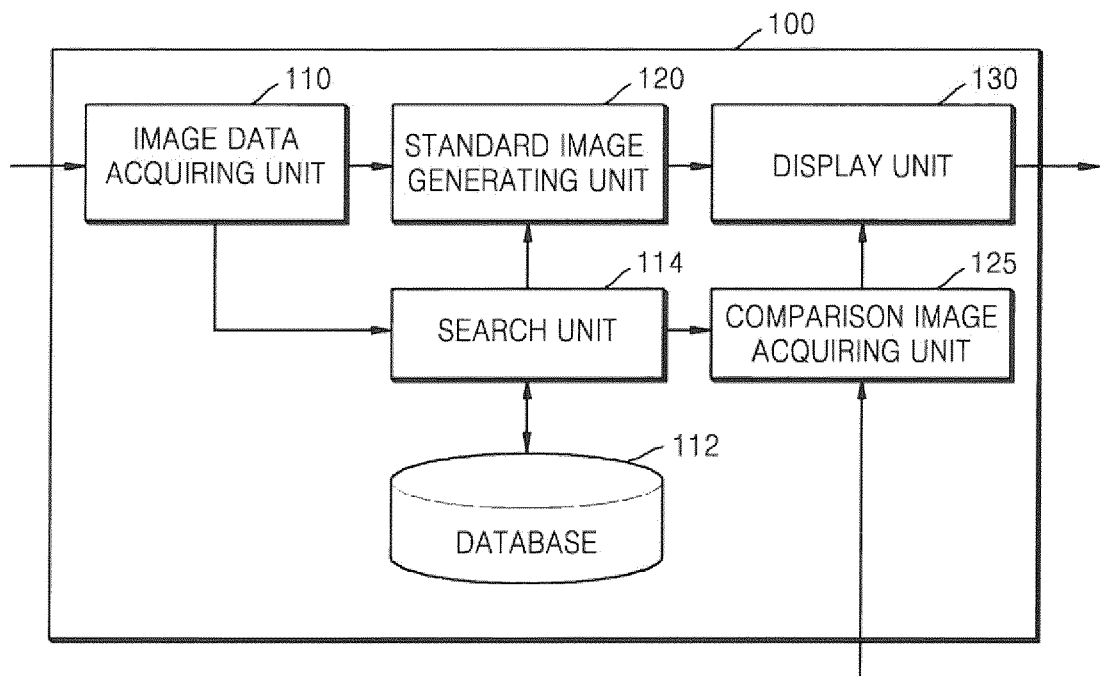


FIG. 6

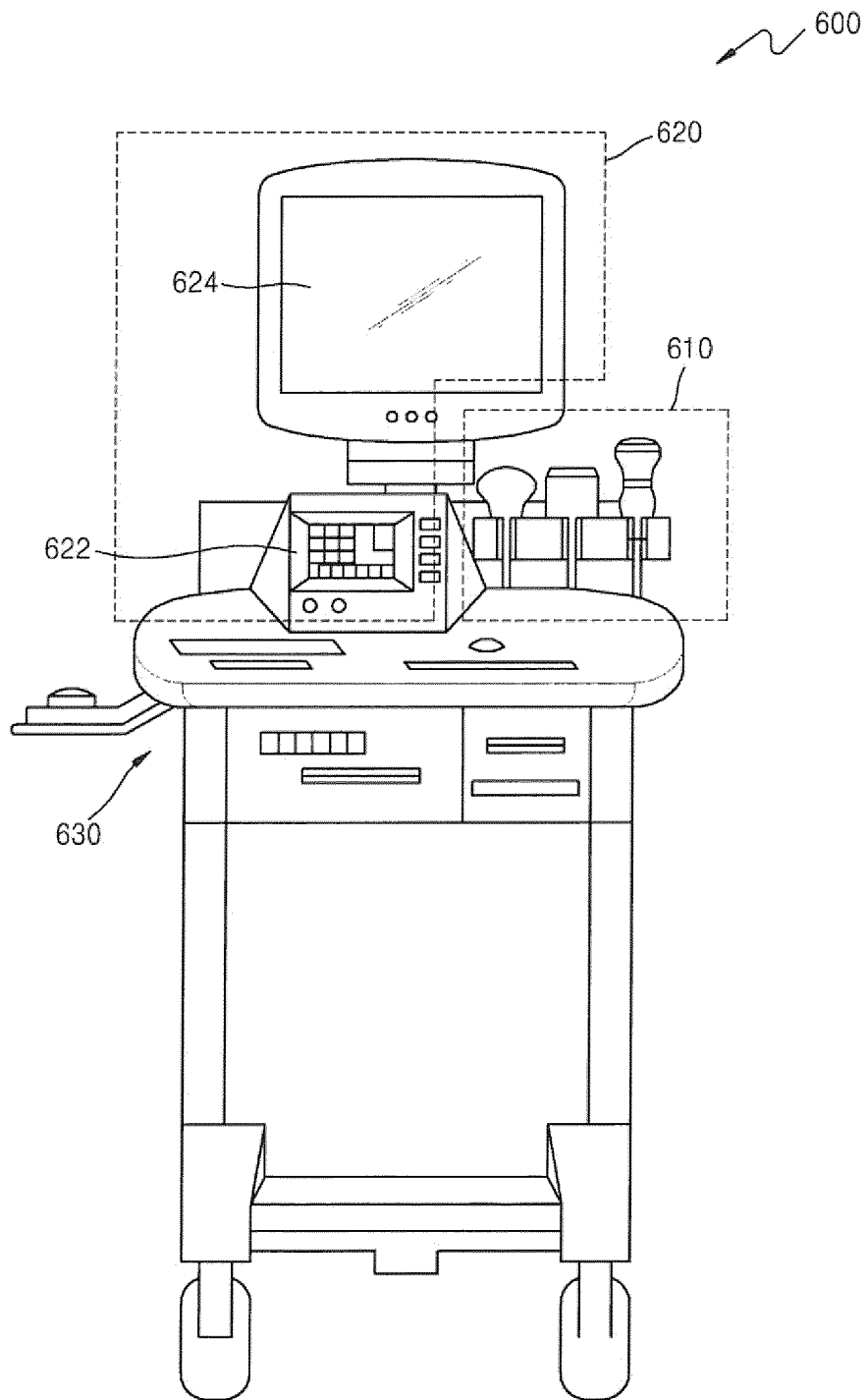


FIG. 7

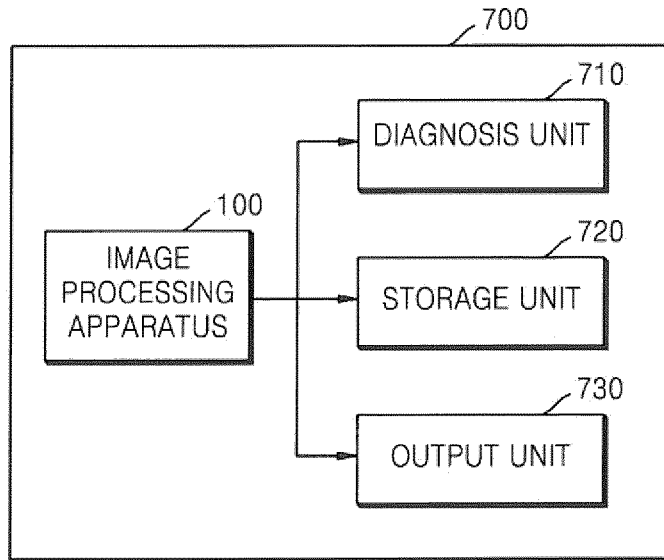


FIG. 8

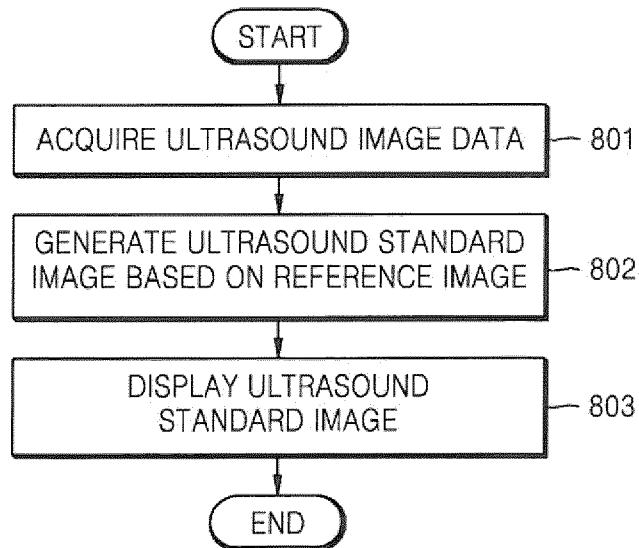


FIG. 9

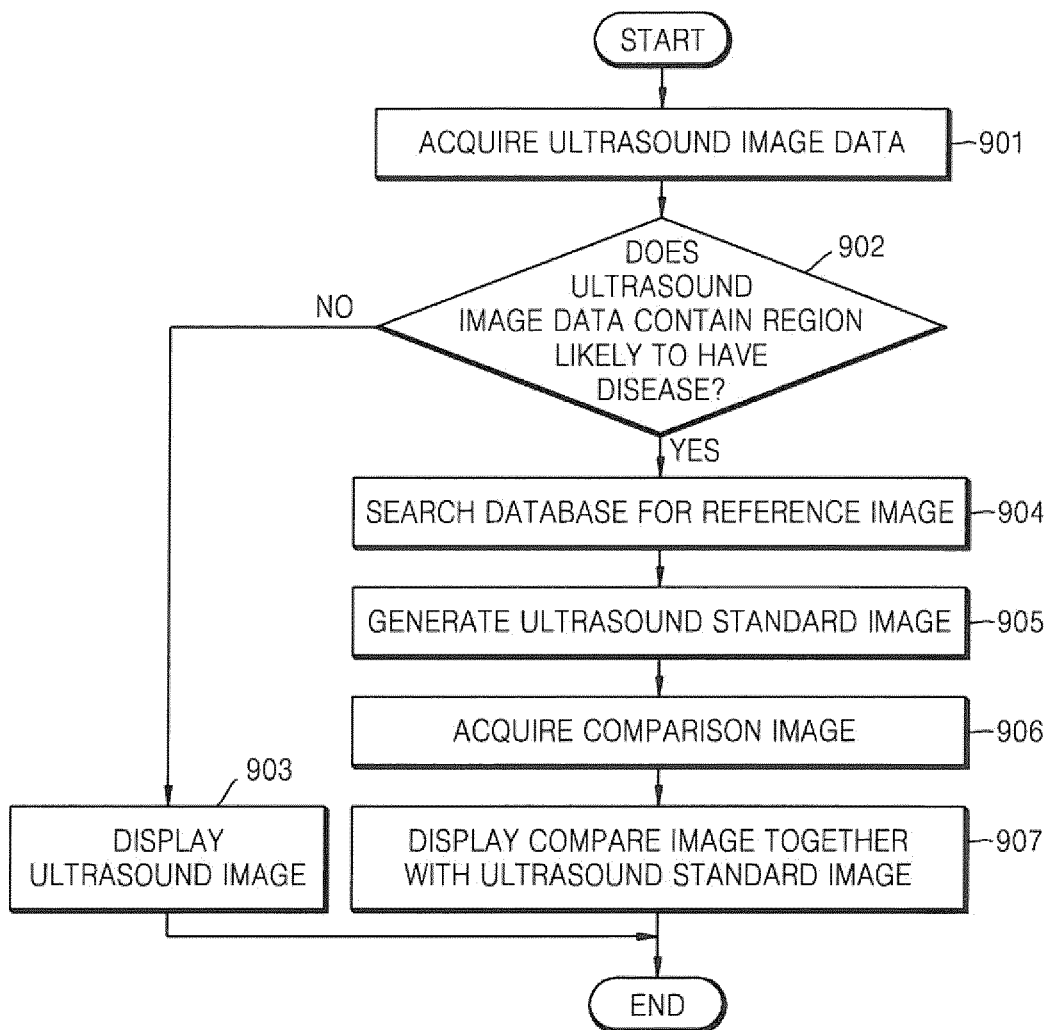
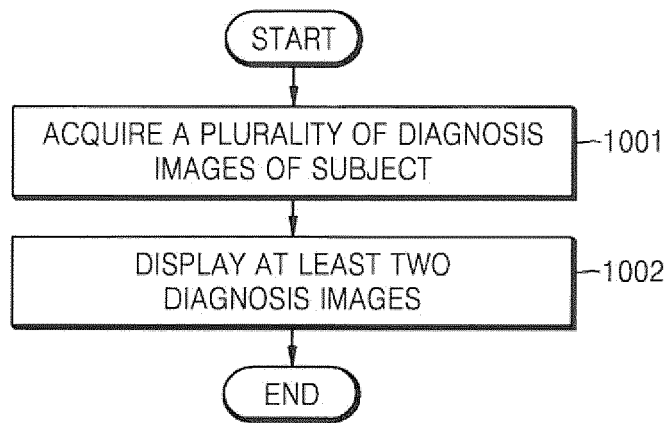


FIG. 10



REFERENCES CITED IN THE DESCRIPTION

This list of references cited by the applicant is for the reader's convenience only. It does not form part of the European patent document. Even though great care has been taken in compiling the references, errors or omissions cannot be excluded and the EPO disclaims all liability in this regard.

Patent documents cited in the description

- US 2011028844 A1 [0004]
- WO 2011074207 A1 [0005]

Non-patent literature cited in the description

- **WINTER S et al.** Toward Registration of 3D Ultrasound and CT Images of the Spine in Clinical Praxis: Design and Evaluation of a Data Acquisition Protocol. *Ultrasound in Medicine and Biology*, New York, 01 November 2009, vol. 35 (11), ISSN 0301-5629, 1773-1782 [0003]

| | | | |
|----------------|---|---------|------------|
| 专利名称(译) | 用于处理图像的方法和设备，超声诊断设备和医学成像系统 | | |
| 公开(公告)号 | EP2570081B1 | 公开(公告)日 | 2015-09-09 |
| 申请号 | EP2012161828 | 申请日 | 2012-03-28 |
| [标]申请(专利权)人(译) | 三星麦迪森株式会社 | | |
| 申请(专利权)人(译) | 三星MEDISON CO. , LTD. | | |
| 当前申请(专利权)人(译) | 三星MEDISON CO. , LTD. | | |
| [标]发明人 | BAEK JI HYE | | |
| 发明人 | BAEK, JI-HYE | | |
| IPC分类号 | A61B8/00 | | |
| CPC分类号 | A61B5/055 A61B5/7425 A61B8/4405 A61B8/461 A61B8/466 A61B8/467 A61B8/483 A61B8/523 A61B8/5261 G06F19/321 G16H30/20 G16H30/40 A61B8/463 | | |
| 代理机构(译) | SCHMID , WOLFGANG | | |
| 优先权 | 1020110094280 2011-09-19 KR | | |
| 其他公开文献 | EP2570081A1 | | |
| 外部链接 | Espacenet | | |

摘要(译)

一种图像处理装置，包括：图像数据获取单元，用于获取指示关于对象的信息的超声图像数据；标准图像生成单元，用于生成超声图像数据的超声标准图像；显示单元，用于显示超声标准图像。

