



(12) **EUROPEAN PATENT APPLICATION**
 published in accordance with Art. 153(4) EPC

(43) Date of publication:
10.12.2008 Bulletin 2008/50

(51) Int Cl.:
A61B 8/00 (2006.01)

(21) Application number: **06835185.7**

(86) International application number:
PCT/JP2006/325815

(22) Date of filing: **25.12.2006**

(87) International publication number:
WO 2007/111013 (04.10.2007 Gazette 2007/40)

(84) Designated Contracting States:
DE FR GB IT NL

(72) Inventor: **HASHIBA, Kunio**
Kokubunji-shi, Tokyo 185-8601 (JP)

(30) Priority: **24.03.2006 JP 2006082947**

(74) Representative: **Strehl Schübel-Hopf & Partner**
Maximilianstrasse 54
80538 München (DE)

(71) Applicant: **HITACHI MEDICAL CORPORATION**
Tokyo 101-0021 (JP)

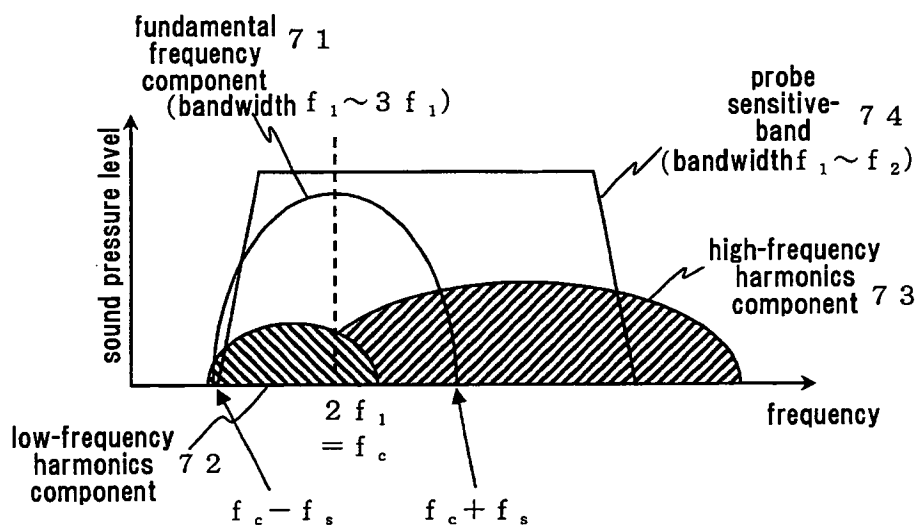
(54) **ULTRASOUND IMAGING DEVICE**

(57) An ultrasound imaging device, which can extract nonlinear components efficiently and improve the ultrasound penetration, is provided.

frequency f_1 or lower ($f_1 - 3f_1$). When the ultrasound wave in such band is transmitted, the low-frequency harmonic component 72 of the nonlinear component may have higher frequency than the first frequency f_1 and therefore can be received by the receiving means. Also, as most of the high-frequency harmonic components 73 can be generated in the reception band 74, most of the high-frequency harmonic components 73 can be received.

The receiving means has a given reception band 74, and the lower limit frequency of the reception band 74 is the first frequency f_1 . The frequency band of the ultrasound wave transmitted by the transmitting means is set as the first frequency f_1 or higher and 3 times of the first

[Figure 4]



Description

Field of the Invention

5 **[0001]** The present invention relates to an ultrasound imaging device used in the medical field, wherein nonlinear components generated by the acoustic nonlinear effects in the living body are used for imaging.

Prior Art

10 **[0002]** The ultrasound imaging device, which can visualize cross-sectional view of the living body less invasively, is used broadly for medical purposes. When the ultrasound wave is irradiated in the living body the waveform is distorted due to acoustic nonlinearity of the tissue of the living body, and nonlinear components are generated depending on the frequency components of the irradiated ultrasound waves. The imaging method using these nonlinear components is generally called as the tissue harmonic imaging (THI). For example, if the second harmonic components (or high-frequency harmonic components) surrounding the frequency $2f_0$, which are generated by the irradiation of pulse wave consisting of fundamental frequency components surrounding the frequency f_0 , are used for imaging, the resolution is improved as compared with the imaging using the fundamental frequency components and artifacts caused by grating lobe are reduced. Consequently, the quality of the image is improved.

20 **[0003]** In the imaging method using THI, since the strength of the generated nonlinear components contained in the reflected echo is extremely smaller than the reflected fundamental frequency components, it is necessary to separate the nonlinear components from the reflected echo. Conventionally, as shown in Figure 17, the second harmonic component was extracted by filter separating the second harmonic component, which is generated surrounding the frequency $2f_0$, and the fundamental frequency component surrounding the frequency f_0 from the echo.

25 **[0004]** Another method used for extracting nonlinear components contained in the echo is the pulse inversion (PI) method. Figure 18 shows the concept of the PI method in frequency space. This method extracts nonlinear components by adding the first echo, which is obtained by transmitting the first pulse consisting of fundamental frequency components and the second echo, which is obtained by transmitting the second pulse, 180 degree-inverted phase component of the first pulse. The nonlinear component can be expressed using the square of the fundamental frequency component, and the fundamental frequency components contained in the first and second pulse echoes are offset each other but the nonlinear components remain. Accordingly, by using the PI method, though the frame rate is halved, nonlinear components can be obtained even the bands of fundamental frequency component and nonlinear component are overlapped.

30 **[0005]** As mentioned earlier, the THI using the second harmonics realizes the improved quality of image due to higher resolution and reduced artifact. However, the second harmonics have higher frequency than the fundamental wave, and therefore undergo strong frequency-dependent attenuation. Accordingly, the reduced ultrasound penetration in deep part of the imaging region makes it difficult to obtain images with uniform brightness. The patent document 1 (paragraph 0018, Figure 6) discloses the imaging by extracting low-frequency harmonic components surrounding DC, which are generated as nonlinear components and have lower frequency than those of fundamental wave (frequency components in the band slightly expanding around the zero frequency in the center). The low-frequency harmonic components are extracted by filtration or PI method. In order for most of the low-frequency harmonic components thus extracted to be contained in the ultrasound probe-sensitive band, it has been proposed in the Patent Document 1 (paragraph 0022) that the frequency of the fundamental frequency component should agree with the highest band of the ultrasound probe-sensitive band and that the center frequency of the low-frequency harmonic components should be shifted to the slightly higher band.

35 **[0006]** Above mentioned Patent Document 1 (paragraph 0024, Figure 8) discloses another method to generate and extract difference-frequency wave component of $f_b - f_a$, which is a kind of low-frequency harmonics, in addition to low-frequency harmonic component surrounding DC by irradiating ultrasound waves having two peaks f_a and f_b ($f_a < f_b$) on the frequency spectrum as a fundamental frequency component, as shown in Figure 19. Since this method allows more low-frequency harmonic components to be contained in the probe-sensitive band, low-frequency harmonic wave components can be extracted more efficiently.

40 **[0007]** The Patent Document 2 (paragraph 0038, Figure 2), on the other hand, discloses the method to use the components of $f_b - f_a$ and $2f_a$ for imaging by controlling the frequency and the phase of f_b and superimposing the aforementioned difference-frequency wave components of $f_b - f_a$ on the components $2f_a$. According to this method, nonlinear components of wider band than the frequency band which has been used conventionally in the THI can be extracted by mutually controlling harmonics component $2f_a$ and difference-frequency wave components $f_b - f_a$.

55

[Patent Document 1]

Japan Published unexamined patents application No. 2002-301068

[Patent Document 1]

Japan Published unexamined patents application No.2004-298620

Disclosure of the Invention

5 Object to be Achieved by the Invention

[0008] The aforementioned conventional ultrasound imaging device, which uses nonlinear components, extracts only either of the high-frequency harmonics or low-frequency harmonics components or only part of the whole nonlinear components that may be generated. In other word, as above mentioned, the conventional ultrasound imaging device, which uses low-frequency harmonics, extracts only low-frequency harmonic components. Or it extracts either of the component $2f_a$ or $f_b - f_a$ or both of them by irradiating ultrasound wave with the fundamental frequency components having a peak at two frequencies, f_a and f_b . However, of the low-frequency harmonic components and high-frequency harmonic components, the frequency components of $2f_b$ and $f_a + f_b$ have the highest rate of energy conversion from fundamental frequency components to nonlinear frequency components. Accordingly, in the conventional ultrasound imaging device using low-frequency harmonics many nonlinear frequency components are not used as signals for imaging.

[0009] The most effective way to increase the strength of nonlinear frequency components is to increase the strength of fundamental frequency component of the transmission pulse. However, in respect of its use for the living body, the ultrasonic strength of irradiation is specified as mechanical index (MI) for safety purpose. Therefore when ultrasonic pulse wave having fundamental frequency components with a peak at two frequencies, f_a and f_b , is irradiated, the strength of its component f_a must be lower than the strength of f_a when the ultrasonic pulse wave having a frequency component of f_a alone is irradiated. The nonlinear frequency component has the sound pressure amplitude, which is proportional to the square of that of the fundamental frequency component. As a result, the generation of $2f_a$ component arising as harmonic component is restrained.

[0010] As explained above, conventional ultrasound nonlinear imaging extracts only part of the nonlinear components, which are expressed by the low-frequency harmonic components and high-frequency harmonic components derived from the fundamental frequency components, and uses them for imaging. Improvement of ultrasound penetration requires higher ultrasonic energy, but the conventional imaging has a disadvantage of poor energy use efficiency.

[0011] The object of the present invention is to provide an ultrasound imaging device which can extract nonlinear frequency components efficiently and improve ultrasound penetration.

Means for solving the problems

[0012] According to the first embodiment of the present invention, the following ultrasound imaging device will be provided in order to solve the aforementioned problems. Namely, the ultrasound imaging device has a transmitting means which transmits ultrasound wave to the target, a receiving means which receives ultrasound wave arriving from the target and a signal processor which processes signals received at the receiving means and generates image data, wherein the receiving means has a given receiving band in which the first frequency is a lower limit frequency. In this case, the frequency band of the ultrasound wave which is transmitted by the transmitting means is set at higher than the first frequency and lower than three times of the first frequency. When the ultrasound wave in such band is transmitted, of all nonlinear components, the low-frequency harmonic components having a higher frequency than the first frequency can be received by the receiving means.

[0013] In the transmission by the aforementioned transmitting means, the wave whose spectral components are all cosine waves can be used. As this enables the generation of all nonlinear frequency components in-phase, the amplitudes of nonlinear components strengthen each other, thereby making it possible to obtain high-resolution image.

[0014] In the transmission by the aforementioned transmitting means, the wave whose spectral components are all sine waves can be used. As this enables the transmission of ultrasound wave with larger pulse power than that using cosine wave, the ultrasound penetration is improved.

[0015] In the transmission by the transmitting means, the ultrasound wave contains carrier wave components and modulating wave components modulating the amplitude of the carrier wave components. The carrier wave component of cosine wave can be used. The carrier wave components of sine wave can be also used.

[0016] In the transmission by the transmitting means, the ultrasound wave contains the carrier wave components and modulating wave components modulating the amplitude of the carrier wave components, wherein the carrier wave whose frequency is set as twice of the first frequency and the modulating wave whose frequency is set as the first frequency can be used. This makes it possible to set the frequency band of the ultrasound wave to be transmitted as higher than the first frequency but lower than three times of the first frequency.

[0017] It can be also configured to have an accepting means to accept instructions from users to increase or decrease the frequency of the modulating wave having the first frequency at a center. In this case, the transmitting means is

configured to increase or decrease the frequency of modulating wave depending on the increment or decrement accepted by the accepting means.

[0018] Also, if the upper limit frequency in the receiving band of the receiving means is the second frequency f_2 , the frequency f_c of the carrier wave and the frequency f_s of modulating wave can be set to satisfy the relationship with the second frequency f_2 which is expressed by $2f_c + 2f_s \leq f_2$. By this, it is possible to make the highest frequency of the nonlinear frequency components lower than that of the second frequency, and to receive them by the receiving means.

[0019] The aforementioned transmitting means can be configured to transmit, as the ultrasound waves, the first ultrasound wave in the aforementioned frequency band and the second ultrasound wave, which is in the aforementioned frequency band and whose waveform is the inverted one of the first ultrasound wave. The signal processor applies a so called pulse inversion method, in which the signal processor adds the first received signals, which is ultrasound wave originating from the aforementioned first ultrasound wave, coming from the aforementioned target and received by the receiving means, and the second received signals, which is ultrasound wave originating from the second ultrasound wave, coming from the target and received by the receiving means, and generates the aforementioned image data by using the added signals.

[0020] Also, according to the second embodiment of the present invention, the following ultrasound imaging device is provided. That is the ultrasound imaging device comprising a transmitting means to transmit ultrasound wave to the target, a receiving means to receive ultrasound wave from the target, and a signal processor to process the signals received by the receiving means and generate the image data, wherein the receiving means has a given receiving band in which the first frequency is the lower limit frequency. The ultrasound wave to be transmitted by the transmitting means contains carrier wave and modulating wave to modulate the carrier wave, wherein the frequency of the carrier wave is set as twice or more of the first frequency and the frequency of the modulating frequency is set as higher than the first frequency. By transmitting the ultrasound wave in such band, of the nonlinear frequency components the low-frequency harmonic component having higher frequency than the first frequency can be received by the receiving means.

[0021] In the second embodiment, the frequency of the carrier wave can be set as twice of the first frequency, while the frequency of the modulating wave can be set as the first frequency.

[0022] In the second embodiment, if the upper limit frequency in the receiving band of the receiving means is the second frequency f_2 , it is possible to use the frequency f_c of the carrier wave and the frequency f_s of the modulating wave, which have the relationship with the aforementioned second frequency f_2 to be expressed as $2f_c + 2f_s \leq f_2$. By this, it is possible to make the highest frequency of the nonlinear frequency components lower than that of the second frequency, and to receive them by the receiving means.

[0023] In the second embodiment, the ultrasound wave whose spectral components are all cosine or sine waves can be used as the ultrasound wave which is transmitted by the transmitting means. If all of the components are cosine waves, the amplitudes of the nonlinear components strengthen each other and provide a high resolution image. If all of the components are sine waves, the ultrasound wave with high pulse power can be transmitted, and consequently the ultrasound penetration is improved.

[0024] In the second embodiment, the frequency of the modulating wave can be configured to contain the means to accept instructions from users to increase or decrease the frequency of the modulating wave from the aforementioned first frequency. In this case, the transmitting means is equipped with a frequency adjusting means which increases or decreases the frequency of the modulating wave depending on the increment or decrement accepted by the aforementioned accepting means.

[0025] In the second embodiment, the pulse inversion method can be applied in which the transmitting means transmits, as ultrasound wave, the first ultrasound wave and the second ultrasound wave having the inverted waveform of the aforementioned first ultrasound wave.

Effect of the Invention

[0026] According to the present invention, since various low-frequency harmonic components and high-frequency harmonic components are generated effectively in the probe-sensitive band by the nonlinear acoustic interaction of the components in the band of transmission pulse, nonlinear imaging with high energy-use efficiency is provided. As a result, high-resolution imaging using a wider band is achieved in the shallow part of the imaging region where the level of high frequency components in the nonlinear components is relatively high and in the region close to the transmission focal point. And, even in the deep part of the imaging region where high frequency components attenuate, sufficient penetration is obtained by the imaging with low frequency components. Consequently, a uniform image over the entire imaging region can be obtained.

Best Mode for Carrying out the Invention

[0027] Embodiments of the present invention will be explained below with reference to the attached drawings.

The embodiment of this invention is an ultrasound imaging device using nonlinear components, and has a configuration to produce low-frequency harmonic components and high-frequency harmonic components at the same time in the probe-sensitive band. This enables the probe to detect many of the nonlinear components, thereby improving energy-use efficiency and the ultrasound penetration.

5 [0028] To begin with, the ultrasound imaging device of this embodiment is explained by using Figure 1. Here, among ultrasound imaging device, particularly the ultrasound diagnostic equipment 10 used for medical purpose is explained, but the ultrasound imaging device of the present invention is not limited to the diagnostic apparatus for the medical purposes.

10 [0029] The ultrasound diagnostic equipment 10 is equipped with a probe 11, a main frame 20, and an outer interface 12 and a display 13.

In transmission, the probe 11 converts transmission electric signals from the main frame 20 into transmission echo signals, and after transmitting the ultrasound wave to the non-illustrated subjects, it converts the echo signals reflected from the subject to the reception electric signals and transmit them to the main frame 20. The probe 11 usually has one- or two-dimensional array structure, which is configured to enable to focus and deflect the transmitted beam and received beam.

15 [0030] The main frame 20 comprises a pulse synchronizer 23, which generates waveform to be transmitted from the probe 11, a transmit amplifier 22, which amplifies the transmission waveform from the pulse synchronizer 23, receive amplifier 24, which amplifies signals received from the probe 11, transmit/receive (T/R) switch 21, which electrically connects the transmit amplifier 22 and the probe 11 in transmission and the receive amplifier 24 and the probe 11 in reception, the A/D converter 25, which converts analog signals amplified by the receive amplifier 24 into digital signals, receive beamformer 26, which gives a given delay to the aforementioned received signals to form received beam, a signal processor 27, which applies signal processing to the aforementioned received beam as described below in detail, an image processor 28, which constructs image data using the output from the signal processor 27, and a controller 29, which controls transmission/reception timing, transmission waveform, receive amplifier gain, amount of delay, signal processing and others for the constituent elements.

20 [0031] The output from the imaging processor 28 is displayed on the display 13 as an image such as 2-D tomogram and 3-D image. It is configured to enable operators to control the aforementioned constituent elements of the main frame 20 and the display 13, through the controller 29 from the outer interface 12. In addition, if the outer interface 12 is not added, imaging can be performed under the control conditions determined in advance.

25 [0032] Next, the action of pulse transmission and reception and the processing sequences at the signal processor 27 in the ultrasound diagnostic equipment of this invention will be explained in detail with reference to Figure 1 and Figure 2. The ultrasound diagnostic equipment of the present invention uses the pulse inversion method, in which one image data can be obtained by at least two-rate transmission and reception, as shown in Figure 1. The frequency band of the fundamental frequency components of the transmission pulse, which is a feature of the present invention, will be explained in detail later.

30 [0033] Firstly, a given transmission pulse waveform is formed by using the controller 29 at the pulse synchronizer 23, and via the transmit amplifier 22 and the transmit/receive switch 21, the first fundamental wave pulse 30 is irradiated from the ultrasound probe 11 onto the subject. The first fundamental wave pulse 30 propagates in the body of the subject while producing waveform distortions due to acoustic nonlinear effects and repeating reflections and penetrations in a boundary of different acoustic impedance. After the first fundamental wave pulse 30 is irradiated from the probe 11, the transmit/receive switch 21 electrically connects the receive amplifier 24 and the probe 11 immediately according to the instructions from the controller 29. The echo reflected from the subject sequentially arrives at the probe 11 as the first echo 31 in the order of proximity to the probe 11, and the first rate of transmission and reception is completed at the time when the first echo 31 is expected to return from the deepest part of the imaging region. The first echo 31 is transmitted as the first received signal 32 to the signal processor 27 through the transmit/receive switch 21, the receive amplifier 24, A/D converter 25 and the receive beamformer 26.

35 [0034] After the first rate of transmission and reception is completed, the transmit amplifier 22 and the probe 11 are electrically re-connected by the transmit/receive switch 21. Next, an another transmit pulse waveform is formed at the pulse synchronizer 23, and transmitted via the transmit amplifier 22 and the transmit/receive switch 21 to the probe 11, from which the second fundamental wave pulse 33 is irradiated onto the subject. The second fundamental pulse 33 has the waveform, which is roughly plus-minus inverted waveform of the first fundamental wave pulse 30. Moreover, it is desirable that the pulse synchronizer 23 has such means to remove electrical distortion generated at the transmit amplifier 22 and the effect of phase rotation attributable to the frequency characteristic of the probe 11, and to adjust the waveform of at least the first fundamental wave pulse 30 or the second fundamental wave pulse 33.

40 [0035] The second fundamental wave pulse 33 propagates in the subject body while generating waveform distortions due to acoustic nonlinear effects and repeating reflections and penetrations in a boundary of different acoustic impedance. After the second fundamental wave pulse 33 is irradiated from the probe 11, the transmit/receive switch 21 electrically connects the receive amplifier 24 and the probe 11 immediately according to the instructions from the controller 29. The

echo reflected from the subject sequentially arrives at the probe 11, as the second received echo 34, in the order of proximity to the probe 11, and the second rate of transmission and reception is completed at the time when the second echo 34 is expected to return from the deepest part of imaging region. The second received echo 34 is transmitted as the second received signal 35 to the signal processor 27 through the transmit/receive switch 21, the receive amplifier 24, the A/D converter 25 and the receive beamformer 26.

[0036] Figure 2 shows an example of detailed configuration of the signal processor 27 shown in Figure 1. The signal processor 27 has temporary memories 40 and 41, an adder 42, a quadrature detecting processor 43 and a filtering processor 44. The output from the filtering processor 44 is further processed in a B-mode processor 45 and a Doppler processor 46 and outputted in the imaging processor 28. In the temporary memories 40 and 41 the first received signal 32 of the first rate and the second received signal 35 of the second rate are temporarily stored respectively and added then at the adder 42.

[0037] The received signals added here contain received signal components made of fundamental wave components constituting the first fundamental wave pulse 30 and the second fundamental wave pulse 33, and the received signal components made of nonlinear components generated based on the nonlinear propagation of these fundamental wave pulses in the subject body. However, since the phase of the fundamental wave components of the first fundamental wave pulse 30 is inverted by 180 degree from that of the second fundamental wave pulse 33, sum of them is ideally zero.

[0038] On the other hand, as the nonlinear components are generated as a result of the square of the fundamental wave component, there is no phase inversion, and the signal to noise ratio (S/N) can be improved by about 3dB by addition. By this, only nonlinear components can be extracted by this adding process. It can also be configured that the ratio of strength between the first received signal 32 and the second received signal 35 can be changed continuously in the time direction (depth direction for the imaging region) automatically or manually. And it is also possible to configure to allow users to adjust aforementioned ratio through the outer interface 12.

[0039] The quadrature detecting processor 43 applies frequency shift depending on the reference frequency and provide in-phase signal components and quadrature signal components. Extracted nonlinear components are high-frequency and low-frequency harmonic components, which are generated in the receiving band of the probe 11. Since the higher frequency components undergo stronger frequency-dependent attenuation, the received signals from the point deeper than the transmission focal point are composed mostly of low frequency components. Accordingly, it is desirable to select, as a reference frequency at the quadrature detecting processor 43, higher frequency for the signals received from relatively shallow region up to the transmission focal point, and lower frequency for the received signals from the depth. As a result it is possible to configure to be able to change the reference frequency continuously in the time direction (depth direction for the imaging region) automatically or manually. And it can be also configured to allow users to adjust the reference frequency through the outer interface 12.

[0040] The signal components in the frequency band to be used as image data are extracted at the filtering processor 44 from the signals after the quadrature detection and used to construct the data for B-mode images for displaying the strength of reflected echo as brightness information and the data such as blood flow rate to be calculated based on the Doppler effect at the B-mode processor 45 and the Doppler processor 46. The imaging processor 28 converts these data into space data by appropriate coordinate conversion and delivers them to the display 13. With this, the display 13 displays B mode images and the blood flow data and others as image.

[0041] Next, the fundamental wave component of the transmission pulse in this embodiment will be explained in detail. According to this embodiment, a single pulse wave having a single frequency peak as shown in Figure 3 is used as a fundamental wave component 71 of the first fundamental wave pulse 30 and the second fundamental wave pulse 33. The fundamental wave component 71 has the peak frequency of f_c and the bandwidth of $2f_s$. Accordingly, the band of the fundamental wave component is from $f_c - f_s$ to $f_c + f_s$. Unless these frequencies f_c and f_s are set appropriately as shown in Figure 3, many of the low-frequency harmonic components 72 and high-frequency harmonic components 73 are generated outside the probe-sensitive band 74 and cannot be detected. In this embodiment, however, the frequencies f_c and f_s are set at given values relative to the probe-sensitive band from f_1 to f_2 as shown in Figure 4. Accordingly, many of the low-frequency harmonic components 72 and high-frequency harmonic components 73 can be generated within the probe-sensitive band $f_1 - f_2$ as shown in Figure 4. The lower limit frequency f_1 in the probe-sensitive band is not defined by the bandwidth of -6dB which is generally used, but is the lower limit frequency of the signal components which can be used as image signals in the received echo signal component after passing through the probe.

[0042] Firstly, the relationship between the nonlinear components used for imaging and the fundamental frequency components, which the first fundamental pulse and the second fundamental pulse have, will be explained by using formulas and diagrams.

[0043] Nonlinear imaging of the present invention effectively captures nonlinear components derived from the fundamental frequency component due to acoustic nonlinear effects in the subject body and achieves both higher resolution and improved ultrasound penetration. The way of propagation of sound wave is expressed mathematically by the Khokhlov-Zabolotskaya-Kuznetsov equation (KZK equation) or the Burgers' equation shown in Formula 1.

[Formula 1]

$$\frac{\partial p}{\partial x} - \frac{b}{2 \rho c^3} \frac{\partial^2 p}{\partial t^2} = \frac{\beta}{2 \rho c^3} \frac{\partial p^2}{\partial t}$$

[0044] Formula 1 describes nonlinear acoustic propagation in the direction of x in 1-D space, where p is sound pressure, ρ is density, c is speed of sound, β is nonlinear coefficient and t is delay time in the coordinate system which moves at the speed of sound c in the direction of x. b is the amount of substance associated with the absorption of sound wave, and its relationship with the absorption coefficient α and the angular frequency ω is expressed by the equation, $\alpha = b\omega^2$. The right side member of Formula 1 expresses the term of virtual source which arises in the course of nonlinear propagation. If third or higher harmonics is neglected, and the changes in waveform in the direction of x are not remarkable with least attenuation per wavelength, the nonlinear components to be generated can be estimated by temporal differentiation of the square value of linear sound pressure. Considering the fundamental wave obtained by subjecting the carrier frequency $f_c = \omega_c/2\pi$ to amplitude modulation with the modulating frequency $f_s = \omega_s/2\pi$ and the degree of modulation m, the band of the nonlinear components to be generated, their phase and amplitude will be explained below.

[0045] Here, the amplitude modulated wave $p(t) = p_0(1 + m \cos 2\pi f_s t) \cos 2\pi f_c t$ is used as the fundamental wave, for example. The results of calculation using nonlinear components generated by the acoustic nonlinear effects as dp^2/dt are expressed by Formula 2.

[Formula 2]

$$\begin{aligned} & \frac{d p^2}{d t} \\ &= \frac{d}{d t} \{ p_0 (1 + m \cos \omega_s t) \cos \omega_c t \}^2 \\ &= \frac{p_0^2}{2} (-2 m \omega_s \sin \omega_s t - m^2 \omega_s \sin 2 \omega_s t) (1 + \cos 2 \omega_c t) \\ & \quad - p_0^2 \omega_c \left\{ 1 + 2 m \cos \omega_s t + \frac{1}{2} (1 + \cos 2 \omega_s t) \right\} \sin 2 \omega_c t \\ &= -2 m \pi f_s p_0^2 \sin 2 \pi f_s t \\ & \quad - m^2 \pi f_s p_0^2 \sin 4 \pi f_s t \\ & \quad - \frac{m^2 \pi}{2} (f_c - f_s) p_0^2 \sin 2 \pi (2 f_c - 2 f_s) t \\ & \quad - m \pi (2 f_c - f_s) p_0^2 \sin 2 \pi (2 f_c - f_s) t \\ & \quad - (2 + m^2) \pi f_c p_0^2 \sin 4 \pi f_c t \\ & \quad - m \pi (2 f_c + f_s) p_0^2 \sin 2 \pi (2 f_c + f_s) t \\ & \quad - \frac{m^2 \pi}{2} (f_c + f_s) p_0^2 \sin 2 \pi (2 f_c + 2 f_s) t \end{aligned}$$

[0046] This result suggests that seven frequency components are generated as nonlinear components, such as f_s , $2f_s$, $2f_c - 2f_s$, $2f_c - f_s$, $2f_c$, $2f_c + f_s$ and $2f_c + 2f_s$, all of which are components in-phase.

[0047] These seven nonlinear components are generated when the fundamental wave is continuous wave. In this embodiment, since the fundamental wave is a single pulse wave, these seven components will have a number of bands around the frequency component of seven nonlinear components as shown in Figure 5 (a) and (b). Figure 5 (a) to (c) shows the amplitude spectrum of nonlinear component where the degree of modulation m is set as 1, the carrier frequency f_c as 2.5MHz and the modulating frequency f_s as 0.5MHz and when the pulse width is changed to $9/f_s$, $3/f_s$ and $1/f_s$.

[0048] As known from Figure 5 (a) to (c), when the pulse width becomes shorter, the aforementioned seven frequency

components are roughly divided into two bands, the low-frequency harmonic component 72 consisting mainly of f_s and $2f_s$, and the high-frequency harmonic components 73, consisting mainly of the band ranging from $2f_c-2f_s$ to $2f_c+2f_s$ with $2f_c$ as a center.

[0049] In the conventional THI or nonlinear imaging using low-frequency harmonic components, because of the absence of the probe band that can detect both low-frequency harmonic components 72 and high-frequency harmonic components 73 as shown in Figure 5(c), only one of the components could be extracted. However, as mentioned earlier, when the high-frequency harmonic component (second harmonic component) is used in THI (see Figure 17), the penetration in deeper region may become insufficient. Also, when the low-frequency harmonic component surrounding DC or the difference-frequency wave component is used (see Figure 19), only a trace amount of converted energy out of the nonlinear component energy-converted from the fundamental frequency components can be used, and a problem that sufficient S/N and dynamic range cannot be ensured. Moreover, in some probe-sensitive band, the energy-use efficiency is further decreased.

[0050] The concept of the present invention is to generate nonlinear components, which will be produced from the fundamental frequency component by energy conversion, within the probe-sensitive band as far as possible. This may maximize the energy-use efficiency and achieve higher resolution as well as better ultrasound penetration in deep.

[0051] As shown in Figure 5 (a) to (c), nonlinear components, which are generated by irradiating fundamental frequency pulse 71 with a certain band, are divided into low-frequency harmonic component 72 and high-frequency harmonic component 73, depending on the said band. The received echo as a whole is a reflected echo within the band containing the fundamental frequency component 71 and the nonlinear components 72 and 73 as shown in Figure 3, and nonlinear components 72 and 73 are generated in the frequency band distant from the fundamental frequency component 71. In this invention, appropriate setting the frequency f_c and the band $2f_s$ of the fundamental frequency component 71 makes it possible to bring the band, in which the nonlinear components 72 and 73 are generated, closer to the fundamental frequency component 71 and to superimpose it on the fundamental frequency component 71, and contain many bands of the nonlinear components 72 and 73 in the probe-sensitive band 74. The fundamental frequency component 71, even if it is superimposed on the nonlinear components 72 and 73, can be removed by using pulse inversion method.

[0052] Conditions for setting the fundamental frequency component 71 to enable the band of the nonlinear components consisting of low-frequency harmonic component 72 and the high-frequency harmonic component 73 to superimpose on the probe-sensitive band ranging from f_1 to f_2 will be explained in detail.

The probe-sensitive band 74 for both transmission frequency band and received frequency band is set as ranging from f_1 to f_2 ($f_1 < f_2$). The fundamental frequency component 71 is the amplitude modulating wave with the carrier frequency of f_c and the modulating frequency of f_s as mentioned above. The frequency band of the fundamental frequency component 71 is from f_c-f_s to f_c+f_s . So for this component to be included in the probe-sensitive band, the conditions of $f_c-f_s \geq f_1$ and $f_c+f_s \leq f_2$ must be satisfied.

[0053] As is known from Formula 2, there are two possible cases. The lowest frequency component of all generated nonlinear components is f_s in one case and $2f_c-2f_s$ in other case. The conditions required for containing either of these components in the probe-sensitive band 74 is $f_s \geq f_1$ for the former and $2f_c-2f_s \geq f_1$ for the latter.

[0054] If the lowest frequency of the nonlinear component is f_s , it should satisfy $f_s \geq f_1$ to be contained in the probe-sensitive band 74. As the condition, $f_c-f_s \geq f_1$, to contain the lower limit frequency of the fundamental frequency 71 in the probe-sensitive band 74 must be also satisfied, the conditions should be $f_s \geq f_1$ and $f_c \geq 2f_s$. Namely, in this embodiment, the modulation frequency f_s of the amplitude modulation wave is set higher than the lower limit frequency f_1 of the probe-sensitive band 74, while the carrier frequency f_c is set as twice or more of the modulation frequency f_s .

[0055] Further, the condition, $2f_c+2f_s \leq f_2$, for the highest frequency component, $2f_c+2f_s$ (high-frequency harmonic component) of all generated nonlinear components to be contained in the probe-sensitive band 74, and the condition, $f_c+f_s \leq f_2$, for the upper limit frequency of the fundamental frequency component 71 to be contained in the probe-sensitive band 74, should also be satisfied. In addition, the conditions to contain the lower limit frequency f_1 in the probe-sensitive band 74, $f_s \geq f_1$ and $f_c \geq 2f_s$ should also be satisfied. It is known from these, that the upper limit frequency f_2 of the probe-sensitive band 74 should satisfy $f_2 \geq 6f_1$.

[0056] However, as the fractional bandwidth of the probe 11 made of piezoelectric material such as PZT is about 80% at maximum, it is difficult to achieve the probe 11 having a wide probe-sensitive band 74 of $f_2 \geq 6f_1$ namely ranging from f_1 to $6f_1$ (fractional bandwidth is 143%) at present. On the other hand, as it is clear from Formula 2, since the high-frequency harmonic component 73, of the generated nonlinear components, contains more energy than the low-frequency harmonic component 72, the level of detection (energy to be detected) of the high-frequency harmonics component 73 in the high frequency band by the probe 11 is higher than the level of the low-frequency harmonic component 72 in the low frequency band. In this embodiment, therefore, with priority to improving the detection level of the low-frequency harmonic component 72 in the low frequency band, which may seriously affect in-depth penetration, all bands of the low-frequency harmonic component 72 are made to be contained in the probe-sensitive band 74, and the maximum possible bands of the high-frequency harmonic component 73 are made to be contained in the probe-sensitive band 74, as shown in Figure 4.

[0057] Particularly, by setting the lower limit frequency of the low-frequency harmonic component 72 as identical with the lower limit frequency for the probe-sensitive band as shown in Figure 4, the whole band of the low-frequency harmonic component 72 is made to be contained in the probe-sensitive band 74 and the band of the high-frequency harmonic component 73 to be contained in the probe-sensitive band 74 is maximized. In other words, if the lowest frequency component of the generated nonlinear components is f_s , based on the conditions of $f_s \geq f_1$ and $f_c \geq 2f_s$, the modulating frequency f_s is set as the lower limit frequency f_1 in the probe-sensitive band 74 ($f_s = f_1$) and the amplitude modulation frequency f_c is set as twice of the modulating frequency f_s ($f_c = 2f_s$).

[0058] Even under these conditions, the high-frequency harmonic component 73 on the higher frequency side can be caught by expanding fractional bandwidth of the probe sensitivity through the adjustment of the matching layer of the probe 11 and the use of single crystal piezoelectric element and capacitive micro-machined ultrasound transducer.

[0059] If the probe 11 having a wide sensitive band from f_1 to $6f_1$ can be achieved, f_c and f_s are set to satisfy $2f_c + 2f_s \leq f_2$ and $f_c + f_s \leq f_2$, the conditions for the highest frequency components of the generated nonlinear components, $2f_c + 2f_s$ (high-frequency harmonic component) to be contained in the probe-sensitive band 74. By this, all nonlinear components can be generated in the probe-sensitive band 74 of the probe 11 and caught.

[0060] Then, for the case in which the lowest frequency of nonlinear components is $2f_c - 2f_s$, the condition required for the frequency to be higher than the lower limit frequency, f_1 , of the probe 11 is $2f_c - 2f_s \geq f_1$. In this case, since the frequency f_s which arises as the low-frequency harmonic component 72 of the nonlinear components satisfies the condition, $f_s \geq f_1$, the $2f_c - 2f_s \geq f_s$ is also satisfied and therefore $f_c \geq 1.5f_s$. The condition, $f_s \geq 2f_1$, is obtained by using the condition of the lower limit frequency of the fundamental frequency components 71, $f_c - f_s \geq f_1$. However, in order to satisfy the condition, $2f_c + 2f_s \leq f_2$, for the upper limit frequency of the high-frequency harmonic component to be contained in the probe-sensitive band 74, there must be $f_2 \geq 10f_1$. It therefore requires further wider probe-sensitive band 74 than the aforementioned case of $f_s \geq f_1$, it becomes more unlikely to be realized.

[0061] Based on all stated above, in this embodiment, if the aforementioned amplitude modulation wave is the fundamental frequency component 71 as mentioned above, the modulating frequency f_s is set as the lower limit frequency in the probe-sensitive band, f_1 ($f_s = f_1$), and the carrier frequency f_c as twice higher than the modulating frequency ($f_c = 2f_s$). Furthermore, by taking into account that the frequency band of this amplitude modulation wave ranges from $f_c - f_s$ to $f_c + f_s$, it can be described more generally that, when the lower limit frequency in the probe-sensitive band is f_1 , the frequency band of the fundamental frequency component 71 is set as from f_1 to $3f_1$.

[0062] This condition of the fundamental frequency component 71 is applied when the transmit/receive sensitivity band of the probe 11 is the same. For example, when some of the arrays constituting the probe 11 are used exclusively for transmission, the transmission frequency band of the array exclusively for transmission and the reception frequency band of the reception array can be selected based on the concept of the present invention to improve energy-use efficiency of nonlinear components. Even in this case, it is desirable to set that the lowest frequency component among arising low-frequency harmonic component can be caught by the receiving array.

[0063] The setting of the band of the fundamental frequency component 71 has been above explained. The waveform of the fundamental wave irradiated in the subject body in nonlinear imaging using the ultrasound diagnostic equipment of this invention will be explained below.

Nonlinear components expressed by Formula 2 use the amplitude modulating wave $p(t) = p_0(1 + m \cos 2\pi f_s t) \cos 2\pi f_c t$ as fundamental wave. Similar calculation is performed for the carrier wave component f_c and the modulating wave component f_s , in both sine and cosine wave cases. The phase at $t=0$ of the aforementioned seven nonlinear components in both cases are summarized in Figure 6.

[0064] It is understood from Figure 6 that all nonlinear components are in-phase when the carrier wave component f_c and the modulating wave component f_s are cosine wave. Since the amplitude of sound pressure of nonlinear components to be detected is the sum of the amplitudes of seven nonlinear component waveforms, if all nonlinear components are in-phase, the maximum amplitude of sound pressure to be detected is the sum of the amplitudes of these seven nonlinear components. Consequently, it is possible to detect large amplitude and achieve good image quality of high resolution.

[0065] Thus, in order to obtain signals of wide band nonlinear components for achieving high quality images, it is desirable that both carrier wave component and modulating wave component are expressed by cosine wave as $p(t) = p_0(1 + m \cos 2\pi f_s t) \cos 2\pi f_c t$. This is applicable to the Fourier expansion of fundamental wave, in which all frequency components are expressed only by cosine wave, and high-resolution nonlinear imaging is achieved by transmitting the pulse wave having such fundamental frequency component.

[0066] Meanwhile, the nonlinear components which arise by the fundamental wave consisting only of spectral components of sine wave, as $p(t) = p_0(1 + m \cos 2\pi f_s t) \sin 2\pi f_c t$, are in-phase for each of low-frequency harmonic component 72 and high-frequency harmonics component 73. For the imaging in a living body, there is a mechanical index (MI), specified for each site of imaging is applied for the safety consideration, and particularly the limit on the amplitude of sound pressure at the negative pressure side. As aforementioned, when all Fourier series components of the fundamental wave are given by cosine wave, the maximum amplitude of sound pressure is expressed as a sum of the amplitudes of

all frequency components. When all Fourier series components of the fundamental wave are given by sine wave, the maximum amplitude of sound pressure becomes less than the sum of the amplitudes of all frequency components. For example, the maximum amplitude of $\cos\omega t + \cos 2\omega t$ is 2, whereas the maximum amplitude of $\sin\omega t + \sin 2\omega t$ is $\sqrt{3}$. This means that under the conditions where MI is constant, the fundamental wave whose Fourier series components are all sine wave components can be set to have larger pulse power (amplitude of sound pressure) than the fundamental wave whose Fourier series components are all cosine components.

[0067] As it is apparent from Formula 2, nonlinear components which arise with the propagation of sound wave due to acoustic nonlinear effects are proportionate to the square of the sound pressure amplitude. Therefore, when the fundamental wave whose Fourier series components are all sine components is transmitted, higher levels of low-frequency harmonics and high-frequency harmonics are obtained than when the fundamental wave whose Fourier series components are all cosine wave components is transmitted. Accordingly, in order to give priority to improving the ultrasound penetration in the deep part of the imaging region than to improving resolution, it is desirable to transmit the fundamental wave whose Fourier series components consist only of sine components.

[0068] Therefore, it is desirable to configure that the setting of the waveform can be changed automatically or manually, so that the users who want to give priority to improving resolution can set both carrier wave component f_c and modulating wave component f_s as cosine wave, whereas those who want to give priority to improving the ultrasound penetration can set both carrier wave component f_c and modulating wave component f_s as sine wave.

[0069] In order to confirm the propagation characteristic of the transmission waveform when the waveform of the fundamental wave is cosine or sine wave as mentioned above, the propagation characteristics of the transmission waveform was obtained by the analysis of nonlinear propagation of sound wave by using the KZK equation. The result of the analysis is explained below. The propagation characteristics which are identical with the results of the pulse inversion are also obtained. Here, all analyses shown below were conducted by assuming a uniform acoustic medium which is similar to the physical property of living body, and using the speed of sound of 1500m/s, density of 1000 kg/m³, nonlinear parameter B/A of 7 and frequency-dependent absorption coefficient of 0.7dB/cm/MHz. The calculation for 2-D sound field model assumed 1-D array with an aperture of 40mm and the distance of 100mm from the array front as a focal point. Furthermore, the transmission- and reception-sensitive band of the probe 11 was set as the range from about 1MHz to 5 MHz, and the maximum sound pressure amplitude of the fundamental wave pulse on the probe surface as 4MPa(rms).

(Fundamental waveform in which Fourier series components are given only by cosine waves)

[0070] In order to generate wide-band and large-amplitude nonlinear components for achieving higher resolution, it is desirable that the Fourier series components consist of only cosine components as mentioned above. The amplitude modulating wave, $p(t) = p_0(1 + \cos 2\pi f_s t) \cos 2\pi f_c t$ with the degree of modulation $m=1$, was used as the fundamental wave. And based on the aforementioned conditions for setting the fundamental frequency component f_1 , the modulating frequency f_s is set as the lower limit frequency in the transmit/receive band of the probe, 1MHz, and the carrier frequency f_c as twice of f_s , 2MHz. Moreover, as it is apparent from Figure 5(a), (b) and (c), a shorter pulse width of the fundamental wave to be transmitted is better for widening the band of the nonlinear components. In this embodiment, therefore, the pulse width was set as $1/f_s$, one wavelength of the modulating frequency f_s . The band of the fundamental pulse to be transmitted of -6dB ranges from 1MHz to 3MHz, and falls in the assumed probe-sensitive band.

[0071] Figure 7 is the results of analysis showing the changes in waveform of the aforementioned fundamental wave pulse 30 along the sound axis, where the waveform corresponds to that of the first received echo 31 from each position on the sound axis. The horizontal axis expresses delay time in movement with speed of sound in the direction of sound axis. Figure 8 shows the results of similar analysis showing the changes in waveform of the second fundamental wave pulse 33, which is the fundamental pulse in Figure 7 with positive/negative inversion and corresponds to the waveform of the second received echo 34. In Figure 7 and Figure 8, (a) is the surface of the probe 11, (b) is the distance of 10mm on the sound axis, (c) and (d) are waveforms at the distance of 100mm and 200mm, respectively. The fundamental waveform given by Fourier series components consisting only of cosine wave is, as apparent in Figure 7 (a) and Figure 8(a), symmetric about the time center of the fundamental wave pulse. Such the waveform is given by the inverse Fourier transformation of, for example, cosine roll off function. In this case, cut-off frequency has just to be set to have the band from f_1 to $3f_1$, where f_1 is the lower unit frequency of the probe-sensitive band 74.

[0072] As it is understood from Figure 7 and Figure 8, propagating sound wave is subject to the distortion of waveform due to acoustic nonlinear effects and frequency-dependent attenuation. Namely, the waveform distortion means the generation of nonlinear components, while the frequency-dependent attenuation means that because the components at the higher frequency side attenuate more, only the signal components of narrow band at the lower frequency side remain in deep region.

[0073] Figure 9 (a) - (d) shows the sum of the waveforms at different distances in (a) - (d) in Figures 7 and 8. Addition of the results of (a) - (d) in Figures 7 and 8 gives the waveform identical to that obtained by pulse inversion. As the linear

components of the first and second fundamental wave pulse, 30 and 33 respectively, are removed by the addition, the waveforms shown in Figure 9 (a) - (d) consist only of the nonlinear components.

[0074] Figure 10 is an amplitude spectrum of waveform consisting of nonlinear components as shown in Figure 9 (b) - (d). Figure 11 is a distant characteristics diagram showing the maximum sound pressure amplitude of the waveform after pulse inversion relative to distance on the sound axis. It is apparent from Figure 10 that at the distance of 10mm on the sound axis non linear components are generated intensively in the range from 1MHz to 5MHz, which is assumed as the probe-sensitive band. This indicates that the energy of nonlinear components can be very efficiently used for imaging. As it is also apparent from Figure 11, nonlinear components of such wide band are effective up to the focal distance of 100mm, but attenuate dramatically after the focal distance. As known from the amplitude spectrum at the distance of 200mm along the sound axis, only narrow-band signal components at the lower frequency side remain in such range. Therefore, in such range, the linear components may be used for imaging by changing the ratio of addition of the first and second received echoes 31 and 34.

[0075] Nonlinear components are generated prominently in the high-frequency harmonic component 74 of the fundamental wave pulse, but they undergo attenuation in the course of propagation and the low-frequency harmonic components 72 remain in the deep region. Since the optimal frequency band usable for imaging changes with the distance of propagation, it is desirable to change the reference frequency in the direction of distance in the quadrature detection after pulse inversion. Namely, if this analysis is used as an example, it is necessary only to continuously change the reference frequency from 5MHz to 4MHz in the distance of up to 100mm, 3MHz at 150mm and 2MHz from 180mm or more from the focal point.

(Fundamental waveform where all Fourier series components are given with sine wave)

[0076] In order to generate high-energy nonlinear components while giving priority to improving ultrasound penetration, it is desirable as mentioned above that the Fourier series components consist only of sine waves. Therefore, the amplitude modulating wave, $p(t) = p_0(1 + \cos 2\pi f_s t) \sin 2\pi f_c t$ with the degree of modulation $m=1$, was used as the fundamental wave. And based on the aforementioned conditions of the fundamental wave, the modulating frequency f_s is set as 1MHz, a lower limit frequency in the probe's transmission-reception band, while the carrier wave frequency f_c is set as 2MHz, twice of f_s . Since the nonlinear components are generated by nonlinear interaction in the region where the fundamental frequency pulse is present, the resolution can be improved by shortening the pulse width. Accordingly, the one wavelength of the modulating frequency f_s was set as the pulse length in this case. The band of fundamental wave pulse to be transmitted at -6dB is from 1MHz to 3MHz, and is contained in the assumed probe-sensitive band 74.

[0077] Figure 12 is the results of analysis showing the changes in waveform along the sound axis of the aforementioned fundamental wave pulse 30, where the waveform corresponds to that of the first received echo 31 from each position on the sound axis. The horizontal axis expresses delay time in movement with speed of sound in the direction of sound axis. Figure 13 shows the results of similar analysis showing the changes in waveform of the second fundamental wave pulse 33, which is the fundamental pulse in Figure 12 with positive/negative inversion and corresponds to the waveform of the second received echo 34. In Figure 12 and Figure 13, (a) is the surface of the probe 11, (b) is the distance of 10mm on the sound axis, (c) and (d) are the waveforms at the distance of 100mm and 200mm, respectively.

[0078] As it is known from Figure 12 and Figure 13, the sound wave is subject to the distortion of waveform in the course of propagation due to acoustic nonlinear effects and frequency-dependent attenuation. Namely, the waveform distortion means the generation of nonlinear components, while the frequency-dependent attenuation means that because the components at the higher frequency side attenuate more, only the signal components of narrow band at the lower frequency side remain in deep region.

[0079] Figure 14 (a) - (d) each shows the sum of the waveforms at different distances shown in (a) - (d) in Figures 12 and 13. Addition of the results in (a) to (d) in Figures 12 and 13 gives the waveform identical to that obtained by pulse inversion. As the linear components of the first fundamental pulse 30 and the second fundamental pulse 33 are removed by the addition, the waveforms shown in Figure 14 consist only of the nonlinear components.

[0080] Figure 15 is an amplitude spectrum of the waveform consisting of nonlinear components shown in Figure 14 (b) - (d), and Figure 16 is a distant characteristics diagram showing the maximum sound pressure amplitude of the waveform after pulse inversion relative to the distance on the sound axis. As known from the results of analysis at the distance of 10mm on the sound axis in Figure 15, because the fundamental wave pulse consisting only of sine wave components has an inverted phase between high- and low-frequency harmonic components, the notch will appear in the amplitude spectrum. However, as it is apparent from the comparison between the results of Figure 10 and Figure 15, under the condition in which the maximum sound pressure amplitude of the fundamental wave pulse is fixed constant, the fundamental wave pulse consisting only of sine wave components can increase the energy of the original pulse than the fundamental wave pulse consisting only of cosine components can do. As a result, the efficiency of energy conversion from fundamental wave components to nonlinear components can be increased. Comparison between Figure 11 and Figure 16 also suggests that when the fundamental wave pulse is constituted only by sine wave components the energy

is higher by about 3dB even at the position 150mm beyond the focal point.

[0081] As it is known from Figure 16, on the other hand, such nonlinear components are effective up to the focal distance of about 100mm, but dramatically attenuate beyond this point. As it is apparent from the amplitude spectrum at the distance of 200mm on the sound axis in Figure 15, because only narrow band signal components at the lower frequency side remain in this region, the linear components can be used for imaging by changing the ratio of addition of the first and second received echo 31 and 34 in this region.

[0082] Also, of the nonlinear components the high-frequency harmonic component 73 of the fundamental wave pulse are generated prominently, but they undergo attenuation in the course of propagation and the low-frequency harmonic components 72 remain in the deep region. Accordingly, since the optimal frequency band usable in imaging changes with propagation distance, it is desirable to change the reference frequency in the direction of distance in the quadrature detection after pulse inversion. Namely, if this analysis is used as an example, it is necessary only to continuously change the reference frequency from 5MHz to 4MHz in the distance of up to 100mm, 3MHz at 150mm and 2MHz from 180mm or more from the focal point.

[0083] The ultrasound diagnostic equipment 10 of the present invention may be equipped with additional functions with which optimal choice of the waveform of fundamental wave (sine or cosine) as abovementioned can be automatically adjusted by the controller 29 depending on the depth of imaging region, or configured to allow users to select the waveform freely from the outer interface 12. When the waveforms of the first and second fundamental wave pulse are transmitted as an amplitude modulating wave as mentioned above, the controller 29 or the pulse synchronizer 23 may be equipped with the functions which allow users to adjust the bands of fundamental wave pulse 30 and 33 by increasing or decreasing the modulating frequency f_s through the outer interface 12. By equipping these adjusting functions, the image quality with optimal resolution, brightness and uniformity of image can be obtained.

[0084] In the aforementioned embodiment the amplitude modulating wave is used as the first and second fundamental wave pulse to be transmitted. As a fundamental wave pulse having similar frequency band with it, the waveform whose frequency varies in the direction of sound axis can be used. The first fundamental wave pulse whose frequency varies decreasingly (increasingly) and the second fundamental wave pulse whose frequency varies increasingly (decreasingly) may also be used.

[0085] Here, the waveform with changing frequency may be a cycle or combined cycles of the waveform with different frequency, for example. It can be configured to combine fractions such as 1/2 cycle, 1/4 cycle and 1/8 cycle of the waveform with different frequency, for example. A chirp waveform whose frequency changes continuously may be also used.

[0086] As stated above, since the ultrasound diagnostic equipment of the present invention, in ultrasound nonlinear imaging, can contain many of the nonlinear components generated by the nonlinear interaction of ultrasound in the subject body in the probe-sensitive band 74 by setting the band of the fundamental wave component 71 of the transmission pulse in relation to the probe-sensitive band 74, the nonlinear components can be caught highly efficiently by the probe 11. This achieves higher resolution and improves ultrasound penetration deep in the imaging region at the same time, thereby creating a uniform and high-quality image over the entire imaging region.

[0087] Appropriate selection of the fundamental waveform (cosine or sine wave) of transmission pulse according to the depth of the imaging region can provide the images with excellent resolution, brightness and uniformity.

Brief Description of the Drawings

[0088]

[Figure 1]

A block diagram showing the configuration of the ultrasound diagnostic equipment of one embodiment of the present invention

[Figure 2]

A block diagram showing the configuration of one embodiment of the signal processor contained in the ultrasound diagnostic equipment of the present invention

[Figure 3]

A spectrum showing the frequency and the amplitude of the fundamental frequency component and the nonlinear component contained in the echo reflected from the subject

[Figure 4]

A spectrum showing the frequency and the amplitude of the fundamental frequency component and the nonlinear components generated according to the embodiment of the present invention

[Figure 5](a)-(c)

An amplitude spectrum of the nonlinear component generated with the amplitude modulating wave as the fundamental wave in the embodiment of the present invention

[Figure 6]

A diagram explaining the phase relation of nonlinear components generated with the amplitude modulating wave as the fundamental wave in the embodiment of the present invention

[Figure 7](a)-(d)

5 Graphs showing the nonlinear propagation waveform of the first fundamental wave pulse 30 consisting of cosine components in the embodiment of the present invention

[Figure 8](a)-(d)

Graphs showing the nonlinear propagation waveform of the second fundamental wave pulse 33 consisting of cosine components in the embodiment of the present invention

10 [Figure 9] (a)-(d)

Graphs showing the waveform after pulse inversion by the fundamental wave pulse consisting of cosine components in the embodiment of the present invention

[Figure 10]

15 A graph showing the amplitude and the frequency of waveform after pulse inversion by the fundamental wave pulse consisting of cosine components in the embodiment of the present invention

[Figure 11]

A graph showing distant characteristics on the sound axis for the maximum sound pressure amplitude of the waveform after pulse inversion by the fundamental wave pulse consisting of cosine components in the embodiment of the present invention

20 [Figure 12] (a)-(d)

Graphs showing the nonlinear propagation waveform of the first fundamental pulse consisting of sine components in the embodiment of the present invention

[Figure 13] (a)-(d)

25 Graphs showing the nonlinear propagation waveform of the second fundamental pulse consisting of sine components in the embodiment of the present invention

[Figure 14] (a)-(d)

Graphs showing the waveforms after pulse inversion by the fundamental wave pulse consisting of sine components in the embodiment of the present invention

[Figure 15]

30 A graph showing the amplitude and the frequency of waveform after pulse inversion by the fundamental wave pulse consisting of sine components in the embodiment of the present invention

[Figure 16]

A graph showing distance characteristics on the sound axis of the maximum sound pressure amplitude of the waveform after pulse inversion by the fundamental wave pulse consisting of sine components in the embodiment of the present invention

35

[Figure 17]

A diagram explaining the conventional harmonic imaging method in the frequency domain

[Figure 18]

Diagrams explaining the method of pulse inversion

40

[Figure 19]

A diagram explaining the conventional nonlinear imaging method using low-frequency harmonics in the frequency domain

Description of Notations

45

[0089]

- 10 Ultrasound diagnostic equipment
- 11 Ultrasound probe
- 50 12 Outer interface
- 13 Display
- 20 Main frame
- 21 Transmit/Receive switch
- 22 Transmit amplifier
- 55 23 Pulse synchronizer
- 24 Receive amplifier
- 25 A/D converter
- 26 Receive beamformer

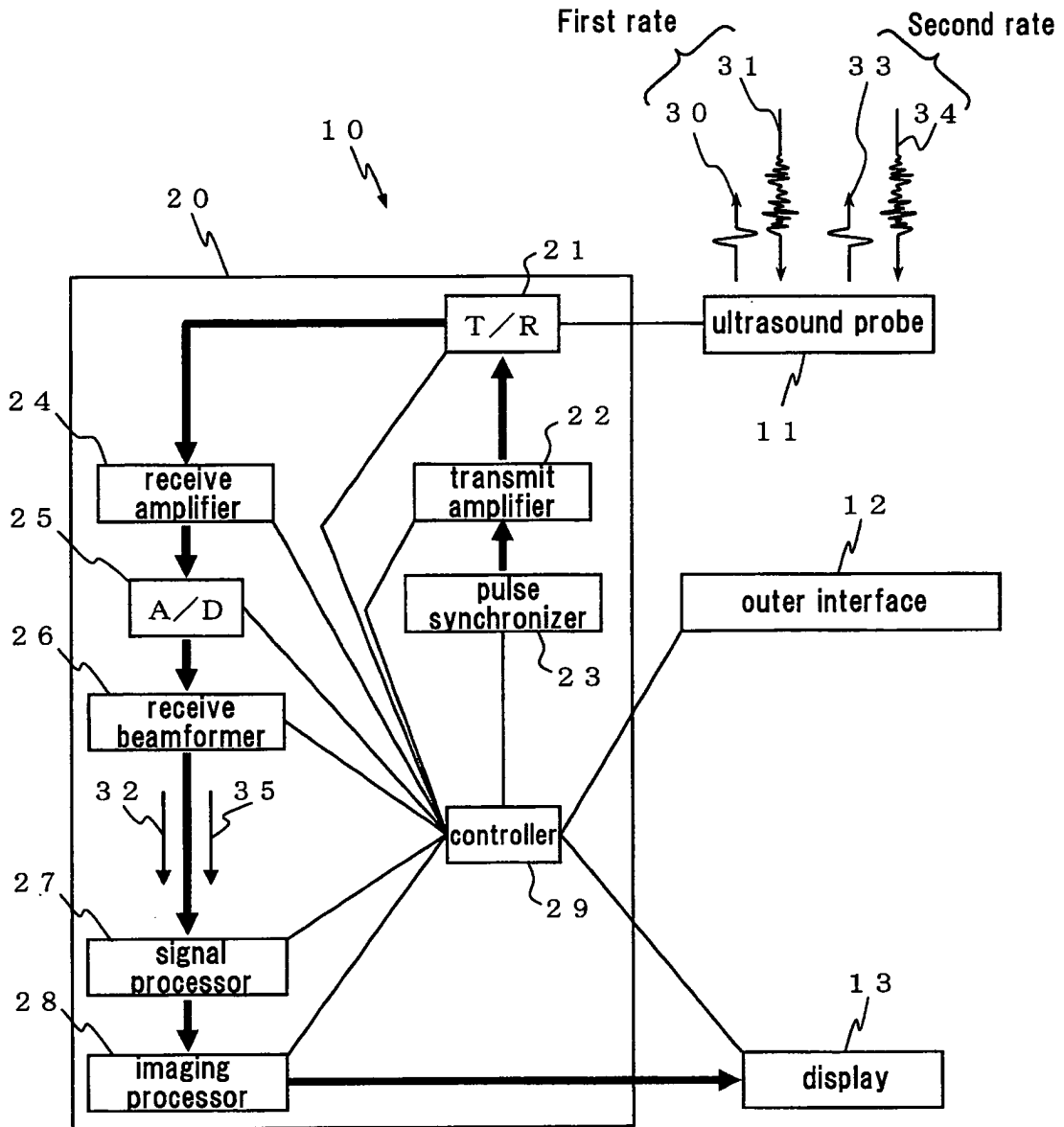
27	Signal processor
28	Imaging processor
29	Controller
30	First fundamental wave pulse
5 31	First received echo
32	First received signal
33	Second fundamental wave pulse
34	Second received echo
35	Second received signals
10 40,41	Temporary memory
42	Adder
43	Quadrature detecting processor
44	Filtering processor
45	B-mode processor
15 46	Doppler processor

Claims

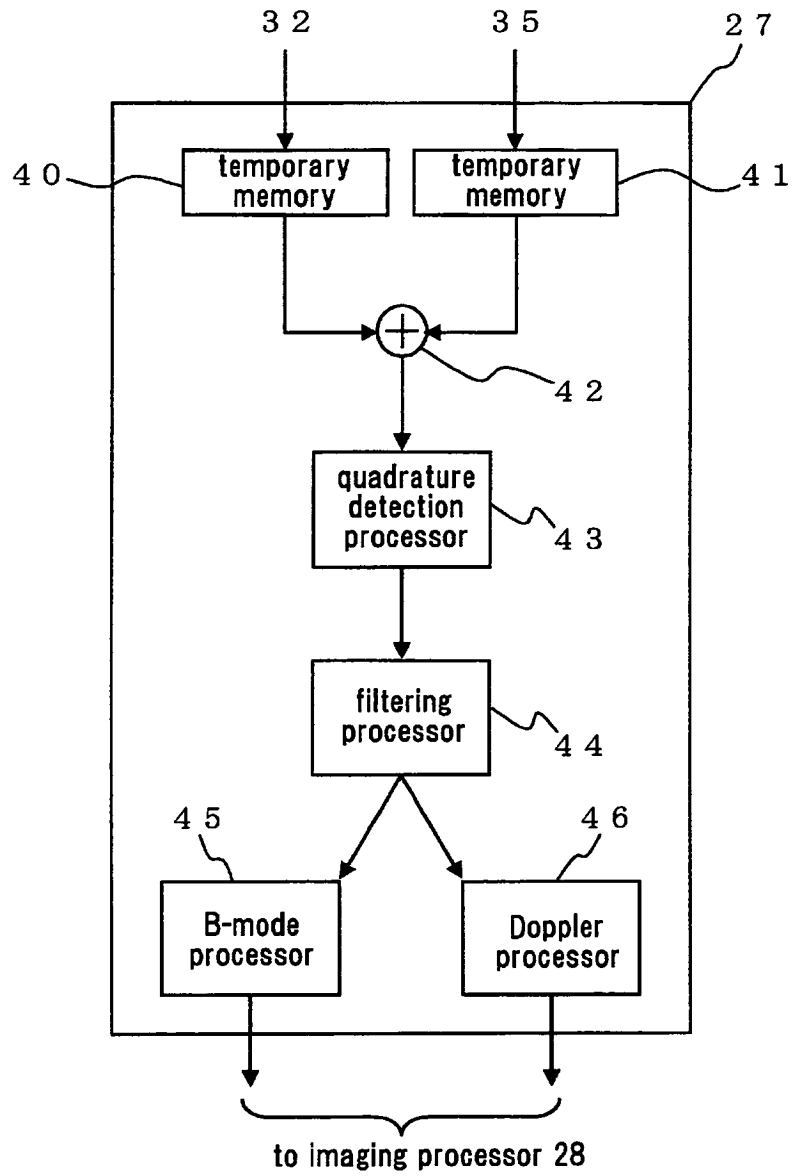
- 20 1. An ultrasound imaging device, comprising a transmission means which transmits ultrasound to the target, a receiving means which receives ultrasound coming from the target, and a signal processing part which processes the receipt signals at the receiving means and generates image data, wherein the receiving means has a given reception band in which the lower limit frequency is the first frequency, and wherein the frequency range of the ultrasound to be transmitted by the transmitting means is set as the first
25 frequency or higher and triple of the first frequency or lower.
2. The ultrasound imaging device according to Claim 1, wherein all spectral components of the ultrasound wave to be transmitted by the transmitting means are cosine wave.
- 30 3. The ultrasound imaging device according to Claim 1, wherein all spectral components of the ultrasound wave to be transmitted by the transmitting means are sine wave.
4. The ultrasound imaging device according to Claim 1, wherein the ultrasound wave to be transmitted by the transmitting means contains carrier components and modulating
35 components for modulating the amplitude of the carrier components, and the carrier components consist of cosine wave.
5. The ultrasound imaging device according to Claim 1, wherein the ultrasound wave to be transmitted by the transmitting means contains carrier components and modulating
40 components for modulating the amplitude of the carrier components, and the carrier components which consist of sine wave.
6. The ultrasound imaging device according to Claim 1, wherein the ultrasound wave to be transmitted by the transmitting means contains carrier components and modulating
45 components for modulating amplitude of the carrier components, the frequency of the carrier wave is set as twice of the first frequency and the frequency of the modulating wave is set as the first frequency.
7. The ultrasound imaging device according to Claim 6, wherein the apparatus has an accepting means to receive instructions from users to increase or decrease the
50 frequency of the modulating wave from the first frequency, and the transmitting means has a frequency adjusting means to increase or decrease the frequency of the modulating wave according to the increase or decrease which is received by the accepting means.
8. The ultrasound imaging device according to one of the Claim 1 to Claim 7, wherein the maximum frequency of the reception band of the receiving means is the second frequency f_2 , and the
55 relationship of the frequency (f_c) of the carrier wave and the frequency (f_s) of the modulating wave with the second frequency f_2 satisfies $2f_c + 2f_s \leq f_2$.

- 5 9. The ultrasound imaging device according to one of Claim 1 to Claim 8,
wherein the transmitting means transmits, as the ultrasound wave, the first ultrasound wave with the frequency band
and the second ultrasound wave with the frequency band having an inverted waveform of the first ultrasound wave,
wherein the signal processor adds the first received signals, which is ultrasound wave originating at the first ultrasound
wave, coming from the target and received by the receiving means, and the second received signal, which is
ultrasound wave originating at the second ultrasound wave, coming from the target and received by the receiving
means, and generates image data by using added signals.
- 10 10. The ultrasound imaging device according to one of Claim 1 to Claim 9,
wherein the apparatus has a means to display the image data
- 15 11. An ultrasound imaging device comprising a transmitting means to transmit ultrasound wave to the target, a receiving
means to receive ultrasound wave from the target and a signal processor to process signals received at the receiving
means and generate image data,
wherein the receiving means has a given reception band with the first frequency as the minimum frequency, and
the ultrasound wave to be transmitted by the transmitting means contains carrier wave and modulating wave for
modulating the carrier wave, and
wherein the frequency of the carrier wave is set as twice or higher of the first frequency and the frequency of the
modulating wave is set as the first frequency or higher.
- 20 12. The ultrasound imaging device according to Claim 11,
wherein the frequency of the carrier wave is set as twice of the first frequency and the frequency of the modulating
wave is set as the first frequency.
- 25 13. The ultrasound imaging device according to Claim 11 or Claim 12,
wherein the maximum frequency of the reception band of the receiving means is the second frequency (f_2), and the
relationship of the frequency (f_c) of the carrier wave and the frequency (f_s) of the modulating wave with the second
frequency f_2 satisfies $2f_c + 2f_s \leq f_2$.
- 30 14. The ultrasound imaging device according to one of the Claim 11 to Claim 13,
wherein all spectral components of the ultrasound wave to be transmitted by the transmitting means are cosine wave.
- 35 15. The ultrasound imaging device according to one of the Claim 11 to Claim 13,
wherein all spectral components of the ultrasound wave which is transmitted by the transmitting means are sine wave.
- 40 16. The ultrasound imaging device according to one of the Claim 11 to Claim 15,
wherein the apparatus has an accepting means to receive instructions from users to increase or decrease the
frequency of the modulating wave from the first frequency as a center, and the transmitting means has a frequency
adjusting means to increase or decrease the frequency of the modulating wave according to the increase or decrease
which is received by the accepting means.
- 45 17. The ultrasound imaging device according to one of the Claim 11 to Claim 16,
wherein the transmitting means transmits, as the ultrasound wave, the first ultrasound wave and the second ultra-
sound wave having an inverted waveform of the first ultrasound wave, and
wherein the signal processor adds the first received signals which is an ultrasound wave originating at the first
ultrasound wave, coming from the target and received by the receiving means, and the second received signal
which is an ultrasound wave originating at the second ultrasound wave, coming from the target and received by the
receiving means, and generates the image data by using added signals.
- 50
- 55

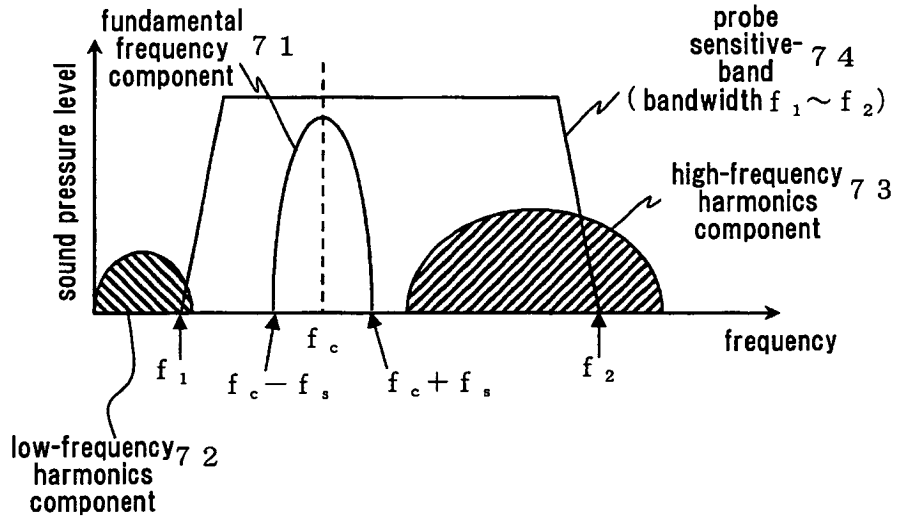
[Figure 1]



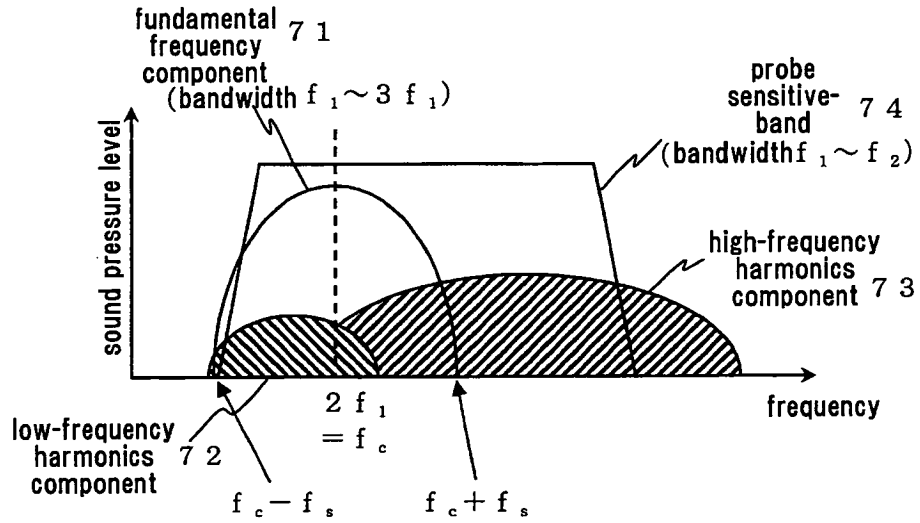
[Figure 2]



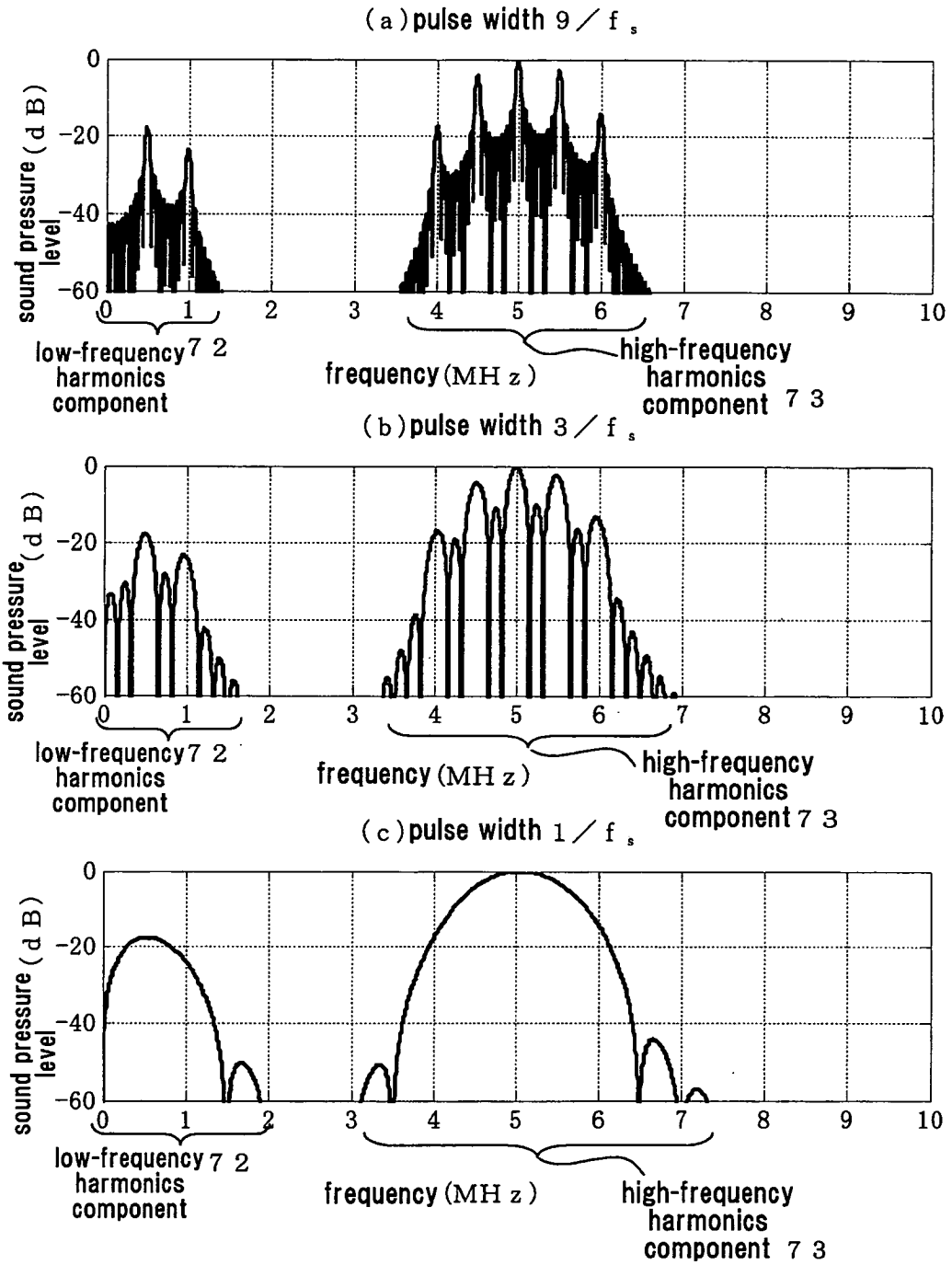
[Figure 3]



[Figure 4]



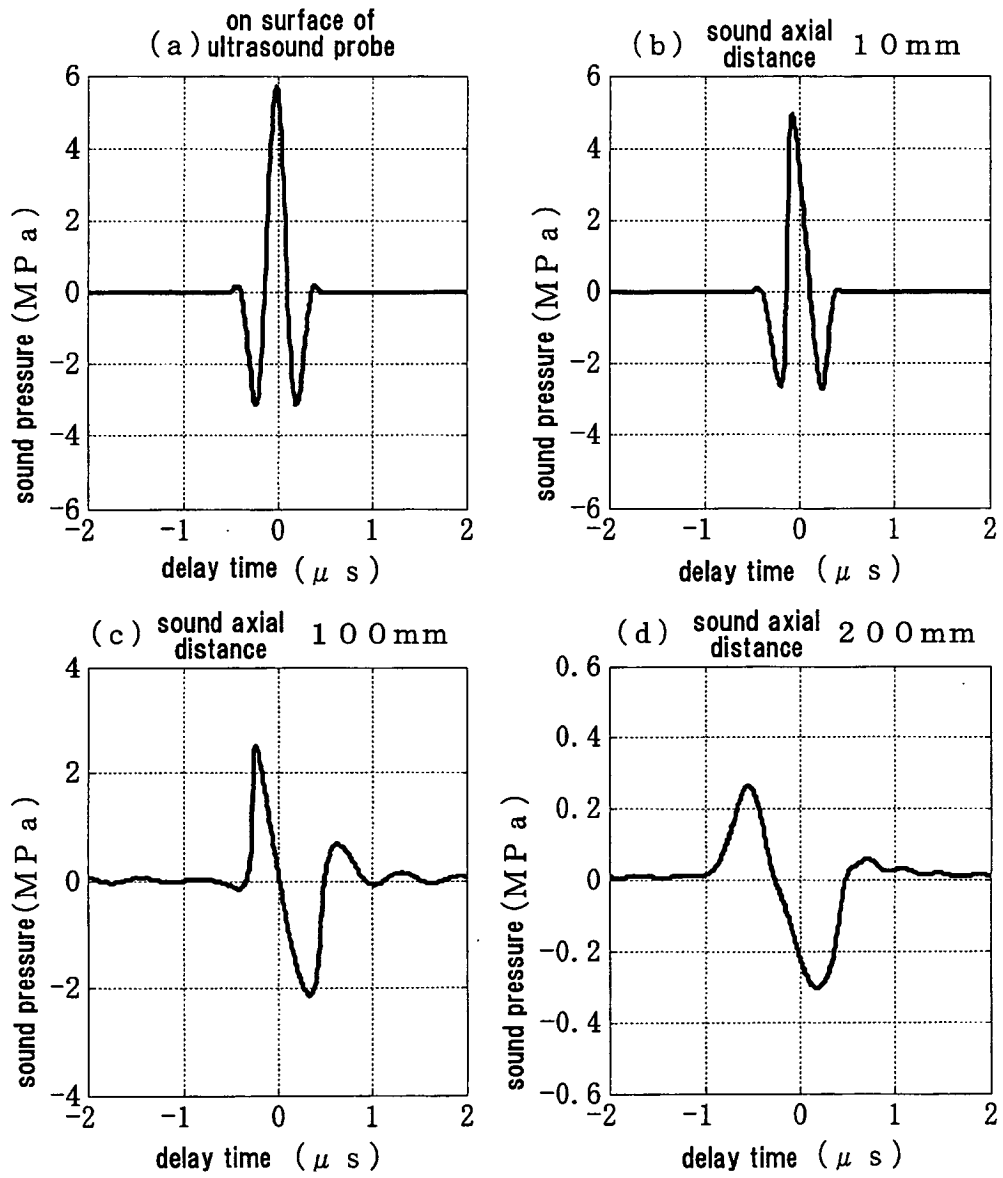
[Figure 5]



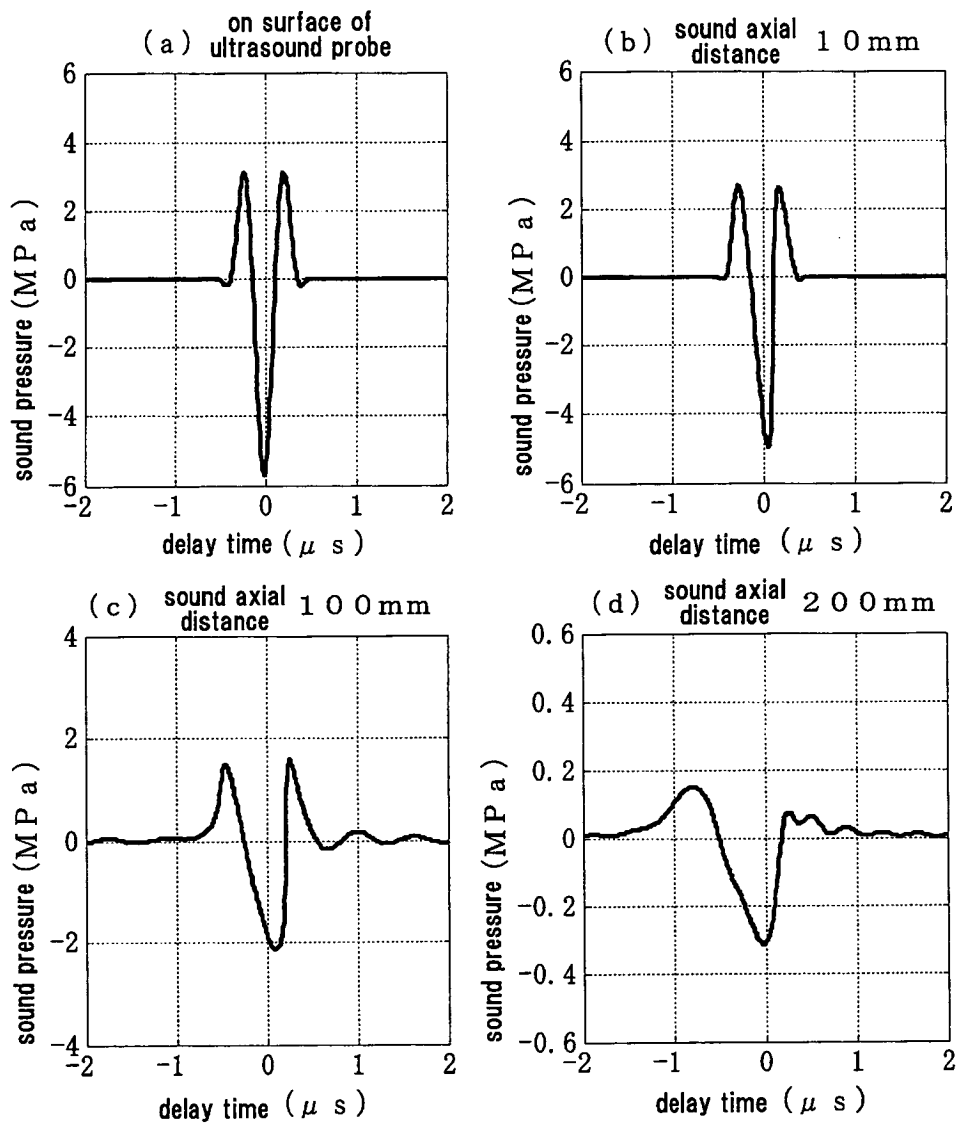
[Figure 6]

carrier wave	$\cos 2\pi f_c t$	$\cos 2\pi f_c t$	$\sin 2\pi f_c t$	$\sin 2\pi f_c t$
modulating wave	$1+m \cos 2\pi f_s t$	$1+m \sin 2\pi f_s t$	$1+m \cos 2\pi f_s t$	$1+m \sin 2\pi f_s t$
f_s component	0	$\pi/2$	0	$\pi/2$
$2f_s$ component	0	π	0	π
$2f_c - 2f_s$ component	0	π	π	0
$2f_c - f_s$ component	0	$-\pi/2$	π	$\pi/2$
$2f_c$ component	0	0	π	π
$2f_c + f_s$ component	0	$\pi/2$	π	$-\pi/2$
$2f_c + 2f_s$ component	0	π	π	0

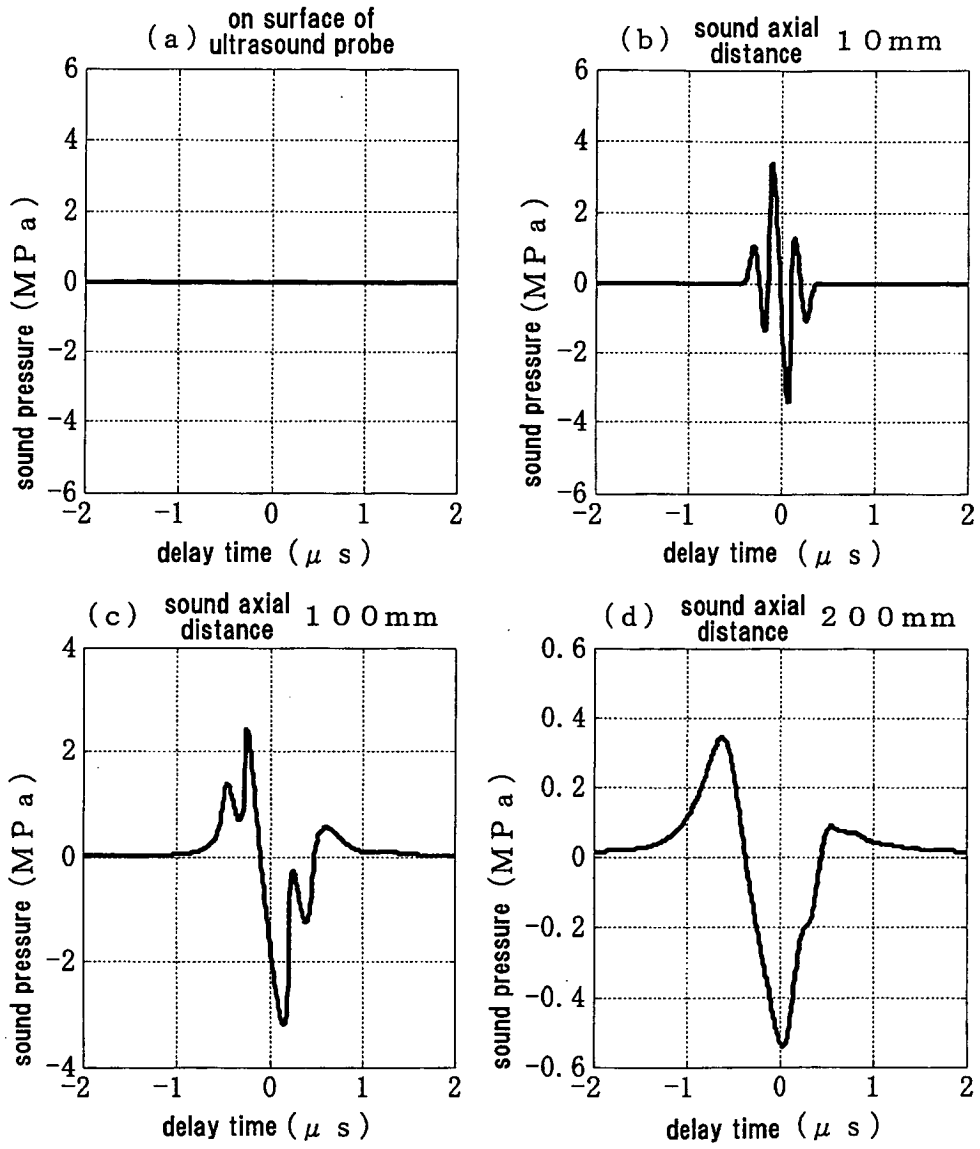
[Figure 7]



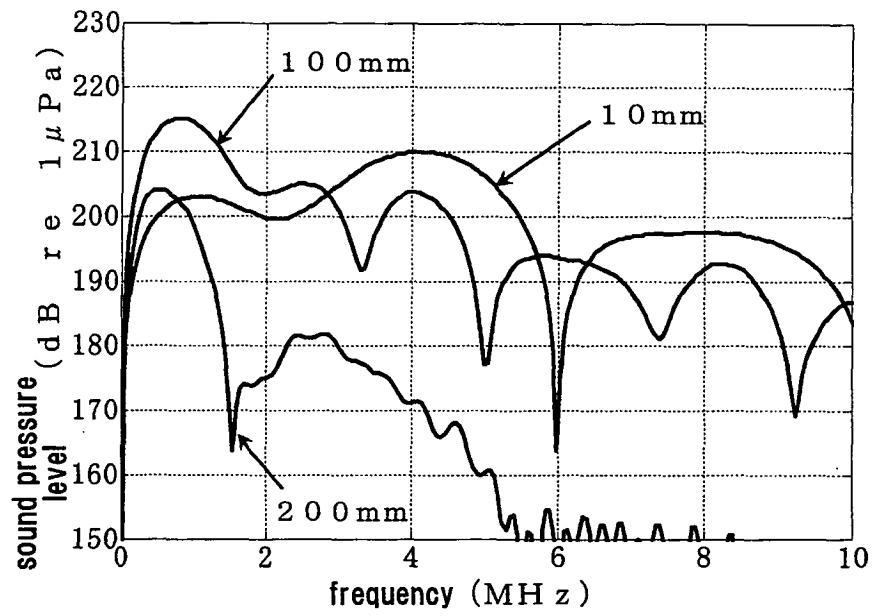
[Figure 8]



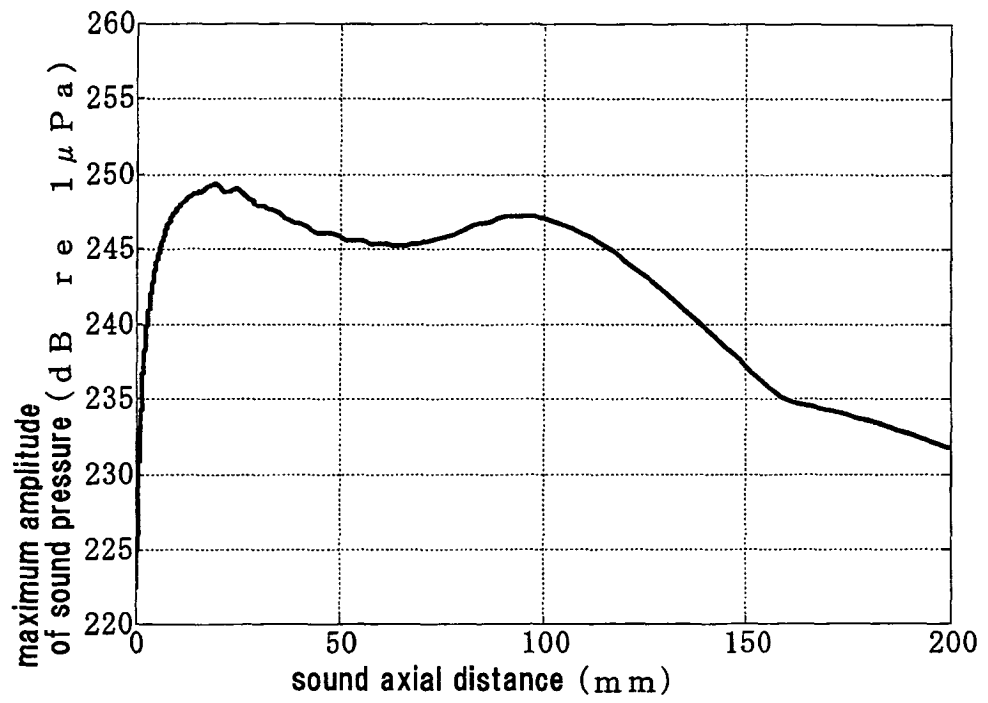
[Figure 9]



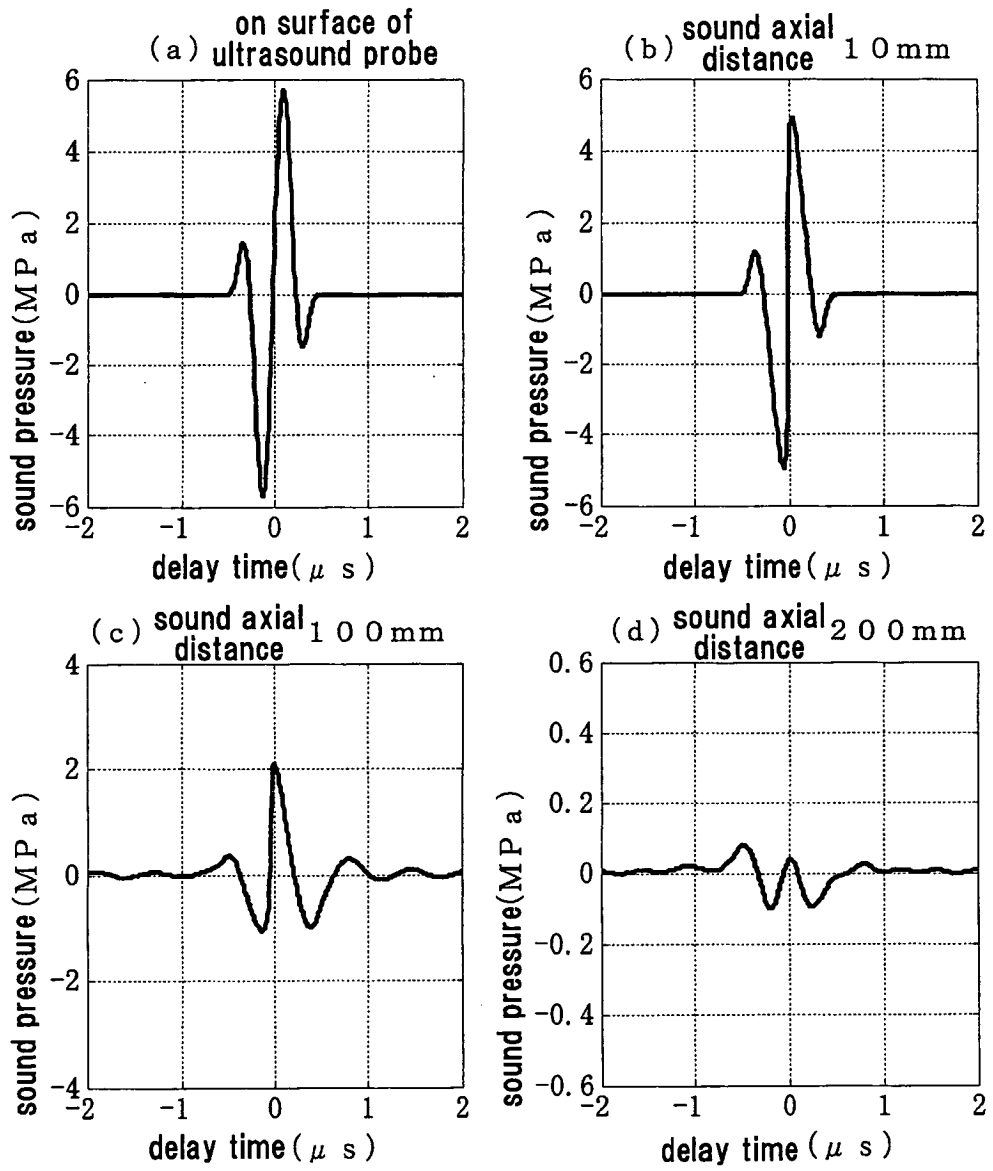
[Figure 10]



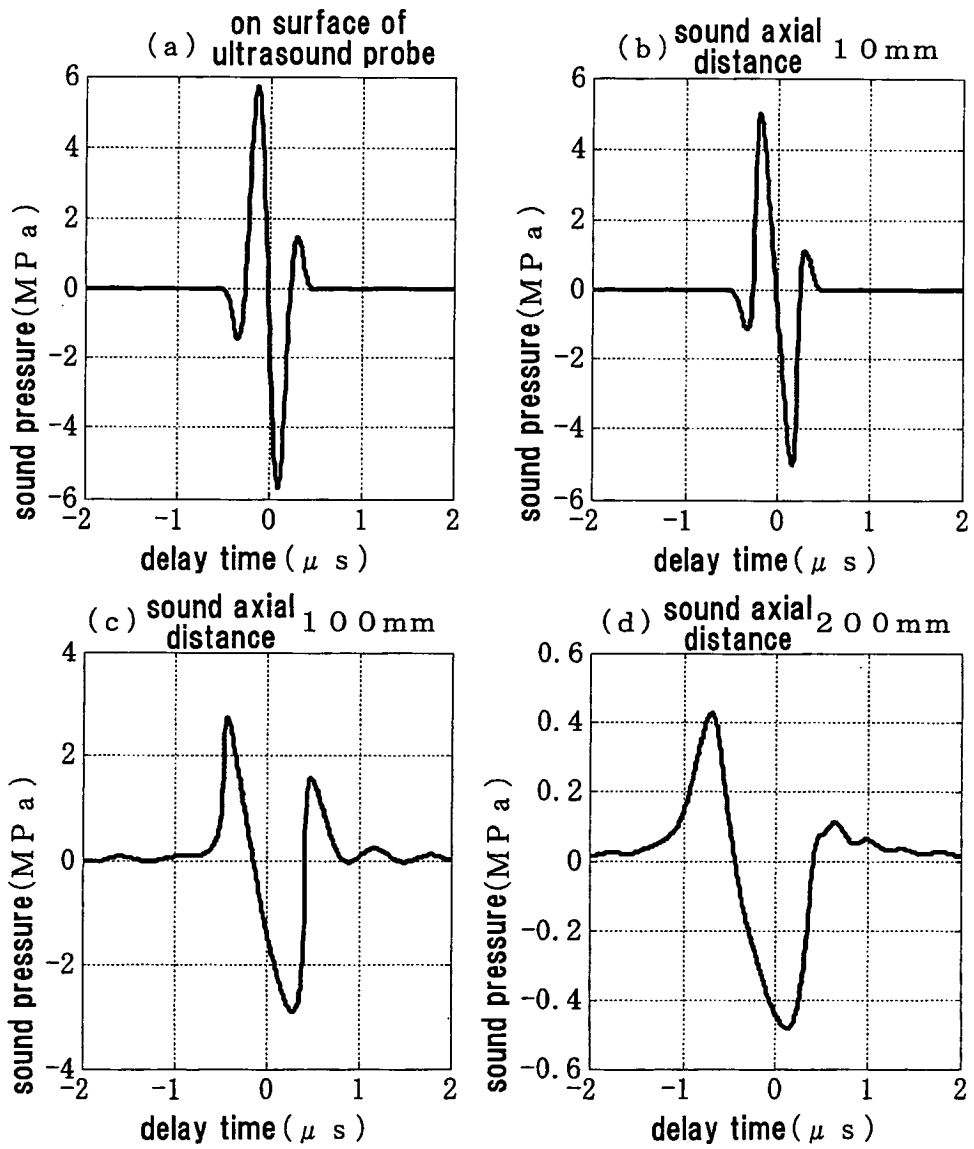
[Figure 11]



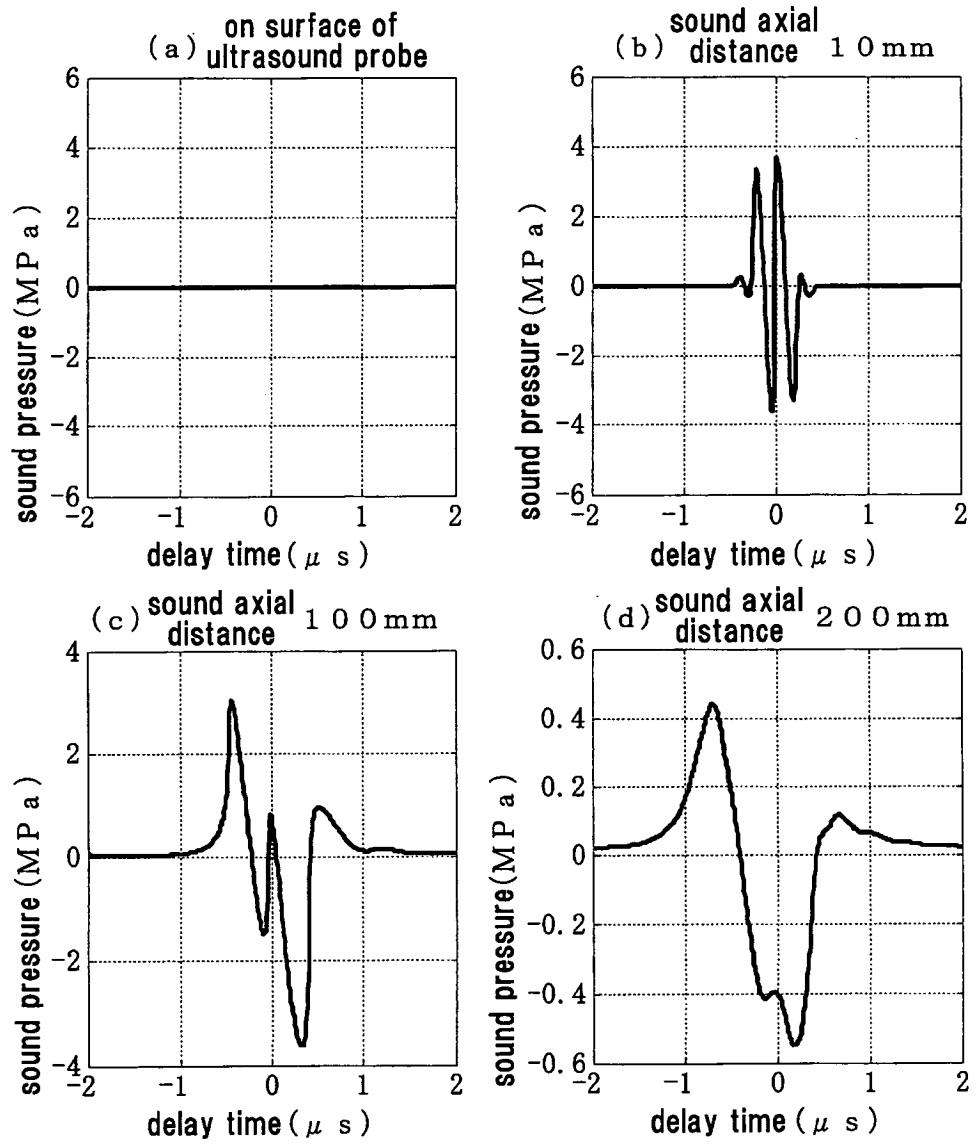
[Figure 12]



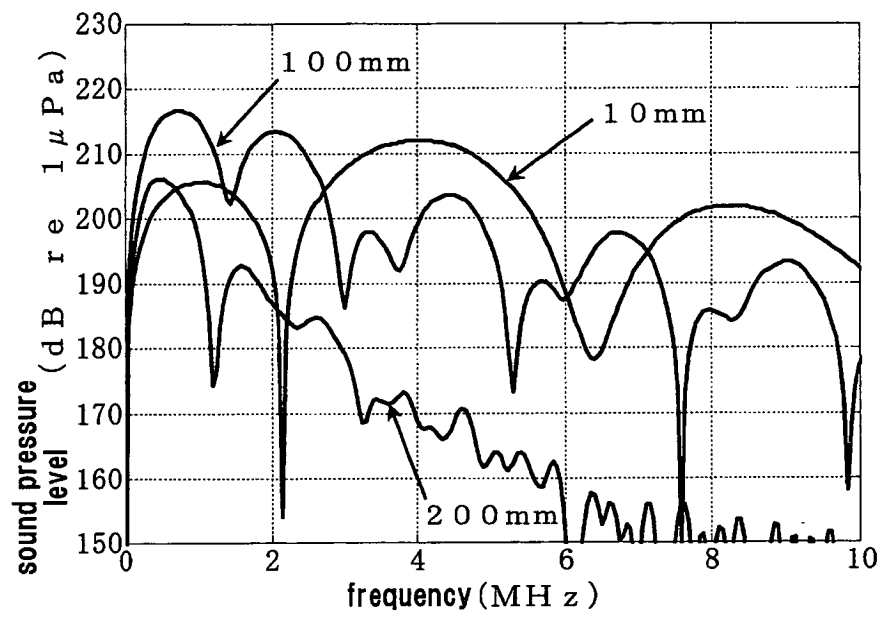
[Figure 13]



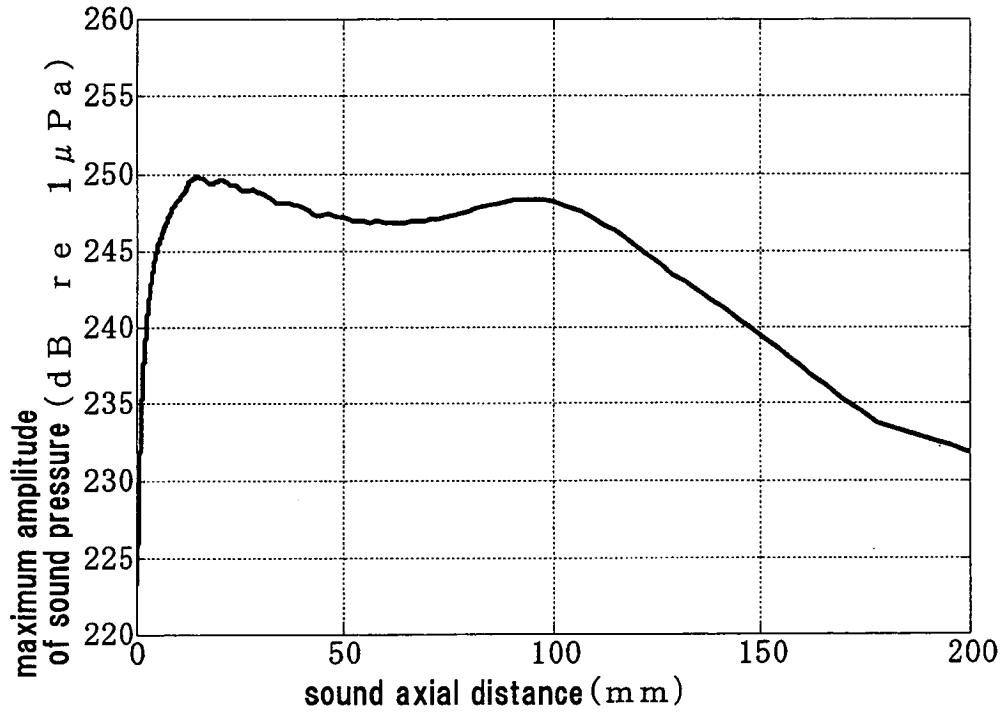
[Figure 14]



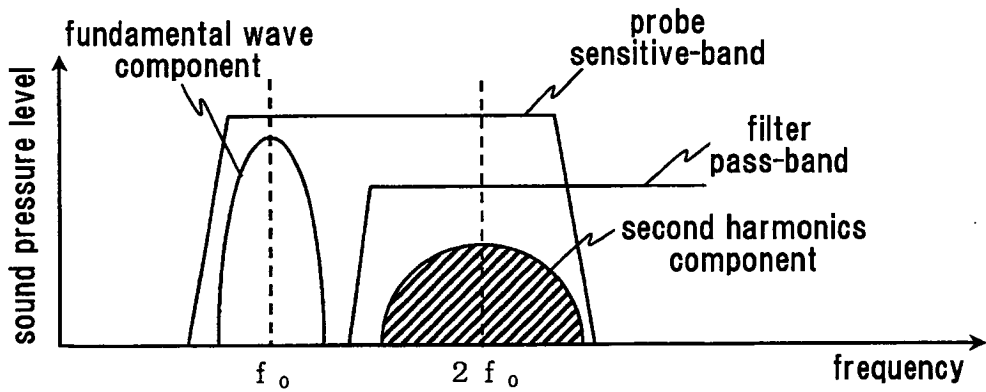
[Figure 15]



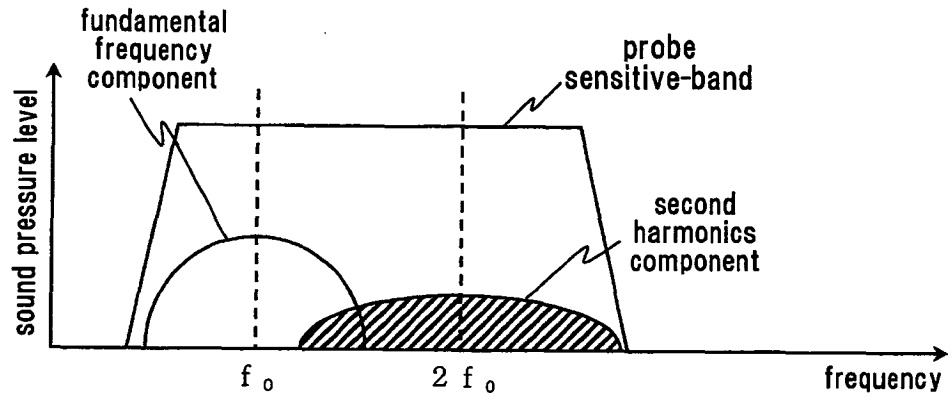
[Figure 16]



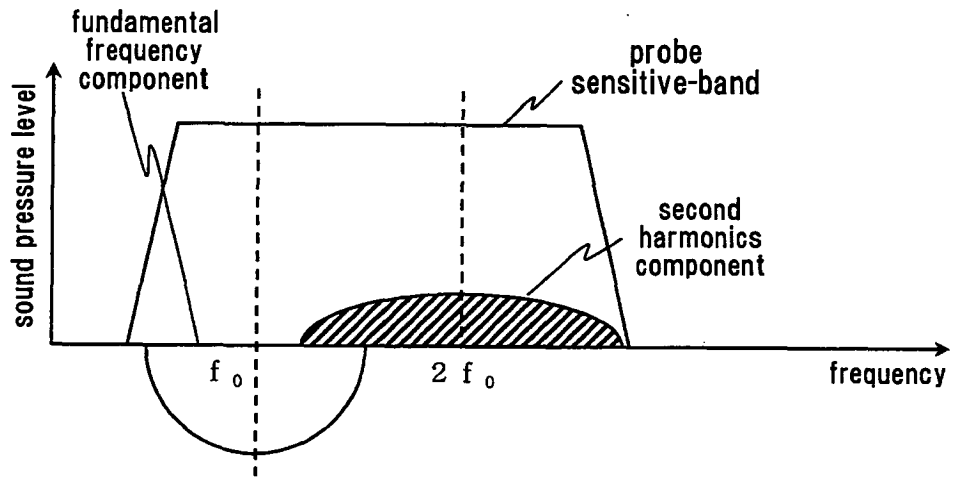
[Figure 17]



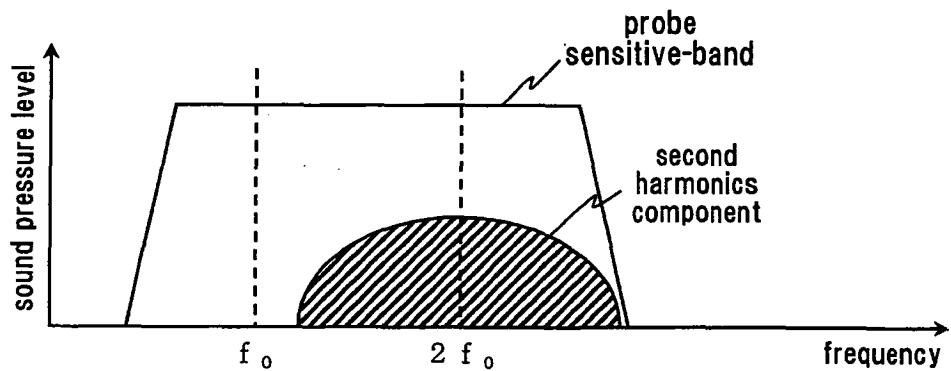
[Figure 18]



(a) first pulse echo component

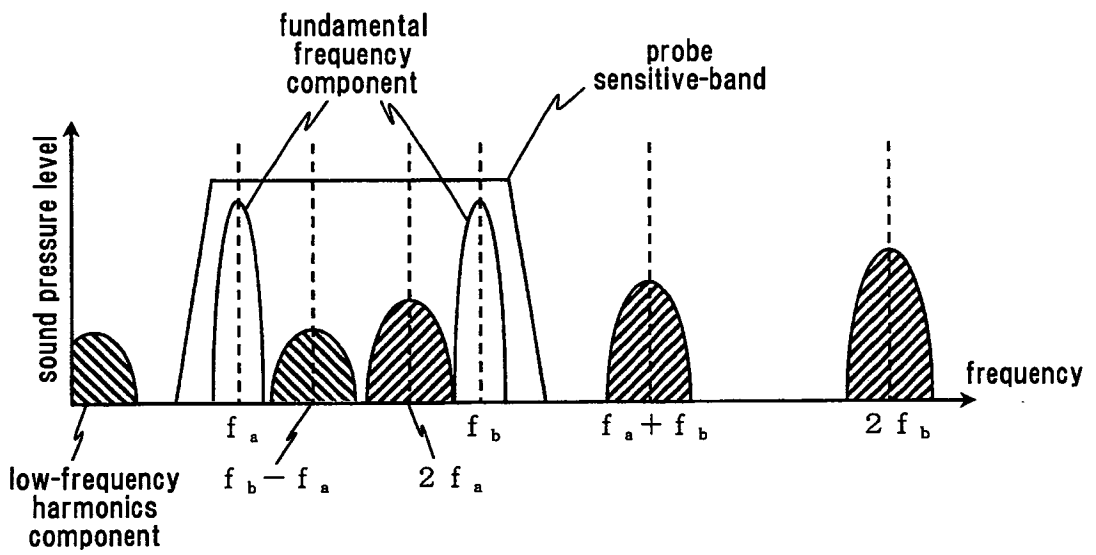


(b) second pulse echo component



(c) sum component of first and second pulse echo

[Figure 19]



REFERENCES CITED IN THE DESCRIPTION

This list of references cited by the applicant is for the reader's convenience only. It does not form part of the European patent document. Even though great care has been taken in compiling the references, errors or omissions cannot be excluded and the EPO disclaims all liability in this regard.

Patent documents cited in the description

- JP 2002301068 A [0007]
- JP 2004298620 A [0007]

专利名称(译)	超声成像设备		
公开(公告)号	EP2000096A2	公开(公告)日	2008-12-10
申请号	EP2006835185	申请日	2006-12-25
[标]申请(专利权)人(译)	株式会社日立医药		
申请(专利权)人(译)	日立医疗器械股份有限公司		
当前申请(专利权)人(译)	日立医疗器械股份有限公司		
[标]发明人	HASHIBA KUNIO		
发明人	HASHIBA, KUNIO		
IPC分类号	A61B8/00 G01S7/52 G01S15/89		
CPC分类号	G01S7/5202 G01S7/52038 G01S15/895 G01S15/8963 G01S15/8979 Y10S128/916 A61B8/14 A61B8/488 A61B8/5207 A61B8/5246 G06T11/005		
优先权	2006082947 2006-03-24 JP		
其他公开文献	EP2000096B1 EP2000096A4 EP2000096A9		
外部链接	Espacenet		

摘要(译)

提供一种超声成像装置，其能够有效地提取非线性成分并改善超声波穿透。接收装置具有给定的接收频带74，并且接收频带74的下限频率是第一频率 f_1 。由发送装置发送的超声波的频带被设置为第一频率 f_1 或更高以及第一频率 f_1 或更低 (f_1-3f_1) 的3倍。当发送这种频带中的超声波时，非线性分量的低频谐波分量72可以具有比第一频率 f_1 更高的频率，因此可以由接收装置接收。而且，由于可以在接收频带74中产生大多数高频谐波分量73，所以可以接收大部分高频谐波分量73。

[Figure 4]

