

(19)



(11)

**EP 1 834 587 B1**

(12)

**EUROPEAN PATENT SPECIFICATION**

(45) Date of publication and mention of the grant of the patent:  
**16.07.2014 Bulletin 2014/29**

(51) Int Cl.:  
**A61B 8/00 (2006.01)**

(21) Application number: **07005386.3**

(22) Date of filing: **15.03.2007**

**(54) Ultrasound diagnostic apparatus and method for displaying ultrasound image**

Ultraschalldiagnosevorrichtung und Verfahren zur Anzeige eines Ultraschallbildes

Appareil de diagnostic ultrasonique et procédé pour l'affichage d'une image ultrason

(84) Designated Contracting States:  
**DE**

(30) Priority: **15.03.2006 JP 2006071041**

(43) Date of publication of application:  
**19.09.2007 Bulletin 2007/38**

(73) Proprietor: **Kabushiki Kaisha Toshiba Tokyo (JP)**

(72) Inventors:  

- **Nakajima, Osamu Otawara-Shi Tochigi-Ken (JP)**
- **Higuchi, Jiro Otawara-Shi Tochigi-Ken (JP)**

- **Akaki, Kazuya Otawara-Shi Tochigi-Ken (JP)**
- **Gunji, Takayuki Otawara-Shi Tochigi-Ken (JP)**
- **Kurita, Koichiro Otawara-Shi Tochigi-Ken (JP)**

(74) Representative: **Kramer - Barske - Schmidtchen Landsberger Strasse 300 80687 München (DE)**

(56) References cited:  
**EP-A- 0 963 736 WO-A-99/08599**  
**WO-A1-98/15846 US-A1- 2002 035 326**  
**US-A1- 2002 035 329**

**EP 1 834 587 B1**

Note: Within nine months of the publication of the mention of the grant of the European patent in the European Patent Bulletin, any person may give notice to the European Patent Office of opposition to that patent, in accordance with the Implementing Regulations. Notice of opposition shall not be deemed to have been filed until the opposition fee has been paid. (Art. 99(1) European Patent Convention).

## Description

### CROSS-REFERENCE TO RELATED APPLICATIONS

**[0001]** This application is based upon and claims the benefit of priority from the prior Japanese Patent Application No. 2006-71041, filed on March 15 2006, the entire contents of which are incorporated herein by reference.

### BACKGROUND OF THE INVENTION

### FIELD OF THE INVENTION

**[0002]** An ultrasound diagnostic apparatus having a multi plane scan function is known in the art. Such an ultrasound diagnostic apparatus is used with a two dimensional arrayed probe or mechanical oscillation probe configured to transmit ultrasound beams to a universal direction. For the usage of such a probe, a plurality of planes of a subject can be scanned at essentially the same time. Therefore, for such a scanning, a plurality of ultrasound images indicating different planes of the subject are displayed alongside one another. This function is called a multi plane scan function or multi display function. By observing ultrasound images produced in conjunction with this function, a doctor can make a diagnosis on the basis of a 3 dimensional understanding of the subject.

**[0003]** In the ultrasound diagnostic apparatus having a multi plane scan function or multi display function, a variety of imaging conditions or displaying conditions can be employed. The imaging conditions to be selected include ultrasound power, scanning line density, receiving sensitivity, signal processing and so on. The display conditions include display size, display scanning line density and so on. The plurality of ultrasound images is generated on the basis of the same imaging conditions and displaying conditions. The ultrasound images then each have a same image quality.

**[0004]** By the way, because the observable viewing range is not so broad, in spite of displaying a plurality of images, the number of images which one can observe at one time is limited to about one. In this case, because an ultrasound image that is not being observed has a meaning as a pilot image, there is often a case that a doctor need not observe one ultrasound image closely.

**[0005]** However, in the hitherto known ultrasound diagnostic apparatus, when a doctor wants to observe one of displayed images closely, the doctor must adjust imaging conditions or displaying conditions of all images displayed at the same time. For example, when scanning line density and display size is changed into high values, the condition of the image a doctor does not want to observe is also changed to be the same as the image being observed closely. In this case, despite that one image need not be observed closely, because of high scanning line density of this one image, the frame rate of another image is decreased. Furthermore, a display range of a

monitor is limited and large display size of the one image limits the size of the other displayed image. In another word, the coupling of changing conditions of ultrasound images results in limitation of image quality and display size of an ultrasound image to be observed closely.

**[0006]** WO 99/08599 describes an ultrasonic method and system for imaging blood flow utilizing two separate perpendicular one-dimensional arrays. WO 98/15846 A1 discloses a two-dimensional array transducer and beam former to simultaneously and independently form multiple inclined acoustic beam sets.

### SUMMARY OF THE INVENTION

**[0007]** It is an object of the present invention to provide an ultrasound diagnostic apparatus and method for displaying ultrasound image in which the efficiency of three dimensional diagnosis is improved.

**[0008]** This is achieved by the apparatus of claim 1 and the method of claim 6. Further advantageous features are specified in the dependent claims.

### DESCRIPTION OF THE DRAWINGS

**[0009]** A more complete appreciation of the invention and many of the attendant advantages thereof will be readily obtained as the same becomes better understood by reference to the following detailed description when considered in connection with the accompanying drawings, wherein:

Fig. 1 is a block diagram of a exemplary embodiment of the ultrasonic diagnostic apparatus of the invention.

Fig. 2 is a flow chart of a processing by the ultrasonic diagnostic apparatus of the exemplary embodiment. Fig. 3 is a view showing an illustration of a frame format of components of files stored in a control database of the exemplary embodiment.

Figs. 4(a) and 4(b) are illustrations of a frame format of the first exemplary display embodiment of the exemplary embodiment.

Figs. 5(a) and 5(b) are illustrations of a frame format of the second exemplary display embodiment of the exemplary embodiment.

Figs. 6(a) and 6(b) are illustrations of a frame format of the third exemplary display embodiment of the exemplary embodiment.

Figs. 7(a) and 7(b) are illustrations of a frame format of the forth exemplary display embodiment of the exemplary embodiment.

### DETAILED DESCRIPTION OF THE PREFERRED EMBODIMENTS

**[0010]** Referring now to the drawings, wherein like reference numerals designate identical or corresponding parts throughout the several views, various embodi-

ments of the present invention are next described.

(Components)

**[0011]** As shown in Fig. 1, an ultrasound diagnostic apparatus 10 of an exemplary embodiment includes a control unit 11, a transmitting and receiving unit 12, a signal processing unit 13, a two dimensional array probe 14, a monitor 15, an operation unit 16 including a key board, a track ball or a touch command screen (TCS) and a bio-signal acquiring unit 17.

**[0012]** The control unit 11 further includes a CPU 111, a control program unit 112 and a control database 113. The CPU 111 processes several kinds of signals. The control program unit 112 stores programs for processing of the CPU 111. The control database 113 stores data related to the multi scan plane function or multi display function.

**[0013]** The transmitting and receiving unit 12 further includes a transmit circuit 121, a receiving circuit 122, a transmitting and receiving control unit 123 and a transmitting and receiving control memory 124. The transmit circuit 121 transmits pulse signals for driving of the two dimensional array probe 14. The receiving circuit 122 processes ultrasound signals reflected from a subject 18. The transmitting and receiving control unit 123 controls the transmit circuit 121 and the receiving circuit 122 on the basis of control signals delivered from the CPU 111. The transmitting and receiving control memory 124 temporarily stores the transmitting and receiving control data from the control database 113.

**[0014]** The signal processing unit 13 further includes a signal processing circuit 131, an image processing memory 134, an image processing control unit 133, and an image screen generation unit 132. The signal processing circuit 131 processes signals delivered from the receiving circuit 122. The image processing memory 134 temporarily stores control data delivered from the control database 113. The signal image processing control unit 133 receives the control data delivered from the CPU 111 and the image control data memory 134 and transmits signal processing control signals to the signal processing circuit 131. The image screen generation circuit 132 converts the image signals from the signal processing circuit 131 into display screen data on the basis of control data from the image control data memory 134.

**[0015]** The control database 113 stores control files which include a file for each of constructions of ultrasound images of the multi display function. The control file is set for every number (n) of ultrasound images displayed in the monitor 15 at same time. For example, control data are set as follows: control data for two image displays, control data for three image display, control data for four image display.... Furthermore, when the number of displayed images is n, a plurality of display modes is set. For example, in the two image display mode, there are control data for displaying images in the same size and

control data for displaying one small image and another big image and so on. In other words, when a number of display modes is m and a number of images is n, the control data is grouped into file Fnm. By way of example, content of file F20 is shown as Fig. 3(b), where the file F20 is a 0th control file for two image display. In this explanation, the two images displayed at same time are named A image and B image. Data is set for each of these images. The data for each is further grouped into transmitting and receiving control data and image display control data. For example, transmitting and receiving control data further includes data related to ultrasound driving power, scanning line density, receiving gain, pulse gate range, beam delay data, scan order and so on. For example, the image display control data further includes data related to brightness, range, display size, color/monochrome display, freeze/movie display and so on.

**[0016]** It is presupposed that 0th data for X image of mth display mode is indicated by TXmo. In this exemplary embodiment, default setting of the multi display function is a file Fn0. The file Fn0 is set the same as the hitherto known multi display mode for displaying a plurality of images in a same manner.

**[0017]** Next, an operation of the ultrasound diagnostic apparatus of this exemplary embodiment is explained by reference to Fig. 2. In the following explanation, it is presupposed that a number of images are displayed in same time. The images, which are the A image and the B image, are displayed side by side.

**[0018]** First, the ultrasound diagnostic apparatus of this exemplary embodiment is powered, and the display mode of two images display is selected by a predetermined operation. Next, in step S 11, the A image and the B image are displayed in a same transmitting and receiving condition and image displaying condition. This is the same as the hitherto known multi display function. By observing these images, an operator searches for a portion of interest and finds a test portion of the subject in ultrasound image.

**[0019]** Next, the operator further closely observes and diagnoses. In step S12, the operator operates the TCS, the mouse, and the track ball of the operation input unit 16 in order to instruct a suitable ultrasound image display mode. By this instruction of step S12, in step S13, one of the files Fnm stored in the control database 113 is selected.

**[0020]** In step S15 transmitting and receiving control data for the selected file is temporarily stored in the transmitting and receiving control data memory 124. In step S 16 signal processing control data of the selected file is temporarily stored in the image control data memory 134.

**[0021]** At the same time, a part of control data of the selected file Fnm is used as data for calculating control parameters in step S14. The calculated data is also temporarily stored in the transmitting and receiving control data memory 124 or the image control data memory 134.

**[0022]** On the basis of temporarily stored data in the

transmitting and receiving control data memory 124, in step S17, the transmitting circuit 121 and the receiving circuit 122 are driven to transmit and receive ultrasound waves to and from the subject. In step S18, receiving signals processed in the receiving circuit 122 are inputted to the signal processing circuit 131. The signal processing circuit 131 generates image data for image display on the basis of control data for image display stored in the image control data memory 134.

**[0023]** The image data from the signal processing circuit 131 is inputted to the image screen generation circuit 132, which constructs a screen to be displayed in step S19. The construction of the screen is executed on the basis of the control data stored in the image control data memory 134. In step S20, according to setting by the step S19, picture elements of the A image and the B image are mapped into a screen frame memory in the image screen generation circuit 132.

**[0024]** Next, in step S21, the screen frame memory of the image screen generation circuit 132 is continuously read into the monitor 15. In this manner, the A image and the B image that have transmitting and receiving conditions and/or image display conditions different from each other are both displayed on the monitor 15.

**[0025]** Furthermore, in step S22, it is judged whether to change the transmitting and receiving conditions and image display conditions of the A image and the B image. In the case of changing the conditions, when instruction is inputted, the processing returns to step S12. In the case of not changing the conditions, the condition data of the file Fnm is maintained.

**[0026]** Furthermore, in this exemplary embodiment, the case of displaying two images is explained. However, in general three or more image display may be adapted in the above mentioned manner.

**[0027]** Next, examples of image display embodiments on the monitor 15 in this exemplary embodiment are described in reference to Fig. 4 - Fig. 7. Here, the case that two images are displayed is explained.

(First exemplary display embodiment)

**[0028]** Fig. 4 shows an appearance of changing of display. In this exemplary display embodiment, an initial state is the same as the hitherto known appearance of the screen of the multi display function. The A image 41 and the B image 42 which indicate different planes are displayed in a same condition.

**[0029]** In this exemplary display embodiment, in step S12 an operator clicks an icon indicating selecting right image on TCS of the operation unit 16. This icon is for moving only the selected image.

**[0030]** This icon "selecting right" is corresponded to file F2a stored in the control database 113. In step S13, the file F2a is searched as condition data. Control data in the searched file F2a is described bellow. In transmitting and receiving control data for the A image, for parameter k=1 to k, data TAak and TBak is set so as to scan only for

the A image. In other words, TAak is set preferably so as to scan only for the A image and TBak is set so as not to scan for the B image. GAak is set as a display condition according to TAak and GBak is set so as not to refresh the image and to be in the freeze state.

**[0031]** By this processing, image data are finally mapped in the image screen generation circuit 132. Therefore, screen data of each frame is delivered to the monitor 15. In this manner, as shown in Fig 4 (b), a right image 46 as a real time movie and a left image 47 as a freeze image of another plane are displayed on the monitor 15.

**[0032]** In this exemplary display embodiment, without waiting for scanning for the B image, only scanning for the A image is repeated. In this manner, frame rate of the A image is increased and an operator can observe a smooth image of the A image.

(Second exemplary display embodiment)

**[0033]** Figs. 5(a) and 5(b) illustrate an appearance of changing of display. In this exemplary display embodiment, an initial state is the same as the hitherto known screen appearance of the multi display function. The A image 51 and the B image 52 which indicate different planes are displayed in a same condition.

**[0034]** In this exemplary display embodiment, in step S12 an operator clicks an icon indicating display advanced right image on TCS of the operation unit 16.

**[0035]** This icon "advancing right" is correlated to file F2b stored in the control database 113. In step S13, the file F2b is searched as condition data. In this file F2b, in item i indicating frame rate of image display control data, data is set as GAOi=GAbi, GBOi=GBbi. In other words, after changing display conditions, the same frame rate is maintained. On the other hand, in item h indicating density of scan line in transmitting and receiving control data, data is set as noted below. At first, in file F20 TAOh=TBOh, in an initial state, the A image and the B image are not distinguished. However, in file F2b for the changing, TAOh>TBOh. In other words, the displayed A image is denser than the displayed B image.

**[0036]** In step S15 and S16, this control data is delivered to the transmitting and receiving control unit 123 and the control unit 133. In this manner, without changing frame rate of the A image and the B image, scan line density of the A image is advanced and the B image is scanned successively.

**[0037]** By this processing, image data is finally mapped in the image screen generation circuit 132. Therefore, screen data of each frame are delivered to the monitor 15. In this manner, as shown in Fig 4 (b), a right image 46 as a real time movie and a left image 47 as a freeze image of another plane are displayed on the monitor 15. In this manner, an advanced A image and a deteriorating B image are displayed in real time on the monitor 15.

**[0038]** In this exemplary display embodiment, without stopping scanning of one image, another image can be

advanced. An operator can understand three dimensional relationships by observing a plurality of images and observing one image closely.

**[0039]** In addition, in the above explanation, scan line density is changed and frame rate is maintained, but it is possible that frame rate is changed and scan line density is maintained. Also it is possible that frame rate and scan line density of one image are both advanced.

**[0040]** In the case that frame rate of one image is increased, the scan order for each plane is shown below. When the frame rate of the A image is increased, control data may be set so that the B image is scanned only once while the A image is scanned twice. For example, the A image is scanned while half of the B image is scanned. If scan line density is the same for each other, it is also possible that every two scan lines of the A image are transmitted and received while a scan line of the B image is transmitted and received.

**[0041]** In addition, a concrete value of scan line density may be set by an operator. Several values of scan line density may be set previously and an operator may be able to select from the several values. Known devices for inputting values may be provided and in accordance with the inputted values, scan line density may be set.

(Third exemplary display embodiment)

**[0042]** Fig. 6 shows an appearance of changing of display. In this exemplary display embodiment, an initial state is the same as the hitherto known screen appearance of the multi display function. The A image 61 and the B image 62 which indicate different planes are displayed in a same condition.

**[0043]** In this exemplary display embodiment, in step S 12 an operator clicks an icon instructing to enlarge right image on TCS of the operation unit 16.

**[0044]** This icon "enlarge right" corresponds to file F2c stored in the control database 113. In step S13, the file F2c is searched as condition data. In this file F2c, T Ach and TBch (T Ach>TBch) are set as data for scan line density of transmitting and receiving data and G Aci and GBci (G Aci>GBci) are set as data for display size of image display control data.

**[0045]** In other hand, in item h indicating density of scan line in transmitting and receiving control data, data is set as noted below. At first, in file F20 T AOh=TBOh, in an initial state, the A image and the B image are not distinguished. However, in file F2c for the changing, data is set as T Ach>TBch. In other words, the displayed A image is denser than the B image. In item i indicating display size of image display control data, data is set as noted below. In file F20 data is set as G AOi=GBOi. In an initial state, the A image and the B image are not distinguished. However, in file F2c for the changing, data is set as G Aci>GBci. In other words, the displayed size of the A image is larger than the size of the B image.

**[0046]** By the control data set as above noted, ultrasound beams are transmitted and received and the

screen image 65 is generated. In this manner, as shown in Fig. 6 (b), the displayed A image is bigger than the B image and has a denser scan line than the B image. In addition, both images move in real time.

**[0047]** In this exemplary display embodiment, without stopping scanning one image, another image can be advanced. An operator can understand the three dimensional relationship by observing a plurality of images and observing one image closely.

**[0048]** In addition, in the above explanation, scan line density and display size are changed and frame rate is maintained, but it is possible that frame rate and display size are changed and scan line density is maintained. Also it is possible that frame rate and scan line density of one image are both advanced. A concrete method of this manner is almost same as above mentioned manner in the first exemplary display embodiment.

**[0049]** In addition, as a method of setting concrete values of scan line density and display size, several values of scan line density or display size may be set previously and an operator may be able to select from the several values. Known devices for inputting values may be provided and in the accordance with the inputted value, scan line density or display size may be set.

(Fourth exemplary display embodiment)

**[0050]** Fig. 7 illustrates an appearance of changing of display. In this exemplary display embodiment, an initial state is the same as the hitherto known screen appearance of the multi display function. The A image 71 and the B image 72 which indicate different planes are displayed in a same condition.

**[0051]** In addition, in this exemplary display embodiment, the bio-signal acquiring unit 17 is provided. The bio-signal may be one of an electro cardiograph (ECG) signal, a phonocardiogram (PCG) signal or a breathing signal. In this explanation, the bio-signal is an ECG signal, and a transesophageal multi plane probe is provided. The transesophageal multi plane probe images a longitudinal plane and a traverse plane of the heart in accordance with synchronization of the ECG signal. The ECG 73 is displayed on the monitor as Fig. 7(a).

**[0052]** In this exemplary display embodiment, in step S 12, an operator clicks an icon indicating change alternately on TCS of the operation unit 16.

**[0053]** This icon "change alternately" corresponds to file F2d stored in the control database 113. In step S 13, the file F2d is searched as condition data. In this file F2d, T Adk and TBdk (T Adk<TBdk) are set as data for scan line density of transmitting and receiving data and G Adk and GBdk (G Adk<GBdk) are set as data for display size of image display control data. At first, in accordance with this setting, the B image is bigger and high density,

**[0054]** When the R wave is detected, data for the A image and data for the B image in the transmitting and receiving control data memory 124 and the image control data memory 134 are switched and rewrite performed.

In other words, TBdk is set as data for the A image and TAdk is set as data for the B image. This processing is done in step S 13. By repeating step S 13 to step S19, switching the display condition of the A image and the B image is repeated.

[0055] In this manner, in one cardiac cycle, an operator can observe one plane, and in next cardiac cycle, an operator can observe another plane without stopping scanning of the one plane.

[0056] In addition, the above explanation is for the case using a transesophageal multi plane probe, but it is needless to say that the case using another two dimensional arrayed probe operated by contacting from outside the body can be adapted to this technique. In the case of observing the heart, this manner is especially effective.

[0057] In addition, in the above explanation, scan line density and display size are changed and frame rate is maintained. However it is possible that frame rate and display are changed and scan line density is maintained. Also it is possible that frame rate, scan line density and display size of one image are both advanced. A concrete method of this manner is almost same as above mentioned manner in the first exemplary display embodiment.

[0058] In addition, as a method of setting concrete value of scan line density and display size, several values of scan line density or display size may be set previously and an operator may be able to select from the several values. Known devices for inputting values may be provided and in the accordance with the inputted value, scan line density or display size may be set.

[0059] Numerous modifications and variations of the present invention are possible in light of the above teachings. It is therefore to be understood that within the scope of the appended claims, the invention may be practiced otherwise than as specifically described herein.

[0060] It is explicitly stated that all features disclosed in the description and/or the claims are intended to be disclosed separately and independently from each other for the purpose of original disclosure as well as for the purpose of restricting the claimed invention independent of the composition of the features in the embodiments and/or the claims. It is explicitly stated that all value ranges or indications of groups of entities disclose every possible intermediate value or intermediate entity for the purpose of original disclosure as well as for the purpose of restricting the claimed invention, in particular as limits of value ranges.

## Claims

1. An ultrasonic diagnostic apparatus comprising:

a transmitting and receiving unit (12) configured to transmit and receive ultrasonic waves toward and from a plurality of planes of a subject by a two-dimensional array ultrasonic probe (14) by scanning the plurality of planes at essentially the

same time in a multi plane scan mode, and an image signal generation unit (13) configured to execute image processing on the basis of a signal received from the transmitting and receiving unit (12) and to generate image signals for ultrasound images indicating each of the planes, wherein the transmitting and receiving unit (12) is configured to execute transmitting and receiving for at least one of the planes in a condition of a scan line density and/or frame rate that is increased with respect to another one of the planes, such that images (A, B) of different image conditions and scanned in the multi plane scan mode can be displayed simultaneously.

2. The ultrasound diagnostic apparatus according to claim 1, further comprising;

a control data setting unit (11) configured to set control data including data related to transmitting and receiving or image processing in correspondence with the condition, and to set the control data with respect to each of the planes;

wherein the transmitting and receiving unit (12) or the image signal generation unit (13) is configured to execute transmitting and receiving or image processing on the basis of respective control data for each of the planes.

3. The ultrasound diagnostic apparatus according to claim 1 or 2, wherein the image signal generation unit (13) is configured to execute image processing for at least one of the planes in a display size that is different with respect to another one of the planes.

4. The ultrasound diagnostic apparatus according to claim 2 or 3, further comprising; a storage unit configured to store a plurality of files composed of the control data; and a selecting unit configured to select from the files; wherein the control data setting unit is configured to set the selected file for the planes.

5. The ultrasound diagnostic apparatus according to any of claims 2 to 4, further comprising:

a bio-signal acquiring unit (17) configured to acquire a bio-signal of the subject; wherein the control data setting unit (11) is configured to change setting of the control data according to detection of a predetermined form of the bio-signal.

6. A method for displaying ultrasonic images, comprising:

transmitting and receiving ultrasound waves toward and from a plurality of planes of a subject

- using a two-dimensional array ultrasonic probe (14) by scanning the plurality of planes at essentially the same time in a multi-plane scan mode, and  
 executing image processing on the basis of a received signal, including generating image signals for ultrasound images indicating each of the planes;  
 wherein a condition of a scan line density and/or frame rate for the transmitting and receiving for at least one of the planes is increased with respect to another one of the planes,  
 such that images (A, B) of different image conditions and scanned in the multi plane scan mode can be displayed simultaneously.
7. The method for displaying ultrasonic image according to claim 6, further comprising;  
 setting control data including data related to transmitting and receiving or image processing and corresponding to the condition with respect to each of the planes;  
 wherein the transmitting and receiving or the image processing is executed on the basis of the control data set with respect to each of the planes.
8. The method for displaying ultrasonic image according to claim 6 or 7, wherein a display size for the executing image processing for at least one of the planes is different with respect to another one of the planes.
9. The method for displaying ultrasonic image according to claim 7 or 8, further comprising;  
 storing a plurality of files composed of the control data; and  
 selecting from the files;  
 wherein the control data setting comprises setting the selected files for the planes.
10. The method for displaying ultrasonic image according to any of claims 7 to 9, further comprising:  
 acquiring a bio-signal of the subject; and  
 changing setting of the control data according to detection of a predetermined form of the bio-signal.

#### Patentansprüche

1. Ultraschall Diagnosevorrichtung mit einer Übertragungs- und Empfangseinheit (12) zum Übertragen und Empfangen von Ultraschallwellen zu und von einer Mehrzahl von Schichten eines Subjekts mit einer zweidimensionalen Array-Ultraschallprobe (14) durch Scannen der mehreren Schichten zu im Wesentlichen der gleichen Zeit in einem Mehr-
- schichtscanmodus und einer Bildsignalerzeugungseinheit (13) zur Ausführung der Bildverarbeitung auf Basis des von der Übertragungs- und Empfangseinheit (12) empfangenen Signals und zum Erzeugen von Bildsignalen für Ultraschallbilder, die die einzelnen Schichten anzeigen,  
 wobei die Übertragungs- und Empfangseinheit (12) ausgebildet ist zum Ausführen des Übertragens und Empfangens für mindestens eine der Schichten in einem Zustand einer Scanliniendichte und/oder Frame-Rate, die bezüglich einer anderen Schicht angehoben ist,  
 sodass Bilder (A, B), die zu unterschiedlichen Bildbedingungen gehören und im Mehrschichtscanmodus gescannt wurden, gleichzeitig dargestellt werden können.
2. Ultraschall Diagnosevorrichtung nach Anspruch 1, ferner mit  
 einer Steuerungsdateneinstelleinheit (11) zum Einstellen der Steuerungsdaten, welche Daten des Übertragens und des Empfangens oder des Bildverarbeitens gemäß der Bedingung aufweisen, und zum Einstellen der Steuerungsdaten mit Bezug auf jede der Schichten,  
 wobei die Übertragungs- und Empfangseinheit (12) oder die Bildsignalerzeugungseinheit (13) zum Ausführen des Übertragens und des Empfangens oder des Bildverarbeitens auf Basis der entsprechenden Steuerungsdaten für jede der Schichten ausgebildet ist.
3. Ultraschall Diagnosevorrichtung gemäß Anspruch 1 oder 2, wobei die Bildsignalerzeugungseinheit (13) zum Ausführen des Bildverarbeitungsprozesses für mindestens eine der Schichten in einer Darstellgröße ausgebildet ist, die sich von einer anderen der Schichten unterscheidet.
4. Ultraschall Diagnosevorrichtung nach Anspruch 2 oder 3, ferner mit  
 einer Speichereinheit zum Speichern einer Mehrzahl von die Steuerungsdaten aufweisenden Dokumenten und  
 einer Auswahleinheit zum Auswählen aus den Dokumenten,  
 wobei die Steuerungsdateneinstelleinheit zum Auswählen des ausgewählten Dokuments für die Schichten ausgebildet ist.
5. Ultraschall Diagnosevorrichtung gemäß einem der Ansprüche 2 bis 4, ferner mit  
 einer Biosignalgewinnungseinheit (17) zum Gewinnen von Biosignalen des Subjekts, wobei die Steuerungsdateneinstelleinheit (11) zum Ändern der Einstellung der Steuerungsdaten gemäß der Erkennung einer vorbestimmten Form des Biosignals aus-

gebildet ist.

6. Verfahren zum Darstellen von Ultraschallbildern mit Übertragen und Empfangen von Ultraschallwellen zu und von einer Mehrzahl von Schichten eines Subjekts unter Benutzung einer zweidimensionalen Array-Ultraschallprobe (14) durch Scannen der Mehrzahl von Schichten zur im Wesentlichen gleichen Zeit in einem Mehrschichtscanmodus und Ausführen einer Bildverarbeitung auf der Basis eines empfangenen Signals mit Erzeugen von Bildsignalen für Ultraschallbilder, die jede der Schichten anzeigen, wobei eine Bedingung einer Scanliniendichte und/oder einer Frame-Rate für das Übermitteln oder Empfangen für mindestens eine der Schichten mit Bezug auf eine andere Schicht angehoben ist, so dass Bilder (A, B), die zu unterschiedlichen Bildbedingungen gehören und im Mehrschichtscanmodus gescannt wurden, gleichzeitig dargestellt werden können.
7. Verfahren zum Darstellen von Ultraschallbildern gemäß Anspruch 6, ferner mit Einstellen von Steuerungsdaten, die Daten bezüglich des Übertragens und des Empfangens oder des Bildverarbeitens aufweisen und die der Bedingung mit Bezug auf jede der Schichten entsprechen, wobei das Übertragen und das Empfangen oder das Bildverarbeiten basierend auf den mit Bezug auf jede der Schichten eingestellten Steuerungsdaten ausgeführt wird.
8. Verfahren zum Darstellen von Ultraschallbildern gemäß Anspruch 6 oder 7, wobei eine Darstellgröße für das Ausführen des Bildverarbeitens für mindestens eine der Schichten bezüglich einer anderen der Schichten unterschiedlich ist.
9. Verfahren zum Darstellen von Ultraschallbildern gemäß Anspruch 7 oder 8, ferner mit Speichern einer Mehrzahl von Dokumenten, die Steuerungsdaten aufweisen, und Auswählen aus den Dokumenten, wobei das Steuerungsdateneinstellen das Einstellen der ausgewählten Dokumente für die Schichten aufweist.
10. Verfahren zum Darstellen von Ultraschallbildern gemäß einem der Ansprüche 7 bis 9, ferner mit Gewinnen von Biosignalen des Subjekts und Ändern der Einstellung der Steuerungsdaten gemäß der Erkennung einer vorbestimmten Form des Biosignals.

## Revendications

1. Un appareil de diagnostic à ultrasons comprenant :

une unité (12) de transmission et de réception configurée pour transmettre des ondes ultrasoniques en direction et à partir d'une pluralité de plans d'un sujet par une sonde (14) ultrasonique en réseau par scannage de la pluralité de plans de manière essentiellement simultanée dans un mode multi-planaires, et une unité (13) de génération d'un signal d'image configurée pour exécuter un traitement d'image sur base d'un signal reçu depuis l'unité (12) de transmission et de réception et pour générer des signaux d'image relatifs à des images à ultrasons indiquant chacun des plans, dans lequel l'unité (12) de transmission et de réception est configurée pour exécuter la transmission et la réception d'au moins un des plans sous une condition de densité de lignes et/ou de cadence d'images qui est augmentée par rapport aux autres plans, de sorte que les images (A, B) de différentes conditions d'image et scannées dans le mode de scannage multi-planaires peuvent être affichées simultanément.

2. Appareil de diagnostic à ultrasons selon la revendication 1, comprenant en outre :

une unité (11) de contrôle de paramètres de données configurée pour paramétrer des données y compris des données relatives à la transmission et à la réception ou au traitement d'image en correspondance avec la condition, et pour paramétrer les données de contrôle pour chacun des plans ; dans lequel l'unité (12) de transmission et de réception ou l'unité (13) de génération d'un signal d'image est configurée pour exécuter la transmission et la réception ou le traitement d'image sur base des données de contrôle respectives pour chacun des plans.

3. Appareil de diagnostic à ultrasons selon la revendication 1 ou 2, dans lequel l'unité (13) de génération d'un signal d'image est configurée pour exécuter le traitement d'image pour au moins un des plans dans une taille d'affichage qui est différente par rapport à un autre des plans.

4. Appareil de diagnostic à ultrasons selon la revendication 2 ou 3, comprenant en outre :

une unité de stockage configurée pour stocker une pluralité de fichiers composés des données de contrôle ; et une unité de sélection configurée pour sélectionner à partir des fichiers ; dans lequel l'unité de paramétrage des données de contrôle est configurée pour paramétrer les fichiers sélectionnés pour les plans.

5. Appareil de diagnostic à ultrasons selon l'une quelconque des revendications 2 à 4, comprenant en outre :
- une unité (17) d'acquisition d'un bio-signal configurée pour acquérir un bio-signal du sujet ; dans lequel l'unité (11) de paramétrage des données de contrôle est configurée pour modifier le paramétrage des données de contrôle suivant la détection d'une forme prédéterminée du bio-signal. 5
6. Méthode d'affichage d'images ultrasoniques, comprenant :
- la transmission et la réception d'ondes ultrasons en direction et à partir d'une pluralité de plans d'un sujet en utilisant une sonde (14) ultrasonique en réseau par scannage de la pluralité de plans de manière essentiellement simultanée dans un mode multi-planaires, et exécuter un traitement d'image sur base d'un signal reçu, y compris générer des signaux d'image relatifs à des images à ultrasons indiquant chacun des plans ; 20
- dans laquelle une condition de densité de lignes et/ou de cadence d'images pour la transmission et la réception d'au moins un des plans est augmentée par rapport aux autres plans, la taille d'affichage pour exécuter le traitement d'image pour au moins un des plans est différente par rapport à un autre des plans de sorte que les images (A, B) de différentes conditions d'image et scannées dans le mode de scannage multi-planaires peuvent être affichées simultanément. 25 30 35
7. Méthode d'affichage d'images ultrasoniques selon la revendication 6, comprenant en outre :
- le paramétrage de données de contrôle y compris de données relatives à la transmission et à la réception ou au traitement et à la condition d'image pour chacun des plans ; 40
- dans lequel la transmission et la réception ou le traitement d'image est exécuté sur base des données de contrôle respectives pour chacun des plans. 45
8. Méthode d'affichage d'images ultrasoniques selon la revendication 6 ou 7, dans laquelle une condition pour exécuter le traitement d'image pour au moins un des plans est différente par rapport à un autre des plans 50
9. Méthode d'affichage d'images ultrasoniques selon la revendication 7 ou 8, comprenant en outre :
- le stockage d'une pluralité de fichiers composés des données de contrôle ; et la sélection à partir des fichiers ; dans lequel le paramétrage des données de contrôle comprend le paramétrage des fichiers sélectionnés pour les plans. 55
10. Méthode d'affichage d'images ultrasoniques selon l'une quelconque des revendications 7 à 9, comprenant en outre :
- l'acquisition d'un bio-signal du sujet ; et la modification du paramétrage des données de contrôle selon la détection d'une forme prédéterminée du bio-signal. 55

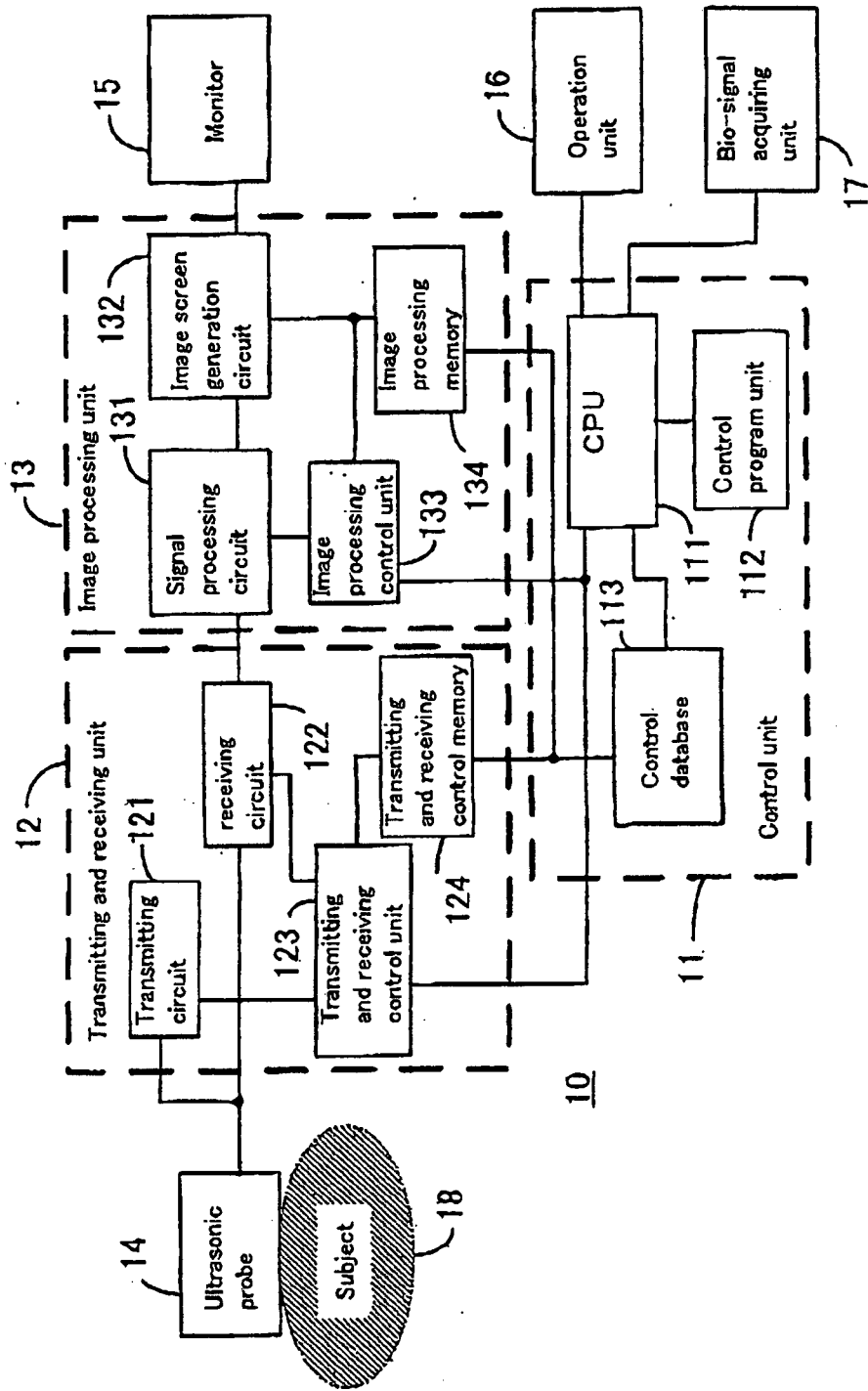


Fig. 1

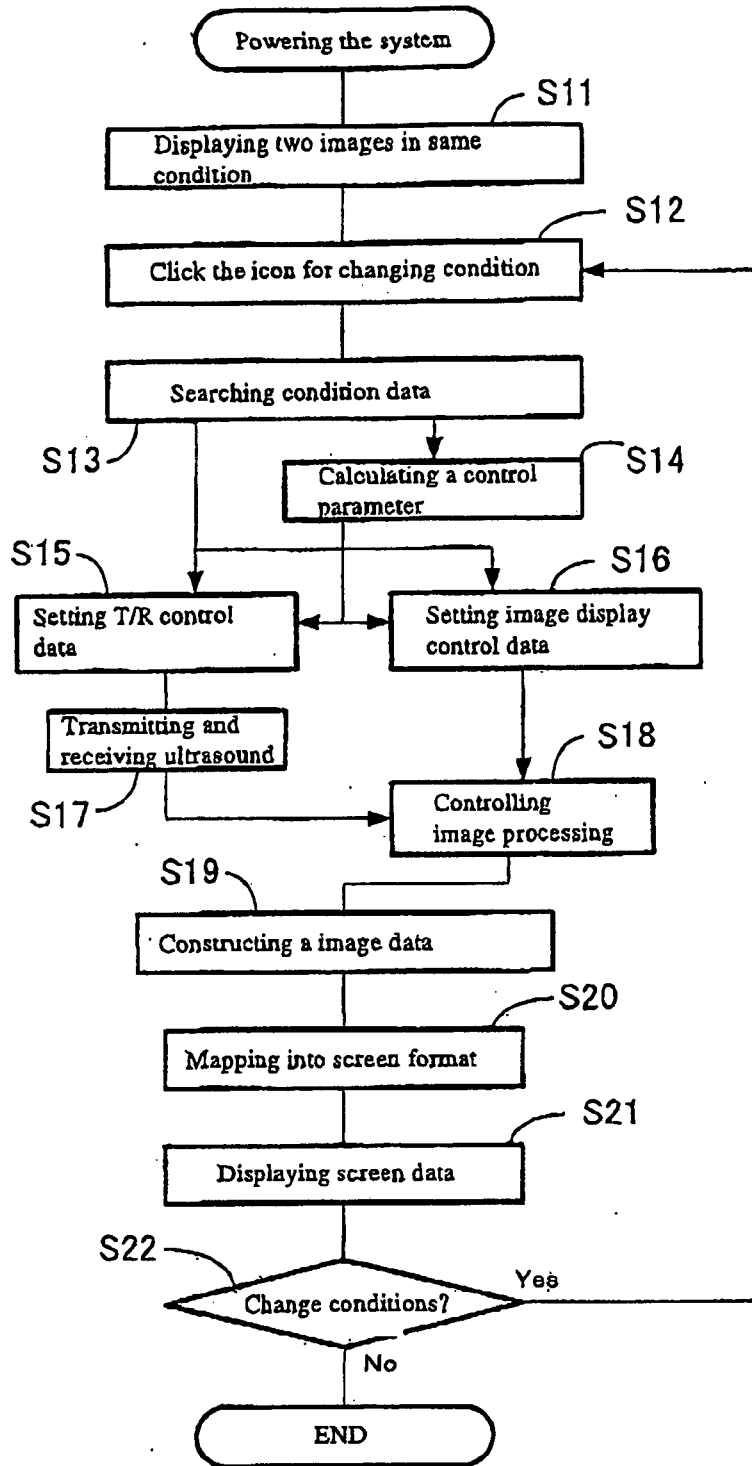


Fig. 2

Fig. 3(a)

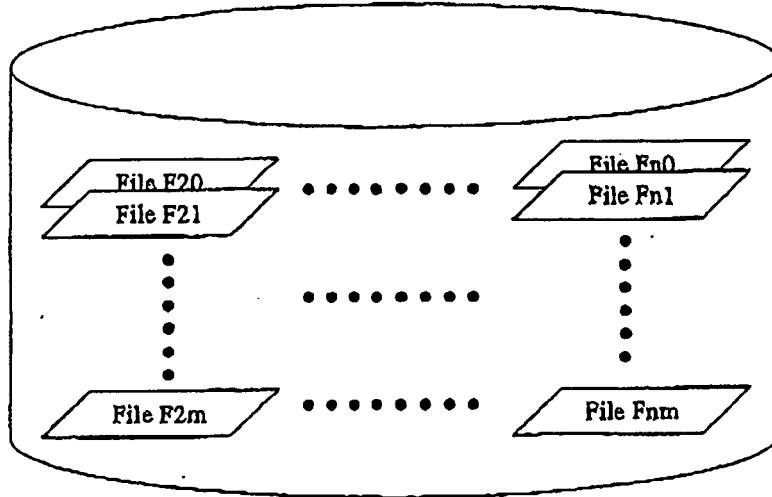


Fig. 3(b)

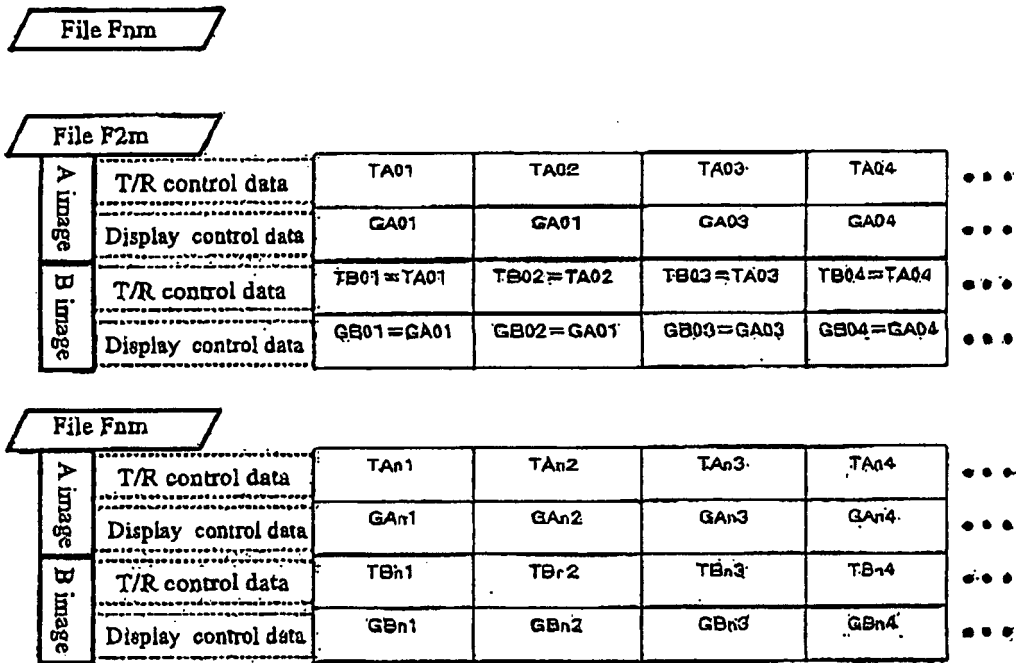


Fig. 4(a)

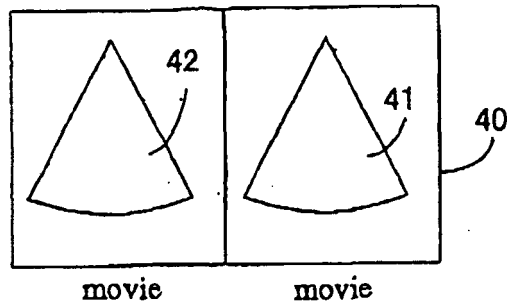


Fig. 4(b)

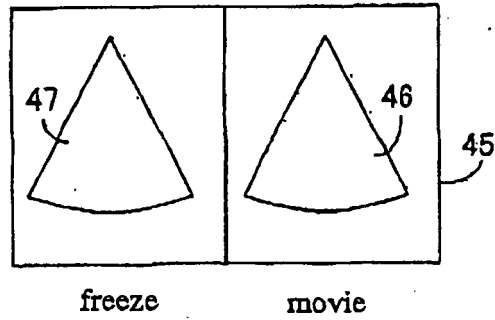


Fig. 5(a)

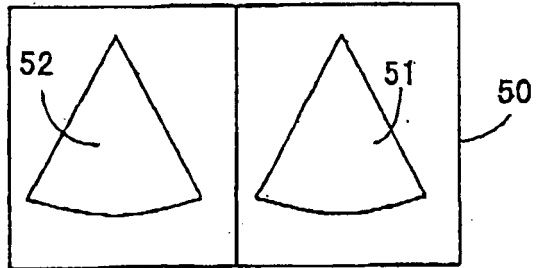
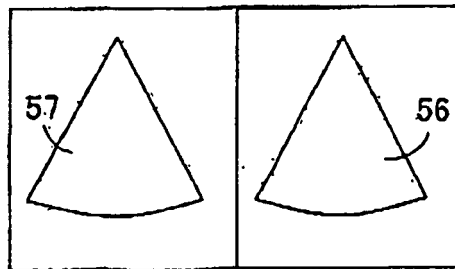


Fig. 5(b) . 55



rough

dense

Fig. 6(a)

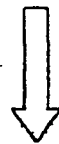
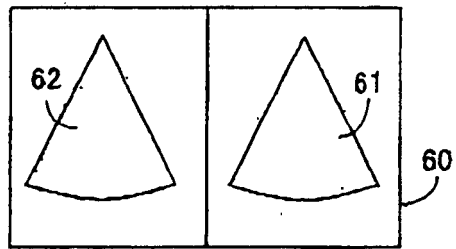


Fig. 6(b)

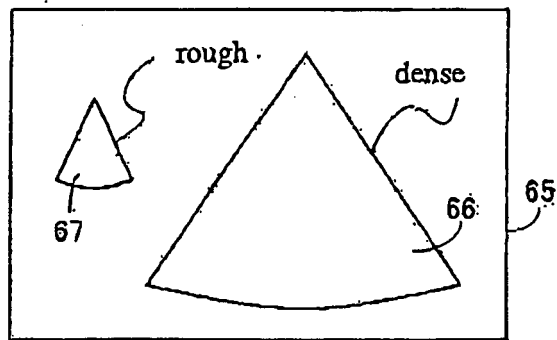


Fig. 7(a)

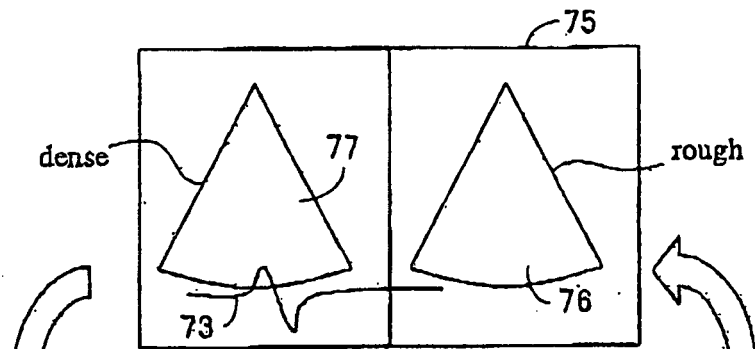
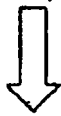
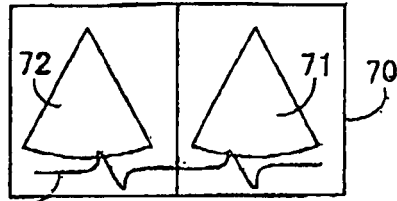


Fig. 7(b)

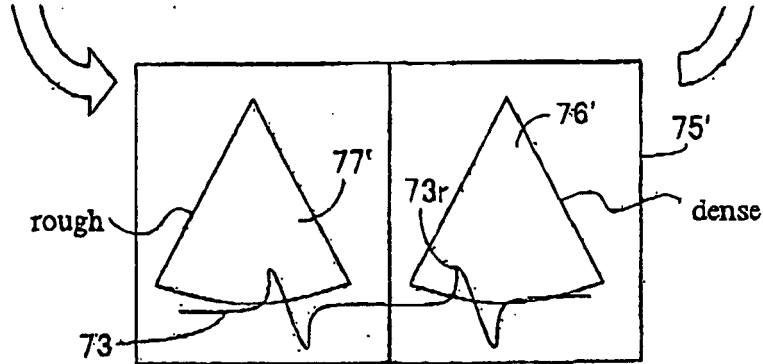


Fig. 7(c)

**REFERENCES CITED IN THE DESCRIPTION**

*This list of references cited by the applicant is for the reader's convenience only. It does not form part of the European patent document. Even though great care has been taken in compiling the references, errors or omissions cannot be excluded and the EPO disclaims all liability in this regard.*

**Patent documents cited in the description**

- JP 2006071041 A [0001]
- WO 9908599 A [0006]
- WO 9815846 A1 [0006]

专利名称(译)	超声诊断设备和显示超声图像的方法		
公开(公告)号	<a href="#">EP1834587B1</a>	公开(公告)日	2014-07-16
申请号	EP2007005386	申请日	2007-03-15
[标]申请(专利权)人(译)	株式会社东芝		
申请(专利权)人(译)	株式会社东芝		
当前申请(专利权)人(译)	株式会社东芝		
[标]发明人	NAKAJIMA OSAMU HIGUCHI JIRO AKAKI KAZUYA GUNJI TAKAYUKI KURITA KOICHIRO		
发明人	NAKAJIMA, OSAMU HIGUCHI, JIRO AKAKI, KAZUYA GUNJI, TAKAYUKI KURITA, KOICHIRO		
IPC分类号	A61B8/00		
CPC分类号	A61B8/00 A61B8/0883 A61B8/145 A61B8/463 G01S7/52074 G01S7/52085		
代理机构(译)	KRAMER - HARSH - 施密特陈		
优先权	2006071041 2006-03-15 JP		
其他公开文献	EP1834587A1		
外部链接	<a href="#">Espacenet</a>		

摘要(译)

一种超声波诊断装置，包括：发送和接收单元，被配置为通过超声波探头从对象的多个平面发送和接收超声波；以及图像信号生成单元，被配置为基于来自所述超声波探测器的接收信号执行图像处理。发送和接收单元，并产生用于指示每个平面的超声图像的图像信号，其中发送和接收单元或图像信号发生单元被配置为对条件中的一个平面执行发送和接收或图像处理。这与另一架飞机有所不同。

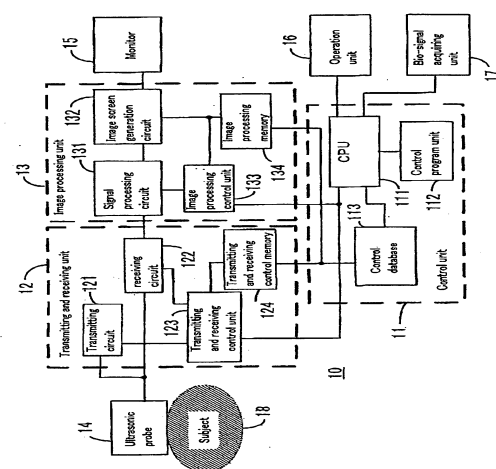


Fig. 1