



(12) **EUROPEAN PATENT APPLICATION**

(43) Date of publication:
03.08.2005 Bulletin 2005/31

(51) Int Cl.⁷: **A61B 8/14**

(21) Application number: **05250404.0**

(22) Date of filing: **26.01.2005**

(84) Designated Contracting States:
AT BE BG CH CY CZ DE DK EE ES FI FR GB GR
HU IE IS IT LI LT LU MC NL PL PT RO SE SI SK TR
Designated Extension States:
AL BA HR LV MK YU

(30) Priority: **30.01.2004 US 540812**
27.04.2004 US 832561

(71) Applicant: **General Electric Company**
Schenectady, New York 12345 (US)

(72) Inventors:
• **Lysyansky, Peter**
Haifa (IL)
• **Friedman, Zvi**
Kiryat Byalik (IL)
• **Raz, Israel**
Illinois 60035 (US)

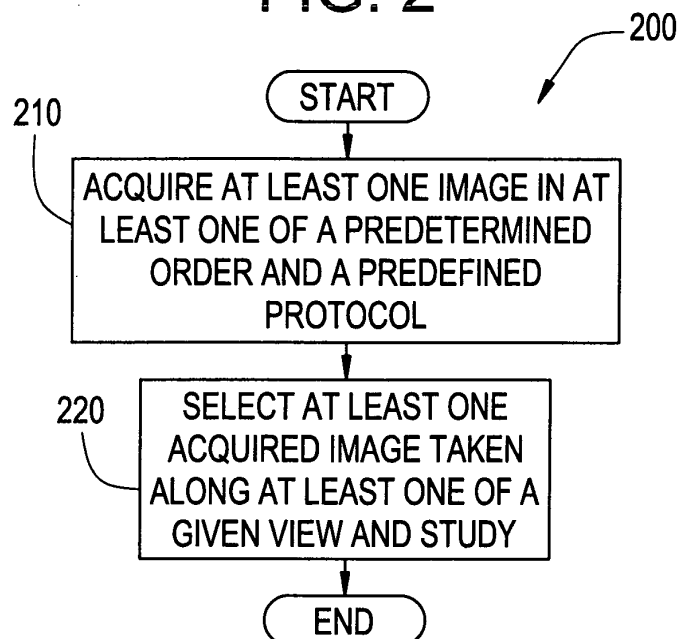
(74) Representative: **Pedder, James Cuthbert et al**
London Patent Operation,
General Electric International, Inc.,
15 John Adam Street
London WC2N 6LU (GB)

(54) **Protocol-driven ultrasound examination**

(57) The present invention relates to a system (5) and method for performing a protocol-driven ultrasound examination for generating an image of moving cardiac structure and blood of a heart. One embodiment comprises a front-end (20) and at least one processor (50). The front end is arranged to transmit ultrasound waves into the moving cardiac structure and blood, generating

received signals in response to the ultrasound waves backscattered from the moving cardiac structure and blood. The at least one processor, responsive to the received signals, acquires at least one image of the structure in at least one of a predetermined order and a predefined protocol, and selects at least one of the acquired images taken along at least one of a given view and study.

FIG. 2



Description

[0001] Embodiments of the present invention relate to a system and method for performing an ultrasound examination. More specifically, embodiments of the present invention relate to a system and method for performing a protocol-driven ultrasound examination to image a structure, moving cardiac structure and blood of a heart for example.

[0002] It should be appreciated that ultrasonic examinations are generally an operator-dependent complicated task performed by highly skilled operators. Moreover, due mainly to budgetary constraints, the examination (i.e., acquisition of one or more images) is often performed by a technologist, whereas the review and clinical interpretation of the acquired data (i.e., reading the one or more acquired images) is performed by a physician. This is generally true for a variety of applications such as general radiology, vascular ultrasonic examination, echocardiography, and during cardiac surgery, where the anesthesiologist performs the ultrasonic examination.

[0003] In order to assure the quality of this complex diagnostic process, several professional societies (e.g., the American Society for Echo, the Society for Cardiovascular Anesthesiology, etc.) have published recommended guidelines for this process. The guidelines advocate following a prescribed protocol that includes acquiring a sequence of several different views (up to 20 views for example) necessary to complete a comprehensive examination. These views may be obtained by positioning the probe at different locations, viewing angles, and orientations.

[0004] Cardiac Ultrasound imaging, using a Trans Esophageal (TEE) probe for example, is an important tool in assessing and monitoring heart function during cardiac and other surgical procedures. Such imaging provides real-time information, which the surgeon depends on in planning, monitoring, and assessing surgical success in the operating room (OR). It should be appreciated that the embodiments of the present invention are not limited to performing cardiac ultrasound imaging using a TEE probe, but other fields of diagnostic examinations (including ultrasonic examinations on non-cardiac structure) are contemplated, some of which are discussed previously.

[0005] Hospitals differ in terms of the protocols (i.e., the number and orders of views) they follow for TEE monitoring in different procedures (e.g., cardiac bypass, valve repair, etc.). Anesthesiology fellows and other professionals (or users) seeking to develop these skills are trained to follow the strict protocols adopted by each hospital. The only such tool to guide them during surgery, while they develop expertise in this area comprises handouts, drawings, "cheat sheets", etc. This method is cumbersome and prone to error.

[0006] Situations frequently occur in the OR wherein a clip taken at a given view (e.g., 4-chamber view) must

be compared to a clip taken previously at the same given view. This is a laborious task, since the archive of clips or images from this surgery may already contain a large number of clips of different views. Therefore the search and selection of the appropriate clips may be tedious and labor intensive. It should be appreciated that these situations referred to above generally occur as a result of an emergency in the operation procedure, placing the user under stress.

[0007] Further limitations and disadvantages of conventional and traditional approaches will become apparent to one of skill in the art, through comparison of such systems with the present invention as set forth in the remainder of the present application with reference to the drawings.

[0008] Embodiments of the present invention relate to an ultrasound system and method for performing an ultrasound examination. More specifically, embodiments of the present invention relate to a system and method for performing a protocol-driven ultrasound examination to image a structure, moving cardiac structure and blood of a heart for example.

[0009] One or more embodiments of the system and method of the present invention provides anesthesiologists, monitoring professionals and other users with an efficient tool used in training, simulation, and surgical planning. Embodiments of the present invention may improve consistency in operation, quality control, and workflow. Embodiments may improve the quality of the examination, speed of operation, and standard of care, in addition to facilitating communication and exchanging expert knowledge among professionals worldwide.

[0010] An apparatus is provided for performing a protocol-driven ultrasound examination for generating an image of moving cardiac structure and blood of a heart for example. This embodiment comprises a front-end and at least one processor. The front end is arranged to transmit ultrasound waves into the moving cardiac structure and blood, generating received signals in response to the ultrasound waves backscattered from the moving cardiac structure and blood. The at least one processor, responsive to the received signals, acquires at least one image of the structure in at least one of a predetermined order and a predefined protocol, and selects at least one of the acquired images taken along at least one of a given view and study.

[0011] Embodiments of the apparatus may include a display processor and monitor for displaying the at least one acquired image. Other embodiments comprise the at least one processor adapted to label the at least one acquired image.

[0012] One embodiment of the present invention relates to a method for performing an examination on a structure using an ultrasound system. This embodiment of the method comprises acquiring at least one image of the structure in at least one of a predetermined order and a predefined protocol. The method further comprises selecting at least one of the acquired images taken

along at least one of a given view and study.

[0013] Embodiments are contemplated in which the at least one acquired image is displayed on an ultrasound system display, where the at least one acquired image may be display simultaneously with at least one stored image or at least one icon associated with the acquired image.

[0014] Embodiments of the invention are further contemplated in which the at least one predefined protocol is user configurable, wherein the configurable predefined protocol comprises at least one view. At least one selected image may be selected and/or stored wherein at least one stored image may be retrieved using a label. Further, at least two or more icons may be arranged in a predetermined scanning order.

[0015] Still another embodiment of the present invention relates to a method for performing an examination on moving cardiac structure and blood in a heart. This embodiment comprises selecting at least one of a predetermined order and predefined protocol for acquiring at least one image of the moving cardiac structure and blood in the heart. The least one image is acquired in at least one of a predetermined order and a predefined protocol, forming at least one clip. The at least one clip is selected, labeled and stored.

[0016] The invention will now be described in greater detail, by way of example, with reference to the drawings, in which:-

Fig. 1 depicts a block diagram of an embodiment of an ultrasound system and machine in accordance with various embodiments of the present invention.

Fig. 2 depicts a high level flowchart illustrating an embodiment of a method performed by the system depicted in Fig. 1, in accordance with various embodiments of the present invention.

Fig. 3 depicts a detailed flowchart illustrating an embodiment of a method performed by the system depicted in Fig. 1, in accordance with various embodiments of the present invention.

Fig. 4 depicts a view of a display displaying images and icons using the methods of Figs. 2 and 3 in accordance with various embodiments of the present invention.

Fig. 5 depicts a schematic view of a display of the system of Fig. 1 comprising four quadrants illustrating at least one live view and reference clips in accordance with various embodiments of the present invention.

[0017] The foregoing summary, as well as the following detailed description of certain embodiments of the present invention, will be better understood when read in conjunction with the appended drawings. It should be

understood, however, that the present invention is not limited to the arrangements and instrumentality shown in the attached drawings.

[0018] Embodiments of the present invention relate to an ultrasound system and method for performing an ultrasound examination. More specifically, embodiments of the present invention relate to a system and method for performing an examination of a structure, a protocol-drive ultrasound examination to image a heart for example. Moving cardiac structure and blood may be monitored to accomplish this function. As used herein, the term structure comprises non-liquid and non-gas matter, such as cardiac tissue for example.

[0019] In at least one embodiment of the present invention, the system and method enables the user to reconstruct a scanning session following the procedure or surgery. The user may quickly access selected phases in the procedure or surgery, access specific views/studies within each phase, etc. These conventions may also be transferred to a report generation package.

[0020] TEE monitoring is currently conducted based on protocols suggested in the guidelines of various professional societies. Many professionals, especially those less experienced professionals performing ultrasound examinations, rely on external reference materials used in tandem with the ultrasound system during monitoring. One embodiment of the present invention incorporates expert knowledge regarding the protocols the user intends to follow directly into the ultrasound system, machine or method. In this manner, the user focuses on the task at hand and is not distracted during this time-critical surgical procedure.

[0021] Another embodiment relates to the efficiency of work in the OR by enabling quick comparison of the current patient situation with previous situations. Finally, embodiments of this invention may facilitate the post-surgical record review process enabling the reviewers to sort quickly through the different surgery phases and focus on selected images with minimal effort.

[0022] Fig. 1 illustrates an embodiment of an ultrasound machine, generally designated 5, in accordance with embodiments of the present invention. A transducer or probe 10 (a TEE probe for example) transmits ultrasound waves into a subject by converting electrical analog signals to ultrasonic energy and receives the ultrasound waves backscattered from the subject by converting ultrasonic energy to analog electrical signals. A front-end 20, that in one embodiment comprises a receiver, transmitter, and beamformer, may be used to create the necessary transmitted waveforms, beam patterns, receiver filtering techniques, and demodulation schemes that are used for the various imaging modes. Front-end 20 performs such functions, converting digital data to analog data and vice versa. Front-end 20 interfaces to transducer or probe 10 using analog interface 15 and interfaces to a non-Doppler processor 30, a Doppler processor 40 and a control processor 50 over a bus 70 (digital bus for example). Bus 70 may comprise sev-

eral digital sub-buses, each sub-bus having its own unique configuration and providing digital data interfaces to various parts of the ultrasound machine 5.

[0023] Non-Doppler processor 30 is, in one embodiment, adapted to provide amplitude detection functions and data compression functions used for imaging modes such as B-mode, M-mode, and harmonic imaging. Doppler processor 40, in one embodiment, provides clutter filtering functions and movement parameter estimation functions used for imaging modes such as tissue velocity imaging (TVI), strain rate imaging (SRI), and color M-mode. In one embodiment, the two processors, 30 and 40, accept digital signal data from the front-end 20, process the digital signal data into estimated parameter values, and pass the estimated parameter values to processor 50 and a display 75 over digital bus 70. The estimated parameter values may be created using the received signals in frequency bands centered at the fundamental, harmonics, or sub-harmonics of the transmitted signals in a manner known to those skilled in the art.

[0024] Display 75 is adapted, in one embodiment, to provide scan-conversion functions, color mapping functions, and tissue/flow arbitration functions for example, performed by a display processor 80 which accepts digital parameter values from processors 30, 40, and 50, processes, maps, and formats the digital data for display, converts the digital display data to analog display signals, and communicates the analog display signals to a monitor 90. Monitor 90 accepts the analog display signals from display processor 80 and displays the resultant image.

[0025] A user interface 60 enables user commands to be input by the operator to the ultrasound machine 5 through control processor 50. User interface 60 may comprise a keyboard, mouse, switches, knobs, buttons, track balls, foot pedals, voice control and on-screen menus, among other devices.

[0026] A timing event source 65 generates a cardiac timing event signal 66 that represents the cardiac waveform of the subject. The timing event signal 66 is input to ultrasound machine 5 through control processor 50.

[0027] In one embodiment, control processor 50 comprises the main, central processor of the ultrasound machine 5, interfacing to various other parts of the ultrasound machine 5 through digital bus 70. Control processor 50 executes the various data algorithms and functions for the various imaging and diagnostic modes. Digital data and commands may be communicated between control processor 50 and other various parts of the ultrasound machine 5. As an alternative, the functions performed by control processor 50 may be performed by multiple processors, or may be integrated into processors 30, 40, or 80, or any combination thereof. As a further alternative, the functions of processors 30, 40, 50, and 80 may be integrated into a single PC back-end.

[0028] One embodiment of the present invention

comprises a system and method for performing a protocol-driven ultrasound examination to acquire an image of a structure, moving cardiac structure and blood of a heart for example. Fig. 2 depicts a high level flow chart illustrating a method 200 for acquiring at least one image in accordance with various embodiments of the present invention. In the illustrated embodiment, method 200 comprises Step 210, which comprises acquiring at least one image in at least one of a predetermined order and a predefined protocol while imaging the heart using ultrasound system 5 for example. In one embodiment, the at least one image (or clip) is acquired automatically, and at least the protocol is configurable by the user for example. Step 212 comprises selecting at least one acquired image or clip taken at or along at least one of a given view (parasternal long axis for example) or study (MR study for example).

[0029] In at least one embodiment of the invention, application software is incorporated into an ultrasound system (running on processor 50 of ultrasound system 5 for example) enabling an examining professional or other user to program user-defined protocols into the system. Such protocols may be used to guide the examining professional through a sequence of views (e.g., 4CH, LAX, SAX, etc.) and studies (e.g., MR study, AV study, LV volume, etc.) appropriate for the procedure being performed. Thus, in at least one embodiment, the system and method provides one or more schematics of the target view/study during the examination, providing visual aids to guide the examining professional in correct positioning and orientation of the transducer or probe (a TEE probe for example) for best visualization of the targeted view. When one or more target views are acquired (forming a clip), the image may be saved with a corresponding label. The system and method proceeds to present the next view in the protocol, until the entire protocol is completed.

[0030] Fig. 3 depicts a flow chart illustrating an embodiment of a method 250 (similar to method 200 depicted in Fig. 2) performed (using the system or machine illustrated in Fig. 1 for example) in accordance with various embodiments of the present invention. In the illustrated embodiment, method 250 comprises Step 252, which comprises selecting at least one of a predetermined order and predefined protocol for acquiring at least one image of the moving structure. In one embodiment, method 250 enables a user to select both the predetermined order and predetermined protocol.

[0031] Fig. 4 illustrates a display, generally designated 300, that may be depicted or displayed on monitor 90 of the system of Fig. 1 for example. In one embodiment, display 300 includes at least one acquired image of moving cardiac structure (of a heart for example) and a series of graphical icons or labels 302A through 302L (and, in one embodiment, a void icon 306). In the illustrated embodiment, icons 302A through 302L are arranged in display 300 in a predetermined scanning order that may be configured by the user. In at least one embod-

iment, the configurable predetermined scanning order is represented as a protocol.

[0032] Method 250 further comprises Step 254, which comprises acquiring at least one image in at least one of an predetermined order and a predefined protocol while imaging the heart using ultrasound system 5 for example. In one embodiment the predefined protocol is configurable. It is further contemplated that the at least one image or clip may be acquired automatically by the system or machine for example.

[0033] Step 256 comprises selecting at least one acquired image or clip, where the selected clip may have been taken at or along at least one of a given view (parasternal long axis for example) and study (MR study for example). In at least one embodiment, selecting the at least one clip comprises selecting at least one icon 304A-304B depicted in Fig. 4 for example. The selected icon will be highlighted in the protocol list 305 and the associated image 302 shown on display 300. In one embodiment, image 302 is shown simultaneously with the highlighted icon. Embodiments are contemplated in which the clip is selected and labeled. In at least one embodiment the clip may be selected during acquisition, selected from an archive, or some combination thereof.

[0034] In one embodiment, method 250 further comprises Step 254, which comprises labeling the at least one clip and Step 260, which comprises storing the at least one clip. It is contemplated that labeling the clip may comprise associating or more identifiers (or labels) with the clip, so that the clip may be retrieved using such identifier for example. It is contemplated that one or more clips may be stored in processor 50, another storage device on the ultrasound system (not shown in Fig. 1) or an external storage device (not shown in Fig. 1). It should be appreciated that the one or more clips may be labeled before storage or stored and then labeled.

[0035] Fig. 4 illustrates display or monitor 300, including at least one acquired image of a moving structure (moving cardiac structure of a heart for example) generally designated 302 and a protocol bar or protocol list 305. In this embodiment, the protocol bar 305 comprise the series or sequence of graphical icons or labels 302A through 302L; void icon 306; pre-pump icon 308; mitral and aortic regurgitation (alternatively referred to as "MR" and "AR" respectively); icons 310 and 312 respectively; up and down arrow icons 314 and 316 respectively. In this embodiment, icons 302A through 302L are arranged in display 300 in a predetermined scanning order that may configured by the user. It is contemplated that in one or more embodiments display 300 may provide the image 302 simultaneously with the associated icon, in addition to providing other information, including an EKG 318 for example.

[0036] In one embodiment of the present invention, the system and method may toggle between displaying and not displaying protocol list 305. When the protocol button or icon (not shown) is selected, protocol bar or list 305, including all associated icons will appear in dis-

play 300. Selecting the protocol button a second time, hides or stops displaying the protocol list 305.

[0037] As provided previously, one or more embodiments of the present invention, displays a series of graphical icons or labels 304A-304L in a configurable predetermined order of scanning (representing the protocol). The series of icons include a void icon 306. The system and method enables the user to select at least one icon. The selected icon will be in this embodiment, highlighted in the protocol list 305 and simultaneously shown on the image 302.

[0038] In this embodiment, the selected icon will be attached to the clip and will be shown on the image 302 in all operating modes (with body marks for example). The icon selection will either automatically move one step forward in the protocol list after each clip is stored or archived or not, depending on the mode of operation. The user can configure the selection between the two modes of operation.

[0039] It is further contemplated that the user may reselect an icon before or during scanning. For example, the user may reselect the icon during the clip storing process (between first and second presses or selection of the store button or icon for example). The system further enables the operator to relabel a stored or archived clip. The system enables the operator to mark an operation stage, toggling between pre-pump and post-pump status or state using the pre-pump icon 308 for example. The stored clips in a clipboard may be marked with different colored frames or borders when selected (for example the stored clips in a clipboard may have a green frame in the pre-pump status and a blue frame in the post-pump status).

[0040] In at least one embodiment, the present invention, may include an automatic on-line help module providing information to guide the user in obtaining or acquiring images, wherein the information may be provided graphically, verbally and graphically and verbally. The system enables the user to configure the system to either provide or not provide this information.

[0041] It is contemplated that, in at least one embodiment, the system and method may provide for labeling one or more clips during acquisition. When a protocol button or icon (not shown) is selected, protocol list 305 may be displayed on display 300, on the right side of the display for example. In one embodiment of the invention, the system and method enables the user to toggle between pre-pump and post-pump status or state. In at least this embodiment, the pre-pump icon 308 may be used to toggle between the pre-pump and post-pump status or states. It is contemplated that at least one embodiment of the system and method starts from the pre-pump state.

[0042] Embodiments of present invention may indicate or designate which icons are selected and in what state. For example, the selected icon 304A-304L may be marked with different colored frames or borders (for example the selected icon may have a green frame in

the pre-pump status and a blue frame in the post-pump frame). In one embodiment, the selected icon appears in the image 300.

[0043] It should be appreciated that the user may want to toggle between or select an image that is different from the displayed image. In at least one embodiment of the present invention, the user may change the icon either by clicking on or otherwise selecting a desired icon (if it is included in the protocol bar 305), using the arrow icons 314 and 316 or using the arrows on an associated keyboard. In at least one embodiment, the newly selected icon may also appear on the image 302.

[0044] For example, after selecting the store icon (not shown), the user may change icons. Selecting or hitting the store icon a second time enables the system to automatically jump to the next label, provided that the system was preconfigured to operate in this mode. If the void icon or Autojump Off option was selected in the protocol configuration, the system maintains the selected icon and will not jump to the next icon in the list. In one embodiment, all thumbnail images in the clipboard labeled with a currently selected label are marked with the appropriate frame.

[0045] It is contemplated that, in at least one embodiment, the system and method may provide for labeling one or more stored or archived clips. In this embodiment, the user selects the desired clip and then selects the protocol button or icon (not shown). The user selects the desired icon and selects the store button or icon.

[0046] It is contemplated that, in at least one embodiment, the system and method may provide for reviewing one or more images using a given or selected icon. To review the images using an icon, the icon in the protocol list 305 must be selected. All images associated with the selected icon will be marked or otherwise highlighted. In one embodiment, the images associated with the selected icon may be marked with a different colored frames or borders (for example the images may have a green frame in the pre-pump status and a blue frame in the post-pump status). It is contemplated that all the images associated with the selected icon may displayed simultaneously, in sequence, etc.

[0047] It should be appreciated that in at least one embodiment, the ultrasound system may operate in different modes or have different configurations. In one embodiment of the present invention, the user may configure the system to "Scan by Protocol". In this configuration, the system acquires one or more images using the icon list in the order of the icon list. Also, the system may be configured to operate in (and toggle between) "Autojump On" or "Autojump Off" modes. In the "Autojump On" mode, the system operates in protocol mode, scanning one image then jumping to the next icon in the protocol list (the next icon is marked or highlighted in the protocol list for example). In the "Autojump Off" mode, the system operates manually (i.e., the system does not jump to the next icon in the protocol list)

[0048] Other embodiments of the present invention

are also contemplated. An embodiment is contemplated in which, in addition to ordering echo examination, each view/study may be linked with a set of scanning parameters, where the set of scanning parameters is optimized for this view/study. This enables the user to save time and to immediately obtain optimal image quality for all views and studies.

[0049] Other embodiments are contemplated, including the capability to link each view/study with a specific subset of parameters. This enables the user to save time by working with a short list of parameters for each view/study. These capabilities are especially important for less skilled user.

[0050] It should be appreciated that different protocols may be used depending on the procedure or surgery. Embodiments of the present invention are adapted to accommodate different protocols. More particularly, embodiments of the present invention are adapted to accommodate multiple protocols, depending on the type of procedure or surgery, enabling the user to select one protocol from among the plurality of protocols. Additionally, it is contemplated that the user may be able to define a new protocol, using one or more icons from protocols currently existing or stored on the system.

[0051] Other embodiments contemplate a link to a measurements package and automatic present and scanning mode selection.

[0052] Yet still another embodiment of the invention includes a live view module, providing for comparison of live scanning (live images for example) with previously scanned reference cine clips. In the scan-by-protocol mode of operation for example, the reference clips may always be the same view as the live image.

[0053] In one embodiment of the present invention, one or more reference clips will automatically be "zoomed" to the same scale as that of the live image. It is contemplated that in one embodiment, the system and method may accommodate at least a live image and one reference clip. In other embodiments, the system and method may accommodate a live image and two or more reference clips (alternatively referred to as "Ref1" and "Ref2"). It is contemplated that, in at least one embodiment, Ref1 and Ref2 may each comprise a family of clips with all possible labels. While scanning a live image with a given label, the corresponding clips from Ref1 and Ref2 with the corresponding labels may be displayed. In at least one embodiment, the corresponding clips of Ref1 and Ref2 are rescaled to the scale of the live image.

[0054] Fig. 5 depicts a schematic view of a display, generally designated 400, that may be depicted or displayed on monitor 90 of the system of Fig. 1 for example. In one embodiment, display 400 provides at least one live view and one reference clip in accordance with various embodiments of the present invention. More particularly, display 400 comprises four quadrants A, B, C and D (designated 404, 402, 406 and 408 respectively) depicting at least one live view, Ref1 and Ref2 for ex-

ample.

[0055] In at least one embodiment, the user selects the live view module by selecting or toggling an LV Monitoring key or icon (not shown). The monitor depicts display 400, wherein display 90 is split into four quadrants for example. In this embodiment, a live image is displayed in quadrant B 402. Selecting, depressing or toggling an Ref1 button or icon (not shown) enables the system to capture a clip of the live image into Ref1, which may be displayed in quadrant A 404. Ref2 may be displayed in quadrant C 406. It should be appreciated that, as the live image may be scanned with a multitude of labels Ref1 (and/or Ref2) actually represents a series of clips with different labels. When a specific label is assigned to the live image, the corresponding clips of Ref1 and Ref2 are displayed in the quadrants A and C. If there is no Ref1 or Ref2 image with the present label, the corresponding quadrant may be left blank.

Claims

1. A method (200, 250) for performing an examination on a structure using an ultrasound system, the method (200, 250) comprising:
 - acquiring (210, 254) at least one image of the structure in at least one of a predetermined order and a predefined protocol; and
 - selecting (220, 256) at least one of said acquired images taken along at least one of a given view and study.
2. The method (200) of Claim 1 comprising displaying said at least one acquired image on a display (75, 300) of the ultrasound system (5).
3. The method (200, 250) of Claim 2 comprising displaying said at least one acquired image simultaneously with at least one stored image.
4. The method (200, 250) of Claim 2 comprising displaying said at least one acquired image simultaneously with at least one icon (304) associated with said acquired image.
5. The method (200, 250) of Claim 1 wherein at least said predefined protocol is user configurable.
6. The method (200, 250) of Claim 1 comprising arranging two or more icons (304) in a predetermined scanning order.
7. A method (250) for performing an examination on moving cardiac structure and blood in a heart, said method comprising:

selecting (252) at least one of a predetermined

order and predefined protocol for acquiring at least one image of the moving cardiac structure and blood in the heart;
 acquiring (254) said at least one image in at least one of a predetermined order and a predefined protocol, forming at least one clip;
 selecting (256) at least one clip; and
 labeling (258) and storing (260) said at least one clip.

8. The method (250) of Claim 7 wherein at least said predefined protocol is user configurable.
9. In an ultrasound machine (5) for generating an image responsive to moving cardiac structure and blood within a heart of a subject, an apparatus comprising:
 - a front-end (20) arranged to transmit ultrasound waves into the moving cardiac structure and blood, generating received signals in response to the ultrasound waves backscattered from the moving cardiac structure and blood; and
 - at least one processor (30, 40, 50) responsive to the received signals, acquiring at least one image of the moving cardiac structure and blood in at least one of a predetermined order and a predefined protocol, and selecting at least one of said acquired images taken along at least one of a given view and study.
10. The apparatus (5) of Claim 9 wherein said at least one processor (30, 40, 50) is adapted to label said at least one acquired image.

FIG. 1

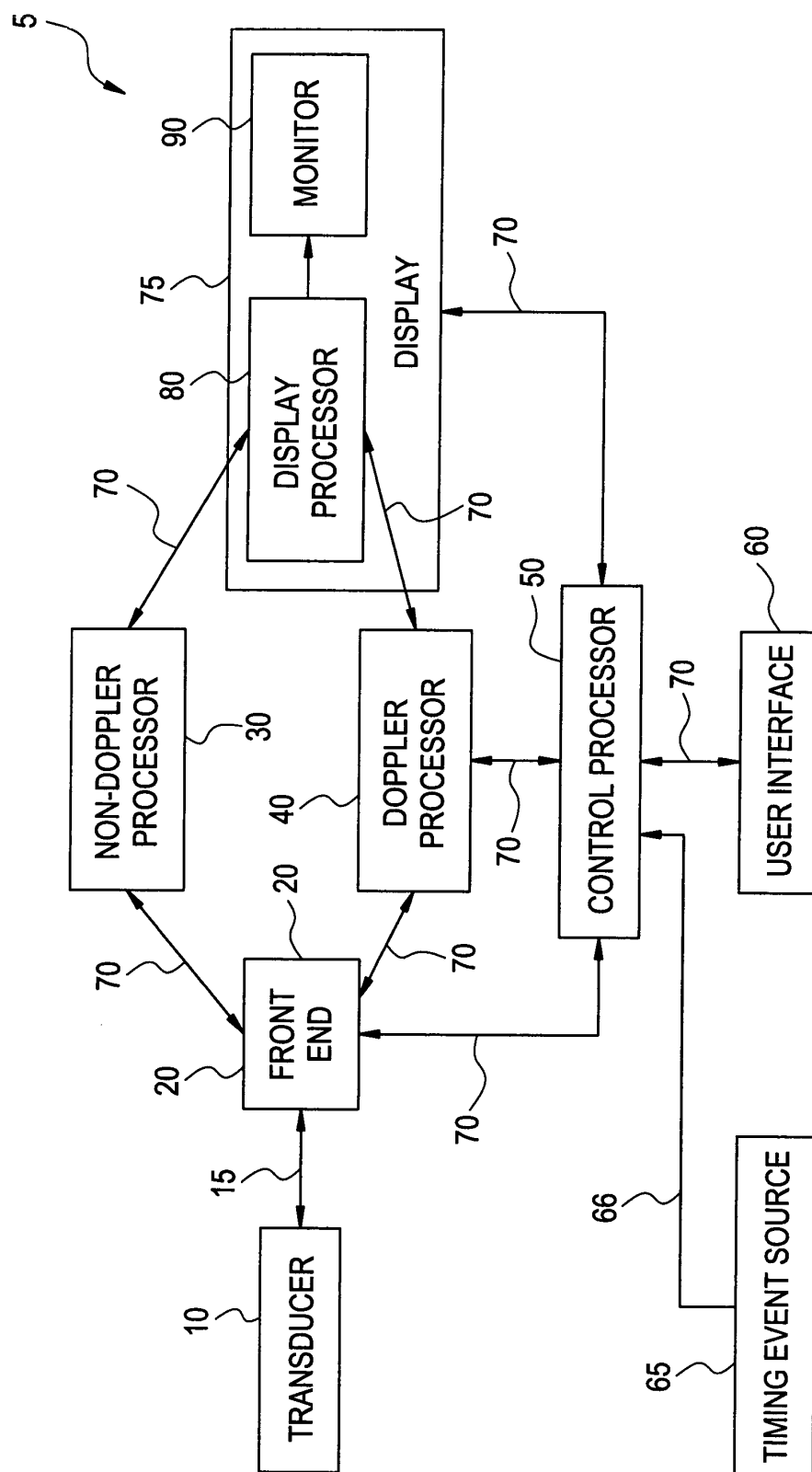


FIG. 2

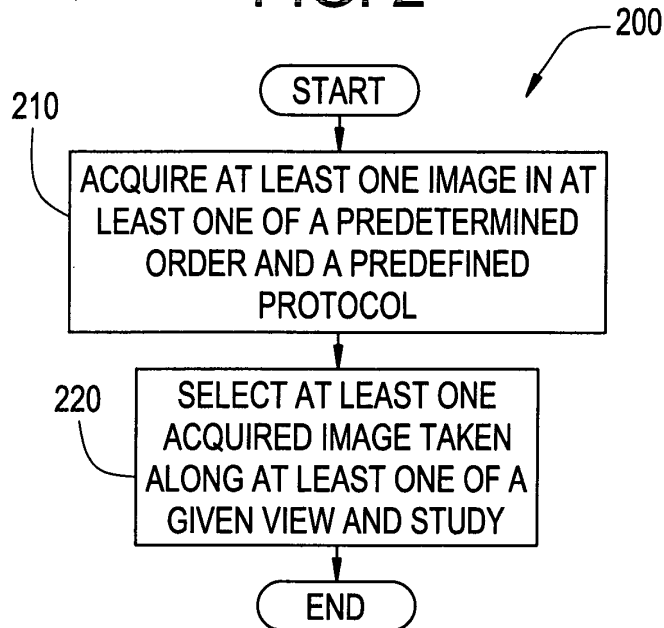


FIG. 3

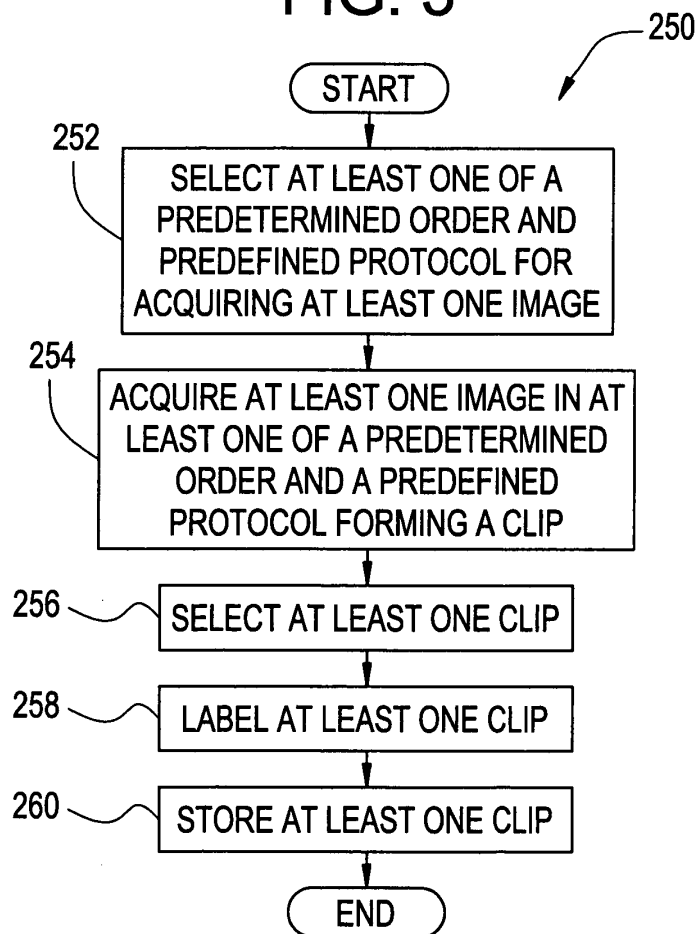


FIG. 4

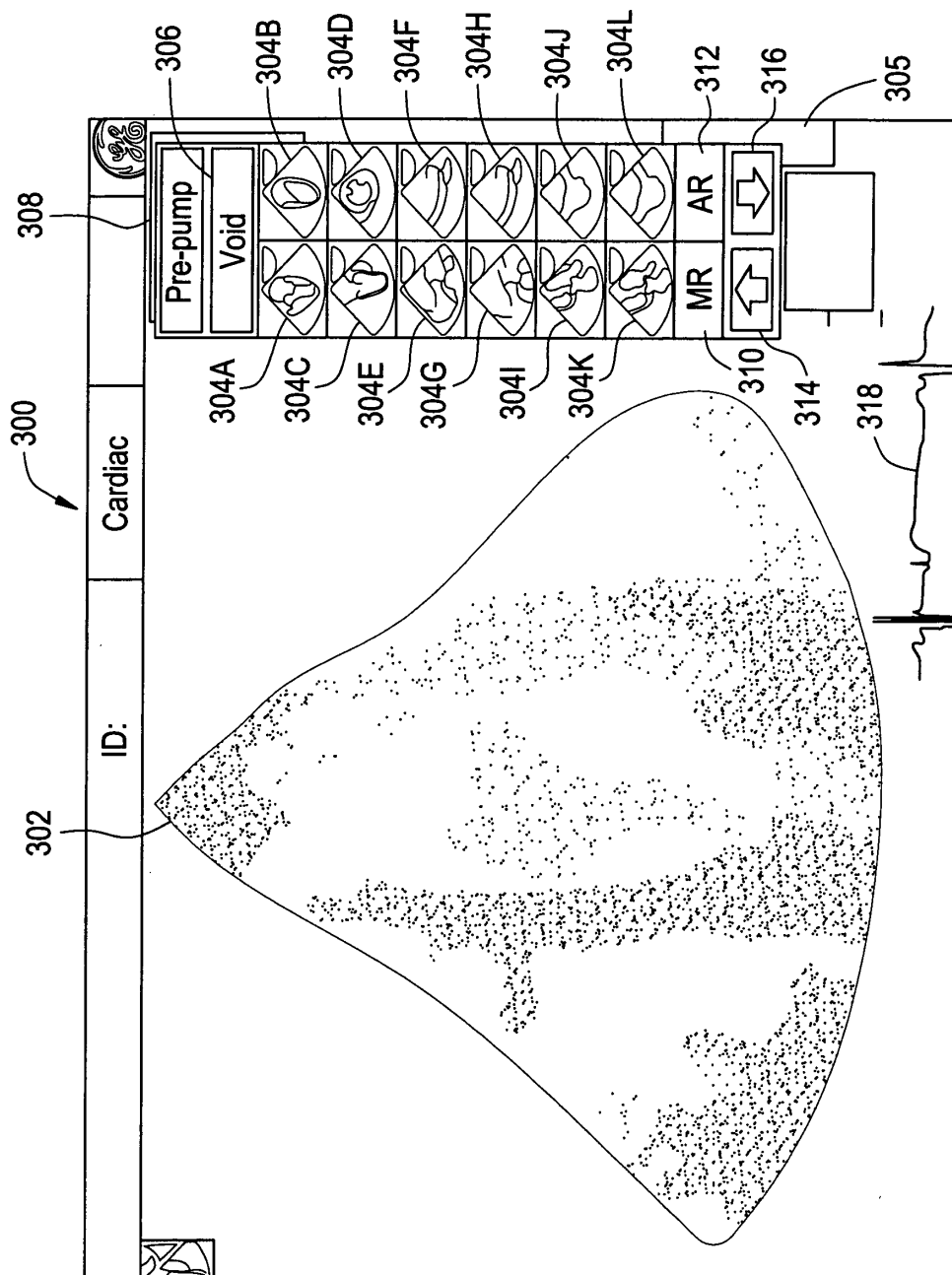
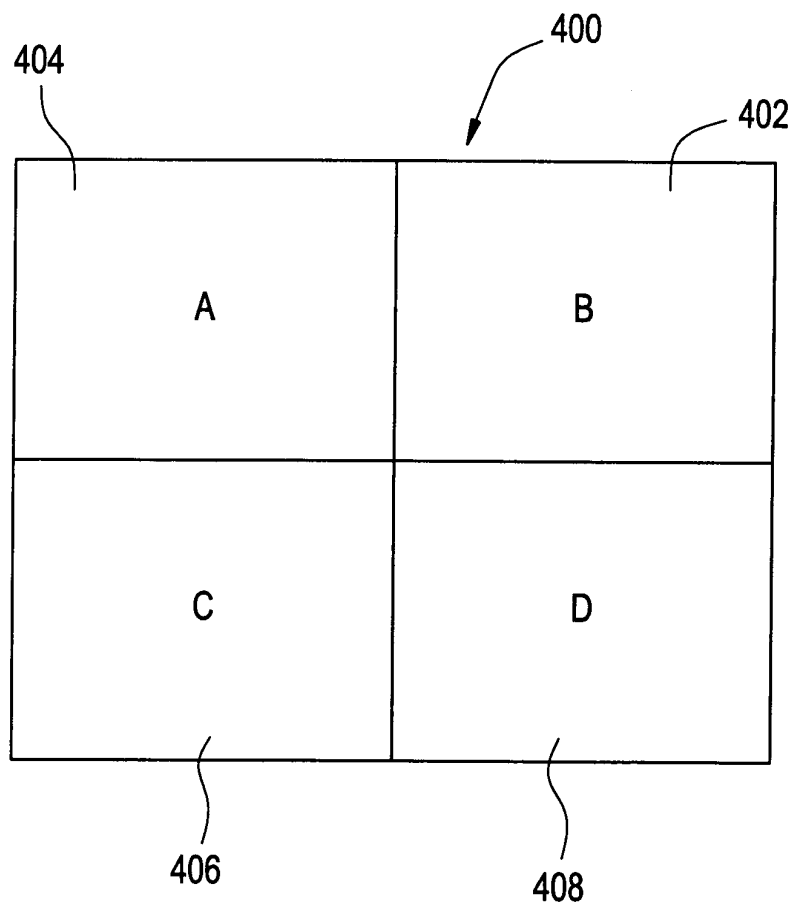


FIG. 5





European Patent
Office

EUROPEAN SEARCH REPORT

Application Number
EP 05 25 0404

DOCUMENTS CONSIDERED TO BE RELEVANT			
Category	Citation of document with indication, where appropriate, of relevant passages	Relevant to claim	CLASSIFICATION OF THE APPLICATION (Int.Cl.7)
X A	US 6 468 212 B1 (SCOTT WALTER GUY ET AL) 22 October 2002 (2002-10-22) * column 1, line 66 - column 2, line 4 * * column 2, line 37, paragraph 47 * * column 10, line 44 - column 12, line 3 * * figures 17-20 * -----	1-6,9,10 7,8	A61B8/14
X	US 6 458 081 B1 (MATSUI SUSUMU ET AL) 1 October 2002 (2002-10-01) * column 2, lines 11-24 * * column 8, line 60 - column 9, line 33 * * column 9, lines 63-67 * * column 11, lines 28-42 * -----	1-10	
A	WO 03/043501 A (KABUSHIKI KAISHA TOSHIBA; SANO, AKIHIRO; KAMIYAMA, NAOHISA; OGASAWARA,) 30 May 2003 (2003-05-30) * abstract * & EP 1 454 585 A (KABUSHIKI KAISHA TOSHIBA) 8 September 2004 (2004-09-08) -----	5,8	
			TECHNICAL FIELDS SEARCHED (Int.Cl.7)
			A61B
The present search report has been drawn up for all claims			
Place of search Munich		Date of completion of the search 17 May 2005	Examiner Willig, H
<p>CATEGORY OF CITED DOCUMENTS</p> <p>X : particularly relevant if taken alone Y : particularly relevant if combined with another document of the same category A : technological background O : non-written disclosure P : intermediate document</p> <p>T : theory or principle underlying the invention E : earlier patent document, but published on, or after the filing date D : document cited in the application L : document cited for other reasons & : member of the same patent family, corresponding document</p>			

2
EPO FORM 1503 03.82 (P04C01)

**ANNEX TO THE EUROPEAN SEARCH REPORT
ON EUROPEAN PATENT APPLICATION NO.**

EP 05 25 0404

This annex lists the patent family members relating to the patent documents cited in the above-mentioned European search report.
The members are as contained in the European Patent Office EDP file on
The European Patent Office is in no way liable for these particulars which are merely given for the purpose of information.

17-05-2005

Patent document cited in search report		Publication date	Patent family member(s)	Publication date
US 6468212	B1	22-10-2002	NONE	

US 6458081	B1	01-10-2002	JP 2000300551 A	31-10-2000
			JP 2001046380 A	20-02-2001
			JP 2001137237 A	22-05-2001

WO 03043501	A	30-05-2003	WO 03043501 A1	30-05-2003
			EP 1454585 A1	08-09-2004
			US 2004254465 A1	16-12-2004

EP 1454585	A	08-09-2004	WO 03043501 A1	30-05-2003
			EP 1454585 A1	08-09-2004
			US 2004254465 A1	16-12-2004

专利名称(译)	协议驱动的超声检查		
公开(公告)号	EP1559373A1	公开(公告)日	2005-08-03
申请号	EP2005250404	申请日	2005-01-26
[标]申请(专利权)人(译)	通用电气公司		
申请(专利权)人(译)	通用电气公司		
当前申请(专利权)人(译)	通用电气公司		
[标]发明人	LYSYANSKY PETER FRIEDMAN ZVI RAZ ISRAEL		
发明人	LYSYANSKY, PETER FRIEDMAN, ZVI RAZ, ISRAEL		
IPC分类号	A61B8/08 A61B8/00 A61B8/06 A61B8/12 A61B8/14		
CPC分类号	A61B8/06 A61B8/08 A61B8/0883 A61B8/12 A61B8/13 A61B8/14 A61B8/463 A61B8/465 A61B8/488 G01S7/52098 G16H30/20 G16H40/63 E02D5/805 E02D2600/30		
优先权	60/540812 2004-01-30 US 10/832561 2004-04-27 US		
其他公开文献	EP1559373B1		
外部链接	Espacenet		

摘要(译)

本发明涉及一种系统 (5) 和方法，用于执行协议驱动的超声检查，以产生移动的心脏结构和心脏血液的图像。一个实施例包括前端 (20) 和至少一个处理器 (50)。前端布置成将超声波发射到移动的心脏结构和血液中，响应于从移动的心脏结构和血液反向散射的超声波产生接收的信号。响应于所接收的信号，所述至少一个处理器以预定顺序和预定义协议中的至少一个获取所述结构的至少一个图像，并且选择沿着给定的至少一个获取的至少一个所获取的图像。观点和研究。

