



(12) **EUROPEAN PATENT APPLICATION**  
 published in accordance with Art. 153(4) EPC

(43) Date of publication:  
**24.07.2019 Bulletin 2019/30**

(51) Int Cl.:  
**A61B 8/14 (2006.01) A61B 8/08 (2006.01)**

(21) Application number: **17850484.1**

(86) International application number:  
**PCT/JP2017/019373**

(22) Date of filing: **24.05.2017**

(87) International publication number:  
**WO 2018/051577 (22.03.2018 Gazette 2018/12)**

(84) Designated Contracting States:  
**AL AT BE BG CH CY CZ DE DK EE ES FI FR GB GR HR HU IE IS IT LI LT LU LV MC MK MT NL NO PL PT RO RS SE SI SK SM TR**  
 Designated Extension States:  
**BA ME**  
 Designated Validation States:  
**MA MD**

(71) Applicant: **FUJIFILM Corporation**  
**Tokyo 106-8620 (JP)**

(72) Inventor: **MATSUMOTO Tsuyoshi**  
**Ashigara-kami-gun Kanagawa 258-8538 (JP)**

(74) Representative: **Klunker IP**  
**Patentanwälte PartG mbB**  
**Destouchesstraße 68**  
**80796 München (DE)**

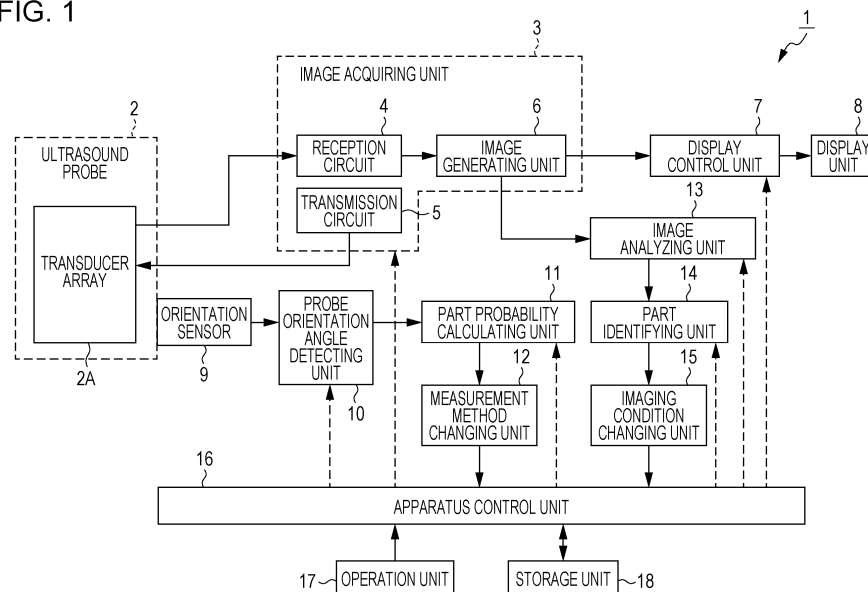
(30) Priority: **16.09.2016 JP 2016181575**

(54) **ULTRASONIC DIAGNOSTIC DEVICE AND METHOD FOR CONTROLLING ULTRASONIC DIAGNOSTIC DEVICE**

(57) An ultrasound diagnostic apparatus has: an image acquiring unit that transmits/receives an ultrasound beam from an ultrasound probe to acquire an ultrasound image; a part probability calculating unit that calculates, for the ultrasound image acquired in accordance with a first measurement method, a probability that a part included in the ultrasound image is a specific part from at least one of an orientation angle of the ultrasound probe

or an analysis result of the ultrasound image; and a measurement method changing unit that changes, when the probability is greater than or equal to a threshold value, the first measurement method to a second measurement method for identifying the part for which the probability has been calculated, in which an ultrasound image is further acquired by using the second measurement method.

FIG. 1



## Description

### BACKGROUND OF THE INVENTION

#### 1. Field of the Invention

**[0001]** The present invention relates to an ultrasound diagnostic apparatus and a control method of the ultrasound diagnostic apparatus, and particularly to an ultrasound diagnostic apparatus that identifies a part of a subject for which an ultrasound image has been generated.

#### 2. Description of the Related Art

**[0002]** In the related art, ultrasound diagnostic apparatuses have been known as apparatuses that obtain images of the inside of subjects by applying a transducer array on the subjects. A typical ultrasound diagnostic apparatus transmits an ultrasound beam from the transducer array, in which a plurality of elements are arranged, toward the inside of a subject and receives ultrasound echoes from the subject in the transducer array to acquire element data. Further, the ultrasound diagnostic apparatus performs electrical processing on the obtained element data to obtain an ultrasound image of the relevant part of the subject.

**[0003]** In a case of making a diagnosis of a subject by using such an ultrasound diagnostic apparatus, an ultrasound image of a part of the subject is sometimes acquired by using a plurality of measurement methods. For example, JP2015-131097A discloses an ultrasound diagnostic apparatus that can perform B-mode (Brightness mode) measurement, elasticity measurement, Doppler measurement, and sound speed measurement. In addition, JP2014-166198A discloses an ultrasound diagnostic apparatus that can perform B-mode measurement, Doppler measurement, and sound speed measurement. In a case of making an ultrasound diagnosis by using a plurality of measurement methods as described above, it is desired that a measurement method that is appropriate for a diagnostic part be selected.

### SUMMARY OF THE INVENTION

**[0004]** By the way, for example, in eFAST (extended Focused Assessment with Sonography for Trauma) testing in which a plurality of diagnostic parts are successively diagnosed for an initial diagnosis of a wound patient in emergency, in many cases, an ultrasound diagnosis is made by using a general imaging condition as an initial condition for the plurality of diagnostic parts. Therefore, for example, in the eFAST testing, the amount of information for identifying each diagnostic part obtained from a generated ultrasound image is small, and it has been difficult to finely identify the diagnostic part.

**[0005]** In addition, in this case, with the techniques disclosed in JP2015-131097A and JP2014-166198A, means for identifying the diagnostic part is not present.

Thus, in a case where the diagnostic part is unknown, it has been difficult to select a measurement method that is appropriate for the diagnostic part.

**[0006]** The present invention has been made to solve such problems of the related art, and an object is to provide an ultrasound diagnostic apparatus that can finely identify a diagnostic part and a control method of the ultrasound diagnostic apparatus.

**[0007]** In order to achieve the above object, an ultrasound diagnostic apparatus according to the present invention has: an ultrasound probe; an image acquiring unit that transmits an ultrasound beam from the ultrasound probe toward a subject and receives the ultrasound beam in accordance with one measurement method among a plurality of measurement methods to acquire an ultrasound image; a part probability calculating unit that calculates, for the ultrasound image acquired by the image acquiring unit in accordance with a first measurement method, a probability that a part of the subject included in the ultrasound image is a specific part from at least one of an orientation angle of the ultrasound probe or an analysis result of the ultrasound image; and a measurement method changing unit that changes, when the probability calculated in the part probability calculating unit is greater than or equal to a predetermined threshold value, the first measurement method to a second measurement method for identifying the part for which the probability has been calculated, in which the image acquiring unit further acquires an ultrasound image by using the second measurement method.

**[0008]** In addition, it is preferable that the image acquiring unit acquire the ultrasound image by using two or more measurement methods among B-mode measurement, M-mode measurement, elasticity measurement, sound velocity measurement, and Doppler measurement.

**[0009]** In addition, it is preferable that the ultrasound diagnostic apparatus further have an orientation sensor that detects an operation or a position of the ultrasound probe; and a probe orientation angle detecting unit that detects the orientation angle on the basis of a signal of the orientation sensor, in which the part probability calculating unit calculates the probability on the basis of the orientation angle.

**[0010]** In addition, it is preferable that the ultrasound diagnostic apparatus further have an image analyzing unit that analyzes the ultrasound image further acquired in the image acquiring unit.

**[0011]** Alternatively, the ultrasound diagnostic apparatus may further have an image analyzing unit that analyzes the ultrasound image acquired in the image acquiring unit, in which the part probability calculating unit calculates the probability on the basis of the analysis result in the image analyzing unit.

**[0012]** Alternatively, the ultrasound diagnostic apparatus may further have an image analyzing unit that analyzes the ultrasound image acquired in the image acquiring unit; an orientation sensor that detects an operation

or a position of the ultrasound probe; and a probe orientation angle detecting unit that detects the orientation angle on the basis of a signal of the orientation sensor, in which the part probability calculating unit calculates the probability on the basis of the orientation angle and the analysis result of the ultrasound image in the image analyzing unit.

[0013] In addition, it is preferable that the part probability calculating unit calculate the probability on the basis of a result of image analysis of an ultrasound image of a single frame in the image analyzing unit.

[0014] Alternatively, the part probability calculating unit may calculate the probability on the basis of a result of analysis of a movement of a specific pattern included in ultrasound images of a plurality of frames in common in the image analyzing unit.

[0015] In addition, it is preferable that the ultrasound diagnostic apparatus further have a part identifying unit that identifies a part of a subject for which the probability has been calculated on the basis of the analysis result of the ultrasound image in the image analyzing unit, the ultrasound image being further acquired in the image acquiring unit.

[0016] In addition, in a control method of an ultrasound diagnostic apparatus according to the present invention, an ultrasound beam is transmitted from an ultrasound probe toward a subject and is received in accordance with one measurement method among a plurality of measurement methods to acquire an ultrasound image; for the ultrasound image acquired in accordance with a first measurement method, a probability that a part of the subject included in the ultrasound image is a specific part is calculated from at least one of an orientation angle of the ultrasound probe or an analysis result of the ultrasound image; when the calculated probability is greater than or equal to a predetermined threshold value, the first measurement method is changed to a second measurement method for identifying the part for which the probability has been calculated; and an ultrasound image is further acquired by using the second measurement method.

[0017] According to the present invention, the ultrasound diagnostic apparatus has the measurement method changing unit that changes, on the basis of the probability calculated by the part probability calculating unit, the first measurement method to the second measurement method for identifying the part for which the probability has been calculated, and thus, even in a case where an ultrasound image is generated by using a measurement method with which it is difficult to identify a diagnostic part in the ultrasound diagnostic apparatus, it is possible to finely identify the diagnostic part.

## BRIEF DESCRIPTION OF THE DRAWINGS

[0018]

Fig. 1 is a block diagram illustrating a configuration

of an ultrasound diagnostic apparatus according to a first embodiment of the present invention;

Fig. 2 is a block diagram illustrating an internal configuration of a reception circuit used in the first embodiment;

Fig. 3 is a block diagram illustrating an internal configuration of an image generating unit used in the first embodiment;

Fig. 4 is a flowchart of the first embodiment;

Fig. 5 is a block diagram illustrating a configuration of an ultrasound diagnostic apparatus according to a second embodiment;

Fig. 6 is a flowchart of the second embodiment;

Fig. 7 is a block diagram illustrating a configuration of an ultrasound diagnostic apparatus according to a third embodiment; and

Fig. 8 is a flowchart of the third embodiment.

## DESCRIPTION OF THE PREFERRED EMBODIMENTS

[0019] Hereinafter, embodiments of the invention will be described with reference to the attached drawings.

### 25 First Embodiment

[0020] Fig. 1 illustrates a configuration of an ultrasound diagnostic apparatus according to a first embodiment of the present invention. An ultrasound diagnostic apparatus 1 includes an ultrasound probe 2 in which a transducer array 2A is incorporated, and a display control unit 7 and a display unit 8 are sequentially connected to the ultrasound probe 2 via an image acquiring unit 3.

[0021] The image acquiring unit 3 has a reception circuit 4 and a transmission circuit 5 that are to be connected to the transducer array 2A of the ultrasound probe 2 and an image generating unit 6 that is connected to the reception circuit 4, and the display control unit 7 is connected to the image generating unit 6. In addition, the ultrasound probe 2 includes an orientation sensor 9, and a probe orientation angle detecting unit 10 is connected to the orientation sensor 9. Further, a part probability calculating unit 11 and a measurement method changing unit 12 are sequentially connected to the probe orientation angle detecting unit 10. In addition, an image analyzing unit 13 is connected to the image generating unit 6 of the image acquiring unit 3, a part identifying unit 14 is connected to the image analyzing unit 13, and an imaging condition changing unit 15 is connected to the part identifying unit 14.

[0022] Further, an apparatus control unit 16 is connected to the image acquiring unit 3, the display control unit 7, the probe orientation angle detecting unit 10, the part probability calculating unit 11, the measurement method changing unit 12, the image analyzing unit 13, the part identifying unit 14, and the imaging condition changing unit 15, and an operation unit 17 and a storage unit 18 are each connected to the apparatus control unit 16. Note

that the apparatus control unit 16 and the storage unit 18 are connected in such a manner that information can be mutually transferred.

**[0023]** The transducer array 2A of the ultrasound probe 2 illustrated in Fig. 1 has a plurality of elements (ultrasound transducers) that are arranged one-dimensionally or two-dimensionally. These elements each transmit an ultrasound in accordance with a driving signal supplied from the transmission circuit 5 and also receive ultrasound echoes from a subject to output a reception signal. Each of the elements is constituted by using, for example, a transducer in which electrodes are formed at both ends of a piezoelectric material formed of piezoelectric ceramic typified by PZT (Lead Zirconate Titanate), a high molecular piezoelectric element typified by PVDF (Poly Vinylidene Di Fluoride), a piezoelectric single crystal typified by PMN-PT (Lead Magnesium Niobate-Lead Titanate), or the like.

**[0024]** When a pulsed or continuous-wave voltage is applied to the electrodes of such transducers, the piezoelectric material stretches or compresses, and a pulsed or continuous-wave ultrasound is generated from each of the transducers, and a composite wave of these ultrasounds form an ultrasound beam. In addition, by receiving a propagating ultrasound, the respective transducers stretch and compress to generate electric signals, and these electric signals are output as an ultrasound reception signal from the respective transducers to the reception circuit 4.

**[0025]** As illustrated in Fig. 2, the reception circuit 4 of the image acquiring unit 3 has a configuration in which an amplification unit 19 and an A/D (Analog/Digital) conversion unit 20 are connected in series. The reception circuit 4 amplifies the reception signal output from each of the elements of the transducer array 2A in the amplification unit 19, and outputs element data obtained by digitalizing the reception signal in the A/D conversion unit 20 to the image generating unit 6.

**[0026]** The transmission circuit 5 includes, for example, a plurality of pulse generators, and on the basis of a transmission delay pattern selected in accordance with a control signal from the apparatus control unit 16, adjusts a delay amount of each driving signal in such a manner that ultrasounds transmitted from the plurality of elements of the transducer array 2A form an ultrasound beam, and supplies the driving signal to the plurality of elements.

**[0027]** The image generating unit 6 of the image acquiring unit 3 generates various kinds of image signals (ultrasound images). In addition, as illustrated in Fig. 3, the image generating unit 6 has a B-mode (Brightness mode) image generating unit 21, a Doppler image generating unit 22, an elasticity map generating unit 23, a sound speed map generating unit 24, and an M-mode (Motion mode) image generating unit 25. In addition, the Doppler image generating unit 22, the elasticity map generating unit 23, and the sound speed map generating unit 24 are each connected to the B-mode image generating

unit 21.

**[0028]** On the basis of a reception delay pattern selected in accordance with a control signal from the apparatus control unit 16, the B-mode image generating unit 21 performs reception focus processing in which each element data item in accordance with a set sound speed is given a corresponding delay and addition (phasing addition) is performed. Through this reception focus processing, a sound ray signal in which a focus of ultrasound echoes is narrowed is generated. Further, the B-mode image generating unit 21 performs, on the sound ray signal, correction of attenuation due to a propagating distance in accordance with a depth of a reflection position of the ultrasound wave, and then performs envelope detection processing to generate a B-mode image signal, which is sectional-layer image information regarding tissues in the subject. In addition, the B-mode image generating unit 21 converts the generated B-mode image signal to an image signal according to a scan method of a typical television signal (performs raster conversion) and performs various kinds of necessary image processing, such as tone processing on the image signal, and then outputs the image signal to the display control unit 7.

**[0029]** The Doppler image generating unit 22 generates, for example, a Doppler image by using a color Doppler method. Although not illustrated, the Doppler image generating unit 22 calculates a Doppler transition frequency by performing frequency analysis of the element data and acquires, as Doppler data, information on a relative moving speed of a tissue in a part of a subject relative to the ultrasound probe 2. Further, the Doppler image generating unit 22 converts each Doppler data item in the corresponding tissue into color information corresponding to the speed and performs various kinds of necessary image processing, such as tone processing to generate a color Doppler image signal (Doppler image). The generated Doppler image is combined with, for example, a B-mode image so as to be superposed with each tissue in a part in the corresponding B-mode image.

**[0030]** On the basis of the sound ray signal generated in the B-mode image generating unit 21 and the reception signal output from the reception circuit 4, from a stress distribution and distortion data, the elasticity map generating unit 23 generates an elasticity map, which is a distribution of a modulus of elasticity with respect to each tissue in a part included in the B-mode image. The generated elasticity map is, for example, a map of a distribution of a modulus of elasticity using color pixels and is combined with a B-mode image in such a manner that information on each modulus of elasticity that is mapped is superposed with a corresponding tissue in a part in the B-mode image.

**[0031]** On the basis of the reception signal, the sound speed map generating unit 24 calculates a local sound speed value in each tissue in a part included in the B-mode image and generates a sound speed map, which is a distribution of the local sound speed value with respect to each tissue. The generated sound speed map

is, for example, a map of a distribution of the local sound speed using color pixels and is combined with a B-mode image in such a manner that information on each local sound speed value that is mapped is superposed with a corresponding tissue in a part in the B-mode image.

**[0032]** Note that the Doppler image signal, the elasticity map signal, and the sound speed map signal are subjected to raster conversion as in the B-mode image signal in the Doppler image generating unit 22, the elasticity map generating unit 23, and the sound speed map generating unit 24, respectively, and image signals are subjected to various kinds of necessary image processing, such as tone processing, and are then output to the display control unit 7.

**[0033]** On the basis of a reception delay pattern selected in accordance with a control signal from the apparatus control unit 16, the M-mode image generating unit 25 performs reception focus processing in which each element data item in accordance with the set sound speed is given a corresponding delay and addition (phasing addition) is performed. Through this reception focus processing, a sound ray signal in which a focus of ultrasound echoes is narrowed is generated. Further, the M-mode image generating unit 25 plots a depth-direction signal on a time axis along a sound line (scan line) that is freely set and generates an M-mode image signal. In addition, as in the B-mode image generating unit 21, the M-mode image generating unit 25 performs raster conversion on the M-mode image signal and performs various kinds of necessary image processing, such as tone processing on the image signal, and then outputs the image signal to the display control unit 7.

**[0034]** As illustrated in Fig. 1, on the basis of the B-mode image signal acquired in the image acquiring unit 3, the display control unit 7 of the ultrasound diagnostic apparatus 1 causes the display unit 8 to display an ultrasound diagnostic image.

**[0035]** The display unit 8 includes, for example, a display apparatus such as an LCD (Liquid Crystal Display) and displays an ultrasound diagnostic image under control of the apparatus control unit 16.

**[0036]** The orientation sensor 9 is included in the ultrasound probe 2 and detects, as an electric signal, an operation or a position of the ultrasound probe 2 that is operated by an operator during an ultrasound diagnosis.

**[0037]** The orientation sensor 9 is not particularly limited as long as the operation or the position of the ultrasound probe 2 can be detected. However, in the following description, a case where an acceleration sensor that detects the operation of the ultrasound probe 2 is used as the orientation sensor 9 will be described. In this case, the orientation sensor 9 detects, as the electric signal, acceleration of three components along three axes that intersect with one another in a three-dimensional space. Further, the signal detected by the orientation sensor 9 is output to the probe orientation angle detecting unit 10.

**[0038]** On the basis of the signal indicating the operation of the ultrasound probe 2 detected by the orientation

sensor 9, the probe orientation angle detecting unit 10 detects an orientation angle of the ultrasound probe 2. For example, from the acceleration in the three-dimensional space obtained in the orientation sensor 9, the orientation angle of the ultrasound probe 2 can be calculated by using a known calculation method.

**[0039]** When an operator makes an ultrasound diagnosis by using the ultrasound probe 2, on the basis of the orientation angle of the ultrasound probe 2 detected in the probe orientation angle detecting unit 10, the part probability calculating unit 11 calculates a probability (part probability) that a part of the subject included in the ultrasound image acquired in the image acquiring unit 3 is a specific part. The part probability calculating unit 11 can calculate, for example, a probability that the part of the subject included in the ultrasound image acquired in the image acquiring unit 3 is a heart. Note that the calculation of the part probability in the part probability calculating unit 11 will be described later in detail.

**[0040]** The measurement method changing unit 12 changes a measurement method used when the ultrasound image is acquired in the image acquiring unit 3 to a measurement method in accordance with the part where the ultrasound diagnosis has been made. Measurement methods here include B-mode measurement, M-mode measurement, elasticity measurement, Doppler measurement, and sound speed measurement. The measurement method changing unit 12 changes at least one measurement method among these measurement methods on the basis of a calculation result of the part probability in the part probability calculating unit 11.

**[0041]** The image analyzing unit 13 performs image analysis such as movement analysis or pattern recognition for various image signals generated in the image generating unit 6 of the image acquiring unit 3, and outputs a result of image analysis to the part identifying unit 14.

**[0042]** On the basis of the result of analysis of the ultrasound image in the image analyzing unit 13, the part identifying unit 14 identifies the part of the subject included in the ultrasound image and outputs information on the identified part to the imaging condition changing unit 15.

**[0043]** On the basis of the information on the part identified in the part identifying unit 14, the imaging condition changing unit 15 changes the imaging condition used when the ultrasound image is acquired in the image acquiring unit 3 to an imaging condition that is appropriate for the identified part. The imaging condition here includes a frame rate at the time of an ultrasound diagnosis, a resolution of the ultrasound image, brightness of the ultrasound image, and a dynamic range at the time of the ultrasound diagnosis.

**[0044]** On the basis of an instruction that has been input by an operator through the operation unit 17, the apparatus control unit 16 controls each unit of the ultrasound diagnostic apparatus 1.

**[0045]** The operation unit 17 is used by the operator

to perform an input operation and can be configured to include a keyboard, a mouse, a trackball, a touch panel, and the like.

**[0046]** The storage unit 18 stores an operation program of the ultrasound diagnostic apparatus 1 and the like and can be a recording medium such as an HDD (Hard Disc Drive), an SSD (Solid State Drive), an FD (Flexible Disc), an MO disc (Magneto-Optical disc), an MT (Magnetic Tape), a RAM (Random Access Memory), a CD (Compact Disc), a DVD (Digital Versatile Disc), an SD card (Secure Digital card), or a USB memory (Universal Serial Bus memory), a server, or the like.

**[0047]** Note that the image generating unit 6, the display control unit 7, the probe orientation angle detecting unit 10, the part probability calculating unit 11, the measurement method changing unit 12, the image analyzing unit 13, the part identifying unit 14, and the imaging condition changing unit 15 are configured from a CPU (Central Processing Unit) and an operation program for causing the CPU to perform various kinds of processing. However, these units may also be configured by using a digital circuit. In addition, these image generating unit 6, the display control unit 7, the probe orientation angle detecting unit 10, the part probability calculating unit 11, the measurement method changing unit 12, the image analyzing unit 13, the part identifying unit 14, and the imaging condition changing unit 15 can also be configured to be partly or generally integrated with one CPU.

**[0048]** Next, an operation of the ultrasound diagnostic apparatus 1 in the first embodiment will be described with reference to a flowchart illustrated in Fig. 4.

**[0049]** First, in step S1, the apparatus control unit 16 initializes a measurement method at the time of acquiring an ultrasound image in the image acquiring unit 3 to a first measurement method, and also initializes an imaging condition for acquiring the ultrasound image in the image acquiring unit 3 to a first imaging condition. The first measurement method is not particularly limited as long as the first measurement method is a measurement method used for an ultrasound diagnosis. However, in the following description, the first measurement method is B-mode measurement that is generally used for each diagnostic part in many cases. In addition, the first imaging condition is, for example, an imaging condition for which a general setting is set for a plurality of diagnostic parts. Such a general imaging condition for a plurality of diagnostic parts is set in many cases in such a manner that, for example, a plurality of parts can be diagnosed rapidly in a continuous diagnosis such as eFAST testing.

**[0050]** In step S2, under the first imaging condition and in accordance with the first measurement method, the reception circuit 4 and the transmission circuit 5 of the image acquiring unit 3 transmits/receives and passes an ultrasound beam by using a plurality of ultrasound transducers of the transducer array 2A of the ultrasound probe 2. At this time, a reception signal is output to the reception circuit 4 from each of the ultrasound transducers that have received ultrasound echoes from the subject, and

the reception signal is amplified and subjected to A/D conversion in the amplification unit 19 and the A/D conversion unit 20 of the reception circuit 4 so that the reception signal is generated. In addition, while the ultrasound beam is transmitted/received and passed, the orientation sensor 9 detects the operation of the ultrasound probe 2 that is being operated by an operator as an electric signal.

**[0051]** The following step S3 and step S4 are performed in synchronization and in parallel.

**[0052]** In step S3, the B-mode processing unit 20 of the image generating unit 6 sequentially generates B-mode images by using reception signals that have been input from the reception circuit 4 on the basis of a frame rate at the time of acquiring the ultrasound images, which is set in the first imaging condition.

**[0053]** In addition, in step S4, on the basis of an electric signal representing the operation of the ultrasound probe 2, the electrical signal having been input from the orientation sensor 9, the probe orientation angle detecting unit 10 detects an orientation angle of the ultrasound probe 2 at the time of transmission/reception or passing of an ultrasound beam performed in step S2. For example, from the acceleration of three components along three axes that intersect with one another in a three-dimensional space, which has been detected by the orientation sensor 9, the orientation angle of the ultrasound probe 2 can be calculated by using a known calculation method. The orientation angle of the ultrasound probe 2 differs depending on the part of the subject for which the ultrasound diagnosis is made. For example, in eFAST testing, the diagnostic part can be a heart, lungs, a right abdomen, a left abdomen, or a urinary bladder. In order to conduct appropriate testing on these parts, it is known that the ultrasound probe 2 is used at a different orientation angle depending on the part. In addition, in the ultrasound diagnosis of a plurality of parts, for example, in an abdomen diagnosis, an operator makes a diagnosis while moving the ultrasound probe 2 in many cases. In the above manner, in a case where the operator moves the ultrasound probe 2 during the ultrasound diagnosis, the probe orientation angle detecting unit 10 can detect, for example, an average value of the orientation angle of the ultrasound probe 2 within a fixed period of time as the orientation angle of the ultrasound probe 2.

**[0054]** The generation of a B-mode image in step S3 and the detection of the orientation angle of the ultrasound probe 2 in step S4 are started at the same time by simultaneously transmitting, to the image acquiring unit 3 and the probe orientation angle detecting unit 10 from the apparatus control unit 15, information indicating that the B-mode image generation is to be started and information indicating that the orientation angle detection is to be started. In response to the start of the generation of the B-mode image and the detection of the orientation angle of the ultrasound probe 2 in step S3 and step S4, the frame rate that is set in the first imaging condition and a sampling frequency for the probe orientation angle de-

tecting unit 10 to sample a signal of the orientation sensor 9 are synchronized. In the above manner, the generation of the B-mode image in step S3 and the detection of the orientation angle of the ultrasound probe 2 in step S4 are performed in synchronization and in parallel. Note that, for example, by thinning out information of the orientation sensor at a frequency higher than the frame rate that is set in the first imaging condition, the frame rate that is set in the first imaging condition and the sampling frequency of the probe orientation angle detecting unit 10 can correspond to each other.

**[0055]** In step S5, from the orientation angle of the ultrasound probe 2 detected by the probe orientation angle detecting unit 10 in step S4, the part probability calculating unit 11 calculates a probability (part probability) that the part of the subject included in the B-mode image (ultrasound image) generated by the B-mode image generating unit 21 of the image generating unit 6 in step S3 is a specific part. Although various calculation methods can be used for the calculation of the part probability in the part probability calculating unit 11, for example, the part probability calculating unit 11 can calculate, as the part probability, a reciprocal of a difference between a target orientation angle of the ultrasound probe 2 (target probe angle) for a specific part of the subject and the actual orientation angle detected by the probe orientation angle detecting unit 10. In this case, by using the target probe angle for each part of the subject, the part probability calculating unit 11 calculates each part probability that the part included in the ultrasound image is the specific part.

**[0056]** In step S6, the apparatus control unit 16 determines whether the part probability calculated by the part probability calculating unit 11 by using the orientation angle of the ultrasound probe 2 is greater than or equal to a predetermined threshold value. For example, in a case where the part probability calculating unit 11 calculates the probabilities that the part included in the ultrasound image generated in step S3 is a heart, lungs, a right abdomen, a left abdomen, and a urinary bladder, it is determined whether these part probabilities are each greater than or equal to the threshold value. The threshold value used for the determination of the part probability is preferably a value at which only the part probabilities for parts where the orientation angles of the ultrasound probe 2 at the time of the ultrasound diagnosis, that is, the target probe angles, are similar are greater than or equal to the threshold value.

**[0057]** Note that this threshold value can be decided by, for example, calculating a statistical value for the orientation angle of the ultrasound probe 2 in previous diagnoses, pretesting, or the like.

**[0058]** If the apparatus control unit 16 determines in step S6 that at least one part probability among the plurality of part probabilities calculated by the part probability calculating unit 11 is greater than or equal to the threshold value, the process proceeds to step S7. In step S7, on the basis of the part probability that is determined by the

apparatus control unit 16 to be greater than or equal to the threshold value, the measurement method changing unit 12 changes the first measurement method to a second measurement method for identifying the part for which the part probability has been calculated. For example, if it is determined in step S6 that the part probability that the part included in the ultrasound image is the heart is greater than or equal to the threshold value and that the part probability that the part included in the ultrasound image is the right abdomen is greater than or equal to the threshold value, the measurement method changing unit 12 changes the first measurement method to the second measurement method for identifying the part included in the ultrasound image as either of the heart and the right abdomen. In this case, for example, as the second measurement method, a measurement method using Doppler measurement for determining the presence or absence of blood flow that is characteristic to the heart can be set.

**[0059]** If the apparatus control unit 16 determines in step S6 that the plurality of part probabilities calculated by the part probability calculating unit 11 are all less than the threshold value, the process proceeds to step S16. In step S16, the apparatus control unit 16 determines whether the number of times the apparatus control unit 16 determines in step S6 that the plurality of part probabilities are all less than the threshold value is N. If the number of times the apparatus control unit 16 determines that the plurality of part probabilities are all less than the threshold value is less than N, the process returns to step S2, and an ultrasound image is acquired by using the first measurement method. Subsequently, when the number of times of determination that the plurality of part probabilities are all less than the threshold value becomes N, the process proceeds to step S17. A message indicating that an error has occurred is displayed in the display unit 8, and then the ultrasound diagnostic apparatus 1 terminates the operation.

**[0060]** Note that N is a natural number of greater than or equal to 1 and can be set in advance in a program or the like of the ultrasound diagnostic apparatus 1. However, in some cases, the ultrasound image is preferably acquired again as in a case where an operator fails to generate the ultrasound image by using the ultrasound diagnostic apparatus 1, and thus, N is preferably a number of greater than or equal to 2.

**[0061]** In step S8 subsequent to step S7, under the first imaging condition and in accordance with the second measurement method, the reception circuit 4 and the transmission circuit 5 of the image acquiring unit 3 further transmits/receives and passes an ultrasound beam to/from a part of the subject.

**[0062]** Further, in step S9, the image generating unit 6 of the image acquiring unit 3 generates an ultrasound image by using an ultrasound reception signal acquired in accordance with the second measurement method. For example, in a case where Doppler measurement is performed as the second measurement method, the

Doppler image generating unit 22 of the image generating unit 6 can generate a color Doppler image. In this color Doppler image, a portion where a flow velocity changes is a color pixel.

**[0063]** In step S10, the image analyzing unit 13 performs image analysis on the ultrasound image further generated by the image generating unit 6 in order to identify the part of the subject included in the ultrasound image. For example, in a case where Doppler measurement is performed as the second measurement method and the color Doppler image is acquired, the image analyzing unit 13 can calculate the area of color pixels included in the color Doppler image. According to such an analysis method, for example, it can become easier to identify the heart having a large amount of blood flow and the right abdomen having a kidney with a small amount of blood flow.

**[0064]** In step S11, on the basis of an analysis result of the ultrasound image in the image analyzing unit 13, the part identifying unit 14 identifies the part of the subject included in the ultrasound image. For example, in a case where the part probabilities determined in step S6 to be greater than or equal to the threshold value are the part probability that the part included in the ultrasound image is the heart and the part probability that the part included in the ultrasound image is the right abdomen and where the image analyzing unit 13 calculates the area of color pixels included in the color Doppler image, the part identifying unit 14 identifies the part as the heart if the calculated area of color pixels is greater than or equal to a fixed value and identifies the part as the right abdomen if the calculated area of color pixels is less than or equal to the fixed value.

**[0065]** In step S12, the imaging condition changing unit 15 changes the first imaging condition to a second imaging condition that is appropriate for the part identified by the part identifying unit 14.

**[0066]** In the subsequent step S13, under the second imaging condition and in accordance with the second measurement method, the reception circuit 4 and the transmission circuit 5 of the image acquiring unit 3 transmits/receives and passes an ultrasound beam to/from the part identified by the part identifying unit 14.

**[0067]** Further, in step S14, under the second imaging condition and in accordance with the second measurement method, the image generating unit 6 of the image acquiring unit 3 generates an image signal from a reception signal acquired by the reception circuit 4 and the transmission circuit 5. In addition, although not illustrated, an image signal based on a desired measurement method, without being limited to the second measurement method, can also be generated in step S14. For example, a B-mode image can be generated in step S14 on the basis of B-mode measurement, which is the measurement method used in step S1 to step S3.

**[0068]** In step S15, the apparatus control unit 16 determines whether the part of the subject for which the ultrasound diagnosis is currently being performed has

been changed. For example, when the diagnostic part transitions from the heart to the lungs, it is determined that the diagnostic part has been changed. Specifically, in a case where the diagnostic part is changed, the probe typically is released from the surface of the body and radiation is performed to the air, and thus, by the detection of such radiation-to-the-air state (a state where a reflection signal is not obtained), it can be determined that the diagnostic part has been changed. If it is determined in step S15 that the diagnostic part has not been changed, that is, that the same diagnostic part is being diagnosed, the process returns to step S13, and the ultrasound image is acquired by using the second imaging condition. On the other hand, if it is determined in step S15 that the diagnostic part has been changed, the process returns to step S1, and the second measurement method is initialized to the first measurement method, and also, the second imaging condition is initialized to the first imaging condition.

**[0069]** As described above, according to the ultrasound diagnostic apparatus 1 in the first embodiment illustrated in Fig. 1, the ultrasound image is acquired in accordance with the first measurement method in order to calculate the part probability on the basis of the orientation angle of the ultrasound probe 2, and then the measurement method is changed to the second measurement method to further acquire the ultrasound image in order to identify the part included in the ultrasound image on the basis of the calculated part probability. In the above manner, by acquiring the ultrasound image twice separately, candidate parts for identification can be narrowed down, and thus, the part can be finely identified so as to set an appropriate imaging condition. In addition, the data processing amount of the ultrasound diagnostic apparatus 1 is small compared with the identification of a part using only pattern identification referring to a database, which has been widely performed in the related art, and the period of time for image analysis can be shortened when identifying the part included in the ultrasound image. Further, also in a case where an ultrasound image of a plurality of parts is acquired by using a general measurement method as the first measurement method, on the basis of a determination result of the part probability in step S6, the first measurement method can be changed to the second measurement method for identifying the candidate parts for identification, and thus, the ultrasound diagnostic apparatus 1 can accurately identify the part.

**[0070]** In addition, the B-mode image is generated in step S3 and the orientation angle of the ultrasound probe 2 is acquired in step S4 in synchronization and in parallel in the above description. However, as long as the B-mode image and the orientation angle of the ultrasound probe 2 are acquired prior to transition to step S5, step S3 and step S4 are not necessarily performed in synchronization and in parallel. That is, after the B-mode image has been acquired in step S3, the orientation angle of the ultrasound probe 2 may be acquired in step S4. Alternatively, after the orientation angle of the ultrasound probe 2 has

been acquired, the B-mode image may be acquired.

**[0071]** In addition, the calculation method of the orientation angle in the probe orientation angle detecting unit 10 is not limited to the above-described method as long as the orientation angle of the ultrasound probe 2 can be calculated. For example, although not illustrated, on the basis of positional information of the ultrasound probe 2 calculated by performing time quadrature twice, within a fixed time, on the acceleration detected by the orientation sensor 9, the orientation angle of the ultrasound probe 2 may be calculated in the probe orientation angle detecting unit 10.

**[0072]** In addition, although the use of the acceleration sensor has been illustrated as an example of the orientation sensor 9 that detects the operation of the ultrasound probe 2, another sensor may also be used as the orientation sensor 9 as long as the operation or the position of the ultrasound probe 2 is detected. As the orientation sensor 9 like this, for example, in addition to the acceleration sensor, a gyro sensor, a magnetic sensor, a GPS (Global Positioning System) sensor, or the like can be used. In addition, these sensors may be equipped with the ultrasound probe 2 or may be incorporated in the ultrasound probe 2.

**[0073]** For example, by using the gyro sensor that is attached to the ultrasound probe 2 as the orientation sensor 9, on the basis of an angular speed of the ultrasound probe 2 obtained from the gyro sensor, the orientation angle of the ultrasound probe 2 may also be detected from a known calculation method. In addition, for example, by using the magnetic sensor as the orientation sensor 9, on the basis of positional information of the ultrasound probe 2 detected by the magnetic sensor, the orientation angle of the ultrasound probe 2 may also be detected. Further, for example, by using the GPS sensor as the orientation sensor 9, on the basis of positional information of the ultrasound probe 2 acquired from the GPS sensor, the orientation angle of the ultrasound probe 2 may also be detected.

**[0074]** In addition, as long as the operation or the position of the ultrasound probe 2 is detected, the orientation sensor 9 is not necessarily equipped with or incorporated in the ultrasound probe 2, and may also be provided separately from the ultrasound probe 2. As the orientation sensor 9 like this, for example, although not illustrated, a known camera or the like may be used to detect positional information of the ultrasound probe 2, and on the basis of the detected positional information of the ultrasound probe 2, the orientation sensor 9 may also detect the orientation angle of the ultrasound probe 2.

**[0075]** In addition, in the above description, in a case where Doppler measurement is performed as the second measurement method and where a color Doppler image is acquired in the image acquiring unit 3, the image analyzing unit 13 calculates the area of color pixels included in the acquired color Doppler image. However, it is needless to say that the image analysis performed in the image

analyzing unit 13 is not limited to this. For example, in the color Doppler image of the heart, the portion constituted by color pixels forms a circular region, and thus, the image analyzing unit 13 can detect the color pixels or the like. In this case, the part identifying unit 14 performs pattern recognition or the like on the color Doppler image in which the color pixels have been detected so that the heart and the right abdomen can be identified.

**[0076]** In addition, although a case where Doppler measurement is performed as the second measurement method has been described, another measurement method may also be used as the second measurement method. For example, in a case where it is determined in step S6 that the probability that the part included in the ultrasound image is the heart and the probability that the part included in the ultrasound image is the right abdomen are greater than or equal to the threshold value, elasticity measurement can also be performed as the second measurement method. In this case, the image acquiring unit 3 acquires an elasticity image according to elasticity measurement. As for the elasticity image, while color pixels in accordance with the modulus of elasticity of a tissue included in the part are mapped in the ultrasound image, the modulus of elasticity of flow of a fluid such as blood flow cannot be detected. Accordingly, for example, in an elasticity image of the heart, for which a large amount of blood flow is characteristic, the area of color pixels is small. In this case, the image analyzing unit 13 calculates the area of a color image in the elasticity image, and thereby it becomes easy to distinguish between the heart with a large amount of blood flow and the right abdomen with a small amount of blood flow. Further, for example, in this case, the part identifying unit 14 determines whether the area of color pixels calculated in the elasticity image is greater than or equal to a fixed value, and thereby it is possible to identify the part included in the ultrasound image as the heart or the right abdomen.

**[0077]** In addition, for example, in a case where it is determined in step S6 that the probability that the part included in the ultrasound image is the heart and the probability that the part included in the ultrasound image is the right abdomen are greater than or equal to the threshold value, sound speed measurement may also be performed as the second measurement method. In this case, the image acquiring unit 3 acquires a sound speed map according to the sound speed measurement. The sound speed map is an image in which the sound speed in a case where a region included in the ultrasound image is a medium is mapped as color pixels in the ultrasound image. For example, the sound speed in blood flowing in the heart and the sound speed in a kidney located in the right abdomen differ from each other. Accordingly, the image analyzing unit 13 calculates the area of color pixels with respect to the sound speed in a case where blood with a high purity is a medium, and thereby it becomes easy to distinguish between the heart and the right abdomen. Further, for example, in this case, the

part identifying unit 14 determines whether the area of color pixels calculated in the sound speed map is greater than or equal to a fixed value, and thereby it is possible to identify the part included in the ultrasound image as the heart or the right abdomen.

**[0078]** In addition, for example, in a case where it is determined in step S6 that the probability that the part included in the ultrasound image is the heart and the probability that the part included in the ultrasound image is the right abdomen are greater than or equal to the threshold value, M-mode measurement may also be performed as the second measurement method. In this case, for example, the image analyzing unit 13 can perform pattern recognition using template matching, texture analysis, machine learning, or the like.

**[0079]** In a case where pattern recognition is performed as means for image analysis, the image analyzing unit 13 can calculate a degree of similarity to each part or the like as a score. In this case, the part identifying unit 14 determines whether the calculated score is greater than or equal to a fixed value, and thereby it is possible to identify the part included in the ultrasound image as the heart or the right abdomen.

**[0080]** In the above description, mainly, a case has been described as an example where the part probability that is determined by the apparatus control unit 16 to be greater than or equal to the threshold value in step S6 is the part probability that the part included in the ultrasound image is the heart and the part probability that the part included in the ultrasound image is the right abdomen. However, it is needless to say that the apparatus control unit 16 determines that the part probability that the part included in the ultrasound image is a part other than the heart and the right abdomen is greater than or equal to the threshold value. Since the orientation angle of the ultrasound probe 2 at the time of making an ultrasound diagnosis of lungs and the orientation angle of the ultrasound probe 2 at the time of making an ultrasound diagnosis of a urinary bladder are similar, for example, in a case where the apparatus control unit 16 determines that the part probability that the part included in the ultrasound image is lungs and the part probability that the part included in the ultrasound image is a urinary bladder are greater than or equal to the threshold value, in order to distinguish between the lungs and the urinary bladder, the ultrasound diagnosis can be made by using a measurement method such as elasticity measurement or sound speed measurement as the second measurement method.

**[0081]** For example, in a case where elasticity measurement is performed as the second measurement method in order to distinguish between the lungs and the urinary bladder, the image analyzing unit 13 can calculate the area of color pixels. In an elasticity image, a portion of air is not mapped by using color pixels, and thus, an elasticity image of lungs including much air relative to structures as an organ has a small number of color pixels. On the other hand, the urinary bladder has a large

number of structures as an organ, and thus has a large number of color pixels in an elasticity image. Accordingly, for example, the part identifying unit 14 determines whether the area of color pixels calculated in the image analyzing unit 13 is greater than or equal to a fixed value, and thereby it is possible to identify the part included in the ultrasound image as the lungs or the urinary bladder.

**[0082]** In addition, for example, also in a case where sound speed measurement is performed as the second measurement method in order to distinguish between the lungs and the urinary bladder, the image analyzing unit 13 can calculate the area of color pixels. The lungs include much air, and the urinary bladder includes structures as an organ and urine. Thus, the sound speed differs in the lungs and in the urinary bladder. Accordingly, for example, the part identifying unit 14 determines whether the area of a color image calculated in the image analyzing unit 13 is greater than or equal to a fixed value, and thereby it is possible to identify the part included in the ultrasound image as the lungs or the urinary bladder.

**[0083]** In addition, in the above description, the image generating unit 6 of the image acquiring unit 3 has all of the B-mode image generating unit 21, the Doppler image generating unit 22, the elasticity map generating unit 23, the sound speed map generating unit 24, and the M-mode image generating unit 25. However, the image generating unit 6 may acquire an ultrasound image by using two or more measurement methods among B-mode measurement, M-mode measurement, elasticity measurement, sound speed measurement, and Doppler measurement. Accordingly, the image generating unit 6 may include two or more of the B-mode image generating unit 21, the Doppler image generating unit 22, the elasticity map generating unit 23, the sound speed map generating unit 24, and the M-mode image generating unit 25.

**[0084]** In addition, the ultrasound diagnostic apparatus 1 described above is small, and thus may be a mobile ultrasound diagnostic apparatus that is used by being carried easily, or may be a stationary ultrasound diagnostic apparatus that is used by being provided in a consultation room or the like.

**[0085]** In addition, the ultrasound probe 2 is not particularly limited as long as an ultrasound beam can be transmitted/received to/from a subject, and may be of a sector type, a convex type, a linear type, or a radial type.

#### Second Embodiment

**[0086]** Fig. 5 illustrates an ultrasound diagnostic apparatus 26 in a second embodiment. The ultrasound diagnostic apparatus 26 does not have the orientation sensor and the probe orientation angle detecting unit in the ultrasound diagnostic apparatus 1 in the first embodiment illustrated in Fig. 1 but has a part probability calculating unit 27 instead of the part probability calculating unit 11, and further, the image analyzing unit 13 is connected to the part probability calculating unit 27. The other config-

uration has the same components as those in the ultrasound diagnostic apparatus 1 illustrated in Fig. 1. Accordingly, in Fig. 5, the same components as those in Fig. 1 are denoted by the same reference numerals, and a detailed description of these components is omitted.

**[0087]** The part probability calculating unit 11 in the first embodiment calculates the probability that a part of a subject included in an ultrasound image is each specific part on the basis of the orientation angle of the ultrasound probe 2. However, the part probability calculating unit 27 in the second embodiment calculates the probability that a part of a subject included in an ultrasound image is each specific part on the basis of an image analysis result.

**[0088]** An operation of the ultrasound diagnostic apparatus 26 having such a configuration in the second embodiment will be described below with reference to a flowchart illustrated in Fig. 6.

**[0089]** Step S1 to step S3 are the same as step S1 to step S3 in the first embodiment illustrated in Fig. 4 except that step S3 and step S4 are not performed in synchronization and in parallel. The measurement method is initialized to the first measurement method, and the imaging condition is initialized to the first imaging condition, and an image signal (ultrasound image) is generated from a reception signal acquired by transmitting/receiving and passing an ultrasound beam using the first measurement method and the first imaging condition. Although various measurement methods can be used as the first measurement method, the second embodiment will also be described in which B-mode measurement is performed as the first measurement method as in the first embodiment.

**[0090]** In step S18 subsequent to step S3, the apparatus control unit 16 determines whether acquisition of the ultrasound image by using the first measurement method is a first time counting from the initialization in step S1.

**[0091]** If, in step S18, the acquisition of an ultrasound image by using the first imaging condition is the first time counting from the initialization in step S1, the process proceeds to step S19. In step S19, the image analyzing unit 13 performs image analysis on an ultrasound image of a single frame that has been output from the image generating unit 6 of the image acquiring unit 3. The image analysis performed on the ultrasound image of a single frame in step S19 is performed in order to narrow down candidate parts of a subject included in the ultrasound image from, for example, a plurality of diagnostic parts determined in eFAST testing. As such image analysis of the ultrasound image of a single frame, for example, the image analyzing unit 13 can detect an edge structure included in the ultrasound image of a single frame and can calculate an area (edge pixel area) of pixels of the edge structure oriented in a specific direction, which is, for example, an oblique direction.

**[0092]** Further, in step S20, on the basis of a result of the image analysis of the ultrasound image of a single

frame in step S19, the part probability calculating unit 27 calculates a part probability that a part included in the ultrasound image is each specific part. Although various calculation methods can be used for the calculation of the part probability in the part probability calculating unit 27, for example, the part probability calculating unit 27 can calculate, as the part probability, a reciprocal of a difference between an area (target edge pixel area) of pixels of the edge structure oriented in the specific direction, which is a target for each specific part of the subject, and the actual edge pixel area calculated in step S19. In this case, the part probability calculating unit 27 calculates the probability that the part included in the ultrasound image is each specific part by using the target pixel area for each part of the subject.

**[0093]** In the subsequent step S6, as in step S6 in the first embodiment, the apparatus control unit 16 determines whether the part probability calculated in step S20 is greater than or equal to a predetermined threshold value. As for the threshold value used for the determination of the part probability, for example, it is preferable that only the part probabilities for parts where the edge pixel areas, that is, the target edge pixel areas, are similar be greater than or equal to the threshold value. For example, if edge structure detection is performed through image analysis, a large number of oblique edge structures are detected in both the ultrasound image of the heart and the ultrasound image of the right abdomen. Thus, the target edge pixel areas for the heart and the right abdomen are similar. On the other hand, since the lungs have a small number of structures as an organ, there are a small number of oblique edge structures even if the edge structure detection is performed through image analysis, and the target edge pixel areas of the heart and the right abdomen are not similar. Thus, the lungs can be distinguished from the heart and the right abdomen.

**[0094]** If it is determined in step S6 that at least one part probability among a plurality of part probabilities calculated by the part probability calculating unit 27 is greater than or equal to the threshold value, the process proceeds to step S7. Step S7 to step S15 are the same as step S7 to step S15 in the first embodiment illustrated in Fig. 4, and the first measurement method is changed to the second measurement method on the basis of the part probability, and then, the ultrasound image that is further acquired is subjected to image analysis, and thereby the part of the subject included in the ultrasound image is identified. Subsequently, the first imaging condition is changed to the second imaging condition that is appropriate for the identified part, and the ultrasound image is further acquired by using the second imaging condition. The ultrasound image is further acquired until the diagnostic part is changed, and when the diagnostic part is changed, the process returns to step S1.

**[0095]** If it is determined in step S6 that the plurality of part probabilities calculated by the part probability calculating unit 27 are all less than the threshold value, the

process returns to step S2. When the ultrasound image is acquired in second-time step S2 and step S3, in the subsequent step S18, the apparatus control unit 16 determines that the acquisition of the ultrasound image is not the first time, and the process proceeds to step S21.

**[0096]** In step S21, the image analyzing unit 13 performs image analysis on ultrasound images of a plurality of frames that are output from the image generating unit 6 of the image acquiring unit 3. As in the image analysis of the ultrasound image of a single frame in step S19, the image analysis of the ultrasound images of a plurality of frames performed in step S21 is performed in order to narrow down candidate parts of a subject included in the ultrasound images from a plurality of diagnostic parts. As such image analysis of the ultrasound images of a plurality of frames, for example, image analysis using so-called optical flow can be performed on the ultrasound image acquired by using the first measurement method. Although not illustrated, the optical flow is a technique for mapping a direction and distance of movement of each pattern by using a vector or the like for a plurality of characteristic patterns in the same part included in the ultrasound images of a plurality of frames in common by using the ultrasound images of a plurality of frames acquired in a time-series manner.

**[0097]** In the subsequent step S22, on the basis of a result of the image analysis of the ultrasound images of a plurality of frames in step S21, the part probability calculating unit 27 calculates the part probability. The part probability calculating unit 27 can calculate, as the part probability, for example, a reciprocal of a difference between the number of vectors (target number of vectors) mapped in the optical flow, which is a target for each specific part of the subject, and the actual number of vectors (number of vectors) calculated in step S21. In this case, by using the target number of vectors for each part of the subject, the part probability calculating unit 27 calculates the probabilities that the part included in the ultrasound images is each specific part.

**[0098]** Note that in this case, although it is possible to distinguish between a part with much movement and a part with a little movement by calculating the part probability, there is also a part that is not explicitly distinguished. For example, since the heart has beats, a large number of vectors are mapped in an ultrasound image of the heart by the optical flow. In addition, the abdomen includes a large number of structures as an organ and the ultrasound probe 2 is moved by an operator at the time of an ultrasound diagnosis, and thus, a large number of vectors are mapped due to the movement of the ultrasound probe 2 in an ultrasound image of the abdomen. On the other hand, for example, as for the lungs, there are a small number of structures as an organ and the ultrasound probe 2 is rarely moved by an operator at the time of the ultrasound diagnosis, and thus, the number of vectors mapped by the optical flow is small in an ultrasound image of the lungs. Accordingly, for example, by calculation of the part probability based on the optical

flow for the ultrasound image obtained by using the first imaging condition, it is possible to distinguish between the heart and the abdomen, which are the parts with much movement, and the lungs, which are the parts with a little movement.

**[0099]** In step S23, as in step S6, the apparatus control unit 16 determines whether the part probability obtained in step S22 is greater than or equal to the threshold value.

**[0100]** If it is determined in step S23 that the plurality of part probabilities calculated on the basis of the result of image analysis of the ultrasound images of a plurality of frames are all less than the threshold value, the process proceeds to step S16.

**[0101]** As in step S16 in the first embodiment illustrated in Fig. 4, in step S16, it is determined whether the number of times of determination in step S23 that the plurality of part probabilities are all less than the threshold value is N. At this time, if the number of times of determination in step S23 that the plurality of part probabilities are all less than the threshold value is less than N, the process returns to step S2. Subsequently, when the number of times of determination that the plurality of part probabilities are all less than the threshold value becomes N in step S23, an error is displayed in the display unit 8 in step S17, and the ultrasound diagnostic apparatus 26 terminates the operation.

**[0102]** On the other hand, if it is determined in step S23 that at least one of the plurality of part probabilities calculated on the basis of the result of image analysis of the ultrasound images of a plurality of frames is greater than or equal to the threshold value, the process proceeds to step S7.

**[0103]** As described above, according to the ultrasound diagnostic apparatus 26 in the second embodiment illustrated in Fig. 5, the part probability is calculated on the basis of the analysis result of the ultrasound image(s), the first measurement method is changed to the second measurement method on the basis of the part probability, and the ultrasound image is further acquired by using the second measurement method. Accordingly, as in the ultrasound diagnostic apparatus 1 in the first embodiment illustrated in Fig. 1, by acquiring the ultrasound image twice separately, the ultrasound diagnostic apparatus 26 in the second embodiment illustrated in Fig. 5 can narrow down candidate parts for identification, and thus, the part can be finely identified so as to set an appropriate imaging condition. In addition, on the basis of the image analysis result using the ultrasound image of a single frame or the image analysis result using the ultrasound images of a plurality of frames, the part probability calculating unit 27 can calculate the part probability, that is, calculate the part probability by using characteristics of the structure of the part or the movement of the part. Accordingly, an accurate part probability can be calculated by using image analysis that is appropriate for the part.

**[0104]** In addition, although a case where detection of the edge structure included in the ultrasound image is

used as a method of image analysis using the ultrasound image of a single frame has been described, a method of image analysis such as detection of a high-brightness pixel or pattern recognition such as template matching can also be used.

**[0105]** For example, in a case where a high-brightness pixel is detected as image analysis using the ultrasound image of a single frame, in step S19, the image analyzing unit 13 can calculate the area (high-brightness pixel area) of pixels having a fixed brightness or higher included in the ultrasound image. In the subsequent step S20, for example, the part probability calculating unit 27 can calculate, as the part probability, a reciprocal of a difference between a target high-brightness pixel area (target high-brightness pixel area) for each diagnostic part and the actual high-brightness pixel area calculated in step S19.

**[0106]** In addition, for example, in a case where pattern recognition such as template matching is performed as image analysis using the ultrasound image of a single frame, in step S19, the image analyzing unit 13 can calculate, as a score, a degree of similarity between a template of each diagnostic part and a part included in the actual ultrasound image. In the subsequent step S20, for example, the part probability calculating unit 27 can calculate, as the part probability, a reciprocal of a difference between a target degree of similarity score (target score) for each diagnostic part and the actual score calculated in step S19.

**[0107]** In addition, although a case where the optical flow is used as the method of image analysis using the ultrasound images of a plurality of frames has been described, another analysis method can also be used. For example, as such a method of image analysis, the image analyzing unit 13 can track a specific high-brightness point of a part included in each of the ultrasound images of a plurality of frames in a time-series manner to calculate a period for reciprocation of the high-brightness point. In this case, for example, the part probability calculating unit 27 can calculate, as the part probability, a reciprocal of a difference between a period of a target high-brightness point for each diagnostic part and a period of the calculated actual high-brightness point.

### Third Embodiment

**[0108]** Fig. 7 illustrates an ultrasound diagnostic apparatus 28 in a third embodiment. The ultrasound diagnostic apparatus 28 has the same components as those in the ultrasound diagnostic apparatus 1 illustrated in Fig. 1 except that the part probability calculating unit 11 of the ultrasound diagnostic apparatus 1 in the first embodiment illustrated in Fig. 1 is replaced with a part probability calculating unit 29 and that the part probability calculating unit 29 is connected to the image analyzing unit 13. Therefore, the same components as those in Fig. 1 are denoted by the same reference numerals in Fig. 7, and a detailed description of these components is omitted.

**[0109]** By the way, the part probability calculating unit

11 in the first embodiment illustrated in Fig. 1 calculates the part probability only on the basis of the orientation angle of the ultrasound probe 2, and the part probability calculating unit 27 in the second embodiment illustrated in Fig. 5 calculates the part probability only on the basis of the result of image analysis. In contrast, the part probability calculating unit 29 in the third embodiment calculates the part probability by integrating the orientation angle of the ultrasound probe 2 and the result of image analysis.

**[0110]** An operation of the ultrasound diagnostic apparatus 28 having such a configuration in the third embodiment will be described below with reference to a flowchart illustrated in Fig. 8.

**[0111]** Step S1 to step S4 are the same as step S1 to step S4 in the first embodiment illustrated in Fig. 4. The measurement method is initialized to the first measurement method, and also the imaging condition is initialized to the first imaging condition. An image signal (ultrasound image) is generated from a reception signal acquired by transmitting/receiving and passing an ultrasound beam using the first measurement method and the first imaging condition. In synchronization with the generation of the B-mode image, the orientation angle of the ultrasound probe 2 is detected.

**[0112]** In addition, step S18 subsequent to step S3 and step S4 is the same as step S18 in the second embodiment illustrated in Fig. 5. The apparatus control unit 16 determines whether acquisition of the ultrasound image by using the first measurement method is a first time from the initialization in step S1.

**[0113]** If it is determined in step S18 that the acquisition of the ultrasound image by using the first measurement method is the first time, the process proceeds to step S24. In step S24, the image analyzing unit 13 performs image analysis on an ultrasound image of a single frame acquired by using the first measurement method. The method of image analysis of the ultrasound image of a single frame in step S24 is the same as the method of image analysis of the ultrasound image of a single frame described in step S19 in the second embodiment.

**[0114]** In the subsequent step S25, the part probability calculating unit 29 calculates each of a part probability based on the orientation angle of the ultrasound probe 2 detected in step S24 and a part probability based on a result of image analysis of the ultrasound image of a single frame. The method of calculating the part probability based on the orientation angle of the ultrasound probe 2 is the same as the calculation method described in step S5 in the first embodiment, and the method of calculating the part probability based on the result of image analysis of the ultrasound image of a single frame is the same as the calculation method described in step S20 in the second embodiment. In step S25, the part probability calculating unit 29 further integrates the part probability based on the orientation angle of the ultrasound probe 2 and the part probability based on the result of image analysis of the ultrasound image of a single frame to calculate

each part probability that a part included in the ultrasound image is each specific part. Although various methods can be used as such a method of integrating the part probabilities calculated by two types of calculation methods, for example, as each part probability, it is possible to calculate, for each part serving as a candidate diagnostic part, an average of the part probability based on the orientation angle of the ultrasound probe 2 and the part probability based on the result of image analysis of the ultrasound image of a single frame.

**[0115]** In step S6 subsequent to step S25, as in step S6 in the first embodiment illustrated in Fig. 4, it is determined whether the part probability calculated in step S25 is greater than or equal to a predetermined threshold value.

**[0116]** If, in step S6, at least one of the plurality of calculated part probabilities is greater than or equal to the threshold value, the process proceeds to step S7. Step S7 to step S15 are the same as step S7 to step S15 in the first embodiment illustrated in Fig. 4, and a detailed description thereof is omitted.

**[0117]** If, in step S6, the plurality of calculated part probabilities are all less than the threshold value, the process returns to step S2. When the ultrasound image is acquired by using the first measurement method in second-time step S2 and step S3, in the subsequent step S18, it is determined that the acquisition of the ultrasound image by using the first measurement method is not the first time, and the process proceeds to step S26.

**[0118]** In step S26, the image analyzing unit 13 performs image analysis on ultrasound images of a plurality of frames acquired by using the first measurement method. The method of image analysis of the ultrasound images of a plurality of frames in step S26 is the same as the method of image analysis of the ultrasound images of a plurality of frames described in step S21 in the second embodiment.

**[0119]** In step S27, the part probability calculating unit 29 calculates each of the part probability based on the orientation angle of the ultrasound probe 2 detected in step S26 and the part probability based on a result of the image analysis of the ultrasound images of a plurality of frames. The method of calculating the part probability based on the orientation angle of the ultrasound probe 2 is the same as the calculation method described in step S5 in the first embodiment, and the method of calculating the part probability based on the result of image analysis of the ultrasound images of a plurality of frames is the same as the calculation method described in step S22 in the second embodiment. In step S26, the part probability calculating unit 29 further integrates the part probability based on the orientation angle of the ultrasound probe 2 and the part probability based on the result of image analysis of the ultrasound images of a plurality of frames to calculate each part probability that a part included in the ultrasound image is each specific part. As in the method described in step S25, various methods can be used as such a method of integrating the part

probabilities calculated by two types of calculation methods.

**[0120]** In step S23 subsequent to step S27, as in step S23 in the second embodiment illustrated in Fig. 6, it is determined whether the part probability calculated in step S27 is greater than or equal to the threshold value.

**[0121]** If, in step S23, the plurality of calculated part probabilities are all less than the threshold value, the process proceeds to step S16.

**[0122]** As in step S16 in the first embodiment illustrated in Fig. 4, in step S16, the apparatus control unit 16 determines whether the number of times of determination in step S23 that the plurality of part probabilities are all less than the threshold value is N. If it is determined in step S16 that the number of times of determination that the plurality of part probabilities are all less than the threshold value is less than N, the process returns to step S2. Subsequently, when the number of times of determination that the plurality of part probabilities are all less than the threshold value becomes N in step S16, an error is displayed in the display unit 8 in step S17, and the ultrasound diagnostic apparatus 28 terminates the operation.

**[0123]** If, in step S23, at least one of the plurality of calculated part probabilities is greater than or equal to the threshold value, the process proceeds to step S7.

**[0124]** As described above, with the ultrasound diagnostic apparatus 28 in the third embodiment illustrated in Fig. 7, the part probability is calculated on the basis of each of the orientation angle of the ultrasound probe 2 and the result of image analysis of the ultrasound image, the first measurement method is changed to the second measurement method on the basis of the part probability, and the ultrasound image is further acquired by using the second measurement method. Accordingly, as in the ultrasound diagnostic apparatus 1 in the first embodiment illustrated in Fig. 1, by acquiring the ultrasound image twice separately, the ultrasound diagnostic apparatus 28 in the third embodiment illustrated in Fig. 7 can narrow down candidate parts for identification, and thus, the part can be finely identified so as to set an appropriate imaging condition. In addition, since the part probability can be calculated by taking into account both of the part probability calculated on the basis of the orientation angle of the ultrasound probe 2 and the part probability calculated by using the result of image analysis, the part probability calculating unit 29 can calculate a part probability that is more accurate than a part probability calculated by using only one of the orientation angle of the ultrasound probe 2 and the result of image analysis.

**[0125]** In addition, as a method of integrating the part probability calculated on the basis of the orientation angle of the ultrasound probe 2 and the part probability calculated on the basis of the result of image analysis, an average of the part probabilities is used in the above description, another method can also be used.

**[0126]** For example, the part probability calculating unit 29 can weight at least one of the part probability calcu-

lated on the basis of the orientation angle of the ultrasound probe 2 and the part probability calculated on the basis of the result of image analysis to calculate the average of the part probabilities. By weighting the part probability in this manner, a priority can be given to a part probability calculation method that is appropriate for each part, and thus, the accuracy of the part probability for each part can be increased.

**[0127]** In addition, for example, the part probability calculating unit 29 can employ a higher part probability of the part probability calculated on the basis of the orientation angle of the ultrasound probe 2 and the part probability calculated on the basis of the result of image analysis. In this case, a part probability calculated by using a more appropriate calculation method for each part of the part probability calculated on the basis of the orientation angle of the ultrasound probe 2 and the part probability calculated on the basis of the result of image analysis can be used.

**[0128]** The ultrasound diagnostic apparatus according to the present invention has been described above in detail. However, the present invention is not limited to the above examples, and it is needless to say that various kinds of improvement and modification may be made without departing from the spirit of the present invention. In addition, the plurality of embodiments and examples illustrated in the above description may be used in appropriate combination.

Reference Signs List

**[0129]**

- 1, 26, 28    ultrasound diagnostic apparatus
- 2            ultrasound probe
- 2A          transducer array
- 3            image acquiring unit
- 4            reception circuit
- 5            transmission circuit
- 6            image generating unit
- 7            display control unit
- 8            display unit
- 9            orientation sensor
- 10          probe orientation angle detecting unit
- 11, 27, 29   part probability calculating unit
- 12          measurement method changing unit
- 13          image analyzing unit
- 14          part identifying unit
- 15          imaging condition changing unit
- 16          apparatus control unit
- 17          operation unit
- 18          storage unit
- 19          amplification unit
- 20          A/D conversion unit
- 21          B-mode image generating unit
- 22          Doppler image generating unit
- 23          elasticity map generating unit
- 24          sound speed map generating unit

25            M-mode image generating unit

**Claims**

1. An ultrasound diagnostic apparatus comprising:

an ultrasound probe;  
 an image acquiring unit that transmits an ultrasound beam from the ultrasound probe toward a subject and receives the ultrasound beam in accordance with one measurement method among a plurality of measurement methods to acquire an ultrasound image;  
 a part probability calculating unit that calculates, for the ultrasound image acquired by the image acquiring unit in accordance with a first measurement method, a probability that a part of the subject included in the ultrasound image is a specific part from at least one of an orientation angle of the ultrasound probe or an analysis result of the ultrasound image; and  
 a measurement method changing unit that changes, when the probability calculated in the part probability calculating unit is greater than or equal to a predetermined threshold value, the first measurement method to a second measurement method for identifying the part for which the probability has been calculated, wherein the image acquiring unit further acquires an ultrasound image by using the second measurement method.

2. The ultrasound diagnostic apparatus according to claim 1, wherein the image acquiring unit acquires the ultrasound image by using two or more measurement methods among B-mode measurement, M-mode measurement, elasticity measurement, sound velocity measurement, and Doppler measurement.

3. The ultrasound diagnostic apparatus according to claim 1 or 2, further comprising:  
 an orientation sensor that detects an operation or a position of the ultrasound probe; and  
 a probe orientation angle detecting unit that detects the orientation angle on the basis of a signal of the orientation sensor, wherein the part probability calculating unit calculates the probability on the basis of the orientation angle.

4. The ultrasound diagnostic apparatus according to claim 3, further comprising an image analyzing unit that analyzes the ultrasound image further acquired in the image acquiring unit.

5. The ultrasound diagnostic apparatus according to

claim 1 or 2, further comprising an image analyzing unit that analyzes the ultrasound image acquired in the image acquiring unit, wherein the part probability calculating unit calculates the probability on the basis of the analysis result in the image analyzing unit.

6. The ultrasound diagnostic apparatus according to claim 1 or 2, further comprising:

an image analyzing unit that analyzes the ultrasound image acquired in the image acquiring unit;  
 an orientation sensor that detects an operation or a position of the ultrasound probe; and  
 a probe orientation angle detecting unit that detects the orientation angle on the basis of a signal of the orientation sensor,  
 wherein the part probability calculating unit calculates the probability on the basis of the orientation angle and the analysis result of the ultrasound image in the image analyzing unit.

7. The ultrasound diagnostic apparatus according to claim 5 or 6, wherein the part probability calculating unit calculates the probability on the basis of a result of image analysis of an ultrasound image of a single frame in the image analyzing unit.

8. The ultrasound diagnostic apparatus according to claim 5 or 6, wherein the part probability calculating unit calculates the probability on the basis of a result of analysis of a movement of a specific pattern included in ultrasound images of a plurality of frames in common in the image analyzing unit.

9. The ultrasound diagnostic apparatus according to any one of claims 4 to 8, further comprising a part identifying unit that identifies a part of a subject for which the probability has been calculated on the basis of the analysis result of the ultrasound image in the image analyzing unit, the ultrasound image being further acquired in the image acquiring unit.

10. A control method of an ultrasound diagnostic apparatus, comprising:

transmitting an ultrasound beam from an ultrasound probe toward a subject and receiving the ultrasound beam in accordance with one measurement method among a plurality of measurement methods to acquire an ultrasound image; calculating, for the ultrasound image acquired in accordance with a first measurement method, a probability that a part of the subject included in the ultrasound image is a specific part, from at least one of an orientation angle of the ultrasound probe or an analysis result of the ultra-

sound image; changing, when the calculated probability is greater than or equal to a predetermined threshold value, the first measurement method to a second measurement method for identifying the part for which the probability has been calculated; and further acquiring an ultrasound image by using the second measurement method.

FIG. 1

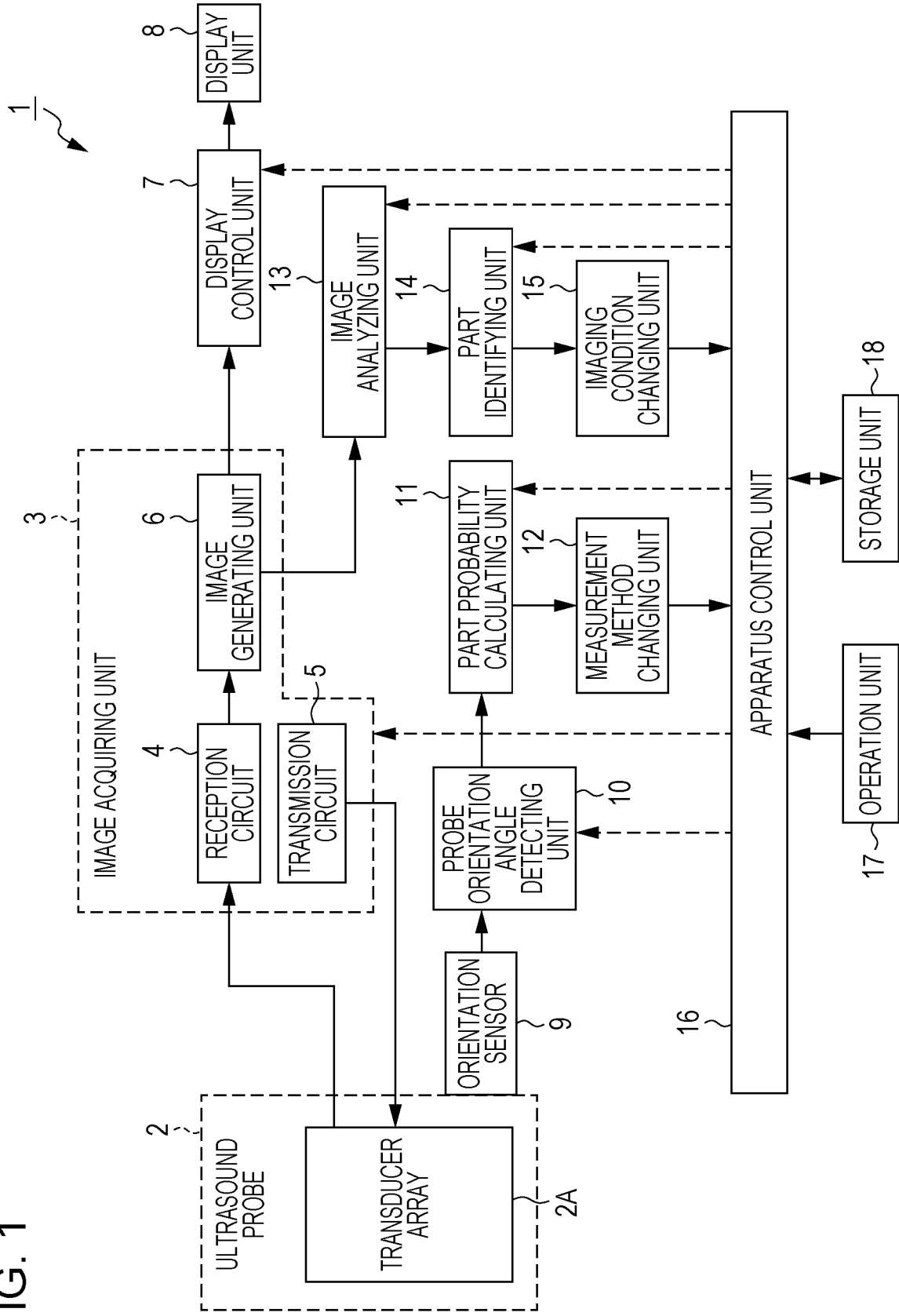


FIG. 2

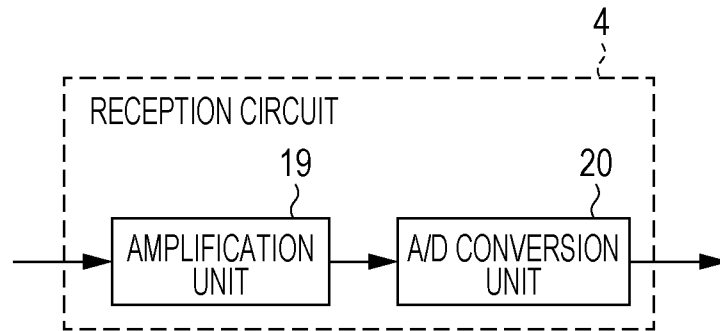


FIG. 3

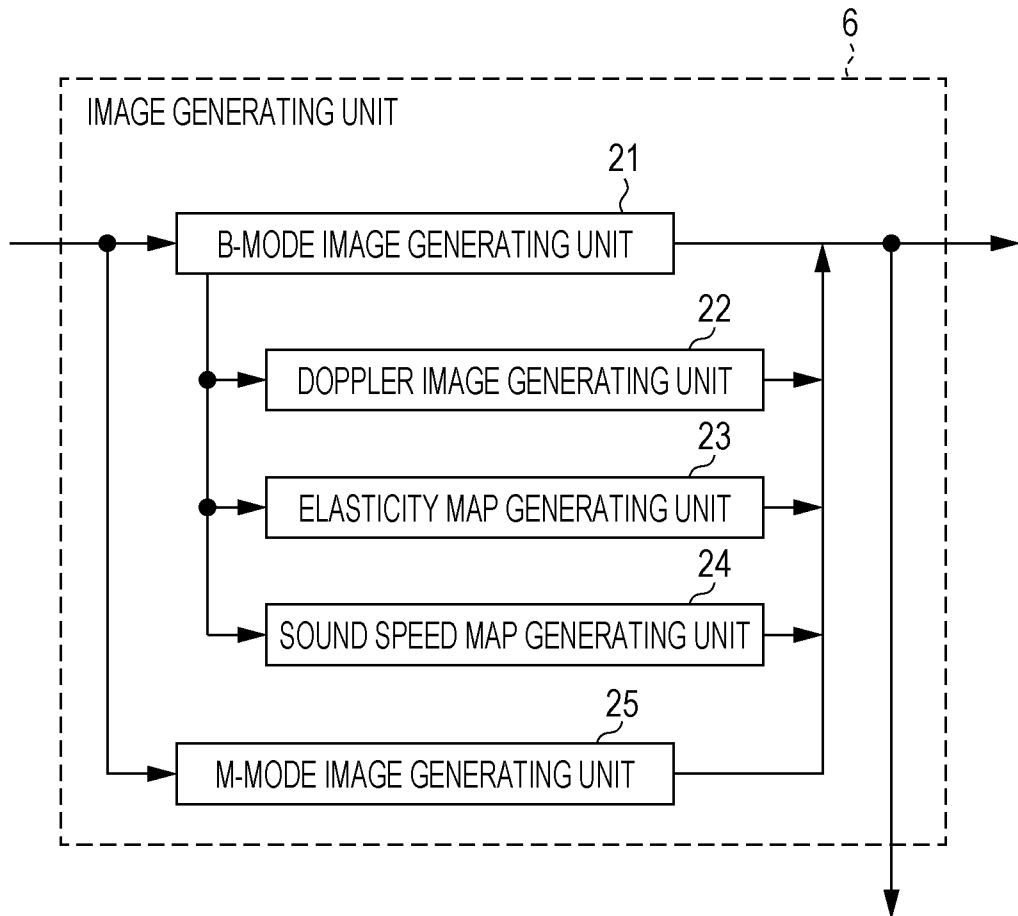


FIG. 4

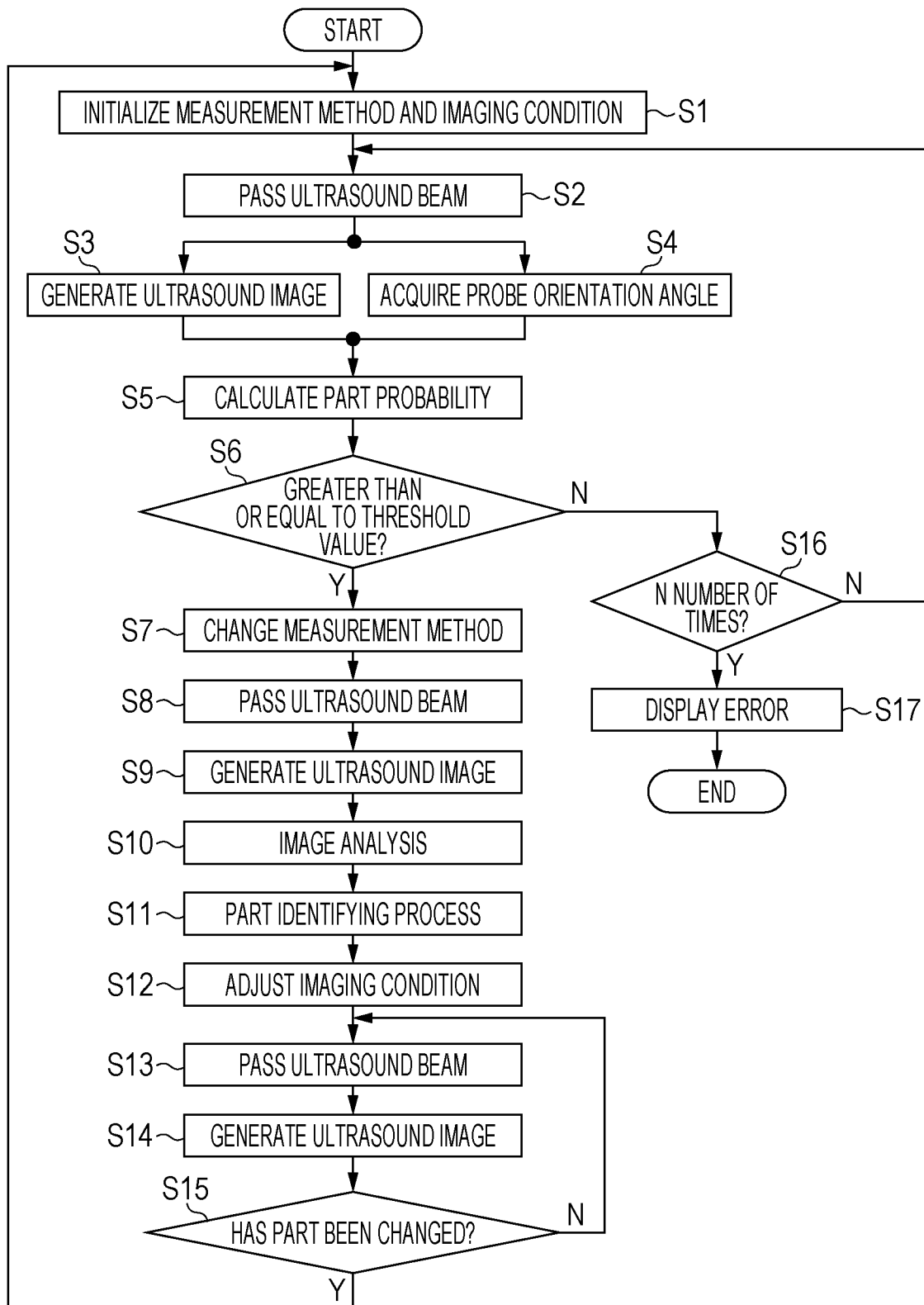


FIG. 5

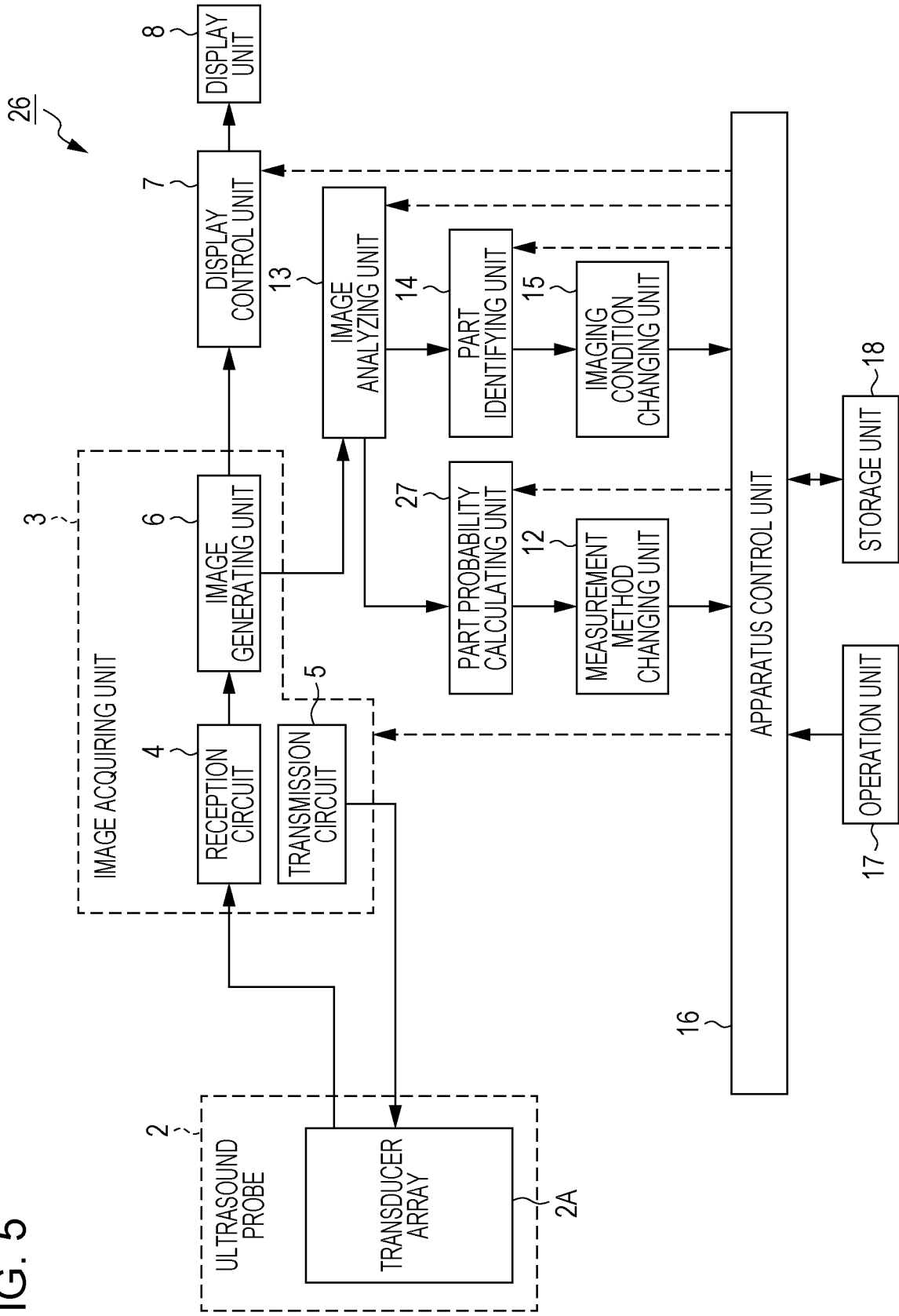


FIG. 6

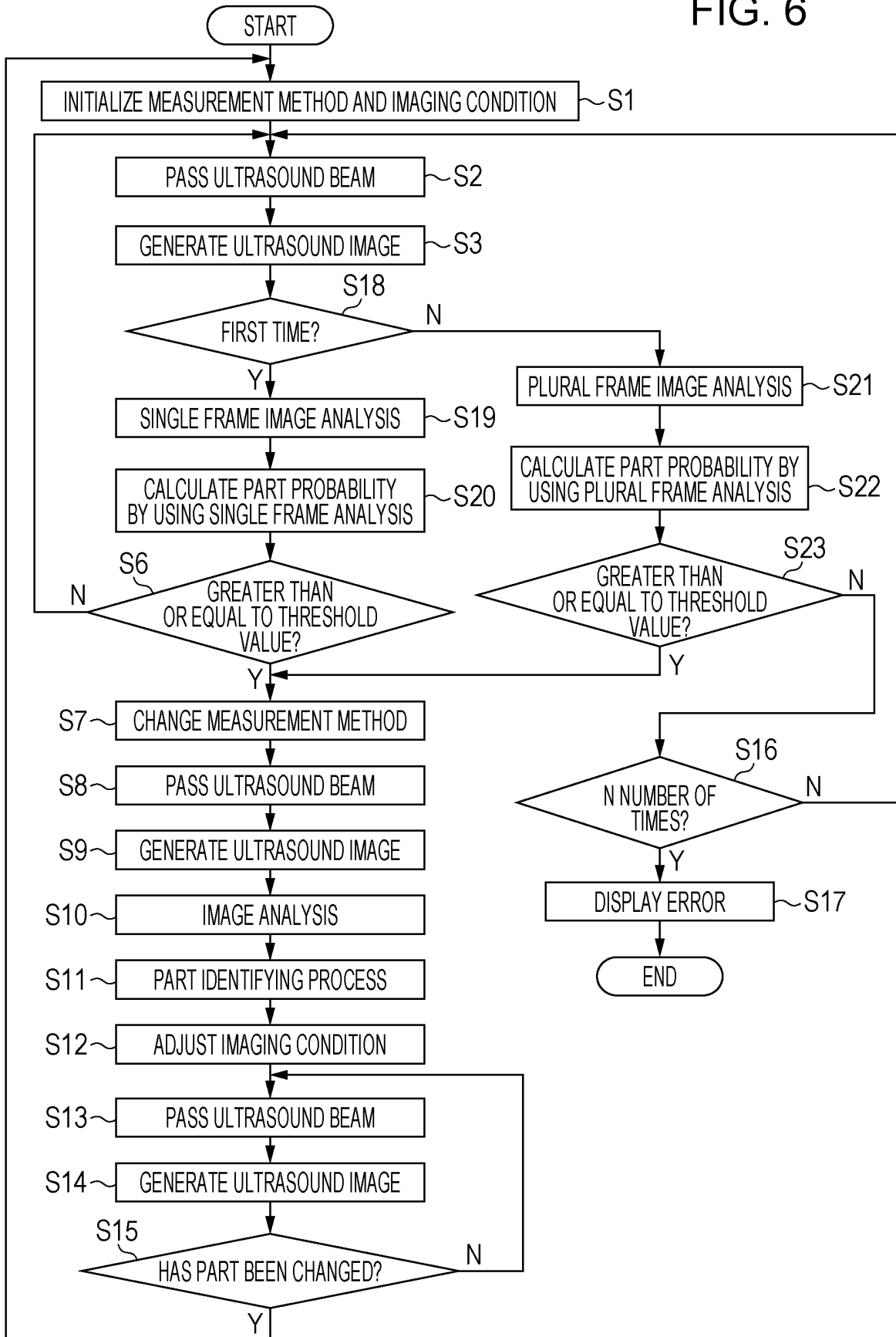


FIG. 7

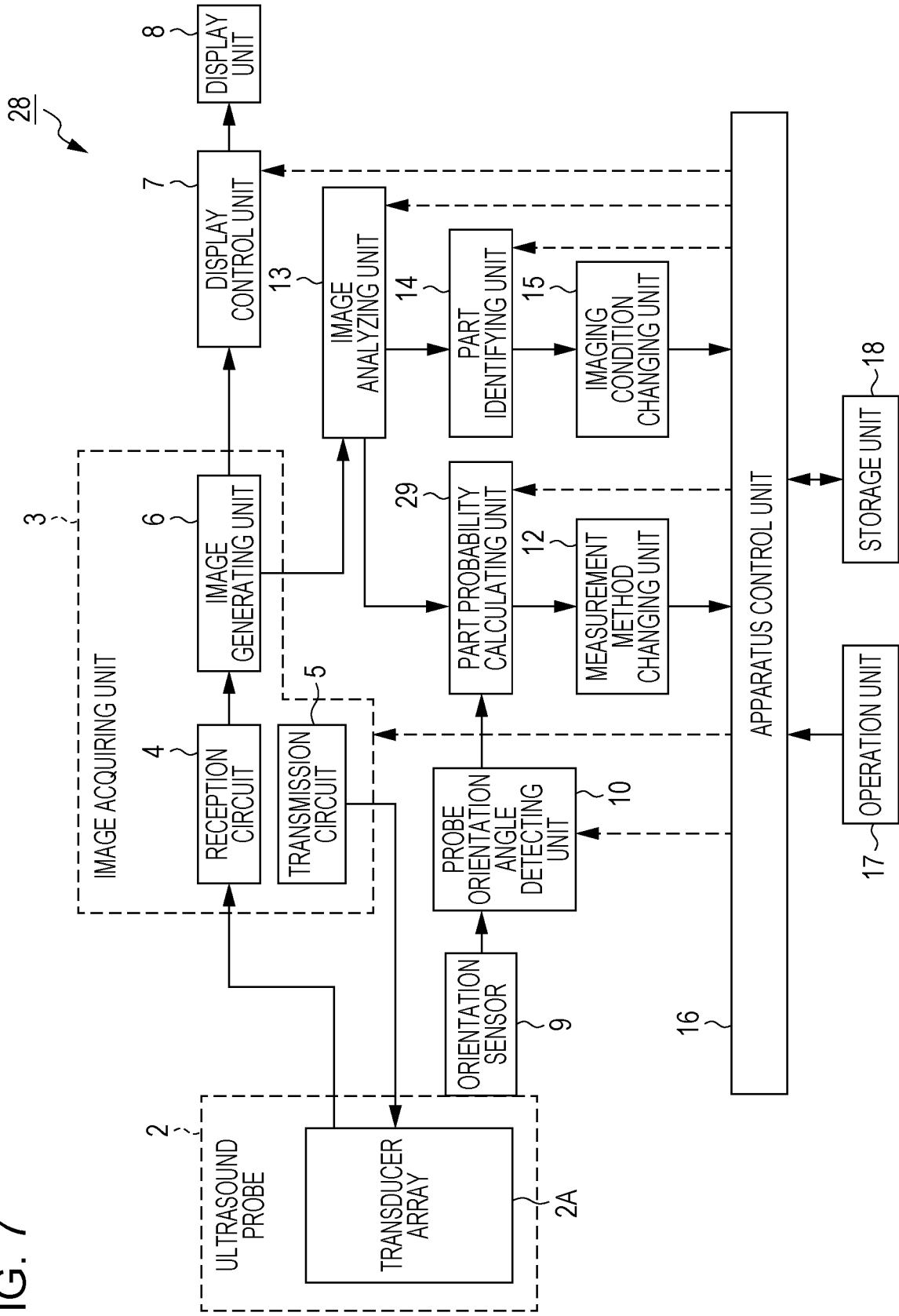
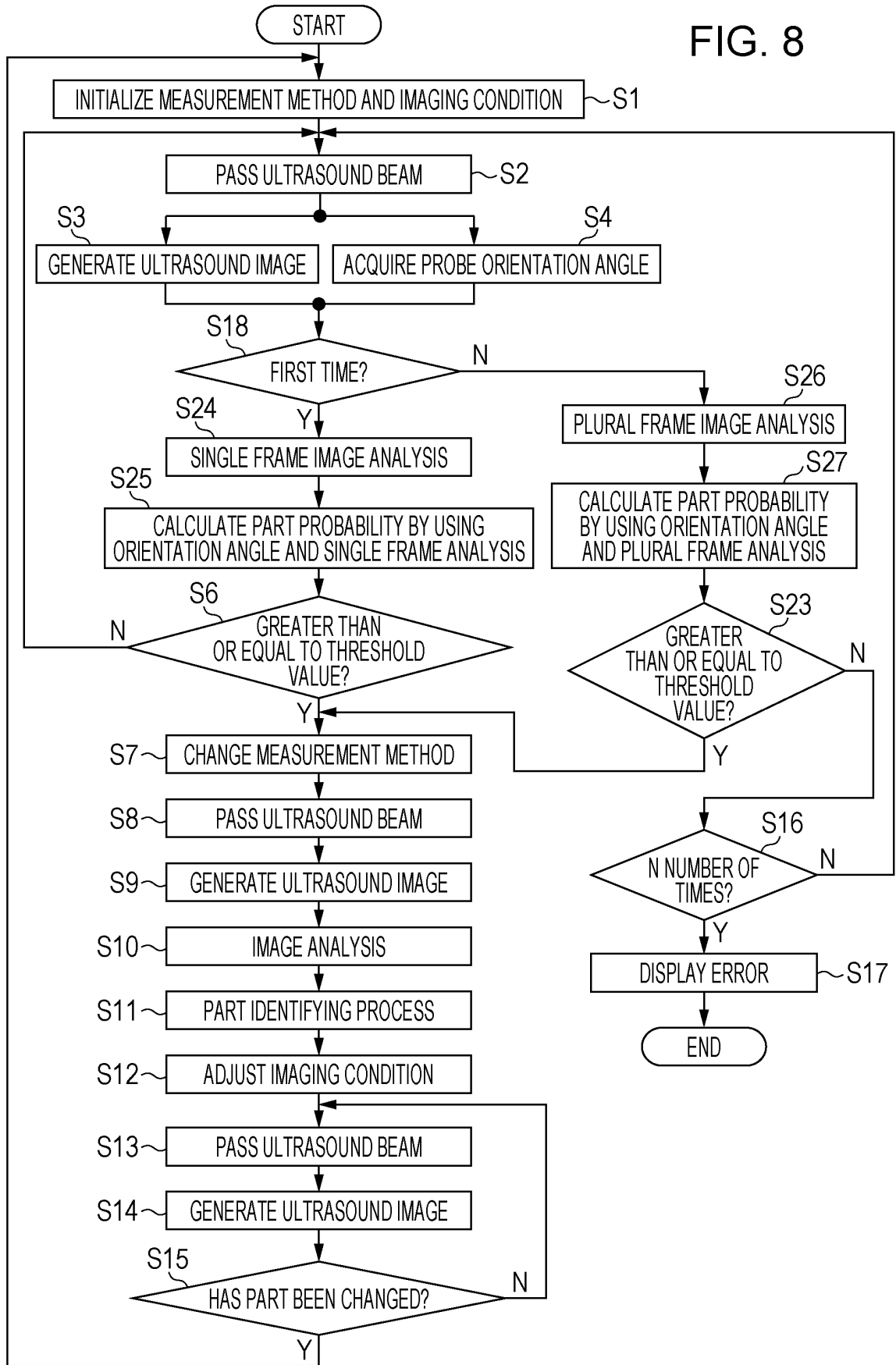


FIG. 8



## INTERNATIONAL SEARCH REPORT

International application No.

PCT/JP2017/019373

5	A. CLASSIFICATION OF SUBJECT MATTER A61B8/14(2006.01)i, A61B8/08(2006.01)i	
	According to International Patent Classification (IPC) or to both national classification and IPC	
10	B. FIELDS SEARCHED Minimum documentation searched (classification system followed by classification symbols) A61B8/14, A61B8/08	
15	Documentation searched other than minimum documentation to the extent that such documents are included in the fields searched Jitsuyo Shinan Koho 1922-1996 Jitsuyo Shinan Toroku Koho 1996-2017 Kokai Jitsuyo Shinan Koho 1971-2017 Toroku Jitsuyo Shinan Koho 1994-2017	
	Electronic data base consulted during the international search (name of data base and, where practicable, search terms used)	
20	C. DOCUMENTS CONSIDERED TO BE RELEVANT	
	Category*	Citation of document, with indication, where appropriate, of the relevant passages
25	A	JP 2014-135962 A (Seiko Epson Corp.), 28 July 2014 (28.07.2014), entire text; all drawings & US 2014/0200451 A1
30	A	JP 2015-16390 A (Canon Inc.), 29 January 2015 (29.01.2015), entire text; all drawings (Family: none)
35	A	JP 2016-83022 A (Seiko Epson Corp.), 19 May 2016 (19.05.2016), entire text; all drawings (Family: none)
40	<input type="checkbox"/> Further documents are listed in the continuation of Box C. <input type="checkbox"/> See patent family annex.	
45	* Special categories of cited documents: "A" document defining the general state of the art which is not considered to be of particular relevance "E" earlier application or patent but published on or after the international filing date "L" document which may throw doubts on priority claim(s) or which is cited to establish the publication date of another citation or other special reason (as specified) "O" document referring to an oral disclosure, use, exhibition or other means "P" document published prior to the international filing date but later than the priority date claimed	"T" later document published after the international filing date or priority date and not in conflict with the application but cited to understand the principle or theory underlying the invention "X" document of particular relevance; the claimed invention cannot be considered novel or cannot be considered to involve an inventive step when the document is taken alone "Y" document of particular relevance; the claimed invention cannot be considered to involve an inventive step when the document is combined with one or more other such documents, such combination being obvious to a person skilled in the art "&" document member of the same patent family
50	Date of the actual completion of the international search 08 August 2017 (08.08.17)	Date of mailing of the international search report 22 August 2017 (22.08.17)
55	Name and mailing address of the ISA/ Japan Patent Office 3-4-3, Kasumigaseki, Chiyoda-ku, Tokyo 100-8915, Japan	Authorized officer  Telephone No.

Form PCT/ISA/210 (second sheet) (January 2015)

**REFERENCES CITED IN THE DESCRIPTION**

*This list of references cited by the applicant is for the reader's convenience only. It does not form part of the European patent document. Even though great care has been taken in compiling the references, errors or omissions cannot be excluded and the EPO disclaims all liability in this regard.*

**Patent documents cited in the description**

- JP 2015131097 A [0003] [0005]
- JP 2014166198 A [0003] [0005]

专利名称(译)	超声波诊断装置和控制超声波诊断装置的方法		
公开(公告)号	<a href="#">EP3513737A1</a>	公开(公告)日	2019-07-24
申请号	EP2017850484	申请日	2017-05-24
[标]申请(专利权)人(译)	富士胶片株式会社		
申请(专利权)人(译)	富士胶片株式会社		
当前申请(专利权)人(译)	富士胶片株式会社		
[标]发明人	MATSUMOTO TSUYOSHI		
发明人	MATSUMOTO TSUYOSHI		
IPC分类号	A61B8/14 A61B8/08		
CPC分类号	A61B8/4254 A61B8/4263 A61B8/5223 A61B8/54 A61B8/08 A61B8/14 G01S7/52042 G01S7/52098 G01S15/8915 G01S15/8979 G16H50/30 A61B8/485 A61B8/486 A61B8/488 A61B8/5207 A61B8/5246		
优先权	2016181575 2016-09-16 JP		
其他公开文献	EP3513737A4		
外部链接	<a href="#">Espacenet</a>		

摘要(译)

超声波诊断装置具有：图像获取单元，其从超声波探头发送/接收超声波束以获取超声波图像；部分概率计算单元，对于根据第一测量方法获取的超声图像，计算超声图像中包括的部分是来自超声探头的取向角或分析中的至少一个的特定部分的部分的概率超声图像的结果；测量方法改变单元，当概率大于或等于阈值时，将第一测量方法改变为用于识别已计算概率的部分的第二测量方法，其中超声图像进一步通过使用第二测量方法获得。

FIG. 1

