

(19)



(11)

EP 2 830 508 B1

(12)

EUROPEAN PATENT SPECIFICATION

(45) Date of publication and mention of the grant of the patent:
13.07.2016 Bulletin 2016/28

(51) Int Cl.:
A61B 8/08 (2006.01) G01S 7/52 (2006.01)
A61B 8/00 (2006.01) G01S 15/89 (2006.01)

(21) Application number: **13770398.9**

(86) International application number:
PCT/JP2013/059804

(22) Date of filing: **26.03.2013**

(87) International publication number:
WO 2013/147298 (03.10.2013 Gazette 2013/40)

(54) METHODS AND APPARATUS FOR ULTRASOUND IMAGING

VERFAHREN UND VORRICHTUNG FÜR ULTRASCHALLBILDGEBUNG

PROCÉDÉS ET APPAREIL POUR L'IMAGERIE ULTRASONORE

(84) Designated Contracting States:
AL AT BE BG CH CY CZ DE DK EE ES FI FR GB GR HR HU IE IS IT LI LT LU LV MC MK MT NL NO PL PT RO RS SE SI SK SM TR

(72) Inventor: **TAMURA, Tadashi**
North Haven, Connecticut 06473 (US)

(30) Priority: **30.03.2012 US 201261617839 P**
10.09.2012 US 201213608361

(74) Representative: **Strehl Schübel-Hopf & Partner**
Maximilianstrasse 54
80538 München (DE)

(43) Date of publication of application:
04.02.2015 Bulletin 2015/06

(56) References cited:
WO-A1-2011/004661 WO-A1-2011/004661
WO-A2-2011/126727 WO-A2-2011/126727
US-A1- 2004 215 075 US-A1- 2009 216 119
US-B1- 6 270 459

(73) Proprietor: **Hitachi Aloka Medical, Ltd.**
Tokyo 181-8622 (JP)

EP 2 830 508 B1

Note: Within nine months of the publication of the mention of the grant of the European patent in the European Patent Bulletin, any person may give notice to the European Patent Office of opposition to that patent, in accordance with the Implementing Regulations. Notice of opposition shall not be deemed to have been filed until the opposition fee has been paid. (Art. 99(1) European Patent Convention).

Description

Background

5 **[0001]** Systems and methods described herein generally relate to the field of ultrasound imaging. More specifically, embodiments described below relate to methods and systems for measuring shear wave velocity in tissue.

[0002] Pathological conditions may result in soft tissue which is stiffer than would be present under physiological conditions. Physicians therefore use palpation to locate stiff tissue within a body and thereby identify pathological conditions. For example, breast cancers are known to be generally harder than healthy breast tissue and may be detected as a hard lump through palpation.

10 **[0003]** The propagation velocity of shear waves in tissue is related to the stiffness (Young's modulus) of tissue by the following equation,

$$15 \quad E = 3\rho \cdot c^2 \quad (1)$$

where c is the propagation velocity of shear wave, E is Young's modulus, and ρ is the tissue density. Therefore, cancers or other pathological conditions may be detected in tissue by measuring the propagation velocity of shear waves passing through the tissue.

20 **[0004]** A shear wave may be created within tissue by applying a strong ultrasound pulse to the tissue. The ultrasound pulse may exhibit a high amplitude and a long duration (e.g., on the order of 100 microseconds). The ultrasound pulse generates an acoustic radiation force which pushes the tissue, thereby causing layers of tissue to slide along the direction of the ultrasound pulse. These sliding (shear) movements of tissue may be considered shear waves, which are of low frequencies (e.g., from 10 to 500 Hz) and may propagate in a direction perpendicular to the direction of the ultrasound pulse. The ultrasound pulse may propagate at a speed of 1540 m/s in tissue. However, the shear wave propagates much more slowly in tissue, approximately on the order of 1-10 m/s.

25 **[0005]** Since the tissue motion is generally in the axial direction (i.e., the ultrasound pulse direction) the shear waves may be detected using conventional ultrasound Doppler techniques. In this regard, the ultrasound Doppler technique is best suited to detect velocity in the axial direction. Alternately, shear waves may be detected by measuring a tissue displacement caused by the acoustic radiation force.

30 **[0006]** In order to accurately measure the propagation velocity of the shear wave, the shear wave needs to be tracked at a fast rate or a fast frame rate of several thousands frames per second. An image in a frame may consist of a few hundred ultrasound lines. A typical frame rate of regular ultrasound imaging is about 50 frames/s, which is too slow to track the shear wave propagation. Therefore, there exists a need to increase the frame rate while maintaining a good signal to noise ratio and good spatial resolution. Also, there exists a need to efficiently provide an indication of tissue stiffness.

35 **[0007]** Shear wave velocity imaging may exhibit limited spatial resolution. Lateral spatial resolution may be particularly limited because the measurement of shear wave velocity requires detection of shear wave at at least two lateral positions (i.e., at the positions of at least two ultrasound beams). On the other hand, tissue strain may be detected at using only one ultrasound beam. Therefore, tissue strain imaging may exhibit higher spatial resolution than shear wave velocity imaging. However, tissue strain imaging may yield only a qualitative measurement of tissue stiffness while shear wave velocity imaging provides a quantitative measure.

40 **[0008]** A technique for generating a shear wave image from strain data and shear data is disclosed in US 2009/0216119 A1. The precharacterising part of the independent claims starts out from such prior art.

45 **[0009]** The invention is defined by the appended claims.

BRIEF DESCRIPTION OF THE DRAWINGS

[0010]

50 FIG. 1. A diagram of shear wave generation resulting from an acoustic radiation force.

FIG. 2. A diagram of an ultrasound imaging system of some embodiments.

55 FIG. 3. A diagram of a conventional ultrasound imaging system.

FIG. 4. A diagram of multiple ultrasound transmitted/received beams.

FIG. 5. A diagram of an ultrasound transmitted beam and multiple ultrasound received beams.

FIG. 6. Color coding of shear wave propagation velocity squared.

5 FIG. 7. Color coding of shear wave propagation velocity squared.

FIG. 8. A diagram illustrating generation of shear waves by acoustic radiation forces and the propagation of shear waves.

10 FIG. 9. A diagram illustrating sliding movements of shear waves.

FIG. 10. A diagram illustrating the propagation of shear waves.

15 FIG. 11. A diagram illustrating the propagation of shear waves.

FIG. 12. An example of a color-coded image of shear wave propagation velocity squared in tissue.

FIG. 13. A diagram to illustrate tissue displacement caused by an acoustic radiation force.

20 FIG. 14. Scale of shear wave velocity squared c^2 by color coding bar composed of RGB representation.

Figure 15. A diagram to show an ultrasound coordinate system with respect to an ultrasound transducer.

25 Figure 16A. Strain image.

Figure 16B. Shear wave image.

Figure 16C. Strain image and shear wave image.

30 Figure 17. Correlation and a regression line between shear wave image values and strain image values according to some embodiments.

Figure 18. Flow chart of a process according to some embodiments.

35 Figure 19A. Tissue before compression.

Figure 19B. Tissue after compression.

40 Figure 20. Flow chart of a process according to some embodiments.

Detailed Description

[0011] Embodiments will be described with reference to the accompanying drawing figures wherein like numbers represent like elements throughout. Before embodiments of the invention are explained in detail, it is to be understood that embodiments are not limited in their application to the details of the examples set forth in the following description or illustrated in the figures. Other embodiments may be practiced or carried out in a variety of applications and in various ways. Also, it is to be understood that the phraseology and terminology used herein is for the purpose of description and should not be regarded as limiting. The use of "including," "comprising," or "having," and variations thereof herein is meant to encompass the items listed thereafter and equivalents thereof as well as additional items. The terms "mounted," "connected," and "coupled," are used broadly and encompass both direct and indirect mounting, connecting, and coupling. Further, "connected," and "coupled" are not restricted to physical or mechanical connections or couplings.

[0012] Acoustic radiation force is created by a strong ultrasound pulse 120 as shown in Figure 1. The ultrasound pulse 120 exhibits a high amplitude as well as a long duration, (e.g., on the order of 100 microseconds). The ultrasound pulse 120 is transmitted from an ultrasound transducer array 110. The ultrasound pulse 120 is focused at a focal point 130 in biological tissue 160, resulting in an acoustic radiation force which pushes the tissue 160 at the focal point 130. The ultrasound pulse 120 may be transmitted multiple times and may be focused at a different focal point for each of multiple transmitted ultrasound pulses.

[0013] The tissue 160 is pushed mostly in the axial direction of the ultrasound pulse 120, creating shear waves 140,

150 which may propagate in the lateral direction or directions other than the axial direction (i.e., vertical direction). The propagation velocity of the shear waves 140, 150 depends on the stiffness (Young's modulus or the shear modulus) of the tissue 160. Greater tissue stiffness results in greater shear wave propagation velocity as shown in equation 1. Pathological conditions such as cancer may increase tissue stiffness thus these conditions may be diagnosed by determining the propagation velocity. For example, the shear wave propagation velocity may vary from 1 m/s to 10 m/s, depending on tissue conditions.

[0014] Since the shear wave may be characterized by tissue movement (or motion), the shear wave may be detected by the ultrasound Doppler technique (e.g., see US4573477, US4622977, US4641668, US4651742, US4651745, US4759375, US4766905, US4768515, US4771789, US4780837, US4799490, and US4961427). To detect this tissue movement (motion), the ultrasound pulse is transmitted multiple times to the tissue, and the ultrasound is scattered by scatterers in tissue and received by an ultrasound transducer as received ultrasound signals. The received ultrasound signals from the ultrasound array transducers are filtered, amplified, digitized, apotized, and beamformed (i.e. summed) after applying delays and/or phase-rotations for focusing and steering. The order of these processing steps may be interchanged. Received beamformed RF ultrasound signals undergo quadrature demodulation, resulting in complex, Doppler I-Q signals. In a color Doppler technique, the ultrasound is transmitted at a pulse repetition frequency (PRF) and the velocity is detected as the shift in frequency (Doppler shift frequency) in the received ultrasound signal. The received ultrasound is mixed with in-phase (0 degrees) and quadrature (90 degrees) reference signals of the same frequency as the transmitted ultrasound frequency, resulting in complex I-Q Doppler signals.

[0015] Generally, the complex I-Q signal is used to derive the Doppler shift frequency because the Doppler shift frequency and the blood velocity have the following relationship

$$\Delta f = \frac{2f_t v \cos \theta}{c_s} \quad (2),$$

where Δf is the Doppler shift frequency, f_t is the transmitted frequency, v is the blood velocity, θ is the angle between the ultrasound beam direction and the velocity vector, and c_s is the speed of sound. The Doppler shift frequency is thus dependent on the angle between the velocity direction and the ultrasound beam direction and is a measurement that an ultrasound color Doppler system may obtain.

[0016] In the case of color Doppler, the number of the sampled signals may be limited to several. Therefore, an auto-correlation technique is usually used to determine the phase differences between the I-Q signals and then to determine the Doppler shift frequency and the velocity as follows. The color Doppler's I-Q signals $z(m) = x(m) + jy(m)$ are used to calculate "auto-correlation" r as shown in the following equation, where $z(m)$ is the complex I-Q Doppler signal, $x(m)$ is the in-phase (real) signal, $y(m)$ is the quadrature phase (imaginary) signal, m indicates the signal number, j is the imaginary unit and $*$ indicates the complex conjugate.

$$r = \sum z(m) \cdot z^*(m-1) \quad (3)$$

[0017] The real ($Re\{r\}$) and imaginary ($Im\{r\}$) parts of r are used to obtain the phase φ as shown in the following equation.

$$\varphi = \tan^{-1} \frac{Im\{r\}}{Re\{r\}} \quad (4)$$

[0018] Since \tan^{-1} usually provides only -0.5π to 0.5π , the position of complex value r in the complex coordinate may be also used to derive φ in the range of $-\pi$ to π . The phase (i.e., color Doppler phase) φ is then related to the Doppler shift frequency (i.e., color Doppler shift frequency) as shown in the following equation.

$$\Delta f = \frac{\varphi_{PRF}}{2\pi} \quad (5)$$

[0019] Autocorrelation r between the received complex baseband ultrasound signals is thus obtained to detect tissue velocity or movement.

[0020] Tissue movement is detected at multiple lateral points in a field of tissue region by multiple ultrasound beams

(for example, 540, 545, 550 in Figure 5) in order to monitor movement. This movement reflects action of the shear wave at those multiple lateral points (or multiple ultrasound beams). Consequently, the lateral propagation velocity of the shear wave may be determined from the detected tissue movement.

[0021] Alternately, the shear wave may be detected by measuring tissue displacement caused by acoustic radiation force which is in turn caused by a strong ultrasound pulse as shown in Figure 13. Tissue 1310 is positioned at a position 1320 before the acoustic radiation is applied and then is moved to a position 1330 after the acoustic radiation force was applied. To measure tissue displacement caused by the strong ultrasound pulse, ultrasound pulses are transmitted to tissue from an ultrasound transducer 1305 and then the ultrasound pulses are scattered from scatterers in tissue and returned to the transducer 1305 and received by the transducer 1305 as received ultrasound signals. The ultrasound pulses are focused at a depth in order to increase a signal-to-noise ratio of the resulting received ultrasound signals in comparison to unfocused ultrasound pulses. Using correlation of the received ultrasound signals from tissue the displacement 1340 (from the position 1320 to the position 1330) of the tissue 1310 due to the acoustic radiation force may be obtained and the tissue 1310 may be tracked thereafter. The ultrasound pulses may thereby track shear waves after shear waves are created by acoustic radiation force.

[0022] Ultrasound signals resulting from the first ultrasound pulse and received from the tissue 1310 before acoustic radiation force is applied are cross-correlated with received ultrasound signals resulting from the second ultrasound pulse after the acoustic radiation force is applied in order to find the best match between the received ultrasound signals. The best match may be found by finding a maximum correlation value to track the tissue and its displacement due to the acoustic radiation force. Therefore, when tissue displacement is observed or measured, a shear wave is detected. The displacement and tissue velocity may be related in that the displacement is a time integral $\int v_s dt$ of tissue velocity v_s . Therefore, the tissue displacement may be obtained by calculating the time integral of color Doppler velocity. Received ultrasound signals may be RF (Radio Frequency), IF (Intermediate Frequency) or baseband signals after demodulation. Alternately, the displacement may be further differentiated to obtain tissue strain, which may be then used to detect the shear wave propagation velocity.

[0023] Cross correlation $CC(t, \tau)$ of signals in the previous paragraphs may be mathematically expressed as follows,

$$CC(t, \tau) = \int^{+W} S_1(t') S_2(t' - \tau) dt' \quad (6)$$

where $CC(t, \tau)$: cross correlation; $S_1(t')$: received signal from the first ultrasound transmission; $S_2(t' - \tau)$: received ultrasound signal from the second ultrasound transmission; W : window length; t : time, t' : time; τ : time displacement. Time displacement value τ , which makes the maximum cross correlation (or the best match), determines the tissue displacement. Interpolation of signals using an interpolation function (e.g. cubic-spline) may be performed before cross correlation to increase spatial resolution.

[0024] The cross correlation may be replaced by the sum of absolute differences (SAD), the sum of square differences (SSD), the sum of absolute cubic differences (SCD), or the sum of absolute power differences (SPD) as follows.

$$SAD[l, k] = \sum_{n=0}^N |S_1[l + n] - S_2[l + n - k]| \quad (7)$$

$$SSD[l, k] = \sum_{n=0}^N (S_1[l + n] - S_2[l + n - k])^2 \quad (8)$$

$$SCD[l, k] = \sum_{n=0}^N |S_1[l + n] - S_2[l + n - k]|^3 \quad (9)$$

$$SPD[l, k] = \sum_{n=0}^N |S_1[l + n] - S_2[l + n - k]|^p \quad (10)$$

S_1 is the received ultrasound signal from the first ultrasound transmission before displacement, S_2 is the received ultrasound signal from the second ultrasound transmission after displacement. N : the number of signals in the signal

window. k: window displacement by the number of signals and equivalent of τ . l: the position of the window. p is a real number. For SAD, SSD, SCD and SPD, the tissue displacement is determined based on the value of k that makes the minimum (or best match) of each of the SAD, SSD, SCD and SPD.

[0025] In some embodiments, a color Doppler velocity, a color Doppler shift frequency or a color Doppler phase (as shown in equations 2, 3, 4 and 5) may be calculated based on the I-Q signals of the received ultrasound signals in order to determine tissue displacement as previously discussed. A time integral of the color Doppler velocity (or color Doppler shift frequency, color Doppler phase) yields the tissue displacement as previously described. The angle θ in equation 2 may be considered zero (0) degrees in this case.

[0026] Figures 8 and 9 are used to illustrate shear wave generation and detection in detail. A strong ultrasound pulse 820 is applied to tissue 860, 960 from an ultrasound transducer 810, 910 once or more times to increase the amplitude of shear waves which are caused by acoustic radiation forces resulting from the ultrasound pulse. Shear waves attenuate very quickly in tissue and thus a greater amplitude results in a greater propagation distance. One or multiple ultrasound pulses may be focused at one focal point or different focal points. The ultrasound pulse creates acoustic radiation forces which push a layer of tissue, resulting in tissue movement 830, 910 mostly in the axial (vertical) direction as illustrated in Figure 9. The tissue layer movement 910 causes adjacent tissue layer movements 920, 925 mostly in the axial direction. The tissue layer movements 920, 925 then in turn cause next tissue layer movements 930, 935 which then cause adjacent tissue layer movements 940, 945. This succession of tissue movements represents a propagation of shear waves 840, 850 in the lateral (horizontal) direction as shown in Figure 8. Since the tissue movements (or motions) caused by acoustic radiation forces are mostly in the axial direction, the motion may be detected by the color Doppler technique, which is sensitive to motions in the axial direction.

[0027] For example, the color Doppler technique transmits and receives several ultrasound pulses, determines phase differences between the received ultrasound signals, and calculates a velocity of tissue or blood using the autocorrelation technique as previously discussed and known in the art. Variance and power of color Doppler signals may be also calculated in addition to the velocity. As in the conventional display of moving tissue or blood, one of these parameters may be used to display shear waves as shown in Figures 10, 11. It will be assumed that shear waves 1040 (1140), 1050 (1150) are determined in a color Doppler frame representing a certain time and shear waves 1060 (1160), 1070 (1170) are determined at a next moment or in a next frame. More image frames of shear waves may be obtained to track the shear waves and to create a movie of shear wave propagation. In alternate embodiments, tissue displacement due to acoustic radiation forces may be detected.

[0028] Figures 10 and 11 depict shear wave propagation at two points in time. Local shear wave propagation velocities, as illustrated by arrows 1080, 1090, may be derived by correlating two images of shear waves at two points in time. More image frames of shear waves may be used to track the propagation of shear waves in more image areas in order to present local shear wave propagation velocities or shear wave propagation velocity squared in a two-dimensional image as described below.

[0029] Correlation coefficient (CCV) between a first frame signal S^1 and the second frame signal S^2 may be obtained as speckle tracking as follows,

$$CCV(S^1, S^2) = \frac{\sum_{x=1}^m \sum_{z=1}^n (S^1_{x,z} - \bar{S}^1)(S^2_{x+X, z+Z} - \bar{S}^2)}{\sqrt{\sum_{x=1}^m \sum_{z=1}^n (S^1_{x,z} - \bar{S}^1)^2 \cdot \sum_{x=1}^m \sum_{z=1}^n (S^2_{x+X, z+Z} - \bar{S}^2)^2}} \quad (11)$$

where $S^1_{x,z}$ is the ultrasound signal at x, z of the first frame, $S^2_{x+X, z+Z}$ is the ultrasound signal at x+X, z+Z of the second frame, \bar{S}^1 is mean signal value in the window of the first frame signal, \bar{S}^2 is mean signal value in the window of the second frame signal. The coordinate system (x,y,z) is shown with respect to an ultrasound transducer 1510 in Figure 15. The elevational axis y is perpendicular to the paper of Figure 15 although it is shown slightly different for illustration purposes.

[0030] The displacement X, Z, that yields the maximum correlation coefficient determines the correct speckle tracking and the distance, and thus the velocity (i.e., the distance per time).

[0031] Similar to the 1D case, the correlation coefficient may be replaced by the sum of absolute differences (SAD), the sum of square differences (SSD), the sum of absolute cubic differences (SCD) and the sum of absolute power differences (SPD) as follows.

$$SAD(S^1, S^2, X, Z) = \sum_{x=1}^m \sum_{z=1}^n |S^1_{x,z} - S^2_{x+X,z+Z}| \quad (12)$$

5

$$SSD(S^1, S^2, X, Z) = \sum_{x=1}^m \sum_{z=1}^n (S^1_{x,z} - S^2_{x+X,z+Z})^2 \quad (13)$$

10

$$SCD(S^1, S^2, X, Z) = \sum_{x=1}^m \sum_{z=1}^n |S^1_{x,z} - S^2_{x+X,z+Z}|^3 \quad (14)$$

15

$$SPD(S^1, S^2, X, Z) = \sum_{x=1}^m \sum_{z=1}^n |S^1_{x,z} - S^2_{x+X,z+Z}|^p \quad (15)$$

20

p is a real number; m and n are integers. The 2D speckle tracking may be approximated by a 1D speckle tracking to obtain the shear wave propagation velocity and the shear wave propagation velocity squared. The mathematical expression will be similar to that used in the displacement measurement.

[0032] Alternately, a shear wave equation (16) may be used to derive the shear wave propagation velocity as follows,

25

$$\rho \frac{\partial^2 u_i}{\partial t^2} = \mu \left(\frac{\partial^2 u_i}{\partial x^2} + \frac{\partial^2 u_i}{\partial y^2} + \frac{\partial^2 u_i}{\partial z^2} \right) \quad (16)$$

30

where $i=x,y,z$, ρ is tissue density, μ is the shear modulus, u_i is the displacement vector, x is lateral coordinate, y is elevational coordinate and z is axial coordinate as shown in Figure 15. For incompressible materials, the Young's modulus E and the shear modulus μ have the following relationship.

$$E = 3\mu \quad (17)$$

35

Therefore, the shear wave propagation velocity squared may be obtained as a ratio of the shear modulus to the density as the following equation.

40

$$c^2 = \frac{\mu}{\rho} \quad (18)$$

One of the displacement components u_z in equation 16 may be determined by cross-correlation as previously discussed. By combining z component of equation 16 and equation 18, the shear wave propagation velocity squared and velocity are obtained as follows,

45

$$c^2 = \frac{\frac{\partial^2 u_z}{\partial t^2}}{\frac{\partial^2 u_z}{\partial x^2} + \frac{\partial^2 u_z}{\partial y^2} + \frac{\partial^2 u_z}{\partial z^2}} \quad (19)$$

50

and

55

$$c = \sqrt{\frac{\frac{\partial^2 u_z}{\partial t^2}}{\frac{\partial^2 u_z}{\partial x^2} + \frac{\partial^2 u_z}{\partial y^2} + \frac{\partial^2 u_z}{\partial z^2}}} \quad (20).$$

Therefore, the shear wave propagation velocity is obtained as the square root of the ratio between the temporal second-order derivative of the displacement and the spatial second-order derivatives of the displacement. Likewise, the shear wave propagation velocity squared is obtained as the ratio between the temporal second-order derivative of the displacement and the spatial second-order derivatives of the displacement. Since the spatial derivative of the displacement

in elevational direction $\frac{\partial^2 u_z}{\partial y^2}$ may be considered negligible compared with the other spatial derivatives, the shear wave

propagation velocity squared and velocity may be obtained from the other measurement values.

[0033] It is desirable to monitor and to track the shear wave frequently, meaning at a fast rate or frame rate. To speed up the frame rate, a wide, focused ultrasound pulse 520 may be transmitted and multiple ultrasound signals 540, 545, 550 may be simultaneously received as shown in Figure 5. The received ultrasound beams are used as described previously to detect shear waves and to derive shear wave propagation properties (i.e., velocity and velocity squared) therefrom. The focused transmit ultrasound beam 520 may be particularly suitable for maintaining a good signal-to-noise ratio of resulting received ultrasound beams during the detection of shear waves.

[0034] In some embodiments, multiple ultrasound beams (pulses) are simultaneously applied and transmitted to the tissue field and multiple ultrasound beams (pulses) per transmitted ultrasound pulse are received to increase the frame rate, as shown in Figure 4. In Figure 4, ultrasound pulses 420, 430 are simultaneously transmitted to biological tissue 480 from an ultrasound transducer array 410. For each transmitted ultrasound pulse 420, 430, multiple ultrasound receive signals 440, 445, 465, 460, 465, 470 are simultaneously received. The multiple ultrasound pulses may be transmitted simultaneously or at substantially simultaneous times. The multiple ultrasound pulses may be simultaneously transmitted. Or a second ultrasound pulse may be transmitted after a first ultrasound pulse is transmitted and before the first ultrasound pulse returns to the ultrasound transducer from a deepest depth of an ultrasound field. This transmission method increases the frame rate.

[0035] Figure 4 shows an example of two simultaneous transmitted ultrasound pulses but more than two transmitted ultrasound pulses may be also used. In some embodiments, coded ultrasound waveforms may be transmitted for better separation of simultaneous multiple ultrasound signals. For example, chirp codes, Barker codes, Golay codes or Hadamard codes may be used for better separation of ultrasound pulses. Again, the received signals are analyzed using the methods previously described to determine tissue movement at multiple points, and shear wave propagation properties are derived therefrom.

[0036] An image of a shear wave can be created based on the motion (or velocity) detected at multiple points in the imaging field. Subsequent transmit/receive sequences of ultrasound may create multiple images of the shear wave at multiple points in time. Correlation between the images of the shear wave is then calculated to obtain the shear wave propagation velocity and velocity squared as previously discussed. Alternately, tissue displacement caused by acoustic radiation force is determined and the shear wave propagation velocity is calculated as the square root of the ratio between the temporal second-order derivative of the displacement and the spatial second-order derivatives of the displacement. Likewise, the shear wave propagation velocity squared is calculated as the ratio between the temporal second-order derivative of the displacement and the spatial second-order derivatives of the displacement.

[0037] In some embodiments, the propagation velocity of a detected shear wave (c) may be displayed. In some embodiments, the propagation velocity squared (c^2) of the detected shear wave may be displayed. Advantageously, the propagation velocity squared (c^2) may be more closely related than the propagation velocity (c) to the Young's modulus or the shear modulus as shown in equation 1. Therefore the propagation velocity squared (c^2) may provide an efficient proxy for the actual stiffness. In some embodiments, the propagation velocity squared (c^2) may be multiplied by three and then displayed. If tissue density is close to 1 g/cm³, this number (i.e., $3c^2$) may be close to the actual Young's modulus. In some embodiments, a product (bc^2) of any real number (b) and the propagation velocity squared (c^2) may be displayed. Determinations of actual stiffness are difficult and error-prone because the density of the tissue is unknown and must be estimated.

[0038] A color coding technique, a grayscale technique, or a graphical coding technique may be employed to present a shear wave propagation property (i.e., velocity c or velocity squared c^2) to a user. In some embodiments, a propagation velocity squared (c^2) of shear waves within tissue is displayed in a two-dimensional color image. Graphical-coding and/or two-dimensional images may also be used to represent the propagation velocity c or velocity squared c^2 in some embodiments.

[0039] A low value of shear wave propagation velocity squared c^2 may be coded using a red color while a high value of c^2 may be coded using a blue color. For example, Figure 6 illustrates a legend indicating that a red-colored tissue area includes shear waves associated with low c^2 values (e.g., $1 \text{ m}^2/\text{s}^2$) and that a blue-colored tissue area includes shear waves associated with high c^2 values (e.g., $100 \text{ m}^2/\text{s}^2$). Embodiments are not limited to color-based coding. Images of shear wave propagation properties within tissue may be coded using grayscale or any combination of graphical patterns (e.g., vertical lines, horizontal lines, cross-hatching, dot patterns of different densities, etc.) and colors.

[0040] After determining the propagation velocity squared (c^2), c^2 may be coded linearly with respect to the color wavelength as shown in Figure 6. For example, if c^2 within a tissue area is determined to be $50 \text{ m}^2/\text{s}^2$, the tissue area may be displayed using a yellow color 630.

[0041] Alternately, color-coding of the shear wave propagation velocity squared (c^2) may be defined as shown in Figure 15. Tissue areas associated with low values of the shear wave propagation velocity squared may be displayed as blue 710 while areas associated with high values of the velocity squared may be displayed as red 720. Different color-coding methods may be also used to represent the propagation velocity squared (c^2) or velocity c of shear waves. For example, color coding may be based on hue, brightness, and other color characteristics. The color-coded scale may represent different maximums and minimums of the shear wave propagation velocity squared or velocity than shown in Figure 6, 7. In this regard, the velocity squared maximum of $100 \text{ m}^2/\text{s}^2$ and velocity squared minimum of $1 \text{ m}^2/\text{s}^2$ in Figures 6 and 7 are only for the illustration purposes and do not limit the scope of the claims. Other values may represent the maximum or minimum values of the coding scale.

[0042] Color coding based on Red, Green and Blue (RGB) values may be used to represent the propagation velocity c or velocity squared (c^2) of shear waves as shown in Figure 14. In this example (Figure 14), the propagation velocity squared (c^2) of a shear wave within tissue is represented according to a color coding bar 1410 which is based on RGB values 1420, 1430 and 1440. The shear wave propagation velocity squared has 256 possible values in this example, as represented 256 colors in the color coding bar 1410. The smallest velocity squared $c^2(0)$ 1412 is represented by a color composed of a combination of R(0) 1422, G(0) 1432 and B(0) 1442. The middle velocity squared $c^2(127)$ 1415 is represented by a color composed of a combination of R(127) 1425, G(127) 1435 and B(127) 1445. The highest velocity squared $c^2(255)$ 1418 is represented by a color composed of a combination of R(255) 1428, G(255) 1438 and B(255) 1448. In this example, R(255) only indicates a Red color associated with the red index 255 and does not necessarily indicate a Red color value of 255, which is the brightest Red color. Likewise, G(255) indicates a Green color associated with the green index 255 and B(255) indicates a Blue color associated with the blue index 255.

[0043] Alternately, Red, Green, Blue and Yellow may be used to define a color coding bar. Alternately, a Hue-based color coding bar may be used.

[0044] Figure 12 represents an example of a color-coded image 1260 displaying a shear wave propagation velocity squared c^2 within human soft tissue (e.g. breast). A color coding scale 1250 is illustrated, in which a color code 1210 (i.e., representing a red color although displayed as white in this black/white document) represents a low shear wave propagation velocity squared value and a color code 1220 (i.e., representing a blue color although displayed as hatched in this black/white document) represents a higher shear wave propagation velocity squared value.

[0045] Based on the coding scale 1250, it can be seen that the color coded image 1260 includes an area 1280 of high propagation velocity squared c^2 . Since the shear wave propagation velocity squared c^2 is proportional to the Young's modulus, the tissue area corresponding to area 1280 is likely to be hard. Since a tumor is generally hard, image 1260 may indicate pathological conditions.

[0046] The color-coding method provides efficient distinction between an area including shear waves having a high propagation velocity squared value and other areas including shear waves having a low propagation velocity squared value. The color coding method therefore allows efficient identification of hard tissue areas within soft tissue areas. An image displaying shear wave propagation velocity or velocity squared may be combined (e.g., superimposed) with a regular image of ultrasound, e.g. B-mode image, or a combined B-mode image and color Doppler image and/or spectral Doppler image. Alternately, the shear wave propagation velocity squared or velocity may be displayed numerically. In some embodiments, the shear wave propagation velocity squared may be displayed in gray scale or based on other graphic coding methods such as using patterns rather than colors. For example, low values of shear wave propagation velocity or square of the shear wave propagation velocity may be displayed in black or dark gray while high values of shear wave propagation velocity or shear wave propagation velocity squared may be displayed in light gray or white using a grayscale coding method.

[0047] Tissue strain ε is a measure of tissue displacement as follows,

$$\sigma = E\varepsilon \quad (21)$$

$$\sigma = E \frac{\Delta L}{L} \quad (22)$$

5

$$\varepsilon = \frac{\Delta L}{L} \quad (23)$$

10

where σ is stress, E Young's modulus, L tissue length, ΔL displacement as shown in Figures 19A and 19B. Figure 19A illustrates tissue 1910 and its length L before a force 1930 was applied while Figure 19B shows the tissue 1920 after the force 1930 was applied and the tissue 1920 was compressed. The stress σ is a force per area and is related to the strain ε via the Young's modulus E as shown in equation 21. The force may be a mechanical force from pushing an

15

ultrasound probe into the tissue or an acoustic radiation force created by a transmit ultrasound pulse. Equation (22) may be re-written for a local strain $\frac{\partial u_z}{\partial z}$, instead of a global strain $\frac{\Delta L}{L}$ (i.e., mean strain over the length L).

20

$$\sigma = E \frac{\partial u_z}{\partial z} \quad (24)$$

where u_z is a local displacement at an axial position z using the convention introduced in equation 16. Therefore, the spatial derivative of the displacement is a strain or a local strain which may vary from one position to another position. Likewise, the stress may vary from one position to another position. As tissue stress or compression increases, tissue strain increases. For a given stress, strain is smaller if the tissue stiffness is harder and Young's modulus is larger. Therefore, tissue strain may indicate tissue stiffness as long as the stress is known. However, in general stress may not be readily available. Therefore strain may indicate relative tissue stiffness in an area of similar stress and thus may be considered qualitative. Stress and thus strain may be created by acoustic radiation forces previously discussed or mechanical compression by an ultrasound probe. On the other hand, shear wave propagation velocity or velocity squared are more directly related to tissue stiffness because the tissue density may be relatively constant in equation 1. Thus shear wave propagation velocity or velocity squared may directly indicate tissue stiffness and Young's modulus and thus may be considered quantitative. However, the shear wave velocity imaging requires shear wave detection at 2 or more lateral positions or 2 or more ultrasound beams and thus may have a limited lateral resolution. On the other hand, strain may be obtained over one ultrasound beam and thus may have better lateral resolution than shear wave velocity imaging. Therefore in this embodiment, a new shear wave velocity image is created using both strain imaging and shear wave velocity imaging data.

25

30

35

[0048] First, a shear wave velocity image 1640 is obtained as previously discussed and shown in Figure 16B. Second, a strain image 1630 is created either by acoustic radiation forces or mechanical compression, e.g. by an ultrasound probe, and is shown in Figure 16A. An ultrasound image is obtained from tissue as a reference image before forces, i.e., acoustic radiation forces or mechanical compression, are applied as shown in Figure 19A. The second ultrasound image is acquired after the forces, i.e., acoustic radiation forces or mechanical compression, are applied as shown in Figure 19B. Tissue displacement is calculated by correlation of the two (first and second) images (Figures 19A and 19B). For example, equations 6, 7, 8, 9 or 10 may be applied to the two images obtain a correlation and thus a displacement

45

u_z . The spatial derivative of the displacement $\frac{\partial u_z}{\partial z}$ yields a strain image.

[0049] Third, both strain 1630 and shear wave velocity images 1640 are partitioned (divided) to multiple matched areas as shown in Figure 16C. This process is performed because the stress may vary from one position to another as previously discussed. In Figure 16C, the two images (i.e. strain image 1630, shear wave image 1640) are superimposed on each other to depict their spatial relationship. The slightly larger elliptical image 1620 depicts a tumor imaged by the shear wave imaging while the smaller elliptical image 1610 represents the tumor imaged by the strain imaging, indicating different spatial resolution. Fourth, each strain image value (horizontal axis) of each pixel point in an area is plotted against the shear wave image value (vertical axis) of each same (corresponding) pixel point in the area as shown in Figure 17. Fifth, a regression line (e.g. a straight line or a curved line) or regression line equation (e.g., $Y=aX+b$, where X represents strain image value while Y represents shear wave image value) and a correlation coefficient are obtained between the strain image values and the shear wave image values as shown Figure 17, i.e. the square of shear wave

50

55

propagation velocity and the inverse (reciprocal) of strain at each corresponding pixel position in each area as shown in Figure 16C.

[0050] The regression line is a line to closely relate variables X and Y by minimizing errors. Variable X (X_i : actual shear data samples) and variable Y (Y_i : actual strain data samples) at a given image point (pixel) are assumed related by a regression line; e.g. $Y=aX+b$ and a and b are obtained to minimize the sum of errors (e.g., square errors) as follows,

$$\sum (Y_i - aX_i - b)^2 \quad (25)$$

where an error is a difference between the estimated Y value Y_{est} by the regression line for a given X_i using the regression line and the actual data sample Y_i as follows,

$$Y_{est} = aX_i + b \quad (26)$$

$$Error = Y_i - Y_{est} \quad (27).$$

[0051] From equation (1), (21) and (24), assuming a constant stress in a small area, the square of shear wave propagation velocity is proportional to the inverse of the strain as follows,

$$c^2 \propto \frac{1}{\varepsilon} \quad (28).$$

[0052] Alternately, the strain may be proportional to the inverse of the square of shear wave propagation velocity as follows.

$$\varepsilon \propto \frac{1}{c^2} \quad (29)$$

where, ε is the strain and c is the shear wave propagation velocity. Therefore, in a small area where a constant stress is expected, a linear correlation may be expected as shown in Figure 17.

[0053] In some embodiments, in addition to actual data, virtual data at the origin (0, 0) may be used for the calculation of a regression line because of the relationship between the square of the shear wave velocity and the strain.

[0054] The correlation coefficient r between data samples X_i and data samples Y_i is obtained as follows,

$$r = \frac{\sum_{i=1}^n (X_i - \bar{X})(Y_i - \bar{Y})}{\sqrt{\sum_{i=1}^n (X_i - \bar{X})^2} \sqrt{\sum_{i=1}^n (Y_i - \bar{Y})^2}} \quad (30)$$

where \bar{X} and \bar{Y} are mean of X_i and Y_i , respectively.

If the correlation coefficient in one of the areas is greater than a preset value (i.e., a threshold), the strain image values in that area are converted to the square of shear wave velocity using the regression line by inputting X (i.e., a strain image value) in the regression line equation and calculating the resulting new shear wave velocity (or velocity squared) (i.e., Y) image value. Since the strain image values are used to create the new shear wave image values for the area, the new shear wave image should have the same spatial resolution as the strain image, which is greater than the spatial resolution of the original shear wave image.

[0055] If the correlation coefficient is lower than the threshold for an area, the strain image values and shear wave image values for the area are not well correlated. This may occur in areas of large stiffness changes, e.g., at the border of stiff tissue areas. If the correlation coefficient is lower than the preset value, a regression line of the nearest neighboring

area associated with a correlation coefficient greater than the preset value is used as described above to convert strain image values of the current area to shear wave image values.

5 [0056] Overall flow is shown in Figure 18. A shear wave image (either velocity or velocity squared) and a strain image are acquired at 1810. The images are divided into smaller areas at 1820. A regression line and a correlation coefficient are obtained at 1830 for each smaller area based on the shear wave image values (e.g., shear wave velocity or velocity squared) and strain image values (e.g. strain, inverse of strain) of the smaller area. If the correlation coefficient for an area is determined to be greater than a threshold at 1840, the strain image values of the area are converted to shear wave image values of the area using the regression line at 1850. If the correlation coefficient for the area is not greater than the threshold, the strain image values are converted at 1860 to shear wave image values using a regression line of the nearest neighboring area having a correlation coefficient greater than the threshold.

10 [0057] In some embodiments, smaller areas may be made from the strain and shear wave images rather than dividing (partitioning) the images as shown in Figure 16C. In other words, there may be a gap between neighboring areas. Figure 16C represents the case without any gap. All or some of shear wave or strain pixels in each area may be used for the calculation of the correlation coefficient and the regression line.

15 [0058] In some embodiments, a small area is selected in a strain image and a shear wave. A relationship (e.g., a regression line and/or a correlation coefficient) is obtained between strain image values and shear wave image values in the area. Then the strain image values are converted to shear wave image values based on the relationship. This procedure may be repeated in another small area to cover all or part of the images. The strain image is thus converted a new shear wave image in all or part of the original image area. Figure 20 illustrates the flow of the processing. First, a shear wave and strain images are acquired at 2010. A relationship (e.g. a regression line and/or a correlation coefficient) is obtained in an area at 2020. Strain image data are converted to shear wave image data using the relationship at 2030.

20 [0059] In some embodiments, strain image data are converted to shear wave image data using the regression line without checking the correlation coefficient.

25 [0060] In some embodiments, an area is adaptively selected where correlation between the shear wave image data and strain image data is high. In other words, an area is searched where correlation between shear wave image data and strain image data is higher than a threshold. In this area, the regression line is obtained and the strain image data are converted to shear wave image data using the regression line. This process may be repeated in another area. This is effective to find an area of the same stress and to exclude areas of large stress variation, e.g. borders of hard tissue lesions (or tumors) as shown in Figure 16C.

30 [0061] In some embodiments, shear wave image values may be converted to strain image values based on the regression line. The detailed process follows. A first shear wave image is acquired. A strain image is acquired. The strain image and the first shear wave are divided into plural areas. A regression line between the strain image values and the first shear wave image values in each area of the plural areas is calculated. The strain image values are converted to shear wave values based on the regression line in each area.

35 [0062] In some embodiments, a shear wave image and/or strain image may consist of a few pixels to billions of pixels. In some embodiments, a shear wave image and/or strain image may consist of at least one image pixel.

[0063] In the previous discussion, two-dimensional images are used to describe the embodiments. However, the processes described herein may be applied to three-dimensional images, in which the images are divided into volumes, instead of areas, at 1820.

40 [0064] Figure 3 shows a diagram of a conventional ultrasound diagnostic imaging system with B-mode imaging, Doppler spectrum and color Doppler imaging. The system may include other imaging modes, e.g. elasticity imaging, 3D imaging, real-time 3D imaging, tissue Doppler imaging, tissue harmonic imaging, contrast imaging and others. An ultrasound signal is transmitted from an ultrasound probe 330 driven by a transmitter/transmit beamformer 310 through a transmit/receive switch 320. The probe 320 may consist of an array of ultrasound transducer elements which are separately driven by the transmitter/transmit beamformer 310 with different time-delays so that a transmit ultrasound beam is focused and steered. A receive beamformer 340 receives the received ultrasound signals from the probe 330 through the switch 320 and processes the signals 325. The receive beamformer 340 applies delays and/or phases to the signals and the resultant signals are summed for focusing and steering a received ultrasound beam. The receive beamformer 340 may also apply apodization, amplification and filtering.

45 [0065] The processed signal 345 is coupled to a Doppler spectrum processor 350, a color Doppler processor 360, and a B-mode image processor 370. The Doppler spectrum processor 350 includes a Doppler signal processor and a spectrum analyzer, and processes Doppler flow velocity signals and calculates and outputs a Doppler spectrum 355. The color Doppler processor 360 processes the received signal 345 and calculates and outputs velocity, power and variance signals 365. The B-mode image processor 370 processes the received signal 345 and calculates and outputs a B-mode image 375 or the amplitude of the signal by an amplitude detection.

50 [0066] The Doppler spectrum signals 355, color Doppler processor signals (velocity, power, and variance) 365 and B-mode processor signals 375 are coupled to a scan converter 380 that converts the signals to scan-converted signals. The output of scan converter 380 is coupled to a display monitor 390 for displaying ultrasound images.

[0067] Figure 2 shows a diagram of elements of an ultrasound imaging system including a shear wave/strain processor 295 according to some embodiments. The ultrasound system in Figure 2 transmits strong ultrasound pulses to biological tissue to create acoustic radiation forces which push the biological tissue. Shear waves are created and propagate in the tissue after the biological tissue is pushed. The ultrasound system then transmits and receives ultrasound pulses to track the shear waves as the shear waves propagate in the biological tissue. Multiple received ultrasound beams may be simultaneously formed by the receive beamformer 240. Likewise, multiple transmitted ultrasound beams may be simultaneously formed by the transmitter/transmit beamformer 210. Received ultrasound signals from the receive beamformer 240 are processed to obtain tissue displacement, Doppler velocity, correlation, shear wave propagation velocity and/or shear wave propagation velocity squared as previously described. The shear wave/strain processor 295 may perform the shear wave and strain processing methods described previously. The shear wave/strain processor 295 receives output 245 from the receive beamformer 240. Output 297 comprises shear wave velocity data or other shear wave properties. For example, the shear wave/strain processor 295 outputs the propagation velocity or the square of the propagation velocity of the shear wave to a scan converter 280 and a representation of the shear wave propagation velocity or the square of the shear wave propagation velocity is output to the display monitor along with the B-mode, color Doppler or spectral Doppler images.

[0068] The shear wave/strain processor 295 may comprise of general purpose central processing units (CPUs), digital signal processors (DSPs), field programmable Arrays (FPGAs), graphic processing units (GPUs) and/or discrete electronics devices.

[0069] Figure 2 represents a logical architecture according to some embodiments, and actual implementations may include more or different elements arranged in other manners. Other topologies may be used in conjunction with other embodiments. Moreover, each element of the Figure 2 system may be implemented by any number of computing devices in communication with one another via any number of other public and/or private networks. Two or more of such computing devices may be located remote from one another and may communicate with one another via any known manner of network(s) and/or a dedicated connection. The system may comprise any number of hardware and/or software elements suitable to provide the functions described herein as well as any other functions. For example, any computing device used in an implementation of the Figure 2 system may include a processor to execute program code such that the computing device operates as described herein.

[0070] All systems and processes discussed herein may be embodied in program code stored on one or more non-transitory computer-readable media. Such media may include, for example, a floppy disk, a CD-ROM, a DVD-ROM, a Blu-ray disk, a Flash drive, magnetic tape, and solid state Random Access Memory (RAM) or Read Only Memory (ROM) storage units. The program code may be executed by one or more computing devices to perform any of the processes described herein. In this regard, the one or more computing devices may also include one or more memory devices (e.g., RAM or ROM storage units) to store the program code prior to execution thereof. Embodiments are therefore not limited to any specific combination of hardware and software.

[0071] One or more embodiments have been described. Nevertheless, various modifications will be apparent to those in the art.

Claims

1. A method comprising:

acquiring a first shear wave image (1640) of at least one shear wave propagation property;
 acquiring a strain image (1630); and
 converting the strain image to a second shear wave image of at least one shear wave propagation property based on the first shear wave image,

characterised in that converting the strain image to the second shear wave image of at least one shear wave propagation property comprises:

dividing (1820) the strain image and the first shear wave image into plural areas;
 calculating (1830) a regression line and a correlation coefficient between the strain image values and the first shear wave image values in each area of the plural areas;
 if the correlation coefficient in said each area is greater than a preset value, converting (1850) the strain image values to shear wave values based on the regression line in said each area; and
 if the correlation coefficient in said each area is not greater than the preset value, converting (1860) the strain image values to shear wave values based on the regression line in the nearest neighbor area of said each area.

2. A method according to claim 1, wherein acquiring the first shear wave image (1640) comprises:

5 applying a first ultrasound pulse to biological tissue to create shear waves (1140, 1150, 1160, 1170) in the biological tissue;
 transmitting a focused ultrasound pulse into the biological tissue;
 receiving one or more ultrasound signals from the biological tissue generated in response to the focused ultrasound pulse;
 detecting the shear waves in the biological tissue based on the received one or more ultrasound signals;
 10 determining at least one shear wave propagation property associated with the detected shear waves; and
 forming the first shear wave image (1640) of the at least one shear wave propagation property associated with the detected shear waves.

3. A method according to claim 1, wherein the at least one shear wave propagation property comprises one or more of:

15 a shear wave propagation velocity associated with one or more of the detected shear waves; and
 a product (bc^2) of a real number (b) and the square of the shear wave propagation velocity (c^2).

4. A method according to claim 1, wherein acquiring the strain image (1630) comprises acquiring the strain image by using forces of acoustic radiation forces or mechanical compression.

5. A method according to claim 1, wherein the first shear wave image (1640) comprises at least one image pixel.

6. A method according to claim 4, wherein acquiring the strain image (1630) by using the forces comprises:

25 acquiring a first ultrasound image before the forces are applied to the biological tissue;
 acquiring a second ultrasound image after the forces are applied to the biological tissue;
 calculating tissue displacements between the first and second ultrasound images by a cross correlation, a sum of absolute differences (SAD), a sum of square differences (SSD), a sum of absolute cubic differences (SCD),
 a sum of absolute power differences (SPD), a color Doppler shift frequency, a color Doppler phase or a color
 30 Doppler velocity; and
 calculating the strain image (1630) by calculating a spatial derivative of the displacements.

7. A system comprising:

35 a memory device;
 a processor configured to execute computer-executable program code stored in the memory to cause the system to:
 acquire a first shear wave image (1640) of at least one shear wave propagation property;
 acquire a strain image (1630); and
 40 convert the strain image to a second shear wave image of at least one shear wave propagation property based on the first shear wave image,

characterised in that conversion of the strain image to the second shear wave image of at least one shear wave propagation property comprises:

45 division (1820) of the strain image and the first shear wave image into plural areas;
 calculation (1830) of a regression line and a correlation coefficient between the strain image values and the first shear wave image values in each area of the plural areas;
 conversion (1850) of the strain image values to shear wave values based on the regression line in said each
 50 area if the correlation coefficient in said each area is greater than a preset value; and
 conversion (1860) of the strain image values to shear wave values based on the regression line in the nearest neighbor area of said each area if the correlation coefficient in said each area is not greater than the preset value.

8. A system according to claim 7, wherein acquisition of the first shear wave image (1640) comprises:

55 application of a first ultrasound pulse to biological tissue to create shear waves (1140, 1150, 1160, 1170) in the biological tissue;
 transmission of a focused ultrasound pulse into the biological tissue;

reception of one or more ultrasound signals from the biological tissue generated in response to the focused ultrasound pulse;

detection of the shear waves in the biological tissue based on the received one or more ultrasound signals; determination of at least one shear wave propagation property associated with the detected shear waves; and formation of the first shear wave image (1640) of the at least one shear wave propagation property associated with the detected shear waves.

9. A system according to claim 7, wherein the at least one shear wave propagation property comprises one or more of: a shear wave propagation velocity associated with one or more of the detected shear waves; and a product (bc^2) of a real number (b) and the square of the shear wave propagation velocity (c^2).

10. A system according to claim 7, wherein acquisition of the strain image (1630) comprises acquisition of the strain image by using forces of acoustic radiation forces or mechanical compression.

11. A system according to claim 7, wherein the first shear wave image (1640) comprises at least one image pixel.

12. A system according to claim 7, wherein the strain image values comprise the strain or the inverse of strain.

13. A system according to claim 10, wherein acquisition of the strain image (1630) by using the forces comprises:

acquisition of a first ultrasound image before the forces are applied to the biological tissue; acquisition of a second ultrasound image after the forces are applied to the biological tissue; calculation of tissue displacements between the first and second ultrasound images by a cross correlation, a sum of absolute differences (SAD), a sum of square differences (SSD), a sum of absolute cubic differences (SCD), a sum of absolute power differences (SPD), a color Doppler shift frequency, a color Doppler phase or a color Doppler velocity; and calculation of the strain image (1630) by calculating a spatial derivative of the displacements.

Patentansprüche

1. Verfahren umfassend:

Gewinnen eines ersten Scherwellenbilds (1640) mindestens einer Scherwellenausbreitungseigenschaft; Gewinnen eines Verformungsbilds (1630); und Umwandeln des Verformungsbilds in ein zweites Scherwellenbild mindestens einer Scherwellenausbreitungseigenschaft aufgrund des ersten Scherwellenbilds,

dadurch gekennzeichnet, dass das Umwandeln des Verformungsbilds in das zweite Scherwellenbild mindestens einer Scherwellenausbreitungseigenschaft Folgendes umfasst:

Teilen (1820) des Verformungsbilds und des ersten Scherwellenbilds in mehrere Bereiche; Berechnen (1830) einer Regressionslinie und eines Korrelationskoeffizienten zwischen den Verformungsbildwerten und den ersten Scherwellenbildwerten in jedem der mehreren Bereiche; wenn der Korrelationskoeffizient im jeweiligen Bereich größer als ein voreingestellter Wert ist, Umwandeln (1850) der Verformungsbildwerte in Scherwellenwerte aufgrund der Regressionslinie im jeweiligen Bereich; und wenn der Korrelationskoeffizient im jeweiligen Bereich nicht größer als der voreingestellte Wert ist, Umwandeln (1860) der Verformungsbildwerte in Scherwellenwerte aufgrund der Regressionslinie im nächsten Nachbarbereich des jeweiligen Bereichs.

2. Verfahren nach Anspruch 1, wobei das Gewinnen des ersten Scherwellenbilds (1640) Folgendes umfasst:

Anlegen eines ersten Ultraschallimpulses an biologisches Gewebe, um darin Scherwellen (1140, 1150, 1160, 1170) zu erzeugen;

Senden eines fokussierten Ultraschallimpulses in das biologische Gewebe;

Empfangen eines oder mehrerer Ultraschallsignale aus dem biologischen Gewebe, die in Antwort auf den fokussierten Ultraschallimpuls erzeugt werden;

Erfassen der Scherwellen im biologischen Gewebe aufgrund des empfangenen einen oder der empfangenen

mehreren Ultraschallsignale;
Bestimmen mindestens einer Scherwellenausbreitungseigenschaft für die erfassten Scherwellen; und
Bilden des ersten Scherwellenbilds (1640) der mindestens einen Scherwellenausbreitungseigenschaft für die
erfassten Scherwellen.

5

3. Verfahren nach Anspruch 1, wobei die mindestens eine Scherwellenausbreitungseigenschaft Folgendes umfasst:

eine Scherwellenausbreitungsgeschwindigkeit für eine oder mehrere der erfassten Scherwellen; und/oder
ein Produkt (bc^2) einer reellen Zahl (b) und des Quadrats der Scherwellenausbreitungsgeschwindigkeit (c^2).

10

4. Verfahren nach Anspruch 1, wobei das Gewinnen des Verformungsbilds (1630) das Gewinnen des Verformungsbilds
unter Verwendung von akustischen Strahlungskräften oder mechanischen Kompressionskräften umfasst.

15

5. Verfahren nach Anspruch 1, wobei das erste Scherwellenbild (1640) mindestens ein Bildpixel umfasst.

6. Verfahren nach Anspruch 4, wobei das Gewinnen des Verformungsbilds (1630) unter Verwendung der Kräfte Fol-
gendes umfasst:

20

Gewinnen eines ersten Ultraschallbilds, bevor die Kräfte an das biologische Gewebe angelegt werden;
Gewinnen eines zweiten Ultraschallbilds, nachdem die Kräfte an das biologische Gewebe angelegt wurden;
Berechnen von Gewebeverschiebungen zwischen dem ersten und dem zweiten Ultraschallbild mittels einer
Kreuzkorrelation, einer Summe absoluter Differenzen (SAD), einer Summe quadratischer Differenzen (SSD),
einer Summe absoluter kubischer Differenzen (SCD), einer Summe absoluter Potenzdifferenzen (SPD), einer
Farbdopplerverschiebungsfrequenz, einer Farbdopplerphase oder einer Farbdopplergeschwindigkeit; und
Berechnen des Verformungsbilds (1630) durch Berechnen einer räumlichen Ableitung der Verschiebungen.

25

7. System, umfassend:

30

eine Speichervorrichtung;
einen Prozessor, der zur Ausführung eines im Speicher gespeicherten Computer-ausführbaren Programmcodes
eingrichtet ist, um das System zu Folgendem zu veranlassen:

35

Gewinnen eines ersten Scherwellenbilds (1640) mindestens einer Scherwellenausbreitungseigenschaft;
Gewinnen eines Verformungsbilds (1630); und
Umwandeln des Verformungsbilds in ein zweites Scherwellenbild mindestens einer Scherwellenausbrei-
tungseigenschaft aufgrund des ersten Scherwellenbilds,

dadurch gekennzeichnet, dass das Umwandeln des Verformungsbilds in das zweite Scherwellenbild mindestens
einer Scherwellenausbreitungseigenschaft Folgendes umfasst:

40

Teilen (1820) des Verformungsbilds und des ersten Scherwellenbilds in mehrere Bereiche;
Berechnen (1830) einer Regressionslinie und eines Korrelationskoeffizienten zwischen den Verformungsbild-
werten und den ersten Scherwellenbildwerten in jedem der mehreren Bereiche;
Umwandeln (1850) der Verformungsbildwerte in Scherwellenwerte aufgrund der Regressionslinie im jeweiligen
Bereich, wenn der Korrelationskoeffizient im jeweiligen Bereich größer als ein voreingestellter Wert ist; und
Umwandeln (1860) der Verformungsbildwerte in Scherwellenwerte aufgrund der Regressionslinie im nächsten
Nachbarbereich des jeweiligen Bereichs, wenn der Korrelationskoeffizient im jeweiligen Bereich nicht größer
als der voreingestellte Wert ist.

45

- 50 8. System nach Anspruch 7, wobei das Gewinnen des ersten Scherwellenbilds (1640) Folgendes umfasst:

55

Anwenden eines ersten Ultraschallimpulses auf biologisches Gewebe, um darin Scherwellen (1140, 1150, 1160,
1170) zu erzeugen;
Senden eines fokussierten Ultraschallimpulses in das biologische Gewebe;
Empfangen eines oder mehrerer Ultraschallsignale aus dem biologischen Gewebe, die in Antwort auf den
fokussierten Ultraschallimpuls erzeugt werden;
Erfassen der Scherwellen im biologischen Gewebe aufgrund des empfangenen einen oder der empfangenen
mehreren Ultraschallsignale;

EP 2 830 508 B1

Bestimmen mindestens einer Scherwellenausbreitungseigenschaft für die erfassten Scherwellen; und Bilden des ersten Scherwellenbilds (1640) aus der mindestens einen Scherwellenausbreitungseigenschaft für die erfassten Scherwellen.

- 5 9. System nach Anspruch 7, wobei die mindestens eine Scherwellenausbreitungseigenschaft Folgendes umfasst:
- eine Scherwellenausbreitungsgeschwindigkeit für eine oder mehrere der erfassten Scherwellen; und/oder ein Produkt (bc^2) einer reellen Zahl (b) und des Quadrats der Scherwellenausbreitungsgeschwindigkeit (c^2).
- 10 10. System nach Anspruch 7, wobei das Gewinnen des Verformungsbilds (1630) das Gewinnen des Verformungsbilds unter Verwendung von akustischen Strahlungskräften oder mechanischen Kompressionskräften umfasst.
11. System nach Anspruch 7, wobei das erste Scherwellenbild (1640) mindestens ein Bildpixel umfasst.
- 15 12. System nach Anspruch 7, wobei die Verformungsbildwerte die Verformung oder das Inverse der Verformung umfassen.
13. System nach Anspruch 10, wobei das Gewinnen des Verformungsbilds (1630) unter Verwendung der Kräfte Folgendes umfasst:
- 20 Gewinnen eines ersten Ultraschallbilds, bevor die Kräfte an das biologische Gewebe angelegt werden; Gewinnen eines zweiten Ultraschallbilds, nachdem die Kräfte an das biologische Gewebe angelegt wurden; Berechnen von Gewebeverschiebungen zwischen dem ersten und dem zweiten Ultraschallbild mittels einer Kreuzkorrelation, einer Summe absoluter Differenzen (SAD), einer Summe quadratischer Differenzen (SSD),
- 25 einer Summe absoluter kubischer Differenzen (SCD), einer Summe absoluter Potenzdifferenzen (SPD), einer Farbdopplerverschiebungsfrequenz, einer Farbdopplerphase oder einer Farbdopplergeschwindigkeit; und Berechnen des Verformungsbilds (1630) durch Berechnen einer räumlichen Ableitung der Verschiebungen.

30 Revendications

1. Procédé comportant les étapes consistant à :

35 acquérir une première image d'onde de cisaillement (1640) d'au moins une propriété de propagation d'onde de cisaillement, acquérir une image de contrainte (1630), et convertir l'image de contrainte en une seconde image d'onde de cisaillement d'au moins une propriété de propagation d'onde de cisaillement sur la base de la première image d'onde de cisaillement,

40 **caractérisé en ce que** la conversion de l'image de contrainte en la seconde image d'onde de cisaillement d'au moins une propriété de propagation d'onde de cisaillement comporte les étapes consistant à :

45 diviser (1820) l'image de contrainte et la première image d'onde de cisaillement en une pluralité de zones, calculer (1830) une droite de régression et un coefficient de corrélation entre les valeurs d'image de contrainte et les valeurs de la première image d'onde de cisaillement dans chaque zone de la pluralité de zones, si le coefficient de corrélation dans chaque dite zone est supérieur à une valeur pré-établie, convertir (1850) les valeurs d'images de contrainte en valeurs d'onde de cisaillement sur la base de la droite de régression dans chaque dite zone, et

50 si le coefficient de corrélation dans chaque dite zone n'est pas supérieur à la valeur pré-établie, convertir (1850) les valeurs d'image de contrainte en valeurs d'onde de cisaillement sur la base de la droite de régression dans la zone voisine la plus proche de chaque dite zone.

2. Procédé selon la revendication 1, dans lequel l'acquisition de la première image d'onde de cisaillement (1640) comporte les étapes consistant à :

55 appliquer une première impulsion ultrasonore à un tissu biologique pour créer des ondes de cisaillement (1140, 1150, 1160, 1170) dans le tissu biologique, transmettre une impulsion ultrasonore focalisée dans le tissu biologique,

recevoir un ou plusieurs signaux ultrasonores provenant du tissu biologique générés en réponse à l'impulsion ultrasonore focalisée,
détecter les ondes de cisaillement dans le tissu biologique sur la base du ou des signaux ultrasonores reçus,
déterminer au moins une propriété de propagation d'onde de cisaillement associée aux ondes de cisaillement détectées, et
former la première image d'onde de cisaillement (1640) de la au moins une propriété de propagation d'onde de cisaillement associée aux ondes de cisaillement détectées.

3. Procédé selon la revendication 1, dans lequel la au moins une propriété de propagation d'onde de cisaillement comporte un ou plusieurs éléments parmi :

une vitesse de propagation d'onde de cisaillement associée à une ou plusieurs des ondes de cisaillement détectées, et
un produit (bc^2) d'un nombre réel (b) et du carré de la vitesse de propagation d'onde de cisaillement (c^2).

4. Procédé selon la revendication 1, dans lequel l'acquisition de l'image de contrainte (1630) comporte l'acquisition de l'image de contrainte en utilisant des forces de forces de rayonnement acoustique ou de compression mécanique.

5. Procédé selon la revendication 1, dans lequel la première image d'onde de cisaillement (1640) comporte au moins un pixel d'image.

6. Procédé selon la revendication 4, dans lequel l'acquisition de l'image de contrainte (1630) en utilisant les forces comporte les étapes consistant à :

acquérir une première image ultrasonore avant que les forces soient appliquées au tissu biologique,
acquérir une seconde image ultrasonore après que les forces ont été appliquées au tissu biologique,
calculer des déplacements de tissu entre les première et seconde images ultrasonores par une corrélation croisée, une somme de différences absolues (SAD), une somme de différences de carrés (SSD), une somme de différences cubiques absolues (SCD), une somme de différences de puissance absolues (SPD), une fréquence de décalage Doppler de couleur, une phase Doppler de couleur ou une vitesse Doppler de couleur, et
calculer l'image de contrainte (1630) en calculant une dérivée spatiale des déplacements.

7. Système comportant :

un dispositif de mémoire,
un processeur configuré pour exécuter un code de programme exécutable sur ordinateur mémorisé dans la mémoire pour amener le système à :

acquérir une première image d'onde de cisaillement (1640) d'au moins une propriété de propagation d'onde de cisaillement,
acquérir une image de contrainte (1630), et
convertir l'image de contrainte en une seconde image d'onde de cisaillement d'au moins une propriété de propagation d'onde de cisaillement sur la base de la première image d'onde de cisaillement,

caractérisé en ce que la conversion de l'image de contrainte en la seconde image d'onde de cisaillement d'au moins une propriété de propagation d'onde de cisaillement comporte :

la division (1820) de l'image de contrainte et de la première image d'onde de cisaillement en une pluralité de zones,

le calcul (1830) d'une droite de régression et d'un coefficient de corrélation entre les valeurs d'image de contrainte et les valeurs de la première image d'onde de cisaillement dans chaque zone de la pluralité de zones,
la conversion (1850) des valeurs d'images de contrainte en valeurs d'ondes de cisaillement sur la base de la droite de régression dans chaque dite zone si le coefficient de corrélation dans chaque dite zone est supérieur à une valeur pré-établie, et

la conversion (1860) des valeurs d'image de contrainte en valeurs d'onde de cisaillement sur la base de la droite de régression dans la zone voisine la plus proche de chaque dite zone si le coefficient de corrélation dans chaque dite zone n'est pas supérieur à la valeur pré-établie.

8. Système selon la revendication 7, dans lequel l'acquisition de la première image d'onde de cisaillement (1640) comporte :

5 l'application d'une première impulsion ultrasonore à un tissu biologique pour créer des ondes de cisaillement (1140, 1150, 1160, 1170) dans le tissu biologique,
la transmission d'une impulsion ultrasonore focalisée dans le tissu biologique,
la réception d'un ou plusieurs signaux ultrasonores provenant du tissu biologique générés en réponse à l'impulsion ultrasonore focalisée,
10 la détection des ondes de cisaillement dans le tissu biologique sur la base du ou des signaux ultrasonores reçus,
la détermination d'au moins une propriété de propagation d'onde de cisaillement associée aux ondes de cisaillement détectées, et
la formation de la première image d'onde de cisaillement (1640) de la au moins une propriété de propagation d'onde de cisaillement associée aux ondes de cisaillement détectées.

- 15 9. Système selon la revendication 7, dans lequel la au moins une propriété de propagation d'onde de cisaillement comporte un ou plusieurs éléments parmi :

une vitesse de propagation d'onde de cisaillement associée à une ou plusieurs des ondes de cisaillement détectées, et
20 un produit (bc^2) d'un nombre réel (b) et du carré de la vitesse de propagation d'onde de cisaillement (c^2).

10. Système selon la revendication 7, dans lequel l'acquisition de l'image de contrainte (1630) comporte l'acquisition de l'image de contrainte en utilisant des forces de forces de rayonnement acoustique ou de compression mécanique.

- 25 11. Système selon la revendication 7, dans lequel la première image d'onde de cisaillement (1640) comporte au moins un pixel d'image.

12. Système selon la revendication 7, dans lequel les valeurs d'images de contrainte comportent la contrainte ou l'inverse de la contrainte.

- 30 13. Système selon la revendication 10, dans lequel l'acquisition de l'image de contrainte (1630) en utilisant les forces comporte :

l'acquisition d'une première image ultrasonore avant que les forces soient appliquées au tissu biologique,
35 l'acquisition d'une seconde image ultrasonore après que les forces ont été appliquées au tissu biologique,
le calcul de déplacements de tissu entre les première et seconde images ultrasonores par une corrélation croisée, une somme de différences absolues (SAD), une somme de différences de carrés (SSD), une somme de différences cubiques absolues (SCD), une somme de différences de puissance absolues (SPD), une fréquence de décalage Doppler de couleur, une phase Doppler de couleur ou une vitesse Doppler de couleur, et
40 le calcul de l'image de contrainte (1630) en calculant une dérivée spatiale des déplacements.

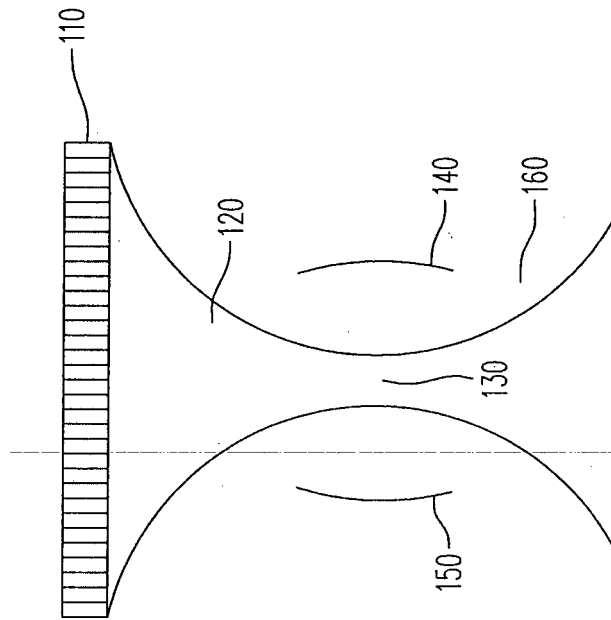


Figure 1

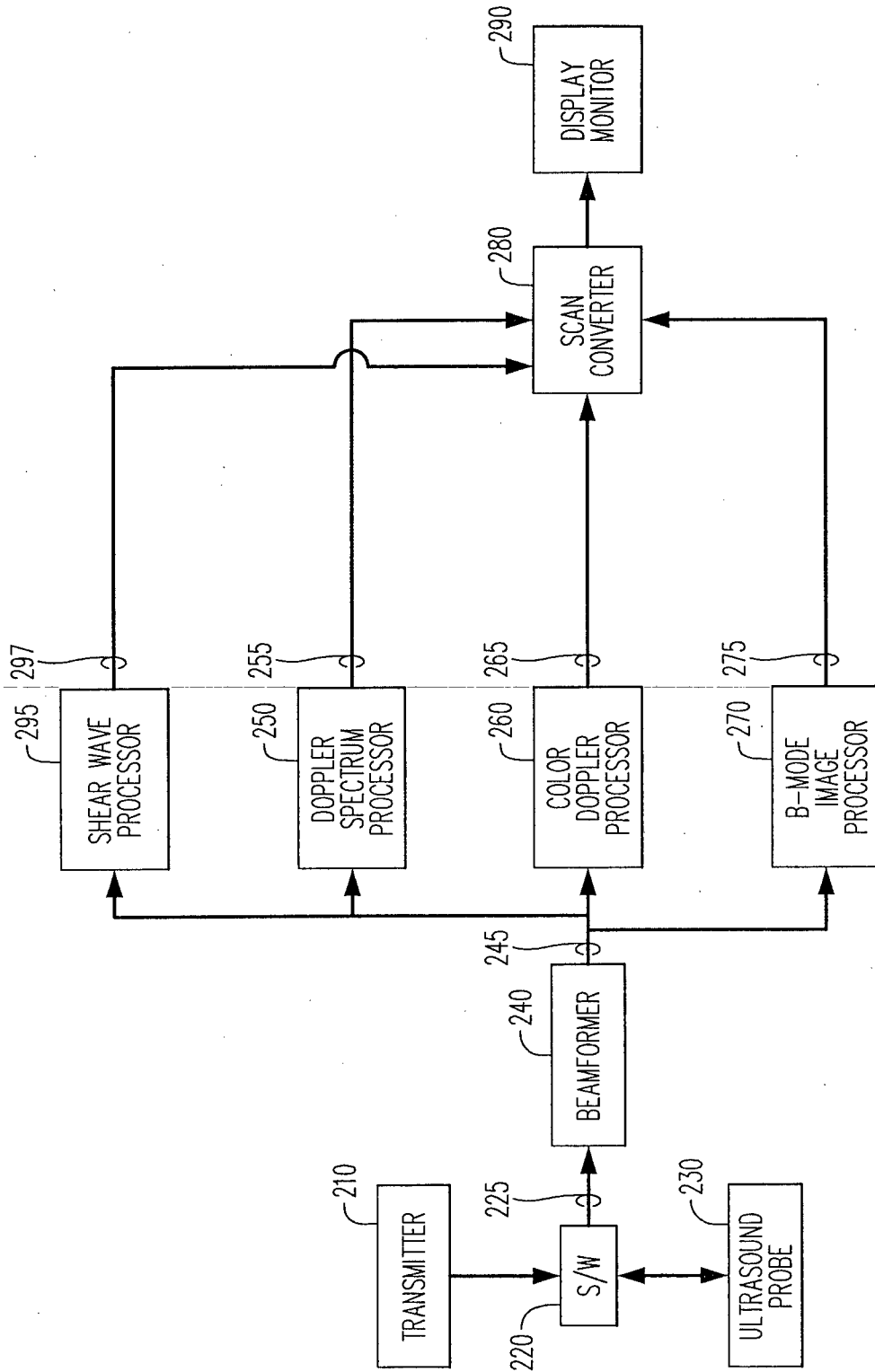


Figure 2

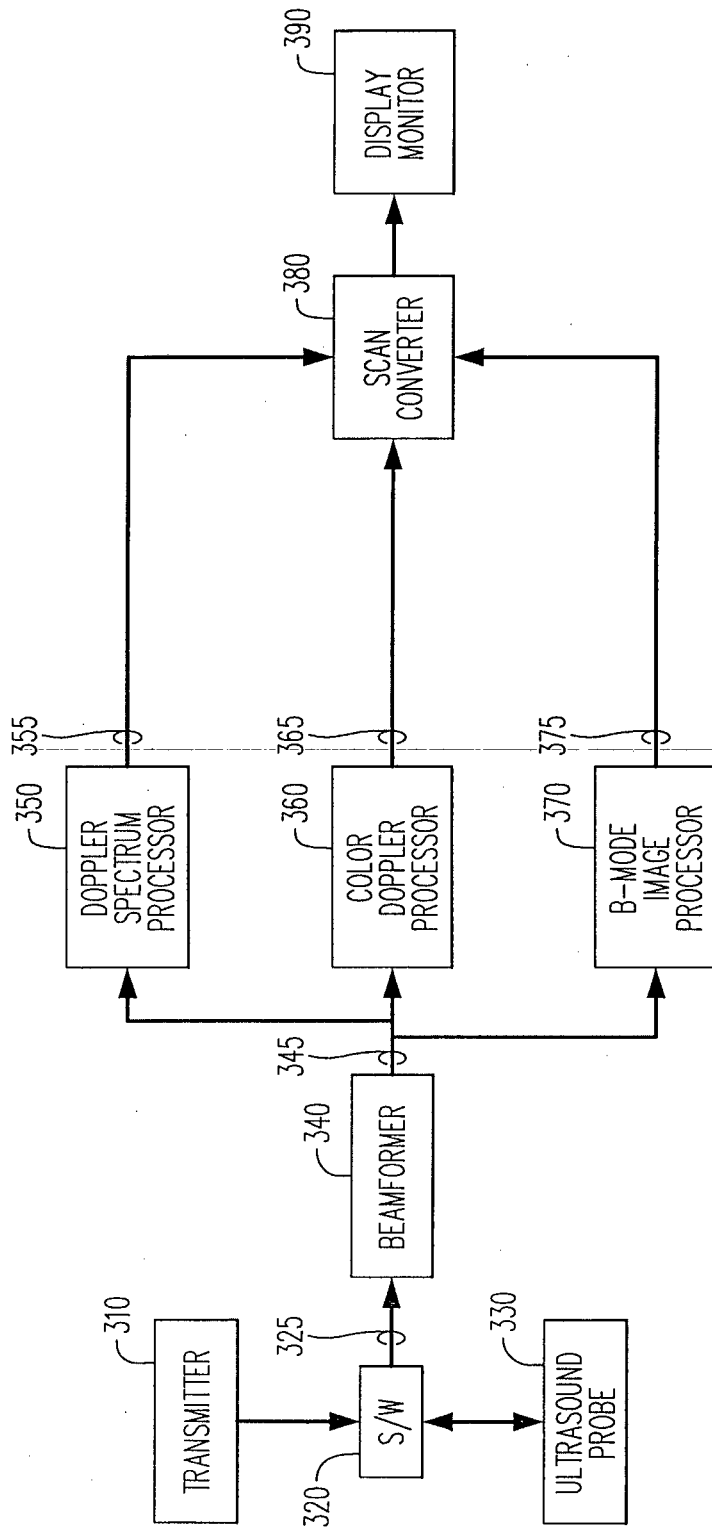


Figure 3
(PRIOR ART)

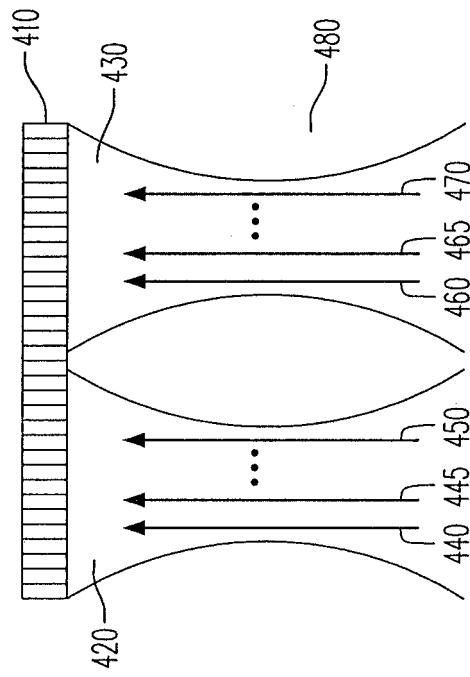


Figure 4

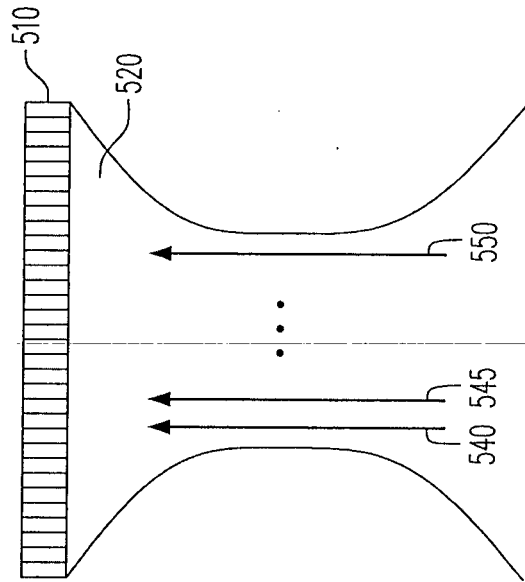


Figure 5

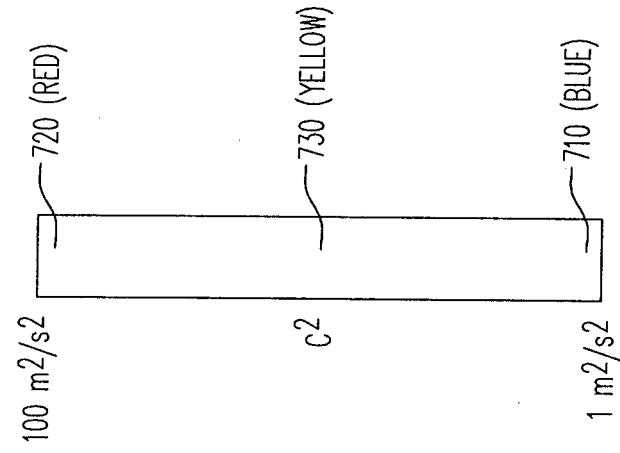


Figure 6

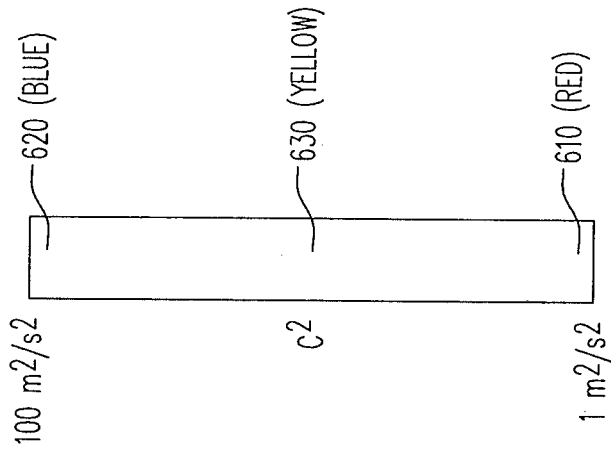


Figure 7

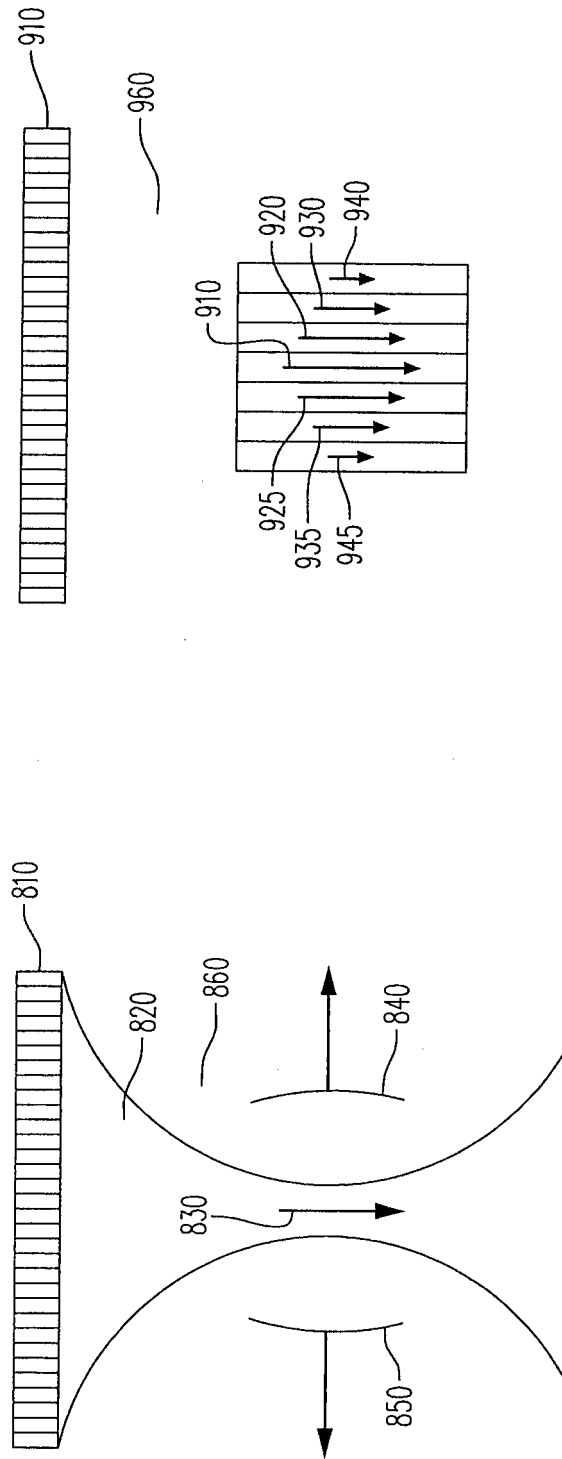


Figure 8

Figure 9

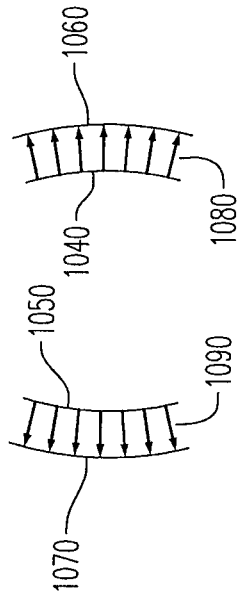
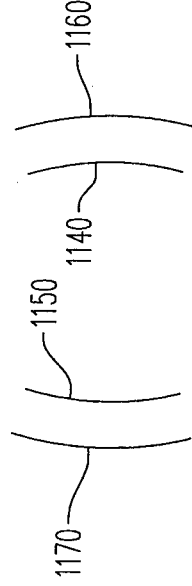


Figure 11

Figure 10

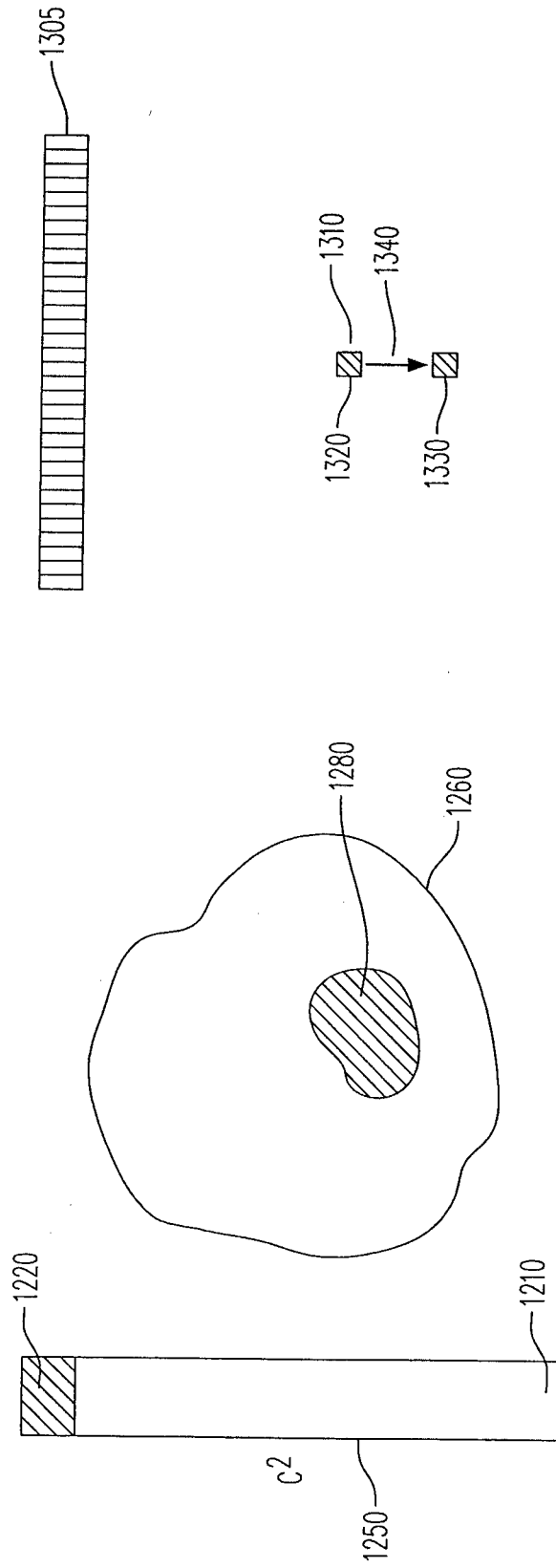


Figure 12

Figure 13

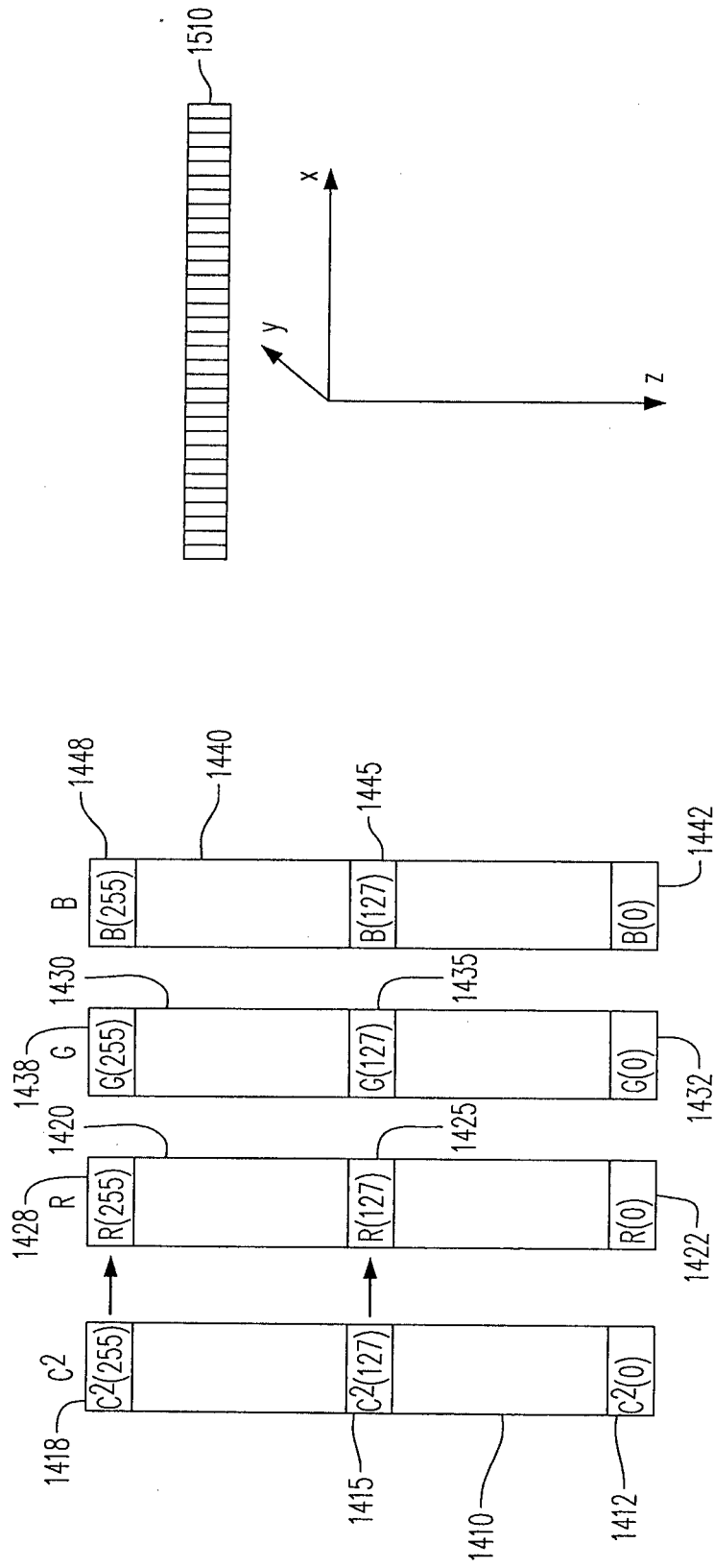


Figure 15

Figure 14

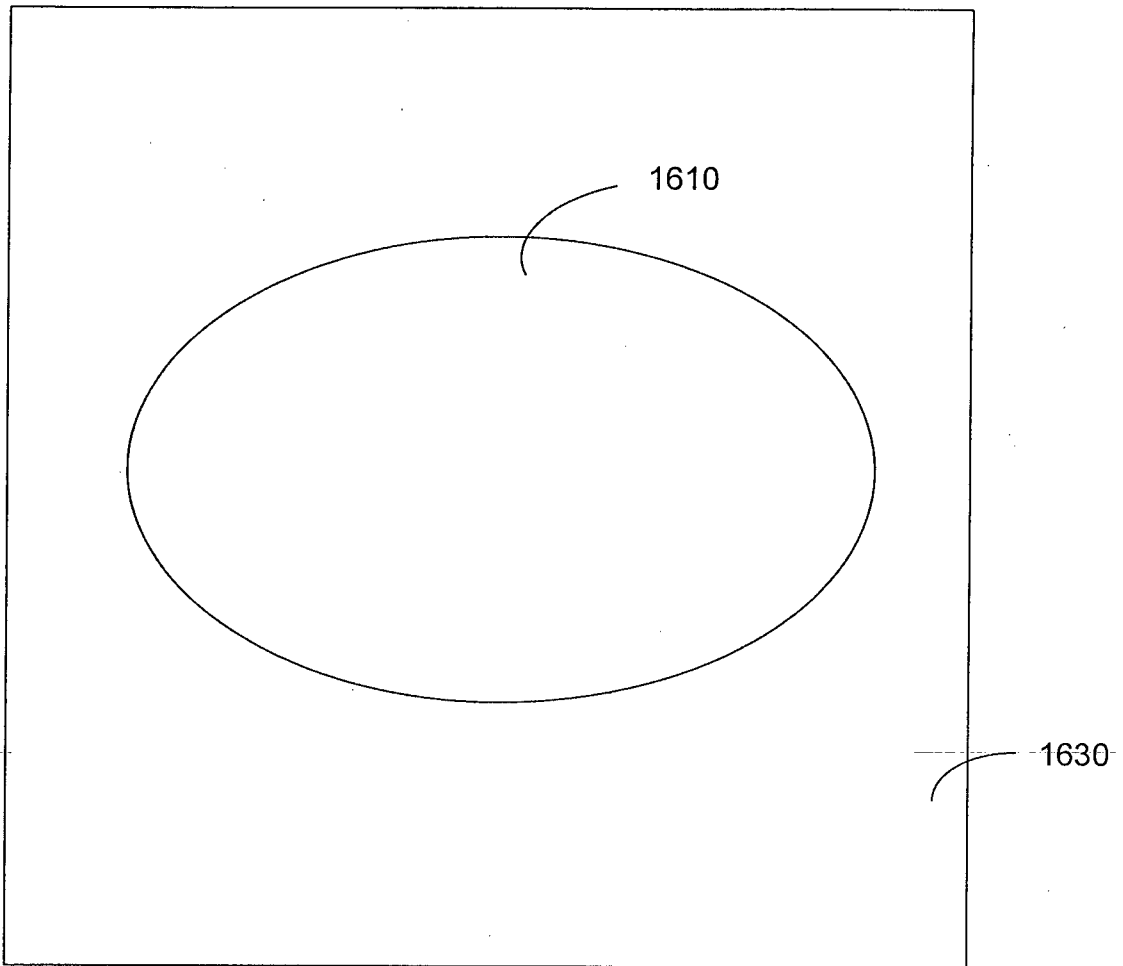


Figure 16A

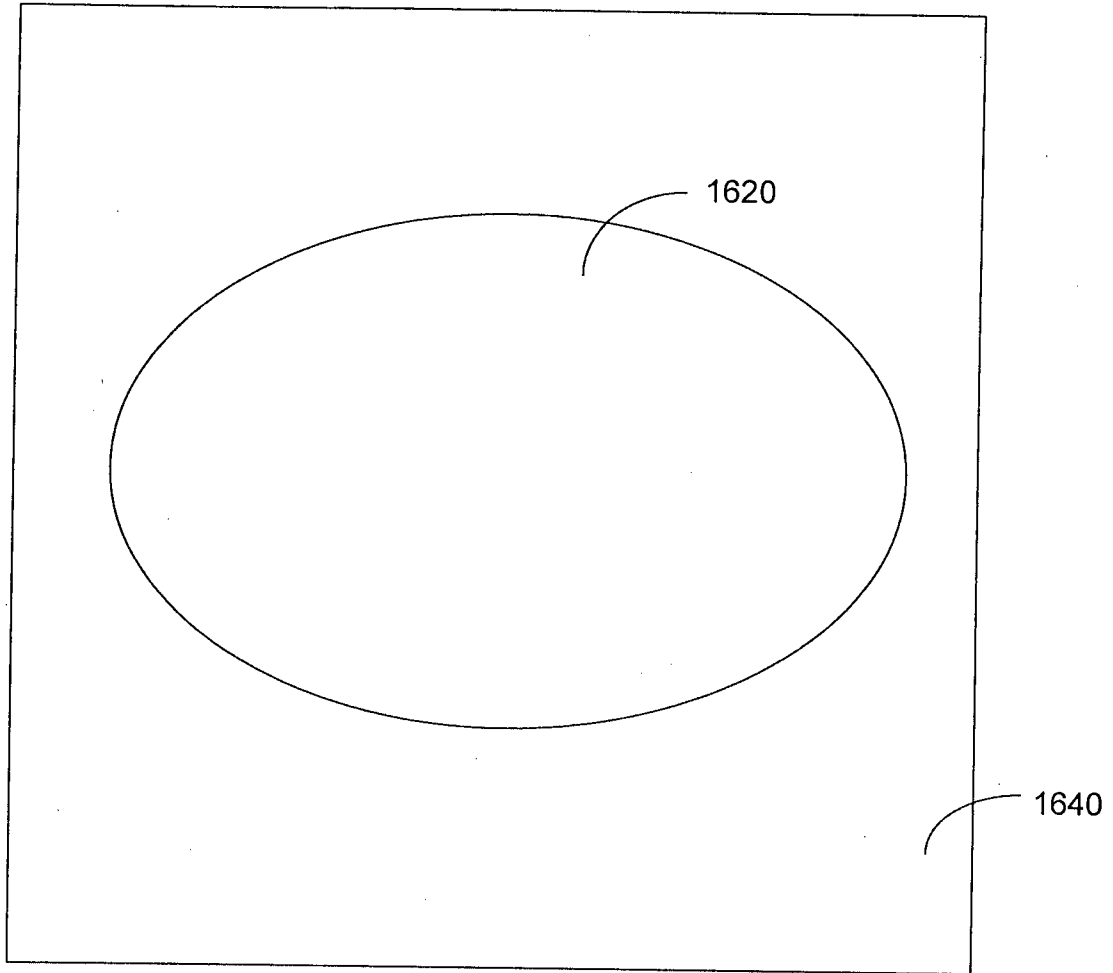


Figure 16B

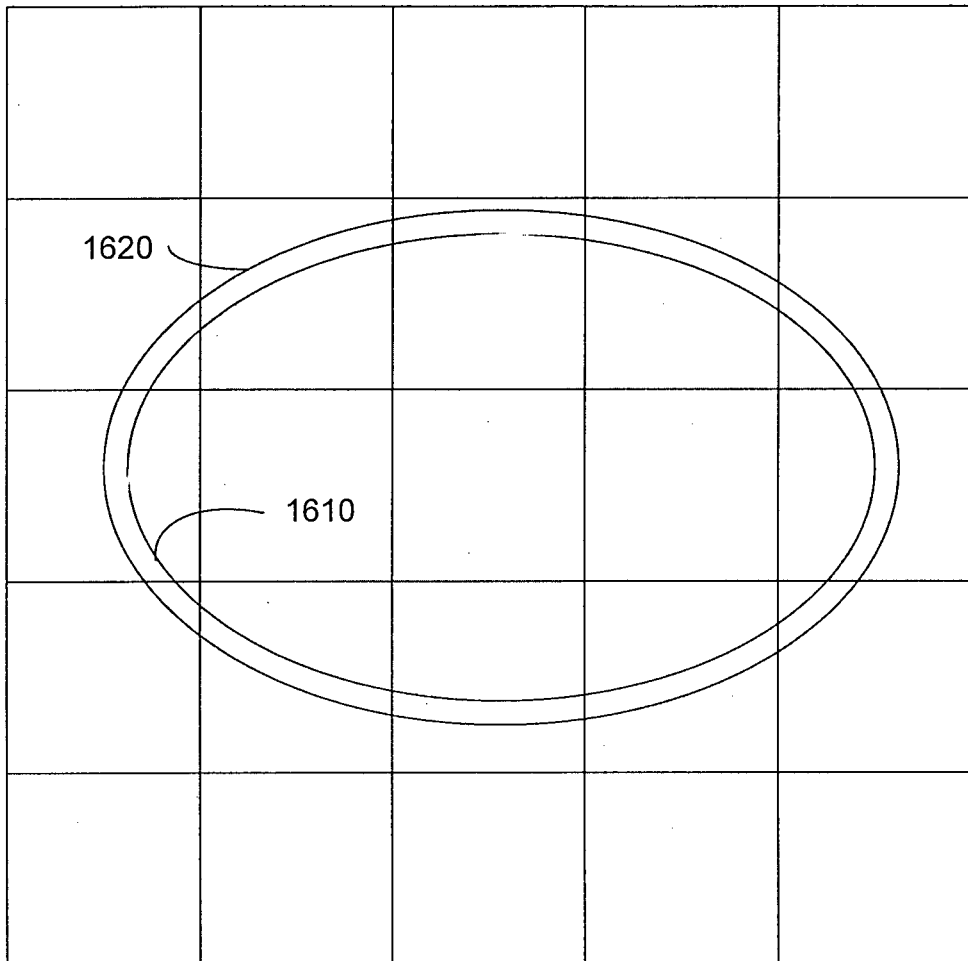


Figure 16C

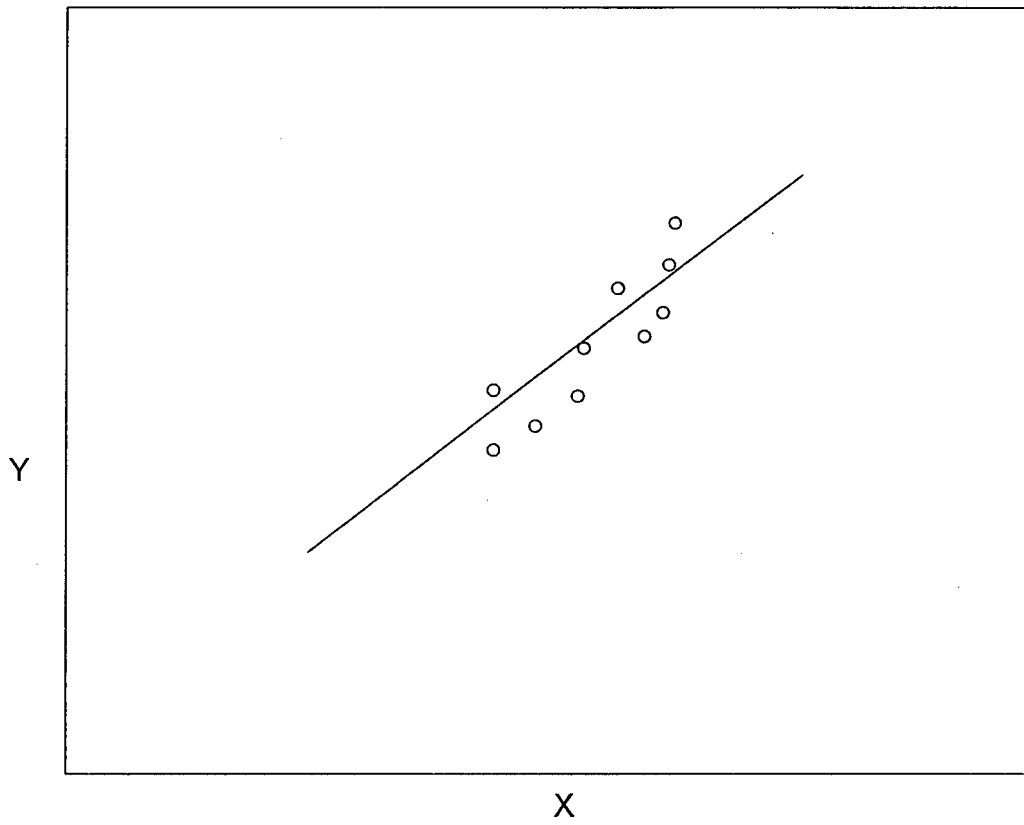


Figure 17

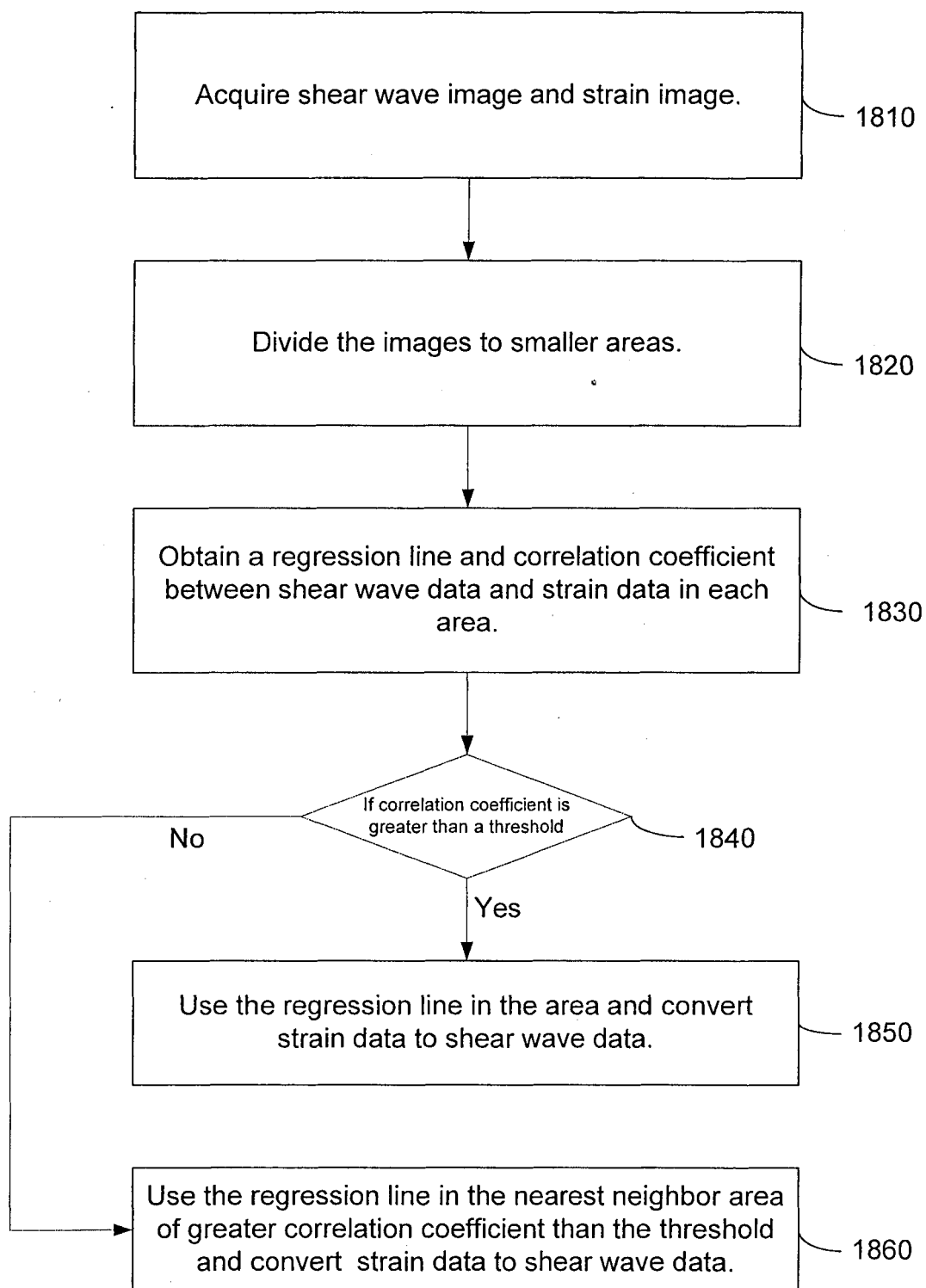


Figure 18

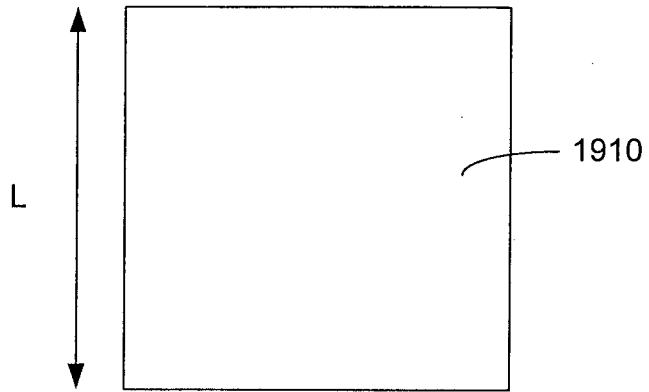


Figure 19A

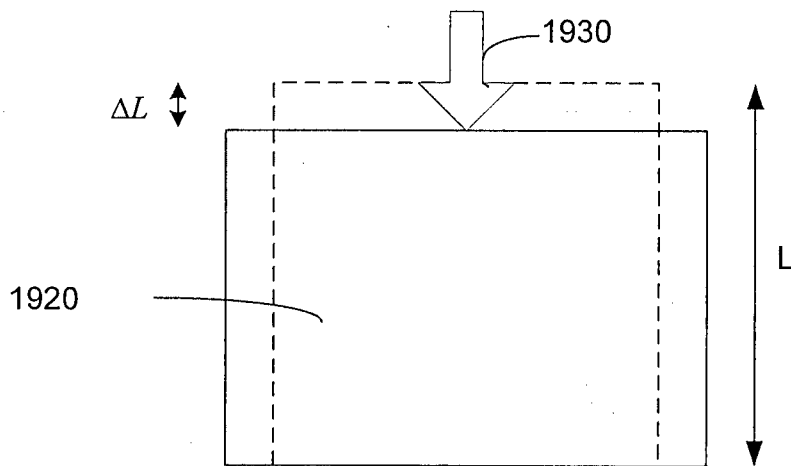


Figure 19B

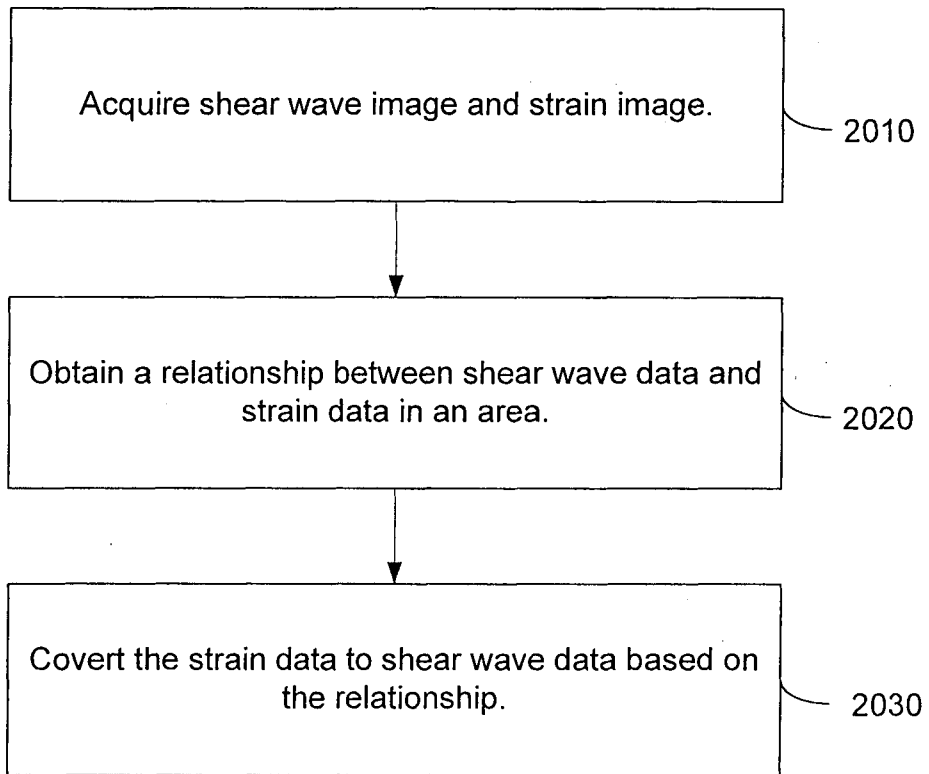


Figure 20

REFERENCES CITED IN THE DESCRIPTION

This list of references cited by the applicant is for the reader's convenience only. It does not form part of the European patent document. Even though great care has been taken in compiling the references, errors or omissions cannot be excluded and the EPO disclaims all liability in this regard.

Patent documents cited in the description

- US 20090216119 A1 [0008]
- US 4573477 A [0014]
- US 4622977 A [0014]
- US 4641668 A [0014]
- US 4651742 A [0014]
- US 4651745 A [0014]
- US 4759375 A [0014]
- US 4766905 A [0014]
- US 4768515 A [0014]
- US 4771789 A [0014]
- US 4780837 A [0014]
- US 4799490 A [0014]
- US 4961427 A [0014]

专利名称(译)	用于超声成像的方法和设备		
公开(公告)号	EP2830508B1	公开(公告)日	2016-07-13
申请号	EP2013770398	申请日	2013-03-26
[标]申请(专利权)人(译)	日立阿洛卡医疗株式会社		
申请(专利权)人(译)	日立ALOKA MEDICAL. , LTD.		
当前申请(专利权)人(译)	HITACHI , LTD.		
[标]发明人	TAMURA TADASHI		
发明人	TAMURA, TADASHI		
IPC分类号	A61B8/08 G01S7/52 A61B8/00 G01S15/89		
CPC分类号	A61B8/485 A61B8/08 A61B8/461 A61B8/488 A61B8/5207 G01S7/52036 G01S7/52042 G01S15/8979		
优先权	13/608361 2012-09-10 US 61/617839 2012-03-30 US		
其他公开文献	EP2830508A1 EP2830508A4		
外部链接	Espacenet		

摘要(译)

将第一超声脉冲施加到生物组织以在生物组织中产生剪切波，将聚焦的超声脉冲发射到生物组织中，从生物组织接收一个或多个超声信号，并且在生物组织中检测剪切波。基于所接收的一个或多个超声信号。确定与检测到的剪切波相关联的至少一个传播特性，并且显示所确定的至少一个传播特性。通过声辐射力或机械压缩（例如，通过超声探头）获得应变图像。然后通过使用先前获得的剪切波速度图像将应变图像转换为新的剪切波速度图像。

$$E = 3\rho \cdot c^2 \quad (1)$$