



(12) **EUROPEAN PATENT APPLICATION**

(43) Date of publication:  
**10.03.2010 Bulletin 2010/10**

(51) Int Cl.:  
**A61B 5/06** (2006.01) **A61B 6/00** (2006.01)  
**A61B 8/08** (2006.01)

(21) Application number: **09169200.4**

(22) Date of filing: **02.09.2009**

(84) Designated Contracting States:  
**AT BE BG CH CY CZ DE DK EE ES FI FR GB GR HR HU IE IS IT LI LT LU LV MC MK MT NL NO PL PT RO SE SI SK SM TR**  
Designated Extension States:  
**AL BA RS**

- **Washburn, Michael**  
**Brookfield, WI 53045 (US)**
- **Zang, William Alphonsus**  
**Cedarburg, WI 53012 (US)**

(30) Priority: **05.09.2008 US 205699**

(71) Applicant: **General Electric Company**  
**Schenectady, NY 12345 (US)**

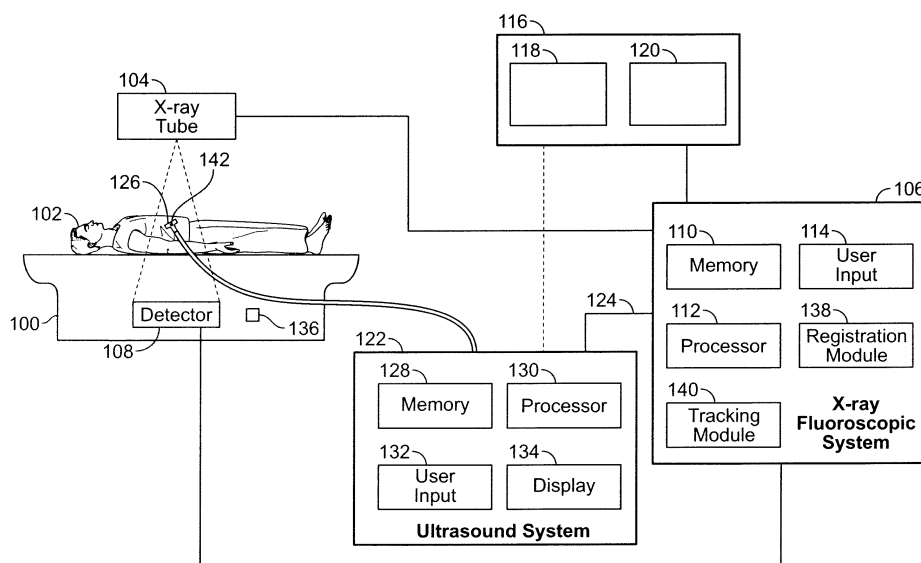
(74) Representative: **Illingworth-Law, William**  
**Illingworth**  
**Global Patent Operation - Europe**  
**GE International Inc.**  
**15 John Adam Street**  
**London WC2N 6LU (GB)**

(72) Inventors:  
• **Hall, Anne Lindsay**  
**New Berlin, WI 53151 (US)**

(54) **Method and apparatus for catheter guidance using a combination of ultrasound and x-ray imaging**

(57) An apparatus for tracking movement of a foreign object within a subject (102) has an X-ray fluoroscopic system (106) with an X-ray detector (108) and an ultrasound system (122) that has a probe (126) with a position sensor (142). A display (116) is configured to display a static X-ray image (150) acquired by the X-ray fluoroscopic system (106) and a real-time ultrasound image

(160) acquired by the ultrasound system (122). The X-ray image (150) and the ultrasound image (160) each display at least a portion of the foreign object and at least a portion of surrounding area. A tracking module (140) is configured to track movement of the foreign object within the ultrasound image (160) and the display (116) is further configured to display an indication of the movement of the foreign object on the X-ray image (150).



**FIG. 1**

## Description

### BACKGROUND OF THE INVENTION

**[0001]** This invention relates generally to dual modality imaging and more particularly to vascular interventional radiology.

**[0002]** Vascular interventional radiology often involves angioplasty using a balloon catheter. Once in place, such as in an area of stenosis, the balloon is inflated, compressing the plaque against the walls of the vessel with the purpose of creating a larger lumen. Traditionally, fluoroscopy is used to track the insertion of a guide wire in real-time to an area in which the balloon catheter will be deployed. Vasculature is not visible on the fluoroscopic images, and thus a bolus of contrast is often injected through a guidance catheter to provide an image of the arterial tree. Precise guidance of the guide wire and catheter are needed to avoid damage to anatomical structures.

**[0003]** As the positioning of the guide wire involves real-time fluoroscopic imaging, the subject or patient typically receives a high dose of radiation over the course of the procedure, as do persons standing nearby. In addition, the contrast agent is quickly cleared by the body, and thus multiple doses of contrast are often injected, which in some cases may result in contrast induced nephrotoxicity, as well as additional cost.

### BRIEF DESCRIPTION OF THE INVENTION

**[0004]** In one embodiment, an apparatus for tracking movement of a foreign object within a subject has an X-ray fluoroscopic system with an X-ray detector and an ultrasound system that has a probe with a position sensor. A display is configured to display a static X-ray image acquired by the X-ray fluoroscopic system and a real-time ultrasound image acquired by the ultrasound system. The X-ray image and the ultrasound image each display at least a portion of the foreign object and at least a portion of surrounding area. A tracking module is configured to track movement of the foreign object within the ultrasound image and the display is further configured to display an indication of the movement of the foreign object on the X-ray image.

**[0005]** In another embodiment, a method for positioning a guide wire within a subject comprises displaying a static X-ray image comprising at least a tip of a guide wire and vessels indicated by contrast. A live ultrasound image is displayed that includes at least the tip of the guide wire and at least a portion of the vessels. The guide wire is identified on both the X-ray image and the ultrasound image. Movement of the guide wire is indicated on the X-ray image based on movement of the guide wire that is detected in the ultrasound image.

**[0006]** In yet another embodiment, an apparatus for positioning a guide wire within the vasculature of a subject has an X-ray detector configured to detect X-rays

that are generated by an X-ray tube and transmitted through a subject. An ultrasound probe has a position sensor. At least one display is configured to display a static contrast-enhanced X-ray image that is detected by the X-ray detector and a real-time ultrasound image that is acquired by the ultrasound probe. The X-ray image and the ultrasound image display at least a portion of a guide wire. A registration module is configured to register the X-ray and ultrasound images with respect to each other based on a point identified in each of the X-ray and ultrasound images. The display is further configured to display an indication of movement of the guide wire on the X-ray image based on movement of the guide wire detected within the ultrasound image.

### BRIEF DESCRIPTION OF THE DRAWINGS

**[0007]** FIG. 1 illustrates an ultrasound system interconnected with an X-ray fluoroscopic system formed in accordance with an embodiment of the present invention.

**[0008]** FIG. 2 illustrates a method for tracking movement of a foreign object on an image acquired by a first imaging system based on movement of the object within an image acquired by a second imaging system in accordance with an embodiment of the present invention.

**[0009]** FIG. 3 illustrates a contrast-enhanced X-ray image on a display that shows the vascular tree pattern and a guide wire and guidance catheter inserted into a vessel in accordance with an embodiment of the present invention.

**[0010]** FIG. 4 illustrates the X-ray image and a real-time ultrasound image showing a guide wire in accordance with an embodiment of the present invention.

**[0011]** FIG. 5 illustrates the X-ray image and a real-time ultrasound projection image in accordance with an embodiment of the present invention.

### DETAILED DESCRIPTION OF THE INVENTION

**[0012]** The foregoing summary, as well as the following detailed description of certain embodiments of the present invention, will be better understood when read in conjunction with the appended drawings. To the extent that the figures illustrate diagrams of the functional blocks of various embodiments, the functional blocks are not necessarily indicative of the division between hardware circuitry. Thus, for example, one or more of the functional blocks (e.g., processors or memories) may be implemented in a single piece of hardware (e.g., a general purpose signal processor or random access memory, hard disk, or the like). Similarly, the programs may be stand alone programs, may be incorporated as subroutines in an operating system, may be functions in an installed software package, and the like. It should be understood that the various embodiments are not limited to the arrangements and instrumentality shown in the drawings.

**[0013]** As used herein, an element or step recited in

the singular and proceeded with the word "a" or "an" should be understood as not excluding plural of said elements or steps, unless such exclusion is explicitly stated. Furthermore, references to "one embodiment" of the present invention are not intended to be interpreted as excluding the existence of additional embodiments that also incorporate the recited features. Moreover, unless explicitly stated to the contrary, embodiments "comprising" or "having" an element or a plurality of elements having a particular property may include additional such elements not having that property.

**[0014]** FIG. 1 illustrates an ultrasound system interconnected with an X-ray fluoroscopic system in accordance with an embodiment of the present invention. A table 100 or bed is provided for supporting a subject 102. An X-ray tube 104 or other generator is connected to an X-ray fluoroscopic system 106. As shown, the X-ray tube 104 is positioned above the subject 102, but it should be understood that the X-ray tube 104 may be moved to other positions with respect to the subject 102. A detector 108 is positioned opposite the X-ray tube 104 with the subject 102 there-between. The detector 108 may be any known detector capable of detecting X-ray radiation.

**[0015]** The X-ray fluoroscopic system 106 has at least a memory 110, a processor 112 and at least one user input 114, such as a keyboard, trackball, pointer, touch panel, and the like. To acquire an X-ray image, the X-ray fluoroscopic system 106 causes the X-ray tube 104 to generate X-rays and the detector 108 detects an image. Fluoroscopy may be accomplished by activating the X-ray tube 104 continuously or at predetermined intervals while the detector 108 detects corresponding images. Detected image(s) may be displayed on a display 116 that may be configured to display a single image or more than one image at the same time.

**[0016]** An ultrasound system 122 communicates with the X-ray fluoroscopic system 106 via a connection 124. The connection 124 may be a wired or wireless connection. The ultrasound system 122 may transmit or convey ultrasound imaging data to the X-ray fluoroscopic system 106. The communication between the systems 106 and 122 may be one-way or two-way, allowing image data, commands and information to be transmitted between the two systems 106 and 122. The ultrasound system 122 may be a stand-alone system that may be moved from room to room, such as a cart-based system, hand-carried system, or other portable system.

**[0017]** An operator (not shown) may position an ultrasound probe 126 on the subject 102 to image an area of interest within the subject 102. The ultrasound probe 126 has a position sensor 142. The ultrasound system 122 has at least a memory 128, a processor 130, and a user input 132. Optionally, if the ultrasound system 122 is a stand-alone system, a display 134 may be provided. By way of example, images acquired using the X-ray fluoroscopic system 106 may be displayed as a first image 118 and images acquired using the ultrasound system 122 may be displayed as a second image 120 on the

display 116, forming a dual display configuration. In another embodiment, two side-by-side monitors (not shown) may be used. The images acquired by both the X-ray fluoroscopic system 106 and the ultrasound system 122 may be acquired in known manners.

**[0018]** In one embodiment, the ultrasound system 122 may be a 3D-capable miniaturized ultrasound system that is connected to the X-ray fluoroscopic system 106 via the connection 124. As used herein, "miniaturized" means that the ultrasound system 122 is configured to be carried in a person's hand, pocket, briefcase-sized case, or backpack. For example, the ultrasound system 122 may be a hand-carried device having a size of a typical laptop computer, for instance, having dimensions of approximately 2.5 inches in depth, approximately 14 inches in width, and approximately 12 inches in height. The ultrasound system 122 may weigh about ten pounds, and thus is easily portable by the operator. An integrated display, such as the display 134, may be configured to display an ultrasound image as well as an X-ray image acquired by the X-ray fluoroscopic system 106.

**[0019]** As another example, the ultrasound system 122 may be a 3D capable pocket-sized ultrasound system. By way of example, the pocket-sized ultrasound system may be approximately 2 inches wide, approximately 4 inches in length, and approximately .5 inches in depth and weigh less than 3 ounces. The pocket-sized ultrasound system may include a display (e.g. the display 134), a user interface (e.g. user input 132) and an input/output (I/O) port for connection to the probe 126. It should be noted that the various embodiments may be implemented in connection with a miniaturized or pocket-sized ultrasound system having different dimensions, weights, and power consumption.

**[0020]** In another embodiment, the ultrasound system 122 may be a console-based ultrasound imaging system provided on a movable base. The console-based ultrasound imaging system may also be referred to as a cart-based system. An integrated display (e.g. the display 134) may be used to display the ultrasound image alone or simultaneously with the X-ray image as discussed herein.

**[0021]** In yet another embodiment, the X-ray fluoroscopic system 106 and the ultrasound system 122 may be integrated together and may share at least some processing, user input and memory functions. For example, a probe port 136 may be provided on the table 100 or other apparatus near the subject 102. The probe 126 may thus be connected to the probe port 136.

**[0022]** A registration module 138 may be used to register the first and second images 118 and 120 with respect to each other, and a tracking module 140 may be used to track a foreign object, such as a guide wire, within one of the images, which is a live image. The movement of the foreign object is indicated within a corresponding static image. In one example, the live image is an ultrasound image and the static image is an X-ray image. Although shown within the X-ray fluoroscopic system

106, the registration module 138 and the tracking module 140 may be within the ultrasound system 122 or within a separate module or system.

**[0023]** FIG. 2 illustrates a method for tracking movement of a foreign object on an image acquired by a first imaging system based on movement of the object within an image acquired by a second imaging system. The foreign object may be any object inserted into the body such as a guide wire, a tip of the guide wire, or a catheter. In this example the two different imaging systems are the X-ray fluoroscopic system 106 and the ultrasound system 122, both shown in FIG. 1. In another embodiment, a different modality, such as a Magnetic Resonance Imaging (MRI) system or a Computer Tomography (CT) system may be used with the ultrasound system 122.

**[0024]** At 200, the first and second imaging systems are interconnected. For example, connection 124 may be used to connect the X-ray fluoroscopic system 106 and the ultrasound system 122 either through a wire or cable, or wirelessly. In another embodiment, if the two imaging systems are integrated into a single system, the probe 126 may be connected to the probe port 136.

**[0025]** At 202 real-time X-ray and/or fluoroscopy are used to provide images for initially positioning a guide wire and guidance catheter to a central location in the vascular system of the subject 102. The central location may be determined by the ultimate desired position of a balloon catheter or a position where other action is desired or needed. The fluoroscopic or X-ray images may be displayed as the first image 118 on the display 116.

**[0026]** When the tip of the guide wire has reached the desired initial position, at 204 a bolus of radio-opaque contrast agent is introduced through the guidance catheter. At 206, an X-ray image displaying the location of the guide wire and guidance catheter, as well as the vascular tree pattern, is captured and displayed on the display 116 as the first image 118. Therefore, the fluoroscopic image used when initially positioning the guide wire may be replaced on the display 116 by a contrast-enhanced X-ray image. By way of example, the contrast-enhanced X-ray image may be a single fluoroscopic frame, a single X-ray frame, or a digital subtraction angiographic image, where the resulting image is the difference between a pre-contrast and post-contrast injection image. It should be understood that other types of images may be used. In one embodiment, the ultimate desired position of the balloon catheter within the vascular system may be within the contrast-enhanced X-ray image.

**[0027]** FIG. 3 illustrates a contrast-enhanced X-ray image 150 in accordance with an embodiment of the invention on the display 116 that shows a vascular tree pattern 146 as well as a guide wire 152 and a guidance catheter 154 inserted into a vessel 144. Returning to FIG. 2, at 208 a tip 156 (shown in FIG. 3) of the guide wire 152 is identified. The tip 156 may be the outermost end of the guide wire 152. For example, the operator may use the user input 114, such as a cursor, to select the tip 156. Alternatively, the processor 112 may automatically de-

tect the tip 156 using, for example, boundary detection or other recognition type of algorithm that searches for the guide wire 152, or may detect the guide wire 152 based on a level of brightness in the X-ray image 150. Other automatic detection methods and algorithms may be used. In one embodiment, automatic detection may be accomplished within a user defined area or region of interest 158, while in another embodiment automatic detection may be accomplished across the entire X-ray image 150.

**[0028]** At 210 the operator scans the subject 102 with the ultrasound probe 126, and at 212 the live ultrasound image is displayed on the display 116 as the second image 120. FIG. 4 illustrates the X-ray image 150 and a real-time ultrasound image 160 showing the guide wire 152. By way of example only, the ultrasound image 160 may be a B-mode image. At 214 of FIG. 2, tip 162 (shown in FIG. 4) of the guide wire 152 is identified in the ultrasound image 160. The operator may identify the tip 162 using the one of the user inputs 114 or 132, or the tip 162 may be automatically identified through automatic image processing.

**[0029]** The X-ray image 150 has a fixed geometry based on the X-ray fluoroscopic system 106 that is known, and therefore the position and/or orientation of the guide wire 152 and tip 156 within the X-ray image 150 are also known. Using position information from the position sensor 142 of the probe 126 and the identified locations of the tips 156 and 162 in the images 150 and 160, at 216 the registration module 138 registers the X-ray image 150 and the ultrasound image 160 with respect to each other. Registration of the two images 150 and 160 may be accomplished using any registration process available for registering images acquired using two different modalities and/or two different imaging systems. For example, auto registration and correlation processes may be used based on anatomical similarities.

**[0030]** In another embodiment, an anatomical point that is visualized in both the X-ray image 150 and the ultrasound image 160 may be defined and/or selected, and may be used as the registration point. For example, the operator may select an intersection of two or more vessels on each of the images 150 and 160 and the registration module 138 may register the two images based on the two selected points.

**[0031]** The operator then, at 218, adjusts the position of the guide wire 152, feeding the guide wire 152 towards the point or area of interest. The operator may watch the motion of the guide wire 152 in real-time on the ultrasound image 160 while using the X-ray image 150 that shows the vascular tree pattern 146 as a base or reference image. The probe 126 may be moved or adjusted as necessary to view the anatomy of interest. In some embodiments, the tip 162 of the guide wire 152 may be indicated on the ultrasound image 160 with an indicator (not shown), and the processor 112 or 130 may automatically update the indicator as the tip 162 moves within the ultrasound image 160.

**[0032]** At 220 the tracking module 140 detects movement of the tip 162 of the guide wire 152 in the ultrasound image 160 and a new position of the corresponding tip 156 of the guide wire 152 is indicated on the X-ray image 150. For example, a position sensor (not shown) may be mounted to or integrated with the tip of the guide wire 152. The guide wire position sensor reading may be used to update the position on the X-ray image 150 as well as in the ultrasound image. In cases where the guide wire 152 is outside of the current ultrasound image, the position may be projected onto the ultrasound image with the relative location reflected in the graphical appearance of the projection. For example, the position sensor may transmit spatial location information wirelessly or through the guide wire 152. Alternatively, image processing and/or algorithms that may automatically identify the guide wire 152 in the ultrasound image 160, such as at 214, may be used to automatically track movement of the tip 162 of the guide wire 152. In another embodiment, after adjusting the guide wire 152 to a new location, the operator may identify the new location of the tip 162 on the ultrasound image 160 using one of the user inputs 114 or 132. The processor 112 and/or tracking module 140 then determine and indicate the corresponding location of the tip 156 on the X-ray image 150. It should be understood that other methods may be used to track, detect, and locate the position of the tip 162 of the guide wire 152 in the ultrasound image 160.

**[0033]** For example, the operator may advance the guide wire 152 to point 164 as shown on the ultrasound image 160 of FIG. 4. The movement of the guide wire 152 is indicated on the X-ray image 150 as dotted line 166. The indication on the display 116 may be a line, a dotted line, a dot, point, character such as an "X" or other indicator. In another embodiment, the indication may be displayed in a color or may have a different or predetermined intensity. In yet another embodiment, the indication may be a number that is used to indicate a location or to indicate movement based on time, distance, and the like, or any other indication that is visible to the operator so that the operator may track the real-time progress of the guide wire 152 on the static X-ray image 150.

**[0034]** The method loops between 218 and 220 to continuously detect (and possibly separately indicate) movement of the tip 162 of the guide wire 152 within the ultrasound image 160 and to indicate the movement of the corresponding tip 156 on the X-ray image 150. It should be understood that other foreign objects may be tracked and indicated in the same manner.

**[0035]** Once the tip 162 of the guide wire 152 is positioned in the desired region of the vessel, the operator may take further action based on the treatment or procedure. For example, the guidance catheter may be removed and a balloon catheter may be inserted using the guide wire 152 to position the balloon catheter, such as for angioplasty. Other interventional vascular procedures may be performed, such as ablation, biopsy and the like.

**[0036]** In one embodiment, a projection 168 (shown on FIG. 4) of the face of the probe 126 may be displayed on the X-ray image 150. The projection 168 is based on the particular probe 126 being used and thus may be a rectangle, as shown, a square or other shape. For example, the orientation of the probe 126 may be specified by the operator or the orientation of the probe face may be specified by using a fixed orientation during the specification of a common point, such as the tips 156 and 162. Alternatively, a graphic may be adjusted to match the current probe orientation, or the same point in the ultrasound image 160 may be marked from three or more probe face orientations. The projection 168 may be updated based on movement detected by the position sensor 142.

**[0037]** In some situations, the operator may wish to update the X-ray image 150 with a new subsequent X-ray image showing the vascular tree and the current position of the guide wire 152. The method may thus return to 204, wherein a new bolus of X-ray contrast agent is introduced. The subsequent x-ray image may replace the X-ray image 150. The tip 156 on the X-ray image 150 and optionally, the tip 162 on the ultrasound image 160, may be redefined, and the operator continues to advance the guide wire 152 as desired. Alternatively, the current guide wire indication(s) may be retained from the prior X-ray image(s).

**[0038]** In another embodiment, the operator may wish to update the X-ray image 150 to redefine the guide wire location without redefining or showing the vascular tree. In this example, a new contrast bolus is not used and thus a subsequent X-ray image is captured that does not display the vascular tree. The subsequent X-ray image may be fused with the X-ray image 150 to update the position of the guide wire 152. If multiple X-ray images are taken over time, multiple guide wires may be superimposed onto the same image. Each of the guide wires may be auto-detected and numbered (or otherwise indicated differently with respect to each other) to provide information regarding the most recent position as well as previous positions. Alternatively, the guide wire 152 may be removed or deleted from one or more previous images to display only the most recent guide wire 152 or to indicate the most recent position of the tip 156. In another embodiment, the guide wire indications may each be toggled on and off, such as to track the movement of the guide wire from one image to the next.

**[0039]** In some embodiments the ultrasound system 122 and probe 126 may be capable of real-time 3D imaging, also known as 4D imaging. The real-time 3D image data may be displayed on the display 116, such as in a volume, to allow real-time 3D tracking of the guide wire.

**[0040]** The real-time 3D image data may also be displayed in any other 3D display method known in the art, such as maximum projection, average projection and surface rendering. FIG. 5 illustrates the X-ray image 150 and a real-time ultrasound projection image 180. The ultrasound system 122 collects real-time 3D imaging data,

using a 3D capable probe that has the position sensor 142. As discussed previously, the operator selects the tip 156 on the X-ray image 150 and the tip 162 on the ultrasound image. Alternatively, one or both of the tips 156 and 162 may be automatically identified. The ultrasound image may be a B-mode ultrasound image 160 as previously discussed. The registration module 138 registers the two images with respect to each other, and the processor 112 forms an ultrasound projection image 180 that has the same orientation as the X-ray image 150.

**[0041]** In one embodiment, the projection image 180 is scaled geometrically to match the geometry of the X-ray image 150. In this example, processor 112 may automatically determine or the operator may input one or more anatomical landmarks or points that are used to determine scaling, and possibly orientation, of the images 150 and 180. The projection image 180 may then be combined with the X-ray image 150. For example, the projection image 180 may be fused with or overlaid on the X-ray image 150. Optionally, the X-ray image 150 may be overlaid on the projection image 180. The motion of the guide wire 152 may then be visually observed as the guide wire 152 and tip 162 move along the X-ray contrast opaque vessels. In a different embodiment, the projection image 180 is displayed separately from the X-ray image 150 as shown in FIG. 5, and the tracking module 140 tracks the movement of the guide wire 152 on the X-ray image 150 as discussed previously. In another embodiment, the display 116 may display more than two images, such that one or both of the X-ray and projection images 150 and 180 may be displayed simultaneously with a combined X-ray and projection image.

**[0042]** Other ultrasound images may be formed and displayed, such as a C-plane or other plane through the ultrasound volume. In the example of the C-plane, the probe 126 is positioned in the same orientation as the X-ray tube 104, such that the C-plane or slice is perpendicular to the direction of the X-rays. The C-plane may be oriented and scaled geometrically to match the X-ray image 150 orientation and dimensions, and may be overlaid on the X-ray image 150. The operator may then modify the depth of the C-plane that is displayed, allowing tracking of the movement of the guide wire 152 in the depth direction. If displaying a plane that is not the C-plane, the operator may adjust the position of the plane, but this may not correlate with the depth as defined by the orientation of the X-ray image 150. As with the ultrasound projection image 180, the C-plane or other plane may be displayed simultaneously with the X-ray image 150 and/or simultaneously with an image that combines the X-ray image 150 and the ultrasound plane.

**[0043]** In another embodiment, the ultrasound system 122 may acquire 2D ultrasound image data. Alternatively, a slice or plane of 2D ultrasound data may be selected from an acquired ultrasound volume. The 2D dataset may be overlaid, fused or otherwise combined with the X-ray image 150 (or the X-ray image 150 may be overlaid on the 2D dataset) and displayed on the display 116 as a

single image.

**[0044]** In addition to tracking the guide wire 152, the ultrasound system 122 may be used to evaluate a procedure immediately, such as immediately post-angioplasty, to non-invasively document the absence of a flow reducing stenosis or to identify additional areas of concern. For example, B-mode, color and spectral Doppler modes and the like may be used. Also, the use of the ultrasound system 122 may lead to less mistakes in the navigation of the guide wire 152.

**[0045]** In another embodiment, once the guide wire 152 has been advanced to the initial position, such as at 202 of FIG. 2, ultrasound contrast agent may be introduced into the subject 102. A 3D ultrasound vascular image may then be acquired and used as the base or reference image rather than the contrast-enhanced X-ray image 150. The ultrasound vascular image may be, for example, a rendered ultrasound image of the contrast agent or a projection image, and is used together with the live ultrasound image 160 for guidance of the guide wire 152.

**[0046]** A technical effect of at least one embodiment is the ability to guide the movement and placement of a guide wire and/or catheter or other foreign object using two imaging modalities at the same time. One imaging modality may be X-ray fluoroscopy in which a bolus of contrast agent is introduced so that the vascular tree may be imaged and displayed. The other imaging modality may be ultrasound wherein the static contrast-enhanced X-ray image and the real-time ultrasound image are registered with respect to each other. The operator may then utilize both the X-ray image and the real-time ultrasound image to advance the guide wire. The amount of contrast that needs to be given to the subject may be decreased, thus decreasing the possible side effects of the contrast, such as nephrotoxicity. Also, because fluoroscopy is not being continuously performed throughout the procedure, the operator, subject and other staff receive less X-ray radiation compared to procedures conducted using only X-ray.

**[0047]** It is to be understood that the above description is intended to be illustrative, and not restrictive. For example, the above-described embodiments (and/or aspects thereof) may be used in combination with each other. In addition, many modifications may be made to adapt a particular situation or material to the teachings of the invention without departing from its scope. While the dimensions and types of materials described herein are intended to define the parameters of the invention, they are by no means limiting and are exemplary embodiments. Many other embodiments will be apparent to those of skill in the art upon reviewing the above description. The scope of the invention should, therefore, be determined with reference to the appended claims, along with the full scope of equivalents to which such claims are entitled. In the appended claims, the terms "including" and "in which" are used as the plain-English equivalents of the respective terms "comprising" and "wherein."

Moreover, in the following claims, the terms "first," "second," and "third," etc. are used merely as labels, and are not intended to impose numerical requirements on their objects. Further, the limitations of the following claims are not written in means-plus-function format and are not intended to be interpreted based on 35 U.S.C. § 112, sixth paragraph, unless and until such claim limitations expressly use the phrase "means for" followed by a statement of function void of further structure.

**[0048]** This written description uses examples to disclose the invention, including the best mode, and also to enable any person skilled in the art to practice the invention, including making and using any devices or systems and performing any incorporated methods. The patentable scope of the invention is defined by the claims, and may include other examples that occur to those skilled in the art. Such other examples are intended to be within the scope of the claims if they have structural elements that do not differ from the literal language of the claims, or if they include equivalent structural elements with insubstantial differences from the literal languages of the claims.

**[0049]** Aspects of the present invention are defined in the following numbered clauses:

1. An apparatus for tracking movement of a foreign object within a subject, the apparatus comprising:

an X-ray fluoroscopic system comprising an X-ray detector;

an ultrasound system comprising a probe having a position sensor;

a display configured to display a static X-ray image acquired by the X-ray fluoroscopic system and a real-time ultrasound image acquired by the ultrasound system, the X-ray image and the ultrasound image each displaying at least a portion of the foreign object and at least a portion of surrounding area; and

a tracking module configured to track movement of the foreign object within the ultrasound image, the display further configured to display an indication of the movement of the foreign object on the X-ray image.

2. The apparatus of clause 1, further comprising one of a wired connection and a wireless connection interconnecting the X-ray fluoroscopic system and the ultrasound system, the wired or wireless connection configured to convey at least imaging data between the ultrasound system and the X-ray fluoroscopic system.

3. The apparatus of clause 1 or clause 2, wherein the ultrasound system and the X-ray fluoroscopic

system are integrated together into one system.

4. The apparatus of any one of the preceding clauses, further comprising a user input for identifying a tip of the foreign object on at least one of the X-ray image and the ultrasound image.

5. The apparatus of any one of the preceding clauses, further comprising a processor configured to automatically identify a tip of the foreign object on at least one of the X-ray image and the ultrasound image.

6. The apparatus of clause 1, further comprising a registration module configured to register the X-ray and ultrasound images with respect to each other based on at least one point identified in each of the X-ray and ultrasound images.

7. The apparatus of clause 1, wherein the indication of the movement on the X-ray image is one of a number, a line, a dotted line, displayed in a different color than a color of the foreign object in the X-ray image, and displayed in a different intensity than an intensity of the foreign object in the X-ray image.

8. The apparatus of clause 1, wherein the display is further configured to display a projection of a face of the probe on the X-ray image.

9. The apparatus of clause 1, wherein the X-ray image is a contrast-enhanced X-ray image.

10. A method for positioning a guide wire within a subject, the method comprising:

displaying a static X-ray image comprising at least a tip of a guide wire and vessels indicated by contrast;

displaying a live ultrasound image comprising at least the tip of the guide wire and at least a portion of the vessels;

identifying the guide wire on both the X-ray image and the ultrasound image; and

indicating movement of the guide wire on the X-ray image based on movement of the guide wire detected in the ultrasound image.

11. The method of clause 10, further comprising:

receiving inputs associated with the X-ray image and the ultrasound image; and

registering the X-ray and ultrasound images based on the inputs.

12. The method of clause 10 or clause 11, the identifying further comprising identifying a region of interest associated with the X-ray image, the tip of the guide wire being automatically detected within the region of interest.

5

13. The method of any one of clauses 10 to 12, further comprising displaying the X-ray image and the ultrasound image simultaneously on one of a single display and two displays positioned side-by-side.

10

14. The method of any of clauses 10 to 13, wherein the ultrasound image comprises one of a projection image, a 2D dataset and a 3D dataset, the method further comprising:

15

combining the ultrasound image and the X-ray image; and  
displaying at least the combined image.

20

15. The method of any one of clauses 10 to 14, wherein the ultrasound image is a plane representative of ultrasound data from within a 3D volume of data, the method further comprising at least one of displaying the plane overlaid on the X-ray image and displaying the plane simultaneously with the X-ray image.

25

16. The method of any one of clauses 10 to 15, further comprising:

30

acquiring a subsequent X-ray image, the subsequent X-ray image displaying at least the tip of the guide wire; and

combining the subsequent X-ray image and the X-ray image to display a new position of the tip of the guide wire.

35

17. The method of any one of clauses 10 to 16, further comprising:

40

acquiring at least one subsequent X-ray image, the at least one subsequent X-ray image displaying the guide wire;

45

deleting the guide wire on the X-ray image; and

combining the subsequent X-ray image and the X-ray image.

50

18. An apparatus for positioning a guide wire within the vasculature of a subject, the apparatus comprising:

an X-ray detector configured to detect X-rays that are generated by an X-ray tube and transmitted through the subject;

55

an ultrasound probe comprising a position sensor;

at least one display configured to display a static contrast-enhanced X-ray image detected by the X-ray detector and a real-time ultrasound image acquired by the ultrasound probe, the X-ray image and the ultrasound image displaying at least a portion of a guide wire; and

a registration module configured to register the X-ray and ultrasound images with respect to each other based on a point identified in each of the X-ray and ultrasound images, the display further configured to display an indication of movement of the guide wire on the X-ray image based on movement of the guide wire detected within the ultrasound image.

19. The apparatus of clause 18, wherein the X-ray detector is further configured to acquire a subsequent X-ray image, the subsequent X-ray image displaying at least a tip of the guide wire, the display further configured to combine the subsequent X-ray image and the X-ray image.

20. The apparatus of clause 18 or clause 19, wherein the X-ray detector is further configured to acquire a subsequent X-ray image, the subsequent X-ray image displaying at least a tip of the guide wire, the display further configured to combine the subsequent X-ray image and the X-ray image and to indicate the guide wire of the subsequent X-ray image differently than the guide wire of the X-ray image.

## Claims

1. An apparatus for tracking movement of a foreign object within a subject (102), the apparatus comprising:

an X-ray fluoroscopic system (106) comprising an X-ray detector (108);

an ultrasound system (122) comprising a probe (126) having a position sensor (142);

a display (116) configured to display a static X-ray image (150) acquired by the X-ray fluoroscopic system (106) and a real-time ultrasound image (160) acquired by the ultrasound system (122), the X-ray image (150) and the ultrasound image (160) each displaying at least a portion of the foreign object and at least a portion of surrounding area; and

a tracking module (140) configured to track movement of the foreign object within the ultrasound image (160), the display (116) further configured to display an indication of the movement of the foreign object on the X-ray image



- (150).
2. The apparatus of claim 1, further comprising one of a wired connection (124) and a wireless connection (129) interconnecting the X-ray fluoroscopic system (106) and the ultrasound system (122), the wired or wireless connection (124) configured to convey at least imaging data between the ultrasound system (122) and the X-ray fluoroscopic system (106).
  3. The apparatus of claim 1 or claim 2, wherein the ultrasound system (122) and the X-ray fluoroscopic system (106) are integrated together into one system.
  4. The apparatus of any one of the preceding claims, further comprising a user input (114) for identifying a tip (156) of the foreign object on at least one of the X-ray image (150) and the ultrasound image (160).
  5. The apparatus of any one of the preceding claims, further comprising a processor (112) configured to automatically identify a tip (156) of the foreign object on at least one of the X-ray image (150) and the ultrasound image (160).
  6. The apparatus of any one of the preceding claims, further comprising a registration module configured to register the X-ray and ultrasound images with respect to each other based on at least one point identified in each of the X-ray and ultrasound images.
  7. The apparatus of any one of the preceding claims, wherein the indication of the movement on the X-ray image is one of a number, a line, a dotted line, displayed in a different color than a color of the foreign object in the X-ray image, and displayed in a different intensity than an intensity of the foreign object in the X-ray image.
  8. The apparatus of any one of the preceding claims, wherein the display is further configured to display a projection of a face of the probe on the X-ray image.
  9. The apparatus of any one of the preceding claims, wherein the X-ray image is a contrast-enhanced X-ray image.
  10. A method for positioning a guide wire (152) within a subject (102), the method comprising:
    - displaying a static X-ray image (150) comprising at least a tip (156) of a guide wire (152) and vessels (144) indicated by contrast;
    - displaying a live ultrasound image (160) comprising at least the tip (156, 162) of the guide wire (152) and at least a portion of the vessels (144);
    - identifying the guide wire (152) on both the X-ray image (150) and the ultrasound image (160); and
    - indicating movement of the guide wire (152) on the X-ray image (150) based on movement of the guide wire (152) detected in the ultrasound image (160).
  11. The method of claim 10, further comprising:
    - receiving inputs associated with the X-ray image (150) and the ultrasound image (160); and
    - registering the X-ray and ultrasound images (150, 160) based on the inputs.
  12. The method of claim 10 or claim 11, wherein the ultrasound image (160) comprises one of a projection image (180), a 2D dataset and a 3D dataset, the method further comprising:
    - combining the ultrasound image (160) and the X-ray image (150); and
    - displaying at least the combined image.
  13. The method of any one of claims 10 to 12, wherein the ultrasound image (160) is a plane representative of ultrasound data from within a 3D volume of data, the method further comprising at least one of displaying the plane overlaid on the X-ray image and displaying the plane simultaneously with the X-ray image.
  14. The method of any one of claims 10 to 13, further comprising:
    - acquiring a subsequent X-ray image, the subsequent X-ray image displaying at least the tip (156) of the guide wire (152); and
    - combining the subsequent X-ray image and the X-ray image to display a new position of the tip (156) of the guide wire (152).
  15. An apparatus for positioning a guide wire within the vasculature of a subject, the apparatus comprising:
    - an X-ray detector configured to detect X-rays that are generated by an X-ray tube and transmitted through the subject;
    - an ultrasound probe comprising a position sensor;
    - at least one display configured to display a static contrast-enhanced X-ray image detected by the X-ray detector and a real-time ultrasound image acquired by the ultrasound probe, the X-ray image and the ultrasound image displaying at least a portion of a guide wire; and
    - a registration module configured to register the X-ray and ultrasound images with respect to

each other based on a point identified in each of the X-ray and ultrasound images, the display further configured to display an indication of movement of the guide wire on the X-ray image based on movement of the guide wire detected within the ultrasound image.

10

15

20

25

30

35

40

45

50

55

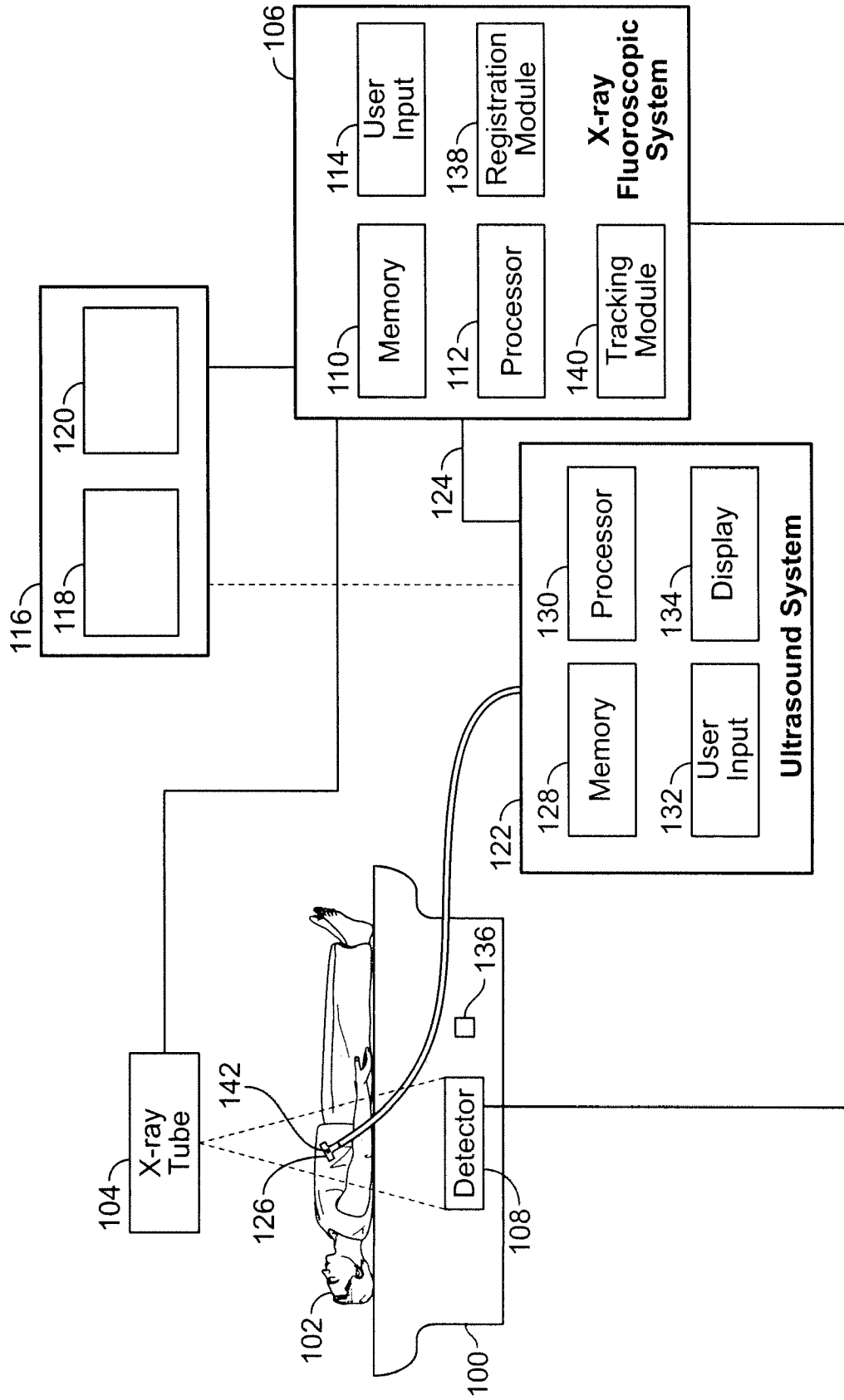


FIG. 1

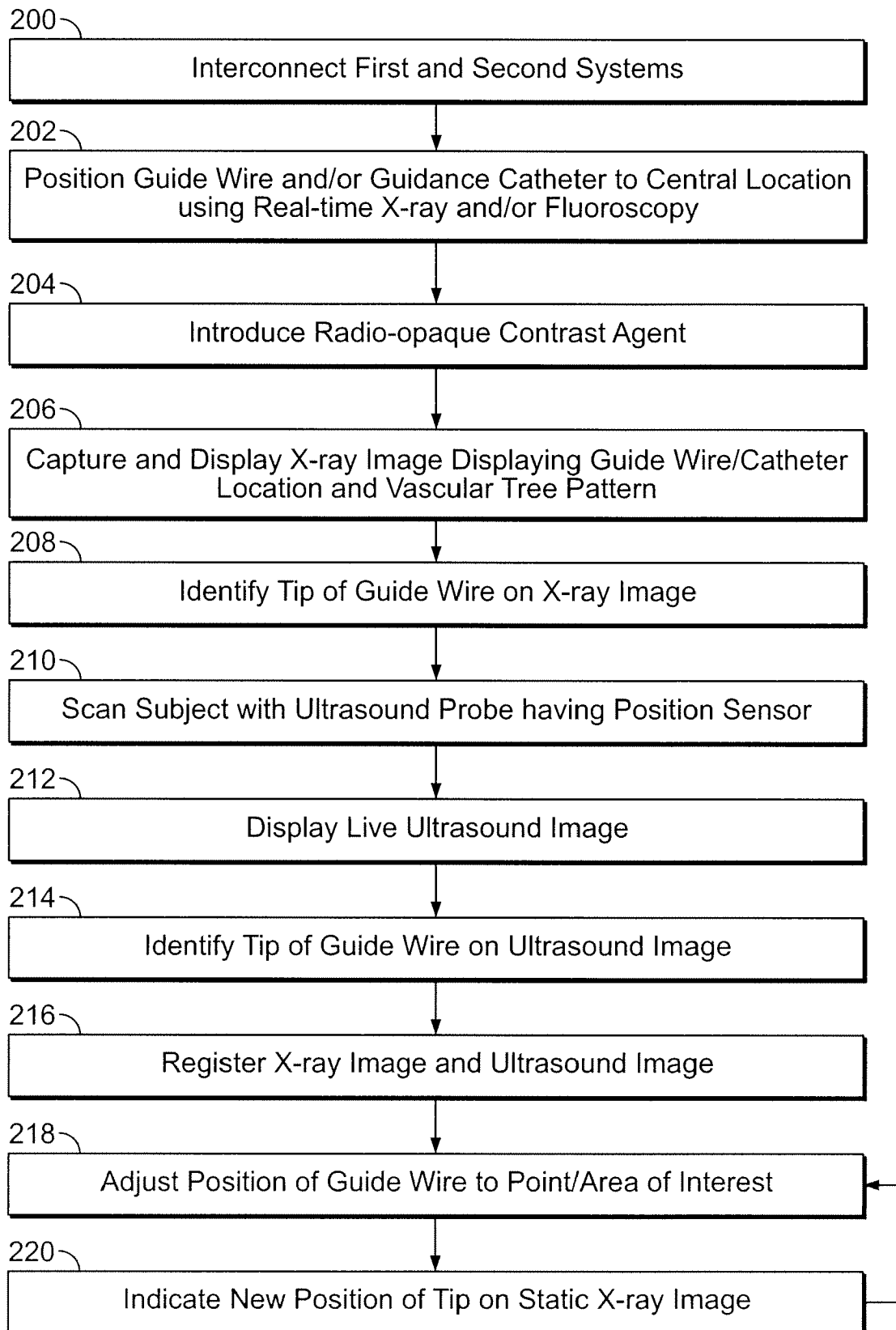


FIG. 2

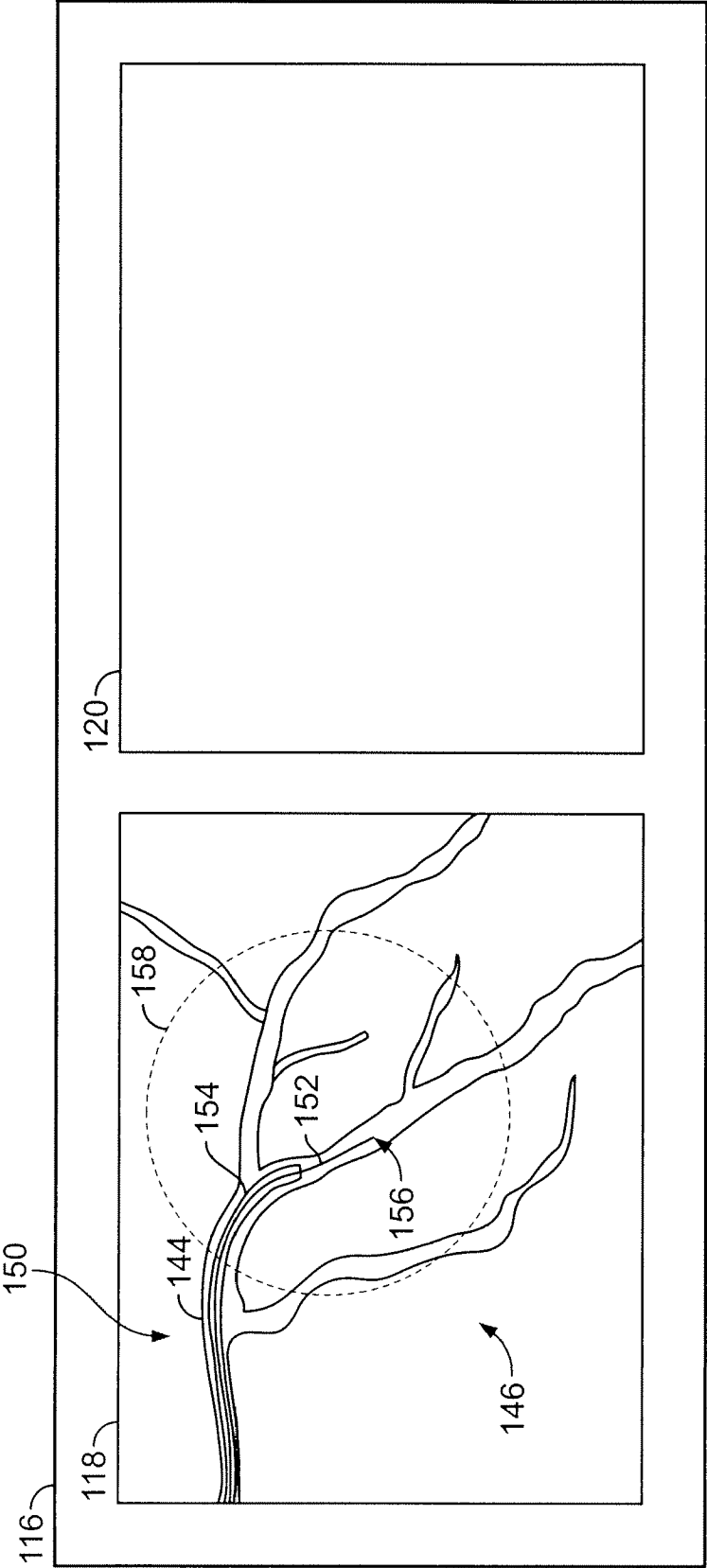


FIG. 3

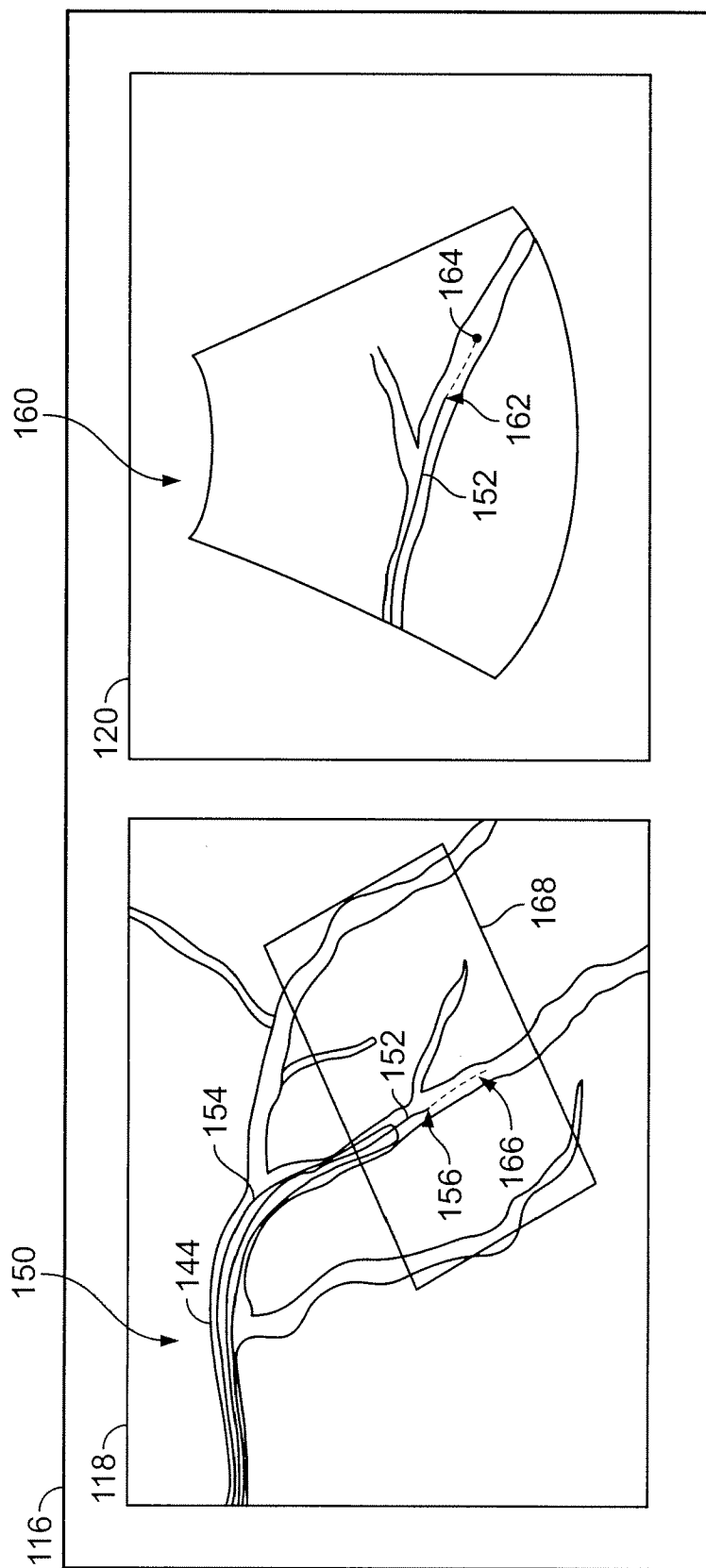


FIG. 4

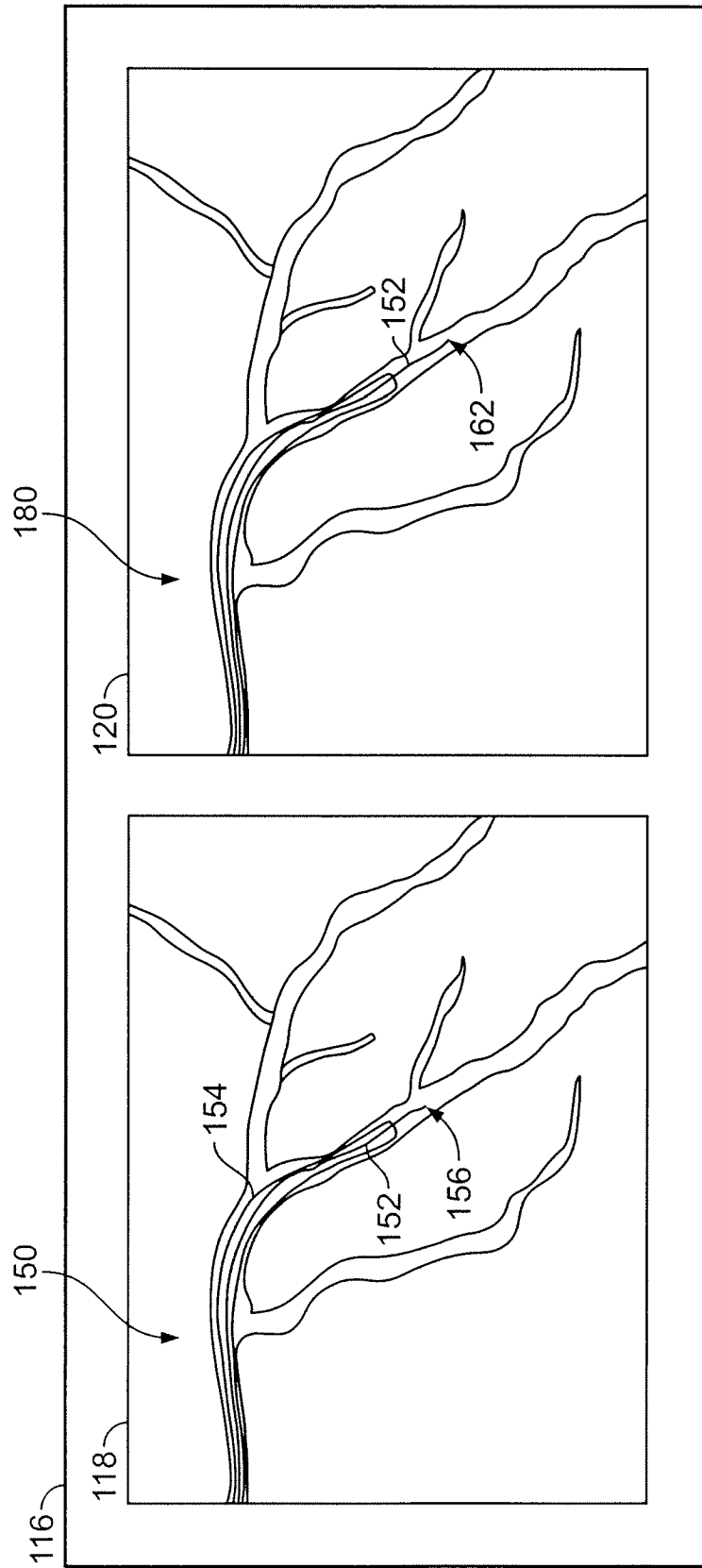


FIG. 5

**PARTIAL EUROPEAN SEARCH REPORT**

Application Number

which under Rule 63 of the European Patent Convention EP 09 16 9200 shall be considered, for the purposes of subsequent proceedings, as the European search report

DOCUMENTS CONSIDERED TO BE RELEVANT			
Category	Citation of document with indication, where appropriate, of relevant passages	Relevant to claim	CLASSIFICATION OF THE APPLICATION (IPC)
Y	US 6 546 279 B1 (BOVA FRANK J [US] ET AL) 8 April 2003 (2003-04-08) * column 8, line 56 - column 11, line 6 * * figure 2 *	1-9,15	INV. A61B5/06 A61B6/00 A61B8/08
Y	US 2008/199059 A1 (ECK KAI [DE] ET AL) 21 August 2008 (2008-08-21) * paragraph [0044] - paragraph [0059] * * figures 1-4 *	1-9,15	
A	US 2005/033160 A1 (YAMAGATA HITOSHI [JP] ET AL) 10 February 2005 (2005-02-10) * paragraph [0174] - paragraph [0179] * * paragraph [0187] - paragraph [0188] * * figures 23,24,30,31 *	1-9,15	
A	WO 2006/076409 A2 (VOLCANO CORP [US]; HUENNEKENS R SCOTT [US]; FRY STEPHEN M [US]; WALKER) 20 July 2006 (2006-07-20) * paragraph [0035] - paragraph [0045] * * figures 2-7 *	1-9,15	
			TECHNICAL FIELDS SEARCHED (IPC)
			A61B A61M G06T
<b>INCOMPLETE SEARCH</b>			
<p>The Search Division considers that the present application, or one or more of its claims, does/do not comply with the EPC to such an extent that a meaningful search into the state of the art cannot be carried out, or can only be carried out partially, for these claims.</p> <p>Claims searched completely :</p> <p>Claims searched incompletely :</p> <p>Claims not searched :</p> <p>Reason for the limitation of the search:</p> <p>see sheet C</p>			
Place of search		Date of completion of the search	Examiner
The Hague		30 November 2009	Görlach, Tobias
<p>CATEGORY OF CITED DOCUMENTS</p> <p>X : particularly relevant if taken alone Y : particularly relevant if combined with another document of the same category A : technological background O : non-written disclosure P : intermediate document</p> <p>T : theory or principle underlying the invention E : earlier patent document, but published on, or after the filing date D : document cited in the application L : document cited for other reasons</p> <p>&amp; : member of the same patent family, corresponding document</p>			

 1  
EPO FORM 1503 03.82 (P04E07)



## Application Number

EP 09 16 9200

DOCUMENTS CONSIDERED TO BE RELEVANT			CLASSIFICATION OF THE APPLICATION (IPC)
Category	Citation of document with indication, where appropriate, of relevant passages	Relevant to claim	
A	GUTIERREZ L F ET AL: "Multimodality image guidance system integrating X-ray fluoroscopy and ultrasound image streams with electromagnetic tracking" PROGRESS IN BIOMEDICAL OPTICS AND IMAGING - PROCEEDINGS OF SPIE - MEDICAL IMAGING 2007: VISUALIZATION AND IMAGE-GUIDED PROCEDURES 2007 SPIE US, vol. 6509, no. PART 1, 2007, XP002558167 * the whole document *	1-9,15	
A	----- US 2007/027390 A1 (MASCHKE MICHAEL [DE] ET AL) 1 February 2007 (2007-02-01) * paragraph [0016] - paragraph [0017] * * paragraph [0029] - paragraph [0034] *	1-9,15	TECHNICAL FIELDS SEARCHED (IPC)
A	----- US 2008/146919 A1 (CAMUS ESTELLE [DE] ET AL) 19 June 2008 (2008-06-19) * paragraph [0007] - paragraph [0008] * * paragraph [0019] - paragraph [0033] *	1-9,15	



**INCOMPLETE SEARCH  
SHEET C**

Application Number  
EP 09 16 9200

Claim(s) completely searchable:  
1-9, 15

Claim(s) not searched:  
10-14

Reason for the limitation of the search (non-patentable invention(s)):

Article 53 (c) EPC - Method for treatment of the human or animal body by surgery

Claims 10-14 relate to methods positioning a guidewire inside a subject, i.e. within a human or animal body. This implies that the guidewire has been inserted into the body (see also paragraphs [0023] and [0027] of the description), which makes these methods invasive and therefore surgical.

**ANNEX TO THE EUROPEAN SEARCH REPORT  
ON EUROPEAN PATENT APPLICATION NO.**

EP 09 16 9200

This annex lists the patent family members relating to the patent documents cited in the above-mentioned European search report.  
The members are as contained in the European Patent Office EDP file on  
The European Patent Office is in no way liable for these particulars which are merely given for the purpose of information.

30-11-2009

Patent document cited in search report		Publication date	Patent family member(s)	Publication date
US 6546279	B1	08-04-2003	WO 03032837 A1	24-04-2003
US 2008199059	A1	21-08-2008	CN 1973297 A	30-05-2007
			WO 2005111932 A2	24-11-2005
			JP 2007536973 T	20-12-2007
US 2005033160	A1	10-02-2005	NONE	
WO 2006076409	A2	20-07-2006	EP 1835855 A2	26-09-2007
			JP 2008526387 T	24-07-2008
			US 2006241465 A1	26-10-2006
US 2007027390	A1	01-02-2007	DE 102005032755 A1	25-01-2007
US 2008146919	A1	19-06-2008	NONE	

专利名称(译)	使用超声和x射线成像的組合的导管引导的方法和设备		
公开(公告)号	<a href="#">EP2160978A1</a>	公开(公告)日	2010-03-10
申请号	EP2009169200	申请日	2009-09-02
[标]申请(专利权)人(译)	通用电气公司		
申请(专利权)人(译)	通用电气公司		
当前申请(专利权)人(译)	通用电气公司		
[标]发明人	HALL ANNE LINDSAY WASHBURN MICHAEL ZANG WILLIAM ALPHONSUS		
发明人	HALL, ANNE LINDSAY WASHBURN, MICHAEL ZANG, WILLIAM ALPHONSUS		
IPC分类号	A61B5/06 A61B6/00 A61B8/08		
CPC分类号	A61B6/12 A61B6/481 A61B6/504 A61B6/5247 A61B8/0833 A61B8/0841 A61B8/12 A61B8/4245 A61B8/4254 A61B8/5238 A61B34/20 A61B2090/376 A61B2090/378		
优先权	12/205699 2008-09-05 US		
外部链接	<a href="#">Espacenet</a>		

#### 摘要(译)

用于跟踪对象(102)内的异物移动的设备具有带X射线检测器(108)的X射线荧光透视系统(106)和具有探头(126)的超声系统(122)。位置传感器(142)。显示器(116)被配置为显示由X射线透视系统(106)获取的静态X射线图像(150)和由超声系统(122)获取的实时超声图像(160)。X射线图像(150)和超声图像(160)均显示异物的至少一部分和周围区域的至少一部分。跟踪模块(140)被配置为跟踪超声图像(160)内的异物的移动,并且显示器(116)还被配置为显示异物在X射线图像上的移动的指示(150)。 )。

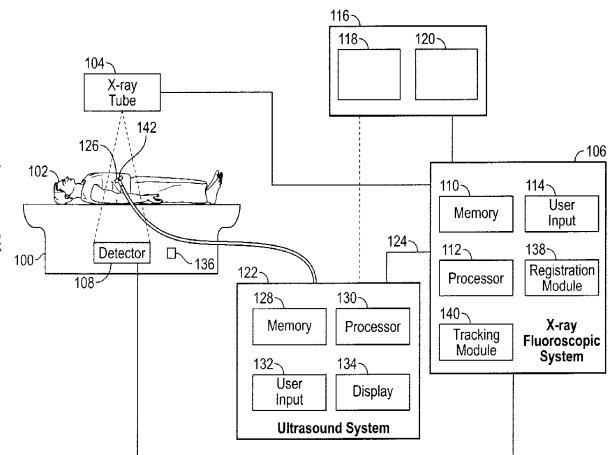


FIG. 1