



- (51) International Patent Classification:  
A61B 8/00 (2006.01) A61B 8/08 (2006.01)
- (21) International Application Number:  
PCT/US2017/059123
- (22) International Filing Date:  
30 October 2017 (30.10.2017)
- (25) Filing Language: English
- (26) Publication Language: English
- (30) Priority Data:  
15/347,697 09 November 2016 (09.11.2016) US
- (71) Applicant: FUJIFILM SONOSITE, INC. [US/US];  
21919 30th Drive SE, Bothell, WA 98021 (US).
- (72) Inventor: KARADAYI, Kerem; 538 Lakeside Avenue S.,  
Apt. 212, Seattle, WA 98144 (US).
- (74) Agent: TULLETT, Rodney et al.; Perkins Coie LLP, P.O.  
Box 1247, Seattle, WA 98111-1247 (US).

- (81) Designated States (unless otherwise indicated, for every kind of national protection available): AE, AG, AL, AM, AO, AT, AU, AZ, BA, BB, BG, BH, BN, BR, BW, BY, BZ, CA, CH, CL, CN, CO, CR, CU, CZ, DE, DJ, DK, DM, DO, DZ, EC, EE, EG, ES, FI, GB, GD, GE, GH, GM, GT, HN, HR, HU, ID, IL, IN, IR, IS, JO, JP, KE, KG, KH, KN, KP, KR, KW, KZ, LA, LC, LK, LR, LS, LU, LY, MA, MD, ME, MG, MK, MN, MW, MX, MY, MZ, NA, NG, NI, NO, NZ, OM, PA, PE, PG, PH, PL, PT, QA, RO, RS, RU, RW, SA, SC, SD, SE, SG, SK, SL, SM, ST, SV, SY, TH, TJ, TM, TN, TR, TT, TZ, UA, UG, US, UZ, VC, VN, ZA, ZM, ZW.
- (84) Designated States (unless otherwise indicated, for every kind of regional protection available): ARIPO (BW, GH, GM, KE, LR, LS, MW, MZ, NA, RW, SD, SL, ST, SZ, TZ, UG, ZM, ZW), Eurasian (AM, AZ, BY, KG, KZ, RU, TJ, TM), European (AL, AT, BE, BG, CH, CY, CZ, DE, DK, EE, ES, FI, FR, GB, GR, HR, HU, IE, IS, IT, LT, LU, LV, MC, MK, MT, NL, NO, PL, PT, RO, RS, SE, SI, SK, SM, TR), OAPI (BF, BJ, CF, CG, CI, CM, GA, GN, GQ, GW, KM, ML, MR, NE, SN, TD, TG).

(54) Title: ULTRASOUND SYSTEM FOR ENHANCED INSTRUMENT VISUALIZATION

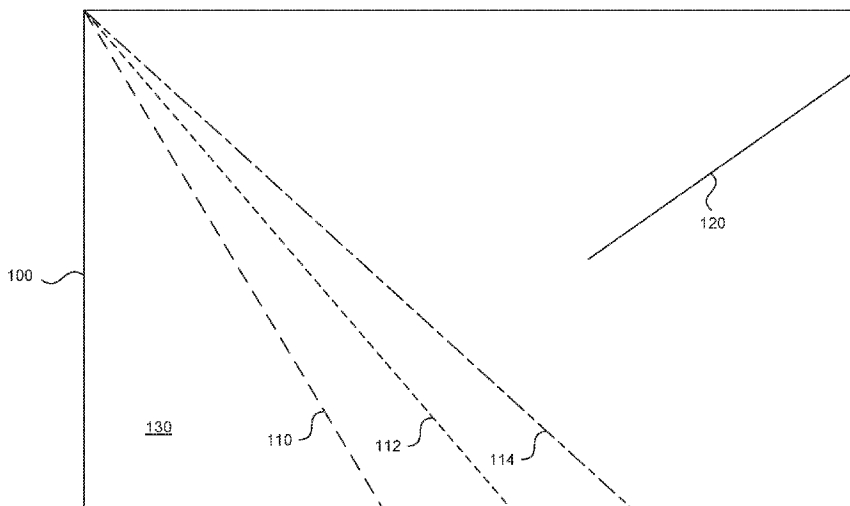


FIG. 4

(57) Abstract: An ultrasound imaging system includes a processor programmed to generate an anatomy image and a number of needle frames at different transmit beam angles. The system analyzes the data in the needle frames and selects segments therein that are identified as likely representing an interventional instrument. Data from one or more needle frames are blended with the data for the anatomy image of the tissue to create a composite image of the tissue and the interventional instrument.



**Declarations under Rule 4.17:**

- *as to applicant's entitlement to apply for and be granted a patent (Rule 4.17(ii))*
- *as to the applicant's entitlement to claim the priority of the earlier application (Rule 4.17(iii))*

**Published:**

- *with international search report (Art. 21(3))*

## ULTRASOUND SYSTEM FOR ENHANCED INSTRUMENT VISUALIZATION

### RELATED PRIORITY APPLICATION

**[0001]** The present application claims the benefit of and priority to U.S. Patent Application 15/347,697 filed November 9, 2016, which is herein incorporated by reference in its entirety.

### TECHNICAL FIELD

**[0002]** The disclosed technology relates to ultrasound imaging systems and in particular to ultrasound imaging systems for imaging interventional instruments within a body.

### BACKGROUND

**[0003]** Ultrasound imaging is becoming increasingly accepted as the standard of care to be used when guiding an interventional instrument to a desired location within a body. One common use for this procedure is during the application of anesthesia, whereby a physician or a medical technician views an ultrasound image to help guide a needle to a desired nerve or a region of interest. To enhance the ability of the physician to view the needle, many ultrasound systems incorporate so called "needle visualization" technologies that produce a composite image from an anatomy image of the tissue and an image of the needle.

**[0004]** One of the common problems associated with most needle visualization techniques is that the beam direction of the ultrasound system used to image the needle has to be preset by the user. In order to obtain the best image, the transmit beam direction should be nearly perpendicular to a needle or other interventional instrument. If the needle does not appear clearly in the composite image of the tissue, then the user is supposed to change the settings on the machine to vary the beam direction. This is often too cumbersome for an unassisted operator when the operator has one hand holding the ultrasound probe and another hand guiding the needle. Even

if the operator has an assistant, it is often distracting to instruct the assistant to change the beam direction settings, which may need frequent adjustment depending on how the probe is held and how the instrument is advanced into the body. Therefore, many procedures are performed where the transmit beam direction for visualizing a needle or other interventional instrument is not set in the optimal direction.

#### BRIEF DESCRIPTION OF THE DRAWINGS

**[0005]** Figure 1 is a simplified illustration of an ultrasound imaging system for producing and displaying a composite image of tissue and an interventional instrument in accordance with one embodiment of the disclosed technology;

**[0006]** Figure 2 is a block diagram of an ultrasound imaging system in accordance with an embodiment of the disclosed technology; and

**[0007]** Figures 3A - 3C show representative composite frames obtained by combining image data with echo data representing an interventional instrument from single needle frame transmissions at shallow, medium and steep transmit angles, respectively;

**[0008]** Figure 3D illustrates a representative composite image created by blending echo data from one or more of the needle frames shown in Figures 3A-3C with echo data for an anatomy image in accordance with an embodiment of the disclosed technology; and

**[0009]** Figure 4 shows a number of needle frames whereby one or more of the frame rate, line density or multi-line processing are adjusted for frames obtained with transmit beam angles that are not nearly perpendicular to the orientation of an interventional instrument in accordance with an embodiment of the disclosed technology.

#### DETAILED DESCRIPTION

**[0010]** As will be explained in further detail below, the disclosed technology relates to improvements in ultrasound imaging systems and in particular to an ultrasound imaging system that is configured to produce a combined image of tissue and an instrument that is inserted into the tissue. In the description below, the interventional instrument is described as being a needle used to deliver anesthesia or other drugs to a

desired location. However, other devices such as biopsy needles, needles for suturing tissue, needles for withdrawing fluids (e.g. amniocentesis), robotic surgical instruments, catheters, guidewires or other invasive medical instruments can also be imaged.

**[0011]** In one embodiment, a processor in the ultrasound system is configured to cause a number of transmit beams to be created and delivered to a body in order to produce an anatomy image of the tissue under examination. In addition, the processor is configured to cause a number of transmit beams to be generated at different transmit beam angles in order to image an interventional instrument. To distinguish the anatomy image from the images of the interventional instrument, the frames of the interventional instrument can be referred to as “needle frames,” even if the instrument is not a needle.

**[0012]** Each of the needle frames produced from the transmissions at the different transmit angles is analyzed to detect the presence of an interventional instrument. In one embodiment, a composite image is created using the anatomy image and echo data from one or more of the needle frames that are captured using the different transmit beam directions in order to show both the tissue and the position of the interventional instrument.

**[0013]** Figure 1 shows a representative ultrasound imaging system that implements the disclosed technology for imaging the tissue of a patient. In one embodiment, an ultrasound imaging system 10 can be a hand-held, portable or cart-based system that uses a transducer probe 12 to transmit ultrasound signals into a region of interest and to receive the corresponding echo signals in order to produce an image of the tissue being scanned. The probe 12 can be a one or two dimensional linear or curved transducer or a phased array transducer all of which can selectively change the transmit beam angles electronically.

**[0014]** The ultrasound imaging system 10 converts characteristics of the received echo signals (e.g. their amplitude, phase, power, frequency shift etc.) into data that is quantified and displayed for the user as an image. The images created may also be stored electronically for digital record keeping or transmitted via a wired or wireless communication link to another device or location. In some embodiments, an operator guides an interventional instrument 15 into the patient (or subject) 20 with one hand while holding the probe 12 with the other hand. The operator views a composite image

22 of the tissue and a representation 24 of where the interventional instrument is located in the tissue. The composite image 22 is updated on the screen while the instrument is guided to the target location. Such a location may be a particular nerve site in the field of anesthesia or other area of interest such as a vessel or a particular organ (e.g. uterus, prostate, tumor, heart vessel etc.).

**[0015]** As will be understood by those skilled in the art, the optimal beam direction for imaging a long thin interventional instrument is at an angle that is approximately perpendicular to the length of the instrument. However, the imaging parameters and beam directions required to image an instrument are often not the same as those that are optimal for imaging the tissue. In one embodiment of the disclosed technology, the user is not required to select a particular beam angle to use in generating the needle frames. Instead, the processor is programmed to generate needle frames using multiple different transmit beam angles. The echo data for the needle frames created from these different transmit beam angles are analyzed to detect the presence of objects that may be an interventional instrument. Echo data from one or more of the needle frames obtained using different transmit beam directions and that likely represent an interventional instrument are copied from the needle frames and blended with the echo data for the anatomy image in order to produce the composite image that shows both the tissue and the position of the interventional instrument.

**[0016]** Figure 2 shows a simplified block diagram of an ultrasound imaging system in accordance with an embodiment of the disclosed technology. As will be appreciated by those skilled in the art, the ultrasound system may be constructed with components that are different than those shown. In addition, the ultrasound system includes parts that are not discussed (e.g. a power supply etc.) and that are not necessary for the understanding of how to make and use the disclosed technology. In the embodiment shown, the ultrasound system includes a processor 40 having a built-in or external memory (not shown) containing instructions that are executable by the processor to operate the ultrasound imaging system as will be explained in detail below. In the transmit path, the ultrasound system includes a transmit beamformer 42, a transmit gain control amplifier 44 and a transmit/receive switch 46. If the ultrasound probe 12, is a phased array type or can otherwise change the angle of transmissions electronically, the transmit beamformer 42 operates to generate a number of signals having a relative amplitude and phase (timing) that are selected to produce an ultrasound beam from

some or all of the transducer elements of the probe that constructively add in a desired transmit beam direction (the desired transmit beam angle). The signals from the transmit beamformer are amplified by the transmit amplifier 44 to a sufficiently high voltage level that will cause the transducer elements to produce the desired acoustic signals in the tissue being examined. In some embodiments, the processor 40 is connected to supply a control command such as a digital value (e.g. 0 - 255) to the gain control amplifier. The value of the command controls the amount of gain that is supplied by the transmit amplifier 44.

**[0017]** Other techniques for adjusting the power of the ultrasound signals include changing the waveforms that drive the transducer elements to either increase or decrease the power of the ultrasound signals. In another embodiment, the voltage rails (+V, -V) of an amplifier that produces the driving signals can be changed in order to vary the power of the ultrasound signals. In yet another embodiment, driving signals can be supplied to a lesser or a greater number of transducer elements to change the power of the ultrasound signals. Those skilled in art will understand that these techniques are merely exemplary and that there are numerous ways in which the level of acoustic power of the ultrasound signals delivered to the patient can be adjusted.

**[0018]** The amplified transmit signals are supplied to the transducer probe 12 through the transmit/receive switch 46, which disconnects or shields sensitive receive electronics from the transmit signals at the time they are delivered to the transducer probe 12. After the signals are transmitted, the transmit/receive switch 46 connects the receive electronics to the transducer elements to detect the corresponding electronic echo signals created when the returning acoustic waves impinge upon the transducer elements.

**[0019]** In the receive path, the ultrasound imaging system includes a low noise amplifier 50, a time gain control (TGC) amplifier 52, an analog to digital converter 54, a receive beamformer 56 and an image processor 58. Analog echo signals produced by the imaging probe are directed through the transmit/receive switch 46 to the low noise amplifier where they are amplified. The TGC amplifier 52 applies a variable amplification to the received signals that varies the level of amplification applied with the return time of the signals (e.g. proportional to the depth in the tissue being imaged) to counteract the attenuation of the signals versus depth. The amplified signals are

then converted into a digital format by the analog to digital converter 54. The digitized echo signals are then delayed and summed by the receive beamformer 56 before being supplied to the image processor.

**[0020]** In some embodiments, the number of transmitted beams and received beams (lines) may differ from each other. For example, the receive beamformer may produce in parallel (i.e., simultaneously) two or more adjacent lines per transmitted beam, a technique sometimes known as parallel receive beamforming or multi-line processing. Multi-line processing may be used to increase the imaging frame rate by lowering the number of transmitted beams while still being able to keep the number of received lines per frame (line density) constant. Alternatively, a higher multi-line order (number of receive lines beamformed in parallel from a single transmitted beam) may be used to increase the number of received lines per frame while keeping the number of transmitted beams, hence the frame rate, constant. Other combinations of line density, frame rate and multi-line order are also possible. Furthermore, it is even possible to transmit an unfocused beam (plane wave) and beamform all the receive lines of a frame from that single transmitted beam. The system may also employ different combinations of line density and multi-line order for imaging the tissue vs. imaging an interventional instrument. However, it will be appreciated by those skilled in the art that use of a higher multi-line order, a lower-line density, or unfocused transmit beams, while improving the frame rate, may reduce the quality of the acquired images.

**[0021]** Images produced by the image processor 58 from the received signals are displayed on a display 60. In addition, the images can be recorded in an image memory (not shown) for future recall and review. A number of inputs 72 are provided to allow an operator to change various operating parameters of the ultrasound imaging system and to enter data such as the patient's name or other record keeping data. In addition, the ultrasound imaging system includes input/output (I/O) circuitry to allow the system to connect to computer communication links (LAN, WAN, Internet etc.) through a wired (e.g. Ethernet, USB, Thunderbolt, Firewire, or the like) or wireless (802.11, cellular, satellite, Bluetooth or the like) communication link.

**[0022]** The details of the components that comprise the ultrasound imaging system and how they operate are generally considered to be well known to those of ordinary skill in the art. Although the ultrasound imaging system is shown having many separate

components, it will be appreciated that devices such as ASICs, FPGAs, digital signal processors (DSPs), CPUs or GPUs may be used to perform the function of multiple ones of these individual components.

**[0023]** As discussed above, the processor 40 is programmed to create a composite image of the tissue being examined and an interventional instrument being introduced into the tissue. In one embodiment, the image processor produces an anatomy image of the tissue being examined with imaging parameters that are selected for the depth and particular type of tissue being scanned. The anatomy image created by the image processor 58 is stored in memory to be combined with echo data for one or more of the needle frames that are created to locate an interventional instrument.

**[0024]** In one embodiment, the processor causes the transmit electronics to produce transmit beams in a number of different transmit directions to image the interventional instrument. For example, the processor 40 may direct transmit beams to be produced at a shallow, medium and steep angle as measured with respect to a longitudinal axis of the transducer probe. In most cases, the position of the instrument will show more clearly in one or more of the needle frames than in the others.

**[0025]** In one embodiment, the echo data for each of the needle frames created from the transmissions at the different transmit angles are analyzed for the presence of an interventional instrument. Various instrument detection algorithms can be used. For example, the images can be analyzed for the presence of a linear segment of pixels that are much brighter (e.g. greater amplitude) than adjacent pixels thereby indicating the presence of a strong linear reflector. The length of the segments that may represent an interventional instrument may vary and in some embodiments, may be curved if the interventional instrument itself is curved or bends when the instrument is inserted. Alternatively, the segments may seem to be curved in the coordinate system where detection is performed if the images were acquired using a curved transducer geometry (e.g., convex).

**[0026]** In one embodiment, each segment of bright pixels is scored to indicate how likely the segment represents an interventional instrument. Such a score can be adjusted by for example, the length of the bright pixels above a certain threshold, how straight or linear the segment of pixels is, how much contrast is present between the bright pixels and the adjacent pixels, how strong the edges around the segment of

bright pixels are as determined by a gradient or other edge-detection operations, etc. A Hough transform or other similar techniques can be used to determine the location of pixels that lie on a linear or parameterized curved segment, from which a score can also be determined.

**[0027]** In one embodiment, the brightness data values for an image are converted into corresponding gradient values by looking at differences between adjacent brightness values along the beam lines. A needle or other bright reflector that is an interventional instrument is generally characterized by a large positive gradient (e.g. dark to light) in brightness values followed closely by a large negative gradient (e.g. light to dark) of brightness values when viewed in the direction from the transducer and into the tissue. The gradient values can be filtered to ensure that the large changes in the positive and negative gradient values occur within a distance that would be expected for the interventional instrument. Next, a Hough transform can be used to determine if the large positive/negative gradient changes occur in a linear pattern in the adjacent beam lines. Scores for the segments of large gradient changes can be increased or decreased depending on one or more of the length of the gradient changes, how close a positive gradient change is from a negative gradient change, how the gradient changes align spatially from beam to beam.

**[0028]** In one embodiment, segments of echo data are scored according to how large the gradients are and how well the gradients align in adjacent beam lines. Those segments having larger gradients and are more in line are given greater scores than those with smaller gradients and are less aligned. A representation of an instrument may comprise a single long segment or multiple shorter segments and not all segments having the highest score may originate from the same needle frame

**[0029]** In one embodiment, echo data representing likely interventional instruments from those images with the highest scoring segments are copied from two or more needle frames and blended with the echo data for the anatomy image. In another embodiment, echo data are copied from a single needle frame and blended with the echo data for the anatomy image.

**[0030]** Other needle visualization techniques for detecting the presence of a needle or other interventional instrument in an ultrasound image could also be used.

**[0031]** In one embodiment, the processor is programmed to identify segments of pixel data from one or more of the needle frames created from the transmissions taken at the various transmit angles that have a score that indicates the pixels likely represent an interventional instrument. The processor copies the pixel data representing the instrument and uses a blending function to combine the copied pixel data with the pixel data in the anatomy image.

**[0032]** Figures 3A - 3C show representative composite frames obtained by combining image data with echo data representing an interventional instrument from single needle frame transmissions at shallow, medium and steep transmit angles, respectively. In the composite frames shown, it can be seen that some needle frames show different parts of the interventional instrument better than others. In one embodiment, the processor copies the pixel data for various segments obtained using multiple firing angles that have the highest scores representing an interventional instrument and blends the copied segment pixel data into the anatomy image.

**[0033]** Figure 3D shows a representative composite image of the tissue that is created by blending pixel data copied from one or more of the needle frames obtained at different firing angles and that have a score indicating that the data likely represent an interventional instrument. In some embodiments, the data are blended with a feathering function so that the copied data representing the interventional instrument are seen strongly in the composite image while the copied data for areas surrounding the instrument blend in lightly with the data for the anatomy image so that the tissue surrounding the instrument can be seen.

**[0034]** Figure 4 shows a representative region of interest into which a needle is inserted. In the example shown, an anatomy image 100 is obtained with a linear transducer. A number of needle frames are obtained at differing beam steering angles 110, 112 and 114. An interventional instrument 120 is inserted into the image. In the embodiment shown, the differences between the angle of insertion of the instrument and the angles that are perpendicular to the beam angles 110 and 112 are approximately equal. Therefore, the scores of the segments that represent the instrument in the needle frames created from firings in the beam steering angles 110 and 112 should be generally equal. Pixel data from each of these needle frames can therefore be copied and blended into the anatomy image 100. If the insertion angle of

the instrument 120 were in a direction that was closer to a line perpendicular to the steering angle 114 for example, then pixel data from the needle frame that was created in response to the transmissions at the angle 114 would be copied and blended with the data for the anatomy image.

**[0035]** In the example shown in Figure 4, the beam steering angles 110, 112 are determined to be the closest to being perpendicular to the insertion angle of the interventional instrument or are otherwise identified as producing the best image of the instrument based on the scores of the segments from the echo data received from these transmit angles. In one embodiment, the frame rate of transmissions at one or more of the angles 110 and 112 can be increased because they represent high priority angles, whereas the frame rate, line density or multi-line processing for the needle frame created from the beam steering direction 114 can be adjusted because that transmit angle is not a high priority angle as is explained further below.

**[0036]** In some embodiments, the pixel data used to display the ultrasound images are analyzed to detect the presence of an interventional instrument. However, it will be appreciated that the echo data that is not yet converted into pixel data that is ready for display could be analyzed. For example, echo data that has been amplified, converted to digital and beamformed but not yet scan converted could be analyzed to detect and score segments in the data that represent interventional instruments.

**[0037]** As will be appreciated by those skilled in the art, creating a number of needle frames at different transmit angles can decrease the frame rate of the ultrasound imaging system. In one embodiment, the processor selects a higher line density and/or a lower multi-line setting for a subset of the needle frames (e.g. high-quality needle frames) than the rest of the needle frames (lower-quality needle frames), where the high-quality needle frame(s) is/are chosen adaptively based on the orientations of structures detected by the instrument detection algorithm with a high score (i.e. a high probability for the presence of an interventional instrument). If the detection algorithm finds structures of a similar orientation with high scores in multiple needle frames, the needle frame with an imaging steering angle that would insonate an interventional instrument at a close-to-perpendicular angle to the orientation of the probe can be chosen to be a high quality needle frame acquisition and the other needle frames can continue to be acquired as lower quality needle frames. This adaptively

picked high-quality needle frame ensures a high quality visualization of the “most-probable” interventional instrument while the remaining lower-quality needle frames would ensure that instruments at other orientations are not missed and that an operator is not required to manually select a high-quality needle frame if the angle of the interventional instrument with respect to the ultrasound scan head changes during the procedure.

**[0038]** The system may also alter the number and acquisition rate of the needle frames and the angles employed adaptively based on the detection scores. For example, if features with high detection scores are identified within a needle frame with a certain angle setting, the system may designate that angle as a “high priority angle” and increase the acquisition rate of needle frames at or close to that angle setting, while dropping the acquisition rate of needle frames at angles farther away from the high-priority angle or for needle frames that do not contain features with high segment scores. In one embodiment, the system continues to acquire and analyze needle frames that have angles farther away from the high-priority angle setting as “scouting” needle frames so that the system can re-asses and change the “high-priority angle” on the fly if features with higher detection scores are detected with those scouting needle frames at any time. However, the angles of the scouting needle frames may be selected to have a larger angle spread between them and/or a lower acquisition rate to minimize the overall impact to the frame rate.

**[0039]** The subject matter and the operations described in this specification can be implemented in digital electronic circuitry, or in computer software, firmware, or hardware, including the structures disclosed in this specification and their structural equivalents, or in combinations of one or more of them. Embodiments of the subject matter described in this specification can be implemented as one or more computer programs, i.e., one or more modules of computer program instructions, encoded on computer storage medium for execution by, or to control the operation of, data processing apparatus.

**[0040]** A computer storage medium can be, or can be included in, a computer-readable storage device, a computer-readable storage substrate, a random or serial access memory array or device, or a combination of one or more of them. Moreover, while a computer storage medium is not a propagated signal, a computer storage

medium can be a source or destination of computer program instructions encoded in an artificially-generated propagated signal. The computer storage medium also can be, or can be included in, one or more separate physical components or media (e.g., multiple CDs, disks, or other storage devices).

**[0041]** The term “processor” encompasses all kinds of apparatus, devices, and machines for processing data, including by way of example a programmable processor, a computer, a system on a chip, or multiple ones, or combinations, of the foregoing. The apparatus can include special purpose logic circuitry, e.g., an FPGA (field programmable gate array) or an ASIC (application-specific integrated circuit). The apparatus also can include, in addition to hardware, code that creates an execution environment for the computer program in question, e.g., code that constitutes processor firmware, a protocol stack, a database management system, an operating system, a cross-platform runtime environment, a virtual machine, or a combination of one or more of them. The apparatus and execution environment can realize various different computing model infrastructures, such as web services, distributed computing and grid computing infrastructures.

**[0042]** A computer program (also known as a program, software, software application, script, or code) can be written in any form of programming language, including compiled or interpreted languages, declarative or procedural languages, and it can be deployed in any form, including as a stand-alone program or as a module, component, subroutine, object, or other unit suitable for use in a computing environment. A computer program may, but need not, correspond to a file in a file system. A program can be stored in a portion of a file that holds other programs or data (e.g., one or more scripts stored in a markup language document), in a single file dedicated to the program in question, or in multiple coordinated files (e.g., files that store one or more modules, sub-programs, or portions of code). A computer program can be deployed to be executed on one computer or on multiple computers that are located at one site or distributed across multiple sites and interconnected by a communication network.

**[0043]** The processes and logic flows described in this specification can be performed by one or more programmable processors executing one or more computer programs to perform actions by operating on input data and generating output. The

processes and logic flows can also be performed by, and apparatus can also be implemented as, special purpose logic circuitry, e.g., an FPGA (field programmable gate array) or an ASIC (application-specific integrated circuit).

**[0044]** Processors suitable for the execution of a computer program include, by way of example, both general and special purpose microprocessors. Devices suitable for storing computer program instructions and data include all forms of non-volatile memory, media and memory devices, including by way of example semiconductor memory devices, e.g., EPROM, EEPROM, and flash memory devices; magnetic disks, e.g., internal hard disks or removable disks; magneto-optical disks; and CD-ROM and DVD-ROM disks. The processor and the memory can be supplemented by, or incorporated in, special purpose logic circuitry.

**[0045]** From the foregoing, it will be appreciated that specific embodiments of the invention have been described herein for purposes of illustration, but that various modifications may be made without deviating from the scope of the invention. Accordingly, the invention is not limited except as by the appended claims.

## CLAIMS

I/We claim:

1. An ultrasound imaging system comprising:  
an image processor that is configured to  
acquire echo data for an anatomy image of tissue being examined from received ultrasound signals; and  
acquire echo data for two or more needle frames of the tissue being examined that are obtained with different transmit beam directions;  
a processor that is configured to  
analyze the echo data for the two or more needle frames obtained with the different transmit beam directions to score segments of echo data that indicate how likely the segments represent an interventional instrument; and  
selecting echo data for segments that likely represent the interventional instrument from at least one of the two or more needle frames obtained with different transmit beam directions to blend with echo data for the anatomy image in order to create a composite image of the tissue and the interventional instrument based on the score of the segments.
2. The ultrasound imaging system of claim 1, wherein the processor is configured to identify segments of echo data in the needle frames that likely represent an interventional instrument and to determine if an angle of the transmit beam used to acquire the echo data for the needle frame is nearly perpendicular to the orientation of the interventional instrument.
3. The ultrasound imaging system of claim 2, wherein the processor is configured to increase a frame rate at which needle frames obtained at a transmit beam angle that is nearly perpendicular to the orientation of the interventional instrument are obtained.

4. The ultrasound imaging system of claim 2, wherein the processor is configured to decrease the frame rate at which needle frames obtained at a transmit beam angle that is not nearly perpendicular to the orientation of the interventional instrument are obtained.

5. The ultrasound imaging system of claim 1, wherein the processor is configured to:

identify a transmission angle for a needle frame that has segments with the highest score representing an interventional instrument;  
increase a frame rate of needle frames obtained at the identified transmission angle.

6. The ultrasound imaging system of claim 1, wherein the processor is configured to:

identify a transmission angle for a needle frame that has segments with the highest score representing an interventional instrument; and  
increase a line density of needle frames obtained at the identified transmission angle.

7. The ultrasound imaging system of claim 1, wherein the processor is configured to:

identify a transmission angle for a needle frame that has segments with the highest score representing an interventional instrument; and  
decrease a number of receive lines that are beamformed in parallel for each transmit beam to produce needle frames obtained at the identified transmission angle.

8. The ultrasound imaging system of claim 1, wherein the processor is configured to:

identify a transmission angle for a needle frame that has segments with the highest score representing an interventional instrument; and

decrease a frame rate of needle frames obtained at angles that are not the identified transmission angle.

9. The ultrasound imaging system of claim 1, wherein the processor is configured to:

identify a transmission angle for a needle frame that has segments with the highest score representing an interventional instrument; and  
decrease a line density of needle frames obtained at angles that are not the identified transmission angle.

10. The ultrasound imaging system of claim 1, wherein the processor is configured to:

identify a transmission angle for a needle frame that has segments with the highest score representing an interventional instrument; and  
increase a number of receive lines that are beamformed in parallel for each transmit beam to produce needle frames that are not obtained at the identified transmission angle.

11. An ultrasound imaging system comprising:

an image processor that is configured to

produce an anatomy image of tissue being examined from received ultrasound signals; and

produce two or more needle frames of tissue being examined that are obtained with different transmit beam directions;

a processor that is configured to

analyze echo data for the two or more needle frames created with the different transmit beam directions to assign a score to segments of echo data that likely represent an interventional instrument; and

copying echo data from at least one of the needle frames created with different transmit beam directions to blend with the echo data for the anatomy image based on the score of the segments in the two or more needle frames.

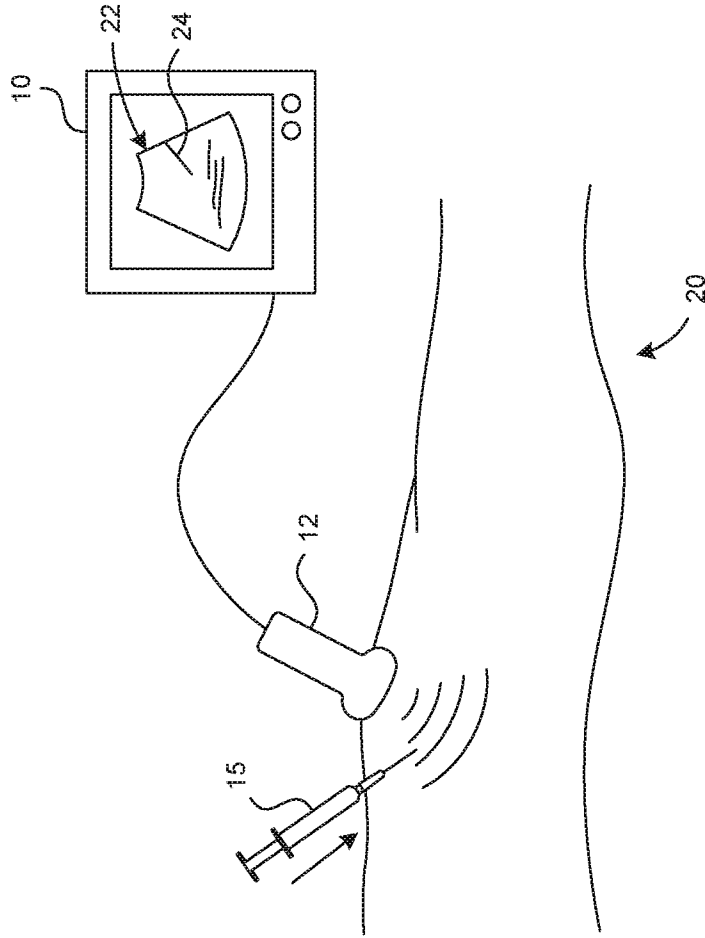
12. An ultrasound imaging system comprising:  
an image processor that is configured to  
    produce an anatomy image of tissue being examined from received  
    ultrasound signals; and  
    produce two or more needle frames of tissue being examined that are  
    obtained with different transmit beam directions;  
a processor that is configured to  
    analyze data for the two or more needle frames created with the different  
    transmit beam directions to assign a score to segments of pixels that  
    likely represent an interventional instrument; and  
    copying pixels from at least one of the needle frames created with  
    different transmit beam directions to blend with the pixels of an anatomy  
    image based on the score of the segments.

13. The ultrasound system of claim 12, wherein the processor is configured to identify a high priority beam steering direction of the needle frame having segments with a highest score, and wherein the processor is configured to adjust a frame rate of additional needle frames obtained with transmissions that are not in the high priority beam steering direction.

14. The ultrasound system of claim 12, wherein the processor is configured to identify a high priority beam steering direction of a needle frame having the segments with a highest score, and wherein the processor is configured to adjust line density of additional needle frames obtained at transmission angles that are not in the high priority beam steering direction.

15. The ultrasound system of claim 12, wherein the processor is configured to identify a high priority beam steering direction of a needle frame having the segments with a highest score, and wherein the processor is configured to adjust a number of receive lines that are beamformed in parallel from transmission angles that are not in the high priority beam steering direction.

16. An ultrasound imaging system comprising:
- an image processor that is configured to
    - produce an anatomy image of tissue being examined from received ultrasound signals; and
    - receive echo data for two or more needle frames of the tissue being examined that are obtained with different transmit beam directions;
  - a processor that is configured to
    - analyze the echo data for the needle frames that are created in response to the transmissions in the different transmit beam directions to assign a score to segments of data that likely represent an interventional instrument; and
    - selecting one or more of the needle frames from which echo data are copied to be blended with the echo data for the anatomy image based on the score of the segments.



**FIG. 1**

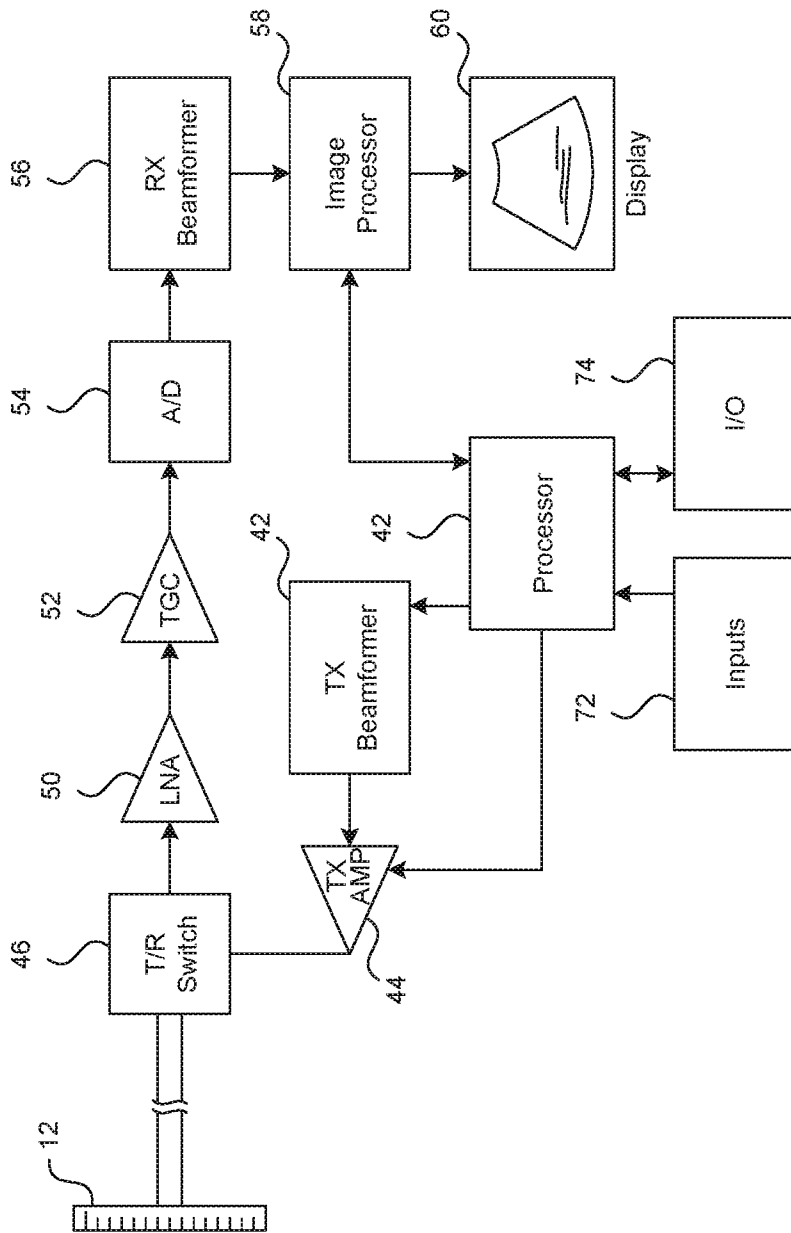


FIG. 2

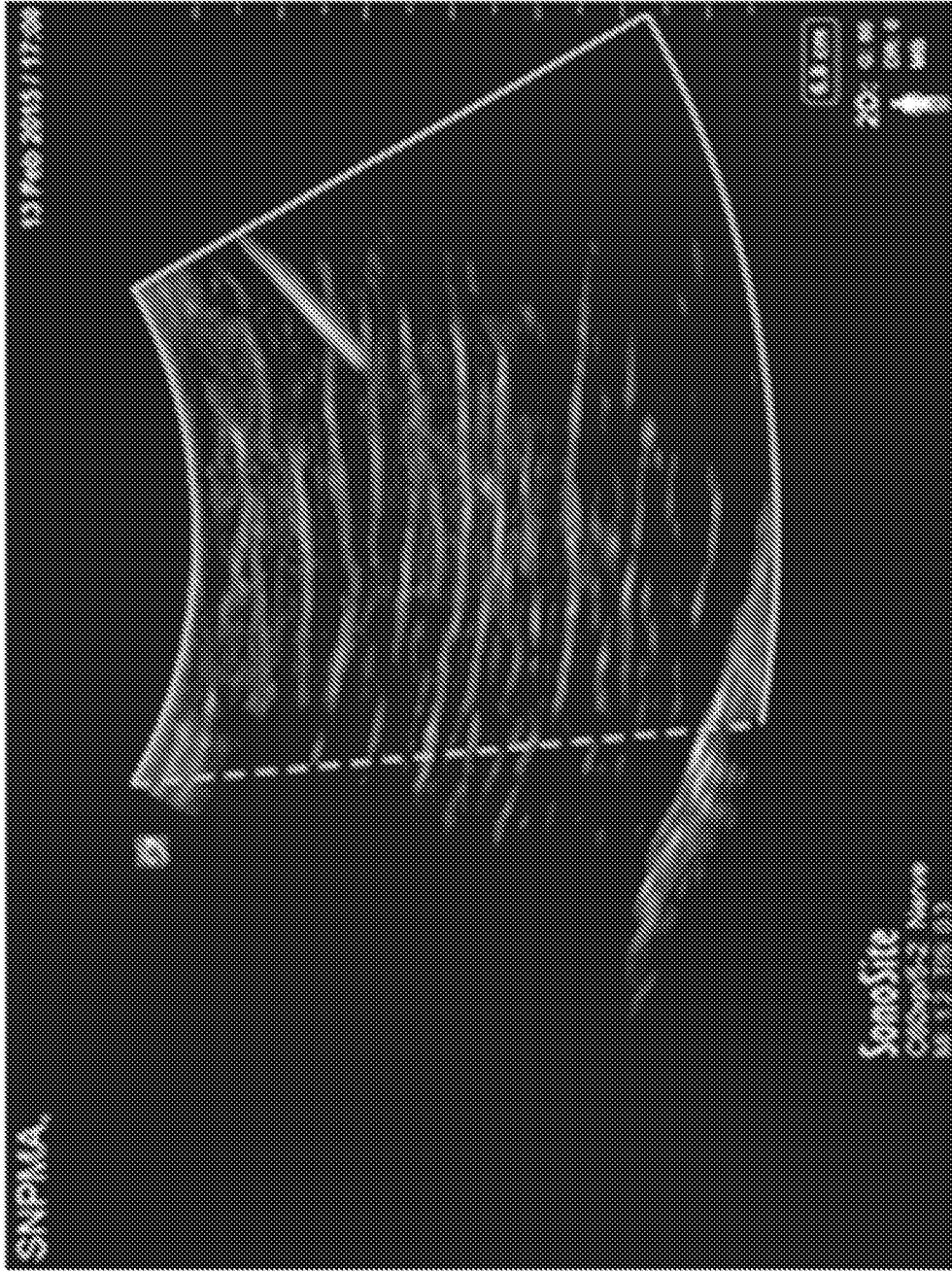


FIG. 3A

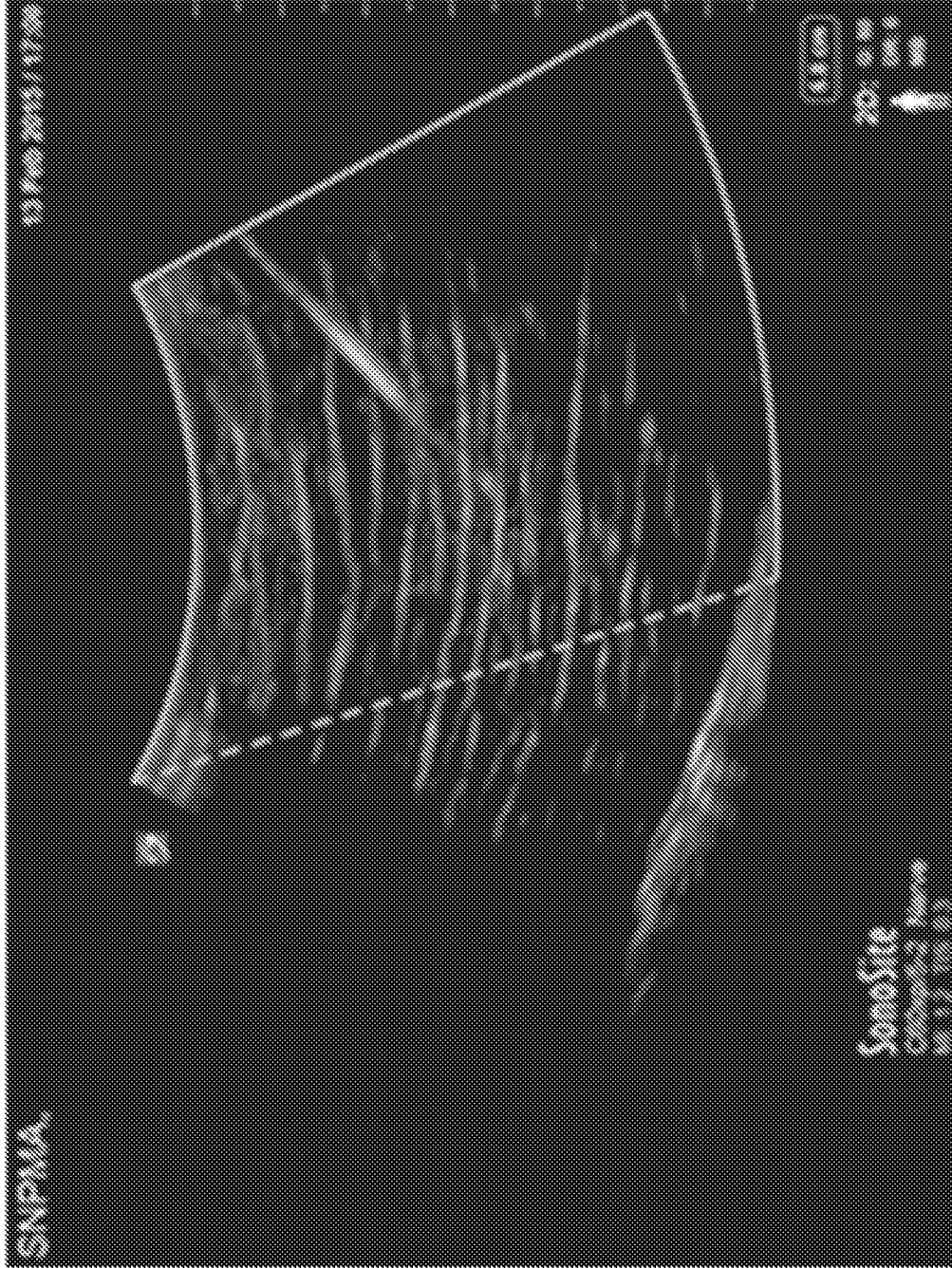


FIG. 3B

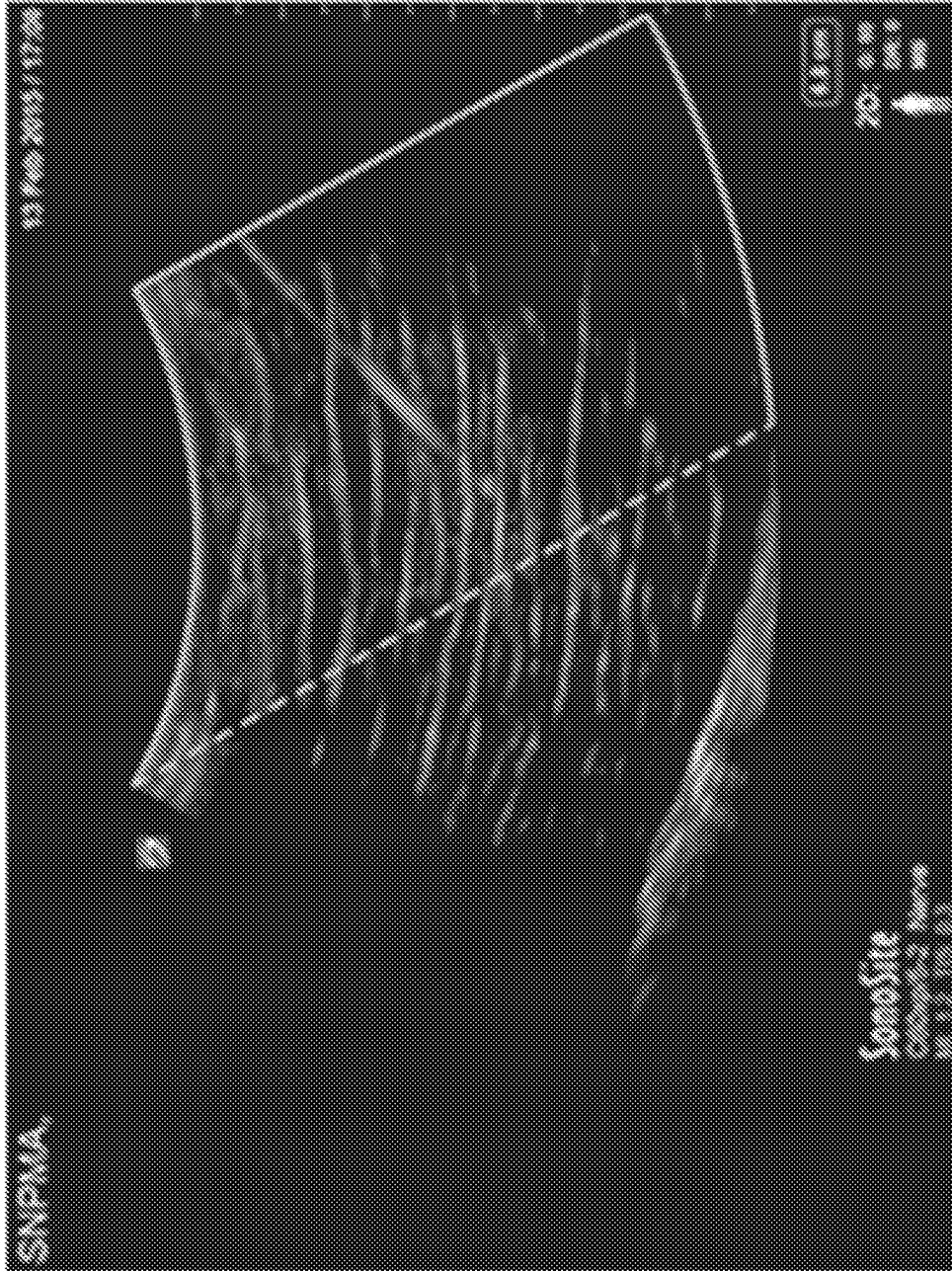
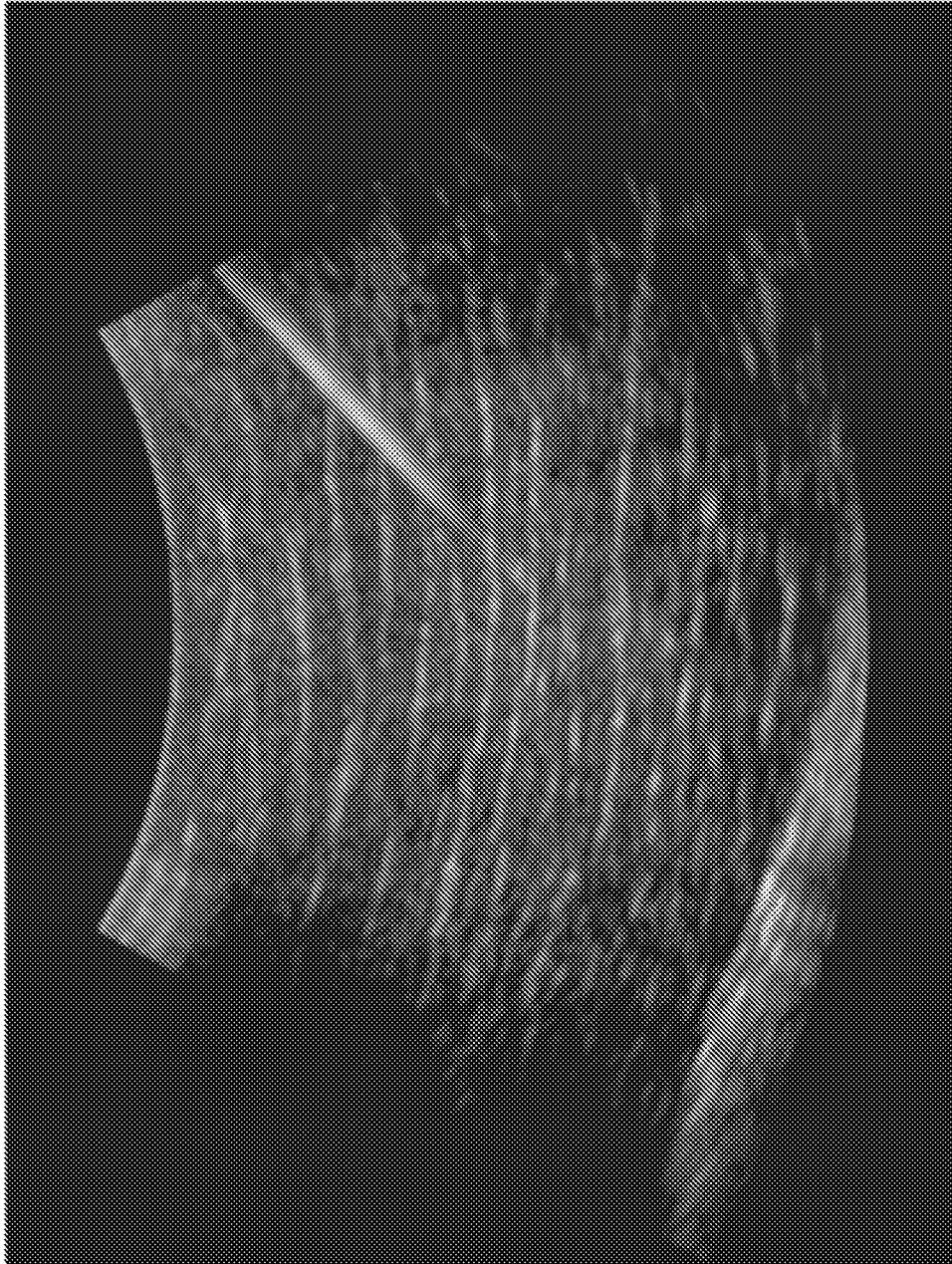
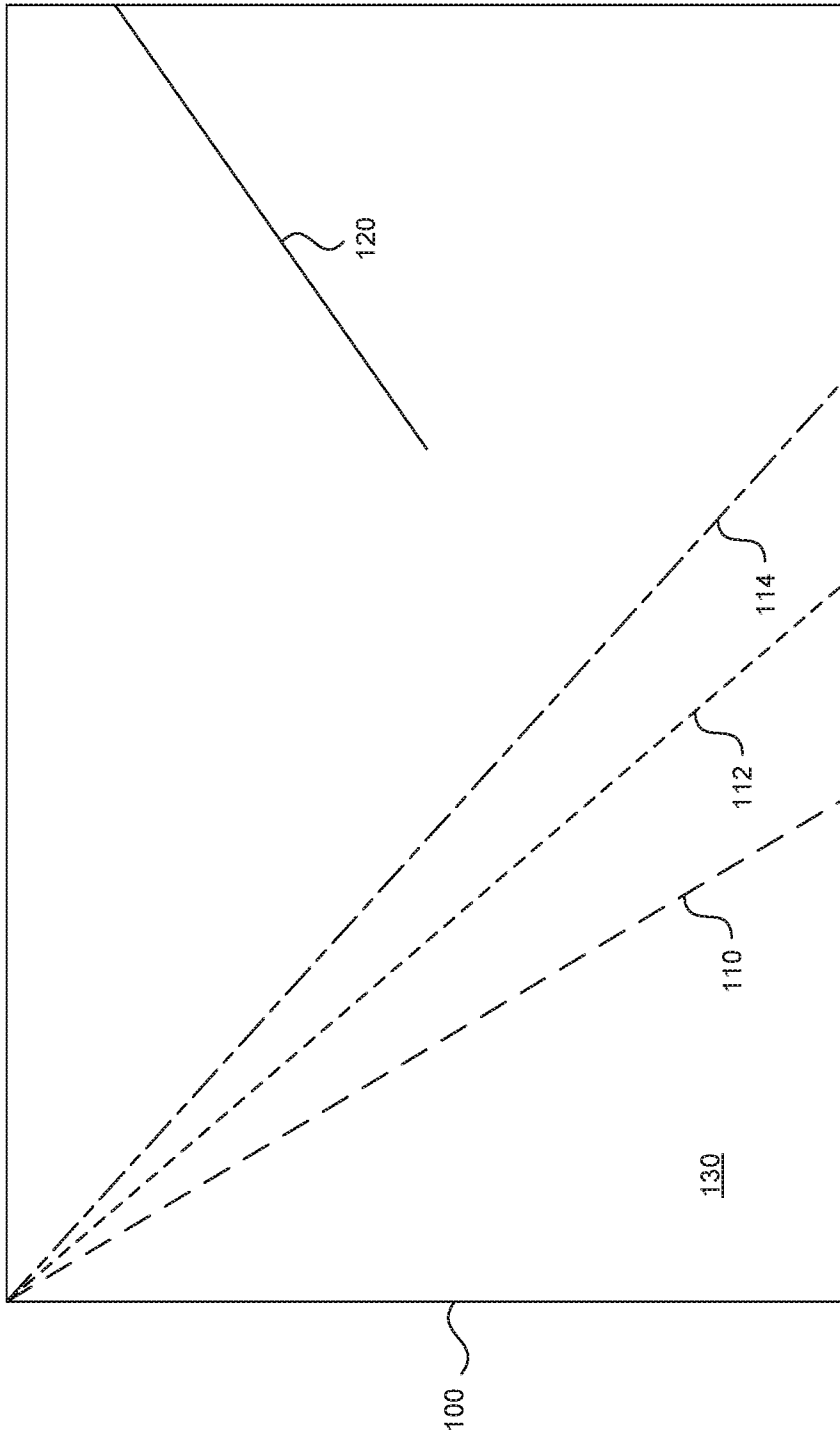


FIG. 3C



*FIG. 3D*

717



**FIG. 4**

**A. CLASSIFICATION OF SUBJECT MATTER****A61B 8/00(2006.01)i, A61B 8/08(2006.01)i**

According to International Patent Classification (IPC) or to both national classification and IPC

**B. FIELDS SEARCHED**

Minimum documentation searched (classification system followed by classification symbols)

A61B 8/00; A61B 6/02; G06F 3/0481; G06T 1/60; A61B 8/08; G06K 9/66; G06K 9/00; A61B 5/00; A61B 10/04

Documentation searched other than minimum documentation to the extent that such documents are included in the fields searched

Korean utility models and applications for utility models

Japanese utility models and applications for utility models

Electronic data base consulted during the international search (name of data base and, where practicable, search terms used)

eKOMPASS(KIPO internal) &amp; Keywords: , ,

**C. DOCUMENTS CONSIDERED TO BE RELEVANT**

Category*	Citation of document, with indication, where appropriate, of the relevant passages	Relevant to claim No.
Y	WO 2015-136534 A1 (IMAGEGALIL INNOVATION (2013) LTD.) 17 September 2015 See claims 17-20 and figures 1-2B.	1-16
Y	US 2016-0070436 A1 (MONROE M. THOMAS et al.) 10 March 2016 See claim 1 and figure 2	1-16
A	US 2015-0173706 A1 (KONINKLIJKE PHILIPS N.V.) 25 June 2015 See claim 1 and figures 6,7.	1-16
A	US 2016-0317118 A1 (KONINKLIJKE PHILIPS N.V.) 03 November 2016 See claims 1-4 and figure 1.	1-16
A	US 9401047 B2 (BOGONI et al.) 26 July 2016 See claims 1,2 and figures 1,2.	1-16

 Further documents are listed in the continuation of Box C. See patent family annex.

\* Special categories of cited documents:

"A" document defining the general state of the art which is not considered to be of particular relevance

"E" earlier application or patent but published on or after the international filing date

"L" document which may throw doubts on priority claim(s) or which is cited to establish the publication date of another citation or other special reason (as specified)

"O" document referring to an oral disclosure, use, exhibition or other means

"P" document published prior to the international filing date but later than the priority date claimed

"T" later document published after the international filing date or priority date and not in conflict with the application but cited to understand the principle or theory underlying the invention

"X" document of particular relevance; the claimed invention cannot be considered novel or cannot be considered to involve an inventive step when the document is taken alone

"Y" document of particular relevance; the claimed invention cannot be considered to involve an inventive step when the document is combined with one or more other such documents, such combination being obvious to a person skilled in the art

"&amp;" document member of the same patent family

Date of the actual completion of the international search

24 January 2018 (24.01.2018)

Date of mailing of the international search report

**25 January 2018 (25.01.2018)**

Name and mailing address of the ISA/KR

International Application Division

Korean Intellectual Property Office

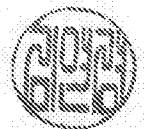
189 Cheongsa-ro, Seo-gu, Daejeon, 35208, Republic of Korea

Facsimile No. +82-42-481-8578

Authorized officer

Kim, Yeonkyung

Telephone No. +82-42-481-3325



## INTERNATIONAL SEARCH REPORT

Information on patent family members

International application No.

**PCT/US2017/059123**

Patent document cited in search report	Publication date	Patent family member(s)	Publication date
WO 2015-136534 A1	17/09/2015	None	
US 2016-0070436 A1	10/03/2016	AU 2014-231341 A1	05/11/2015
		AU 2014-231341 A1	18/09/2014
		AU 2014-231342 A1	05/11/2015
		AU 2014-231342 A1	18/09/2014
		AU 2014-231343 A1	05/11/2015
		AU 2014-231343 A1	18/09/2014
		AU 2014-231344 A1	18/09/2014
		AU 2014-231344 A1	05/11/2015
		AU 2014-231345 A1	18/09/2014
		AU 2014-231345 A1	05/11/2015
		AU 2014-231346 A1	18/09/2014
		AU 2014-231346 A1	05/11/2015
		AU 2014-231470 A1	05/11/2015
		AU 2014-231470 A1	18/09/2014
		AU 2014-231665 A1	05/11/2015
		AU 2014-231665 A1	18/09/2014
		AU 2014-386694 A1	17/09/2015
		AU 2014-386694 A1	13/10/2016
		AU 2014-386696 A1	13/10/2016
		AU 2014-386696 A1	17/09/2015
		CA 2892554 A1	18/09/2014
		CA 2892554 C	18/04/2017
		CA 2894133 A1	18/09/2014
		CA 2894133 C	01/11/2016
		CA 2896381 A1	18/09/2014
		CA 2896381 C	10/01/2017
		CA 2897086 A1	18/09/2014
		CA 2897086 C	05/07/2016
		CA 2899359 A1	18/09/2014
		CA 2899359 C	17/01/2017
		CA 2902592 A1	18/09/2014
		CA 2902771 A1	18/09/2014
		CA 2903088 A1	18/09/2014
		CA 2904766 A1	18/09/2014
		CA 2905611 A1	18/09/2014
		CA 2905611 C	15/08/2017
		CA 2906414 A1	18/09/2014
		CA 2906414 C	26/07/2016
		CA 2917938 A1	15/01/2015
		CA 2917938 C	30/08/2016
		CA 2929702 A1	18/09/2014
		CA 2939262 A1	17/09/2015
		CA 2939262 C	12/09/2017
		CA 2940297 A1	17/09/2015
		CA 2940662 A1	17/09/2015
		CA 2942069 A1	18/09/2014
		CA 2942189 A1	17/09/2015

**INTERNATIONAL SEARCH REPORT**

Information on patent family members

International application No.

**PCT/US2017/059123**

Patent document cited in search report	Publication date	Patent family member(s)	Publication date
		CA 2942417 A1	17/09/2015
		CA 2948719 A1	18/09/2014
		CA 2949252 A1	18/09/2014
		CA 2962015 A1	17/09/2015
		CN 105050527 A	11/11/2015
		CN 105163684 A	16/12/2015
		CN 105208958 A	30/12/2015
		CN 105263398 A	20/01/2016
		CN 105392436 A	09/03/2016
		CN 105636541 A	01/06/2016
		CN 106232047 A	14/12/2016
		EP 2967292 A1	20/01/2016
		EP 2967297 A1	20/01/2016
		EP 2967343 A1	20/01/2016
		EP 2967347 A1	20/01/2016
		EP 2967348 A1	20/01/2016
		EP 2967349 A1	20/01/2016
		EP 2967350 A1	20/01/2016
		EP 2967423 A1	20/01/2016
		EP 3116376 A1	18/01/2017
		EP 3116435 A1	18/01/2017
		HK 1216706 A1	02/12/2016
		HK 1216707 A1	02/12/2016
		HK 1218502 A1	24/02/2017
		HK 1219405 A1	07/04/2017
		HK 1219406 A1	07/04/2017
		HK 1221141 A1	26/05/2017
		JP 2016-515848 A	02/06/2016
		JP 2016-517287 A	16/06/2016
		JP 2016-517288 A	16/06/2016
		JP 2016-518148 A	23/06/2016
		JP 2016-525391 A	25/08/2016
		JP 2017-508579 A	30/03/2017
		JP 2017-514637 A	08/06/2017
		KR 10-2017-0034349 A	28/03/2017
		KR 10-2017-0035831 A	31/03/2017
		KR 10-2017-0044610 A	25/04/2017
		SG 11201507609 A	29/10/2015
		SG 11201507610 A	29/10/2015
		SG 11201507611 A	29/10/2015
		SG 11201507612 A	29/10/2015
		SG 11201507613 A	29/10/2015
		US 2015-0109427 A1	23/04/2015
		US 2015-0351860 A1	10/12/2015
		US 2015-0366620 A1	24/12/2015
		US 2016-0000515 A1	07/01/2016
		US 2016-0005169 A1	07/01/2016
		US 2016-0015471 A1	21/01/2016
		US 2016-0022146 A1	28/01/2016
		US 2016-0038253 A1	11/02/2016

## INTERNATIONAL SEARCH REPORT

Information on patent family members

International application No.

**PCT/US2017/059123**

Patent document cited in search report	Publication date	Patent family member(s)	Publication date
		US 2016-0067007 A1	10/03/2016
		US 2016-0113728 A1	28/04/2016
		US 2016-0155364 A1	02/06/2016
		US 2016-0235482 A1	18/08/2016
		US 2016-0354155 A1	08/12/2016
		US 2017-0069073 A1	09/03/2017
		US 2017-0076501 A1	16/03/2017
		US 2017-0143429 A1	25/05/2017
		US 2017-0148213 A1	25/05/2017
		US 2017-0245940 A1	31/08/2017
		US 2017-0273715 A1	28/09/2017
		US 2017-309069 A1	26/10/2017
		US 9600138 B2	21/03/2017
		US 9668768 B2	06/06/2017
		US 9734632 B2	15/08/2017
		US 9788906 B2	17/10/2017
		US 9814390 B2	14/11/2017
		US 9827054 B2	28/11/2017
		WO 2014-138916 A1	18/09/2014
		WO 2014-138923 A1	18/09/2014
		WO 2014-138997 A1	18/09/2014
		WO 2014-139010 A1	18/09/2014
		WO 2014-139018 A1	18/09/2014
		WO 2014-139019 A1	18/09/2014
		WO 2014-139020 A1	18/09/2014
		WO 2014-139021 A1	18/09/2014
		WO 2014-139022 A1	18/09/2014
		WO 2014-139023 A1	18/09/2014
		WO 2014-139024 A1	18/09/2014
		WO 2015-003271 A1	15/01/2015
		WO 2015-135055 A1	17/09/2015
		WO 2015-135056 A1	17/09/2015
		WO 2015-135057 A1	17/09/2015
		WO 2015-135058 A1	17/09/2015
		WO 2015-135059 A1	17/09/2015
US 2015-0173706 A1	25/06/2015	CN 104427944 A	18/03/2015
		CN 104427944 B	11/08/2017
		EP 2866671 A1	06/05/2015
		JP 2015-527109 A	17/09/2015
		JP 6165244 B2	19/07/2017
		RU 2015102538 A	20/08/2016
		WO 2014-001963 A1	03/01/2014
		WO 2014-001963 A9	03/01/2014
US 2016-0317118 A1	03/11/2016	CN 106413565 A	15/02/2017
		EP 3082615 A1	26/10/2016
		JP 2017-503548 A	02/02/2017
		WO 2015-092582 A1	25/06/2015

**INTERNATIONAL SEARCH REPORT**

Information on patent family members

International application No.

**PCT/US2017/059123**

Patent document cited in search report	Publication date	Patent family member(s)	Publication date
US 9401047 B2	26/07/2016	US 2011-255763 A1	20/10/2011

专利名称(译)	超声系统增强仪器可视化		
公开(公告)号	<a href="#">EP3537981A1</a>	公开(公告)日	2019-09-18
申请号	EP2017868877	申请日	2017-10-30
[标]申请(专利权)人(译)	富士胶片索诺声公司		
申请(专利权)人(译)	FUJIFILM SONOSITE , INC.		
当前申请(专利权)人(译)	FUJIFILM SONOSITE , INC.		
[标]发明人	KARADAYI KEREM		
发明人	KARADAYI, KEREM		
IPC分类号	A61B8/00 A61B8/08		
CPC分类号	A61B8/0841 A61B8/145 A61B8/4488 A61B8/5223 A61B8/5246 A61B8/54 A61B2034/2063 G01S7/52036 G01S7/52073 G01S7/52074 G01S7/52095 G01S15/8915 A61B8/14		
优先权	15/347697 2016-11-09 US		
其他公开文献	EP3537981A4		
外部链接	<a href="#">Espacenet</a>		

#### 摘要(译)

一种超声成像系统包括处理器，该处理器被编程为以不同的发射波束角生成解剖图像和多个针帧。该系统分析针帧中的数据并选择其中被识别为可能代表介入仪器的分段。来自一个或多个针框架的数据与用于组织的解剖结构图像的数据混合以产生组织和介入器械的合成图像。