

(19) World Intellectual Property
Organization
International Bureau



(43) International Publication Date
17 June 2004 (17.06.2004)

PCT

(10) International Publication Number
WO 2004/049952 A1

(51) International Patent Classification⁷: **A61B 8/08**, 8/14

[US/US]; P.O. Box 3001, Briarcliff Manor, NY 10510-8001 (US).

(21) International Application Number:

PCT/IB2003/005279

(74) Common Representative: **KONINKLIJKE PHILIPS ELECTRONICS N.V.**; c/o VODOPIA, John, P.O. Box 3001, Briarcliff Manor, NY 10510-8001 (US).

(22) International Filing Date:

18 November 2003 (18.11.2003)

(25) Filing Language:

English

(26) Publication Language:

English

(30) Priority Data:

60/430,876 4 December 2002 (04.12.2002) US

(81) Designated States (*national*): AE, AG, AL, AM, AT, AU, AZ, BA, BB, BG, BR, BW, BY, BZ, CA, CH, CN, CO, CR, CU, CZ, DE, DK, DM, DZ, EC, EE, EG, ES, FI, GB, GD, GE, GH, GM, HR, HU, ID, IL, IN, IS, JP, KE, KG, KP, KR, KZ, LC, LK, LR, LS, LT, LU, LV, MA, MD, MG, MK, MN, MW, MX, MZ, NI, NO, NZ, OM, PG, PH, PL, PT, RO, RU, SC, SD, SE, SG, SK, SL, SY, TJ, TM, TN, TR, TT, TZ, UA, UG, US, UZ, VC, VN, YU, ZA, ZM, ZW.

(71) Applicant (*for all designated States except US*): **KONINKLIJKE PHILIPS ELECTRONICS N.V.** [NL/NL]; Groenewoudseweg 1, NL-5621 BA Eindhoven (NL).

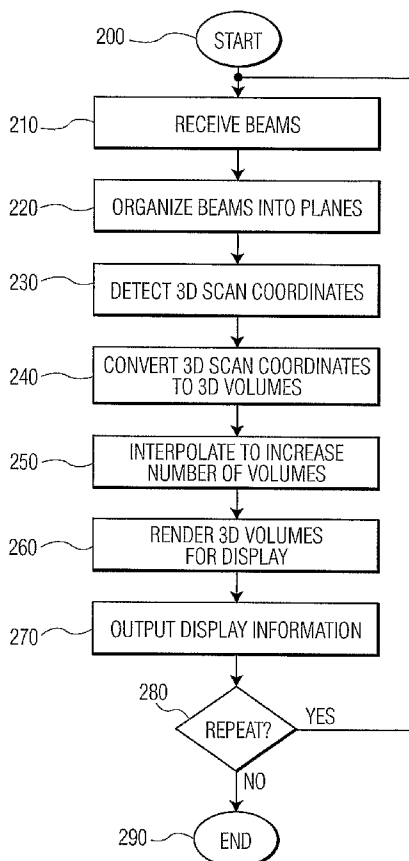
(84) Designated States (*regional*): ARIPO patent (BW, GH, GM, KE, LS, MW, MZ, SD, SL, SZ, TZ, UG, ZM, ZW), Eurasian patent (AM, AZ, BY, KG, KZ, MD, RU, TJ, TM), European patent (AT, BE, BG, CH, CY, CZ, DE, DK, EE, ES, FI, FR, GB, GR, HU, IE, IT, LU, MC, NL, PT, RO, SE,

(72) Inventor; and

(75) Inventor/Applicant (*for US only*): **THIELE, Karl**

[Continued on next page]

(54) Title: HIGH FRAME RATE THREE DIMENSIONAL ULTRASOUND IMAGER



(57) Abstract: A three dimensional ultrasound imaging device, having an interpolator that creates up sampled ultrasound image information from a three dimensional ultrasound image information using interpolation; and a memory that stores at least one of the three dimensional ultrasound image information and the up sampled ultrasound image information. The three dimensional ultrasound imaging device can have a probe that sends ultrasound waves, gathers reflected ultrasound waves and creates ultrasound information and a processor that converts the ultrasound information to three dimensional ultrasound image information. The ultrasound imaging device may also have a display that displays the up sampled image information. The three dimensional ultrasound imaging device may use at least one of 2 image to 3 image interpolation, 2 image to 4 image interpolation, 3 image to 4 image interpolation and 3 image to 5 image interpolation. The three dimensional ultrasound imaging device may use two dimensional solids and three dimensional volumes. The three dimensional ultrasound imaging device may also create up sampled ultrasound image information that has a greater number of frames, a greater number of three-dimensional frames, a greater number of two-dimensional volumes, a greater number of three dimensional volumes and a larger amount of ultrasound information.

WO 2004/049952 A1



SI, SK, TR), OAPI patent (BF, BJ, CF, CG, CI, CM, GA, GN, GQ, GW, ML, MR, NE, SN, TD, TG).

Published:

— with international search report

Declaration under Rule 4.17:

— as to applicant's entitlement to apply for and be granted a patent (Rule 4.17(ii)) for all designations

For two-letter codes and other abbreviations, refer to the "Guidance Notes on Codes and Abbreviations" appearing at the beginning of each regular issue of the PCT Gazette.

HIGH FRAME RATE THREE DIMENSIONAL ULTRASOUND IMAGER

The present invention relates to an ultrasound device that produces a three-dimensional image.

Ultrasound imaging devices operate by generating ultrasound signals and bouncing
5 the ultrasound signals off an object to generate an image. The object may be a fetus or an internal organ such as a heart or kidney. FIG. 1 is a diagram illustrating a general system 100 for generating an ultrasound image. A patient 10 needing, for example, ultrasound image of their heart has a probe 20 placed against or near their chest. The probe 20 produces ultrasound signals and generates a volume of data from the received ultrasound
10 signals. This data is sent to imager 50 that then produces an ultrasound image on display 90. The image may be saved for later review and/or may be transmitted to an external storage device.

A disadvantage of a conventional ultrasound system is that it is difficult to generate
15 a three-dimensional image of sufficient size to either view the entire heart at once, or to have a frame rate high enough that the image does not appear jerky.

Several solutions have been proposed, such as increasing the processing power of the ultrasound device, reducing the overall area of the scanning such that the processing complexity drops and the scanning rate can be increased, image smoothing from frame to frame, and displaying only two-dimensional images.

20 However, all of these solutions suffer either extremely large size to produce the processing power or reduced diagnostic efficiency because of the small areas that are actually imaged.

An increased frame rate can be achieved at various stages in the ultrasound imaging process by using for example, interpolation to create three up sampled images using image
25 data from two detected images. The up sampled imaged can then have a high frame rate without increasing the amount of scanning information gathered. The invention includes at least a three dimensional ultrasound device that creates up sampled images, the method of up sampling images for a three dimensional ultrasound image and a system for up sampling three dimensional ultrasound image information.

30 In one exemplary embodiment of the present invention linear interpolation/up sampling occurs in a three dimensional ultrasound diagnostic device after a three-dimensional volume has been rendered. The exemplary embodiment thus provides for an

apparatus that includes a linear interpolator to an imaging device that also includes a beam former, detector, 3D scan converter and render engine.

The present invention also provides a method to increase the apparent frame rate in a three dimensional ultrasound diagnostic device, comprising receiving beams, organizing
5 the beams in the planes, detecting 3D scan coordinate system objects, converting the 3D scan coordinate system objects to 3D volumes, interpolating to increase the number of volumes, rendering the 3D volumes for display and outputting the display information.

In various other exemplary embodiments, the interpolation to increase the number of volumes can occur at various stages in the process such as during the acquisition
10 coordinate space; prior to detection of voxel to voxel; above but post detection (noncoherent); voxel to voxel after scan conversion (typically in Cartesian coordinates); and pixel to pixel after the volume has been rendered or the tomographic slice has been extracted from the full volume.

Thus, various exemplary embodiments up sample the number of volumes in a 3D
15 xyz domain so that a viewer perceives an increased frame rate. The up sampling is advantageous in a three dimensional environment because of its computational simplicity and because coherent interpolation is likely to fail for a large number of cases, because the phase for given voxel from acquired volume is likely to be uncorrelated with its corresponding volume in voxel in the next volume.

Thus, exemplary embodiments of the invention include a three dimensional
20 ultrasound imaging device, having an interpolator that creates up sampled ultrasound image information from a three dimensional ultrasound image information using interpolation and a memory that stores at least one of the three dimensional ultrasound image information and the up sampled ultrasound image information. The ultrasound
25 imaging device may also include a probe that sends ultrasound waves, gathers reflected ultrasound waves and creates ultrasound information and a processor that converts the ultrasound information to three dimensional ultrasound image information. The ultrasound imaging device of may also have a display that displays the up sampled image information.

The ultrasound imaging device in several embodiments has the interpolation that is
30 at least one of 2 image to 3 image interpolation, 2 image to 4 image interpolation, 3 image to 4 image interpolation and 3 image to 5 image interpolation. The ultrasound imaging device may act on three-dimensional information, two dimensional planes and three dimensional volumes. The ultrasound imaging device may also have the up sampled

ultrasound image information that has at least one of a greater number of frames, a greater number of three-dimensional frames, a greater number of two-dimensional planes, a greater number of three dimensional volumes and a larger amount of ultrasound information.

5 Advantages of the invention will become apparent and more readily appreciated for the following description of the preferred embodiments taken in conjunction with the accompanying drawings of which:

FIG. 1 illustrates a general ultrasound system;

FIG. 2 is an exemplary ultrasound apparatus according to the invention;

10 FIG 3 is a flow chart illustrating a method of producing a high frame rate 3D ultrasound image according to the invention;

FIG. 4 is another flow chart illustrating a method of producing a high frame rate 3D ultrasound image according to the invention;

15 FIG. 5 is an exemplary embodiment of the data that is handled at various stages in the production of a three dimensional ultrasound image;

FIG. 6 is another exemplary embodiment of the data that is handled at various stages in the production of a three dimensional ultrasound image;

FIG. 7 is a third exemplary embodiment of the data that is handled at various stages in the production of a three dimensional ultrasound image;

20 FIG. 8 is an exemplary embodiment of a method for up sampling ultrasound image data; and

FIG. 9 is another exemplary embodiment of a method for up sampling ultrasound data.

25 Reference will now be made in detail to the exemplary embodiments of the present invention, examples of which are illustrated in the accompanying drawings, wherein like reference numerals refer to the like elements throughout.

The present invention creates a new, much higher frame frequency rate ultrasound device as can be seen in the general system diagram of FIG. 1. In FIG. 1, the patient 10 is having an ultrasound image taken of his heart using ultrasound system 100. Ultrasound
30 system 100 includes probe 20, imager 50 and display 90.

The probe 20 emits ultrasound waves, which differentially bounce off a patient's heart and return to the probe 20. Ultrasound waves are reflected differentially depending on the density of an object. The probe 20 is connected to the imager 50. The imager 50

converts the data sent from the probe 20 of the ultrasound wave of the patient's heart. The imager sends the data to the display 90. The display 90 can display an ultrasound image of the patient's heart.

5 Ultrasound waves are useful for many different applications, such as imaging hearts, fetuses and other portions of a human's anatomy. In addition, the system can be used to image any other material containing differential responses to ultrasound waves, such as metal, welds, or any other now known or later devised material.

10 FIG. 2 is an exemplary block diagram of an ultrasound-imaging device of the present invention. The ultrasound-imaging device has a probe 120, user input device 130, imager 150 and display 190. The probe 120 can contain a beam transmitter 122 and beam receiver 124. The beam transmitter 122 can be in a now known or later device apparatus for transmitting waves with a differential rate of reflection depending on the device to be inspected. The beam receiver 124 can be in a now known or later device that can receive the waves transmitted. The probe 120 can then translate the received information in the form of reflected waves and convert it into a transportable form for transmission to the imager 150.

20 User input device 130 can be a keyboard, a mouse, a light tablet or any other device for allowing the user to input and control the probe, the imager, or the display. Imager 150 can contain input 152, beam former 154, detector 156, 3D scan converter 158, render engine 160, output 162, interpolator 164, processor 166, controller 168, and memory 170. Imager 150 operates by receiving signals that correspond to the reflection of the waves received by the beam receiver 124 at input 152. The controller 168 can then direct the information to memory 170, interpolator 164 or beam former 154.

25 Other exemplary embodiments of three dimensional ultrasound devices can include additional modules, or combine several of the modules into one. For example, the beam former 154, detector 156, 3D scan converter 158, render engine 160 can be programs stored in memory 170 that are used to set a programmable processor 166 to perform the functions of beam former 154, detector 156, 3D scan converter 158 and render engine 160. Each of the beam former 154, detector 156, 3D scan converter 158, render engine 160 will be explained functionally in relation to a related three-dimensional ultrasound-imaging device.

30 A related three-dimensional ultrasound-imaging device uses standard processing steps. The first standardized processing step is to organize the received raw data into

two-dimensional planes, called beam forming. The two-dimensional planes are then analyzed to detect 3D scan coordinates, called detecting. The 3D scan coordinates can then be aggregated to form 3D volumes, called 3D scan converting and the 3D volumes can then be rendered to be output on the display terminal.

5 The beam former 154 can thereby be used to form the beams into three-dimensional coordinates of information. The detector 156 can then be used to detect objects within the planes. The 3D scan converter 158 can then be used to convert the objects detected by detector 156 into three-dimensional objects. The render engine 160 can then be used to render the three-dimensional objects created by the 3D scan converter
10 158 into display data. The display data can then be output to output 162 and transferred to display 190 where the results are displayed.

3D scan coordinates can be a probe-centric coordinate system in which the data is stored in three dimensions related to the location of the probe. The three dimensions can be "r," the radial distance, sometime in Centimeters, from a body-target to a center of the
15 probe face, "theta," the azimuth or lateral angle in degrees left or right from the center of the probe, and "phi," the elevation angle in degrees up or down from the center of the probe. 3D scan conversion can then be the converting the image information stored in 3D scan coordinates to another 3D data set, for example a Cartesian coordinate system, that can consist of X, Y and Z coordinates.

20 As noted above, beam former 154, detector 156, 3D scan converter 158, and render engine 160 can either be application specific integrated circuits, or programs to be implemented on processor 166. Controller 168 can control the flow of information from the input 152 to the output 162 and control the various steps in between. Memory 170 can be RAM, ROM, a hard drive or any other now known or later device means for storing
25 data on either a temporary or permanent basis.

Interpolator 164 is a straight-line interpolator that forms one of many different types of average images from raw data. For example, a first frame of data may be entered into memory 170 and a second frame of data may be entered into memory 170. Interpolator 164 may then be used to create a third frame of data that is the average of the
30 first two frames of data saved in memory 170. The interpolation can happen at any of several stages in the standardized process for creating a three-dimensional image.

The pre-scan coordinate system can vary as a function of various exemplary probe types used in various exemplary embodiments. A polar/spherical coordinate system is

most applicable to a “sector” embodiment, which tends to scan the body using a windshield wiper fan sweep. An “Omni-Tee” probe is one exemplary embodiment of a probe using a cylindrical coordinate system. Other exemplary embodiments might scan the body using a parallelogram coordinate system.

5 Another exemplary embodiment of the invention can use a beam former that that scans in a spiral format, where the beams cannot be aligned along a traditional planar format. The invention is applicable regardless of the method of acquiring and analyzing the ultrasonic beams. Conversion can be used in various exemplary embodiments to facilitate “down stream” volume rendering. However, it is possible in other exemplary
10 embodiments to render directly from raw, unconverted data sets.

A possible exemplary embodiment can take any 2 of the 3 polar dimensions and perform two dimensional scan conversion, resulting in a two dimensional plane of information for each value of the third dimension. The thereby created stack of two dimensional planes can then be three dimensionally converted to a three dimensional
15 Cartesian coordinate system.

FIG. 3 is a flow chart of an exemplary process of applying the invention. The process starts at start 200 and continues to receive beams 210. In receive beams 210, reflected ultrasound frequency beams are received by the process as raw data. The method then continues to organize beams into planes 220.

20 Organize beams into planes 220 is where the raw data is organized into two-dimensional planes. The process then continues to detect 3D scan coordinates 230. In detect 3D scan coordinates 230, the planes of data are then analyzed to detect any 3D scan coordinates that may exist within the data. The process then continues to convert 3D scan coordinates to 3D volumes 240. In convert 3D scan coordinates to 3D volumes 240,
25 the process organizes a series of 3D scan coordinates and converts them into 3D volumes. The process then continues to interpolate to increase the number of volumes 250.

In interpolate to increase the number of volumes 250, an interpolator can do a straight-line interpolation of the three-dimensional volumes across various iterations of the data in the time dimension. Thus, more three-dimensional volumes are created than were
30 originally detected in the time realm. Thus, an increased frame rate can be displayed. The method then continues to render 3D volumes for display 260.

In render 3D volumes for display 260, the three-dimensional volumes are rendered for display on the display panel. The method then continues to output display information

270. An output display information 270, the render three-dimensional volumes are output to the display device. The method then continues to the determination of repeating 280. In determination of repeat 280, if the method is to continue the method jumps back to receive beams 210. If the method is to conclude the method continues to end 290.

5 FIG. 4 is a flow chart of another exemplary process of applying the invention. The process starts at start 300 and continues to receive beams 310. In receive beams 310, reflected ultrasound frequency beams are received by the process as raw data. The method then continues to organize beams into planes 320.

 Organize beams into planes 320 is where the raw data is organized into
10 two-dimensional planes. The process then continues to detect 3D scan coordinates 330. In detect 3D scan coordinates 330, the planes of data are then analyzed to detect any 3D scan coordinates that may exist within the data. The process then continues to interpolate to increase the number of volumes 340.

 In interpolate to increase the number of volumes 340, an interpolator can do a
15 straight-line interpolation of the two-dimensional volumes across various iterations of the data in the time dimension. Thus, more two-dimensional volumes are created than were originally detected in the time realm. Thus, an increased frame rate can be displayed. The process then continues to convert 3D scan coordinates to 3D volumes 350. In convert 3D scan coordinates to 3D volumes 350, the process organizes the series of 3D scan
20 coordinates and converts them into 3D volumes. The method then continues to render 3D volumes for display 360.

 In render 3D volumes for display 360, the three-dimensional volumes are rendered for display on the display panel. The method then continues to output display information 370. An output display information 370, the render three-dimensional volumes are output
25 to the display device. The method then continues to the determination of repeating 380. In determination of repeat 380, if the method is to continue the method jumps back to receive beams 310. If the method is to conclude the method continues to end 390.

 FIG. 5 is a block diagram showing the data in the process of producing a three-dimensional ultrasound image. The process begins with acquiring images A 410, image B
30 430 and image C 450 from the raw ultrasound waves that are returned to the ultrasound receiver. The raw data images A 410, image B 430 and image C 450 can be saved in a memory and retrieved at later periods of time.

Next, 2D images can be detected such as images 412, images 432 and images 452. The images then represent two-dimensional slices of the object at an angle, position and time period. The two-dimensional images can then be converted into three-dimensional images to give a block of three-dimensional images A414, a block of three-dimensional images B434 and a block of three-dimensional images C454.

Interpolation can then occur. The interpolation can be any one of several types. The first exemplary type of interpolation is the image itself A 460, half of the image A combined with one half of image B 462, then image B 464. The images can then be rendered to come up with image A460, half image A, plus half image B462, image B464, half image B, plus half image C466 and image C468. Thus, with very little additional computational complexity, a three-dimensional ultrasound device can produce a high frame rate ultrasound image.

FIG. 6 is another block diagram showing the data in the process of producing a three-dimensional ultrasound image. The process begins with acquiring images A 500, image B 530 and image C 550 from the raw ultrasound waves that are returned to the ultrasound receiver. The raw data images A 510, image B 530 and image C 550 can be saved in a memory and retrieved at later periods of time.

Next, 2D images can be detected such as images 512, images 532 and images 552. The images then represent two-dimensional slices of the object at an angle, position and time period. Interpolation can then occur. The interpolation can be any one of several types. The first exemplary type of interpolation is the image itself A 570, half of the image A combined with one half of image B 572, then image B 574.

The images can then be converted into three-dimensional images to come up with image A570, half image A, plus half image B572, image B574, half image B, plus half image C576 and image C578. Thus, with very little additional computational complexity, a three-dimensional ultrasound device can produce a high frame rate ultrasound image. The three-dimensional images can then be rendered to give a block of three-dimensional images 560, 562, 564, 566 and 568.

FIG. 7 is a block diagram showing the data in the process of producing a three-dimensional ultrasound image. The process begins with acquiring images A 610, image B 630 and image C 650 from the raw ultrasound waves that are returned to the ultrasound receiver. The raw data images A 610, image B 630 and image C 650 can be saved in a memory and retrieved at later periods of time.

Interpolation can then occur. The interpolation can be any one of several types. The first exemplary type of interpolation is the image itself A 680, half of the image A combined with one half of image B 682, then image B 684. The images can then be rendered to come up with image A 680, half image A, plus half image B 682, image B 684,
5 half image B, plus half image C 686 and image C 688.

Next, 2D images can be detected such as images 680, images 682, images 684, images 686 and images 688. The images then represent two-dimensional slices of the object at an angle, position and time period. The two-dimensional images can then be converted into three-dimensional images to give a block of three-dimensional images A
10 670, a block of three-dimensional images half image A, plus half image B 672, a block of three-dimensional images B 674, a block of three-dimensional images half image B, plus half image C 676 and a block of three-dimensional images C 678.

The images can then be rendered, producing images 660, 662, 664, 666 and 668. Thus, with very little additional computational complexity, a three-dimensional ultrasound
15 device can produce a high frame rate ultrasound image. Thus, a lower error rate involved with interpolation early in the process can be balanced by additional complexity involved in handling a larger number of images.

FIG. 8 is an exemplary embodiment of a second type of interpolation that may be used. In FIG. 8, three-dimensional image 710, three-dimensional image B 720 and
20 three-dimensional image C 730 can be interpolated into 3-quarters image A plus 1-quarter image B 780, 1-quarter image A plus 3-quarter image B 782 and 3-quarter image B plus 3-quarter image C 784 and 1-quarter image B and 3-quarter image C 786.

FIG. 9 is another exemplary embodiment of a type of interpolation that may be used. In FIG. 9, three-dimensional image 810 and three-dimensional image C 820 can be
25 interpolated into 7/8 image A plus 1/8 image B 880, 5/8 image A plus 3/8 image B 882, 3/8 image A plus 5/8 image B 884 and 1/8 image A plus 7/8 image B 886.

Thus, as can be seen in FIGs. 8 and 9, various other interpolation schemes may be used, as is well known in the art. Various exemplary embodiments have been shown that include differing numbers of beginning and ending frames. Various additional exemplary
30 embodiments include greater or lesser numbers of beginning frames and greater or lesser numbers of ending frames. In addition, the exemplary interpolation has been shown where only two frames are interpolated into the additional frames desired. Additional numbers of frames can be used to produce the interpolated information.

The exemplary embodiments shown also use straight-line interpolation. Various other exemplary embodiments may use various other forms of interpolation such as parabolic, stepped, cubic, FIR (Finite Impulse Response, IIR (Infinite Impulse Response), or other formulaic methods of interpolation.

5 Thus a person of ordinary skill in the art can appreciate that the present invention may be applied to any type of ultrasound device. Further, the present invention may be retrofitted onto existing ultrasound devices and may expand the number of uses for an ultrasound device because of the additional utility.

10 Although preferred embodiments of the present invention have been shown and described, it would be appreciated by those skilled in the art that changes may be made in this embodiment without departing from the principles and spirit of the invention, the scope of which is defined in the claims, drawings and their equivalents.

CLAIMS:

1. A three dimensional ultrasound imaging device, comprising:
an interpolator that creates an up sampled image information from a three dimensional ultrasound image information using interpolation; and
a memory that stores at least one of the three dimensional ultrasound image information and the up sampled image information.
2. The ultrasound imaging device of claim 1, further comprising:
a probe that sends ultrasound waves, gathers reflected ultrasound waves and creates ultrasound information; and
a processor that converts the ultrasound information to three dimensional ultrasound image information.
3. The ultrasound imaging device of claim 1, further comprising a display that displays the up sampled image information.
4. The ultrasound imaging device of claim 1, wherein the interpolation is at least one of 2 image to 3 image interpolation, 2 image to 4 image interpolation, 3 image to 4 image interpolation and 3 image to 5 image interpolation.
5. The ultrasound imaging device of claim 1, wherein the ultrasound image information is at least one of two dimensional solids and three dimensional volumes.
6. The ultrasound imaging device of claim 1, wherein the up sampled ultrasound image information has at least one of a greater number of frames, a greater number of three-dimensional frames, a greater number of two-dimensional volumes, a greater number of three dimensional volumes and a larger amount of ultrasound information.
7. The ultrasound imaging device of claim 1, wherein the interpolation used is at least one of straight line, parabolic, stepped, cubic, FIR (Finite Impulse Response) and IIR (Infinite Impulse Response).
8. A method of processing three dimensional ultrasound imaging information, comprising:
creating up sampled ultrasound image information from a three dimensional ultrasound image information using interpolation; and
storing at least one of the three dimensional ultrasound image information and the up sampled ultrasound image information.

9. The method of processing three dimensional ultrasound imaging information of claim 8, further comprising:
sending ultrasound waves, gathering reflected ultrasound waves and creating ultrasound information; and
converting the ultrasound information to three dimensional ultrasound image information.
10. The method of processing three dimensional ultrasound imaging information of claim 8, further comprising displaying the up sampled image information.
11. The method of processing three dimensional ultrasound imaging information of claim 8, wherein the interpolation is at least one of 2 image to 3 image interpolation, 2 image to 4 image interpolation, 3 image to 4 image interpolation and 3 image to 5 image interpolation.
12. The method of processing three dimensional ultrasound imaging information of claim 8, wherein the three dimensional ultrasound image information is at least one of two dimensional solids and three dimensional volumes.
13. The method of processing three dimensional ultrasound imaging information of claim 8, wherein the up sampled ultrasound image information has at least one of a greater number of frames, a greater number of three-dimensional frames, a greater number of two-dimensional volumes, a greater number of three dimensional volumes and a larger amount of ultrasound information.
14. The method of processing three dimensional ultrasound imaging information of claim 8, wherein the interpolation used is at least one of straight line, parabolic, stepped, cubic, FIR (Finite Impulse Response) and IIR (Infinite Impulse Response).
15. A system for three dimensional ultrasound imaging, comprising:
an interpolator that creates up sampled ultrasound image information from a three dimensional ultrasound image information using interpolation; and
a memory device that stores at least one of the three dimensional ultrasound image information and the up sampled ultrasound image information.
16. The system for three dimensional ultrasound imaging of claim 15, further comprising:
a probe that sends ultrasound waves, gathers reflected ultrasound waves and creates three dimensional ultrasound information; and
a processor that converts the ultrasound information to three dimensional ultrasound image information.

17. The system for three dimensional ultrasound imaging of claim 15, further comprising a display device that displays the up sampled image information.
18. The system for three dimensional ultrasound imaging of claim 15, wherein the interpolation is at least one of 2 image to 3 image interpolation, 2 image to 4 image interpolation, 3 image to 4 image interpolation and 3 image to 5 image interpolation.
19. The system for three dimensional ultrasound imaging of claim 15, wherein the up sampled ultrasound image information has at least one of a greater number of frames, a greater number of three-dimensional frames, a greater number of two-dimensional volumes, a greater number of three dimensional volumes and a larger amount of ultrasound information.
20. The system for three dimensional ultrasound imaging of claim 15, wherein the interpolation used is at least one of straight line, parabolic, stepped, cubic, FIR (Finite Impulse Response) and IIR (Infinite Impulse Response).

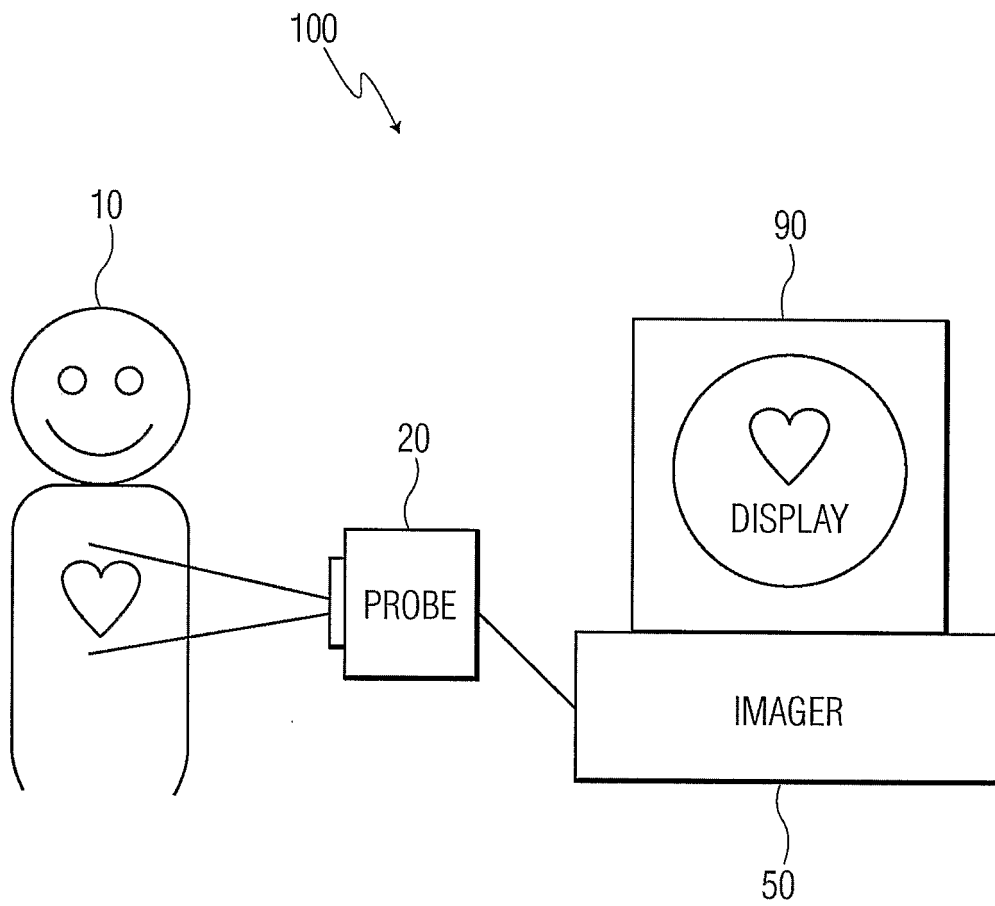


FIG. 1

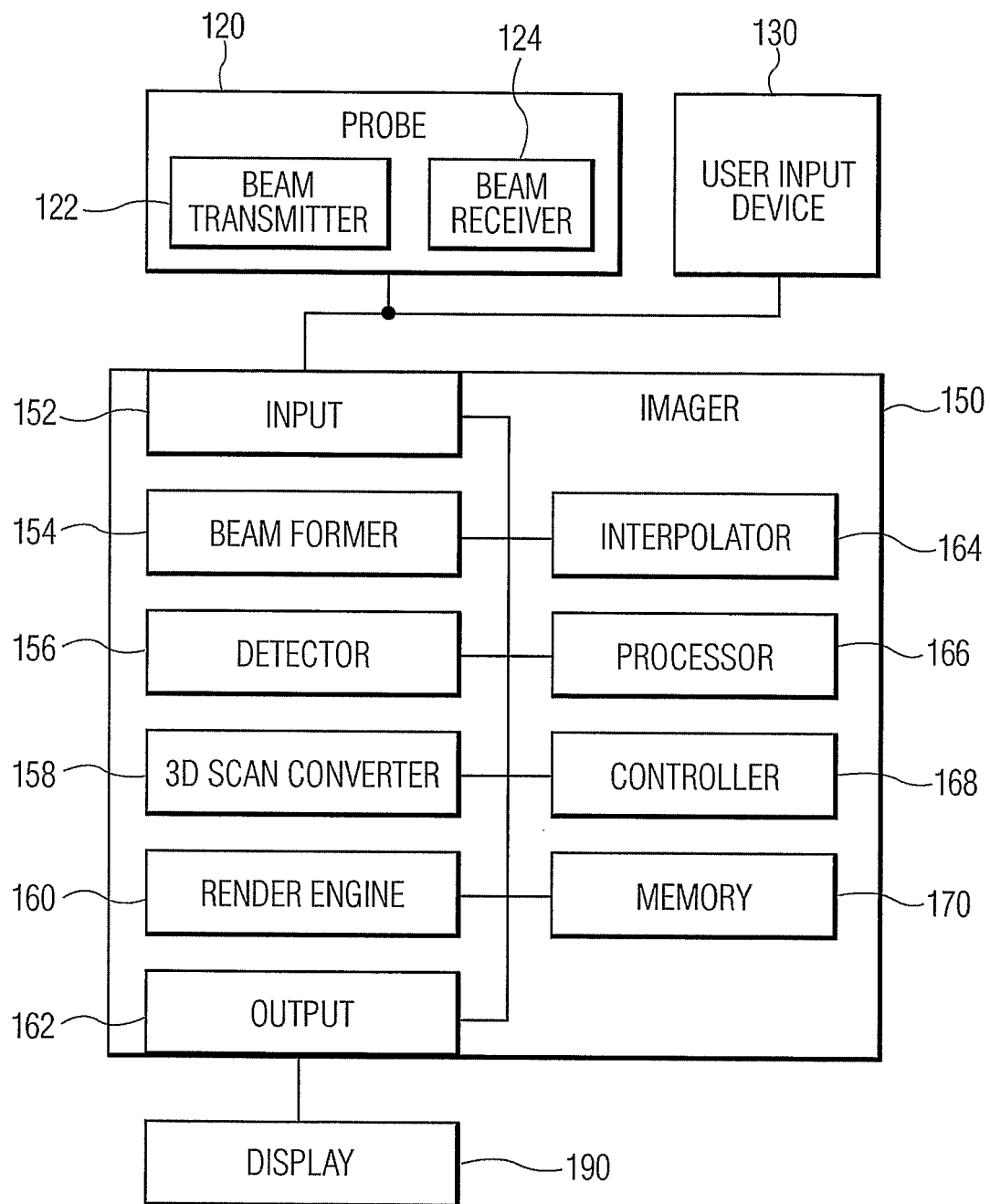


FIG. 2

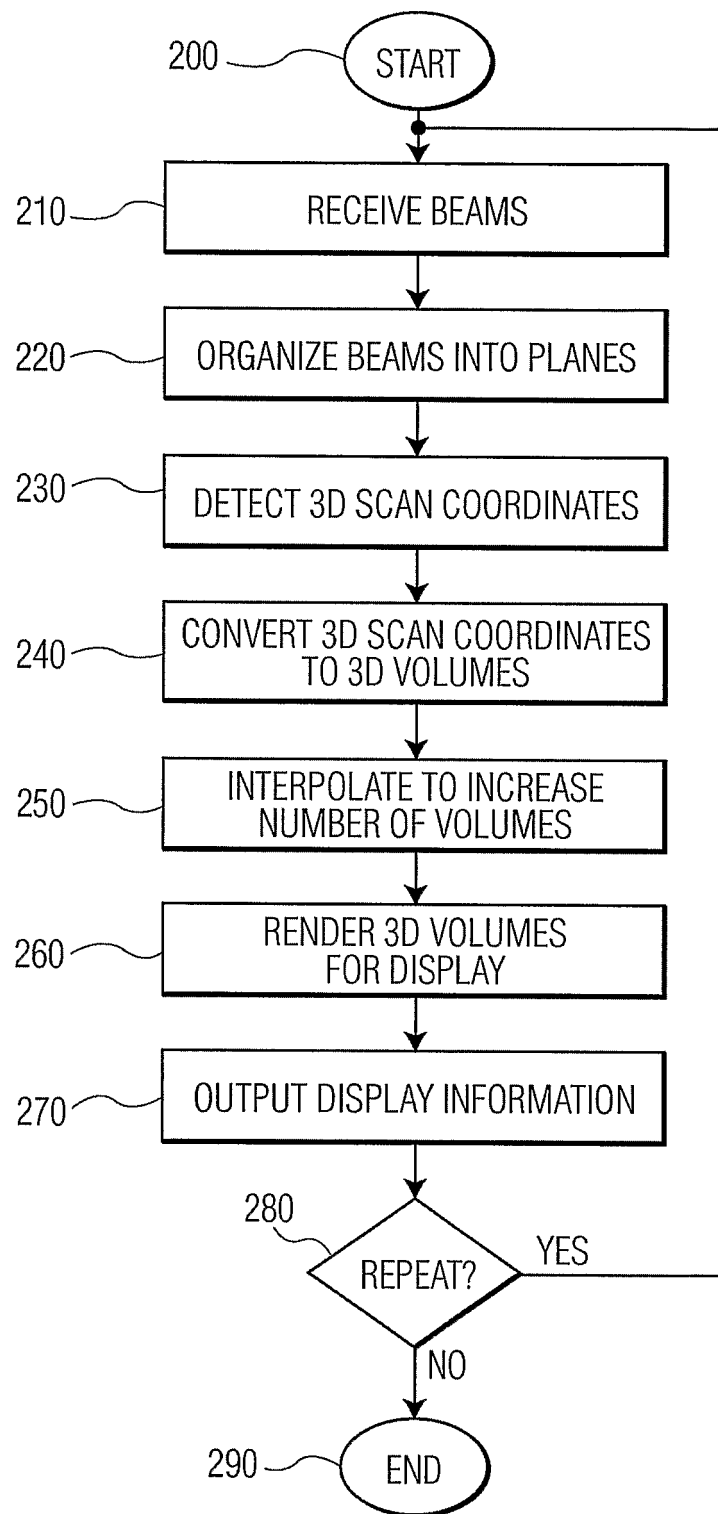


FIG. 3

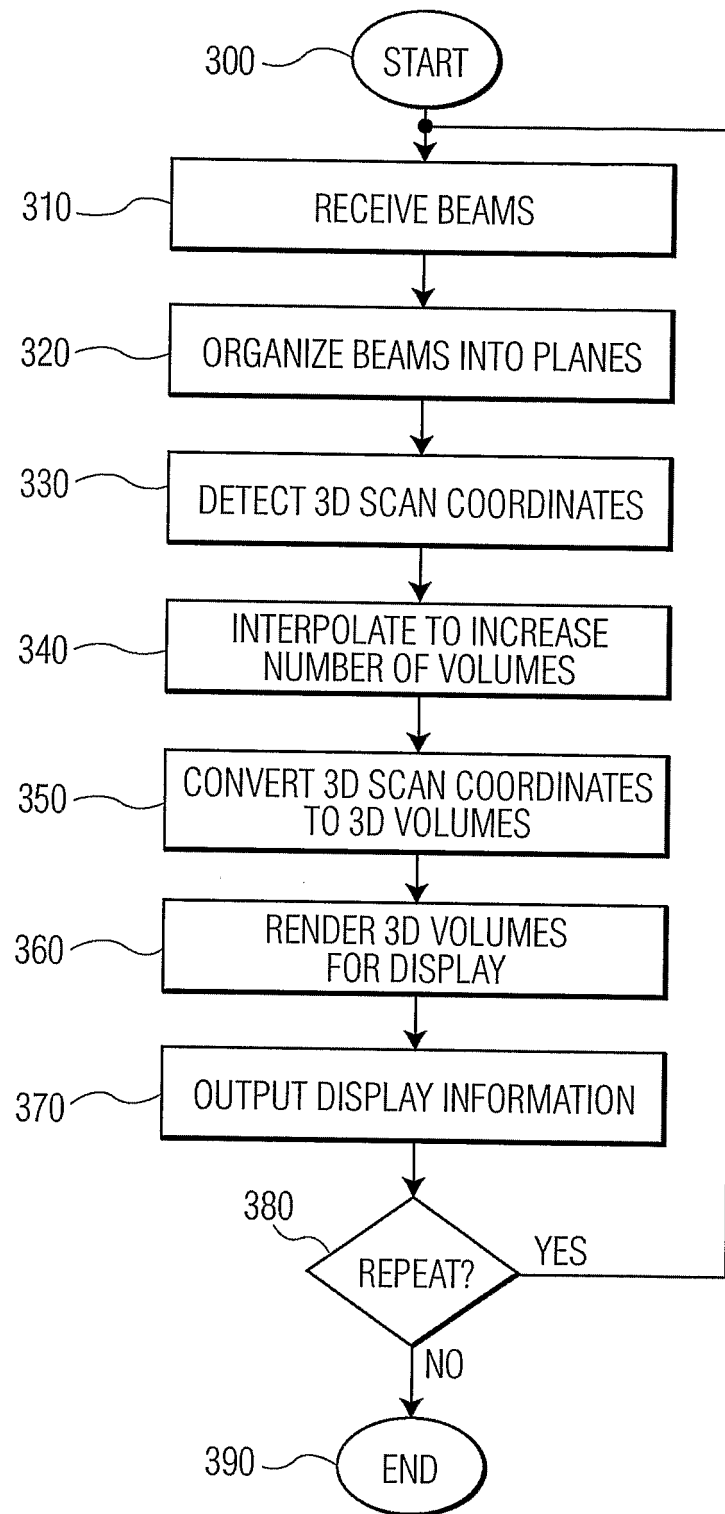


FIG. 4

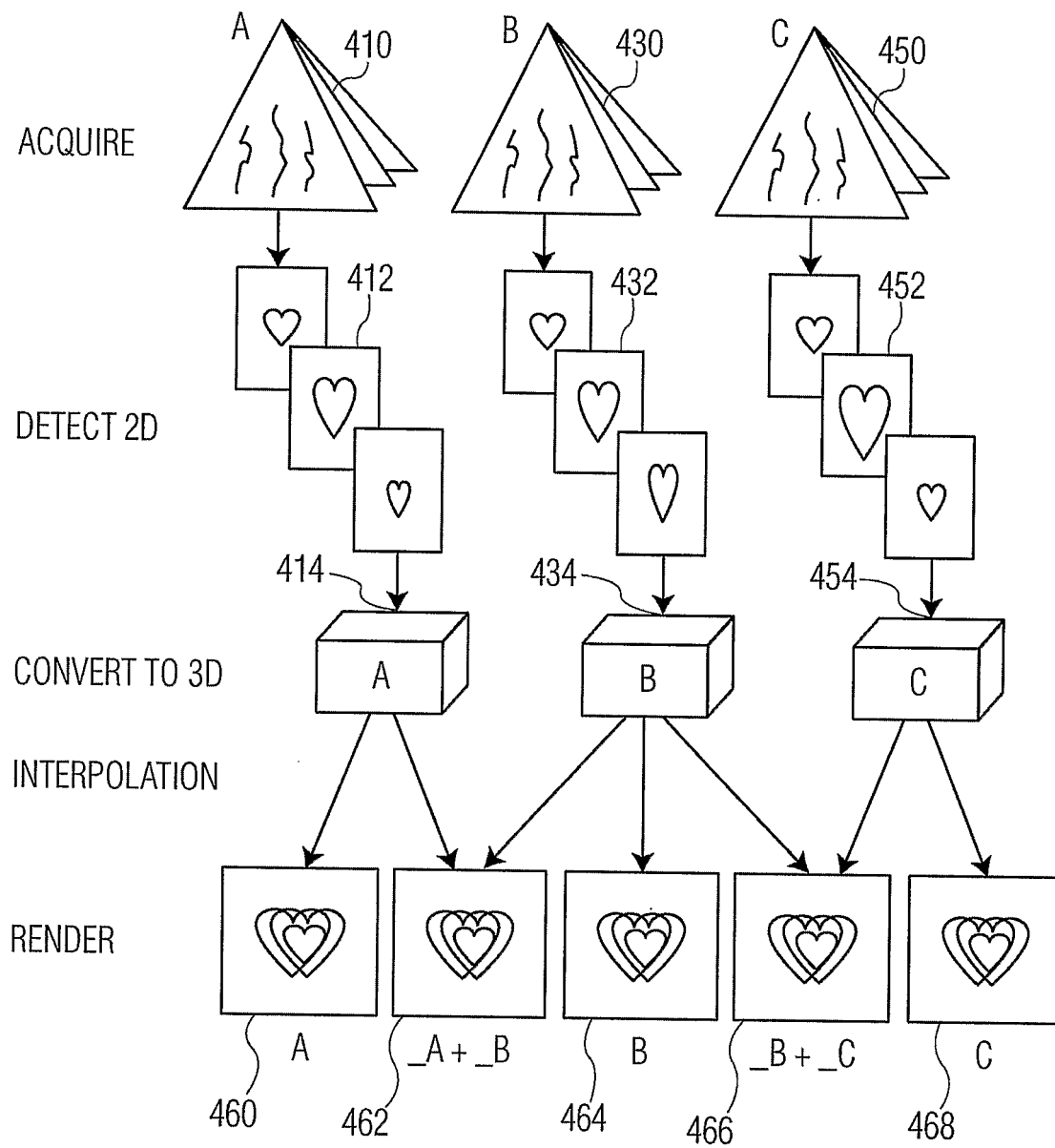


FIG. 5

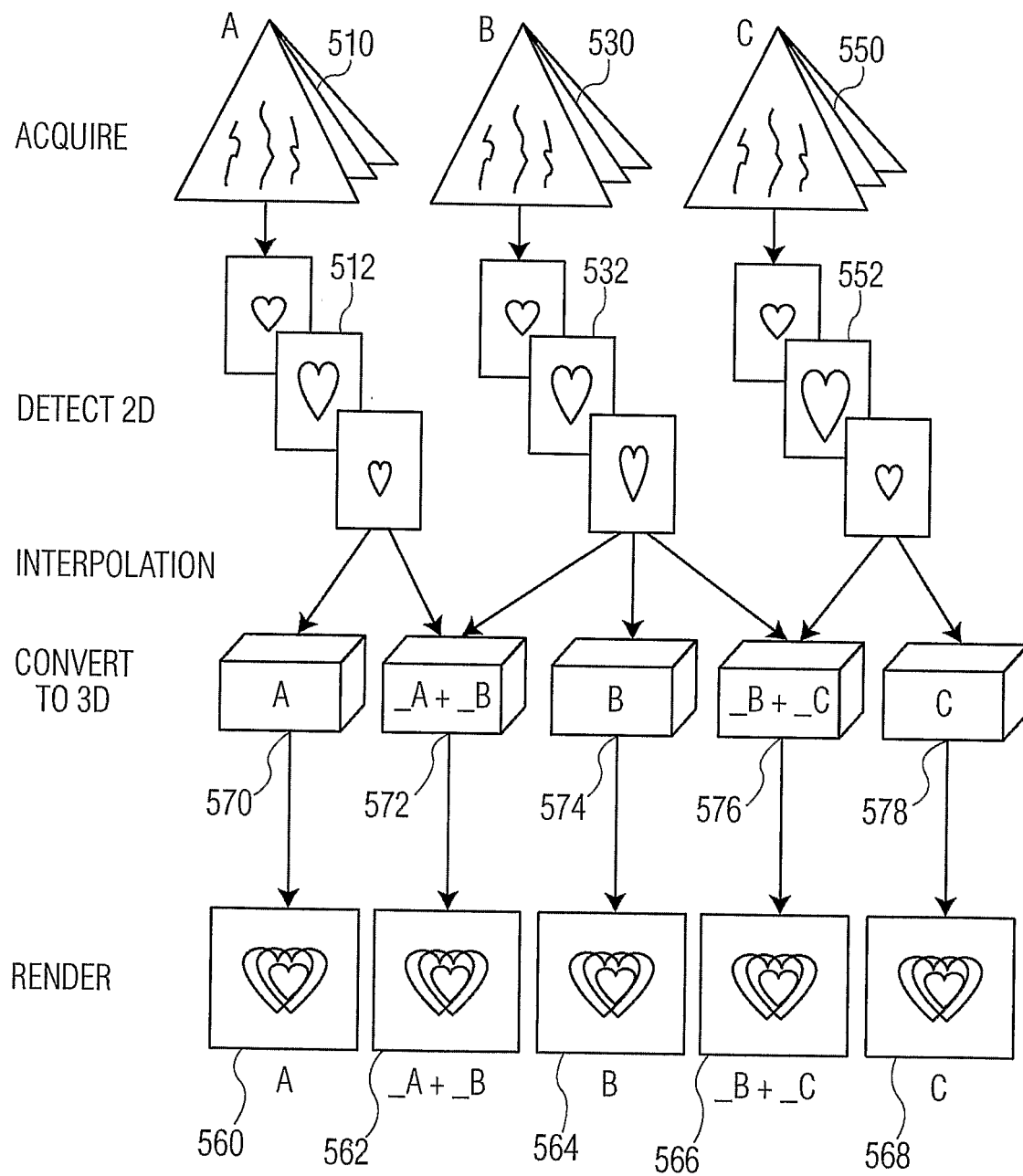


FIG. 6

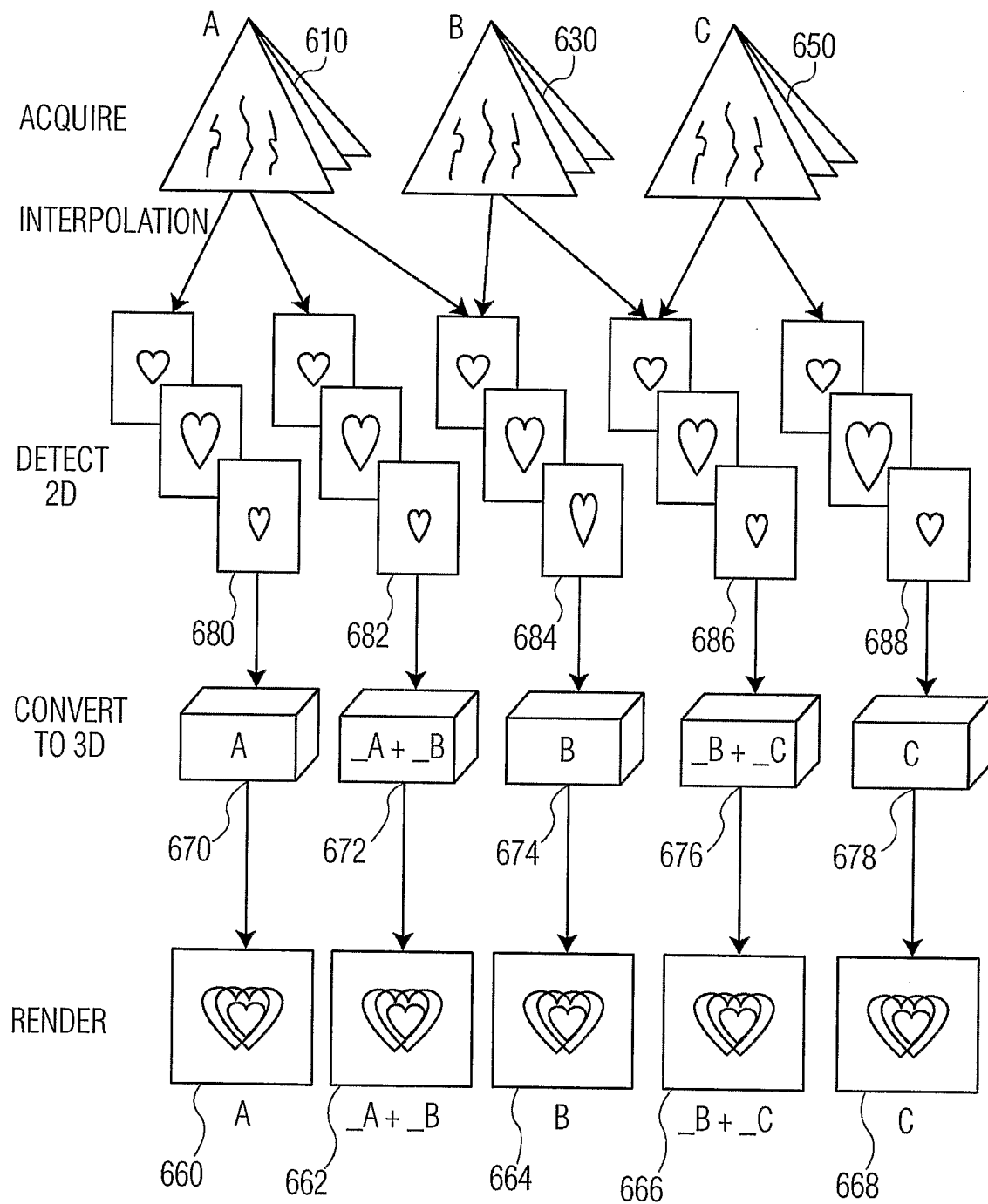


FIG. 7

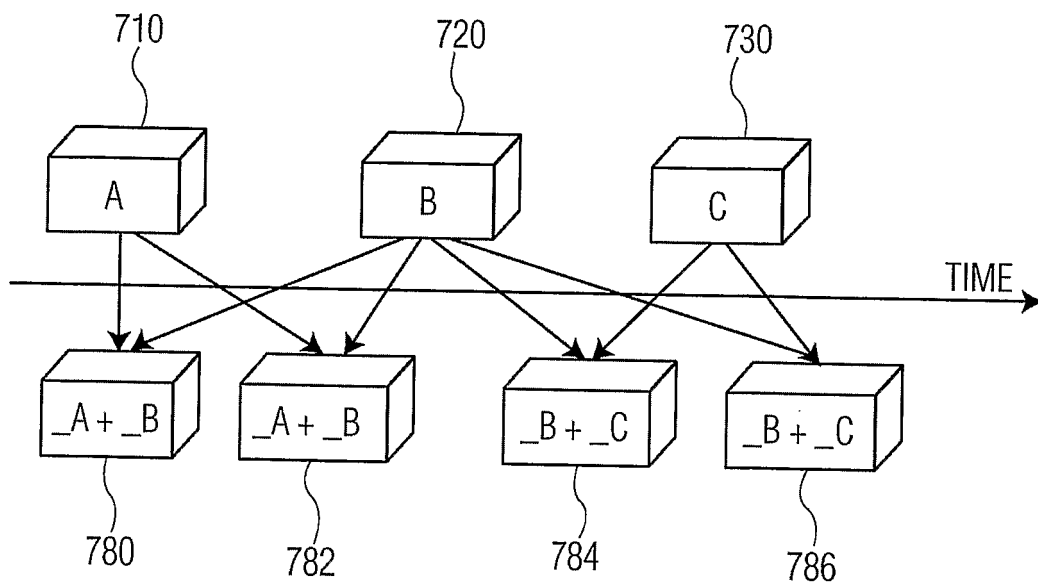


FIG. 8

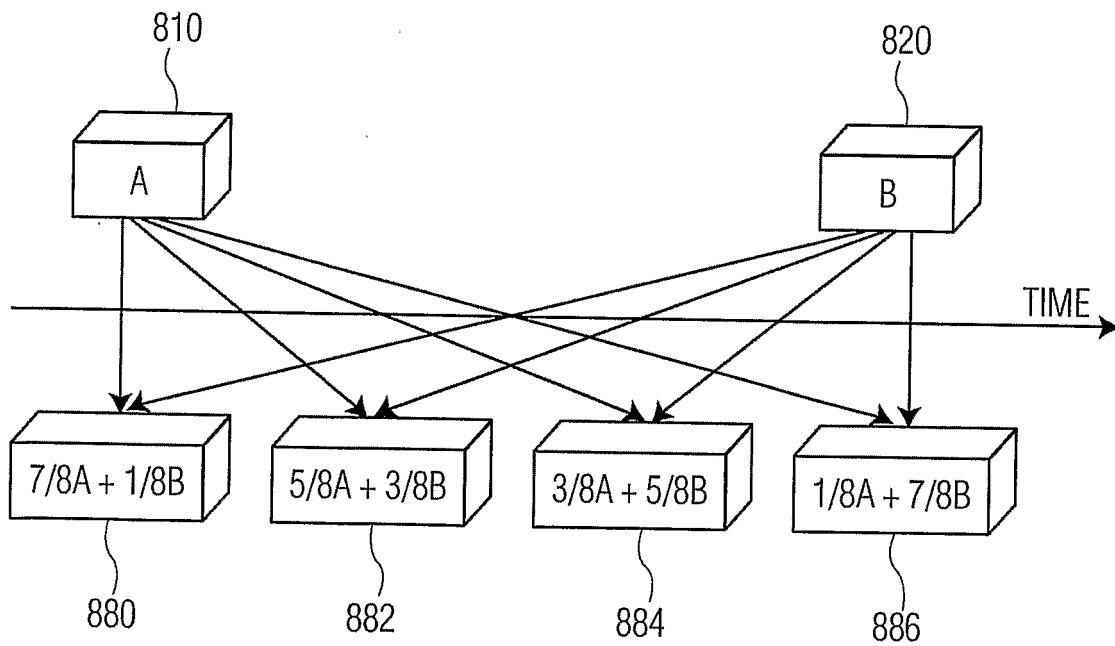


FIG. 9

INTERNATIONAL SEARCH REPORT

Internat application No
PCT/IB 03/05279

A. CLASSIFICATION OF SUBJECT MATTER
IPC 7 A61B8/08 A61B8/14

According to International Patent Classification (IPC) or to both national classification and IPC

B. FIELDS SEARCHED

Minimum documentation searched (classification system followed by classification symbols)
IPC 7 A61B

Documentation searched other than minimum documentation to the extent that such documents are included in the fields searched

Electronic data base consulted during the international search (name of data base and, where practical, search terms used)

WPI Data, EPO-Internal, INSPEC

C. DOCUMENTS CONSIDERED TO BE RELEVANT

Category °	Citation of document, with indication, where appropriate, of the relevant passages	Relevant to claim No.
X	EP 0 944 026 A (ALOKA CO LTD) 22 September 1999 (1999-09-22) paragraphs '0051!', '0052!', '0059! ---	1-20
E	EP 1 372 001 A (MEDISON CO LTD) 17 December 2003 (2003-12-17) paragraphs '0009!', '0014!', '0016!', '0017!', '0024! -----	1-20

☐ Further documents are listed in the continuation of box C.

☒ Patent family members are listed in annex.

° Special categories of cited documents :

- *A* document defining the general state of the art which is not considered to be of particular relevance
- *E* earlier document but published on or after the international filing date
- *L* document which may throw doubts on priority claim(s) or which is cited to establish the publication date of another citation or other special reason (as specified)
- *O* document referring to an oral disclosure, use, exhibition or other means
- *P* document published prior to the international filing date but later than the priority date claimed

- *T* later document published after the international filing date or priority date and not in conflict with the application but cited to understand the principle or theory underlying the invention
- *X* document of particular relevance; the claimed invention cannot be considered novel or cannot be considered to involve an inventive step when the document is taken alone
- *Y* document of particular relevance; the claimed invention cannot be considered to involve an inventive step when the document is combined with one or more other such documents, such combination being obvious to a person skilled in the art.
- *&* document member of the same patent family

Date of the actual completion of the international search

17 February 2004

Date of mailing of the international search report

25/02/2004

Name and mailing address of the ISA

European Patent Office, P.B. 5818 Patentlaan 2
NL - 2280 HV Rijswijk
Tel. (+31-70) 340-2040, Tx. 31 651 epo nl,
Fax: (+31-70) 340-3016

Authorized officer

Knüpling, M

INTERNATIONAL SEARCH REPORT

Internat^l Application No
PCT/IB 03/05279

Patent document cited in search report		Publication date	Patent family member(s)	Publication date
EP 0944026	A	22-09-1999	JP 3218216 B2	15-10-2001
			JP 11267126 A	05-10-1999
			EP 0944026 A2	22-09-1999
			US 6263093 B1	17-07-2001
EP 1372001	A	17-12-2003	EP 1372001 A2	17-12-2003
			US 2003231178 A1	18-12-2003

专利名称(译)	高帧率三维超声成像仪		
公开(公告)号	EP1569559A1	公开(公告)日	2005-09-07
申请号	EP2003772483	申请日	2003-11-18
[标]申请(专利权)人(译)	皇家飞利浦电子股份有限公司		
申请(专利权)人(译)	皇家飞利浦电子N.V.		
当前申请(专利权)人(译)	皇家飞利浦电子N.V.		
[标]发明人	THIELE KARL		
发明人	THIELE, KARL		
IPC分类号	A61B8/08 A61B8/14		
CPC分类号	A61B8/13 A61B8/08 A61B8/0883 A61B8/14 A61B8/483 G01S7/52034 G01S15/8993		
优先权	60/430876 2002-12-04 US		
外部链接	Espacenet		

摘要(译)

一种三维超声成像设备，具有插值器，该插值器使用插值从三维超声图像信息创建采样的超声图像信息；以及存储器，其存储三维超声图像信息和上采样的超声图像信息中的至少一个。三维超声成像设备可以具有发送超声波，收集反射的超声波并创建超声信息的探头以及将超声信息转换为三维超声图像信息的处理器。超声成像设备还可以具有显示上采样图像信息的显示器。三维超声成像设备可以使用2图像到3图像插值，2图像到4图像插值，3图像到4图像插值和3图像到5图像插值中的至少一个。三维超声成像设备可以使用二维固体和三维体积。三维超声成像设备还可以创建采样的超声图像信息，其具有更多帧，更多数量的三维帧，更多数量的二维体积，更多数量的三维体积和更大超声信息量。