



US008843199B2

(12) **United States Patent**
Kim et al.

(10) **Patent No.:** **US 8,843,199 B2**
(45) **Date of Patent:** **Sep. 23, 2014**

(54) **CARDIAC RESPONSE CLASSIFICATION USING MULTISITE SENSING AND PACING**

(58) **Field of Classification Search**
USPC 607/9, 26-28; 600/510
See application file for complete search history.

(71) Applicant: **Cardiac Pacemakers, Inc.**, St. Paul, MN (US)

(56) **References Cited**

(72) Inventors: **Jaeho Kim**, Redmond, WA (US);
Joseph M. Bocek, Seattle, WA (US);
Scott A. Meyer, Lakeville, MN (US);
Paul A. Haefner, Circle Pines, MN (US);
Haris Sih, Minneapolis, MN (US)

U.S. PATENT DOCUMENTS

3,920,005 A 11/1975 Gombrich et al.
4,023,564 A 5/1977 Valiquette et al.
4,365,636 A 12/1982 Barker et al.
4,458,692 A 7/1984 Simson
4,550,221 A 10/1985 Mabuth

(Continued)

(73) Assignee: **Cardiac Pacemakers, Inc.**, St. Paul, MN (US)

FOREIGN PATENT DOCUMENTS

(*) Notice: Subject to any disclaimer, the term of this patent is extended or adjusted under 35 U.S.C. 154(b) by 0 days.

EP 1038498 A2 9/2000
EP 1151718 A2 11/2001

(Continued)

(21) Appl. No.: **14/010,269**

OTHER PUBLICATIONS

(22) Filed: **Aug. 26, 2013**

Splett et al., "Determination of Pacing Capture in Implantable Defibrillators: Benefit of Evoked Response Detection Using RV Coil to Can Vector," PACE, vol. 23, pp. 1645-1650.

(65) **Prior Publication Data**

US 2013/0338725 A1 Dec. 19, 2013

(Continued)

Related U.S. Application Data

Primary Examiner — Rex R Holmes

(63) Continuation of application No. 10/735,519, filed on Dec. 12, 2003, now Pat. No. 8,521,284.

(74) *Attorney, Agent, or Firm* — Seager, Tuft & Wickhem, LLC

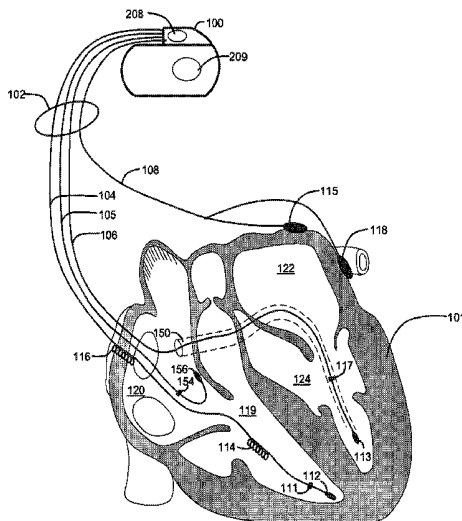
(51) **Int. Cl.**
A61N 1/36 (2006.01)
A61N 1/37 (2006.01)
A61B 5/00 (2006.01)
A61B 5/0452 (2006.01)

(57) **ABSTRACT**

Methods and devices for classifying a cardiac pacing response involve using a first electrode combination for pacing and a second electrode combination for sensing a cardiac signal following pacing. The cardiac response to pacing may be classified using the sensed cardiac signal. One process involves using the sensed cardiac signal to detect the cardiac response as a fusion/pseudofusion beat. Another process involves using the sensed cardiac signal to classify the cardiac response to pacing as one of at least three cardiac response types.

(52) **U.S. Cl.**
CPC **A61N 1/371** (2013.01); **A61B 5/04525** (2013.01); **A61B 5/7264** (2013.01); **A61B 5/7217** (2013.01)
USPC **607/27**

20 Claims, 29 Drawing Sheets



(56)

References Cited

U.S. PATENT DOCUMENTS

| | | | | | |
|-------------|---------|---------------------|--------------|---------|-----------------------|
| 4,552,154 A | 11/1985 | Hartlaub | 5,545,202 A | 8/1996 | Dahl et al. |
| 4,562,841 A | 1/1986 | Brockway et al. | 5,549,655 A | 8/1996 | Erickson et al. |
| 4,648,407 A | 3/1987 | Sackner | 5,603,732 A | 2/1997 | Dahl et al. |
| 4,680,708 A | 7/1987 | Ambos et al. | 5,620,466 A | 4/1997 | Haefner et al. |
| 4,686,332 A | 8/1987 | Greanias et al. | 5,626,620 A | 5/1997 | Kieval |
| 4,827,935 A | 5/1989 | Geddes et al. | 5,634,938 A | 6/1997 | Swanson et al. |
| 4,860,766 A | 8/1989 | Sackner | 5,641,326 A | 6/1997 | Adams |
| 4,878,497 A | 11/1989 | Callaghan et al. | 5,650,759 A | 7/1997 | Hittman et al. |
| 4,928,688 A | 5/1990 | Mower | 5,662,688 A | 9/1997 | Haefner et al. |
| 4,953,551 A | 9/1990 | Mehra et al. | 5,674,254 A | 10/1997 | van Krieken |
| 4,979,507 A | 12/1990 | Heinz et al. | 5,683,431 A | 11/1997 | Wang |
| 5,000,189 A | 3/1991 | Throne et al. | 5,683,434 A | 11/1997 | Archer |
| 5,036,849 A | 8/1991 | Hauck et al. | 5,697,953 A | 12/1997 | Kroll et al. |
| 5,101,831 A | 4/1992 | Koyama et al. | 5,704,365 A | 1/1998 | Albrecht et al. |
| 5,105,354 A | 4/1992 | Nishimura et al. | 5,713,933 A | 2/1998 | Condie et al. |
| 5,133,353 A | 7/1992 | Hauser | 5,715,812 A | 2/1998 | Deighan et al. |
| 5,146,918 A | 9/1992 | Kallok | 5,724,984 A | 3/1998 | Arnold et al. |
| 5,170,784 A | 12/1992 | Ramon | 5,738,102 A | 4/1998 | Lemelson |
| 5,178,156 A | 1/1993 | Takishima et al. | 5,779,645 A | 7/1998 | Olson et al. |
| 5,179,945 A | 1/1993 | Van Hofwegen et al. | 5,814,087 A | 9/1998 | Renirie |
| 5,184,615 A | 2/1993 | Nappholz et al. | 5,817,027 A | 10/1998 | Arand et al. |
| 5,187,657 A | 2/1993 | Forbes et al. | 5,827,326 A | 10/1998 | Kroll et al. |
| 5,203,348 A | 4/1993 | Dahl et al. | 5,836,987 A | 11/1998 | Baummann et al. |
| 5,209,229 A | 5/1993 | Gilli et al. | 5,844,506 A | 12/1998 | Binstead et al. |
| 5,217,021 A | 6/1993 | Steinhaus et al. | 5,855,593 A | 1/1999 | Olson et al. |
| 5,222,493 A | 6/1993 | Sholder | 5,857,956 A | 1/1999 | Liprie |
| 5,230,337 A | 7/1993 | Dahl et al. | 5,857,977 A | 1/1999 | Caswell et al. |
| 5,233,983 A | 8/1993 | Markowitz | 5,860,918 A | 1/1999 | Schradi et al. |
| 5,261,400 A | 11/1993 | Bardy | 5,861,011 A | 1/1999 | Stoop |
| 5,271,411 A | 12/1993 | Ripley et al. | 5,861,013 A | 1/1999 | Peck et al. |
| 5,273,035 A | 12/1993 | Markowitz et al. | 5,871,512 A | 2/1999 | Hemming et al. |
| 5,284,136 A | 2/1994 | Hauck et al. | 5,873,898 A | 2/1999 | Hemming et al. |
| 5,292,338 A | 3/1994 | Bardy | 5,876,353 A | 3/1999 | Riff et al. |
| 5,300,106 A | 4/1994 | Dahl et al. | 5,895,414 A | 4/1999 | Sanchez-Zambrano |
| 5,301,677 A | 4/1994 | Hsung | 5,916,243 A | 6/1999 | KenKnight et al. |
| 5,313,953 A | 5/1994 | Yomtov et al. | 5,944,680 A | 8/1999 | Christopherson et al. |
| 5,314,430 A | 5/1994 | Bardy | 5,964,778 A | 10/1999 | Fugoso et al. |
| 5,314,459 A | 5/1994 | Swanson et al. | 5,974,340 A | 10/1999 | Kadhiresan |
| 5,318,597 A | 6/1994 | Hauck et al. | 5,987,352 A | 11/1999 | Klein et al. |
| 5,324,310 A | 6/1994 | Greeninger | 6,016,442 A | 1/2000 | Hsu et al. |
| 5,331,966 A | 7/1994 | Bennett et al. | 6,023,620 A | 2/2000 | Hansson |
| 5,333,095 A | 7/1994 | Stevenson et al. | 6,027,630 A | 2/2000 | Cohen |
| 5,334,222 A | 8/1994 | Salo et al. | 6,044,298 A | 3/2000 | Salo et al. |
| 5,335,657 A | 8/1994 | Terry, Jr. et al. | 6,045,513 A | 4/2000 | Stone et al. |
| 5,350,410 A | 9/1994 | Kleks et al. | 6,049,730 A | 4/2000 | Kristbjarnarson |
| 5,353,788 A | 10/1994 | Miles et al. | 6,052,620 A | 4/2000 | Gillberg et al. |
| 5,360,442 A | 11/1994 | Dahl et al. | 6,055,454 A | 4/2000 | Heemels |
| 5,366,496 A | 11/1994 | Dahl et al. | 6,064,910 A | 5/2000 | Andersson et al. |
| 5,372,606 A | 12/1994 | Lang | 6,076,014 A | 6/2000 | Alt |
| 5,374,280 A | 12/1994 | den Dulk | 6,076,015 A | 6/2000 | Hartley et al. |
| 5,376,106 A | 12/1994 | Stahmann | 6,084,253 A | 7/2000 | Turner |
| 5,376,476 A | 12/1994 | Eylon et al. | 6,091,973 A | 7/2000 | Colla et al. |
| 5,388,578 A | 2/1995 | Yomtov et al. | 6,101,416 A | 8/2000 | Sloman |
| 5,391,200 A | 2/1995 | KenKnight | 6,115,628 A | 9/2000 | Stadler et al. |
| 5,397,342 A | 3/1995 | Heil et al. | 6,120,441 A | 9/2000 | Griebel et al. |
| 5,411,031 A | 5/1995 | Yomtov et al. | 6,126,611 A | 10/2000 | Bourgeois et al. |
| 5,411,529 A | 5/1995 | Hudrlik et al. | 6,128,534 A | 10/2000 | Park et al. |
| 5,411,533 A | 5/1995 | Dubreuil et al. | 6,128,535 A | 10/2000 | Maarse |
| 5,411,539 A | 5/1995 | Neisz et al. | 6,132,384 A | 10/2000 | Christopherson et al. |
| 5,431,693 A | 7/1995 | Schroepel | 6,134,473 A | 10/2000 | Hemming et al. |
| 5,439,482 A | 8/1995 | Adams et al. | 6,141,581 A | 10/2000 | Olson et al. |
| 5,441,518 A | 8/1995 | Adams et al. | 6,147,680 A | 11/2000 | Tareev |
| 5,441,525 A | 8/1995 | Shelton et al. | 6,148,230 A | 11/2000 | KenKnight |
| 5,443,485 A | 8/1995 | Housworth et al. | 6,148,234 A | 11/2000 | Struble |
| 5,447,519 A | 9/1995 | Peterson | 6,163,724 A | 12/2000 | Hemming et al. |
| 5,468,254 A | 11/1995 | Hahn et al. | 6,169,921 B1 | 1/2001 | KenKnight et al. |
| 5,485,851 A | 1/1996 | Erickson | 6,175,766 B1 | 1/2001 | Bornzin et al. |
| 5,517,983 A | 5/1996 | Deighan et al. | 6,190,326 B1 | 2/2001 | McKinnon et al. |
| 5,520,191 A | 5/1996 | Karlsson et al. | 6,192,275 B1 | 2/2001 | Zhu et al. |
| 5,522,860 A | 6/1996 | Molin et al. | 6,221,011 B1 | 4/2001 | Bardy |
| 5,531,779 A | 7/1996 | Dahl et al. | 6,226,551 B1 | 5/2001 | Zhu et al. |
| 5,534,017 A | 7/1996 | van Krieken et al. | 6,227,072 B1 | 5/2001 | Ritchey |
| 5,540,727 A | 7/1996 | Tockman et al. | 6,238,419 B1 | 5/2001 | Lindgren et al. |
| 5,540,732 A | 7/1996 | Testerman | 6,251,126 B1 | 6/2001 | Ottenhoff et al. |
| 5,545,186 A | 8/1996 | Olson et al. | 6,253,102 B1 | 6/2001 | Hsu et al. |
| | | | 6,258,039 B1 | 7/2001 | Okamoto et al. |
| | | | 6,259,947 B1 | 7/2001 | Olson et al. |
| | | | 6,266,554 B1 | 7/2001 | Hsu et al. |
| | | | 6,270,457 B1 | 8/2001 | Bardy |

(56)

References Cited

U.S. PATENT DOCUMENTS

| | | | | | | | |
|-----------|----|---------|---------------------------|-----------|----|---------|--------------------|
| 6,272,377 | B1 | 8/2001 | Sweeney et al. | 6,658,293 | B2 | 12/2003 | Vonk |
| 6,275,731 | B1 | 8/2001 | Zhu et al. | 6,684,100 | B1 | 1/2004 | Sweeney et al. |
| 6,277,072 | B1 | 8/2001 | Bardy | 6,690,967 | B2 | 2/2004 | Meij et al. |
| 6,280,380 | B1 | 8/2001 | Bardy | 6,701,170 | B2 | 3/2004 | Stetson |
| 6,280,462 | B1 | 8/2001 | Hauser et al. | 6,708,058 | B2 | 3/2004 | Kim et al. |
| 6,282,440 | B1 | 8/2001 | Brodnick et al. | 6,725,085 | B2 | 4/2004 | Schwartzman et al. |
| 6,285,907 | B1 | 9/2001 | Kramer et al. | 6,731,973 | B2 | 5/2004 | Voith |
| 6,299,581 | B1 | 10/2001 | Rapoport et al. | 6,731,983 | B2 | 5/2004 | Ericksen et al. |
| RE37,454 | E | 11/2001 | Sutton et al. | 6,731,984 | B2 | 5/2004 | Cho et al. |
| 6,312,378 | B1 | 11/2001 | Bardy | 6,738,669 | B1 | 5/2004 | Sloman et al. |
| 6,312,388 | B1 | 11/2001 | Marcovecchio et al. | 6,754,523 | B2 | 6/2004 | Toole |
| 6,324,421 | B1 | 11/2001 | Stadler et al. | 6,754,528 | B2 | 6/2004 | Bardy et al. |
| 6,324,427 | B1 | 11/2001 | Florio | 6,760,615 | B2 | 7/2004 | Ferek-Petric |
| 6,336,903 | B1 | 1/2002 | Bardy | 6,766,190 | B2 | 7/2004 | Ferek-Petric |
| 6,345,201 | B1 | 2/2002 | Sloman et al. | 6,768,923 | B2 | 7/2004 | Ding et al. |
| 6,351,669 | B1 | 2/2002 | Hartley et al. | 6,768,924 | B2 | 7/2004 | Ding et al. |
| 6,351,673 | B1 | 2/2002 | Ding et al. | 6,773,404 | B2 | 8/2004 | Poezevera et al. |
| 6,353,759 | B1 | 3/2002 | Hartley et al. | 6,778,860 | B2 | 8/2004 | Ostroff et al. |
| 6,358,203 | B2 | 3/2002 | Bardy | 6,788,974 | B2 | 9/2004 | Bardy et al. |
| 6,360,127 | B1 | 3/2002 | Ding et al. | 6,830,548 | B2 | 12/2004 | Bonnet et al. |
| 6,363,270 | B1 | 3/2002 | Colla et al. | 6,834,204 | B2 | 12/2004 | Ostroff et al. |
| 6,368,284 | B1 | 4/2002 | Bardy | 6,856,835 | B2 | 2/2005 | Bardy et al. |
| 6,368,287 | B1 | 4/2002 | Hadas | 6,865,417 | B2 | 3/2005 | Rissmann |
| 6,371,922 | B1 | 4/2002 | Baummann et al. | 6,866,044 | B2 | 3/2005 | Bardy et al. |
| 6,375,621 | B1 | 4/2002 | Sullivan | 6,881,192 | B1 | 4/2005 | Park |
| 6,393,316 | B1 | 5/2002 | Gillberg et al. | 6,884,218 | B2 | 4/2005 | Olson |
| 6,398,728 | B1 | 6/2002 | Bardy | 6,885,893 | B1 | 4/2005 | Lu |
| 6,409,675 | B1 | 6/2002 | Turcott | 6,888,538 | B2 | 5/2005 | Ely et al. |
| 6,411,848 | B2 | 6/2002 | Kramer et al. | 6,889,079 | B2 | 5/2005 | Boccek et al. |
| 6,415,174 | B1 | 7/2002 | Bebehani et al. | 6,890,306 | B2 | 5/2005 | Poezevera |
| 6,415,183 | B1 | 7/2002 | Scheiner | 6,895,274 | B2 | 5/2005 | Mower |
| 6,418,340 | B1 | 7/2002 | Conley et al. | 6,904,315 | B2 | 6/2005 | Panken et al. |
| 6,418,343 | B1 | 7/2002 | Zhang et al. | 6,904,320 | B2 | 6/2005 | Park et al. |
| 6,424,234 | B1 | 7/2002 | Stevenson | 6,917,832 | B2 | 7/2005 | Hutten et al. |
| 6,424,865 | B1 | 7/2002 | Ding | 6,925,324 | B2 | 8/2005 | Shusterman |
| 6,434,417 | B1 | 8/2002 | Lovett | 6,925,330 | B2 | 8/2005 | Kleine |
| 6,434,428 | B1 | 8/2002 | Sloman et al. 607/28 | 6,927,721 | B2 | 8/2005 | Ostroff |
| 6,438,409 | B1 | 8/2002 | Malik et al. | 6,928,324 | B2 | 8/2005 | Park et al. |
| 6,438,410 | B2 | 8/2002 | Hsu | 6,937,907 | B2 | 8/2005 | Bardy et al. |
| 6,440,066 | B1 | 8/2002 | Bardy | 6,944,579 | B2 | 9/2005 | Shimizu |
| 6,449,503 | B1 | 9/2002 | Hsu | 6,950,702 | B2 | 9/2005 | Sweeney |
| 6,456,481 | B1 | 9/2002 | Stevenson | 6,950,705 | B2 | 9/2005 | Bardy et al. |
| 6,459,929 | B1 | 10/2002 | Hopper et al. | 6,952,608 | B2 | 10/2005 | Ostroff |
| 6,466,820 | B1 | 10/2002 | Juran et al. | 6,952,610 | B2 | 10/2005 | Ostroff et al. |
| 6,468,439 | B1 | 10/2002 | Whitehurst et al. | 6,954,670 | B2 | 10/2005 | Ostroff |
| 6,475,369 | B1 | 11/2002 | Cohen | 6,959,214 | B2 | 10/2005 | Pape et al. |
| 6,477,422 | B1 | 11/2002 | Splett | 6,961,613 | B2 | 11/2005 | Björling et al. |
| 6,480,733 | B1 | 11/2002 | Turcott | 6,961,619 | B2 | 11/2005 | Casey |
| 6,480,734 | B1 | 11/2002 | Zhang et al. | 6,973,350 | B1 | 12/2005 | Levine et al. |
| 6,486,715 | B2 | 11/2002 | Gongwer et al. | 6,975,904 | B1 | 12/2005 | Sloman |
| 6,487,443 | B2 | 11/2002 | Olson et al. | 6,983,264 | B2 | 1/2006 | Shimizu |
| 6,491,639 | B1 | 12/2002 | Turcott | 6,988,003 | B2 | 1/2006 | Bardy et al. |
| 6,493,586 | B1 | 12/2002 | Stahmann et al. | 6,993,379 | B1 | 1/2006 | Kroll et al. |
| 6,505,067 | B1 | 1/2003 | Lee et al. | 6,993,389 | B2 | 1/2006 | Ding et al. |
| 6,505,071 | B1 | 1/2003 | Zhu et al. | 6,999,817 | B2 | 2/2006 | Park et al. |
| 6,512,940 | B1 | 1/2003 | Brabec et al. | 7,006,869 | B2 | 2/2006 | Bradley |
| 6,512,953 | B2 | 1/2003 | Florio et al. | 7,025,730 | B2 | 4/2006 | Cho et al. |
| 6,522,915 | B1 | 2/2003 | Ceballos et al. | 7,027,861 | B2 | 4/2006 | Thompson |
| 6,542,775 | B2 | 4/2003 | Ding et al. | 7,027,868 | B2 | 4/2006 | Rueter |
| 6,564,106 | B2 | 5/2003 | Guck et al. | 7,027,871 | B2 | 4/2006 | Burnes et al. |
| 6,567,701 | B2 | 5/2003 | Vonk | 7,039,459 | B2 | 5/2006 | Bardy et al. |
| 6,574,507 | B1 | 6/2003 | Bonnet | 7,039,465 | B2 | 5/2006 | Bardy et al. |
| 6,584,351 | B1 | 6/2003 | Ekwall 607/9 | 7,043,299 | B2 | 5/2006 | Erlinger et al. |
| 6,589,199 | B1 | 7/2003 | McCrory et al. | 7,050,851 | B2 | 5/2006 | Plombon |
| 6,595,927 | B2 | 7/2003 | Pitts-Crick et al. | 7,065,400 | B2 | 6/2006 | Schechter |
| 6,597,951 | B2 | 7/2003 | Kramer et al. | 7,065,407 | B2 | 6/2006 | Bardy et al. |
| 6,600,949 | B1 | 7/2003 | Turcott | 7,065,410 | B2 | 6/2006 | Bardy et al. |
| 6,607,509 | B2 | 8/2003 | Bobroff et al. | 7,069,080 | B2 | 6/2006 | Bardy et al. |
| 6,615,082 | B1 | 9/2003 | Mandell | 7,076,296 | B2 | 7/2006 | Rissmann et al. |
| 6,615,083 | B2 | 9/2003 | Küpper et al. | 7,079,988 | B2 | 7/2006 | Albera et al. |
| 6,618,649 | B1 | 9/2003 | Shilo | 7,081,095 | B2 | 7/2006 | Lynn et al. |
| 6,622,046 | B2 | 9/2003 | Fraley et al. | 7,085,599 | B2 | 8/2006 | Kim |
| 6,631,290 | B1 | 10/2003 | Guck et al. | 7,090,682 | B2 | 8/2006 | Sanders et al. |
| 6,641,542 | B2 | 11/2003 | Cho et al. | 7,092,754 | B2 | 8/2006 | Bardy et al. |
| 6,654,637 | B2 | 11/2003 | Rouw et al. | 7,094,207 | B1 | 8/2006 | Koh |
| | | | | 7,096,064 | B2 | 8/2006 | Deno et al. |
| | | | | 7,103,404 | B2 | 9/2006 | Stadler et al. |
| | | | | 7,107,093 | B2 | 9/2006 | Burnes |
| | | | | 7,113,823 | B2 | 9/2006 | Yonce et al. |

(56)

References Cited

U.S. PATENT DOCUMENTS

7,115,097 B2 10/2006 Johnson
 7,117,036 B2 10/2006 Florio
 7,120,495 B2 10/2006 Bardy et al.
 7,123,960 B2 10/2006 Ding et al.
 7,127,290 B2 10/2006 Girouard et al.
 7,129,935 B2 10/2006 Mackey
 7,139,610 B2 11/2006 Ferek-Petric
 7,144,586 B2 12/2006 Levy et al.
 7,146,212 B2 12/2006 Bardy et al.
 7,149,575 B2 12/2006 Ostroff et al.
 7,155,278 B2 12/2006 King et al.
 7,160,252 B2 1/2007 Cho et al.
 7,177,689 B2 2/2007 Ternes et al.
 7,179,229 B1 2/2007 Koh
 7,181,285 B2 2/2007 Lindh et al.
 7,184,835 B2 2/2007 Kramer et al.
 7,191,003 B2 3/2007 Greenhut et al.
 7,191,004 B2 3/2007 Kim et al.
 7,194,302 B2 3/2007 Bardy et al.
 7,194,309 B2 3/2007 Ostroff et al.
 7,203,540 B2 4/2007 Ding et al.
 7,203,542 B2 4/2007 Obel
 7,203,543 B2 4/2007 Meyer et al.
 7,212,862 B2 5/2007 Park et al.
 7,225,021 B1 5/2007 Park et al.
 7,228,172 B2 6/2007 Järverud et al.
 7,228,173 B2 6/2007 Cazares
 7,236,819 B2 6/2007 Brockway et al.
 7,242,978 B2 7/2007 Cao et al.
 7,245,962 B2 7/2007 Ciaccio et al.
 7,248,921 B2 7/2007 Palreddy et al.
 7,248,925 B2 7/2007 Bruhns et al.
 7,263,399 B2 8/2007 Carlson
 7,277,754 B2 10/2007 McCabe et al.
 7,286,876 B2 10/2007 Yonce et al.
 7,299,086 B2 11/2007 McCabe et al.
 7,308,311 B2 12/2007 Sorensen et al.
 7,319,900 B2 1/2008 Kim et al.
 7,330,761 B2 2/2008 Zhang
 7,337,000 B2 2/2008 Meyer et al.
 7,359,749 B2 4/2008 Quenet et al.
 7,369,889 B2 5/2008 Aström et al.
 7,438,686 B2 10/2008 Cho et al.
 7,457,664 B2 11/2008 Zhang et al.
 7,468,040 B2 12/2008 Hartley et al.
 7,477,932 B2 1/2009 Lee et al.
 7,499,751 B2 3/2009 Meyer et al.
 7,509,170 B2 3/2009 Zhang et al.
 7,529,578 B2 5/2009 Dong et al.
 7,558,628 B2 7/2009 Yonce et al.
 7,761,162 B2 7/2010 Dong et al.
 7,774,064 B2 8/2010 Meyer et al.
 7,979,113 B2 7/2011 Dong et al.
 2002/0002327 A1 1/2002 Grant et al.
 2002/0035377 A1 3/2002 Bardy et al.
 2002/0035378 A1 3/2002 Bardy et al.
 2002/0035379 A1 3/2002 Bardy et al.
 2002/0035381 A1 3/2002 Bardy et al.
 2002/0082658 A1 6/2002 Heinrich et al.
 2002/0095184 A1 7/2002 Bardy et al.
 2002/0095188 A1 7/2002 Mower
 2002/0107544 A1 8/2002 Ostroff et al.
 2002/0107545 A1 8/2002 Rissmann et al.
 2002/0138111 A1 9/2002 Greenhut et al.
 2002/0183798 A1 12/2002 Vonk
 2003/0023175 A1 1/2003 Arzbaecher et al.
 2003/0050671 A1 3/2003 Bradley
 2003/0083710 A1 5/2003 Ternes et al.
 2003/0083711 A1 5/2003 Yonce et al.
 2003/0125777 A1* 7/2003 Ding et al. 607/27
 2003/0195571 A1 10/2003 Burnes et al.
 2003/0199945 A1 10/2003 Ciulla
 2003/0204146 A1 10/2003 Carlson
 2003/0204213 A1 10/2003 Jensen et al.
 2003/0212436 A1 11/2003 Brown

2004/0127950 A1 7/2004 Kim
 2004/0171959 A1 9/2004 Stadler et al.
 2004/0172065 A1 9/2004 Sih et al.
 2004/0215277 A1 10/2004 Oosterhoff
 2004/0243014 A1 12/2004 Lee et al.
 2004/0260351 A1 12/2004 Holmstrom
 2005/0004612 A1 1/2005 Scholten et al.
 2005/0010120 A1 1/2005 Jung et al.
 2005/0038478 A1 2/2005 Klepfer
 2005/0043652 A1 2/2005 Lovett et al.
 2005/0065587 A1 3/2005 Gryzwa
 2005/0085865 A1 4/2005 Tehrani
 2005/0107839 A1 5/2005 Sanders
 2005/0113710 A1 5/2005 Stahmann et al.
 2005/0131476 A1 6/2005 Kim et al.
 2005/0131477 A1 6/2005 Meyer et al.
 2005/0131478 A1 6/2005 Kim et al.
 2005/0288600 A1 12/2005 Zhang et al.
 2006/0069322 A1 3/2006 Zhang et al.
 2006/0074331 A1 4/2006 Kim et al.
 2006/0111747 A1 5/2006 Cazares et al.
 2006/0116593 A1 6/2006 Zhang et al.
 2006/0129194 A1 6/2006 Zhang
 2006/0129196 A1 6/2006 Dong et al.
 2006/0241706 A1 10/2006 Yonce et al.
 2006/0247695 A1 11/2006 Stalsberg et al.
 2006/0253043 A1 11/2006 Zhang et al.
 2006/0253044 A1 11/2006 Zhang et al.
 2007/0016261 A1 1/2007 Dong et al.
 2007/0049974 A1 3/2007 Li et al.
 2007/0142737 A1 6/2007 Cazares et al.
 2007/0142741 A1 6/2007 Berthon-Jones et al.
 2007/0239057 A1 10/2007 Pu et al.
 2008/0004665 A1 1/2008 McCabe et al.
 2008/0009909 A1 1/2008 Sathaye et al.
 2008/0045851 A1 2/2008 Cazares et al.
 2008/0154324 A1 6/2008 Kim et al.
 2009/0105778 A1 4/2009 Lee et al.
 2009/0163973 A1 6/2009 Meyer et al.
 2009/0240301 A1 9/2009 Dong et al.

FOREIGN PATENT DOCUMENTS

EP 1291038 A2 3/2003
 EP 1430930 A1 6/2004
 EP 1629863 A1 3/2006
 JP 6502778 T 3/1994

OTHER PUBLICATIONS

Cohen et al., "Capture Management Efficacy in children and you adults with endocardial and unipolar epicardial systems," *Europace*, vol. 6, pp. 248-255, 2004.

Acar et al., "SVD-Based on-line exercise ECG signal orthogonalization," *IEEE Transactions on Biomedical Engineering*, vol. 46, No. 3, Mar. 1999, Abstract only.

Ajilore et al., "Nightcap: Laboratory and home-based evaluation of a portable sleep monitor," *Psychophysiology*, vol. 32, No. 1, pp. 92-98, Jan. 1995, Abstract only.

Belouchrani et al., "Blind Source Separation Based on Time-Frequency Signal Representations," *IEEE Transactions on Signal Processing*, vol. 46, No. 11, pp. 2888-2897, Nov. 1998.

Comon, "Independent component analysis, A new concept?" *Signal Processing*, vol. 36, No. 3, pp. 287-314, Apr. 1994.

Gallois et al., "Multi-Channel Analysis of the EEG Signals and Statistic Particularities for Epileptic Seizure Forecast," *Second Joint EMBC/BMES Conference*, pp. 208-215, Oct. 23-26, 2002.

Gradaus et al., "Nonthoracotomy Implantable Cardioverter Defibrillator Placement in Children: Use of a Subcutaneous Array Leads and Abdominally Placed Implantable Cardioverter Defibrillator Placement in Children," *Journal of Cardiovascular Electrophysiology*, vol. 12, No. 3, pp. 356-360, Mar. 2001.

Hartz et al., "New Approach to Defibrillator Insertion," *Journal of Thoracic Cardiovascular Surgery*, vol. 97, pp. 920-922, (1989).

Hyvärinen et al., "Independent Component Analysis: A Tutorial," *Helsinki University of Technology*, Apr. 1999.

(56)

References Cited

OTHER PUBLICATIONS

Kolettis et al., "Submammary Implantation of a Cardioverter-Defibrillator with a Nonthoractomy Lead System," *American Heart Journal*, vol. 126, pp. 1222-1223, Nov. 1993.

Krahn et al., "Recurrent syncope. Experience with an implantable loop record," *Cardiol. Clin.*, vol. 15, No. 2, pp. 316-326, May 1997.

Leng et al., "Lead Configuration for Defibrillator Implantation in a Patient with Congenital Heart Disease and a Mechanical Prosthetic Tricuspid Valve," *Pace*, vol. 24, No. 8, pp. 1291-1292, Aug. 2001.

Park et al., "Use of an Implantable Cardioverter Defibrillator in an Eight-Month-Old Infant with Ventricular Fibrillation Arising from a Myocardial Fibroma," *Pace*, vol. 22, No. 1, pp. 138-139, Jan. 1999.

Rieta et al., "Atrial Activity Extraction Based on Blind Source Separation as an Alternative to QRST Cancellation for Atrial Fibrillation Analysis," *Computers in Cardiology*, vol. 27, pp. 69-72 (2000).

Schuder et al., "Experimental Ventricular Defibrillation with an Automatic and Completely Implanted System," *Trans. American Society Artif. Int. Organs*, vol. 16, pp. 207212 (1970).

Schuder et al., "Transthoracic Ventricular Defibrillation in the Dog with Truncated and Untruncated Exponential Stimuli," *IEEE Transactions on Bio-Medical Engineering*, vol. BME-18, No. 6, pp. 410-415, Nov. 1971.

Schuder et al., "Ventricular Defibrillation in the Dog Using Implanted and Partially Implanted Electrode Systems," *American Journal of Cardiology*, vol. 33, pp. 243-247, Feb. 1974.

Smits et al., "Defibrillation Threshold (DFT) Model of a Fully Subcutaneous ICD System," *Europace Supplements*, vol. 2, at col. 7778, p. B83, Jun. 2001.

Stirbis et al., "Optimizing the Shape of Implanted Artificial Pacemakers," Kaunas Medical Institute, translated from *Meditsinskaya Tekhnika*, No. 6, pp. 25-27 (1986).

Verrier et al., "Sleep, dreams, and sudden death: the case for sleep as an autonomic stress test for the heart," *Cardiovascular Research*, vol. 31, pp. 181-211 (1996).

Verrier et al., "Sleep Related Cardiovascular Risk: New Home-Based Monitoring Technology for Improved Diagnosis and Therapy," *A.N. E.*, vol. 2, No. 2, pp. 158-175, Apr. 1997.

Waldemark et al., "Detection of Apnea Using Short Window FFT Technique and Artificial Neural Network," *SPIE International Society for Optical Engineering*, vol. 3390, pp. 122-133 (1998).

Zarzoso et al., "Blind Separation of Independent Sources for Virtually Any source Probability Density Function," *IEEE Transactions on Signal Processing*, vol. 47, No. 9, pp. 2419-2431, Sep. 1999.

Zarzoso et al., "Noninvasive Fetal Electrocardiogram Extraction Blind Separation Versus Adaptive Noise Cancellation," *IEEE Transactions on Biomedical Engineering*, vol. 48, No. 1, pp. 12-18, Jan. 2001.

* cited by examiner

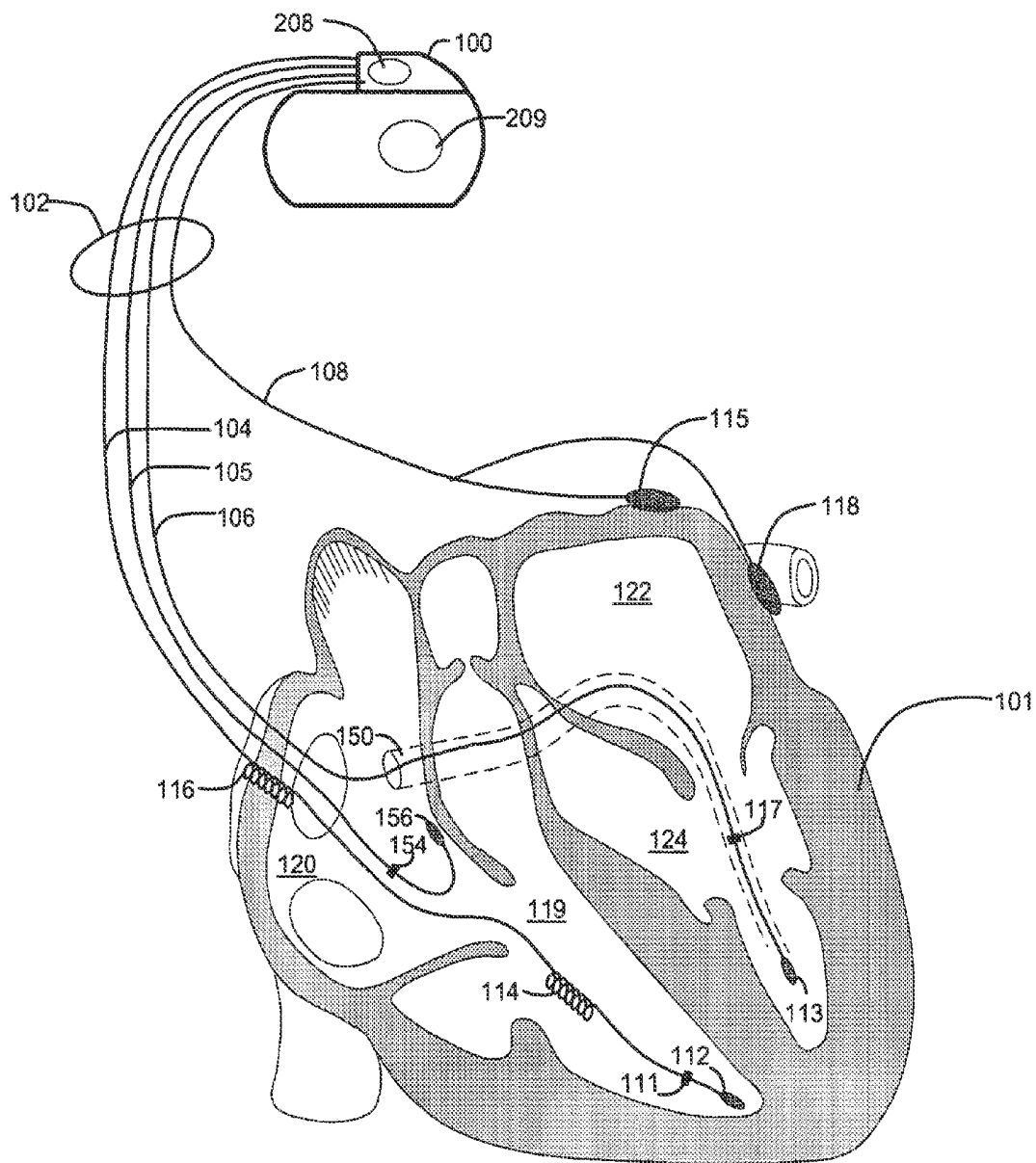


Figure 1

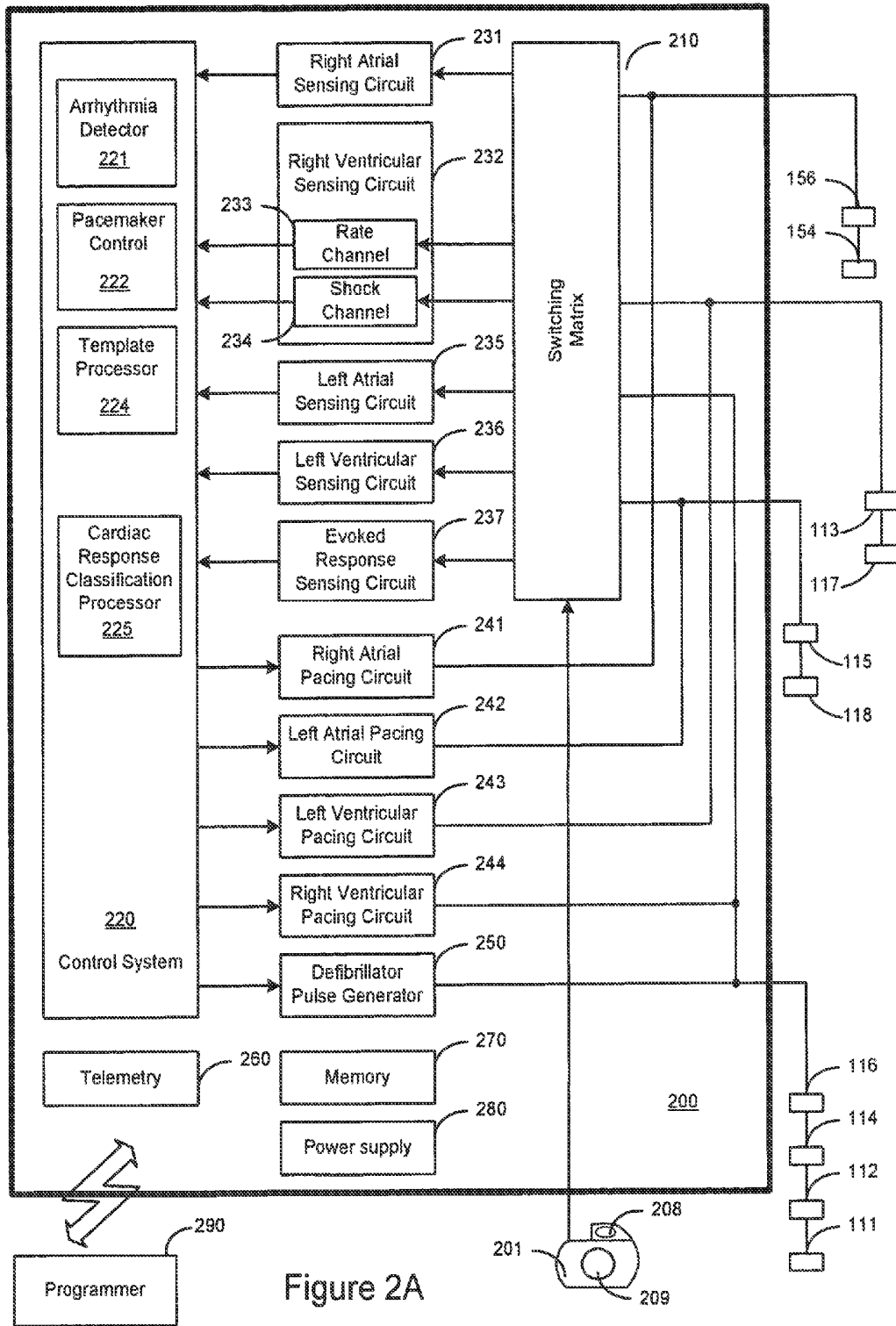


Figure 2A

Figure 2B

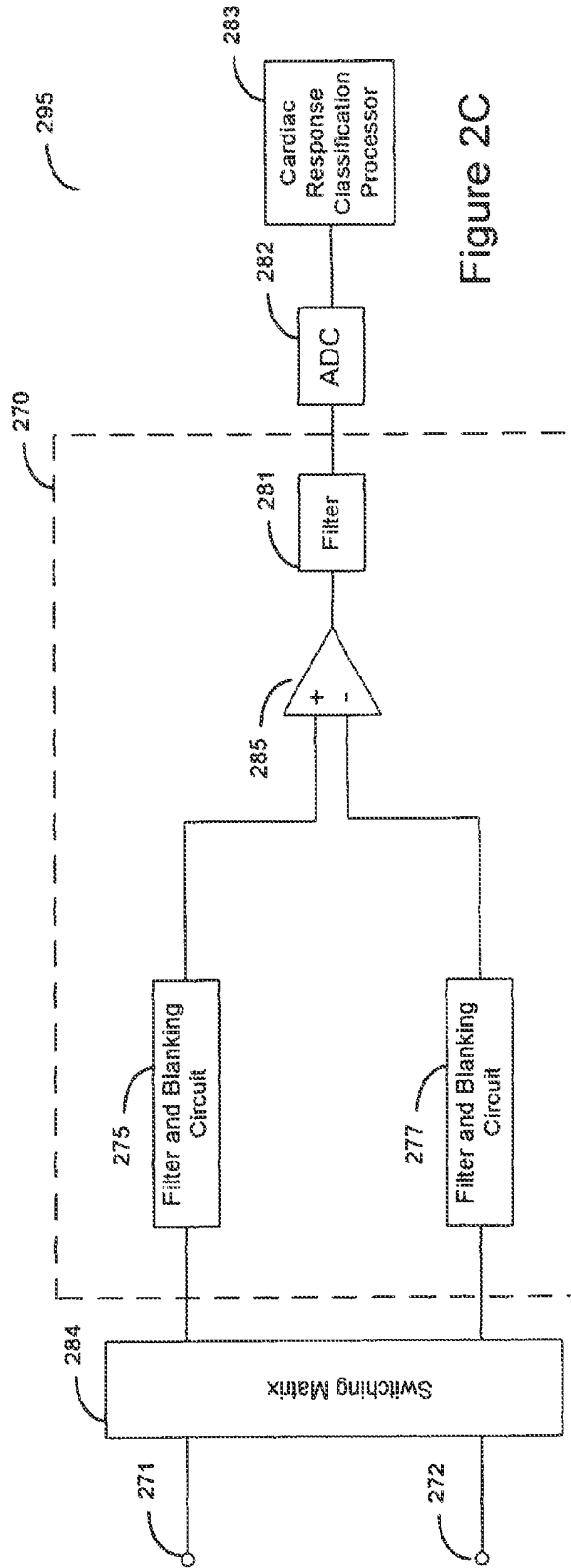
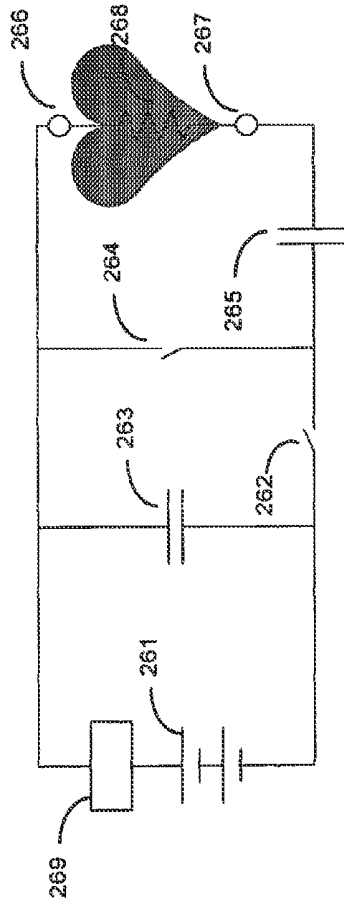


Figure 2C

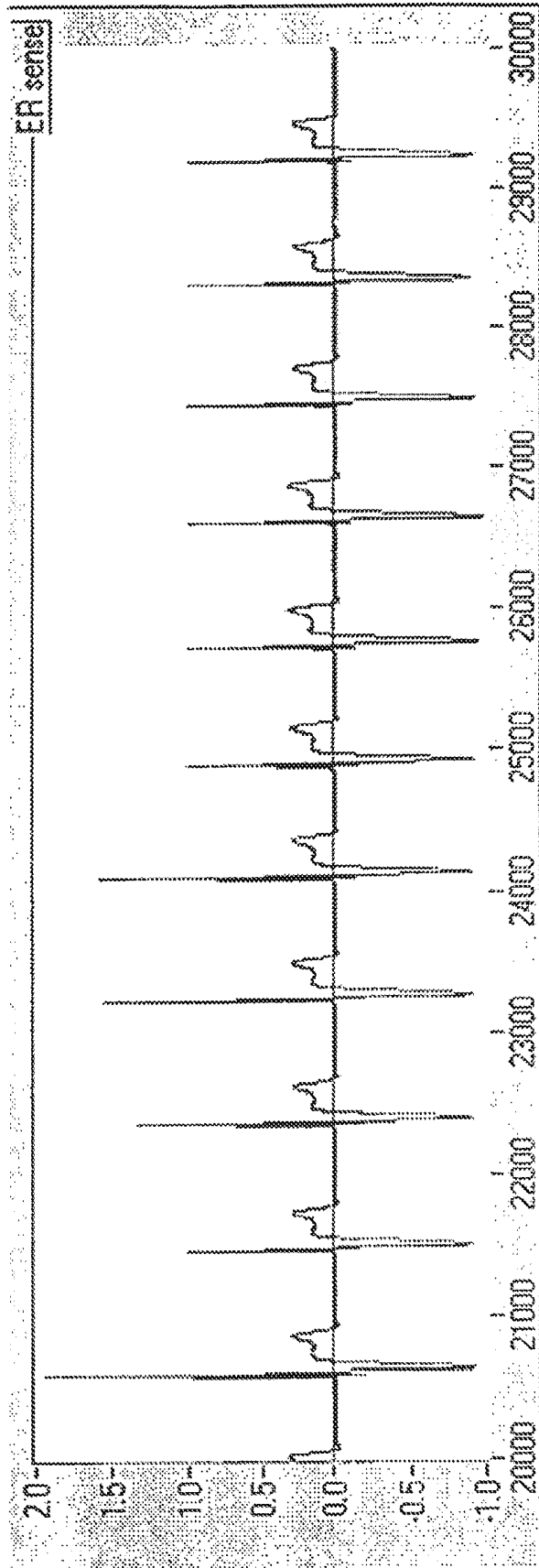


Figure 3

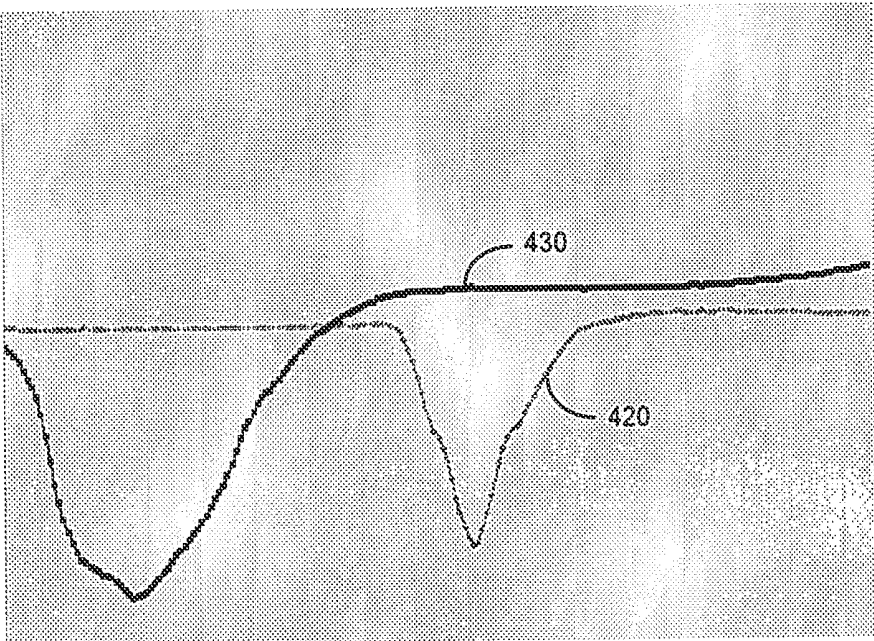


Figure 4

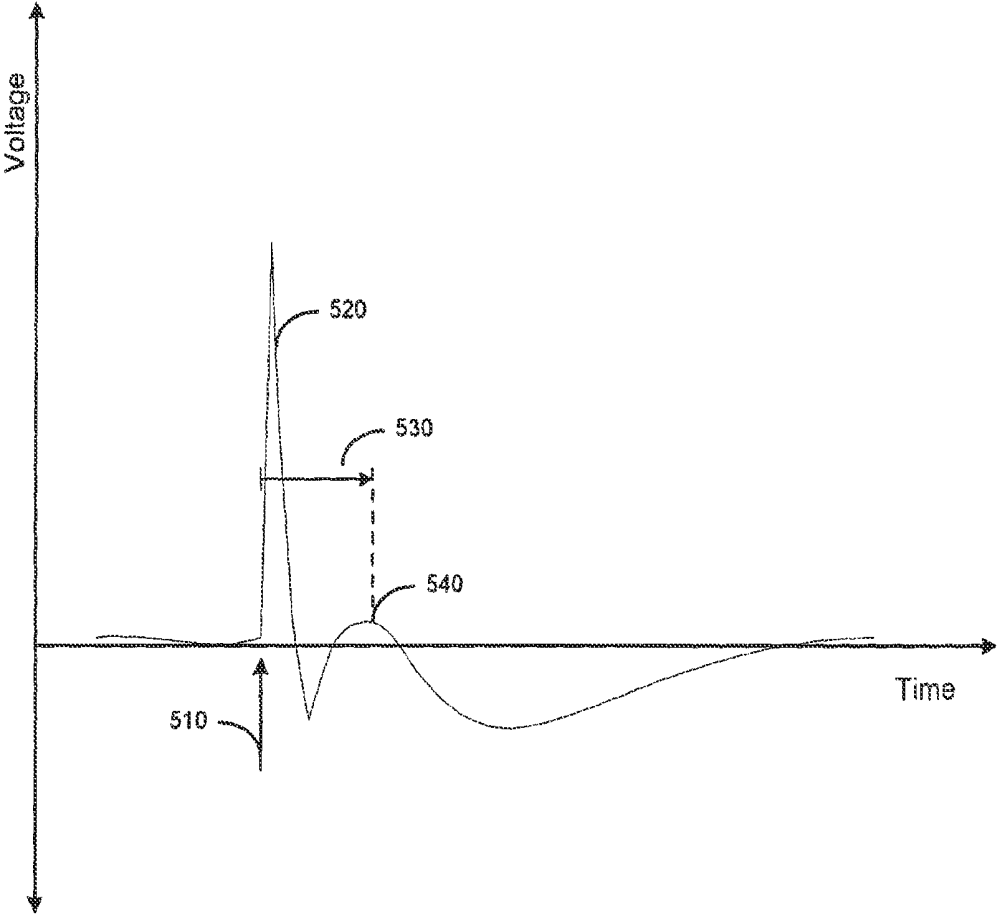


Figure 5

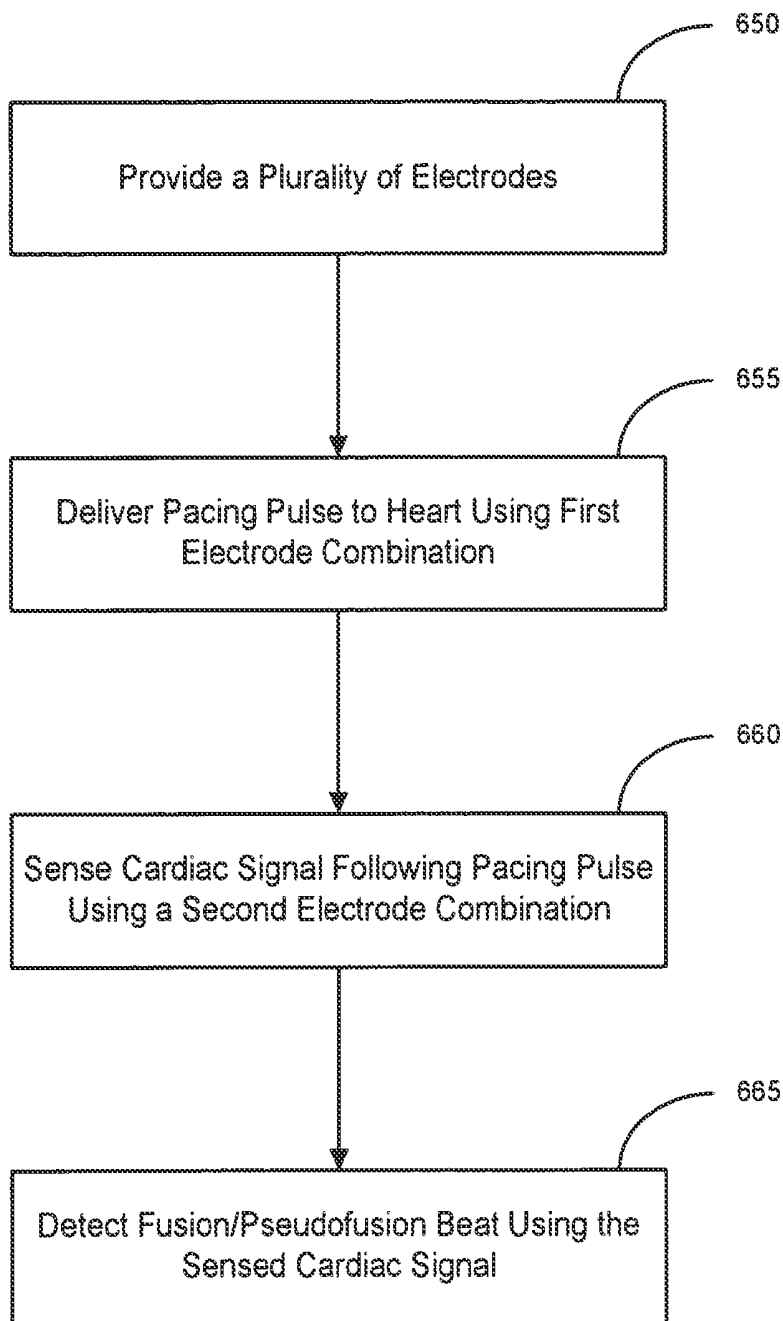


Figure 6A

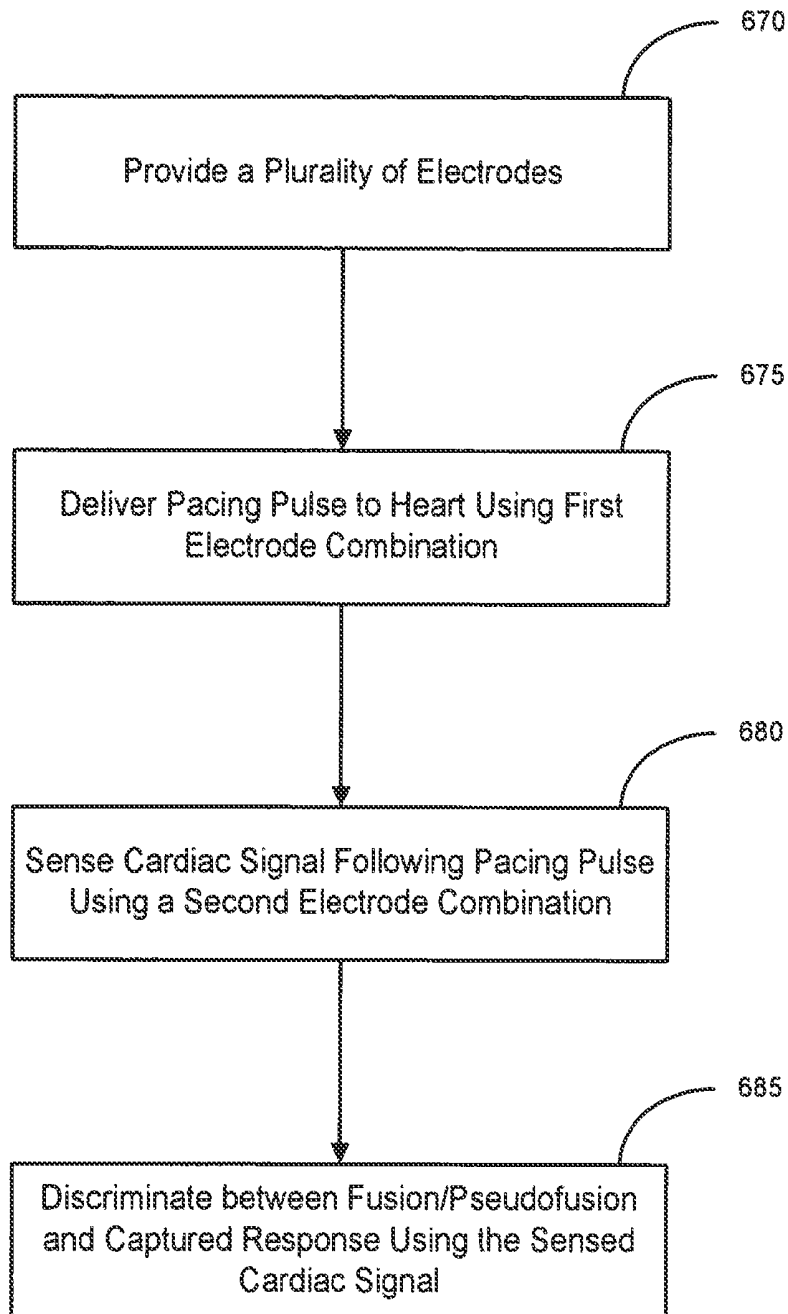


Figure 6B

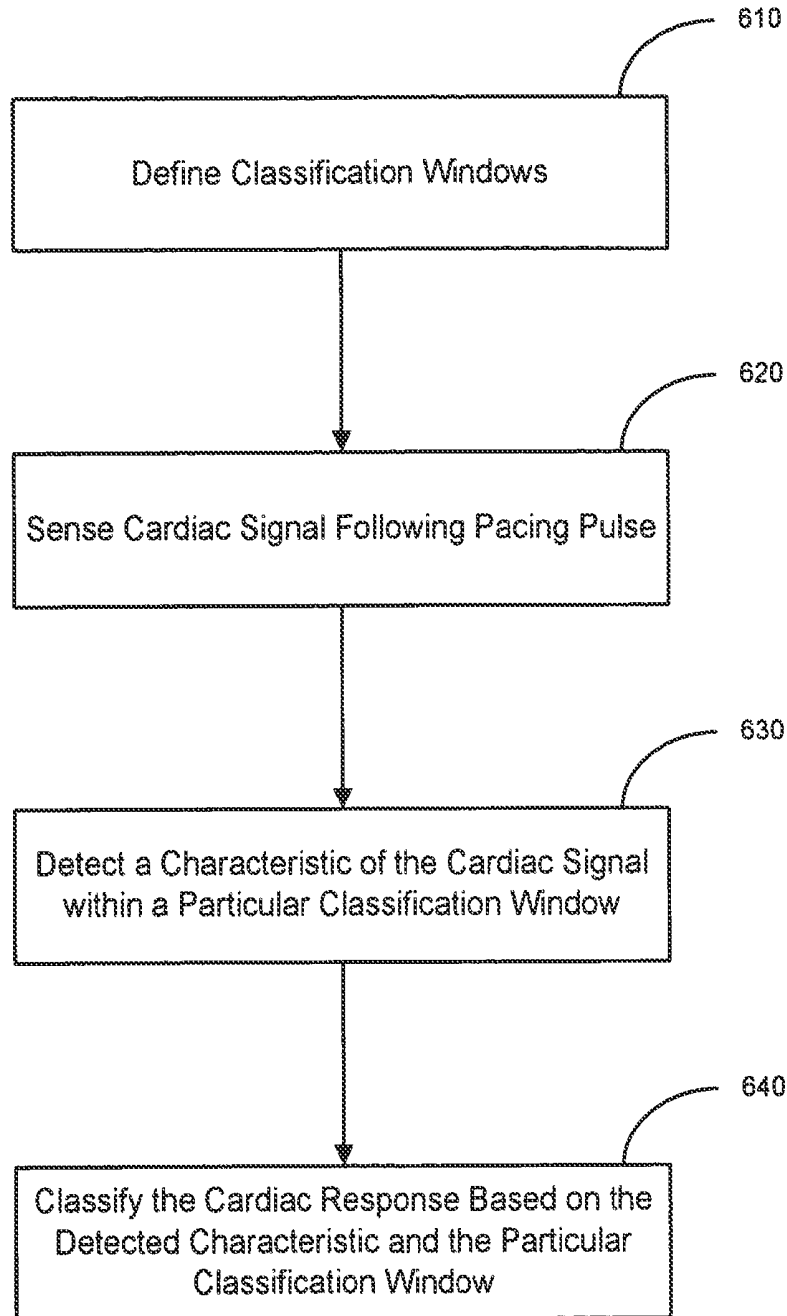


Figure 6C

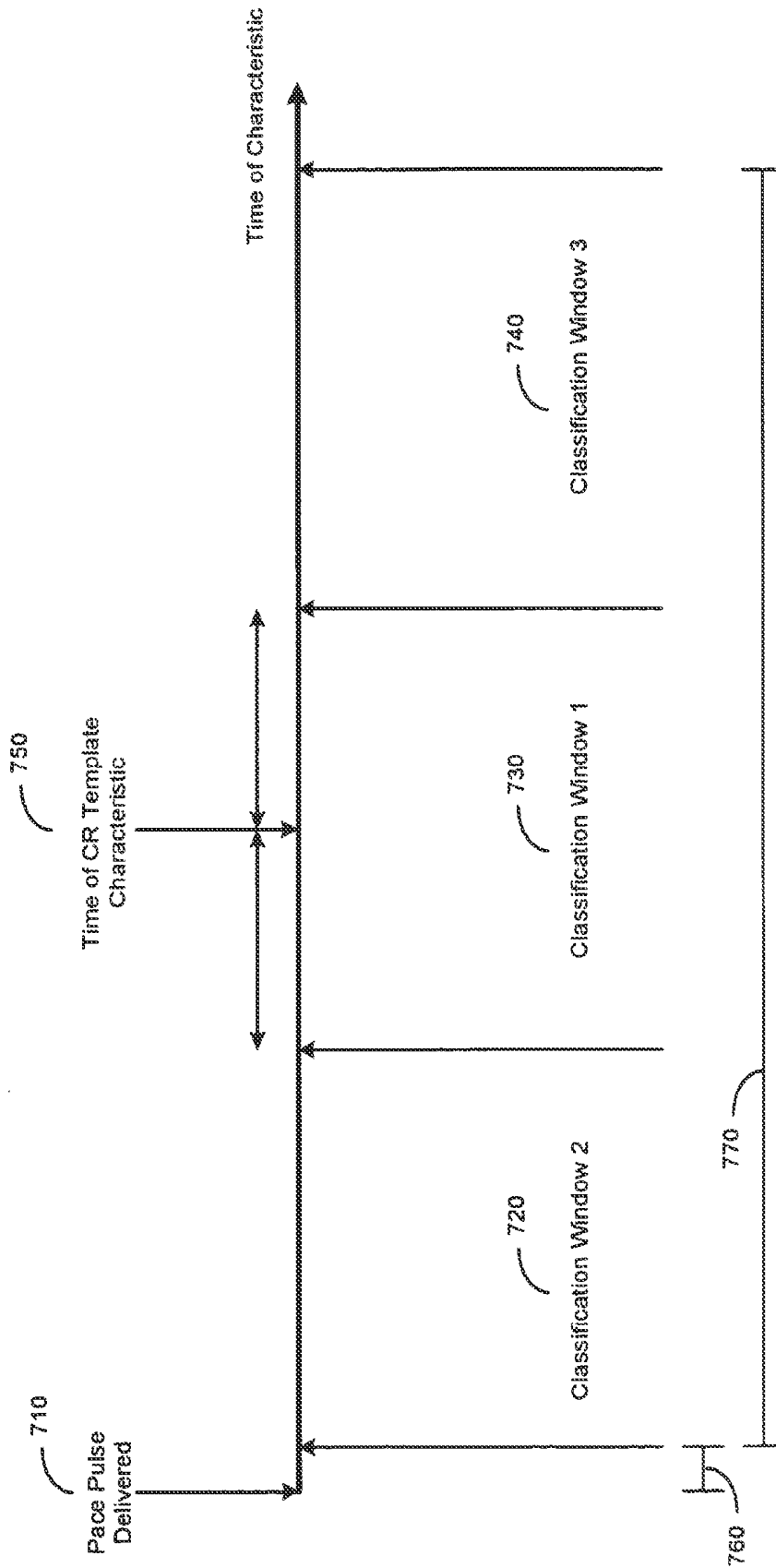


Figure 7A

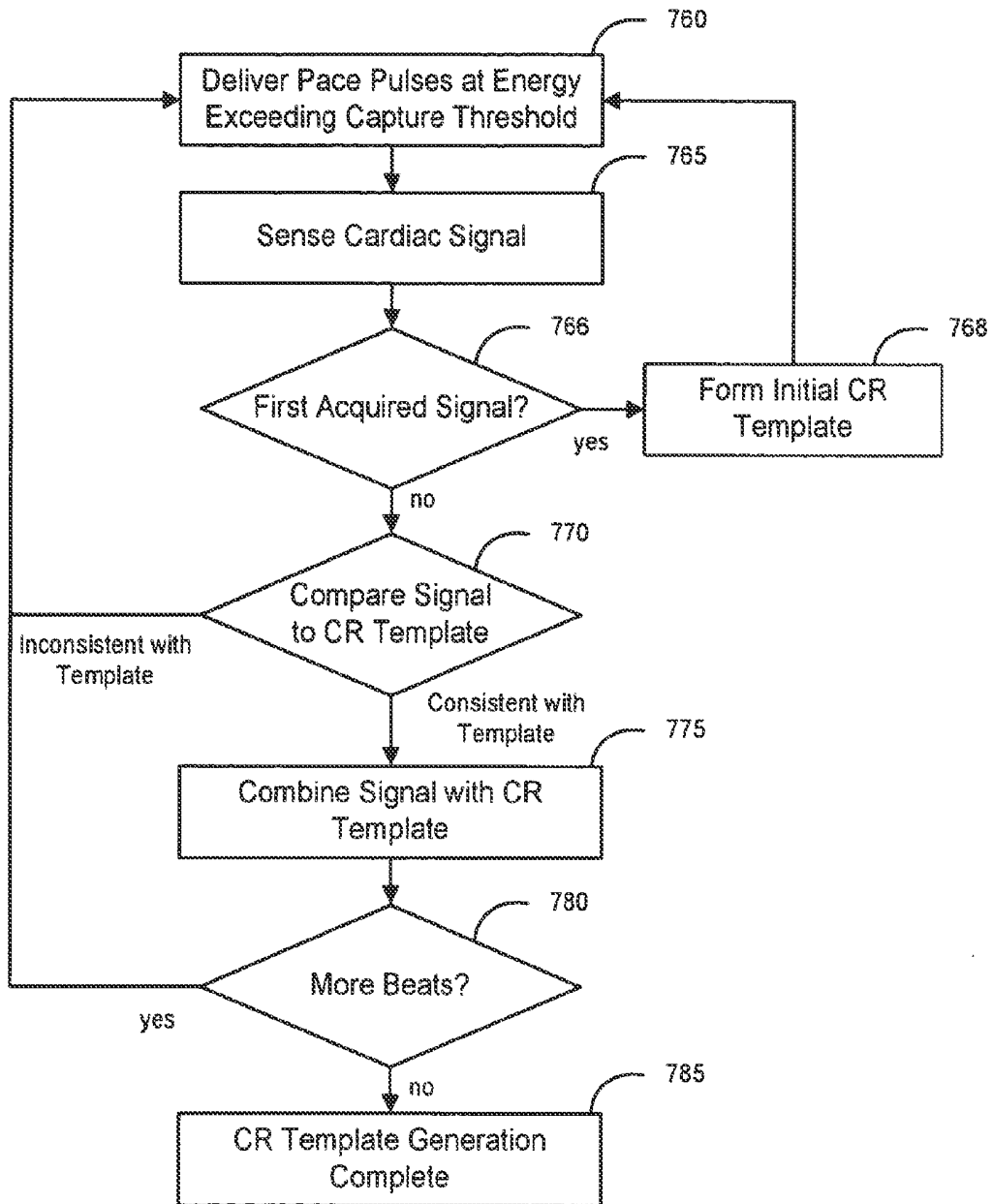


Figure 7B

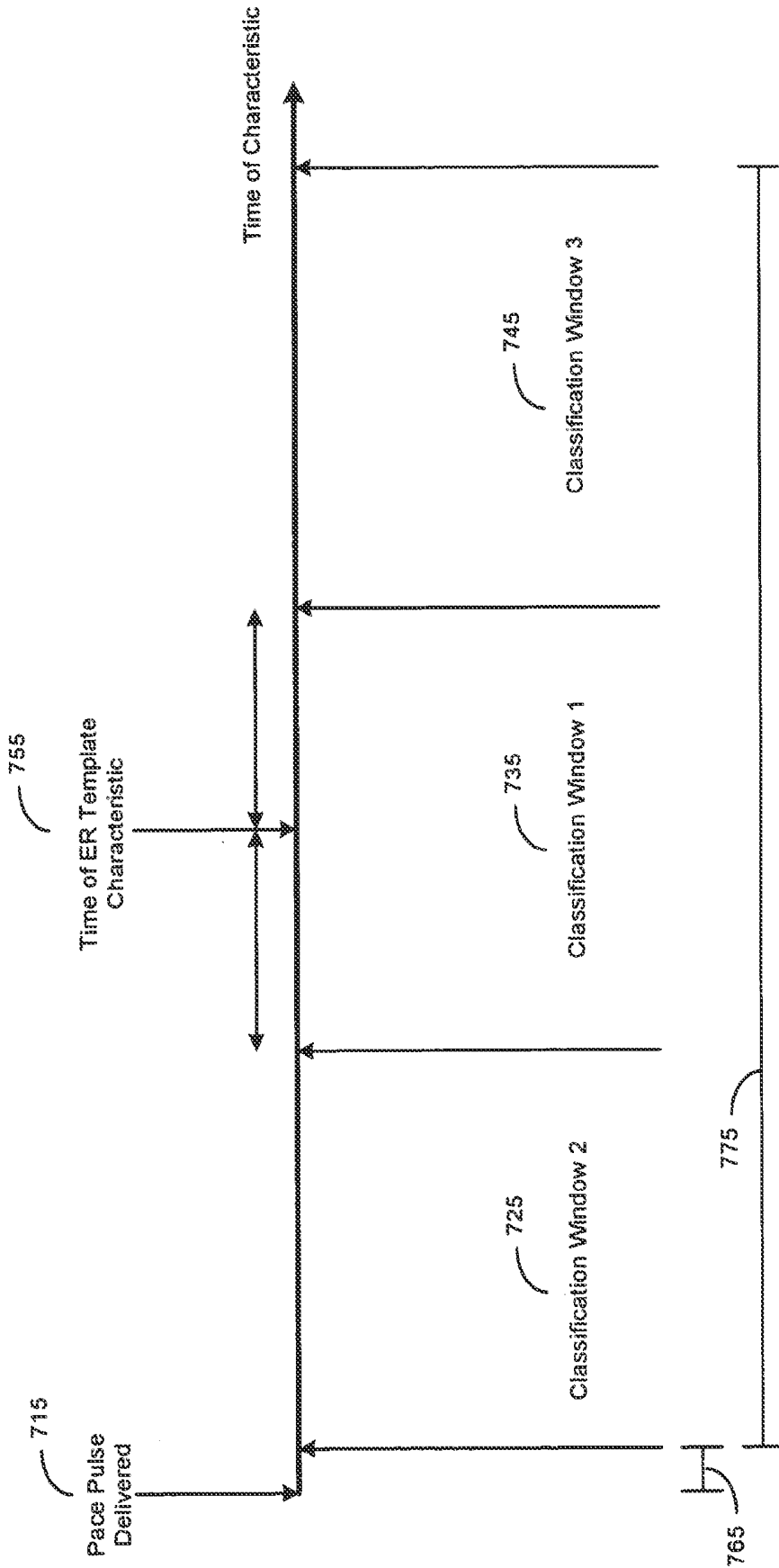


Figure 7C

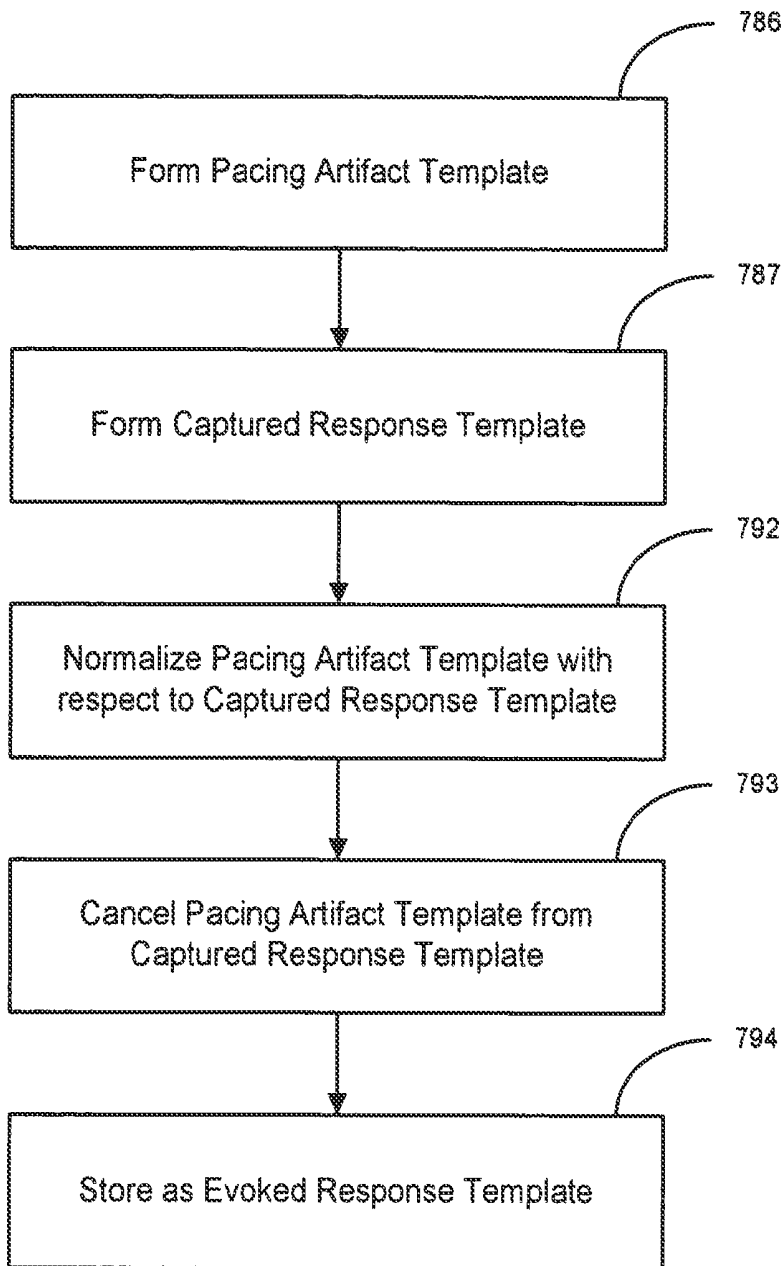


Figure 7D

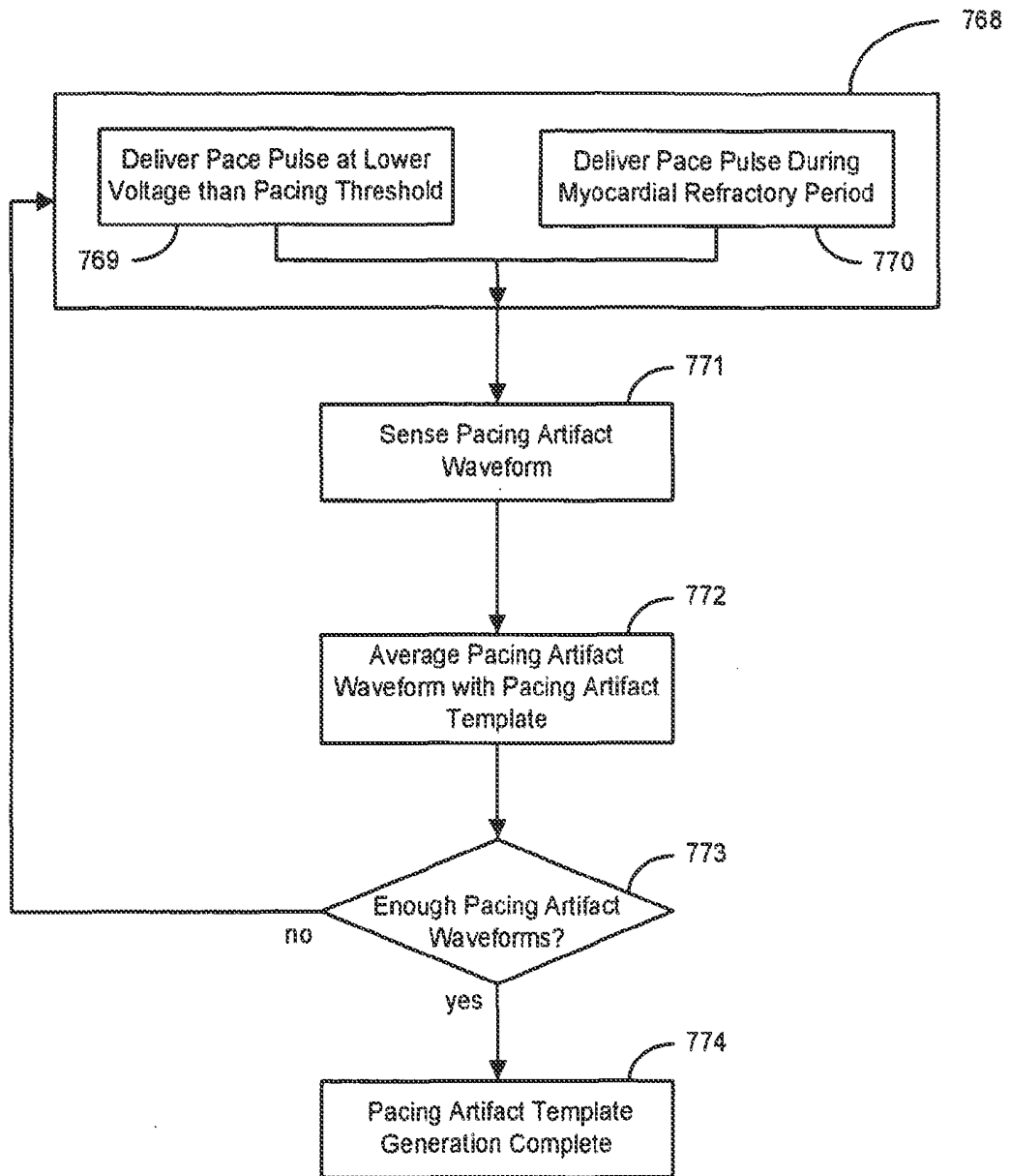


Figure 7E

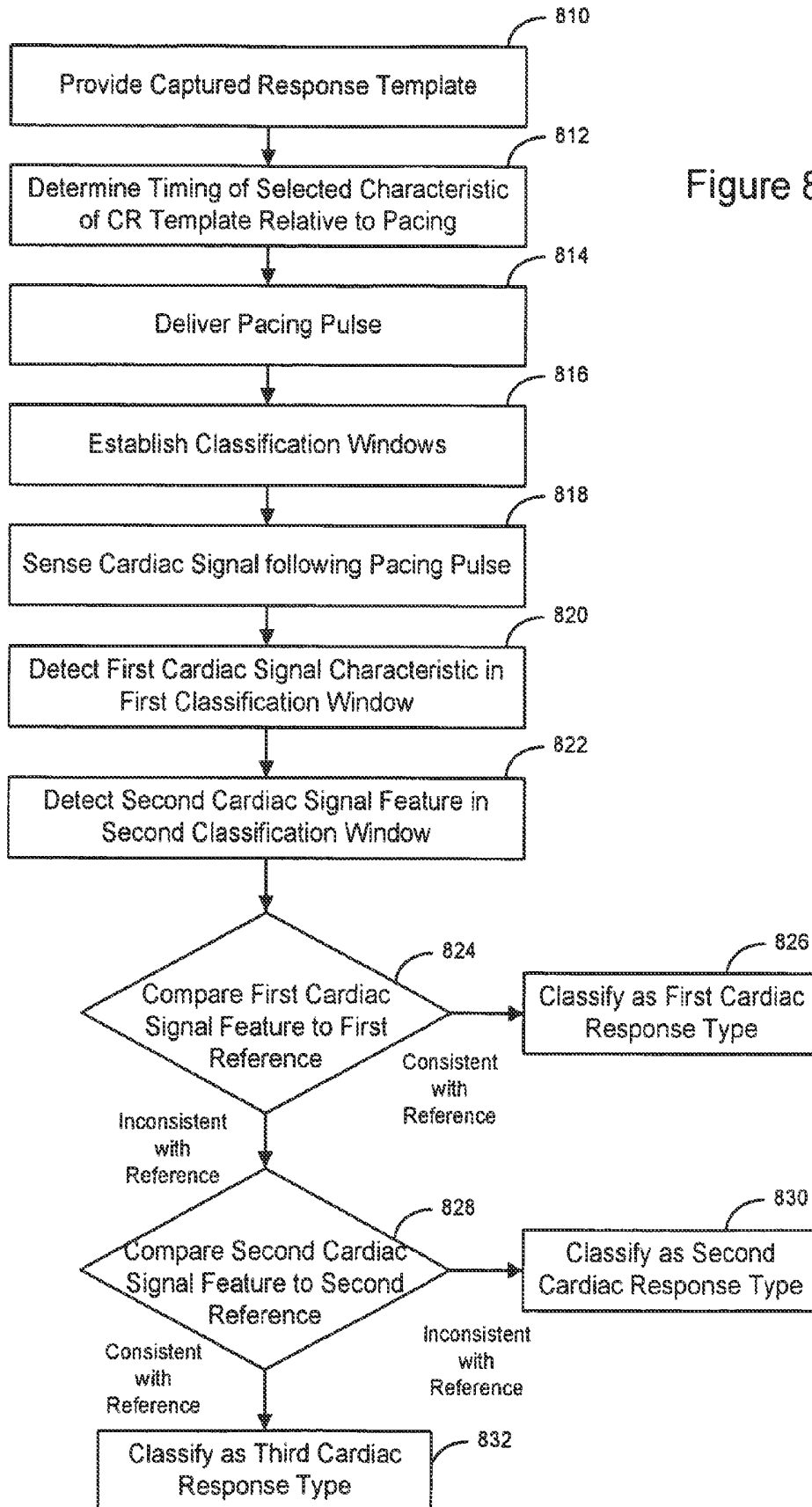
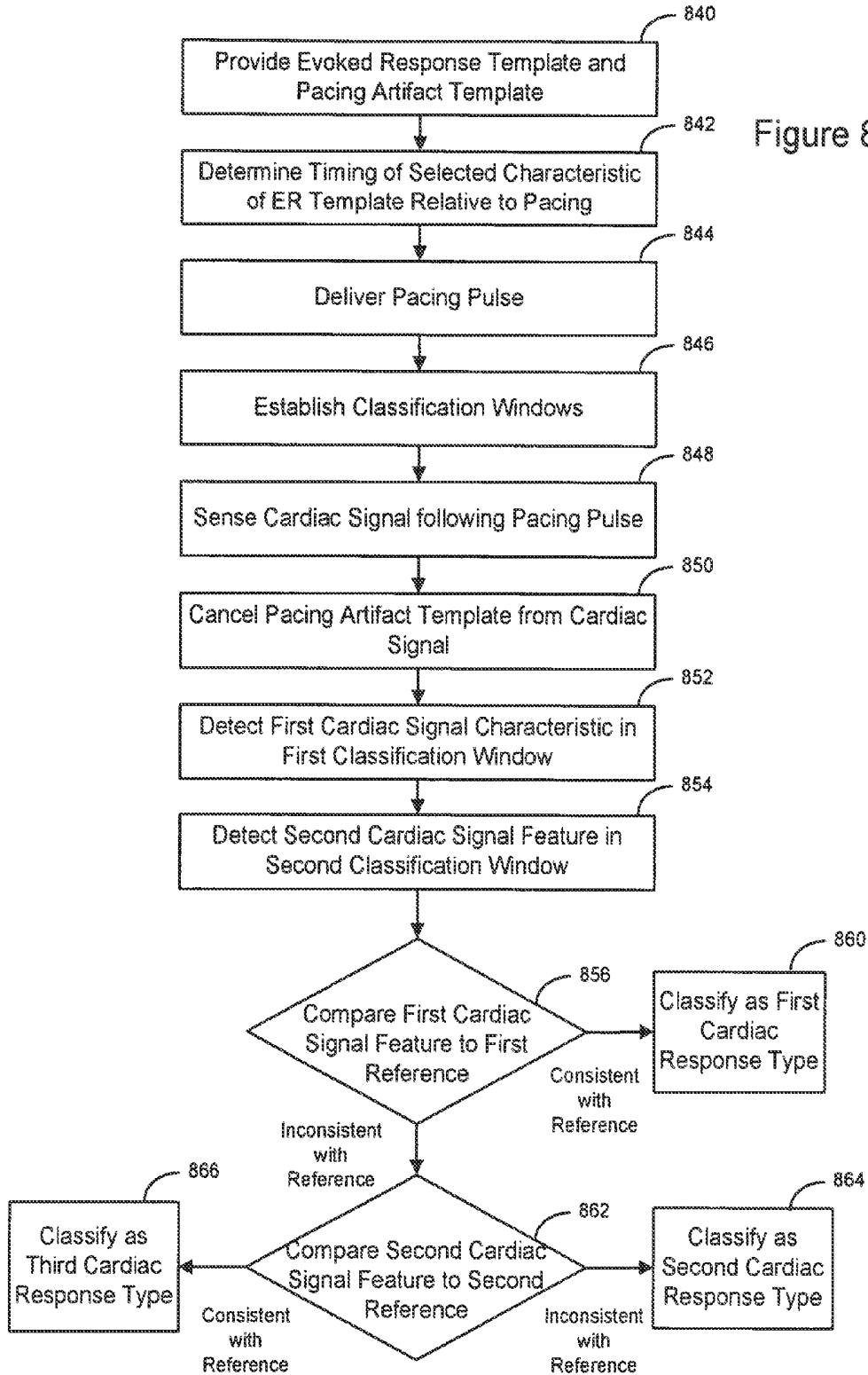


Figure 8A



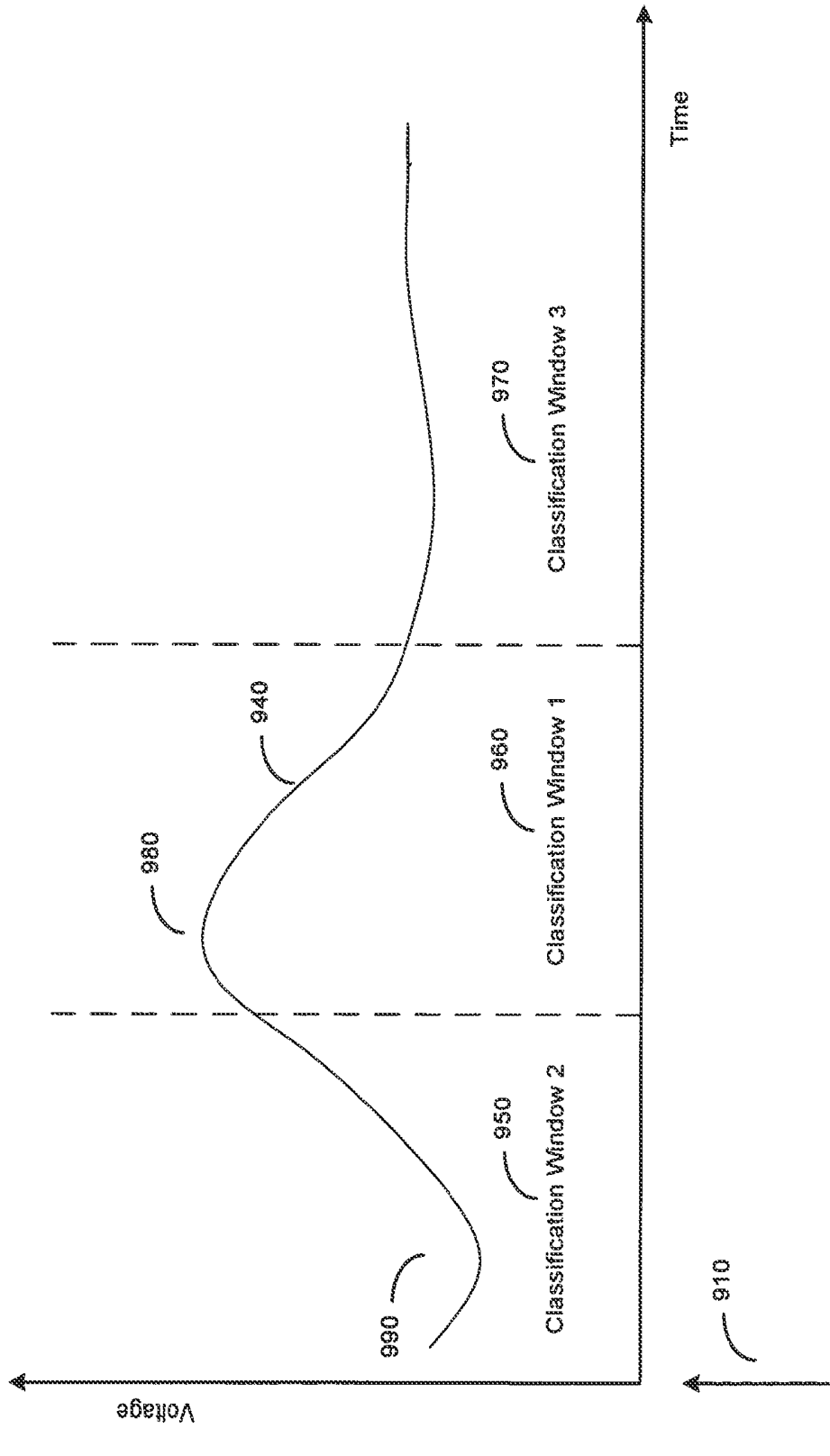


Figure 9

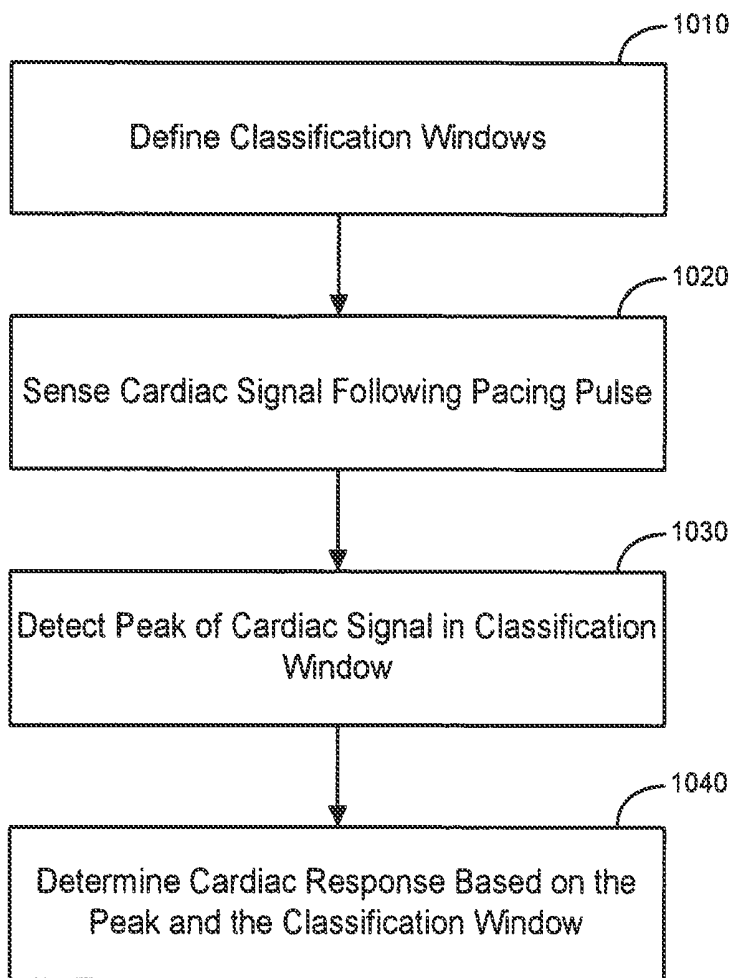


Figure 10

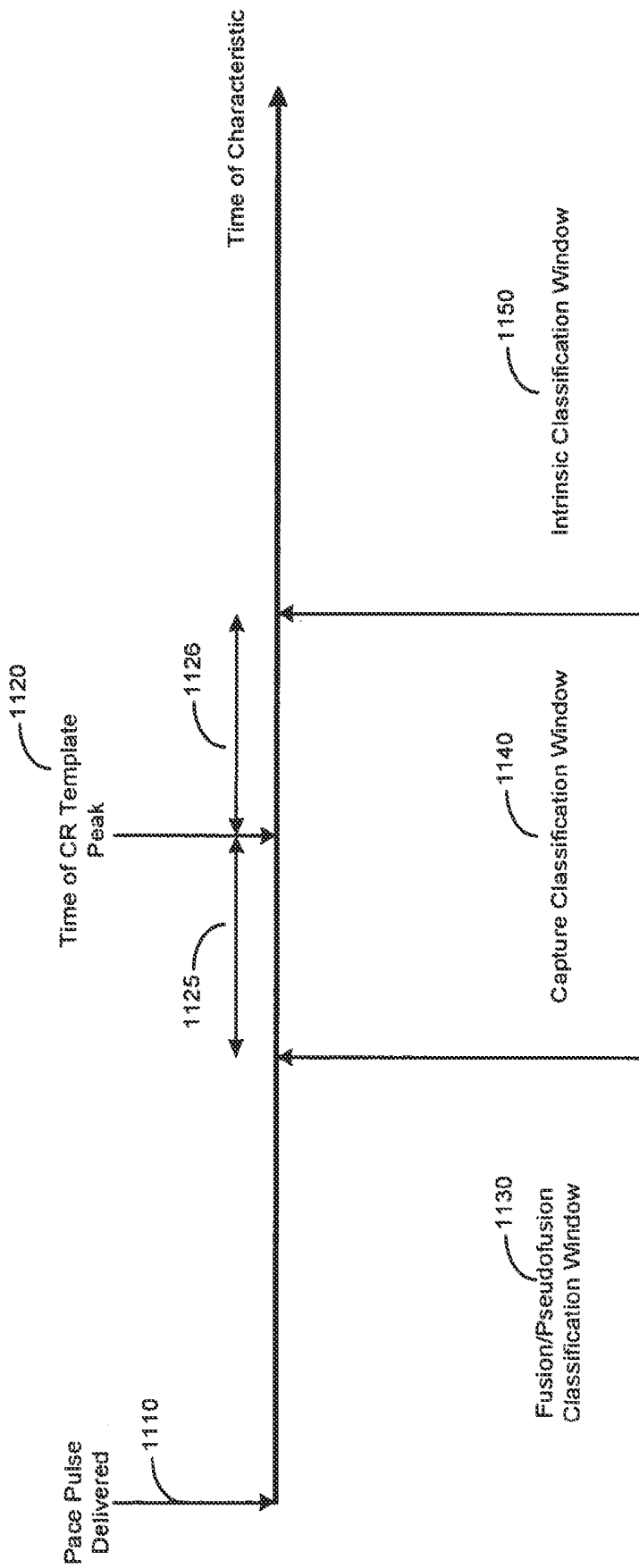


Figure 11

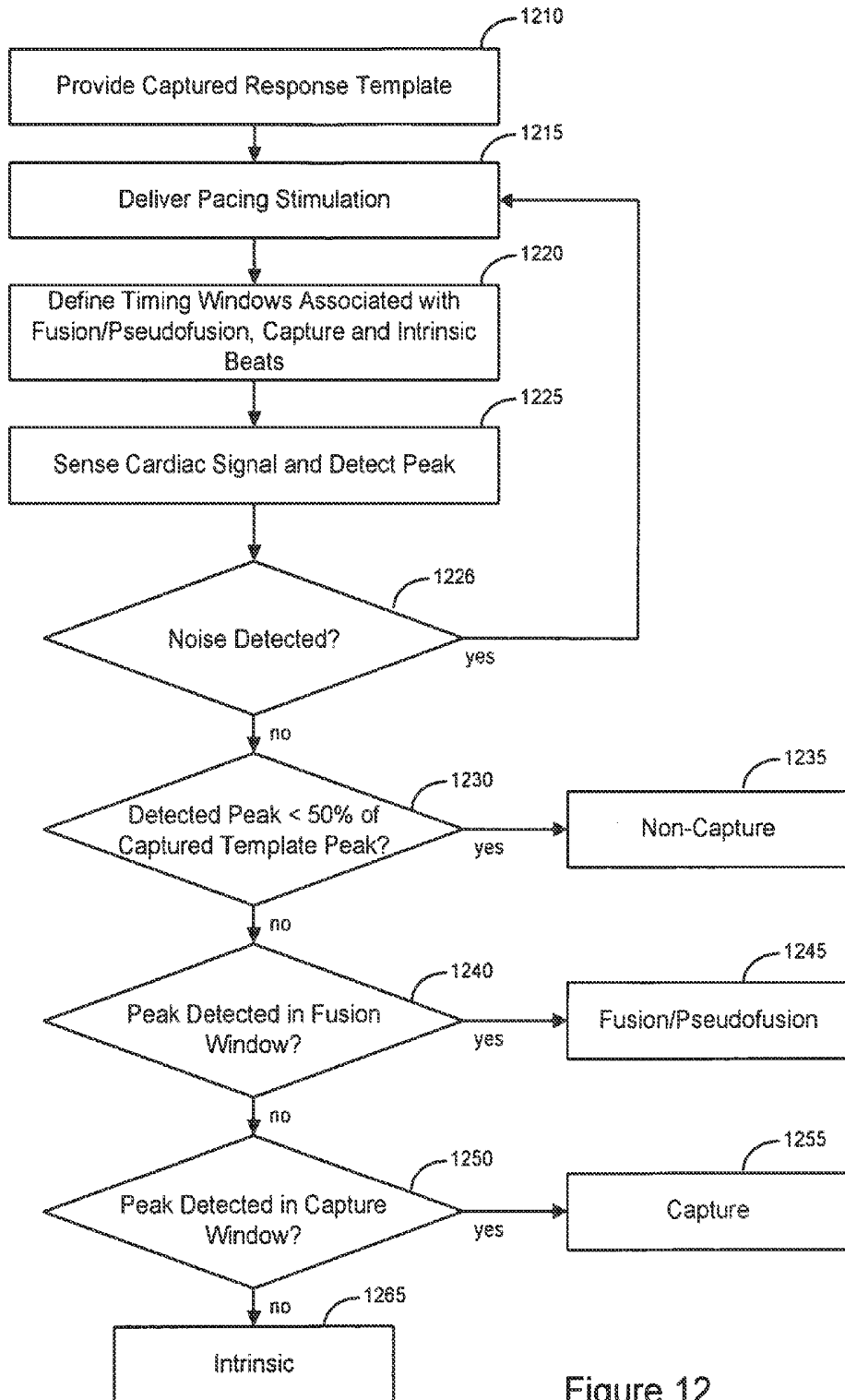


Figure 12

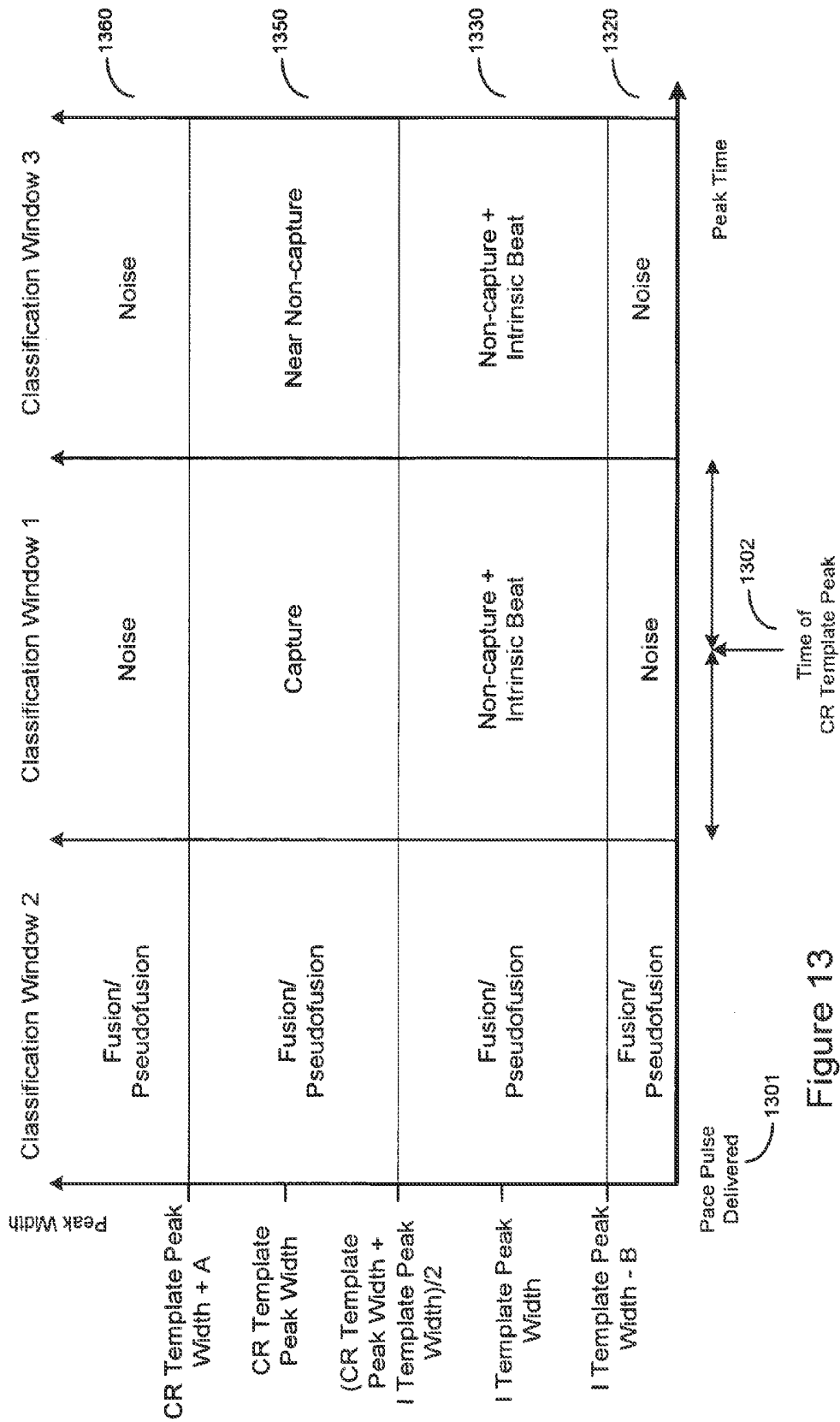


Figure 13

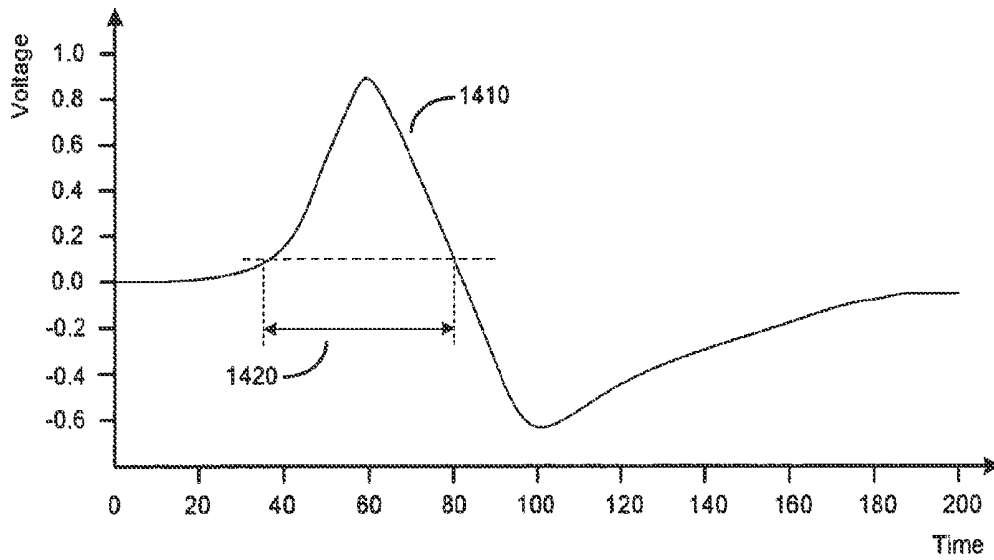


Figure 14A

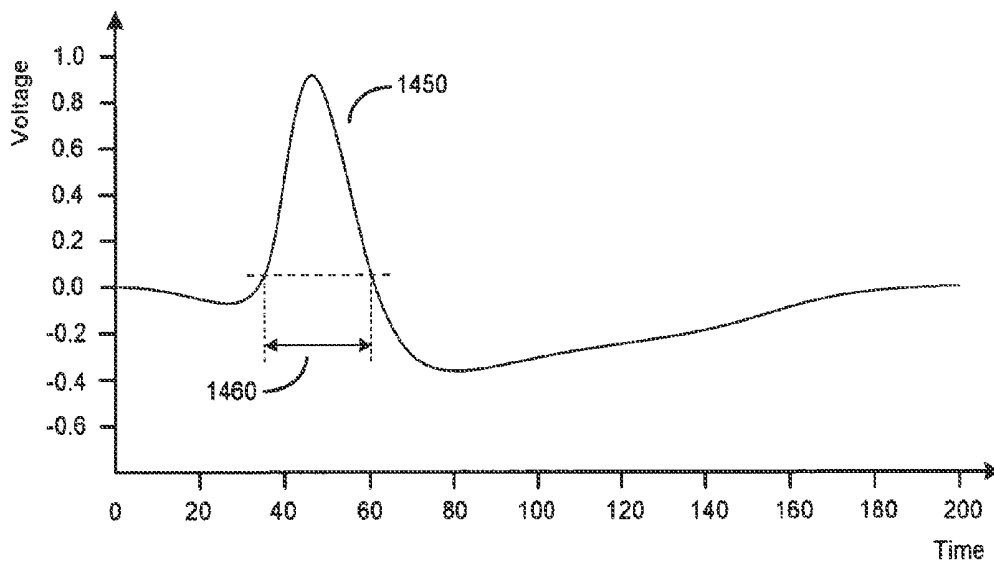
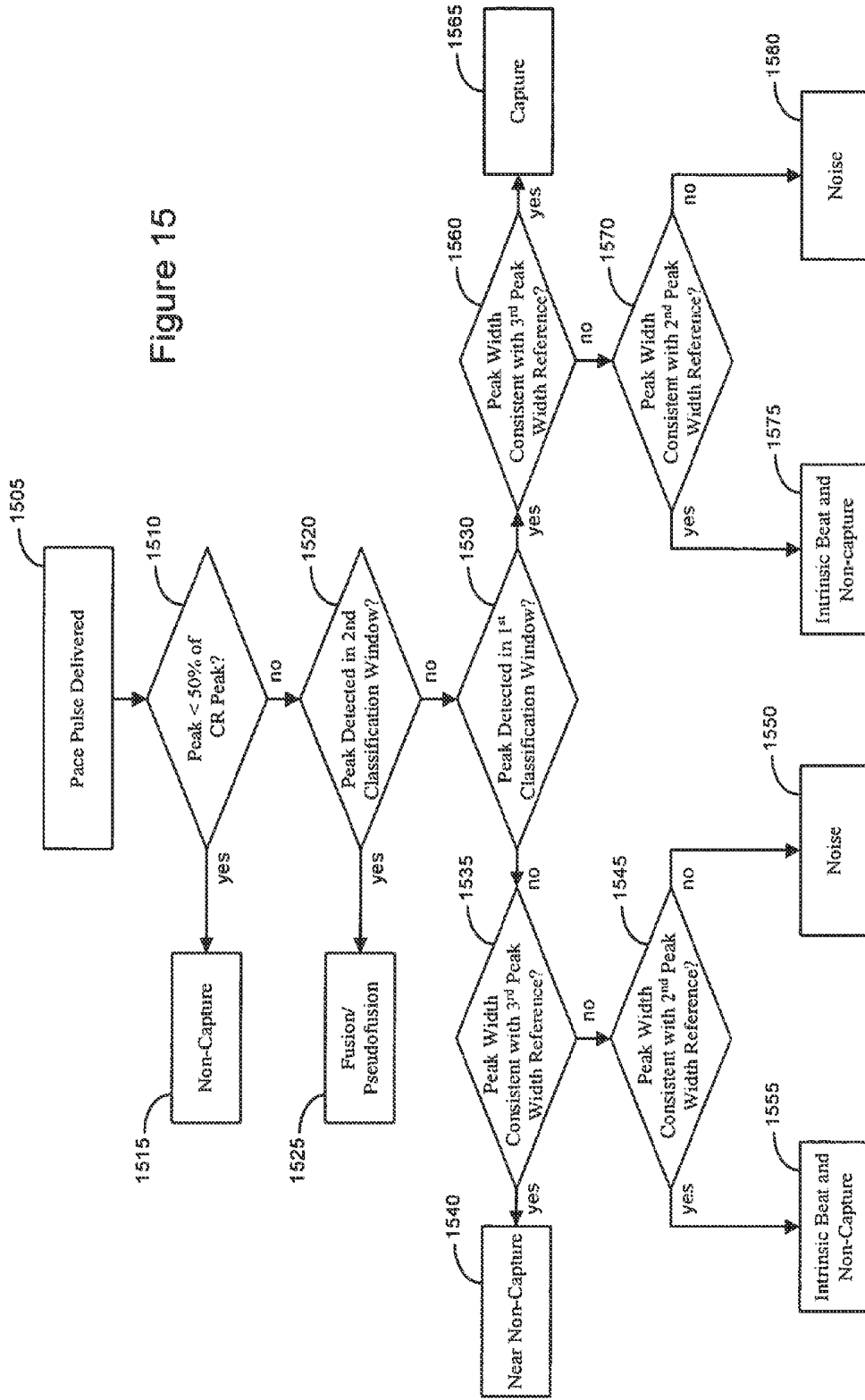


Figure 14B

Figure 15



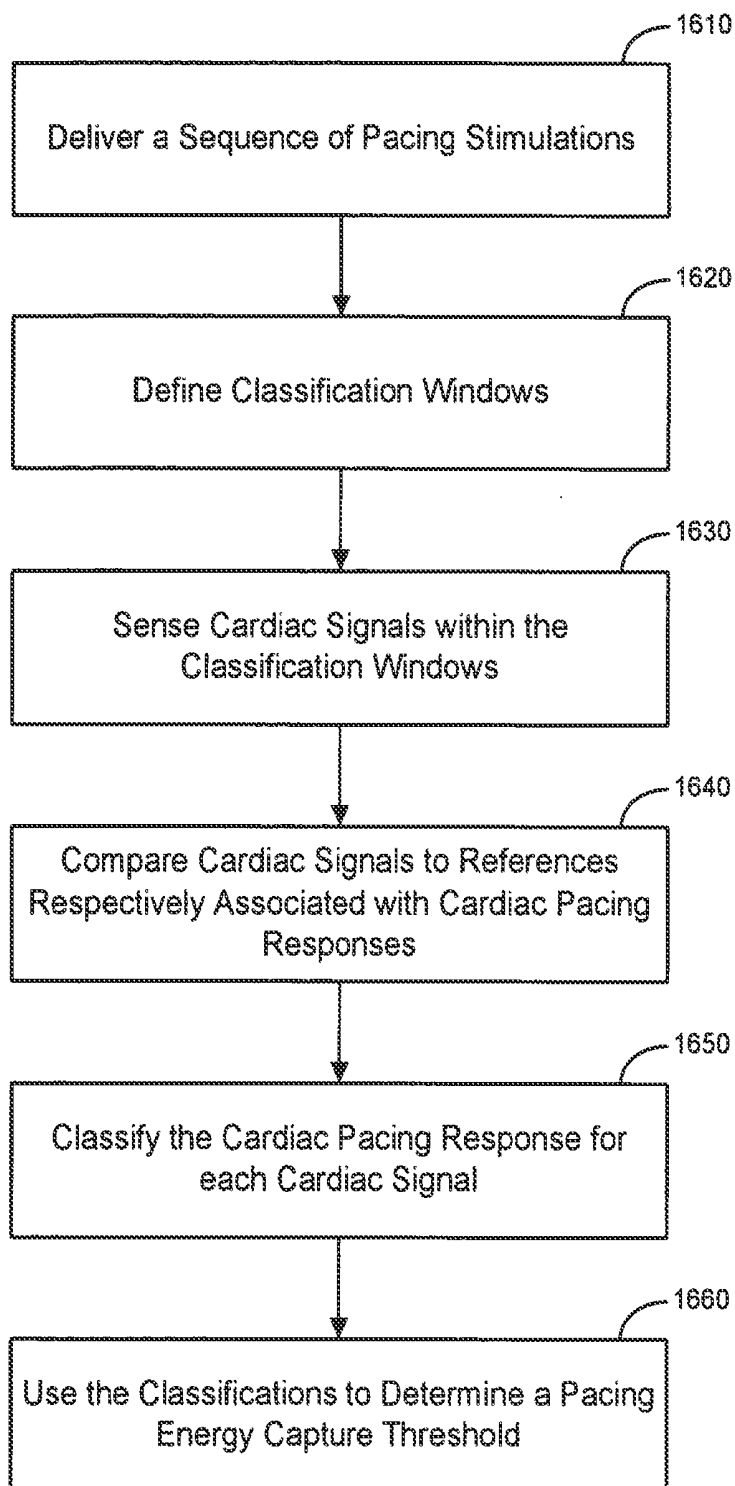


Figure 16

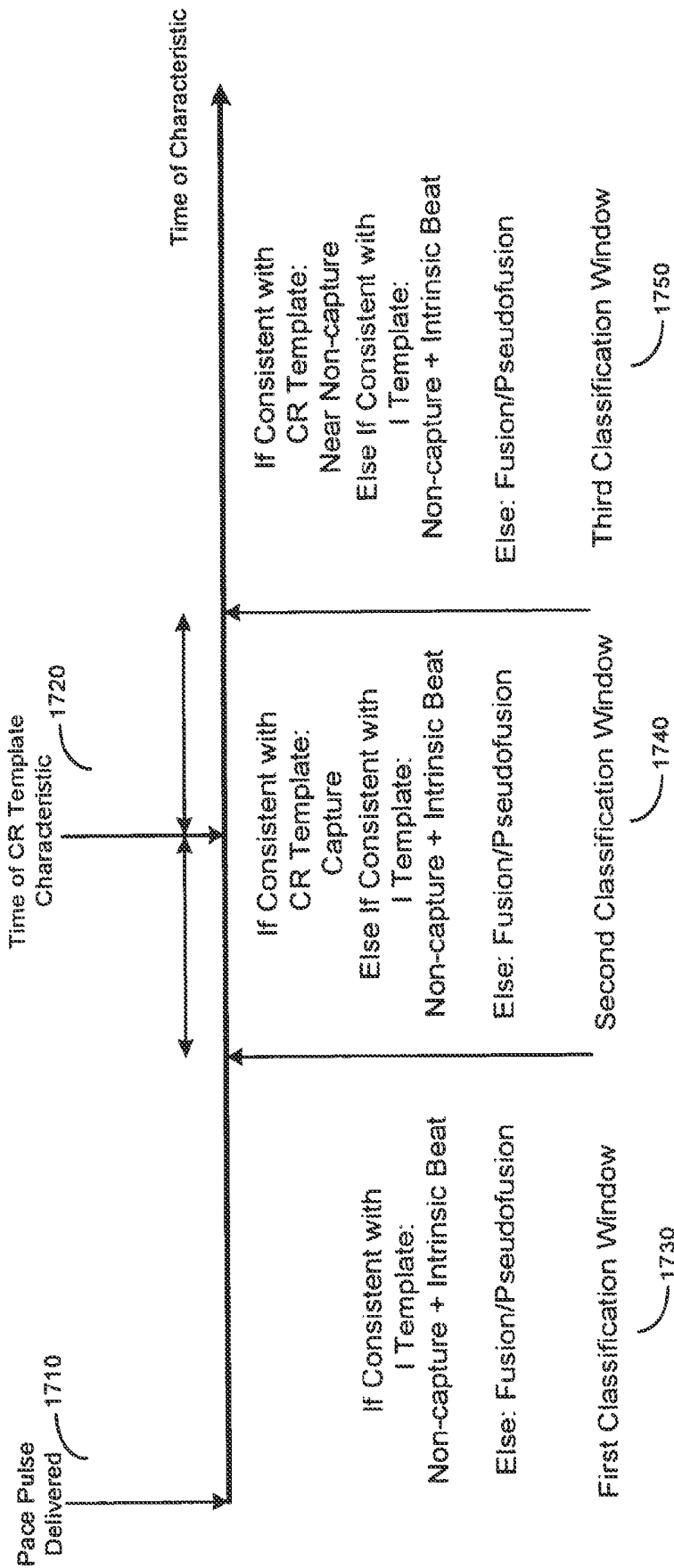
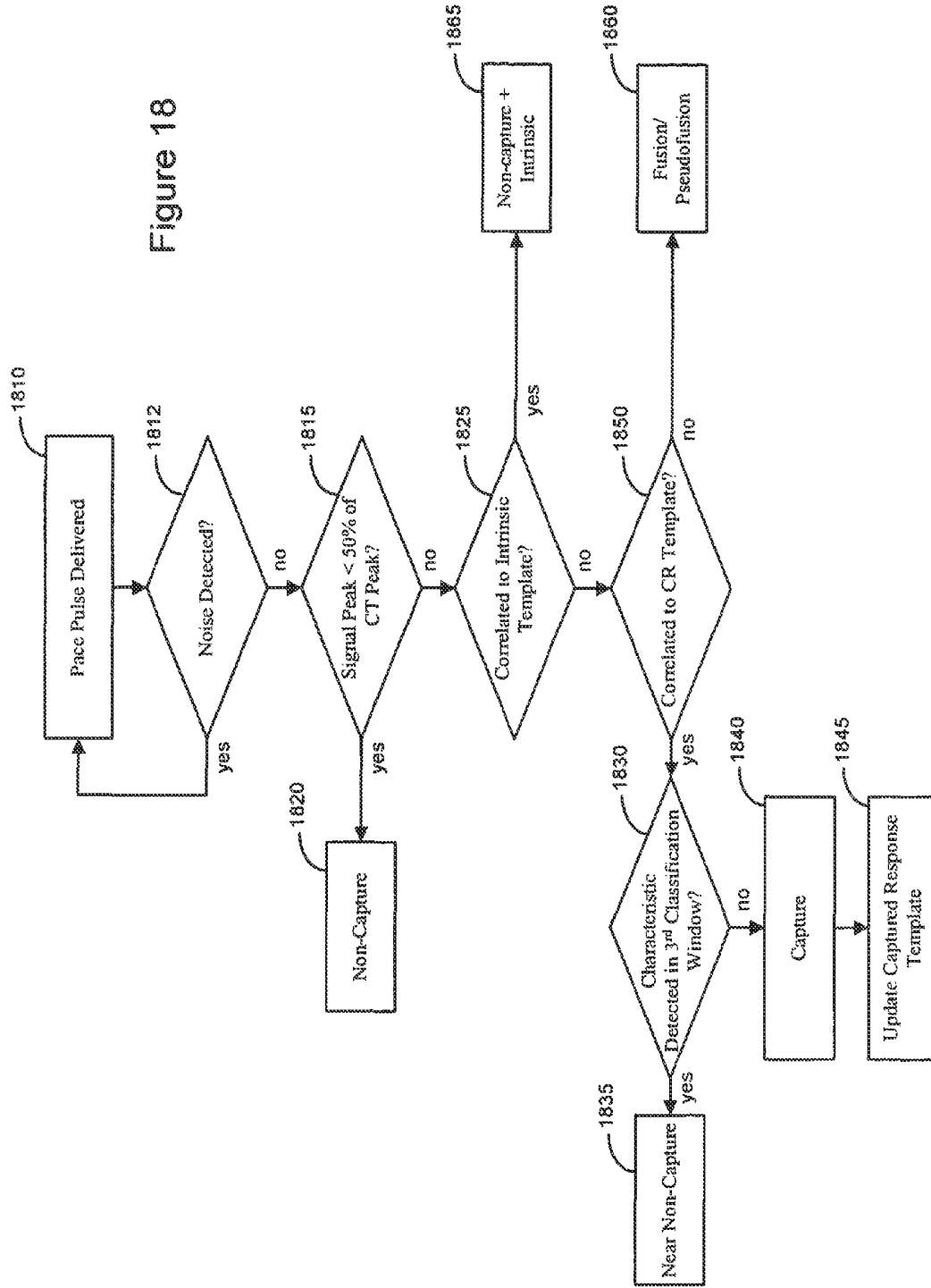


Figure 17

Figure 18



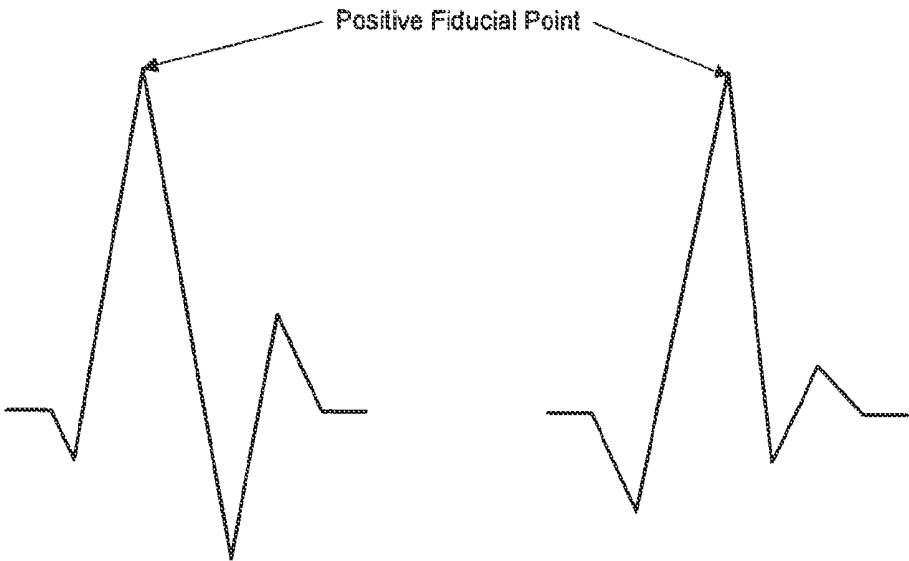


Figure 19

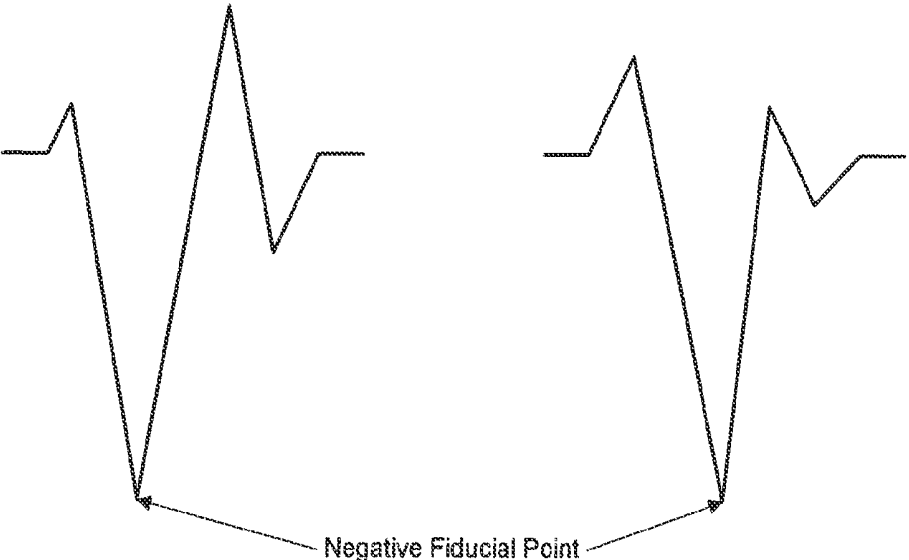


Figure 20

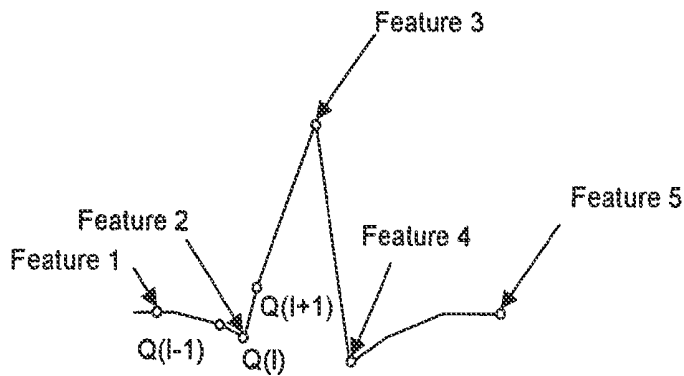


Figure 21

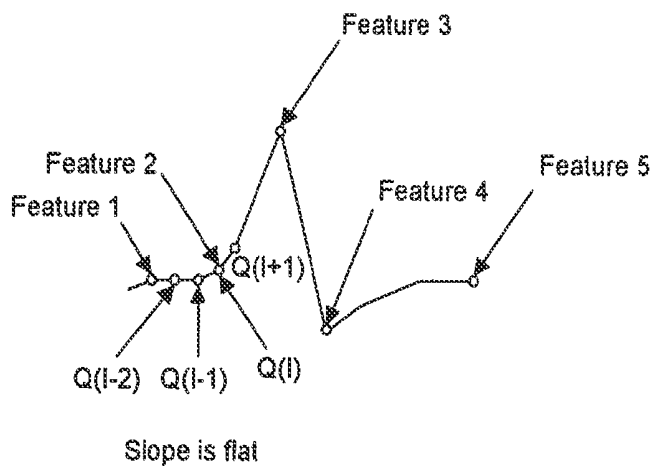


Figure 22

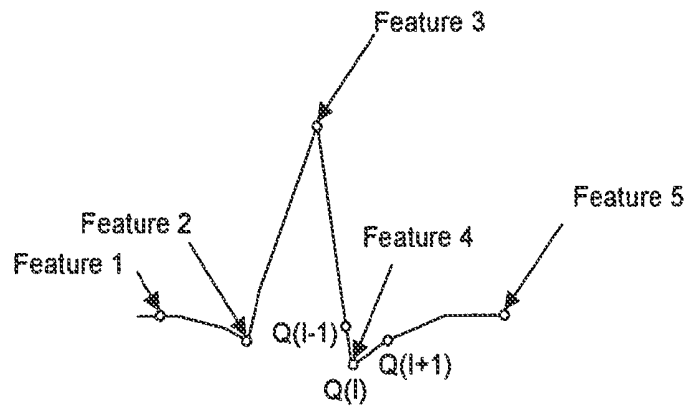


Figure 23

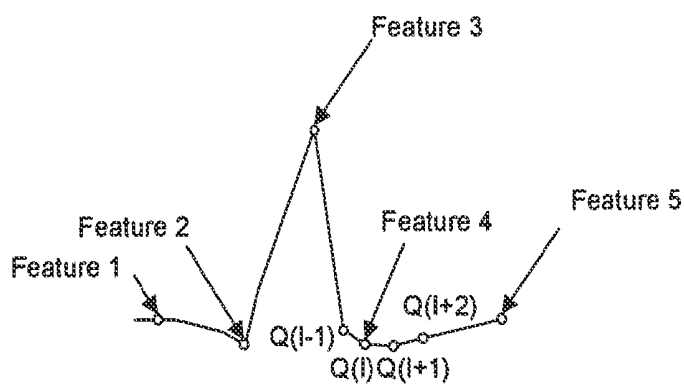


Figure 24

CARDIAC RESPONSE CLASSIFICATION USING MULTISITE SENSING AND PACING

RELATED APPLICATIONS

This application is a continuation of U.S. patent application Ser. No. 10/735,519, filed on Dec. 13, 2003, now U.S. Pat. No. 8,521,284 which is hereby incorporated by reference herein.

FIELD OF THE INVENTION

The present invention relates generally to implantable medical devices and, more particularly, to classifying a cardiac response following delivery of a pace pulse based on multisite sensing and pacing.

BACKGROUND OF THE INVENTION

When functioning normally, the heart produces rhythmic contractions and is capable of pumping blood throughout the body. However, due to disease or injury, the heart rhythm may become irregular resulting in diminished pumping efficiency. Arrhythmia is a general term used to describe heart rhythm irregularities arising from a variety of physical conditions and disease processes. Cardiac rhythm management systems, such as implantable pacemakers and cardiac defibrillators, have been used as an effective treatment for patients with serious arrhythmias. These systems typically comprise circuitry to sense electrical signals from the heart and a pulse generator for delivering electrical stimulation pulses to the heart. Leads extending into the patient's heart are connected to electrodes that contact the myocardium for sensing the heart's electrical signals and for delivering stimulation pulses to the heart in accordance with various therapies for treating the arrhythmias.

Cardiac rhythm management systems operate to stimulate the heart tissue adjacent to the electrodes to produce a contraction of the tissue. Pacemakers are cardiac rhythm management systems that deliver a series of low energy pace pulses timed to assist the heart in producing a contractile rhythm that maintains cardiac pumping efficiency. Pace pulses may be intermittent or continuous, depending on the needs of the patient. There exist a number of categories of pacemaker devices, with various modes for sensing and pacing one or more heart chambers.

When a pace pulse produces a contraction in the heart tissue, the electrical cardiac signal following the contraction is denoted the captured response (CR). The captured response may include an electrical signal, denoted the evoked response signal, associated with the heart contraction, along with a superimposed signal associated with residual post pace polarization at the electrode-tissue interface. The magnitude of the residual post pace polarization signal, or pacing artifact, may be affected by a variety of factors including lead polarization, after-potential from the pace pulse, lead impedance, patient impedance, pace pulse width, and pace pulse amplitude, for example.

A pace pulse must exceed a minimum energy value, or capture threshold, to produce a contraction. It is desirable for a pace pulse to have sufficient energy to stimulate capture of the heart without expending energy significantly in excess of the capture threshold. Thus, accurate determination of the capture threshold is required for efficient pace energy management. If the pace pulse energy is too low, the pace pulses may not reliably produce a contractile response in the heart and may result in ineffective pacing. If the pace pulse energy

is too high, the patient may experience discomfort and the battery life of the device will be shorter.

Capture detection allows the cardiac rhythm management system to adjust the energy level of pace pulses to correspond to the optimum energy expenditure that reliably produces a contraction. Further, capture detection allows the cardiac rhythm management system to initiate a back-up pulse at a higher energy level whenever a pace pulse does not produce a contraction.

At times, a pacing pulse may merge with an intrinsic beat, producing a fusion beat. A fusion beat is a cardiac contraction that occurs when two cardiac depolarizations of a particular chamber, but from separate initiation sites, merge. When the heart is being paced, a fusion beat may occur when an intrinsic cardiac depolarization of a particular chamber merges with a pacer output pulse within that chamber. Fusion beats, as seen on electrocardiographic recordings, exhibit various morphologies. The merging depolarizations of a fusion beat do not contribute evenly to the total depolarization.

Pseudofusion occurs when a pacer output pulse is superimposed upon a spontaneous P wave during atrial pacing or upon a spontaneous QRS complex during ventricular pacing. In pseudofusion, the pacing stimulus may be ineffective because the tissue around the electrode has already spontaneously depolarized and is in its refractory period.

During normal pacing, the presence of fusion or pseudofusion beats may be of little consequence except for wasted energy due to the generation of unnecessary pace pulses. However, detection of fusion or pseudofusion beats may be required during an automatic capture or threshold determination procedures. Fusion or pseudofusion beats may cause false detection of capture and may lead to erroneous capture threshold values.

Capture may be verified by detecting if a cardiac signal following a pace pulse indicates a captured response. However, the captured response must be discerned from other responses, including the superimposed residual post pace polarization without capture, intrinsic beats, and fusion/pseudofusion beats.

SUMMARY OF THE INVENTION

The present invention involves various methods and devices for classifying a cardiac response to a pacing stimulation. In accordance with various embodiments of the invention, a first electrode combination is used for pacing the heart and a second electrode combination is used to sense cardiac signal following the pacing pulse to classify the cardiac pacing response.

An embodiment of the invention involves a method for classifying a cardiac response to a pacing pulse. A plurality of electrodes electrically coupled to a heart is provided. A pacing pulse is delivered to the heart using a first electrode combination and a cardiac signal following the pacing pulse is sensed using a second electrode combination. The cardiac response to pacing is classified as one of a captured response, a non-captured response, and a fusion/pseudofusion beat using the sensed cardiac signal.

In accordance with an embodiment of the invention a method of classifying a cardiac response to a pacing stimulation involves providing a plurality of electrodes electrically coupled to a heart. A pacing pulse is delivered to the heart using a first electrode combination. A cardiac signal following the pacing pulse is sensed using a second electrode combination. The cardiac response to the pacing pulse is classified as one of at least three cardiac response types using the sensed signal.

Another embodiment of the invention involves a method for classifying a cardiac pacing response. The method includes providing a plurality of electrodes electrically coupled to a heart. A pacing pulse is delivered using a first electrode combination and a cardiac signal is sensed following the pacing pulse using a second electrode combination. A plurality of classification windows are defined relative to and subsequent to the pacing pulse. A characteristic of the cardiac signal is detected within a particular classification window. The cardiac response to the pacing pulse is classified based on the detected characteristic and the particular classification window.

Yet another embodiment of the invention involves a method for detecting a fusion/pseudofusion beat. A plurality of electrodes electrically coupled to the heart is provided. A pacing pulse is delivered to the heart using a first electrode combination and a cardiac signal following the pacing pulse is sensed using a second electrode combination. A fusion/pseudofusion beat is detected using the sensed cardiac signal.

In accordance with yet another embodiment of the invention, a medical device for classifying a cardiac pacing response includes a plurality of electrodes electrically coupled to a heart. A pulse delivery circuit and a sensing circuit are coupled to the plurality of electrodes. The pulse delivery circuit is configured to deliver a pacing pulse to a heart using a first electrode combination. The sensing circuit is configured to sense a cardiac signal following the pacing pulse using a second electrode combination. A control circuit is coupled to the sensing circuit and is configured to classify a cardiac response to the pacing pulse as one of at least three cardiac response types based on the sensed cardiac signal.

A further embodiment of the invention involves a medical device for detecting a fusion/pseudofusion response to a pacing pulse. The medical device includes a plurality of electrodes electrically coupled to a heart. A pulse delivery circuit is configured to deliver a pacing pulse using a first electrode combination. A sensing circuit is configured to sense a cardiac signal following the pacing pulse using a second electrode combination. A control circuit coupled to the sensing circuit is configured to detect a fusion/pseudofusion beat based on the sensed cardiac signal.

The above summary of the present invention is not intended to describe each embodiment or every implementation of the present invention. Advantages and attainments, together with a more complete understanding of the invention, will become apparent and appreciated by referring to the following detailed description and claims taken in conjunction with the accompanying drawings.

BRIEF DESCRIPTION OF THE DRAWINGS

FIG. 1 is a partial view of one embodiment of an implantable medical device in accordance with embodiments of the invention;

FIG. 2A is a block diagram of an implantable medical device that may be used to classify a cardiac response to pacing in accordance with embodiments of the invention;

FIG. 2B is a schematic diagram of a circuit that may be used to generate pacing stimulations in accordance with embodiments of the invention;

FIG. 2C is a schematic diagram of a circuit that may be used to sense a cardiac signal following the delivery of a pacing stimulation and to classify the cardiac response to the pacing stimulation according to embodiments of the invention;

FIG. 3 is a graph illustrating a cardiac signal that indicates capture;

FIG. 4 is a graph comparing a captured response and a non-captured intrinsic response in accordance with embodiments of the invention;

FIG. 5 is a graph illustrating a propagation delay of a cardiac signal sensed on a shock channel following a pacing pulse delivered on a rate channel;

FIG. 6A is a flowchart illustrating a method used for detection of fusion/pseudofusion beats in accordance with embodiments of the invention;

FIG. 6B is a flowchart illustrating a method of cardiac response classification in accordance with embodiments of the invention;

FIG. 6C is a flowchart illustrating a method of classifying a cardiac response to pacing using multiple classification windows in accordance with embodiments of the invention;

FIG. 7A illustrates establishment of a set of classification windows relative and subsequent to the pacing stimulation based on a captured response template characteristic in accordance with embodiments of the invention;

FIG. 7B is a flowchart illustrating a method of forming a captured response (CR) template in accordance with embodiments of the invention;

FIG. 7C illustrates establishment of a set of classification windows relative and subsequent to the pacing stimulation based on an evoked response template characteristic in accordance with embodiments of the invention;

FIG. 7D is a flowchart illustrating a method of providing an evoked response template for use in cardiac response classification in accordance with embodiments of the invention;

FIG. 7E is a flowchart illustrating a method of acquiring a pacing artifact template in accordance with an embodiment of the invention;

FIG. 8A is a flowchart illustrating a method of cardiac response classification utilizing a captured response (CR) template to define multiple classification windows in accordance with embodiments of the invention;

FIG. 8B is a flowchart illustrating a method of cardiac response classification using an evoked response template to define multiple classification windows in accordance with embodiments of the invention.

FIG. 9 is a diagram illustrating a cardiac signal sensed within multiple classification windows established following a pacing pulse in accordance with embodiments of the invention;

FIG. 10 is a flowchart illustrating a method for performing cardiac response classification in accordance with embodiments of the invention;

FIG. 11 is a diagram illustrating fusion, capture, and non-capture plus intrinsic response classification windows in accordance with embodiments of the invention;

FIG. 12 is a flowchart illustrating a method of classifying a cardiac response using fusion, capture, and intrinsic classification windows in accordance with an embodiment of the invention;

FIG. 13 is a diagram illustrating peak width classification references used to classify a cardiac response in accordance with embodiments of the invention;

FIGS. 14A and 14B are graphs illustrating the peak width of a captured response and an intrinsic beat, respectively;

FIG. 15 is a flowchart of a method of classifying a cardiac response using peak width references according to embodiments of the invention;

FIG. 16 is a flowchart of a method of implementing a cardiac response classification process in accordance with the embodiments of the invention;

FIG. 17 is a diagram illustrating the use of captured response and intrinsic beat templates-in connection with classification of a cardiac response in accordance with embodiments of the invention;

FIG. 18 is a flowchart of a method of using template references to classify a cardiac response in accordance with embodiments of the invention.

FIGS. 19 and 20 illustrate positive and negative type fiducial points determined from rate channel signals in accordance with embodiments of the invention;

FIGS. 21 and 22 show morphological features, including turning point and flat slope features, respectively, for choosing template features in accordance with embodiments of the invention; and

FIGS. 23 and 24 show morphological features, including turning point and flat slope features, respectively, for choosing template features in accordance with embodiments of the present invention.

While the invention is amenable to various modifications and alternative forms, specifics thereof have been shown by way of example in the drawings and will be described in detail below. It is to be understood, however, that the intention is not to limit the invention to the particular embodiments described. On the contrary, the invention is intended to cover all modifications, equivalents, and alternatives falling within the scope of the invention as defined by the appended claims.

DETAILED DESCRIPTION OF VARIOUS EMBODIMENTS

In the following description of the illustrated embodiments, references are made to the accompanying drawings forming a part hereof, and in which are shown by way of illustration, various embodiments by which the invention may be practiced. It is to be understood that other embodiments may be utilized, and structural and functional changes may be made without departing from the scope of the present invention.

Various embodiments of the invention involve using an electrode combination for pacing that is different from the electrode combination used for sensing the cardiac response to pacing. Employing different electrode combinations for pacing and sensing may be used to enhance cardiac response classification. In various embodiments, using different pacing and sensing electrode combinations facilitates discrimination between a captured response and a fusion/pseudofusion beat. Further, in accordance with embodiments of the invention detection of fusion/pseudofusion beats may be implemented using this approach.

In accordance with various aspects of the invention, cardiac response classification may be implemented by defining a plurality of classification windows relative to and following a pacing stimulation. A cardiac signal following the pacing stimulation is sensed. One or more characteristics of the cardiac signal, for example, a peak, slope, curvature, sequence of feature points, or other characteristic of the cardiac signal is detected in one of the classification windows. The cardiac response to the pacing stimulation is determined based on the one or more detected characteristics and the particular classification windows in which the one or more characteristics are detected. The cardiac response may be determined to be one of a captured response, a non-captured response, a non-captured response added to an intrinsic beat, a fusion/pseudofusion beat. The cardiac response classification may be cancelled if noise is detected on the cardiac signal.

By way of example, the processes of the present invention may be used to enhance capture threshold testing to determine the optimal energy for pacing. Determination of the optimal pacing energy may be implemented, for example, by an automatic capture threshold testing procedure executed by an implantable cardiac rhythm management system. Additionally, automatic capture verification may be used to monitor pacing on a beat-by-beat basis. Automatic capture verification may be used to control back up pacing when a pace pulse delivered to the heart fails to evoke a captured response (CR). These and other applications may be enhanced by employment of the systems and methods of the present invention.

Those skilled in the art will appreciate that reference to a capture threshold procedure indicates a method of determining the capture threshold in one of the left atrium, the right atrium, the left ventricle, and the right ventricle. In such a procedure, the pacemaker, automatically or upon command, initiates a search for the capture threshold of the selected heart chamber. The capture threshold is defined as the lowest pacing energy that consistently produces a contraction in the chamber.

In one example of an automatic capture threshold procedure, the pacemaker delivers a sequence of pacing pulses to the heart and detects the cardiac responses to the pace pulses. The energy of the pacing pulses may be decreased in discrete steps until a predetermined number of loss-of-capture events occur. The pacemaker may increase the stimulation energy in discrete steps until a predetermined number of capture events occur to confirm the capture threshold. A capture threshold test may be performed using cardiac response classification methods of the present invention.

Other procedures for implementing capture threshold testing may be utilized. In one example, the pacing energy may be increased in discrete steps until capture is detected. In another example, the pacing energy may be adjusted according to a binomial search pattern.

Automatic capture threshold determination is distinguishable from automatic capture detection, a procedure that may occur on a beat-by-beat basis during pacing. Automatic capture detection verifies that a delivered pace pulse results in a captured response. When a captured response is not detected following a pace pulse, the pacemaker may deliver a back up safety pace to ensure consistent pacing. The back up pace may be delivered, for example, about 70-80 ms after the initial pace pulse. If a predetermined number of pace pulses delivered during normal pacing do not produce a captured response, the pacemaker may initiate a capture threshold test to determine the capture threshold. Automatic capture detection and back up pacing may be implemented using the cardiac response classification processes of the present invention.

The embodiments of the present system illustrated herein are generally described as being implemented in an implantable cardiac defibrillator (ICD) that may operate in numerous pacing modes known in the art. Various types of single and multiple chamber implantable cardiac defibrillators are known in the art and may be used in connection with the cardiac response classification methods of the present invention. The methods of the present invention may also be implemented in a variety of implantable or patient-external cardiac rhythm management devices, including single and multi chamber pacemakers, defibrillators, cardioverters, bi-ventricular pacemakers, cardiac resynchronizers, and cardiac monitoring systems, for example.

Although the present system is described in conjunction with an implantable cardiac defibrillator having a micropro-

cessor-based architecture, it will be understood that the implantable cardiac defibrillator (or other device) may be implemented in any logic-based integrated circuit architecture, if desired.

Referring now to FIG. 1 of the drawings, there is shown a cardiac rhythm management system that may be used to implement cardiac response classification methods of the present invention. The cardiac rhythm management system in FIG. 1 includes an ICD 100 electrically and physically coupled to a lead system 102. The housing and/or header of the ICD 100 may incorporate one or more electrodes 208, 209 used to provide electrical stimulation energy to the heart and to sense cardiac electrical activity. The ICD 100 may utilize all or a portion of the ICD housing as a can electrode 209. The ICD 100 may include an indifferent electrode positioned, for example, on the header or the housing of the ICD 100. If the ICD 100 includes both a can electrode 209 and an indifferent electrode 208, the electrodes 208, 209 typically are electrically isolated from each other.

The lead system 102 is used to detect electric cardiac signals produced by the heart 101 and to provide electrical energy to the heart 101 under certain predetermined conditions to treat cardiac arrhythmias. The lead system 102 may include one or more electrodes used for pacing, sensing, and/or defibrillation. In the embodiment shown in FIG. 1, the lead system 102 includes an intracardiac right ventricular (RV) lead system 104, an intracardiac right atrial (RA) lead system 105, an intracardiac left ventricular (LV) lead system 106, and an extracardiac left atrial (LA) lead system 108. The lead system 102 of FIG. 1 illustrates one embodiment that may be used in connection with the cardiac response classification methodologies described herein. Other leads and/or electrodes may additionally or alternatively be used.

The lead system 102 may include intracardiac leads 104, 105, 106 implanted in a human body with portions of the intracardiac leads 104, 105, 106 inserted into a heart 101. The intracardiac leads 104, 105, 106 include various electrodes positionable within the heart for sensing electrical activity of the heart and for delivering electrical stimulation energy to the heart, for example, pacing pulses and/or defibrillation shocks to treat various arrhythmias of the heart.

As illustrated in FIG. 1, the lead system 102 may include one or more extracardiac leads 108 having electrodes, e.g., epicardial electrodes, positioned at locations outside the heart for sensing and pacing one or more heart chambers.

The right ventricular lead system 104 illustrated in FIG. 1 includes an SVC-coil 116, an RV-coil 114, an RV-ring electrode 111, and an RV-tip electrode 112. The right ventricular lead system 104 extends through the right atrium 120 and into the right ventricle 119. In particular, the RV-tip electrode 112, RV-ring electrode 111, and RV-coil electrode 114 are positioned at appropriate locations within the right ventricle 119 for sensing and delivering electrical stimulation pulses to the heart. The SVC-coil 116 is positioned at an appropriate location within the right atrium chamber 120 of the heart 101 or a major vein leading to the right atrial chamber 120 of the heart 101.

In one configuration, the RV-tip electrode 112 referenced to the can electrode 209 may be used to implement unipolar pacing and/or sensing in the right ventricle 119. Bipolar pacing and/or sensing in the right ventricle may be implemented using the RV-tip 112 and RV-ring 111 electrodes. In yet another configuration, the RV-ring 111 electrode may optionally be omitted, and bipolar pacing and/or sensing may be accomplished using the RV-tip electrode 112 and the RV-coil 114, for example. The right ventricular lead system 104 may

be configured as an integrated bipolar pace/shock lead. The RV-coil 114 and the SVC-coil 116 are defibrillation electrodes.

The left ventricular lead 106 includes an LV distal electrode 113 and an LV proximal electrode 117 located at appropriate locations in or about the left ventricle 124 for pacing and/or sensing the left ventricle 124. The left ventricular lead 106 may be guided into the right atrium 120 of the heart via the superior vena cava. From the right atrium 120, the left ventricular lead 108 may be deployed into the coronary sinus ostium, the opening of the coronary sinus 150. The lead 106 may be guided through the coronary sinus 150 to a coronary vein of the left ventricle 124. This vein is used as an access pathway for leads to reach the surfaces of the left ventricle 124 which are not directly accessible from the right side of the heart. Lead placement for the left ventricular lead 106 may be achieved via subclavian vein access and a preformed guiding catheter for insertion of the LV electrodes 113, 117 adjacent to the left ventricle.

Unipolar pacing and/or sensing in the left ventricle may be implemented, for example, using the LV distal electrode referenced to the can electrode 209. The LV distal electrode 113 and the LV proximal electrode 117 may be used together as bipolar sense and/or pace electrodes for the left ventricle. The left ventricular lead 106 and the right ventricular lead 104, in conjunction with the ICD 100, may be used to provide cardiac resynchronization therapy such that the ventricles of the heart are paced substantially simultaneously, or in phased sequence, to provide enhanced cardiac pumping efficiency for patients suffering from chronic heart failure.

The right atrial lead 105 includes a RA-tip electrode 156 and an RA-ring electrode 164 positioned at appropriate locations in the right atrium 120 for sensing and pacing the right atrium 120. In one configuration, the RA-tip 156 referenced to the can electrode 209, for example, may be used to provide unipolar pacing and/or sensing in the right atrium 120. In another configuration, the RA-tip electrode 156 and the RA-ring electrode 154 may be used to effect bipolar pacing and/or sensing.

FIG. 1 illustrates one embodiment of a left atrial lead system 108. In this example, the left atrial lead 108 is implemented as an extracardiac lead with LA distal 118 and LA proximal 115 electrodes positioned at appropriate locations outside the heart 101 for sensing and pacing the left atrium 122. Unipolar pacing and/or sensing of the left atrium may be accomplished, for example, using the LA distal electrode 118 to the can 209 pacing vector. The LA proximal 115 and LA distal 118 electrodes may be used together to implement bipolar pacing and/or sensing of the left atrium 122.

Referring now to FIG. 2A, there is shown an embodiment of a cardiac defibrillator 200 suitable for implementing a cardiac response classification methodology of the present invention. FIG. 2A shows a cardiac defibrillator divided into functional blocks. It is understood by those skilled in the art that there exist many possible configurations in which these functional blocks can be arranged. The example depicted in FIG. 2A is one possible functional arrangement. Other arrangements are also possible. For example, more, fewer or different functional blocks may be used to describe a cardiac defibrillator suitable for implementing the cardiac response classification methodology of the present invention. In addition, although the cardiac defibrillator 200 depicted in FIG. 2A contemplates the use of a programmable microprocessor-based logic circuit, other circuit implementations may be utilized.

The cardiac defibrillator 200 depicted in FIG. 2A includes circuitry for receiving cardiac signals from a heart and deliv-

ering electrical stimulation energy to the heart in the form of pacing pulses or defibrillation shocks. In one embodiment, the circuitry of the cardiac defibrillator **200** is encased and hermetically sealed in a housing **201** suitable for implanting in a human body. Power to the cardiac defibrillator **200** is supplied by an electrochemical battery **280**. A connector block (not shown) is attached to the housing **201** of the cardiac defibrillator **200** to allow for the physical and electrical attachment of the lead system conductors to the circuitry of the cardiac defibrillator **200**.

The cardiac defibrillator **200** may be a programmable microprocessor-based system, including a control system **220** and a memory **270**. The memory **270** may store parameters for various pacing, defibrillation, and sensing modes, along with other parameters. Further, the memory **270** may store data indicative of cardiac signals received by other components of the cardiac defibrillator **200**. The memory **270** may be used, for example, for storing historical EGM and therapy data. The historical data storage may include, for example, data obtained from long term patient monitoring used for trending or other diagnostic purposes. Historical data, as well as other information, may be transmitted to an external programmer unit **290** as needed or desired.

The control system **220** and memory **270** may cooperate with other components of the cardiac defibrillator **200** to control the operations of the cardiac defibrillator **200**. The control system depicted in FIG. 2A incorporates a cardiac response classification processor **226** for classifying cardiac responses to pacing stimulation in accordance with various embodiments of the present invention. The control system **220** may include additional functional components including a pacemaker control circuit **222**, an arrhythmia detector **221**, and a template processor **224**, along with other components for controlling the operations of the cardiac defibrillator **200**.

Telemetry circuitry **280** may be implemented to provide communications between the cardiac defibrillator **200** and an external programmer unit **280**. In one embodiment, the telemetry circuitry **260** and the programmer unit **290** communicate using a wire loop antenna and a radio frequency telemetric link, as is known in the art, to receive and transmit signals and data between the programmer unit **280** and the telemetry circuitry **260**. In this manner, programming commands and other information may be transferred to the control system **220** of the cardiac defibrillator **200** from the programmer unit **290** during and after implant. In addition, stored cardiac data pertaining to capture threshold, capture detection and/or cardiac response classification, for example, along with other data, may be transferred to the programmer unit **290** from the cardiac defibrillator **200**.

In the embodiment of the cardiac defibrillator **200** illustrated in FIG. 2, electrodes RA-tip **156**, RA-ring **154**, RV-tip **112**, RV-ring **111**, RV-coil, SVC-coil, LV distal electrode **113**, LV proximal electrode **117**, LA distal electrode **118**, LA proximal electrode **115**, indifferent electrode **208**, and can electrode **209** are coupled through a switch matrix **210** to sensing circuits **231-237**.

A right atrial sensing circuit **231** serves to detect and amplify electrical signals from the right atrium of the heart. Bipolar sensing in the right atrium may be implemented, for example, by sensing voltages developed between the RA-tip **156** and the RA-ring **154**. Unipolar sensing may be implemented, for example, by sensing voltages developed between the RA-tip **156** and the can electrode **209**. Outputs from the right atrial sensing circuit are coupled to the control system **220**.

A right ventricular sensing circuit **232** serves to detect and amplify electrical signals from the right ventricle of the heart.

The right ventricular sensing circuit **232** may include, for example, a right ventricular rate channel **233** and a right ventricular shock channel **234**. Right ventricular cardiac signals sensed through use of the RV-tip **112** electrode are right ventricular near-field signals and are denoted RV rate channel signals. A bipolar RV rate channel signal may be sensed as a voltage developed between the RV-tip **112** and the RV-ring. Alternatively, bipolar sensing in the right ventricle may be implemented using the RV-tip electrode **112** and the RV-coil **114**. Unipolar rate channel sensing in the right ventricle may be implemented, for example, by sensing voltages developed between the RV-tip **112** and the can electrode **209**.

Right ventricular cardiac signals sensed through use of the RV-coil electrode **114** are far-field signals, also referred to as RV morphology or RV shock channel signals. More particularly, a right ventricular shock channel signal may be detected as a voltage developed between the RV-coil **114** and the SVC-coil **116**. A right ventricular shock channel signal may also be detected as a voltage developed between the RV-coil **114** and the can electrode **209**. In another configuration the can electrode **209** and the SVC-coil electrode **116** may be electrically shorted and a RV shock channel signal may be detected as the voltage developed between the RV-coil **114** and the can electrode **209**/SVC-coil **116** combination.

Outputs from the right ventricular sensing circuit **232** are coupled to the control system **220**. In one embodiment of the invention, rate channel signals and shock channel signals may be used to develop morphology templates for analyzing cardiac signals. In this embodiment, rate channel signals and shock channel signals may be transferred from the right ventricular sensing circuit **232** to the control system **220** and to a template processor **224** where the morphological characteristics of a cardiac signal are analyzed. The template processor **224** works in combination with the control system **220** and the memory **270** to generate and maintain various types of templates, including, for example, templates used for arrhythmia discrimination as well as cardiac response classification as described in more detail below.

Left atrial cardiac signals may be sensed through the use of one or more left atrial electrodes **115**, **118**, which may be configured as epicardial electrodes. A left atrial sensing circuit **235** serves to detect and amplify electrical signals from the left atrium of the heart. Bipolar sensing and/or pacing in the left atrium may be implemented, for example, using the LA distal electrode **118** and the LA proximal electrode **115**. Unipolar sensing and/or pacing of the left atrium may be accomplished, for example, using the LA distal electrode **118** to can vector **209** or the LA proximal electrode **115** to can vector **209**.

A left ventricular sensing circuit **236** serves to detect and amplify electrical signals from the left ventricle of the heart. Bipolar sensing in the left ventricle may be implemented, for example, by sensing voltages developed between the LV distal electrode **113** and the LV proximal electrode **117**. Unipolar sensing may be implemented, for example, by sensing voltages developed between the LV distal electrode **113** or the LV proximal electrode **117** to the can electrode **209**.

Optionally, an LV coil electrode (not shown) may be inserted into the patient's cardiac vasculature, e.g., the coronary sinus, adjacent the left heart. Signals detected using combinations of the LV electrodes, **113**, **117**, LV coil electrode (not shown), and/or can electrodes **209** may be sensed and amplified by the left ventricular sensing circuitry **238**. The output of the left ventricular sensing circuit **236** is coupled to the control system **220**.

The outputs of the switching matrix **210** may be operated to couple selected combinations of electrodes **111**, **112**, **113**,

114, 115, 116, 117, 118, 156, 154 to an evoked response sensing circuit **237**. The evoked response sensing circuit **237** serves to sense and amplify voltages developed using various combinations of electrodes for cardiac response classification in accordance with embodiments of the invention.

In the embodiments described below, various combinations of pacing and sensing electrodes may be utilized in connection with pacing and sensing the cardiac signal following the pace pulse to classify the cardiac response to the pacing pulse. In various embodiments a first electrode combination is used for pacing a heart chamber and a second electrode combination is used to sense the cardiac signal following pacing. In other embodiments, the same electrode combination is used for pacing and sensing.

Sensing the cardiac signal following a pacing pulse using the same electrode combination for both pacing and sensing may yield a sensed cardiac signal including a pacing artifact component associated with residual post pace polarization at the electrode-tissue interface. The pacing artifact component may be superimposed on a smaller signal indicative of the cardiac response to the pacing pulse, i.e., the evoked response. The pacing output circuitry may include a coupling capacitor to block DC components from the heart and to condition the pacing stimulus pulse. A relatively large coupling capacitor may cause a larger pacing artifact that decays exponentially over a relatively long period of time.

The presence of a large pacing artifact signal may complicate the classification of the cardiac response to pacing. Various embodiments of the invention are directed to methods involving detection of a cardiac signal following pacing and canceling the pacing artifact from the detected signal. Classification of the cardiac response to pacing is implemented using the pacing artifact cancelled signal. Cancellation of the pacing artifact in cardiac response classification is particularly important when the same or similar electrode combinations are used both for delivering pacing pulses and for sensing the cardiac signals following the delivery of the pacing pulses. Cancellation of the pacing artifact may also be beneficial when a first electrode combination is used for pacing the heart chamber and a different electrode combination is used to sense the subsequent cardiac response.

In various embodiments described herein a first electrode combination may be used for pacing the heart chamber and a second electrode combination used for sensing the cardiac signals following the pace for cardiac response classification. If different electrode combinations are used for pacing and sensing, a temporal separation between the cardiac response signal, e.g., the evoked response, and the pacing artifact may facilitate classification of the cardiac response to pacing. The temporal separation occurs due to the propagation delay of the depolarization wavefront initiated at the pacing electrode and traveling to a sensing electrode that is physically spaced apart from the pacing electrode. The temporal separation of the cardiac response signal and the pacing artifact may be sufficient to obviate cancellation of the pacing artifact. Use of different electrodes for pacing and sensing in connection with detection of an evoked response is described in commonly owned U.S. Pat. No. 6,128,535 which is incorporated herein by reference. Various embodiments herein describe classifying the cardiac response as one of at least three cardiac response types. In accordance with embodiments of the invention, the cardiac response types may include, for example, a captured response, a non-captured response, a non-captured response plus an intrinsic beat, a near non-captured response, and a fusion/pseudofusion beat.

The pacemaker control circuit **222**, in combination with pacing circuitry for the left atrium, right atrium, left ventricle,

and right ventricle **241, 242, 243, 244**, may be implemented to selectively generate and deliver pacing pulses to the heart using various electrode combinations. The pacing electrode combinations may be used to effect bipolar or unipolar pacing of the heart chambers as described above

As described above, bipolar or unipolar pacing pulses may be delivered to a head chamber using one of the pacing vectors as described above. The electrical signal following the delivery of the pacing pulses may be sensed through various sensing vectors coupled through the switch matrix **210** to the evoked response sensing circuit **237** and used to classify the cardiac response to pacing.

The vector used to sense the cardiac signal following the pacing pulse may be different from the vector that was used to deliver the pacing pulse. The sensing vector may be selected to minimize the pacing artifact. Cancellation of the pacing artifact may not be necessary if the pacing artifact is sufficiently minimized using this technique.

In one embodiment, the cardiac signal sensed using a sensing vector different from the pacing vector may be used to detect fusion/pseudofusion beats. In another embodiment, the cardiac signal sensed using a sensing vector different from the pacing vector may be used to classify the cardiac response as one of at least three cardiac response types. For example, the cardiac response to the pacing stimulation may be classified as one of a captured response, a non-captured response, a non-captured response and an intrinsic beat, and a fusion/pseudofusion beat. If noise is detected prior to the cardiac response classification, the cardiac response classification process may be cancelled.

In various embodiments, the pacing pulse may be delivered using electrodes associated with a near-field vector and the sensing vector may be a far-field vector. In an example of right ventricular pacing and cardiac response sensing, the pacing vector may be the rate channel vector and the sensing vector may be the shock channel vector.

In one example, cardiac response classification may be accomplished by comparing the cardiac signal to one or more references to classify the cardiac response. For example the cardiac response may be classified by comparing the cardiac signal to an amplitude reference, a slope or rise time reference, a curvature reference, a peak width reference, among other reference types. In addition, samples or features of the cardiac signal may be compared to a template to classify the cardiac response.

In another example, the cardiac response classification may be accomplished using multiple classification windows defined following delivery of the pacing pulse as described in greater detail below.

Possible sensing vectors for effecting cardiac response classification in accordance with embodiments of the invention may include, for example, RV-tip **112** and RV-coil **114**, RV-coil **114** and LV distal electrode **113**, RV coil **114** and LV proximal electrode **117**, RV-coil **114** and can **209**, RV-coil **114** and SVC coil **116**, RV-coil **114** and SVC coil **116** tied and the can **209**, RV-coil **114** and A-ring **154**, RV-coil **114** and RA-tip **156**, LV distal electrode **113** and LV proximal electrode **117**, LV distal electrode **113** and can **209**, LV distal electrode **113** and SVC coil **116**, LV distal electrode **113** and A-ring **154**, LV distal electrode **113** and RA-tip **156**, LV proximal electrode **117** and can **209**, LV proximal electrode **117** and SVC coil **116**, LV proximal electrode **117** and A-ring **164**, LV proximal electrode **117** and RA-tip **156**, SVC coil **116** and can **209**, RA-ring **154** and can **209**, RA-tip **156** and can **209**, SVC coil **116** and A-ring **154**, SVC coil **116** and RA-tip **156** and RA-ring **154** and RA-tip **156**. This list is not exhaustive and other sensing vector combinations may be

developed to implement cardiac response classification in accordance with embodiments of the invention. For example, other combinations may include a coronary sinus electrode, an indifferent electrode, a leadless ECG electrode, cardiac epicardial electrodes, subcutaneous electrodes, and/or other electrodes.

Approaches for using leadless ECG electrodes for capture detection are described in U.S. Pat. No. 5,222,493, which is incorporated by reference in its entirety.

Subcutaneous electrodes may provide additional sensing vectors useable for cardiac response classification. In one implementation, cardiac rhythm management system may involve a hybrid system including first device, e.g. a pacemaker coupled to an intracardiac lead system, configured to pace the heart, and a second device, e.g. a defibrillator coupled to a subcutaneous lead system, configured to perform functions other than pacing. The second device may be employed to detect and classify cardiac responses to pacing based on signals sensed using subcutaneous electrode arrays. The first and second devices may operate cooperatively with communication between the devices occurring over a wireless link, for example. Examples of subcutaneous electrode systems and devices are described in commonly owned U.S. patent applications Ser. No. 10/462,001, filed Jun. 13, 2003 and Ser. No. 10/465,520, filed Jun. 19, 2003 which are incorporated by reference herein in their respective entireties.

For right ventricular pacing, bipolar pacing may be delivered using the RV-tip electrode **112** and the RV-ring electrode **111**. Unipolar pacing may be delivered using the RV-tip **112** to can **209** vector. The preferred sensing electrode combinations for cardiac response classification following RV pacing include RV-coil **114** to SVC-coil **116** tied to the can electrode **209**, RV-coil **114** to can electrode **209**, and, if the system includes an left ventricular lead, LV distal electrode **113** to LV proximal electrode **117**.

In an example of left ventricular pacing, bipolar pacing pulses may be delivered to the left ventricle between the LV distal electrode **113** and the LV proximal electrode **117**. In another example, unipolar pacing pulses may be delivered to the left ventricle, for example, between the LV distal electrode **113** and the can **209**. The cardiac signal following the delivery of the pacing pulses may preferably be sensed using the LV proximal electrode **117** and the can **209**.

In an example of right atrial pacing, bipolar pacing pulses may be delivered to the right atrium between the RA-tip electrode **156** and the RA-ring electrode **154**. In another example, unipolar pacing pulses may be delivered to the right atrium, for example, between the RA-tip electrode **156** and the can electrode **209**. For unipolar right atrial pacing, the preferred electrode combination for sensing cardiac signals following pacing for cardiac response classification comprises the RA-ring **154** to indifferent electrode.

In an example of left atrial pacing, bipolar pacing pulses may be delivered to the left atrium between the LA distal electrode **118** and the LA proximal electrode **115**. In another example, unipolar pacing pulses may be delivered to the left atrium, for example, between the LA distal electrode **118** and the can electrode **209**. The cardiac signal following the delivery of the pacing pulses and used for cardiac response classification may preferably be sensed using the RA-tip **158** to RA-ring **154** vector.

In one embodiment of the invention, a switching matrix **210** is coupled to the RA-tip **156**, RA-ring **154**, RV-tip **112**, RV-coil **114**, LV distal electrode **113**, LV proximal electrode **117**, SVC coil **116**, LA distal electrode **118**, LA proximal electrode **115**, indifferent, and can **209** electrodes. The switching matrix **210** may be arranged to provide connections

to various configurations of pacing and defibrillation electrodes. The outputs of the switching matrix **210** are coupled to an evoked response (ER) sensing circuit **237** that serves to sense and amplify cardiac signals detected between the selected combinations of electrodes. The detected signals are coupled through the ER amplifier **237** to a cardiac response classification processor **225**. The cardiac response classification processor **225** includes circuitry configured to classify a cardiac response to a pacing stimulation, including, for example, classifying a captured response, a non-captured response, an intrinsic beat added to a non-captured response, and a fusion/pseudofusion response, in accordance with the invention.

FIGS. **2B** and **2C** illustrate more detailed examples of pacing and sensing circuitry, respectively, that may be used for cardiac pace/sense channels of a pacemaker in accordance with embodiments of the invention. It will be appreciated that the example pacing and sensing circuits illustrated in FIGS. **2B** and **2C** may be arranged to achieve the pacing and sensing vectors described above.

In example embodiments of the invention, the pacing circuit of FIG. **2B** includes a power supply or battery **261**, a first switch **262**, a second switch **264**, a pacing charge storage capacitor **263**, coupling capacitor **265**, and a pacer capacitor charging circuit **269** all of which are cooperatively operable under the direction of a controller of known suitable construction. The power supply or battery **281** is preferably the battery provided to power the pacemaker and may comprise any number of commercially available batteries suitable for pacing applications. The switches **262**, **264** may be implemented using any number of conventionally available switches. The pacing capacitor charging circuit **269** includes circuitry to regulate the voltage across the pacing charge storage capacitor **263**.

The pacing charge storage capacitor **263** may also comprise any number of conventional storage capacitors that can be used to develop a sufficient pacing charge for stimulating the heart. The primary function of the coupling capacitor **265** is to block any DC signal from reaching the heart during pacing and additionally to attenuate the polarization voltage or "afterpotential" that results from pacing. The coupling capacitor **265** may have a capacitance, for example, in the range of about 2 microfarads to about 22 microfarads. Energy stored in the pacing charge storage capacitor **263** may be delivered to the heart **268** using various combinations of cardiac electrodes **266**, **267**, as described above.

FIG. **2C** illustrates a block diagram of circuit **295** that may be used to sense cardiac signals following the delivery of a pacing stimulation and classify the cardiac response to the pacing stimulation according to embodiments of the invention. A switch matrix **284** is used to couple the cardiac electrodes **271**, **272** in various combinations discussed above to the sensing portion **270** of the cardiac response classification circuit **295**. The sensing portion **270** includes filtering and blanking circuitry **275**, **277**, sense amplifier **285**, band pass filter **281**, and analog to digital converter **282**. The analog to digital converter **282** is coupled to a cardiac response classification processor **283**.

A control system, e.g., the control system **220** depicted in FIG. **2A**, is operatively coupled to components of the cardiac response classification circuit **295** and controls the operation of the cardiac response classification circuit **280**, including the filtering and blanking circuits **275**, **277**. Following a blanking period of sufficient duration following delivery of the pacing stimulation, the blanking circuitry **275**, **277** operates to allow detection of a cardiac signal responsive to the pacing stimulation. The cardiac signal is filtered, amplified,

and converted from analog to digital form. The digitized signal is communicated to the cardiac response classification processor **283** which operates in cooperation with other components of the control system **220**, FIG. 2A, including the template processor **241**, FIG. 2A, to classify cardiac responses to pacing according to embodiments of the invention.

When pacing pulses delivered to the heart produce a depolarization wave in cardiac tissue resulting in a cardiac contraction, a captured response may be detected by examining the cardiac signal following the delivery of the pacing pulse. FIG. 3 is a graph illustrating the output of the sensing portion **270** of the cardiac response classification circuit **295** of FIG. 2C in which the cardiac signal consistently indicates capture following a sequence of pacing pulses. In this example, a pacing pulse is delivered to the heart using the RV-tip and RV-coil electrodes, also referred to herein as a right ventricular rate channel. The cardiac signal following a right ventricular pace is sensed using a RV-coil to SVC-coil+can sensing vector, also referred to herein as the shock channel. FIG. 4 provides superimposed graphs of a captured response **430** and non-captured intrinsic response **420** when the pacing pulse is delivered on the RV rate channel and the cardiac signal following pacing is sensed on the RV shock channel.

As previously discussed, if a first vector, e.g., rate channel vector RV-tip to RV-coil, is used to deliver a pacing pulse and a second vector, e.g., shock channel vector RV-coil to SVC-coil or RV-coil to SVC-coil+can, is used to sense the cardiac signal responsive to the pacing pulse, the pacing artifact is separated from the evoked response due to a propagation delay from RV-tip to RV-coil. FIG. 5 is a graph illustrating a signal **520** sensed on a right ventricular (RV) shock channel vector following a pacing pulse **510** delivered on a rate channel. The cardiac signal **520** exhibits a propagation delay **530**, for example, a propagation delay of about 55 ms, between the pacing pulse **510** and the portion of the cardiac signal indicating a captured response **540**.

FIG. 6A is a flowchart illustrating a method used for detection of fusion/pseudofusion beats in accordance with embodiments of the invention. A plurality of electrodes electrically coupled to a heart is provided **650**. A pacing pulse stimulation is delivered **655** to the heart using a first electrode combination.

For example, the pacing stimulation may be delivered to the right ventricle, the left ventricle, the right atrium, or the left atrium.

In one example, the pacing a pulse may be delivered to the heart using electrodes associated with a near-field vector, e.g., RV rate channel. The cardiac signal following the pacing pulse is sensed **660** using a second electrode combination. For example, if the pacing pulse is delivered on a near-field vector (RV rate channel) as described above, the cardiac response may be sensed using a far-field vector (RV shock channel vector). A fusion/pseudofusion beat may be detected **665** using the sensed cardiac signal.

FIG. 6B is a flowchart illustrating a method of cardiac response classification in accordance with embodiments of the invention. A plurality of electrodes electrically coupled to a heart are provided **670**. A pacing pulse is delivered **876** to the heart using a first electrode combination. For example, the pacing pulse may be delivered to the heart using a near-field vector, e.g., RV rate channel. The cardiac signal following the pacing pulse is sensed **680** using a second electrode combination. For example, if the pacing pulse is delivered on a near-field vector (RV rate channel) as described above, the cardiac response may be sensed using a far-field vector (RV shock channel vector). The cardiac response may be classi-

fied as one of at least three cardiac response types. The cardiac response types may include, for example, a captured response, a non-captured response, a non-captured response plus an intrinsic beat, a near non-captured response, and a fusion/pseudofusion beat.

Classification of a cardiac response to pacing may be accomplished using a multiple classification window approach. Classification of a cardiac response to pacing in accordance with embodiments of the invention involves analyzing one or more features of the cardiac signal sensed following a pacing stimulation with respect to multiple classification windows. The cardiac response to pacing may be determined based on one or more characteristics of the cardiac signal and the one or more classification windows in which the one or more characteristics are detected.

FIG. 6C is a flowchart illustrating a method of classifying a cardiac response using multiple classification windows in accordance with embodiments of the invention. In accordance with this method, a pacing pulse is delivered using a first electrode combination and plurality of response classification windows are defined **610** subsequent to delivery of a pacing pulse. A cardiac signal following the pacing pulse is sensed **620** using a second electrode combination. A characteristic of the cardiac signal, for example, magnitude, slope or sequence of morphological feature points, is detected **630** in a particular classification window of the plurality of classification windows. The cardiac response is classified **640** based on the detected characteristic and the particular classification window in which the characteristic is detected.

Although the flowchart of FIG. 6C describes classification of a cardiac response based on the detection of a characteristic of the cardiac signal within a particular classification window, any number of characteristics of the cardiac signal detected in any number of classification windows may be used to classify the cardiac response according to the principles of invention. Although in various examples provided herein, the classification windows are contiguous and non-overlapping, the classification windows may be overlapping and/or may involve a delay interval defined between classification windows.

FIG. 7A illustrates the establishment of a set of classification windows relative and subsequent to the pacing stimulation. In this example, three classification windows **720**, **730**, **740** are established based on a selected characteristic of a captured response template. A captured response (CR) template exemplifies a waveform representative of a captured response. The CR template may be derived from a waveform that is produced when a pacing pulse captures the heart, and may include both the evoked response and the superimposed pacing artifact. A CR template may comprise, for example, a sequence of samples or feature points of a cardiac signal representing a captured response. Multiple cardiac response classification windows may be defined based on features of the CR template.

Initial generation of a CR template may be implemented by delivering pacing pulses to the heart at an energy greater than the capture threshold. Delivery of pacing pulses at a high energy level may be performed, for example, during a capture threshold test. A capture threshold test may involve pacing a selected heart chamber at an initially high energy level and ramping down the pacing energy until loss of capture is detected. Pacing pulses delivered early in the capture threshold test have energy levels exceeding the capture threshold, and produce cardiac signals indicative of captured beats. The pacing pulses may be delivered using a first vector and the cardiac signals following pacing may be sensed using a sec-

ond vector. Cardiac signals representing one of more captured cardiac beats may be used to form the CR template.

FIG. 7B is a flowchart illustrating a method of forming a CR template in accordance with embodiments of the invention. Pacing pulses are delivered **760** to a heart chamber using a first electrode combination at a pacing energy exceeding the capture threshold for the chamber. The cardiac signal following delivery of the pacing pulse is sensed **765** using a second electrode combination. If the sensed cardiac signal is the first acquired signal **766**, the cardiac signal is used **768** to form an initial CR template. If the sensed cardiac signal is not the first acquired signal **766**, then the sensed cardiac signal is compared **770** to the existing CR template. If the sensed cardiac signal is consistent **770** with the CR template, then it is combined **775** with the CR template. A cardiac signal may be considered to be consistent with a template if the features, samples, or other morphological characteristics of the cardiac signal are determined to be sufficiently similar to the template features, samples, or morphological characteristics. If a cardiac signal is sufficiently similar to a template representative of a particular type of cardiac beat, then the cardiac signal may be classified as the particular type of beat. Various techniques may be used to compare a template and a cardiac signal, including the correlation techniques described herein.

In some implementations, the cardiac signal may be combined with the CR template by averaging the cardiac signal and the CR template sample by sample, or by other averaging methods. In other implementations, different methods of combining the cardiac signal with the template may be used. If more beats are available **780** for CR template generation then the process of blocks **760-775** is repeated. If no more beats are available for CR template generation, then the CR template generation process is complete **785**.

In one implementation, the comparison between an existing CR template and a sensed cardiac signal may be accomplished by calculating a correlation coefficient (CC) comparing the sensed cardiac signal and the CR template using a technique such as Correlation Waveform Analysis (CWA). According to this technique, a correlation coefficient (CC) may be calculated to compare the sensed cardiac signal to the CR template sample by sample. In one particular embodiment, Equation 1 is used to compute the CC between the samples of a cardiac signal sensed following a pacing pulse and the CR template samples.

$$CC = \frac{N \sum_{i=1}^N X_i Y_i - \left(\sum_{i=1}^N X_i \right) \left(\sum_{i=1}^N Y_i \right)}{\sqrt{\left(N \sum_{i=1}^N X_i^2 - \left(\sum_{i=1}^N X_i \right)^2 \right) \left(N \sum_{i=1}^N Y_i^2 - \left(\sum_{i=1}^N Y_i \right)^2 \right)}} \quad [1]$$

where, X, represents template N samples and Y, represents cardiac signal M samples in this illustrative example. Typically, the number of samples associated with each waveform or template is about 33 samples. If the correlation coefficient is greater than a predetermined value, for example, about 0.71, the cardiac signal is considered to represent a captured response signal and may be combined with the CR template.

In another implementation, features used to form an existing CR template and features of a sensed cardiac signal may be compared by calculating a feature correlation coefficient (FCC). The FCC may be determined, for example, using every fourth sample of the cardiac signal and the captured response template. For example, Equation 2, provided below,

may be used to compute the FCC between selected CR template features and cardiac signal features:

$$FCC = \frac{\left(N \sum_{i=1}^N X_i Y_i - \left(\sum_{i=1}^N X_i \right) \left(\sum_{i=1}^N Y_i \right) \right)^2}{\left(N \sum_{i=1}^N X_i^2 - \left(\sum_{i=1}^N X_i \right)^2 \right) \left(N \sum_{i=1}^N Y_i^2 - \left(\sum_{i=1}^N Y_i \right)^2 \right)} \quad [2]$$

where, X_i represents CR template N features and Y_i represents beat N features. The sign of the numerator term is checked before squaring. If the numerator is negative, the beat is uncorrected, and the remainder of the computation need not be performed.

If the FCC is greater than a predetermined value, for example 0.94, then the cardiac beat is correlated to the CR template. If the FCC is less than or equal to the predetermined value, then the cardiac beat is uncorrected to the template.

The CR template may be periodically updated using cardiac signals classified as captured responses. Updating the CR template allows the CR template to adapt to slow variations in the patient's captured response over time. Updating the CR template may be accomplished by averaging, or otherwise combining, the samples or feature points of an existing CR template with corresponding samples or feature points of cardiac signals representing captured response beats.

If the CR template is updated, the classification windows based on CR template features or morphology may also be updated. For example, the timing of a classification window based on a CR template feature may be modified to accommodate an updated timing of the CR template feature. Further, the duration of one or more of the classification windows may be modified based on updated information with respect to the CR template morphology.

In one implementation, a CR template may be formed or updated during a capture threshold test. The test may deliver pacing pulses to the heart at an initially high pacing energy and ramp down the pacing energy over a series of pulses until a loss of capture is detected. A CR template may be formed or updated using the cardiac signals associated with captured responses following delivery of high energy pace pulses to the heart during capture threshold testing.

Returning to FIG. 7A, establishment of classification windows used to classify a cardiac signal following a pacing pulse is further described. In this example, classification windows may be established based on a feature or features of the captured response (CR) template. As illustrated in FIG. 7A, a first classification window **730** may be established based on the time **750** of a selected characteristic of a captured response (CR) template. In one example, the first classification window **730** is established based on a timing of the peak of the CR template, although other characteristics such as slope, curvature, amplitude, rise time or fall time may be used. The first classification window **730** represents a time interval defined in relation to the timing of the selected characteristic of the CR template **750** from a pacing stimulation **710**. In the example illustrated in FIG. 7A, the first classification window **730** comprises a time interval, e.g., a time interval of about 20 ms, centered at the time **750** of the selected CR template characteristic with respect to the time of the delivery of the pacing pulse.

In this example, a second classification window **720** may be defined subsequent to the time **710** of the delivery of the pacing pulse and prior to the beginning of the first classifica-

tion window **730**. A third classification window **740** may be defined following the end of the first classification window **730**.

The classification windows may be defined for example, following a blanking period **760** that is initiated subsequent to the delivery **710** of the pacing pulse. The blanking period **760** may comprise an interval of less than about 40 ms, or other value, for example. The first, second and third classification windows may comprise a total time interval of less than about 200 ms, for example.

FIGS. **7A** and **7B** and the associated discussion illustrate methods of defining classification windows using a captured response (CR) template characteristic, e.g., the CR template peak in accordance with embodiments of the invention. Such a technique may be particularly useful if different pacing and sensing vectors are used to reduce the effect of the pacing artifact. Classification of a cardiac response using multiple-classification windows may be enhanced using cancellation of the pacing artifact.

FIGS. **7C** and **7D** illustrate a method of cardiac response classification involving cancellation of the pacing artifact from the sensed cardiac signal in accordance with various embodiments of the invention. According to this approach, a pacing artifact template representative of the pacing artifact is determined. The captured response template may be determined as described above. The pacing artifact template is then cancelled from the captured response template. Cancellation of the pacing artifact template from the captured response template defines a template representative of the evoked response (ER), i.e., the portion of the cardiac signal representing the evoked response without the superimposed pacing artifact. Multiple cardiac response classification windows may be defined based on a feature or features of the ER template.

For a paced beat, classification of a cardiac response to the pacing stimulation involves canceling the pacing artifact template from the cardiac signal sensed following a pacing pulse. One or more features of the pacing artifact cancelled signal may be analyzed with respect to the multiple classification windows. The cardiac response may be determined based on a feature of the pacing artifact cancelled cardiac signal and the classification window in which the feature is detected.

As illustrated in FIG. **7C**, a first classification window **735** may be established based on the time **755** of a selected characteristic of an evoked response (ER) template. In one example, the first classification window **735** is established based on a peak of the ER template, although other characteristics such as slope, curvature, amplitude, rise time or fall time may be used. The first classification window **735** represents a time interval defined in relation to the timing of the selected characteristic of the ER template **755** from a pacing stimulation **715**. In the example illustrated in FIG. **7C**, the first classification window **735** comprises a time interval, e.g., a time interval of about 20 ms, centered at the time **755** of the selected ER template characteristic.

In this example, a second classification window **725** is established subsequent to the time **715** of the delivery of the pacing pulse and prior to the beginning of the first classification window **735**. A third classification window **745** may be established following the end of the first classification window **735**.

FIG. **7D** is a flowchart illustrating a method of providing an evoked response template for use in cardiac response classification in accordance with embodiments of the invention. In this example, the heart is stimulated by pace pulses having a voltage greater than the capture threshold. The resultant captured cardiac responses are sensed and averaged to form a

captured response template. A pacing artifact template is subtracted or otherwise cancelled from the captured response template to produce an evoked response template.

Turning to the flowchart of FIG. **7D**, a pacing artifact template is provided at block **786**. Generation of the pacing artifact template is described in connection with FIG. **7E** below. A captured response template may be determined **787** by delivering a predetermined number of pace pulses at a pacing voltage greater than the capture threshold as described in connection with FIG. **7B** above. The pacing artifact template may be normalized **792** with respect to the captured response template. Following normalization, the pacing artifact template is canceled from the captured response template **783**. For example, the pacing artifact template may be canceled by subtracting the pacing artifact template from the captured response template sample by sample. The result of the subtraction of the pacing artifact template from the captured response template may be stored **794** as an evoked response template. The evoked response template may be used in subsequent cardiac response classification procedures.

In another embodiment, the pacing artifact template may be normalized and canceled from a number of captured response beats. The pacing artifact template canceled beats may then be averaged to produce the evoked response template.

FIG. **7E** illustrates a method of generating a pacing artifact template according to embodiments of the invention. In the exemplary embodiment illustrated by FIG. **7E**, a number of pace pulses are delivered **788** to generate pacing artifact waveforms. The pace pulses are delivered in such a way that capture does not occur. The resultant cardiac signal may represent a relatively pure pacing artifact waveform without a superimposed evoked response. Pacing artifact signals without an associated evoked response may be produced by delivering **769** pace pulses at an energy level lower than the pacing threshold. Alternatively, the pace pulses may be delivered **770** during a myocardial refractory period. The myocardial refractory period represents a time when the heart tissue is recovering from a previous cardiac beat. A pace pulse delivered during the myocardial refractory period typically does not produce an evoked response in the heart tissue, thus a pacing artifact waveform may be acquired.

Following delivery **768** of a pace pulse using either of the above methods described in connection with blocks **769** or **770**, a pacing artifact waveform is sensed **771**. The pacing artifact waveform may be averaged with previously acquired pacing artifact waveforms **772**, if any. The process of generating a pace pulse and detecting the resultant pacing artifact waveform **768-772** may be repeated until a predetermined number of pacing artifact waveforms has been acquired **773**. When a sufficient number of pacing artifact waveforms has been acquired **773**, the average pacing artifact waveform is stored **774** as the pacing artifact template.

The pacing artifact may exhibit small variations in morphology with respect to pace pulse amplitude. Accordingly, the use of multiple pacing artifact templates corresponding to various pace pulse amplitudes may provide a more thorough cancellation of the pacing artifact over a range of pace pulse amplitudes, e.g., as used in a pacing threshold test. The method illustrated in FIG. **7E** may be applied to generate pacing artifact templates for each pacing pulse amplitude of interest.

Alternatively, or additionally, a set of two or more pacing artifact templates may be generated, wherein a particular pacing artifact template characterizes the pacing artifact associated with a small range of pace pulse amplitudes. A pacing

artifact template for a pace pulse range can be formed by combining pacing artifact waveforms from various pace pulse amplitudes within the range using, for example, an averaging operation. The pacing artifact template for a pace pulse range may also be formed by selecting a pacing artifact waveform at a single pace pulse amplitude, e.g., a pacing artifact waveform for a pulse amplitude near the center of the range to be characterized. The set of pacing artifact templates correspond to the entire pace pulse amplitude range to be evaluated.

The artifact waveform measurement may be accomplished during the refractory period of the myocardium. Pace pulses delivered during the refractory period produce pacing artifact waveforms without the evoked response components. The timing of the pace pulse delivered for pacing artifact measurement in the myocardial refractory period should be selected to be before the vulnerable period of the myocardium to avoid pro-arrhythmia, and after the deflections from the myocardial response from the previous cardiac event in the chamber have passed, e.g., 80 ms after the preceding cardiac event.

Processes for CR template formation, ER template formation, and pacing artifact template formation are described in commonly owned U.S. patent applications Ser. No. 10/335,599, filed Dec. 31, 2002, and Ser. No. 10/335,534, filed Dec. 31, 2002, both of which are incorporated herein by reference.

The flowchart of FIG. 8A illustrates a method of cardiac response classification utilizing a captured response (CR) template to define multiple classification windows according to embodiments of the invention. A captured response template is provided **810**, for example, using a technique such as the one described above. The timing of a selected characteristic of the CR template is determined **812** relative to a pacing stimulation. A pacing pulse is delivered **814** and cardiac response classification windows are established **816** based on the timing of the selected CR template characteristic, as illustrated in FIG. 9. A cardiac signal following the pacing pulse is sensed **818**. A first cardiac signal characteristic is detected **820** in the first classification window and a second cardiac signal characteristic may be detected **822** in the second classification window.

The first characteristic is compared **824** to a first reference. If the first characteristic is consistent with the first reference, then the cardiac response is classified **826** as a first type of response. If the first characteristic is inconsistent with the reference, then the second characteristic may be checked.

The second characteristic is compared **828** to a second reference. If the second characteristic is inconsistent with the second reference, the cardiac signal is classified **830** as a second type of response. If the second characteristic is consistent **832** with the second reference, then the cardiac signal is classified as a third type of response.

This example is further illustrated by the graph of FIG. 9. A plurality of classification windows **950**, **960**, **970** are established relative to a pacing pulse **910** based on the timing of a selected characteristic of the CR template. For example, the selected characteristic may comprise an extreme point, slope, curvature or other morphological feature characteristic of the CR template. A cardiac signal **940** following the pacing pulse is illustrated with respect to three established classification windows **950**, **960**, **970**. A first characteristic **980**, in this example, a positive peak, is detected in the first classification window **980**. A second characteristic, e.g., negative peak **990** is detected in the second classification window **950**. The first and the second characteristics **980**, **990** may be compared to references and the cardiac response classified as described in connection with the flowchart of FIG. 8A.

The flowchart of FIG. 8B illustrates a method of cardiac response classification using an evoked response template to define multiple classification windows in accordance with embodiments of the invention. An evoked response (ER) template and a pacing artifact template are provided **840**, for example, using the techniques described above. The timing of a selected characteristic of the ER template is determined **842** relative to a pacing stimulation. A pacing pulse is delivered **844** and first and second classification windows are established **846** based on the timing of the selected ER template characteristic. A cardiac signal following the pacing pulse is sensed **848**. The pacing artifact template is subtracted from the sensed cardiac signal **850**. Using the pacing artifact cancelled cardiac signal, a first cardiac signal characteristic is detected **852** in the first classification window and a second cardiac signal characteristic is detected **854** in the second classification window.

The first characteristic is compared **856** to a first reference. If the first characteristic is consistent with the first reference, then the cardiac response is classified **860** as a first type of response. If the first characteristic is inconsistent with the reference **856**, then the second characteristic is checked **862**.

The second characteristic is compared to a second reference **862**. If the second characteristic is inconsistent **862** with the second reference, the cardiac signal is classified as a second type of response **864**. If the second characteristic is consistent with the second reference **862**, then the cardiac signal is classified as a third type of response **866**.

The cardiac response classification processes described herein may be implemented in an autocapture process wherein capture of the heart is verified on a beat-by-beat basis during pacing. If a pacing stimulation does not produce a captured response, a variety of interventions may be effected, including, for example, delivering a back-up pacing stimulation at a higher energy level and/or initiating a capture threshold test to determine the capture threshold of the cardiac tissue. In accordance with embodiments of the invention, a method for performing cardiac response classification that is particularly suitable for implementation in an autocapture process is illustrated in the flowchart of FIG. 10. Although the process described in FIG. 10 is described in connection with an autocapture procedure, the process may be advantageously applied in other procedures to accomplish cardiac response classification.

Classification windows are defined **1010** based on the timing of the peak of the CR template. A cardiac signal following a pacing stimulation is sensed **1020**. The peak of the sensed cardiac signal is detected **1030** in one of the classification windows. Classification of the cardiac response is performed **1040** based on the amplitude of the peak and the particular classification window in which the peak is sensed.

FIG. 11 is a graph illustrating the implementation of classification windows that may be established in connection with the method of FIG. 10. In this example, three classification windows **1130**, **1140**, **1150** are established based on the timing of the peak of the CR template **1120** relative to the timing of the delivery of the pacing stimulation **1110**. In this example, a first classification window **1130** is associated with a fusion/pseudofusion response, the second window **1140** is associated with a captured response, and the third window **1150** is associated with intrinsic beats. The second classification window **1140** may be centered about the timing of the CR template peak **1120** and includes predetermined intervals before **1125** and after **1126** the CR template peak **1120**, e.g., intervals of about 10 ms.

The flowchart of FIG. 12 illustrates a method of classifying a cardiac response using the classification windows described

in FIG. 11. A CR template is generated **1210** and the timing of the peak of the CR template is determined. A pacing stimulation is delivered **1215**. Classification windows, including a fusion/pseudofusion window, a captured response window and a non-captured response window, are established **1220** based on the timing of the CR template peak relative to the pacing stimulation. The peak of a cardiac signal sensed following the pacing stimulation is detected **1225** in one of the classification windows.

If the cardiac signal is determined to be noisy **1226**, then cardiac response classification is not performed for the pacing stimulation and the process continues. Commonly owned U.S. Pat. No. 6,505,071, which is incorporated herein by reference, describes methods and systems that may be utilized for noise deflection in the context of the cardiac response classification processes in accordance with embodiments of the invention. If noise is not detected **1226**, and if the amplitude of the detected peak is less than **1230** a reference value, then the cardiac response is classified **1235** as a non-captured response.

In various embodiments described herein, reference values or thresholds used in connection with cardiac response classification may be dynamic references that are adjusted based on respiration, activity level, and lead maturation, among other factors as described in commonly owned U.S. Pat. No. 6,192,275 which is incorporated herein by reference. In other embodiments, the reference values may be fixed. For example a reference value for determining a non-captured response may be a predetermined percentage, e.g., 50% of the captured response template peak. The cardiac response may be classified as a non-captured response if the cardiac signal exhibits a peak that is less than 50% of the captured response template peak, where the cardiac signal peak and the CR template peak have the same sign.

If the peak of the sensed cardiac signal is detected **1240** in the fusion/pseudofusion classification window, the cardiac response is classified **1245** as fusion or pseudofusion. If the peak of the sensed cardiac signal is detected **1250** in the captured response classification window, the cardiac response is classified **1255** as a captured response. If the peak of the cardiac signal is not detected in the fusion/pseudofusion window or the capture window, if it is detected **1260** in the intrinsic classification window, and the cardiac signal is classified **1285** as an intrinsic beat.

FIGS. 13-15 illustrate method of using the peak width of a cardiac signal sensed after a pacing stimulation to classify a cardiac response in accordance with embodiments of the invention. Such a method may be particularly useful, for example, in an automatic capture detection process performed on a beat-by-beat basis, but may also be used in connection with other procedures involving the classification of cardiac responses to pacing. According to the process illustrated in FIGS. 13-15, the peak width of the sensed cardiac signal is compared to one or more peak width references to determine the cardiac response. FIG. 13 illustrates the classification windows **1305**, **1310**, **1315** used to classify the cardiac response. The peak width of the cardiac signal may be established as a time interval that the cardiac signal remains above a predetermined percentage, e.g., 10%, or other amount, of the cardiac signal peak amplitude.

The classification windows **1305**, **1310**, **1315** may be established, for example, based on the time of the peak of a CR template **1302** relative to the time of the pacing stimulation **1301**. In one example, a first classification window **1310** may be associated with a captured response, a second classification window **1305** may be associated with a fusion/pseudofusion response, and a third classification window **1315** may

be associated with an intrinsic beat. If the peak of the sensed cardiac signal exceeds a predetermined amplitude, e.g., about 50% of the CR template peak amplitude, and is detected in one of the classification windows **1305**, **1310**, **1315**, the peak width of the detected cardiac signal is compared to one or more peak width references. The peak width references may comprise a single peak width value, or a range of values, for example. FIG. 13 illustrates four peak width references **1320**, **1330**, **1350**, **1360**.

In this example, the each of the peak width references is associated with a range of peak widths. The peak width references are determined based on the peak width of the CR template, the peak width associated with a template characterizing an intrinsic cardiac beat (I template), or both. The CR template may be established as previously described. The peak width of the CR template may be established as the time interval that the CR template waveform remains above a predetermined percentage, e.g., 10%, or other amount, of the CR template waveform peak amplitude.

An intrinsic template (I template) characterizes the patient's supraventricular conducted rhythm (SVR). The I template may be formed from a combination of one or more beats, wherein the each beat represents the patient's SVR rhythm. The peak width of the I template may be determined, for example, as an average of the peak widths of the one or more beats used to form the I template. The peak width of each of the one or more beats used to form the I template may be established as the time interval that the beat waveform remains above a predetermined percentage, e.g., 10%, or other amount, of the peak amplitude. Specific embodiments involving I template formation are described in more detail below with reference to FIGS. 19-24.

FIGS. 14A and 14B illustrate the peak widths of cardiac signals representative of a captured response **1410** and an intrinsic beat **1450**, respectively. The peak width of the captured response **1420** may be established, for example, as the time period that the cardiac signal remains above a predetermined percentage, for example, 10% or other amount, of the captured response peak. Similarly, the peak width of the intrinsic beat **1460** may be established as the time period that the cardiac signal remains above a predetermined percentage of the intrinsic beat peak.

FIG. 13 illustrates a first peak width reference **1320** comprising the range of peak widths less than or equal to the I template peak width minus B, a first predetermined amount, e.g., 10 ms or other value. A second peak width reference **1330** comprises a range of peak widths greater than the I template peak width minus B and less than or equal to an average of the CR template and I template peak widths. A third peak width reference **1350** may be established as the range of peak widths exceeding the average of the CR template and I template peak widths and less than or equal to the CR template peak width plus A, a second predetermined amount, e.g., 10 ms or other value. A fourth peak width reference **1360** may be established as the range of peak widths exceeding the CR template peak width plus A. The values of A and B may be determined based on the morphologies of the CR template and/or the intrinsic template, for example. In one implementation, the values of A and B may be determined based on the peak widths of the CR template and/or the intrinsic template. Further, the values of A and B may be adapted to track slow changes in the CR template and/or intrinsic template morphology.

The flowchart of FIG. 15 illustrates a method of classifying a cardiac response to a pacing stimulation in accordance with embodiments of the invention. The processes of FIG. 15 use

the classification windows and peak width references established as illustrated in the graph of FIG. 13.

A pacing stimulation is delivered 1505 to the heart and a cardiac signal following the pacing stimulation is sensed. The amplitude and width of the cardiac signal peak are determined. If the cardiac signal peak has insufficient amplitude 1510, e.g., less than 50% of the CR template peak, then the cardiac response is classified 1515 as a non-captured response. If the cardiac signal peak has an amplitude greater than or equal to 50% of the CR template peak and the cardiac signal peak is detected 1520 in the second classification window, then the cardiac response is classified 1525 as a fusion/pseudofusion response.

If the cardiac signal peak is detected 1530 in the first classification window, then the peak width of the cardiac signal is compared to one or more peak width references to classify the cardiac response. If the peak width (PW) of the cardiac signal falls 1560 within the range of the third peak width reference, $(CR \text{ template peak width} + I \text{ template peak width})/2 \leq PW < CR \text{ template peak width} + A$, then the cardiac response is classified 1565 as a captured response. If the peak width (PW) of the cardiac signal falls 1570 within the range of with the second peak width reference, $I \text{ template peak width} - B \leq PW < (CR \text{ template peak width} + I \text{ template peak width})/2$, then the cardiac response is classified 1575 as non-captured and intrinsic. If the peak width of the cardiac signal does not fall 1570 within the range of either the second or third peak width references, then it falls into the ranges of the first peak width reference, $PW \leq CR \text{ template peak width} + A$, or the fourth peak width reference, $PW < I \text{ template peak width} - B$, and is classified 1580 as noise.

If the cardiac signal peak is not detected 1520 in the second classification window and is also not detected 1530 in the first classification window, then it falls within the third classification window. The cardiac signal peak width is compared to one or more peak width references to determine the cardiac response. If the peak width falls 1535 within the range of the third peak width reference, the cardiac response is classified 1540 as near non-capture. A near non-captured response comprises a response that occurs when the pacing stimulation is captured but delayed.

If the peak width of the cardiac signal falls 1545 within the range of the second peak width reference, then the cardiac response is classified 1555 as a non-captured response plus an intrinsic beat. If the peak width of the cardiac signal does not fall 1545 within the range of either the second peak width reference or the third peak width reference, then the peak width falls into either the range of the first peak width reference or the fourth peak width reference and is classified 1550 as noise.

The cardiac response classification methods of the invention as described below may be particularly useful in an automatic capture threshold determination procedure. A capture threshold test may initially deliver pacing at a high energy level, thus ensuring captured responses. The pacing energy level may be ramped down from the initial high energy level until loss of capture is detected. The point just before loss of capture occurs may be established as the capture threshold.

The flowchart of FIG. 16 illustrates a process that is particularly useful for performing a capture threshold determination process based on cardiac response classification in accordance with embodiments of the invention. Although this process is described in terms of a capture threshold procedure, the methods of cardiac response classification may be used in connection with other procedures including, for example, beat by beat automatic capture verification.

A sequence of pacing pulses are delivered 1610 to the heart. For example, the pacing pulses may have an initially high energy level with the pacing energy level decreasing in discrete steps. For each delivered pace pulse, a plurality of classification windows are established 1620 relative to and following the time of each pace pulse. Cardiac signals following the pacing pulses are sensed 1630 within the classification windows. The cardiac signals are compared 1640 to references respectively associated with different types of cardiac responses. The cardiac response to each of the pace pulses is classified 1650 based on the comparisons. The classifications of the cardiac responses are used 1660 to determine a pacing energy capture threshold.

In one example, the pacing energy of the pacing pulses is ramped down from an initially high pacing energy. The cardiac response following the delivery of each pacing pulse is determined as described in connection with the flowchart of FIG. 16. When a predetermined number of pacing pulses produce a non-captured response, e.g., about two out of three delivered pacing pulses, loss of capture is determined. The point just before loss of capture occurs comprises the capture threshold.

FIG. 17 is a diagram illustrating classification windows and references that may be used in determining a cardiac pacing response according to embodiments of the invention. In this example embodiment, first, second, and third classification windows 1730, 1740, 1750 are established based on the timing of a particular CR template characteristic 1720, such as the peak of the CR template, relative to the time of the delivery of the pace pulse 1710. A selected characteristic of the cardiac signal following the pace pulse, e.g., the peak of the cardiac signal, is detected in one of the classification windows 1730, 1740, 1750. Depending upon the particular classification window in which the selected characteristic is detected, features of the cardiac signal are compared to one or more references. The references may include, for example, templates characterizing various types of cardiac responses, including the CR template and/or the I template. The cardiac response is classified based on the comparison of the cardiac signal feature or features and the one or more references, and the particular window in which the selected characteristic of the cardiac signal is detected.

The flowchart of FIG. 18 provides a more detailed illustration of a method of classifying a cardiac response following a pacing pulse based on a comparison between the cardiac signal and the CR template or the I template, for example. The method described with reference to FIGS. 17 and 18 make use of cardiac signal morphology templates including the captured response (CR) template and the intrinsic response I template. The method described in connection with FIG. 18 may be particularly useful in connection with an automatic capture threshold detection procedure.

As discussed previously, a captured response (CR) template exemplifies a waveform representative of a captured response. The CR template may be derived from a waveform that is produced when a pacing pulse captures the heart, and includes both the evoked response and the superimposed pacing artifact. A CR template may comprise, for example, a sequence of samples or feature points of a cardiac signal representing a captured response.

An intrinsic response template, referred to herein as an I template, characterizes the morphology of an electrical signal associated with the patient's supraventricular conducted cardiac rhythm (SVR). Processes for forming templates representing the patient's supraventricular conducted rhythm (SVR) using a two channel approach are described in commonly owned U.S. patent applications Ser. No. 09/845,987

filed Apr. 30, 2001, Ser. No. 10/105,875, filed Mar. 25, 2002, Ser. No. 10/278,746, filed Oct. 23, 2002, Ser. No. 10/121,944, filed Apr. 12, 2002, and in U.S. Pat. No. 6,449,503 all of which are incorporated herein by reference.

An I template may be formed from a combination of one or more beats, wherein each beat represents the patient's SVR rhythm. Cardiac beats used to form the I template may be required to meet certain criteria, such as stability and/or rate criteria. According to one embodiment, an I template generation process involves sensing cardiac signals on a rate channel and on a shock channel. Shock channel automatic gain control may be performed prior to collecting beats for I template generation. For example, the shock channel gain control may be effected by measuring the peak value in four beats meeting certain rate and stability criteria and adjusting the shock channel gain such that the averaged peak value is 50% of the maximum A/D converter value.

According to a two channel approach for template generation, a peak of the rate channel signal is determined and identified as the fiducial point. The value and location of features of the initial shock channel waveform are determined relative to the rate channel fiducial point. Additional cardiac signals, including rate channel signals and shock channel signals are sensed. The fiducial points for the additional rate channel signals are determined. The shock channel waveforms are then aligned with the I template using the fiducial points developed from the rate channel signals. The I template is generated using features extracted from the aligned shock channel waveforms.

A fiducial point represents a peak value of the rate channel signal. A fiducial point type is either positive (Pos), associated with a positive peak, or negative (Neg), associated with a negative peak. When a template is formed, the positive peak (Pos) or the negative peak (Neg) of the rate channel signal used to form the template determines the fiducial point type of the template. FIGS. 19 and 20 depict positive and negative fiducial points, respectively. The Pos and Neg peaks are measured as absolute values. The fiducial point type is determined by Equation 3 as follows;

If Pos>0.9*Neg, the fiducial point type is positive

If Pos≤0.9*Neg, the fiducial point type is negative [3]

If a stored I template exists, the fiducial point type of the stored template is used as the fiducial point type of the template. If no stored template exists, the fiducial point type of the first beat used to form the template is used as the fiducial point type for the template.

In one embodiment of the invention, and with reference to FIGS. 21 and 22, five features are initially identified for the I template, followed by three additional features determined at midpoints between certain ones of the five initially selected features.

Feature 3 is selected as the absolute maximum peak in a feature window defined by 31 samples centered at the fiducial point. If the positive peak amplitude is equal to the negative peak amplitude, the positive peak is selected as Feature 3.

Feature 2 is found by searching backward from Feature 3 until a point is reached that meets the following conditions: 1) the search is limited to 10 samples. If no point satisfies the following conditions, then the 10th sample becomes Feature 2; 2) the amplitude is less than 25% of the maximum peak; 3) a turning point is found or the slope is flat, and 4) Feature 2 is at least 4 samples away from Feature 3.

By way of example, let Q(I) represent the current sample, A turning point is found if:

$Q(I-1) \geq Q(I)$ and $Q(I) < Q(I+1)$ for a positive Feature 3

$Q(I+1) \leq Q(I)$ and $Q(I) > Q(I+1)$ for a negative Feature 3 [4]

As is shown in FIG. 21, Q(I) is selected as Feature 2. As such, Feature 2 is selected as a turning point.

The slope is considered flat, as shown in FIG. 22, if $\text{abs}(Q(I+1)-Q(I-1)) < 4$ and $\text{abs}(G(I+1)-Q(I-2)) < 4$, in the case when the A/D converter maximum value is 128. In the illustrative depiction of FIG. 22, Q(I) is selected as Feature 2. As such, Feature 2 is selected as a flat slope point.

Feature 4 is found by searching forward starting from Feature 3 until a point is reached that meets the following conditions: 1) the search is limited to 18 samples. If no point satisfies the following conditions, then the 16th sample becomes Feature 4; 2) the amplitude is less than 26% of the maximum peak; and 3) a turning point is found or the slope is flat.

By way of example, let Q(I) represent the current sample. A turning point is found if:

$Q(I+1) \geq Q(I)$ and $Q(I) < Q(I-1)$ for a positive Feature 3

$Q(I+1) \leq Q(I)$ and $Q(I) > Q(I-1)$ for a negative Feature 3 [5]

Q(I) is selected as Feature 4, as is shown in FIG. 23.

The slope is flat, as shown in FIG. 24, if $\text{abs}(Q(I-1)-Q(I-1)) < 4$ and $\text{abs}(Q(I-1)-Q(I+2)) < 4$. In this case, Q(I) is selected as Feature 4.

Feature 1 is selected as the seventeenth sample from the beginning of the detection window. Feature 5 is selected as the last sample of the detection window. Three additional features are selected at the midpoint of Features 1 and 2, the midpoint of Features 2 and 3, and the midpoint of Features 3 and 4, respectively. If a midpoint falls between two sample points, the leftmost (earlier in time) point is selected. Thus, according to this embodiment, eight feature values (e.g., amplitudes) and their associated locations with respect to the fiducial point and the corresponding fiducial point type are saved as the I template.

Following generation of an I template, a subsequently detected cardiac beat may be compared to the I template to classify the cardiac beat. If the cardiac beat has a morphology similar to that of an intrinsic beat, then the features of the cardiac beat will be correlated to the template features. Various steps associated with determining if a cardiac beat is correlated to an I template in accordance with embodiments of the invention are described below.

The rate channel signal and the shock channel signal for the cardiac beat are sensed. The fiducial point of the rate channel signal is determined. The rate channel fiducial point is used to align the rate and shock channel waveforms of the cardiac beat with the template. Features of the shock channel signal are determined at the locations relative to the fiducial point previously determined for the template. The template features and the cardiac signal features are compared by calculating a feature correlation coefficient (FCC). In one particular embodiment, Equation 6, provided below, is used to compute the FCC between the template features and the cardiac signal features.

$$FCC = \frac{\left(N \sum_{i=1}^N X_i Y_i - \left(\sum_{i=1}^N X_i \right) \left(\sum_{i=1}^N Y_i \right) \right)^2}{\left(N \sum_{i=1}^N X_i^2 - \left(\sum_{i=1}^N X_i \right)^2 \right) \left(N \sum_{i=1}^N Y_i^2 - \left(\sum_{i=1}^N Y_i \right)^2 \right)} \quad [6]$$

where, Xi represents template N features and Yi represents beat N features, and N=8 in this illustrative example. The sign

of the numerator term is checked before squaring. If the numerator is negative, the beat is uncorrelated, and the remainder of the computation need not be performed.

If the FCC is greater than a predetermined value, for example 0.94, then the cardiac beat is correlated to the template. If the FCC is less than or equal to the predetermined value, then the cardiac beat is uncorrelated to the template. Alternatively, correlation between the cardiac beat and the template may be calculated using the CWA technique described by Equation 1 above.

Other techniques may also be implemented to generate templates and to compare templates and the cardiac signals. For example, an alternate methodology for generating templates representative of various types of cardiac signals is described in commonly owned U.S. patent application Ser. No. 09/703,269, filed Oct. 31, 2000, which is incorporated herein by reference. The patent application cited immediately above describes a curvature-based method for selecting features of a template, e.g., a I template for example. The curvature-based method of template formation may be used in the cardiac response classification processes described herein.

The flowchart of FIG. 18 illustrates a method for classifying a cardiac signal following delivery of a pacing pulse based on comparison of the cardiac signal one or more of a CR template and an I template. Following the delivery 1810 of a pace pulse to the heart, classification windows such as those described in connection with FIG. 17 are established relative to the timing of the pace pulse. The peak of the cardiac signal following the pace pulse is detected in one of the established classification windows. The peak amplitude of the cardiac signal is determined.

If noise is detected 1812, then cardiac response classification is not performed for the pacing stimulation and the process continues. If noise is not detected 1812 and if the peak amplitude of the cardiac signal is less than 1815 a predetermined value, for example, about 50% of the CR template peak amplitude, then the cardiac response is classified as a non-captured response. If the peak amplitude of the cardiac signal is greater than or equal to 1815 the predetermined value, then the cardiac signal may be compared to one or more references to classify the cardiac response to the pacing stimulation.

If the cardiac signal peak amplitude is greater than or equal to 1815 the predetermined value, then cardiac signal is compared to the intrinsic template. If the cardiac signal is correlated 1825 to the I template then the cardiac response is classified 1865 as a non-captured response and intrinsic beat. Correlation may be determined by calculating a feature correlation coefficient representing the degree of correlation between the cardiac signal and the I template using Equation 5 above. For the purposes of cardiac response classification, a cardiac signal is determined to be correlated to the intrinsic beat template if the FCC is about 0.94.

If the cardiac signal is not correlated 1825 to the I template, then correlation with the CR template is checked 1850. The comparison of the cardiac signal to the CR template may be performed, for example, by calculating a correlation coefficient (CC) representing the degree of correlation between the cardiac signal and the captured response template using a technique such as Correlation Waveform Analysis (CWA). In one particular embodiment, Equation 1, provided above, is used to compute the CC between the samples of a cardiac signal and the captured response template samples. Typically, the number of samples used for the calculation is about 33 samples. If the correlation coefficient is greater than a predetermined value, for example, about 0.94, the cardiac signal is considered to be correlated to the CR template. If the cardiac

signal is not correlated 1850 to the CR template, then the cardiac response is classified 1860 as a fusion/pseudofusion response.

If the cardiac signal is correlated 1850 to the CR template and the peak of the cardiac signal is detected 1830 within the third classification window, illustrated in FIG. 17, then the cardiac response is determined 1835 to be near non capture. If the peak of the cardiac signal is not detected 1830 in the third classification window, then the cardiac response is classified 1840 as capture and the CR template may be updated 1845 using the cardiac signal.

Although the examples illustrated in FIGS. 11-18 are described in terms of using a CR template for cardiac response classification, similar approaches may be implemented using an ER template. In processes using an ER template, the pacing artifact template may be subtracted or otherwise cancelled from the sensed cardiac signal prior to analyzing the sensed cardiac signal to determine the cardiac response.

Various modifications and additions can be made to the preferred embodiments discussed hereinabove without departing from the scope of the present invention. Accordingly, the scope of the present invention should not be limited by the particular embodiments described above, but should be defined only by the claims set forth below and equivalents thereof.

What is claimed is:

1. A method of determining a cardiac response to a pacing pulse, comprising:
 - delivering two or more initialization pacing pulses to the heart using a first electrode combination of a plurality of electrodes that are electrically coupled to a heart;
 - sensing for a cardiac response following each of the two or more initialization pacing pulses using a second electrode combination;
 - for each of the two or more initialization pacing pulses, determining a delay interval between when the initialization pacing pulse was delivered using the first electrode combination until when a corresponding cardiac response was sensed using the second electrode combination;
 - following delivery of the two or more initialization pacing pulses:
 - delivering a pacing pulse to the heart using the first electrode combination;
 - sensing a cardiac response to the pacing pulse using the second electrode combination; and
 - classifying the cardiac response to the pacing pulse as one of a captured response and a non-captured response, the classifying step including:
 - determining if the sensed cardiac response to the pacing pulse has a predetermined characteristic that falls within a classification window, the pre-determined characteristic comprising a peak amplitude that exceeds a pre-determined threshold and wherein the classification window begins after a predetermined time delay following the pacing pulse and extends for a window duration, wherein the predetermined time delay is chosen based at least in part on the determined delay intervals of each of two or more of the initialization pacing pulses.
2. The method of claim 1, wherein the predetermined time delay is chosen by combining the determined delay intervals of each of two or more of the initialization pacing pulses.

3. The method of claim 1, wherein the two or more initialization pacing pulse are provided at a pacing energy that is sufficient to result in capture.

4. The method of claim 2, wherein the combining step includes averaging the delay intervals of the two or more initialization pacing pulses.

5. The method of claim 1, wherein the two or more initialization pacing pulses are sequentially pacing pulses.

6. The method of claim 1, wherein:

prior to delivering the pacing pulse, generating a template that is based, at least in part, on the determined delay intervals of each of two or more of the initialization pacing pulses; and

after delivering of the pacing pulse, the predetermined time delay is based on the previously generated template.

7. The method of claim 1, wherein the classification window represents a time interval that follows the pacing pulse, and wherein the time interval includes a time that the predetermined characteristic of the sensed cardiac response is expected to occur.

8. The method of claim 7, wherein the classification window represents a time interval that includes a first amount of time before the time that the predetermined characteristic of the sensed cardiac response is expected to occur and a second amount of time after the time that the predetermined characteristic of the sensed cardiac response is expected to occur.

9. The method of claim 8, wherein the second amount of time is about.

10. The method of claim 1, wherein the predetermined characteristic further corresponds to one or more of a peak time, a slope, a curvature, a rise time and a fall time of the sensed cardiac response.

11. The method of claim 1, wherein the classifying step includes classifying the cardiac response to the pacing pulse as one of a captured response, a non-captured response and a fusion response.

12. The method of claim 1, further comprising:

detecting a level of noise in the cardiac response; and selectively canceling the classification of the cardiac response based on the level of detected noise.

13. The method of claim 1, wherein:

delivering the pacing pulse to the heart using the first electrode combination comprises delivering the pacing pulse using a near-field vector; and

sensing the cardiac response following the pacing pulse using the second electrode combination comprises sensing the cardiac response using a far-field vector.

14. The method of claim 1, wherein:

delivering the pacing pulse to the heart comprises delivering the pacing pulse to one ventricle using the first electrode combination; and

sensing the cardiac response following the pacing pulse comprises sensing the cardiac response using at least one electrode disposed in the other ventricle.

15. The method of claim 1, wherein:

delivering the pacing pulse to the heart comprises delivering the pacing pulse to an atrium using the first electrode combination; and

sensing the cardiac response following the pacing pulse comprises sensing the cardiac response using the second electrode combination.

16. The method of claim 1, wherein:

delivering the pacing pulse to the heart comprises delivering the pacing pulse to one atrium using the first electrode combination; and

sensing the cardiac response following the pacing pulse comprises sensing the cardiac response using at least one electrode disposed in the other atrium.

17. A method of determining a cardiac response to a pacing pulse, comprising:

delivering two or more initialization pacing pulses to a heart using a first electrode combination, wherein the first electrode combination includes an electrode associated with a left ventricle;

sensing for a cardiac response following each of the two or more initialization pacing pulses using a second electrode combination, wherein the second electrode combination includes an electrode associated with a right ventricle;

for each of the two or more initialization pacing pulses, determining a delay interval between when the initialization pacing pulse was delivered using the first electrode combination until when a corresponding cardiac response was sensed using the second electrode combination;

choosing a predetermined time delay based, at least in part, on the determined delay intervals of each of two or more of the initialization pacing pulses;

following delivery of the two or more initialization pacing pulses:

delivering a pacing pulse to the heart using the first electrode combination;

sensing a cardiac response to the pacing pulse using the second electrode combination; and

classifying the cardiac response to the pacing pulse as one of a captured response and a non-captured response, the classifying step including:

determining if the sensed cardiac response has a predetermined characteristic that falls within a classification window, the pre-determined characteristic comprising a peak amplitude that exceeds a predetermined threshold and wherein the classification window begins after the predetermined time delay following the pacing pulse and extends for a window duration.

18. The method of claim 17, wherein the predetermined time delay is chosen by combining the determined delay intervals of each of two or more of the initialization pacing pulses.

19. A medical device, comprising:

a plurality of electrodes electrically configured to be coupled to a heart;

a pulse delivery circuit configured to deliver a pacing pulse to a heart using a first electrode combination including at least one electrode associated with a left ventricle;

a sensing circuit configured to sense a cardiac response for cardiac response classification following the pacing pulse using a second electrode combination including at least one electrode associated with a right ventricle;

a control circuit, the control circuit coupled to the sensing circuit and configured to classify the cardiac response to the pacing pulse as one of a captured response and a non-captured response by determining if the sensed cardiac response has a predetermined characteristic that falls within a classification window, the pre-determined characteristic comprising a peak amplitude that exceeds a pre-determined threshold, and wherein the classification window begins after a predetermined time delay following the pacing pulse and extends for a window duration; and

wherein before the pulse delivery circuit delivers the pacing pulse to the heart,

the control circuit causes the pulse delivery circuit to provide two or more initialization pacing pulses to the heart using the first electrode combination, wherein the sensing circuit senses for a cardiac response following each of the two or more initialization pacing pulses using the second electrode combination;

for each initialization pacing pulse, the control circuit is configured to determine a delay interval between when the initialization pacing pulse was provided using the first electrode combination until when a corresponding cardiac response was sensed using the second electrode combination; and

wherein the control circuit is further configured to establish the predetermined time delay based, at least in part, on the delay intervals of the two or more initialization pacing pulses.

20. The medical device of claim **19**, wherein the predetermined time delay is established by combining the delay intervals of each of two or more of the initialization pacing pulses.

* * * * *

| | | | |
|----------------|---|---------|------------|
| 专利名称(译) | 使用多点传感和起搏进行心脏反应分类 | | |
| 公开(公告)号 | US8843199 | 公开(公告)日 | 2014-09-23 |
| 申请号 | US14/010269 | 申请日 | 2013-08-26 |
| [标]申请(专利权)人(译) | 心脏起搏器股份公司 | | |
| 申请(专利权)人(译) | 心脏起搏器, INC. | | |
| 当前申请(专利权)人(译) | 心脏起搏器, INC. | | |
| [标]发明人 | KIM JAEHO BOCEK JOSEPH M MEYER SCOTT A HAEFNER PAUL A SIH HARIS | | |
| 发明人 | KIM, JAEHO BOCEK, JOSEPH M. MEYER, SCOTT A. HAEFNER, PAUL A. SIH, HARIS | | |
| IPC分类号 | A61N1/36 A61B5/00 A61B5/0452 A61N1/362 A61N1/37 | | |
| CPC分类号 | A61N1/371 A61B5/7264 A61B5/7217 A61B5/04525 A61N1/368 G16H50/20 | | |
| 其他公开文献 | US20130338725A1 | | |
| 外部链接 | Espacenet USPTO | | |

摘要(译)

用于对心脏起搏响应进行分类的方法和装置涉及使用第一电极组合进行起搏和使用第二电极组合来在起搏后感测心脏信号。可以使用感测的心脏信号对心脏起搏的响应进行分类。一个过程涉及使用感测的心脏信号来检测心脏响应作为融合/假融合搏动。另一个过程涉及使用感测的心脏信号将心脏响应分类为起搏, 作为至少三种心脏响应类型之一。

