



US 20150077268A1

(19) **United States**

(12) **Patent Application Publication**

Lane et al.

(10) **Pub. No.: US 2015/0077268 A1**

(43) **Pub. Date: Mar. 19, 2015**

(54) **CONTINUOUS PATIENT MONITORING**

(52) **U.S. Cl.**

(71) Applicant: **Welch Allyn, Inc.**, Skaneateles Falls, NY (US)

CPC **A61B 5/0024** (2013.01); **G08C 17/02** (2013.01)

USPC **340/870.09**

(72) Inventors: **John A. Lane**, Weedsport, NY (US);
Vuong B. Nguyen, Liverpool, NY (US);
Kristin Ann Alisanski, Syracuse, NY (US)

(57) **ABSTRACT**

(73) Assignee: **Welch Allyn, Inc.**, Skaneateles Falls, NY (US)

A system for providing continuous monitoring of a patient includes: a first monitor device configured to measure one or more physiological attributes associated with the patient, the first monitor device being a contactless device; and a second monitor device configured to measure one or more physiological attributes associated with the patient, the second monitor device including one or more sensors contacting the patient; wherein, upon an alarm condition by the first monitor device, the second monitor device is configured to measure a physiological attribute and suppress the alarm condition when the second monitor device detects a non-alarm condition.

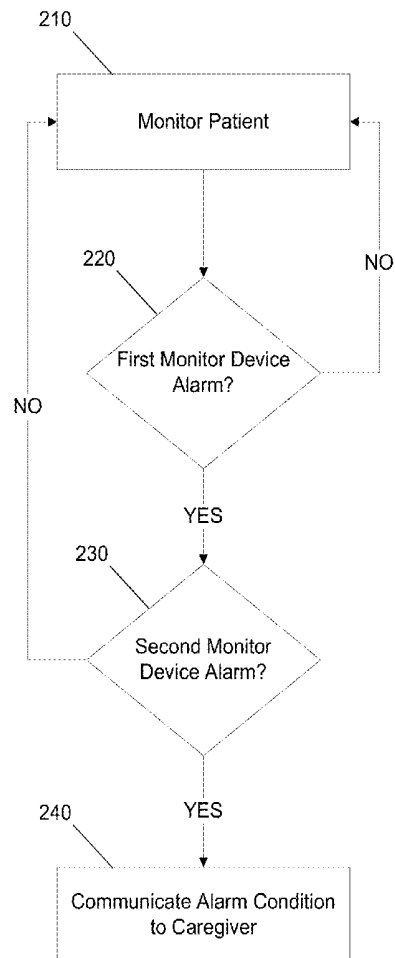
(21) Appl. No.: **14/026,802**

(22) Filed: **Sep. 13, 2013**

Publication Classification

(51) **Int. Cl.**
A61B 5/00 (2006.01)
G08C 17/02 (2006.01)

200 ↘



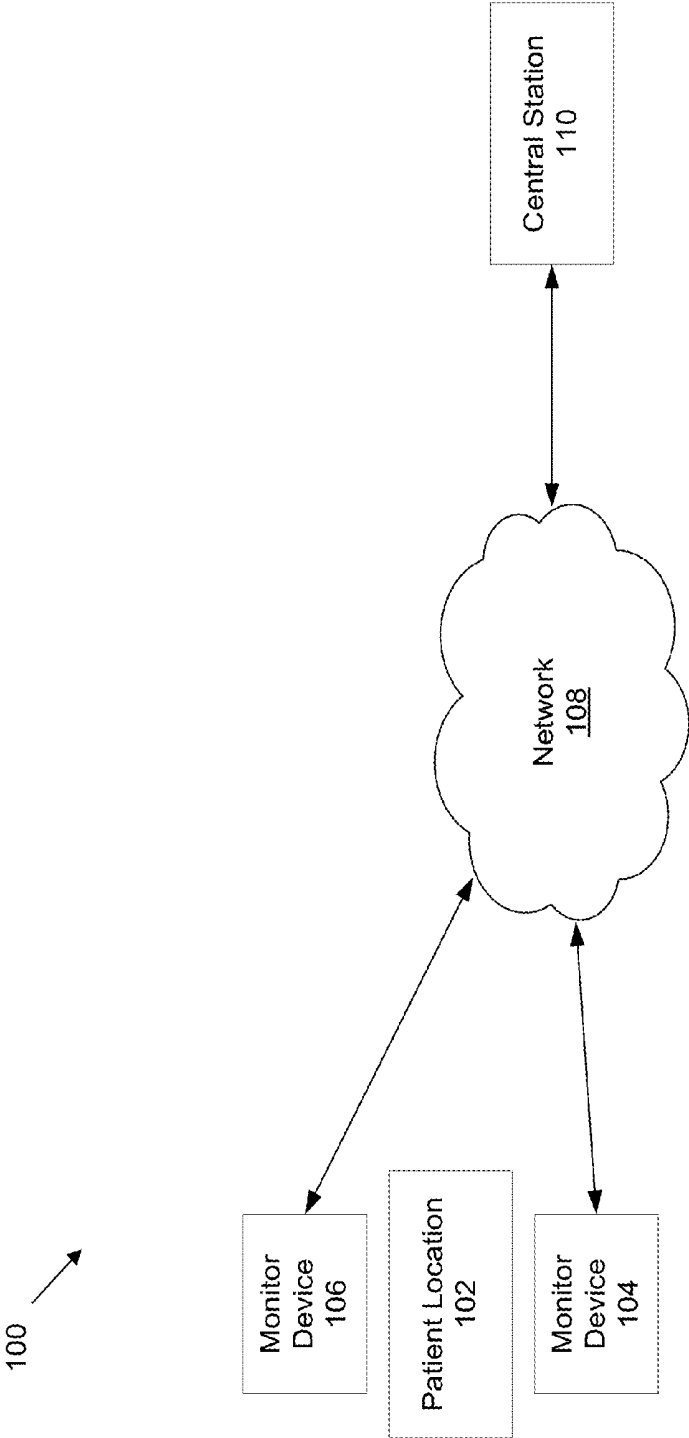


FIG. 1

200 →

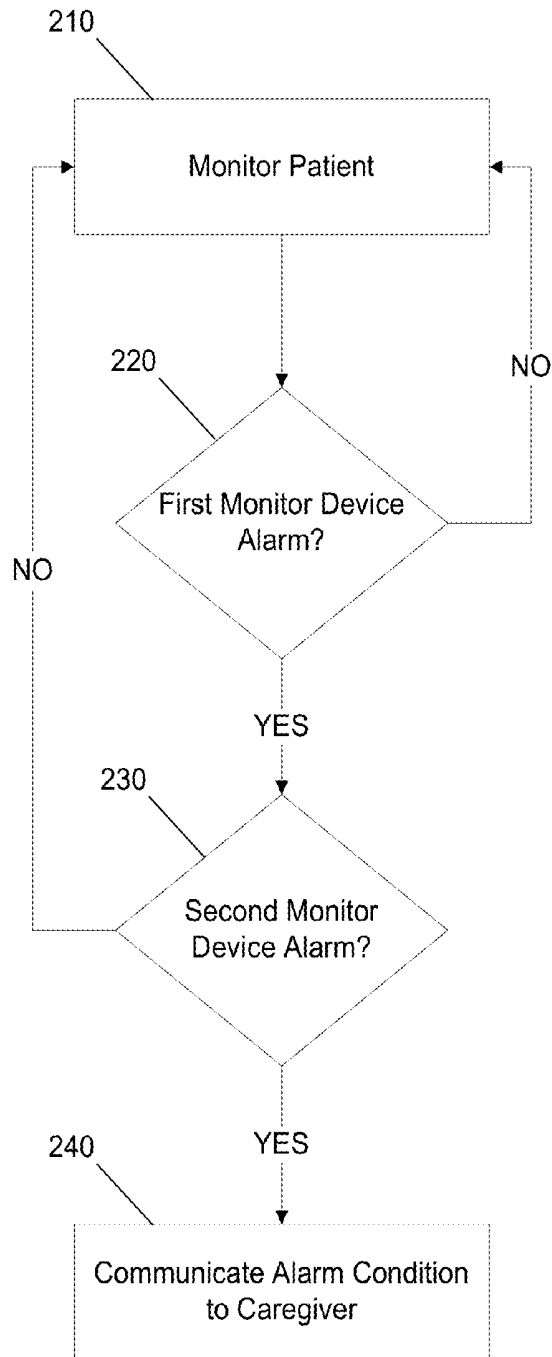


FIG. 2

300

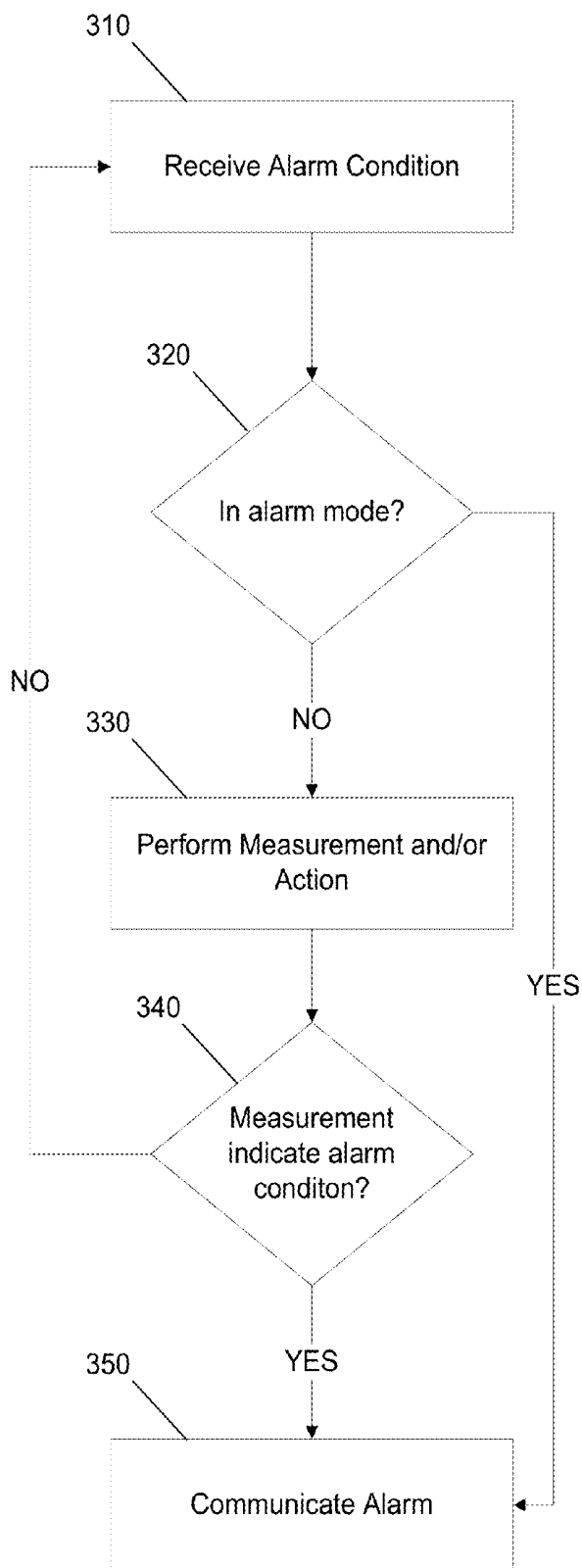


FIG. 3

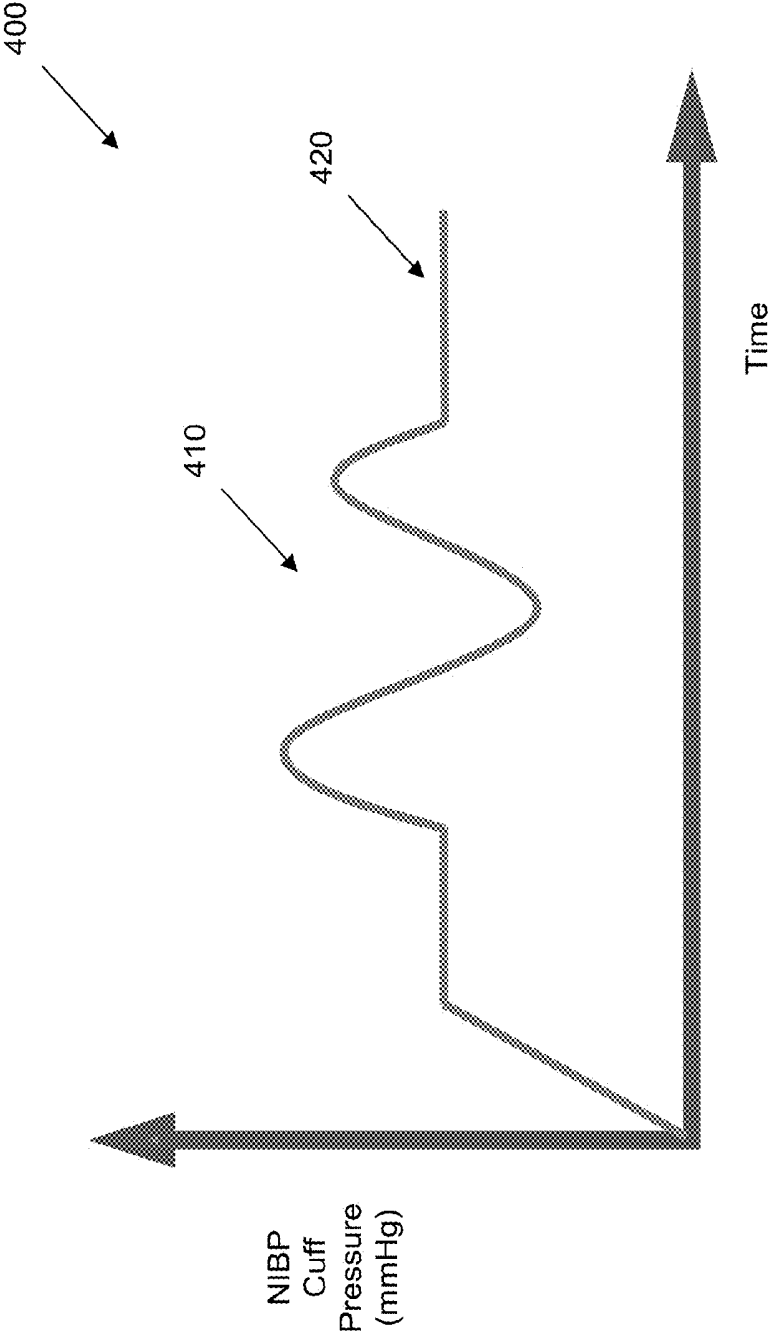


FIG. 4

CONTINUOUS PATIENT MONITORING

BACKGROUND

[0001] The continuous monitoring of patients can be labor-intensive and time consuming. This is particularly true of patients that are recovering from surgery. The costs associated with caregivers monitoring the vital signs of post-surgical patients can be significant. This limits the number of patients that can be monitored by each caregiver and increases the medical costs. Automated systems that are used to provide such monitoring are sometimes inaccurate. Such systems can be plagued with inadequate monitoring and false alarming.

SUMMARY

[0002] In one aspect, a system for providing continuous monitoring of a patient includes: a first monitor device configured to measure one or more physiological attributes associated with the patient, the first monitor device being a contactless device; and a second monitor device configured to measure one or more physiological attributes associated with the patient, the second monitor device including one or more sensors contacting the patient; wherein, upon an alarm condition by the first monitor device, the second monitor device is configured to measure a physiological attribute and suppress the alarm condition when the second monitor device detects a non-alarm condition.

[0003] In another aspect, a system for providing continuous monitoring of a patient includes: a first monitor device configured to measure one or more physiological attributes associated with the patient, the first monitor device being a piezoelectric device that measures the physiological attributes without contact, and wherein the physiological attributes including heart rate, respiration rate, and patient movement; and a second monitor device configured to measure one or more physiological attributes associated with the patient, the second monitor device including one or more sensors contacting the patient; wherein, upon an alarm condition by the first monitor device, the second monitor device is configured to measure a physiological attribute and either: suppress the alarm condition when the second monitor device detects a non-alarm condition; or allow the alarm condition when the second monitor device detects an alarm condition.

[0004] In yet another aspect, a method for continuously monitoring a patient includes: measuring a first physiological attribute using a first monitor device, the first monitor device being a contactless device; detecting an alarm condition by the first monitor device; measuring a second physiological attribute using a second monitor device, the second monitor device including one or more sensors contacting the patient; and suppressing the alarm condition when the second monitor device detects a non-alarm condition.

DESCRIPTION OF THE FIGURES

[0005] FIG. 1 shows an example system for continuous monitoring of a patient.

[0006] FIG. 2 shows an example method for continuous monitoring of a patient.

[0007] FIG. 3 shows an example method for confirming an alarm condition during continuous monitoring of a patient.

[0008] FIG. 4 shows an example chart with blood pressure data indicative of movement of the patient.

DETAILED DESCRIPTION

[0009] The present disclosure relates to systems and methods for providing the continuous monitoring of patients.

[0010] FIG. 1 is a block diagram illustrating an example system 100 for monitoring patients.

[0011] In this example, the patient is located at a patient location 102. The patient location 102 can be a hospital room or other location at which a patient is placed for monitoring. In this example, the patient location 102 is a patient bed in a hospital room or other caregiving location. In other examples, the patient location 102 can be a chair or other structure upon which a patient is rested. Finally, as described further below, the patient location 102 can include a space in which the patient resides, such as a hospital room.

[0012] In this example, the patient is being monitored by monitor devices 104, 106. The patient can, for example, be placed in the patient location 102 after surgery has been performed. The patient is monitored as the patient recovers from surgery. For example, if the patient was anesthetized during surgery, the patient is placed in patient location 102 after surgery and monitored as the patient wakes from the anesthesia.

[0013] The patient can be monitored at the patient location 102 for other reasons as well. For example, the patient can be ill or injured, and the monitor devices 104, 106 can be used to monitor the patient as the patient recovers.

[0014] For example, in some embodiments, the patient is monitored for events like fall situations. In such an example, the monitor devices 104, 106 are used to detect acute changes, such as the position of the patient (e.g., in or out of bed).

[0015] In yet other examples, the monitor devices 104, 106 are used to monitor the patient's level of ambulation. This is correlated with the vital signs for the patient. In such an embodiment, patient motion in and out of bed can be correlated with vital signs to determine a level of patient recovery. This can be used to determine when a patient is ready for discharge.

[0016] In yet other examples, the patient can wear one or both of the monitor devices 104, 106. In such an embodiment, the level of ambulation can be measured as the patient sleeps, sits, stands, and moves. Other configurations are possible.

[0017] In this example, the monitor device 104 is a device that monitors certain physiological attributes associated with the patient. The monitor device 104 is a contact-free patient monitor, meaning that the monitor device 104 does not directly contact the patient to measure the physiological attributes. Instead, the monitor device 104 uses piezoelectric technology to monitor such attributes as heart rate, respiration rate, and patient movement (e.g., if the patient is moving and/or if the patient has exited the patient location).

[0018] In this example, the monitor device 104 includes a sensor that is placed in proximity to the patient to measure the attributes. For example, the sensor of the monitor device 104 can be placed under a mattress of the patient's bed located at the patient location 102 or under a cushion of the patient's chair. The piezoelectric technology associated with the sensor allows the sensor to sense the specified attributes of the patient without directly contacting the patient.

[0019] In this example, the monitor device 104 is part of the EarlySense System manufactured by EarlySense of Waltham, Massachusetts. Aspects of that system are described in U.S. patent application Ser. No. 11/552,872 filed on Oct. 25, 2006. Other devices can be used.

[0020] The monitor device **106** is a patient monitoring device that monitors various attributes associated with a patient, such as temperature, oxygen saturation level (SpO₂), non-invasive blood pressure (NIBP), end tidal carbon dioxide (ETCO₂), and respiration rate. In this example, the monitor device **106** is a contact device, in that the sensors of the monitor device **106** may contact the patient. For example, the NIBP sensor is a pressure cuff that is positioned around the patient's arm to take measurements to estimate such attributes as the patient's blood pressure, movement, heart rate, etc.

[0021] In another example, the monitor device **106** includes a photoplethysmography sensor used to create a photoplethysmogram. Such a sensor can be used to create a high-accuracy and resolution heart rate measurements. Other sensors can be used.

[0022] In this example, the monitor device **106** is a Welch Allyn 1500 Patient Monitor manufactured by Welch Allyn of Skaneateles Falls, N.Y. Other devices can be used.

[0023] The monitor devices **104, 106** communicate with a network **108**. In one example, the monitor devices **104, 106** and the network **108** are part of a CONNEX™ system from Welch Allyn of Skaneateles Falls, N.Y., although other systems can be used. In such an example, the monitor devices communicate through known protocols, such as the Welch Allyn Communications Protocol (WACP). WACP uses a taxonomy as a mechanism to define information and messaging. Taxonomy can be defined as description, identification, and classification of a semantic model. Taxonomy as applied to a classification scheme may be extensible. Semantic class-based modeling utilizing taxonomy can minimize the complexity of data description management by limiting, categorizing, and logically grouping information management and operational functions into families that contain both static and dynamic elements.

[0024] The network **108** is an electronic communication network that facilitates communication between the monitor devices **104, 106**. An electronic communication network is a set of computing devices and links between the computing devices. The computing devices in the network use the links to enable communication among the computing devices in the network. The network **108** can include routers, switches, mobile access points, bridges, hubs, intrusion detection devices, storage devices, standalone server devices, blade server devices, sensors, desktop computers, firewall devices, laptop computers, handheld computers, mobile telephones, and other types of computing devices.

[0025] In various embodiments, the network **108** includes various types of links. For example, the network **108** can include wired and/or wireless links. Furthermore, in various embodiments, the network **108** is implemented at various scales. For example, the network **108** can be implemented as one or more local area networks (LANs), metropolitan area networks, subnets, wide area networks (such as the Internet), or can be implemented at another scale.

[0026] The monitor devices **104, 106** communicate through the network **108** with a central station **110**. The central station **110** is a location at which a caregiver (e.g., a nurse or doctor) can monitor a plurality of patients. For example, the monitor devices **104, 106** send patient data to the central station **110**, and the caregiver monitors the patient information at the central station **110**.

[0027] In this example, the central station is a Welch Allyn Acuity® Central Monitoring Station manufactured by Welch Allyn. Other configurations are possible.

[0028] The monitor devices **104, 106** also provide alarming information to the central station **110**. For example, if the monitor device **104** detects a lack of heart rate, respiration rate, and/or patient movement for a specified period of time, the monitor device **104** can communicate an alarm condition to the central station **110**. This alerts a caregiver at the central station **110** of a condition that may require attention by the caregiver. Likewise, the monitor device **106** provides an alarm condition about abnormal attributes, such as a low pulse or respiration rate, to the central station **110**.

[0029] However, in some instances, the alarm information is indicative of a false positive. For example, because the monitor device **104** is contactless, it is possible for the monitor device **104** to take a period of time to acquire the signal from the patient. Further, patient movement (e.g., rolling over, etc.) can cause loss of the signal. This slow acquisition time and loss of signal can result in alarm conditions that are false positives.

[0030] For example, the patient could roll over, and the monitor device **104** could lose the acquisition of the signal associated with the patient's heart rate. If the signal is not reacquired in a certain amount of time, the monitor device **104** may provide an alarm condition to the central station **110**. This false positive may require a caregiver to check on the patient, wasting resources.

[0031] Likewise, the monitor device **106** can provide false positives. For example, if the SpO₂ sensor becomes dislodged from the patient, the monitor device **106** loses the oxygen saturation levels for the patient, which could cause an alarm condition to be sent.

[0032] To minimize false positive information from being provided to the caregiver, a series of checks are provided between the monitor devices **104, 106**. Generally, if one device indicates an alarm condition, information from the second device is checked prior to providing the alarm condition to the caregiver.

[0033] For example, referring now to FIG. 2, an example method **200** for the continuous monitoring of a patient is provided. In this example, the patient is monitored at operation **210** using, for example, the monitor devices **104, 106**.

[0034] Next, at operation **220**, a determination is made regarding whether or not one of the monitor devices (e.g., monitor device **104**) is providing an indication of an alarm condition. If not, control is passed back to operation **210**, and monitoring is continued.

[0035] If the monitor device is indicating an alarm condition, control is instead passed to operation **230**, and a determination is made regarding whether or not the other of the monitor devices (e.g., monitor device **106**) is providing an indication of an alarm condition. If not, control is passed back to operation **210**, and continuous monitoring is continued.

[0036] If the monitor device is indicating an alarm condition, control is passed to operation **240**, and the alarm condition is communicated to the caregiver. For example, the alarm condition can be sent to the central station.

[0037] The method **200** allows each of the two monitor devices **104, 106** to become a check and balance on the other of the monitor devices **104, 106**, to minimize false alarming. In such a scenario, the method **200** utilizes the following logic.

Monitor Device 104	Monitor Device 106	Alarm?
Yes	Yes	Yes
No	Yes	No
Yes	No	No
No	No	No

[0038] In one example, the monitor device **106** is used to minimize the false positives provided by the monitor device **104**. For example, if the monitor device **104** loses the heart rate or respiration signals (e.g., when the patient moves) and starts to alarm, the monitor device **106** is consulted before the alarm condition is communicated to the caregiver at the central station **110**.

[0039] In one embodiment, the monitor device **106** performs one or more measurements or actions to determine if alarming should occur upon receiving an alarm signal from the monitor device **104**. The measurement can include taking a vital signs measurement (e.g., blood pressure, respiration rate, heart rate, oxygen saturation, or a combination thereof).

[0040] For example, referring now to FIG. 3, a method **300** for confirming an alarm condition during continuous monitoring of a patient is shown. At operation **310**, the monitor device **106** receives an alarm condition from the monitor device **104**. Next, at operation **320**, a determination is made regarding whether or not the monitor device **106** is already indicating an alarm. If so, the alarm is communicated to the central station **110**.

[0041] Alternatively, if the monitor device **106** is not already alarming, control is passed to operation **330**, and the monitor device **106** performs one or more measurements and/or actions to determine if alarming is appropriate. This is done to minimize false alarming.

[0042] At operation **340**, a determination is made regarding whether or not an alarm condition exists. If the measurement is indicative of an alarm condition, control is passed to operation **350**, and the alarm is communicated. If not, control is passed back to operation **310**, and the false positive is suppressed before the condition is used to alert the caregiver.

[0043] The alarming threshold for the system can be configurable. For example, the sensitivity for the system can be configured based upon different parameters, such as being dependent on the medication and/or surgical situation for the patient. In these examples, the system can be set to be more sensitive, which may result in greater false positives but a closer level of supervision. The converse is true if the sensitivity is decreased.

[0044] For example, the monitor device **106** can inflate the NIBP cuff to a sub-measurement pressure (e.g., 30 mmHg through 300 mmHg). At this pressure, the NIBP cuff can register patient movement in the form of physical movement, breathing, and/or heart rate. This information can be used to make a determination of whether or not alarming is appropriate. For example, if the NIBP cuff is expanded and movement is detected, the alarm condition for the monitor device **106** is set to non-alarm, and the alarm condition from the monitor device **104** can be suppressed. Conversely, if no movement is detected, the alarm condition can be communicated to the caregiver.

[0045] For example, FIG. 4 illustrates a chart **400** with data from a NIBP cuff that is plotted over time. The movement of the patient is manifested by the peaks and valleys shown at section **410**. If the data is relative flat, such as at **420**, the data would instead be indicative of no movement.

[0046] In another example, the SpO2 sensor of the monitor device **106** is used to determine whether an alarm condition exists. In this example, the SpO2 data is examined to look for indications of movement (e.g., spiking of the data) and/or heart rate (periodic). This information can be used to determine whether to suppress or allow the alarm condition to be communicated to the caregiver.

[0047] In some examples, the suppression of the alarm condition is time-based. For example, if the monitor device **104** alarms and the monitor device **106** senses movement, the monitor device **106** only suppresses the alarm transmission to the caregiver for a certain period of time. If that period of time expires and the monitor device **104** continues to alarm, the alarm condition is transmitted to the caregiver even if the monitor device **106** continues to sense an attribute that would allow for suppression of the alarm condition (e.g., movement).

[0048] In some examples, other factors can also be determined other than alarming conditions. For example, in another embodiment, the data from the devices is windowed or trended to determine a state of recovery for the patient—e.g., if a patient is starting to ambulate or worsen. These trends can be used to estimate a patient's progress, determine necessary interventions, and determine a proper discharge date.

[0049] The monitor devices **104**, **106** and the central station **110** are computing devices. A computing device is a physical, tangible device that processes data. Example types of computing devices include personal computers, standalone server computers, blade server computers, mainframe computers, handheld computers, smart phones, special purpose computing devices, and other types of devices that process data.

[0050] Computing devices can include at least one central processing unit (“CPU”), a system memory, and a system bus that couples the system memory to the CPU. The system memory includes a random access memory (“RAM”) and a read-only memory (“ROM”). A basic input/output system containing the basic routines that help to transfer information between elements within the device, such as during startup, is stored in the ROM. The device further includes a mass storage device. The mass storage device is able to store software instructions and data.

[0051] The mass storage device and its associated computer-readable data storage media provide non-volatile, non-transitory storage for the device. Although the description of computer-readable data storage media contained herein refers to a mass storage device, such as a hard disk or CD-ROM drive, it should be appreciated by those skilled in the art that computer-readable data storage media can be any available non-transitory, physical device or article of manufacture from which the device can read data and/or instructions.

[0052] Computer-readable data storage media include volatile and non-volatile, removable and non-removable media implemented in any method or technology for storage of information such as computer-readable software instructions, data structures, program modules or other data. Example types of computer-readable data storage media include, but are not limited to, RAM, ROM, EPROM, EEPROM, flash memory or other solid state memory technology, CD-ROMs, digital versatile discs (“DVDs”), other optical storage media, magnetic cassettes, magnetic tape, magnetic disk storage or other magnetic storage devices, or any other medium which can be used to store the desired information and which can be accessed by the device.

[0053] The computing device can also include an input/output controller for receiving and processing input from a number of other devices, including a keyboard, a mouse, a touch user interface display screen, or another type of input device. Similarly, the input/output controller provides output to a touch user interface display screen, a printer, or other type of output device.

[0054] Although various embodiments are described herein, those of ordinary skill in the art will understand that many modifications may be made thereto within the scope of the present disclosure. Accordingly, it is not intended that the scope of the disclosure in any way be limited by the examples provided.

What is claimed is:

1. A system for providing continuous monitoring of a patient, the system comprising:

a first monitor device configured to measure one or more physiological attributes associated with the patient, the first monitor device being a contactless device; and

a second monitor device configured to measure one or more physiological attributes associated with the patient, the second monitor device including one or more sensors contacting the patient;

wherein, upon an alarm condition by the first monitor device, the second monitor device is configured to measure a physiological attribute and suppress the alarm condition when the second monitor device detects a non-alarm condition.

2. The system of claim 1, wherein the second monitor device allows the alarm condition when the second monitor device detects an alarm condition.

3. The system of claim 1, wherein the first monitor device includes a piezoelectric device.

4. The system of claim 3, wherein the piezoelectric device is positioned under a mattress or cushion of a structure upon which the patient is laid.

5. The system of claim 4, wherein the piezoelectric device detects the patient's heart rate, respiration rate, and patient movement.

6. The system of claim 1, wherein the second monitor device inflates a blood pressure cuff to estimate movement of the patient.

7. The system of claim 6, wherein the blood pressure cuff is inflated to a sub-measurement pressure.

8. The system of claim 1, wherein suppression of the alarm condition by the second monitor device is limited to a specified time period.

9. The system of claim 8, wherein the second monitor device allows the alarm condition to be transmitted when the specified time period expires and the first monitor device continues to issue the alarm condition.

10. A system for providing continuous monitoring of a patient, the system comprising:

a first monitor device configured to measure one or more physiological attributes associated with the patient, the

first monitor device being a piezoelectric device that measures the physiological attributes without contact, and wherein the physiological attributes including heart rate, respiration rate, and patient movement; and

a second monitor device configured to measure one or more physiological attributes associated with the patient, the second monitor device including one or more sensors contacting the patient;

wherein, upon an alarm condition by the first monitor device, the second monitor device is configured to measure a physiological attribute and either:

(i) suppress the alarm condition when the second monitor device detects a non-alarm condition; or

(ii) allow the alarm condition when the second monitor device detects an alarm condition.

11. The system of claim 10, wherein the piezoelectric device is positioned under a mattress of a bed upon which the patient is laid.

12. The system of claim 10, wherein the second monitor device inflates a blood pressure cuff to estimate movement of the patient.

13. The system of claim 12, wherein the blood pressure cuff is inflated to a sub-measurement pressure.

14. The system of claim 10, wherein suppression of the alarm condition by the second monitor device is limited to a specified time period.

15. The system of claim 14, wherein the second monitor device allows the alarm condition to be transmitted when the specified time period expires and the first monitor device continues to issue the alarm condition.

16. A method for continuously monitoring a patient, the method comprising:

measuring a first physiological attribute using a first monitor device, the first monitor device being a contactless device;

detecting an alarm condition by the first monitor device;

measuring a second physiological attribute using a second monitor device, the second monitor device including one or more sensors contacting the patient; and

suppressing the alarm condition when the second monitor device detects a non-alarm condition.

17. The method of claim 16, further comprising transmitting the alarm condition when the second monitor device detects an alarm condition.

18. The method of claim 16, wherein the first monitor device includes a piezoelectric device.

19. The method of claim 18, further comprising positioning the piezoelectric device under a mattress of a bed upon which the patient is laid.

20. The method of claim 16, further comprising trending data from the first and second monitor devices to determine a state of recovery for the patient.

* * * * *

专利名称(译)	持续的患者监测		
公开(公告)号	US20150077268A1	公开(公告)日	2015-03-19
申请号	US14/026802	申请日	2013-09-13
[标]申请(专利权)人(译)	伟伦公司		
申请(专利权)人(译)	伟伦, INC.		
当前申请(专利权)人(译)	伟伦, INC.		
[标]发明人	LANE JOHN A NGUYEN VUONG B ALISANSKI KRISTIN ANN		
发明人	LANE, JOHN A. NGUYEN, VUONG B. ALISANSKI, KRISTIN ANN		
IPC分类号	A61B5/00 G08C17/02		
CPC分类号	G08C17/02 A61B5/0024 A61B5/0022 A61B5/02055 A61B5/746 G16H40/63		
其他公开文献	US9517012		
外部链接	Espacenet USPTO		

摘要(译)

一种用于提供对患者的连续监测的系统包括：第一监测设备，被配置为测量与患者相关联的一个或多个生理属性，第一监测设备是非接触设备；第二监视器设备，被配置为测量与患者相关联的一个或多个生理属性，第二监视器设备包括接触患者的一个或多个传感器；其中，在第一监视器设备发出警报状态时，第二监视器设备被配置为在第二监视器设备检测到非警报状况时测量生理属性并抑制警报状况。

