



US010136815B2

(12) **United States Patent**  
**Lyon et al.**

(10) **Patent No.:** **US 10,136,815 B2**  
(45) **Date of Patent:** **\*Nov. 27, 2018**

(54) **PATIENT MONITORING DEVICE WITH REMOTE ALERT**

(58) **Field of Classification Search**  
None

See application file for complete search history.

(71) Applicant: **PHYSIO-CONTROL, INC.**, Redmond, WA (US)

(56) **References Cited**

(72) Inventors: **Richard Mark Lyon**, Scotland (GB); **Robert G. Walker**, Seattle, WA (US); **Jeffery S. Edwards**, Redmond, WA (US); **Niklas Andersson**, Seattle, WA (US); **Bethany Joyce Johnson**, Snoqualmie, WA (US)

U.S. PATENT DOCUMENTS

2,330,356 A 3/1943 Belliveau  
2,335,524 A 11/1943 Lomax  
(Continued)

FOREIGN PATENT DOCUMENTS

(73) Assignee: **PHYSIO-CONTROL, INC.**, Redmond, WA (US)

EP 1623666 2/2006  
EP 1679648 7/2006  
(Continued)

(\* ) Notice: Subject to any disclaimer, the term of this patent is extended or adjusted under 35 U.S.C. 154(b) by 0 days.

This patent is subject to a terminal disclaimer.

OTHER PUBLICATIONS

European Search Report from EP 09014863 dated Jan. 20, 2010.  
(Continued)

(21) Appl. No.: **15/073,442**

*Primary Examiner* — Steven Lim

*Assistant Examiner* — Renee Dorsey

(22) Filed: **Mar. 17, 2016**

(74) *Attorney, Agent, or Firm* — Lane Powell PC

(65) **Prior Publication Data**

US 2016/0199008 A1 Jul. 14, 2016

(57) **ABSTRACT**

**Related U.S. Application Data**

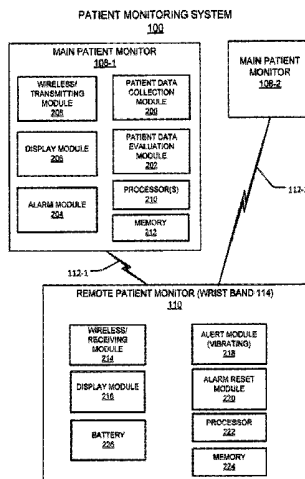
(63) Continuation of application No. 14/035,903, filed on Sep. 24, 2013, now Pat. No. 9,314,159.  
(Continued)

A remote patient monitoring system having a main patient monitor and a remote patient monitor. The main patient monitor is configured to receive and collect one or more patient physiological parameters and to provide an alarm in response to an alarm trigger. The alarm trigger includes a determination that at least one of the collected patient physiological parameters has reached a predetermined value. The remote patient monitor has an alarm reset and is configured to be carried by a caregiver. It is also configured to receive a signal from the main patient monitor in response to the alarm and to transmit an indication about the alarm trigger. The indication includes one or more of a notification that the patient is being attended to, a request by the caregiver for additional help, or a message about resolution of the alarm trigger.

(51) **Int. Cl.**  
**G08B 19/00** (2006.01)  
**A61B 5/00** (2006.01)  
(Continued)

(52) **U.S. Cl.**  
CPC ..... **A61B 5/0004** (2013.01); **A61B 5/0002** (2013.01); **A61B 5/0205** (2013.01);  
(Continued)

**20 Claims, 5 Drawing Sheets**



<b>Related U.S. Application Data</b>					
(60)	Provisional application No. 61/704,710, filed on Sep. 24, 2012.		5,050,612 A	9/1991	Matsumura
			5,062,151 A	10/1991	Shipley
			5,065,154 A	11/1991	Kaiser
			5,075,523 A	12/1991	Ford
			5,086,290 A	2/1992	Murray et al.
			5,103,108 A	4/1992	Crimmins
(51)	<b>Int. Cl.</b>		5,124,991 A	6/1992	Allen
	<i>A61B 5/0205</i> (2006.01)		5,137,033 A	8/1992	Norton
	<i>G06F 19/00</i> (2018.01)		5,140,309 A	8/1992	Gusakov
(52)	<b>U.S. Cl.</b>		5,153,584 A	10/1992	Engira
	CPC .....	<i>A61B 5/746</i> (2013.01); <i>A61B 5/7465</i> (2013.01); <i>G06F 19/3418</i> (2013.01)	5,235,258 A	8/1993	Schuerch
			5,266,944 A	11/1993	Carroll et al.
			5,276,680 A	1/1994	Messenger
			5,291,399 A	3/1994	Chaco
(56)	<b>References Cited</b>		5,319,355 A	6/1994	Russek
	<b>U.S. PATENT DOCUMENTS</b>		5,319,363 A	6/1994	Welch et al.
			5,327,592 A	7/1994	Stump
			5,351,439 A	10/1994	Takeda et al.
			5,357,254 A	10/1994	Kah, Jr.
			5,375,604 A	12/1994	Kelly et al.
			5,396,224 A	3/1995	Dukes et al.
			5,396,227 A	3/1995	Carroll et al.
			5,400,301 A	3/1995	Rackley
			5,416,695 A	5/1995	Stutman et al.
			5,430,900 A	7/1995	Kim
			5,434,755 A	7/1995	Sims et al.
			5,446,678 A	8/1995	Saltzstein et al.
			5,455,560 A	10/1995	Owen
			5,458,123 A	10/1995	Unger
			5,461,390 A	10/1995	Hoshen
			5,475,367 A	12/1995	Prevost
			5,511,256 A	4/1996	Capaldi
			5,534,851 A	7/1996	Russek
			5,537,459 A	7/1996	Price et al.
			5,548,637 A	8/1996	Heller et al.
			5,549,119 A	8/1996	Halleck et al.
			5,561,412 A	10/1996	Novak et al.
			5,564,108 A	10/1996	Hunsaker et al.
			5,568,119 A	10/1996	Schipper et al.
			5,576,452 A	11/1996	Dever et al.
			5,576,952 A	11/1996	Stutman et al.
			5,579,001 A	11/1996	Dempsey et al.
			5,588,005 A	12/1996	Ali et al.
			5,594,786 A	1/1997	Chaco et al.
			5,600,214 A	2/1997	Fromson
			5,621,388 A	4/1997	Sherburne et al.
			5,635,907 A	6/1997	Bernhard et al.
			5,636,245 A	6/1997	Ernst et al.
			5,640,953 A	6/1997	Bishop et al.
			5,649,833 A	7/1997	Pfeuffer et al.
			5,650,759 A	7/1997	Campana, Jr.
			5,650,770 A	7/1997	Schlager et al.
			5,664,270 A	9/1997	Bell et al.
			5,682,193 A	10/1997	Pradeep et al.
			5,686,229 A	11/1997	Chaco et al.
			5,686,888 A	11/1997	Welles, II
			5,686,902 A	11/1997	Reis et al.
			5,687,734 A	11/1997	Dempsey et al.
			5,691,980 A	11/1997	Welles, II et al.
			5,699,038 A	12/1997	Ulrich et al.
			5,705,980 A	1/1998	Shapiro
			5,708,421 A	1/1998	Boyd
			5,713,856 A	2/1998	Eggers et al.
			5,714,548 A	2/1998	Ma et al.
			5,719,761 A	2/1998	Gatti et al.
			5,731,757 A	3/1998	Layson, Jr.
			5,742,237 A	4/1998	Bledsoe
			5,751,246 A	5/1998	Hertel
			5,752,917 A	5/1998	Fuchs
			5,760,704 A	6/1998	Barton et al.
			5,767,791 A	6/1998	Stoop et al.
			5,781,442 A	7/1998	Engelson et al.
			5,781,921 A	7/1998	Nichols
			5,787,528 A	8/1998	Antinori
			5,788,646 A *	8/1998	Fuchs ..... G06F 17/241 600/523
			5,793,290 A	8/1998	Eagleson et al.
			5,808,564 A	9/1998	Simms et al.
			5,812,056 A	9/1998	Law

(56)

## References Cited

## U.S. PATENT DOCUMENTS

5,822,418	A	10/1998	Yacenda et al.	6,553,106	B1	4/2003	Gould et al.
5,822,544	A	10/1998	Chaco et al.	6,554,174	B1	4/2003	Aceves
5,838,233	A	11/1998	Gallant et al.	6,556,630	B1	4/2003	Brinsfield et al.
5,844,488	A	12/1998	Musick	6,560,165	B1	5/2003	Barker
5,867,821	A	2/1999	Ballantyne et al.	6,560,224	B1	5/2003	Kung et al.
5,877,675	A	3/1999	Rebstock et al.	6,560,274	B1	5/2003	Leitgeb et al.
5,901,391	A	5/1999	Kato	6,572,556	B2	6/2003	Stoycos et al.
5,933,488	A	8/1999	Marcus et al.	6,575,901	B2	6/2003	Stoycos et al.
5,936,539	A	8/1999	Fuchs	6,581,204	B2	6/2003	DeBusk et al.
5,942,986	A	8/1999	Shabot et al.	6,584,182	B2	6/2003	Brodnick
5,944,659	A	8/1999	Flach et al.	6,584,454	B1	6/2003	Hummel, Jr. et al.
5,956,539	A	9/1999	Fitterman et al.	6,585,645	B2	7/2003	Hutchinson
5,963,137	A	10/1999	Waters, Sr.	6,589,170	B1	7/2003	Flach et al.
5,974,389	A	10/1999	Clark et al.	6,593,528	B2	7/2003	Franklin-Lees et al.
5,991,728	A	11/1999	DeBusk et al.	6,594,146	B2	7/2003	Frangesch et al.
5,995,937	A	11/1999	DeBusk et al.	6,594,519	B2	7/2003	Stoycos et al.
6,014,633	A	1/2000	DeBusk et al.	6,600,421	B2	7/2003	Freeman
6,037,723	A	3/2000	Shafer et al.	6,603,494	B1	8/2003	Banks et al.
6,057,758	A	5/2000	Dempsey et al.	6,609,115	B1	8/2003	Mehring et al.
6,057,782	A	5/2000	Koenig	6,616,606	B1	9/2003	Petersen et al.
6,067,019	A	5/2000	Scott	6,622,088	B2	9/2003	Hood
6,076,166	A	6/2000	Moshfeghi et al.	6,640,246	B1	10/2003	Gary, Jr. et al.
6,078,261	A	6/2000	Davsko	6,643,238	B2	11/2003	Nakajima
6,085,493	A	7/2000	DeBusk et al.	6,650,346	B1	11/2003	Jaeger et al.
6,088,362	A	7/2000	Turnbull et al.	6,659,947	B1	12/2003	Carter et al.
6,093,146	A	7/2000	Filangeri	6,665,358	B1	12/2003	Oldagiri
6,097,308	A	8/2000	Albert et al.	6,665,385	B2	12/2003	Rogers et al.
6,101,644	A	8/2000	Gagneur et al.	6,665,820	B1	12/2003	Frowein et al.
6,111,509	A	8/2000	Holmes	6,669,630	B1	12/2003	Joliat et al.
6,125,350	A	9/2000	Dirbas	6,671,547	B2	12/2003	Lyster et al.
6,133,837	A	10/2000	Riley	6,671,563	B1	12/2003	Engelson et al.
6,142,592	A	11/2000	Grittke et al.	6,685,633	B2	2/2004	Albert et al.
6,147,592	A	11/2000	Ulrich et al.	6,689,091	B2	2/2004	Bui et al.
6,183,417	B1	2/2001	Geheb et al.	6,693,514	B2	2/2004	Perea, Jr. et al.
6,208,250	B1	3/2001	Dixon et al.	6,694,367	B1	2/2004	Miesbauer et al.
6,241,668	B1	6/2001	Herzog	6,694,509	B1	2/2004	Stoval et al.
6,259,355	B1	7/2001	Chaco et al.	6,697,765	B2	2/2004	Kuth
6,264,614	B1	7/2001	Albert et al.	6,707,476	B1	3/2004	Hochstedler
6,272,347	B1	8/2001	Griffith et al.	6,714,913	B2	3/2004	Brandt et al.
6,279,183	B1	8/2001	Kummer et al.	6,721,818	B1	4/2004	Nakamura
6,287,253	B1	9/2001	Ortega et al.	6,726,634	B2	4/2004	Freeman
6,302,844	B1	10/2001	Walker et al.	6,727,818	B1	4/2004	Wildman et al.
6,314,556	B1	11/2001	DeBusk et al.	6,731,311	B2	5/2004	Bufe et al.
6,320,510	B2	11/2001	Menkedick et al.	6,731,989	B2	5/2004	Engleson et al.
6,344,794	B1	2/2002	Ulrich et al.	6,736,759	B1	5/2004	Stubbs et al.
6,348,777	B1	2/2002	Brown et al.	6,740,033	B1	5/2004	Olejniczak et al.
6,362,725	B1	3/2002	Ulrich et al.	6,749,566	B2	6/2004	Russ
6,364,834	B1	4/2002	Reuss et al.	6,751,630	B1	6/2004	Franks et al.
6,398,727	B1	6/2002	Bui et al.	6,754,545	B2	6/2004	Haeuser et al.
6,406,426	B1	6/2002	Reuss et al.	6,754,833	B1	6/2004	DeBusk et al.
6,407,335	B1	6/2002	Franklin-Lees et al.	6,759,607	B2	7/2004	Engler
6,412,980	B1	7/2002	Lounsbury et al.	6,759,959	B2	7/2004	Wildman
6,416,471	B1	7/2002	Kumar et al.	6,763,541	B2	7/2004	Mahoney et al.
6,421,649	B1	7/2002	Rattner	6,771,172	B1	8/2004	Robinson et al.
6,439,469	B1	8/2002	Polkus et al.	6,773,396	B2	8/2004	Flach et al.
6,441,742	B1	8/2002	Lovely et al.	6,778,225	B2	8/2004	David
6,442,290	B1	8/2002	Ellis et al.	6,781,517	B2	8/2004	Moster et al.
6,445,299	B1	9/2002	Rojas, Jr.	6,784,797	B2	8/2004	Smith et al.
6,450,956	B1	9/2002	Rappaport et al.	6,788,206	B1	9/2004	Edwards
6,462,656	B2	10/2002	Ulrich et al.	6,791,460	B2	9/2004	Dixon et al.
6,483,264	B1	11/2002	Shafer et al.	6,792,396	B2	9/2004	Inda et al.
6,486,792	B1	11/2002	Moster et al.	6,801,227	B2	10/2004	Bocionek et al.
6,493,568	B1	12/2002	Bell et al.	6,807,543	B2	10/2004	Muthya
6,494,831	B1	12/2002	Koritzinsky	6,825,763	B2	11/2004	Ulrich et al.
6,510,344	B1	1/2003	Halpern	6,826,578	B2	11/2004	Brackett et al.
6,516,324	B1	2/2003	Jones et al.	6,828,992	B1	12/2004	Freeman et al.
6,526,310	B1	2/2003	Carter et al.	6,829,478	B1*	12/2004	Layton ..... G08B 25/003 370/242
6,529,164	B1	3/2003	Carter	6,829,796	B2	12/2004	Salvatini et al.
6,533,453	B1	3/2003	Heidsieck et al.	6,830,549	B2	12/2004	Bui et al.
6,535,576	B2	3/2003	Vafi et al.	6,832,199	B1	12/2004	Kucek et al.
6,539,393	B1	3/2003	Kabala	6,840,117	B2	1/2005	Hubbard, Jr.
6,544,173	B2	4/2003	West et al.	6,847,814	B1	1/2005	Vogeleisen
6,544,174	B2	4/2003	West et al.	6,864,795	B2	3/2005	Smith et al.
6,551,243	B2	4/2003	Bocionek et al.	6,868,256	B2	3/2005	Dooley et al.
6,553,105	B2	4/2003	Chea, Jr. et al.	6,870,484	B1	3/2005	Brinsfield et al.
				6,871,211	B2	3/2005	Labounty et al.
				6,873,884	B2	3/2005	Brackett et al.
				6,876,303	B2	4/2005	Reeder et al.

(56)

References Cited

U.S. PATENT DOCUMENTS

6,876,985 B2	4/2005	Kawanaka	2003/0030569 A1	2/2003	Ulrich et al.
6,885,288 B2	4/2005	Pincus	2003/0052787 A1	3/2003	Zerhusen et al.
6,891,909 B2	5/2005	Hurley et al.	2003/0074222 A1	4/2003	Rosow et al.
6,892,083 B2	5/2005	Shostak	2003/0146835 A1	8/2003	Carter
6,904,161 B1	6/2005	Becker et al.	2003/0149598 A1	8/2003	Santoso et al.
6,909,995 B2	6/2005	Shiraishi	2003/0176798 A1	9/2003	Simon
6,912,549 B2	6/2005	Rotter et al.	2003/0179099 A1	9/2003	Perea, Jr. et al.
6,915,170 B2	7/2005	Engleson et al.	2003/0197614 A1	10/2003	Smith et al.
6,925,367 B2	8/2005	Fontius	2003/0206116 A1	11/2003	Weiner et al.
6,930,878 B2	8/2005	Brackett et al.	2003/0208110 A1	11/2003	Mault et al.
6,958,706 B2	10/2005	Chaco et al.	2003/0212575 A1	11/2003	Saalsaa et al.
6,968,375 B1	11/2005	Brown	2003/0230469 A1	12/2003	Engler
6,982,639 B2	1/2006	Brackett et al.	2004/0064890 A1	4/2004	Kim et al.
6,988,989 B2	1/2006	Weiner et al.	2004/0158922 A1	8/2004	Eberler et al.
6,998,986 B2	2/2006	Smith	2004/0183681 A1	9/2004	Smith
7,020,921 B2	4/2006	Wang	2004/0183684 A1	9/2004	Callaway
7,023,821 B2	4/2006	Wotherspoon et al.	2004/0186358 A1	9/2004	Chernow et al.
7,038,584 B2	5/2006	Carter	2004/0193449 A1	9/2004	Wildman et al.
7,053,767 B2	5/2006	Petite et al.	2004/0222897 A1	11/2004	Schuhmann et al.
7,061,396 B1	6/2006	Conrad et al.	2004/0243446 A1	12/2004	Wyatt
7,068,143 B2	6/2006	Doering et al.	2004/0249670 A1	12/2004	Noguchi et al.
7,071,820 B2	7/2006	Callaway	2004/0261184 A1	12/2004	Flick
7,079,036 B2	7/2006	Cooper et al.	2005/0035862 A1	2/2005	Wildman et al.
7,088,235 B1	8/2006	Carricut	2005/0055779 A1	3/2005	Damewood
7,092,376 B2	8/2006	Schuman	2005/0076441 A1	4/2005	Dominati et al.
7,107,642 B2	9/2006	Wong et al.	2005/0110617 A1	5/2005	Kile et al.
7,138,902 B2	11/2006	Menard	2005/0155149 A1	7/2005	Pedersen
7,151,457 B2*	12/2006	Riley	2005/0170863 A1	8/2005	Shostak
		G08B 21/0469	2005/0206505 A1	9/2005	Arcaria
		340/286.07	2005/0242946 A1	11/2005	Hubbard, Jr. et al.
7,160,133 B2	1/2007	Karadimas et al.	2006/0046579 A1	3/2006	Karadimas et al.
7,242,306 B2	7/2007	Wildman et al.	2006/0049936 A1	3/2006	Collins, Jr. et al.
7,248,881 B2	7/2007	Shostak	2006/0114854 A1	6/2006	Wotherspoon et al.
7,263,669 B2	8/2007	Denholm	2006/0126560 A1	6/2006	Wotherspoon et al.
7,275,220 B2	9/2007	Brummel et al.	2006/0136265 A1	6/2006	Summers et al.
7,290,299 B2	11/2007	Votel	2006/0214786 A1	9/2006	Bixier et al.
7,292,135 B2	11/2007	Bixler et al.	2006/0220798 A1	10/2006	Willis
7,299,512 B2	11/2007	Cavalier et al.	2006/0239195 A1	10/2006	Camins et al.
7,301,451 B2	11/2007	Hastings	2006/0248221 A1	11/2006	Hottel et al.
7,307,522 B2	12/2007	Dawson	2006/0267740 A1	11/2006	Bixier et al.
7,310,541 B2	12/2007	Shostak	2007/0071114 A1	3/2007	Brown
7,319,386 B2	1/2008	Collins, Jr. et al.	2007/0156456 A1	7/2007	McGillin et al.
7,333,002 B2	2/2008	Bixler et al.	2007/0210917 A1	9/2007	Collins, Jr. et al.
7,336,187 B2	2/2008	Hubbard, Jr. et al.	2007/0229249 A1	10/2007	McNeal et al.
7,746,218 B2	6/2010	Collins, Jr. et al.	2007/0237487 A1	10/2007	Lin
8,086,728 B2	12/2011	Nasnas	2007/0239484 A1	10/2007	Around et al.
8,120,471 B2	2/2012	Collins, Jr. et al.	2007/0257788 A1	11/2007	Carlson et al.
8,536,990 B2	9/2013	Collins, Jr. et al.	2008/0004904 A1	1/2008	Tran
8,598,995 B2	12/2013	Schuman et al.	2008/0015900 A1	1/2008	Denholm
8,866,598 B2	10/2014	Collins, Jr. et al.	2008/0018436 A1	1/2008	Traughber et al.
9,050,031 B2	6/2015	Collins, Jr. et al.	2008/0027754 A1	1/2008	Auker et al.
9,299,242 B2	3/2016	Schuman et al.	2008/0205310 A1	8/2008	Perkins et al.
9,336,672 B2	5/2016	Collins, Jr. et al.	2009/0063183 A1	3/2009	McNeely et al.
9,517,034 B2	12/2016	Collins, Jr. et al.	2009/0076350 A1	3/2009	Bly et al.
9,517,035 B2	12/2016	Schuman et al.	2009/0212925 A1	8/2009	Schuman, Sr. et al.
9,861,321 B2	1/2018	Collins, Jr. et al.	2009/0212956 A1	8/2009	Schuman et al.
9,955,926 B2	5/2018	Schuman et al.	2009/0217080 A1	8/2009	Ferguson et al.
2001/0014769 A1*	8/2001	Bufe	2009/0243833 A1	10/2009	Huang et al.
		G06F 19/3418	2010/0079276 A1	4/2010	Collins, Jr. et al.
		600/300	2010/0087900 A1	4/2010	Flint
2001/0050610 A1	12/2001	Gelston	2010/0102973 A1*	4/2010	Grohman
2001/0051765 A1	12/2001	Walker et al.			G05B 23/0272
2002/0014951 A1	2/2002	Kramer et al.	2010/0179389 A1*	7/2010	340/584
2002/0032583 A1	3/2002	Joao			600/301
2002/0044043 A1	4/2002	Chaco et al.	2011/0224505 A1	9/2011	Moroney
2002/0044059 A1	4/2002	Reeder et al.	2011/0257544 A1	10/2011	Sadhu
2002/0067273 A1	6/2002	Jaques et al.	2011/0263950 A1*	10/2011	Kaasinen et al.
2002/0070867 A1	6/2002	Conway et al.			A61B 5/1113
2002/0080037 A1	6/2002	Dixon et al.	2012/0112903 A1	5/2012	600/301
2002/01010349 A1	8/2002	Rojas, Jr.	2012/0119890 A1	5/2012	Kaib et al.
2002/0103674 A1	8/2002	Reeder et al.	2012/0165688 A1	6/2012	Collins, Jr. et al.
2002/0151990 A1	10/2002	Ulrich et al.	2012/0203076 A1	6/2012	Liu et al.
2002/0173991 A1	11/2002	Avitali	2012/0203078 A1	8/2012	Fatta et al.
2002/0186136 A1	12/2002	Schuman	2012/0232366 A1	8/2012	Sze et al.
2002/0196141 A1	12/2002	Boone et al.	2012/0232366 A1	9/2012	Kiani et al.
2003/0010345 A1	1/2003	Koblasz et al.	2012/0286955 A1	11/2012	Welch et al.
2003/0028449 A1	2/2003	Heinen et al.	2013/0045685 A1*	2/2013	Kiani
					G06F 19/3406
					455/41.2
			2014/0009271 A1	1/2014	Collins, Jr. et al.
			2015/0022330 A1	1/2015	Collins, Jr. et al.

(56)

**References Cited**

U.S. PATENT DOCUMENTS

2016/0166214 A1 6/2016 Schuman et al.  
2016/0174909 A1 6/2016 Collins, Jr. et al.  
2017/0035370 A1 2/2017 Collins, Jr. et al.

FOREIGN PATENT DOCUMENTS

GB	250769	4/1926
WO	9523378	8/1995
WO	9808203	2/1998
WO	02091297	11/2002
WO	2002091297	11/2002
WO	2004036390	4/2004

OTHER PUBLICATIONS

European Search Report from EP 10179932.8-2415, dated Jan. 24, 2011, 12 pages.

European Search Report from EP 10179917 dated Feb. 9, 2011, 16 pages.

Partial European Search Report from EP 09 25 0420, dated Jun. 16, 2009.

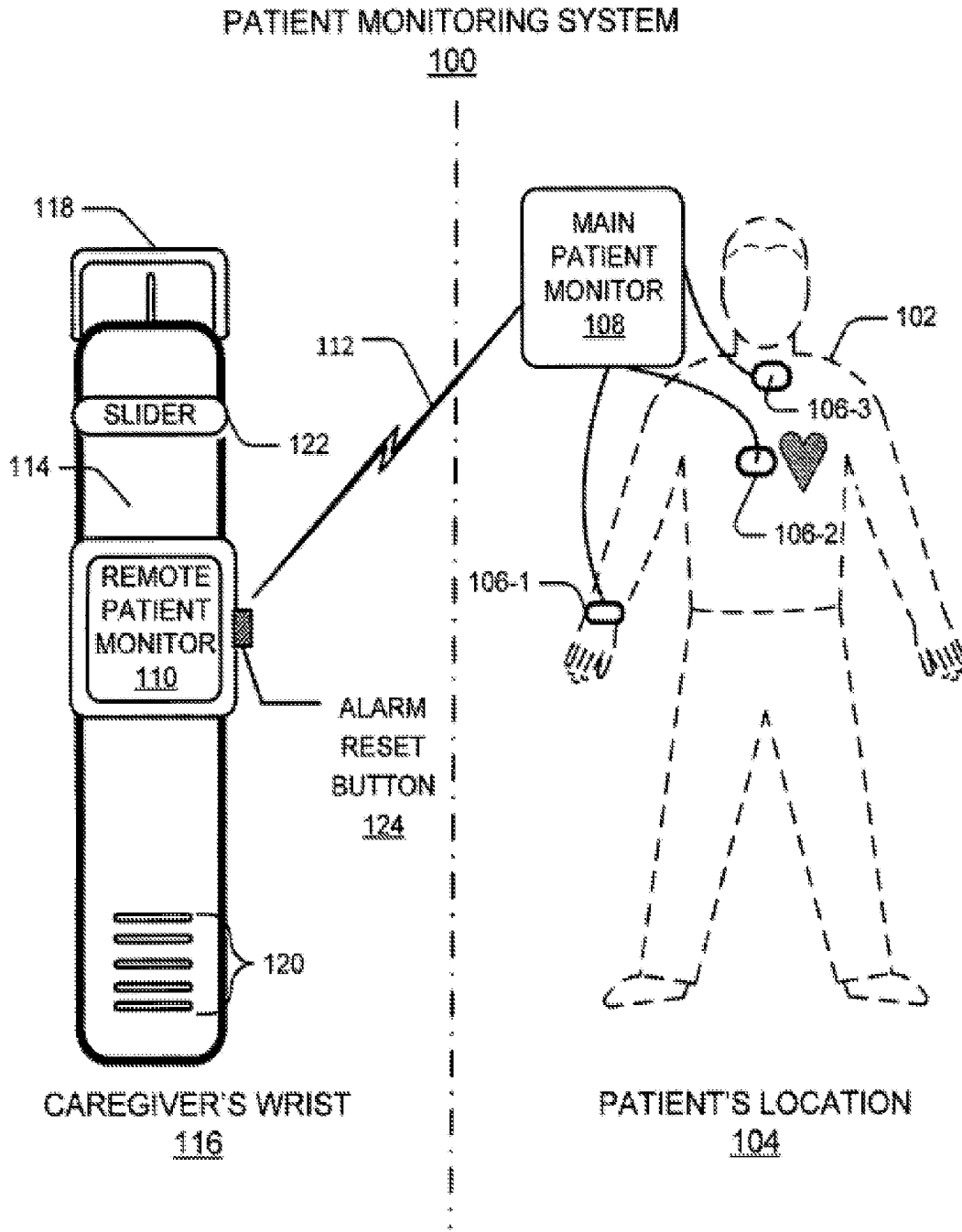
European Search Report for EP 09250419 dated Aug. 13, 2010 (12 pages).

European Search Report for European Appl. No. 12164812.5, dated Mar. 9, 2012 (8 pages).

European Search Report for European Appl. No. 12164815.8 dated Mar. 9, 2012 (8 pages).

European Search Report for European Appl. No. 12164817.4 dated Mar. 9, 2012 (9 pages).

\* cited by examiner



**FIG. 1**

PATIENT MONITORING SYSTEM  
100

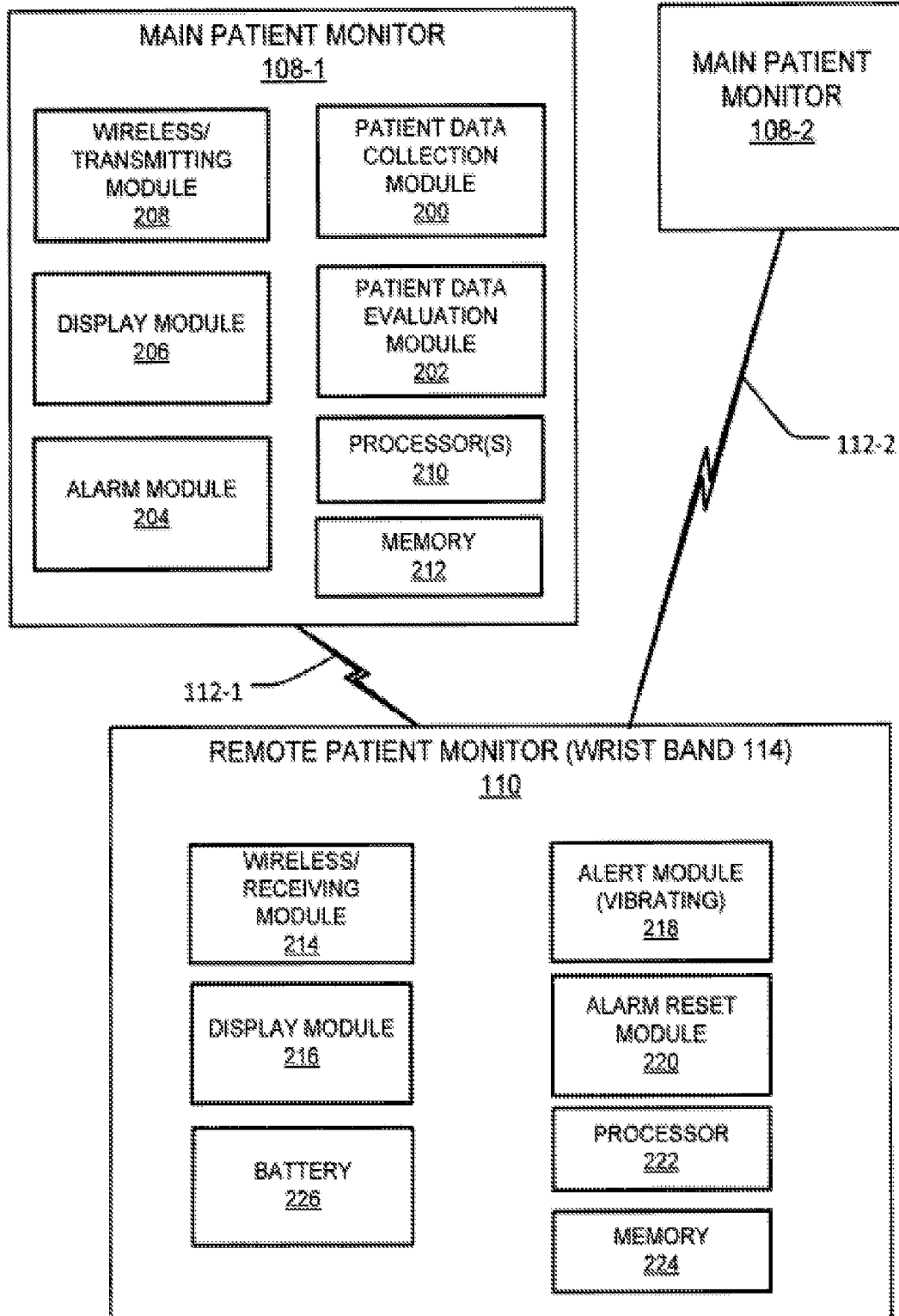


FIG. 2

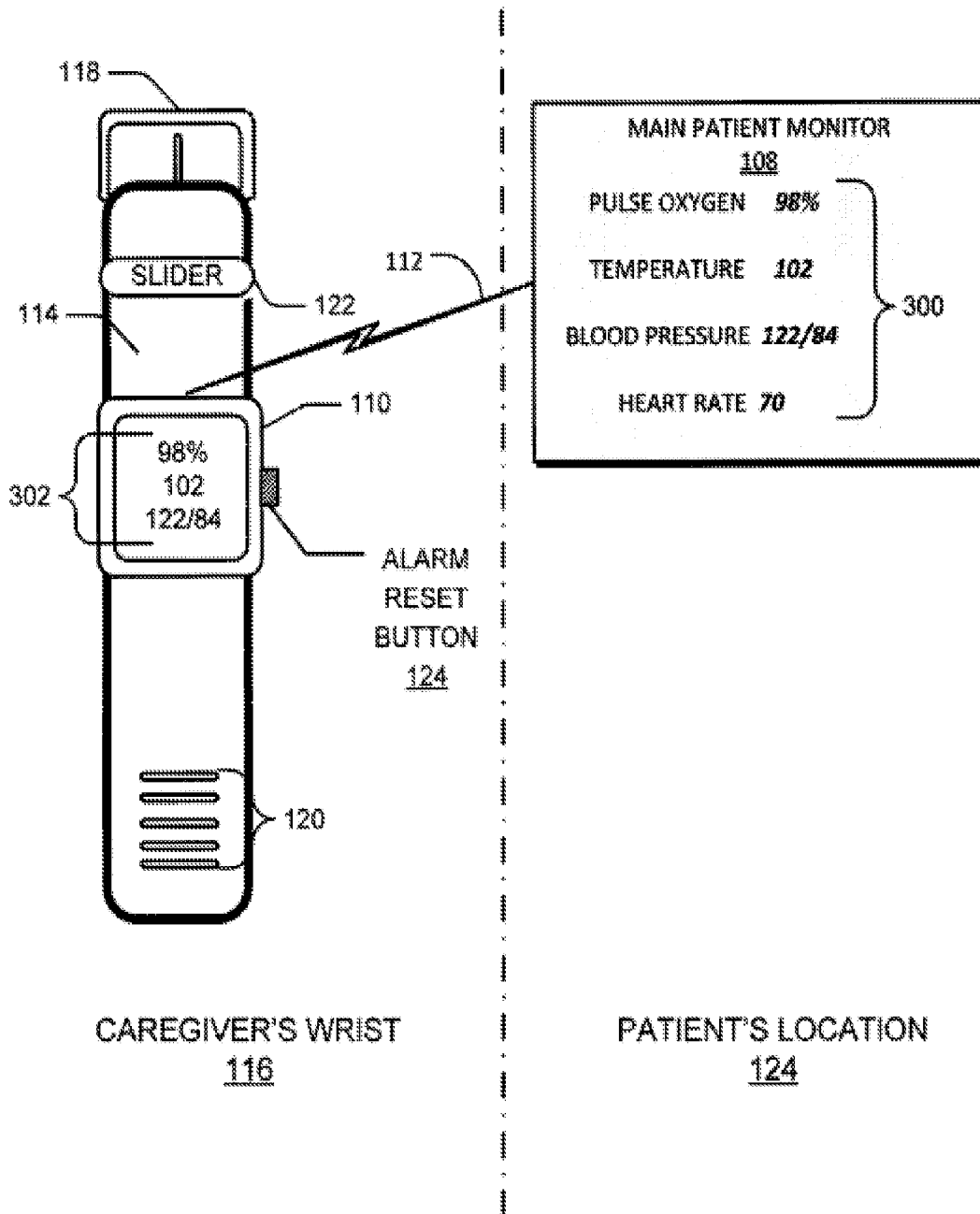
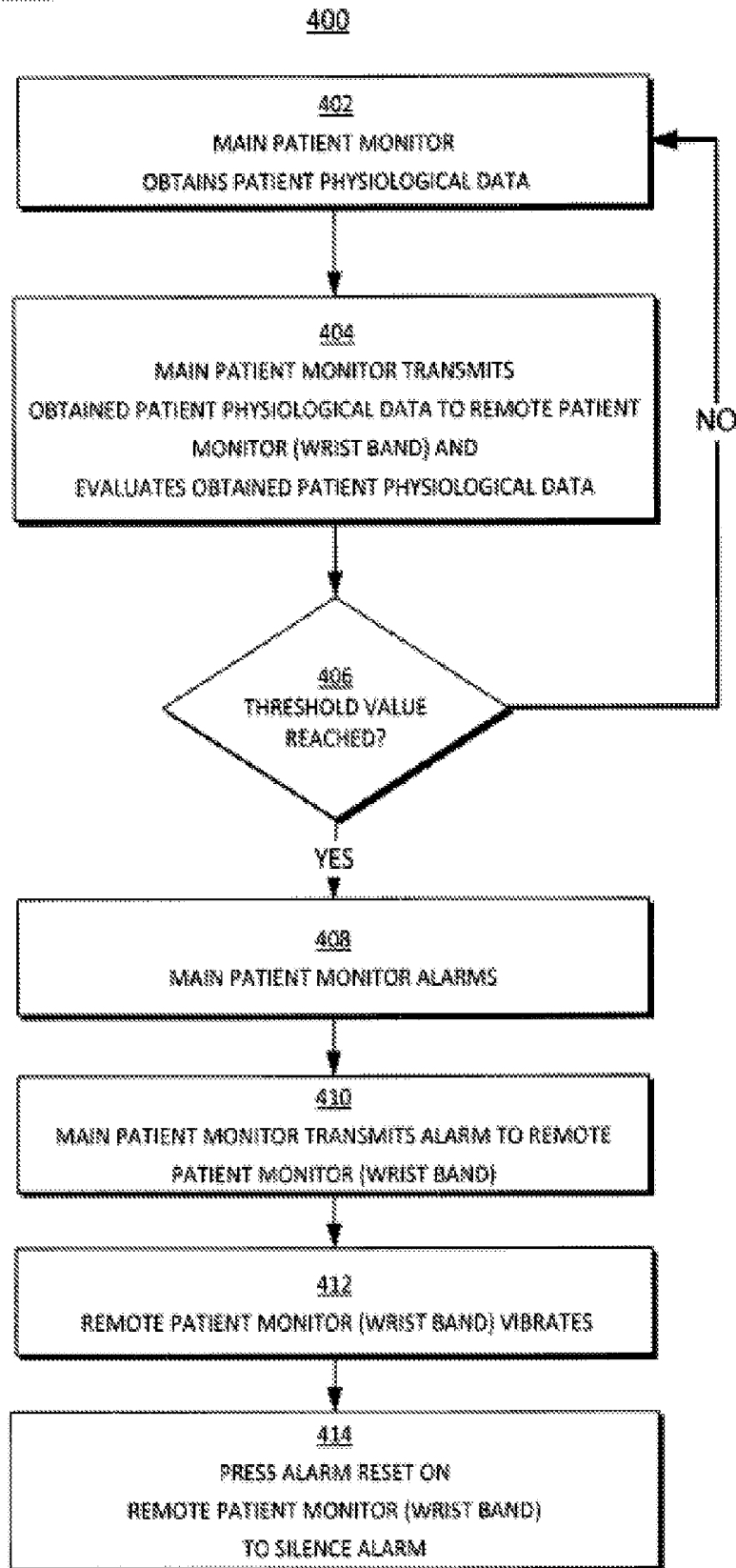


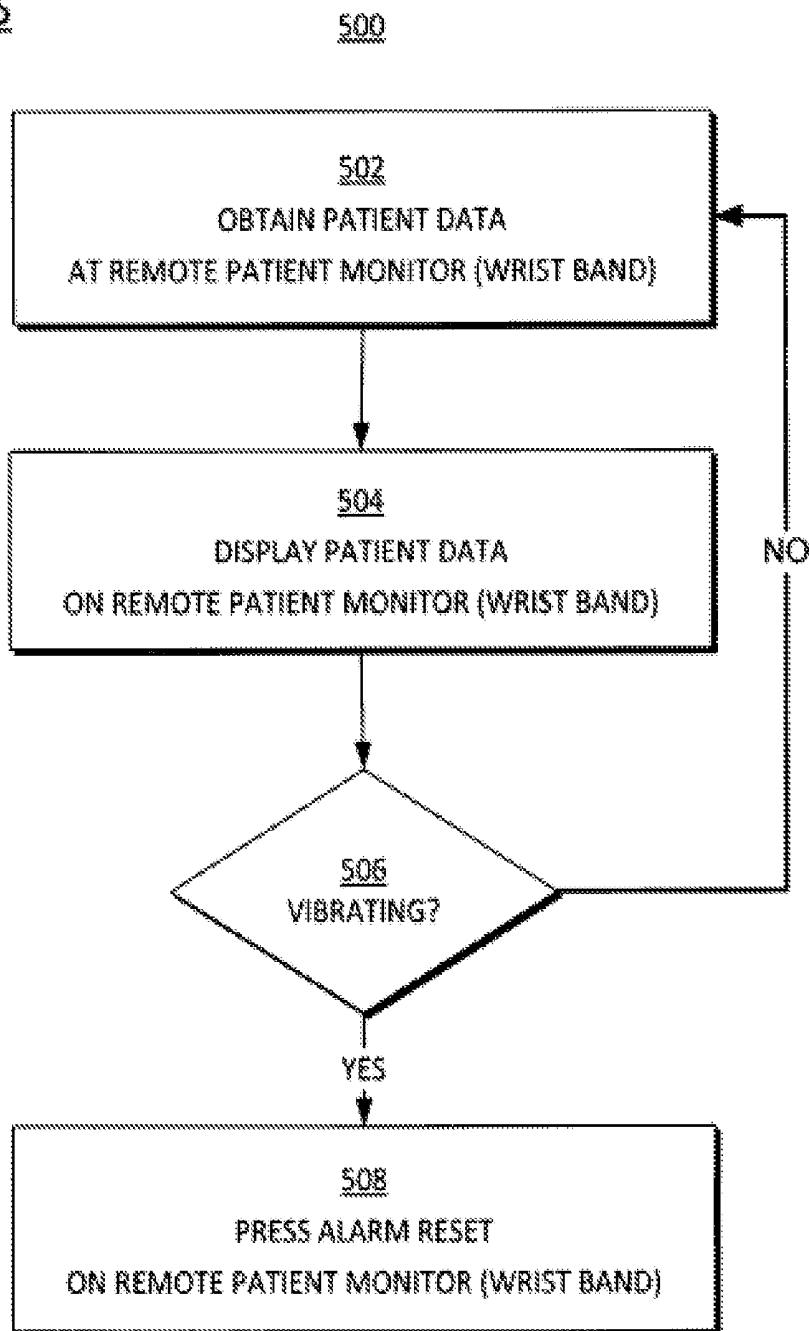
FIG. 3

METHODS



**FIG. 4**

METHODS



**FIG. 5**

## PATIENT MONITORING DEVICE WITH REMOTE ALERT

### CROSS-REFERENCES TO RELATED APPLICATIONS

This patent application is a continuation of application Ser. No. 14/035,903 filed Sep. 24, 2013, which claims the benefit of provisional Application No. 61/704,710 filed Sep. 24, 2012. Each of those applications is incorporated in this patent application by this reference.

### BACKGROUND

In typical medical care situations, monitors are connected to devices that receive physiological data from patients. Such devices may be passive monitoring devices or active delivery devices. Active delivery devices, for example, may provide stimulus (e.g., cardiopulmonary resuscitation (CPR) machines), drugs, and/or oxygen.

In such situations, the monitors of such devices provide critical patient information to the caregivers, such as health care providers or medical professionals (e.g., medical doctors, nurses, emergency medical technicians, etc.). In many cases, the monitors are connected to the devices as an integrated package. Oftentimes, the monitors are not readily visible to the caregivers, particularly if the caregivers are away from the patient and the devices.

Although caregivers are away from the monitors and devices, the need to be aware of a patient's condition(s) continues. In certain cases, a medical professional may not be able to view a monitor and be aware of the patient's condition(s). Examples of such situations, include instances when the caregiver has to walk away to check on another patient or attend to another task. In certain cases, a caregiver is physically unable to view a monitor. An example includes a medical evacuation situation in a helicopter when a technician and patient are physically situated such that the technician is unable to view the monitor of the device. Furthermore, in such medical evacuation situations, the environment may not be ideal (e.g., noisy, dimly lit, etc.) to properly view the monitor.

In certain situations, a monitor not only provides status of physiological data and of the connected device, but may also provide alerts as to critical levels of a patient. For example, a blood pressure device may alert the medical professional as to a critically low blood pressure level and/or irregular heartbeat. In the case of an oxygen sensing device, a monitor may alert the professional as to low levels of oxygen to the patient. Such alerts may be triggered by abnormalities/conditions experienced by the patient and/or problems/malfunctions of the device.

If a caregiver is away from a monitor, the patient's care may be compromised because the caregiver cannot properly view the condition of the patient or be aware of alerts provided by the device through the monitor.

### SUMMARY OF THE DISCLOSURE

The present description gives instances of medical technology that facilitates the remote monitoring of patients.

In one embodiment, a medical device facilitates monitoring of a patient. The medical system includes a main patient monitor collecting patient physiological parameter data, and also capable of transmitting the collected patient physiological parameter data. The main patient monitor alarms if the collected data is determined to reach a predetermined value.

The device further includes a remote patient monitor, also referred to as a remote patient monitoring device, in the form of a wrist band, worn by a caregiver, configured to receive the collected patient physiological parameter data, display the collected patient physiological parameter data received from the main patient monitor, and receive a signal in response to an alarm(s) from the main patient monitor.

In one embodiment, the remote patient monitor can be a bracelet, a wrist or arm band, or other type of a small, compact, or wearable device. The remote patient monitor interfaces with the main patient monitor, a defibrillator, and/or other medical device or system. Alternatively, the remote patient monitor operates as a stand-alone, such as a puck or is incorporated into another device, such as a cell phone, a watch, bag valve mask, defibrillation electrodes, etc. The remote patient monitor allows a wearer of the device to monitor a patient through pre-set alarms, which can manifest as one or a combination of visual, tactile, auditory types of notifications, which may vary in intensity and duration depending on the preset parameters.

In some embodiments, the remote patient monitor includes a sensory feedback, such as haptic feedback, guiding a rescuer, dictating the rate via metronome, and/or notifying of elapsed time in Cardiopulmonary Resuscitation (CPR). The remote patient monitor further may include haptic feedback mechanism in bag valve mask (BVM). The remote patient monitor is, in one example, configured to differentiate haptic sensation to the wearer/rescuer to signify that a two-minute cycle has elapsed, and further to detect ventricular fibrillation (VF) or shockable rhythm, ST-elevation, ROSC (Return of Spontaneous Circulation), apnea, desaturation, etc. These and other features and advantages of this description will become more readily apparent from the following Detailed Description, which proceeds with reference to the drawings, in which:

### BRIEF DESCRIPTION OF THE DRAWINGS

FIG. 1 is a diagram of a remote patient monitoring system used to remotely provide physiological data and alerts of a patient according to one or more embodiments described herein.

FIG. 2 is a diagram of a sample of a remote patient monitoring system used to remotely provide physiological data and alerts of a patient according to one or more embodiments described herein.

FIG. 3 is a diagram of sample physiological data and alerts that are remotely provided according to one or more embodiments described herein.

FIG. 4 is a flowchart for illustrating methods to remotely provide physiological data and alerts of a patient according to one or more embodiments described herein.

FIG. 5 is another flowchart for illustrating methods to remotely provide physiological data and alerts of a patient according to one or more embodiments described herein.

### DETAILED DESCRIPTION

As has been mentioned, the present description pertains to remote patient monitoring technology. Embodiments are now described in more detail.

#### Patient Monitoring System

FIG. 1 is a diagram of a remote patient monitoring system 100 according to the technology described herein. A patient 102 may be in particular location 104. A patient may be, by way of example, a hospital patient in bed in a particular unit with more less stationary devices and monitors around

his/her bed or may be an ambulatory or outside-a-hospital patient accessorized with devices such as implantable devices or monitoring and therapy devices attached to the patient. In certain instances, a caregiver (not shown) may be in a different location. Various medical probes and/or delivery devices **106** are connected to the patient **102**. A main patient monitor **108** is connected to medical probes and/or delivery devices **106**. The medical probes and/or delivery devices **106** may actively provide medicine, oxygen and/or liquids to the patient **102**. In some embodiments, the medical probes and/or delivery devices **106** monitor and/or track physiological parameter data. The physiological parameter data may include one or more vital signs. For example, physiological parameter data may include heart rate, blood pressure, oxygen saturation, end-tidal CO<sub>2</sub>, respiration rate level of the monitored patient **102**.

The main patient monitor **108** may be configured to collect patient physiological parameter data, to transmit the collected patient physiological parameter data, and to alarm if the collected data is determined to reach a predetermined value. Other alarms may be provided, such as condition states of the main patient monitor **108** and/or devices connected to the patient of the main patient monitor **108**. Examples of condition states include low power/battery of the patient monitor **108** and/or devices, transmission connectivity to the remote patient monitor **110** and other networks, etc.

The main patient monitor **108** may be connected to a remote patient monitor **110**. The connection between the main patient monitor **108** and the remote patient monitor **110** may be a wired or wireless connection as represented by connection **112**. In other words, the main patient monitor **108** and the remote patient monitor **110** may be wired or wirelessly coupled to one another.

In certain embodiments, the main patient monitor **108** and remote patient monitor **110** may be connected intermediately through a network, such as a cloud based network. In other words, the connection **112** may go through or be part of a network or networks, which may include cloud based network(s). In certain embodiments, cloud based network(s) may perform monitoring based on information received from the main patient monitor **108**.

The remote patient monitor **110** may be configured as or be part of a cell phone, puck, or arm or wrist band **114**, that may be worn or carried by a caregiver, for example on a caregiver's wrist **116**. In another embodiment, the band **114** may be in a form of a necklace, arm band, or waist band, or other wearable device. Other embodiments are possible. Caregivers may include laypeople such as family members, and/or trained medical professionals such as medical doctors, medical directors, nurses, emergency medical technicians (EMTs), and the like. Therefore, in some embodiments, the remote patient monitor **110** may be in the form of a band, such as a wrist band **114** and configured to be worn by a caregiver, to receive the collected patient physiological parameter data. The remote patient monitor **110** further may display the collected patient physiological parameter data received from the main patient monitor **108**, and to receive a signal in response to an alarm from the main patient monitor **108**.

In some embodiments, the band **114** may be adjustable and may include a buckle **118** and holes to attach the buckle **118** to adjust to accommodate for various sized wrists, waists, etc. A slider **122** may be used to secure to excess length of the band **114**. In addition to being adjustable, the band **114** may also be waterproof and/or shock-resistant. In certain embodiments, the band **114** may be in the form of or

attached to a necklace or lanyard around the caregiver's neck. In other embodiments the band **114** may be in the form of or attached to a belt around the caregiver's waist. Other embodiments may provide for the remote patient monitor **110** to be clipped onto the caregiver's clothing, such as on a lapel or chest pocket. Other embodiments may provide for the remote patient monitor **110** to be implemented as a wearable device.

The remote patient monitor **110** may include an alarm reset button **124** to reset any alarms received from the main patient monitor **108**. In certain embodiments, the alarm(s) that is(are) received by the remote patient monitor **110** include one or more of vibrate (e.g., tactile/haptic alarm), light up, and/or an audible noise. In particular embodiments, the remote patient monitor **110** only vibrates as determined by the main patient monitor **108**.

In certain embodiments, the remote patient monitor **110** receives haptic/sensory feedback for patient monitoring that may include a guide rate for chest compression, such as used in CPR. In such an implementation, a patient may have a physiologic monitoring sensor, which is not necessarily "wearable", but merely attached to the patient. The patient sensor provides data to the remote patient monitor **110**. The remote patient monitor **110** may include a haptic motor that conveys information to the caregiver in the form of "mimicked" sensory feedback from the patient. In yet certain other embodiments, monitoring data transmitted to the remote patient monitor **110** may include information about ventilation (e.g. rate, tidal volume, airway pressure) being provided to the patient. The patient sensors may be incorporated as a wearable device (e.g., wrist band, head band, bracelet, etc.), standalone sensor, or incorporated into another device (e.g. bag valve mask).

In certain embodiments, the patient may be provided with disposable components such as a sticker with a wireless identifier (i.e., an RFID chip) to initiate or inform as to a haptic component/feedback. Different variations of such disposable components may make use of color coded stickers with RFID used to set various rates (e.g., 100/min for chest compression and 8/min for ventilation). Other colors may be used for various rate guidance purposes. Disposable component/sticker or RFIDs may be used to start or stop a patient/caregiver haptic motor when patient/caregiver is in proximity of the RFID. In certain implementation, a disposable component/sticker may be incorporated into a device, such as a defibrillator.

Other haptic signals may include use of different frequencies, duty cycles, sensations (vibration, taps, squeeze, etc.) to communicate different information. Physiological feedback could provide input signal to vibration intensity, rate, sensation, etc. The remote patient monitor **110** and particularly a wearable portion may incorporate a display, such that a haptic signal would alert the caregiver and the display would provide detailed information about the alert.

In certain embodiments, depending on the level of a caregiver's expertise, the alarm(s) that is(are) received by the remote patient monitor **110** may be activated based on specific preset threshold values. The alarms may include a general overall urgency alarm, and/or specific alarms. Variety of settings may be determined depending on the patient's condition, parameters, status and combined with the caregiver's rank, skills, expertise, and preferences. An alarm may be initiated at the remote patient monitor **110** to indicate an urgent need to respond to the patient, such as a cardiac arrest, an oxygen desaturation, etc. In such cases, a general urgency alarm may be activated, and/or specific alarms indicating specific medical conditions may be activated.

Specific alarms may further be selected by a user/caregiver to differentiate between sounds, vibration patterns, and intensity depending on the patient identification, location, and other parameters. If several caregivers receive alarms pertaining to the same patient, and one of the alerted caregivers responds, other caregivers may be notified that the patient is being attended to. If the attending to the patient caregiver still needs additional help, the caregiver may be able to send another alarm to solicit further help. Alternatively, upon arrival at the patient's side or resolution as to the patient needs, one caregiver may terminate alarms sent to others and may further be able to follow up with a message as to the resolution of the issue.

Alarms may be sent by signals from the main patient monitor **108** to the remote patient monitor **110**. After a period of time the signals may be degraded. Therefore, in certain embodiments a decoupling or a disconnection may occur between the main patient monitor **108** and the remote patient monitor **110** after a determined time period after a signal(s) is degraded. In certain instances, it may be desirable for a caregiver to reset the alarm(s) of the remote patient monitor **110**. An alarm reset button **124** is provided by the remote patient monitor **110** to allow resetting of the alarm(s).

The patient monitor **110**, or a wearable portion of the patient monitor **110**, may include a start/stop haptic feedback metronome which may include different pre-selected metronome rates such as ventilation (e.g., 8/min), compression (e.g., 100/min), etc.

In certain embodiments, the remote patient monitor **110** may be coupled to more than one main patient monitors, including the main patient monitor **108** that is shown. In such embodiments, the remote patient monitor **110** is configured to receive various patient physiological parameter data and alarms from different medical devices and/or patients.

In certain embodiments, there may be more than one patient. Therefore, the remote patient monitor **110** may be coupled to more than one main patient monitors and/or one or more patients.

The patient monitoring system **100** may be part of different health care environments. In certain embodiments, the patient monitoring system **100** may be part of a hospital environment that includes nursing stations. A nursing station may include multiple patient monitors, such as main patient monitor **108**.

Caregivers, such as medical doctors, nurses, etc., are able to simultaneously monitor patients from a central station at the nursing station. However, in certain situations the caregiver may be away from the central stations and the monitors, but would still need to be aware of the patients. In such cases, the remote patient monitor **110** may be configured to provide alarms to let the caregiver know the status of the patients and/or determine which patient(s) need to be attended to. In certain embodiments, the remote patient monitor **110** may provide a patient's name, room number (location) and/or other specific patient information. In certain embodiments, either through preset thresholds that are set at particular main patient monitor(s) **108**, patients may be listed in order of need for medical attention or listed some other order, such as first request. In a further embodiment, the remote patient monitor is configured to monitor more than one patient simultaneously. If one caregiver is monitoring more than one patient, the remote patient monitor **110** can provide ranking of urgency between patients, depending on a patient's symptoms.

In certain embodiments, there may be multiple caregivers connected to the patient monitoring system **100**. Provision

may be made to allow a caregiver that is the first responder to the patient, to notify other caregivers that the first responding caregiver has reached the patient. Provision may also be provided to allow the first responding caregiver to request for additional help if needed. This may be performed through the remote patient monitor that is worn by the first responding caregiver.

In certain embodiments, the main patient monitor **108** may be configured with a cellular, global positioning system (GPS), or other tracking unit (not shown). The tracking unit may provide specific location of the patient (i.e., patient location **104**). This may assist in identifying specific location of an ambulatory patient, to the remote patient monitor **110**. The foregoing indications and responses described in conjunction with FIG. **1** can be implemented in various combinations in other embodiments, with each indication and/or response providing its advantages even if combined with other indication(s) and/or response(s).

Example Patient Monitoring System Components

FIG. **2** is a diagram of a sample structure of a remote patient monitoring system **100** used to remotely provide physiological data and alerts of a patient according to the technology described herein. In the illustrated embodiment, one or more main patient monitors **108** are wire or wirelessly coupled to a remote patient monitor **110** by wire and/or wireless connections **112**.

In this embodiment, a main patient monitor **108-1** is shown to include a patient data collection module **200** which communicates with and receives patient physiological data from one or more medical devices and/or probes, such as medical probes and/or delivery devices **106** described above. In particular, the patient data collection module **200** gathers patient physiological parameter data, which may include one or more vital signs of a monitored patient (e.g., patient **102**). As an example, the patient physiological parameter data may particularly include one or more of the following: blood pressure, heart rate, respiration rate, pulse rate, oxygen saturation, air flow, temperature, ECG parameters, and/or other parameters. Device data, such as low battery on one of the devices/probes interfacing/interacting with the patient or the band's inability to access information, or other parameters/data, can also be included. Other example data that may be sent can include 1) physiologic data, such as vital signs data, and/or alarm info on vital signs excursions out of normal/stable ranges; 2) monitoring device data, battery status, sensor status, etc. (i.e., information meriting the attention or intervention of a caregiver); and 3) Medical care/intervention data, i.e., information about the presence or quality of the care being applied to the patient by someone other than the person wearing the remote patient monitor, for example, alert the person managing a resuscitation (and e.g. wearing a haptic wristband) that the person managing the airway is ventilating too fast, or the person doing chest compressions has paused for too long.

The main patient monitor **108-1** may include a patient data evaluation module **202** which is configured with values for patient physiological parameter data. Such values may be preset by a caregiver to trigger an alarm. For example, if a particular value reaches or exceeds a particular level or levels, the alarm or alarms may be triggered. In this example, an alarm module **204** may be configured to provide such alert(s) in response to reaching a predetermined value(s) for the patient physiological parameter data. Alarms or alerts may initiate one or more actions such as vibration, light up, or a noise/audible sound. Such alarms or alerts may be communicated to the remote patient monitor **110**.

The main patient monitor **108-1** may include a display module **206** to display the patient physiological parameter data and/or alarms. A transmitting module **208** provides signals (e.g., one or more alarm signals) to the remote patient monitor **110**. The signals to the remote patient monitor **110** may include the one or more actions such as vibration, light up, or a noise/audible/haptic sound/response. In certain embodiments, the transmitting module **208** is a wireless module that may implement one or more various wireless technologies, including but not limited to Bluetooth® one or more the various IEEE 802.11 standards, etc.

The main patient monitor **108-1** includes one or more processors **210** couple with the other components of the main patient monitor **108-1**. Volatile and nonvolatile memory **212** is included in main patient monitor **108-1**. Memory **212** may include computer-readable storage medium that includes instructions to perform the acts/methods described herein.

The remote patient monitor **110** is wired or wireless coupled to the main patient monitors **108** by respective links or connections **112**. The remote patient monitor **110** includes a receiving module **214**. In certain embodiments the receiving module **214** is a wireless receiving module, which may implement one or more various wireless technologies, including but not limited to Bluetooth®, one or more the various IEEE 802.11 standards, etc. The receiving module **214** receives one more alerts, which may be in the form of one more transmitted signals from the main patient monitors **108**. The received signals from main patient monitors **108** may include the one or more actions such as vibration, light up, or a noise/audible sound.

The remote patient monitor **110** may include display module **216** may display the patient physiological parameter data and/or alarms (alerts). The display module **216** may light up with a particular alert or alerts. The remote patient monitor **110** may include a separate alert module **218**. A function the alert module may perform is to vibrate when a particular alert or alerts is/are received from the main patient monitors **108**. An alarm reset module **220**, which may be reset by alarm reset button **124** described above, may be implemented by the remote patient monitor **110** to reset one or more alerts and alarms that are activated/displayed.

The remote patient monitor **110** includes one or more processors **222** coupled with the other components of the remote patient monitor **110**. Volatile and nonvolatile memory **224** is included in remote patient monitor **110**. Memory **224** may include computer-readable storage medium that includes instructions to perform the acts/methods described herein. In certain embodiments, and particular where the remote patient monitor **110** is a portable unit, a long lasting battery(ies) **226** may be part of the remote patient monitor **110**.

The foregoing indications and responses described in conjunction with FIG. 2 can be implemented in various combinations in other embodiments, with each indication and/or response providing its advantages even if combined with other indication(s) and/or response(s).

#### Example Physiological Data and Alerts

FIG. 3 is a diagram of sample physiological data and alerts that are remotely provided according to the technology described herein. The main patient monitor **108** may provide alarms/alerts of collected physiological data to the remote patient monitor **110**. The physiological data may be for patient physiological parameter data. As described above, such patient physiological parameter data may have values that preset by a caregiver to trigger an alarm. For example,

if a particular value reaches or exceeds a particular level or levels, the alarm or alarms may be triggered.

Shown in FIG. 3 are monitored physiological data **300** that includes current patient monitored values. In this example, pulse oxygen, temperature, blood pressure and heart rate values are monitored and displayed. Such values are communicated to the remote patient monitor **110** are displayed as patient physiological data **302**. The displayed values shown in remote patient monitor **110** are a compact or condensed version displayed by the main patient monitor **108**.

The functions of this description may be implemented by one or more devices that include logic circuitry. The device performs functions and/or methods as are described in this document. The logic circuitry may include a processor that may be programmable for a general purpose, or dedicated, such as microcontroller, a microprocessor, a Digital Signal Processor (DSP), etc. For example, the device may be a digital computer like device, such as a general-purpose computer selectively activated or reconfigured by a computer program stored in the computer. Alternately, the device may be implemented by an Application Specific Integrated Circuit (ASIC), etc.

Moreover, methods are described below. The methods and algorithms presented herein are not necessarily inherently associated with any particular computer or other apparatus. Rather, various general-purpose machines may be used with programs in accordance with the teachings herein, or it may prove more convenient to construct more specialized apparatus to perform the required method steps. The required structure for a variety of these machines will become apparent from this description.

In all cases there should be borne in mind the distinction between methods in this description, and the method of operating a computing machine. This description relates both to methods in general, and also to steps for operating a computer and for processing electrical or other physical signals to generate other desired physical signals.

Programs are additionally included in this description, as are methods of operation of the programs. A program is generally defined as a group of steps leading to a desired result, due to their nature and their sequence. A program is usually advantageously implemented as a program for a computing machine, such as a general-purpose computer, a special purpose computer, a microprocessor, etc.

Storage media are additionally included in this description. Such media, individually or in combination with others, have stored thereon instructions of a program made according to the technology described herein. A storage medium according to the technology described herein is a computer-readable medium, such as a memory, and is read by the computing machine mentioned above.

Performing the steps or instructions of a program requires physical manipulations of physical quantities. Usually, though not necessarily, these quantities may be transferred, combined, compared, and otherwise manipulated or processed according to the instructions, and they may also be stored in a computer-readable medium. These quantities include, for example electrical, magnetic, and electromagnetic signals, and also states of matter that can be queried by such signals. It is convenient at times, principally for reasons of common usage, to refer to these quantities as bits, data bits, samples, values, symbols, characters, images, terms, numbers, or the like. It should be borne in mind, however, that all of these and similar terms are associated with the appropriate physical quantities, and that these terms are

merely convenient labels applied to these physical quantities, individually or in groups.

This detailed description is presented largely in terms of flowcharts, display images, algorithms, and symbolic representations of operations of data bits within at least one computer readable medium, such as a memory. Indeed, such descriptions and representations are the type of convenient labels used by those skilled in programming and/or the data processing arts to effectively convey the substance of their work to others skilled in the art. A person skilled in the art of programming may use these descriptions to readily generate specific instructions for implementing a program according to the technology described herein.

Often, for the sake of convenience only, it is preferred to implement and describe a program as various interconnected distinct software modules or features, individually and collectively also known as software. This is not necessary, however, and there may be cases where modules are equivalently aggregated into a single program with unclear boundaries. In any event, the software modules or features of this description may be implemented by themselves, or in combination with others. Even though it is said that the program may be stored in a computer-readable medium, it should be clear to a person skilled in the art that it need not be a single memory, or even a single machine. Various portions, modules or features of it may reside in separate memories, or even separate machines. The separate machines may be connected directly, or through a network, such as a local access network (LAN), or a global network, such as the Internet.

It will be appreciated that some of these methods may include software steps that may be performed by different modules of an overall software architecture. For example, data forwarding in a router may be performed in a data plane, which consults a local routing table. Collection of performance data may also be performed in a data plane. The performance data may be processed in a control plane, which accordingly may update the local routing table, in addition to neighboring ones. A person skilled in the art will discern which step is best performed in which plane.

An economy is achieved in the present document in that flowcharts are used to describe both programs, and also methods. So, while flowcharts are described in terms of boxes, they can mean both method and programs.

For this description, the methods may be implemented by machine operations. In other words, embodiments of programs are made such that they perform methods in accordance to embodiments of the technology that are described in this document. These may be optionally performed in conjunction with one or more human operators performing some, but not all of them. As per the above, the users need not be collocated with each other, but each only with a machine that houses a portion of the program. Alternately, some of these machines may operate automatically, without users and/or independently from each other.

#### Example Methods

FIG. 4 shows a flowchart 400 for describing methods according to the technology described herein, for a patient monitoring system to remotely provide physiological data and alerts of a patient. The method of flowchart 400 may also be practiced by patient monitoring systems made according to the technology described herein described above.

According to an operation 402, a main patient monitor obtains patient's physiological data.

According to an operation 404, the main patient monitor transmits the obtained patient physiological data to a remote

patient monitor, which may be part of or integrated as a wrist band, and the evaluates obtained patient physiological data.

According to an operation 406, a decision is made whether a threshold value is reached. If the threshold value is not reached, following the "NO" branch of operation 406, operation 402 is performed.

According to an operation 408, if the threshold value is reached as determined by operation 406, then following the "YES" branch of operation 406, the main patient monitor triggers or performs an alarm or alarms.

According to an operation 410, the main patient monitor transmits the alarm or alarms to the remote patient monitor.

According to an operation 412, the remote patient monitor vibrates, alerting a caregiver.

According to an operation 412, an alarm reset button on the remote patient monitor may be activated by the caregiver to silence the alarm or alarms.

For flowchart 400, it will be recognized that a number of their operations can be augmented with what was described above.

FIG. 5 is another flowchart 500 for describing methods according to the technology described herein, for a patient monitoring system to remotely provide physiological data and alerts of a patient. The method of flowchart 500 may also be practiced by patient monitoring systems made according to the technology described herein described above.

An operation 502 obtains patient physiological data at a remote patient monitor. The remote patient monitor may be part of or integrated as a wrist band.

An operation 502 displays the patient physiological data at the remote patient monitor.

An operation 506 determines if the remote patient monitor is vibrating. If the remote patient monitor is not vibrating, then following the "NO" branch of operation 506, operation 502 is performed.

According to an operation 508, if the remote patient monitor is vibrating as determined by operation 506, then following the "YES" branch of operation 506, the alarm or alarms on the remote patient monitor may be reset.

For flowchart 500, it will be recognized that a number of their operations can be augmented with what was described above.

#### Notes and Additional/Alternative Implementation Details

In the above description of exemplary implementations, for purposes of explanation, specific numbers, materials configurations, and other details are set forth in order to better explain the present invention, as claimed. However, it will be apparent to one skilled in the art that the claimed invention may be practiced using different details than the exemplary ones described herein. In other instances, well-known features are omitted or simplified to clarify the description of the exemplary implementations.

The inventor intends the described exemplary implementations to be primarily examples. The inventor does not intend these exemplary implementations to limit the scope of the appended claims. Rather, the inventor has contemplated that the claimed invention might also be embodied and implemented in other ways, in conjunction with other present or future technologies.

Moreover, the word "exemplary" is used herein to mean serving as an example, instance, or illustration. Any aspect or design described herein as exemplary is not necessarily to be construed as preferred or advantageous over other aspects or designs. Rather, use of the word "exemplary" is intended to present concepts and techniques in a concrete fashion. The term "technology," for instance, may refer to one or

more devices, apparatuses, systems, methods, articles of manufacture, and/or computer-readable instructions as indicated by the context described herein.

As used in this application, the term “or” is intended to mean an inclusive “or” rather than an exclusive “or.” That is, unless specified otherwise or clear from context, “X employs A or B” is intended to mean any of the natural inclusive permutations. That is, if X employs A; X employs B; or X employs both A and B, then “X employs A or B” is satisfied under any of the foregoing instances. In addition, the articles “a” and “an” as used in this application and the appended claims should generally be construed to mean “one or more,” unless specified otherwise or clear from context to be directed to a singular form.

Note that the order in which the processes are described is not intended to be construed as a limitation, and any number of the described process blocks can be combined in any order to implement the processes or an alternate process. Additionally, individual blocks may be deleted from the processes without departing from the spirit and scope of the subject matter described herein.

One or more embodiments described herein may be implemented fully or partially in software and/or firmware. This software and/or firmware may take the form of instructions contained in or on a non-transitory computer-readable storage medium. Those instructions may then be read and executed by one or more processors to enable performance of the operations described herein. The instructions may be in any suitable form, such as but not limited to source code, compiled code, interpreted code, executable code, static code, dynamic code, and the like. Such a computer-readable medium may include any tangible non-transitory medium for storing information in a form readable by one or more computers, such as but not limited to read only memory (ROM); random access memory (RAM); magnetic disk storage media; optical storage media; a flash memory, etc.

The term “computer-readable media” includes computer-storage media. For example, computer-storage media may include, but are not limited to, magnetic storage devices (e.g., hard disk, floppy disk, and magnetic strips), optical disks (e.g., compact disk [CD] and digital versatile disk [DVD]), smart cards, flash memory devices (e.g., thumb drive, stick, key drive, and SD cards), and volatile and nonvolatile memory (e.g., RAM and ROM).

In the claims appended herein, the inventor invokes 35 U.S.C. § 112, paragraph 6 only when the words “means for” or “steps for” are used in the claim. If such words are not used in a claim, then the inventor does not intend for the claim to be construed to cover the corresponding structure, material, or acts described herein (and equivalents thereof) in accordance with 35 U.S.C. § 112, paragraph 6.

The invention claimed is:

1. A patient monitoring system, comprising:

a main patient monitor configured to:

receive and collect one or more patient physiological parameters of a patient, and

provide an alarm in response, at least in part, to an alarm trigger, the alarm trigger including a determination that at least one of the collected patient physiological parameters has reached a predetermined value; and

one or more of remote patient monitors, each of the one or more of remote patient monitors having an alarm reset configured to:

terminate the alarm,

be carried by a caregiver,

receive a signal from the main patient monitor in response to the alarm, and

transmit, by the remote patient monitor carried by the caregiver, feedback on the alarm trigger by the caregiver to other caregivers via the main patient monitor, the feedback comprising one or more of a notification that the patient is being attended, a request by the caregiver for additional help, or a message about resolution of the alarm trigger.

2. The patient monitoring system of claim 1, wherein the main patient monitor is further configured to transmit at least one of: the collected patient physiological parameter, patient identification, location identification, device data concerning the remote patient monitor, device data concerning one or more medical probes or delivery devices connected to the main patient monitor, and caregiver messages.

3. The patient monitoring system of claim 1, wherein the remote patient monitor is further configured to display at least one of: the collected patient physiological parameter received from the main patient monitor, patient identification, location identification, device data concerning the remote patient monitor, device data concerning one or more medical probes or delivery devices connected to the main patient monitor, and caregiver messages.

4. The patient monitoring system of claim 1, wherein the one or more patient physiological parameters includes at least one of: a heart rate, a blood pressure, an oxygen saturation, an end-tidal CO<sub>2</sub>, or a respiration rate.

5. The patient monitoring system of claim 1, wherein the main patient monitor and the remote patient monitor are coupled wirelessly through one or more networks.

6. The patient monitoring system of claim 1, wherein the remote patient monitor is further configured to, in response to the signal from the main patient monitor, commence an action selected from a group consisting of vibration output, visual output, and auditory output.

7. The patient monitoring system of claim 6, wherein the remote patient monitor is configured to vary a degree of intensity of the commenced action, the degree of intensity of the commenced action being indicative of a risk to the patient.

8. The patient monitoring system of claim 1, wherein the main patient monitor comprises a plurality of different main patient monitors, and wherein each of the plurality of different main patient monitors is configured to monitor an individual patient and provide alarm signals to the one or more of the remote patient monitors.

9. A patient monitoring system, comprising:

a main patient monitor configured to:

receive and collect one or more patient physiological parameters of a patient, and

provide an alarm in response, at least in part, to an alarm trigger, the alarm trigger including a determination that at least one of the collected patient physiological parameters has reached a predetermined value; and

one or more of remote patient monitors, each of the one or more of remote patient monitors having an alarm reset configured to:

terminate the alarm,

be carried by a caregiver,

receive a signal from the main patient monitor in response to the alarm, and

transmit, by the remote patient monitor carried by the caregiver, feedback on the alarm trigger by the caregiver to other caregivers via the main patient monitor, the feedback comprising a notification that the patient is being attended.

13

10. The patient monitoring system of claim 9, wherein the remote patient monitor is further configured to, in response to the signal from the main patient monitor, commence an action selected from a group consisting of vibration output, visual output, and auditory output.

11. The patient monitoring system of claim 10, wherein the remote patient monitor is configured to vary a degree of intensity of the commenced action, the degree of intensity of the commenced action being indicative of a risk to the patient.

12. The patient monitoring system of claim 9, wherein the main patient monitor comprises a plurality of different main patient monitors, and wherein each of the plurality of different main patient monitors is configured to monitor an individual patient and provide alarm signals to the one or more of the remote patient monitors.

13. A patient monitoring system, comprising:  
a main patient monitor configured to:

receive and collect one or more patient physiological parameters of a patient, and  
provide an alarm in response, at least in part, to an alarm trigger, the alarm trigger including a determination that at least one of the collected patient physiological parameters has reached a predetermined value; and

one or more of remote patient monitors, each of the one or more of remote patient monitors having an alarm reset configured to:

terminate the alarm,  
be carried by a caregiver,  
receive a signal from the main patient monitor in response to the alarm, and  
transmit, by the remote patient monitor carried by the caregiver, feedback on the alarm trigger by the caregiver to other caregivers via the main patient monitor, the feedback comprising a request by the caregiver for additional help.

14. The patient monitoring system of claim 13, wherein the remote patient monitor is further configured to, in response to the signal from the main patient monitor, commence an action selected from a group consisting of vibration output, visual output, and auditory output.

15. The patient monitoring system of claim 14, wherein the remote patient monitor is configured to vary a degree of intensity of the commenced action, the degree of intensity of the commenced action being indicative of a risk to the patient.

14

16. The patient monitoring system of claim 13, wherein the main patient monitor comprises a plurality of different main patient monitors, and wherein each of the plurality of different main patient monitors is configured to monitor an individual patient and provide alarm signals to the one or more of the remote patient monitors.

17. A patient monitoring system, comprising:  
a main patient monitor configured to:

receive and collect one or more patient physiological parameters of a patient, and

provide an alarm in response, at least in part, to an alarm trigger, the alarm trigger including a determination that at least one of the collected patient physiological parameters has reached a predetermined value; and

one or more of remote patient monitors, each of the one or more of remote patient monitors having an alarm reset configured to:

terminate the alarm,

be carried by a caregiver,

receive a signal from the main patient monitor in response to the alarm, and

transmit, by the remote patient monitor carried by the caregiver, feedback on the alarm trigger by the caregiver to other caregivers via the main patient monitor, the feedback comprising a message about resolution of the alarm trigger.

18. The patient monitoring system of claim 17, wherein the remote patient monitor is further configured to, in response to the signal from the main patient monitor, commence an action selected from a group consisting of vibration output, visual output, and auditory output.

19. The patient monitoring system of claim 18, wherein the remote patient monitor is configured to vary a degree of intensity of the commenced action, the degree of intensity of the commenced action being indicative of a risk to the patient.

20. The patient monitoring system of claim 17, wherein the main patient monitor comprises a plurality of different main patient monitors, and wherein each of the plurality of different main patient monitors is configured to monitor an individual patient and provide alarm signals to the one or more of the remote patient monitors.

\* \* \* \* \*

专利名称(译)	具有远程警报的患者监测设备		
公开(公告)号	<a href="#">US10136815</a>	公开(公告)日	2018-11-27
申请号	US15/073442	申请日	2016-03-17
申请(专利权)人(译)	生理控制, INC.		
当前申请(专利权)人(译)	生理控制, INC.		
[标]发明人	LYON RICHARD MARK WALKER ROBERT G EDWARDS JEFFERY S ANDERSSON NIKLAS JOHNSON BETHANY JOYCE		
发明人	LYON, RICHARD MARK WALKER, ROBERT G. EDWARDS, JEFFERY S. ANDERSSON, NIKLAS JOHNSON, BETHANY JOYCE		
IPC分类号	G08B19/00 A61B5/0205 A61B5/00 G06F19/00		
CPC分类号	A61B5/0004 A61B5/0002 G16H40/63 A61B5/746 A61B5/7465 A61B5/0205 G16H40/67 G16Z99/00 G06F19/00 G06F19/3418		
审查员(译)	LIM, 史蒂芬		
优先权	61/704710 2012-09-24 US		
其他公开文献	US20160199008A1		
外部链接	<a href="#">Espacenet</a>		

摘要(译)

远程患者监测系统, 具有主要患者监测器和远程患者监测器。主要患者监测器被配置为接收和收集一个或多个患者生理参数并响应于警报触发器提供警报。警报触发包括确定所收集的患者生理参数中的至少一个已达到预定值。远程患者监护仪具有警报复位并且被配置为由护理人员携带。它还被配置为响应于警报从主患者监测器接收信号并且发送关于警报触发的指示。该指示包括患者正在照顾的通知, 护理人员提供额外帮助的请求或关于警报触发的解决的消息中的一个或多个。

