



US009408548B2

(12) **United States Patent**
Volpe et al.

(10) **Patent No.:** **US 9,408,548 B2**
(45) **Date of Patent:** ***Aug. 9, 2016**

(54) **SELECTION OF OPTIMAL CHANNEL FOR RATE DETERMINATION**

USPC 600/509
See application file for complete search history.

(71) Applicant: **ZOLL MEDICAL CORPORATION**,
Chelmsford, MA (US)

(56) **References Cited**

(72) Inventors: **Shane S. Volpe**, Saltsburg, PA (US);
Thomas E. Kaib, North Huntingdon, PA (US)

U.S. PATENT DOCUMENTS

2,688,752 A 9/1954 Sbarra et al.
3,241,556 A 3/1966 Zacouto

(73) Assignee: **ZOLL MEDICAL CORPORATION**,
Chelmsford, MA (US)

(Continued)

(*) Notice: Subject to any disclaimer, the term of this patent is extended or adjusted under 35 U.S.C. 154(b) by 0 days.

FOREIGN PATENT DOCUMENTS

EP 396048 A1 11/1990
EP 0295497 B1 9/1993

This patent is subject to a terminal disclaimer.

(Continued)

(21) Appl. No.: **14/536,189**

OTHER PUBLICATIONS

(22) Filed: **Nov. 7, 2014**

American Journal of Respiratory and Critical Care Medicine, vol. 166, pp. 111-117 (2002), American Thoracic Society, ATS Statement: Guidelines for the Six-Minute Walk Test, available at <http://ajrccm.atsjournals.org/cgi/content/full/166/1/111>.

(65) **Prior Publication Data**

US 2015/0065844 A1 Mar. 5, 2015

(Continued)

Related U.S. Application Data

(63) Continuation of application No. 13/428,329, filed on Mar. 23, 2012, now Pat. No. 8,897,860.

(60) Provisional application No. 61/467,599, filed on Mar. 25, 2011.

Primary Examiner — Carl H Layno
Assistant Examiner — Erin M Piatetski

(74) *Attorney, Agent, or Firm* — Finch & Maloney PLLC

(51) **Int. Cl.**
A61B 5/046 (2006.01)
A61B 5/0408 (2006.01)
(Continued)

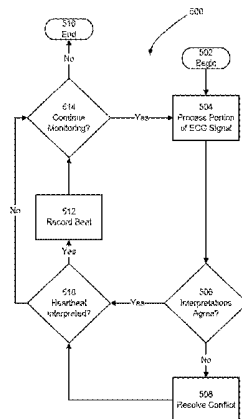
(57) **ABSTRACT**

According to at least one example, an ambulatory medical device is provided. The device includes a plurality of electrodes disposed at spaced apart positions about a patient's body and a control unit. The control unit includes a sensor interface, a memory and a processor. The sensor interface is coupled to the plurality of electrodes and configured to receive a first ECG signal from a first pairing of the plurality of electrodes and to receive a second ECG signal from a second pairing of the plurality of electrodes. The memory stores information indicating a preferred pairing, the preferred pairing being either the first pairing or the second pairing. The processor is coupled to the sensor interface and the memory and is configured to resolve conflicts between interpretations of first ECG signal and the second ECG signal in favor of the preferred pairing.

(52) **U.S. Cl.**
CPC **A61B 5/04288** (2013.01); **A61B 5/0245** (2013.01); **A61B 5/046** (2013.01);
(Continued)

(58) **Field of Classification Search**
CPC A61B 5/04288; A61B 5/0245; A61B 5/04011; A61B 5/04012; A61B 5/0408; A61B 5/0432; A61B 5/04525; A61B 5/046; A61B 5/0472; A61B 5/4836; A61B 5/6801; A61B 5/7221; A61B 5/7475; A61B 5/0006; A61B 5/6805; A61B 2560/0266

20 Claims, 6 Drawing Sheets



(51)	Int. Cl.		5,371,692 A	12/1994	Draeger et al.
	<i>A61B 5/04</i>	(2006.01)	5,381,798 A	1/1995	Burrows
	<i>A61B 5/0245</i>	(2006.01)	5,405,361 A	4/1995	Persson
	<i>A61B 5/0428</i>	(2006.01)	5,413,262 A	5/1995	Dewire et al.
	<i>A61B 5/0452</i>	(2006.01)	5,433,737 A	7/1995	Aimone
	<i>A61N 1/39</i>	(2006.01)	5,443,494 A	8/1995	Paolizzi et al.
	<i>A61B 5/0432</i>	(2006.01)	5,470,341 A	11/1995	Kuehn et al.
	<i>A61B 5/0472</i>	(2006.01)	5,544,661 A	8/1996	Davis et al.
	<i>A61B 5/00</i>	(2006.01)	5,558,098 A	9/1996	Fain
	<i>A61N 1/04</i>	(2006.01)	5,558,640 A	9/1996	Pfeiler et al.
			5,601,612 A	2/1997	Gliner et al.
			5,606,242 A	2/1997	Hull et al.
(52)	U.S. Cl.		5,607,454 A	3/1997	Cameron et al.
	CPC	<i>A61B5/04011</i> (2013.01); <i>A61B 5/04012</i>	5,611,085 A	3/1997	Rasmussen
		(2013.01); <i>A61B 5/0432</i> (2013.01); <i>A61B</i>	5,619,117 A	4/1997	Koenck
		<i>5/0472</i> (2013.01); <i>A61B 5/04085</i> (2013.01);	5,625,291 A	4/1997	Brink et al.
		<i>A61B 5/04525</i> (2013.01); <i>A61B 5/4836</i>	5,662,689 A	9/1997	Elsberry et al.
		(2013.01); <i>A61B 5/6801</i> (2013.01); <i>A61B</i>	5,701,894 A	12/1997	Cherry et al.
		<i>5/7221</i> (2013.01); <i>A61B 5/7475</i> (2013.01);	5,708,978 A	1/1998	Johnsrud
		<i>A61N 1/3925</i> (2013.01); <i>A61B 5/0006</i>	5,718,242 A	2/1998	McClure et al.
		(2013.01); <i>A61B 5/6805</i> (2013.01); <i>A61B</i>	5,721,482 A	2/1998	Benvegar et al.
		<i>2560/0266</i> (2013.01); <i>A61N 1/046</i> (2013.01);	5,724,025 A	3/1998	Tavori
		<i>A61N 1/0476</i> (2013.01); <i>A61N 1/0484</i>	5,730,143 A	3/1998	Schwarzberg
		(2013.01)	5,738,102 A	4/1998	Lemelson
			5,741,306 A	4/1998	Glegyak et al.
			5,758,366 A	6/1998	Wilson
			5,758,443 A	6/1998	Pedrazzini
			5,772,604 A	6/1998	Langberg et al.
			5,792,190 A	8/1998	Olson et al.
(56)	References Cited		5,824,017 A	10/1998	Sullivan et al.
	U.S. PATENT DOCUMENTS		5,827,196 A *	10/1998	Yeo A61B 5/04525 128/901
			5,830,236 A	11/1998	Mouchawar et al.
	3,409,007 A	11/1968 Fuller	5,833,714 A	11/1998	Loeb
	3,460,542 A	8/1969 Gemmer	5,887,978 A	3/1999	Lunghofer et al.
	3,553,651 A	1/1971 Bird et al.	5,924,979 A	7/1999	Swedlow et al.
	3,664,560 A	5/1972 Perkins	5,929,601 A	7/1999	Kaib et al.
	3,702,613 A	11/1972 Panico et al.	5,944,669 A *	8/1999	Kaib A61B 5/0464 600/389
	3,706,313 A	12/1972 Milani et al.	6,016,445 A	1/2000	Baura
	3,724,455 A	4/1973 Unger	6,045,503 A	4/2000	Grabner et al.
	3,744,482 A	7/1973 Kaufman et al.	6,047,203 A	4/2000	Sackner et al.
	3,826,245 A	7/1974 Funfstuck	6,065,154 A	5/2000	Hulings et al.
	3,862,636 A	1/1975 Bell et al.	6,097,987 A	8/2000	Milani
	3,886,950 A	6/1975 Ukkestad et al.	6,148,233 A	11/2000	Owen et al.
	3,897,785 A	8/1975 Barto, Jr.	6,169,387 B1	1/2001	Kaib
	3,942,533 A	3/1976 Cannon, III	6,169,397 B1	1/2001	Steinbach et al.
	3,961,623 A	6/1976 Milani et al.	6,178,343 B1	1/2001	Bindzus et al.
	4,002,239 A	1/1977 Buchalter	6,208,896 B1	3/2001	Mulhauser
	4,088,138 A	5/1978 Diack et al.	6,253,099 B1	6/2001	Oskin et al.
	4,094,310 A	6/1978 McEachern et al.	6,280,461 B1	8/2001	Glegyak et al.
	4,136,690 A	1/1979 Anderson et al.	6,336,900 B1	1/2002	Alleckson et al.
	4,576,170 A	3/1986 Bradley et al.	6,390,996 B1	5/2002	Halperin et al.
	4,580,572 A	4/1986 Granek et al.	6,406,426 B1	6/2002	Reuss et al.
	4,583,547 A	4/1986 Granek et al.	6,418,346 B1	7/2002	Nelson et al.
	4,608,987 A	9/1986 Mills	6,442,433 B1	8/2002	Linberg
	4,619,265 A	10/1986 Morgan et al.	6,681,003 B2	1/2004	Linder et al.
	4,632,122 A	12/1986 Johansson et al.	6,687,523 B1	2/2004	Jayaramen et al.
	4,679,572 A	7/1987 Baker, Jr.	6,690,969 B2	2/2004	Bystrom et al.
	4,698,848 A	10/1987 Buckley	6,694,191 B2	2/2004	Starkweather et al.
	4,729,377 A	3/1988 Granek et al.	6,804,554 B2	10/2004	Ujhelyi et al.
	4,823,796 A	4/1989 Benson	6,827,695 B2	12/2004	Palazzolo et al.
	4,889,131 A	12/1989 Salem et al.	6,889,078 B2	5/2005	Struble et al.
	4,926,879 A	5/1990 Sevrain et al.	6,889,079 B2	5/2005	Bocek et al.
	4,928,690 A	5/1990 Heilman et al.	6,908,437 B2	6/2005	Bardy
	4,938,231 A	7/1990 Milijasevic et al.	6,925,330 B2	8/2005	Kleine
	4,978,926 A	12/1990 Zerod et al.	6,961,612 B2	11/2005	Elghazzawi et al.
	4,991,217 A	2/1991 Garrett et al.	6,990,373 B2	1/2006	Jayne et al.
	5,000,189 A	3/1991 Throne et al.	7,130,690 B2	10/2006	Rueter et al.
	5,007,427 A	4/1991 Suzuki et al.	7,149,579 B1	12/2006	Koh et al.
	5,062,834 A	11/1991 Gross et al.	7,220,235 B2	5/2007	Geheb et al.
	5,078,134 A	1/1992 Heilman et al.	7,340,296 B2	3/2008	Stahmann et al.
	5,097,830 A	3/1992 Eikefjord et al.	7,453,354 B2	11/2008	Reiter et al.
	5,224,479 A	7/1993 Sekine	7,488,293 B2	2/2009	Marcovecchio et al.
	5,225,763 A	7/1993 Krohn et al.	7,534,212 B2	5/2009	Baker, Jr.
	5,306,956 A	4/1994 Ikeda et al.	7,712,373 B2	5/2010	Nagle et al.
	5,342,404 A	8/1994 Alt et al.	7,831,303 B2	11/2010	Rueter et al.
	5,348,008 A	9/1994 Bornn et al.	7,974,689 B2	7/2011	Volpe et al.
	5,357,696 A	10/1994 Gray et al.	7,991,460 B2	8/2011	Fischell et al.
	5,361,412 A	11/1994 Perry			
	5,365,932 A	11/1994 Greenhut			

(56)

References Cited

U.S. PATENT DOCUMENTS

8,121,683	B2	2/2012	Bucher et al.	2008/0312520	A1	12/2008	Rowlandson et al.
8,140,154	B2	3/2012	Donnelly et al.	2008/0312522	A1	12/2008	Rowlandson et al.
8,271,082	B2	9/2012	Donnelly et al.	2009/0018428	A1	1/2009	Dias et al.
8,369,944	B2	2/2013	Macho et al.	2009/0066366	A1	3/2009	Solomon
8,406,842	B2	3/2013	Kaib et al.	2009/0073991	A1	3/2009	Landrum et al.
8,706,215	B2*	4/2014	Kaib A61B 5/04085	2009/0076336	A1	3/2009	Mazar et al.
			600/509	2009/0076340	A1	3/2009	Libbus et al.
8,897,860	B2*	11/2014	Volpe A61B 5/046	2009/0076341	A1	3/2009	James et al.
			600/388	2009/0076342	A1	3/2009	Amurthur et al.
				2009/0076343	A1	3/2009	James et al.
9,161,723	B2	10/2015	Rodriguez-Llorente et al.	2009/0076344	A1	3/2009	Libbus et al.
2001/0031991	A1	10/2001	Russial	2009/0076345	A1	3/2009	Manicka et al.
2002/0077689	A1	6/2002	Kirkland	2009/0076346	A1	3/2009	James et al.
2003/0004547	A1	1/2003	Owen et al.	2009/0076348	A1	3/2009	Manicka et al.
2003/0032988	A1	2/2003	Fincke	2009/0076349	A1	3/2009	Libbus et al.
2003/0095648	A1	5/2003	Kaib et al.	2009/0076350	A1	3/2009	Bly et al.
2003/0109904	A1	6/2003	Silver et al.	2009/0076363	A1	3/2009	Bly et al.
2003/0149462	A1	8/2003	White et al.	2009/0076364	A1	3/2009	Libbus et al.
2003/0158593	A1	8/2003	Heilman et al.	2009/0076397	A1	3/2009	Libbus et al.
2003/0174049	A1	9/2003	Beigel et al.	2009/0076405	A1	3/2009	Amurthur et al.
2003/0195567	A1	10/2003	Jayne et al.	2009/0076410	A1	3/2009	Libbus et al.
2003/0212311	A1	11/2003	Nova et al.	2009/0076559	A1	3/2009	Libbus et al.
2003/0216786	A1	11/2003	Russial	2009/0093687	A1	4/2009	Telfort et al.
2004/0007970	A1	1/2004	Ma et al.	2009/0118808	A1	5/2009	Belacazar et al.
2004/0010294	A1	1/2004	Kleine	2009/0138059	A1	5/2009	Ouwerkerk
2004/0049233	A1	3/2004	Edwards	2009/0146822	A1	6/2009	Soliman
2004/0143297	A1	7/2004	Ramsey	2009/0212984	A1	8/2009	Baker
2004/0162510	A1	8/2004	Jayne et al.	2009/0231124	A1	9/2009	Klabunde et al.
2004/0249419	A1	12/2004	Chapman et al.	2009/0232286	A1	9/2009	Hurwitz
2005/0049515	A1	3/2005	Misczynski et al.	2009/0234410	A1	9/2009	Libbus et al.
2005/0049644	A1*	3/2005	Warren A61B 5/0402	2009/0264792	A1	10/2009	Mazar
			607/9	2009/0275848	A1	11/2009	Brockway et al.
2005/0131465	A1	6/2005	Freeman et al.	2009/0281394	A1	11/2009	Russell et al.
2005/0144043	A1	6/2005	Holland et al.	2009/0287120	A1	11/2009	Ferren et al.
2005/0246199	A1	11/2005	Futch	2009/0292194	A1	11/2009	Libbus et al.
2005/0283198	A1	12/2005	Haubrich et al.	2009/0295326	A1	12/2009	Daynes et al.
2005/0288599	A1*	12/2005	MacAdam A61B 5/046	2009/0307266	A1	12/2009	Fleizach et al.
			600/509	2009/0318779	A1	12/2009	Tran
2006/0036292	A1	2/2006	Smith et al.	2010/0010559	A1	1/2010	Zhang et al.
2006/0085049	A1	4/2006	Cory et al.	2010/0052892	A1	3/2010	Allen et al.
2006/0095091	A1	5/2006	Drew	2010/0052897	A1	3/2010	Allen et al.
2006/0178706	A1	8/2006	Lisogurski et al.	2010/0056881	A1	3/2010	Libbus et al.
2006/0211934	A1	9/2006	Hassonjee et al.	2010/0069735	A1	3/2010	Berkner
2006/0220809	A1	10/2006	Stigall et al.	2010/0076513	A1	3/2010	Warren et al.
2006/0270952	A1	11/2006	Freeman et al.	2010/0076533	A1	3/2010	Dar et al.
2007/0016029	A1*	1/2007	Donaldson A61B 8/469	2010/0081962	A1	4/2010	Hamaguchi et al.
			600/437	2010/0114243	A1	5/2010	Nowak et al.
2007/0073120	A1	3/2007	Li et al.	2010/0171611	A1	7/2010	Gao et al.
2007/0118056	A1	5/2007	Wang et al.	2010/0234716	A1	9/2010	Engel
2007/0129769	A1	6/2007	Bourget et al.	2010/0241181	A1	9/2010	Savage et al.
2007/0143864	A1	6/2007	Cabana et al.	2010/0295674	A1	11/2010	Hsieh et al.
2007/0161913	A1	7/2007	Farrell et al.	2010/0298899	A1	11/2010	Donnelly et al.
2007/0162390	A1	7/2007	Pancholy et al.	2010/0305462	A1*	12/2010	Callas A61N 1/3706
2007/0169364	A1	7/2007	Townsend et al.				600/521
2007/0197878	A1	8/2007	Shklarski	2010/0312297	A1	12/2010	Volpe et al.
2007/0239214	A1	10/2007	Cinbis	2011/0015533	A1	1/2011	Cox et al.
2007/0239220	A1	10/2007	Greenhut et al.	2011/0022105	A9	1/2011	Owen et al.
2007/0265533	A1*	11/2007	Tran A61B 5/021	2011/0093840	A1	4/2011	Pynenburg et al.
			600/481	2011/0098765	A1	4/2011	Patel
2007/0265671	A1	11/2007	Roberts et al.	2011/0170692	A1	7/2011	Konrad et al.
2008/0004536	A1	1/2008	Baxi et al.	2011/0172550	A1	7/2011	Martin et al.
2008/0021532	A1	1/2008	Kveen et al.	2011/0288604	A1	11/2011	Kaib et al.
2008/0030656	A1	2/2008	Watson et al.	2011/0288605	A1	11/2011	Kaib et al.
2008/0033495	A1	2/2008	Kumar	2012/0011382	A1	1/2012	Volpe et al.
2008/0045815	A1	2/2008	Derchak et al.	2012/0016361	A1	1/2012	White et al.
2008/0058884	A1	3/2008	Matos	2012/0053479	A1	3/2012	Hopenfeld
2008/0097793	A1	4/2008	Dicks et al.	2012/0112903	A1	5/2012	Kaib et al.
2008/0103402	A1	5/2008	Stickney et al.	2012/0146797	A1	6/2012	Oskin et al.
2008/0167535	A1	7/2008	Stivoric et al.	2012/0158075	A1	6/2012	Kaib et al.
2008/0177193	A1*	7/2008	Farrington A61B 5/0428	2012/0283794	A1	11/2012	Kaib et al.
			600/509	2012/0289809	A1	11/2012	Kaib et al.
2008/0177341	A1	7/2008	Bowers	2012/0293323	A1	11/2012	Kaib et al.
2008/0183090	A1	7/2008	Farrington et al.	2013/0085538	A1	4/2013	Volpe et al.
2008/0249591	A1	10/2008	Gaw et al.	2013/0231711	A1	9/2013	Kaib
2008/0287749	A1	11/2008	Reuter				
2008/0294019	A1	11/2008	Tran				

FOREIGN PATENT DOCUMENTS

EP 0335356 B1 3/1996
 EP 0707825 A2 4/1996

(56)

References Cited

FOREIGN PATENT DOCUMENTS

EP	0761255	A1	3/1997
EP	1455640	B1	1/2008
EP	1720446	B1	7/2010
JP	5115450	A	5/1993
JP	2002200059	A	7/2002
WO	83/04171	A1	12/1983
WO	9722297	A1	6/1997
WO	9839061	A2	9/1998
WO	9843537	A1	10/1998
WO	9959465	A1	11/1999
WO	0002484	A1	1/2000
WO	0030529	A1	6/2000
WO	2004054656	A1	7/2004
WO	2004067083	A2	8/2004
WO	2004078259	A1	9/2004
WO	2005082454	A1	9/2005

WO	2006050325	A2	5/2006
WO	2007019325	A2	2/2007
WO	2009034506	A1	3/2009
WO	2010025432	A1	3/2010
WO	2010077997	A2	7/2010

OTHER PUBLICATIONS

DeBock, et al., "Captopril treatment of chronic heart failure in the very old," J. Gerontol. (1994) 49: M148-M152.

<http://web.archive.org/web/20030427001846/http://www.lifecor.com/imagelib/imageproduct.asp>. Published by LifeCor, Inc., 2002, on a webpage owned by LifeCor, Inc.

International Search Report from corresponding International Application No. PCT/US2012/030433, mailed Jul. 5, 2012.

O'Keeffe et al., "Reproducibility and responsiveness of quality of life assessment and six minute walk test in elderly heart failure patients," Heart (1998) 80: 377-382.

* cited by examiner

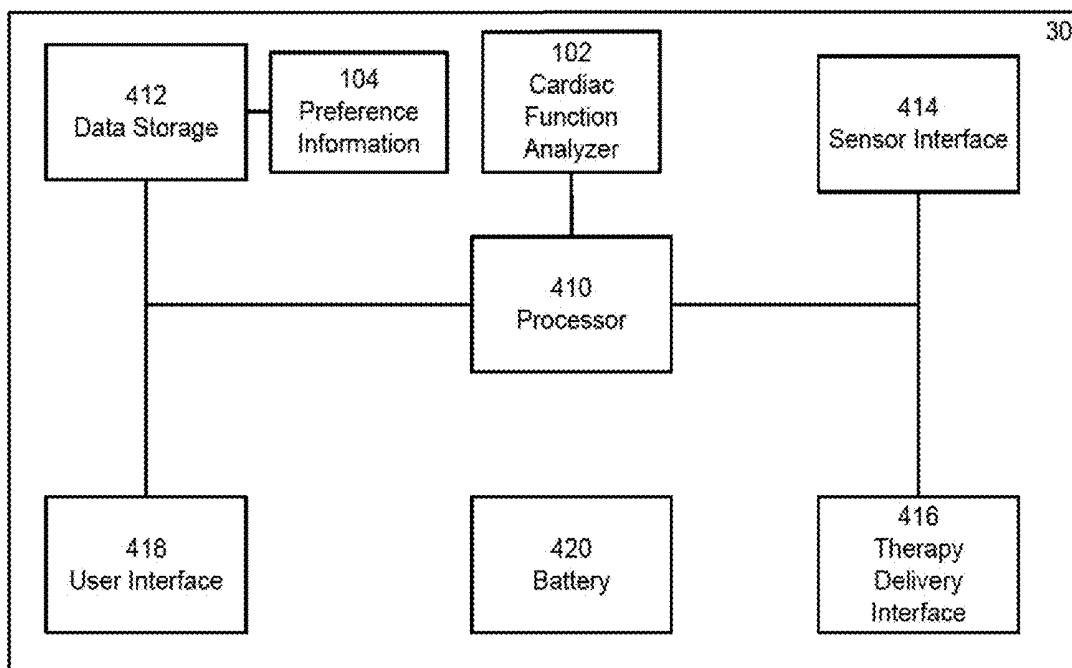


FIG. 1

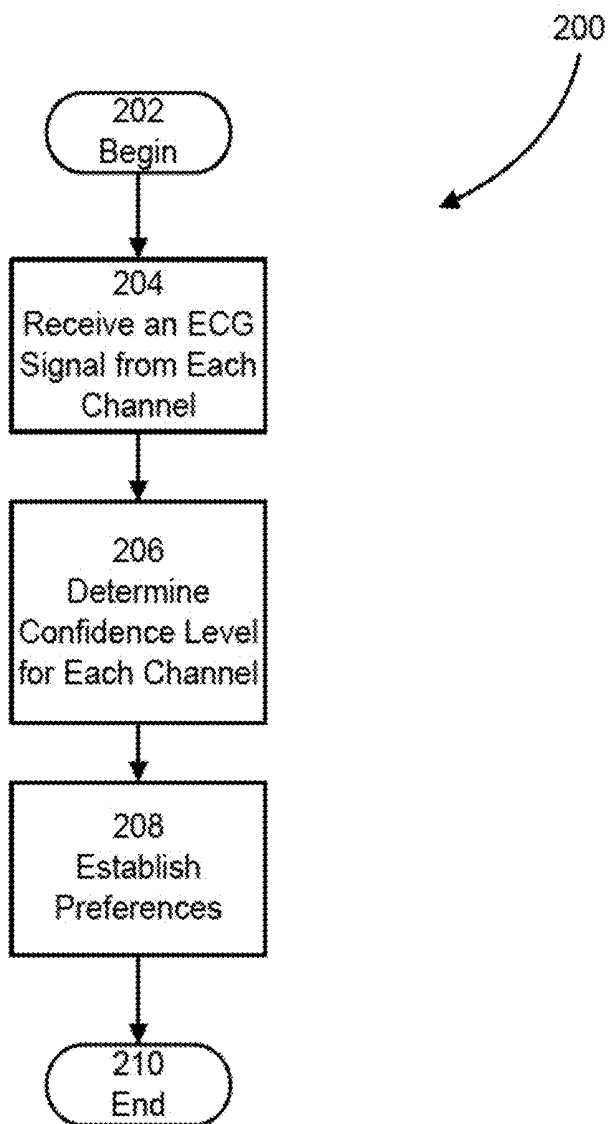


FIG. 2

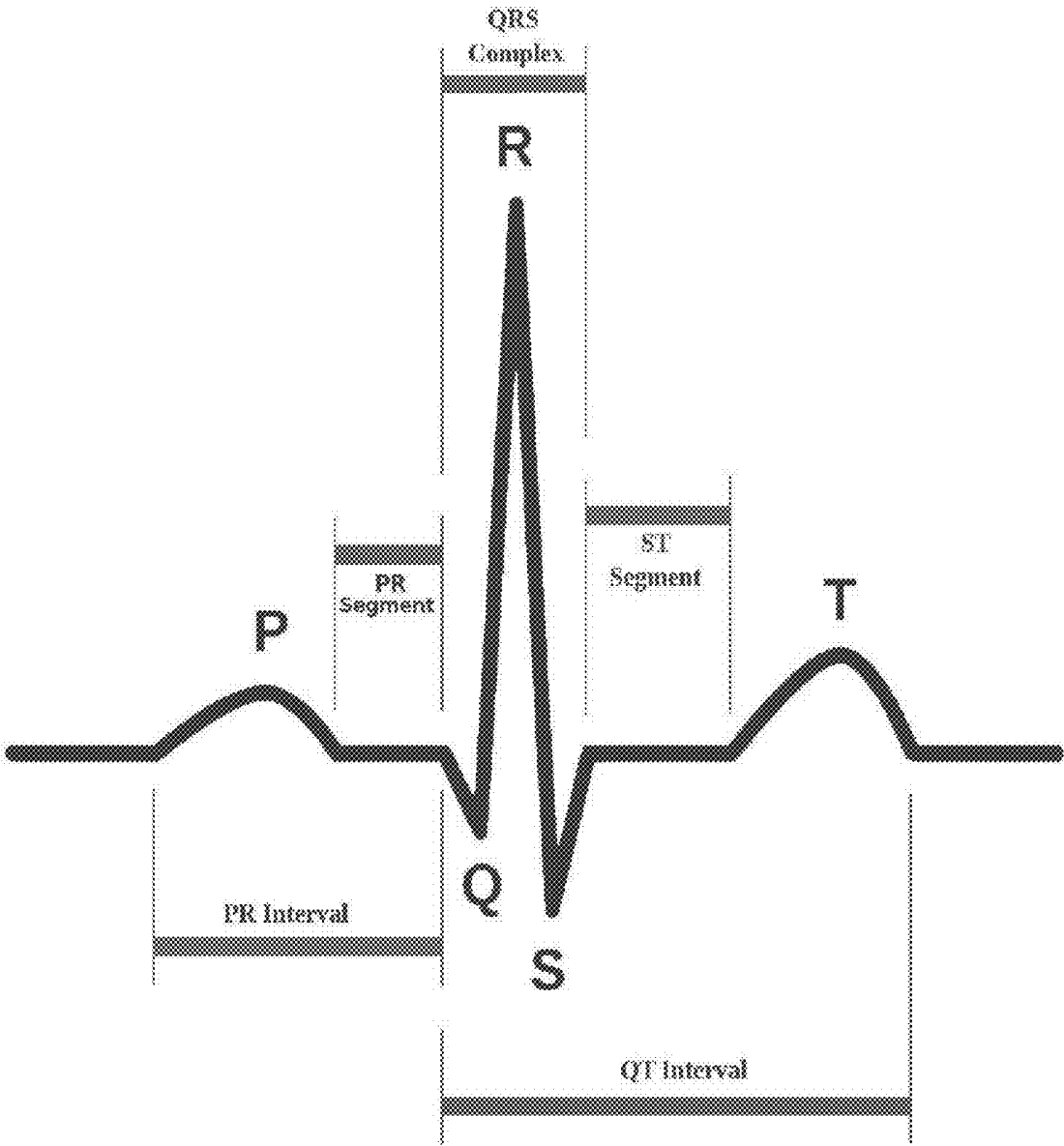


FIG. 3
(PRIOR ART)

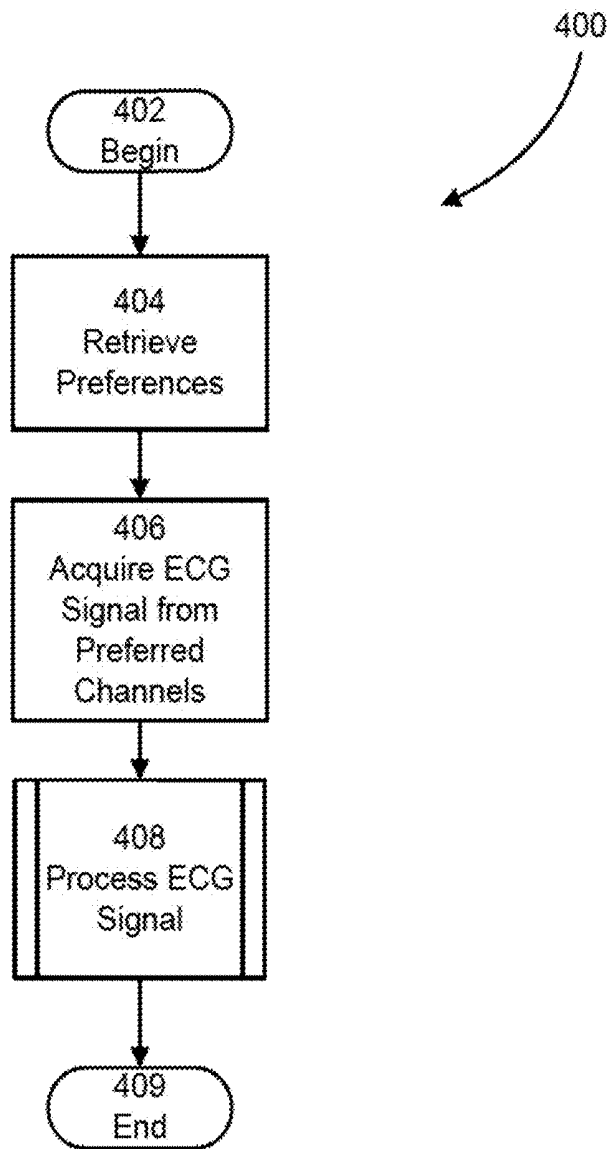


FIG. 4

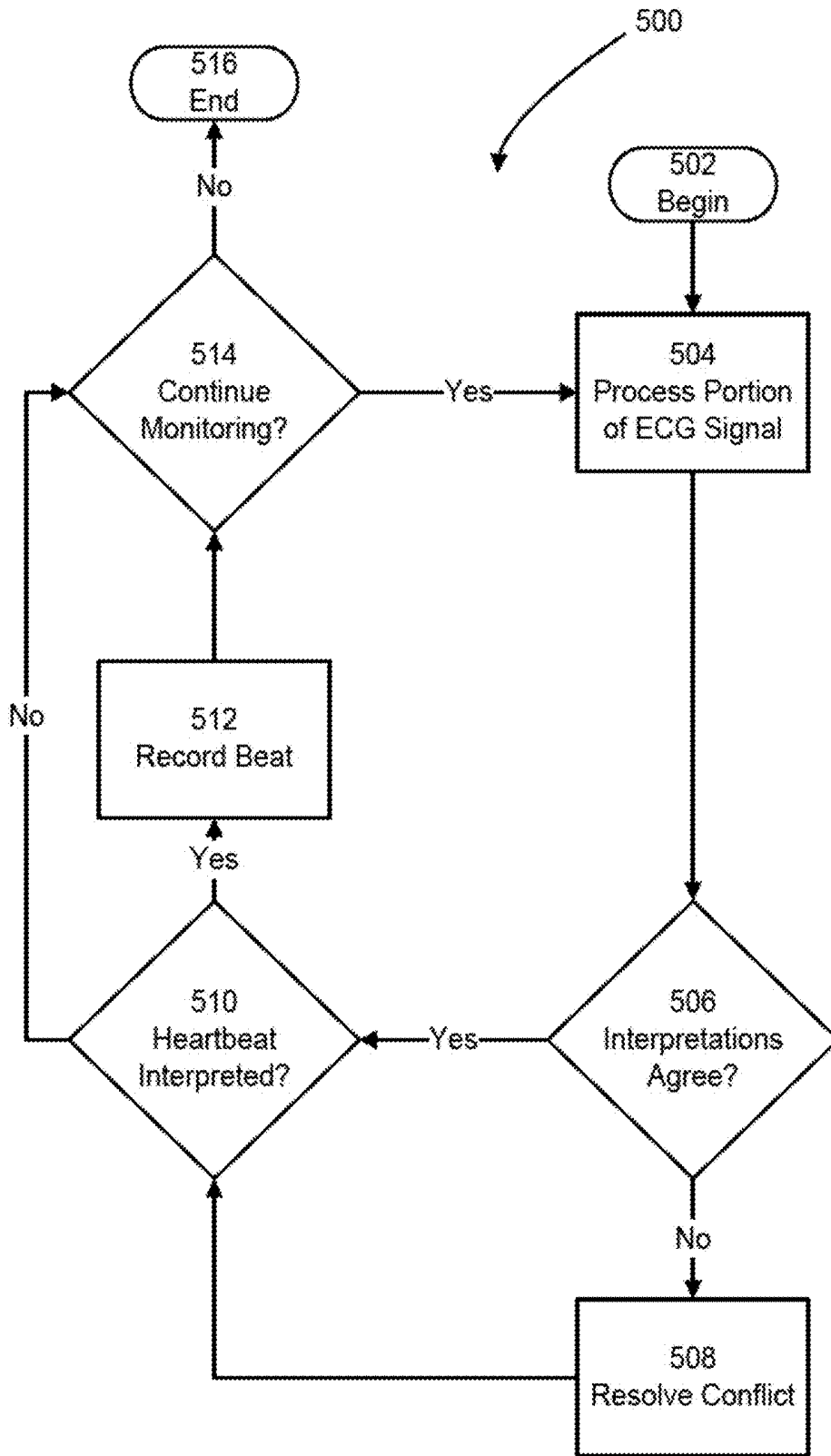


FIG. 5

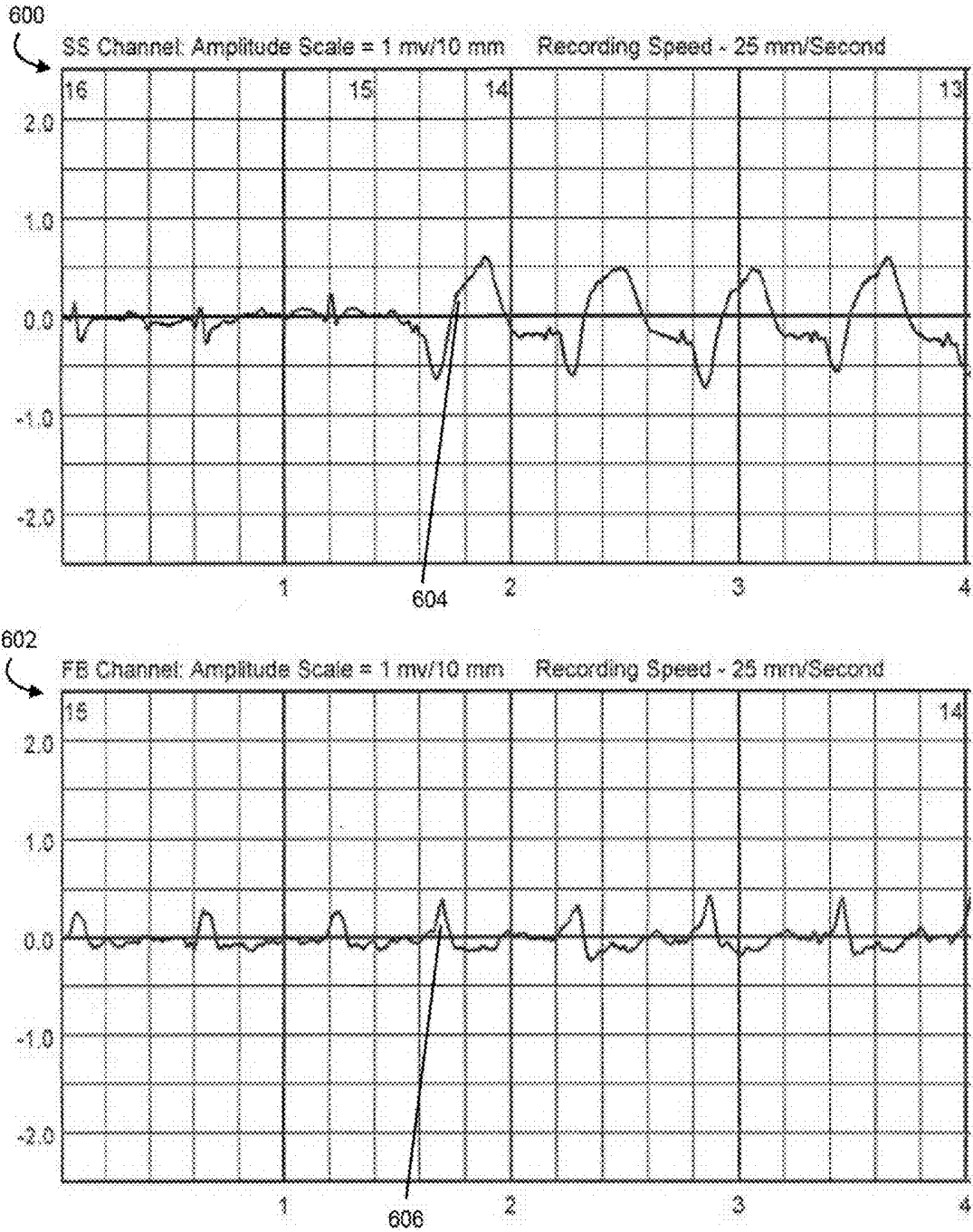


FIG. 6

SELECTION OF OPTIMAL CHANNEL FOR RATE DETERMINATION

RELATED APPLICATIONS

This application claims the benefit under 35 U.S.C. §120 as a continuation of U.S. application Ser. No. 13/428,329, entitled "SELECTION OF OPTIMAL CHANNEL FOR RATE DETERMINATION," filed on Mar. 23, 2012, now U.S. Pat. No. 8,897,860, which claims priority under 35 U.S.C. §119(e) to U.S. Provisional Application Ser. No. 61/467,599, entitled "SELECTION OF OPTIMAL CHANNEL FOR RATE DETERMINATION," filed on Mar. 25, 2011, both of which are hereby incorporated herein by reference in their entireties for all purposes.

BACKGROUND

1. Technical Field

Examples disclosed herein relate generally to the detection of cardiac function in a patient, and more particularly to the detection of cardiac function and the treatment of cardiac conditions in an ambulatory medical device, such as a wearable defibrillator.

2. Discussion

With a wearable defibrillator worn by an ambulatory patient, the patient's electrocardiogram (ECG) signal is obtained from body surface electrodes. Determining the true characteristics of an ambulatory patient's cardiac cycle based on an ECG signal in this manner can be difficult. Electrical noise and electrode fall-off frequently degrade the quality of the ECG signal. In addition, the characteristics of ECG signals vary from patient to patient due to factors such as the patient's state of health, individual physiology, and electrode positions on the body surface.

Known ambulatory wearable defibrillators, such as the LifeVest® Wearable Cardioverter Defibrillator available from Zoll Medical Corporation of Chelmsford, Mass., use four ECG sensing electrodes in a dual-channel configuration. That is, an electrical signal provided by one of the four ECG sensing electrodes is paired with the electrical signal provided by another of the four ECG sensing electrodes to form a channel. This arrangement of ECG sensing electrodes is usually suitable because in most cases it is rare that noise or electrode movement affects the entire body circumference. The dual-channel configuration provides redundancy and allows the system to operate on a single channel if necessary. Because signal quality also varies from patient to patient, having two channels provides the opportunity to have improved signal pickup, since the ECG sensing electrodes are located in different body positions.

SUMMARY

Examples disclosed herein are directed to a wearable medical device that monitors ECG signals received on a plurality of channels and interprets the ECG signals according to a set of preferences. This set of preferences indicates which channels and detection methods are more likely to provide accurate results for the patient wearing the wearable medical device. By interpreting ECG signals according to the set of preferences, the wearable medical device decreases the frequency of falsely detected cardiac malfunctions.

According to one example, an ambulatory medical device is provided. The device includes a plurality of electrodes disposed at spaced apart positions about a patient's body and a control unit. The control unit includes a sensor interface

coupled to the plurality of electrodes and configured to receive a first ECG signal from a first pairing of the plurality of electrodes and to receive a second ECG signal from a second pairing of the plurality of electrodes, a memory storing information indicating a preferred pairing, the preferred pairing being either the first pairing or the second pairing and a processor coupled to the sensor interface and the memory and configured to resolve conflicts between interpretations of first ECG signal and the second ECG signal in favor of the preferred pairing. In some examples, the first pairing includes electrodes that are distinct from the electrodes included in the second pairing. In other examples, one of the plurality of electrodes is common between the first and second pairings. The device may include a plurality of electrodes that are integrated into a garment that is worn about a patient's body. In addition, the interpretations of the ECG signals may detect heartbeats.

According to another example, a method of monitoring ECG signals is provided. In some examples, the method is executed by an ambulatory medical device as described herein. The method includes acts of determining a first interpretation of a first ECG signal provided by a first channel of the plurality of channels, determining a second interpretation of a second ECG signal provided by a second channel of the plurality of channels, determining which one of the first channel and the second channel provides a more reliable ECG signal and resolving a conflict between the first interpretation and the second interpretation based upon which of the first channel and the second channel is determined to provide the more reliable ECG signal.

According to at least one example, an ambulatory medical device is provided. The device includes a plurality of electrodes disposed at spaced apart positions about a patient's body and a control unit. The control unit includes a sensor interface, a memory and a processor. The sensor interface is coupled to the plurality of electrodes and configured to receive a first ECG signal from a first pairing of the plurality of electrodes and to receive a second ECG signal from a second pairing of the plurality of electrodes. The memory stores information indicating a preferred pairing, the preferred pairing being either the first pairing or the second pairing. The processor is coupled to the sensor interface and the memory and is configured to resolve conflicts between interpretations of first ECG signal and the second ECG signal in favor of the preferred pairing.

The device may further comprise a garment that is configured to be worn about the patient's body. The plurality of electrodes may be integrated into the garment. The plurality of electrodes may include adhesive electrodes. In some examples, the interpretations of the ECG signals may detect heartbeats.

In the device, the information indicating the preferred pairing may include information indicating a first heart rate detection method preferred for the first pairing and a second heart rate detection method preferred for the second pairing. The processor may be further configured to interpret the first ECG signal using the first heart rate detection method and interpret the second ECG signal using the second heart rate detection method.

In the device, the processor may be further configured to determine a first confidence level for the first pairing, determine a second confidence level for the second pairing, determine the preferred pairing with reference to the first confidence level and the second confidence level and store the information indicating the preferred pairing in the memory. In addition, the processor may be configured to determine the first confidence level by comparing the first ECG signal to

benchmark information. The benchmark information may reflect a particular patient's normal rhythm. In addition, the processor may be configured to compare the first ECG signal to the benchmark information by comparing a morphology of the first ECG signal to a morphology indicated within the benchmark information.

According to another example, a method of monitoring ECG signals using an ambulatory medical device is provided. The method includes acts of receiving, by the ambulatory medical device, a first ECG signal from a first pairing of a plurality of electrodes, receiving a second ECG signal from a second pairing of the plurality of electrodes and resolving conflicts between interpretations of first ECG signal and the second ECG signal in favor of a preferred pairing being either the first pairing or the second pairing.

In the method, the act of resolving the conflicts between the interpretations may include resolving conflicts between interpretations that detect heartbeats. The method may further comprise acts of interpreting the first ECG signal using a first heart rate detection method and interpreting the second ECG signal using a second heart rate detection method. The first heart rate detection method may be different from the second heart rate detection method.

The method may further comprise acts of determining a first confidence level for the first pairing, determining a second confidence level for the second pairing and determining the preferred pairing with reference to the first confidence level and the second confidence level. In the method, the act of determining the first confidence level may include an act of comparing the first ECG signal to benchmark information. The act of comparing the first ECG signal to the benchmark information may include comparing the first ECG signal to benchmark information that reflects a particular patient's normal rhythm. In addition, the act of comparing the first ECG signal to the benchmark information may include comparing a morphology of the first ECG signal to a morphology indicated within the benchmark information.

In another example, a non-transitory computer readable medium having stored thereon sequences of instruction for monitoring ECG signals is provided. The instructions instruct at least one processor to receive a first ECG signal from a first pairing of the plurality of electrodes, receive a second ECG signal from a second pairing of the plurality of electrodes and resolve conflicts between interpretations of first ECG signal and the second ECG signal in favor of a preferred pairing being either the first pairing or the second pairing.

Furthermore, the instructions may further instruct the at least one processor to determine a first confidence level for the first pairing, determine a second confidence level for the second pairing and determine the preferred pairing with reference to the first confidence level and the second confidence level. The instructions that instruct the at least one processor to determine the first confidence level may include instructions that instruct the at least one processor to compare the first ECG signal to benchmark information. The instructions that instruct the at least one processor to compare the first ECG signal to the benchmark information may include instructions that instruct the at least one processor to compare a morphology of the first ECG signal to a morphology indicated within the benchmark information.

Still other aspects, examples, and advantages of these exemplary aspects and examples, are discussed in detail below. Moreover, it is to be understood that both the foregoing information and the following detailed description are merely illustrative examples of various aspects, and are intended to provide an overview or framework for understanding the nature and character of the claimed subject matter. Refer-

ences to "an example," "some examples," "an alternate example," "various examples," "one example," "at least one example," "this and other examples" or the like are not necessarily mutually exclusive and are intended to indicate that a particular feature, structure, or characteristic described in connection with the example may be included in that example and other examples. The appearances of such terms herein are not necessarily all referring to the same example.

Furthermore, in the event of inconsistent usages of terms between this document and documents incorporated herein by reference, the term usage in the incorporated references is supplementary to that of this document; for irreconcilable inconsistencies, the term usage in this document controls. In addition, the accompanying drawings are included to provide illustration and a further understanding of the various aspects and examples, and are incorporated in and constitute a part of this specification. The drawings, together with the remainder of the specification, serve to explain principles and operations of the described and claimed aspects and examples.

BRIEF DESCRIPTION OF DRAWINGS

The accompanying drawings are not intended to be drawn to scale. In the drawings, components that are identical or nearly identical may be represented by a like numeral. For purposes of clarity, not every component is labeled in every drawing. In the drawings:

FIG. 1 is a functional schematic diagram of an exemplary control unit used to control electrode systems;

FIG. 2 is a flow chart of an exemplary process for configuring ECG signal processing preferences;

FIG. 3 is a schematic diagram of an ECG signal produced by a normal cardiac cycle;

FIG. 4 is a flow chart of an exemplary process for detecting cardiac function from a portion of an ECG signal;

FIG. 5 is a flow chart of an exemplary process for interpreting ECG signals according to a set of ECG signal processing preferences; and

FIG. 6 is an exemplary ECG signal produced by an idiosyncratic cardiac cycle.

DETAILED DESCRIPTION

Examples disclosed herein manifest an appreciation that some patients regularly produce ECG signals that are highly idiosyncratic. In these instances, the electrical signals generated during these patient's cardiac cycles can cause conventional heart rate detection methods to detect an erroneous number of heartbeats over a given period of time. These errors are particularly problematic to a wearable medical device, such as a wearable defibrillator, because, within this context, a real-time determination of heart rate can be matter of life and death importance. For this reason, wearable medical devices that monitor heart rate tend to interpret ECG signals in a conservative light and err on the side of reporting potential arrhythmias or other cardiac malfunction to a patient, physician or others. An unfortunate side-effect of this approach is that, in some instances, patients are forced to regularly deal with falsely indicated cardiac malfunction.

The conventional heart rate detection methods mentioned above include derivative-based QRS detectors that detect heartbeats by identifying QRS complexes, which are representative of ventricular depolarization, within an ECG signal. Conventional derivative-based QRS detectors identify QRS complexes by comparing a slope of the ECG signal to established thresholds. For example, a conventional derivative-based QRS detector may compare a magnitude of the slope of

the R wave portion of the QRS complex to a threshold, and if the magnitude exceeds the threshold, the QRS detector may indicate the occurrence of a heartbeat. Typically, such derivative-based QRS detectors are configured (via hardware or software) to the morphology of the heart, and the patient.

For instance, to prevent over counting, the QRS detector may be configured to detect an occurrence of a QRS complex only after a minimum amount of time has transpired after a prior QRS complex. In some examples this minimum amount of time, which is referred to herein as the “refractory period” or the “programmed refractory period,” is typically configured to be about 200 milliseconds. Moreover, the QRS detector may also be configured to use an adaptive threshold that is based upon prior samples of the patient’s ECG signal, to account for variations from one patient to another, or to changes in the patient’s medical condition. Upon identifying a QRS complex in this manner, conventional derivative-based QRS detectors indicate the occurrence of a heartbeat.

Given their reliance on slope, conventional derivative-based QRS detectors may double count heartbeats where a patient’s normal rhythm presents an elongated QRS complex or an abnormally sharp T wave. For example, if the QRS complex generated by the patient’s normal rhythm has a duration that exceeds the configured refractory period of the QRS detector, the QRS detector may detect a heartbeat at the beginning of the QRS complex and, after the refractory period has expired, detect another heartbeat near the end of the QRS complex. In another example, if the amplitude of the ECG signal is small, the adaptive thresholds used by the QRS detector may adjust to low values. In this situation, even a moderate spike in one of the other waves, such as the T wave, that occurs after expiration of the refractory period may result in a slope steep enough to cause the QRS detector to indicate the occurrence of a false heartbeat.

To address these difficulties, some exemplary wearable medical devices disclosed herein process ECG signals from multiple channels according to a set of preference information that is tailored to fit the characteristics of the patient wearing the wearable medical device. The set of preference information may include, among other information, information indicating preferred channels and rate detection methods for the patient. For instance, in at least one example, a wearable medical device processes ECG signals received via two channels, namely a front to back channel and a side to side channel, using one or more QRS rate detectors, which may include, for example, one or more conventional QRS rate detectors. According to this example, the wearable medical device resolves conflicts between these two channels in favor of a previously identified, preferred channel. Further, in some examples, the set of preference information is automatically configured by the wearable medical device and continuously adjusted during its operation. For example, the set of preference information may be adjusted based on the current health of the patient, the activity of the patient, and the present locations of the electrodes relative to the patient’s body.

The examples of the processes and apparatuses described herein are not limited in application to the details of construction and the arrangement of components set forth in the following description or illustrated in the accompanying drawings. The methods and apparatuses are capable of implementation in other examples and of being practiced or of being carried out in various ways. Examples of specific implementations are provided herein for illustrative purposes only and are not intended to be limiting. In particular, acts, elements and features discussed in connection with any one or more examples are not intended to be excluded from a similar role in any other examples.

Also, the phraseology and terminology used herein is for the purpose of description and should not be regarded as limiting. Any references to examples or elements or acts of the systems and methods herein referred to in the singular may also embrace examples including a plurality of these elements, and any references in plural to any example or element or act herein may also embrace examples including only a single element. References in the singular or plural form are not intended to limit the presently disclosed systems or methods, their components, acts, or elements. The use herein of “including,” “comprising,” “having,” “containing,” “involving,” and variations thereof is meant to encompass the items listed thereafter and equivalents thereof as well as additional items. References to “or” may be construed as inclusive so that any terms described using “or” may indicate any of a single, more than one, and all of the described terms.

Electrode System

Co-pending application Ser. No. 13/109,382, entitled WEARABLE AMBULATORY MEDICAL DEVICE WITH MULTIPLE SENSING ELECTRODES, filed May 17, 2011 (hereinafter the “’382 application”), which is incorporated by reference herein in its entirety, describes an apparatus and method for processing ECG signals using one or more channels. With reference to FIGS. 1A and 1B, the ’382 application discloses an electrode system **100** that incorporates a control unit **30**. As described with reference to FIG. **4** in the ’382 application, at least one example of the control unit **30** includes a processor **410**, data storage **412**, a sensor interface **414**, a therapy delivery interface **416**, a user interface **418** and a battery **420**.

Some of the examples disclosed herein for processing ECG signals according to a set of preferences are implemented using the electrode system **100** disclosed in the ’382 application. FIG. **1** illustrates the control unit **30** of one such example. As shown in FIG. **1**, the control unit **30** includes two additional components: a cardiac function analyzer **102** and preference information **104**.

The cardiac function analyzer **102** is configured to analyze a portion of the ECG signal to configure preference information, such as the preference information **104**, and to determine cardiac functions of the patient using the preference information. The cardiac function analyzer **102** may be implemented using hardware or a combination of hardware and software. For instance, in one example, the cardiac function analyzer **102** is implemented as a software component that is stored within the data storage **412** and executed by the processor **410**. In this example, the instructions included in the cardiac function analyzer **102** program the processor **410** to configure preference information and determine the heart rate of the patient using the preference information. In other examples, the cardiac function analyzer **102** may be an application-specific integrated circuit (ASIC) that is coupled to the sensor interface **414** and tailored to determine the heart rate of the patient. Thus, examples of the cardiac function analyzer **102** are not limited to a particular hardware or software implementation. In addition, particular examples of the processes that the cardiac function analyzer **102** is configured to perform are discussed further below with reference to FIGS. **2-6**.

The preference information **104** includes data that describes parameters used by the cardiac function analyzer **102** during its analysis of ECG signals. More particularly, according to the illustrated example, the preference information **104** identifies one or more channels from which the cardiac function analyzer **102** receives ECG signals. In this example, the preference information **104** also includes information that ranks each channel relative to the other identified channels. As is discussed further below, the cardiac function

analyzer **102** uses this ranking information to resolve conflicts generated from the interpretation of two or more ECG signals received via the identified channels.

In some examples, the preference information **104** also includes information indicating one or more preferred rate detectors for each channel. In these examples, the cardiac function analyzer **102** uses the preferred rate detectors of each channel to interpret the ECG signal received from each channel. In other examples, the preference information **104** includes an association that groups channel and rate detector preference information into individual profiles. In these examples, the preference information **104** also includes data that indicates an active profile that is used by the cardiac function analyzer **102** to analyze ECG signals. These examples provide the added advantage of easily configuring channel and rate detector information preferences simply by changing the indicator of the active profile from the active profile to another profile.

The preference information **104** may be stored in any logical construction capable of storing information on a computer readable medium including, among other structures, flat files, indexed files, hierarchical databases, relational databases or object oriented databases. In addition, various examples organize the preference information **104** into particularized and, in some cases, unique structures to perform the functions disclosed herein. In these examples, the data structures are sized and arranged to store values for particular types of data.

In some examples, the components disclosed herein, such as the cardiac function analyzer **102**, may read parameters that affect the functions performed by the components. These parameters may be physically stored in any form of suitable memory including volatile memory, such as RAM, or non-volatile memory, such as a magnetic hard drive. In addition, the parameters may be logically stored in a propriety data structure, such as a database or file defined by a user mode application, or in a commonly shared data structure, such as an application registry that is defined by an operating system. In addition, some examples provide for both system and user interfaces, as may be implemented using the user interface **418**, that allow external entities to modify the parameters and thereby configure the behavior of the components.

Preferential ECG Signal Processing

FIG. 2 illustrates a process **200** for configuring the preference information **104** according to one example. As shown, the process **200** includes acts of receiving an ECG signal from each channel, determining a confidence level for each channel and establishing preferences. The process **200** begins at **202**.

In act **204**, an electrode system, such as the electrode system **100** discussed above, receives one or more ECG signals via one or more channels. According to one example, the electrode system receives ECG signals from a front-to-back channel and from a side-to-side channel. The front-to-back channel includes an electrode positioned on the chest of the patient and another electrode positioned on the back of the patient. The side-to-side channel includes an electrode positioned on the left side of the chest and another electrode positioned on the right side of the patient. Other examples may employ additional, or fewer, electrodes or electrodes located in other positions on the patient's body. In addition, act **204** may include a variety of acts designed to render an accurate interpretation of the ECG signal. For instance, in one example, a control unit, such as the control unit **30** discussed above with reference to FIG. 1, filters or otherwise manipulates the ECG signal to remove or lower the effect of noise

generated by sources other than the patient's heart, such as other muscle movement or electrical disturbances near the patient.

In act **206**, the filtered ECG signals are analyzed to determine a confidence level for the interpretation of each filtered ECG signal. According to the illustrated example, the filtered ECG signal of each channel is compared to benchmark information to determine a level of confidence that interpretations of the filtered ECG signal are accurate. As discussed further below, this benchmark information may include benchmark ECG signals and benchmark values that characterize attributes of a normal cardiac cycle.

The source of the benchmark information varies from example to example. For instance, according to one example, a standardized representation of a normal sinus rhythm, such as the ECG signal illustrated in FIG. 3, is utilized as a benchmark ECG signal. In other examples, the benchmark ECG signal includes idiosyncratic characteristics of a particular patient's normal rhythm. In these examples, the benchmark ECG signal may be received by the control unit via one or more designated channels. For instance, in one of these examples, the control unit records a benchmark ECG signal when the electrode system is initially prescribed and fitted to a patient. In addition, according to these examples, the benchmark ECG signal may adapt over time. For instance, the cardiac function analyzer **102** may adjust the benchmark ECG signal to match a composite ECG signal made up of filtered ECG signals falling within a moving window of a predefined duration. Alternatively, the benchmark ECG signal may be replaced by a newly received ECG signal with desirable characteristics such as higher amplitudes, less noise or that more closely match the normal rhythm of the patient.

Like the source of the benchmark ECG signal, the comparison operation used within the act **206** to determine the quality of interpretations of the filtered ECG signals varies between examples. In some examples, the morphology of the filtered ECG signal is compared to the morphology of the benchmark ECG signal. In these examples, the level of confidence associated with the channel that received the filtered ECG signal is directly related to the fit of the filtered ECG signal to the benchmark ECG signal. More particularly, according to one example, a full cardiac cycle that includes P, Q, R, S and T waves is interpreted from the filtered signal. In this example, a deviation from the interpreted benchmark wave sequence of P, Q, R, S and T waves, such as one or more repeated R waves, indicates a potential double counting of a heartbeat and results in a decreased level of confidence associated with the channel. In some examples, this comparison operation is conducted by a user, such as a physician, through visual inspection.

In another example, the heart rate detected by each combination of channel and heart rate detection method is compared to the actual heart rate as determined by a user, such as a physician. In this example, the heart rate detection methods used may include derivative-based QRS detectors, spectrum analyzers or axis analyzers, as described in commonly owned U.S. Pat. No. 5,944,669 (hereinafter referred to as the "'669 patent'"), which is incorporated herein by reference in its entirety. In this example, the level of confidence associated with the channel receiving the filtered ECG signal is inversely related to any difference between the heart rate detected and the actual heart rate. In addition, a level of confidence for each combination of channel and heart rate detection method may be established using this example.

In other examples, the refractory period is automatically configured to more closely fit the duration of detected QRS complexes. According to these examples, a valid QRS com-

plex is identified by matching the morphology of the benchmark ECG signal to the morphology of the filtered ECG signal. In these examples, the refractory period is adjusted (in most cases lengthened) to encompass the duration of the valid QRS complex while the morphology of the benchmark ECG signal continues to match the morphology of the filtered ECG signal. In at least one example, an axis analyzer, such as the axis analyzer described in the '669 patent, identifies the valid QRS complex and monitors the filtered ECG signal to ensure that a match between the filtered ECG signal and the benchmark ECG is maintained. Channels with refractory periods adjusted in this manner are associated with a high level of confidence.

In act 208, preferences are established for determining the cardiac function of a given patient. In one example, preference information, such as preference information 104, is stored within the data storage 412. This preference information includes a ranking of channels based on the results of the comparison performed in act 206 with channels having a higher level of confidence being ranked above channels with a lower level of confidence. In another example, the preference information also ranks heart rate detection methods by channel, with heart rate detection methods having a higher level of confidence being ranked above heart rate detection methods having a lower level of confidence. In other examples, the ranking information may include the strength of the fit detected between the filtered ECG signal and the benchmark ECG signal or the output of the axis analyzer. In some of these examples, the strength of the fit reflects any differences in timing between interpreted ECG signal characteristics, such as QRS complexes, and interpreted benchmark ECG signal characteristics. According to a variety of examples, act 208 can be repeated at periodic intervals or as requested by a user, such as a patient or a physician. The process 200 ends at 210.

Processes in accord with the process 200 configure an electrode system, such as the electrode system 100 discussed above, to include a set of preferences for processing ECG signals. According to some examples, the process 200 is conducted by an electrode system, such as the electrode system 100 discussed above. In these examples, the data storage 412 includes the benchmark information and the cardiac function analyzer 102 conducts the acts included in the process 200. In other examples, some aspects of the process 200 are conducted by users. For instance, in one example, a user, such as a physician, performs the act 206 by determining the confidence level associated with each channel and heart rate detection method and if the user notices that the amplitude or signal to noise ratio of a particular channel is superior, the confidence level associated with that channel is increased. Further, in this example, the user performs the act 208 by storing the preference information in the electrode system, via a user interface, such as the user interface 418.

According to another example, the user, such as a physician, performs the act 208 by causing the preference information to be stored on the control unit of an electrode system via a network interface. In this example, a processor included in the control unit of the electrode system, such as the processor 410 of the control unit 30, is coupled to a network interface such as the network interface 206 described in co-pending application Ser. No. 12/833,096, entitled SYSTEM AND METHOD FOR CONSERVING POWER IN A MEDICAL DEVICE, filed Jul. 9, 2010, which is incorporated by reference herein in its entirety.

FIG. 4 illustrates an exemplary process 400 for interpreting ECG signals using preference information. As shown, the process 400 includes acts of retrieving preferences, acquiring

ECG signals from preferred channels and processing the ECG signals according to the retrieved preferences. The process 400 begins at 402.

In act 404, the cardiac function analyzer 102, discussed above, retrieves preference information, such as preference information 104 discussed above, from data storage. According to one example, the preference information includes information ranking the channels through which ECG signals can be received and further indicating a preferred set of ranked channels. In another example, the preference information includes information ranking the heart rate detection methods available for each ranked channel and indicating a preferred set of heart rate detection methods.

In act 406, the cardiac function analyzer 102 acquires ECG signals from each of the preferred set of ranked channels. The electrode system may perform a variety of acts designed to render an accurate interpretation of the ECG signal. For instance, in one example, a control unit, such as the control unit 30 discussed above with reference to FIG. 1, filters or otherwise manipulates the ECG signal to remove or lower the effect of noise generated by sources other than the patient's heart, such as other muscle movement or electrical disturbances near the patient.

In act 408, the cardiac function analyzer 102 processes the ECG signals to determine a heart rate for the patient. FIG. 5 illustrates an exemplary process 500 in accord with act 408. As shown, the process 500 begins at 502.

In act 504, the cardiac function analyzer 102 processes a portion of the filtered ECG signal received by each preferred channel using one or more of the heart rate detection methods discussed above with reference to the process 200. For instance, the cardiac function analyzer 102 may utilize conventional derivative-based QRS detectors, axis detectors or others. According to a particular example discussed further below, when the cardiac cycle appears to be in a normal sinus rhythm, the cardiac function analyzer 102 determines a heart rate using both a QRS detector and an axis detector. In this example, the axis detector indicates the occurrence of a heartbeat when a peak in the magnitude indicated by the axis detector corresponds to a zero phase crossing. In another example, the axis detector may concurrently compare the quality of the fit of multiple ECG signals coming from multiple channels to a benchmark ECG and may use the heart rate determined in this manner provided that the quality of the fit between the benchmark ECG signal and the multiple ECG signals meets a predetermined value. In still another example, a single channel fit is performed using the axis detector. In these examples that utilize an axis detector, the quality of the fit is determined by summing errors calculated between samples of the benchmark ECG signal and one or more ECG signals over an identified period.

In act 506, if the results of these methods agree (for example, if each method detects a single heartbeat from the portion of the interpreted ECG signal) then the cardiac function analyzer 102 proceeds to act 510. Otherwise, the cardiac function analyzer 102 proceeds to act 508. In act 508, the cardiac function analyzer 102 resolves conflicts between channels and heart rate detection methods. The particular conflict resolution procedure employed varies from example to example and examples are not limited to a particular approach to resolving conflicting results between channels or combinations of channels and heart rate detection methods. For instance, according to one example, the cardiac function analyzer 102 resolves conflicts that involve multiple channels in favor of the highest ranking preferred channel. In another example, the cardiac function analyzer 102 resolves conflicts that involve multiple channels and heart rate detectors in favor

of the result indicated by a majority of the channel and heart rate detector combinations. Continuing with the particular example discussed above involving the QRS and axis detectors, conflicts between QRS detector results on separate channels are resolved in favor of the channel with a result that agrees with the axis detector result.

In act **510**, if the all of the interpretations, or the favored interpretations, of the ECG signals indicate that a heartbeat has occurred, the cardiac function analyzer **102** records the occurrence of a heartbeat in act **512**. Otherwise, the cardiac function analyzer **102** determines if an interruption in monitoring is about to commence, such as an interruption caused by shutdown of the electrode system, in act **514**. If so, the cardiac function analyzer ends the process **500** at **516**. Otherwise, the cardiac function analyzer **102** returns to act **504** and the process **500** continues.

Examples in accord with process **500** enable an electrode system to more accurately track patient heart rate. More accurate heart rate tracking results in several benefits. These benefits include more accurate patient historical information and generation of fewer falsely indicated arrhythmias. Fewer false arrhythmias, in turn, may result in avoidance of unnecessary alarms and delivery of therapy to a patient, thereby increasing the runtime between charges of the electrode system and avoiding unnecessary patient discomfort.

Each of the processes disclosed herein depicts one particular sequence of acts in a particular example. The acts included in each of these processes may be performed by, or using, an electrode system specially configured as discussed herein. Although described herein in association with an electrode system of a wearable defibrillator such as the LIFEVEST Cardioverter defibrillator, embodiments disclosed herein may be used with any electrode system, including conventional stick-on adhesive electrodes, dry capacitive ECG electrodes, radio transparent electrodes, etc. Some acts are optional and, as such, may be omitted in accord with one or more examples. Additionally, the order of acts can be altered, or other acts can be added, without departing from the scope of the systems and methods discussed herein. In addition, as discussed above, in at least one example, the acts are performed on a particular, specially configured machine, namely an electrode system configured according to the examples disclosed herein.

Usage Scenario

FIG. **6** illustrates two exemplary idiosyncratic ECG signals **600** and **602** received by an exemplary electrode system. As shown, the ECG signal **600** was acquired via a side-to-side (SS) channel and includes QRS complex **604**. The ECG signal **602** was acquired via a front-to-back (FB) channel and includes QRS complex **606**. As illustrated, the ECG signal **600** may be double counted by conventional derivative-based QRS complex detectors because the QRS complexes presented within the ECG signal **600**, such as the portion of the ECG signal indicated by reference number **604**, are elongated and exceed the default configuration of the refractory period. Thus, conventional derivative-based QRS complex detectors may detect a first QRS complex at the onset of the QRS complex **604** and detect a second QRS complex near the end of the QRS complex **604** after the refractory period has expired.

According to one example, a user, such as a physician, may perform act **206** of process **200** and thereby determine that the SS channel is susceptible to double counting by comparing the morphology of the ECG signal acquired via the SS channel to an ECG signal representative to a normal sinus rhythm. Further, the user may perform act **208** by configuring preference information to rank the FB channel higher than the SS

channel. After receiving this preference information and during the execution of process **400**, the exemplary electrode system favors the FB channel over the SS channel if the two channels yield differing heart rates. This approach results in a decreased likelihood of heartbeat double counting because the QRS complexes displayed within the FB channel do not extend beyond the programmed refractory period and are, therefore, less likely to be double counted.

Having thus described several aspects of at least one embodiment of this invention, it is to be appreciated various alterations, modifications, and improvements will readily occur to those skilled in the art. Such alterations, modifications, and improvements are intended to be part of this disclosure, and are intended to be within the scope of the invention. Accordingly, the foregoing description and drawings are by way of example only.

What is claimed is:

1. An ambulatory medical device comprising:

a plurality of electrodes disposed at spaced apart positions about a patient's body; and

a control unit including:

a sensor interface coupled to the plurality of electrodes and configured to receive a plurality of ECG signals from a plurality of pairings of the plurality of electrodes;

a memory storing a configurable parameter indicating at least one preferred pairing of the plurality of pairings; and

at least one processor coupled to the sensor interface and the memory, the least one processor implementing a cardiac function analyzer to process the plurality of ECG signals to determine a plurality of signal interpretations of a physical condition of the patient, to detect a difference in the physical condition of the patient under two or more signal interpretations of the plurality of signal interpretations, and to resolve the difference by retrieving the configurable parameter and resolving the difference in favor of the at least one preferred pairing.

2. The ambulatory medical device of claim 1, wherein the cardiac function analyzer is further configured to identify automatically the at least one preferred pairing during operation of the ambulatory medical device.

3. The ambulatory medical device of claim 2, wherein the cardiac function analyzer is configured to identify the at least one preferred pairing by comparing at least one signal interpretation derived from the at least one preferred pairing to a benchmark.

4. The ambulatory medical device of claim 3, wherein the benchmark includes a signal interpretation of at least one of a normal cardiac rhythm and the patient's cardiac rhythm.

5. The ambulatory medical device of claim 4, wherein the patient's cardiac rhythm is recorded during initial prescription and fitting of the ambulatory medical device.

6. The ambulatory medical device of claim 5, wherein the cardiac function analyzer is further configured to adjust the benchmark to match a composite ECG signal summarizing historical ECG signals of the patient.

7. The ambulatory medical device of claim 6, wherein the historical ECG signals fall within a moving window of a predefined duration.

8. The ambulatory medical device of claim 1, wherein the cardiac function analyzer is further configured to identify at least one of one or more detection methods and one or more refractory periods for the at least one preferred pairing.

9. The ambulatory medical device of claim 8, wherein the cardiac function analyzer is further configured to adjust the

13

refractory period to avoid differences in the plurality of signal interpretations due to abnormal T waves.

10. The ambulatory medical device of claim 8, wherein the memory stores a plurality of patient profiles and the cardiac function analyzer is further configured to store an indication of the at least one preferred pairing and an indication of at least one of the one or more detection methods and the one or more refractory periods within a patient profile of the plurality of patient profiles.

11. The ambulatory medical device of claim 8, further comprising a network interface configured to receive preference information descriptive of at least one of the at least one preferred pairing, the one or more detection methods, and the one or more refractory periods.

12. The ambulatory medical device of claim 1, wherein the cardiac function analyzer is configured to process at least one ECG signal of the plurality of ECG signals using a plurality of detection methods to determine at least two signal interpretations of the plurality of signal interpretations, to detect the difference in the physical condition of the patient under the at least two signal interpretations, and to resolve the difference in favor of at least one detection method of the plurality of detection methods that is preferred for the at least one preferred pairing.

13. The ambulatory medical device of claim 1, wherein the at least one detection method includes an axis detection method.

14. The ambulatory medical device of claim 1, wherein the at least one preferred pairing includes a plurality of preferred pairings and the cardiac function analyzer is configured to resolve the difference in favor of a highest ranking preferred pairing of the plurality of preferred pairings.

15. The ambulatory medical device of claim 1, wherein the at least one preferred pairing includes a plurality of preferred pairings and the cardiac function analyzer is configured to resolve the difference in favor of a majority of the plurality of preferred pairings.

16. A method of monitoring ECG signals using an ambulatory medical device including a memory and a plurality of electrodes, the method comprising:

storing, in the memory, a configurable parameter indicating at least one preferred pairing of a plurality of preferred pairings of the plurality of electrodes;

14

receiving, by the ambulatory medical device, a plurality of ECG signals from the plurality of pairings;

processing the plurality of ECG signals to determine a plurality of signal interpretations of a physical condition of the patient;

detecting a difference in the physical condition of the patient under two or more signal interpretations of the plurality of signal interpretations; and

resolving the difference by retrieving the configurable parameter and resolving the difference in favor of the at least one preferred pairing.

17. The method of claim 16, further comprising identifying, automatically by the ambulatory medical device, the at least one preferred pairing during operation of the ambulatory medical device.

18. The method of claim 16, further comprising adjusting, by the ambulatory medical device, a refractory period for the at least one preferred pairing to avoid differences in the plurality of signal interpretations due to abnormal T waves.

19. A non-transitory computer readable medium storing sequences of instruction for monitoring ECG signals including instructions configured to instruct at least one processor to:

store a configurable parameter indicating at least one preferred pairing of a plurality of preferred pairings of the plurality of electrodes;

receive a plurality of ECG signals from the plurality of pairings;

process the plurality of ECG signals to determine a plurality of signal interpretations of a physical condition of the patient;

detect a difference in the physical condition of the patient under two or more signal interpretations of the plurality of signal interpretations; and

resolve the difference by retrieving the configurable parameter and resolving the difference in favor of the at least one preferred pairing.

20. The computer readable medium of claim 19, wherein the instructions are further configured to instruct the at least one processor to identify automatically the at least one preferred pairing during operation of the ambulatory medical device.

* * * * *

专利名称(译)	选择用于速率确定的最佳信道		
公开(公告)号	US9408548	公开(公告)日	2016-08-09
申请号	US14/536189	申请日	2014-11-07
[标]申请(专利权)人(译)	卓尔医学产品公司		
申请(专利权)人(译)	ZOLL医疗公司		
当前申请(专利权)人(译)	ZOLL医疗公司		
[标]发明人	VOLPE SHANE S KAIB THOMAS E		
发明人	VOLPE, SHANE S. KAIB, THOMAS E.		
IPC分类号	A61B5/046 A61B5/0428 A61B5/0245 A61B5/04 A61B5/0432 A61B5/0472 A61B5/0408 A61B5/0452 A61N1/39 A61N1/04 A61B5/00		
CPC分类号	A61B5/04085 A61B5/04525 A61B5/7221 A61N1/3925 A61B5/0432 A61B5/7475 A61B5/04012 A61B5/ /04011 A61B5/0245 A61B5/6801 A61B5/04288 A61B5/4836 A61B5/0472 A61B5/046 A61B5/0006 A61B5/6805 A61B2560/0266 A61N1/046 A61N1/0476 A61N1/0484 A61B2562/17 A61B5/6804 A61B2560/0214		
优先权	61/467599 2011-03-25 US		
其他公开文献	US20150065844A1		
外部链接	Espacenet USPTO		

摘要(译)

根据至少一个示例，提供了一种移动医疗设备。该装置包括围绕患者身体和控制单元设置在间隔开的位置的多个电极。控制单元包括传感器接口，存储器和处理器。传感器接口耦合到多个电极并且被配置为从多个电极的第一对接收第一ECG信号并从多个电极的第二对接收第二ECG信号。存储器存储指示优选配对的信息，优选配对是第一配对或第二配对。处理器耦合到传感器接口和存储器，并且被配置为解决第一ECG信号和第二ECG信号的解释之间的冲突，以有利于优选配对。

