



US 20180089825A1

(19) **United States**

(12) **Patent Application Publication**  
**DE CHILLOU**

(10) **Pub. No.: US 2018/0089825 A1**  
(43) **Pub. Date: Mar. 29, 2018**

(54) **METHOD AND SYSTEM FOR IDENTIFYING AN ISTHMUS IN A THREE-DIMENSIONAL MAP**

*A61B 5/0472* (2006.01)  
*A61B 5/04* (2006.01)  
*G01R 33/32* (2006.01)  
*A61B 5/00* (2006.01)

(71) Applicants: **UNIVERSITE DE LORRAINE**,  
Nancy Cedex (FR); **CENTRE HOSPITALIER REGIONAL DE NANCY**, Nancy Cedex (FR)

(52) **U.S. Cl.**  
CPC ..... *G06T 7/0012* (2013.01); *A61B 5/04525* (2013.01); *A61B 5/0472* (2013.01); *G06T 2207/30048* (2013.01); *G01R 33/323* (2013.01); *A61B 5/0044* (2013.01); *G06T 2207/20152* (2013.01); *A61B 5/04012* (2013.01)

(72) Inventor: **Christian DE CHILLOU**, Marly (FR)

(21) Appl. No.: **15/564,033**

(22) PCT Filed: **Apr. 1, 2016**

(57) **ABSTRACT**

(86) PCT No.: **PCT/EP2016/057237**

§ 371 (c)(1),  
(2) Date: **Oct. 3, 2017**

(30) **Foreign Application Priority Data**

Apr. 3, 2015 (FR) ..... 1552901

**Publication Classification**

(51) **Int. Cl.**  
*G06T 7/00* (2006.01)  
*A61B 5/0452* (2006.01)

A method is provided for identifying an isthmus in a three-dimensional map of a cardiac cavity by means of a processing unit configured to perform the following steps: a) correlation between a set of stimulated points of the cardiac cavity, each stimulated point being represented by a set of signals that are obtained following surface electrocardiography (ECG), excluding ventricular tachycardia; b) identification of a watershed line on the basis of the above correlation results and of the 3D coordinates of the stimulated points in the 3D map; and c) determination of the isthmus based on a 3D corridor substantially transverse to the watershed line.

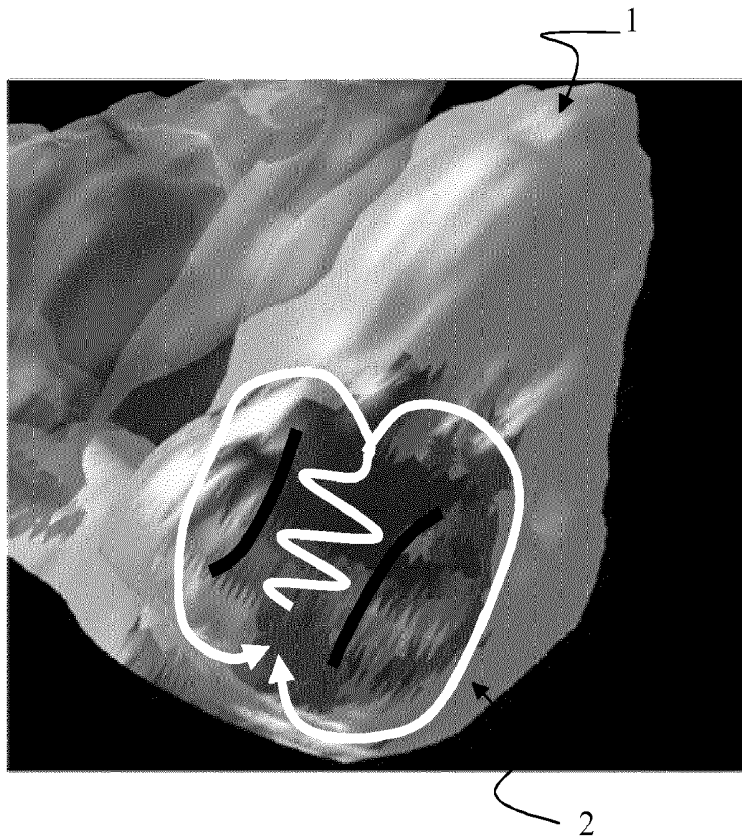




FIG. 1

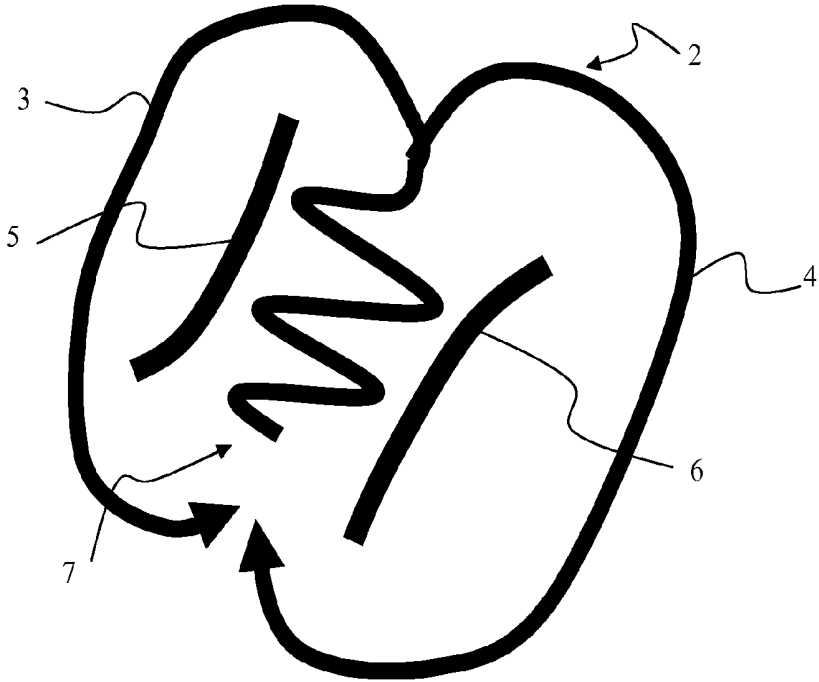


FIG. 2

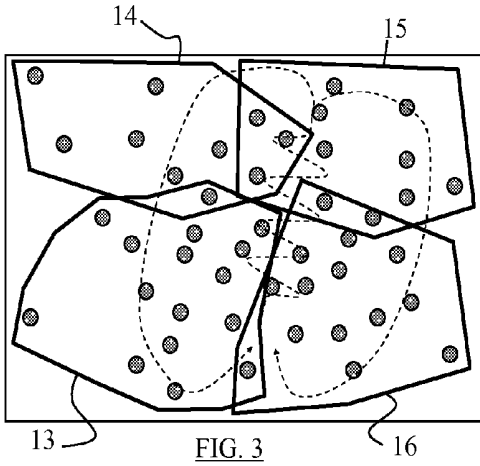


FIG. 3

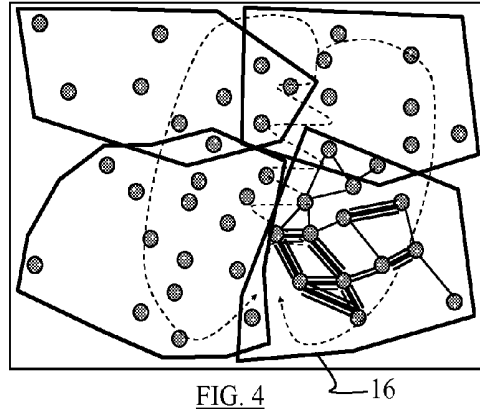


FIG. 4

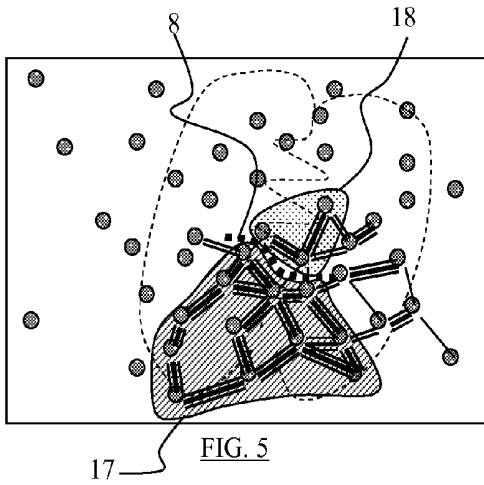


FIG. 5

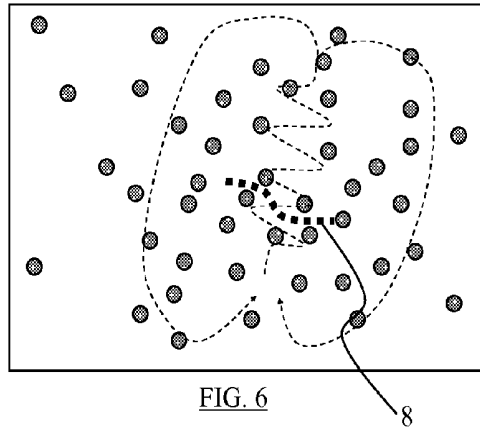


FIG. 6

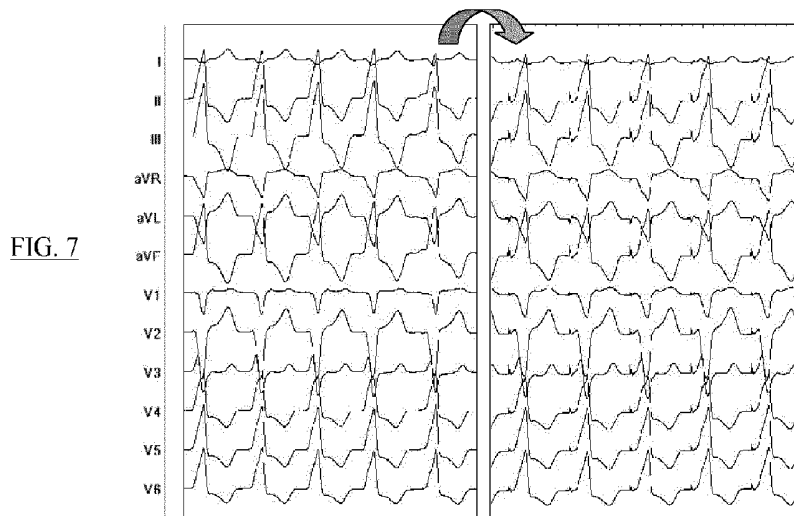


FIG. 7

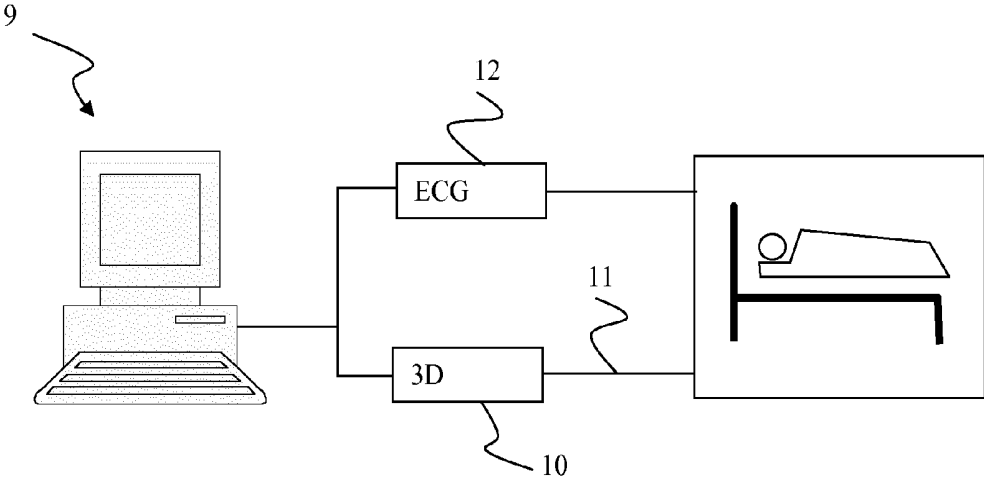


FIG. 8

**METHOD AND SYSTEM FOR IDENTIFYING  
AN ISTHMUS IN A THREE-DIMENSIONAL  
MAP**

**[0001]** The present invention relates to a method and a system for identifying an isthmus in a three-dimensional mapping. It has a particularly useful application in the field of disturbances of the cardiac rhythm, during a ventricular tachycardia for example.

**[0002]** Since the start of the 1990's and the use of radiofrequency energy for endocavitary ablation for rapid rhythm disorders, the indications for ablation have been progressively extended to all rhythm disorders.

**[0003]** In fact, interventional heart rhythm specialists are treating rhythm disorders the mechanism of which is increasingly complex, added to the need for accurate spatial representation of the positioning of the ablation catheter and finally, integration of the spatial and temporal data, in order to identify the arrhythmogenic substrate.

**[0004]** 3D mapping systems associated with magnetic resonance imaging (MRI) constitute a very important tool for the interventional heart rhythm specialist. These systems represent a considerable help for identifying the complex arrhythmogenic substrates which require "tailored" ablations for a given patient.

**[0005]** The help provided by these systems involves not only understanding and spatial indexing of the arrhythmogenic substrate, but also the accurate positioning of the ablation catheter. Another element of progress relates to the reduction in X-ray exposure time, both for the patient and also for the electrophysiology team, as these systems do not use X-rays in their clean technology.

**[0006]** In normal function, the atria of the heart impose the heartbeat rhythm on the ventricles. The latter receive blood from the atria and contract in a synchronized fashion in order to eject the blood either to the lungs or to the other organs of the body. Electrical pulses at the level of the atria allow this contraction. Ventricular tachycardia occurs when the electrical pulse originates at the level of the muscle of one of the two ventricles and not from the atria. Ventricular tachycardia (VT) is a rapid arrhythmia, i.e. a very rapid acceleration of the heart above 180 beats per minute for example. The heart can no longer fill; the heart pump then beats while empty. This poor function can degenerate into another arrhythmia, ventricular fibrillation, which can lead to a cardiac arrest if it is not treated rapidly with success.

**[0007]** It is considered that three fundamental mechanisms can be at the origin of ventricular tachycardias:

**[0008]** diastolic depolarization phenomena,

**[0009]** focal re-excitation phenomena, and

**[0010]** reentry phenomena, the latter being the most frequent.

**[0011]** The concept of reentry requires the presence of a slow conduction zone.

**[0012]** Generally, the diagnosis is established using an electrocardiogram (ECG) recorded during ventricular tachycardia.

**[0013]** The purpose of the ECG is to collect simultaneously, on several leads (pairs of electrodes), the overall electrical activity of the heart (cardiac vector): propagation in time and in space.

**[0014]** The leads correspond to the pairs of electrodes present during the recording. Each lead gives a unidirectional image of the cardiac activation vector. This image corresponds to the projection of the vector on the lead. A

standard ECG records the cardiac activity on 12 to 18 leads, which divide into two categories:

**[0015]** Peripheral leads and

**[0016]** Precordial leads.

**[0017]** The tracing must comprise the 12 main leads as a minimum, i.e., in order: the three standard leads (I, II, III), the three unipolar limb leads (aVR, aVL, aVF), and the six precordial leads from V1 to V6.

**[0018]** A 12-Lead ECG is a set of 12 curves each having particular shapes such as a bump for a P wave or a rapid variation for a QRS complex.

**[0019]** A QRS complex corresponds to the depolarization of the ventricles. It has an average duration of approximately 0.08 sec.

**[0020]** As regards preventive treatments, an automatic defibrillator can be used implanted in the patient so as to generate electrical pulses in case arrhythmia starts.

**[0021]** A medicinal treatment can also be implemented in order to reduce the number of crises.

**[0022]** Finally, it is possible to carry out radiofrequency ablation when an arrhythmia linked to the reentry mechanism is involved. In this case it is a question of identifying the low conduction zone which will be destroyed by burning so as to create a barrier to the intraventricular circuit forming an arrhythmogenic substrate and containing this low conduction zone. This arrhythmogenic substrate, also called an isthmus, can be determined during an electrophysiological exploration, the patient being in ventricular tachycardia. It can be cauterized and limited by a probe the end of which is heated by a radio frequency current. The examination is helped by a three-dimensional heart mapping system. This technique has good efficacy but the risk of recurrence is not eliminated and as a rule does not allow the implantation of a defibrillator to be dispensed with.

**[0023]** A postinfarct isthmus ablation technique of this type is known, in which surface ECGs are carried out and then compared to a reference ECG recorded during an episode of ventricular tachycardia. Such a technique is described in the document "Localizing the critical isthmus of postinfarct ventricular tachycardia: the value of pace-mapping during sinus rhythm", by Chillou et al, Heart Rhythm; 2014 February;11(2):175-81.

**[0024]** A purpose of the present invention is a novel method for rapidly determining the isthmus.

**[0025]** Another purpose of the invention is identifying the isthmus in a completely preventive fashion, even for patients unable to withstand, specifically, a provoked episode of ventricular tachycardia.

**[0026]** At least one of the aforementioned objectives is achieved with a method for identifying an isthmus in three-dimensional mapping of a cardiac cavity, by means of a processing unit configured to carry out the following steps:

**[0027]** a) correlation between a set of stimulated points of the cardiac cavity, each stimulated point being represented by a set of signals obtained following surface electrocardiography (ECG), excluding ventricular tachycardia, in sinus rhythm for example,

**[0028]** b) identifying a watershed line based on the above correlation results and the 3D coordinates of the stimulated points in the 3D mapping,

**[0029]** c) determining the isthmus based on a 3D corridor substantially transverse to the watershed line.

**[0030]** The invention can relate to a method for identifying a watershed line in three-dimensional mapping of a cardiac cavity, by means of a processing unit configured to carry out the following steps:

**[0031]** a) correlation between a set of stimulated points of the cardiac cavity, each stimulated point being represented by a set of signals obtained following surface electrocardiography (ECG), excluding ventricular tachycardia, in sinus rhythm for example,

**[0032]** b) identifying a watershed line based on the above correlation results and the 3D coordinates of the stimulated points in the 3D mapping.

**[0033]** The expression “excluding ventricular tachycardia” is an expression that is clear to a person skilled in the art which means that the ECG is acquired according to a base rhythm which is not ventricular tachycardia (VT). It is known to a person skilled in the art that the rhythm excluding VT can be a sinus rhythm most of the time, but can also be atrial fibrillation, a rhythm electrically controlled by a pacemaker etc.

**[0034]** The watershed line corresponds to abrupt variation in the correlations between near neighbours.

**[0035]** With the method according to the invention, reference electrocardiography, which is generally ventricular tachycardia electrocardiography, is not used, the latter having the drawback of being time-consuming and putting the patient at risk.

**[0036]** Correlation between the different points makes it possible to demonstrate an abrupt geographical variation between correlation levels, this abrupt geographical variation zone corresponding to a zone of very low electrical conduction.

**[0037]** According to the invention, the stimulated points are sites in a patient’s heart which are stimulated so as to obtain an electrocardiogram. These points can be chosen at random throughout the entire volume of the cardiac cavity, but they can also be determined methodically.

**[0038]** According to an advantageous characteristic of the invention, prior to step a), a step is carried out to constitute several overlapping volumes in the 3D mapping, these volumes containing the set of stimulated points, step a) being carried out between stimulated points of each of the volumes.

**[0039]** In this way families of points are constituted. In each family calculations are carried out of the correlation coefficient of each point with respect to all the others, or of each point with respect to these near neighbours only. A point can be part of several volumes or families, thus ensuring continuity throughout the cardiac cavity.

**[0040]** According to an advantageous embodiment of the invention, in order to save time during implementation, not all of the cardiac cavity is stimulated equally. According to the invention, at least one iteration of steps a) and b) can preferably be carried out; at each iteration, new stimulated points are added close to the watershed line identified in the preceding iteration. In this way, a maximum correlation coefficient is calculated around the watershed line, which is the zone which allows the isthmus to be precisely identified. The other zones can contain very few stimulated points.

**[0041]** Carrying out the iterations makes it possible to obtain broad identifications initially, becoming increasingly precise; the criterion for stopping the iterations can be the duration, number of points stimulated, or a predetermined number of iterations.

**[0042]** Preferably, said signals can correspond to the 12 leads of a surface ECG.

**[0043]** According to an advantageous embodiment of the invention, the correlation is carried out on QRS complexes originating from said signals.

**[0044]** In this case a first step can be identifying the QRS complexes in the signals. This allows an improvement in the speed of the calculations and as a result the speed of the entire procedure for identifying the isthmus. In particular, the correlation can be implemented according to the BARD algorithm called “template matching” or correspondence diagram. This method is described in particular in the document “Quantitative Comparison of Spontaneous and Paced 12-Lead Electrocardiogram During Right Ventricular Outflow Tract Ventricular Tachycardia”, Gerstenfeld EP et al. J Am Coll Cardiol 2003;41:2046-53.

**[0045]** This involves comparing the morphology of the 12-Lead ECG complexes. The Bard method defines a numerical calculation making it possible to compare two 12-lead electrocardiograms by objective criteria.

**[0046]** The correlation coefficient CORR is calculated in the usual way. For two completely opposite wave forms the correlation coefficient CORR=-1. For two identical wave forms the correlation coefficient CORR=1. Two wave forms with a similar morphology each containing one-third of the zone of the other have a correlation coefficient CORR=1.

**[0047]** For comparing the multiple wave forms, such as those of the complexes of a 12-lead ECG, the formula is:

$$CORR = \frac{\sum_{lead=1}^{12} \left[ \sum_{i=1}^n (X_i - \bar{X}) \cdot (Y_i - \bar{Y}) \right]}{\sum_{lead=1}^{12} \sqrt{\sum_{i=1}^n (X_i - \bar{X})^2 \cdot \sum_{i=1}^n (Y_i - \bar{Y})^2}}$$

where X and Y are vectors of length n representing the two signals to be compared. The correlation coefficient CORR generally varies from -1 for a completely opposite wave form to +1 for identical signals.

**[0048]** According to a characteristic of the invention, step a) comprises moreover a step for identifying groups of stimulated points as a function of the level of correlation between these stimulated points.

**[0049]** The first distribution by family is a geographical distribution only; here the level of the correlation coefficient is used as criterion. Advantageously, groups are identified by displaying on a display screen, with an identical colour, the set of stimulated points of one and the same group. A colour code is determined, making it possible to display a group having a high coefficient of correlation with one another. This can allow easy visual identification of an isthmus.

**[0050]** According to another aspect of the invention, a system is proposed for identifying an isthmus in a three-dimensional mapping of a cardiac cavity, this system comprising:

**[0051]** an electrocardiograph for generating an electrocardiography by stimulating several points of a body, and

- [0052] a processing unit configured to carry out the following steps:
- [0053] a) correlation between a set of stimulated points of the cardiac cavity, each stimulated point being represented by a set of signals obtained following surface electrocardiography (ECG), excluding ventricular tachycardia,
- [0054] b) identifying a watershed line based on the above correlation results and the 3D coordinates of the stimulated points in the 3D mapping,
- [0055] c) determining the isthmus based on a 3D corridor substantially transverse to the watershed line.
- [0056] This system can moreover advantageously comprise an ablation catheter.
- [0057] Other advantages and characteristics of the invention will become apparent on examination of the detailed description of an embodiment which is in no way limitative, and the attached drawings, in which:
- [0058] FIG. 1 is a three-dimensional representation of a cardiac cavity with an illustration of an electrical circuit in the case of ventricular tachycardia,
- [0059] FIG. 2 is a simplified diagrammatic view of the reentry electrical circuit revealing the isthmus to be identified,
- [0060] FIGS. 3 to 5 are diagrammatic views of a set of stimulated points in the cardiac cavity, these different figures illustrating different steps of pair correlation between the different stimulated points so as to constitute a density map making it possible to form groups among highly-correlated stimulated points,
- [0061] FIG. 6 is a diagrammatic view illustrating the ventricular tachycardia circuit with display of the zone to be ablated across the isthmus,
- [0062] FIG. 7 is a diagrammatic view of two electrocardiograms that are to undergo a correlation operation, and
- [0063] FIG. 8 is a very simplified diagrammatic view of a system for the implementation of the method according to the invention.
- [0064] In the prior art, it was sometimes necessary to provoke a ventricular tachycardia episode so as to have a reference ECG. This was then compared with other sinus rhythm ECGs (normal heart function). With the present invention, this episode which is sometimes artificially triggered is avoided. In fact, this could be complicated for patients equipped with a permanent pacemaker or defibrillator.
- [0065] The present invention involves a system of 3D mapping making it possible to have a three-dimensional representation of the heart, as can be seen in FIG. 1. In particular, the left ventricle 1 is distinguished as a whole. This is an amplitude mapping of the left ventricle of a patient presenting with sequelae of an earlier infarctus. The healthy zones appear entirely outside the circuit 2 drawn on the mapping and the infarction sequelae entirely inside this circuit 2.
- [0066] The circuit 2 is more clearly shown in FIG. 2. This circuit shows the pathway of a depolarization front during an episode of tachycardia. All the ventricular tachycardias can be represented by a reentry circuit 2 in the form of a double loop forming a figure of eight, the two loops 3 and 4 being the seat of a depolarization front circulating in opposite directions around barriers 5 and 6 delimiting the isthmus. The isthmus is the central zone 7 which forms the arrhythmic substrate of the mapped arrhythmia.
- [0067] Treatment of the ventricular tachycardia amounts to carrying out an ablation of the isthmus. More precisely, a part of the isthmus is burnt away by radiofrequency waves so as to produce a break therein and thus prevent the propagation of the depolarization wave.
- [0068] The invention is remarkable in particular for the fact that the ablation zone is determined without resorting to a prior ventricular tachycardia ECG.
- [0069] In order to do this, a catheter is used for stimulating several points of the cardiac cavity for about ten seconds. At each stimulated point, a 12-lead ECG is obtained. FIG. 2 shows a random distribution of these points. A priori the circuit 2 which is represented in FIGS. 2 to 6 is unknown. It is represented simply to aid understanding. The distribution of the points can be random but it can also be obtained in a methodical, in particular predetermined, manner, so as for example to cover a surface or a volume evenly. The distribution can therefore be homogeneous or defined as a function of physiological criteria.
- [0070] In a second step, several points that are geographically close are grouped together. These groups constituted in this way can overlap so that one point can belong to several groups. Each group is a family of points which are geographically close to each other. In FIG. 3, for example four families 13, 14, 15 and 16 can be seen.
- [0071] A correlation coefficient is determined for each pair of a family. To this end, the Bard method is used, taking into account the twelve leads associated with each stimulated point. Thus, a mapping of densities is established of the links between different stimulated points, as can be seen very diagrammatically in FIG. 4 with reference to the family 16. In each family, techniques can be utilized making it possible to determine the correlation coefficients step by step, without necessarily calculating this coefficient for all the pairs of the family.
- [0072] FIG. 7 shows two sets of signals of two electrocardiograms are seen, obtained after stimulation of two points in sinus rhythm. Unlike in the prior art, a reference ECG originating from a prior ventricular tachycardia is not used here. The ECGs are compared with each other, preferably by family or in a general fashion.
- [0073] Then the points having substantially the same density are identified, i.e. the points which are strongly linked together independently of the families constituted above. In this way groups of points that are strongly linked together as seen in FIG. 5 for the groups 17 and 18.
- [0074] In FIG. 5, a watershed line 8 is identified, i.e. the site where an abrupt fall is noted, a genuine discrepancy between the two groups 17 and 18. This can be represented as a "cliff" which separates two neighbouring groups. This is done by the watershed line technique or by any other technique making it possible to detect two neighbouring groups having the weakest link between them. This cliff corresponds to a low conduction zone.
- [0075] Ideally, the watershed line 8 is the zone to be burnt away. In FIG. 6, the isthmus is the zone substantially perpendicular to the watershed line 8. The ablation making it possible to interrupt the isthmus can also be carried out at any other site different from the watershed line.
- [0076] When the stimulated points are not sufficient to correctly calculate the watershed line, other stimulated points are acquired around the indicated zone or zones so as to calculate the watershed line with certainty.

[0077] FIG. 8 diagrammatically shows a system allowing the present invention to be put into practice. A processing unit 9 can be seen, equipped with at least one microprocessor, memory spaces, communication cards to external peripherals, input/output components and a display means. This processing unit is connected to a mapping device 10 comprising a catheter 11 one end of which can be placed at different sites of the cardiac cavity of a patient. The mapping device 10 is also connected to electrodes (not shown) for producing 3D mappings and thus producing 12-lead ECGs.

[0078] The catheter makes it possible to stimulate any point of the cardiac cavity. It also allows radiofrequency ablation to be carried out.

[0079] For producing 3D mapping, electromagnetic emission sources are used, placed at the vertices of a triangular frame, itself positioned under the examination table on which the patient is positioned. One of the electromagnetic sensors (the spatial reference) is incorporated in a cutaneous patch positioned under fluoroscopy opposite the cardiac shadow at the level of the patient's back. The other sensor is incorporated at the level of the distal end of the ablation catheter that will be moved to different points at the level of the endocardial surface of the cardiac cavity which will be mapped during the examination. The movement of this catheter can be observed in real time on a monitor. At each new position of the catheter in a given cardiac cavity, this position can be acquired in the form of a point which will appear on the monitor. The points thus acquired will be automatically linked together by the computer program which will create a virtual surface between the different points and, with the accumulation thereof, a three-dimensional geometrical form will be obtained which exactly follow the endocardial contours of the mapped cardiac cavity. The catheter is provided with electrodes making it possible to obtain the bipolar and unipolar endocavitary signal at the level of each of the points which form the virtual reconstruction of the cardiac cavity. It is therefore possible, using a colour coding correlated with the bipolar or unipolar amplitude of the signal obtained, to obtain a mapping of the amplitude of the cardiac cavity examined.

[0080] In FIG. 8, an electrophysiology rack 12 allowing the production of the 12-lead ECGs is also shown.

[0081] Of course, the invention is not limited to the examples which have just been described and numerous adjustments can be made to these examples without exceeding the scope of the invention. The present invention can consist of a processing unit receiving at the input a 3D mapping of a cardiac cavity, to which optionally, magnetic resonance imaging can be added, as well as sinus rhythm ECGs of a set of stimulated points. The output of the processing unit can be an image of the cardiac cavity on which the watershed line is displayed superimposed. This watershed line can be represented in the form of a set of spatial coordinates which can be used for the ablation.

[0082] The method according to the invention advantageously allows identification of the isthmus of a postinfarctal ventricular tachycardia independently of the availability of a 12-lead ECG during ventricular tachycardia. It is henceforth possible to carry out preventive treatments by

radiofrequency ablation by means of a catheter for a large number of postinfarctal patients.

1. A method for identifying an isthmus in a three-dimensional mapping of a cardiac cavity, by means of a processing unit configured to carry out the following steps:

- a) correlation between a set of stimulated points of the cardiac cavity, each stimulated point being represented by a set of signals obtained following surface electrocardiography (ECG), excluding ventricular tachycardia;
- b) identifying a watershed line based on the above correlation results and the 3D coordinates of the stimulated points in the 3D mapping; and
- c) determining the isthmus based on a 3D corridor substantially transverse to the watershed line.

2. The method according to claim 1, characterized in that, prior to step a), a step of constituting several volumes which overlap in the 3D mapping is carried out, these volumes containing the set of stimulated points, step a) being carried out between stimulated points of each of the volumes.

3. The method according to claim 1, characterized in that at least one iteration of steps a) and b) is carried out; at each iteration, new stimulated points are added close to the watershed line identified in the preceding iteration.

4. The method according to claim 1, characterized in that said signals correspond to the 12 leads of a surface ECG.

5. The method according to claim 4, characterized in that the correlation is carried out on QRS complexes originating from said signals.

6. The method according to claim 5, characterized in that the correlation is implemented according to the BARD algorithm called "template matching".

7. The method according to claim 1, characterized in that step a) comprises moreover a step for identifying groups of stimulated points as a function of the level of correlation between these stimulated points.

8. The method according to claim 7, characterized in that the groups are identified by displaying on a display screen, with an identical colour, the set of stimulated points of one and the same group.

9. A system for identifying an isthmus in a three-dimensional mapping of a cardiac cavity, this system comprising: an electrocardiograph for generating an electrocardiography by stimulating several points of a body, and a processing unit configured to carry out the following steps:

- a) correlation between a set of stimulated points of the cardiac cavity, each stimulated point being represented by a set of signals obtained following surface electrocardiography (ECG), excluding ventricular tachycardia;
- b) identifying a watershed line based on the above correlation results and the 3D coordinates of the stimulated points in the 3D mapping; and
- c) determining the isthmus based on a 3D corridor substantially transverse to the watershed line.

10. The system according to claim 9, characterized in that it comprises moreover an ablation catheter.

\* \* \* \* \*

专利名称(译)	用于在三维地图中识别地峡的方法和系统		
公开(公告)号	<a href="#">US20180089825A1</a>	公开(公告)日	2018-03-29
申请号	US15/564033	申请日	2016-04-01
[标]申请(专利权)人(译)	洛林大学 CENT HOSPITALER区域南锡		
申请(专利权)人(译)	UNIVERSITE DE LORRAINE 中心医院区域南锡		
当前申请(专利权)人(译)	UNIVERSITE DE LORRAINE 中心医院区域南锡		
[标]发明人	DE CHILLOU CHRISTIAN		
发明人	DE CHILLOU, CHRISTIAN		
IPC分类号	G06T7/00 A61B5/0452 A61B5/0472 A61B5/04 G01R33/32 A61B5/00		
CPC分类号	G06T7/0012 A61B5/04525 A61B5/0472 A61B5/04012 G01R33/323 A61B5/0044 G06T2207/20152 G06T2207/30048 A61B5/489 G06K9/00201 G06K9/0055 G06K9/0057 G06T7/11 G06T7/187 A61B5/055		
优先权	2015052901 2015-04-03 FR		
外部链接	<a href="#">Espacenet</a> <a href="#">USPTO</a>		

摘要(译)

提供了一种用于通过配置成执行以下步骤的处理单元来识别心腔的三维地图中的峡部的方法：a) 心腔的一组刺激点之间的相关性，每个刺激点被表示通过表面心电图 ( ECG ) 后获得的一组信号，排除室性心动过速；b) 基于上述相关结果和3D地图中的激励点的3D坐标来识别分水岭线；以及c) 基于基本横向于分水岭线的3D走廊来确定峡部。

