



US010478083B2

(12) **United States Patent**  
**Felix et al.**

(10) **Patent No.: US 10,478,083 B2**  
(45) **Date of Patent: Nov. 19, 2019**

(54) **EXTENDED WEAR AMBULATORY  
ELECTROCARDIOGRAPHY AND  
PHYSIOLOGICAL SENSOR MONITOR**

(56) **References Cited**

U.S. PATENT DOCUMENTS

(71) Applicant: **Bardy Diagnostics, Inc.**, Charlotte, NC  
(US)

3,215,136 A 11/1965 Holler et al.  
3,569,852 A 3/1971 Berkovits  
(Continued)

(72) Inventors: **Jason Felix**, Vashon Island, WA (US);  
**Jon Mikalson Bishay**, Seattle, WA  
(US); **Gust H. Bardy**, Carnation, WA  
(US)

FOREIGN PATENT DOCUMENTS

DE 19955211 5/2001  
EP 1859833 11/2007

(73) Assignee: **Bardy Diagnostics, Inc.**, Seattle, WA  
(US)

(Continued)

(\* ) Notice: Subject to any disclaimer, the term of this  
patent is extended or adjusted under 35  
U.S.C. 154(b) by 0 days.

OTHER PUBLICATIONS

15 Of the Hottest Wearable Gadgets, URL <http://thehottestgadgets.com/2008/09/the-15-hottest-wearable-gadgets-001253>.

(Continued)

(21) Appl. No.: **15/676,896**

(22) Filed: **Aug. 14, 2017**

*Primary Examiner* — Joseph A Stoklosa

*Assistant Examiner* — Brian M Antiskay

(65) **Prior Publication Data**

US 2017/0340215 A1 Nov. 30, 2017

(74) *Attorney, Agent, or Firm* — Krista A. Wittman

**Related U.S. Application Data**

(57) **ABSTRACT**

(63) Continuation of application No. 14/080,725, filed on  
Nov. 14, 2013, now Pat. No. 9,730,593.

(Continued)

Physiological monitoring can be provided through a wear-  
able monitor that includes two components, a flexible  
extended wear electrode patch and a removable reusable  
monitor recorder. The wearable monitor sits centrally (in the  
midline) on the patient's chest along the sternum oriented  
top-to-bottom. The placement of the wearable monitor in a  
location at the sternal midline (or immediately to either side  
of the sternum) benefits extended wear by removing the  
requirement that ECG electrodes be continually placed in  
the same spots on the skin throughout the monitoring period.  
Instead, the patient can place an electrode patch anywhere  
within the general region of the sternum. Power is provided  
through a battery provided on the electrode patch, which  
avoids having to open the monitor recorder's housing for  
battery replacement.

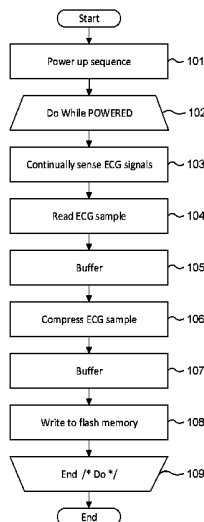
(51) **Int. Cl.**  
*A61B 5/04* (2006.01)  
*A61B 5/0408* (2006.01)  
(Continued)

(52) **U.S. Cl.**  
CPC ..... *A61B 5/04085* (2013.01); *A61B 5/0006*  
(2013.01); *A61B 5/0022* (2013.01);  
(Continued)

(58) **Field of Classification Search**  
CPC . A61B 5/04085; A61B 5/0006; A61B 5/6833;  
A61B 5/04087; A61B 5/0402;  
(Continued)

**16 Claims, 6 Drawing Sheets**

100



| Related U.S. Application Data |   |               |         |                  |                        |
|-------------------------------|---|---------------|---------|------------------|------------------------|
|                               |   | 5,215,098 A * | 6/1993  | Steinhaus .....  | A61B 5/0428<br>600/509 |
| (60)                          | Provisional application No. 61/882,403, filed on Sep. 25, 2013.   | 5,231,990 A   | 8/1993  | Gauglitz         |                        |
|                               |   | D341,423 S    | 11/1993 | Bible            |                        |
|                               |   | 5,263,481 A   | 11/1993 | Axelgaard        |                        |
|                               |   | 5,265,579 A   | 11/1993 | Ferrari          |                        |
| (51)                          | <b>Int. Cl.</b>   | 5,333,615 A   | 8/1994  | Craelius et al.  |                        |
|                               | <i>A61B 5/00</i> (2006.01)  | 5,341,806 A   | 8/1994  | Gadsby et al.    |                        |
|                               | <i>A61B 5/0452</i> (2006.01)  | 5,348,008 A   | 9/1994  | Bomn et al.      |                        |
|                               | <i>A61B 5/0205</i> (2006.01)  | 5,355,891 A   | 10/1994 | Wateridge et al. |                        |
|                               | <i>A61B 5/0432</i> (2006.01)  | 5,365,934 A   | 11/1994 | Leon et al.      |                        |
|                               | <i>A61B 5/11</i> (2006.01)  | 5,365,935 A   | 11/1994 | Righter et al.   |                        |
|                               | <i>A61B 5/01</i> (2006.01)  | 5,392,784 A   | 2/1995  | Gudaitis         |                        |
|                               | <i>A61B 5/021</i> (2006.01)   | D357,069 S    | 4/1995  | Plahn et al.     |                        |
|                               | <i>A61B 5/087</i> (2006.01)   | 5,402,780 A   | 4/1995  | Faasse, Jr.      |                        |
|                               | <i>A61B 5/091</i> (2006.01)   | 5,402,884 A   | 4/1995  | Gilman et al.    |                        |
|                               | <i>A61B 5/145</i> (2006.01)   | 5,450,845 A   | 9/1995  | Axelgaard        |                        |
|                               | <i>A61B 5/1455</i> (2006.01)  | 5,451,876 A   | 9/1995  | Sendford et al.  |                        |
|                               | <i>G01N 27/30</i> (2006.01)   | 5,458,141 A   | 10/1995 | Neil             |                        |
|                               | <i>A61B 5/08</i> (2006.01)  | 5,473,537 A   | 12/1995 | Glazer et al.    |                        |
| (52)                          | <b>U.S. Cl.</b>   | 5,483,969 A   | 1/1996  | Testerman et al. |                        |
|                               | CPC .....   | 5,511,553 A   | 4/1996  | Segalowitz       |                        |
|                               | <i>A61B 5/02055</i> (2013.01); <i>A61B 5/04017</i> (2013.01); <i>A61B 5/0452</i> (2013.01); <i>A61B 5/04087</i> (2013.01); <i>A61B 5/04325</i> (2013.01); <i>A61B 5/04525</i> (2013.01); <i>A61B 5/1116</i> (2013.01); <i>A61B 5/1117</i> (2013.01); <i>A61B 5/1118</i> (2013.01); <i>A61B 5/4809</i> (2013.01); <i>A61B 5/6801</i> (2013.01); <i>A61B 5/6823</i> (2013.01); <i>A61B 5/6833</i> (2013.01); <i>A61B 5/01</i> (2013.01); <i>A61B 5/021</i> (2013.01); <i>A61B 5/087</i> (2013.01); <i>A61B 5/0816</i> (2013.01); <i>A61B 5/091</i> (2013.01); <i>A61B 5/14532</i> (2013.01); <i>A61B 5/14542</i> (2013.01); <i>A61B 5/14551</i> (2013.01); <i>A61B 5/7455</i> (2013.01); <i>A61B 2505/07</i> (2013.01); <i>A61B 2560/0271</i> (2013.01); <i>A61B 2560/045</i> (2013.01); <i>A61B 2560/0412</i> (2013.01); <i>A61B 2562/0219</i> (2013.01); <i>A61B 2562/164</i> (2013.01); <i>G01N 27/307</i> (2013.01) | 5,540,733 A   | 7/1996  | Testerman et al. |                        |
|                               |   | 5,546,952 A   | 8/1996  | Erickson         |                        |
|                               |   | 5,549,655 A   | 8/1996  | Erickson         |                        |
|                               |   | 5,579,919 A   | 12/1996 | Gilman et al.    |                        |
|                               |   | 5,582,181 A   | 12/1996 | Ruess            |                        |
|                               |   | D377,983 S    | 2/1997  | Sabri et al.     |                        |
|                               |   | 5,601,089 A   | 2/1997  | Bledsoe et al.   |                        |
|                               |   | 5,623,935 A   | 4/1997  | Faisandier       |                        |
|                               |   | 5,682,901 A   | 11/1997 | Kamen            |                        |
|                               |   | 5,697,955 A   | 12/1997 | Stolte           |                        |
|                               |   | 5,724,967 A   | 3/1998  | Venkatachalam    |                        |
|                               |   | 5,749,902 A   | 5/1998  | Olsen et al.     |                        |
|                               |   | 5,788,633 A   | 8/1998  | Mahoney          |                        |
|                               |   | 5,817,151 A   | 10/1998 | Olsen et al.     |                        |
|                               |   | 5,819,741 A   | 10/1998 | Karlsson et al.  |                        |
|                               |   | 5,850,920 A   | 12/1998 | Gilman et al.    |                        |
|                               |   | D407,159 S    | 3/1999  | Roberg           |                        |
|                               |   | 5,876,351 A   | 3/1999  | Rohde            |                        |
|                               |   | 5,906,583 A   | 5/1999  | Rogel            |                        |
|                               |   | 5,951,598 A   | 9/1999  | Bishay et al.    |                        |
|                               |   | 5,957,857 A   | 9/1999  | Hartley          |                        |
|                               |   | 5,984,102 A   | 11/1999 | Tay              |                        |
|                               |   | 6,032,064 A   | 2/2000  | Devlin et al.    |                        |
|                               |   | 6,038,469 A   | 3/2000  | Karlsson et al.  |                        |
|                               |   | 6,101,413 A   | 8/2000  | Olsen et al.     |                        |
|                               |   | 6,115,638 A   | 9/2000  | Groenke          |                        |
| (58)                          | <b>Field of Classification Search</b>   | 6,117,077 A   | 9/2000  | Del Mar et al.   |                        |
|                               | CPC .....   | 6,134,479 A   | 10/2000 | Brewer et al.    |                        |
|                               | A61B 2018/00351; A61N 1/04; A61N 1/0484   | 6,148,233 A   | 11/2000 | Owen et al.      |                        |
|                               | USPC .....  | 6,149,602 A   | 11/2000 | Arcelus          |                        |
|                               | 600/372, 382, 384, 386, 388, 390–393, 600/508–509   | 6,149,781 A   | 11/2000 | Forand           |                        |
|                               | See application file for complete search history.   | 6,188,407 B1  | 2/2001  | Smith et al.     |                        |
|                               |   | D443,063 S    | 5/2001  | Pisani et al.    |                        |
| (56)                          | <b>References Cited</b>   | 6,245,025 B1  | 6/2001  | Torok et al.     |                        |
|                               | <b>U.S. PATENT DOCUMENTS</b>  | 6,246,330 B1  | 6/2001  | Nielsen          |                        |
|                               |   | 6,249,696 B1  | 6/2001  | Olson et al.     |                        |
|                               |   | D445,507 S    | 7/2001  | Pisani et al.    |                        |
|                               |   | 6,269,267 B1  | 7/2001  | Bardy et al.     |                        |
|                               |   | 6,272,385 B1  | 8/2001  | Bishay et al.    |                        |
|                               |   | 6,298,255 B1  | 10/2001 | Cordero et al.   |                        |
|                               |   | 6,301,502 B1  | 10/2001 | Owen et al.      |                        |
|                               |   | 6,304,773 B1  | 10/2001 | Taylor et al.    |                        |
|                               |   | 6,304,780 B1  | 10/2001 | Owen et al.      |                        |
|                               |   | 6,304,783 B1  | 10/2001 | Lyster et al.    |                        |
|                               |   | 6,374,138 B1  | 4/2002  | Owen et al.      |                        |
|                               |   | 6,381,482 B1  | 4/2002  | Jayaraman et al. |                        |
|                               |   | 6,416,471 B1  | 7/2002  | Kumar et al.     |                        |
|                               |   | 6,418,342 B1  | 7/2002  | Owen et al.      |                        |
|                               |   | 6,424,860 B1  | 7/2002  | Karlsson et al.  |                        |
|                               |   | 6,427,083 B1  | 7/2002  | Owen et al.      |                        |
|                               |   | 6,427,085 B1  | 7/2002  | Boon et al.      |                        |
|                               |   | 6,456,872 B1  | 7/2002  | Faisandier       |                        |
|                               |   | 6,454,708 B1  | 9/2002  | Ferguson et al.  |                        |
|                               |   | 6,463,320 B1  | 10/2002 | Xue et al.       |                        |
|                               |   | 6,546,285 B1  | 4/2003  | Owen et al.      |                        |
|                               |   | 6,605,046 B1  | 8/2003  | Del Mar          |                        |
|                               |   | 6,607,485 B2  | 8/2003  | Bardy            |                        |

(56)

## References Cited

## U.S. PATENT DOCUMENTS

|              |         |                     |                 |         |                         |
|--------------|---------|---------------------|-----------------|---------|-------------------------|
| 6,611,705 B2 | 8/2003  | Hopman et al.       | 8,591,430 B2    | 11/2013 | Amurthur et al.         |
| 6,671,545 B2 | 12/2003 | Fincke              | 8,594,763 B1    | 11/2013 | Bibian et al.           |
| 6,671,547 B2 | 12/2003 | Lyster et al.       | 8,600,486 B2    | 12/2013 | Kaib et al.             |
| 6,694,186 B2 | 2/2004  | Bardy               | 8,613,708 B2    | 12/2013 | Bishay et al.           |
| 6,704,595 B2 | 3/2004  | Bardy               | 8,613,709 B2    | 12/2013 | Bishay et al.           |
| 6,705,991 B2 | 3/2004  | Bardy               | 8,620,418 B1    | 12/2013 | Kuppuraj et al.         |
| 6,719,701 B2 | 4/2004  | Lade                | 8,626,277 B2    | 1/2014  | Felix et al.            |
| 6,754,523 B2 | 6/2004  | Toole               | 8,628,020 B2    | 1/2014  | Beck                    |
| 6,782,293 B2 | 8/2004  | Dupelle et al.      | 8,668,653 B2    | 3/2014  | Nagata et al.           |
| 6,856,832 B1 | 2/2005  | Matsumura           | 8,684,925 B2    | 4/2014  | Manicka et al.          |
| 6,860,897 B2 | 3/2005  | Bardy               | 8,688,190 B2    | 4/2014  | Libbus et al.           |
| 6,866,629 B2 | 3/2005  | Bardy               | 8,718,752 B2    | 5/2014  | Libbus et al.           |
| 6,887,201 B2 | 5/2005  | Bardy               | 8,744,561 B2    | 6/2014  | Fahey                   |
| 6,893,397 B2 | 5/2005  | Bardy               | 8,774,932 B2    | 7/2014  | Fahey                   |
| 6,904,312 B2 | 6/2005  | Bardy               | 8,790,257 B2    | 7/2014  | Libbus et al.           |
| 6,908,431 B2 | 6/2005  | Bardy               | 8,790,259 B2    | 7/2014  | Katra et al.            |
| 6,913,577 B2 | 7/2005  | Bardy               | 8,795,174 B2    | 8/2014  | Manicka et al.          |
| 6,944,498 B2 | 9/2005  | Owen et al.         | 8,798,729 B2    | 8/2014  | Kaib et al.             |
| 6,960,167 B2 | 11/2005 | Bardy               | 8,798,734 B2    | 8/2014  | Kuppuraj et al.         |
| 6,970,731 B1 | 11/2005 | Jayaraman et al.    | 8,818,478 B2    | 8/2014  | Scheffler et al.        |
| 6,978,169 B1 | 12/2005 | Guerra              | 8,818,481 B2    | 8/2014  | Bly et al.              |
| 6,993,377 B2 | 1/2006  | Flick et al.        | 8,823,490 B2    | 9/2014  | Libbus et al.           |
| 7,020,508 B2 | 3/2006  | Stivoric et al.     | 8,903,484 B2    | 12/2014 | Mazar                   |
| 7,027,864 B2 | 4/2006  | Snyder et al.       | 8,938,287 B2    | 1/2015  | Felix et al.            |
| 7,065,401 B2 | 6/2006  | Worden              | 8,965,492 B2    | 2/2015  | Baker et al.            |
| 7,085,601 B1 | 8/2006  | Bardy et al.        | 9,066,664 B2    | 6/2015  | Karjalainen             |
| 7,104,955 B2 | 9/2006  | Bardy               | 9,155,484 B2    | 10/2015 | Baker et al.            |
| 7,134,996 B2 | 11/2006 | Bardy               | 9,204,813 B2    | 12/2015 | Kaib et al.             |
| 7,137,389 B2 | 11/2006 | Berthon-Jones       | 9,241,649 B2    | 1/2016  | Kumar et al.            |
| 7,147,600 B2 | 12/2006 | Bardy               | 9,259,154 B2    | 2/2016  | Miller et al.           |
| 7,215,991 B2 | 5/2007  | Besson et al.       | 9,277,864 B2    | 3/2016  | Yang et al.             |
| 7,248,916 B2 | 7/2007  | Bardy               | 9,339,202 B2    | 5/2016  | Brockway et al.         |
| 7,257,438 B2 | 8/2007  | Kinast              | 9,375,179 B2    | 6/2016  | Schultz et al.          |
| 7,277,752 B2 | 10/2007 | Matos               | 9,414,786 B1    | 8/2016  | Brockway et al.         |
| 7,294,108 B1 | 11/2007 | Bornzin et al.      | 9,439,566 B2    | 9/2016  | Arne et al.             |
| D558,882 S   | 1/2008  | Brady               | 9,603,542 B2*   | 3/2017  | Veen ..... A61B 5/04284 |
| 7,328,061 B2 | 2/2008  | Rowlandson et al.   | 9,700,222 B2    | 7/2017  | Quinlan et al.          |
| 7,412,395 B2 | 8/2008  | Rowlandson et al.   | 9,770,182 B2    | 9/2017  | Bly et al.              |
| 7,429,938 B1 | 9/2008  | Corndorf            | 10,034,614 B2   | 7/2018  | Edic et al.             |
| 7,552,031 B2 | 6/2009  | Vock et al.         | 10,045,708 B2   | 8/2018  | Dusan                   |
| D606,656 S   | 12/2009 | Kobayashi et al.    | 10,049,182 B2   | 8/2018  | Cheffes et al.          |
| 7,706,870 B2 | 4/2010  | Shieh et al.        | 2002/0013538 A1 | 1/2002  | Teller                  |
| 7,756,721 B1 | 7/2010  | Falchuk et al.      | 2002/0013717 A1 | 1/2002  | Ando et al.             |
| 7,787,943 B2 | 8/2010  | McDonough           | 2002/0016798 A1 | 2/2002  | Sakai et al.            |
| 7,874,993 B2 | 1/2011  | Bardy               | 2002/0103422 A1 | 8/2002  | Harder et al.           |
| 7,881,785 B2 | 2/2011  | Nassif et al.       | 2002/0109621 A1 | 8/2002  | Khair et al.            |
| D639,437 S   | 6/2011  | Bishay et al.       | 2002/0120310 A1 | 8/2002  | Linden et al.           |
| 7,959,574 B2 | 6/2011  | Bardy               | 2002/0128686 A1 | 9/2002  | Minogue et al.          |
| 8,108,035 B1 | 1/2012  | Bharmi              | 2002/0184055 A1 | 12/2002 | Naghavi et al.          |
| 8,116,841 B2 | 2/2012  | Bly et al.          | 2002/0193668 A1 | 12/2002 | Munneke                 |
| 8,135,459 B2 | 3/2012  | Bardy et al.        | 2003/0004547 A1 | 1/2003  | Owen et al.             |
| 8,150,502 B2 | 4/2012  | Kumar et al.        | 2003/0073916 A1 | 4/2003  | Yonce                   |
| 8,160,682 B2 | 4/2012  | Kumar et al.        | 2003/0083559 A1 | 5/2003  | Thompson                |
| 8,172,761 B1 | 5/2012  | Rulkov et al.       | 2003/0097078 A1 | 5/2003  | Maeda                   |
| 8,180,425 B2 | 5/2012  | Selvitelli et al.   | 2003/0139785 A1 | 7/2003  | Riff et al.             |
| 8,200,320 B2 | 6/2012  | Kovacs              | 2003/0176802 A1 | 9/2003  | Galen et al.            |
| 8,231,539 B2 | 7/2012  | Bardy               | 2003/0211797 A1 | 11/2003 | Hill et al.             |
| 8,231,540 B2 | 7/2012  | Bardy               | 2004/0008123 A1 | 1/2004  | Carrender               |
| 8,239,012 B2 | 8/2012  | Felix et al.        | 2004/0019288 A1 | 1/2004  | Kinast                  |
| 8,249,686 B2 | 8/2012  | Libbus et al.       | 2004/0034284 A1 | 2/2004  | Aversano et al.         |
| 8,260,414 B2 | 9/2012  | Nassif et al.       | 2004/0049132 A1 | 3/2004  | Barron et al.           |
| 8,266,008 B1 | 9/2012  | Siegal et al.       | 2004/0073127 A1 | 4/2004  | Istvan et al.           |
| 8,277,378 B2 | 10/2012 | Bardy               | 2004/0087836 A1 | 5/2004  | Green et al.            |
| 8,285,356 B2 | 10/2012 | Bly et al.          | 2004/0088019 A1 | 5/2004  | Rueter et al.           |
| 8,285,370 B2 | 10/2012 | Felix et al.        | 2004/0093192 A1 | 5/2004  | Hasson et al.           |
| 8,308,650 B2 | 11/2012 | Bardy               | 2004/0148194 A1 | 7/2004  | Wellons et al.          |
| 8,366,629 B2 | 2/2013  | Bardy               | 2004/0163034 A1 | 8/2004  | Colbath et al.          |
| 8,374,688 B2 | 2/2013  | Libbus et al.       | 2004/0167416 A1 | 8/2004  | Lee                     |
| 8,412,317 B2 | 4/2013  | Mazar               | 2004/0207530 A1 | 10/2004 | Nielsen                 |
| 8,460,189 B2 | 6/2013  | Libbus et al.       | 2004/0210165 A1 | 10/2004 | Marmaropoulos et al.    |
| 8,473,047 B2 | 6/2013  | Chakravarthy et al. | 2004/0236202 A1 | 11/2004 | Burton                  |
| 8,478,418 B2 | 7/2013  | Fahey               | 2004/0243435 A1 | 12/2004 | Williams                |
| 8,538,503 B2 | 9/2013  | Kumar et al.        | 2004/0256453 A1 | 12/2004 | Lammle                  |
| 8,554,311 B2 | 10/2013 | Warner et al.       | 2004/0260188 A1 | 12/2004 | Syed et al.             |
| 8,560,046 B2 | 10/2013 | Kumar et al.        | 2004/0260192 A1 | 12/2004 | Yamamoto                |
|              |         |                     | 2005/0010139 A1 | 1/2005  | Aminian et al.          |
|              |         |                     | 2005/0096717 A1 | 5/2005  | Bishay et al.           |
|              |         |                     | 2005/0108055 A1 | 5/2005  | Ott et al.              |
|              |         |                     | 2005/0151640 A1 | 7/2005  | Hastings                |

(56)

## References Cited

## U.S. PATENT DOCUMENTS

|              |    |         |                     |              |    |         |                    |
|--------------|----|---------|---------------------|--------------|----|---------|--------------------|
| 2005/0154267 | A1 | 7/2005  | Bardy               | 2009/0012979 | A1 | 1/2009  | Bateni             |
| 2005/0182308 | A1 | 8/2005  | Bardy               | 2009/0054952 | A1 | 2/2009  | Glukhovskiy et al. |
| 2005/0182309 | A1 | 8/2005  | Bardy               | 2009/0062897 | A1 | 3/2009  | Axelgaard          |
| 2005/0215918 | A1 | 9/2005  | Frantz et al.       | 2009/0069867 | A1 | 3/2009  | KenKnight et al.   |
| 2005/0222513 | A1 | 10/2005 | Hadley et al.       | 2009/0073991 | A1 | 3/2009  | Landrum et al.     |
| 2005/0228243 | A1 | 10/2005 | Bardy               | 2009/0076336 | A1 | 3/2009  | Mazar et al.       |
| 2005/0245839 | A1 | 11/2005 | Stivoric et al.     | 2009/0076341 | A1 | 3/2009  | James et al.       |
| 2005/0275416 | A1 | 12/2005 | Hervieux et al.     | 2009/0076342 | A1 | 3/2009  | Amurthur et al.    |
| 2006/0025696 | A1 | 2/2006  | Kurzweil et al.     | 2009/0076343 | A1 | 3/2009  | James et al.       |
| 2006/0025824 | A1 | 2/2006  | Freeman et al.      | 2009/0076346 | A1 | 3/2009  | James et al.       |
| 2006/0030767 | A1 | 2/2006  | Lang et al.         | 2009/0076349 | A1 | 3/2009  | Libbus et al.      |
| 2006/0030904 | A1 | 2/2006  | Quiles              | 2009/0076397 | A1 | 3/2009  | Libbus et al.      |
| 2006/0041201 | A1 | 2/2006  | Behbehani et al.    | 2009/0076401 | A1 | 3/2009  | Mazar et al.       |
| 2006/0084883 | A1 | 4/2006  | Linker              | 2009/0076559 | A1 | 3/2009  | Libbus et al.      |
| 2006/0111642 | A1 | 5/2006  | Baura et al.        | 2009/0088652 | A1 | 4/2009  | Tremblay           |
| 2006/0122469 | A1 | 6/2006  | Martel              | 2009/0112116 | A1 | 4/2009  | Lee et al.         |
| 2006/0124193 | A1 | 6/2006  | Orr et al.          | 2009/0131759 | A1 | 5/2009  | Sims et al.        |
| 2006/0224072 | A1 | 10/2006 | Shennib             | 2009/0156908 | A1 | 6/2009  | Belalcazar et al.  |
| 2006/0229522 | A1 | 10/2006 | Barr                | 2009/0216132 | A1 | 8/2009  | Orbach             |
| 2006/0235320 | A1 | 10/2006 | Tan et al.          | 2009/0270708 | A1 | 10/2009 | Shen et al.        |
| 2006/0253006 | A1 | 11/2006 | Bardy               | 2009/0270747 | A1 | 10/2009 | Van Dam et al.     |
| 2006/0264730 | A1 | 11/2006 | Stivoric et al.     | 2009/0292194 | A1 | 11/2009 | Libbus et al.      |
| 2006/0264767 | A1 | 11/2006 | Shennib             | 2010/0007413 | A1 | 1/2010  | Herleikson et al.  |
| 2007/0003115 | A1 | 1/2007  | Patton et al.       | 2010/0022897 | A1 | 1/2010  | Parker et al.      |
| 2007/0038057 | A1 | 2/2007  | Nam et al.          | 2010/0056881 | A1 | 3/2010  | Libbus et al.      |
| 2007/0050209 | A1 | 3/2007  | Yered               | 2010/0081913 | A1 | 4/2010  | Cross et al.       |
| 2007/0078324 | A1 | 4/2007  | Wijisiriwardana     | 2010/0174229 | A1 | 7/2010  | Hsu et al.         |
| 2007/0078354 | A1 | 4/2007  | Holland             | 2010/0177100 | A1 | 7/2010  | Carnes et al.      |
| 2007/0088406 | A1 | 4/2007  | Bennett et al.      | 2010/0185063 | A1 | 7/2010  | Bardy              |
| 2007/0089800 | A1 | 4/2007  | Sharma              | 2010/0185076 | A1 | 7/2010  | Jeong et al.       |
| 2007/0093719 | A1 | 4/2007  | Nichols, Jr. et al. | 2010/0191154 | A1 | 7/2010  | Berger et al.      |
| 2007/0100248 | A1 | 5/2007  | Van Dam et al.      | 2010/0191310 | A1 | 7/2010  | Bly                |
| 2007/0100667 | A1 | 5/2007  | Bardy               | 2010/0223020 | A1 | 9/2010  | Goetz              |
| 2007/0123801 | A1 | 5/2007  | Goldberger et al.   | 2010/0234715 | A1 | 9/2010  | Shin et al.        |
| 2007/0131595 | A1 | 6/2007  | Jansson et al.      | 2010/0234716 | A1 | 9/2010  | Engel              |
| 2007/0136091 | A1 | 6/2007  | McTaggart           | 2010/0280366 | A1 | 11/2010 | Arne et al.        |
| 2007/0179357 | A1 | 8/2007  | Bardy               | 2010/0312188 | A1 | 12/2010 | Robertson et al.   |
| 2007/0185390 | A1 | 8/2007  | Perkins et al.      | 2010/0324384 | A1 | 12/2010 | Moon et al.        |
| 2007/0203415 | A1 | 8/2007  | Bardy               | 2011/0021937 | A1 | 1/2011  | Hugh et al.        |
| 2007/0203423 | A1 | 8/2007  | Bardy               | 2011/0054286 | A1 | 3/2011  | Crosby et al.      |
| 2007/0208232 | A1 | 9/2007  | Kovacs              | 2011/0060215 | A1 | 3/2011  | Tupin et al.       |
| 2007/0208233 | A1 | 9/2007  | Kovacs              | 2011/0066041 | A1 | 3/2011  | Pandia et al.      |
| 2007/0208266 | A1 | 9/2007  | Hadley              | 2011/0077497 | A1 | 3/2011  | Oster et al.       |
| 2007/0225611 | A1 | 9/2007  | Kumar et al.        | 2011/0105861 | A1 | 5/2011  | Derchak et al.     |
| 2007/0244405 | A1 | 10/2007 | Xue et al.          | 2011/0144470 | A1 | 6/2011  | Mazar et al.       |
| 2007/0265510 | A1 | 11/2007 | Bardy               | 2011/0160548 | A1 | 6/2011  | Forster            |
| 2007/0276270 | A1 | 11/2007 | Tran                | 2011/0224564 | A1 | 9/2011  | Moon et al.        |
| 2007/0276275 | A1 | 11/2007 | Proctor et al.      | 2011/0237922 | A1 | 9/2011  | Parker, III et al. |
| 2007/0293738 | A1 | 12/2007 | Bardy               | 2011/0237924 | A1 | 9/2011  | McGusty et al.     |
| 2007/0293739 | A1 | 12/2007 | Bardy               | 2011/0245699 | A1 | 10/2011 | Snell et al.       |
| 2007/0293740 | A1 | 12/2007 | Bardy               | 2011/0245711 | A1 | 10/2011 | Katra et al.       |
| 2007/0293741 | A1 | 12/2007 | Bardy               | 2011/0288605 | A1 | 11/2011 | Kaib et al.        |
| 2007/0293772 | A1 | 12/2007 | Bardy               | 2012/0003933 | A1 | 1/2012  | Baker et al.       |
| 2007/0299325 | A1 | 12/2007 | Farrell et al.      | 2012/0029306 | A1 | 2/2012  | Paquet et al.      |
| 2007/0299617 | A1 | 12/2007 | Willis              | 2012/0029315 | A1 | 2/2012  | Raptis et al.      |
| 2008/0027339 | A1 | 1/2008  | Nagai et al.        | 2012/0029316 | A1 | 2/2012  | Raptis et al.      |
| 2008/0051668 | A1 | 2/2008  | Bardy               | 2012/0035432 | A1 | 2/2012  | Katra et al.       |
| 2008/0058661 | A1 | 3/2008  | Bardy               | 2012/0078127 | A1 | 3/2012  | McDonald et al.    |
| 2008/0088467 | A1 | 4/2008  | Al-Ali et al.       | 2012/0088998 | A1 | 4/2012  | Bardy et al.       |
| 2008/0091089 | A1 | 4/2008  | Guillory et al.     | 2012/0088999 | A1 | 4/2012  | Bishay et al.      |
| 2008/0091097 | A1 | 4/2008  | Linti et al.        | 2012/0089000 | A1 | 4/2012  | Bishay et al.      |
| 2008/0108890 | A1 | 5/2008  | Teng et al.         | 2012/0089001 | A1 | 4/2012  | Bishay et al.      |
| 2008/0114232 | A1 | 5/2008  | Gazit               | 2012/0089037 | A1 | 4/2012  | Bishay et al.      |
| 2008/0139953 | A1 | 6/2008  | Baker et al.        | 2012/0089412 | A1 | 4/2012  | Bardy et al.       |
| 2008/0143080 | A1 | 6/2008  | Burr                | 2012/0089417 | A1 | 4/2012  | Bardy et al.       |
| 2008/0177168 | A1 | 7/2008  | Callahan et al.     | 2012/0095352 | A1 | 4/2012  | Tran               |
| 2008/0194927 | A1 | 8/2008  | KenKnight et al.    | 2012/0101358 | A1 | 4/2012  | Boettcher et al.   |
| 2008/0208009 | A1 | 8/2008  | Shklarski           | 2012/0101396 | A1 | 4/2012  | Solosko et al.     |
| 2008/0208014 | A1 | 8/2008  | KenKnight et al.    | 2012/0165645 | A1 | 6/2012  | Russel et al.      |
| 2008/0284599 | A1 | 11/2008 | Zdeblick et al.     | 2012/0306662 | A1 | 6/2012  | Vosch et al.       |
| 2008/0288026 | A1 | 11/2008 | Cross et al.        | 2012/0172695 | A1 | 7/2012  | Ko et al.          |
| 2008/0294024 | A1 | 11/2008 | Cosentino et al.    | 2012/0238910 | A1 | 9/2012  | Nordstrom          |
| 2008/0306359 | A1 | 12/2008 | Zdeblick et al.     | 2012/0253847 | A1 | 10/2012 | Dell'Anno et al.   |
| 2008/0312522 | A1 | 12/2008 | Rowlandson          | 2012/0302906 | A1 | 11/2012 | Felix et al.       |
| 2009/0012412 | A1 | 1/2009  | Wiesel              | 2012/0330126 | A1 | 12/2012 | Hoppe et al.       |
|              |    |         |                     | 2013/0041272 | A1 | 2/2013  | Javier et al.      |
|              |    |         |                     | 2013/0077263 | A1 | 3/2013  | Oleson et al.      |
|              |    |         |                     | 2013/0079611 | A1 | 3/2013  | Besko              |
|              |    |         |                     | 2013/0085347 | A1 | 4/2013  | Manicka et al.     |

## (56) References Cited

## U.S. PATENT DOCUMENTS

2013/0085403 A1 4/2013 Gunderson et al.  
 2013/0096395 A1 4/2013 Katra et al.  
 2013/0116533 A1 5/2013 Lian et al.  
 2013/0123651 A1 5/2013 Bardy  
 2013/0158361 A1 6/2013 Bardy  
 2013/0197380 A1 8/2013 Oral et al.  
 2013/0225963 A1 8/2013 Kodandaramaiah et al.  
 2013/0225966 A1 8/2013 Macia Barber et al.  
 2013/0231947 A1 9/2013 Shusterman  
 2013/0243105 A1 9/2013 Lei et al.  
 2013/0274584 A1 10/2013 Finlay et al.  
 2013/0275158 A1 10/2013 Fahey  
 2013/0324809 A1 12/2013 Lisogurski et al.  
 2013/0324855 A1 12/2013 Lisogurski et al.  
 2013/0324856 A1 12/2013 Lisogurski et al.  
 2013/0325081 A1 12/2013 Karst et al.  
 2013/0325359 A1 12/2013 Jarverud et al.  
 2013/0331665 A1 12/2013 Libbus et al.  
 2013/0338448 A1 12/2013 Libbus et al.  
 2013/0338472 A1 12/2013 Macia Barber et al.  
 2014/0056452 A1 2/2014 Moss et al.  
 2014/0088399 A1 3/2014 Lian et al.  
 2014/0140359 A1 5/2014 Kalevo et al.  
 2014/0180027 A1 6/2014 Buller  
 2014/0189928 A1 7/2014 Oleson et al.  
 2014/0206977 A1 7/2014 Bahney et al.  
 2014/0214134 A1 7/2014 Peterson  
 2014/0215246 A1 7/2014 Lee et al.  
 2014/0249852 A1 9/2014 Proud  
 2014/0296651 A1 10/2014 Stone  
 2014/0343390 A1 11/2014 Berzowska et al.  
 2014/0358193 A1 12/2014 Lyons et al.  
 2014/0364756 A1 12/2014 Brockway et al.  
 2015/0048836 A1 2/2015 Guthrie et al.  
 2015/0065842 A1 3/2015 Lee et al.  
 2015/0177175 A1 6/2015 Elder et al.  
 2015/0250422 A1 9/2015 Bay  
 2015/0257670 A1 9/2015 Ortega et al.  
 2015/0305676 A1 11/2015 Shoshani  
 2015/0359489 A1 12/2015 Baudenbacher et al.  
 2016/0135746 A1 5/2016 Kumar et al.  
 2016/0217691 A1 7/2016 Kadobayashi et al.  
 2019/0021671 A1 1/2019 Kumar et al.

## FOREIGN PATENT DOCUMENTS

EP 2438851 4/2012  
 EP 2438852 4/2012  
 EP 2465415 6/2012  
 EP 2589333 5/2013  
 JP H06319711 11/1994  
 JP H11188015 7/1999  
 JP 2004129788 4/2004  
 JP 2007082938 4/2007  
 JP 2009219554 10/2009  
 WO 199852463 11/1998  
 WO 00/78213 12/2000  
 WO 2003032192 4/2003  
 WO 2006009767 1/2006  
 WO 2006014806 2/2006  
 WO 2007066270 6/2007  
 WO 2007092543 8/2007  
 WO 2008010216 1/2008  
 WO 2008057884 5/2008  
 WO 2008092098 7/2008  
 WO 2009036306 3/2009  
 WO 2009036313 3/2009  
 WO 2009036327 3/2009  
 WO 2009112976 9/2009  
 WO 2009112978 9/2009  
 WO 2009112979 9/2009  
 WO 2009142975 11/2009  
 WO 2010066507 6/2010  
 WO 2010105045 9/2010

WO 2011047207 4/2011  
 WO 2012140559 10/2012  
 WO 2012146957 11/2012

## OTHER PUBLICATIONS

Alivecor, URL <<http://www.businesswire.com/news/home/20121203005545/en/AliveCor%E2%80%99s-Heart-Monitor-iPhone-Receives-FDA-Clearance#.U7rtq7FVTyF>> (Dec. 3, 2012).  
 Bharadwaj et al., Techniques for Accurate ECG signal processing, *EE Times*, URL <[www.eetimes.com/document.asp?doc\\_id=1278571](http://www.eetimes.com/document.asp?doc_id=1278571)> (Feb. 14, 2011).  
 Chen et al. "Monitoring Body Temperature of Newborn Infants at Neonatal Intensive Care Units Using Wearable Sensors," *BodyNets 2010, Corfu Island, Greece*. Sep. 10-12, 1210.  
 Epstein, Andrew E. et al.; ACC/AHA/HRS 2008 Guidelines for Device-Based Therapy of Cardiac Rhythm Abnormalities. *J. Am. Coll. Cardiol.* 2008; 51; e1-e62, 66 Pgs.  
 Fitbit Tracker, URL <<http://www.fitbit.com/>> (Web page cached on Sep. 10, 2008).  
 Smith, Jawbone Up, URL <<http://www.businessinsider.com/fitbit-flex-vs-jawbone-up-2013-5?op=1>> (Jun. 1, 2013).  
 Kligfield, Paul et al., Recommendations for the Standardization and Interpretation of the Electrocardiogram: Part I. *J. Am. Coll. Cardiol.* 2007; 49; 1109-27, 75 Pgs.  
 Lauren Gravitz, "When Your Diet Needs A Band-Aid," *Technology Review*, MIT. (May 1, 2009).  
 Lieberman, Jonathan, "How Telemedicine is Aiding Prompt ECG Diagnosis in Primary Care," *British Journal of Community Nursing*, vol. 13, No. 3, Mar. 1, 2008 (Mar. 1, 2008), pp. 123-126, XP009155082, ISSN: 1462-4751.  
 McManus et al., "A Novel Application for the Detection of an Irregular Pulse using an iPhone 4S in Patients with Atrial Fibrillation," vol. 10(3), pp. 315-319 (Mar. 2013).  
 Mike+ Fuel Band, URL <[http://www.nike.com/us/en\\_us/c/nikeplus-fuelband](http://www.nike.com/us/en_us/c/nikeplus-fuelband)> (Web page cached on Jan. 11, 2013).  
 P. Libby et al., "Braunwald's Heart Disease—A Textbook of Cardiovascular Medicine," Chs. 11, pp. 125-148 and 12, pp. 149-193 (8th ed. 2008), American Heart Association.  
 Polar Loop, URL <<http://www.dcrainmaker.com/2013/09/polar-loop-firstlook.html>>.  
 Sittig et al., "A Computer-Based Outpatient Clinical Referral System," *International Journal of Medical Informatics*, Shannon, IR, vol. 55, No. 2, Aug. 1, 1999, pp. 149-158, XO004262434, ISSN: 1386-5056(99)00027-1.  
 Sleepview, URL <<http://www.clevemed.com/sleepview/overview.shtml>> (Web page cached on Sep. 4, 2013).  
 Actigraphy/ Circadian Rhythm SOMNOWatch, URL <<http://www.somnomedics.eu/news-events/publications/somnowatchtm.html>> (Web page cached on Jan. 23, 2010).  
 Zio Event Card, URL <<http://www.irhythmtech.com/zio-solution/zio-event/>> (Web page cached on Mar. 11, 2013).  
 Zio Patch System, URL <<http://www.irhythmtech.com/zio-solution/zio-system/index.html>> (Web page cached on Sep. 8, 2013).  
 Saadi et al. "Heart Rhythm Analysis Using ECG Recorded With a Novel Sternum Based Patch Technology—A Pilot Study." *Cardio technix 2013—Proceedings of the International Congress on Cardiovascular Technologies*, Sep. 20, 2013.  
 Anonymous. "Omegawave Launches Consumer App 2.0 in U.S. Endurance Sportswire—Endurance Sportswire." Jul. 11, 2013 URL: <http://endurancesportswire.com/omegawave-launches-consumer-app-2-0-in-u-s/>.  
 Chan et al. "Wireless Patch Sensor for Remote Monitoring of Heart Rate, Respiration, Activity, and Falls." pp. 6115-6118. 2013 35th Annual International Conference of the IEEE Engineering in Medical and Biology Society. Jul. 1, 2013.  
 Daoud et al. "Fall Detection Using Shimmer Technology and Multiresolution Analysis." Aug. 2, 2013. URL: <https://decibel.ni.com/content/docs/DOC-26652>.  
 Libbus. "Adherent Cardiac Monitor With Wireless Fall Detection for Patients With Unexplained Syncope." Abstracts of the First AMA-IEEE Medical Technology Conference on Individualized Healthcare. May 22, 2010.

(56)

**References Cited**

## OTHER PUBLICATIONS

Duttweiler et al., "Probability Estimation in Arithmetic and Adaptive-Huffman Entropy Coders," IEEE Transactions on Image Processing, vol. 4, No. 3, Mar. 1, 1995, pp. 237-246.

Gupta et al., "An ECG Compression Technique for Telecardiology Application," India Conference (INDICON), 2011 Annual IEEE, Dec. 16, 2011, pp. 1-4.

Nave et al., "ECG Compression Using Long-Term Prediction," IEEE Transactions on Biomedical Engineering, IEEE Service Center, NY, USA, vol. 40, No. 9, Sep. 1, 1993, pp. 877-885.

Skretting et al., "Improved Huffman Coding Using Recursive Splitting," NORSIG, Jan. 1, 1999.

A Voss et al., "Linear and Nonlinear Methods for Analyses of Cardiovascular Variability in Bipolar Disorders," Bipolar Disorders, vol. 8, No. 5p1, Oct. 1, 2006, pp. 441-452, XP55273826, DK ISSN: 1398-5647, DOI: 10.1111/i.1399-5618.2006.00364.x.

Varicrad-Kardi Software User's Manual Rev. 1.1, Jul. 8, 2009 (Jul. 8, 2009), XP002757888, retrieved from the Internet: URL:<http://www.ehrlich.tv/KARDiVAR-Software.pdf> [retrieved on May 20, 2016].

<https://web.archive.org/web/20130831204020/http://www.biopac.com/research.asp?CatID=37&Main=Software> (Aug. 2013).

Adinstruments:ECG Analysis Module for LabChart & PowerLab, 2008.

BIOPAC Systems, Inc. #AS148-Automated ECG Analysis, Mar. 24, 2006.

G. G. Ivanov, "HRV Analysis Under the Usage of Different Electrocardiography Systems," Apr. 15, 2008 (Apr. 15, 2008), XP55511209, Retrieved from the Internet: URL:[http://www.drkucera.eu/upload\\_doc/hrv\\_analysis\\_\(methodical\\_recommendations\).pdf](http://www.drkucera.eu/upload_doc/hrv_analysis_(methodical_recommendations).pdf) [retrieved on Oct. 1, 2018].

\* cited by examiner

Fig. 1.

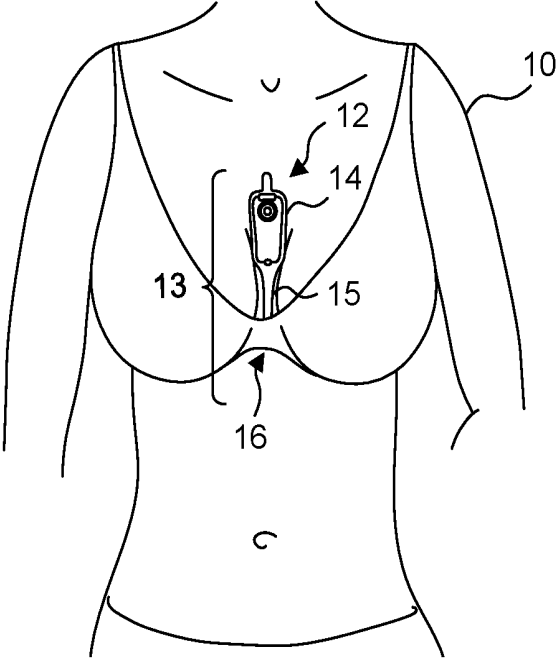


Fig. 2.

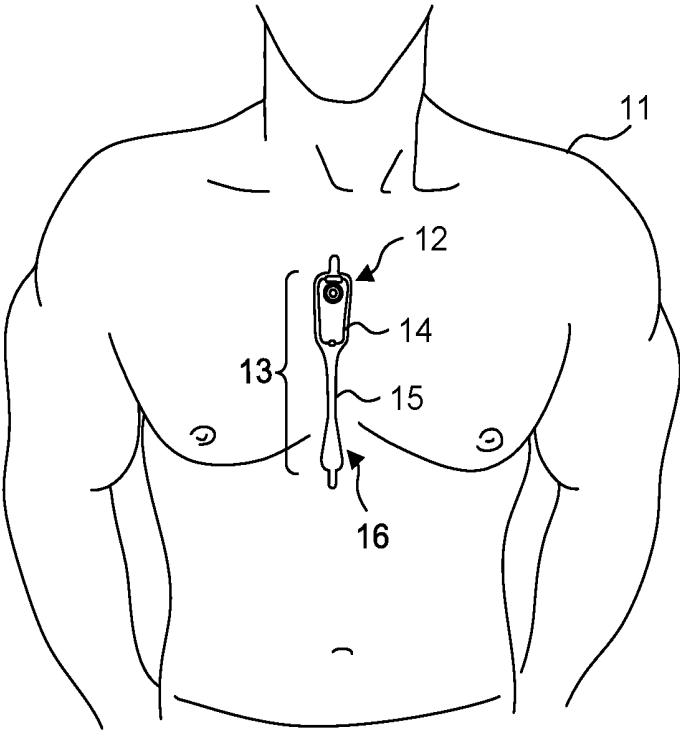


Fig. 3.

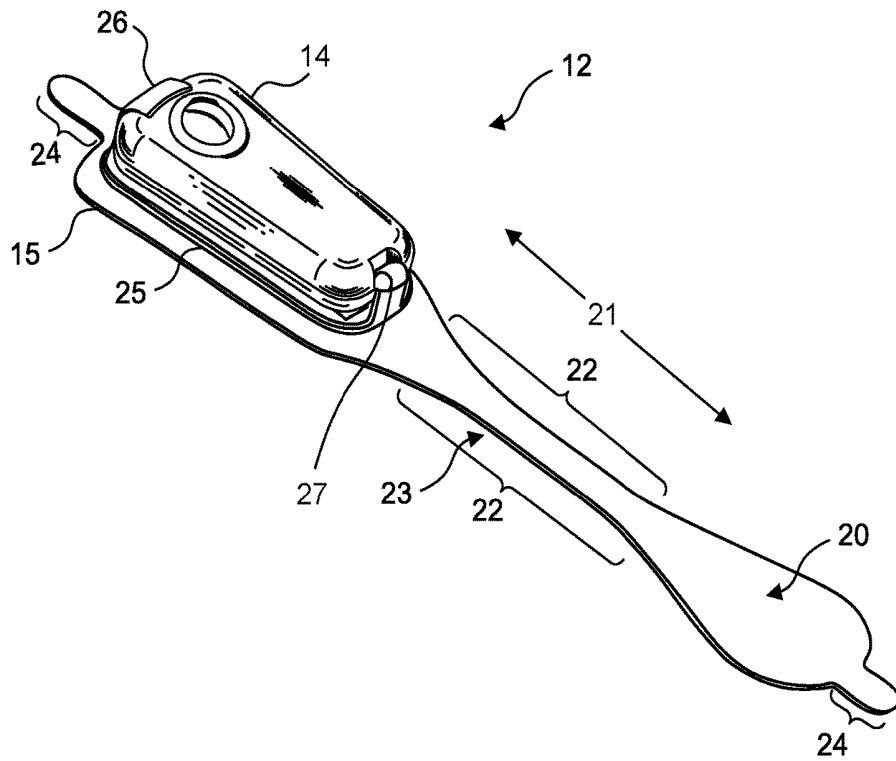


Fig. 4.

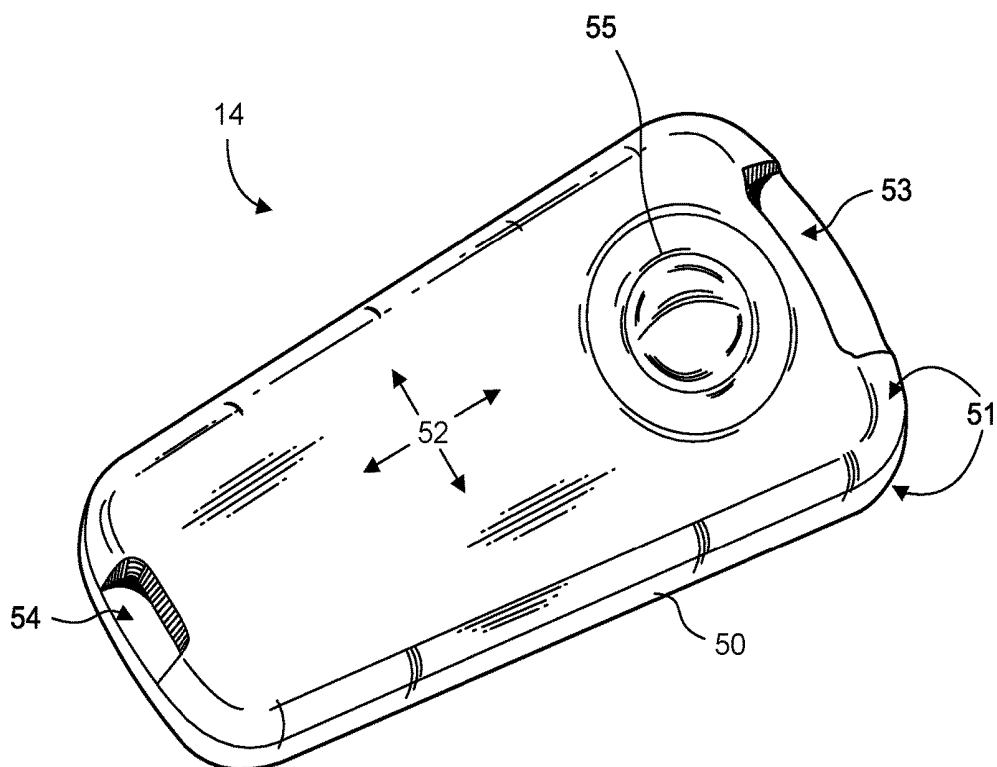


Fig. 5.

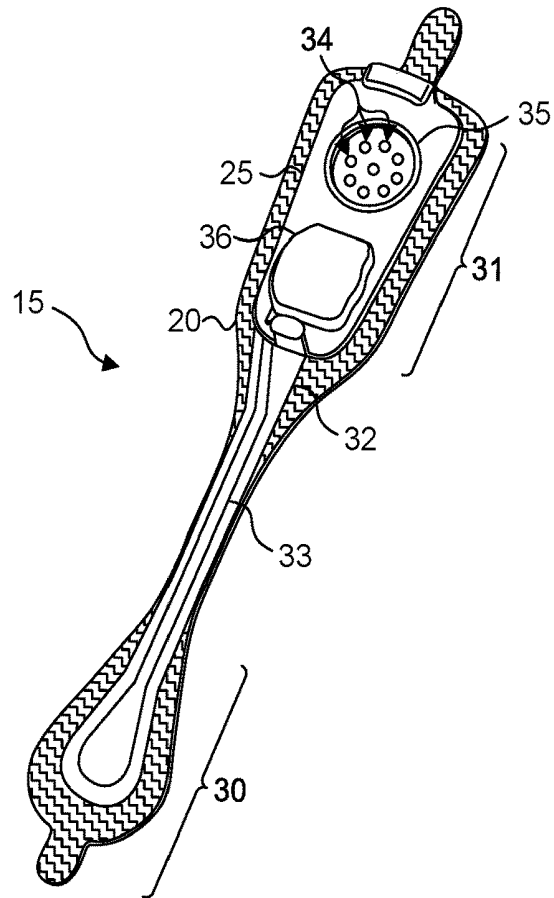


Fig. 6.

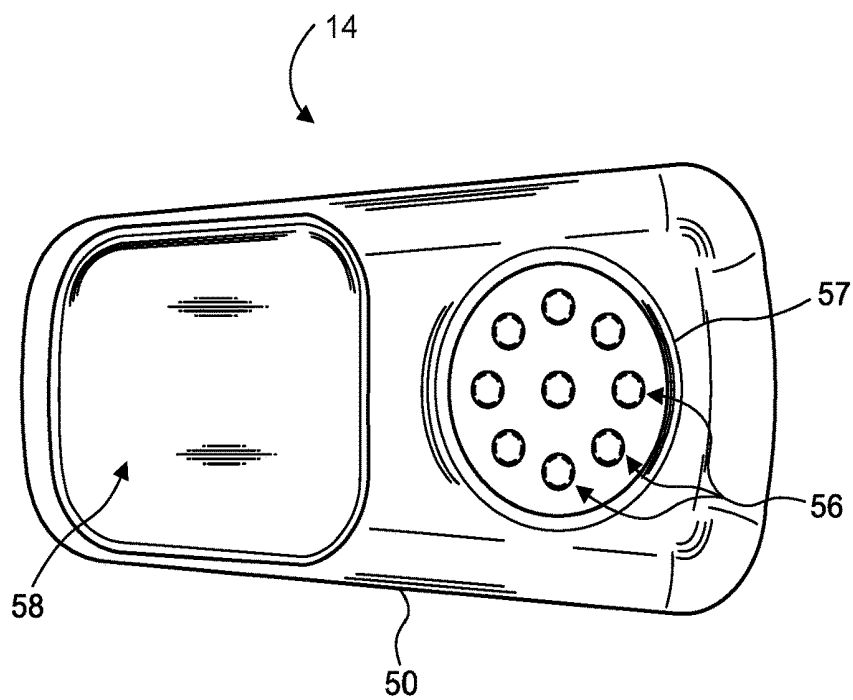


Fig. 7.

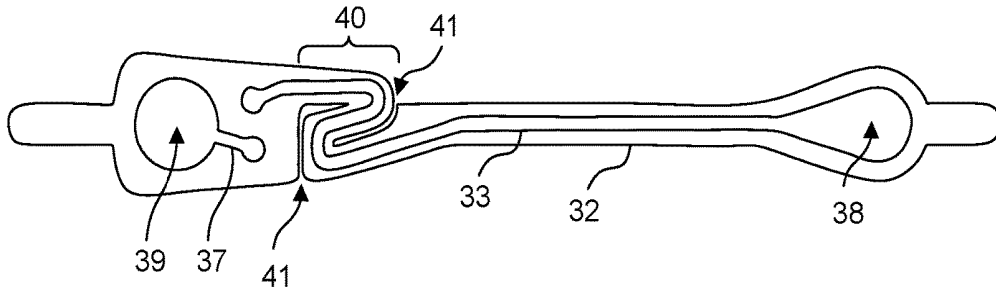


Fig. 8.

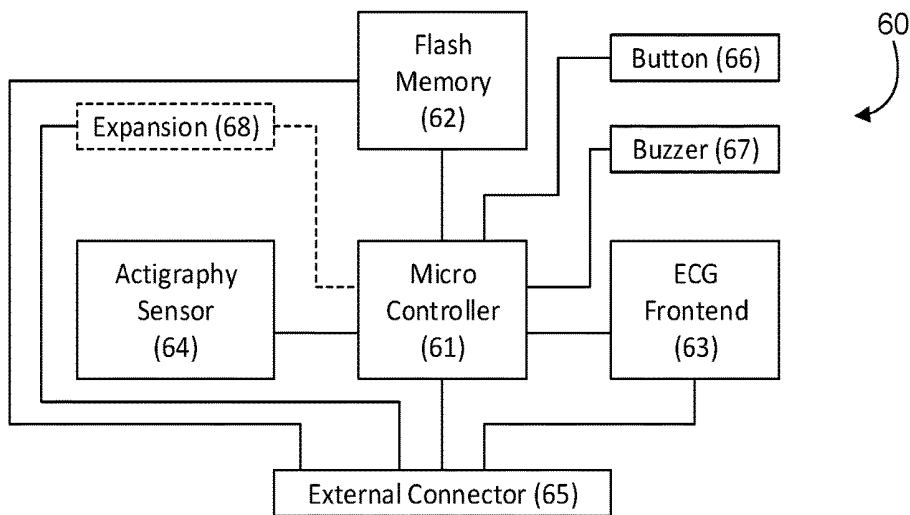


Fig. 9.

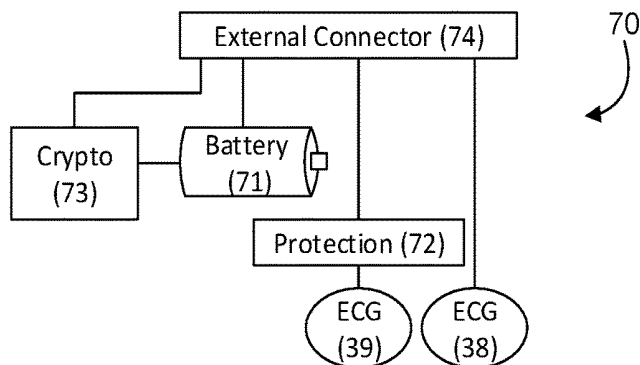


Fig. 10.

100

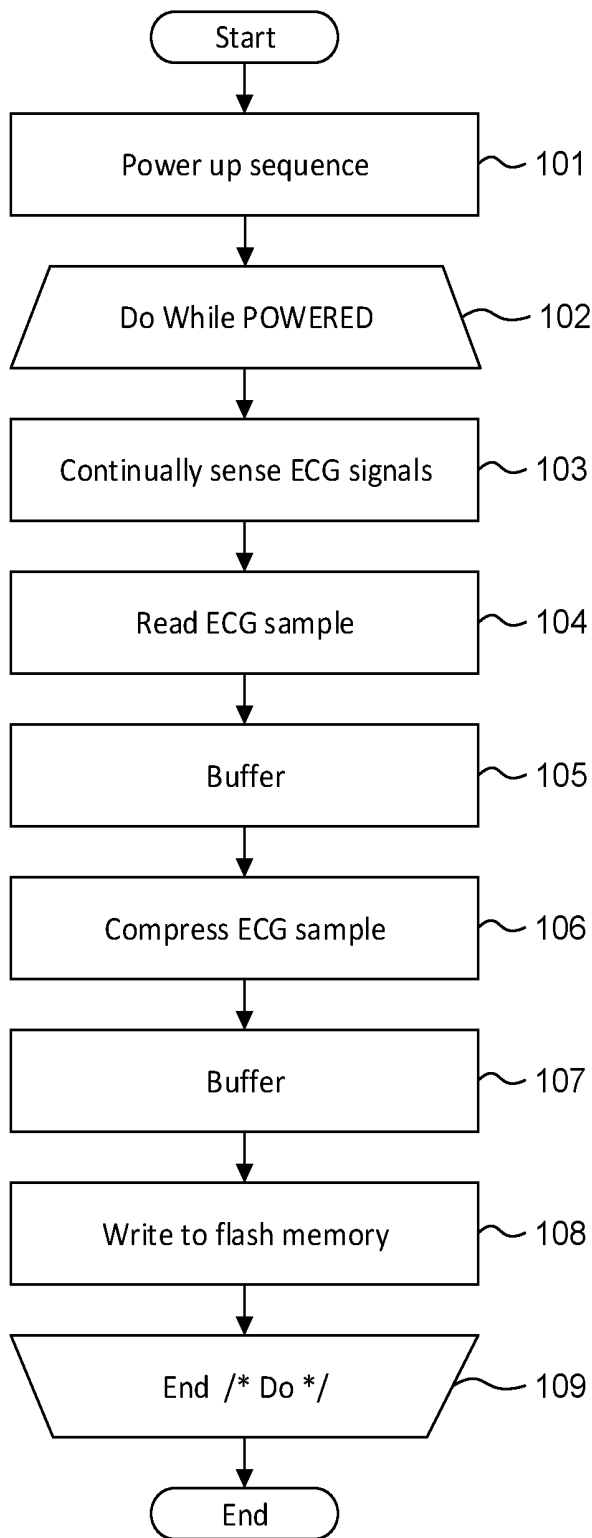
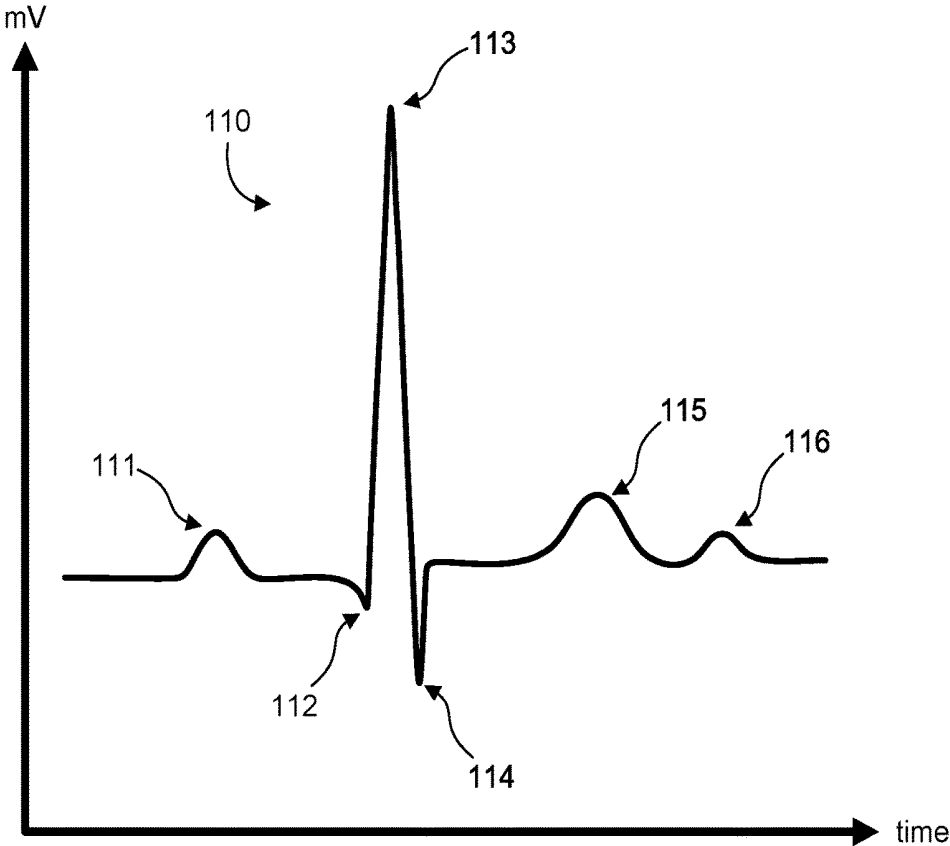


Fig. 11.



## EXTENDED WEAR AMBULATORY ELECTROCARDIOGRAPHY AND PHYSIOLOGICAL SENSOR MONITOR

### CROSS-REFERENCE TO RELATED APPLICATION

This non-provisional patent application is a continuation of U.S. Pat. No. 9,730,593, issued Aug. 15, 2017, and further claims priority under 35 U.S.C. § 119(e) to U.S. Provisional Patent application, Ser. No. 61/882,403, filed Sep. 25, 2013, the filing dates of which are claimed and the disclosures of which are incorporated by reference.

### FIELD

This application relates in general to electrocardiographic monitoring and, in particular, to an extended wear ambulatory electrocardiography and physiological sensor monitor.

### BACKGROUND

The heart emits electrical signals as a by-product of the propagation of the action potentials that trigger depolarization of heart fibers. An electrocardiogram (ECG) measures and records such electrical potentials to visually depict the electrical activity of the heart over time. Conventionally, a standardized set format 12-lead configuration is used by an ECG machine to record cardiac electrical signals from well-established traditional chest locations. Electrodes at the end of each lead are placed on the skin over the anterior thoracic region of the patient's body to the lower right and to the lower left of the sternum, on the left anterior chest, and on the limbs. Sensed cardiac electrical activity is represented by PQRSTU waveforms that can be interpreted post-ECG recordation to derive heart rate and physiology. The P-wave represents atrial electrical activity. The QRSTU components represent ventricular electrical activity.

An ECG is a tool used by physicians to diagnose heart problems and other potential health concerns. An ECG is a snapshot of heart function, typically recorded over 12 seconds, that can help diagnose rate and regularity of heartbeats, effect of drugs or cardiac devices, including pacemakers and implantable cardioverter-defibrillators (ICDs), and whether a patient has heart disease. ECGs are used in-clinic during appointments, and, as a result, are limited to recording only those heart-related aspects present at the time of recording. Sporadic conditions that may not show up during a spot ECG recording require other means to diagnose them. These disorders include fainting or syncope; rhythm disorders, such as tachyarrhythmias and bradyarrhythmias; apneic episodes; and other cardiac and related disorders. Thus, an ECG only provides a partial picture and can be insufficient for complete patient diagnosis of many cardiac disorders.

Diagnostic efficacy can be improved, when appropriate, through the use of long-term extended ECG monitoring. Recording sufficient ECG and related physiology over an extended period is challenging, and often essential to enabling a physician to identify events of potential concern. A 30-day observation day period is considered the "gold standard" of ECG monitoring, yet achieving a 30-day observation day period has proven unworkable because such ECG monitoring systems are arduous to employ, cumbersome to the patient, and excessively costly. Ambulatory monitoring in-clinic is implausible and impracticable. Nevertheless, if a patient's ECG could be recorded in an ambulatory setting,

thereby allowing the patient to engage in activities of daily living, the chances of acquiring meaningful information and capturing an abnormal event while the patient is engaged in normal activities becomes more likely to be achieved.

For instance, the long-term wear of ECG electrodes is complicated by skin irritation and the inability ECG electrodes to maintain continual skin contact after a day or two. Moreover, time, dirt, moisture, and other environmental contaminants, as well as perspiration, skin oil, and dead skin cells from the patient's body, can get between an ECG electrode, the non-conductive adhesive used to adhere the ECG electrode, and the skin's surface. All of these factors adversely affect electrode adhesion and the quality of cardiac signal recordings. Furthermore, the physical movements of the patient and their clothing impart various compressional, tensile, and torsional forces on the contact point of an ECG electrode, especially over long recording times, and an inflexibly fastened ECG electrode will be prone to becoming dislodged. Notwithstanding the cause of electrode dislodgment, depending upon the type of ECG monitor employed, precise re-placement of a dislodged ECG electrode maybe essential to ensuring signal capture at the same fidelity. Moreover, dislodgment may occur unbeknownst to the patient, making the ECG recordings worthless. Further, some patients may have skin that is susceptible to itching or irritation, and the wearing of ECG electrodes can aggravate such skin conditions. Thus, a patient may want or need to periodically remove or replace ECG electrodes during a long-term ECG monitoring period, whether to replace a dislodged electrode, reestablish better adhesion, alleviate itching or irritation, allow for cleansing of the skin, allow for showering and exercise, or for other purpose. Such replacement or slight alteration in electrode location actually facilitates the goal of recording the ECG signal for long periods of time.

Conventionally, Holter monitors are widely used for long-term extended ECG monitoring. Typically, they are often used for only 24-48 hours. A typical Holter monitor is a wearable and portable version of an ECG that include cables for each electrode placed on the skin and a separate battery-powered ECG recorder. The cable and electrode combination (or leads) are placed in the anterior thoracic region in a manner similar to what is done with an in-clinic standard ECG machine. The duration of a Holter monitoring recording depends on the sensing and storage capabilities of the monitor, as well as battery life. A "looping" Holter monitor (or event) can operate for a longer period of time by overwriting older ECG tracings, thence "recycling" storage in favor of extended operation, yet at the risk of losing event data. Although capable of extended ECG monitoring, Holter monitors are cumbersome, expensive and typically only available by medical prescription, which limits their usability. Further, the skill required to properly place the electrodes on the patient's chest hinders or precludes a patient from replacing or removing the precordial leads and usually involves moving the patient from the physician office to a specialized center within the hospital or clinic.

The ZIO XT Patch and ZIO Event Card devices, manufactured by iRhythm Tech., Inc., San Francisco, Calif., are wearable stick-on monitoring devices that are typically worn on the upper left pectoral region to respectively provide continuous and looping ECG recording. The location is used to simulate surgically implanted monitors. Both of these devices are prescription-only and for single patient use. The ZIO XT Patch device is limited to a 14-day monitoring period, while the electrodes only of the ZIO Event Card device can be worn for up to 30 days. The ZIO XT Patch

device combines both electronic recordation components, including battery, and physical electrodes into a unitary assembly that adheres to the patient's skin. The ZIO XT Patch device uses adhesive sufficiently strong to support the weight of both the monitor and the electrodes over an extended period of time and to resist disadherence from the patient's body, albeit at the cost of disallowing removal or relocation during the monitoring period. Moreover, throughout monitoring, the battery is continually depleted and battery capacity can potentially limit overall monitoring duration. The ZIO Event Card device is a form of downsized Holter monitor with a recorder component that must be removed temporarily during baths or other activities that could damage the non-waterproof electronics. Both devices represent compromises between length of wear and quality of ECG monitoring, especially with respect to ease of long term use, female-friendly fit, and quality of atrial (P-wave) signals.

Therefore, a need remains for an extended wear continuously recording ECG monitor practicably capable of being worn for a long period of time in both men and women and capable of recording atrial signals reliably.

A further need remains for a device capable of recording signals ideal for arrhythmia discrimination, especially a device designed for atrial activity recording.

#### SUMMARY

Physiological monitoring can be provided through a wearable monitor that includes two components, a flexible extended wear electrode patch and a removable reusable monitor recorder. The wearable monitor sits centrally (in the midline) on the patient's chest along the sternum oriented top-to-bottom. The placement of the wearable monitor in a location at the sternal midline (or immediately to either side of the sternum), with its unique narrow "hourglass"-like shape, benefits long-term extended wear by removing the requirement that ECG electrodes be continually placed in the same spots on the skin throughout the monitoring period. Instead, the patient is free to place an electrode patch anywhere within the general region of the sternum. In addition, power is provided through a battery provided on the electrode patch, which avoids having to either periodically open the housing of the monitor recorder for the battery replacement, which also creates the potential for moisture intrusion and human error, or to recharge the battery, which can potentially take the monitor recorder off line for hours at a time. In addition, the electrode patch is intended to be disposable, while the monitor recorder is a reusable component. Thus, each time that the electrode patch is replaced, a fresh battery is provided for the use of the monitor recorder.

One embodiment provides an extended wear electrocardiography and physiological sensor monitor recorder that includes a sealed housing configured to be removably secured into a receptacle on an electrode patch that has a battery electrically interfaced to a pair of electrical pads on the receptacle. The sealed housing also includes a set of electrical contacts that protrude from a bottom surface and correspond with further electrical pads on the receptacle. Electronic circuitry is provided within the sealed housing and includes a micro-controller operable to execute under micro-programmable control, an electrographic front end circuit electrically interfaced to the micro-controller and operable to sense electrocardiographic signals through electrocardiographic electrodes provided on the electrode patch,

and a flash memory electrically interfaced with the micro-controller and operable to store samples of the electrocardiographic signals.

A further embodiment provides an extended wear electrocardiography and physiological sensor monitor that includes an electrode patch having a flexible backing formed of an elongated strip and a pair of electrocardiographic electrodes conductively exposed on a contact surface of each end of the elongated strip. A receptacle is adhered to an outward-facing side of the elongated strip opposite the contact surface and includes a plurality of electrical pads. A battery is electrically interfaced to a pair of the electrical pads on the receptacle. A flexible circuit is affixed on each end of the elongated strip and includes a pair of circuit traces electrically coupled to the pair of electrocardiographic electrodes and another pair of the electrical pads. An electrocardiography monitor includes a sealed housing configured to be removably secured into the receptacle on the electrode patch and has a set of electrical contacts that protrude from a bottom surface and correspond with further electrical pads on the receptacle. Electronic circuitry is provided within the sealed housing and includes a micro-controller operable to execute under micro-programmable control, an electrographic front end circuit electrically interfaced to the micro-controller and operable to sense electrocardiographic signals through the electrocardiographic electrodes provided on the electrode patch, and a flash memory electrically interfaced with the micro-controller and operable to store samples of the electrocardiographic signals.

The monitoring patch is especially suited to the female anatomy. The narrow longitudinal midsection can fit nicely within the intermammary cleft of the breasts without inducing discomfort, whereas conventional patch electrodes are wide and, if adhered between the breasts, would cause chafing, irritation, frustration, and annoyance, leading to low patient compliance.

The foregoing aspects enhance ECG monitoring performance and quality facilitating long-term ECG recording, critical to accurate arrhythmia diagnosis.

In addition, the foregoing aspects enhance comfort in women (and certain men), but not irritation of the breasts, by placing the monitoring patch in the best location possible for optimizing the recording of cardiac signals from the atrium, another feature critical to proper arrhythmia diagnosis.

Still other embodiments will become readily apparent to those skilled in the art from the following detailed description, wherein are described embodiments by way of illustrating the best mode contemplated. As will be realized, other and different embodiments are possible and the embodiments' several details are capable of modifications in various obvious respects, all without departing from their spirit and the scope. Accordingly, the drawings and detailed description are to be regarded as illustrative in nature and not as restrictive.

#### BRIEF DESCRIPTION OF THE DRAWINGS

FIGS. 1 and 2 are diagrams showing, by way of examples, an extended wear electrocardiography and physiological sensor monitor, including a monitor recorder in accordance with one embodiment, respectively fitted to the sternal region of a female patient and a male patient.

FIG. 3 is a perspective view showing an extended wear electrode patch with a monitor recorder in accordance with one embodiment inserted.

FIG. 4 is a perspective view showing the monitor recorder of FIG. 3.

FIG. 5 is a perspective view showing the extended wear electrode patch of FIG. 3 without a monitor recorder inserted.

FIG. 6 is a bottom plan view of the monitor recorder of FIG. 3.

FIG. 7 is a top view showing the flexible circuit of the extended wear electrode patch of FIG. 3 when mounted above the flexible backing.

FIG. 8 is a functional block diagram showing the component architecture of the circuitry of the monitor recorder of FIG. 3.

FIG. 9 is a functional block diagram showing the circuitry of the extended wear electrode patch of FIG. 3.

FIG. 10 is a flow diagram showing a monitor recorder-implemented method for monitoring ECG data for use in the monitor recorder of FIG. 3.

FIG. 11 is a graph showing, by way of example, a typical ECG waveform.

#### DETAILED DESCRIPTION

Physiological monitoring can be provided through a wearable monitor that includes two components, a flexible extended wear electrode patch and a removable reusable monitor recorder. FIGS. 1 and 2 are diagrams showing, by way of examples, an extended wear electrocardiography and physiological sensor monitor 12, including a monitor recorder 14 in accordance with one embodiment, respectively fitted to the sternal region of a female patient 10 and a male patient 11. The wearable monitor 12 sits centrally (in the midline) on the patient's chest along the sternum 13 oriented top-to-bottom with the monitor recorder 14 preferably situated towards the patient's head. In a further embodiment, the orientation of the wearable monitor 12 can be corrected post-monitoring, as further described infra. The electrode patch 15 is shaped to fit comfortably and conformal to the contours of the patient's chest approximately centered on the sternal midline 16 (or immediately to either side of the sternum 13). The distal end of the electrode patch 15 extends towards the Xiphoid process and, depending upon the patient's build, may straddle the region over the Xiphoid process. The proximal end of the electrode patch 15, located under the monitor recorder 14, is below the manubrium and, depending upon patient's build, may straddle the region over the manubrium.

The placement of the wearable monitor 12 in a location at the sternal midline 16 (or immediately to either side of the sternum 13) significantly improves the ability of the wearable monitor 12 to cutaneously sense cardiac electric signals, particularly the P-wave (or atrial activity) and, to a lesser extent, the QRS interval signals in the ECG waveforms that indicate ventricular activity. The sternum 13 overlies the right atrium of the heart and the placement of the wearable monitor 12 in the region of the sternal midline 13 puts the ECG electrodes of the electrode patch 15 in a location better adapted to sensing and recording P-wave signals than other placement locations, say, the upper left pectoral region. In addition, placing the lower or inferior pole (ECG electrode) of the electrode patch 15 over (or near) the Xiphoid process facilitates sensing of right ventricular activity and provides superior recordation of the QRS interval.

During use, the electrode patch 15 is first adhered to the skin along the sternal midline 16 (or immediately to either side of the sternum 13). A monitor recorder 14 is then snapped into place on the electrode patch 15 to initiate ECG monitoring. FIG. 3 is a perspective view showing an

extended wear electrode patch 15 with a monitor recorder 14 in accordance with one embodiment inserted. The body of the electrode patch 15 is preferably constructed using a flexible backing 20 formed as an elongated strip 21 of wrap knit or similar stretchable material with a narrow longitudinal mid-section 23 evenly tapering inward from both sides. A pair of cut-outs 22 between the distal and proximal ends of the electrode patch 15 create a narrow longitudinal midsection 23 or "isthmus" and defines an elongated "hour-glass"-like shape, when viewed from above.

The electrode patch 15 incorporates features that significantly improve wearability, performance, and patient comfort throughout an extended monitoring period. During wear, the electrode patch 15 is susceptible to pushing, pulling, and torquing movements, including compressional and torsional forces when the patient bends forward, and tensile and torsional forces when the patient leans backwards. To counter these stress forces, the electrode patch 15 incorporates strain and crimp reliefs, such as described in commonly-assigned U.S. Patent, entitled "Extended Wear Electrocardiography Patch," U.S. Pat. No. 9,545,204, issued on Jan. 17, 2017, the disclosure of which is incorporated by reference. In addition, the cut-outs 22 and longitudinal midsection 23 help minimize interference with and discomfort to breast tissue, particularly in women (and gynecomastic men). The cut-outs 22 and longitudinal midsection 23 further allow better conformity of the electrode patch 15 to sternal bowing and to the narrow isthmus of flat skin that can occur along the bottom of the intermammary cleft between the breasts, especially in buxom women. The cut-outs 22 and longitudinal midsection 23 help the electrode patch 15 fit nicely between a pair of female breasts in the intermammary cleft. Still other shapes, cut-outs and conformities to the electrode patch 15 are possible.

The monitor recorder 14 removably and reusable snaps into an electrically non-conductive receptacle 25 during use. The monitor recorder 14 contains electronic circuitry for recording and storing the patient's electrocardiography as sensed via a pair of ECG electrodes provided on the electrode patch 15, as further described infra beginning with reference to FIG. 8. The non-conductive receptacle 25 is provided on the top surface of the flexible backing 20 with a retention catch 26 and tension clip 27 molded into the non-conductive receptacle 25 to conformably receive and securely hold the monitor recorder 14 in place.

The monitor recorder 14 includes a sealed housing that snaps into place in the non-conductive receptacle 25. FIG. 4 is a perspective view showing the monitor recorder 14 of FIG. 3. The sealed housing 50 of the monitor recorder 14 intentionally has a rounded isosceles trapezoidal-like shape 52, when viewed from above, such as described in commonly-assigned U.S. Design Patent, entitled "Electrocardiography Monitor," U.S. Pat. No. D717,955, issued on Nov. 18, 2014, the disclosure of which is incorporated by reference. The edges 51 along the top and bottom surfaces are rounded for patient comfort. The sealed housing 50 is approximately 47 mm long, 23 mm wide at the widest point, and 7 mm high, excluding a patient-operable tactile-feedback button 55. The sealed housing 50 can be molded out of polycarbonate, ABS, or an alloy of those two materials. The button 55 is waterproof and the button's top outer surface is molded silicon rubber or similar soft pliable material. A retention detent 53 and tension detent 54 are molded along the edges of the top surface of the housing 50 to respectively engage the retention catch 26 and the tension clip 27 molded into non-conductive receptacle 25. Other shapes, features, and conformities of the sealed housing 50 are possible.

The electrode patch 15 is intended to be disposable. The monitor recorder 14, however, is reusable and can be transferred to successive electrode patches 15 to ensure continuity of monitoring. The placement of the wearable monitor 12 in a location at the sternal midline 16 (or immediately to either side of the sternum 13) benefits long-term extended wear by removing the requirement that ECG electrodes be continually placed in the same spots on the skin throughout the monitoring period. Instead, the patient is free to place an electrode patch 15 anywhere within the general region of the sternum 13.

As a result, at any point during ECG monitoring, the patient's skin is able to recover from the wearing of an electrode patch 15, which increases patient comfort and satisfaction, while the monitor recorder 14 ensures ECG monitoring continuity with minimal effort. A monitor recorder 14 is merely unsnapped from a worn out electrode patch 15, the worn out electrode patch 15 is removed from the skin, a new electrode patch 15 is adhered to the skin, possibly in a new spot immediately adjacent to the earlier location, and the same monitor recorder 14 is snapped into the new electrode patch 15 to reinitiate and continue the ECG monitoring.

During use, the electrode patch 15 is first adhered to the skin in the sternal region. FIG. 5 is a perspective view showing the extended wear electrode patch 15 of FIG. 3 without a monitor recorder 14 inserted. A flexible circuit 32 is adhered to each end of the flexible backing 20. A distal circuit trace 33 and a proximal circuit trace (not shown) electrically couple ECG electrodes (not shown) to a pair of electrical pads 34. The electrical pads 34 are provided within a moisture-resistant seal 35 formed on the bottom surface of the non-conductive receptacle 25. When the monitor recorder 14 is securely received into the non-conductive receptacle 25, that is, snapped into place, the electrical pads 34 interface to electrical contacts (not shown) protruding from the bottom surface of the monitor recorder 14, and the moisture-resistant seal 35 enables the monitor recorder 14 to be worn at all times, even during bathing or other activities that could expose the monitor recorder 14 to moisture.

In addition, a battery compartment 36 is formed on the bottom surface of the non-conductive receptacle 25, and a pair of battery leads (not shown) electrically interface the battery to another pair of the electrical pads 34. The battery contained within the battery compartment 35 can be replaceable, rechargeable or disposable.

The monitor recorder 14 draws power externally from the battery provided in the non-conductive receptacle 25, thereby uniquely obviating the need for the monitor recorder 14 to carry a dedicated power source. FIG. 6 is a bottom plan view of the monitor recorder 14 of FIG. 3. A cavity 58 is formed on the bottom surface of the sealed housing 50 to accommodate the upward projection of the battery compartment 36 from the bottom surface of the non-conductive receptacle 25, when the monitor recorder 14 is secured in place on the non-conductive receptacle 25. A set of electrical contacts 56 protrude from the bottom surface of the sealed housing 50 and are arranged in alignment with the electrical pads 34 provided on the bottom surface of the non-conductive receptacle 25 to establish electrical connections between the electrode patch 15 and the monitor recorder 14. In addition, a seal coupling 57 circumferentially surrounds the set of electrical contacts 56 and securely mates with the moisture-resistant seal 35 formed on the bottom surface of the non-conductive receptacle 25.

The placement of the flexible backing 20 on the sternal midline 16 (or immediately to either side of the sternum 13)

also helps to minimize the side-to-side movement of the wearable monitor 12 in the left- and right-handed directions during wear. To counter the dislodgment of the flexible backing 20 due to compressional and torsional forces, a layer of non-irritating adhesive, such as hydrocolloid, is provided at least partially on the underside, or contact surface of the flexible backing 20, but only on the distal end 30 and the proximal end 31. As a result, the underside, or contact surface of the longitudinal midsection 23 does not have an adhesive layer and remains free to move relative to the skin. Thus, the longitudinal midsection 23 forms a crimp relief that respectively facilitates compression and twisting of the flexible backing 20 in response to compressional and torsional forces. Other forms of flexible backing crimp reliefs are possible.

Unlike the flexible backing 20, the flexible circuit 32 is only able to bend and cannot stretch in a planar direction. The flexible circuit 32 can be provided either above or below the flexible backing 20. FIG. 7 is a top view showing the flexible circuit 32 of the extended wear electrode patch 15 of FIG. 3 when mounted above the flexible backing 20. A distal ECG electrode 38 and proximal ECG electrode 39 are respectively coupled to the distal and proximal ends of the flexible circuit 32. A strain relief 40 is defined in the flexible circuit 32 at a location that is partially underneath the battery compartment 36 when the flexible circuit 32 is affixed to the flexible backing 20. The strain relief 40 is laterally extendable to counter dislodgment of the ECG electrodes 38, 39 due to tensile and torsional forces. A pair of strain relief cutouts 41 partially extend transversely from each opposite side of the flexible circuit 32 and continue longitudinally towards each other to define in 'S'-shaped pattern, when viewed from above. The strain relief respectively facilitates longitudinal extension and twisting of the flexible circuit 32 in response to tensile and torsional forces. Other forms of circuit board strain relief are possible.

ECG monitoring and other functions performed by the monitor recorder 14 are provided through a micro controlled architecture. FIG. 8 is a functional block diagram showing the component architecture of the circuitry 60 of the monitor recorder 14 of FIG. 3. The circuitry 60 is externally powered through a battery provided in the non-conductive receptacle 25 (shown in FIG. 5). Both power and raw ECG signals, which originate in the pair of ECG electrodes 38, 39 (shown in FIG. 7) on the distal and proximal ends of the electrode patch 15, are received through an external connector 65 that mates with a corresponding physical connector on the electrode patch 15. The external connector 65 includes the set of electrical contacts 56 that protrude from the bottom surface of the sealed housing 50 and which physically and electrically interface with the set of pads 34 provided on the bottom surface of the non-conductive receptacle 25. The external connector includes electrical contacts 56 for data download, microcontroller communications, power, analog inputs, and a peripheral expansion port. The arrangement of the pins on the electrical connector 65 of the monitor recorder 14 and the device into which the monitor recorder 14 is attached, whether an electrode patch 15 or download station (not shown), follow the same electrical pin assignment convention to facilitate interoperability. The external connector 65 also serves as a physical interface to a download station that permits the retrieval of stored ECG monitoring data, communication with the monitor recorder 14, and performance of other functions.

Operation of the circuitry 60 of the monitor recorder 14 is managed by a microcontroller 61. The micro-controller 61 includes a program memory unit containing internal flash

memory that is readable and writeable. The internal flash memory can also be programmed externally. The microcontroller 61 draws power externally from the battery provided on the electrode patch 15 via a pair of the electrical contacts 56. The microcontroller 61 connects to the ECG front end circuit 63 that measures raw cutaneous electrical signals and generates an analog ECG signal representative of the electrical activity of the patient's heart over time.

The circuitry 60 of the monitor recorder 14 also includes a flash memory 62, which the micro-controller 61 uses for storing ECG monitoring data and other physiology and information. The flash memory 62 also draws power externally from the battery provided on the electrode patch 15 via a pair of the electrical contacts 56. Data is stored in a serial flash memory circuit, which supports read, erase and program operations over a communications bus. The flash memory 62 enables the microcontroller 61 to store digitized ECG data. The communications bus further enables the flash memory 62 to be directly accessed externally over the external connector 65 when the monitor recorder 14 is interfaced to a download station.

The circuitry 60 of the monitor recorder 14 further includes an actigraphy sensor 64 implemented as a 3-axis accelerometer. The accelerometer may be configured to generate interrupt signals to the microcontroller 61 by independent initial wake up and free fall events, as well as by device position. In addition, the actigraphy provided by the accelerometer can be used during post-monitoring analysis to correct the orientation of the monitor recorder 14 if, for instance, the monitor recorder 14 has been inadvertently installed upside down, that is, with the monitor recorder 14 oriented on the electrode patch 15 towards the patient's feet, as well as for other event occurrence analyses.

The microcontroller 61 includes an expansion port 68 that also utilizes the communications bus. External devices, separately drawing power externally from the battery provided on the electrode patch 15 or other source, can interface to the microcontroller 61 over the expansion port in half duplex mode. For instance, an external physiology sensor can be provided as part of the circuitry 60 of the monitor recorder 14, or can be provided on the electrode patch 15 with communication with the micro-controller 61 provided over one of the electrical contacts 56. The physiology sensor can include an SpO<sub>2</sub> sensor, blood pressure sensor, temperature sensor, respiratory rate sensor, glucose sensor, airflow sensor, volumetric pressure sensing, or other types of sensor or telemetric input sources. In a further embodiment, a wireless interface for interfacing with other wearable (or implantable) physiology monitors, as well as data offload and programming, can be provided as part of the circuitry 60 of the monitor recorder 14, or can be provided on the electrode patch 15 with communication with the microcontroller 61 provided over one of the electrical contacts 56.

Finally, the circuitry 60 of the monitor recorder 14 includes patient-interfaceable components, including a tactile feedback button 66, which a patient can press to mark events or to perform other functions, and a buzzer 67, such as a speaker, magnetic resonator or piezoelectric buzzer. The buzzer 67 can be used by the microcontroller 61 to output feedback to a patient such as to confirm power up and initiation of ECG monitoring. Still other components as part of the circuitry 60 of the monitor recorder 14 are possible.

While the monitor recorder 14 operates under micro control, most of the electrical components of the electrode patch 15 operate passively. FIG. 9 is a functional block diagram showing the circuitry 70 of the extended wear electrode patch 15 of FIG. 3. The circuitry 70 of the

electrode patch 15 is electrically coupled with the circuitry 60 of the monitor recorder 14 through an external connector 74. The external connector 74 is terminated through the set of pads 34 provided on the bottom of the non-conductive receptacle 25, which electrically mate to corresponding electrical contacts 56 protruding from the bottom surface of the sealed housing 50 to electrically interface the monitor recorder 14 to the electrode patch 15.

The circuitry 70 of the electrode patch 15 performs three primary functions. First, a battery 71 is provided in a battery compartment formed on the bottom surface of the non-conductive receptacle 25. The battery 71 is electrically interfaced to the circuitry 60 of the monitor recorder 14 as a source of external power. The unique provisioning of the battery 71 on the electrode patch 15 provides several advantages. First, the locating of the battery 71 physically on the electrode patch 15 lowers the center of gravity of the overall wearable monitor 12 and thereby helps to minimize shear forces and the effects of movements of the patient and clothing. Moreover, the housing 50 of the monitor recorder 14 is sealed against moisture and providing power externally avoids having to either periodically open the housing 50 for the battery replacement, which also creates the potential for moisture intrusion and human error, or to recharge the battery, which can potentially take the monitor recorder 14 off line for hours at a time. In addition, the electrode patch 15 is intended to be disposable, while the monitor recorder 14 is a reusable component. Each time that the electrode patch 15 is replaced, a fresh battery is provided for the use of the monitor recorder 14, which enhances ECG monitoring performance quality and duration of use. Finally, the architecture of the monitor recorder 14 is open, in that other physiology sensors or components can be added by virtue of the expansion port of the microcontroller 61. Requiring those additional sensors or components to draw power from a source external to the monitor recorder 14 keeps power considerations independent of the monitor recorder 14. Thus, a battery of higher capacity could be introduced when needed to support the additional sensors or components without effecting the monitor recorders circuitry 60.

Second, the pair of ECG electrodes 38, 39 respectively provided on the distal and proximal ends of the flexible circuit 32 are electrically coupled to the set of pads 34 provided on the bottom of the non-conductive receptacle 25 by way of their respective circuit traces 33, 37. The signal ECG electrode 39 includes a protection circuit 72, which is an inline resistor that protects the patient from excessive leakage current.

Last, in a further embodiment, the circuitry 70 of the electrode patch 15 includes a cryptographic circuit 73 to authenticate an electrode patch 15 for use with a monitor recorder 14. The cryptographic circuit 73 includes a device capable of secure authentication and validation. The cryptographic device 73 ensures that only genuine, non-expired, safe, and authenticated electrode patches 15 are permitted to provide monitoring data to a monitor recorder 14.

The monitor recorder 14 continuously monitors the patient's heart rate and physiology. FIG. 10 is a flow diagram showing a monitor recorder-implemented method 100 for monitoring ECG data for use in the monitor recorder 14 of FIG. 3. Initially, upon being connected to the set of pads 34 provided with the non-conductive receptacle 25 when the monitor recorder 14 is snapped into place, the microcontroller 61 executes a power up sequence (step 101). During the power up sequence, the voltage of the battery 71 is checked, the state of the flash memory 62 is confirmed, both in terms of operability check and available capacity,

and microcontroller operation is diagnostically confirmed. In a further embodiment, an authentication procedure between the microcontroller 61 and the electrode patch 15 are also performed.

Following satisfactory completion of the power up sequence, an iterative processing loop (steps 102-109) is continually executed by the microcontroller 61. During each iteration (step 102) of the processing loop, the ECG frontend 63 (shown in FIG. 8) continually senses the cutaneous ECG electrical signals (step 103) via the ECG electrodes 38, 29 and is optimized to maintain the integrity of the P-wave. A sample of the ECG signal is read (step 104) by the microcontroller 61 by sampling the analog ECG signal output front end 63. FIG. 11 is a graph showing, by way of example, a typical ECG waveform 110. The x-axis represents time in approximate units of tenths of a second. The y-axis represents cutaneous electrical signal strength in approximate units of millivolts. The P-wave 111 has a smooth, normally upward, that is, positive, waveform that indicates atrial depolarization. The QRS complex usually begins with the downward deflection of a Q wave 112, followed by a larger upward deflection of an R-wave 113, and terminated with a downward waveform of the S wave 114, collectively representative of ventricular depolarization. The T wave 115 is normally a modest upward waveform, representative of ventricular depolarization, while the U wave 116, often not directly observable, indicates the recovery period of the Purkinje conduction fibers.

Sampling of the R-to-R interval enables heart rate information derivation. For instance, the R-to-R interval represents the ventricular rate and rhythm, while the P-to-P interval represents the atrial rate and rhythm. Importantly, the PR interval is indicative of atrioventricular (AV) conduction time and abnormalities in the PR interval can reveal underlying heart disorders, thus representing another reason why the P-wave quality achievable by the extended wear ambulatory electrocardiography and physiological sensor monitor described herein is medically unique and important. The long-term observation of these ECG indicia, as provided through extended wear of the wearable monitor 12, provides valuable insights to the patient's cardiac function and overall well-being.

Each sampled ECG signal, in quantized and digitized form, is temporarily staged in buffer (step 105), pending compression preparatory to storage in the flash memory 62 (step 106). Following compression, the compressed ECG digitized sample is again buffered (step 107), then written to the flash memory 62 (step 108) using the communications bus. Processing continues (step 109), so long as the monitoring recorder 14 remains connected to the electrode patch 15 (and storage space remains available in the flash memory 62), after which the processing loop is exited and execution terminates. Still other operations and steps are possible.

While the invention has been particularly shown and described as referenced to the embodiments thereof, those skilled in the art will understand that the foregoing and other changes in form and detail may be made therein without departing from the spirit and scope.

What is claimed is:

1. An extended wear electrocardiography and physiological sensor monitor recorder, comprising:
  - a sealed housing having a rounded isosceles trapezoid shape with substantially straight edge on a proximal end that is longer than a substantially straight edge on a distal end and configured to be removably secured

into a receptacle on an electrode patch that comprises a battery electrically interfaced to a pair of electrical pads on the receptacle;

a set of electrical contacts that protrude from a bottom surface of the proximal end of the sealed housing and correspond with further electrical pads on the receptacle;

a patient feedback button located on the proximal end of the sealed housing on a surface opposite the electrical contacts on the bottom surface; and

electronic circuitry comprised within the sealed housing, comprising:

an electrographic front end circuit operable to sense electrocardiographic signals through electrocardiographic electrodes provided on the electrode patch;

a micro-controller electrically interfaced to the electrocardiographic front end circuit and operable to execute under micro-programmable control to sample the electrocardiographic signals sensed by the electrocardiographic front end circuit, to stage each electrocardiographic signal sample in a buffer, to compress each of the staged electrocardiographic signal samples, to further buffer each of the compressed electrocardiographic signal samples, and to write the buffered electrocardiographic signal samples to memory; and

a flash memory electrically interfaced with the micro-controller and operable to store the buffered samples of the electrocardiographic signals.

2. An electrocardiography and physiological sensor monitor recorder according to claim 1, wherein the micro-controller executes a power up sequence during which the battery on the electrode patch is checked, a state of the flash memory is confirmed, and operation of the micro-controller is confirmed.

3. An electrocardiography and physiological sensor monitor recorder according to claim 1, wherein the sealed housing is removed from the electrode patch and removably secured into a further receptacle on a further electrode patch.

4. An electrocardiography and physiological sensor monitor recorder according to claim 1, the electrode patch further comprising:

a flexible backing formed of an elongated strip of stretchable material with a narrow longitudinal midsection and, on each end, a contact surface at least partially coated with an adhesive dressing;

a pair of the electrocardiographic electrodes conductively exposed on the contact surface of each end of the elongated strip; and

a flexible circuit affixed on each end of the elongated strip and comprising a pair of circuit traces electrically coupled to the pair of the electrocardiographic electrodes and a different pair of the electrical pads.

5. An electrocardiography and physiological sensor monitor recorder according to claim 1, further comprising:

an expansion port operatively interconnected to the micro-controller;

a physiology sensor comprised within the electrode patch and operable to sense physiology and to draw power from the battery via battery leads, the physiology sensor electrically interfaced with the micro-controller over the expansion port; and;

the flash memory further operable through the expansion port to store samples of the physiology sensed by the physiology sensor.

6. An electrocardiography and physiological sensor monitor recorder according to claim 5, wherein the physiology

sensor is selected from the group comprising an SpO2 sensor, a blood pressure sensor, a temperature sensor, a respiratory rate sensor, a glucose sensor, an air flow sensor, and a volumetric pressure sensor.

7. An electrocardiography and physiological sensor monitor recorder according to claim 1, further comprising:

- an expansion port operatively interconnected to the micro-controller;
- a physiology sensor comprised within the sealed housing and operable to sense physiology and to draw power from the battery, the physiology sensor electrically interfaced with the micro-controller over the expansion port; and

the flash memory further operable through the expansion port to store samples of the physiology sensed by the physiology sensor.

8. An electrocardiography and physiological sensor monitor recorder according to claim 7, wherein the physiology sensor is selected from the group comprising an SpO2 sensor, a blood pressure sensor, a temperature sensor, a respiratory rate sensor, a glucose sensor, an air flow sensor, and a volumetric pressure sensor.

9. An extended wear electrocardiography and physiological sensor monitor, comprising:

- an electrode patch, comprising:
  - a flexible backing formed of an elongated strip;
  - a pair of electrocardiographic electrodes conductively exposed on a contact surface of each end of the elongated strip;
  - a receptacle adhered to an outward-facing side of the elongated strip opposite the contact surface and comprising a plurality of electrical pads;
  - a battery electrically interfaced to a pair of the electrical pads on the receptacle; and
  - a flexible circuit affixed on each end of the elongated strip and comprising a pair of circuit traces electrically coupled to the pair of electrocardiographic electrodes and another pair of the electrical pads; and
- an electrocardiography monitor having a sealed housing formed as a rounded isosceles trapezoid shape with a substantially straight edge on a proximal end that is longer than a substantially straight edge on a distal end and configured to be removably secured into the receptacle on the electrode patch and comprising:
  - a set of electrical contacts that protrude from a bottom surface on the proximal end of the sealed housing and correspond with further electrical pads on the receptacle;
  - a patient feedback button located on the proximal end of the sealed housing on a surface opposite the electrical contacts on the bottom surface; and
  - electronic circuitry comprised within the sealed housing, comprising:
    - a micro-controller operable to execute under micro-programmable control;
    - an electrographic front end circuit electrically interfaced to the micro-controller and operable to sense electrocardiographic signals through the electrocardiographic electrodes provided on the electrode patch;
    - a micro-controller electrically interfaced to the electrocardiographic front end circuit and operable to execute under micro-programmable control to sample the electrocardiographic signals sensed by

the electrocardiographic front end circuit, to stage each electrocardiographic signal sample in a buffer, to compress each of the staged electrocardiographic signal samples, to further buffer each of the compressed electrocardiographic signal samples, and to write the buffered electrocardiographic signal samples to memory; and

- a flash memory electrically interfaced with the micro-controller and operable to store the buffered samples of the electrocardiographic signals.

10. An electrocardiography and physiological sensor monitor according to claim 9, wherein the micro-controller executes a power up sequence during which the battery on the electrode patch is checked, a state of the flash memory is confirmed, and operation of the micro-controller is confirmed.

11. An electrocardiography and physiological sensor monitor according to claim 9, wherein the sealed housing is removed from the electrode patch and removably secured into a further receptacle on a further electrode patch.

12. An electrocardiography and physiological sensor monitor according to claim 9, the electrode patch further comprising:

- a cryptographic circuit to authenticate the electrode patch for use with the electrocardiography monitor.

13. An electrocardiography and physiological sensor monitor according to claim 9, further comprising:

- an expansion port operatively interconnected to the micro-controller and electrically coupled to at least one of the electrical pads;
- a physiology sensor comprised within the disposable extended wear electrode patch and operable to sense physiology and to draw power from the battery via battery leads, the physiology sensor electrically interfaced with the micro-controller over the expansion port; and
- the flash memory further operable through the expansion port to store samples of the physiology sensed by the physiology sensor.

14. An electrocardiography and physiological sensor monitor according to claim 13, wherein the physiology sensor is selected from the group comprising an SpO2 sensor, a blood pressure sensor, a temperature sensor, a respiratory rate sensor, a glucose sensor, an air flow sensor, and a volumetric pressure sensor.

15. An electrocardiography and physiological sensor monitor according to claim 9, further comprising:

- an expansion port operatively interconnected to the micro-controller;
- a physiology sensor comprised within the electrocardiography monitor and operable to sense physiology and to draw power from a battery via a pair of the electrical pads, the physiology sensor electrically interfaced with the micro-controller over the expansion port; and
- the flash memory further operable through the expansion port to store samples of the physiology sensed by the physiology sensor.

16. An electrocardiography and physiological sensor monitor according to claim 15, wherein the physiology sensor is selected from the group comprising an SpO2 sensor, a blood pressure sensor, a temperature sensor, a respiratory rate sensor, a glucose sensor, an air flow sensor, and a volumetric pressure sensor.

|                |   |         |            |
|----------------|---|---------|------------|
| 专利名称(译)        | 长时间佩戴动态心电图和生理传感器监护仪   |         |            |
| 公开(公告)号        | <a href="#">US10478083</a>  | 公开(公告)日 | 2019-11-19 |
| 申请号            | US15/676896   | 申请日     | 2017-08-14 |
| [标]申请(专利权)人(译) | BARDY诊断   |         |            |
| 申请(专利权)人(译)    | BARDY诊断, INC.   |         |            |
| 当前申请(专利权)人(译)  | BARDY诊断, INC.   |         |            |
| [标]发明人         | FELIX JASON<br>BISHAY JON MIKALSON<br>BARDY GUST H  |         |            |
| 发明人            | FELIX, JASON<br>BISHAY, JON MIKALSON<br>BARDY, GUST H.  |         |            |
| IPC分类号         | A61B5/04 A61B5/0408 A61B5/0452 A61B5/11 A61B5/0432 A61B5/0205 A61B5/00 A61B5/087 A61B5/021 A61B5/145 A61B5/01 A61B5/091 A61B5/1455 G01N27/30 A61B5/08   |         |            |
| CPC分类号         | A61B5/6801 A61B5/04087 A61B5/6823 A61B5/0006 A61B5/0452 A61B5/04325 A61B5/02055 A61B5/04017 A61B5/1117 A61B5/6833 A61B5/04085 A61B5/04525 A61B5/0022 A61B5/1116 A61B5/4809 A61B5/1118 A61B5/0816 A61B2505/07 A61B2560/0412 A61B5/021 A61B2560/045 A61B5/14532 A61B5/14542 A61B5/01 A61B2560/0271 A61B5/087 A61B5/14551 A61B2562/164 G01N27/307 A61B5/7455 A61B5/091 A61B2562/0219 |         |            |
| 优先权            | 61/882403 2013-09-25 US   |         |            |
| 其他公开文献         | US20170340215A1   |         |            |
| 外部链接           | <a href="#">Espacenet</a>   |         |            |

摘要(译)

生理监测可通过可穿戴的监测器提供，该监测器包括两个组件，一个灵活的扩展磨损电极贴片和一个可移动的可重复使用的监测器记录器。可穿戴式监护仪沿着胸骨的上下方向位于患者胸部中央（中线）。将可穿戴式监护仪放置在胸骨中线处（或紧邻胸骨的任一侧）的位置，通过消除在整个监护期间将ECG电极连续放置在皮肤上相同位置的要求，可以延长穿戴时间。取而代之的是，患者可以在胸骨一般区域内的任何地方放置电极贴片。通过电极贴片上的电池提供电源，避免了打开监护仪记录仪的外壳更换电池的麻烦。

100

