



US010332379B2

(12) **United States Patent**  
**Fahey**

(10) **Patent No.:** **US 10,332,379 B2**  
(45) **Date of Patent:** **Jun. 25, 2019**

(54) **REMOTE HEALTH MONITORING SYSTEM**  
(71) Applicant: **InfoBionic, Inc.**, Lowell, MA (US)  
(72) Inventor: **Michael Fahey**, Medway, MA (US)  
(73) Assignee: **INFOBIONIC, INC.**, Lowell, MA (US)  
(\* ) Notice: Subject to any disclaimer, the term of this patent is extended or adjusted under 35 U.S.C. 154(b) by 0 days.

(21) Appl. No.: **14/326,178**  
(22) Filed: **Jul. 8, 2014**

(65) **Prior Publication Data**  
US 2014/0323883 A1 Oct. 30, 2014

**Related U.S. Application Data**  
(63) Continuation of application No. 13/911,213, filed on Jun. 6, 2013, which is a continuation of application (Continued)

(51) **Int. Cl.**  
**A61B 5/00** (2006.01)  
**G08B 21/10** (2006.01)  
(Continued)

(52) **U.S. Cl.**  
CPC ..... **G08B 21/10** (2013.01); **A61B 5/0002** (2013.01); **A61B 5/0006** (2013.01);  
(Continued)

(58) **Field of Classification Search**  
CPC ..... A61B 5/0205; A61B 5/0006; A61B 5/08; A61B 5/0022; A61B 5/0402; A61N 1/37252; G06F 19/3418  
(Continued)

(56) **References Cited**  
U.S. PATENT DOCUMENTS

3,832,994 A 9/1974 Bicher et al.  
4,173,971 A 11/1979 Karz  
(Continued)

FOREIGN PATENT DOCUMENTS

EP 0 959 607 A2 11/1999  
WO WO 01/93756 A2 12/2001  
(Continued)

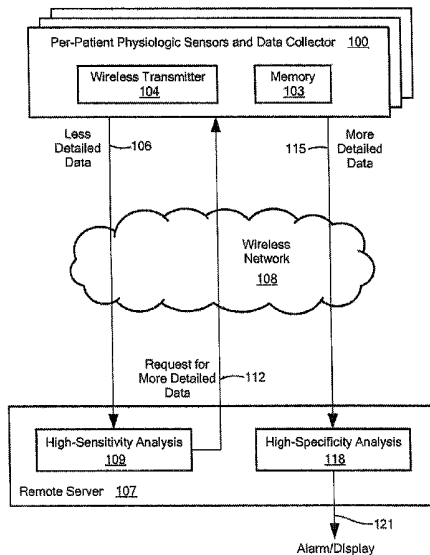
OTHER PUBLICATIONS

International Search Authority, International Search Report and the Written Opinion for International Application No. PCT/US2012/033554 dated Aug. 28, 2012 (15 pages).  
(Continued)

*Primary Examiner* — Tammie K Marlen  
(74) *Attorney, Agent, or Firm* — Bookoff McAndrews, PLLC

(57) **ABSTRACT**  
A data collection system collects and stores physiological data from an ambulatory patient at a high resolution and/or a high data rate (“more detailed data”) and sends a low-resolution and/or downsampled version of the data (“less detailed data”) to a remote server via a wireless network. The server automatically analyzes the less detailed data to detect an anomaly, such as an arrhythmia. A two-tiered analysis scheme is used, where the first tier is more sensitive and less specific than the second tier. If the more sensitive analysis detects or suspects the anomaly, the server signals the data collector to send more detailed data that corresponds to a time period associated with the anomaly. The more specific second tier analyzes the more detailed data to verify the anomaly. The server may also store the received data and make it available to a user, such as via a graphical or tabular display.

**29 Claims, 7 Drawing Sheets**



<b>Related U.S. Application Data</b>						
	No. 13/446,490, filed on Apr. 13, 2012, now Pat. No. 8,478,418.					
(60)	Provisional application No. 61/476,072, filed on Apr. 15, 2011.					
(51)	<b>Int. Cl.</b>					
	<i>G06F 19/00</i> (2018.01)					
	<i>A61B 5/0205</i> (2006.01)					
	<i>A61B 5/08</i> (2006.01)					
	<i>A61B 5/1455</i> (2006.01)					
(52)	<b>U.S. Cl.</b>					
	CPC ..... <i>A61B 5/0022</i> (2013.01); <i>A61B 5/0205</i> (2013.01); <i>A61B 5/08</i> (2013.01); <i>A61B 5/14552</i> (2013.01); <i>G06F 19/3418</i> (2013.01); <i>Y02A 90/26</i> (2018.01)					
(58)	<b>Field of Classification Search</b>					
	USPC ..... 600/509, 523; 607/32, 60					
	See application file for complete search history.					
(56)	<b>References Cited</b>					
	U.S. PATENT DOCUMENTS					
	4,364,397 A	12/1982	Citron et al.	6,589,170 B1	7/2003	Flach et al.
	4,635,646 A	11/1987	Gilles et al.	6,602,191 B2	8/2003	Quy
	4,721,114 A	1/1988	DuFault et al.	6,611,705 B2	8/2003	Hopman et al.
	4,791,933 A	12/1988	Asai et al.	6,648,820 B1	11/2003	Sarel
	4,883,064 A	11/1989	Olson et al.	6,654,631 B1	11/2003	Sahai
	4,905,205 A	2/1990	Rialan	6,664,893 B1	12/2003	Eveland et al.
	4,920,489 A	4/1990	Hubelbank et al.	6,665,385 B2	12/2003	Rogers et al.
	5,025,795 A	6/1991	Kunig	6,694,177 B2	2/2004	Eggers et al.
	5,058,597 A	10/1991	Onoda et al.	6,694,186 B2	2/2004	Bardy
	5,080,105 A	1/1992	Thornton	6,704,595 B2	3/2004	Bardy
	5,090,418 A	2/1992	Squires et al.	6,708,057 B2	3/2004	Morganroth
	5,226,431 A	7/1993	Bible et al.	6,773,396 B2	8/2004	Flach et al.
	5,238,001 A	8/1993	Gallant et al.	6,801,137 B2	10/2004	Eggers
	5,309,920 A	5/1994	Gallant et al.	6,804,558 B2	10/2004	Haller et al.
	5,365,935 A	11/1994	Righter et al.	6,826,425 B2	11/2004	Bardy
	5,417,222 A	5/1995	Dempsey et al.	6,840,904 B2	1/2005	Goldberg
	5,501,229 A	3/1996	Selker et al.	6,856,832 B1	2/2005	Matsumura et al.
	5,502,688 A	3/1996	Recchione et al.	6,871,089 B2	3/2005	Korzinov et al.
	5,544,661 A	8/1996	Davis et al.	6,897,788 B2	5/2005	Khair et al.
	5,564,429 A	10/1996	Bornn et al.	6,913,577 B2	7/2005	Bardy
	5,678,562 A	10/1997	Sellers	6,925,324 B2	8/2005	Shusterman
	5,718,233 A	2/1998	Selker et al.	6,940,403 B2	9/2005	Kail, IV
	5,748,103 A	5/1998	Flach et al.	6,945,934 B2	9/2005	Bardy
	5,782,773 A	7/1998	Kuo et al.	6,957,107 B2	10/2005	Rogers et al.
	5,871,451 A	2/1999	Unger et al.	6,980,112 B2	12/2005	Nee
	5,876,351 A	3/1999	Rohde	6,987,965 B2	1/2006	Ng et al.
	5,944,659 A	8/1999	Flach et al.	7,002,468 B2	2/2006	Eveland et al.
	6,049,730 A	4/2000	Kristbjarnarson	7,016,721 B2	3/2006	Lee et al.
	6,168,563 B1	1/2001	Brown	7,058,444 B2	6/2006	Logan et al.
	6,213,942 B1	4/2001	Flach et al.	7,082,334 B2	7/2006	Boute et al.
	6,225,901 B1	5/2001	Kail, IV	7,092,751 B2	8/2006	Erkkila
	6,238,338 B1	5/2001	DeLuca et al.	7,099,715 B2	8/2006	Korzinov et al.
	6,272,377 B1	8/2001	Sweeney et al.	7,117,037 B2	10/2006	Heibert et al.
	6,280,380 B1	8/2001	Bardy	7,120,485 B2	10/2006	Glass et al.
	6,366,871 B1	4/2002	Geva	7,130,396 B2	10/2006	Rogers et al.
	6,389,308 B1	5/2002	Shusterman	7,156,809 B2	1/2007	Quy
	6,411,840 B1	6/2002	Bardy	7,171,166 B2	1/2007	Ng et al.
	6,416,471 B1	7/2002	Kumar et al.	7,194,300 B2	3/2007	Korzinov
	6,418,340 B1	7/2002	Conley et al.	7,197,357 B2	3/2007	Istvan et al.
	6,441,747 B1	8/2002	Khair et al.	7,212,850 B2	5/2007	Prystowsky et al.
	6,466,806 B1	10/2002	Geva et al.	7,222,054 B2	5/2007	Geva
	6,471,087 B1	10/2002	Shusterman	7,248,916 B2	7/2007	Bardy
	6,485,418 B2	11/2002	Yasushi et al.	7,257,438 B2	8/2007	Kinast
	6,494,731 B1	12/2002	Lovett	7,343,197 B2	3/2008	Shusterman
	6,494,829 B1	12/2002	New, Jr. et al.	7,382,247 B2	6/2008	Welch et al.
	6,496,705 B1	12/2002	Ng et al.	7,403,808 B2	7/2008	Istvan et al.
	6,496,829 B1	12/2002	Nakamura	7,412,281 B2	8/2008	Shen et al.
	6,553,262 B1	4/2003	Lang et al.	7,433,731 B2	10/2008	Matsumara et al.
	6,569,095 B2	5/2003	Eggers	7,477,933 B2	1/2009	Ueyama
				7,509,160 B2	3/2009	Bischoff et al.
				7,539,533 B2	5/2009	Tran
				7,542,878 B2	6/2009	Nanikashvili
				7,552,035 B2	6/2009	Cataltepe et al.
				7,558,623 B2	7/2009	Fischell et al.
				7,580,755 B1	8/2009	Schwartz et al.
				7,587,237 B2	9/2009	Korzinov et al.
				7,593,764 B2	9/2009	Kohls et al.
				7,596,405 B2	9/2009	Kurzweil et al.
				7,630,756 B2	12/2009	Linker
				7,654,965 B2	2/2010	Morganroth
				7,689,439 B2	3/2010	Parker
				7,702,382 B2	4/2010	Xue et al.
				7,706,883 B1	4/2010	Sing
				7,715,905 B2	5/2010	Kurzweil et al.
				7,729,753 B2	6/2010	Kremliovskiy et al.
				7,734,335 B2	6/2010	Kontothanassis et al.
				7,761,143 B2	7/2010	Matsumura et al.
				D621,048 S	8/2010	Severe et al.
				7,783,342 B2	8/2010	Syeda-Mahmood et al.
				7,801,591 B1	9/2010	Shusterman
				7,803,118 B2	9/2010	Reisfeld et al.
				7,803,119 B2	9/2010	Reisfeld
				7,837,629 B2	11/2010	Bardy
				7,844,323 B2	11/2010	Fischell et al.
				7,860,557 B2	12/2010	Istvan et al.
				7,907,996 B2	3/2011	Prystowsky et al.
				7,912,537 B2	3/2011	Lee et al.
				7,933,642 B2	4/2011	Istvan et al.
				7,941,207 B2	5/2011	Korzinov

(56)

## References Cited

## U.S. PATENT DOCUMENTS

7,979,111 B2	7/2011	Acquista	2006/0079797 A1	4/2006	Bischoff et al.
7,996,075 B2	8/2011	Korzinov et al.	2006/0079798 A1	4/2006	Bischoff et al.
7,996,187 B2	8/2011	Nanikashvili et al.	2006/0149156 A1	7/2006	Cochran et al.
8,005,531 B2	8/2011	Xue et al.	2006/0206066 A1	9/2006	Ferek-Petric
8,046,060 B2	10/2011	Simms, Jr.	2006/0229522 A1	10/2006	Barr
RE42,934 E	11/2011	Thompson	2007/0010748 A1	1/2007	Rauch et al.
8,055,332 B2	11/2011	McCabe et al.	2007/0027388 A1	2/2007	Chou
8,064,990 B2	11/2011	Diem et al.	2007/0073266 A1	3/2007	Chmiel et al.
8,073,536 B2	12/2011	Gunderson et al.	2007/0093719 A1	4/2007	Nichols et al.
8,121,673 B2	2/2012	Tran	2007/0130657 A1	6/2007	Rogers et al.
8,126,728 B2	2/2012	Dicks et al.	2007/0179357 A1	8/2007	Bardy
8,126,729 B2	2/2012	Dicks et al.	2007/0179376 A1	8/2007	Gerder
8,126,730 B2	2/2012	Dicks et al.	2007/0191723 A1	8/2007	Prystowsky
8,126,732 B2	2/2012	Dicks et al.	2007/0197878 A1	8/2007	Shklarski
8,126,733 B2	2/2012	Dicks et al.	2007/0208233 A1	9/2007	Kovacs
8,126,734 B2	2/2012	Dicks et al.	2007/0270665 A1	11/2007	Yang et al.
8,126,735 B2	2/2012	Dicks et al.	2007/0276270 A1	11/2007	Tran
8,150,502 B2	4/2012	Kumar et al.	2007/0279217 A1	12/2007	Venkatraman et al.
8,160,682 B2	4/2012	Kumar et al.	2007/0279239 A1	12/2007	Lachenit et al.
8,190,246 B2	5/2012	Belalcazar et al.	2007/0293776 A1	12/2007	Korzinov et al.
8,204,580 B2	6/2012	Kurzweil et al.	2008/0004904 A1	1/2008	Tran
8,224,430 B2	7/2012	Fischell et al.	2008/0097550 A1	4/2008	Dicks et al.
8,225,238 B2	7/2012	Wolk et al.	2008/0097551 A1	4/2008	Dicks et al.
8,244,335 B2	8/2012	Kumar et al.	2008/0097552 A1	4/2008	Dicks et al.
8,255,041 B2	8/2012	Istvan et al.	2008/0097793 A1	4/2008	Dicks et al.
8,255,238 B2	8/2012	Powell et al.	2008/0097908 A1	4/2008	Dicks et al.
8,260,408 B2	9/2012	Ostrow	2008/0097909 A1	4/2008	Dicks et al.
8,290,129 B2	10/2012	Rogers et al.	2008/0097910 A1	4/2008	Dicks et al.
8,301,236 B2	10/2012	Baumann et al.	2008/0097911 A1	4/2008	Dicks et al.
8,301,252 B2	10/2012	Hatlestad et al.	2008/0097912 A1	4/2008	Dicks et al.
8,308,650 B2	11/2012	Bardy	2008/0097913 A1	4/2008	Dicks et al.
8,323,188 B2	12/2012	Tran	2008/0097914 A1	4/2008	Dicks et al.
8,326,407 B2	12/2012	Linker	2008/0097917 A1	4/2008	Dicks et al.
8,328,718 B2	12/2012	Tran	2008/0103370 A1	5/2008	Dicks et al.
8,352,018 B2	1/2013	Xue et al.	2008/0103554 A1	5/2008	Dicks et al.
8,391,962 B2	3/2013	Watanabe	2008/0103555 A1	5/2008	Dicks et al.
8,391,989 B2	3/2013	Hatlestad et al.	2008/0108907 A1*	5/2008	Stahmann et al. .... 600/529
8,396,542 B2	3/2013	Johnson et al.	2008/0139894 A1	6/2008	Szydlo-Moore et al.
8,406,862 B2	3/2013	Hopenfeld	2008/0183502 A1	7/2008	Dicks et al.
8,425,414 B2	4/2013	Eveland	2008/0215120 A1	9/2008	Dicks et al.
8,425,415 B2	4/2013	Tran	2008/0215360 A1	9/2008	Dicks et al.
8,428,703 B2	4/2013	Hopenfeld	2008/0218376 A1	9/2008	Dicks et al.
8,428,705 B2	4/2013	Kurzweil et al.	2008/0224852 A1	9/2008	Dicks et al.
8,449,471 B2	5/2013	Tran	2008/0281215 A1	11/2008	Alhussiny
8,478,389 B1	7/2013	Brockway et al.	2009/0076344 A1	3/2009	Libbus et al.
8,483,807 B2	7/2013	Kurzweil et al.	2009/0076345 A1	3/2009	Manicka et al.
8,509,882 B2	8/2013	Albert et al.	2009/0076350 A1	3/2009	Bly et al.
8,535,223 B2	9/2013	Corroy et al.	2009/0076405 A1	3/2009	Amurthur et al.
8,606,351 B2	12/2013	Wheeler	2009/0099469 A1	4/2009	Flores
8,652,038 B2	2/2014	Tran et al.	2009/0112769 A1	4/2009	Dicks et al.
8,655,441 B2	2/2014	Fletcher et al.	2009/0115628 A1	5/2009	Dicks et al.
8,657,742 B2	2/2014	Neumann	2009/0124869 A1	5/2009	Hu et al.
2001/0023360 A1	9/2001	Nelson et al.	2009/0149718 A1	6/2009	Kim et al.
2001/0047127 A1	11/2001	New et al.	2009/0171227 A1	7/2009	Dziubinski et al.
2002/0082665 A1	6/2002	Haller et al.	2009/0234672 A1	9/2009	Dicks et al.
2002/0143576 A1	10/2002	Nolvak et al.	2009/0261968 A1	10/2009	El-Hamamsy et al.
2002/0156384 A1	10/2002	Eggers et al.	2009/0264783 A1	10/2009	Xi et al.
2003/0028442 A1	2/2003	Wagstaff et al.	2009/0275854 A1	11/2009	Zielinski et al.
2003/0122677 A1	7/2003	Kail, IV	2009/0299207 A1	12/2009	Barr
2003/0172940 A1	9/2003	Rogers et al.	2009/0326981 A1	12/2009	Karknias et al.
2004/0006278 A1	1/2004	Webb et al.	2010/0049006 A1	2/2010	Magar et al.
2004/0100376 A1	5/2004	Lye et al.	2010/0056881 A1	3/2010	Libbus et al.
2004/0127802 A1	7/2004	Istvan et al.	2010/0069735 A1	3/2010	Berkner
2004/0172290 A1	9/2004	Leven	2010/0076325 A1	3/2010	Cho et al.
2004/0260189 A1	12/2004	Eggers et al.	2010/0113895 A1	5/2010	Cho et al.
2005/0004486 A1	1/2005	Glass et al.	2010/0160742 A1	6/2010	Seidl et al.
2005/0049515 A1	3/2005	Misczynski et al.	2010/0198089 A1	8/2010	Litovchick et al.
2005/0101875 A1	5/2005	Semler et al.	2010/0204586 A1	8/2010	Pu et al.
2005/0131308 A1	6/2005	Chio et al.	2010/0249541 A1	9/2010	Geva et al.
2005/0154325 A1	7/2005	Lauter et al.	2010/0249625 A1	9/2010	Lin
2005/0165318 A1	7/2005	Brodnick et al.	2010/0250271 A1	9/2010	Pearce et al.
2005/0182308 A1	8/2005	Bardy	2010/0268103 A1	10/2010	McNamara et al.
2005/0182334 A1	8/2005	Korzinov et al.	2010/0286545 A1	11/2010	Wolfe et al.
2005/0203349 A1	9/2005	Nanikashvili	2010/0298664 A1	11/2010	Baumann et al.
2005/0234307 A1	10/2005	Heinonen et al.	2010/0331649 A1	12/2010	Chou
			2011/0004072 A1	1/2011	Fletcher et al.
			2011/0009711 A1	1/2011	Nanikashvili
			2011/0066042 A1	3/2011	Pandia et al.
			2011/0066555 A1	3/2011	Dicks et al.

(56)

## References Cited

## U.S. PATENT DOCUMENTS

2011/0071364	A1	3/2011	Kuo et al.
2011/0078441	A1	3/2011	Dicks et al.
2011/0090086	A1	4/2011	Dicks et al.
2011/0092835	A1	4/2011	Istvan et al.
2011/0093283	A1	4/2011	Dicks et al.
2011/0093284	A1	4/2011	Dicks et al.
2011/0093285	A1	4/2011	Dicks et al.
2011/0093286	A1	4/2011	Dicks et al.
2011/0093287	A1	4/2011	Dicks et al.
2011/0093297	A1	4/2011	Dicks et al.
2011/0097710	A1	4/2011	Macrae et al.
2011/0098583	A1	4/2011	Pandia et al.
2011/0105928	A1	5/2011	Bojovic et al.
2011/0137133	A1	6/2011	Espina
2011/0144470	A1	6/2011	Mazar et al.
2011/0158430	A1	6/2011	Dicks et al.
2011/0161111	A1	6/2011	Dicks et al.
2011/0166466	A1	7/2011	Chon et al.
2011/0166468	A1	7/2011	Prystowsky et al.
2011/0167250	A1	7/2011	Dicks et al.
2011/0179405	A1	7/2011	Dicks et al.
2011/0245633	A1	10/2011	Goldberg et al.
2011/0270049	A1	11/2011	Katra et al.
2011/0270112	A1	11/2011	Manera et al.
2011/0288379	A1	11/2011	Wu
2011/0301435	A1	12/2011	Albert et al.
2011/0301439	A1	12/2011	Albert et al.
2012/0022387	A1	1/2012	Balda
2012/0101396	A1	4/2012	Solosko et al.
2012/0165616	A1	6/2012	Geva et al.
2012/0179055	A1	7/2012	Tamil et al.
2012/0203124	A1	8/2012	Lim
2012/0215123	A1	8/2012	Kumar et al.
2013/0085364	A1	4/2013	Lu et al.
2013/0109927	A1	5/2013	Menzel
2013/0197322	A1	8/2013	Tran
2013/0204100	A1	8/2013	Acquista
2013/0225967	A1	8/2013	Esposito
2013/0237861	A1	9/2013	Margarida et al.
2013/0237874	A1	9/2013	Zoicas
2013/0245387	A1	9/2013	Patel
2013/0245472	A1	9/2013	Eveland
2013/0253354	A1	9/2013	Fahey
2013/0253355	A1	9/2013	Fahey
2013/0289424	A1	10/2013	Brockway et al.
2013/0303926	A1	11/2013	Kurzweil et al.
2013/0331663	A1	12/2013	Albert et al.
2013/0338516	A1	12/2013	Manera et al.
2013/0338518	A1	12/2013	Zoica

## FOREIGN PATENT DOCUMENTS

WO	WO 01/93756	A3	12/2001
WO	WO 02/082799	A2	10/2002
WO	WO 02/082799	A3	10/2002

## OTHER PUBLICATIONS

International Search Authority, International Search Report and the Written Opinion for International Application No. PCT/US2012/033592 dated Aug. 31, 2012 (14 pages).

Jovanov et al., "Patient Monitoring Using Personal Area Networks of Wireless Intelligent Sensors," Electrical and Computer Engineering Department, University of Alabama in Huntsville, Biomedical Sciences Instrumentation, 37:378-8, 6 pages, 2001.

Hopley et al., "The Magnificent ROC (Receiver Operating Characteristic Curve)," <http://www.anaesthest.com/stats/roc/index.htm>, 26 pages, Sep. 21, 2001.

Chazal et al., "Automatic Classification of Heartbeats Using ECG Morphology and Heartbeat Interval Features," *IEEE Transactions on Biomedical Engineering*, vol. 51, No. 7, pp. 1196-1206, 11 pages, Jul. 2004.

Philips, "Philips Remote Patient Monitoring," Philips Medical Systems, 4 pages, 2007.

Archive.org, "Clinical Policy Bulletin: Cardiac Event Monitors," No. 0073, Aetna, Inc., [web.archive.org\\_web\\_20090514063858\\_](http://www.aetna.com_cpb_medical_data_1_99_0073.html) [http://www.aetna.com\\_cpb\\_medical\\_data\\_1\\_99\\_0073.html](http://www.aetna.com_cpb_medical_data_1_99_0073.html), 10 pages, May 14, 2009.

Center for Technology and Aging, "Technologies for Remote Patient Monitoring in Older Adults," Center for Technology and Aging, Position Paper, Discussion Draft, 30 pages, Dec. 2009.

Edevice, "M2M Solutions for Home Health Monitoring," edevice, [http://www.edevice.com/medical/?gclid=CPCd1fIR\\_KcCFUpN4AodZEyzqO](http://www.edevice.com/medical/?gclid=CPCd1fIR_KcCFUpN4AodZEyzqO), 2 pages, 2010.

MedApps, Inc., "MedApps Mobile Wireless Remote Patient Monitoring," <http://www.medapps.com/>, 3 pages, 2010.

Archive.org, "The Area Under an ROC Curve," <http://web.archive.org/web/20100527211847/http://gim.unmc.edu/dxtests/roc3.htm>, 2 pages, May 27, 2010.

Medical Biostatistics.com, "Sensitivity-Specificity, Bayes' Rule, and Predictives," MedicalBiostatistics.com, <http://www.medicalbiostatistics.com/ROCCurve.pdf>, 4 pages, Sep. 5, 2010.

Medical Biostatistics.com, "ROC Curve," MedicalBiostatistics.com, 9 pages, Sep. 25, 2010/.

IEEE, "Remote Patient Monitoring Service Using Heterogeneous Wireless Access Networks: Architecture and Optimization" Niyato et al. paper abstract, IEEE Xplore Digital Library [http://ieeexplore.ieee.org/xpl/freeabs\\_all.jsp?arnumber=4909280](http://ieeexplore.ieee.org/xpl/freeabs_all.jsp?arnumber=4909280), 1 page, 2011.

TriMed Media Group, Inc., "FDA Green Lights AirStrip Smartphone Patient Monitoring Tool," TriMed Media Group, Inc., [http://cardiovascularbusiness.com/index.php?option=com\\_articles&article=23414&publication=137&view=portals&form=article23414&limitstart=30](http://cardiovascularbusiness.com/index.php?option=com_articles&article=23414&publication=137&view=portals&form=article23414&limitstart=30), 1 page, 2011.

Google Patents, Google Patent Search: "Healthcare Monitoring 'web server' smartphone or mobile," [www.google.com/patents](http://www.google.com/patents), Mar. 9, 2011, 2 pages.

Wikipedia.org, "Holter Monitor," Wikipedia.org, [http://en.wikipedia.org/w/index.php?title=Holter\\_monitor&oldid=417997699](http://en.wikipedia.org/w/index.php?title=Holter_monitor&oldid=417997699), Mar. 9, 2011, 4 pages.

Aetna, Inc., "Clinical Policy Bulletin: Cardiac Event Monitors," No. 0073, Aetna, Inc., [www.aetna.com\\_cpb\\_medical\\_data\\_1\\_99\\_0073.html](http://www.aetna.com_cpb_medical_data_1_99_0073.html), 10 pages, Mar. 11, 2011.

Wikipedia.org, "Receiver Operating Characteristics," Wikipedia.org, [http://en.wikipedia.org/wiki/Receiver\\_operating\\_characteristic](http://en.wikipedia.org/wiki/Receiver_operating_characteristic), 6 pages, Apr. 14, 2011.

International Searching Authority, Invitation to Pay Additional Fees and, Where Applicable, Protest Fee for International Application No. PCT/US2012/033554, 4 pages, Jul. 3, 2012.

International Searching Authority, Invitation to Pay Additional Fees and, Where Applicable, Protest Fee for International Application No. PCT/US2012/033592, 5 pages, Jul. 3, 2012.

Medical Biostatistics.com, "Predictives Based ROC Curve," MedicalBiostatistics.com <http://www.medicalbiostatistics.com/PredictivityBasedROC.pdf>, 3 pages, Sep. 5, 2012.

International Preliminary Report on Patentability, PCT/US2012/033554; dated Oct. 15, 2013.

International Preliminary Report on Patentability; PCT/US2012/033592; dated Oct. 15, 2013.

\* cited by examiner

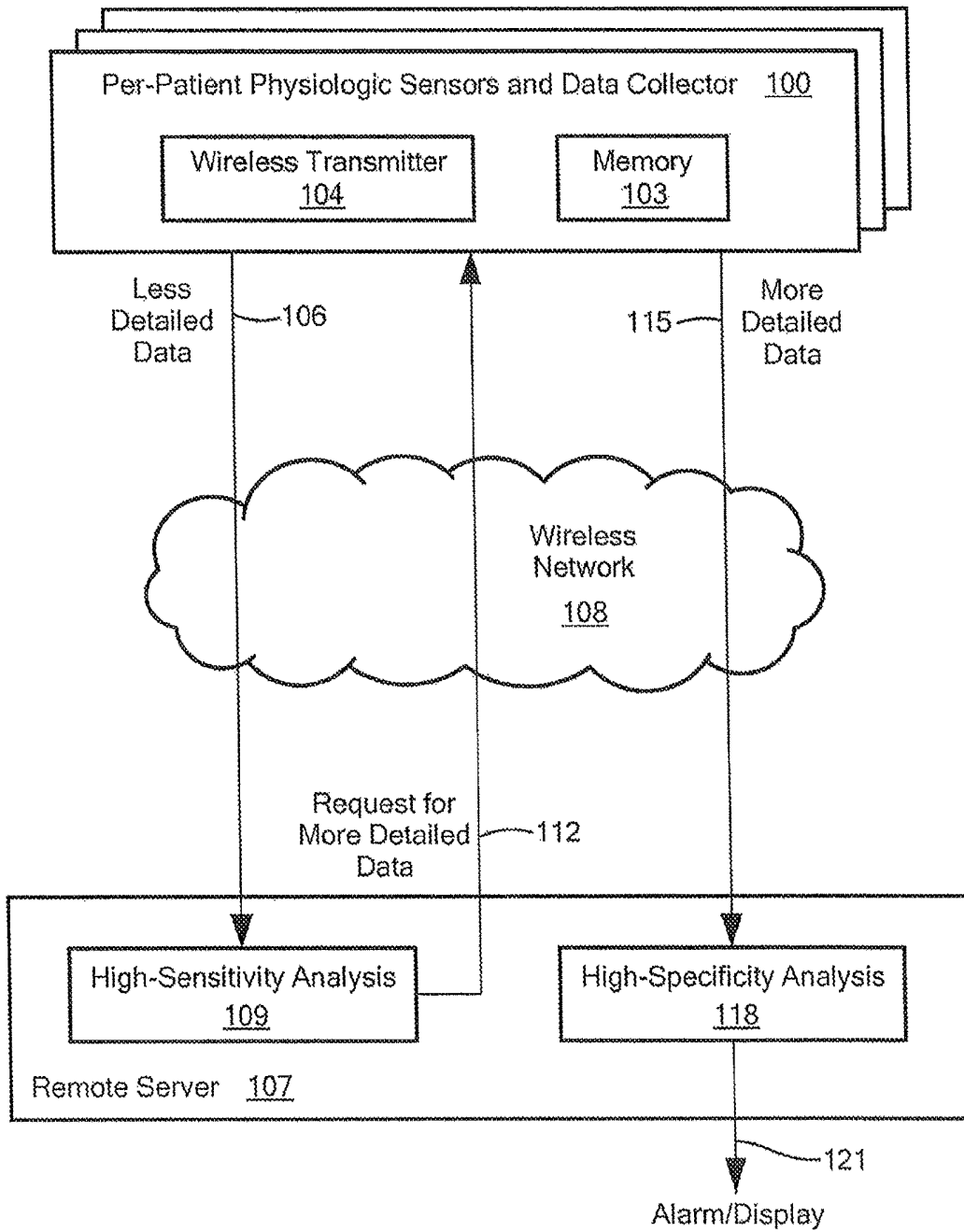


FIG. 1

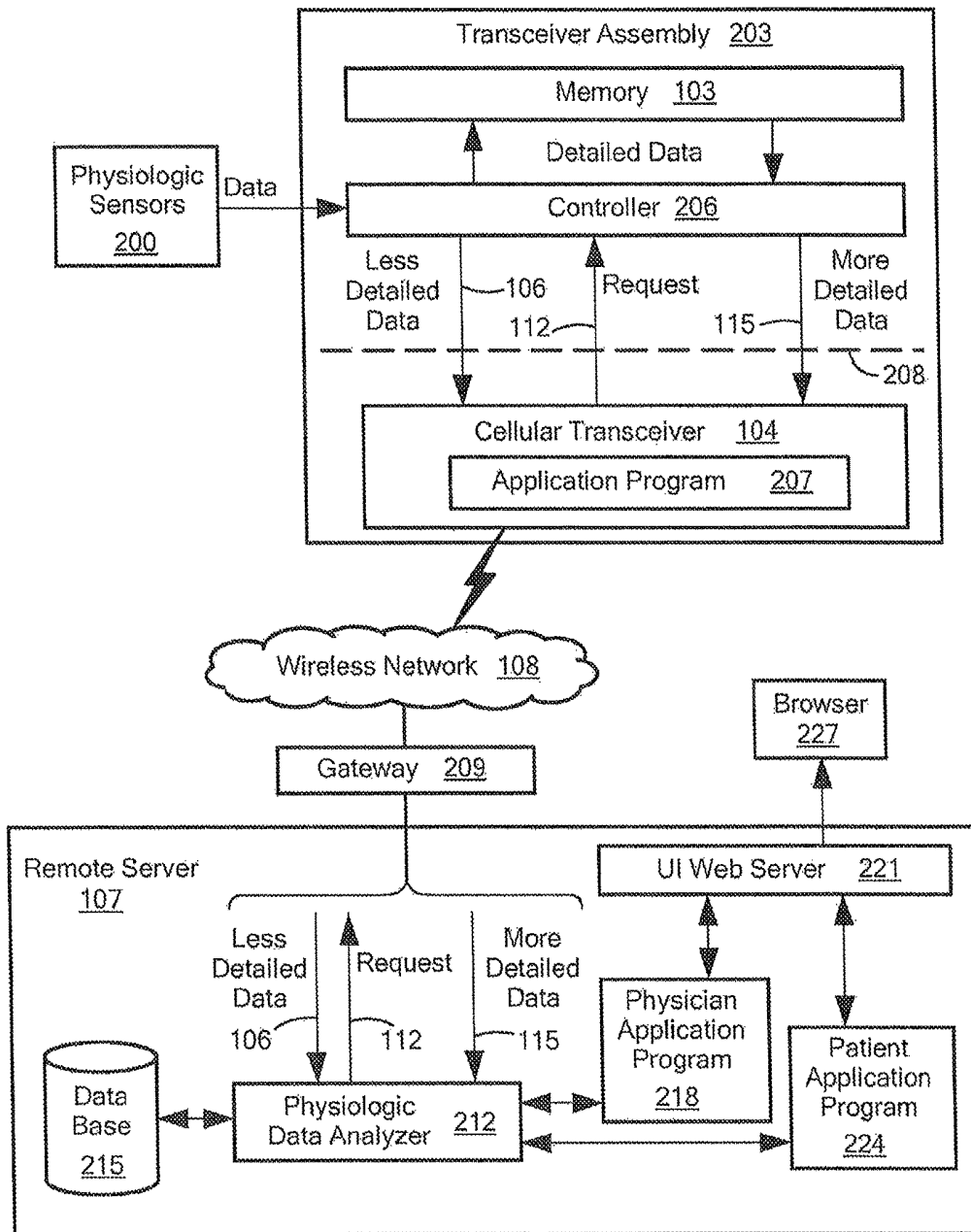


FIG. 2

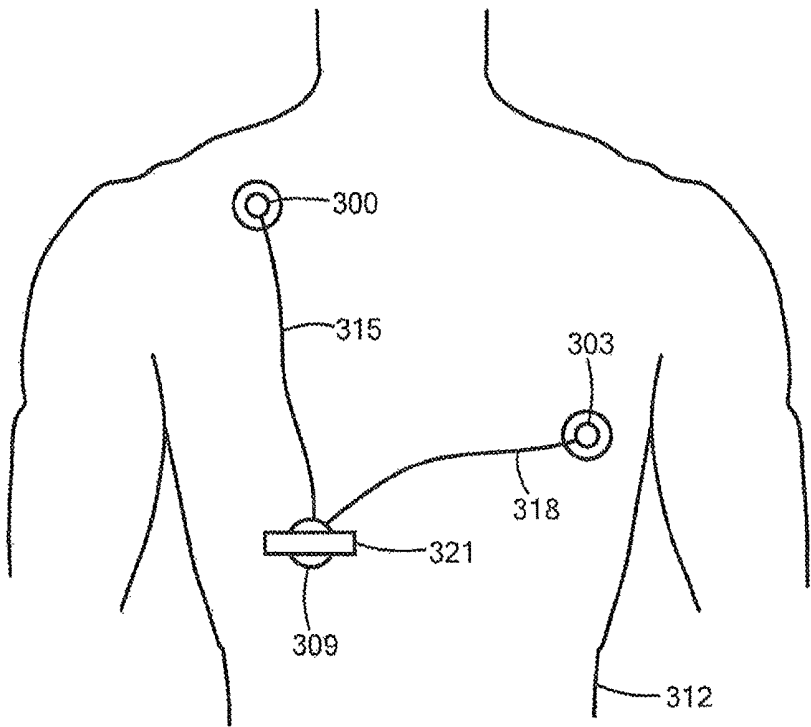


FIG. 3

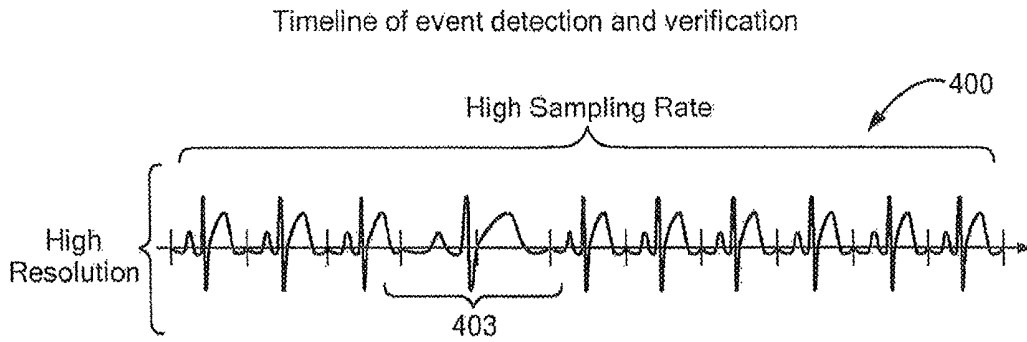


FIG. 4

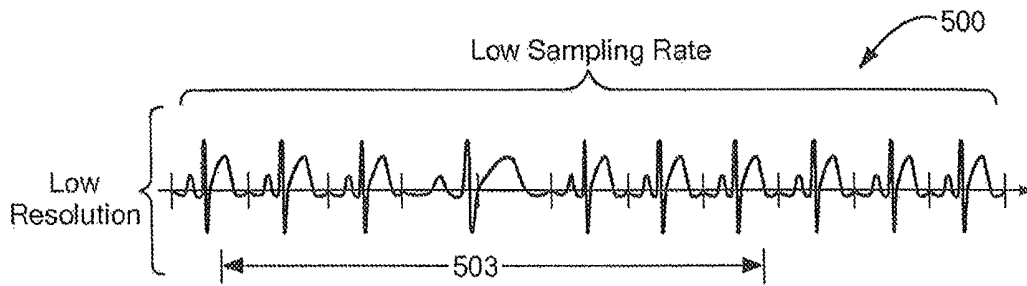


FIG. 5

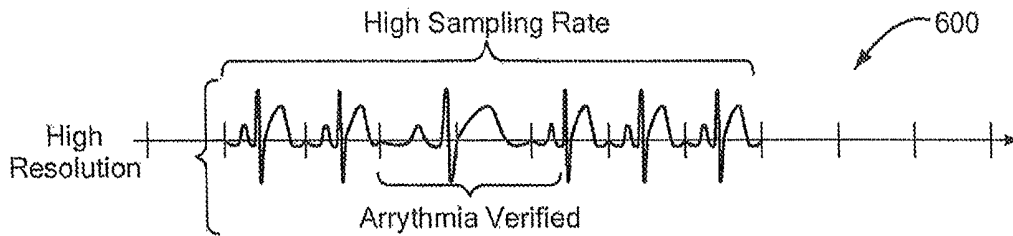


FIG. 6

700

Setting	Resolution Bits	Sampling rate/second	Transmission Duty Cycle
Low	12	1K	10's of seconds
Medium	16	2K	seconds
High	20	4K	sub seconds
Real Time	24	32K	Live Streaming

**FIG. 7**

800  
Table of Example Parameter Measurements Range in Physician's Interface

Activity Level	Low (Resting)	Moderate (Walking)	Heavy (Running)	Time Window
SpO2	>99%	>99%	>99%	1 minute
Blood Pressure	110/60 to 140/80	<140/90	<150/100	5 minutes
Respiration	15-25	20/50	30-80	2 minutes
Heart Rate	50-70	60-100	80-130	30 seconds

**FIG. 8**

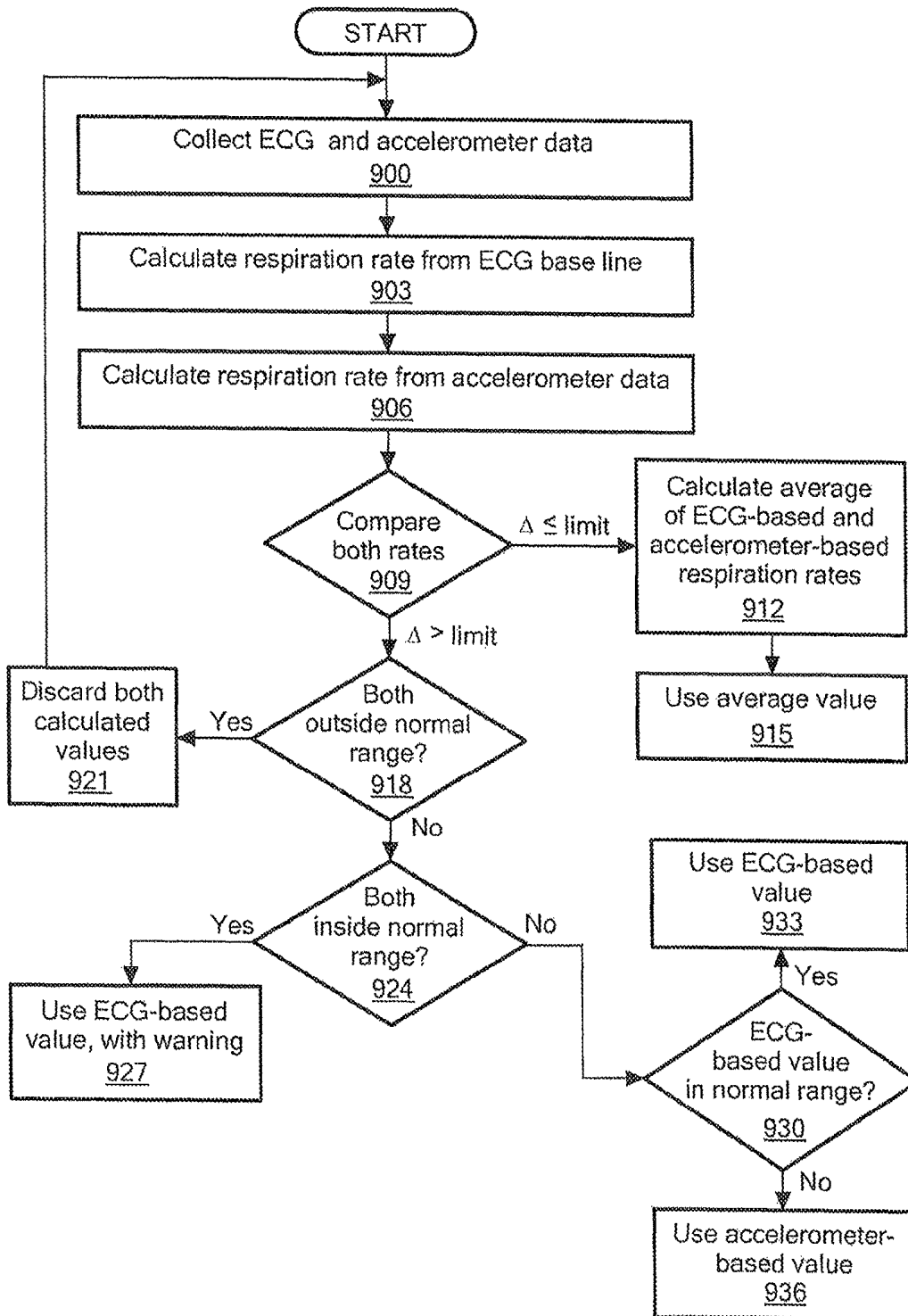
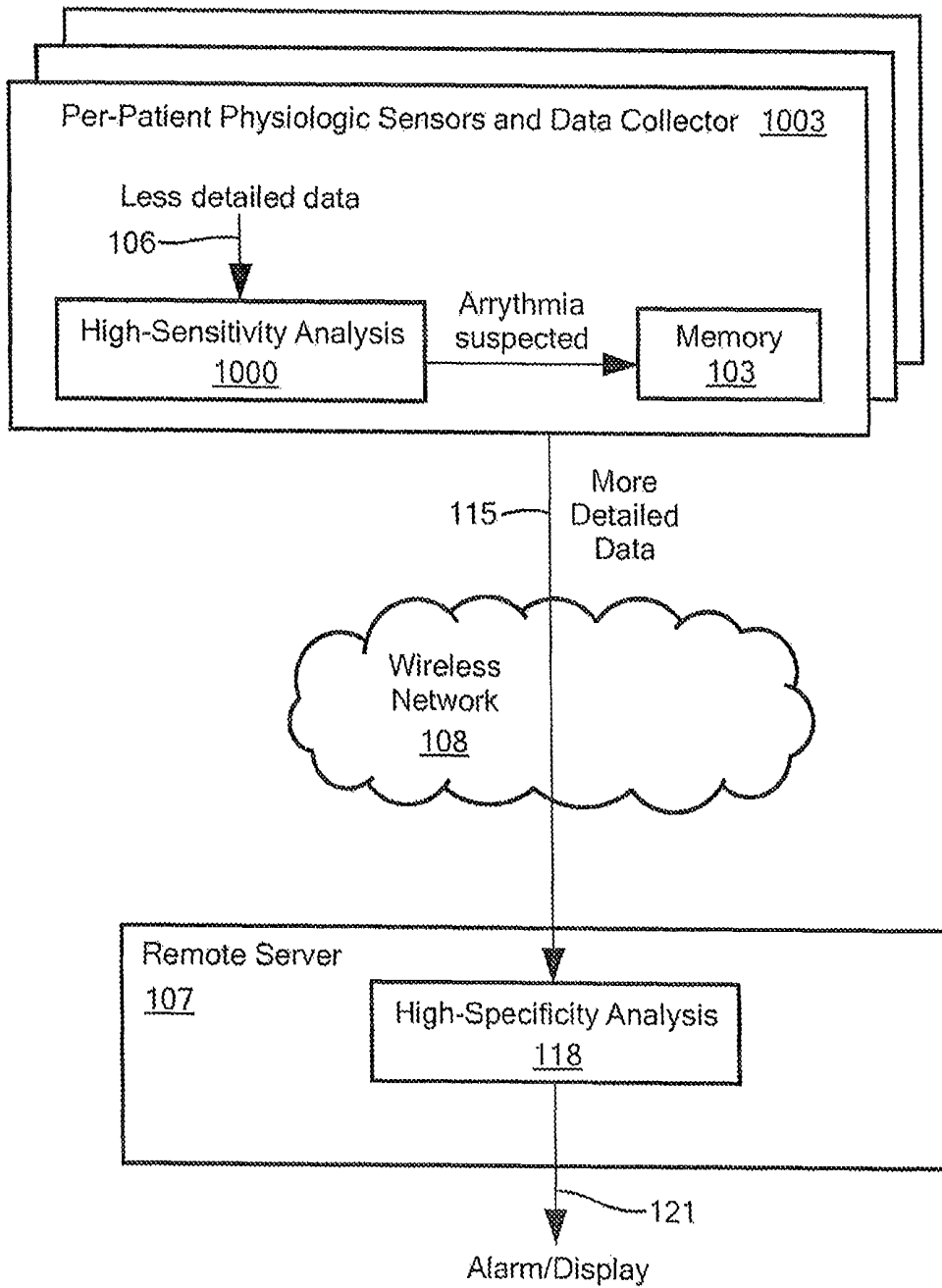


FIG. 9



**FIG. 10**

**REMOTE HEALTH MONITORING SYSTEM****CROSS REFERENCE TO RELATED APPLICATIONS**

This is a continuation application of U.S. patent application Ser. No. 13/911,213, filed on Jun. 6, 2013, now pending, which is a continuation application of U.S. patent application Ser. No. 13/446,490, filed Apr. 13, 2012, now U.S. Pat. No. 8,478,418, which claims the benefit of U.S. Provisional Patent Application No. 61/476,072, filed Apr. 15, 2011, the entire contents of each of which are hereby incorporated by reference herein.

**TECHNICAL FIELD**

The present invention relates to remote physiologic monitoring systems and, more particularly, to patient-worn remotely-controlled physiologic monitoring systems.

**BACKGROUND ART**

Remote monitoring of ambulatory patients enables doctors to detect or diagnose heart problems, such as arrhythmias, that may produce only transient symptoms and, therefore, may not be evident when the patients visit the doctors' offices. Several forms of cardiac event monitors have been used.

A "Halter" monitor is worn by a patient and collects and stores data for a period of time, typically at least 24 hours, and in some cases up to two weeks. After the data has been collected, the Halter monitor is typically brought or sent to a doctor's office, laboratory or the like, and the data is retrieved from: the monitor and analyzed, Holter monitors are relatively inexpensive, but they cannot be used for real-time analysis of patient data, because the data is analyzed hours, days or weeks after it has been collected.

More timely analysis of heart data is made possible by pre-symptom (looping memory) event monitors. Such a device collects and stores patient data in a "loop" memory device. The event monitor constantly overwrites previously stored data with newly collected data. The event monitor may include a button, which the patient is instructed to actuate if the patient feels ill or otherwise detects a heart-related anomaly. In response, the event monitor continues to record data for a short period of time and then stops recording, thereby retaining data for a time period that spans the button actuation, i.e., the retained data represents a period of time that extends from (typically) a few minutes before the user actuated the button to (typically) a few minutes after the user actuated the button. The retained data may then be sent via a modem and a telephone, connection to a doctor's office or to a laboratory for analysis. Although such an event monitor can facilitate analysis of patient data more proximate in time to the patient-detected anomaly, relying on the patient to actuate the device and then send the data can be problematic.

Some event monitors automatically detect certain arrhythmias and in response, record electrocardiograph (ECG) data. Automatic event monitors are thought to be more sensitive, but less specific than manually triggered cardiac event monitors for significant cardiac arrhythmias. However, these devices still rely on patients to send the recorded data for analysis, and there is still a delay between detection of a suspected arrhythmia and transmission of the data.

Mobile cardiovascular telemetry (MCT) refers to a technique that involves noninvasive ambulatory cardiac event

monitors that are capable of continuous measurements of heart rate and rhythm over several days. For example, CardioNet, Philadelphia, Pa., provides an MCT device under the trade name "Mobile Cardiac Outpatient Telemetry" (MCOT). The MCOT device includes an automatic ECG arrhythmia detector. The MCOT device couples to a cellular telephone device to immediately transmit automatically detected abnormal ECG waveforms to a remote monitoring center, which can then alert a physician. The MCOT device also includes a memory capable of storing up to 96 hours of ECG waveform data, which can be transmitted over standard telephone lines to the remote monitoring center at the end of each day. Although data about automatically detected arrhythmias are sent immediately to the remote monitoring center, without requiring patient action, the computational resources and corresponding electrical power (battery) required to perform the automatic ECG analysis in the MCOT device are significant.

Some MCT devices continuously send collected ECG data to a remote monitoring center for analysis. These MCT devices typically do not perform any ECG analysis of their own. Although no patient-initiated action is required, the large amount of data transmitted by the MCT wireless devices congests the wireless channels used to convey the data. Furthermore, a large amount of computational resources is required at the remote monitoring center to analyze the continuous stream of received data, especially when many patients are monitored by a single data center.

U.S. Pat. Publ. No. 2010/0298664 discloses a wireless ECG data collection and analysis system.

U.S. Pat. No. 7,996,187 discloses a personal health monitor that collects and processes physiologic data and wirelessly transmits the processed data to a remote entity.

U.S. Pat. Publ. No. 2009/0076405 discloses a wireless respiration monitoring system. Upon receipt of a notification, a medical provider, a remote monitoring system or a medical treatment device can trigger a higher data sample rate in the patient-worn monitor device and use the higher sample rate data collected thereafter to verify an alert condition.

U.S. Pat. No. 7,801,591 discloses a healthcare information management system that displays patient information at various levels of analysis, based on user need and sophistication level.

**SUMMARY OF EMBODIMENTS**

An embodiment of the present invention provides a system for remote physiologic monitoring of a body of a patient. The monitoring is performed in association with a remote server. The system includes a plurality of sensors and a transceiver assembly. Each sensor of the plurality of sensors configured to be coupled to the body of the patient to generate respective physiologic data about the body. The transceiver assembly includes a memory, a controller and a wireless transceiver. The transceiver assembly is communicatively coupled to the plurality of sensors. The transceiver assembly is configured to receive the physiologic data from the plurality of sensors. The transceiver assembly is also configured to store the received physiologic data in the memory. The stored data is referred to as "more detailed data." The transceiver assembly is configured to send a subset of the received physiologic data (referred to as "less detailed data"), via the wireless transceiver, to the remote server. The less detailed data sent to the remote server is characterized by: a lower resolution than the more detailed data stored in the memory for a corresponding time period

and/or a lower sampling rate than the more detailed data stored in the memory for a corresponding time period, and/or having been received from a different set of the sensors than the more detailed data stored in the memory for a corresponding time period. The transceiver assembly is configured to fetch at least a portion of the more detailed physiologic data from the memory, in response to a signal from the remote server. In addition, in response to the signal from the remote server, the transceiver assembly is configured to send the fetched more detailed physiologic data to the remote server.

The less detailed data sent to the remote server may be characterized by a lower resolution than the more detailed data stored in the memory for a corresponding time period and/or a lower sampling rate than the more detailed data stored in the memory for a corresponding time period.

The remote server may be configured to receive the less detailed physiologic data sent by the transceiver assembly and automatically analyze the received less detailed physiologic data for an indication of a health-related anomaly. If the health-related anomaly is indicated, the remote server may be configured to automatically send the signal to the transceiver assembly.

The health-related anomaly may be or include an arrhythmia.

The remote server may also be configured to receive the more detailed physiologic data and automatically analyze the received more detailed physiologic data to verify the indicated health-related anomaly.

The remote server may be configured to analyze the less detailed physiologic data according to a first analytic technique and analyze the more detailed physiologic data according to a second analytic technique. The second analytic technique may have a higher specificity for the health-related anomaly than the first analytic technique.

The remote server may be configured to automatically analyze the received less detailed physiologic data for the indication of the health-related anomaly using ECG data and automatically analyze the received more detailed physiologic data to verify the indicated health-related anomaly using data other than ECG data.

The remote server may be configured to display a first user interface configured to accept at least one user-specified criterion. The remote server may be configured to automatically analyze the received less detailed physiologic data for the indication of the health-related anomaly, based on at least a portion of the less detailed physiologic data meeting the user-specified criterion.

The remote server may be configured to display a first user interface configured to accept at least one user-specified criterion and automatically analyze the received more detailed physiologic data to verify the indicated health-related anomaly, based on at least a portion of the more detailed physiologic data meeting the user-specified criterion.

The wireless transceiver may include a cellular telephone.

The wireless transceiver assembly may include a cellular telephone coupled via a short-range wireless link to the wireless transceiver. The cellular telephone may be configured to store the more detailed data in the memory; send the less detailed data to the remote server; responsive to the signal, fetch the at least the portion of the more detailed physiologic data from the memory and send the fetched more detailed physiologic data to the remote server via a wireless carrier network.

The system may also include a cellular telephone configured to be communicatively coupled to a wireless carrier

network. The cellular telephone may be configured to receive the physiologic data sent by the transceiver assembly via the wireless transceiver and send the received physiologic data via the wireless carrier network to the remote server.

The system may also include an application program configured to be executed by a cellular telephone that is configured to be communicatively coupled to a wireless carrier network. The application program may be configured to receive the physiologic data sent by the transceiver assembly via the wireless transceiver and send the received physiologic data via the wireless carrier network to the remote server.

The plurality of sensors may include an ECG sensor and at least one accelerometer. The remote server may be configured to calculate a respiration rate, based at least in part on data from the ECG sensor and data from the at least one accelerometer.

The remote server may be configured to calculate a first candidate respiration rate, based on the data from the ECG sensor and calculate a second candidate respiration rate based on the data from the at least one accelerometer. If a difference between the first and second candidate respiration rates is less than a predetermined value, the remote server may calculate the respiration rate as an average of the first and second candidate respiration rates. If both the first and second candidate respiration rates are within a predetermined range, the remote server may calculate the respiration rate as being equal to the first candidate respiration rate. If only the first candidate respiration rate is within the predetermined range, the remote server may calculate the respiration rate as being equal to the first candidate respiration rate. If only the second candidate respiration rate is within the predetermined range, the remote server may calculate the respiration rate as being equal to the second candidate respiration rate.

The remote server may be configured to accept, through a first user interface, a user-specified data collection parameter. In response to accepting the user-specified data collection parameter, the remote server may be configured to send the data collection parameter to the transceiver assembly. The transceiver assembly may be configured to receive the data collection parameter and, in response to receipt of the data collection parameter, to change the resolution and/or the sampling rate of the less detailed physiologic data thereafter sent to the remote server.

The remote server may be configured to generate a first display, in a first user interface, from the less detailed physiologic data received from the transceiver assembly. In response to a user input, the remote server may be configured to generate a second display, in the first user interface, from at least a portion of the more detailed physiologic data received from the transceiver assembly and corresponding to a time associated with the data displayed in the first display.

The remote server may be further configured, in response to the user input, to send the signal to the transceiver assembly.

Another embodiment of the present invention provides a method for remote physiologic monitoring of a body of a patient. According to the method, physiologic data is received from a plurality of sensors coupled to the body of the patient. The received physiologic data is stored in a memory. The stored data is referred to as "more detailed data." A subset of the received physiologic data (referred to as "less detailed data") is wirelessly sent to a remote server. The less detailed data sent to the remote server is characterized by: a lower resolution than the more detailed data

stored in the memory for a corresponding time period and/or a lower sampling rate than the more detailed data stored in the memory for a corresponding time period and/or having been received from a different set of the sensors than the more detailed data stored in the memory for a corresponding time period. Responsive to a signal from the remote server, at least a portion of the more detailed physiologic data is fetched from the memory. The fetched more detailed physiologic data is sent to the remote server.

The less detailed data sent to the remote server may be characterized by: a lower resolution than the more detailed data stored in the memory for a corresponding time period and/or a lower sampling rate than the more detailed data stored in the memory for a corresponding time period.

In addition, the less detailed physiologic data may be received at the remote server. The received less detailed physiologic data may be automatically analyzed for an indication of a health-related anomaly. If the health-related anomaly is indicated, the signal may be automatically sent.

The more detailed physiologic data may be received, and the received more detailed physiologic data may be automatically analyzed to verify the indicated health-related anomaly.

Analyzing the less detailed physiologic data may include analyzing the less detailed data according to a first analytic technique. Analyzing the more detailed physiologic data may include analyzing the more detailed data according to a second analytic technique. The second analytic technique may have a higher specificity for the health-related anomaly than the first analytic technique.

Yet another embodiment of the present invention provides a system for remote physiologic monitoring of a body of a patient. The monitoring is performed in association with a remote server. The system includes a plurality of sensors and a transmitter assembly. Each sensor of the plurality of sensors is configured to be coupled to the body of the patient to generate respective physiologic data about the body. The transmitter assembly includes a memory, a controller and a wireless transmitter. The transmitter assembly is communicatively coupled to the plurality of sensors. The transmitter assembly is configured to receive the physiologic data from the plurality of sensors and store the received physiologic data in the memory. The stored physiologic data is referred to as "More detailed data." The transmitter assembly is also configured to automatically analyze a subset of the received physiologic data (referred to as "less detailed data") for an indication of a health-related anomaly. The less detailed data is characterized by: a lower resolution than the more detailed data stored in the memory for a corresponding time period and/or a lower sampling rate than the more detailed data stored in the memory for a corresponding time period and/or having been received from a different set of the sensors than the more detailed data stored in the memory for a corresponding time period. If the health-related anomaly is indicated, the transmitter assembly is configured to automatically fetch at least a portion of the more detailed physiologic data from the memory and send the fetched more detailed physiologic data to the remote server.

The less detailed data may be characterized by at least one of: a lower resolution than the more detailed data stored in the memory for a corresponding time period and/or a lower sampling rate than the more detailed data stored in the memory for a corresponding time period.

The remote server may be configured to receive the more detailed physiologic data and automatically analyze the received more detailed physiologic data to verify the indicated health-related anomaly.

The transmitter assembly may be configured to analyze the less detailed physiologic data according to a first analytic technique, and the remote server may be configured to analyze the more detailed physiologic data according to a second analytic technique. The second analytic technique may have a higher specificity for the health-related anomaly than the first analytic technique.

#### BRIEF DESCRIPTION OF THE DRAWINGS

The invention will be more fully understood by referring to the following Detailed Description of Specific Embodiments in conjunction with the Drawings, of which:

FIG. 1 is a schematic block diagram of an embodiment of the present invention.

FIG. 2 is a more detailed schematic block diagram of an embodiment of the present invention.

FIG. 3 is a schematic diagram illustrating one possible combination of physiological sensors and a possible placement of the sensors on a torso of a patient, according to an embodiment of the present invention.

FIG. 4 contains a hypothetical ECG waveform representing detailed data collected from the sensors of FIG. 3 and stored in a memory, according to an embodiment of the present invention.

FIG. 5 contains a waveform representing a less detailed version of the data collected from the sensors of FIG. 3 and sent to a remote server, according to an embodiment of the present invention.

FIG. 6 contains a waveform representing the more detailed data a transceiver assembly sends to the remote server in response to a request from the server, according to an embodiment of the present invention.

FIG. 7 contains a table of exemplary resolutions, sample rates and transmission duty cycles, according to an embodiment of the present invention.

FIG. 8 contains a table that lists exemplary threshold values for several patient activity levels, according to an embodiment of the present invention.

FIG. 9 is a flowchart illustrating a process for calculating a respiration rate, according to an embodiment of the present invention.

FIG. 10 is a schematic block diagram of an embodiment of the present invention.

#### DETAILED DESCRIPTION OF SPECIFIC EMBODIMENTS

In accordance with embodiments of the present invention, methods and apparatus are disclosed for locally collecting and locally storing physiologic data from an ambulatory patient, wirelessly sending only a proper subset of the collected data to a remote central server and there automatically analyzing the sent data in real time. The sent subset of the collected data is less detailed than the data collected and stored by a local patient-attached data collector.

The central server employs a two-tiered analysis methodology. If the first tier, which performs a high-sensitivity but low-specificity analysis, detects a possible, arrhythmia in the received subset of the collected data, the server requests the data collector to retrospectively send more detailed data the collector previously stored, i.e. more detailed data from around the time of the suspected arrhythmia.

The second tier performs a high-specificity analysis of the more detailed data to confirm or refute ("verify") the suspected arrhythmia. Thus, overall utilization of the wireless channel used to send the data is kept low by sending detailed

data only when necessary to verify a suspected arrhythmia. Furthermore, electrical power (battery) and computational resource requirements of the patient-attached data collector are kept low, because the data collector performs no data analysis.

Thus, significantly, embodiments of the present invention enable the remote server to operate primarily on a less detailed subset of collected data and retrospectively obtain more detailed data when necessary to verify a suspected arrhythmia. In contrast, no known prior art ambulatory patient monitor stores detailed collected data locally and sends only a subset of the collected data to a remote server. No known prior art remote server requests more detailed data from an earlier time period (“retrospectively requests data”) in response to detecting a suspected arrhythmia and then uses the more detailed data to verify the suspected arrhythmia.

A “subset” of the collected data means less than all of the collected data. The subset may, for example, be a down-sampled (lower sampling rate) or quantized (less accurate samples) version of the collected data. The subset may include data from one or more sensors or one or more types of data, such as heart rate, ECG waveform, respiration rate, SpO<sub>2</sub>, blood pressure, body movement (such as provided by accelerometers). The more detailed data may include data from all the same, some of the same or different sensors or different types of data. SpO<sub>2</sub> is a measure of the amount of oxygen attached to hemoglobin cells in circulating blood system. SpO<sub>2</sub> is typically given as a percentage, normal is around 96%. The “S” in SpO<sub>2</sub> stands for “saturation.”

FIG. 1 is a schematic block diagram of an embodiment of the present invention. A data collector and set of physiologic sensors (collectively identified at **100**) is assigned to each monitored patient. The physiologic sensors are attached to the patient, and data collected from the sensors are stored in a memory **103** within the data collector **100**. Time stamps, corresponding to times at which the data were collected, or other suitable data timing information is also stored in the memory **103**. If the memory **103** becomes full or reaches a predetermined fullness, the data collector **100** begins overwriting previously stored data, beginning with the oldest data. Thus, the memory **103** stores the most recently collected data on a rolling basis.

The data collector **100** includes, or is coupled to a suitable wireless transceiver **104**, such as a cellular telephone. A subset of the collected data (identified as “less detailed data” **106**), including information about when the data were collected, is sent wirelessly to a central remote server **107**, such as via a cellular telephone network **108**. The less detailed data **106** may be a downsampled version of the collected data. That is, the less detailed data **106** may have a lower sampling rate than the collected and stored data. For example, only every Nth sample of the collected data may be included in the less detailed data **106**, where N is an integer or rational fraction that provides a sampling rate sufficient for the first tier analysis. Optionally or alternatively, the less detailed data **106** may be a quantized version of the collected data. That is, the less detailed data **106** may be rounded or otherwise include fewer digits of accuracy than the collected data, although sufficient for the first tier analysis.

The central server **107** may serve many per-patient data collectors **100**. The central server **107** performs a high-sensitivity analysis **109** of the less detailed data **106**. The high-sensitivity analysis **109** is configured such that it has a low probability of generating a false negative result. That is, the high-sensitivity analysis **109** is not likely to fail to detect

an actual arrhythmia. However, to achieve this high level of sensitivity, the high-sensitivity analysis **109** is likely to generate a relatively large number of false positive results, i.e., the first analytical tier may have low specificity.

A relatively large number of false positive results is, however, acceptable for several reasons, including only a relatively small subset of the collected physiological data is sent via the wireless channel **108**, thereby conserving the wireless channel’s carrying capacity. Conserving wireless channel carrying capacity may be important to support a large number of per-patient data collectors **100** over the wireless channel **108** and/or to enable the wireless channel **108** to carry other types of traffic, such as text messages, streaming video and voice telephone calls, most or all of which may be unrelated to the physiological monitoring described here. Thus, at least conceptually, false positives are traded, at least in part, for increased wireless channel capacity. Furthermore, the bulk or all of the false positives are filtered out by the second tier of analysis, as described next.

If the high-sensitivity analysis **109** detects a suspected arrhythmia, the high-sensitivity analysis **109** sends a request **112** to the data collector **100**. The request **112** identifies a time period of interest, such as a time period surrounding the time at which the data that lead to the suspicion were collected. In response to the request **112**, the data collector **100** fetches more detailed data for the requested time period from the memory **103** and sends the more detailed data **115** to the central server **107**, and then a high-specificity analysis **118** is performed on the more detailed data **115**. Preferably, the second analytical tier **118** is also high in sensitivity, so it has a low probability of generating a false negative result.

The high-specificity analysis **118** is configured such that it has a low probability of generating false positive results. That is, the high-specificity analysis **118** is not likely to indicate an arrhythmia when none actually occurred. If the high-specificity analysis **118** verifies that an arrhythmia occurred, an alarm may be raised or information may be displayed **121**, such as to alert a physician or technician.

In order to provide results with high specificity and high sensitivity, the high-specificity analysis **118** needs the more detailed data **115**, as well as typically consuming more computational resources than the high-sensitivity analysis **109**. Requesting **112** and sending **115** the more detailed data utilizes a portion of the wireless channel capacity. However, this utilization occurs only relatively infrequently, i.e., when the high-sensitivity analysis **109** detects a suspected arrhythmia. In addition, the high-specificity analysis **118** consumes a relatively large amount of computational resources. Again, however, this consumption occurs only relatively infrequently.

Thus, the two-tiered analysis **109** and **118** can be seen, at least conceptually, as a tradeoff between, on one hand, complexity involving two separate analysis tiers and occasional high wireless channel and computation resource utilization and, on the other hand, an overall reduction of wireless channel and computational resource utilization. The overall scheme disclosed herein requires fewer computational resources, and correspondingly less power (battery), on the per-patient data collector **100** than prior art schemes that attempt to analyze the collected data at the per-patient device and notify a central system only when an arrhythmia is detected. In addition, the overall scheme uses less wireless channel capacity and fewer central analysis server resources than prior art systems that send constant streams of all collected data to a central server for analysis.

Furthermore, the overall scheme is well suited for implementation in a “cloud computing” environment, where computing resources are available on demand. Thus, in some embodiments, the additional computational resources required for the high-specificity analysis **118** need not be pre-allocated and therefore, idle most of the time. Instead, computational resources for the high-specificity analysis **118** can be dynamically and automatically utilized, requested or scheduled whenever they are required. Such a cloud computing environment is available from Amazon Web Services LLC under the trade name Amazon Elastic Compute Cloud. (Amazon EC2) and RightScale cloud management from RightScale, Inc.

FIG. 2 is a schematic block diagram of an embodiment of the present invention, showing more detail than FIG. 1. One or more physiological sensors **200** are coupled to a transceiver assembly **203**. The coupling may be provided by via a short-range wireless system, such as Bluetooth transceivers. Alternatively, the coupling may be provided by wires or optical cable. The transceiver assembly **203** includes a memory **103** and a long-range wireless transceiver **104**, such as a cellular telephone transceiver, as discussed above. The long-range wireless transceiver **104** may be replaced by any suitable wireless transceiver, such as a WiFi transceiver (not shown).

A controller **206** directs operation of the transceiver assembly **203**. The controller **206** may be implemented by a microprocessor executing instructions stored in a memory, such as the memory **103** or another memory. The controller **206** receives data from the sensors **200** and stores the received data in the memory **103**. The controller **206** also provides a less detailed version **106** of the sensor data to the long-range wireless transceiver **104** for transmission, via the wireless network **108**, to the remote server **107**. The controller **206** may be coupled to the long-range wireless transceiver **104** via wires, optical cables or a short-range wireless system, such as Bluetooth.

Optionally or alternatively, part or all of the functions of the controller **206** and the memory **103** may be implemented by a processor and a memory within the long-range wireless transceiver **104**. For example, a “smart phone” may store and execute an application program (software) **207** configured to receive the data from the sensors **200**, store the received sensor data in a memory of the smart phone and transmit a subset of the collected data to the remote server **107**. In response to the request **112** from the remote server **107**, the application program **207** may fetch the more detailed data **115** and send it to the remote server **107**. Furthermore, the application program **207** may alter, such as in response to commands from the remote server **107** data collection parameters, such as sampling rate and sampling precision, and data transmission parameters, such as sampling rate and sampling precision of the less detailed data **106** and of the more detailed data **115**, as well as transmission packet size, packet transmission rate, number of samples per packet, etc.

The controller **206** and the long-range wireless transceiver **104** should check authenticity of each other and authority to receive data and to be controlled by each other, prior to engaging in substantive communications, transmission of sensor data, control, etc. Furthermore, data and control communications, particularly wireless communications, between and among components of embodiments should be encrypted. For example, wireless data communications between the sensors **200** and the controller **206**, between the controller **206** and the long-range wireless transceiver **104**

and between the long-range wireless transceiver **104** and the remote server **107** should be suitably encrypted, such as to protect patient privacy.

The transceiver assembly **203** may be implemented as one physical assembly. Alternatively, the transceiver assembly **203** may be implemented as two physically separable components, one component including the controller **206** and the memory **103**, and the other component including the long-range wireless transceiver **104**. Such a two-part division is indicated by dashed line **208**. The two components may communicate with each other via a short-range wireless system, such as Bluetooth (not shown). The tasks of receiving the data from the sensors **200**, storing the received data in the memory **103** or in a memory in a smart phone and generating the less detailed data **106** from the collected data may be divided or allocated between the controller **206** and the smart phone.

A suitable gateway **209**, as well as other well-known computer networking equipment, such as network switches, routers, firewalls and the like, may be used to couple the remote server **107** to the wireless network **108**. The remote server **107** includes a physiological data analyzer **212**, which is configured to perform the high-sensitivity analysis **109** and the high-specificity analysis **118** discussed above, with respect to FIG. 1. The remote server **107** may include a database **215**, and the data analyzer **212** may be configured to store the received less detailed data **106** and/or the received more detailed data **115**, or a portion thereof, in the database **215**. The data may be stored in the database **215** in an encrypted form to increase security of the data against unauthorized access.

A physician application program **218** a physician to control parameters of the system, such as threshold values used by the data analyzer **212** in performing the high-sensitivity **109** and/or the high-specificity **118** analyses. Optionally, the physician application program **218** also allows the physician to set operating parameters of the transceiver assembly **203**, such as the amount by which the less detailed data is downsampled quantized, etc.

The physician application program **218** also displays data to the physician and allows the physician to select types of data to display, time periods of the data to display, levels of data detail display and other operating parameters of the system. For example, the physician may select a beginning and ending time surrounding a suspected or verified arrhythmia for display. In response to a query by the physician, the physician application program **218** may fetch and display data from the database **215**. If the requested data is not available in the database **215**, or if the requested data is not available in the database **215** at the level of detail requested by the physician, the physician application program **218** may automatically communicate with the transceiver assembly **203** to fetch the appropriate data in the appropriate amount of detail.

The physician application program **218** may implement appropriate security protocols, such as requiring the physician to enter logon credentials, so as to appropriately limit access to patient data and comply with regulations, such as the Health Insurance Portability and Accountability Act (HIPAA).

A user interface/web server **221** accepts user (physician, patient or administrator) inputs and generates appropriate displays to facilitate user interaction with the physician application program **218** and a similar patient application program **214**, described below. The user interface/web server **221** may generate a window-metaphor based computer user interface on a screen (not shown) coupled to the

remote server 107, or the user interface/web server 218 may generate web pages that are rendered by a browser 227 executed by a separate user computer (not shown). The web server 221 and the web browser 227 may communicate with each other using an appropriate encrypted protocol, such as Hypertext Transfer Protocol. Secure (HTTPS).

The patient application program 224 provides access by a patient to her own data, using appropriate patient logon credentials and an appropriately secured browser connection.

FIG. 3 is a schematic diagram illustrating one possible combination of physiological sensors 300, 303 and 309 and a possible placement of the sensors on a torso 312 of a patient. One of the sensors 309 may be attached at about the elevation of the diaphragm of the patient. Each sensor 300-309 may be attached to the torso 312 using well-known gel pads or other conventional attachment techniques. Any combination of well-known physiological electrodes may be used for the sensors 300-309. For example, the sensors 300-309 may include any combination of SpO2 sensors, blood pressure sensors, heart electrodes, respiration sensors, movement and activity sensors, and the like. Movement or activity may be sensed with appropriate accelerometers or gyroscopes such as micro electro-mechanical system (MEMS) devices. The sensors 300-309 may be connected via wires or optical cables 315 and 318 or via wireless links, such as Bluetooth links. Respiration data may be derived from ECG baseline data, as is known to those of skill in the art.

The transceiver assembly 203 (FIG. 2), or a portion thereof may be attached to, and supported by, one of the sensors 309, as indicated at 321. Optionally, other sensors, such as a patient weight measuring device, blood pressure cuff, etc., may be disconnectably coupled via wires, optical cables or wirelessly to the transceiver assembly 203.

As noted, the transceiver assembly 203 collects physiologic data, stores the collected data in a memory 103 and sends a less detailed version of the data 106 to the remote server 107. Upon detecting a suspected arrhythmia, the remote server 107 requests 112 more detailed data. FIG. 4 contains a hypothetical ECG waveform 400, representing detailed data collected from the sensors 200 and stored in the memory 103. That is, the collected data has a relatively high sampling rate and a relatively high resolution. Assume the waveform 400 includes a portion 403, during which the waveform is anomalous.

FIG. 5 contains a waveform 500, representing a less detailed version 106 of the collected data. The less detailed data 106 is transmitted to the remote server 107. The high-sensitivity analysis 109 (FIG. 1) performed by the data analyzer 212 (FIG. 2) detects the anomaly 403 as a suspected arrhythmia. Responsive to this detection, the data analyzer 212 (FIG. 2) sends a request 112 to the transceiver assembly 203 for more detailed data for a time period 503 around the anomaly 403. The length of the period 503 may depend on the type of anomaly detected by the data analyzer 212. Various types of anomalies, and corresponding time periods 503, may be specified by the physician via the physician application program 218.

FIG. 6 contains a waveform 600, representing the more detailed data 115 (FIG. 2) the transceiver assembly 203 sends to the remote server 107. The more detailed data 115 has a higher sampling rate, higher resolution and/or contains data from more sensors than the less detailed data 106. Using the more detailed data 115, the high-specificity analysis performed by the data analyzer 212 verifies the suspected arrhythmia 603.

FIG. 7 contains a table 700 of exemplary resolutions, sample rates and transmission duty cycles (times between data transmissions from the transceiver assembly 203 to the remote server 107). Each row of the table 700 represents a different combination of these parameters. Each row is labeled with a "Setting," indicating relative timeliness of the data feed from the transceiver assembly 203, such as based on relative seriousness of the patient's condition. Thus, the transceiver assembly 203 may store more highly resolved data (in terms of the number of bits per sample), more data samples (in terms of the number of samples per second) and/or data from more sensors or more types of sensors than are sent to the remote server 107. Furthermore, the transceiver assembly 203 may store data for a period of time after data representing that time period has been sent to the remote server 107. The specific settings in the table 700 are only examples of what a physician may determine from a range of possible values.

The remote server 107 may be configured to determine data collection parameters, either manually, such as in response to inputs received via the physician application program 218, or automatically, such as in response to collected data meeting one or more predetermined criteria, such as detecting an anomaly in the collected data. A physician may select, via the physician application program 218, one of the sets of data collection parameters shown in table 700, or the physician may specify custom values, such as values for each patient, by entering the values via the physician application program 218. The physician may specify, via the physician application program 218, different data collection parameters for different time periods of a day, different days or any other specified time periods. Similarly, through the physician application program 218, the physician may alter threshold values, against which the data analyzer 212 compares collected data. Optionally or alternatively, which set of data collection parameters, which row of the table 700, is used may depend in part or in whole on the amount of charge remaining in the battery that powers the transceiver assembly 203, the sensors 200 (if there is a separate battery for the sensors) and/or the long-range wireless transceiver 104. Less remaining charge may cause selection of a lower setting in the table 700.

In some embodiments, data collection and/or transmission parameters may be automatically changed in response to automatically detecting a measured physiologic data value exceeding or falling below a predetermined threshold. For example, if respiration rate, SpO2 or blood pressure exceeds a high-limit threshold or falls below a low-limit threshold, the remote server 107 can instruct the transceiver assembly 203 to increase the rate at which data is sampled from the sensors 200 and/or transmitted as less detailed data 106 or more detailed data 115 to the remote server 107. Similarly, the data sampling resolution and data transmission rate (from the transceiver assembly 203) or other parameter (collectively referred to herein as "data collection parameters") may be increased.

Some or all of the thresholds may be predetermined or they may be specified on a per-patient basis by the physician via the physician application program 218. Optionally or alternatively, some or all of the thresholds may be automatically determined, based on collected data. For example, if data collected from a patient indicates to the remote server 107 that the patient is exercising, i.e., if for example data from the accelerometers indicates body movements consistent with the patient performing jumping jacks or sit-ups, thresholds for respiration and heart rate may be automatically increased until after these movements cease to be

detected, plus an optional rest period. FIG. 8 contains a table 800 that lists exemplary threshold values for several patient activity levels.

Optionally, after the metric that caused a data collection parameter to be increased returns to normal for at least a predetermined period of time, the data collection parameter may be returned to its original value or a value intermediate the increased value and its original value. The data collection parameter may be returned to its original value in timed stages or stages based on measured data values.

The anomaly that triggers request 112 for retrospective data or a change in the data collection parameters may be more complex than a measured value exceeding or falling below a threshold value. In some embodiments, an automatically detected anomaly in the measured ECG automatically triggers the request 112 for retrospective data or altering one or more data collection parameters. For example, the ECG data may be processed by the data analyzer 212 to automatically classify heartbeats using morphology and heartbeat interval features, as described by Philip de Chazal. et al., in "Automatic Classification of Heartbeats Using ECG Morphology and Heartbeat Interval Features," IEEE Transactions on Biomedical Engineering, Vol. 51, No. 7, July, 2004, the contents of which are hereby incorporated by reference. In other words, collected data may be processed, before a determination is made whether an anomaly has been detected.

As noted, arrhythmia may be suspected or verified (or both) using ECG data, non-ECG data or a combination thereof. For example, an arrhythmia may be suspected or verified, based in whole or in part on respiration rate. The respiration rate may be determined based on data from one or more accelerometers in the sensors attached to the torso of the patient, as shown for example in FIG. 3. Chest movements detected by the accelerometers may be filtered, such as within expected frequencies and amplitudes, to derive the respiration rate. For example, one accelerometer may be included in the sensor 309 (FIG. 3), which is located adjacent the patient's diaphragm, and another accelerometer may be included in the sensor 300 or 303. Relative motion between the two locations on the torso 312 represented by the two accelerometers closely represents diaphragm movement and, therefore, breathing.

The respiration rate may also, or alternatively, be derived from ECG baseline data, as is well known in the art. Either of these respiration rates may be used by the data analyzer 212. However, some embodiments use both derived rates, as shown in a flowchart in FIG. 9. At 900, ECG and accelerometer data are collected. At 903, a first candidate respiration rate is calculated, based on the ECG baseline data, and at 906, a second candidate respiration rate is calculated, based on the accelerometer data. These two candidate rates are compared at 909. If the difference between the two candidate rates is less than a predetermined value, such as about 10%, an average of the two candidate rates is calculated at 912, and this average is used 915 by the data analyzer 212. Optionally, the maximum allowable difference between the two candidate rates, i.e., the limit in 909, may be specified by the physician via the physician application program 218.

However, if the two candidate rates differ by more than the predetermined value, control passes to 918. If both candidate rates are outside a predetermined range of normal respiration rates, both candidate rates are discarded 921, and the procedure loops back to 900. If both candidate rates are

not outside the predetermined range of normal respiration rates, i.e., if at least one of the candidate rates is within the range, control passes to 924.

At 924, if both candidate rates are within the predetermined normal range, the ECG-based candidate respiration rate is used at 927. However, if only one of the candidate rates is within the predetermined normal range, control passes to 930.

At 930, if only the ECG-based candidate respiration rate is within the predetermined normal range, the ECG-based candidate respiration rate is used at 933. However, at 930, if the ECG-based candidate respiration rate is not within the predetermined normal range, the accelerometer-based candidate respiration rate is used at 936.

Although embodiments in which all the data analysis is performed by the remote server 107 (FIG. 2) have been described, the high-sensitivity analysis 109 (FIG. 1) may optionally or alternatively be performed by the controller 206 or the cellular transceiver 104, i.e., at the patient, rather than in the remote server 107, as schematically illustrated in FIG. 10. In this case, if an arrhythmia is suspected by the high-sensitivity analysis 1000, no request signal needs to be sent to the per-patient physiologic sensors and data collector 1003. Instead, the controller 206 (see FIG. 2) or the cellular transceiver 104 (see FIG. 2) automatically sends the more detailed data to the remote server 1006, and the remote server 1006 performs the high-specificity analysis 118, as described above. In such an embodiment, the transceiver assembly 203 (see FIG. 2) may be referred to as a transmitter assembly, because it primarily or exclusively sends data to the remote server 1006 and does not necessarily receive any requests 112 (See FIGS. 1 and 2) from the remote server 1006.

Although embodiments of the present invention have been described as detecting and verifying suspected arrhythmias, other embodiments may be similarly configured and used to detect and verify other health or fitness conditions, such as inappropriate insulin level, respiration, blood pressure, SpO2, body movement, exertion and the like.

A remote health monitoring system includes a processor controlled by instructions stored in memory. For example, the transceiver assembly may include and be controlled by such a processor, and the remote server may be controlled by another such processor. The memory may be random access memory (RAM), read-only memory (ROM), flash memory or any other memory, or combination thereof, suitable for storing control software or other instructions and data.

Some of the functions performed by the remote health monitoring system have been described with reference to flowcharts and/or block diagrams. Those skilled in the art should readily appreciate that functions, operations, decisions, etc. of all or a portion of each block, or a combination of blocks, of the flowcharts or block diagrams may be implemented as computer program instructions, software, hardware, firmware or combinations thereof.

Those skilled in the art should also readily appreciate that instructions or programs defining the functions of the present invention may be delivered to a processor in many forms, including, but not limited to, information permanently stored on non-writable storage media (e.g. read-only memory devices within a computer such as ROM, or devices readable by a computer I/O attachment, such as CD-ROM or DVD disks), information alterably stored on writable storage media (e.g. floppy disks, removable flash memory and hard drives) or information conveyed to a computer through communication media, including wired or wireless computer networks.

In addition, while the invention may be embodied in software, the functions necessary to implement the invention may optionally or alternatively be embodied in part or in whole using firmware and/or hardware components, such as combinatorial logic, Application Specific Integrated Circuits (ASICs), Field-Programmable Gate Arrays (FPGAs) or other hardware or some combination of hardware, software and/or firmware components.

The embodiments of the invention described above are intended to be merely exemplary. While the invention is described through the above-described exemplary embodiments it will be understood by those of ordinary skill in the art that modifications to, and variations of, the illustrated embodiments may be made without departing from the inventive concepts disclosed herein. For example, although some aspects of remote health monitoring system have been described with reference to a flowchart, those skilled in the art should readily appreciate that functions, operations, decisions, etc. of all or a portion of each block, or a combination of blocks, of the flowchart may be combined, separated into separate operations or performed in other orders. Furthermore, disclosed aspects, or portions of these aspects, may be combined in ways not listed above. Accordingly, the invention should not be viewed as being limited to the disclosed embodiments.

What is claimed is:

1. A method for detecting arrhythmia from collected data including a first set of data and a second set of data, the method comprising:

receiving at a computer-based data analyzer, from a remote device, the first set of data, the first set of data being wirelessly transmitted from the remote device at a preset duty cycle, wherein receiving the first set of data includes receiving the first set of data at a fixed interval of time between data receptions;

automatically analyzing the first set of data with the data analyzer using a first data analysis technique to identify a suspected arrhythmia;

automatically requesting the second set of data from the remote device, wherein the second set of data is requested in response to the identification of the suspected arrhythmia in the analysis of the first set of data; receiving at the data analyzer, from the remote device, the second set of data; and

automatically analyzing the second set of data with the data analyzer using a second data analysis technique to verify the suspected arrhythmia identified using the first data analysis technique, wherein the first data analysis technique and the second data analysis technique include different computations respectively performed by the data analyzer on the received first set of data and the received second set of data.

2. The method of claim 1, wherein the collected data includes data of a patient sensed by at least one sensor configured to sense at least one of acceleration, pulse oximetry, blood pressure, respiration, movement, and cardiac electrical signals.

3. The method of claim 1, wherein the collected data includes electrocardiograph (ECG) data.

4. The method of claim 1, wherein requesting the second set of data includes requesting data corresponding to a time period that spans the identified suspected arrhythmia.

5. The method of claim 1, wherein the first set of data was collected by a first set of a plurality of sensors, and the second set of data was collected by a second set of the plurality of sensors, and wherein at least one sensor in the

second set of the plurality of sensors is different from the sensors in the first set of the plurality of sensors.

6. The method of claim 1, wherein the collected data is collected at a first resolution, and wherein the first set of data includes data of a second resolution, wherein the second resolution is lower than the first resolution.

7. The method of claim 1, wherein (a) the first set of data includes data of a first resolution for a first time period, (b) the second set of data includes data of a second resolution for a second time period, (c) the second resolution is greater than the first resolution, and (d) the second time period is smaller than or equal to the first time period.

8. The method of claim 1, wherein (a) the first set of data includes data of a first sampling rate for a first time period, (b) the second set of data includes data of a second sampling rate for a second time period, (c) the second sampling rate is greater than the first sampling rate, and (d) the second time period is smaller than or equal to the first time period.

9. The method of claim 1, wherein the step of analyzing the first set of data is performed remotely of the patient.

10. The method of claim 1, wherein at least one of the received first and second sets of data is encrypted.

11. The method of claim 1, wherein receiving the first set of data includes receiving data that has not been analyzed by the remote device.

12. The method of claim 1, wherein receiving the first set of data includes receiving the first set of data in real-time from the remote device.

13. The method of claim 1, wherein the fixed interval of time between data receptions varies from tens of seconds to live streaming.

14. The method of claim 1, wherein analyzing the first set of data includes analyzing the first set of data based on morphology and heart beat interval features.

15. The method of claim 1, wherein the preset duty cycle is a user selectable time interval between periodic transmissions of the first set of data from the remote device.

16. The method of claim 1, further including displaying the received first and second sets of data and the identified arrhythmia, and selecting (a) a type of data to display and (b) time periods of data to display.

17. The method of claim 1, further including sending instructions from the data analyzer to the remote device to change data collection parameters of the remote device.

18. The method of claim 17, wherein the sending instructions includes automatically sending instructions based on a comparison of received second set of data with a predetermined threshold.

19. The method of claim 1, wherein the first data analysis technique has a lower probability of generating a false negative result for arrhythmia detection compared to the second data analysis technique, and the second data analysis technique has a lower probability of generating a false positive result for arrhythmia detection compared to the first data analysis technique.

20. The method of claim 1, wherein the remote device includes a phone and the data analyzer is part of a cloud server.

21. An apparatus for identifying arrhythmia from collected data, the collected data including a first set of data and a second set of data, the apparatus comprising:

a data storage device storing instructions for analyzing the collected data;

a computer-based data analyzer configured to execute the instructions to perform a method comprising:

receiving at the data analyzer, from a remote device, the first set of data, the first set of data being wirelessly

17

transmitted from the remote device at a preset duty cycle, wherein receiving the first set of data includes receiving the first set of data at a fixed interval of time between data receptions;

5 automatically analyzing the first set of data with the data analyzer using a first data analysis technique to identify a suspected arrhythmia;

10 automatically requesting the second set of data from the remote device, wherein the second set of data is requested in response to the identification of the suspected arrhythmia in the analysis of the first set of data;

receiving at the data analyzer, from the remote device, the second set of data; and

15 automatically analyzing the second set of data with the data analyzer using a second data analysis technique to verify the suspected arrhythmia identified using the first data analysis technique, wherein the first data analysis technique and the second data analysis technique include different computations respectively performed by the data analyzer on the received first set of data and the received second set of data.

22. The apparatus of claim 21, wherein the collected data includes electrocardiograph (ECG) data of a patient sensed by at least one sensor of a plurality of sensors.

25 23. The apparatus of claim 21, wherein the collected data is collected at a first resolution, and wherein the first set of data includes data of a second resolution, wherein the second resolution is lower than the first resolution.

30 24. The apparatus of claim 21, wherein the steps of analyzing the first and second sets of data are performed remotely of the patient.

35 25. A non-transitory computer readable medium comprising instructions that when executed on a processor cause the processor to perform operations for detecting arrhythmia from collected data, the collected data including a first set of data and a second set of data, the operations including:

receiving at a computer-based data analyzer, from a remote device, the first set of data, the first set of data

18

being wirelessly transmitted from the remote device at a preset duty cycle, wherein receiving the first set of data includes receiving the first set of data at a fixed interval of time between data receptions;

5 automatically analyzing the first set of data with the data analyzer using a first data analysis technique to identify a suspected arrhythmia;

10 automatically requesting the second set of data from the remote device, wherein the second set of data is requested in response to the identification of the suspected arrhythmia in the analysis of the first set of data;

receiving at the data analyzer, from the remote device, the second set of data; and

15 automatically analyzing the second set of data with the data analyzer using a second data analysis technique to verify the suspected arrhythmia identified using the first data analysis technique, wherein the first data analysis technique and the second data analysis technique include different computations respectively performed by the data analyzer on the received first set of data and the received second set of data.

26. The non-transitory computer readable medium of claim 25, wherein the collected data includes electrocardiograph (ECG) data of a patient sensed by at least one sensor of a plurality of sensors.

27. The non-transitory computer readable medium of claim 25, wherein the collected data is collected at a first resolution, and wherein the first set of data includes data of a second resolution, wherein the second resolution is lower than the first resolution.

28. The non-transitory computer readable medium of claim 25, wherein the steps of analyzing the first and second sets of data are performed remotely of the patient.

29. The non-transitory computer readable medium of claim 25, wherein the first set of data is received continuously by the data analyzer from the remote device.

\* \* \* \* \*

专利名称(译)	远程健康监测系统		
公开(公告)号	<a href="#">US10332379</a>	公开(公告)日	2019-06-25
申请号	US14/326178	申请日	2014-07-08
申请(专利权)人(译)	INFOBIONIC INC.		
当前申请(专利权)人(译)	INFOBIONIC INC.		
[标]发明人	FAHEY MICHAEL		
发明人	FAHEY, MICHAEL		
IPC分类号	A61B5/00 A61B5/08 A61B5/1455 G08B21/10 A61B5/0205		
CPC分类号	G16H40/67 G08B21/10 A61B5/0002 A61B5/0006 A61B5/0205 A61B5/08 A61B5/14552 A61B5/0022 Y02A90/26		
优先权	13/446490 2013-07-02 US 61/476072 2011-04-15 US		
其他公开文献	US20140323883A1		
外部链接	<a href="#">Espacenet</a>		

摘要(译)

数据收集系统以高分辨率和/或高数据速率 (“更详细的数据”) 收集和存储来自门诊患者的生理数据, 并发送数据的低分辨率和/或下采样版本 (“不太详细的数据”) 通过无线网络到远程服务器。服务器自动分析较不详细的数据以检测异常, 例如心律失常。使用双层分析方案, 其中第一层比第二层更敏感且更不具体。如果更敏感的分析检测到或怀疑异常, 则服务器通知数据收集器发送对应于与异常相关联的时间段的更详细数据。更具体的第二层分析更详细的数据以验证异常。服务器还可以存储所接收的数据并使其可供用户使用, 例如通过图形或表格显示。

