



US009552460B2

(12) **United States Patent**
Riley et al.

(10) **Patent No.:** **US 9,552,460 B2**
(45) **Date of Patent:** ***Jan. 24, 2017**

(54) **APPARATUS FOR SUPPORTING AND MONITORING A PERSON**

(71) Applicant: **Hill-Rom Services, Inc.**, Batesville, IN (US)

(72) Inventors: **Carl W. Riley**, Milan, IN (US);
Timothy J. Receveur, Guilford, IN (US); **David L. Ribble**, Indianapolis, IN (US); **Dan R. Tallent**, Hope, IN (US)

(73) Assignee: **Hill-Rom Services, Inc.**, Batesville, IN (US)

(*) Notice: Subject to any disclaimer, the term of this patent is extended or adjusted under 35 U.S.C. 154(b) by 0 days.

This patent is subject to a terminal disclaimer.

(21) Appl. No.: **14/325,535**

(22) Filed: **Jul. 8, 2014**

(65) **Prior Publication Data**

US 2015/0005675 A1 Jan. 1, 2015

Related U.S. Application Data

(63) Continuation of application No. 13/153,672, filed on Jun. 6, 2011, now abandoned, and a (Continued)

(51) **Int. Cl.**
G06F 19/00 (2011.01)
A61B 5/0205 (2006.01)
(Continued)

(52) **U.S. Cl.**
CPC **G06F 19/3431** (2013.01); **A61B 5/02055** (2013.01); **A61B 5/1113** (2013.01);
(Continued)

(58) **Field of Classification Search**

CPC G06F 19/3431; G06F 19/3406; G06F 19/3418; A61B 5/1113; A61B 5/1115; A61B 5/02055; A61B 5/6891; A61B 5/14551; A61B 5/024; A61B 5/0816; A61B 2562/0247; A61G 7/018; A61G 7/057

(Continued)

(56) **References Cited**

U.S. PATENT DOCUMENTS

2,194,809 A 3/1940 Powell, Jr.
3,325,799 A 6/1967 Farris

(Continued)

FOREIGN PATENT DOCUMENTS

EP 2 417 908 A1 2/2012
EP 2 335 232 B1 8/2012

(Continued)

OTHER PUBLICATIONS

L. Tarassenko et al., "Biosign™: Multi-Parameter Monitoring for Early Warning of Patient Deterioration", (6 pages).

(Continued)

Primary Examiner — David E Sosnowski

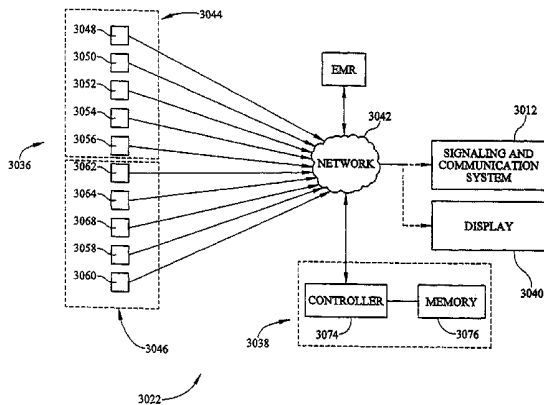
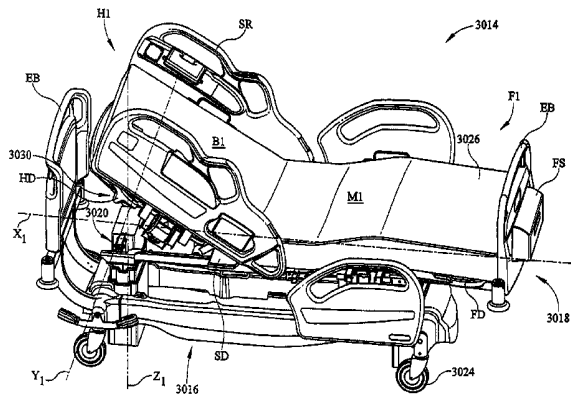
Assistant Examiner — David R Hare

(74) *Attorney, Agent, or Firm* — Barnes & Thornburg LLP

(57) **ABSTRACT**

A system includes a person-support structure, a sensor configured to sense a characteristic of a person supported on the person-support structure, and a control configured to calculate a condition score as a function of the characteristic of the person. The control is operable to change a characteristic of the person-support structure as a function of the condition score.

12 Claims, 7 Drawing Sheets



Related U.S. Application Data

	continuation-in-part of application No. 14/011,833, filed on Aug. 28, 2013, now Pat. No. 9,044,204, which is a continuation of application No. 12/881,285, filed on Sep. 14, 2010, now Pat. No. 8,525,680.	4,971,065 A	11/1990	Pearce
		5,010,772 A	4/1991	Bourland et al.
		5,052,067 A	10/1991	Thomas et al.
		5,057,819 A	10/1991	Valenti
		5,060,174 A	10/1991	Gross
		5,101,828 A	4/1992	Welkowitz et al.
		5,117,518 A	6/1992	Schild
		5,170,364 A	12/1992	Gross et al.
		5,182,826 A	2/1993	Thomas et al.
		5,184,112 A	2/1993	Gusakov
		5,276,432 A	1/1994	Travis
		5,283,735 A	2/1994	Gross et al.
		5,539,942 A	7/1996	Melou
		5,561,412 A	10/1996	Novak et al.
		5,664,270 A	9/1997	Bell et al.
		5,738,102 A	4/1998	Lemelson
		5,794,288 A	8/1998	Soltani et al.
		5,815,864 A	10/1998	Sloop
		5,817,146 A	10/1998	Augustine
		5,829,081 A	11/1998	Pearce
		5,873,137 A	2/1999	Yavets-Chen
		5,934,280 A	8/1999	Viard et al.
		5,964,720 A	10/1999	Pelz
		5,970,789 A	10/1999	Meyer et al.
		6,009,580 A	1/2000	Caminade et al.
		6,011,477 A	1/2000	Teodorescu et al.
		6,034,526 A	3/2000	Montant et al.
		6,067,019 A	5/2000	Scott
		6,067,466 A	5/2000	Selker et al.
		6,079,068 A	6/2000	Viard
		6,094,762 A	8/2000	Viard et al.
		6,208,250 B1	3/2001	Dixon et al.
		6,212,718 B1	4/2001	Stolpmann et al.
		6,493,568 B1	12/2002	Bell et al.
		6,560,804 B2	5/2003	Wise et al.
		6,721,980 B1	4/2004	Price et al.
		6,739,006 B2	5/2004	Borders et al.
		6,984,207 B1	1/2006	Sullivan et al.
		7,031,857 B2	4/2006	Tarassenko et al.
		7,077,810 B2	7/2006	Lange et al.
		7,127,948 B2	10/2006	Tavares et al.
		7,183,930 B2	2/2007	Basir et al.
		7,242,306 B2	7/2007	Wildman et al.
		7,242,308 B2	7/2007	Ulrich et al.
		7,245,956 B2	7/2007	Matthews et al.
		7,248,933 B2	7/2007	Wildman
		7,253,366 B2	8/2007	Bhai
		7,289,844 B2	10/2007	Miszczynski et al.
		7,296,312 B2	11/2007	Menkedick et al.
		7,304,580 B2	12/2007	Sullivan et al.
		7,306,564 B2	12/2007	Nakatani et al.
		7,472,956 B2	1/2009	Mahsous et al.
		7,973,666 B2	7/2011	Petrosenko et al.
		8,525,680 B2*	9/2013	Riley A61B 5/02055
				340/573.1
		8,844,073 B2*	9/2014	Riley A61B 5/02055
				177/144
		9,333,136 B2*	5/2016	Gibson A61G 7/05769
		2001/0004778 A1	6/2001	Heimbrock et al.
		2003/0144829 A1	7/2003	Geatz et al.
		2004/0111045 A1	6/2004	Sullivan et al.
		2005/0027416 A1	2/2005	Basir et al.
		2005/0124864 A1	6/2005	Mack et al.
		2005/0165284 A1	7/2005	Gefen
		2005/0168341 A1	8/2005	Reeder et al.
		2005/0190062 A1	9/2005	Sullivan et al.
		2005/0190068 A1	9/2005	Gentry et al.
		2005/0273940 A1	12/2005	Petrosenko et al.
		2006/0019282 A1	1/2006	Negishi
		2006/0101581 A1*	5/2006	Blanchard A61G 7/00
				5/713
		2006/0179952 A1	8/2006	Tavares et al.
		2007/0118054 A1	5/2007	Pinhas et al.
		2007/0210917 A1	9/2007	Collins et al.
		2007/0247316 A1	10/2007	Wildman et al.
		2008/0060138 A1	3/2008	Price et al.
		2008/0094207 A1	4/2008	Collins, Jr. et al.
		2008/0095156 A1	4/2008	Schuman
		2008/0114260 A1	5/2008	Lange et al.

(60) Provisional application No. 61/352,017, filed on Jun. 7, 2010, provisional application No. 61/243,714, filed on Sep. 18, 2009, provisional application No. 61/243,741, filed on Sep. 18, 2009, provisional application No. 61/243,806, filed on Sep. 18, 2009, provisional application No. 61/243,825, filed on Sep. 18, 2009.

- (51) **Int. Cl.**
A61B 5/11 (2006.01)
A61B 5/00 (2006.01)
A61G 7/018 (2006.01)
A61G 7/057 (2006.01)
A61B 5/021 (2006.01)
A61B 5/024 (2006.01)
A61B 5/08 (2006.01)
A61B 5/1455 (2006.01)

- (52) **U.S. Cl.**
 CPC *A61B 5/1115* (2013.01); *A61B 5/6891* (2013.01); *A61B 5/7275* (2013.01); *A61G 7/018* (2013.01); *A61G 7/057* (2013.01); *G06F 19/3406* (2013.01); *G06F 19/3418* (2013.01); *A61B 5/021* (2013.01); *A61B 5/024* (2013.01); *A61B 5/0816* (2013.01); *A61B 5/14551* (2013.01); *A61B 2562/0247* (2013.01)

- (58) **Field of Classification Search**
 USPC 5/710, 713-715, 424; 177/144
 See application file for complete search history.

(56) **References Cited**

U.S. PATENT DOCUMENTS

3,631,438 A	12/1971	Lewin
3,644,950 A	2/1972	Lindsay, Jr.
3,727,606 A	4/1973	Sielaff
3,836,900 A	9/1974	Mansfield
3,996,928 A	12/1976	Marx
4,146,885 A	3/1979	Lawson, Jr.
4,195,287 A	3/1980	McCoy et al.
4,245,651 A	1/1981	Frost
4,422,458 A	12/1983	Kravath
4,481,686 A	11/1984	Lacoste
4,483,029 A	11/1984	Paul
4,485,505 A	12/1984	Paul
4,525,885 A	7/1985	Hunt et al.
4,559,656 A	12/1985	Foster
4,564,965 A	1/1986	Goodwin
4,595,023 A	6/1986	Bonnet
4,602,643 A	7/1986	Dietz
4,637,083 A	1/1987	Goodwin
4,657,026 A	4/1987	Tagg
4,677,857 A	7/1987	Feldmann
4,681,098 A	7/1987	Lee
4,694,520 A	9/1987	Paul et al.
4,757,825 A	7/1988	Diamond
4,799,276 A	1/1989	Kadish
4,838,309 A	6/1989	Goodwin
4,889,131 A	12/1989	Salem et al.
4,934,468 A	6/1990	Koerber, Sr. et al.
4,935,968 A	6/1990	Hunt et al.
4,942,635 A	7/1990	Hargest et al.
4,949,412 A	8/1990	Goode
4,949,414 A	8/1990	Thomas et al.
4,967,195 A	10/1990	Shipley

(56)

References Cited

U.S. PATENT DOCUMENTS

2008/0146892 A1 6/2008 LeBoeuf et al.
 2008/0269625 A1 10/2008 Halperin et al.
 2008/0275349 A1 11/2008 Halperin et al.
 2008/0281170 A1 11/2008 Eshelman et al.
 2009/0054735 A1 2/2009 Higgins et al.
 2009/0062623 A1 3/2009 Cohen et al.
 2009/0069642 A1 3/2009 Gao et al.
 2009/0088606 A1 4/2009 Cuddihy et al.
 2009/0093686 A1 4/2009 Hu et al.
 2009/0163774 A1 6/2009 Thatha et al.
 2009/0216556 A1 8/2009 Martin et al.
 2009/0326339 A1 12/2009 Horvitz
 2010/0099954 A1 4/2010 Dickinson et al.
 2010/0170043 A1 7/2010 Young et al.
 2010/0174198 A1 7/2010 Young et al.
 2011/0010014 A1 1/2011 Oexman et al.
 2011/0068935 A1 3/2011 Riley et al.
 2011/0068939 A1* 3/2011 Lachenbruch A61B 5/002
 340/626
 2011/0163885 A1 7/2011 Poulos et al.
 2012/0174322 A1 7/2012 Skinner et al.

FOREIGN PATENT DOCUMENTS

JP 06315424 A2 11/1994

WO WO 2008/096307 A1 8/2008
 WO WO 2009/095877 A2 8/2009
 WO WO 2009108228 A1 * 9/2009 A47C 27/061

OTHER PUBLICATIONS

C. P. Subbe, et al., "Validation of a modified Early Warning Score in medical admissions", *Q J Med* 2001: 94: 521-526.
 Marilyn Hravnak et al., "Defining the Incidence of Cardiorespiratory Instability in Patients in Step-down Units Using an Electronic Integrated Monitoring System", *Arch Intern Med*, vol. 168 (No. 12), Jun. 23, 2008, 1300-1308.
 L. Tarassenko, et al., "Integrated monitoring and analysis for early warning of patient deterioration", *British Journal of Anaesthesia*, May 17, 2006, (5 pages).
 "Visensia", *OBS Medical Ltd.* (4 pages).
 Coba V. Rubinfeld I, et al., "Can the Visensia Index Score Predict Mortality in High Risk Injured Patients?", (1 page).
 Sufi et al., A mobile phone based intelligent scoring approach for assessment of critical illness, Technology and Applications in Bio-medicine, 2008. ITAB 2008. International Conference on, IEEE, Piscataway, NJ, USA, May 30, 2008, pp. 290-293, XP031289425. European search report from EP 10 176765 dated Feb. 16, 2001 (11 pages).

* cited by examiner

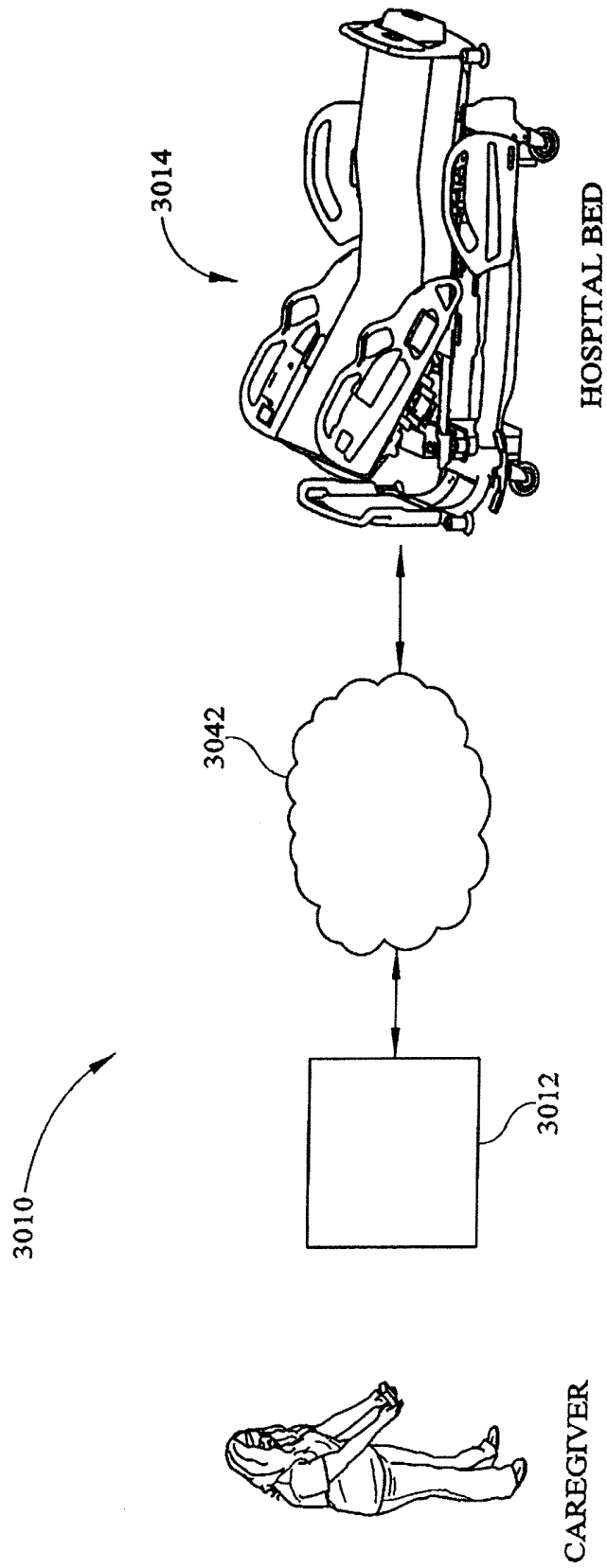


FIG. 1

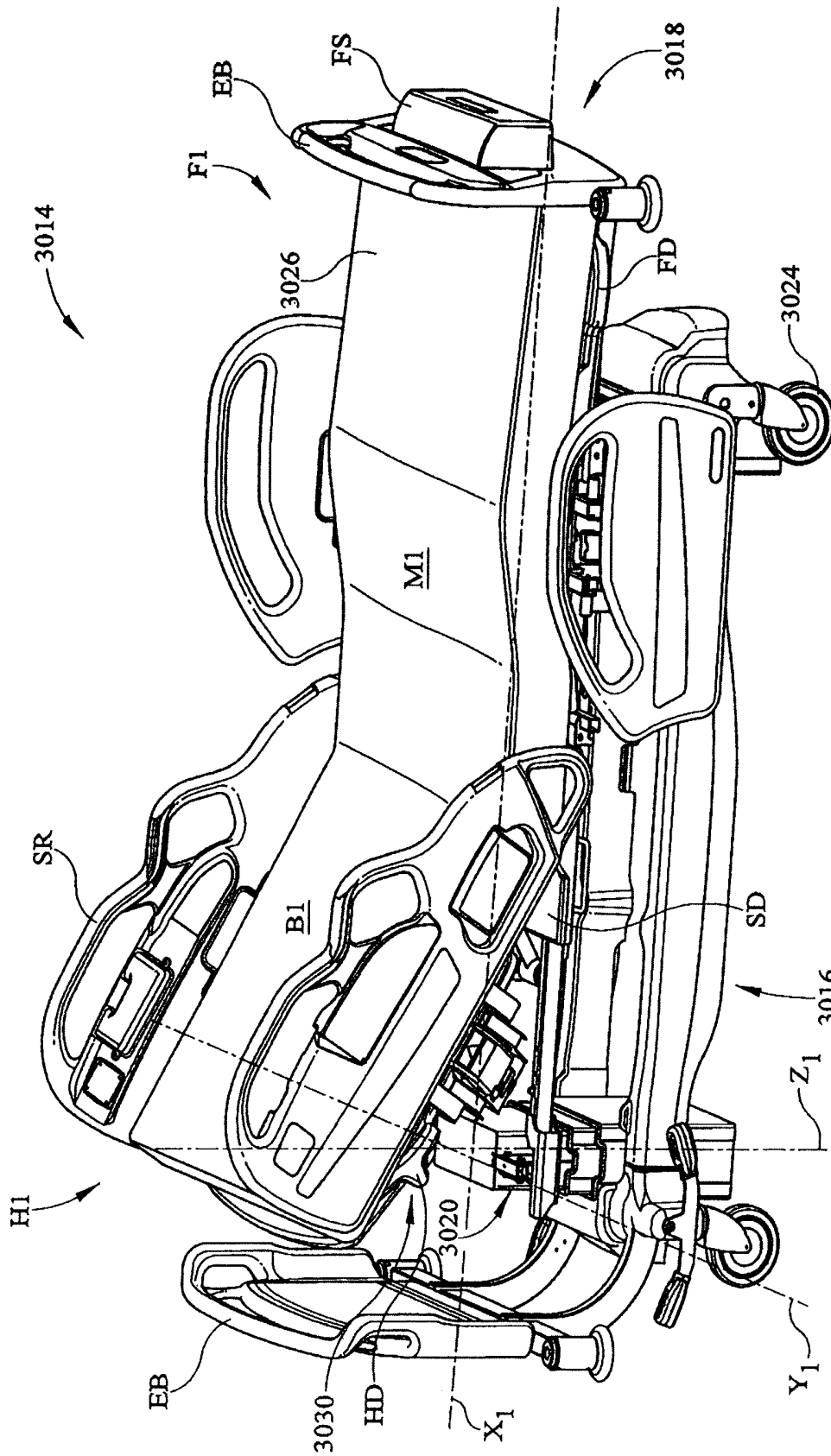


FIG. 2

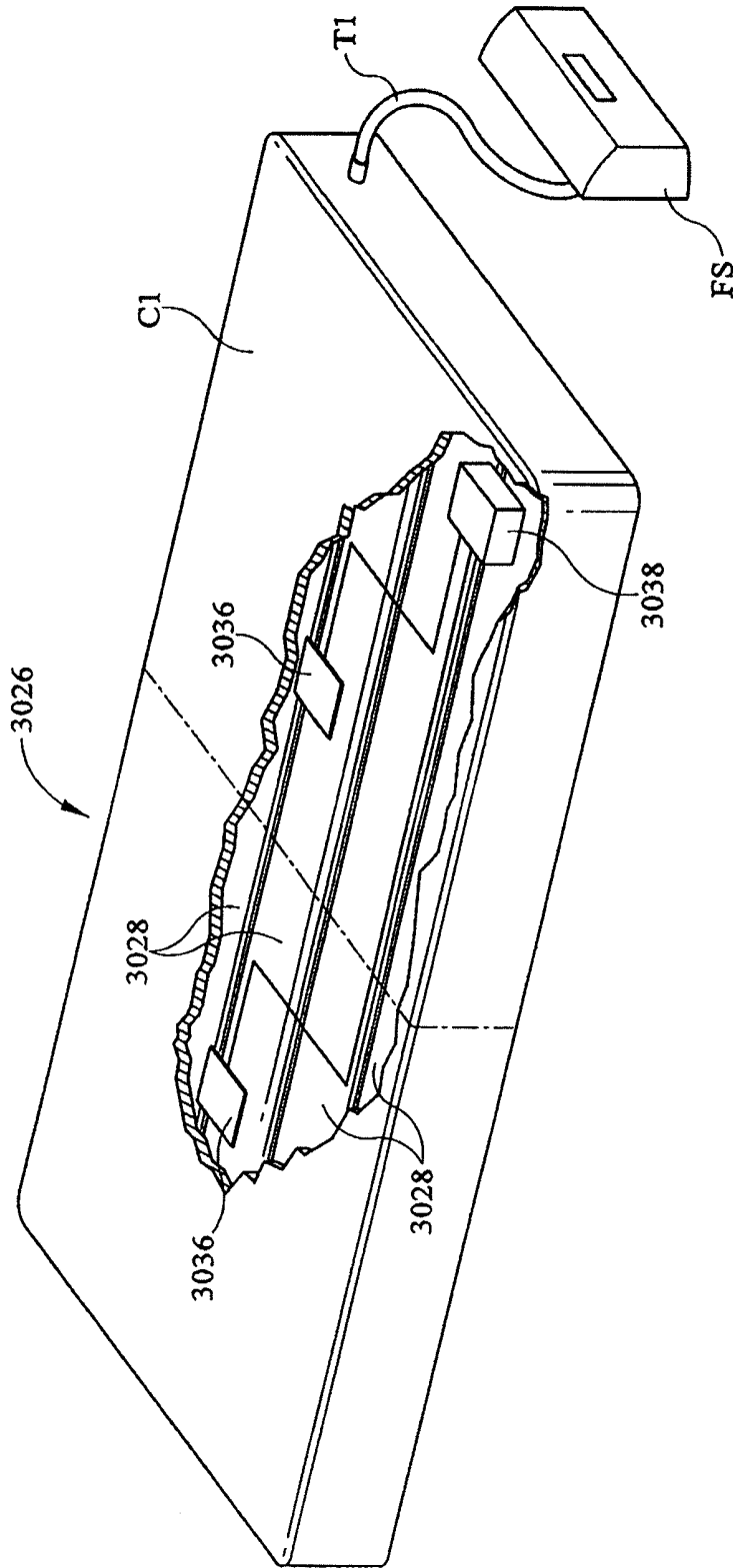


FIG. 3

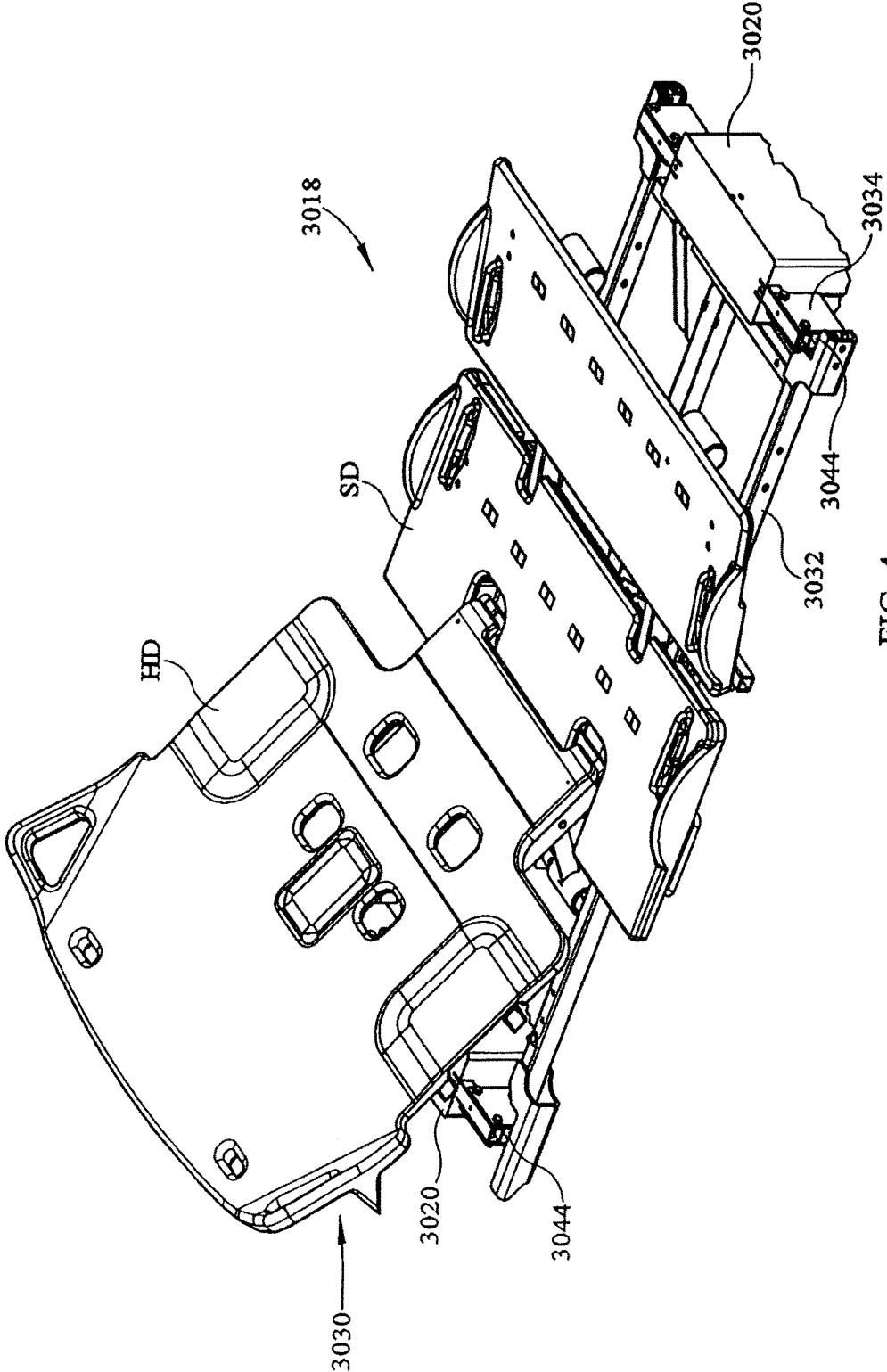


FIG. 4

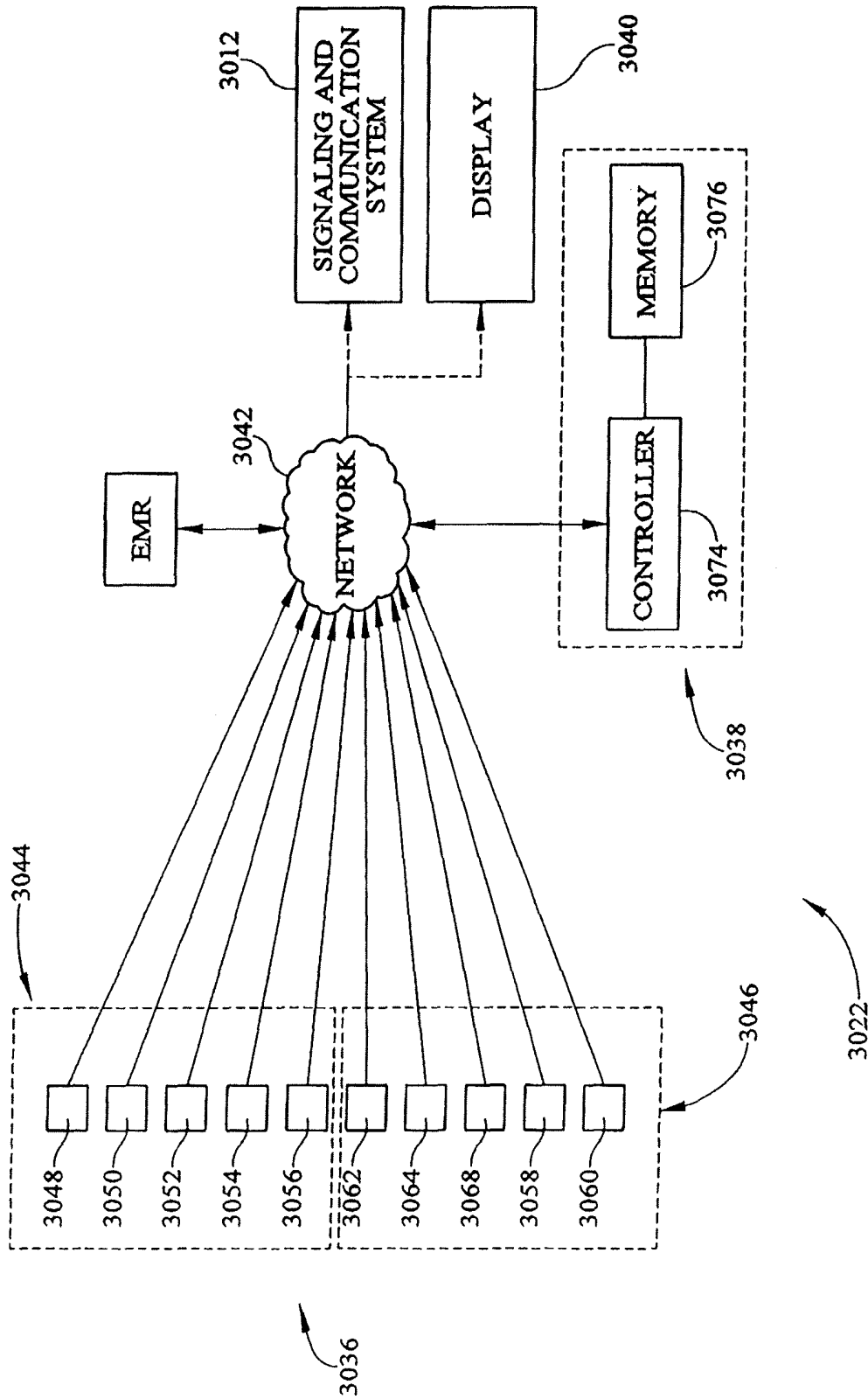


FIG. 5

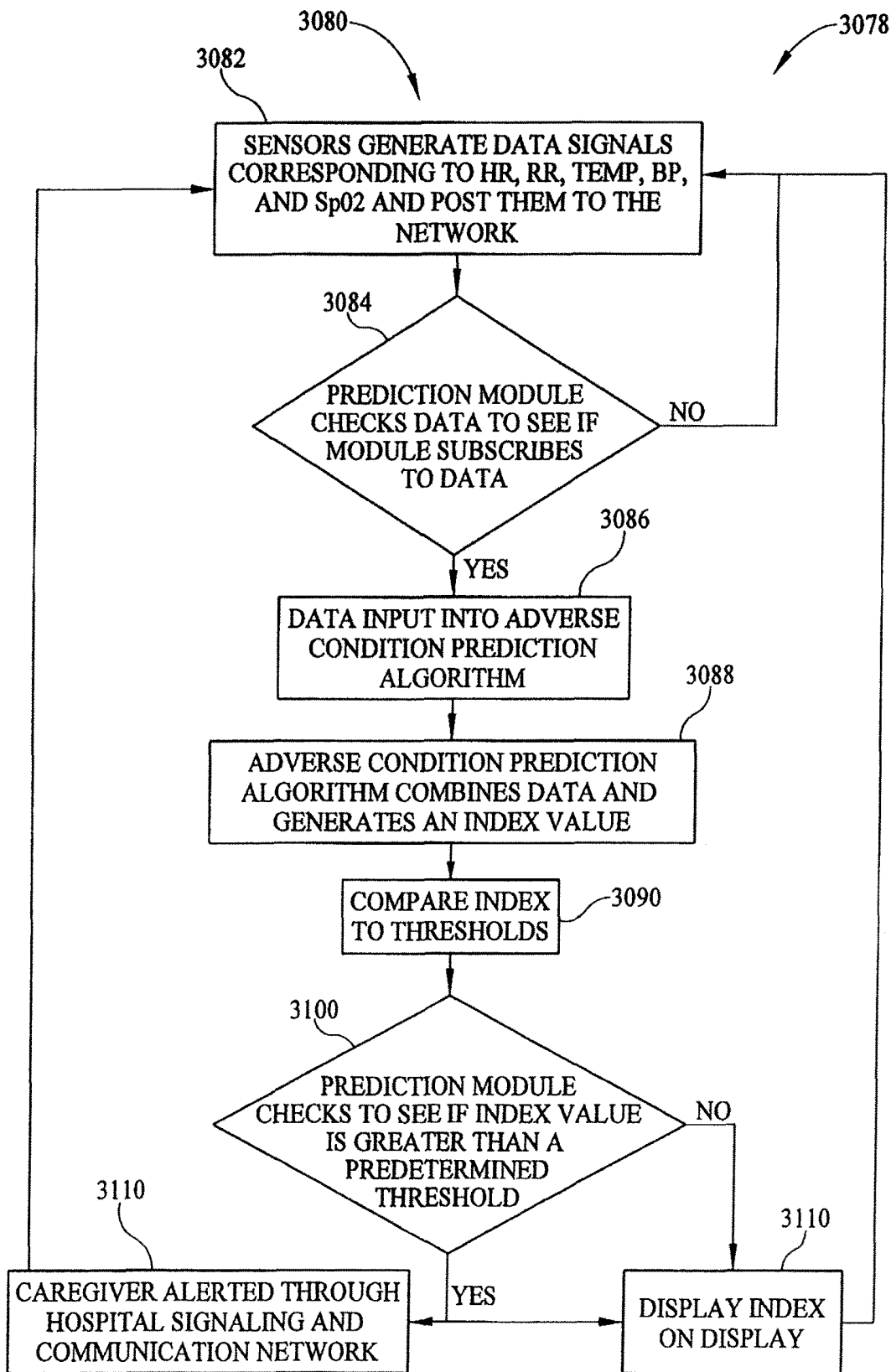


FIG. 6

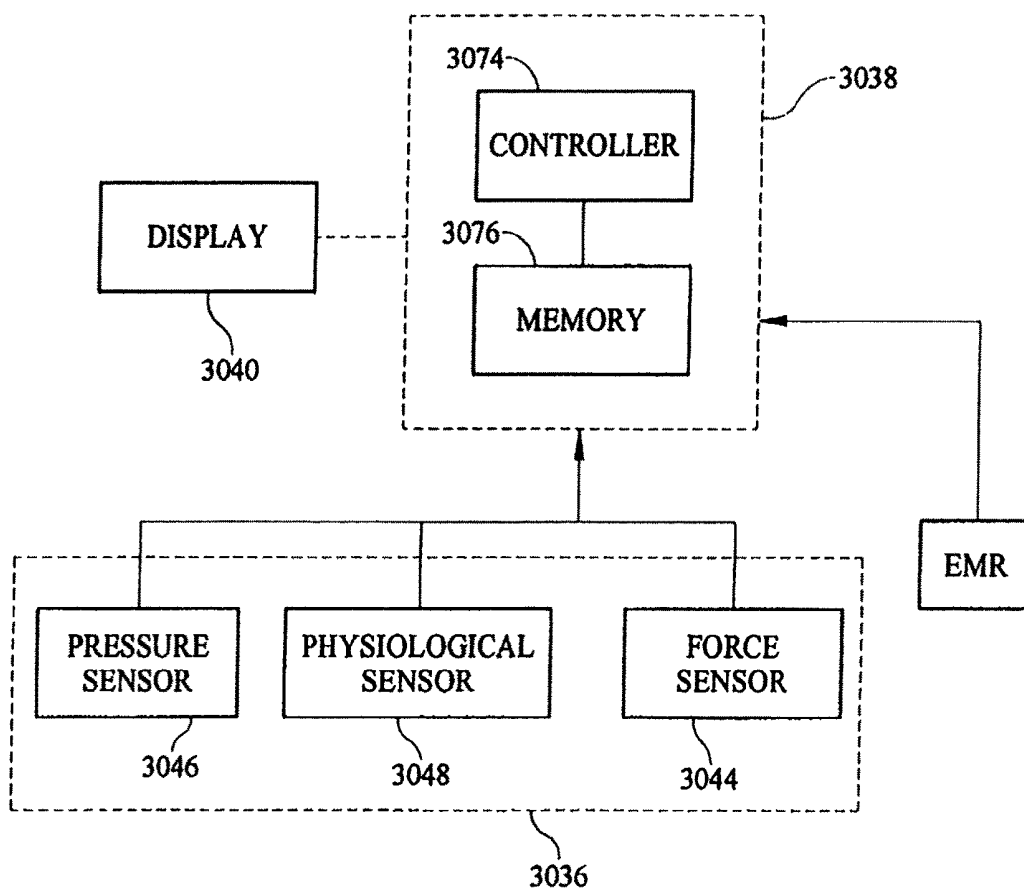


FIG. 7

APPARATUS FOR SUPPORTING AND MONITORING A PERSON

CROSS-REFERENCE TO RELATED APPLICATIONS

The present application is a continuation of U.S. application Ser. No. 13/153,672, filed Jun. 6, 2011, which claims the benefit, under 35 U.S.C. §119(e), of U.S. Provisional Application No. 61/352,017 which was filed Jun. 7, 2010 and which is hereby incorporated by reference herein. The present application is also a continuation-in-part of U.S. application Ser. No. 14/011,833, filed Aug. 28, 2013, which is a continuation of U.S. application Ser. No. 12/881,285, filed Sep. 14, 2010, now U.S. Pat. No. 8,525,680, which claims the benefit, under 35 U.S.C. §119(e), of U.S. Provisional Application Nos. 61/243,714; 61/243,741; 61/243,806; and 61/243,825; each of which was filed Sep. 18, 2009 and each of which is hereby incorporated by reference herein.

The present application relates to U.S. application Ser. No. 13/153,672, filed Jun. 6, 2011 and titled "Apparatus for Supporting and Monitoring a Person."

BACKGROUND

This disclosure relates to person support apparatuses. More particularly, but not exclusively, the present disclosure relates to person support apparatuses that incorporate or are used with vital signs monitoring devices and movement detection systems, and prediction of the onset of a condition.

Person support apparatuses can include beds, chairs, stretchers, seats, mattresses, therapy surfaces, furniture, and the like, or other apparatuses that support a person. Hospital beds and stretchers, hospital mattresses, and wheelchairs are examples of such apparatuses that support persons. Consumer beds, chairs, and furniture are also examples of such person support apparatuses, as are seats for vehicles, businesses, and venues.

Vital signs monitors monitor one or more physiological parameters of a person, such as body temperature, pulse rate, heart rate, blood pressure, and respiratory rate, as well as other body signs, such as end-tidal CO₂, SpO₂ (saturation of oxygen in arterial blood flow, sometimes referred to as pulse oximetry), and other indicators of the person's physiological state. Movement and/or position detection systems monitor the movement of a person to determine if they are attempting to exit the support apparatus. Movement and/or position detection systems are sometimes included as part of a hospital bed.

While various systems have been developed, there is still a need for further contributions and improvements in these areas of technology, particularly with regard to predicting the onset of an adverse condition prior to the occurrence of the condition.

SUMMARY

The present disclosure includes one or more of the features recited in the appended claims and/or the following features which, alone or in any combination, may comprise patentable subject matter.

According to this disclosure, a method may include receiving an input signal from an electronic medical record and configuring a person-support apparatus as a function of

the input signal. The input signal may include a fall risk assessment score or a pressure ulcer risk assessment score, for example.

Also according to this disclosure, a method may include sensing a characteristic of a person supported on a person-support apparatus, calculating a condition score as a function of the characteristic, and configuring a support system as a function of the condition score. The support system may include a person-support apparatus or a person-support surface, for example.

Further according to this disclosure, a method may include sensing a characteristic of a person supported on a person-support apparatus, calculating a condition score as a function of the characteristic, and configuring a communication system as a function of the condition score. The communication system may include a work-flow process program, for example.

According to this disclosure, a person-support apparatus may include a frame configured to support a person thereon, a sensor configured to sense a characteristic of a person supported on the frame, and a control configured to calculate a condition score as a function of the characteristic of the person. The control may be operable to change a characteristic of the frame as a function of the condition score.

The person-support apparatus may further include a communication device configured to receive an input signal corresponding to information in an electronic medical record. The control may calculate the condition score as a function of the characteristic of the person and the input signal. The input signal may include a fall risk assessment score or a pressure ulcer risk assessment score, for example. The frame of the person-support apparatus may include an upper frame portion with a deck movably coupled thereto. The deck may have a head section. The control may cause the head section to rotate between a relatively horizontal position and an inclined position.

It is contemplated by this disclosure that a person-support apparatus may include a frame configured to support a person thereon, a communication device configured to receive an input signal corresponding to information in an electronic medical record, and a control configured to calculate a condition score as a function of the input signal. The control may be operable to change a characteristic of the frame as a function of the condition score.

It is also contemplated by this disclosure that a person-support surface may be configured to support a person thereon and may include a fluid chamber, a fluid supply configured to supply fluid to the fluid chamber, a communication device configured to receive an input signal corresponding to information in an electronic medical record, and a control configured to calculate a condition score as a function of the input signal. The control may be operable to control the fluid supply as a function of the condition score.

Further according to this disclosure, a person-support surface may be configured to support a person thereon and may include a fluid chamber, a fluid supply configured to supply gas to the fluid chamber, a sensor configured to sense a characteristic of a person supported on the person-support surface, and a control configured to calculate a condition score as a function of the characteristic of the person. The control may be operable to control the fluid supply as a function of the condition score.

The person-support surface may further include a communication device configured to receive an input signal corresponding to information in an electronic medical record. The control may calculate the condition score as a function of the characteristic of the person and the input

signal. The input signal may include a fall risk assessment score or a pressure ulcer risk assessment score, as noted previously. In some embodiments, the fluid chamber may comprise a temperature and humidity topper. Alternatively, or additionally, the fluid chamber may include a gas bladder.

Some embodiments may include a control system for a person support system configured to receive input signals from at least one of a sensor and an electronic medical record (EMR), generate a condition score as a function of the input that can correspond to the likelihood of an adverse condition occurring, and alert a caregiver when the condition score exceeds a predetermined threshold.

According to this disclosure, therefore, a method may include sensing a characteristic of a person supported on a person-support apparatus, calculating a condition score as a function of the characteristic, and configuring a support system and/or a communication system as a function of the condition score. The support system may include the person-support apparatus, such as a bed frame, and/or a person-support surface. The condition score may include a fall risk assessment score or a pressure ulcer risk assessment score. The support system may further include a fluid supply and the configuring may comprise causing the fluid supply to initiate a therapy.

Also according to this disclosure, a system may include a person-support structure, a sensor configured to sense a characteristic of a person supported on the person-support structure, and a control configured to calculate a condition score as a function of the characteristic of the person. The control may be operable to change a characteristic of the person-support structure as a function of the condition score.

The person-support structure may include a bed frame with a movement mechanism. The control may control the movement mechanism as a function of the condition score to change a characteristic of the bed frame. In some embodiments, the frame may include an upper frame portion with a deck movably coupled thereto having a head section. The control may cause the head section to rotate between a relatively horizontal position and an inclined position.

The system may further have a fluid supply and the person-support structure may include a fluid chamber configured to receive fluid from the fluid supply. The control may control the fluid supply as a function of the condition score. In some instances, the control may cause the fluid supply to initiate a therapy. It is contemplated by this disclosure that the fluid chamber may comprise, for example, at least one of a temperature and humidity topper, a mattress, and a gas bladder.

The system may further include a communication device configured to receive an input signal corresponding to information in an electronic medical record. The control may calculate the condition score as a function of the characteristic of the person and the input signal. The input signal may include a fall risk assessment score or a pressure ulcer risk assessment score. The control may calculate the condition score as a function of the status of the person-support structure and the characteristic of the person. In some embodiments, the control may calculate the condition score as a function of the status of the person-support structure, an input signal corresponding to information in an electronic medical record, and the characteristic of the person.

Additional features, which alone or in combination with any other feature(s), such as those listed above and/or those listed in the claims, can comprise patentable subject matter and will become apparent to those skilled in the art upon consideration of the following detailed description of vari-

ous embodiments exemplifying the best mode of carrying out the embodiments as presently perceived.

BRIEF DESCRIPTION OF THE DRAWINGS

Referring now to the illustrative examples in the drawings, wherein like numerals represent the same or similar elements throughout:

FIG. 1 is a diagrammatic view of person monitoring system according to one or more principles of the present disclosure;

FIG. 2 is a perspective side view of the person support apparatus of the person monitoring system of FIG. 1 according to one illustrative embodiment;

FIG. 3 is a perspective side view of a person support surface that can be supported on the person support apparatus of FIG. 2 according to one illustrative embodiment;

FIG. 4 is a perspective side view of the upper frame of the person support apparatus of FIG. 2 according to one illustrative embodiment;

FIG. 5 is diagrammatic view of a control system of the person support apparatus of FIG. 2 according to one illustrative embodiment including a controller and a plurality of sensors;

FIG. 6 is a flow chart illustrating a procedure that can be executed by the controller of the control system of FIG. 5 according to one illustrative embodiment; and

FIG. 7 is a diagrammatic view of a control system of the person support apparatus of FIG. 2 according to one illustrative embodiment including a controller and a plurality of sensors.

DETAILED DESCRIPTION

While the present disclosure can take many different forms, for the purpose of promoting an understanding of the principles of the disclosure, reference will now be made to the embodiments illustrated in the drawings, and specific language will be used to describe the same. No limitation of the scope of the disclosure is thereby intended. Various alterations, further modifications of the described embodiments, and any further applications of the principles of the disclosure, as described herein, are contemplated.

One illustrative embodiment includes a control system coupled to a person support system configured to receive input signals corresponding to at least one of bed status information, person position, electronic medical record information, and physiological information, generate a condition score corresponding to the likelihood of an adverse condition occurring, and alert a caregiver when the condition score exceeds a predetermined threshold.

A person monitor system 3010 according to one illustrative embodiment of the current disclosure is shown in FIG. 1. The person monitor system 3010 includes a signaling and communication system 3012 in communication with a person support apparatus 3014. The person monitor system 3010 is configured to provide caregivers with information about a person supported on the person support apparatus 3014 through the signaling and communication system 3012. In one illustrative embodiment, the signaling and communication system 3012 comprises a patient/nurse call system 3012 that, in some embodiments, includes patient stations capable of generating hospital calls and a remote master station which prioritizes and store the calls. One example of such a system is disclosed in U.S. Pat. No. 5,561,412 issued on Oct. 1, 1996 to Novak et al., which is incorporated by reference herein in its entirety. Another

example of such a system is disclosed in U.S. Pat. No. 4,967,195 issued on May 8, 2006 to Shipley, which is incorporated by reference herein in its entirety.

In some embodiments, the signaling and communication system **3012** includes a system **3012** for transmitting voice and data in packets over a network with any suitable number of intra-room networks that can couple a number of data devices to an audio station, where the audio station couples the respective intra-room network to a packet based network. One example of such a system is disclosed in U.S. Pat. No. 7,315,535 issued on Jan. 1, 2008 to Schuman, which is incorporated by reference herein in its entirety. Another example of such a system is disclosed in U.S. Patent Publication No. 2008/0095156 issued on Apr. 24, 2008 to Schuman, which is incorporated by reference herein in its entirety.

According to some embodiments, the signaling and communication system **3012** includes a patient/nurse call system, a nurse call/locating badge, an electronic medical record (EMR) database, and one or more computers programmed with work-flow process software. One example of such a system is disclosed in U.S. Patent Publication No. 2008/0094207 published on Apr. 24, 2008 to Collins, Jr. et al., which is incorporated by reference herein in its entirety. Another example of such a system is disclosed in U.S. Patent Publication No. 2007/0210917 published on Sep. 13, 2007 to Collins, Jr. et al., which is incorporated by reference herein in its entirety. Yet another example of such a system is disclosed in U.S. Pat. No. 7,319,386 published on Jan. 15, 2008 to Collins, Jr. et al., which is incorporated by reference herein in its entirety. It should be appreciated that the workflow process software can be the NaviCare® software available from Hill-Rom Company, Inc. It should also be appreciated that the workflow process software can be the system disclosed in U.S. Pat. No. 7,443,303 issued on Oct. 28, 2008 to Spear et al., which is incorporated by reference herein in its entirety. It should further be appreciated that the badge can be of the type available as part of the ComLinx™ system from Hill-Rom Company, Inc. It should also be appreciated that the badge can also be of the type available from Vocera Communications, Inc.

According to some embodiments, the remote signaling and communication system **3012** is configured to organize, store, maintain and facilitate retrieval of bed status information, along with the various non-bed calls placed in a hospital wing or ward, and remotely identify and monitor the status and location of the person support apparatus, patients, and caregivers. One example of such a system is disclosed in U.S. Pat. No. 7,242,308 issued on Jul. 10, 2007 to Ulrich et al., which is incorporated by reference herein in its entirety. It should be appreciated that the remote status and location monitoring can be the system disclosed in U.S. Pat. No. 7,242,306 issued on Jul. 10, 2007 to Wildman et al., which is incorporated by reference herein in its entirety. It should also be appreciated that the remote status and location monitoring can be the system disclosed in U.S. Patent Publication No. 2007/0247316 published on Oct. 25, 2007 to Wildman et al., which is incorporated by reference herein in its entirety.

The person support apparatus **3014** according to one illustrative embodiment of the current disclosure is shown in FIG. 2. The person support apparatus **3014** includes a head section H1, where the head and a portion of the torso of a person are to be positioned, and a foot section F1, where the feet of a person are to be positioned. The person support apparatus **3014** includes a lower frame **3016** or base **3016**, an upper frame **3018**, a plurality of supports **3020**, and a

control system **3022**. It should be appreciated that the person support apparatus **3014** can include only one support **3016**. The lower frame **3016** includes at least one lower frame section supported by casters **3024**. The supports **3020** are lift mechanisms **3020** that define a vertical axis Z1 which extends through the lower frame **3016** and the upper frame **3018** and are configured to move the upper frame **3018** with respect to the lower frame **3016**. It should be appreciated that the supports **3020** can be at least one fixed column (not shown), if desired. It should also be appreciated that, in some embodiments, the supports **3020** move the upper frame **3018** to a Trendelenburg/reverse Trendelenburg position and/or rotate the upper frame **3014** from side to side with respect to the lower frame **3012**.

The person support apparatus **3014** supports a person support surface **3026** on the upper frame **3018** as shown in FIGS. 2 and 3. The person support surface **3026** is configured to support a person (not shown) in multiple articulated positions. The person support surface **3026** includes a back portion B1 and a main portion M1. The person support surface **3026** includes an outer cover or ticking C1 that covers one or more support sections and/or layers having foam and/or fluid bladders **3028**. In some embodiments, the person support surface **3026** delivers therapy to the person, such as, for example, through sequential inflation/deflation of the fluid bladders **3028**, rapid changes in pressure of the fluid in the fluid bladders **3028**, passing fluid through the person support surface **3026**, and/or various other techniques. For example, in various embodiments, one or more portions of the surface **3026** provide alternating pressure therapy, continuous lateral rotation therapy, low air loss therapy, boost assistance, percussion/vibration therapy, and/or other therapies. It should also be appreciated that, in some embodiments, the person support surface **3026** includes a coverlet (not shown) that overlies another person support surface **3026** and is configured to deliver therapy to a person supported thereon. The person support surface **3026** receives fluid from a fluid supply FS connected to the person support surface **3026** by a connecting tube T1. In some embodiments, the fluid supply FS is a gas blower and is configured to vary at least one of a rate and a temperature of fluid supplied to the person support surface **3026**.

The upper frame **3018** defines a longitudinal axis X1 that extends at least the length of the person support apparatus **3014** through the head end H1 and the foot end F1 along the lateral center of the upper frame **3018**, and a lateral axis Y1 that is perpendicular to the longitudinal axis X1 and extends at least the width of the person support apparatus **3014** through the longitudinal center of the upper frame **3018** as shown in FIGS. 2 and 4. The upper frame **3018** includes a deck **3030**, an intermediate frame **3032**, and an upper frame base **3034** that couples with the supports **3020** and supports the deck **3030** and the intermediate frame **3032**. It should be appreciated that the upper frame **3018** includes a footboard FB, a head board HB, and/or siderails SR in some embodiments. The deck **3030** is comprised of multiple sections, such as, a head deck section HD, a seat deck section SD, and a foot deck section FD, that are pivotably coupled to one another and/or the intermediate frame **3032** and articulate about the lateral axis Y1.

The control system **3022** is configured to control various functions of the person support apparatus **3014** and/or communicate with the signaling and communication system **3012** as shown in FIG. 5. Additionally or alternatively, the control system **3022** can be configured to be controlled through the signaling and communication system **3012**, if desired. In some embodiments, the control system **3022** is

configured to articulate the deck 3030 with respect to the intermediate frame 3032. In some embodiments, the control system 3022 is configured to administer therapy to a person supported on the person support apparatus 3014. According to some embodiments, the control system 3022 is configured to alert caregivers when a person is exiting the person support apparatus 3014. According to other embodiments, the control system 3022 is configured to predict the onset of an adverse condition and alert a caregiver.

The control system 3022 includes a plurality of sensors 3036, control modules 3038, and a display 3040 as shown in FIG. 5. The sensors 3036 and/or the control modules 3038 are coupled to the upper frame 3018 in some embodiments. It should be appreciated that the sensors 3036 and/or the control modules 3038 can be coupled to the lower frame 3016, supports 3020, and/or incorporated within or coupled to the person support surface 3020 in other embodiments, if desired. In one illustrative embodiment, the sensors 3036, control modules 3038, and the display 3040 are directly connected to one another. In another illustrative embodiment, the sensors 3036, control modules 3038, and the display 3040 are operatively connected to one another through a network 3042.

The network 3042 facilitates communication between the various modules 3038, sensors 3036, displays 3040, and/or other equipment operatively connected to the network 3042. In one illustrative embodiment, the network 3042 comprises a CAN network on a person support apparatus 3014. In another illustrative embodiment, the network 3042 is part of the signaling and communication system 3012. In some embodiments, the network 3042 comprises a Serial Peripheral Interface (SPI) network. It should be appreciated that the network 3042 can be other types of networks or communication protocols that can facilitate communication between two or more devices. It should also be appreciated that the module 3038 can be configured to connect to the network 3042 wirelessly, if desired. In one illustrative embodiment, the control module 3038 negotiates with the network 3042 to be a network node. According to some embodiments contemplated by this disclosure, the control modules 3038 can be located at or on any node on the network 3042 and/or distributed across multiple nodes on the network 3042.

In the illustrative example, the sensors 3036 are operatively connected to the control modules 3038 and include sensors that contact the person (contact sensors 3044) and/or sensors that do not contact the person (contact-less sensors 3046) as shown in FIG. 5. In one illustrative embodiment, the contact sensors 3044 contact a person's tissue to measure the desired parameter. In another illustrative embodiment, the contact-less sensors 3046 are integrated into the person support surface 3026. It should be appreciated that the contact-less sensors 3046 can be integrated into the portion of the ticking C1 contacting the person, if desired. In some embodiments, the contact-less sensors 3046 are coupled to at least one of the upper frame 3018, the supports 3020, and/or the lower frame 3016. It should be appreciated that the contact-less sensors 3046 can be coupled to the casters 3024 and/or engaged by the casters 3024, if desired.

The sensors 3036 are configured to sense a variety of parameters, including, but not limited to, for example, a person's physiological information, a position of a person on the person support apparatus 3014 and/or person support surface 3026, a pressure of the fluid inside the bladders 3028 in the person support surface 3026, or other various parameters. In one illustrative embodiment, the contact sensors 3044 include blood pressure sensors 3048 that are config-

ured to sense the person's blood pressure; oxygen saturation level (SpO2) sensors 3050 that are configured to sense the amount of hemoglobin binding sites in the person's bloodstream occupied by oxygen; temperature sensors 3052 that are configured to sense the person's body temperature; heart rate sensors 3054 that are configured to sense the rate at which a person's heart contracts; and respiration rate sensors 3056 that are configured to sense the person's breathing rate as shown in FIG. 5. It should be appreciated that the SpO2 sensors 3050 comprise a pulse oximeter device in some embodiments. It should be appreciated that the contact sensors 3044 are configured to measure other physiological and biochemical parameters in other embodiments.

In some embodiments, the contact-less sensors 3046 include one or more of the following: force sensors 3058 configured to sense the force profile and/or distribution of a person supported on a person support apparatus 3014; pressure sensors 3060 configured to measure the pressure in or among the bladders 3028; temperature sensors 3062 configured to sense the person's body temperature; heart rate sensors 3064 configured to sense the rate at which the person's heart contracts; respiration rate sensors 3066 configured to sense the person's breathing rate; and other sensors configured to sense information corresponding to the status of the person-support apparatus 3014, such as, for example, the angle of the head deck section HD with respect to the longitudinal axis X1 as shown in FIG. 5.

In some embodiments, the force sensors 3058 are load cells 3058 that couple the intermediate frame 3032 to the upper frame base 3034 proximate the corners of the upper frame 3018 and are configured to measure the weight of a person on the person support apparatus 3014. Alternatively or additionally, the force sensors 3058 comprise piezoelectric sensors and/or elongated sensor strips or arrays 3058 in some embodiments. In some embodiments, the pressure sensors 3060 are coupled between the bladders 3028 such that they allow communication between adjacent bladders 3028. In some embodiments, pressure sensors 3060 are situated within the bladders 3028 and measure the pressure within the bladder 3028.

In some embodiments, the heart rate sensors 3064 and respiration rate sensors 3066 are integrated into the surface 3026. In some embodiments contemplated herein, the heart rate sensors 3064 and respiration rate sensors 3066 are force sensors 3058 and/or pressure sensors 3060. It will be appreciated that the sensors 3036 are configured to sense various other physiological characteristics. In some embodiments, the heart rate sensors 3064 and respiration rate sensors 3066 are pressure-strip sensors disposed on the fluid bladders 3028 along an axis parallel to the lateral axis Y1 and/or along an axis parallel to the longitudinal axis X1.

The control modules 3038 can each be configured to perform different operations, if desired. According to this disclosure, a single control module 3038 can be configured to perform the multiple different operations if desired. Optionally, a single control module 3038 can be configured to perform operations independently or in conjunction with at least one other control module 3038. In one contemplated embodiment, one control module 3038, such as, a person position monitor module (not shown) (PPM), is configured to detect the position of a person on the person support apparatus 3014. Alternatively or additionally, a second control module 3038, such as a therapy control module (not shown), is configured to sense and/or modify the pressure within the fluid bladders 3028. Optionally, a third control module 3038, such as a physiological parameter monitor (not shown), is configured to detect a person's physiological

information. In some embodiments, a fourth control module **3038**, such as a wake up detector (not shown), is configured to detect when a person is regaining consciousness.

In some contemplated embodiments, a fifth control module **3038**, such as, a person-support apparatus configuration module (not shown), configures the person-support apparatus **3014** as a function of an input signal. Additionally or alternatively, the person-support apparatus **3014** streams information to the control system **3022**, such as, the Navicare system, which configures the person-support apparatus **3014** based on the information. The input signal includes information from the EMR, a user input through the interface, i.e., user interface, a physiological characteristic of a person supported on the person-support apparatus **3014**, or other information or combinations thereof. In one example, the control module **3038** automatically activates alarms, such as, a bed exit alarm, siderail-down alarm, head of bed angle, wheel brake not set, person-support apparatus **3014** not in lowest position, based on information from the EMR, such as, a fall risk assessment score. In some embodiments, the control module **3038** prompts the caregiver and asks them if they want to apply the fall risk protocol. Also, in some embodiments, the control module **3038** automatically applies the protocol. Further, in some embodiments, the control module **3038** configures the person-support apparatus **3014** based on a remote signal, such as, a signal from the EMR or a remote interface, without a caregiver present.

In another example, the fifth control module **3038** automatically activates therapies, such as, low-air loss therapy, percussion vibration, lateral rotation, microclimate management, heating/cooling, and/or other therapies, based on information from the EMR, such as, a pressure ulcer assessment score. In another example, the control module **3038** changes the angle of at least one section of the deck **3030** based on a change in the respiration rate or heart rate of a person. In another example, the control module **3038** changes the height of the upper frame **3018** with respect to the lower frame **3016** based on a fall risk protocol. In another example, the control module **3014** configures the person-support apparatus **3014** based on the center of gravity of the person. In another example, the control module **3038** configures the person-support apparatus **3014** based on the person's physiology/morphology (a person having no legs might be more prone to triggering an out of position alarm versus a bed exit alarm). In another example, the control module **3038** configures the person-support apparatus **3014** based on the output from one of the other modules, such as, the person position monitor module, the therapy control module, the physiological parameter monitor, the wake up detector, or other modules. In another example, the control module **3038** configures the person-support apparatus **3014** based on an adverse condition prediction score (described below). In some embodiments, the communication system **3012** configures itself as a function of an input signals described above and can receive data from the person-support apparatus **3014**.

Once the fifth control module **3038** has configured the person-support apparatus **3014**, the control module **3038** inputs the person-support status information and/or the person's status information into the EMR (or confirm that the recommended action was taken). Alternatively or additionally, the caregiver must acknowledge that a task or function was completed through the interface, i.e., user interface, and the acknowledgement is also input into the EMR by the control module **3038**. In some embodiments,

the communication system **3012** inputs the person-support status information and/or the person's status information into the EMR.

The control modules **3038** are implemented using software or hardware. In some embodiments, the control modules **3038** are implemented in software and are configured to perform one or more operations. In some embodiments, for example, the modules **3038** are configured to communicate via a memory mailbox where information from one module is sent to the memory address of a recipient module. In other embodiments, the software modules are configured to push information in a memory location, such as, a stack, that the control modules **3038** monitor or periodically check for information that the software modules subscribe to.

In contemplated embodiments, the control module **3038** is implemented using hardware. The control module **3038** includes a controller **3074** or processor **3074** and memory **3076** as shown in FIG. 5. The controller **3074** is provided as a single component or a collection of operatively coupled components; and can be comprised of digital circuitry, analog circuitry, or a hybrid combination of both of these types. When of a multi-component form, controller **3074** has one or more components remotely located relative to the others. The controller **3074** can include multiple processing units arranged to operate independently, in a pipeline processing arrangement, in a parallel processing arrangement, and/or such different arrangement as would occur to those skilled in the art.

In some embodiments, processor **3074** is a programmable microprocessing device of a solid-state, integrated circuit type that includes one or more processing units and memory. The controller **3074** can include one or more signal conditioners, modulators, demodulators, Arithmetic Logic Units (ALUs), Central Processing Units (CPUs), limiters, oscillators, control clocks, amplifiers, signal conditioners, filters, format converters, communication ports, clamps, delay devices, memory devices, and/or different circuitry or functional components as would occur to those skilled in the art to perform the desired communications. In some embodiments, the controller **3074** includes a computer network interface to communicate among various system components and/or components not included in the depicted system, as desired. The listed examples are not intended to be an exhaustive list of structures that are within the scope of controller **3074**, but are instead only a non-exhaustive list of such structures which can have substantial differences in the manner in which they are implemented and/or operate.

The controller **3074** is configured to receive input signals corresponding to signals from the sensors **3036** and/or output signals from other modules **3038** via the network **3042**. The information is stored in the memory **3076**, which is operatively coupled to the controller **3074** as shown in FIG. 5. It should be appreciated that the memory **3076** is integrated into the controller in some embodiments. The controller **3074** is configured to execute operating logic **3078** that defines various control, management, and/or regulation functions. This operating logic **3078** can be in the form of software, firmware, and/or dedicated hardware, such as, a series of programmed instructions, code, electronic files, or commands using general purpose or special purpose programming languages or programs that are executed on one or more general purpose or special purpose computers, processors, other control circuitry, or networks; a hardwired state machine; and/or a different form as would occur to those skilled in the art.

In the illustrative embodiment, the controller **3074** includes operating logic **3078** in the form of procedure **3080**,

for example, as shown in the flowchart of FIG. 6. Procedure 3080 includes operations/conditionals shown at blocks 3082, 3084, 3086, and 3088. Procedure 3080 is used to generate a condition score corresponding to the condition of a person, which is compared to a threshold in order to predict the onset of an adverse condition.

The thresholds are established in accordance with hospital specific standard protocols and/or are generic thresholds that can be modified as desired. In some embodiments, the preset thresholds that are set by standard hospital specific protocols, which are automatically selected based on information present in a person's electronic medical record (EMR), in patient profiles, and/or based on the condition score generated by the procedure 3080. Alternatively or additionally, the thresholds are set by a caregiver through an interface (not shown) on the person-support apparatus 3014 by manually selecting the protocols or modifying the generic thresholds. In some contemplated embodiments, the thresholds are automatically modified based on information in the person's electronic medical record (EMR). It should be appreciated that the thresholds can be person specific and can be incorporated into the person's EMR. It should also be appreciated that the thresholds can be incorporated into a patient profile that can be used for multiple people with similar characteristics. In some embodiments, the thresholds are modified by a caregiver through the signaling and communication system 3012.

Illustrative procedure 3080 begins with operation 3082 where, in one illustrative embodiment, the sensors 3036 post electronic data signals corresponding to at least one of an event and an amount on the network 3042. In some embodiments, the sensors 3036 post electronic data signals to a memory mailbox or register (not shown) where the modules 3038 are implemented in software. In some embodiments, sensors 3036 post data signals substantially continuously and, in other embodiments, sensors 3036 post data signals at predetermined intervals. The data signals from sensors 3036 are representative of heart rate, respiration rate, temperature, blood pressure and/or SpO2 as indicated at block 3082 of FIG. 6. Data signals corresponding to features of the person support apparatus 3014 are also posted to the network such as, for example, signals from force sensors 3044 of a patient position and/or movement monitoring system of apparatus 3014 and are used in a similar manner as signals from sensors 3036 in procedure 3080.

In the conditional of block 3084, the controller 3074 examines each of the data signals posted by the sensors 3036 on the network 3042 and determines if the associated module 3038 subscribes to the data. If the module 3038 does not subscribe to the data, then the algorithm returns to block 3082 and awaits more incoming data.

If at block 3084 it is determined that module 3038 subscribes to the data, the algorithm proceeds to the operation of block 3086 and the data is input into an algorithm that is used to predict an adverse event or condition. In some embodiments, the data signals can be used to select one or more standard hospital specific protocols, which, in some instances, have predetermined thresholds associated therewith. Alternatively or additionally, the data signals can be input into an algorithm that is used to select the hospital specific protocols and/or to set the predetermined thresholds associated with the protocols.

In the operation of block 3088, the controller 3074 executes the algorithm to generate a condition score corresponding to the condition of the person and/or to generate a graphic representative of the condition of the person. In one embodiment, the algorithm receives inputs from the contact-

less sensors 3046 corresponding to the heart rate, respiration rate, and temperature of a person, and inputs from the contact sensors 3044 corresponding to the blood pressure and SpO2 of a person. It should be understood that all of the inputs can be from the contact sensors 3044 in other embodiments. The controller 3074 processes the data inputs in accordance with the algorithm to calculate the condition score and/or generate the graphic.

In some embodiments, the algorithm combines the inputs into a data point, which is used to calculate a condition score constituting a one-dimensional visualization space based on the distance of the data point in a multi-dimensional measurement space, whose coordinates are defined by values of the inputs, from a normal point. In other contemplated embodiments, the algorithm maps the inputs from an n-dimensional measurement space to an m-dimensional visualization space using a dimensionality reduction mapping technique, and displays the m-dimensional visualization space on the display 3040. One example of such a system using this algorithm and technique is disclosed in U.S. Pat. No. 7,031,857 issued on Apr. 18, 2006 to Tarassenko et al., which is hereby incorporated by reference herein in its entirety. One condition score in accordance with the teachings of U.S. Pat. No. 7,031,857 is known as a Visensia® index that can be produced by the Visensia® system sold by OBS Medical, for example. The Visensia® index creates a score based on heart rate, respiration rate, blood pressure, temperature, and SpO2 data.

Based on the foregoing, it will be understood that the Visensia® index is a condition score that is based on, or a function of, only a person's physiological data. According to this disclosure, some or all of the physiological data used to calculate the Visensia® index is obtained by one or more sensors included as part of the person support apparatus 3014. This distinguishes over the known prior art. To the extent that some of the physiological data needed to calculate a condition score, such as the Visensia® index, is obtained by equipment and/or sensors that are not included as part of person support apparatus 3014, such data is transmitted to controller 3074 in accordance with this disclosure for the purpose of calculating the condition score. For example, data is transmitted to controller 3074 from a person's EMR in some instances as suggested diagrammatically in FIG. 5. In other instances, person support apparatus 3014 is communicatively coupled to physiological monitoring equipment that is co-located with apparatus 3014 to obtain the needed data for calculating a condition score. In the preceding examples, controller 3074 automatically initiates the queries to obtain the needed data from the EMR or co-located equipment and/or picks up the needed data from network transmissions. Thus, controller 3074 automatically calculates the condition score without the need for any further actions on the part of caregivers or users. However, it is within the scope of this disclosure for some or all of the needed physiological data to be entered by a caregiver using a user interface of the apparatus 3014.

In another contemplated embodiment, the condition score comprises a modified early warning score (MEWS). According to this disclosure, the data needed to calculate the MEWS is obtained from sensors included as part of person support apparatus 3014, obtained via manual user inputs, obtained from separate monitoring equipment that communicates with controller 3074 of apparatus 3014, and/or obtained from the person's EMR. The MEWS is a known score calculated based on the following table:

	Score						
	3	2	1	0	1	2	3
Systolic BP	<70	71-80	81-100	101-199	—	>200	—
Heart rate (BPM)	—	<40	41-50	51-100	101-110	111-129	>130
Respiratory rate (RPM)	—	<9	—	9-14	15-20	21-29	>30
Temperature (° C.)	—	<35	—	35.0-38.4	—	>38.5	—
AVPU	—	—	—	A	V	P	U

In the MEWS table, the various integers in the column headings are added together based on the various readings for the person of the data corresponding to the rows of the table. A score of 5 or greater indicates a likelihood of death. With regard to the systolic blood pressure, heart rate, respiratory rate, and temperature portions of the MEWS, those pieces of information are obtained using sensors 3036 of person support apparatus 3014 and/or using the other manners of obtaining a person's physiological data as discussed above. It is contemplated by this disclosure that the AVPU portion of the MEWS is obtained using information from the person support apparatus 3014 as discussed below.

The AVPU portion of the MEWS indicates whether a person is alert (A), responsive to voice (V), responsive to pain (P), or unresponsive (U). As discussed above, the person support apparatus 3014 in some embodiments comprises a hospital bed having a patient position monitoring system including sensors, such as load cells, piezoelectric sensors, and/or force sensitive resistors (FSR's) which sense a patient's position and/or movement. In accordance with this disclosure, the patient movement information is used by the controller to automatically assign an appropriate integer corresponding to the A portion or the U portion of the AVPU line of the MEWS depending upon the amount of movement of the patient. For example, if the patient has not moved for a threshold amount of time, such as fifteen minutes or an hour or some threshold greater than or less than these particular times, then the integer associated with the U portion of the AVPU line of the MEWS is assigned automatically by controller 3074. If the patient has moved by a threshold amount within a particular time period, then the integer associated with the A portion of the AVPU line of the MEWS is assigned automatically by controller 3074.

It is contemplated by this disclosure that the controller 3074 initiates a voice query to the person in some embodiments. If the person answers the voice query orally or by engaging a designated user input, such as pressing a particular button mentioned in the voice query, then the controller 3074 automatically assigns an appropriate integer corresponding to the V portion of the MEWS. The voice query is a pre-recorded message in some embodiments. The voice query is initiated by controller 3074 if the person has been inactive for the threshold period of time. In other words, in some embodiments, the voice query is initiated only after the conditions for assigning the U portion of the MEWS has been satisfied. Thus, if the person responds properly to the voice query, the AVPU portion of the MEWS is assigned as V rather than U. Apparatus 3014, therefore, has speakers or similar such sound-producing devices through which the voice query is played and, in some instances, a microphone that picks up the person's oral response. Appropriate interactive voice recognition (IVR) software is provided in such embodiments.

With regard to determining whether to select the P portion of the AVPU line of the MEWS score, apparatus 3014 is

operated to inflict some amount of discomfort to the patient and then monitors the person's response, such as an oral response or movement. For example, in some embodiments, apparatus 3014 includes an inflatable cuff or sleeve placed on a limb of the person and the controller 3074 controls inflation and deflation of the cuff or sleeve. If the patient movement information indicates sufficient patient movement by the patient in response to inflation of the cuff or sleeve, then the controller automatically assigns the appropriate integer corresponding to the P portion of the AVPU line of the MEWS. Alternatively or additionally, a microphone is used to determine if the patient expresses an audible pain or discomfort sound at which point the integer associated with the P portion of the AVPU line of the MEWS is assigned. The steps for determining whether to assign the P integer are performed only after the steps for determining whether to assign the U integer and/or the V integer in some embodiments. That is, operating the person apparatus 3014 so as to cause the patient some discomfort is only done as a last resort. In assigning the AVPU integer in the MEWS, it will be appreciated that it is the lowest pertinent integer that is assigned. Clearly, an alert person would also be responsive to voice for example.

The MEWS and Visensia® index discussed above are just a couple of examples of condition scores according to this disclosure. The teachings of this disclosure are intended to be broadly applicable to all types of condition scores.

Referring once again to FIG. 6, in the operation of block 3090, the controller 3074 compares the calculated condition score (referred to sometimes in FIG. 6 as an "index value" or simply an "index") with the predetermined thresholds to determine at least one of the likelihood that an adverse condition will occur, an amount of time before an adverse condition will occur, and/or how close the condition score is to the threshold.

In the conditional of block 3100, if the controller 3074 determines that the condition score is greater than the threshold, then, in one illustrative embodiment, a status update including the condition score is communicated to a caregiver through the signaling and communication system 3012 and/or is displayed on the display 3040 as indicated at block 3110. That is, if the condition score exceeds the threshold, then, in some embodiments, at least one of the condition score and an alert signal are communicated to a caregiver. In other embodiments, the alert condition may correspond to the condition score being less than, rather than greater than, a particular threshold. The term "greater than" is intended to cover one or both of a greater than situation and a greater than or equal to situation and the term "less than" is intended to cover one or both of a less than situation and a less than or equal to situation.

As alluded to above, in some embodiments, the condition score and/or alert signal are communicated to a caregiver through the signaling and communication system 3012. Alternatively or additionally, the condition score and/or alert

signal are displayed on the display 3040. In still other embodiments, the condition score and/or alert signal are communicated to the Visensia® Alert system sold by OBS Medical. In further embodiments, the condition score is communicated to and stored in the person's EMR.

The display 3040 is any suitable display such as a liquid crystal display, touch screen display, plasma screen, light emitting diode display, cathode ray tube display, or other conventional display. The display 3040 is operable to display multiple parameters thereon along with the condition score in some embodiments. In some contemplated embodiments, the display 3040 displays physiological and/or biochemical information sensed by contact sensors 3044 along with the condition score. Thus, it is within the scope of this disclosure for the display 3040 to display physiological and/or biochemical information on the display 3040 along with the condition score. In yet other embodiments, the display 3040 displays bed status information and/or graphics, for example, a head deck section HD angle or PPM armed indicator, on the display along with the condition score. In still other contemplated examples, the display 3040 displays bed status information and/or graphics along with patient condition graphics, such as, pie charts. Other information that is displayable on the display 3040 includes force profile information and/or graphics, person position information and/or graphics, weight, and other physiological information.

Referring now to FIG. 7, the sensors 3036 are operatively coupled to the control modules 3038 and are configured to sense various parameters, including, but not limited to, for example, a person's physiological information, a position of a person on the person support apparatus 3014 and/or person support surface 3026, a pressure of the fluid inside the bladders 3028 in the person support surface 3026, or other various parameters. As mentioned above, the sensors 3036 can be sensors configured to contact the tissue of a person and/or sensors configured to not contact the tissue of a person. In some embodiments, the sensors 3036 are force sensors 3044 coupled to the upper frame 3018 and are configured to measure force on the upper frame 3018 as shown in FIGS. 4 and 7. In some embodiments, the sensors 3036 are force sensors 3044 that measure force on the upper frame 3018 and are positioned between the intermediate frame 3032 and the upper frame base 3034 so as to couple the intermediate frame 3032 and deck 3030 to the upper frame base 3034.

In some contemplated embodiments, the sensors 3036 are force sensors 3044 integrated into the person support surface 3026 and configured to measure changes in force on the person support surface 3026 as shown in FIG. 4. Alternatively or additionally, the force sensors 3044 are coupled to the supports 3020 and/or the lower frame 3016. Sensors 3044 integrated into the casters 3024 and/or engaged by the casters 3024 are also within the scope of this disclosure. In some embodiments, the force sensors 3044 are load cells that are coupled proximate the corners of the intermediate frame 3032. In other embodiments, the sensors 3044 are piezoelectric sensors and/or elongated sensor strips or arrays 3038. It will be appreciated that the force sensors 3044 comprising other force sensor types can be provided and positioned in other locations on the upper frame 3018 and/or within the person support surface 3026.

In some embodiments, the sensors 3036 are pressure sensors 3046 integrated into the person support surface 3026 and configured to measure the pressure in or among the fluid bladders 3028 in the person support surface 3026 as shown diagrammatically in FIG. 7. The pressure sensors 3046 are

coupled between the bladders 3028 in some embodiments such that they can allow communication between adjacent bladders 3028. It should be appreciated that the pressure sensors can be situated within the bladders 3028 and/or otherwise positioned to measure the pressure within the bladder 3028. Pressure sensors 3046 coupled to bladders 3028 via pneumatic tubes, hoses, or other types of conduits are contemplated by this disclosure as well.

In some embodiments, the sensors 3036 are physiological sensors 3048 integrated into the person support surface 3026 and configured to measure various physiological parameters of a person supported on the person support surface 3026 as suggested in FIG. 7. Optionally, the physiological sensors 3048 can be coupled to the upper frame 3018, the supports 3020, and/or the lower frame 3016 in lieu of being coupled to the mattress 3046. As indicated above, the force sensor 3044 and/or pressure sensor 3046 are configured to sense physiological parameters in some embodiments. For example, one or more of the physiological sensors 3048 are used to sense the heart rate and/or respiration rate of a person supported on the person support surface 3026 in some embodiments. Alternatively or additionally, one or more of the physiological sensors 3048 are configured to sense the temperature of the person. In some embodiments, the physiological sensors 3048 are configured to sense the weight of the person on the person support surface 3026. In some embodiments, the physiological sensors 3048 are pressure-strip sensors disposed on the fluid bladders 3028 along an axis parallel to the lateral axis Y1 and/or along an axis parallel with the longitudinal axis X1.

In some embodiments, one or more of the sensors 3036 produces an analog data signal and is connected directly to the controller 3074. In other embodiments, one or more of the sensors 3036 produce a digital data signal, e.g., a serial digital data signal, and are connected to the network 3042, e.g., SPI network, to communicate with the controller 3074. The data signals can be stored in the memory 3076, which is operatively coupled with the controller 3074. As mentioned above, the memory 3076 is integrated into the controller 3074 in some embodiments.

In some embodiments, the controller 3074 executes operating logic that defines various control, management, and/or regulation functions. This operating logic can be in the form of software, firmware, and/or dedicated hardware, such as, a series of programmed instructions, code, electronic files, or commands using general purpose or special purpose programming languages or programs that can be executed on one or more general purpose or special purpose computers, processors, other control circuitry, or networks; a hardwired state machine; and/or a different form as would occur to those skilled in the art.

Any theory, mechanism of operation, proof, or finding stated herein is meant to further enhance understanding of principles of the present disclosure and is not intended to make the present disclosure in any way dependent upon such theory, mechanism of operation, illustrative embodiment, proof, or finding. It should be understood that while the use of the word preferable, preferably or preferred in the description above indicates that the feature so described can be more desirable, it nonetheless can not be necessary and embodiments lacking the same can be contemplated as within the scope of the disclosure, that scope being defined by the claims that follow.

In reading the claims it is intended that when words such as "a," "an," "at least one," "at least a portion" are used there is no intention to limit the claim to only one item unless specifically stated to the contrary in the claim. When the

language “at least a portion” and/or “a portion” is used the item can include a portion and/or the entire item unless specifically stated to the contrary.

While embodiments of the disclosure have been illustrated and described in detail in the drawings and foregoing description, the same are to be considered as illustrative and not restrictive in character, it being understood that only the selected embodiments have been shown and described and that all changes, modifications and equivalents that come within the spirit of the disclosure as defined herein or by any of the following claims are desired to be protected.

The invention claimed is:

1. A method comprising

sensing a characteristic of a person supported on a person-support apparatus, the characteristic being a physiological parameter of the person,

calculating a condition score as a function of the characteristic,

configuring the person-support apparatus as a function of the condition score, and

displaying the condition score on a graphical display of the person-support apparatus, wherein configuring the person-support apparatus as a function of the condition score includes controlling a movement mechanism of the person-support apparatus as a function of the condition score to change a characteristic of a bed frame of the person-support apparatus,

wherein the bed frame of the person-support apparatus includes an upper frame portion with a deck movably couple thereto having a head section, and wherein controlling the movement mechanism results in the head section rotating between a relatively horizontal position and an inclined position based on the condition score.

2. The method of claim 1, wherein the person-support apparatus includes a person-support surface.

3. The method of claim 1, wherein the condition score includes a fall risk assessment score or a pressure ulcer risk assessment score.

4. The method of claim 1, wherein the person-support apparatus includes a fluid supply and the configuring comprises causing the fluid supply to initiate a therapy.

5. A system comprising:

a person-support structure,

a sensor configured to sense a characteristic of a person supported on the person-support structure, the characteristic being a physiological parameter of the person, and

a control configured to calculate a condition score as a function of the characteristic of the person, the control being operable to change a characteristic of the person-support structure as a function of the condition score and to display the condition score on a graphical display of the person-support structure, wherein the person-support structure includes a bed frame with a movement mechanism, the control controlling the movement mechanism as a function of the condition score to change a characteristic of the bed frame,

wherein the frame includes an upper frame portion with a deck movably coupled thereto having a head section, the control causing the movement mechanism to move the head section to rotate between a relatively horizontal position and an inclined position based on the condition score.

6. The system of claim 5, further comprising a fluid supply, the person-support structure including a fluid chamber configured to receive fluid from the fluid supply, and the control controlling the fluid supply as a function of the condition score.

7. The system of claim 6, wherein the control causes the fluid supply to initiate a therapy.

8. The system of claim 6, wherein the fluid chamber comprises at least one of a temperature and humidity topper, a mattress, and a gas bladder.

9. The system of claim 5, further comprising a communication device configured to receive an input signal corresponding to information in an electronic medical record, the control calculating the condition score as a function of the characteristic of the person and the input signal.

10. The system of claim 5, wherein the input signal includes a fall risk assessment score or a pressure ulcer risk assessment score.

11. The system of claim 5, wherein the control calculates the condition score as a function of a status of the person-support structure and the characteristic of the person.

12. The system of claim 5, wherein the control calculates the condition score as a function of a status of the person-support structure, an input signal corresponding to information in an electronic medical record, and the characteristic of the person.

* * * * *

专利名称(译)	用于支持和监视人的装置		
公开(公告)号	US9552460	公开(公告)日	2017-01-24
申请号	US14/325535	申请日	2014-07-08
[标]申请(专利权)人(译)	希尔 - 罗姆服务股份有限公司		
申请(专利权)人(译)	HILL- ROM SERVICES , INC.		
当前申请(专利权)人(译)	HILL-ROM SERVICES , INC.		
[标]发明人	RILEY CARL W RECEVEUR TIMOTHY J RIBBLE DAVID L TALLENT DAN R		
发明人	RILEY, CARL W. RECEVEUR, TIMOTHY J. RIBBLE, DAVID L. TALLENT, DAN R.		
IPC分类号	G06F19/00 A61B5/11 A61B5/0205 A61B5/00 A61G7/057 A61G7/018 A61B5/08 A61B5/024 A61B5/1455 A61B5/021		
CPC分类号	G06F19/3431 A61B5/02055 A61B5/1113 A61B5/1115 A61B5/6891 A61B5/7275 A61G7/018 A61G7/057 G06F19/3406 G06F19/3418 A61B5/021 A61B5/024 A61B5/0816 A61B5/14551 A61B2562/0247 G06F19/00 G16H40/63 G16H40/67 G16H50/30		
优先权	61/352017 2010-06-07 US 61/243714 2009-09-18 US 61/243741 2009-09-18 US 61/243806 2009-09-18 US 61/243825 2009-09-18 US		
其他公开文献	US20150005675A1		
外部链接	Espacenet USPTO		

摘要(译)

一种系统包括人支撑结构，被配置为感测人支撑结构上支持的人的特征的传感器，以及被配置为根据人的特征计算条件分数的控件。控制器可操作以根据条件得分改变人 - 支撑结构的特征。

