



US009041542B2

(12) **United States Patent**
Chang et al.

(10) **Patent No.:** **US 9,041,542 B2**
(45) **Date of Patent:** ***May 26, 2015**

(54) **SYSTEM AND METHOD FOR DETECTING AND PREVENTING DROWSINESS**

B62D 15/02 (2006.01)
G08B 21/06 (2006.01)
B62D 1/04 (2006.01)

(71) Applicants: **Hsuan Chang**, Los Altos, CA (US); **H. Craig Heller**, Palo Alto, CA (US); **Dennis A. Grahn**, Palo Alto, CA (US)

(52) **U.S. Cl.**
CPC **B62D 15/029** (2013.01); **G08B 21/06** (2013.01); **B62D 1/04** (2013.01)

(72) Inventors: **Hsuan Chang**, Los Altos, CA (US); **H. Craig Heller**, Palo Alto, CA (US); **Dennis A. Grahn**, Palo Alto, CA (US)

(58) **Field of Classification Search**
None
See application file for complete search history.

(73) Assignees: **Honda Motor Co., Ltd.**, Tokyo (JP); **The Board of Trustees of the Leland Stanford Junior University**, Palo Alto, CA (US)

(56) **References Cited**

U.S. PATENT DOCUMENTS

6,313,749	B1 *	11/2001	Horne et al.	340/575
2002/0101354	A1 *	8/2002	Banas	340/576
2008/0180235	A1 *	7/2008	Chang	340/449
2010/0076273	A1 *	3/2010	Shigetou	600/300

(*) Notice: Subject to any disclaimer, the term of this patent is extended or adjusted under 35 U.S.C. 154(b) by 0 days.

* cited by examiner

This patent is subject to a terminal disclaimer.

Primary Examiner — Jennifer Mehmood

Assistant Examiner — Pameshanand Mahase

(21) Appl. No.: **14/543,763**

(74) *Attorney, Agent, or Firm* — Fenwick & West LLP; Mark E. Duell

(22) Filed: **Nov. 17, 2014**

(65) **Prior Publication Data**

US 2015/0070177 A1 Mar. 12, 2015

Related U.S. Application Data

(63) Continuation of application No. 13/490,044, filed on Jun. 6, 2012, now Pat. No. 8,917,182.

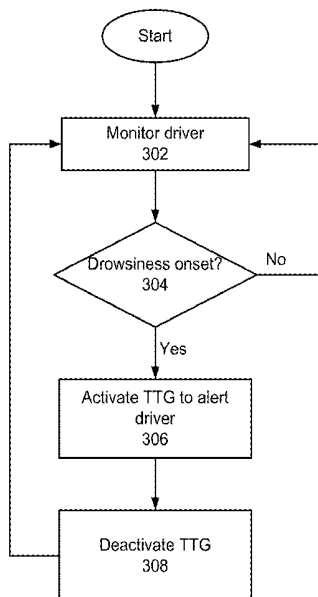
(57) **ABSTRACT**

A system for preventing drowsiness in a driver by employing a thermal grill. The system includes a detection module and an intervention module. The detection module monitors a driver's parameters to determine whether the driver is drowsy. If the driver is determined to be drowsy, the intervention module activates a thermal grill with interlaced hot and cold regions. This activation causes the hot regions to approach one temperature and the cold regions to approach another. Additionally, this activation leads to an uncomfortable sensation for the driver, alerts the driver, and prevents the driver from getting drowsy.

(51) **Int. Cl.**

G08B 23/00 (2006.01)
B60L 1/02 (2006.01)
A61B 5/00 (2006.01)
G08B 17/00 (2006.01)

20 Claims, 4 Drawing Sheets



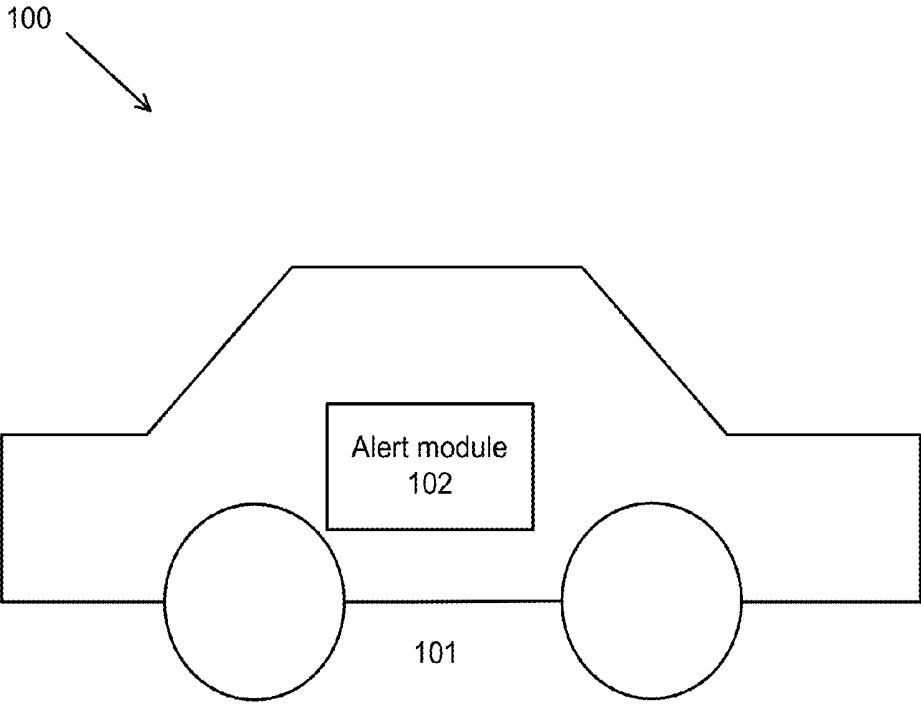


Fig. 1

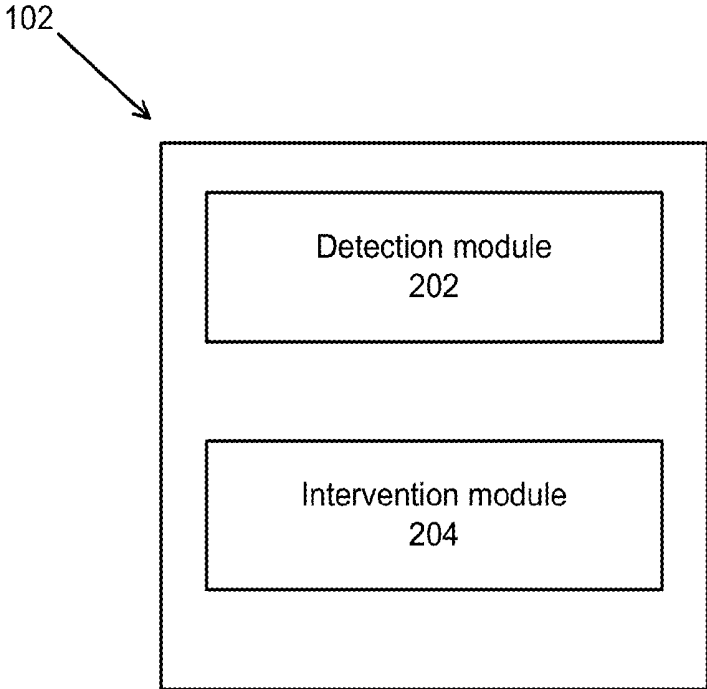


Fig. 2

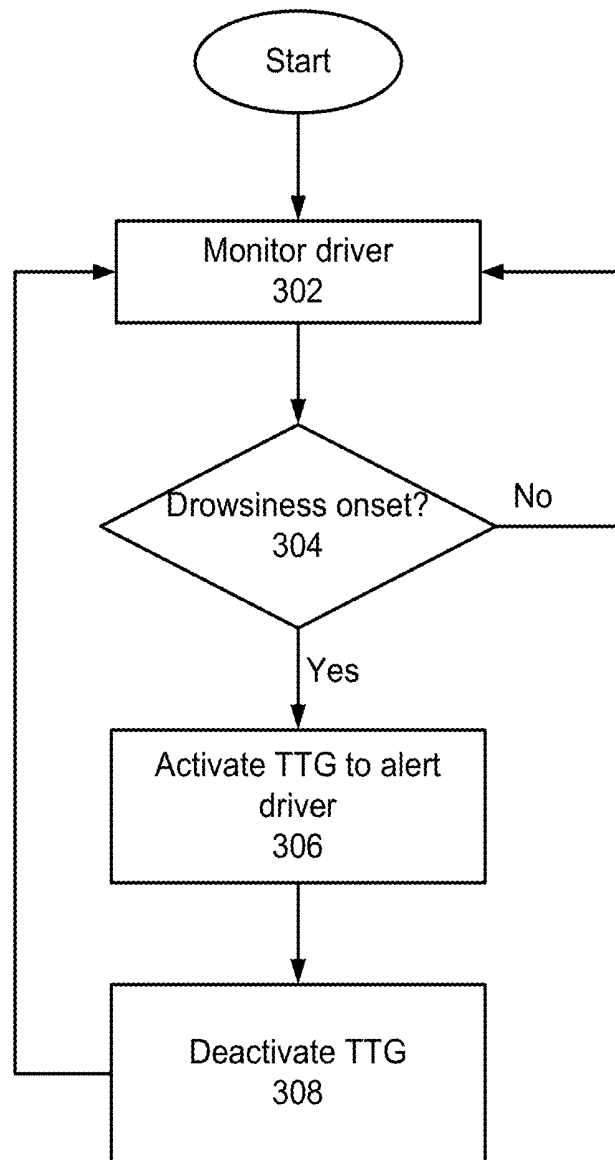


Fig. 3

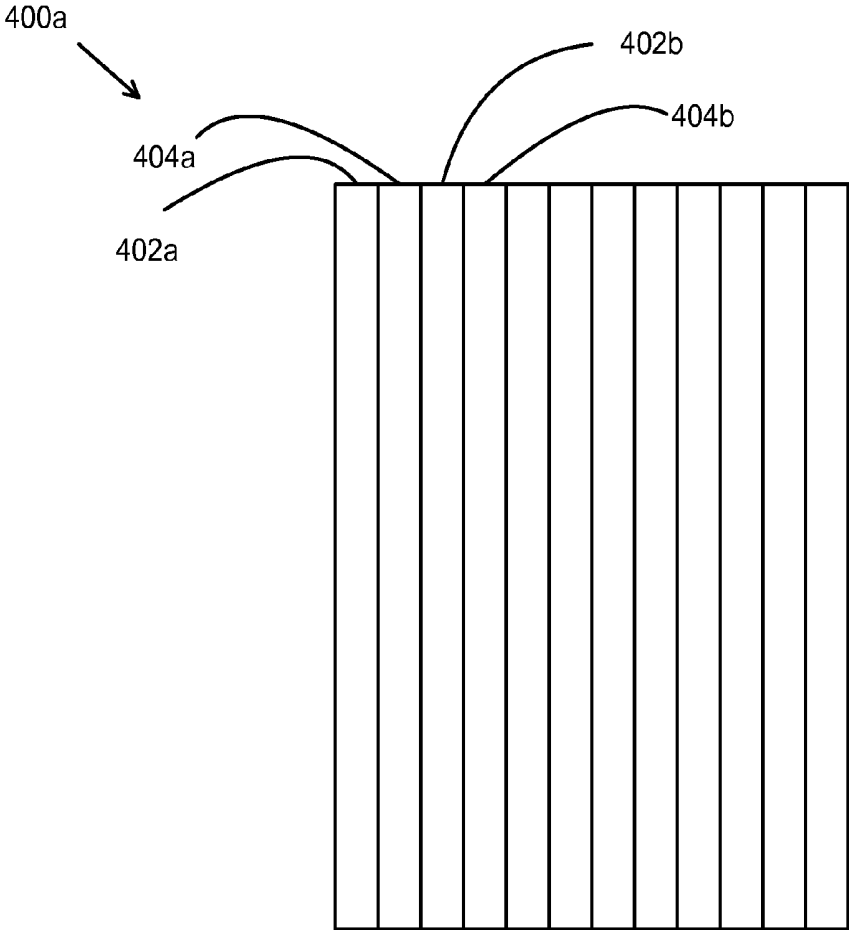


FIG. 4A

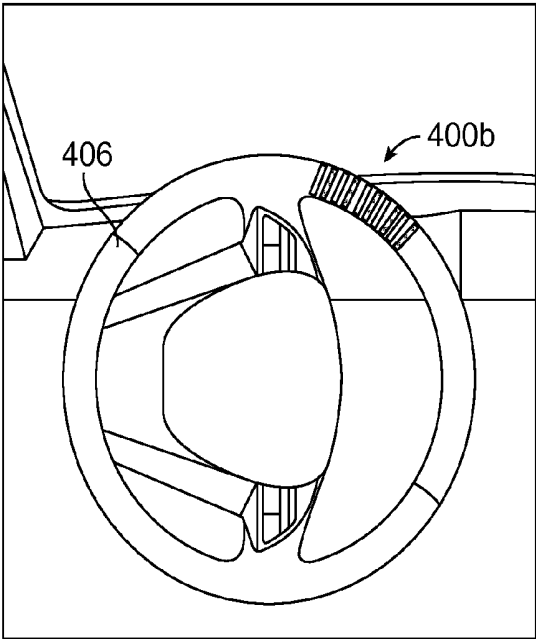


FIG. 4B

SYSTEM AND METHOD FOR DETECTING AND PREVENTING DROWSINESS

CROSS REFERENCE TO RELATED APPLICATIONS

This application is a continuation of U.S. application Ser. No. 13/490,044, filed Jun. 6, 2012, now U.S. Pat. No. 8,917,182, which is incorporated by reference in its entirety.

BACKGROUND

1. Field of Disclosure

The disclosure generally relates to driver and vehicle safety, in particular to detecting and preventing drowsiness.

2. Description of the Related Art

Vehicle manufacturers today are developing various safety features for detecting sleep onset and then alerting the driver. For example, the prior art systems blow air on the driver's face or play an alert sound to alert a drowsy driver. However, such mechanisms of alerting the driver have limited transient effect.

SUMMARY

Embodiments of the invention prevent drowsiness in a driver by employing a thermal grill. The disclosed system includes a detection module and an intervention module. The detection module determines whether a driver is drowsy based on one or more parameters associated with the driver. Examples of these parameters include the driver's steering angle, steering movement, speed and acceleration employed by the driver while driving.

If the detection module determines the driver to be drowsy, the detection system informs the intervention module about the driver's drowsiness. Consequently, the intervention module activates a thermal grill comprising of interlaced hot and cold regions. Upon activation, the hot regions are heated or set to a first temperature and the cold regions are cooled or set to a second temperature. Such activation induces an uncomfortable sensation in the driver's body part that is in contact with the thermal grill. This uncomfortable sensation alerts the driver. In one embodiment, the alerting stimulus provided by the uncomfortable sensation prevents the driver from getting drowsy. In one embodiment, the thermal grill is located on the steering wheel and is in contact with the driver's palm.

Other embodiments of the invention include computer-readable medium that store instructions for implementing the above described functions of the system, and computer-implemented method that includes steps for performing the above described functions.

The features and advantages described in the specification are not all inclusive and, in particular, many additional features and advantages will be apparent to one of ordinary skill in the art in view of the drawings, specification, and claims. Moreover, it should be noted that the language used in the specification has been principally selected for readability and instructional purposes, and may not have been selected to delineate or circumscribe the disclosed subject matter.

BRIEF DESCRIPTION OF DRAWINGS

FIG. 1 is a block diagram illustrating a computing environment for detecting and preventing drowsiness onset according to one embodiment.

FIG. 2 is a block diagram illustrating a driver alert module according to one embodiment.

FIG. 3 is a flow diagram illustrating a method for detecting and preventing drowsiness onset according to one embodiment.

FIG. 4A is a block diagram illustrating a thermal grill for preventing drowsiness onset according to one embodiment.

FIG. 4B is a block diagram illustrating a thermal grill mounted on a steering wheel for preventing drowsiness onset according to one embodiment.

DETAILED DESCRIPTION

The computing environment described herein detects and prevents drowsiness in a driver. The figures and the following description describe certain embodiments by way of illustration only. One skilled in the art will readily recognize from the following description that alternative embodiments of the structures and methods illustrated herein may be employed without departing from the principles described herein. Reference will now be made in detail to several embodiments, examples of which are illustrated in the accompanying figures. It is noted that wherever practicable similar or like reference numbers may be used in the figures and may indicate similar or like functionality.

System Environment

Referring to FIG. 1, the computing environment **100** for detecting and preventing driver drowsiness comprises an alert module **102**. In one embodiment, the alert module **102** is located in vehicle **101** driven by the driver. In another embodiment, the alert module **102** is located in a remote location and the alert module **102** wirelessly communicates with various sensors and other components in vehicle **101**. Regardless of the location of the alert module **102**, the alert module **102** monitors various parameters described below, detects drowsiness onset, and prevents the driver from falling asleep on the wheel.

To prevent the driver from falling asleep, the alert module **102** activates a Thunberg Thermal Grill (hereinafter referred to as "TTG") in contact with the driver. The TTG, also known as thermal grill, is further described in U.S. Pat. No. 7,321,309, which is incorporated by reference. The TTG is located in the vehicle **101** such that it is in contact with the driver. For example, the TTG can be located on the steering wheel such that the TTG is in contact with part of the driver's palms. The TTG comprises interlaced warm and cold regions or bars. In one embodiment, the alert module **102** activates the TTG such that the temperature of the warm bars is approximately 40 degrees Celsius and the temperature of cold bars is approximately 20 degrees Celsius. The activated TTG produces an uncomfortable or painful sensation for the driver. In one embodiment, the uncomfortable sensation is an icy hot sensation. The WIPO publication WO 2009/007952 provides additional details and examples of this sensation produced by the TTG, and this WIPO publication WO2009/007952 is incorporated herein by reference. This TTG induced sensation alerts the driver and prevents the driver from falling asleep. Moreover, this TTG induced sensation does not create long term harmful effects for the driver and the sensation has a longer lasting effect on the driver than transient mechanisms like blowing air on the driver's face. Accordingly, the alert module **102** beneficially employs TTG to alert the driver for longer periods of time without causing long term harm to the driver. The alert module **102** is further described in FIG. 2 below.

As illustrated in FIG. 2, the alert module **102** comprises a detection module **202** and an intervention module **204**. The detection module **202** monitors the driver's parameters to detect drowsiness onset stage. As described below, the detec-

tion module **202** determines that a driver has entered a drowsiness onset stage based on movement of the steering wheel in the vehicle, or acceleration or speed of the vehicle. In other embodiments, the detection module **202** determines that a driver has entered a drowsiness onset stage based on images of the driver's pupil, eyelids and/or head, or based on readings about driver's physiology.

In one embodiment, the detection module **202** is communicatively coupled to an image capturing system (not shown). The image capturing system captures images of the driver's pupil, driver's eyelids, and/or driver's head movement. The detection module **202** receives the captured images and determines whether the driver is drowsy based on driver's pupil dilation activity, blink rate and head movement. Additionally, in some embodiments, the detection module **202** receives, from various sensors in the vehicle, readings about driver's pertinent physiology signs. For example, the detection module **202** receives Electroencephalography (EEG) measurements, Electromyography (EMG) measurements, or Electrocardiograph (ECG) measurements for the driver. The detection module **202** receives one or more of these measurements and compares these measurements with previously stored measurements indicating drowsiness. Based on the comparison, the detection module **202** determines whether the driver has entered the drowsiness onset stage.

Additionally, in one embodiment, the detection module **202** accounts for vehicle readings to determine whether the driver is drowsy. Accordingly, the detection module **202** receives measurements indicating steering angle, steering movement, lane-keeping feedback, acceleration, or speed. Based on these measurements, the detection module **202** determines whether the driver has entered the drowsiness onset state. For example, if measurements about the steering movement and the lane-keeping feedback indicates that the vehicle has been swerving, or if speed measurements indicate that the driver has been driving at a constant speed for a predetermined amount of time (e.g. for five minutes or seven minutes), the detection module **202** determines that the driver has entered the drowsiness onset state.

Regardless of how the detection module **202** determines that the driver has entered the drowsiness onset state, the detection module **202** transmits a signal to the intervention module **204** informing the module **204** that the driver has entered the drowsiness onset state.

The intervention module **204** receives the signal from the detection module **202** and activates TTG in contact with the driver. FIG. 4A illustrates an example of TTG. As illustrated in FIG. 4A, TTG **400a** comprises alternating hot regions **402a-b** and cold regions **404a-b**. TTG **400a** may be mounted in various locations in the vehicle **101** such that TTG is in contact with the driver. FIG. 4B illustrates one such location wherein, according to one embodiment, TTG **400b** is located on the steering wheel **406** of the vehicle according to one embodiment. Placing TTG on steering wheel **406** beneficially places TTG **406** in constant contact with driver's palms and allows TTG to alert the driver when directed to do so by the intervention module **204**.

Referring back to FIG. 2, the intervention module **204** transmits a signal to TTG or a temperature regulator (not shown) indicating activation of TTG. The signal causes the temperature of the hot bars or regions in TTG to approach or reach a first temperature, and the temperature of cold bars or regions to approach or reach a second temperature. In one embodiment, the first temperature and second temperature differ by at least 10 degrees Celsius. In another embodiment, the first temperature is within 35-42 degrees Celsius and the second temperature is within 15-27 degrees Celsius. In one

embodiment, the temperature in TTG regions is regulated through warm and cold thermally conductive solution running under the surface of TTG. In another embodiment, the temperature in TTG regions is regulated through other known techniques for regulating temperature.

As the hot and cold regions in TTG approach their desired temperatures, the part of the driver in contact with TTG perceives an uncomfortable sensation like an icy hot sensation or a sensation received from an electric shock or a sting. This sensation beneficially alerts the driver and prevents the driver from falling asleep on the wheel.

After the intervention module **204** has activated TTG and alerted the driver, the module **204** deactivates TTG. To deactivate, the intervention module **204** transmits a deactivate signal that directs TTG, directly or through an intermediary, to return its hot and cold region to their steady state or neutral temperatures. In one embodiment, the steady state temperatures for both regions are the ambient temperature in the vehicle or normal human skin temperature that is approximately 33 degrees Celsius.

In one embodiment, the intervention module **204** deactivates TTG after a predetermined amount of time has elapsed since the intervention module **204** activated TTG. In another embodiment, the intervention module **204** receives temperature readings from hot and cold regions of TTG, and the intervention module **204** deactivates TTG after the regions have approximately or accurately attained their desired temperature for a predetermined amount of time. After the intervention module **204** deactivates TTG, the hot and cold regions in TTG return to their steady state temperatures. Such deactivation of TTG, after a predetermined amount of time since activation, beneficially ensures that the driver does not get acclimated to sensation produced by activated TTG. Accordingly, deactivation beneficially ensures that later activation still produces the uncomfortable sensation for the driver.

In one embodiment, the intervention module **204** activates TTG after the driver has been driving the vehicle for a predetermined amount of time (for e.g., three hours), or activates the TTG at a particular time of day (for e.g., 6 pm). In another embodiment, the intervention module **204** repeatedly activates and deactivates TTG for a predetermined amount of time. The repeated activation and deactivation further alerts the driver by repeatedly inducing the uncomfortable sensation for the driver. In one embodiment, the intervention module **204** does not repeatedly activate and deactivate the TTG after receiving an input signal from the driver indicating that the driver is alert. The driver may provide this input signal by pressing a button (not shown) or through another input means present in the vehicle.

Drowsiness Detection and Prevention Methodology

FIG. 3 is a flow diagram illustrating a method for preventing drowsiness onset in a driver. The driver enters the vehicle **101** and the alert module **102** begins **302** monitoring the driver. Next, the alert module **102** receives various parameters from one or more sensors in vehicle **101** and determines **304** based on received parameters whether the driver is entering a drowsiness onset stage. If yes, the alert module **102** activates **306** the TTG to alert the driver. Otherwise, the alert module **102** keeps **302** monitoring the driver. If the alert module activates **306** the TTG, the alert module next deactivates **308** the TTG after the driver has been alerted.

The foregoing description of the embodiments of the invention has been presented for the purpose of illustration; it is not intended to be exhaustive or to limit the invention to the precise forms disclosed. Persons skilled in the relevant art can appreciate that many modifications and variations are possible in light of the above disclosure.

Some portions of this description describe the embodiments of the invention in terms of algorithms and symbolic representations of operations on information. These algorithmic descriptions and representations are commonly used by those skilled in the data processing arts to convey the substance of their work effectively to others skilled in the art. These operations, while described functionally, computationally, or logically, are understood to be implemented by computer programs or equivalent electrical circuits, microcode, or the like. Furthermore, it has also proven convenient at times, to refer to these arrangements of operations as modules, without loss of generality. The described operations and their associated modules may be embodied in software, firmware, hardware, or any combinations thereof. One of ordinary skill in the art will understand that the hardware, implementing the described modules, includes at least one processor and a memory, the memory comprising instructions to execute the described functionality of the modules.

Any of the steps, operations, or processes described herein may be performed or implemented with one or more hardware or software modules, alone or in combination with other devices. In one embodiment, a software module is implemented with a computer program product comprising a computer-readable medium containing computer program code, which can be executed by a computer processor for performing any or all of the steps, operations, or processes described.

Embodiments of the invention may also relate to an apparatus for performing the operations herein. This apparatus may be specially constructed for the required purposes, and/or it may comprise a general-purpose computing device selectively activated or reconfigured by a computer program stored in the computer. Such a computer program may be stored in a non transitory, tangible computer readable storage medium, or any type of media suitable for storing electronic instructions, which may be coupled to a computer system bus. Furthermore, any computing systems referred to in the specification may include a single processor or may be architectures employing multiple processor designs for increased computing capability.

Embodiments of the invention may also relate to a product that is produced by a computing process described herein. Such a product may comprise information resulting from a computing process, where the information is stored on a non transitory, tangible computer readable storage medium and may include any embodiment of a computer program product or other data combination described herein.

Finally, the language used in the specification has been principally selected for readability and instructional purposes, and it may not have been selected to delineate or circumscribe the inventive subject matter. It is therefore intended that the scope of the invention be limited not by this detailed description, but rather by any claims that issue on an application based hereon. Accordingly, the disclosure of the embodiments of the invention is intended to be illustrative, but not limiting, of the scope of the invention, which is set forth in the following claims.

What is claimed is:

1. A vehicle comprising:

a steering wheel;

a thermal grill located on an outermost surface of the steering wheel such that at least a portion of the thermal grill is exposed on the outermost surface of the steering wheel, the thermal grill comprising interlaced regions; one or more monitors configured to monitor one or more parameters associated with the driver; and

a controller configured to, in response to one or more monitored parameters indicating a driver of the vehicle

is drowsy, activate the thermal grill such that two adjacent regions of the thermal grill approach two different temperatures.

2. The vehicle of claim 1, wherein the controller is further configured to:

determining whether a pre-determined amount of time has elapsed since activation of the thermal grill; and responsive to determining that the pre-determined amount of time has elapsed, deactivating the thermal grill.

3. The vehicle of claim 1, wherein the controller is further configured to de-activate the thermal grill in response to one or more monitored parameters indicating that the driver of the vehicle is alert.

4. The vehicle of claim 1, wherein the two different temperatures of the two adjacent regions are separated by at least ten degrees Celsius.

5. The vehicle of claim 1, wherein the thermal grill is in physical contact with a palm of the driver when the driver is gripping the steering wheel.

6. The vehicle of claim 1, wherein the one or more monitored parameters associated with the driver include one or more of: driver pupil dilation, driver blink rate, and driver head movement.

7. The vehicle of claim 1, wherein the one or more monitored parameters associated with the driver include one or more of: one or more driver electroencephalography measurements, one or more driver electromyography measurements, and one or more driver electrocardiograph measurements.

8. The vehicle of claim 1, wherein the one or more monitored parameters associated with the driver include one or more of: vehicle steering angle, vehicle steering movement, feedback indicative of whether the vehicle is staying within a lane, vehicle acceleration, and vehicle speed.

9. A computer-implemented method for preventing drowsiness in a driver of a vehicle, the method comprising: monitoring one or more parameters associated with the driver, the monitored parameters comprising one or both of: parameters associated with a driver's body and parameters associated with an operation of the vehicle by the driver;

determining, by a processor, whether the driver is drowsy based on the monitored parameters associated with the driver; and

responsive to determining that the driver is drowsy, activating a thermal grill located on an outermost surface of a steering wheel of the vehicle such that at least a portion of the thermal grill is exposed on the outermost surface of the steering wheel, the thermal grill comprising interlaced regions, wherein activating the thermal grill results in two adjacent regions approaching two different temperatures.

10. The method of claim 9, wherein the one or more parameters associated with a driver's body include one or more of: driver pupil dilation, driver blink rate, and driver head movement.

11. The method of claim 9, wherein the one or more parameters associated with a driver's body include one or more of: one or more driver electroencephalography measurements, one or more driver electromyography measurements, and one or more driver electrocardiograph measurements.

12. The method of claim 9, wherein the one or more parameters associated with an operation of the vehicle by the driver include one or more of: vehicle steering angle, vehicle steering movement, feedback indicative of whether the vehicle is staying within a lane, vehicle acceleration, and vehicle speed.

7

13. A thermal grill, the thermal grill comprising interlaced regions located on an outermost surface of a steering wheel of a vehicle such that at least a portion of the thermal grill is exposed on the outermost surface of the steering wheel, the thermal grill configured to, in response to a detection of one or more parameters associated with a driver of the vehicle indicative that the driver is drowsy, activate such that two adjacent regions of the thermal grill approach two different temperatures.

14. The thermal grill of claim 13, wherein the thermal grill is further configured to:

deactivate in response to a determination that a pre-determined amount of time has elapsed since the thermal grill was activated.

15. The vehicle of claim 13, wherein the thermal is further configured to de-activate in response to detecting one or more parameters indicative that the driver is alert.

16. The vehicle of claim 13, wherein the two different temperatures of the two adjacent regions are separated by at least ten degrees Celsius.

8

17. The vehicle of claim 13, wherein the thermal grill is in physical contact with a palm of the driver when the driver is gripping the steering wheel.

18. The vehicle of claim 13, wherein the one or more parameters associated with the driver include one or more of: driver pupil dilation, driver blink rate, and driver head movement.

19. The vehicle of claim 13, wherein the one or more parameters associated with the driver include one or more of: one or more driver electroencephalography measurements, one or more driver electromyography measurements, and one or more driver electrocardiograph measurements.

20. The vehicle of claim 13, wherein the one or more parameters associated with the driver include one or more of: vehicle steering angle, vehicle steering movement, feedback indicative of whether the vehicle is staying within a lane, vehicle acceleration, and vehicle speed.

* * * * *

专利名称(译)	用于检测和预防困倦的系统和方法		
公开(公告)号	US9041542	公开(公告)日	2015-05-26
申请号	US14/543763	申请日	2014-11-17
[标]申请(专利权)人(译)	常HSUAN 贺拉斯克雷格 格拉汉丹尼斯H		
申请(专利权)人(译)	常, HSUAN HELLER, HORACE CRAIG GRAHN, 丹尼斯H.		
当前申请(专利权)人(译)	本田汽车公司., LTD. THE利兰·斯坦福, 齐齐哈尔大学董事会		
[标]发明人	CHANG HSUAN HELLER H CRAIG GRAHN DENNIS A		
发明人	CHANG, HSUAN HELLER, H. CRAIG GRAHN, DENNIS A.		
IPC分类号	G08B23/00 A61B5/00 G08B17/00 B60L1/02 B62D1/04 B62D15/02 G08B21/06		
CPC分类号	B62D15/029 G08B21/06 B62D1/04		
其他公开文献	US20150070177A1		
外部链接	Espacenet USPTO		

摘要(译)

一种通过采用热烤架防止驾驶员困倦的系统。该系统包括检测模块和干预模块。检测模块监控驾驶员的参数以确定驾驶员是否困倦。如果确定驾驶员困倦，则干预模块激活具有交错的冷热区域的热烤架。这种激活导致热区域接近一个温度而冷区域接近另一个温度。此外，这种激活会给驾驶员带来不舒服的感觉，提醒驾驶员，并防止驾驶员昏昏欲睡。

