



US010039482B2

(12) **United States Patent**
Al-Ali et al.

(10) **Patent No.:** **US 10,039,482 B2**
(45) **Date of Patent:** ***Aug. 7, 2018**

(54) **SYSTEM AND METHOD FOR MONITORING
THE LIFE OF A PHYSIOLOGICAL SENSOR**

(71) Applicant: **Masimo Corporation**, Irvine, CA (US)

(72) Inventors: **Ammar Al-Ali**, Tustin, CA (US);
Walter M. Weber, Laguna Hills, CA
(US); **Ryan Timothy McHale**, Tustin,
CA (US)

(73) Assignee: **Masimo Corporation**, Irvine, CA (US)

(*) Notice: Subject to any disclaimer, the term of this
patent is extended or adjusted under 35
U.S.C. 154(b) by 0 days.

This patent is subject to a terminal dis-
claimer.

(21) Appl. No.: **15/388,075**

(22) Filed: **Dec. 22, 2016**

(65) **Prior Publication Data**

US 2017/0202490 A1 Jul. 20, 2017

Related U.S. Application Data

(63) Continuation of application No. 14/821,590, filed on
Aug. 7, 2015, now Pat. No. 9,560,998, which is a
(Continued)

(51) **Int. Cl.**
G08B 21/00 (2006.01)
A61B 5/1495 (2006.01)
(Continued)

(52) **U.S. Cl.**
CPC **A61B 5/1495** (2013.01); **A61B 5/0002**
(2013.01); **A61B 5/14551** (2013.01);
(Continued)

(58) **Field of Classification Search**

None

See application file for complete search history.

(56) **References Cited**

U.S. PATENT DOCUMENTS

2,567,926 A	9/1951	Dunkelberger
3,103,214 A	9/1963	Smith
(Continued)		

FOREIGN PATENT DOCUMENTS

AU	85938/91	4/1992
CA	2052650	4/1992
(Continued)		

OTHER PUBLICATIONS

de Kock, J.P. et al., "The Effect of Varying LED Intensity on Pulse
Oximeter Accuracy", *Journal of Medical Engineering & Technol-*
ogy, Vol. 15, No. 3.

(Continued)

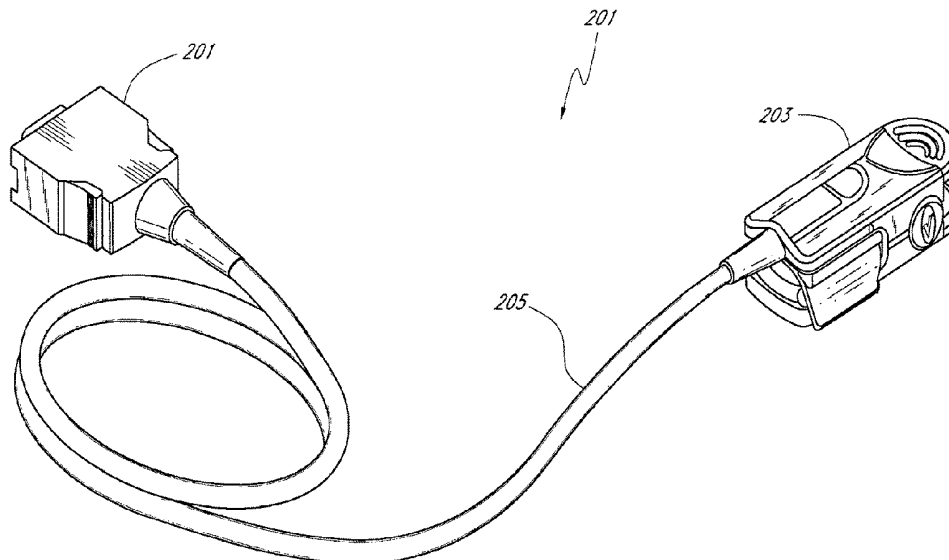
Primary Examiner — Adnan Aziz

(74) *Attorney, Agent, or Firm* — Knobbe, Martens, Olson
& Bear, LLP

(57) **ABSTRACT**

Aspects of the present disclosure include a sensor configured
to store in memory indications of sensor use information and
formulas or indications of formulas for determining the
useful life of a sensor from the indications of sensor use
information. A monitor connected to the sensor monitors
sensor use and stores indications of the use on sensor
memory. The monitor and/or sensor compute the useful life
of the sensor from the indications of use and the formulas.
When the useful life of the sensor is reached, an indication
is given to replace the sensor.

19 Claims, 9 Drawing Sheets



Related U.S. Application Data

continuation of application No. 14/573,332, filed on Dec. 17, 2014, now Pat. No. 9,107,626, which is a continuation of application No. 13/015,207, filed on Jan. 27, 2011, now Pat. No. 8,922,382, which is a continuation of application No. 11/580,214, filed on Oct. 12, 2006, now Pat. No. 7,880,626.

(51) **Int. Cl.**

A61B 5/1455 (2006.01)

A61B 5/00 (2006.01)

(52) **U.S. Cl.**

CPC **A61B 5/14552** (2013.01); **A61B 5/6826** (2013.01); **A61B 5/6838** (2013.01); **A61B 2560/028** (2013.01); **A61B 2560/0238** (2013.01); **A61B 2560/0266** (2013.01); **A61B 2560/0276** (2013.01); **A61B 2560/045** (2013.01); **A61B 2560/0475** (2013.01); **A61B 2562/0238** (2013.01); **A61B 2562/043** (2013.01); **A61B 2562/085** (2013.01)

(56)

References Cited

U.S. PATENT DOCUMENTS

3,313,290 A	4/1967	Chance et al.	4,815,469 A	3/1989	Cohen et al.
3,319,216 A	5/1967	McCullough	4,824,242 A	4/1989	Frick et al.
3,463,142 A	8/1969	Harte et al.	4,825,872 A	5/1989	Tan et al.
3,482,565 A	12/1969	Gowen	4,825,879 A	5/1989	Tan et al.
3,543,310 A	10/1970	Pelissier	4,830,014 A	5/1989	Goodman et al.
3,647,299 A	3/1972	Lavallee	4,838,808 A	6/1989	Fujiura
3,704,706 A	12/1972	Herczfeld et al.	4,844,784 A	7/1989	Suzuki et al.
3,710,303 A	1/1973	Gallagher, Jr.	4,848,901 A	7/1989	Hood, Jr.
3,711,272 A	1/1973	Randall et al.	4,858,615 A	8/1989	Meinema
3,740,570 A	6/1973	Kaelin et al.	4,859,057 A	8/1989	Taylor et al.
3,799,672 A	3/1974	Vurek	4,865,038 A	9/1989	Rich et al.
3,970,353 A	7/1976	Kaufman	4,867,165 A	9/1989	Noller et al.
3,995,209 A	11/1976	Weston	4,877,322 A	10/1989	Hill
4,086,915 A	5/1978	Kofsky et al.	4,880,304 A	11/1989	Jaeb et al.
4,129,124 A	12/1978	Thalmann	4,907,594 A	3/1990	Muz
4,169,976 A	10/1979	Cirri	4,913,150 A	4/1990	Cheung et al.
4,182,977 A	1/1980	Stricklin, Jr.	4,927,264 A	5/1990	Shiga et al.
4,305,401 A	12/1981	Reissmueller et al.	4,938,218 A	7/1990	Goodman et al.
4,308,456 A	12/1981	Van Der Gaag et al.	4,942,877 A	7/1990	Sakai et al.
4,321,930 A	3/1982	Jobsis et al.	4,952,177 A	8/1990	Drake et al.
4,334,544 A	6/1982	Hill et al.	4,960,128 A	10/1990	Gordon et al.
4,346,590 A	8/1982	Brown	4,961,711 A	10/1990	Fujiura et al.
4,350,165 A	9/1982	Striese	4,964,408 A	10/1990	Hink et al.
4,380,240 A	4/1983	Jöbsis et al.	4,974,591 A	12/1990	Awazu et al.
4,406,289 A	9/1983	Wesseling et al.	4,996,975 A	3/1991	Nakamura
4,407,290 A	10/1983	Wilber	5,007,704 A	4/1991	McCartney
4,414,980 A	11/1983	Godfrey	RE33,643 E	7/1991	Isaacson et al.
4,449,821 A	5/1984	Lee	5,031,608 A	7/1991	Weinstein
4,451,694 A	5/1984	Harper et al.	5,041,187 A	8/1991	Hink et al.
4,480,886 A	11/1984	Bergamin	5,058,098 A	10/1991	Sakaue et al.
4,481,804 A	11/1984	Eberhard et al.	5,058,588 A	10/1991	Kaestle
4,490,003 A	12/1984	Robinson	5,066,859 A	11/1991	Karkar et al.
4,498,722 A	2/1985	Fedder et al.	5,069,213 A	12/1991	Polczynski
4,505,848 A	3/1985	Kobayashi	5,080,098 A	1/1992	Willett et al.
4,528,986 A	7/1985	Arundel et al.	5,086,229 A	2/1992	Rosenthal et al.
4,531,795 A	7/1985	Sinclair	5,087,242 A	2/1992	Petelenz et al.
4,580,867 A	4/1986	Wright et al.	5,090,410 A	2/1992	Saper et al.
4,621,643 A	11/1986	New, Jr. et al.	5,099,842 A	3/1992	Mannheimer et al.
4,636,786 A	1/1987	Haertling	5,108,298 A	4/1992	Simmel
4,642,627 A	2/1987	Hodsdon	5,109,848 A	5/1992	Thomas et al.
4,653,498 A	3/1987	New, Jr. et al.	5,109,849 A	5/1992	Goodman et al.
4,684,245 A	8/1987	Goldring	5,113,862 A	5/1992	Mortazavi
4,684,246 A	8/1987	Downing et al.	5,125,403 A	6/1992	Culp
4,685,464 A	8/1987	Goldberger et al.	5,140,228 A	8/1992	Biegel
4,690,492 A	9/1987	Beard	5,163,438 A	11/1992	Gordon et al.
4,695,258 A	9/1987	Hanson et al.	5,170,786 A	12/1992	Thomas et al.
4,700,708 A	10/1987	New, Jr. et al.	5,188,098 A	2/1993	Hoffman et al.
4,770,179 A	9/1988	New, Jr. et al.	5,209,230 A	5/1993	Swedlow et al.
4,797,125 A	1/1989	Malana	5,217,013 A	6/1993	Lewis et al.
			5,224,478 A	7/1993	Sakai et al.
			5,224,882 A	7/1993	Olms
			5,246,003 A	9/1993	DeLonzor
			5,247,931 A	9/1993	Norwood
			5,249,576 A	10/1993	Goldberger et al.
			5,266,792 A	11/1993	Crowne et al.
			5,267,562 A	12/1993	Ukawa et al.
			5,287,853 A	2/1994	Vester et al.
			5,295,852 A	3/1994	Renn et al.
			5,295,872 A	3/1994	Christensson
			5,302,133 A	4/1994	Tondreault
			5,308,919 A	5/1994	Minnich
			5,309,908 A	5/1994	Friedman et al.
			5,313,940 A	5/1994	Fuse et al.
			5,317,269 A *	5/1994	Mills A61B 5/0404 324/427
			5,319,355 A	6/1994	Russek
			5,337,744 A	8/1994	Branigan
			5,339,810 A	8/1994	Ivers et al.
			5,341,805 A	8/1994	Stavridi et al.
			5,365,937 A	11/1994	Reeves et al.
			D353,195 S	12/1994	Savage et al.
			D353,196 S	12/1994	Savage et al.
			5,377,676 A	1/1995	Vari et al.
			5,380,213 A	1/1995	Piorunneck et al.
			5,387,122 A	2/1995	Goldberger et al.
			5,390,670 A	2/1995	Centa et al.
			5,397,247 A	3/1995	Aoki et al.
			5,400,267 A	3/1995	Denen et al.
			5,407,368 A	4/1995	Strand et al.

(56)

References Cited

U.S. PATENT DOCUMENTS

5,415,629 A	5/1995	Henley	5,991,355 A	11/1999	Dahlke
D359,546 S	6/1995	Savage et al.	5,995,855 A	11/1999	Kiani et al.
5,422,632 A	6/1995	Bucholtz et al.	5,997,343 A	12/1999	Mills et al.
5,425,375 A	6/1995	Chin et al.	6,002,952 A	12/1999	Diab et al.
5,431,170 A	7/1995	Mathews	6,011,986 A	1/2000	Diab et al.
D361,840 S	8/1995	Savage et al.	6,027,452 A	2/2000	Flaherty et al.
5,438,986 A	8/1995	Disch et al.	6,036,642 A	3/2000	Diab et al.
D362,063 S	9/1995	Savage et al.	6,045,509 A	4/2000	Caro et al.
5,452,717 A	9/1995	Branigan et al.	6,067,462 A	5/2000	Diab et al.
D363,120 S	10/1995	Savage et al.	6,081,735 A	6/2000	Diab et al.
5,456,252 A	10/1995	Vari et al.	6,088,607 A	7/2000	Diab et al.
5,469,845 A	11/1995	DeLonzor et al.	6,110,522 A	8/2000	Lepper, Jr. et al.
5,479,934 A	1/1996	Imran	6,124,597 A	9/2000	Shehada
5,482,036 A	1/1996	Diab et al.	6,128,521 A	10/2000	Marro et al.
5,490,505 A	2/1996	Diab et al.	6,129,675 A	10/2000	Jay
5,490,523 A	2/1996	Isaacson et al.	6,144,868 A	11/2000	Parker
5,494,043 A	2/1996	O'Sullivan et al.	6,151,516 A	11/2000	Kiani-Azarbayjany et al.
5,498,235 A	3/1996	Flower	6,152,754 A	11/2000	Gerhardt et al.
5,509,823 A	4/1996	Harting et al.	6,157,850 A	12/2000	Diab et al.
5,515,169 A	5/1996	Cargill et al.	6,165,005 A	12/2000	Mills et al.
5,520,177 A	5/1996	Ogawa et al.	6,174,283 B1	1/2001	Nevo
5,521,997 A	5/1996	Rovenolt et al.	6,184,521 B1	2/2001	Coffin, IV et al.
5,533,509 A	7/1996	Koashi et al.	6,206,830 B1	3/2001	Diab et al.
5,533,511 A	7/1996	Kaspari et al.	6,223,064 B1	4/2001	Lynn et al.
5,534,851 A	7/1996	Russek	6,229,856 B1	5/2001	Diab et al.
5,561,275 A	10/1996	Savage et al.	6,232,609 B1	5/2001	Snyder et al.
5,562,002 A	10/1996	Lalin	6,236,872 B1	5/2001	Diab et al.
5,564,417 A	10/1996	Chance	6,241,683 B1	6/2001	Macklem et al.
5,569,823 A	10/1996	Schreier et al.	6,253,097 B1	6/2001	Aronow et al.
5,570,002 A	10/1996	Castleman	6,256,523 B1	7/2001	Diab et al.
5,584,296 A	12/1996	Cui et al.	6,263,222 B1	7/2001	Diab et al.
5,588,427 A	12/1996	Tien	6,278,522 B1	8/2001	Lepper, Jr. et al.
5,590,649 A	1/1997	Caro et al.	6,280,213 B1	8/2001	Tobler et al.
5,602,924 A	2/1997	Durand et al.	6,285,896 B1	9/2001	Tobler et al.
5,617,857 A	4/1997	Chader et al.	6,301,493 B1	10/2001	Marro et al.
5,632,272 A	5/1997	Diab et al.	6,308,089 B1	10/2001	Von Der Ruhr et al.
5,638,816 A	6/1997	Kiani-Azarbayjany et al.	6,317,627 B1	11/2001	Ennen et al.
5,638,818 A	6/1997	Diab et al.	6,321,100 B1	11/2001	Parker
5,645,440 A	7/1997	Tobler et al.	6,325,761 B1	12/2001	Jay
5,660,567 A	8/1997	Nierlich et al.	6,330,468 B1	12/2001	Scharf
5,685,299 A	11/1997	Diab et al.	6,334,065 B1	12/2001	Al-Ali et al.
5,692,503 A	12/1997	Kuenstner	6,343,224 B1	1/2002	Parker
5,720,293 A	2/1998	Quinn et al.	6,349,228 B1	2/2002	Kiani et al.
D393,830 S	4/1998	Tobler et al.	6,360,114 B1	3/2002	Diab et al.
5,743,262 A	4/1998	Lepper, Jr. et al.	6,368,283 B1	4/2002	Xu et al.
5,758,644 A	6/1998	Diab et al.	6,371,921 B1	4/2002	Caro et al.
5,760,910 A	6/1998	Lepper, Jr. et al.	6,377,829 B1	4/2002	Al-Ali
5,769,785 A	6/1998	Diab et al.	6,388,240 B2	5/2002	Schulz et al.
5,779,630 A	7/1998	Fein et al.	6,397,091 B2	5/2002	Diab et al.
5,782,757 A	7/1998	Diab et al.	6,430,437 B1	8/2002	Marro
5,785,659 A	7/1998	Caro et al.	6,430,525 B1	8/2002	Weber et al.
5,791,347 A	8/1998	Flaherty et al.	6,433,696 B1	8/2002	Deiterman et al.
5,803,909 A	9/1998	Maki et al.	6,463,142 B1	10/2002	Kilp
5,807,247 A	9/1998	Mechant et al.	6,463,311 B1	10/2002	Diab
5,807,248 A	9/1998	Mills	6,470,199 B1	10/2002	Kopotic et al.
5,810,724 A	9/1998	Gronvall	6,473,632 B1	10/2002	Myers
5,810,734 A	9/1998	Caro et al.	6,501,975 B2	12/2002	Diab et al.
5,817,010 A	10/1998	Hibl	6,505,059 B1	1/2003	Kollias et al.
5,818,985 A	10/1998	Merchant et al.	6,515,273 B2	2/2003	Al-Ali
5,823,950 A	10/1998	Diab et al.	6,519,487 B1	2/2003	Parker
5,830,129 A	11/1998	Baer et al.	6,525,386 B1	2/2003	Mills et al.
5,830,131 A	11/1998	Caro et al.	6,526,300 B1	2/2003	Kiani et al.
5,833,618 A	11/1998	Caro et al.	6,541,756 B2	4/2003	Schulz et al.
5,860,919 A	1/1999	Kiani-Azarbayjany et al.	6,542,764 B1	4/2003	Al-Ali et al.
5,890,929 A	4/1999	Mills et al.	6,553,241 B2	4/2003	Mannheimer et al.
5,895,369 A	4/1999	Flower	6,580,086 B1	6/2003	Schulz et al.
5,904,654 A	5/1999	Wohlmann et al.	6,584,336 B1	6/2003	Ali et al.
5,919,133 A	7/1999	Taylor et al.	6,595,316 B2	7/2003	Cybulski et al.
5,919,134 A	7/1999	Diab	6,597,932 B2	7/2003	Tian et al.
5,934,925 A	8/1999	Tobler et al.	6,597,933 B2	7/2003	Kiani et al.
5,940,182 A	8/1999	Lepper, Jr. et al.	6,606,511 B1	8/2003	Ali et al.
5,939,609 A	9/1999	Knapp et al.	6,611,320 B1	8/2003	Lindberg et al.
5,957,885 A	9/1999	Bollish et al.	6,632,181 B2	10/2003	Flaherty et al.
5,970,353 A	10/1999	Sultan	6,639,668 B1	10/2003	Trepagnier
5,987,343 A	11/1999	Kinast	6,640,116 B2	10/2003	Diab
			6,643,530 B2	11/2003	Diab et al.
			6,650,917 B2	11/2003	Diab et al.
			6,654,624 B2	11/2003	Diab et al.
			6,658,276 B2	12/2003	Kianl et al.

(56)

References Cited

U.S. PATENT DOCUMENTS

6,661,161	B1	12/2003	Lanzo et al.	7,254,433	B2	8/2007	Diab et al.
6,671,531	B2	12/2003	Al-Ali et al.	7,254,434	B2	8/2007	Schulz et al.
6,678,543	B2	1/2004	Diab et al.	7,272,425	B2	9/2007	Al-Ali
6,684,090	B2	1/2004	Ali et al.	7,274,955	B2	9/2007	Kiani et al.
6,684,091	B2	1/2004	Parker	D554,263	S	10/2007	Al-Ali
6,697,656	B1	2/2004	Al-Ali	7,280,858	B2	10/2007	Al-Ali et al.
6,697,657	B1	2/2004	Shehada et al.	7,289,835	B2	10/2007	Mansfield et al.
6,697,658	B2	2/2004	Al-Ali	7,292,883	B2	11/2007	De Felice et al.
RE38,476	E	3/2004	Diab et al.	7,295,866	B2	11/2007	Al-Ali
6,699,194	B1	3/2004	Diab et al.	7,319,894	B2	1/2008	Higgins
6,714,804	B2	3/2004	Al-Ali et al.	7,328,053	B1	2/2008	Diab et al.
RE38,492	E	4/2004	Diab et al.	7,332,784	B2	2/2008	Mills et al.
6,721,582	B2	4/2004	Trepagnier et al.	7,340,287	B2	3/2008	Mason et al.
6,721,585	B1	4/2004	Parker	7,341,559	B2	3/2008	Schulz et al.
6,725,075	B2	4/2004	Al-Ali	7,343,186	B2	3/2008	Lamego et al.
6,728,560	B2	4/2004	Kollias et al.	D566,282	S	4/2008	Al-Ali et al.
6,735,459	B2	5/2004	Parker	7,355,512	B1	4/2008	Al-Ali
6,745,060	B2	6/2004	Diab et al.	7,356,365	B2	4/2008	Schurman
6,760,607	B2	7/2004	Al-Ali	7,371,981	B2	5/2008	Abdul-Hafiz
6,770,028	B1	8/2004	Ali et al.	7,373,193	B2	5/2008	Al-Ali et al.
6,771,994	B2	8/2004	Kiani et al.	7,373,194	B2	5/2008	Weber et al.
6,792,300	B1	9/2004	Diab et al.	7,376,453	B1	5/2008	Diab et al.
6,813,511	B2	11/2004	Diab et al.	7,377,794	B2	5/2008	Al Ali et al.
6,816,741	B2	11/2004	Diab	7,377,899	B2	5/2008	Weber et al.
6,822,564	B2	11/2004	Al-Ali	7,383,070	B2	6/2008	Diab et al.
6,826,419	B2	11/2004	Diab et al.	7,415,297	B2	8/2008	Al-Ali et al.
6,830,711	B2	12/2004	Mills et al.	7,428,432	B2	9/2008	Ali et al.
6,850,787	B2	2/2005	Weber et al.	7,438,683	B2	10/2008	Al-Ali et al.
6,850,788	B2	2/2005	Al-Ali	7,440,787	B2	10/2008	Diab
6,852,083	B2	2/2005	Caro et al.	7,454,240	B2	11/2008	Diab et al.
6,861,639	B2	3/2005	Al-Ali	7,467,002	B2	12/2008	Weber et al.
6,898,452	B2	5/2005	Al-Ali et al.	7,469,157	B2	12/2008	Diab et al.
6,920,345	B2	7/2005	Al-Ali et al.	7,471,969	B2	12/2008	Diab et al.
6,931,268	B1	8/2005	Kiani-Azarbayjany et al.	7,471,971	B2	12/2008	Diab et al.
6,934,570	B2	8/2005	Kiani et al.	7,483,729	B2	1/2009	Al-Ali et al.
6,939,305	B2	9/2005	Flaherty et al.	7,483,730	B2	1/2009	Diab et al.
6,943,348	B1	9/2005	Coffin, IV	7,483,731	B2 *	1/2009	Hoarau A61B 5/14552 600/310
6,950,687	B2	9/2005	Al-Ali	7,489,958	B2	2/2009	Diab et al.
6,961,598	B2	11/2005	Diab	7,496,391	B2	2/2009	Diab et al.
6,970,792	B1	11/2005	Diab	7,496,393	B2	2/2009	Diab et al.
6,979,812	B2	12/2005	Al-Ali	D587,657	S	3/2009	Al-Ali et al.
6,985,764	B2	1/2006	Mason et al.	7,499,741	B2	3/2009	Diab et al.
6,993,371	B2	1/2006	Kiani et al.	7,499,835	B2	3/2009	Weber et al.
6,996,427	B2	2/2006	Ali et al.	7,500,950	B2	3/2009	Al-Ali et al.
6,997,879	B1	2/2006	Turcott	7,509,154	B2	3/2009	Diab et al.
6,999,904	B2	2/2006	Weber et al.	7,509,494	B2	3/2009	Al-Ali
7,003,338	B2	2/2006	Weber et al.	7,510,849	B2	3/2009	Schurman et al.
7,003,339	B2	2/2006	Diab et al.	7,526,328	B2	4/2009	Diab et al.
7,015,451	B2	2/2006	Dalke et al.	7,530,942	B1	5/2009	Diab
7,024,233	B2	4/2006	Al et al.	7,530,949	B2	5/2009	Al Ali et al.
7,027,849	B2	4/2006	Al-Ali	7,530,955	B2	5/2009	Diab et al.
7,030,749	B2	4/2006	Al-Ali	7,563,110	B2	7/2009	Al-Ali et al.
7,039,449	B2	5/2006	Al-Ali	7,596,398	B2	9/2009	Al-Ali et al.
7,041,060	B2	5/2006	Flaherty et al.	7,618,375	B2	11/2009	Flaherty
7,044,918	B2	5/2006	Diab	D606,659	S	12/2009	Kiani et al.
7,067,893	B2	6/2006	Mills et al.	7,647,083	B2	1/2010	Al-Ali et al.
7,096,052	B2	8/2006	Mason et al.	D609,193	S	2/2010	Al-Ali et al.
7,096,054	B2	8/2006	Abdul-Hafiz et al.	7,660,616	B1	2/2010	Poore
7,132,641	B2	11/2006	Schulz et al.	D614,305	S	4/2010	Al-Ali et al.
7,142,901	B2	11/2006	Kiani et al.	RE41,317	E	5/2010	Parker
7,149,561	B2	12/2006	Diab	7,729,733	B2	6/2010	Al-Ali et al.
7,186,966	B2	3/2007	Al-Ali	7,734,320	B2	6/2010	Al-Ali
7,190,261	B2	3/2007	Al-Ali	7,761,127	B2	7/2010	Al-Ali et al.
7,215,984	B2	5/2007	Diab	7,761,128	B2	7/2010	Al-Ali et al.
7,215,986	B2	5/2007	Diab	7,764,982	B2	7/2010	Dalke et al.
7,221,971	B2	5/2007	Diab	D621,516	S	8/2010	Kiani et al.
7,225,006	B2	5/2007	Al-Ali et al.	7,791,155	B2	9/2010	Diab
7,225,007	B2	5/2007	Al-Ali	7,801,581	B2	9/2010	Diab
RE39,672	E	6/2007	Shehada et al.	7,822,452	B2	10/2010	Schurman et al.
7,239,905	B2	7/2007	Kiani-Azarbayjany et al.	RE41,912	E	11/2010	Parker
7,241,270	B2	7/2007	Horzewski et al.	7,844,313	B2	11/2010	Kiani et al.
7,245,953	B1	7/2007	Parker	7,844,314	B2	11/2010	Al-Ali
7,248,910	B2	7/2007	Li et al.	7,844,315	B2	11/2010	Al-Ali
7,254,429	B2	8/2007	Schurman et al.	7,865,222	B2	1/2011	Weber et al.
7,254,431	B2	8/2007	Al-Ali	7,873,497	B2	1/2011	Weber et al.
				7,880,606	B2	2/2011	Al-Ali
				7,880,626	B2	2/2011	Al-Ali et al.
				7,891,355	B2	2/2011	Al-Ali et al.

(56)

References Cited

U.S. PATENT DOCUMENTS

7,894,868	B2	2/2011	Al-Ali et al.	8,388,353	B2	3/2013	Kiani
7,899,507	B2	3/2011	Al-Ali et al.	8,399,822	B2	3/2013	Al-Ali
7,899,518	B2	3/2011	Trepagnier et al.	8,401,602	B2	3/2013	Kiani
7,904,132	B2	3/2011	Weber et al.	8,405,608	B2	3/2013	Al-Ali et al.
7,909,772	B2	3/2011	Popov et al.	8,414,499	B2	4/2013	Al-Ali et al.
7,910,875	B2	3/2011	Al-Ali	8,418,524	B2	4/2013	Al-Ali
7,919,713	B2	4/2011	Al-Ali et al.	8,423,106	B2	4/2013	Lamego et al.
7,937,128	B2	5/2011	Al-Ali	8,428,967	B2	4/2013	Olsen et al.
7,937,129	B2	5/2011	Mason et al.	8,430,817	B1	4/2013	Al-Ali et al.
7,937,130	B2	5/2011	Diab et al.	8,437,825	B2	5/2013	Dalvi et al.
7,941,199	B2	5/2011	Kiani	8,455,290	B2	6/2013	Siskavich
7,951,086	B2	5/2011	Flaherty et al.	8,457,703	B2	6/2013	Al-Ali
7,957,780	B2	6/2011	Lamego et al.	8,457,707	B2	6/2013	Kiani
7,962,188	B2	6/2011	Kiani et al.	8,463,349	B2	6/2013	Diab et al.
7,962,190	B1	6/2011	Diab et al.	8,466,286	B2	6/2013	Bellot et al.
7,976,472	B2	7/2011	Kiani	8,471,713	B2	6/2013	Poeze et al.
7,988,637	B2	8/2011	Diab	8,473,020	B2	6/2013	Kiani et al.
7,990,382	B2	8/2011	Kiani	8,483,787	B2	7/2013	Al-Ali et al.
7,991,446	B2	8/2011	Ali et al.	8,489,364	B2	7/2013	Weber et al.
8,000,761	B2	8/2011	Al-Ali	8,498,684	B2	7/2013	Weber et al.
8,008,088	B2	8/2011	Bellott et al.	8,504,128	B2	8/2013	Blank et al.
RE42,753	E	9/2011	Kiani-Azarbayjany et al.	8,509,867	B2	8/2013	Workman et al.
8,019,400	B2	9/2011	Diab et al.	8,515,509	B2	8/2013	Bruinsma et al.
8,028,701	B2	10/2011	Al-Ali et al.	8,523,781	B2	9/2013	Al-Ali
8,029,765	B2	10/2011	Bellott et al.	8,529,301	B2	9/2013	Al-Ali et al.
8,036,727	B2	10/2011	Schurman et al.	8,532,727	B2	9/2013	Ali et al.
8,036,728	B2	10/2011	Diab et al.	8,532,728	B2	9/2013	Diab et al.
8,046,040	B2	10/2011	Ali et al.	D692,145	S	10/2013	Al-Ali et al.
8,046,041	B2	10/2011	Diab et al.	8,547,209	B2	10/2013	Kiani et al.
8,046,042	B2	10/2011	Diab et al.	8,548,548	B2	10/2013	Al-Ali
8,048,040	B2	11/2011	Kiani	8,548,549	B2	10/2013	Schurman et al.
8,050,728	B2	11/2011	Al-Ali et al.	8,548,550	B2	10/2013	Al-Ali et al.
RE43,169	E	2/2012	Parker	8,560,032	B2	10/2013	Al-Ali et al.
8,118,620	B2	2/2012	Al-Ali et al.	8,560,034	B1	10/2013	Diab et al.
8,126,528	B2	2/2012	Diab et al.	8,570,167	B2	10/2013	Al-Ali
8,128,572	B2	3/2012	Diab et al.	8,570,503	B2	10/2013	Vo et al.
8,130,105	B2	3/2012	Al-Ali et al.	8,571,617	B2	10/2013	Reichgott et al.
8,145,287	B2	3/2012	Diab et al.	8,571,618	B1	10/2013	Lamego et al.
8,150,487	B2	4/2012	Diab et al.	8,571,619	B2	10/2013	Al-Ali et al.
8,175,672	B2	5/2012	Parker	8,584,345	B2	10/2013	Al-Ali et al.
8,180,420	B2	5/2012	Diab et al.	8,577,431	B2	11/2013	Lamego et al.
8,182,443	B1	5/2012	Kiani	8,588,880	B2	11/2013	Abdul-Hafiz et al.
8,185,180	B2	5/2012	Diab et al.	8,600,467	B2	12/2013	Al-Ali et al.
8,190,223	B2	5/2012	Al-Ali et al.	8,606,342	B2	12/2013	Diab
8,190,227	B2	5/2012	Diab et al.	8,626,255	B2	1/2014	Al-Ali et al.
8,203,438	B2	6/2012	Kiani et al.	8,630,691	B2	1/2014	Lamego et al.
8,203,704	B2	6/2012	Merritt et al.	8,634,889	B2	1/2014	Al-Ali et al.
8,204,566	B2	6/2012	Schurman et al.	8,641,631	B2	2/2014	Sierra et al.
8,219,172	B2	7/2012	Schurman et al.	8,652,060	B2	2/2014	Al-Ali
8,224,411	B2	7/2012	Al-Ali et al.	8,663,107	B2	3/2014	Kiani
8,228,181	B2	7/2012	Al-Ali	8,666,468	B1	3/2014	Al-Ali
8,229,533	B2	7/2012	Diab et al.	8,667,967	B2	3/2014	Al-Ali et al.
8,233,955	B2	7/2012	Al-Ali et al.	8,670,811	B2	3/2014	O'Reilly
8,244,325	B2	8/2012	Al-Ali et al.	8,670,814	B2	3/2014	Diab et al.
8,255,026	B1	8/2012	Al-Ali	8,676,286	B2	3/2014	Weber et al.
8,255,027	B2	8/2012	Al-Ali et al.	8,682,407	B2	3/2014	Al-Ali
8,255,028	B2	8/2012	Al-Ali et al.	RE44,823	E	4/2014	Parker
8,260,577	B2	9/2012	Weber et al.	RE44,875	E	4/2014	Kiani et al.
8,265,723	B1	9/2012	McHale et al.	8,690,799	B2	4/2014	Telfort et al.
8,274,360	B2	9/2012	Sampath et al.	8,700,112	B2	4/2014	Kiani
8,301,217	B2	10/2012	Al-Ali et al.	8,702,627	B2	4/2014	Telfort et al.
8,306,596	B2	11/2012	Schurman et al.	8,706,179	B2	4/2014	Parker
8,310,336	B2	11/2012	Muhsin et al.	8,712,494	B1	4/2014	MacNeish, III et al.
8,315,683	B2	11/2012	Al-Ali et al.	8,715,206	B2	5/2014	Telfort et al.
RE43,860	E	12/2012	Parker	8,718,735	B2	5/2014	Lamego et al.
8,337,403	B2	12/2012	Al-Ali et al.	8,718,737	B2	5/2014	Diab et al.
8,346,330	B2	1/2013	Lamego	8,718,738	B2	5/2014	Blank et al.
8,353,842	B2	1/2013	Al-Ali et al.	8,720,249	B2	5/2014	Al-Ali
8,355,766	B2	1/2013	MacNeish, III et al.	8,721,541	B2	5/2014	Al-Ali et al.
8,359,080	B2	1/2013	Diab et al.	8,721,542	B2	5/2014	Al-Ali et al.
8,364,223	B2	1/2013	Al-Ali et al.	8,723,677	B1	5/2014	Kiani
8,364,226	B2	1/2013	Diab et al.	8,740,792	B1	6/2014	Kiani et al.
8,374,665	B2	2/2013	Lamego	8,754,776	B2	6/2014	Poeze et al.
8,385,995	B2	2/2013	Al-Ali et al.	8,755,535	B2	6/2014	Telfort et al.
8,385,996	B2	2/2013	Smith et al.	8,755,856	B2	6/2014	Diab et al.
				8,755,872	B1	6/2014	Marinow
				8,761,850	B2	6/2014	Lamego
				8,764,671	B2	7/2014	Kiani
				8,768,423	B2	7/2014	Shakespeare et al.

(56)

References Cited

U.S. PATENT DOCUMENTS

8,771,204	B2	7/2014	Telfort et al.
8,922,382	B2	12/2014	Al-Ali et al.
2001/0045532	A1	11/2001	Schulz et al.
2002/0013538	A1	1/2002	Teller
2003/0111592	A1	6/2003	Al-Ali
2004/0267103	A1	12/2004	Li et al.
2005/0221276	A1	10/2005	Rozakis et al.
2005/0234317	A1	10/2005	Kiani
2006/0161054	A1	7/2006	Reuss et al.
2006/0167351	A1	7/2006	Isaacson et al.
2006/0220897	A1	10/2006	Chan
2011/0172967	A1	7/2011	Al-Ali et al.

FOREIGN PATENT DOCUMENTS

DE	3619442	12/1987
DE	3711272	5/1989
EP	0 013 278	7/1980
EP	0 019 278 B1	11/1980
EP	0 019 478 A2	11/1980
EP	0 074 428	3/1983
EP	0 262 779	4/1988
EP	0 329 196	8/1989
EP	0 104 772 B1	3/1990
EP	0 404 562	12/1990
EP	0 481 612	4/1992
EP	0 538 631 B1	4/1993
EP	0 745 348	12/1996
EP	0 832 598	4/1998
EP	0 576 560 B1	5/2000
EP	0 790 800 B1	8/2000
EP	1 424 036	6/2004
JP	52-031736	10/1977
JP	62-217938	9/1987
JP	63-065844	3/1988
JP	02-17462	1/1990
JP	02-191434	7/1990
JP	03-245042	10/1991
JP	04-138342	5/1992
JP	04-250140	9/1992
JP	05-207993	8/1993
JP	05-275746	10/1993
JP	06-003890	1/1994
JP	06-237013	8/1994
JP	08-015023	1/1996
JP	08-315919	11/1996
JP	09-187442	7/1997
JP	11-156657	11/1997
JP	63-50694	4/1998
JP	10-165420	6/1998

JP	10-314149	12/1998
JP	11-053662	2/1999
JP	11-170568	6/1999
JP	11-185193	7/1999
JP	2003-521985	7/2003
RU	2096985	11/1997
WO	WO 92/01894	2/1992
WO	WO 92/16142	10/1992
WO	WO 96/13208	5/1996
WO	WO 97/23159	7/1997
WO	WO 97/29678	8/1997
WO	WO 01/13790 A1	3/2001
WO	WO 01/58347 A1	8/2001
WO	WO 02/17779 A1	3/2002
WO	WO 2008/054976 A2	5/2008

OTHER PUBLICATIONS

<http://www.masimo.com/systemo.htm>, "System Overview & Performance," 2 pages reviewed on Sep. 17, 1999.

<http://www.masimo.com/pandt.htm>, "Products & Technology," 1 page reviewed on Sep. 17, 1999.

<http://www.masimo.com/cables.htm>, "Patient Cables," 1 page reviewed on Sep. 17, 1999.

<http://www.masimo.com/adt.htm>, "Inop-adt-Adult Disposable Digit Sensor," 1 page reviewed on Sep. 17, 1999.

International Search Report dated May 21, 2008 for International Application No. PCT/US2007/081146, filed Oct. 11, 2007, 6 pages.
International Preliminary Report on Patentability dated Nov. 26, 2008 for International Application No. PCT/US2007/081146, filed Oct. 11, 2007, 12 pages.

Reynolds, K.J., et al., "Temperature Dependence of LED and its Theoretical Effect on Pulse Oximetry", British Journal & Anaesthesia, 1991, vol. 67, pp. 638-643.

Schmitt, Joseph M., "Simple Photon Diffusion Analysis of the Effects of Multiple Scattering on Pulse Oximetry", IEEE Transactions on Biomedical Engineering, vol. 38, No. 12, Dec. 1991, pp. 1194-1203.

Office Action dated May 21, 2010 issued in European Application No. 07868424.8, 4 pages.

Office Action dated Mar. 25, 2014 issued in European Application No. 07868424.8, 4 pages.

Oral Summons dated Mar. 23, 2016 issued in European Application No. 07868424.8, 4 pages.

Office Action dated Jan. 31, 2013 issued in Japanese Application No. 2009-532585, along with its English Translation, 6 pages.

Office Action dated Oct. 25, 2013 issued in Japanese Application No. 2009-532585, along with its English Translation, 10 pages.

Final Office Action dated Apr. 1, 2014 issued in Japanese Application No. 2009-532585, along with its English Translation, 6 pages

* cited by examiner

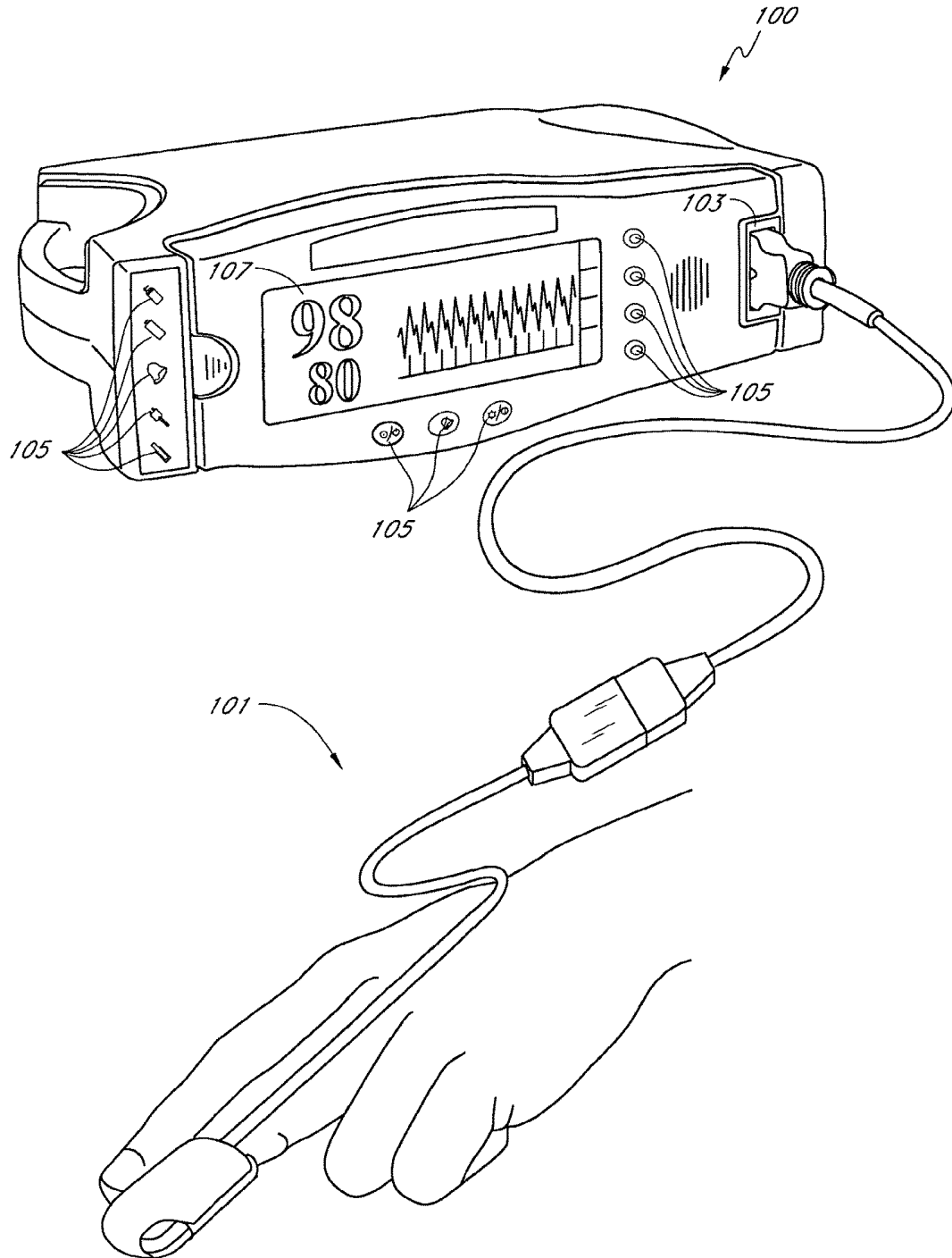
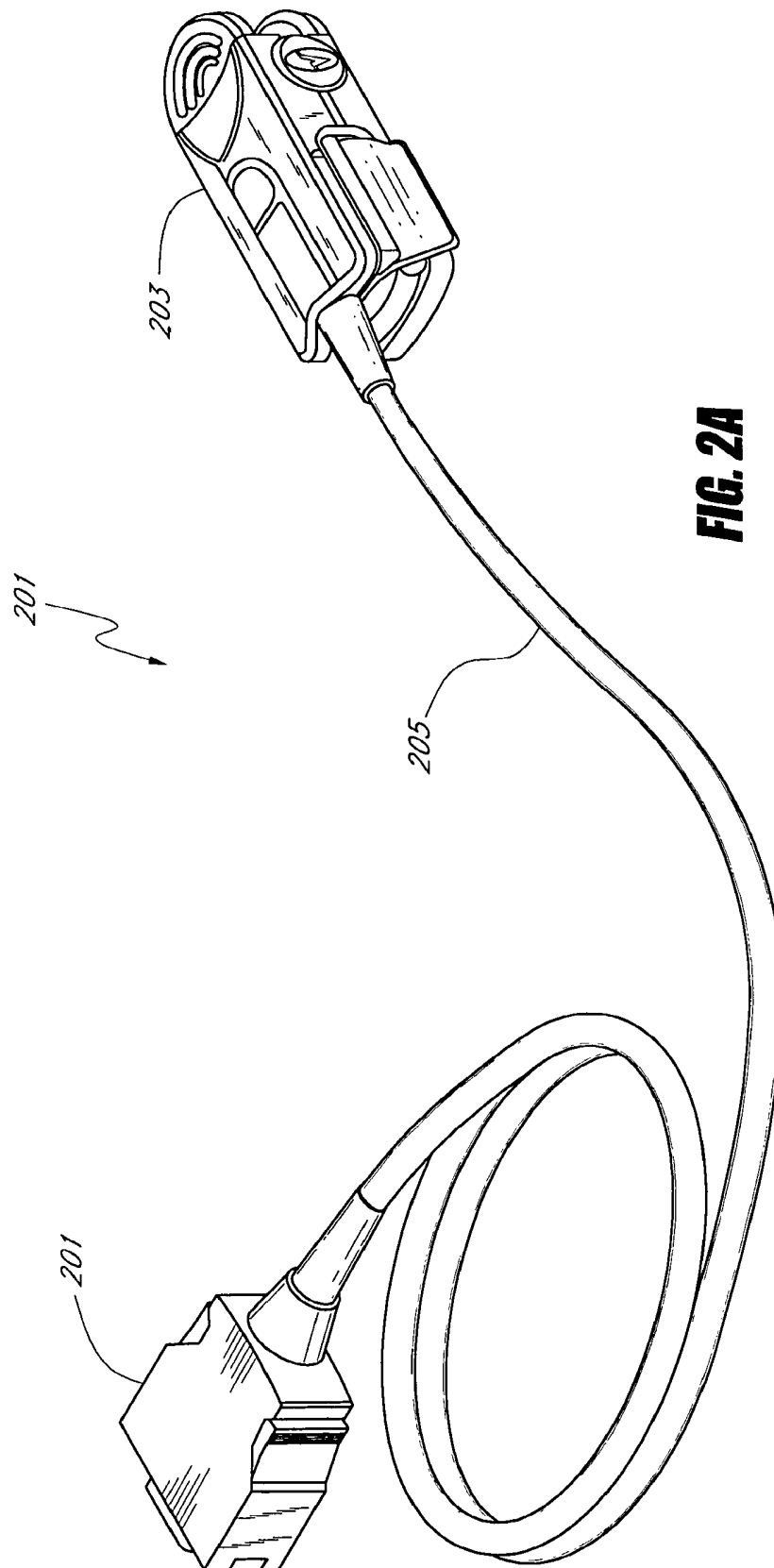


FIG.1
(PRIOR ART)



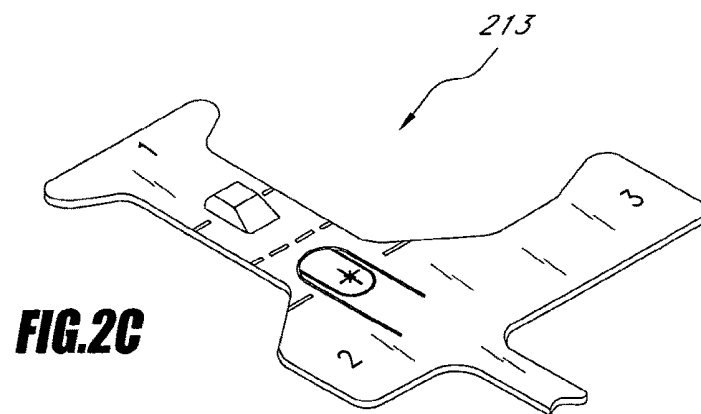
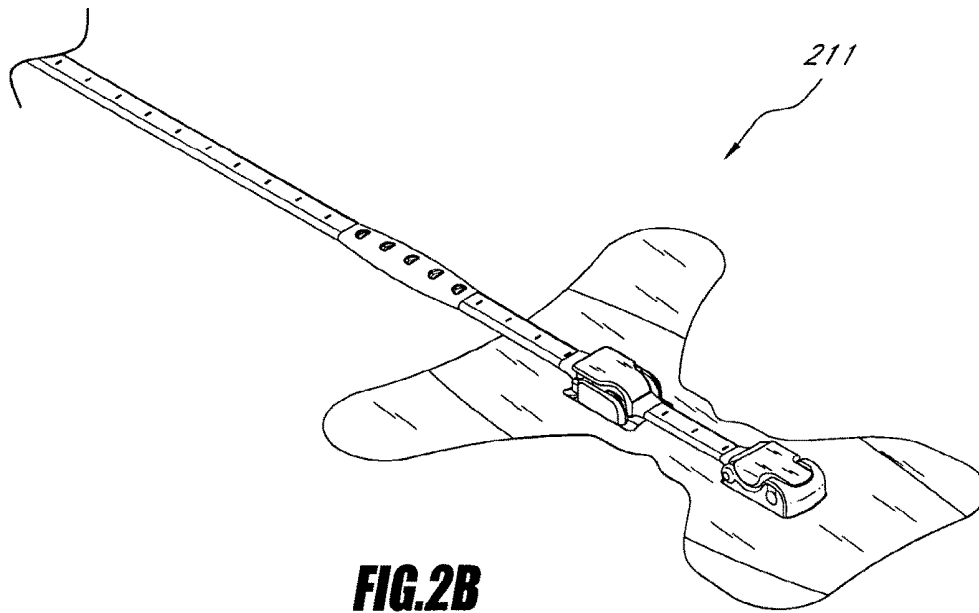
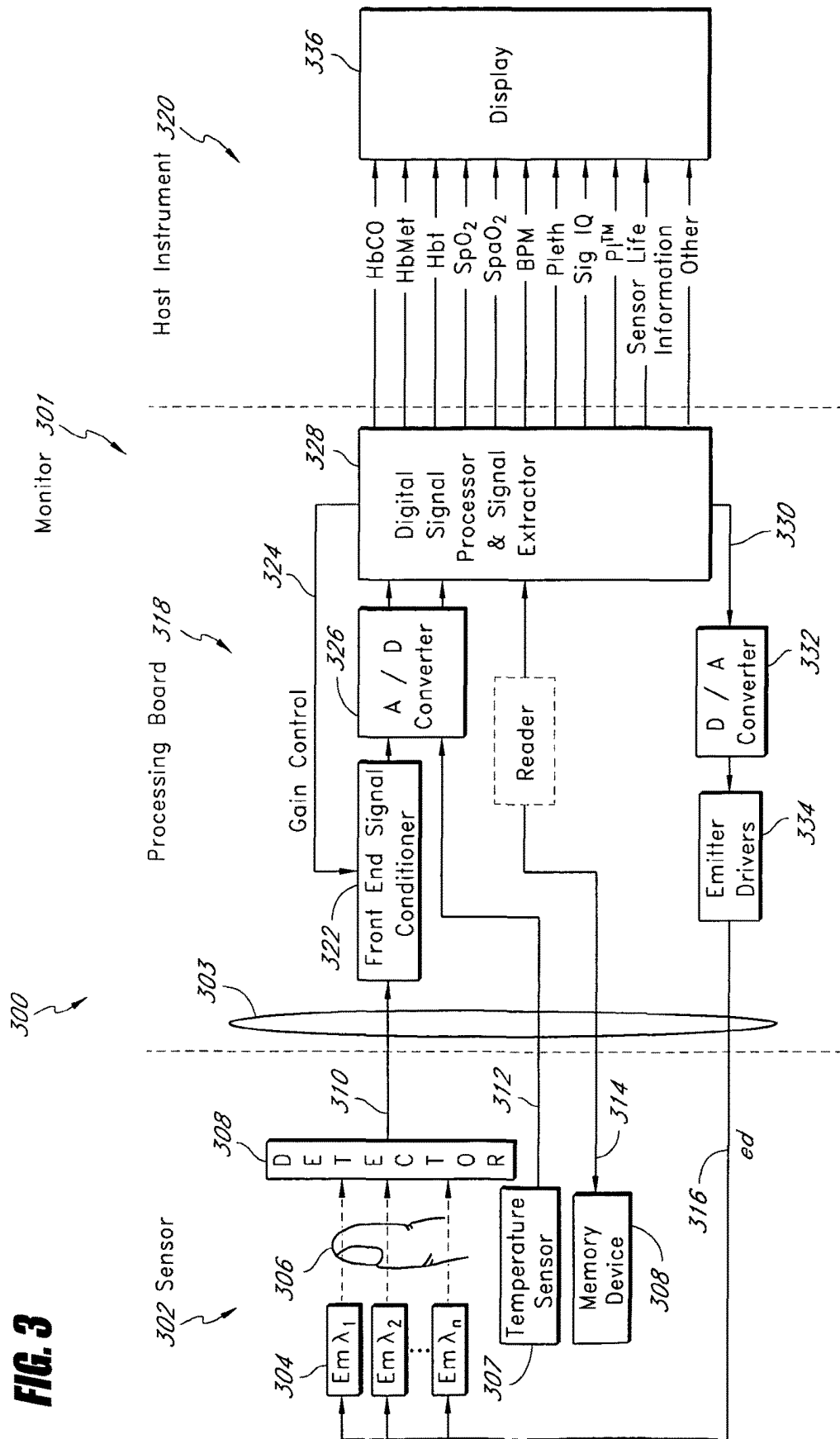
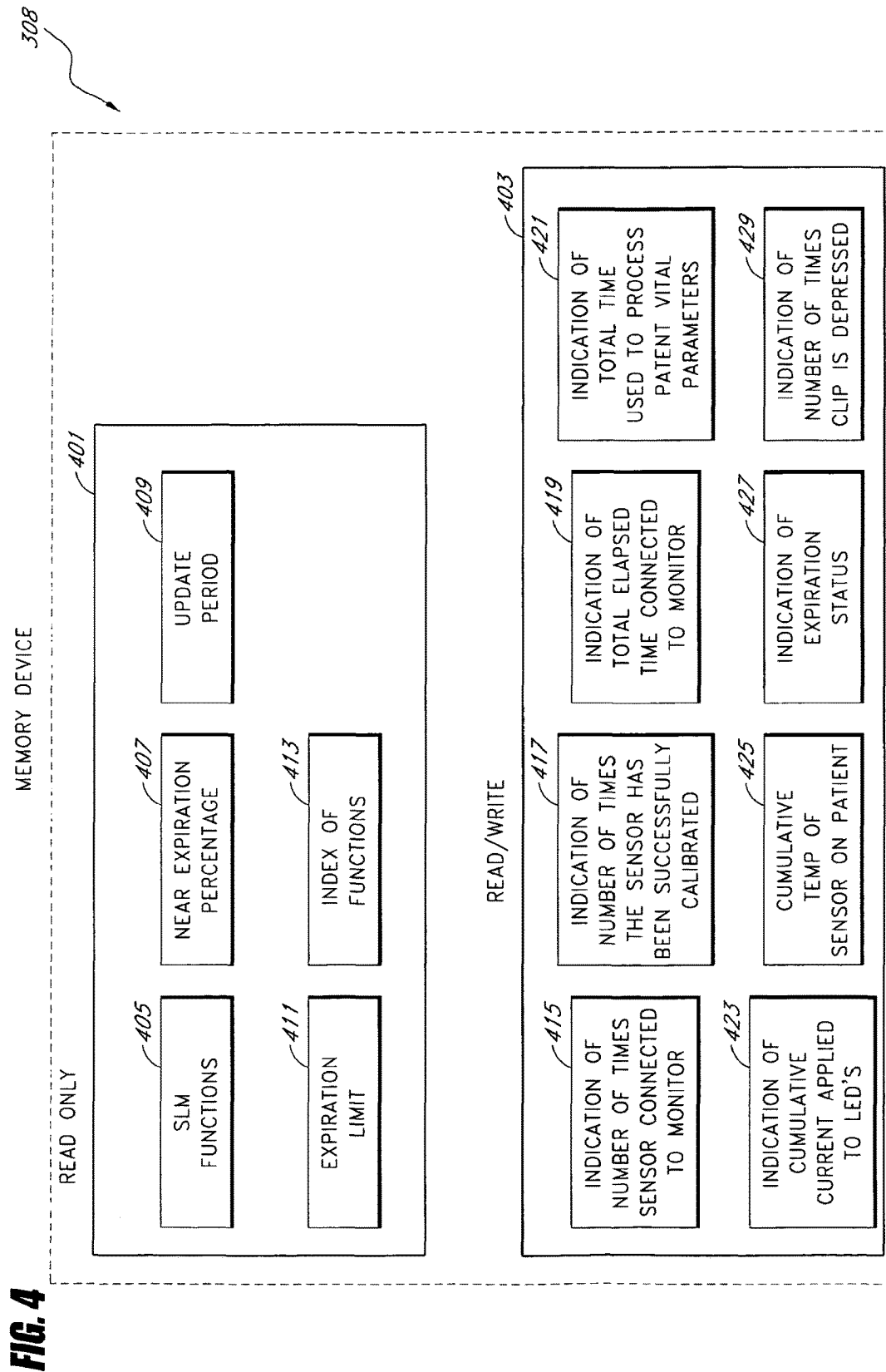
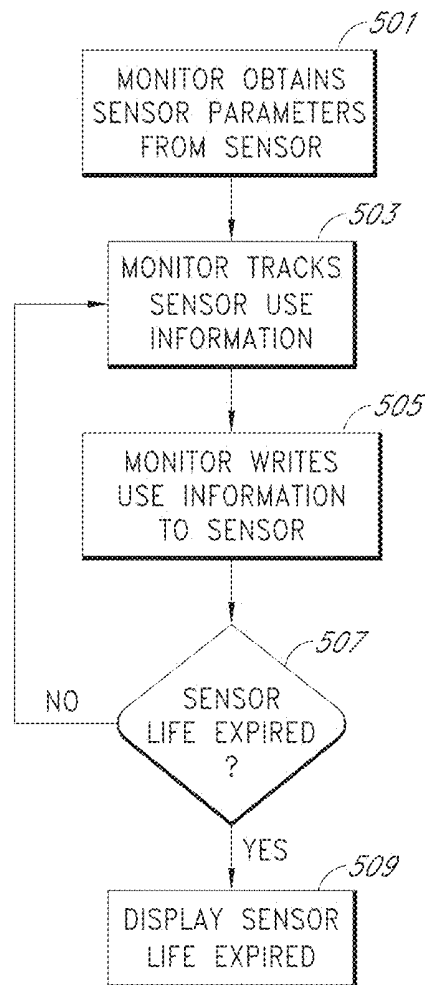
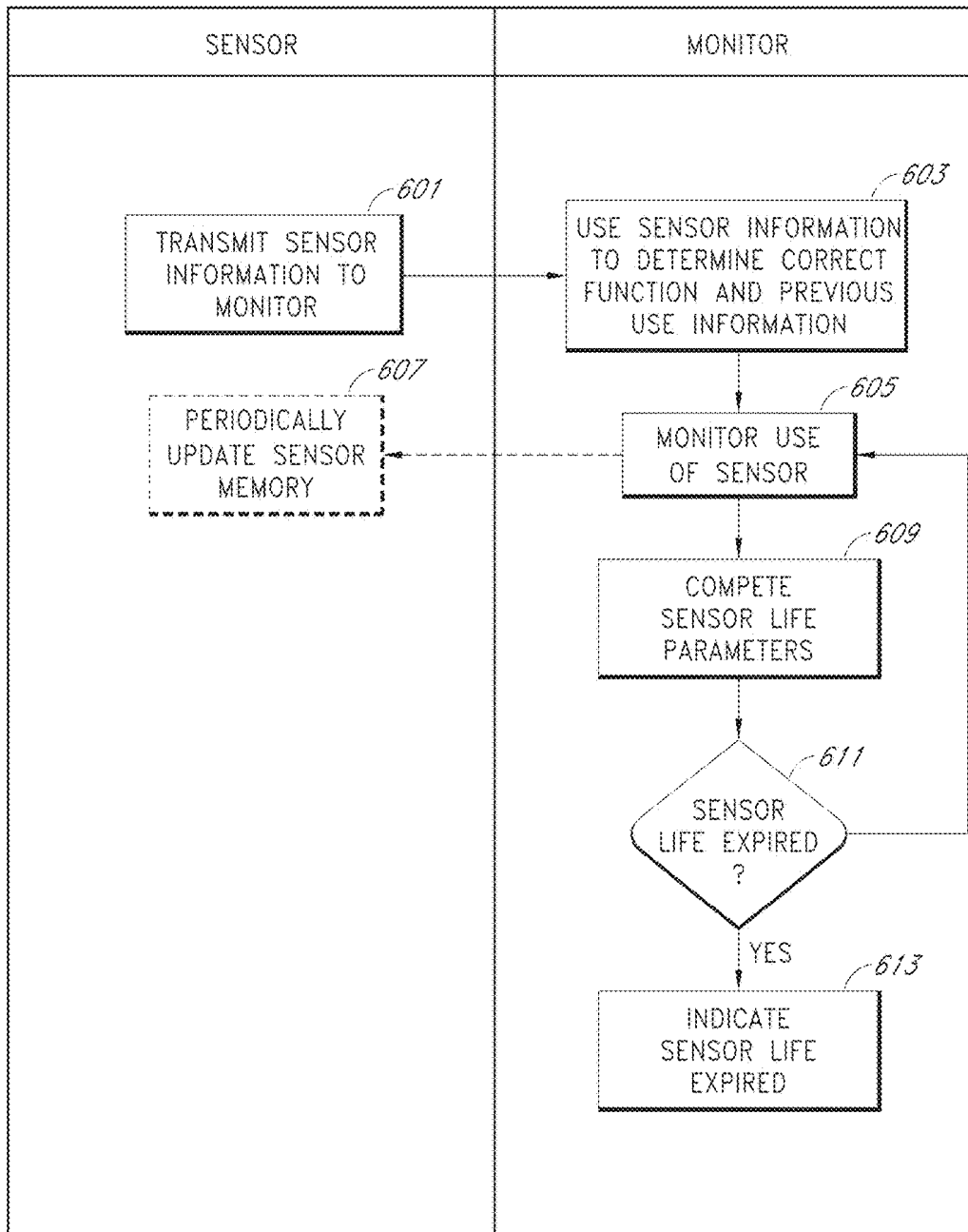


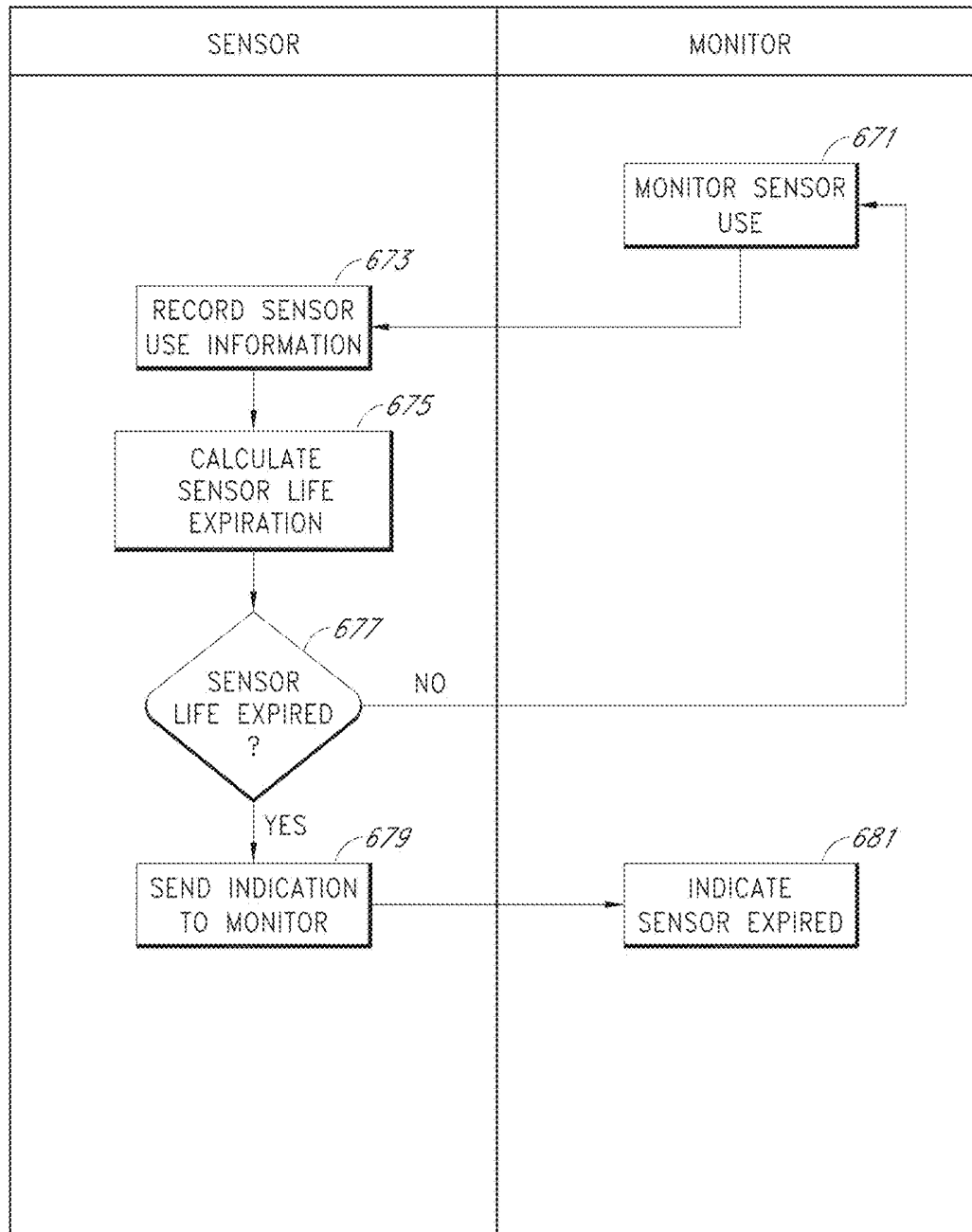
FIG. 3

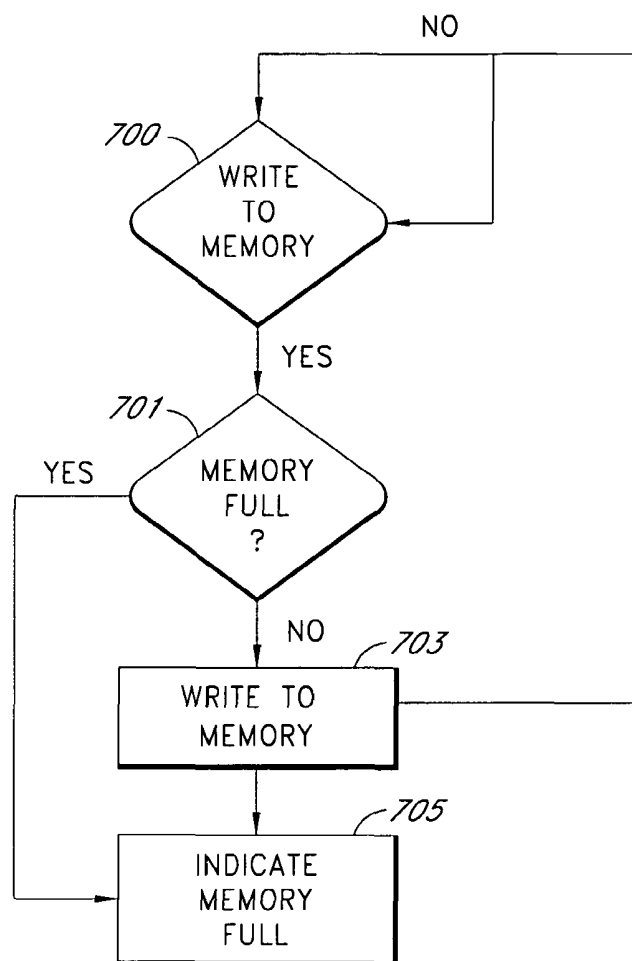




**FIG. 5**

**FIG. 6A**

**FIG. 6B**

**FIG. 7**

SYSTEM AND METHOD FOR MONITORING THE LIFE OF A PHYSIOLOGICAL SENSOR

CROSS REFERENCE TO RELATED APPLICATIONS

The present application is a continuation of U.S. application Ser. No. 14/821,590, filed Aug. 7, 2015, entitled "System and Method for Monitoring the Life of a Physiological Sensor," which is a continuation of U.S. application Ser. No. 14/573,332, filed Dec. 17, 2014, entitled "System and Method for Monitoring the Life of a Physiological Sensor," which is a continuation of U.S. application Ser. No. 13/015,207, filed Jan. 27, 2011, entitled "System and Method for Monitoring the Life of a Physiological Sensor," which is a continuation of U.S. application Ser. No. 11/580,214, filed Oct. 12, 2006, entitled "System and Method for Monitoring the Life of a Physiological Sensor," each of which is incorporated herein by reference in its entirety.

The present application also relates to U.S. Pat. No. 6,388,240, filed Mar. 2, 2001, entitled "Shielded Optical Probe and Method Having a Longevity Indication," and U.S. Pat. No. 6,515,273, filed Feb. 10, 2000, entitled "A system for Indicating the Expiration of the Useful Operating Life of a Pulse Oximetry Sensor," their continuations, divisionals, continuation-in-parts and the like, and incorporates each of the foregoing disclosures herein by reference in their entirety.

FIELD

The present invention relates to a sensor for measuring oxygen content in the blood, and, in particular, relates to an apparatus and method for monitoring the life of a pulse oximetry sensor.

BACKGROUND

Early detection of low blood oxygen is critical in a wide variety of medical applications. For example, when a patient receives an insufficient supply of oxygen in critical care and surgical applications, brain damage and death can result in just a matter of minutes. Because of this danger, the medical industry developed pulse oximetry, a noninvasive procedure for measuring the oxygen saturation of the blood. A pulse oximeter interprets signals from a sensor attached to a patient in order to determine that patient's blood oxygen saturation.

A conventional pulse oximetry sensor has a red emitter, an infrared emitter, and a photodiode detector. The sensor is typically attached to a patient's finger, earlobe, or foot. For a finger, the sensor is configured so that the emitters project light from one side of the finger, through the outer tissue of the finger, and into the blood vessels and capillaries contained inside. The photodiode is positioned at the opposite side of the finger to detect the emitted light as it emerges from the outer tissues of the finger. The photodiode generates a signal based on the emitted light and relays that signal to the pulse oximeter. The pulse oximeter determines blood oxygen saturation by computing the differential absorption by the arterial blood of the two wavelengths (red and infrared) emitted by the sensor.

The foregoing conventional sensor is typically detachable from the oximeter to allow for periodic replacement. Periodic replacement is advantageous for a wide variety of reasons. For example, the sensor can become soiled, thereby possibly inhibiting sensor sensitivity or causing cross-pa-

tient contamination. Furthermore, the electronic circuitry in the sensor can become damaged, thereby causing sensor failure or inaccurate results. Moreover, the securing mechanism for the sensor, such as an adhesive substrate, can begin to fail, thereby improperly positioning the sensor in proximity to a measurement site and providing inaccurate data. Accordingly, periodic replacement of the sensor is an important aspect of maintaining a sterile, highly sensitive, accurate pulse oximetry system.

However, a conventional pulse oximetry sensor is generally reliant on an operator for timely replacement of soiled, damaged, or otherwise overused sensors. This approach is problematic not only from the standpoint of operator mistake or negligence, but also from the perspective of deliberate misuse for cost saving or other purposes.

SUMMARY

Accordingly, one aspect of the present invention is to provide an inexpensive, accurate sensor life monitoring system for monitoring the useful and safe life of a pulse oximetry sensor. In an embodiment, a sensor is provided with a memory device, such as, for example, an EPROM or EEPROM. At predetermined intervals and/or in response to predetermined events, information is written onto the memory device. When the sensor reaches a predetermined level of use, a sensor replacement signal is indicated to a user.

In an embodiment, depending on the characteristics of the sensor, the sensor stores information related to the life expectancy of the sensor. In an embodiment, the life expectancy information is a function or set of functions that is used to calculate the useful life of the sensor. In an embodiment, the information is an indication of the use of the sensor. In an embodiment, the function or set of functions is stored on the sensor with an indication of the use of the sensor. In an embodiment, the function or set of functions is used in conjunction with the indication of the use of the sensor in order to determine the useful life of the sensor.

In an embodiment, the function or set of functions is a predetermined function or set of functions based on empirical data obtained from observing sensor use and/or inspecting used sensors. In an embodiment the empirical data is obtained experimentally in the normal course of using a sensor on a patient. In an embodiment, the empirical data is obtained experimentally without using patients. In an embodiment, the function or set of functions is based on theoretical data. In an embodiment, the function or set of functions is based on the individual life of each component of the sensor.

In an embodiment, a patient monitor works in conjunction with the sensor to determine the useful life of the sensor. In an embodiment, the monitor tracks information related to the use of the sensor and stores an indication of the information related to the use on the sensor. In an embodiment, the monitor uses the information stored on the sensor, including the functions and/or the previously stored indications of use and calculates the useful sensor life. In an embodiment, the monitor updates the already stored indications of use on the sensor. In an embodiment, the monitor indicates a sensor life expired status to a user.

In an embodiment, the sensor uses the function(s) and/or the indications of use and calculates the useful sensor life. In an embodiment, the sensor calculates the useful life of the sensor based on information provided by the monitor. In an embodiment, the monitor stores the functions and/or the sensor use information relevant to a particular sensor. In an

3

embodiment, a range or set of functions is stored on the monitor and the sensor stores an indication of which function or set of functions are to be used to calculate the useful life of the sensor. In an embodiment, indications of use information are stored on the sensor, so as to conserve memory space. In an embodiment, the sensor memory includes both read only and read/write memory. In an embodiment, the read only memory stores the functions and other read only information such as the update period, expiration limit, index of functions, near expiration percentage, or the like. In an embodiment, the read/write memory stores use information which changes periodically based on the use of the sensor.

In an embodiment, the use information includes one or more of the following: the number of times a sensor has been connected and/or disconnected from a monitor, the number of times the sensor has been successfully calibrated, the total elapsed time the sensor has been connected to the monitor, the total time the sensor has been used to process the patient vital parameters, the age of the sensor, the cumulative or average current applied to the LED's, the cumulative or average current provided to the sensor, the cumulative or average temperature of the sensor during use, an indication of the expiration status or existing life of the sensor, the number of times the clip has been depressed, the number of times the clip has been placed on a patient, the number of patients the sensor has been used on, the number of times and time between cleanings and/or sterilization of the sensor, the number of monitors a particular sensor has been connected to, the number of times a sensor has been refurbished, the number of times the sensor has been sterilized, the time period between uses, as well as any other information useful in determining the life of a sensor as would be understood by a person of ordinary skill in the art from the disclosure herein.

In an embodiment, a reusable noninvasive physiological sensor is disclosed. The sensor has a first and second emitter which emit light of at least two wavelengths through tissue, a detector which senses the light after it has passed through the tissue and generates a signal indicative of the sensed light, a memory device which stores an indication of sensor use information and an indication of a function to be used in determining the useful life of the sensor, and a communication port which communicates at least the signal and information stored on the memory with a patient monitor. In an embodiment, the memory device has a read only portion and a read/write portion. In an embodiment, the indication of the function is stored in the read only portion and the indication of sensor use information is stored in the read/write portion of the memory. In an embodiment, the memory device is made up of a plurality of memory devices. In an embodiment, the indication of the sensor use information is an indication of one or more of an age of the sensor, a use time of the sensor, a current supplied to the sensor, a temperature of the sensor, a number of times the sensor is depressed, a number of times the sensor is calibrated, or a number of times the sensor is powered up. In an embodiment, the monitor tracks the use information and sends an indication of the use information to the sensor for storage in the memory.

In an embodiment, a method of determining the useful life of a physiological sensor is disclosed, the method includes the steps of using a physiological sensor having a memory device to obtain physiological information, monitoring the use of the sensor, storing an indication of the use of the sensor on the memory device, and determining when the useful life of the sensor has been exceeded by using a

4

mathematical function and the indications of use. In an embodiment, the indication of the use of the sensor includes an indication of one or more of an age of the sensor, a use time of the sensor, a current supplied to the sensor, a temperature of the sensor, a number of times the sensor is depressed, a number of times the sensor is calibrated, or a number of times the sensor is powered up. In an embodiment, the step of monitoring the use of the sensor is performed by a patient monitor. In an embodiment, the step of monitoring the use of the sensor is performed by the sensor. In an embodiment, the mathematical function is stored in the sensor memory. In an embodiment, the mathematical function is stored in the memory of a patient monitor. In an embodiment, an indication of the mathematical function is stored in the sensor memory. In an embodiment, the mathematical function is derived from use data. In an embodiment, the use data is obtained from used sensors. In an embodiment, the used sensors have been used on patients. In an embodiment, the physiological sensor is one or more of a blood oxygen sensor, a blood pressure sensor, or an ECG sensor.

In an embodiment, a method of reusing at least portion of a sensor is disclosed. The method includes the steps of accessing a memory device of a physiological sensor, retrieving sensor use information on the memory device, and using the retrieved sensor use information determine if at least one portion of the sensor can be reused. In an embodiment, the method also includes the step of reusing at least one portion of the sensor. In an embodiment, the step of reusing includes producing a refurbished sensor including at least one part of the sensor. In an embodiment, the method also includes the step of analyzing the use information to determine an extent of use of the sensor. In an embodiment, the method includes the step of storing reuse information on the refurbished sensor.

In an embodiment, a method of indicating when a physiological sensor needs to be replaced is disclosed. The method includes the steps of emitting light from a light emitting element, detecting light from the light emitting element after it has been attenuated by tissue, storing information on a sensor memory module, determining when the sensor memory module is full, and indicating that the sensor needs to be replaced when it is determined that the sensor memory module is full. In an embodiment, the method includes the step of storing information at predetermined time intervals. In an embodiment, the information includes usage information.

BRIEF DESCRIPTION OF THE DRAWINGS

FIG. 1 illustrates an embodiment of a physiological measurement system.

FIG. 2A illustrates an embodiment of a sensor assembly.

FIGS. 2B-C illustrate alternative sensor embodiments.

FIG. 3 illustrates a block diagram of an exemplary embodiment of a monitoring system.

FIG. 4 illustrates a block diagram of the contents of one embodiment of a sensor memory.

FIG. 5 illustrates a flowchart of one embodiment of a sensor life monitoring system.

FIGS. 6A-6B illustrate flowcharts of embodiments of sensor life monitoring systems.

FIG. 7 illustrates a flowchart of one embodiment of a sensor life monitoring system.

DETAILED DESCRIPTION

FIG. 1 illustrates an embodiment of a physiological measurement system 100 having a monitor 101 and a sensor

assembly **101**. The physiological measurement system **100** allows the monitoring of a person, including a patient. In particular, the multiple wavelength sensor assembly **101** allows the measurement of blood constituents and related parameters, including oxygen saturation, HbCO, HbMet, and pulse rate.

In an embodiment, the sensor assembly **101** is configured to plug into a monitor sensor port **103**. Monitor keys **105** provide control over operating modes and alarms, to name a few. A display **107** provides readouts of measured parameters, such as oxygen saturation, pulse rate, HbCO and HbMet to name a few.

FIG. 2A illustrates a multiple wavelength sensor assembly **201** having a sensor **203** adapted to attach to a tissue site, a sensor cable **205** and a monitor connector **201**. In an embodiment, the sensor **203** is incorporated into a reusable finger clip adapted to removably attach to, and transmit light through, a fingertip. The sensor cable **205** and monitor connector **201** are integral to the sensor **203**, as shown. In alternative embodiments, the sensor **203** can be configured separately from the cable **205** and connector **201**, although such communication can advantageously be wireless, over public or private networks or computing systems or devices, through intermediate medical or other devices, combinations of the same, or the like.

FIGS. 2B-C illustrate alternative sensor embodiments, including a sensor **211** (FIG. 2B) partially disposable and partially reusable (resposable) and utilizing an adhesive attachment mechanism. Also shown is a sensor **213** being disposable and utilizing an adhesive attachment mechanism. In other embodiments, a sensor can be configured to attach to various tissue sites other than a finger, such as a foot or an ear. Also a sensor can be configured as a reflectance or transreflectance device that attaches to a forehead or other tissue surface. The artisan will recognize from the disclosure herein that the sensor can include mechanical structures, adhesive or other tape structures, Velcro wraps or combination structures specialized for the type of patient, type of monitoring, type of monitor, or the like.

FIG. 3 illustrates a block diagram of an exemplary embodiment of a monitoring system **300**. As shown in FIG. 3, the monitoring system **300** includes a monitor **301**, a noninvasive sensor **302**, communicating through a cable **303**. In an embodiment, the sensor **302** includes a plurality of emitters **304** irradiating the body tissue **306** with light, and one or more detectors **308** capable of detecting the light after attenuation by tissue **306**. As shown in FIG. 3, the sensor **302** also includes a temperature sensor **307**, such as, for example, a thermistor or the like. The sensor **302** also includes a memory device **308** such as, for example, an EEPROM, EPROM or the like. The sensor **302** also includes a plurality of conductors communicating signals to and from its components, including detector composite signal conductors **310**, temperature sensor conductors **312**, memory device conductors **314**, and emitter drive signal conductors **316**.

According to an embodiment, the sensor conductors **310**, **312**, **314**, **316** communicate their signals to the monitor **301** through the cable **303**. Although disclosed with reference to the cable **303**, a skilled artisan will recognize from the disclosure herein that the communication to and from the sensor **306** can advantageously include a wide variety of cables, cable designs, public or private communication networks or computing systems, wired or wireless communications (such as Bluetooth or WiFi, including IEEE 801.11a, b, or g), mobile communications, combinations of

the same, or the like. In addition, communication can occur over a single wire or channel or multiple wires or channels.

In an embodiment, the temperature sensor **307** monitors the temperature of the sensor **302** and its components, such as, for, example, the emitters **304**. For example, in an embodiment, the temperature sensor **307** includes or communicates with a thermal bulk mass having sufficient thermal conduction to generally approximate a real-time temperature of a substrate of the light emission devices **304**. The foregoing approximation can advantageously account for the changes in surface temperature of components of the sensor **302**, which can change as much or more than ten degrees Celsius (10° C.) when the sensor **302** is applied to the body tissue **306**. In an embodiment, the monitor **101** can advantageously use the temperature sensor **307** output to, among other things, ensure patient safety, especially in applications with sensitive tissue. In an embodiment, the monitor **301** can advantageously use the temperature sensor **307** output and monitored operating current or voltages to correct for operating conditions of the sensor **302** as described in U.S. patent application Ser. No. 11/366,209, filed Mar. 1, 2006, entitled "Multiple Wavelength Sensor Substrate," and herein incorporated by reference.

The memory **308** can include any one or more of a wide variety of memory devices known to an artisan from the disclosure herein, including an EPROM, an EEPROM, a flash memory, a combination of the same or the like. The memory **308** can include a read-only device such as a ROM, a read and write device such as a RAM, combinations of the same, or the like. The remainder of the present disclosure will refer to such combination as simply EPROM for ease of disclosure; however, an artisan will recognize from the disclosure herein that the memory **308** can include the ROM, the RAM, single wire memories, combinations, or the like.

The memory device **308** can advantageously store some or all of a wide variety data and information, including, for example, information on the type or operation of the sensor **302**, type of patient or body tissue **306**, buyer or manufacturer information, sensor characteristics including the number of wavelengths capable of being emitted, emitter specifications, emitter drive requirements, demodulation data, calculation mode data, calibration data, software such as scripts, executable code, or the like, sensor electronic elements, sensor life data indicating whether some or all sensor components have expired and should be replaced, encryption information, monitor or algorithm upgrade instructions or data, or the like. In an embodiment, the memory device **308** can also include emitter wavelength correction data.

In an advantageous embodiment, the monitor reads the memory device on the sensor to determine one, some or all of a wide variety of data and information, including, for example, information on the type or operation of the sensor, a type of patient, type or identification of sensor buyer, sensor manufacturer information, sensor characteristics including the number of emitting devices, the number of emission wavelengths, data relating to emission centroids, data relating to a change in emission characteristics based on varying temperature, history of the sensor temperature, current, or voltage, emitter specifications, emitter drive requirements, demodulation data, calculation mode data, the parameters it is intended to measure (e.g., HbCO, HbMet, etc.) calibration data, software such as scripts, executable code, or the like, sensor electronic elements, whether it is a disposable, reusable, or multi-site partially reusable, partially disposable sensor, whether it is an adhesive or non-adhesive sensor, whether it is reflectance or transmittance sensor, whether it is a finger, hand, foot, forehead, or ear

sensor, whether it is a stereo sensor or a two-headed sensor, sensor life data indicating whether some or all sensor components have expired and should be replaced, encryption information, keys, indexes to keys or has functions, or the like monitor or algorithm upgrade instructions or data, some or all of parameter equations, information about the patient, age, sex, medications, and other information that can be useful for the accuracy or alarm settings and sensitivities, trend history, alarm history, sensor life, or the like.

FIG. 3 also shows the monitor 301 comprising one or more processing boards 318 communicating with one or more host instruments 320. According to an embodiment, the board 318 includes processing circuitry arranged on one or more printed circuit boards capable of installation into the handheld or other monitor 301, or capable of being distributed as an OEM component for a wide variety of host instruments 320 monitoring a wide variety of patient information, or on a separate unit wirelessly communicating to it. As shown in FIG. 3, the board 318 includes a front end signal conditioner 322 including an input receiving the analog detector composite signal from the detector 308, and an input from a gain control signal 324. The signal conditioner 322 includes one or more outputs communicating with an analog-to-digital converter 326 ("A/D converter 326").

The A/D converter 326 includes inputs communicating with the output of the front end signal conditioner 322 and the output of the temperature sensor 307. The converter 326 also includes outputs communicating with a digital signal processor and signal extractor 328. The processor 328 generally communicates with the A/D converter 326 and outputs the gain control signal 324 and an emitter driver current control signal 330. The processor 328 also communicates with the memory device 308. As shown in phantom, the processor 328 can use a memory reader, memory writer, or the like to communicate with the memory device 308. Moreover, FIG. 3 also shows that the processor 328 communicates with the host instrument 320 to for example, display the measured and calculated parameters or other data.

FIG. 3 also shows the board 318 including a digital-to-analog converter 332 ("D/A converter 332") receiving the current control signal 330 from the processor 328 and supplying control information to emitter driving circuitry 334, which in turns drives the plurality of emitters 304 on the sensor 302 over conductors 316. In an embodiment, the emitter driving circuitry 334 drives sixteen (16) emitters capable of emitting light at sixteen (16) predefined wavelengths, although the circuitry 334 can drive any number of emitters. For example, the circuitry 334 can drive two (2) or more emitters capable of emitting light at two (2) or more wavelengths, or it can drive a matrix of eight (8) or more emitters capable of emitting light at eight (8) or more wavelengths. In addition, one or more emitters could emit light at the same or substantially the same wavelength to provide redundancy.

In an embodiment, the host instrument 320 communicates with the processor 328 to receive signals indicative of the physiological parameter information calculated by the processor 328. The host instrument 320 preferably includes one or more display devices 336 capable of providing indicia representative of the calculated physiological parameters of the tissue 306 at the measurement site. In an embodiment, the host instrument 320 can advantageously include virtually any housing, including a handheld or otherwise portable monitor capable of displaying one or more of the foregoing measured or calculated parameters. In still additional

embodiments, the host instrument 320 is capable of displaying trending data for one or more of the measured or determined parameters. Moreover, an artisan will recognize from the disclosure herein many display options for the data available from the processor 328.

In an embodiment, the host instrument 320 includes audio or visual alarms that alert caregivers that one or more physiological parameters are falling below or above predetermined safe thresholds, which are trending in a predetermined direction (good or bad), and can include indications of the confidence a caregiver should have in the displayed data. In further embodiment, the host instrument 320 can advantageously include circuitry capable of determining the expiration or overuse of components of the sensor 302, including, for example, reusable elements, disposable elements, or combinations of the same. Moreover, a detector could advantageously determine a degree of clarity, cloudiness, transparency, or translucence over an optical component, such as the detector 308, to provide an indication of an amount of use of the sensor components and/or an indication of the quality of the photo diode.

An artisan will recognize from the disclosure herein that the emitters 304 and/or the detector 308 can advantageously be located inside of the monitor, or inside a sensor housing. In such embodiments, fiber optics can transmit emitted light to and from the tissue site. An interface of the fiber optic, as opposed to the detector can be positioned proximate the tissue. In an embodiment, the physiological monitor accurately monitors HbCO in clinically useful ranges. This monitoring can be achieved with non-fiber optic sensors. In another embodiment, the physiological monitor utilizes a plurality, or at least four, non-coherent light sources to measure one or more of the foregoing physiological parameters. Similarly, non-fiber optic sensors can be used. In some cases the monitor receives optical signals from a fiber optic detector. Fiber optic detectors are useful when, for example, monitoring patients receiving MRI or cobalt radiation treatments, or the like. Similarly, light emitters can provide light from the monitor to a tissue site with a fiber optic conduit. Fiber optics are particularly useful when monitoring HbCO and HbMet. In another embodiment, the emitter is a laser diode placed proximate tissue. In such cases, fiber optics are not used. Such laser diodes can be utilized with or without temperature compensation to affect wavelength.

FIG. 4 shows one embodiment of a memory device on the sensor 308. Memory device 308 has a read only section 401 and a read write section 403. One of ordinary skill in the art will understand that the read only and read write sections can be on the same memory or on a separate physical memory. One of ordinary skill in the art will also understand that the read only block 401 and the read write block 403 can consist of multiple separate physical memory devices or a single memory device. The read only section 401 contains read only information, such as, for example, sensor life monitoring functions (SLM) 405, near expiration percentage 407, update period 409, expiration limit 411, index of functions 413, sensor type or the like.

The read write section 403 contains numerous read write parameters, such as the number of times sensor is connected to a monitoring system 415, the number of times the sensor has been successfully calibrated 417, the total elapsed time connected to monitor system 419, the total time used to process patient vital parameters 421, the cumulative current applied to LEDs 423, the cumulative temperature of sensor on patient 425, the expiration status 427, and the number of times clip is depressed 429. Although described in relation to certain parameters and information, a person of ordinary

Sensor use information can be determined in any number of ways. For example, in an embodiment, in order to determine the life of the emitters, the number of emitter pulses can be counted and an indication stored in memory. In an embodiment, the time period in which power is provided to the sensor is determined and an indication stored in memory. In an embodiment, the amount of current supplied to the sensor and/or LEDs is monitored and an indication is stored in memory. In an embodiment, the number of times the sensor is powered up or powered down is monitored and an indication is stored in memory. In an embodiment, the number of times the sensor is connected to a monitor is tracked and an indication is stored in memory. In an embodiment, the number of times the sensor is placed on or removed from a patient is monitored and an indication is stored in the memory. The number of times the sensor is placed on or removed from a patient can be monitored by monitoring the number of probe off conditions sensed, or it can be monitored by placing a separate monitoring device on the sensor to determine when the clip is depressed, opened, removed, replaced, attached, etc. In an embodiment, the average operating temperature of the sensor is monitored and an indication stored. This can be done, for example, through the use of bulk mass as described above, or through directly monitoring the temperature of each emitter, or the temperature of other parts of the sensor. In an embodiment, the number of different monitors connected to the sensor is tracked and an indication is stored in memory. In an embodi-

In an embodiment, a weighted function or average of functions is determined based on the sensor/monitor configuration. For example, in an embodiment, the sensor life function is the sum of a weighted indication of use. For example, in an embodiment, the following sensor life function is used:

where f_{ij} refers to a function determined based on operating conditions and c_j refers to an indication of sensor use. For example, the correct f_{ij} can be determined from a table such as:

[illegible]

11

Where F_i refers the type of sensor and/or the type and number of parameters being monitored. For each different sensor and for each different parameter, a separate function is used in determining the useful life of a sensor. In an embodiment, the correct F_i for a given sensor can be stored on the sensor memory. In an embodiment, all of the functions f_{ij} for a sensor are stored in the sensor memory. In an embodiment, the entire table is stored in the sensor memory. c_j can be determined from the monitored sensor parameters. For example, a c_j for can be determined by counting the total time in use, averaging use time during certain parameters, squaring use time, etc. Thus a c_j can be an indication of use. In an embodiment, the correct c for the number of times the sensor has been turned on or off can be determined by the following formula:

$$e^{\frac{c}{100}}$$

where c is the number of times turned on or off.

In an embodiment, when the useful life of a sensor has been reached, the monitor or sensor sounds an alarm or gives a visual indication that the sensor is at the end of its life. In an embodiment, the monitor will give an indication that the sensor is bad. In an embodiment, the monitor will not output data. In an embodiment, an indication of the end of the sensor life is not given while the sensor is actively measuring vital signs. In an embodiment, the percent of life left in a sensor is indicated. In an embodiment, an estimated remaining use time is indicated. In an embodiment, an indication that the end of the sensor life is approaching is indicated without giving a specific percentage or time period.

FIGS. 6A and 6B illustrate flowcharts of embodiments of sensor life monitoring systems. Referring to FIG. 6A, in an embodiment of a sensor life monitoring system, a sensor including a memory device is connected to a monitor. The sensor transmits sensor information to the monitor at block 601. The information can include one or more of a function, use parameters, expiration parameters, or any other sensor specific information useful in determining the life expiration of a sensor. At block 603, the sensor information is used to determine the correct function to use in determining the sensor expiration date. Any previous use information transmitted is also used during the monitoring process. At block 605, the patient monitor monitors the sensor use. Optionally, the monitor periodically writes updated use information to the sensor at block 607 or, in an embodiment, the use information is written once at the end of a monitoring cycle. At block 609, the monitor computes sensor life parameters and sensor life expiration. The system then moves onto decision block 611 where it is determined whether the sensor life has expired. If the sensor life has expired, then the system moves to block 613 where an indication of the sensor life expiration is given. If the sensor life has not expired at decision block 611, then the system returns to block 605, where sensor use is monitored.

FIG. 6B illustrates a flowchart where the sensor life is calculated on the sensor instead of the monitor. At block 671, the patient monitor monitors sensor use. The use information is supplied to the sensor at block 673, the use information is recorded. At block 675, the sensor calculates the sensor life expiration. The system then moves onto decision block 677. At decision block 677, if the sensor has expired, the system moves onto block 679, where the sensor sends an expiration indication to the monitor and the monitor indicates the

12

sensor expiration at block 681. If, however, at block 671 the sensor has not expired, the system returns to block 671 where the sensor use is monitored.

FIG. 7 illustrates a flowchart of an embodiment of a system for measuring the life of a sensor. In the course of monitoring a patient, information is written on the EPROM. Because the EPROM is finite in the amount of information it can hold, at some point, the EPROM becomes full. When the EPROM becomes full, the sensor will need to be replaced. Thus, an EPROM full signal indicates that the life span of the sensor has expired. The EPROM's memory capacity can be chosen to so as to estimate the life of the sensor. In addition, the monitor can be programmed to write to the sensor at set intervals so that after a predictable period of time, the EPROM's memory will be full. Once the EPROM is full, the monitor gives an audio and/or visual indication that the sensor needs to be replaced.

Referring to FIG. 7, the patient monitoring system determines whether to write to the sensor EPROM at block 700. If information is not to be written to the EPROM at block 700, then the system continues at block 700. If information is to be written to the EPROM at block 700, then the system continues to block 701, where the system determines if the EPROM is full. If the EPROM is full, then the system moves to block 703, where the system writes information to the EPROM. Once the information has been written, the system returns to block 700 where it waits until information is to be written to the EPROM. If at block 701, the system determines that the EPROM is full, then the system moves to block 703, where an indication is given to the user that the sensor needs to be replaced.

In an embodiment, the sensor can be refurbished and used again. For example, if the memory used is an erasable memory module, then the sensor's memory can be erased during the refurbishment process and the entire sensor can be used again. In an embodiment, each time part or all of the memory is erased, an indicator of the number of times the memory has been erased is stored on the memory device. In this way, an indication of the number of refurbishments of a particular sensor can be kept. If a write only memory is used, then parts of the sensor can be salvaged for reuse, but a new memory module will replace the used memory module. In an embodiment, once the sensor memory is full, the sensor is discarded.

In an embodiment, various parts of used sensors can be salvaged and reused. In an embodiment, the sensor keeps track of various use information as described above. The sensor memory can then be reviewed to see which parts of the used sensor can be salvaged based on the use information stored in the memory. For example, in an embodiment, an indication of the number of times the clip is depressed is stored in memory. A refurbisher can look at that use information and determine whether the mechanical clip can be salvaged and used on a refurbished sensor. Of course, the same principals apply to other aspects of the sensor, such as, for example, the LEDs, the cables, the detector, the memory, or any other part of the sensor.

Although the foregoing invention has been described in terms of certain preferred embodiments, other embodiments will be apparent to those of ordinary skill in the art from the disclosure herein. For example, although disclosed with respect to a pulse oximetry sensor, the ideas disclosed herein can be applied to other sensors such as ECG/EKG sensor, blood pressure sensors, or any other physiological sensors. Additionally, the disclosure is equally applicable to physiological monitor attachments other than a sensor, such as, for example, a cable connecting the sensor to the physi-

13

ological monitor. Additionally, other combinations, omissions, substitutions and modifications will be apparent to the skilled artisan in view of the disclosure herein. It is contemplated that various aspects and features of the invention described can be practiced separately, combined together, or substituted for one another, and that a variety of combination and subcombinations of the features and aspects can be made and still fall within the scope of the invention. Furthermore, the systems described above need not include all of the modules and functions described in the preferred embodiments. Accordingly, the present invention is not intended to be limited by the recitation of the preferred embodiments, but is to be defined by reference to the appended claims.

What is claimed is:

1. A reusable noninvasive physiological sensor configured to store an indication of a sensor life function, the sensor comprising:

a first and second emitter configured to emit light of at least two wavelengths through tissue;

a detector configured to sense the light after it has passed through the tissue and to generate a signal indicative of the sensed light;

a memory device configured to store at least one indication of a sensor life function, wherein the at least one indication of a sensor life function identifies at least one sensor life function stored in a separately housed patient monitor, and wherein the at least one sensor life function indicates to the separately housed patient monitor how to calculate a useful life of the sensor; and

a communication port configured to communicate the signal indicative of the sensed light and the at least one indication of a sensor life function to the separately housed patient monitor, wherein the separately housed patient monitor calculates the useful life of the sensor based at least in part on the at least one sensor life function identified by the at least one indication of a sensor life function received from the sensor.

2. The sensor of claim 1, wherein the separately housed patient monitor calculates the useful life of the sensor using the at least one sensor life function identified by the at least one indication of a sensor life function received from the sensor.

3. The sensor of claim 1, wherein the memory device comprises a read only portion and a read/write portion and the at least one indication of a sensor life function is stored in the read only portion of the memory device.

4. The sensor of claim 1, wherein the memory device is further configured to store sensor type information.

5. The sensor of claim 1, wherein the memory device is further configured to store sensor usage data, the communication port is further configured to communicate the sensor usage data to the separately housed patient monitor, and the calculation by the separately housed patient monitor is further based at least in part on the sensor usage data.

6. The sensor of claim 5, wherein the sensor usage data comprises one or more of an amount of time the sensor is in use, an amount of time period in which power is provided to the sensor, a number of times the sensor is powered up, a number of times the sensor is powered down, a number of times the sensor is connected to a monitor, a number of different monitors connected to the sensor, a number of patients which use a sensor is monitored, a number of times the sensor is calibrated, an amount of time the sensor is connected to a finger, a number of times the sensor opens and closes, an average temperature, or an average current provided to the sensor.

14

7. The sensor of claim 1, wherein the sensor life function includes at least two indications of sensor usage data, wherein the at least one sensor life function assigns different weighting values to each of the at least two indications of sensor usage data.

8. A method of determining a useful life of a physiological sensor comprising a memory device, the method comprising:

storing at least one indication of a sensor life function in a memory device of the sensor, wherein the at least one indication of a sensor life function identifies at least one sensor life function stored in a separately housed patient monitor, and wherein the at least one sensor life function indicates to the separately housed patient monitor how to calculate a useful life of the sensor;

generating at the sensor a signal indicative of light after the light has passed through tissue; and

communicating the at least one indication of a sensor life function and the signal indicative of the light to the separately housed patient monitor, wherein the separately housed patient monitor calculates the useful life of the sensor based at least in part on the at least one sensor life function identified by the at least one indication of a sensor life function received from the sensor.

9. The method of claim 8, further comprising:

storing sensor type information in the memory device.

10. The method of claim 8, further comprising:

storing at least one indication of sensor usage data in the memory device, and

communicating the at least one indication of sensor usage data, wherein said calculation of the useful life of the sensor is further based at least in part on the at least one indication of sensor usage data.

11. The method of claim 10, wherein the sensor usage data comprises one or more of an amount of time the sensor is in use, an amount of time period in which power is provided to the sensor, a number of times the sensor is powered up, a number of times the sensor is powered down, a number of times the sensor is connected to a monitor, a number of different monitors connected to the sensor, a number of patients which use a sensor is monitored, a number of times the sensor is calibrated, an amount of time the sensor is connected to a finger, a number of times the sensor opens and closes, an average temperature, or an average current provided to the sensor.

12. The method of claim 8, wherein the sensor life function includes at least two indications of sensor usage data, wherein the at least one sensor life function assigns different weighting values to each of the at least two indications of sensor usage data stored in the memory device.

13. The method of claim 8, wherein the separately housed patient monitor calculates the useful life of the sensor using the at least one sensor life function identified by the at least one indication of a sensor life function received from the sensor.

14. A reusable noninvasive physiological sensor comprising:

a detector configured to sense light after it has passed through tissue and to generate a signal indicative of the sensed light;

a memory device configured to store at least one indication of a sensor life function, wherein the at least one indication of a sensor life function identifies at least one sensor life function stored in a separately housed patient monitor, and wherein the at least one sensor life

15

function indicates to the separately housed patient monitor how to calculate a useful life of the sensor; and a communication port configured to communicate the at least one indication of a sensor life function to the separately housed patient monitor, wherein the separately housed patient monitor calculates the useful life of the sensor based at least in part on the at least one sensor life function identified by the at least one indication of a sensor life function received from the sensor.

15. The reusable noninvasive physiological sensor of claim 14, wherein the memory device is further configured to store sensor type information.

16. The reusable noninvasive physiological sensor of claim 14, wherein the memory device is further configured to store at least one indication of sensor usage data, wherein the communication port is further configured to communicate the at least one indication of sensor usage data to the separately housed patient monitor, and wherein the calculation of the useful life of the sensor by the separately housed patient monitor is further based at least in part on the at least one indication of sensor usage data.

17. The reusable noninvasive physiological sensor of claim 16, wherein the sensor usage data comprises one or

16

more of an amount of time the sensor is in use, an amount of time period in which power is provided to the sensor, a number of times the sensor is powered up, a number of times the sensor is powered down, a number of times the sensor is connected to a monitor, a number of different monitors connected to the sensor, a number of patients which use a sensor is monitored, a number of times the sensor is calibrated, an amount of time the sensor is connected to a finger, a number of times the sensor opens and closes, an average temperature, or an average current provided to the sensor.

18. The reusable noninvasive physiological sensor of claim 14, wherein the at least one sensor life function includes at least two indications of sensor usage data, wherein the at least one sensor life function assigns different weighting values to each of the at least two indications of sensor usage data.

19. The reusable noninvasive physiological sensor of claim 14, wherein the separately housed patient monitor calculates the useful life of the sensor using the at least one sensor life function identified by the at least one indication of a sensor life function received from the sensor.

* * * * *

专利名称(译)	用于监测生理传感器寿命的系统和方法		
公开(公告)号	US10039482	公开(公告)日	2018-08-07
申请号	US15/388075	申请日	2016-12-22
[标]申请(专利权)人(译)	梅西莫股份有限公司		
申请(专利权)人(译)	Masimo公司		
当前申请(专利权)人(译)	Masimo公司		
[标]发明人	AL ALI AMMAR WEBER WALTER M MCHALE RYAN TIMOTHY		
发明人	AL-ALI, AMMAR WEBER, WALTER M. MCHALE, RYAN TIMOTHY		
IPC分类号	G08B21/00 A61B5/1495 A61B5/1455 A61B5/00		
CPC分类号	A61B5/1495 A61B5/14551 A61B5/14552 A61B5/6826 A61B5/6838 A61B5/0002 A61B2562/085 A61B2560/028 A61B2560/0238 A61B2560/0266 A61B2560/0276 A61B2560/045 A61B2560/0475 A61B2562/0238 A61B2562/043		
审查员(译)	阿齐兹ADNAN		
优先权	14/573332 2015-08-18 US		
其他公开文献	US20170202490A1		
外部链接	Espacenet		

摘要(译)

本公开的各方面包括传感器，该传感器被配置为在存储器中存储传感器使用信息的指示和用于根据传感器使用信息的指示确定传感器的使用寿命的公式或公式的指示。连接到传感器的监视器监视传感器的使用并在传感器存储器上存储使用的指示。监视器和/或传感器根据使用指示和公式计算传感器的使用寿命。当达到传感器的使用寿命时，给出指示以更换传感器。

