



US009737454B2

(12) **United States Patent**
Hornbach et al.

(10) **Patent No.:** **US 9,737,454 B2**
(45) **Date of Patent:** **Aug. 22, 2017**

(54) **SEQUENTIAL COMPRESSION THERAPY COMPLIANCE MONITORING SYSTEMS AND METHODS**

(58) **Field of Classification Search**
CPC A61H 9/00; A61H 9/005; A61H 9/0078; A61H 9/0092; A61B 5/1113; A61B 5/1115

(71) Applicant: **Hill-Rom Services, Inc.**, Batesville, IN (US)

See application file for complete search history.

(72) Inventors: **David W. Hornbach**, Brookville, IN (US); **David L. Ribble**, Indianapolis, IN (US); **Christopher R. O’Keefe**, Batesville, IN (US); **Timothy J. Receveur**, Guilford, IN (US); **Thomas K. Skripps**, Acton, MA (US)

(56) **References Cited**

U.S. PATENT DOCUMENTS

891,181 A 6/1908 Mitchell
RE14,681 E 7/1919 Faries
(Continued)

FOREIGN PATENT DOCUMENTS

EP 0 861 651 A1 9/1998
EP 0 992 230 A2 4/2000
(Continued)

OTHER PUBLICATIONS

Expressmedsupplies.com website, Jobst Ultrasheer 8-1 Revitaleg Portable Pneumatic Compression Leg Massager.
(Continued)

Primary Examiner — Justine Yu
Assistant Examiner — Timothy Stanis
(74) *Attorney, Agent, or Firm* — Barnes & Thornburg LLP

(57) **ABSTRACT**

A system includes a sequential compression device (SCD) used by a patient as part of a sequential compression therapy (SCT) protocol. The system also includes a computer device that determines whether the SCD is in use in substantially real time in compliance with the protocol. The computer device initiates a notification to a caregiver if noncompliance with the SCT protocol is detected.

21 Claims, 6 Drawing Sheets

(73) Assignee: **Hill-Rom Services, Inc.**, Batesville, IN (US)

(*) Notice: Subject to any disclaimer, the term of this patent is extended or adjusted under 35 U.S.C. 154(b) by 786 days.

(21) Appl. No.: **14/041,128**

(22) Filed: **Sep. 30, 2013**

(65) **Prior Publication Data**

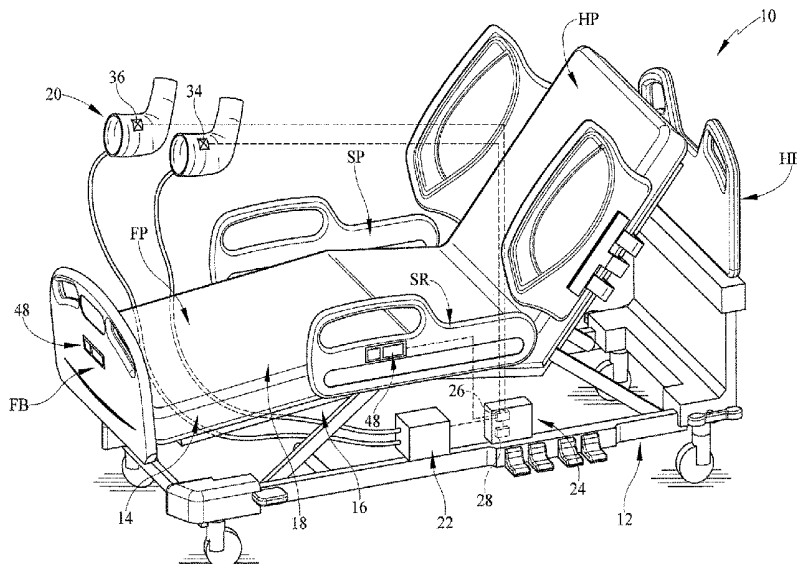
US 2014/0031730 A1 Jan. 30, 2014

Related U.S. Application Data

(63) Continuation-in-part of application No. 13/410,502, filed on Mar. 2, 2012.

(51) **Int. Cl.**
A61H 9/00 (2006.01)
A61H 7/00 (2006.01)
(Continued)

(52) **U.S. Cl.**
CPC **A61H 7/00** (2013.01); **A61B 5/0295** (2013.01); **A61B 5/02141** (2013.01);
(Continued)



(51)	Int. Cl.		4,331,133 A	5/1982	Arkans
	G06F 19/00	(2011.01)	4,335,726 A	6/1982	Kolstedt
	A61B 5/00	(2006.01)	4,369,588 A	1/1983	Berguer
	A61B 5/021	(2006.01)	4,370,975 A	2/1983	Wright
	A61B 5/0295	(2006.01)	4,372,297 A	2/1983	Perlin
	A61B 5/11	(2006.01)	4,374,518 A	2/1983	Villanueva
	A61N 1/04	(2006.01)	4,375,217 A	3/1983	Arkans
	A61B 5/02	(2006.01)	4,388,923 A	6/1983	Heimreid
			4,396,010 A	8/1983	Arkans
(52)	U.S. Cl.		4,402,312 A	9/1983	Villari et al.
	CPC	A61B 5/1115 (2013.01); A61B 5/4833	4,418,690 A	12/1983	Mummert
		(2013.01); A61B 5/7275 (2013.01); G06F	4,424,596 A	1/1984	Jackson
		19/3481 (2013.01); A61B 5/02007 (2013.01);	4,453,538 A	6/1984	Whitney
		A61H 9/0078 (2013.01); A61H 2201/0184	4,481,937 A	11/1984	Arkans
		(2013.01); A61H 2201/10 (2013.01); A61H	4,492,234 A	1/1985	Arkans
		2201/501 (2013.01); A61H 2201/5002	4,502,301 A	3/1985	Swallow et al.
		(2013.01); A61H 2201/5012 (2013.01); A61H	4,513,740 A	4/1985	Westlake
		2201/5071 (2013.01); A61H 2209/00	4,527,402 A	7/1985	Swallow et al.
		(2013.01); A61H 2230/06 (2013.01); A61H	4,573,453 A	3/1986	Tissot
		2230/10 (2013.01); A61H 2230/30 (2013.01);	4,577,626 A	3/1986	Marukawa et al.
		A61N 1/0452 (2013.01); A61N 1/0456	4,597,384 A	7/1986	Whitney
		(2013.01)	4,614,179 A	9/1986	Gardner et al.
			4,614,180 A	9/1986	Gardner et al.
			4,624,244 A	11/1986	Taheri
			4,628,911 A	12/1986	Bornstein
			4,648,392 A	3/1987	Cartier et al.
			4,657,003 A	4/1987	Wirtz
(56)	References Cited		4,682,588 A	7/1987	Curlee
	U.S. PATENT DOCUMENTS		4,696,289 A	9/1987	Gardner et al.
			4,702,232 A	10/1987	Gardner et al.
			4,721,101 A	1/1988	Gardner et al.
			4,722,332 A	2/1988	Saggers
			4,730,610 A	3/1988	Graebe
			4,744,391 A	5/1988	Lardner
			4,745,917 A	5/1988	Hasty et al.
			4,753,226 A	6/1988	Zheng et al.
			4,773,397 A	9/1988	Wright et al.
			4,793,328 A	12/1988	Kolstedt et al.
			4,804,208 A	2/1989	Dye
			4,805,601 A	2/1989	Eischen, Sr.
			4,809,684 A	3/1989	Gardner et al.
			4,827,912 A	5/1989	Carrington et al.
			4,832,010 A	5/1989	Lerman
			RE32,939 E	6/1989	Gardner et al.
			RE32,940 E	6/1989	Gardner et al.
			4,841,956 A	6/1989	Gardner et al.
			4,846,160 A	7/1989	Gardner et al.
			4,858,596 A	8/1989	Kolstedt et al.
			4,865,020 A	9/1989	Bullard
			RE33,090 E	10/1989	Berguer
			4,922,893 A	5/1990	Wright et al.
			4,928,674 A	5/1990	Halperin et al.
			4,938,208 A	7/1990	Dye
			4,941,458 A	7/1990	Taheri
			4,945,905 A	8/1990	Dye et al.
			4,947,834 A	8/1990	Kartheus et al.
			4,966,396 A	10/1990	Dye
			4,971,044 A	11/1990	Dye
			4,989,589 A	2/1991	Pekanmaki et al.
			5,000,164 A	3/1991	Cooper
			5,005,567 A	4/1991	Gilman et al.
			5,007,411 A	4/1991	Dye
			5,014,681 A	5/1991	Heeman et al.
			5,022,387 A	6/1991	Hasty
			5,025,781 A	6/1991	Ferrari
			5,027,797 A	7/1991	Bullard
			5,031,604 A	7/1991	Dye
			5,074,285 A	12/1991	Wright
			5,080,089 A	1/1992	Mason et al.
			5,109,832 A	5/1992	Proctor et al.
			5,117,812 A	6/1992	McWhorter
			5,125,400 A	6/1992	Johnson, Jr.
			5,127,808 A	7/1992	Nichols et al.
			5,133,199 A	7/1992	Pariikh et al.
			5,135,473 A	8/1992	Epler et al.
			5,139,479 A	8/1992	Peters
			5,176,624 A	1/1993	Kuehnreich
			5,179,941 A	1/1993	Siemssen et al.
			5,186,163 A	2/1993	Dye

(56)	References Cited		5,891,065 A	4/1999	Cariapa et al.	
			5,916,183 A	6/1999	Reid	
	U.S. PATENT DOCUMENTS		5,917,414 A *	6/1999	Oppelt	A61B 5/0002 340/573.1
5,211,162 A	5/1993	Gillen, Jr. et al.	5,931,797 A	8/1999	Tumey et al.	
5,218,954 A	6/1993	van Bemmelen	5,938,628 A	8/1999	Oguri et al.	
5,226,898 A	7/1993	Gross	5,951,502 A	9/1999	Peeler et al.	
5,263,473 A	11/1993	McWhorter	5,968,073 A *	10/1999	Jacobs	A61B 34/74 601/152
5,288,286 A	2/1994	Davis	5,989,204 A	11/1999	Lina	
5,307,791 A	5/1994	Senoue et al.	6,001,119 A	12/1999	Hampson et al.	
RE34,661 E	7/1994	Grim	6,010,470 A	1/2000	Albery et al.	
5,328,445 A	7/1994	Spahn et al.	6,022,327 A	2/2000	Chang	
5,342,285 A	8/1994	Dye	6,036,662 A	3/2000	Van Brunt et al.	
5,354,260 A	10/1994	Cook	6,047,424 A	4/2000	Osborne et al.	
5,368,034 A	11/1994	Isner	6,080,120 A	6/2000	Sandman et al.	
5,368,547 A	11/1994	Polando	6,119,291 A	9/2000	Osborne et al.	
5,383,894 A	1/1995	Dye	6,129,688 A	10/2000	Arkans	
5,389,065 A	2/1995	Johnson, Jr.	6,141,792 A	10/2000	Acker et al.	
5,396,896 A	3/1995	Tumey et al.	D434,150 S	11/2000	Tumey et al.	
D357,736 S	4/1995	Dye	6,149,674 A	11/2000	Borders	
D358,216 S	5/1995	Dye	6,171,270 B1	1/2001	Gau	
5,413,142 A	5/1995	Johnson et al.	6,193,679 B1	2/2001	Quinn	
5,435,009 A	7/1995	Schild et al.	D439,341 S	3/2001	Tumey et al.	
5,437,610 A	8/1995	Cariapa et al.	6,231,532 B1	5/2001	Watson et al.	
5,441,533 A	8/1995	Johnson et al.	6,249,198 B1	6/2001	Clark et al.	
5,443,440 A	8/1995	Tumey et al.	6,290,662 B1	9/2001	Morris et al.	
5,449,379 A	9/1995	Hadtke	6,296,617 B1	10/2001	Peeler et al.	
D363,988 S	11/1995	Dye	6,315,745 B1	11/2001	Kloecker	
D364,459 S	11/1995	Dye	6,319,215 B1	11/2001	Manor et al.	
D364,460 S	11/1995	Dye	6,322,530 B1	11/2001	Johnson, Jr. et al.	
D364,680 S	11/1995	Dye	6,355,008 B1	3/2002	Nakao	
5,464,385 A	11/1995	Grim	6,358,219 B1	3/2002	Arkans	
5,466,250 A	11/1995	Johnson, Jr. et al.	6,361,512 B1	3/2002	Mackay et al.	
5,478,119 A	12/1995	Dye	6,368,357 B1	4/2002	Schon et al.	
D367,115 S	2/1996	Barber et al.	6,387,065 B1	5/2002	Tumey	
5,490,820 A	2/1996	Schock et al.	6,436,064 B1	8/2002	Kloecker	
5,496,262 A	3/1996	Johnson, Jr. et al.	6,440,093 B1	8/2002	McEwen et al.	
D369,664 S	5/1996	Dye	6,447,467 B1	9/2002	Barak	
D373,192 S	8/1996	Murphy et al.	6,450,981 B1	9/2002	Shabty et al.	
5,558,627 A	9/1996	Singer et al.	6,463,934 B1	10/2002	Johnson, Jr. et al.	
D374,931 S	10/1996	Cesaroni et al.	6,467,111 B1	10/2002	Vrzalik et al.	
5,562,091 A	10/1996	Foster et al.	6,468,237 B1	10/2002	Lina	
D376,013 S	11/1996	Sandman et al.	6,478,757 B1	11/2002	Barak	
5,571,075 A	11/1996	Bullard	6,488,643 B1	12/2002	Tumey et al.	
5,575,762 A	11/1996	Peeler et al.	6,494,852 B1	12/2002	Barak et al.	
5,584,798 A	12/1996	Fox	6,524,239 B1 *	2/2003	Reed	A61B 5/0002 128/920
5,588,954 A	12/1996	Ribando et al.	6,544,202 B2	4/2003	McEwen et al.	
5,588,955 A	12/1996	Johnson, Jr. et al.	6,551,280 B1	4/2003	Knighton et al.	
5,591,200 A	1/1997	Cone et al.	6,558,338 B1	5/2003	Wasserman	
5,596,770 A	1/1997	Kunesh	6,572,621 B1	6/2003	Zheng et al.	
5,611,096 A	3/1997	Bartlett et al.	6,585,669 B2	7/2003	Manor et al.	
5,613,941 A	3/1997	Prenghler	6,589,194 B1	7/2003	Calderon et al.	
5,626,556 A	5/1997	Tobler et al.	6,589,267 B1	7/2003	Hui	
5,630,238 A	5/1997	Weismiller et al.	6,592,534 B1	7/2003	Rutt et al.	
5,634,889 A	6/1997	Gardner et al.	6,611,979 B2	9/2003	Welling et al.	
5,669,872 A	9/1997	Fox	6,893,409 B1	5/2005	Lina	
5,671,751 A	9/1997	Tumey et al.	7,641,623 B2	1/2010	Biondo et al.	
5,674,262 A	10/1997	Tumey	7,909,786 B2	3/2011	Bonnefin et al.	
5,676,639 A	10/1997	Schild	2001/0000262 A1	4/2001	McEwen et al.	
5,688,225 A	11/1997	Walker	2001/0011393 A1	8/2001	Brooke et al.	
5,711,760 A	1/1998	Ibrahim et al.	2002/0042583 A1	4/2002	Barak et al.	
5,713,954 A	2/1998	Rosenberg et al.	2003/0139255 A1	7/2003	Lina	
5,715,548 A	2/1998	Weismiller et al.	2004/0127937 A1 *	7/2004	Newton	A61H 9/0078 606/202
5,715,548 A	2/1998	Weismiller et al.	2006/0058587 A1	3/2006	Heimbrock et al.	
5,725,485 A	3/1998	Ribando et al.	2006/0258964 A1	11/2006	Biondo et al.	
5,730,136 A	3/1998	Laufer et al.	2007/0049853 A1	3/2007	Adams et al.	
5,747,460 A	5/1998	Bylund et al.	2007/0143920 A1	6/2007	Frondorf et al.	
5,769,801 A	6/1998	Tumey et al.	2007/0179521 A1 *	8/2007	Horvat	A61B 17/1355 606/201
5,781,949 A	7/1998	Weismiller et al.	2007/0180616 A1	8/2007	Newkirk et al.	
5,783,563 A	7/1998	Antonsson et al.	2008/0000477 A1 *	1/2008	Huster	A61B 34/25 128/204.23
5,795,312 A	8/1998	Dye	2008/0169931 A1 *	7/2008	Gentry	A61B 5/1113 340/573.1
5,800,528 A	9/1998	Lederman et al.	2008/0235872 A1	10/2008	Newkirk et al.	
5,810,750 A	9/1998	Buser	2009/0049610 A1	2/2009	Heimbrock et al.	
5,826,761 A	10/1998	Basaj				
5,833,711 A	11/1998	Schneider, Sr.				
5,840,049 A	11/1998	Tumey et al.				
5,843,007 A	12/1998	McEwen et al.				
5,865,722 A	2/1999	Heng				
5,868,690 A	2/1999	Eischen, Sr.				
5,876,359 A	3/1999	Bock et al.				

(56)

References Cited

U.S. PATENT DOCUMENTS

2009/0112630 A1 4/2009 Collins, Jr. et al.
 2009/0209830 A1* 8/2009 Nagle A43B 7/147
 600/301
 2009/0234262 A1* 9/2009 Reid, Jr. A61B 5/026
 601/152
 2010/0076356 A1 3/2010 Biondo et al.
 2010/0125952 A1 5/2010 Frondorf et al.
 2011/0030141 A1 2/2011 Soderberg et al.
 2011/0082401 A1* 4/2011 Iker A61H 9/0092
 601/152
 2011/0190675 A1* 8/2011 Vess A61H 9/0092
 601/152
 2011/0210925 A1 9/2011 Pittenger et al.
 2011/0214234 A1 9/2011 Herman
 2012/0022414 A1 1/2012 Receveyr et al.
 2012/0029879 A1 2/2012 Sing et al.
 2012/0047652 A1 3/2012 Metz et al.
 2012/0047653 A1 3/2012 Metz et al.
 2012/0083712 A1* 4/2012 Watson A61B 5/026
 600/587
 2012/0089419 A1 4/2012 Huster et al.
 2012/0110735 A1 5/2012 Andrienko et al.
 2012/0198627 A1 8/2012 Turner et al.
 2013/0048705 A1 2/2013 Tallent et al.
 2013/0145558 A1 6/2013 Bhai
 2013/0231596 A1 9/2013 Hornbach et al.

FOREIGN PATENT DOCUMENTS

WO WO 93/12708 7/1993
 WO WO 99/11215 3/1999

OTHER PUBLICATIONS

Notification of Transmittal of the International Search Report and the Written Opinion of the International Searching Authority, or the Declaration, dated—May 17, 2013, International Application No.—PCT/US2013/028629; International Filing Date—Mar. 1, 2013; Applicant—Hill-Rom Services, Inc., Authorized Officer—Blaine R. Copenheaver.
 PCT International Search Report, dated—May 17, 2013; International Application No.—PCT/US2013/028629; International Filing

Date—Mar. 1, 2013; Applicant—Hill-Rom Services, Inc., Date of Actual Completion of the International Search—Apr. 26, 2013, Authorized Officer—Blaine R. Copenheaver.
 PCT Written Opinion of the International Searching Authority, dated May 17, 2013, , International Application No.—PCT/US2013/028629; International Filing Date—Mar. 1, 2013; Applicant—Hill-Rom Services, Inc., Date of Completion of Opinion—Apr. 26, 2013, Authorized Officer—Blaine R. Copenheaver.
 Search History, PCT Application No. PCT/US2013/028629, dated—Apr. 26, 2013.
 Advisory Action for U.S. Appl. No. 13/410,502 dated Sep. 9, 2016 (3 Pages).
 Amendment for U.S. Appl. No. 13/410,502 dated Aug. 18, 2016 (12 Pages).
 Final Office Action U.S. Appl. No. 13/410,502 dated Jun. 24, 2016 (35 Pages).
 Amendment for U.S. Appl. No. 13/410,502 dated Apr. 21, 2016 (11 Pages).
 Office Action for U.S. Appl. No. 13/410,502 dated Feb. 2, 2016 (36 Pages).
 Amendment for U.S. Appl. No. 13/410,502 dated Jan. 5, 2016 (12 Pages).
 Advisory Action for U.S. Appl. No. 13/410,502 dated Dec. 24, 2015 (3 Pages).
 Amendment for U.S. Appl. No. 13/410,502 dated Dec. 8, 2015 (12 Pages).
 Final Office Action for U.S. Appl. No. 13/410,502 dated Oct. 20, 2015 (20 Pages).
 Amendment for U.S. Appl. No. 13/410,502 dated Jun. 18, 2015 (8 Pages).
 Office Action for U.S. Appl. No. 13/410,502 dated Mar. 31, 2015 (22 pages).
 Response to Office Action dated Nov. 19, 2014 for U.S. Appl. No. 13/410,502 dated Mar. 12, 2015 (10 Pages).
 Final Office Action for U.S. Appl. No. 13/410,502 dated Nov. 19, 2014 (17 Pages).
 Response to Office Action dated Aug. 13, 2014 for U.S. Appl. No. 13/410,502 dated Oct. 27, 2014 (15 Pages).
 Office Action for U.S. Appl. No. 13/410,502 dated Aug. 13, 2014 (25 pages).
 Amendment for U.S. Appl. No. 13/410,502 dated Jan. 13, 2017 (12 Pages).
 Office Action for U.S. Appl. No. 13/410,502 dated Oct. 20, 2016 (44 Pages).

* cited by examiner

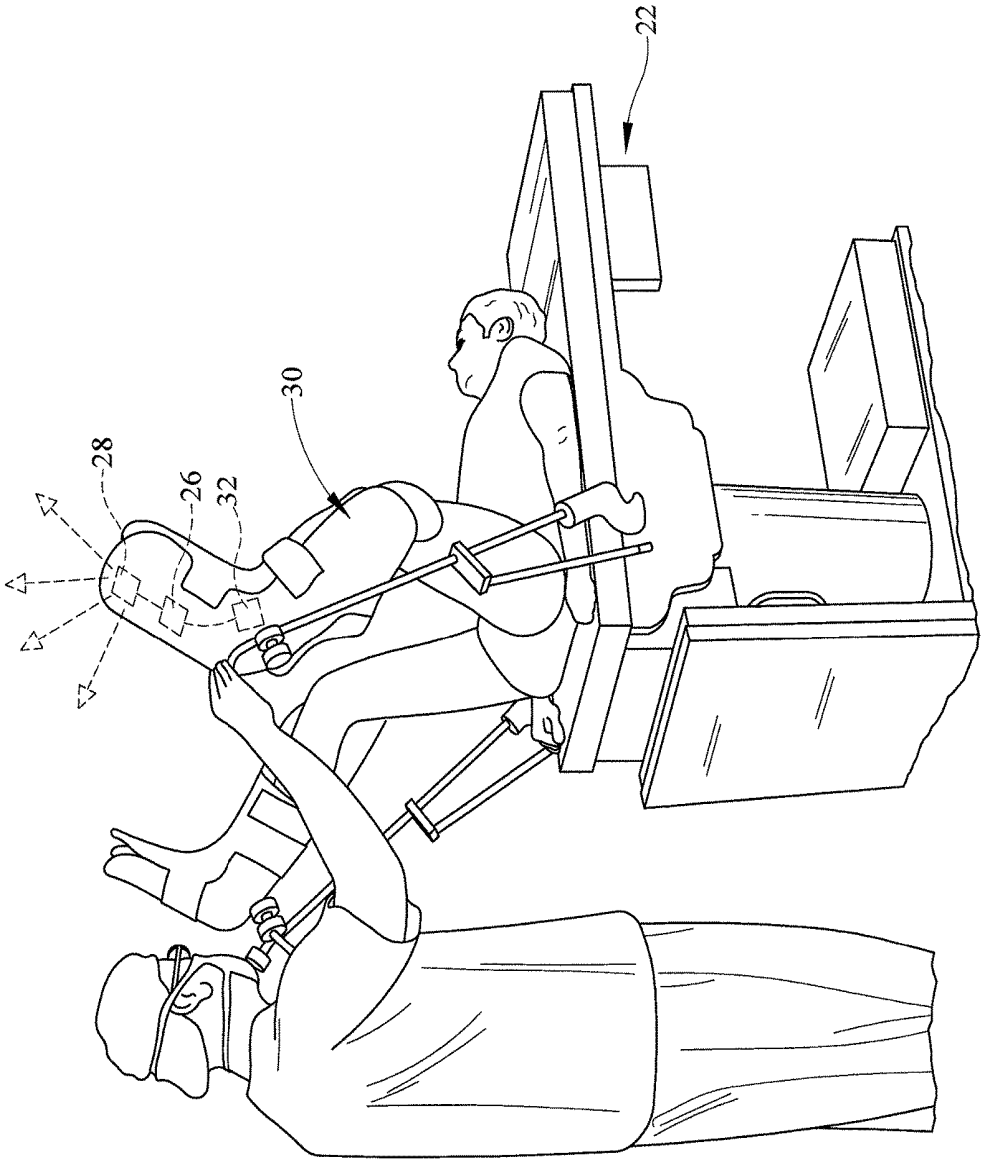


FIG. 2

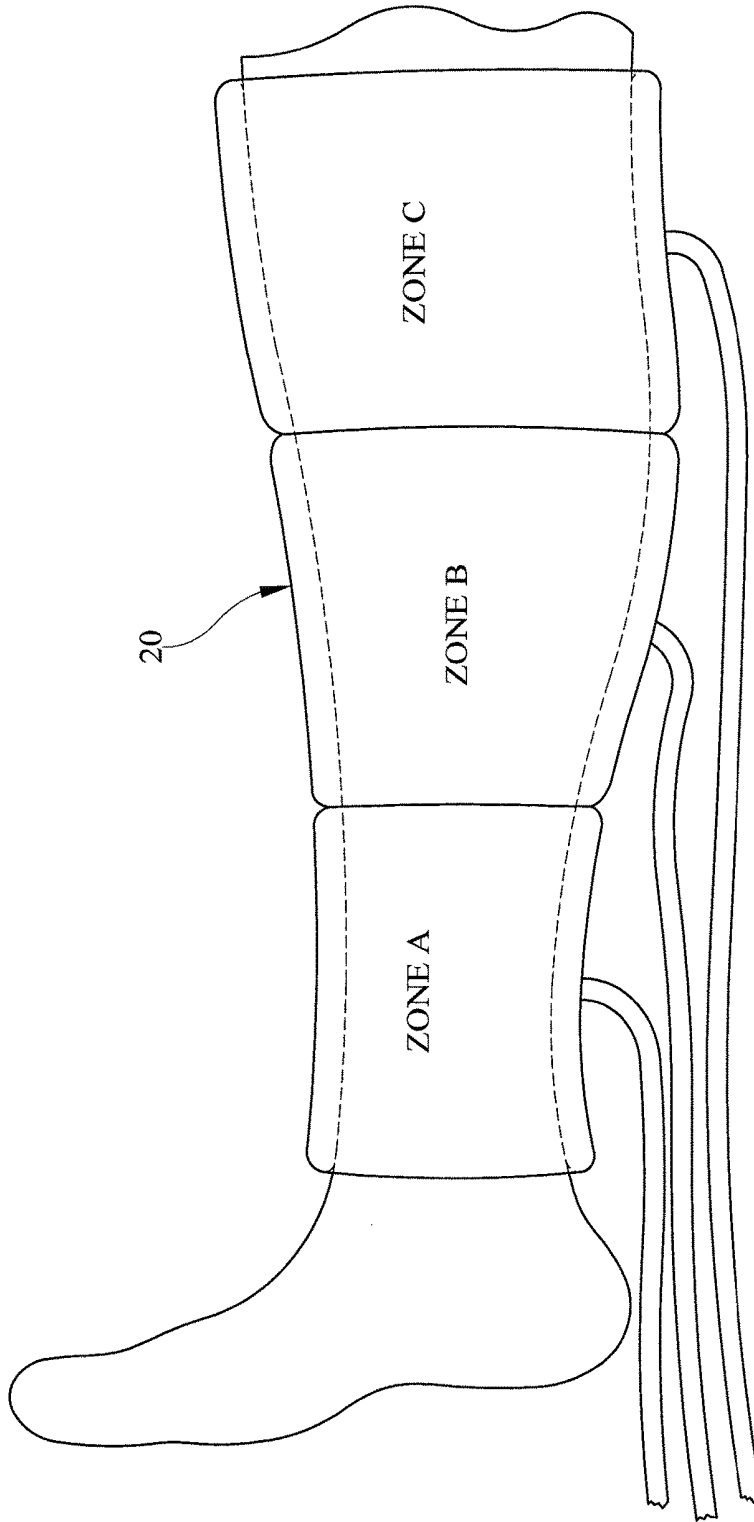


FIG. 3

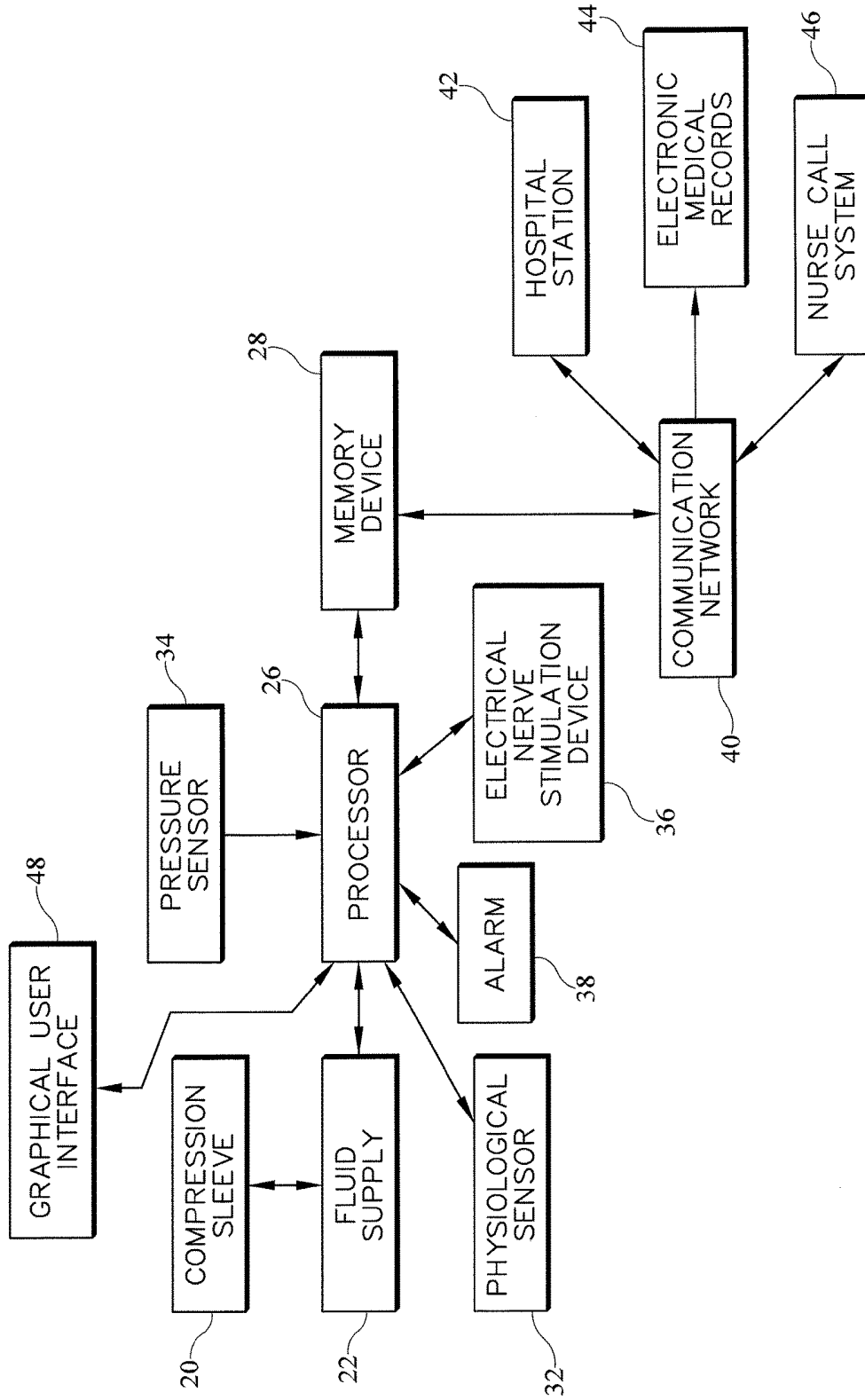


FIG. 4

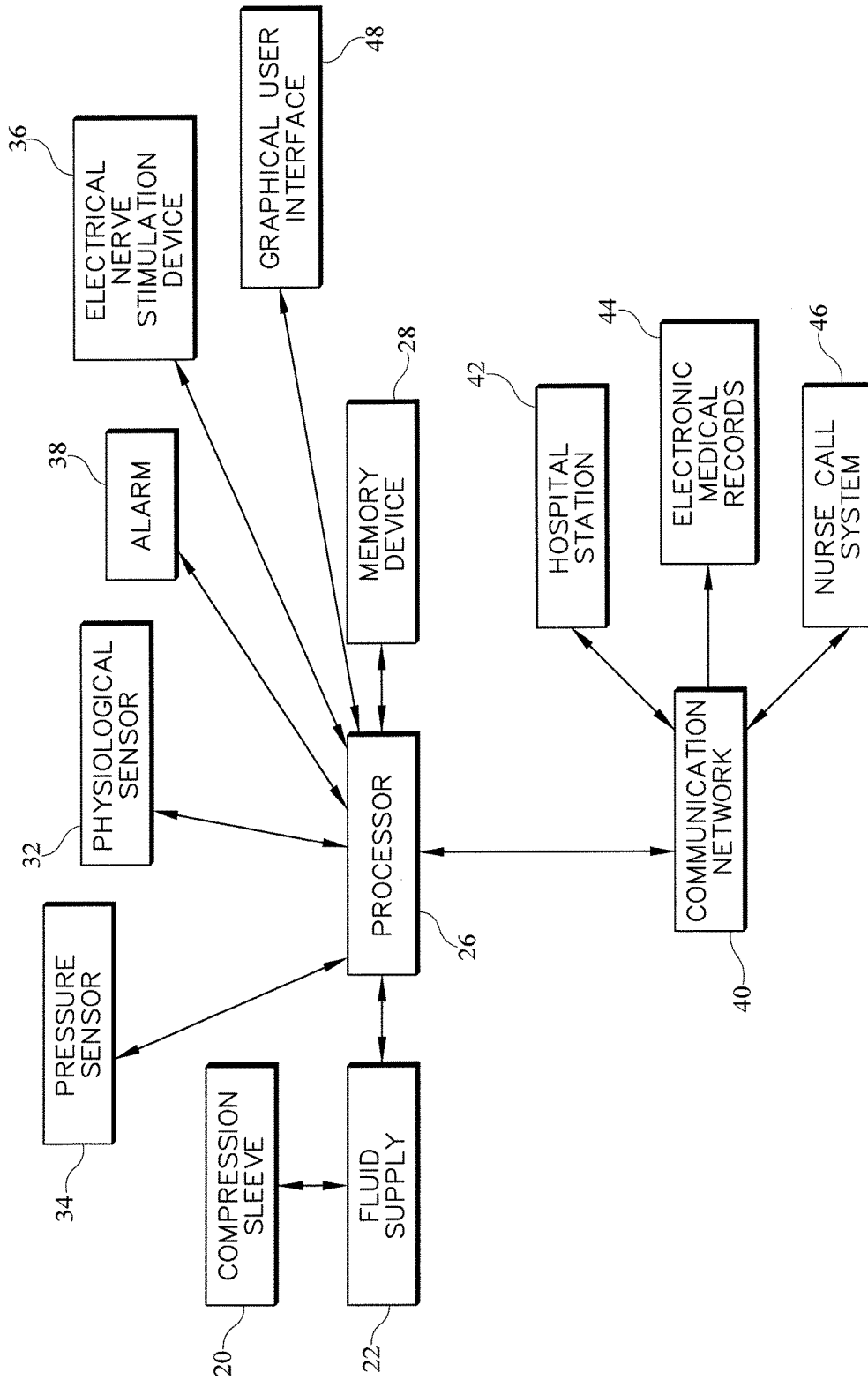


FIG. 5

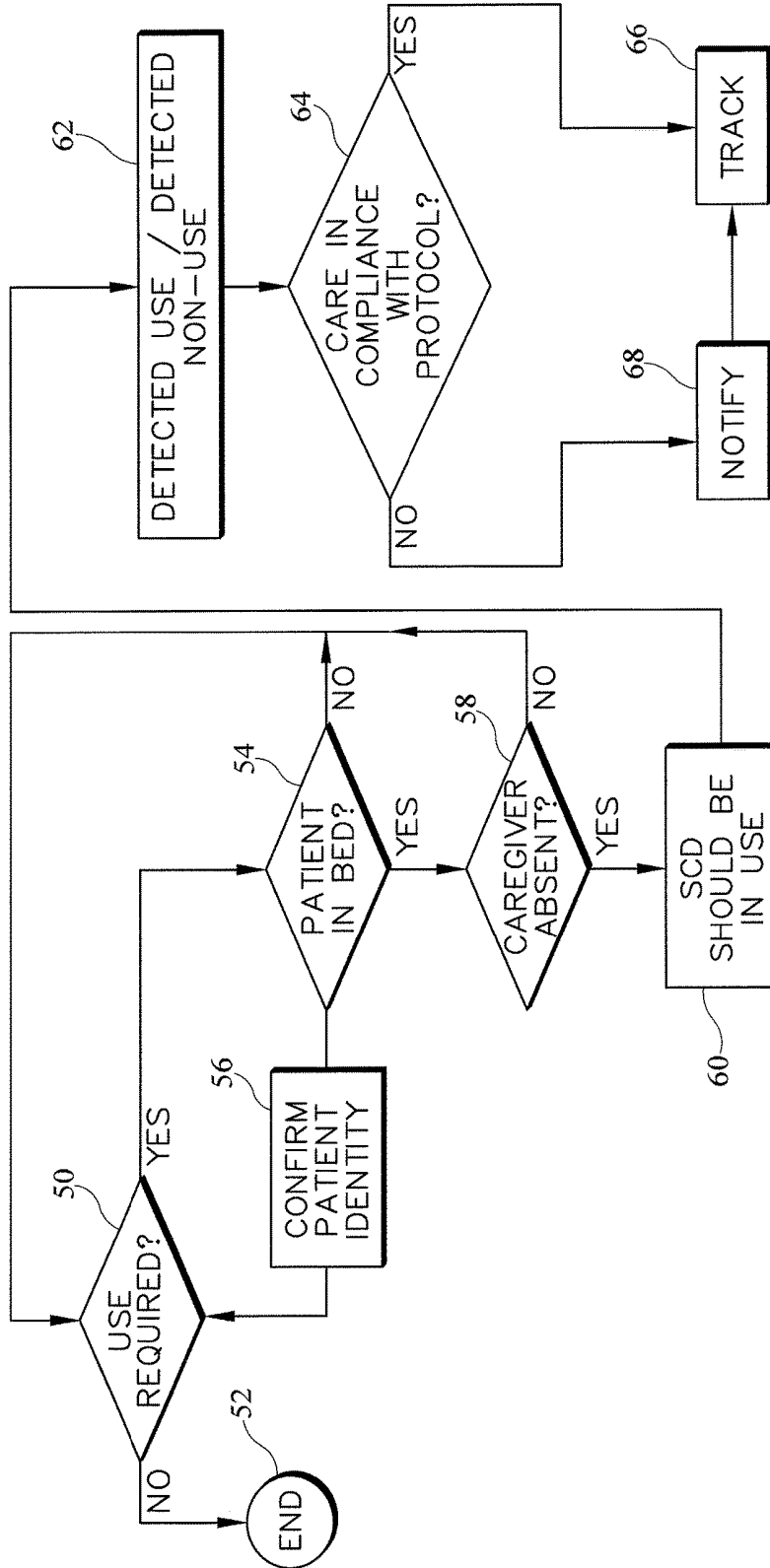


FIG. 6

SEQUENTIAL COMPRESSION THERAPY COMPLIANCE MONITORING SYSTEMS AND METHODS

CROSS-REFERENCE TO RELATED APPLICATIONS

This application is a continuation-in-part of U.S. patent application Ser. No. 13/410,502, which was filed Mar. 2, 2012 and which is expressly incorporated herein by reference.

BACKGROUND

Sequential compression therapy (SCT) is often used for prevention of deep venous thrombosis (DVT). Traditionally monitoring compliance and the utilization of sequential compression therapy by a patient are accomplished by a caregiver. While various systems have been developed for monitoring sequential compression therapy, there is still room for improvement. Thus, a need persists for further contribution in this area of technology.

SUMMARY

The present disclosure includes one or more of the features recited in the appended claims and/or the following features which, alone or in any combination, may comprise patentable subject matter.

One embodiment of the system to track usage of a compression sleeve comprises a compression sleeve, a fluid supply operable to inflate the compression sleeve, a processor configured to control the operation of the fluid supply and a memory device configured to record duration of the inflation of the compression sleeve.

Another embodiment of the system to monitor compliance of a compression sleeve usage comprises a memory device configured to record usage of a compression sleeve, a processor configured to compare the usage with a predetermined threshold.

One embodiment of the method to monitor compliance of a compression sleeve usage comprises determining usage of a compression sleeve, comparing usage of a compression sleeve with a predetermined threshold and determining compliance by comparing usage of a compression sleeve with the predetermined threshold.

Another embodiment of a system to monitor compliance of a compression sleeve usage comprises a compression sleeve and a first processor mounted on the compression sleeve configured to determine duration of inflation of the compression sleeve and communicate with a second processor mounted on a person support apparatus.

According to some embodiments, a system may include a sequential compression device (SCD) that may be used by a patient as part of a sequential compression therapy (SCT) protocol and a computer device that may determine whether the SCD is in use in substantially real time in compliance with the protocol and that may initiate a notification to a caregiver if noncompliance with the SCT protocol is detected.

In some embodiments, the computer device may determine whether an excused non-use condition exists. The excused non-use condition may correspond to a caregiver being present in the room of the patient or may correspond to the patient being off a person support apparatus.

In some embodiments, the computer device may determine that the SCD should be in use currently. The determi-

nation that the SCD should be in use may be based on one or more of the following: a locating tag of the SCD being sensed in the patient's room, a locating tag attached to a compression sleeve of the SCD being sensed in the patient's room, a locating tag attached to an SCD pump of the SCD being sensed in the patient's room, and the patient being sensed to be in the patient's room. In this regard, the system may include a locating tag for tracking the location of the patient or a wristband for tracking the location of the patient.

The determination that the SCD should be in use may be based on an electronic order. The electronic order may be entered at the patient's bedside or may be stored in a patient's electronic medical record (EMR), for example. Alternatively or additionally, the determination that the SCD should be in use may be based on at least one risk factor of the patient. The risk factor may include the patient having poor circulation or that the patient is recovering from surgery.

In some embodiments, the SCD being in use may be determined based on detecting one or more of the following: an SCD pump is on, the SCD pump is blowing air, the SCD pump is moving fluid, a motor of the SCD pump is drawing current, a compression sleeve is connected to the SCD pump, the compression sleeve is inflated to a threshold pressure, the SCD pump experiences a threshold back pressure due to pressurization of the compression sleeve, or a threshold amount of force is sensed by a sensor indicative of force between the compression sleeve and the patient.

Additional features, which alone or in combination with any other feature(s), such as those listed above, may comprise patentable subject matter and will become apparent to those skilled in the art upon consideration of the following detailed description of various embodiments exemplifying the best mode of carrying out the embodiments as presently perceived.

BRIEF DESCRIPTION OF THE DRAWINGS

The accompanying drawings incorporated in and forming a part of the specification illustrate several aspects of the claimed subject matter and, together with the description, serve to explain the principles of the claimed subject matter. In the drawings:

FIG. 1 is a perspective view of a system to track usage of a compression sleeve integrated with a hospital bed, constructed according to principles of one or more of the teachings herein;

FIG. 2 is a perspective view of a system to track usage of a compression sleeve integrated with a fracture table, constructed according to principles of one or more of the teachings herein;

FIG. 3 is a side view of a compression sleeve mounted on a patient's leg, constructed according to principles of one or more of the teachings herein;

FIG. 4 is a block diagram of a system to monitor compliance of a compression sleeve, integrated with a hospital bed, constructed according to principles of one or more of the teachings herein;

FIG. 5 is a block diagram of another system to monitor compliance of a compression sleeve, integrated with a hospital bed, constructed according to principles of one or more of the teachings herein; and

FIG. 6 is a flow chart showing steps of an algorithm to determine whether a patient is complying with a protocol requiring current use of a sequential compression device (SCD).

The embodiments of the claimed subject matter and the various features and advantageous details thereof are explained more fully with reference to the non-limiting 5 embodiments and examples that are described and/or illustrated in the accompanying drawings and detailed in the following description. It should be noted that the features illustrated in the drawings are not necessarily drawn to scale, and features of one embodiment may be employed with other embodiments as the skilled artisan would recognize, even if not explicitly stated herein. Descriptions of well-known components and processing techniques may be briefly mentioned or omitted so as to not unnecessarily obscure the embodiments of the claimed subject matter 15 described. The examples used herein are intended merely to facilitate an understanding of ways in which the claimed subject matter may be practiced and to further enable those of skill in the art to practice the embodiments of the claimed subject matter described herein. Accordingly, the examples 20 and embodiments herein are merely illustrative and should not be construed as limiting the scope of the claimed subject matter, which is defined solely by the appended claims and applicable law. Moreover, it is noted that like reference numerals represent similar parts throughout the several views of the drawings.

It is understood that the subject matter claimed is not limited to the particular methodology, protocols, devices, apparatus, materials, applications, etc., described herein, as these may vary. It is also to be understood that the terminology used herein is used for the purpose of describing 30 particular embodiments only, and is not intended to limit the scope of the claimed subject matter.

Unless defined otherwise, all technical and scientific terms used herein have the same meanings as commonly understood by one of ordinary skill in the art.

A person support apparatus 10 according to one illustrative embodiment of the current disclosure is shown in FIG. 1. In the illustrative embodiment as shown in FIG. 1, the person support apparatus 10 is a hospital bed. The person support apparatus 10 includes a lower frame or base 12, a plurality of supports 16 coupled with the lower frame 12, and an upper frame 14 supported by the plurality of supports 40 above the lower frame 12. The upper frame 14 is configured to variably elevate with respect to the lower frame 12. A person support surface 18 is mounted on at least a portion of the person support apparatus 10. The person support surface 18 has a head support section HP, a seat support section SP and a foot support section FP as shown in FIG. 1. The person support apparatus 10 may be a stretcher or an operating table 50 in another embodiment as shown in FIG. 2.

FIG. 1 illustrates a system to track usage of a compression sleeve comprising a fluid supply 22 mounted on the person support apparatus 10 and fluidly connected to the compression sleeve 20 using any one of a multitude of connection mechanisms, including quick disconnect type connectors. Compression sleeve 20 may be of any form, including but not limited to cuffs, boots and/or a wrap and may be customized to fit any body part. In one embodiment, the fluid supply 22 is removably mounted on the foot board FB, head board HB or the side rails SR. In another embodiment, the fluid supply 22 may be mounted on the compression sleeve 22. The fluid supply 22 may be used for other functions of the person support apparatus 10, including but not limited to inflation and/or deflation of a mattress.

In another embodiment, the system to track usage of a compression sleeve 20 comprises a dedicated fluid supply

22. The fluid supply 22 provides fluid to the compression sleeve 20 during inflation and vents the fluid from the compression sleeve 20 during deflation of the compression sleeve 20 in one embodiment. The fluid supply unit may be pneumatic or hydraulic in nature and may comprise a pump, blower, fan and/or a compressor. Therefore, the compression sleeve may be inflated with air, water, oil or any other fluid.

A controller 24 comprises a processor 26 in communication with the fluid supply 22 and provides a control signal to the fluid supply 22 to inflate or deflate the compression sleeve 20. The processor 26 also communicates with a pressure sensor 34 mounted on the compression sleeve 20 to allow measurement of the pressure inside the inflated compression sleeve 20 and/or the pressure applied on a patient's extremity to which the compression sleeve 20 is mounted. Alternatively, back pressure and/or electrical characteristics such as current and voltage changes of the prime mover of the fluid supply 22 may be used to determine the pressure in the compression sleeve in another embodiment.

An electrical stimulation device 36 is mounted in the compression sleeve 20 to provide appropriate therapy to the patient in some embodiments. The electrical stimulation device 36 may be of any type, including a Transcutaneous Nerve Stimulation (TENS) type for blocking pain and/or an Electro Muscle Stimulation (EMS) device for stimulating muscles. The electrical stimulation device 36 is in communication with and receives control signals from the processor 26 to initiate or terminate therapy. In one embodiment, the electrical stimulation device 36 receives power from the controller 24 while in another embodiment the electrical stimulation device 36 has a dedicated power source such as a battery pack.

The controller 24 is in communication with a Graphical User Interface (GUI) 48 to display alarms and other messages. The GUI 48 is integral to the person support apparatus 10 in one embodiment and is used to control other functions of the person support apparatus 10. The GUI 48 also allows for user inputs and commands to set thresholds for the amplitude, frequency and/or time duration of SCT and/or electrical stimulation therapy. These thresholds may be in the form of an upper bound (should not exceed), lower bound (should be greater than) and/or a range. The processor 26 uses these thresholds to determine compliance with prescribed therapy.

In one embodiment, the duration of cumulative therapy is tracked by the processor 26, by storing, in a memory device 28, data related to inflation and deflation of the compression sleeve 20 and/or operation of the electrical stimulation device. The memory device 28 may be of any type, including volatile and non-volatile types. If the cumulative duration of therapy does not meet the criteria established earlier, an alarm will be displayed on the GUI 48. Display of other performance characteristics of the therapy on the GUI 48 is well within the scope of this disclosure, including, but not limited to cumulative duration of therapy, duration of therapy of current session, average amplitude of therapy which in one embodiment may be the pressure and/or the electrical stimulation applied and frequency of therapy. The GUI 48 also allows a user to clear previously stored data in the memory device 28 and/or initiate therapy. In another embodiment, the system to track usage of a compression sleeve includes a dedicated GUI 48, which may be in the form of a pendant.

The illustrative embodiment of FIG. 2 shows a compression sleeve 20 mounted in a stirrup 30 used in conjunction with an operating table. In the embodiment shown in FIG. 2, the processor 26 and the memory device 28 are mounted on

the compression sleeve 20. The compression sleeve 20 is configured to couple to a fluid supply 22 mounted on the operating table using any type of connection mechanism, including a quick disconnect mechanism. In another embodiment, the fluid supply 22 may be mounted on the stirrup 30 or the compression sleeve 20. The processor 26 and/or the memory device 28 wirelessly communicate with a communication network 40 (FIG.4). The communication network 40 is in turn connected to a GUI 48, not shown in FIG. 2 and the GUI 48 allows for inputting commands, display of messages and/or for communicating alarms received from the processor 26 and/or the memory device 28.

The illustrative embodiment as shown in FIG. 2 also has a physiological sensor 32 mounted on the compression sleeve 22 in communication with the processor 26. It is well within the scope of the disclosure to include more than one physiological sensor 32 in the system. Physiological sensor 32 may be of any type and communicates with the processor 26 by way of an electrical signal indicative of at least one physiological parameter, including but not limited to temperature, blood pressure, heart rate and electrical activity. Processor 26 monitors the signals from the physiological sensor 32 and is configured to communicate an alarm to the GUI 48 in response to any of the physiological parameters not complying with a predetermined rule or threshold.

The GUI 48 is also configured to display data obtained from physiological sensors 32 via processor 26. The illustrative embodiment as shown in FIG. 2 allows for the same compression sleeve to be used in post-operative care as was used during an operation. This transfer from an operating room to post-operative care often involves changing rooms and/or person support apparatus 10. Since the system as shown in FIG. 2 allows for mounting the processor 26 and memory device 28 on the compression sleeve 22, a continuous stream of data is available and a cumulative usage of the compression sleeve may be determined. The processor 26 and/or memory device 28 are configured to communicate with other controllers comprising processors and/or GUIs which in one embodiment may be remote. The processor 26 and/or the memory device 28 may communicate with a controller comprising a processor and/or GUI 48 integral to a patient support apparatus 10 via a wireless or wired connection based on the physical distance between the two devices. Thus, as the patient is moved from the operating room to a post-operative room, the processor 26 and/or the memory device 28 automatically connects with the controller of the person support apparatus 10 in the post-operative room. As described earlier, a fluid supply 22 mounted on the compression sleeve 20 allows for continued therapy during patient transfer.

The illustrative embodiment of FIG. 3 shows one embodiment of a compression sleeve 20 for use in the system to track usage of a compression sleeve. FIG. 3 shows the compression sleeve 20 used for sequential compression therapy of the patient's calf region. As shown in FIG. 3, the compression sleeve 20 has more than one zone in this embodiment, although a single pressurized zone is well within the scope of the current disclosure. The sleeve as shown in FIG. 3 has fluid supply lines connected to each zone, although a single supply line to all the zones may be used in another embodiment.

FIG. 4 shows a block diagram of one embodiment of the system to track usage of a compression sleeve. The compression sleeve 20 is supplied fluid by a fluid supply 22, which in turn receives a control signal from the processor 26. At least one pressure sensor 34 mounted in the com-

pression sleeve is in electrical communication with the processor 26. At least one electrical stimulation device 36 is also in communication with the processor 26. The processor 26 communicates with a memory device 28 and records parameters related to the sequential compression therapy, including, but not limited to any one or combination of the cumulative duration of therapy, duration of therapy for an individual session, amplitude and frequency of pressure applied. The processor 26 also conveys data corresponding to the signals received from at least one physiological sensor 32 and the electrical stimulation device 36 to the memory device 28. The processor 26 is also in communication with an alarm 38, which may be any combination of an audio, visual or tactile output. The processor 26 is configured to enable the alarm 38 based on the thresholds for sequential compression therapy, signals from the electrical stimulation device 36 and/or the physiological sensor 32. The processor 26 is in communication with a graphical user interface (GUI) 48 which allows for input of control parameters by a user and for display of system messages. Alarm 38 may be triggered and in another embodiment a timer may be activated for the alarm to trigger after a predetermined time period.

In the illustrative embodiment shown in FIG. 4, the memory device 28 is connected to a communication network 40. The communication network 40 may be of any type, including but not limited to Wide Area Network (WAN), Local Area Network (LAN), Virtual Private Network (VPN), telephone lines, optical communications, internet communications or telex. The communication network 40 is in communication with at least one Electronic Medical Record (EMR) 44 or another healthcare information database, a hospital communication station 42 and a nurse call system 46. The communication station 42 is a centralized location wherein one or more patients may be monitored by a caregiver. In one embodiment the communication station 42 may be stationary, while in another embodiment, it may be a mobile unit to accommodate prompt deployment.

In the illustrative embodiment shown in FIG. 5, the processor 26 is connected to a communication network 40. The communication network 40 may be of any type, including but not limited to Wide Area Network (WAN), Local Area Network (LAN), Virtual Private Network (VPN), telephone lines, optical communications, internet communications or telex. The communication network 40 is in communication with at least one Electronic Medical Record (EMR) 44 or another healthcare information database, a hospital communication station 42 and/or a nurse call system 46. The communication station 42 is a centralized location wherein one or more patients may be monitored by a caregiver. In one embodiment the communication station 42 may be stationary, while in another embodiment, it may be a mobile unit to accommodate prompt deployment.

According to this disclosure, a system and method is provided for determining noncompliance with a protocol relating to the use of a sequential compression device (SCD) as part of sequential compression therapy (SCT). The system determines that an SCD should be in use in substantially real time (aka that the device should be in use "at this moment") and alerts one or more caregivers of the nonuse of the SCD so that the nonuse can be rectified. In order to determine compliance or non-compliance with the SCT protocol, the system first determines whether SCD use is required. This determination is made, in some embodiments, based on the detection of a physical trigger, such as a locating or tracking tag of an SCD being sensed in a particular location, such as a patient's room. In some embodiments, a tag attached to a

compression sleeve and a tag attached to an SCD pump both need to be sensed in the same location in order for the system to determine that SCD use is required. Alternatively or additionally, a patient also needs to be sensed in the same location as the sleeve and/or pump. A patient wristband or location tag may be used to sense the location of the patient. Thus, in this latter embodiment, if a patient along with one or both of a compression sleeve and an SCD pump are determined to be in the same location (e.g., patient room), then the system makes the determination that the SCD device should be in use.

In other embodiments, an electronic order, such as one entered at the bedside or stored in a patient's electronic medical record (EMR) is considered by the system in making the determination that an SCD should be in use. In such embodiments, even if an SCD (e.g., pump and/or sleeve) is absent from a patient's location, if there is a physician's order for the patient to be undergoing SCT, then the system makes the determination that an SCD should be in use. Alternatively or additionally, based on other information in a patient's EMR or based on care setting, the system makes the determination that an SCD should be in use. For example, patients with poor circulation or other risk factors may be prescribed SCT after surgery for a certain number of hours in some healthcare facilities. Thus, based on information that a patient with such risk factors has just finished surgery, the system is able to make the determination that an SCD should be in use for that patient.

To summarize, there are a variety of ways contemplated by this disclosure to determine whether an SCD should be in use for a particular patient including the following: a tagged SCD pump has been placed in the patient's room; a tagged compression sleeve has been placed in the patient's room; a patient is designated as an at risk patient in the patient's EMR; the patient is designated as an at risk patient based on information transmitted from the patient's wristband; the patient is designated as an at risk patient based on a standard protocol; there is a physician's order for the patient to receive SCT; and/or the patient is in a particular location (e.g., all patients in post-op should be receiving SCT from an SCD).

FIG. 6 is a flow chart of an algorithm that is illustrative of software that is run by a computer device, such as those included as part of hospital station 42, EMR 44, nurse call system 46 and/or processor 26 of person support apparatus 10. As indicated at block 50, the algorithm first determines whether use of an SCD is required for a particular patient. The various options for making this determination are discussed in the preceding paragraphs. If use of an SCD is not required for the patient, then the algorithm ends as indicated at block 52. If use of an SCD is required for the patient, the algorithm determines whether the patient is in bed as indicated at block 54. In connection with making such a determination, data from a bed exit system of the patient support apparatus 50 is used. In some embodiments, if a threshold amount of weight is detected on the bed, such as by use of one or more load cells of a weigh scale system as is well-known in the art, then it is assumed that the patient is in bed.

In some embodiments, the algorithm of FIG. 6 checks to confirm patient identity as indicated at block 56. Thus, in a first iteration of the algorithm in those instances when use of an SCD is required, the algorithm loops through blocks 50, 54, 56 to confirm patient identity. This, confirmation is made that the particular patient requiring SCT is actually the patient in bed, as opposed to a visitor or caregiver or some other patient sitting or lying on the bed rather than the

patient in need of SCT. According to this disclosure, the patient's identity can be confirmed in a number of ways. For example, if the patient has a tag or wristband that transmits a patient ID, then a locating and tracking system confirms the patient's identity. Alternatively or additionally, a caregiver confirms the patient's identity and enters the information manually on the GUI 48 of person support apparatus 10. In some embodiments, bed 10 includes a biometric sensor that reads a patient's biometrics (e.g., fingerprint scanner, retinal scanner, camera and software for facial recognition, etc.) and confirms the patient's identity by comparison of the sensed information with that stored in a remote database, for example.

If at block 54, the patient is not in bed, then algorithm loops back to block 50 without checking the patient's identity. The patient being out of bed is considered to be one of the situations in which non-use of the SCD is excused according to some embodiments. For example, the patient may be going to the bathroom or may be scheduled for therapy or lab work in a different area of the healthcare facility. After the patient's identity is confirmed at block 56 and the patient is in bed as determined at block 54, then the second iteration through block 54 results in the algorithm advancing to block 58 and making a determination that no caregiver is present in the patient's room. If a caregiver is present in the patient's room, then this is also considered an excused non-use of the SCD by the patient, the assumption being that a caregiver may be attending to other medical needs of the patient or may be replacing a soiled compression sleeve or performing some other task. If at block 58 it is determined that caregivers are absent from the patient's room, then the SCD should be in use as indicated at block 60.

After it is determined that the SCD should be in use, the algorithm proceeds to make the determination regarding whether or not the SCD is actually in use currently by the patient as indicated at block 62. This determination is made based on data transmitted by compression sleeve 20 and/or fluid supply 22. For example, data indicating that the pump is active and/or that various zones of sleeve 20 are being pressurized is indicative that the SCD is in use currently. In some embodiments, a detected use involves detecting one or more of the following: the SCD pump is on, the SCD pump is blowing air (or moving other fluid), the motor of the SCD pump is running or drawing current, the compression sleeve is connected to the pump, the compression sleeve is inflated to a threshold pressure, the pump experiences a threshold back pressure due to pressurization of the compression sleeve, and/or a threshold amount of force is sensed by a sensor (e.g., piezoelectric sensor or force sensitive resistor (FSR)) positioned between the sleeve and the patient or otherwise positioned to sense pressure between the sleeve and the patient. On the other hand, if the one or more conditions just described are not detected, then this corresponds to a detected non-use. So, if no pump or sleeve is determined to be located in the room, if the pump is not operating, or if the sleeve is not being pressurized, then the algorithm determines at block 60 that there is a detected non-use condition.

After the use or non-use of the SCD is detected at block 62, the algorithm proceeds to block 64 and determines whether the use or non-use detected at block 62 is in compliance with the protocol for the associated patient. For example, even if the SCD is not in use, it could be that the duration of the SCT has expired or rest periods are permitted within the scope of the protocol. Thus, a detected non-use does not necessarily indicate a violation of the protocol. If

at block 64 it is determined that the use or non-use of the SCD is in compliance with the protocol, then algorithm 66 proceeds to block 66 and tracks the use or non-use of the SCD. For example, the starting and ending times of the SCT are tracked in some embodiments. Alternatively or additionally, the frequency and/or pressure set points are tracked. Tracking refers to storing information in a database regarding the use and/or non-use of the SCD.

If at block 64 it is determined that the use or, more likely, the non-use of the SCD is not in compliance with the protocol, the algorithm proceeds to block 68 and notifies a caregiver of the noncompliance. After the notification, the algorithm proceeds to block 66 and data continues to be tracked even in the event of non-compliance. In the event of noncompliance with the SCT protocol, a number of solutions for achieving compliance may be undertaken according to this disclosure. For example, a caregiver is reminded of the protocol, such as via a message to a communication device carried by the caregiver, and guided to implement the SCT. A caregiver is notified that a patient has disabled the SCT and the caregiver can then work with the patient to address the issue and convince the patient of the benefits of compliance with the SCT protocol.

In some embodiments, a nurse manager is notified of the noncompliance and provides further training to an assigned caregiver regarding the value of the SCT and protocol compliance. Optionally, hospital administrators are able to track and reward continually increasing compliance with the SCT protocol. Hospital administrators may also use the gathered information of compliance and noncompliance with the SCT protocol to demonstrate a correlation between protocol compliance and improved patient outcomes. Furthermore, it is contemplated by this disclosure that the data regarding SCT protocol compliance is stored in other health-care information systems such as the EMR 44.

In connection with the locating and tracking tags mentioned above, it will be appreciated that locating and tracking system are known in the art. See, for example, U.S. Pat. Nos. 8,421,606; 7,907,053; 7,734,476; 7,450,024; 7,248,933; 7,242,306; 6,972,683; and 6,825,763, each of which is hereby expressly incorporated by reference herein.

The use of the terms "a" and "an" and "the" and similar referents in the context of describing the subject matter (particularly in the context of the following claims) are to be construed to cover both the singular and the plural, unless otherwise indicated herein or clearly contradicted by context. Recitation of ranges of values herein are merely intended to serve as a shorthand method of referring individually to each separate value falling within the range, unless otherwise indicated herein, and each separate value is incorporated into the specification as if it were individually recited herein. Furthermore, the foregoing description is for the purpose of illustration only, and not for the purpose of limitation, as the scope of protection sought is defined by the claims as set forth hereinafter together with any equivalents thereof entitled to. The use of any and all examples, or exemplary language (e.g., "such as") provided herein, is intended merely to better illustrate the subject matter and does not pose a limitation on the scope of the subject matter unless otherwise claimed. The use of the term "based on" and other like phrases indicating a condition for bringing about a result, both in the claims and in the written description, is not intended to foreclose any other conditions that bring about that result. No language in the specification should be construed as indicating any non-claimed element as essential to the practice of the invention as claimed.

Preferred embodiments are described herein, including the best mode known to the inventor for carrying out the claimed subject matter. Of course, variations of those preferred embodiments will become apparent to those of ordinary skill in the art upon reading the foregoing description. The inventor expects skilled artisans to employ such variations as appropriate, and the inventor intends for the claimed subject matter to be practiced otherwise than as specifically described herein. Accordingly, this claimed subject matter includes all modifications and equivalents of the subject matter recited in the claims appended hereto as permitted by applicable law. Moreover, any combination of the above-described elements in all possible variations thereof is encompassed unless otherwise indicated herein or otherwise clearly contradicted by context.

The disclosures of any references and publications cited above are expressly incorporated by reference in their entireties to the same extent as if each were incorporated by reference individually.

The invention claimed is:

1. A system for use with a compression sleeve, the system comprising:

a patient support apparatus comprising a base, an upper frame that variably elevates relative to the base, and a person support surface supported by the upper frame; a fluid supply mechanically connected to the patient support apparatus and configured to fluidly connect to the compression sleeve;

a controller mechanically connected to the patient support apparatus and configured to provide a control signal to the fluid supply to inflate or deflate the compression sleeve, the patient support apparatus having a weigh scale coupled to the controller, the controller being configured to determine whether a patient is on the patient support apparatus based on one or more signals from the weigh scale; and

a graphical user interface mechanically connected to the patient support apparatus and configured to control functions of the patient support apparatus, wherein the graphical user interface is further configured to allow for entering of inputs for the amplitude, frequency, or time duration of a compression therapy to be carried out by the controller and the fluid supply, wherein the controller is configured to determine whether the compression sleeve should be in use based on a protocol, wherein the controller initiates a notification to a caregiver if noncompliance with the protocol is detected, and wherein the controller determines compliance with the protocol only after the controller determines that the patient is on the patient support apparatus based on the one or more signals from the weigh scale.

2. The system of claim 1, wherein the controller is configured to determine whether the compression sleeve is in use in substantially real time if the patient is on the patient support apparatus.

3. The system of claim 2, wherein the controller determines whether an excused non-use condition exists.

4. The system of claim 3, wherein the excused non-use condition corresponds to a caregiver being present in the room of the patient.

5. The system of claim 3, wherein the excused non-use condition corresponds to the patient being off the person support apparatus.

6. The system of claim 2, wherein the controller determines that the compression sleeve should be in use currently if use is prescribed, the patient is on the patient support apparatus, and no caregiver is present.

11

7. The system of claim 6, wherein the determination that the compression sleeve should be in use is further based on one or more of the following: a locating tag of the fluid supply being sensed in the patient's room, a locating tag attached to the compression sleeve being sensed in the patient's room, or an identity of the patient being confirmed.

8. The system of claim 6, wherein the determination that the compression sleeve should be in use is further based on a locating tag attached to the compression sleeve being sensed in the patient's room and a locating tag attached to the fluid supply being sensed in the patient's room.

9. The system of claim 6, wherein the determination that the compression sleeve should be in use is based on a locating tag attached to the fluid supply being sensed in the patient's room and an identity of the patient being confirmed.

10. The system of claim 9, further comprising a locating tag for tracking the location of the patient or a wristband for tracking the location of the patient.

11. The system of claim 6, wherein the determination that the compression sleeve should be in use is based on a locating tag attached to the compression sleeve being sensed in the patient's room and an identity of the patient being confirmed.

12. The system of claim 11, further comprising a locating tag for tracking the location of the patient or a wristband for tracking the location of the patient.

13. The system of claim 6, wherein the determination that the compression sleeve should be in use is further based on an electronic order.

14. The system of claim 13, wherein the electronic order is entered at the patient's bedside or is stored in a patient's electronic medical record (EMR).

15. The system of claim 13, wherein the determination that the compression sleeve should be in use is further based on at least one risk factor of the patient.

16. The system of claim 15, wherein the risk factor comprises the patient having poor circulation.

17. The system of claim 15, wherein the risk factor comprises the patient recovering from surgery.

18. The system of claim 2, wherein the compression sleeve being in use is determined based on detecting one or more of the following: the fluid supply is on, the fluid supply is blowing air, the fluid supply is moving fluid, a motor of the fluid supply is drawing current, the compression sleeve is connected to the fluid supply, the compression sleeve is inflated to a threshold pressure, the fluid supply experiences

12

a threshold back pressure due to pressurization of the compression sleeve, or a threshold amount of force is sensed by a sensor indicative of force between the compression sleeve and the patient.

19. The system of claim 1, further comprising a physiological monitor configured having a sensor to detect a physiological parameter of a patient on the patient support apparatus and wherein the physiological monitor communicates an alarm for display on the graphical user interface in response to any physiological parameters not complying with a rule or threshold.

20. The system of claim 1, wherein the protocol includes cumulative usage time of the compression sleeve.

21. A system for use with a compression sleeve, the system comprising:

a patient support apparatus comprising a base, an upper frame that variably elevates relative to the base, and a person support surface supported by the upper frame;
a fluid supply mechanically connected to the patient support apparatus and configured to fluidly connect to the compression sleeve;

a controller mechanically connected to the patient support apparatus and configured to provide a control signal to the fluid supply to inflate or deflate the compression sleeve, the patient support apparatus having a weigh scale coupled to the controller, the controller being configured to determine whether a patient is on the patient support apparatus based on one or more signals from the weigh scale; and

a graphical user interface mechanically connected to the patient support apparatus and configured to control functions of the patient support apparatus, wherein the graphical user interface is further configured to allow for entering of inputs for a compression therapy to be carried out by the controller and the fluid supply, wherein the controller is configured to determine whether the compression sleeve should be in use based on a protocol that includes a cumulative usage time of the compression sleeve, wherein the controller initiates a notification to a caregiver if noncompliance with the protocol is detected, and wherein the controller determines compliance with the protocol only after the controller determines that the patient is on the patient support apparatus based on the one or more signals from the weigh scale.

* * * * *

专利名称(译)	顺序压迫治疗依从性监测系统和方法		
公开(公告)号	US9737454	公开(公告)日	2017-08-22
申请号	US14/041128	申请日	2013-09-30
[标]申请(专利权)人(译)	希尔 - 罗姆服务股份有限公司		
申请(专利权)人(译)	HILL-ROM服务公司.		
当前申请(专利权)人(译)	HILL-ROM SERVICES , INC.		
[标]发明人	HORNBAACH DAVID W RIBBLE DAVID L OKEEFE CHRISTOPHER R RECEVEUR TIMOTHY J SKRIPPS THOMAS K		
发明人	HORNBAACH, DAVID W. RIBBLE, DAVID L. O'KEEFE, CHRISTOPHER R. RECEVEUR, TIMOTHY J. SKRIPPS, THOMAS K.		
IPC分类号	A61H9/00 A61H7/00 G06F19/00 A61B5/11 A61B5/0295 A61B5/00 A61B5/021 A61B5/02 A61N1/04		
CPC分类号	A61H7/00 A61B5/0295 A61B5/02141 A61B5/1115 A61B5/4833 A61B5/7275 G06F19/3481 A61B5/02007 A61H9/0078 A61H2201/0184 A61H2201/10 A61H2201/501 A61H2201/5002 A61H2201/5012 A61H2201/5071 A61H2209/00 A61H2230/06 A61H2230/10 A61H2230/30 A61N1/0452 A61N1/0456		
其他公开文献	US20140031730A1		
外部链接	Espacenet USPTO		

摘要(译)

系统包括由患者使用的顺序压迫装置 (SCD) ，作为顺序压迫疗法 (SCT) 协议的一部分。该系统还包括计算机设备，该计算机设备根据协议基本上实时地确定SCD是否在使用中。如果检测到不符合SCT协议，则计算机设备向护理人员发起通知。

