



US009579034B2

(12) **United States Patent**
Thakur et al.

(10) **Patent No.:** **US 9,579,034 B2**
(45) **Date of Patent:** **Feb. 28, 2017**

(54) **ENHANCED ACTIVATION ONSET TIME OPTIMIZATION BY SIMILARITY BASED PATTERN MATCHING**

(58) **Field of Classification Search**
None
See application file for complete search history.

(71) Applicant: **Boston Scientific Scimed Inc.**, Maple Grove, MN (US)

(56) **References Cited**

U.S. PATENT DOCUMENTS

(72) Inventors: **Pramodsingh H. Thakur**, White Bear Lake, MN (US); **Shantha Arcot-Krishnamurthy**, Vadnais Heights, MN (US); **Allan C. Shuros**, St. Paul, MN (US); **Shibaji Shome**, Arden Hills, MN (US); **Barun Maskara**, Blaine, MN (US); **Sunipa Saha**, Shoreview, MN (US)

4,754,753 A 7/1988 King
4,799,493 A 1/1989 DuFault
(Continued)

FOREIGN PATENT DOCUMENTS

CN 102245091 A 11/2011
CN 105307558 A 2/2016
(Continued)

(73) Assignee: **Boston Scientific Scimed Inc.**, Maple Grove, MN (US)

OTHER PUBLICATIONS

(*) Notice: Subject to any disclaimer, the term of this patent is extended or adjusted under 35 U.S.C. 154(b) by 0 days.

Barbaro, V., et. al. Measure of Synchronisation of Right Atrial Depolarisation Wavefronts During Atrial Fibrillation. Med. Biol. Eng. Comput., 40(1): 56-62, 2002.

(Continued)

(21) Appl. No.: **14/868,182**

Primary Examiner — Brian T Gedeon

(22) Filed: **Sep. 28, 2015**

(74) *Attorney, Agent, or Firm* — Faegre Baker Daniels LLP

(65) **Prior Publication Data**

US 2016/0089050 A1 Mar. 31, 2016

(57) **ABSTRACT**

Related U.S. Application Data

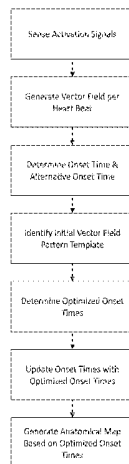
(63) Continuation of application No. 14/279,723, filed on May 16, 2014, now Pat. No. 9,144,391.
(Continued)

An anatomical mapping system and method includes mapping electrodes configured to detect activation signals of cardiac activity. A processing system is configured to record the detected activation signals and generate a vector field for each sensed activation signal during each instance of the physiological activity. The processing system determines an onset time and alternative onset time candidates, identifies an initial vector field template based on a degree of similarity between the initial vector field and a vector field template from a bank of templates, then determines an optimized onset time for each activation signal based on a degree similarity between the onset time candidates and initial vector field template.

(51) **Int. Cl.**
A61B 5/0452 (2006.01)
A61B 5/042 (2006.01)
(Continued)

20 Claims, 5 Drawing Sheets

(52) **U.S. Cl.**
CPC **A61B 5/04525** (2013.01); **A61B 5/04012** (2013.01); **A61B 5/0422** (2013.01);
(Continued)



Related U.S. Application Data

- (60) Provisional application No. 61/824,245, filed on May 16, 2013.
- (51) **Int. Cl.**
A61B 5/04 (2006.01)
A61B 5/00 (2006.01)
A61B 5/046 (2006.01)
A61B 18/14 (2006.01)
A61B 18/00 (2006.01)
- (52) **U.S. Cl.**
 CPC *A61B 5/7246* (2013.01); *A61B 5/046* (2013.01); *A61B 5/6858* (2013.01); *A61B 18/1492* (2013.01); *A61B 2018/00357* (2013.01); *A61B 2018/00577* (2013.01)

(56) **References Cited**

U.S. PATENT DOCUMENTS

- | | | | |
|------------------|---------|---------------------------|---------|
| 5,038,791 A | 8/1991 | Collins et al. | |
| 5,158,092 A | 10/1992 | Glace | |
| 5,254,088 A | 10/1993 | Lundquist et al. | |
| 5,292,348 A | 3/1994 | Saumarez et al. | |
| 5,433,198 A | 7/1995 | Desai | |
| 5,485,849 A | 1/1996 | Panescu et al. | |
| 5,582,609 A | 12/1996 | Swanson et al. | |
| 5,647,870 A | 7/1997 | Kordis et al. | |
| 5,657,755 A | 8/1997 | Desai | |
| 5,810,740 A | 9/1998 | Paisner | |
| 6,016,442 A | 1/2000 | Hsu et al. | |
| 6,070,094 A | 5/2000 | Swanson et al. | |
| 6,233,491 B1 | 5/2001 | Kordis et al. | |
| 6,574,492 B1 | 6/2003 | Ben-Haim et al. | |
| 6,600,948 B2 | 7/2003 | Ben-Haim et al. | |
| 6,735,465 B2 | 5/2004 | Panescu | |
| 6,950,689 B1 | 9/2005 | Willis et al. | |
| 6,978,168 B2 | 12/2005 | Beatty et al. | |
| 7,123,954 B2 | 10/2006 | Narayan et al. | |
| 7,841,986 B2 | 11/2010 | He et al. | |
| 9,144,391 B2 | 9/2015 | Thakur et al. | |
| 9,332,920 B2 | 5/2016 | Thakur et al. | |
| 2005/0007091 A1 | 1/2005 | Makeig et al. | |
| 2005/0261599 A1 | 11/2005 | Shvilkin et al. | |
| 2006/0074336 A1 | 4/2006 | Grieve et al. | |
| 2006/0116594 A1 | 6/2006 | Zhang et al. | |
| 2007/0299351 A1 | 12/2007 | Harlev et al. | |
| 2008/0222109 A1 | 9/2008 | Sakurai | |
| 2011/0251505 A1* | 10/2011 | Narayan A61B 5/0422 | 600/515 |
| 2012/0184858 A1 | 7/2012 | Harlev et al. | |
| 2012/0296569 A1 | 11/2012 | Shahaf et al. | |
| 2014/0336518 A1 | 11/2014 | Shuros et al. | |
| 2014/0343388 A1 | 11/2014 | Thakur et al. | |
| 2014/0343442 A1 | 11/2014 | Thakur et al. | |
| 2014/0371616 A1 | 12/2014 | Narayan et al. | |
| 2015/0065836 A1 | 3/2015 | Thakur et al. | |
| 2015/0366476 A1 | 12/2015 | Laughner et al. | |
| 2016/0073913 A1 | 3/2016 | Francis et al. | |

FOREIGN PATENT DOCUMENTS

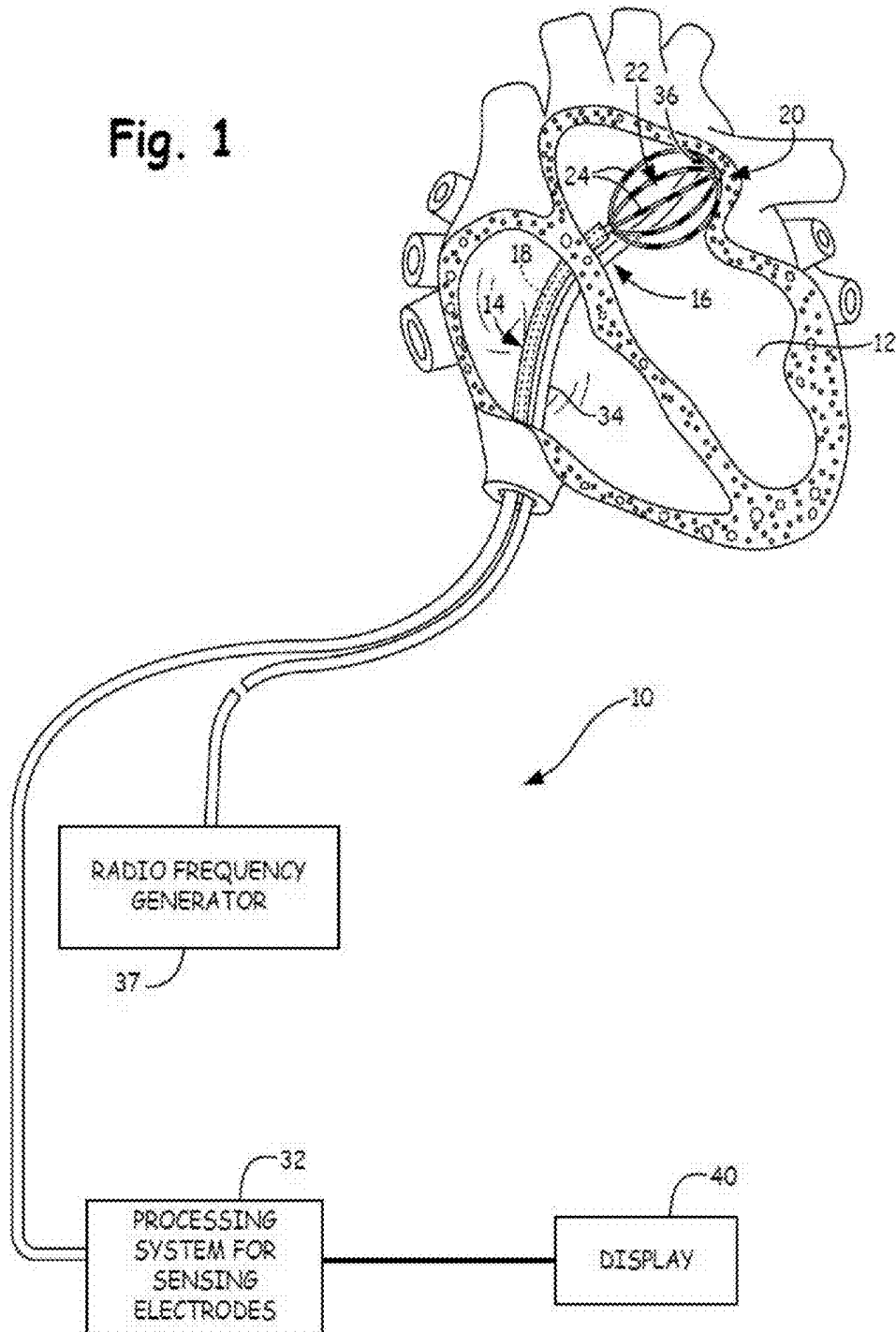
- | | | |
|----|-----------------|---------|
| EP | 2996547 A1 | 3/2016 |
| GB | 13072111 D0 | 5/2013 |
| JP | 201250547 A | 3/2012 |
| WO | WO2000045700 A1 | 8/2000 |
| WO | 2006066324 A1 | 6/2006 |
| WO | 2011127211 A2 | 10/2011 |
| WO | 2012092016 A1 | 7/2012 |
| WO | 2013123549 A1 | 9/2012 |
| WO | 2014100464 A1 | 6/2014 |
| WO | 2014186684 A1 | 11/2014 |
| WO | 2015196107 A1 | 12/2015 |

OTHER PUBLICATIONS

- Berkowitsch, Alexander et al., "Electrophysiological Heterogeneity of Atrial Fibrillation and Local Effect of Propafenone in the Human Right Atrium: Analysis Based on Symbolic dynamics", *Journal of Interventional Cardiac Electrophysiology*, Jun. 1, 2000, pp. 383-394.
- Brodda, K., et. al. A New Method for Detection of P Waves in Electrocardiograms. *Signal Processing*, 1(1): 15-25, 1979.
- Ciaccio, Edward J. et al., "Identification of recurring patterns in fractionated atrial electrograms using new transform coefficients", *Biomedical engineering Online*, vol. 11, No. 1, Jan. 1, 2012, 19 pages.
- Fitzgerald, Tamara N. et al., "Identification of Cardiac Rhythm Features by Mathematical Analysis of Vector Fields", *Eee Transactions on Biomedical Engineering*, vol. 52, No. 1, Jan. 2005, pp. 19-29.
- Habel, N., et. al. The Temporal Variability of Dominant Frequency and Complex Fractionated Atrial Electrograms Constrains the Validity of Sequential Mapping in Human Atrial Fibrillation. *Heart Rhythm*, 7:586-593, 2010.
- Holm, Magnus et al. A New Method for Analysis of Atrial Activation During Chronic Atrial Fibrillation in Man. *IEEE Transactions on Biomedical Engineering*, 43(2): 198-210, Feb. 1996.
- Houben, R. P. M., et. al. Processing of Intracardiac Electrograms in Atrial Fibrillation: Diagnosis of Electropathological Substrate of AF. *IEEE Engineering in Medicine and Biology Magazine*, 25(6):40-51, Nov. 1, 2006.
- Houben, Richard P.M. et al., "Processing Intracardiac Electrograms in Atrial Fibrillation", *Diagnosis of Electropathological Substrate of AF*, *IEEE Engineering in Medicine and Biology Magazine*, Nov./Dec. 2006, pp. 40-51.
- International Preliminary Report on Patentability issued in PCT/US2013/076667, mailed Jul. 2, 2015, 9 pages.
- International Preliminary Report on Patentability issued in PCT/US2014/038357, mailed Nov. 26, 2015, 8 pages.
- International Preliminary Report on Patentability issued in PCT/US2014/053147, mailed Mar. 10, 2016, 9 pages.
- International Search Report and Written Opinion issued in PCT/US20141038357, mailed Sep. 1, 2014, 11 pages.
- International Search Report and Written Opinion issued in PCT/US2013/076667, mailed Mar. 20, 2014, 14 pages.
- International Search Report and Written Opinion issued in PCT/US2014/062876, mailed Feb. 11, 2015, 12 pages.
- International Search Report and Written Opinion issued in PCT/US2015/036746, mailed 1 Sep. 2015, 12 pages.
- International Search Report and Written Opinion] issued in PCT/US20141053147, mailed Nov. 7, 2014, 12 pages.
- Jadidi, - et. al. A et al Functional Nature of Electrogram Fractionation Demonstrated by Left Atrial High-Density Mapping. *Circ. Arrhythm Electrophysiol.*, 5:32-42, 2012.
- Marbroukeh, Nizar R. et al., "A Taxonomy of Sequential Pattern Mining Algorithms", *ACM Computing Surveys*, vol. 43, No. 1, Nov. 1, 2010, pp. 1-41.
- Masse, Stephane et al., "Wave similarity of human ventricular fibrillation from bipolar electrograms", *Europace*, vol. 9, No. 1, Jan. 1, 2007, 10 pages.
- Rogers, Jack m et al., Recurrent Wavefront Morphologies: a Method for Quantifying the Complexity of Epicardial Activation Patterns, *Annals of Biomedical Engineering*, vol. 25, No. 5, 1997, pp. 761-768.
- Sanders et al., "Spectral Analysis Identifies Sites of High-Frequency Activity Maintaining Atrial Fibrillation in Humans", *circulation*, 112:789-797, 2005.
- International Preliminary Report on Patentability issued in PCT/US2014/062876, mailed May 12, 2016, 9 pages.

* cited by examiner

Fig. 1



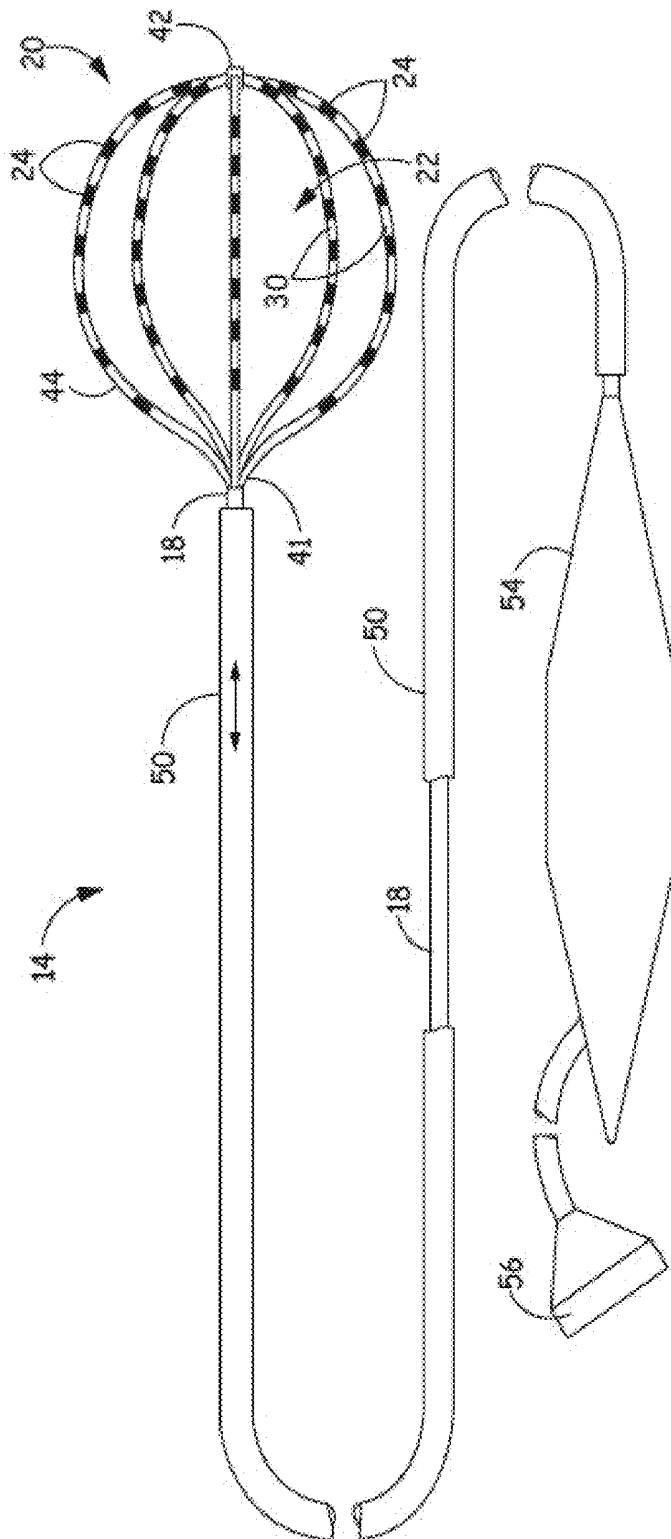


FIG. 2

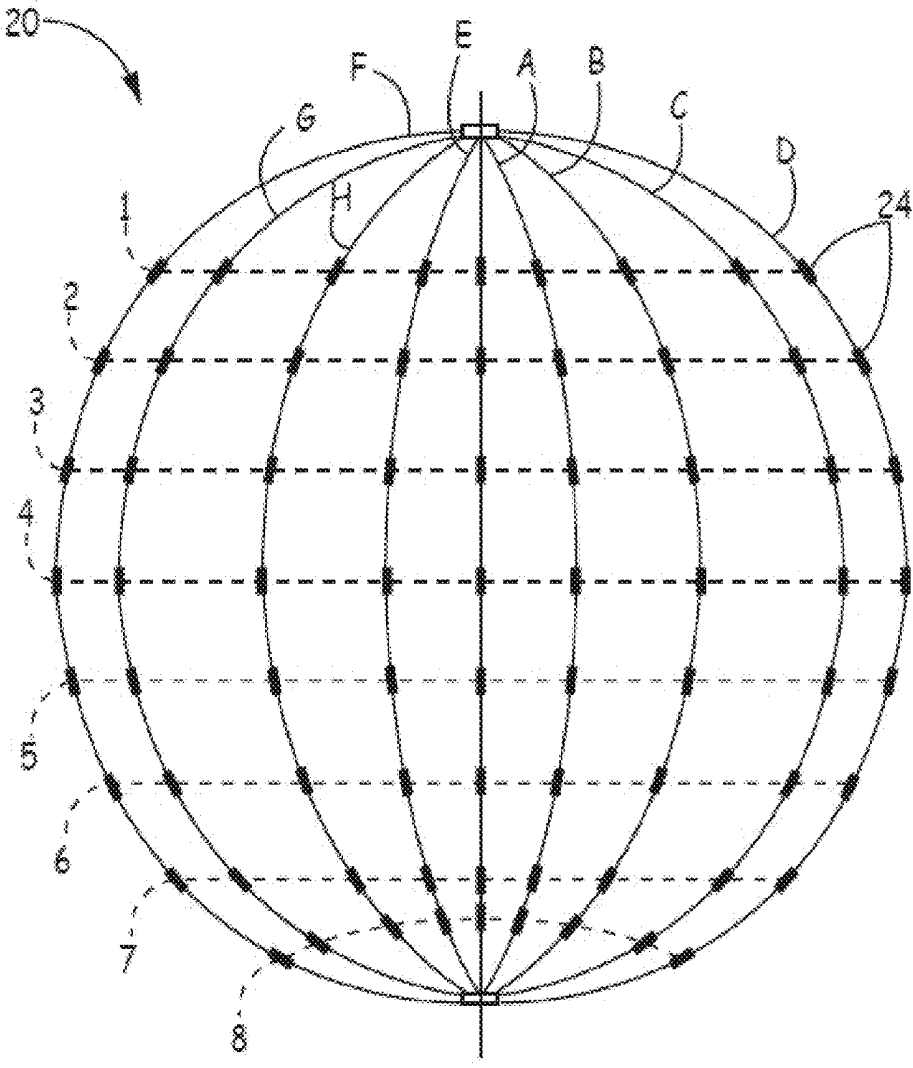


FIG. 3

PRE-CORRECTION		POST-CORRECTION	
A	442 432 437 378 383	A	442 442 432 428 378 383
B	433 422 420 NaN NaN	B	433 422 420 422 442 NaN
C	423 418 416 420 410	C	431 418 416 416 410
D	422 420 417 414 431	D	422 420 417 414 431
E	434 424 421 420 443	E	438 424 421 420 443
F	432 428 433 432 442	F	432 428 424 428 442
G	NaN 421 NaN NaN NaN	G	450 421 NaN NaN NaN
H	421 1 2 3 4 4 6	H	429 429 445 NaN 467 469 6

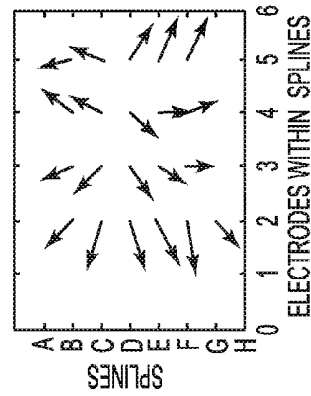
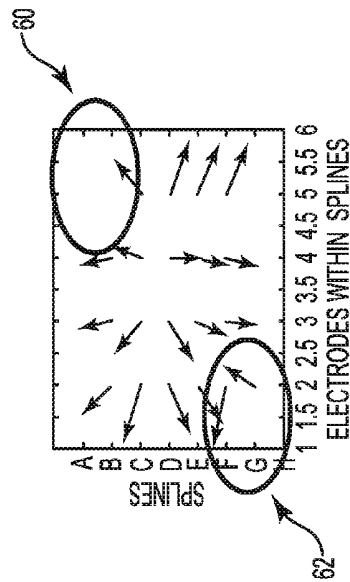
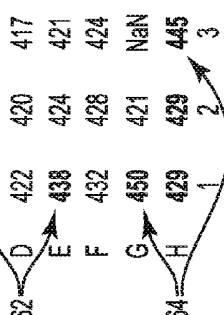
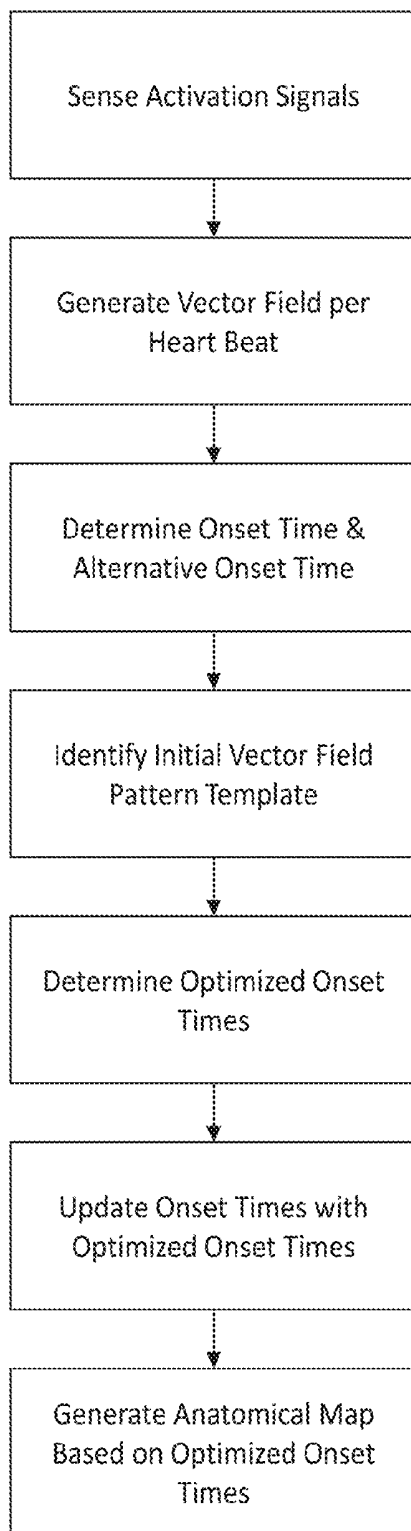


Fig. 4

**FIG. 5**

ENHANCED ACTIVATION ONSET TIME OPTIMIZATION BY SIMILARITY BASED PATTERN MATCHING

CROSS-REFERENCE TO RELATED APPLICATION

This application is a continuation of U.S. application Ser. No. 14/279,723, filed May 16, 2014, which claims priority to Provisional Application No. 61/824,245, filed May 16, 2013, both of which are herein incorporated by reference in their entirety.

TECHNICAL FIELD

The present invention relates to medical devices and methods for accessing an anatomical space of the body. More specifically, the invention relates to devices and methods for generating vector field maps of electrical activity of anatomical structures.

BACKGROUND

Diagnosing and treating heart rhythm disorders often involve the introduction of a catheter having a plurality of sensors/probes into a cardiac chamber through the surrounding vasculature. The sensors detect electric activity of the heart at sensor locations in the heart. The electric activity is generally processed into electrogram signals that represent signal propagation through cardiac tissue at the sensor locations.

Systems can be configured to display the electrical signals detected in the cardiac chamber as an activation map based on voltages detected. Robust and reliable estimation of onset times for sensed activation signals is the key to visualizing underlying activation patterns and identify targets for applying therapy, e.g. ablation therapy. Traditional methods use characteristic features of the activation signals such as steepest descent for a unipolar signal or most negative peak of a derivative unipolar signal. Any characteristic feature is susceptible to ambiguity stemming from noise or other artifacts, such as a far-field activation signal or multiple large negative peaks adjacent to one another, which superimpose over the signal of interest. There exists a need to improve the reliability of detection of onset times of activation signals in anatomical mapping.

SUMMARY

In Example 1, a method for mapping an anatomical structure includes sensing activation signals during an instance of physiological activity with a plurality of mapping electrodes disposed in or near the anatomical structure, generating a vector field for each sensed activation signal during each instance of the physiological activity, determining an onset time and alternative onset time candidates for each activation signal, identifying an initial vector field pattern template for each activation signal based on a degree of similarity between the generated vector field and at least one vector field template pattern, and determining an optimized onset time for each activation signal based on the corresponding onset time candidates and the initial vector field pattern template.

In Example 2, the method according to Example 1, further includes replacing the determined onset times with corre-

sponding optimized onset times, and generating a display on a display device of the activation signals based on the optimized onset times.

In Example 3, the method according to either of Examples 1 and 2, wherein determining an onset time further includes calculating a derivative of the sensed activation signals, and identifying a minimum peak for each sensed activation signal.

In Example 4, the method according to any one of Examples 1-3, wherein determining alternative onset time candidates further includes identifying negative peaks among the derivative sensed activation signals which are at least one of within a local neighborhood of an identified minimum peak and within an amplitude threshold based on the amplitude of the corresponding minimum peak.

In Example 5, the method according to any one of Examples 1-4, wherein identifying an initial vector field pattern template further includes determining a degree of similarity between each generated vector field and at least one vector field template pattern of a bank of vector field template patterns, and identifying a vector field template pattern having a maximum degree of similarity with a corresponding vector field.

In Example 6, the method according to any one of Examples 1-5, wherein determining optimized onset times further includes generating a vector field candidate for each onset time candidate, determining a degree of similarity between each vector field candidate and the vector field generated based on the corresponding activation signal, and identifying if the degree of similarity between the vector field candidate and the vector field exceeds the degree of similarity between the vector field and initial vector field pattern.

In Example 7, a method for mapping cardiac tissue includes sensing activation signals of electrical cardiac activity during each heart beat with a plurality of mapping electrodes disposed in or near the heart, generating a vector field for each sensed activation signal during each heart beat, determining an onset time and alternative onset time candidates for each activation signal, identifying an initial vector field pattern template for each activation signal based on a degree of similarity between the generated vector field and at least one vector field template pattern, and determining an optimized onset time for each activation signal based on the corresponding onset time candidates and the initial vector field pattern template.

In Example 8, the method according to Example 7, further includes replacing the determined onset times with corresponding optimized onset times, and generating a display on a display device of the activation signals of the heart based on the optimized onset times.

In Example 9, the method according to either of Examples 7 and 8, wherein determining an onset time further includes calculating a derivative of the sensed activation signals, and identifying a minimum peak for each sensed activation signal.

In Example 10, the method according to any one of Examples 7-9, wherein determining alternative onset time candidates further includes identifying negative peaks among the derivative sensed activation signals which are at least one of within a local neighborhood of an identified minimum peak and within an amplitude threshold based on the amplitude of the corresponding minimum peak.

In Example 11, the method according to any one of Examples 7-10, wherein identifying an initial vector field pattern template further includes determining a degree of similarity between each generated vector field and at least

one vector field template pattern of a bank of vector field template patterns, and identifying a vector field template pattern having a maximum degree of similarity with a corresponding vector field.

In Example 12, the method according to any one of Examples 7-11, wherein determining optimized onset times further includes generating a vector field candidate for each onset time candidate, determining a degree of similarity between each vector field candidate and the vector field generated based on the corresponding activation signal, and updating the onset time with a corresponding onset time candidate if the degree of similarity between the vector field candidate and the vector field exceeds the degree of similarity between the vector field and initial vector field pattern.

In Example 13, an anatomical mapping system includes a plurality of mapping electrodes disposed in or near the anatomical structure configured to detect activation signals during an instance of physiological activity, and a processing system associated with the plurality of mapping electrodes, the mapping processor configured to record the detected activation signals and associate one of the plurality of mapping electrodes with each recorded activation signal, the processor system further configured to generate a vector field for each sensed activation signal during each instance of the physiological activity, determine an onset time and alternative onset time candidates for each activation signal, identify an initial vector field pattern template for each activation signal based on a degree of similarity between the generated vector field and at least one vector field template pattern, and determine an optimized onset time for each activation signal based on the corresponding onset time candidates and the initial vector field pattern template.

In Example 14, the anatomical mapping system according to Example 13, wherein the processing system is further configured to replace the determined onset times with corresponding optimized onset times, and generate a display on a display device of the activation signals based on the optimized onset times.

In Example 15, the anatomical mapping system according to either of Examples 13 and 14, wherein, to determine an onset time, the processing system is further configured to calculate a derivative of the sensed activation signals, and identifying a minimum peak for each sensed activation signal.

In Example 16, the anatomical mapping system according to any one of Examples 13-15, wherein, to determine alternative onset time candidates, the processing system is further configured to identify negative peaks among the derivative sensed activation signals which are at least one of within a local neighborhood of an identified minimum peak and within an amplitude threshold based on the amplitude of the corresponding minimum peak.

In Example 17, the anatomical mapping system according to any one of Examples 13-16, wherein, to identify an initial vector field pattern template, the processing system is further configured to determine a degree of similarity between each generated vector field and at least one vector field template pattern of a bank of vector field template patterns, and identify a vector field template pattern having a maximum degree of similarity with a corresponding vector field.

In Example 18, the anatomical mapping system according to any one of Examples 13-17, wherein, to determine optimized onset times, the processing system is further configured to generate a vector field candidate for each onset time candidate, determine a degree of similarity between each vector field candidate and the vector field generated based on the corresponding activation signal, and identify if

the degree of similarity between the vector field candidate and the vector field exceeds the degree of similarity between the vector field and initial vector field pattern.

In Example 19, a method for mapping an anatomical structure includes sensing activation signals of physiological activity with a plurality of mapping electrodes disposed in or near the anatomical structure, each mapping electrode having an electrode location, determining an onset time and alternative onset time candidates for each activation signal, wherein an onset time indicates an onset of activation signals at a corresponding electrode location during the corresponding instance of the physiological activity, generating an initial characteristic representation of the sensed activation signals based on the determined onset times during the corresponding instance of physiological activity, determining an initial pattern for each initial characteristic representation, the initial pattern representing a characteristic propagation pattern of the activations signals during the corresponding instance of the physiological activity, generating a candidate characteristic representation of the sensed activation signal based each of the corresponding alternative onset time candidates, and determining an optimized onset time for each activation signal based on the candidate characteristic representations and the initial pattern.

In Example 20, the method according to Example 19, further includes replacing the determined onset times with corresponding optimized onset times, and generating a display of the activation pattern on a display device based on the optimized onset times.

In Example 21, the method according to either of Examples 19 and 20, wherein determining an onset time further includes calculating a derivative of the sensed activation signals, and identifying a minimum peak for each sensed activation signal.

In Example 22, the method according to any one of Examples 19-21, wherein determining alternative onset time candidates further includes identifying negative peaks among the derivative sensed activation signals which are at least one of within a local neighborhood of an identified minimum peak and within an amplitude threshold based on the amplitude of the corresponding minimum peak.

In Example 23, the method according to any one of Examples 19-22, wherein determining an initial pattern further includes determining a similarity index between the initial characteristic representation and each of a plurality of pattern templates of a bank of pattern templates, and identifying the pattern template which maximizes the degree of similarity to the initial characteristic representation.

In Example 24, the method according to any one of Examples 19-23, wherein the pattern templates are characteristic representations of expected patterns of propagation across the plurality of electrodes.

In Example 25, the method according to any one of Examples 19-24, wherein generating a candidate characteristic representation further includes replacing an onset time with each corresponding onset time candidate, and generating a characteristic representation based on each onset time candidate.

In Example 26, the method according to any one of Examples 19-25, wherein determining the optimized onset time further includes determining a degree of similarity between each candidate characteristic representation and the initial pattern, and identifying the candidate characteristic representation and corresponding onset time candidate which maximizes the degree of similarity to the initial pattern.

In Example 27, the method according to any one of Examples 19-26, wherein the characteristic representation of sensed activation across the plurality of electrodes is a vector field consisting of a plurality of vectors each denoting a direction and magnitude of propagation at each electrode location.

In Example 28, the method according to any one of Examples 19-27, wherein the initial pattern template consists of at least one pattern based on focal activity located at various regions covered by the plurality of electrodes and one pattern based on rotor activity at various regions covered by the plurality of electrodes.

While multiple embodiments are disclosed, still other embodiments of the present invention will become apparent to those skilled in the art from the following detailed description, which shows and describes illustrative embodiments of the invention. Accordingly, the drawings and detailed description are to be regarded as illustrative in nature and not restrictive.

BRIEF DESCRIPTION OF THE DRAWINGS

FIG. 1 is a schematic view of an embodiment of a system for accessing a targeted tissue region in the body for diagnostic and therapeutic purposes.

FIG. 2 is a schematic view of an embodiment of a mapping catheter having a basket functional element carrying structure for use in association with the system of FIG. 1.

FIG. 3 is a schematic side view of an embodiment of the basket functional element including a plurality of mapping electrodes.

FIG. 4 is an illustration of an initial vector field and corresponding initial onset times before and after correction of the onset times.

FIG. 5 is a method flow chart for mapping cardiac tissue.

While the invention is amenable to various modifications and alternative forms, specific embodiments have been shown by way of example in the drawings and are described in detail below. The intention, however, is not to limit the invention to the particular embodiments described. On the contrary, the invention is intended to cover all modifications, equivalents, and alternatives falling within the scope of the invention as defined by the appended claims.

DETAILED DESCRIPTION

FIG. 1 is a schematic view of a system 10 for accessing a targeted tissue region in the body for diagnostic or therapeutic purposes. FIG. 1 generally shows the system 10 deployed in the left ventricle of the heart. Alternatively, system 10 can be deployed in other regions of the heart, such as the left atrium, right atrium, or right ventricle. While the illustrated embodiment shows the system 10 being used for ablating myocardial tissue, the system 10 (and the methods described herein) may alternatively be configured for use in other tissue ablation applications, such as procedures for ablating tissue in the prostate, brain, gall bladder, uterus, and other regions of the body, including in systems that are not necessarily catheter-based.

The system 10 includes a mapping probe 14 and an ablation probe 16. In FIG. 1, each is separately introduced into the selected heart region 12 through a vein or artery (e.g., the femoral vein or artery) through suitable percutaneous access. Alternatively, the mapping probe 14 and

ablation probe 16 can be assembled in an integrated structure for simultaneous introduction and deployment in the heart region 12.

The mapping probe 14 has a flexible catheter body 18. The distal end of the catheter body 18 carries a three-dimensional multiple electrode structure 20. In the illustrated embodiment, the structure 20 takes the form of a basket defining an open interior space 22 (see FIG. 2), although other multiple electrode structures could be used wherein the geometry of the electrode structure and electrode locations are known. The multiple electrode structure 20 carries a plurality of mapping electrodes 24 each having an electrode location and channel. Each electrode 24 is configured to sense intrinsic physiological activity in the anatomical region on which the ablation procedure is to be performed. In some embodiments, the electrodes 24 are configured to detect activation signals of the intrinsic physiological activity within the anatomical structure, e.g., the activation times of cardiac activity.

The electrodes 24 are electrically coupled to a processing system 32. A signal wire (not shown) is electrically coupled to each electrode 24 on the basket structure 20. The wires extend through the body 18 of the probe 14 and electrically couple each electrode 24 to an input of the processing system 32, as will be described later in greater detail. The electrodes 24 sense intrinsic electrical activity in the anatomical region, e.g., myocardial tissue. The sensed activity, e.g. activation signals, is processed by the processing system 32 to assist the physician by generating an anatomical map, e.g., a vector field map, to identify the site or sites within the heart appropriate for ablation. The processing system 32 identifies a near-field signal component, i.e. activation signals associated with local activation and originating from the tissue adjacent to the mapping electrode 24, from an obstructive far-field signal component, i.e. activation signals originating from non-adjacent tissue, within the sensed activation signals. For example, in an atrial study, the near-field signal component includes activation signals originating from atrial myocardial tissue whereas the far-field signal component includes activation signals originating from the ventricular myocardial tissue. The near-field activation signal component can be further analyzed to find the presence of a pathology and to determine a location suitable for ablation for treatment of the pathology, e.g., ablation therapy.

The processing system 32 includes dedicated circuitry (e.g., discrete logic elements and one or more microcontrollers; application-specific integrated circuits (ASICs); or specially configured programmable devices, such as, for example, programmable logic devices (PLDs) or field programmable gate arrays (FPGAs)) for receiving and/or processing the acquired activation signals. In some embodiments, the processing system 32 includes a general purpose microprocessor and/or a specialized microprocessor (e.g., a digital signal processor, or DSP, which may be optimized for processing activation signals) that executes instructions to receive, analyze and display information associated with the received activation signals. In such implementations, the processing system 32 can include program instructions, which when executed, perform part of the signal processing. Program instructions can include, for example, firmware, microcode or application code that is executed by microprocessors or microcontrollers. The above-mentioned implementations are merely exemplary, and the reader will appreciate that the processing system 32 can take any suitable form.

In some embodiments, the processing system 32 may be configured to measure the intrinsic electrical activity in the

myocardial tissue adjacent to the electrodes **24**. For example, in some embodiments, the processing system **32** is configured to detect intrinsic electrical activity associated with a dominant rotor or divergent activation pattern in the anatomical feature being mapped. Studies have shown that dominant rotors and/or divergent activation patterns have a role in the initiation and maintenance of atrial fibrillation, and ablation of the rotor path, rotor core, and/or divergent foci may be effective in terminating the atrial fibrillation. In either situation, the processing system **32** processes the sensed activation signals to generate a display of relevant characteristic, such as an APD map, a vector field map, a contour map, a reliability map, an electrogram, and the like. The relevant characteristics may be used by the physician to identify a site suitable for ablation therapy.

The ablation probe **16** includes a flexible catheter body **34** that carries one or more ablation electrodes **36**. The one or more ablation electrodes **36** are electrically connected to a radio frequency generator (RF) **37** that is configured to deliver ablation energy to the one or more ablation electrodes **36**. The ablation probe **16** is movable with respect to the anatomical feature to be treated, as well as the structure **20**. The ablation probe **16** is positionable between or adjacent to electrodes **24** of the structure **20** as the one or more ablation electrodes **36** are positioned with respect to the tissue to be treated.

The processing system **32** outputs to a device **40** the display of relevant characteristics for viewing by a physician. In the illustrated embodiment, device **40** is a CRT, LED, or other type of display, or a printer). The device **40** presents the relevant characteristics in a format most useful to the physician. In addition, the processing system **32** may generate position-identifying output for display on the device **40** that aids the physician in guiding the ablation electrode(s) **36** into contact with tissue at the site identified for ablation.

FIG. 2 illustrates an embodiment of the mapping catheter **14** including electrodes **24** at the distal end suitable for use in the system **10** shown in FIG. 1. The mapping catheter **14** has a flexible catheter body **18**, the distal end of which carries the three dimensional structure **20** configured to carry the mapping electrodes or sensors **24**. The mapping electrodes **24** sense intrinsic electrical activity, e.g., activation signals, in the myocardial tissue, the sensed activity is then processed by the processing system **32** to assist the physician in identifying the site or sites having a heart rhythm disorder or other myocardial pathology via a generated and displayed relevant characteristics. This information can then be used to determine an appropriate location for applying appropriate therapy, such as ablation, to the identified sites, and to navigate the one or more ablation electrodes **36** to the identified sites.

The illustrated three-dimensional structure **20** comprises a base member **41** and an end cap **42** between which flexible splines **44** generally extend in a circumferentially spaced relationship. As discussed above, the three dimensional structure **20** takes the form of a basket defining an open interior space **22**. In some embodiments, the splines **44** are made of a resilient inert material, such as Nitinol metal or silicone rubber, and are connected between the base member **41** and the end cap **42** in a resilient, pretensed condition, to bend and conform to the tissue surface they contact. In the illustrated embodiment, eight splines **44** form the three dimensional structure **20**. Additional or fewer splines **44** could be used in other embodiments. As illustrated, each spline **44** carries eight mapping electrodes **24**. Additional or fewer mapping electrodes **24** could be disposed on each

spline **44** in other embodiments of the three dimensional structure **20**. In the illustrated embodiment, the three dimensional structure **20** is relatively small (e.g., 40 mm or less in diameter). In alternative embodiments, the three dimensional structure **20** is even smaller or larger (e.g., 40 mm in diameter or greater).

A slidable sheath **50** is movable along the major axis of the catheter body **18**. Moving the sheath **50** forward (i.e., toward the distal end) causes the sheath **50** to move over the three dimensional structure **20**, thereby collapsing the structure **20** into a compact, low profile condition suitable for introduction into and/or removal from an interior space of an anatomical structure, such as, for example, the heart. In contrast, moving the sheath **50** rearward (i.e., toward the proximal end) exposes the three dimensional structure **20**, allowing the structure **20** to elastically expand and assume the pretensed position illustrated in FIG. 2. Further details of embodiments of the three dimensional structure **20** are disclosed in U.S. Pat. No. 5,647,870, entitled "Multiple Electrode Support Structures," which is hereby expressly incorporated herein by reference in its entirety.

A signal wire (not shown) is electrically coupled to each mapping electrode **24**. The wires extend through the body **18** of the mapping catheter **20** into a handle **54**, in which they are coupled to an external connector **56**, which may be a multiple pin connector. The connector **56** electrically couples the mapping electrodes **24** to the processing system **32**. Further details on mapping systems and methods for processing signals generated by the mapping catheter are discussed in U.S. Pat. No. 6,070,094, entitled "Systems and Methods for Guiding Movable Electrode Elements within Multiple-Electrode Structure," U.S. Pat. No. 6,233,491, entitled "Cardiac Mapping and Ablation Systems," and U.S. Pat. No. 6,735,465, entitled "Systems and Processes for Refining a Registered Map of a Body Cavity," the disclosures of which are hereby expressly incorporated herein by reference.

It is noted that other multi-electrode structures could be deployed on the distal end of the mapping catheter **14**. It is further noted that the multiple mapping electrodes **24** may be disposed on more than one structure rather than, for example, the single mapping catheter **14** illustrated in FIG. 2. For example, if mapping within the left atrium with multiple mapping structures, an arrangement comprising a coronary sinus catheter carrying multiple mapping electrodes and a basket catheter carrying multiple mapping electrodes positioned in the left atrium may be used. As another example, if mapping within the right atrium with multiple mapping structures, an arrangement comprising a decapolar catheter carrying multiple mapping electrodes for positioning in the coronary sinus, and a loop catheter carrying multiple mapping electrodes for positioning around the tricuspid annulus may be used.

Although the mapping electrodes **24** have been described as being carried by dedicated mapping probes, such as the mapping catheter **14**, the mapping electrodes may be carried on non-mapping dedicated probes or multifunction probes. For example, an ablation catheter, such as the ablation catheter **16**, can be configured to include one or more mapping electrodes **24** disposed on the distal end of the catheter body and coupled to the signal processing system **32** and guidance system (not shown). As another example, the ablation electrode at the distal end of the ablation catheter may be coupled to the signal processing system **32** to also operate as a mapping electrode.

To illustrate the operation of the system **10**, FIG. 3 is a schematic side view of an embodiment of the basket struc-

ture **20** including a plurality of mapping electrodes **24**. In the illustrated embodiment, the basket structure includes 64 mapping electrodes **24**. The mapping electrodes **24** are disposed in groups of eight electrodes (labeled 1, 2, 3, 4, 5, 6, 7, and 8) on each of eight splines (labeled A, B, C, D, E, F, G, and H) to form an 8x8 array of electrodes **24**. While an arrangement of sixty-four mapping electrodes **24** is shown disposed on a basket structure **20**, the mapping electrodes **24** may alternatively be arranged in different numbers such as an MxN array (N electrodes each on M splines) of electrodes **24**, on different structures, and/or in different positions. In addition, multiple basket structures can be deployed in the same or different anatomical structures to simultaneously obtain signals from different anatomical structures.

After the basket structure **20** is positioned adjacent to the anatomical structure to be treated, for example directly adjacent to or in direct contact with the interior of the left atrium or left ventricle of the heart, the processing system **32** is configured to record the activation signals from each electrode **24** channel related to intrinsic physiological activity of the anatomical structure, i.e. the electrodes **24** measure electrical activation signals intrinsic to the physiology of the anatomical structure.

In some embodiments, the processing system **32** is configured to identify dislocated and/or misplaced onset times for each sensed activation signal. An overlaying artifact signal, e.g. a far-field activation signals, or noise can cause a detected onset time for a true underlying local activation signal to be corrupted. After the activation signals of intrinsic physiological activity are sensed by the mapping electrodes **24**, the processing system **32** generates a characteristic representation of a propagation pattern of the sensed electrical activity as the electrical signals propagate throughout tissue of the anatomical structure, e.g. left atrium or ventricle, during each heart beat. Characteristic representations can be generated individually for each beat, or averaged over multiple neighboring or subsequent beats. In one example, the characteristic representation can be a vector field over the MxN electrode array (N electrodes each on M splines). The vector field consists of a vector at each of the MxN electrode that indicates the direction of activity propagation at each of the MxN electrodes. In another example, the characteristic representation can be a contour map of activity propagation over the MxN electrode array during each heart beat. In yet another example, the characteristic representation could be the spatio-temporal evolution of the activity across the MxN electrodes denoted by a voltage map, Action potential duration map (APD) or a phase map over T time steps surrounding each beat.

In some embodiments the characteristic representation is a vector field. the vector field is a characteristic representation with a grid of vectors corresponding to each mapping electrode **24** location wherein each vector represents a local direction of propagation and magnitude of the activation signals sensed at the corresponding electrode **24** with respect to an adjacent or neighboring electrode **24** during a time period. The processing system **32** senses the activation signals at an electrode location and determines an onset time associated with the activation signal at the current electrode location. To determine the vector corresponding to the propagating activation signal, the processing system **32** calculates a circular average of detected activation signals at adjacent or neighboring electrodes **24** according to latency between an activation signal onset time at a current electrode location and an activation signal onset time at a neighboring electrode location. This is repeated for all mapping elec-

trodes **24** for all electrode locations until the grid of vectors corresponding to each electrode **24** is generated.

The onset time is the time or a timestamp the processing system **32** assigns to the detection or sensing of the commencement of electrical activity associated with the activation signals arriving at an electrode location. The electrodes **24** of the MxN array detect the propagation of the activation signals during a heartbeat, i.e. electrical signals associated with an action potential depolarization or the cardiac tissue cells. The processing system **32** determines the onset times based on a derivative of each activation signal. The derivative detects changes in amplitude of the activation signals, e.g. a heart beat elicits a sharp rise in amplitude within sensed electrical signal in the heart. The processing system identifies minimum peaks among the derivative activation signals. The minimum peaks can be identified as onset times. As previously noted, far-field activation signals and noise, among other artifacts, can cause an inappropriately identified onset time. For example, multiple large minimum peaks in close proximity to or artifact signals overlying the signal of interest can cause ambiguities when determining onset times such as dislocated and confounded minimum peaks in the derivative signal. The processing system **32** generates an initial characteristic representation, for example an initial vector field, based on determined initial onset times, i.e. onset times determined based on the sensed activation signals.

In some embodiments, the processing system is further configured to identify alternative onset time candidates. The onset time candidates can be onset times identified within a local neighborhood directly before and after the determined onset time or initial onset time. The local neighborhood can include time window that surrounds the initial onset time. The processing system can identify other minimum peaks that fall within the surrounding onset time window. If necessary, the processing system can limit those onset time candidates that fall within in the onset time window based on their amplitude and/or the amplitude of the initial onset time. For example, if the amplitude of the onset time candidate is within a percentage of the corresponding initial onset time, the processing system will limit the identified onset time candidates as those falling within the amplitude percentage threshold. Other thresholds are also contemplated, such as fixed amplitude threshold rather than a percentage based threshold.

The processing system **32** is configured to determine or identify an initial pattern template from a bank of pattern templates which most closely matches the initial characteristic representation, wherein each pattern template is representative of characteristic propagation patterns that have been observed in the past or expected to occur. In the example where the characteristic pattern is a vector field, the bank of pattern templates can include a plurality of characteristic propagation patterns such as various curl patterns, divergent patterns, laminar patterns, and the that are centered or oriented at various locations and at various angles within the vector field. Similar propagation patterns can be used for other characteristic representation such that the template patterns are corresponding representative propagation patterns, e.g. contour map, a voltage map, an APD map, a phase map, or the like. To determine the initial pattern template, the processing system **32** compares the generated initial vector field (the vector field generated based on initial onset times) with each pattern template vector field stored in the bank of pattern template vector fields. The pattern templates can be normalized according to, for example, a Frobenius norm to yield ideal vector fields which are rep-

resented in terms of units vectors and compared to each characteristic representation based on the described methods.

The comparison can yield a similarity index or degree of similarity based upon the similarity or dissimilarity between the initial vector field or initial characteristic representation and the pattern templates compared therewith. The pattern template with the highest degree of similarity is identified as the initial pattern template or signature pattern template and the corresponding similarity index is identified as the initial similarity index. Therefore, the processing system 32 can determine initial onset times along with candidate onset times and can generate an initial characteristic representation from which an initial template pattern and corresponding initial similarity index is identified.

The bank of pattern templates can be a database or an array or a plurality of pattern templates that are stored locally in memory in the processing system 32 or can be stored in a remote location and accessed via a network or internet connection. Each pattern template represents a priori expected patterns of interest (e.g. a curl, a divergent, or a laminar pattern) and a location, direction, and/or angle associated with each pattern. In one example, a pattern template may be related to identifying a dominant rotor and/or divergent activation pattern associated with cardiac fibrillation. Each pattern template may represent a unique pattern having a unique location wherein patterns include, for example, a curled pattern which can represent rotor activity including a rotor core and/or rotor path having a core location or a divergent pattern representing focal activity having a foci location. The pattern templates can represent a vector field, contour map, a time dependent voltage map or phase map, an action potential duration map, or any characteristic representation that can be utilized to represent the sensed activation signals and/or electrical activity as they propagation through the anatomical structure of interest.

To identify which onset time, either the initial onset time or one of the alternative onset time candidates, is the accurate onset time of the corresponding activation signal, the processing system 32 iteratively replaces the initial onset times with the corresponding alternative onset time candidates and generates a candidate characteristic representation for each iteration, i.e. for each onset time candidate a candidate characteristic representation is generated. Each candidate characteristic representation is compared to the initial pattern template and a degree of similarity determined therebetween. If the degree similarity between the candidate characteristic representation and the initial template pattern is greater than the degree of similarity between the initial characteristic pattern and the initial template pattern, the initial characteristic representation is updated with the onset time candidate that corresponds to the candidate characteristic representation which has a similarity index greater than the initial similarity index. Therefore, the processing system 32 determines an optimized onset for each activation signal time based on the comparison between the candidate characteristic representation and the initial pattern template.

In the example of vector field characteristic representation, the processing system 32 iteratively replaces an initial onset time with the corresponding onset time candidates and generates a candidate vector field based on that onset time candidate. Each candidate vector field is compared to the initial pattern template and a similarity index is determined. If the current similarity index is greater than the initial similarity index, the initial onset time is updated or replaced with candidate onset time and the initial vector field is updated with the new initial onset time. Furthermore, the

initial similarity index is updated or replaced by the current similarity vector. The processing system 32 repeats the method for each onset time candidate until an optimized onset time is determined for each initial onset time. It should be noted that the initial onset time can be the optimized onset time for an activation signal if the onset time candidates do not manifest a similarity index greater than the initial similarity index.

In some embodiments, comparing the determined characteristic representations to the pre-determined template patterns may not be suitable or appropriate as they may artificially bias the sensed activation signals and ensuing characteristic representations towards a priori expectations of the user. Alternatively, the processing system 32 can average a selected number of generated initial characteristic representations and use the resulting averaged characteristic representation as a pattern template. In this case, the pattern templates are data driven and unique to each subject and/or set of sensed activations signals. Determining the initial pattern template based on the activation signals sensed from the subject avoids the risk of artificially imposing a pattern due to a priori expectations or beliefs when using a bank of pattern templates that can generated from other subjects or ideal circumstances. The user or physician can select a number of preceding or proceeding characteristic representations adjacent to the initial characteristic representation as candidates to be averaged and represented as the initial pattern template.

The comparison between an initial characteristic representation and pattern template can be done via a number of similarity determination methods which determine a degree of similarity therebetween. For example, a similarity index could be generated via a cross-correlation measure. In another example, each characteristic representation can be treated as a single vector, i.e. a super-vector, wherein standard vector comparison methods from linear algebra can be used to derive a similarity index or measure. For example, a vector field over $M \times N$ electrodes can be treated as a super-vector in an $M \times N \times 2$ dimensional space. Alternatively, a spatio-temporal characteristic representation over T time-steps, such as an APD map, voltage map, or phase map, can also be treated as a super-vector in an $M \times N \times T$ dimensional space.

The processing system 32 determines a projection of a super-vector derived from each initial characteristic representations onto a super-vector derived from each pattern template. The processing system 32 determines a projection energy from the projection of super-vectors which can be used as a measure or index of similarity. The similarity index calculation can be based on a similarity algorithm that ranks the pattern templates in terms of similarity towards the corresponding initial pattern template. Other algorithms to identify the pattern template which represents the initial characteristic representation most accurately can include any one of a dissimilarity algorithm, a correlation algorithm, a distance algorithm, an object detection algorithm, an image processing, any combination thereof, and the like. After the pattern template with the maximum or optimal degree of similarity is determined, the processing system 32 identifies the corresponding projection as an initial projection. The initial projection is noted as the initial similarity index and can be used to determine which one set time is the most accurate onset time to associate with the sensed activation signal.

Returning to the vector field example, the processing system 32 iteratively replaces each onset time with one of the alternative onset time candidates. A new candidate

vector field characteristic representation is generated during each iteration and is then compared to the identified pattern template and thus a current similarity index is also determined during each iteration. Each current similarity index is compared to the initial similarity index which was used to identify the initial pattern template. If a current index exceeds the initial index in similarity, then the initial vector field characteristic representation is updated with the onset time candidate that corresponds to the vector field that was generated based on the onset time candidate. Furthermore, the current similarity index now replaces the initial similarity index, and is now used as the initial similarity index for subsequent iterations. Therefore, the initial vector field characteristic representation is iteratively updated with the most accurate or optimized onset time, i.e. the first determined or initial onset time or one of the alternative onset time candidates. Once all of the onset time candidates have been exhausted, the resultant vector field characteristic representation will be updated with the most accurate or optimized onset time for each sensed activation signal at each electrode location.

In some embodiments, the identified initial pattern template can be held constant over all subsequent iterations. Alternately, it is also contemplated that after every iteration a new initial pattern template is identified based on the updated onset times and the optimized initial characteristic pattern after the completion of each iteration. In this embodiment, the processing system could potentially discover a different or initial pattern template even though the initial onset times and the initial vector field characteristic representation are biased to a completely different pattern template. Therefore, the initial pattern template does not remain static; rather it is dynamically updated or optimized with each iteration.

In some embodiments, the processing system 32 computes angles or distances between corresponding super-vectors of the initial and/or current characteristic representations and pattern templates to determine which onset time is the most accurate onset time. If a current angle or current distance is less than an initial angle or initial distance, respectively, the processing system updates the initial onset time with the corresponding current onset time.

In some embodiments, the processing system is further configured to identify dislocated or misplaced onset times. An overlaying artifact signals (e.g. far-field activation signal) or noise can cause a peak in the derivative signal to be identified at a different temporal location. After identifying the onset times and alternative onset time candidates as previously described, the processing system 32 identifies activation signals with no alternative onset time candidates associated with the lone determined initial onset time, i.e. solitary onset times. In one embodiment, the initial vector field characteristic representation is generated for each activation signal based on the determined initial onsite times. An initial pattern template for each initial vector field is identified along with a corresponding initial similarity index as previously described. The processing system iteratively removes each solitary onset time and generates a current vector field during each iteration. A current similarity index is determined based on a comparison of each current vector field onto the initial vector field. Each current similarity index is compared to the initial similarity index which was used to identify to the initial pattern template. If a current similarity index exceeds the initial similarity index, then the initial vector field is updated without the corresponding solitary onset time. Therefore, the initial vector field is iteratively updated with solitary onset times removed if they

do not accurately correspond to an activation signal. Once all dislocated or misplaced solitary onset times have been iteratively removed, the resultant vector field will be updated or optimized with the most accurate onset time for each sensed activation signal at each electrode location.

FIG. 4 illustrates determined onset times prior to the correction of occluded or misplaced onset times. As shown by the circled regions 60, 62 in the initial vector field, some vectors are missing entirely 60 and some vectors are misplaced 62. In the post-correction onset times shown on the right, some onset times were changed 64 to reveal the most accurate onset time while some onset times 66 were recovered after the initial onset time was not identifiable.

FIG. 5 details a method for mapping cardiac tissue in vivo. After the mapping probe 14 is introduced into a cardiac chamber, the processing system 32 senses activation signals of electrical activity generated the cardiac tissue during each heart beat with the plurality of mapping electrodes 24 disposed at the distal end of the processing system 32. The processing system 32 generates a vector field of the sensed electrical activity or activation signals as they propagate throughout the cardiac tissue during each heart beat. For each activation signal, the processing system 32 determines and onset time according to peaks identified in a derivative signal of the corresponding activation signal. In the presence of noise in and around the heart, determined onset times may not be entirely accurate. Therefore, alternative onset time candidates are determined for each onset time. These candidates may be identified according to local peaks in and around the determined onset time.

A bank pattern templates that are representative of characteristic propagation patterns that have been observed in the past or expected to occur is used to identify an initial vector field pattern template. Each generated vector field is compared to each pattern template to determine a degree of similarity therebetween. The pattern template which most closely matches or has the highest degree of similarity is identified as the initial vector field pattern template corresponding to the vector field. The initial vector field pattern template can be used to determine an optimized onset time for each activation signal based on the corresponding onset time candidates and onset times associated with the identified initial vector field pattern template. If an optimized onset time is different than the initial onset time, the initial onset time is updated or replaced with the corresponding optimized onset time. The processing system 32 repeats this processes for each heart beat and the corresponding sensed activations corresponding to each heart beat. A vector field or anatomical map of the heart can be generated and displayed based on the optimized onset times.

Various modifications and additions can be made to the exemplary embodiments discussed without departing from the scope of the present invention. For example, while the embodiments described above refer to particular features, the scope of this invention also includes embodiments having different combinations of features and embodiments that do not include all of the described features. Accordingly, the scope of the present invention is intended to embrace all such alternatives, modifications, and variations as fall within the scope of the claims, together with all equivalents thereof.

We claim:

1. A method for mapping an anatomical structure, the method comprising:
 - sensing activation signals during an instance of physiological activity with a plurality of mapping electrodes disposed in or near the anatomical structure;

generating a vector field for each sensed activation signal during each instance of the physiological activity; determining an onset time and alternative onset time candidates for each activation signal; identifying a vector field pattern template for each activation signal based on a degree of similarity between the generated vector field and at least one vector field template pattern; determining an optimized onset time for each activation signal based on the corresponding onset time candidates and the vector field pattern template; generating an updated vector field for each sensed activation signal based on the optimized onset time for each activation signal; and updating the identified vector field pattern template based on the sensed activation signals.

2. The method of claim 1, wherein updating the identified vector field pattern template includes dynamically updating the identified vector field pattern template based on the optimized onset time for each activation signal.

3. The method according to claim 1, further comprising: replacing the determined onset times with corresponding optimized onset times; and generating a display on a display device of the activation signals based on the optimized onset times.

4. The method according to claim 1, wherein determining an onset time further includes: calculating a derivative of the sensed activation signals; and identifying a minimum peak for each sensed activation signal.

5. The method according to claim 4, wherein determining alternative onset time candidates further includes: identifying negative peaks among the derivative sensed activation signals which are at least one of within a local neighborhood of an identified minimum peak and within an amplitude threshold based on the amplitude of the corresponding minimum peak.

6. The method according to claim 1, wherein identifying an initial vector field pattern template further includes: determining a degree of similarity between each generated vector field and at least one vector field template pattern of a bank of vector field template patterns; and identifying a vector field template pattern having a maximum degree of similarity with a corresponding vector field.

7. The method according to claim 1, wherein determining optimized onset times further includes: generating a vector field candidate for each onset time candidate; determining a degree of similarity between each vector field candidate and the vector field generated based on the corresponding activation signal; identifying if the degree of similarity between the vector field candidate and the vector field exceeds the degree of similarity between the vector field and initial vector field pattern.

8. An anatomical mapping system comprising: a plurality of mapping electrodes disposed in or near the anatomical structure configured to detect activation signals during an instance of physiological activity; a processing system associated with the plurality of mapping electrodes, the mapping processor configured to record the detected activation signals and associate one of the plurality of mapping electrodes with each recorded activation signal, the processor system further configured to generate a vector field for each sensed

activation signal during each instance of the physiological activity, determine an onset time and alternative onset time candidates for each activation signal, identify an initial vector field pattern template for each activation signal based on a degree of similarity between the generated vector field and at least one vector field template pattern, determine an optimized onset time for each activation signal based on the corresponding onset time candidates and the initial vector field pattern template, generate an updated vector field for each sensed activation signal based on the optimized onset time for each activation signal, and update the identified initial vector field pattern template with an optimized vector field pattern template based on the detected activation signals.

9. The anatomical mapping system according to claim 8, wherein, to update the identified vector field pattern template, the processing system is configured to dynamically update the identified vector field pattern template based on the optimized onset time for each activation signal.

10. The anatomical mapping system according to claim 8, wherein the processing system is further configured to replace the determined onset times with corresponding optimized onset times, and generate a display on a display device of the activation signals based on the optimized onset times.

11. The anatomical mapping system according to claim 8, wherein, to determine an onset time, the processing system is further configured to calculate a derivative of the sensed activation signals, and identifying a minimum peak for each sensed activation signal.

12. The anatomical mapping system according to claim 11, wherein, to determine alternative onset time candidates, the processing system is further configured to identify negative peaks among the derivative sensed activation signals which are at least one of within a local neighborhood of an identified minimum peak and within an amplitude threshold based on the amplitude of the corresponding minimum peak.

13. The anatomical mapping system according to claim 8, wherein, to identify an initial vector field pattern template, the processing system is further configured to determine a degree of similarity between each generated vector field and at least one vector field template pattern of a bank of vector field template patterns, and identify a vector field template pattern having a maximum degree of similarity with a corresponding vector field.

14. The anatomical mapping system according to claim 8, wherein, to determine optimized onset times, the processing system is further configured to generate a vector field candidate for each onset time candidate, determine a degree of similarity between each vector field candidate and the vector field generated based on the corresponding activation signal, and identify if the degree of similarity between the vector field candidate and the vector field exceeds the degree of similarity between the vector field and initial vector field pattern.

15. An anatomical mapping system comprising: a plurality of mapping electrodes disposed in or near the anatomical structure configured to sensing activation signals of physiological activity; a processing system associated with the plurality of mapping electrodes, the mapping processor configured to determine an onset time and alternative onset time candidates for each activation signal, wherein an onset time indicates an onset of activation signals at a corresponding electrode location during the corresponding

17

instance of the physiological activity, generate a characteristic representation of the sensed activation signals based on the determined onset times during the corresponding instance of physiological activity, determine a pattern for each characteristic representation, the pattern representing a characteristic propagation pattern of the activation signals during the corresponding instance of the physiological activity, generate a candidate characteristic representation of the sensed activation signal based each of the corresponding alternative onset time candidates, determine an optimized onset time for each activation signal based on the candidate characteristic representations and the pattern, generate an updated characteristic representation for the sensed activation signals based on the optimized onset time for each activation signal and update the pattern with an optimized pattern based on the sensed activation signals.

16. The anatomical mapping system according to claim 15, wherein, to update the pattern with an optimized pattern, the processing system is configured to dynamically update the pattern based on the optimized onset time for each activation signal.

18

17. The anatomical mapping system according to claim 16, wherein, to update the pattern with an optimized pattern, the processing system is configured to dynamically update the pattern further based on the updated characteristic representation.

18. The anatomical mapping system according to claim 16, wherein the optimized pattern comprises a characteristic representation of expected patterns of propagation across the plurality of electrodes.

19. The method according to claim 15, wherein the characteristic representation of sensed activation across the plurality of electrodes is a vector field consisting of a plurality of vectors each denoting a direction and magnitude of propagation at each electrode location.

20. The method according to claim 19, wherein the pattern consists of at least one pattern based on focal activity located at various regions covered by the plurality of electrodes and one pattern based on rotor activity at various regions covered by the plurality of electrodes.

* * * * *

专利名称(译)	通过基于相似性的模式匹配来增强激活开始时间		
公开(公告)号	US9579034	公开(公告)日	2017-02-28
申请号	US14/868182	申请日	2015-09-28
[标]申请(专利权)人(译)	波士顿科学西美德公司		
申请(专利权)人(译)	BOSTON SCIENTIFIC SCIMED INC.		
当前申请(专利权)人(译)	BOSTON SCIENTIFIC SCIMED INC.		
[标]发明人	THAKUR PRAMODSINGH H ARCOT KRISHNAMURTHY SHANTHA SHUROS ALLAN C SHOME SHIBAJI MASKARA BARUN SAHA SUNIPA		
发明人	THAKUR, PRAMODSINGH H. ARCOT-KRISHNAMURTHY, SHANTHA SHUROS, ALLAN C. SHOME, SHIBAJI MASKARA, BARUN SAHA, SUNIPA		
IPC分类号	A61B5/0452 A61B5/04 A61B5/042 A61B18/14 A61B5/046 A61B5/00 A61B18/00		
CPC分类号	A61B5/04525 A61B5/04012 A61B5/0422 A61B5/7246 A61B5/046 A61B5/6858 A61B18/1492 A61B2018/00357 A61B2018/00577		
代理机构(译)	FAEGRE BAKER丹尼尔斯律师事务所		
优先权	61/824245 2013-05-16 US		
其他公开文献	US20160089050A1		
外部链接	Espacenet USPTO		

摘要(译)

解剖映射系统和方法包括配置成检测心脏活动的激活信号的映射电极。处理系统被配置为记录检测到的激活信号，并在生理活动的每个实例期间为每个感测的激活信号生成矢量场。处理系统确定起始时间和备选起始时间候选，基于初始矢量场与来自一组模板的矢量场模板之间的相似度识别初始矢量场模板，然后确定每次激活的优化开始时间。基于起始时间候选和初始矢量场模板之间的程度相似性的信号。

