



US010321663B2

(12) **United States Patent**
Horton et al.

(10) **Patent No.:** **US 10,321,663 B2**
(45) **Date of Patent:** **Jun. 18, 2019**

(54) **AGRICULTURAL DRONE FOR USE IN LIVESTOCK MONITORING**

(58) **Field of Classification Search**

CPC A01K 29/005; B64C 2201/127; B64C 39/024; B64D 47/08

(71) Applicant: **Digi-Star, LLC**, Oakland, NJ (US)

See application file for complete search history.

(72) Inventors: **Christopher V. Horton**, Stoughton, WI (US); **Samuel R. Vorpahl**, Fort Atkinson, WI (US)

(56) **References Cited**

U.S. PATENT DOCUMENTS

(73) Assignee: **DIGI-STAR, LLC**, Fort Atkinson, WI (US)

3,781,837 A 12/1973 Anderson
3,893,111 A 7/1975 Cotter
4,148,278 A 4/1979 Anderson
4,399,821 A 8/1983 Bowers
4,844,076 A 7/1989 Lesho et al.
4,854,328 A 8/1989 Pollack
4,865,044 A 9/1989 Wallace et al.

(*) Notice: Subject to any disclaimer, the term of this patent is extended or adjusted under 35 U.S.C. 154(b) by 347 days.

(Continued)

(21) Appl. No.: **14/864,222**

FOREIGN PATENT DOCUMENTS

(22) Filed: **Sep. 24, 2015**

CN 103299975 A 9/2013
CN 103723275 A 4/2014

(65) **Prior Publication Data**

(Continued)

US 2017/0086428 A1 Mar. 30, 2017

(51) **Int. Cl.**

OTHER PUBLICATIONS

H04N 7/18 (2006.01)
A01K 29/00 (2006.01)
B64C 39/02 (2006.01)
G06K 9/00 (2006.01)
A61B 5/00 (2006.01)
A61B 5/01 (2006.01)
B64D 47/08 (2006.01)

Anonymous: "PrecisionHawkTurn Applications into Data: Livestock Management PrecisionHawk", precisionhawk.com, Jul. 15, 2014 (Jul. 15, 2014), XP055314971.*

(Continued)

(52) **U.S. Cl.**

Primary Examiner — Md N Haque

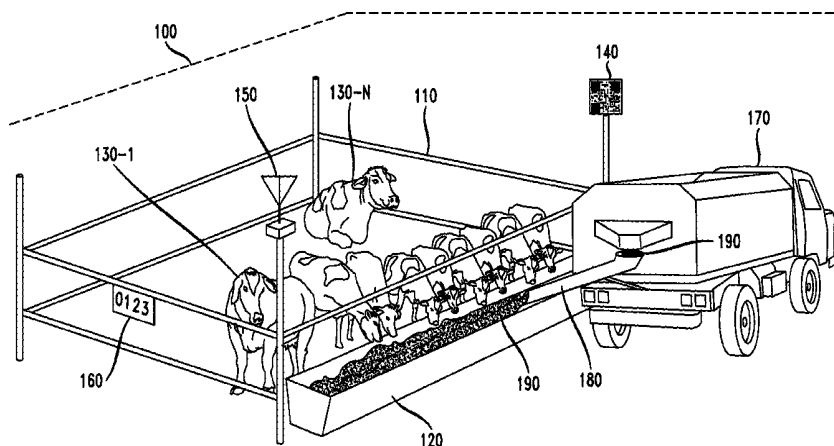
(74) *Attorney, Agent, or Firm* — Chiesa Shahinian & Giantomasi PC

CPC **A01K 29/005** (2013.01); **A61B 5/0008** (2013.01); **A61B 5/0015** (2013.01); **A61B 5/01** (2013.01); **B64C 39/024** (2013.01); **G06K 9/00063** (2013.01); **G06K 9/00771** (2013.01); **H04N 7/185** (2013.01); **A61B 5/0075** (2013.01); **A61B 5/0077** (2013.01); **A61B 5/6887** (2013.01); **A61B 5/6896** (2013.01); **A61B 2503/40** (2013.01); **B64C 2201/127** (2013.01); **B64D 47/08** (2013.01)

(57) **ABSTRACT**

A method and system utilizing one or more agricultural drones to improve the real-time monitoring, measuring and analysis of the health of livestock, in particular, the core body temperatures thereof.

32 Claims, 7 Drawing Sheets



(56)

References Cited

U.S. PATENT DOCUMENTS

5,008,821 A 4/1991 Pratt et al.
 5,424,957 A 6/1995 Kerkhoff et al.
 5,474,085 A 12/1995 Hurnik et al.
 5,751,576 A 5/1998 Monson
 5,974,348 A 10/1999 Rocks
 5,984,875 A 11/1999 Brune
 6,032,084 A * 2/2000 Anderson A01K 29/00
 348/E13.004

 6,059,733 A 5/2000 Brune et al.
 6,099,482 A 8/2000 Brune et al.
 6,445,983 B1 9/2002 Dickson et al.
 6,529,615 B2 3/2003 Hendrickson et al.
 7,479,884 B1 1/2009 Fullerton
 7,536,976 B1 5/2009 Bryant
 7,689,434 B2 3/2010 Cureton et al.
 8,297,231 B2 10/2012 Yanai et al.
 8,442,765 B1 5/2013 Ingvalson
 8,588,887 B2 11/2013 Arneson et al.
 8,730,014 B2 5/2014 Fullerton
 9,037,521 B1 5/2015 Mewes et al.
 2002/0010390 A1 1/2002 Guice et al.
 2004/0162638 A1 8/2004 Solomon
 2007/0208442 A1 9/2007 Perrone
 2008/0059263 A1 * 3/2008 Stroman G06Q 10/063
 705/7.25
 2009/0187392 A1 * 7/2009 Risky A01K 11/007
 703/11

 2009/0294573 A1 12/2009 Wilson et al.
 2009/0299496 A1 12/2009 Cade
 2010/0017046 A1 1/2010 Cheung et al.
 2012/0022719 A1 1/2012 Matos
 2012/0101861 A1 4/2012 Lindores
 2012/0109614 A1 5/2012 Lindores
 2012/0310532 A1 12/2012 Snoeck et al.
 2013/0173321 A1 * 7/2013 Johnson G06Q 10/06
 705/7.12

 2013/0231968 A1 9/2013 Wiliness
 2014/0024313 A1 1/2014 Campbell
 2014/0035752 A1 2/2014 Johnson
 2014/0089045 A1 3/2014 Johnson
 2014/0095261 A1 4/2014 Johnson
 2014/0155756 A1 6/2014 Elazari-Volcani
 2014/0188573 A1 7/2014 Avey et al.
 2014/0222246 A1 8/2014 Mohamadi
 2014/0303814 A1 10/2014 Burema et al.
 2014/0316614 A1 10/2014 Newman
 2015/0037307 A1 2/2015 Bralkowski et al.
 2015/0106434 A1 4/2015 Fiene et al.
 2016/0050840 A1 2/2016 Sauder et al.
 2016/0093212 A1 * 3/2016 Barfield, Jr. H04N 7/185
 348/144

FOREIGN PATENT DOCUMENTS

CN 103770943 A 5/2014
 CN 203652111 U 6/2014
 DE 102010046479 A1 3/2012

DE 102014201203 A1 7/2015
 WO 2008097080 8/2008
 WO 2008098290 A1 8/2008
 WO 2010057266 5/2010
 WO 2013041636 A1 3/2013
 WO 2014058337 A1 4/2014
 WO 2014146884 A1 9/2014
 WO 2015142166 A1 9/2015
 WO 2016123201 A1 8/2016

OTHER PUBLICATIONS

Anonymous: "PrecisionHawkTurn Applications into Data: Live-stock Management PrecisionHawk", precisionhawk.com, Jul. 15, 2014 (Jul. 15, 2014), XP055314971 (Year: 2014).
 International Search Report and Written Opinion dated Sep. 27, 2016 in connection with International Patent Application No. PCT/US2016/041705, 9 pages.
 International Search Report and Written Opinion dated Nov. 9, 2016 in connection with International Application No. PCT/US2016/051673, 19 pages.
 Krissa Welshans, "Sky's the Limit for UAVs in Ag—Feedstuffs Foodlink," published on Mar. 27, 2015; URL: <http://feedstuffsfoodlink.com.story-skys-limit-uavs-ag-0-125732-printversion>; retrieved on Dec. 5, 2016.
 "PrecisionHawk>Turn Applications into Data: Livestock Management PrecisionHawk,"; precisionhawk.com, Jul. 15, 2014, XP055314971, URL: <http://media.precisionhawk.com/topic/turn-applications-into-data-livestock-management>; retrieved on Oct. 28, 2016.
 International Search Report and Written Opinion dated Nov. 25, 2016 in connection with International Application No. PCT/US2016/051584, 14 pages.
 "Unmanned Aerial Vehicles, Farming and Cattle", Penn State Extension, published on Feb. 24, 2015; URL:<http://extension.psu.edu/animals/dairy/news/2015/unmanned-aerial-vehicles-farming-and-cattle>; retrieved on Dec. 5, 2016.
 Lee Jespersen, "Flying Drone Around the Feedlot," Published on Dec. 27, 2014; URL:<http://www.youtube.com/watch?v=K122WAURDY>; retrieved on Oct. 31, 2016.
 Utility U.S. Appl. No. 14/860,072, filed Sep. 21, 2015.
 Utility U.S. Appl. No. 14/859,974, filed Sep. 21, 2015.
 International Search Report and Written Opinion dated Feb. 9, 2017 in connection with International Application No. PCT/US2016/059626, 12 pages.
 "Drones for Agricultural Crop Surveillance," Precision Drone, Agriculture, retrieved on May 20, 2015, from <http://www.precisiondrone.com/agriculture/>, 3 pgs.
 "Drones for Agriculture," SenseFly Ltd., retrieved on May 20, 2015, from <https://www.sensefly.com/applications/agriculture.html>, 5 pgs.
 "eBee Ag—The Precision Agriculture Drone," retrieved on May 27, 2015, from <https://www.sensefly.com/drones/ebee-ag.html>, 7 pgs.
 "The Drone for Precision Agriculture" Brochure, eBee senseFly, senseFly Ltd., 2014, 7 pgs.
 Postflight Terra 3D Professional photogrammetry software, Feature List, Version 3.4, Release Date: Apr. 8, 2015, 2 pgs.

* cited by examiner

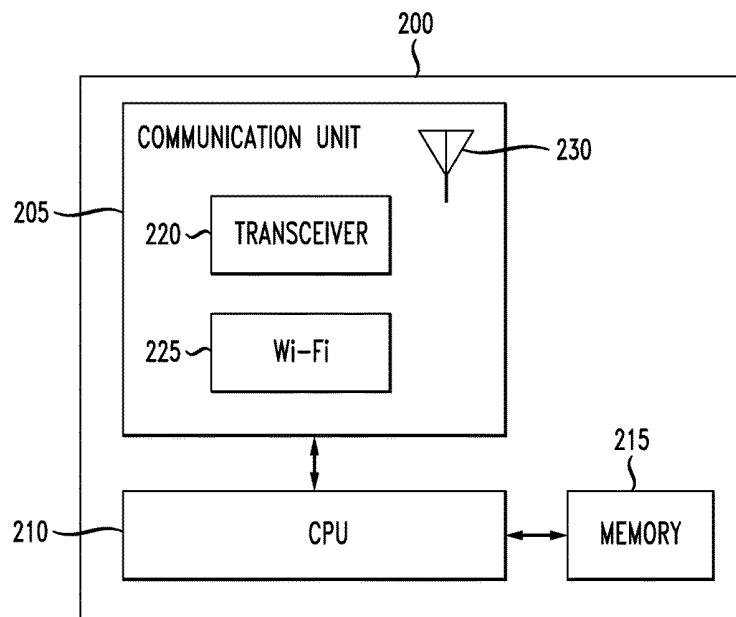


FIG. 2

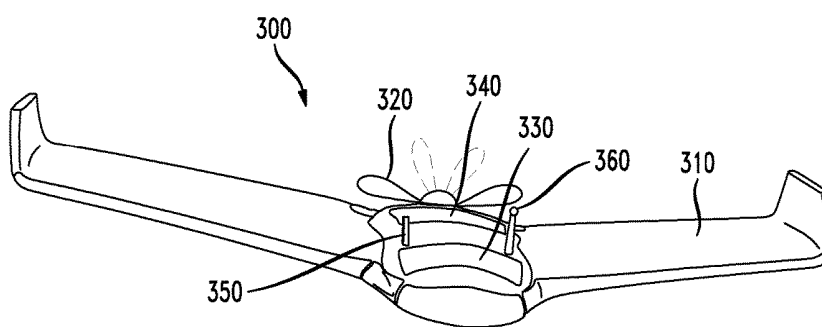


FIG. 3

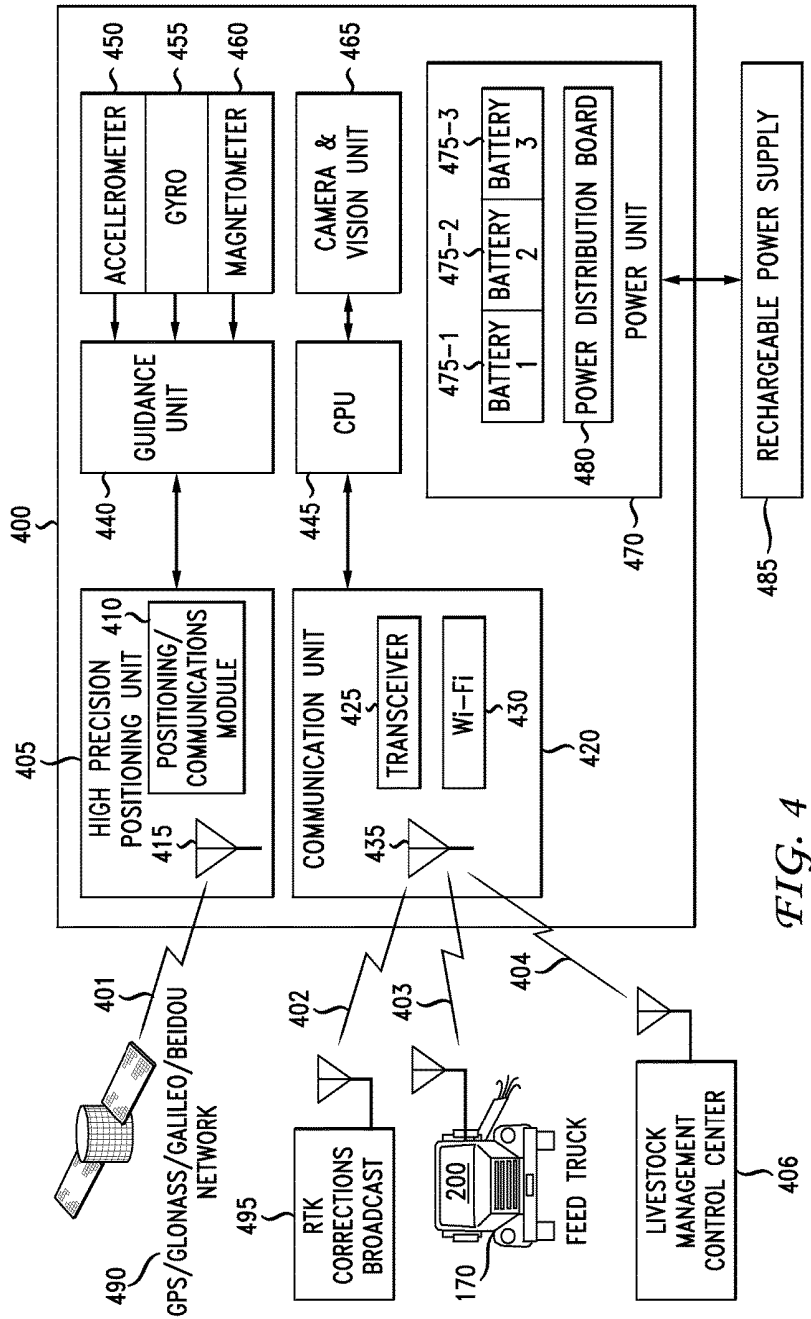


FIG. 4

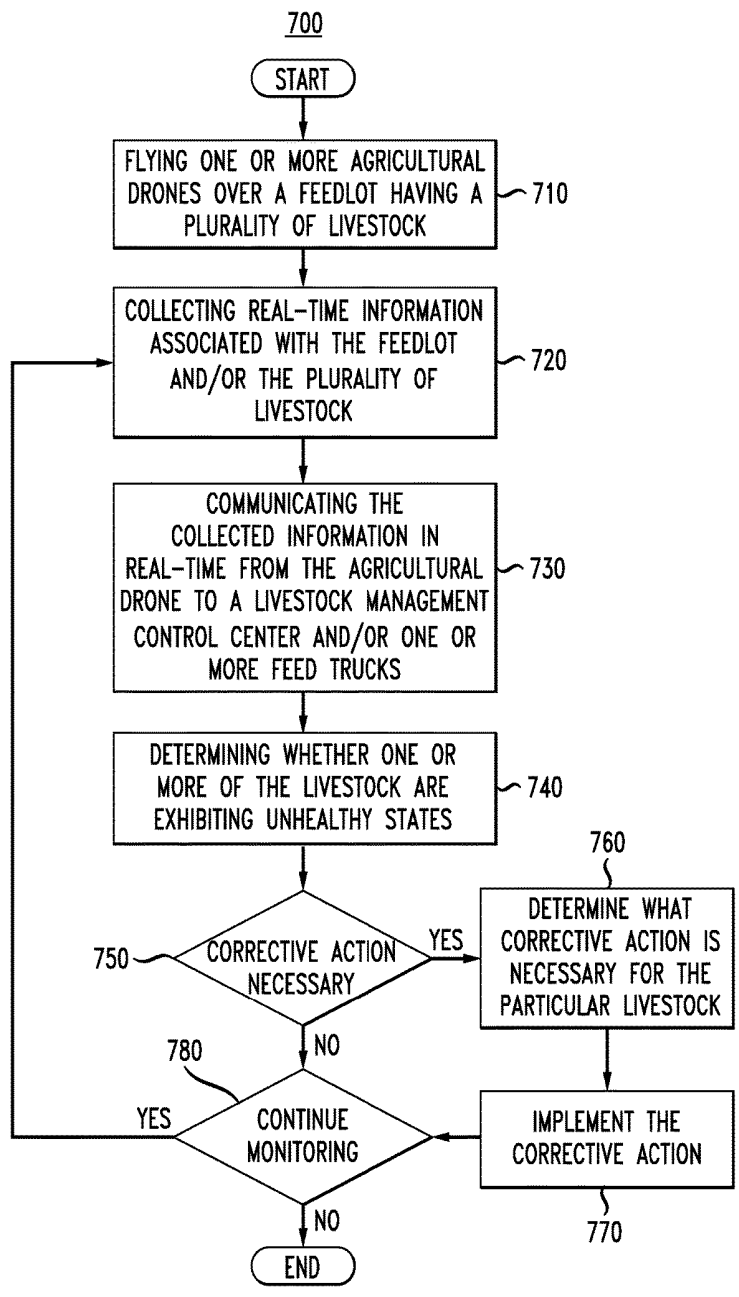


FIG. 7

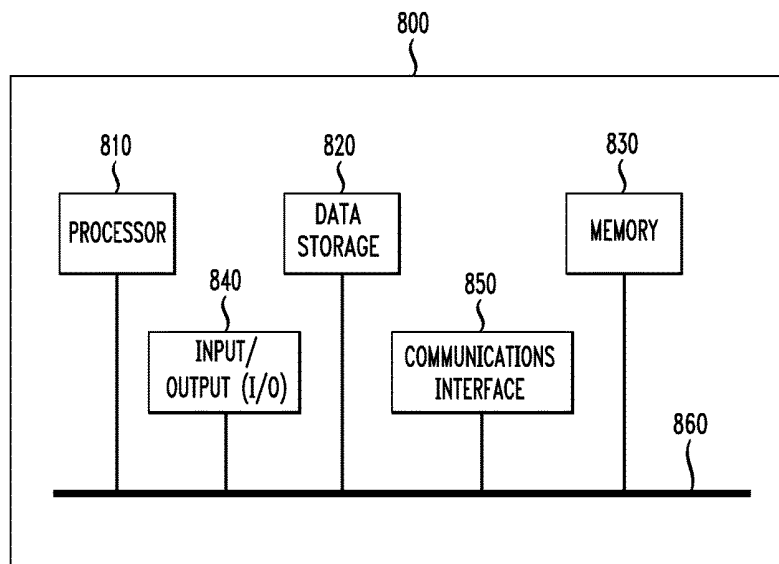


FIG. 8

AGRICULTURAL DRONE FOR USE IN LIVESTOCK MONITORING

TECHNICAL FIELD

The present invention relates generally to livestock in a feedlot or other area, and, more particularly, to a process and system for using an agricultural drone for monitoring the health and condition of livestock.

BACKGROUND OF THE INVENTION

Modern livestock operations employ a large percentage of beef cattle and other livestock fed by commercial feedlot operators. These businesses are often independent contractors which accept livestock (e.g., cattle) from farmers or ranchers at a certain size and age and feed them until they reach a designated size for slaughter. Typically, the farmer or rancher pays the commercial feedlot operator a rental fee for space and care in the feedlot pen(s) and for the associated feeding costs including other operating expenses.

In the feedlot, cattle are grouped in pens according to their feed requirements. Feedlots generally feed thousands of head of cattle or other livestock at various stages of growth. Cattle within a feedlot are physically contained in cattle pens where each pen will typically have a feed bunk to receive and hold feed for the cattle to consume. Ownership of particular cattle in the feedlot is defined by a unique lot number, for example, and the number of cattle in a particular feedlot can vary and may occupy a fraction of one or more cattle pens.

Within a particular pen, cattle are fed substantially the same feed ration (i.e., substantially the same ration type and quantity) and any one feedlot may have a large number of pens to accommodate cattle at various growth stages or that require special feed handling due to illness or malnourishment, for example. That is, livestock may be exposed to disease which can devastate a livestock population and be very costly to the owners. Each year large numbers of livestock are lost due to undetected or late detection of illness.

Considerable human labor is expended in monitoring the health and status of livestock in such feedlots (and other environments) including but not limited to monitoring certain physiological states. For example, a current practice for detection of sick livestock in typical feedlot operations is to employ a so-called "pen rider" who is an individual (e.g., a cowboy) responsible for riding about pens across the feedlot looking for individual livestock (e.g., cattle) that are exhibiting sickly characteristics. Such characteristics might include head down, reduced mobility, reduced alertness and runny noses. In addition to identifying such livestock, an important goal is to ultimately isolate the sick animals from the other livestock in the pen to reduce the risk of spreading any sickness and for treating the sick animals. Of course, as with any human centric activity, issues arise with respect to availability (i.e., finding enough capable workers to fill the need), effectiveness, consistency, speed, accuracy and a variety of working conditions that can make the job difficult for humans.

One critical physiological measure of determining livestock health is the core body temperature of the animal which can vary from a normal core body temperature due to a variety of conditions. For example, several hours before a cow is in standing heat and most likely to conceive, the core body temperature of the cow rises, or if the cow is sick or under heat stress from ambient conditions this may also

cause a rise in temperature of the animal. Conversely, the temperature of the cow may drop shortly before delivery of a calf, or if the cow is experiencing hypothermia and/or if the cow has died.

As such, given that core body temperature is an important indicator of a variety of physiological states, there have been a number of techniques developed to measure temperature of livestock and/or reduce the human factor needed to collect such information. For example, U.S. Pat. Nos. 5,984,875, 6,059,733 and 6,099,482 describe an animal temperature system that utilizes ingestible boluses for monitoring physiological parameters of animals. Further, for example, U.S. Pat. No. 4,865,044 describes a temperature sensing system for cattle that utilizes a transmitter and encoding circuitry mounted on an ear tag which is connected to a temperature-sensing probe placed in the ear canal of the cattle being monitored, and U.S. Patent Application Publication No. 2002/0010390 describes a system for the automated monitoring of livestock and other animals that utilizes an implantable wireless "smart tele-sensor" that can be implanted in the animal which measures and transmits temperature and other parameters (e.g., blood oxygen and heart rate) related to the health and status of the animal being monitored. The transmitted temperature and other parameters are transmitted to human personnel carrying certain receiving devices (e.g., personal hand-operated radios, personal digital assistants or cell phones) to take corrective action and/or an off-site location for monitoring.

As will be appreciated, while a variety of animal temperature monitoring techniques exist the ability to rapidly deploy a complete, practical, efficient and cost effective temperature monitoring system for large-scale commercial livestock operations is beneficial.

Therefore, a need exists for an improved technique for reliably, efficiently and more effectively monitoring the temperature of livestock or other animals in large-scale commercial livestock operations.

BRIEF SUMMARY OF THE EMBODIMENTS

In accordance with various embodiments, one or more agricultural drones are used to improve the real-time monitoring, measuring and analysis of the health of livestock, in particular, the core body temperatures thereof.

More particularly, in accordance with an embodiment, one or more agricultural drones are dispatched to fly over one or more feedlots (or other large-scale livestock operations) having one or more pens associated therewith that hold a plurality of livestock. In accordance with the embodiment, the flying of the drone and the traversing of the feedlots allows the drone to monitor and examine one or more livestock in order to facilitate rapid and real-time measurement and analysis of at least the core body temperature of the individual livestock.

In accordance with an embodiment, the agricultural drone is configured with an imaging apparatus which includes a thermal imaging device and may also include further imaging devices such as a general still camera, a video camera having a video recording function, a stereoscopic camera capable of obtaining a three-dimensional image using parallax, a 360 degree camera capable of obtaining 360 degree video, and/or a hyper-spectrum camera. For example, the thermal imaging device is a thermographic camera that forms an image using infrared radiation in a wavelength as long as 14,000 nm (i.e., in the infrared spectral band 7500-14,000 nm). Further, for example, a hyper-spectrum camera is used for obtaining an image having a wavelength

band from near-ultraviolet (for example, 350 nm) to near-infrared (for example, 1100 nm) and splits the wavelength of the image at predetermined intervals (for example, 5 nm) using a diffraction grating or the like to obtain hyper spectrum information. This thermographic and/or hyper spectrum information facilitates the measurement of the core temperature of the animal(s) being monitored and an analysis to determine, for example, the current health condition of the animal. For example, the agricultural drone may communicate such temperature analysis information to a central location for processing by a livestock management control center to facilitate taking any corrective action necessary with respect to identified sick livestock. In accordance with an embodiment, the temperature analysis information may include measured temperature information, other images of the livestock (e.g., photographic images) taken by the agricultural drone that can be collectively utilized to assess the health of one or more livestock, and/or the location of the livestock.

In accordance with another embodiment, the agricultural drone may process such temperature analysis information directly while in-flight and communicate the need and/or appropriate action to be taken to a respective feed truck (or other agricultural truck) traversing the feedlot so that a human operator of the truck may take further corrective action and/or isolate the sick animal in a particular pen. In accordance with this embodiment, the flying of the agricultural drone and the traversing of the feed lots by the feed truck(s) occur substantially contemporaneously. As such, the agricultural drone communicates the collected temperature analysis information, as the drone flies over the feed lot, to the feed truck operating in some proximity to the drone so that the operator of the vehicle can utilize the information to take corrective action regarding an identified sick livestock during, illustratively, the delivery of feed to feed bunks associated with the pen. For example, to isolate the livestock within the pen or remove the livestock from pen. Similarly, in accordance with other embodiments, the agricultural drone may also communicate in real-time with one or more pen riders traversing the feed lot (e.g., on horseback) and/or a herd manager (e.g., monitoring the livestock from livestock management control center) to identify sick livestock and undertaking correction action.

These and other advantages of the embodiments will be apparent to those of ordinary skill in the art by reference to the following detailed description and the accompanying drawings.

BRIEF DESCRIPTION OF THE DRAWINGS

FIG. 1 shows an illustrative feedlot, feed bunk and feed truck arrangement for the caring and feeding of livestock in accordance with an embodiment;

FIG. 2 shows a high-level block diagram of a livestock monitoring analysis unit which is integral with the feed truck of FIG. 1 in accordance with an embodiment;

FIG. 3 shows an illustrative agricultural drone in accordance with an embodiment;

FIG. 4 shows a high-level block diagram of on-board electronics which is integral with the agricultural drone of FIG. 3 in accordance with an embodiment;

FIG. 5 shows an explanatory diagram of the use of the agricultural drone configured in accordance with FIG. 3 and FIG. 4 for monitoring the health of livestock in a feedlot in accordance with an embodiment;

FIG. 6 shows an explanatory diagram of the use of multiple agricultural drones configured in accordance with

FIG. 3 and FIG. 4 for monitoring the health of livestock in a feedlot in accordance with an embodiment;

FIG. 7 shows a flowchart of illustrative operations for monitoring the health of livestock in a feedlot utilizing agricultural drone(s) in accordance with an embodiment; and

FIG. 8 is a high-level block diagram of a further exemplary livestock monitoring analysis unit in accordance with an embodiment.

DETAILED DESCRIPTION

In accordance with various embodiments, one or more agricultural drones are used to improve the real-time monitoring, measuring and analysis of the health of livestock, in particular, the core body temperatures thereof.

FIG. 1 shows an illustrative feedlot **100**, feed bunk **120** and feed truck **170** arrangement for the feeding of livestock. As shown, feedlot **100** has pen **110** holding a plurality of livestock (illustratively cattle **130-1** through cattle **130-N**), feed bunk **120** for holding a ration (i.e., a type of feed, in a selected quantity) selected for the livestock contained by pen **110**, i.e., cattle **130-1** through **130-N**. Pen **110** has an associated identification symbol **160** to distinguish pen **110** from other pens (not shown) in feedlot **100** so that a driver of feed truck **170** driving by feedlot **100** can clearly distinguish pen **110** when reading feed bunk **120** or delivering feed **190** in a designated feed ration to feed bunk **120** by feed truck **170** through feed chute **180**. Alternatively, the identification of pen **110** can be automated using an RF signal transmitted locally by transmitter **150** and/or by affixing bar code **140** to pen **110** for reading by a bar code scanner, and/or by using an associated GNSS location, for example. As will be appreciated, while a single pen, i.e., pen **110**, is shown in feedlot **100** it will be understood that feedlot **100** can be a size of hundreds of miles with many feed bunks located throughout its geographic footprint. The driver of feed truck **170**, in addition to feed delivery, may also be responsible for observing and monitoring the health of the livestock contained by pen **110**, i.e., cattle **130-1** through **130-N**.

In accordance with an embodiment, feed truck **170** is configured with livestock monitoring analysis unit **200** as shown in FIG. 2. Livestock monitoring analysis unit **200** includes communication unit **205** having transceiver **220**, Wi-Fi controller **225** and antenna **230**, central processing unit (CPU) **210**, and memory **215**. As detailed further herein below, livestock monitoring analysis unit **200**, being integral with feed truck **170**, will facilitate real-time communications between feed truck **170** and one or more agricultural drones flying in proximity thereto in order to improve the health monitoring of livestock in a feedlot. Further, in accordance with an embodiment, CPU **210** can execute certain livestock management application software (as stored in memory **215**) for receiving and processing the temperature analysis information transmitted from the one or more agricultural drones, as detailed further herein below. Of course, as will be appreciated, while the embodiments described herein are with respect to pens, feedlots, and feed trucks it will be understood that the principles disclosed herein are not limited to such embodiments and are equally applicable to any large-scale livestock operation where the real-time monitoring, measuring and analysis of the health of livestock, in particular, their core body temperatures is desired.

In particular, FIG. 3 shows an illustrative agricultural drone **300** in accordance with an embodiment. As shown, agricultural drone **300** includes a lightweight body and

wings 310, motor assembly 320, built-in GNSS/RTK/PPP receiver 330, imaging apparatus 340, pitot tube 350 and antenna 360. Of course, agricultural drone 300 will include other components and functionality not depicted in FIG. 3 such as batteries, ground sensors, other onboard electronics and communications, onboard artificial intelligence, collision avoidance, to name a few. One such commercially available agricultural drone is the eBee Ag drone sold by senseFly Ltd, Route de Geneve 38, 033 Cheseaux-Lausanne, Switzerland. Agricultural drone 300 is fully autonomous and will fly in accordance with a predefined flight plan and in the case of agricultural applications the drone will capture highly accurate images of a particular field or fields and/or a particular feedlot or feedlots covering hundreds of hectares/acres in a single flight, and monitoring and measuring the health (e.g., core body temperature) of livestock in the field or fields in accordance with various embodiments.

In accordance with an embodiment, agricultural drone 300 is configured with imaging apparatus 340 which includes a thermal imaging device and may also include further imaging devices such as a general still camera, a video camera having a video recording function, a stereoscopic camera capable of obtaining a three-dimensional image using parallax, a 360 degree camera capable of obtaining 360 degree video, and/or a hyper-spectrum camera. For example, the thermal imaging device is a thermographic camera that forms an image using infrared radiation in a wavelength as long as 14,000 nm (i.e., in the infrared spectral band 7500-14,000 nm). Further, for example, a hyper-spectrum camera is used for obtaining an image having a wavelength band from near-ultraviolet (for example, 350 nm) to near-infrared (for example, 1100 nm) and splits the wavelength of the image at predetermined intervals (for example, 5 nm) using a diffraction grating or the like to obtain hyper spectrum information.

Illustratively, imaging apparatus 340 as configured with the thermal imaging device (e.g., a laser or other such device) provides agricultural drone 300 with the ability to monitor the core body temperature of the livestock. This thermographic and/or hyper spectrum information facilitates the measurement of the core temperature of the animal(s) being monitored and analysis to determine, for example, the current health condition of the animal. For example, agricultural drone 300 may communicate such temperature analysis information to a central location for processing by a livestock management control center to facilitate taking any corrective action necessary with respect to an identified sick livestock (e.g., cattle 130-1 as shown in FIG. 1). For example, a herd manager resident at the livestock management control center may receive a warning signal from the agricultural drone 300 that a particular livestock is exhibiting a current temperature that is outside of a normal temperature range, and the herd manager may send a remote communication back to agricultural drone 300 that directs agricultural drone 300 to study that particular livestock (e.g., using imaging apparatus 340) more closely through still imaging, for example. In accordance with an embodiment, the temperature analysis information may include measured temperature information, other images of the livestock taken by the agricultural drone that can be collectively utilized to assess the health of one or more livestock, and/or the location of the particular "down" livestock that has been monitored. For example, a color photographic image of the livestock can be useful in conveying the current physical state of the livestock and possibly compared to prior stored images of that livestock to assist ascertaining the current physical state.

FIG. 4 shows a high-level block diagram of on-board electronics 400 which are integral with agricultural drone 300 of FIG. 3 in accordance with an embodiment. As shown, on-board electronics 400 includes high precision positioning unit 405 having positioning/communications module 410 (e.g., a GPS/GLONASS/GALILEO/BEIDOU positioning/communications module) and antenna 415 which communicates, via communications link 401, with GPS/GLONASS/GALILEO/BEIDOU network 490 in a well-known fashion, communication unit 420 having transceiver 425, Wi-Fi controller 430 and antenna 435 which interfaces with at least RTK corrections broadcast 495 over communications link 402 in a well-known fashion, guidance unit 440, central processing unit (CPU) 445, accelerometer 450, gyro 455, magnetometer 460, camera and vision unit 465 (forming imaging apparatus 340 shown in FIG. 3, in whole or in part), power unit 470 having batteries 475-1 through 475-3 and power distribution board 480 which interfaces with rechargeable power supply 485 in a well-known fashion. In accordance with various embodiments, agricultural drone 300 will transmit and communicate real-time communications and livestock health information regarding at least one physiological parameter (i.e., measured core body temperatures of particular ones of the livestock being monitored) to feed truck 170 as configured with livestock monitoring analysis unit 200 (as shown illustratively in FIG. 4), via communication link 403, utilizing communications unit 420 with respect to a particular feedlot under investigation by agricultural drone 300.

In accordance with further embodiments, agricultural drone 300 will transmit and communicate real-time communications and information to livestock management control center 406, via communication link 404, utilizing communications unit 420 with respect to a particular feedlot and/or livestock under investigation by agricultural drone 300, and a user (not shown) working in livestock management control center 406 may analyze the information received from agricultural drone 300 to determine if particular ones of the livestock are exhibiting any health issues and define what corrective action(s) to take. Of course, in a further embodiment, agricultural drone 300 may also transmit and communicate such real-time communications and information simultaneously to both feed truck 170 and livestock management control center 406. Similarly, in accordance with other embodiments, the agricultural drone may also communicate in real-time with one or more pen riders (not shown) traversing the feed lot and/or a herd manager (not shown) to identify sick livestock (e.g., monitoring the livestock from livestock management control center) and undertaking corrective action.

FIG. 5 shows an explanatory diagram 500 of an embodiment the use of agricultural drone 510 configured in accordance with FIG. 3 and FIG. 4 for monitoring the health of livestock in a feedlot in accordance with an embodiment. Further, feed truck 580-1 through feed truck 580-N are each configured in accordance with FIG. 1 and FIG. 2 (as shown illustratively in FIG. 4) for interfacing, for example, with agricultural drone 510. As will be appreciated, while the description of the various embodiments herein utilize agricultural drones configured consistent with agricultural drone 300, the principles and advantages of the embodiments are not limited to such a drone and are equally useful and applicable to other types of drones and unmanned aerial vehicles having the same or similar configurations.

As shown, feed trucks 580-1 through 580-N are travelling along feed alley 525-1, feed alley 525-2, feed alley 525-3, and feed alley 525-4, as the case may be, that are routed

through feedlot **515** for the delivery of feed rations to a plurality of feed bunks (i.e., feed bunk **530-1** through **530-N**). As shown, agricultural drone **510** is flying over feedlot **515** having a plurality of pens (i.e., pen **520-1** through pen **520-N**), with each respective pen holding one or more livestock (e.g., cattle **540-1** through **540-N**) and configured with a particular one feed bunk of the plurality of feed bunks **530-1** through **530-N**, a particular one transmitter (i.e., transmitter **570-1** through **570-N**), a particular one bar code (i.e., bar code **560-1** through **560-N**) and a particular one identification symbol (i.e., identification symbol **550-1** through **550-N**). It will be understood that the plurality of livestock may be any kind (one or many) of livestock or other animals that are typically fed using feedlots or roaming in other large scale livestock populations.

The flyover by agricultural drone **510** will be in accordance with a defined flight plan in a well-known manner during which agricultural drone **510** will be collecting real-time information with respect to feedlot **515** and/or one or more of the livestock associated therewith (i.e., cattle **540-1** through cattle **540-N**). In accordance with this embodiment, the flying of agricultural drone **510** and the traversing of feedlot **515** by feed trucks **580-1** through **580-N** occur substantially contemporaneously. In accordance with further embodiments, agricultural drone **510** may fly in advance of the routing (in whole or in part) of feed trucks **580-1** through **580-N**.

In accordance with the embodiment, the flying of agricultural drone **510** and the traversing of feedlot **515** (and associated pens **520-1** through **520-N**) allows agricultural drone **510** to monitor and examine individual livestock (e.g., cattle **540-1**) in order to facilitate rapid and real-time analysis and monitoring of the health of the livestock by measuring at least one physiological parameter, for example, at least their core body temperature (e.g., measuring the core body temperature of cattle **540-1**). As such, in accordance with the embodiment, agricultural drone **510** is able to fly over the feedlot and plurality of livestock to scan for livestock that are “down” due to sickness or death, for example. Illustratively, such health monitoring and temperature measuring is accomplished as agricultural drone **510** flies over feedlot **515** and utilizes the image apparatus configured therein (i.e., imaging apparatus **340**) to direct beam **595-1** at cattle **540-1** or direct beam **595-2** at cattle **540-2** which will measure the respective temperature of each by capturing a thermal image of cattle **540-1** and/or cattle **540-2** in a well-known fashion. Such thermal image is then used, in accordance with the embodiment, to determine the core body temperature of cattle **540-1** and/or cattle **540-2** to ascertain the animal’s overall current health condition. In other words, in accordance with the embodiment, ascertaining the current physiological state of one or more of the plurality of cattle **540-1** through **540-N**.

Illustratively, these thermal images can be examined using thermographic imaging software that will analyze the information transmitted and received from agricultural drone **510**, either in real-time or at some future time. Further, illustratively, agricultural drone **510** may also capture other images (e.g., photographic images) of cattle **540-1** and/or cattle **540-2** from imaging apparatus **340** which can be useful in determining the current physiological state of cattle **540-1** and/or cattle **540-2**. Further, as detailed above, agricultural drone **510** may be configured to also monitor and analyze the temperature(s) of the plurality of cattle **540-1** through **540-N** itself to determine whether one or more of the animals are suffering from a current health issue and report the physiological state of the livestock as part of the

information collected by the drone. In other words, in accordance with the embodiment, the agricultural drone **510** is able ascertain the current physiological state of one or more of the plurality of cattle **540-1** through **540-N**.

Advantageously, in accordance with the embodiment, the real-time livestock health information collected by agricultural drone **510** such as thermal images and/or other images will be utilized and communicated, over one or more communications links **590**, to livestock management control center **545** and/or one or more of the feed trucks **580-1** through **580-N** to assist with monitoring the health of cattle **540-1** through **540-N**. Communications links **590** are, illustratively, a wireless communications link established over wireless infrastructure, such as a third party supplied cellular or Wi-Fi network, but in many cases where an existing third party wireless infrastructure does not exist, the user must provide a suitable replacement. In such cases, one type of a user supplied infrastructure configuration is a narrowband single frequency radio system that may be operated over feedlot **515**, for example. Such communication is realized with, for example, Wi-Fi radios as well as cellular phones (e.g., 3G/4G/LTE/5G), UHF radios and/or solid state radios.

As such, the real-time information collected, provided and transmitted by agricultural drone **510** allows for increased efficiency, speed and/or accuracy in the health monitoring of livestock which far exceeds that of traditional, labor intensive monitoring techniques. Further, given that the conditions associated with feedlot **515** can change rapidly due to a variety of adverse conditions (e.g., wind, rain, heat, etc.) that may also impact the health of the livestock (e.g., cattle **540-1** through **540-N**), the application of agricultural drone **510** in real-time allows for a determination of their overall impact on the health of the livestock at any particular time.

FIG. **6** shows an explanatory diagram **600** of another embodiment use of multiple agricultural drones configured in accordance with FIG. **3** and FIG. **4** for monitoring the health of livestock in a feedlot in accordance with an embodiment. That is, agricultural drone **610-1** and agricultural drone **610-2** are each configured the same as agricultural drone **300** in accordance with FIG. **3** and FIG. **4** and flying over feedlot **615**. Further, feed truck **680-1** through feed truck **680-N** are each configured in accordance with FIG. **1** and FIG. **2** (as shown illustratively in FIG. **4**). These flyovers by agricultural drone **610-1** and agricultural drone **610-2** will be in accordance with a defined flight plans in a well-known manner during which agricultural drone **610-1** and/or agricultural drone **610-2** will each be collecting real-time information with respect to feedlot **615** and/or the livestock associated therewith (i.e., cattle **640-1** through cattle **640-N**). Of course, while FIG. **6** illustratively shows two drones it will be understood that any number of drones may be utilized in accordance with the principles of the embodiments.

As shown, feed trucks **680-1** through **680-N** are travelling along feed alley **625-1**, feed alley **625-2**, feed alley **625-3**, and feed alley **625-4**, as the case may be, that are routed through feedlot **615** for the delivery of feed rations to a plurality of feed bunks (i.e., feed bunk **630-1** through **630-N**). As shown, agricultural drone **610-1** and agricultural drone **610-2** are flying over feedlot **615** having a plurality of pens (i.e., pen **620-1** through pen **620-N**), with each respective pen holding one or more livestock (e.g., cattle **640-1** through **640-N**) and configured with a particular one feed bunk of the plurality of feed bunks **630-1** through **630-N**, a particular one transmitter (i.e., transmitter **670-1** through **670-N**), a particular one bar code (i.e., bar code **660-1** through **660-N**) and a particular one identification symbol

(i.e., identification symbol **650-1** through **650-N**). It will be understood that the plurality of livestock may be any kind (one or many) of livestock or other animals that are typically fed using feedlots.

The flyover by agricultural drone **610-1** and agricultural drone **610-2** will be in accordance with a defined flight plan in a well-known manner during which these agricultural drones will be collecting real-time information with respect to feedlot **615** and/or one or more of the livestock associated therewith (i.e., cattle **640-1** through **640-N**). In accordance with this embodiment, the flying of agricultural drone **610-1** and agricultural drone **610-2** and the traversing of feedlot **615** by feed trucks **680-1** through **680-N** occur substantially contemporaneously. In accordance with further embodiments, agricultural drone **610-1** and/or agricultural drone **610-2** may fly in advance of the routing (in whole or in part) of feed trucks **680-1** through **680-N**. As such, in accordance with the embodiment, agricultural drone **610-1** and/or agricultural drone **610-2** are each able to fly over the feedlot and plurality of livestock to scan for livestock that are “down” due to sickness or death, for example.

In accordance with the embodiment, the real-time information collected by agricultural drone **610-1** and/or agricultural drone **610-2** such thermal images and/or other images will be utilized and communicated, over one or more communications links **690**, to livestock management control center **645** and/or one or more of the feed trucks **680-1** through **680-N** to assist with monitoring the health of one or more livestock (e.g., cattle **640-1** through **640-N**). Further, communications can be exchanged by and between agricultural drone **610-1** and agricultural drone **610-2**, in a well-known manner, in order to coordinate their actions and traversing of feedlot **615**.

In accordance with the embodiment, the flying of agricultural drone **610-1** and agricultural drone **610-2** and the traversing of feedlot **615** (and associated pens **620-1** through **620-N** and feed bunks **630-1** through **630-N**) allows the drones, individually and collectively, to monitor and examine individual livestock in order to facilitate rapid and real-time analysis and monitoring of the health of the livestock by measuring at least one physiological parameter, for example, at least their core body temperature (e.g., measuring the core body temperature of cattle **640-1** and/or cattle **640-N**). Illustratively, such health monitoring and temperature measuring is accomplished as agricultural drone **610-1** and/or agricultural drone **610-2** flies over feedlot **615** and utilizes the image apparatus configured therein (i.e., imaging apparatus **340**) to direct beam **695-1** at cattle **640-1** and beam **695-2** at cattle **640-2**, respectively, which will measure such temperature by capturing a thermal image of cattle **640-1** and cattle **640-2** in a well-known fashion. Such thermal image is then used, in accordance with the embodiment, to determine the core body temperature of cattle **640-1** and cattle **640-2** to ascertain each animal’s overall current health condition.

Illustratively, these thermal images can be examined, in well-known fashion, using thermographic imaging software that will analyze the information transmitted and received from agricultural drone **610-1** and/or agricultural drone **610-2**, either in real-time or at some future time. Further, illustratively, agricultural drone **610-1** and/or agricultural drone **610-2** may also capture other images (e.g., photographic images) of cattle **640-1** through **640-N** from imaging apparatus **340** which can be useful in depicting the current physiological state of the animals. Further, as detailed above, agricultural drone **610-1** and/or agricultural drone **610-2** may be configured to also monitor and analyze the

temperature(s) of the plurality of cattle **640-1** through **640-N** themselves to determine whether one or more of the animals are suffering from a current health issue and report the physiological state of the livestock as part of the information collected by the drones. In other words, in accordance with the embodiment, the agricultural drones **610-1** and **610-2** are able to ascertain the current physiological state of one or more of the plurality of cattle **640-1** through **640-N**.

FIG. 7 shows a flowchart of illustrative operations **700** for monitoring the health of livestock in a feedlot utilizing agricultural drone(s) in accordance with an embodiment. In accordance with the operations of FIG. 7, at step **710**, one or more agricultural drones is flown over a feedlot having a plurality of livestock and, at step **720**, collecting real-time information associated with the feedlot and/or the plurality of livestock (e.g., core body temperatures, as detailed herein above) from the agricultural drone. At step **730**, the collected information is transmitted and communicated, in real-time, from the agricultural drone(s) to a livestock management control center and/or one or more feed trucks traversing the feedlot substantially contemporaneously with the agricultural drone(s), as detailed herein above, and, at step **740**, a determination is made whether one or more of the livestock are exhibiting any unhealthy states and whether corrective action, step **750**, is necessary. If corrective action is necessary, the corrective action is determined, at step **760**, for the particular livestock and implemented at step **770**, and monitoring of the livestock by the agricultural drone(s) continues as desired (step **780**).

Advantageously, in accordance with the embodiment, the real-time livestock health information collected by agricultural drone (e.g., agricultural drone **610-1** or agricultural drone **610-2**) such as thermal images and/or other images will be utilized and communicated, over one or more communications links (e.g., communication links **690**), to a livestock management control center (e.g., livestock management control center **645**) and/or one or more of the feed trucks (e.g., feed trucks **680-1** through **680-N**) to assist with monitoring the health of the livestock (e.g., cattle **640-1** through **640-N**), as detailed above.

As detailed above, the various embodiments herein can be embodied in the form of methods and apparatuses for practicing those methods. The disclosed methods may be performed by a combination of hardware, software, firmware, middleware, and computer-readable medium (collectively “communications device”) installed in and/or communicatively connected to a processor or the like. FIG. 8 is a high-level block diagram of livestock monitoring analysis unit **800** which is an alternative configuration of exemplary livestock monitoring analysis unit **200** (as shown in FIG. 2) that may be used for monitoring the health of livestock in accordance with the various embodiments herein.

Livestock monitoring analysis unit **800** comprises a processor **810** operatively coupled to a data storage device **820** and a memory **830**. Processor **810** controls the overall operation of livestock monitoring analysis unit **800** by executing computer program instructions that define such operations. Communications bus **860** facilitates the coupling and communication between the various components of livestock monitoring analysis unit **800**. The computer program instructions may be stored in data storage device **820**, or a non-transitory computer readable medium, and loaded into memory **830** when execution of the computer program instructions is desired.

Thus, certain of the steps of the disclosed method (see, e.g., FIG. 7) and the associated discussion herein above can be defined by the computer program instructions stored in

memory **830** and/or data storage device **820** and controlled by processor **810** executing the computer program instructions. For example, the computer program instructions can be implemented as computer executable code programmed by one skilled in the art to perform the illustrative operations defined by the disclosed method. Accordingly, by executing the computer program instructions, processor **810** executes an algorithm defined by the disclosed method. Livestock monitoring analysis unit **800** also includes one or more communications interface **850** for communicating with other devices via a network (e.g., a wireless communications network) or communications protocol (e.g., Bluetooth®). For example, such communication interfaces may be a receiver, transceiver or modem for exchanging wired or wireless communications in any number of well-known fashions. Livestock monitoring analysis unit **800** also includes one or more input/output devices **840** that enable user interaction with livestock monitoring analysis unit **800** (e.g., camera, display, keyboard, mouse, speakers, microphone, buttons, etc.).

Processor **810** may include both general and special purpose microprocessors, and may be the sole processor or one of multiple processors of livestock monitoring analysis unit **800**. Processor **810** may comprise one or more central processing units (CPUs), for example. Processor **810**, data storage device **820**, and/or memory **830** may include, be supplemented by, or incorporated in, one or more application-specific integrated circuits (ASICs) and/or one or more field programmable gate arrays (FPGAs).

Data storage device **820** and memory **830** each comprise a tangible non-transitory computer readable storage medium. Data storage device **820**, and memory **830**, may each include high-speed random access memory, such as dynamic random access memory (DRAM), static random access memory (SRAM), double data rate synchronous dynamic random access memory (DDR RAM), or other random access solid state memory devices, and may include non-volatile memory, such as one or more magnetic disk storage devices such as internal hard disks and removable disks, magneto-optical disk storage devices, optical disk storage devices, flash memory devices, semiconductor memory devices, such as erasable programmable read-only memory (EPROM), electrically erasable programmable read-only memory (EEPROM), compact disc read-only memory (CD-ROM), digital versatile disc read-only memory (DVD-ROM) disks, or other non-volatile solid state storage devices.

Input/output devices **840** may include peripherals, such as a camera, printer, scanner, display screen, etc. For example, input/output devices **840** may include a display device such as a cathode ray tube (CRT), plasma or liquid crystal display (LCD) monitor for displaying information to the user, a keyboard, and a pointing device such as a mouse or a trackball by which the user can provide input to livestock monitoring analysis unit **800**.

It should be noted that for clarity of explanation, the illustrative embodiments described herein may be presented as comprising individual functional blocks or combinations of functional blocks. The functions these blocks represent may be provided through the use of either dedicated or shared hardware, including, but not limited to, hardware capable of executing software. Illustrative embodiments may comprise digital signal processor (“DSP”) hardware and/or software performing the operation described herein. Thus, for example, it will be appreciated by those skilled in the art that the block diagrams herein represent conceptual views of illustrative functions, operations and/or circuitry of

the principles described in the various embodiments herein. Similarly, it will be appreciated that any flowcharts, flow diagrams, state transition diagrams, pseudo code, program code and the like represent various processes which may be substantially represented in computer readable medium and so executed by a computer, machine or processor, whether or not such computer, machine or processor is explicitly shown. One skilled in the art will recognize that an implementation of an actual computer or computer system may have other structures and may contain other components as well, and that a high level representation of some of the components of such a computer is for illustrative purposes.

The foregoing Detailed Description is to be understood as being in every respect illustrative and exemplary, but not restrictive, and the scope of the invention disclosed herein is not to be determined from the Detailed Description, but rather from the claims as interpreted according to the full breadth permitted by the patent laws. It is to be understood that the embodiments shown and described herein are only illustrative of the principles of the present invention and that various modifications may be implemented by those skilled in the art without departing from the scope and spirit of the invention. Those skilled in the art could implement various other feature combinations without departing from the scope and spirit of the invention.

The invention claimed is:

1. A method for monitoring a plurality of livestock, the method comprising:

collecting real-time information specific to at least one livestock of the plurality of livestock from a first agricultural drone flying over the plurality of livestock, and wherein the real-time information specific to the at least one livestock collected includes image data of the at least one livestock;

collecting real-time information with respect to a feedlot associated with the at least one livestock, and wherein the real-time information with respect to the feedlot collected includes a plurality of adverse conditions, and wherein at least one of the adverse conditions of the plurality of adverse conditions is impacting the health of the at least one livestock, the at least one of the adverse conditions being a wind condition, a rain condition, or a heat condition;

analyzing, by the first agricultural drone and based on the real-time information specific to the at least one livestock collected and the real-time information with respect to the feedlot collected, at least one physiological parameter to ascertain the physiological state of the at least one livestock, the at least one physiological parameter being a current core temperature associated with the at least one livestock;

determining, by the first agricultural drone, whether the current core temperature is outside a normal temperature range associated with the at least one livestock, and if so, generating a first warning signal that the at least one livestock is exhibiting the current core temperature that is outside the normal temperature range; and

transmitting the real-time information specific to the at least one livestock collected and the real-time information with respect to the feedlot collected and the first warning signal specific to the at least one livestock in real-time from the first agricultural drone for monitoring the at least one physiological state of the at least one livestock of the plurality of livestock.

2. The method of claim 1 further comprising: measuring, by the first agricultural drone, at least one other physiological parameter of the at least one least

13

livestock, the at least one other physiological parameter included in the collected information; and transmitting the at least one other physiological parameter measured as part of the collected information.

3. The method of claim 1 further comprising:

receiving the real-time information specific to the at least one livestock collected and the real-time information with respect to the feedlot collected and the first warning signal at a livestock management control center; and

sending, from the livestock management control center, a remote communication to the first agricultural drone, the remote communication directing the first agricultural drone to further analyze the at least one livestock.

4. The method of claim 1 further comprising: collecting real-time information specific to at least one other livestock of the plurality of livestock from a second agricultural drone, and wherein the real-time information specific to the at least one other livestock collected includes image data of the at least one other livestock, and the second agricultural drone flying contemporaneously with the first agricultural drone;

collecting real-time information with respect to a feedlot associated with the at least one other livestock, and wherein the real-time information with respect to the feedlot collected includes a plurality of adverse conditions, and wherein at least one of the adverse conditions of the plurality of adverse conditions is impacting the health of the at least one other livestock, the at least one of the adverse conditions being a wind condition, a rain condition, or a heat condition;

analyzing, by the second agricultural drone and based on the real-time information specific to the at least one other livestock collected and the real-time information with respect to the feedlot collected by second agricultural drone, at least one physiological parameter to ascertain the physiological state of the at least one other livestock, the at least one physiological parameter being a current core temperature associated with the at least one other livestock;

determining, by the second agricultural drone, whether the current core temperature is outside a normal temperature range associated with the at least one other livestock, and if so, generating a second warning signal that the at least one other livestock is exhibiting the current core temperature that is outside the normal temperature range; and

transmitting the real-time information specific to the at least one other livestock collected and the real-time information with respect to the feedlot collected and the second warning signal specific to the at least one other livestock in real-time from the second agricultural drone for monitoring at least one physiological state of the at least one other livestock.

5. The method of claim 4 further comprising:

measuring, by the second agricultural drone, at least one physiological parameter of the at one other least one other livestock, the at least one physiological parameter included in the collected information; and

transmitting the at least one physiological parameter measured as part of the collected information specific to the at least one other livestock.

6. The method of claim 5 wherein the real-time information specific to the at least one other livestock collected is transmitted in real-time from the second agricultural drone to at least one feed truck traversing a feedlot associated with the plurality of livestock.

14

7. The method of claim 1 wherein the image data includes a thermal image of the at least one livestock.

8. The method of claim 7 wherein the collected information includes a location of the at least one livestock.

9. The method of claim 3 wherein the transmitting the information specific to the at least one livestock collected and the real-time information with respect to the feedlot collected and the first warning signal specific to the at least one livestock is to the livestock management control center.

10. The method of claim 2 further comprising: isolating the at least one livestock based on the real-time information specific to the at least one livestock collected.

11. The method of claim 3 wherein the plurality of livestock are associated with a feedlot.

12. The method of claim 7 wherein the image data includes a photographic image of the at least one livestock.

13. The method of claim 6 wherein the at least one feed truck is traversing the feedlot contemporaneously with the flying of the first agricultural drone and the second agricultural drone.

14. The method of claim 3 further comprising: receiving, by the first agricultural drone, the remote communication;

transmitting, by the first agricultural drone, a real-time color photographic image of the at least one livestock conveying a current physical state of the at least one livestock; and

determining, using the real-time color photographic image, whether a corrective action is necessary with respect to the at least one livestock.

15. A system for monitoring a plurality of livestock, the system comprising:

a first agricultural drone configured to fly over the plurality of livestock, and to (i) collect real-time information specific to at least one livestock of the plurality of livestock and wherein the real-time information specific to the at least one livestock collected includes image data of the at least one livestock, and real-time information with respect to a feedlot associated with the at least one livestock and wherein the real-time information with respect to the feedlot collected includes a plurality of adverse conditions, and wherein at least one of the adverse conditions of the plurality of adverse conditions is impacting the health of the at least one livestock, the at least one of the adverse conditions being a wind condition, a rain condition, or a heat condition, (ii) analyze, from the collected real-time information specific to the at least one livestock and the real-time information with respect to the feedlot at least one physiological parameter to ascertain the physiological state of the at least one livestock, the at least one physiological parameter being a current core temperature associated with the at least one livestock, (iii) determine whether the current core temperature is outside a normal temperature range associated with the at least one livestock, and if so, generate a first warning signal that the at least one livestock is exhibiting the current core temperature that is outside the normal temperature range, and (iv) transmit the collected real-time information specific to the at least one livestock and the real-time information with respect to the feedlot and the first warning signal specific to the at least one livestock in real-time from the first agricultural drone for monitoring at least one physiological state of the at least one livestock.

16. The system of claim 15 wherein a livestock management control center is configured to (i) receive the collected information, the real-time information with respect to a feedlot associated with the at least one livestock and the first warning signal specific to the at least one livestock from the first agricultural drone in real-time, (ii) transmit a remote communication to the first agricultural drone, the remote communication directing the first agricultural drone to further study the at least one livestock, (iii) receive a color photographic image from the first agricultural drone in response to the remote communication, (iv) and determine if any corrective action is necessary based on the collected information and the color photographic image specific to the at least one livestock from the first agricultural drone.

17. The system of claim 15 wherein the first agricultural drone is further configured to measure at least one physiological parameter of the at least one livestock, and transmit the at least one physiological parameter measured as part of the collected information.

18. The system of claim 16 wherein the livestock management control center is further configured to compare the current color photographic image of the at least one livestock to one or more previously stored color images of the at least one livestock.

19. The system of claim 18 wherein the corrective action is determined based on the comparison of the current color photographic image to the one or more previously stored color images.

20. The system of claim 15 further comprising:

a second agricultural drone configured to fly over the plurality of livestock, and to (i) collect real-time information specific to at least one other livestock of the plurality of livestock and wherein the real-time information specific to the at least one livestock collected includes image data of the at least one livestock, and real-time information with respect to a feedlot associated with the at least one other livestock, wherein the real-time information with respect to the feedlot collected includes a plurality of adverse conditions, and wherein at least one of the adverse conditions of the plurality of adverse conditions is impacting the health of the at least one other livestock, the at least one of the adverse conditions being a wind condition, a rain condition, or a heat condition, (ii) analyze, from the collected real-time information specific to the at least one other livestock and the real-time information with respect to the feedlot at least one physiological parameter to ascertain the physiological state of the at least one other livestock, the at least one physiological parameter being a current core temperature associated with the at least one other livestock, (iii) determine whether the current core temperature is outside a normal temperature range associated with the at least one other livestock, and if so, generate a second warning signal that the at least one other livestock is exhibiting the current core temperature that is outside the normal temperature range, and (iv) transmit the collected real-time information and the second warning signal specific to the at least one other livestock in real-time from the second agricultural drone for monitoring a physiological state of the at least one other livestock.

21. The system of claim 20 wherein the first agricultural drone and the second agricultural drone are configured to fly contemporaneously.

22. The system of claim 21 wherein at least one feed truck of a plurality of feed trucks receives the collected informa-

tion specific to the at least one other livestock from the second agricultural drone in real-time.

23. The system of claim 20 wherein the first agricultural drone and the second agricultural drone are configured to communicate with each other.

24. The system of claim 17 wherein the first agricultural drone is further configured to capture a thermal image of the at least one livestock and determine the current core temperature therefrom.

25. The system of claim 20 wherein the second agricultural drone is further configured to capture a thermal image of the at least one livestock and determine the current core temperature therefrom.

26. A method for operating an agricultural drone, the method comprising:

flying the agricultural drone over a plurality of livestock; collecting real-time information specific to the plurality of livestock from the agricultural drone, and wherein the real-time information specific to at least one livestock collected includes image data of the at least one livestock;

collecting real-time information with respect to a feedlot associated with the plurality of livestock, wherein the real-time information with respect to the feedlot collected includes a plurality of adverse conditions, and wherein at least one of the adverse conditions of the plurality of adverse conditions is impacting the health of the at least one livestock, the at least one of the adverse conditions being a wind condition, a rain condition, or a heat condition;

analyzing, by the agricultural drone using the real-time information specific to the at least one livestock collected and the real-time information with respect to the feedlot collected, at least one physiological parameter to ascertain the physiological state of at least one livestock of the plurality of livestock, the at least one physiological parameter being a current core temperature associated with the at least one livestock;

determining, by the agricultural drone, whether the current core temperature is outside a normal temperature range associated with the at least one livestock, and if so, generating a warning signal that the at least one livestock is exhibiting the current core temperature that is outside the normal temperature range; and

transmitting, by the agricultural drone, the real-time information specific to the at least one livestock collected and the real-time information with respect to the feedlot collected and the warning signal specific to the plurality of livestock in real-time from the agricultural drone for monitoring the health of the at least one livestock and particular other ones of the livestock of the plurality of livestock.

27. The method of claim 26 further comprising:

measuring, by the agricultural drone, at least one physiological parameter of the particular ones of the livestock, the at least one physiological parameter included in the collected information; and

transmitting the at least one physiological parameter measured for the particular ones of the livestock as part of the collected information.

28. The method of claim 27, further comprising:

receiving a remote communication, the remote communication directing the agricultural drone to further study the at least one livestock; and

transmitting, in response to the remote communication received, a current color photographic image of the at least one livestock.

29. The method of claim 28 further comprising:
isolating one or more of the particular ones of livestock
based on the collected information.

30. The method of claim 29 wherein the image data
includes thermal images of the particular ones of the live- 5
stock.

31. The method of claim 30 wherein the image data
includes photographic images of the particular ones of the
livestock.

32. The method of claim 28 further comprising: 10
determining a corrective action specific to the at least one
livestock based on a comparison of the current color
photographic image of the at least one livestock to one
or more previously stored color images of the at least
one livestock. 15

* * * * *

专利名称(译)	用于牲畜监测的农用无人机		
公开(公告)号	US10321663	公开(公告)日	2019-06-18
申请号	US14/864222	申请日	2015-09-24
[标]申请(专利权)人(译)	DIGI STAR		
申请(专利权)人(译)	DIGI-STAR , LLC		
当前申请(专利权)人(译)	DIGI-STAR , LLC		
[标]发明人	HORTON CHRISTOPHER V VORPAHL SAMUEL R		
发明人	HORTON, CHRISTOPHER V. VORPAHL, SAMUEL R.		
IPC分类号	H04N7/18 A01K29/00 B64C39/02 G06K9/00 A61B5/00 A61B5/01 B64D47/08		
CPC分类号	A01K29/005 A61B5/0008 A61B5/0015 A61B5/01 B64C39/024 G06K9/0063 G06K9/00771 H04N7/185 A61B5/0075 A61B5/0077 A61B5/6887 A61B5/6896 A61B2503/40 B64C2201/127 B64D47/08 G16H40 /67		
其他公开文献	US20170086428A1		
外部链接	Espacenet		

摘要(译)

一种利用一个或多个农用无人机来改进牲畜健康状况，特别是其核心体温的实时监测，测量和分析的方法和系统。

