



US010299741B2

(12) **United States Patent**  
**Kravis et al.**

(10) **Patent No.:** **US 10,299,741 B2**  
(45) **Date of Patent:** **May 28, 2019**

(54) **MULTIPLE-DIMENSION IMAGING SENSOR AND STATE-BASED OPERATION OF AN IMAGING SYSTEM INCLUDING A MULTIPLE-DIMENSION IMAGING SENSOR**

(58) **Field of Classification Search**  
CPC ..... A61B 6/12; A61B 6/4441; A61B 6/5235; A61B 6/54; A61B 6/547; A61B 6/584;  
(Continued)

(71) Applicants: **Dental Imaging Technologies Corporation**, Hatfield, PA (US); **Teledyne DALSA B.V.**, Eindhoven (NL)

(56) **References Cited**

U.S. PATENT DOCUMENTS

4,223,228 A 9/1980 Kaplan  
5,463,669 A 10/1995 Kaplan  
(Continued)

(72) Inventors: **Scott David Kravis**, Lambertville, NJ (US); **Leonid Khatutskiy**, Washington Crossing, PA (US); **James Paul Frerichs**, Sellersville, PA (US); **Adrian David French**, Suno (IT); **Kyle Alan Pixton**, Lansdale, PA (US); **Hein Loijens**, Tilburg (NL); **Frank Polderdijk**, Goes (NL); **Helmut Rosner**, Tilburg (NL)

FOREIGN PATENT DOCUMENTS

WO 2010150148 A1 12/2010

OTHER PUBLICATIONS

Non-Final Office Action U.S. Appl. No. 15/627,199, filed Apr. 10, 2018 (20 pages).

(Continued)

*Primary Examiner* — Taeho Jo

(74) *Attorney, Agent, or Firm* — Michael Best & Friedrich LLP

(73) Assignees: **DENTAL IMAGING TECHNOLOGIES CORPORATION**, Hatfield, PA (US); **TELEDYNE DALSA B.V.**, Eindhoven (NL)

(\*) Notice: Subject to any disclaimer, the term of this patent is extended or adjusted under 35 U.S.C. 154(b) by 0 days.

(57) **ABSTRACT**

Methods and systems are described for operating an imaging sensor, the imaging sensor including a multi-dimensional sensor. An electronic processor receives an output from the multi-dimensional sensor and transitions the imaging sensor from the low-power state into a ready state in response to a determination by the electronic processor, based on the output from the multi-dimensional sensor, that a first state transition criteria is satisfied and transitions the imaging sensor from the ready state into an armed state in response to a determination that a second state transition criteria is satisfied. In some implementations, the electronic processor operates the imaging sensor to capture image data only when operating in the armed state and prevents the imaging system from transitioning from the low-power state directly into the armed state.

(21) Appl. No.: **15/265,753**

(22) Filed: **Sep. 14, 2016**

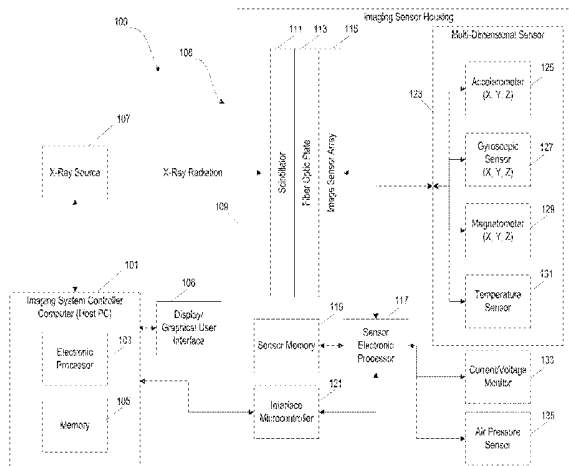
(65) **Prior Publication Data**

US 2018/0070895 A1 Mar. 15, 2018

(51) **Int. Cl.**  
**A61B 6/14** (2006.01)  
**A61B 6/00** (2006.01)  
(Continued)

(52) **U.S. Cl.**  
CPC ..... **A61B 6/145** (2013.01); **A61B 5/01** (2013.01); **A61B 5/4547** (2013.01);  
(Continued)

**38 Claims, 14 Drawing Sheets**



- (51) **Int. Cl.**
- |                    |           |                  |         |                     |                      |
|--------------------|-----------|------------------|---------|---------------------|----------------------|
| <i>A61B 5/01</i>   | (2006.01) | 7,986,415 B2     | 7/2011  | Thiel et al.        |                      |
| <i>G01J 3/28</i>   | (2006.01) | 7,988,356 B2     | 8/2011  | Watanabe            |                      |
| <i>A61B 5/00</i>   | (2006.01) | 7,997,796 B2     | 8/2011  | De Godzinsky        |                      |
| <i>G01R 31/44</i>  | (2006.01) | 8,149,990 B2     | 4/2012  | De Godzinsky        |                      |
| <i>H02S 40/44</i>  | (2014.01) | 8,324,587 B2     | 12/2012 | Zeller              |                      |
| <i>G06F 1/3215</i> | (2019.01) | 8,519,348 B2     | 8/2013  | Topfer et al.       |                      |
| <i>G06F 1/3234</i> | (2019.01) | 8,690,426 B2     | 4/2014  | Liu et al.          |                      |
| <i>G06F 3/00</i>   | (2006.01) | 9,216,003 B1     | 12/2015 | Chen et al.         |                      |
| <i>G06F 3/03</i>   | (2006.01) | 9,314,216 B2     | 4/2016  | De Godzinsky et al. |                      |
| <i>H04N 5/232</i>  | (2006.01) | 2001/0055368 A1  | 12/2001 | Carroll             |                      |
| <i>H04N 5/32</i>   | (2006.01) | 2002/0015934 A1  | 2/2002  | Rubbert et al.      |                      |
| <i>G01L 7/00</i>   | (2006.01) | 2003/0194056 A1  | 10/2003 | Spahn               |                      |
| <i>G01R 33/02</i>  | (2006.01) | 2004/0218792 A1  | 11/2004 | Spoonhower et al.   |                      |
| <i>G01T 1/16</i>   | (2006.01) | 2006/0257816 A1  | 11/2006 | Klemola et al.      |                      |
| <i>G01R 31/02</i>  | (2006.01) | 2007/0223649 A1  | 9/2007  | De Godzinsky        |                      |
| <i>H01H 35/14</i>  | (2006.01) | 2007/0286335 A1  | 12/2007 | De Godzinsky        |                      |
| <i>H01L 31/00</i>  | (2006.01) | 2008/0002808 A1  | 1/2008  | De Godzinsky        |                      |
| <i>H01L 27/14</i>  | (2006.01) | 2008/0019579 A1  | 1/2008  | Crucs               |                      |
| <i>A61B 5/055</i>  | (2006.01) | 2008/0130837 A1  | 6/2008  | Heath et al.        |                      |
|                    |           | 2008/0234935 A1  | 9/2008  | Wolf et al.         |                      |
|                    |           | 2010/0007725 A1  | 1/2010  | Crucs               |                      |
|                    |           | 2011/0192966 A1  | 8/2011  | Harada et al.       |                      |
|                    |           | 2011/0228075 A1* | 9/2011  | Madden              | G03B 15/05<br>348/81 |
- (52) **U.S. Cl.**
- CPC ..... *A61B 6/4233* (2013.01); *A61B 6/4405* (2013.01); *A61B 6/465* (2013.01); *A61B 6/467* (2013.01); *A61B 6/54* (2013.01); *A61B 6/58* (2013.01); *A61B 6/586* (2013.01); *A61B 6/587* (2013.01); *G01J 3/2803* (2013.01); *G01R 31/44* (2013.01); *G06F 1/325* (2013.01); *G06F 1/3215* (2013.01); *G06F 3/005* (2013.01); *G06F 3/0304* (2013.01); *H02S 40/44* (2014.12); *H04N 5/232* (2013.01); *H04N 5/32* (2013.01); *A61B 5/055* (2013.01); *A61B 2560/0204* (2013.01); *A61B 2562/0219* (2013.01); *A61B 2562/0223* (2013.01); *A61B 2562/0247* (2013.01); *G01L 7/00* (2013.01); *G01R 31/02* (2013.01); *G01R 33/02* (2013.01); *G01T 1/16* (2013.01); *H01H 35/14* (2013.01); *H01L 27/14* (2013.01); *H01L 31/00* (2013.01)
- |  |  |                  |         |                     |                         |
|--|--|------------------|---------|---------------------|-------------------------|
|  |  | 2011/0305319 A1  | 12/2011 | Liu et al.          |                         |
|  |  | 2012/0041298 A1  | 2/2012  | Mersky              |                         |
|  |  | 2012/0288819 A1  | 11/2012 | Burrell et al.      |                         |
|  |  | 2012/0307965 A1  | 12/2012 | Bothorel et al.     |                         |
|  |  | 2013/0034213 A1  | 2/2013  | Liu et al.          |                         |
|  |  | 2013/0064346 A1* | 3/2013  | Ferren              | G01N 23/04<br>378/62    |
|  |  | 2013/0140289 A1* | 6/2013  | Baratier            | A61C 7/36<br>219/121.83 |
|  |  | 2014/0005555 A1* | 1/2014  | Tesar               | A61B 17/02<br>600/476   |
|  |  | 2014/0010349 A1  | 1/2014  | De Godzinsky et al. |                         |
|  |  | 2014/0086389 A1  | 3/2014  | Baek et al.         |                         |
|  |  | 2014/0152464 A1  | 6/2014  | Smith               |                         |
|  |  | 2014/0198901 A1  | 7/2014  | Christoff           |                         |
|  |  | 2014/0199649 A1  | 7/2014  | Apte et al.         |                         |
|  |  | 2014/0199650 A1  | 7/2014  | Moffson et al.      |                         |
|  |  | 2014/0254760 A1* | 9/2014  | Hiroike             | A61B 6/4233<br>378/62   |
|  |  | 2014/0272772 A1  | 9/2014  | Andreiko et al.     |                         |
|  |  | 2014/0342324 A1* | 11/2014 | Ghovanloo           | G09B 5/06<br>434/185    |
|  |  | 2014/0347274 A1* | 11/2014 | Koh                 | G06F 3/0346<br>345/158  |
|  |  | 2014/0351558 A1* | 11/2014 | Burca               | G06F 3/0346<br>712/30   |
|  |  | 2014/0351559 A1* | 11/2014 | Lautner             | G06F 3/0346<br>712/30   |
|  |  | 2014/0351560 A1* | 11/2014 | Lautner             | G06F 3/0346<br>712/30   |
|  |  | 2015/0238073 A1* | 8/2015  | Charles             | A61B 17/02<br>600/102   |
|  |  | 2015/0250433 A1  | 9/2015  | Hyde et al.         |                         |
|  |  | 2015/0250435 A1  | 9/2015  | Hyde et al.         |                         |
|  |  | 2015/0250436 A1* | 9/2015  | Hyde                | A61B 6/145<br>378/62    |
|  |  | 2015/0306340 A1* | 10/2015 | Giap                | G06F 19/00<br>600/301   |
|  |  | 2015/0333535 A1  | 11/2015 | Feine               |                         |
|  |  | 2015/0342558 A1* | 12/2015 | Kwak                | A61B 6/4266<br>378/62   |
|  |  | 2016/0033424 A1* | 2/2016  | Ferren              | G01N 23/04<br>378/62    |
|  |  | 2016/0100908 A1* | 4/2016  | Tesar               | A61B 17/02<br>600/202   |
|  |  | 2016/0128624 A1  | 5/2016  | Matt                |                         |
|  |  | 2016/0135779 A1* | 5/2016  | Kim                 | A61B 6/547<br>378/116   |
|  |  | 2016/0143609 A1* | 5/2016  | Park                | A61B 6/547<br>378/98.2  |
|  |  | 2016/0262715 A1  | 9/2016  | Charnegie et al.    |                         |
|  |  | 2016/0262716 A1* | 9/2016  | Kravis              | A61B 6/463              |
|  |  | 2016/0310077 A1* | 10/2016 | Hunter              | A61B 5/0024             |
- (58) **Field of Classification Search**
- CPC ..... *A61B 8/0841*; *A61B 8/4444*; *A61B 6/461*; *A61B 6/465*; *A61B 6/466*; *A61B 6/145*; *A61B 5/01*; *A61B 5/4547*; *A61B 6/4233*; *A61B 6/4405*; *A61B 6/467*; *A61B 6/586*; *A61B 6/587*; *A61B 5/055*; *A61B 2560/0204*; *A61B 2560/0219*; *A61B 2560/0223*; *A61B 2560/0247*; *H02S 40/44*; *G01J 3/2803*; *G01R 31/44*; *G01R 31/02*; *G01R 33/02*; *G06F 1/3215*; *G06F 1/325*; *G06F 3/005*; *G06F 3/0304*; *H04N 5/232*; *H04N 5/32*; *G01L 7/00*; *G01T 1/16*; *H01H 35/14*; *H01L 27/14*; *H01L 31/00*
- USPC ..... 250/362
- See application file for complete search history.
- (56) **References Cited**
- U.S. PATENT DOCUMENTS
- |               |         |                   |           |  |  |
|---------------|---------|-------------------|-----------|--|--|
| 5,661,519 A   | 8/1997  | Franetzi          |           |  |  |
| 5,887,049 A   | 3/1999  | Fossum            |           |  |  |
| 6,122,538 A   | 9/2000  | Sliwa, Jr. et al. |           |  |  |
| 6,924,486 B2  | 8/2005  | Schick et al.     |           |  |  |
| 7,016,468 B1* | 3/2006  | Krema             | H05G 1/34 |  |  |
|               |         |                   | 378/101   |  |  |
| 7,503,692 B2  | 3/2009  | De Godzinsky      |           |  |  |
| 7,588,369 B2  | 9/2009  | Varjonen et al.   |           |  |  |
| 7,599,538 B2  | 10/2009 | Crucs             |           |  |  |

(56)

**References Cited**

U.S. PATENT DOCUMENTS

2017/0027532 A1\* 2/2017 Joshi ..... A61B 6/4405  
2017/0128030 A1\* 5/2017 Kong ..... A61B 6/56  
2017/0300119 A1\* 10/2017 Wu ..... A61B 6/145

OTHER PUBLICATIONS

Non-Final Office Action for U.S. Appl. No. 15/627,232 dated May 9, 2018 (26 pages).

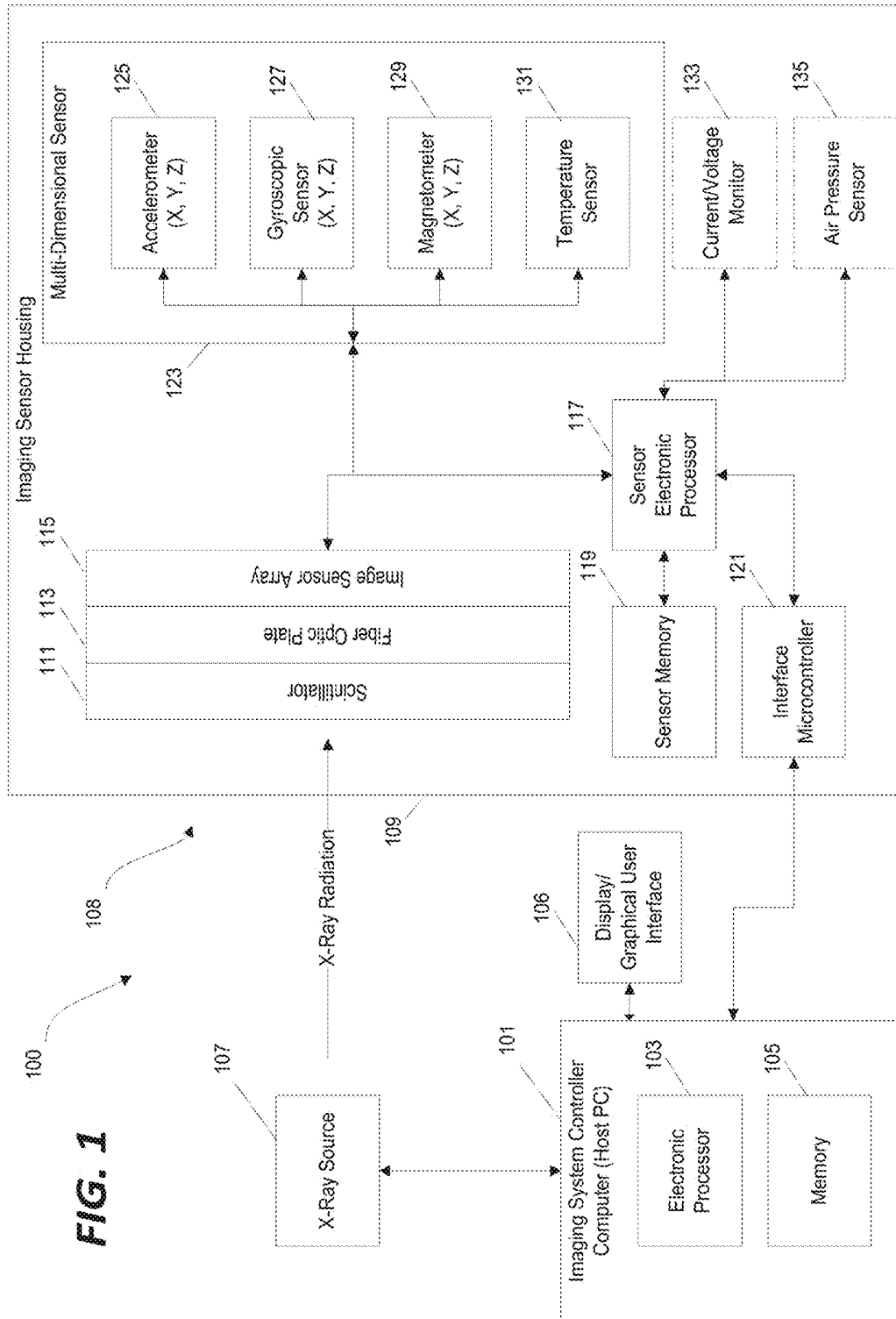
Non-Final Office Action for U.S. Appl. No. 15/627,245 dated May 23, 2018 (19 pages).

Notice of Allowance from the U.S. Appl. No. 15/627,199 dated Oct. 11, 2018 (17 pages).

Final Office Action from the U.S. Appl. No. 15/627,232 dated Nov. 6, 2018 (11 pages).

Notice of Allowance from the U.S. Appl. No. 15/627,245 dated Jan. 10, 2019 (14 pages).

\* cited by examiner



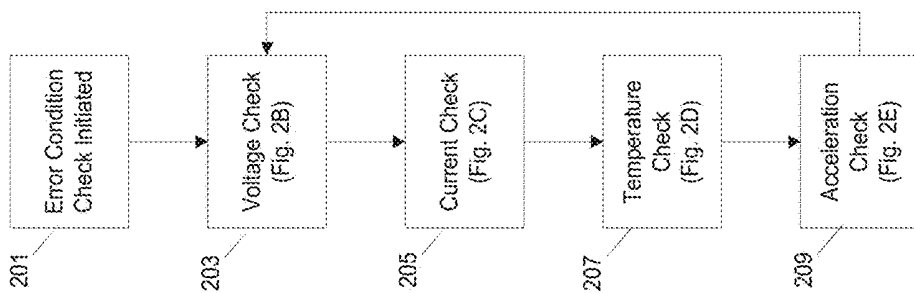


FIG. 2A

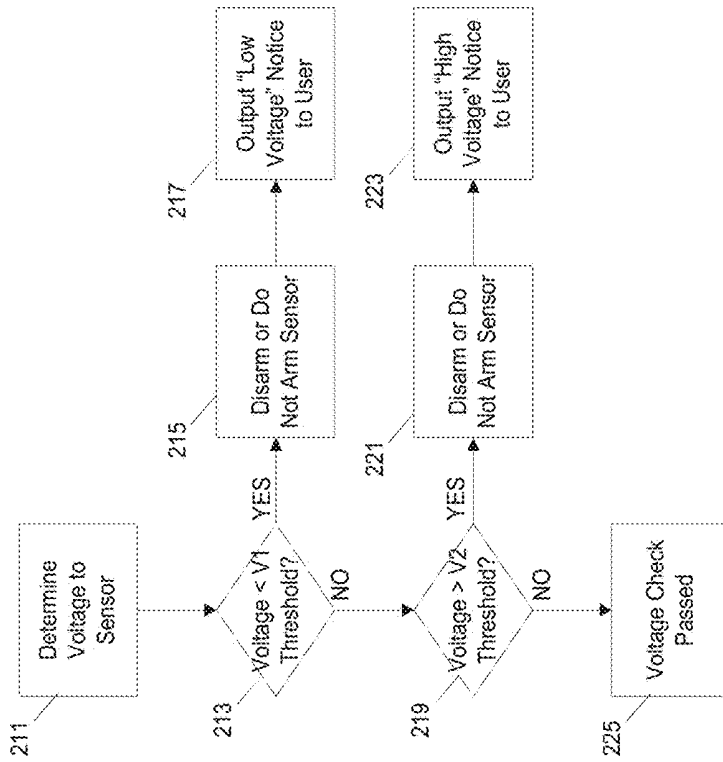
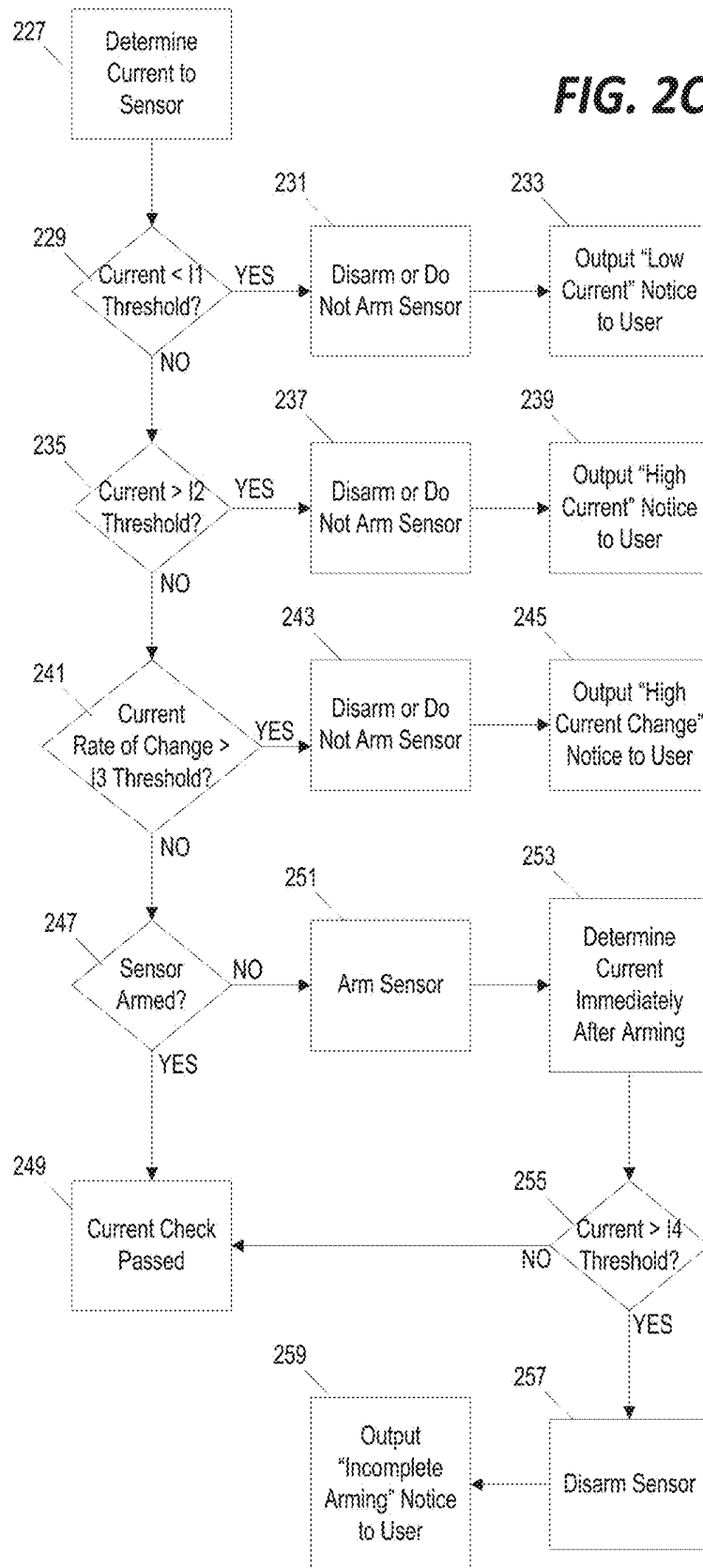
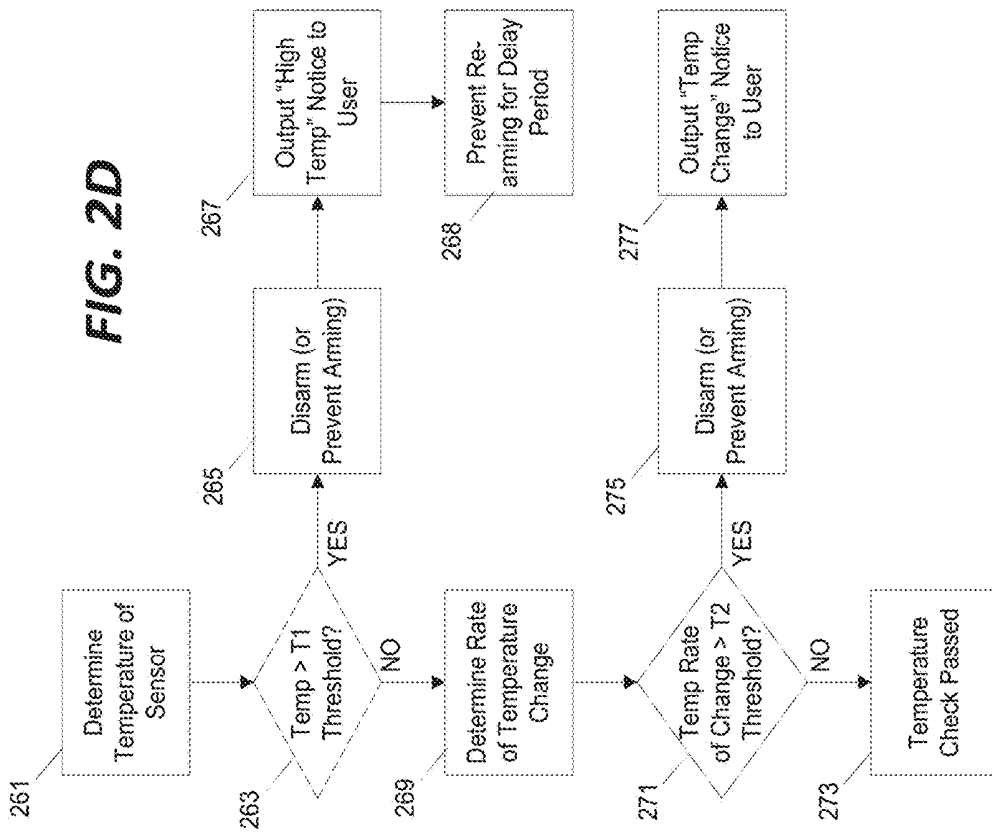
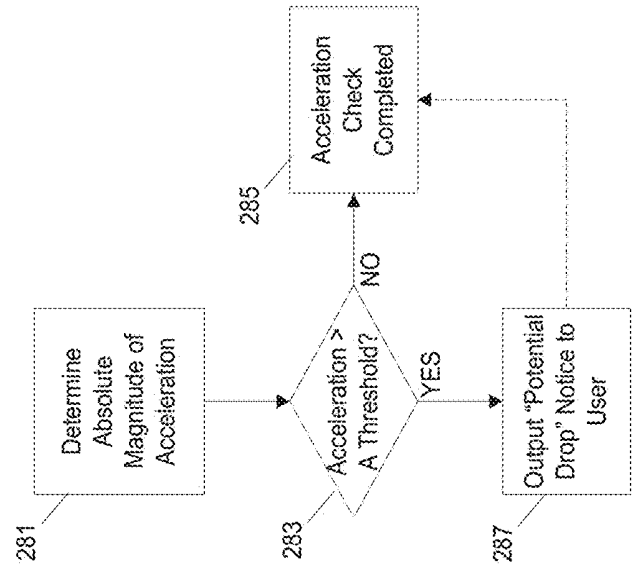


FIG. 2B

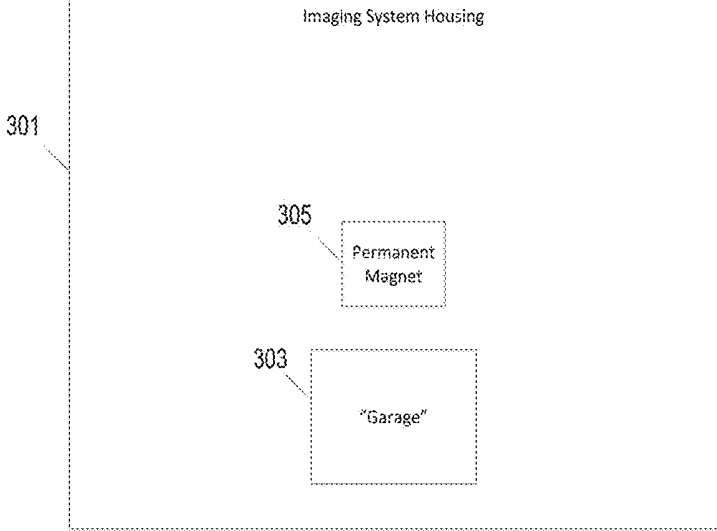




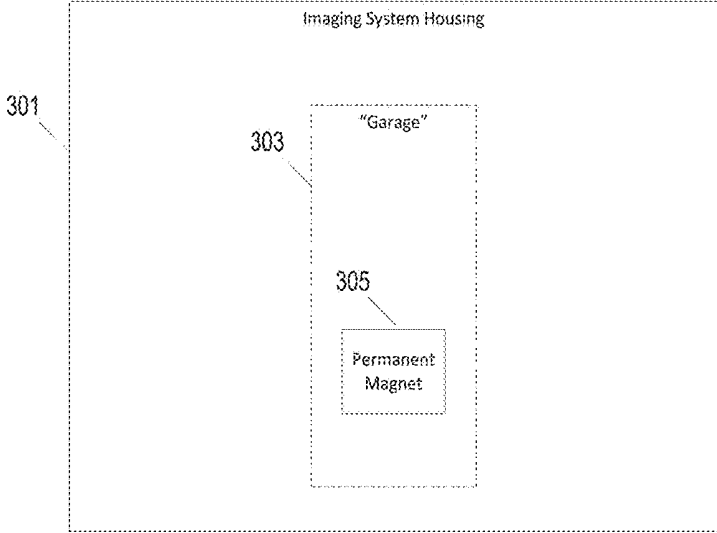
**FIG. 2D**



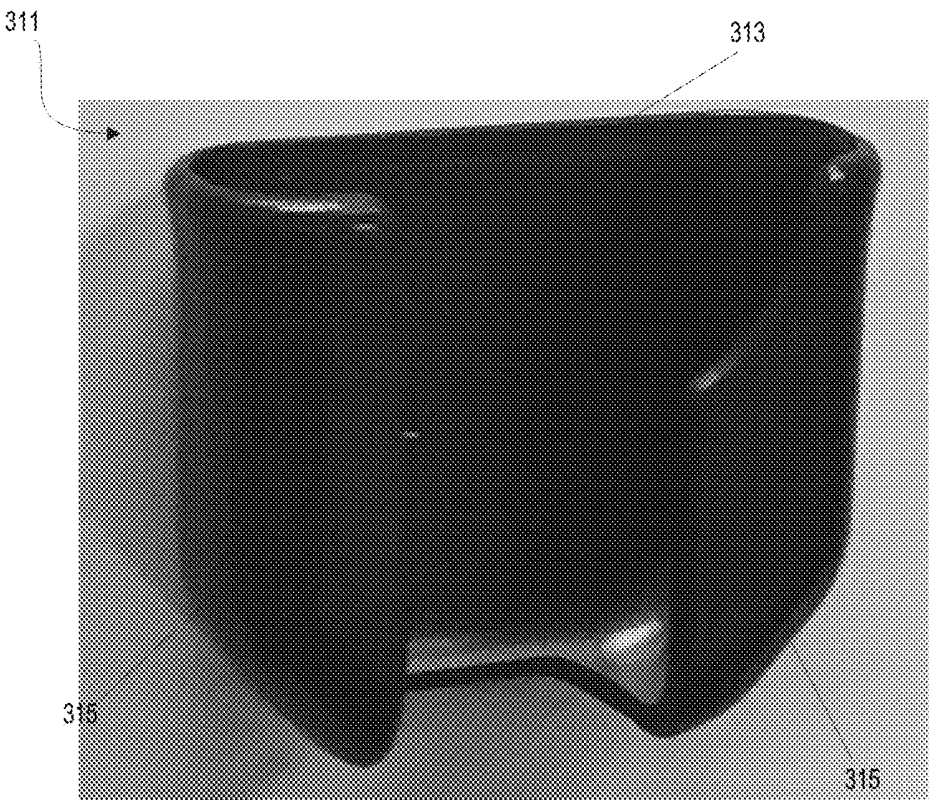
**FIG. 2E**



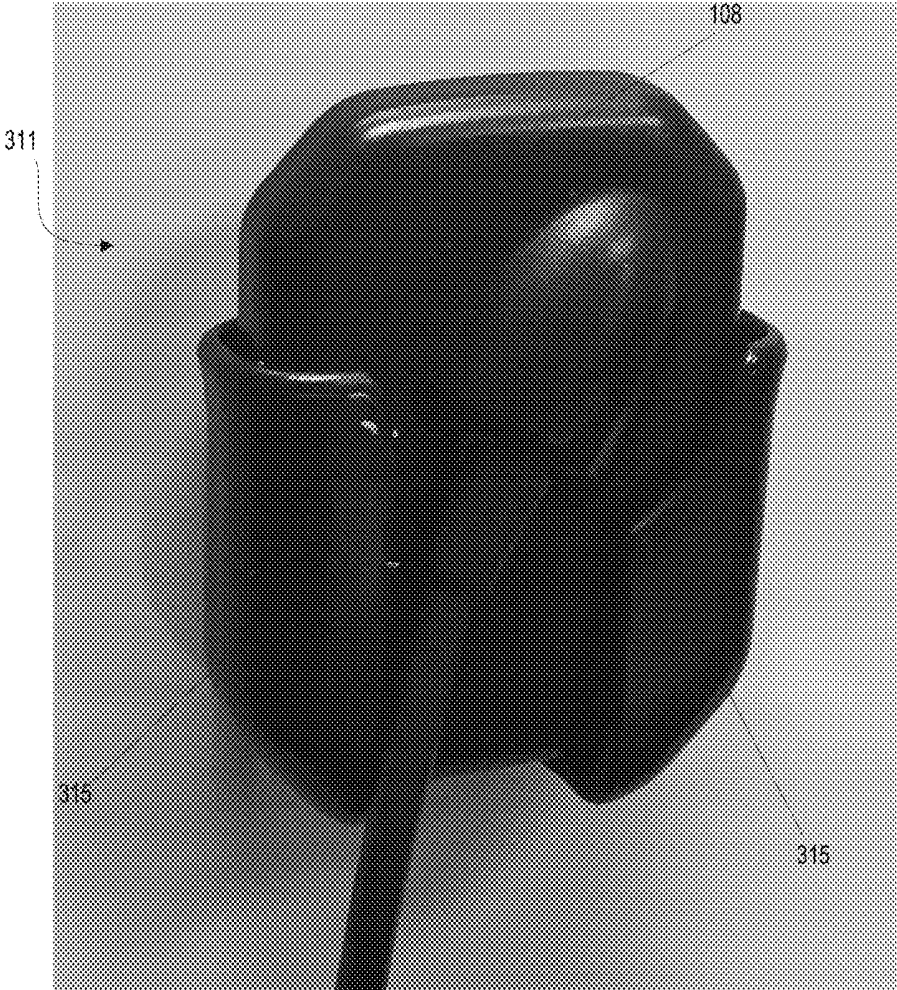
**FIG. 3A**



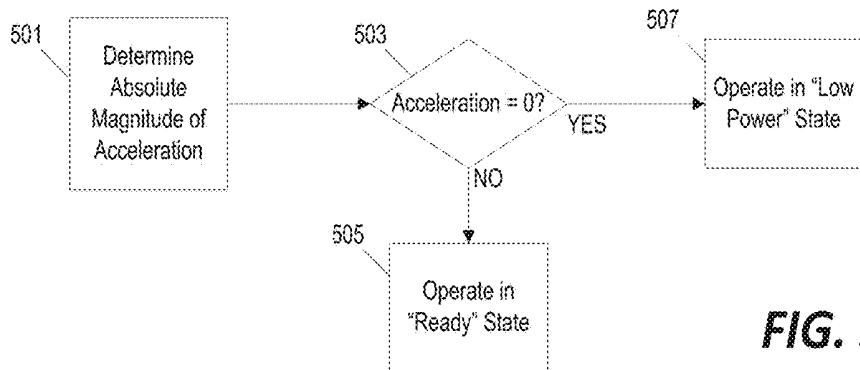
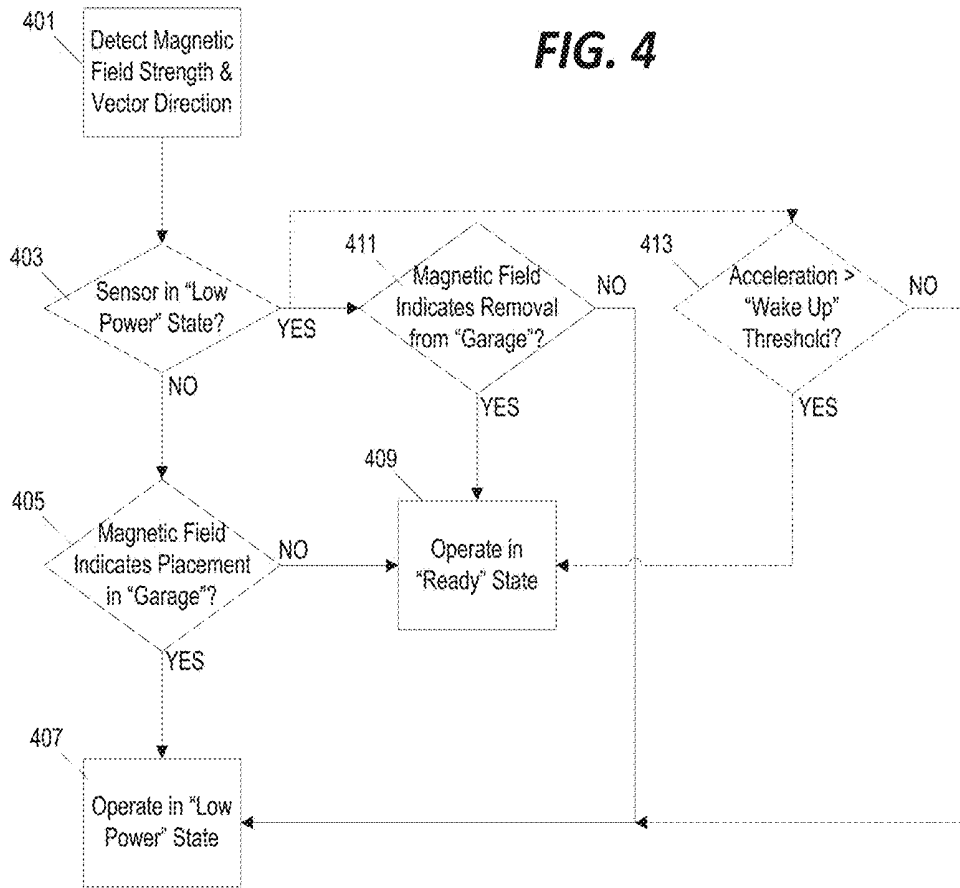
**FIG. 3B**



**FIG. 3C**



**FIG. 3D**



**FIG. 5**

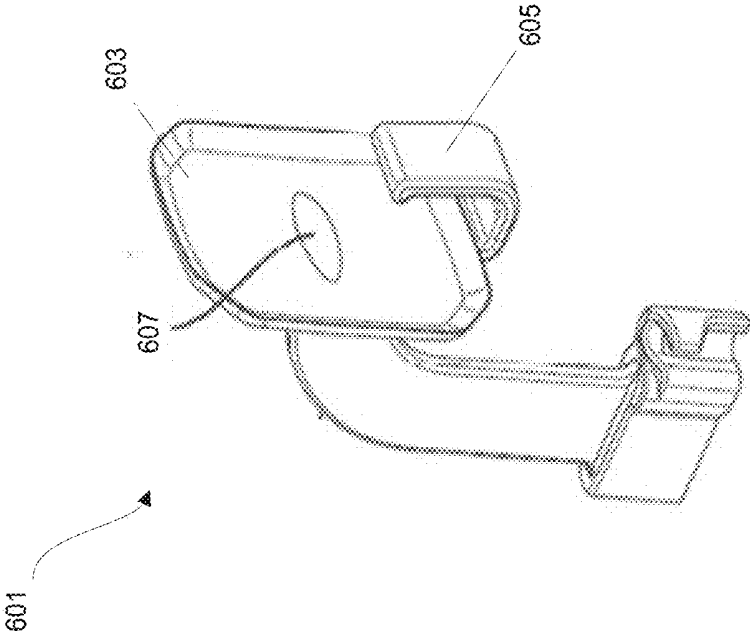


FIG. 6A

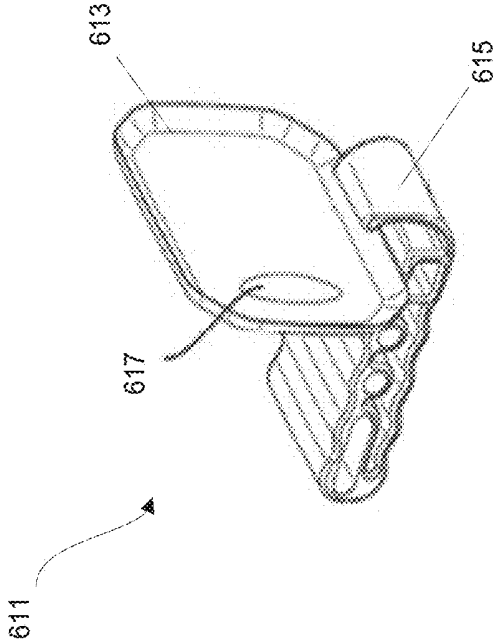
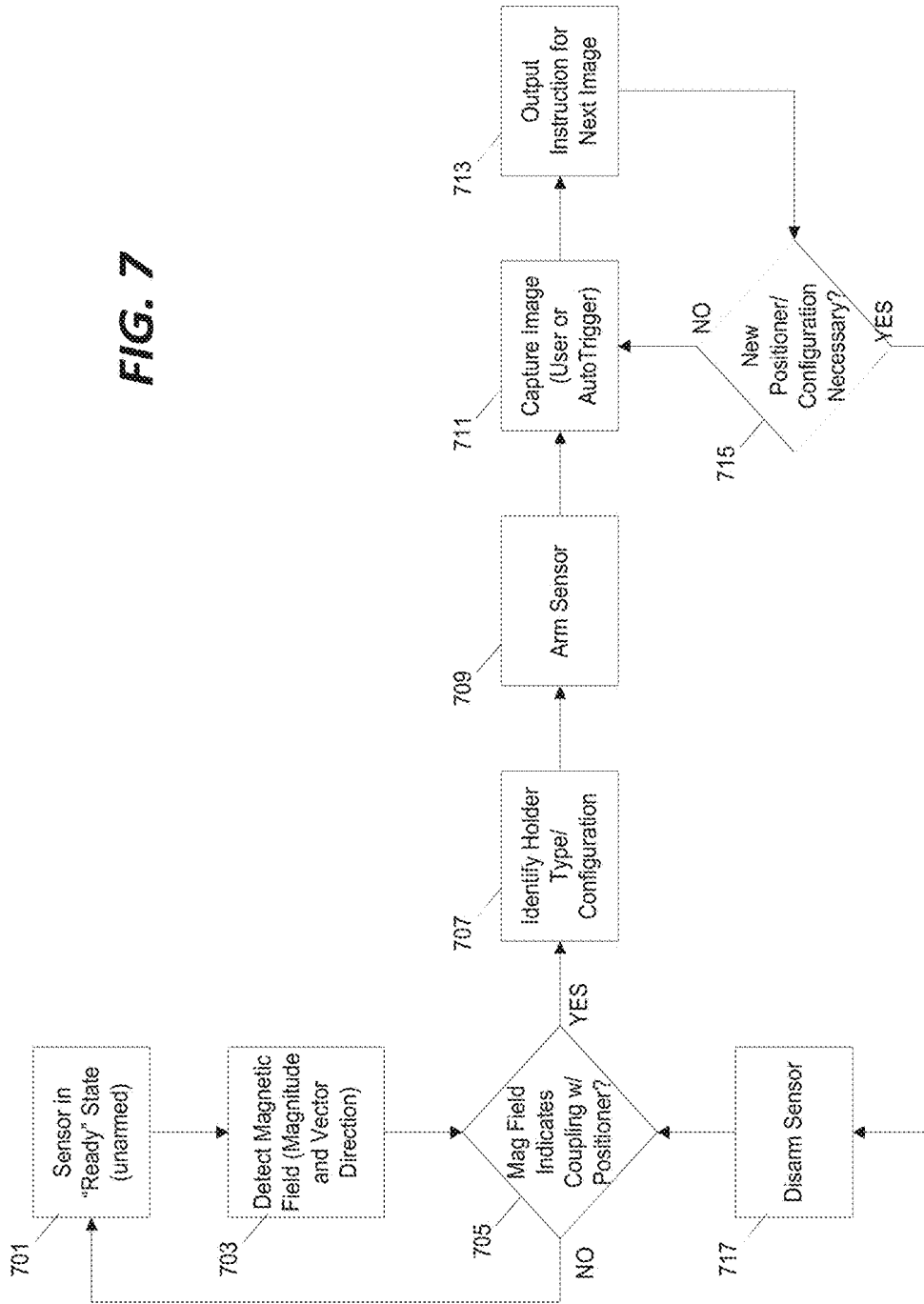


FIG. 6B

FIG. 7



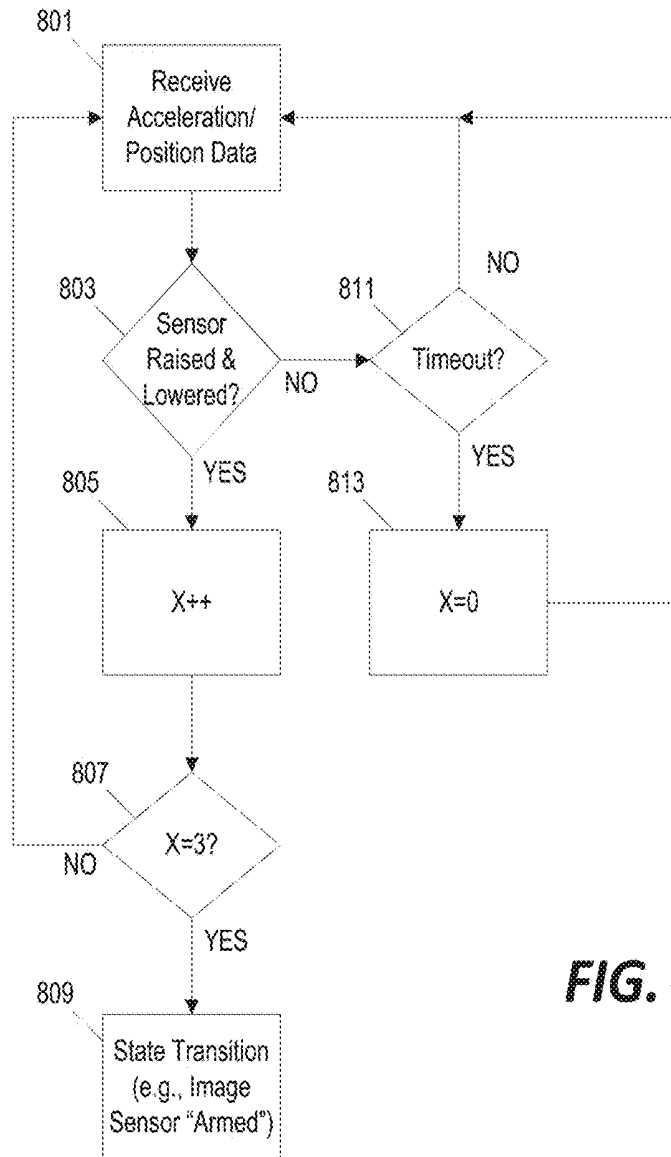
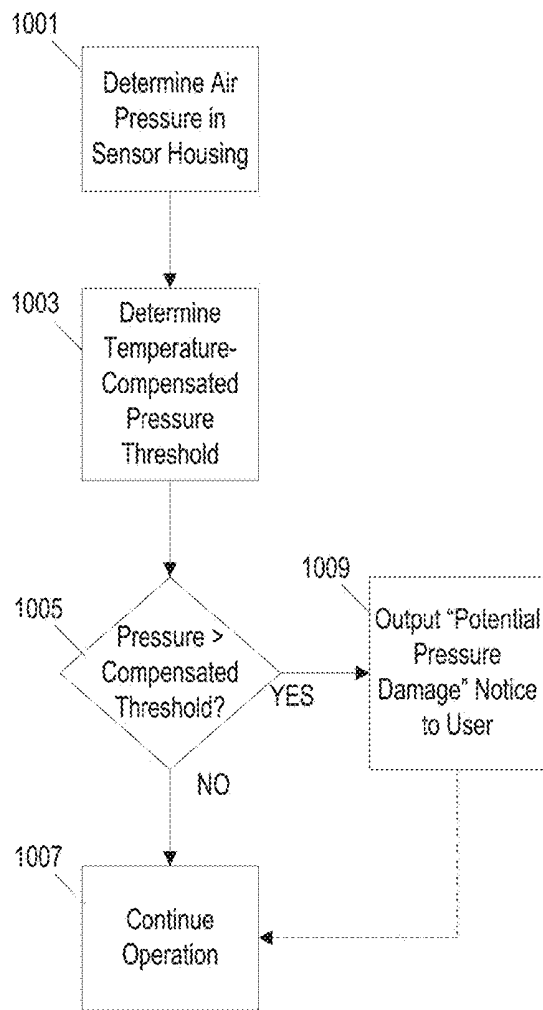


FIG. 8





**FIG. 10**

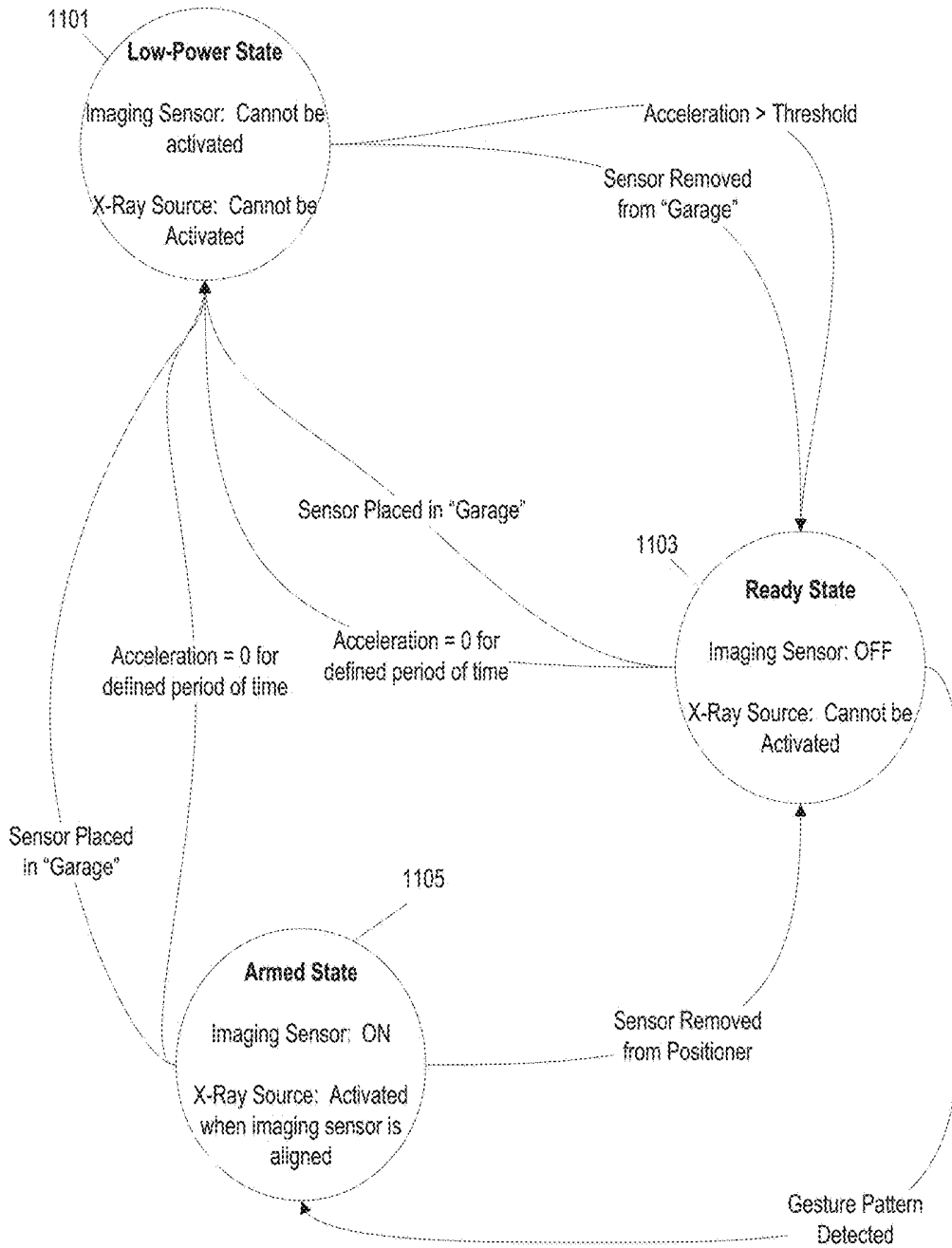


FIG. 11

**MULTIPLE-DIMENSION IMAGING SENSOR  
AND STATE-BASED OPERATION OF AN  
IMAGING SYSTEM INCLUDING A  
MULTIPLE-DIMENSION IMAGING SENSOR**

**BACKGROUND**

Embodiments relate to systems and methods for capturing images using a sensor.

X-ray imaging systems often include a sensor for detecting x-ray radiation that has passed through an object of interest or structure. For example, in dental applications, an intra-oral sensor may be positioned in the mouth of a patient. X-ray radiation is directed at the object of interest and toward the sensor. Data output from the intra-oral sensor is processed to generate an x-ray image of the object of interest, for example, one or more teeth or other dental structures.

**SUMMARY**

In some instances, a multi-dimensional sensor is incorporated into an intra-oral x-ray sensor (sometimes referred to as an “imaging sensor”). The multi-dimensional sensor can include, for example, a three-dimensional accelerometer, a three-dimensional gyroscopic sensor, and a three-dimensional magnetometer to provide nine-dimensions of positional and movement information for the imaging sensor. In some instances, additional or alternative sensors may also be incorporated into the imaging sensor including, for example, a temperature sensor, a current/voltage sensor or monitoring circuit, and an air pressure sensor.

Among other things, an imaging sensor equipped with a multi-dimensional sensor can be used to determine when the imaging sensor is properly aligned with an x-ray source and with a dental structure to be imaged. In addition, information provided by the multi-dimensional sensor can be used by an imaging system to determine when to arm the imaging sensor, to determine the “health” of the imaging sensors, and, in some implementations, when to place the imaging sensor in a “low power” mode.

In one embodiment, the invention provides a method for operating an imaging sensor, the imaging sensor including a multi-dimensional sensor. An electronic processor receives an output from the multi-dimensional sensor and transitions the imaging sensor from a first operating state into a second operating state in response to a determination by the electronic processor, based on the output from the multi-dimensional sensor, that a first state transition criteria is satisfied.

In another embodiment, the invention provides a method for operating an imaging sensor, the imaging sensor including a multi-dimensional sensor. An electronic processor operates the imaging sensor in a low-power state. While operating in the low-power state, the imaging sensor does not capture any image data and is not able to transition directly into an “armed” state in which image data is captured. The electronic processor receives an output from the multi-dimensional sensor and transitions the imaging sensor from the low-power state into a ready state in response to a determination by the electronic processor, based on the output from the multi-dimensional sensor, that a first state transition criteria is satisfied. The electronic processor also transitions the imaging sensor from the ready state into an armed state in response to a determination made by the electronic processor, based on the output from the multi-dimensional sensor, that a second state transition criteria is satisfied. The electronic processor operates the

imaging sensor to capture image data only when operating in the armed state and does not transition from the low-power state directly into the armed state based on automated state transition criteria from the multi-dimensional sensor.

Other aspects of the invention will become apparent by consideration of the detailed description and accompanying drawings.

**BRIEF DESCRIPTION OF THE DRAWINGS**

FIG. 1 is a block diagram of an imaging system including a multi-dimensional sensor integrated into the imaging sensor housing according to one embodiment.

FIG. 2A is a flowchart of method for checking a sensor for errors performed by the imaging system of FIG. 1.

FIG. 2B is a flowchart of a method for checking the sensor voltage in the method of FIG. 2A.

FIG. 2C is a flowchart of a method for checking the sensor current in the method of FIG. 2A.

FIG. 2D is a flowchart of a method for checking the sensor temperature in the method of FIG. 2A.

FIG. 2E is a flowchart of a method for detecting a potential dropped sensor (or when a sensor is dropped) in the method of FIG. 2A.

FIG. 3A is a partially transparent elevation view of a storage compartment (sometimes referred to as a “garage”) for the imaging sensor in the imaging system of FIG. 1.

FIG. 3B is a partially transparent overhead view of the storage compartment of FIG. 3A.

FIG. 3C is a perspective view of an alternative example of an imaging sensor storage without an imaging sensor.

FIG. 3D is a perspective view of the alternative example of the imaging sensor storage of FIG. 3C with an imaging sensor therein.

FIG. 4 is a flowchart of a method for transitioning between operating states of the imaging system of FIG. 1 based on whether the sensor is detected in the storage compartment of FIGS. 3A and 3B.

FIG. 5 is a flowchart of a method for transitioning between operating states of the imaging sensor of FIG. 1 based on an acceleration detected by the multi-dimensional sensor of the imaging sensor.

FIG. 6A is a perspective view of a sensor positioner for holding an imaging sensor in a first position for capturing an image.

FIG. 6B is a perspective view of a second sensor positioner for holding the imaging sensor in a second position for capturing an image.

FIG. 7 is a flowchart of a method for transitioning between operating states of the imaging system of FIG. 1 based on a detection of a coupling between the imaging sensor and a sensor holder of FIG. 6.

FIG. 8 is a flowchart of a method for transitioning between operating states of the imaging system of FIG. 1 based on a detection of a specific movement of the imaging sensor based on an output of the multi-dimensional sensor.

FIG. 9 is a flowchart of a method for detecting when the imaging sensor of the imaging system of FIG. 1 is placed in the mouth of a patient based on an output of the multi-dimensional sensor.

FIG. 10 is a flowchart of a method for detecting possible damage to the sensor housing in the imaging system of FIG. 1 based on an air pressure detected by the multi-dimensional sensor.

FIG. 11 is a state diagram of transitions between multiple operating states in the imaging system of FIG. 1 based on outputs from the multi-dimensional sensor.

#### DETAILED DESCRIPTION

Before any embodiments are explained in detail, it is to be understood that the invention is not limited in its application to the details of construction and the arrangement of components set forth in the following description or illustrated in the following drawings. Other embodiments and ways of being practiced or of being carried out are possible.

FIG. 1 illustrates an example of an imaging system 100. In the examples discussed herein, the imaging system 100 is a dental imaging system for use with an intra-oral imaging sensor. However, in other implementations, the imaging system 100 may be configured for other medical or non-medical imaging purposes. The imaging system 100 includes an imaging system controller computer 101, which, in some implementations, is provided as software executed on a personal computer, tablet computer, or other computing device. The imaging system controller computer 101 includes an electronic processor 103 and a memory 105. In one example, all or part of the memory 105 is non-transitory and computer readable and stores instructions that are executed by the electronic processor 103 to provide the functionality of the imaging system controller computer 101, for example, as presented in this disclosure.

In the example of FIG. 1, the imaging system controller computer 101 is communicatively coupled to a display 106. The system controller computer 101 generates a graphical user interface that is output on the display 106. As discussed in greater detail below, the graphical user interface is configured to receive various inputs from a user and to output instructions, data, and other information to the user. Although the display 106 is shown as a separate unit coupled to the imaging system controller computer 101 in the example of FIG. 1, in other implementations, the display 106 is integrated into the same housing as the imaging system controller computer 101, for example, where the imaging system controller computer 101 is implemented as a laptop computer or a tablet computer.

In the example of FIG. 1, the imaging system controller computer 101 is communicatively coupled to an x-ray source 107 and an imaging sensor 108. The imaging sensor 108—in this example, an intra-oral dental imaging sensor—includes an imaging sensor housing 109. A scintillator 111, a fiber optic plate 113, and an image sensor array 115 are positioned within the imaging sensor housing. In response to receiving x-ray radiation, the scintillator 111 produces photons that pass through the fiber optic plate 113. The image sensor array 115 detects the photons directed by the fiber optic plate 113 and outputs data used to generate an x-ray image. Other implementations may include other image detection components including, for example, a photon counter that is configured to operate without a scintillator.

A sensor electronic processor 117 is also positioned within the imaging sensor housing 109 and is communicatively coupled to the image sensor array 115 to receive signals indicative of the detected x-ray radiation. In some implementations, the sensor electronic processor 117 is also coupled to a sensor memory 119. In certain embodiments, the sensor electronic processor 117 is provided as a field programmable gate array configured to trigger “interrupts” in response to certain criteria based on the output of the various sensor components. In other embodiments that sensor electronic processor 117 is a different type of processor

and the sensor memory 119 is a non-transitory computer-readable memory which stores instructions that are executed by the sensor electronic processor 117 to provide or perform certain functions as described herein. In the example of FIG. 1, the sensor electronic processor 117 is also communicatively coupled with an interface microcontroller 121, which is also positioned within the imaging sensor housing 109 and is configured to provide communication between the sensor electronic processor 117 and the imaging system controller computer 101 as discussed in greater detail below. In some implementations, the imaging system controller computer 101 is selectively coupleable to the sensor electronic processor 117 and/or the interface microcontroller 121 by a wired or wireless connection including, for example, a USB cable or Wi-Fi.

The image sensor housing 109 also includes a multi-dimensional sensor 123 providing information about the placement, movement, and operation of the imaging sensor 108. In the example of FIG. 1, the multi-dimensional sensor 123 includes a three-dimensional accelerometer 125 configured to output a signal indicative of a magnitude and direction of acceleration in three-dimensional space. The multi-dimensional sensor 123 also includes a three-dimensional gyroscopic sensor 127 and a three-dimensional magnetometer 129.

In various implementations, the imaging sensor 108 may also include additional sensor components. In the particular example of FIG. 1, the multi-dimensional sensor 123 also includes a temperature sensor 131 configured to output a signal indicative of a temperature of the imaging sensor 108. The imaging sensor 108 also includes a current/voltage monitor circuit 133 configured to output a signal indicative of a current and a voltage of the power supply provided to the imaging sensor 108 and an air pressure sensor 135 configured to output a signal indicative of an air pressure within the imaging sensor 108. In some implementations, the current/voltage monitor circuit 133 is not positioned within the imaging sensor housing 109 and instead is provided in a separate housing that is externally coupled to the imaging sensor housing 109.

In the example of FIG. 1, the current/voltage monitor circuit 133 and the air pressure sensor 135 are provided as separate components and are not integrated into the multi-dimensional sensor 123. However, in other implementations, the current/voltage monitor circuit 133, the air pressure sensor 135, and the temperature sensor 131 may be integrated into the multi-dimensional sensor 123. Conversely, in some implementations, the accelerometer 125, the gyroscopic sensor 127, the magnetometer 129, the temperature sensor 131, the current/voltage monitor circuit 133, and the air pressure sensor 135 are all provided within the imaging sensor housing 109 as separate components without any single internal structure or housing identifiable as a “multi-dimensional sensor.” In those implementations, the multi-dimensional sensor 123 refers collectively to one or more sensor components provided within the imaging sensor housing 109. Lastly, although the example of FIG. 1 presents a specific list of types of sensor components within the imaging sensor housing 109, in other implementations, the imaging sensor 108 may include more, fewer, or different sensor components.

In the imaging system 100 illustrated in FIG. 1, the imaging system controller computer 101 monitors the outputs from the sensors positioned within the imaging sensor housing 109 and operates the various components based at least in part on the outputs from the sensors. In particular, as described in greater detail below, the imaging system con-

troller computer **101** operates the imaging sensor **108** in one of a plurality of different operating states and transitions between the operating states based at least in part on outputs from the sensors of the imaging sensor **108**. In some implementations, the plurality of different operating states includes one or more “low power” states, one or more “ready” states, and one or more “armed” states.

When operating in a “low power” state, electrical power provided to the imaging sensor and/or the electrical power consumed by various components of the imaging sensor **108** is reduced and some functions/operations of the imaging sensor **108** are prohibited or restricted (barring a manual override). For example, in some implementations, the imaging sensor **108**—particularly the image sensor array **115**—cannot be armed when the imaging sensor **108** is operated in the “low power” state. Instead, the imaging sensor **108** must first transition to a “ready” state in response to a determination that a first state transition criteria has been satisfied. When operating in the “ready” state, the imaging sensor **108** is not yet armed, but can be transitioned into the “armed” operating state in response to an input or a condition detected by the imaging system controller computer **101** indicating that a second state transition criteria has been satisfied. In some implementations, electrical power provided to one or more of the sensor components in the imaging sensor housing **109** is also reduced or disconnected while the imaging sensor **108** is operating in the “low power” state.

In some implementations, the communication interface between the imaging sensor **108** and the imaging system controller computer **101** is disabled when the imaging sensor **108** is operating in the “low power” state. For example, in the system of FIG. 1, the interface microcontroller **121** may be turned off or powered down when the imaging sensor **108** enters the “low power” state. The sensor electronic processor **117** monitors the output of the various sensor components and may be triggered to initiate an “interrupt” routine or another flag in response to detecting that a state transition criteria has been satisfied as described in further detail below. In such implementations, the interface microcontroller **121** resumes operation in response to the interrupt and communication between the imaging sensor **108** and the imaging sensor controller computer **101** is restored. Accordingly, although several of the examples presented below discuss functionality performed and executed by the electronic processor **103** of the imaging system controller computer **101**, in other implementations, this functionality (including the detection of state transition criteria and the transitions between operating state) is provided in full or in part by another electronic processor—for example, the sensor electronic processor **117**.<sub>[41]</sub>

In some implementations, before transitioning from the “low power” state into the “ready” state or, in other implementations, before transitioning from the “ready” state into the “armed” state, the imaging system controller computer **101** or the sensor electronic processor **117** implements an error condition check routine to ensure that the imaging sensor **108** is operating properly. In other implementations, an error condition check routine is performed periodically while the imaging sensor **108** is operated in a single operating state—for example, after each image is captured while operating in the “armed” state. In still other implementations, an error notification can cause the electronic processor to automatically launch other system check routines or automated self-correction routines.

An example error condition check routine is illustrated in FIGS. 2A through 2E. Beginning in FIG. 2A, after the error

condition check routine is initiated (block **201**), the imaging system **100** first performs a “voltage” check (block **203**). If the imaging sensor **108** passes the voltage check, the imaging system **100** performs a “current” check (block **205**). If the imaging sensor **108** passes the current check, then the imaging system **100** performs a “temperature” check (block **207**). If the imaging sensor **108** passes the temperature check, then the imaging system **100** perform an “acceleration” check (block **209**). If the imaging sensor **108** passes each of the error condition check routines, then the imaging system **100** continues with the operation of the imaging sensor **108** (for example, continuing to operate in the “armed” state or transition into the “armed” state).

FIG. 2B illustrates an example of the “voltage check” routine in greater detail. Based on an output from the current/voltage monitor circuit **133**, the imaging system **100** determines a voltage of the electrical power provided to the imaging sensor **108**, for example, through the USB cable coupled to the imaging system controller computer **101** (block **211**). If the detected voltage does not exceeds a first voltage threshold ( $V_1$ ) (block **213**), then the imaging system **100** determines that there is an error condition either within the imaging sensor **108** or the cable connecting the imaging sensor **108** to its power source. In response to this detected condition, the imaging system **100** disarms the sensor and, in some implementations, prevents the sensor from transitioning into the “armed” state (block **215**). A “low voltage” notice is output to the user (block **217**). The “low voltage” notice can be output, for example, as a graphical notice shown on a display coupled to the imaging system controller computer **101**. The “low voltage” notice, in some implementations, displays a value of the detected voltage and instructs the user on possible corrective measures. For example, the “low voltage” notice may instruct the user to try connecting the imaging sensor **108** to another USB port, connecting the imaging sensor **108** to a different computer/imaging system controller computer **101**, or connecting the imaging sensor **108** to the imaging system controller computer **101** using a different USB cable. The “low voltage” notice may also instruct the user to contact technical support if the condition persists. In some implementations, detected error/fault conditions (e.g., the “low voltage” condition and other conditions described below) are recorded to a log file used to track errors/faults of an imaging sensor **108**.

Similarly, if the imaging system **100** determines that the detected voltage exceeds a second voltage threshold ( $V_2$ ) that is higher than the first voltage threshold (block **219**), then the imaging system **100** detects a “high voltage” condition on the imaging sensor **108**. The imaging system **100** either disarms the sensor and, in some implementations, prevents the sensor from transitioning into the “armed” state (block **221**). A “high voltage” notice is output to the user (block **223**). Because a “high voltage” condition can potentially damage the imaging sensor **108** hardware, the “high voltage” notice instructs the user to promptly unplug the imaging sensor **108** from the power supply to prevent damage. In some implementations, based on information such as the magnitude of the detected voltage, the “high voltage” notice includes user instructions informing the user to try connecting the imaging sensor **108** to a different computer or to contact technical support. In still other implementations, the imaging system **100** may be configured to transmit an error message directly to a technical support system and to include in the error message an identification and location of the imaging system controller computer **101** that detected the error condition and an indication of the magnitude of the detected voltage.

If, however, the detected voltage of the electrical power provided to the imaging sensor **108** is between the first voltage threshold and the second voltage threshold, then imaging sensor **108** has passed the “voltage check” portion of the test. The imaging system **100** then continues to the “current check” routine (block **225**).

FIG. **2C** illustrates the “current check” component (block **205** of FIG. **2A**) of the error condition check routine. In some implementations, if the imaging sensor **108** does not pass the “voltage check” component (block **203** of FIG. **2A**), then the imaging system **100** disarms the imaging sensor **108** without performing the current check component. However, after passing the “voltage check” component, the imaging system **100** begins the current check component by determining the current of the electrical power provided to the imaging sensor **108** (block **227**). If the current is below a first current threshold (**I1**) (block **229**), then the imaging system **100** determines that a “low current” condition exists and, in response, the imaging sensor **108** is disarmed or prohibited from arming (block **231**) and a “low current” notice is output on the graphical user interface of the imaging system controller computer **101** (block **233**). The “low current” notice may include a magnitude of the determined current, an instructions for troubleshooting the detected problem (for example, try another USB port, another computer, or another USB cable), or an instruction to contact technical support.

If the current is above the first current threshold (**I1**), then the imaging system **100** determines whether the detected current is above a second current threshold (**I2**) that is greater than the first current threshold (block **235**). If so, the imaging system **100** determines that a “high current” condition exists and, in response, disarms the imaging sensor **108** and, in some implementations, prevents the imaging sensor **108** from arming (block **237**). A “high current” notice is output to the user (block **239**). Because a high current can potentially damage the hardware of the imaging sensor **108**, in some implementations, the “high current” notice instructs the user to disconnect the sensor immediately to prevent damage. The “high current” notice may also instruct the user to try connecting the imaging sensor **108** to another computer (for example, imaging system controller computer **101**), to connect using another cable, or to contact technical support.

If the detected current is between the first current threshold and the second current threshold, the imaging system **100** then determines a rate of change of the detected current. The rate of change of the detected current is determined based on the most recently detected current and one or more previously detected currents. In some implementations, a current log file is maintained so that the rate of change of the detected current can be tracked over longer periods of time by extracting or reading data from the log file. The rate of change of the current is compared to a rate of change current threshold (**I3**) (block **241**). In some implementations, this comparison indicates whether the current has increased by more than the defined threshold with respect to a baseline current determined at the time that the imaging sensor **108** was plugged into the power source (for example, the imaging system controller computer **101**). If the rate of change exceeds the rate of change current threshold, the imaging sensor **108** is disarmed or, in some implementations, is prevented from arming (block **243**). A “high current change” notice is output to the user on the graphical user interface of the imaging system controller computer **101** (block **245**). The “high current change” notice instructs the user to disconnect the imaging sensor **108** in order to prevent damage and, in some implementations, provides further

instructions for troubleshooting/mitigation including, for example, contacting technical support.

If the imaging sensor **108** passes all three of these checks and the sensor is already armed (block **247**), then the imaging system **100** continues to operate the imaging sensor **108** in its current operating state or continues to the other components of the error condition check routine (block **249**). However, if the imaging sensor **108** is not yet armed (at block **247**), then the current check component includes another verification test. The imaging system **100** arms the imaging sensor **108** (block **251**) and measures the current immediately after arming the imaging sensor **108** (block **253**). If the current detected immediately after arming the imaging sensor **108** exceeds a fourth current threshold (**I4**) (block **255**), then the imaging sensor **108** is disarmed (block **257**) and an “incomplete arming” notice is output to the user indicating that an error condition was detected based on the detected electrical current during the arming process (block **259**). The “incomplete arming” notice indicates to the user that the imaging sensor **108** was not successfully armed and that x-ray images will not be captured. In some implementations, the “incomplete arming” notice may also provide additional instructions for mitigating/troubleshooting the error condition including, for example, trying another USB port, computer, or USB cable or contacting technical support.

However, if the current detected immediately after arming the imaging sensor **108** is below the fourth current threshold (**I4**) (block **255**), then the imaging system **100** proceeds with operating the imaging sensor **108** in the “armed” state and/or proceeds to the next test in the error condition check routine. In the example of FIGS. **2A** through **2E**, an imaging sensor **108** that is transitioning from the “ready” state to the “armed” state becomes “armed” during the current check mechanism and remains armed for the “temperature” check component (block **207** in FIG. **2A**) and the acceleration check (block **209** in FIG. **2A**). However, in some other implementations, the portion of the current check component that compares the detected current immediately after the imaging sensor **108** is armed to a fourth current threshold (**I4**) (block **255**) is delayed until after one or more additional tests are performed while the imaging sensor **108** is unarmed.

After completing the voltage check component (block **203** in FIG. **2A**) and the current check component (block **205** in FIG. **2A**), the imaging system **100** applies a temperature check to the imaging sensor **108**. In this example, the temperature check is applied after the imaging sensor **108** has been armed. However, in other implementations, the imaging system **100** performs the temperature check before arming the imaging sensor **108**. If the imaging sensor **108** passes the voltage check and the current check components, then an abnormal temperature detected during the temperature check may indicate a problem with both the current of the imaging sensor **108** and the voltage/current monitor circuit **133**.

In performing the temperature check component, the imaging system **100** first determines a temperature of the sensor (block **261**) and then compares the detected temperature to a first temperature threshold (**T1**) (block **263**). If the detected temperature exceeds the first temperature threshold, then the imaging system **100** determines that an error condition exists, disarms the imaging sensor **108** (or, in some implementations, prevents the imaging sensor **108** from arming) (block **265**) and outputs a “high temperature” notice to the user on the graphical user interface of the imaging system controller computer **101** (block **267**).

Because a high temperature may be indicative of a high current or an electrical short in the circuitry of the imaging sensor 108, the “high temperature” notice in some implementations instructs the user to immediately disconnect the imaging sensor 108 from the power source (for example, the imaging system controller computer 101) and to contact technical support. In some implementations, the imaging system 100 then continues to prevent the imaging sensor 108 from being re-armed for a defined delay period to allow the imaging sensor 108 to cool (block 268).

If the temperature of the imaging sensor 108 is below the first temperature threshold (T1), the imaging system 100 then considers whether there is an abnormal rate of temperature change in the imaging sensor 108. The imaging system 100 determines a rate of temperature change (block 269) based on the most recently detected temperature and one or more earlier detected temperatures and compares the calculated rate of temperature change to a temperature change threshold (T2) (block 271). If the rate of temperature change is below the temperature change threshold, then the imaging sensor 108 has passes the temperature component of the error condition check routine and the imaging system 100 continues to operate the imaging sensor 108 (block 273). However, if the rate of temperature change exceeds the threshold, the imaging system 100 disarms the imaging sensor 108 (or prevents arming of the imaging sensor 108) (block 273) and outputs a “temperature change” notice to the user on the graphical user interface of the imaging system controller computer 101 (block 277). The “temperature change” notice may instruct the user to immediately disconnect the imaging sensor 108 to prevent damage and may also instruct the user to contact technical support.

Lastly, if the imaging sensor 108 has passed the voltage component, the current component, and the temperature component of the error condition check routine, then the imaging system 100 evaluates the output of the accelerometer 127 to determine whether the imaging sensor 108 has been dropped during or prior to the arming process. The imaging system 100 determines an absolute magnitude of acceleration based on the output of the accelerometer 125 (block 281). In some implementations, the imaging system 100 determines a maximum acceleration detected since the imaging sensor 108 transitioned from the “low power” state into the “ready” state or since the last “acceleration check” was performed. If the detected acceleration is less than the acceleration threshold (block 283), then the imaging sensor 108 is armed and continues its normal operation (block 285). However, if the detected acceleration exceeds an acceleration threshold indicative of a sudden drop or other potentially damaging impact, then an “potential damage” notice is output to the user on the graphical user interface of the imaging system controller computer 101 (block 287). The “potential damage” notice indicates that a potentially damaging event was detected and instructs the user to visually inspect the imaging sensor housing 109 for visible damage. In some implementations, the imaging sensor 108 continues to operate in the “armed” state even after a potential damage event is detected as long as the other components of the error condition check routine have passed successfully. Furthermore, as noted above, in some implementations, the determination of whether the output of the accelerometer exceeds the acceleration threshold indicative of a sudden drop is performed by a logic component positioned within the imaging sensor housing 109 and configured to output an interrupt in response—this enables the acceleration indicative of a “drop” event to be detected quickly without the need for communication between the imaging sensor 108

and the imaging system controller computer 101 and further processing by the imaging system controller computer 101. In some embodiments, this logic component is provided as the sensor electronic processor 117, a field programmable gate array, or other logic circuit.

The example discussed above in reference to FIGS. 2A through 2E is just one example of an error condition check routine that is applied to an imaging sensor 108. In other implementations, the steps may be performed in another order and may include more, fewer, or alternative tests and steps. In addition, although most of the failed tests discussed above result only in a notice displayed to the user on the graphical user interface of the imaging system controller computer 101, other implementations may provide automated mitigation steps. For example, the imaging system 100 may be configured to automatically disconnect the imaging sensor 108 from the power source if one or more specific tests are not passed. Additionally, instead of instructing a user to contact technical support if a problem persists, the imaging system 100 may be configured to automatically transmit a message to a technical support system including an identification and/or location of the imaging system controller computer 101. The message may also include other details about the failed test (including the sensor output reading that caused the imaging sensor 108 to fail the test).

As discussed above, one or more of the error condition check routines illustrated in FIGS. 2A through 2E above may be performed periodically while an imaging sensor 108 is operated in an “armed” state or may be performed as the imaging sensor 108 is transitioned from one state to another. However, the imaging system 100 may be configured to use the output from the various sensor components of the imaging sensor 108 to transition from one operating state to another. For example, FIGS. 3A and 3B illustrate an imaging system housing 301 that includes a “garage” 303 or “storage holder” for storage of the imaging sensor 108 when it is not in use. A permanent magnet 305 is integrated into the imaging system housing 301 and positioned to apply a magnetic field to the imaging sensor 108 when it is stored in the “garage” 303. The magnetic field generated by the permanent magnet 305 has a magnitude and vector direction that can be detected and identified based on the output of the magnetometer 129 of the imaging sensor 108.

As illustrated in FIG. 4, the imaging system 100 is configured to transition between the “low power” state and the “ready” state based on whether the output of the magnetometer 129 indicates that the imaging sensor 108 is positioned within the garage 303 of the imaging system housing 301. The imaging system 100 periodically processes the output signal from the magnetometer 129 to detect a strength and vector direction of a magnetic field relative to the imaging sensor 108 (block 401). If the imaging sensor 108 is not currently operating in a “low power” state (block 403), then the detected magnetic field is analyzed to determine whether the detected magnetic field is indicative of placement of the imaging sensor 108 in the “garage” 303 or storage holder (block 405). If a magnetic field indicative of placement in the “garage” 303 is detected, then the imaging sensor 108 is transitioned into the “low power” state (block 407). However, if the magnetic field indicative of placement in the “garage” 303 is not detected, then the imaging sensor 108 remains in the “ready” state (block 409).

When the imaging sensor 108 is already operating in the “low power” mode (block 403), the imaging system 100 determines whether the detected magnetic field is indicative

of removal of the imaging sensor 108 from the “garage” 303 (block 411). In some embodiments, a magnetic field indicative of removal of the imaging sensor 108 from the “garage” 303 is one in which the magnitude of the detected magnetic field drops below a defined threshold and/or the vector direction of the detected magnetic field deviates from the vector direction of the magnetic field expected to be applied by the permanent magnet 305 by a predetermined amount. If a magnetic field indicative of removal of the imaging sensor 108 from the “garage” 303 is detected (block 411), then the imaging sensor 108 is transitioned from the “low power” mode into the “ready” mode (block 409). However, if the detected magnetic field continues to indicate that the imaging sensor 108 is placed within the “garage” 303, then the imaging sensor 108 remains in the “low power” state (block 407).

In some implementations, the imaging sensor 108 “wakes up” (for example, transitions from the “low power” state into the “ready” state) based only on a detected change in the magnetic field applied by the permanent magnet 305. However, in some implementations, additional or alternative information provided by the sensor components of the imaging sensor 108 are used to determine whether to transition the imaging sensor 108 into the “ready” mode. For example, as also illustrated in FIG. 4, while the imaging sensor 108 is operating in the “low power” state, the imaging system 100 may be configured to periodically detect the acceleration of the imaging sensor 108 based on the output of the accelerometer 125. If the detected acceleration exceeds a “wake up” threshold (block 413), the imaging sensor 108 is transitioned into the “ready” state (block 409) and, if the detected acceleration is below the “wake up” threshold, the imaging sensor 108 remains in the “low power” state (block 407). As illustrated in the example of FIG. 4, the magnetic field and acceleration “wake up” criteria are applied in parallel in some embodiments and a condition meeting either criterion will cause the imaging sensor 108 to transition into the “ready” state. However, in other implementations, the magnetic field and acceleration “wake up” criteria are applied in series and both criteria must be satisfied before the imaging sensor 108 will be transitioned into the “ready” state.

As discussed above, in some implementations, determinations such as those described in reference to FIG. 4 are performed by the imaging system controller computer 101 based on data periodically received from the imaging sensor 108. However, in other implementations—for example, in implementations where communication between the imaging sensor 108 and the imaging system controller computer 101 are disabled while the imaging sensor 108 is operated in the low power mode—some or all of the state transition determinations are made by the sensor electronic processor 117. In still other implementations, a logic component positioned within the imaging sensor housing 109 is configured to generate an “interrupt” in response to certain output conditions from the multi-dimensional sensor. For example, in reference to FIG. 4, a logic component may be provided as a field programmable gate array that is configured to generate an interrupt when the output of the accelerometer 125 exceeds the “wake up” threshold. This interrupt causes the imaging sensor 108 to transition from the low power state into the ready state. When the state transition condition is initiated by an interrupt, the imaging sensor 108 may not need to communicate acceleration data to the imaging system controller computer 101 as frequently as might be required if the imaging system controller computer 101 were periodically monitoring the acceleration of the

imaging sensor 108 to determine whether the “wake up” threshold is exceeded. In some implementations, no acceleration data is communicated from the imaging sensor 108 to the imaging system controller computer 101 while the imaging sensor 108 is operating in the low power state.

Furthermore, in the example of FIGS. 3A and 3B, the permanent magnet 305 is positioned above the “garage” 303 or permanently integrated into a wall or surface of the garage. However, in other implementations, the permanent magnet 305 can be positioned at other locations to provide a unique and detectable magnetic field when an imaging sensor 108 is positioned within the “garage” 303. Similarly, although the storage holder is illustrated in FIGS. 3A and 3B as a “garage,” the storage holder can be provided in other configurations in other implementations including, for example, as a “holster” or a clip positioned on the side of the imaging system housing 301. In still other implementations, the storage holder or “garage” 303 may be provided as a housing that is completely separate from the imaging system controller computer 101 and may be positionable near the workspace of the dental practitioner for easy access. For example, FIGS. 3C and 3D illustrate an example of an image sensor storage 311 where the imaging sensor 108 is supported against a backplate 313 by a pair of support arms 315. In this example, the permanent magnet is incorporated into the backplate 313 to generate a magnetic field and the imaging sensor 108 is not fully enclosed when placed in the image sensor storage 311. FIG. 3C shows only the image sensor storage 311 and FIG. 3D shows the image sensor storage 311 with the imaging sensor 108 positioned therein.

Although the example of FIGS. 3A and 3B discuss using a permanent magnet to detect whether the imaging sensor 108 is placed in the “garage” 303 and, based on that determination, transition between operating states, in some other implementations, other mechanisms may be used to detect whether the imaging sensor 108 is in a storage position and to transition between operating states accordingly.

In still other implementations, the magnetometer 129 may be disabled when the imaging sensor 108 is operating in the “low power” state. Therefore, the determination of when to transition the imaging sensor 108 into the “ready” state is based on criteria from another sensor or sensors—for example, the acceleration criteria (block 413) may be applied as the only test to determine when to transition the device from the “low power” state into the “ready” state.

Similarly, in some implementations, acceleration as detected based on the output from the accelerometer 125 may govern the transition between the “ready” state and the “low power” state even without a determination that the imaging sensor 108 has been placed in the “garage” 303. This may occur, for example, when a dental practitioner places the imaging sensor 108 on a counter or table. As illustrated in FIG. 5, the imaging system 100 determines an absolute magnitude of acceleration based on the output from the accelerometer 125 (block 501). If the detected acceleration does not equal zero (indicating that the device is moving) (block 503), then the imaging sensor 108 is operated in the “ready” state. Conversely, if the detected acceleration indicates that the imaging sensor 108 is stationary (block 503), then the imaging sensor 108 is placed in the “low power” state (block 507).

In some implementations, the imaging sensor 108 is not transitioned from the “ready” state into the “low power” state immediately upon detection of an acceleration equal to zero and, instead, the zero acceleration must be detected continuously for a defined period of time before the imaging

sensor 108 is transitioned into the “low power” state based on the criteria of FIG. 5. In other implementations, the state transition criteria described in reference to FIG. 5 is not applied if the imaging sensor 108 is operating in the “armed” state and the imaging sensor 108 must first be operating in the “ready” state before the imaging sensor 108 can transition into the “low power” state based on a detected acceleration of zero.

State transitions may also be governed by detecting and identifying other magnetic fields acting upon the imaging sensor 108. For example, FIGS. 6A and 6B each shows a sensor positioner configured to hold the imaging sensor 108 in a position for capturing a specific type of image. The first sensor positioner 601, illustrated in FIG. 6A, includes a backplate 603 and a pressure arm 605. To selectively couple the imaging sensor 108 to the first sensor positioner 601, the imaging sensor 108 is placed between the backplate 603 and the pressure arm 605. The imaging sensor 108 is held in place by the shape of the backplate 603 and friction/pressure applied by the pressure arm 605. A first permanent magnet 607 is also included in the first sensor position at a location proximal to the imaging sensor 108 when coupled to the sensor positioner 601. The first permanent magnet 607 creates a magnetic field of a known magnitude and vector direction that is detectable by the magnetometer 129 of the imaging sensor 108 when the imaging sensor is coupled to the first sensor positioner 601.

The second sensor positioner 611, illustrated in FIG. 6B, also includes a backplate 613 and a pressure arm 615 for selectively coupling the imaging sensor 108 to the second sensor positioner 611. The shape and arrangement of the second sensor positioner 611 is different from that of the first sensor positioner 601 and is configured for placing the imaging sensor for capturing images of dental structures at a different location in a patient’s mouth. The second sensor positioner 611 also includes a second permanent magnet 617. The second permanent magnet 617 also generates a magnetic field of a known magnitude and vector direction that is detectable by the imaging sensor 108 when coupled to the second sensor positioner 611. However, due to the type and positioning of the second permanent magnet 617, the magnetic field generated by the second permanent magnet 617 and detected by the magnetometer 129 of the imaging sensor 108 when coupled to the second sensor positioner 611 is different from the magnetic field that is generated by the first permanent magnet 607 and detected by the magnetometer 129 when the imaging sensor 108 is coupled to the first sensor positioner 601. Based on these different and known magnetic fields, the imaging system 102 is configured to identify, based on the output of the magnetometer 129, when the imaging sensor 108 is coupled to a sensor positioner and to identify whether the imaging sensor 108 is coupled to the first sensor positioner 601 or to the second sensor positioner 611.

Although the examples illustrated in FIGS. 6A and 6B show the permanent magnet 607, 617 positioned in or on the backplate 603, 613, in other implementations and in other sensor positioners, the permanent magnet can be positioned in other fixed locations. For example, a permanent magnet may be positioned on the pressure arm 615 or on another structural portion of the sensor positioner behind or below the backplate 613.

As illustrated in FIG. 7, a magnetic field applied by a permanent magnet integrated into a sensor positioner can govern a transition from the “ready” state into the “armed” state and, in some implementations where multiple different sensor positioners and/or sensor positioner configurations

are used to capture a series of images, the detected magnetic field can be used to provide automated instructions to a user of the imaging system 100. While the imaging sensor 108 is operating in a “ready” mode (block 701), the output of the magnetometer 129 is analyzed to determine a magnitude and vector direction of a magnetic field (block 703). The detected magnetic field is analyzed to determine whether the detected magnetic field indicates a coupling with a sensor positioner (block 705). If not, then the imaging sensor 108 continues to operate in the “ready” state (block 701). However if the detected magnetic field is indicative of coupling with a sensor positioner (block 705), then the type and/or configuration of the sensor positioner is identified based on the magnitude and vector direction of the detected magnetic field (block 707). In response, the imaging sensor 108 is armed (block 709) and, in some implementations, an instruction for placement of the imaging sensor 108 is displayed on the graphical user interface of the imaging system controller computer 101. After an image is captured (based, for example, on a user-activated or automated trigger) (block 711), the graphical user interface of the imaging system controller computer 101 outputs an instruction for a next image to be captured (block 713). In some embodiments, the instruction is output as a text instruction shown on the display 106 while, in other embodiments, the instruction is output audibly through a speaker.

In some embodiments, the output instruction also indicates whether a new sensor positioner or a new configuration is required for the next image to be captured. If the same sensor positioner and the same configuration is to be used for the next image (block 715), the imaging sensor 108 remains in the “armed” state and the next image is captured (block 711). However, if a different sensor positioner or a different configuration is needed for the next image (block 715), then the imaging sensor 108 is disarmed (block 717) and the detected magnetic field is again monitored until a magnetic field is identified that is indicative of a coupling between the imaging sensor housing 109 and the sensor positioner (block 705).

Although the example of FIG. 7 describes a transition from a “ready” state into an “armed” state, in other implementations, the magnetic field applied by a permanent magnet incorporated into the sensor positioner can instead govern other types of state transitions including, for example, a transition from one “ready” state into another “ready” state, from one “armed” state into another “armed” state, or from a “low power” state to a “ready” state.

In some implementations, the transition from the “ready” state into the “armed” state can be governed based on outputs from other sensor components of the imaging sensor 108. For example, specific gestures made with the imaging sensor housing 109 can be detected based on the output from the accelerometer 125 and/or the gyroscopic sensor 127 and used to transition from the “ready” state into the “armed” state. FIG. 8 illustrates a method for detecting one example of a specific gesture that can trigger a transition from a “ready” state into an “armed” state. In this example, the imaging sensor 108 is transitioned into the “armed” state if the imaging sensor 108 is raised and lowered three times in succession.

Acceleration and/or position data is received from the accelerometer 125 and/or the gyroscopic sensor 127, respectively, (block 801) and is analyzed to determine whether a “raise & lower” gesture has been made with the imaging sensor 108 (block 803). If so, a counter is incremented (block 805) and, if the counter has not yet been incremented to three (3) (block 807), the imaging system 100 continues

to monitor the acceleration/position data (block 801) to detect additional “raise and lower” gestures (block 803). When three successive “raise and lower” gestures are detected and the counter has been incremented to three (block 807), then the imaging sensor 108 is transitioned from the “ready” state into the “armed” state (block 809).

To ensure that the three “raise and lower” gestures are made in deliberate succession, a timeout mechanism is applied. If a timeout period has not yet elapsed since the first “raise and lower” gesture was detected (or, in some implementations, since the most recent “raise and lower” gesture was detected) (block 811), the imaging system 100 continues to monitor the acceleration/position data (block 801) to detect additional “raise and lower” gestures (block 803). However, if the timeout period has expired (block 811), then the counter is reset to zero (block 813). The detection of specific gestures and movements can also be used to trigger other operations of the imaging system including, for example, resetting a dark current.

FIG. 8 illustrates only one example of a gesture that can be performed with the imaging sensor 108 and detected based on the outputs from the various sensors within the imaging sensor housing 109. In other implementations, the imaging system 100 is configured to detect other types of gestures instead of three successive “raise and lower” gestures. In some implementations, different gestures can be used to not only trigger a transition into the “armed” state, but also to indicate to the imaging system 100 which specific type of image (or image series) is to be captured by the imaging system 100. For example, detection of a first gesture pattern indicates to the imaging system 100 that a first type of x-ray image is to be captured and, in response, the graphical user interface of the imaging system controller computer 101 outputs instructions and information relevant specifically to the first type of x-ray image. Conversely, detection of a second, different gesture pattern indicates to the imaging system 100 that a second type of x-ray image is to be captured and, in response, the graphical user interface of the imaging system controller computer 101 outputs instructions and information relevant specifically to the second type of x-ray image or image series. Alternatively, the imaging system controller computer 101 may process or store the captured image data differently based on which image type is indicated by the detected gesture pattern.

In some implementations, the imaging system 100 may also be configured to transition from one state to another by detecting when the imaging sensor 108 has likely been placed within the mouth of a patient. FIG. 9 illustrates a method of determining whether the imaging sensor 108 has been placed within the mouth of a patient based on an output from the temperature sensor 131. Because the temperature detected by the temperature sensor 131 will likely increase when the imaging sensor 108 is placed in the mouth of a patient, the imaging system 100 applies three different temperature-based criteria to confirm that the imaging sensor 108 has been moved from a position outside of the patient’s mouth to a new position within the patient’s mouth.

First, the imaging system 100 determines and stores a temperature reading based on the output of the temperature sensor 131 (block 901). The present temperature is compared to a temperature threshold (for example, 98° F.) (block 903). If the imaging sensor 108 has been placed in the mouth of a patient, then the sensed temperature should exceed this temperature threshold.

Second, the imaging system 100 determines a first derivative of sensed temperatures based on the most recently detected temperature and previously detected temperatures

stored on a memory (for example, memory 105 or sensor memory 119) (block 905). The calculated first derivative of the temperature is compared to a rate-of-change threshold (block 907). If the imaging sensor 108 has been moved from a position outside of a patient’s mouth (at room temperature) to a position inside the patient’s mouth (at “body” temperature), then the calculated first derivative should exceed this rate-of-change threshold.

Third, the imaging system 100 determines a second derivative of sensed temperatures (block 909). This second derivative is indicative of how quickly the rate-of-change of the temperature is increasing and is compared to an “acceleration” threshold (block 911). Again, if the imaging sensor 108 has been moved from a position outside of the patient’s mouth (at room temperature) to a position inside the patient’s mouth (at “body” temperature), then the calculated second derivative should indicate a sudden increase in the rate of temperature change and should exceed this acceleration threshold.

If all three temperature-based criteria are satisfied, the imaging sensor 108 is transitioned into the “armed” state based on the assumption that the imaging sensor 108 has been placed inside a patient’s mouth (block 913). However, if any one of the three criteria is not satisfied, the imaging system 100 cannot “confirm” that the imaging sensor 108 has been placed inside a patient’s mouth and, therefore, the imaging sensor 108 remains in the “ready” state (block 915). Due to ambient temperature fluctuations, some methods for determining whether an imaging sensor 108 has been placed in the mouth of a patient based on sensed temperatures may result in false “negatives” causing the imaging sensor 108 to remain in the “ready” state even after the imaging sensor 108 has actually been placed in the mouth of the patient. In some embodiments, the user can override a false negative and force the imaging sensor 108 to transition into the “armed” state using a switch or input on the graphical user interface of the imaging system controller computer 101 (block 917).

As discussed above in reference to FIGS. 2A-2E, the imaging system 100 may be configured to apply one or more error condition check routines when the imaging sensor 108 is first connected to the imaging system controller computer 101, in response to (or in preparation for) a state transition, or periodically while operating in a particular state. In some implementations, the imaging sensor 108 is equipped with one or more additional internal sensors that are configured for other types of error condition detection. For example, FIG. 9 illustrates a method for detecting potential damage to the imaging sensor housing 109 due to sudden impact on the housing or biting of the housing by a patient based on an air pressure within the imaging sensor housing 109 detected by the air pressure sensor 135.

In the example of FIG. 10, the imaging system 100 monitors the output of the air pressure sensor 135 (block 1001). Because air pressures will change naturally due to changes in temperature, the imaging system 100 determines a temperature-compensated pressure threshold (block 1003) and compares the detected air pressure to the compensated threshold (block 1005). If the detected air pressure remains below the compensated threshold, then the imaging system 100 continues its operation (block 1007). However, an air pressure that is above the compensated threshold may be caused by biting of the imaging sensor housing 109 or another potential damaging impact. Therefore, in response to detecting an air pressure above the compensated threshold (block 1005), the imaging system 100 outputs a “Potential Pressure Damage” notice to the user on the graphical user interface of the imaging system controller computer 101

(block 909). In some implementations, this notice instructs the user to visually inspect the imaging sensor housing 109 for damage. In other implementations, the imaging system 100 is configured to run an automated check routine in response to detecting an air pressure indicative of potential damage and, depending on the result of the automated check routine, will either apply an automated self-correction or output a notice to the user with further instructions.

In the example of FIG. 10, even after detecting an increased air pressure indicative of a possible damage event, the imaging system 100 continues its operation (block 1007) and relies upon the user to determine whether the imaging sensor housing 109 has been damaged to the extent that usage of the imaging sensor 108 should be stopped. However, in other implementations, the imaging system 100 may be configured to disable the imaging sensor 108 in response to detection of the possible damage event or to take additional mitigating action before continuing operation. For example, the imaging system 100 may be configured to automatically transmit a notice to a technical support system requesting more substantial inspection or testing of the imaging sensor 108 in response to detecting an air pressure that exceeds the compensation threshold. In other implementations, the imaging system 100 may be configured to automatically initiate the error condition check routine (for example, one or more of the routines illustrated in FIGS. 2A through 2E) in response to detection of an air pressure that exceeds the compensation threshold.

In still other implementations, the imaging system 100 may apply multiple air pressure thresholds each triggering a different mitigating action. For example, the imaging system 100 may be configured to output a notice on the graphical user interface instructing the user to visually inspect the imaging sensor housing 109 if a first pressure threshold is exceeded, to apply the error condition check routine of FIGS. 2A through 2E if a second (higher) pressure threshold is exceeded, and to disable the imaging sensor 108 until it is thoroughly inspected by technical support personnel if a third (highest) threshold is exceeded.

The systems and methods described above provide examples of methods implemented by the imaging system 100 for detecting error conditions and for transitioning between states that govern the operation of an imaging sensor 108. FIG. 11 provides a specific example of a state diagram illustrating the interaction of various methods and systems described above for controlling and regulating the operation of the imaging sensor 108. In the example of FIG. 11, the imaging sensor 108 is operated in one of three states: a low power state, a ready state, and an armed state.

When operating in the low power state 1101, the imaging sensor 108 cannot be activated—that is the imaging sensor 108 cannot capture image data—and the x-ray source 107 cannot be activated to emit x-ray radiation. In some implementations, some of the other sensor and/or logic components of the imaging sensor 108 are also turned off or powered down when the imaging sensor 108 is operating in the low-power state.

When operating in the ready state 1103, the image sensor array 115 is turned OFF, but can be activated (i.e., operated to capture image data) upon a transition from the ready state 1103 into the armed state 1105. In the example of FIG. 11, the imaging sensor 108 cannot transition directly from the low-power state 1101 into the armed state 1105.

When operating in the armed state 1105, the image sensor array 115 is turned on and will capture image data in response to a user-activated or an automated trigger. In the example of FIG. 11, the x-ray source 107 can be activated to

emit x-rays when the imaging sensor 108 is operating in the armed state 1105 and when the output of the multi-dimensional sensor 123 indicates that the imaging sensor 108 is aligned with the x-ray source 107.

When operating in the low-power state 1101, the imaging sensor 108 can transition into the ready state 1103 in response to detecting that the imaging sensor 108 has been removed from the “garage” 303 (for example, the method of FIG. 4) or in response to detecting an acceleration that exceeds a threshold (for example, the method of FIG. 5). In the example of FIG. 11, the imaging sensor 108 cannot transition directly into the armed state 1105 when operating in the low-power state 1101.

When operating in the ready state 1103, the imaging sensor 108 can transition into the armed state 1105 in response to detecting a gesture pattern (for example, the method of FIG. 8). The imaging sensor 108 can also transition from the ready state 1103 into the low-power state 1101 in response to detecting placement of the imaging sensor 108 in the “garage” 303 (for example, the method of FIG. 4) or in response to detecting an acceleration equal to zero for a defined period of time (for example, the method of FIG. 5).

When operating in the armed state 1105, the imaging sensor 108 can be operated to capture x-ray image data. The imaging sensor 108 can transition from the armed state 1105 into the ready state 1103 in response to detecting that the imaging sensor 108 has been removed from a sensor positioner (for example, the method of FIG. 7). In the example of FIG. 11, the imaging sensor 108 can also transition directly from the armed state 1105 into the low-power state 1101 in response to detecting that the imaging sensor 108 has been placed in the storage “garage” 303 (for example, the method of FIG. 4) or in response to detecting an acceleration equal to zero for a defined period of time (for example, the method of FIG. 5).

In some imaging systems 100 implementing the state diagram of FIG. 11, the imaging system 100 may be configured to perform one or more of the error condition check routines described above in reference to FIGS. 2A through 2E and FIG. 10 when the imaging sensor 108 transitions from the ready state 1103 into the armed state 1105. In some implementations, the imaging system 100 also performs one or more of these error condition check routines either periodically while operating in the armed state 1105 or after capturing a defined number (for example, one or more) of x-ray images while operating in the armed state 1105.

FIG. 11 is only one example of a state diagram that may be implemented by an imaging system 100. In other implementations, the imaging system 100 may implement more operating states including one or more “low-power” states, one or more “ready” states, and one or more “armed” states. In other implementations, more, fewer, or different criteria may be used to initiate transitions from one operating state to another.

Also, the examples discussed above describe the “imaging system 100” monitoring the outputs from the sensor components of the imaging sensor 108 and determining whether to initiate a state transition. Accordingly, in various different embodiments, these and other methods may be executed by one or more of the various processors included in the imaging system 100 or other processing systems communicative coupled to the imaging system 100. For example, in some implementations, the methods for analyzing the sensor outputs, determining when to initiate a state transition, and performing an error condition check routine are provided by the electronic processor 103 of the imaging

system controller computer 101 executing instructions stored on the memory 105. However, in other implementations, these methods are provided by the sensor electronic processor 117 executing instructions stored on the sensor memory 119. In still other implementations, some of the methods are performed by the electronic processor 103 of the imaging system controller computer 101 while other methods are performed by the sensor electronic processor 117 or methods are performed cooperatively by instructions executed on both the sensor electronic processor 117 and the electronic processor 103 of the imaging system controller computer 101.

Thus, the invention provides, among other things, imaging systems configured to transition an imaging sensor between multiple operating states, including a low-power state, based on outputs from sensor components integrated into an imaging sensor housing. Various features and advantages of the invention are set forth in the following claims.

What is claimed is:

1. A method for operating an imaging sensor, wherein the imaging sensor is an intraoral imaging sensor and includes a multi-dimensional sensor and a housing, the method comprising:

operating the imaging sensor, by the electronic processor, in a low-power state, wherein the image sensor does not capture image data when operating in the low-power state;

receiving, by an electronic processor, an output from the multi-dimensional sensor of the imaging sensor;

transitioning the imaging sensor, by the electronic processor, from a first operating state into a second operating state in response to a determination by the electronic processor, based on the output from the multi-dimensional sensor, that a first state transition criteria is satisfied,

wherein at least one operation of the imaging sensor is configured to function differently when the imaging sensor is in the second operating state than when the imaging sensor is in the first operating state, and

wherein transitioning the imaging sensor from the first operating state into the second operating state includes transitioning the imaging sensor between the low-power state and a ready state; and

capturing image data using the imaging sensor while the housing of the imaging sensor is positioned within a mouth of a patient.

2. The method of claim 1, further comprising transitioning the imaging sensor, by the electronic processor, from the second operating state into a third operating state in response to a determination by the electronic processor, based on the output from the multi-dimensional sensor, that a second state transition criteria is satisfied.

3. The method of claim 1, further comprising:

transitioning the imaging sensor, by the electronic processor, from the ready state into an armed state in response to a determination by the electronic processor, based on the output from the multi-dimensional sensor, that a second state transition criteria is satisfied; and capturing image data only when the imaging sensor is operating in the armed state.

4. The method of claim 3, wherein the electronic processor is unable to transition from the low-power state directly into the armed state based on the output from the multi-dimensional sensor.

5. The method of claim 3, further comprising monitoring movement and orientation of the imaging sensor based on an output from the multi-dimensional sensor while operating in

the ready state or the armed state, the output from the multi-dimensional sensor including

an output indicative of a three-dimensional acceleration of the imaging sensor from an accelerometer of the multi-dimensional sensor,

an output indicative of a three-dimensional orientation of the imaging sensor from a gyroscopic sensor of the multi-dimensional sensor, and

an output indicative of a three-dimensional magnetic field of the imaging sensor from a magnetometer of the multi-dimensional sensor.

6. The method of claim 3, further comprising:

selectively coupling the imaging sensor to a first sensor positioner, the first sensor positioner including a permanent magnet positioned to generate a magnetic field of a known magnitude and vector direction on the imaging sensor when the imaging sensor is coupled to the first sensor positioner; and

determining, by the electronic processor, that the imaging sensor has been coupled to the first sensor positioner by detecting a magnetic field on the imaging sensor based on an output from a magnetometer of the multi-dimensional sensor,

determining, by the electronic processor, a magnitude and a vector direction of the magnetic field, and

comparing the determined magnitude and the determined vector direction of the detected magnetic field to the known magnitude and vector direction generated by the permanent magnet of the first sensor positioner.

7. The method of claim 6, wherein transitioning the imaging sensor from the ready state into the armed state in response to the determination that the second state transition criteria is satisfied includes transitioning the imaging sensor from the ready state into the armed state in response to determining that the imaging sensor has been coupled to the first sensor positioner.

8. The method of claim 6, further comprising outputting a first instruction through a user interface in response to determining that the imaging sensor has been coupled to the first sensor positioner, the first instruction providing information for capturing an image using the first sensor positioner.

9. The method of claim 8, wherein outputting the first instruction includes at least one selected from a group consisting of displaying a text instruction on a graphical user interface and outputting an audio instruction through a speaker.

10. The method of claim 3, further comprising determining, based on an output from an accelerometer of the multi-dimensional sensor, that a first defined gesture pattern has been performed with the imaging sensor,

wherein transitioning the imaging sensor from the ready state into the armed state in response to the determination that the second state transition criteria is satisfied includes transitioning the imaging sensor from the ready state into the armed state in response to determining that the first defined gesture pattern has been performed with the imaging sensor.

11. The method of claim 10, wherein determining that the first gesture pattern has been performed includes determining that the imaging sensor has been successively raised and lowered a defined number of times.

12. The method of claim 1, further comprising executing, by the electronic processor, one or more error condition

21

check routines to determine whether an error condition is present based on the output received from the multi-dimensional sensor.

13. The method of claim 12, further comprising outputting, by a user interface, a notice indicative of the error condition detected by the electronic processor, wherein the notice includes an instruction for mitigation of the detected error condition.

14. The method of claim 13, wherein outputting the notice by the user interface includes displaying a text-based notice on a graphical user interface.

15. The method of claim 12, wherein executing, by the electronic processor, the one or more error condition check routines includes:

detecting a voltage of electrical power provided to the imaging sensor based on an output from a voltage monitoring circuit of the multi-dimensional sensor, and determining that an error condition is present when the detected voltage exceeds a first voltage threshold or is below a second voltage threshold, the second voltage threshold being lower than the first voltage threshold.

16. The method of claim 12, wherein executing, by the electronic processor, the one or more error condition check routines includes:

detecting a current of the electrical power provided to the imaging sensor based on an output from a current monitoring circuit of the multi-dimensional sensor, and determining that an error condition is present when the current exceeds a first current threshold or is below a second current threshold, the second current threshold being lower than the first current threshold.

17. The method of claim 12, wherein executing, by the electronic processor, the one or more error condition check routines includes:

detecting a temperature of the imaging sensor based on an output from a temperature sensor of the multi-dimensional sensor, and determining that an error condition is present when the detected temperature exceeds a temperature threshold or when a rate of change of the detected temperature exceeds a rate of temperature change threshold.

18. The method of claim 12, wherein executing, by the electronic processor, one or more error condition check routines includes:

determining whether a voltage error condition is present based on an output from a voltage/current monitoring circuit of the multi-dimensional sensor;  
determining whether a current error condition is present based on an output from the voltage/current monitoring circuit of the multi-dimensional sensor; and  
determining whether a temperature error condition is present based on an output from a temperature sensor of the multi-dimensional sensor.

19. The method of claim 18, wherein executing, by the electronic processor, the one or more error condition check routines further includes

performing sequentially the acts of determining whether the voltage error condition is present, determining whether the current error condition is present, and determining whether the temperature error condition is present,

wherein the electronic processor performs the act of determining whether the current error condition is present only after determining that the voltage error condition is not present, and

wherein the electronic processor performs the act of determining whether the temperature error condition is

22

present only after determining that both the voltage error condition and the current error condition are not present.

20. The method of claim 12, further comprising selectively coupling the imaging sensor to an imaging system controller computer, the imaging system controller computer including the electronic processor, and

wherein executing, by the electronic processor, the one or more error condition check routines includes executing the one or more error condition check routines in response to the imaging sensor being selectively coupled to the imaging system controller computer.

21. The method of claim 12, wherein executing, by the electronic processor, the one or more error condition check routines including executing the one or more error condition check routines in response to a defined number of images being captured by the imaging sensor.

22. The method of claim 1, further comprising:

detecting, by the electronic processor, a possible damaging impact by

determining a magnitude of acceleration based on an output from an accelerometer of the multi-dimensional sensor, and

determining that the possible damaging impact has occurred when the magnitude of the acceleration exceeds an acceleration threshold; and

outputting a potential damaging impact notice on a graphical user interface instructing a user to visually inspect the imaging sensor in response to determining that the possible damaging impact has occurred.

23. The method of claim 1, further comprising:

determining, by the electronic processor, an air pressure within the housing of the imaging sensor based on an output from an air pressure sensor of the multi-dimensional sensor;

determining that possible damage due to biting pressure on the housing of the imaging sensor has occurred when the detected air pressure exceeds an air pressure threshold; and

outputting a possible biting data notice on a graphical user interface instructing a user to visually inspect the imaging sensor in response to determining that the possible damage due to biting pressure has occurred.

24. The method of claim 1, further comprising:

receiving the imaging sensor in an imaging sensor storage compartment for storage, wherein a permanent magnet is positioned proximal to the imaging sensor storage compartment generating a magnetic field with a known magnitude and vector direction within the imaging sensor storage compartment; and

determining whether the imaging sensor is placed in the imaging sensor storage compartment by

detecting a magnetic field on the imaging sensor based on an output from a magnetometer of the multi-dimensional sensor,

determining, by the electronic processor, a magnitude and a vector direction of the magnetic field, and

comparing the determined magnitude and the determined vector direction of the detected magnetic field to the known magnitude and vector direction generated by the permanent magnet within the imaging sensor storage compartment,

wherein transitioning the imaging sensor from the first operating state into the second operating state in response to the determination by the electronic processor, based on the output from the multi-dimensional sensor, that the first state transition criteria is satisfied

23

includes transitioning the imaging sensor from the ready state into the low-power state in response to determining that the imaging sensor has been placed in the imaging sensor storage compartment.

25. The method of claim 24, further comprising transitioning the imaging sensor from the low-power state into the ready state in response to a determination by the electronic processor, based on the output of the magnetometer of the multi-dimensional sensor, that the imaging sensor has been removed from the imaging sensor storage compartment.

26. The method of claim 25, further comprising determining, by the electronic processor, based on the output of the magnetometer of the multi-dimensional sensor, that the determined magnitude and the determined vector direction of the detected magnetic field no longer matches the known magnitude and vector direction generated by the permanent magnet within the imaging sensor storage compartment after previously determining that the imaging sensor had been placed in the imaging sensor storage compartment.

27. The method of claim 24, further comprising:  
detecting a magnitude of acceleration of the imaging sensor based on an output from an accelerometer of the multi-dimensional sensor; and

transitioning the imaging sensor from the low-power state into the ready state in response to a determination that the detected magnitude of acceleration exceeds an acceleration threshold after previously determining that the imaging sensor had been placed in the imaging sensor storage compartment.

28. The method of claim 1, wherein transitioning the imaging sensor from the first operating state into the second operating state in response to the determination that the first state transition criteria is satisfied includes transitioning the imaging sensor from the low-power state into the ready state in response to detecting a non-zero acceleration of the imaging sensor based on an output from an accelerometer of the multi-dimensional sensor, and further comprising transitioning from the ready state into the low-power state in response to detecting an acceleration of the imaging sensor with a magnitude of zero for a defined period of time based on the output from the accelerometer of the multi-dimensional sensor.

29. The method of claim 1, wherein receiving the output from the multi-dimensional sensor of the imaging sensor includes receiving an output indicative of a three-dimensional acceleration of the imaging sensor from an accelerometer of the multi-dimensional sensor,

wherein transitioning the imaging sensor from the first operating state into a second operating state in response to the determination by the electronic processor that the first state transition criteria is satisfied includes transitioning the imaging sensor from a low-power state into a ready state in response to determining, based on the output from the accelerometer of the three-dimensional sensor, that an acceleration of the imaging sensor has increased from below a defined acceleration threshold to above the defined acceleration threshold,

the method further comprising:

transitioning the imaging sensor from the ready state into an armed state in response to determining, based on the output from the accelerometer of the multi-dimensional sensor, that a defined gesture pattern has been performed with the imaging sensor;

determining, based on the output from the accelerometer of the multi-dimension sensor, whether the imaging sensor is aligned with an x-ray source while operating in the armed state; and

24

activating the x-ray source and capturing image data through the imaging sensor in response to determining that the imaging sensor is aligned with the x-ray source while operating in the armed state.

30. The method of claim 29, further comprising transitioning from the armed state or from the ready state into the low-power state in response to determining, based on the output of the accelerometer of the multi-dimensional sensor, that the acceleration of the imaging sensor is below the defined acceleration threshold for a defined period of time.

31. The method of claim 29, wherein receiving the output from the multi-dimensional sensor of the imaging sensor includes receiving an output indicative of a three-dimensional magnetic field acting on the imaging sensor from a magnetometer of the multi-dimensional sensor, and further comprising:

determining a magnitude and a vector direction of the magnetic field acting on the imaging sensor based on the output from the magnetometer of the multi-dimensional sensor;

determining that the imaging sensor has been placed in an imaging sensor storage compartment when the determined magnitude and the determined vector direction matches a known magnitude and a known vector direction of a magnetic field generated in the imaging sensor storage compartment by a permanent magnet positioned proximal to the imaging sensor storage compartment; and

transitioning the imaging sensor from the armed state or from the ready state into the low-power state in response to determining, based on the output of the magnetometer, that the imaging sensor has been placed in the imaging sensor storage compartment.

32. A method for operating an imaging sensor, the imaging sensor including a multi-dimensional sensor, the method comprising:

receiving, by an electronic processor, an output from the multi-dimensional sensor of the imaging sensor;

transitioning the imaging sensor, by the electronic processor, from a first operating state into a second operating state in response to a determination by the electronic processor, based on the output of the multi-dimensional sensor, that a first state transition criteria is satisfied;

selectively coupling the imaging sensor to a first sensor positioner, the first sensor positioner including a permanent magnet positioned to generate a magnetic field of a known magnitude and vector direction on the imaging sensor when the imaging sensor is coupled to the first sensor positioner;

determining, by the electronic processor, that the imaging sensor has been coupled to the first sensor positioner by detecting a magnetic field on the imaging sensor based on an output from a magnetometer of the multi-dimensional sensor,

determining, by the electronic processor, a magnitude and a vector direction of the magnetic field, and comparing the determined magnitude and the determined vector direction of the detected magnetic field to the known magnitude and vector direction generated by the permanent magnet of the first sensor positioner,

wherein transitioning the imaging sensor from the first operating state into the second operating state in response to the determination that the first state transition criteria is satisfied includes transitioning the imaging sensor from a ready state into an armed

state in response to determining that the imaging sensor has been coupled to the first sensor positioner; determining, based on the output from the magnetometer of the multi-dimensional sensor, when the imaging sensor has been disconnected from the first sensor positioner; and transitioning the imaging sensor from the armed state into the ready state in response to determining that the imaging sensor has been disconnected from the first sensor positioner.

33. A method for operating an imaging sensor, the imaging sensor including a multi-dimensional sensor, the method comprising:

receiving, by an electronic processor, an output from the multi-dimensional sensor of the imaging sensor; transitioning the imaging sensor, by the electronic processor, from a first operating state into a second operating state in response to a determination by the electronic processor, based on the output of the multi-dimensional sensor, that a first state transition criteria is satisfied;

selectively coupling the imaging sensor to a first sensor positioner, the first sensor positioner including a permanent magnet positioned to generate a magnetic field of a known magnitude and vector direction on the imaging sensor when the imaging sensor is coupled to the first sensor positioner;

determining, by the electronic processor, that the imaging sensor has been coupled to the first sensor positioner by detecting a magnetic field on the imaging sensor based on an output from a magnetometer of the multi-dimensional sensor, determining, by the electronic processor, a magnitude and a vector direction of the magnetic field, and comparing the determined magnitude and the determined vector direction of the detected magnetic field to the known magnitude and vector direction generated by the permanent magnet of the first sensor positioner; and

outputting a second instruction in response to a defined number of images being captured by the imaging sensor while the imaging sensor is coupled to the first sensor positioner, the second instruction including an identification of a second sensor positioner to be used in capturing the next image.

34. The method of claim 33, further comprising determining, based on the magnetic field detected by the magnetometer of the multi-dimensional sensor, when the imaging sensor has been coupled to the second sensor positioner, the second sensor positioner including a second permanent magnet positioned to generate a second magnetic field of a known magnitude and vector direction on the imaging sensor when the imaging sensor is coupled to the second sensor positioner, the known magnitude and vector direction of the second magnetic field being different from the known magnitude and vector direction of the magnetic field generated by the first sensor positioner.

35. The method of claim 34, further comprising: transitioning the imaging sensor from an armed state into a ready state after capturing the defined number of

images and before the imaging sensor is coupled to the second sensor positioner; and transitioning the imaging sensor from the ready state into the armed state in response to determining that the imaging sensor has been coupled to the second sensor positioner.

36. A method for operating an imaging sensor, the imaging sensor including a multi-dimensional sensor, the method comprising:

receiving, by an electronic processor, an output from the multi-dimensional sensor of the imaging sensor; transitioning the imaging sensor, by the electronic processor, from a first operating state into a second operating state in response to a determination by the electronic processor, based on the output of the multi-dimensional sensor, that a first state transition criteria is satisfied;

determining, based on an output from an accelerometer of the multi-dimensional sensor, that a first defined gesture pattern has been performed with the imaging sensor,

wherein transitioning the imaging sensor from the first operating state into the second operating state in response to the determination that the first state transition criteria is satisfied includes transitioning the imaging sensor from a ready state into an armed state in response to determining that the first defined gesture pattern has been performed with the imaging sensor,

wherein transitioning from the ready state into the armed state in response to determining that the first defined gesture pattern has been performed with the imaging sensor further includes transitioning from the ready state into a first armed state of a plurality of armed states;

determining, based on the output from the accelerometer of the multi-dimensional sensor, that a second defined gesture pattern has been performed with the imaging sensor, the second defined gesture pattern being different from the first defined gesture pattern; and

transitioning the imaging sensor from the ready state into a second armed state of the plurality of armed state in response to determining that the second defined gesture pattern has been performed with the imaging sensor.

37. The method of claim 36, further comprising processing images captured while operating in the first armed state differently than images captured while operating in the second armed state.

38. The method of claim 36, further comprising: outputting a first set of image capture instructions through the user interface when operating in the first armed state; and outputting a second set of image capture instructions through the user interface when operating in the second armed state, the first set of image capture instructions being different from the second set of image capture instructions.

\* \* \* \* \*

专利名称(译)	多维成像传感器和包括多维成像传感器的成像系统的基于状态的操作		
公开(公告)号	<a href="#">US10299741</a>	公开(公告)日	2019-05-28
申请号	US15/265753	申请日	2016-09-14
[标]申请(专利权)人(译)	登塔尔图像科技公司 DALSA		
申请(专利权)人(译)	牙科成像科技股份有限公司 TELEDYNE DALSA B.V.		
当前申请(专利权)人(译)	牙科成像科技股份有限公司 TELEDYNE DALSA B.V.		
[标]发明人	KRAVIS SCOTT DAVID KHATUTSKIY LEONID FRERICHS JAMES PAUL FRENCH ADRIAN DAVID PIXTON KYLE ALAN LOIJENS HEIN POLDERDIJK FRANK ROSNER HELMUT		
发明人	KRAVIS, SCOTT DAVID KHATUTSKIY, LEONID FRERICHS, JAMES PAUL FRENCH, ADRIAN DAVID PIXTON, KYLE ALAN LOIJENS, HEIN POLDERDIJK, FRANK ROSNER, HELMUT		
IPC分类号	A61B6/14 H04N5/32 H04N5/232 G06F3/03 G06F3/00 G06F1/3234 G06F1/3215 H02S40/44 G01R31/44 G01J3/28 A61B5/01 A61B6/00 A61B5/00 G01R33/02 G01T1/16 G01R31/02 H01H35/14 G01L7/00 H01L27/14 A61B5/055 H01L31/00		
CPC分类号	A61B6/145 A61B5/4547 A61B6/4233 A61B6/4405 A61B6/465 A61B6/467 A61B6/54 A61B6/58 A61B6/586 A61B6/587 G01J3/2803 G01R31/44 G06F1/325 G06F1/3215 G06F3/005 G06F3/0304 H02S40/44 H04N5/232 H04N5/32 A61B5/01 H01L31/00 A61B5/055 A61B2560/0204 A61B2562/0219 A61B2562/0223 A61B2562/0247 G01L7/00 G01R31/02 G01R33/02 G01T1/16 H01H35/14 H01L27/14 G01R31/50		
其他公开文献	US20180070895A1		
外部链接	<a href="#">Espacenet</a>		

#### 摘要(译)

描述了用于操作成像传感器的方法和系统，该成像传感器包括多维传感器。电子处理器接收来自多维传感器的输出，并且响应于电子处理器基于来自多维传感器的输出的确定，将成像传感器从低功率状态转换到就绪状态。满足第一状态转换标准，并响应于确定满足第二状态转换标准，将成像传感器从就绪状态转换为待命状态。在一些实施方式中，电子处理器操作成像传感器以仅在操作处于待命状态时捕获图像数据并且防止成像系统从低功率状态直接转换到待命状态。

