



US009402584B2

(12) **United States Patent**
Fennell

(10) **Patent No.:** **US 9,402,584 B2**
(45) **Date of Patent:** ***Aug. 2, 2016**

(54) **METHOD AND APPARATUS FOR PROVIDING DYNAMIC MULTI-STAGE SIGNAL AMPLIFICATION IN A MEDICAL DEVICE**

(2013.01); *A61B 5/0004* (2013.01); *A61B 5/14532* (2013.01); *A61B 5/14546* (2013.01); *A61B 5/14865* (2013.01); *A61B 5/7246* (2013.01); *A61B 5/7475* (2013.01); *A61B 2560/0209* (2013.01); *A61B 2560/0252* (2013.01); *A61B 2560/045* (2013.01)

(71) Applicant: **Abbott Diabetes Care Inc.**, Alameda, CA (US)

(58) **Field of Classification Search**

CPC *A61B 5/14532*; *A61B 5/14546*; *A61B 5/14865*; *A61B 5/7475*; *A61B 5/002*; *A61B 5/0004*; *A61B 5/7225*; *A61B 5/7246*
USPC 340/511, 573.1; 422/68.1; 330/85; 204/401; 205/792
See application file for complete search history.

(72) Inventor: **Martin J. Fennell**, Concord, CA (US)

(73) Assignee: **Abbott Diabetes Care Inc.**, Alameda, CA (US)

(*) Notice: Subject to any disclaimer, the term of this patent is extended or adjusted under 35 U.S.C. 154(b) by 0 days.

This patent is subject to a terminal disclaimer.

(56) **References Cited**

U.S. PATENT DOCUMENTS

3,260,656 A 7/1966 Ross, Jr.
3,581,062 A 5/1971 Aston
3,926,760 A 12/1975 Allen et al.

(Continued)

FOREIGN PATENT DOCUMENTS

EP 0098592 1/1984
EP 0127958 12/1984

(Continued)

OTHER PUBLICATIONS

Canadian Patent Application No. 2,683,721, Examiner's Report mailed Mar. 17, 2015.

(Continued)

Primary Examiner — John A Tweel, Jr.

(74) Attorney, Agent, or Firm — Jackson & Co., LLP

(57) **ABSTRACT**

Methods and apparatus for providing multi-stage signal amplification in a medical telemetry system are provided.

20 Claims, 4 Drawing Sheets

(21) Appl. No.: **14/596,759**

(22) Filed: **Jan. 14, 2015**

(65) **Prior Publication Data**

US 2015/0126836 A1 May 7, 2015

Related U.S. Application Data

(63) Continuation of application No. 14/188,659, filed on Feb. 24, 2014, now Pat. No. 8,937,540, which is a continuation of application No. 13/867,948, filed on Apr. 22, 2013, now Pat. No. 8,698,615, which is a

(Continued)

(51) **Int. Cl.**

G08B 29/00 (2006.01)

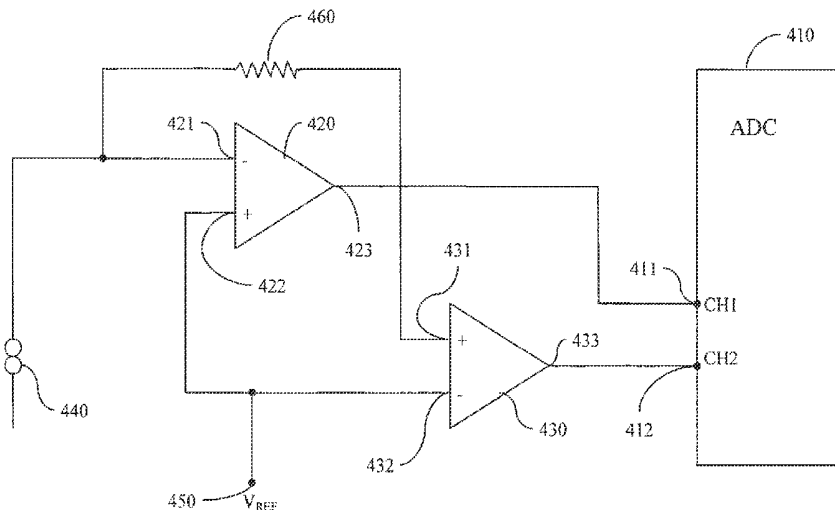
A61B 5/00 (2006.01)

A61B 5/145 (2006.01)

A61B 5/1486 (2006.01)

(52) **U.S. Cl.**

CPC *A61B 5/7225* (2013.01); *A61B 5/002*



Related U.S. Application Data

- continuation of application No. 13/437,894, filed on Apr. 2, 2012, now Pat. No. 8,427,298, which is a continuation of application No. 13/114,029, filed on May 23, 2011, now Pat. No. 8,149,103, which is a continuation of application No. 12/849,004, filed on Aug. 2, 2010, now Pat. No. 7,948,369, which is a continuation of application No. 12/102,836, filed on Apr. 14, 2008, now Pat. No. 7,768,387.
- (60) Provisional application No. 60/911,866, filed on Apr. 14, 2007.

(56)

References Cited

U.S. PATENT DOCUMENTS

3,949,388 A	4/1976	Fuller	5,360,404 A	11/1994	Novacek et al.
4,031,449 A	6/1977	Trombly	5,371,787 A	12/1994	Hamilton
4,036,749 A	7/1977	Anderson	5,372,427 A	12/1994	Padovani et al.
4,055,175 A	10/1977	Clemens et al.	5,379,238 A	1/1995	Stark
4,129,128 A	12/1978	McFarlane	5,390,671 A	2/1995	Lord et al.
4,245,634 A	1/1981	Albisser et al.	5,391,250 A	2/1995	Cheney, II et al.
4,327,725 A	5/1982	Cortese et al.	5,408,999 A	4/1995	Singh et al.
4,344,438 A	8/1982	Schultz	5,411,647 A	5/1995	Johnson et al.
4,349,728 A	9/1982	Phillips et al.	5,425,868 A	6/1995	Pedersen
4,425,920 A	1/1984	Bourland et al.	5,429,602 A	7/1995	Hauser
4,464,170 A	8/1984	Clemens et al.	5,431,160 A	7/1995	Wilkins
4,478,976 A	10/1984	Goertz et al.	5,431,921 A	7/1995	Thombre
4,494,950 A	1/1985	Fischell	5,438,271 A	8/1995	White et al.
4,509,531 A	4/1985	Ward	5,438,983 A	8/1995	Falcone
4,527,240 A	7/1985	Kvitash	5,462,051 A	10/1995	Oka et al.
4,538,616 A	9/1985	Rogoff	5,462,645 A	10/1995	Albery et al.
4,583,035 A	4/1986	Sloan	5,497,772 A	3/1996	Schulman et al.
4,619,793 A	10/1986	Lee	5,507,288 A	4/1996	Bocker et al.
4,671,288 A	6/1987	Gough	5,509,410 A	4/1996	Hill et al.
4,703,756 A	11/1987	Gough et al.	5,514,718 A	5/1996	Lewis et al.
4,731,726 A	3/1988	Allen, III	5,531,878 A	7/1996	Vadgama et al.
4,749,985 A	6/1988	Corsberg	5,568,806 A	10/1996	Cheney, II et al.
4,757,022 A	7/1988	Shults et al.	5,569,186 A	10/1996	Lord et al.
4,777,953 A	10/1988	Ash et al.	5,582,184 A	12/1996	Erickson et al.
4,779,618 A	10/1988	Mund et al.	5,586,553 A	12/1996	Halili et al.
4,847,785 A	7/1989	Stephens	5,593,852 A	1/1997	Heller et al.
4,854,322 A	8/1989	Ash et al.	5,609,575 A	3/1997	Larson et al.
4,890,620 A	1/1990	Gough	5,628,310 A	5/1997	Rao et al.
4,925,268 A	5/1990	Iyer et al.	5,628,324 A	5/1997	Sarbach
4,953,552 A	9/1990	DeMarzo	5,653,239 A	8/1997	Pompei et al.
4,986,271 A	1/1991	Wilkins	5,665,222 A	9/1997	Heller et al.
4,995,402 A	2/1991	Smith et al.	5,711,001 A	1/1998	Bussan et al.
5,000,180 A	3/1991	Kuypers et al.	5,711,861 A	1/1998	Ward et al.
5,002,054 A	3/1991	Ash et al.	5,726,646 A	3/1998	Bane et al.
5,019,974 A	5/1991	Beckers	5,729,225 A	3/1998	Ledzius
5,050,612 A	9/1991	Matsumura	5,772,586 A	6/1998	Heinonen et al.
5,055,171 A	10/1991	Peck	5,791,344 A	8/1998	Schulman et al.
5,061,941 A	10/1991	Lizzi et al.	5,856,758 A	1/1999	Joffe et al.
5,068,536 A	11/1991	Rosenthal	5,899,855 A	5/1999	Brown
5,082,550 A	1/1992	Rishpon et al.	5,919,141 A	7/1999	Money et al.
5,106,365 A	4/1992	Hernandez	5,925,021 A	7/1999	Castellano et al.
5,112,455 A	5/1992	Cozzette et al.	5,935,224 A	8/1999	Svancarek et al.
5,122,925 A	6/1992	Inpy	5,942,979 A	8/1999	Luppino
5,135,004 A	8/1992	Adams et al.	5,957,854 A	9/1999	Besson et al.
5,165,407 A	11/1992	Wilson et al.	5,964,993 A	10/1999	Blubaugh, Jr. et al.
5,246,867 A	9/1993	Lakowicz et al.	5,965,380 A	10/1999	Heller et al.
5,262,035 A	11/1993	Gregg et al.	5,971,922 A	10/1999	Arita et al.
5,262,305 A	11/1993	Heller et al.	5,995,860 A	11/1999	Sun et al.
5,264,104 A	11/1993	Gregg et al.	6,001,067 A	12/1999	Shults et al.
5,264,105 A	11/1993	Gregg et al.	6,024,699 A	2/2000	Surwit et al.
5,279,294 A	1/1994	Anderson et al.	6,028,413 A	2/2000	Brockmann
5,285,792 A	2/1994	Sjoquist et al.	6,049,727 A	4/2000	Crothall
5,293,877 A	3/1994	O'Hara et al.	6,055,316 A	4/2000	Perlman et al.
5,299,571 A	4/1994	Mastrototaro	6,066,448 A	5/2000	Wohlstadter et al.
5,320,725 A	6/1994	Gregg et al.	6,083,710 A	7/2000	Heller et al.
5,322,063 A	6/1994	Allen et al.	6,088,608 A	7/2000	Schulman et al.
5,340,722 A	8/1994	Wolfbeis et al.	6,091,976 A	7/2000	Pfeiffer et al.
5,342,789 A	8/1994	Chick et al.	6,093,172 A	7/2000	Funderburk et al.
5,356,786 A	10/1994	Heller et al.	6,096,364 A	8/2000	Bok et al.
			6,103,033 A	8/2000	Say et al.
			6,117,290 A	9/2000	Say et al.
			6,119,028 A	9/2000	Schulman et al.
			6,120,676 A	9/2000	Heller et al.
			6,121,009 A	9/2000	Heller et al.
			6,121,611 A	9/2000	Lindsay et al.
			6,122,351 A	9/2000	Schlueter, Jr. et al.
			6,134,461 A	10/2000	Say et al.
			6,162,611 A	12/2000	Heller et al.
			6,175,752 B1	1/2001	Say et al.
			6,200,265 B1	3/2001	Walsh et al.
			6,212,416 B1	4/2001	Ward et al.
			6,219,574 B1	4/2001	Cormier et al.
			6,233,471 B1	5/2001	Berner et al.
			6,248,067 B1	6/2001	Causey, III et al.
			6,270,455 B1	8/2001	Brown
			6,275,717 B1	8/2001	Gross et al.
			6,284,478 B1	9/2001	Heller et al.
			6,293,925 B1	9/2001	Safabash et al.
			6,295,506 B1	9/2001	Heinonen et al.

(56)

References Cited

U.S. PATENT DOCUMENTS

6,299,347	B1	10/2001	Pompei	6,881,551	B2	4/2005	Heller et al.
6,306,104	B1	10/2001	Cunningham et al.	6,892,085	B2	5/2005	McIvor et al.
6,309,884	B1	10/2001	Cooper et al.	6,893,396	B2	5/2005	Schulze et al.
6,314,317	B1	11/2001	Willis	6,895,263	B2	5/2005	Shin et al.
6,329,161	B1	12/2001	Heller et al.	6,895,265	B2	5/2005	Silver
6,359,270	B1	3/2002	Bridson	6,931,327	B2	8/2005	Goode, Jr. et al.
6,359,594	B1	3/2002	Junod	6,932,894	B2	8/2005	Mao et al.
6,360,888	B1	3/2002	McIvor et al.	6,936,006	B2	8/2005	Sabra
6,366,794	B1	4/2002	Moussy et al.	6,950,708	B2	9/2005	Bowman IV et al.
6,377,828	B1	4/2002	Chaiken et al.	6,958,705	B2	10/2005	Lebel et al.
6,379,301	B1	4/2002	Worthington et al.	6,968,294	B2	11/2005	Gutta et al.
6,385,473	B1	5/2002	Haines et al.	6,971,274	B2	12/2005	Olin
6,424,847	B1	7/2002	Mastrototaro et al.	6,974,437	B2	12/2005	Lebel et al.
6,427,088	B1	7/2002	Bowman, IV et al.	6,983,176	B2	1/2006	Gardner et al.
6,440,068	B1	8/2002	Brown et al.	6,987,474	B2	1/2006	Freeman et al.
6,471,689	B1	10/2002	Joseph et al.	6,990,366	B2	1/2006	Say et al.
6,478,736	B1	11/2002	Mault	6,997,907	B2	2/2006	Safabash et al.
6,480,744	B2	11/2002	Ferek-Petric	6,998,247	B2	2/2006	Monfre et al.
6,484,046	B1	11/2002	Say et al.	7,003,336	B2	2/2006	Holker et al.
6,493,069	B1	12/2002	Nagashimada et al.	7,003,340	B2	2/2006	Say et al.
6,514,718	B2	2/2003	Heller et al.	7,003,341	B2	2/2006	Say et al.
6,544,212	B2	4/2003	Galley et al.	7,022,072	B2	4/2006	Fox et al.
6,546,268	B1	4/2003	Ishikawa et al.	7,024,245	B2	4/2006	Lebel et al.
6,551,494	B1	4/2003	Heller et al.	7,027,931	B1	4/2006	Jones et al.
6,558,321	B1	5/2003	Burd et al.	7,029,444	B2	4/2006	Shin et al.
6,558,351	B1	5/2003	Steil et al.	7,041,068	B2	5/2006	Freeman et al.
6,560,471	B1	5/2003	Heller et al.	7,052,483	B2	5/2006	Wojcik
6,561,978	B1	5/2003	Conn et al.	7,056,302	B2	6/2006	Douglas
6,562,001	B2	5/2003	Lebel et al.	7,074,307	B2	7/2006	Simpson et al.
6,564,105	B2	5/2003	Starkweather et al.	7,081,195	B2	7/2006	Simpson et al.
6,565,509	B1	5/2003	Plante et al.	7,098,803	B2	8/2006	Mann et al.
6,571,128	B2	5/2003	Lebel et al.	7,108,778	B2	9/2006	Simpson et al.
6,572,545	B2	6/2003	Knobbe et al.	7,110,803	B2	9/2006	Shults et al.
6,576,101	B1	6/2003	Heller et al.	7,113,821	B1	9/2006	Sun et al.
6,577,899	B2	6/2003	Lebel et al.	7,134,999	B2	11/2006	Brauker et al.
6,579,690	B1	6/2003	Bonnecaze et al.	7,136,689	B2	11/2006	Shults et al.
6,580,364	B1	6/2003	Munch et al.	7,167,818	B2	1/2007	Brown
6,585,644	B2	7/2003	Lebel et al.	7,171,274	B2	1/2007	Starkweather et al.
6,591,125	B1	7/2003	Buse et al.	7,174,199	B2	2/2007	Berner et al.
6,595,919	B2	7/2003	Berner et al.	7,190,988	B2	3/2007	Say et al.
6,605,200	B1	8/2003	Mao et al.	7,192,450	B2	3/2007	Brauker et al.
6,605,201	B1	8/2003	Mao et al.	7,198,606	B2	4/2007	Boecker et al.
6,607,509	B2	8/2003	Bobroff et al.	7,226,978	B2	6/2007	Tapsak et al.
6,610,012	B2	8/2003	Mault	7,267,665	B2	9/2007	Steil et al.
6,633,772	B2	10/2003	Ford et al.	7,276,029	B2	10/2007	Goode, Jr. et al.
6,635,014	B2	10/2003	Starkweather et al.	7,286,894	B1	10/2007	Grant et al.
6,645,368	B1	11/2003	Beaty et al.	7,299,082	B2	11/2007	Feldman et al.
6,648,821	B2	11/2003	Lebel et al.	7,310,544	B2	12/2007	Brister et al.
6,654,625	B1	11/2003	Say et al.	7,335,294	B2	2/2008	Heller et al.
6,656,114	B1	12/2003	Poulson et al.	7,354,420	B2	4/2008	Steil et al.
6,658,396	B1	12/2003	Tang et al.	7,364,592	B2	4/2008	Carr-Brendel et al.
6,659,948	B2	12/2003	Lebel et al.	7,366,556	B2	4/2008	Brister et al.
6,668,196	B1	12/2003	Villegas et al.	7,379,765	B2	5/2008	Petisce et al.
6,687,546	B2	2/2004	Lebel et al.	7,402,153	B2	7/2008	Steil et al.
6,689,056	B1	2/2004	Kilcoyne et al.	7,424,318	B2	9/2008	Brister et al.
6,692,446	B2	2/2004	Hoek	7,460,898	B2	12/2008	Brister et al.
6,694,191	B2	2/2004	Starkweather et al.	7,467,003	B2	12/2008	Brister et al.
6,695,860	B1	2/2004	Ward et al.	7,471,972	B2	12/2008	Rhodes et al.
6,698,269	B2	3/2004	Baber et al.	7,494,465	B2	2/2009	Brister et al.
6,702,857	B2	3/2004	Brauker et al.	7,497,827	B2	3/2009	Brister et al.
6,730,025	B1	5/2004	Platt	7,519,408	B2	4/2009	Rasdal et al.
6,733,446	B2	5/2004	Lebel et al.	7,547,281	B2	6/2009	Hayes et al.
6,740,075	B2	5/2004	Lebel et al.	7,569,030	B2	8/2009	Lebel et al.
6,741,877	B1	5/2004	Shults et al.	7,583,990	B2	9/2009	Goode, Jr. et al.
6,746,582	B2	6/2004	Heller et al.	7,591,801	B2	9/2009	Brauker et al.
6,758,810	B2	7/2004	Lebel et al.	7,599,726	B2	10/2009	Goode, Jr. et al.
6,770,030	B1	8/2004	Schaupp et al.	7,613,491	B2	11/2009	Boock et al.
6,790,178	B1	9/2004	Mault et al.	7,615,007	B2	11/2009	Shults et al.
6,809,653	B1	10/2004	Mann et al.	7,618,369	B2	11/2009	Hayter et al.
6,810,290	B2	10/2004	Lebel et al.	7,632,228	B2	12/2009	Brauker et al.
6,811,533	B2	11/2004	Lebel et al.	7,653,425	B2	1/2010	Hayter et al.
6,811,534	B2	11/2004	Bowman, IV et al.	7,699,775	B2	4/2010	Desai et al.
6,813,519	B2	11/2004	Lebel et al.	7,766,829	B2	8/2010	Sloan et al.
6,862,465	B2	3/2005	Shults et al.	7,768,387	B2	8/2010	Fennell et al.
6,873,268	B2	3/2005	Lebel et al.	7,775,444	B2	8/2010	DeRocco et al.
				7,804,197	B2	9/2010	Iisaka et al.
				7,811,231	B2	10/2010	Jin et al.
				7,826,382	B2	11/2010	Scirello et al.
				7,833,151	B2	11/2010	Khait et al.

(56)

References Cited

U.S. PATENT DOCUMENTS

7,889,069	B2	2/2011	Fifolt et al.	2004/0193020	A1	9/2004	Chiba et al.
7,948,369	B2	5/2011	Fennell et al.	2004/0193025	A1	9/2004	Steil et al.
7,978,063	B2	7/2011	Baldus et al.	2004/0193090	A1	9/2004	Lebel et al.
8,000,918	B2	8/2011	Fjield et al.	2004/0197846	A1	10/2004	Hockersmith et al.
8,010,174	B2	8/2011	Goode et al.	2004/0199056	A1	10/2004	Husemann et al.
8,010,256	B2	8/2011	Oowada	2004/0199059	A1	10/2004	Brauker et al.
8,149,103	B2	4/2012	Fennell et al.	2004/0204687	A1	10/2004	Mogensen et al.
8,260,393	B2	9/2012	Kamath et al.	2004/0204868	A1	10/2004	Maynard et al.
8,282,549	B2	10/2012	Brauker et al.	2004/0206916	A1	10/2004	Colvin, Jr. et al.
8,427,298	B2	4/2013	Fennell et al.	2004/0212536	A1	10/2004	Mori et al.
8,478,389	B1	7/2013	Brockway et al.	2004/0225199	A1	11/2004	Evanyk et al.
8,638,411	B2	1/2014	Park et al.	2004/0225338	A1	11/2004	Lebel et al.
8,698,615	B2	4/2014	Fennell et al.	2004/0236200	A1	11/2004	Say et al.
8,849,459	B2	9/2014	Ramey et al.	2004/0254433	A1	12/2004	Bandis et al.
8,937,540	B2*	1/2015	Fennell	2004/0260478	A1	12/2004	Schwamm
			340/511	2004/0267300	A1	12/2004	Mace
2001/0011795	A1	8/2001	Ohtsuka et al.	2005/0001024	A1	1/2005	Kusaka et al.
2002/0019022	A1	2/2002	Dunn et al.	2005/0004439	A1	1/2005	Shin et al.
2002/0023852	A1	2/2002	McIvor et al.	2005/0004494	A1	1/2005	Perez et al.
2002/0042090	A1	4/2002	Heller et al.	2005/0010269	A1	1/2005	Lebel et al.
2002/0045808	A1	4/2002	Ford et al.	2005/0017864	A1	1/2005	Tsoukalis
2002/0065454	A1	5/2002	Lebel et al.	2005/0027177	A1	2/2005	Shin et al.
2002/0103499	A1	8/2002	Perez et al.	2005/0031689	A1	2/2005	Shults et al.
2002/0106709	A1	8/2002	Potts et al.	2005/0038332	A1	2/2005	Saidara et al.
2002/0128594	A1	9/2002	Das et al.	2005/0043598	A1	2/2005	Goode, Jr. et al.
2002/0161288	A1	10/2002	Shin et al.	2005/0049179	A1	3/2005	Davidson et al.
2002/0169635	A1	11/2002	Shillingburg	2005/0059372	A1	3/2005	Arayashiki et al.
2002/0185130	A1	12/2002	Wright et al.	2005/0070777	A1	3/2005	Cho et al.
2003/0004403	A1	1/2003	Drinan et al.	2005/0090607	A1	4/2005	Tapsak et al.
2003/0023317	A1	1/2003	Brauker et al.	2005/0096511	A1	5/2005	Fox et al.
2003/0032874	A1	2/2003	Rhodes et al.	2005/0096512	A1	5/2005	Fox et al.
2003/0042137	A1	3/2003	Mao et al.	2005/0096516	A1	5/2005	Soykan et al.
2003/0060692	A1	3/2003	Ruchti et al.	2005/0112169	A1	5/2005	Brauker et al.
2003/0060753	A1	3/2003	Starkweather et al.	2005/0113648	A1	5/2005	Yang et al.
2003/0065308	A1	4/2003	Lebel et al.	2005/0113653	A1	5/2005	Fox et al.
2003/0100821	A1	5/2003	Heller et al.	2005/0114068	A1	5/2005	Chey et al.
2003/0119457	A1	6/2003	Standke	2005/0116683	A1	6/2005	Cheng et al.
2003/0125612	A1	7/2003	Fox et al.	2005/0121322	A1	6/2005	Say et al.
2003/0130616	A1	7/2003	Steil et al.	2005/0131346	A1	6/2005	Douglas
2003/0134347	A1	7/2003	Heller et al.	2005/0137530	A1	6/2005	Campbell et al.
2003/0168338	A1	9/2003	Gao et al.	2005/0143635	A1	6/2005	Kamath et al.
2003/0175992	A1	9/2003	Toranto et al.	2005/0176136	A1	8/2005	Burd et al.
2003/0176933	A1	9/2003	Lebel et al.	2005/0177398	A1	8/2005	Watanabe et al.
2003/0187338	A1	10/2003	Say et al.	2005/0182306	A1	8/2005	Sloan
2003/0199790	A1	10/2003	Boecker et al.	2005/0182358	A1	8/2005	Veit et al.
2003/0208113	A1	11/2003	Mault et al.	2005/0187720	A1	8/2005	Goode, Jr. et al.
2003/0212317	A1	11/2003	Kovatchev et al.	2005/0192494	A1	9/2005	Ginsberg
2003/0212379	A1	11/2003	Bylund et al.	2005/0192557	A1	9/2005	Brauker et al.
2003/0216630	A1	11/2003	Jersey-Willuhn et al.	2005/0195930	A1	9/2005	Spital et al.
2003/0217966	A1	11/2003	Tapsak et al.	2005/0199494	A1	9/2005	Say et al.
2004/0010207	A1	1/2004	Flaherty et al.	2005/0203360	A1	9/2005	Brauker et al.
2004/0011671	A1	1/2004	Shults et al.	2005/0221504	A1	10/2005	Petruno et al.
2004/0030581	A1	2/2004	Levin et al.	2005/0236361	A1	10/2005	Ufer et al.
2004/0034289	A1	2/2004	Teller et al.	2005/0239154	A1	10/2005	Feldman et al.
2004/0039255	A1	2/2004	Simonsen et al.	2005/0241957	A1	11/2005	Mao et al.
2004/0039298	A1	2/2004	Abreu et al.	2005/0242479	A1	11/2005	Petisce et al.
2004/0040840	A1	3/2004	Mao et al.	2005/0245795	A1	11/2005	Goode, Jr. et al.
2004/0045879	A1	3/2004	Shults et al.	2005/0245799	A1	11/2005	Brauker et al.
2004/0063435	A1	4/2004	Sakamoto et al.	2005/0245839	A1	11/2005	Stivoric et al.
2004/0064068	A1	4/2004	DeNuzzio et al.	2005/0245904	A1	11/2005	Estes et al.
2004/0106858	A1	6/2004	Say et al.	2005/0277912	A1	12/2005	John
2004/0106859	A1	6/2004	Say et al.	2005/0287620	A1	12/2005	Heller et al.
2004/0116786	A1	6/2004	Iijima et al.	2006/0001538	A1	1/2006	Kraft et al.
2004/0122353	A1	6/2004	Shahmirian et al.	2006/0004270	A1	1/2006	Bedard et al.
2004/0133164	A1	7/2004	Funderburk et al.	2006/0015020	A1	1/2006	Neale et al.
2004/0133390	A1	7/2004	Osorio et al.	2006/0015024	A1	1/2006	Brister et al.
2004/0136377	A1	7/2004	Miyazaki et al.	2006/0016700	A1	1/2006	Brister et al.
2004/0138588	A1	7/2004	Saikley et al.	2006/0019327	A1	1/2006	Brister et al.
2004/0146909	A1	7/2004	Duong et al.	2006/0020186	A1	1/2006	Brister et al.
2004/0147872	A1	7/2004	Thompson	2006/0020187	A1	1/2006	Brister et al.
2004/0152622	A1	8/2004	Keith et al.	2006/0020188	A1	1/2006	Kamath et al.
2004/0167801	A1	8/2004	Say et al.	2006/0020189	A1	1/2006	Brister et al.
2004/0171921	A1	9/2004	Say et al.	2006/0020190	A1	1/2006	Kamath et al.
2004/0176672	A1	9/2004	Silver et al.	2006/0020191	A1	1/2006	Brister et al.
2004/0186362	A1	9/2004	Brauker et al.	2006/0020192	A1	1/2006	Brister et al.
2004/0186365	A1	9/2004	Jin et al.	2006/0020300	A1	1/2006	Nghiem et al.
				2006/0029177	A1	2/2006	Cranford, Jr. et al.
				2006/0031094	A1	2/2006	Cohen et al.
				2006/0036139	A1	2/2006	Brister et al.

(56)

References Cited

U.S. PATENT DOCUMENTS

2006/0036140	A1	2/2006	Brister et al.	2008/0027586	A1	1/2008	Hern et al.
2006/0036141	A1	2/2006	Kamath et al.	2008/0029391	A1	2/2008	Mao et al.
2006/0036142	A1	2/2006	Brister et al.	2008/0033254	A1	2/2008	Kamath et al.
2006/0036143	A1	2/2006	Brister et al.	2008/0039702	A1	2/2008	Hayter et al.
2006/0036144	A1	2/2006	Brister et al.	2008/0045824	A1	2/2008	Tapsak et al.
2006/0036145	A1	2/2006	Brister et al.	2008/0057484	A1	3/2008	Miyata et al.
2006/0058588	A1	3/2006	Zdeblick	2008/0058625	A1	3/2008	McGarraugh et al.
2006/0154642	A1	7/2006	Scannell	2008/0058626	A1	3/2008	Miyata et al.
2006/0155180	A1	7/2006	Brister et al.	2008/0058678	A1	3/2008	Miyata et al.
2006/0166629	A1	7/2006	Reggiardo	2008/0060955	A1	3/2008	Goodnow
2006/0173260	A1	8/2006	Gaoni et al.	2008/0062055	A1	3/2008	Cunningham et al.
2006/0173406	A1	8/2006	Hayes et al.	2008/0064937	A1	3/2008	McGarraugh et al.
2006/0173444	A1	8/2006	Choy et al.	2008/0067627	A1	3/2008	Boeck et al.
2006/0183984	A1	8/2006	Dobbles et al.	2008/0071156	A1	3/2008	Brister et al.
2006/0183985	A1	8/2006	Brister et al.	2008/0071157	A1	3/2008	McGarraugh et al.
2006/0189863	A1	8/2006	Peyser et al.	2008/0071158	A1	3/2008	McGarraugh et al.
2006/0193375	A1	8/2006	Lee et al.	2008/0081977	A1	4/2008	Hayter et al.
2006/0222566	A1	10/2006	Brauker et al.	2008/0083617	A1	4/2008	Simpson et al.
2006/0224109	A1	10/2006	Steil et al.	2008/0086042	A1	4/2008	Brister et al.
2006/0229512	A1	10/2006	Petisce et al.	2008/0086044	A1	4/2008	Brister et al.
2006/0247508	A1	11/2006	Fennell	2008/0086273	A1	4/2008	Shults et al.
2006/0253296	A1	11/2006	Liisberg et al.	2008/0092638	A1	4/2008	Brenneman et al.
2006/0264785	A1	11/2006	Dring et al.	2008/0097289	A1	4/2008	Steil et al.
2006/0264888	A1	11/2006	Moberg et al.	2008/0108942	A1	5/2008	Brister et al.
2006/0270922	A1	11/2006	Brauker et al.	2008/0154513	A1	6/2008	Kovatchev et al.
2006/0272652	A1	12/2006	Stocker et al.	2008/0161666	A1	7/2008	Feldman et al.
2006/0293607	A1	12/2006	Alt et al.	2008/0167543	A1	7/2008	Say et al.
2007/0007133	A1	1/2007	Mang et al.	2008/0172205	A1	7/2008	Breton et al.
2007/0016381	A1	1/2007	Kamath et al.	2008/0183060	A1	7/2008	Steil et al.
2007/0017983	A1	1/2007	Frank et al.	2008/0183061	A1	7/2008	Goode et al.
2007/0026440	A1	2/2007	Broderick et al.	2008/0183399	A1	7/2008	Goode et al.
2007/0027381	A1	2/2007	Stafford	2008/0188731	A1	8/2008	Brister et al.
2007/0032706	A1	2/2007	Kamath et al.	2008/0188796	A1	8/2008	Steil et al.
2007/0033074	A1	2/2007	Nitzan et al.	2008/0189051	A1	8/2008	Goode et al.
2007/0038044	A1	2/2007	Dobbles et al.	2008/0194934	A1	8/2008	Ray et al.
2007/0053341	A1	3/2007	Lizzi	2008/0194935	A1	8/2008	Brister et al.
2007/0060814	A1	3/2007	Stafford	2008/0194936	A1	8/2008	Goode et al.
2007/0060869	A1	3/2007	Tolle et al.	2008/0194937	A1	8/2008	Goode et al.
2007/0066873	A1	3/2007	Kamath et al.	2008/0194938	A1	8/2008	Brister et al.
2007/0071681	A1	3/2007	Gadkar et al.	2008/0195232	A1	8/2008	Carr-Brendel et al.
2007/0073129	A1	3/2007	Shah et al.	2008/0195967	A1	8/2008	Goode et al.
2007/0078320	A1	4/2007	Stafford	2008/0197024	A1	8/2008	Simpson et al.
2007/0078321	A1	4/2007	Mazza et al.	2008/0200788	A1	8/2008	Brister et al.
2007/0078322	A1	4/2007	Stafford	2008/0200789	A1	8/2008	Brister et al.
2007/0078323	A1	4/2007	Reggiardo et al.	2008/0200791	A1	8/2008	Simpson et al.
2007/0093786	A1	4/2007	Goldsmith et al.	2008/0208025	A1	8/2008	Shults et al.
2007/0100222	A1	5/2007	Mastrototaro et al.	2008/0208113	A1	8/2008	Damiano et al.
2007/0106135	A1	5/2007	Sloan et al.	2008/0212600	A1	9/2008	Yoo
2007/0124002	A1	5/2007	Estes et al.	2008/0214900	A1	9/2008	Fennell et al.
2007/0135697	A1	6/2007	Reggiardo	2008/0214915	A1	9/2008	Brister et al.
2007/0149875	A1	6/2007	Ouyang et al.	2008/0214918	A1	9/2008	Brister et al.
2007/0153705	A1	7/2007	Rosar et al.	2008/0228051	A1	9/2008	Shults et al.
2007/0156094	A1	7/2007	Safabash et al.	2008/0228054	A1	9/2008	Shults et al.
2007/0163880	A1	7/2007	Woo et al.	2008/0234943	A1	9/2008	Ray et al.
2007/0168224	A1	7/2007	Letzt et al.	2008/0242961	A1	10/2008	Brister et al.
2007/0173706	A1	7/2007	Neinast et al.	2008/0254544	A1	10/2008	Modzelewski et al.
2007/0173712	A1	7/2007	Shah et al.	2008/0255434	A1	10/2008	Hayter et al.
2007/0173761	A1	7/2007	Kanderian et al.	2008/0255437	A1	10/2008	Hayter
2007/0179349	A1	8/2007	Hoyme et al.	2008/0255808	A1	10/2008	Hayter
2007/0179352	A1	8/2007	Randlov et al.	2008/0256048	A1	10/2008	Hayter
2007/0191701	A1	8/2007	Feldman et al.	2008/0262469	A1	10/2008	Brister et al.
2007/0191702	A1	8/2007	Yodfat et al.	2008/0267823	A1	10/2008	Wang et al.
2007/0203407	A1	8/2007	Hoss et al.	2008/0275313	A1	11/2008	Brister et al.
2007/0203966	A1	8/2007	Brauker et al.	2008/0287761	A1	11/2008	Hayter
2007/0208245	A1	9/2007	Brauker et al.	2008/0287762	A1	11/2008	Hayter
2007/0219496	A1	9/2007	Kamen et al.	2008/0287763	A1	11/2008	Hayter
2007/0222609	A1	9/2007	Duron et al.	2008/0287764	A1	11/2008	Rasdal et al.
2007/0235331	A1	10/2007	Simpson et al.	2008/0287765	A1	11/2008	Rasdal et al.
2007/0249922	A1	10/2007	Peyser et al.	2008/0287766	A1	11/2008	Rasdal et al.
2007/0255321	A1	11/2007	Gerber et al.	2008/0288180	A1	11/2008	Hayter
2007/0255348	A1	11/2007	Holtzclaw	2008/0288204	A1	11/2008	Hayter et al.
2007/0271285	A1	11/2007	Eichorn et al.	2008/0294024	A1	11/2008	Cosentino et al.
2008/0009692	A1	1/2008	Stafford	2008/0296155	A1	12/2008	Shults et al.
2008/0017522	A1	1/2008	Heller et al.	2008/0306368	A1	12/2008	Goode et al.
2008/0021666	A1	1/2008	Goode, Jr. et al.	2008/0306434	A1	12/2008	Dobbles et al.
				2008/0306435	A1	12/2008	Kamath et al.
				2008/0306444	A1	12/2008	Brister et al.
				2008/0312841	A1	12/2008	Hayter
				2008/0312842	A1	12/2008	Hayter

(56) **References Cited**

FOREIGN PATENT DOCUMENTS

WO WO-2005/117269 12/2005
 WO WO-2006/024671 3/2006

OTHER PUBLICATIONS

- Armour, J. C., et al., "Application of Chronic Intravascular Blood Glucose Sensor in Dogs", *Diabetes*, vol. 39, 1990, pp. 1519-1526.
- Bennion, N., et al., "Alternate Site Glucose Testing: A Crossover Design", *Diabetes Technology & Therapeutics*, vol. 4, No. 1, 2002, pp. 25-33.
- Blank, T. B., et al., "Clinical Results From a Non-Invasive Blood Glucose Monitor", Optical Diagnostics and Sensing of Biological Fluids and Glucose and Cholesterol Monitoring II, *Proceedings of SPIE*, vol. 4624, 2002, pp. 1-10.
- Brooks, S. L., et al., "Development of an On-Line Glucose Sensor for Fermentation Monitoring", *Biosensors*, vol. 3, 1987/88, pp. 45-56.
- Cass, A. E., et al., "Ferrocene-Medicated Enzyme Electrode for Amperometric Determination of Glucose", *Analytical Chemistry*, vol. 56, No. 4, 1984, 667-671.
- Csoregi, E., et al., "Design and Optimization of a Selective Subcutaneously Implantable Glucose Electrode Based on 'Wired' Glucose Oxidase", *Analytical Chemistry*, vol. 67, No. 7, 1995, pp. 1240-1244.
- Feldman, B., et al., "A Continuous Glucose Sensor Based on Wired Enzyme™ Technology—Results from a 3-Day Trial in Patients with Type 1 Diabetes", *Diabetes Technology & Therapeutics*, vol. 5, No. 5, 2003, pp. 769-779.
- Feldman, B., et al., "Correlation of Glucose Concentrations in Interstitial Fluid and Venous Blood During Periods of Rapid Glucose Change", *Abbott Diabetes Care, Inc. Freestyle Navigator Continuous Glucose Monitor Pamphlet*, 2004.
- Isermann, R., "Supervision, Fault-Detection and Fault-Diagnosis Methods—An Introduction", *Control Engineering Practice*, vol. 5, No. 5, 1997, pp. 639-652.
- Isermann, R., et al., "Trends in the Application of Model-Based Fault Detection and Diagnosis of Technical Processes", *Control Engineering Practice*, vol. 5, No. 5, 1997, pp. 709-719.
- Johnson, P. C., "Peripheral Circulation", *John Wiley & Sons*, 1978, pp. 198.
- Jungheim, K., et al., "How Rapid Does Glucose Concentration Change in Daily Life of Patients with Type 1 Diabetes?", 2002, pp. 250.
- Jungheim, K., et al., "Risky Delay of Hypoglycemia Detection by Glucose Monitoring at the Arm", *Diabetes Care*, vol. 24, No. 7, 2001, pp. 1303-1304.
- Kaplan, S. M., "Wiley Electrical and Electronics Engineering Dictionary", *IEEE Press*, 2004, pp. 141, 142, 548, 549.
- Lortz, J., et al., "What is Bluetooth? We Explain the Newest Short-Range Connectivity Technology", *Smart Computing Learning Series, Wireless Computing*, vol. 8, Issue 5, 2002, pp. 72-74.
- Malin, S. F., et al., "Noninvasive Prediction of Glucose by Near-Infrared Diffuse Reflectance Spectroscopy", *Clinical Chemistry*, vol. 45, No. 9, 1999, pp. 1651-1658.
- McGarraugh, G., et al., "Glucose Measurements Using Blood Extracted from the Forearm and the Finger", *TheraSense, Inc.*, 2001, 16 Pages.
- McGarraugh, G., et al., "Physiological Influences on Off-Finger Glucose Testing", *Diabetes Technology & Therapeutics*, vol. 3, No. 3, 2001, pp. 367-376.
- McKean, B. D., et al., "A Telemetry-Instrumentation System for Chronically Implanted Glucose and Oxygen Sensors", *IEEE Transactions on Biomedical Engineering*, vol. 35, No. 7, 1988, pp. 526-532.
- Pickup, J., et al., "Implantable Glucose Sensors: Choosing the Appropriate Sensing Strategy", *Biosensors*, vol. 3, 1987/88, pp. 335-346.
- Pickup, J., et al., "In Vivo Molecular Sensing in Diabetes Mellitus: An Implantable Glucose Sensor with Direct Electron Transfer", *Diabetologia*, vol. 32, 1989, pp. 213-217.
- Pishko, M. V., et al., "Amperometric Glucose Microelectrodes Prepared Through Immobilization of Glucose Oxidase in Redox Hydrogels", *Analytical Chemistry*, vol. 63, No. 20, 1991, pp. 2268-2272.
- Quinn, C. P., et al., "Kinetics of Glucose Delivery to Subcutaneous Tissue in Rats Measured with 0.3-mm Amperometric Microsensors", *The American Physiological Society*, 1995, E155-E161.
- Roe, J. N., et al., "Bloodless Glucose Measurements", *Critical Review in Therapeutic Drug Carrier Systems*, vol. 15, Issue 3, 1998, pp. 199-241.
- Sakakida, M., et al., "Development of Ferrocene-Mediated Needle-Type Glucose Sensor as a Measure of True Subcutaneous Tissue Glucose Concentrations", *Artificial Organs Today*, vol. 2, No. 2, 1992, pp. 145-158.
- Sakakida, M., et al., "Ferrocene-Mediated Needle-Type Glucose Sensor Covered with Newly Designed Biocompatible Membrane", *Sensors and Actuators B*, vol. 13-14, 1993, pp. 319-322.
- Salehi, C., et al., "A Telemetry-Instrumentation System for Long-Term Implantable Glucose and Oxygen Sensors", *Analytical Letters*, vol. 29, No. 13, 1996, pp. 2289-2308.
- Schmidtke, D. W., et al., "Measurement and Modeling of the Transient Difference Between Blood and Subcutaneous Glucose Concentrations in the Rat After Injection of Insulin", *Proceedings of the National Academy of Sciences*, vol. 95, 1998, pp. 294-299.
- Shaw, G. W., et al., "In Vitro Testing of a Simply Constructed, Highly Stable Glucose Sensor Suitable for Implantation in Diabetic Patients", *Biosensors & Bioelectronics*, vol. 6, 1991, pp. 401-406.
- Shichiri, M., et al., "Glycaemic Control in Pancreatectomized Dogs with a Wearable Artificial Endocrine Pancreas", *Diabetologia*, vol. 24, 1983, pp. 179-184.
- Shichiri, M., et al., "In Vivo Characteristics of Needle-Type Glucose Sensor—Measurements of Subcutaneous Glucose Concentrations in Human Volunteers", *Hormone and Metabolic Research Supplement Series*, vol. 20, 1988, pp. 17-20.
- Shichiri, M., et al., "Membrane Design for Extending the Long-Life of an Implantable Glucose Sensor", *Diabetes Nutrition and Metabolism*, vol. 2, 1989, pp. 309-313.
- Shichiri, M., et al., "Needle-type Glucose Sensor for Wearable Artificial Endocrine Pancreas", *Implantable Sensors for Closed-Loop Prosthetic Systems*, Chapter 15, 1985, pp. 197-210.
- Shichiri, M., et al., "Telemetry Glucose Monitoring Device With Needle-Type Glucose Sensor: A Useful Tool for Blood Glucose Monitoring in Diabetic Individuals", *Diabetes Care*, vol. 9, No. 3, 1986, pp. 298-301.
- Shichiri, M., et al., "Wearable Artificial Endocrine Pancreas With Needle-Type Glucose Sensor", *The Lancet*, 1982, pp. 1129-1131.
- Shults, M. C., et al., "A Telemetry-Instrumentation System for Monitoring Multiple Subcutaneously Implanted Glucose Sensors", *IEEE Transactions on Biomedical Engineering*, vol. 41, No. 10, 1994, pp. 937-942.
- Sternberg, R., et al., "Study and Development of Multilayer Needle-Type Enzyme-Based Glucose Microsensors", *Biosensors*, vol. 4, 1988, pp. 27-40.
- Thompson, M., et al., "In Vivo Probes: Problems and Perspectives", *Clinical Biochemistry*, vol. 19, 1986, pp. 255-261.
- Turner, A., et al., "Diabetes Mellitus: Biosensors for Research and Management", *Biosensors*, vol. 1, 1985, pp. 85-115.
- Updike, S. J., et al., "Principles of Long-Term Fully Implanted Sensors with Emphasis on Radiotelemetric Monitoring of Blood Glucose from Inside a Subcutaneous Foreign Body Capsule (FBC)", *Biosensors in the Body: Continuous in vivo Monitoring*, Chapter 4, 1997, pp. 117-137.
- Velho, G., et al., "Strategies for Calibrating a Subcutaneous Glucose Sensor", *Biomedica Biochimica Acta*, vol. 48, 1989, pp. 957-964.
- Wilson, G. S., et al., "Progress Toward the Development of an Implantable Sensor for Glucose", *Clinical Chemistry*, vol. 38, No. 9, 1992, pp. 1613-1617.
- European Patent Application No. 08745799.0, Extended European Search Report mailed Oct. 16, 2012.
- PCT Application No. PCT/US2008/060273, International Preliminary Report on Patentability and Written Opinion of the International Searching Authority mailed Oct. 29, 2009.

(56)

References Cited

OTHER PUBLICATIONS

PCT Application No. PCT/US2008/060273, International Search Report and Written Opinion of the International Searching Authority mailed Oct. 1, 2008.

U.S. Appl. No. 12/102,836, Notice of Allowance mailed Jun. 18, 2010.

U.S. Appl. No. 12/102,836, Office Action mailed Mar. 11, 2010.

U.S. Appl. No. 12/894,004, Notice of Allowance mailed Apr. 7, 2011.

U.S. Appl. No. 12/894,004, Office Action mailed Dec. 30, 2010.

U.S. Appl. No. 12/894,004, Office Action mailed Jan. 21, 2011.

U.S. Appl. No. 13/114,029, Notice of Allowance mailed Jan. 18, 2012.

U.S. Appl. No. 13/114,029, Office Action mailed Nov. 2, 2011.

U.S. Appl. No. 13/437,894, Notice of Allowance mailed Jan. 15, 2013.

U.S. Appl. No. 13/437,894, Office Action mailed Oct. 17, 2012.

U.S. Appl. No. 13/867,948, Notice of Allowance mailed Feb. 4, 2014.

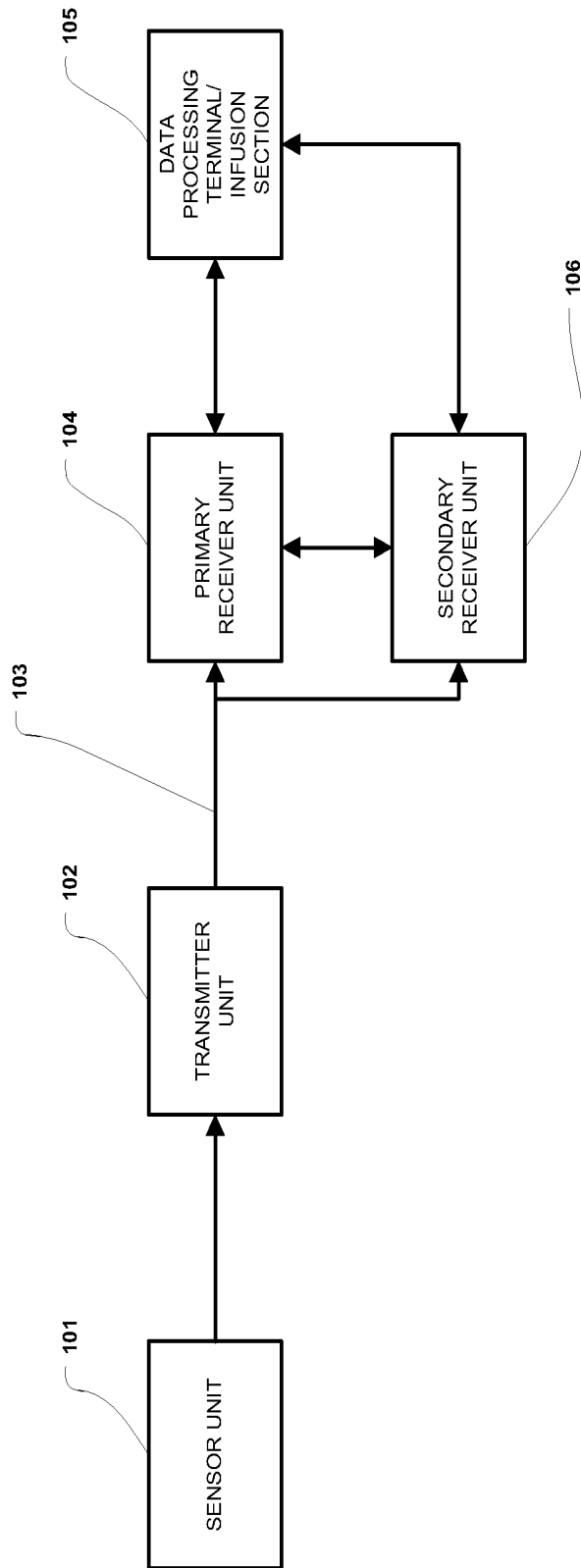
U.S. Appl. No. 13/867,948, Office Action mailed Dec. 16, 2013.

U.S. Appl. No. 13/867,948, Office Action mailed Jul. 10, 2013.

U.S. Appl. No. 14/188,659, Notice of Allowance mailed Nov. 26, 2014.

U.S. Appl. No. 14/188,659, Office Action mailed Sep. 17, 2014.

* cited by examiner



100

FIGURE 1

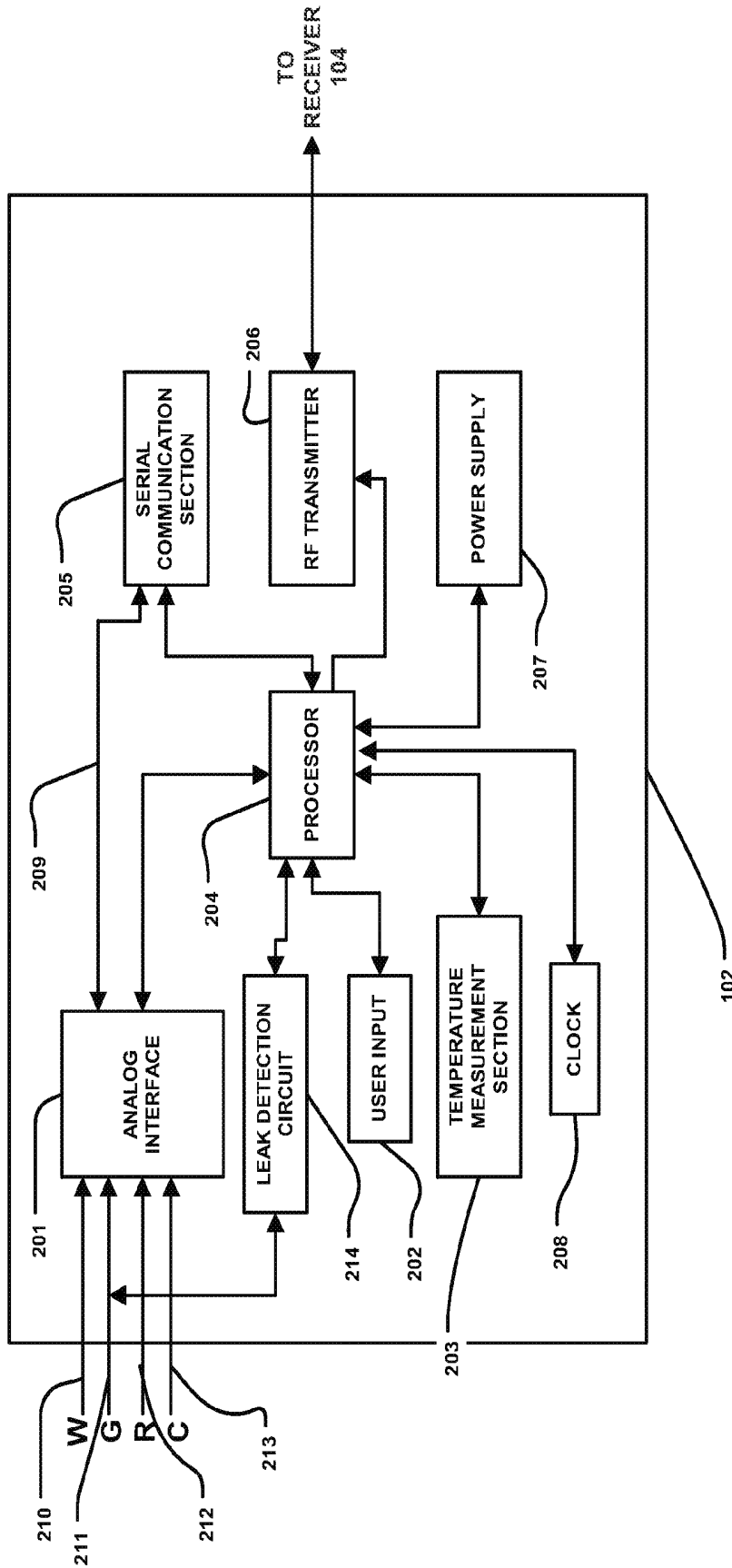


FIGURE 2

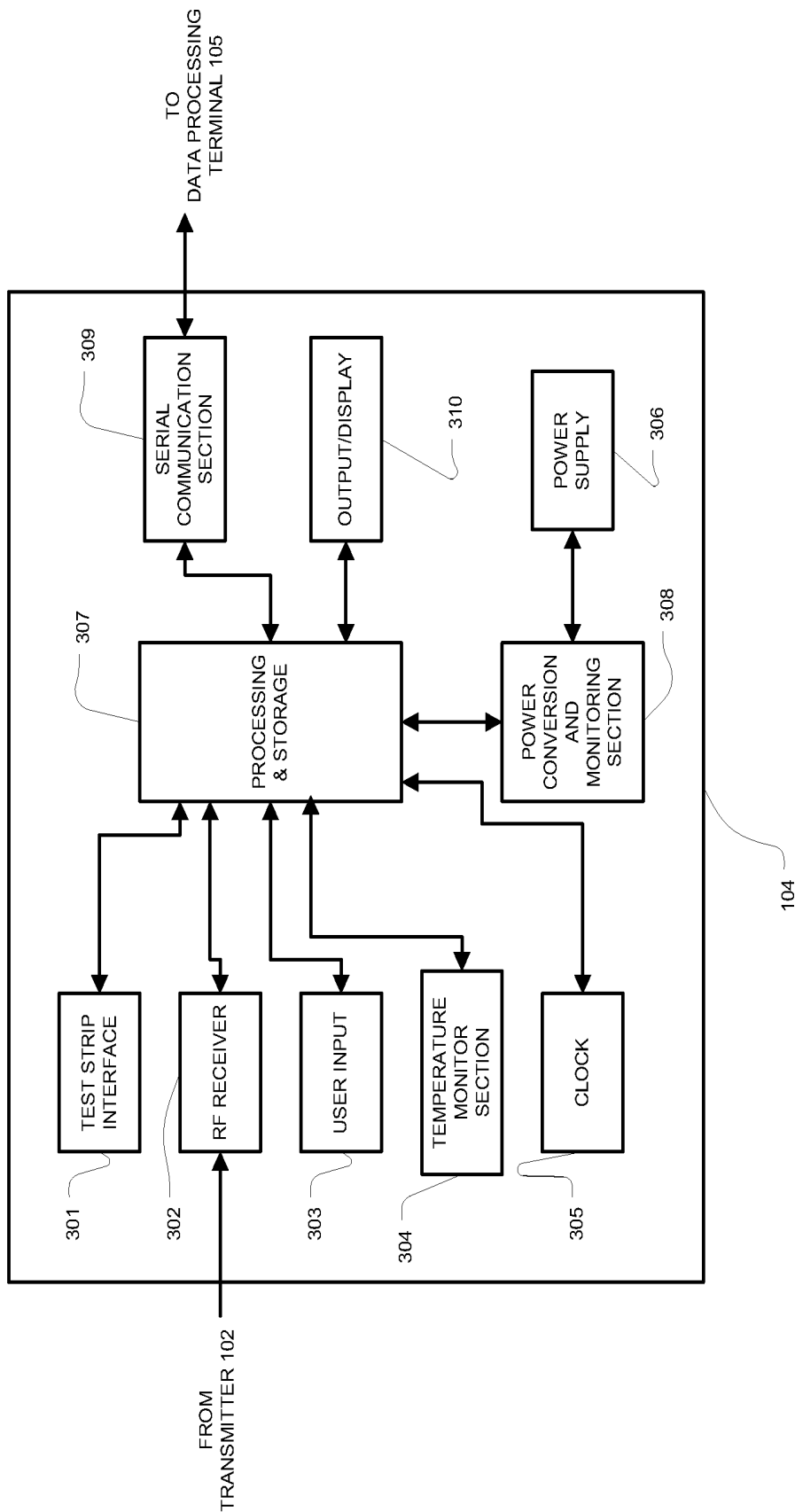


FIGURE 3

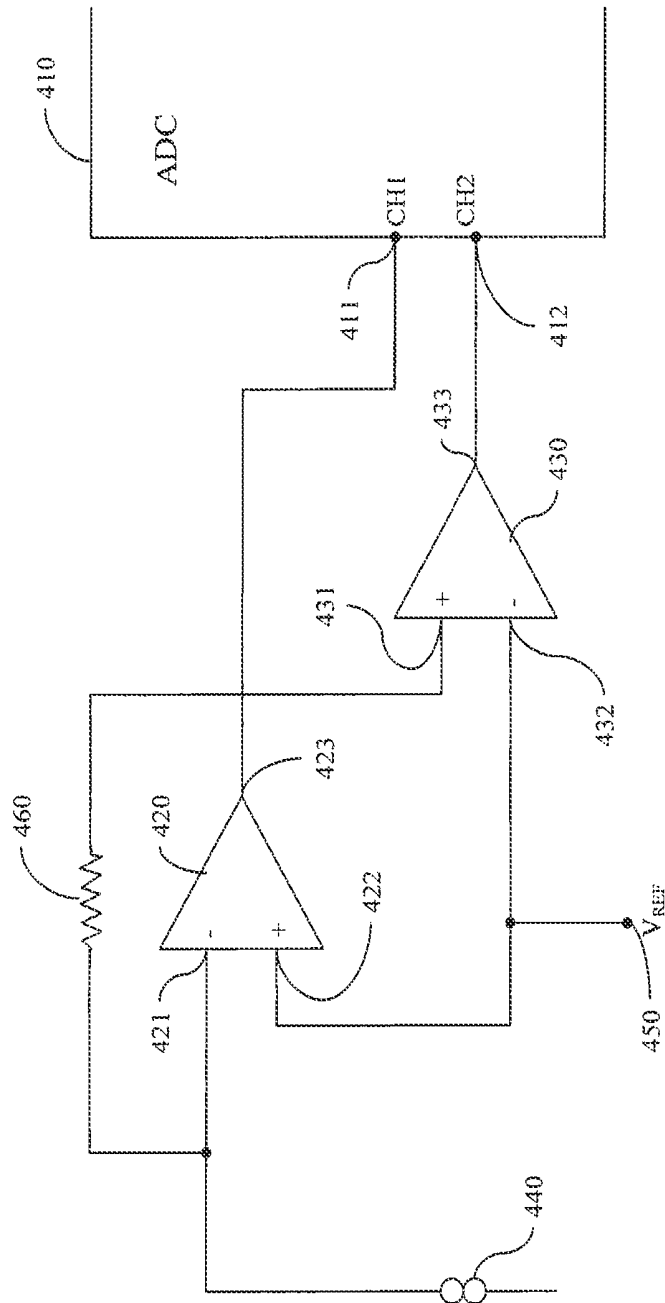


FIGURE 4

**METHOD AND APPARATUS FOR
PROVIDING DYNAMIC MULTI-STAGE
SIGNAL AMPLIFICATION IN A MEDICAL
DEVICE**

RELATED APPLICATIONS

The present application is a continuation of U.S. patent application Ser. No. 14/188,659 filed Feb. 24, 2014, U.S. Pat. No. 8,937,540, now U.S. Pat. No. 8,937,540, which is a continuation of U.S. patent application Ser. No. 13/867,948 filed Apr. 22, 2013, now U.S. Pat. No. 8,698,615, which is a continuation of U.S. patent application Ser. No. 13/437,894 filed Apr. 2, 2012, now U.S. Pat. No. 8,427,298, which is a continuation of U.S. patent application Ser. No. 13/114,029 filed May 23, 2011, now U.S. Pat. No. 8,149,103, which is a continuation of U.S. patent application Ser. No. 12/849,004 filed Aug. 2, 2010, now U.S. Pat. No. 7,948,369, which is a continuation of U.S. patent application Ser. No. 12/102,836 filed Apr. 14, 2008, now U.S. Pat. No. 7,768,387, which claims priority under §35 U.S.C. 119(e) to U.S. provisional application No. 60/911,866 filed Apr. 14, 2007, entitled "Method and Apparatus for Providing Dynamic Multi-Stage Signal Amplification in a Medical Device", the disclosures of each of which are incorporated herein by reference for all purposes.

BACKGROUND

Analyte (e.g., glucose) monitoring systems including continuous and discrete monitoring systems generally include a small, lightweight battery powered and microprocessor controlled system which is configured to detect signals proportional to the corresponding measured glucose levels using an electrometer, and RF signals to transmit the collected data. One aspect of certain analyte monitoring systems include a transcutaneous or subcutaneous analyte sensor configuration which is, for example, partially mounted on the skin of a subject whose analyte level is to be monitored. The sensor cell may use a two or three-electrode (work, reference and counter electrodes) configuration driven by a controlled potential (potentiostat) analog circuit connected through a contact system.

The analyte sensor may be configured so that a portion thereof is placed under the skin of the patient so as to detect the analyte levels of the patient, and another portion of segment of the analyte sensor that is in communication with the transmitter unit. The transmitter unit is configured to transmit the analyte levels detected by the sensor over a wireless communication link such as an RF (radio frequency) communication link to a receiver/monitor unit. The receiver/monitor unit performs data analysis, among others on the received analyte levels to generate information pertaining to the monitored analyte levels. To provide flexibility in analyte sensor manufacturing and/or design, among others, tolerance of a larger range of the analyte sensor sensitivities for processing by the transmitter unit is desirable.

In view of the foregoing, it would be desirable to have a method and apparatus for providing a dynamic multi-stage amplification of signals for use in medical telemetry systems such as, for example, analyte monitoring systems.

SUMMARY OF THE INVENTION

In one embodiment, an apparatus including a first amplifier having at least one input terminal and an output terminal, the at least one input terminal coupled to a signal source, the output terminal configured to provide a first output signal, a

second amplifier having at least one input terminal and an output terminal, the at least one input terminal coupled to the output terminal of the first amplifier, the output terminal of the second amplifier configured to provide a second output signal, a processor operatively coupled to receive the first output signal and the second output signal, where the first output signal is a predetermined ratio of the second output signal, and further, where the first output signal and the second output signal are associated with a monitored analyte level of a user is disclosed.

These and other objects, features and advantages of the present invention will become more fully apparent from the following detailed description of the embodiments, the appended claims and the accompanying drawings.

BRIEF DESCRIPTION OF THE DRAWINGS

FIG. 1 illustrates a block diagram of a data monitoring and management system for practicing one or more embodiments of the present invention;

FIG. 2 is a block diagram of the transmitter unit of the data monitoring and management system shown in FIG. 1 in accordance with one embodiment of the present invention;

FIG. 3 is a block diagram of the receiver/monitor unit of the data monitoring and management system shown in FIG. 1 in accordance with one embodiment of the present invention; and

FIG. 4 is a schematic of the dynamic multi-stage signal amplification in the transmitter unit of the data monitoring and management system shown in FIG. 1 in accordance with one embodiment of the present invention.

DETAILED DESCRIPTION

As described in further detail below, in accordance with the various embodiments of the present invention, there is provided a method and apparatus for providing dynamic multi-stage signal amplification for use in a medical telemetry system. In particular, within the scope of the present invention, there are provided method and apparatus for a multi-stage signal amplifier configuration in the analog interface of the data transmitter unit in the data processing and management system.

FIG. 1 illustrates a data monitoring and management system such as, for example, analyte (e.g., glucose) monitoring system **100** in accordance with one embodiment of the present invention. The subject invention is further described primarily with respect to a glucose monitoring system for convenience and such description is in no way intended to limit the scope of the invention. It is to be understood that the analyte monitoring system may be configured to monitor a variety of analytes, e.g., lactate, and the like.

Analytes that may be monitored include, for example, acetyl choline, amylase, bilirubin, cholesterol, chorionic gonadotropin, creatine kinase (e.g., CK-MB), creatine, DNA, fructosamine, glucose, glutamine, growth hormones, hormones, ketones, lactate, peroxide, prostate-specific antigen, prothrombin, RNA, thyroid stimulating hormone, and tropoin. The concentration of drugs, such as, for example, antibiotics (e.g., gentamicin, vancomycin, and the like), digitoxin, digoxin, drugs of abuse, theophylline, and warfarin, may also be monitored.

The analyte monitoring system **100** includes a sensor **101**, a transmitter unit **102** coupled to the sensor **101**, and a primary receiver unit **104** which is configured to communicate with the transmitter unit **102** via a communication link **103**. The primary receiver unit **104** may be further configured to

transmit data to a data processing terminal **105** for evaluating the data received by the primary receiver unit **104**. Moreover, the data processing terminal in one embodiment may be configured to receive data directly from the transmitter unit **102** via a communication link which may optionally be configured for bi-directional communication.

Also shown in FIG. 1 is a secondary receiver unit **106** which is operatively coupled to the communication link and configured to receive data transmitted from the transmitter unit **102**. Moreover, as shown in the Figure, the secondary receiver unit **106** is configured to communicate with the primary receiver unit **104** as well as the data processing terminal **105**. Indeed, the secondary receiver unit **106** may be configured for bi-directional wireless communication with each of the primary receiver unit **104** and the data processing terminal **105**. As discussed in further detail below, in one embodiment of the present invention, the secondary receiver unit **106** may be configured to include a limited number of functions and features as compared with the primary receiver unit **104**. As such, the secondary receiver unit **106** may be configured substantially in a smaller compact housing or embodied in a device such as a wrist watch, for example. Alternatively, the secondary receiver unit **106** may be configured with the same or substantially similar functionality as the primary receiver unit **104**, and may be configured to be used in conjunction with a docking cradle unit for placement by bedside, for night time monitoring, and/or bi-directional communication device.

Only one sensor **101**, transmitter unit **102**, communication link **103**, and data processing terminal **105** are shown in the embodiment of the analyte monitoring system **100** illustrated in FIG. 1. However, it will be appreciated by one of ordinary skill in the art that the analyte monitoring system **100** may include one or more sensor **101**, transmitter unit **102**, communication link **103**, and data processing terminal **105**. Moreover, within the scope of the present invention, the analyte monitoring system **100** may be a continuous monitoring system, or semi-continuous, or a discrete monitoring system. In a multi-component environment, each device is configured to be uniquely identified by each of the other devices in the system so that communication conflict is readily resolved between the various components within the analyte monitoring system **100**.

In one embodiment of the present invention, the sensor **101** is physically positioned in or on the body of a user whose analyte level is being monitored. The sensor **101** may be configured to continuously sample the analyte level of the user and convert the sampled analyte level into a corresponding data signal for transmission by the transmitter unit **102**. In one embodiment, the transmitter unit **102** is coupled to the sensor **101** so that both devices are positioned on the user's body, with at least a portion of the analyte sensor **101** positioned transcutaneously under the skin layer of the user. The transmitter unit **102** performs data processing such as filtering and encoding on data signals, each of which corresponds to a sampled analyte level of the user, for transmission to the primary receiver unit **104** via the communication link **103**.

In one embodiment, the analyte monitoring system **100** is configured as a one-way RF communication path from the transmitter unit **102** to the primary receiver unit **104**. In such embodiment, the transmitter unit **102** transmits the sampled data signals received from the sensor **101** without acknowledgement from the primary receiver unit **104** that the transmitted sampled data signals have been received. For example, the transmitter unit **102** may be configured to transmit the encoded sampled data signals at a fixed rate (e.g., at one minute intervals) after the completion of the initial power on

procedure. Likewise, the primary receiver unit **104** may be configured to detect such transmitted encoded sampled data signals at predetermined time intervals. Alternatively, the analyte monitoring system **100** may be configured with a bi-directional RF (or otherwise) communication between the transmitter unit **102** and the primary receiver unit **104**.

Additionally, in one aspect, the primary receiver unit **104** may include two sections. The first section is an analog interface section that is configured to communicate with the transmitter unit **102** via the communication link **103**. In one embodiment, the analog interface section may include an RF receiver and an antenna for receiving and amplifying the data signals from the transmitter unit **102**, which are thereafter, demodulated with a local oscillator and filtered through a band-pass filter. The second section of the primary receiver unit **104** is a data processing section which is configured to process the data signals received from the transmitter unit **102** such as by performing data decoding, error detection and correction, data clock generation, and data bit recovery.

In operation, upon completing the power-on procedure, the primary receiver unit **104** is configured to detect the presence of the transmitter unit **102** within its range based on, for example, the strength of the detected data signals received from the transmitter unit **102** or a predetermined transmitter identification information. Upon successful synchronization with the corresponding transmitter unit **102**, the primary receiver unit **104** is configured to begin receiving from the transmitter unit **102** data signals corresponding to the user's detected analyte level. More specifically, the primary receiver unit **104** in one embodiment is configured to perform synchronized time hopping with the corresponding synchronized transmitter unit **102** via the communication link **103** to obtain the user's detected analyte level.

Referring again to FIG. 1, the data processing terminal **105** may include a personal computer, a portable computer such as a laptop or a handheld device (e.g., personal digital assistants (PDAs)), and the like, each of which may be configured for data communication with the receiver via a wired or a wireless connection. Additionally, the data processing terminal **105** may further be connected to a data network (not shown) for storing, retrieving and updating data corresponding to the detected analyte level of the user.

Within the scope of the present invention, the data processing terminal **105** may include an infusion device such as an insulin infusion pump or the like, which may be configured to administer insulin to patients, and which may be configured to communicate with the receiver unit **104** for receiving, among others, the measured analyte level. Alternatively, the receiver unit **104** may be configured to integrate an infusion device therein so that the receiver unit **104** is configured to administer insulin therapy to patients, for example, for administering and modifying basal profiles, as well as for determining appropriate boluses for administration based on, among others, the detected analyte levels received from the transmitter unit **102**.

Additionally, the transmitter unit **102**, the primary receiver unit **104** and the data processing terminal **105** may each be configured for bi-directional wireless communication such that each of the transmitter unit **102**, the primary receiver unit **104** and the data processing terminal **105** may be configured to communicate (that is, transmit data to and receive data from) with each other via the wireless communication link. More specifically, the data processing terminal **105** may in one embodiment be configured to receive data directly from the transmitter unit **102** via the communication link, where the communication link, as described above, may be configured for bi-directional communication.

In this embodiment, the data processing terminal **105** which may include an insulin pump, may be configured to receive the analyte signals from the transmitter unit **102**, and thus, incorporate the functions of the receiver **104** including data processing for managing the patient's insulin therapy and analyte monitoring. In one embodiment, the communication link **103** may include one or more of an RF communication protocol, an infrared communication protocol, a Bluetooth® enabled communication protocol, an 802.11x wireless communication protocol, or an equivalent wireless communication protocol which would allow secure, wireless communication of several units (for example, per HIPAA requirements) while avoiding potential data collision and interference.

FIG. 2 is a block diagram of the transmitter of the data monitoring and detection system shown in FIG. 1 in accordance with one embodiment of the present invention. Referring to the Figure, the transmitter unit **102** in one embodiment includes an analog interface **201** configured to communicate with the sensor **101** (FIG. 1), a user input **202**, and a temperature detection section **203**, each of which is operatively coupled to a transmitter processor **204** such as a central processing unit (CPU). As can be seen from FIG. 2, there are provided four contacts, three of which are electrodes—work electrode (W) **210**, guard contact (G) **211**, reference electrode (R) **212**, and counter electrode (C) **213**, each operatively coupled to the analog interface **201** of the transmitter unit **102** for connection to the sensor unit **101** (FIG. 1). In one embodiment, each of the work electrode (W) **210**, guard contact (G) **211**, reference electrode (R) **212**, and counter electrode (C) **213** may be made using a conductive material that is either printed or etched, for example, such as carbon which may be printed, or metal foil (e.g., gold) which may be etched. Moreover, in a further aspect, the electrode layers may be disposed in a stacked configuration where, each of the working electrode **210**, the reference electrode **212** and the counter electrode **213** may be disposed on a substrate layer with one or more dielectric layers disposed therebetween such that at least a portion of each of the electrodes are positioned on top of one another in a stacked or layered configuration.

Further shown in FIG. 2 are a transmitter serial communication section **205** and an RF transmitter **206**, each of which is also operatively coupled to the transmitter processor **204**. Moreover, a power supply **207** such as a battery is also provided in the transmitter unit **102** to provide the necessary power for the transmitter unit **102**. Additionally, as can be seen from the Figure, clock **208** is provided to, among others, supply real time information to the transmitter processor **204**.

In one embodiment, a unidirectional input path is established from the sensor **101** (FIG. 1) and/or manufacturing and testing equipment to the analog interface **201** of the transmitter unit **102**, while a unidirectional output is established from the output of the RF transmitter **206** of the transmitter unit **102** for transmission to the primary receiver unit **104**. In this manner, a data path is shown in FIG. 2 between the aforementioned unidirectional input and output via a dedicated link **209** from the analog interface **201** to serial communication section **205**, thereafter to the processor **204**, and then to the RF transmitter **206**. As such, in one embodiment, via the data path described above, the transmitter unit **102** is configured to transmit to the primary receiver unit **104** (FIG. 1), via the communication link **103** (FIG. 1), processed and encoded data signals received from the sensor **101** (FIG. 1). Additionally, the unidirectional communication data path between the analog interface **201** and the RF transmitter **206** discussed above allows for the configuration of the transmitter unit **102**

for operation upon completion of the manufacturing process as well as for direct communication for diagnostic and testing purposes.

As discussed above, the transmitter processor **204** is configured to transmit control signals to the various sections of the transmitter unit **102** during the operation of the transmitter unit **102**. In one embodiment, the transmitter processor **204** also includes a memory (not shown) for storing data such as the identification information for the transmitter unit **102**, as well as the data signals received from the sensor **101**. The stored information may be retrieved and processed for transmission to the primary receiver unit **104** under the control of the transmitter processor **204**. Furthermore, the power supply **207** may include a commercially available battery.

The transmitter unit **102** is also configured such that the power supply section **207** is capable of providing power to the transmitter for a minimum of about three months of continuous operation after having been stored for about eighteen months in a low-power (non-operating) mode. In one embodiment, this may be achieved by the transmitter processor **204** operating in low power modes in the non-operating state, for example, drawing no more than approximately 1 μ A of current. Indeed, in one embodiment, the final step during the manufacturing process of the transmitter unit **102** may place the transmitter unit **102** in the lower power, non-operating state (i.e., post-manufacture sleep mode). In this manner, the shelf life of the transmitter unit **102** may be significantly improved. Moreover, as shown in FIG. 2, while the power supply unit **207** is shown as coupled to the processor **204**, and as such, the processor **204** is configured to provide control of the power supply unit **207**, it should be noted that within the scope of the present invention, the power supply unit **207** is configured to provide the necessary power to each of the components of the transmitter unit **102** shown in FIG. 2.

Referring back to FIG. 2, the power supply section **207** of the transmitter unit **102** in one embodiment may include a rechargeable battery unit that may be recharged by a separate power supply recharging unit (for example, provided in the receiver unit **104**) so that the transmitter unit **102** may be powered for a longer period of usage time. Moreover, in one embodiment, the transmitter unit **102** may be configured without a battery in the power supply section **207**, in which case the transmitter unit **102** may be configured to receive power from an external power supply source (for example, a battery) as discussed in further detail below.

Referring yet again to FIG. 2, the temperature detection section **203** of the transmitter unit **102** is configured to monitor the temperature of the skin near the sensor insertion site. The temperature reading is used to adjust the analyte readings obtained from the analog interface **201**. The RF transmitter **206** of the transmitter unit **102** may be configured for operation in the frequency band of 315 MHz to 322 MHz, for example, in the United States. Further, in one embodiment, the RF transmitter **206** is configured to modulate the carrier frequency by performing Frequency Shift Keying and Manchester encoding. In one embodiment, the data transmission rate is 19,200 symbols per second, with a minimum transmission range for communication with the primary receiver unit **104**.

Referring yet again to FIG. 2, also shown is a leak detection circuit **214** coupled to the guard electrode (G) **211** and the processor **204** in the transmitter unit **102** of the data monitoring and management system **100**. The leak detection circuit **214** in accordance with one embodiment of the present invention may be configured to detect leakage current in the sensor

101 to determine whether the measured sensor data are corrupt or whether the measured data from the sensor 101 is accurate.

Additional detailed description of the continuous analyte monitoring system, its various components including the functional descriptions of the transmitter are provided in U.S. Pat. No. 6,175,752 issued Jan. 16, 2001 entitled "Analyte Monitoring Device and Methods of Use", and in application Ser. No. 10/745,878 filed Dec. 26, 2003 entitled "Continuous Glucose Monitoring System and Methods of Use", each assigned to the Assignee of the present application, the disclosure of each of which are incorporated herein by reference for all purposes.

FIG. 3 is a block diagram of the receiver/monitor unit of the data monitoring and management system shown in FIG. 1 in accordance with one embodiment of the present invention. Referring to FIG. 3, the primary receiver unit 104 includes a blood glucose test strip interface 301, an RF receiver 302, an input 303, a temperature detection section 304, and a clock 305, each of which is operatively coupled to a receiver processor 307. As can be further seen from the Figure, the primary receiver unit 104 also includes a power supply 306 operatively coupled to a power conversion and monitoring section 308. Further, the power conversion and monitoring section 308 is also coupled to the receiver processor 307. Moreover, also shown are a receiver serial communication section 309, and an output 310, each operatively coupled to the receiver processor 307.

In one embodiment, the test strip interface 301 includes a glucose level testing portion to receive a manual insertion of a glucose test strip, and thereby determine and display the glucose level of the test strip on the output 310 of the primary receiver unit 104. This manual testing of glucose can be used to calibrate sensor 101. The RF receiver 302 is configured to communicate, via the communication link 103 (FIG. 1) with the RF transmitter 206 of the transmitter unit 102, to receive encoded data signals from the transmitter unit 102 for, among others, signal mixing, demodulation, and other data processing. The input 303 of the primary receiver unit 104 is configured to allow the user to enter information into the primary receiver unit 104 as needed. In one aspect, the input 303 may include one or more keys of a keypad, a touch-sensitive screen, or a voice-activated input command unit. The temperature detection section 304 is configured to provide temperature information of the primary receiver unit 104 to the receiver processor 307, while the clock 305 provides, among others, real time information to the receiver processor 307.

Each of the various components of the primary receiver unit 104 shown in FIG. 3 is powered by the power supply 306 which, in one embodiment, includes a battery. Furthermore, the power conversion and monitoring section 308 is configured to monitor the power usage by the various components in the primary receiver unit 104 for effective power management and to alert the user, for example, in the event of power usage which renders the primary receiver unit 104 in sub-optimal operating conditions. An example of such sub-optimal operating condition may include, for example, operating the vibration output mode (as discussed below) for a period of time thus substantially draining the power supply 306 while the processor 307 (thus, the primary receiver unit 104) is turned on. Moreover, the power conversion and monitoring section 308 may additionally be configured to include a reverse polarity protection circuit such as a field effect transistor (FET) configured as a battery activated switch.

The serial communication section 309 in the primary receiver unit 104 is configured to provide a bi-directional communication path from the testing and/or manufacturing

equipment for, among others, initialization, testing, and configuration of the primary receiver unit 104. Serial communication section 309 can also be used to upload data to a computer, such as time-stamped blood glucose data. The communication link with an external device (not shown) can be made, for example, by cable, infrared (IR) or RF link. The output 310 of the primary receiver unit 104 is configured to provide, among others, a graphical user interface (GUI) such as a liquid crystal display (LCD) for displaying information. Additionally, the output 310 may also include an integrated speaker for outputting audible signals as well as to provide vibration output as commonly found in handheld electronic devices, such as mobile telephones presently available. In a further embodiment, the primary receiver unit 104 also includes an electro-luminescent lamp configured to provide backlighting to the output 310 for output visual display in dark ambient surroundings.

Referring back to FIG. 3, the primary receiver unit 104 in one embodiment may also include a storage section such as a programmable, non-volatile memory device as part of the processor 307, or provided separately in the primary receiver unit 104, operatively coupled to the processor 307. The processor 307 is further configured to perform Manchester decoding as well as error detection and correction upon the encoded data signals received from the transmitter unit 102 via the communication link 103.

In a further embodiment, the one or more of the transmitter unit 102, the primary receiver unit 104, secondary receiver unit 106, or the data processing terminal/infusion section 105 may be configured to receive the blood glucose value wirelessly over a communication link from, for example, a glucose meter. In still a further embodiment, the user or patient manipulating or using the analyte monitoring system 100 (FIG. 1) may manually input the blood glucose value using, for example, a user interface (for example, a keyboard, keypad, and the like) incorporated in the one or more of the transmitter unit 102, the primary receiver unit 104, secondary receiver unit 106, or the data processing terminal/infusion section 105.

FIG. 4 is a schematic of the dynamic multi-stage signal amplification in the transmitter unit of the data monitoring and management system shown in FIG. 1 in accordance with one embodiment of the present invention. Referring to FIG. 4, there is provided in one embodiment a transimpedance amplifier 420 whose output terminal 423 is coupled to a first input terminal 411 of the analog to digital converter (ADC) 410 in the analog interface 201 (FIG. 2) of the transmitter unit 102. Further shown in FIG. 4, the monitored analyte sensor signal from the sensor unit 101 is provided to an inverting input terminal 421 of the transimpedance amplifier 420. The sensor signal in FIG. 4 is shown as a signal source 440. Furthermore, a noninverting input terminal 422 of the transimpedance amplifier 420 is provided with a reference voltage signal from a reference signal source Vref 450. In one embodiment, the reference voltage signal may be approximately 1.012 volts. However, based upon the component tolerance, and design configuration, other suitable reference voltage signals may be used.

In one aspect, based on the input analyte sensor signal from the signal source 440 and the reference signal Vref 450, the transimpedance amplifier 420 may be in one embodiment configured to convert the received current signal representing the monitored or detected analyte level, and to convert the current signal to a corresponding voltage signal which is provided to the output terminal 423 of the transimpedance amplifier 420. Further, as shown in FIG. 4 the monitored analyte voltage signal from the output terminal 423 of the

transimpedance amplifier **420** is provided to the first input terminal **411** (Channel 1) of the ADC **410**.

Referring again to FIG. 4, a second amplifier **430** is provided in one embodiment whose noninverting input terminal **431** is coupled to the output terminal **423** of the transimpedance amplifier **420** to receive the output voltage signal corresponding to the monitored analyte level, while an inverting input terminal **432** of the second amplifier **430** is coupled in one embodiment to the reference signal V_{ref} source **450**. Moreover, output terminal **433** of the second amplifier is coupled in one embodiment to a second input terminal **412** (Channel 2) of the ADC **410**. In operation, the second amplifier **430** may be configured to step up the output signal of the transimpedance amplifier **410** by a predetermined factor (for example, a factor of 2), and to provide the stepped up signal to the analog to digital converter (ADC) **410**.

Referring back to FIG. 4, the analog to digital converter (ADC) **410** of the analog interface **201** (FIG. 2) of the transmitter unit **102** (FIG. 1) in one embodiment may be configured to detect signals at both the first and second input terminals or channels **411**, **412**, and based on one or more predetermined process or routine, the voltage signal at one of the first or the second input terminals or channels **411**, **412** is used by the ADC **410** for further processing as corresponding to the monitored analyte level from the sensor unit **101** (FIG. 1). That is, in one embodiment, depending upon the signal resolution corresponding to the analyte level monitored, the ADC **410** may be configured to select one of the output signals from the transimpedance amplifier **420** or the second amplifier **430** for further processing.

For example, when the signal received at the second input terminal **412** of the ADC **410** exceeds a predetermined threshold value, the input signal at the first input terminal **411** may be used. More specifically, in one embodiment, the ADC **410** may be configured to process the signals at the second input terminal **412** (Channel 2) since it has a higher resolution compared to the signal at the first input terminal **411** received from the transimpedance amplifier **420**. When the signal received at the second input terminal **412** exceeds a predetermined threshold level (for example, based on the tolerance level of the analog to digital converter (ADC) **410**), the voltage signal received at the first input terminal **411** from the transimpedance amplifier **420** may be used to convert to a corresponding digital signal representing the monitored analyte level detected by the sensor unit **101** (FIG. 1).

Referring back to FIG. 4, in one embodiment, the analog to digital converter (ADC) **410** may include a 12 bit A/D converter configured to support up to approximately 4,096 bits or ADC counts. In this case, in one embodiment, when the signal at the second input terminal **412** of the ADC **410** approaches approximately 4,000 bits or ADC counts, for example, the processor **204** (FIG. 2) of the transmitter unit **102** may be configured to switch from the second input terminal **412** to the first input terminal **411**, to use the output signal from the transimpedance amplifier **420**. In this manner, in one embodiment, the processor **204** of the transmitter unit **102** may be configured to monitor the signal levels at the two input terminals **411**, **412** of the ADC **410**, and when the signal level or ADC count associated with the output signal from the second amplifier **430** provided at the second input terminal **412** of the ADC **410** exceeds the predetermined threshold (for example, 4,000 bits or ADC count), the processor **204** may be configured to switch over to the output signal of the transimpedance amplifier **410** provided on the first input terminal **411** of the ADC **410** for further processing.

In the manner described above, the dynamic multi-stage amplifier configuration in one embodiment may be config-

ured to support variations in the analyte sensor sensitivities due to, for example, manufacturing variations, among others, while maintaining an acceptable or desirable sensor signal resolution. For example, in one embodiment, high sensitivity sensors may be configured for use with the full scale or range (for example, up to approximately 150 nA corresponding to the supported approximately 500 mg/dL glucose level) associated with the transimpedance amplifier **420** output signal provided to the first input terminal **411** (Channel 1) of the analog to digital converter (ADC) **410**, while low sensitivity sensors may be associated with the second amplifier **430** output signal (for example, full scale current signal level of approximately 75 nA corresponding to the supported approximately 500 mg/dL glucose level) provided to the second input terminal **412** (Channel 2) of the analog to digital converter (ADC) **410**.

For example, as discussed above, in one embodiment, the processor **204** of the transmitter unit **102** may be configured to monitor the signals at the two input terminals **411**, **412** of the ADC **410**, and determine, that if the received signal level does not have sufficient resolution to convert to the desired resolution of the digital signal (for example, 12 bits for the ADC **410**) corresponding to the monitored analyte level associated with the sensor unit **101**, the processor **204** may be configured to dynamically toggle or switch from using the voltage signal received from one of the two input terminals **411**, **412**, to using the voltage signal from the other one of the two input terminals **411**, **412** to provide a dynamic range of tolerance level for the sensor sensitivities.

Accordingly, an apparatus in one embodiment includes a first amplifier having at least one input terminal and an output terminal, the at least one input terminal coupled to a signal source, the output terminal configured to provide a first output signal, a second amplifier having at least one input terminal and an output terminal, the at least one input terminal coupled to the output terminal of the first amplifier, the output terminal of the second amplifier configured to provide a second output signal, a processor operatively coupled to receive the first output signal and the second output signal, where the first output signal is a predetermined ratio of the second output signal, and further, where the first output signal and the second output signal are associated with a monitored analyte level of a user.

In one aspect, the first amplifier may include a transimpedance amplifier.

The monitored analyte level may include glucose level.

Also, the at least one input terminal of the first amplifier may include an inverting input terminal, and, also may include a reference signal source coupled to a noninverting input terminal of the first amplifier.

In a further aspect, the second amplifier may include a gain of approximately two.

In still another aspect, the first output signal may be associated with a signal level from the signal source.

The apparatus may also include an analog to digital converter coupled to the output terminals of the first and second amplifiers, where the analog to digital (A/D) converter may include a 12 bit A/D converter.

The apparatus in another embodiment may include a processor operatively coupled to the A/D converter for processing the one or more signals received at the one or more first amplifier output terminal and the second amplifier output terminal.

Moreover, the processor may be configured to compare the one or more signals received at the one or more first amplifier output terminal and the second amplifier output terminal to a

predetermined threshold value, which, in one embodiment may include approximately 4,000 bits (or analog to digital converter (ADC) counts).

Still further, the processor may be configured to process a signal associated with one of the one or more signals received at the one or more first amplifier output terminal and the second amplifier output terminal when another signal associated with the other one of the one or more signals received at the one or more first amplifier output terminal and the second amplifier output terminal exceeds the predetermined threshold value.

A method in accordance with another embodiment includes receiving a first signal having a first signal resolution and associated with a monitored analyte level of a user, receiving a second signal having a second signal resolution and associated with the monitored analyte level of the user, comparing the received first signal to a predetermined threshold level, and processing one of the received first or second signals based on the comparing step.

When the received first signal does not exceed the predetermined threshold level, further including processing the first signal. On the other hand, when the received first signal exceeds the predetermined threshold level, further including processing the second signal.

A data processing device in accordance with still another embodiment includes a multi stage amplifier unit configured to receive a signal and to generate a plurality of amplifier unit output signals each corresponding to a monitored analyte level of a patient, an analog to digital (A/D) conversion unit operatively coupled to the multi-stage amplifier unit configured to digitally convert the plurality of amplifier unit output signals, and a processor unit operatively coupled to the A/D conversion unit, the processor unit configured to process one of the plurality of digitally converted amplifier unit output signals.

The device in another aspect may include a data communication unit operatively coupled to the processor unit, and configured to transmit the digitally converted and processed amplifier unit output signal.

The data communication unit may include an RF transmitter for wireless data transmission to a remote device such as, for example, a data receiver unit, data processing terminal, an infusion device or the like configured for RF communication.

Various other modifications and alterations in the structure and method of operation of this invention will be apparent to those skilled in the art without departing from the scope and spirit of the invention. Although the invention has been described in connection with specific preferred embodiments, it should be understood that the invention as claimed should not be unduly limited to such specific embodiments. It is intended that the following claims define the scope of the present invention and that structures and methods within the scope of these claims and their equivalents be covered thereby.

What is claimed is:

1. A method of processing signals from an analyte sensor, comprising:

coupling a first amplifier to a second amplifier and a signal source;

comparing signals at an output terminal of the second amplifier to a predetermined threshold value; and

processing a signal associated with the signals at the second amplifier output terminal when another signal at the second amplifier output terminal exceeds the predetermined threshold value.

2. The method of claim 1, wherein the first amplifier includes a transimpedance amplifier.

3. The method of claim 1, wherein the first amplifier includes an inverting input terminal.

4. The method of claim 3, further including coupling a reference signal source to a noninverting input terminal of the first amplifier.

5. The method of claim 1, wherein a first output signal from the first amplifier is a predetermined ratio of a second output signal from the second amplifier.

6. The method of claim 5, wherein the first output signal is associated with a signal from the signal source.

7. The method of claim 5, wherein the first output signal and the second output signal are associated with a monitored analyte level.

8. The method of claim 1, further including configuring the signal source to receive one or more signals associated with a monitored analyte level from the analyte sensor.

9. The method of claim 1, further including operatively coupling the signal source to a glucose sensor.

10. The method of claim 9, wherein the glucose sensor comprises a plurality of electrodes including a working electrode, wherein the working electrode comprises a glucose-responsive enzyme and a mediator, wherein at least one of the glucose-responsive enzyme and the mediator is chemically bonded to a polymer disposed on the working electrode, and wherein at least one of the glucose-responsive enzyme and the mediator is crosslinked with the polymer.

11. An apparatus, comprising:

a first amplifier operatively coupled to a signal source;

a second amplifier operatively coupled to the first amplifier; and

a processing unit operatively coupled to one or more of the first amplifier, and the second amplifier, the processing unit configured to compare signals at an output terminal of the second amplifier to a predetermined threshold value, and configured to process a signal associated with the signals at the second amplifier output terminal when another signal at the second amplifier output terminal exceeds the predetermined threshold value.

12. The apparatus of claim 11, wherein the first amplifier includes a transimpedance amplifier.

13. The apparatus of claim 11, wherein the first amplifier includes an inverting input terminal.

14. The apparatus of claim 13, further including a reference signal source operatively coupled to a noninverting input terminal of the first amplifier.

15. The apparatus of claim 11, wherein a first output signal from the first amplifier is a predetermined ratio of a second output signal from the second amplifier.

16. The apparatus of claim 15, wherein the first output signal is associated with a signal from the signal source.

17. The apparatus of claim 15, wherein the first output signal and the second output signal are associated with a monitored analyte level.

18. The apparatus of claim 11, wherein the signal source is further configured to receive one or more signals associated with a monitored analyte level from an analyte sensor.

19. The apparatus of claim 11, wherein the signal source is operatively coupled to a glucose sensor.

20. The apparatus of claim 19, wherein the glucose sensor comprises a plurality of electrodes including a working electrode, wherein the working electrode comprises a glucose-responsive enzyme and a mediator, wherein at least one of the glucose-responsive enzyme and the mediator is chemically bonded to a polymer disposed on the working electrode, and wherein at least one of the glucose-responsive enzyme and the mediator is crosslinked with the polymer.

专利名称(译)	用于在医疗设备中提供动态多级信号放大的方法和装置		
公开(公告)号	US9402584	公开(公告)日	2016-08-02
申请号	US14/596759	申请日	2015-01-14
[标]申请(专利权)人(译)	雅培糖尿病护理公司		
申请(专利权)人(译)	雅培糖尿病INC.		
当前申请(专利权)人(译)	雅培糖尿病INC.		
[标]发明人	FENNELL MARTIN J		
发明人	FENNELL, MARTIN J.		
IPC分类号	G08B29/00 A61B5/00 A61B5/145 A61B5/1486		
CPC分类号	A61B5/14532 A61B5/14546 A61B5/14865 A61B5/002 A61B5/0004 A61B5/7225 A61B5/7246 A61B5/7475 A61B2560/0209 A61B2560/0252 A61B2560/045 A61M5/1723		
优先权	13/867948 2014-04-15 US 13/437894 2013-04-23 US 13/114029 2012-04-03 US 12/849004 2011-05-24 US 12/102836 2010-08-03 US 60/911866 2007-04-14 US		
其他公开文献	US20150126836A1		
外部链接	Espacenet USPTO		

摘要(译)

提供了用于在医疗遥测系统中提供多级信号放大的方法和装置。

