



US010568535B2

(12) **United States Patent**
Roberts et al.

(10) **Patent No.:** **US 10,568,535 B2**
(45) **Date of Patent:** **Feb. 25, 2020**

(54) **SURGICAL NAVIGATION WITH STEREOVISION AND ASSOCIATED METHODS**

(56) **References Cited**

U.S. PATENT DOCUMENTS

(71) Applicant: **The Trustees of Dartmouth College**, Hanover, NH (US)

5,109,276 A 4/1992 Nudelman et al.
5,303,705 A * 4/1994 Nenov G01R 33/563
600/410

(Continued)

(72) Inventors: **David W. Roberts**, Lyme, NH (US);
Keith D. Paulsen, Hanover, NH (US);
Alexander Hartov, Enfield, NH (US);
Songbai Ji, Hanover, NH (US);
Xiaoyao Fan, Lebanon, NH (US)

FOREIGN PATENT DOCUMENTS

JP 2006-195240 A 7/2006
KR 10-2011-0097030 A 8/2011

(Continued)

(73) Assignee: **THE TRUSTEES OF DARTMOUTH COLLEGE**, Hanover, NH (US)

OTHER PUBLICATIONS

(*) Notice: Subject to any disclaimer, the term of this patent is extended or adjusted under 35 U.S.C. 154(b) by 63 days.

U.S. Appl. No. 12/994,044 / 2011/0153254 / U.S. Pat. No. 9,052,384, filed Jan. 21, 2011 / Jun. 23, 2011 / Jun. 9, 2015, Alexander Hartov.

(Continued)

(21) Appl. No.: **15/367,243**

Primary Examiner — Irfan Habib

(22) Filed: **Dec. 2, 2016**

(74) *Attorney, Agent, or Firm* — Lathrop GPM LLP

(65) **Prior Publication Data**

(57) **ABSTRACT**

US 2017/0085855 A1 Mar. 23, 2017

Related U.S. Application Data

A surgical guidance system has two cameras to provide stereo image stream of a surgical field; and a stereo viewer. The system has a 3D surface extraction module that generates a first 3D model of the surgical field from the stereo image streams; a registration module for co-registering annotating data with the first 3D model; and a stereo image enhancer for graphically overlaying at least part of the annotating data onto the stereo image stream to form an enhanced stereo image stream for display, where the enhanced stereo stream enhances a surgeon's perception of the surgical field. The registration module has an alignment refiner to adjust registration of the annotating data with the 3D model based upon matching of features within the 3D model and features within the annotating data; and in an embodiment, a deformation modeler to deform the annotating data based upon a determined tissue deformation.

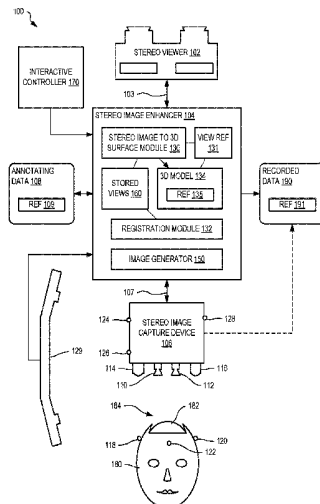
(63) Continuation-in-part of application No. PCT/US2015/033672, filed on Jun. 2, 2015, which is (Continued)

(51) **Int. Cl.**
G06T 3/00 (2006.01)
H04N 13/257 (2018.01)
(Continued)

(52) **U.S. Cl.**
CPC **A61B 5/0484** (2013.01); **A61B 5/0042** (2013.01); **A61B 5/0077** (2013.01);
(Continued)

(58) **Field of Classification Search**
CPC A61B 5/0484; G06T 7/33; H04N 13/257
See application file for complete search history.

20 Claims, 11 Drawing Sheets



Related U.S. Application Data

a continuation-in-part of application No. 12/994,044, filed as application No. PCT/US2009/045082 on May 22, 2009, now Pat. No. 9,052,384, and a continuation-in-part of application No. PCT/US2013/020352, filed on Jan. 4, 2013, and a continuation-in-part of application No. PCT/US2013/024400, filed on Feb. 1, 2013, which is a continuation-in-part of application No. PCT/US2013/020352, filed on Jan. 4, 2013, said application No. PCT/US2015/033672 is a continuation-in-part of application No. 14/373,443, filed as application No. PCT/US2013/022266 on Jan. 18, 2013, now abandoned, said application No. PCT/US2015/033672 is a continuation-in-part of application No. 14/345,029, filed as application No. PCT/US2012/055755 on Sep. 17, 2012, now Pat. No. 9,655,545.

- (60) Provisional application No. 62/006,786, filed on Jun. 2, 2014, provisional application No. 61/055,355, filed on May 22, 2008, provisional application No. 61/583,092, filed on Jan. 4, 2012, provisional application No. 61/594,862, filed on Feb. 3, 2012, provisional application No. 61/583,092, filed on Jan. 4, 2012, provisional application No. 61/588,708, filed on Jan. 20, 2012.

(51) **Int. Cl.**

H04N 13/239 (2018.01)
A61B 34/10 (2016.01)
A61B 5/0484 (2006.01)
A61B 5/00 (2006.01)
G06T 7/33 (2017.01)
A61B 90/00 (2016.01)
A61B 5/0476 (2006.01)
A61B 5/055 (2006.01)

(52) **U.S. Cl.**

CPC **G06T 3/0068** (2013.01); **G06T 7/33** (2017.01); **H04N 13/239** (2018.05); **H04N 13/257** (2018.05); **A61B 5/0476** (2013.01); **A61B 5/055** (2013.01); **A61B 2034/104** (2016.02); **A61B 2034/105** (2016.02); **A61B 2034/107** (2016.02); **A61B 2090/367** (2016.02); **G06T 2207/10012** (2013.01); **G06T 2207/10064** (2013.01); **G06T 2207/10072** (2013.01); **G06T 2207/30016** (2013.01)

(56) **References Cited**

U.S. PATENT DOCUMENTS

5,381,236 A * 1/1995 Morgan G01B 11/026
 250/201.7
 5,810,731 A 9/1998 Sarvazyan et al.
 6,175,759 B1 1/2001 Chan et al.
 6,208,886 B1 3/2001 Alfano et al.
 6,379,302 B1 4/2002 Kessman et al.
 6,661,571 B1 12/2003 Shioda et al.
 6,678,398 B2 1/2004 Wolters et al.
 6,793,350 B1 9/2004 Raskar et al.
 6,961,405 B2 11/2005 Scherch
 7,085,400 B1 8/2006 Holsing et al.
 7,387,802 B2 6/2008 Sambanthamurthi et al.
 7,804,075 B2 9/2010 Ntziachristos et al.
 7,945,077 B2 5/2011 Demos
 8,406,859 B2 3/2013 Zuzak et al.
 8,948,851 B2 2/2015 Leblond et al.
 9,052,384 B2 6/2015 Hartov et al.
 9,167,222 B2 * 10/2015 Park H04N 13/106

9,330,477 B2 * 5/2016 Rappel G06T 11/00
 9,336,592 B2 5/2016 Fan et al.
 9,456,200 B2 9/2016 Ji et al.
 9,655,545 B2 * 5/2017 Ji A61B 5/0053
 9,699,438 B2 * 7/2017 Walsh G06T 19/006
 9,712,746 B2 * 7/2017 Arcas G06T 3/4038
 9,766,441 B2 * 9/2017 Rappel G02B 21/22
 2002/0080481 A1 6/2002 Tachihara et al.
 2002/0099295 A1 7/2002 Gil et al.
 2003/0158470 A1 8/2003 Wolters et al.
 2004/0015062 A1 1/2004 Ntziachristos et al.
 2004/0215072 A1 10/2004 Zhu
 2005/0085732 A1 4/2005 Sevick-Muraca et al.
 2005/0111758 A1 5/2005 Lange et al.
 2005/0215911 A1 9/2005 Alfano et al.
 2006/0024390 A1 2/2006 Schauss et al.
 2006/0033026 A1 2/2006 Treado et al.
 2007/0038126 A1 2/2007 Pyle et al.
 2007/0083124 A1 4/2007 Ehben et al.
 2007/0145136 A1 6/2007 Wiklof et al.
 2007/0165927 A1 7/2007 Muradyan et al.
 2007/0236414 A1 10/2007 Lin
 2007/0236514 A1 * 10/2007 Agusanto A61B 1/00193
 345/646
 2007/0238957 A1 10/2007 Yared
 2007/0299335 A1 12/2007 Declerck et al.
 2008/0218727 A1 9/2008 Djaziri et al.
 2008/0267472 A1 10/2008 Demos
 2009/0021746 A1 1/2009 Toida et al.
 2009/0036902 A1 2/2009 Dimairo et al.
 2009/0076732 A1 3/2009 Sprigle et al.
 2009/0137908 A1 5/2009 Patwardhan
 2009/0180178 A1 7/2009 Luecke et al.
 2009/0295910 A1 12/2009 Mir et al.
 2009/0312611 A1 * 12/2009 Mangiardi A61B 17/02
 600/210
 2009/0326362 A1 12/2009 Carise et al.
 2010/0019170 A1 1/2010 Hart et al.
 2010/0085423 A1 4/2010 Lange
 2010/0145416 A1 6/2010 Kang et al.
 2010/0201789 A1 8/2010 Yahagi
 2010/0208963 A1 8/2010 Kruecker et al.
 2010/0231593 A1 * 9/2010 Zhou G06T 3/4007
 345/428
 2011/0054355 A1 3/2011 Hunter et al.
 2011/0102549 A1 5/2011 Takahashi
 2011/0128352 A1 6/2011 Higgins et al.
 2011/0175910 A1 7/2011 Yahagi
 2011/0183370 A1 7/2011 Noiseux et al.
 2011/0222757 A1 9/2011 Yeatman et al.
 2011/0275932 A1 11/2011 Leblond et al.
 2011/0293142 A1 12/2011 Van Der Mark et al.
 2012/0002012 A1 1/2012 O'Grady et al.
 2012/0112098 A1 5/2012 Hoyt
 2012/0133740 A1 5/2012 Klimov et al.
 2012/0307056 A1 12/2012 Zuzak et al.
 2012/0307081 A1 12/2012 Dewald et al.
 2013/0012794 A1 1/2013 Zeng et al.
 2013/0038689 A1 2/2013 McDowall
 2013/0076863 A1 3/2013 Rappel
 2013/0259805 A1 10/2013 Bacskai
 2014/0020476 A1 1/2014 Inoue et al.
 2014/0063241 A1 3/2014 Li et al.
 2014/0362186 A1 12/2014 Ji et al.
 2014/0378843 A1 * 12/2014 Valdes G02B 21/06
 600/476
 2015/0264340 A1 9/2015 Seidl et al.
 2015/0374308 A1 12/2015 Tichauer et al.
 2016/0278678 A1 9/2016 Valdes et al.
 2017/0119330 A1 5/2017 Tichauer et al.

FOREIGN PATENT DOCUMENTS

KR 10-1088364 B1 12/2011
 WO 2000/027131 A2 5/2000
 WO 2005/089637 A2 9/2005
 WO 2005/099581 A1 10/2005
 WO 2007/111570 A2 10/2007

(56) **References Cited**

FOREIGN PATENT DOCUMENTS

WO	2009/061425	A1	5/2009
WO	2009/143491	A2	11/2009
WO	2010/090673	A1	8/2010
WO	2011/113162	A1	9/2011
WO	2013/040555	A2	3/2013
WO	2013/103870	A1	7/2013
WO	2013/109966	A1	7/2013
WO	2013/116694	A1	8/2013
WO	2013/122710	A1	8/2013
WO	2014/127145	A1	8/2014
WO	2015/023990	A1	2/2015
WO	2015/187620	A1	12/2015
WO	2016/007734	A1	1/2016

OTHER PUBLICATIONS

- U.S. Appl. No. 13/145,505 / 2011/02759332 / U.S. Pat. No. 8,948,851, filed Jul. 20, 2011 / Nov. 10, 2011 / Feb. 3, 2015, Frederic Leblond.
- U.S. Appl. No. 14/345,029 / 2014/0371600 / U.S. Pat. No. 9,655,545, filed Mar. 14, 2014 / Dec. 18, 2014 / May 23, 2017, Songbai Ji.
- U.S. Appl. No. 14/370,713 / 2014/0362186 / U.S. Pat. No. 9,456,200, filed Jul. 3, 2014 / Dec. 11, 2014 / Sep. 27, 2016, Songbai Ji.
- U.S. Appl. No. 14/373,443 / 2014/0378843, filed Jul. 21, 2014 / Dec. 25, 2014, Pablo A. Valdes.
- U.S. Appl. No. 14/375,311 / 2014/0369584 / U.S. Pat. No. 9,336,592, filed Jul. 29, 2014 / Dec. 18, 2014 / May 10, 2016, Xiaoyao Fan.
- U.S. Appl. No. 14/767,836 / 2015/0374308, filed Aug. 13, 2015 / Dec. 31, 2015, Kenneth Tichauer.
- U.S. Appl. No. 15/044,097 / 2016/0278687, filed Feb. 15, 2016 / Sep. 29, 2016, Pablo Valdes.
- U.S. Appl. No. 15/367,243 / 2017/0085855, filed Dec. 2, 2016 / Mar. 23, 2017, David W. Roberts.
- U.S. Appl. No. 15/402,077 / 2017/0119330, filed Jan. 9, 2017 / May 4, 2017, Pablo Valdes.
- PCT/US2009/045082 / WO 2009/143491, May 22, 2009 / Nov. 26, 2009, Alexander Hartov.
- PCT/US2009/066839 / WO 2010/090673, Dec. 4, 2009 / Aug. 12, 2010, Frederic Leblond.
- PCT/US2012/055755 / WO 2013/040555, Sep. 17, 2012 / Mar. 21, 2013, Songbai Ji.
- PCT/US2013/020352 / WO 2013/103870, Jan. 4, 2013 / Jul. 11, 2013, Songbai Ji.
- PCT/US2013/022266 / WO 2013/109966, Jan. 18, 2013 / Jul. 25, 2013, Pablo Valdes.
- PCT/US2013/024400 / WO 2013/116694, Feb. 1, 2013 / Aug. 8, 2013, Xiaoyao Fan.
- PCT/US2014/016291 / WO 2014/127145, Feb. 13, 2014 / Aug. 21, 2014, Kenneth Tichauer.
- PCT/US2014/051356 / WO 2015/023990, Aug. 15, 2014 / Feb. 19, 2015, Pablo Valdes.
- PCT/US2015/033672 / WO 2015/187620, Jun. 2, 2015 / Dec. 10, 2015, David W. Roberts.
- PCT/US2015/039728 / WO 2016/007734, Jul. 9, 2015 / Jan. 14, 2016, Kenneth Tichauer.
- Bradley et al. (2006) "A review of attenuation correction techniques for tissue fluorescence," *Journal of the Royal Society Interface*. 3(6):1-13.
- Davis et al. (2005) "Contrast-detail analysis characterizing diffuse optical fluorescence tomography image reconstruction," *J. Biomed. Optics*. 10(5):050501. pp. 1-3.
- Diop et al. (2012) "Deconvolution method for recovering the photon time-of-flight distribution from time-resolved measurements," *Optics Letters*. 37:2358-60.
- Fan (May 2012) "Later Stage Brain Deformation Compensation in Image-Guided Neurosurgery," Ph.D. Dissertation. Dartmouth College.
- Fan et al. (2011) "Simulation of Brain Tumor Resection in Image-Guided Neurosurgery," *Medical Imaging 2011: Visualization Image-Guided Procedures, and Modeling*, Proc. of Spie Proceedings vol. 796. 79640U. pp. 1-11.
- Fan et al. (2012) "Registering Stereovision Surface with Preoperative Magnetic Resonance Images for Brain Shift Compensation," *Proceedings vol. 8316, Medical Imaging 2012: Image-Guided Procedures, Robotic Interventions, and Modeling*. 83161C. pp. 1-10.
- Fellers et al. (2012) "Acousto-Optic Tunable Filters (AOTFs)," Accessible on the Internet at URL: <http://www.olympusmicro.com/primer/techniques/confocal/aotfintro.html>. [Last Accessed Oct. 12, 2017].
- Feng et al. (2010) "Relative Brain Displacement and Deformation During Constrained Mild Frontal Head Impact," *J R Soc Interface*. 7(53):1677-88.
- Friesen et al. (2002) "5-Aminolevulinic acid-based photodynamic detection and therapy of brain tumors (review)," *Int. J. Oncol*. 21(3):577-582.
- Gao et al. (2010) "Snapshot Image Mapping Spectrometer (IMS) with high sampling density for hyperspectral microscopy," *Optics Express*. 18:14330-14344.
- Hartov et al. (1999) "Error Analysis for a Free-Hand Three Dimensional Ultrasound System for Neuronavigation," *Neurosurg. Focus*. 6(3):5. 14 pgs.
- Hillman (2007) "Optical brain imaging in vivo: techniques and applications from animal to man," *J. Biomed. Optics*. 12(5):051402.
- Joshi (2010) "DigiWarp: a method for deformable mouse atlas warping to surface topographic data," *Phys. Med. Biol*. 55(20):6197-214.
- Kuroiwa et al. (1998) "Development of a fluorescein operative microscope for use during malignant glioma surgery: a technical note and preliminary report," *Surg. Neurol*. 50(1):41-48.
- Leblond et al. (2007) "Diffuse optical fluorescence tomography using time-resolved data acquired transmission," *Proceedings vol. 6431, Multimodal Biomedical Imaging II*. 643106.
- Miller et al. (2000) "Mechanical Properties of Brain Tissue In-Vivo: Experiment and Computer Simulation," *Journal of Biomechanics*. 33:1369-1376.
- Najib et al. (2011) "Transcranial brain stimulation: clinical applications and future directions," *Neurosurg. Clin. N. Am*. 22(2):233-51.
- Nourrit et al. (2010) "High-resolution hyperspectral imaging of the retina with a modified fundus camera," *J. Fr. Ophthalmol*. 33(10):686-692.
- Ntziachristos et al. (2000) "Concurrent MRI and diffuse optical tomography of breast after indocyanine green enhancement," *Proc. Natl. Acad. Sci. USA*. 97(6):2767-72.
- Ntziachristos et al. (2002) "Charge-coupled-device based scanner for tomography of fluorescent near-infrared probes in turbid media," *Medical Physics*. 29(5):803-9.
- Patwardhan (2005) "Monte Carlo Simulation of Light-Tissue Interaction: Three-Dimensional Simulation for Trans-Illumination-Based Imaging of Skin Lesions," *IEEE Transactions on Biomedical Engineering*. 52(7):1227-1236.
- Saager et al. (2011) "Quantitative fluorescence imaging of protoporphyrin IX through determination of tissue optical properties in the spatial frequency domain," *Journal of Biomedical Optics*. 16(12):126013. pp. 1-5.
- Sabet et al. (2008) "Deformation of the human brain induced by mild angular head acceleration," *J. Biomech*. 41:307-15.
- Stummer et al. (2006) "Fluorescence-guided surgery with 5-aminolevulinic acid for resection of malignant glioma: a randomised controlled multicentre phase III trial," *Lancet Oncology*. 7(5):392-401.
- Sun (May 2004) "Stereopsis-Guided Brain Shift Compensation," Ph.D. Dissertation. Dartmouth College.
- Sun et al. (2005) "Stereopsis-Guided Brain Shift Compensation," *IEEE Trans Med. Imaging*. 25(8):1039-1052.
- Swartling et al. (2005) "Fluorescence spectra provide information on the depth of fluorescent lesions in tissue," *Optics Letters*. 44(10):1934-1941.
- Tichauer et al. (Apr. 2014) "Accounting for pharmacokinetic differences in dual-tracer receptor density imaging," *Phys. Med. Biol*. 59:2341-2351.
- Tichauer et al. (Jan. 2013) "Dual-tracer background subtraction approach for fluorescent molecular tomography," *Journal of Biomedical Optics*. 18(1):016003.

(56)

References Cited

OTHER PUBLICATIONS

Tichauer et al. (Jun. 2012) "Improved tumor contrast achieved by single time point dual-reporter fluorescence imaging," *Journal of Biomedical Optics*. 17(6):066001. pp. 1-10.

Valdes (2011) "Quantitative fluorescence in intracranial tumor: implications for ALA-induced PpIX as an intraoperative biomarker," *J. Neurosurg.* 115:11-17.

Valdes et al. (Jun. 1, 2012) "A spectrally constrained dual-band normalization technique for protoporphyrin IX pantification in fluorescence-guided surgery," *Optics Letters*. 37(11):1817-1819.

Vigneron et al. (2009) "2D XFEM-Based Modeling of Retraction and Successive Resections for Preoperative Image Update," *Comput. Aided Surg.* 14(1-3):1-20.

Zhang et al. (2000) "Turbidity-free fluorescence spectroscopy of biological tissue," *Optic Letters*. 25(19):1451-1453.

International Search Report with Written Opinion corresponding to International Patent Application No. PCT/US2009/045082, dated Jan. 7, 2010, 6 pgs.

International Search Report with Written Opinion corresponding to International Patent Application No. PCT/US2009/066839, dated Jun. 25, 2010, 7 pgs.

International Search Report with Written Opinion corresponding to International Patent Application No. PCT/US2012/055755, dated Feb. 28, 2013, 7 pgs.

International Search Report with Written Opinion corresponding to International Patent Application No. PCT/US2013/020352, dated Apr. 26, 2013, 7 pgs.

International Search Report with Written Opinion corresponding to International Patent Application No. PCT/US2013/022266, dated May 15, 2013, 8 pgs.

International Search Report with Written Opinion corresponding to International Patent Application No. PCT/US2013/024400, dated May 15, 2013, 10 pgs.

International Search Report with Written Opinion corresponding to International Patent Application No. PCT/US2014/016291, dated May 27, 2014, 11 pgs.

International Search Report with Written Opinion corresponding to International Patent Application No. PCT/US2014/051356, dated Dec. 9, 2014, 8 pgs.

International Search Report with Written Opinion corresponding to International Patent Application No. PCT/US2015/033672, dated Aug. 19, 2015, 9 pgs.

International Search Report with Written Opinion corresponding to International Patent Application No. PCT/US2015/039728, dated Oct. 7, 2015, 10 pgs.

Notice of Allowance corresponding to U.S. Appl. No. 12/994,044, dated Feb. 5, 2015, 11 pgs.

Notice of Allowance corresponding to U.S. Appl. No. 13/145,505, dated Sep. 30, 2014, 9 pgs.

Notice of Allowance corresponding to U.S. Appl. No. 14/345,029, dated Feb. 14, 2017, 9 pgs.

Notice of Allowance corresponding to U.S. Appl. No. 14/370,713, dated May 18, 2016, 9 pgs.

Notice of Allowance corresponding to U.S. Appl. No. 14/375,311, dated Jan. 20, 2016, 16 pgs.

Office Action corresponding to U.S. Appl. No. 12/994,044, dated Jan. 3, 2014, 11 pgs.

Rajaram et al., "Lookup table-based inverse model for determining optical properties of turbid," *J Biomed Opt.*, vol. 13, Issue 5, 2008, pp. 1-7.

Non-Final Rejection of U.S. Appl. No. 14/373,443 dated Mar. 9, 2018, 20 pp.

Raymond et al., "Lifetime-based tomographic multiplexing", *Journal of Biomedical Optics*, vol. 15, Issue 4, Jul./Aug. 2010, pp. 1-9. U.S. Appl. No. 14/373,443; Final Office Action dated Dec. 17, 2018—30 pgs.

Office Action corresponding to U.S. Appl. No. 12/994,044, dated May 15, 2014, 13 pgs.

Office Action corresponding to U.S. Appl. No. 12/994,044, dated Oct. 6, 2014, 15 pgs.

Office Action corresponding to U.S. Appl. No. 13/145,505, dated Jun. 20, 2013, 21 pgs.

Office Action corresponding to U.S. Appl. No. 13/145,505, dated Nov. 14, 2013, 10 pgs.

Office Action corresponding to U.S. Appl. No. 14/345,029, dated Jul. 25, 2016, 10 pgs.

Office Action corresponding to U.S. Appl. No. 14/345,029, dated Oct. 7, 2015, 10 pgs.

Office Action corresponding to U.S. Appl. No. 14/370,713, dated Feb. 2, 2016, 17 pgs.

Office Action corresponding to U.S. Appl. No. 14/373,443, dated Jun. 21, 2017, 20 pgs.

Office Action corresponding to U.S. Appl. No. 14/373,443, dated Nov. 16, 2016, 17 pgs.

Restriction Requirement corresponding to U.S. Appl. No. 12/994,044, dated Oct. 21, 2013, 6 pgs.

Restriction Requirement corresponding to U.S. Appl. No. 13/145,505, dated Mar. 27, 2015, 9 pgs.

Restriction Requirement corresponding to U.S. Appl. No. 14/373,443, dated Sep. 8, 2016, 10 pgs.

Restriction Requirement corresponding to U.S. Appl. No. 14/375,311, dated Oct. 5, 2015, 6 pgs.

* cited by examiner

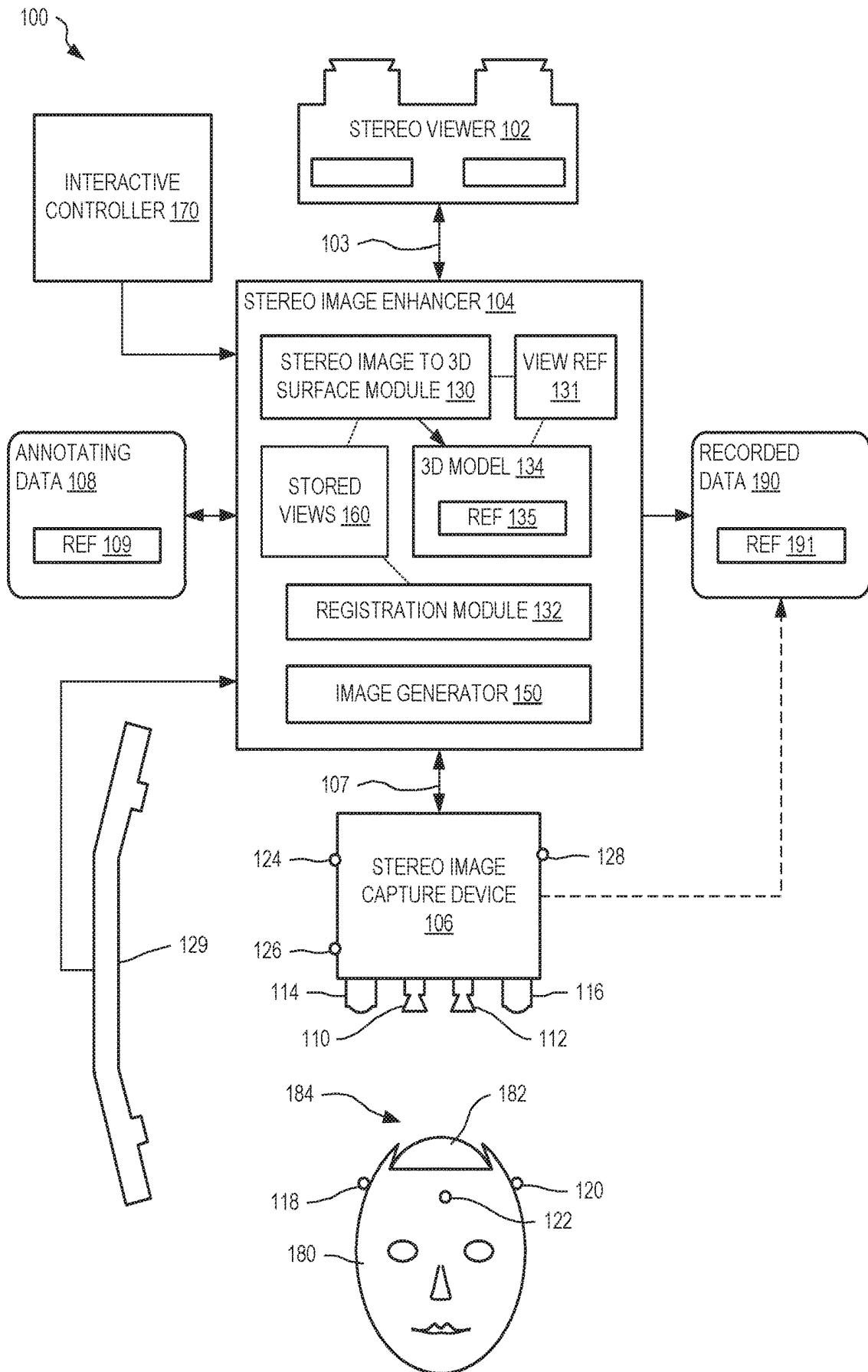


FIG. 1

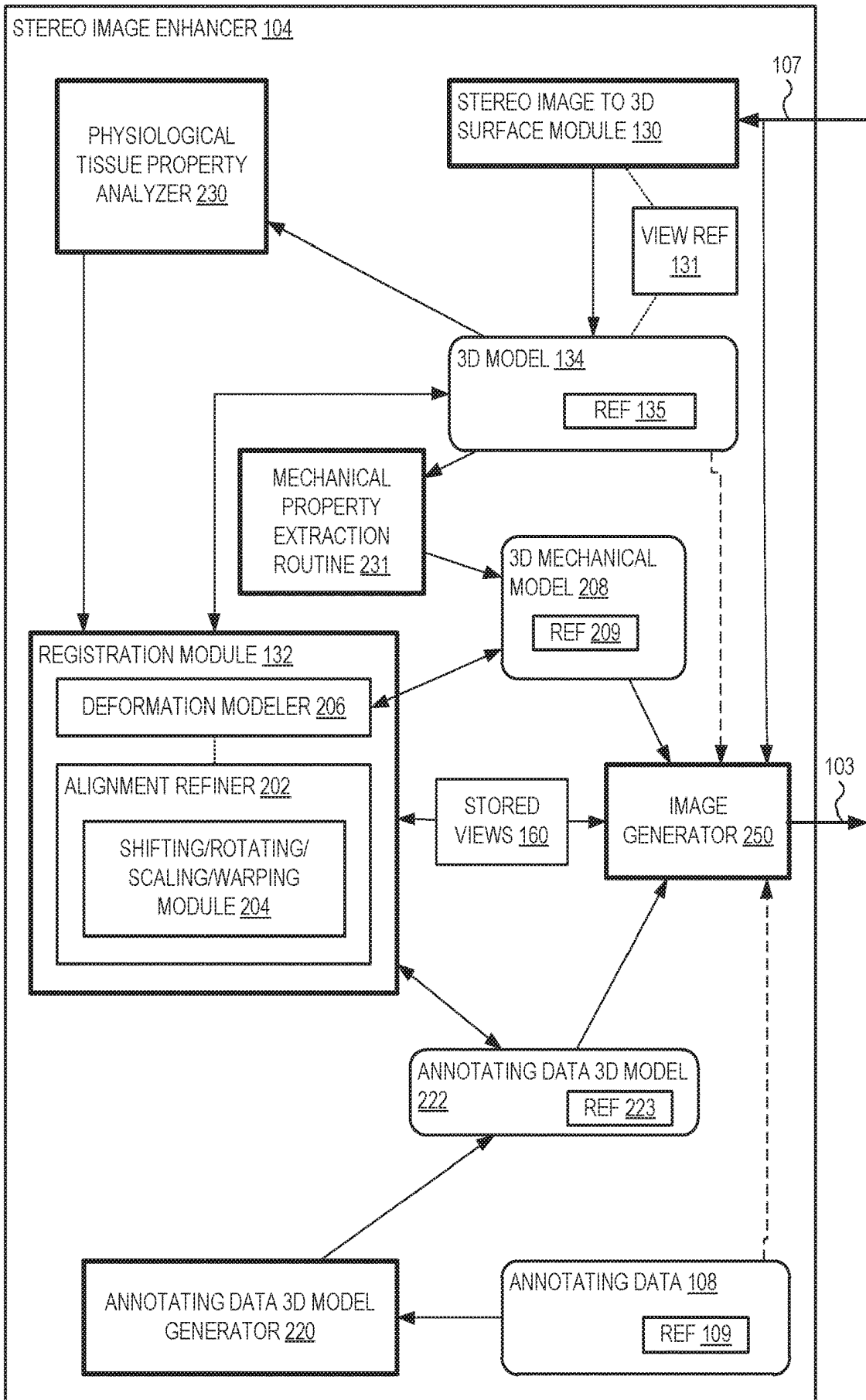
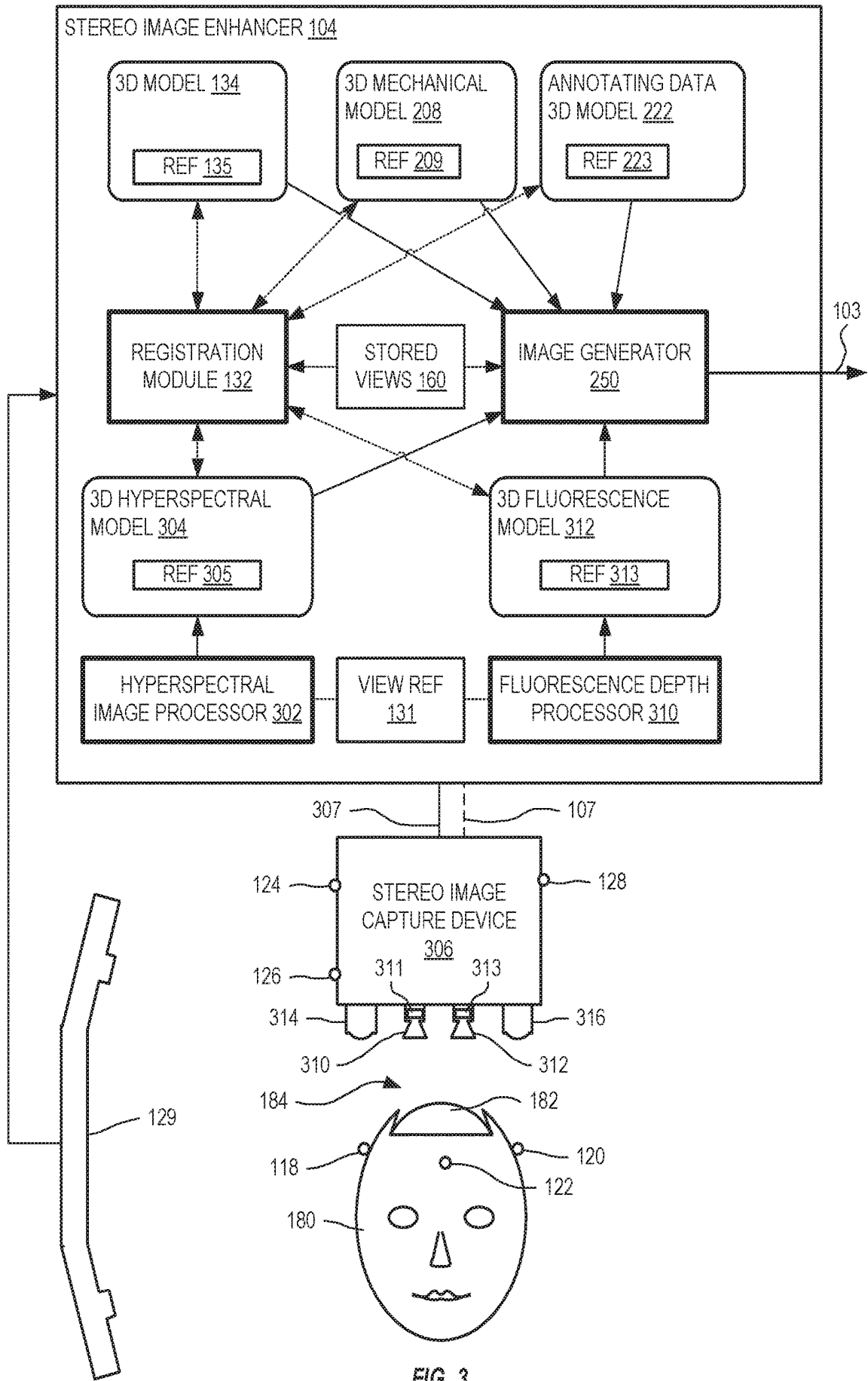


FIG. 2



400 ↘

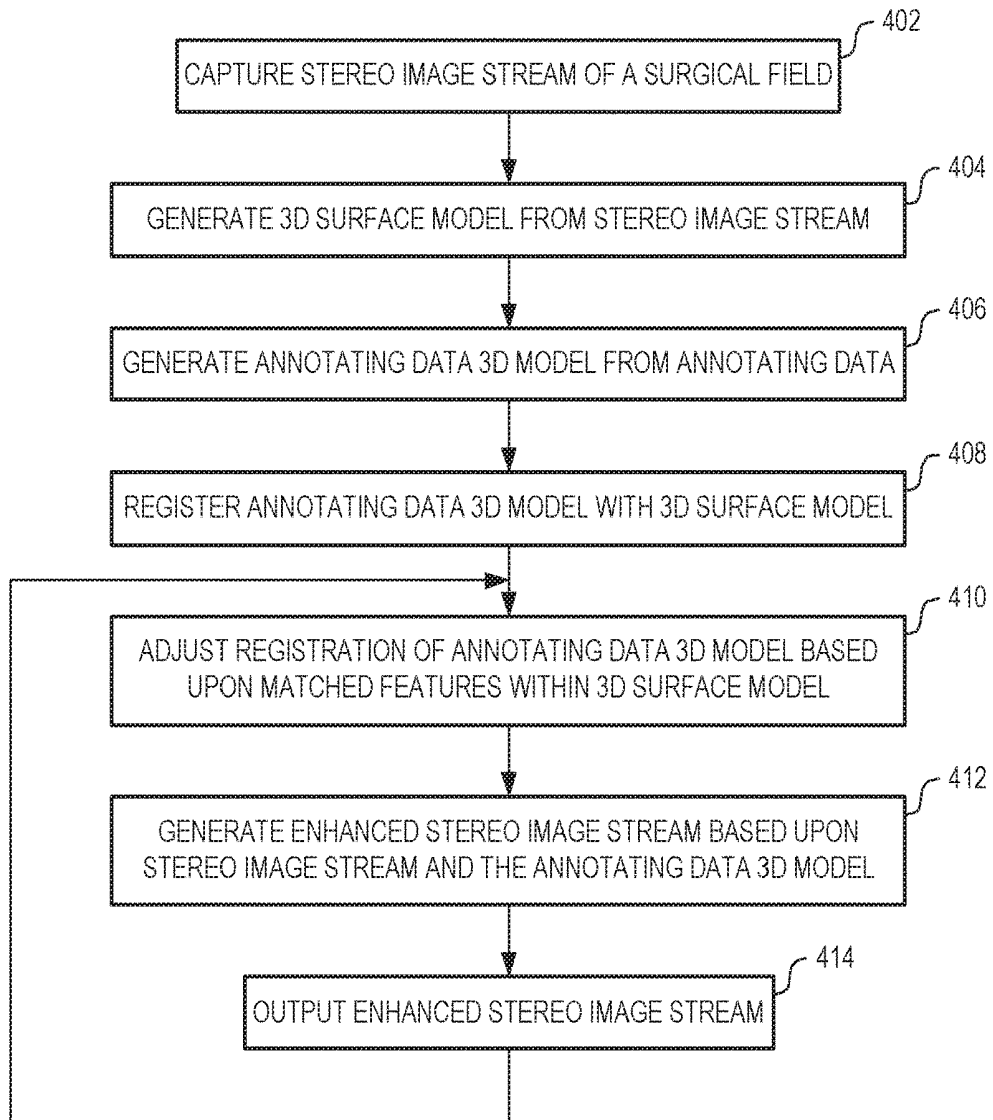


FIG. 4

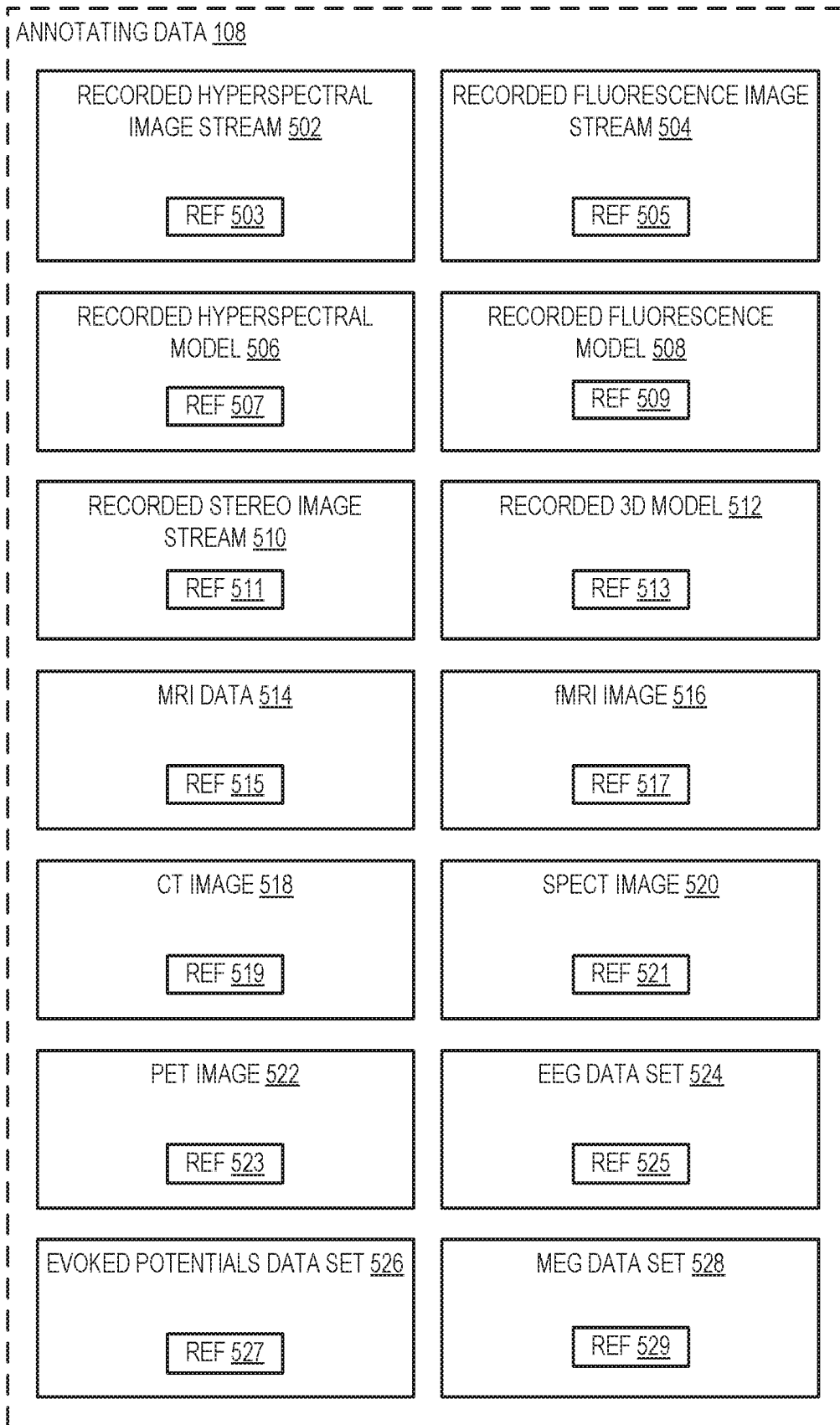


FIG. 5

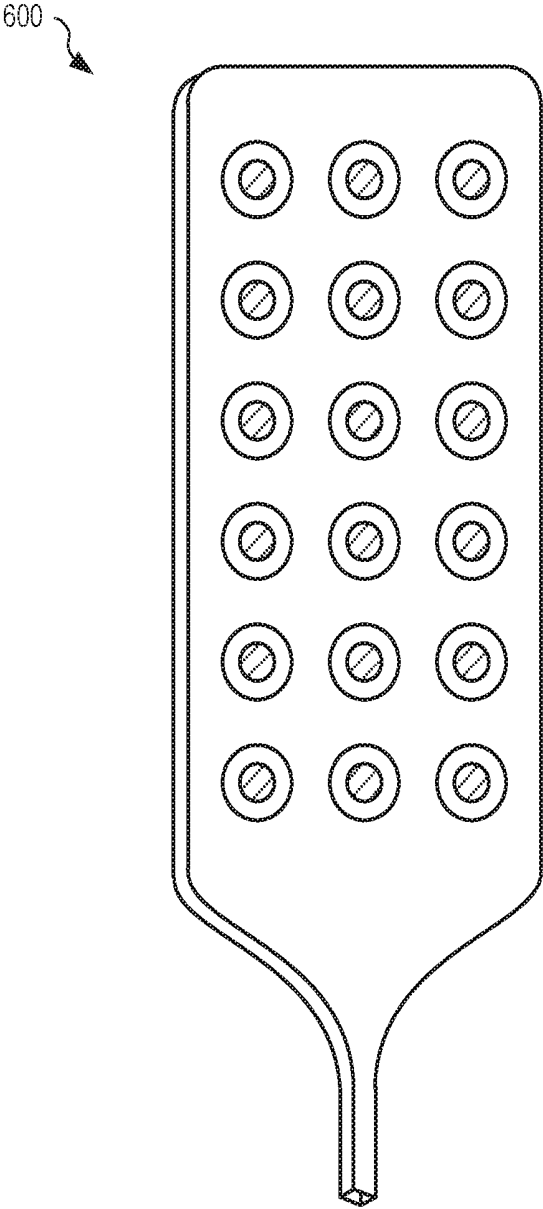


FIG. 6A

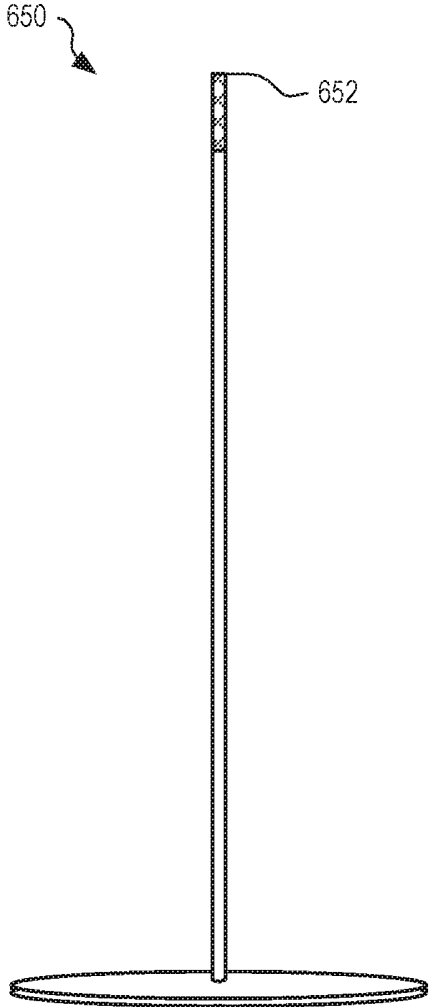


FIG. 6B

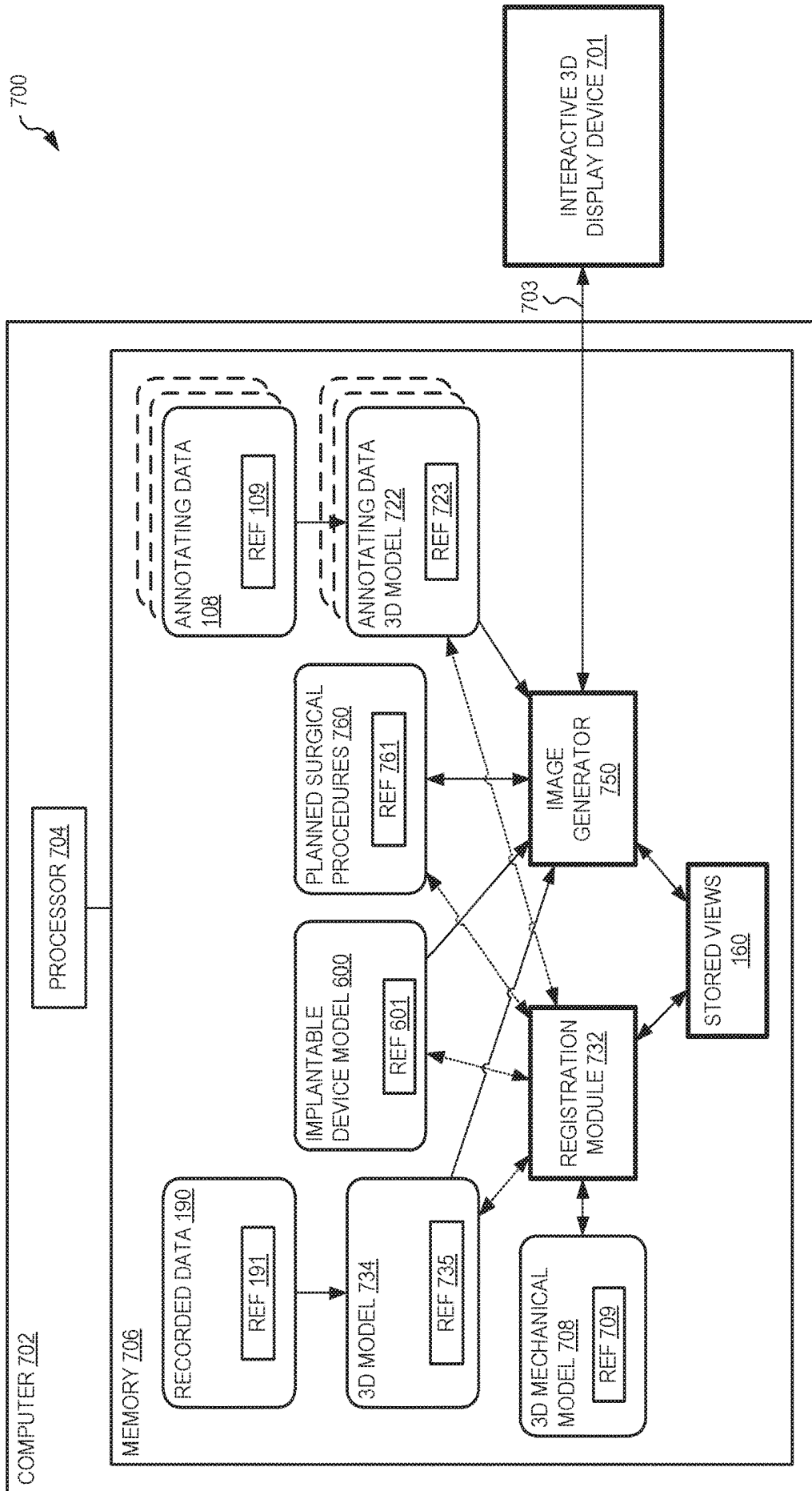


FIG. 7

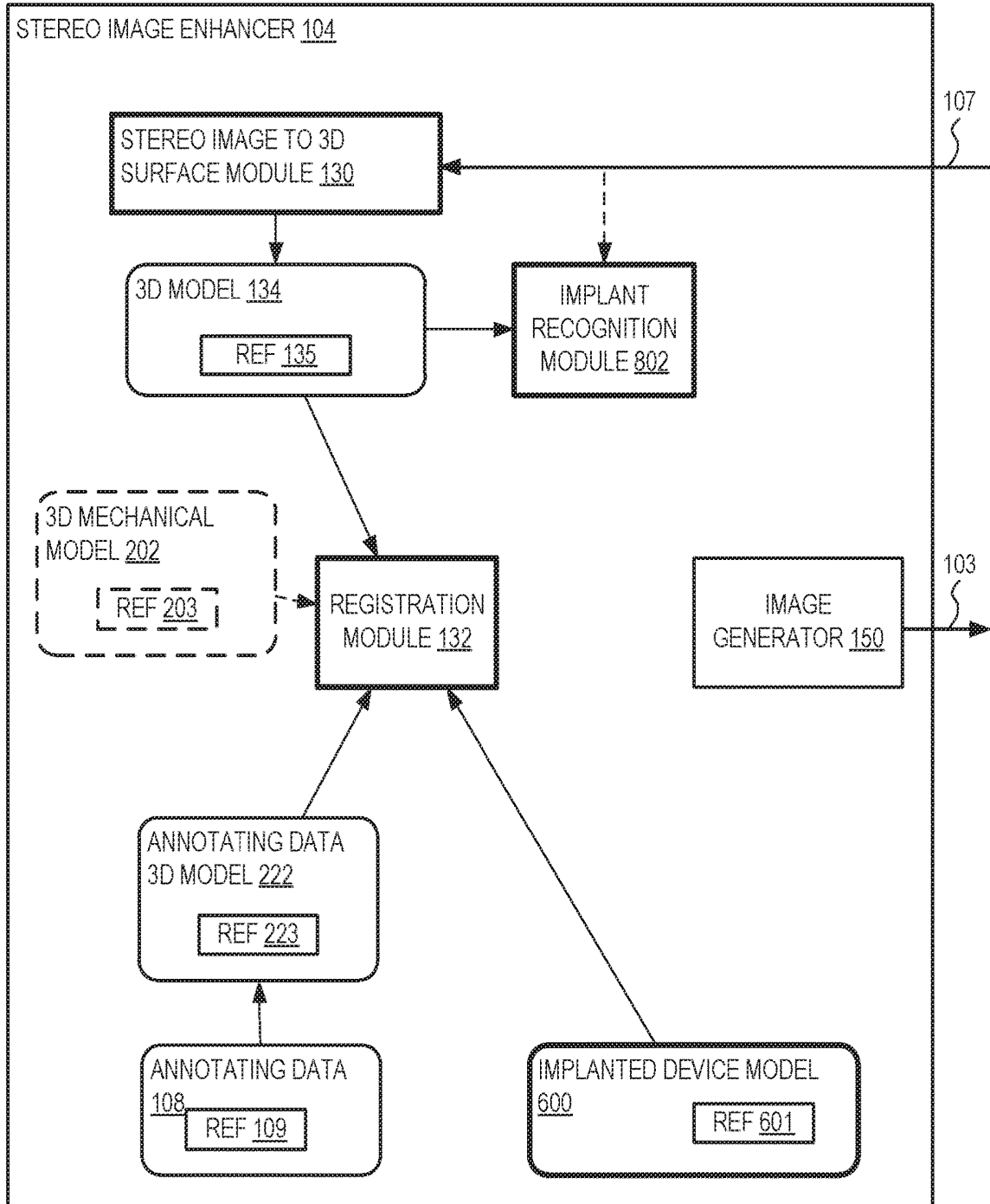


FIG. 8

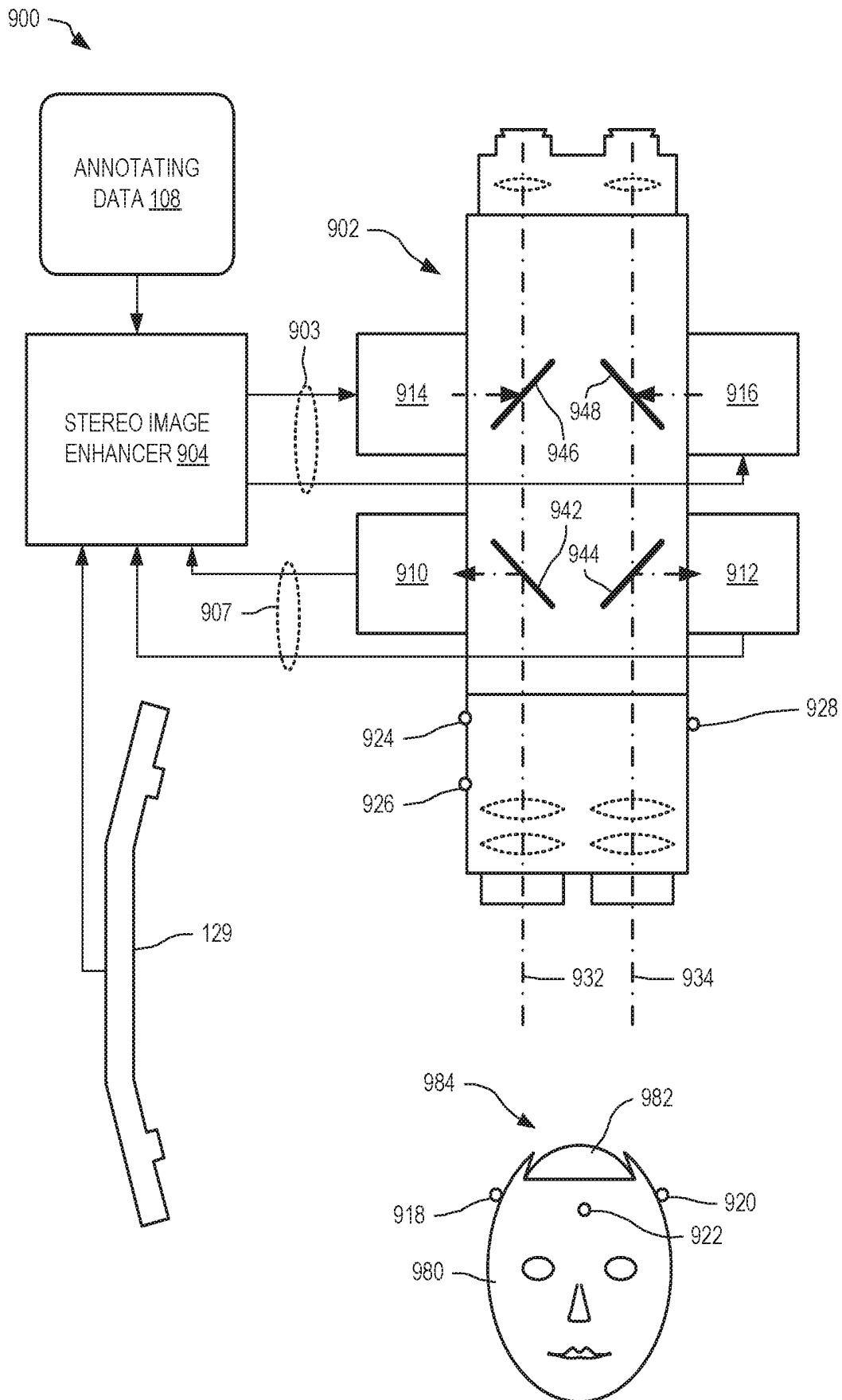


FIG. 9

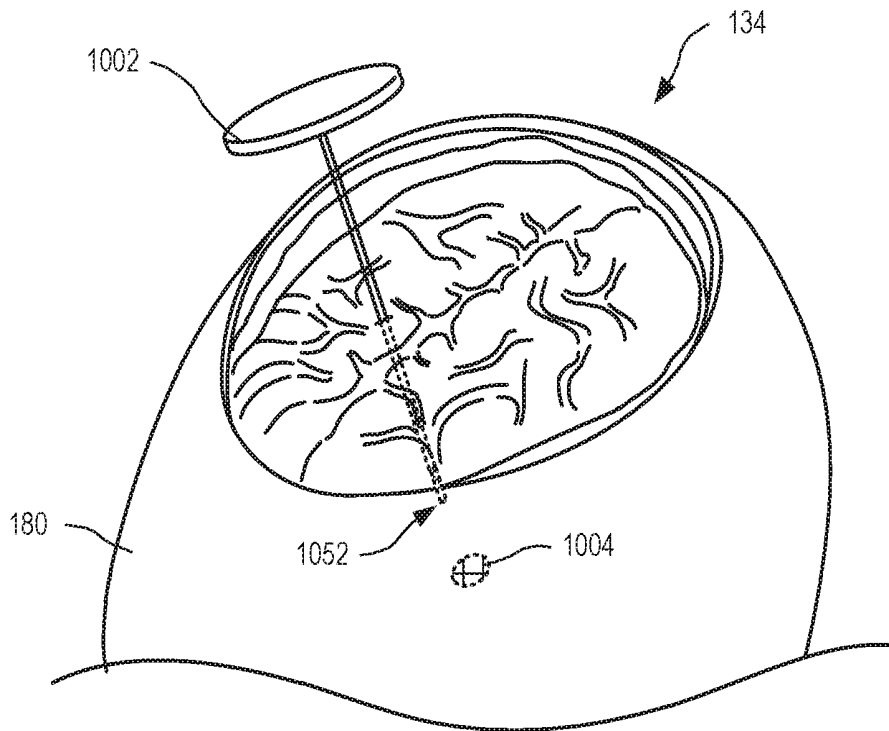


FIG. 10A

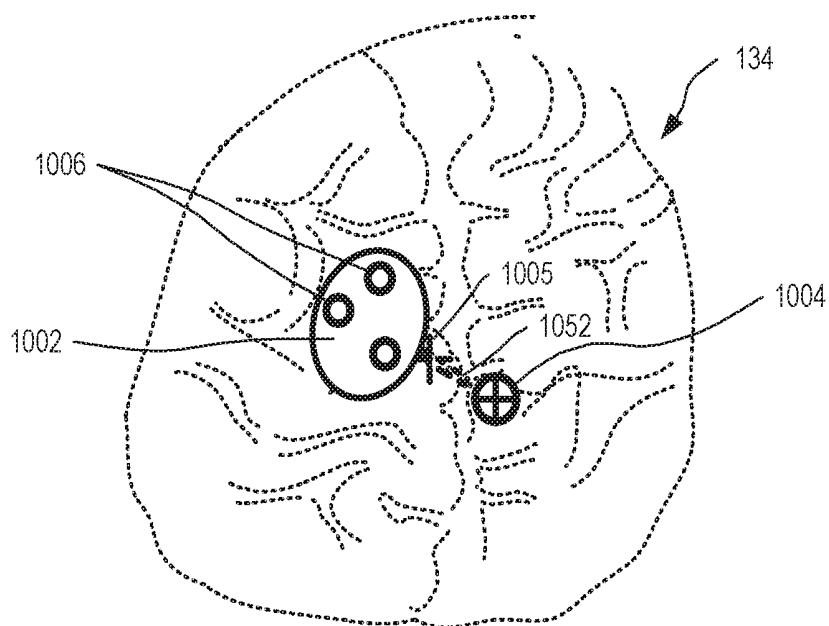


FIG. 10B

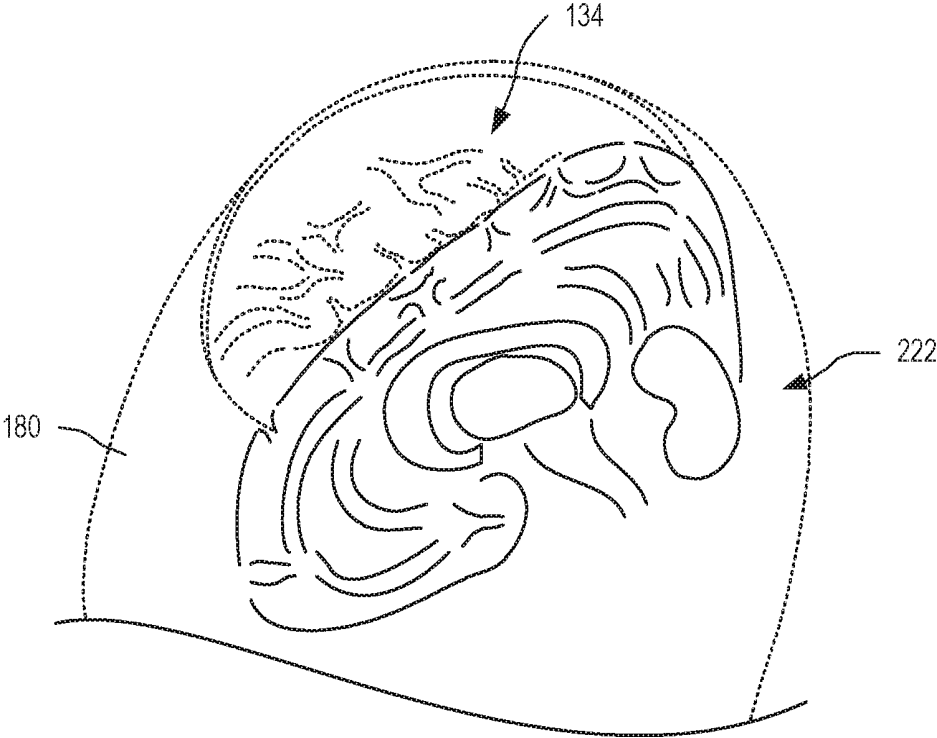


FIG. 11

**SURGICAL NAVIGATION WITH
STEREOVISION AND ASSOCIATED
METHODS**

PRIORITY CLAIM & RELATED APPLICATIONS

This application is a continuation-in-part of International Patent Application No. PCT/US15/33672 filed Jun. 2, 2015, which claims priority to U.S. Provisional Patent Application No. 62/006,786 filed Jun. 2, 2014, the disclosures of which are incorporated herein by reference.

International Patent Application No. PCT/US15/33672 is also a continuation-in-part of U.S. patent application Ser. No. 12/994,044 filed on Jan. 21, 2011, now U.S. Pat. No. 9,052,384 issued Jun. 9, 2015, which is a National Stage Entry of PCT Patent Application Serial Number PCT/US2009/045082 filed May 22, 2009, which claims priority to U.S. Provisional Patent Application No. 61/055,355, filed May 22, 2008, the disclosure of which are incorporated herein by reference.

International Patent Application No. PCT/US15/33672 is also a continuation-in-part of International Patent Application No. PCT/US2013/020352 filed Jan. 4, 2013, which claims priority to U.S. Patent Application No. 61/583,092, filed Jan. 4, 2012, the disclosures of which are incorporated herein by reference.

International Patent Application No. PCT/US15/33672 is also a continuation-in-part of International Patent Application No. PCT/US2013/024400 filed Feb. 1, 2013, which claims priority to U.S. Provisional Patent Application No. 61/594,862 filed Feb. 3, 2012 and which is also a continuation-in-part of PCT Application No. PCT/US2013/020352 filed Jan. 4, 2013, which claims priority to U.S. Patent Application Ser. No. 61/583,092, filed Jan. 4, 2012. The disclosures of the above-referenced applications are each incorporated in their entirety herein by reference.

International Patent Application No. PCT/US15/33672 is related to U.S. patent application Ser. No. 13/145,505, filed in the United States Patent and Trademark Office on Jul. 20, 2011, now U.S. Pat. No. 8,948,851 issued Feb. 3, 2015, which is a United States National Phase application of International Patent Application No. PCT/US2009/066839 filed Dec. 4, 2009, which claims priority to United States Provisional Patent Application No. 61/145,900 filed Jan. 20, 2009. The disclosures of the above-referenced applications are each incorporated in their entirety herein by reference.

International Patent Application No. PCT/US15/33672 is also a continuation-in-part of U.S. application Ser. No. 14/373,443 filed Jul. 21, 2014 which is a National Stage Entry of PCT Application No. PCT/US2013/022266 filed Jan. 18, 2013, which claims priority to U.S. Provisional Patent Application Ser. No. 61/588,708, filed Jan. 20, 2012. The disclosures of the above-referenced applications are each incorporated in their entirety herein by reference.

International Patent Application No. PCT/US15/33672 is also a continuation-in-part of U.S. patent application Ser. No. 14/345,029 filed Mar. 14, 2014, which is a national phase of PCT Application No. PCT/US2012/055755 filed Sep. 17, 2012, which in turn claims priority to U.S. Patent Application Ser. No. 61/535,201 filed Sep. 15, 2011. The disclosures of the above-referenced applications are each incorporated in their entirety herein by reference.

GOVERNMENT RIGHTS

This invention was made with government support under grant numbers R01 CA159324-01, R01 EB002082-11 and

1R21 NS078607 awarded by the National Institutes of Health. The United States Government has certain rights in the invention.

SUMMARY

A system for generating a photographic image of a surgical field, includes a stereo image capture device for capturing a stereo image stream from two cameras imaging the surgical field; and a stereo viewer for displaying the stereo image stream to a surgeon. The system also includes a stereo image to 3D surface extraction module, implemented as machine readable instructions stored in memory of a computer, that is capable of, when the instructions are executed by a processor of the computer, generating a first 3D model of the surgical field from the stereo image streams; a registration module, implemented as machine readable instructions stored in the memory, that is capable of, when the instructions are executed by the processor, co-registering annotating data with the first 3D model; and a stereo image enhancer, implemented as machine readable instructions stored in the memory, that is capable of, when the instructions are executed by the processor, graphically overlaying at least part of the annotating data onto the stereo image stream to form an enhanced stereo image stream for display by the stereo viewer, wherein the enhanced stereo stream enhances the surgeon's perception of the surgical field.

In another embodiment, a system configured for graphically representing and displaying a first and second annotating data in relation to a surgical field, including an interactive display device; a registration module, implemented as machine readable instruction stored in a memory of a computer, that is capable of, when the instructions are executed by a processor of the computer, co-registering the first and second annotating data; and a stereo image enhancer, implemented as machine readable instruction stored in the memory, that is capable of, when the instructions are executed by the processor, graphically overlaying at least part of the annotating data onto the stereo image stream to form an enhanced stereo image stream for display by the stereo viewer, wherein the enhanced stereo stream enhances the surgeon's perception of the surgical field.

In another embodiment, a method for surgical navigation with stereo vision, including capturing a stereo image pair of a surgical field; generating a 3D surface model from the stereo image pair; registering preoperatively captured annotating data with the 3D surface model; generating an enhanced stereo image based upon the stereo image pair and the annotating data; wherein the annotating data is graphically overlaid onto the stereo image pair.

BRIEF DESCRIPTION OF THE FIGURES

FIG. 1 shows one exemplary system for surgical navigation with stereovision, in an embodiment.

FIG. 2 shows the stereo image enhancer of FIG. 1 in further exemplary detail.

FIG. 3 shows a portion of the stereo imaging system of FIG. 1 configured with stereo hyperspectral cameras for capturing a stereo hyperspectral image stream, in an embodiment.

FIG. 4 is a flowchart illustrating one exemplary method for surgical navigation with stereo vision, in an embodiment.

FIG. 5 shows examples of the annotating data of FIG. 1.

FIG. 6A is a perspective view of one exemplary implantable device model that is stored within the system of FIG. 1, in an embodiment.

FIG. 6B is a perspective view of one exemplary implantable device model that is stored within the system of FIG. 1 in an embodiment.

FIG. 7 shows one exemplary system with an interactive stereo display device for interacting with a surgeon to analyze and/or create a surgical procedure for a patient, in an embodiment.

FIG. 8 shows the system of FIG. 1 further configured for use in positioning an implantable device during a surgical procedure, in an embodiment.

FIG. 9 shows one exemplary optical system for surgical navigation with stereovision, in an embodiment.

FIG. 10A is a perspective view of the 3D model of FIG. 1 and the implantable device model of FIG. 6B.

FIG. 10B is a 2D representation of the enhanced stereo image stream of the surgical field corresponding to FIG. 10A as generated by the system of FIG. 1.

FIG. 11 is a perspective view of the 3D model and the annotating data 3D model generated from the annotating data of FIG. 1, where the annotating data is based upon MRI tomography data.

DETAILED DESCRIPTION OF THE EMBODIMENTS

FIG. 1 shows one exemplary system 100 for surgical navigation with stereovision. System 100 includes a stereo viewer 102, a stereo image annotator or enhancer 104, and a stereo image capture device 106. System 100 is used to aid a surgeon during an operation on a person 180. In the example of FIG. 1, the surgeon is performing a procedure on a brain 182 of person 180. However, system 100 may be used to aid procedures on other parts of a person's body, and may be used when performing procedures on animals as well as on humans.

Stereo image capture device 106 includes illumination sources 114, 116 and at least two cameras 110, 112, that cooperate to capture a high quality stereo image stream 107 of a surgical field 184 (i.e., the area where the procedure is performed). System 100 may be calibrated using one or more calibration targets used in surgical field 184, as taught by PCT/US2009/045082.

Stereo image enhancer 104 receives stereo image stream 107 from capture device 106 and generates an enhanced stereo image stream 103 from stereo image stream 107 by adding information from annotating data 108. Annotating data 108 is for example a previously stored imaging data set such as one of (a) preoperative, intraoperative and postoperative radiological studies selected from the group including MRI, fMRI, CT, SPECT, and PET, and (b) physiological studies selected from the group including EEG, evoked potentials, and magnetoencephalography (MEG).

At least three reference points 118, 120, 122 may be attached to patient 180 for the duration of the procedure and the location of each reference point is defined as a location within a patient-centered coordinate system of patient 180. A tracker 129 determines, relative to itself, locations of reference points 118, 120, 122 attached to patient 180 and reference points 124, 126, 128 attached to stereo image capture device 106. Registration module 132 uses these locations to determine a view reference 131 (e.g., spatial relationship including relative position and orientation) between patient 180 and stereo image capture device 106. View reference 131 defines a spatial relationship of stereo

image stream 107 relative to surgical field 184, and may also incorporate functions (e.g., zoom) of optics within cameras 110 and 112. Tracker 129 is in some embodiments a commercially available operating room tracking device that determines positions of reference points or transponders attached to equipment in the operating room, including stereo image capture device 106, and may include transponders attached to the patient. Tracker 129 may utilize one or both of optical and electromagnetic tracking as known in the art. In an alternate embodiment, where stereo image stream 107 includes images of reference points 118, 120, and 122, registration module 132 may automatically determine a spatial relationship between stereo image capture device 106 and patient 180, or to a frame attached to patient 180. 3D model 134 allows each pixel within stereo image stream 107 to be located within the patient-centered coordinate system. By determining this relationship between pixels of stereo image stream 107 and the patient-centered reference system, image post-processing techniques may be used to evaluate captured images.

In a particular embodiment where registration module 132 automatically determines spatial relationship between stereo image capture device and patient 180, the registration module determines features of patient bone structure from pre-operative CT scans and/or MRI scans, and registers this bone structure to features of bone structure determined from other CT scans and MRI scans for the same patient as well as to bone structure determined from 3D surfaces extracted from the stereo images. In the event an inconsistency, such as a scan with significant bony differences from other scans associated with the patient, or features of facial 3D surfaces that are inconsistent with features of bone structure extracted from the 3D surfaces, is found while automatically registering scans, a warning message is generated and provided to the surgeon.

It should be noted that stereo image stream 107 is recorded throughout a surgical procedure, and the recorded stereo image stream is effectively continuously geotagged by attaching an encoded position and orientation of image capture device 106 as determined by tracker 129 in real-time. The recorded image stream is available for documentation, and image pairs from the image stream are sampled and processed as indicated herein for extraction of 3D surface models and for co-registration of, and co-presentation of, data from other image sources, as described herein, periodically throughout a surgical procedure.

Stereo image enhancer 104 may be controlled, in a particular embodiment by the surgeon or a surgical assistant, to graphically enhance stereo image stream 107 with selected information from annotating data 108 such that the surgeon has an enhanced view of surgical field 184 through stereo viewer 102. Enhancer 104 includes a stereo image to 3D surface module 130 that generates a 3D model 134 of surgical field 184 from stereo image stream 107. 3D model 134 includes a reference 135 that defines a spatial relationship of 3D model 134 relative to the patient-centered coordinate system of patient 180, in a particular embodiment the spatial relationship is determined from tracker 129 based upon reference points 118, 120, 122. Although the patient-centered coordinate system described herein, other coordinate system may be used without departing from the scope hereof. For example, an operating-room centered coordinate system may be used, wherein the determined spatial relationship between patient 180 and stereo capture device 106 allows conversion of coordinates from one coordinate system to another according to a calibration.

Registration module 132 operates to co-register annotating data 108 (based upon a reference 109 associated, or included with, annotating data 108) and 3D model 134 (based upon determined reference 135) and generate graphical information from annotating data 108 that corresponds to surgical field 184 as imaged within image stream 107. For example, where annotating data 108 is a tomographic image generated from a MRI scan, that image may be scaled and oriented with respect to the surgical field viewed by the surgeon through stereo viewer 102 and graphically added to enhanced stereo image stream 103. Enhancer 104 thereby enhances the view of surgical field 184 seen by the surgeon by adding information from other sources and co-registering this information to a conventional optical view; thus the surgeon assimilates the information without the need to move or avert his/her eyes from the surgical field. In another embodiment, the surgeon may view a corresponding view of 3D model 134 and a 3D model of annotating data 108, and may view data from the 3D model 134 with superimposed annotating data 108 as rendered stereo images, as wireframe models, as one or more tomographic slices, as false-color renderings embodying color-encoded depth, as a combination of these representations.

Applicant notes that not only may the coordinate systems used to represent images from each modality may differ—for example an MRI may use a rectilinear coordinate system while an ultrasound imaging modality may use a polar coordinate system, but each series of images within a modality may be offset relative to other images of that modality—for example two successive MRIs may be offset relative to each other. A mapping between raw image coordinates and patient coordinates is established and, and images transformed from raw coordinate systems into the patient centered coordinate system, by registration module 132 for each image.

Registration module 132 may identify features within stereo image stream 107 and/or 3D model 134 that correspond to features identified within annotating data 108, wherein registration module 130 automatically aligns graphical images generated from annotating data 108 with stereo image stream 107. This automatic alignment may include one or more of shifting, rotating, warping, and scaling of annotating data 108 to align corresponding features between annotating data 108 and stereo image stream 107. Registration module 132 may also identify tissue shift within 3D model 134 as compared to annotating data 108, wherein registration module 132 may shift, rotate, warp, and/or scale annotating data 108 to correspond to 3D model 134. Brain, and many other organs, are soft, deformable, tissues. For example, when prepared for surgery, soft tissue may move as a result of skull removal, retraction, incision, and the like. Similarly, during surgery, tissue and inclusions therein such as tumors or critical structures may shift position. Stereo image to 3D surface module 130 continually updates 3D model 134 based upon stereo image stream 107 and registration module 132 continually compares 3D model 134 to annotating data 108, shifting, rotating, warping, and/or scaling annotating data 108 to match 3D model 134. In one embodiment, registration module 132 utilizes a mechanical model of tissue, instruments, and structure within surgical field 184 such that accurate manipulation of annotating data 108 may be made corresponding to detected movement within 3D model 134.

In one embodiment, where enhanced data 108 does not include imagery (i.e., EEG and/or evoked potentials),

enhancer 104 generates contour lines mapped to 3D model 134 and corresponded to information within enhanced data 108.

In another embodiment, where enhanced data 108 includes a 3D model or data derived in a voxel-based form (e.g., MRI data), enhancer 104 may generate one or more cross sections through an indicated incision plane and map that cross section to the incision plane within 3D model 134 such that the surgeon views the corresponding 3D structures beneath the incision plane prior to, and after, making the actual incision. By displaying structure that is not readily or directly visible, the surgeon is made aware of such structures and their relative positions without the need to look away from the surgical field to reference other sources that may distract the surgeon from the procedure, or which may not represent current positions of the structures. That is, system 100 makes information of enhanced data 108 available within the same field of view as surgical field 184, thereby lessening need for the surgeon to look away from stereo viewer 102 or from surgical field 184.

System 100 includes an interactive controller 170 adapted to select one of a plurality of predefined stored views 160 of 3D model 134 and annotating data 108. In one embodiment, controller 170 is controlled by a surgeon's foot. In another embodiment, controller 170 is controlled by the surgeon's eye movement, wherein controller 170 may be implemented within stereo viewer 102. In yet another embodiment, controller 170 is controlled by a surgeon's voice using a trained speech interpretation interface. Stored views 160 define a plurality of views that combine annotating data 108 with stereo image stream 107 to generate enhanced stereo image stream 103. For example, one view may select a particular annotating data 108 for enhancing stereo image stream 103. Each view within stored views 160 also defines which portions of annotating data 108 to select for combining with stereo image stream 107. For example, where a surgical incision is planned (see planned surgical procedures 760 of FIG. 7), stored view 160 may define a view that graphically indicates planned incisions within enhanced stereo image stream 103, and may further define a corresponding portion of annotating data 3D model 222 for display with the planned incision to indicate tissue structures beneath the intended point of incision. This provides the surgeon with additional information relative to the next immediate step in the planned operational procedure.

Stored views 160 may also define an alternate viewing point for display within stereo viewer 102, wherein the stereo image enhancer 104 generates the alternate view based upon 3D model 134 and annotating data 108. For example, a surgeon may elect to temporarily view a side image of a patient's head to learn additional information from MRI tomography data stored within annotating data 108 in relation to surgical field 184.

FIG. 2 shows stereo image enhancer 104 of FIG. 1 in further exemplary detail. Registration module 132 includes an alignment refiner 202 that utilizes a shifting/rotating/scaling/warping module 204 to improve registration of annotating data 108 with 3D model 134. Registration module 132 may also include a deformation modeler 206 that generates a 3D mechanical model 208 of annotating data 108 to model deformation of tissue within annotating data 108 based upon one or more of gravity, retraction, incision, and so on. Deformation modeler 206 thereby determines an appropriate deformation of annotating data 108 to match determined deformation of tissue within 3D model 134 and surgical field 184. In one example, a portion of a patient's skull is removed for surgery, resulting in reduced pressure

and support for soft brain tissues. This reduced support allows the brain tissue to reposition as a result of gravity and reduced support. Deformation modeler **206** uses 3D mechanical model **208** to estimate such deformation and alignment refiner **202** uses shifting/rotating/scaling/warping module **204** to apply the estimated deformation to annotating data **108** such that annotating data **108** better aligns to 3D model **134**. Similarly, when a surgeon applies retraction, or makes an incision, deformation modeler **206** uses 3D mechanical model **208** to estimate deformation of surrounding tissue to better align annotating data **108** to 3D model **134**.

In one embodiment, 3D mechanical model **208** includes learning capability and is continually updated based upon detected deformation of actual tissue during the surgery. In an embodiment, stereo pairs captured using the stereo image capture device **106** are processed to extract a 3D surface model, which in turn is used to determine an actual surface configuration that is fed back to mechanical model **208**; in a particular embodiment these 3D surface models are used to tune coefficients of a neural network implementation of a mechanical model **208**. For example, each time 3D model **134** is updated based upon a performed surgical procedure, a mechanical property extraction routine **231** updates 3D mechanical model **208** to better predict the outcome of the procedure.

Stereo image enhancer **104** may also include an annotating data 3D model generator **220** that generates an annotating data 3D model **222** from annotating data **108**. For example, where annotating data **108** represents an MRI scan, annotating data 3D model **222** is generated to represent a model of the scanned tissue. Where annotating data **108** represents data from a physiological study (i.e., physiological data) selected from the group including EEG, evoked potentials, and magnetoencephalography (MEG), annotating data 3D model generator **220** may generate annotating data 3D model **222** using contours based upon 3D model **134** or known shape of the patient.

Electrical activity may be recorded by EEG electrodes at particular times during a preoperative or an intraoperative EEG study, and may include recorded evoked potentials. Preoperative studies may use conventional scalp electrodes, while intraoperative studies may use any combination of scalp, cortical surface, and deep electrodes appropriate to the surgical procedure and stage of surgery at which EEG study is desired. This electrical activity is mapped onto a 3D model, for example as extracted from a CT scan or MRI imaging study, of the subject's brain. The resulting 3D maps of electrical activity are processed by annotating data 3D model generator **220** to generate annotating data 3D model **222** that is then co-registered with 3D model **134** extracted from stereo image stream **107**. In this way, EEG activity associated with an epileptic focus may be used to enhance the surgeon's view of the surgical field. EEG activity associated with evoked potentials, such as potentials evoked when the subject speaks, may thus be added to the surgeon's view of the surgical field. For example, EEG activity associated with particular areas, such as Broca's area critical for speech, or visual cortex associated with the fovea, may be incorporated within enhanced stereo image stream **103**.

Mechanical property extraction routine **231** updates 3D mechanical model **208** based upon observed displacement of tissue, such as when an indenter is placed on the brain for example.

Stereo image enhancer **104** may also include a physiological tissue property analyzer **230** that processes intraoperative visual information for determination of tissue

physiological properties, including but not limited to blood flow and oxygenation (oxygenation is determined by measuring tissue absorbance parameters at each of several wavelengths of light), light scattering and absorbance parameters, fluorescence of physiologic biomarkers, various chromophores including heme and porphyrins, and fluorescent optical biomarkers such as may be produced by metabolism of prodrugs. System **100** may have an integral tissue classifier based upon these physiological properties. For example, analyzer **230** may map and display tissue classifications and/or the presence or absence of particular degrees of oxygenation, light scattering, and absorbance parameters. Such physiological properties may be indicated within enhanced stereo image stream **103** and/or output separately. Since tumor cells may have different average sizes than normal cells, and many tumors are hypoxic, this information may be used to locate tumors.

Further, since patients may be conscious during surgery, blood flow and oxygenation is dependent upon neurological activity, and oxygenation is measured by the hyperspectral portion of the system by observing differences in absorption due to the spectral shift of hemoglobin with oxygenation, the system may perform intraoperative functional neuroimaging. Intraoperative functional neuroimaging is of use in isolating structures that require preservation, or in locating epileptic foci.

Registration module **132** may first align each model **134**, **208**, **222** and annotating data **108** based upon references **135**, **209**, **223**, and **109** that defines a relationship of the model/data to a patient-centered reference system for example, and thereby to one another. Registration module **132** may then use alignment refiner **202** to better register two or more models together, such as by deforming annotating data **108** to align identifiable features within annotating data **108** with corresponding features within 3D model **134**.

An image generator **250** then generates enhanced stereo image stream **103** based upon stereo image stream **107** and rendering of one or more of 3D model **134**, 3D mechanical model **208**, annotating data 3D model **222**, and annotating data **108**. For example, at least part of one or more of 3D model **134**, 3D mechanical model **208**, annotating data 3D model **222** and annotating data **108** may be graphically rendered and overlaid onto stereo image stream **107** to form enhanced stereo image stream **103**.

Fluorescence/Hyperspectral Enhancement

FIG. 3 shows a portion of stereo imaging system **100** of FIG. 1 configured with stereo hyperspectral cameras **310**, **312** for capturing a stereo hyperspectral image stream **307**. In a first embodiment, each camera **310**, **312** has a monochrome sensor and a controllable color filter **311**, **313**, wherein the filter is controlled to selectively capture images of a particular color band. In a second embodiment, each camera **310**, **312** has a high resolution sensor that is fitted with patterned filters having a plurality (e.g., **64**) of color bands, wherein the camera simultaneously captures images in each of the color bands. These cameras operate similarly to conventional color imagers that typically have Bayer filters for separating the captured image into three color bands (red, green, and blue). However, in this embodiment, the image is separated into 64 (or more) distinct color bands (at the expense of resolution). In a third embodiment, each camera **310**, **312** has a scanning slit with a dispersing element (e.g., prism or grating) that disperses the image from each point along the slit across multiple pixels of a sensor array, and thereby provides a spectrum, including measurements of intensity at as many as 1024 wavelengths, at each point along the slit. An optical system is configured

such that the slit traverses a field of view, and a hyperspectral cube is captured of the entire field of view.

In one embodiment, cameras 310, 312 replace camera 110, 112, wherein processing within stereo image capture device 306 recombines stereo hyperspectral image stream 307 to form stereo image stream 107. In this embodiment, since stereo hyperspectral image stream 307 and stereo image stream 107 are generated from the same captured images, co-registration is ensured.

In another embodiment, cameras 310, 312 are included with cameras 110, 112 such that image streams 107 and 307 are generated independently.

Within enhancer 104, a hyperspectral image processor 302 receives stereo hyperspectral image stream 307 and generates a 3D hyperspectral model 304 with a reference 305. Fluorescence depth processor 310 operates to generate a 3D fluorescence model 312 with a reference 313 from hyperspectral stream 307; in an embodiment fluorescence depth processor 310 determines depth in tissue of fluorophores of 3D fluorescence model 312 by determining observed fluorescent emissions spectra—the intensity of observed fluorescent emissions in hyperspectral stream 307 at two or more wavelengths. The depth processor 310 models spectral shift due to absorption and scattering of light by tissue at those two or more wavelengths relative to known emissions spectra of the fluorophores. Since each fluorophore emits light with a known emissions spectra or distribution of intensity of emitted light at the two or more wavelengths, and tissue absorbs and scatters light at each wavelength differently, deeper fluorophores generally have a greater spectral shift between observed fluorescent emissions spectra and the known emissions spectra of the fluorophores.

Registration module 132 operates to co-register two or more models 134, 208, 222, 304, and 312, and image generator 205 operates to graphically combine at least part of one or more models 134, 208, 222, 304, and 312 with stereo image stream 107 to form enhanced stereo image stream 103. In an embodiment, hyperspectral image processor 302 also is adapted to capture a first fluorescent image and a second fluorescent image at different wavelengths and to produce a third or difference image according to a formula (third image)=K1 (K2*(first image)-(second image)) for some real numbers K1 and K2. In an alternative embodiment, a decay rate image is generated by fitting intensity I of pixels of a sequence of N fluorescent images indexed by integer k taken over a period of time T are fitted to an exponential decay function $I(k)=I(1)10^{-kTd}$, where I(1) is an initial intensity after a fluorescent agent is administered, and d is a per-pixel decay rate;

Captured hyperspectral/fluorescent image streams, and/or determined 3D models therefrom, may be stored for use as annotating data 108 in a following procedure/operation. For example, a first part of a surgical procedure may collect hyperspectral/fluorescence data from a patient, wherein that data is stored within system 100 and used (e.g., as annotating data 108) within a subsequent part of the procedure.

FIG. 4 is a flowchart illustrating one exemplary method 400 for surgical navigation with stereo vision, in an embodiment. In step 402, method 400 captures a stereo image stream of a surgical field. In one example of step 402, stereo image capture device 106 captures stereo image stream 107 of surgical field 184. In step 404, method 400 generates a 3D surface model from the stereo image stream. In one example of step 404, stereo image to 3D surface module 130 generates 3D model 134 based upon stereo image stream 107. In step 406, method 400 generates a 3D enhancing model from

annotating data. In one example of step 406, annotating data 3D model generator 220 generates annotating data 3D model 222 from annotating data 108.

In step 408, method 400 registers the 3D enhancing model with the 3D surface model. In one example of step 408, registration module 132 aligns annotating data 3D model 222 with 3D model 134 based upon reference 223 of model 222 and reference 135 of model 134. In step 410, method 400 adjusts registration of the 3D enhancing model based upon matched features between the 3D enhancing model and the 3D surface model; in an embodiment features are matched between these 3D models by manual tagging, in an alternate embodiment common features of the models are matched automatically. In one example of step 410, alignment refiner 202 is invoked by registration module 132 to better register/align identifiable features within annotating data 108 to corresponding features within 3D model 134. In another example of step 410, alignment refiner 202 invokes deformation modeler 206 to annotate a 3D mechanical model 208 with annotating data 108 and then deform 3D mechanical model 208 based upon alignment of corresponding identified features of 3D model 134 to determine post-deformation locations of features found in annotating data 108. Alignment refiner 202 then invokes shifting/rotating/scaling/warping module 204 to apply the identified changes of 3D mechanical model 208 to annotating data 3D model 222.

In step 412, method 400 generates an enhanced stereo image stream based upon the stereo image stream and the annotating data 3D model. In one example of step 412, image generator 250 generates enhanced image stream 103 based upon stereo image stream 107 and at least part of enhanced data 3D model 222.

In step 414, method 400 outputs the enhanced stereo image stream. In one example of step 414, image generator 250 outputs enhanced stereo image stream 103 to stereo viewer 102.

FIG. 5 shows examples of annotating data 108 of FIG. 1. As noted above, annotating data 108 is a previously created set of data from one of radiological studies and physiological studies of the patient. Each data set may be independently modeled by generator 220 to generate an independent annotating data 3D model 222 that may be included at least in part within enhanced stereo image stream 103.

In addition to live hyperspectral, fluorescence depth-resolved, differential fluorescence, and other images, annotating data 108 may include one or more of: a recorded hyperspectral image stream 502 that has an associated reference 503, a recorded fluorescence image stream 504 that has an associated reference 505, a recorded fluorescence difference image stream, a recorded hyperspectral image model 506 that has an associated reference 507, a recorded fluorescence image model 508 that has an associated reference 509, a recorded stereo image stream 510 that has an associated reference 511, a recorded 3D model 512 that has an associated reference 513, MRI data 514 that has an associated reference 515, an fMRI image 516 that has an associated reference 517, a CT image 518 that has an associated reference 519, a single-photon emission computed tomography (SPECT) image 520 that has an associated reference 521, a PET image 522 that has an associated reference 523, an EEG data set 524 that has an associated reference 525, an evoked potentials data set 526 that has an associated reference 527, and a MEG (Magnetoencephalographic) data set 528 that has an associated reference 529. For each data set or image, the associated reference relates the data to the patient-centered coordinate system such that

system **100** may relate one set of data with another, and each set of data with 3D model **134**.

FIG. 6A shows a perspective view of one exemplary implantable device model **600** that is stored within system **100**. Model **600** represents an electrode array that may be implanted subdural, where positioning of the device during surgery is critical to successful operation.

FIG. 6B shows a perspective view of a model **650** of one exemplary implantable device model **650** that is stored within system **100**. Model **650** represents a deep brain probe, deep brain stimulator, electrode array, or other device, that should be inserted into a brain such that a tip **652** of the probe is positioned within a target area of the brain. Positioning of the device during surgery is critical to successful operation and is further complicated in that a surgeon is unable to visually see the location of tip **652** with respect to the target area. A current position of the implantable device is determined by triangulation in the 3D images taken by the 3D imaging device using reference marks on the rear or top of the implantable device and known positions of the 3D imaging device.

In an embodiment, during surgery, and in order to facilitate accurate placement of implantable devices, probes, or similar tools, a current 3D model of tissue is rendered and displayed. The current 3D model is displayable from either the point of view of a tip of the implantable device, or from a point of view of a surgeon with a representation of the implantable device, including a representation of portions of the device that are hidden from view by tissue. The system provides for superimposition of modeled locations, as displaced during surgery, of features extracted from annotating data, including a target area for the probe tip in the brain. A surgeon viewing the target area from the point of view of the probe tip can aim the probe at the target area, and by viewing the probe and target area as viewed from a different angle, can judge how much further the probe should be inserted to reach the target area.

FIG. 7 shows one exemplary system **700** with an interactive stereo display device **701** (e.g., stereo viewer **102** of FIG. 1, a 3D television type display (for use with 3D glasses), touch screen, keyboard and mouse, and so on) for interacting with a surgeon to analyze and/or create a surgical procedure for a patient. In some embodiments, system **700** is used outside of an operating theater to plan a surgical procedure using 3D models of the patient. Recorded data **190** from a previous surgery and/or annotating data **108** captured during a previous procedure on the patient are co-registered and presented for interaction with the surgeon. System **700** has a computer **702** with a processor **704** that is communicatively coupled with a memory **706**. Memory **706** is shown storing a registration module **732** and an image generator **750**. Registration module **732** and image generator **750** have similar functionality to registration module **132** and image generator **250** of system **100**, FIGS. 1 and 2. Registration module **732** and image generator **750** are at least partly implemented as machine readable instructions that are loaded and executed by processor **704** to perform the functionality described herein. Registration module **732** co-registers two or more models to present a coherent stereovision display, that, if desired by the surgeon, shows features of derived from multiple preoperative imaging modalities such as MRI, CT, and ultrasound imaging to a surgeon using system **700**.

The surgeon interacts with interactive 3D display device **701** to manipulate models of one or more of an implantable device, define planned surgical procedures **760**, and define views within stored views **160** for use during a procedure.

For example, system **700** allows a surgeon to plan an operation by manipulating views (e.g., rendered images that may include appropriate shading and simulated lighting) of one or more 3D models **734**, **600**, **722**, defining the planned surgical procedures **760**, such as making incisions, positioning an implantable device, and preselecting the appropriate views (stored within stored views **160**) of annotating data **108** to support the operation.

In one example of operation, the surgeon positions a model of an implantable device relative to a 3D model of a patient's brain generated from MRI data. The surgeon defines one or more views of the modeled implant and modelled MRI data (and any other annotating data **108** that may provide useful information) that will provide additional guidance to the surgeon during the operation. Implantable device model **600**, planned surgical procedures **760**, and stored views **160** are then used within system **100** to provide additional support to the surgeon during the operation.

In another example of operation, the surgeon selects previously recorded data **190** and annotating data **108** for a patient and operates system **700** to generate a view of at least a portion of the patient based upon an indicated surgical field (e.g., surgical field **184**, FIG. 1). The surgeon may adjust the field of view to synchronously rotate the viewed image. Thus, the surgeon may select a stereo view of the models that is optimal for positioning an implantable device, or for planning a surgical procedure. Registration module **732** aligns (co-registers) a 3D model **734** generated from recorded data **190** with an annotating data 3D model **722** generated from annotating data **108** such that the generated view of 3D model **734** and annotating data 3D model **722** are consistent. For example, where annotating data 3D model **722** is based upon MRI tomographic images, the surgeon may select a particular cross section or portion of annotating data 3D model **722** for display within stereo viewer **102** during the operation.

As with system **100**, registration module **732** aligns 3D model **734** and annotating data 3D model **722** based upon reference **735** and reference **723**, respectively. Registration module **732** may also include an alignment refiner (similar to alignment refiner **202**, FIG. 2) to ensure correct alignment of 3D model **722** with 3D model **734**.

Planned surgical procedures **760** define surgical activities that the surgeon intends to perform on the patient. These activities are selected from the group including resection, retraction, trajectory determination, and surgical corridor, and may be defined singly or in combination. These surgical activities are thus defined preoperatively with respect to one or more imaging data sets previously captured of the patient.

System **700** may include a 3D mechanical model **708** (similar to 3D mechanical model **208** of FIG. 2) that is used to model tissue in at least part of the surgical field and/or annotating data 3D model **722** such that tissue displacement resulting from planned surgical procedures **760** are predicted and portrayed correctly.

FIG. 8 shows system **100** of FIG. 1 further configured for use in positioning an implantable device during a surgical procedure based upon implantable device model **600** and associated reference **601**, where reference **601** is defined by system **700** of FIG. 7 as the intended position of the implantable device within the patient.

As previously described, system **100** invokes stereo image to 3D surface module **130** to generate 3D model **134** based upon stereo image stream **107**. Registration module **132** then aligns (co-registers) annotating data 3D model **122** and implantable device model **600** with 3D model **134** based upon references **123**, **601**, and **135**. System **100** may then

refine this alignment using alignment refiner **202** (not shown in FIG. **8**) as described above.

System **100** may also include an implant recognition module **802** that operates to detect the location of an implant within 3D image stream **107** based upon implanted device model **600**. Implant recognition module **802** may determine position and orientation of the implant even when only a part of the implant is visible within stereo image stream **107**. In one embodiment, the implant includes identification and orientation markings that aid recognition and orientation by implant recognition module **802**.

By determining position and orientation of the implantable device and the desired position of the implantable device, system **100** may generate graphical guides to aid the surgeon's positioning and insertion of the device. In particular, by modeling deformation of tissues (including target and other non-visible structures) resulting from applied pressure and/or displacement, system **100** provides guidance for more accurate positioning of the implantable devices as compared to using conventional placement means. Further, where the implantable device passes adjacent critical structures within the tissue, system **100** may provide warnings (visual and/or audio) to the surgeon where the device is approaching such critical areas. Visual indications may include 3D graphical display of target and critical structures and a 3d graphical representation of the implantable device as it moves through the tissue during the procedure.

As shown in FIG. **1**, system **100** may record one or both of stereo image stream **107** and enhanced stereo image stream **107** throughout the surgical procedure/operation. System **700** of FIG. **7** may they be used to perform a post-operative analysis of the surgical procedure based upon the recorded information and annotating data **108**, wherein system **700** automatically refines alignment and uses 3D mechanical model **702** to allow for tissue deformation resulting from activities during the operational procedure. Recorded data **190** thereby provide documentation of the surgical procedure for future reference and analysis alone or co-registered with other imaging data sets of annotating data **108**, even where the annotating data **108** was not used during the surgery—such as when obtained post-surgery.

Recorded data **190** and annotating data **108** may be used for postoperative use of intraoperatively acquired functional information (including but not limited to motor, sensory, speech, memory, and other cognitive function). For example, recorded data **190** may be co-registered with other annotating data **108** acquired postoperatively.

Recorded data **190** (e.g., hyperspectral stereo imaging data) and annotating data **108** may be used to determine abnormal tissue physiological properties, including but limited to blood flow and tissue oxygenation, and to concentrations of selective and nonselective fluorescent optical biomarkers.

Recorded data **190** may be analyzed using system **700** together with subsequently acquired and potentially co-registered imaging data sets, either extraoperatively or intraoperatively at any subsequent surgery.

FIG. **10A** is a perspective view of 3D model **134** and implantable device model **650** illustrating a tip **1000** of a partially positioned device corresponding to model **650** in relation to a target area **1004** within brain **182**. FIG. **10B** is a 2D representation of enhanced stereo image stream **103** (i.e., the surgeon's view) of surgical field **184** corresponding to FIG. **10A**. As appreciated, the 3D view resulting from enhanced stereo image stream **103** provides significantly

more information that can be shown in the 2D example of FIG. **10B**. FIGS. **10A** and **10B** are best viewed together with the following description.

The position and orientation of the device being implanted is detected by implant recognition module **802** and model **650** positioned relative to 3D model **134** accordingly. Target area **1004** is defined within planned surgical procedures **760** for example, and may include a desired entry point **1005** and/or path for the implantable device. A view of models **134**, **650** and target area **1004** is generated corresponding to the surgeon's view of surgical area **184** and added to enhanced stereo image stream **103** such that the surgeon sees, in 3D, a representation **1052** (e.g., a rendered image) of tip **652** and target area **1004** in relation to surgical field **184**. The surgeon may also view models **134**, **650** and target area **1004** from other perspectives during the activity of inserting the implantable device. Since the position of the device being implanted is determined from stereo image stream **107** and is accurately co-registered (aligned) with the tissue of patient **180** based upon 3d model **134**, the displayed alternate view is also accurate and updated in real-time. Implantable device **1002** may have one or more visibly detectable markings to facilitate determining orientation of device **1002** by implant recognition module **802**.

Other annotating data **108** may also be selected for display to the surgeon. FIG. **11** is a perspective view of 3D model **134** and annotating data 3D model **222** generated from annotating data **108** based upon MRI tomography data. For clarity of illustration, model **650** and target area **1004** are not shown in the example of FIG. **11**, but could be selectively added by the surgeon to show progress of tip **652** towards target area **1004**.

In the example of FIG. **11**, a section of annotating data 3D model **222** is superimposed onto a cut-away of 3D model **134** to emphasize the inner structures of tissue below the surface of 3D model **134**. System **100** generates enhanced stereo image stream **103** to superimpose the hidden tissue structure onto the surgeon's view of surgical field **184**. Since model **222** is aligned with 3d model **134** and corrected based upon 3D mechanical model **208**, system **100** enhances the surgeon's view with a very accurate 3D portrayal of the tissue normally hidden from the surgeon's view.

FIG. **9** shows one exemplary system **900** for surgical navigation with stereovision. System **900** includes an optical surgical microscope **902** and a stereo image enhancer **904** that receives a stereo image stream **907** of a surgical field **984** from cameras **910** and **912**. System **900** operates similarly to system **100** of FIG. **1** to enhance a surgeon's view of a surgical field **984**.

At least three reference points **918**, **920**, **922** may be attached to patient **980** for the duration of the procedure and the location of each reference point is defined as a location within a patient-centered coordinate system of patient **980**. As with system **100**, tracker **129** determines locations of reference points **918**, **920**, **922** attached to patient **980** and reference points **924**, **926**, **928** attached to microscope **902**. Stereo image enhancer **904** uses these locations to determine a view reference (e.g., spatial relationship including relative position and orientation) between patient **980** and microscope **902** to define a reference of stereo image stream **907** captured by cameras **910**, **912**. Stereo image enhancer **904** generates and sends an enhancing image stream **903** to image projectors **914**, **916** that project the images from stereo image stream **903** into optical paths **932**, **934**, respectively. As shown, optical path **932** includes a first beam splitter **942** that diverts a portion of light from surgical field **984** to camera **910** and a beam combiner **946** that adds light

from image projector 914 to optical path 932. Similarly, optical path 934 includes a first beam splitter 944 that diverts a portion of light from surgical field 984 to camera 912 and a beam combiner 948 that adds light from image projector 916 to optical path 934.

Combinations

The features and capabilities herein described may be combined in many different ways into a system; for example but not limitation the fluorescent depth processor and fluorescent stimulus light sources may be in an optional, extra-cost, module found in some systems but not in others. Among other combinations of features anticipated include:

A system designated A for generating a photographic image of a surgical field, including a stereo image capture device for capturing a stereo image stream from two cameras imaging the surgical field; and a stereo viewer for displaying the stereo image stream to a surgeon. The system also includes a stereo image to 3D surface extraction module, implemented as machine readable instructions stored in memory of a computer, that is capable of, when the instructions are executed by a processor of the computer, generating a first 3D model of the surgical field from the stereo image streams; a registration module, implemented as machine readable instructions stored in the memory, that is capable of, when the instructions are executed by the processor, co-registering annotating data with the first 3D model; and a stereo image enhancer, implemented as machine readable instructions stored in the memory, that is capable of, when the instructions are executed by the processor, graphically overlaying at least part of the annotating data onto the stereo image stream to form an enhanced stereo image stream for display by the stereo viewer, wherein the enhanced stereo stream enhances the surgeon's perception of the surgical field.

A system designated AA including the system designated A, wherein the registration module aligns the annotating data with the first 3D model.

A system designated AB including the system designated A or AA further including a 3D model generator for generating a second 3D model from the annotating data, wherein the registration module co-registers the second 3D model with the first 3D model; and an image generator configured to generate a graphical image of the second 3D model based upon the surgical field.

A system designated AC including the system designated A, AA or AB wherein the annotating data comprises one of a preoperative, an intraoperative and a postoperative radiological study selected from the group consisting of magnetic resonance imaging (MRI), functional magnetic resonance imaging (fMRI), x-ray computed tomography (CT), Single-photon emission computed tomography (SPECT), and positron emission tomography (PET).

A system designated AD including the system designated AB or AC, the image generator configured to generate a cross sectional view of the second 3D model based upon an indicated surgical plane within the surgical field.

A system designated AE including the system designated A, AA, AB, AC, or AD wherein the annotating data further comprises physiological study data selected from the group including EEG, evoked potentials, and magnetoencephalography (MEG).

A system designated AF including the system designated A, AA, AB, AC, AD or AE, the registration module further including an alignment refiner configured to adjust the registration of the annotating data with the 3D model based upon matching of features within the 3D model and features within the annotating data.

A system designated AG including the system designated A, AA, AB, AC, AD, AE, or AF, the registration module further including a deformation modeler configured to deform the annotating data based upon a determined tissue deformation within the surgical field.

A system designated AH including the system designated AF, the tissue deformation resulting from one or more of skull removal, retraction, and incision.

A system designated AI including the system designated A, AA, AB, AC, AD, AE, AF, or AG and further including a first controllable filter coupled with a first of the two cameras to filter light entering the first of the two cameras from the surgical field; a first controllable light source for illuminating the surgical field with light of a determined fluorescent stimulus wavelength; and a fluorescence depth processor, implemented as machine readable instructions stored in the memory, that is capable of, when the instructions are executed by the processor, generating a 3D fluorescence model; wherein the stereo image enhancer graphically overlays at least a portion of the 3D fluorescence model onto the enhanced stereo image stream.

A system designated AJ including the system designated AI, further including a second controllable filter coupled with a second of the two cameras to filter light entering the second of the two cameras from the surgical field; and a hyperspectral image processor, implemented as machine readable instructions stored in the memory, that is capable of, when the instructions are executed by the processor, controlling the first and second filters to capture a stereo hyperspectral image stream and generate a 3D hyperspectral model; wherein the stereo image enhancer graphically overlays at least a portion of the 3D hyperspectral model onto the enhanced stereo image stream.

A system designated AK including the system designated AI, AA, AB, AC, AD, AE, AF, or AJ, further including a first and a second hyperspectral imaging camera for capturing a stereo hyperspectral image stream of the surgical field; and a hyperspectral image processor, implemented as machine readable instructions stored in the memory, that is capable of, when the instructions are executed by the processor, generating a 3D hyperspectral model from the stereo hyperspectral image stream; wherein the stereo image enhancer graphically overlays at least a portion of the 3D hyperspectral model onto the enhanced stereo image stream.

A system designated B for graphically representing and displaying a first and second annotating data in relation to a surgical field, including an interactive display device; a registration module, implemented as machine readable instruction stored in a memory of a computer, that is capable of, when the instructions are executed by a processor of the computer, co-registering the first and second annotating data; and a stereo image enhancer, implemented as machine readable instruction stored in the memory, that is capable of, when the instructions are executed by the processor, graphically overlaying at least part of the annotating data onto the stereo image stream to form an enhanced stereo image stream for display by the stereo viewer, wherein the enhanced stereo stream enhances the surgeon's perception of the surgical field.

A system designated BA including the system designated B, further configured to review a recorded surgical procedure that is co-registered with post operatively acquired imaging and/or psychological data.

A method designated C for surgical navigation with stereo vision, including capturing a stereo image pair of a surgical field; generating a 3D surface model from the stereo image pair; registering preoperatively captured annotating data

with the 3D surface model; generating an enhanced stereo image based upon the stereo image pair and the annotating data; wherein the annotating data is graphically overlaid onto the stereo image pair.

A method designated CA including the method designated C, the step of registering further including generating a 3D model based upon the annotating data; and registering the 3D model to the 3D surface model.

A method designated CB including the method designated C or CA, further including adjusting the annotating data based upon matched features of the 3D surface model and features of the annotating data.

A method designated CC including the method designated C, CA, or CB, the step of adjusting comprising one or more of shifting, rotating, warping, and scaling the annotating data.

A method designated CD including the method designated C or CA, step of adjusting including generating a mechanical model of the tissue within the surgical field to determine the adjustment of the enhanced data.

A method designated CE including the method designated C, CA, CB, or CC, further including recording the stereo image pair.

A method designated CF including the method designated C, CA, CB, or CC, further including recording the enhanced stereo image pair.

A method designated CG including the method designated C, CA, CB, or CC, wherein the annotating data comprises one of a preoperative, an intraoperative and a postoperative radiological study selected from the group consisting of magnetic resonance imaging (MRI), functional magnetic resonance imaging (fMRI), x-ray computed tomography (CT), Single-photon emission computed tomography (SPECT), and positron emission tomography (PET).

A method designated CH including the method designated C, CA, CB, CC, CD, CE, CF, or CG, wherein the annotating data further comprises a physiological study selected from the group including EEG, evoked potentials, and magnetoencephalography (MEG).

Changes may be made in the above methods and systems without departing from the scope hereof. It should thus be noted that the matter contained in the above description or shown in the accompanying drawings should be interpreted as illustrative and not in a limiting sense. The following claims are intended to cover all generic and specific features described herein, as well as all statements of the scope of the present method and system, which, as a matter of language, might be said to fall therebetween.

What is claimed is:

1. A system for generating a photographic image of a surgical field, comprising:
 - a stereo image capture device for capturing a stereo image stream from two cameras imaging the surgical field;
 - a stereo viewer for displaying the stereo image stream to a surgeon;
 - a stereo image to 3D surface model extraction module, implemented as machine readable instructions stored in memory of a computer, adapted to, when the instructions are executed by a processor of the computer during an operation on the surgical field, generate a first 3D model of the surgical field from the stereo image stream;
 - a registration module, implemented as machine readable instructions stored in the memory, adapted to, when the

instructions are executed by a processor of the computer, co-register annotating data with the first 3D model; and

a stereo image enhancer, implemented as machine readable instructions stored in the memory, adapted to, when the instructions are executed by a processor of the computer, graphically overlay at least part of the annotating data onto the stereo image stream to form an enhanced stereo image stream for display by the stereo viewer, wherein the enhanced stereo stream enhances the surgeon's perception of the surgical field.

2. The system of claim 1, wherein the registration module aligns the annotating data with the first 3D model.

3. The system of claim 1, further comprising:

- a 3D model generator for generating a second 3D model from the annotating data, wherein the registration module co-registers the second 3D model with the first 3D model; and

an image generator configured to generate a graphical image of the second 3D model based upon the surgical field.

4. The system of claim 3, further configured to review a recorded surgical procedure that is co-registered with post operatively acquired imaging and/or psychological data.

5. The system of claim 3, wherein the annotating data comprises one of a preoperative, an intraoperative and a postoperative radiological study selected from the group consisting of magnetic resonance imaging (MRI), functional magnetic resonance imaging (fMRI), x-ray computed tomography (CT), Single-photon emission computed tomography (SPECT), and positron emission tomography (PET).

6. The system of claim 5, the image generator configured to generate a cross sectional view of the second 3D model based upon an indicated surgical plane within the surgical field.

7. The system of claim 5, further comprising:

- a first controllable filter coupled with a first of the two cameras to filter light entering the first of the two cameras from the surgical field;

a first controllable light source for illuminating the surgical field with light of a determined fluorescent stimulus wavelength; and

a fluorescence depth processor, implemented as machine readable instructions stored in the memory, adapted to, when the instructions are executed by the processor, generate a 3D fluorescence model;

wherein the stereo image enhancer graphically overlays at least a portion of the 3D fluorescence model onto the enhanced stereo image stream.

8. The system of claim 7, further comprising:

- a second controllable filter coupled with a second of the two cameras to filter light entering the second of the two cameras from the surgical field; and

a hyperspectral image processor, implemented as machine readable instructions stored in the memory, adapted to, when the instructions are executed by the processor, control the first and second filters to capture a stereo hyperspectral image stream and generate a 3D hyperspectral model;

wherein the stereo image enhancer graphically overlays at least a portion of the 3D hyperspectral model onto the enhanced stereo image stream.

9. The system of claim 1, the registration module further comprising an alignment refiner configured to adjust the

registration of the annotating data with the 3D model based upon matching of features within the 3D model and features within the annotating data.

10. The system of claim 1, the registration module further comprising a deformation modeler configured to deform the annotating data based upon a determined tissue deformation within the surgical field.

11. The system of claim 10, the tissue deformation resulting from one or more of skull removal, retraction, and incision.

12. The system of claim 1, further comprising:

a first and a second hyperspectral imaging camera for capturing a stereo hyperspectral image stream of the surgical field; and

a hyperspectral image processor, implemented as machine readable instructions stored in the memory, adapted to, when the instructions are executed by the processor, generate a 3D hyperspectral model from the stereo hyperspectral image stream;

wherein the stereo image enhancer graphically overlays at least a portion of the 3D hyperspectral model onto the enhanced stereo image stream.

13. A system for generating a photographic image of a surgical field, comprising:

a stereo image capture device for capturing a stereo image stream from two cameras imaging the surgical field;

a stereo viewer for displaying the stereo image stream to a surgeon;

a stereo image to 3D surface extraction module, implemented as machine readable instructions stored in memory of a computer, configured to, when the instructions are executed by a processor of the computer during an operation on the surgical field, generate a first 3D model of the surgical field from the stereo image stream;

a registration module, implemented as machine readable instructions stored in the memory, configured to, when the instructions are executed by the processor, co-register annotating data with the first 3D model;

a stereo image enhancer, implemented as machine readable instructions stored in the memory, configured to, when the instructions are executed by the processor, graphically overlay at least part of the annotating data onto the stereo image stream to form an enhanced stereo image stream for display by the stereo viewer, wherein the enhanced stereo stream enhances the surgeon's perception of the surgical field;

a 3D model generator for generating a second 3D model from the annotating data, wherein the registration module co-registers the second 3D model with the first 3D model; and

an image generator configured to generate a graphical image of the second 3D model based upon the surgical field;

wherein the annotating data further comprises physiological study data selected from the group including EEG, evoked potentials, and magnetoencephalography (MEG).

14. A method for surgical navigation with stereo vision, comprising:

capturing a stereo image pair of a surgical field during an operation on the surgical field;

generating a 3D surface model from the stereo image pair; registering preoperatively captured annotating data with the 3D surface model, said registering including adjusting the annotating data based upon matched features of the 3D surface model and features of the annotating data, said adjusting including generating a mechanical model of the tissue within the surgical field to determine an adjustment;

generating an enhanced stereo image based upon the stereo image pair and the annotating data as registered with the 3D surface model;

wherein the annotating data is graphically overlaid onto the stereo image pair as registered with the 3D surface model.

15. The method of claim 14, the step of registering further comprising:

generating a 3D model based upon the annotating data; and

registering the 3D model to the 3D surface model.

16. The method of claim 14, the step of adjusting comprising one or more of shifting, rotating, warping, and scaling the annotating data.

17. The method of claim 14, wherein the annotating data comprises one of a preoperative, an intraoperative and a postoperative radiological study selected from the group consisting of magnetic resonance imaging (MRI), functional magnetic resonance imaging (fMRI), x-ray computed tomography (CT), Single-photon emission computed tomography (SPECT), and positron emission tomography (PET).

18. A method for surgical navigation with stereo vision, comprising:

capturing a stereo image pair of a surgical field during an operation on the surgical field;

generating a 3D surface model from the stereo image pair; registering preoperatively captured annotating data with the 3D surface model;

generating an enhanced stereo image based upon the stereo image pair and the annotating data;

wherein the annotating data is graphically overlaid onto the stereo image pair, and wherein the annotating data further comprises a physiological study selected from the group including EEG, evoked potentials, and magnetoencephalography (MEG).

19. The method of claim 18, further comprising recording the stereo image pair.

20. The method of claim 18, further comprising recording the enhanced stereo image pair.

* * * * *

专利名称(译)	带有立体视觉的手术导航及相关方法		
公开(公告)号	US10568535	公开(公告)日	2020-02-25
申请号	US15/367243	申请日	2016-12-02
[标]申请(专利权)人(译)	达特茅斯学院		
申请(专利权)人(译)	达特茅斯学院的受托人		
当前申请(专利权)人(译)	达特茅斯学院的受托人		
[标]发明人	ROBERTS DAVID W PAULSEN KEITH D HARTOV ALEXANDER JI SONGBAI FAN XIAOYAO		
发明人	ROBERTS, DAVID W. PAULSEN, KEITH D. HARTOV, ALEXANDER JI, SONGBAI FAN, XIAOYAO		
IPC分类号	G06T3/00 H04N13/257 H04N13/239 A61B34/10 A61B5/00 G06T7/33 A61B5/0484 A61B5/0476 A61B5/055 A61B90/00		
CPC分类号	A61B5/0042 A61B5/0077 G06T3/0068 H04N13/239 A61B5/0484 G06T7/33 H04N13/257 A61B2090/367 G06T2207/10072 G06T2207/10012 G06T2207/30016 A61B5/055 A61B2034/107 G06T2207/10064 A61B2034/105 A61B5/0476 A61B2034/104		
优先权	PCT/US2009/045082 2009-05-22 WO PCT/US2013/022266 2013-01-18 WO PCT/US2012/055755 2012-09-17 WO 62/006786 2014-06-02 US 61/055355 2008-05-22 US 61/583092 2012-01-04 US 61/594862 2012-02-03 US 61/588708 2012-01-20 US		
其他公开文献	US20170085855A1		
外部链接	Espacenet		

摘要(译)

外科手术引导系统具有两个照相机，以提供外科手术场的立体图像流。和立体声查看器。该系统具有3D表面提取模块，该模块从立体图像流中生成手术区域的第一3D模型。注册模块，用于与所述第一3D模型共同注册注释数据；立体图像增强器，用于将至少部分注释数据图形化叠加到立体图像流上，以形成增强的立体图像流以进行显示，其中，增强的立体流增强了外科医生对手术视野的感知。配准模块具有对准细化器，以基于3D模型内的特征和标注数据内的特征的匹配来调整注释数据与3D模型的配准；在一个实施例中，变形建模器基于确定的组织变形来使注释数据变形。

