



US009877670B2

(12) **United States Patent**
Xu

(10) **Patent No.:** **US 9,877,670 B2**
(45) **Date of Patent:** **Jan. 30, 2018**

(54) **METHOD AND SYSTEM FOR
NON-INVASIVE OPTICAL BLOOD GLUCOSE
DETECTION UTILIZING SPECTRAL DATA
ANALYSIS**

(56) **References Cited**

U.S. PATENT DOCUMENTS

2,441,343 A 5/1948 Becker
3,621,268 A 11/1971 Friedrich et al.
(Continued)

(71) Applicant: **St. Louis Medical Devices, Inc.**,
Sunnyvale, CA (US)

FOREIGN PATENT DOCUMENTS

(72) Inventor: **Zhi Xu**, St. Louis, MO (US)

CN 1192665 9/1998
CN 2694097 Y 4/2005
(Continued)

(73) Assignee: **St. Louis Medical Devices, Inc.**,
Sunnyvale, CA (US)

(*) Notice: Subject to any disclaimer, the term of this
patent is extended or adjusted under 35
U.S.C. 154(b) by 0 days.

OTHER PUBLICATIONS

Attached please find the Office Action dated Jun. 30, 2017 for the
Indian application No. 4886/KOLNP/2010.

(21) Appl. No.: **15/464,253**

(Continued)

(22) Filed: **Mar. 20, 2017**

Primary Examiner — Daniel Cerioni

(65) **Prior Publication Data**

(74) *Attorney, Agent, or Firm* — Haverstock & Owens
LLP

US 2017/0188917 A1 Jul. 6, 2017

Related U.S. Application Data

(57) **ABSTRACT**

(60) Continuation of application No. 13/610,423, filed on
Sep. 11, 2012, now Pat. No. 9,629,576, which is a
(Continued)

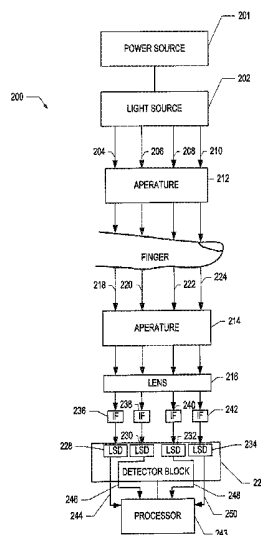
Systems and methods are disclosed for non-invasively measuring blood glucose levels in a biological sample based on spectral data. This includes at least one light source configured to strike a target area of a sample, at least one light detector positioned to receive light from the at least one light source and to generate an output signal, having a time dependent current, which is indicative of the power of light detected, a processor configured to receive the output signal from the at least one light detector based on the received output signal, calculate the attenuation attributable to blood in a sample present in the target area with a ratio factor, eliminate effect of uncertainty caused by temperature dependent detector response of the at least one light detector, and then determine a blood glucose level associated with a sample present in the target area based on the calculated attenuation with the processor.

(51) **Int. Cl.**
A61B 5/00 (2006.01)
A61B 5/145 (2006.01)
A61B 5/1455 (2006.01)

(52) **U.S. Cl.**
CPC *A61B 5/14532* (2013.01); *A61B 5/1455*
(2013.01); *A61B 5/6826* (2013.01);
(Continued)

(58) **Field of Classification Search**
CPC A61B 5/1455; A61B 5/14552; A61B
5/14532; A61B 5/1495
(Continued)

3 Claims, 4 Drawing Sheets



Related U.S. Application Data

- division of application No. 12/425,535, filed on Apr. 17, 2009, now Pat. No. 8,340,738.
- (60) Provisional application No. 61/055,303, filed on May 22, 2008, provisional application No. 61/089,152, filed on Aug. 15, 2008.
- (52) **U.S. Cl.**
CPC *A61B 5/7225* (2013.01); *A61B 2562/0238* (2013.01); *A61B 2576/00* (2013.01)
- (58) **Field of Classification Search**
USPC 600/310, 316
See application file for complete search history.

6,671,528	B2	12/2003	Steuer et al.
6,684,099	B2	1/2004	Ridder et al.
6,723,048	B2	4/2004	Fuller
6,731,963	B2	5/2004	Finarov et al.
6,775,564	B1	8/2004	Peters et al.
6,804,002	B2	10/2004	Fine et al.
6,833,540	B2	12/2004	MacKenzie et al.
6,865,408	B1	3/2005	Abbink et al.
6,873,865	B2	3/2005	Steuer et al.
6,958,039	B2	11/2005	Burd et al.
6,968,222	B2	11/2005	Burd et al.
6,990,365	B1	1/2006	Parker et al.
6,993,372	B2	1/2006	Fine et al.
7,039,446	B2	5/2006	Ruchti et al.
7,039,447	B2	5/2006	Berman et al.
7,043,289	B2	5/2006	Fine et al.
7,107,087	B2	9/2006	Hwang et al.
7,133,711	B2	11/2006	Chemoguz et al.
7,254,432	B2	8/2007	Fine et al.
7,266,400	B2	9/2007	Fine et al.
7,409,239	B2	8/2008	Chung et al.
7,424,317	B2	9/2008	Parker et al.
7,436,511	B2	10/2008	Ruchti et al.
7,809,418	B2	10/2010	Xu
7,961,305	B2	6/2011	Xu et al.
8,272,771	B2	9/2012	Arai
8,340,738	B2	12/2012	Xu

(56) **References Cited**

U.S. PATENT DOCUMENTS

3,910,701	A	10/1975	Henderson et al.		
3,963,327	A	6/1976	Poirier		
3,954,560	A	10/1976	Henderson et al.		
4,014,321	A	3/1977	March		
4,632,559	A	12/1986	Brunsting		
4,655,225	A	4/1987	Dahne et al.	2001/0030742	A1 10/2001 Kramer et al.
4,781,195	A	11/1988	Martin	2001/0039376	A1 11/2001 Steuer et al.
4,962,311	A	10/1990	Poysel et al.	2001/0047137	A1 11/2001 Moreno et al.
4,997,769	A	3/1991	Lundsgaard et al.	2002/0010563	A1 1/2002 Ratteree et al.
5,009,230	A	4/1991	Hutchison	2002/0016534	A1 2/2002 Trepagnier et al.
5,028,787	A	7/1991	Rosenthal et al.	2002/0019055	A1 2/2002 Brown et al.
5,077,476	A	12/1991	Rosenthal	2002/0038080	A1 3/2002 Makarewicz et al.
5,086,229	A	2/1992	Rosenthal et al.	2002/0091324	A1 7/2002 Kollias et al.
5,112,124	A	5/1992	Harjunmaa et al.	2002/0161289	A1 10/2002 Hopkins et al.
5,137,023	A	8/1992	Mendelson et al.	2002/0167704	A1 11/2002 Kleinhans et al.
5,183,042	A	2/1993	Harjunmaa et al.	2003/0004423	A1 1/2003 Lavie et al.
5,222,496	A	6/1993	Clarke et al.	2003/0023152	A1 1/2003 Abbink et al.
5,255,171	A	10/1993	Clark	2003/0055325	A1 3/2003 Weber et al.
5,282,473	A	2/1994	Braig et al.	2003/0078504	A1 4/2003 Rowe
5,361,758	A	11/1994	Hall et al.	2004/0015734	A1 1/2004 Rahman
5,423,983	A	6/1995	Chiang et al.	2004/0087844	A1 5/2004 Yen
5,515,847	A	5/1996	Braig et al.	2004/0106163	A1 6/2004 Workman et al.
5,522,388	A	6/1996	Ishikawa et al.	2004/0127779	A1 7/2004 Steuer et al.
5,529,065	A	6/1996	Tsuchiya	2004/0181132	A1 9/2004 Rosenthal
5,535,743	A	7/1996	Backhaus et al.	2004/0204865	A1* 10/2004 Lee A61B 5/14532 702/25
5,553,613	A	9/1996	Parker	2004/0225205	A1 11/2004 Fine et al.
5,576,544	A	11/1996	Rosenthal	2004/0225206	A1 11/2004 Kouchnir
5,615,672	A	4/1997	Braig et al.	2005/0131286	A1 6/2005 Parker et al.
5,615,673	A	4/1997	Berger et al.	2005/0197790	A1 9/2005 Sterling et al.
5,666,956	A	9/1997	Buchert	2005/0261560	A1 11/2005 Ridder et al.
5,671,301	A	9/1997	Kuperschmidt	2005/0272987	A1* 12/2005 Kiani-Azarbayjany E02B 11/005 600/322
5,703,364	A	12/1997	Rosenthal		
5,743,262	A	4/1998	Lepper, Jr. et al.	2005/0276072	A1 12/2005 Hayashi et al.
5,910,109	A	6/1999	Peters et al.	2006/0002598	A1 1/2006 Rowe et al.
6,025,597	A	2/2000	Sterling et al.	2006/0009685	A1 1/2006 Finarov et al.
6,043,492	A	3/2000	Lee et al.	2006/0058622	A1 3/2006 Tearney et al.
6,064,898	A	5/2000	Aldrich	2006/0063983	A1 3/2006 Yamakoshi
6,067,463	A	5/2000	Jeng et al.	2006/0092643	A1 5/2006 Wong et al.
6,097,975	A	8/2000	Petrovsky et al.	2006/0129040	A1 6/2006 Fine et al.
6,134,458	A	10/2000	Rosenthal	2006/0152726	A1 7/2006 Larsen et al.
6,151,517	A	11/2000	Honigs et al.	2006/0200014	A1 9/2006 Fine et al.
6,167,290	A	12/2000	Yang et al.	2006/0224057	A1 10/2006 Burd et al.
6,181,958	B1	1/2001	Steuer et al.	2006/0226992	A1 10/2006 Al-Ali et al.
6,205,354	B1	3/2001	Gellermann et al.	2006/0234386	A1 10/2006 Bums et al.
6,208,788	B1	3/2001	Nosov	2006/0250676	A1 11/2006 Hagood
6,304,767	B1	10/2001	Soller et al.	2006/0258918	A1 11/2006 Burd et al.
6,312,393	B1	11/2001	Abreu	2006/0264719	A1 11/2006 Schurman et al.
6,337,564	B2	1/2002	Manzini et al.	2007/0049811	A1 3/2007 Kobayashi et al.
6,403,944	B1	6/2002	MacKenzie et al.	2007/0078312	A1 4/2007 Fine et al.
6,412,548	B1	7/2002	Berman et al.	2007/0112258	A1 5/2007 Soyemi et al.
6,424,848	B1	7/2002	Berman et al.	2007/0149869	A1 6/2007 Yen
6,424,849	B1	7/2002	Berman et al.	2008/0027297	A1 1/2008 Yamakoshi
6,424,851	B1	7/2002	Berman et al.	2008/0144004	A1 6/2008 Rosenthal
6,430,424	B1	9/2002	Berman et al.	2008/0194014	A1 8/2008 Young et al.
6,445,938	B1	9/2002	Berman et al.	2008/0266900	A1 10/2008 Harbers et al.
6,522,903	B1	2/2003	Berman et al.	2009/0059586	A1 3/2009 Livesay et al.
6,574,490	B2	6/2003	Abbink et al.		

(56) **References Cited**

U.S. PATENT DOCUMENTS

2009/0079964 A1 3/2009 Xu
 2009/0105565 A1 4/2009 Xu
 2009/0116017 A1 5/2009 Xu et al.
 2009/0196025 A1 8/2009 Joseph et al.
 2009/0247843 A1 10/2009 Xu
 2009/0270700 A1 10/2009 Van Herpen et al.
 2009/0292186 A1 11/2009 Xu
 2010/0026995 A1 2/2010 Merrit et al.
 2010/0252721 A1 10/2010 Xu
 2013/0006070 A1 1/2013 Xu
 2013/0006072 A1 1/2013 Xu
 2013/0006073 A1 1/2013 Xu

FOREIGN PATENT DOCUMENTS

CN 1932840 A 3/2007
 EP 0319159 A1 6/1989
 EP 0781527 A1 7/1997
 EP 01094745 A1 5/2001
 EP 1281370 A2 2/2003
 EP 1300712 A2 4/2003
 EP 830582 B1 8/2005
 GB 810256 A 3/1959
 JP 56-156138 A 12/1981
 JP 02-191434 A 7/1990
 JP 07-088105 A 4/1995
 JP 720551 U 4/1995
 JP 9010238 1/1997
 JP H0956702 A 3/1997
 JP 11037931 A 2/1999
 JP 11-178813 A 7/1999
 JP 2000083933 A 3/2000
 JP 2003245265 A 9/2003
 JP 2004267613 A 9/2004
 JP 2004286475 A 10/2004
 JP 2004290544 A 10/2004
 JP 2004538054 A 12/2004
 JP 2005283563 A 10/2005
 JP 2007185348 A 7/2007
 JP 2009545344 A 12/2009
 RU 2050545 C1 12/1995
 RU 2188425 C2 8/2002
 RU 2198402 C2 2/2003
 SU 1193541 A1 11/1985
 WO 90/130922 A1 11/1990
 WO 1991015991 A1 10/1991
 WO 1991015992 A1 10/1991
 WO 92/00513 A1 1/1992
 WO 1993000856 A1 1/1993
 WO 93/06774 A1 4/1993
 WO 93/16629 A1 9/1993
 WO 1994013199 A1 6/1994
 WO 1994016614 A1 8/1994
 WO 95/05599 A1 2/1995
 WO 1995031930 A1 11/1995
 WO 1996004840 A1 2/1996
 WO 1996017546 A1 6/1996
 WO 96/39926 A1 12/1996
 WO 96/41151 A1 12/1996
 WO 1996039927 A1 12/1996
 WO 1998003847 A2 1/1998
 WO 1998036681 A1 8/1998
 WO 99/16136 A1 4/1999
 WO 199939631 A1 8/1999
 WO 2000001294 A1 1/2000
 WO 2000016688 A1 3/2000
 WO 01/16578 A1 3/2001
 WO 2001093755 A1 12/2001
 WO 2001096872 A2 12/2001
 WO 2002082990 A1 10/2002
 WO 03001177 A2 1/2003
 WO 2003010510 A2 2/2003
 WO 03/077756 A1 9/2003
 WO 2003079900 A1 10/2003
 WO 2005045377 A2 5/2005

WO 2006086566 A2 8/2006
 WO 2006094109 A1 9/2006
 WO 2007122557 A2 11/2007
 WO 2008014890 A1 2/2008
 WO 2008/039195 A1 4/2008
 WO 2009/035669 A1 3/2009
 WO 2009/045492 A1 4/2009
 WO 2009/120600 A2 10/2009
 WO 2009/142853 A1 11/2009
 WO 2010017238 A1 2/2010
 WO 2010114736 10/2010

OTHER PUBLICATIONS

Office Action for CN Application 200880114960.3 dated Feb. 17, 2015.
 Office Action for EP Application 09751083.8 dated Feb. 24, 2015.
 Office Action for CN Application 201310489245.0 dated Feb. 26, 2015.
 Office Action for CA Application 2699626 dated Feb. 27, 2015.
 Office Action for JP Application 2012-503498 dated Mar. 31, 2015.
 Office Action dated for RU Application 2011144084 dated Apr. 17, 2015.
 Office Action for CA Application 2700996 dated Aug. 7, 2015.
 Office Action for U.S. Appl. No. 12/407,999 dated Jan. 5, 2016.
 Office Action for JP Application 2014-245584 dated Jan. 5, 2016, includes English Translation.
 Office Action for CN Application 201310489245 dated Jan. 25, 2016.
 Office Action for EP Application 9751083.8 dated Jan. 26, 2016.
 Extended European Search Report for EP Application 08836010.2 dated Mar. 8, 2016.
 Office Action for U.S. Appl. No. 13/610,423 dated Mar. 24, 2016.
 Office Action for CA Application 2789658 dated Mar. 30, 2016.
 Office Action for U.S. Appl. No. 13/610,342 dated Apr. 14, 2016.
 Office Action for U.S. Appl. No. 13/610,387 dated Apr. 14, 2016.
 Office Action for U.S. Appl. No. 13/610,140 dated May 13, 2016.
 International Preliminary Report on Patentability (Chapter II) for PCT/US2009/037805 dated Dec. 14, 2010.
 Wagner et al., "Invasiveness as a Barrier to Self-Monitoring of Blood Glucose in Diabetes", Diabetes Technology & Therapeutics, Aug. 1, 2005.
 Web page Document entitled http://www.oreense.com/Diabetes_Monitoring dated Aug. 9, 2007.
 International Search Report for PCT/US/2008/010670 dated Nov. 21, 2008.
 International Search Report for PCT/US/2008/011438 dated Dec. 9, 2008.
 Office Action for U.S. Appl. No. 12/209,807 dated May 17, 2010.
 International Search Report and Written Opinion for PCT/US2010/028255 dated May 19, 2010.
 Office Action for U.S. Appl. No. 12/256,028 dated May 24, 2010.
 International Preliminary Report on Patentability (Chapter II) for PCT/US2008/011438 dated Jun. 18, 2010.
 Office Action for U.S. Appl. No. 12/256,028 dated Sep. 15, 2010.
 Office Action for U.S. Appl. No. 12/209,807 dated Sep. 17, 2010.
 International Preliminary Report on Patentability (Chapter II) for PCT/US2009/040942 dated Dec. 13, 2010.
 Office Action for U.S. Appl. No. 12/425,535 dated Mar. 22, 2012.
 Office Action for U.S. Appl. No. 12/407,999 dated Apr. 6, 2012.
 Office Action for U.S. Appl. No. 12/425,535 dated May 16, 2012.
 Office Action for CN Application 200980126116.7 dated Jun. 4, 2012.
 Office Action for RU Application 2010117396 dated Jun. 18, 2012.
 Office Action for RU Application 2010114587 dated Jun. 22, 2012.
 Office Action for U.S. Appl. No. 12/729,886 dated Oct. 2, 2012.
 Office Action for U.S. Appl. No. 12/407,999 dated Nov. 21, 2012.
 Office Action for JP Application 2010-524873 dated Dec. 25, 2012.
 Office Action for JP Application 2010-527994 dated Dec. 25, 2012.
 Office Action for CN Application 200880114960.3 dated Jan. 29, 2013.
 Office Action for CN Application 200980126116.7 dated Feb. 16, 2013.

(56)

References Cited

OTHER PUBLICATIONS

Office Action for U.S. Appl. No. 12/729,886 dated Mar. 12, 2013.
Office Action for RU Application 2010152373 dated Mar. 26, 2013.
Extended European Search Report for EP Application 08830786.3 dated Apr. 22, 2013.
Office Action for JP Application 2011-501936 dated Jun. 25, 2013.
Office Action for CN Application 201080022242.0 dated Jul. 4, 2013.
Extended European Search Report for EP Application 09751083.8 dated Jul. 26, 2013.
Office Action for AU Application 2010232841 dated Aug. 13, 2013.
Office Action for AU Application 2008299938 dated Sep. 13, 2013.
Office Action for U.S. Appl. No. 12/407,999 dated Oct. 10, 2013.
Office Action for CN Application 200980126116.7 dated Oct. 17, 2013.
Office Action for JP Application 2010-524873 dated Nov. 19, 2013.
Office Action for JP Application 2011-510533 dated Dec. 3, 2013.
Examiner's Decision of Rejection for JP Application 2010-527994 dated Dec. 10, 2013.

Office Action for CN Application 201210419849.3 dated Jan. 6, 2014.
Office Action for EP Application 08830786.3 dated Jan. 10, 2014.
Office Action for CN Application 201210420843.8 dated Feb. 17, 2014.
Office Action for CN Application 201210419740.X dated Feb. 28, 2014.
Office Action for CN Application 201080022242.0 dated Mar. 12, 2014.
Office Action for RU Application 2010114587 dated Mar. 25, 2014.
Office Action for EP Application 09751083.8 dated Mar. 28, 2014.
Office Action for CA Application 2700996 dated Jul. 30, 2014.
Office Action for JP Application 2011-501936 dated Aug. 5, 2014.
Office Action for U.S. Appl. No. 12/407,999 dated Nov. 20, 2014.
Office Action for CN Application 201210420830.0 dated Jan. 5, 2015.
Office Action for U.S. Appl. No. 13/610,342 dated Jan. 21, 2015.
Office Action for U.S. Appl. No. 13/610,423 dated Jan. 22, 2015.
Office Action for U.S. Appl. No. 13/610,387 dated Jan. 22, 2015.

* cited by examiner

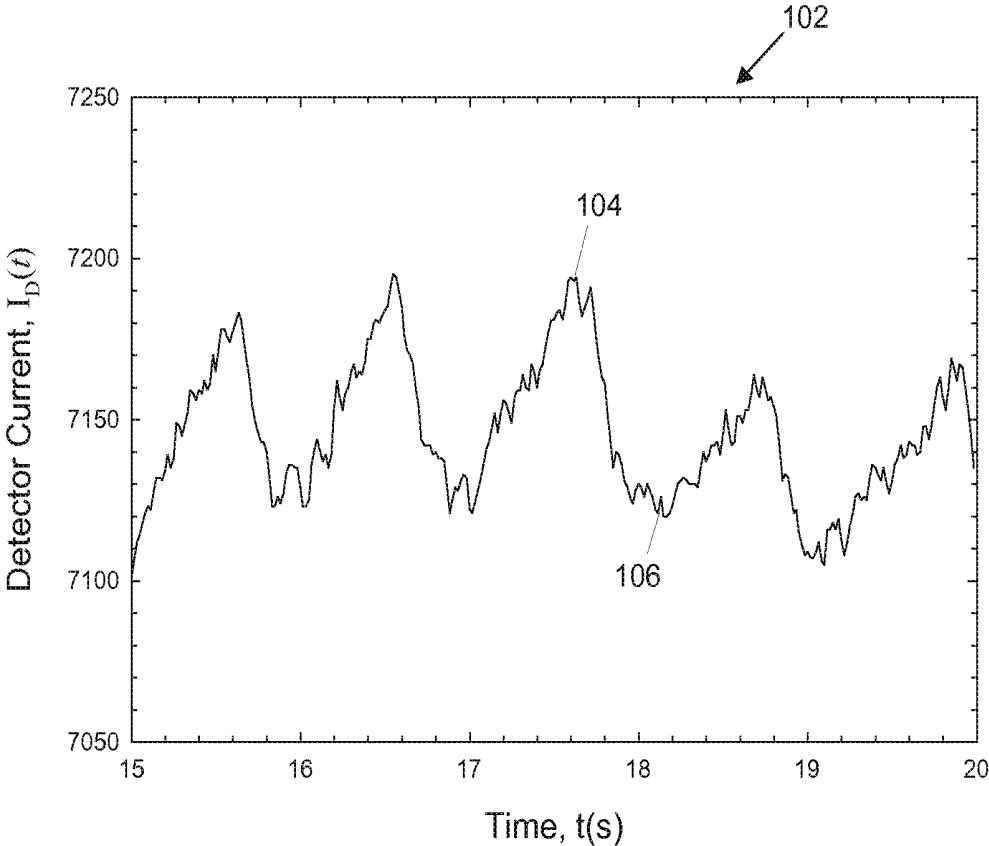
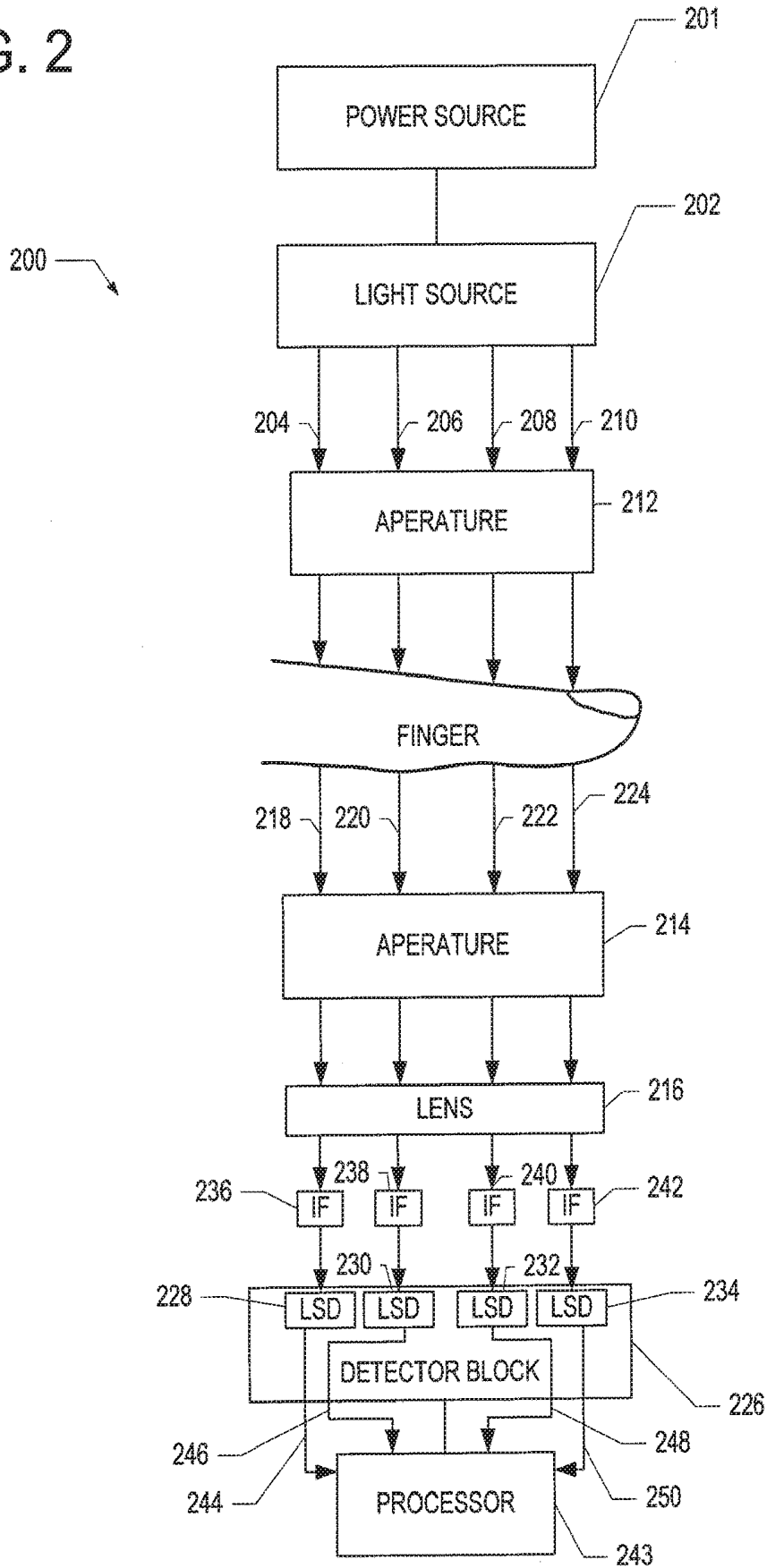


FIG. 1

FIG. 2



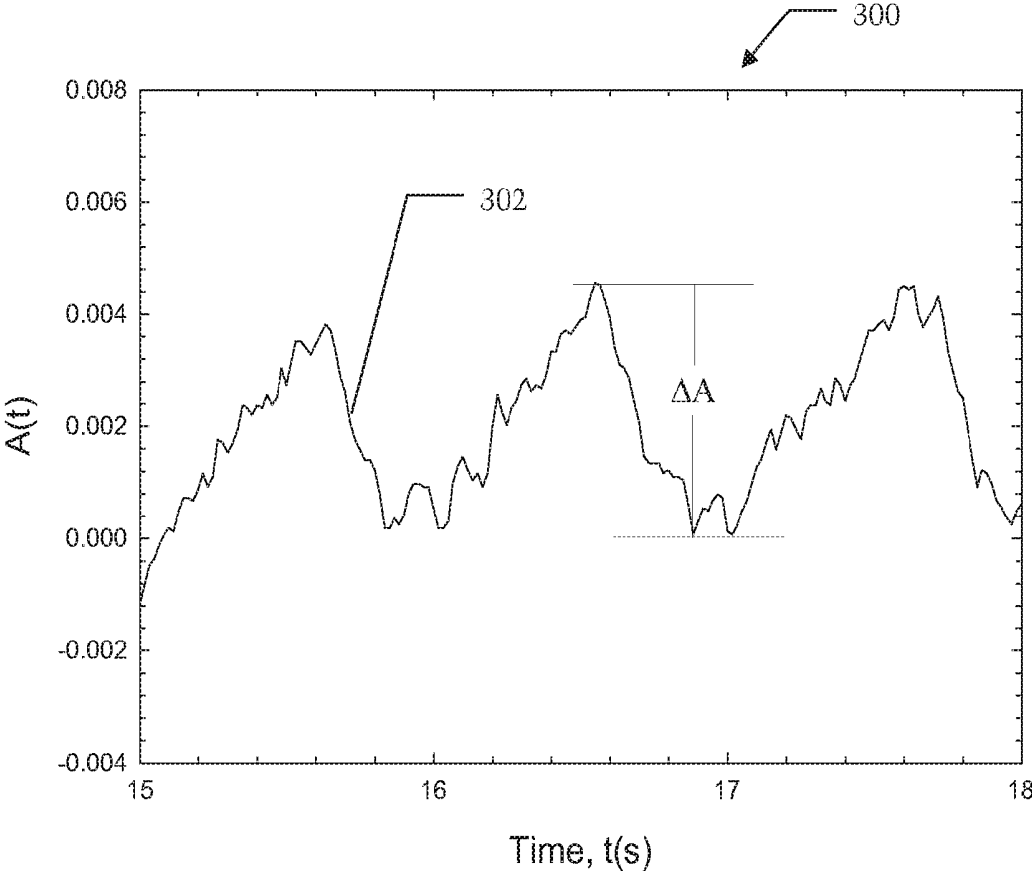


FIG. 3

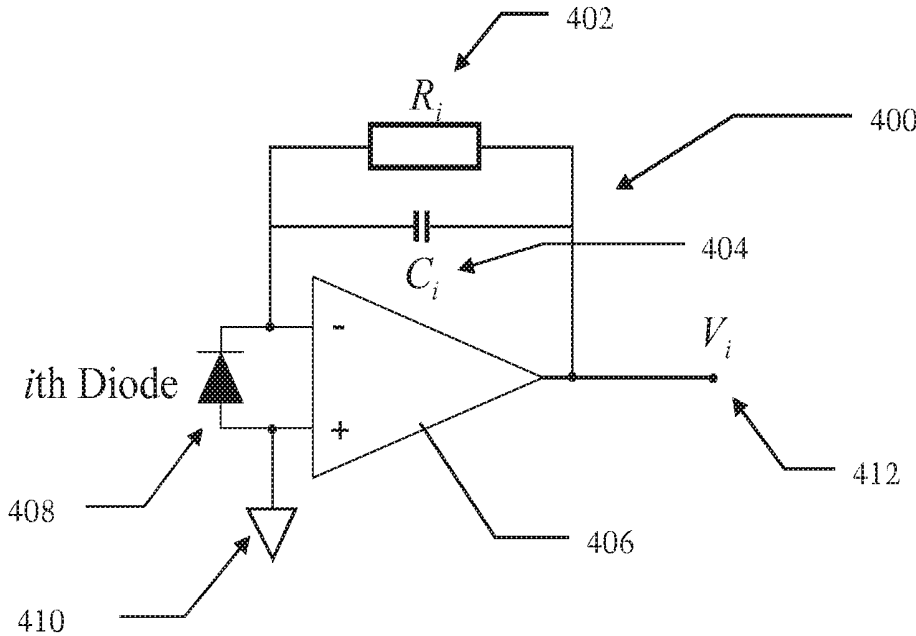


FIG. 4

**METHOD AND SYSTEM FOR
NON-INVASIVE OPTICAL BLOOD GLUCOSE
DETECTION UTILIZING SPECTRAL DATA
ANALYSIS**

CROSS-REFERENCE TO RELATED
APPLICATION

This application is continuation of co-pending U.S. patent application Ser. No. 13/610,423, filed Sep. 11, 2012, and entitled METHOD AND SYSTEM FOR NON-INVASIVE OPTICAL BLOOD GLUCOSE DETECTION UTILIZING SPECTRAL DATA ANALYSIS, which is a divisional of prior U.S. patent application Ser. No. 12/425,535, filed Apr. 17, 2009, which are both hereby incorporated herein by reference in their entirety, and also claims priority to U.S. Provisional Patent Application Ser. No. 61/055,303, filed on May 22, 2008, the disclosure of which is incorporated herein by reference, and also claims priority to U.S. Provisional Patent Application Ser. No. 61/089,152, filed on Aug. 15, 2008, the disclosure of which is incorporated herein by reference.

BACKGROUND OF THE INVENTION

Diabetes is a chronic disease that, when not controlled, over time leads to serious damage to many of the body's systems, including the nerves, blood vessels, eyes, kidneys and heart. The National Institute of Diabetes and Digestive and Kidney Diseases (NIDDK) estimates that 23.6 million people, or 7.8 percent of the population in the United States, had diabetes in 2007. Globally, the World Health Organization (WHO) estimates that more than 180 million people have diabetes, a number they expect to increase to 366 million by 2030, with 30.3 million in the United States. According to the WHO, an estimated 1.1 million people died from diabetes in 2005. They project that diabetes deaths will increase by more than 50% between 2006 and 2015 overall and by more than 80% in upper-middle income countries.

The economic burden from diabetes for individuals and society as a whole is substantial. According to the American Diabetes Association, the total annual economic cost of diabetes was estimated to be \$174 billion in the United States in 2007. This is an increase of \$42 billion since 2002. This 32% increase means the dollar amount has risen over \$8 billion more each year.

A vital element of diabetes management is the self-monitoring of blood glucose (SMBG) concentration by diabetics in the home environment. By testing blood glucose levels often, diabetics can better manage medication, diet, and exercise to maintain control and prevent the long-term negative health outcomes. In fact, the Diabetes Control and Complications Trial (DCCT), which followed 1,441 diabetics for several years, showed that those following an intensive-control program with multiple blood sugar tests each day, as compared with the standard-treatment group, had only one-fourth as many people develop diabetic eye disease, half as many develop kidney disease, one-third as many develop nerve disease, and far fewer people who already had early forms of these three complications got worse.

However, current monitoring techniques discourage regular use due to the inconvenient and painful nature of drawing blood through the skin prior to analysis, which causes many diabetics to not be as diligent as they should be for good blood glucose control. As a result, non-invasive measurement of glucose concentration is a desirable and beneficial

development for the management of diabetes. A non-invasive monitor will make testing multiple times each day pain-free and more palatable for children with diabetes. According to a study published in 2005 (J. Wagner, C. Malchoff, and G. Abbott, *Diabetes Technology & Therapeutics*, 7(4) 2005, 612-619), people with diabetes would perform SMBG more frequently and have improved quality of life with a non-invasive blood glucose monitoring device.

There exist a number of non-invasive approaches for blood glucose determination. One technique of non-invasive blood chemical detection involves collecting and analyzing light spectra data.

Extracting information about blood characteristics, such as glucose concentration from spectral or other data obtained from spectroscopy, is a complex problem due to the presence of components (e.g., skin, fat, muscle, bone, interstitial fluid) other than blood in the area that is being sensed. Such other components can influence these signals in such a way as to alter the reading. In particular, the resulting signal may be much larger in magnitude than the portion of the signal that corresponds to blood, and therefore limits the ability to accurately extract blood characteristics information.

The present invention is directed to overcoming one or more of the problems set forth above.

SUMMARY OF INVENTION

In an aspect of the present invention, a method for detecting glucose in a biological sample is disclosed. The method includes utilizing at least one light source configured to strike a target area of a sample, utilizing at least one light detector positioned to receive light from the at least one light source and to generate an output signal, having a time dependent current, which is indicative of the power of light detected, receiving the output signal from the at least one light detector with a processor and based on the received output signal, calculating the attenuation attributable to blood in a sample present in the target area with a ratio factor with the processor, eliminating effect of uncertainty caused by temperature dependent detector response of the at least one light detector with the processor, and determining a blood glucose level associated with a sample present in the target area with the processor based on the calculated attenuation with the processor.

In yet another aspect of the present invention, a system for detecting glucose in a biological sample is disclosed. This system includes at least one light source configured to strike a target area of a sample, at least one light detector positioned to receive light from the at least one light source and to generate an output signal, having a time dependent current, which is indicative of the power of light detected, a processor configured to receive the output signal from the at least one light detector based on the received output signal, calculate the attenuation attributable to blood in a sample present in the target area with a ratio factor, eliminate effect of uncertainty caused by temperature dependent detector response of the at least one light detector, and then determine a blood glucose level associated with a sample present in the target area based on the calculated attenuation with the processor.

These are merely some of the innumerable aspects of the present invention and should not be deemed an all-inclusive listing of the innumerable aspects associated with the present invention.

BRIEF DESCRIPTION OF THE DRAWINGS

For a better understanding of the present invention, reference may be made to accompanying drawings, in which:

FIG. 1 illustrates a plot of a pulse wave corresponding to light absorption of arterial blood, according to exemplary embodiments;

FIG. 2 illustrates an exemplary system for obtaining spectral data;

FIG. 3 illustrates a plot of $A(t)$, calculated according to Equation (9) using data in FIG. 1; and

FIG. 4 is a basic illustrative schematic of a preamplifier circuit that converts photocurrent into voltage prior to digitization.

DETAILED DESCRIPTION OF THE INVENTION

In the following detailed description, numerous exemplary specific details are set forth in order to provide a thorough understanding of the invention. However, it will be understood by those skilled in the art that the present invention may be practiced without these specific details, or with various modifications of the details. In other instances, well known methods, procedures, and components have not been described in detail so as not to obscure the present invention.

Optical spectroscopy can be used to determine the amount of light absorbed and scattered, i.e., attenuated, by a biological sample such as a human finger. By measuring the amount of light absorbed by the sample, it is possible to determine glucose, cholesterol, and hemoglobin levels of a subject non-invasively. Fingertip measurements are usually preferred because of the large concentration of capillaries in the fingertip and because of the conversion of arterial blood into venous blood that occurs in the fingertip. However, the techniques of the present invention are not limited to use with a fingertip. For example, the biological sample could be a human earlobe.

When light is transmitted through a biological sample, such as a human finger, the light is attenuated by various components of the finger including skin, muscle, bone, fat, interstitial fluid and blood. It has been observed, however, that light attenuation by a human finger exhibits a small cyclic pattern that corresponds to a heartbeat. It is believed that this cyclic pattern will be present in measurements of many other human body parts, the earlobe being one of many examples.

FIG. 1 depicts a plot **102** of a detector photocurrent, $I_D(t)$, that corresponds to the power of light received by a detector after the light has passed through a subject's finger. As can be seen, the detector photocurrent exhibits a cyclic pattern. This cyclic pattern is due to the subject's heartbeat, which cyclically increases and decreases the quantity of blood in the subject's capillaries (or other structures). Although the magnitude of the cyclic pattern is small in comparison to the total photocurrent generated by the detector, considerable information can be extracted from the cyclic pattern of the plot **102**. For example, assuming that the person's heart rate is sixty beats per minute, the time between the start of any pulse beat and the end of that pulse beat is one second. During this one-second period, the photocurrent will have a maximum or peak reading **104** and minimum or valley reading **106**. The peak reading **104** of the plot corresponds to when there is a minimum amount of blood in the capillaries, and the valley reading **106** corresponds to when there is a maximum amount of blood in the capillaries. By using information provided by the peak and valley of the cyclic plot, the optical absorption and scattering by major finger constituents that are not in the capillaries, such as skin, fat, bones, muscle and interstitial fluids, are excluded.

These major constituents that are not in the capillaries are excluded because they are not likely to change during the time interval of one heartbeat. In other words, the light that is absorbed and scattered, i.e., attenuated, by the blood can be detected based on the peaks and valleys of the plot **102**.

Assuming that the peak of the cyclic photocurrent generated by the light-sensing device is I_P , the adjacent valley of the cyclic photocurrent is I_V , and the photocurrent generated by the light-sensing device without a human finger is I_0 , the transmittances corresponding to the peak and valley photocurrents can be defined as:

$$T_V = \frac{I_V}{I_0} \quad (1)$$

and

$$T_P = \frac{I_P}{I_0} \quad (2)$$

The corresponding peak and valley absorbance are:

$$A_V = -\log(T_V) \quad (3)$$

and

$$A_P = -\log(T_P) \quad (4)$$

The difference between A_V and A_P represents the light absorption and scattering by the blood in the finger, excluding non-blood constituents:

$$\Delta A = A_V - A_P = \log\left(\frac{I_P}{I_V}\right) \quad (5)$$

As can be seen in the algorithm shown in Equation (5), ΔA does not depend on I_0 . Thus, calculating ΔA does not require a determination of the current generated by the light-sensing device without a sample. Monitoring the photocurrent corresponding to light power transmitted through a sample is sufficient to calculate ΔA .

FIG. 2 depicts a simplified block diagram of an exemplary apparatus for use in an exemplary embodiment. Optical measurement system, which is generally indicated by numeral **200**, uses the "pulsatile" concept for determining an amount of light absorbed and scattered solely by the blood in a sample (a human finger in this exemplary embodiment). A power source **201**, such as a battery, provides power to a light source **202** that generates a plurality of light beams **204**, **206**, **208**, **210** that are directed toward the top of the finger of a subject. In an exemplary embodiment, each of the light beams **204**, **206**, **208**, **210** have the same wavelength or a different wavelength range, typically within 800 nm to 1600 nm. Although the optical measurement system **200** is described herein as generating four (4) light beams, it is contemplated that the light source **202** can be altered to generate fewer light beams or additional light beams in other embodiments,

A first aperture **212** ensures that the light beams **204**, **206**, **208**, **210** strike a target area of the finger. A second aperture **214** ensures that the portion of the light beams that are transmitted through the finger strike a lens **216**. Light beams **204**, **206**, **208**, **210** are attenuated by the finger and components of the optical measurement system **200**, and, thus, attenuated light beams **218**, **220**, **222**, **224** are emitted from the finger. The attenuated light beams **218**, **220**, **222**, **224** strike the lens **216**, and the lens **216** collects the attenuated

light beams **218, 220, 222, 224** so that they impinge more efficiently on a detector block **226**.

The detector block **226** is positioned directly under the lens **216** and comprises a plurality of light-sensing devices (LSD) **228, 230, 232, 234** such as an array of photodiodes. According to one aspect of the optical measurement system **200**, each of the light-sensing devices **228, 230, 232, 234** detects a specific wavelength of light as defined by corresponding interference filters (IF) **236, 238, 240, 242**, respectively. The interference filter transmits one or more spectral bands or lines of light, and blocks others.

Each of the light-sensing devices **228, 230, 232, 234** generates a corresponding photocurrent signal that is proportional to the power of the light received by the particular light sensing device. The photocurrent signal generated by the photodiode can be converted to another form of signal, such as an analog voltage signal or a digital signal. A processor **243** is coupled to the detector block **226** and is configured to calculate the change of photocurrent signals **244, 246, 248, 250**.

According to one aspect, the processor **243** executes an algorithm such as shown in the Equation (5) to calculate the change in the light absorption (ΔA) solely caused by the blood in the finger. Thereafter, this quantitative calculation of light absorption of the blood can be used to determine a characteristic of the blood. For example, by comparing the calculated light absorption value to predetermined values corresponding to different glucose levels stored in a memory (not shown), a blood-glucose level of the subject can be determined.

A difficulty associated with the finger based pulsatile detection methodology is low signal-to-noise (S/N) ratio, because the amplitude of cyclic pattern (i.e., the difference between peak and valley) is typically 1%-2% of the total photocurrent generated by the light power transmitted through the finger. To obtain a S/N ratio of 100:1 in the determination of ΔA , the baseline noise of the device being used to measure the light absorption by the finger should not be larger than 3.0×10^{-5} in absorbance (peak to peak), within a 10 Hz bandwidth.

However, a 3.0×10^{-5} absorbance (peak to peak) baseline noise level within a 10 Hz bandwidth is difficult to obtain with the low light power levels that are used by some battery-powered hand held non-invasive blood chemical measurement devices. One solution involves data averaging. To increase the S/N ratio, the averaged value of ΔA , as defined by the Equation below, is used in further calculation to extract blood glucose concentration:

$$\overline{\Delta A} = \sum_{j=1}^M \Delta A_j \quad (6)$$

In Equation (6), M is the number of heartbeats during the time interval of the pulsatile measurement. However, this approach requires long data acquisition time, due to the fact that the rate of heartbeat is in the order of one per second. For example, 25 seconds would be needed for increasing the S/N ratio by a factor of five, and 100 seconds would be needed for increasing the S/N ratio by a factor of ten. In comparison, current commercial blood drawing glucose meters can determine blood glucose level within 5 seconds. Furthermore, long detection time will significantly increase measurement errors due to finger movement, light power

drift, device temperature change, etc. Thus, there is a need for new techniques to measure blood glucose levels quickly and accurately.

Improving S/N Ratio by Standard Deviation

The time dependent detector photocurrent output, $I_D(t)$, shown in FIG. 1 can be expressed as the sum of a small time dependent cyclic photocurrent $\Delta I(t)$, corresponding to the heartbeat, a noise current $n(t)$, and a constant baseline photocurrent I_B :

$$I_D(t) = I_B + \Delta I(t) + n(t) \quad (7)$$

The above Equation can be re-arranged as:

$$\frac{I_D(t)}{I_B} = 1 + \frac{\Delta I(t) + n(t)}{I_B} \quad (8)$$

Applying common logarithm to both side of the Equation (8), one obtains:

$$A(t) = \log \left[\frac{I_D(t)}{I_B} \right] = \log \left(1 + \frac{\Delta I(t) + n(t)}{I_B} \right) \quad (9)$$

FIG. 3, which is generally indicated by numeral 300, shows a typical A(t) plot 302, calculated according to Equation (9) using data in FIG. 1. For a pulse function A(t) shown in FIG. 3, the following key relationship exists during the time interval of one heartbeat:

$$\sigma[A(t)] = k \Delta A \quad (10)$$

in which $\sigma[A(t)]$ is the Standard Deviation of A(t), and k is a proportional constant.

Considering the fact that I_B is a constant and $\sigma^2(\log I_B) = 0$, one obtains:

$$\sigma[A(t)] = \sigma[\log I_D(t)] \quad (12)$$

Therefore, the peak-to-valley height of the A(t) plot during the time interval of one heartbeat can be obtained directly from the standard deviation of the logarithm of $I_D(t)$:

$$\Delta A = \frac{\sigma[A(t)]}{k} = \frac{\sigma[\log I_D(t)]}{k} \quad (13)$$

A major advantage of Equation (13) is that high S/N ratio can be achieved within short data acquisition time (approximately one second), as explained below.

In a finger based pulsatile measurement depicted by FIG. 2, the value of the sum, $\Delta I(t) + n(t)$ is typically less than 2% of the large constant baseline photocurrent I_B . Therefore, Equation (9) can be approximated as:

$$A(t) = \log \left[\frac{I_D(t)}{I_B} \right] \approx \frac{1}{\ln 10} \frac{\Delta I(t) + n(t)}{I_B} \quad (14)$$

Similarly, the standard deviation of A(t) can be approximated as:

$$\sigma[A(t)] \approx \frac{1}{\ln 10} \frac{\sqrt{\sigma^2[\Delta I(t)] + \sigma^2[n(t)]}}{I_B} \quad (15)$$

Equation (15) demonstrates great noise reduction power of Equation (13). For example, for a relatively high baseline noise with the ratio

$$\rho = \frac{\sigma[n(t)]}{\sigma[\log \Delta I(t)]} = 0.1 \text{ (or 10\%)},$$

the contribution to $\sigma[A(t)]$ from the baseline noise $n(t)$ is estimated to be less than 0.005 (or 0.5%), corresponding to an increase in S/N ratio by a factor of 20 without increasing detection time. As such, dramatic noise reduction can be obtained without increasing the data acquisition time, and a finger based pulsatile measurement can be completed within the time interval of one heartbeat (which is approximately one second), and the requirement for the S/N ratio of 100 to 1 in determination of ΔA can be satisfied using an optical system with a baseline noise of about 6.0×10^{-4} absorbance (peak to peak) within a 10 Hz bandwidth. It should be pointed out that when the baseline noise of an optical system is dominated by shot noise due to low light illumination power, a noise reduction by a factor of 20 equals an increasing in light illumination power by a factor of $20^2=400$.

This ability of obtaining higher S/N ratio within the very short data acquisition time, e.g., less than one second, will significantly reduce detection error caused by factors such as finger movement, temperature change, and light power drift during the measurement, and therefore dramatically improve the accuracy and reproducibility of the pulsatile detection methodology.

Furthermore, the value of k does not change with wavelength, because transmitted lights at all wavelengths have identical pulse shape due to the heartbeat. As a result, the constant k be cancelled in data normalization discussed in next section, and $\sigma[\log I_D(t)]$ will be used in further regression analysis to establish correlation between the optical measurement and blood glucose level. This will greatly simplify the data analysis process since $\sigma[\log I_D(t)]$ involves only two standard math functions available in most popular spreadsheet programs such as Microsoft EXCEL®. EXCEL® is a federally registered trademark of Microsoft Corporation, having a place of business at One Microsoft Way, Redmond, Wash. 98052-6399.

Normalization

At each wavelength λ_i , the absorption $\Delta A(\lambda_i)$ is linked to the increase of amount of blood (ΔB) in the optical sensing area of the fingertip due to the heartbeat by the following Equation:

$$\Delta A(\lambda_i) = \epsilon(C, \lambda_i, T) \Delta B \quad (16)$$

in which $\epsilon(C, \lambda_i, T)$ is the absorption/scattering coefficient of blood at wavelength λ_i , finger temperature T , and blood glucose concentration C . It is well understood that the variable ΔB differs from person to person, and may even change from day to day for the same person.

The uncertainty from the variable ΔB can be cancelled by introducing the normalization factor $Q_i(C, T)$ at each wavelength λ_i , as defined by the Equation below:

$$Q_i(C, T) = \frac{\Delta A(\lambda_i)}{\sum_{i=1}^N \Delta A(\lambda_i)} = \frac{\epsilon(C, \lambda_i, T)}{\sum_{i=1}^N \epsilon(C, \lambda_i, T)}, \quad (17)$$

in which N is total number of wavelength employed. Preferably, N typically ranges from twenty to thirty.

Based on Equations (13) and (17), $Q_i(C, T)$ is linked to the detector photocurrent at each wavelength λ_i , $I_D(\lambda_i, t)$, by the following Equation:

$$Q_i(C, T) = \frac{\Delta A(\lambda_i)}{\sum_{i=1}^N \Delta A(\lambda_i)} = \frac{\sigma[\log I_D(\lambda_i, t)]/k}{\sum_{i=1}^N \sigma[\log I_D(\lambda_i, t)]/k} = \frac{\sigma[\log I_D(\lambda_i, t)]}{\sum_{i=1}^N \sigma[\log I_D(\lambda_i, t)]}, \quad (18)$$

As shown by Equation (18), the constant k is cancelled and $\sigma[\log I_D(t)]$ will be used in further regression analysis to establish correlation between the optical measurement and blood glucose level. This is possible because data are taken simultaneously from all detection channels.

A correlation between optical measurement and blood glucose concentration can be established according to the following Equation:

$$C_{optical} = \sum_{i=1}^N a_i(T) Q_i(C, T) \quad (19)$$

in which $C_{optical}$ is the blood glucose concentration predicted by the optical measurement, $Q_i(C, T)$ is defined by Equations (17) and (18), and $a_i(T)$ is the temperature dependent regression coefficient corresponding to wavelength λ_i . The values of $a_i(T)$ can be extracted using proper statistics methods such as Partial Least Squares (PLS) regression.

Equation (19) represents ideal cases when large number of calibrations can be made at different finger temperatures. In reality, frequently only a limited number of calibrations can be made (e.g., 15 to 20), and each may be taken at a different finger temperature. Under this condition, the finger temperature can be treated as an independent variable, and the above Equation can be approximated as:

$$C_{optical} = \sum_{i=1}^N b_i Q_i(C, T) + \eta T \quad (20)$$

in which b_i is the temperature independent regression coefficient corresponding to wavelength λ_i , and η is the regression coefficient for the finger temperature. The values of b_i and that of η can be extracted using proper statistics methods such as Partial Least Squares (PLS) regression.

Ratio Methodology

Alternatively, the uncertainty from the variable ΔB can be cancelled by introducing a ratio factor Y_{ij} at wavelength λ_i :

$$Y_{ij}(C, T) = \frac{\Delta A(\lambda_i)}{\Delta A(\lambda_j)} = \frac{\epsilon(C, \lambda_i, T)}{\epsilon(C, \lambda_j, T)} = \frac{\sigma[\log I_D(\lambda_i, t)]}{\sigma[\log I_D(\lambda_j, t)]}, \quad (21)$$

in which j can be any number from 1 to N , assuming that the device collects signal at all N wavelengths.

Similar to the normalization algorithm discussed before, a correlation between optical measurement and blood glucose level can be established according to the following Equation:

$$C_{optical} = \sum_{i \neq j}^N f_i(T) Y_{ij}(C, T) \quad (22)$$

in which $C_{optical}$ is the blood glucose concentration predicted by the optical measurement, $Y_{ij}(C, T)$ is defined by Equation (21), and $f_i(T)$ is the temperature dependent regression coefficient corresponding to wavelength λ_i . The value of $f_i(T)$ can be obtained using statistics methods such as Partial Least Squares (PLS) regression.

Equation (22) represents ideal cases when large number of calibration can be made at different finger temperatures. In reality, frequently only limited number of calibration can be made (e.g., 15 to 20), and each may be taken at a different finger temperature. Under this condition, the finger temperature can be treated as an independent variable, and the above Equation can be approximated as:

$$C_{optical} = \sum_{i \neq j}^N h_i Y_{ij}(C, T) + \beta T \quad (23)$$

in which h_i is the temperature independent regression coefficient corresponding to wavelength λ_i , and β is the regression coefficient for the finger temperature. The values of h_i and that of β can be extracted using proper statistics methods such as Partial Least Squares (PLS) regression.

Elimination of the Effect of Temperature Dependent Device Response

It is well understood that the detector sensitivity of a silicon photodiode detector is a function of wavelength and temperature. For the device configuration shown in FIG. 2, which is generally indicated by numeral 200, the light power received by i th silicon diode detector, corresponding to wavelength is converted into a photocurrent according to the following Equation:

$$I_D(\lambda_i, t) = P(\lambda_i, t) S_0(\lambda_i) [1 + \gamma(\lambda_i)(T_{Di}(t) - 25^\circ \text{C.})] \quad (24)$$

In the above Equation (24), $P(\lambda_i, t)$ is the light power received by the detector, $S_0(\lambda_i)$ is the photosensitivity of the detector at wavelength λ_i and 25°C. , $\gamma(\lambda_i)$ is the temperature coefficient of the photosensitivity at wavelength λ_i and $T_{Di}(t)$ is the temperature of i th photodiode detector. The temperature coefficient $\gamma(\lambda_i)$ varies with the wavelength. For example, for Hamamatsu S1337 series photodiode detectors, $\gamma(\lambda_i)$ ranges from near zero at 900 nm to over 1.0%/°C. at 1100 nm. This imposes a potential problem for the device configuration show in FIG. 2, because it is very difficult to keep temperature of each individual diode detector constant in a handheld device used by a person with diabetes under a normal household/office environment,

This uncertainty due to the detector temperature $T_{Di}(t)$ can be eliminated using the algorithm shown by Equations (12) and (13). Applying common logarithm on both sides of the Equation (24), one obtains:

$$\log I_D(\lambda_i, t) = \log P(\lambda_i, t) + \log S_0(\lambda_i) + \log [1 + \gamma(\lambda_i)(T_{Di}(t) - 25^\circ \text{C.})] \quad (25)$$

Considering the fact that $S_0(\lambda_i)$ is a constant and that detector temperature $T_{Di}(t)$ remains almost constant during the very short data acquisition time interval of approximately one second, one obtains:

$$\sigma[\log I_D(\lambda_i, t)] = \sigma[\log P(\lambda_i, t)] \quad (26)$$

As such, the uncertainty caused by detector temperature $T_{Di}(t)$ is eliminated by the use of this standard deviation methodology.

Voltage Detection Mode

In the device configuration shown in FIG. 2, the photocurrent of i th photodiode detector $I_D(\lambda_i, t)$ is typically converted into a voltage using a preamplifier before digitization. FIG. 4 shows the schematic circuit diagram of a typical preamplifier, which is generally indicated by numeral 400.

The output voltage 412 of i th preamplifier 400, in coupling with i th photodiode detector 408, can be expressed as:

$$V_i(t) = R_{Di} I_D(\lambda_i, t) = R_{Di} [1 + \chi_i(T_{Ri}(t) - 25^\circ \text{C.})] I_D(\lambda_i, t) \quad (27)$$

In the above Equation (27), R_{Di} is the resistance value of feedback resistor 402 for i th preamplifier at 25°C. , χ_i is the temperature coefficient of the resistor, and $T_{Ri}(t)$ is the temperature of the resistor. Applying common logarithm to both side of the Equation (27), one obtains:

$$\log V_i(t) = \log R_{Di} + \log [1 + \chi_i(T_{Ri}(t) - 25^\circ \text{C.})] + \log I_D(\lambda_i, t) \quad (28)$$

Considering the fact that R_{Di} is a constant and that the resistor temperature $T_{Ri}(t)$ does not change during the very short data acquisition time interval of approximately one second, one obtains:

$$\sigma[\log V_i(t)] = \sigma[\log I_D(\lambda_i, t)] \quad (29)$$

Substituting Equation (26) into Equation (29), one obtains:

$$\sigma[\log V_i(t)] = \sigma[\log P(\lambda_i, t)] \quad (30)$$

As such, the uncertainty caused by resistor temperature $T_{Ri}(t)$ is eliminated.

Under the voltage detection mode, the normalization factor in Equation (18) can be expressed as:

$$Q_i(C, T) = \frac{\sigma[\log V_i(t)]}{\sum_{i=1}^N \sigma[\log V_i(t)]} \quad (31)$$

The mathematic correlation between optical measurement and blood glucose concentration can then be established according to Equation (19) or Equation (20), under corresponding calibration conditions.

Similarly, the ratio factor defined by Equation (21) can be expressed as:

$$Y_{ij}(C, T) = \frac{\sigma[\log V_i(t)]}{\sigma[\log V_j(t)]} \quad (32)$$

The mathematic correlation between optical measurement and blood glucose concentration can then be established according to Equation (22) or Equation (23), under corresponding calibration conditions. The schematic circuit diagram of a typical preamplifier 400 also includes a feedback capacitor 404, an operational amplifier 406, and a ground connection 410.

Digitization

The voltage output 412 from the preamplifier 400 is usually digitized using an analog-to-digital convertor (ADC). The digitized signal is then sent to a computer for data analysis. The output of i th ADC, in communication with i th preamplifier that is in coupling with i th photodiode 408 collecting light power at wavelength λ_i , can be expressed by the following Equation:

$$(ADC)_i = (ADC)_{0i} + G_i \{ [I_D(\lambda_p, t) + I_{Dark,i}] R_i + A_{0i} \} \quad (33)$$

In the above Equation (33), $(ADC)_{0i}$ is the offset of ith ADC, G_i is the nominal ADC Gain used during the detection, $I_D(\lambda_p, t)$ is the photocurrent of ith photodiode detector, $I_{Dark,i}$ is the dark current of ith photodiode detector, $R_i = R_{0i} [1 + \gamma_i (T_{Ri}(t) - 25^\circ \text{C.})]$ is the resistance of feedback resistor of ith preamplifier, and A_{0i} is the offset of ith preamplifier.

The contribution of the three factors, $(ADC)_{0i}$, $I_{Dark,i}$ and A_{0i} can be removed by carrying out a dark measurement with the light source turned off right before or after the corresponding finger measurement. When the light source is turned off, the above Equation (33) becomes:

$$(ADC)_{Dark,i} = (ADC)_{0i} + G_i (I_{Dark,i} R_i + A_{0i}) \quad (34)$$

The difference between the two above Equations (33) and (34) reflects ADC output corresponding to the photocurrent:

$$\Delta(ADC)_i = (ADC)_i - (ADC)_{Dark,i} = G_i I_D(\lambda_p, t) R_i \quad (35)$$

Applying common logarithm to both side of the Equation (35), one obtains:

$$\log \Delta(ADC)_i = \log G_i + \log I_D(\lambda_p, t) + \log R_i \quad (36)$$

G_i and R_i can be considered as constants as long as the time interval between the finger measurement and the dark measurement is short. As such, one obtains:

$$\sigma[\log \Delta(ADC)_i] = \sigma[\log I_D(\lambda_p, t)] \quad (37)$$

Substituting Equation (26) into Equation (37), one further obtains:

$$\sigma[\log \Delta(ADC)_i] = \sigma[\log P(\lambda_p, t)] \quad (38)$$

Based on Equation (37), the normalization factor defined by Equation (18) can be expressed as:

$$Q_i(C, T) = \frac{\sigma[\log \Delta(ADC)_i]}{\sum_{i=1}^N \sigma[\log \Delta(ADC)_i]} \quad (39)$$

The mathematic correlation between optical measurement and blood glucose concentration can then be established according to Equation (19) or (20), under corresponding calibration conditions.

Similar to normalization, the ratio factor defined by Equation (21) can be expressed as:

$$Y_{ij}(C, T) = \frac{\sigma[\log \Delta(ADC)_i]}{\sigma[\log \Delta(ADC)_j]} \quad (40)$$

The correlation between optical measurement and blood glucose concentration can then be established according to Equations (22) or (23), under corresponding calibration conditions.

Thus, there has been shown and described several embodiments of a novel invention. As is evident from the foregoing description, certain aspects of the present invention are not limited by the particular details of the examples illustrated herein, and it is therefore contemplated that other modifications and applications, or equivalents thereof, will occur to those skilled in the art. The terms in "have," "having," "includes," "including," and similar terms as used in the foregoing specification are used in the sense of "optional" or "may include" and not as "required." Many changes, modifications, variations and other uses and applications of the present construction will, however, become

apparent to those skilled in the art after considering the specification and the accompanying drawings. All such changes, modifications, variations and other uses and applications, which do not depart from the spirit and scope of the invention, are deemed to be covered by the invention, which is limited only by the claims that follow. It should be understood that the embodiments disclosed herein include any and all combinations of features described in any of the dependent claims.

The invention claimed is:

1. A method for detecting glucose in a biological sample, comprising:

utilizing at least one light generating structure configured to generate one or more light beams having a wavelength in a range between 800 nm and 1600 nm to strike a target area of a sample;

utilizing at least one photocurrent signal generating light detector positioned to receive light from the at least one light source and to generate an output photocurrent signal, having a time dependent current, which is indicative of the power of light detected;

receiving the output photocurrent signal from the at least one photocurrent signal generating light detector with a light absorbance change determining algorithm implemented processor programmed to calculate a change in a light absorption caused by blood in the biological sample and based on the received output photocurrent signal, wherein the at least one photocurrent signal generating light detector includes a preamplifier having a feedback resistor;

calculating the attenuation attributable to blood in a sample present in the target area with either a normalization factor or a ratio factor with the light absorbance change determining algorithm implemented processor; eliminating effect of uncertainty caused by temperature dependent detector response of the at least one light detector with the light absorbance change determining algorithm implemented processor by calculating a standard deviation of a logarithm of the time dependent output current generated by the light power from the same target area of the biological sample;

determining a blood glucose level associated with a sample present in the target area with the light absorbance change determining algorithm implemented processor based on the calculated attenuation with the light absorbance change determining algorithm implemented processor; and

calculating at least one of a normalization factor $Q_i(C, T)$ based on a preamplifier output voltage $V_i(t)$ of an ith preamplifier as a function of time, where σ is standard deviation according to equation:

$$Q_i(C, T) = \frac{\sigma[\log V_i(t)]}{\sum_{i=1}^N \sigma[\log V_i(t)]}$$

or a ratio factor $Y_{ij}(C, T)$ based on the preamplifier output voltage $V_i(t)$ of a ith preamplifier and $V_j(t)$ of the jth preamplifier as a function of time, where σ is standard deviation according to the equation:

$$Y_{ij}(C, T) = \frac{\sigma[\log V_i(t)]}{\sigma[\log V_j(t)]}$$

13

utilizing the light absorbance change determining algorithm implemented processor;
 wherein T is a temperature of the biological sample and
 C is a concentration of blood glucose in the biological sample. 5
 2. The method for detecting glucose in a biological sample according to claim 1, further comprising utilizing an analog-to-digital convertor having a digitized voltage output.
 3. A method for detecting glucose in a biological sample, 10
 comprising:
 utilizing at least one light generating structure configured to generate one or more light beams having a wavelength in a range between 800 nm and 1600 nm to strike a target area of a sample; 15
 utilizing at least one photocurrent signal generating light detector positioned to receive light from the at least one light source and to generate an output photocurrent signal, having a time dependent current, which is indicative of the power of light detected; 20
 receiving the output photocurrent signal from the at least one photocurrent signal generating light detector with a light absorbance change determining algorithm implemented processor programmed to calculate a change in a light absorption caused by blood in the biological sample and based on the received output photocurrent signal, wherein the at least one photocurrent signal generating light detector includes a preamplifier having a feedback resistor; 25
 calculating the attenuance attributable to blood in a sample present in the target area with either a normalization factor or a ratio factor with the light absorbance change determining algorithm implemented processor; 30
 eliminating effect of uncertainty caused by temperature dependent detector response of the at least one light detector with the light absorbance change determining algorithm implemented processor by calculating a stan-

14

dard deviation of a logarithm of the time dependent output current generated by the light power from the same target area of the biological sample;
 determining a blood glucose level associated with a sample present in the target area with the light absorbance change determining algorithm implemented processor based on the calculated attenuance with the light absorbance change determining algorithm implemented processor;
 utilizing an analog-to-digital convertor having a digitized voltage output; and
 calculating at least one of a normalization factor $Q_i(C,T)$ based on an analog to digital convertor voltage output $\Delta(ADC)_i$ of an ith analog-to-digital convertor, where σ is standard deviation according to the equation:

$$Q_i(C, T) = \frac{\sigma[\log \Delta(ADC)_i]}{\sum_{i=1}^N \sigma[\log \Delta(ADC)_i]}$$

or a ratio factor $Y_{ij}(C,T)$ based on the voltage output $\Delta(ADC)_i$ of the ith analog-to-digital convertor and a voltage output $\Delta(ADC)_j$ of a jth analog-to-digital convertor, where σ is standard deviation according to the equation:

$$Y_{ij}(C, T) = \frac{\sigma[\log \Delta(ADC)_i]}{\sigma[\log \Delta(ADC)_j]}$$

utilizing the light absorbance change determining algorithm implemented processor;
 wherein T is a temperature of the biological sample and
 C is a concentration of blood glucose in the biological sample.

* * * * *

专利名称(译)	利用光谱数据分析进行非侵入式光学血糖检测的方法和系统		
公开(公告)号	US9877670	公开(公告)日	2018-01-30
申请号	US15/464253	申请日	2017-03-20
[标]申请(专利权)人(译)	圣路易斯医疗器械公司		
申请(专利权)人(译)	圣路易斯医疗器械公司		
当前申请(专利权)人(译)	圣路易斯医疗器械公司		
[标]发明人	XU ZHI		
发明人	XU, ZHI		
IPC分类号	A61B5/00 A61B5/145 A61B5/1455		
CPC分类号	A61B5/14532 A61B5/1455 A61B5/7225 A61B5/6826 A61B2576/00 A61B2562/0238 A61B5/6838 G06F19/00		
优先权	61/055303 2008-05-22 US 61/089152 2008-08-15 US		
其他公开文献	US20170188917A1		
外部链接	Espacenet USPTO		

摘要(译)

公开了用于基于光谱数据非侵入地测量生物样品中的血糖水平的系统和方法。这包括至少一个被配置为撞击样本的目标区域的光源，至少一个光检测器被定位成接收来自至少一个光源的光并且产生具有时间相关电流的输出信号，其指示检测到光的功率，处理器被配置为基于接收的输出信号从至少一个光检测器接收输出信号，利用比率因子计算归因于存在于目标区域中的样本中的血液的衰减，消除由至少一个光检测器的温度依赖性检测器响应引起的不确定性，然后基于利用处理器计算的衰减确定与目标区域中存在的样本相关联的血糖水平。

