



(19) **United States**

(12) **Patent Application Publication**
Kharam et al.

(10) **Pub. No.: US 2018/0116540 A1**
(43) **Pub. Date: May 3, 2018**

(54) **IMPLANTABLE MEDICAL DEVICE HAVING A SENSE CHANNEL WITH PERFORMANCE ADJUSTMENT**

A61N 1/375 (2006.01)
A61N 1/37 (2006.01)
A61N 1/372 (2006.01)

(71) Applicant: **CARDIAC PACEMAKERS, INC.**, St. Paul, MN (US)

(52) **U.S. Cl.**
CPC *A61B 5/0456* (2013.01); *A61B 5/7203* (2013.01); *A61B 5/686* (2013.01); *A61N 1/3756* (2013.01); *A61B 2560/0209* (2013.01); *A61B 5/7221* (2013.01); *A61N 1/37512* (2017.08); *A61N 1/37252* (2013.01); *A61N 1/3704* (2013.01)

(72) Inventors: **Aleksandra Kharam**, Maple Grove, MN (US); **Ron A. Balczewski**, Bloomington, MN (US); **Paul Huelskamp**, St. Paul, MN (US); **Lance Eric Juffer**, Lino Lakes, MN (US); **Keith R. Maile**, New Brighton, MN (US)

(57) **ABSTRACT**

(73) Assignee: **CARDIAC PACEMAKERS, INC.**, St. Paul, MN (US)

An implantable medical device (IMD) may include a sensor for providing a sensor output signal and a sense channel configured to receive the sensor output signal from the sensor. The sense channel may be configured to process the sensor output signal and output a sense channel output signal. The sense channel may have an adjustable performance level, wherein for a higher performance level the sense channel consumes more power than for a lower performance level. A controller may be configured to adjust the performance level of the sense channel to achieve more performance and more power consumption when a higher degree of sense channel performance is desired and to achieve less performance and less power consumption when a higher degree of performance is not desired.

(21) Appl. No.: **15/792,353**

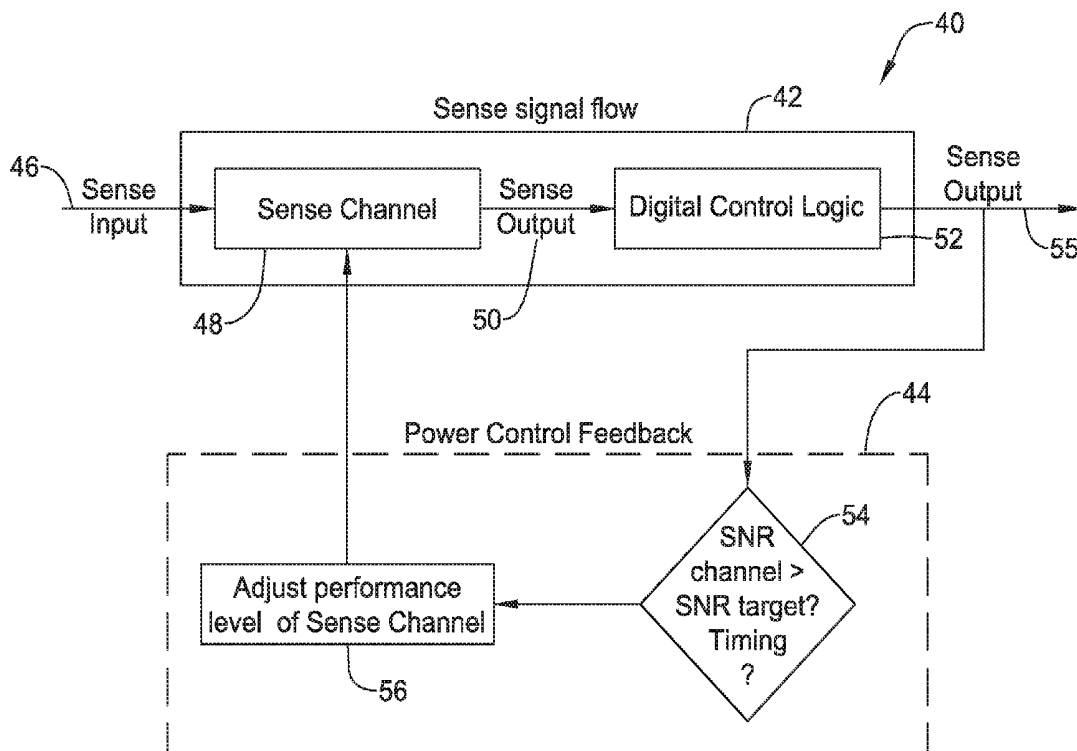
(22) Filed: **Oct. 24, 2017**

Related U.S. Application Data

(60) Provisional application No. 62/413,726, filed on Oct. 27, 2016.

Publication Classification

(51) **Int. Cl.**
A61B 5/0456 (2006.01)
A61B 5/00 (2006.01)



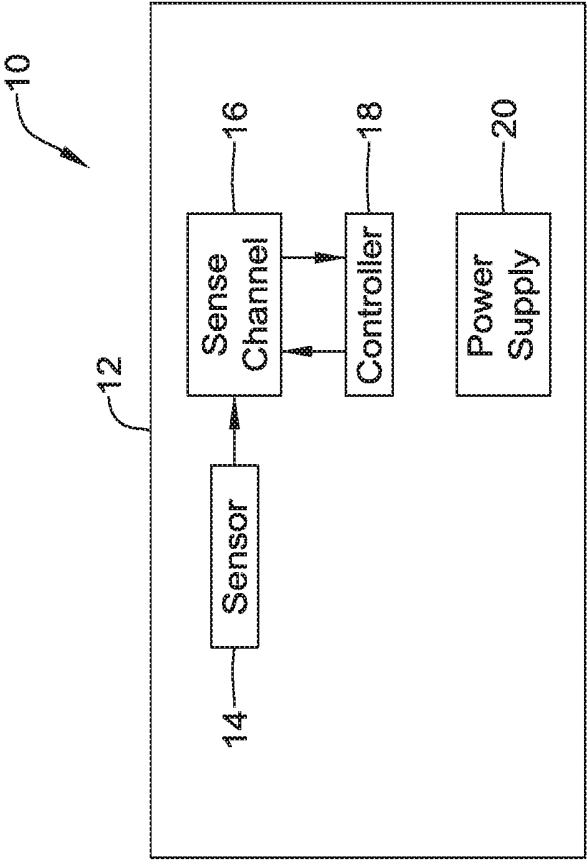


FIG. 1

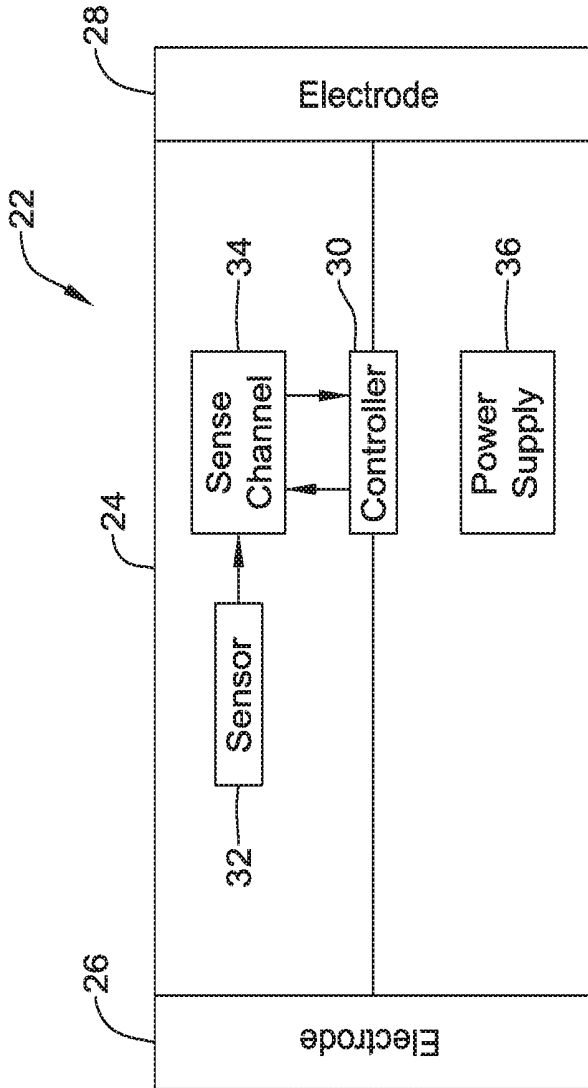


FIG. 2

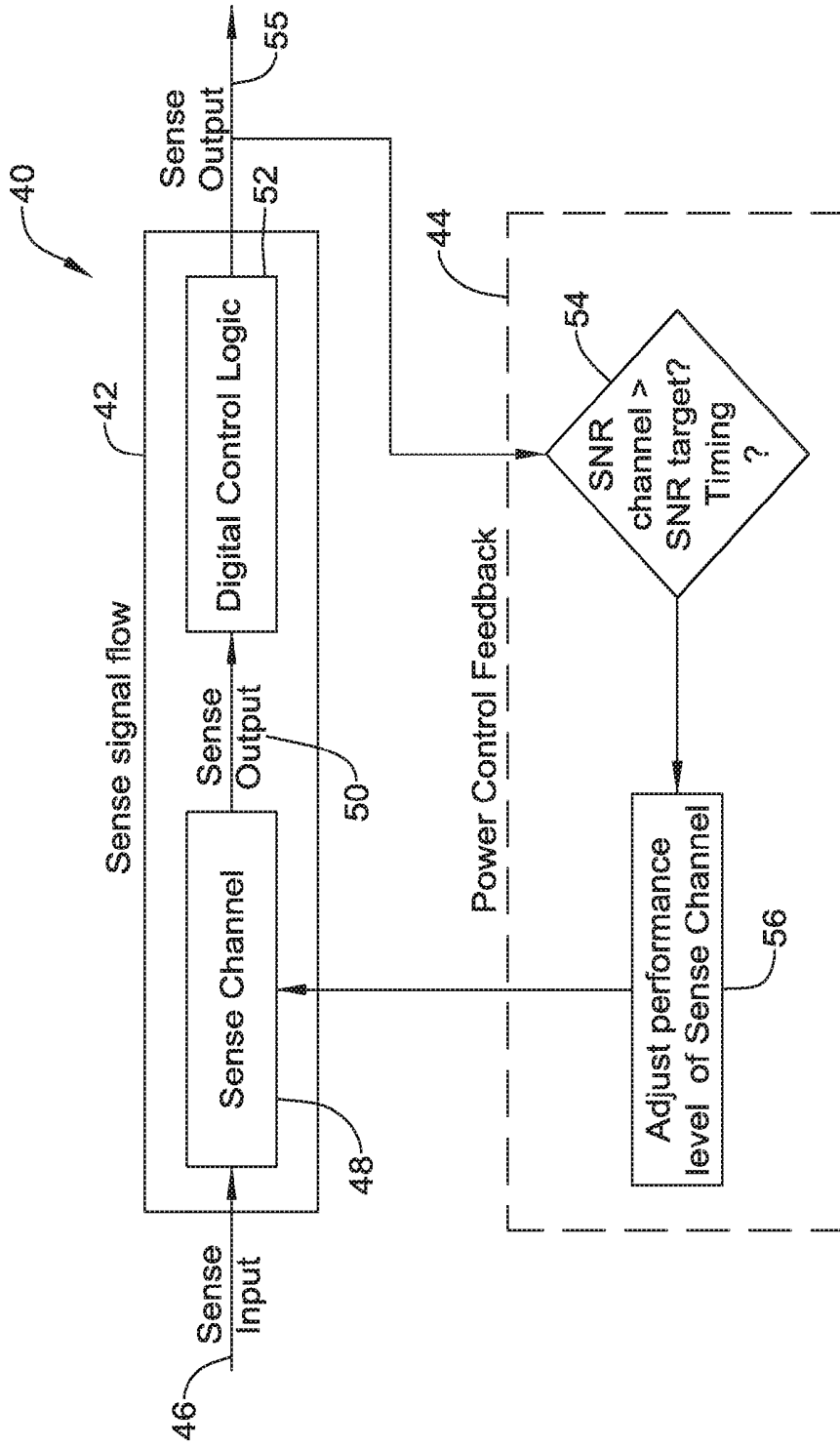


FIG. 3

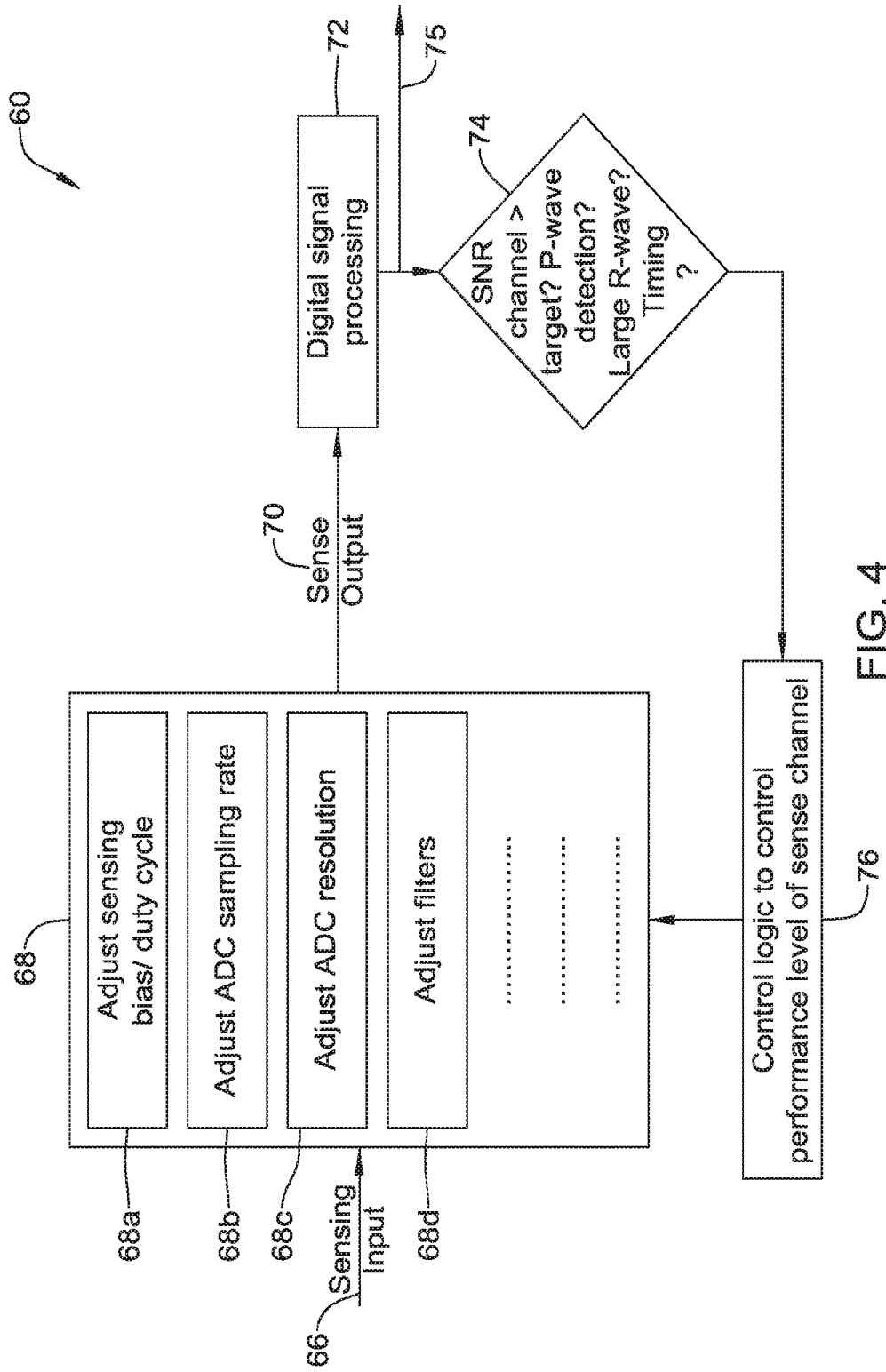


FIG. 4

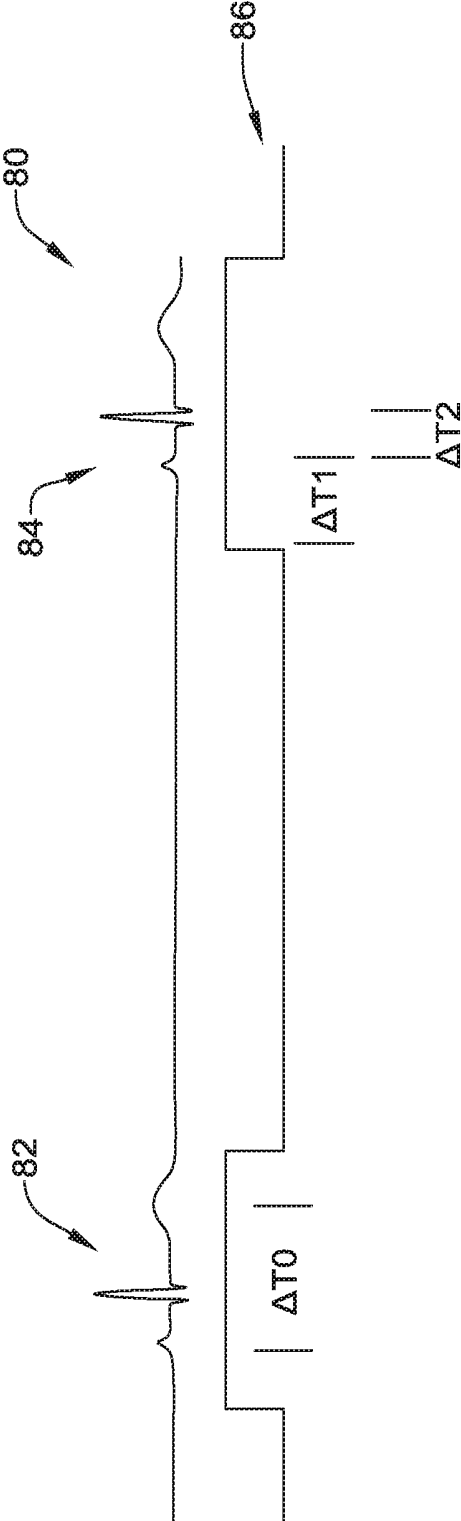


FIG. 5

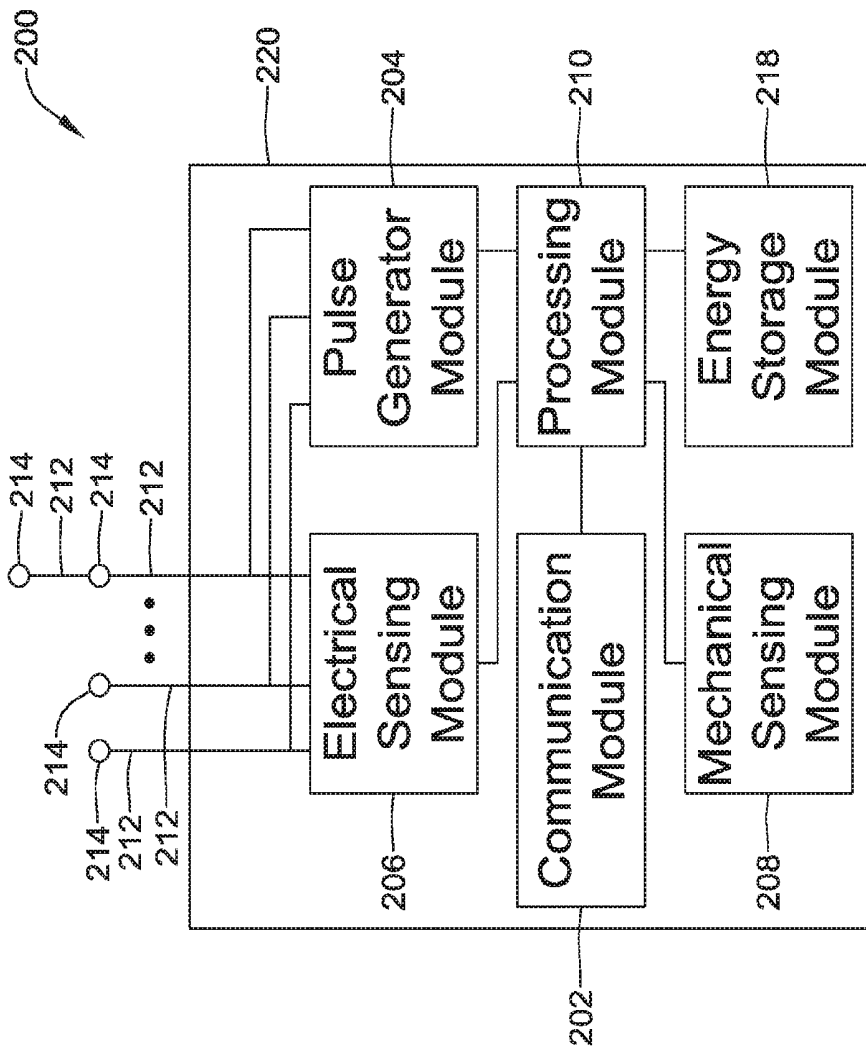


Figure 7

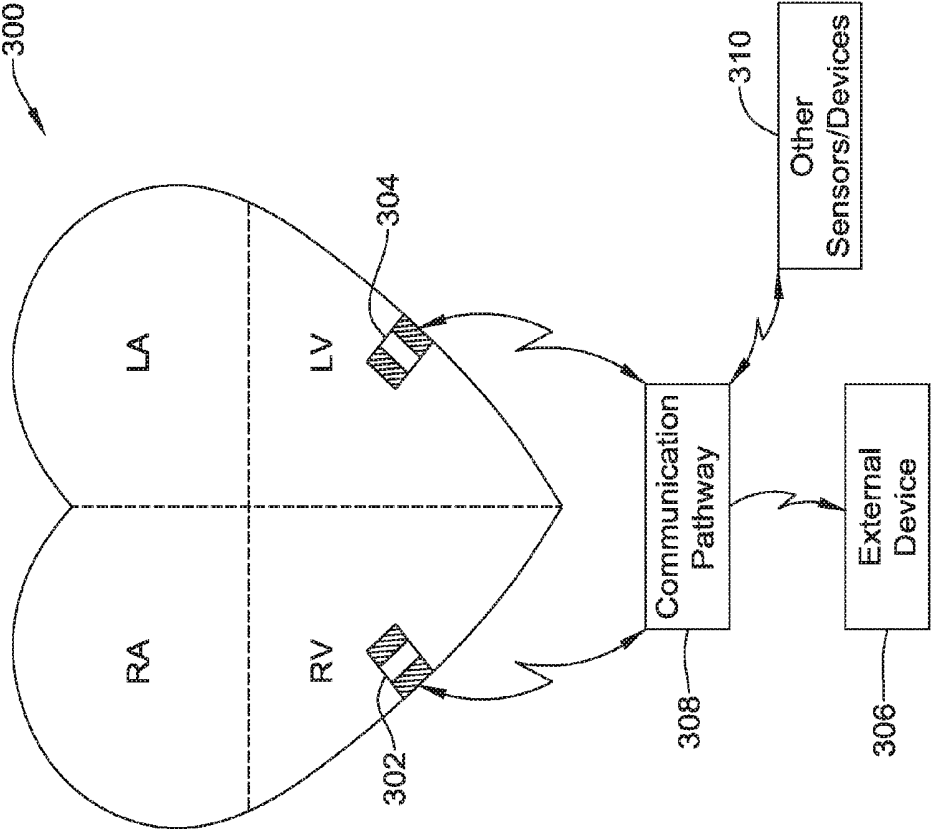


Figure 8

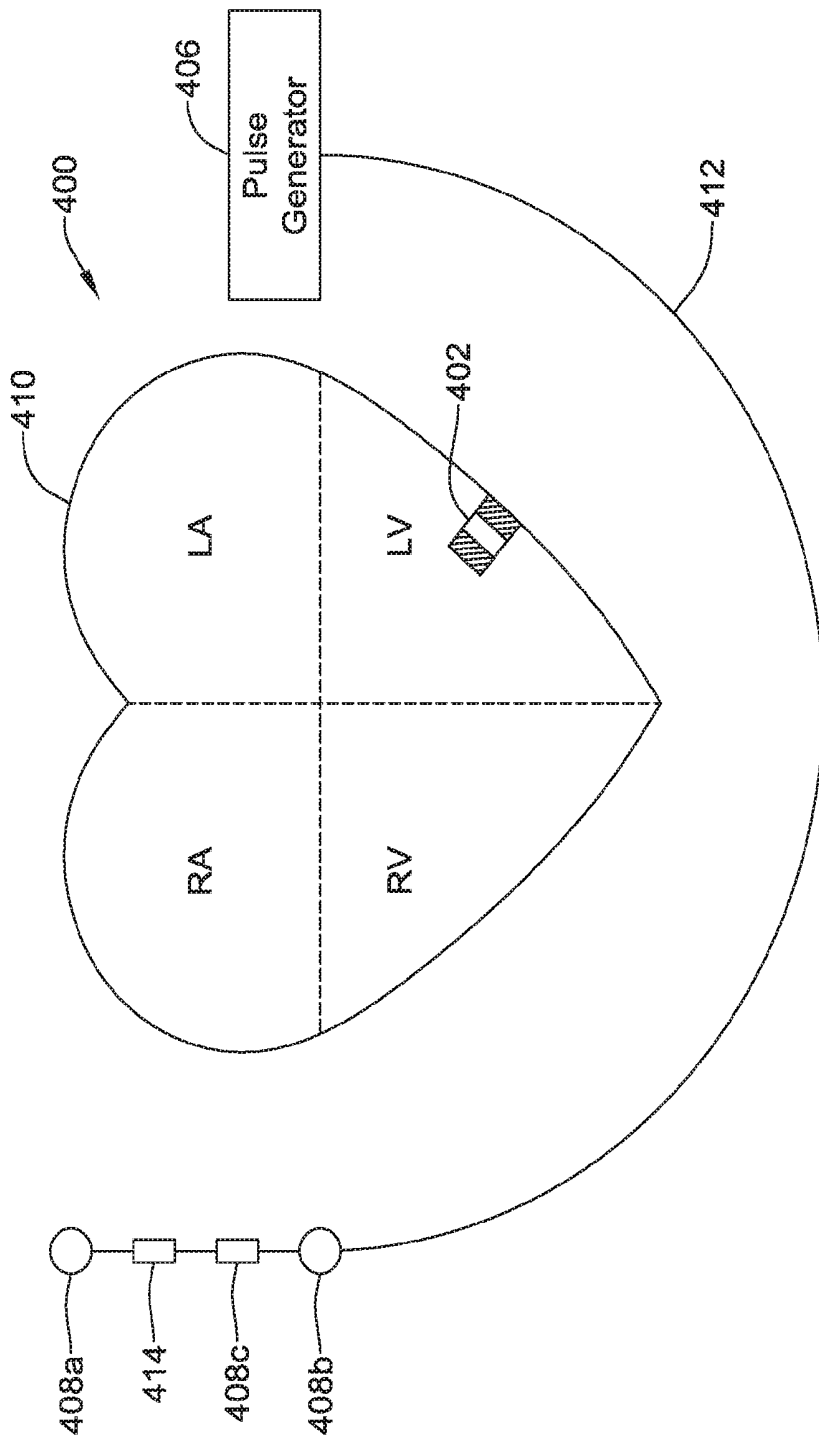


Figure 9

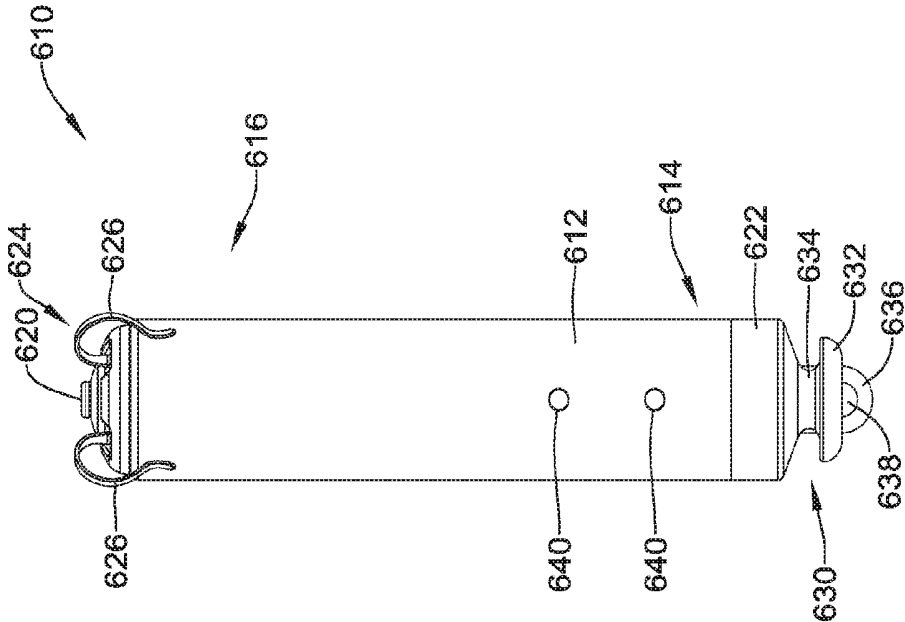


FIG. 10

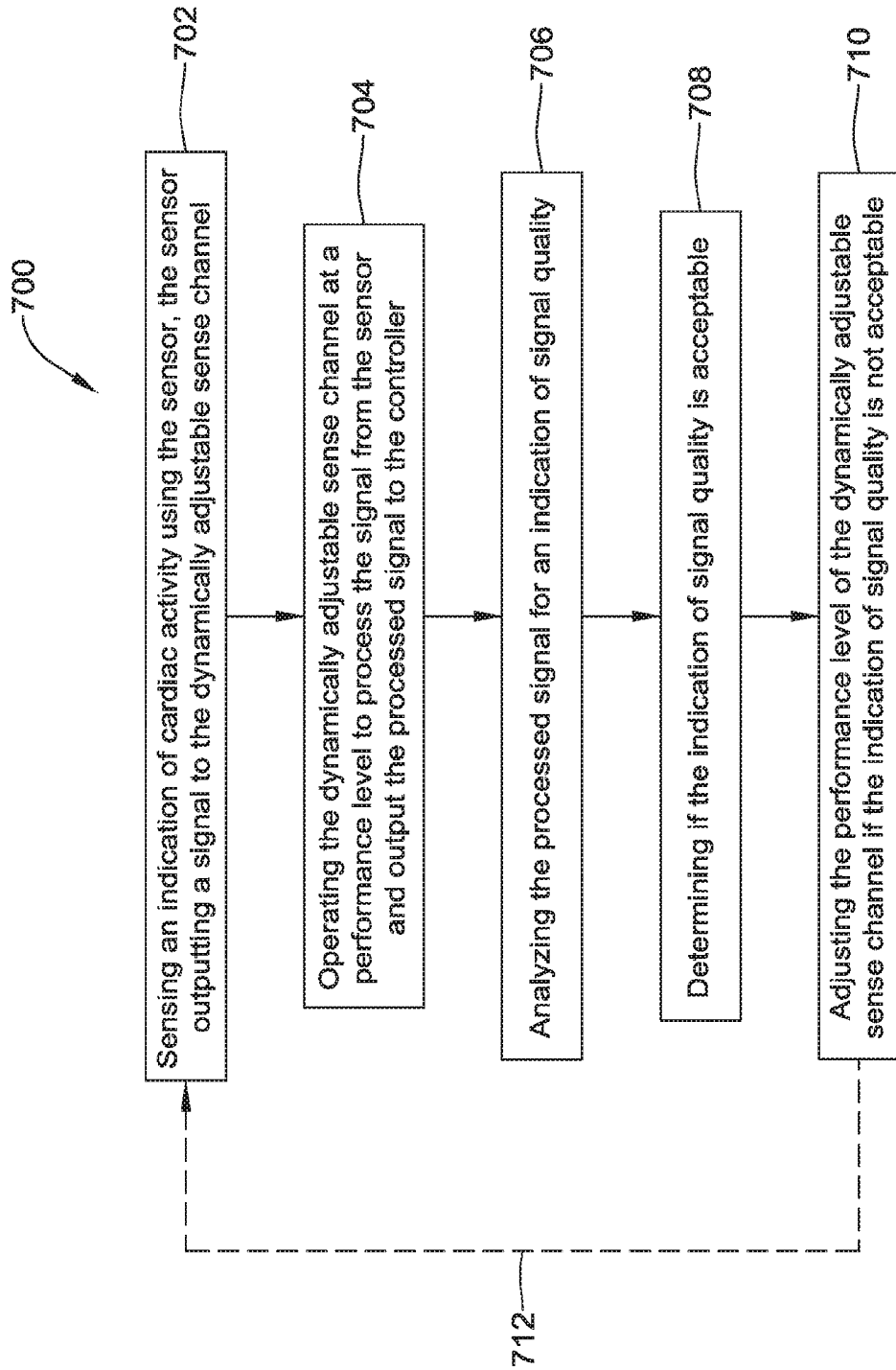


FIG. 11

**IMPLANTABLE MEDICAL DEVICE HAVING
A SENSE CHANNEL WITH PERFORMANCE
ADJUSTMENT**

**CROSS REFERENCE TO RELATED
APPLICATIONS**

[0001] This application claims the benefit of U.S. Provisional Patent Application Ser. No. 62/413,726 filed on Oct. 27, 2016, the disclosure of which is incorporated herein by reference.

TECHNICAL FIELD

[0002] The present disclosure pertains to medical devices, and more particularly to implantable medical devices in which performance may be adjusted

BACKGROUND

[0003] Implantable medical devices are commonly used today to monitor and/or delivery therapy to a patient. In one example, many patients suffer from heart conditions that can result in a reduced ability of the heart to deliver sufficient amounts of blood to the patient's body. Such heart conditions may lead to slow, rapid, irregular, and/or inefficient heart contractions. To help alleviate some of these conditions, various medical devices (e.g., pacemakers, defibrillators, etc.) can be implanted in a patient's body. Such devices may monitor and in some cases provide electrical stimulation (e.g. pacing, defibrillation, etc.) to the heart to help the heart operate in a more normal, efficient and/or safe manner. In another example, neuro stimulators are often used to stimulate tissue of a patient to help alleviate pain and/or some other condition. In yet another example, an implantable medical device may simply be a monitor that monitors one or more physiological or other parameters of the patient, and to communicate the sensed parameters to another device such as another implanted medical device or an external programmer. To extend the effective lifetime of such implanted medical devices, there is a desire to conserve energy while still providing effective monitoring and/or delivery of therapy to the patient.

SUMMARY

[0004] This disclosure describes implantable medical devices that include a sense channel that can be dynamically adjusted to achieve a desired performance level based on the current conditions and/or current needs. A higher performance level will typically increase the power consumption of the sense channel relative to a lower performance level. By setting the performance level of the sense channel to an appropriate level, the effective lifetime of the power supply of the implantable medical device may be extended.

[0005] In one example, an implantable medical device (IMD) may include a housing, a sensor for providing a sensor output signal and a sense channel that is configured to receive the sensor output signal from the sensor, process the sensor output signal, and output a sense channel output signal. The sense channel may have an adjustable performance level, wherein for a higher performance level the sense channel consumes more power and for a lower performance level the sense channel consumes less power. The IMD may include a controller that is configured to receive the sense channel output signal. In some cases, the controller may be configured to adjust the performance level of the

sense channel to achieve more performance and more power consumption when a higher degree of performance is desired and to achieve less performance and less power consumption when a high degree of performance is not desired.

[0006] Alternatively or additionally to any of the embodiments above, the controller may be configured to determine a measure of a signal-to-noise ratio (SNR) of the sense channel output signal, and to adjust the performance level of the sense channel based at least in part on the measure of the signal-to-noise ratio (SNR) of the sense channel output signal.

[0007] Alternatively or additionally to any of the embodiments above, the performance level of the sense channel may be adjusted by adjusting a noise floor of a sense amplifier of the sense channel.

[0008] Alternatively or additionally to any of the embodiments above, the performance level of the sense channel may be adjusted by adjusting a resolution of the sense channel and/or a supply voltage of a sense amplifier of the sense channel.

[0009] Alternatively or additionally to any of the embodiments above, the performance level of the sense channel may be adjusted by adjusting a sample rate of the sense channel.

[0010] Alternatively or additionally to any of the embodiments above, the sense channel may include a sense amplifier, and the performance level of the sense channel may be adjusted by adjusting a bias of the sense amplifier.

[0011] Alternatively or additionally to any of the embodiments above, the sense channel is activated and deactivated at a duty cycle, and the performance level of the sense channel may be adjusted by adjusting the duty cycle of the sense channel.

[0012] Alternatively or additionally to any of the embodiments above, the sense channel samples the sensor output signal at a sample rate, and the performance level of the sense channel may be adjusted by adjusting the sample rate of the sense channel.

[0013] Alternatively or additionally to any of the embodiments above, the sense channel includes an analog-to-digital (A/D) converter with an adjustable resolution, and the performance level of the sense channel may be adjusted by adjusting the resolution of the A/D converter.

[0014] Alternatively or additionally to any of the embodiments above, the IMD is configured to sense and process two or more different cardiac signals, and the controller may be configured to adjust the performance level of the sense channel based at least in part on which of the two or more different cardiac signals is to be sensed and processed. In some cases, the two or more different cardiac signals include an R-wave and a P-Wave, and the controller may be configured to adjust the performance level of the sense channel to achieve more performance and more power consumption when the P-Wave is to be sensed and processed, and to adjust the performance level of the sense channel to achieve less performance and less power consumption when the R-Wave is to be sensed and processed.

[0015] Alternatively or additionally to any of the embodiments above, the controller may be configured to automatically and dynamically adjust the performance level of the sense channel.

[0016] Alternatively or additionally to any of the embodiments above, the IMD may be a leadless cardiac pacemaker (LCP).

[0017] Alternatively or additionally to any of the embodiments above, the IMD may be an insertable cardiac monitor (ICM).

[0018] In another example, a leadless cardiac pacemaker (LCP) configured for implantation into a patient's heart may be configured to sense electrical cardiac activity and to deliver pacing pulses to the patient's heart. The LCP may include a housing, a first electrode that is secured relative to the housing and a second electrode that is secured relative to the housing and is spaced from the first electrode. A controller may be disposed within the housing and may be operably coupled to the first electrode and the second electrode such that the controller is capable of receiving, via the first electrode and the second electrode, electrical cardiac signals of the heart. A sensor may be disposed within the housing and may be configured to sense an indication of cardiac activity and provide a sensor output signal. A sense channel may be configured to receive the sensor output signal from the sensor, process the sensor output signal and to output a sense channel output signal. In some cases, the sense channel may have an adjustable performance level, wherein for a higher performance level the sense channel consumes more power and for a lower performance level the sense channel consumes less power. The controller may be configured to receive the sense channel output signal and to adjust the performance level of the sense channel to achieve more performance and more power consumption when a higher degree of performance is desired and to achieve less performance and less power consumption when a high degree of performance is not desired.

[0019] Alternatively or additionally to any of the embodiments above, the LCP may be configured to sense and process two or more different cardiac signals, and the controller may be configured to adjust the performance level of the sense channel based at least in part on which of the two or more different cardiac signals is to be sensed and processed.

[0020] Alternatively or additionally to any of the embodiments above, the sensor may include an electrical signal sensor that senses an electric signal between the first electrode and the second electrode.

[0021] Alternatively or additionally to any of the embodiments above, the sensor may include one or more of an accelerometer, a pressure sensor, a gyroscope, and a magnetic sensor.

[0022] In another example, a method of monitoring a patient's heart using an implantable medical device that is configured for implantation proximate the patient's heart and that includes a sensor configured to sense an indication of cardiac activity, a dynamically adjustable sense channel configured to process a signal from the sensor, and a controller operably coupled to the dynamically adjustable sense channel. The illustrative method includes sensing an indication of cardiac activity using the sensor, the sensor outputting a signal to the dynamically adjustable sense channel. The dynamically adjustable sense channel is operated at a performance level to process the signal from the sensor and output the processed signal to the controller. The processed signal may then be analyzed for an indication of signal quality and a determination may be made as to whether the indication of signal quality is acceptable. The

performance level of the dynamically adjustable sense channel may be adjusted upward if the indication of signal quality is not acceptable. In some cases, the performance level of the dynamically adjustable sense channel may be adjusted downward to a lower performance level if the indication of signal quality exceeds a threshold to help reduce power consumption. The illustrative method may further include repeating the sensing, operating, analyzing, determining and adjusting steps until the indication of signal quality is determined to be acceptable.

[0023] The above summary of some illustrative embodiments is not intended to describe each disclosed embodiment or every implementation of the present disclosure. The Figures, and Detailed Description, which follow, more particularly exemplify some of these embodiments.

BRIEF DESCRIPTION OF THE DRAWINGS

[0024] The disclosure may be more completely understood in consideration of the following detailed description in connection with the accompanying drawings, in which:

[0025] FIG. 1 is a schematic block diagram of an implantable medical device (IMD) in accordance with an example of the disclosure;

[0026] FIG. 2 is a schematic block diagram of a leadless cardiac pacemaker (LCP) in accordance with an example of the disclosure;

[0027] FIG. 3 is a schematic diagram of an illustrative logic flow that may be used in the IMD of FIG. 1 and/or the LCP of FIG. 2;

[0028] FIG. 4 is a schematic diagram of an illustrative logic flow that may be used in the IMD of FIG. 1 and/or the LCP of FIG. 2;

[0029] FIG. 5 is a schematic illustration of a cardiac signal, indicating example time ranges for activating a sense channel in order to reduce power consumption;

[0030] FIG. 6 is a schematic block diagram of an illustrative LCP in accordance with an example of the disclosure;

[0031] FIG. 7 is a schematic block diagram of another illustrative medical device that may be used in conjunction with the LCP of FIG. 6;

[0032] FIG. 8 is a schematic diagram of an exemplary medical system that includes multiple LCPs and/or other devices in communication with one another;

[0033] FIG. 9 is a schematic diagram of a system including an LCP and another medical device, in accordance with an example of the disclosure;

[0034] FIG. 10 is a side view of an illustrative implantable leadless cardiac device; and

[0035] FIG. 11 is a flow diagram of an illustrative method for monitoring a patient's heart using the IMD of FIG. 1 and/or the LCP of FIG. 2.

[0036] While the disclosure is amenable to various modifications and alternative forms, specifics thereof have been shown by way of example in the drawings and will be described in detail. It should be understood, however, that the intention is not to limit the disclosure to the particular embodiments described. On the contrary, the intention is to cover all modifications, equivalents, and alternatives falling within the spirit and scope of the disclosure.

DETAILED DESCRIPTION

[0037] For the following defined terms, these definitions shall be applied, unless a different definition is given in the claims or elsewhere in this specification.

[0038] All numeric values are herein assumed to be modified by the term “about,” whether or not explicitly indicated. The term “about” generally refers to a range of numbers that one of skill in the art would consider equivalent to the recited value (i.e., having the same function or result). In many instances, the terms “about” may include numbers that are rounded to the nearest significant figure.

[0039] The recitation of numerical ranges by endpoints includes all numbers within that range (e.g. 1 to 5 includes 1, 1.5, 2, 2.75, 3, 3.80, 4, and 5).

[0040] As used in this specification and the appended claims, the singular forms “a,” “an,” and “the” include plural referents unless the content clearly dictates otherwise. As used in this specification and the appended claims, the term “or” is generally employed in its sense including “and/or” unless the content clearly dictates otherwise.

[0041] It is noted that references in the specification to “an embodiment,” “some embodiments,” “other embodiments,” etc., indicate that the embodiment described may include one or more particular features, structures, and/or characteristics. However, such recitations do not necessarily mean that all embodiments include the particular features, structures, and/or characteristics. Additionally, when particular features, structures, and/or characteristics are described in connection with one embodiment, it should be understood that such features, structures, and/or characteristics may also be used connection with other embodiments whether or not explicitly described unless clearly stated to the contrary.

[0042] The following detailed description should be read with reference to the drawings in which similar structures in different drawings are numbered the same. The drawings, which are not necessarily to scale, depict illustrative embodiments and are not intended to limit the scope of the disclosure.

[0043] FIG. 1 is a schematic view of an implantable medical device (IMD) 10. In some cases, the IMD 10 may represent an insertable cardiac monitor (ICM). In some cases, the IMD 10 may represent a cardiac pacemaker such as a leadless cardiac pacemaker (LCP). These are just examples.

[0044] Cardiac pacemakers provide electrical stimulation to heart tissue to cause the heart to contract and thus pump blood through the vascular system. Conventional pacemakers may include an electrical lead that extends from a pulse generator implanted subcutaneously or sub-muscularly to an electrode positioned adjacent the inside or outside wall of the cardiac chamber. As an alternative to conventional pacemakers, self-contained or leadless cardiac pacemakers (LCP) have been proposed. Leadless cardiac pacemakers (LCP) are small capsules that may, for example, be fixed to an intracardiac implant site in a cardiac chamber. In some cases, the small capsule may include bipolar pacing/sensing electrodes, a power source (e.g. a battery), and associated electrical circuitry for controlling the pacing/sensing electrodes, and thus may provide electrical stimulation to heart tissue and/or sense a physiological condition. The capsule may be delivered to the heart using a delivery device which may be advanced through a femoral vein, into the inferior vena cava, into the right atrium, through the tricuspid valve,

and into the right ventricle. Accordingly, it may be desirable to provide delivery devices which facilitate advancement through the vasculature.

[0045] Referring specifically to FIG. 1, and in some instances, the IMD 10 includes a housing 12 and a sensor 14 that may be configured to provide a sensor output signal. In some cases, the sensor 14 may be an electrical signal sensor that senses an electric signal between, for example, two sensor electrodes. In some instances, the sensor 14 may be one or more of an accelerometer, a pressure sensor, a gyroscope and a magnetic sensor. These are just examples. In some cases, a sense channel 16 may be configured to receive the sensor output signal from the sensor 14, process the sensor output signal and output a sense channel output signal. It is contemplated that the sensor output signal may be processed by an analog circuit (e.g. sense amplifier), a digital circuit (e.g. Analog-to-Digital Converter) and/or digital processor, or both. In some cases, the sense channel 16 may have an adjustable performance level, wherein a higher performance level the sense channel 16 consumes more power than a lower performance level.

[0046] A controller 18 may be configured to receive the sense channel output signal from the sense channel 16. In some case, the controller 18 may be configured to adjust the performance level of the sense channel 16 to achieve more performance (and thus more power consumption) when a higher degree of performance is desired, and to achieve less performance (and less power consumption) when a high degree of performance is not desired. In some cases, the controller 18 may be configured to adjust the performance level of the sense channel 16 in accordance with one or more received signals or other indications of the patient’s posture and/or activity level. For example, if the patient is sleeping, the sense channel 16 may be operated at a lower performance level as their cardiac cycle may be expected to vary less, for example. As another example, if the patient is relatively active, the sense channel 16 may be operated at a higher performance level as their cardiac cycle may be expected to vary more.

[0047] In some cases, the controller 18 may be configured to dynamically adjust the performance level of the sense channel 16. In some cases, for example, the controller 18 may be configured to determine a measure of a signal-to-noise ratio (SNR) of the sense channel output signal, and adjust the performance level of the sense channel 16 based at least in part on the measure of the signal-to-noise ratio (SNR) of the sense channel output signal. In another example, the IMD 10 may be configured to sense and process two or more different cardiac signals, and the controller 18 may be configured to adjust the performance level of the sense channel 16 based at least in part on which of the two or more different cardiac signals is to be sensed and processed. For example, the two or more different cardiac signals may include an R-wave and a P-Wave, and the controller 18 may be configured to adjust the performance level of the sense channel 16 to achieve more performance and more power consumption when the P-Wave is to be sensed and processed, and to adjust the performance level of the sense channel 16 to achieve less performance and less power consumption when the R-Wave is to be sensed and processed.

[0048] In some cases, the performance level of the sense channel 16 may be increased by increasing a noise floor and/or a bias of a sense amplifier (not explicitly shown) of

the sense channel 16. In some cases, the performance level of the sense channel may be increased by increasing a sample rate of the sense channel 16. If increased sensitivity is desired, the controller 18 may increase the sample rate of the sense channel 16. In some cases, if increased sensitivity is desired, the controller 18 may increase the supply voltage to the sense channel 16. If power conservation considerations outweigh a need for sensitivity, the controller 18 may decrease the sample rate of the sense channel 16. In some cases, the sense channel 16 may be activated and deactivated at a duty cycle, and the performance level of the sense channel 16 may be adjusted by adjusting the duty cycle of the sense channel 16. In some cases, a duty cycle may correspond to a single cardiac cycle. In some cases, a duty cycle may correspond to several consecutive cardiac cycles. In some instances, for example, the duty cycle may pertain to turning off the sense channel 16 during a refractory period. As another example, in some cases the duty cycle may include turning the sense channel 16 on during a particular cardiac cycle and then turning the sense channel 16 off during a subsequent cardiac cycle. These are just examples. In some cases, the sense channel 16 may include an analog-to-digital (A/D) converter with an adjustable resolution, and the performance level of the sense channel 16 may be adjusted by adjusting the resolution and/or sample rate of the A/D converter.

[0049] A power supply 20 may provide power to the sensor 14, sense channel 16 and/or controller 18. The power supply 20 may include a capacitor, a battery and/or any other suitable power storage device. In some cases, the power supply 20 may be a non-rechargeable lithium-based battery. These are just examples. In most cases, the power supply will have a limited power capacity, which limits the effective lifetime of the corresponding implanted medical device. To extend the effective lifetime of the implanted medical device, there is a desire to reduce battery consumption while still providing effective monitoring and/or delivery of therapy to the patient.

[0050] FIG. 2 is a schematic view of a leadless cardiac pacemaker (LCP) 22 that is configured for implantation into a patient's heart. The LCP 22 may be configured to sense electrical cardiac activity and to deliver pacing pulses to the patient's heart when appropriate. In some cases, the LCP 22 may include a housing 24, a first electrode 26 that is secured relative to the housing 24, and a second electrode 28 that is secured relative to the housing 24 and that is spaced from the first electrode 26. A controller 30 may be disposed within the housing 24 and may be operably coupled to the first electrode 26 and to the second electrode 28 such that the controller 30 is capable of receiving, via the first electrode 26 and the second electrode 28, electrical cardiac signals of the patient's heart. In some cases, a sensor 32 may be disposed within the housing 24 and may be configured to sense an indication of cardiac activity and/or another parameter relative to the patient and to provide a sensor output signal. A sense channel 34 may be configured to receive the sensor output signal from the sensor 32 and to process (analog and/or digital) the sensor output signal in order to output a sense channel output signal. In some cases, the sense channel 34 may have an adjustable performance level, wherein for a higher performance level the sense channel 34 consumes more power and for a lower performance level the sense channel 34 consumes less power.

[0051] The controller 30 may be configured to receive the sense channel output signal and adjust the performance level of the sense channel 34 to achieve more performance and more power consumption when a higher degree of performance is desired and to achieve less performance and less power consumption when a high degree of performance is not desired. The controller 30, sense channel 34 and/or sensor 32 may be operably powered by a power supply 36.

[0052] In some cases, the sensor 32 may be an electrical signal sensor that senses an electric signal between the first electrode 26 and the second electrode 28. In some instances, the sensor 32 may be one or more of an accelerometer, a pressure sensor, a gyroscope and a magnetic sensor. These are just some example sensors.

[0053] In some cases, the controller 30 may be configured to dynamically adjust the performance level of the sense channel 34. In some cases, for example, the controller 30 may be configured to determine a measure of a signal-to-noise ratio (SNR) of the sense channel output signal, and adjust the performance level of the sense channel 34 based at least in part on the measure of the signal-to-noise ratio (SNR) of the sense channel output signal. In another example, the LCP 22 may be configured to sense and process two or more different cardiac signals, and the controller 30 may be configured to adjust the performance level of the sense channel 34 based at least in part on which of the two or more different cardiac signals is to be sensed and processed. For example, the two or more different cardiac signals may include an R-wave and a P-Wave, and the controller 30 may be configured to adjust the performance level of the sense channel 34 to achieve more performance and more power consumption when the P-Wave is to be sensed and processed, and to adjust the performance level of the sense channel 34 to achieve less performance and less power consumption when the R-Wave is to be sensed and processed.

[0054] In some cases, the performance level of the sense channel 34 may be increased by increasing a noise floor and/or a bias of a sense amplifier (not explicitly shown) of the sense channel 34. In some cases, the performance level of the sense channel 34 may be increased by increasing a sample rate of the sense channel 34. If increased sensitivity is desired, the controller 30 may increase the sample rate of the sense channel 34. If power conservation considerations outweigh a need for sensitivity, the controller 30 may decrease the sample rate of the sense channel 34. In some cases, the sense channel 34 may be activated and deactivated at a duty cycle, and the performance level of the sense channel 34 may be adjusted by adjusting the duty cycle of the sense channel 34. In some cases, the sense channel 34 may include an analog-to-digital (A/D) converter with an adjustable resolution, and the performance level of the sense channel 34 may be adjusted by adjusting the resolution and/or sample rate of the A/D converter. These are just examples.

[0055] FIG. 3 is a schematic diagram of an illustrative logic flow 40 that may be used in controlling the sense channel 16 (FIG. 1) and/or the sense channel 34 (FIG. 2). In some cases, the logic flow 40 may be considered as including a sense signal flow block 42 and a power control feedback block 44. In some instances, a sense input 46 may enter the logic flow 40, such as a signal from the sensor 14 (FIG. 1) and/or the sensor 32 (FIG. 2) and pass through the sense channel 48. In the example shown, the sense channel

48 may function to amplify the sense input 46, and provide a sense output signal 50 to a digital control logic block 52. The digital control logic block 52, when provided, may include an Analog-to-Digital Converter (ADC) and/or other digital processing circuitry. In the example shown in FIG. 3, a sense channel output signal 55 exits the digital control logic block 52 and may be used by the controller 18 (FIG. 1) and/or controller 30 (FIG. 2) to control one or more functions of the IMD 10 (FIG. 1) and/or LCP (FIG. 2).

[0056] In the example shown in FIG. 3, the sense channel output signal 55 is also provided to the power control feedback block 44. The power control feedback block 44 may be part of the controller 18 (FIG. 1), the controller 30 (FIG. 2), or a separate control block. In FIG. 3, the sense channel output signal 55 is provided to a signal to noise (SNR) decision block 54 of the power control feedback block 44. The SNR decision block 54 may determine a SNR value for the sense channel output signal 55, and may compare the SNR value to a threshold, standard or baseline. In the example shown, the control block 56 may adjust the performance level of the sense channel 48 depending on whether the SNR value is above or below a SNR value. In some cases, the control block 56 may adjust the performance level of the sense channel 48 upward to provide an increased signal to noise ratio (SNR Value) if the desired signal (e.g. P-wave) in the sense input 46 is small relative to existing noise, or perhaps to adjust the performance level of the sense channel 48 downward to reduce the signal to noise ratio (SNR value) if the desired signal (e.g. R-wave) in the sense input 46 is relatively large relative to existing noise. This is just one example.

[0057] FIG. 4 is a schematic diagram of an illustrative logic flow 60 that may be used in controlling the sense channel 16 (FIG. 1) and/or the sense channel 34 (FIG. 2). In some instances, a sense input 66 may enter the logic flow 60, such as a signal from the sensor 14 (FIG. 1) and/or the sensor 32 (FIG. 2) and pass through the sense channel 68. In some cases, the sense channel 68 may function to amplify the sense input 66, and provide a sense output signal 70 to a digital signal processing block 72. The digital signal processing block 72, when provided, may include an Analog-to-Digital Converter (ADC) and/or other digital processing circuitry. In the example shown in FIG. 4, a sense channel output signal 75 exits the digital signal processing block 72 and may be used by the controller 18 (FIG. 1) and/or controller 30 (FIG. 2) to control one or more functions of the IMD 10 (FIG. 1) and/or LCP (FIG. 2).

[0058] In the example shown in FIG. 4, the sense channel output signal 75 is also provided to a signal to noise (SNR) decision block 74, where a SNR value for a desired signal in the sense channel output signal 75 is estimated or determined. A control block 76 may then adjust the performance level of the sense channel 68 to achieve a desired SNR value in the sense channel output signal 75. In some cases, the SNR value may be directly measured.

[0059] Rather than directly measuring the SNR value, it is contemplated that the SNR decision block 74 may simply identify whether the IMD or LCP is currently attempting to sense a smaller signal (e.g. P-wave) that may have a relatively lower signal to noise ratio (SNR), or if the IMD or LCP is currently attempting to sense a larger signal (e.g. an R-wave) that may have a relatively higher signal to noise ratio (SNR). This may be reported to the control block 76. If the IMD or LCP is currently attempting to sense a smaller

signal, the control block 76 may automatically increase the performance level of the sense channel 68 at the expense of power consumption, and if the IMD or LCP is currently attempting to sense a larger signal, the control block 76 may decrease the performance level of the sense channel 68 to reduce power consumption. In some cases, the SNR decision block 74 may confirm that the resulting SNR value is sufficient.

[0060] Control block 76 may be part of a feedback path to adjust the performance level of the sense channel 68. In some cases, the control block 76 may adjust the sense channel 68 to, for example, provide an increased signal to noise ratio (SNR value) if the sense input 66 is small relative to existing noise, or perhaps to allow a decreased signal to noise ratio (SNR value) if the sense input 66 is relatively robust relative to existing noise. In some cases, the decision block 74 may monitor the sense channel output signal 75 when a desired signal is not expected at the sense input 66 to help identify the existing noise level.

[0061] In some cases, the sense channel 68 may have an adjustable performance level. For example, a bias and/or gain of a sense amplifier of the sense channel 68 may be adjusted as shown at block 68a to change the performance level of the sense channel 68. Increasing the gain may amplify a desired signal relative to the existing noise. In another example, a sampling rate and/or resolution (number of bits) of an ADC may be adjusted as shown at blocks 68b and 68c, to change the performance level of the sense channel 68. In another example, one or more filters (Low pass, high pass, band pass) of the sense channel 68 may be activated/deactivated and/or one or more poles of one or more filters may be adjusted, as shown at block 68d, to help filter the noise and thus change the performance level of the sense channel 68. These are just examples.

[0062] In some cases, a sense channel or portions thereof may be operated in accordance with an expected timing within, for example, a cardiac cycle. For example, if a sensor operably coupled to a sense channel is configured to sense a P-wave, the sense channel may be configured to turn itself on or to increase its resolution, sensitivity or gain shortly before the next P-wave is expected. To illustrate, FIG. 5 provides a cardiac signal trace 80 including a first QRS complex 82 and a second QRS complex 84 and a timing signal 86. In the example shown, an expected PT time (e.g. an expected time from P-wave to T-wave) may be utilized. This is labeled as delta T0 on the timing signal 86, and may be on the order of 300 milliseconds. In some cases, the sense channel may be activated or placed in a higher performance mode during the period delta T0, and deactivated or placed in a lower performance mode outside of the period delta T0.

[0063] In some case, the sense channel may be turned off just before the T-wave (such as about 0 to 50 milliseconds after the previous R-wave), and then may be turned on a time delta T1 before the P-wave. In some cases, P-wave timing may be predicted using a timing fiducial from a previous cardiac cycle, and a time period denoted as delta T2 may be subtracted from an R-R interval (time between a first R-wave and a second R-wave). As another option, a dynamic PT time may be used, based upon the QT interval, which is based on the heart rate. These are just examples of adjusting the performance level of a sense channel based on when a desired signal is expected to be present.

[0064] FIG. 6 depicts an illustrative leadless cardiac pacemaker (LCP) that may be implanted into a patient and may

operate to deliver appropriate therapy to the heart, such as to deliver anti-tachycardia pacing (ATP) therapy, cardiac resynchronization therapy (CRT), bradycardia therapy, and/or the like. The LCP shown in FIG. 6 may include the features described herein for adjusting the performance level of a sense channel. As can be seen in FIG. 6, the LCP 100 may be a compact device with all components housed within the or directly on a housing 120. In some cases, the LCP 100 may be considered as being an example of the IMD 10 (FIG. 1) and/or the LCP 22 (FIG. 2). In the example shown in FIG. 6, the LCP 100 may include a communication module 102, a pulse generator module 104, an electrical sensing module 106, a mechanical sensing module 108, a processing module 110, a battery 112, and an electrode arrangement 114. The LCP 100 may include more or less modules, depending on the application.

[0065] The communication module 102 may be configured to communicate with devices such as sensors, other medical devices such as an ICD, and/or the like, that are located externally to the LCP 100. Such devices may be located either external or internal to the patient's body. Irrespective of the location, external devices (i.e. external to the LCP 100 but not necessarily external to the patient's body) can communicate with the LCP 100 via communication module 102 to accomplish one or more desired functions. For example, the LCP 100 may communicate information, such as sensed electrical signals, data, instructions, messages, R-wave detection markers, etc., to an external medical device (e.g. ICD and/or programmer) through the communication module 102. The external medical device may use the communicated signals, data, instructions, messages, R-wave detection markers, etc., to perform various functions, such as determining occurrences of arrhythmias, delivering electrical stimulation therapy, storing received data, and/or performing any other suitable function. The LCP 100 may additionally receive information such as signals, data, instructions and/or messages from the external medical device through the communication module 102, and the LCP 100 may use the received signals, data, instructions and/or messages to perform various functions, such as determining occurrences of arrhythmias, delivering electrical stimulation therapy, storing received data, and/or performing any other suitable function. The communication module 102 may be configured to use one or more methods for communicating with external devices. For example, the communication module 102 may communicate via radio-frequency (RF) signals, inductive coupling, optical signals, acoustic signals, conducted communication signals, and/or any other signals suitable for communication.

[0066] In the example shown in FIG. 6, the pulse generator module 104 may be electrically connected to the electrodes 114. In some examples, the LCP 100 may additionally include electrodes 114'. In such examples, the pulse generator 104 may also be electrically connected to the electrodes 114'. The pulse generator module 104 may be configured to generate electrical stimulation signals. For example, the pulse generator module 104 may generate and deliver electrical stimulation signals by using energy stored in the battery 112 within the LCP 100 and deliver the generated electrical stimulation signals via the electrodes 114 and/or 114'. Alternatively, or additionally, the pulse generator 104 may include one or more capacitors, and the pulse generator 104 may charge the one or more capacitors by drawing energy from the battery 112. The pulse generator 104 may

then use the energy of the one or more capacitors to deliver the generated electrical stimulation signals via the electrodes 114 and/or 114'. In at least some examples, the pulse generator 104 of the LCP 100 may include switching circuitry to selectively connect one or more of the electrodes 114 and/or 114' to the pulse generator 104 in order to select which of the electrodes 114/114' (and/or other electrodes) the pulse generator 104 delivers the electrical stimulation therapy. The pulse generator module 104 may generate and deliver electrical stimulation signals with particular features or in particular sequences in order to provide one or multiple of a number of different stimulation therapies. For example, the pulse generator module 104 may be configured to generate electrical stimulation signals to provide electrical stimulation therapy to combat bradycardia, tachycardia, cardiac synchronization, bradycardia arrhythmias, tachycardia arrhythmias, fibrillation arrhythmias, cardiac synchronization arrhythmias and/or to produce any other suitable electrical stimulation therapy. Some more common electrical stimulation therapies include anti-tachycardia pacing (ATP) therapy, cardiac resynchronization therapy (CRT), and cardioversion/defibrillation therapy. In some cases, the pulse generator 104 may provide a controllable pulse energy. In some cases, the pulse generator 104 may allow the controller to control the pulse voltage, pulse width, pulse shape or morphology, and/or any other suitable pulse characteristic.

[0067] In some examples, the LCP 100 may include an electrical sensing module 106, and in some cases, a mechanical sensing module 108. The electrical sensing module 106 may be configured to sense the cardiac electrical activity of the heart. For example, the electrical sensing module 106 may be connected to the electrodes 114/114', and the electrical sensing module 106 may be configured to receive cardiac electrical signals conducted through the electrodes 114/114'. The cardiac electrical signals may represent local information from the chamber in which the LCP 100 is implanted. For instance, if the LCP 100 is implanted within a ventricle of the heart (e.g. RV, LV), cardiac electrical signals sensed by the LCP 100 through the electrodes 114/114' may represent ventricular cardiac electrical signals. In some cases, the LCP 100 may be configured to detect cardiac electrical signals from other chambers (e.g. far field), such as the P-wave from the atrium.

[0068] The mechanical sensing module 108 may include one or more sensors, such as an accelerometer, a pressure sensor, a heart sound sensor, a blood-oxygen sensor, a chemical sensor, a temperature sensor, a flow sensor and/or any other suitable sensors that are configured to measure one or more mechanical/chemical parameters of the patient. Both the electrical sensing module 106 and the mechanical sensing module 108 may be connected to a processing module 110, which may provide signals representative of the sensed mechanical parameters. Although described with respect to FIG. 6 as separate sensing modules, in some cases, the electrical sensing module 206 and the mechanical sensing module 208 may be combined into a single sensing module, as desired.

[0069] The electrodes 114/114' can be secured relative to the housing 120 but exposed to the tissue and/or blood surrounding the LCP 100. In some cases, the electrodes 114 may be generally disposed on either end of the LCP 100 and may be in electrical communication with one or more of the modules 102, 104, 106, 108, and 110. The electrodes 114/

114' may be supported by the housing **120**, although in some examples, the electrodes **114/114'** may be connected to the housing **120** through short connecting wires such that the electrodes **114/114'** are not directly secured relative to the housing **120**. In examples where the LCP **100** includes one or more electrodes **114'**, the electrodes **114'** may in some cases be disposed on the sides of the LCP **100**, which may increase the number of electrodes by which the LCP **100** may sense cardiac electrical activity, deliver electrical stimulation and/or communicate with an external medical device. The electrodes **114/114'** can be made up of one or more biocompatible conductive materials such as various metals or alloys that are known to be safe for implantation within a human body. In some instances, the electrodes **114/114'** connected to the LCP **100** may have an insulative portion that electrically isolates the electrodes **114/114'** from adjacent electrodes, the housing **120**, and/or other parts of the LCP **100**. In some cases, one or more of the electrodes **114/114'** may be provided on a tail (not shown) that extends away from the housing **120**.

[0070] The processing module **110** can be configured to control the operation of the LCP **100**. For example, the processing module **110** may be configured to receive electrical signals from the electrical sensing module **106** and/or the mechanical sensing module **108**. Based on the received signals, the processing module **110** may determine, for example, abnormalities in the operation of the heart **H**. Based on any determined abnormalities, the processing module **110** may control the pulse generator module **104** to generate and deliver electrical stimulation in accordance with one or more therapies to treat the determined abnormalities. The processing module **110** may further receive information from the communication module **102**. In some examples, the processing module **110** may use such received information to help determine whether an abnormality is occurring, determine a type of abnormality, and/or to take particular action in response to the information. The processing module **110** may additionally control the communication module **102** to send/receive information to/from other devices.

[0071] In some examples, the processing module **110** may include a pre-programmed chip, such as a very-large-scale integration (VLSI) chip and/or an application specific integrated circuit (ASIC). In such embodiments, the chip may be pre-programmed with control logic in order to control the operation of the LCP **100**. By using a pre-programmed chip, the processing module **110** may use less power than other programmable circuits (e.g. general purpose programmable microprocessors) while still being able to maintain basic functionality, thereby potentially increasing the battery life of the LCP **100**. In other examples, the processing module **110** may include a programmable microprocessor. Such a programmable microprocessor may allow a user to modify the control logic of the LCP **100** even after implantation, thereby allowing for greater flexibility of the LCP **100** than when using a pre-programmed ASIC. In some examples, the processing module **110** may further include a memory, and the processing module **110** may store information on and read information from the memory. In other examples, the LCP **100** may include a separate memory (not shown) that is in communication with the processing module **110**, such that the processing module **110** may read and write information to and from the separate memory.

[0072] The battery **112** may provide power to the LCP **100** for its operations. In some examples, the battery **112** may be a non-rechargeable lithium-based battery. In other examples, a non-rechargeable battery may be made from other suitable materials, as desired. Because the LCP **100** is an implantable device, access to the LCP **100** may be limited after implantation. Accordingly, it is desirable to have sufficient battery capacity to deliver therapy over a period of treatment such as days, weeks, months, years or even decades. In some instances, the battery **112** may be a rechargeable battery, which may help increase the useable lifespan of the LCP **100**. In still other examples, the battery **112** may be some other type of power source, as desired.

[0073] To implant the LCP **100** inside a patient's body, an operator (e.g., a physician, clinician, etc.), may fix the LCP **100** to the cardiac tissue of the patient's heart. To facilitate fixation, the LCP **100** may include one or more anchors **116**. The anchor **116** may include any one of a number of fixation or anchoring mechanisms. For example, the anchor **116** may include one or more pins, staples, threads, screws, helix, tines, and/or the like. In some examples, although not shown, the anchor **116** may include threads on its external surface that may run along at least a partial length of the anchor **116**. The threads may provide friction between the cardiac tissue and the anchor to help fix the anchor **116** within the cardiac tissue. In other examples, the anchor **116** may include other structures such as barbs, spikes, or the like to facilitate engagement with the surrounding cardiac tissue.

[0074] FIG. 7 depicts an example of another or second medical device (MD) **200**, which may be used in conjunction with the LCP **100** (FIG. 6) in order to detect and/or treat cardiac abnormalities. In some cases, the MD **200** may be considered as an example of the IMD **10** (FIG. 1) and/or the LCP **22** (FIG. 2). In the example shown, the MD **200** may include a communication module **202**, a pulse generator module **204**, an electrical sensing module **206**, a mechanical sensing module **208**, a processing module **210**, and a battery **218**. Each of these modules may be similar to the modules **102**, **104**, **106**, **108**, and **110** of LCP **100**. Additionally, the battery **218** may be similar to the battery **112** of the LCP **100**. In some examples, however, the MD **200** may have a larger volume within the housing **220**. In such examples, the MD **200** may include a larger battery and/or a larger processing module **210** capable of handling more complex operations than the processing module **110** of the LCP **100**.

[0075] While it is contemplated that the MD **200** may be another leadless device such as shown in FIG. 6, in some instances the MD **200** may include leads such as leads **212**. The leads **212** may include electrical wires that conduct electrical signals between the electrodes **214** and one or more modules located within the housing **220**. In some cases, the leads **212** may be connected to and extend away from the housing **220** of the MD **200**. In some examples, the leads **212** are implanted on, within, or adjacent to a heart of a patient. The leads **212** may contain one or more electrodes **214** positioned at various locations on the leads **212**, and in some cases at various distances from the housing **220**. Some leads **212** may only include a single electrode **214**, while other leads **212** may include multiple electrodes **214**. Generally, the electrodes **214** are positioned on the leads **212** such that when the leads **212** are implanted within the patient, one or more of the electrodes **214** are positioned to perform a desired function. In some cases, the one or more of the electrodes **214** may be in contact with the patient's

cardiac tissue. In some cases, the one or more of the electrodes **214** may be positioned subcutaneously and outside of the patient's heart. In some cases, the electrodes **214** may conduct intrinsically generated electrical signals to the leads **212**, e.g. signals representative of intrinsic cardiac electrical activity. The leads **212** may, in turn, conduct the received electrical signals to one or more of the modules **202**, **204**, **206**, and **208** of the MD **200**. In some cases, the MD **200** may generate electrical stimulation signals, and the leads **212** may conduct the generated electrical stimulation signals to the electrodes **214**. The electrodes **214** may then conduct the electrical signals and delivery the signals to the patient's heart (either directly or indirectly).

[0076] The mechanical sensing module **208**, as with the mechanical sensing module **108**, may contain or be electrically connected to one or more sensors, such as accelerometers, acoustic sensors, blood pressure sensors, heart sound sensors, blood-oxygen sensors, and/or other sensors which are configured to measure one or more mechanical/chemical parameters of the heart and/or patient. In some examples, one or more of the sensors may be located on the leads **212**, but this is not required. In some examples, one or more of the sensors may be located in the housing **220**.

[0077] While not required, in some examples, the MD **200** may be an implantable medical device. In such examples, the housing **220** of the MD **200** may be implanted in, for example, a transthoracic region of the patient. The housing **220** may generally include any of a number of known materials that are safe for implantation in a human body and may, when implanted, hermetically seal the various components of the MD **200** from fluids and tissues of the patient's body.

[0078] In some cases, the MD **200** may be an implantable cardiac pacemaker (ICP). In this example, the MD **200** may have one or more leads, for example the leads **212**, which are implanted on or within the patient's heart. The one or more leads **212** may include one or more electrodes **214** that are in contact with cardiac tissue and/or blood of the patient's heart. The MD **200** may be configured to sense intrinsically generated cardiac electrical signals and determine, for example, one or more cardiac arrhythmias based on analysis of the sensed signals. The MD **200** may be configured to deliver CRT, ATP therapy, bradycardia therapy, and/or other therapy types via the leads **212** implanted within the heart. In some examples, the MD **200** may additionally be configured provide defibrillation therapy.

[0079] In some instances, the MD **200** may be an implantable cardioverter-defibrillator (ICD). In such examples, the MD **200** may include one or more leads implanted within a patient's heart. The MD **200** may also be configured to sense cardiac electrical signals, determine occurrences of tachyarrhythmias based on the sensed signals, and may be configured to deliver defibrillation therapy in response to determining an occurrence of a tachyarrhythmia. In other examples, the MD **200** may be a subcutaneous implantable cardioverter-defibrillator (S-ICD). In examples where the MD **200** is an S-ICD, one of the leads **212** may be a subcutaneously implanted lead. In at least some examples where the MD **200** is an S-ICD, the MD **200** may include only a single lead which is implanted subcutaneously, but this is not required. In some instances, the lead(s) may have one or more electrodes that are placed subcutaneously and outside of the chest cavity. In other examples, the lead(s)

may have one or more electrodes that are placed inside of the chest cavity, such as just interior of the sternum but outside of the heart H.

[0080] In some examples, the MD **200** may not be an implantable medical device. Rather, the MD **200** may be a device external to the patient's body, and may include skin-electrodes that are placed on a patient's body. In such examples, the MD **200** may be able to sense surface electrical signals (e.g. cardiac electrical signals that are generated by the heart or electrical signals generated by a device implanted within a patient's body and conducted through the body to the skin). In such examples, the MD **200** may be configured to deliver various types of electrical stimulation therapy, including, for example, defibrillation therapy.

[0081] FIG. 8 illustrates an example of a medical device system and a communication pathway through which multiple medical devices **302**, **304**, **306**, and/or **310** may communicate. In the example shown, the medical device system **300** may include LCPs **302** and **304**, external medical device **306**, and other sensors/devices **310**. The external device **306** may be any of the devices described previously with respect to the MD **200**. Other sensors/devices **310** may also be any of the devices described previously with respect to the MD **200**. In some instances, other sensors/devices **310** may include a sensor, such as an accelerometer, an acoustic sensor, a blood pressure sensor, or the like. In some cases, other sensors/devices **310** may include an external programmer device that may be used to program one or more devices of the system **300**.

[0082] Various devices of the system **300** may communicate via communication pathway **308**. For example, the LCPs **302** and/or **304** may sense intrinsic cardiac electrical signals and may communicate such signals to one or more other devices **302/304**, **306**, and **310** of the system **300** via communication pathway **308**. In one example, one or more of the devices **302/304** may receive such signals and, based on the received signals, determine an occurrence of an arrhythmia. In some cases, the device or devices **302/304** may communicate such determinations to one or more other devices **306** and **310** of the system **300**. In some cases, one or more of the devices **302/304**, **306**, and **310** of the system **300** may take action based on the communicated determination of an arrhythmia, such as by delivering a suitable electrical stimulation to the heart of the patient. It is contemplated that the communication pathway **308** may communicate using RF signals, inductive coupling, optical signals, acoustic signals, or any other signals suitable for communication. Additionally, in at least some examples, device communication pathway **308** may include multiple signal types. For instance, other sensors/device **310** may communicate with the external device **306** using a first signal type (e.g. RF communication) but communicate with the LCPs **302/304** using a second signal type (e.g. conducted communication). Further, in some examples, communication between devices may be limited. For instance, as described above, in some examples, the LCPs **302/304** may communicate with the external device **306** only through other sensors/devices **310**, where the LCPs **302/304** send signals to other sensors/devices **310**, and other sensors/devices **310** relay the received signals to the external device **306**.

[0083] In some cases, the communication pathway **308** may include conducted communication. Accordingly, devices of the system **300** may have components that allow

for such conducted communication. For instance, the devices of system 300 may be configured to transmit conducted communication signals (e.g. current and/or voltage pulses) into the patient's body via one or more electrodes of a transmitting device, and may receive the conducted communication signals (e.g. pulses) via one or more electrodes of a receiving device. The patient's body may "conduct" the conducted communication signals (e.g. pulses) from the one or more electrodes of the transmitting device to the electrodes of the receiving device in the system 300. In such examples, the delivered conducted communication signals (e.g. pulses) may differ from pacing or other therapy signals. For example, the devices of the system 300 may deliver electrical communication pulses at an amplitude/pulse width that is sub-capture threshold to the heart. Although, in some cases, the amplitude/pulse width of the delivered electrical communication pulses may be above the capture threshold of the heart, but may be delivered during a blanking period of the heart (e.g. refractory period) and/or may be incorporated in or modulated onto a pacing pulse, if desired.

[0084] Delivered electrical communication pulses may be modulated in any suitable manner to encode communicated information. In some cases, the communication pulses may be pulse width modulated or amplitude modulated. Alternatively, or in addition, the time between pulses may be modulated to encode desired information. In some cases, conducted communication pulses may be voltage pulses, current pulses, biphasic voltage pulses, biphasic current pulses, or any other suitable electrical pulse as desired.

[0085] FIG. 9 shows an illustrative medical device system. In FIG. 9, an LCP 402 is shown fixed to the interior of the left ventricle of the heart 410, and a pulse generator 406 is shown coupled to a lead 412 having one or more electrodes 408a-408c. In some cases, the pulse generator 406 may be part of a subcutaneous implantable cardioverter-defibrillator (S-ICD), and the one or more electrodes 408a-408c may be positioned subcutaneously. In some cases, the one or more electrodes 408a-408c may be placed inside of the chest cavity but outside of the heart, such as just interior of the sternum.

[0086] In some cases, the LCP 402 may communicate with the subcutaneous implantable cardioverter-defibrillator (S-ICD). In some cases, the lead 412 and/or pulse generator 406 may include an accelerometer 414 that may, for example, be configured to sense vibrations that may be indicative of heart sounds.

[0087] In some cases, the LCP 402 may be in the right ventricle, right atrium, left ventricle or left atrium of the heart, as desired. In some cases, more than one LCP 402 may be implanted. For example, one LCP may be implanted in the right ventricle and another may be implanted in the right atrium. In another example, one LCP may be implanted in the right ventricle and another may be implanted in the left ventricle. In yet another example, one LCP may be implanted in each of the chambers of the heart.

[0088] FIG. 10 is a side view of an illustrative implantable leadless cardiac pacemaker (LCP) 610. The LCP 610 may be similar in form and function to the LCP 100 described above. The LCP 610 may include any of the modules and/or structural features described above with respect to the LCP 100 described above. The LCP 610 may include a shell or housing 612 having a proximal end 614 and a distal end 616. The illustrative LCP 610 includes a first electrode 620 secured relative to the housing 612 and positioned adjacent

to the distal end 616 of the housing 612 and a second electrode 622 secured relative to the housing 612 and positioned adjacent to the proximal end 614 of the housing 612. In some cases, the housing 612 may include a conductive material and may be insulated along a portion of its length. A section along the proximal end 614 may be free of insulation so as to define the second electrode 622. The electrodes 620, 622 may be sensing and/or pacing electrodes to provide electro-therapy and/or sensing capabilities. The first electrode 620 may be capable of being positioned against or may otherwise contact the cardiac tissue of the heart while the second electrode 622 may be spaced away from the first electrode 620. The first and/or second electrodes 620, 622 may be exposed to the environment outside the housing 612 (e.g. to blood and/or tissue).

[0089] In some cases, the LCP 610 may include a pulse generator (e.g., electrical circuitry) and a power source (e.g., a battery) within the housing 612 to provide electrical signals to the electrodes 620, 622 to control the pacing/sensing electrodes 620, 622. While not explicitly shown, the LCP 610 may also include, a communications module, an electrical sensing module, a mechanical sensing module, and/or a processing module, and the associated circuitry, similar in form and function to the modules 102, 106, 108, 110 described above. The various modules and electrical circuitry may be disposed within the housing 612. Electrical connections between the pulse generator and the electrodes 620, 622 may allow electrical stimulation to heart tissue and/or sense a physiological condition.

[0090] In the example shown, the LCP 610 includes a fixation mechanism 624 proximate the distal end 616 of the housing 612. The fixation mechanism 624 is configured to attach the LCP 610 to a wall of the heart H, or otherwise anchor the LCP 610 to the anatomy of the patient. In some instances, the fixation mechanism 624 may include one or more, or a plurality of hooks or tines 626 anchored into the cardiac tissue of the heart H to attach the LCP 610 to a tissue wall. In other instances, the fixation mechanism 624 may include one or more, or a plurality of passive tines, configured to entangle with trabeculae within the chamber of the heart H and/or a helical fixation anchor configured to be screwed into a tissue wall to anchor the LCP 610 to the heart H. These are just examples.

[0091] The LCP 610 may further include a docking member 630 proximate the proximal end 614 of the housing 612. The docking member 630 may be configured to facilitate delivery and/or retrieval of the LCP 610. For example, the docking member 630 may extend from the proximal end 614 of the housing 612 along a longitudinal axis of the housing 612. The docking member 630 may include a head portion 632 and a neck portion 634 extending between the housing 612 and the head portion 632. The head portion 632 may be an enlarged portion relative to the neck portion 634. For example, the head portion 632 may have a radial dimension from the longitudinal axis of the LCP 610 that is greater than a radial dimension of the neck portion 634 from the longitudinal axis of the LCP 610. In some cases, the docking member 630 may further include a tether retention structure 636 extending from or recessed within the head portion 632. The tether retention structure 636 may define an opening 638 configured to receive a tether or other anchoring mechanism therethrough. While the retention structure 636 is shown as having a generally "U-shaped" configuration, the retention structure 636 may take any shape that provides an

enclosed perimeter surrounding the opening 638 such that a tether may be securably and releasably passed (e.g. looped) through the opening 638. In some cases, the retention structure 636 may extend through the head portion 632, along the neck portion 634, and to or into the proximal end 614 of the housing 612. The docking member 630 may be configured to facilitate delivery of the LCP 610 to the intracardiac site and/or retrieval of the LCP 610 from the intracardiac site. While this describes one example docking member 630, it is contemplated that the docking member 630, when provided, can have any suitable configuration.

[0092] It is contemplated that the LCP 610 may include one or more pressure sensors 640 coupled to or formed within the housing 612 such that the pressure sensor(s) is exposed to the environment outside the housing 612 to measure blood pressure within the heart. For example, if the LCP 610 is placed in the left ventricle, the pressure sensor(s) 640 may measure the pressure within the left ventricle. If the LCP 610 is placed in another portion of the heart (such as one of the atriums or the right ventricle), the pressure sensor(s) may measure the pressure within that portion of the heart. The pressure sensor(s) 640 may include a MEMS device, such as a MEMS device with a pressure diaphragm and piezoresistors on the diaphragm, a piezoelectric sensor, a capacitor-Micro-machined Ultrasonic Transducer (cMUT), a condenser, a micro-monometer, or any other suitable sensor adapted for measuring cardiac pressure. The pressure sensor(s) 640 may be part of a mechanical sensing module described herein. It is contemplated that the pressure measurements obtained from the pressure sensor(s) 640 may be used to generate a pressure curve over cardiac cycles. The pressure readings may be taken in combination with impedance measurements (e.g. the impedance between electrodes 620 and 622) to generate a pressure-impedance loop for one or more cardiac cycles as will be described in more detail below. The impedance may be a surrogate for chamber volume, and thus the pressure-impedance loop may be representative for a pressure-volume loop for the heart H.

[0093] In some embodiments, the LCP 610 may be configured to measure impedance between the electrodes 620, 622. More generally, the impedance may be measured between other electrode pairs, such as the additional electrodes 114' described above. In some cases, the impedance may be measured between two spaced LCP's, such as two LCP's implanted within the same chamber (e.g. LV) of the heart H, or two LCP's implanted in different chambers of the heart H (e.g. RV and LV). The processing module of the LCP 610 and/or external support devices may derive a measure of cardiac volume from intracardiac impedance measurements made between the electrodes 620, 622 (or other electrodes). Primarily due to the difference in the resistivity of blood and the resistivity of the cardiac tissue of the heart H, the impedance measurement may vary during a cardiac cycle as the volume of blood (and thus the volume of the chamber) surrounding the LCP changes. In some cases, the measure of cardiac volume may be a relative measure, rather than an actual measure. In some cases, the intracardiac impedance may be correlated to an actual measure of cardiac volume via a calibration process, sometimes performed during implantation of the LCP(s). During the calibration process, the actual cardiac volume may be determined using fluoroscopy or the like, and the measured impedance may be correlated to the actual cardiac volume.

[0094] In some cases, the LCP 610 may be provided with energy delivery circuitry operatively coupled to the first electrode 620 and the second electrode 622 for causing a current to flow between the first electrode 620 and the second electrode 622 in order to determine the impedance between the two electrodes 620, 622 (or other electrode pair). It is contemplated that the energy delivery circuitry may also be configured to deliver pacing pulses via the first and/or second electrodes 620, 622. The LCP 610 may further include detection circuitry operatively coupled to the first electrode 620 and the second electrode 622 for detecting an electrical signal received between the first electrode 620 and the second electrode 622. In some instances, the detection circuitry may be configured to detect cardiac signals received between the first electrode 620 and the second electrode 622.

[0095] When the energy delivery circuitry delivers a current between the first electrode 620 and the second electrode 622, the detection circuitry may measure a resulting voltage between the first electrode 620 and the second electrode 622 (or between a third and fourth electrode separate from the first electrode 620 and the second electrode 622, not shown) to determine the impedance. When the energy delivery circuitry delivers a voltage between the first electrode 620 and the second electrode 622, the detection circuitry may measure a resulting current between the first electrode 620 and the second electrode 622 (or between a third and fourth electrode separate from the first electrode 620 and the second electrode 622) to determine the impedance.

[0096] FIG. 11 is a flow diagram showing an illustrative method 700 of monitoring a patient's heart using an implantable medical device (such as, but not limited to, the IMD 10 of FIG. 1, the LCP of FIG. 2, the LCP of FIG. 6, the LCP of FIG. 10) that is configured for implantation proximate the patient's heart and that includes a sensor configured to sense an indication of cardiac activity and a dynamically adjustable sense channel configured to process a signal from the sensor. The implantable medical device may further include a controller to dynamically adjust the performance level of the sense channel. As generally seen at block 702, an indication of cardiac activity may be sensed using the sensor. The sensor outputs a signal to the dynamically adjustable sense channel. The dynamically adjustable sense channel may be operated at a performance level to process the signal from the sensor and output the processed signal to the controller, as indicated at block 704. In some cases, and as seen at block 706, the processed signal may be analyzed for an indication of signal quality and a determination may be made as to whether the indication of signal quality is acceptable, as indicated at block 708. In some cases, and as seen at block 710, the performance level of the dynamically adjustable sense channel may be adjusted upward if the indication of signal quality is not acceptable. In some cases, the performance level of the dynamically adjustable sense channel may be adjusted downward to a lower performance level if the indication of signal quality exceeds a threshold in order to help reduce power consumption of the implantable medical device. In some cases, these steps may be repeated until the indication of signal quality is determined to be acceptable, as indicated by a dashed control line 712.

[0097] It should be understood that this disclosure is, in many respects, only illustrative. Changes may be made in details, particularly in matters of shape, size, and arrangement of steps without exceeding the scope of the disclosure.

This may include, to the extent that it is appropriate, the use of any of the features of one example embodiment being used in other embodiments. The disclosure's scope is, of course, defined in the language in which the appended claims are expressed.

What is claimed is:

1. An implantable medical device (IMD) comprising:
 - a housing;
 - a sensor for providing a sensor output signal;
 - a sense channel configured to receive the sensor output signal from the sensor, the sense channel configured to process the sensor output signal and output a sense channel output signal;
 - the sense channel having an adjustable performance level, wherein for a higher performance level the sense channel consumes more power and for a lower performance level the sense channel consumes less power;
 - a controller configured to receive the sense channel output signal; and
 - the controller is configured to adjust the performance level of the sense channel to achieve more performance and more power consumption when a higher degree of performance is desired and to achieve less performance and less power consumption when a high degree of performance is not desired.
2. The IMD of claim 1, wherein the controller is configured to determine a measure of a signal-to-noise ratio (SNR) of the sense channel output signal, and to adjust the performance level of the sense channel based at least in part on the measure of the signal-to-noise ratio (SNR) of the sense channel output signal.
3. The IMD of claim 1, wherein the performance level of the sense channel is adjusted by adjusting a noise floor of a sense amplifier of the sense channel.
4. The IMD of claim 1, wherein the performance level of the sense channel is adjusted by adjusting a resolution of the sense channel and/or a supply voltage of a sense amplifier of the sense channel.
5. The IMD of claim 1, wherein the performance level of the sense channel is adjusted by adjusted a sample rate of the sense channel.
6. The IMD of claim 1, wherein the sense channel comprises a sense amplifier, and wherein the performance level of the sense channel is adjusted by adjusting a bias of the sense amplifier.
7. The IMD of claim 1, wherein the sense channel is activated and deactivated at a duty cycle, and wherein the performance level of the sense channel is adjusted by adjusting the duty cycle of the sense channel.
8. The IMD of claim 1, wherein the sense channel samples the sensor output signal at a sample rate, and wherein the performance level of the sense channel is adjusted by adjusting the sample rate of the sense channel.
9. The IMD of claim 1, wherein the sense channel comprises an analog-to-digital (A/D) converter with an adjustable resolution, and wherein the performance level of the sense channel is adjusted by adjusting the resolution of the A/D converter.
10. The IMD of claim 1, wherein the IMD is configured to sense and process two or more different cardiac signals, and wherein the controller is configured to adjust the performance level of the sense channel based at least in part on which of the two or more different cardiac signals is to be sensed and processed.
11. The IMD of claim 10, wherein the two or more different cardiac signals comprise an R-wave and a P-Wave, and wherein the controller is configured to adjust the performance level of the sense channel to achieve more performance and more power consumption when the P-Wave is to be sensed and processed, and to adjust the performance level of the sense channel to achieve less performance and less power consumption when the R-Wave is to be sensed and processed.
12. The IMD of claim 1, wherein the controller is configured to dynamically adjust the performance level of the sense channel.
13. The IMD of claim 1, comprising a leadless cardiac pacemaker (LCP).
14. The IMD of claim 1, comprising an insertable cardiac monitor (ICM).
15. A leadless cardiac pacemaker (LCP) configured for implantation into a patient's heart, the LCP configured to sense electrical cardiac activity and to deliver pacing pulses to the patient's heart, the LCP comprising:
 - a housing;
 - a first electrode secured relative to the housing;
 - a second electrode secured relative to the housing, the second electrode spaced from the first electrode;
 - a controller disposed within the housing and operably coupled to the first electrode and the second electrode such that the controller is capable of receiving, via the first electrode and the second electrode, electrical cardiac signals of the heart;
 - a sensor disposed within the housing, the sensor configured to sense an indication of cardiac activity and provide a sensor output signal;
 - a sense channel configured to receive the sensor output signal from the sensor, the sense channel configured to process the sensor output signal and output a sense channel output signal;
 - the sense channel having an adjustable performance level, wherein for a higher performance level the sense channel consumes more power and for a lower performance level the sense channel consumes less power;
 - the controller configured to receive the sense channel output signal; and
 - the controller is configured to adjust the performance level of the sense channel to achieve more performance and more power consumption when a higher degree of performance is desired and to achieve less performance and less power consumption when a high degree of performance is not desired.
16. The LCP of claim 15, wherein the LCP is configured to sense and process two or more different cardiac signals, and wherein the controller is configured to adjust the performance level of the sense channel based at least in part on which of the two or more different cardiac signals is to be sensed and processed.
17. The LCP of claim 15, wherein the sensor comprises an electrical signal sensor that senses an electric signal between the first electrode and the second electrode.
18. The LCP of claim 15, wherein the sensor comprises one or more of an accelerometer, a pressure sensor, a gyroscope, and a magnetic sensor.
19. A method of monitoring a patient's heart using an implantable medical device configured for implantation proximate the patient's heart, the implantable medical device including a sensor configured to sense an indication

of cardiac activity and a dynamically adjustable sense channel configured to process a signal from the sensor, the implantable medical device further including a controller operably coupled to the dynamically adjustable sense channel, the method comprising:

sensing an indication of cardiac activity using the sensor, the sensor outputting a signal to the dynamically adjustable sense channel;

operating the dynamically adjustable sense channel at a performance level to process the signal from the sensor and output the processed signal to the controller;

analyzing the processed signal for an indication of signal quality;

determining if the indication of signal quality is acceptable; and

adjusting the performance level of the dynamically adjustable sense channel if the indication of signal quality is not acceptable.

20. The method of claim **19**, further comprising:

repeating the sensing, operating, analyzing, determining and adjusting steps until the indication of signal quality is determined to be acceptable.

* * * * *

专利名称(译)	具有带有性能调节的感测通道的可植入医疗设备		
公开(公告)号	US20180116540A1	公开(公告)日	2018-05-03
申请号	US15/792353	申请日	2017-10-24
[标]申请(专利权)人(译)	心脏起搏器股份公司		
申请(专利权)人(译)	心脏起搏器, INC.		
当前申请(专利权)人(译)	心脏起搏器, INC.		
[标]发明人	KHARAM ALEKSANDRA BALCZEWSKI RON A HUELSKAMP PAUL MAILE KEITH R		
发明人	KHARAM, ALEKSANDRA BALCZEWSKI, RON A. HUELSKAMP, PAUL JUFFER, LANCE ERIC MAILE, KEITH R.		
IPC分类号	A61B5/0456 A61B5/00 A61N1/375 A61N1/37 A61N1/372		
CPC分类号	A61B5/0456 A61B5/7203 A61B5/686 A61N1/3756 A61N1/3704 A61B5/7221 A61N1/37512 A61N1/37252 A61B2560/0209 A61B5/0402 A61N1/3708 A61N1/37205 A61N1/378		
优先权	62/413726 2016-10-27 US		
其他公开文献	US10561330		
外部链接	Espacenet USPTO		

摘要(译)

可植入医疗设备 (IMD) 可以包括用于提供传感器输出信号的传感器和被配置为从传感器接收传感器输出信号的传感通道。感测通道可以被配置为处理传感器输出信号并输出感测通道输出信号。感测通道可以具有可调节的性能水平, 其中对于较高的性能水平, 感测通道消耗比低性能水平更多的功率。控制器可以被配置为当期望更高度度的感测信道性能时调整感测信道的性能水平以实现更多性能和更多功耗, 并且当不期望更高度度的性能时实现更少的性能和更少的功耗。

