



US009364178B2

(12) **United States Patent**
Duncan et al.

(10) **Patent No.:** **US 9,364,178 B2**
(45) **Date of Patent:** **Jun. 14, 2016**

(54) ROBOTIC VEHICLE CONTROL	6,950,022 B2	9/2005	Breed	
	7,082,359 B2	7/2006	Breed	
(71) Applicant: Elwha LLC , Bellevue, WA (US)	7,639,148 B2 *	12/2009	Victor	340/576
	7,834,867 B2	11/2010	Sprague et al.	
	7,894,951 B2	2/2011	Norris et al.	
(72) Inventors: William D. Duncan , Kirkland, WA (US); Roderick A. Hyde , Redmond, WA (US)	7,956,858 B2	6/2011	Sprague et al.	
	7,978,189 B2	7/2011	Sprague et al.	
	7,986,315 B2	7/2011	Sprague et al.	
	8,126,642 B2	2/2012	Trepagnier et al.	
(73) Assignee: Elwha LLC , Bellevue, WA (US)	8,280,623 B2	10/2012	Trepagnier et al.	
	8,355,013 B2	1/2013	Sprague et al.	
(*) Notice: Subject to any disclaimer, the term of this patent is extended or adjusted under 35 U.S.C. 154(b) by 157 days.	2003/0002690 A1	1/2003	Breed et al.	
	2003/0136600 A1	7/2003	Breed et al.	
	2005/0125117 A1	6/2005	Breed	
	2006/0220883 A1	10/2006	Matos	

(Continued)

(21) Appl. No.: **14/091,060**

FOREIGN PATENT DOCUMENTS

(22) Filed: **Nov. 26, 2013**

JP	2009/269431 A	11/2009
KR	2008/0010151 A	1/2008

(65) **Prior Publication Data**

OTHER PUBLICATIONS

US 2015/0149021 A1 May 28, 2015

PCT International Search Report; International App. No. PCT/US2014/067119; Mar. 27, 2015; pp. 1-4.

(51) **Int. Cl.**

G05D 1/00 (2006.01)

A61B 5/18 (2006.01)

B60W 30/00 (2006.01)

A61B 5/00 (2006.01)

Primary Examiner — John Q Nguyen

Assistant Examiner — Anshul Sood

(74) *Attorney, Agent, or Firm* — Foley & Lardner LLP

(52) **U.S. Cl.**

CPC **A61B 5/18** (2013.01); **A61B 5/6893** (2013.01); **B60W 30/00** (2013.01); **G05D 1/0061** (2013.01); **A61B 2560/0242** (2013.01); **G05D 2201/0213** (2013.01)

(57) **ABSTRACT**

A vehicle includes a detection system, configured to acquire data regarding operation of the vehicle, and a robotic driving device, configured to provide robotic control of the vehicle. The vehicle also includes a control system configured to determine whether the robotic driving device is activated, such that the vehicle is in robotic driving mode; receive a request by a prospective operator of the vehicle to deactivate the robotic driving device to initiate a manual driving mode; determine whether the prospective operator is impaired based on the data; and selectively grant or refuse the request based on the determination.

(58) **Field of Classification Search**

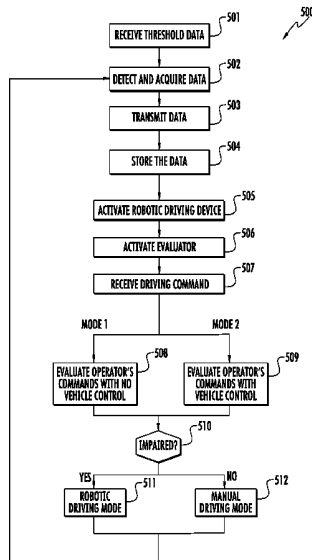
CPC B60W 30/00; B60W 40/08
USPC 701/23, 29.2
See application file for complete search history.

(56) **References Cited**

U.S. PATENT DOCUMENTS

6,474,683 B1	11/2002	Breed et al.
6,793,242 B2	9/2004	Breed et al.

32 Claims, 8 Drawing Sheets



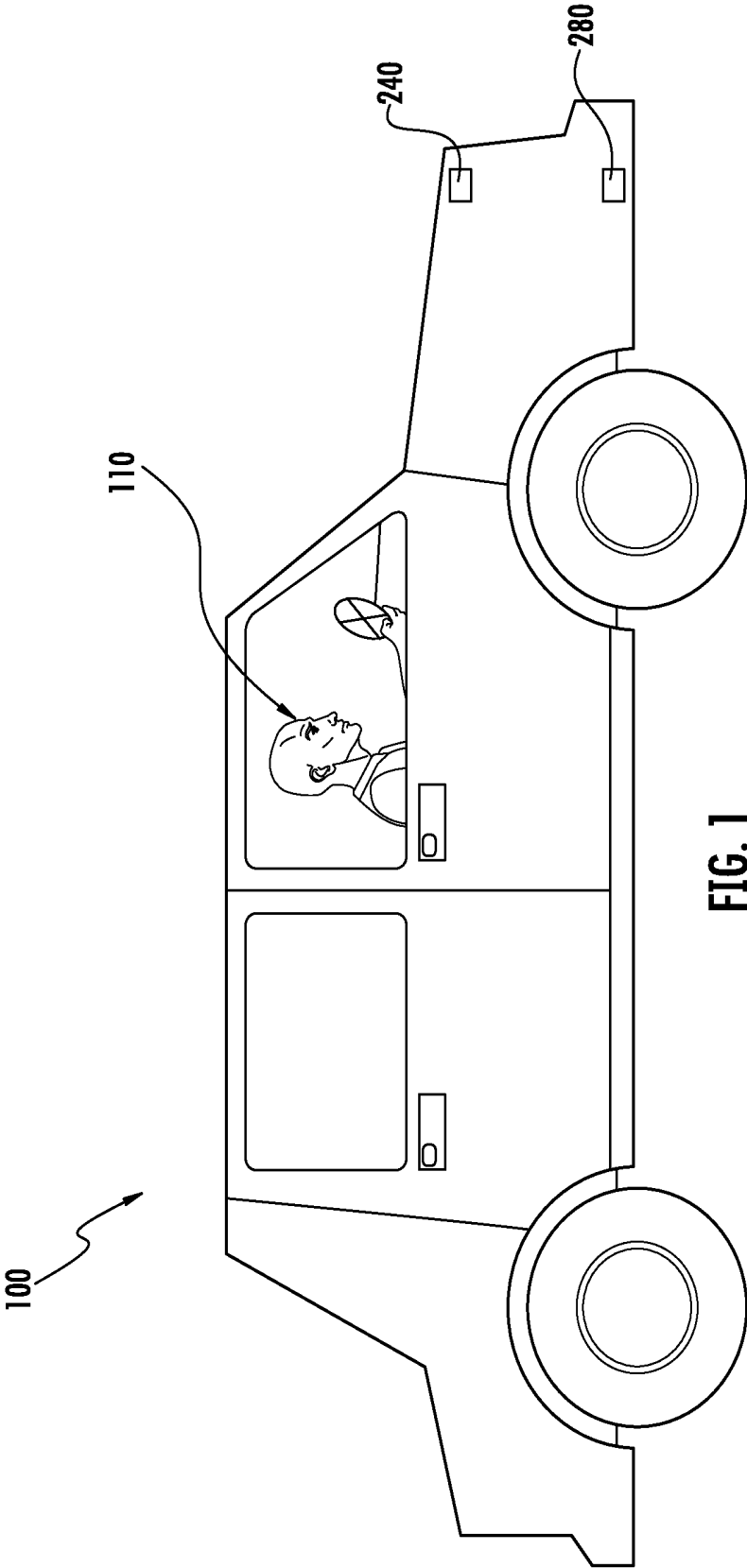
(56)

References Cited

U.S. PATENT DOCUMENTS

2007/0219720	A1 *	9/2007	Trepagnier et al.	701/300	2011/0210867	A1	9/2011	Benedikt
2007/0273794	A1	11/2007	Sprague et al.		2011/0234919	A1	9/2011	Sprague et al.
2008/0122636	A1	5/2008	Matos		2011/0282130	A1	11/2011	Krueger
2010/0106356	A1	4/2010	Trepagnier et al.		2012/0101680	A1	4/2012	Trepagnier et al.
2010/0305778	A1 *	12/2010	Dorneich et al.	701/2	2012/0206252	A1	8/2012	Sherony et al.
2011/0018986	A1	1/2011	Sprague et al.		2012/0283912	A1 *	11/2012	Lee et al.
2011/0025930	A1	2/2011	Sprague et al.		2013/0070043	A1	3/2013	Geva et al.
2011/0025983	A1	2/2011	Sprague et al.		2013/0131907	A1	5/2013	Green et al.
					2013/0304514	A1	11/2013	Hyde et al.
					2014/0375462	A1 *	12/2014	Biondo et al.
					2015/0066284	A1 *	3/2015	Yopp 701/29.2

* cited by examiner



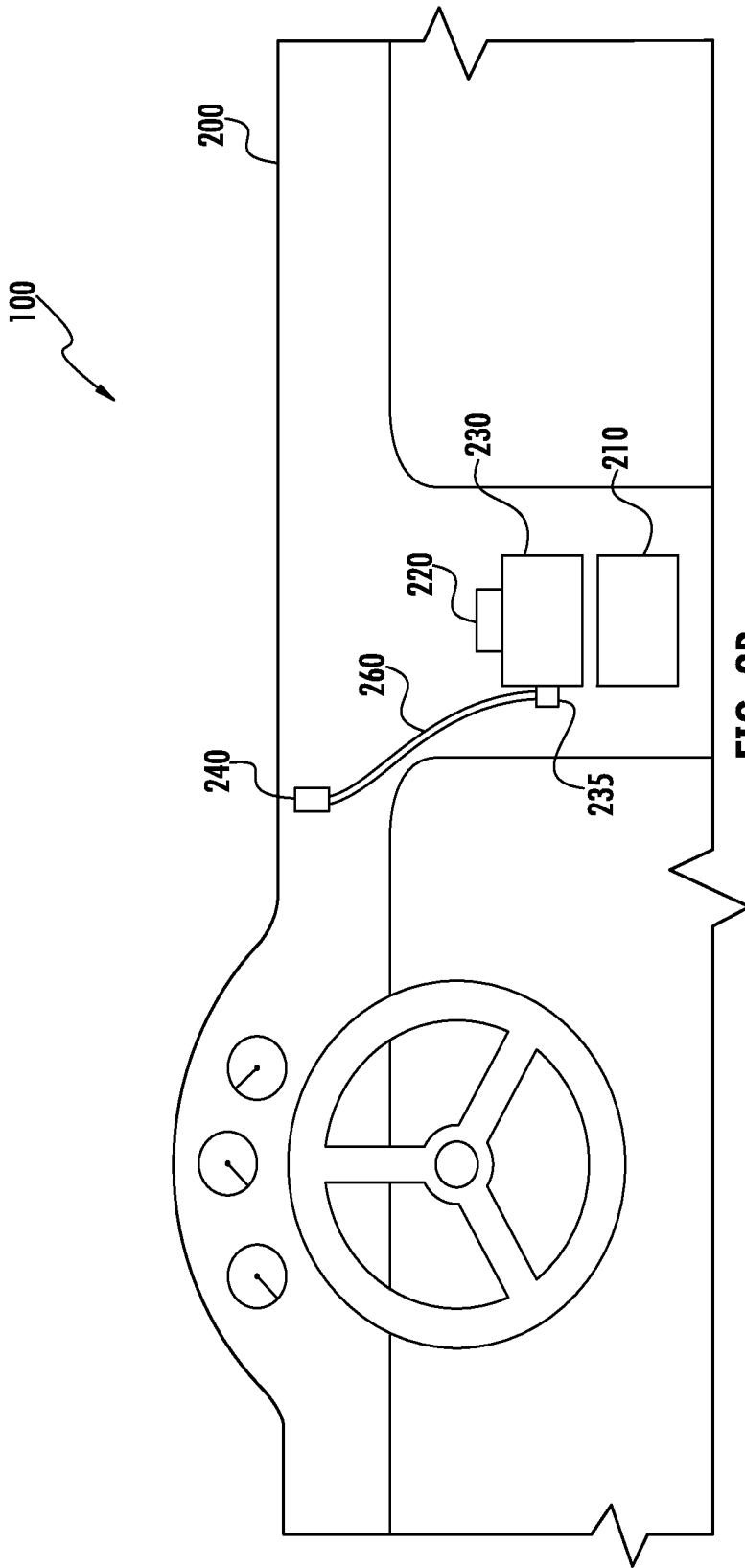


FIG. 2B

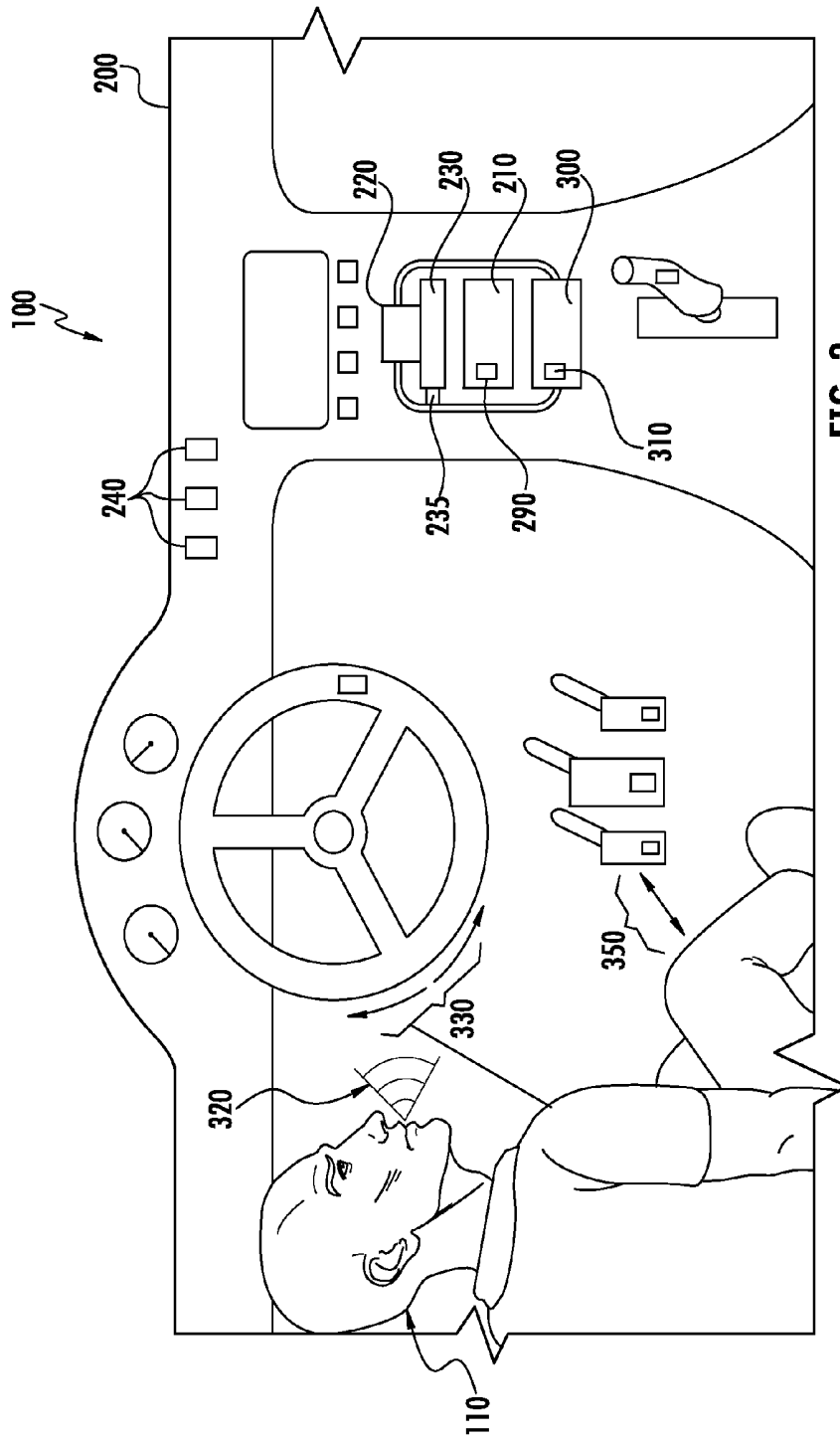


FIG. 3

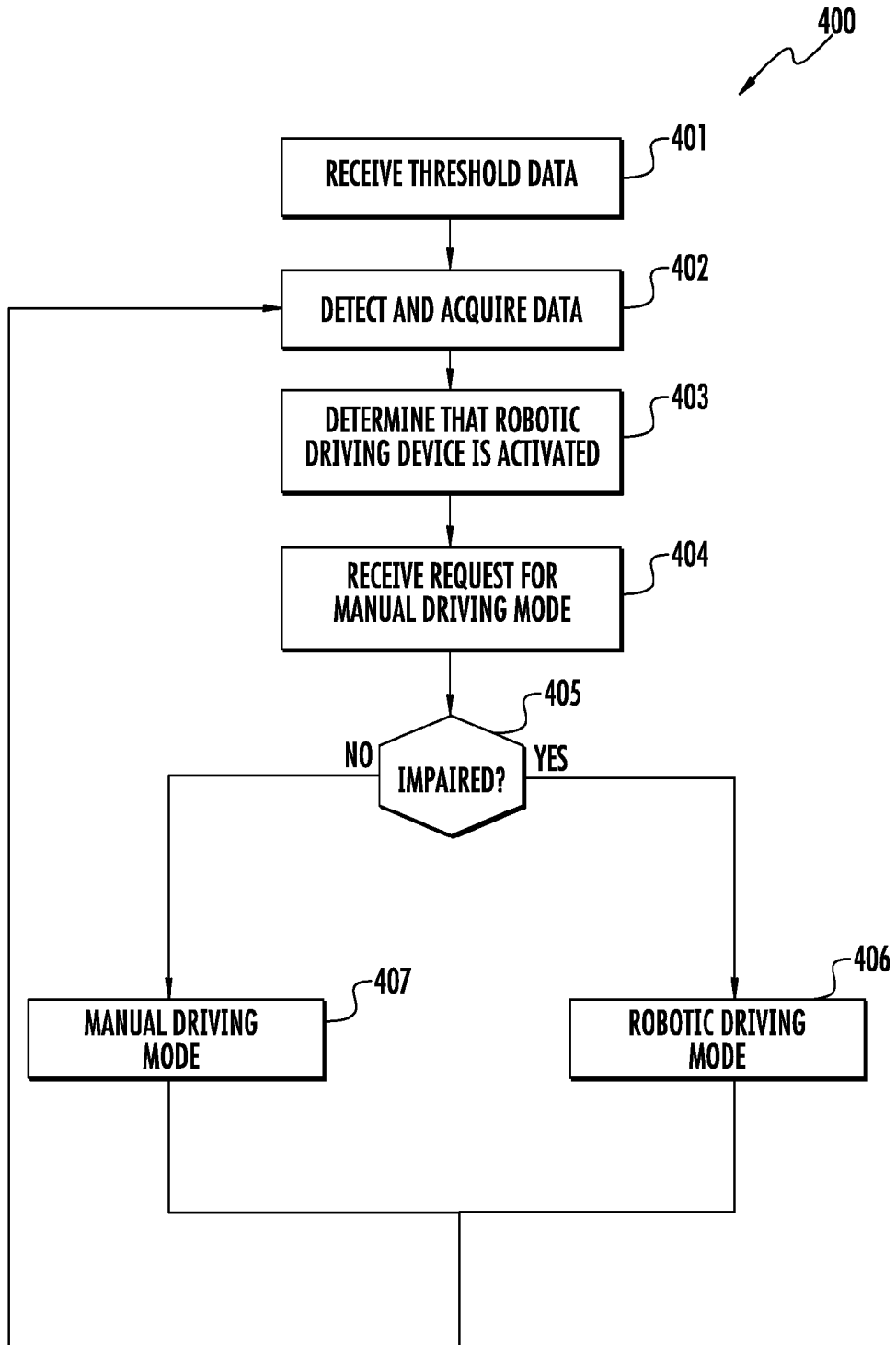


FIG. 4

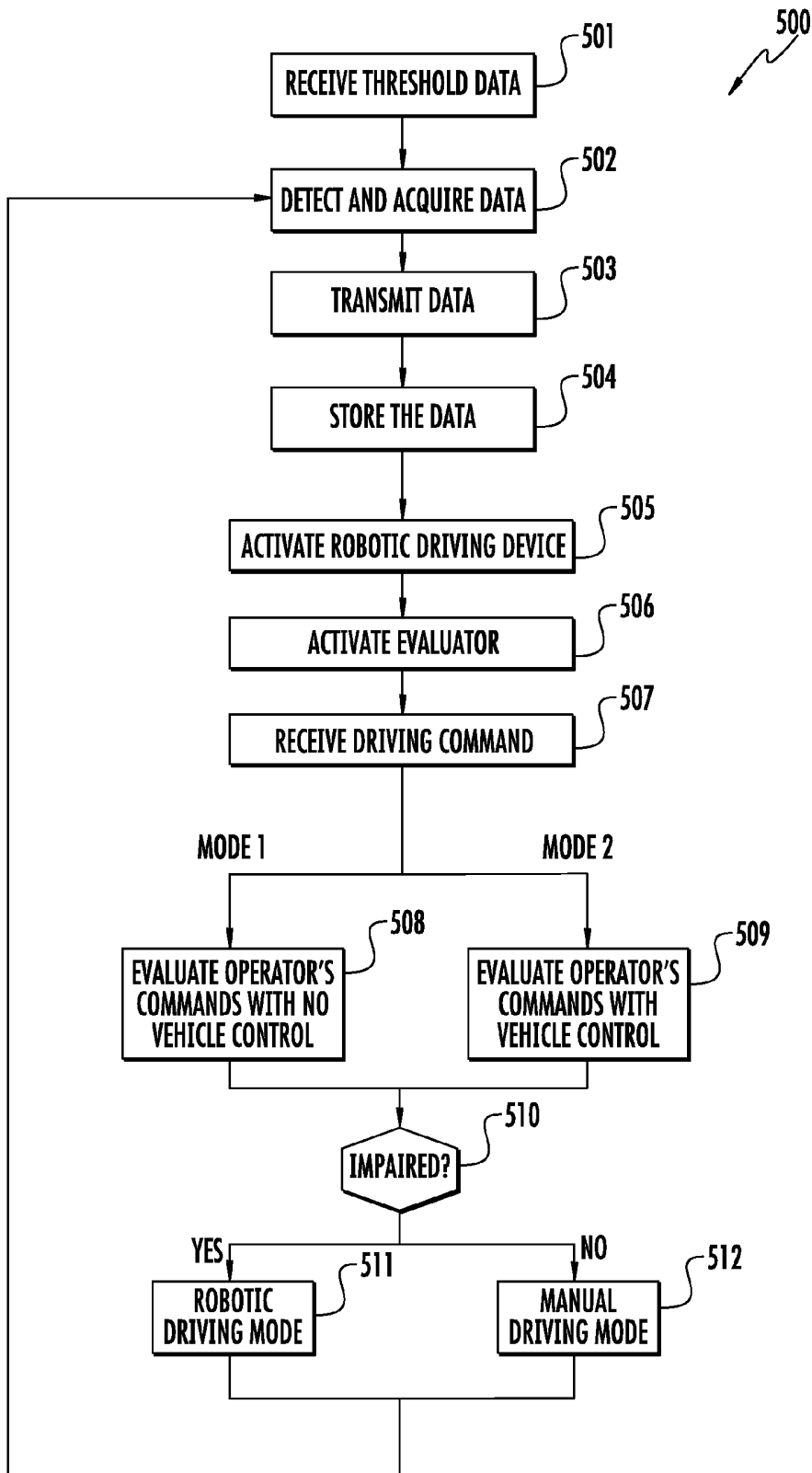


FIG. 5

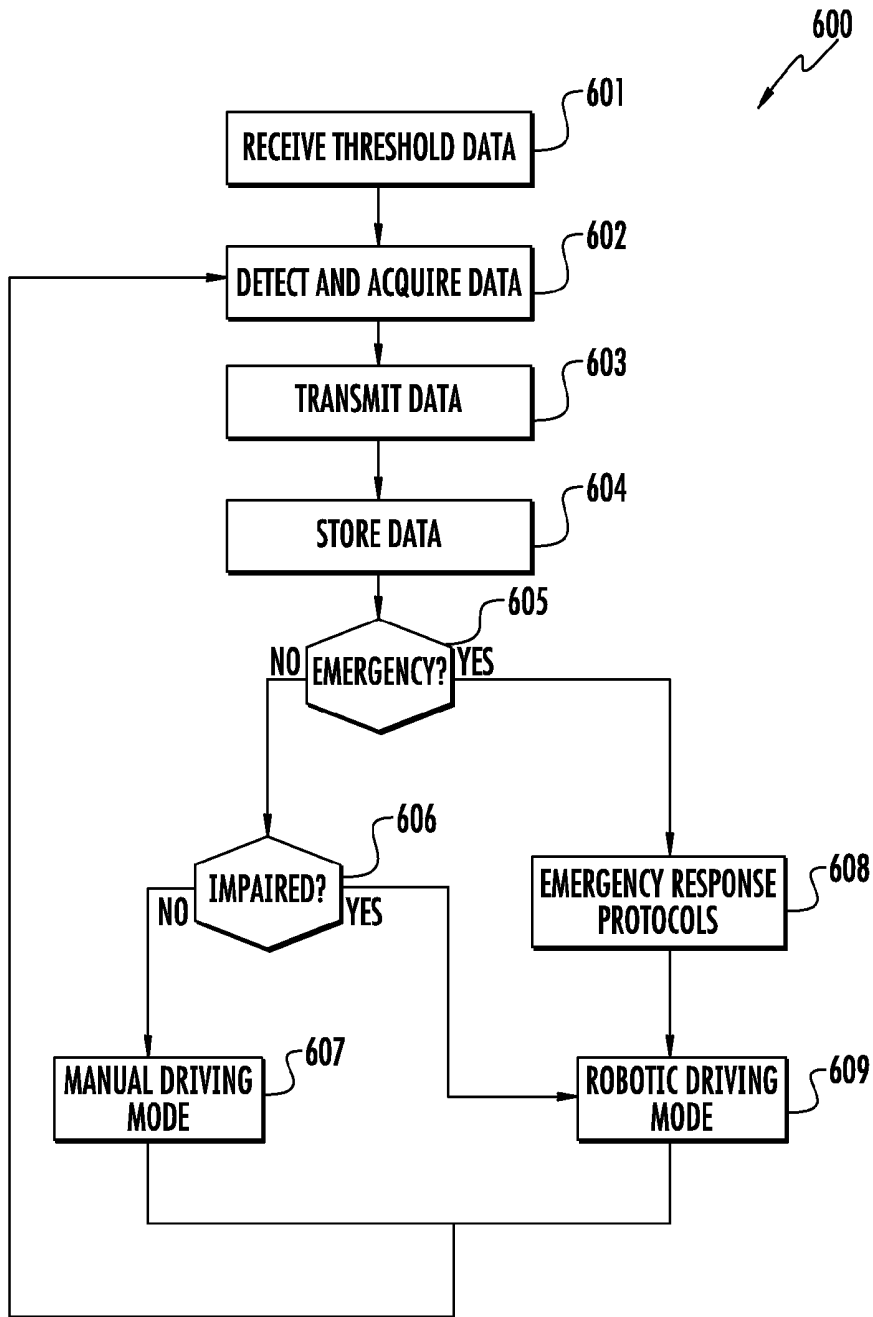


FIG. 6

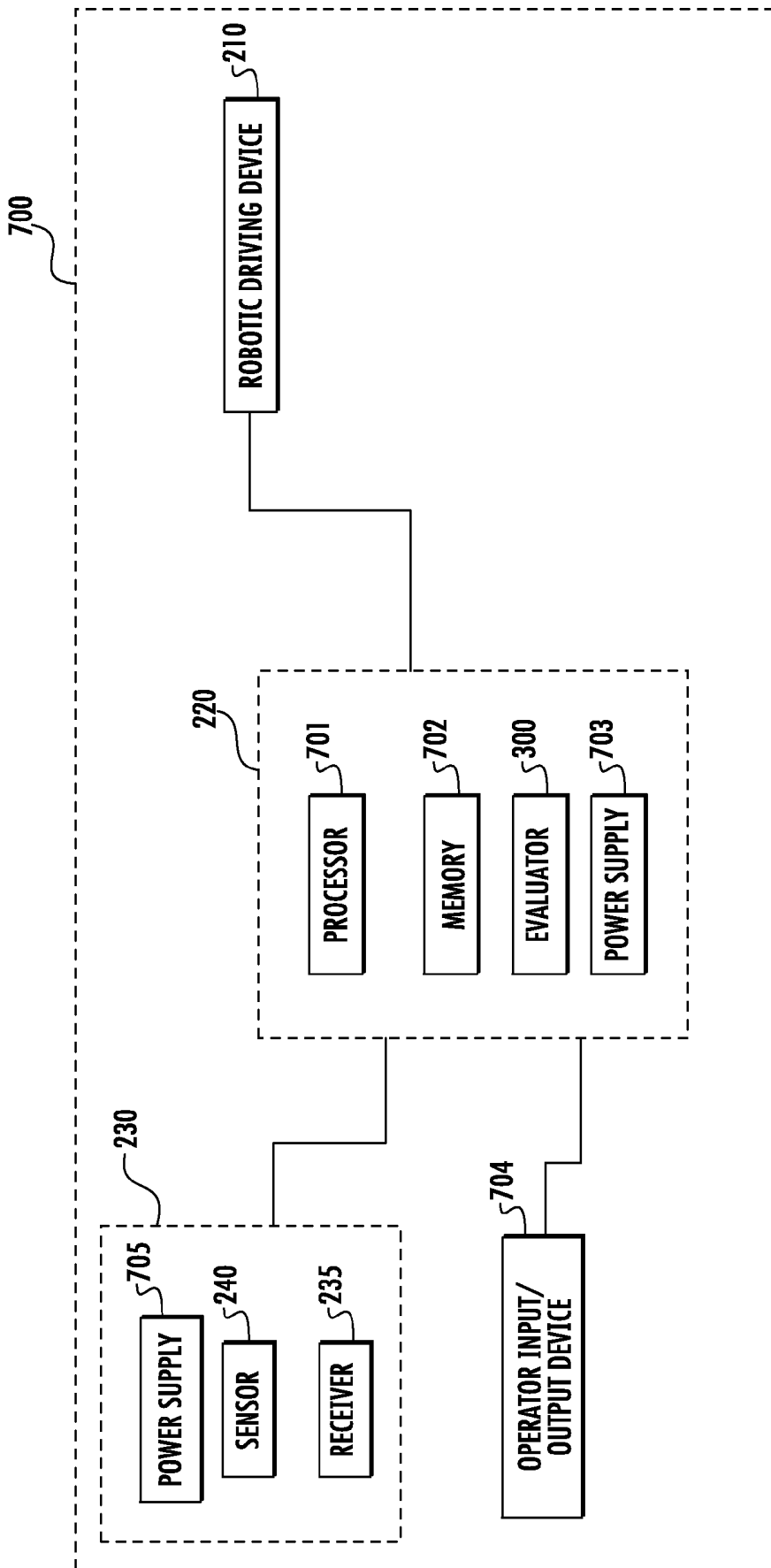


FIG. 7

ROBOTIC VEHICLE CONTROL

BACKGROUND

With the general population increasing and vehicles becoming cheaper and easier to obtain, the number of people on roadways has increased. As roadways become more crowded, the likelihood of accidents increases. However, technology has also advanced, leading to an increase in vehicle safety features, which can limit the severity and frequency of such vehicular accidents.

SUMMARY

One embodiment relates to a vehicle comprising a detection system configured to acquire data regarding operation of the vehicle. The vehicle also includes a robotic driving device configured to provide robotic control of the vehicle. The vehicle further includes a control system configured to determine that the robotic driving device is activated, such that the vehicle is in a robotic driving mode; receive a request by a prospective operator of the vehicle to deactivate the robotic driving device to initiate a manual driving mode; determine whether the prospective operator is impaired based on the data; and selectively deactivate the robotic driving device based on the determination.

Another embodiment relates to an apparatus for detecting and responding to a potential impairment of an operator of a vehicle, comprising a detection system configured to acquire data regarding the operator during constrained operation of the vehicle. The apparatus also includes a robotic driving device configured to provide robotic operation of the vehicle during the operator's constrained operation of the vehicle. The apparatus further includes an evaluator configured to evaluate the operator during the operator's constrained operation for an impairment based on the data. The apparatus also includes a control system configured to selectively deactivate the robotic driving device based on signals received from the evaluator.

Still another embodiment relates to an apparatus for detecting and responding to an emergency situation in a vehicle, comprising a detection system configured to acquire data regarding operation of a vehicle. The apparatus also includes a robotic driving device configured to provide robotic operation of the vehicle. The apparatus further includes a control system configured to determine whether an emergency situation exists based on the data and based on the determination, to selectively activate the robotic driving device to direct the vehicle to an emergency response location selected based on the emergency situation.

Yet another embodiment relates to a method for detecting and responding to operator impairment in a vehicle comprising acquiring data regarding a prospective operator, receiving a request from the prospective operator to initiate a manual driving mode, determining that a robotic driving device is activated, determining whether the prospective operator is impaired based on the data, and selectively deactivating the robotic driving device based on the determination.

Still another embodiment relates to a method of analyzing an operator of a vehicle for impairment, comprising acquiring data regarding the operator during constrained operation of the vehicle, activating a robotic driving mode during the operator's constrained operation of the vehicle, receiving a driving command from the operator during the operator's constrained operation, evaluating whether the operator is impaired during the operator's constrained operation based

on at least one of the data and the received driving commands, and selectively deactivating robotic driving mode based on the evaluation.

Another embodiment relates to a method of responding to an emergency situation in a vehicle, comprising receiving threshold data indicative of an emergency situation, acquiring operation data regarding operation of the vehicle, determining whether an emergency situation exists based on at least one of the threshold data and the operation data, and selectively activating a robotic driving mode to direct the vehicle to an emergency response location selected based on the emergency situation determination.

Still another embodiment relates to an impaired driving avoidance system, comprising a detection system configured to acquire data regarding an operator of a vehicle and a control system coupled to the detection system including an evaluator. The control system is configured to determine whether the operator is impaired based on the data, determine that a robotic driving device is activated such that the vehicle is in a robotic driving mode, receive a request to deactivate the robotic driving device, and selectively deactivate the robotic driving device based on the determination of whether an impairment exists. The evaluator is configured to constrain control of the vehicle and provide an operator with an evaluation period within which to show that the operator is not impaired.

The foregoing summary is illustrative only and is not intended to be in any way limiting. In addition to the illustrative aspects, embodiments, and features described above, further aspects, embodiments, and features will become apparent by reference to the drawings and the following detailed description.

BRIEF DESCRIPTION OF THE DRAWINGS

FIG. 1 is an isometric view of a vehicle and an operator, according to one embodiment.

FIG. 2A is a front view of a vehicle's dashboard including a robotic driving device, a control system, and a detection system, according to one embodiment.

FIG. 2B is a front view of a vehicle's dashboard including wired protocols, according to one embodiment.

FIG. 3 is a front view of a vehicle's dashboard including a robotic driving device, a control system, a detection system, and an evaluator, according to one embodiment.

FIG. 4 is a diagram of a method of detecting and responding to driver impairment, according to one embodiment.

FIG. 5 is a diagram of a method of activating a robotic driving device based on evaluating an operator, according to one embodiment.

FIG. 6 is a diagram of a method of initiating a robotic driving device based on an emergency, according to one embodiment.

FIG. 7 is a diagram of a control system coupled to a detection system, according to one embodiment.

DETAILED DESCRIPTION

In the following detailed description, reference is made to the accompanying drawings, which form a part thereof. In the drawings, similar symbols typically identify similar components, unless context dictates otherwise. The illustrative embodiments described in the detailed description, drawings, and claims are not meant to be limiting. Other embodiments may be utilized, and other changes may be made, without departing from the spirit or scope of the subject matter presented here.

Referring to the figures generally, various embodiments disclosed herein relate to a vehicle with two driving modes: manual and robotic. Manual driving mode relates to driver-controlled vehicle operation and robotic driving mode relates to autonomous vehicle operation. Implementation of robotic driving mode is configured to be in connection with detection and analysis of an operator's characteristics. These characteristics include his/her driving characteristics and/or state characteristics, such as a presence of alcohol in one's system. If an impairment or potential impairment is detected based on the operator's characteristics, robotic driving mode is activated, wherein the vehicle can be autonomously driven to various locations, including hospitals, if an emergency is detected. As discussed in greater detail below, various techniques may be utilized in determining when and how to activate robotic driving mode. It should be understood that the present disclosure relates to various vehicles, including automatic and/or manual transmission cars, trucks, semi-trucks, buses, motorcycles, three-wheeled motorcycles, boats, trains, etc.

Referring to FIG. 1, vehicle 100 with operator 110 is shown according to one embodiment. In traditional vehicles, operator 110 is responsible for starting vehicle 100, choosing where to drive vehicle 100, and driving vehicle 100. This type of vehicle operation will be referred to as manual driving (or, manual driving mode) herein. It should be understood that operator 110 is not included in FIGS. 2A-2B for clarity, but will be referred to as if present.

Referring to FIG. 2A, a front view of dashboard 200 and other components of vehicle 100 is shown according to one embodiment. Vehicle 100 includes robotic driving device 210, control system 220, and detection system 230. Detection system 230 includes one or more sensors shown as sensor 240, which can be configured to acquire various types of data. Detection system 230 further includes receiver 235. Receiver 235 is configured to receive the data acquired by sensor 240. In one embodiment, receiver 235 then transmits this data to control system 220 for further processing.

According to one configuration, receiver 235 and sensor 240 communicate via wireless protocols 250. Wireless protocols can include Wi-Fi, wireless local area network ("WLAN"), Bluetooth, radio frequency ("RF"), optical communication, infrared, microwave, sonic and ultrasonic waves, and electromagnetic induction communications platforms. According to an alternative embodiment, receiver 235 and sensor 240 communicate via wired protocols, such as a wired connection 260 (see FIG. 2B). Wired protocols can include fiber-optics, universal serial bus ("USB"; including all micro, mini, and standard types), twisted-pair cables, and coaxial cables.

Sensor 240 is configured to acquire data related to driving characteristics of operator 110, state characteristics of operator 110, and/or surroundings data, which includes environmental conditions both inside and outside of vehicle 100. According to one embodiment, sensor 240 can be placed inside and/or outside of vehicle 100. Sensor 240 can also be configured to directly attach to operator 110. In the alternative, sensor 240 is configured to operate without direct attachment to operator 110.

Sensor 240 can include external vehicle sensors, such as: seismometers; geophones; carbon monoxide and carbon dioxide detectors; smoke detectors; radiation detectors; etc. Sensor 240 can also include internal vehicle sensors, such as: carbon monoxide and carbon dioxide detectors; smoke detectors; radiation detectors; odorant sensors (e.g., for alcohol, marijuana, etc.); drug and alcohol sensors; accelerometers; pressure gauges on the steering wheel, shifter, and brake,

accelerator, and clutch pedals; and temperature and pressure sensors. Sensor 240 can further include breathalyzers; other drug and alcohol sensors (e.g., pupil dilation sensor); vision and hearing sensors; alertness sensors; heart rate monitors; blood analyzers; tremor sensors (e.g., to detect hand tremors); dexterity sensors; cognitive sensors; etc. In some embodiments, an operator is nominally impaired (e.g., due to poor eyesight, poor hearing, a medical condition such as Parkinson's, bipolar disorders, or the like) and requires active measures to sufficiently reduce the impairment in order to safely operate the vehicle. In this embodiment, sensor 240 can detect (e.g., via cameras, blood analyzers, communication with drug dispensers, etc.) the presence or absence of eyeglasses, contact lenses, hearing aids, drugs for treating the impairing medical condition (i.e., the presence of an impairment antagonist drug), etc. In some embodiments, sensor 240 is configured as an external sensor to detect toxins in the environment that may impair the operator, such that robotic driving device 210 may be activated. It should be understood that all of the above-mentioned sensors can be used in conjunction with each other or independent of each other. Moreover, FIGS. 1-3 are illustrative and not meant to be limiting as to various sensor 240 locations.

As mentioned above, data acquired can include state and driving characteristics of operator 110 and surroundings data. State characteristics can include an indication of: alertness; pupil-dilation; presence of impairing drugs (e.g., lysergic acid diethylamide, marijuana, etc.); temperature; response to test questions; speech patterns; blood-alcohol level; medical diagnostics, such as heart rate, blood flow, and oxygen levels; vision acuity; cognitive response ability; etc. Driving characteristics of an operator can include an indication of: shifting tendencies; squeeze pressure on shifter and steering wheel; jerkiness of steering; frequency and force of applying brakes; rate and force of clutch and accelerator pedal depressions/releases; lane changing tendencies; following distance tendencies (e.g., average); pattern of obeying posted driving laws; poor driving skills; etc. Surroundings data can include an indication of: environmental conditions both internal and external of the vehicle, such as: temperature and pressure levels; carbon monoxide, carbon dioxide, smoke, and radiation levels; presence and level of harmful toxins; icy road conditions; time of day (e.g., nighttime); ambient light levels (e.g., night, glare, dusk); presence of fog; precipitation (e.g., rain, hail, snow); etc.

Sensor 240 transmits the acquired data to detection system 230. Detection system 230 is configured to transmit the data to control system 220. Control system 220 is configured to receive the data and analyze it for operator 110 impairment and/or potential impairment.

Control system 220 is further configured to activate robotic driving device 210 and to receive a request (e.g., to operate the vehicle in manual driving mode) from an operator or prospective operator. According to one configuration, during a period of robotic driving, control system 220 receives a request from a prospective operator to take over control of the vehicle (i.e., deactivate the robotic driving device 210). The request can include a selection by the prospective operator or a command to deactivate a robotic driving mode in favor of a manual driving mode; this selection may be verbal, electronic, touching of a switch, etc. According to one configuration, control system 220 can also receive operator inputs (e.g., data values corresponding to no impairment) defining approved data levels for manual driving mode (i.e., data levels corresponding to no impairment). Approved data levels may also be set by a manufacturer and/or by federal, state, and local law agencies. As mentioned above, control system 220 can be configured to

analyze data acquired by sensors **240**. Data can be acquired before the request, and/or in response to it. If the acquired data does not conform to the approved and/or pre-selected data levels (can be based on one or many data points), control system **220** prevents deactivation of robotic driving device **210**. For example, prospective operator **110** may be too tired to safely operate the vehicle. Sensor **240** may detect a slow cognitive response time of prospective operator **110** (e.g., prospective operator slowly, incorrectly, or altogether does not respond to test questions), and based on this data, control system **220** may prevent deactivation of robotic driving device **210**, thereby preventing prospective operator **110** from controlling vehicle **100** (e.g., via manual driving mode). Alternatively, sensor **240** may detect carbon monoxide outside of vehicle **100**, such that control system **220** retains robotic driving device **210** in anticipation of a potential driver impairment. Detection of carbon monoxide may qualify as a potential impairment depending on how control system **220** is pre-programmed. As such, this type of potential impairment (e.g., elevated levels of carbon monoxide, elevated levels of radiation, presence of tear gas, etc.) may also prevent deactivation of robotic driving device **210** to prevent the possibility of impaired operator driving.

Defining when an impairment exists can be highly customizable and/or programmable. For example, any acquired data could be required to be within ten percent of set parameter numbers/approved data levels; within a standard deviation from an average of acquired data levels; within a certain amount of approved/pre-programmed data levels; not exceeding (alternatively, below) thresholds for certain data characteristics; etc. Additionally, the operator may be required to input his/her characteristics (e.g., age, height, weight, blood type, health history, etc.), such that the impairment determination is tailored for a specific operator. For example, a larger individual may be able to consume more alcohol than a smaller person before becoming impaired, such that this correlation is now taken into account. An operator, a user, and/or a manufacturer can also program control system **220** with their own formula, method, and/or rubric for what qualifies as an impairment. This programming can be based on federal, state, or local laws. In turn, what constitutes an impairment in one state may not qualify as an impairment in another state, such that programming may be location-specific (e.g., state-based, county-based, etc.).

According to another embodiment, data acquired by sensor **240** is stored by control system **220** for each operator and prospective operator of vehicle **100**. As such, many vehicle operators and prospective operators can be analyzed for impairment based on his/her average data levels or other driver-specific parameters. In another embodiment, average data levels are not used to determine impairment. The acquired data is analyzed against preset/pre-approved data levels; or with a preset algorithm; and/or with any of the methods listed above.

In another embodiment, sensor **240** is configured to detect and acquire data regarding emergency situations. Emergency situations can include an indication of a presence of excessive blood loss; loss of consciousness; presence of potentially lethal fumes, such as carbon monoxide; going into labor; a medical emergency; low heart rate; presence of a harmful drug in the operator; presence of radiation; theft of vehicle; etc. For example, detection of an unfamiliar operator based on facial recognition may be considered an emergency situation by control system **220**. Robotic driving device **210** may then be activated, and vehicle **100** re-routed to a police station. Additionally, the police, owner of vehicle **100**, and other emergency service personnel may be contacted. Operator **110**

and/or the manufacturer may also have the option of using control system **220** to dictate when emergency situations exist. For example, if operator **110** has a blood alcohol content over 0.08% (0.08 grams of alcohol per 100 milliliters of blood), control system **220** may consider him/her impaired and activate robotic driving device **210**. If operator **110** has a blood alcohol content greater than 0.25% (0.25 grams of alcohol per 100 milliliters of blood), control system **220** may consider this to be an emergency situation, and activate emergency response protocols. Control system **220** is configured to be programmed with parameters indicative of various emergency situations, such that the data acquired by sensors **240** can be analyzed for emergency situations.

Emergency response protocols can include re-routing vehicle **100** via robotic driving mode to the nearest appropriate emergency response location (e.g., medical facility for a medical emergency, law enforcement facility for theft of the vehicle, etc.) based on the nature of the emergency situation detected. Moreover, the appropriate emergency response location can be selected by an operator after an emergency is detected, selected by off-site personnel in response to an emergency detection, and/or selected and programmed into control system **220** prior to any emergency situation being detected (i.e., if a medical emergency occurs, the pre-selected emergency location of a hospital is selected by pre-programming where the vehicle is then directed to the hospital via robotic driving mode). In another embodiment, the emergency response location can be selected based on distance (e.g., nearest location), wait time (i.e., if one hospital is closer but has a longer wait time than a second hospital, the first hospital is bypassed), insurance provider of the operator or prospective operator (i.e., only directing the vehicle to locations covered by the operator's insurance), specialty of the location (e.g., a police station for a theft or a hospital that handles child births versus one that does not), or some combination therewith. Emergency response protocols can also include activating robotic driving device **210** to otherwise control vehicle **100**; alerting the appropriate personnel; turning off vehicle **100** upon arrival at the appropriate emergency response location; etc. Emergency response protocols can be pre-programmed by a manufacturer in control system **220** and/or modified by operator **110** and/or by other vehicle **100** users. Additionally, vehicle **100** may be controlled via robotic driving device **210** by offsite emergency personnel in order to divert vehicle **100** to a proper location.

Further referring to FIG. 2A, robotic driving device **210** is configured to drive vehicle **100**. As such, robotic driving device **210** is coupled to the steering, electrical, transmission, and engine components in a vehicle. Robotic driving device **210** is also configured to obey all posted signage and all federal, state, and local vehicular laws. Robotic driving device **210** can include a transceiver **280**. Transceiver **280** is configured to acquire vehicle surroundings information or data. Vehicle surroundings information can include an indication of: the presence and location of other vehicles; posted speed limits; weather conditions; etc. Robotic driving device **210** uses this information to safely and effectively drive vehicle **100**. Robotic driving device **210** can also include a navigation system shown as global positioning system ("GPS") receiver **290**. GPS receiver **290** is configured to acquire various location information. This information is configured to aid vehicle **100** in going to a specific location while using robotic driving device **210**. Robotic driving device **210** is configured to drive and navigate vehicle **100**: along a pre-programmed path provided by control system **220** whenever robotic driving device **210** is activated; along a path provided by a prospective operator; along a path provided by

operator **110** while in vehicle **100** (in either robotic driving mode or manual driving mode); and/or to a location being driven to by operator **110** prior to robotic driving device **210** being activated. According to another configuration, robotic driving device **210** is capable of being controlled remotely by a central operator and/or by a central processing unit offsite.

According to one embodiment, after vehicle **100** is started, vehicle **100** cannot be operated (e.g., manual driving mode) without an impairment determination being made. In some embodiments, only state characteristics and/or surroundings data are used because the vehicle is not moving. According to another embodiment, the vehicle is able to be started and driven in manual driving mode prior to the impairment determination taking place. Preset parameters in control system **220** can determine how long the vehicle can be driven without engaging in an impairment analysis. According to an alternative embodiment, the vehicle is started in robotic driving mode, operated in robotic driving mode, and then an operator impairment analysis is made.

In some embodiments, an evaluator can be used to evaluate an operator while the vehicle is in motion. For example, referring to FIG. 3, evaluator **300** coupled to vehicle **100** is shown according to one embodiment. Evaluator **300** is configured to provide operator **110** with constrained operational control of the vehicle and an evaluation period during which the operator or prospective operator has the opportunity to show that he/she is not impaired. At the completion of the evaluation period or at some point prior, evaluator **300** is configured to send one or more signals to control system **220** regarding the results of the evaluation (i.e., whether the operator is impaired and/or should be in control of the vehicle). If operator **110** is successful (shows no impairment), control system **220** can deactivate robotic driving device **210** in favor of manual driving mode.

According to one embodiment, evaluator **300** is configured to be utilized while vehicle **100** is using robotic driving device **210** (e.g., while the vehicle is in motion with robotic driving mode). During the evaluation period, evaluator **300** is configured to receive driving commands from operator **110**. In this embodiment, vehicle **100** stays in robotic driving mode while receiving commands from operator **110**, such that operator **110** has only constrained operational control over vehicle **100**. In this embodiment, evaluator **300** (alternatively, control system **220**) can review operator commands, and can compare the effects (e.g., actual or predicted effects) of operator commands to the effects of the robotic driving device's commands. If the effects differ too much (e.g., beyond a defined threshold) evaluator **300** can send a signal to control system **220** to ignore operator commands in favor of those from robotic driving device **210**. Conversely, if the effects are sufficiently similar, the operator's commands can be accepted.

In some embodiments, evaluator **300** (alternatively, control system **220**) can apply a weighted combination of commands from the operator and from the robotic driving device. In another embodiment, driving commands of operator **110** are able to override robotic driving device **210** during the constrained operation period. However, if operator **110** displays an impairment, operator **110** will no longer be able to drive, steer, or control vehicle **100** and robotic driving device **210** will override the driving commands from operator **110**. For example, if operator **110** makes too many or too great of mistakes (e.g., deviates from the driving lane) during the constrained operation period, evaluator **300** can stop the evaluation period and return to robotic driving mode.

Driving commands can include rate, frequency, and force of depression and release in brake, accelerator, and clutch

pedals (**350**). Driving commands can also include verbal instructions **320** received from operator **110**, such as "go faster," "turn right," "slow down," etc. Driving commands can further include frequency and force of turning the steering wheel (**330**). After receiving the driving commands, evaluator **300** is configured to analyze the commands for impairment. For example, if operator **110** instructs vehicle **100** verbally **320** to "go faster" while at a red stop light, evaluator **300** will send a signal to control system **220** instructing control system **220** that operator has not successfully completed the evaluation. As such, control system **220** will keep vehicle **100** in robotic driving mode due to the appearance of an operator impairment. In an alternative embodiment, evaluator **300** is configured to transmit operator driving commands to control system **220**, such that control system **220** can be configured to analyze the commands for impairment rather than evaluator **300**.

According to another embodiment, evaluator **300** is further configured to analyze/evaluate data regarding operator **110** (or prospective operator) of vehicle **100**. The data can include state and driving characteristics as well as surroundings data, as described above. The data can be continuously acquired while operator **110** is in vehicle **100** or at specific intervals of time (e.g., every five minutes while the vehicle is in operation). If evaluator **300** determines that the data indicates no impairment, evaluator **300** can send a signal to control system **220** to deactivate robotic driving device **210** in favor of manual driving mode.

According to another embodiment, evaluator **300** includes a timer **310**. Timer **310** is configured to control the length of time of the evaluation period or the constrained operation period. Timer **310** is further configured to control the length of time between evaluation periods. For example, the time between evaluation periods can be pre-programmed, such as forty-five minutes. In turn, operator **110** may have multiple opportunities to be evaluated while in vehicle **100**. In some embodiments, timer **310** may be programmed with a three minute evaluation period, such that operator **110** is evaluated and in control (or, alternatively, just evaluated with no vehicle control) of vehicle **100** for three minutes. In an alternative embodiment, the length of the evaluation period can be based on driving activity, such as the number of turns taken; different speeds achieved; number of stop-to-go transitions; or any other metric wherein the driving commands and/or state characteristics of operator **110** are evaluated. Timer **310** is highly programmable, with a user, operator, and/or manufacturer being able to set the evaluation period length and/or time between the evaluation periods (e.g., through control system **220**).

Referring next to FIG. 4, method **400** for detecting and responding to operator impairment in a vehicle is shown according to one embodiment. Pre-approved/selected threshold data levels are received by a control system (**401**). Threshold data includes approved operator state characteristics, such as an indication of: blood-alcohol level; presence of harmful affecting drugs; medical diagnostics, such as heart rate and oxygen levels; vision acuity; and cognitive reactivity acuity (see above for additional data references). Threshold data can also include pre-approved/selected operator driving characteristics (see above) and/or pre-approved/selected surroundings data (see above, e.g., environmental conditions internal and/or external to the vehicle). Pre-approved/selected threshold data levels can be inputted by any operator of the vehicle, the vehicle's owner, and/or be preset from manufacturer specifications. Operator (and prospective operator) and/or surroundings data is acquired by a detection system using a sensor (**402**). The sensor can include the sensor types

and functions described above. A robotic driving device is determined to be activated (403). As such, the vehicle is in robotic driving mode. A request from the operator or prospective operator to initiate manual driving mode is received (404). Typically, a control system receives the request from a prospective operator to take over control of the vehicle (i.e., deactivate the robotic driving device 210). The request can include selection by the prospective operator or a command to deactivate a robotic driving mode for a manual driving mode; this selection may be verbal, electronic, touching of a switch, etc. For example, the user can start the vehicle (i.e., turn the key) and attempt to put the vehicle into gear, which is a "request" to initiate manual driving mode.

The operator and/or surroundings data is transmitted to the control system and processed alongside the pre-approved/selected threshold data levels to determine whether the operator (or prospective operator) is impaired or potentially may be impaired (405). Based on this determination, the request may be granted or refused by the control system. If the control system determines the operator to be impaired or potentially impaired, the request is refused, which thereby initiates robotic driving mode (406). Thus, the control system has selected to not deactivate the robotic driving device. Robotic driving device can have the same function and characteristics as described earlier. If the control system determines that the operator is not impaired, the request is granted, which initiates manual driving mode (407). Thus, the robotic driving device is deactivated, which in turn initiates manual driving mode. According to another embodiment, the acquired data could be stored for one or more operators to be used for subsequent impairment determinations.

The detection system can be programmed to continuously or periodically acquire operator and/or surroundings data. For example, if the operator was previously determined to be impaired, during a later analysis period, the control system may determine that the operator is no longer impaired and deactivate robotic driving mode. Additionally, operator and/or surroundings data can be continually or periodically acquired while in manual driving mode. If an impairment is determined at some point during the operation of the vehicle, robotic driving device can be activated.

Referring next to FIG. 5, method 500 of initiating robotic driving mode using an evaluator is shown according to one embodiment. Pre-approved/selected threshold data levels of a vehicle operator are received by a control system (501). Pre-approved/selected threshold data levels are mentioned above and can be inputted by any operator of the vehicle, the vehicle's owner, and/or be preset from a manufacturer. Operator (i.e., driving and state characteristics) and/or surroundings data is acquired by a detection system using a sensor (502). The operator and/or surroundings data is transmitted to the control system (503), and stored in the control system of the vehicle (504). This can be done, for example, to acquire average data levels of each operator, if there are several operators of the vehicle. Thus, the pre-approved/selected threshold data levels can be based on each operator's average acquired data levels. For example, a high pupil dilation may signify impairment in one operator wherein that pupil dilation is normal in another operator (no impairment). A robotic driving device is activated by the control system (505). The robotic driving device can have the same function and characteristics as described above. The control system then activates an evaluator to evaluate the operator during a constrained operational period of control of the vehicle by the operator (506). The evaluator is configured to receive driving commands from the operator or prospective operator of the vehicle during the constrained period (507). As mentioned

above, operator commands can include verbal instructions on driving the vehicle and/or physical commands, such as actually steering and using the accelerator pedals.

Upon activating the evaluator, two modes are possible. Based on initial programming, a default mode of the evaluator is initially selected (e.g., mode 1). However, the control system can allow a user, manufacturer, or operator to change which mode the evaluator is in. If the evaluator is activated in mode 1, the evaluator analyzes and evaluates the commands of the operator (or prospective operator) with such commands having no control over the operation of the vehicle (508). If a user has directed the control system to change the evaluator to mode 2, then the evaluator is used to analyze and evaluate the commands of the operator with such commands actually controlling the operation of the vehicle (509). For example, the operator may verbally direct the vehicle by saying "turn" and "speed up," whereby the vehicle then "turns" or "speeds up." However, if the evaluator determines that the commands show the operator to be impaired, then the commands no longer control the vehicle and robotic driving mode is reengaged (hence, constrained operational control of the vehicle).

Regardless of whether mode 1 or mode 2 is active, the time frame within which the operator's commands (e.g., verbal, physical, etc.) are analyzed is referred to as the evaluation period (or constrained operation period) herein. At the end of the evaluation period, the evaluator analyzes the commands for impairment (510). If the operator is determined/evaluated to be impaired, robotic driving mode is reengaged (511) if in mode 2 via activation of the robotic driving device (note that robotic driving mode is already active in mode 1). If the operator is evaluated to not be impaired, the robotic driving device is deactivated in favor of manual driving mode (512). According to one embodiment, this method can be continually performed while the car is in operation.

According to one configuration, evaluation of the commands for operator impairment (510) can be done by comparing the current operator commands with pre-approved commands. The control system can use the acquired data (steps 501 through 504) to determine what the appropriate operator commands should be based on the, for example, surroundings data. The operator's commands can then be analyzed against the determined appropriate commands for impairment. According to another embodiment, the evaluator can compare the pre-robotic driving mode commands from past operator experiences with current commands to determine if there is a deviation that shows operator impairment (e.g., if an operator drives the same road weekly at 25 miles per hour, and during evaluation drives the road at 75 miles per hour while swerving, this deviation may indicate impairment). Additionally, a safety factor identifying an acceptable difference between the operator commands and the approved commands can be utilized to determine operator impairment.

According to another embodiment, a timer is included with the evaluator. The timer is configured to preset the time for the evaluation period. The timer is further configured to set the time between evaluation periods. In an alternative embodiment, the evaluation period may be based on driving activity, such as the number of turns taken; different speeds achieved; number of stop-to-go transitions; or any other metric wherein the driving commands and/or state characteristics of the operator are evaluated.

Referring to FIG. 6, method 600 for operating a vehicle with a robotic driving mode and an emergency response feature is shown, according to one embodiment. Approved/pre-selected data levels are received by a control system (601). The threshold data levels may include operation data including operator state and driving characteristics as well as sur-

roundings data. The data levels may also include threshold parameters indicative of various emergency situations. A detection system uses a sensor to detect and acquire threshold and operation data (602). The acquired data is then transmitted back to the control system (603) and stored in the control system (604). This allows for computation of average acquired data levels for each operator and average threshold data levels (e.g., sunlight only present for 4 hours a day in one area of the world may not indicate an emergency but may indicate an emergency in another area of the world based on threshold data averages) Subsequently, impairment determinations can be made based on the averages (or, alternatively, based on a pre-programmed formula, rubric, or algorithm) The data (threshold and operational) is analyzed for the presence of any emergency situations (605). Emergency situations can include an indication of a presence of excessive blood loss; loss of consciousness; presence of potentially lethal fumes, such as carbon monoxide; going into labor; medical emergency; low heart rate; presence of a harmful drug in the operator; presence of radiation; theft of vehicle; etc. If there is no emergency situation, an impairment analysis based on the acquired data can be performed by the control system (606). If there is no impairment, manual driving mode is activated (607). If there is an impairment, robotic driving mode is selected by activating a robotic driving device (609).

If an emergency situation is detected, emergency response protocols are initiated (608). Emergency response protocols can include activating a robotic driving device to initiate robotic driving mode (609) to re-route the vehicle to the nearest appropriate emergency response location. Emergency response protocols can also include activating the robotic driving device to control the vehicle; alerting the appropriate personnel; turning off the vehicle after arriving at the emergency response location; etc. According to further embodiments, the emergency and impairment determinations are continually processed. Thus, even if an earlier determination of no impairment or emergency was determined, a subsequent impairment or emergency situation can still be detected with the appropriate response performed by the control system (e.g., activating robotic driving or re-routing the vehicle due to a determined emergency).

According to an alternative embodiment, to avoid the possibilities of "false positives," some or all emergency situation determinations can be relayed to a remote monitoring system wherein an operator can call the vehicle to talk to an individual in the vehicle to see if an emergency actually exists. According to another embodiment, the control system can be configured to determine if an impairment or emergency exists for anyone in the vehicle in addition to the operator. Thus, various vehicle sensors can detect data regarding any or all of the vehicle's occupants.

Referring next to FIG. 7, impaired driving avoidance system 700 is shown according to one embodiment. System 700 includes control system 220 coupled to detection system 230. System 700 also includes robotic driving device 210 and operator input/output device 704. System 700 is configured to be used in connection with many different types of vehicles including, cars, trucks, semi-trucks, buses, motorcycles, three-wheel motorcycles, trains, boats, etc. System 700 is configured to prevent a vehicle from being operated by an impaired driver.

According to one embodiment, control system 220 includes processor 701, memory 702, power supply 703, and evaluator 300. Processor 701 may be implemented as a general-purpose processor, an application specific integrated circuit (ASIC), one or more field programmable gate arrays (FPGAs), a digital-signal-processor (DSP), a group of pro-

cessing components, or other suitable electronic processing components. Memory 702 is one or more devices (e.g., RAM, ROM, Flash Memory, hard disk storage, etc.) for storing data and/or computer code for facilitating the various processes described herein. Memory 702 may be or include non-transient volatile memory or non-volatile memory. Memory 702 may include database components, object code components, script components, or any other type of information structure for supporting the various activities and information structures described herein. Memory 702 may be communicably connected to processor 701 and provide computer code instructions to processor 701 for executing the processes described herein.

Detection system 230 includes sensor 240, receiver 235, and power supply 705. Control system 220 is configured to control the operation of detection system 230. Control system 220 is further configured to control operation of robotic driving device 210 and allow for operator, driver, and/or user programming through operator input/output device 704. Operator input/output device 704 is configured to enable an operator to program what data constitutes an impairment and/or an emergency in control system 220; to display acquired data to an operator; and/or to transmit commands from the operator to control system 220.

Control system 220 can communicate with detection system 230, operator input/output device 704, and robotic driving device 210 using wireless and/or wired protocols. Wireless protocols can include Wi-Fi, wireless local area network ("WLAN"), Bluetooth, radio frequency ("RF"), optical communication, infrared, microwave, sonic and ultrasonic waves, and electromagnetic induction communications platforms. Wired protocols can include fiber-optics, universal serial bus ("USB"; including all micro, mini, and standard types), twisted-pair cables, and coaxial cables.

Processor 701 is configured to analyze acquired data for operator impairment and/or potential impairment. Processor 701 is further configured to initiate robotic driving device 210 if an impairment or potential impairment is identified. In addition, processor 701 is configured to turn robotic driving device 210 off if an operator is no longer impaired. Robotic driving device 210 can have the same function and characteristics as described above. Processor 701 is further configured to transmit commands received from operator input/output device 704. For example, sensor 240 may be directed to acquire only certain types of data because an operator only chose those types of data through operator input/output device 704.

Memory 702 is configured to store pre-approved/pre-selected threshold data levels received via operator input/output device 704. Pre-approved threshold data levels correspond to driving and state characteristics of an operator as well as environmental conditions (surroundings data) internal and external to the vehicle (described in greater detail above). Processor 701 is configured to use pre-approved threshold data levels to determine whether or not an operator is impaired. In another embodiment, memory 702 is configured to store the data acquired for each operator (e.g., state and driving characteristics described above), such that processor 701 determines the presence of impairments based on comparisons with the data levels (e.g., average data levels) for each operator. Processor 701 can be pre-programmed for how much deviation from average is allowed prior to a determination of impaired being made. In a further embodiment, a combination of average data levels and pre-approved data levels can be used by processor 701 to perform an impairment analysis.

Control system 220 can be powered by power supply 703. Power supply 703 may receive power from any suitable source (e.g., rechargeable battery, non-rechargeable battery, etc.), including a vehicle's battery. Power supply 703 may also receive power through wireless inductive power, by converting mechanical energy present from operation of the vehicle into electrical energy, from solar cells, and/or through photovoltaic cells. Power supply 703 is configured to power control system 220 and detection system 230. In an alternate embodiment, power supply 705 is configured to power detection system 230. Power supply 705 can have the same characteristics to that of power supply 703 mentioned above.

As discussed in greater detail above, sensor 240 is configured to detect and acquire data regarding the operator and the surroundings, such as an operator's blood-alcohol level, medical diagnostics (e.g., heart rate, blood flow, and oxygen levels), vision acuity, radiation levels, etc. Sensor 240 can have the same function and structure as described above. Receiver 235 is configured to receive data from sensor 240. The acquired data is configured to be transmitted to control system 220 for processing.

In some embodiments, control system 220 further includes evaluator 300. Evaluator 300 is configured to receive driving commands from the operator and can have the same function and structure as described above. Evaluator 300 analyzes the commands for an impairment. Commands can include verbal and physical commands like those described above. Evaluator 300 may also include a timer programmed to intermittently start an evaluation period and configured to determine the length of the evaluation period. As such, an operator can be analyzed for impairments multiple times throughout operation of the vehicle. Moreover, evaluator 300 can be configured to allow the operator to have control of the vehicle during the evaluation period or to keep the vehicle in robotic driving mode while receiving the commands. Evaluator 300 can include or be embodied in processor 701 and/or memory 702 components. According to another configuration, evaluator 300 functions can be integrated into processor 701 and/or memory 702 of control system 220.

The present disclosure contemplates methods, systems, and program products on any machine-readable media for accomplishing various operations. The embodiments of the present disclosure may be implemented using existing computer processors, or by a special purpose computer processor for an appropriate system, incorporated for this or another purpose, or by a hardwired system. Embodiments within the scope of the present disclosure include program products comprising machine-readable media for carrying or having machine-executable instructions or data structures stored thereon. Such machine-readable media can be any available media that can be accessed by a general purpose or special purpose computer or other machine with a processor. By way of example, such machine-readable media can comprise RAM, ROM, EPROM, EEPROM, CD-ROM or other optical disk storage, magnetic disk storage or other magnetic storage devices, or any other medium which can be used to carry or store desired program code in the form of machine-executable instructions or data structures and which can be accessed by a general purpose or special purpose computer or other machine with a processor. When information is transferred or provided over a network or another communications connection (either hardwired, wireless, or a combination of hardwired or wireless) to a machine, the machine properly views the connection as a machine-readable medium. Thus, any such connection is properly termed a machine-readable medium. Combinations of the above are also included within the scope of machine-readable media. Machine-executable

instructions include, for example, instructions and data which cause a general purpose computer, special purpose computer, or special purpose processing machines to perform a certain function or group of functions.

Although the figures may show a specific order of method steps, the order of the steps may differ from what is depicted. Also two or more steps may be performed concurrently or with partial concurrence. Such variation will depend on the software and hardware systems chosen and on designer choice. All such variations are within the scope of the disclosure. Likewise, software implementations could be accomplished with standard programming techniques with rule based logic and other logic to accomplish the various connection steps, processing steps, comparison steps and decision steps.

While various aspects and embodiments have been disclosed herein, other aspects and embodiments will be apparent to those skilled in the art. The various aspects and embodiments disclosed herein are for purposes of illustration and are not intended to be limiting, with the true scope and spirit being indicated by the following claims.

What is claimed is:

1. A vehicle, comprising:

a detection system configured to acquire data regarding operation of the vehicle;

a robotic driving device configured to provide robotic control of the vehicle; and

a control system configured to:

determine that the robotic driving device is activated, such that the vehicle is in a robotic driving mode;

receive a request by a prospective operator of the vehicle to deactivate the robotic driving device to initiate a manual driving mode;

evaluate a driving command from the prospective operator during robotic driving mode subsequent to the request and relative to a pre-approved driving command, the driving command configured to control movement of the vehicle;

determine whether the prospective operator is impaired based on the evaluation and the driving command; and

selectively deactivate the robotic driving device based on the impairment determination.

2. The vehicle of claim 1, wherein the control system is configured to deactivate the robotic driving device based on the determination that the prospective operator is not impaired.

3. The vehicle of claim 1, wherein the detection system is configured to acquire the data in response to reception of the request.

4. The vehicle of claim 1, wherein the control system is configured to make the impairment determination in response to reception of the request.

5. The vehicle of claim 1, wherein the data includes a state characteristic of the prospective operator.

6. The vehicle of claim 5, wherein the state characteristic includes an indication of at least one of a cognitive response ability, a heart rate, a tremor, a blood alcohol level, a blood flow level, a pupil dilation level, a vision acuity level, and a presence of an impairing drug.

7. The vehicle of claim 5, wherein the state characteristic includes an indication of at least one of eyeglasses, contact lenses, a hearing aid, and a presence of an impairment antagonist drug.

8. The vehicle of claim 1, wherein the driving command includes at least one of a verbal command and a physical command, wherein the physical command includes an indication of at least one of:

- a rate, a frequency, and a force of depression and release in at least one of a brake pedal, an accelerator pedal, and a clutch pedal; and
- a frequency of turning the steering wheel.

9. The vehicle of claim 1, wherein the data includes surroundings data.

10. The vehicle of claim 9, wherein the surroundings data includes at least one of an indication of a temperature, a time of day, an ambient light level, a road surface condition, a precipitation level, a fog level, a radiation level, a carbon monoxide level, and a harmful toxin level.

11. The vehicle of claim 1, wherein the control system is configured to store the data for a plurality of prospective operators of the vehicle.

12. The vehicle of claim 1, wherein the control system is configured to determine impairment based on a preset deviation from the average data levels for each prospective operator of a plurality of prospective operators.

13. The vehicle of claim 1, wherein the control system is configured to determine impairment based on a preset deviation from pre-approved data levels.

14. The vehicle of claim 1, wherein the robotic driving device is configured to drive the vehicle.

15. The vehicle of claim 1, wherein the robotic driving device is configured to drive the vehicle along a predetermined path.

16. The vehicle of claim 15, wherein the predetermined path is provided by the prospective operator.

17. The vehicle of claim 15, wherein the predetermined path is provided by the control system.

18. The vehicle of claim 15, wherein the predetermined path is a path provided by the prospective operator while the vehicle was in manual driving mode.

19. The vehicle of claim 1, wherein the robotic driving device is configured to override operator control of the vehicle.

20. An apparatus for detecting and responding to a potential impairment of an operator of a vehicle, comprising:

- a detection system configured to acquire data regarding the operator;
- a robotic driving device configured to provide robotic operation of the vehicle;
- an evaluator configured to receive an operator command from the operator to evaluate the operator for an impairment during robotic operation of the vehicle, the operator command including a frequency of a depression and a release of an accelerator pedal; and
- a control system configured to selectively deactivate the robotic driving device based on signals received from the evaluator.

21. The apparatus of claim 20, wherein the control system is configured to deactivate the robotic driving device based on signals received from the evaluator.

22. The apparatus of claim 20, wherein the evaluation includes comparing effects of the operator command to effects of commands received from the robotic driving device.

23. The apparatus of claim 22, wherein the control system preferentially uses commands from the robotic driving device when the difference between the effects exceeds a threshold.

24. The apparatus of claim 22, wherein the control system preferentially uses commands from the operator when the difference between the effects is less than a threshold.

25. The apparatus of claim 20, wherein the control system uses a weighted combination of commands from the operator and commands from the robotic driving device.

26. The apparatus of claim 20, wherein the evaluator is configured to evaluate the operator of the vehicle during an evaluation period to determine whether the operator is impaired.

27. The apparatus of claim 20, wherein the evaluator is configured to override the operator command from the operator during a constrained operation period.

28. An apparatus for detecting and responding to an emergency situation in a vehicle, comprising:

- a detection system configured to acquire data regarding operation of a vehicle;
- a robotic driving device configured to provide robotic operation of the vehicle; and
- a control system configured to:
 - determine whether an emergency situation exists based on the data and based on the determination;
 - selectively activate the robotic driving device to direct the vehicle to an emergency response location selected based on the emergency situation; and
 - evaluate a driving command from an operator of the vehicle for impairment during robotic operation of the vehicle, the driving command including a frequency of a depression and a release of an accelerator pedal; and
 - in response to an impaired determination, maintain robotic operation of the vehicle.

29. The apparatus of claim 28, wherein the control system is further configured to prevent deactivation of the robotic driving device during the direction to the emergency response location.

30. The apparatus of claim 28, wherein the control system is configured to include parameters indicative of various emergency situations.

31. The apparatus of claim 28, wherein the control system is configured to initiate an emergency response protocol.

32. The apparatus of claim 31, wherein initiating the emergency response protocol includes activating the robotic driving device to override control of the vehicle by an operator.

专利名称(译)	机器人车辆控制		
公开(公告)号	US9364178	公开(公告)日	2016-06-14
申请号	US14/091060	申请日	2013-11-26
[标]申请(专利权)人(译)	埃尔瓦有限公司		
申请(专利权)人(译)	ELWHA LLC		
当前申请(专利权)人(译)	ELWHA LLC		
[标]发明人	DUNCAN WILLIAM D HYDE RODERICK A		
发明人	DUNCAN, WILLIAM D. HYDE, RODERICK A.		
IPC分类号	G05D1/00 B60W30/00 A61B5/00 A61B5/18		
CPC分类号	A61B5/18 B60W30/00 G05D1/0061 A61B5/6893 G05D2201/0213 A61B2560/0242 B60K28/06 B60W30/12 B60W30/16 B60W50/082 B60W50/12 B60W2540/10 B60W2540/12 B60W2540/14 B60W2540/18 B60W2540/21 B60W2540/24 B60W2540/26 B60W2540/30 B60W2555/20 B60W2556/50 G05D1/0088		
代理机构(译)	FOLEY & Lardner的律师事务所		
其他公开文献	US20150149021A1		
外部链接	Espacenet USPTO		

摘要(译)

一种车辆，包括：检测系统，被配置为获取关于车辆的操作的数据；以及机器人驱动装置，被配置为提供对车辆的机器人控制。该车辆还包括控制系统，该控制系统被配置为确定机器人驱动装置是否被激活，使得车辆处于机器人驾驶模式；接收车辆的未来操作员的请求以停用机器人驱动装置以启动手动驾驶模式；根据数据确定预期运营商是否受损；并根据确定有选择地授予或拒绝请求。

