



US 20190349769A1

(19) **United States**

(12) **Patent Application Publication**
PALIN et al.

(10) **Pub. No.: US 2019/0349769 A1**
(43) **Pub. Date: Nov. 14, 2019**

(54) **TRANSFER OF SENSOR DATA**

(71) Applicant: **NOKIA TECHNOLOGIES OY**,
Espoo (FI)

(72) Inventors: **Arto PALIN**, Akaa (FI); **Jukka REUNAMÄKI**, Tampere (FI)

(21) Appl. No.: **16/465,223**

(22) PCT Filed: **Nov. 30, 2016**

(86) PCT No.: **PCT/FI2016/050847**

§ 371 (c)(1),

(2) Date: **May 30, 2019**

(52) **U.S. Cl.**

CPC **H04W 12/0609** (2019.01); **A61B 5/0002**
(2013.01); **A61B 5/117** (2013.01); **G01G 19/50**
(2013.01); **A61B 5/1118** (2013.01); **H04W**
76/10 (2018.02); **H04W 8/005** (2013.01);
A61B 5/024 (2013.01)

(57)

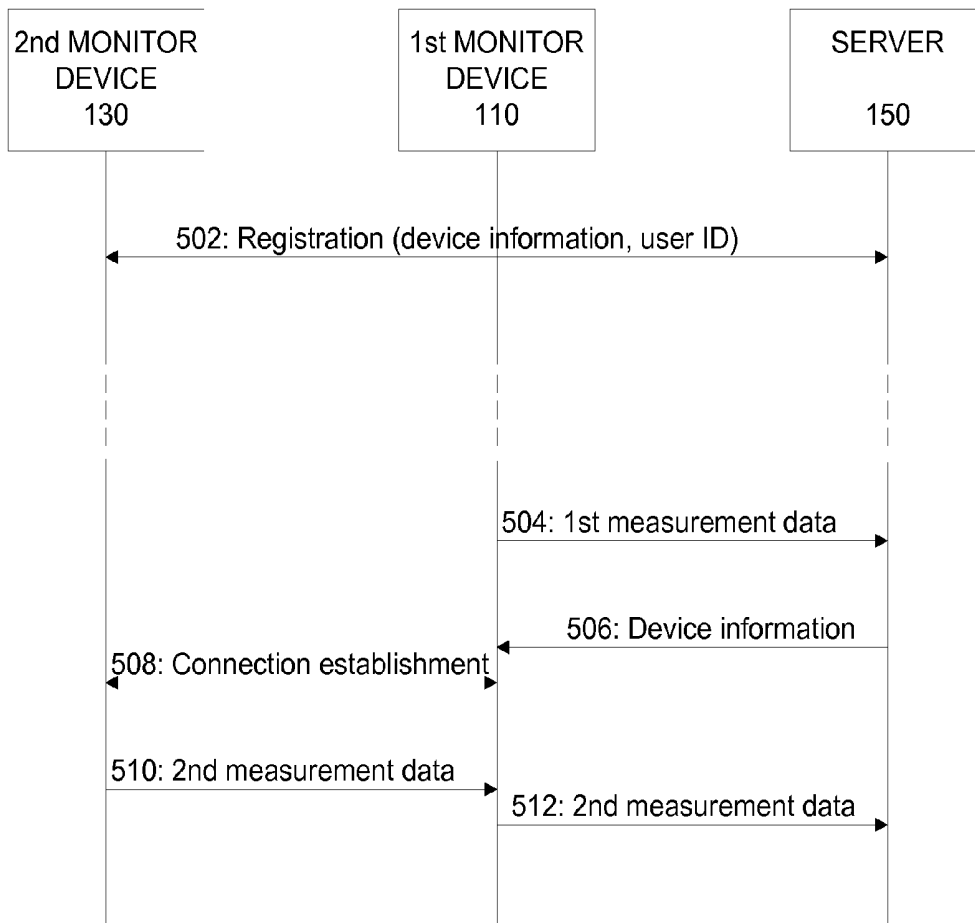
ABSTRACT

According to an example embodiment, there is provided a method in a device (110) that comprises a sensor portion (119) for deriving, on basis of one or more sensor signals that are descriptive of respective physical characteristic pertaining to a user, at least one measurement signal that is descriptive of a characteristic pertaining to the user, the method comprising obtaining first measurement data that comprises one or more values indicated by the at least one measurement signal and transferring the first measurement data to a server device (150) over a first wireless link (104), receiving, from the server device (150), device information that comprises at least a device identifier and access information for another device that is capable of providing second measurement data that is descriptive of one or more characteristics pertaining to the same user, in response to receiving said device information, detecting presence of said another device (130) and establishing a second wireless link (106) with said another device (130) using said device information, and receiving the second measurement data from said another device (130) via the second wireless link (106) and transferring the second measurement data to the server device (150) via the first wireless link (104).

Publication Classification

(51) **Int. Cl.**

H04W 12/06 (2006.01)
A61B 5/00 (2006.01)
A61B 5/117 (2006.01)
A61B 5/024 (2006.01)
A61B 5/11 (2006.01)
H04W 76/10 (2006.01)
H04W 8/00 (2006.01)
G01G 19/50 (2006.01)



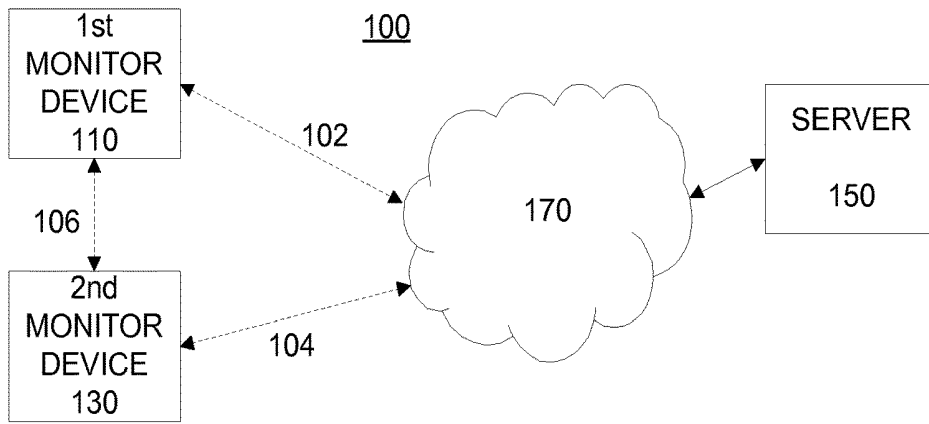


Figure 1

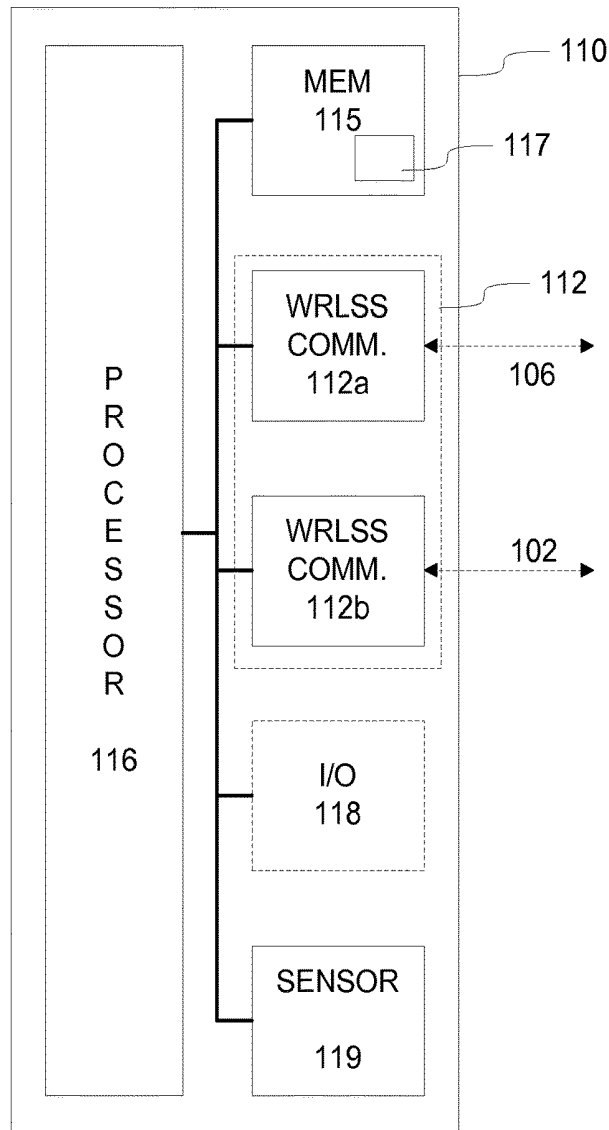


Figure 2

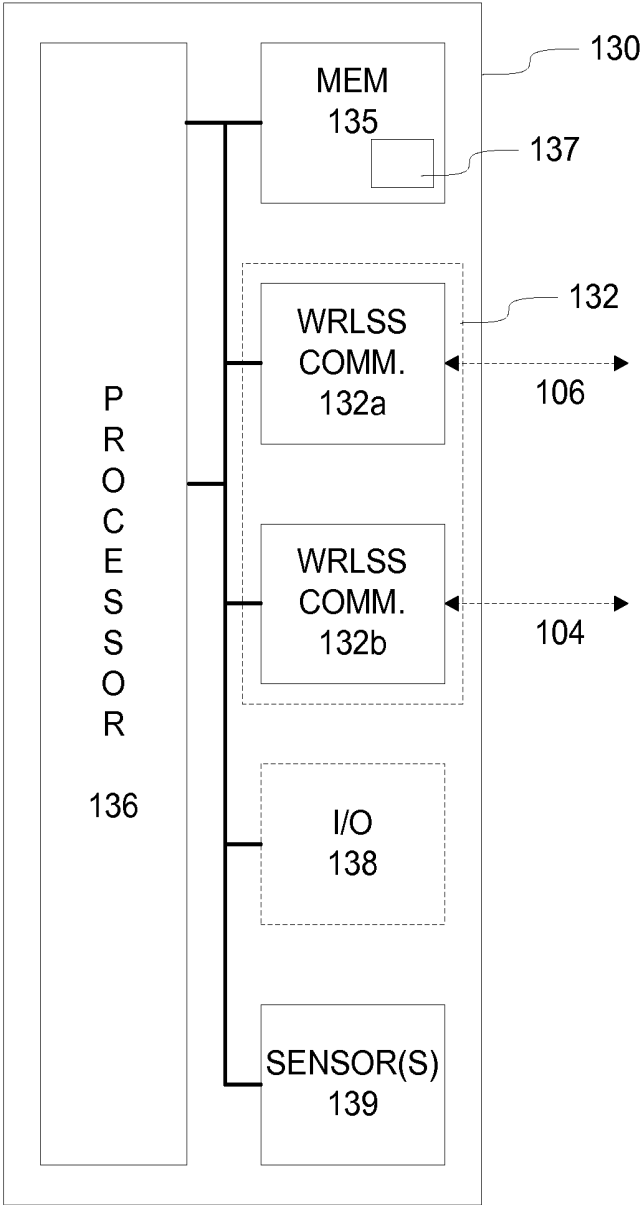


Figure 3

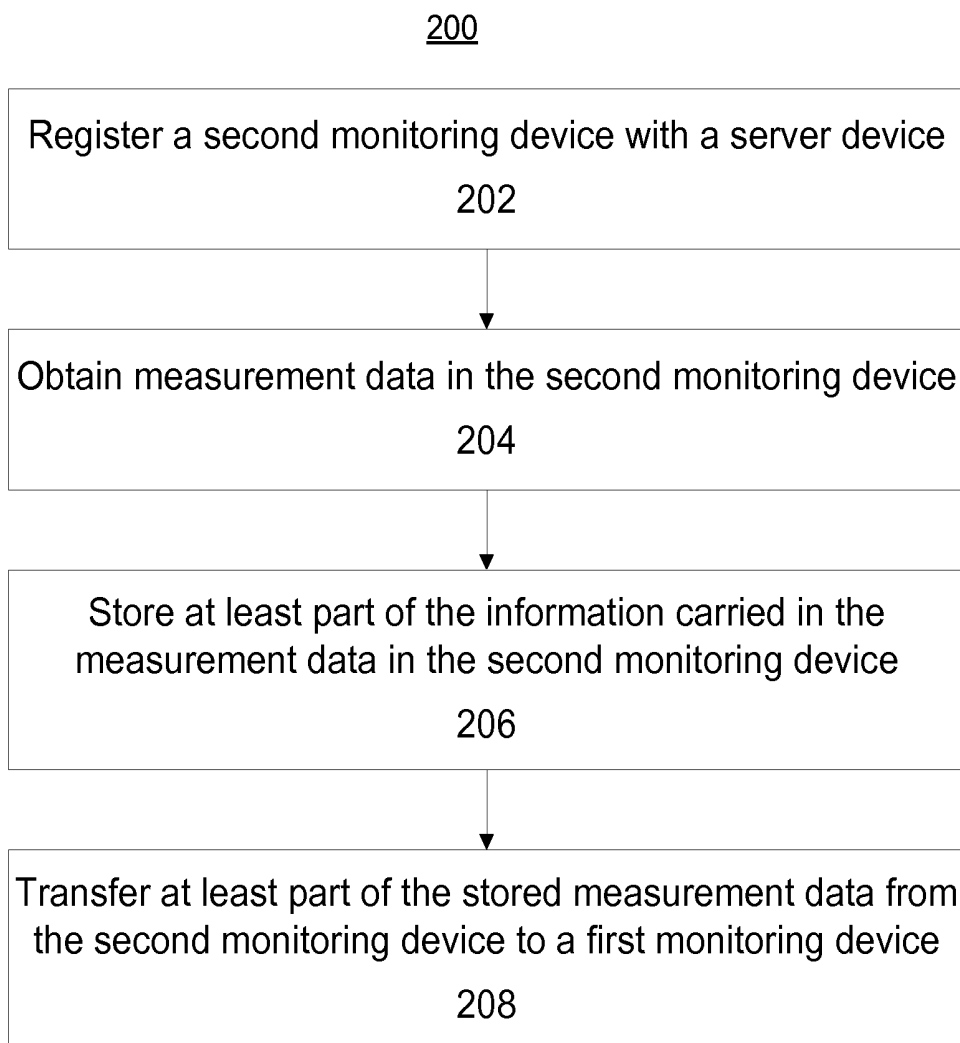


Figure 4

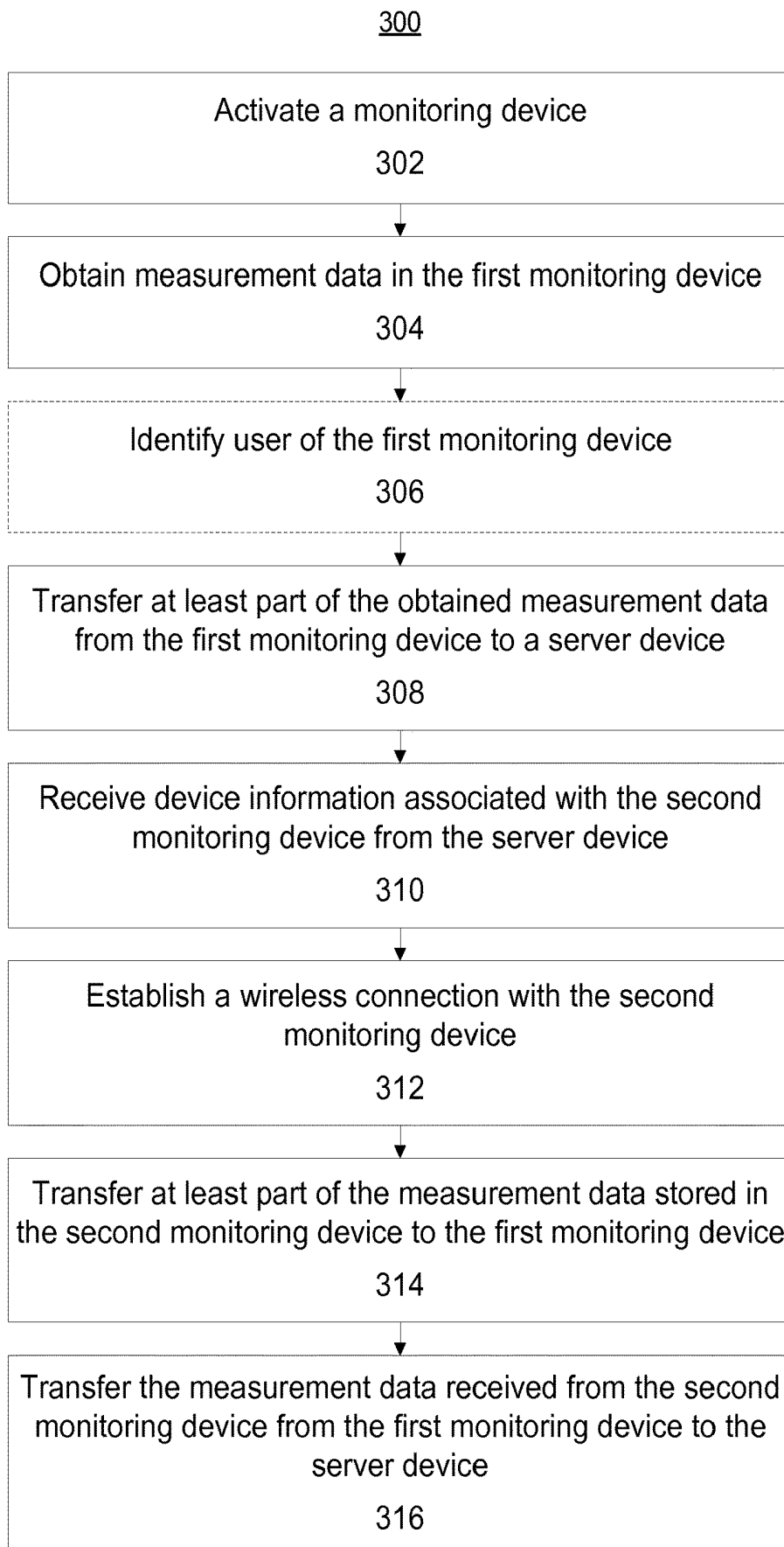


Figure 5

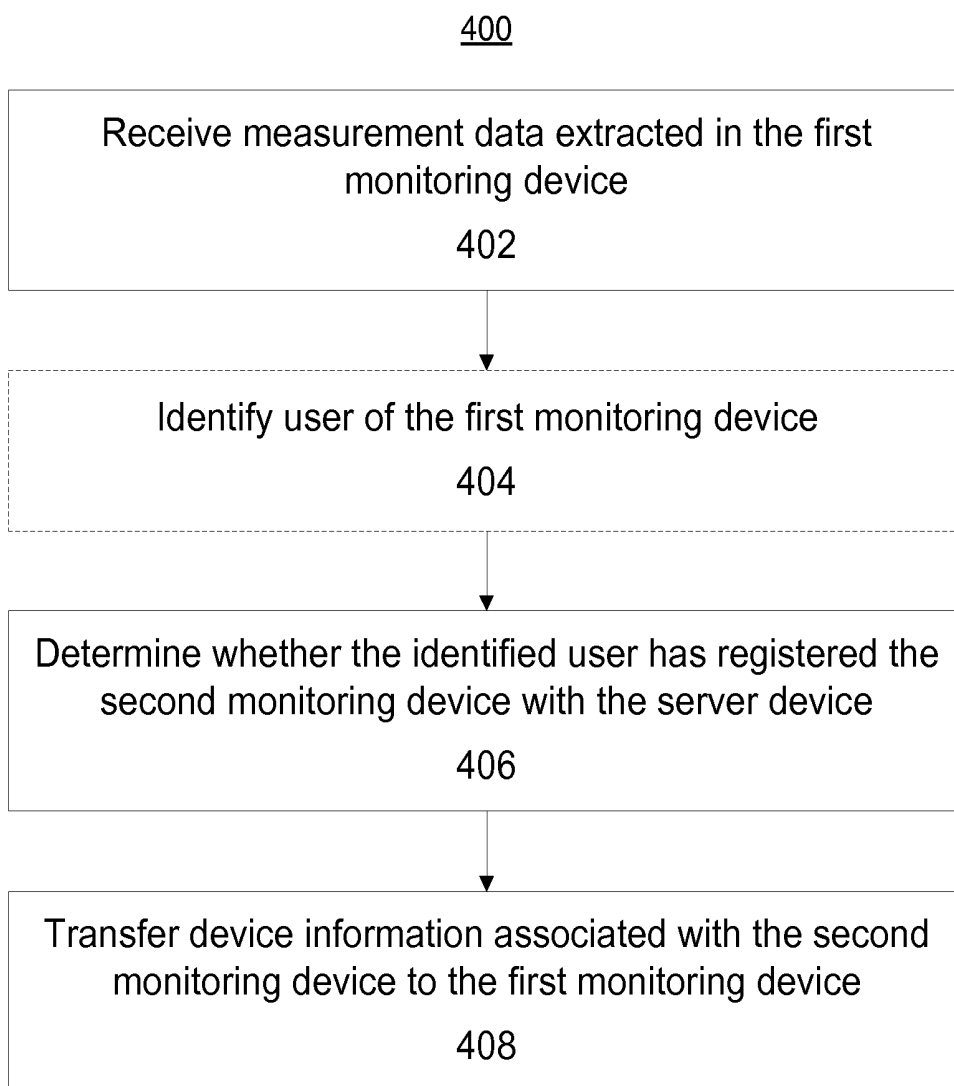


Figure 6

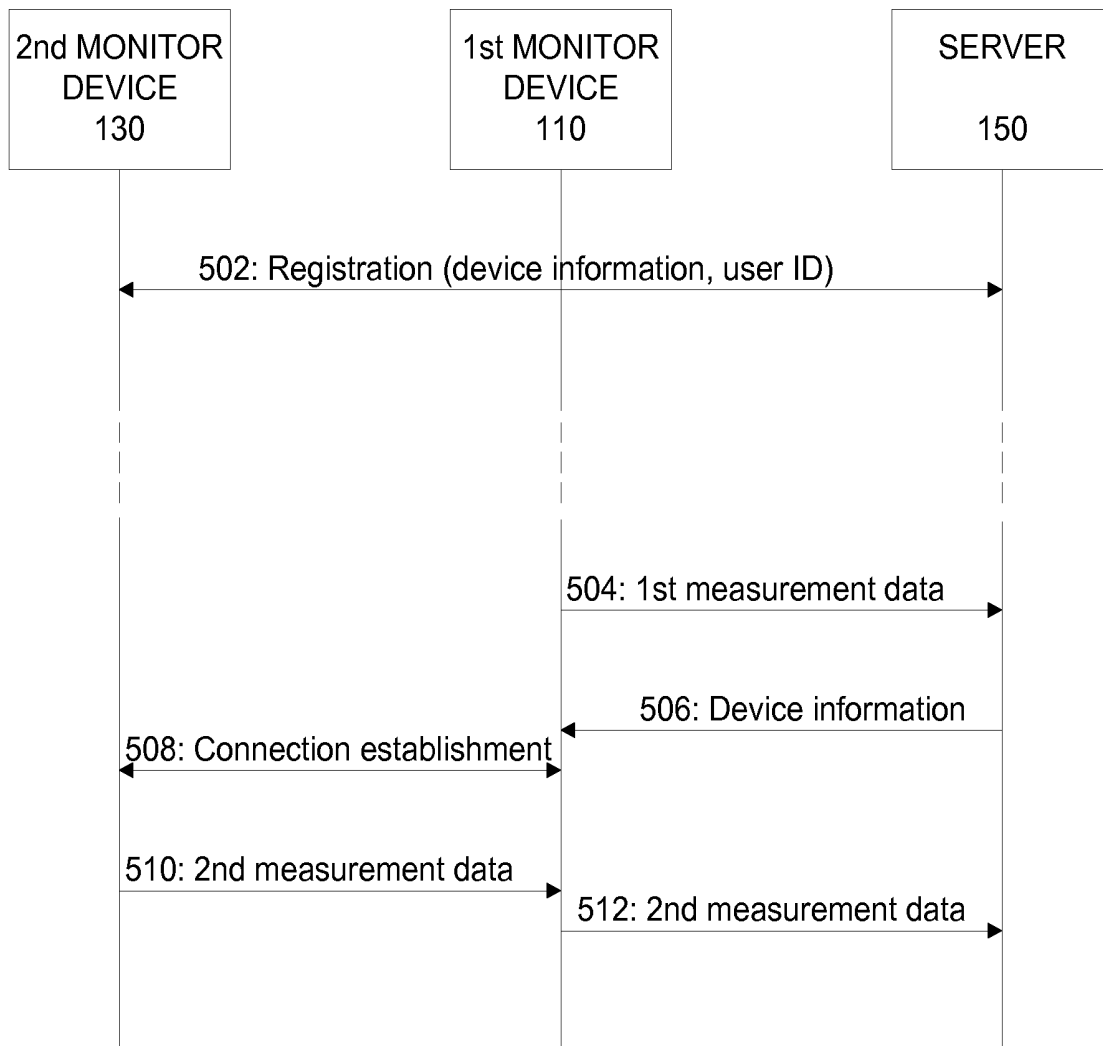


Figure 7

TRANSFER OF SENSOR DATA

TECHNICAL FIELD

[0001] The example and non-limiting embodiments of the present invention relate to transfer of sensor data pertaining to a user extracted by one or more monitoring devices in an efficient and user-friendly manner.

BACKGROUND

[0002] Different kind of activity monitors and monitoring devices of other type that collect sensor data measured from a user have become more and more popular. A single user may have multiple devices that each collect respective sensor data pertaining to the same user, such as activity data and health related data. Collection of such data may be continuous or it may take place from time to time, either autonomously or in response to a user action. In one viewpoint, such monitoring devices may be considered as Internet of Things (IoT) sensor devices that serve to measure certain predefined parameters, such as the number of steps taken by the user or the weight of the user and provide measured values to a remote server for storage and/or analysis therein.

[0003] In a typical scenario, a monitoring device is locally connected to a mobile device of the user and relies on a specific application installed on the mobile device, which application then enables uploading the measured values to the remote server via user operating the application.

SUMMARY

[0004] According to an example embodiment, there is provided a method in a device that comprises a sensor portion for deriving, on basis of one or more sensor signals that are descriptive of respective physical characteristic pertaining to a user, at least one measurement signal that is descriptive of a characteristic pertaining to the user, the method comprising obtaining first measurement data that comprises one or more values indicated by the at least one measurement signal and transferring the first measurement data to a server device over a first wireless link, receiving, from the server device, device information that comprises at least a device identifier and access information for another device that is capable of providing second measurement data that is descriptive of one or more characteristics pertaining to the same user, in response to receiving said device information, detecting presence of said another device and establishing a second wireless link with said another device using said device information, and receiving the second measurement data from said another device via the second wireless link and transferring the second measurement data to the server device via the first wireless link.

[0005] According to another example embodiment, a device is provided, the device comprising a sensor portion for deriving, on basis of one or more sensor signals that are descriptive of respective physical characteristic pertaining to a user, at least one measurement signal that is descriptive of a characteristic pertaining to the user, a communication apparatus for wireless communication over a wireless link, and a control portion arranged to cause the device to perform at least the following: obtain first measurement data that comprises one or more values indicated by the at least one measurement signal and transfer the first measurement data to a server device over a first wireless link, receive, from the

server device, device information that comprises at least a device identifier and access information for another device that is capable of providing second measurement data that is descriptive of one or more characteristics pertaining to the same user, in response to receiving said device information, detect presence of said another device and establish a second wireless link with said another device using said device information, and receive the second measurement data from said another device via the second wireless link and transfer the second measurement data to the server device via the first wireless link.

[0006] According to another example embodiment, a device is provided, the device comprising a sensor means for deriving, on basis of one or more sensor signals that are descriptive of respective physical characteristic pertaining to a user, at least one measurement signal that is descriptive of a characteristic pertaining to the user, a communication means for wireless communication over a wireless link, and a control means for causing the device to perform at least the following: obtain first measurement data that comprises one or more values indicated by the at least one measurement signal and transfer the first measurement data to a server device over a first wireless link, receive, from the server device, device information that comprises at least a device identifier and access information for another device that is capable of providing second measurement data that is descriptive of one or more characteristics pertaining to the same user, in response to receiving said device information, detect presence of said another device and establish a second wireless link with said another device using said device information, and receive the second measurement data from said another device via the second wireless link and transfer the second measurement data to the server device via the first wireless link.

[0007] According to another example embodiment, a computer program is provided, the computer program comprising computer readable program code configured to cause performing at least the method according to the example embodiment described in the foregoing when said program code is executed on a computing apparatus:

[0008] The computer program according to an example embodiment may be embodied on a volatile or a non-volatile computer-readable record medium, for example as a computer program product comprising at least one computer readable non-transitory medium having program code stored thereon, the program which when executed by an apparatus cause the apparatus at least to perform the operations described hereinbefore for the computer program according to an example embodiment of the invention.

[0009] The exemplifying embodiments of the invention presented in this patent application are not to be interpreted to pose limitations to the applicability of the appended claims. The verb “to comprise” and its derivatives are used in this patent application as an open limitation that does not exclude the existence of also unrecited features. The features described hereinafter are mutually freely combinable unless explicitly stated otherwise.

[0010] Some features of the invention are set forth in the appended claims. Aspects of the invention, however, both as to its construction and its method of operation, together with additional objects and advantages thereof, will be best understood from the following description of some example embodiments when read in connection with the accompanying drawings.

BRIEF DESCRIPTION OF FIGURES

[0011] The embodiments of the invention are illustrated by way of example, and not by way of limitation, in the figures of the accompanying drawings, where

[0012] FIG. 1 schematically illustrates some components of a wireless communication arrangement according to an example embodiment;

[0013] FIG. 2 schematically illustrates some components of a monitoring device according to an example embodiment;

[0014] FIG. 3 schematically illustrates some components of a monitoring device according to an example embodiment;

[0015] FIG. 4 illustrates a method according to an example embodiment;

[0016] FIG. 5 illustrates a method according to an example embodiment;

[0017] FIG. 6 illustrates a method according to an example embodiment;

[0018] FIG. 7 depicts signaling between elements of the wireless communication arrangement according to an example embodiment.

DESCRIPTION OF SOME EMBODIMENTS

[0019] FIG. 1 schematically illustrates a block diagram of some components and/or entities of a wireless communication arrangement 100 to depict an exemplifying framework for one or more embodiments of the present invention. The wireless communication arrangement 100 comprises a first monitoring device 110 for capturing sensor data pertaining to a user, a second monitoring device 130 for capturing sensor data pertaining to the (same) user and a server device 150 for storing and/or processing the sensor data captured by the first and second monitoring devices 110, 130. The first monitoring device 110 is connectable to a network 170 via a first wireless link 102, thereby enabling a connection between the first monitoring device 110 and the server device 150 via the network 170. The second monitoring device 130 is connectable to other devices, e.g. to the first monitoring device 110, via a second wireless link 106. The second monitoring device 130 may be further connectable to the network 170 via a third wireless link 104, thereby enabling a connection between the second monitoring device 130 and the server device 150 via the network 170.

[0020] The first monitoring device 110 may employ (a first set of) one or more sensors for capturing respective sensor signals that are descriptive of respective physical characteristics pertaining to a user and to generate, on basis of the captured sensor signals, one or more measurement signals. The measurement signal(s) generated in the first monitoring device 110 or information extracted from the generated measurement signals are stored in the first monitoring device 110 and/or transferred from the first monitoring device 110 to the server device 150.

[0021] The second monitoring device 130 may employ (a second set of) one or more sensors to capture respective sensor signals that are descriptive of respective physical characteristics pertaining to the same user as the sensor signals captured in the first monitoring device 110 and to generate, on basis of the captured sensor signals, one or more measurement signals. The measurement signals generated in the second monitoring device 130 or information extracted from the generated measurement signals are stored

in the second monitoring device 130 and/or transferred from the second monitoring device 130 to the server device 150. The transfer may be carried out via the wireless link 104 in response to a user action or the transfer may be carried autonomously via the wireless link 106 and hence via the first monitoring device 110 according to procedures described via a number of examples in the following.

[0022] The examples described in the foregoing and in the following refer to a measurement signal that is descriptive of a certain characteristic pertaining to a user in singular. This, however, is a choice made in favor of editorial clarity of the description, and in other examples the measurement signal may consist of two or more distinct signals (e.g. sub-signals) that are jointly descriptive of the certain characteristic pertaining to the user.

[0023] FIG. 2 depicts a block diagram of some components of an exemplifying first monitoring device 110. The first monitoring device 110 may comprise further components or portions in addition to those depicted in FIG. 2. In this regard, the first monitoring device 110 further comprises e.g. a power supply for providing electrical power to components of the first monitoring device 110. The power supply may comprise, e.g. a rechargeable or non-rechargeable battery, which battery may be replaceable or it may be installed in the first monitoring device 110 in a fixed manner. Alternatively, the first monitoring device 110 may comprise an interface for receiving electrical power e.g. from the mains electricity.

[0024] The first monitoring device 110 is typically provided as a portable device that can be conveniently carried to the site of its usage but that is not an actual mobile device that is frequently or constantly carried by the user due to its shape, size, weight and/or function. Such device is typically a special-purpose device having generation of the measurement signal(s) and their transfer to the server device 150 as its sole function or as one of its main functions. In another example, the first monitoring device 110 is installed to its site in a fixed or semi-fixed manner and the usage of the first monitoring device is assumed to primarily take place at this site. In a way, such device is a stationary device that is not expected to be transferred from its site of usage and/or is only exceptionally relocated to another site. In a further example, the first monitoring device 110 may be provided as a special-purpose mobile device that has generation of the measurement signal(s) and their transfer to the server device 150 as one of its main functions.

[0025] The first monitoring device 110 comprises a communication portion 112. The communication portion 112 comprises at least a first communication apparatus 112a for wireless communication with other apparatuses and it may further comprise a second communication apparatus 112b for wireless communication with other apparatuses. The communication portion 112 may comprise one or more further communication apparatuses for wireless and/or wired communication with other apparatuses. The first communication apparatus 112a may enable, for example, wireless communication with other devices by using a wireless communication technique or protocol that enables a point-to-point or a point-to-multipoint wireless connection with another device. The first communication apparatus 112a may be employed to establish the wireless link 106 that enables wireless communication with the second monitoring device 130. The second communication apparatus 112b, if included in the first monitoring device 110, may apply

communication technique/protocol different from that of the first communication apparatus **112a** and it may enable establishing the wireless link **102** to the network **170**, which in turn enables communication with the server device **150**.

[0026] The first monitoring device **110** further comprises a processor **116** and a memory **115** for storing data and computer program code **117**. The first monitoring device **110** may further comprise user I/O (input/output) components **118** that may be arranged, possibly together with the processor **116** and a portion of the computer program code **117**, to provide a user interface (UI) for receiving input from a user of the first monitoring device **110** and/or providing output to the user of the first monitoring device **110**. The user I/O components **118** may comprise hardware components such as a display, a touchscreen, a touchpad, a keyboard, and/or an arrangement of one or more keys or buttons, etc. The processor **116** may be arranged to control operation of the first monitoring device **110** e.g. in accordance with a portion of the computer program code **117** stored in the memory **115** and possibly further in accordance with the user input received via the user I/O components **118** and/or in accordance with information received via the communication portion **112**. The memory **115** and a portion of the computer program code **117** stored therein may be further arranged to, with the processor **116**, to provide a control portion or a control function for controlling operation of a communication apparatus of the communication portion **112**, possibly together with a control portion or a control function that may be provided within the respective communication apparatus of the communication portion **112** (which will be described later in this text). These control functions may be, separately or jointly, referred to as control means (of the first monitoring device **110**).

[0027] The first monitoring device **110** further comprises a sensor portion **119** for deriving one or more first measurement signals, where each first measurement signal is descriptive of a respective characteristic pertaining to the user. The sensor portion **119** may include one or more first sensors for capturing respective first sensor signals, where each first sensor signal is descriptive of a physical characteristic associated with the user. The one or more first sensor signals are used as basis for generating the one or more first measurement signals. In a straightforward example, a first sensor signal, i.e. a sensor signal captured by a respective one of the one or more first sensors, is provided as such as the respective first measurement signal. In another example the sensor portion **119** comprises an analysis portion (not shown in FIG. 2) that is arranged to derive each of the first measurement signals on basis of one or more first sensor signals. In an example, a first measurement signal is indicative of an instantaneous value of a certain characteristic pertaining to the user. In another example, a first measurement signal is indicative of an average value of a certain characteristic pertaining to the user, computed over a pre-defined time period. In a further example, a first measurement signal is indicative of the value of a certain characteristic pertaining to the user as a function of time.

[0028] The control means may operate the sensor portion **119** and the analysis portion (if present) to obtain the one or more first measurement signals as desired and store at least part of the information carried in the one or more first measurement signals as first measurement data in the memory **115**. In addition to or instead of storing the information, the control means may operate the communication

portion **112** (e.g. the second communication apparatus **112b**) to transfer at least part of the first measurement data to the server device **150** for subsequent analysis and/or presentation to the user. Herein, the analysis portion serves as a logical entity that may be provided, instead of being provided as part of the sensor portion **119**, for example, as part of the control means or as an entity separate from the sensor portion **119** and the control means.

[0029] FIG. 3 depicts a block diagram of some components of an exemplifying second monitoring device **130**. The second monitoring device **130** may comprise further components or portions in addition to those depicted in FIG. 3. As an example in this regard, the second monitoring device **130** further comprises e.g. a power supply for providing electrical power to components of the secondary monitoring device **130**. The power supply may comprise, e.g. a rechargeable or non-rechargeable battery, which battery may be replaceable or it may be installed in the second monitoring device **130** in a fixed manner.

[0030] The second monitoring device **130** is typically provided as a mobile device that is frequently carried by its user. As an example in this regard, the second monitoring device **130** is a mobile device that a user may carry with him/her or wear as he/she chooses. As a particular example of the latter, the first monitoring device **110** may be provided as a wearable device that the user is able to wear through wearing a fitting arrangement or an installation arrangement designed for the purpose. Such wearable devices are typically special-purpose devices that have generation of the measurement signal(s) and their transfer to the server device **150** as its sole function or as one of its main functions. Non-limiting example of such a wearable device is an activity tracker that is arranged to measure one or more characteristic that are descriptive of activity of the user and that may be provided e.g. as a wrist band or as a smart watch. Further non-limiting examples include a wireless sensor arrangement integrated to clothing and a wireless sensor arrangement that is wearable by the user by using a specially designed fitting arrangement such as a chest band. Such wearable sensor arrangement may be provided e.g. as heart rate monitor, a blood pressure meter, a glucose meter, etc.

[0031] The second monitoring device **130** comprises a communication portion **132**. The communication portion **132** comprises at least a first communication apparatus **132a** for wireless communication with other apparatuses and it may further comprise a second communication apparatus **132b** for wireless communication with other apparatuses. The communication portion **132** may comprise one or more further communication apparatuses for wireless and/or wired communication with other apparatuses. The communication apparatus **132a** may enable, for example, wireless communication with other devices by using a wireless communication technique or protocol that enables a point-to-point or a point-to-multipoint wireless connection with another device, in particular with the communication apparatus **112a**. The communication apparatus **132a** may hence be employed to establish the wireless link **106** that enables the second monitoring device **130** to wirelessly communicate with the first monitoring device **110**. The second communication apparatus **132b**, if included in the second monitoring device **130**, may apply communication technique/protocol different from that of the first communication apparatus **132a** and it may enable establishing the wireless

link **104** to the network **170**, which in turn enables communication with the server device **150**.

[0032] The second monitoring device **130** further comprises a processor **136** and a memory **135** for storing data and computer program code **137**. The second monitoring device **130** may further comprise user I/O (input/output) components **138** that may be arranged, together with the processor **136** and a portion of the computer program code **137**, to provide a user interface (UI) for receiving input from a user of the second monitoring device **130** and/or providing output to the user of the second monitoring device **130**. The user I/O components **138** may comprise hardware components such as a display, a touchscreen, a touchpad, a keyboard and/or an arrangement of one or more keys or buttons, etc. The processor **136** may be arranged to control operation of the second monitoring device **130** in accordance with a portion of the computer program code **137** stored in the memory **135** and possibly further in accordance with the user input received via the user I/O components **138** and/or in accordance with information received via the communication portion **132**. The memory **135** and a portion of the computer program code **137** stored therein may be further arranged, with the processor **136**, to provide a control portion or a control function for controlling operation of a communication apparatus of the communication portion **132**, possibly together with a control portion or a control function that may be provided within the respective communication apparatus of the communication portion **132** (which will be described later in this text). These control functions may be, separately or jointly, referred to as control means (of the second monitoring device **130**).

[0033] The second monitoring device **130** further comprises a sensor portion **139** for deriving one or more second measurement signals, where each second measurement signal is descriptive of a respective characteristic pertaining to the user. The sensor portion **139** may include one or more second sensors for capturing respective second sensor signals, where each second sensor signal is descriptive of a respective physical characteristic associated with the user. The one or more second sensor signals are used as basis for generating the one or more second measurement signals. In an example, a second sensor signal, i.e. a sensor signal captured by a respective one of the one or more second sensors, is provided as such as the respective second measurement signal. In another example the sensor portion **139** comprises an analysis portion (not shown in FIG. 3) that is arranged to derive each of the second measurement signals on basis of one or more second sensor signals. In an example, a second measurement signal is indicative of an instantaneous value of a certain characteristic pertaining to the user. In another example, a second measurement signal is indicative of the value of a certain characteristic pertaining to the user as a function of time.

[0034] The control means may operate the sensor portion **139** and the analysis portion (if present) to derive the one or more second measurement signals as desired and store at least part of the information carried in the one or more second measurement signals as second measurement data in the memory **135**. In addition to or instead of storing the information, the control means may operate the communication portion **132** to transfer at least part of the second measurement to the server device **150** for subsequent analysis and/or presentation to the user. The transfer may be carried out via the wireless link **104** (e.g. by the second

communication apparatus **132b**) in response to a user action or the transfer may be carried autonomously via the wireless link **106** (e.g. by the first communication apparatus **132a**) and hence via the first monitoring device **110**. In variations of this example, the operation of the analysis portion is provided as part of the control means, or the analysis portion is provided as an entity separate from the sensor portion **139** and the control means.

[0035] The server device **150** is typically a remote server device that is arranged to provide a server function that is accessible by a number of first monitoring devices **110** and/or second monitoring device **130**. Although described herein, for editorial clarity of description, as a single entity, the server function described in this text by using the server device **150** as an example may be jointly provided by a number of server devices that are arranged to provide a cloud service, a cloud server arrangement or a cloud computing arrangement.

[0036] In general, a sensor of the sensor portion **119**, **139** may be any type of sensor known in the art, depending on the measurement signals to be derived by the respective monitoring device **110**, **130**. As a few non-limiting examples, suitable types of sensor include an accelerometer, a pressure sensor, a temperature sensor, a speed sensor, etc. The capture sensor signals, in turn, may be applied to device various types of measurement signals according to the intended usage of the monitoring device **110**, **130**. As a few non-limiting examples, a measurement signal may be indicative of a characteristic pertaining to a biometric characteristic of a user (such as heart rate, blood pressure, body temperature, etc.) or a characteristic pertaining to physical state of a user (such as speed of movement, number of steps taken, location of the user, etc.).

[0037] In order to provide a concrete but non-limiting examples, in the following occasional references are made to an example where the first monitoring device **110** comprises a digital weighing scale that is arranged to generate respective first measurement signals to indicate weight of the user and a heart rate of the user and where the second monitoring device **130** comprises an activity tracker provided in a wrist band that is arranged to generate respective second measurement signals to indicate one or more of the following: distance traveled by the user, the number of steps taken by the user, the speed of movement of the user, the heart rate of the user.

[0038] As described in the foregoing, the communication portion **112** may comprise communication apparatuses **112a** and **112b**, while the communication portion **132** may comprise communication apparatuses **132a** and **132b**. Each of the communication apparatuses **112a**, **112b**, **132a** and **132b** described in the foregoing may also be referred to as a respective (wireless) communication means. A communication apparatus may be provided e.g. as a respective chipset and/or as a respective communication module. For clarity and brevity of description, each of the communication apparatuses **112a**, **112b**, **132a** and **132b** may be considered as a respective single logical entity that may also be capable of processing at least some of the information received via the employed wireless link **102**, **104**, **106** and/or at least some of the information that is to be transmitted via the employed wireless link **102**, **104**, **106** without external control from other components of the respective monitoring device **110**, **130** (e.g. from the processor **116**, **136**, respectively). In an embodiment, a communication apparatus **112a**,

112b, **132a**, **132b** comprises e.g. a respective wireless transceiver portion for wireless communication and a respective control portion (or a control function) for controlling operation of the respective wireless transceiver portion and for processing information received/transmitted via the respective wireless transceiver portion. Such a control function may be provided by hardware means, by software means or by a combination of hardware means and software means. As an example in this regard, the communication apparatus **112a**, **112b**, **132a**, **132b** may comprise a memory, a processor, whereas a portion of a computer program code stored in the memory may be arranged to, with the processor, provide the control function for controlling operation of the respective wireless communication apparatus **112a**, **112b**, **132a**, **132b**, either independently or jointly with the control function provided by the respective memory **115**, **135**, a portion of the respective computer program **117**, **137** and the respective processor **116**, **136** of the respective monitoring device **110**, **130**.

[0039] The first wireless communication apparatus **112a** in the communication portion **112** and the first wireless communication apparatus **132a** in the communication portion **132** may be arranged to employ any suitable short-range wireless communication technique or protocol known in the art to establish the wireless link **106** between the two monitoring devices **110**, **130**. Such a wireless link may also be referred to as a local wireless link. The local wireless link typically involves a peer-to-peer connection between the involved devices. The term short-range wireless communication as used herein refers to a wireless communication technique or protocol that enables typical operating range in the scale of tens of meters, e.g. up to 100 meters. However, especially in an indoor environment, the operating range of such short-range wireless communication technique/protocol may be significantly shorter e.g. due to walls and other stationary structures as well as furniture etc. that are likely to partially block or interfere with the radio communication between communication apparatuses **112a**, **132a**. On the other hand, in favorable conditions in outdoor use the operating range may extend to several hundreds of meters.

[0040] Examples of such a short-range wireless communication technique/protocol include the Bluetooth Basic Rate/Enhanced Data Rate (BT BR/EDR) protocol and the Bluetooth Low Energy (BLE) protocol, both specified e.g. in the Bluetooth Specification Version 4.1, Covered Core Package version: 4.1 (publication date 3 Dec. 2013), incorporated herein by reference in its entirety. In the following, this document is referred to as a Bluetooth Specification. However, the BT BR/EDR and BLE technologies serve as illustrative and non-limiting examples in this regard, and the description generalizes into any short-range wireless communication technique/protocol. A further example of a suitable short-range wireless communication technique/protocol includes Wireless Local Area Network (WLAN) technology specified e.g. in IEEE 802.11 specifications (where the acronym IEEE stands for the Institute of Electrical and Electronics Engineers). Yet further examples of other suitable short-range wireless communication techniques/protocols known in the art include ANT wireless sensor network technology and IEEE 802.15.4 network technology for low-rate wireless personal networks (LR-WPANs).

[0041] The second wireless communication apparatus **112b** in the communication portion **112** of the first monitoring device **110**, if included therein, may be arranged to

employ any suitable wireless access technology known in the art to establish the wireless link **102** that enables a connection to the network **170** that further connects the first monitoring device **110** to the server device **150**. As an example in this regard, assuming that the first wireless communication apparatus **112a** applies some other communication protocol/technique (such as BT BR/EDR or BLE), the second wireless communication apparatus **112b** may be arranged to employ the WLAN technology referred to in the foregoing to establish the wireless link **102** with a wireless access point in its vicinity, which wireless link **102** enables the first monitoring device **110** to access the network **170** that further enables connection to the server device **150**. As another example, the wireless communication apparatus **112b** may be arranged to employ a cellular access technology known in the art to establish the wireless link **102** with a base station of a cellular network, which wireless link **102** enables the first monitoring device **110** to access the network **170** that further enables connection to the server device **150**. Similar considerations are valid also for the second wireless communication apparatus **132b** possibly included in the communication portion **132** of the second monitoring device **130** with respect to establishment of the wireless link **104**.

[0042] FIG. 4 illustrates an exemplifying method **200** that may be carried out by the second monitoring device **130**, FIG. 5 illustrates an exemplifying method **300** that may be carried out by the first monitoring device **110**, and FIG. 6 illustrates an exemplifying method **400** that may be carried out by the server device **150**, where each of the methods **200**, **300** and **400** may be implemented, for example, within the framework of the wireless communication arrangement **100**. Moreover, FIG. 7 depicts a signaling chart that serves to illustrate a non-limiting example of information exchange between the elements of the wireless communication arrangement **100** in context of methods **200**, **300** and **400**.

[0043] The method **200** commences by the second monitoring device **130** registering with the server device **150**, as indicated in block **202**. In an example, the registration may be carried out using a connection established via the wireless link **104**. The registration procedure is represented in FIG. 7 by step **502** and the registration procedure may involve transferring one or more messages between the second monitoring device **130** and the server device **150**. In another example, the registration is carried out by another device connected to the second monitoring device **130**. In this regard, the second monitoring may employ the first communication apparatus **132a** to establish a wireless link to a mobile device (such as a mobile phone, a smartphone, a tablet computer, a laptop computer, . . .) that provides a connection to the server device **150** via the network **170**. The mobile device further runs an application that enables controlling at least part of operation of the second monitoring device **130** and/or accessing the second measurement data stored in the second monitoring device **130**. In such an arrangement the registration procedure may be carried out at least in part by the application running in the mobile device and using a connection between the mobile device and the second monitoring device **130** established via the wireless link.

[0044] The registration procedure results in storing, in a second user information database in the server device **150**, at least a user identifier (user ID) assigned for the user of the second device **130** and device information associated with

the second monitoring device **130**. This device information may comprise a device identifier (device ID) assigned for the second device **130** and access information for establishing connection with the second monitoring device **130**.

[0045] The user ID serves to uniquely identify the user at least in the framework of the wireless communication arrangement **100**. In this regard, the user ID may be created or assigned as part of the registration procedure or the user ID may comprise (or be based on) in predefined user ID. The user ID may comprise, for example, the name of the user, a username assigned for the user, an email address of the user, a random or pseudo-random string of characters assigned to serve as identification of the user, etc. The device ID serves to uniquely identify the second monitoring device **130** at least in the framework of the wireless communication arrangement **100**. The device ID may comprise, for example, a network address or a device address associated with the second monitoring device **130** or an identification of other type assigned to and/or selected by the second monitoring device **130**. As an example, the device ID may comprise a MAC address assigned for the second communication apparatus **132b**. The access information referred to above may comprise e.g. an authentication key and/or an encryption key that enable another device to establish a connection with the second monitoring device **130**.

[0046] Although the second user information database is described herein as a single database, this is a non-limiting illustrative example chosen for editorial clarity and in general the second user information database may be provided as a combination of one or more databases and/or data storage structures of other types known in the art.

[0047] The registration (block **202**) may be followed by the second monitoring device **130** obtaining the second measurement data, as indicated in block **204**. In this regard, the control means in the second monitoring device **130** operates the sensor portion **139** to capture one or more second sensor signals and operates the analysis portion therein to process these captured second sensor signals into the one or more second measurement signals. As described in the foregoing, a second measurement signal may be indicative of an instantaneous value of the respective characteristic pertaining to the user or it may be indicative of the value of the respective characteristic as a function of time.

[0048] The second monitoring device **130** stores at least part of the information carried in the one or more second measurement signals in the memory **135** as the second measurement data for subsequent transfer to other devices, as indicated in block **206**. In this regard, if considering a piece of the second measurement data extracted from a certain second measurement signal, the second measurement data may comprise, for example, a single value extracted from the certain second measurement signal, a time series or other subset of values extracted from the certain second measurement signal, or one or more values derived from a single value or from a time series or other subset of values extracted from the certain second measurement signal.

[0049] Referring to the example where the second monitoring device **130** is provided as the activity tracker, the second measurement data may include information that descriptive of distance traveled by the user, the number of steps taken by the user, the speed of movement of the user and/or heart rate of the user.

[0050] The method **200** continues with the second monitoring device **130** transferring the second measurement data

to the first monitoring device **110**, as indicate in block **208**, for subsequent forwarding to the server device **150**. The transfer of the second measurement data to the first monitoring device **110** is represented in FIG. 7 by step **510**. The transfer may involve the second monitoring device **130** uploading the second measurement data to the first monitoring device **110** or the first monitoring device downloading the second measurement data from the second monitoring device **130**. Before proceeding into description of examples concerning transfer of the second measurement data from the first monitoring device **110** onwards, some aspects of operation of the first monitoring device **110** in accordance with the method **300** are described first.

[0051] The method **300** commences by activating the first monitoring device **110**, as indicated in block **302**. The activation may involve the switching the first monitoring device **110** from off state to on state or from a sand-by state (or a power-saving state) to the on state. The activation may result from a user operating a switch (e.g. an on/off switch) of the UI of the first monitoring device **110** or from the user otherwise physically interacting with the first monitoring device **110** in a predefined manner.

[0052] Referring to the example where the first monitoring device **110** is provided as the digital weighing scale, the activation may comprise the first monitoring device **110** detecting the user stepping on the weighing scale.

[0053] The method **300** proceeds to obtaining the first measurement data, as indicated in block **304**. In this regard, the control means in the first monitoring device **110** operates the sensor portion **119** to capture one or more first sensor signals and operates the analysis portion therein to process these captured first sensor signals into the one or more first measurement signals. As described in the foregoing, a first measurement signal may be indicative of an instantaneous value of the respective characteristic pertaining to the user or it may be indicative of the value of the respective characteristic as a function of time.

[0054] The first monitoring device **110** stores at least part of the information carried in the one or more first measurement signals in the memory **115** as the first measurement data for subsequent transfer to other devices. In this regard, if considering a piece of the first measurement data extracted from a certain first measurement signal, the first measurement data may comprise, for example, a single value extracted from the certain first measurement signal, a time series or other subset of values extracted from the certain first measurement signal, or one or more values derived from a single value or from a time series or other subset of values extracted from the certain first measurement signal.

[0055] Referring to the example where the first monitoring device **110** is provided as the digital weighing scale, the first measurement data may include indication of the weight of the user and the heart rate of the user.

[0056] In the course of the method **300**, the first monitoring device **110** may identify the user, as indicated in block **306**. As a result of user identification a user ID assigned for the identified user is stored at least temporarily in the memory **115**. As described for the second device **130** in the foregoing, the user ID serves to uniquely identify the user at least in the framework of the wireless communication arrangement **100**. In an example, the user identification is based on user input received via the UI of the first monitoring device **110**. In this regard, the user input may directly

indicate the user ID or the user ID may be derivable from the user input via mapping information available in the first monitoring device 110.

[0057] In another example, the user identification is automated and it is based at least in part on the first measurement data, on one or more of the first sensor signals and/or on one or more of the first measurement signals in comparison to corresponding data and/or signals obtained in the past. Such an automated method may involve verifying whether the first measurement data indicates for a certain characteristic a value that matches (e.g. is the same or close to) a predefined value associated with a certain user and considering the first measurement data to serve as identification of the certain user in case the verification is affirmative. In an example, such a predefined value may comprise a value obtained for the same characteristic in a recent past for the certain user. In a further example, the user identification is based on a combination of user input received via the UI of the first monitoring device 110 and the first measurement data, e.g. such that an automated method is applied first to find one or more potential users, respective identifications of the potential users are presented to the user via the UI and a user selection among the presented identifications is received via the UI and applied as identification of the user.

[0058] Referring to the example where the first monitoring device 110 is provided as the digital weighing scale, the user identification may be based on measured weight and/or heart rate of the user e.g. such that the measured weight and/or heart rate properties such as heart rate variability that are the same as or close to a weight and/or heart rate properties obtained for a certain user in the recent past results in identifying the measured weight and/or heart rate to pertain to the certain user.

[0059] Thereafter, the method 300 proceeds into transferring at least the first measurement data from the first monitoring device 110 to the server device 150 for storage therein, as indicated in block 308. This data transfer from the first monitoring device 110 to the server device 150 is represented in FIG. 7 by step 504. In an example, the user ID transferred from the first monitoring device 110 to the server device 150 together with the first monitoring data. The first measurement data and the user ID (if received) may be stored in a first user information database in the server device 150.

[0060] Although the first user information database is described herein as a single database, this is a non-limiting illustrative example chosen for editorial clarity and in general the first user information database may be provided as a combination of one or more databases and/or data storage structures of other types known in the art.

[0061] Referring now to the method 400, the server device 150 receives the first measurement data and the user ID from the first monitoring device, as indicated in block 402. Upon receiving these pieces of information the server device 150 stores them in the first user information database for subsequent analysis and/or provision for display to the user.

[0062] In alternative example, the user identification (block 306) in the first monitoring device 110 is omitted and only the first measurement data is transferred from the first monitoring device 110 to the server device 150. Consequently, the user identification to obtain the user ID may be carried out in the server device 150 instead, as indicated in block 404. In such an example, the user identification is provided as an automated procedure that is based on the first

measurement data received from the first monitoring device 110. The user ID obtained via the automated procedure in the server device 110 is stored together with the first measurement data in the first user information database.

[0063] When in possession of the user ID, the server device 150 determines whether the same user has registered another device, e.g. the second monitoring device, as indicated in block 406. As an example in this regard, the server device 150 may search the second user information database in an attempt to identify a database entry that includes the user ID that matches the one received from the first monitoring device 110. If such a database entry is identified from the second user information database, the device information included in the identified database entry or parts thereof are extracted and transferred from the server device 150 to the first monitoring device 110, as indicated in block 408 and further represented in FIG. 7 by step 506. The device information transferred to the first monitoring device 110 includes the device ID and the access information for establishing connection with the second monitoring device 130, which in turn may include at least one of the authentication key and the encryption key assigned for the second monitoring device 130.

[0064] Referring to the example where the second monitoring device 130 is provided as the activity tracker, the search in the second user information database may result in extracting the device information associated with the activity tracker.

[0065] Referring back to the method 300, the first monitoring device 110 receives the device information from the server device 150, as indicated in block 310 (and represented in FIG. 7 by step 504). For the sake of an illustrative example, we may herein assume that the received device information serves to identify the second monitoring device 130. The first monitoring device 110 further makes use of the device information received from the server device 150 to establish the wireless link 106 and a connection between the first and second monitoring devices 110, 130 via the wireless link 106, as indicated in block 312 and represented in FIG. 7 by step 508.

[0066] Referring to the example where the first monitoring device 110 is provided as the digital weighing scale and the second monitoring device 130 is provided as the activity tracker, the operation(s) of the block 312 may involve the digital weighing scale establishing a wireless connection with the activity tracker.

[0067] The operations associated with the block 312 and/or step 508 may involve the first monitoring device 110 carrying out a device discovery procedure in order to detect presence of the second monitoring device 130. The device discovery may be based at least in part on the device information received from the server device 150 (e.g. the device ID) and it may be carried out using procedures known in the art. The device discovery procedure results in the first monitoring device 110 obtaining connection information that enables, together with the access information received from the server device, establishing the wireless link 106 to the second monitoring device 130. The connection information may be stored in the first monitoring device 110, e.g. in the memory 115, for subsequent connection attempts. If the first monitoring device 110 is already aware of the second monitoring device 130, the method 300 proceeds into reading the connection information from the memory 115. The first monitoring device applies the connection information

together with the access information received from the server device **130** to establish the wireless link **106** and the connection between the first and second monitoring devices **110**, **130** via the wireless link **106**.

[0068] Once the connection between the first and second monitoring devices **110**, **130** via the wireless link **106** has been established, the second measurement data stored in the second monitoring device **130** (e.g. in the memory **135** therein) is transferred to the first monitoring device **110**, as indicated in block **314** and represented in FIG. 7 by step **510**. In this regard, the first monitoring device **110** receives the second measurement data transmitted from the second monitoring device **130** in context of block **208** of the method **200**. As described therein, the transfer of the second measurement data may involve the second monitoring device **130** uploading the second measurement data to the first monitoring device **110** or the first monitoring device downloading the second measurement data from the second monitoring device **130**.

[0069] After reception of the second measurement data from the second monitoring device **130**, the first monitoring device **110** transfers the second monitoring data to the server device **150** for storage and/or for presentation to the user therein, as indicated in block **316** and represented in FIG. 7 by step **512**.

[0070] Referring to the example where the first monitoring device **110** is provided as the digital weighing scale and the second monitoring device **130** is provided as the activity tracker, the operation(s) of the blocks **314** and **316** may involve the digital weighing scale receiving one or more of information that descriptive of distance traveled by the user, the number of steps taken by the user, the speed of movement of the user and/or heart rate of the user from the activity tracker and forwarding this data to the server device **150**.

[0071] Referring back to components of the first monitoring device **110** and the second monitoring device **130** depicted in FIGS. 2 and 3, respectively, the processor **116**, **136** is configured to read from and write to the respective memory **115**, **135**. Although each of the processors **116**, **136** is depicted as a respective single component, any of the processors **116**, **136** may be implemented as respective one or more separate processing components. Similarly, although each of the memories **115**, **135** is depicted as a respective single component, any of the memories **115**, **135** may be implemented as respective one or more separate components, some or all of which may be integrated/removable and/or may provide permanent/semi-permanent/dynamic/cached storage.

[0072] The memory **115**, **135**, may store the respective computer program **117**, **137** comprising computer-executable instructions that control the operation of the respective monitoring device **110**, **130** when loaded into the respective processor **116**, **136**. As an example, the computer program **117** may include one or more sequences of one or more instructions. The computer program **117** may be provided as a computer program code. The processor **116** is able to load and execute the computer program **117** by reading the one or more sequences of one or more instructions included therein from the memory **115**. The one or more sequences of one or more instructions may be configured to, when executed by the processor **116**, cause the first monitoring device **110** to carry out operations, procedures and/or functions described in the foregoing. Hence, the first monitoring device **110** may

comprise at least one processor **116** and at least one memory **115** including computer program code for one or more programs, the at least one memory **115** and the computer program code configured to, with the at least one processor **116**, cause the first monitoring device **110** to perform operations, procedures and/or functions described in the foregoing. Similar considerations are equally valid for corresponding components **13x** of the second monitoring device **130**.

[0073] Each of the computer programs **117**, **137** may be provided e.g. as a respective computer program product comprising at least one computer-readable non-transitory medium having program code stored thereon, the program code, when executed by the respective monitoring device **110**, **130**, causes the monitoring device **110**, **130** at least to perform operations, procedures and/or functions described in the foregoing in context of the respective monitoring device **110**, **130**. The computer-readable non-transitory medium may comprise a memory device or a record medium such as a CD-ROM, a DVD, a Blu-ray disc or another article of manufacture that tangibly embodies the computer program. As another example, the computer program may be provided as a signal configured to reliably transfer the computer program.

[0074] Reference(s) to a processor should not be understood to encompass only programmable processors, but also dedicated circuits such as field-programmable gate arrays (FPGA), application specific circuits (ASIC), signal processors, etc. Features described in the preceding description may be used in combinations other than the combinations explicitly described.

[0075] Although functions have been described with reference to certain features, those functions may be performable by other features whether described or not. Although features have been described with reference to certain embodiments, those features may also be present in other embodiments whether described or not.

1.-27. (canceled)

28. A method, in a device comprising a sensor portion for deriving, on basis of one or more sensor signals that are descriptive of respective physical characteristic pertaining to a user, at least one measurement signal that is descriptive of a characteristic pertaining to the user, the method comprising:

- obtaining first measurement data that comprises one or more values indicated by the at least one measurement signal and transferring the first measurement data to a server device over a first wireless link;

- receiving, from the server device, device information that comprises at least a device identifier and access information for another device that is capable of providing second measurement data that is descriptive of one or more characteristics pertaining to the same user;

- in response to receiving said device information, detecting presence of said another device and establishing a second wireless link with said another device using said device information; and

- receiving the second measurement data from said another device via the second wireless link and transferring the second measurement data to the server device via the first wireless link.

29. The method of claim **28**, further comprising identifying the user at least in part on basis of the at least one

measurement signal and transferring an identification of the user to the server device together with the first measurement data.

30. The method of claim **29**, further comprising identifying the user at least in part on basis of past values obtained for the at least one measurement signal.

31. The method of claim **28**, further comprising identifying the user at least in part on basis of user input received via a user interface of the device.

32. The method of claim **28**, wherein detecting presence of said another device comprises carrying out a device discovery procedure to detect presence of a device having said device identifier assigned thereto.

33. The method of claim **28**, wherein said access information comprises at least one of an authentication key or an encryption key and wherein establishing the second wireless link comprises establishing the second wireless link using at least one of said authentication key or said encryption key.

34. The method of claim **28**, further comprising

activating the device; and

obtaining the first measurement data and transferring the first measurement data to the server device in response to activating the device.

35. A non-transitory computer readable medium comprising program instructions for causing a device to perform at least the following:

obtaining first measurement data that comprises one or more values indicated by at least one measurement signal descriptive of respective physical characteristic pertaining to a user;

transferring the first measurement data to a server device over a first wireless link;

receiving, from the server device, device information that comprises at least a device identifier and access information for another device that is capable of providing second measurement data that is descriptive of one or more characteristics pertaining to the same user;

in response to receiving said device information, detecting presence of said another device and establishing a second wireless link with said another device using said device information; and

receiving the second measurement data from said another device via the second wireless link and transferring the second measurement data to the server device via the first wireless link.

36. A device comprising:

a sensor portion for deriving, on basis of one or more sensor signals that are descriptive of respective physical characteristic pertaining to a user, at least one measurement signal that is descriptive of a characteristic pertaining to the user;

a communication apparatus for wireless communication over a wireless link; and

a control portion configured to cause the device to perform at least the following:

obtain first measurement data that comprises one or more values indicated by the at least one measurement signal and transfer the first measurement data to a server device over a first wireless link;

receive, from the server device, device information that comprises at least a device identifier and access information for another device that is capable of providing second measurement data that is descriptive of one or more characteristics pertaining to the same user;

in response to receiving said device information, detect presence of said another device and establish a second wireless link with said another device using said device information, and

receive the second measurement data from said another device via the second wireless link and transfer the second measurement data to the server device via the first wireless link.

37. The device of claim **36**, wherein the control portion is further configured to

identify the user at least in part on basis of the at least one measurement signal, and

transfer an identification of the user to the server device together with the first measurement data.

38. The device of claim **37**, wherein identifying the user at least in part on basis of past values obtained for the at least one measurement signal.

39. The device of claim **36**, wherein the control portion is further configured to identify the user at least in part on basis of user input received via a user interface of the device.

40. The device of claim **36**, wherein detecting presence of said another device comprises carrying out a device discovery procedure to detect presence of a device having said device identifier assigned thereto.

41. The device of claim **36**, wherein said access information comprises at least one of an authentication key or an encryption key, and wherein establishing the second wireless link comprises establishing the second wireless link using at least one of said authentication key or said encryption key.

42. The device of claim **36**, wherein the control portion is further configured to

activate the device; and

obtain the first measurement data and transfer the first measurement data to the server device in response to activating the device.

43. The device of claim **42**, wherein activating the device comprises activating the device in response to a user physically interacting with the device in a predefined manner.

44. The device of claim **36**, wherein said first measurement data is indicative of one or more of a biometric characteristic of the user and a physical state of the user.

45. The device of claim **36**, wherein said first measurement data is indicative one or more of a weight of the user, and a heart rate of the user.

46. The device of claim **36**, wherein said second measurement data is indicative of one or more of a biometric characteristic of the user, and a physical state of the user.

47. The device of claim **36**, wherein said second measurement data is indicative one or more of a distance travelled by the user, the number of steps taken by the user, a speed of movement of the user, and a heart rate of the user.

* * * * *

专利名称(译)	传感器数据传输		
公开(公告)号	US20190349769A1	公开(公告)日	2019-11-14
申请号	US16/465223	申请日	2016-11-30
[标]申请(专利权)人(译)	诺基亚技术有限公司		
申请(专利权)人(译)	NOKIA TECHNOLOGIES OY		
当前申请(专利权)人(译)	NOKIA TECHNOLOGIES OY		
[标]发明人	PALIN ARTO REUNAMAKI JUKKA		
发明人	PALIN, ARTO REUNAMÄKI, JUKKA		
IPC分类号	H04W12/06 A61B5/00 A61B5/117 A61B5/024 A61B5/11 H04W76/10 H04W8/00 G01G19/50		
CPC分类号	H04W76/10 A61B5/117 H04W8/005 H04W12/0609 G01G19/50 A61B5/0002 A61B5/024 A61B5/1118 A61B5/0022 A61B5/01 A61B5/021 A61B5/02438 A61B5/681 A61B5/6823 G16H40/63 G16H40/67 G16Z99/00 H04L63/0861 H04W4/38 H04W8/18 H04W84/18 H04W4/00 H04W8/00		
外部链接	Espacenet USPTO		

摘要(译)

根据示例实施例，提供了一种在包括传感器部分119的设备（110）中的方法，该传感器部分用于基于一个或多个描述与运动相关的各自物理特性的传感器信号来得出。用户，至少一个描述与用户有关的特性的测量信号，该方法包括：获取包括至少一个测量信号指示的一个或多个值的第一测量数据，并将该第一测量数据传输至服务器设备（150）在一无无线链路（104）上从服务器设备（150）接收设备信息，该设备信息至少包括设备标识符和能够提供第二测量数据的另一设备的访问信息描述与相同用户有关的一个或多个特征，响应于接收到所述设备信息，检测到所述另一个用户的存在服务（130），并使用所述设备信息与所述另一设备（130）建立第二无线链路（106），并通过第二无线从所述另一设备（130）接收第二测量数据106，并通过第一无线链路（104）将第二测量数据传输到服务器设备（150）。

