



US010076276B2

(12) **United States Patent**
Ochs et al.

(10) **Patent No.: US 10,076,276 B2**
(45) **Date of Patent: Sep. 18, 2018**

(54) **METHODS AND SYSTEMS FOR ALERTING PRACTITIONERS TO PHYSIOLOGICAL CONDITIONS**

(71) Applicant: **COVIDIEN LP**, Mansfield, MA (US)

(72) Inventors: **James Ochs**, Seattle, WA (US); **Scott Amundson**, Oakland, CA (US); **Keith Batchelder**, New York, NY (US)

(73) Assignee: **Covidien LP**, Mansfield, MA (US)

(*) Notice: Subject to any disclaimer, the term of this patent is extended or adjusted under 35 U.S.C. 154(b) by 423 days.

(21) Appl. No.: **14/825,982**

(22) Filed: **Aug. 13, 2015**

(65) **Prior Publication Data**

US 2015/0342541 A1 Dec. 3, 2015

Related U.S. Application Data

(60) Continuation of application No. 14/286,269, filed on May 23, 2014, now Pat. No. 9,107,635, which is a (Continued)

(51) **Int. Cl.**
A61B 5/00 (2006.01)
A61M 16/06 (2006.01)
(Continued)

(52) **U.S. Cl.**
CPC **A61B 5/4818** (2013.01); **A61B 5/002** (2013.01); **A61B 5/0205** (2013.01);
(Continued)

(58) **Field of Classification Search**
CPC A61B 5/4818; A61B 5/14542; A61B 5/14551; A61B 5/7278; A61B 5/7282; A61B 5/746; A61B 5/02416

See application file for complete search history.

(56) **References Cited**

U.S. PATENT DOCUMENTS

3,638,640 A 2/1972 Shaw
3,926,177 A 12/1975 Hardway, Jr. et al.
(Continued)

FOREIGN PATENT DOCUMENTS

DE 19640807 9/1997
EP 178197 5/1989
(Continued)

OTHER PUBLICATIONS

Aoyagi, T., et al.; "Analysis of Motion Artifacts in Pulse Oximetry," *Japanese Society ME*, vol. 42, p. 20 (1993) (Article in Japanese—contains English summary of article).

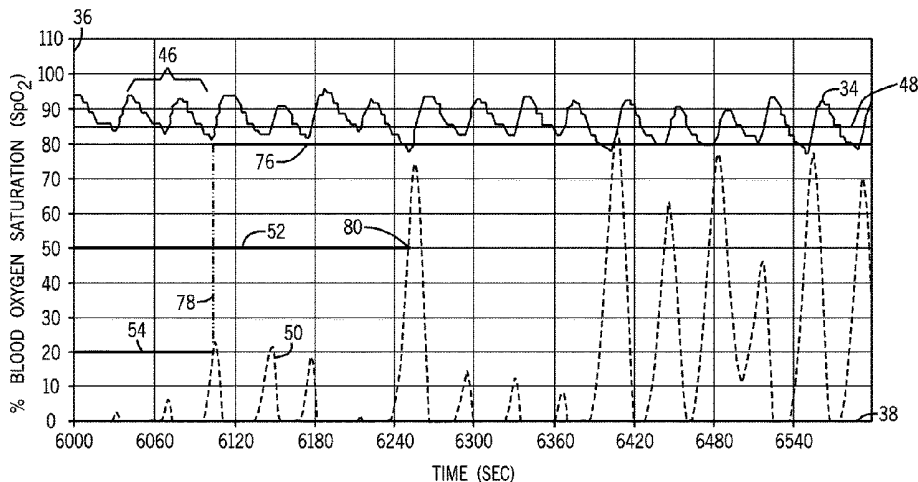
(Continued)

Primary Examiner — Devin Henson

(57) **ABSTRACT**

Embodiments of the present disclosure provide systems and methods for monitoring a patient to produce a signal representing a blood oxygen concentration. The signal may be analyzed to determine the presence of one or more sleep apnea events, and an integral of the signal may be calculated if the signal is outside of a set range or threshold. A practitioner may choose to be informed of the presence of sleep apnea events if the blood oxygen concentration is less than a preset limit, if an upper limit has been reached for an integral representing the severity of the oxygen deprivation over time, or anytime sleep apnea events may be present in the signal.

20 Claims, 9 Drawing Sheets



Related U.S. Application Data					
	division of application No. 12/388,123, filed on Feb. 18, 2009, now Pat. No. 8,750,953.		5,692,503 A	12/1997	Keunstner
			5,730,124 A	3/1998	Yamauchi
			5,758,644 A	6/1998	Diab et al.
			5,779,631 A	7/1998	Chance
			5,782,757 A	7/1998	Diab et al.
			5,786,592 A	7/1998	Hök
(60)	Provisional application No. 61/066,182, filed on Feb. 19, 2008.		5,830,136 A	11/1998	DeLonzor et al.
			5,830,139 A	11/1998	Abreu
			5,831,598 A	11/1998	Kauffert et al.
(51)	Int. Cl.		5,842,981 A	12/1998	Larsen et al.
	<i>A61M 16/00</i> (2006.01)		5,865,736 A	2/1999	Baker et al.
	<i>G08B 21/04</i> (2006.01)		5,871,442 A	2/1999	Madarasz et al.
	<i>A61B 5/0205</i> (2006.01)		5,873,821 A	2/1999	Chance et al.
	<i>A61B 5/1455</i> (2006.01)		5,920,263 A	7/1999	Huttenhoff et al.
	<i>A61B 5/145</i> (2006.01)		5,995,855 A	11/1999	Kiani et al.
	<i>A61B 5/145</i> (2006.01)		5,995,856 A	11/1999	Mannheimer et al.
	<i>A61B 5/024</i> (2006.01)		5,995,859 A	11/1999	Takahashi
(52)	U.S. Cl.		6,011,986 A	1/2000	Diab et al.
	CPC <i>A61B 5/14551</i> (2013.01); <i>A61B 5/14552</i> (2013.01); <i>A61B 5/7246</i> (2013.01); <i>A61B 5/7278</i> (2013.01); <i>A61B 5/7282</i> (2013.01); <i>A61B 5/742</i> (2013.01); <i>A61B 5/7405</i> (2013.01); <i>A61B 5/746</i> (2013.01); <i>A61B 5/7475</i> (2013.01); <i>A61M 16/0051</i> (2013.01); <i>A61M 16/021</i> (2017.08); <i>A61M 16/06</i> (2013.01); <i>G08B 21/0453</i> (2013.01); <i>A61B 5/02416</i> (2013.01); <i>A61B 5/1455</i> (2013.01); <i>A61B 5/14542</i> (2013.01); <i>A61M 2205/18</i> (2013.01); <i>A61M 2205/50</i> (2013.01)		6,064,898 A	5/2000	Aldrich
			6,070,098 A	5/2000	Moore-Ede et al.
			6,081,742 A	6/2000	Amano et al.
			6,088,607 A	7/2000	Diab et al.
			6,120,460 A	9/2000	Abreu
			6,134,460 A	10/2000	Chance
			6,150,951 A	11/2000	Olejniczak
			6,154,667 A	11/2000	Miura et al.
			6,163,715 A	12/2000	Larsen et al.
			6,181,958 B1	1/2001	Steuer et al.
			6,181,959 B1	1/2001	Schöllermann et al.
			6,223,064 B1 *	4/2001	Lynn A61B 5/14551 600/324
			6,230,035 B1	5/2001	Aoyagi et al.
			6,266,546 B1	7/2001	Steuer et al.
			6,285,895 B1	9/2001	Ristolainen et al.
(56)	References Cited		6,312,393 B1	11/2001	Abreu
	U.S. PATENT DOCUMENTS		6,353,750 B1	3/2002	Kimura et al.
			6,397,091 B2	5/2002	Diab et al.
			6,415,236 B2	7/2002	Kobayashi et al.
			6,419,671 B1	7/2002	Lemberg
			6,438,399 B1	8/2002	Kurth
			6,461,305 B1	10/2002	Schnall
			6,466,809 B1	10/2002	Riley
			6,487,439 B1	11/2002	Skladnev et al.
			6,501,974 B2	12/2002	Huiku
			6,501,975 B2	12/2002	Diab et al.
			6,526,301 B2	2/2003	Larsen et al.
			6,544,193 B2	4/2003	Abreu
			6,546,267 B1	4/2003	Sugiura et al.
			6,549,795 B1	4/2003	Chance
			6,580,086 B1	6/2003	Schulz et al.
			6,584,336 B1	6/2003	Ali et al.
			6,591,122 B2	7/2003	Schmitt
			6,594,513 B1	7/2003	Jobsis et al.
			6,606,509 B2	8/2003	Schmitt
			6,606,511 B1	8/2003	Ali et al.
			6,615,064 B1	9/2003	Aldrich
			6,618,042 B1	9/2003	Powell
			6,622,095 B2	9/2003	Kobayashi et al.
			6,654,621 B2	11/2003	Palatnik et al.
			6,654,624 B2	11/2003	Diab et al.
			6,658,276 B2	12/2003	Kianl et al.
			6,658,277 B2	12/2003	Wasserman
			6,662,030 B2	12/2003	Khalil et al.
			6,668,183 B2	12/2003	Hicks et al.
			6,671,526 B1	12/2003	Aoyagi et al.
			6,671,528 B2	12/2003	Steuer et al.
			6,678,543 B2	1/2004	Diab et al.
			6,684,090 B2	1/2004	Ali et al.
			6,690,958 B1	2/2004	Walker et al.
			6,697,658 B2	2/2004	Al-Ali
			6,708,048 B1	3/2004	Chance
			6,711,424 B1	3/2004	Fine et al.
			6,711,425 B1	3/2004	Reuss
			6,714,245 B1	3/2004	Ono
			6,731,274 B2	5/2004	Powell
			6,754,516 B2 *	6/2004	Mannheimer A61B 5/02455 600/309
			6,760,608 B2	7/2004	Lynn
			6,785,568 B2	8/2004	Chance

(56)

References Cited

U.S. PATENT DOCUMENTS

6,793,654	B2	9/2004	Lemberg
6,801,797	B2	10/2004	Mannheimer et al.
6,801,798	B2	10/2004	Geddes et al.
6,801,799	B2	10/2004	Mendelson
6,829,496	B2	12/2004	Nagai et al.
6,850,053	B2	2/2005	Daalmans et al.
6,863,652	B2	3/2005	Huang et al.
6,873,865	B2	3/2005	Steuer et al.
6,889,153	B2	5/2005	Dietiker
6,898,451	B2	5/2005	Wuori
6,918,878	B2	7/2005	Brodnick
6,939,307	B1	9/2005	Dunlop
6,947,780	B2	9/2005	Scharf
6,949,081	B1	9/2005	Chance
6,961,598	B2	11/2005	Diab
6,983,178	B2	1/2006	Fine et al.
6,993,371	B2	1/2006	Kiani et al.
6,996,427	B2	2/2006	Ali et al.
7,024,235	B2	4/2006	Melker et al.
7,027,849	B2	4/2006	Al-Ali
7,030,749	B2	4/2006	Al-Ali
7,035,697	B1	4/2006	Brown
7,047,056	B2	5/2006	Hannula et al.
7,127,278	B2	10/2006	Melker et al.
7,162,306	B2	1/2007	Caby et al.
7,190,261	B2	3/2007	Al-Ali
7,190,995	B2	3/2007	Chervin et al.
7,209,775	B2	4/2007	Bae et al.
7,236,811	B2	6/2007	Schmitt
7,263,395	B2	8/2007	Chan et al.
7,272,426	B2	9/2007	Schmid
7,373,193	B2	5/2008	Al-Ali et al.
7,507,207	B2	3/2009	Sakai et al.
7,639,145	B2*	12/2009	Lawson A61B 5/02405 340/573.1
8,750,953	B2	6/2014	Ochs et al.
2001/0005773	A1	6/2001	Larsen et al.
2001/0020122	A1	9/2001	Steuer et al.
2001/0039376	A1	11/2001	Steuer et al.
2001/0044700	A1	11/2001	Kobayashi et al.
2002/0026106	A1	2/2002	Khalil et al.
2002/0035318	A1	3/2002	Mannheimer et al.
2002/0038079	A1	3/2002	Steuer et al.
2002/0042558	A1	4/2002	Mendelson
2002/0049389	A1	4/2002	Abreu
2002/0062071	A1	5/2002	Diab et al.
2002/0111748	A1	8/2002	Kobayashi et al.
2002/0133068	A1	9/2002	Huiku
2002/0156354	A1	10/2002	Larson
2002/0161287	A1	10/2002	Schmitt
2002/0161290	A1	10/2002	Chance
2002/0165439	A1	11/2002	Schmitt
2002/0198443	A1	12/2002	Ting
2003/0023140	A1	1/2003	Chance
2003/0055324	A1	3/2003	Wasserman
2003/0060693	A1	3/2003	Monfre et al.
2003/0139687	A1	7/2003	Abreu
2003/0144584	A1	7/2003	Mendelson
2003/0220548	A1	11/2003	Schmitt
2003/0220576	A1	11/2003	Diab
2004/0010188	A1	1/2004	Wasserman
2004/0054270	A1	3/2004	Pewzner et al.
2004/0087846	A1	5/2004	Wasserman
2004/0107065	A1	6/2004	Al-Ali
2004/0127779	A1	7/2004	Steuer et al.
2004/0171920	A1	9/2004	Mannheimer et al.
2004/0176670	A1	9/2004	Takamura et al.
2004/0176671	A1	9/2004	Fine et al.
2004/0230106	A1	11/2004	Schmitt et al.
2004/0254481	A1	12/2004	Brodnick
2005/0080323	A1	4/2005	Kato
2005/0101850	A1	5/2005	Parker
2005/0113651	A1	5/2005	Wood et al.
2005/0113656	A1	5/2005	Chance
2005/0168722	A1	8/2005	Forstner et al.

2005/0177034	A1	8/2005	Beaumont
2005/0192488	A1	9/2005	Bryenton et al.
2005/0203357	A1	9/2005	Debreczeny et al.
2005/0228248	A1	10/2005	Dietiker
2005/0267346	A1	12/2005	Faber et al.
2005/0283059	A1	12/2005	Iyer et al.
2006/0009688	A1	1/2006	Lamego et al.
2006/0015021	A1	1/2006	Cheng
2006/0020181	A1	1/2006	Schmitt
2006/0030763	A1	2/2006	Mannheimer et al.
2006/0052680	A1	3/2006	Diab
2006/0058683	A1	3/2006	Chance
2006/0064024	A1	3/2006	Schnall
2006/0195028	A1	8/2006	Hannula et al.
2006/0224058	A1	10/2006	Mannheimer
2006/0247501	A1	11/2006	Ali
2006/0258921	A1	11/2006	Addison et al.
2007/0179369	A1	8/2007	Baker, Jr.
2007/0282212	A1	12/2007	Sierra et al.
2008/0097175	A1	4/2008	Boyce et al.

FOREIGN PATENT DOCUMENTS

EP	0615723	9/1994
EP	0630203	12/1994
EP	1491135	12/2004
EP	1740095	1/2007
EP	1821076	8/2007
JP	63275325	11/1988
JP	3170866	7/1991
JP	3238813	10/1991
JP	4191642	7/1992
JP	4332536	11/1992
JP	7124138	5/1995
JP	7136150	5/1995
JP	10216115	8/1998
JP	2003194714	7/2003
JP	2003210438	7/2003
JP	2003275192	9/2003
JP	2003339678	12/2003
JP	2004008572	1/2004
JP	2004113353	4/2004
JP	2004135854	5/2004
JP	2004194908	7/2004
JP	2004202190	7/2004
JP	2004248819	9/2004
JP	2004290545	10/2004
JP	2005034472	2/2005
WO	WO9101678	2/1991
WO	WO9221281	12/1992
WO	WO9309711	5/1993
WO	WO9403102	2/1994
WO	WO9512349	5/1995
WO	WO9639927	12/1996
WO	WO9749330	12/1997
WO	WO9842249	10/1998
WO	WO9842251	10/1998
WO	WO9843071	10/1998
WO	WO9932030	7/1999
WO	WO0021438	4/2000
WO	WO0140776	6/2001
WO	WO0176461	10/2001
WO	WO0176471	10/2001
WO	WO03039326	5/2003
WO	WO2005009221	2/2005
WO	WO05096931	10/2005
WO	WO08122806	10/2008

OTHER PUBLICATIONS

Barreto, A.B., et al.; "Adaptive Cancellation of Motion artifact in Photoplethysmographic Blood Volume Pulse Measurements for Exercise Evaluation," *IEEE-EMBC and CMBC—Theme 4: Signal Processing*, pp. 983-984 (1995).

Vincente, L.M., et al.; "Adaptive Pre-Processing of Photoplethysmographic Blood Volume Pulse Measurements," pp. 114-117 (1996).

(56)

References Cited

OTHER PUBLICATIONS

- Plummer, John L., et al.; "Identification of Movement Artifact by the Nellcor N-200 and N-3000 Pulse Oximeters," *Journal of Clinical Monitoring*, vol. 13, pp. 109-113 (1997).
- Barnum, P.T., et al.; "Novel Pulse Oximetry Technology Capable of Reliable Bradycardia Monitoring in the Neonate," *Respiratory Care*, vol. 42, No. 1, p. 1072 (Nov. 1997).
- Poets, C. F., et al.; "Detection of movement artifact in recorded pulse oximeter saturation," *Eur. J. Pediatr.*; vol. 156, pp. 808-811 (1997).
- Masin, Donald I., et al.; "Fetal Transmission Pulse Oximetry," *Proceedings 19th International Conference IEEE-EMBS*, Oct. 30-Nov. 2, 1997; pp. 2326-2329.
- Pickett, John, et al.; "Pulse Oximetry and PPG Measurements in Plastic Surgery," *Proceedings—19th International Conference—IEEE-EMBS*, Chicago, Illinois, Oct. 30-Nov. 2, 1997, pp. 2330-2332.
- Leahy, Martin J., et al.; "Sensor Validation in Biomedical Applications," *IFAC Modelling and Control in Biomedical Systems*, Warwick, UK; pp. 221-226 (1997).
- Barreto, Armando B., et al.; "Adaptive LMS Delay Measurement in dual Blood Volume Pulse Signals for Non-Invasive Monitoring," *IEEE*, pp. 117-120 (1997).
- East, Christine E., et al.; "Fetal Oxygen Saturation and Uterine Contractions During Labor," *American Journal of Perinatology*, vol. 15, No. 6, pp. 345-349 (Jun. 1998).
- Hayes, Matthew J., et al.; "Quantitative evaluation of photoplethysmographic artifact reduction for pulse oximetry," *SPIE*, vol. 3570, pp. 138-147 (Sep. 1998).
- Edrich, Thomas, et al.; "Can the Blood Content of the Tissues be Determined Optically During Pulse Oximetry Without Knowledge of the Oxygen Saturation?—An In-Vitro Investigation," *Proceedings of the 20th Annual International conference of the IEEE Engie in Medicine and Biology Society*, vol. 20, No. 6, p. 3072-3075, 1998.
- Hayes, Matthew J., et al.; "Artifact reduction in photoplethysmography," *Applied Optics*, vol. 37, No. 31, pp. 7437-7446 (Nov. 1998).
- Such, Hans Olaf; "Optoelectronic Non-invasive Vascular Diagnostics Using multiple Wavelength and Imaging Approach," *Dissertation*, (1998).
- Todd, Bryan, et al.; "The Identification of Peaks in Physiological Signals," *Computers and Biomedical Research*, vol. 32, pp. 322-335 (1999).
- Rhee, Sokwoo, et al.; "Design of a Artifact-Free Wearable Plethysmographic Sensor," *Proceedings of the First joint BMES-EMBS Conference*, Oct. 13-16, 1999, Atlanta, Georgia, p. 786.
- Rheineck-Leyssius, Aart t., et al.; "Advanced Pulse Oximeter Signal Processing Technology Compared to Simple Averaging: I. Effect on Frequency of Alarms in the Operating Room," *Journal of clinical Anesthesia*, vol. 11, pp. 192-195 (1999).
- Kaestle, S.; "An Algorithm for Reliable Processing of Pulse Oximetry Signals Under strong Noise Conditions," *Dissertation Book*, Lubeck University, Germany (1999).
- Seelbach-Göbel, Birgit, et al.; "The prediction of fetal acidosis by means of intrapartum fetal pulse oximetry," *Am J. Obstet. Gynecol.*, vol. 180, No. 1, Part 1, pp. 73-81 (1999).
- Goldman, Julian M.; "Masimo Signal Extraction Pulse Oximetry," *Journal of Clinical Monitoring and Computing*, vol. 16, pp. 475-483 (2000).
- Coetzee, Frans M.; "Noise-Resistant Pulse Oximetry Using a Synthetic Reference Signal," *IEEE Transactions on Biomedical Engineering*, vol. 47, No. 8, Aug. 2000, pp. 1018-1026.
- Nilsson, Lena, et al.; "Monitoring of Respiratory Rate in Postoperative Care Using a New Photoplethysmographic Technique," *Journal of Clinical Monitoring and Computing*, vol. 16, pp. 309-315 (2000).
- Yao, Jianchu, et al.; "Design of a Plug-and-Play Pulse Oximeter," *Proceedings of the Second Joint EMBS-BMES Conference*, Houston, Texas, Oct. 23-26, 2002; pp. 1752-1753.
- Kaestle, S.; "Determining Artefact Sensitivity of New Pulse Oximeters in Laboratory Using Signals Obtained from Patient," *Biomedizinische Technik*, vol. 45 (2000).
- Cysewska-Sobusaik, Anna; "Metrological Problems With noninvasive Transillumination of Living Tissues," *Proceedings of SPIE*, vol. 4515, pp. 15-24 (2001).
- Belal, Suliman Yousef, et al.; "A fuzzy system for detecting distorted plethysmogram pulses in neonates and paediatric patients," *Physiol. Meas.*, vol. 22, pp. 397-412 (2001).
- Hayes, Matthew J., et al.; "A New Method for Pulse Oximetry Possessing Inherent Insensitivity to Artifact," *IEEE Transactions on Biomedical Engineering*, vol. 48, No. 4, pp. 452-461 (Apr. 2001).
- Gehring, Harmut, et al.; "The Effects of Motion Artifact and Low Perfusion on the Performance of a New Generation of Pulse Oximeters in Volunteers Undergoing Hypoxemia," *Respiratory Care*, Vol. 47, No. 1, pp. 48-60 (Jan. 2002).
- Jopling, Michae W., et al.; "Issues in the Laboratory Evaluation of Pulse Oximeter Performance," *Anesth Analg*, vol. 94, pp. S62-S68 (2002).
- Gostt, R., et al.; "Pulse Oximetry Artifact Recognition Algorithm for Computerized Anaesthetic Records," *Journal of Clinical Monitoring and Computing Abstracts*, p. 471 (2002).
- Chan, K.W., et al.; "17.3: Adaptive Reduction of Motion Artifact from Photoplethysmographic Recordings using a Variable Step-Size LMS Filter," *IEEE*, pp. 1343-1346 (2002).
- Yamaya, Yoshiki, et al.; "Validity of pulse oximetry during maximal exercise in normoxia, hypoxia, and hyperoxia," *J. Appl. Physiol.*, vol. 92, pp. 162-168 (2002).
- Yoon, Gilwon, et al.; "Multiple diagnosis based on Photoplethysmography: hematocrit, SpO₂, pulse and respiration," *Optics in Health Care and Biomedical optics: Diagnostics and Treatment; Proceedings of the SPIE*, vol. 4916; pp. 185-188 (2002).
- Tremper, K.K.; "A Second Generation Technique for Evaluating Accuracy and Reliability of Second Generation Pulse Oximeters," *Journal of Clinical Monitoring and Computing*, vol. 16, pp. 473-474 (2000).
- Cyrill, D., et al.; "Adaptive Comb Filter for Quasi-Periodic Physiologic Signals," *Proceedings of the 25th Annual International Conference of the IEEE EMBS*, Cancun, Mexico, Sep. 17-21, 2003; pp. 2439-2442.
- Stetson, Paul F.; "Determining Heart Rate from Noisy Pulse Oximeter Signals Using Fuzzy Logic," *The IEEE International Conference on Fuzzy Systems*, St. Louis, Missouri, May 25-28, 2003; pp. 1053-1058.
- Aoyagi, Takuo; "Pulse oximetry: its invention, theory, and future," *Journal of Anesthesia*, vol. 17, pp. 259-266 (2003).
- Lee, C.M., et al.; "Reduction of motion artifacts from photoplethysmographic recordings using wavelet denoising approach," *IEEE EMBS Asian-Pacific Conference on Biomedical Engineering*, Oct. 20-22, 2003; pp. 194-195.
- A. Johansson; "Neural network for photoplethysmographic respiratory rate monitoring," *Medical & Biological Engineering & Computing*, vol. 41, pp. 242-248 (2003).
- Addison, Paul S., et al.; "A novel time-frequency-based 3D Lissajous figure method and its application to the determination of oxygen saturation from the photoplethysmogram," *Institute of Physics Publishing, Meas. Sci. Technol.*, vol. 15, pp. L15-L18 (2004).
- Yao, Jianchu, et al.; "A Novel Algorithm to Separate Motion Artifacts from Photoplethysmographic Signals Obtained With a Reflectance Pulse Oximeter," *Proceedings of the 26th Annual International conference of the IEEE EMBS*, San Francisco, California, Sep. 2004, pp. 2153-2156.
- Matsuzawa, Y., et al.; "Pulse Oximeter," *Home Care Medicine*, pp. 42-45 (Jul. 2004); (Article in Japanese—contains English summary of article).
- Johnston, W.S., et al.; "Extracting Breathing Rate Information from a Wearable Reflectance Pulse Oximeter Sensor," *Proceedings of the 26th Annual International conference of the IEEE EMBS*, San Francisco, California; Sep. 1-5, 2004; pp. 5388-5391.
- Spigulis, Janis, et al.; "Optical multi-channel sensing of skin blood pulsations," *Optical Sensing, Proceedings of SPIE*, vol. 5459, pp. 46-53 (2004).

(56)

References Cited

OTHER PUBLICATIONS

Yan, Yong-sheng, et al.; "Reduction of motion artifact in pulse oximetry by smoothed pseudo Wigner-Ville distribution," *Journal of NeuroEngineering and Rehabilitation*, vol. 2, No. 3 (9 pages) (Mar. 2005).

J. Huang, et al.; "Low Power Motion Tolerant Pulse Oximetry," *Abstracts*, A7, p. S103. (undated).

P. Lang, et al.; "Signal Identification and Quality Indicator™ for Motion Resistant Pulse Oximetry," *Abstracts*, A10, p. S105. (undated).

Hamilton, Patrick S., et al.; "Effect of Adaptive Motion-Artifact Reduction on QRS Detection," *Biomedical Instrumentation & Technology*, pp. 197-202 (undated).

Kim, J.M., et al.; "Signal Processing Using Fourier & Wavelet Transform," pp. II-310-II-311 (undated).

Odagiri, Y.; "Pulse Wave Measuring Device," *Micromechanics*, vol. 42, No. 3, pp. 6-11 (undated) (Article in Japanese—contains English summary of article).

Yamazaki, Nakaji, et al.; "Motion Artifact Resistant Pulse Oximeter (Durapulse PA 2100)," *Journal of Oral Cavity Medicine*, vol. 69, No. 4, pp. 53 (date unknown) (Article in Japanese—contains English summary of article).

Maletras, Francois-Xavier, et al.; "Construction and calibration of a new design of Fiber Optic Respiratory Plethysmograph (FORP)," *Optomechanical Design and Engineering, Proceedings of SPIE*, vol. 4444, pp. 285-293 (2001).

Earthrowl-Gould, T., et al.; "Chest and abdominal surface motion measurement for continuous monitoring of respiratory function," *Proc. Instn Mech Engrs*, V215, Part H; pp. 515-520 (2001).

Relente, A.R., et al.; "Characterization and Adaptive Filtering of Motion Artifacts in Pulse Oximetry using Accelerometers," *Proceedings of the Second joint EMBS-BMES Conference*, Houston, Texas, Oct. 23-26, 2002; pp. 1769-1770.

R. Neumann, et al.; "Fourier Artifact suppression Technology Provides Reliable SpO₂," *Abstracts*, A11, p. S105 (undated).

* cited by examiner

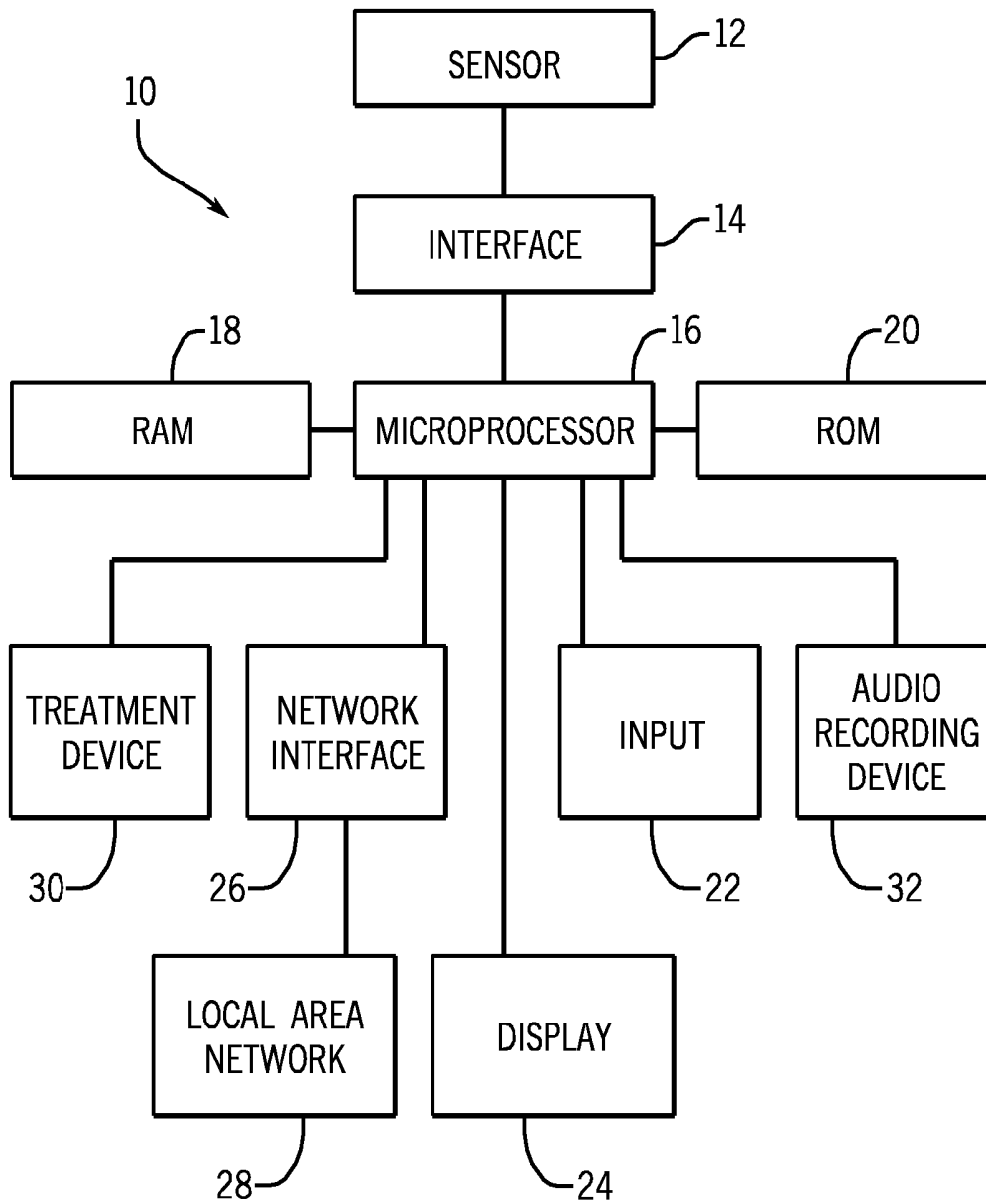


FIG. 1

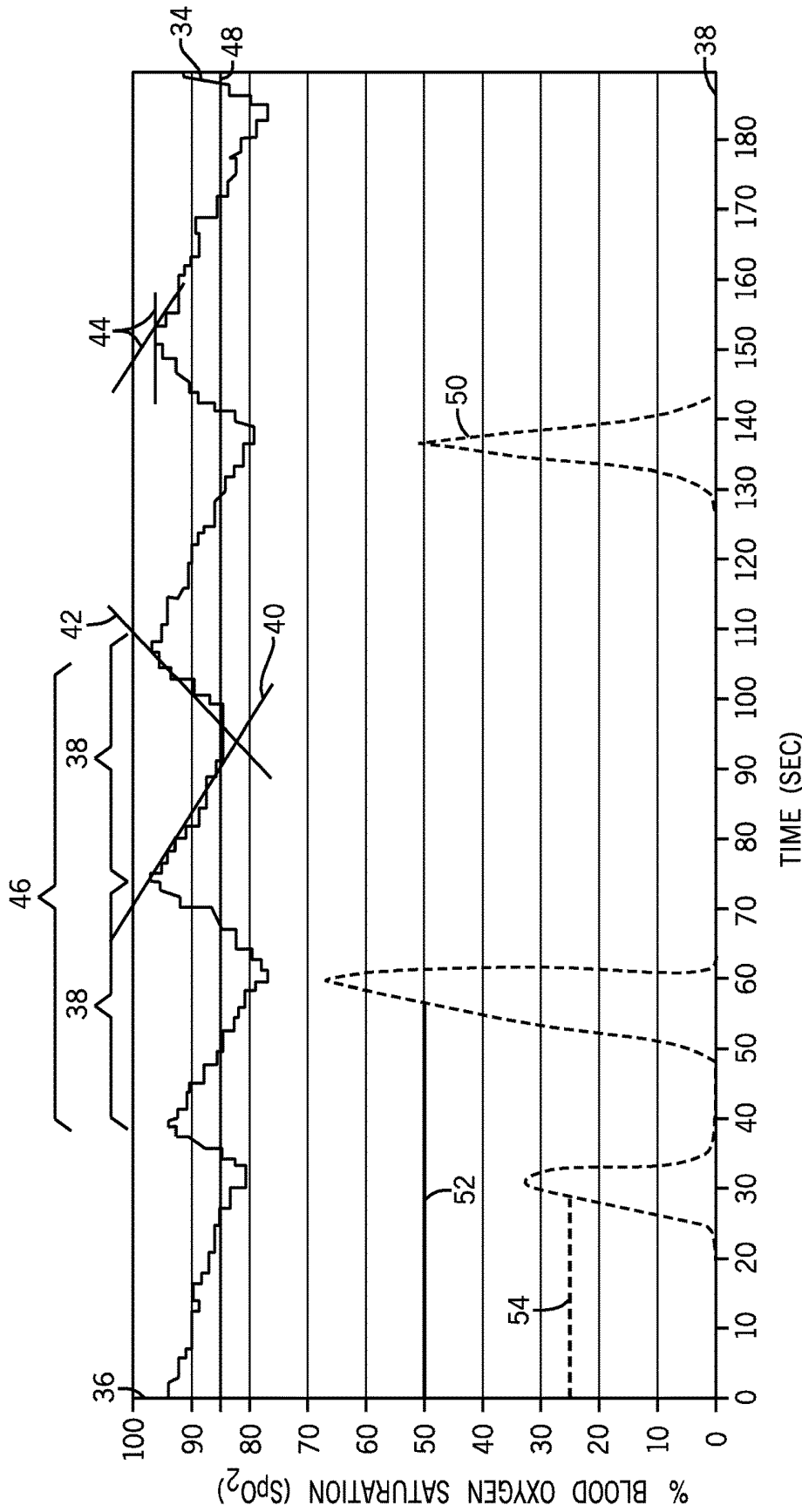


FIG. 2

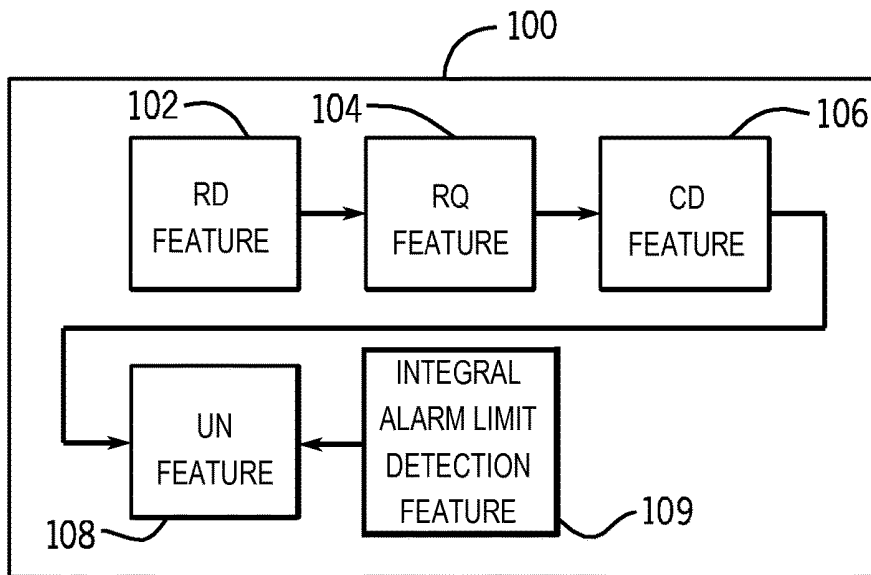


FIG. 3

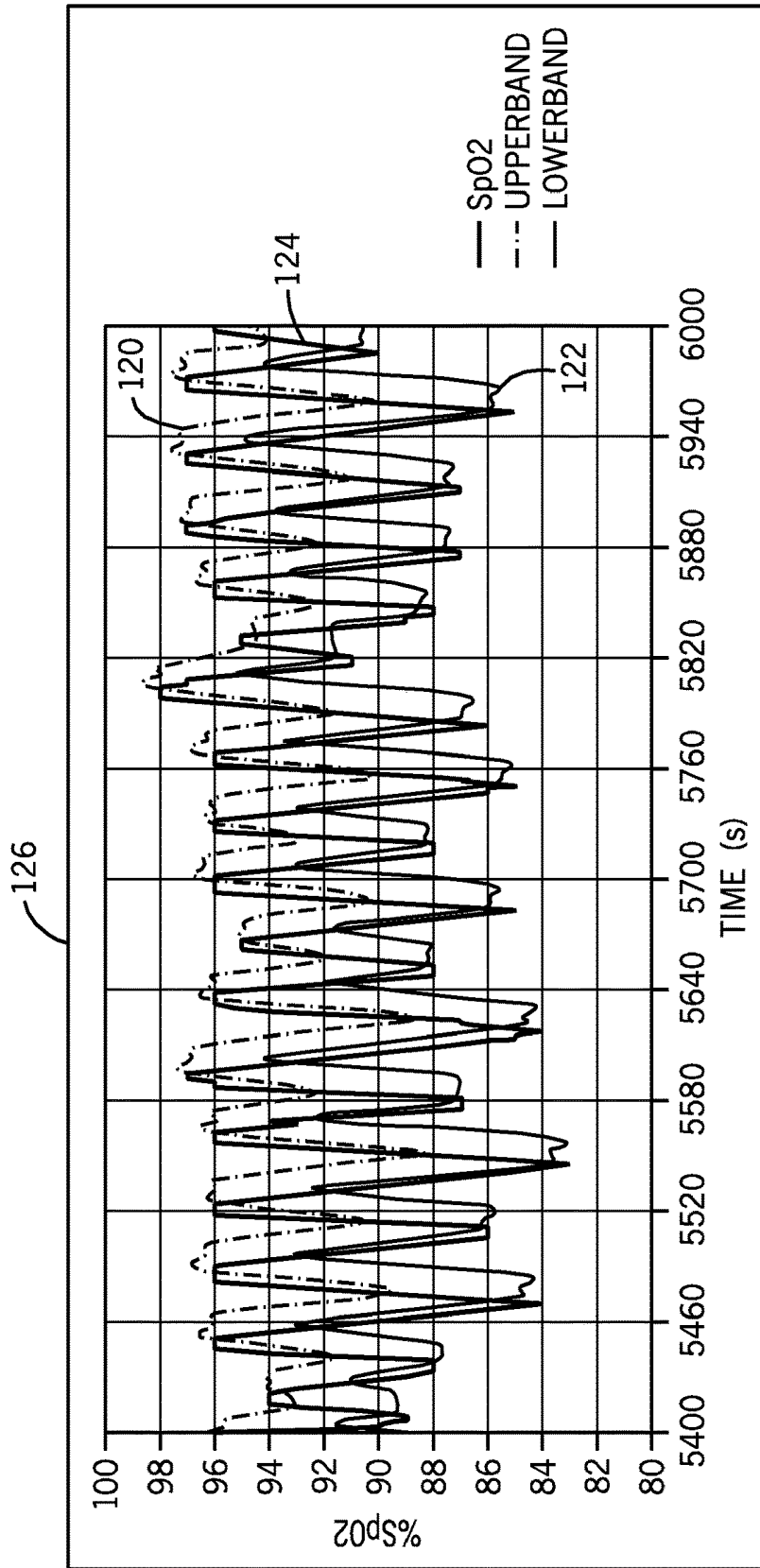


FIG. 4

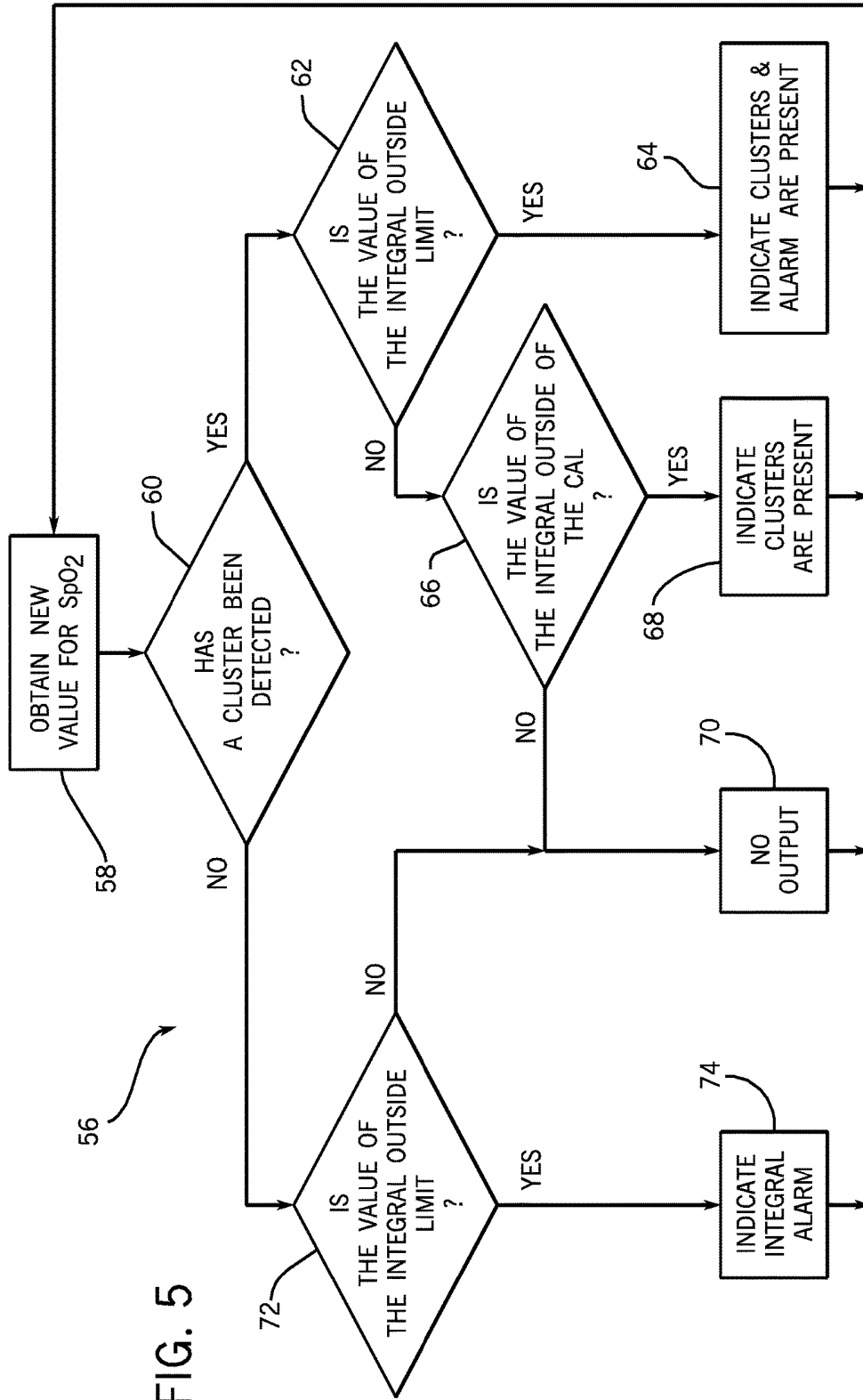


FIG. 5

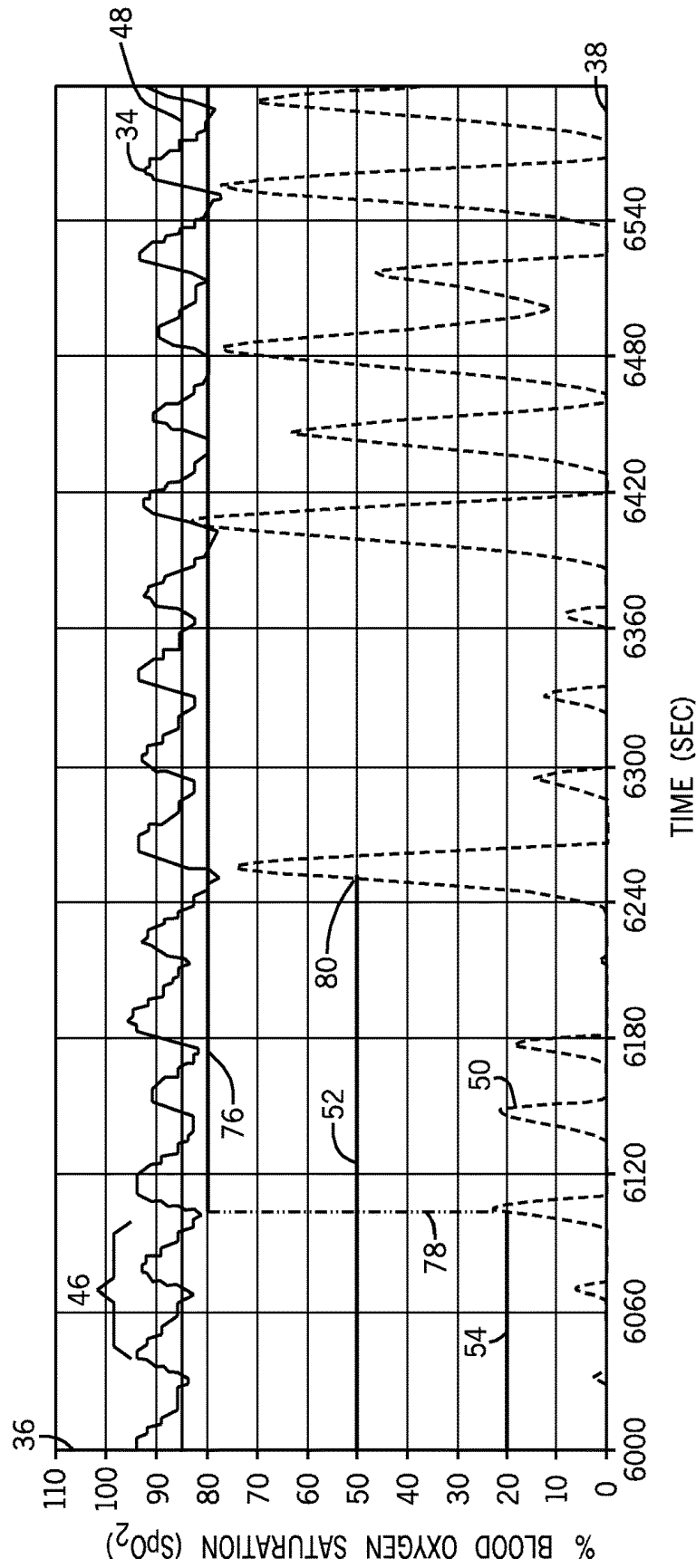


FIG. 6

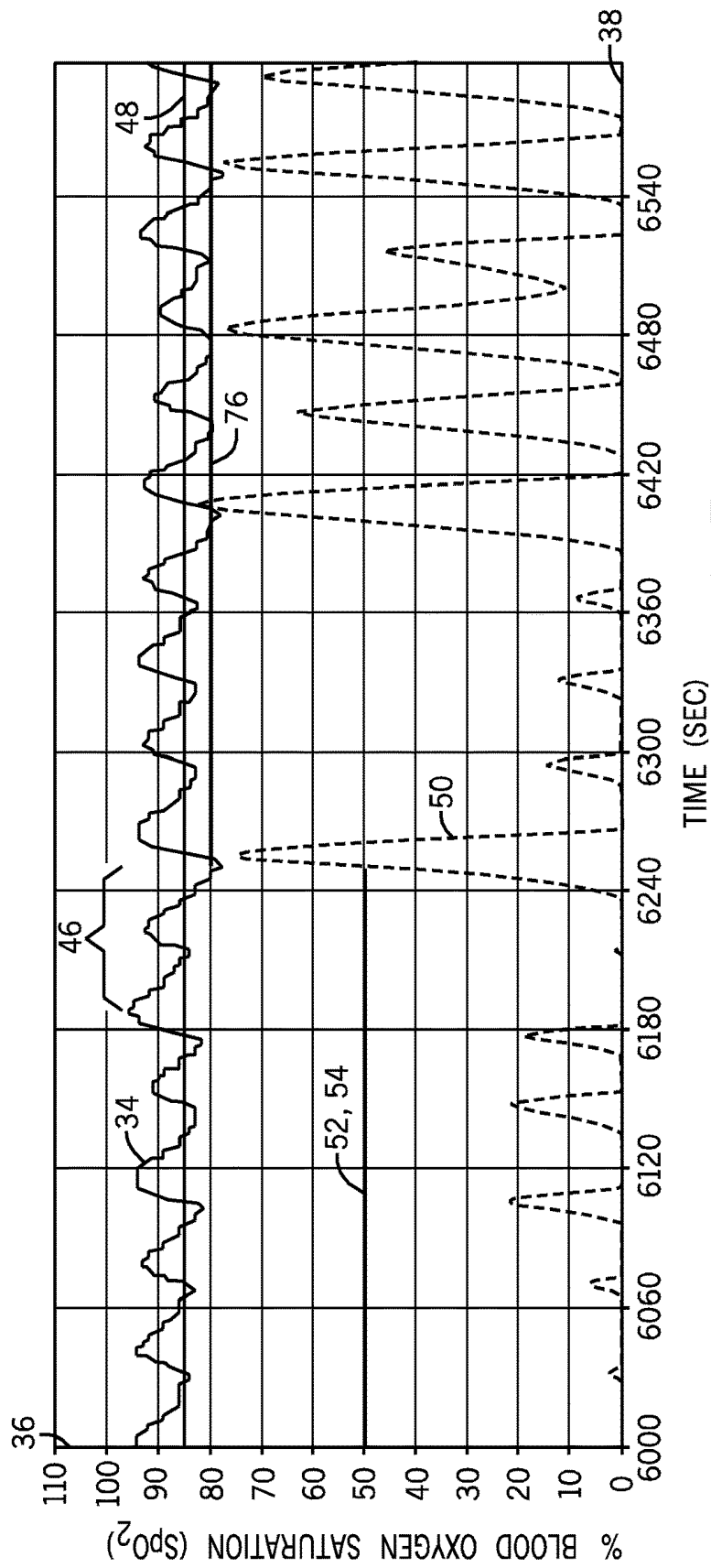


FIG. 7

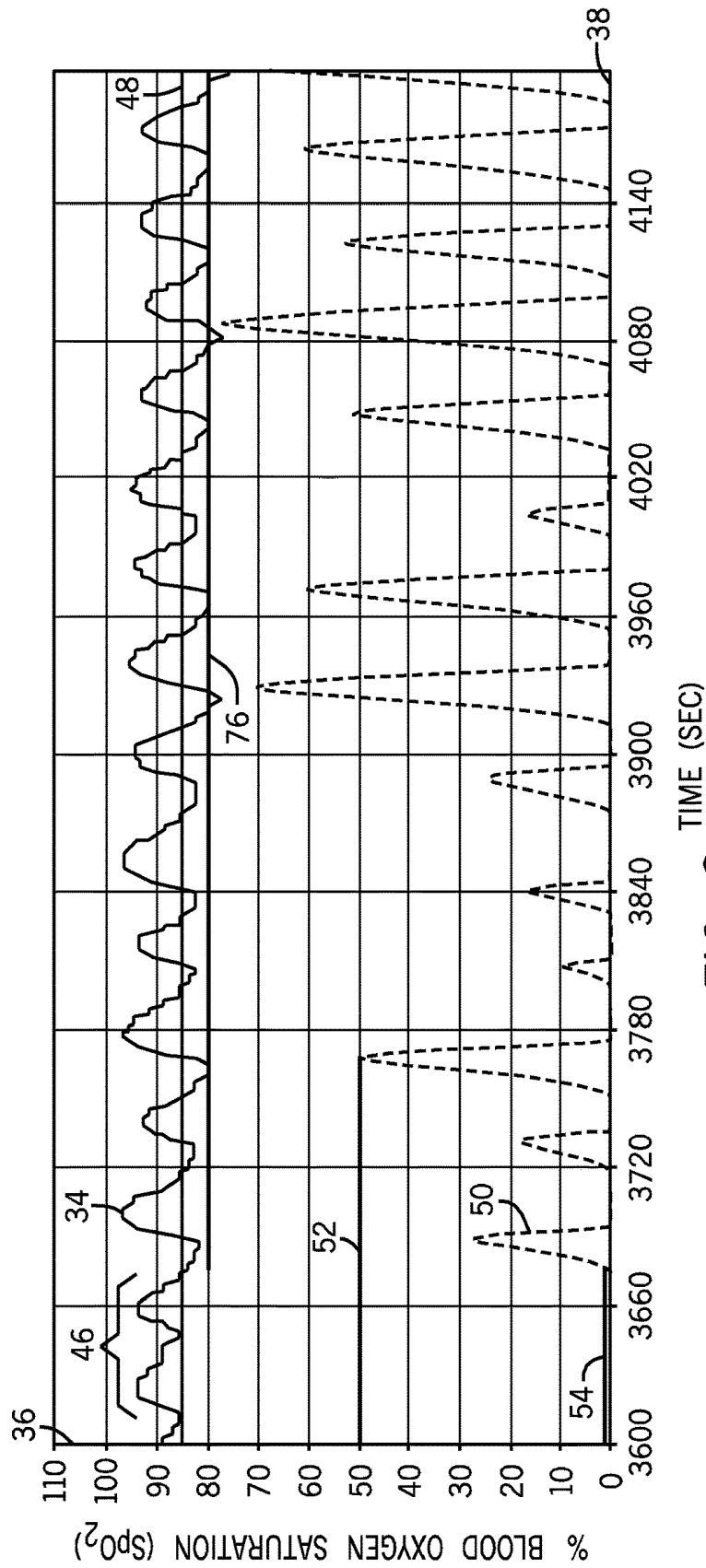


FIG. 8

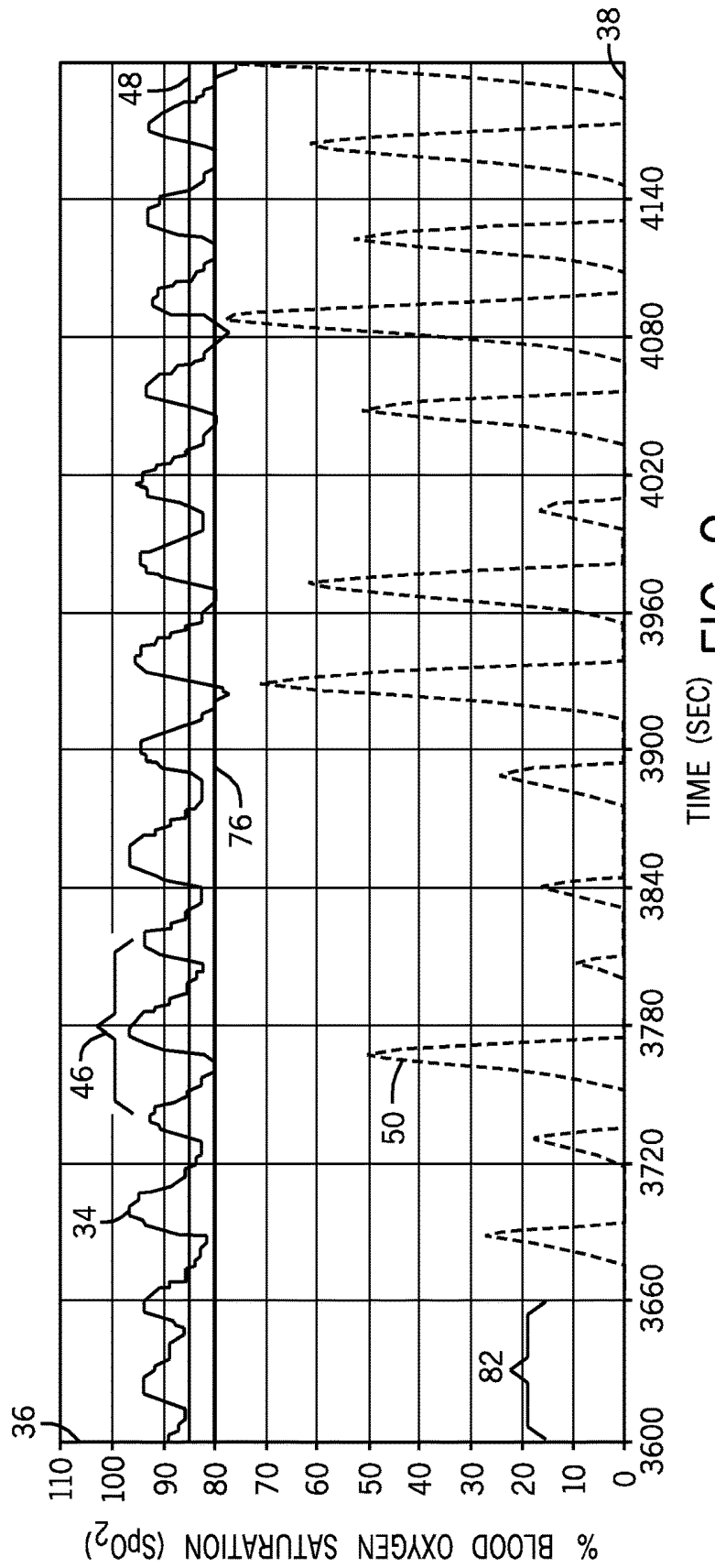


FIG. 9

METHODS AND SYSTEMS FOR ALERTING PRACTITIONERS TO PHYSIOLOGICAL CONDITIONS

CROSS-REFERENCE TO RELATED APPLICATIONS

This application is a continuation of U.S. application Ser. No. 14/286,269, filed May 23, 2014, which is a divisional of U.S. application Ser. No. 12/388,123, filed Feb. 18, 2009, which claims priority to U.S. Provisional Application No. 61/066,182, filed Feb. 19, 2008, the disclosures of which are hereby incorporated in their entirety for all purposes.

BACKGROUND

The present disclosure relates to a system and method for alerting users to physiological conditions, more particularly, to a medical device configured to inform a user of the presence of patterns that may indicate the presence of sleep apnea.

This section is intended to introduce the reader to various aspects of art that may be related to various aspects of the present disclosure, which are described and/or claimed below. This discussion is believed to be helpful in providing the reader with background information to facilitate a better understanding of the various aspects of the present disclosure. Accordingly, it should be understood that these statements are to be read in this light, and not as admissions of prior art.

Obstructive sleep apnea is a condition in which a patient's breathing is temporarily interrupted when sleeping. The condition is believed to be associated with increased fat deposits in the neck, which commonly occur as a patient ages. These increased fat deposits may lead to a narrowing of the airway. When muscle tone diminishes during sleep, the narrowed airway can collapse during inhalation, effectively blocking air movement. The patient attempts to inhale more deeply, further collapsing the airway. With no air movement, the oxygen level in the patient's bloodstream falls, finally reaching a point where the patient is aroused out of sleep. Upon arousal, the muscle tone increases, the airway opens, and air flow to the lungs is precipitously restored. The patient hyperventilates, which quickly restores the blood oxygen levels to normal levels. The period of arousal may be brief, so the patient is often unaware that the event took place. The patient returns to sleeping, and the cycle often repeats.

Over the years, this repeating cycle of low oxygen levels in the bloodstream can damage the heart and lead to other medical complications. Obstructive sleep apnea is believed to be one of the most common disorders in the United States. However, unlike other common medical disorders, such as diabetes, no simple diagnostic test has been developed to determine if a patient has sleep apnea. Tests do exist that can be used to diagnose sleep apnea, but the tests typically involve an overnight sleep study, which can be costly and inconvenient. The need for a simple, low-cost diagnostic test has led medical personnel to try less expensive techniques, such as pulse oximetry, to diagnose the presence of obstructive sleep apnea.

BRIEF DESCRIPTION OF THE DRAWINGS

Advantages of the disclosure may become apparent upon reading the following detailed description and upon reference to the drawings in which:

FIG. 1 is a block diagram of a system that may be used for the diagnosis and treatment of sleep apnea, in accordance with an embodiment;

FIG. 2 is a chart of an SpO₂ signal over time, illustrating techniques for identifying desaturation patterns, clusters, and low oxygen levels in a patient, in accordance with an embodiment;

FIG. 3 is a block diagram of an exemplary cluster detection portion of a system;

FIG. 4 is an exemplary graph of SpO₂ trend data with an upper band and lower band based on mean and standard deviation values;

FIG. 5 is a process flow chart showing a method for alerting practitioners to the presence of certain physiological conditions, in accordance with an embodiment;

FIG. 6 is a chart useful in explaining the operation of the method of FIG. 5 to alert a practitioner to the presence of desaturation patterns when an integral representing blood oxygen saturation crosses a combined alarm limit, in accordance with an embodiment;

FIG. 7 is a chart useful in explaining the performance of the method of FIG. 5 when a user has chosen to ignore desaturation patterns unless an integral representing blood oxygen saturation crosses an integral alarm limit, in accordance with an embodiment;

FIG. 8 is a chart useful in explaining the performance of the method of FIG. 5 when a user has chosen to be alerted to the presence of desaturation patterns whenever the SpO₂ signal is below a lower limit, in accordance with an embodiment; and

FIG. 9 is a chart useful in explaining the performance of the method of FIG. 5 when a user has chosen to be alerted to the presence of desaturation patterns under any blood oxygen condition, in accordance with an embodiment.

DETAILED DESCRIPTION OF SPECIFIC EMBODIMENTS

One or more specific embodiments of the present disclosure will be described below. In an effort to provide a concise description of these embodiments, not all features of an actual implementation are described in the specification. It should be appreciated that in the development of any such actual implementation, as in any engineering or design project, numerous implementation-specific decisions must be made to achieve the developers' specific goals, such as compliance with system-related and business-related constraints, which may vary from one implementation to another. Moreover, it should be appreciated that such a development effort might be complex and time consuming, but would nevertheless be a routine undertaking of design, fabrication, and manufacture for those of ordinary skill having the benefit of this disclosure.

Medical devices may be used to obtain or calculate signals representing physiological parameters from patients, such as SpO₂ signals related to a patient's level of blood oxygenation. However, these signals, which are sequences of numerical values of a physiological parameter over time, may have too much information or noise to be effectively used in the diagnosis or treatment of certain medical conditions. Accordingly, the signals may be processed to generate alerts, which may provide a more useful representation of the status of the medical condition. Embodiments of the present techniques provide methods that may be useful for generating indicators of a physiological status, based on a

signal representing the blood oxygen saturation (SpO₂) level in a patient and, thus, alerting a practitioner to physiologically important conditions.

The indicators may be directly related to the presence of obstructive sleep apnea and may assist practitioners in the diagnosis and treatment of this condition. In embodiments, SpO₂ data collected on a pulse oximeter may be used to calculate or determine the alerts. The relative simplicity of this device could enhance the diagnosis of obstructive sleep apnea by allowing patients to take diagnostic equipment home for use overnight and return the equipment to a practitioner for analysis and diagnosis.

Previous studies have examined the possibility of generating a single index reflective of sleep apnea from pulse oximetry data, such as an airway instability index, but many have used schemes that may either be challenging for a practitioner to implement in a treatment setting or overly sensitive to changes. As embodiments may be implemented using current medical devices, their implementation may be easier to explain and use than a more complex calculation for an airway instability index.

FIG. 1 is a block diagram of a medical device 10, which may be used in embodiments of the present disclosure. The medical device 10 may have a sensor 12 for the collection of a signal representing a physiological parameter. In embodiments, the sensor 12 may be an optical sensor used with a pulse oximeter for the measurement of oxygen saturation in the bloodstream. The signal from the sensor 12 may be conditioned by an interface 14 prior to being utilized by a microprocessor 16. The microprocessor 16 may be coupled to random access memory (RAM) 18 and/or read-only memory (ROM) 20. The RAM 18 may be used to store the signals from the sensor 12 and the results of calculations that the microprocessor 16 performs. The ROM 20 may contain code to direct the microprocessor 16 in collecting and processing the signal. The microprocessor 16 may be coupled to an input device 22 which may be used for local entry of control and calculation parameters for the medical device 10. A display unit 24 may be coupled to the microprocessor 16 to display the results the microprocessor 16 has generated from the signal.

The microprocessor 16 may also be coupled to a network interface 26 for the transfer of data from the microprocessor 16 to devices coupled to a local area network 28. The transferred data may, for example, include signal data, indices including an airway instability index, alert signals, alarm signals, or any combination thereof. The transferred data may also consist of control signals from the devices on the local area network 28, for example, to instruct the medical device 10 to send signal data, or other information, to a device on the local area network 28.

In an embodiment, the medical device 10 may be used to alert a practitioner to a physiological condition using data collected from the sensor 12. The alert may be output to the display unit 24 or sent to a network device on the local area network 28. The processing may take place in real time, or may be run after the data collection may be completed for later identification of the physiological condition.

In another embodiment, a network device located on the local area network 28 may be configured to alert a practitioner to the presence of a physiological condition using the data collected from the sensor 12. In this embodiment, the network device may request that the signal be sent from the medical device 10 through the network interface 26. As for the embodiment discussed above, the network device may be used to either determine the alert signal in real time or to

process a previously collected signal for later identification of the physiological condition.

In either of the embodiments above, the alert signals may appear on devices on the local area network 28, for example, a patient monitoring screen in an ICU. Alternatively, the alert signals may appear on the display unit 24 of the medical device 10. In embodiments, an alert signal may be activated in both locations using the results from either a local calculation on the medical device 10 or from a remote calculation on a network device coupled to the local area network 28.

The microprocessor 16 may also be coupled to a treatment device 30. For example, the treatment device 30 may be a positive pressure mask used to supply air at an increased pressure to maintain an open airway. In an embodiment, the treatment device 30 may be controlled by the microprocessor 16, for example, activating the treatment device 30 to open an airway based on the alert signals. This control may be useful in helping to confirm a diagnosis of obstructive sleep apnea, as restoration of the airway may restore blood oxygen levels to more normal levels.

A diagnosis of sleep apnea may also be aided by the sound the patient may be making during the sleep apnea events. For example, cessation of breathing following by a sudden gasping intake of breath may provide or confirm the diagnosis. However, such events may be irregularly spaced or may be separated by large time intervals, making any continuous audio recording of the patient tedious and/or expensive to analyze. An audio recording device 32 may be coupled to the microprocessor 16 for recording sounds made by the patient. In an embodiment, the microprocessor 16 may activate the audio recording device 32 based on the alert signals and record patient sounds when a sleep apnea event may be likely to be occurring. When combined with the alert signals, the sound recordings are likely to provide a positive diagnosis of obstructive sleep apnea.

Exemplary embodiments activate alert signals on the value of two general conditions. The first condition may be the presence or absence of clusters in the SpO₂ signal, as discussed below. The second condition may be the value of an integral calculated from the absolute level of the SpO₂ signal in comparison to previous set limits. The determination of these conditions is discussed in detail with respect to FIG. 2.

FIG. 2 is a chart of a sequence of values representing the blood oxygen saturation (SpO₂) of a patient over time, i.e., an SpO₂ signal 34. In this chart, a left vertical axis 36 represents the SpO₂ level. A horizontal axis 38 represents the time in seconds. In an embodiment, a pattern analysis method may be used to identify obstructive sleep apnea and calculate an airway instability index from the SpO₂ signal 34. The method takes advantage of the fact that during each sleep apnea event, e.g., during a single one of the desaturation patterns 38, the blood oxygen level falls slowly, as indicated by reference numeral 40, as oxygen stores in the body are used up and then sharply recovers, as indicated by reference numeral 42, as the patient is aroused and hyperventilates.

The determination of the presence of one or more desaturation patterns 38 may be performed by any number of different techniques. For example, in an embodiment, a single one of the desaturation patterns 38 may be identified by a combination of events, such as when a continuously calculated slope 44 of the SpO₂ signal 34 drops to a previously selected value, e.g. -1.5 and the SpO₂ signal crosses a predetermined SpO₂ level, e.g., 85%. In another embodiment, desaturation patterns 38 may be identified

using the methods discussed in U.S. Pat. No. 6,760,608 (hereinafter the '608 patent), incorporated by reference for all purposes as if fully set forth herein. Any number of different numerical values may be used in the determination of the presence of desaturation patterns **38**, for example, in 5 embodiments, the value of the slope **44**, selected to indicate the start of one of the desaturation patterns **38**, may be -0.5, -1.0, -1.5, -2, or any value in between. Further, in embodiments, the predetermined SpO₂ level used to indicate the start of one of the desaturation patterns **38** may be 95%, 10 90%, 85%, 80%, 75%, or any appropriate value in between.

Recurring sleep apnea events may often occur in groups of at least two successive desaturation patterns **38**, called a cluster **46**. The severity of the apnea may be determined from, for example, the number of desaturation patterns **38** in 15 each cluster **46**, the time between each one of the desaturation patterns **38**, the slope of the drop **40** in the blood oxygen level during each one of the desaturation patterns **38** or the slope of the recovery **42** of the blood oxygen level as each one of the desaturation patterns **38** ends, among others. 20

In an embodiment, a medical monitor or electronic device may include a module or a set of programming instructions for detecting desaturation patterns or clusters and for detecting 25 desaturation below certain limits. FIG. **3** is a block diagram of an exemplary cluster detection unit **100** that includes a reciprocation detection (RD) feature **102**, a reciprocation qualification (RQ) feature **104**, a cluster determination (CD) feature **106**, an integral alarm limit detection feature **109**, and a user notification (UN) feature **108**. Each of these components and the coordination of their functions 30 will be discussed in further detail below.

It should be noted that, in order to detect certain data patterns, embodiments of the present disclosure may utilize systems and methods such as those disclosed in U.S. Pat. Nos. 6,760,608, 6,223,064, 5,398,682, 5,605,151, 6,748, 252, U.S. application Ser. No. 11/455,408 filed Jun. 19, 2006, U.S. application Ser. No. 11/369,379 filed Mar. 7, 2006, and U.S. application Ser. No. 11/351,787 filed Feb. 10, 2006. Accordingly, U.S. Pat. Nos. 6,760,608, 6,223,064, 5,398,682, 5,605,151, 6,748,252, U.S. application Ser. No. 11/455,408 filed Jun. 19, 2006, U.S. application Ser. No. 11/369,379 filed Mar. 7, 2006, and U.S. application Ser. No. 11/351,787 filed Feb. 10, 2006 are each incorporated herein 40 by reference in their entirety for all purposes.

The RD feature **102** may be capable of performing an algorithm for detecting reciprocations in a data trend. Specifically, the algorithm of the RD feature **102** may perform a statistical method to find potential reciprocation peaks and nadirs in a trend of SpO₂ data. A nadir may be defined as a 45 minimum SpO₂ value in a reciprocation. The peaks may include a rise peak (e.g., a maximum SpO₂ value in a reciprocation that occurs after the nadir) and/or a fall peak (e.g., a maximum SpO₂ value in a reciprocation that occurs before the nadir). Once per second, the RD feature **102** may calculate a 12 second rolling mean and standard deviation of the SpO₂ trend. Further, based on these mean and standard deviation values, an upper band and lower band **122** with respect to an SpO₂ trend **124**, as illustrated by the graph **226** in FIG. **4**, may be calculated as follows:

Upper Band=mean+standard deviation;

Lower Band=mean-standard deviation.

Once the upper band **120** and lower band **122** have been determined, potential reciprocation peaks and nadirs may be 65 extracted from the SpO₂ trend **124** using the upper band **120** and the lower band **124**. Indeed, a potential peak may be

identified as the highest SpO₂ point in a trend segment which is entirely above the upper band **120**. Similarly, a potential nadir may be identified as the lowest SpO₂ point in a trend segment that is entirely below the lower band **122**. In other words, peaks identified by the RD feature **102** may be at least one standard deviation above the rolling mean, and nadirs identified by the RD feature **102** may be at least one standard deviation below the mean. If there is more than one minimum value below the lower band **122**, the last (or most recent) trend point may be identified as a nadir. If more than one maximum value is above the upper band **120**, the point identified as a peak may depend on where it is in relation to the nadir. For example, regarding potential peaks that occur prior to a nadir (e.g., fall peaks) the most recent maximum trend point may be used. In contrast, for peaks that occur subsequent to a nadir (e.g., rise peaks), the first maximum point may be used. In the example trend data represented in FIG. **4**, a peak and nadir is detected approximately every 30-60 seconds.

In one embodiment, a window size for calculating the mean and standard deviation may be set based on historical values (e.g., average duration of a set number of previous reciprocations). For example, in one embodiment, a window size for calculating the mean and standard deviation may be set to the average duration of all qualified reciprocations in the last 6 minutes divided by 2. In another embodiment, an adaptive window method may be utilized wherein the window size may be initially set to 12 seconds and then increased as the length of qualified reciprocations increases. This may be done in anticipation of larger reciprocations because reciprocations that occur next to each other tend to be of similar shape and size. If the window remained at 12 seconds, it could potentially be too short for larger reciprocations and may prematurely detect peaks and nadirs. The following equation or calculation is representative of a window size determination, wherein the output of the filter is inclusively limited to 12-36 seconds, and the equation is executed each time a new reciprocation is qualified:

If no qualified reciprocations in the last 6 minutes:

Window Size=12(initial value)

else:

RecipDur= $\frac{1}{2}$ *current qualified recip duration+
 $\frac{1}{2}$ *previous RecipDur

Window Size=bound(RecipDur,12,36).

With regard to SpO₂ signals that are essentially flat, the dynamic window method may fail to find the three points (i.e., a fall peak, a rise peak, and a nadir) utilized to identify a potential reciprocation. Therefore, the RD feature **102** may limit the amount of time that the dynamic window method can search for a potential reciprocation. For example, if no reciprocations are found in 240 seconds plus the current adaptive window size, the algorithm of the RD feature **102** may timeout and begin to look for potential reciprocations at the current SpO₂ trend point and later. The net effect of this may be that the RD feature **102** detects potential reciprocations less than 240 seconds long.

Once potential peaks and nadirs are found using the RD feature **102**, the RQ feature **104** may pass the potential reciprocations through one or more qualification stages to determine if a related event is caused by ventilatory instability. A first qualification stage may include checking reciprocation metrics against a set of limits (e.g., predetermined hard limits). A second qualification stage may include a linear qualification function. In accordance with present

embodiments, a reciprocation may be required to pass through both stages in order to be qualified.

As an example, in a first qualification stage, which may include a limit-based qualification, four metrics may be calculated for each potential reciprocation and compared to a set of limits. Any reciprocation with a metric that falls outside of these limits may be disqualified. The limits may be based on empirical data. For example, in some embodiments, the limits may be selected by calculating the metrics for potential reciprocations from sleep lab data where ventilatory instability is known to be present, and then comparing the results to metrics from motion and breathe-down studies. The limits may then be refined to filter out true positives.

The metrics referred to above may include fall slope, magnitude, slope ratio, and path length ratio. With regard to fall slope, it may be desirable to limit the maximum fall slope to filter out high frequency artifact in the SpO₂ trend, and limit the minimum fall slope to ensure that slow SpO₂ changes are not qualified as reciprocations. Regarding magnitude, limits may be placed on the minimum magnitude because of difficulties associated with deciphering the difference between ventilatory instability reciprocations and artifact reciprocations as the reciprocation size decreases, and on the maximum magnitude to avoid false positives associated with sever artifact (e.g., brief changes of more than 35% SpO₂ that are unrelated to actual ventilatory instability). The slope ratio may be limited to indirectly limit the rise slope for the same reasons as the fall slope is limited and because ventilatory instability patterns essentially always have a desaturation rate that is slower than the resaturation (or recovery) rate. The path length ratio may be defined as Path Length/((Fall Peak-Nadir)+(Rise Peak-Nadir)), where Path Length=Σ|Current SpO₂ Value-Previous SpO₂ value| for all SpO₂ values in a reciprocation, and the maximum path length ratio may be limited to limit the maximum standard deviation of the reciprocation, which limits high frequency artifact. The following table (Table I) lists the above-identified metrics along with their associated equations and the limits used in accordance with one embodiment:

TABLE I

Metric	Equation	Minimum	Maximum
Fall Slope	(Nadir - Fall Peak)/Time between Fall Peak and Nadir	-1.6 (Fast Response Mode) -1 (Normal Response Mode)	-0.08 (Fast Response Mode) -0.05 (Normal Response Mode)
Magnitude	Max(Rise Peak, Fall Peak) - Nadir	3	35
Slope Ratio	Fall Slope/Rise Slope	0.05	1.75
Path Length Ratio	Path Length = Σ Current SpO ₂ Value - Previous SpO ₂ Value for all SpO ₂ values in a Reciprocation. Path Length Ratio = Path Length/((Fall Peak - Nadir) +	N/A	2

As indicated in Table I above, an oximetry algorithm in accordance with present embodiments may operate in two response modes: Normal Response Mode or Fast Response Mode. The selected setting may change the SpO₂ filtering performed by the oximetry algorithm, which in turn can

cause changes in SpO₂ patterns. Therefore a saturation pattern detection feature may also accept a response mode so that it can account for the different SpO₂ filtering. Table I indicates values associated with both types of response mode with regard to the Fall Slope values.

A second qualification stage of the RQ feature 204 may utilize a object reciprocation qualification feature. Specifically, the second qualification stage may utilize a linear qualification function based on ease of implementation, efficiency, and ease of optimization. The equation may be determined by performing a least squares analysis. For example, such an analysis may be performed with MATLAB®. The inputs to the equation may include the set of metrics described below. The output may be optimized to a maximum value for patterns where ventilatory instability is known to be present. The equation may be optimized to output smaller values (e.g., 0) for other data sets where potential false positive reciprocations are abundant.

To simplify optimization, the equation may be factored into manageable sub-equations. For example, the equation may be factored into sub-equation 1, sub-equation D, and sub-equation 2, as will be discussed below. The output of each sub-equation may then be substituted into the qualification function to generate an output. The outputs from each of the sub-equations may not be utilized to determine whether a reciprocation is qualified in accordance with present embodiments. Rather, an output from a full qualification function may be utilized to qualify a reciprocation. It should be noted that the equations set forth in the following paragraphs describe one set of constants. However, separate sets of constants may be used based on the selected response mode. For example, a first set of constants may be used for the Normal Response Mode and a second set of constants may be used for the Fast Response Mode.

Preprocessing may be utilized in accordance with present embodiments to prevent overflow for each part of the qualification function. The tables (Tables II-VII) discussed below, which relate to specific components of the qualification function may demonstrate this overflow prevention. Each row in a table contains the maximum value of term which is equal to the maximum value of the input variable multiplied by the constant, wherein the term "maximum" may refer to the largest possible absolute value of a given input. Each row in a table contains the maximum intermediate sum of the current term and all previous terms. For example, a second row may contain the maximum output for the second term calculated, as well as the maximum sum of terms 1 and 2. It should be noted that the order of the row may match the order that the terms are calculated by the RQ feature 204. Further, it should be noted that in the tables for each sub-equation below, equations may be calculated using temporary signed 32-bit integers, and, thus, for each row in a table where the current term or intermediate term sum exceeds 2147483647 or is less than -2147483647 then an overflow/underflow condition may occur.

A first sub-equation, sub-equation 1, may use metrics from a single reciprocation. For example, sub-equation 1 may be represented as follows:

$$Eq1Score = SlopeRatio * SrCf + PeakDiff * PdCf + FallSlope * FsCf + PathRatio * PrCf + Eq1Offset,$$

where SrCf, PdCf, FsCf, PrCf, and Eq1Offset may be selected using least squares analysis (e.g., using MATLAB®). PeakDiff may be defined as equal to |Recip Fall Peak - Recip Rise Peak|. It should be noted that PeakDiff is typically not considered in isolation but in combination with other metrics to facilitate separation. For example, a true

positive reciprocation which meets other criteria but has a high peak difference could be an incomplete recovery. That is, a patient's SpO₂ may drop from a baseline to a certain nadir value, but then fail to subsequently recover to the baseline. However, when used in combination with other metrics in the equation, PeakDiff may facilitate separation of two classifications, as large peak differences are more abundant in false positive data sets.

With regard to sub-equation 1, the tables (Tables II and III) set forth below demonstrate that the inputs may be preprocessed to prevent overflow. Further, the tables set forth below include exemplary limits that may be utilized in sub-equation 1 in accordance with present embodiments. It should be noted that Table II includes Fast Response Mode constants and Table III includes Normal Response Mode constants.

TABLE II

Term	Variable Type	Maximum Variable Value (a)	Variable Preprocessing	Constant Value (b) (Fast Mode)	Maximum Term Value (a * b)	Maximum Intermediate Sum (Sum of all previous rows)	Overflow
PeakDiff*PdCf	U8	100	None. This value may not exceed 100 since the maximum SpO ₂ value accepted is 100	-29282	-2928200	-2928200	NO
SlopeRatio*SrCf	U8	255	None	-1534	-391170	-3319370	NO
FallSlope*FsCf	S16	-32768	None	-19	622592	-2696778	NO
PathRatio*PrCf	U16	65535	None	-7982	-523100370	-525797148	NO
Eq1Offset	N/A	N/A	N/A	809250	809250	-524987898	NO

TABLE III

Term	Variable Type	Maximum Variable Value (a)	Variable Preprocessing	Constant Value (b) (Normal Mode)	Maximum Term Value (a * b)	Maximum Intermediate Sum (Sum of all previous rows)	Overflow
PeakDiff*PdCf	U8	100	None. This value may not exceed 100 since the maximum SpO ₂ value accepted is 100	-33311	-3331100	-3331100	NO
SlopeRatio*SrCf	U8	255	None	-2151	-548505	-3879605	NO
FallSlope*FsCf	S16	-32768	None	-706	23134208	19254603	NO
PathRatio*PrCf	U16	65535	None	-6178	-404875230	-385620627	NO
Eq1Offset	N/A	N/A	N/A	576330	576330	-385044297	NO

A second sub-equation, sub-equation D, may correspond to a difference between two consecutive reciprocations which have passed the hard limit qualifications checks, wherein consecutive reciprocations include two reciprocations that are separated by less than a defined time span. For example, consecutive reciprocations may be defined as two reciprocations that are less than 120 seconds apart. The concept behind sub-equation D may be that ventilatory instability tends to be a relatively consistent event, with little change from one reciprocation to the next. Artifact generally

has a different signature and tends to be more random with greater variation among reciprocations. For example, the following equation may represent sub-equation D:

$$EqD = SlopeRatioDiff * SrDCf + DurationDiff * DDCf + NadirDiff * NdCf + PathLengthRatioDiff * PrDCf - EqDOffset,$$

where, SrDCf, DDCf, NdCf, PrDCf, and EqDOffset may be selected using least squares analysis (e.g., using MATLAB®). With regard to other variables in sub-equation D, SlopeRatioDiff may be defined as |Current Recip Slope Ratio - Slope Ratio of last qualified Recip|; DurationDiff may be defined as |Current Recip Duration - Duration of last qualified Recip|; NadirDiff may be defined as |Current Recip Nadir - Nadir value of last qualified Recip|; and PathLengthRatioDiff may be defined as |Current Recip Path Length Ratio - Path Length Ratio of last qualified Recip|.

With regard to sub-equation D, the tables (Tables IV and V) set forth below demonstrate that the inputs may be preprocessed to prevent overflow. Further, the tables set forth below include exemplary limits that may be utilized in sub-equation D in accordance with present embodiments. It should be noted that Table IV includes Fast Response Mode constants and Table V includes Normal Response Mode constants.

TABLE IV

Term	Variable Type	Maximum Variable Value (a)	Variable Preprocessing	Constant Value (b) (Fast Mode)	Maximum Term Value (a * b)	Maximum Intermediate Sum (Sum of all previous rows)	Overflow
EqDOffset	N/A	N/A	N/A	885030	885030	885030	NO
SlopeRatioDiff*SrDCf	U8	255	None	-2809	-716295	168735	NO

TABLE IV-continued

Term	Variable Type	Maximum Variable Value (a)	Variable Preprocessing	Constant Value (b) (Fast Mode)	Maximum Term Value (a * b)	Maximum Intermediate Sum (Sum of all previous rows)	Overflow
DurationDiff * DDCf	U16	240	The Recip detection module may only detect recips less than or equal to 240 seconds long	-2960	-710400	-541665	NO
NadirDiff* NdCf	U8	100	This value may not exceed 100 since the maximum SpO2 value accepted is 100	-13237	-1323700	-1865365	NO
PathLengthRatioDiff *PrDCf	U16	65535	None	-7809	-511762815	-513628180	NO

TABLE V

Term	Variable Type	Maximum Variable Value (a)	Variable Preprocessing	Constant Value (b) (Normal Mode)	Maximum Term Value (a * b)	Maximum Intermediate Sum (Sum of all previous rows)	Overflow
EqDOffset	N/A	N/A	N/A	847650	847650	847650	NO
SlopeRatioDiff *SrDCf	U8	255	None	-2629	-670395	177255	NO
DurationDiff * DDCf	U16	240	The Recip detection module may only detect recips less than or equal to 240 seconds long	-4282	-1027680	-850425	NO
NadirDiff* NdCf	U8	100	This value may not exceed 100 since the maximum SpO2 value accepted is 100	-11705	-1170500	-2020925	NO
PathLengthRatioDiff *PrDCf	U16	65535	None	-7844	-514056540	-516077465	NO

A third sub-equation, sub-equation 2, may combine the output of sub-equation D with the output of sub-equation 1 for a reciprocation (e.g., a current reciprocation) and a previous reciprocation. For example, the following equation may represent sub-equation 2:

$$Eq2Score = EqDScore * DCf + Eq1ScoreCurrent * CurrEq1Cf + Eq1ScorePrev * PrevEq1Cf$$

where DCf, N1Cf, PrevEq1Cf, and Eq2Offset may be selected using least squares analysis (e.g., using MATLAB®). With regard to other variables in sub-equation 2, EqDScore may be described as the output of sub-equation D; Eq1ScoreCurrent may be described as the output of

sub-equation 1 for a current reciprocation; and Eq1ScorePrev may be described as the output of sub-equation 1 for the reciprocation previous to the current reciprocation.

With regard to sub-equation 2, the tables (Tables VI and VII) set forth below demonstrate that the inputs may be preprocessed to prevent overflow. Further, the tables set forth below include exemplary limits that may be utilized in sub-equation 2 in accordance with present embodiments. It should be noted that Table VI includes Fast Response Mode constants and Table VII includes Normal Response Mode constants.

TABLE VI

Term	Variable Type	Maximum Variable Value (a)	Variable Preprocessing	Constant Value (b) (Fast Mode)	Maximum Term Value (a * b)	Maximum Intermediate Sum (Sum of all previous rows)	Overflow
Eq2Offset	N/A	N/A	N/A	-203800	-203800	-203800	NO
EqDScore * DCf	S32	-501590	The largest output for Sub-equation D may be -513628180 (see Table IV). The input value may be scaled by dividing the value	529	-265341110	-265544910	NO

TABLE VI-continued

Term	Variable Type	Maximum Variable Value (a)	Variable Preprocessing	Constant Value (b) (Fast Mode)	Maximum Term Value (a * b)	Maximum Intermediate Sum (Sum of all previous rows)	Overflow
Eq1ScorePrev * PrevEq1Cf	S32	-512683	by 1024. Therefore the largest input value may be -501590. The largest output for sub-equation 1 may be -524987898 (see Table II). The input value may be scaled by dividing the value by 1024. Therefore the largest input value may be -512683	333	-170723439	-436268349	NO
Eq1ScoreCurrent * CurrEq1Cf	S32	-512683	Same as previous row	617	-316325411	-752593760	NO

TABLE VII

Term	Variable Type	Maximum Variable Value (a)	Variable Preprocessing	Constant Value (b) (Normal Mode)	Maximum Term Value (a * b)	Maximum Intermediate Sum (Sum of all previous rows)	Overflow
Eq2Offset	N/A	N/A	N/A	-194550	-194550	-194550	NO
EqDScore * DCf	S32	-503981	The largest output for Sub-equation D may be -516077465 (see Table V). The input value may be scaled by dividing the value by 1024. Therefore the largest input value may be -503981	532	-268117892	-268312442	NO
Eq1ScorePrev * PrevEq1Cf	S32	-376000	The largest output for sub-equation 1 may be -385024297 (see Table III). The input value may be scaled by dividing the value by 1024. Therefore the largest input value may be -376000	496	-186496000	-454808442	NO
Eq1ScoreCurrent * CurrEq1Cf	S32	-376000	Same as previous row	406	-152656000	-607464442	NO

45

A qualification function may utilize the output of each of the equations discussed above (i.e., sub-equation 1, sub-equation D, and sub-equation 2) to facilitate qualification and/or rejection of a potential reciprocation. For example, the output of the qualification function may be filtered with an IIR filter, and the filtered output of the qualification function may be used to qualify or reject a reciprocation. An equation for an unfiltered qualification function output in accordance with present embodiments is set forth below:

$$QF_{unfiltered} = Eq1Score * SingleRecipWt * Eq2Cf + N2Score * MultipleRecipWt * Eq2Cf + NConsecRecip * ConsecCf + RecipMax * MaxCf + Artifact \% * ArtCf + QFOffset,$$

where Eq2Cf, ConsecCf, MaxCf, ArtCf, and QFOffset may be selected using least squares analysis (e.g., using MATLAB®), and, as indicated above, Eq1Score may be defined as the output of sub-equation 1.

Other metrics in the unfiltered qualification function include SingleRecipWt, MultipleRecipWt, NConsecRecip, RecipMax, and Artifact %. With regard to SingleRecipWt and MultipleRecipWt, when there are two or more consecu-

tive qualified reciprocations (e.g., qualified reciprocations that are less than 120 seconds apart) present, SingleRecipWt may equal 0 and MultipleRecipWt may equal 1. However, when only a single reciprocation is present, SingleRecipWt may equal 1 and MultipleRecipWt may equal 0.

NConsecRecip, which may be defined as equal to max(NConsecRecip', QFConsecMax), may include a count of the number of consecutive reciprocations (e.g., reciprocations that are less than or equal to 120 seconds apart) that have passed the hard limit checks. The value for NConsecRecip may be reset to 0 whenever a gap between any two partially qualified reciprocations exceeds 120 seconds. This may be based on the fact that ventilatory instability is a relatively long lasting event as compared to artifact. Therefore, as more reciprocations pass the hard limit checks, the qualification function may begin qualifying reciprocations that were previously considered marginal. However, to guard against a situation where something is causing a longer term artifact event (e.g., interference from nearby equipment), the value may be clipped to a maximum value to limit the metrics influence on the qualification function output.

55

60

65

RecipMax, which may be defined as equal to max(Fall Peak, Rise Peak), may facilitate making decisions about marginal reciprocations. Indeed, marginal reciprocations with higher maximum SpO₂ values may be more likely to get qualified than marginal reciprocations with lower SpO₂ values. It should be noted that this metric works in tandem with the NConsecRecip metric, and multiple marginal reciprocations with lower maximum SpO₂ values may eventually, over a long period of time, get qualified due to the NConsecRecip metric.

The metric Artifact % may be defined as an artifact percentage that is equal to 100*Total Artifact Count/Recip Duration, where Total Artifact Count is the number of times and artifact flag was set during the reciprocation. Present embodiments may include many metrics and equations that are used to set the artifact flag. Because of this it is a generally reliable indication of the amount of artifact present in the oximetry system as a whole. Marginal reciprocations with a high Artifact % are less likely to be qualified than marginal reciprocations with a low (or 0) artifact percentage.

A last component of the qualification function may include an infinite impulse response (IIR) filter that includes coefficients that may be tuned manually using a tool (e.g., a spreadsheet) that models algorithm performance. The filtered qualification function may be represented by the following equation, which includes different constants for different modes (e.g., Fast Response Mode and Normal Response Mode):

$$QF_{Filtered} = \text{SingleRecip} * W_1 * QF_{Unfiltered} + (1 - a) * QF_{Unfiltered} + a * \text{Prev}QF_{Filtered} * \text{MultipleRecip} * W_2,$$

where QF_{Unfiltered} may be defined as the current unfiltered qualification function output; PrevQF_{Filtered} may be defined as the previous filtered qualification function output; and where the constant “a” may be set to 0.34 for Fast Response Mode and 0.5 for Normal Response Mode.

The filtered output of the qualification function may be compared to a threshold to determine if the current reciprocation is the result of RAF or artifact. The optimum threshold may theoretically be 0.5. However, an implemented threshold may be set slightly lower to bias the output of the qualification function towards qualifying more reciprocations, which may result in additional qualification of false positives. The threshold may be lowered because, in accordance with present embodiments, a cluster determination portion of the algorithm, such as may be performed by the CD feature 106, may require a certain number (e.g., 5) of fully qualified reciprocations before an index may be calculated, and a certain number (e.g., at least 2) of consecutive qualified reciprocations (with no intervening disqualified reciprocations) within the set of fully qualified reciprocations. Since multiple reciprocations may be required, the clustering detection method may be biased toward filtering out false positives. Accordingly, the reciprocation qualification function threshold may be lowered to balance the two processes.

The CD feature 106 may be capable of performing an algorithm that maintains an internal reciprocation counter that keeps track of a number of qualified reciprocations that are currently present. When the reciprocation counter is greater than or equal to a certain value, such as 5, the clustering state may be set to “active” and the algorithm may begin calculating and reporting the detection of clusters. When clustering is not active (e.g., reciprocation count <5) the algorithm may not report the clusters.

The CD feature 106 may utilize various rules to determine the reciprocation count. For example, when the clustering state is inactive, the following rules may be observed:

- 1.) If the distance between qualified reciprocation exceeds 120 seconds, then the reciprocation count=0;
- 2.) If the current reciprocation is qualified, and the time from the start of the current reciprocation to the end of the last qualified reciprocation is <=120 seconds, then the reciprocation count=reciprocation count+1;
- 3.) If the current reciprocation is not qualified, then the reciprocation count=max(reciprocation count-2, 0).

Once clustering is active, it may remain active until the time between two qualified reciprocations exceeds 120 seconds. The following table (Table II) illustrates an example of how the reciprocation count rules may be applied to determine a clustering state.

TABLE VIII

Current Reciprocation Qualified	Time Since Last Qualified Reciprocation (seconds)	Reciprocation Count	Clustering State
TRUE	N/A	1	INACTIVE
FALSE	60	0	INACTIVE
TRUE	N/A	1	INACTIVE
FALSE	60	0	INACTIVE
TRUE	N/A	1	INACTIVE
TRUE	30	2	INACTIVE
TRUE	120	3	INACTIVE
FALSE	60	1	INACTIVE
TRUE	10	2	INACTIVE
TRUE	20	3	INACTIVE
TRUE	40	4	INACTIVE
FALSE	30	2	INACTIVE
FALSE	60	0	INACTIVE
TRUE	N/A	1	INACTIVE
TRUE	20	2	INACTIVE
TRUE	120	3	INACTIVE
TRUE	10	4	INACTIVE
FALSE	90	2	INACTIVE
TRUE	120	3	INACTIVE
TRUE	60	4	INACTIVE
TRUE	20	5	ACTIVE
TRUE	30	6	ACTIVE
FALSE	50	6	ACTIVE
FALSE	100	6	ACTIVE
TRUE	121	1	INACTIVE
FALSE	50	0	INACTIVE
TRUE	N/A	1	INACTIVE
TRUE	30	2	INACTIVE
TRUE	121	1	INACTIVE
TRUE	10	2	INACTIVE
TRUE	20	3	INACTIVE
TRUE	40	4	INACTIVE
TRUE	40	5	ACTIVE

In addition to cluster detection, embodiments may also include an integral alarm limit detection feature 109 that is configured to detect if the SpO₂ signal 34 drops below a lower limit 48. In the embodiment shown in FIG. 4, this limit 48 may be set at an SpO₂ level of 85%. In other embodiments, the level may be 95%, 90%, 80%, 75%, or any other appropriate value selected by the practitioner based on the patient’s condition.

The use of an absolute limit, however, may result in numerous alarms that are not necessarily informative. Accordingly, methods may be used to determine the severity of the condition and only alert the practitioner if the condition persists. For example, in an embodiment, the integral alarm limit detection feature 109 may calculate an integral 50 from the SpO₂ signal 34 by using a summation of the time the signal 34 may be below the lower limit 48 multiplied by the amount the signal 34 may be below the lower limit 48.

Similarly, an upper limit (not shown) may also be used for calculating the integral 50. An integral alarm limit 52 may be selected for alerting a practitioner based on the value of the integral 50. In embodiments, calculation of the integral 50 may be performed by the methods detailed in U.S. Pat. No. 5,865,736 (hereinafter the '736 patent), which is hereby incorporated by reference as if fully set forth herein.

The integral alarm limit detection feature 109 and the CD feature 106 may provide reports or other indications to a user notification feature 108 that may be configured to alert a user if there is one or more of a cluster detection or integral alarm limit violation. Referring back to FIG. 2, a combined alarm limit 54 may be based on both the presence of desaturation patterns 38, or clusters 46 (e.g., clusters determined by any suitable method), and the value of the integral 50. In this embodiment, if desaturation patterns 38, or clusters 46, are present and the integral 50 reaches the value of the combined alarm limit 54 an alert may be activated. In an embodiment, the limit for the combined alarm 54 may not be directly set by a practitioner, but may instead be calculated from the value of other parameters set by the practitioner. For example, the value of the combined alarm limit 54 may be calculated using the formula given in equation 1:

$$\text{CAL}=\text{CAS}*\text{IAL}/100 \quad \text{equation 1.}$$

In this equation, CAL may be the combined alarm limit 54, CAS may be a combined alarm sensitivity set by the user, and IAL may be the integral alarm limit 52 discussed above.

FIG. 5 is a process flow chart showing a method 56 for alerting practitioners to the presence of certain physiological conditions, in accordance with an embodiment. Referring also to FIG. 2, the method 56 of FIG. 5 starts with the collection of a new sample for the SpO₂ signal 34, as shown in block 58. As shown in block 60, the SpO₂ signal 34 may be analyzed to determine if a new cluster 46, e.g., two or more of the desaturation patterns 38 in sequence or a cluster as detected by a programmed functional unit 100, has been detected. In other embodiments, the method 56 may be configured to determine if only one of the desaturation patterns 38 may be detected. If a cluster 46 has been detected, the method 56 proceeds to block 62, to determine if the integral 50 has reached the integral alarm limit 52. If so, as shown in block 64, the method 56 may inform a practitioner that the integral alarm limit 52 has been reached and clusters 46 are present in the SpO₂ signal 34. The method 56 may then return to block 58 to collect the next SpO₂ sample in the SpO₂ signal 34.

If no integral alarm condition has been detected in block 62, the method may determine if the combined alarm limit 54 has been reached by the integral 50, as shown in block 66. The combined alarm limit 54 may be calculated using the method discussed with respect to equation 1. Further, the combined alarm limit 54 may be set to zero, which would inform the user of the presence of clusters 46, even if the value for the integral 50 was zero. If the combined alarm limit 54 has been reached, the method 56 may inform a practitioner that clusters 46 are present, as shown in block 68. If the combined alarm limit 54 has not been reached, the method 56 may activate no alerts, as shown in block 70. After either blocks 68 or 70, the method 56 may return to block 58 to collect the next SpO₂ sample in the SpO₂ signal 34.

If a cluster 46 may be not detected in block 60, the method 56 may still determine if the integral 50 has reached the integral alarm limit 52, as shown in block 72. If the integral 50 has not reached the integral alarm limit 52, no alarm may be activated, as shown in block 70. However, if the integral

50 has reached the integral alarm limit 52, the method 56 may inform a practitioner that the integral alarm limit 52 has been reached, as shown in block 74. After activating the alert, the method 56 may return to block 58 to collect the next SpO₂ sample in the SpO₂ signal 34.

The operation of an embodiment of the method 56 discussed with respect to FIG. 5 may be illustrated by the charts shown in FIGS. 6-9. In each of these charts, as in FIG. 2, the SpO₂ signal 34 may be plotted against the percent blood oxygen saturation level (SpO₂) on the left vertical axis 36 and the time, in seconds, on the horizontal axis 38. The horizontal line at a value of 85% on the SpO₂ axis 36 represents the lower limit 48 that may be used for controlling alarms or in the calculation of the integral 50. The value for the integral 50 may be plotted on each chart, showing the response of the method under the conditions described. An alarm condition indicator line 76 may be used to visually indicate the presence of an alarm condition, for example, when the value of the integral 50 exceeds the combined alarm limit 54 or the integral alarm limit 52. In embodiments, other indicators of the alarm status may be used in addition to, or in place of, the alarm condition indicator line 76. For example, audible alerts on the local unit 10 or on devices attached to a local area network 28, as discussed with respect to FIG. 1, may be activated.

FIG. 6 is a chart of an SpO₂ signal 34 that may illustrate the operation of an embodiment. In this example, a practitioner may wish to be informed of the presence of clusters before the value of the integral 50 has reached the integral alarm limit 52, but does not want to be informed of short duration desaturation events. To achieve this, the practitioner may set the integral alarm limit 52 to 50 and the combined alarm sensitivity to 40%. Using equation 1, this provides a value of 20% for the combined alarm limit 54. The value for the integral 50 reaches the combined alarm limit 54 at about 6105 seconds, as indicated by reference numeral 78, which may result in the presence of the alarm condition indicator line 76. Although the value of the integral 50 later reaches the integral alarm limit 52, as indicated by reference numeral 80, the method 56 has already activated an alarm condition and no further alarm may be activated. However, in other embodiments, a further alarm condition may be activated to indicate the possible presence of a more severe condition. This could be performed, for example, by changing the color of the alarm condition indicator line 78 from yellow to red, by pulsing an audible alarm, or any combination thereof.

FIG. 7 is another chart of the SpO₂ signal 34 that may illustrate the operation of an embodiment. A practitioner may not wish to be informed of the presence of clusters 46 unless the integral 50 has reached the integral alarm limit 52. To achieve this, the practitioner may set the combined alarm sensitivity to 100%. If the integral alarm limit 52 is set to 50, equation 1 would provide a combined alarm limit 54 that is at 50%. As shown in FIG. 7, when the value for the integral 50 reaches 50%, both the integral alarm limit 52 and the combined alarm limit 54 are simultaneously activated, resulting in the presence of the alarm condition indicator line 76.

FIG. 8 is another chart of the SpO₂ signal 34 that may illustrate the operation of an embodiment. A practitioner may wish to be informed anytime there are clusters 46 present in the SpO₂ signal 34 and the SpO₂ value drops below the lower limit 48. To achieve this, the practitioner may set the combined alarm sensitivity to 1%. If the value for the integral alarm limit 52 is set to 50, equation 1 would provide a value of 0.5% for the combined alarm limit 54.

Accordingly, the method 56 would display the alarm condition indicator line 76 if clusters 46 are present and the value of the integral 50 is greater than 0.5%. Thus, the alarm condition would be indicated well before the value of the integral 50 reached the integral alarm limit 52.

FIG. 9 is another chart of the SpO₂ signal 34 that may illustrate the operation of an embodiment. In this example, a practitioner may wish to be informed of the presence of clusters 46 anytime they are present, regardless of the value of the integral 50. Accordingly, the practitioner may set the value for the combined alarm sensitivity to 0%. Thus, the alarm conditioner indicator line 76 is present anytime clusters 46 are present, including during periods in which the value of the integral 50 may be zero, as indicated by reference numeral 82.

While the disclosure is suitable to various modifications and alternative forms, embodiments have been shown by way of example in the drawings and have been described in detail herein. However, it should be understood that the disclosure is not intended to be limited to the particular forms disclosed. Rather, the disclosure is intended to encompass all modifications, equivalents, and alternatives falling within the spirit and scope of this disclosure as defined by the following appended claims.

What is claimed is:

1. A system, comprising:

an input configured to receive an alarm sensitivity from a user; and

a processor coupled to the input and configured to:

determine a presence of one or more oxygen desaturation patterns in a photoplethysmograph (PPG) signal;

determine a value for an integral in response to a determination that the PPG signal is outside of a PPG range or a PPG threshold;

compare the value of the integral to an integral threshold;

compare the value of the integral to a combined alarm limit in response to a determination that the one or more oxygen desaturation patterns are present and that the value of the integral is less than the integral threshold, wherein the combined alarm limit is based on the integral threshold and the alarm sensitivity;

determine that the combined alarm limit has been violated based at least in part on the comparison;

provide a determination of sleep apnea in response to the determination that the combined alarm limit has been violated; and

increase an air pressure supplied by the system in response to the determination of sleep apnea.

2. The system of claim 1, wherein the processor is configured to determine a presence of a cluster of the one or more oxygen desaturation patterns in the PPG signal.

3. The system of claim 1, wherein the processor is configured to determine the value of the integral by accumulating a product of time and a difference between the PPG signal and a threshold value.

4. The system of claim 1, comprising a display coupled to the processor, wherein the processor is configured to provide the determination of sleep apnea as a visual display on the display.

5. The system of claim 1, comprising a PPG sensor configured to generate the PPG signal.

6. The system of claim 1, comprising a mask operatively coupled to the processor, wherein the processor is configured to increase the air pressure supplied by the system via the mask in response to the determination of sleep apnea.

7. The system of claim 1, wherein the alarm sensitivity comprises a percentage.

8. The system of claim 1, comprising a network interface operatively coupled to the processor and configured to send the determination of sleep apnea to a device located on a local area network.

9. A system, comprising:

a photoplethysmograph (PPG) sensor configured to generate a PPG signal; and

a patient monitor comprising:

an input configured to receive an alarm sensitivity from a user; and

a processor coupled to the input and configured to:

receive the PPG signal from the PPG sensor;

determine a presence of one or more oxygen desaturation patterns in the PPG signal;

determine a value for an integral in response to a determination that the PPG signal is outside of a PPG range or a PPG threshold;

compare the value of the integral to an integral threshold;

compare the value of the integral to a combined alarm limit in response to a determination that the one or more oxygen desaturation patterns are present and that the value of the integral is less than the integral threshold, wherein the combined alarm limit is based on the integral threshold and the alarm sensitivity;

determine that the combined alarm limit has been violated based at least in part on the comparison;

provide a determination of sleep apnea in response to the determination that the combined alarm limit has been violated; and

increase an air pressure supplied by the system in response to the determination of sleep apnea.

10. The system of claim 9, wherein the patient monitor comprises a display, and wherein the processor is configured to cause the display to provide the determination of sleep apnea.

11. The system of claim 9, comprising a treatment device operatively coupled to the patient monitor, wherein the processor is configured to increase the air pressure supplied by the system via the treatment device in response to the determination of sleep apnea.

12. The system of claim 9, wherein the processor is configured to determine a presence of a cluster of the one or more oxygen desaturation patterns in the PPG signal.

13. The system of claim 9, wherein processor is configured to determine the value of the integral by accumulating a product of time and a difference between the PPG signal and a threshold value.

14. The system of claim 9, wherein the processor is configured to provide the determination of sleep apnea as a message to a device located on a local area network.

15. A method, comprising:

receiving, via an input, an alarm sensitivity from a user; determining, via a processor, a presence of one or more oxygen desaturation patterns in a photoplethysmograph (PPG) signal;

determining, via the processor, a value for an integral in response to a determination that the PPG signal is outside of a PPG range or a PPG threshold;

comparing, via the processor, the value of the integral to an integral threshold;

comparing, via the processor, the value of the integral to a combined alarm limit in response to a determination that the one or more oxygen desaturation patterns are

present and that the value of the integral is less than the integral threshold, wherein the combined alarm limit is based on the integral threshold and the alarm sensitivity;

determining, via the processor, that the combined alarm limit has been violated based at least in part on the comparison; 5

providing, via the processor, a determination of sleep apnea in response to the determination that the combined alarm limit has been violated; and 10

increasing, via the processor, an air pressure supplied by a system in response to the determination of sleep apnea.

16. The method of claim **15**, comprising:

generating, via a PPG sensor, the PPG signal; and 15

receiving, via the processor, the PPG signal from the PPG sensor.

17. The method of claim **15**, wherein providing the determination of sleep apnea comprises providing the determination of sleep apnea as a visual display on a display 20 operatively coupled to the processor.

18. The method of claim **15**, wherein providing the determination of sleep apnea comprises providing the determination of sleep apnea as a message to a device on a local area network. 25

19. The method of claim **15**, comprising activating, via the processor, a treatment device to increase the air pressure supplied by the system via the treatment device in response to the determination of sleep apnea.

20. The method of claim **15**, comprising determining, via 30 the processor, a presence of a cluster of the one or more oxygen desaturation patterns in the PPG signal.

* * * * *

专利名称(译)	用于警告从业者生理状况的方法和系统		
公开(公告)号	US10076276	公开(公告)日	2018-09-18
申请号	US14/825982	申请日	2015-08-13
[标]申请(专利权)人(译)	柯惠有限合伙公司		
申请(专利权)人(译)	COVIDIEN LP		
当前申请(专利权)人(译)	COVIDIEN LP		
[标]发明人	OCHS JAMES AMUNDSON SCOTT BATCHELDER KEITH		
发明人	OCHS, JAMES AMUNDSON, SCOTT BATCHELDER, KEITH		
IPC分类号	A61B5/00 A61B5/0205 A61B5/024 A61B5/145 A61B5/1455 A61M16/00 A61M16/06 G08B21/04		
CPC分类号	A61B5/4818 A61B5/002 A61B5/0205 A61B5/02416 A61B5/14542 A61B5/1455 A61B5/14551 A61B5/14552 A61B5/7246 A61B5/7278 A61B5/7282 A61B5/7405 A61B5/742 A61B5/746 A61B5/7475 A61M16/0051 A61M16/021 A61M16/06 A61M2205/18 A61M2205/50 G08B21/0453		
优先权	61/066182 2008-02-19 US		
其他公开文献	US20150342541A1		
外部链接	Espacenet		

摘要(译)

本公开的实施例提供用于监测患者以产生表示血氧浓度的信号的系统和方法。可以分析信号以确定一个或多个睡眠呼吸暂停事件的存在，并且如果信号在设定范围或阈值之外，则可以计算信号的积分。如果血氧浓度低于预设极限，如果已经达到表示氧剥夺的严重程度随时间推移的积分的上限，或任何时候睡眠呼吸暂停，从业者可以选择被告知睡眠呼吸暂停事件的存在。事件可能存在于信号中。

