



US 20180256100A1

(19) **United States**

(12) **Patent Application Publication**
Li

(10) **Pub. No.: US 2018/0256100 A1**

(43) **Pub. Date: Sep. 13, 2018**

(54) **MULTI-PURPOSE WEARABLE PATCH FOR MEASUREMENT AND TREATMENT**

(71) Applicant: **VivaLnk, Inc.**, Santa Clara, CA (US)

(72) Inventor: **Jiang Li**, Cupertino, CA (US)

(21) Appl. No.: **15/472,641**

(22) Filed: **Mar. 29, 2017**

Related U.S. Application Data

(63) Continuation-in-part of application No. 15/457,532, filed on Mar. 13, 2017.

Publication Classification

(51) **Int. Cl.**

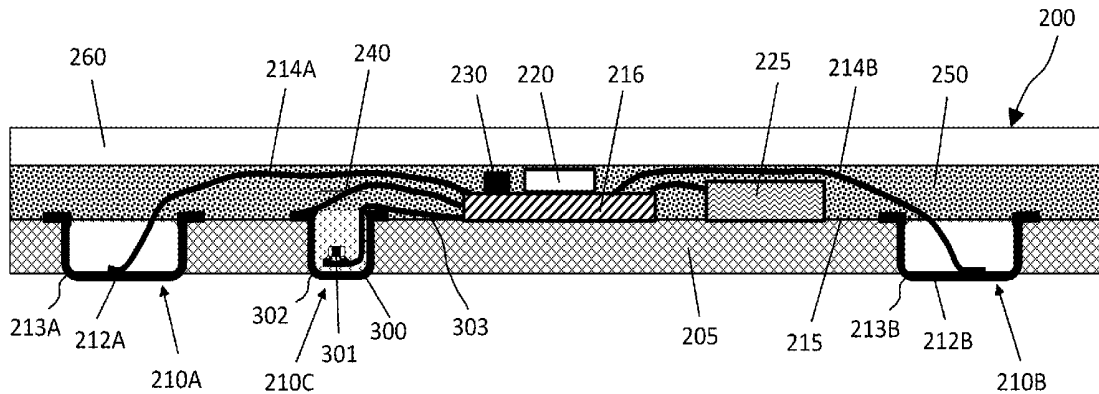
<i>A61B 5/00</i>	(2006.01)
<i>A61B 5/01</i>	(2006.01)
<i>A61B 5/021</i>	(2006.01)
<i>A61N 1/36</i>	(2006.01)
<i>A61F 7/00</i>	(2006.01)
<i>A61N 1/04</i>	(2006.01)

(52) **U.S. Cl.**

CPC *A61B 5/4836* (2013.01); *A61B 5/01* (2013.01); *A61B 5/021* (2013.01); *A61B 5/6816* (2013.01); *A61B 5/6833* (2013.01); *A61F 2007/0078* (2013.01); *A61F 7/007* (2013.01); *A61N 1/0492* (2013.01); *A61F 2007/0005* (2013.01); *A61F 2007/0096* (2013.01); *A61F 2007/0071* (2013.01); *A61N 1/36014* (2013.01)

(57) **ABSTRACT**

A multi-purpose wearable patch includes a stretchable and permeable substrate, a first sensing unit mounted in the stretchable and permeable substrate, the sensing unit that can conduct a first measurement of a user to produce a first measurement signal, a treatment unit that produces a first treatment field in the user's body; a circuit electrically connected with the treatment unit and the sensing unit; and a semiconductor chip in connection with the circuit and configured to receive the first measurement signal from the sensing unit. The semiconductor chip produces a first treatment control signal to control the treatment unit to produce a first treatment field in the user's body.



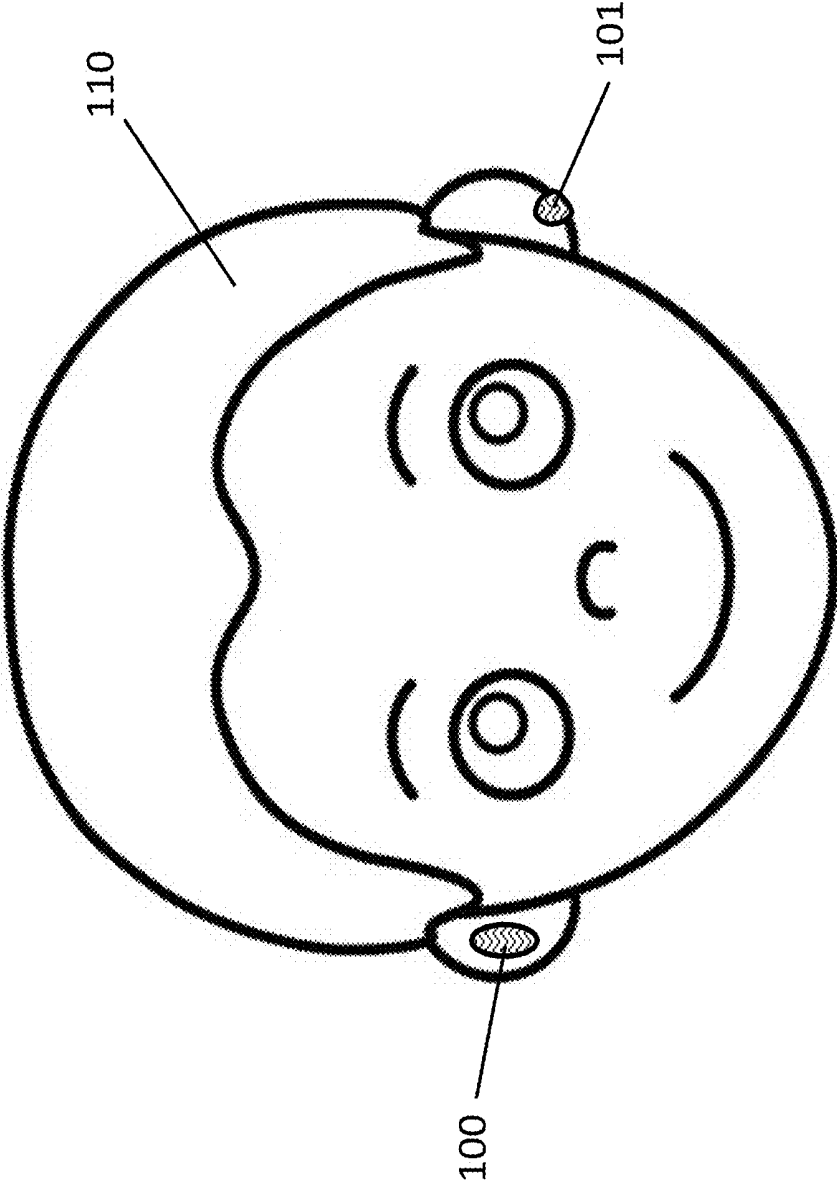


Figure 1

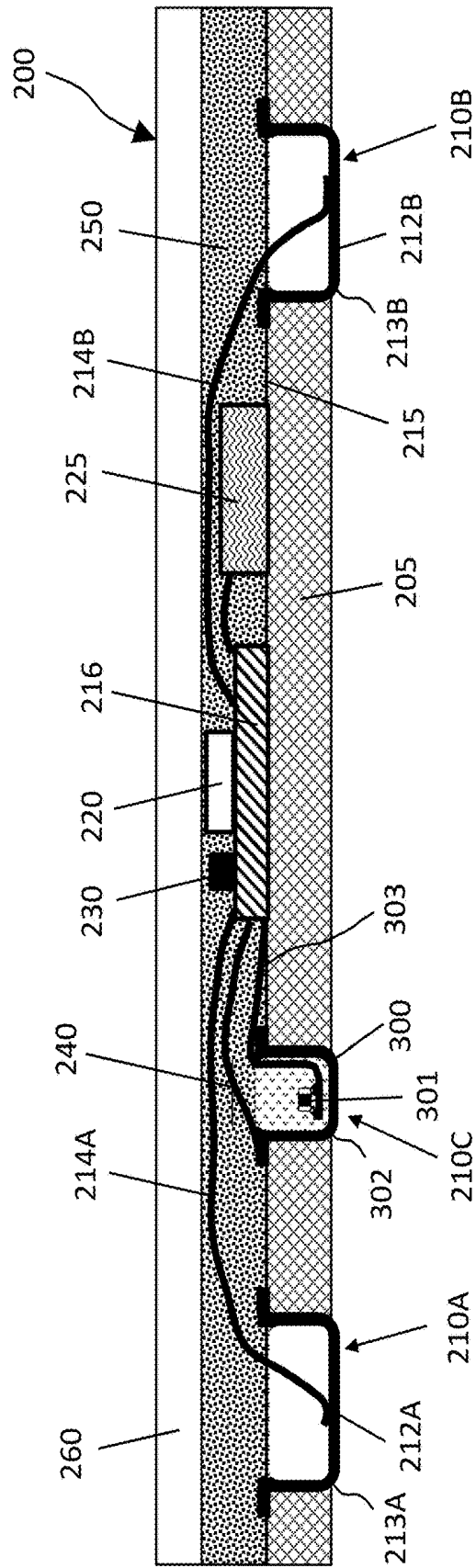


Figure 2

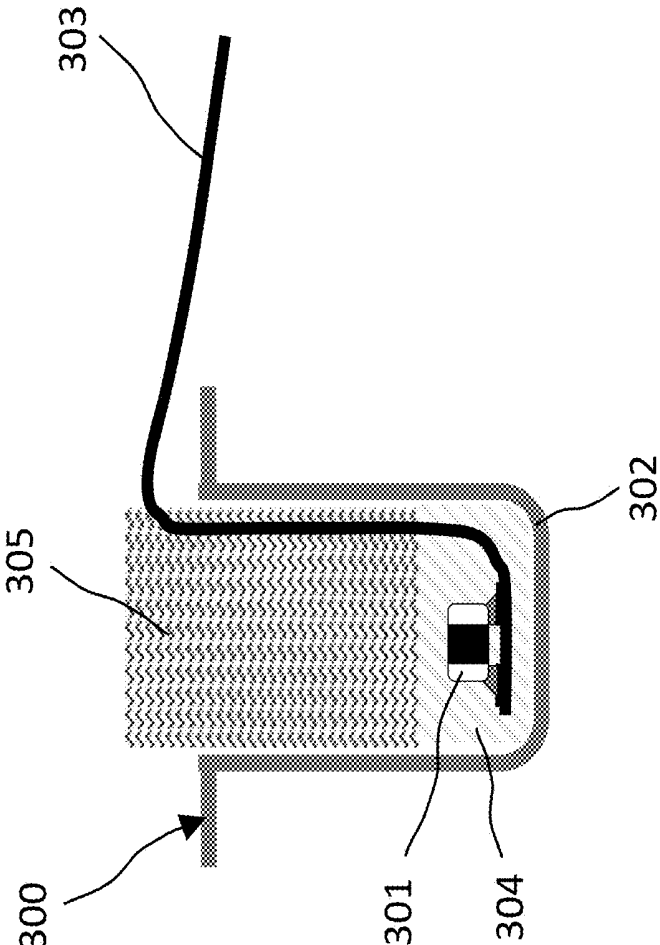


Figure 3

MULTI-PURPOSE WEARABLE PATCH FOR MEASUREMENT AND TREATMENT

BACKGROUND OF THE INVENTION

[0001] The present application relates to wearable electronic devices, and in particular, to wearable patches that can attach to human skin.

[0002] Electronic patches can be used for tracking objects and for performing functions such as producing sound, light or vibrations, and so on. As applications and human needs become more sophisticated and complex, electronic patches are required to perform a rapidly increasing number of tasks. Electronic patches are often required to be conformal to curved surfaces, which in the case of human body, can vary overtime.

[0003] Electronic patches can communicate with smart phones and other devices using WiFi, Bluetooth, Near Field Communication (NFC), and other wireless technologies. NFC is a wireless communication standard that enables two devices to quickly establish communication within a short range around radio frequency of 13.56 MHz. NFC is more secure than other wireless technologies such as Bluetooth and Wi-Fi because NFC requires two devices in close proximity (e.g. less than 10 cm). NFC can also lower cost comparing to other wireless technologies by allowing one of the two devices to be passive (a passive NFC tag).

[0004] Bluetooth is another wireless communication standard for exchanging data over relatively longer distances (in tens of meters). It employs short wavelength UHF radio waves from 2.4 to 2.485 GHz from fixed or mobile devices. Bluetooth devices have evolved to meet the increasing demand for low-power solutions that is required for wearable electronics. Benefited from relatively longer reading distance and active communication, Bluetooth technologies allow wearable patches to continuously monitoring vital information without human interference, which is an advantage over NFC in many applications.

[0005] Wearable patch (or tag) is an electronic patch to be worn by a user. A wearable patch is required to stay on user's skin and operate for an extended period of time from hours to months. A wearable patch can contain a micro-electronic system that can be accessed using NFC, Bluetooth, WiFi, or other wireless technologies. A wearable patch can be integrated with different sensors for measurements such as vital signs monitoring.

[0006] Traditionally, treatments can be conducted on patients using probes wire connected with heavy immobile equipment. For example, Cranial Electrotherapy Stimulation (CES) utilizes extremely small levels of electrical stimulation across the head of a patient for therapeutic treatment of anxiety, depression, insomnia and chronic pain.

[0007] There is therefore a need for convenient measurement of a patient's vital signs and other signals and treatment of the patient's symptoms.

SUMMARY OF THE INVENTION

[0008] The presently disclosure discloses a dual-purpose wearable device that can conveniently measure a patient's vital signs and other signals and treat the patient's symptoms. The disclosed wearable patch is easy and comfortable to wear by patients and do not require wire connections to heavy equipment.

[0009] Moreover, measurements and treatments can be conducted by the disclosed dual purpose wearable patch and the disclosed multi-purpose wearable patch while a patient fulfills his or her normal daily activities. Thus treatments can be timely and dynamically applied which such needs arise according to measurements of vital body signals and other signals.

[0010] Furthermore, effects of treatments can be immediately monitored by the dual purpose wearable patch and the disclosed multi-purpose wearable patch after it applies treatment.

[0011] In one general aspect, the present invention relates to a multi-purpose wearable patch that includes a stretchable and permeable substrate, a first sensing unit mounted in the stretchable and permeable substrate, the sensing unit that can conduct a first measurement of a user to produce a first measurement signal, a treatment unit that can produce a first treatment field in the user's body; a circuit electrically connected with the treatment unit and the sensing unit; and a semiconductor chip in connection with the circuit and configured to receive the first measurement signal from the sensing unit, wherein the semiconductor chip can produce a first treatment control signal to control the treatment unit to produce a first treatment field in the user's body

[0012] Implementations of the system may include one or more of the following. The treatment unit can include a heater, wherein the semiconductor chip can produce the first treatment control signal to control the heater to produce heat in the user's body. The treatment unit can include one or more electrodes, wherein the semiconductor chip is configured to produce the first treatment control signal to control the one or more electrodes to apply a voltage across the user's body. The semiconductor chip can produce a second treatment control signal to control the treatment unit to produce a second treatment field in the user's body. The semiconductor chip can control to control the treatment unit to produce the first treatment field in the user's body in response to the first measurement signal. The semiconductor chip can vary a type, timing, a frequency, or duration of the first treatment field in the user's body based on the first measurement signal. The semiconductor chip can control the first sensing unit to vary a type, timing, a frequency, or duration of the first measurement of the user based on the treatment field applied across the user's body. The semiconductor chip can switch the treatment unit and the sensing unit between a measurement mode and a treatment mode. The first sensing unit can include a mechanical sensor configured to measure a pulse or blood pressure of the user's body. The first sensing unit can include a temperature sensor configured to measure a temperature of the user's skin or body. The multi-purpose wearable patch can further include a second sensing unit to conduct a second measurement of a user to produce a second measurement signal. The semiconductor chip can control to control the treatment unit to produce the first treatment field in the user's body in response to the first measurement signal and the second measurement signal. The semiconductor chip can vary a type, timing, a frequency, or duration of the first treatment field in the user's body based on the first measurement signal and the second measurement signal. The second sensing unit can include a mechanical sensor configured to measure a pulse or blood pressure of the user's body, or a temperature sensor configured to measure a temperature of the user's skin or body. The multi-purpose wearable patch can further

include a circuit substrate comprising the circuit and on the stretchable and permeable substrate, wherein the semiconductor chip is mounted on the circuit substrate; and a battery configured to supply power to the circuit and the semiconductor chip. The multi-purpose wearable patch can further include an antenna in electric connection with the semiconductor chip, wherein the semiconductor chip is configured to produce electric signals to enable the antenna to wirelessly exchange measurement data based on the first measurement signal with an external device, wherein the semiconductor chip is configured to produce electric signals to enable the antenna to wirelessly exchange treatment data with an external device, wherein the treatment control signal is at least in part based on the treatment data. The multi-purpose wearable patch can further include an adhesive layer between the stretchable and permeable substrate and the circuit substrate. The multi-purpose wearable patch can further include an elastic layer formed on the stretchable and permeable substrate, the circuit substrate, and the sensing unit.

[0013] In another aspect, the present invention relates to a dual purpose wearable patch that includes a stretchable and permeable substrate; a sensing unit mounted in the stretchable and permeable substrate, wherein the sensing unit is configured to conduct a measurement of a user to produce a measurement signal; one or more electrodes respectively attached to the stretchable and permeable substrate; a circuit substrate on the stretchable and permeable substrate, wherein the circuit substrate comprises a circuit electrically connected with the one or more electrodes and the sensing unit; and a semiconductor chip mounted on the circuit substrate and in connection with the circuit, wherein the semiconductor chip is configured to receive the measurement signal from the sensing unit, wherein the semiconductor chip can produce a treatment control signal to control the one or more electrodes to apply a voltage across the user's body.

[0014] Implementations of the system may include one or more of the following. The semiconductor chip can produce a treatment control signal to control the one or more electrodes to apply a voltage across the user's body in response to a measurement signal. The dual purpose wearable patch can further include a battery configured to supply power to the circuit and the semiconductor chip. The semiconductor chip can switch the circuit, the one or more electrodes, and the sensing unit into or off from a measurement mode and a treatment mode. The one or more electrodes can include a second electrode and a third electrode configured to apply a voltage across the user's body. The sensing unit can include a temperature sensor configured to measure the user's skin temperature, wherein the measurement signal comprises temperature data. The sensing unit can further include a thermally conductive cup having a bottom portion mounted in a first opening in the stretchable and permeable substrate, wherein the temperature sensor is positioned inside and is in thermal conduction cup with the conductive cup. The sensing unit can include a thermally-conductive adhesive that fixes the temperature sensor to an inner surface of the conductive cup; and a thermally insulating material in a top portion of the conductive cup. The sensing unit can include an accelerometer configured to measure movement of the user. The sensing unit can include a pressure sensor or a force sensor configured to measure blood pressure or pulse of the user. The semiconductor chip can control a type, a

frequency, or duration of a measurement of the user by the sensing unit based on the voltage applied across the user's body. The dual purpose wearable patch can further include an antenna mounted on the circuit substrate and in electric connection with the semiconductor chip, wherein the semiconductor chip is configured to produce electric signals to enable the antenna to wirelessly exchange measurement data based on the measurement signal with an external device, wherein the semiconductor chip can produce electric signals to enable the antenna to wirelessly exchange treatment data with an external device, wherein the treatment control signal is at least in part based on the treatment data. At least one of the one or more electrodes can include an electrically conductive cup that is electrically connected to the control circuit in the circuit substrate, wherein the stretchable and permeable substrate comprises a second opening in which the electrically conductive cup is mounted. The electrically conductive cup can be electrically connected with the circuit. The dual purpose wearable patch can further include an adhesive layer between the stretchable and permeable substrate and the circuit substrate. The dual purpose wearable patch can further include an elastic layer formed on the stretchable and permeable substrate, the circuit substrate, and the sensing unit. The sensing unit includes an accelerometer can measure the user's movement, wherein the measurement signal comprises movement data. The sensing unit can include a pressure sensor or a force sensor configured to measure the user's blood pressure and/or the user's pulse, wherein the measurement signal comprises pulse data and blood pressure data.

[0015] These and other aspects, their implementations and other features are described in detail in the drawings, the description and the claims.

BRIEF DESCRIPTION OF THE DRAWINGS

[0016] FIG. 1 illustrates multi-purpose wearable patches attached to a user's skin.

[0017] FIG. 2 is a cross-sectional view of an exemplified dual purpose wearable patch for measurement and treatment in accordance with some embodiments of the present invention.

[0018] FIG. 3 is a detailed cross-sectional view of an exemplified sensing unit in the dual purpose wearable patch of FIG. 2.

[0019] FIG. 4 is a cross-sectional view of an exemplified multi-purpose wearable patch for measurement and treatment in accordance with some embodiments of the present invention.

DETAILED DESCRIPTION OF THE INVENTION

[0020] Referring to FIG. 1, one or more multi-purpose wearable patches **100**, **101** are attached to the skin of a user **110** for measuring body vital signs. The multi-purpose wearable patch **100** can be placed on the ears, the forehead, the hands, the shoulder, the waist, the leg, or the foot, under the armpit, around the wrist, on or around the arm, or other parts of a user's body. In the present disclosure, the term "wearable patch" can also be referred to as "wearable sticker", "wearable tag", or "wearable band", etc. In the present disclosure, "a multi-purpose wearable patch" also includes "a dual purpose wearable patch".

[0021] As discussed in more detail below, multi-purpose wearable patches **100**, **101** can operate individually, or in a group to provide certain desired treatment or measurement. For example, the purpose wearable patch **101** can wrap around a user's ear for applying an electric field through certain location of the ear. Similar, the disclosed purpose wearable patch can wrap around a user's wrist for providing treatment and measurement. Moreover, the multi-purpose wearable patches **100**, **101** can be attached to different parts of a user's body such as on the two ears or the two temples of the user **100**, which allows a low electric voltage signal to be applied across the user's head.

[0022] In accordance with the present invention, the disclosed multi-purpose wearable patch includes a treatment portion and a measurement portion. The measurement portion can measure vital signs, motion track, skin temperature, and ECG signals. The treatment portion can apply electrical signals, heat, and sometimes force or pressure to user's body.

[0023] In some embodiments, referring to FIGS. 2 and 3, an exemplified dual purpose wearable patch **200** includes a stretchable and permeable substrate **205** that include openings **210A**, **210B**, **210C**. The stretchable and permeable substrate **205** can be made of soft foam materials such as EVA, PE, CR, PORON, EPD, SCF or fabric textile, to provide stretchability and breathability. The measurement portion of the disclosed dual purpose wearable patch **200** includes a sensing unit **300** mounted in the opening **210C**. The treatment portion of the disclosed dual purpose wearable patch **200** includes two electrodes **212A**, **212B**, respectively comprising electrically conductive cups **213A**, **213B**, are mounted in the openings **210A**, **210B**. A circuit substrate **216** and a battery **225** are bonded to the stretchable and permeable substrate **205** by an adhesive layer **215** pre-laminated on the stretchable and permeable substrate **205**. A semiconductor chip **220** and an antenna **230** are mounted on the circuit substrate **216**. The circuit substrate **216** includes an electric circuit therein and can for example be implemented with a printed circuit board.

[0024] The thermal conductive cup **302** in the sensing unit **300** is electrically connected with the circuit substrate **216** by a conductive line **240**, which in turn establishes electrical communication between the thermal conductive cup **302** and the semiconductor chip **220**.

[0025] An elastic layer **250** is also bonded to the stretchable and permeable substrate **205** by the adhesive layer **215** to the stretchable and permeable substrate **205**, and is also formed on the circuit substrate **216**, the sensing unit **300**, and the electrodes **212A**, **212B**. The elastic layer **250** can be formed by soft stretchable and permeable foam materials such as EVA, PE, CR, PORON, EPD, SCF, or fabric textile. A thin film **260** is formed on the elastic layer **250** for protection and cosmetic purposes.

[0026] In usage, an adhesive material formed on the lower surface of the stretchable and permeable substrate **205** is attached to the user's skin, so that the bottom of the thermal conductive cup **302** is in tight contact with a user's skin to accurately measure temperature, electrical, or pressure signals from the user's skin, or apply electrical, thermal, or mechanical signals to the user's skin. The semiconductor chip **220** receives an electric signal from the temperature sensor **301** in response to a temperature measurement of the user's skin.

The Treatment Portion

[0027] In some embodiments, the electrically conductive cups **213A**, **213B** in the electrodes **212A**, **212B** are respectively electrically connected to the electric circuit in the circuit substrate **216** by conductive lines **214A**, **214B** (e.g. flexible ribbons embedded with conductive circuits). In accordance with the present application, the electrodes **212A**, **212B** can also be implemented in other configurations such as conductive pins, conductive pads, conductive buttons, or conductive strips. The semiconductor chip **220** can produce treatment electric signals, which can be amplified by an amplifier (not shown in FIG. 2) with power supplied by the battery **225**, which is sent to the electrodes **212A**, **212B** via the conductive lines **214A**, **214B**.

[0028] In some embodiments, the electric voltage (typically in low amplitude) generated across the electrodes **212A**, **212B** is applied to the user's skin for therapeutic treatment. For example, such Cranial Electrotherapy Stimulation treatment can be applied across the electrode in one disclosed dual purpose wearable patch across a user's ear lobe (e.g. **101** in FIG. 1) or across a user's wrist. In another example, electrical voltage signals can be applied across electrodes in two disclosed dual purpose wearable patches (e.g. **100**, **101** in FIG. 1). In this case, a thin conductive wire behind the user's neck can be tethered to the two dual purpose wearable patches to provide proper ground for the voltage signals.

[0029] The semiconductor chip **220** can communicate with an external device such as a mobile phone or a computer via the antenna **230** in wireless signals. For example, the semiconductor chip **220** can receive a treatment plan from the external device. The wireless signal can be based on using WiFi, Bluetooth, Near Field Communication (NFC), and other wireless standards. The semiconductor chip **220** can generate the treatment electric signals at durations, intervals, and amplitudes as defined in the treatment plan.

[0030] When the dual purpose wearable patch **200** is worn by a user, the antenna **230** is separated from the user's skin by the circuit substrate **216** and the stretchable and permeable substrate **205**, which minimizes the impact of the user's body on the transmissions of wireless signals by the antenna **230**.

Dynamic Treatment

[0031] In some embodiments, the semiconductor chip **220** can generate the treatment electric signals at durations, intervals, and amplitudes based on the measurement data obtained from the sensing unit **300**, as described below. For example, the electrotherapy stimulation treatment can be adjusted based on the user's skin temperature, heart beats, and blood pressure measured by the sensing unit **300**. User's bio vital signals may indicate user's stress levels, which can be treated by appropriate waveforms of electrical signals.

The Measurement Portion

[0032] In some embodiments, in the measurement portion of the disclosed dual purpose wearable patch **200**, the sensing unit **300** includes a temperature sensor **301** in a thermal conductive cup **302** which has its bottom portion mounted into the large opening **210C** and fixed to the stretchable and permeable substrate **205** by an adhesive. The temperature sensor **301** is electrically connected to the

electric circuit in the circuit substrate 216 by a flexible conductive ribbon 303. Referring to FIG. 3, the bottom portion of the thermal conductive cup 302 protrudes out of the lower surface of the stretchable and permeable substrate 205. The lips of the thermal conductive cup 302 near its top portion are fixedly attached or bonded to bonding pads (not shown) on the stretchable and permeable substrate 205 by soldering or with an adhesive. The thermal conductive cup 302 is both thermally and electrically conductive. The thermal conductive cup 302 can be made of a thermally conductive metallic or alloy material such as copper, stainless steel, ceramic or carbide composite materials.

[0033] The temperature sensor 301 is attached to an inner surface near the bottom of the thermal conductive cup 302. The temperature sensor 301 can be implemented, for example, by a thermistor, a Resistor Temperature Detector, or a Thermocouple. The temperature sensor 301 is in thermal conduction with the thermal conductive cup 302. When an outer surface of the bottom portion of the thermal conductive cup 302 is in contact with a user's skin, the thermal conductive cup 302 thus effectively transfers heat from a user's skin to the temperature sensor 301. A flexible conductive ribbon 303 is connected to the temperature sensor 301 in the thermal conductive cup 302 and to the electric circuit in the stretchable and permeable substrate 205.

[0034] The temperature sensor 301 can send an electric signal to the semiconductor chip 220 via the electric circuit in response to a measured temperature. The semiconductor chip 220 processes the electric signal and output another electrical signal which enables the antenna 230 to transmit a wireless signal carrying the measurement data to another external device such as a mobile phone or a computer (its wireless signals, as described below, can be boosted by a charging and wireless boosting station). The wireless signal can be based on using WiFi, Bluetooth, Near Field Communication (NFC), and other wireless standards. The battery 225 powers the semiconductor chip 220, the antenna 230, the first and the second electric circuits, and possibly the temperature sensor 301.

[0035] The temperature sensor 301 can be fixed to an inner surface at the bottom of the thermal conductive cup 302 by a thermally-conductive adhesive 304, which allows effective heat transfer from the bottom of the thermal conductive cup 302 to the temperature sensor 301. Examples of the thermally-conductive adhesive 304 can include electrically-insulative thermally-conductive epoxies and polymers. A thermally insulating material 305 filling the top portion of the thermal conductive cup 302 fixes the thermally-conductive adhesive 304 at the bottom of the thermal conductive cup 302 and reduces heat loss from the temperature sensor 301 to the elastic layer (described below) or the environment. The flexible conductive ribbon 303 can be bent and laid out along the wall the thermal conductive cup 302.

[0036] Further details of the sensing unit are disclosed in the commonly assigned co-pending U.S. patent application Ser. No. 15/224,121 "Wearable thermometer patch for accurate measurement of human skin temperature", filed Jul. 29, 2016, the disclosure of which is incorporated herein by reference.

[0037] In some embodiments, the sensing unit 300 includes an accelerometer that can measure acceleration and movement of the user. In some embodiments, the sensing

unit 300 includes a pressure sensor or a force sensor that can measure the user's pulses or blood pressure during or outside treatments.

[0038] In some embodiments, the sensing unit 300 includes one or more electrodes for measuring ECG signals. The electrode can for example be structured in an electrically conductive cup similar to the thermal conductive cup 302 described above. The ECG signal (voltage) can be measured across two of the electrodes or across one of the electrodes and one of the electrodes 212A, 212B (used as ground). In particular, the ECG signals can be measured when the electrotherapy simulation treatment is not conducted.

[0039] In some embodiments, the sensing unit 300 can include multiple sensors for temperature, movement, blood pressure, moisture, and pulse measurements.

Dynamic Measurement

[0040] In some embodiments, the semiconductor chip 220 can control the type(s), the timing, and frequencies of the measurement(s) by the sensing unit 300 in response to the types of treatment applied. For example, based on the timing, the durations, intervals, and amplitudes of the treatment electric signals, the frequencies, the durations and the type(s) of the measurement(s) can be varied to more accurately and more timely monitor the user's health conditions.

Mode Switching

[0041] The semiconductor chip 220 can control the circuit to switch the sensing unit 300 and the electrodes 210A, 210B into or off from a measurement mode, or into or off from a treatment mode. The mode switching can be specified in the treatment plan received from an external device, or dynamically adjusted according to the user's vital signals and responsiveness to treatment.

Personalized Medicine

[0042] Since the disclosed dual purpose wearable patch is worn by an individual patient, the disclosed dual purpose patch is ideal for personalized medical treatment. Each treatment plan download into the disclosed dual purpose wearable patch can be individualized according to the patient's needs.

[0043] Moreover, the disclosed dual purpose wearable patch can significantly enhance the effectiveness of individualized treatments for patients. In particular, treatments can be dynamically adjusted according to the current condition of the user as indicated by the bio vital signals currently measured from the user.

Multi-Purpose Wearable Patch

[0044] In some embodiments, referring to FIG. 4, a multi-purpose wearable patch 400 includes a stretchable and permeable substrate 405 that include openings 410A, 410B, 410C. The stretchable and permeable substrate 405 can be made of soft foam materials such as EVA, PE, CR, PORON, EPD, SCF or fabric textile, to provide stretchability and breathability. A circuit substrate 416 and a battery 425 are bonded to the stretchable and permeable substrate 405 by an adhesive layer 415 pre-laminated on the stretchable and permeable substrate 405. A semiconductor chip 420 and an antenna 430 are mounted on the circuit substrate 416. The

circuit substrate **416** includes an electric circuit therein and can for example be implemented with a printed circuit board.

[0045] In the multi-purpose wearable patch **400**, the semiconductor chip **420** receives and processes different types of measurement signals from different sensing units. The measurement signals can reflect the user's health, mental, and psychological states. The semiconductor chip **420** receives and can also send out treatment signals for controlling treatment portion to conduct treatments on the user (e.g. thermal, electrical, mechanical, etc.).

[0046] The multi-purpose wearable patch **400** includes a measurement portion that includes a sensor unit **450** mounted in the opening **410A** and a sensing unit **300** mounted in the opening **410C**. The sensing unit **300** includes a temperature sensor **301** in a thermal conductive cup **302** which has its bottom portion mounted into the large opening **410C** and fixed to the stretchable and permeable substrate **405** by an adhesive. The temperature sensor **301** is electrically connected to the electric circuit in the circuit substrate **416** by a flexible conductive ribbon **303**. When an outer surface of the bottom portion of the thermal conductive cup **302** is in contact with a user's skin, the thermal conductive cup **302** thus effectively transfers heat from a user's skin to the temperature sensor **301**. A flexible conductive ribbon (**303** in FIG. 3) is connected to the temperature sensor **301** in the thermal conductive cup **302** and to the electric circuit in the stretchable and permeable substrate **405**. The temperature sensor **301** can send an electric signal to the semiconductor chip **420** via the electric circuit in response to a measured temperature. Details about the sensing unit **300** are described above in relation to FIG. 3.

[0047] The thermal conductive cup **302** in the sensing unit **300** can be electrically conductive. The thermal conductive cup **302** is electrically connected with the circuit substrate **416** by a conductive line **440**, which establishes electrical communication between the thermal conductive cup **302** and the semiconductor chip **420**. When the thermally and electrically conductive cup **302** is in electric contact with a user's skin, the conductive cup **302** and then in turn the semiconductor chip **420** can receive an EEG signal from the skin of the user.

[0048] The sensor unit **450** includes a cup **413A** and a mechanical sensor **412A** mounted in a window at the bottom of the cup **413A**. The mechanical sensor **412A** can detect a pressure or a vibration in the user skin or body when the bottom of the cup **413A** is in contact of the user's skin. The mechanical sensor **412A** can include a piezoelectric material that produce electrical signal in response to pressure or stress. In one implementation, the mechanical sensor **412A** can include a membrane coated with a piezoelectric material that produces an electrical signal in response to pressure, mechanical disturbances, or vibrations. In some implementations, the mechanical sensor **412A** is an integrated micro-mechanical electrical system (MEMS) device that can be micro-fabricated on a semiconductor substrate. When the mechanical sensor **412A** is in contact with user's skin, the vibrations or pressure variations caused by the user's heart beats and blood pressure can be detected; the mechanical sensor **412A** sends a measurement signal to the semiconductor chip **420** via conductive lines **414A**. The semiconductor chip **420** can extract the user's pulse and blood pressure information from the measurement signal.

[0049] Other measurements compatible with the multi-purpose wearable patch can include movement, acceleration, moisture, etc.

[0050] The disclosed multi-purpose wearable patch **400** includes a treatment unit **470** that includes a heater **412B** attached to a thermally conductive cup **413B** mounted in the opening **410B**. The heater **412B** can be a thermal resistor that produces heat when applied with a voltage. The heater **412B** is electrically connected to the electric circuit in the circuit substrate **416** via conductive lines **414B** can be controlled by the semiconductor chip **420**. The semiconductor chip **420** can produce treatment electric signals, which can be amplified by an amplifier (not shown in FIG. 4) with power supplied by the battery **425**, which is sent to control the heater **412B** via the conductive lines **414B**. Under the control the treatment electric signals, the heater **412B** can produce heat to treat the user's skin and body. The heating can be applied in different waveforms such as static, pulses, and waveforms of varying frequencies. Heat treatments can be used to reduce or cure muscle or joint pains, mental stress, and to increase blood circulation, etc. As described above, the treatment unit **470** can also include electrodes that produce electrical voltage across the user's skin or body under the control of the semiconductor chip **420**. In general, the treatment unit **470** can produce treatment field(s) in the user the skin or body, such treatments including electrical, heat, mechanical, magnetic and other fields, which can provide therapy or relaxation to the user.

[0051] An elastic layer **450** is also bonded to the stretchable and permeable substrate **405** by the adhesive layer **415** to the stretchable and permeable substrate **405**, and is also formed on the circuit substrate **416**, the sensing unit **300**, the mechanical sensor **412A**, and the heater **412B**. The elastic layer **450** can be formed by soft stretchable and permeable foam materials such as EVA, PE, CR, PORON, EPD, SCF, or fabric textile. A thin film **460** is formed on the elastic layer **450** for protection and cosmetic purposes.

[0052] In usage, an adhesive material formed on the lower surface of the stretchable and permeable substrate **405** is attached the user's skin, so that the bottom of the thermal conductive cup **302** is in tight contact with a user's skin to accurately measure temperature, electrical, or pressure signals from the user's skin, or apply electrical, thermal, or mechanical signals to the user's skin. The semiconductor chip **420** receives an electric signal from the temperature sensor **301** in response to a temperature measurement of the user's skin.

[0053] Similar to the description above, the multi-purpose wearable patch **400** can conduct dynamic measurement and dynamic treatment for applications in personalized medicine. In dynamic measurement, the sensing unit **300** and the sensor unit **450** the type(s), the timing, and frequencies of the measurement(s) by the sensing unit **300** in response to the types of treatment applied by the heater **412B** under the control of the semiconductor chip **420**. For example, based on the timing, the durations, intervals, and amplitudes of the treatment electric signals, the timing, the frequencies, the durations and the type(s) of the measurement(s) can be varied to more accurately and more timely monitor the user's health conditions.

[0054] Similarly, in dynamic treatment, the semiconductor chip **420** can general the treatment electric signals at durations, intervals, and amplitudes based on the measurement data obtained from the sensing units **300**, **450**, as described

below. For example, the electrotherapy stimulation treatment can be adjusted based on the user's skin temperature, heart beats, and blood pressure measured by the sensing units **300**, **450**. User's bio vital signals may indicate user's stress levels, which can be treated by appropriate waveforms of electrical signals for heat or electrical treatments.

[0055] Furthermore, the semiconductor chip **420** can control the circuit to switch the sensing units **300**, **450** and the heater **412B** between measurement mode, a treatment mode, an off mode or a dynamic mode. The mode switching can be specified in the treatment plan received from an external device, or dynamically adjusted according to the user's vital signals and responsiveness to treatment.

[0056] Other details about wearable patches capable of performing measurement and charging functions are disclosed in commonly assigned U.S. patent application Ser. No. 15/423,585, titled "A wearable patch comprising three electrodes for measurement and charging", filed Feb. 3, 2017, commonly assigned U.S. patent application Ser. No. 15/406,380, titled "A wearable thermometer patch for correct measurement of human skin temperature", filed Jan. 13, 2017, and commonly assigned U.S. patent application Ser. No. 15/414,549, titled "A wearable thermometer patch for measuring temperature and electrical signals", filed Jan. 24, 2017. The disclosures in the above applications are incorporated herein by reference.

[0057] The disclosed dual purpose wearable patch and multi-purpose wearable patch are stretchable, compliant, durable, and comfortable to wear by users. The disclosed wearable thermometer patch includes a flexible substrate covered and protected by an elastic layer that increases the flexibility and stretchability.

[0058] Another advantage of the disclosed dual purpose wearable patch and multi-purpose wearable patch is that it can significantly increase wireless communication range by placing the antenna on the upper surface of the circuit substrate. The thickness of the substrate as well as the height of the thermally conductive cup can be selected to allow enough distance between the antenna and the user's skin to minimize interference of user's body to the wireless transmission signals.

[0059] While this document contains many specifics, these should not be construed as limitations on the scope of an invention that is claimed or of what may be claimed, but rather as descriptions of features specific to particular embodiments. Certain features that are described in this document in the context of separate embodiments can also be implemented in combination in a single embodiment. Conversely, various features that are described in the context of a single embodiment can also be implemented in multiple embodiments separately or in any suitable sub-combination. Moreover, although features may be described above as acting in certain combinations and even initially claimed as such, one or more features from a claimed combination can in some cases be excised from the combination, and the claimed combination may be directed to a sub-combination or a variation of a sub-combination.

[0060] Only a few examples and implementations are described. Other implementations, variations, modifications and enhancements to the described examples and implementations may be made without deviating from the spirit of the present invention.

1. A multi-purpose wearable patch, comprising:
 - a stretchable and permeable substrate;
 - a first sensing unit mounted in the stretchable and permeable substrate, the sensing unit configured to conduct a first measurement of a user to produce a first measurement signal;
 - a treatment unit configured to produce a first treatment field in the user's body;
 - a circuit electrically connected with the treatment unit and the first sensing unit; and
 - a semiconductor chip in connection with the circuit and configured to receive the first measurement signal from the first sensing unit, wherein the semiconductor chip is configured to produce a first treatment control signal to control the treatment unit to produce a first treatment field in the user's body.

2. The multi-purpose wearable patch of claim 1, wherein the treatment unit includes a heater, wherein the semiconductor chip is configured to produce the first treatment control signal to control the heater to produce heat in the user's body.

3. The multi-purpose wearable patch of claim 1, wherein the treatment unit includes one or more electrodes, wherein the semiconductor chip is configured to produce the first treatment control signal to control the one or more electrodes to apply a voltage across the user's body.

4. The multi-purpose wearable patch of claim 1, wherein the semiconductor chip is configured to produce a second treatment control signal to control the treatment unit to produce a second treatment field in the user's body.

5. The multi-purpose wearable patch of claim 1, wherein the semiconductor chip is configured to control the treatment unit to produce the first treatment field in the user's body in response to the first measurement signal.

6. The multi-purpose wearable patch of claim 5, wherein the semiconductor chip is configured to vary a type, timing, a frequency, or duration of the first treatment field in the user's body based on the first measurement signal.

7. The multi-purpose wearable patch of claim 1, wherein the semiconductor chip is configured to control the first sensing unit to vary a type, timing, a frequency, or duration of the first measurement of the user based on the first treatment field applied across the user's body.

8. The multi-purpose wearable patch of claim 1, wherein the semiconductor chip is configured to switch the treatment unit and the first sensing unit between a measurement mode and a treatment mode.

9. The multi-purpose wearable patch of claim 1, wherein the first sensing unit includes a mechanical sensor configured to measure a pulse or blood pressure of the user's body.

10. The multi-purpose wearable patch of claim 1, wherein the first sensing unit includes a temperature sensor configured to measure a temperature of the user's skin or body.

11. The multi-purpose wearable patch of claim 1, further comprising:

- a second sensing unit to conduct a second measurement of a user to produce a second measurement signal.

12. The multi-purpose wearable patch of claim 11, wherein the semiconductor chip is configured to control the treatment unit to produce the first treatment field in the user's body in response to the first measurement signal and the second measurement signal.

13. The multi-purpose wearable patch of claim 12, wherein the semiconductor chip is configured to vary a type, a timing, a frequency, or duration of the first treatment field

in the user's body based on the first measurement signal and the second measurement signal.

14. The multi-purpose wearable patch of claim **11**, wherein the second sensing unit includes a mechanical sensor configured to measure a pulse or blood pressure of the user's body, or a temperature sensor configured to measure a temperature of the user's skin or body.

15. The multi-purpose wearable patch of claim **1**, further comprising:

a circuit substrate comprising the circuit and on the stretchable and permeable substrate, wherein the semiconductor chip is mounted on the circuit substrate; and a battery configured to supply power to the circuit and the semiconductor chip.

16. The multi-purpose wearable patch of claim **1**, further comprising:

an antenna in electric connection with the semiconductor chip, wherein the semiconductor chip is configured to

produce electric signals to enable the antenna to wirelessly exchange measurement data based on the first measurement signal with an external device, wherein the semiconductor chip is configured to produce electric signals to enable the antenna to wirelessly exchange treatment data with an external device, wherein the first treatment control signal is at least in part based on the treatment data.

17. The multi-purpose wearable patch of claim **1**, further comprising:

an adhesive layer between the stretchable and permeable substrate and the circuit substrate.

18. The multi-purpose wearable patch of claim **1**, further comprising:

an elastic layer formed on the stretchable and permeable substrate, the circuit substrate, and the sensing unit.

* * * * *

专利名称(译)	用于测量和治疗的多功能可穿戴贴片		
公开(公告)号	US20180256100A1	公开(公告)日	2018-09-13
申请号	US15/472641	申请日	2017-03-29
[标]申请(专利权)人(译)	VIVALNK		
申请(专利权)人(译)	VIVALNK INC.		
当前申请(专利权)人(译)	VIVALNK INC.		
[标]发明人	LI JIANG		
发明人	LI, JIANG		
IPC分类号	A61B5/00 A61B5/01 A61B5/021 A61N1/36 A61F7/00 A61N1/04		
CPC分类号	A61B5/4836 A61B5/01 A61B5/021 A61B5/6816 A61B5/6833 A61F2007/0078 A61F7/007 A61N1/0492 A61F2007/0005 A61F2007/0096 A61F2007/0071 A61N1/36014 A61N1/36025 A61N1/36031		
其他公开文献	US10321872		
外部链接	Espacenet USPTO		

摘要(译)

一种多用途可穿戴贴片，包括可拉伸和可渗透的基底，安装在可拉伸和可渗透基底中的第一感测单元，可以对用户进行第一次测量以产生第一测量信号的感测单元，产生用户身体的第一个治疗领域；与治疗单元和传感单元电连接的电路；半导体芯片，与电路连接，用于接收来自传感单元的第一测量信号。半导体芯片产生第一治疗控制信号以控制治疗单元以在使用者的身体中产生第一治疗区域。

