



US009795310B2

(12) **United States Patent**
Al-Ali

(10) **Patent No.:** **US 9,795,310 B2**
(45) **Date of Patent:** ***Oct. 24, 2017**

(54) **PATIENT MONITOR FOR DETERMINING
MICROCIRCULATION STATE**

A61B 5/6801 (2013.01); *A61B 5/7275*
(2013.01); *A61B 5/7282* (2013.01); *A61B*
5/746 (2013.01)

(71) Applicant: **MASIMO CORPORATION**, Irvine,
CA (US)

(58) **Field of Classification Search**
None

See application file for complete search history.

(72) Inventor: **Ammar Al-Ali**, San Juan Capistrano,
CA (US)

(56) **References Cited**

(73) Assignee: **MASIMO CORPORATION**, Irvine,
CA (US)

U.S. PATENT DOCUMENTS

(*) Notice: Subject to any disclaimer, the term of this
patent is extended or adjusted under 35
U.S.C. 154(b) by 5 days.

3,980,075 A 9/1976 Heule
4,960,128 A 10/1990 Gordon et al.
(Continued)

This patent is subject to a terminal dis-
claimer.

OTHER PUBLICATIONS

US 8,845,543, 09/2014, Diab et al. (withdrawn)
U.S. Appl. No. 14/746,446, filed Jun. 22, 2015, Kiani.

(21) Appl. No.: **14/923,235**

(22) Filed: **Oct. 26, 2015**

Primary Examiner — Eric Winakur

Assistant Examiner — Marjan Fardanesh

(65) **Prior Publication Data**

US 2016/0113527 A1 Apr. 28, 2016

(74) *Attorney, Agent, or Firm* — Knobbe, Martens, Olson
& Bear LLP

Related U.S. Application Data

(63) Continuation of application No. 14/160,316, filed on
Jan. 21, 2014, now Pat. No. 9,192,312, which is a
(Continued)

(57) **ABSTRACT**

As placement of a physiological monitoring sensor is typi-
cally at a sensor site located at an extremity of the body, the
state of microcirculation, such as whether vessels are
blocked or open, can have a significant effect on the readings
at the sensor site. It is therefore desirable to provide a patient
monitor and/or physiological monitoring sensor capable of
distinguishing the microcirculation state of blood vessels. In
some embodiments, the patient monitor and/or sensor pro-
vide a warning and/or compensates a measurement based on
the microcirculation state. In some embodiments, a micro-
circulation determination process implementable by the
patient monitor and/or sensor is used to determine the state
of microcirculation of the patient.

(51) **Int. Cl.**

A61B 5/1455 (2006.01)

A61B 5/026 (2006.01)

A61B 5/024 (2006.01)

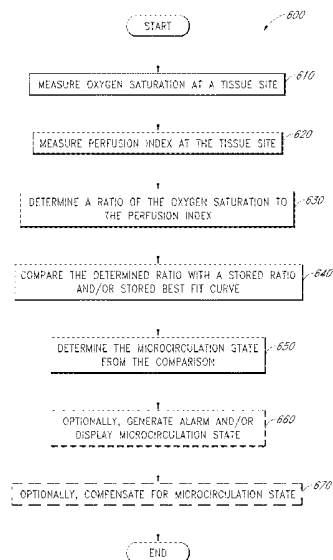
A61B 5/00 (2006.01)

A61B 5/02 (2006.01)

(52) **U.S. Cl.**

CPC *A61B 5/0261* (2013.01); *A61B 5/02007*
(2013.01); *A61B 5/02427* (2013.01); *A61B*
5/14551 (2013.01); *A61B 5/14552* (2013.01);

18 Claims, 7 Drawing Sheets



Related U.S. Application Data

continuation of application No. 13/101,093, filed on May 4, 2011, now Pat. No. 8,666,468.

(60) Provisional application No. 61/332,155, filed on May 6, 2010.

(56) References Cited

U.S. PATENT DOCUMENTS

4,964,408 A	10/1990	Hink et al.	6,157,850 A	12/2000	Diab et al.
5,041,187 A	8/1991	Hink et al.	6,165,005 A	12/2000	Mills et al.
5,069,213 A	12/1991	Polczynski	6,184,521 B1	2/2001	Coffin, IV et al.
5,163,438 A	11/1992	Gordon et al.	6,206,830 B1	3/2001	Diab et al.
5,319,355 A	6/1994	Russek	6,229,856 B1	5/2001	Diab et al.
5,337,744 A	8/1994	Branigan	6,232,609 B1	5/2001	Snyder et al.
5,341,805 A	8/1994	Stavridi et al.	6,236,872 B1	5/2001	Diab et al.
D353,195 S	12/1994	Savage et al.	6,241,683 B1	6/2001	Macklem et al.
D353,196 S	12/1994	Savage et al.	6,253,097 B1	6/2001	Aronow et al.
5,377,676 A	1/1995	Vari et al.	6,256,523 B1	7/2001	Diab et al.
D359,546 S	6/1995	Savage et al.	6,263,222 B1	7/2001	Diab et al.
5,431,170 A	7/1995	Mathews	6,278,522 B1	8/2001	Lepper, Jr. et al.
D361,840 S	8/1995	Savage et al.	6,280,213 B1	8/2001	Tobler et al.
D362,063 S	9/1995	Savage et al.	6,285,896 B1	9/2001	Tobler et al.
5,452,717 A	9/1995	Branigan et al.	6,301,493 B1	10/2001	Marro et al.
D363,120 S	10/1995	Savage et al.	6,317,627 B1	11/2001	Ennen et al.
5,456,252 A	10/1995	Vari et al.	6,321,100 B1	11/2001	Parker
5,479,934 A	1/1996	Imran	6,325,761 B1	12/2001	Jay
5,482,036 A	1/1996	Diab et al.	6,334,065 B1	12/2001	Al-Ali et al.
5,490,505 A	2/1996	Diab et al.	6,343,224 B1	1/2002	Parker
5,494,043 A	2/1996	O'Sullivan et al.	6,349,228 B1	2/2002	Kiani et al.
5,533,511 A	7/1996	Kaspari et al.	6,360,114 B1	3/2002	Diab et al.
5,534,851 A	7/1996	Russek	6,368,283 B1	4/2002	Xu et al.
5,561,275 A	10/1996	Savage et al.	6,371,921 B1	4/2002	Caro et al.
5,562,002 A	10/1996	Lalin	6,377,829 B1	4/2002	Al-Ali
5,590,649 A	1/1997	Caro et al.	6,388,240 B2	5/2002	Schulz et al.
5,602,924 A	2/1997	Durand et al.	6,397,091 B2	5/2002	Diab et al.
5,632,272 A	5/1997	Diab et al.	6,430,437 B1	8/2002	Marro
5,638,816 A	6/1997	Kiani-Azarbayjany et al.	6,430,525 B1	8/2002	Weber et al.
5,638,818 A	6/1997	Diab et al.	6,463,311 B1	10/2002	Diab
5,645,440 A	7/1997	Tobler et al.	6,470,199 B1	10/2002	Kopotic et al.
5,685,299 A	11/1997	Diab et al.	6,501,975 B2	12/2002	Diab et al.
D393,830 S	4/1998	Tobler et al.	6,505,059 B1	1/2003	Kollias et al.
5,743,262 A	4/1998	Lepper, Jr. et al.	6,515,273 B2	2/2003	Al-Ali
5,758,644 A	6/1998	Diab et al.	6,519,487 B1	2/2003	Parker
5,760,910 A	6/1998	Lepper, Jr. et al.	6,525,386 B1	2/2003	Mills et al.
5,769,785 A	6/1998	Diab et al.	6,526,300 B1	2/2003	Kiani et al.
5,782,757 A	7/1998	Diab et al.	6,541,756 B2	4/2003	Schulz et al.
5,785,659 A	7/1998	Caro et al.	6,542,764 B1	4/2003	Al-Ali et al.
5,791,347 A	8/1998	Flaherty et al.	6,580,086 B1	6/2003	Schulz et al.
5,810,734 A	9/1998	Caro et al.	6,584,336 B1	6/2003	Ali et al.
5,823,950 A	10/1998	Diab et al.	6,595,316 B2	7/2003	Cybulski et al.
5,830,131 A	11/1998	Caro et al.	6,597,932 B2	7/2003	Tian et al.
5,833,618 A	11/1998	Caro et al.	6,597,933 B2	7/2003	Kiani et al.
5,860,919 A	1/1999	Kiani-Azarbayjany et al.	6,606,511 B1	8/2003	Ali et al.
5,890,929 A	4/1999	Mills et al.	6,632,181 B2	10/2003	Flaherty et al.
5,904,654 A	5/1999	Wohltmann et al.	6,639,668 B1	10/2003	Trepagnier
5,919,134 A	7/1999	Diab	6,640,116 B2	10/2003	Diab
5,934,925 A	8/1999	Tobler et al.	6,643,530 B2	11/2003	Diab et al.
5,940,182 A	8/1999	Lepper, Jr. et al.	6,650,917 B2	11/2003	Diab et al.
5,995,855 A	11/1999	Kiani et al.	6,654,624 B2	11/2003	Diab et al.
5,997,343 A	12/1999	Mills et al.	6,658,276 B2	12/2003	Pishney et al.
6,002,952 A	12/1999	Diab et al.	6,661,161 B1	12/2003	Lanzo et al.
6,011,986 A	1/2000	Diab et al.	6,671,531 B2	12/2003	Al-Ali et al.
6,027,452 A	2/2000	Flaherty et al.	6,678,543 B2	1/2004	Diab et al.
6,036,642 A	3/2000	Diab et al.	6,684,090 B2	1/2004	Ali et al.
6,045,509 A	4/2000	Caro et al.	6,684,091 B2	1/2004	Parker
6,067,462 A	5/2000	Diab et al.	6,697,656 B1	2/2004	Al-Ali
6,081,735 A	6/2000	Diab et al.	6,697,657 B1	2/2004	Shehada et al.
6,088,607 A	7/2000	Diab et al.	6,697,658 B2	2/2004	Al-Ali
6,110,522 A	8/2000	Lepper, Jr. et al.	RE38,476 E	3/2004	Diab et al.
6,124,597 A	9/2000	Shehada et al.	6,699,194 B1	3/2004	Diab et al.
6,128,521 A	10/2000	Marro et al.	6,714,804 B2	3/2004	Al-Ali et al.
6,129,675 A	10/2000	Jay	RE38,492 E	4/2004	Diab et al.
6,144,868 A	11/2000	Parker	6,721,582 B2	4/2004	Trepagnier et al.
6,151,516 A	11/2000	Kiani-Azarbayjany et al.	6,721,585 B1	4/2004	Parker
6,152,754 A	11/2000	Gerhardt et al.	6,725,075 B2	4/2004	Al-Ali
			6,728,560 B2	4/2004	Kollias et al.
			6,735,459 B2	5/2004	Parker
			6,745,060 B2	6/2004	Diab et al.
			6,760,607 B2	7/2004	Al-Ali
			6,770,028 B1	8/2004	Ali et al.
			6,771,994 B2	8/2004	Kiani et al.
			6,792,300 B1	9/2004	Diab et al.
			6,813,511 B2	11/2004	Diab et al.
			6,816,741 B2	11/2004	Diab
			6,822,564 B2	11/2004	Al-Ali
			6,826,419 B2	11/2004	Diab et al.
			6,830,711 B2	12/2004	Mills et al.

(56)

References Cited

U.S. PATENT DOCUMENTS

6,850,787	B2	2/2005	Weber et al.	7,454,240	B2	11/2008	Diab et al.
6,850,788	B2	2/2005	Al-Ali	7,467,002	B2	12/2008	Weber et al.
6,852,083	B2	2/2005	Caro et al.	7,469,157	B2	12/2008	Diab et al.
6,861,639	B2	3/2005	Al-Ali	7,471,969	B2	12/2008	Diab et al.
6,898,452	B2	5/2005	Al-Ali et al.	7,471,971	B2	12/2008	Diab et al.
6,920,345	B2	7/2005	Al-Ali et al.	7,483,729	B2	1/2009	Al-Ali et al.
6,931,268	B1	8/2005	Kiani-Azarbayjany et al.	7,483,730	B2	1/2009	Diab et al.
6,934,570	B2	8/2005	Kiani et al.	7,489,958	B2	2/2009	Diab et al.
6,939,305	B2	9/2005	Flaherty et al.	7,496,391	B2	2/2009	Diab et al.
6,943,348	B1	9/2005	Coffin IV	7,496,393	B2	2/2009	Diab et al.
6,950,687	B2	9/2005	Al-Ali	D587,657	S	3/2009	Al-Ali et al.
6,961,598	B2	11/2005	Diab	7,499,741	B2	3/2009	Diab et al.
6,970,792	B1	11/2005	Diab	7,499,835	B2	3/2009	Weber et al.
6,979,812	B2	12/2005	Al-Ali	7,500,950	B2	3/2009	Al-Ali et al.
6,985,764	B2	1/2006	Mason et al.	7,509,154	B2	3/2009	Diab et al.
6,993,371	B2	1/2006	Kiani et al.	7,509,494	B2	3/2009	Al-Ali
6,996,427	B2	2/2006	Ali et al.	7,510,849	B2	3/2009	Schurman et al.
6,999,904	B2	2/2006	Weber et al.	7,526,328	B2	4/2009	Diab et al.
7,003,338	B2	2/2006	Weber et al.	7,530,942	B1	5/2009	Diab
7,003,339	B2	2/2006	Diab et al.	7,530,949	B2	5/2009	Al Ali et al.
7,015,451	B2	3/2006	Dalke et al.	7,530,955	B2	5/2009	Diab et al.
7,024,233	B2	4/2006	Ali et al.	7,563,110	B2	7/2009	Al-Ali et al.
7,027,849	B2	4/2006	Al-Ali	7,596,398	B2	9/2009	Al-Ali et al.
7,030,749	B2	4/2006	Al-Ali	7,618,375	B2	11/2009	Flaherty et al.
7,039,449	B2	5/2006	Al-Ali	D606,659	S	12/2009	Kiani et al.
7,041,060	B2	5/2006	Flaherty et al.	7,647,083	B2	1/2010	Al-Ali et al.
7,044,918	B2	5/2006	Diab	D609,193	S	2/2010	Al-Ali et al.
7,067,893	B2	6/2006	Mills et al.	D614,305	S	4/2010	Al-Ali et al.
7,096,052	B2	8/2006	Mason et al.	RE41,317	E	5/2010	Parker
7,096,054	B2	8/2006	Abdul-Hafiz et al.	7,729,733	B2	6/2010	Al-Ali et al.
7,132,641	B2	11/2006	Schulz et al.	7,734,320	B2	6/2010	Al-Ali
7,142,901	B2	11/2006	Kiani et al.	7,761,127	B2	7/2010	Al-Ali et al.
7,149,561	B2	12/2006	Diab	7,761,128	B2	7/2010	Al-Ali et al.
7,186,966	B2	3/2007	Al-Ali	7,764,982	B2	7/2010	Dalke et al.
7,190,261	B2	3/2007	Al-Ali	D621,516	S	8/2010	Kiani et al.
7,215,984	B2	5/2007	Diab	7,791,155	B2	9/2010	Diab
7,215,986	B2	5/2007	Diab	7,801,581	B2	9/2010	Diab
7,221,971	B2	5/2007	Diab	7,822,452	B2	10/2010	Schurman et al.
7,225,006	B2	5/2007	Al-Ali et al.	RE41,912	E	11/2010	Parker
7,225,007	B2	5/2007	Al-Ali	7,844,313	B2	11/2010	Kiani et al.
RE39,672	E	6/2007	Shehada et al.	7,844,314	B2	11/2010	Al-Ali
7,239,905	B2	7/2007	Kiani-Azarbayjany et al.	7,844,315	B2	11/2010	Al-Ali
7,245,953	B1	7/2007	Parker	7,865,222	B2	1/2011	Weber et al.
7,254,429	B2	8/2007	Schurman et al.	7,873,497	B2	1/2011	Weber et al.
7,254,431	B2	8/2007	Al-Ali	7,880,606	B2	2/2011	Al-Ali
7,254,433	B2	8/2007	Diab et al.	7,880,626	B2	2/2011	Al-Ali et al.
7,254,434	B2	8/2007	Schulz et al.	7,891,355	B2	2/2011	Al-Ali et al.
7,272,425	B2	9/2007	Al-Ali	7,894,868	B2	2/2011	Al-Ali et al.
7,274,955	B2	9/2007	Kiani et al.	7,899,507	B2	3/2011	Al-Ali et al.
D554,263	S	10/2007	Al-Ali	7,899,518	B2	3/2011	Trepagnier et al.
7,280,858	B2	10/2007	Al-Ali et al.	7,904,132	B2	3/2011	Weber et al.
7,289,835	B2	10/2007	Mansfield et al.	7,909,772	B2	3/2011	Popov et al.
7,292,883	B2	11/2007	De Felice et al.	7,910,875	B2	3/2011	Al-Ali
7,295,866	B2	11/2007	Al-Ali	7,919,713	B2	4/2011	Al-Ali et al.
7,328,053	B1	2/2008	Diab et al.	7,937,128	B2	5/2011	Al-Ali
7,332,784	B2	2/2008	Mills et al.	7,937,129	B2	5/2011	Mason et al.
7,338,447	B2	3/2008	Phillips	7,937,130	B2	5/2011	Diab et al.
7,340,287	B2	3/2008	Mason et al.	7,941,199	B2	5/2011	Kiani
7,341,559	B2	3/2008	Schulz et al.	7,951,086	B2	5/2011	Flaherty et al.
7,341,562	B2	3/2008	Pless et al.	7,957,780	B2	6/2011	Lamego et al.
7,343,186	B2	3/2008	Lamego et al.	7,962,188	B2	6/2011	Kiani et al.
D566,282	S	4/2008	Al-Ali et al.	7,962,190	B1	6/2011	Diab et al.
7,355,512	B1	4/2008	Al-Ali	7,976,472	B2	7/2011	Kiani
7,356,365	B2	4/2008	Schurman	7,988,637	B2	8/2011	Diab
7,371,981	B2	5/2008	Abdul-Hafiz	7,990,382	B2	8/2011	Kiani
7,373,193	B2	5/2008	Al-Ali et al.	7,991,446	B2	8/2011	Ali et al.
7,373,194	B2	5/2008	Weber et al.	8,000,761	B2	8/2011	Al-Ali
7,376,453	B1	5/2008	Diab et al.	8,008,088	B2	8/2011	Bellott et al.
7,377,794	B2	5/2008	Al-Ali et al.	RE42,753	E	9/2011	Kiani-Azarbayjany et al.
7,377,899	B2	5/2008	Weber et al.	8,019,400	B2	9/2011	Diab et al.
7,383,070	B2	6/2008	Diab et al.	8,028,701	B2	10/2011	Al-Ali et al.
7,415,297	B2	8/2008	Al-Ali et al.	8,029,765	B2	10/2011	Bellott et al.
7,428,432	B2	9/2008	Ali et al.	8,036,727	B2	10/2011	Schurman et al.
7,438,683	B2	10/2008	Al-Ali et al.	8,036,728	B2	10/2011	Diab et al.
7,440,787	B2	10/2008	Diab	8,046,040	B2	10/2011	Ali et al.
				8,046,041	B2	10/2011	Diab et al.
				8,046,042	B2	10/2011	Diab et al.
				8,048,040	B2	11/2011	Kiani
				8,050,728	B2	11/2011	Al-Ali et al.

(56)

References Cited

U.S. PATENT DOCUMENTS

RE43,169	E	2/2012	Parker	8,560,032	B2	10/2013	Al-Ali et al.
8,118,620	B2	2/2012	Al-Ali et al.	8,560,034	B1	10/2013	Diab et al.
8,126,528	B2	2/2012	Diab et al.	8,570,167	B2	10/2013	Al-Ali
8,128,572	B2	3/2012	Diab et al.	8,570,503	B2	10/2013	Vo et al.
8,130,105	B2	3/2012	Al-Ali et al.	8,571,617	B2	10/2013	Reichgott et al.
8,145,287	B2	3/2012	Diab et al.	8,571,618	B1	10/2013	Lamego et al.
8,150,487	B2	4/2012	Diab et al.	8,571,619	B2	10/2013	Al-Ali et al.
8,175,672	B2	5/2012	Parker	8,577,431	B2	11/2013	Lamego et al.
8,180,420	B2	5/2012	Diab et al.	8,581,732	B2	11/2013	Al-Ali et al.
8,182,443	B1	5/2012	Kiani	8,584,345	B2	11/2013	Al-Ali et al.
8,185,180	B2	5/2012	Diab et al.	8,588,880	B2	11/2013	Abdul-Hafiz et al.
8,190,223	B2	5/2012	Al-Ali et al.	8,600,467	B2	12/2013	Al-Ali et al.
8,190,227	B2	5/2012	Diab et al.	8,606,342	B2	12/2013	Diab
8,203,438	B2	6/2012	Kiani et al.	8,626,255	B2	1/2014	Al-Ali et al.
8,203,704	B2	6/2012	Merritt et al.	8,630,691	B2	1/2014	Lamego et al.
8,204,566	B2	6/2012	Schurman et al.	8,634,889	B2	1/2014	Al-Ali et al.
8,219,172	B2	7/2012	Schurman et al.	8,641,631	B2	2/2014	Sierra et al.
8,224,411	B2	7/2012	Al-Ali et al.	8,652,060	B2	2/2014	Al-Ali
8,228,181	B2	7/2012	Al-Ali	8,663,107	B2	3/2014	Kiani
8,229,533	B2	7/2012	Diab et al.	8,666,468	B1	3/2014	Al-Ali
8,233,955	B2	7/2012	Al-Ali et al.	8,667,967	B2	3/2014	Al-Ali et al.
8,244,325	B2	8/2012	Al-Ali et al.	8,670,811	B2	3/2014	O'Reilly
8,255,026	B1	8/2012	Al-Ali	8,670,814	B2	3/2014	Diab et al.
8,255,027	B2	8/2012	Al-Ali et al.	8,676,286	B2	3/2014	Weber et al.
8,255,028	B2	8/2012	Al-Ali et al.	8,682,407	B2	3/2014	Al-Ali
8,260,577	B2	9/2012	Weber et al.	RE44,823	E	4/2014	Parker
8,265,723	B1	9/2012	McHale et al.	RE44,875	E	4/2014	Kiani et al.
8,274,360	B2	9/2012	Sampath et al.	8,690,799	B2	4/2014	Telfort et al.
8,301,217	B2	10/2012	Al-Ali et al.	8,700,112	B2	4/2014	Kiani
8,306,596	B2	11/2012	Schurman et al.	8,702,627	B2	4/2014	Telfort et al.
8,310,336	B2	11/2012	Muhsin et al.	8,706,179	B2	4/2014	Parker
8,315,683	B2	11/2012	Al-Ali et al.	8,712,494	B1	4/2014	Macneish, III et al.
RE43,860	E	12/2012	Parker	8,715,206	B2	5/2014	Telfort et al.
8,337,403	B2	12/2012	Al-Ali et al.	8,718,735	B2	5/2014	Lamego et al.
8,346,330	B2	1/2013	Lamego	8,718,737	B2	5/2014	Diab et al.
8,353,842	B2	1/2013	Al-Ali et al.	8,718,738	B2	5/2014	Blank et al.
8,355,766	B2	1/2013	Macneish, III et al.	8,720,249	B2	5/2014	Al-Ali
8,359,080	B2	1/2013	Diab et al.	8,721,541	B2	5/2014	Al-Ali et al.
8,364,223	B2	1/2013	Al-Ali et al.	8,721,542	B2	5/2014	Al-Ali et al.
8,364,226	B2	1/2013	Diab et al.	8,723,677	B1	5/2014	Kiani
8,374,665	B2	2/2013	Lamego	8,740,792	B1	6/2014	Kiani et al.
8,385,995	B2	2/2013	Al-Ali et al.	8,754,776	B2	6/2014	Poeze et al.
8,385,996	B2	2/2013	Smith et al.	8,755,535	B2	6/2014	Telfort et al.
8,388,353	B2	3/2013	Kiani et al.	8,755,856	B2	6/2014	Diab et al.
8,399,822	B2	3/2013	Al-Ali	8,755,872	B1	6/2014	Marinow
8,401,602	B2	3/2013	Kiani	8,761,850	B2	6/2014	Lamego
8,405,608	B2	3/2013	Al-Ali et al.	8,764,671	B2	7/2014	Kiani
8,414,499	B2	4/2013	Al-Ali et al.	8,768,423	B2	7/2014	Shakespeare et al.
8,418,524	B2	4/2013	Al-Ali	8,771,204	B2	7/2014	Telfort et al.
8,423,106	B2	4/2013	Lamego et al.	8,777,634	B2	7/2014	Kiani et al.
8,428,967	B2	4/2013	Olsen et al.	8,781,543	B2	7/2014	Diab et al.
8,430,817	B1	4/2013	Al-Ali et al.	8,781,544	B2	7/2014	Al-Ali et al.
8,437,825	B2	5/2013	Dalvi et al.	8,781,549	B2	7/2014	Al-Ali et al.
8,455,290	B2	6/2013	Siskavich	8,788,003	B2	7/2014	Schurman et al.
8,457,703	B2	6/2013	Al-Ali	8,790,268	B2	7/2014	Al-Ali
8,457,707	B2	6/2013	Kiani	8,801,613	B2	8/2014	Al-Ali et al.
8,463,349	B2	6/2013	Diab et al.	8,821,397	B2	9/2014	Al-Ali et al.
8,466,286	B2	6/2013	Bellott et al.	8,821,415	B2	9/2014	Al-Ali et al.
8,471,713	B2	6/2013	Poeze et al.	8,830,449	B1	9/2014	Lamego et al.
8,473,020	B2	6/2013	Kiani et al.	8,831,700	B2	9/2014	Schurman et al.
8,483,787	B2	7/2013	Al-Ali et al.	8,840,549	B2	9/2014	Al-Ali et al.
8,489,364	B2	7/2013	Weber et al.	8,847,740	B2	9/2014	Kiani et al.
8,498,684	B2	7/2013	Weber et al.	8,849,365	B2	9/2014	Smith et al.
8,504,128	B2	8/2013	Blank et al.	8,852,094	B2	10/2014	Al-Ali et al.
8,509,867	B2	8/2013	Workman et al.	8,852,994	B2	10/2014	Wojtczuk et al.
8,515,509	B2	8/2013	Bruinsma et al.	8,868,147	B2	10/2014	Stippick et al.
8,523,781	B2	9/2013	Al-Ali	8,868,150	B2	10/2014	Al-Ali et al.
8,529,301	B2	9/2013	Al-Ali et al.	8,870,792	B2	10/2014	Al-Ali et al.
8,532,727	B2	9/2013	Ali et al.	8,886,271	B2	11/2014	Kiani et al.
8,532,728	B2	9/2013	Diab et al.	8,888,539	B2	11/2014	Al-Ali et al.
D692,145	S	10/2013	Al-Ali et al.	8,888,708	B2	11/2014	Diab et al.
8,547,209	B2	10/2013	Kiani et al.	8,892,180	B2	11/2014	Weber et al.
8,548,548	B2	10/2013	Al-Ali	8,897,847	B2	11/2014	Al-Ali
8,548,549	B2	10/2013	Schurman et al.	8,909,310	B2	12/2014	Lamego et al.
8,548,550	B2	10/2013	Al-Ali et al.	8,911,377	B2	12/2014	Al-Ali
				8,912,909	B2	12/2014	Al-Ali et al.
				8,920,317	B2	12/2014	Al-Ali et al.
				8,921,699	B2	12/2014	Al-Ali et al.
				8,922,382	B2	12/2014	Al-Ali et al.

(56)

References Cited

U.S. PATENT DOCUMENTS

8,929,964 B2	1/2015	Al-Ali et al.	2013/0211214 A1	8/2013	Olsen
8,942,777 B2	1/2015	Diab et al.	2013/0243021 A1	9/2013	Siskavich
8,948,834 B2	2/2015	Diab et al.	2013/0253334 A1	9/2013	Al-Ali et al.
8,948,835 B2	2/2015	Diab	2013/0274571 A1	10/2013	Diab et al.
8,965,471 B2	2/2015	Lamego	2013/0296672 A1	11/2013	O'Neil et al.
8,983,564 B2	3/2015	Al-Ali	2013/0317370 A1	11/2013	Dalvi et al.
8,989,831 B2	3/2015	Al-Ali et al.	2013/0324808 A1	12/2013	Al-Ali et al.
8,996,085 B2	3/2015	Kiani et al.	2013/0331670 A1	12/2013	Kiani
8,998,809 B2	4/2015	Kiani	2013/0338461 A1	12/2013	Lamego et al.
9,028,429 B2	5/2015	Telfort et al.	2014/0012100 A1	1/2014	Al-Ali et al.
9,037,207 B2	5/2015	Al-Ali et al.	2014/0025306 A1	1/2014	Weber et al.
9,060,721 B2	6/2015	Reichgott et al.	2014/0034353 A1	2/2014	Al-Ali et al.
9,066,666 B2	6/2015	Kiani	2014/0051953 A1	2/2014	Lamego et al.
9,066,680 B1	6/2015	Al-Ali et al.	2014/0058230 A1	2/2014	Abdul-Hafiz et al.
9,072,474 B2	7/2015	Al-Ali et al.	2014/0066783 A1	3/2014	Kiani et al.
9,078,560 B2	7/2015	Schurman et al.	2014/0077956 A1	3/2014	Sampath et al.
9,084,569 B2	7/2015	Weber et al.	2014/0081100 A1	3/2014	Muhsin et al.
9,095,316 B2	8/2015	Welch et al.	2014/0081175 A1	3/2014	Telfort
9,106,038 B2	8/2015	Telfort et al.	2014/0094667 A1	4/2014	Schurman et al.
9,107,625 B2	8/2015	Telfort et al.	2014/0100434 A1	4/2014	Diab et al.
9,107,626 B2	8/2015	Al-Ali et al.	2014/0114199 A1	4/2014	Lamego et al.
9,113,831 B2	8/2015	Al-Ali	2014/0120564 A1	5/2014	Workman et al.
9,113,832 B2	8/2015	Al-Ali	2014/0121482 A1	5/2014	Merritt et al.
9,119,595 B2	9/2015	Lamego	2014/0121483 A1	5/2014	Kiani
2003/0069489 A1	4/2003	Abreu	2014/0127137 A1	5/2014	Bellott et al.
2009/0143655 A1	6/2009	Shani	2014/0128696 A1	5/2014	Al-Ali
2009/0247984 A1	10/2009	Lamego et al.	2014/0128699 A1	5/2014	Al-Ali et al.
2009/0275844 A1	11/2009	Al-Ali	2014/0129702 A1	5/2014	Lamego et al.
2010/0004518 A1	1/2010	Vo et al.	2014/0135588 A1	5/2014	Al-Ali et al.
2010/0030040 A1	2/2010	Poeze et al.	2014/0142401 A1	5/2014	Al-Ali et al.
2010/0261979 A1	10/2010	Kiani	2014/0142402 A1	5/2014	Al-Ali et al.
2011/0001605 A1	1/2011	Kiani et al.	2014/0163344 A1	6/2014	Al-Ali
2011/0082711 A1	4/2011	Poeze et al.	2014/0163402 A1	6/2014	Lamego et al.
2011/0105854 A1	5/2011	Kiani et al.	2014/0166076 A1	6/2014	Kiani et al.
2011/0208015 A1	8/2011	Welch et al.	2014/0171763 A1	6/2014	Diab
2011/0213212 A1	9/2011	Al-Ali	2014/0180038 A1	6/2014	Kiani
2011/0230733 A1	9/2011	Al-Ali	2014/0180154 A1	6/2014	Sierra et al.
2011/0237911 A1	9/2011	Lamego et al.	2014/0194709 A1	7/2014	Al-Ali et al.
2012/0059267 A1	3/2012	Lamego et al.	2014/0194711 A1	7/2014	Al-Ali
2012/0116175 A1	5/2012	Al-Ali et al.	2014/0194766 A1	7/2014	Al-Ali et al.
2012/0179006 A1	7/2012	Jansen et al.	2014/0206963 A1	7/2014	Al-Ali
2012/0209082 A1	8/2012	Al-Ali	2014/0213864 A1	7/2014	Abdul-Hafiz et al.
2012/0209084 A1	8/2012	Olsen et al.	2014/0243627 A1	8/2014	Diab et al.
2012/0227739 A1	9/2012	Kiani	2014/0266790 A1	9/2014	Al-Ali et al.
2012/0283524 A1	11/2012	Kiani et al.	2014/0275808 A1	9/2014	Poeze et al.
2012/0296178 A1	11/2012	Lamego et al.	2014/0275835 A1	9/2014	Lamego et al.
2012/0319816 A1	12/2012	Al-Ali	2014/0275871 A1	9/2014	Lamego et al.
2012/0330112 A1	12/2012	Lamego et al.	2014/0275872 A1	9/2014	Merritt et al.
2013/0023775 A1	1/2013	Lamego et al.	2014/0275881 A1	9/2014	Lamego et al.
2013/0041591 A1	2/2013	Lamego	2014/0288400 A1	9/2014	Diab et al.
2013/0045685 A1	2/2013	Kiani	2014/0296664 A1	10/2014	Bruinsma et al.
2013/0046204 A1	2/2013	Lamego et al.	2014/0303520 A1	10/2014	Telfort et al.
2013/0060147 A1	3/2013	Welch et al.	2014/0309506 A1	10/2014	Lamego et al.
2013/0096405 A1	4/2013	Garfio	2014/0316228 A1	10/2014	Blank et al.
2013/0096936 A1	4/2013	Sampath et al.	2014/0323825 A1	10/2014	Al-Ali et al.
2013/0109935 A1	5/2013	Al-Ali et al.	2014/0330092 A1	11/2014	Al-Ali et al.
2013/0162433 A1	6/2013	Muhsin et al.	2014/0330098 A1	11/2014	Merritt et al.
2013/0190581 A1	7/2013	Al-Ali et al.	2014/0330099 A1	11/2014	Al-Ali et al.
2013/0197328 A1	8/2013	Diab et al.	2014/0333440 A1	11/2014	Kiani
			2014/0336481 A1	11/2014	Shakespeare et al.
			2014/0343436 A1	11/2014	Kiani
			2015/0018650 A1	1/2015	Al-Ali et al.

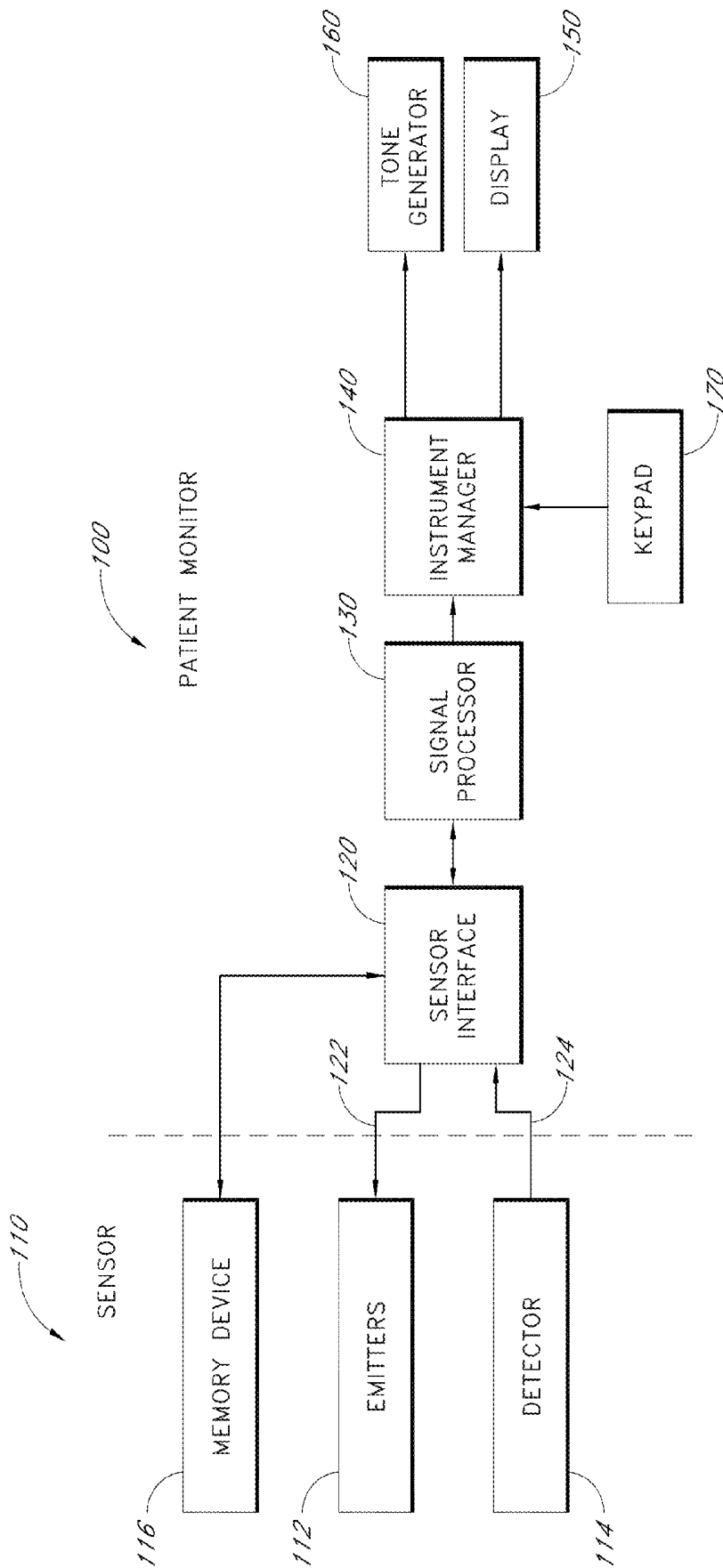


FIG. 1

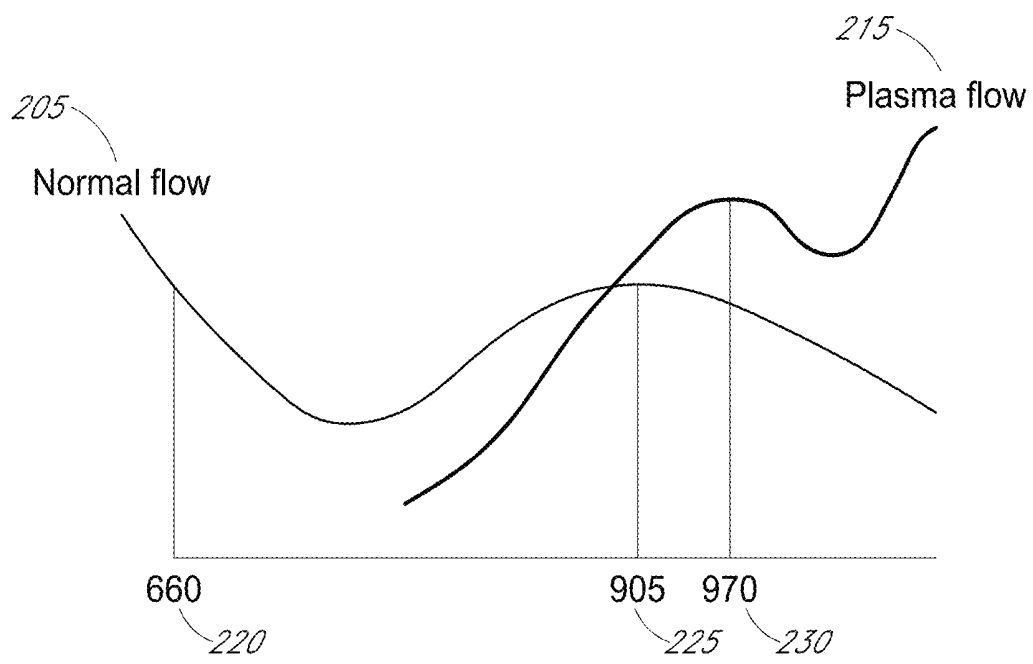


FIG. 2

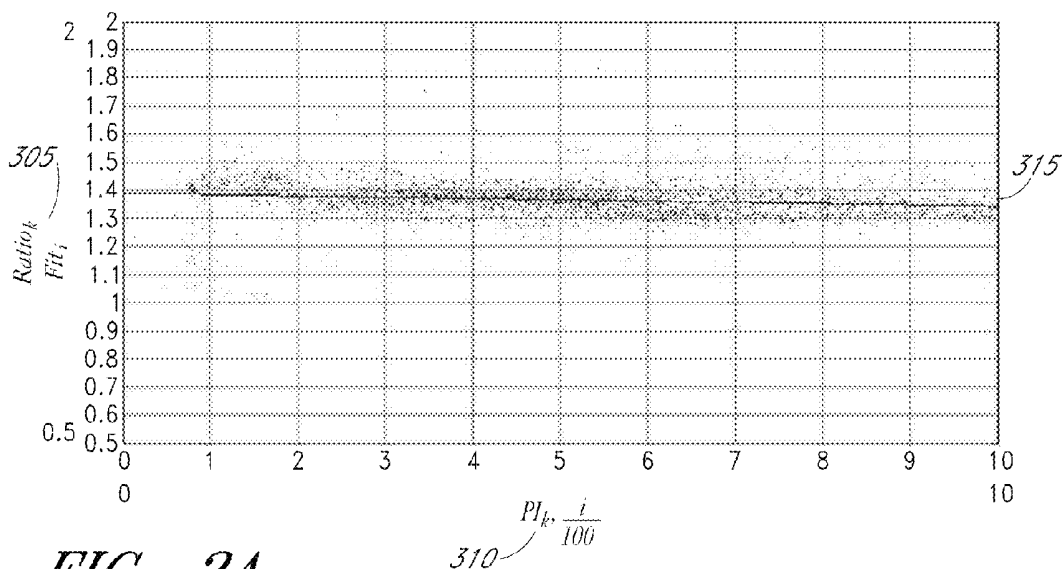


FIG. 3A

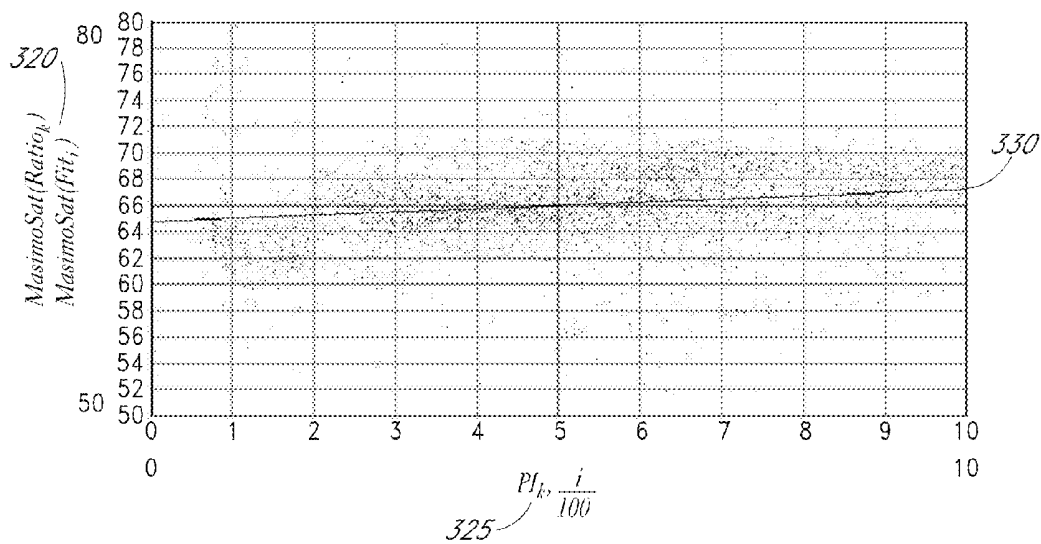


FIG. 3B

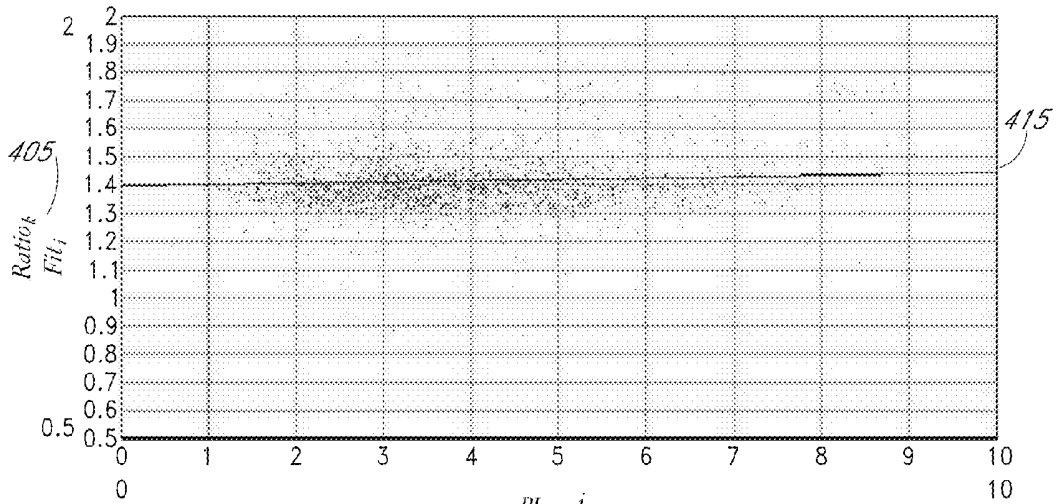


FIG. 4A

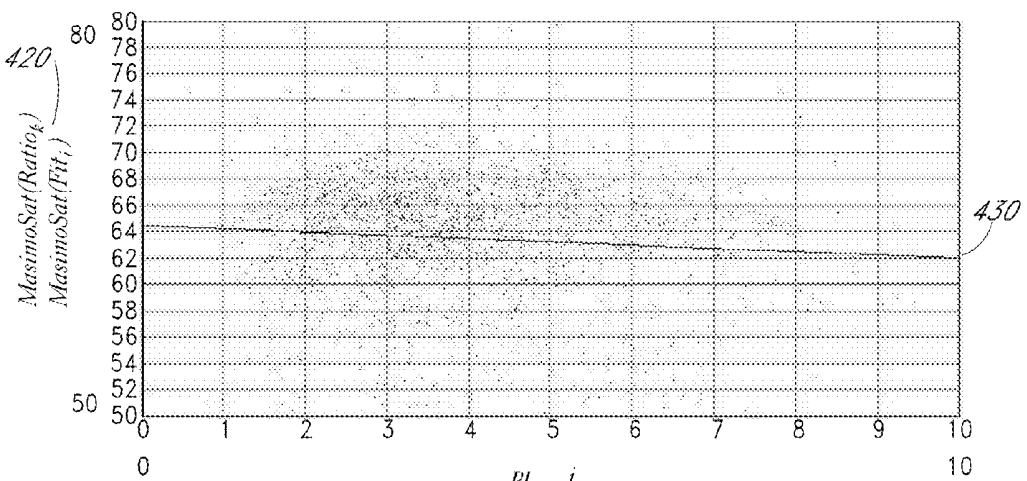


FIG. 4B

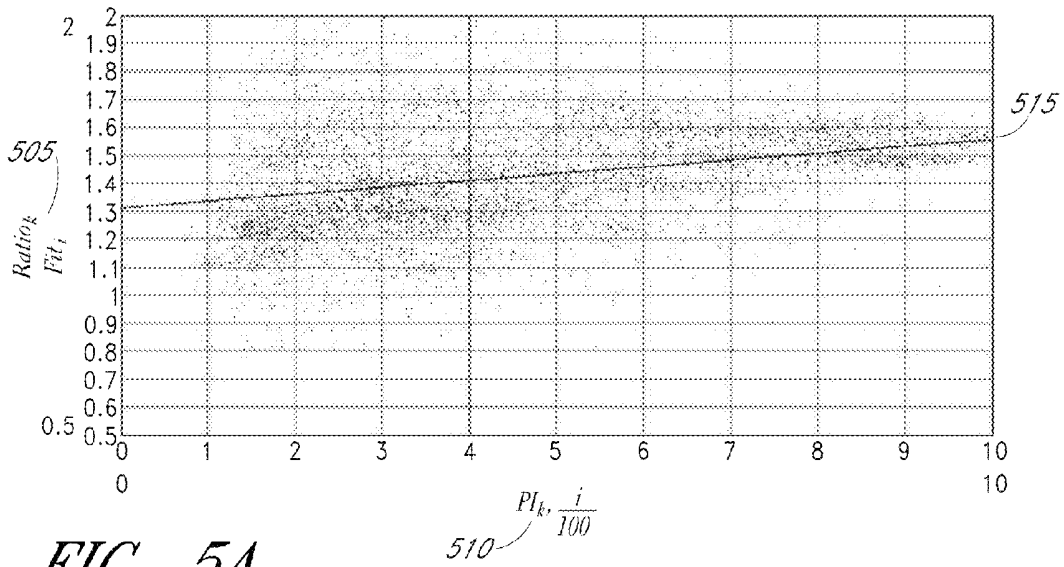


FIG. 5A

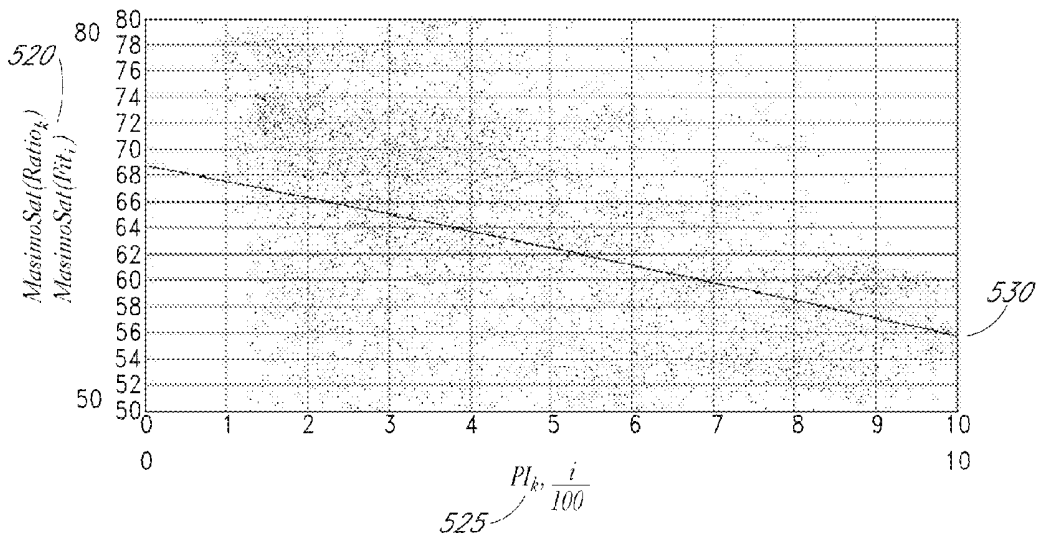


FIG. 5B

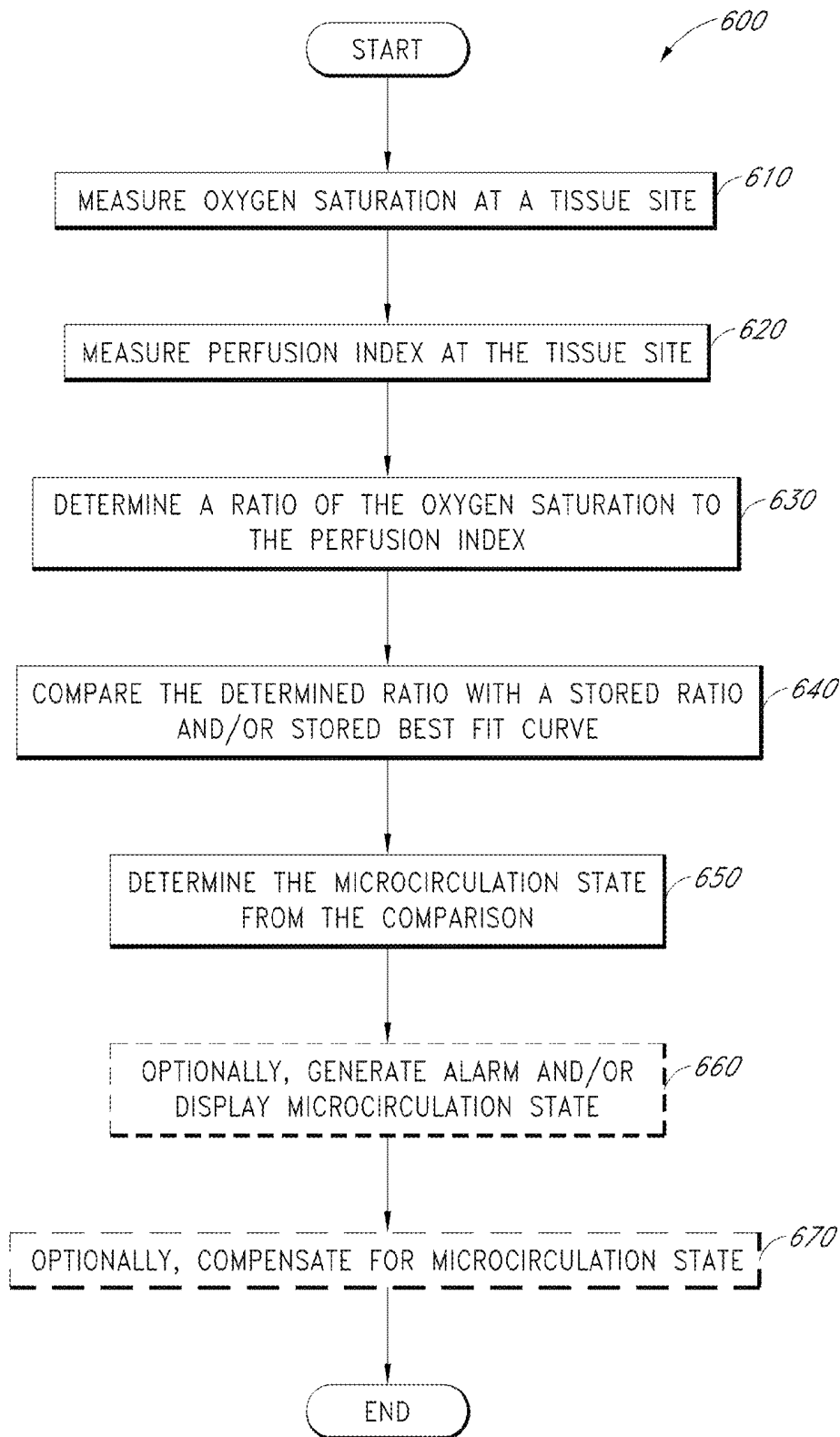


FIG. 6

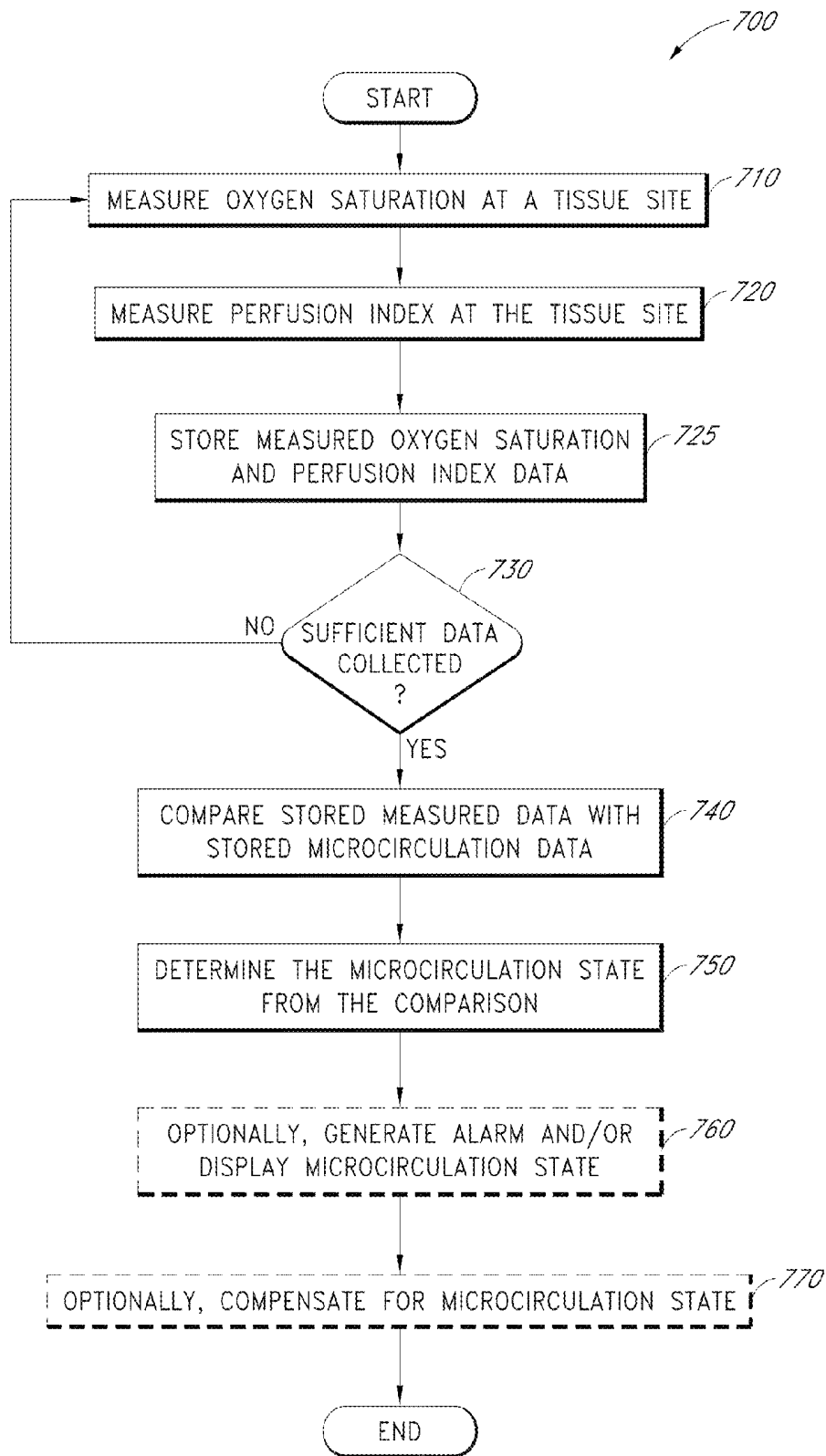


FIG. 7

PATIENT MONITOR FOR DETERMINING MICROCIRCULATION STATE

CROSS-REFERENCE TO RELATED APPLICATIONS

This application is a continuation of U.S. patent application Ser. No. 14/160,316, filed Jan. 21, 2014, titled PATIENT MONITOR FOR DETERMINING MICROCIRCULATION STATE, which is a continuation of U.S. patent application Ser. No. 13/101,093, filed May 4, 2011, titled PATIENT MONITOR FOR DETERMINING MICROCIRCULATION STATE, which claims the benefit of priority under 35 U.S.C. §119(e) of U.S. Provisional Application No. 61/332,155, filed May 6, 2010, titled PATIENT MONITOR FOR DETERMINING MICROCIRCULATION STATE, the entire contents of each of which are hereby incorporated by reference herein in their entireties.

FIELD OF THE DISCLOSURE

The present disclosure relates to medical sensors and specifically to a medical sensor and/or monitor for determining the circulation state in blood vessels.

BACKGROUND OF THE DISCLOSURE

Patient monitoring of various physiological parameters of a patient is important to a wide range of medical applications. Oximetry is one of the techniques that has developed to accomplish the monitoring of some of these physiological characteristics. It was developed to study and to measure, among other things, the oxygen status of blood. Pulse oximetry—a noninvasive, widely accepted form of oximetry—relies on a sensor attached externally to a patient to output signals indicative of various physiological parameters, such as a patient's constituents and/or analytes, including for example a percent value for arterial oxygen saturation, carbon monoxide saturation, methemoglobin saturation, fractional saturations, total hematocrit, bilirubins, perfusion quality, or the like. A pulse oximetry system generally includes a patient monitor, a communications medium such as a cable, and/or a physiological sensor having light emitters and a detector, such as one or more LEDs and a photodetector. The sensor is attached to a tissue site, such as a finger, toe, ear lobe, nose, hand, foot, or other site having pulsatile blood flow which can be penetrated by light from the emitters. The detector is responsive to the emitted light after attenuation by pulsatile blood flowing in the tissue site. The detector outputs a detector signal to the monitor over the communication medium, which processes the signal to provide a numerical readout of physiological parameters such as oxygen saturation (SpO₂) and/or pulse rate.

High fidelity pulse oximeters capable of reading through motion induced noise are disclosed in U.S. Pat. Nos. 7,096,054, 6,813,511, 6,792,300, 6,770,028, 6,658,276, 6,157,850, 6,002,952, 5,769,785, and 5,758,644, which are assigned to Masimo Corporation of Irvine, Calif. ("Masimo Corp.") and are incorporated by reference herein. Advanced physiological monitoring systems can incorporate pulse oximetry in addition to advanced features for the calculation and display of other blood parameters, such as carboxyhemoglobin (HbCO), methemoglobin (HbMet), total hemoglobin (Hbt), total Hematocrit (Hct), oxygen concentrations, glucose concentrations, blood pressure, electrocardiogram data, temperature, and/or respiratory rate as a few examples. Typi-

cally, the physiological monitoring system provides a numerical readout of and/or waveform of the measured parameter. Advanced physiological monitors and multiple wavelength optical sensors capable of measuring parameters in addition to SpO₂, such as HbCO, HbMet and/or Hbt are described in at least U.S. patent application Ser. No. 11/367,013, filed Mar. 1, 2006, titled Multiple Wavelength Sensor Emitters and U.S. patent application Ser. No. 11/366,208, filed Mar. 1, 2006, titled Noninvasive Multi-Parameter Patient Monitor, assigned to Masimo Laboratories, Inc. and incorporated by reference herein. Further, noninvasive blood parameter monitors and optical sensors including Rainbow™ adhesive and reusable sensors and RAD-57™ and Radical-7™ monitors capable of measuring SpO₂, pulse rate, perfusion index (PI), signal quality (SiQ), pulse variability index (PVI), HbCO and/or HbMet, among other parameters, are also commercially available from Masimo Corp.

During blood circulation, arteries carry blood away from the heart in high volume and under high pressure. Arteries branch off into smaller blood vessels, called arterioles. Arterioles are well innervated, surrounded by smooth muscle cells, and are about 10-100 μm in diameter. Arterioles carry the blood to the capillaries, which are the smallest blood vessels, which are not innervated, have no smooth muscle, and are about 5-8 μm in diameter. Blood flows out of the capillaries into the venules, which have little smooth muscle and are about 10-200 μm in diameter. The blood flows from venules into the veins, which carry blood back to the heart.

Microcirculation generally refers to the vascular network lying between the arterioles and the venules, including the capillaries, as well as the flow of blood through this network. These small vessels can be found in the vasculature which are embedded within organs and are responsible for the distribution of blood within tissues as opposed to larger vessels in the macrocirculation which transport blood to and from the organs. One of the functions of microcirculation is to deliver oxygen and other nutrients to tissue. Sometimes, microcirculation in these small vessels can become blocked, interfering with the delivery of oxygen to the tissue.

SUMMARY OF THE DISCLOSURE

As placement of a physiological monitoring sensor is typically at a sensor site located at an extremity of the body, the state of microcirculation, such as whether vessels are blocked or open, can have a significant effect on the readings at the sensor site. It is therefore desirable to provide a patient monitor and/or physiological monitoring sensor capable of distinguishing the microcirculation state of blood vessels. In some embodiments, the patient monitor and/or sensor provide a warning and/or compensates a measurement based on the microcirculation state. In some embodiments, a microcirculation determination process implementable by the patient monitor and/or sensor is used to determine the state of microcirculation of the patient.

BRIEF DESCRIPTION OF THE DRAWINGS

Throughout the drawings, reference numbers may be re-used to indicate correspondence between referenced elements. The drawings are provided to illustrate embodiments of the disclosure described herein and not to limit the scope thereof.

FIG. 1 illustrates a block diagram of a patient monitor, such as a pulse oximeter, and associated sensor;

FIG. 2 illustrates an example graph depicting the optical absorption characteristic of normal blood and plasma;

FIGS. 3A and 3B illustrate graphs of oxygen saturation values for a normal microcirculation state data set;

FIGS. 4A and 4B illustrate graphs of oxygen saturation values for another normal microcirculation state data set;

FIGS. 5A and 5B illustrate graphs of oxygen saturation values for an anomalous microcirculation state data set;

FIG. 6 illustrates a flow diagram for a process for determining the state of microcirculation usable by a pulse oximeter; and

FIG. 7 illustrates a flow diagram for a process for determining the state of microcirculation wherein multiple data points are collected.

DETAILED DESCRIPTION

FIG. 1 illustrates a block diagram of a patient monitor 100, such as a pulse oximeter, and associated sensor 110. Generally, in the case of a pulse oximeter, the sensor 110 has LED emitters 112, generally one at a red wavelength and one at an infrared wavelength, and a photodiode detector 114. The sensor 110 is generally attached to an adult patient's finger or an infant patient's foot. For a finger, the sensor 110 is configured so that the emitters 112 project light through the fingernail and through the blood vessels and capillaries underneath. The LED emitters 112 are activated by drive signals 122 from the pulse oximeter 100. The detector 114 is positioned at the fingertip opposite the fingernail so as to detect the LED emitted light as it emerges from the finger tissues. The photodiode generated signal 124 is relayed by a cable to the pulse oximeter 100.

A pulse oximeter 100 determines oxygen saturation (SpO₂) by computing the differential absorption by arterial blood of the two wavelengths emitted by the sensor 110. A typical pulse oximeter 100 contains a sensor interface 120, one or more processors 130, such as a SpO₂ processor, an instrument manager 140, a display 150, an audible indicator (tone generator) 160, and a keypad 170. The sensor interface 120 provides LED drive current 122 which alternately activates the sensor's red and infrared LED emitters 112. The sensor interface 120 also has input circuitry for amplification and filtering of the signal 124 generated by the photodiode detector 114, which corresponds to the red and infrared light energy attenuated from transmission through the patient tissue site. The SpO₂ processor 130 calculates a ratio of detected red and infrared intensities, and an arterial oxygen saturation value is empirically determined based on that ratio. The instrument manager 140 provides hardware and software interfaces for managing the display 150, audible indicator 160, and keypad 170. The display 150 shows the computed oxygen saturation status, as described above. Similarly, other patient parameters including HbCO, HbMet, Hbt, Hct, oxygen concentrations, glucose concentrations, pulse rate, PI, SiQ, and/or PVI can be computed. The audible indicator 160 provides the pulse beep as well as alarms indicating desaturation events. The keypad 170 provides a user interface for such things as alarm thresholds, alarm enablement, and/or display options.

Computation of SpO₂ relies on the differential light absorption of oxygenated hemoglobin, HbO₂, and deoxygenated hemoglobin, Hb, to determine their respective concentrations in the arterial blood. Specifically, pulse oximetry measurements are made at red (R) and infrared (IR) wavelengths chosen such that deoxygenated hemoglobin absorbs more red light than oxygenated hemoglobin, and, con-

versely, oxygenated hemoglobin absorbs more infrared light than deoxygenated hemoglobin, for example 660 nm (R) and 905 nm (IR).

To distinguish between tissue absorption at the two wavelengths, the red and infrared emitters 112 are provided drive current 122 so that only one is emitting light at a given time. For example, the emitters 112 can be cycled on and off alternately, in sequence, with each only active for a quarter cycle and with a quarter cycle separating the active times. This allows for separation of red and infrared signals and removal of ambient light levels by downstream signal processing. Because only a single detector 114 is used, it responds to both the red and infrared emitted light and generates a time-division-multiplexed ("modulated") output signal 124. This modulated signal 124 is coupled to the input of the sensor interface 120.

In addition to the differential absorption of hemoglobin derivatives, pulse oximetry relies on the pulsatile nature of arterial blood to differentiate hemoglobin absorption from absorption of other constituents in the surrounding tissues. Light absorption between systole and diastole varies due to the blood volume change from the inflow and outflow of arterial blood at a peripheral tissue site. This tissue site might also comprise skin, muscle, bone, venous blood, fat, pigment, and/or the like, each of which absorbs light. It is assumed that the background absorption due to these surrounding tissues is invariant and can be ignored. Thus, blood oxygen saturation measurements are based upon a ratio of the time-varying or AC portion of the detected red and infrared signals with respect to the time-invariant or DC portion: $R/IR = (Red_{AC}/Red_{DC}) / (IR_{AC}/IR_{DC})$.

The desired SpO₂ measurement is then computed from this ratio. The relationship between R/IR and SpO₂ can be determined by statistical regression of experimental measurements obtained from human volunteers and calibrated measurements of oxygen saturation. In a pulse oximeter device, this empirical relationship can be stored as a "calibration curve" in a read-only memory (ROM) look-up table so that SpO₂ can be directly read-out of the memory in response to input R/IR measurements.

The pulse oximeter 100 can also measure perfusion index, PI, which is a numerical value that indicates the strength of the IR signal returned from a monitoring site and provides a relative assessment of the pulse strength at the monitoring site. The perfusion index can be defined as follows: $PI = (IR_{max} - IR_{min}) / IR_{DC}$, where IR_{max} is the maximum value, IR_{min} is the minimum value, and IR_{DC} is the average value of the invariant portion. As the light absorption characteristic of blood is typically "flatter" or less sensitive to oxygen saturation around the infrared wavelength, the infrared signal from a sensor is influenced primarily by the amount of the blood at the monitoring site, not by the level of oxygenation in the blood. Accordingly, the perfusion index, which is a numerical value that indicates the strength of the IR signal returned from a monitoring site, provides a relative assessment of the pulse strength at the monitoring site. PI values generally range from 0.02% (very weak pulse strength) to 20% (very strong pulse strength). In some embodiments, PI can be measured using other wavelengths. For example, red, near red, near IR, as well as other wavelengths can be used.

In an embodiment, the sensor 110 also includes a memory device 116. The memory 116 can include any one or more of a wide variety of memory devices known to an artisan from the disclosure herein, including erasable programmable read only memory (EPROM), electrically erasable programmable read-only memory (EEPROM), flash

memory, other non-volatile memory, a combination of the same or the like. The memory 116 can include read-only memory such as read-only memory (ROM), a read and write device such as a random-access memory (RAM), combinations of the same, or the like. The remainder of the present disclosure will refer to such combination as simply EPROM for ease of disclosure; however, an artisan will recognize from the disclosure herein that the memory can include ROM, RAM, single wire memory, other types of memory, combinations of the same, or the like.

The memory device 116 can advantageously store some or all of a wide variety of data and information, including, for example, information on the type or operation of the sensor, type of patient or body tissue, buyer or manufacturer information, sensor characteristics including the number of wavelengths capable of being emitted, emitter specifications, emitter drive requirements, demodulation data, calculation mode data, calibration data, software such as scripts, executable code, or the like, sensor electronic elements, sensor life data indicating whether some or all sensor components have expired and should be replaced, encryption information, monitor or algorithm upgrade instructions or data, or the like. In an embodiment, the memory device can also include oxygen saturation to perfusion index and R/IR ratio to perfusion index ratios and/or data.

In certain situations, pulse oximetry sensors may produce anomalous readings, such as when a patient suffers from cyanosis. In a patient suffering from cyanosis, blood cells are uncharacteristically low on oxygen, leading to oxygen deficiency and giving the patient's skin a bluish-hue. One potential cause is that the patient's body produces too much hemoglobin, making the blood "thicker" or slower flowing, making microcirculation vessels more prone to blockage. Thus, a "blocked" microcirculation state can indicate cyanosis.

A "blocked" microcirculation state can also indicate other medical conditions, such as sepsis, systemic inflammatory response syndrome (SIRS), or septicemia. Sepsis is a potentially deadly medical condition that is characterized by a whole-body inflammatory state (called SIRS) and the presence of a known or suspected infection. The body may develop this inflammatory response by the immune system to microbes in the blood, urine, lungs, skin, or other tissue. Septicemia is a related medical term referring to the presence of pathogenic organisms in the bloodstream, which can lead to sepsis. Sepsis can also be referred to as blood poisoning. During sepsis or SIRS, inflammation in the body can cause constriction in blood vessels, leading to low blood pressure or insufficient blood flow.

During a "blocked" microcirculation state, blood cells can get blocked in the microcirculation vessels, such as the arterioles and capillaries. Blood cells can clump together or otherwise catch against the wall of blood vessels, creating a blockage that prevents blood cells, including red blood cells carrying hemoglobin, from passing through the blockage. However, plasma, which is composed of mostly water and in which the blood cells are suspended, is generally able to flow through passages in the blockage. In some situations, some blood vessels at the monitoring site may continue to have normal flow while some vessels are blocked. Thus, a "blocked" microcirculation state can indicate that some microcirculation vessels in an area are blocked and not necessarily all vessels in the area are blocked.

With the blockage preventing most or all the red blood cells from passing a blood vessel, at most only a limited amount of hemoglobin passes through a blocked blood vessel. In some situations, the blood vessel may only be

partially blocked, where some hemoglobin passes through but less than when the blood vessel is unblocked. Normally, blood is made up of about 40-50% of red blood cells, of which about 95% is hemoglobin. Plasma, which is about 95% water, normally constitutes about 55% of the blood's volume.

Accordingly, a pulse oximeter placed on a tissue site experiencing blockage in microcirculation vessels may detect mostly plasma passing through with no or only a small percentage of red blood cells, at least at part of the monitoring site. The resulting change in the normal composition of blood can cause anomalous readings in the pulse oximetry monitor. As plasma has generally different absorption characteristics for red and infrared wavelengths than normal blood, pulse oximetry readings may become skewed. Red_{AC} and/or IR_{AC} can be affected, causing measured R/IR ratio to change. For example, if Red_{AC} rises or IR_{AC} drops, the R/IR ratio increases. Alternatively, if Red_{AC} drops or IR_{AC} rises, the R/IR ratio decreases. Thus, the value of R/IR can change due to a change in the light absorption of blood even if the underlying oxygen saturation of the blood remains the same.

However, by comparing oxygen saturation and PI for normal microcirculation to the oxygen saturation and PI for blocked microcirculation, such as by calculating and comparing ratios, the monitor can determine the existence of an abnormal situation. Typically, SpO2 is mostly independent of PI, with SpO2 varying minimally as PI increases. However, SpO2 varying by more than normal as PI increases can indicate an anomalous microcirculation state, such as a blockage. In one embodiment, by analyzing the measured ratios, the pulse oximeter 100 can determine the microcirculation state, such as whether a blocked vessel exists in the microcirculation vessels.

FIG. 2 illustrates an example graph depicting the optical absorption characteristic of normal blood and plasma. The graph depicts sampling wavelengths at 660 nm and at 905 nm. As illustrated, IR absorption for plasma at a frequency of 905 nm is on a "steeper" section of the curve compared to the "flatter" section of the curve for normal blood. This can imply that readings for IR for plasma would be more sensitive to changes in the absorption quality of the blood. In contrast, the IR measurement for normal blood, for example at 905 nm, is usually insensitive to a change in oxygenation of normal blood, but more affected by change in the amount of blood. As illustrated in the graph, plasma can have a "flatter" section in its absorption curve at a different wavelength, for example at 970 nm.

FIGS. 3A and 3B illustrate graphs of oxygen saturation values for a normal microcirculation state data set. FIG. 3A has a y-axis corresponding to the measured ratio, R/IR, and a x-axis corresponding to perfusion index, PI. FIG. 3B has a y-axis corresponding to measured oxygen saturation, and an x-axis corresponding to perfusion index, PI. FIGS. 3A and 3B represent multiple data points with a best fit line indicating the trend of the data points. Each data point represents a measurement. As illustrated, the best fit line for FIG. 3A trends slightly downward and the best fit line for FIG. 3B trends slightly upwards. However, there is generally only a small change in the y-axis for the best fit line as PI increases, with the change in FIG. 3A around 0.1 and the change in FIG. 3B around 4.

FIGS. 4A and 4B illustrate graphs of oxygen saturation values for another normal microcirculation state data set. FIG. 4A has a y-axis corresponding to the measured ratio, R/IR, and an x-axis corresponding to perfusion index, PI. FIG. 4B has a y-axis corresponding to

measured oxygen saturation, and an x-axis **425** corresponding to perfusion index, PI. FIGS. **4A** and **4B** represent multiple data points with a best fit line **415, 430** indicating the trend of the data points. Each data point represents a measurement. As illustrated, the best fit line for FIG. **4A** trends slightly upwards and the best fit line for FIG. **4B** trends slightly downwards. However, there is generally only a small change in the y-axis for the best fit line as PI increases, with the change in FIG. **4A** around 0.1 and the change in FIG. **4B** around 3.

FIGS. **5A** and **5B** illustrate graphs of oxygen saturation values for an anomalous microcirculation state data set. FIG. **5A** has a y-axis **505** corresponding to the measured ratio, R/IR, and an x-axis **510** corresponding to perfusion index, PI. FIG. **5B** has a y-axis **520** corresponding to measured oxygen saturation, and an x-axis **525** corresponding to perfusion index, PI. FIGS. **5A** and **5B** represent multiple data points with a best fit line **515, 530** indicating the trend of the data points. Each data point represents a measurement. As illustrated, the best fit line for FIG. **5A** trends significantly upwards on the y-axis by around 0.3 and the best fit line for FIG. **5B** trends significantly downwards on the y-axis by around 13 as PI increases.

In comparison to FIGS. **3A** and **4A**, FIG. **5A** shows a high R/IR ratio for low values of PI that becomes a high R/IR ratio as PI increases. In comparison to FIGS. **3B** and **4B**, FIG. **5B** shows a high reading for low values of PI that becomes a low reading as PI increases. Differences between the graphs can be explained by the microcirculation state in FIGS. **5A** and **5B** being different from the microcirculation state in FIGS. **3A-4B**. For example, FIGS. **5A** and **5B** can represent a “blocked” or partially blocked microcirculation state where the blood passing through the sensor includes mostly plasma. As discussed above, this can skew R/IR and the measured oxygen saturation derived from R/IR.

FIG. **6** illustrates a flow diagram for a process **600** for determining the state of microcirculation usable by a pulse oximeter. Microcirculation state can be determined by comparison with microcirculation data stored on a patient monitor, such as the pulse oximeter **100** of FIG. **1**. The process **600** can be implemented by embodiments of the sensor **110** and/or patient monitor **100** of FIG. **1** or other suitable device.

While in conventional pulse oximetry, measurements are generally taken pulse-by-pulse and averaged over pulses, microcirculation measurements can be measured using only a single pulse or a portion of a single pulse. This can be done, for example, at the minimum and/or maximum blood flow of a pulse. Microcirculation measurements can also be determined over multiple pulses. In some embodiments, microcirculation measurements are taken during a portion of the normal measurement time used by a physiological sensor to take a measurement of a parameter, thereby allowing detection of aberrant parameter measurements using the microcirculation measurements. For example, while a pulse oximeter is measuring SpO₂ over several pulses, microcirculation measurements can be taken per pulse and a warning given if an irregular microcirculation state is detected, thereby notifying a user of a possible aberration in the current SpO₂ reading.

At block **610**, oxygen saturation is measured at a tissue monitoring site. In one embodiment, oxygen saturation is determined using a pulse oximeter sensor.

At block **620**, perfusion index or pulse strength is measured. In one embodiment, the perfusion index is determined using the same sensor used to measure oxygen saturation so that readings are taken at the same monitoring site.

At block **630**, a ratio of oxygen saturation to perfusion index is determined. Oxygen saturation can be a SpO₂ value based on the measured R/IR ratio looked-up against a calibration curve. Alternatively, the ratio can be perfusion index to oxygen saturation. In other embodiments, the measured R/IR ratio can be used directly instead of SpO₂.

In some embodiments, multiple readings of perfusion index and oxygen saturation can be taken and averaged together before determining the ratio in order to account for outliers. The multiple readings can be filtered before averaging. For example, readings can first be filtered based on closeness of PI values before the readings are averaged together.

At block **640**, the determined ratio in block **630** is compared to stored microcirculation data. The stored data can be data sets for microcirculation states. In some embodiments, a ratio, a curve, a line, table, data points, or formula can be stored that corresponds to a data set. The measured perfusion index and oxygen saturation can then be compared to the stored data. In some embodiments, multiple readings are taken and a best fit line or curve is generated and compared to a stored best fit line or curve. In some embodiments, readings are collected at various PI values in order to generate a trend line.

At block **650**, the microcirculation state is determined from comparison of the stored microcirculation data. For example, if the determined ratio is similar to a stored ratio corresponding to a data set for unblocked microcirculation, the microcirculation state is determined to be unblocked. Other data sets for other microcirculation states, such as blocked and/or partially blocked can also be stored. Where multiple data sets are stored, the state can be determined by selecting the state corresponding to the stored ratio closest to the measured ratio.

At block **660**, the monitor can optionally generate an alarm and/or display the microcirculation state. For example, an alarm signal can be generated by the monitor to indicate that the readings may be anomalous, such as when a blocked or partially blocked microcirculation state is detected. The alarm can be a visual indicator (e.g., icon, message or image) and/or an audio indicator. In an embodiment, the alarm can indicate the detection of cyanosis, sepsis, SIRS or other medical condition based at least partly on the determined microcirculation state. In some situations, no action is taken, such as when readings are determined to be normal or non-threatening.

At block **670**, the monitor can optionally compensate for the microcirculation state in order to improve accuracy of the readings. After the microcirculation state returns to normal, the compensation process can be ended.

In one embodiment, an offset can be added to the measured parameter value, such as SpO₂. The offset can be calculated based on data sets for microcirculation state. Different microcirculation states can have different offsets. For example, if a “blocked” microcirculation state produces high readings for low PI values, a negative offset can be used. However, if a “blocked” state produces a low value for high PI values, then a positive offset can be used. In one embodiment, a varying offset can be used depending on the value of PI.

In one embodiment, a different wavelength emitter can be used to compensate for a microcirculation state. For example, rather than using a regular infrared emitter, typically 905 nm, an emitter with a different infrared wavelength, such as 970 nm can be used. In one embodiment, the different wavelength is selected such that the wavelength is at a “flat” section of the light absorption curve for plasma,

that is, where the light absorption is not much affected by changes in oxygen saturation. In one embodiment, the selected wavelength with regards to plasma mimics the properties of the regular wavelength with regards to normal flowing blood. In some embodiments, a different wavelength red emitter can be used instead of the regular red wavelength emitter.

In some embodiments, the pulse oximeter sensor used to measure oxygen saturation and PI can be provided with an additional emitter at a different wavelength than the existing emitters. When a certain microcirculation state is detected, such as a "blocked" state, the additional emitter can be used. For example, a pulse oximetry sensor can be equipped with LED's capable of emitting at 660 nm, 905 nm, and at 970 nm wavelengths. Under normal operation, the 660 nm and 905 nm emitters are active. However, upon detecting a blocked microcirculation state, the 905 nm emitter can be deactivated and the 970 nm emitter activated in its place. In some embodiments, a variable wavelength emitter can be used rather than separate emitters. In some embodiments, the additional emitter can be a red wavelength emitter.

FIG. 7 illustrates a flow diagram for a process 700 for determining the state of microcirculation wherein multiple data points are collected. The process 700 can be implemented by embodiments of the sensor 110 and/or patient monitor 100 of FIG. 1 or other suitable device.

At block 710 and block 720, oxygen saturation and perfusion index are measured. At block 725, measured values are stored in memory. Each paired measurement forms a data point.

At block 730, the number of stored data points is checked to determine if sufficient data has been collected to determine the microcirculation state. Data can be sufficient if a set number of data points have been collected, a set amount of time has passed, and/or a spectrum of data points have been collected, such as for differing values of PI.

At block 740, the stored measured data is compared with stored microcirculation data. Typically, the microcirculation data is pre-stored on the pulse oximeter before use, as opposed to collected during use. A comparison can involve generating a curve or line from the measured data, calculating a rate of change for the stored data, generating a trend line for the measured data or the like and comparing with the stored microcirculation data.

At block 750, the microcirculation state is determined from comparison of the stored microcirculation data. For example, if the measured data is similar to microcirculation data corresponding to a data set for unblocked microcirculation, the microcirculation state is determined to be unblocked. Other data sets for other microcirculation states, such as for blocked and/or partially blocked can also be stored. Where multiple data sets are stored, the state can be determined by selecting the state corresponding to the stored ratio closest to the measured ratio.

Blocks 760 and 770 are similar to steps 660 and 670 described in FIG. 6.

As will be apparent from the above description, the R/IR ratio corresponds to oxygen saturation or SpO2 and can be used in place of oxygen saturation or SpO2 for the above comparisons, and vice versa.

While the above systems and methods have been described in terms of oxygen saturation and PI, other physiological parameters can be measured in place of or in addition to oxygen saturation and/or perfusion index and used to determine microcirculation state. For example, perfusion index is an indication of amplitude and/or signal strength and other parameters or measurements indicating

amplitude and/or signal strength can be used. In some embodiments, one or more different sensors can be used in place of or in addition to a pulse oximeter sensor.

Conditional language used herein, such as, among others, "can," "could," "might," "may," "e.g.," and the like, unless specifically stated otherwise, or otherwise understood within the context as used, is generally intended to convey that certain embodiments include, while other embodiments do not include, certain features, elements and/or states. Thus, such conditional language is not generally intended to imply that features, elements and/or states are in any way required for one or more embodiments or that one or more embodiments necessarily include logic for deciding, with or without author input or prompting, whether these features, elements and/or states are included or are to be performed in any particular embodiment. The terms "comprising," "including," "having," and the like are synonymous and are used inclusively, in an open-ended fashion, and do not exclude additional elements, features, acts, operations, and so forth. Also, the term "or" is used in its inclusive sense (and not in its exclusive sense) so that when used, for example, to connect a list of elements, the term "or" means one, some, or all of the elements in the list.

Various systems and processes for determining microcirculation state have been disclosed in detail in connection with various embodiments. These embodiments are disclosed by way of examples only and are not to limit the scope of the claims that follow. Indeed, the novel methods and systems described herein can be embodied in a variety of other forms; furthermore, various omissions, substitutions and changes in the form of the methods and systems described herein can be made without departing from the spirit of the inventions disclosed herein. The claims and their equivalents are intended to cover such forms or modifications as would fall within the scope and spirit of certain of the inventions disclosed herein. One of ordinary skill in the art will appreciate the many variations, modifications and combinations. For example, the various embodiments of the microcirculation determination process can be used with other oxygen saturation sensors and with both disposable and reusable sensors. In some embodiments, the determination process can be applied to other blood vessels to detect a blockage, even in vessels not involved in microcirculation.

Furthermore, in certain embodiments, the systems and methods described herein can advantageously be implemented using computer software, hardware, firmware, or any combination of software, hardware, and firmware. In one embodiment, the system includes a number of software modules that comprise computer executable code for performing the functions described herein. In certain embodiments, the computer-executable code is executed on one or more general purpose computers or processors. However, a skilled artisan will appreciate, in light of this disclosure, that any module that can be implemented using software can also be implemented using a different combination of hardware, software or firmware. For example, such a module can be implemented completely in hardware using a combination of integrated circuits. Alternatively or additionally, such a module can be implemented completely or partially using specialized computers or processors designed to perform the particular functions described herein rather than by general purpose computers or processors.

Moreover, certain embodiments of the invention are described with reference to methods, apparatus (systems) and computer program products that can be implemented by computer program instructions. These computer program instructions can be provided to a processor of a general

purpose computer, special purpose computer, or other programmable data processing apparatus to produce a machine, such that the instructions, which execute via the processor of the computer or other programmable data processing apparatus, create means for implementing the acts specified herein to transform data from a first state to a second state.

Each of the processes, methods, and algorithms described in the preceding sections may be embodied in, and fully or partially automated by, code modules executed by one or more computers or computer processors. The code modules may be stored on any type of non-transitory computer-readable medium or computer storage device, such as hard drives, solid state memory, optical disc, and/or the like. The processes and algorithms may be implemented partially or wholly in application-specific circuitry. The results of the disclosed processes and process steps may be stored, persistently or otherwise, in any type of non-transitory computer storage such as, e.g., volatile or non-volatile storage.

The various features and processes described above may be used independently of one another, or may be combined in various ways. All possible combinations and subcombinations are intended to fall within the scope of this disclosure. In addition, certain method or process blocks may be omitted in some implementations. The methods and processes described herein are also not limited to any particular sequence, and the blocks or states relating thereto can be performed in other sequences that are appropriate. For example, described blocks or states may be performed in an order other than that specifically disclosed, or multiple blocks or states may be combined in a single block or state. The example blocks or states may be performed in serial, in parallel, or in some other manner. Blocks or states may be added to or removed from the disclosed example embodiments. The example systems and components described herein may be configured differently than described. For example, elements may be added to, removed from, or rearranged compared to the disclosed example embodiments.

While certain example embodiments have been described, these embodiments have been presented by way of example only, and are not intended to limit the scope of the inventions disclosed herein. Thus, nothing in the foregoing description is intended to imply that any particular feature, characteristic, step, module, or block is necessary or indispensable. Indeed, the novel methods and systems described herein may be embodied in a variety of other forms; furthermore, various omissions, substitutions and changes in the form of the methods and systems described herein may be made without departing from the spirit of the inventions disclosed herein. The accompanying claims and their equivalents are intended to cover such forms or modifications as would fall within the scope and spirit of certain of the inventions disclosed herein.

What is claimed is:

1. A patient monitor configured to monitor a patient and determine a microcirculation condition of the patient, the patient monitor comprising:

a sensor interface configured to receive a signal from a physiological sensor that is configured to transmit light of at least a first wavelength and a second wavelength into tissue of a patient and to detect the light after it has been attenuated by the tissue, wherein the signal is responsive to the detected light;

a memory storing a plurality of previously determined relationships between measures of perfusion and other calculated parameters, wherein:

at least some of the previously determined relationships correspond to an at least partially blocked microcirculation condition, and

at least some of the previously determined relationships correspond to an unblocked microcirculation condition; and

one or more processors configured to:

during monitoring of the patient, process the signal to determine at least:

a measure of perfusion of the tissue of the patient, and

an other calculated parameter responsive to at least a ratio of the detected light at the first wavelength and the second wavelength;

determine a relationship between the measure of perfusion and the other calculated parameter;

compare the determined relationship with at least some of the plurality of previously determined relationships;

when the comparison indicates that the determined relationship is similar to at least one of the previously determined relationships corresponding to an at least partially blocked microcirculation condition, determine a microcirculation condition of the patient comprises an at least partially blocked microcirculation condition in at least a portion of blood vessels in the tissue of the patient; and

responsive to determining the microcirculation condition comprises an at least partially blocked microcirculation condition, perform at least one of:

provide an electronic microcirculation condition warning for review by a caregiver,

cause the physiological sensor to be configured to transmit at least a portion of the light at a different wavelength, or

apply an offset of to at least one of the measure of perfusion or the other calculated parameter to compensate for the at least partially blocked microcirculation condition.

2. The patient monitor of claim 1, wherein the one or more processors are further configured to:

determine that the microcirculation condition is indicative of cyanosis; and

in response to determining that the microcirculation condition is indicative of cyanosis, provide the electronic microcirculation warning.

3. The patient monitor of claim 1, wherein the one or more processors are further configured to:

determine that the microcirculation condition is indicative of sepsis; and

in response to determining that the microcirculation condition is indicative of sepsis, provide the electronic microcirculation warning.

4. The patient monitor of claim 1, wherein the other calculated parameter comprises oxygen saturation, and wherein the measure of perfusion comprises a perfusion index.

5. The patient monitor of claim 4, wherein determining the relationship comprises:

determining a ratio of the measure of oxygen saturation to the measure of perfusion index.

6. The patient monitor of claim 5, wherein comparing the determined relationship with at least some of the plurality of previously determined relationships comprises:

comparing the ratio with at least some of the plurality of previously determined relationships.

13

7. The patient monitor of claim 5, wherein the plurality of previously determined relationships comprise a plurality of lookup curves, and wherein comparing the determined relationship with at least some of the plurality of previously determined relationships further comprises:

generating a trend line based on the ratio and one or more other ratios determined based on further measures of oxygen saturation and perfusion index obtained a different times; and
 comparing the trend line to at least one lookup curve of the plurality of lookup curves.

8. The patient monitor of claim 1, wherein comparing the determined relationship with at least some of the plurality of previously determined relationships comprises:

determining one of the plurality of previously determined relationships that is most similar to the determined relationship.

9. A method of monitoring a patient and non-invasively determining a microcirculation condition of the patient, the method comprising:

receiving, from a non-invasive physiological sensor at a tissue site of a patient, a signal responsive to light of at least at first wavelength and a second wavelength that is transmitted by non-invasive physiological sensor and detected by the non-invasive physiological sensor after attenuation by tissue of the patient;

during monitoring of the patient, processing the signal to determine at least:

a measure of perfusion of the tissue of the patient, and an other calculated parameter responsive to at least a ratio of the detected light at the first wavelength and the second wavelength;

determining a relationship between the measure of perfusion and the other calculated parameter;

comparing the determined relationship with at least some of a plurality of previously determined and stored relationships between measures of perfusion and other calculated parameters, wherein:

at least some of the previously determined relationships correspond to an at least partially blocked microcirculation condition, and

at least some of the previously determined relationships correspond to an unblocked microcirculation condition;

when the comparison indicates that the determined relationship is similar to at least one of the previously determined relationships corresponding to an at least partially blocked microcirculation condition, determining a microcirculation condition of the patient comprises an at least partially blocked microcirculation condition in at least a portion of blood vessels at the tissue site; and

responsive to determining the microcirculation condition comprises an at least partially blocked microcirculation condition, perform at least one of:

providing an electronic microcirculation condition warning for review by a caregiver,

causing the non-invasive physiological sensor to be configured to transmit at least a portion of the light at a different wavelength, or

applying an offset of to at least one of the measure of perfusion or the other calculated parameter to compensate for the at least partially blocked microcirculation condition.

10. The method of claim 9, wherein the other calculated parameter comprises oxygen saturation, and wherein the measure of perfusion comprises a perfusion index.

14

11. The method of claim 10, wherein determining the relationship comprises:

determining a ratio of the measure of oxygen saturation to the measure of perfusion index.

12. The method of claim 11, wherein comparing the determined relationship with at least some of the plurality of previously determined relationships:

comparing the ratio with at least some of the plurality of previously determined relationships.

13. The method of claim 11, wherein the plurality of previously determine relationships comprise a plurality of lookup curves, and wherein comparing the determined relationship with at least some of the plurality of previously determined relationships comprises:

generating a trend line based on the ratio and one or more other ratios determined based on further measures of oxygen saturation and perfusion index obtained a different times; and

comparing the trend line to at least one lookup curve of the plurality of lookup curves.

14. The method of claim 9, wherein comparing the determined relationship with at least some of the plurality of previously determined relationships comprises:

determining one of the plurality of previously determined relationships that is most similar to the determined relationship.

15. A method of monitoring a patient and non-invasively determining a microcirculation condition of the patient, the method comprising:

receiving, from a non-invasive physiological sensor at a tissue site of a patient, a signal responsive to light of at least at first wavelength and a second wavelength that is transmitted by non-invasive physiological sensor and detected by the non-invasive physiological sensor after attenuation by tissue of the patient;

during monitoring of the patient, processing the signal to determine at least:

a first measure of perfusion of the tissue of the patient at a first time,

a first other calculated parameter responsive to at least a ratio of the detected light at the first wavelength and the second wavelength at the first time,

a second measure of perfusion of the tissue of the patient at a second time different from the first time, and

a second other calculated parameter responsive to at least a ratio of the detected light at the first wavelength and the second wavelength at the second time;

determining a first relationship between the first measure of perfusion and the first other calculated parameter;

determining a second relationship between the second measure of perfusion and the second other calculated parameter;

comparing the determined first and second relationships with at least some of a plurality of previously determined and stored relationships between measures of perfusion and other calculated parameters, wherein:

at least some of the previously determined relationships correspond to an at least partially blocked microcirculation condition, and

at least some of the previously determined relationships correspond to an unblocked microcirculation condition;

when the comparison indicates that the determined first and second relationships are similar to at least one of the previously determined relationships corresponding to an at least partially blocked microcirculation condi-

15

tion, determining a microcirculation condition of the patient comprises an at least partially blocked microcirculation condition in at least a portion of blood vessels at the tissue site; and
 responsive to determining the microcirculation condition comprises an at least partially blocked microcirculation condition, perform at least one of:
 providing an electronic microcirculation condition warning for review by a caregiver,
 causing the non-invasive physiological sensor to be configured to transmit at least a portion of the light at a different wavelength, or
 applying an offset of to at least one of the first measure of perfusion, the second measure of perfusion, the first other calculated parameter, or the second other calculated parameter to compensate for the at least partially blocked microcirculation condition.

16. The method of claim 15,
 wherein determining the first and second relationships includes:
 averaging the respective first and second measures of perfusion to determine an average measure of perfusion;
 averaging the respective first and second other calculated parameters to determine an average other calculated parameter; and

16

determining a ratio of the average measure of the other calculated parameter to the average measure of perfusion; and
 wherein comparing the determined first and second relationships with at least some of the plurality of previously determined and stored relationships includes:
 comparing the ratio with at least some of the plurality of previously determined relationships.

17. The method of claim 15,
 wherein determining the first and second relationships includes:
 determining respective ratios of the respective first and second other calculated parameters to the respective first and second measures of perfusion; and
 wherein comparing the determined first and second relationships with at least some of the plurality of previously determined and stored relationships includes:
 comparing the ratios to at least one lookup curve of the plurality of previously determined relationships.

18. The method of claim 15, wherein comparing the determined first and second relationships with at least some of the plurality of previously determined relationships comprises:
 determining one of the plurality of previously determined relationships that is most similar to at least one of the first or second determined relationships.

* * * * *

专利名称(译)	用于确定微循环状态的患者监测器		
公开(公告)号	US9795310	公开(公告)日	2017-10-24
申请号	US14/923235	申请日	2015-10-26
[标]申请(专利权)人(译)	梅西莫股份有限公司		
申请(专利权)人(译)	Masimo公司		
当前申请(专利权)人(译)	Masimo公司		
[标]发明人	AL ALI AMMAR		
发明人	AL-ALI, AMMAR		
IPC分类号	A61B5/1455 A61B5/026 A61B5/024 A61B5/00 A61B5/02		
CPC分类号	A61B5/0261 A61B5/02007 A61B5/02427 A61B5/14551 A61B5/746 A61B5/6801 A61B5/7275 A61B5/7282 A61B5/14552		
代理机构(译)	KNOBBE, MARTENS, 奥尔森 & BEAR LLP		
优先权	13/101093 2014-03-04 US 61/332155 2010-05-06 US		
其他公开文献	US20160113527A1		
外部链接	Espacenet USPTO		

摘要(译)

由于生理监测传感器的放置通常位于位于身体末端的传感器位置处，微循环状态（例如血管是否被阻塞或打开）可对传感器部位处的读数产生显著影响。因此，希望提供一种能够区分血管微循环状态的患者监测器和/或生理监测传感器。在一些实施例中，患者监测器和/或传感器基于微循环状态提供警告和/或补偿测量。在一些实施例中，可由患者监测器和/或传感器实现的微循环确定过程用于确定患者的微循环状态。

