



US010589110B2

(12) **United States Patent**  
**Oskin et al.**

(10) **Patent No.:** **US 10,589,110 B2**  
(45) **Date of Patent:** **Mar. 17, 2020**

(54) **WEARABLE THERAPEUTIC DEVICE**

(71) Applicant: **ZOLL MEDICAL CORPORATION**,  
Chelmsford, MA (US)

(72) Inventors: **Emil Oskin**, Natrona Heights, PA (US);  
**Philip C. Skalos**, Munhall, PA (US);  
**Thomas E. Kaib**, Irwin, PA (US)

(73) Assignee: **ZOLL Medical Corporation**,  
Chelmsford, MA (US)

(\* ) Notice: Subject to any disclaimer, the term of this  
patent is extended or adjusted under 35  
U.S.C. 154(b) by 0 days.

(21) Appl. No.: **16/257,854**

(22) Filed: **Jan. 25, 2019**

(65) **Prior Publication Data**

US 2019/0224487 A1 Jul. 25, 2019

**Related U.S. Application Data**

(63) Continuation of application No. 14/630,947, filed on  
Feb. 25, 2015, now Pat. No. 10,226,638, which is a  
(Continued)

(51) **Int. Cl.**

**A61N 1/39** (2006.01)  
**A61N 1/04** (2006.01)

(Continued)

(52) **U.S. Cl.**

CPC ..... **A61N 1/3918** (2013.01); **A61B 5/0402**  
(2013.01); **A61B 5/6804** (2013.01);  
(Continued)

(58) **Field of Classification Search**

CPC ..... A61N 1/3918; A61N 1/04; A61N 1/0484;  
A61N 1/3968; A61N 1/3993; A61B  
5/6804; A61B 5/0402

See application file for complete search history.

(56) **References Cited**

U.S. PATENT DOCUMENTS

4,016,868 A 4/1977 Allison  
4,094,310 A 6/1978 McEachern et al.  
(Continued)

FOREIGN PATENT DOCUMENTS

DE 2644236 C3 4/1981  
EP 0295497 B1 9/1993  
EP 0335356 B1 3/1996  
EP 1455640 B1 1/2008  
EP 1720446 B1 7/2010  
JP 5115450 A 5/1993  
WO 200002484 A1 1/2000  
WO 2004054656 A1 7/2004  
WO 2009137683 A2 11/2009

OTHER PUBLICATIONS

American Journal of Respiratory and Critical Care Medicine, vol.  
166, pp. 111-117 (2002), American Thoracic Society, ATS State-  
ment: Guidelines for the Six-Minute Walk Test, available at [http://](http://ajrcm.atsjournals.org/cgi/content/full/166/1/111)  
[ajrcm.atsjournals.org/cgi/content/full/166/1/111](http://ajrcm.atsjournals.org/cgi/content/full/166/1/111).

(Continued)

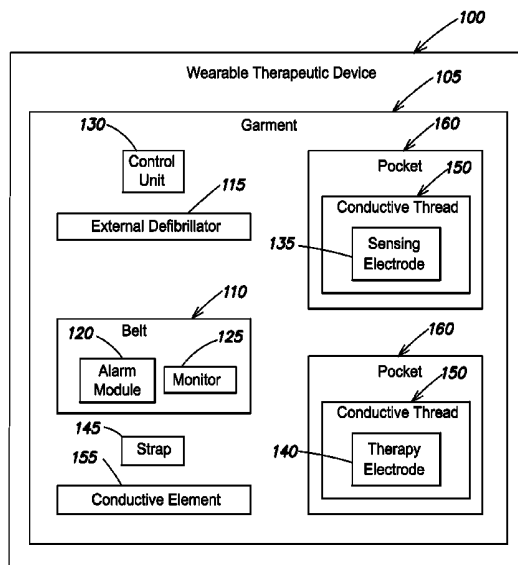
*Primary Examiner* — Ryan W Sherwin

(74) *Attorney, Agent, or Firm* — ZOLL Medical  
Corporation

(57) **ABSTRACT**

A wearable monitoring device is provided. The wearable  
monitoring device includes a garment to hold an electrode,  
be worn about a subject, and include an orientation circuit.  
The monitoring device also includes a control unit coupled  
to the orientation circuit capable of measuring at least one  
parameter associated with the orientation circuit and deter-  
mine whether the electrode is positioned in the garment with  
the conductive surface oriented towards the subject based on  
the at least one parameter.

**17 Claims, 6 Drawing Sheets**



**Related U.S. Application Data**

- continuation of application No. 13/315,894, filed on Dec. 9, 2011, now Pat. No. 9,007,215.
- (60) Provisional application No. 61/530,585, filed on Sep. 2, 2011, provisional application No. 61/421,970, filed on Dec. 10, 2010.
- (51) **Int. Cl.**  
*A61B 5/0402* (2006.01)  
*A61B 5/00* (2006.01)
- (52) **U.S. Cl.**  
 CPC ..... *A61N 1/04* (2013.01); *A61N 1/0484* (2013.01); *A61N 1/3968* (2013.01); *A61N 1/3993* (2013.01)

**(56) References Cited**

## U.S. PATENT DOCUMENTS

4,632,122 A 12/1986 Johansson et al.  
 4,763,660 A 8/1988 Kroll et al.  
 4,827,943 A 5/1989 Bomn et al.  
 4,928,690 A 5/1990 Heilman et al.  
 4,978,926 A 12/1990 Zerod et al.  
 5,007,427 A 4/1991 Suzuki et al.  
 5,062,834 A 11/1991 Gross et al.  
 5,078,134 A 1/1992 Heilman et al.  
 5,348,008 A 9/1994 Bomn et al.  
 5,365,932 A 11/1994 Greenhut  
 5,454,376 A 10/1995 Stephens et al.  
 5,472,453 A 12/1995 Alt  
 5,662,689 A 9/1997 Elsberry et al.  
 5,718,242 A 2/1998 McClure et al.  
 5,738,102 A 4/1998 Lemelson  
 5,741,306 A 4/1998 Glegyak et al.  
 5,758,443 A 6/1998 Pedrazzini  
 5,792,190 A 8/1998 Olson et al.  
 5,929,601 A 7/1999 Kaib et al.  
 5,944,669 A 8/1999 Kaib  
 6,016,445 A 1/2000 Baura  
 6,047,203 A 4/2000 Sackner et al.  
 6,065,154 A 5/2000 Hulings et al.  
 6,097,982 A 8/2000 Glegyak et al.  
 6,097,987 A 8/2000 Milani  
 6,169,397 B1 1/2001 Steinbach et al.  
 6,253,099 B1 6/2001 Oskin et al.  
 6,272,365 B1 8/2001 Ronkainen et al.  
 6,280,461 B1 8/2001 Glegyak et al.  
 6,390,996 B1 5/2002 Halperin et al.  
 6,561,975 B1 5/2003 Pool et al.  
 6,681,003 B2 1/2004 Linder et al.  
 6,690,969 B2 2/2004 Bystrom et al.  
 6,804,554 B2 10/2004 Ujhelyi et al.  
 6,827,695 B2 12/2004 Palazzolo et al.  
 6,908,437 B2 6/2005 Bardy  
 6,990,373 B2 1/2006 Jayne et al.  
 7,089,054 B2 8/2006 Palti  
 7,149,579 B1 12/2006 Koh et al.  
 7,158,822 B2 1/2007 Payne, Jr.  
 7,220,235 B2 5/2007 Geheb et al.  
 7,340,296 B2 3/2008 Stahmann et al.  
 7,453,354 B2 11/2008 Reiter et al.  
 7,488,293 B2 2/2009 Marcovecchio et al.  
 7,831,303 B2 11/2010 Rueter et al.  
 7,974,689 B2 7/2011 Volpe et al.  
 8,121,683 B2 2/2012 Bucher et al.  
 8,140,154 B2 3/2012 Donnelly et al.  
 8,271,082 B2 9/2012 Donnelly et al.  
 8,494,658 B2 7/2013 Crowe et al.  
 8,868,216 B2 10/2014 Dunagan  
 2003/0004547 A1 1/2003 Owen et al.  
 2003/0095648 A1 5/2003 Kaib et al.  
 2003/0149462 A1 8/2003 White et al.  
 2003/0158593 A1 8/2003 Heilman et al.  
 2003/0174049 A1 9/2003 Beigel et al.

2003/0195567 A1 10/2003 Jayne et al.  
 2003/0212311 A1 11/2003 Nova et al.  
 2005/0049515 A1 3/2005 Mischzynski et al.  
 2005/0131465 A1 6/2005 Freeman et al.  
 2006/0036292 A1 2/2006 Smith et al.  
 2006/0085049 A1 4/2006 Cory et al.  
 2006/0211934 A1 9/2006 Hassonjee et al.  
 2006/0270952 A1 11/2006 Freeman et al.  
 2007/0118056 A1 5/2007 Wang et al.  
 2007/0161913 A1 7/2007 Farrell et al.  
 2007/0169364 A1 7/2007 Townsend et al.  
 2007/0239220 A1 10/2007 Greenhut et al.  
 2007/0265671 A1 11/2007 Roberts et al.  
 2008/0004536 A1 1/2008 Baxi et al.  
 2008/0030656 A1 2/2008 Watson et al.  
 2008/0033495 A1 2/2008 Kumar  
 2008/0045815 A1 2/2008 Derchak et al.  
 2008/0046015 A1 2/2008 Freeman et al.  
 2008/0058884 A1 3/2008 Matos  
 2008/0249591 A1 10/2008 Gaw et al.  
 2008/0306560 A1 12/2008 Macho et al.  
 2008/0306562 A1 12/2008 Donnelly et al.  
 2008/0312520 A1 12/2008 Rowlandson et al.  
 2008/0312522 A1 12/2008 Rowlandson et al.  
 2009/0073991 A1 3/2009 Landrum et al.  
 2009/0076336 A1 3/2009 Mazar et al.  
 2009/0076340 A1 3/2009 Libbus et al.  
 2009/0076341 A1 3/2009 James et al.  
 2009/0076342 A1 3/2009 Amurthur et al.  
 2009/0076343 A1 3/2009 James et al.  
 2009/0076344 A1 3/2009 Libbus et al.  
 2009/0076345 A1 3/2009 Manicka et al.  
 2009/0076346 A1 3/2009 James et al.  
 2009/0076348 A1 3/2009 Manicka et al.  
 2009/0076349 A1 3/2009 Libbus et al.  
 2009/0076350 A1 3/2009 Bly et al.  
 2009/0076363 A1 3/2009 Bly et al.  
 2009/0076364 A1 3/2009 Libbus et al.  
 2009/0076397 A1 3/2009 Libbus et al.  
 2009/0076405 A1 3/2009 Amurthur et al.  
 2009/0076410 A1 3/2009 Libbus et al.  
 2009/0076559 A1 3/2009 Libbus et al.  
 2009/0088652 A1 4/2009 Tremblay  
 2009/0093687 A1 4/2009 Telfort et al.  
 2009/0138059 A1 5/2009 Ouwerkerk  
 2009/0234410 A1 9/2009 Libbus et al.  
 2009/0264792 A1 10/2009 Mazar  
 2009/0275848 A1 11/2009 Brockway et al.  
 2009/0287120 A1 11/2009 Ferren et al.  
 2009/0292194 A1 11/2009 Libbus et al.  
 2010/0052898 A1 3/2010 Allen et al.  
 2010/0056881 A1 3/2010 Libbus et al.  
 2010/0069735 A1 3/2010 Berkner  
 2010/0076513 A1 3/2010 Warren et al.  
 2010/0076533 A1 3/2010 Dar et al.  
 2010/0081962 A1 4/2010 Hamaguchi et al.  
 2010/0234716 A1 9/2010 Engel  
 2010/0298899 A1 11/2010 Donnelly et al.  
 2011/0288604 A1 11/2011 Kaib et al.  
 2011/0288605 A1 11/2011 Kaib et al.  
 2012/0011382 A1 1/2012 Volpe et al.  
 2012/0112903 A1 5/2012 Kaib et al.  
 2012/0123232 A1 5/2012 Najarian et al.  
 2012/0146797 A1 6/2012 Oskin et al.  
 2012/0150008 A1 6/2012 Kaib et al.  
 2012/0158075 A1 6/2012 Kaib et al.

## OTHER PUBLICATIONS

DeBock, et al., "Captopril treatment of chronic heart failure in the very old," *J. Gerontol.* (1994) 49: M148-M152.  
 International Search Report from corresponding PCT Application No. US2011064056 dated Apr. 4, 2012.  
 O'Keeffe et al., "Reproducibility and responsiveness of quality of life assessment and six minute walk test in elderly heart failure patients," *Heart* (1998) 80: 377-382.  
 Office Action from corresponding Japanese Application No. 2013-543364 dated Oct. 13, 2015.

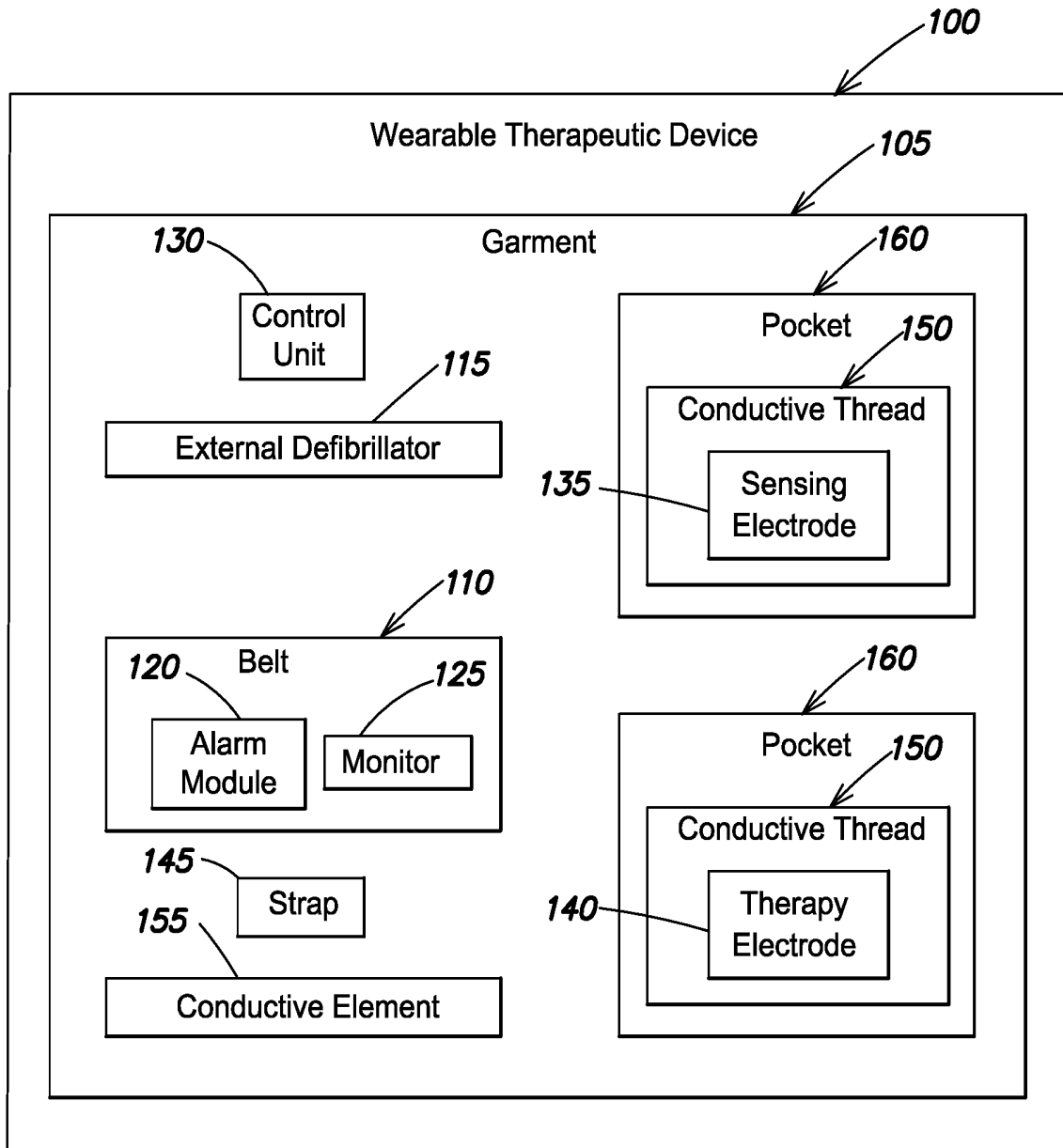


FIG. 1

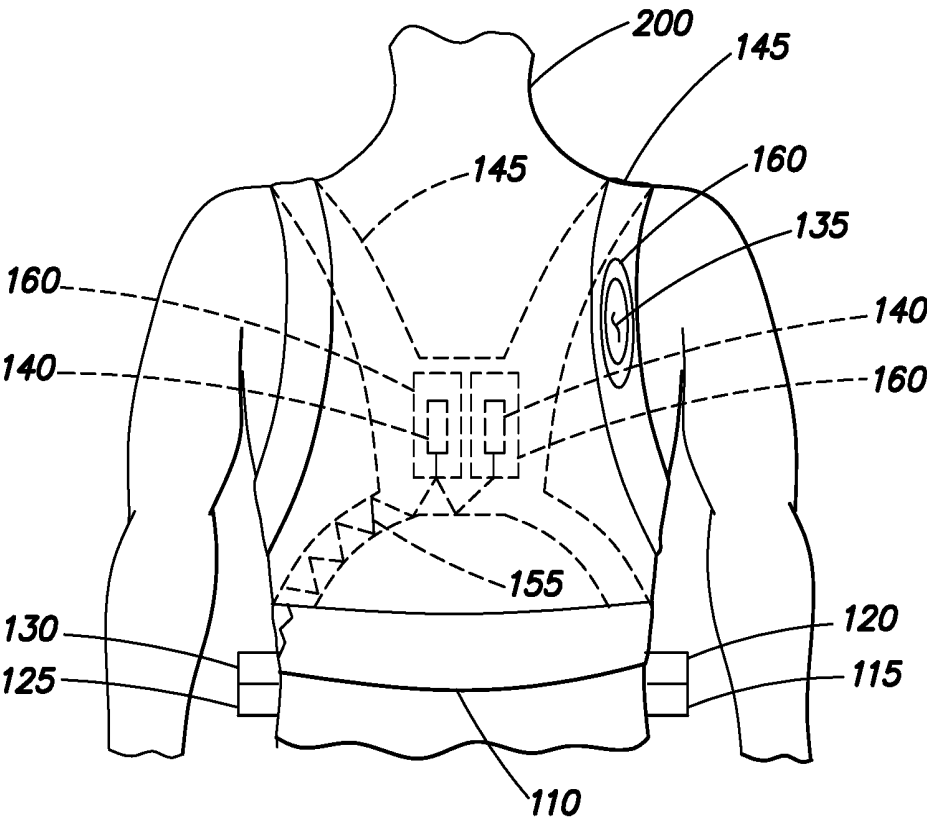


FIG. 2

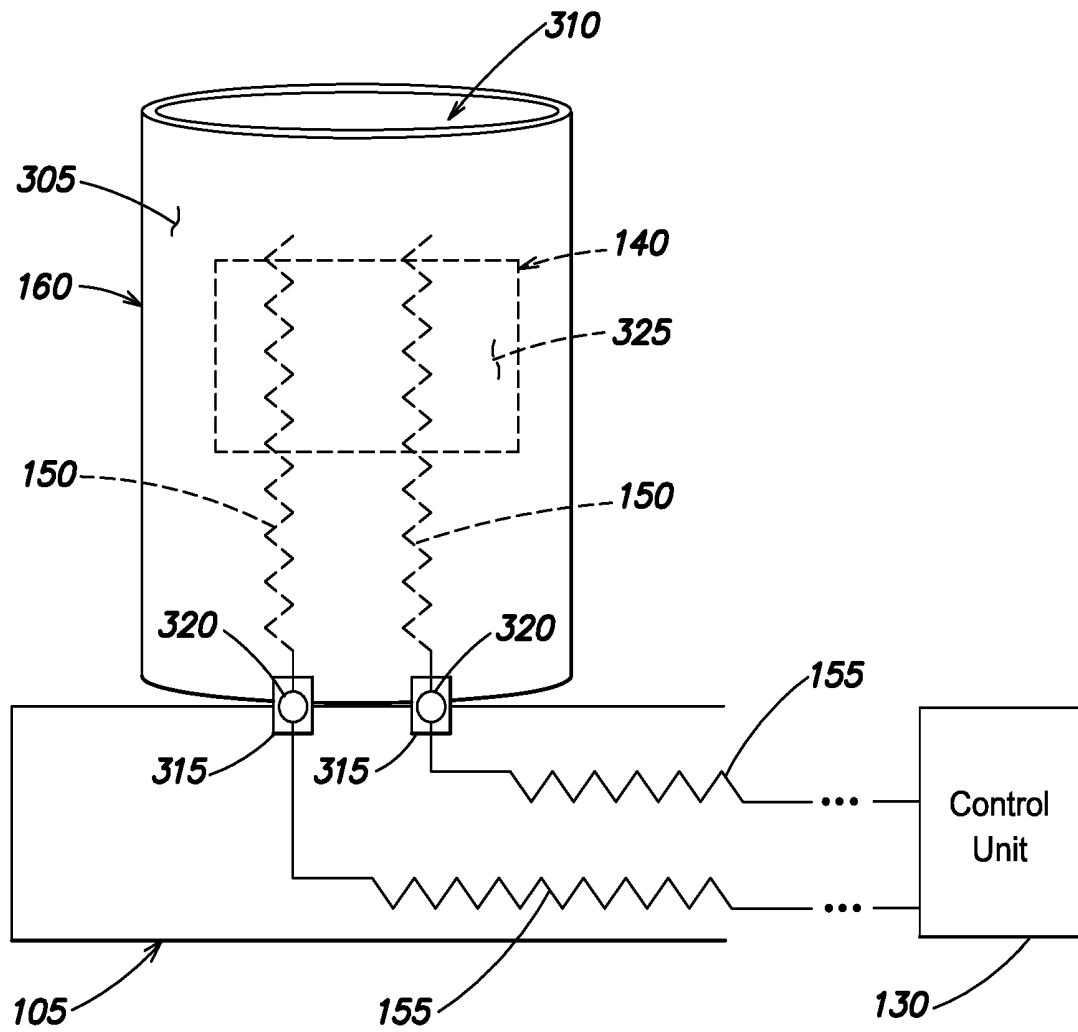


FIG. 3

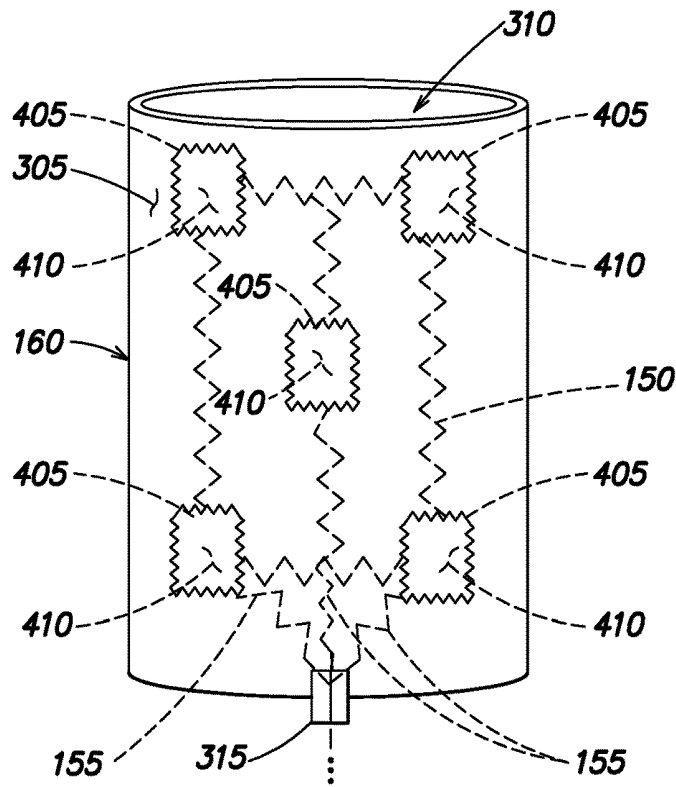


FIG. 4

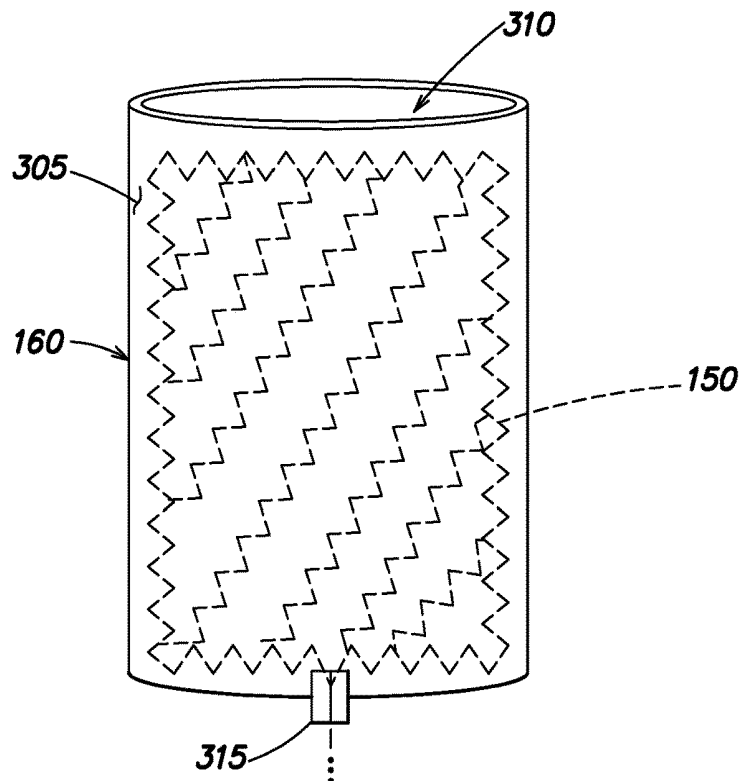
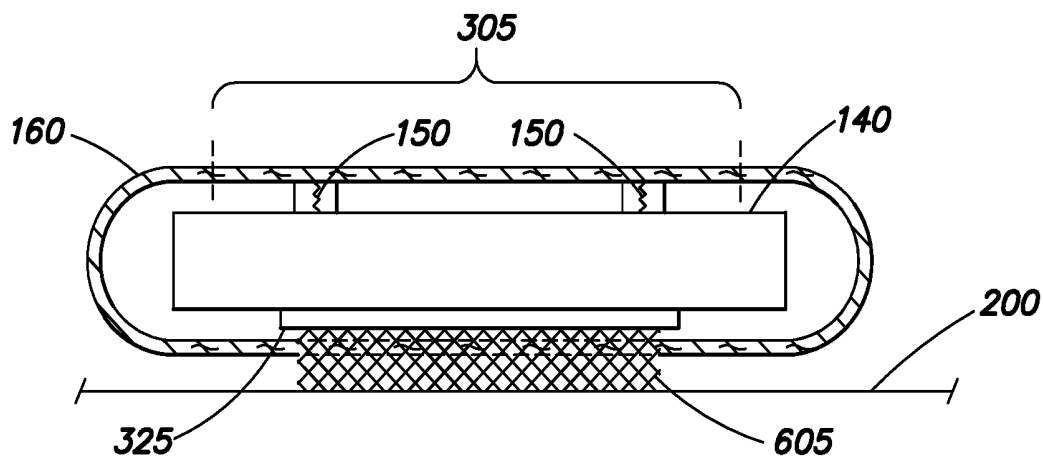
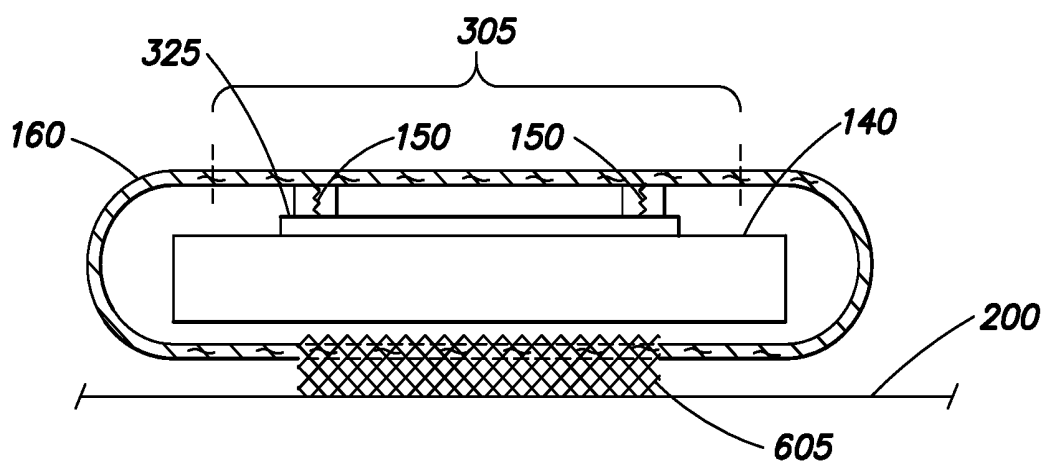


FIG. 5



**FIG. 6**



**FIG. 7**

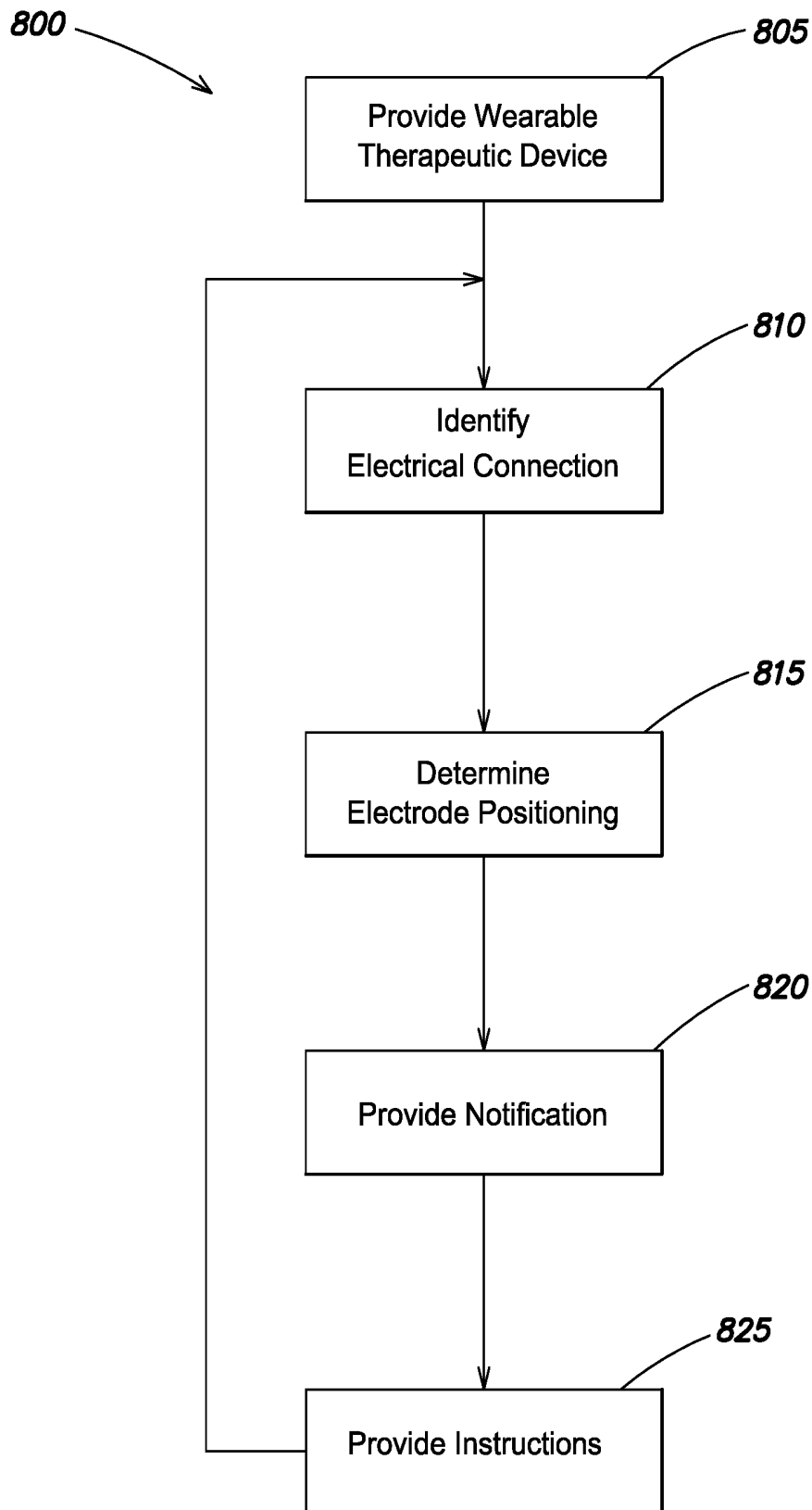


FIG. 8

**WEARABLE THERAPEUTIC DEVICE****CROSS REFERENCE TO RELATED APPLICATION**

This application claims the benefit under 35 U.S.C. § 120 as a continuation of U.S. application Ser. No. 14/630,947, titled "WEARABLE THERAPEUTIC DEVICE," filed Feb. 25, 2015, which claims the benefit under 35 U.S.C. § 120 as a continuation of U.S. application Ser. No. 13/315,894, titled "WEARABLE THERAPEUTIC DEVICE," filed Dec. 9, 2011, now U.S. Pat. No. 9,007,216, which claims priority under 35 U.S.C. § 119(e) to U.S. Provisional Application Ser. No. 61/421,970 titled "WEARABLE THERAPEUTIC DEVICE," filed Dec. 10, 2010 and to U.S. Provisional Application Ser. No. 61/530,585 titled "WEARABLE THERAPEUTIC DEVICE," filed Sep. 2, 2011, each of which is incorporated herein by reference in its entirety.

**BACKGROUND OF THE INVENTION****1. Field of the Invention**

At least one embodiment of the present invention relates generally to a wearable therapeutic device, and more specifically, to a wearable therapeutic device having electrodes configured to monitor or treat a subject.

**2. Discussion of the Related Art**

Cardiac arrest and other health ailments are a major cause of death worldwide. Various resuscitation efforts aim to maintain the body's circulatory and respiratory systems during cardiac arrest in an attempt to save the life of the victim. The sooner these resuscitation efforts begin, the better the victim's chances of survival. Health care professionals also attempt to detect and prevent conditions conducive to cardiac ailments by treating patients with drugs or by suggesting lifestyle changes. These efforts are expensive and have a limited success rate, and cardiac arrest, among other conditions, continues to claim the lives of victims.

**SUMMARY OF THE INVENTION**

Aspects and embodiments of the present invention are directed to a wearable therapeutic device that is configured to be worn by a subject. The wearable therapeutic device includes at least one electrode in, for example, a pocket of the wearable therapeutic device. When properly positioned, a conductive surface of the electrode can be disposed in the pocket to face the subject, proximate to the subject's skin so that information (e.g., cardiac information) can be sensed or treatment (e.g., a defibrillation shock) can be applied to the subject. A conductive thread can be sewn into parts of the wearable therapeutic device, including parts of the pocket that are not proximate to the subject's skin. A circuit can be formed when the conductive surface of the electrode couples with the conductive thread. When this circuit is formed, the conductive surface of the electrode is generally not proximate to the subject's skin, and not in position to apply treatment. Based on the coupling of the conductive surface of the electrode and the conductive thread, an alarm module can indicate that the electrode is or is not properly positioned.

At least one aspect is directed to a wearable therapeutic device. The wearable therapeutic device includes a garment, and the garment includes an electrode and a conductive thread. A control unit is coupled to the conductive thread and identifies an electrical connection between a conductive surface of the electrode and the conductive thread, and an

alarm module indicates information about the positioning of the electrode in the garment based on the electrical connection.

At least one other aspect is directed to a method of facilitating care of a subject. The method provides a wearable therapeutic device that includes an electrode and a conductive thread. The method also identifies an electrical connection between a conductive surface of the electrode and the conductive thread. The method provides a notification to indicate positioning information of the electrode based on the electrical connection.

At least one other aspect is directed to a method that includes providing a wearable therapeutic device including a garment. The garment houses an electrode and includes a conductive thread. The wearable therapeutic device includes a control unit coupled to the conductive thread. The control unit identifies an electrical connection between the electrode and the conductive thread. An alarm module indicates positioning information of the electrode in the garment based on the electrical connection.

The electrode can be a therapy electrode or a sensing electrode. In some embodiments, the garment includes a pocket that houses the electrode. The pocket can have a first lateral side and a second lateral side, with the conductive thread sewn into the first lateral side or into the second lateral side. In one embodiment, one lateral side includes a conductive mesh and the other includes the conductive thread. The first lateral side can be proximate to a subject, and the second lateral side can be distal to the subject, with the conductive thread disposed in the second lateral side of the pocket.

In one embodiment, a conductive element can be included in the garment. A connector can couple the conductive thread with the conductive element. The control unit is further configured to detect a current path that includes the conductive thread, the conductive surface of the electrode, and the conductive element. In one embodiment, the garment includes a belt, with a conductive element included in the belt. A connector can couple the conductive thread with the conductive element to form electrical connection between the conductive surface of the electrode and the conductive element. The connector may include a snap. The conductive element can connect with the conductive thread at one or more points of the conductive thread.

In one embodiment, the conductive thread forms a stitched pattern in the garment. The conductive thread can also form a stitched pattern including at least two substantially parallel stitched lines, or a pattern in at least one of a quadrilateral shape, a polygonal shape, an oblong shape, a circular shape, an oval shape, a round shape, and a triangular shape. In one embodiment, the conductive thread forms part of an electrical connection with the electrode.

In one embodiment, the alarm module can notify a subject wearing the wearable therapeutic device, or a health care provider, that the electrode is properly or improperly positioned. A monitor can display an indication that the electrode is properly or improperly positioned.

In some embodiments, the electrode can be housed in a pocket of the garment, and the conductive thread can be woven into the pocket. The electrode can be determined to be positioned with a conductive surface facing away from a subject. A closed circuit that includes a conductive surface of the electrode and the conductive thread can be detected, and improper positioning of the electrode can be determined. In one embodiment, the wearable therapeutic device includes a conductive element, and a current path that includes the conductive thread, the conductive surface of the

electrode, and the conductive element can be detected. In one embodiment, the conductive thread can be coupled with the conductive element.

In one embodiment, instructions can be provided to operate the wearable therapeutic device. The instructions can include at least one instruction directing a subject to position a conductive surface of the electrode proximate to the subject. The wearable therapeutic device can include a garment with a pocket to house the electrode. The pocket can be formed at least in part from a conductive mesh, and instructions can be provided to position a conductive surface of the electrode facing the conductive mesh. Instructions can also be provided to position a conductive surface of the electrode facing away from the conductive thread.

Other aspects and embodiments are discussed in detail below. The foregoing information and the following detailed description include illustrative examples of various aspects and embodiments, and are intended to provide an overview or framework for understanding the nature and character of the claimed aspects and embodiments. The drawings provide illustration and a further understanding of the various aspects and embodiments, and are incorporated in and constitute a part of this specification. The drawings, together with the remainder of the specification, serve to describe and explain the claimed aspects and embodiments.

#### BRIEF DESCRIPTION OF THE DRAWINGS

The accompanying drawings are not intended to be drawn to scale. In the drawings, each identical or nearly identical component that is illustrated in various figures is represented by a like numeral. For purposes of clarity, not every component may be labeled in every drawing. In the drawings:

FIG. 1 is a block diagram depicting a wearable therapeutic device in accordance with an embodiment;

FIG. 2 is a schematic diagram depicting a wearable therapeutic device in accordance with an embodiment;

FIG. 3 is a diagram depicting a portion of a wearable therapeutic device with conductive thread sewn into a pocket in accordance with an embodiment;

FIG. 4 is a diagram depicting a portion of a wearable therapeutic device with conductive thread sewn into a pocket in accordance with an embodiment;

FIG. 5 is a diagram depicting a portion of a wearable therapeutic device with conductive thread sewn into a pocket in accordance with an embodiment;

FIG. 6 is a cross sectional view of a wearable therapeutic device with an electrode disposed in a pocket of the wearable therapeutic device in accordance with an embodiment;

FIG. 7 is a cross sectional view of a wearable therapeutic device with an electrode disposed in a pocket of the wearable therapeutic device in accordance with an embodiment; and

FIG. 8 is a flowchart depicting a method of facilitating care of a subject in accordance with an embodiment.

#### DETAILED DESCRIPTION

The systems and methods described herein are not limited in their application to the details of construction and the arrangement of components set forth in the description or illustrated in the drawings. The invention is capable of other embodiments and of being practiced or of being carried out in various ways. Also, the phraseology and terminology used herein is for the purpose of description and should not be regarded as limiting. The use of “including” “comprising” “having” “containing” “involving” and variations thereof

herein, is meant to encompass the items listed thereafter, equivalents thereof, and additional items, as well as alternate embodiments consisting of the items listed thereafter exclusively.

Various aspects and embodiments are directed to a wearable therapeutic device that can be worn by a subject. The wearable therapeutic device can include a garment with at least one pocket to house at least one electrode. When the electrode is properly positioned, a conductive surface of the electrode faces the subject and directly or indirectly contacts the subject's skin. When properly positioned, the electrode can apply therapy, such as a defibrillation shock, to the subject. Due, for example, to subject motion or improper installation by the subject, a health care provider or manufacturer, the electrode can become improperly positioned, so that its conductive surface does not face the subject. When the electrode is improperly positioned, its conductive surface can contact a conductive thread included in the garment. This can form an electrical connection, and detection of this electrical connection can indicate that the electrode is improperly positioned to sense information about or apply therapy to the subject. An alarm module can provide a notification that the electrode is properly or improperly positioned. Corrective action can be taken to properly position the electrode.

FIG. 1 is a block diagram of wearable therapeutic device **100** in accordance with an embodiment. In one embodiment, wearable therapeutic device **100** includes the wearable therapeutic device described in commonly owned U.S. patent application Ser. No. 13/109,079, titled “Wearable Therapeutic Device,” filed on May 17, 2011, which is incorporated by reference herein in its entirety. The referenced application generally describes a wearable therapeutic device.

Wearable therapeutic device **100** can include at least one garment **105** in the shape of a vest or shirt. Garment **105** may also include at least one belt **110**. Belt **110** may be worn about a subject's waist, at a higher location about or across the subject's chest, or at other locations between the subject's waist and shoulders. Components of wearable therapeutic device **100**, including garment **105**, can be worn under, over, or partially under and partially over a subject's clothes. In one embodiment, garment **105** is formed from breathable fabric. Garment **105** may also be stretchable.

In one embodiment, wearable therapeutic device **100** includes at least one of the following elements: garment **105**, belt **110**, external defibrillator **115**, alarm module **120**, monitor **125**, control unit **130**, sensing electrode **135**, therapy electrode **140**, strap **145**, conductive thread **150**, conductive element **155**, and pocket **160**. In one embodiment, at least one of external defibrillator **115**, alarm module **120**, monitor **125**, control unit **130**, sensing electrode **135**, therapy electrode **140**, conductive thread **150**, conductive element **155**, and pocket **160** are included in or attached to garment **105**, belt **110** or strap **145**. For example, wearable therapeutic device **100** components can be fitted into open or closed pockets **160**, or otherwise attached to garment **105** via buckles, hook and loop fasteners, holsters, loops, pouches or sleeves that form part of belt **110** or strap **145**. These elements may also be integrated into belt **110** or strap **145**, and these elements may be a permanent part of belt **110** or strap **145**, or releasable from belt **110** or strap **145**. Garment **105** may include a series of belts **110** or straps **145**, and need not constitute an article of clothing. Wearable therapeutic device **100** may include one, more than one, or all of the above mentioned elements, as well as additional elements such as at least one power supply to provide power to control

unit 130, external defibrillator 115, alarm module 120, monitor 125, sensing electrodes 135, or therapy electrodes 140.

External defibrillator 115 can be included as part of wearable therapeutic device 100. For example, external defibrillator 115 can be included in garment 105, pocket 160, attached to strap 145, or disposed in belt 110. In one embodiment, external defibrillator 115 is electrically coupled to therapy electrode 140. Wearable therapeutic device 100 may include at least one receptacle having a conductive fluid encapsulated therein and housed in garment 105. For example, the receptacle can be disposed in belt 110 or strap 145, proximate to at least one of sensing electrode 135 and therapy electrode 140. In one embodiment, electrodes 135 and 140 are dry electrodes. Control unit 130 can release the conductive fluid from the receptacles to enhance an electrical connection between sensing electrode 135 or therapy electrode 140 and a subject wearing wearable therapeutic device 100 to, for example, sense electrocardiograph information about the subject or to apply treatment to the subject. The receptacles can be replaced after their conductive fluid has been released, or upon their expiration. When a shock is applied, therapy electrodes 140, the subject's body, and external defibrillator 115 form at least part of a current path. One embodiment includes at least one sensing electrode 135, one therapy electrode 140 disposed in front of the subject, e.g., proximate to the subject's chest, and two therapy electrodes 140 disposed in back of the subject, e.g., proximate to the subject's back.

Garment 105 can hold electrodes 135 and 140 in position, for example against the subject's skin around the subject's torso. Clothes or other material may be present between garment 105 and the subject's skin. When positioned against the subject, sensing electrodes 135 can sense electrocardiogram signals used by control unit 130 to monitor the subject's cardiac activity. When control unit 130 identifies an arrhythmia or other cardiac event, therapy electrodes 140, when positioned with a conductive surface facing the subject can deliver defibrillating energy to the subject to convert the arrhythmia to a normal sinus rhythm.

In one embodiment, sensing electrodes 135 and therapy electrodes 140 are securely positioned facing the subject's body in order for sensing electrodes 135 to sense cardiac, respiratory, or other information about the subject; and for therapy electrodes 140 to apply treatment to the subject. For example, sensing electrode 135 can include electrocardiogram electrodes that directly or indirectly (e.g., via clothes, a conductive protective barrier, or a conductive fluid) contact the subject's skin to sense an electrocardiogram signal with minimal artifacts. Further, a conductive surface of therapy electrode 140 can directly or indirectly contact the subject's skin to reduce impedance between therapy electrode 140 and the subject's skin and to efficiently deliver defibrillating energy to the subject, without causing burns, blisters, inflammation, or other damage to the subject's skin. In one embodiment, conductive fluid is released from replaceable receptacles that are disposed in wearable therapeutic device 100 to contact the subject's skin and surfaces of sensing electrode 135 or therapy electrode 140 to reduce impedance and improve the quality of sensed electrocardiogram signals.

In one embodiment wearable therapeutic device 100 includes at least one conductive thread 150. Conductive thread 150 can include a metallic or other conductive material, such as a conductive wire that is configured in a stitched (e.g., zig-zag) pattern. Conductive thread 150 can stretch or expand together with garment 105. Conductive

thread 150 may be at least partially shielded, jacketed, or insulated, and may include contact surfaces that are broader than the rest of conductive thread 150 and configured to contact conductive surfaces of sensing electrode 135 or therapy electrode 140. Conductive thread 150 can connect to a power supply of wearable therapeutic device 100 directly or via intervening elements such as conductive element 155 or wires. The power supply can also be associated with external defibrillator 115, control unit 130, alarm module 120, or monitor 125.

Control unit 130 can detect open or closed circuits that include conductive thread 150 and at least one of sensing electrode 135 and therapy electrode 140 to determine that electrode 135 or 140 is improperly positioned, e.g., facing away from the subject, or properly positioned, e.g., facing toward the subject, (or the area the subject occupies when the subject is wearing wearable therapeutic device 100). For example, conductive thread 150 can be located in a lateral side of pocket 160 distal from the subject. When a conductive surface of electrodes 135 or 140 contacts the conductive thread, that conductive surface is facing away from the subject, and in this example is improperly positioned to sense cardiac information or to apply therapy. Control unit 130 can detect this contact, for example by detecting current due to the closed circuit formed by the contact, to determine that electrode 135 or 140 is improperly positioned. In another example, conductive thread 150 can be located in a lateral side of pocket 160 that is proximate to the subject. When a conductive surface of electrodes 135 or 140 contacts the conductive thread, that conductive surface in this example is facing toward the subject, and properly positioned to sense cardiac information or to apply therapy. The formation of this circuit through which current may flow can be identified by control unit 130 to determine that electrode 135 or 140 is properly positioned.

In other examples, when conductive thread 150 is proximate to the subject, e.g., in a lateral side of pocket 160 closest to the subject, an open circuit can indicate that electrodes 135 or 140 are absent or improperly positioned with their conductive surfaces facing away from the subject. When conductive thread 150 is distal to the subject, e.g., in a lateral side of pocket 160 furthest from the subject, an open circuit can indicate that electrodes 135 or 140 are properly positioned with conductive surfaces facing toward the subject, and away from conductive thread 150 in this example.

In one embodiment, garment 105 or its components (e.g., belt 110 or strap 145) include at least one pocket 160 to house at least one electrode (e.g., sensing electrode 135 or therapy electrode 140). At least one pocket 160 can also house control unit 130, external defibrillator 115, alarm module 120, monitor 125, and power supplies and other electronic equipment such as memory storage units. Pocket 160 can have the form of a pouch, sleeve, slit, or flap with an opening on at least one side for entry or removal of sensing electrode 135 or therapy electrode 140. At least one button, snap, or zipper, can secure openings of pocket 160 so that, for example, therapy electrode 140 does not fall out of pocket 160 due to subject movement. In one embodiment, the opening of pocket 160 is not secured by an additional element (e.g., button, snap, hook and loop fastener, fastener, latch, or zipper) and is formed to accommodate sensing electrode 135 or therapy electrode 140. For example, at least part of pocket 160 can have elastic characteristics so that at least a portion expands to accommodate entry of sensing electrode 135 or therapy electrode 140, and contracts to secure any electrode housed in pocket 160.

In one embodiment, pocket **160** has first and second lateral sides, seams around three edges, and a fourth edge open to accommodate entry and removal of sensing electrode **135** or therapy electrode **140** into pocket **160**. The seams need not be continuous, and need not be stitched. For example, a series of buttons, hook and loop fasteners, zippers or snaps can attach the first and second lateral sides of pocket **160** to each other. The seams can have openings to accommodate wires or other electrical components connected to sensing electrode **135** or therapy electrode **140** and, for example, control unit **130**.

In one embodiment, at least one of the first and second lateral sides of pocket **160** is formed at least in part from a conductive mesh material. For example, the mesh material can be a conductive (e.g., metallic) fabric in a fine grid or mesh pattern included in the lateral side of pocket **160** that is facing the subject. The mesh material can facilitate an electrical connection between sensing electrode **135** or therapy electrode **140** and the subject's skin. In one embodiment, conductive thread **150** is included in at least one lateral side of pocket **160**. For example, a first lateral side of pocket **160** that faces away from the subject (when wearing wearable therapeutic device **100**) can include conductive thread **150**, and a second lateral side that faces toward the subject can include the conductive mesh material. Conductive thread **150** can be included in both lateral sides of pocket **160**. In one embodiment, control unit **130** detects electrical connections, (e.g., current) between conductive thread **150** and sensing electrode **135** or therapy electrode **140** to determine proper or improper positioning of electrodes **135**, **140**.

In one embodiment, prior to sensing cardiac information or applying therapy, a conductive fluid is released from capsules proximate to the mesh fabric. The capsules may be located in or proximate to pocket **160**. The conductive fluid can cover at least part of the mesh fabric and the subject's skin, and a conductive surface of sensing electrode **135** or therapy electrode **140** to reduce impedance. This can reduce artifacts in the signal from sensing electrode **135** and causes a more efficient and comfortable application of therapy from therapy electrode **140**.

In one embodiment, control unit **130** includes at least one processor as described in commonly owned U.S. patent application Ser. No. 12/833,096, titled "System and Method for Conserving Power in a Medical Device," filed on Jul. 9, 2010, which is incorporated by reference herein in its entirety. The referenced application generally describes a processing architecture configured to conserve energy. Control unit **130** can monitor a subject's condition and control wearable therapeutic device **100** operations. For example, sensing electrode **135** can sense electrical activity of the subject's heart signals. These signals can be displayed as an electrocardiograph on monitor **125**. When an arrhythmic event or other form of cardiac distress is detected, alarm module **120** can provide a warning that the subject wearing wearable therapeutic device **100** is in danger of, or is experiencing, for example, cardiac arrest. This warning may be audio, visual, haptic (e.g., vibrating alarm module **120**) or combinations thereof. This and other information can be stored in memory units associated with control unit **130** for analysis by a doctor, rescuer, the subject, or a health care provider.

In one embodiment, alarm module **120** provides an alarm that indicates that the subject will receive an electric shock from external defibrillator **115** and at least one therapy electrode **140** when the subject is wearing wearable therapeutic device **100**, with therapy electrode **140** disposed

proximate to the subject's body. Treatment in the form of an electric shock can be applied to the subject wearing wearable therapeutic device **100** unless the subject takes some action to prevent external defibrillator **115** from applying the shock. For example, alarm module **120** or monitor **125** may include an interface having at least one button or touch screen. In this example, the subject can depress a button. This indicates that the subject is conscious. In this example, the shock will not be applied while the subject depresses the button for a sufficient amount of time, or until control unit **130** determines that the electrical heart activity of the subject, detected for example by sensing electrode **135**, has returned to normal. Continuing with this example, if the subject loses consciousness, the subject may release the buttons and external defibrillator **115** can apply a shock via at least one therapy electrode **140**.

Alarm module **120** can be part of monitor **125** or a separate element of wearable therapeutic device **100**. In one embodiment, alarm module **120** alerts and instructs the subject to take corrective action to position or reposition sensing electrode **135** or therapy electrode **140**. In one embodiment, alarm module **120** provides a notification that sensing electrode **135** or therapy electrode **140** is improperly positioned. For example, an improperly positioned conductive surface of electrode **135** or **140** can be facing away from the subject, (e.g., not facing towards or not contacting the subject's skin so that information cannot be sensed or therapy cannot be applied) and can contact conductive thread **150**. This improper positioning may be due to the subject, manufacturer, or health care provider accidentally inserting electrode **135** or **140** backwards, with its conductive surface facing away from the subject; or due to movement of the subject while wearing wearable therapeutic device **100**. The contact between conductive thread **150** and a conductive surface of sensing electrode **135** or therapy electrode **140** can complete or close an electrical circuit, causing current to follow a path that includes conductive thread **150** and a conductive surface of electrode **135** or **140**. Control unit **130** can identify the closed circuit, which indicates an improperly positioned electrode **135** or **140**, and instruct alarm module **120** to notify the subject of the improper positioning.

Alarm module **120** can also provide a notification that sensing electrode **135** or therapy electrode **140** is properly positioned. For example, conductive thread **150** can be located between the subject and a conductive surface of sensing electrode **135** or therapy electrode **140**. In this example, contact between conductive thread **150** and electrode **135** or **140** indicates that electrodes **135** or **140** are properly positioned, with their conductive surfaces facing toward the subject. Control unit **130** can detect this contact and instruct alarm module **120** to notify the subject of the proper electrode **135**, **140** positioning.

Alarm module **120** can instruct the subject to tighten belt **110** to position or reposition sensing electrode **135** or therapy electrode **140**. This can reduce, for example, signal interference at sensing electrode **135** by positioning this electrode proximate to the subject's skin, or proximate to a desired portion of the subject's body where a stronger electrocardiogram signal can be sensed. This can also reduce impedance between therapy electrode **140** and the subject, or between a plurality of therapy electrodes **140**, allowing for more efficient and effective application of therapy to the subject.

Sensing electrode **135** and therapy electrode **140** can be temporary or permanent components of wearable therapeutic device **100**. Electrodes **135** and **140** can be housed

anywhere in garment **105**. For example, at least one sensing electrode **135** can be integral to garment **105** and disposed in pocket **160** proximate to the subject's chest or abdomen when the subject is wearing wearable therapeutic device **100**. At least one therapy electrode **140** can be integral to garment **105** and disposed in pocket **160** proximate to the subject's back when the subject is wearing wearable therapeutic device **100**. Sensing electrode **135** and therapy electrode **140** may include conductive surfaces such as a metal plate, foil, mesh, wires, thread, or conductive material in a generally circular, ovoid, or quadrilateral shape.

In one embodiment, sensing electrode **135** and therapy electrode **140** include conductive material woven, sewn, or embroidered into wearable treatment device **100**. The conductive material can provide connections between any of electrodes **135** and **140**, conductive thread **150**, conductive element **155**, and a battery powered external defibrillator **115**. In one embodiment, sensing electrode **135** senses the subject's electrocardiogram signals and provides the sensed information to control unit **130** or external defibrillator **115**.

The conductive material that may form at least part of sensing electrode **135** and therapy electrode **140** can have various patterns to achieve proper electrocardiogram sensing and to administer therapy. In one embodiment, sensing electrode **135** or therapy electrode **140** includes only conductive stitching. Sensing electrode **135** or therapy electrode **140** may also include conductive stitching that holds a metal foil or other conductive component in place in garment **105**, so that sensing electrode **135** or therapy electrode **140** includes both conductive thread and a conductive foil.

The conductive material can be sewn into garment **105** (e.g., belt **110**) in a zigzag pattern that can stretch as part of garment **105**. This stretchable conductive stitching connects sensing electrode **135** and therapy electrode **140** with control unit **130** or other garment **105** components (e.g., external defibrillator **115**) in the absence of additional wires. In one embodiment, the conductive material (e.g., conductive wiring) can face toward or away from the subject's skin.

In one embodiment, garment **105** includes breathable fabric, or a material that wicks heat away from the subject's body. This can reduce heat buildup between the subject's skin and sensing electrode **135** or therapy electrode **140**. Using conductive stitching for electrodes **135** or **140** reduces heat buildup in one embodiment when electrodes **135** or **140** are formed from stitched conductive material in the absence of any further metallic or conductive foil. In one embodiment, sensing electrode **135** or therapy electrode **140** are made of perforated conductive materials that allow air flow proximate to the subject's skin. This air flow can dry sweat or other fluid from the skin to avoid rashes and other skin problems as a result of heat buildup and irritation.

Garment **105** can be adjusted to snugly fit the subject. For example, portions of garment **105** that include sensing electrode **135** and therapy electrode **140** can be substantially flush against the subject, e.g., electrodes **135** and **140** remain substantially in a fixed position against the subject when the subject is moving about as part of a daily routine, or undertaking moderate physical activity. Clothing may be present between garment **105** and the subject. Alarm module **120** can alert the subject when wearable therapeutic device **100** is not sufficiently tight and snug about the subject. For example, alarm module **120** can notify the subject when the portion of garment **105** (e.g., pocket **160**) that includes sensing electrode **135** or therapy electrode **140** is not flush with or fairly tightly pressed against the patient in a substantially fixed position.

Garment **105** or its components such as belt **110** or strap **145** can expand or stretch with time or repeated use, which can loosen the fit and positioning of sensing electrode **135** and therapy electrode **140** proximate to the subject. Further, the subject's respiration will typically result in periodic expansion of garment **105**. Control unit **130** can detect this expansion and where appropriate, instruct the subject to reposition sensing electrode **135** or therapy electrode **140**, for example by tightening garment **105**.

Wearable therapeutic device **100** can include at least one conductive element **155**, located for example in garment **105**, belt **110**, or strap **145**. In one embodiment, conductive element **155** connects conductive thread **150** with control unit **130**. For example, conductive element **155** can be part of the circuit formed when conductive thread **150** and a conductive surface of sensing electrode **135** or therapy electrode **140** make electrical contact with one another. In one embodiment, a connector such as a snap or male-female connector makes the connection between conductive element **155** and conductive thread **150**.

FIG. 2 is a schematic diagram depicting wearable therapeutic device **100** in accordance with an embodiment. In the example of FIG. 2, garment **105** includes two pockets **160** proximate to the back of subject **200**. Each of these pockets **160** includes one therapy electrode **140**. While not directly illustrated in FIG. 2, pockets **160** can include conductive thread **150**, for example sewn into the inner lateral side of pocket **160** nearest to subject **200**, or the outer lateral side of pocket **160**, farthest from subject **200**. Sensing electrode **135** is also disposed in pocket **160** proximate to the chest of subject **200**, in the general vicinity of the heart. Conductive element **155** connects control unit **130** with therapy electrodes **140**. Wearable therapeutic device **100** can include more than one conductive element **155**. For example, the same or a second conductive element **155** can connect control unit **130** with at least one sensing electrode **135**. Wearable therapeutic device **100** can include other elements not illustrated in FIG. 2, such as power supplies, additional electrodes, and additional straps across the chest of subject **200** that can include conductive element **155**. In one embodiment, at least one therapy electrode **140** is located in a pocket **160** in front of subject **200**, proximate to the chest.

In one embodiment, control unit **130** determines the orientation of sensing electrodes **135** or therapy electrodes **140** to determine if they are properly positioned with a conductive surface of electrodes **135**, **140** facing toward subject **200** or improperly positioned with a conductive surface of electrodes **135**, **140** facing away from subject **200**. Control unit **130** can instruct alarm module **120** to provide a notification to subject **200**. The notification can instruct subject **200** to position or reposition sensing electrode **135** or therapy electrode **140**. The notification can also indicate that an arrhythmic cardiac event has been detected, based on information from sensing electrode **135**, and provide a warning that therapy has been or will be applied within a time period of, for example, a few seconds.

FIG. 3 depicts a portion of garment **105** where pocket **160** includes conductive thread **150** in accordance with an embodiment. With reference to FIG. 3, conductive thread **150** can be sewn into the fabric of lateral side **305** of pocket **160**. Lateral side **305** can be the interior lateral side of pocket **160** that faces inward toward the subject when the subject is wearing wearable therapeutic device **100**, or can be the exterior lateral side of pocket **160** that faces outward away from the subject when the subject is wearing wearable therapeutic device **100**. In one embodiment, the second lateral side of pocket **160**, not visible in FIG. 3, includes a

conductive mesh that lowers impedance of the electrical connection between, for example, therapy electrode 140 and the subject.

In one embodiment, opening 310 of pocket 160 receives sensing electrode 135 or therapy electrode 140. One or more flaps, buttons, snaps, fasteners, latches, hook and loop fasteners, or zippers may close opening 310 when electrode 135 or 140 is disposed in pocket 160. Electrodes 135 or 140 can be removed from pocket 160 to be replaced, recharged, repaired, or repositioned. One or more connectors 315 such as conductive snaps 320 can couple conductive thread 150 with conductive element 155. Control unit 130 can receive as input information from conductive element 155 to determine that conductive thread 150 is or is not in contact with a conductive surface of electrode 135 or 140.

At least one therapy electrode 140 can be disposed in pocket 160, as depicted in FIG. 3. Sensing electrodes 135 may also be disposed in pockets 160. In one embodiment, conductive surface 325 of therapy electrode 140 contacts conductive thread 150 sewn into lateral side 305 of pocket 160. Control unit 130 can determine that this contact has been made, for example by sensing current in conductive element 155, to identify the direction in which conductive surface 325 is facing, e.g., inward toward the subject or outward away from the subject. Control unit 130 can then instruct therapy electrode 140 and defibrillator 115 to apply treatment (e.g., when therapy electrode 140 is properly positioned) or to withhold treatment (e.g., when therapy electrode 140 is improperly positioned). Control unit 130 with alarm module 120 or monitor 125 can also notify the subject of proper or improper positioning, or instruct the subject to reposition therapy electrode 140 or garment 105.

FIG. 4 depicts a portion of garment 105 where pocket 160 includes conductive thread 150 in accordance with an embodiment. Conductive thread 150 can form various patterns in lateral side wall 305 of pocket 160. For example, conductive thread 150 can be woven into the fabric of pocket 160 to form a series of lines, each line substantially parallel to an edge of lateral side 305, with a conductive patch 405 disposed in each of the four corners of lateral side 305. An additional conductive patch 405 may be located substantially in the center of lateral side 305, with conductive thread 150 connecting the central conductive patch 405 with the rest of the pattern. Conductive patches 405 can include conductive thread 150 around their edges, with central portion 410 being made of the same material as the rest of lateral side wall 305, or central portion 410 can include conductive material, such as a mesh, connected to conductive thread 150. One or more conductive elements 155 can connect with conductive thread 150 at one or at a plurality of different points of conductive thread 150, such as at one or more conductive patches 405, or at the corner areas of lateral side wall 305. In one embodiment, a plurality of conductive elements 155 connects with a plurality of conductive threads 150 at lateral side 305.

FIG. 5 depicts a portion of garment 105 where pocket 160 includes conductive thread 150 in accordance with an embodiment. Conductive thread 150 can be woven around the edges of lateral side 305 with a plurality of substantially parallel lines of conductive thread 150 running diagonally across lateral side 305. The substantially parallel lines may or may not be evenly spaced. Other configurations are possible. For example, conductive thread 150 may form serpentine, circular, oval, quadrilateral, coiled, or triangular shapes on lateral side 305. In one embodiment, conductive thread 150 is woven into lateral side 305 sufficiently spaced so that conductive surface 325 contacts conductive thread

150 when sensing electrode 135 or therapy electrode 140 is disposed in pocket 160 with conductive surface 325 facing lateral side 305. Conductive elements 155 can connect with conductive thread 150 at multiple points of conductive thread 150.

FIG. 6 depicts a cross sectional view of garment 105 with therapy electrode 140 disposed in pocket 160. Conductive surface 325 is facing toward conductive mesh 605 and subject 200, away from conductive thread 150, and in this example is properly positioned to apply treatment to subject 200 because conductive surface 325 is in contact with subject 200 via conductive mesh 605. Intervening elements such as conductive fluid or clothes can be present. Conductive thread 150 is woven into lateral side 305 of pocket 160 and not in electrical contact with conductive surface 325. In one embodiment, control unit 130 can determine that therapy electrode 140 is properly positioned in pocket 160 based on the absence of an electrical connection between conductive surface 325 and conductive thread 150. In one embodiment, sensing electrodes are disposed in pocket 160.

In one embodiment, sensing electrode 135 or therapy electrode 140 includes a plurality of conductive surfaces 325. For example, rather than a single continuous conductive surface 325, therapy electrode 140 can have two separate conductive surfaces 325 with an insulating or non-conductive gap between them. In this example, a closed circuit forms when conductive thread 150 bridges the gap and contacts each of the two (or other plurality) of conductive surfaces 325. Control unit 130 can determine that therapy electrode 140 is improperly positioned in pocket 160 based on the electrical connection between both conductive surfaces 325 and conductive thread 150, or that therapy electrode 140 is properly positioned in pocket 160 based on an absence of an electrical connection.

FIG. 7 depicts a cross sectional view of garment 105 with therapy electrode 140 disposed in pocket 160. Conductive surface 325 is facing toward conductive thread 150, away from conductive mesh 605 and subject 200, and in this example is improperly positioned to apply treatment to the subject because conductive surface 325 is not directly or indirectly in contact with subject 200. Conductive thread 150 is woven into lateral side 305 of pocket 160 and is in electrical contact with conductive surface 325. In one embodiment, control unit 130 can detect this electrical connection and based on this connection determine that therapy electrode 140 is improperly positioned in pocket 160. It should be appreciated that the therapy electrode 140 could have a plurality of conductive surfaces 325 separated by an insulating or non-conductive gap, with the presence of an electrical connection between the conductive surfaces 325 (due to the presence of the conductive thread) being indicative of improper positioning. In one embodiment, sensing electrodes may also be disposed in a pocket similar to that of pocket 160.

In one embodiment, surfaces of pocket 160 can include a pressure sensor such as a spring loaded sensor or piezoelectric sensor to detect contact with conductive thread 150, as an alternative or complement to conductive surface 325. Sensing electrodes 135 and therapy electrodes 140 can also include pressure sensors to detect contact with surfaces of pocket 160. These pressure sensors can include conductive elements to detect electrical connections with garment 105 components such as conductive surface 325 or conductive thread 150. These pressure sensors can also determine that garment 105 is properly fitted on the subject with the

appropriate amount of tension to hold garment components such as therapy electrodes **140** in position suitable to deliver treatment to the subject.

FIG. **8** is a flowchart depicting a method **800** of facilitating care of a subject. In one embodiment, method **800** includes an act of providing a wearable therapeutic device (ACT **805**). In one embodiment, providing the wearable therapeutic device (ACT **805**) includes providing a device that includes at least one electrode, such as a therapy electrode or sensing electrode, and at least one length of conductive thread. The electrode may be housed in a garment of the wearable therapeutic device, and providing the wearable therapeutic device (ACT **805**) may include providing a device with the conductive thread included in at least part of the garment, such as a lateral side of a pocket where the electrode is included.

Providing the wearable therapeutic device (ACT **805**) may also include providing a device having a control unit configured to identify electrical connections between conductive surfaces of electrodes and conductive thread, to determine, based on the identified connections or lack thereof, positioning of an electrode, and to notify the subject of proper or improper electrode positioning. Providing the wearable therapeutic device (ACT **805**) may also include providing a device with an alarm module coupled with a control unit to notify the subject of events, conditions, or information about the subject's condition or about the condition of the wearable therapeutic device, including positioning of its components.

Method **800** can include an act of identifying an electrical connection (ACT **810**). In one embodiment, this includes identifying an electrical connection between a conductive surface of the therapy electrode and the conductive thread. For example, contact between the conductive surface and the conductive thread may form a circuit, and a control unit can sense current that follows a path between the conductive surface and the conductive thread to identify (ACT **810**) an electrical connection between these components. Other elements can be included in the circuit, such as a conductive element, e.g., a wire that connects the conductive thread with, for example, a power supply or control unit.

Method **800** can include an act of determining electrode positioning (ACT **815**). In one embodiment, determining electrode positioning (ACT **815**) is based on the identified electrical connection (ACT **810**). For example, when the conductive thread is woven into a lateral side pocket distal from a subject, or distal from the area that a subject occupies when the subject is wearing the device, electrode positioning can be determined (ACT **815**) to be improperly facing away from the subject when an electrical connection is identified (ACT **810**).

In one embodiment, electrode positioning can be determined (ACT **815**) to be proper when an electrical connection is not identified (ACT **810**). For example, an open circuit can be detected, the open circuit including at least portions of the conductive surface of the electrode and the conductive thread. When the conductive thread is located between the subject and the conductive surface of the electrode, the electrode can be determined (ACT **815**) to be properly positioned when there is contact between the conductive surface of the electrode and the conductive thread.

Method **800** may include an act of providing a notification (ACT **820**). In one embodiment, an alarm module provides notification (ACT **820**) that an electrode is properly or improperly positioned. The notification may be provided (ACT **820**) audibly, visually, or haptically by an alarm module included in the wearable therapeutic device. The

notification can be provided (ACT **820**) to the subject wearing the device or to a health care provider remote from the subject via a network connection. In one embodiment, providing the notification (ACT **820**) includes providing instructions to adjust positioning of an electrode. For example, notification can be provided (ACT **820**) that an electrode is improperly positioned in a pocket of the device, and the notification can include instructions to position the electrode with its conductive surface facing inward, toward the subject. In one embodiment, providing a notification (ACT **820**) confirms proper placement of an electrode. Notification can also be provided indicating that a cardiac event or other information has been sensed by a sensing electrode, that therapy will be applied by a treatment electrode, or that therapy has been applied by a treatment electrode. In one embodiment, providing a notification (ACT **820**) alerts bystanders or health care providers to stay away from and not touch the subject due to past application of therapy (e.g., a defibrillation shock) or imminent future application of therapy.

In one embodiment, method **800** includes an act of providing instructions (ACT **825**). For example, providing instructions (ACT **825**) can include providing instructions to operate the wearable therapeutic device, or providing instructions on how to wear the wearable therapeutic device. In one embodiment, the instructions include instructions to the subject regarding positioning of wearable therapeutic device components, such as sensing or therapy electrodes. For example, due to an identified (ACT **810**) electrical connection between an electrode and conductive thread of the garment, instructions can be provided (ACT **825**) to the subject to position an electrode proximate to an area of the subject's body, such as the center of the back, or proximate to the chest and heart of the subject, so that the electrodes are positioned to provide therapy to the subject or to sense cardiac or respiratory function of the subject.

Having now described some illustrative embodiments, it is apparent that the foregoing is illustrative and not limiting, having been presented by way of example. In particular, although many of the examples presented herein involve specific combinations of method acts or system elements, it is understood that those acts and those elements may be combined in other ways to accomplish the same objectives. Acts, elements and features discussed only in connection with one embodiment are not intended to be excluded from a similar role in other embodiments.

Note that in FIGS. **1** through **8**, the enumerated items are shown as individual elements. In actual implementations of the systems and methods described herein, however, they may be inseparable components of other electronic devices such as a digital computer. Thus, actions described above may be implemented at least in part in software that may be embodied in an article of manufacture that includes a program storage medium. In one embodiment, the program storage medium is non-transitory. The program storage medium includes data signals embodied in one or more of a carrier wave, a computer disk (magnetic, or optical (e.g., CD or DVD, or both)), non-volatile memory, tape, a system memory, and a computer hard drive.

From the foregoing, it is appreciated that embodiments of the wearable therapeutic device described herein afford an effective way to verify proper electrode positioning. The wearable therapeutic device according to various embodiments is able to determine electrode positioning based on electrical connections between the electrode and conductive thread woven into the garment so that information may be sensed accurately and so that therapy may be applied when

appropriate. This increases efficiency and effectiveness of the wearable therapeutic device.

Any references to front and back, left and right, top and bottom, inner and outer, toward and away, or upper and lower and the like are intended for convenience of description, not to limit the present systems and methods or their components to any one positional or spatial orientation.

Any references to embodiments or elements or acts of the systems and methods herein referred to in the singular may also embrace embodiments including a plurality of these elements, and any references in plural to any embodiment or element or act herein may also embrace embodiments including only a single element. References in the singular or plural form are not intended to limit the presently disclosed systems or methods, their components, acts, or elements to single or plural configurations. References to any act or element being based on any information, act or element may include embodiments where the act or element is based at least in part on any information, act, or element.

Any embodiment disclosed herein may be combined with any other embodiment, and references to “an embodiment,” “some embodiments,” “an alternate embodiment,” “various embodiments,” “one embodiment” or the like are not necessarily mutually exclusive and are intended to indicate that a particular feature, structure, or characteristic described in connection with the embodiment may be included in at least one embodiment. Such terms as used herein are not necessarily all referring to the same embodiment. Any embodiment may be combined with any other embodiment in any manner consistent with the aspects and embodiments disclosed herein.

References to “or” may be construed as inclusive so that any terms described using “or” may indicate any of a single, more than one, and all of the described terms. Intervening embodiments, acts, or elements are not essential unless recited as such.

Where technical features in the drawings, detailed description or any claim are followed by reference signs, the reference signs have been included for the sole purpose of increasing the intelligibility of the drawings, detailed description, and claims. Accordingly, neither the reference signs nor their absence have any limiting effect on the scope of any claim elements.

One skilled in the art will realize the systems and methods described herein may be embodied in other specific forms without departing from the characteristics thereof. For example, references to electrodes facing toward or away from the subject include references to where the subject would be positioned when wearing the wearable therapeutic device. Electrode positioning can be determined in the absence of the subject wearing the device. Further, conductive thread, conductive elements, electrodes, and other components can be at least partially insulated, jacketed, or sleeved. Electrode positioning can be determined to be proper or improper based on detection of electrical connections or the absence of electrical connections. For example, either an electrical connection indicating an outward facing electrode, or the absence of an electrical connection indicating an inward facing electrode, can indicate an improperly positioned electrode. In some embodiments, an electrical connection indicating an inward facing electrode, or the absence of an electrical connection indicating an outward facing electrode, can indicate a properly positioned electrode. The foregoing embodiments are illustrative rather than limiting. Scope of the systems and methods described herein is thus indicated by the appended claims, rather than

the foregoing description, and changes that come within the meaning and range of equivalency of the claims are embraced therein.

What is claimed is:

1. A wearable monitoring and treatment device comprising:

a garment configured to hold at least one therapy electrode and be worn about a patient, the garment comprising circuitry, at least a portion of such circuitry being integrated into the garment; and

at least one processor operatively coupled to the circuitry, the at least one processor configured to measure at least one parameter associated with the circuitry included in the garment, and

determine, based on the at least one parameter, whether a conductive surface of the at least one therapy electrode is positioned on the patient to apply therapy to the patient, and

cause, responsive to determining that the conductive surface of the at least one therapy electrode is not positioned on the patient so as to apply the therapy to the patient, an alarm to instruct the patient to at least one of

tighten the garment, and

reposition the at least one therapy electrode so that the conductive surface of the at least one therapy electrode is positioned to apply the therapy to the patient,

wherein the at least one processor is further configured to cause the alarm to provide a warning that the therapy will be applied within a time period.

2. The wearable monitoring and treatment device of claim 1, wherein the at least one processor is configured to cause the alarm to provide at least one of a visual, audible, or haptic notification to indicate positioning information of the wearable monitoring and treatment device about the patient.

3. The wearable monitoring and treatment device of claim 1, wherein the at least one parameter comprises at least one of a voltage, a current, and a resistance associated with the circuitry.

4. The wearable monitoring and treatment device of claim 1, wherein the at least one therapy electrode comprises a perforated conductive material.

5. The wearable monitoring and treatment device of claim 1, wherein the garment includes a pocket configured to house the at least one therapy electrode, the pocket having a first lateral side and a second lateral side; and

wherein the circuitry comprises a conductive thread that is integrated into one of the first lateral side and the second lateral side of the pocket.

6. The wearable monitoring and treatment device of claim 5, wherein the pocket comprises one of a pouch, a sleeve, a slit, or a flap.

7. The wearable monitoring and treatment device of claim 1, further comprising at least one of a belt and a strap to removably secure the garment to the patient.

8. The wearable monitoring and treatment device of claim 1, wherein the at least one processor is further configured to cause the alarm to notify a health care provider that the at least one therapy electrode is improperly positioned.

9. The wearable monitoring and treatment device of claim 1, further comprising:

a monitor operatively coupled to the at least one processor and configured to display an indication that the at least one therapy electrode is improperly positioned.

10. The wearable monitoring and treatment device of claim 1, further comprising ECG sensing electrodes configured to sense ECG activity of the patient's heart.

11. The wearable monitoring and treatment device of claim 10, wherein the at least one processor is further configured to

analyze the ECG activity; and cause the alarm to provide a warning that the patient is in danger of experiencing cardiac arrest responsive to detecting a cardiac arrhythmia event based on the ECG activity.

12. The wearable monitoring and treatment device of claim 11, wherein the at least one processor is further configured to cause the alarm to provide a notification that the at least one therapy electrode is properly positioned.

13. The wearable monitoring and treatment device of claim 1, wherein the at least one processor is further configured to cause the alarm to alert the patient that the at least one therapy electrode is not flush with the patient.

14. The wearable monitoring and treatment device of claim 1, wherein the at least one processor is further configured to cause the alarm to instruct the patient to tighten the garment responsive to at least one of movement of the garment and expansion of the garment.

15. The wearable monitoring and treatment device of claim 1, wherein the at least one processor is further configured to cause the alarm to instruct the patient to reposition the garment.

16. The wearable monitoring and treatment device of claim 1, further comprising a monitor operatively coupled to the at least one processor, wherein the at least one processor is configured to cause the alarm to be provided by the monitor.

17. A wearable monitoring and treatment device comprising:

a garment configured to hold at least one therapy electrode and be worn about a patient, the garment comprising circuitry, at least a portion of such circuitry being integrated into the garment;

an alarm; and

at least one processor operatively coupled to the circuitry, the at least one processor configured to

measure at least one parameter associated with the circuitry included in the garment, and

determine, based on the at least one parameter, whether a conductive surface of the at least one therapy electrode is positioned on the patient to apply therapy to the patient, and

cause, responsive to determining that the conductive surface of the at least one therapy electrode is not positioned on the patient so as to apply the therapy to the patient, an alarm to instruct the patient to at least one of

tighten the garment, and

reposition the at least one therapy electrode so that the conductive surface of the at least one therapy electrode is positioned to apply the therapy to the patient,

wherein the at least one processor is further configured to cause the alarm to instruct the patient to tighten the garment responsive to at least one of movement of the garment and expansion of the garment.

\* \* \* \* \*

专利名称(译)	穿戴式治疗仪		
公开(公告)号	<a href="#">US10589110</a>	公开(公告)日	2020-03-17
申请号	US16/257854	申请日	2019-01-25
[标]申请(专利权)人(译)	卓尔医学产品公司		
申请(专利权)人(译)	ZOLL医疗公司		
当前申请(专利权)人(译)	ZOLL医疗公司		
[标]发明人	OSKIN EMIL SKALOS PHILIP C KAIB THOMAS E		
发明人	OSKIN, EMIL SKALOS, PHILIP C. KAIB, THOMAS E.		
IPC分类号	A61N1/39 A61N1/04 A61B5/0402 A61B5/00		
CPC分类号	A61B5/6804 A61B5/0402 A61N1/04 A61N1/3918 A61N1/0484 A61N1/3968 A61N1/3993		
代理机构(译)	ZOLL医疗公司		
优先权	61/530585 2011-09-02 US 61/421970 2010-12-10 US		
其他公开文献	US20190224487A1		
外部链接	<a href="#">Espacenet</a>		

摘要(译)

提供了一种可穿戴的监控装置。可穿戴监控装置包括用于固定电极，被戴在对象周围的衣服以及包括定向电路。监视装置还包括耦合至定向电路的控制单元，该控制单元能够测量与定向电路相关联的至少一个参数，并基于至少一个参数来确定电极是否被定位在衣服中且导电表面朝向对象。。

